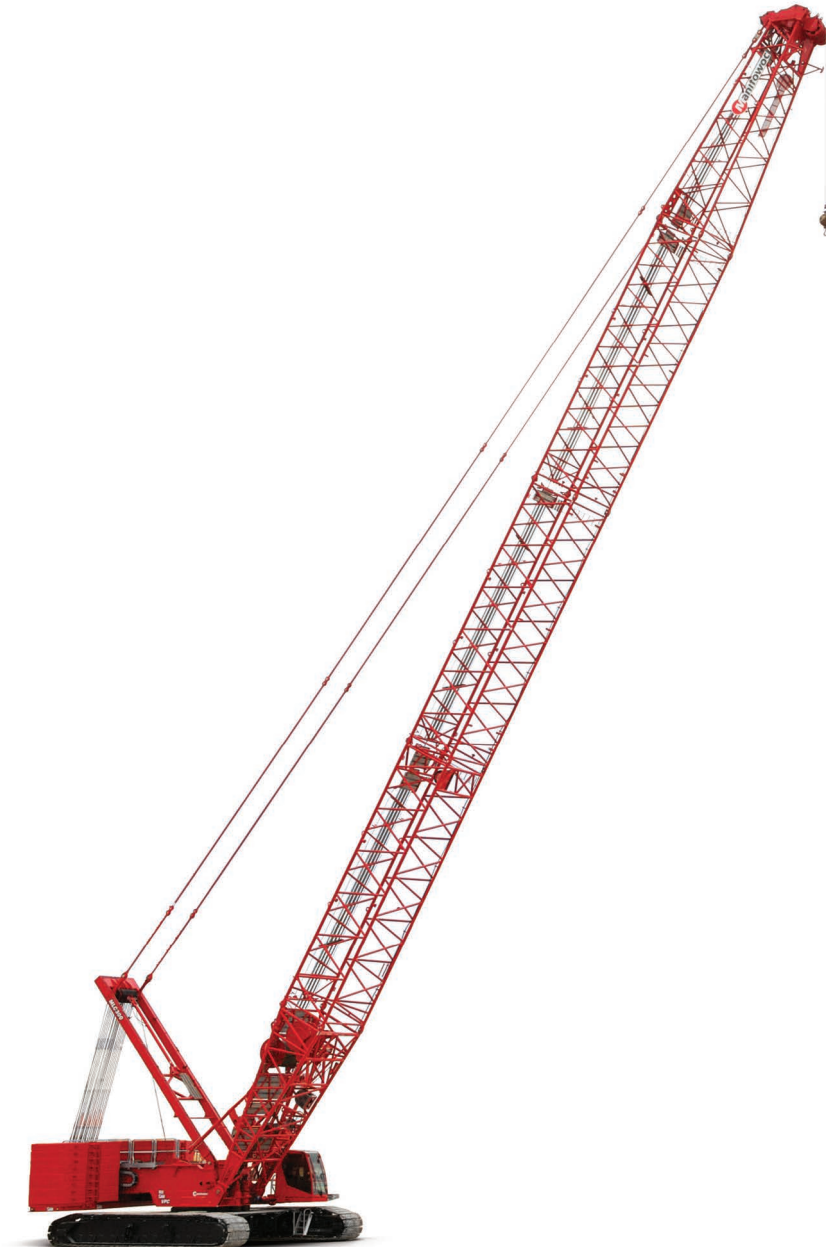


Manitowoc MLC300

605692

Parts Manual

Luffing Jib



ENU
2020-03-31

CLICK HERE TO **DOWNLOAD** THE COMPLETE MANUAL

- Thank you very much for reading the preview of the manual.
- You can download the complete manual from: www.heydownloads.com by clicking the link below



- Please note: If there is no response to CLICKING the link, please download this PDF first and then click on it.

CLICK HERE TO **DOWNLOAD** THE COMPLETE MANUAL

ENU / 2020-03-31

1. CONTROLS, ELECTRICAL
1.1.1 ESI LUFFING JIB BUTT MTG (81031018) Rev D

LIMIT SWITCH SUBASSY (810249950) Rev C				
Pos.	Part	BOM Qty.	Foot Note	Description
1	3643870	1		ELEC CONNECTOR MALE 3 POLE 13 AMP SEALED
2	4716820	1		GRIP CORD .50 NPT CABLE OD (.312-.437)
3	5726060	1		ELEC CONNECTOR WEDGE LOCK W3P
4	6806940	3		TERMINAL PIN CONTACT MALE
5	810161350	1		SWITCH LIMIT
6	810070200	1 FT		TUBING POLYOLEFIN 4.1 SHRINK RATIO 1.2
20	2971820	2 FT		CABLE - SHIELDED 16GA/3COND
21	2972110	1 FT		CABLE WIRE 18 AWG XLPE TYPE TXL BLUE

ENU / 2020-03-31

1. CONTROLS, ELECTRICAL
1.2.1 ESI LUFFING JIB TOP MTG (81031020) Rev D

ESI LUFFING JIB TOP MTG (81031020) Rev D				
Pos.	Part	BOM Qty.	Foot Note	Description
1	1424032	1		WEIGHT
2	3341010	8 FT		CHAIN STRAIGHT LINK #5/0
3	6246330	1		SHACKLE ANCHOR LOOSE PIN GALV
4	80042207	1		ELEC CONNECTOR MOUNT CLIP
5	80069038	1		CONTROLLER SCM
6	84019147 → page 1-24	1		A2B DEVICE MOD TWO SPRINGS
7	810254612	1		BRACKET RECEPTACLE SIZE 24
8	810291390	1		SENSOR ANGLE MEMS 200 DEG
10	810329362	1		HOOK BOLT J 1/2 INCH
11	7126131153	4		HHCS 5 X 20.8.8 FULL THREAD
12	7126152053	4		SCR CAP HEX HD M6-1 X 65 8.8 ZC
13	7126191253	1		HHCS M10X25 8.8 FLZN 4017
14	7126211353	2		HHCS M12X30 8.8 FLZN 4017
15	7660180008	2		HEX NUT 1/2-13 UNC GR8
16	7661130004	4		NUT HEX M5-0.8 10 PLN
17	7661150004	4		HEX NUT M6 10FLZN ISO4032
18	7661190103	1		HEX JAM NUT M10 04FLZN ISO4035
19	7661210003	2		HEX NUT M12 8FLZN ISO4032
20	7950180141	2		WASHER FLAT 0.50 X 0.12
21	7951130014	4		F WASHER 5 ST ISO 7089
22	7951130210	4		L WASHER 5 ST DIN 7980
23	7951150210	4		L WASHER 6 FLZN DIN7980
24	7951190014	8		F WASHER 10 200HV FLZN 7089
25	7951210014	2		F WASHER 12 200HV FLZN 7089
26	7951210210	2		L WASHER 12 ST DIN 7980
27	810070010	1 FT		WIRE ROPE 3/64 7X7 SS VC-1/16 CLEAR
28	810070020	2		SLEEVE 1/16 OVAL ALUMINUM
29	810284270	1		PIN SAFETY .25 DIA X 2.50 LG
30	7126191453	3		HHCS M10X35 8.8 FLZN 4017
31	7661190803	3		HEXAGON LOCK NUT

ENU / 2020-03-31

ATTACHMENTS				
Pos.	Part	BOM Qty.	Foot Note	Description
10	1759161 ➡ page 2-3	1		DECAL DANGER BOOM SECTIONS
40	810233981 ➡ page 2-5	1		TRANSITION INSERT ASSY #500/501 6M
60	810234051 ➡ page 2-7	1		INSERT ASSY 12M #501
80	810234101 ➡ page 2-11	1		INSERT ASSY 6M #501
100	810247831 ➡ page 2-15	1		BUTT ASSY #500A 6.00 M
160	810266701 ➡ page 2-19	1		TOP ASSY #501, 12M LJ
190	810295381 ➡ page 2-25	1		INSERT 12.0 M LUFF JIB EQUIP
280	810300091 ➡ page 2-27	1		INSERT 12.0 M LJ EQUIP-HEAVY
390	810316271 ➡ page 2-29	1		INSERT 6.0 M LUFF JIB EQUIP-MEDIUM
440	810253441 ➡ page 2-31	1		STRUT #502, MAIN ASSY
450	81025347 ➡ page 2-43	1		STRUT ASSY #502, JIB
480	81033831 ➡ page 2-49	1		CATWALK ASSY 6M BUTT #500A
510	81034071 ➡ page 2-51	1		CATWALK ASSY #501, LJ TOP
520	81034271 ➡ page 2-53	1		INSERT ASSY #501,12M W/SUSP
550	84037517 ➡ page 2-57	1		STOP ASSY JIB #501A
630	81036402 ➡ page 2-61	1		SPREADER FRAME 500/501 TRANS INSERT
640	81037271 ➡ page 2-63	1		CATWALK #500/501 6M INSERT
750	810340488 ➡ page 2-65	1		DECAL ASSY FOR TYPICAL INSERT (EN)
760	810340489 ➡ page 2-66	1		DECAL ASSY FOR LUFFING JIB (EN)
770	81042560A ➡ page 2-67	1		DECAL ASSY INSERT SHIPMENT
790	84020169 ➡ page 2-69	1		STRUT #502,SHIPPING ASSY

2. ATTACHMENTS
2.4 INSERT ASSY 6M #501 (810234101) Rev B

INSERT ASSY 6M #501 (810234101) Rev B				
Pos.	Part	BOM Qty.	Foot Note	Description
1	5620640	4		PIN COTTER 5/32 DIA X 1.25 LG
2	5620850	8		PIN COTTER 3/16 DIA X 1.50 LG
3	5621510	2		PIN COTTER 3/8 X 3.50 LG
4	5636400	2		PIN SAFETY .243 OD X 5.00
5	810208520	8		PIN COTTER HAIR 0.14 DIA X 3.38 LG
7	810253062	4		PIN 2 HOLE 19.1 MM DIA X 81.2 MM
8	810254722	2		CLAMP CABLE SPRING CLIP
9	810277822	2		PIN 2 HOLE 19.1 DIA X 287.0 LG
10	810277952	1		TIMBER 50.8 MM X 88.9 MM X 1325.0 MM
11	810297262	2		STRAP 6.0 M #501 JIB 31.75 X 63.0
12	810298062	4		PIN 1 HOLE W/HD 62.0 DIA X 77.8 LG
13	810298072	4		LINK #501 JIB
14	810315992	4		BRACKET STRAP
15	81035733 ▶ page 2-13	1		CATWALK ASSY 6M #501
16	81036348	2		BRACKET STRAP
17	81036354	2		BRACKET STRAP
18	81036398	2		BRACKET STRAP
19	7126151150	4		HHCS 6 X 20 8.8
20	7126191850	12		HHCS M10X55 8.8 FLZN 4014
21	7126191750	4		HHCS M10X50 8.8 FLZN 4014
22	7661150803	4		HEX LOCK NUT M6 8FLZN ISO7040
23	7661190803	16		HEXAGON LOCK NUT
24	7951150014	8		F WASHER 6 200HV FLZN ISO7089
25	7951190014	32		F WASHER 10 200HV FLZN 7089
26	7951270014	8		F WASHER 20 200HV FLZN 7089
27	A117992	4		PIN 2 HOLES 12.7 DIA X 93.0 LG
28	A118002	4		COLLAR 66 MM ID
29	A167322	2		PIN 1 HOLE W/HD 45.00 DIA X 129.0 LG
30	A167332	2		PIN 1 HOLE W/HD 70.00 DIA X 132.4 LG

ENU / 2020-03-31

CLICK HERE TO **DOWNLOAD** THE COMPLETE MANUAL

- Thank you very much for reading the preview of the manual.
- You can download the complete manual from: www.heydownloads.com by clicking the link below



- Please note: If there is no response to CLICKING the link, please download this PDF first and then click on it.

CLICK HERE TO **DOWNLOAD** THE COMPLETE MANUAL

ENU / 2020-03-31

2. ATTACHMENTS
2.10 STRUT #502, MAIN ASSY (810253441) Rev G

STRUT #502, MAIN ASSY (810253441) Rev G				
Pos.	Part	BOM Qty.	Foot Note	Description
1	1771082	2		WASHER 5.78 ID X 8.00 OD
2	5620850	12		PIN COTTER 3/16 DIA X 1.50 LG
3	5621050	4		PIN COTTER 1/4 DIA X 1.50 LG
4	5621120	2		PIN COTTER 1/4 DIA X 4.00 LG
5	5636400	9		PIN SAFETY .243 OD X 5.00
6	5638170	14		PIN HAIRPIN COTTER .148 DIA X 2.69 LG
7	5638510	2		PIN HAIRPIN COTTER .092 DIA X 1.62 LG
8	5965410	4		RING SNAP 1.865 DIA
9	5967600	8		RETAINING RING EXT FOR 2.5"SHAFT .078THK
10	810281790	1		ROLLER 50.8 101.6 TBD NYLON
11	6021740	6		ROLLER 2.08 ID X 4.00 OD X
13	810258190 ➡ page 2-23	8		SHEAVE ASSY 28MM DIA
14	810282652	2		PIN 2 HOLE 19.05 DIA X 167.8 LG
15	81031460	1		SHAFT 129.9 DIA X 1350.0 LG
16	81031494	1		GUARD WIRE ROPE
17	81032183 ➡ page 2-37	1		CATWALK ASSY #502 MAIN STRUT
19	81033375	1		PIN 50.8 DIA X 1065.0 LG
20	81033377	2		ROLLER 52.8 101.6 207 NYLON
21	81033383	1		PIN 50.8 DIA X 350.0 LG
22	81033881 ➡ page 2-39	1		SPREADER ASSY #501 MAIN STRUT
23	81033908	2		PIN 63.5 DIA. X 85.0 LG
24	81034035	3		PIN 2 HOLE 19.1 DIA X 139.0 LG
25	81034037	2		PIN 2 HOLE 19.1 DIA X 195.0 LG
26	81034176	2		COLLAR 131.0 ID X 158.8 OD X 40.0 LG
27	81034501	2		SLEEVE 200.0 OD X 131.0 ID
28	81034773	1		GUARD WIRE ROPE
29	81035062	1		LINK CONNECTING STRUT RAISING PENDANT
30	81035159	1		GUARD WIRE ROPE
31	81035191	1		PIN 66.50 DIA X 180.0 LG
32	81035210	1		SHEAVE 152.4 DIA FOR .375" WIRE ROPE
33	81035213	1		PIN 2 HOLE 9.5 DIA X 60.0 LG
34	81036879	1		ARM 502 M STRUT RAISING
35	81037339	1		SHAFT 25.4 DIA
36	81037361	2		STRAP #502 MAIN STRUT BASIC
37	81037362	2		STRAP BASIC #502 MAIN STRUT BACKSTAY
38	81037363	1		PLATE RETAINER
39	81037372	2		TUBE RD 148.0 X 8.0 X 62.0
40	81037391	1		SHAFT 129.9X324.0 LG
41	81037576	2		PIN 63.5 DIA X 62.0 LG
42	81037623	2		SPACER 158.8 OD X 131.0 ID X 28.0 LG

ENU / 2020-03-31

2.10.4 STRUT STOP MAIN STRUT #502 (81032853) Rev A

STRUT STOP MAIN STRUT #502 (81032853) Rev A				
Pos.	Part	BOM Qty.	Foot Note	Description
1	5636400	2		PIN SAFETY .243 OD X 5.00
2	5638710	2		PIN SAFETY .375 DIA X 2.25 LG
3	810234372	1		PIN QUICK RELEASE 12.0MM DIA X 75.0MM LG
4	81033015	1		PIN 2 HOLE 63.5 DIA. X 185.0 LG
5	81034130	1		STRUT STOP #502 UPPER TUBE
6	81034131	1		STRUT STOP #502, MIDDLE TUBE
7	81034132	1		STRUT STOP #502 LOWER TUBE
8	81034153	1		PIN 2 HOLE 55.0 X 176.0 LG
9	81034317	2		RETAINER #502 MAIN STRUT STOP
10	7127171153	6		HHCS M8x20 10.9 FLZN 4017
11	7127211253	2		HHCS M12x25 10.9 FLZN4017

2. ATTACHMENTS**2.13 CATWALK ASSY #501, LJ TOP (81034071) Rev A**

CATWALK ASSY #501, LJ TOP (81034071) Rev A				
Pos.	Part	BOM Qty.	Foot Note	Description
1	5460590	8		HEX NUT 3/4-10UNC GR 5
2	6124050	42		HHCS 5/16-18UNC X 1.00 GR 5
3	810166910	21		WASHER SHOULDER GRIP STRUT DIAMOND PATRN
4	810169952	6		BRACKET 4 HOLE 1.50X0.13X6.50
5	810266232	3		CATWALK 724 MM X 3667 MM
6	810272652	1		CATWALK 724 MM X 666 MM
7	810281050	2		CABLE .75-10X456.52 (IN)
8	7114153664	21		C BOLT SQ GR 4 5/16-18UNC X 4.50
9	7660152500	63		HEX LOCK NUT PA 5/16-18UNC SS
10	7950150141	105		F WASHER 5/16 ST B18.21.1 NARROW
11	7950220141	8		F WASHER 3/4" DIA

ENU / 2020-03-31

2.16 SPREADER FRAME 500/501 TRANS INSERT (81036402) Rev D

SPREADER FRAME 500/501 TRANS INSERT (81036402) Rev D				
Pos.	Part	BOM Qty.	Foot Note	Description
1	5620850	16		PIN COTTER 3/16 DIA X 1.50 LG
2	81034298	2		PIN 1 HOLE W/HD 65.0 DIA X 82.3 LG
3	81034465	4		PIN 1 HOLE W/HD 65.0 DIA X 104.3 LG
4	81036405	1		SPREADER
5	81036406	4		STRAP SPREADER #500/501
6	81036407	2		STRAP SPREADER #500/501
7	81038662	2		LINK CONNECTING
8	81034247	2		LINK CONNECTING
9	A117992	8		PIN 2 HOLES 12.7 DIA X 93.0 LG
10	A118002	8		COLLAR 66 MM ID
11	810249512	2		PIN 1 HOLE W/HD 65.0 DIA X 94.3 LG
12	84018474	4		BRACKET STRAP SPACER
13	7126213050	2		HHCS 12 X 140 8.8
14	7661210804	2		HEX LOCK NUT M12 10FLZN ISO7040
15	7951210014	4		F WASHER 12 200HV FLZN 7089

Part Number Index

0

0012042 (SPRING .75 X .105 WIRE 3.04) 1-25, 1-27
 0017152 (SPRING WASHER) 1-11, 1-15
 0034392 (SPRING 1 1/4 OD X 7 1/2 FREE HEIGHT) 1-11
 0700912 (BUSHING .762IDX.942ODX1.25LG)... 1-29

1

1424032 (WEIGHT) 1-23
 1478529 (DECAL DANGER BOOM HAZARD)... 2-4
 1622712 (COVER 6 X 7) 1-27
 1759161 (DECAL DANGER BOOM SECTIONS) 2-2
 1768092 (SPRING WASHER) 1-11, 1-15
 1768102 (ROD ACTUATOR) 1-11
 1770762 (BRACKET) 1-27
 177080001 (LEVER CASTING) 1-29
 1770804 (LEVER) 1-27
 1771082 (WASHER 5.78 ID X 8.00 OD) 2-32
 1791942 (PIN 2 HOLE .50 DIA X 3.72 LG)..... 2-21
 1791952 (COLLAR) 2-21
 181503 (ID PLATE BLANK CRANE ID) 2-66
 1953262 (PIN COTTER 2 HOLE 1.00 DIA X 4.38 LG)..... 2-16

2

2250650 (CYL ROLLER BRG 7.87 X 5.12 X 3.74) 2-24, 2-36, 2-48
 2528810 (SHSS-L 3/4 X 1.50 A574) 1-27
 2771270 (PENDANT 15 FT 0 IN) 2-33
 2897970 (BUSHING .752 ID X .937 OD) 1-19
 2971820 (CABLE - SHIELDED 16GA/3COND) 1-13, 1-17, 1-31
 2972110 (CABLE WIRE 18 AWG XLPE TYPE TXL BLUE)..... 1-13, 1-17, 1-31

3

3341010 (CHAIN STRAIGHT LINK #5/0) 1-23
 3503410 (CLOSURE PLUG BLACK HOLE 1.093/1.125") 1-15

3643870 (ELEC CONNECTOR MALE 3 POLE 13 AMP SEALED)..... 1-13, 1-17, 1-31
 3964010 (PIN SPRING SLOT 1/4 DIA X 1.50 LG)..... 1-11, 1-15

4

4292590 (FITTING 90 DEG 46756) 1-29
 4716820 (GRIP CORD .50 NPT CABLE OD (.312-.437)) 1-13, 1-17, 1-31

5

5460590 (HEX NUT 3/4-10UNC GR 5) 2-10, 2-14, 2-38, 2-50, 2-52, 2-56, 2-64
 5467630 (HEX JAM NUT 3/8-16UNC GR5) 1-25, 1-27, 1-29
 5469560 (NUT PANEL 1.69-18 UNEF-2B) 1-7, 1-21
 5620420 (PIN COTTER 1/8 DIA X 0.75 LG)..... 2-58
 5620640 (PIN COTTER 5/32 DIA X 1.25 LG)..... 2-6, 2-8, 2-12, 2-16, 2-54
 5620850 (PIN COTTER 3/16 DIA X 1.50 LG)..... 2-6, 2-8, 2-12, 2-16, 2-20, 2-26, 2-28, 2-30, 2-32, 2-40, 2-44, 2-54, 2-62
 5620870 (PIN COTTER 3/16 DIA X 2.00 LG) ... 2-60
 5621050 (PIN COTTER 1/4 DIA X 1.50 LG)..... 2-21, 2-32, 2-44
 5621060 (PIN COTTER 1/4 DIA X 1.75 LG)..... 2-6, 2-58
 5621080 (PIN COTTER 1/4 DIA X 2.25 LG)..... 2-44
 5621120 (PIN COTTER 1/4 DIA X 4.00 LG)..... 2-32
 5621490 (PIN COTTER 3/8 DIA X 2.50 LG)..... 2-54
 5621510 (PIN COTTER 3/8 X 3.50 LG)..... 2-8, 2-12, 2-20, 2-54
 5621720 (PIN COTTER 1/2 DIA X 4.00 LG)..... 2-6
 5621740 (PIN COTTER 1/2 DIA X 4.50 LG)..... 2-58
 5636400 (PIN SAFETY .243 OD X 5.00) 2-6, 2-8, 2-12, 2-20, 2-32, 2-42, 2-44, 2-54
 5637900 (PIN HAIRPIN COTTER .120 DIA X 2.38 LG)..... 2-44
 5638030 (PIN SAFETY .375 X 2.25 LG) 2-20

ENU / 2020-03-31

CLICK HERE TO **DOWNLOAD** THE COMPLETE MANUAL

- Thank you very much for reading the preview of the manual.
- You can download the complete manual from: www.heydownloads.com by clicking the link below



- Please note: If there is no response to CLICKING the link, please download this PDF first and then click on it.

CLICK HERE TO **DOWNLOAD** THE COMPLETE MANUAL