

Manitowoc

TRADITIONAL CRANE PARTS MANUAL

This manual has been prepared for and is considered part of

3000

Model

3232

Serial Number

GROUP A = Rotating Structure (Includes rotating bed, operator's cab, cases, fuel tanks, transfer pump, counterweights, guards, platforms, catwalks, machinery enclosure, horn)

GROUP B = Upperworks Machinery (Includes front, rear, and auxiliary drums, boom hoist, swing and drive shafts, hand levers, foot pedals, control linkage, rotation indicators, upperworks hydraulic components, hydraulic piping, hydraulic oil reservoir, lubrication pump and piping, blowers)

GROUP C = Air Components & Electrical (Includes control console, air piping, electric wiring, auxiliary light plant and lighting, TV monitoring, compressor and air tank)

GROUP D = Power Components - Upperworks (Includes engine or motor, radiator, auxiliary power plant, take off converters and piping, controls, VICON power lowering, torque limiter, hydraulic pumps and piping, fuel piping, battery box)

GROUP E = Lower Structure & Control (Includes carbody, crawlers, travel shafts and control, steering travel locks, hydraulic travel, travel power outriggers, carrier, pedestal, lowerworks hydraulic piping, RINGER components, barge mounting and machinery, spud drums)

GROUP F = Attachments (Includes booms, jibs, masts, tower, wire rope guides, equalizer, gantry, fairlead, timber guards, boom angle indicator, block-up limit, tag line, hook block, weight ball, upper and lower boom point, wind speed indicator, crowd and retract dipper sticks, dippers,)

O-NUMBER SECTION = (Includes lacing drawings and purchased component parts drawings referenced in sections A through F)

This manual is arranged in sections as listed above. Sections A through F are arranged by group numerical order with an index after each section tab. An alphabetical index for groups A Through F combined is located after the O-number Section. The O-number section is arranged in numerical order by O-number. Following this cover page are the Basic Specifications, Warranty Information, Tool List (if applicable) Outline Dimensions, Weights, and Dealer Listing.

CLICK HERE TO **DOWNLOAD** THE COMPLETE MANUAL

- Thank you very much for reading the preview of the manual.
- You can download the complete manual from: www.heydownloads.com by clicking the link below



- Please note: If there is no response to CLICKING the link, please download this PDF first and then click on it.

CLICK HERE TO **DOWNLOAD** THE COMPLETE MANUAL

adjustments instructions

MANITOWOC ENGINEERING CO.

A Division of The Manitowoc Company, Inc.

Manitowoc, Wisconsin

WEIGHTS – MODEL 3000

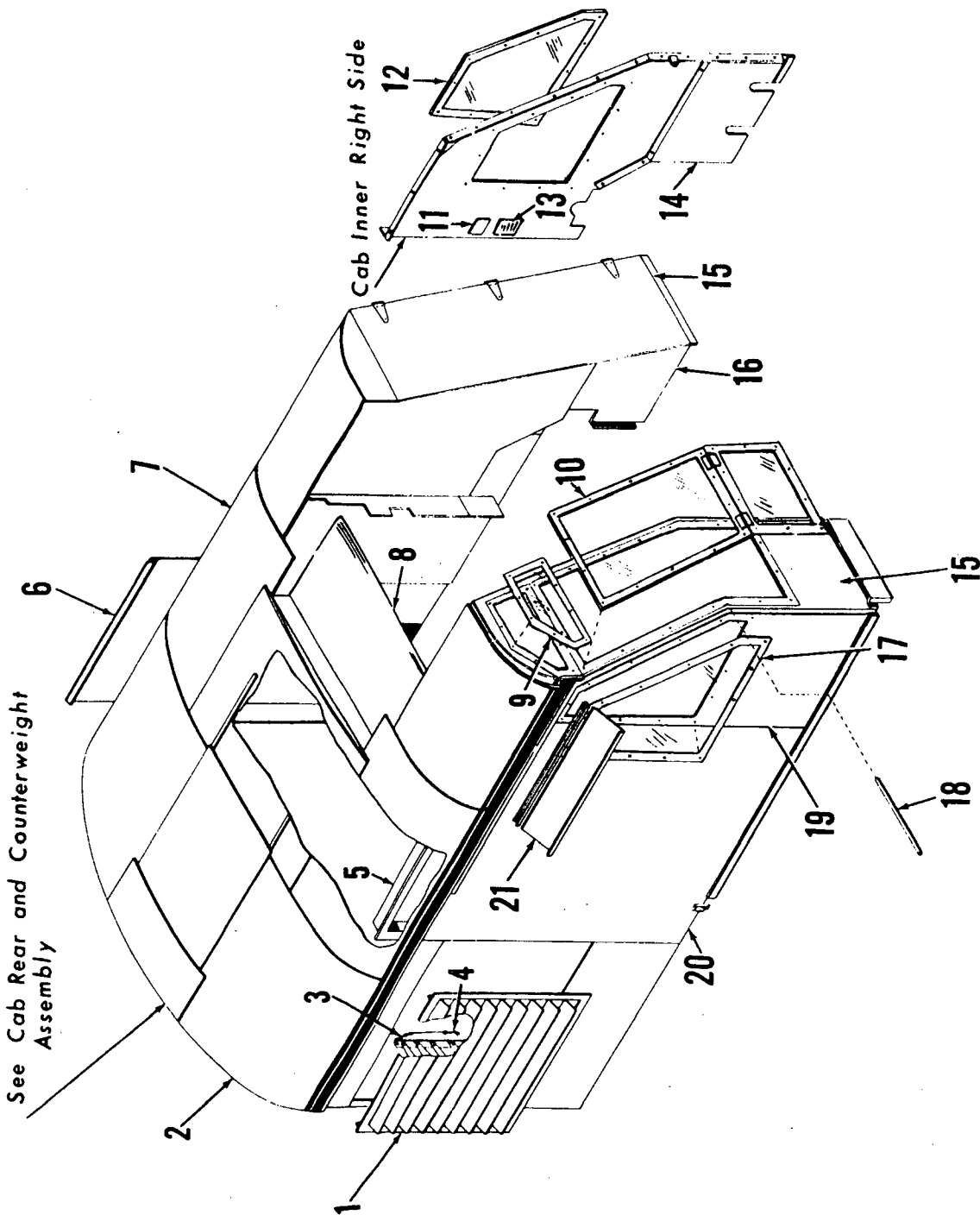
DESCRIPTION

WEIGHT IN POUNDS

Complete Machine equipped as 40 Ton Lifterane W/80' Boom #1.	130,600 L(Approx.)
Complete Machine equipped as 50 Ton Lifterane W/80' Boom #4.	145,570 (Approx.)
Complete Machine equipped as Standard Shovel	137,775 (Approx.)
Complete Machine equipped as Special Shovel.	156,420 (Approx.)
Rotating Bed & Upper Works W/any Engine, Std. Equip. and Rear Cwt. Casting Nonremovable.	55,617 Prior to June 1956
Rotating Bed & Upper Works W/any Engine, Std. Equipment but less Counterweight	43,417
Carbody W/Roller Path, Ring Gear and King Pin – Less Crawlers.	14,730
14'7" Crawler W/33" Treads (Double weight for two)	13,546
16'4" Crawler W/33" Treads (Double weight for two)	15,374
18' " Crawler W/33" Treads (Double weight for two)	17,063

	PART NO.	WEIGHT IN POUNDS
Removable Cwt.	30121.	10,000 Prior to June 1956
Removable Cwt.	30182.	11,500 Prior to June 1956
Removable Cwt.	31185.	23,500 Prior to June 1956
Self-removing Counterweight, 1 or 2 Pc. for 50 Ton Machine		35,190
Self-removing Counterweight, 1 Pc. for 40 Ton Machine		22,500

	PART NO.	WEIGHT IN POUNDS
Boom Base – #4 Boom	42131 or 40837.	3,540
Boom Top (Equipped)	41519.	4,345
10' Insert – Parallel	30758.	1,110
15' Insert – Parallel	21459.	1,430
20' Insert – Parallel	30760.	1,890
25' Insert – Cambered	30761.	2,200
30' Insert – Cambered	40840.	2,870
40' Insert – Cambered	30762.	3,420
45' Insert – Cambered	30763.	4,100
50' Insert – Cambered	30764.	4,750
10' Insert – Tapered	31783.	1,150
25' Insert – Tapered	31898.	2,490
10' Insert – Between Tapered Sections	31167.	1,190
15' Insert – Between Tapered Sections	30957.	1,750
20' Insert – Between Tapered Sections	30649.	2,116
Boom Base – #1 Boom	40835.	2,870
Boom Top (Equipped)	41503.	3,655
10' Insert – Parallel	30757.	690
20' Insert – Parallel	30759.	1,290
30' Insert – Cambered	40839.	1,950
25' Insert – Tapered	41971.	1,800
10' Insert – Tapered	31761.	796
Gantry & Back Hitch Straps.		1,380
Tagline – Model 1248.		670
Block Assembly W/Sheaves & Cheek Weights.		1,200
Jib – 15' W/Strut, Less Cable		1,250
Jib – 20' W/Strut, Less Cable		1,450

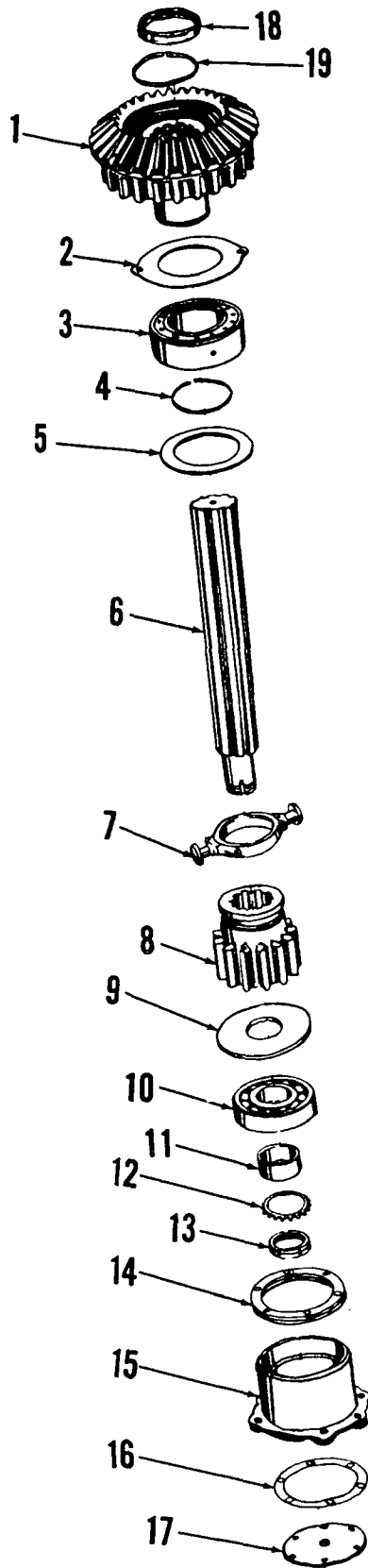


MASTER

MANITOWOC ENGINEERING CO.

A Division of The Manitowoc Company, Inc.

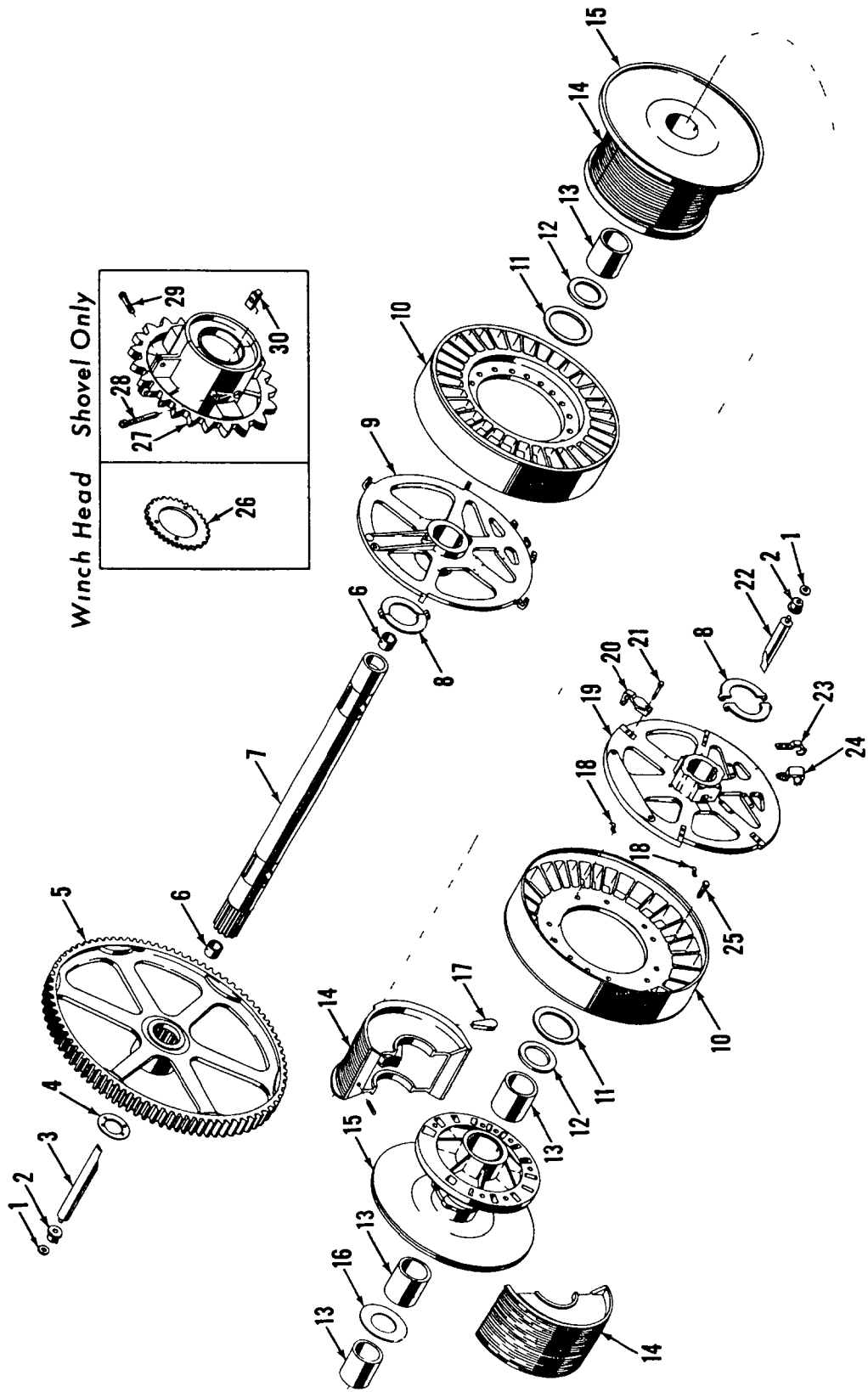
Manitowoc, Wisconsin



ILLUST. No. 20004-A-1

MATERIAL LIST ON BACK

SLIDE PINION SHAFT



ILLUST No 40226-A-1

MATERIAL LIST ON BACK

DRUM SHAFT

MASTER

40226 A1

CLICK HERE TO **DOWNLOAD** THE COMPLETE MANUAL

- Thank you very much for reading the preview of the manual.
- You can download the complete manual from: www.heydownloads.com by clicking the link below



- Please note: If there is no response to CLICKING the link, please download this PDF first and then click on it.

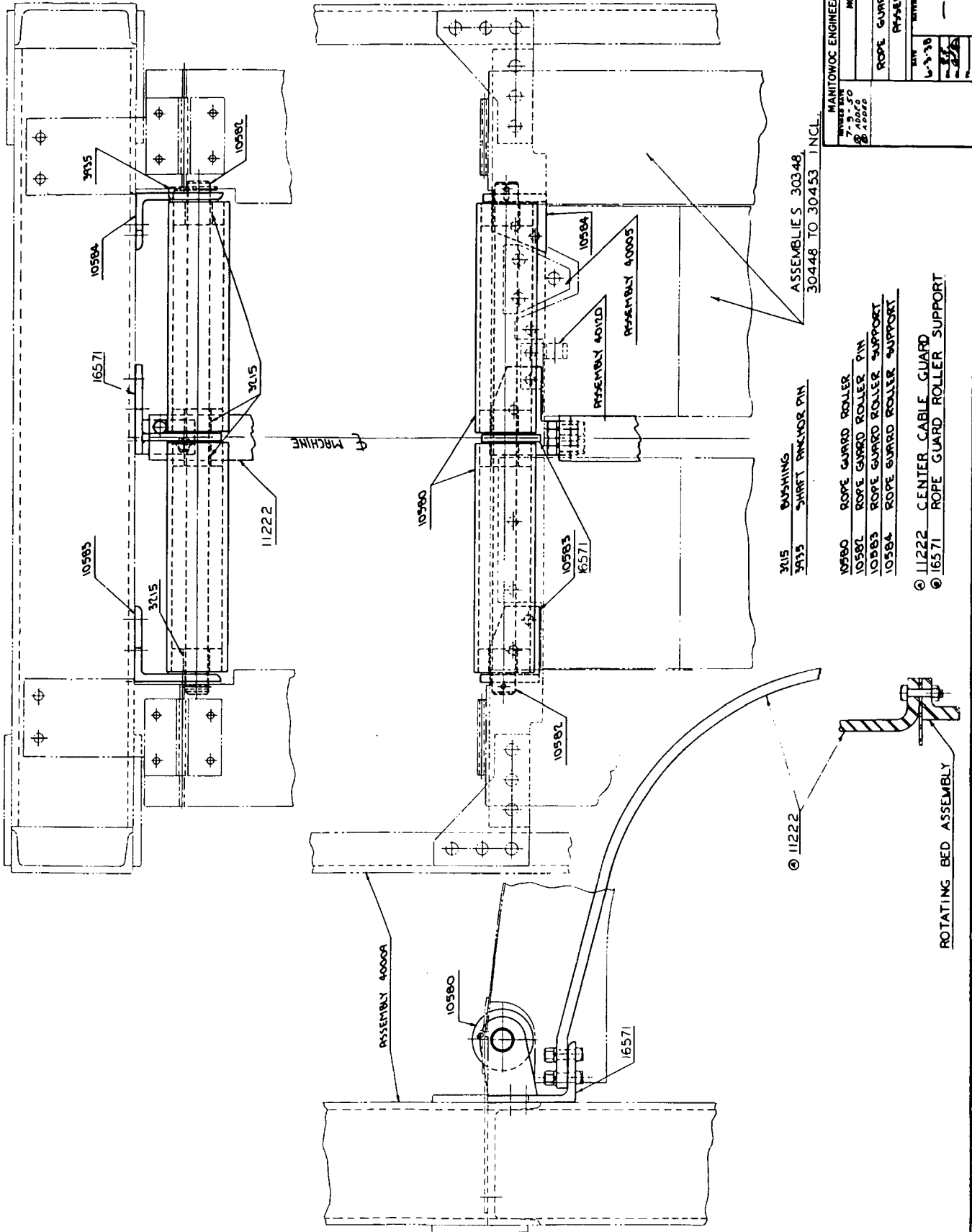
CLICK HERE TO **DOWNLOAD** THE COMPLETE MANUAL

PARTS MANUAL ALPHABETICAL INDEX
Group D - Power Components

DESCRIPTION	PUBLICATION	REV	START DATE	END DATE	GROUP
Engine & Clutch Control	2092	A1	06/13/39	06/20/47	D0501
Engine & Clutch Control	30268	A1	01/11/39	07/10/53	D0501
Engine & Clutch Control	40022	A1	05/04/45	02/08/54	D0501
Power Plant	40166	-	01/04/39		D0101
Power Plant	40166	-	11/03/43		D0101
Power Plant	40166	A	07/10/44	12/08/44	D0101
Power Take Off - Transmission Case	40696	A1	07/11/46	12/18/53	D0401

PARTS MANUAL ALPHABETICAL INDEX
Group E - Lower Structure & Control

DESCRIPTION	PUBLICATION	REV	START DATE	END DATE	GROUP
Carbody	40292	B1	08/14/40	07/06/55	E0101
Carbody Lubrication Piping	20197	A	08/22/45		E0102
Crawlers	40176	-	04/08/38	03/04/54	E0201
Horizontal Travel Shaft	30067	A1	12/02/33	06/23/47	E0401
King Pin & Vertical Travel Shaft	20460	-	11/02/38		E0301
Steering Control	40057	-	12/11/33	10/26/53	E0501
Travel Lock Control	30071	-	01/03/34	02/09/51	E0601



ASSEMBLIES 30348,
30448 TO 30453 INCL.

- 3015 BUSHING
- 3035 SHIRT PUNCHOR PIN
- 10580 ROPE GUARD ROLLER
- 10581 ROPE GUARD ROLLER PIN
- 10582 ROPE GUARD ROLLER SUPPORT
- 10584 ROPE GUARD ROLLER SUPPORT
- 11222 CENTER CABLE GUARD
- 16571 ROPE GUARD ROLLER SUPPORT

MANITOWOC ENGINEERING WORKS	
7-9 3000-3300	MODEL 3000-3300
8 4000-4300	MODEL 4000-4300
9 4400-4700	MODEL 4400-4700
10 4800-5100	MODEL 4800-5100
11 5200-5500	MODEL 5200-5500
12 5600-5900	MODEL 5600-5900
13 6000-6300	MODEL 6000-6300
14 6400-6700	MODEL 6400-6700
15 6800-7100	MODEL 6800-7100
16 7200-7500	MODEL 7200-7500
17 7600-7900	MODEL 7600-7900
18 8000-8300	MODEL 8000-8300
19 8400-8700	MODEL 8400-8700
20 8800-9100	MODEL 8800-9100
21 9200-9500	MODEL 9200-9500
22 9600-9900	MODEL 9600-9900
23 10000-10300	MODEL 10000-10300
24 10400-10700	MODEL 10400-10700
25 10800-11100	MODEL 10800-11100
26 11200-11500	MODEL 11200-11500
27 11600-11900	MODEL 11600-11900
28 12000-12300	MODEL 12000-12300
29 12400-12700	MODEL 12400-12700
30 12800-13100	MODEL 12800-13100
31 13200-13500	MODEL 13200-13500
32 13600-13900	MODEL 13600-13900
33 14000-14300	MODEL 14000-14300
34 14400-14700	MODEL 14400-14700
35 14800-15100	MODEL 14800-15100
36 15200-15500	MODEL 15200-15500
37 15600-15900	MODEL 15600-15900
38 16000-16300	MODEL 16000-16300
39 16400-16700	MODEL 16400-16700
40 16800-17100	MODEL 16800-17100
41 17200-17500	MODEL 17200-17500
42 17600-17900	MODEL 17600-17900
43 18000-18300	MODEL 18000-18300
44 18400-18700	MODEL 18400-18700
45 18800-19100	MODEL 18800-19100
46 19200-19500	MODEL 19200-19500
47 19600-19900	MODEL 19600-19900
48 20000-20300	MODEL 20000-20300
49 20400-20700	MODEL 20400-20700
50 20800-21100	MODEL 20800-21100
51 21200-21500	MODEL 21200-21500
52 21600-21900	MODEL 21600-21900
53 22000-22300	MODEL 22000-22300
54 22400-22700	MODEL 22400-22700
55 22800-23100	MODEL 22800-23100
56 23200-23500	MODEL 23200-23500
57 23600-23900	MODEL 23600-23900
58 24000-24300	MODEL 24000-24300
59 24400-24700	MODEL 24400-24700
60 24800-25100	MODEL 24800-25100
61 25200-25500	MODEL 25200-25500
62 25600-25900	MODEL 25600-25900
63 26000-26300	MODEL 26000-26300
64 26400-26700	MODEL 26400-26700
65 26800-27100	MODEL 26800-27100
66 27200-27500	MODEL 27200-27500
67 27600-27900	MODEL 27600-27900
68 28000-28300	MODEL 28000-28300
69 28400-28700	MODEL 28400-28700
70 28800-29100	MODEL 28800-29100
71 29200-29500	MODEL 29200-29500
72 29600-29900	MODEL 29600-29900
73 30000-30300	MODEL 30000-30300
74 30400-30700	MODEL 30400-30700
75 30800-31100	MODEL 30800-31100
76 31200-31500	MODEL 31200-31500
77 31600-31900	MODEL 31600-31900
78 32000-32300	MODEL 32000-32300
79 32400-32700	MODEL 32400-32700
80 32800-33100	MODEL 32800-33100
81 33200-33500	MODEL 33200-33500
82 33600-33900	MODEL 33600-33900
83 34000-34300	MODEL 34000-34300
84 34400-34700	MODEL 34400-34700
85 34800-35100	MODEL 34800-35100
86 35200-35500	MODEL 35200-35500
87 35600-35900	MODEL 35600-35900
88 36000-36300	MODEL 36000-36300
89 36400-36700	MODEL 36400-36700
90 36800-37100	MODEL 36800-37100
91 37200-37500	MODEL 37200-37500
92 37600-37900	MODEL 37600-37900
93 38000-38300	MODEL 38000-38300
94 38400-38700	MODEL 38400-38700
95 38800-39100	MODEL 38800-39100
96 39200-39500	MODEL 39200-39500
97 39600-39900	MODEL 39600-39900
98 40000-40300	MODEL 40000-40300
99 40400-40700	MODEL 40400-40700
100 40800-41100	MODEL 40800-41100

ROTATING BED ASSEMBLY

O-NUMBER NUMERICAL INDEX

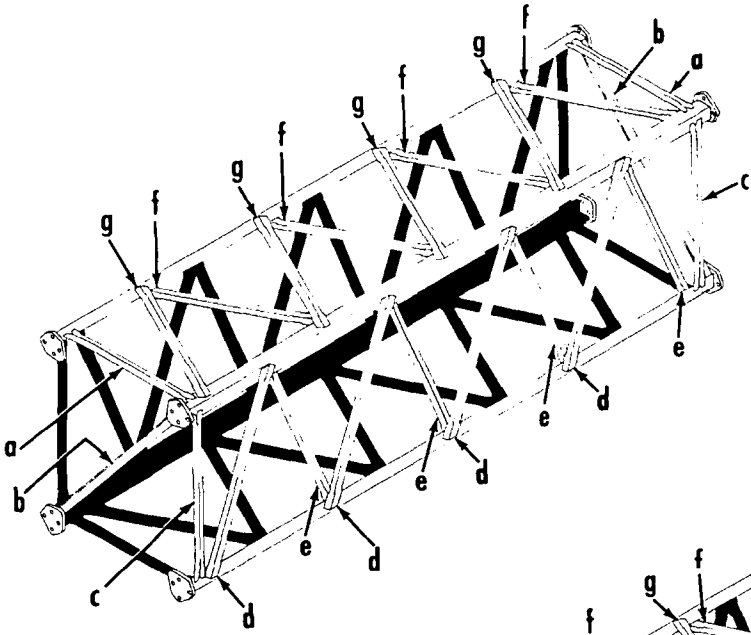
PUBLICATION	REV
0-173	A
0-519	-

MANITOWOC ENGINEERING CO.

A Division of The Manitowoc Company, Inc.

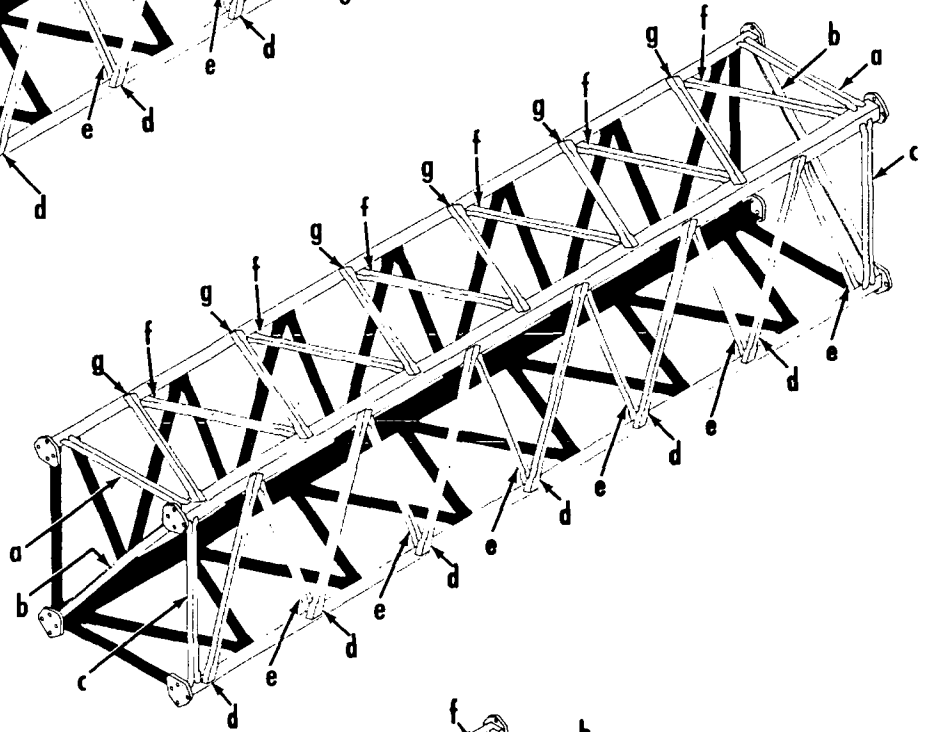
Manitowoc, Wisconsin

Boom #4
Left Side And Bottom Lacings Black
Opposite Lacings Same Unless Noted

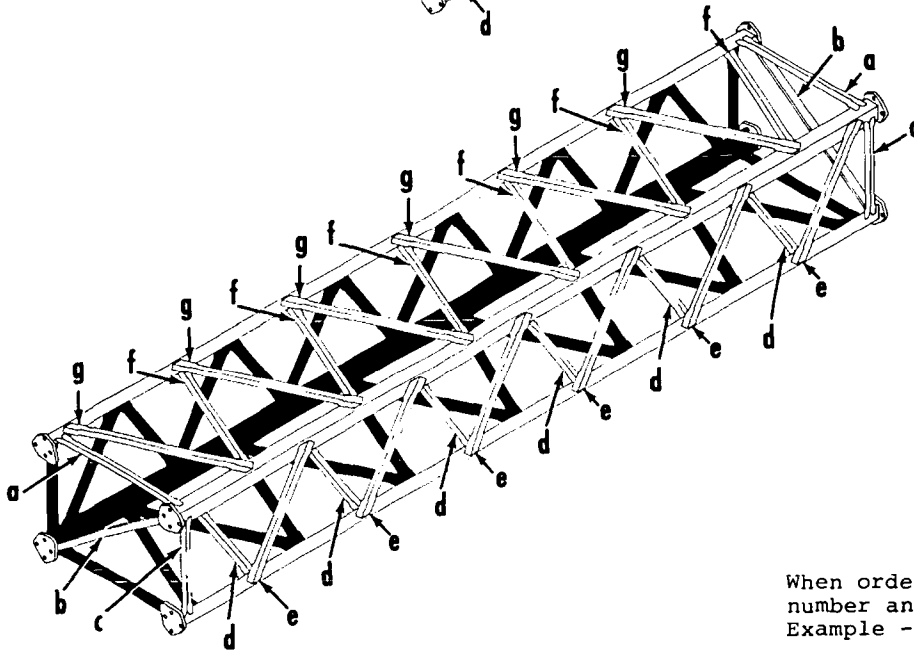


15' Insert
#30957

20' Insert
#30649



20' Insert
#30760



When ordering give the insert number and lacing letter -
Example - Lacing #30760-E

CLICK HERE TO **DOWNLOAD** THE COMPLETE MANUAL

- Thank you very much for reading the preview of the manual.
- You can download the complete manual from: www.heydownloads.com by clicking the link below



- Please note: If there is no response to CLICKING the link, please download this PDF first and then click on it.

CLICK HERE TO **DOWNLOAD** THE COMPLETE MANUAL