



TRADITIONAL CRANE PARTS MANUAL

This manual has been prepared for and is considered part of

4600

Model

46393

Serial Number

GROUP A = Rotating Structure (Includes rotating bed, operator's cab, cases, fuel tanks, transfer pump, counterweights, guards, platforms, catwalks, machinery enclosure, horn)

GROUP B = Upperworks Machinery (Includes front, rear, and auxiliary drums, boom hoist, swing and drive shafts, hand levers, foot pedals, control linkage, rotation indicators, upperworks hydraulic components, hydraulic piping, hydraulic oil reservoir, lubrication pump and piping, blowers)

GROUP C = Air Components & Electrical (Includes control console, air piping, electric wiring, auxiliary light plant and lighting, TV monitoring, compressor and air tank)

GROUP D = Power Components - Upperworks (Includes engine or motor, radiator, auxiliary power plant, take off converters and piping, controls, VICON power lowering, torque limiter, hydraulic pumps and piping, fuel piping, battery box)

GROUP E = Lower Structure & Control (Includes carbody, crawlers, travel shafts and control, steering travel locks, hydraulic travel, travel power outriggers, carrier, pedestal, lowerworks hydraulic piping, RINGER components, barge mounting and machinery, spud drums)

GROUP F = Attachments (Includes booms, jibs, masts, tower, wire rope guides, equalizer, gantry, fairlead, timber guards, boom angle indicator, block-up limit, tag line, hook block, weight ball, upper and lower boom point, wind speed indicator, crowd and retract dipper sticks, dippers,)

O-NUMBER SECTION = (Includes lacing drawings and purchased component parts drawings referenced in sections A through F)

This manual is arranged in sections as listed above. Sections A through F are arranged by group numerical order with an index after each section tab. An alphabetical index for groups A Through F combined is located after the O-number Section. The O-number section is arranged in numerical order by O-number. Following this cover page are the Basic Specifications, Warranty Information, Tool List (if applicable) Outline Dimensions, Weights, and Dealer Listing.

MANITOWOC CRANES, INC.

2401 South 30th Street • PO Box 70

Manitowoc, WI 54221-0070

Phone: 920-684-6621 • Fax: 920-683-6278

CLICK HERE TO **DOWNLOAD** THE COMPLETE MANUAL

- Thank you very much for reading the preview of the manual.
- You can download the complete manual from: www.heydownloads.com by clicking the link below



- Please note: If there is no response to CLICKING the link, please download this PDF first and then click on it.

CLICK HERE TO **DOWNLOAD** THE COMPLETE MANUAL

B. Ordering Lacings without Lacing Drawings

The parts order must contain the following information to ensure that Manitowoc provides you with the correct lacings:

1. Crane serial number (can be found on builders plate in operator's cab.)
2. Boom or jib identification number.
3. Quantity, lacing location, and lacing number.
4. Boom or jib component name (butt, insert, or top) and part number.

NOTE To obtain the lacing location and number, view the boom or the jib from the butt end looking forward. Identify the side on which the damaged lacing is located: left side, top side, right side, or bottom side. Count each lacing up to and including the damaged lacing, starting with **first lacing nearest butt end** of the component as shown in Figure 3.

Do not count a diagonal lacing as the first lacing. Identify diagonal lacing separately; lower end diagonal lacing or upper end diagonal lacing.

ASSISTANCE

If you are in doubt as to which lacings to order, DO NOT GUESS. Contact your nearest Manitowoc distributor for assistance; doing so may prevent the wrong parts from being shipped.

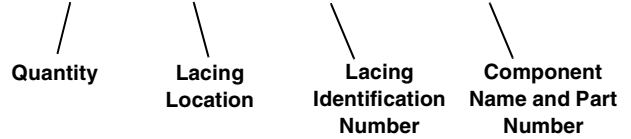
EXAMPLE: Assume you have a number 22 boom and the lacings with circled numbers in Figure 3 are damaged. Your parts order should be similar to the following example:

Crane Serial Number: **00000** (from builders plate).

Boom Identification Number: **#22 Boom**

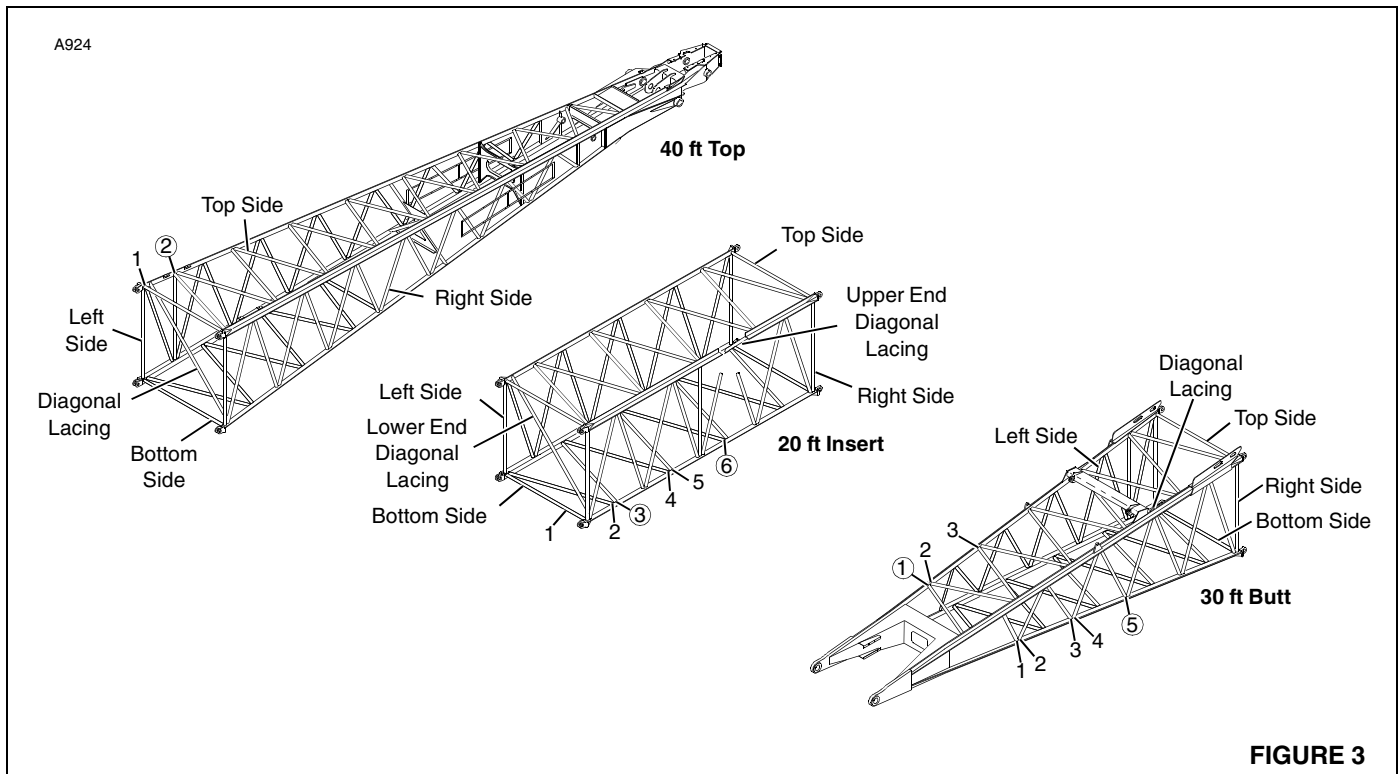
Required:

- 1 each Top Side Lacing (1) for 30 ft Butt 48153-9
- 1 each Right Side Lacing (5) for 30 ft Butt 48153-9
- 1 each Bottom Side Lacing (3) for 20 ft Insert 33426-3
- 1 each Bottom Side Lacing (6) for 20 ft Insert 33426-3
- 1 each Top Side Lacing (2) for 40 ft Top 50453-2



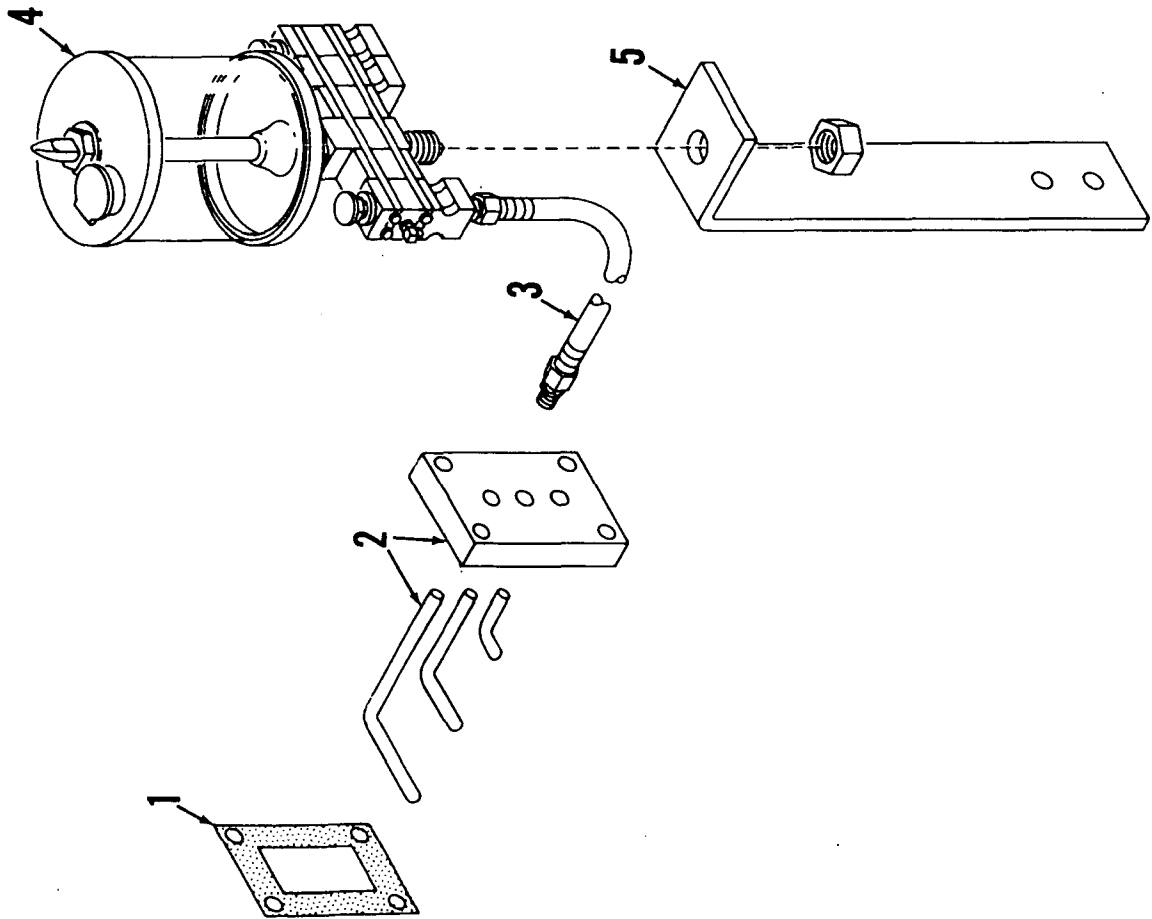
WELDING INSTRUCTIONS

Refer to folio 1316 for welding instructions.



**PARTS MANUAL ALPHABETICAL INDEX
GROUP A - Rotating Structure**

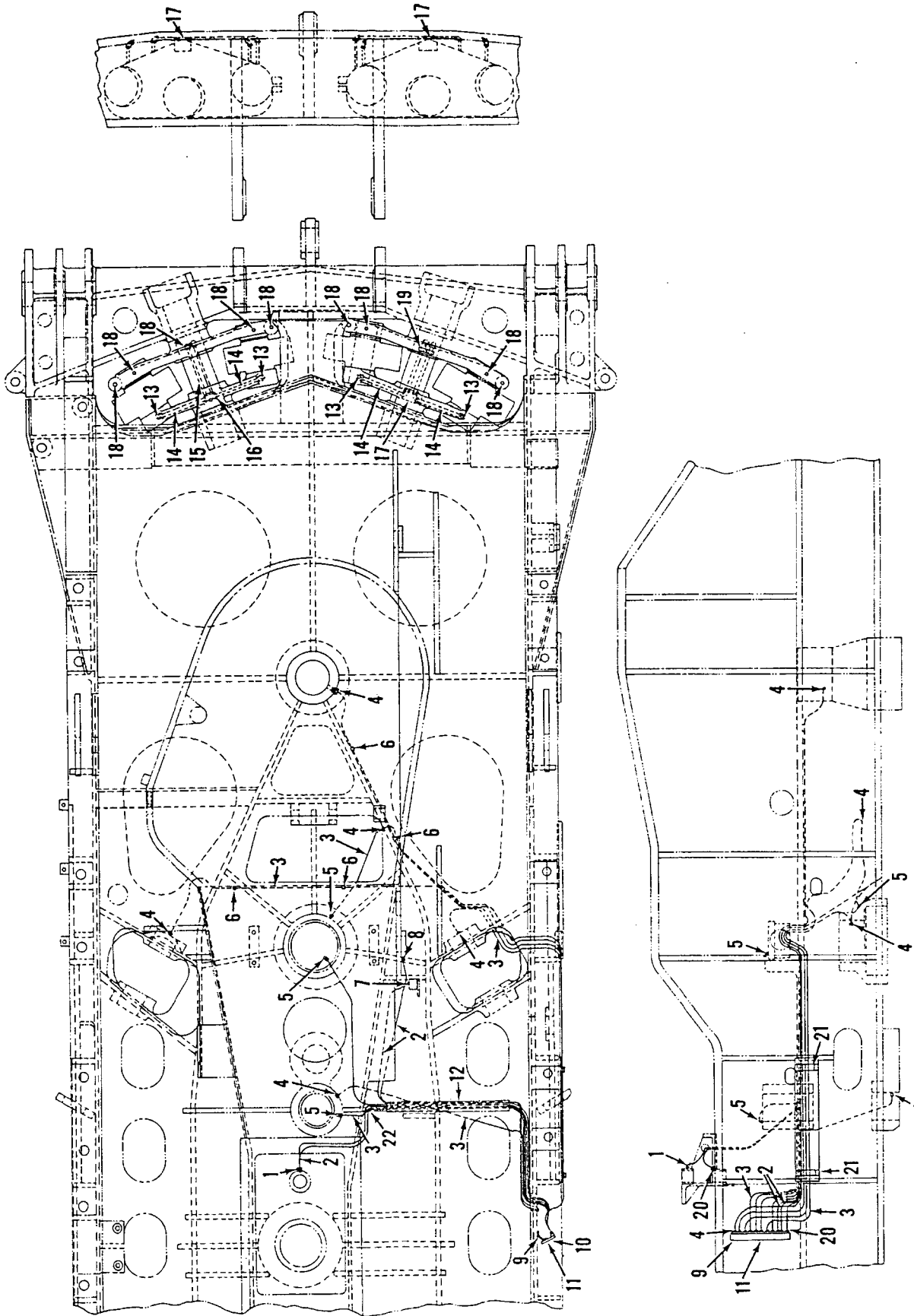
DESCRIPTION	PUBLICATION	REV	START DATE	END DATE	GROUP
"A" Frame	42789	I1	10/24/61	08/08/86	A0101
Cab	24321	-	04/12/60	05/10/84	A0201
Cab	50274	B1	12/10/63		A0201
Cab	50274	K1	05/01/64	01/20/78	A0201
Cab Heater/Air Conditioner	65586	-	03/01/77	07/27/78	A0209
Catwalk	190525	D1	09/20/77	04/11/88	A0801
Chain & Gear Case	31226	B1	10/06/61		A0401
Chain & Gear Case	31226	J1	04/29/65	02/10/78	A0401
Chain & Gear Case	50287	G1	06/13/62	07/14/83	A0401
Chart Holder	93994	A1	11/15/71	04/08/83	A0212
Chart Holder	94035	A1	12/15/71	04/21/75	A0212
Counterweight & Cab Rear	43231	J1	06/23/64	01/15/85	A0301
Drum Drive Chain Case or Interlock Case	42250	A3	07/17/59	09/27/82	A0402
Drum Drive Chain Case or Interlock Case	42250	B1	07/17/59	10/22/76	A0402
Drum Drive Chain Case or Interlock Case	42250	F2	07/19/59	10/22/76	A0402
Fuel Tank	190328	C1	06/10/76	01/20/78	A0601
Fuel Tank	32000	J1	03/18/71	09/27/77	A0601
Fuel Tank	32185	C1			A0601
Fuel Transfer Pump	32416	E1	04/10/61	03/22/78	A0602
Guards	40773	I1	02/26/71	07/21/86	A0501
Guards	48972	D1	05/05/70	04/09/79	A0501
Interlock Drive Oiler	32177	B1	01/20/60	04/07/69	A0403
Operator's Station/Pilothouse	65342	C1	04/21/75	07/28/78	A0202
Platform	190466	A1	04/05/77	07/12/77	A0701
Platform	49427	C1	04/23/71	09/20/77	A0701
Rotating Bed Lubrication Piping	41855	A1	02/01/56	06/28/74	A0104
Rotating Bed/Hoist Frame/Transporter Platform	32991	C1	07/02/64	09/15/77	A0102
Rotating Bed/Hoist Frame/Transporter Platform	50447	I2	01/12/68	09/25/84	A0102
Rotating Bed/Hoist Frame/Transporter Platform	50447	K1	01/12/68	09/25/84	A0102
Windshield Wiper/Defogger	142932	A1	03/11/75	08/04/76	A0210
Windshield Wiper/Defogger	190191	A2	08/26/75	01/24/79	A0210
Windshield Wiper/Defogger	190191	B1	08/26/75	01/24/79	A0210



MANITOWOC ENGINEERING CO.

A Division of The Manitowoc Company, Inc.

Manitowoc, Wisconsin



41855A1

MATERIAL LIST ON BACK

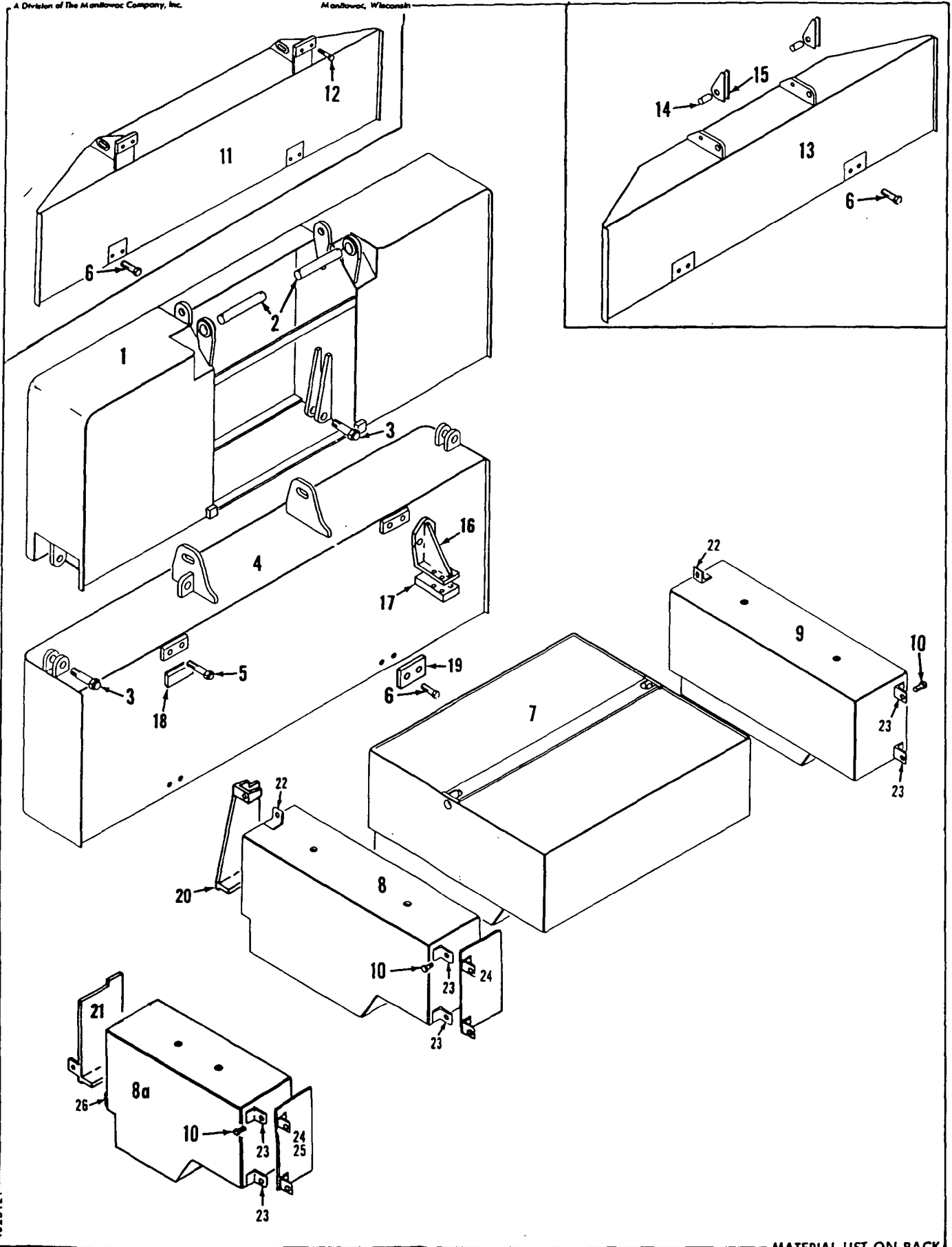
MASTER

LUBE. PIPING - ROTATING BED

MANITOWOC ENGINEERING CO.

A Division of The Manitowoc Company, Inc.

Manitowoc, Wisconsin

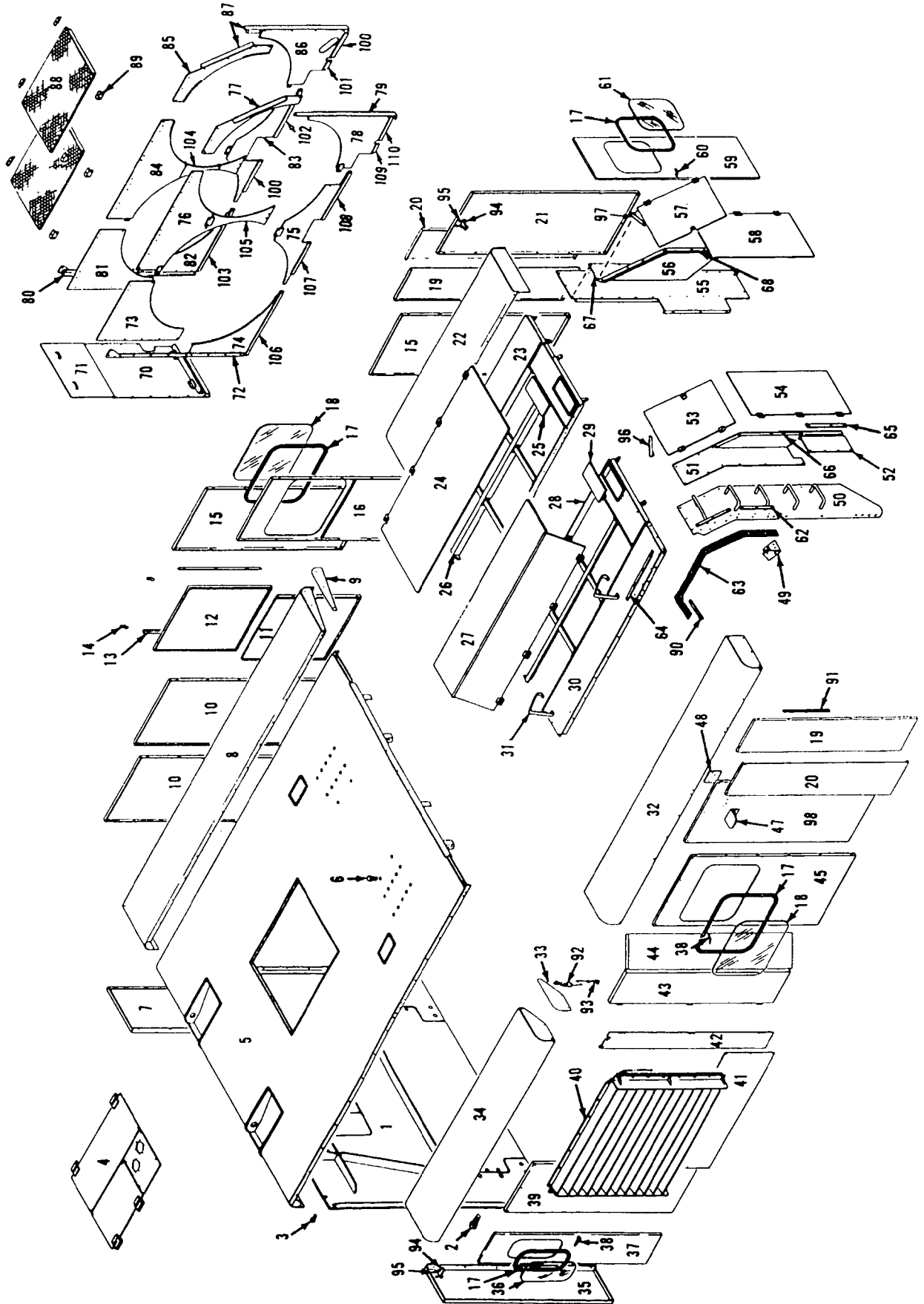


43231E1

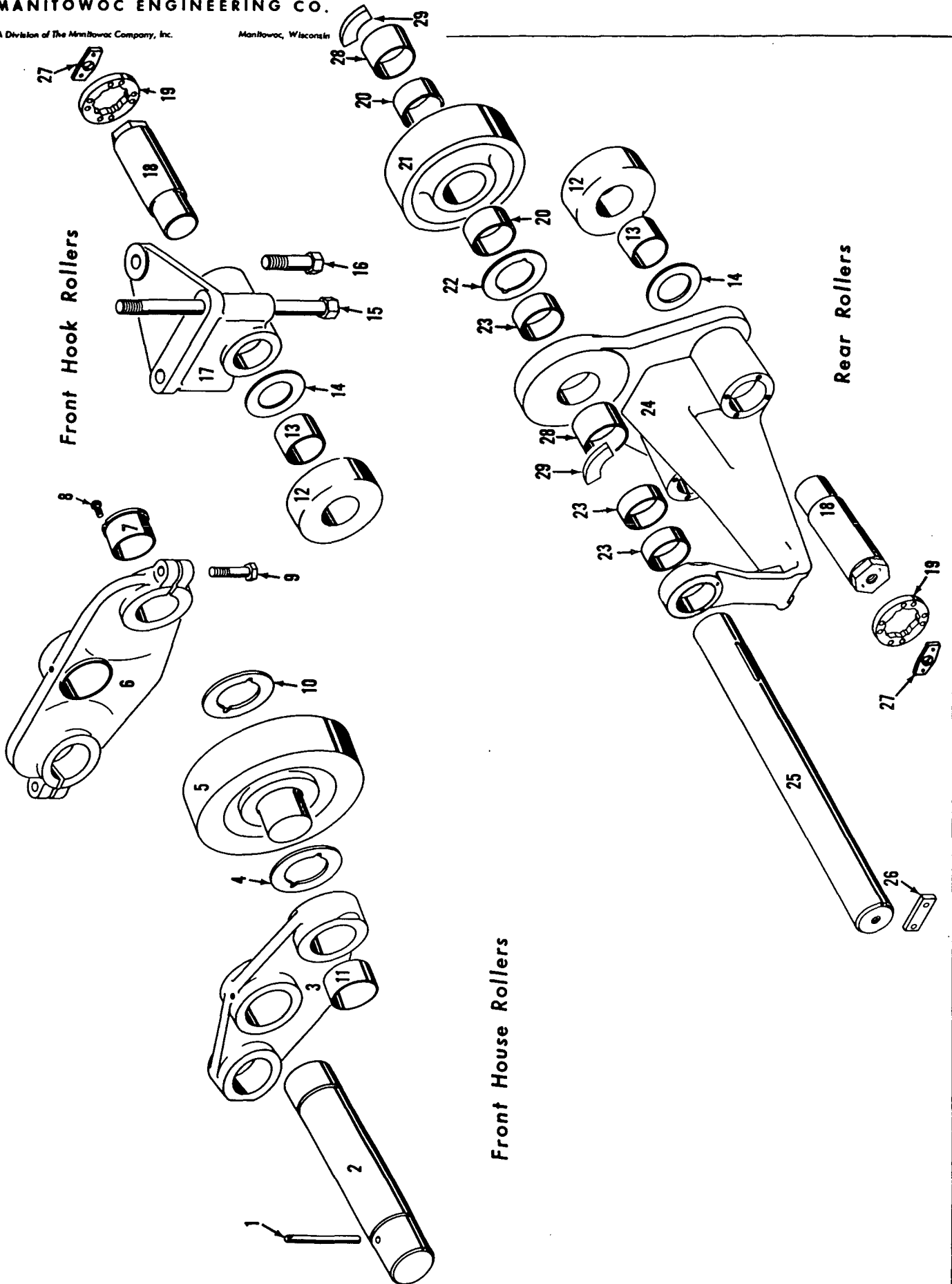
MATERIAL LIST ON BACK

COUNTERWEIGHT

MASTER



MASTER



65342-1 Cont.	REV. C	MODEL 4600 S1 S2 S3
---------------	-----------	------------------------

OPERATOR'S CAB

REF. NO.	PART NUMBER	QUANTITY REQUIRED	DESCRIPTION OF PART	VENDORS PART NO.
44	182480	1	DOOR W/hingers, capscrews and lockwashers	
45	70705	1	GLASS, Window	
46	605301	1	CHANNEL, Rubber (Specify 9'½" or 2.7559 m long)	
47	70706	1	GLASS, Window	
48	605301	1	CHANNEL, Rubber (Specify 6'4-1/8" or 1.9336 m long)	
49	475000	1	HANDLE, Outside	
50	510163	1	LOCK, Right Hand	
51	475001	1	HANDLE, Inside	
52	70838	1	LATCH, Door W/stove bolts, hex nuts and lockwashers	
53	95369	1	PANEL (Perforated 22 ga.)	
54	95370	1	PANEL (Perforated 22 ga.)	
54	96093	1	PANEL (Perforated 22 ga.) (W/24V -24,000 BTU Air Conditioner)	
55	95371	1	PANEL (Perforated 22 ga.)	
56	95372	1	PANEL (Perforated 22 ga.)	
57	95373	1	PANEL (Perforated 22 ga.)	
58	95374	1	PANEL (Perforated 22 ga.)	
59	142787	1	PANEL (Perforated 22 ga.)	
60	142788	1	PANEL (Perforated 22 ga.)	
			<u>ROOF WINDOW INSTALLATION</u> (Delete Ref. Nos. 1, 55, 56)	
1a	65341-9	1	CAB, Operator's	
61	74520	1	COVER, Window W/hingers and mach. screws	
64	90164	1	FRAME, Window W/stove bolts, hex nuts and lockwashers	
55a	95375	1	PANEL (Perforated 22 ga.)	
56a	95376	1	PANEL (Perforated 22 ga.)	
62	74519	1	GLASS, Window	
63	605301	1	CHANNEL, Rubber (Specify 11'9" or 3.5814 m long)	

RUN AS FRONT

MASTER

65342 C1 Cont.

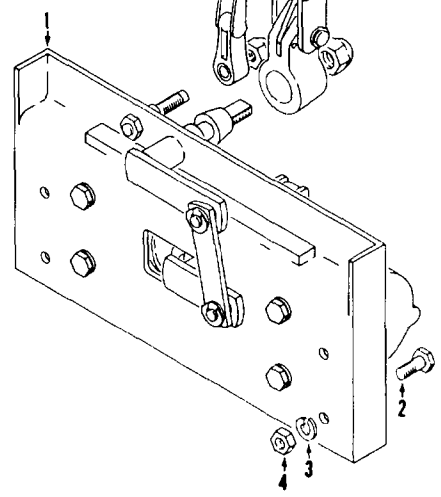
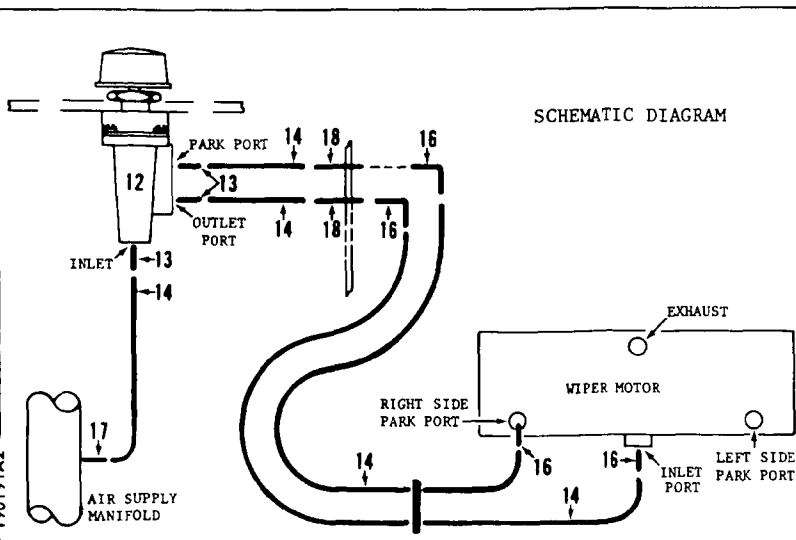
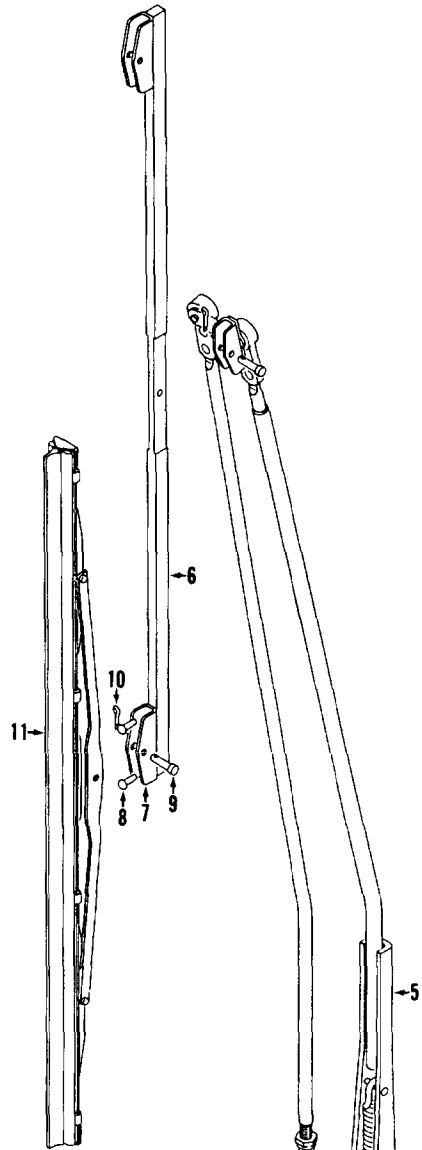
REV. C	65342 - 1
-----------	-----------

PLEASE GIVE MACHINE S/N W/ORDER

MANITOWOC ENGINEERING CO

A Division of The Manitowoc Company, Inc.

Manitowoc Windshield Wiper



MATERIAL LIST ON BACK

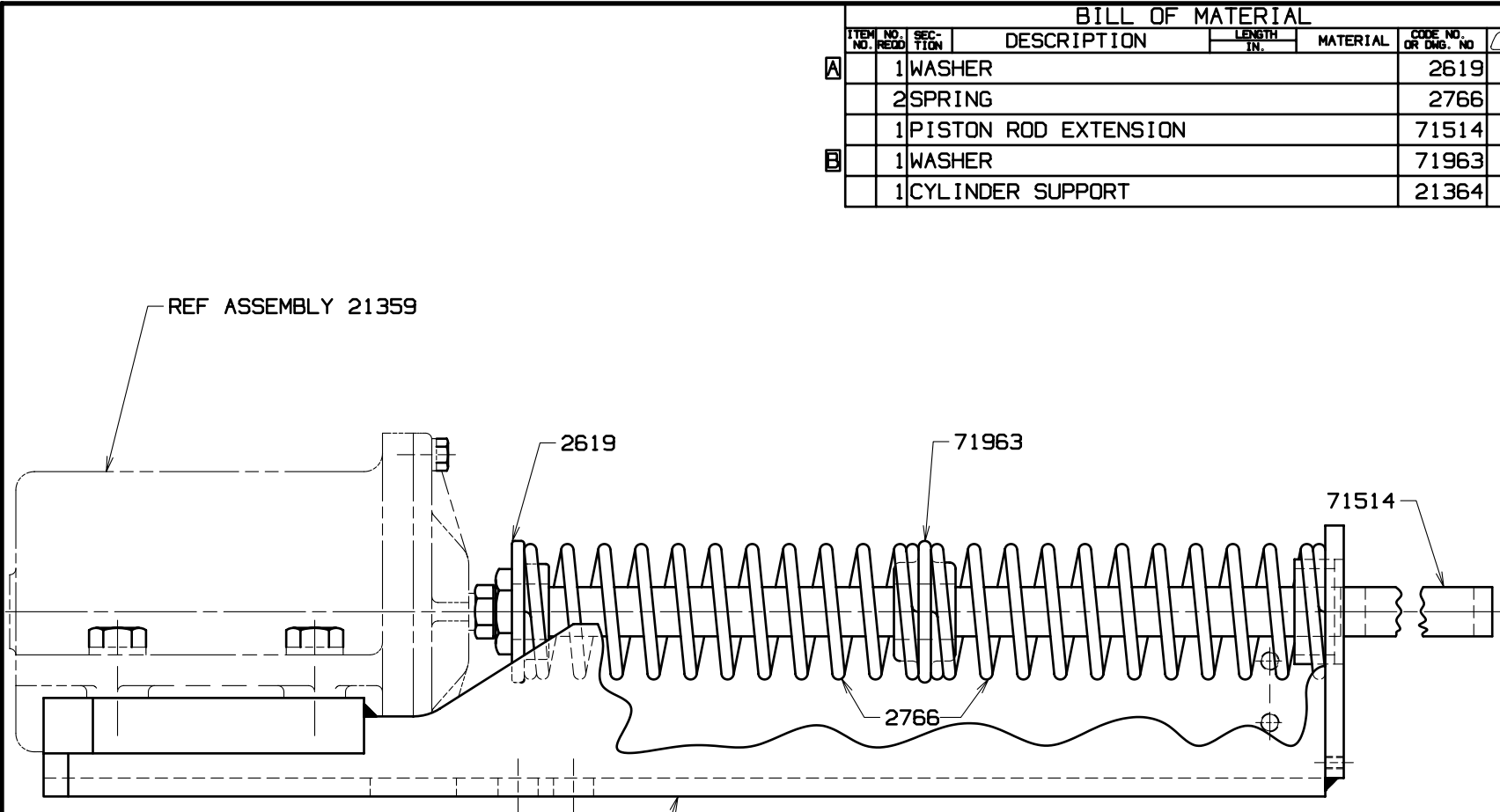
WINDSHIELD WIPER

190191A2

GROUP B - Upperworks Machinery

C

C



BILL OF MATERIAL						
ITEM NO.	NO. REQ'D	SECTION	DESCRIPTION	LENGTH IN.	MATERIAL	CODE NO. OR DWG. NO.
A	1		WASHER			2619
	2		SPRING			2766
	1		PISTON ROD EXTENSION			71514
B	1		WASHER			71963
	1		CYLINDER SUPPORT			21364

ASSEMBLIES USED ON
41802
41803
41861
49308
49661
49784

REVISIONS

7-21-60 PD
 A WAS 3 REQ'D
 B ADDED
 12-16-82 WNM
 REDRAW CADAM
 CK FJZ
 APP RJS

DATE	9-15-59
PATTERN NO.	
DWG. NO.	23984

SCALE	1/2" = 1" FT
DR.	MFB
CK.	DCM
APP	
DWG. NO.	23984

Manitowoc Cranes, Inc.
 Manitowoc, Wisconsin
 MODEL 4500, 4600

AIR CYLINDER
 SUPPORT ASSEMBLY

DO NOT SCALE THIS DRAWING

C

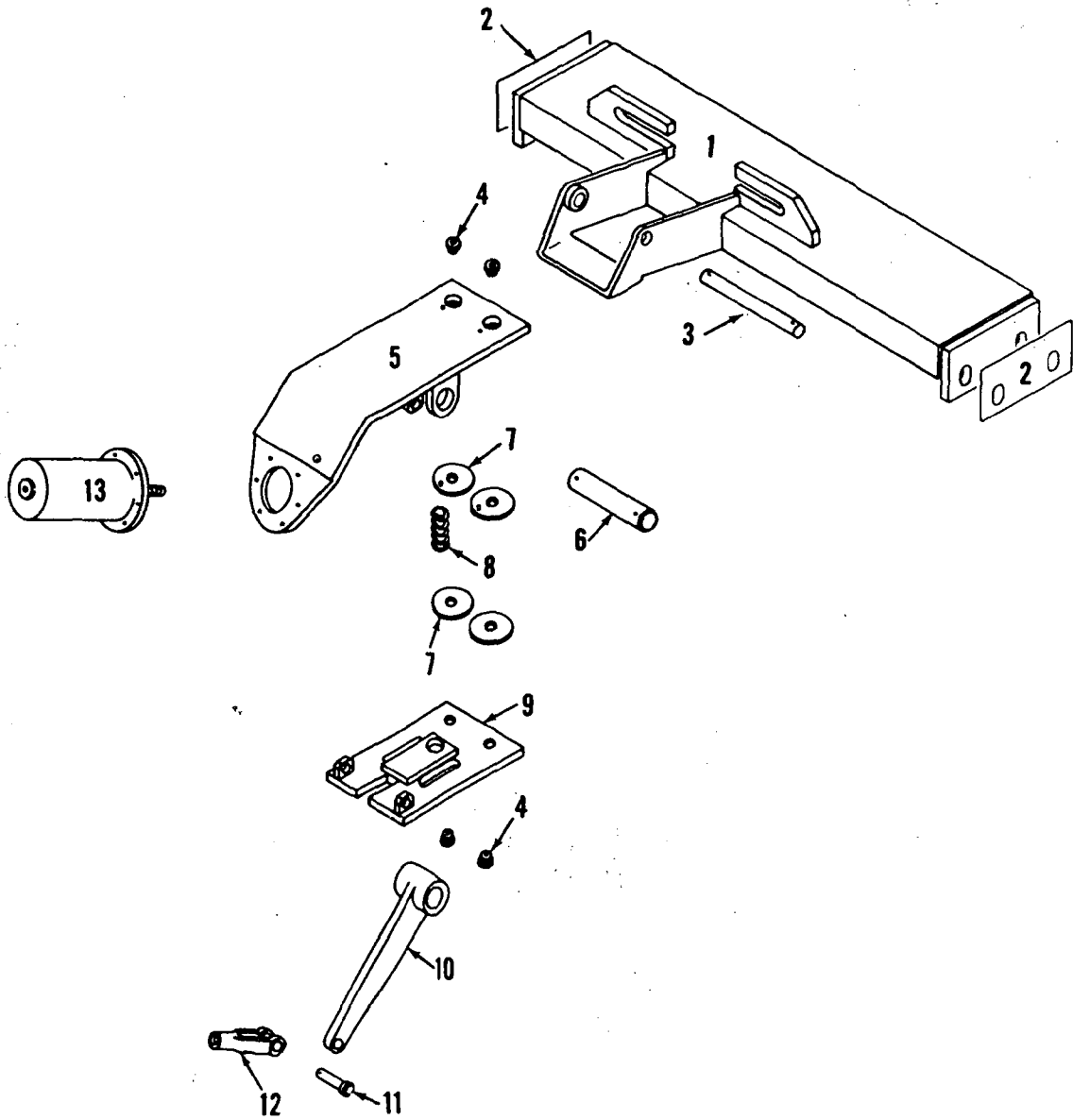
C

MANITOWOC ENGINEERING CO.

A Division of The Manitowoc Company, Inc.

Manitowoc, Wisconsin

MASTER



3309981

MATERIAL LIST ON BACK

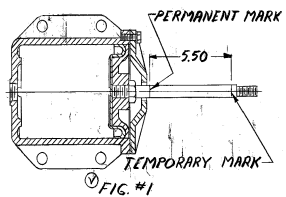
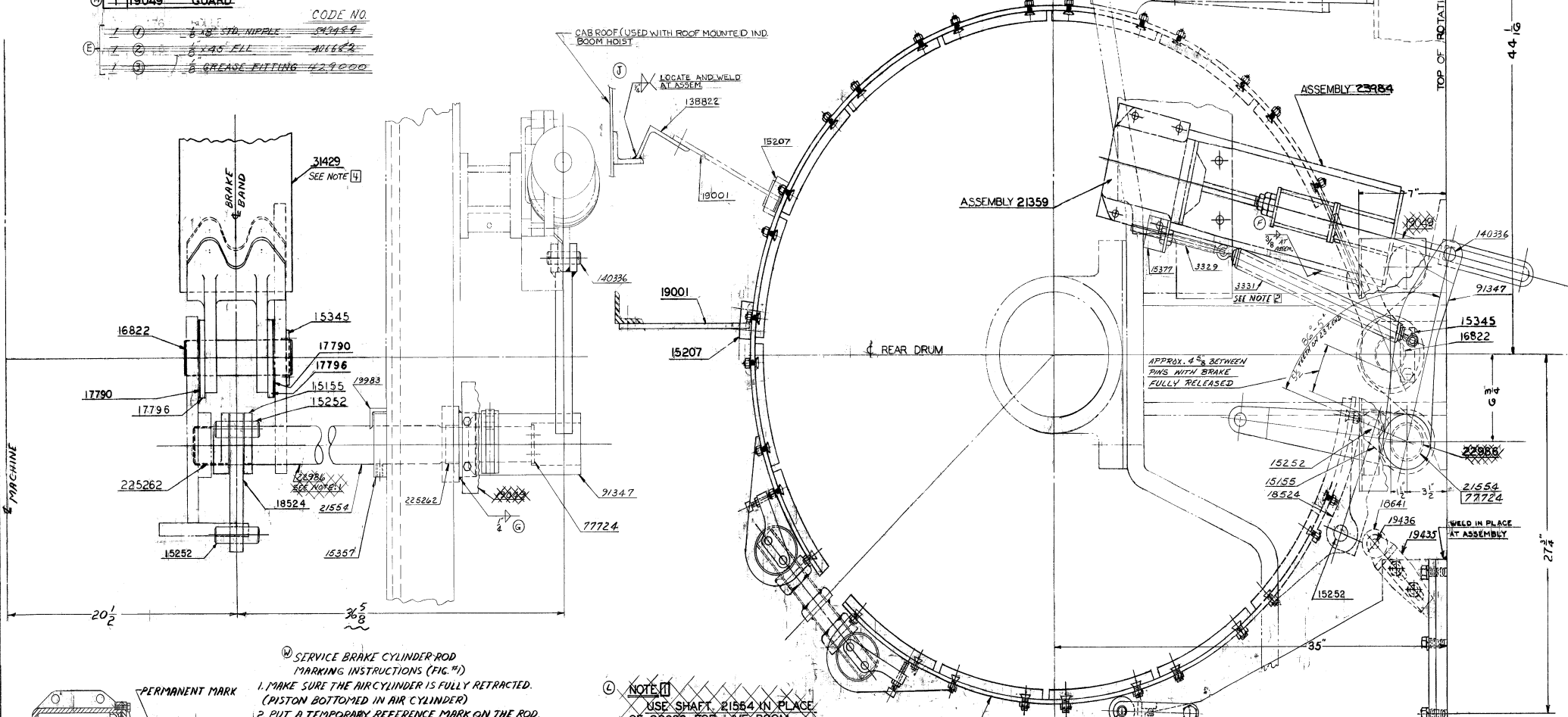
AUXILIARY MAST HOIST BRAKE ASSEMBLY

NO. REC'D	PART NO.	DESCRIPTION
1	3329	ADJUSTING BOLT
1	3331	SPRING
1	19436	PIN
1	140374	PIN
1	19433	GUIDE ROLLER SUPPORT
1	19383	GUIDE BAR
1	15207	GUIDE
2	15252	PIN
1	15155	FORKED LEVER
1	140336	PIN
1	15345	KEEPER PLATE
1	15357	SET COLLAR
1	15377	SPRING CLIP
1	16822	PIN
1	17790	WASHER 1/2" THK.
2	17796	WASHER 1/2" THK.
1	18524	LIVE END CON. LINK
1	18640	ROLLER GUIDE SUPPORT
2	18641	GUIDE ROLLER
1	19001	GUIDE
1	19049	GUARD

1	21359	AIR CYL. ASS'M.
1	23984	AIR CYL. SUPPORT ASS'M.
1	91347	BRAKE LEVER
1	77724	END PLATE
1	23116	GUIDE ROLLER SUPPORT BRACKET
1	22986	DRUM BRAKE SHAFT
1	31429	BRAKE BAND ASS'M. SEE NOTE 1
1	138822	ANGLE (USED WITH ROOF MOUNTED IND. BOOM HOIST)
1	711371	SPECIAL WASHER
2	225262	NEEDLE BEARING
1	21554	DRUM BRAKE SHAFT

CODE NO.	DESCRIPTION	QTY
1	3/8" STD. NIPPLE	543489
1	3/4" X 45" FILL	401682
1	3/8" GREASE FITTING	429000

- NOTE 1: THIS ASSEMBLY IS EQUIPPED WITH CORROSION RESISTANT PINS.
- NOTE 2: ADJUST SPRING 3331 TO OBTAIN A QUICK, FULL RETURN. MAXIMUM SPRING EXTENSION SHOULD NOT EXCEED 22 IN. OVERALL LENGTH.
- NOTE 3: SEE DWG. 162156 FOR BRAKE ADJUSTMENT INSTRUCTIONS.
- NOTE 4: 31429-7 OR 31429-9 FOR MODEL 4600 S-3 ONLY.



- SERVICE BRAKE CYLINDER-ROD MARKING INSTRUCTIONS (FIG. #1)
 1. MAKE SURE THE AIR CYLINDER IS FULLY RETRACTED. (PISTON BOTTOMED IN AIR CYLINDER)
 2. PUT A TEMPORARY REFERENCE MARK ON THE ROD. FLUSH WITH THE END OF THE AIR CYLINDER.
 3. EXTEND THE AIR CYLINDER AND SCRIBE A PERMANENT MARK AS SHOWN IN FIG. #1.
 4. THE SCRIBED MARK IS THE REFERENCE POINT FOR FUTURE BRAKE ADJUSTMENTS.

NOTE 1: USE SHAFT 21554 IN PLACE OF 22986 FOR LIVE BOOM. SEE ASSM. 41274.

FIRST ON CRANE 4616

ALL DIMENSIONS NOMINAL

MANTOVOC ENGINEERING WORKS		SPEEDCRANE-MODEL 4500-4400	
5-19-53	11-19-53	DESIGNED BY	11-19-53
000000	000000	DRAWN BY	11-19-53
000000	000000	CHECKED BY	11-19-53
000000	000000	APPROVED BY	11-19-53
000000	000000	DATE	11-23-53
000000	000000	MATERIAL	STEEL
000000	000000	SCALE	3/4" = 1"
000000	000000	FIG. NO.	41803

42274 -1 Cont.	REV. F	MODEL 4500-4600
----------------	--------	-----------------

LEFT REAR DRUM BRAKE

REF. NO.	PART NUMBER	QUANTITY REQUIRED	DESCRIPTION OF PART	VENDORS PART NO.
			NOTE 1: Deleted per design change of Oct. 6, 1970.	
			NOTE 2: Mach. W/Roof Mounted Ind. Boom Hoist, relocate Ref.2 and add:	
1a	138822	1	ANGLE, Support (Weld to Roof Beam) (See Note 6)	
			NOTE 3: Prior to use of Ref. Nos. 10 and 12 the following were used to support band (See Inset).	
13	19436	1	PIN W/gr. fitting	
14	18641	1	ROLLER, Guide	
15	19435	1	SUPPORT, Roller W/capscrews, flat washers and drill rod	
16	18175	1	SUPPORT, Guide Roller	
			NOTE 4: Washers #709960 required for bands shipped after Nov. 6, 1970 for alignment of link, Ref. No. 23. Washers not required for bands shipped prior to this date.	
			NOTE 5: Mounting Pad #142290, Ref. #12, deleted per design change of Aug. 8, 1979.	
			NOTE 6: Deleted per design change of May 18, 1983.	
			0-71, 22635	
				REV. F 42274 - 1

PLEASE GIVE MACHINE S/N W/ORDER

Run as Front

CR

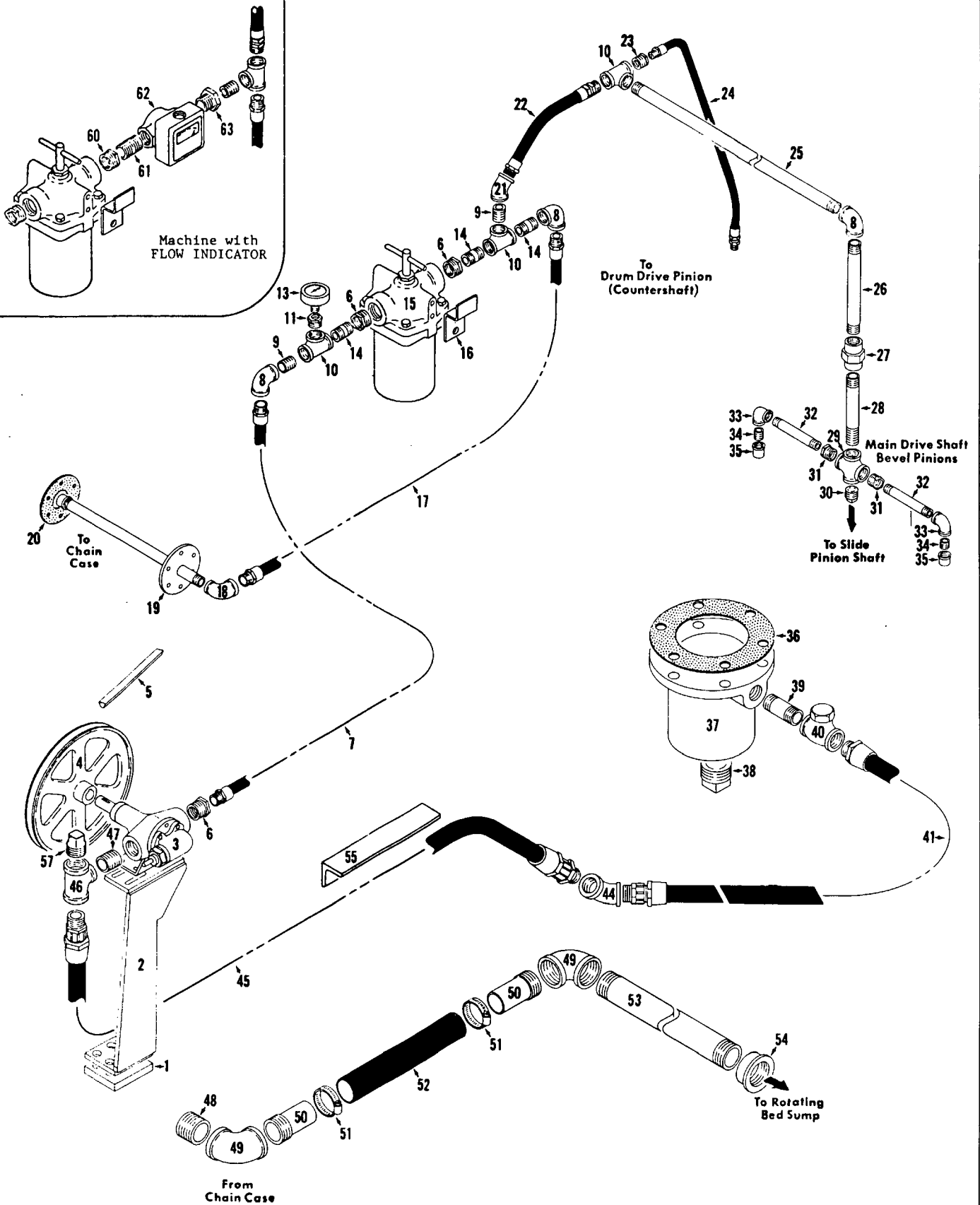
42274 -1 Cont d.

MANITOWOC ENGINEERING CO.

A Division of The Manitowoc Company, Inc.

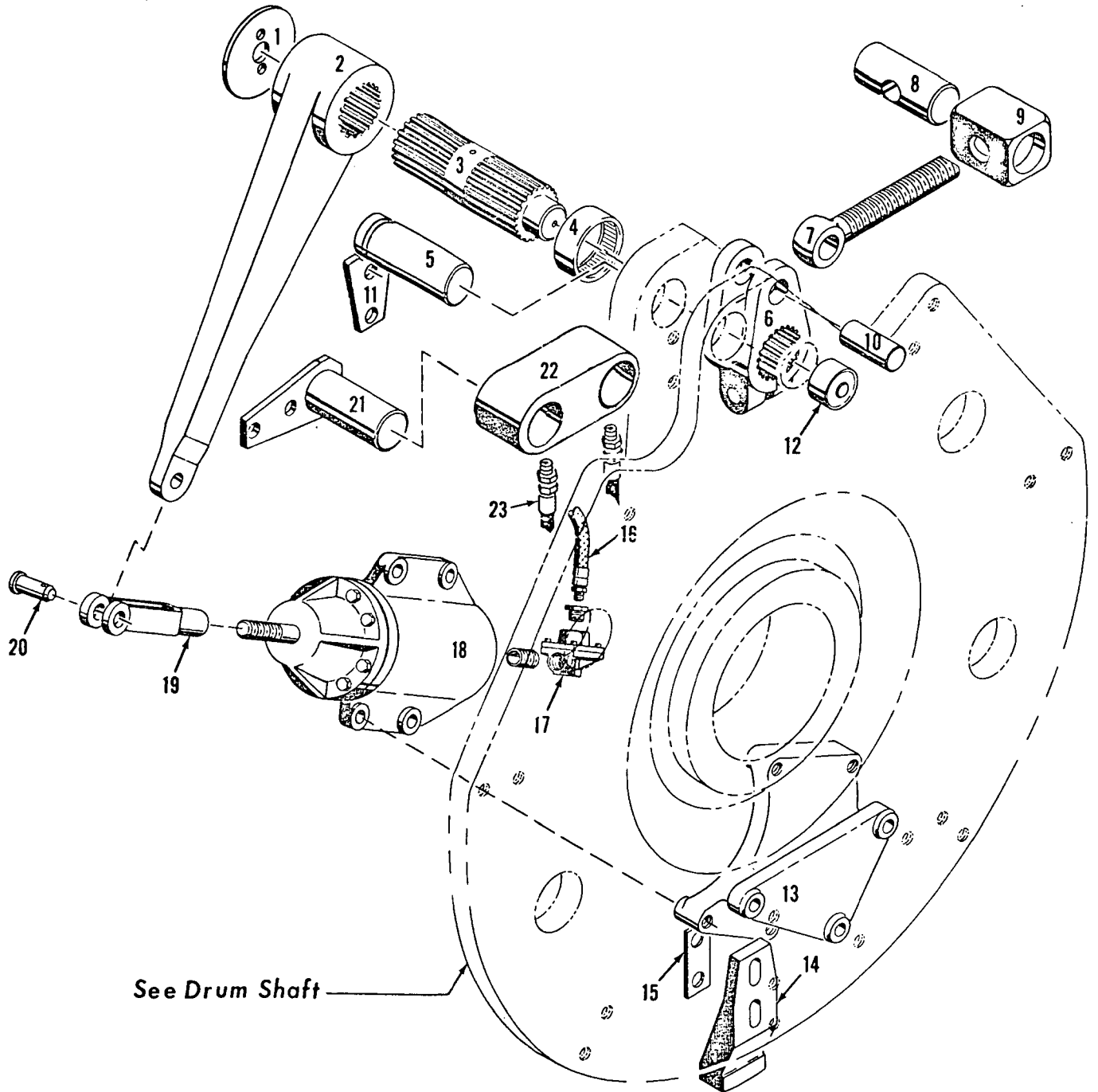
Manitowoc, Wisconsin

MASTER



MATERIAL LIST ON BACK

LUBRICATION PIPING



See Drum Shaft

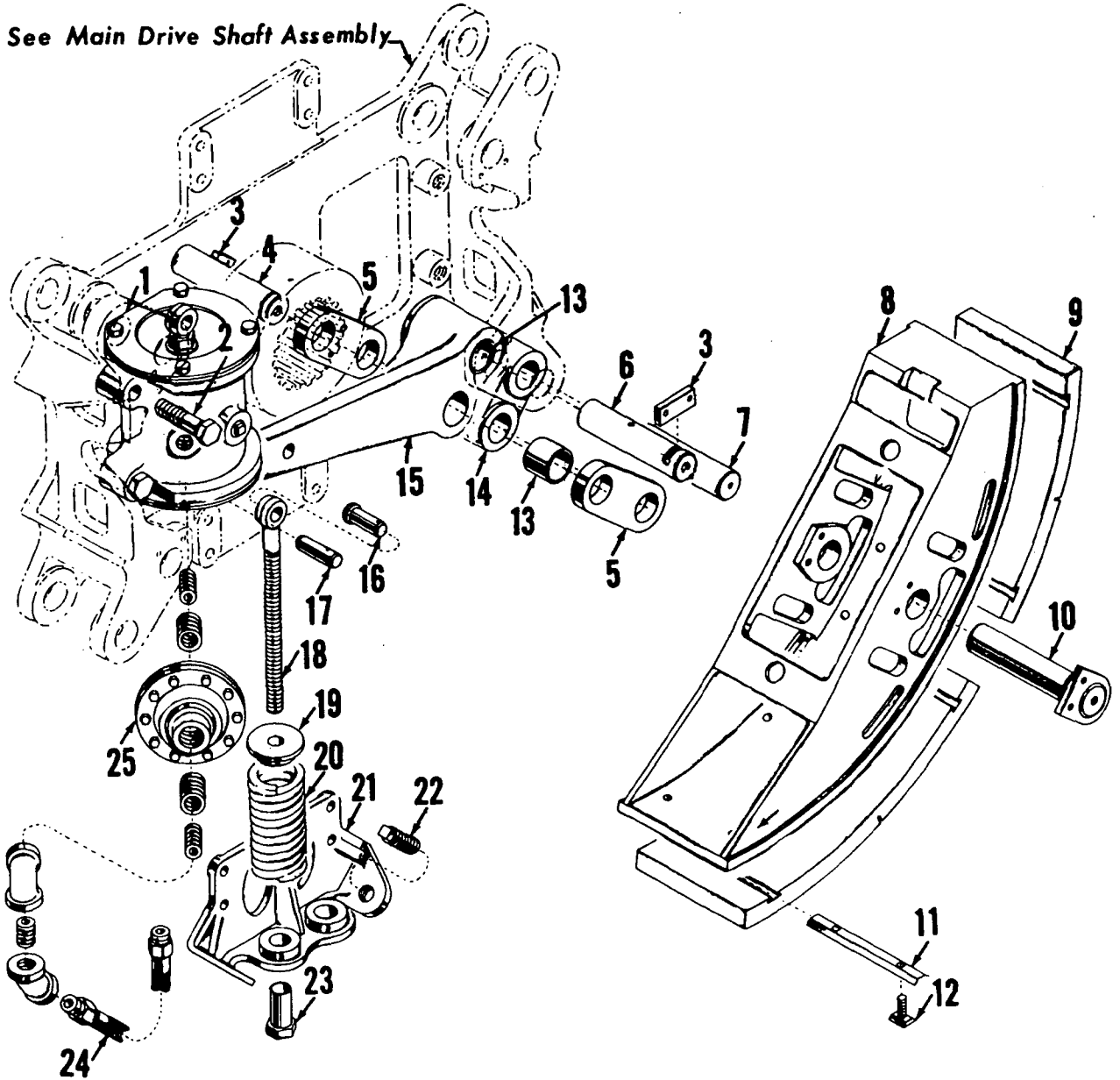
MANITOWOC ENGINEERING CO.

A Division of The Manitowoc Company, Inc.

Manitowoc, Wisconsin

MASTER

See Main Drive Shaft Assembly



50481A2

MATERIAL LIST ON BACK

MAIN DRIVE SHAFT CLUTCH

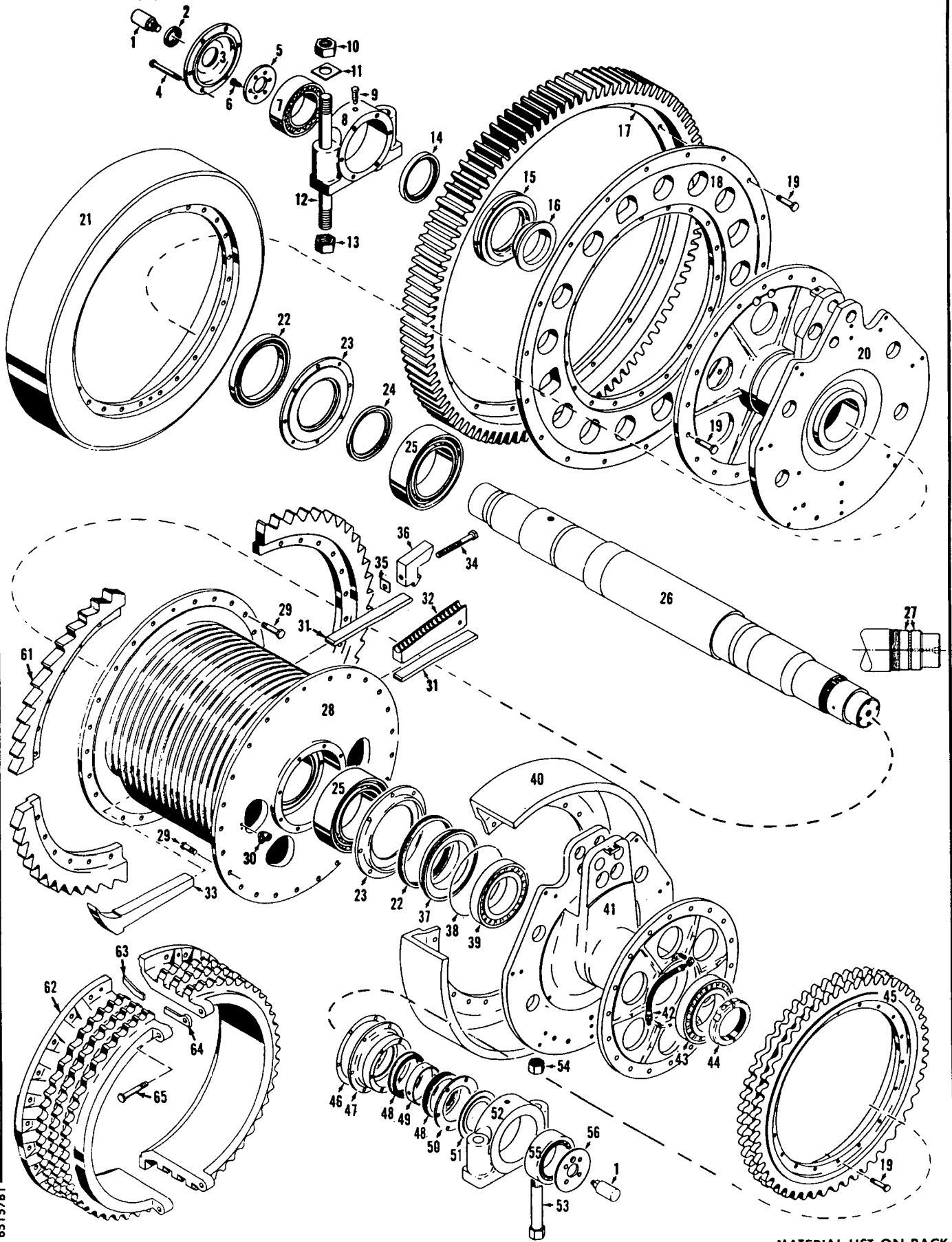
2078178

MANITOWOC ENGINEERING CO.

A Division of The Manitowoc Company, Inc.

Manitowoc, Wisconsin

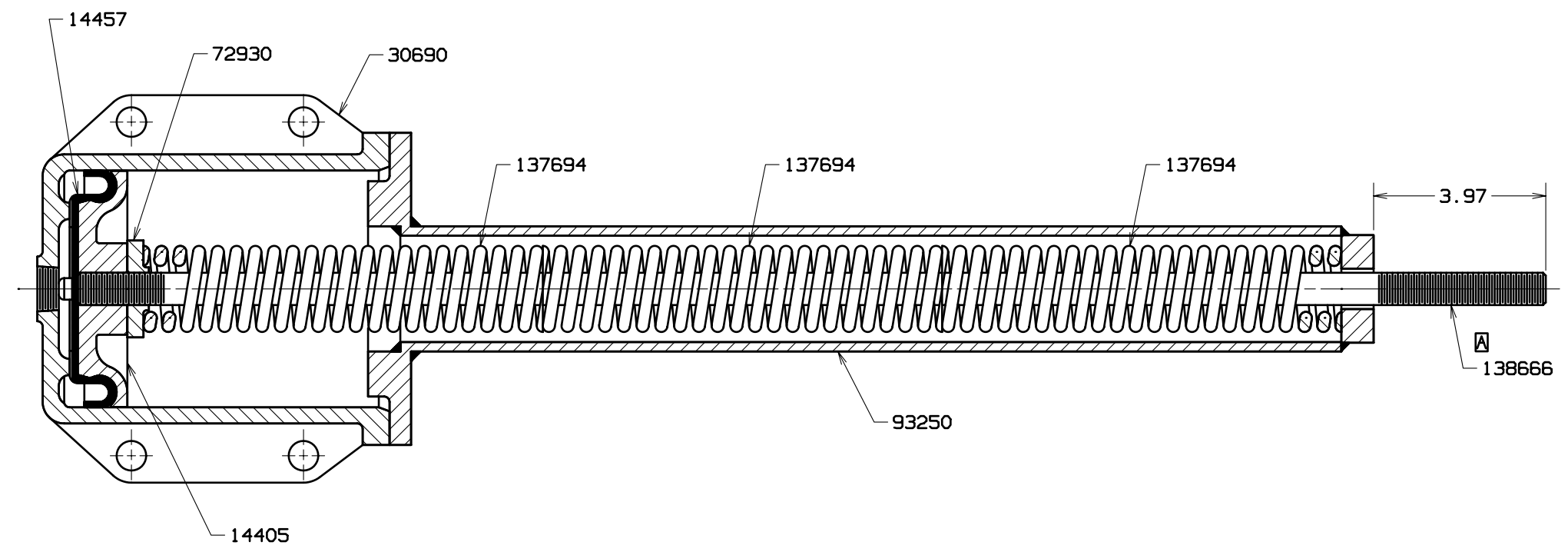
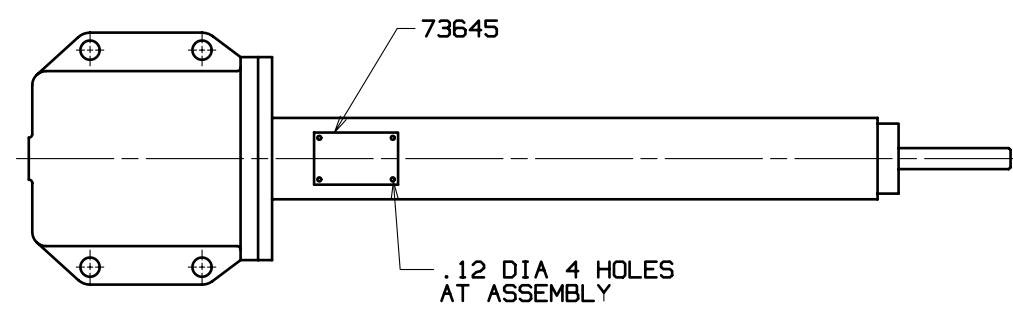
MASTER



6515781

MATERIAL LIST ON BACK

REAR DRUM SHAFT



BILL OF MATERIAL						ASSEMBLIES USED ON	
ITEM NO.	NO. REQD.	SEC. TION	DESCRIPTION	LENGTH IN.	MATERIAL		CODE NO. OR DWG. NO.
	1		PISTON			14405	33749 42768 42769 43433 48860
	1		PACKING CUP			14457	
	1		AIR CYLINDER			30690	
	1		NUT			72930	
	1		NAME PLATE			73645	
	1		SPRING RETAINER			93250	
	3		SPRING			137694	
	1		PISTON ROD			138666	REVISIONS 3-10-70 HDG A WAS 72929 3-19-70 HDG E NO. CORRECTED 3-4-82 RVP REDRAW CADAM CK FJZ APP RJS

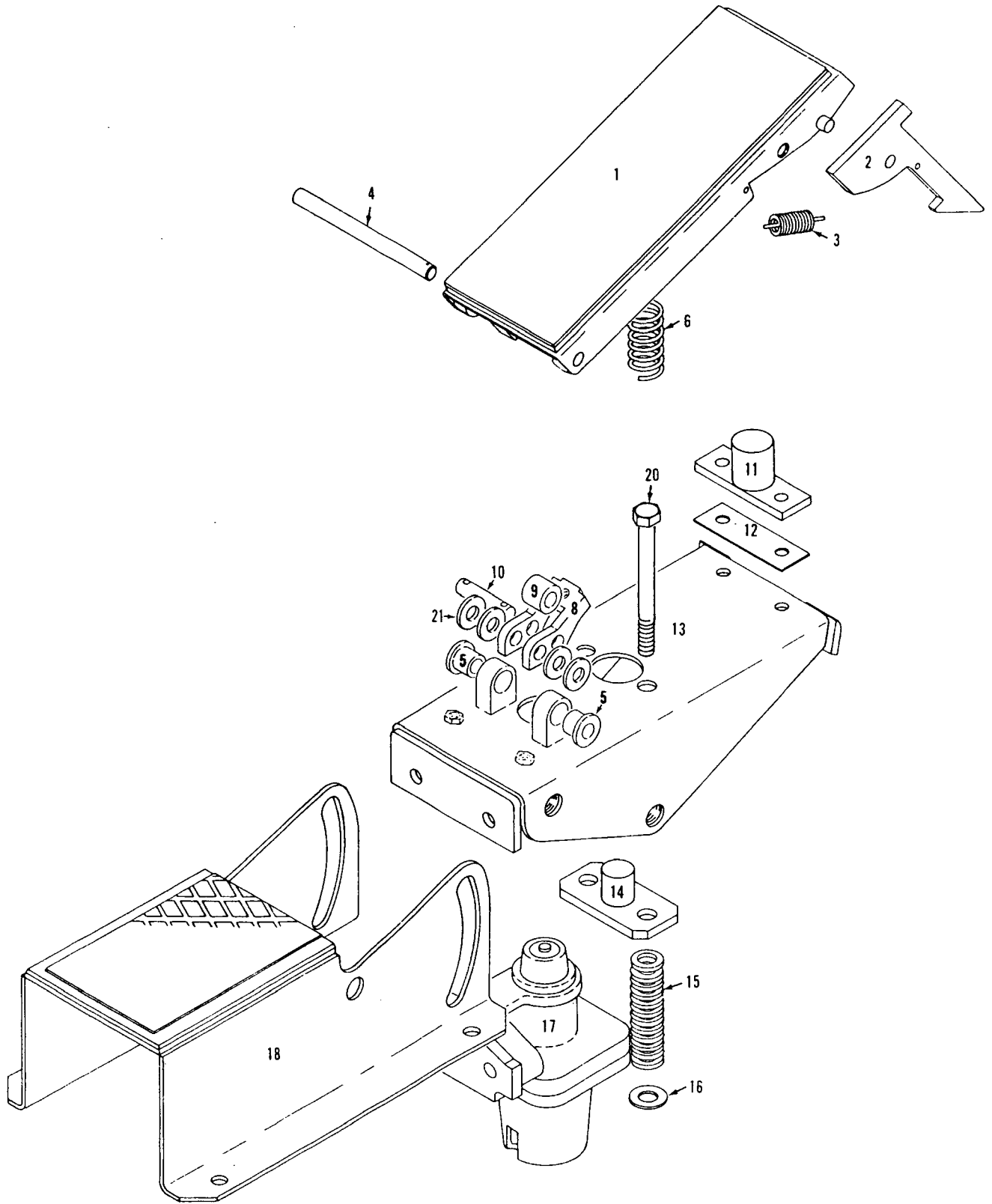
DWG. NO.
93251

FIRST ON S/N 46170

SCALE	6" = 1"	DR. HDG	Manitowoc Cranes, Inc.	Manitowoc, Wisconsin	AIR CYLINDER ASSEMBLY
CK. GMP	MODEL 4600	APP			5.50 BORE X 5.50 STROKE

DATE
1-29-70
PATTERN NO.
DWG. NO.
93251

DO NOT SCALE THIS DRAWING



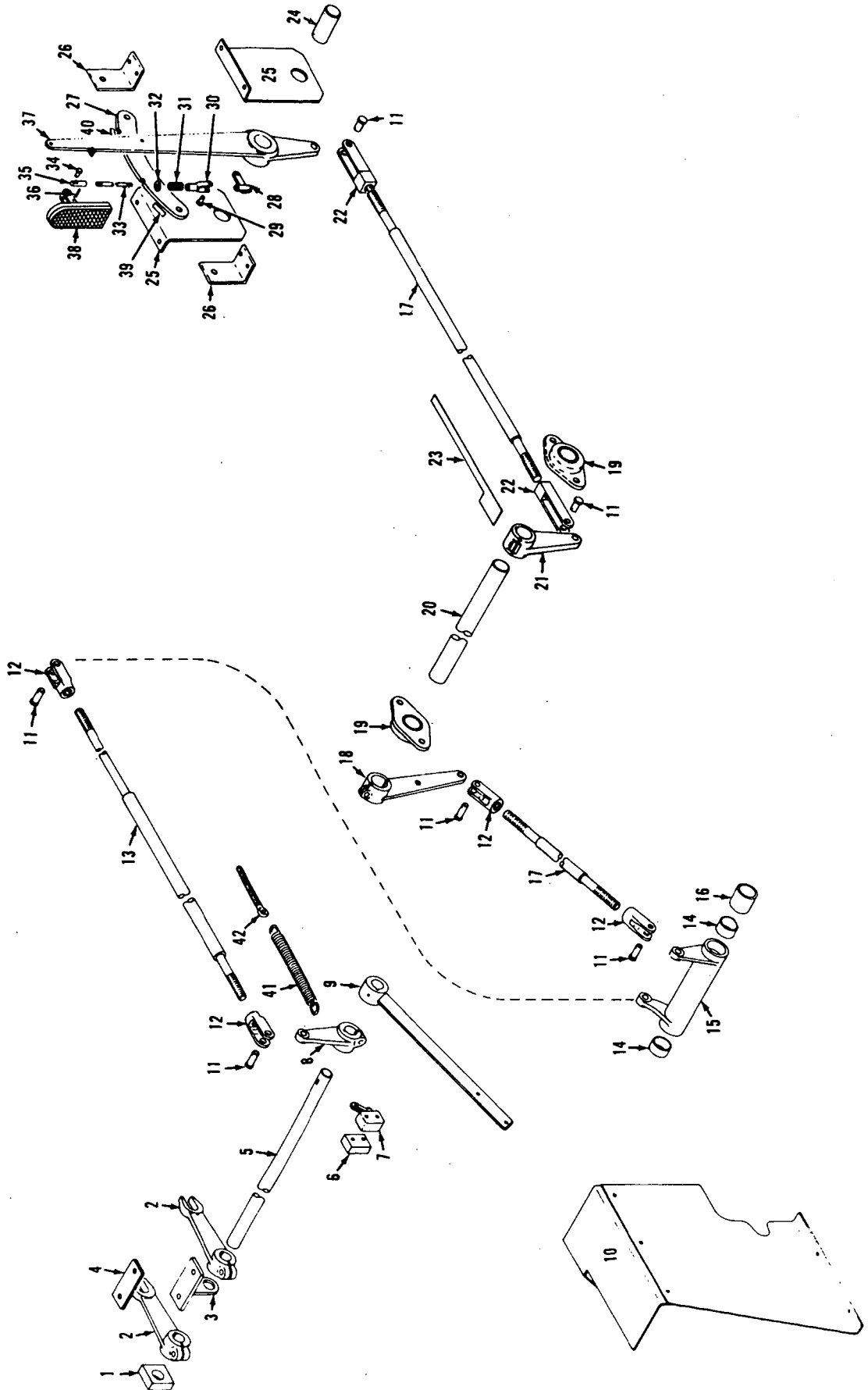
MASTER

13229781

MATERIAL LIST ON BACK

FOOT TREADLE

MASTER



190695C1

MATERIAL LIST ON BACK

SLIDE PINION CONTROL

CLICK HERE TO **DOWNLOAD** THE COMPLETE MANUAL

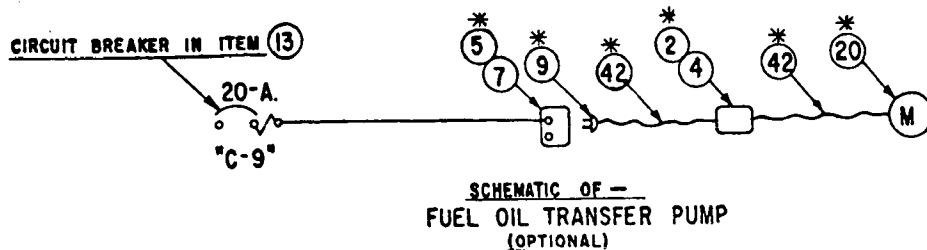
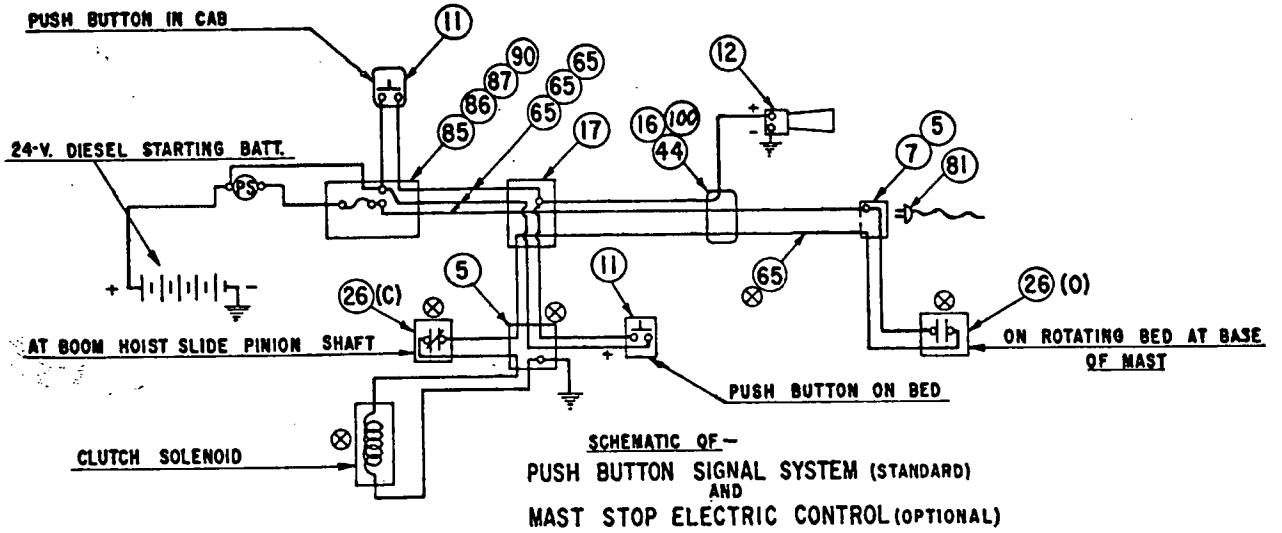
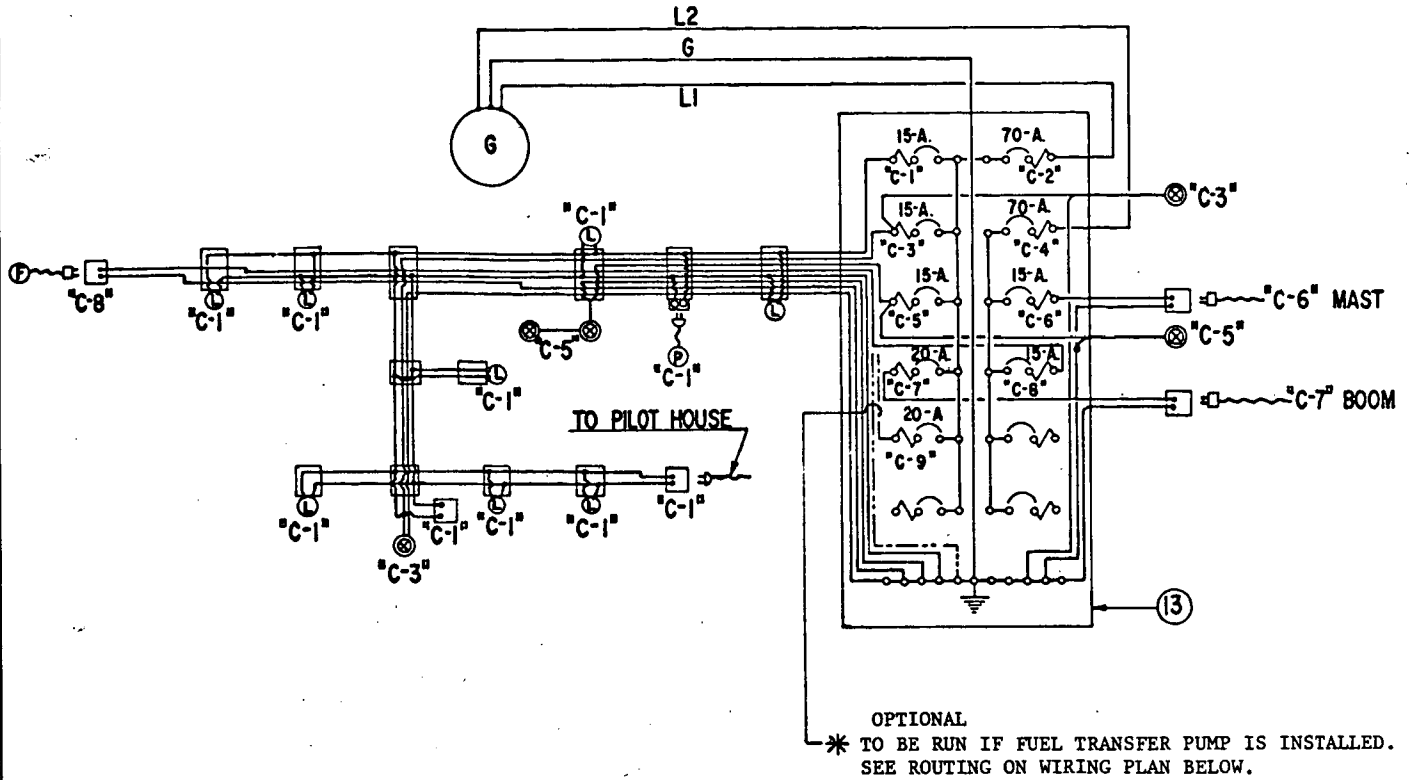
- Thank you very much for reading the preview of the manual.
- You can download the complete manual from: www.heydownloads.com by clicking the link below

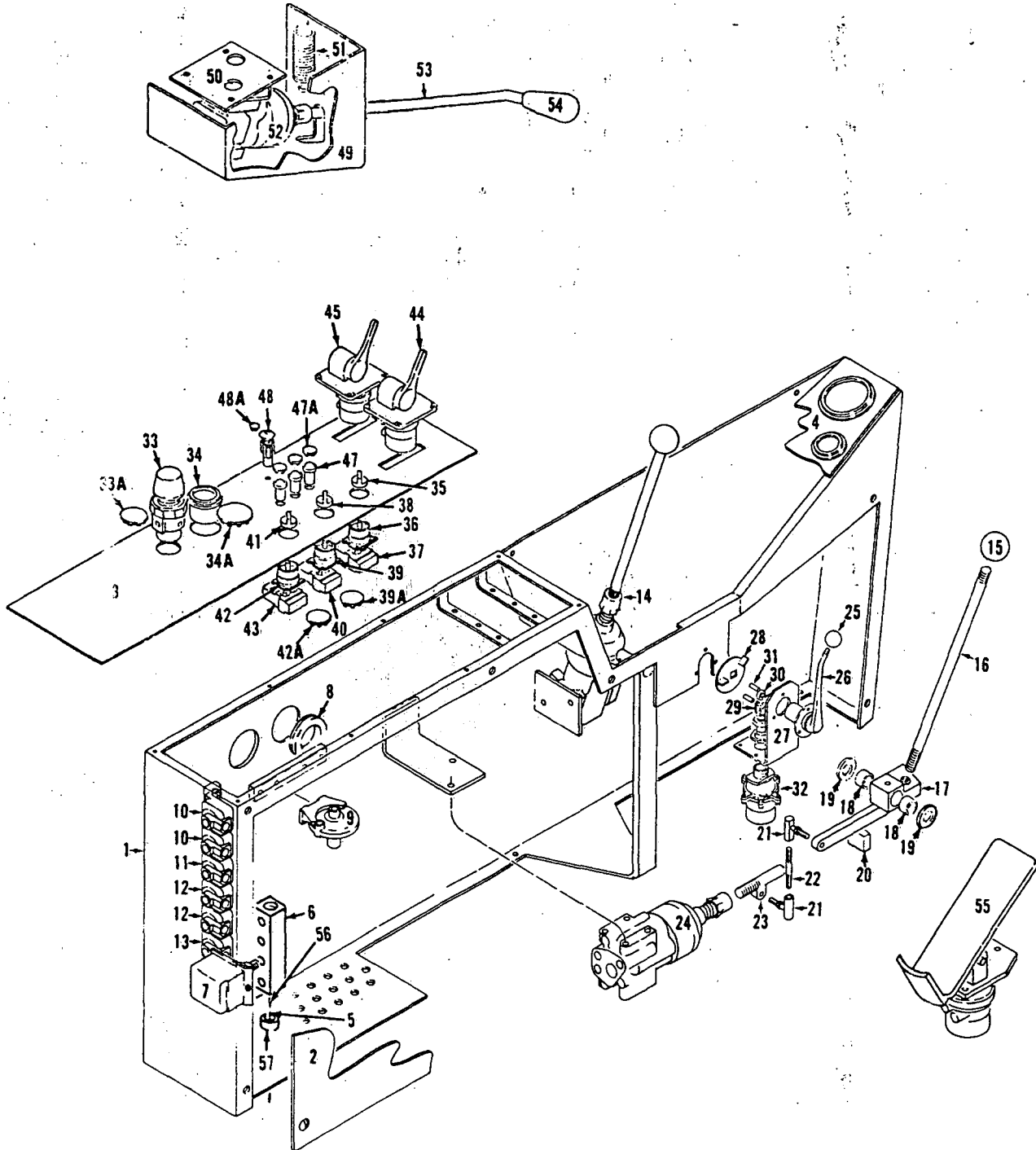


- Please note: If there is no response to CLICKING the link, please download this PDF first and then click on it.

CLICK HERE TO **DOWNLOAD** THE COMPLETE MANUAL

MASTER



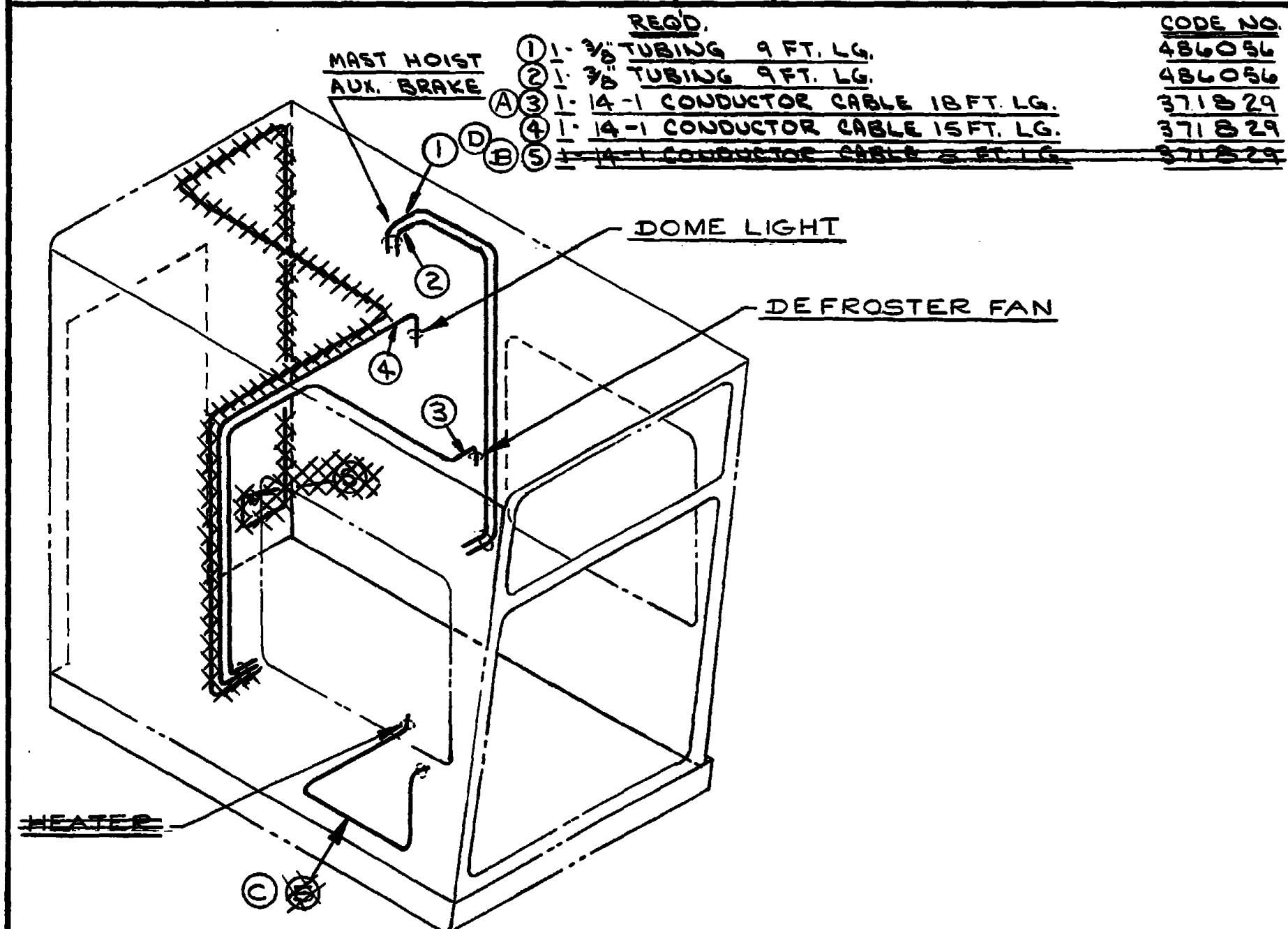


65337C1

MATERIAL LIST ON BACK

LEFT CONTROL CONSOLE

DWG. NO. 142811	CAB SUB ASSEMBLY	SCALE NONE	MANITOWOC ENGINEERING CO. MANITOWOC, WISCONSIN	DATE 3-10-75
CODE NO. 	ELEC. & AIR LINE LOCATION (IN PILOT HOUSE WALLS)	DR. DS		MATERIAL <i>CWS</i>
PATTERN NO.	MODEL SC-240,4600 SERIES 1,2,3	CK. CWH	APP.	1-6-77 JAH A WAS 16-2 CONDUCTOR CABLE, 371829



3-1-77 - J.W.S. B LG. WAS 27 FT. C ITEM 5 RELOCATED
5-18-77 J.C.S. D DELETED

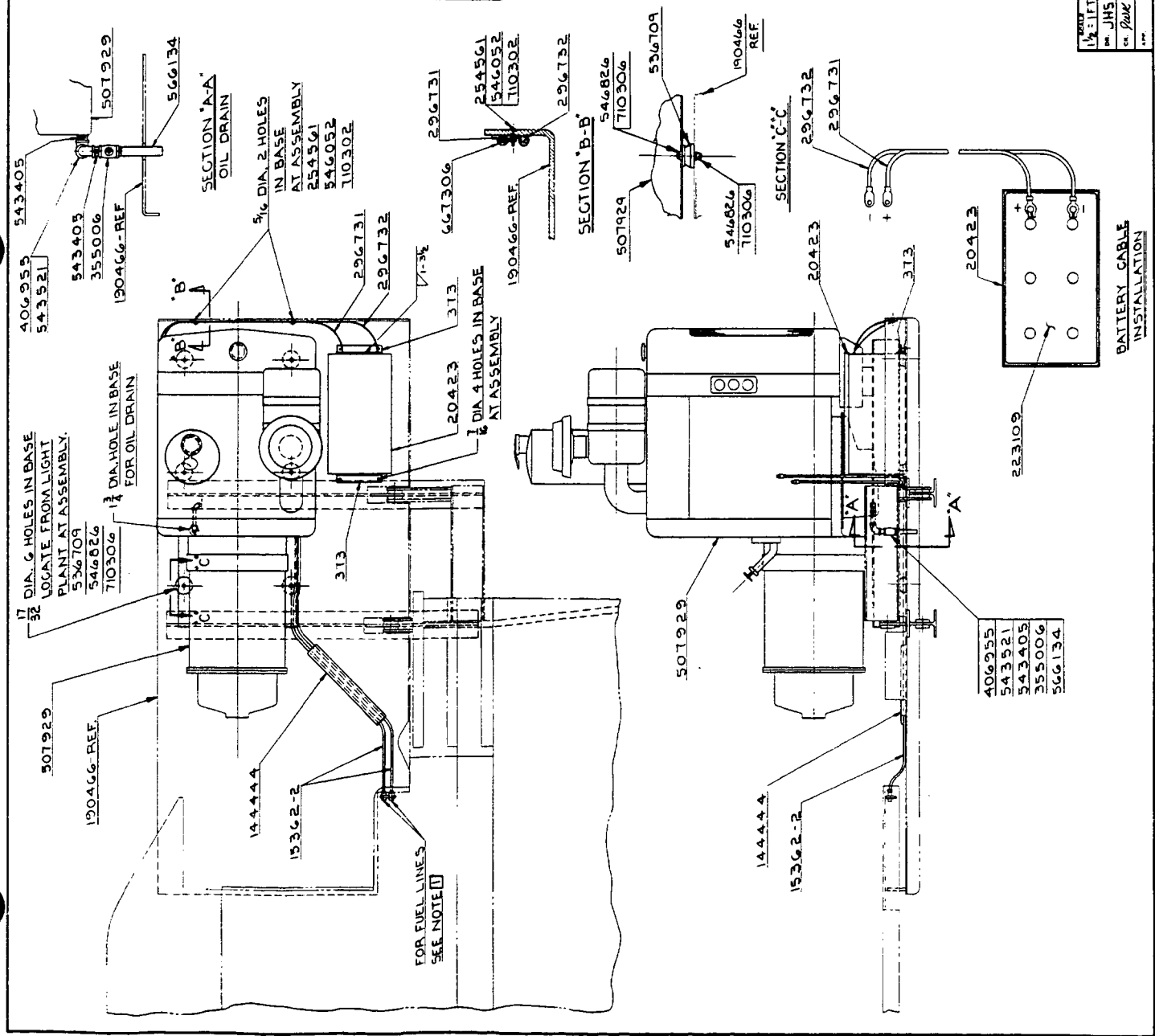
ASSEMBLIES USED ON
65331 65349

DWG. NO.
142811



REV	DATE	DESCRIPTION	BY	CHECKED	REMARKS
1	11-17-77	JLD			ADDED
2		BATTERY BOX CLIP	313		
2		3/8" I.D. FLEXIBLE HOSE	15362-2		SEE DWG. 31906
1		BATTERY BOX	20423		
1		GUARD	144444		
1		BATTERY - 12 VOLT	223109		
2		1/4" 20 UNC. 2A x 1 1/2" OVER HEAD STUD BOLT	254561		
1		BATTERY CABLE (66 LONG)	296731		
1		BATTERY CABLE (73 LONG)	296732		
1		3/4" VALVE	355006		
2		3/4" x 90° ELBOW	406955		
1		LIGHT PLANT	501929		
2		3/4" x 1 1/2" I.D. NIPPLE	543405		
6		RUBBER MOUNT	536709		
1		3/4" x 3 1/2" I.D. NIPPLE	543521		
2		1/4" 20 UNC. 2B HEX NUT	546052		
12		1/2" 20 UNC. F-25 HEX NUT	546826		
1		PIPE 3/4" x 6 1/2"	566134		
2		STRAP DUPEX	667306		
2		1/4" LOCKWASHER	710302		
12		1/2" LOCKWASHER	710306		

DATE	183139
DATE	4-18-77
DATE	183139



NOTE 1
FOR SUPPLY AND RETURN FUEL LINES
SEE DRAWING 182601

NOTE 2
LIGHT PLANT SPECIFICATIONS:
120/240 VOLTS 60 HERTZ SINGLE PHASE

NOTICE
MANITOWOC ENGINEERING CO.
ALL DIMENSIONS UNLESS OTHERWISE SPECIFIED ARE IN INCHES. DIMENSIONS IN PARENTHESES ARE FOR INFORMATION ONLY. DIMENSIONS IN MILLIMETERS ARE FOR INFORMATION ONLY. DIMENSIONS IN METERS ARE FOR INFORMATION ONLY.

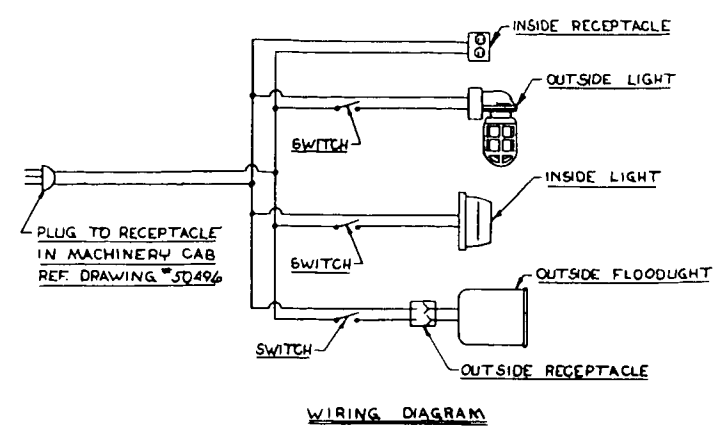
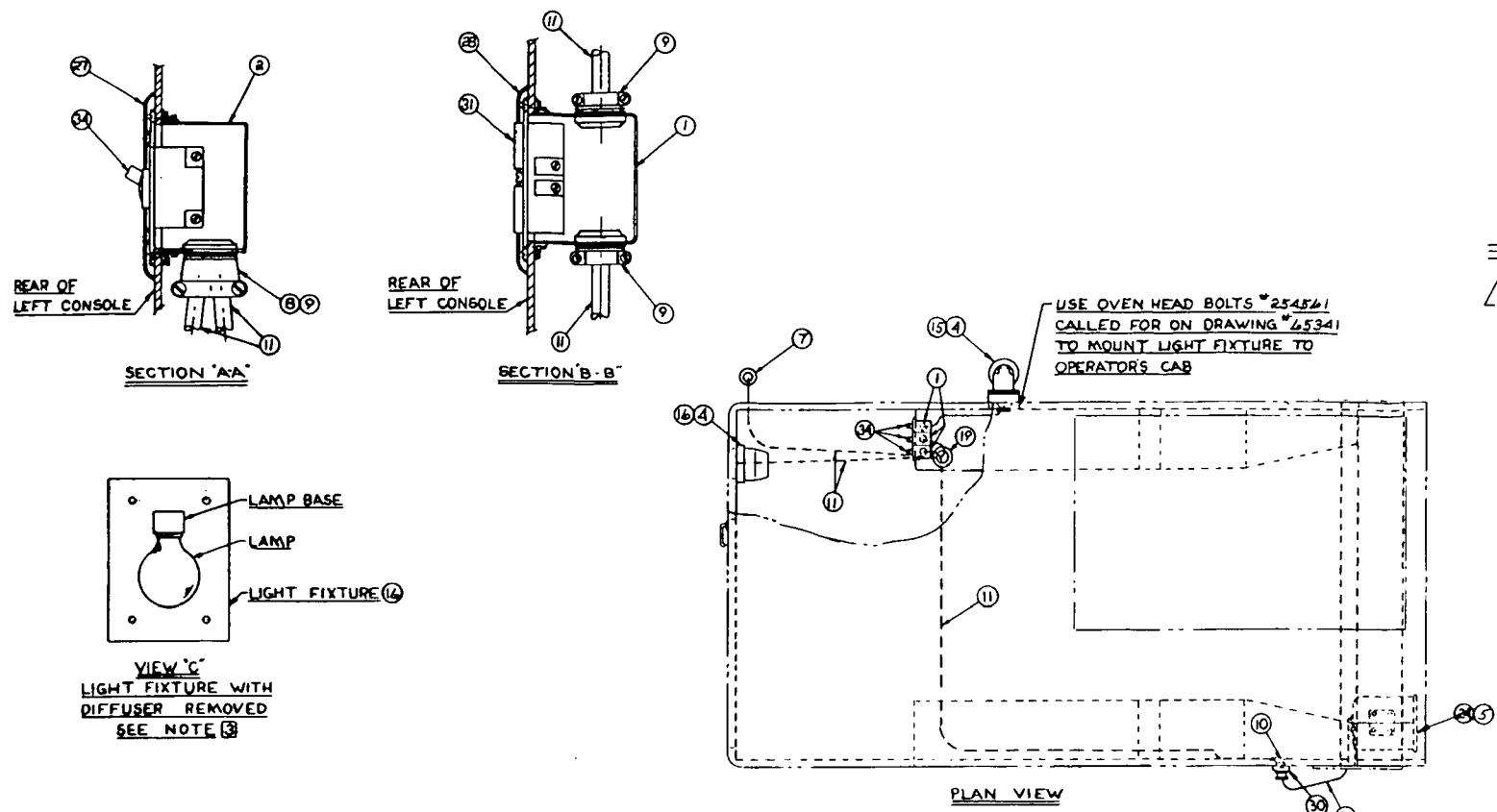
(A) REDESIGNED AS 183323.

FIRST ON 5704636

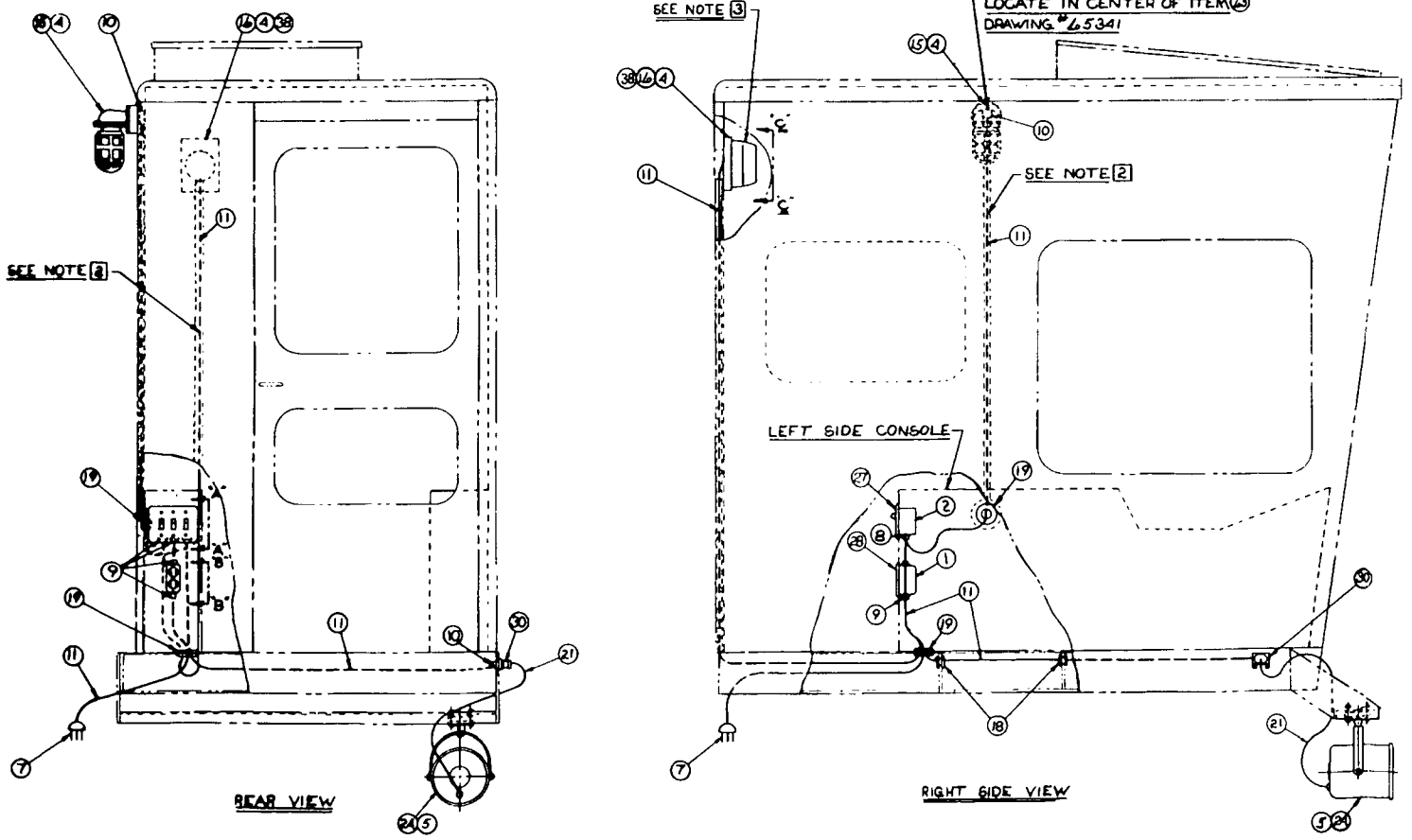
DATE	11-17-77
DATE	4-18-77
DATE	183139

REV	1	DATE	11-17-77
REV	2	DATE	4-18-77
REV	3	DATE	183139

REV	1	DATE	11-17-77
REV	2	DATE	4-18-77
REV	3	DATE	183139



BILL OF MATERIAL					
ITEM NO.	QTY.	DESCRIPTION	MATERIAL	CODE NO. OR SPEC. NO.	REMARKS
1	1	BOX		248316	
2	3	BOX		248300	
3					
4	2	LAMP 100 WATT 120VOLT		284255	ROUGH SERVICE
5	1	LAMP 500 WATT		284404	OPTIONAL
6					
7	1	CAP		304569	
8	1	CONNECTOR STRAIGHT DUPLEX		364151	
9	4	CONNECTOR STRAIGHT		364155	
10	2	CONNECTOR 90°		364168	
11	AS REQD.	CORD *14-3 TYPE 50		371910	SEE NOTE 1
12					
13					
14					
15	1	LIGHT FIXTURE		430271	
16	1	LIGHT FIXTURE		430268	SEE NOTE 3
17					
18	2	GROMMET		472020	
19	2	GROMMET		472026	
20					
21	1	CORD SET		477351	OPTIONAL
22					
23					
24	1	FLOODLIGHT		507463	OPTIONAL
25					
26	AS REQD.	1/4-20UNC-28 HEX. NUT		546052	
27	1	PLATE-SWITCH		570116	
28	1	PLATE-RECEPTACLE		570117	
29					
30	1	RECEPTACLE		589619	
31	1	RECEPTACLE		589786	
32	AS REQD.	STRAP 1 HOLE .500 SINGLE		667206	
33	AS REQD.	STRAP 1 HOLE .500 DUPLEX		667306	
34	3	SWITCH		673177	
35					
36	AS REQD.	1/4 LOCKWASHER		710302	
37	AS REQD.	1/4-20UNC-2A-1/2 LG. STOVE BOLT		854562	
38	4	1/4-20UNC-2A-1 LG. STOVE BOLT		854561	
39					
40					



NOTICE
THIS PRINT REMAINS THE PROPERTY OF
MANITOWOC ENGINEERING CO.

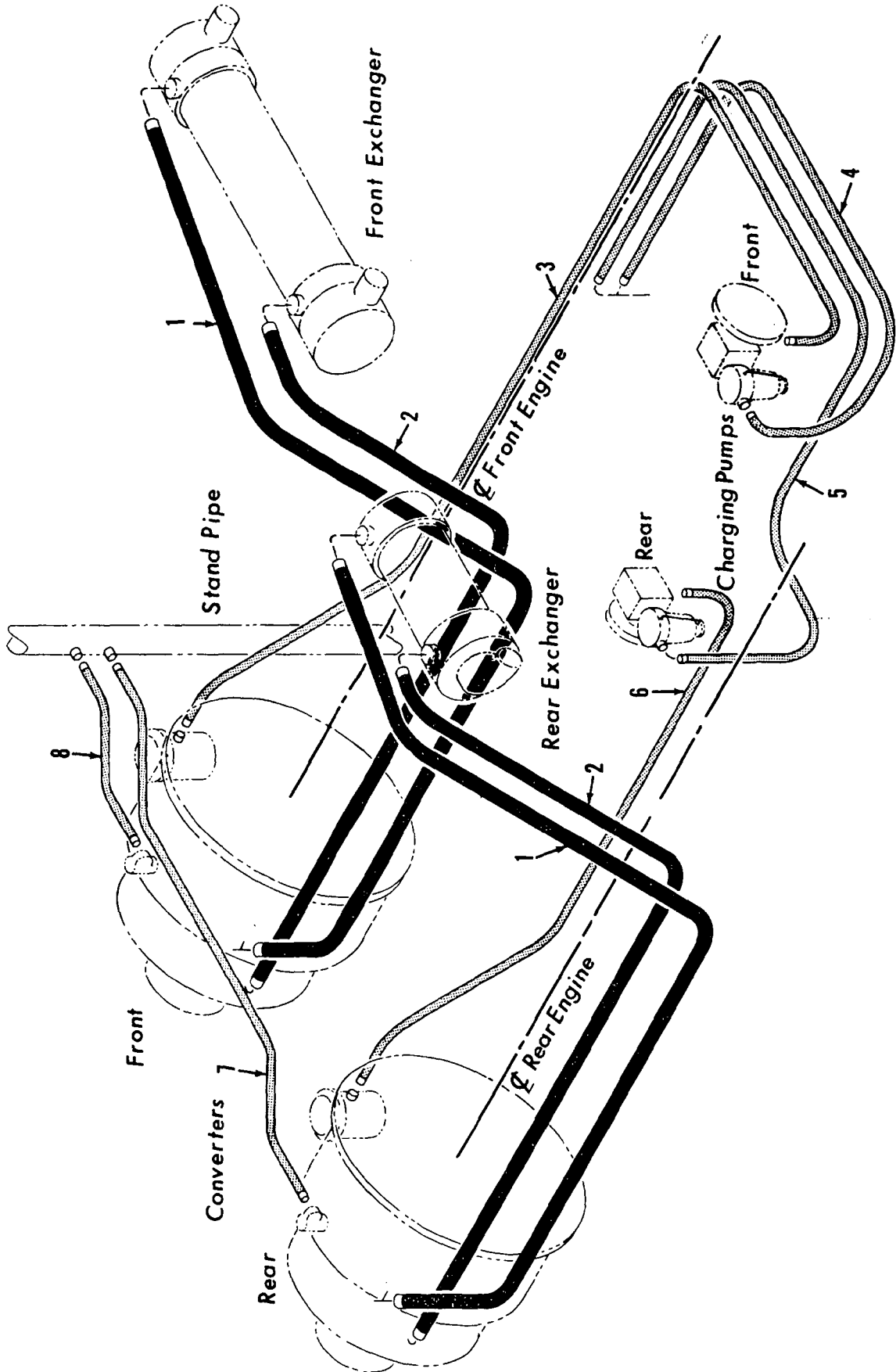
ALL INFORMATION CONTAINED THEREON IS CONFIDENTIAL. IT IS LOANED, SUBJECT TO RETURN UPON DEMAND, AND ON EXPRESS CONDITION THAT IT IS NOT TO BE COPIED OR USED DIRECTLY OR INDIRECTLY IN ANY WAY WHATSOEVER DETRIMENTAL TO OUR INTERESTS.

- NOTE 1**
ONE CONDUCTOR OF *14-3 CORD IS TO BE USED AS GROUNDING CONDUCTOR.
- NOTE 2**
*14-3 CORD TO BE INSTALLED INSIDE OF 1/2 THINWALL CONDUIT WHICH IS PART OF OPERATOR'S CAB CONSTRUCTION.
- NOTE 3**
LIGHT FIXTURE MUST BE INSTALLED WITH LAMP BASE UP THIS IS A MANUFACTURER REQUIREMENT WHEN 100WATT LAMP IS USED. SEE VIEW 'C'.
- NOTE 4**
THIS ASSEMBLY DESIGNED FOR USE WITH CAB LIGHTING ASSEMBLY *50496.

REVISED	DATE	BY	DESCRIPTION
1-1-0			
MANITOWOC ENGINEERING CO.	190170		120 VOLT AC.-NON MARINE
			1-500W INCANDE. FLOODLIGHT
			ON FRONT OF CAB

190170

8-4-77
190170

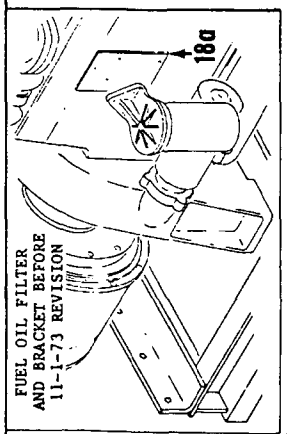
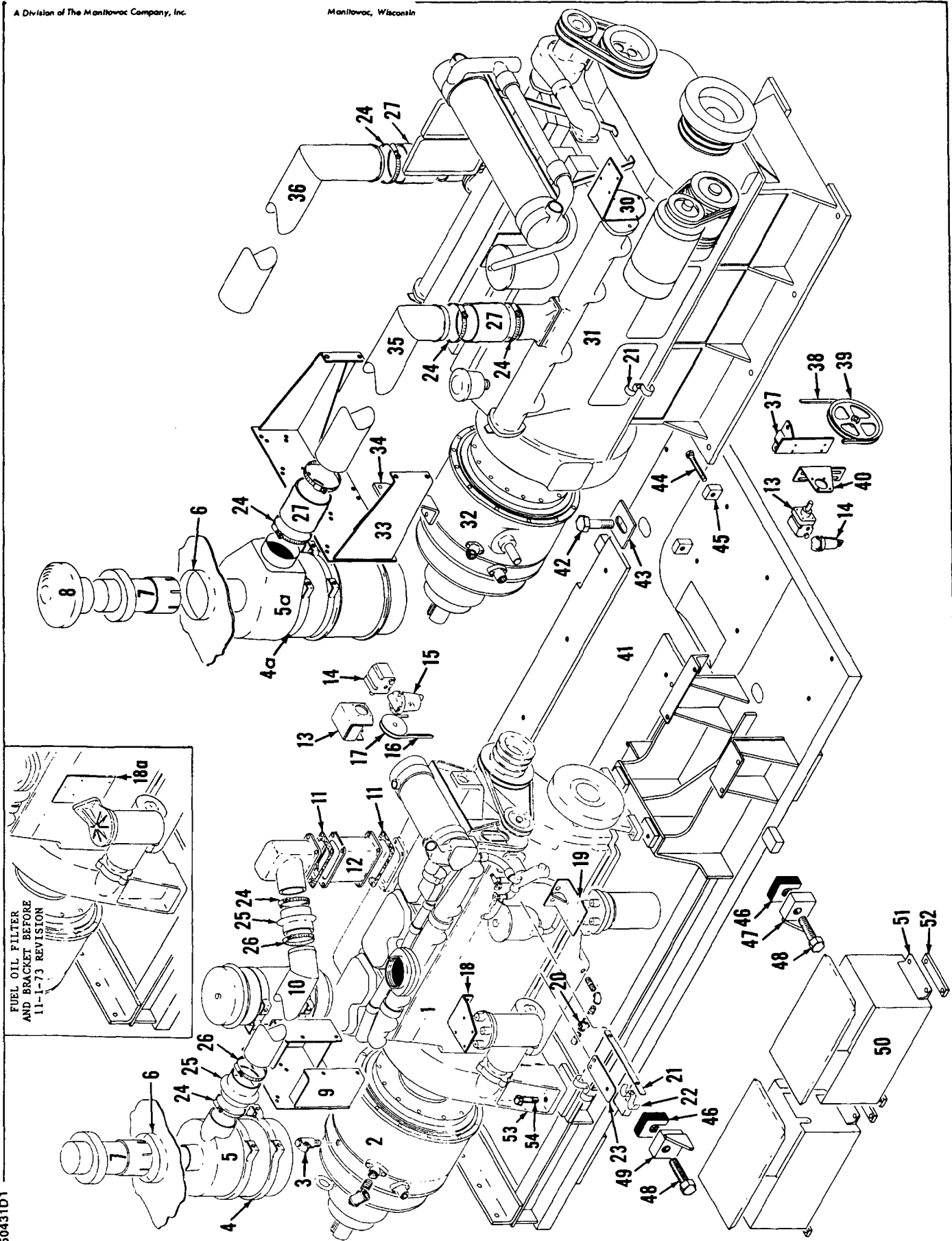


MASTER

MANITOWOC ENGINEERING CO.

A Division of The Manitowoc Company, Inc.

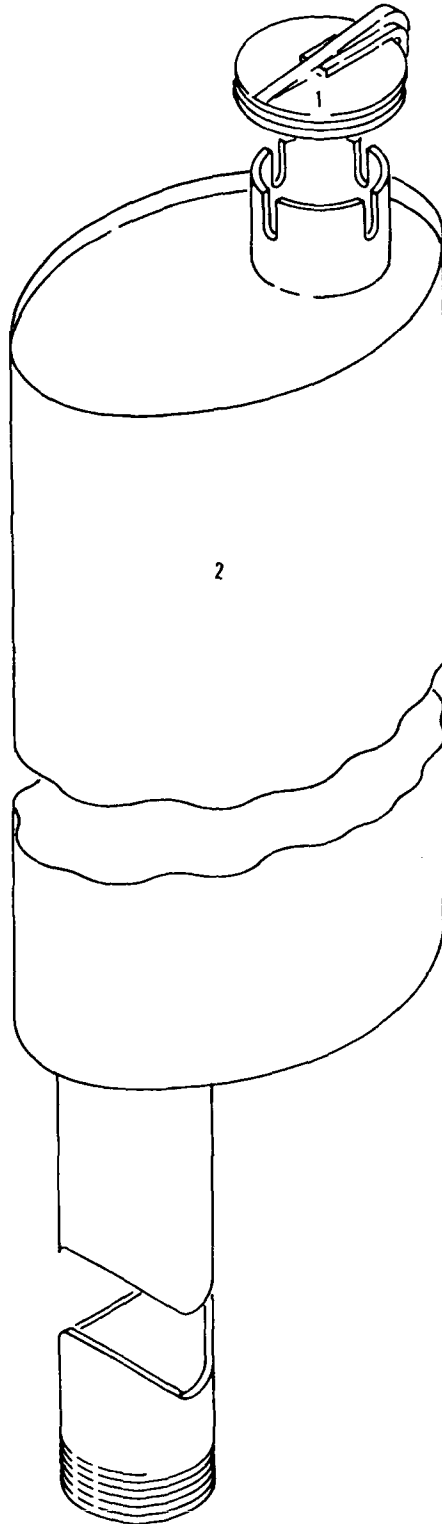
Manitowoc, Wisconsin



50431D1

MATERIAL LIST ON BACK

POWER PLANT

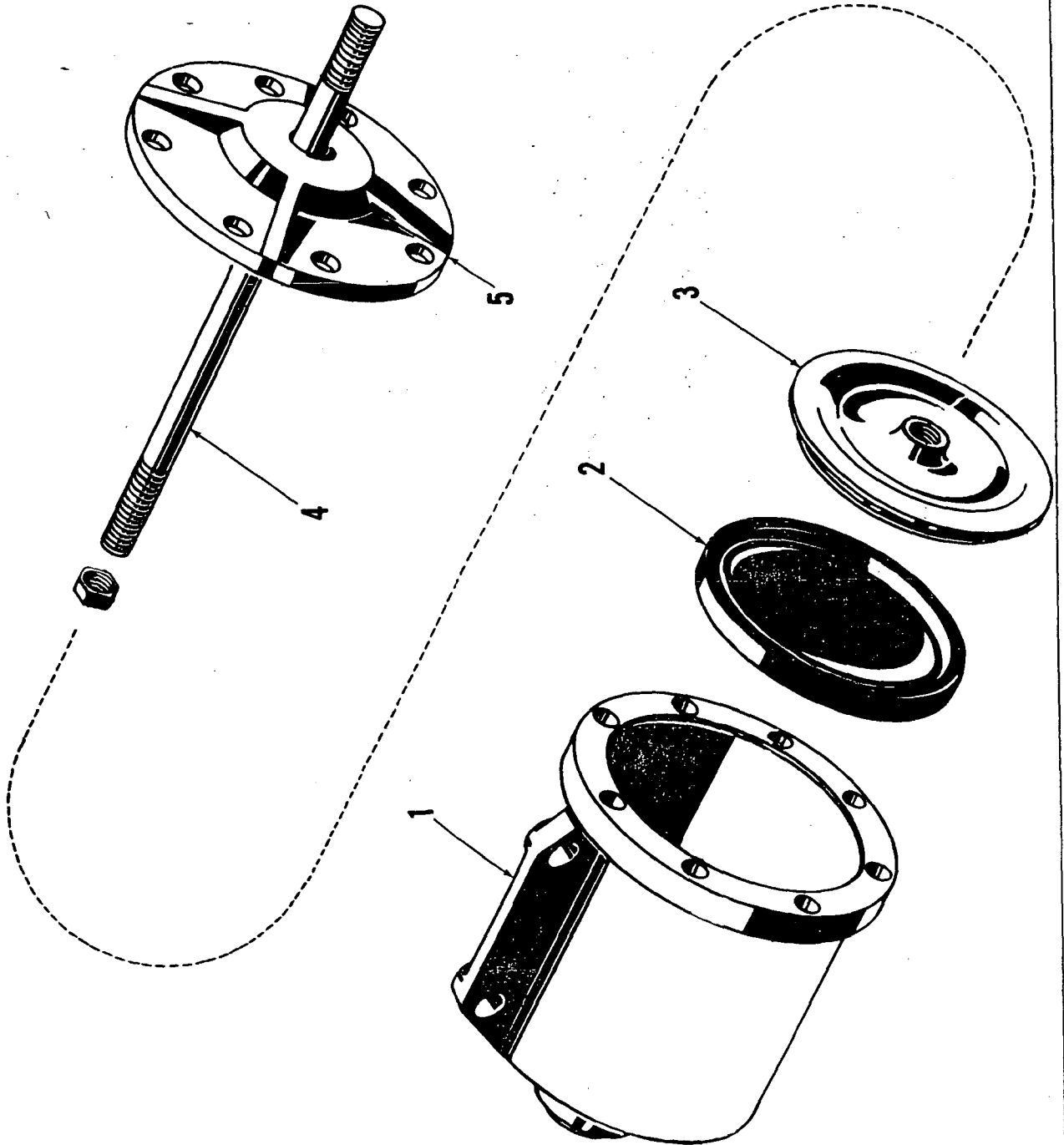


MASTER

MANITOWOC ENGINEERING CO.

A Division of the Manitowoc Company, Inc.

Manitowoc, Wisconsin



ILLUST. No. 20729 -A-1

MATERIAL LIST ON BACK

AIR CYLINDER

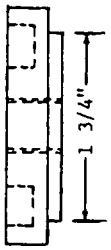
207291.

MADE

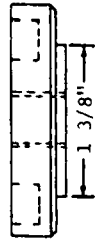
MANITOWOC ENGINEERING CO

A Division of The Manitowoc Company Inc

Manitowoc Wisconsin

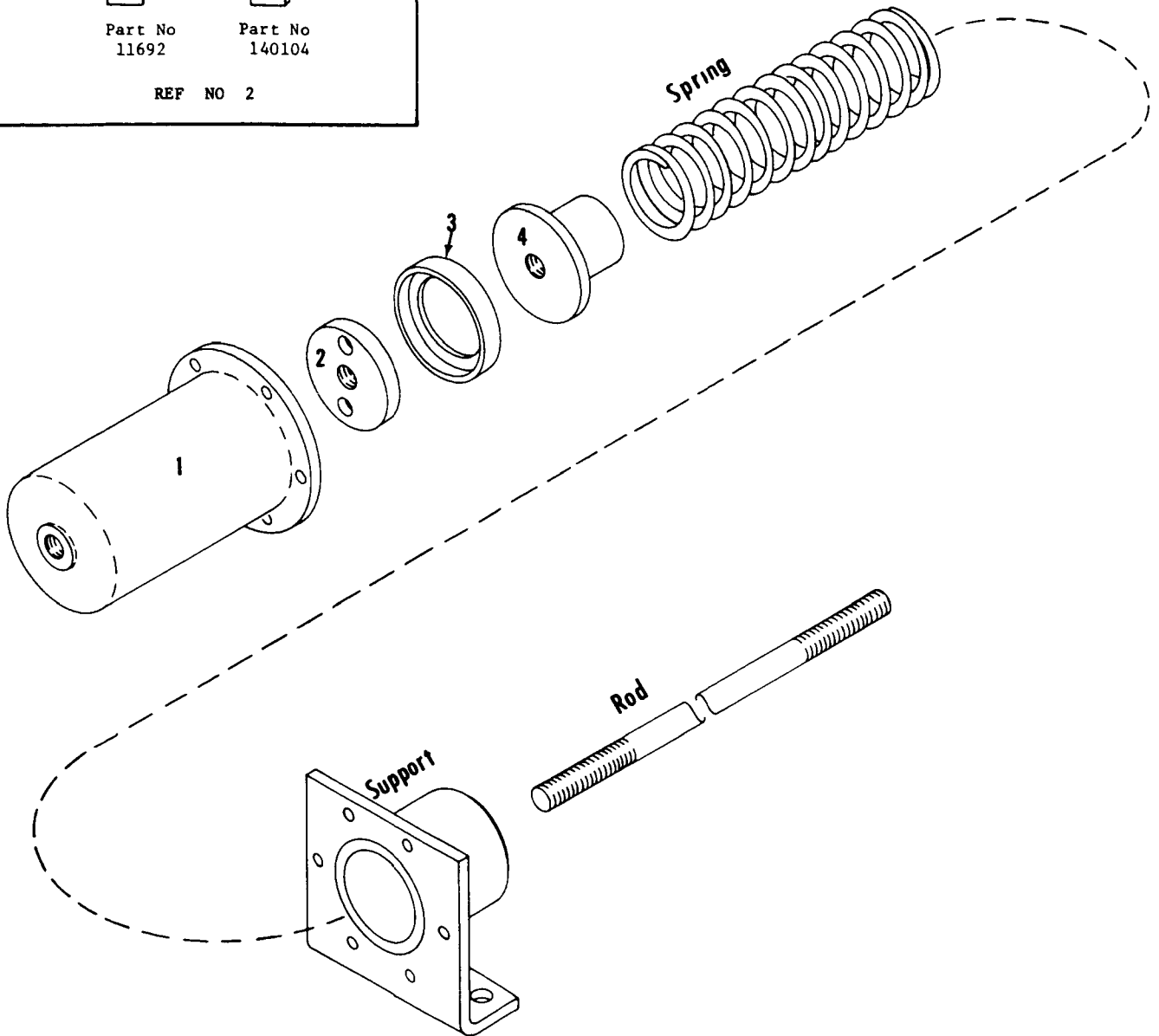


Part No
11692



Part No
140104

REF NO 2



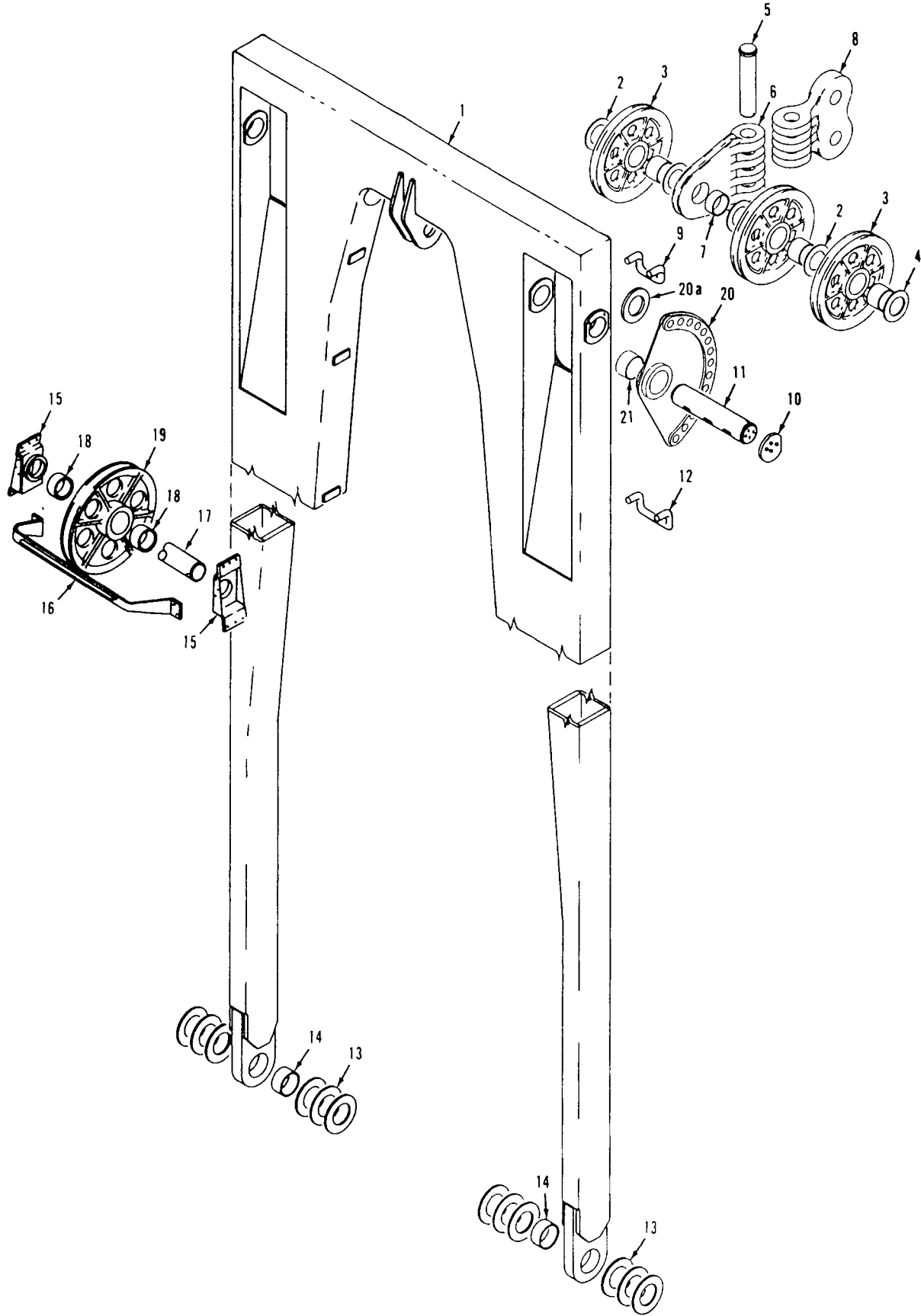
9356081

MATERIAL LIST ON BACK

AIR CYLINDER

PARTS MANUAL ALPHABETICAL INDEX
Group F - Attachments

DESCRIPTION	PUBLICATION	REV	START DATE	END DATE	GROUP
Boom	50294	A4	05/18/62	06/29/82	F0101
Boom	50294	D2	09/19/75	06/29/82	F0101
Boom	50294	D3	09/19/75	06/29/82	F0101
Boom	50294	F1	05/18/62	06/29/82	F0101
Boom Angle Indicator	22334	B1	01/07/52	09/20/85	F1101
Boom Point	92269	C1	05/16/68	05/04/76	F0401
Dragline Fairlead	48974	B1	05/12/70	12/05/84	F1701
Intermediate Drag Drum Brake	93251	A1	01/29/70	03/19/70	F5602
Mast & Reeving	43043	B2	04/18/63	03/29/90	F1201
Mast & Reeving	43043	B3	04/18/63	03/29/90	F1201
Mast & Reeving	43043	K1	01/05/68	03/29/90	F1201
Wire Rope Guide	31480	B1	07/20/55	11/12/76	F0701



43043C1

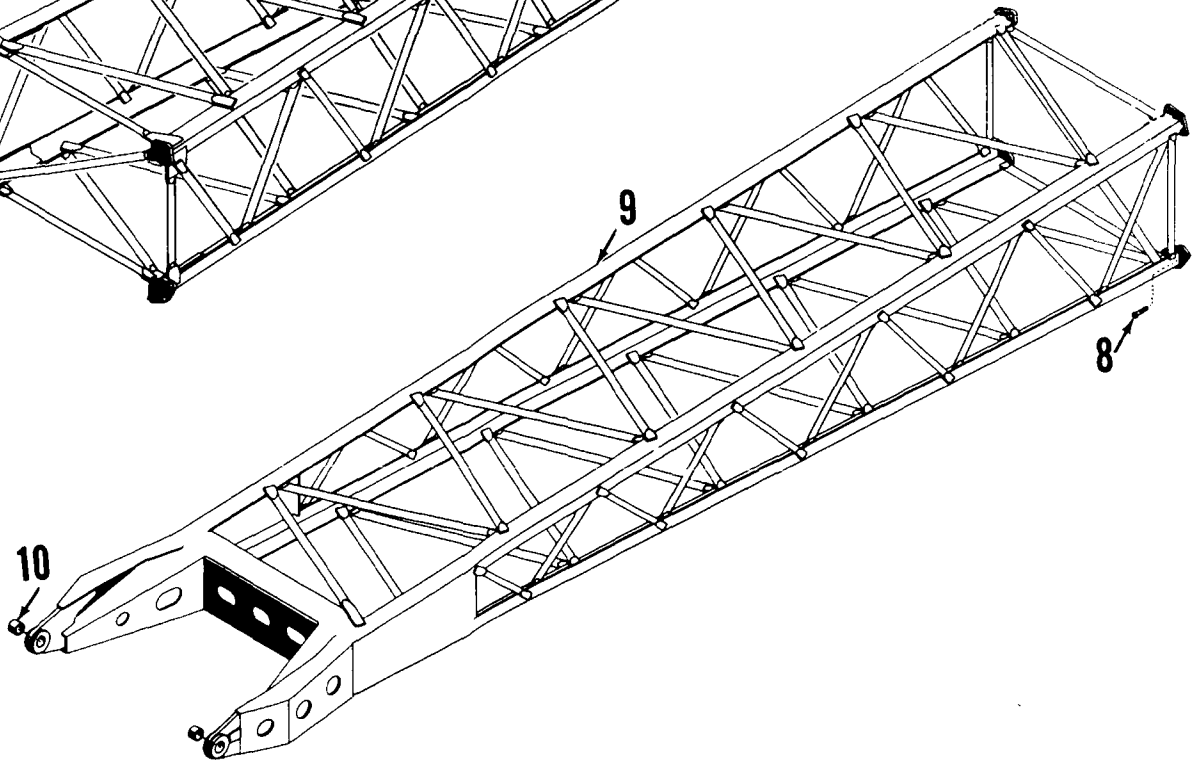
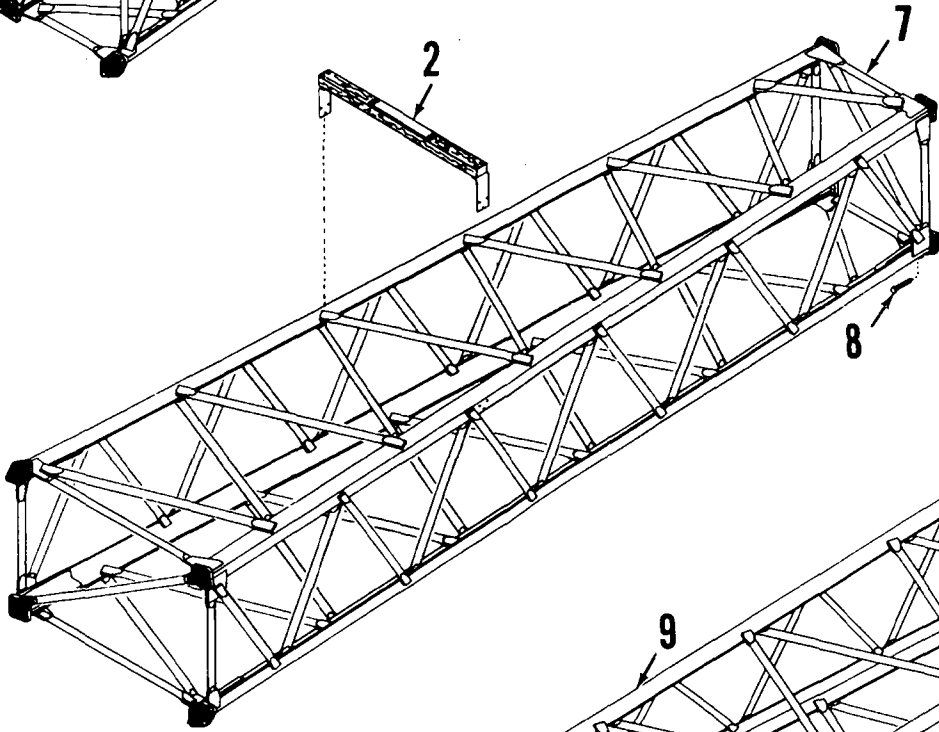
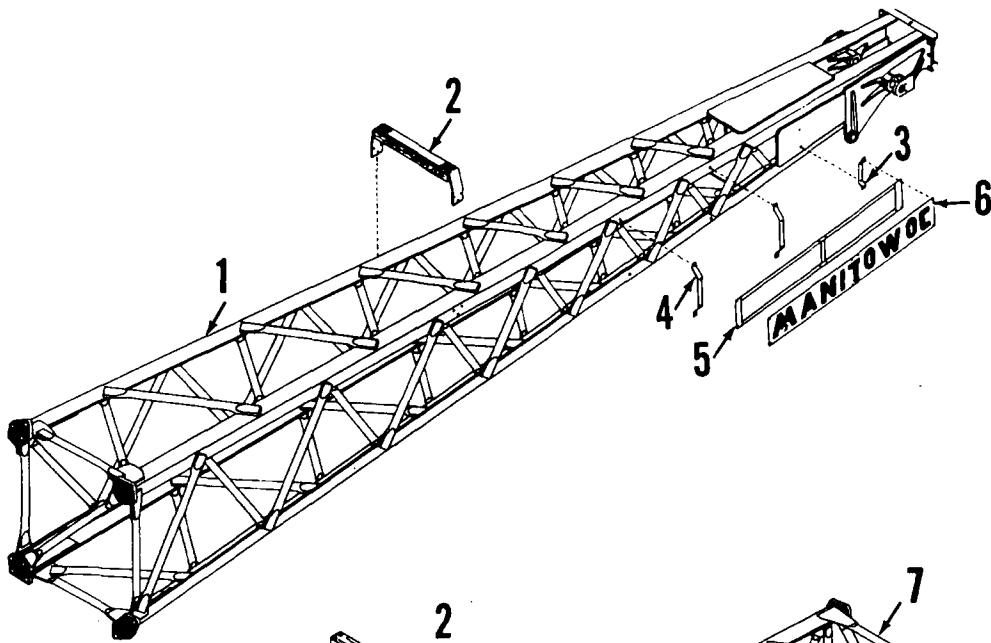
MATERIAL LIST ON BACK

MAST ASSEMBLY

MANITOWOC ENGINEERING CO.

A Division of The Manitowoc Company, Inc.

Manitowoc, Wisconsin



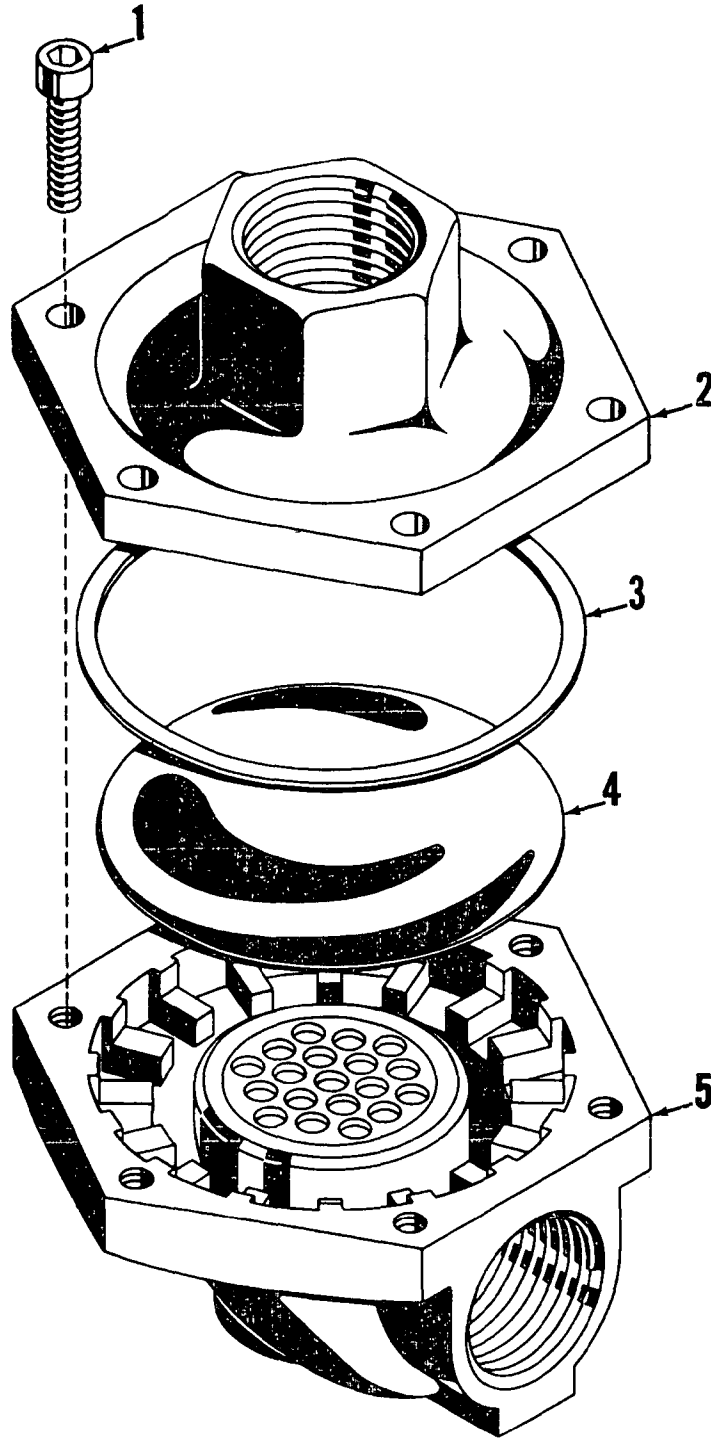
50291A1

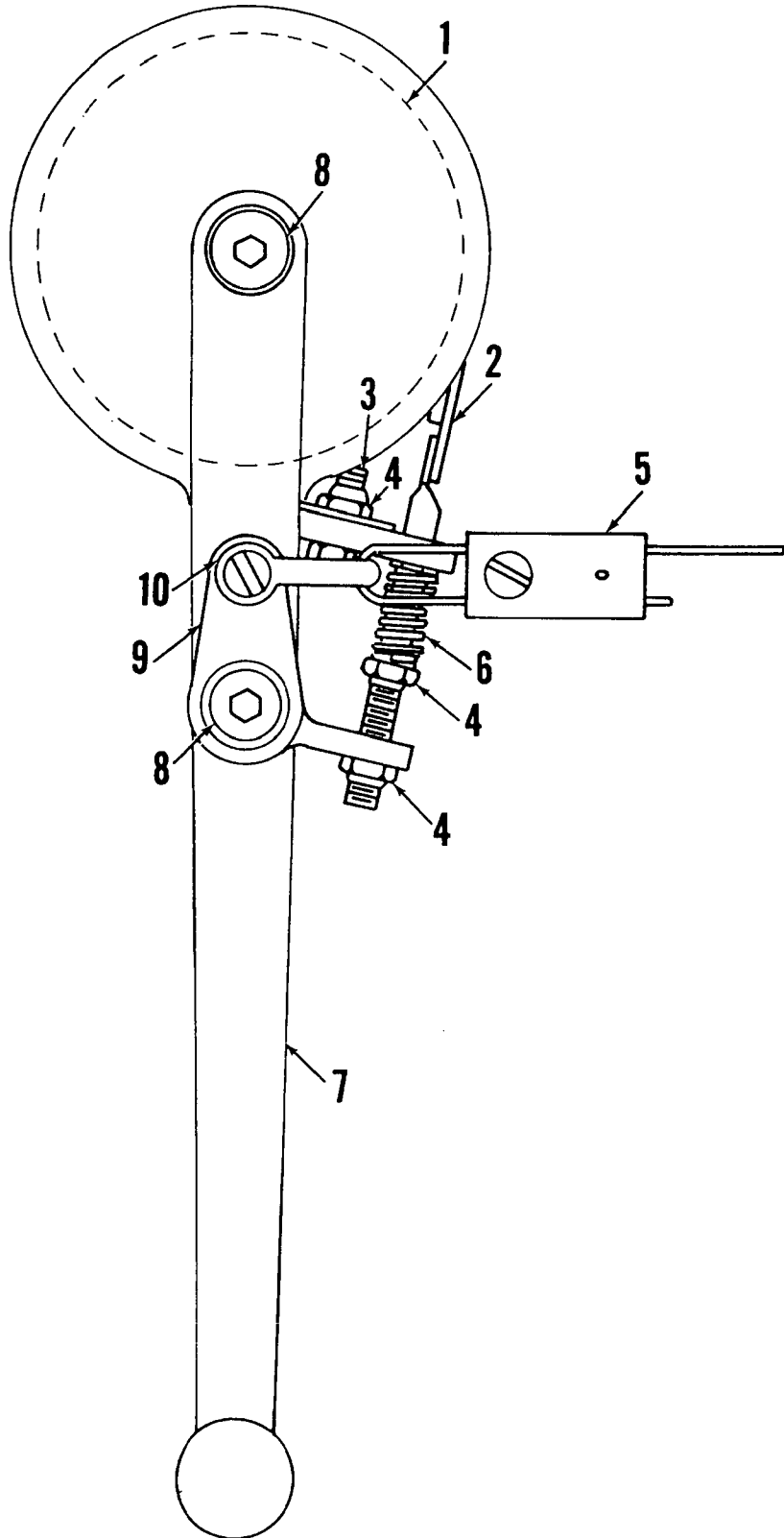
MATERIAL LIST ON BACK

BOOM ASSEMBLY

MASTER

MASTER





MASTER

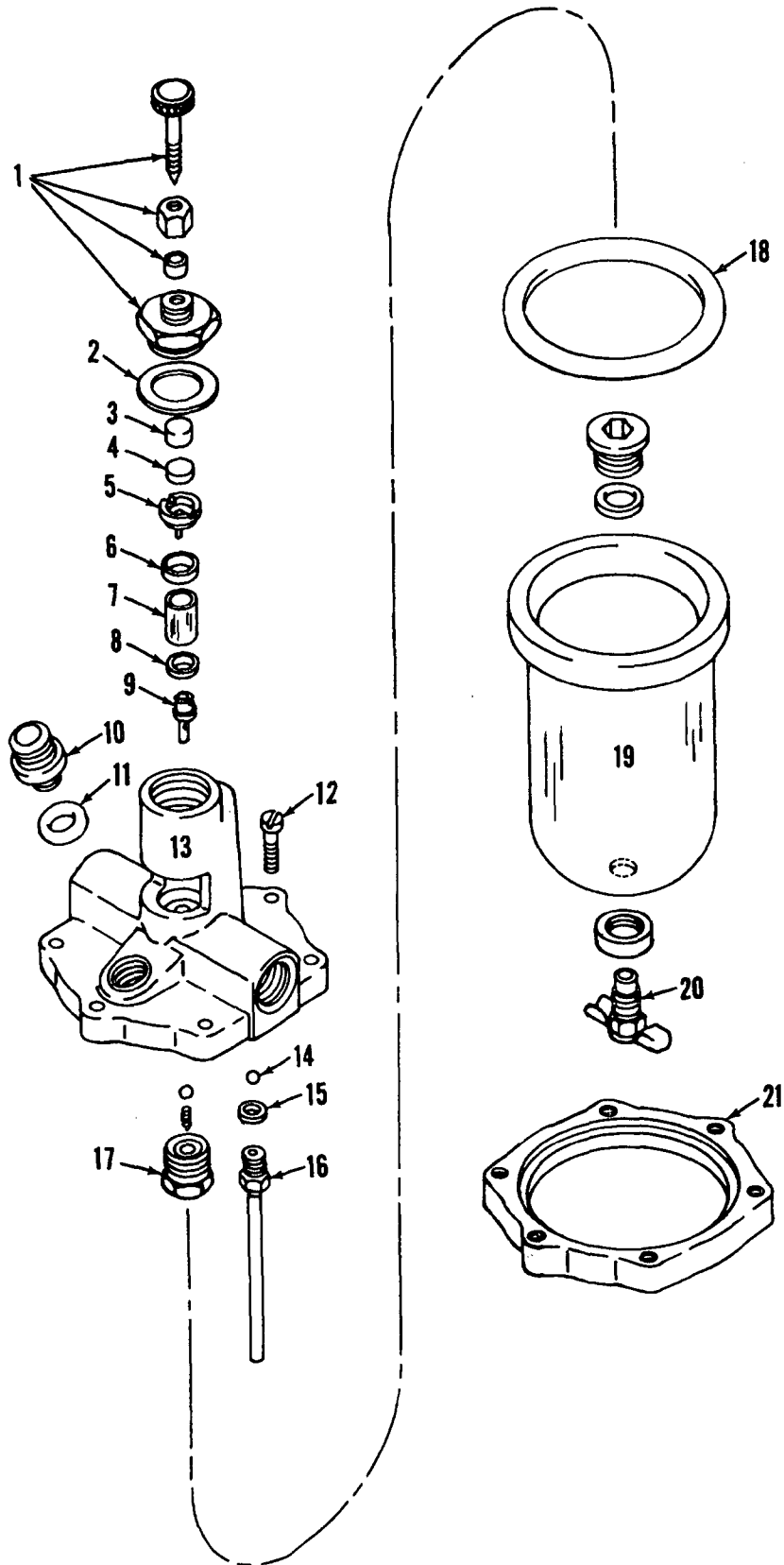
THROTTLE CONTROL ASSEMBLY

MANITOWOC ENGINEERING CO.

A Division of The Manitowoc Company, Inc.

Manitowoc, Wisconsin

MASTER



0-291

MATERIAL LIST ON BACK

LUBRICATOR

162.0

0-300 Cont.	REV. A	MODEL 390-390-4600
-------------	-----------	-----------------------

CONTROL VALVE
(MANITOWOC #702594-WILLIAMS #WM-607H-C1C)
(MANITOWOC #702595-WILLIAMS #WM-607H-C3C)

REF. NO.	PART NUMBER	QUANTITY REQUIRED	DESCRIPTION OF PART	VENDORS PART NO.
50		1	WASHER	4-W-76
51		1	SCREW	1348
52		3	SCREW, Adjusting	16-W-22
<p>NOTE: Parts marked * are available in a repair kit Williams #R-607-S.</p> <p>Repair kit for Barrier Plate Assembly Williams #R-1355.</p> <p>This valve weighs 3 lbs. 8 oz.</p>				

Run as front

MASTER

0- Cont.

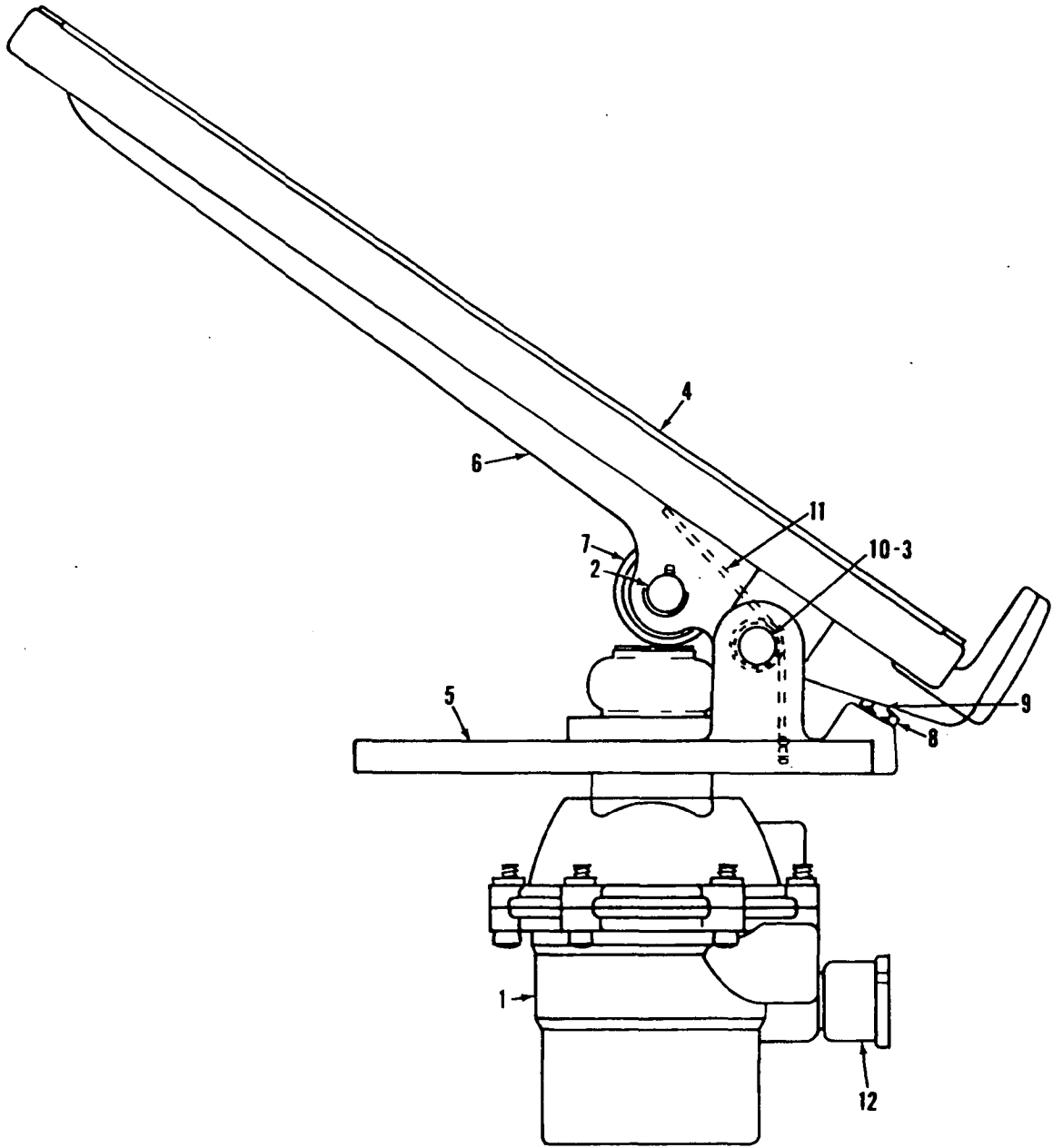
REV. A	0 - 300
-----------	---------

MANITOWOC ENGINEERING CO.

A Division of The Manitowoc Company, Inc.

Manitowoc, Wisconsin

MASTER



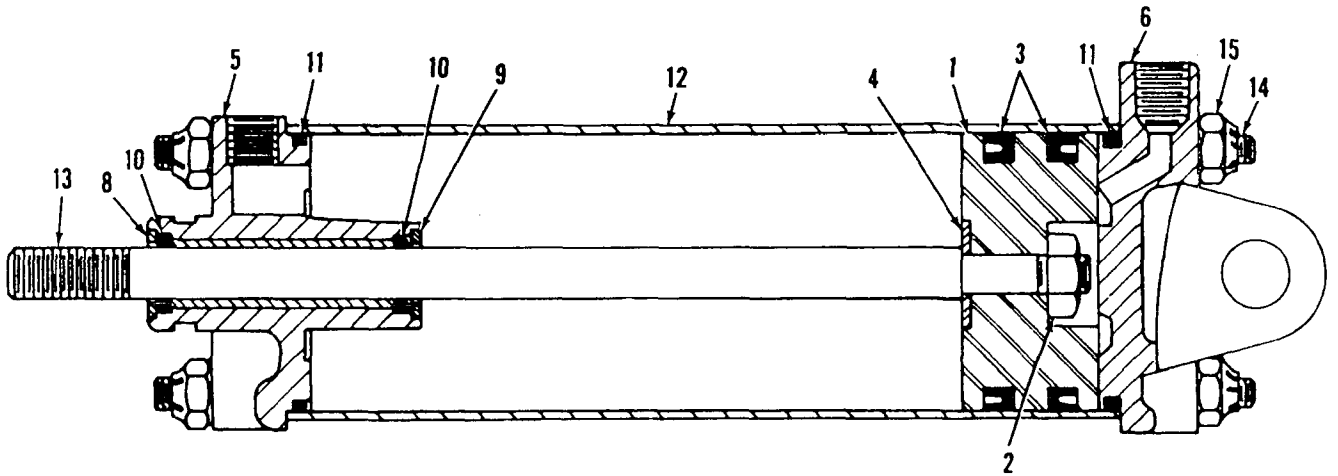
0-308

MATERIAL LIST ON BACK

THROTTLE VALVE

0-308

MASTER

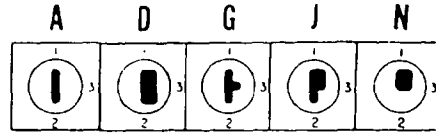
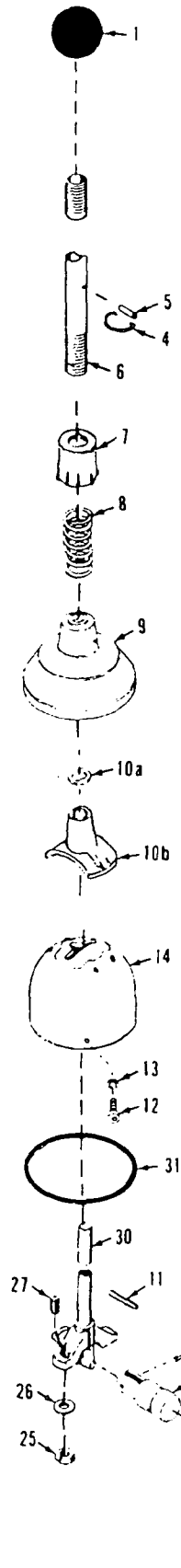


0-414

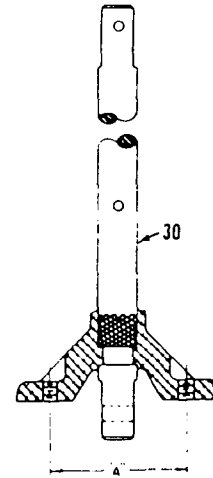
MANITOWOC ENGINEERING CO.

A Division of the Manitowoc Company, Inc.

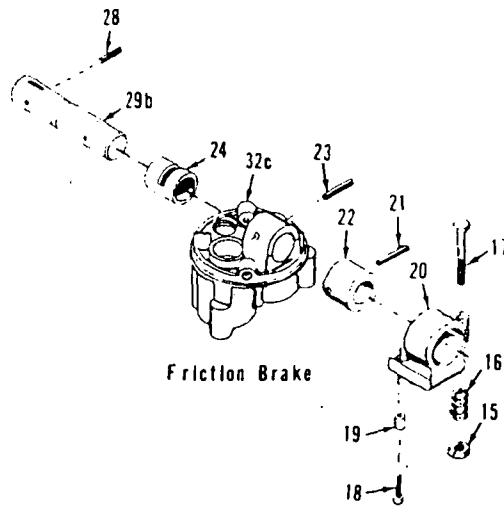
Manitowoc, Wisconsin



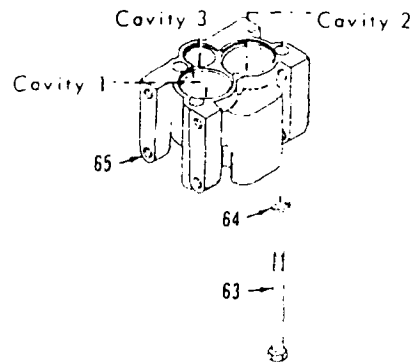
Handle Guide Inserts for Ref. No. 14



Yoke Spacing
Ref. No. 30



Friction Brake



0-441-2B

MATERIAL LIST ON BACK

FLEXAIR VALVE OPERATING MECHANISM

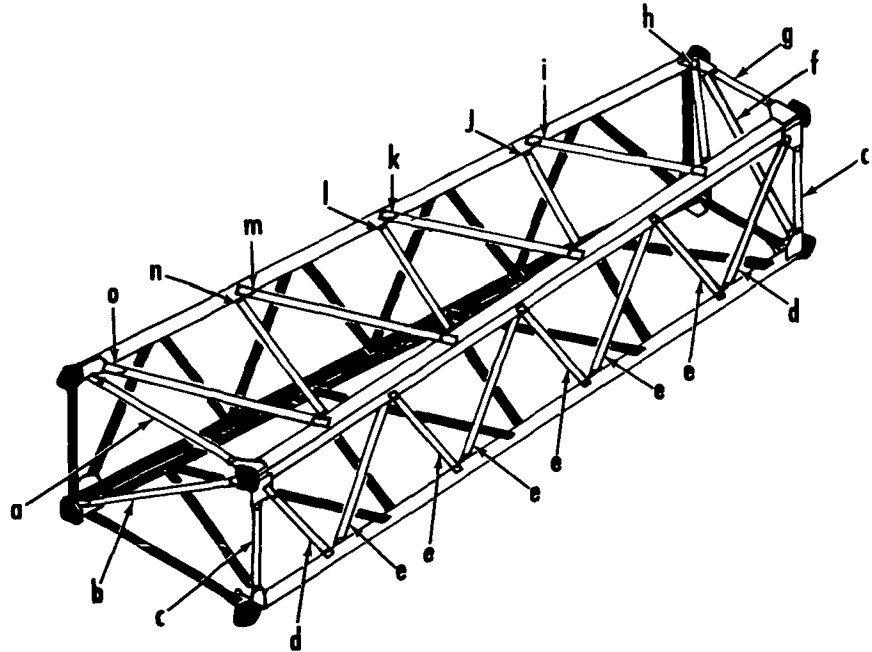
MANITOWOC ENGINEERING CO.

A Division of The Manitowoc Company, Inc.

Manitowoc, Wisconsin

Boom #30-#31-#32-#33
Left Side and Bottom Lacings Black
Opposite Lacings Same Unless Noted

27' CENTER SECTION
#43175



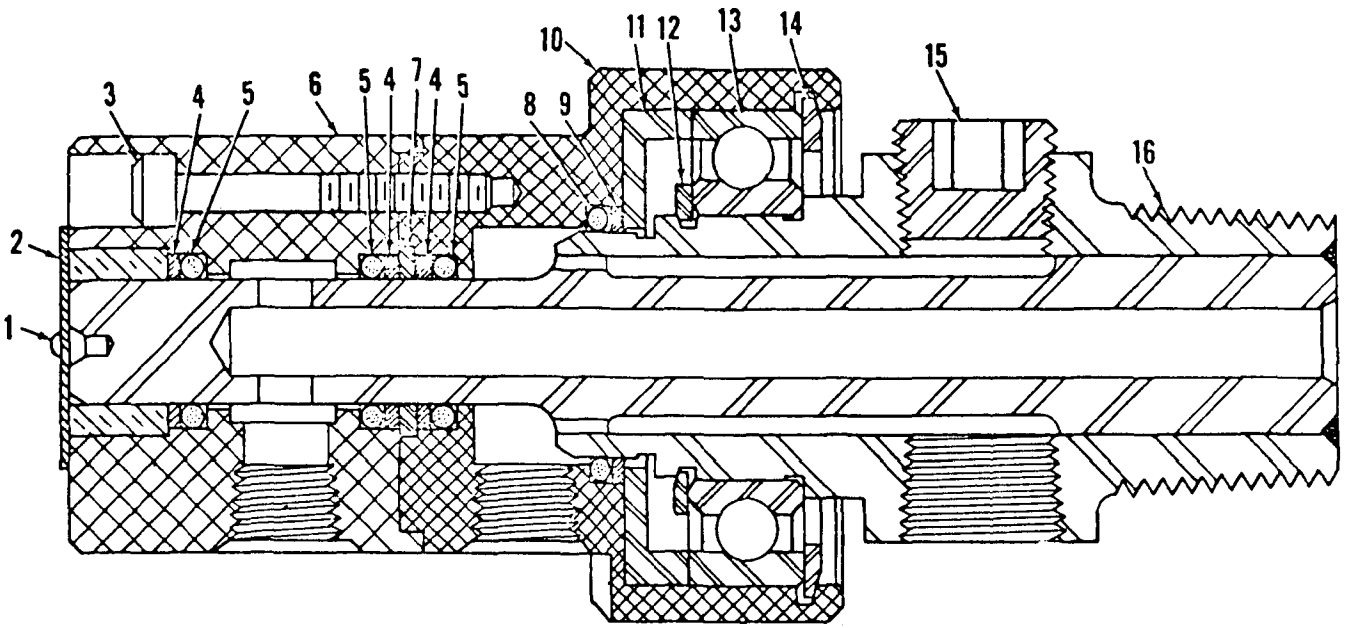
37' CENTER SECTION

- #40739
- #42793
- #42801
- #43491

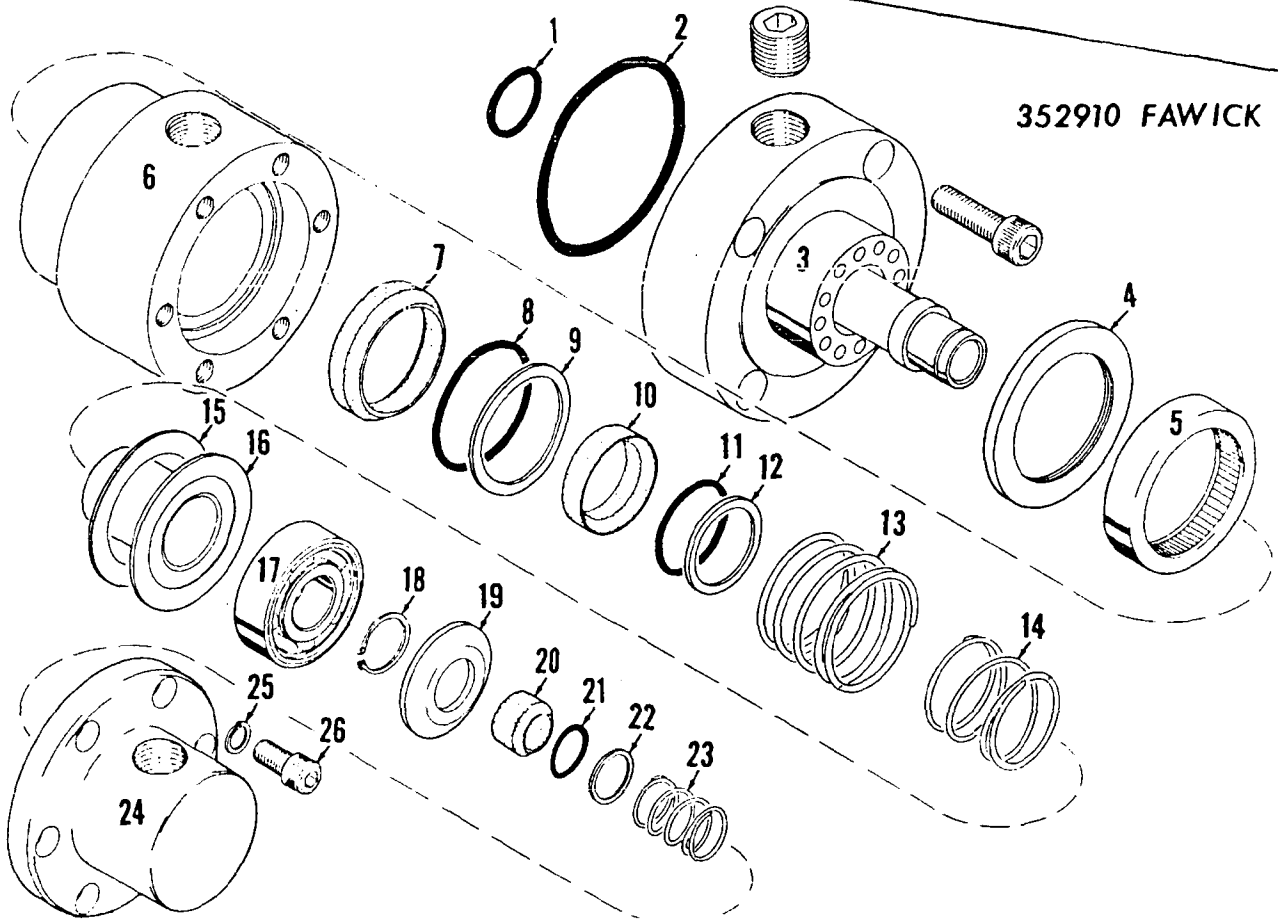


When ordering give the section
number and lacing letter -
Example - Lacing #43491-E

RUN AS FROM MASTER



700705 DEUBLIN



352910 FAWICK

0-92A1

MATERIAL LIST ON BACK

SWIVEL UNION ASSEMBLY

0-92A1

CLICK HERE TO **DOWNLOAD** THE COMPLETE MANUAL

- Thank you very much for reading the preview of the manual.
- You can download the complete manual from: www.heydownloads.com by clicking the link below



- Please note: If there is no response to CLICKING the link, please download this PDF first and then click on it.

CLICK HERE TO **DOWNLOAD** THE COMPLETE MANUAL