

Manitowoc

TRADITIONAL CRANE PARTS MANUAL

This manual has been prepared for and is considered part of

4600

Model

460013

Serial Number

GROUP A = Rotating Structure (Includes rotating bed, operator's cab, cases, fuel tanks, transfer pump, counterweights, guards, platforms, catwalks, machinery enclosure, horn)

GROUP B = Upperworks Machinery (Includes front, rear, and auxiliary drums, boom hoist, swing and drive shafts, hand levers, foot pedals, control linkage, rotation indicators, upperworks hydraulic components, hydraulic piping, hydraulic oil reservoir, lubrication pump and piping, blowers)

GROUP C = Air Components & Electrical (Includes control console, air piping, electric wiring, auxiliary light plant and lighting, TV monitoring, compressor and air tank)

GROUP D = Power Components - Upperworks (Includes engine or motor, radiator, auxiliary power plant, take off converters and piping, controls, VICON power lowering, torque limiter, hydraulic pumps and piping, fuel piping, battery box)

GROUP E = Lower Structure & Control (Includes carbody, crawlers, travel shafts and control, steering travel locks, hydraulic travel, travel power outriggers, carrier, pedestal, lowerworks hydraulic piping, RINGER components, barge mounting and machinery, spud drums)

GROUP F = Attachments (Includes booms, jibs, masts, tower, wire rope guides, equalizer, gantry, fairlead, timber guards, boom angle indicator, block-up limit, tag line, hook block, weight ball, upper and lower boom point, wind speed indicator, crowd and retract dipper sticks, dippers,)

O-NUMBER SECTION = (Includes lacing drawings and purchased component parts drawings referenced in sections A through F)

This manual is arranged in sections as listed above. Sections A through F are arranged by group numerical order with an index after each section tab. An alphabetical index for groups A Through F combined is located after the O-number Section. The O-number section is arranged in numerical order by O-number. Following this cover page are the Basic Specifications, Warranty Information, Tool List (if applicable) Outline Dimensions, Weights, and Dealer Listing.

CLICK HERE TO **DOWNLOAD** THE COMPLETE MANUAL

- Thank you very much for reading the preview of the manual.
- You can download the complete manual from: www.heydownloads.com by clicking the link below



- Please note: If there is no response to CLICKING the link, please download this PDF first and then click on it.

CLICK HERE TO **DOWNLOAD** THE COMPLETE MANUAL

B. Ordering Lacings without Lacing Drawings

The parts order must contain the following information to ensure that Manitowoc provides you with the correct lacings:

1. Crane serial number (can be found on builders plate in operator's cab.)
2. Boom or jib identification number.
3. Quantity, lacing location, and lacing number.
4. Boom or jib component name (butt, insert, or top) and part number.

NOTE To obtain the lacing location and number, view the boom or the jib from the butt end looking forward. Identify the side on which the damaged lacing is located: left side, top side, right side, or bottom side. Count each lacing up to and including the damaged lacing, starting with **first lacing nearest butt end** of the component as shown in Figure 3.

Do not count a diagonal lacing as the first lacing. Identify diagonal lacing separately; lower end diagonal lacing or upper end diagonal lacing.

ASSISTANCE

If you are in doubt as to which lacings to order, **DO NOT GUESS**. Contact your nearest Manitowoc distributor for assistance; doing so may prevent the wrong parts from being shipped.

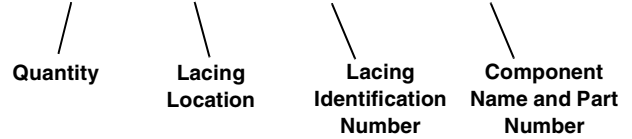
EXAMPLE: Assume you have a number 22 boom and the lacings with circled numbers in Figure 3 are damaged. Your parts order should be similar to the following example:

Crane Serial Number: **00000** (from builders plate).

Boom Identification Number: **#22 Boom**

Required:

- 1 each Top Side Lacing (1) for 30 ft Butt 48153-9
- 1 each Right Side Lacing (5) for 30 ft Butt 48153-9
- 1 each Bottom Side Lacing (3) for 20 ft Insert 33426-3
- 1 each Bottom Side Lacing (6) for 20 ft Insert 33426-3
- 1 each Top Side Lacing (2) for 40 ft Top 50453-2



WELDING INSTRUCTIONS

Refer to folio 1316 for welding instructions.

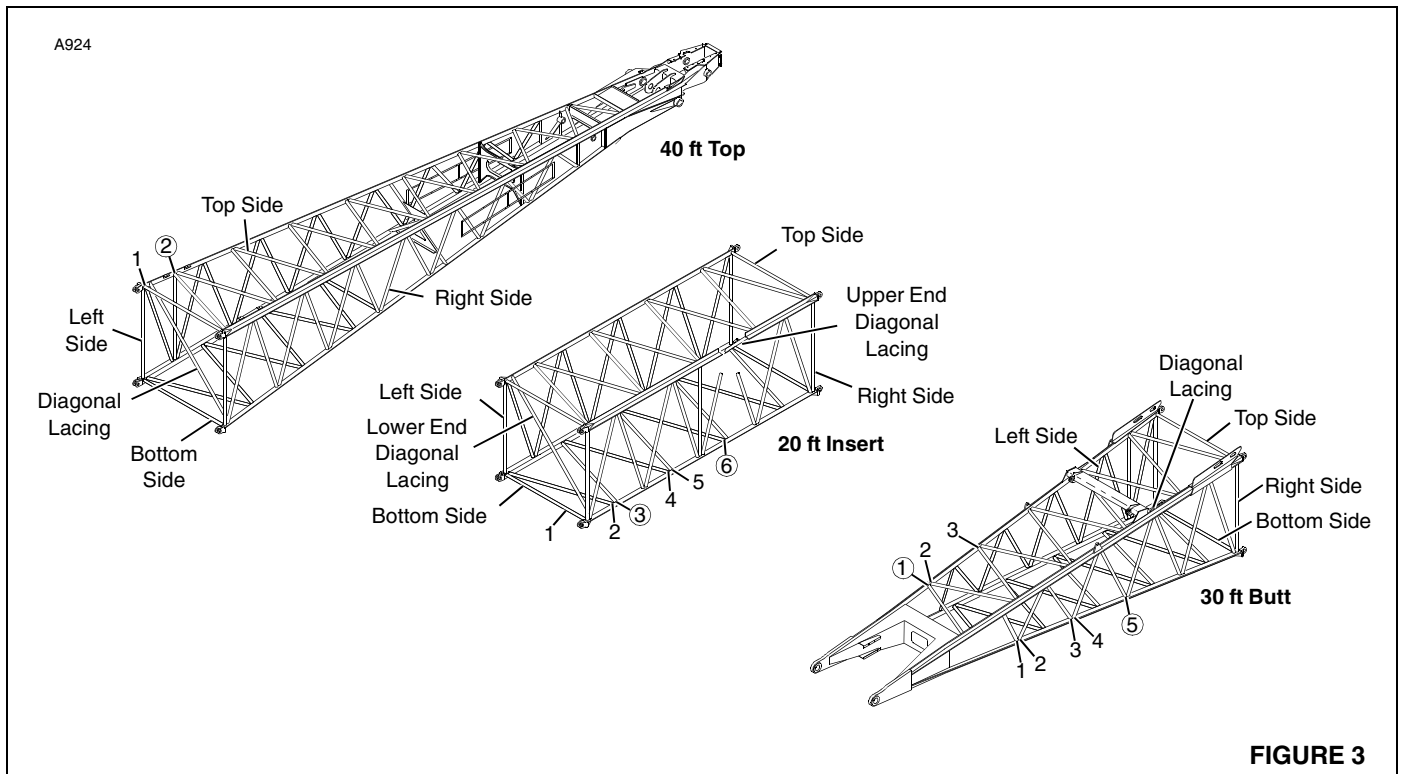
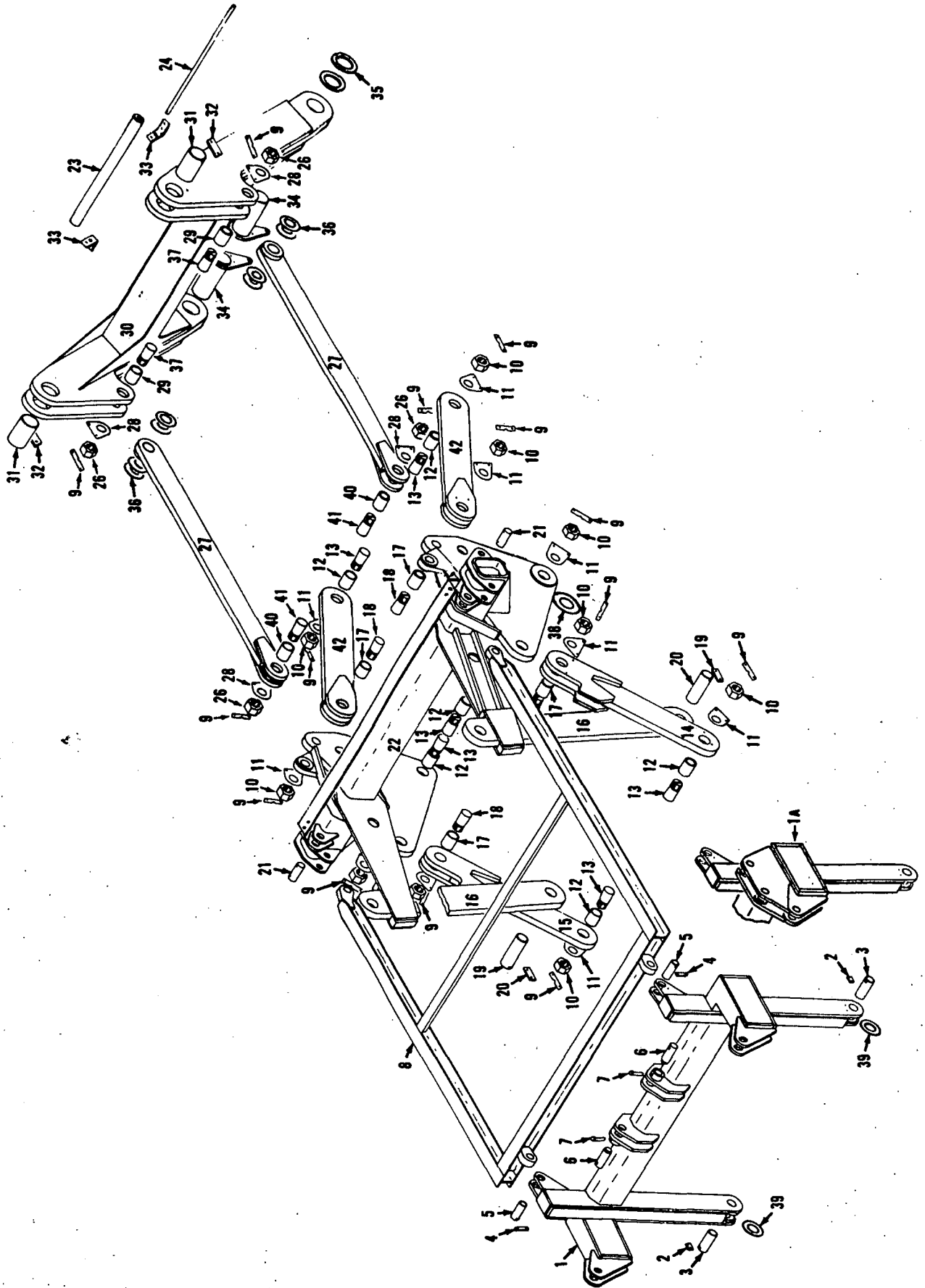


FIGURE 3

GROUP A - Rotating Structure



49658F1

MATERIAL LIST ON BACK

"A" FRAME



65086-1 Cont.	REV. L	MODEL 4600 S4, S5
---------------	-----------	----------------------

ROTATING BED

MASTER

Run as Front

REF. NO.	PART NUMBER	QUANTITY REQUIRED	DESCRIPTION OF PART	VENDORS PART NO.		
50	140756	6	PLATE, End W/capscrews and lockwashers			
	181764	2	ROLLER ASSEMBLY			
51	596084	8	RING, Nilos			
52	225540	4	BEARING (Set of two W/spacer)			
53	140718	4	ROLLER, Front House			
56	140735	4	SLEEVE			
57	49628	2	SUPPORT, Front Roller			
58	140727	4	PIN, Front Roller			
54	225218	4	LOCKNUT			
55	225170	4	LOCKWASHER			
59	140843	2	SPACER			
60	140848	2	PLATE, Keeper W/capscrews and lockwashers			
61	94330	2	SHAFT, Pivot			
62	141910	1	COVER W/capscrews and lockwashers			
63	141911	1	GASKET (1/16" Vellumoid)			
64	144359	1	PLATE, Cover W/capscrews and lockwashers			
65	145635	1	COVER W/capscrews and lockwashers			
66	145636	1	GASKET			
			<p><u>NOTE 1:</u> Capscrews w/Housing #181744 are #613813, 3/4" - 10 x 1 3/4" Grade 5. Torque to 250 foot pounds.</p> <p><u>NOTE 2:</u> Machine w/out air joint, cover opening in Ref. #28 with the following:</p>			
67	146995	1	COVER w/capscrews and lockwashers			
68	16149	1	GASKET			
			<p><u>NOTE 3:</u> Machine w/out travel, cover openings in bed w/the following: (Weld in place)</p>			
69	143221	1	COVER			
70	147010	1	COVER			
71	146993	1	COVER			
72	146992	1	COVER			
			<p><u>NOTE 4:</u> If converting S/N 460001 - 460049 incl. to a Series 5 machine, Rotating Bed #65085, Ref. #1, must be modified per Drwg. #420317.</p> <p><u>NOTE 5:</u> Install washer 140845 with relief facing roller.</p>			
				<table border="1"> <tr> <td>REV. L</td> <td>65086-1</td> </tr> </table>	REV. L	65086-1
REV. L	65086-1					

65086-1 Cont'd.

65151-1 Cont.	REV. I	MODEL 4600-S4
---------------	--------	---------------

MACHINERY CAB

REF. NO.	PART NUMBER	QUANTITY REQUIRED	DESCRIPTION OF PART	VENDORS PART NO.
<u>FOR MACHINES W/66 TOOTH FRONT DRUM GEAR</u>				
113	94721	1	CLOSING SHEET w/stove bolts, hex nuts and lockwashers	
114	139376	1	CLOSING SHEET w/mach. screws, hex nuts and lockwashers	
115	141549	1	CLOSING SHEET w/stove bolts, hex nuts and lockwashers	
116	94723	1	CLOSING SHEET w/stove bolts, hex nuts and lockwashers	
117	94722	1	CLOSING SHEET w/stove bolts, hex nuts and lockwashers	
118	94718	1	CLOSING SHEET w/bolts, hex nuts and lockwashers	
119	139370	1	CLOSING SHEET w/mach. screws, hex nuts and lockwashers	
120	141547	1	CLOSING SHEET	
121	94720	1	CLOSING SHEET w/stove bolts, hex nuts and lockwashers	
121	95999	1	CLOSING SHEET w/stove bolts, hex nuts and lockwashers (w/Front Drum Panel)	
122	94719	1	CLOSING SHEET w/stove bolts, hex nuts and lockwashers	
<p><u>NOTE 1:</u> Prior to design change of February 20, 1975 the following were used:</p>				
24	181999	2	LADDER (w/angle sides)	
25	334101	4	CHAIN (14 links each)	
	508931	8	LINK	
26	563912	4	PIN, Quick Release	
30	141299	4	BRACKET, Ladder (Weld to Roof)	
<p>Ladder 182523 cannot replace ladder 181999 w/out altering catwalk and cab roof.</p>				
<p><u>NOTE 2:</u> Machines w/out gantry lifting device, add the following:</p>				
124	146994	2	COVER	
125	146996	2	COVER	
<p><u>NOTE 3:</u> Design change of 11/25/81 replaces ladder 182523 w/16" steps and hand rails (Ref. 24) with 160101 w/16" steps and hand rails spread to 25" at the top.</p>				
<p><u>NOTE 4:</u> For machines w/99 TOOTH FRONT DRUM GEAR and 63" DRUM FLANGE closing sheet 95909 replaces closing sheet Ref. 107, 95910 replaces 100, 95911 replaces 106, 95912 replaces 99, 95913 replaces 105, 95914 replaces 98, 95915 replaces 104, 95916 replaces 97, and use . . .</p>				
	138505	13	CLIP, Angle (1" x 1" x 1" Lg. w/.31" hole) w/screw and washer	
	138508	13	PAD, Mounting (1" x 1" x 1/4" thick w/1/4" - 20 hole)	
<p>three each on Ref. 95, two each on Ref. 96, four each on two front Ref. 103, and four each on two Ref. 94 (not on rear 94).</p>				
				REV. I
				65151-1

PLEASE GIVE MACHINE S/N W/ORDER

CPT

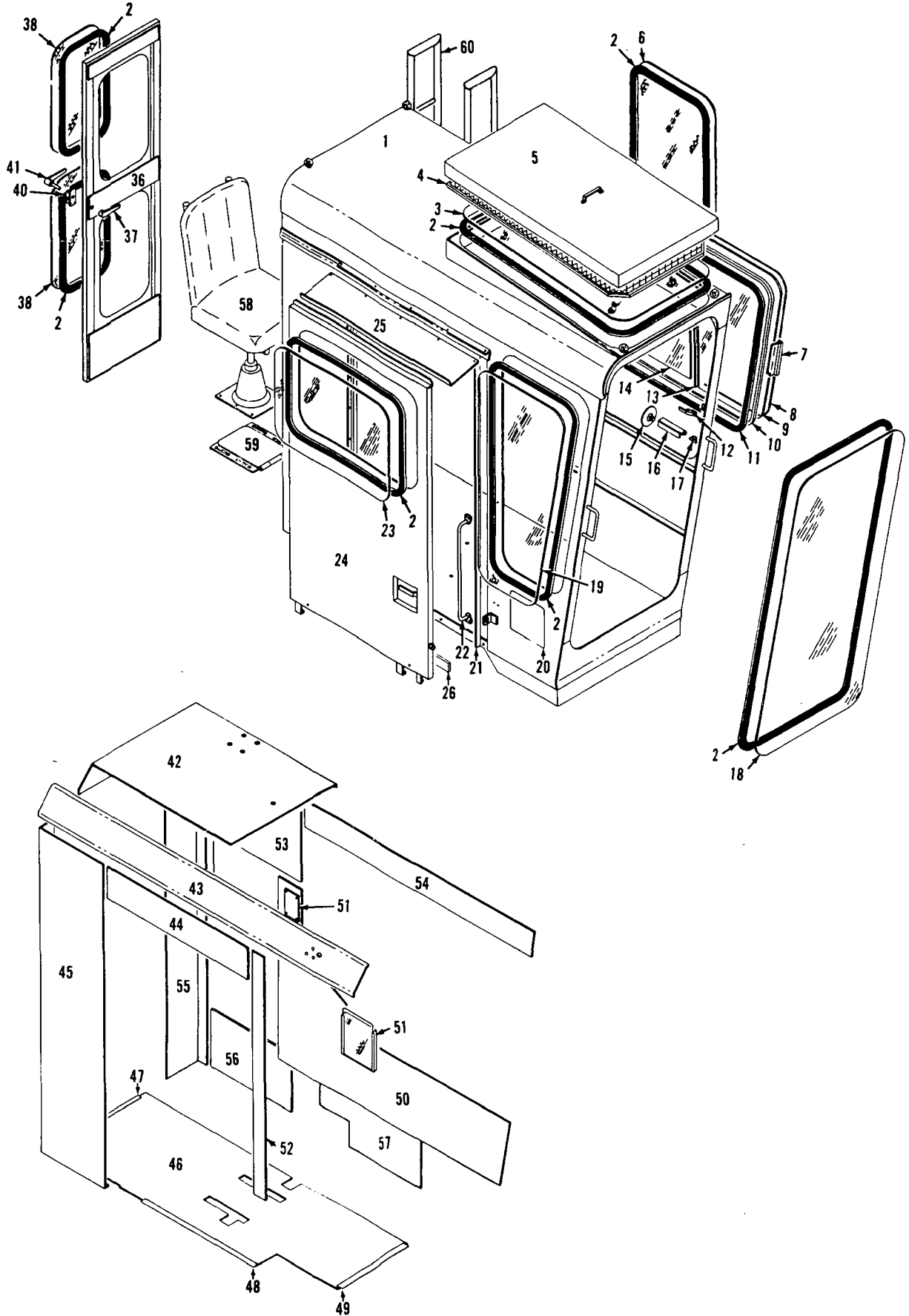
Run as a Front

65151 I1 Cont. 3

MANITOWOC ENGINEERING CO.

A Division of The Manitowoc Company, Inc.

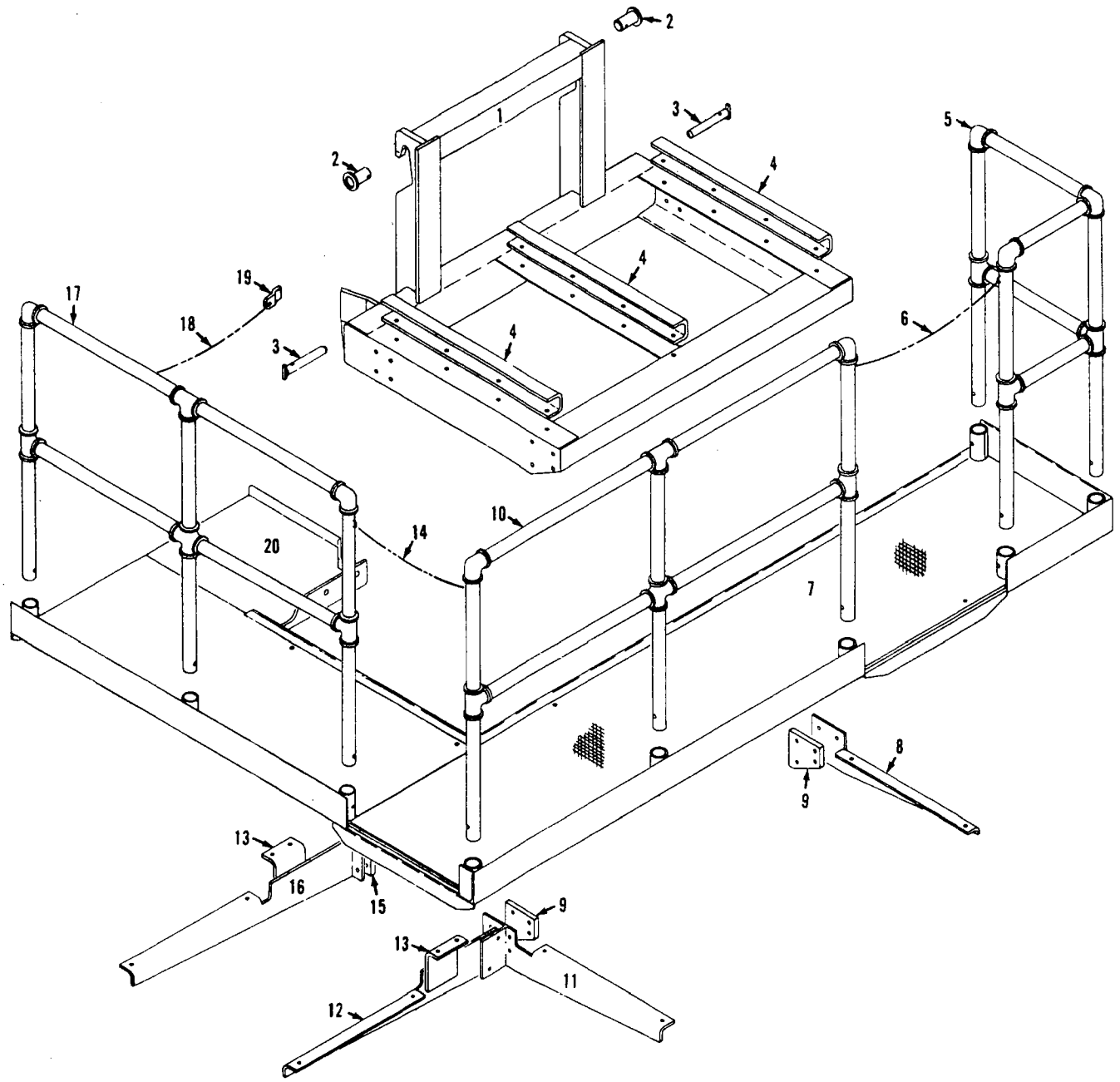
Manitowoc, Wisconsin



6529981

MATERIAL LIST ON BACK

OPERATOR'S CAB



190106A1

MATERIAL LIST ON BACK

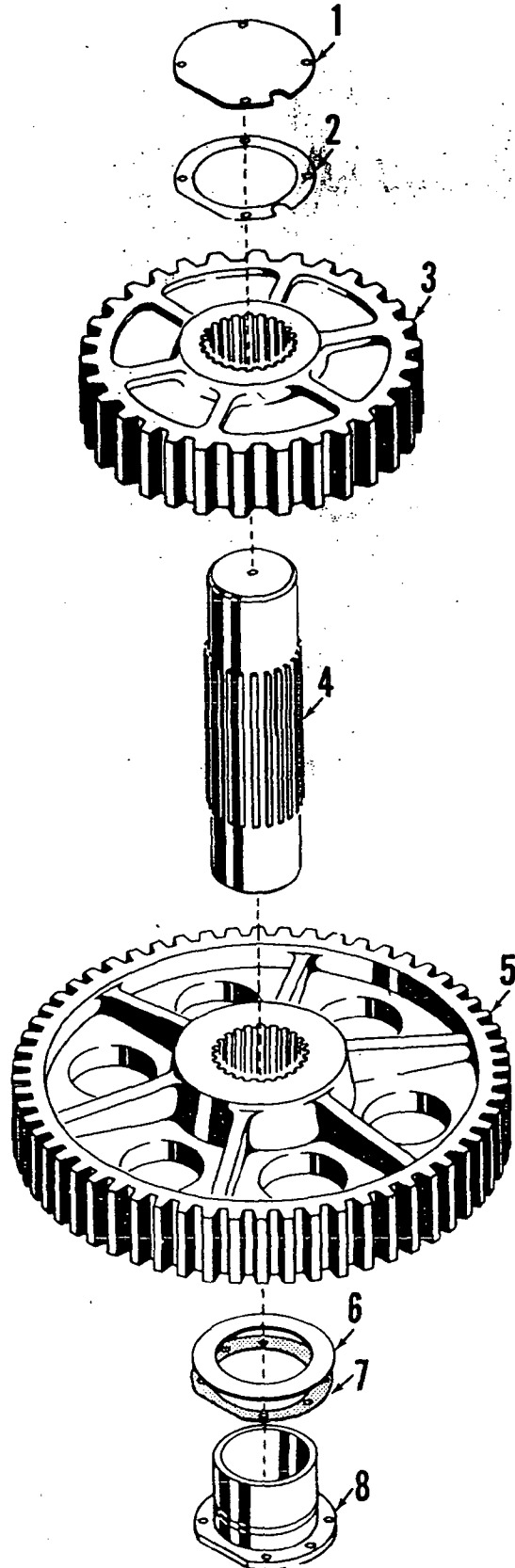
Pilot House Catwalk

MANITOWOC ENGINEERING CO.

A Division of The Manitowoc Company, Inc.

Manitowoc, Wisconsin

MASTER



ILLUST. No. 21629-B-1

MATERIAL LIST ON BACK

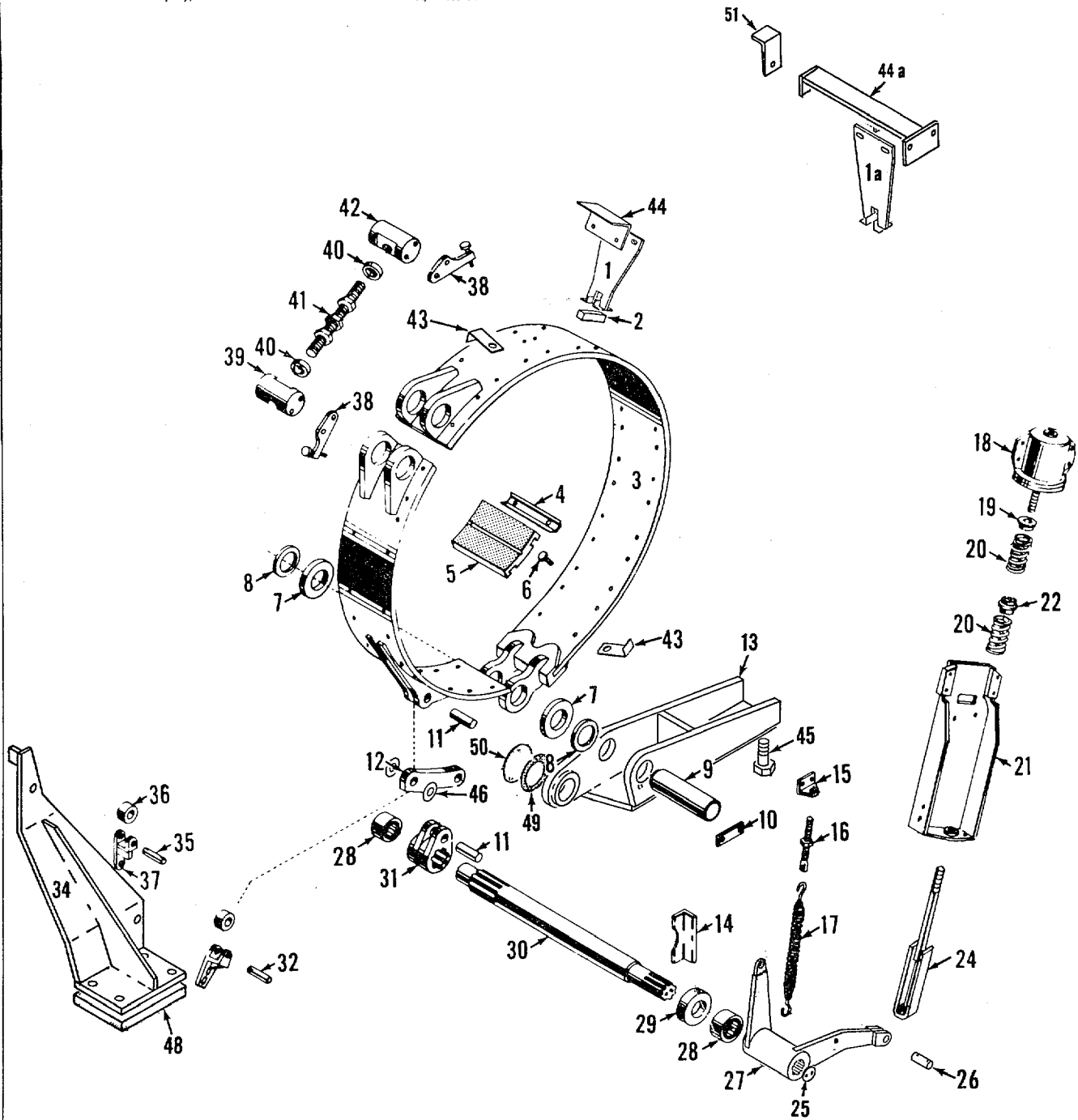
SWING SHAFT ASSEMBLY - INTERMEDIATE

MANITOWOC ENGINEERING CO.

A Division of The Manitowoc Company, Inc.

Manitowoc, Wisconsin

MAER

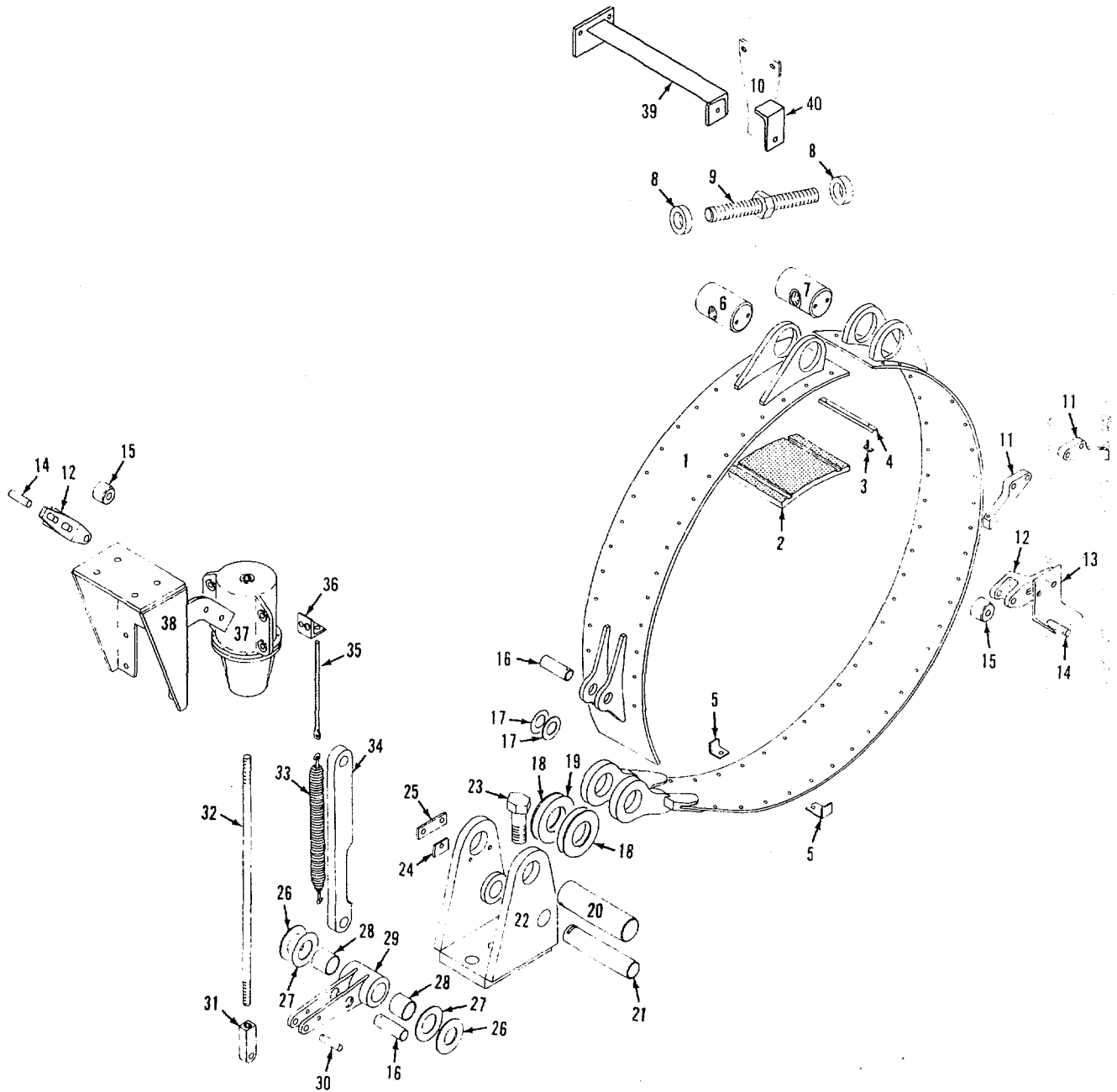


49308E1

MATERIAL LIST ON BACK

DRUM BRAKE

MASTER



4973681

MATERIAL LIST ON BACK

LEFT REAR DRUM BRAKE

49783-1 Cont.	REV. F	MODEL 4600 S4
---------------	-----------	------------------

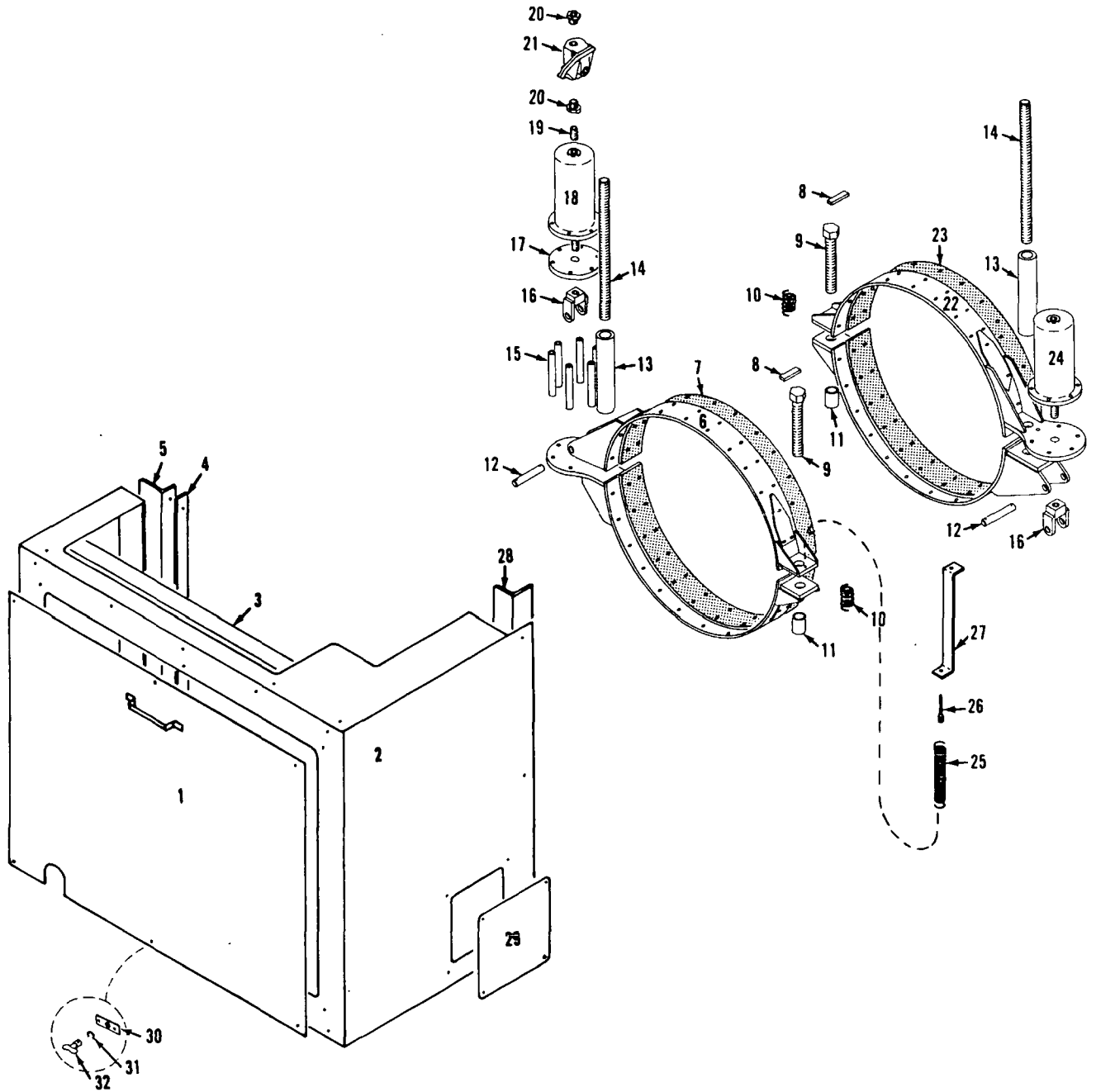
LEFT FRONT DRUM BRAKE
(43" DRUM, 9" BAND, 66 TOOTH GEAR, AIR APPLIED)

MASTER

REF. NO.	PART NUMBER	QUANTITY REQUIRED	DESCRIPTION OF PART	VENDORS PART NO.
45	2774	2	SPRING (See Note 1)	
46	71963	1	WASHER	
47	2619	1	WASHER	
48	21359	1	CYLINDER, Air W/14456 Rod	
<p>NOTE 1: Spring #2774 is of 5/16" Wire. Previous spring before design change of June 26, 1978 was #2766 of 1/4" Wire.</p>				
<p>0-71 Ref. #21359</p>				
REV. F				49783-1

PLEASE GIVE MACHINE S/N W/ORDER

MASTER



49971A1

MATERIAL LIST ON BACK

HYD. BOOM HOIST BRAKE

49971 A1

50927-1 Cont.	REV. P	MODEL 4600 - 4600 S4
---------------	-----------	-------------------------

REAR DRUM SHAFT
(43" WIDE DRUM)

REF. NO.	PART NUMBER	QUANTITY REQUIRED	DESCRIPTION OF PART	VENDORS PART NO.		
36	73548	1	PLATE, End W/capscrews and lockwashers			
37	76282	2	BOLT, Coupling			
	546836	2	NUT, Hex			
38	140082	1	SCREW, Dowel			
	546273	1	NUT, Hex Jam			
39	94565	1	PLUG, Drum (Use W/out lagging)			
40	49716	1	LAGGING (Optional) (41" Dia. - 1-5/8" Wire Rope)			
41	72439	4	STUD W/lockwasher and hex nut			
40	49910	1	LAGGING (Optional) (41½" Dia. - Plain)			
41	72439	4	STUD W/lockwasher and hex nut			
40	190311	1	LAGGING (41½" Dia. - Plain) (Optional W/ratchet)			
41	72439	4	STUD W/hex nut and lockwasher			
40	190703	1	LAGGING (41" Dia. - 1½" Wire Rope - Optional)			
41	72439	4	STUD W/hex nut and lockwasher			
40	163037	1	LAGGING (Optional) (41" Dia. - 1-5/8" Wire Rope) (See Note 6)			
41	72439	4	STUD W/hex nut and lockwasher			
42	182147	1	WHEEL, Ratchet (Optional)			
43	75128	12	BOLT, Coupling W/elastic stop nut (See Note 1)			
42	160293	1	WHEEL, Ratchet (See Note 5)			
43	75128	12	BOLT, Coupling W/elastic stop nut (See Note 1)			
<p><u>NOTE 1:</u> Bolts #75128 replace 12 of bolt #14423, Ref. No. 29, when ratchet and pawl are installed.</p> <p><u>NOTE 2:</u> Torque nuts on bolts #19809 to 700 ft. lbs. Lubricate w/Never Seez on threads and under face of nut.</p> <p><u>NOTE 3:</u> Torque nuts on bolts #14423 or bolts furnished w/ratchet ring to 360 ft. lbs. Lubricate w/Never Seez on threads and under face of nut.</p> <p><u>NOTE 4:</u> Drum #184624 cannot be used w/laggings or ratchet wheel.</p> <p><u>NOTE 5:</u> Lebus drum #160269 must be used w/ratchet wheel #160293 only.</p> <p><u>NOTE 6:</u> Ratchet wheel #182147 & Pawl Asm. #182828 Required when using Lagging #163037.</p> <p><u>NOTE 7:</u> Spacer 18620 is available as 4 suffixes: 18620-3 (.718" wide), 18620-2 (.750"), 18620-5 (.781"), 18620-7 (.812"). Use suffix with width so right end of clutch spider (Ref. #19) contacts spacer 18620 and not bearing retainer (Ref. #22), leaving .025" - .062" end play in drum.</p>						
			0-112			
				<table border="1"> <tr> <td>REV. P</td> <td>50927 - 1</td> </tr> </table>	REV. P	50927 - 1
REV. P	50927 - 1					

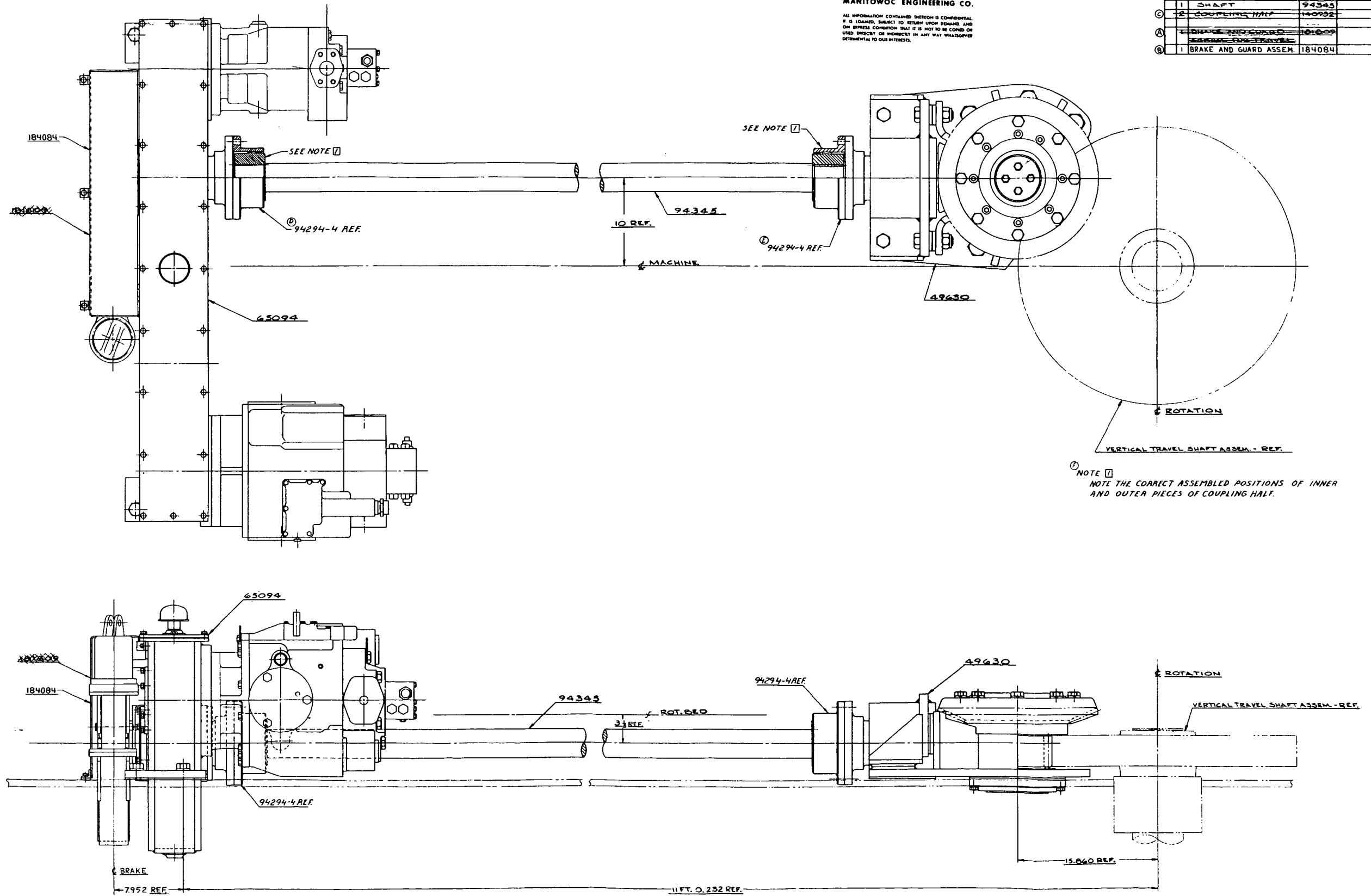
PLEASE GIVE MACHINE S/N W/ORDER

Run as Front

50927 P1 Cont.

NOTICE
 THIS PRINT REMAINS THE PROPERTY OF
MANITOWOC ENGINEERING CO.
 ALL INFORMATION CONTAINED HEREON IS CONFIDENTIAL
 IF IT IS LOANED, SUBJECT TO RETURN UPON DEMAND, AND
 ON EXPRESS CONDITION THAT IT IS NOT TO BE COPIED OR
 USED DIRECTLY OR INDIRECTLY IN ANY WAY WHATSOEVER
 DETRIMENTAL TO OUR INTERESTS.

BILL OF MATERIAL				REVISIONS
QTY	SIZE	MATERIAL	DESCRIPTION	DATE
1		49630	BEVEL GEAR & PINION SHAFT ASSEM. FOR TRAVEL	
1		65094	TRANSMISSION CASE ASSEM. FOR TRAVEL	
1		94345	SHAFT	
2		184084	COUPLING HALF	
1		184084	BRAKE AND GUARD ASSEM.	



NOTE 1
 NOTE THE CORRECT ASSEMBLED POSITIONS OF INNER AND OUTER PIECES OF COUPLING HALF.

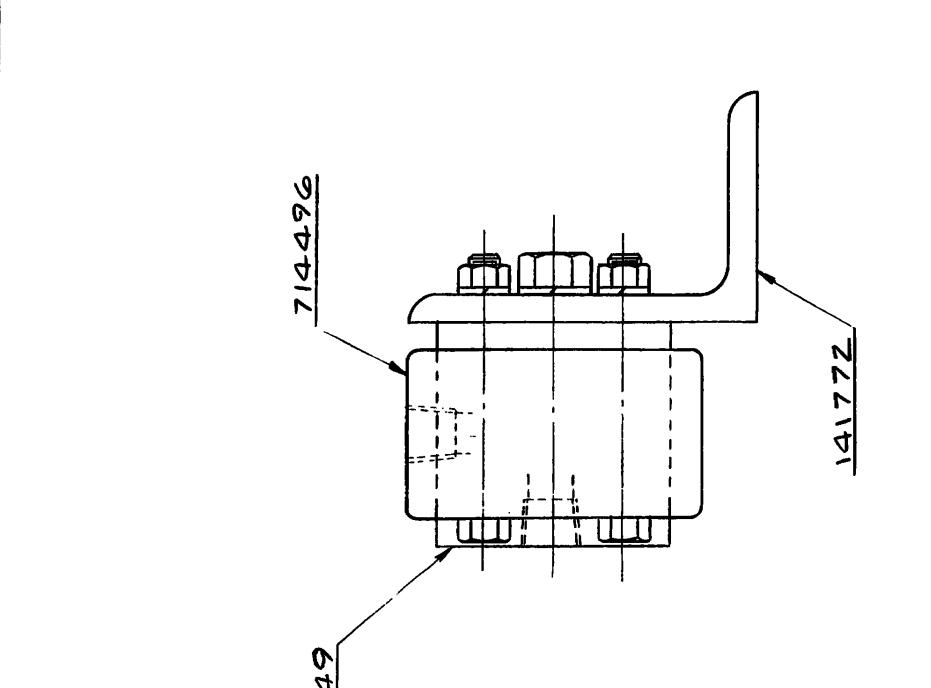
3-11-71	RELEASED	MANITOWOC ENGINEERING CO.	TRAVEL DRIVE ASSEM. IN ROTATING BED	65095
4-11-71				
5-11-71				
6-11-71				
7-11-71				
8-11-71				
9-11-71				
10-11-71				
11-11-71				
12-11-71				

ITEM NO.	SEC. NO.	DESCRIPTION	LENGTH FT.	IN.	MATERIAL	CODE NO. OR DWG. NO.	REMARKS
1		SPACER				141771	
1		MOUNTING ANGLE				141772	
1		AIR CYLINDER				385249	
1		PILOTAIR VALVE				714496	

ASSEMBLIES USED ON
25176
651-4

REVISIONS

BILL OF MATERIAL



DATE
8-14-73

PATTERN NO.

CODE NO.

DWG. NO.
94879

MANITOWOC ENGINEERING CO.
MANITOWOC, WISCONSIN

MODEL **4600 SERIES 4**

AIR SEQUENCE VALVE FOR HYD. MOTOR CONTROL

SCALE
12:1 F.D.

DRAWN BY
BRM

CHK. BY
DJP

APP.

DWG. NO.
94879

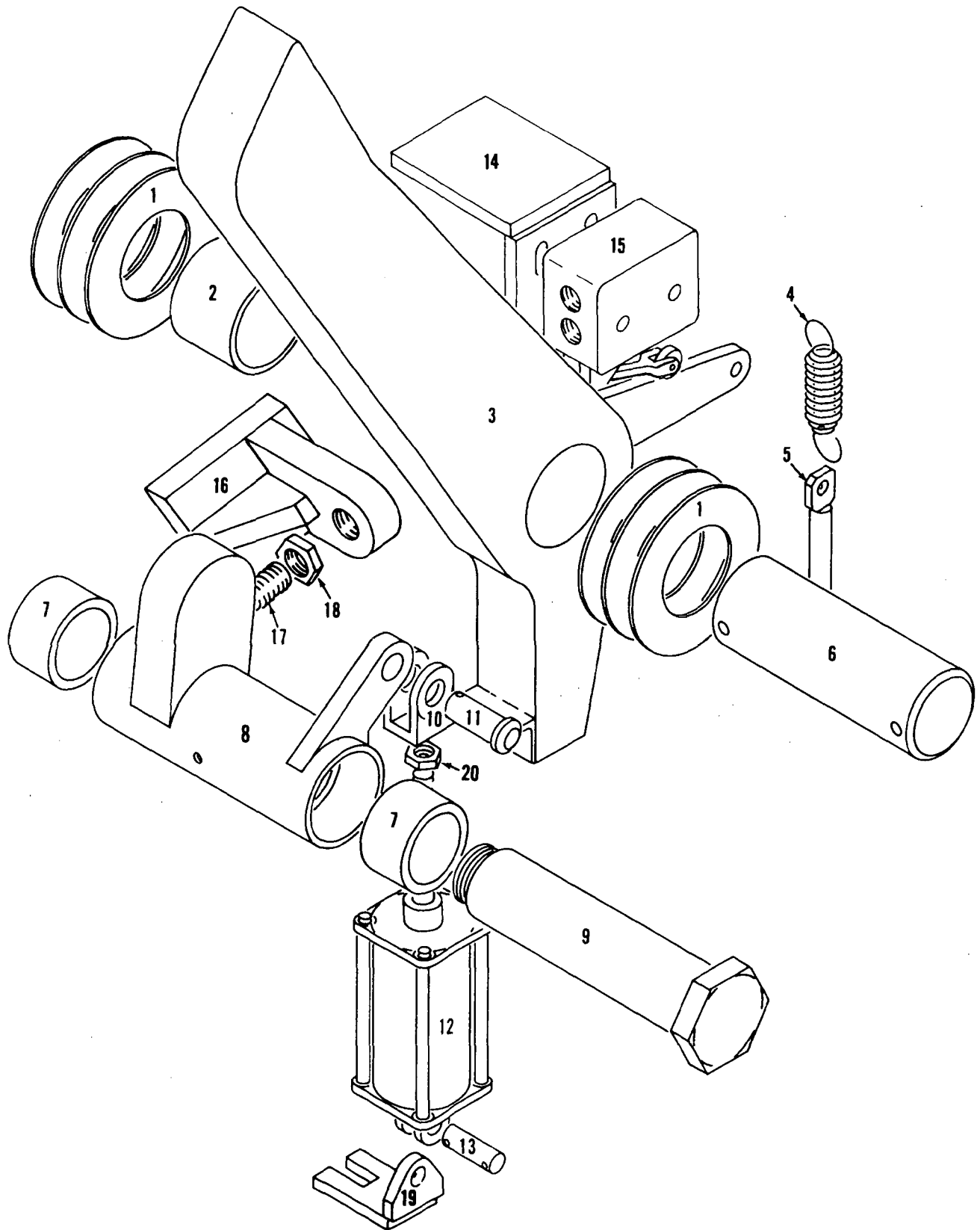
DO NOT SCALE THIS DRAWING

K & E 18-1183 500-8-73

MANITOWOC ENGINEERING CO.

A Division of The Manitowoc Company, Inc.

Manitowoc, Wisconsin



18179981

MATERIAL LIST ON BACK

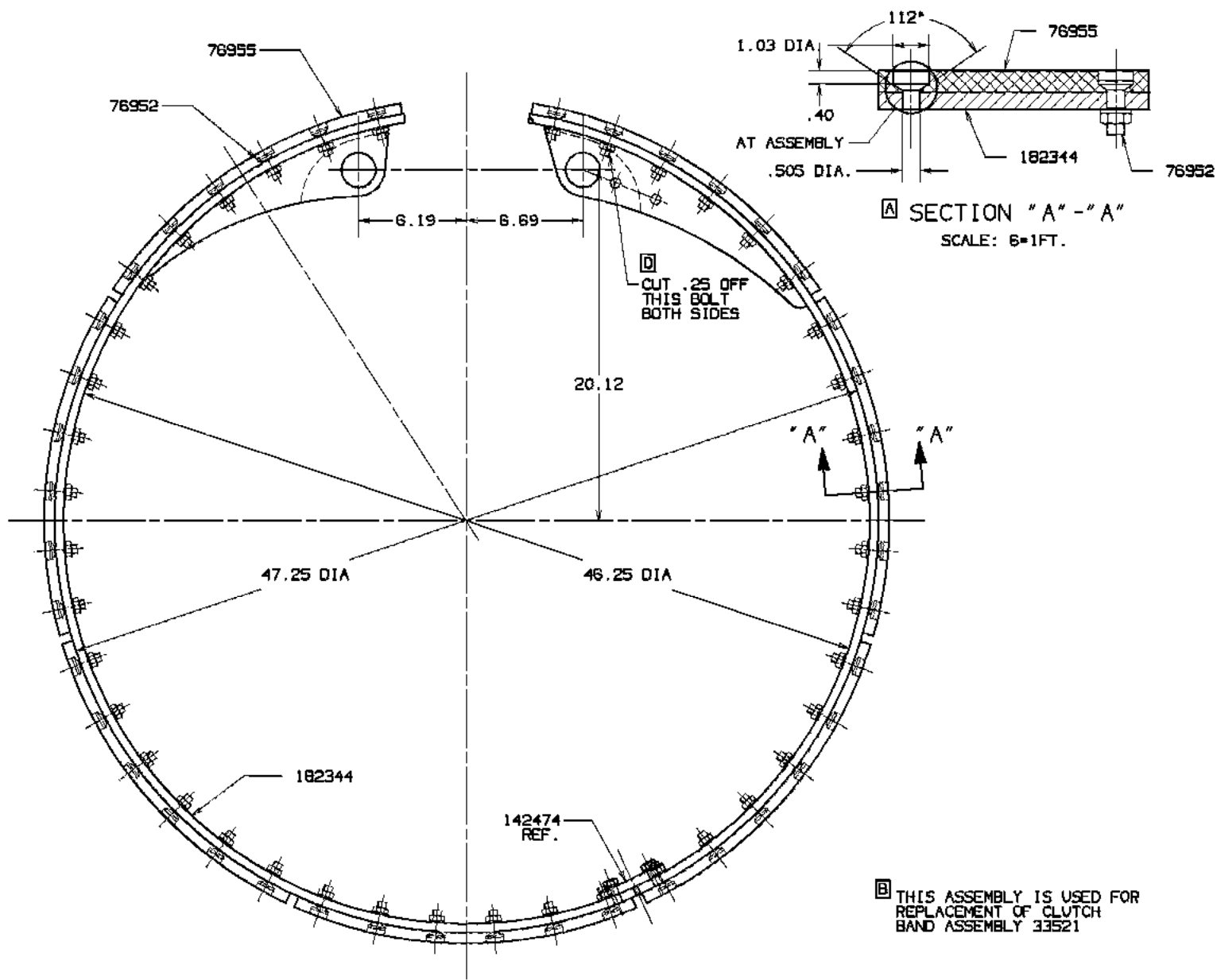
BOOM HOIST PAWL

BILL OF MATERIAL

QTY.	DESCRIPTION	MATERIAL	QTY. OF DWG. NO.
------	-------------	----------	------------------

ASSEMBLY USED ON
50250
50376
50451
50477
50922
65193
65194
65213
192225

REVISIONS
12-19-74 LJV
A) ADDED
2-11-76 EAR
B) NOTE ADDED
6-7-83 RRE
REDRAW CADAM
CK. KP
APP. TLP
5-6-86 LPW
C) ADDED
5-12-95 TMB
D) ADDED



A SECTION "A" - "A"
SCALE: 6=1FT.

B THIS ASSEMBLY IS USED FOR REPLACEMENT OF CLUTCH BAND ASSEMBLY 33521

DWG. NO.
182345

DWG. NO.
7-25-74

PATTERN NO.
182345-1
182345

CLUTCH BAND SUB ASSEM. CODE NO.	CLUTCH BAND LINING PER DWG. 76955		NO. OF BOLTS REQ'D. PER DWG. 76952	NO. OF BANDS REQ'D. PER DWG. 182344
	NO. REQ'D.	CODE NO.		
182345-1	7	508560	84	1
182345-2	7	508650	84	1

SUPERSEDES 33522

3-11-74	Martinez Crane, Inc.		
BY HLW	Martinez, Wisconsin	CLUTCH BAND	
BY JMB	REV. 4600, 4600 S-3	SUB-ASSEMBLY	
BY		FDR 7.75 BAND	

DO NOT SCALE THIS DRAWING

GROUP C - Air Components & Electrical

49974 - 1	REV. C	MODEL 4600 S4
-----------	--------	---------------

AIR PIPING
(MACHINERY CAB TO OPERATOR'S CAB)

REF. NO.	PART NUMBER	QUANTITY REQUIRED	DESCRIPTION OF PART	VENDORS PART NO.
47	288835	1	BUSHING, Reducing (1/2" x 3/8") (W/99T Front Drum Gear Only)	
48	377204	1	COUPLING (1/2")	
49	142900	1	PAD, Mounting	
50	142902	1	CLAMP	
51	142901	1	CLAMP	
52	142905	1	PAD, Mounting	
53	142906	1	CLAMP	
54	142903	1	PAD, Mounting	
55	142904	1	CLAMP	
56	355006	1	VALVE, Shut off (3/4") (See note 2)	
<p>NOTE 1: See chart #6338 for air line identification.</p> <p>NOTE 2: Ref. no. 18 and adjacent Ref. no. 19 deleted per design change of March 2, 1976. Ref. no. 56 w/adjacent Ref. no. 8 added.</p>				
			0-110, (0-71)	
				REV. C
				49974 - 1

MASTER

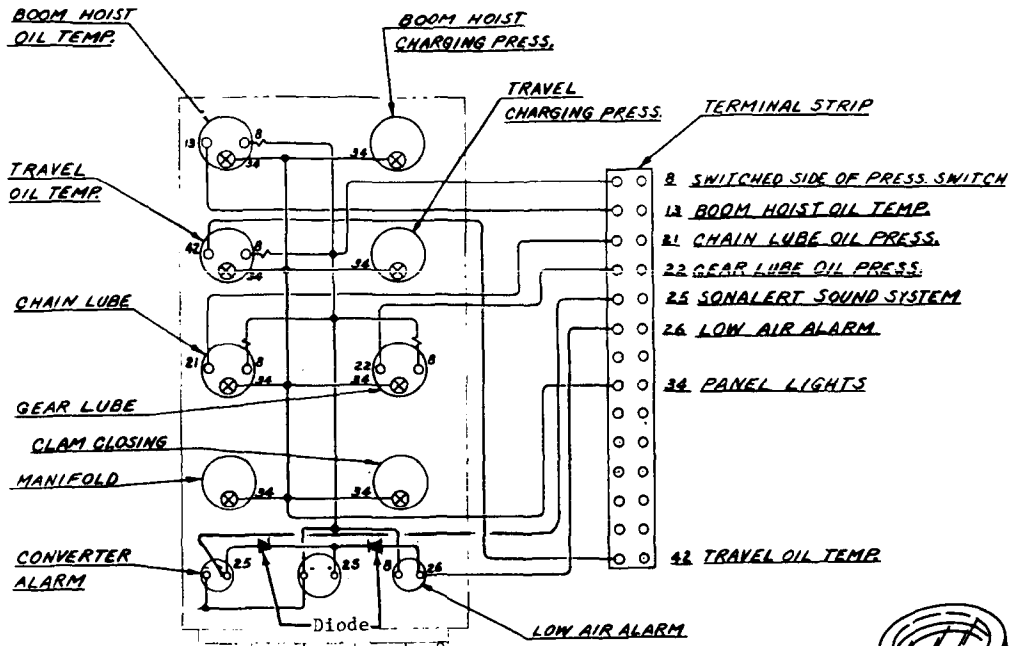
Kun 99 Front

49974 - 1

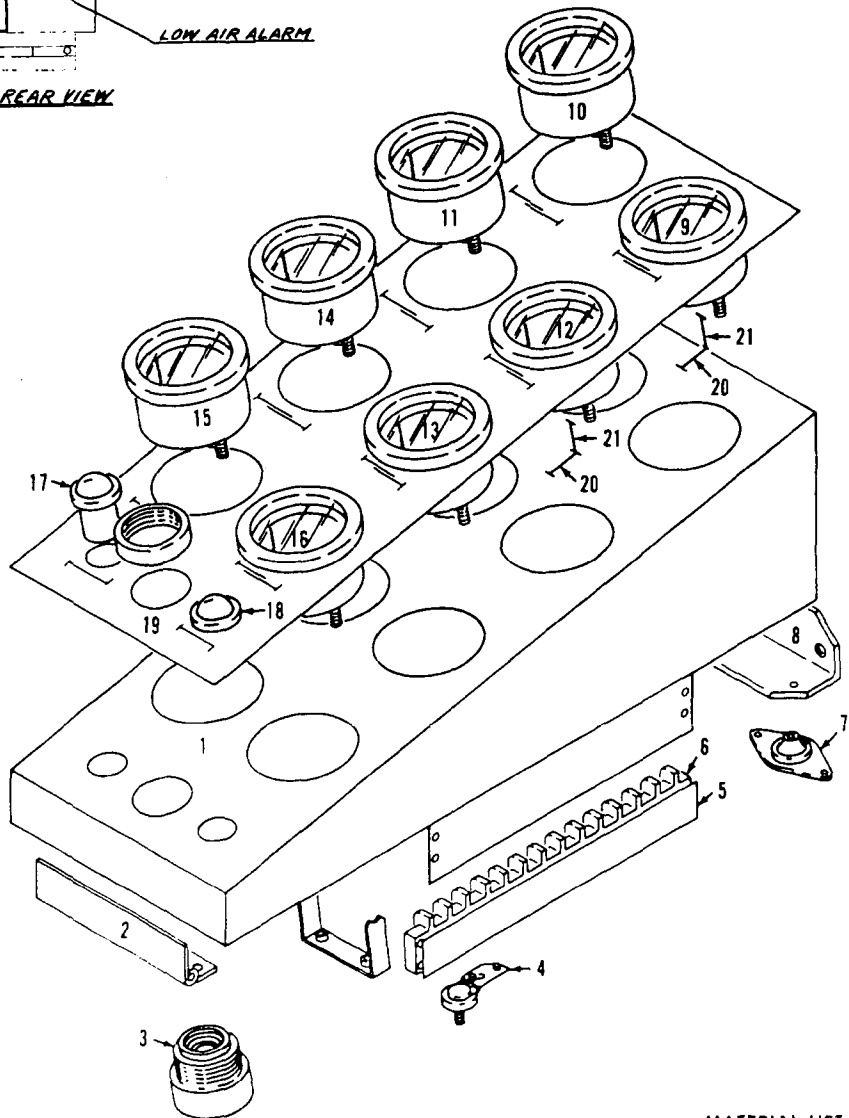
MANITOWOC ENGINEERING CO.

A Division of The Manitowoc Company, Inc.

Manitowoc, Wisconsin



WIRING DIAGRAM REAR VIEW



181916C1

MATERIAL LIST ON BACK

RIGHT INSTRUMENT PANEL

PARTS MANUAL ALPHABETICAL INDEX
Group D - Power Components

DESCRIPTION	PUBLICATION	REV	START DATE	END DATE	GROUP
Battery Boxes	49935	D1	11/20/73	08/15/79	D0104
Converter Control	181830	B1	09/28/72	09/14/77	D0601
Converter Piping	181939	C1	02/02/73	08/24/81	D0701
Converter Piping	182025	A1	06/18/73	12/13/83	D0701
Converter Piping	49756	H1	03/20/74	08/29/79	D0701
Converter Piping	94627	-	02/27/73	06/19/75	D0701
Converter Piping	49760	F1	03/02/73	09/11/80	D0701
Converter Piping	49760	B2	05/03/74	09/11/80	D0701
Engine & Clutch Control	95236	-	07/25/74	10/29/91	D0501
Engine & Clutch Control	95236	A1	07/25/74	07/10/91	D0501
Engine Wiring	182153	-	05/17/74	09/03/76	D0106
Engine Wiring	182305	-	05/01/75	11/14/90	D0106
Exhaust Stack	94681	A1	04/10/73		D0102
Hydraulic Pump/Engine Mounted	49739	G1	01/03/73	07/09/79	D0103
Power Plant	182108	-	09/12/73		D0101
Power Plant	182142	D1	09/06/74	01/12/77	D0101
Power Plant	49728	G1	05/04/74	10/13/81	D0101
Power Plant	65229	-	09/16/74	09/30/76	D0101
Power Plant	65115	F1	10/18/73	10/29/82	D0101
Power Plant	65115	A2	11/14/72	10/29/82	D0101
Power Plant	65115	-	10/18/73	11/11/09	D0101
Power Take Off - Transmission Case	65106	I1	07/01/80	12/07/84	D0401
Power Take Off - Transmission Case	65106	G2	09/25/72	12/23/87	D0401
Power Take Off - Transmission Case	65106	D3	09/25/72	12/23/87	D0401

CLICK HERE TO **DOWNLOAD** THE COMPLETE MANUAL

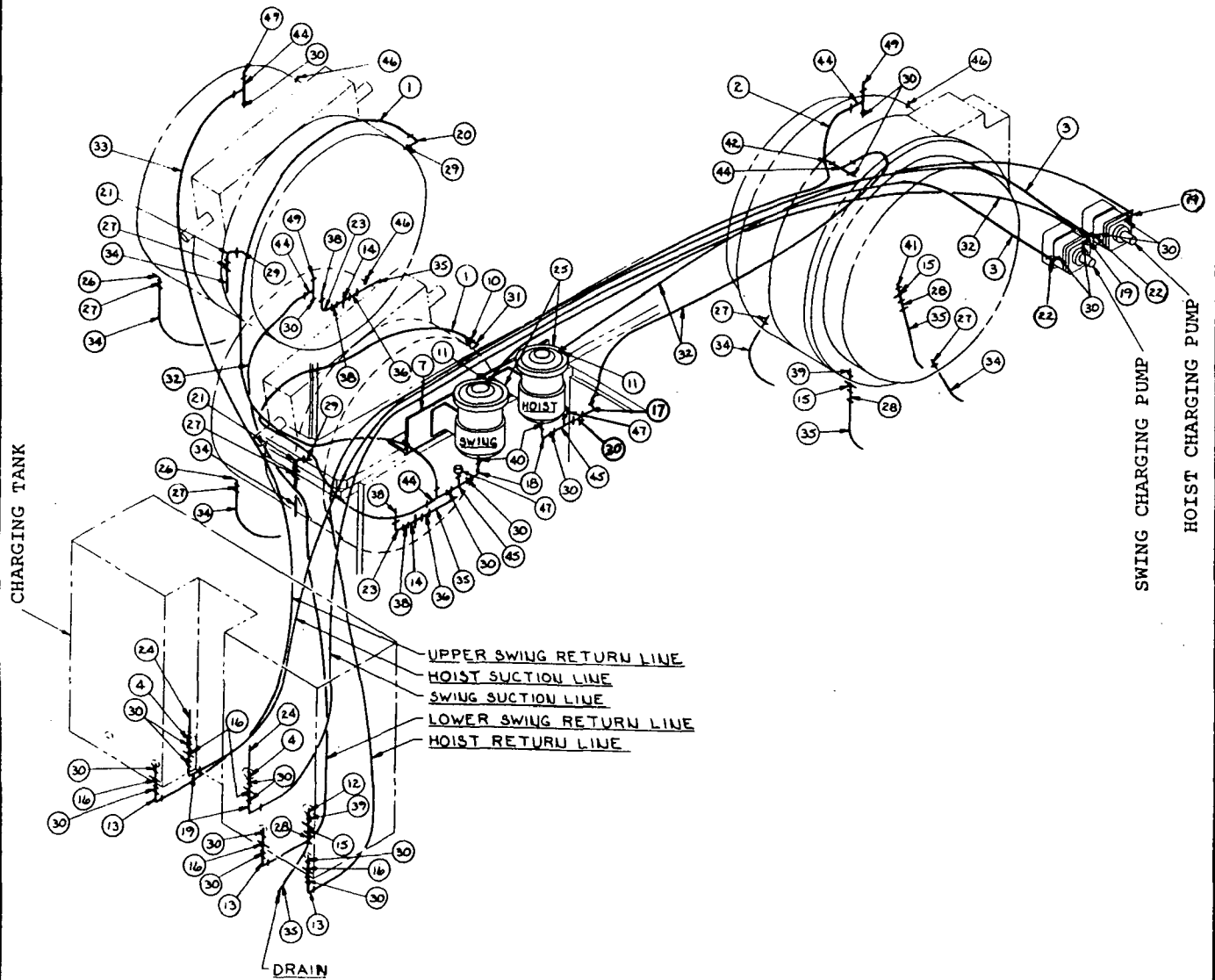
- Thank you very much for reading the preview of the manual.
- You can download the complete manual from: www.heydownloads.com by clicking the link below



- Please note: If there is no response to CLICKING the link, please download this PDF first and then click on it.

CLICK HERE TO **DOWNLOAD** THE COMPLETE MANUAL

MASTER



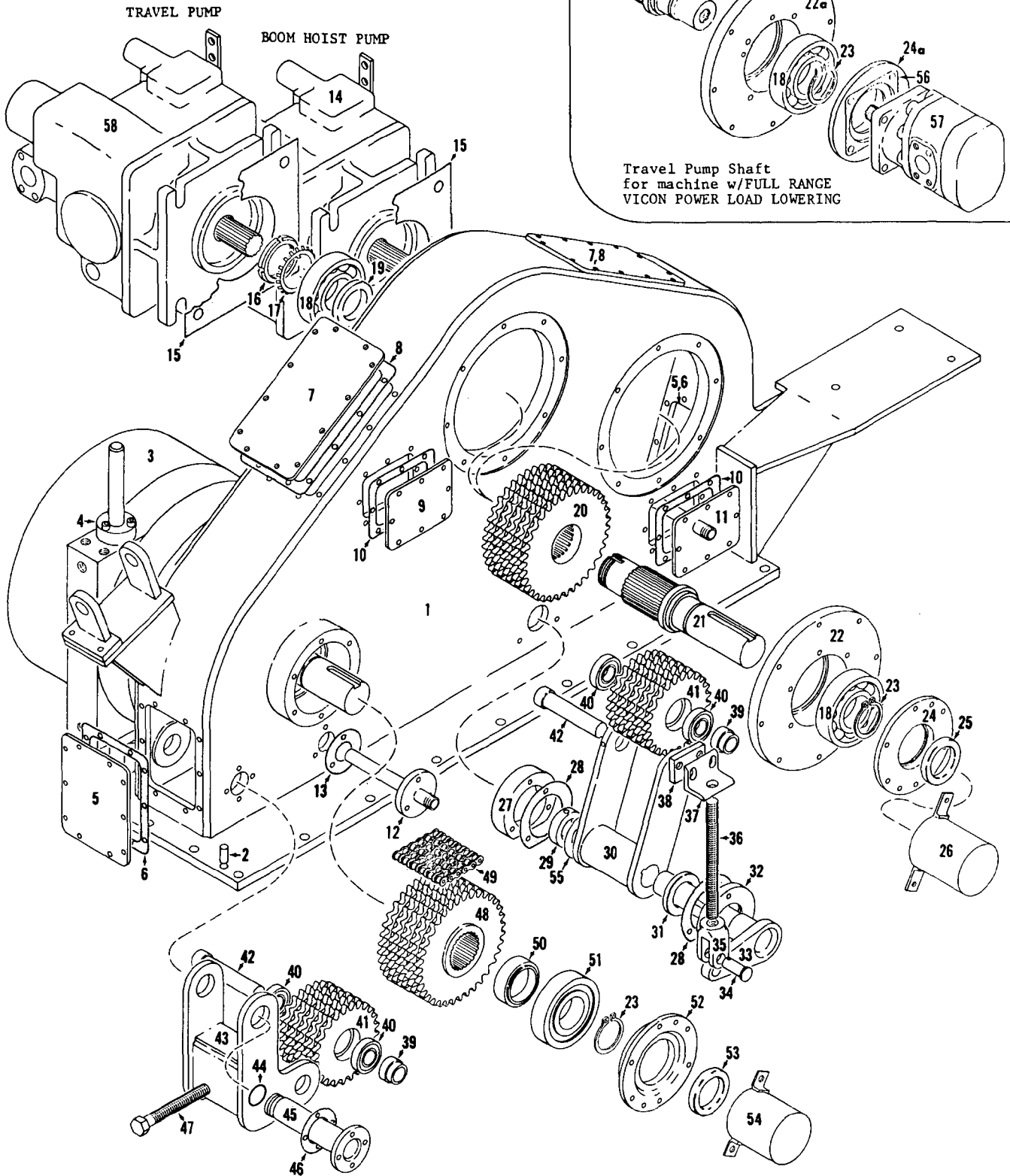
49760E1

MANITOWOC ENGINEERING CO.

A Division of The Manitowoc Company, Inc.

Manitowoc, Wisconsin

MASTER



65106DZ

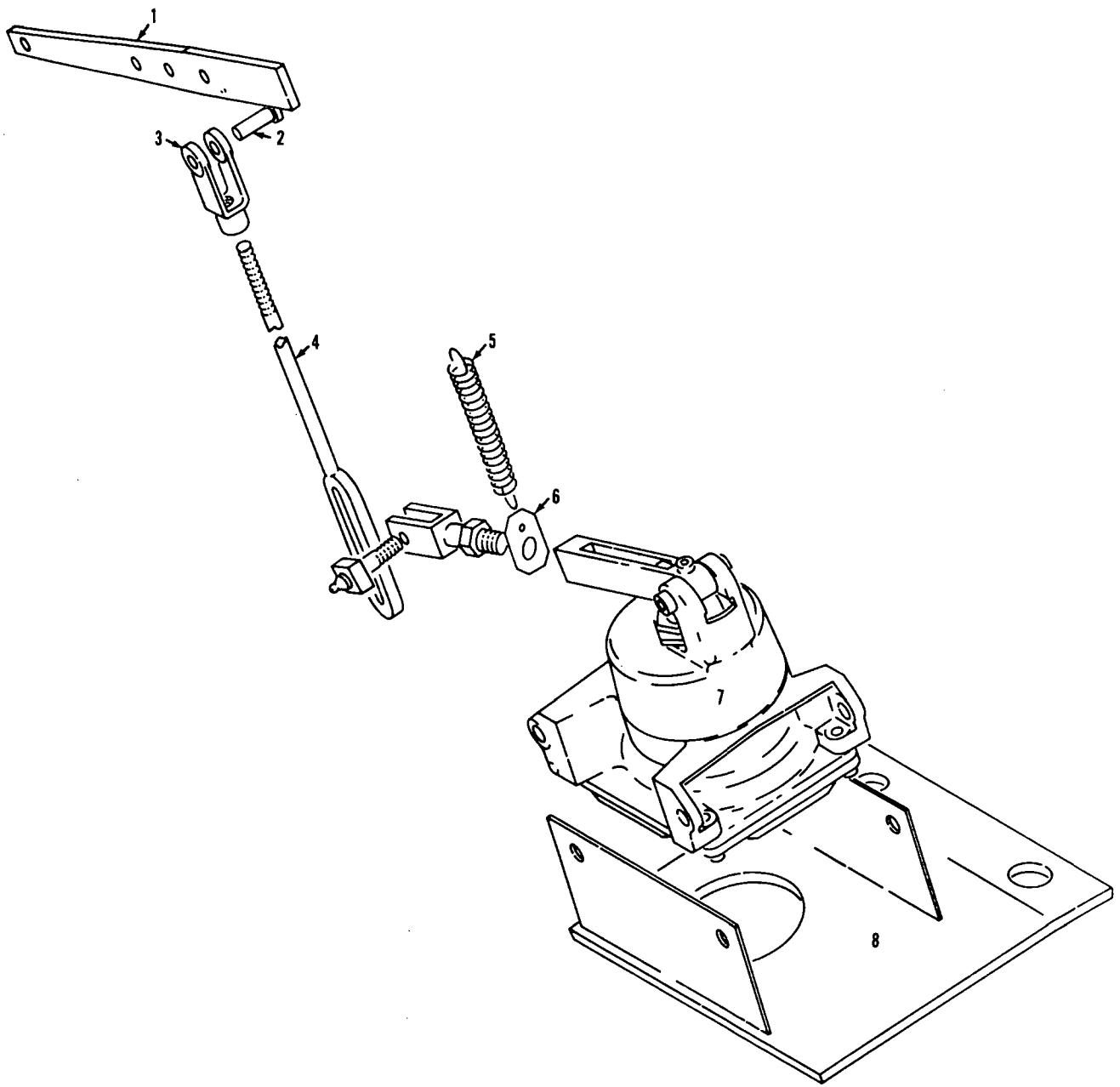
MATERIAL LIST ON BACK

UPPER TRANSMISSION CASE

MANITOWOC ENGINEERING CO.

A Division of The Manitowoc Company, Inc.

Manitowoc, Wisconsin



MASTER

95236A1

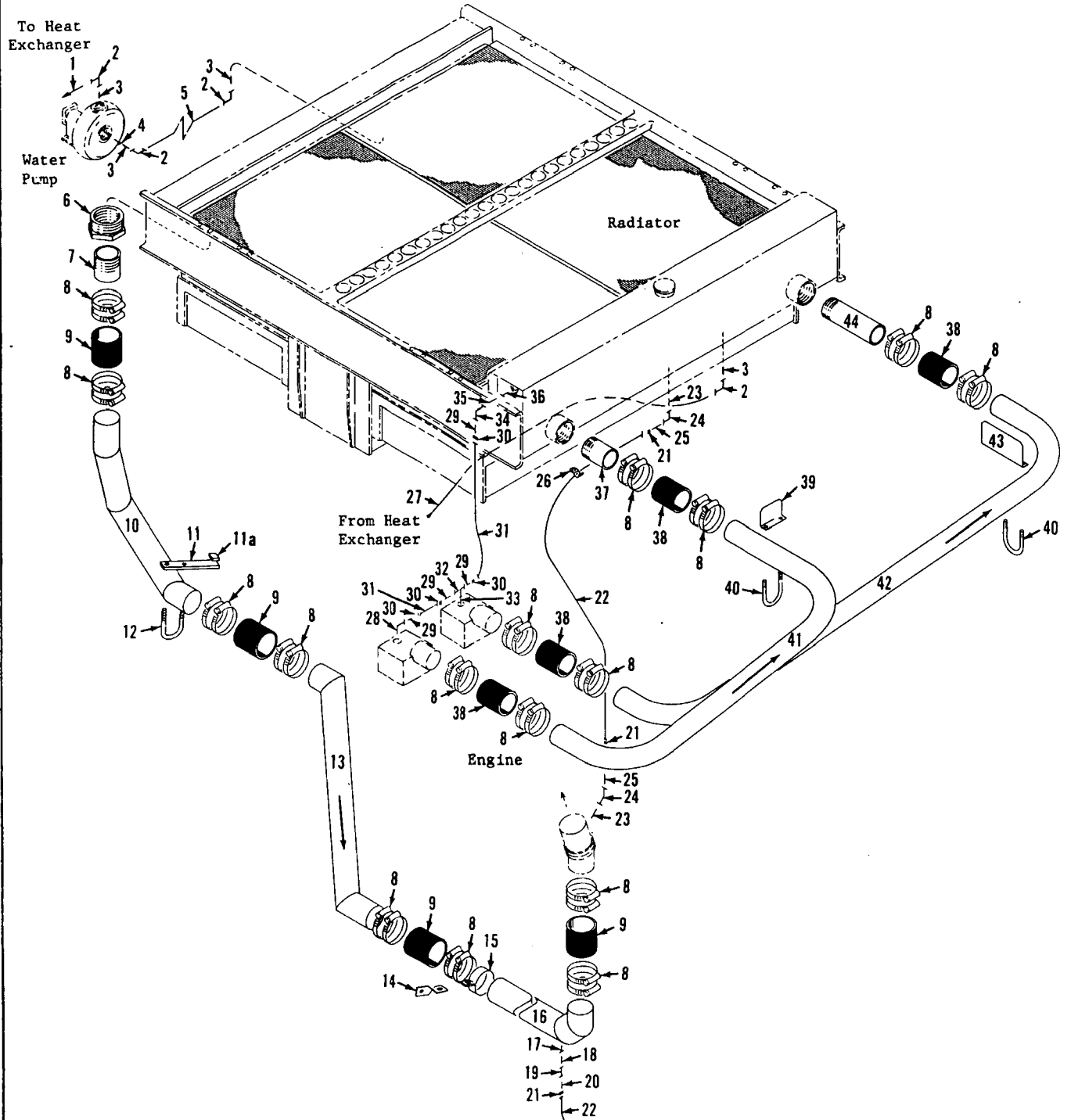
MATERIAL LIST ON BACK

ENGINE CONTROL

MANITOWOC ENGINEERING CO.

A Division of the Manitowoc Company, Inc

Manitowoc, Wisconsin



182142B

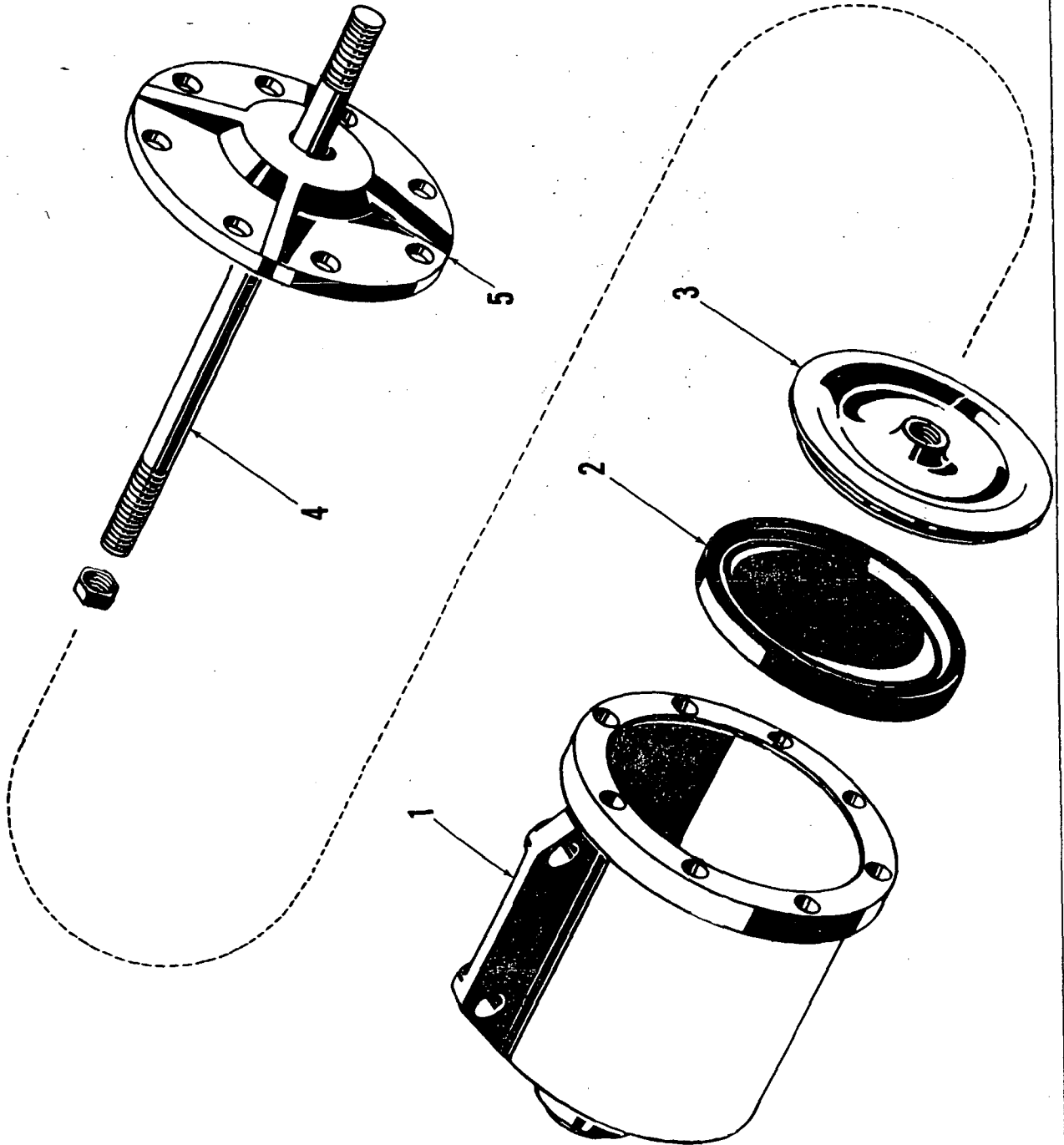
MATERIAL LIST ON BACK

Radiator Piping

MANITOWOC ENGINEERING CO.

A Division of the Manitowoc Company, Inc.

Manitowoc, Wisconsin



ILLUST. No. 20729 -A-1

MATERIAL LIST ON BACK

AIR CYLINDER

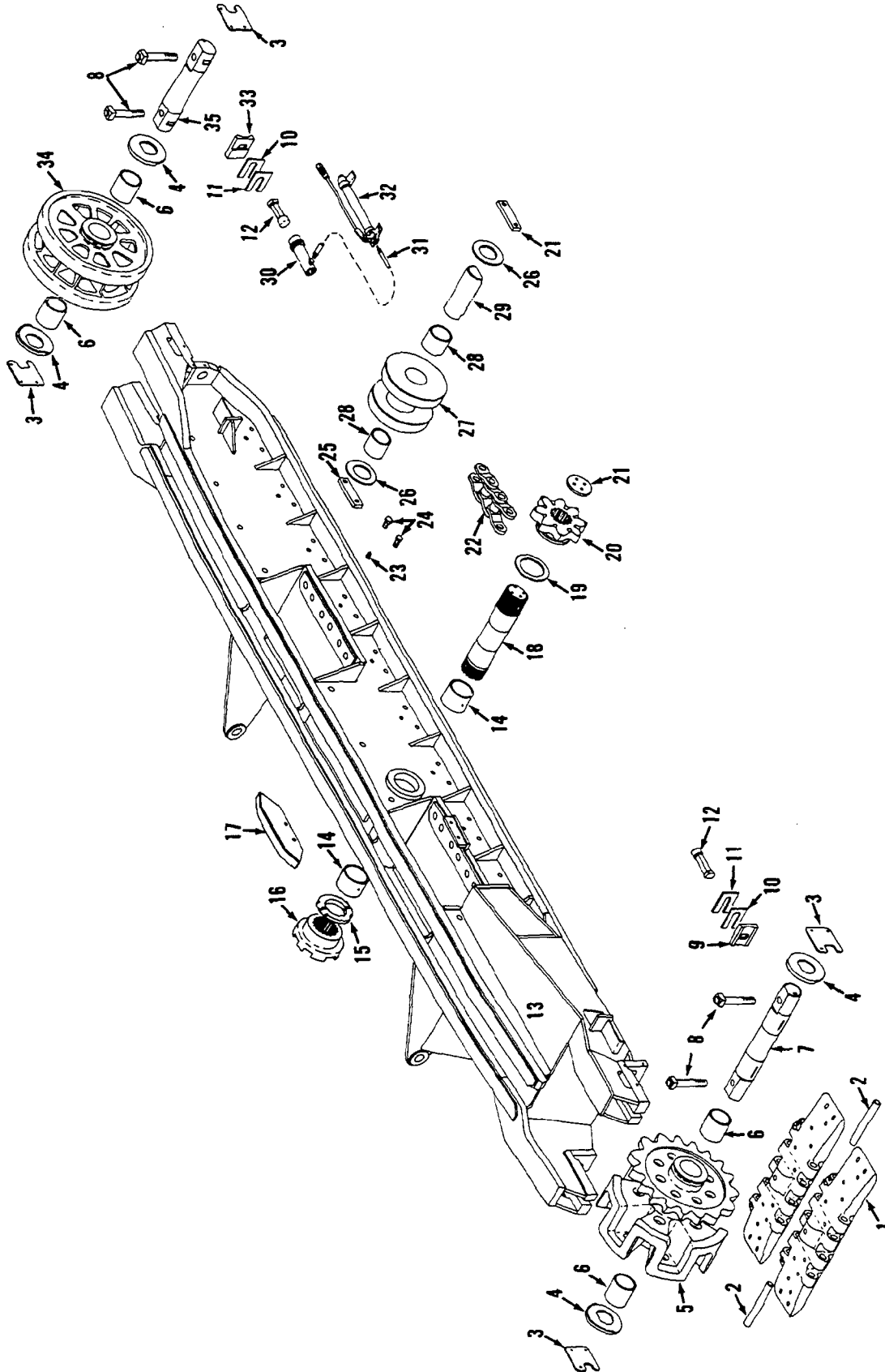
207291.

MADE

MANITOWOC ENGINEERING CO.

A Division of The Manitowoc Company, Inc.

Manitowoc, Wisconsin



65064A1

MATERIAL LIST ON BACK

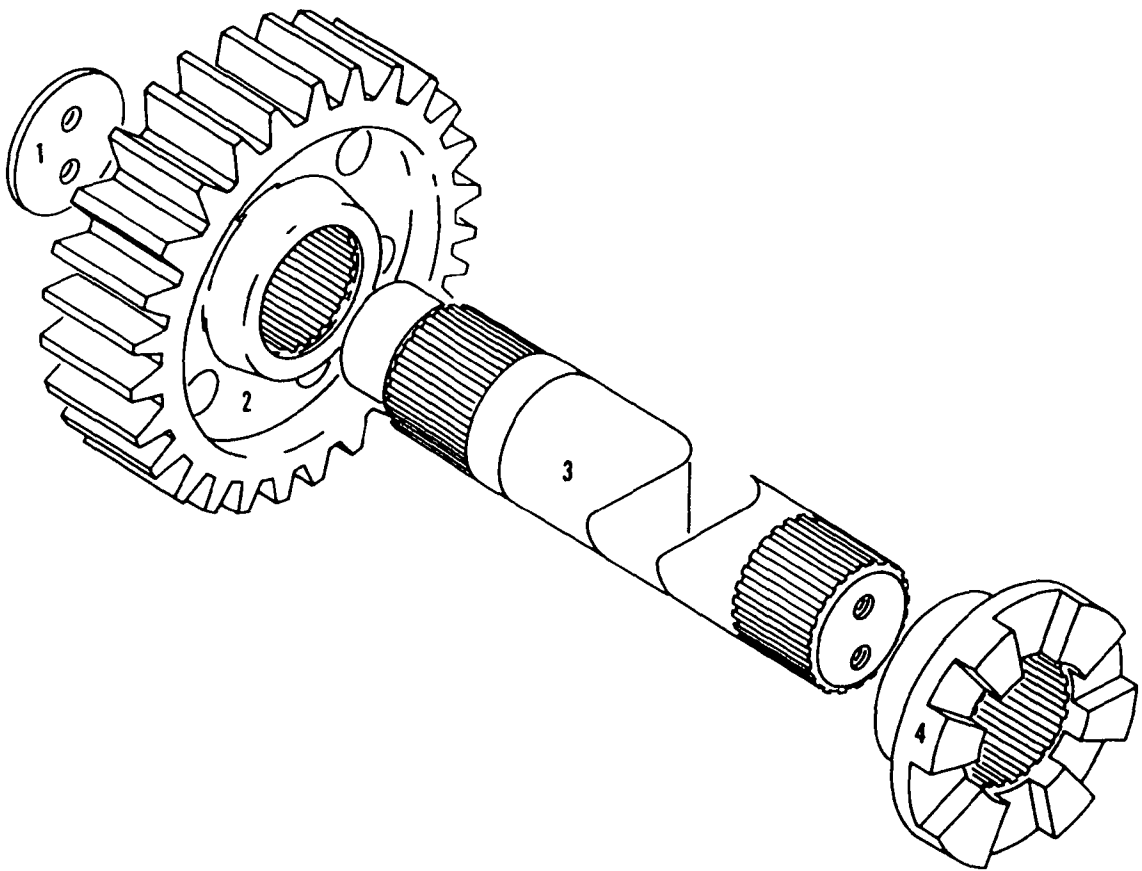
CRAWLER

MANITOWOC ENGINEERING CO

A Division of The Manitowoc Company, Inc.

Manitowoc Wisconsin

MASTER



94173A1

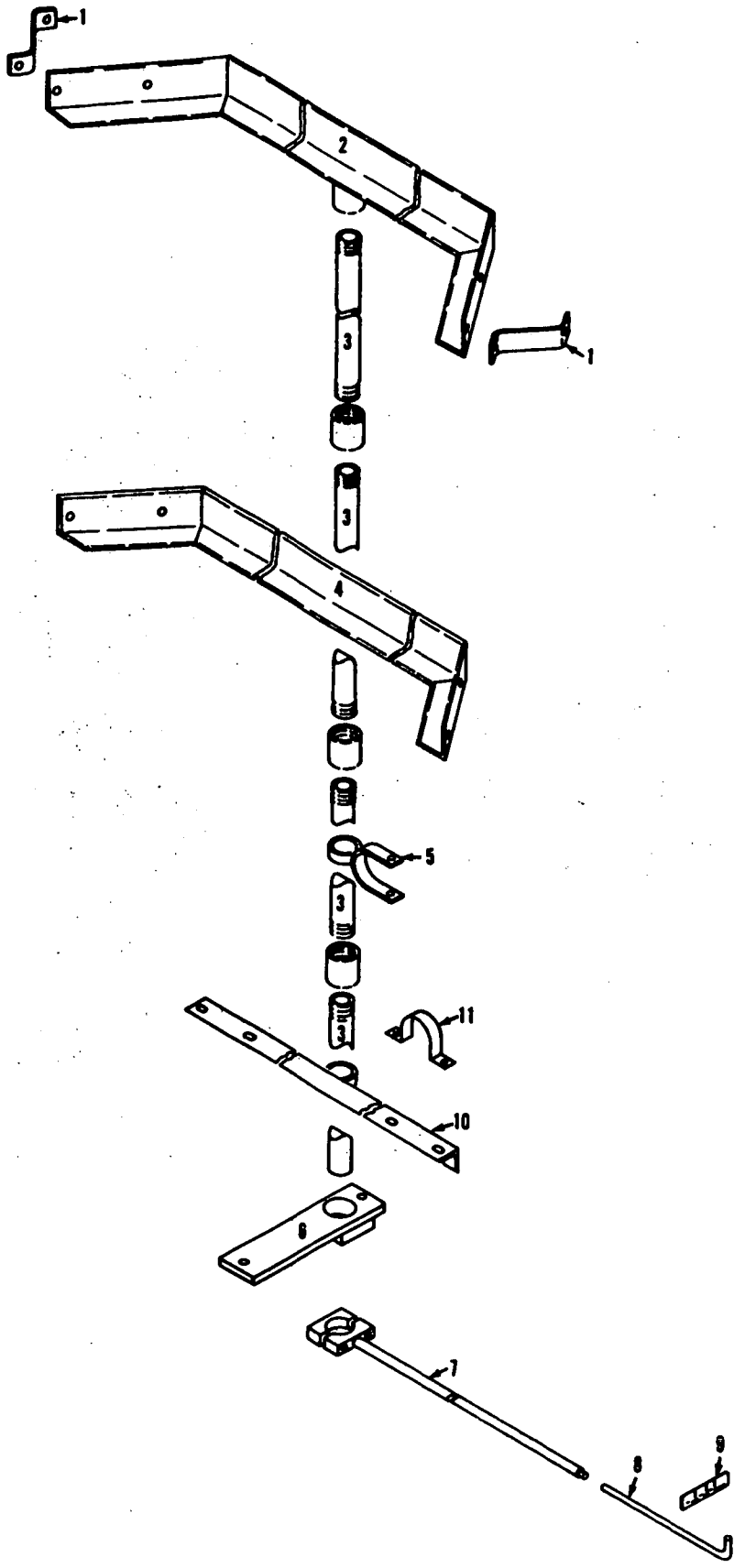
MATERIAL LIST ON BACK

GROUP F - Attachments

MANITOWOC ENGINEERING CO.

A Division of The Manitowoc Company, Inc.

Manitowoc, Wisconsin

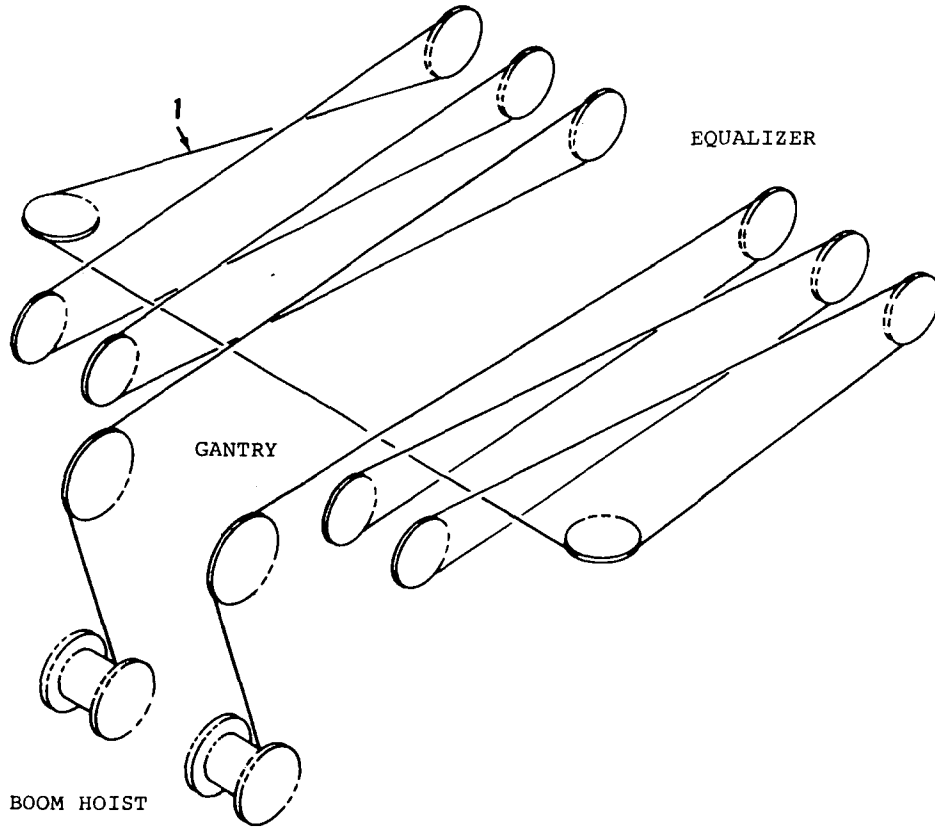


4985281

MATERIAL LIST ON BACK

TOWER TWIST INDICATOR

MASTER

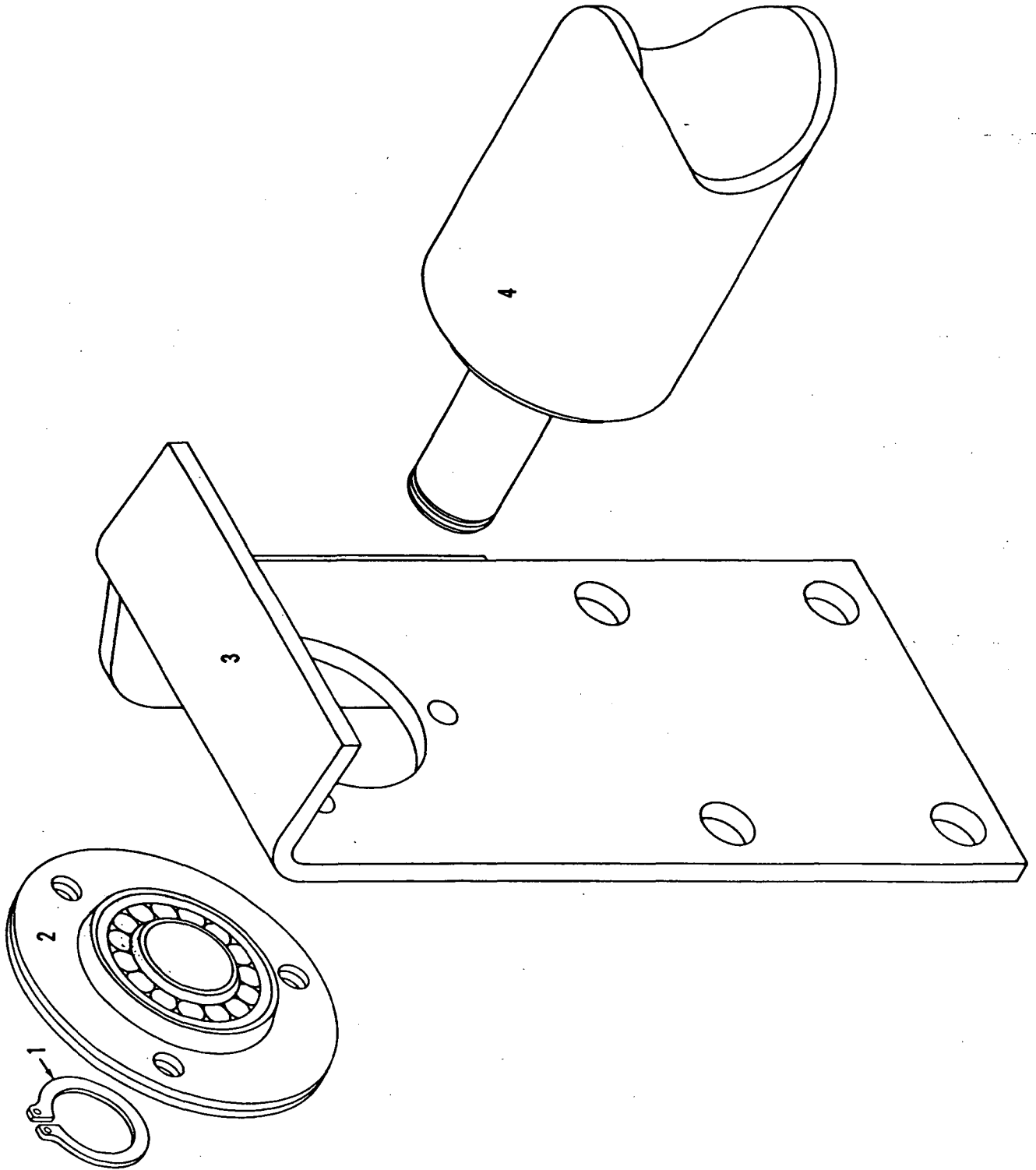


50975A2

MATERIAL LIST ON BACK

BOOM HOIST REEVING

50975 A2



MASTER

77728A1

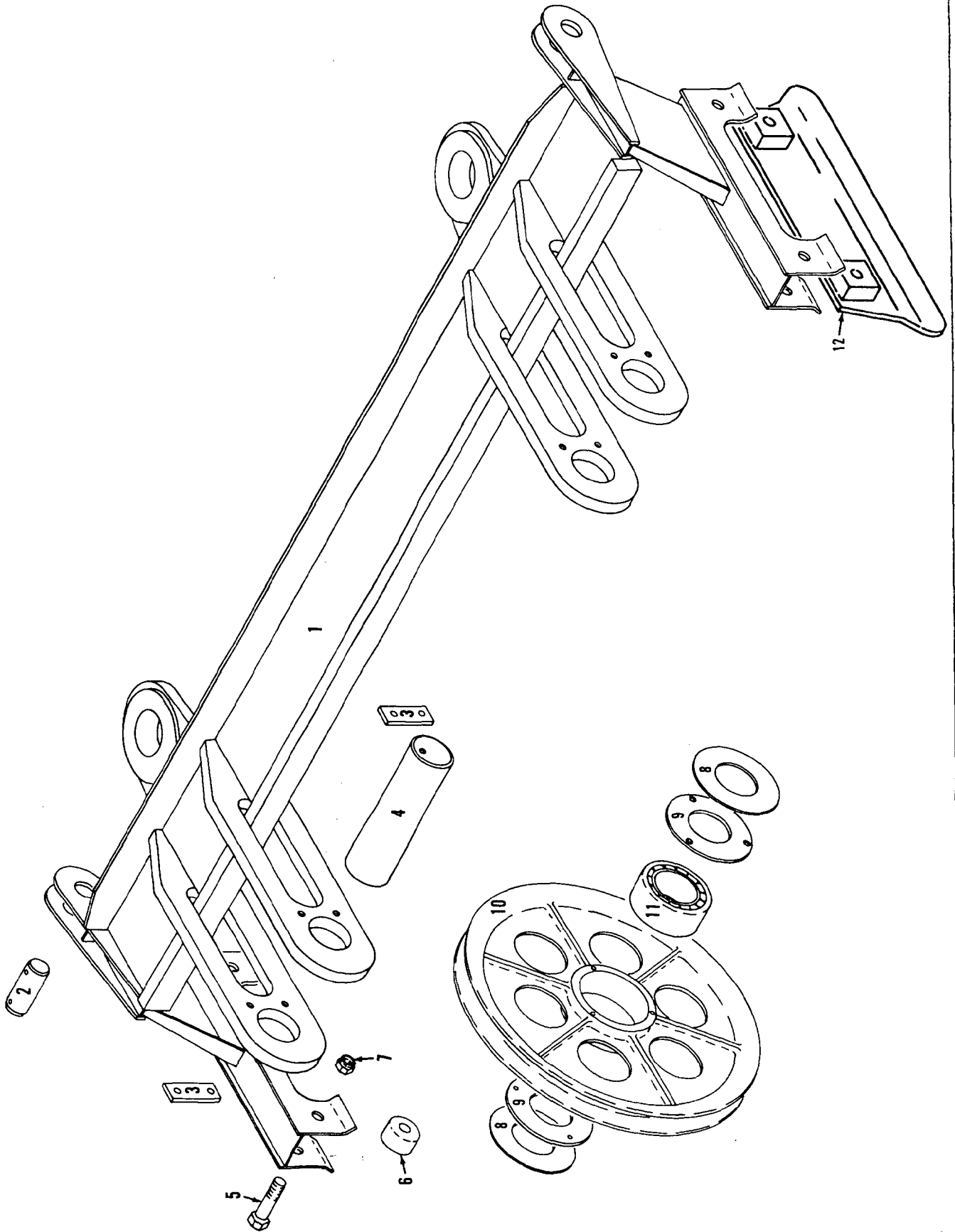
MATERIAL LIST ON BACK

CABLE ROLLER GUIDE ASSEMBLY

MANITOWOC ENGINEERING CO.

A Division of The Manitowoc Company, Inc.

Manitowoc, Wisconsin



18178781

MATERIAL LIST ON BACK

EQUALIZER

181869-1 Cont.	REV. G	MODEL 4600-S4, 4600-S4 Ringer-S3, 36' & 60' P.R.
----------------	--------	--

JIB #125

REF. NO.	PART NUMBER	QUANTITY REQUIRED	DESCRIPTION OF PART	VENDORS PART NO.
36	73142	1	SHEAVE (27" O.D.) W/gr. fitting	
37	225345	1	BEARING, Roller	
38	139317	1	PIN, Sheave	
39	250524	1	BOLT, Machine (5/8" - 11 UNC x 8")	
	548345	1	NUT, Elastic Stop (5/8" - 11 UNC - 2B)	
41	32981	As Req.	INSERT, Jib (10' - 3.048m) (Optional)	
41	182004	As Req.	INSERT, Jib (20' - 6.096m) (Optional)	
<p><u>NOTE 1:</u> Prior to design change of Aug. 26, 1975 the "Anchor Joint Assembly" was as follows:</p>				
	94201	1	ANCHOR JOINT ASSEMBLY (Optional - 1-1/4" or 1-1/8" rope)	
22	73483	1	SHAFT W/capscrew, hex nut and lockwasher	
23	140558	1	SUPPORT, Anchor W/gr. fitting	
24	18129	2	BUSHING	
25	141016	1	PIN W/cotter pins (2" x 5-15/16" pin)*	
26	13204	1	ANCHOR, Rope	
27	71764	1	WEDGE (1-1/4" rope)	
27	75610	1	WEDGE (1-1/8" rope)	
40	3967	2	WASHER	
<p>* Check pin size if in doubt concerning correct anchor joint.</p>				

Run as Front

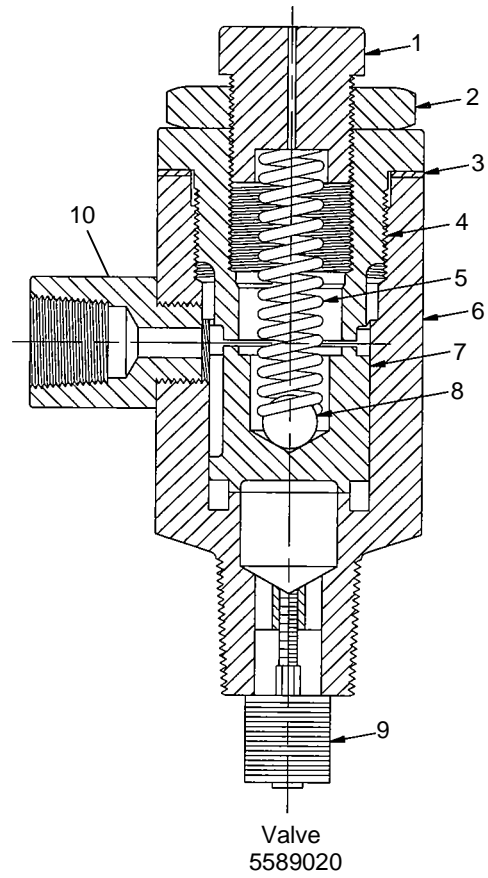
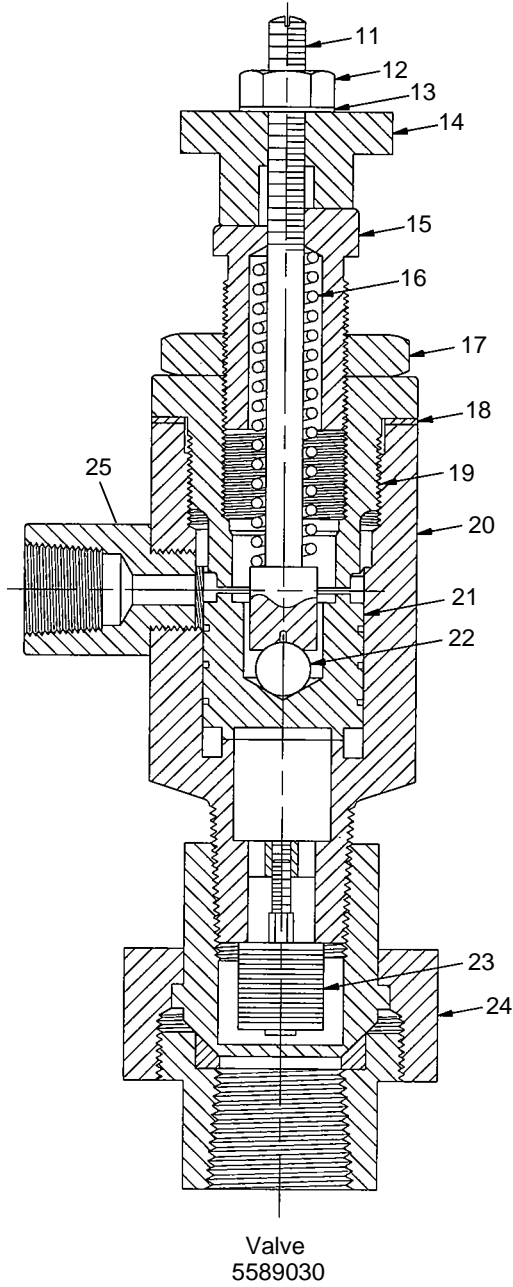
1869 G1 Cont.

REV.	G	181869 - 1
------	---	------------

PLEASE GIVE MACHINE S/N W/ORDER

O-NUMBER NUMERICAL INDEX

PUBLICATION	REV
0-63	C
0-69	C
0-71	-
0-72	B
0-96	C1
0-110	A1
0-112	A1
0-147	D2
0-148	-
0-229	A
0-245	D
0-246	C1
0-247	B
0-247	B1
0-279	B1
0-286	A
0-290	F1
0-294	A
0-294	E
0-301	A
0-302	A
0-313	A
0-313	A1
0-318	-
0-318	A1
0-335	B
0-337	B
0-340	E1
0-414	A
0-414	A1
0-420	C
0-426	-
0-428	B
0-436	-
0-441	A4
0-441	B2
0-457	B1
0-459	A1
0-460	A1
0-471	A1
0-511	-
0-750	P



ASSEMBLY	REVISION
O-72	B

VALVE, UNLOADER PILOT

MANITOWOC ENGINEERING CO.

Division of The Manitowoc Company, Inc.

Manitowoc, Wisconsin 54220



TUBING (soft copper)

Code No.	Tube O.D.
696205	3/16
696210	1/4
696214	5/16
696216	3/8
696218	1/2
696219	5/8
696220	3/4



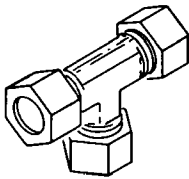
NUT

Code No.	Tube O.D.
424603	3/8
424604	1/2
424605	3/4
424633	5/16
424634	1/4
424635	3/16



FERRULE

Code No.	Tube O.D.
424600	1/4
424601	3/4
424602	3/8
424616	5/16
424617	1/2
424618	1/8
424619	3/16



UNION TEE

Code No.	Tube O.D.
429315	1/4
429316	3/8
429317	5/16



UNION

Code No.	Tube O.D.
429349	3/8
429361	1/4
429362	1/2
429397	5/16



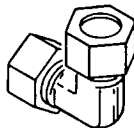
FEMALE CONNECTOR

Code No.	Tube O.D.	Pipe Thread
429312	3/16	1/8
429407	1/4	1/8
429830	1/4	1/4



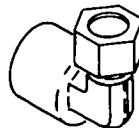
MALE CONNECTOR

Code No.	Tube O.D.	Pipe Thread
429324	3/4	3/4
429328	3/8	1/2
429351	5/16	1/8
429358	1/2	3/4
429359	1/2	3/8
429363	1/4	1/8
429364	1/4	1/4
429365	3/16	1/8
429366	3/8	1/8
429367	3/8	1/4
429368	3/8	3/8



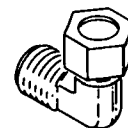
UNION ELBOW

Code No.	Tube O.D.
429372	3/8
429378	1/2
429381	1/4



FEMALE ELBOW

Code No.	Tube O.D.	Pipe Thread
429066	1/4	1/8
429825	1/4	1/4



MALE ELBOW

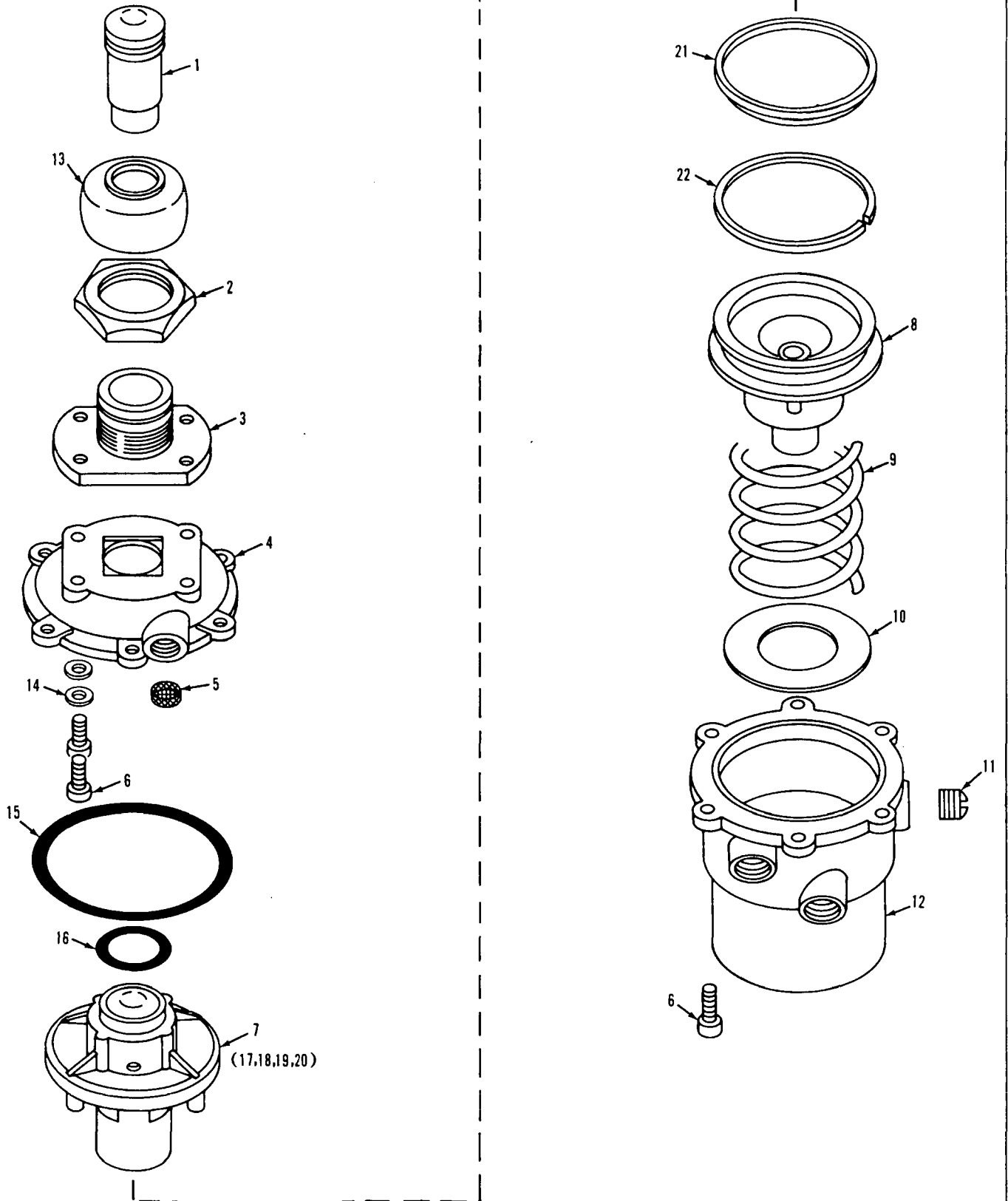
Code No.	Tube O.D.	Pipe Thread
429371	1/2	1/2
429373	3/8	1/8
429374	1/4	1/4
429375	3/8	1/4
429376	1/2	3/8
429380	1/4	1/8
429384	3/8	1/2
429385	5/16	1/8
429386	3/16	1/8
429401	1/2	3/4
429422	3/8	3/8
429453	3/4	3/4

MANITOWOC ENGINEERING CO.

A Division of The Manitowoc Company, Inc.

Manitowoc, Wisconsin

MASTER

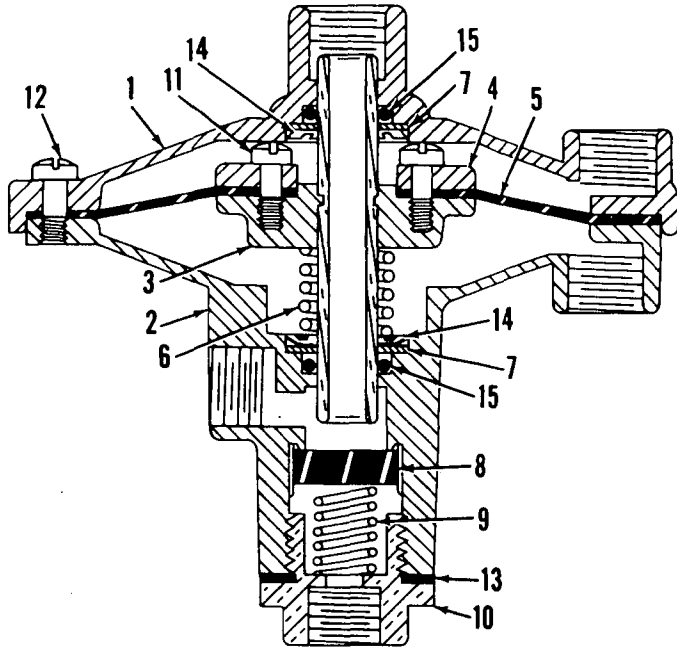


0-247-18

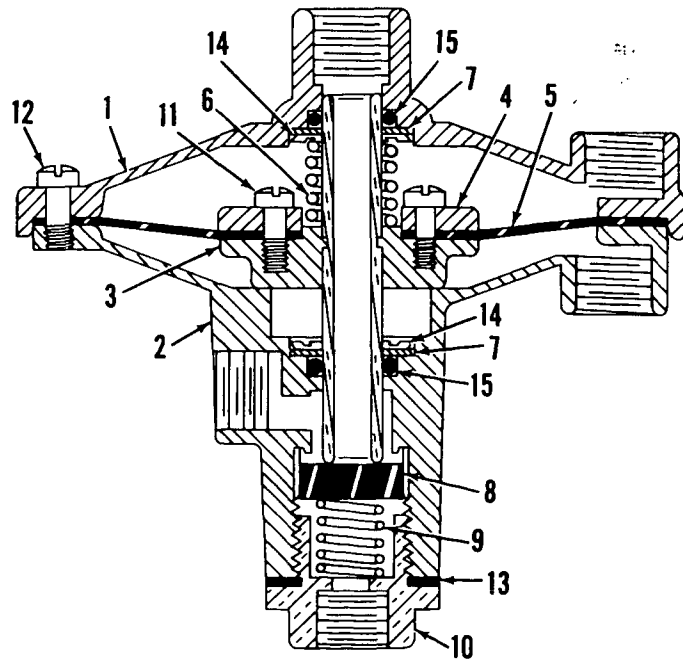
MATERIAL LIST ON BACK

Control Valve

MASTER



Normally Closed

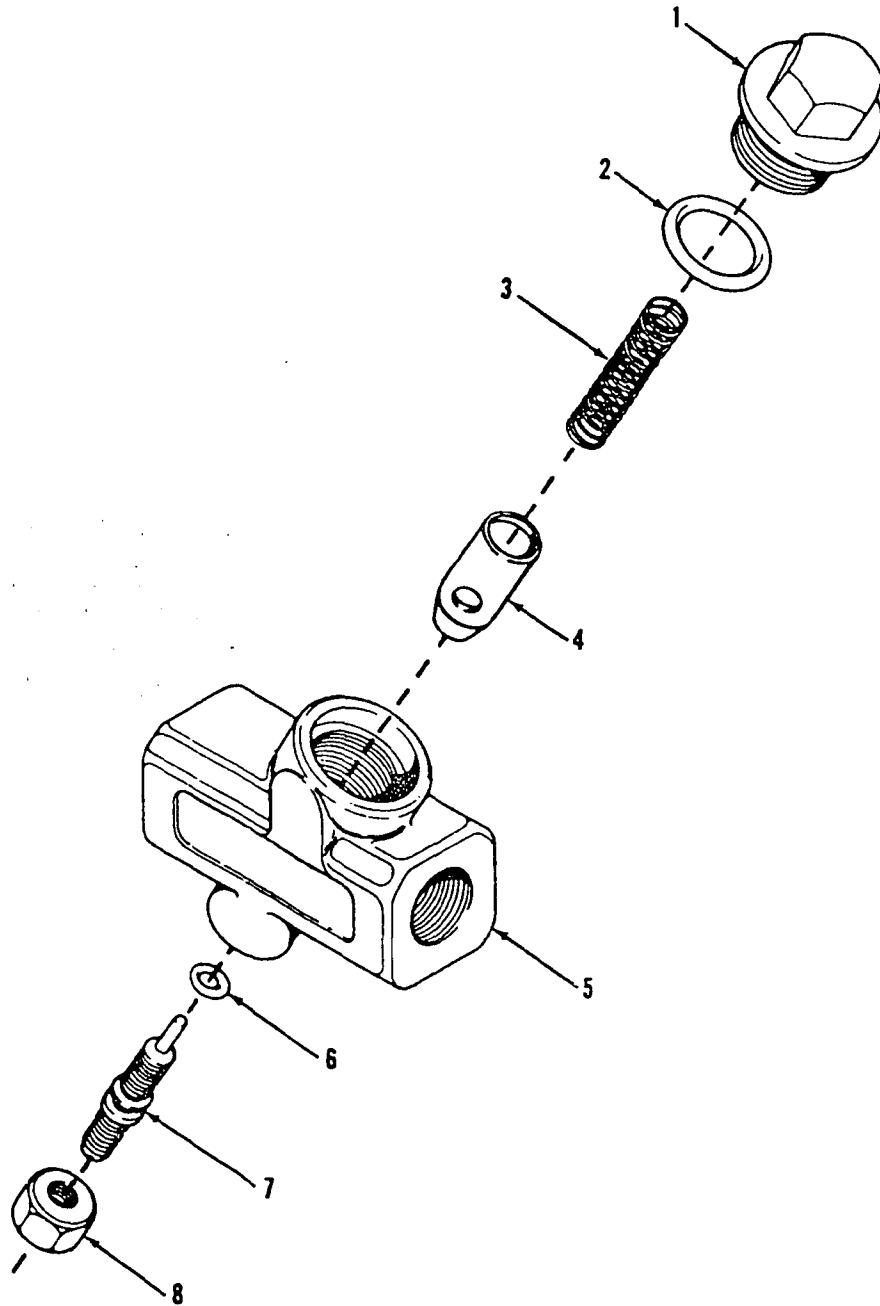


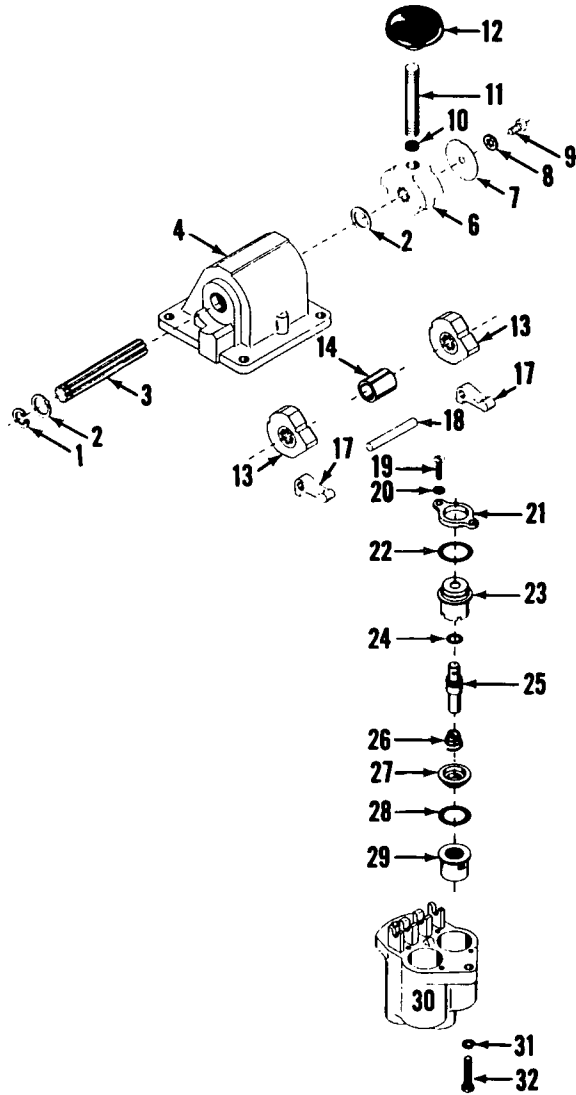
Normally Open

MATERIAL LIST ON BACK

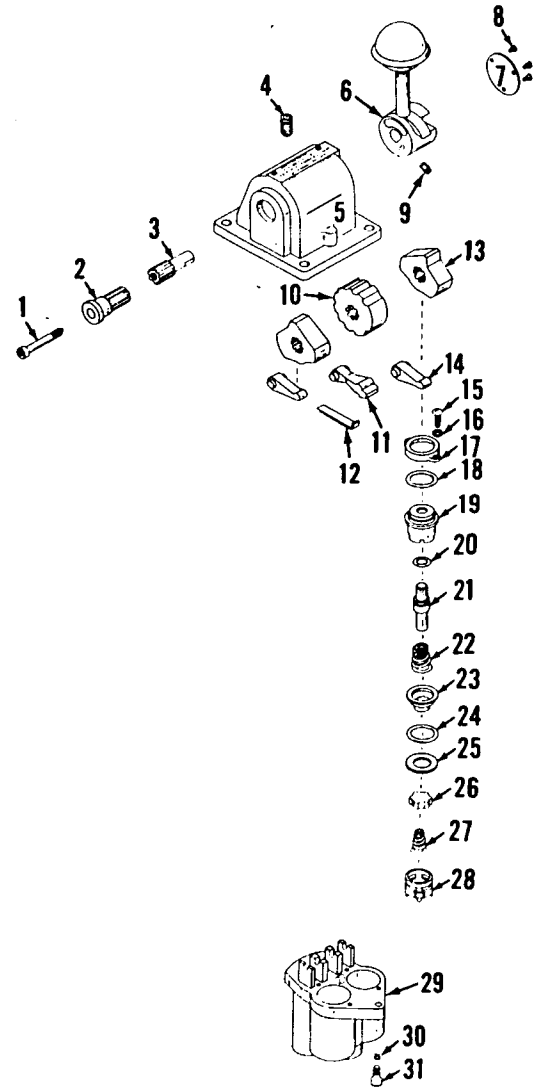
RELAY VALVES

WASIEK





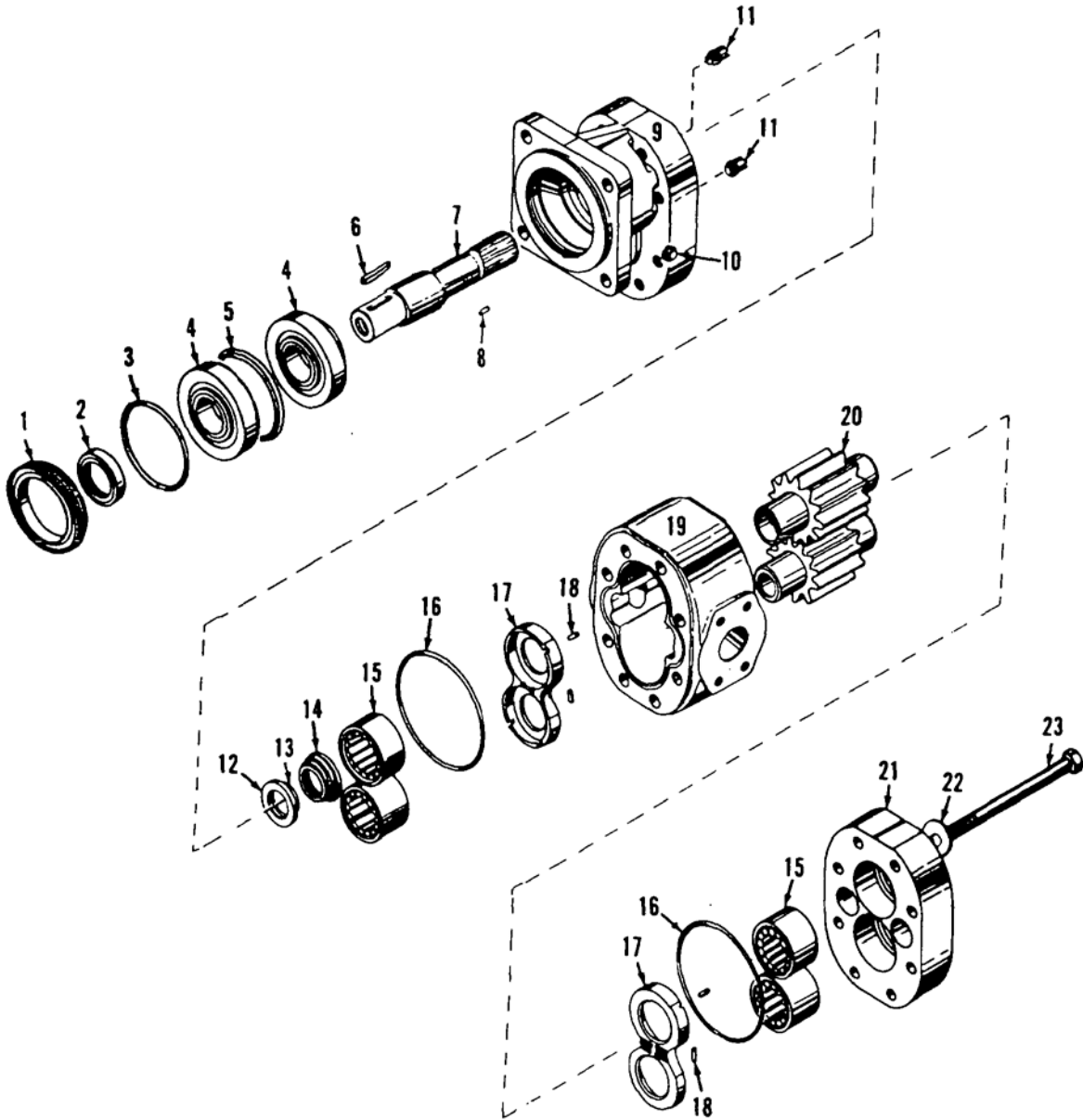
P59340



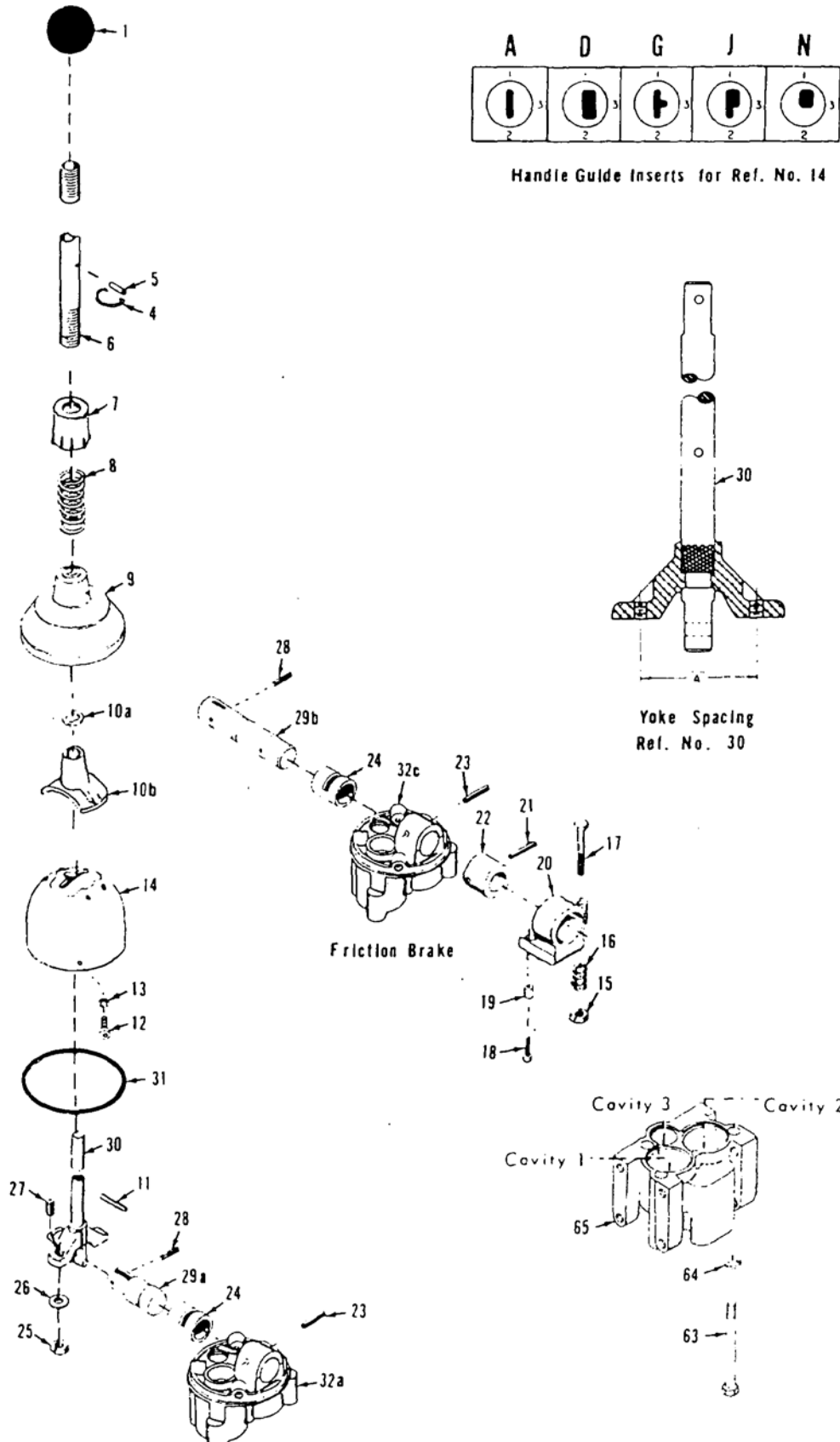
P54426-0241

MATERIAL LIST ON BACK

CONTROL VALVE



ASSEMBLY	REVISION
O-420	C



ASSEMBLY	REVISION
O-441	B

MANITOWOC ENGINEERING CO.

A Division of the Manitowoc Company, Inc.

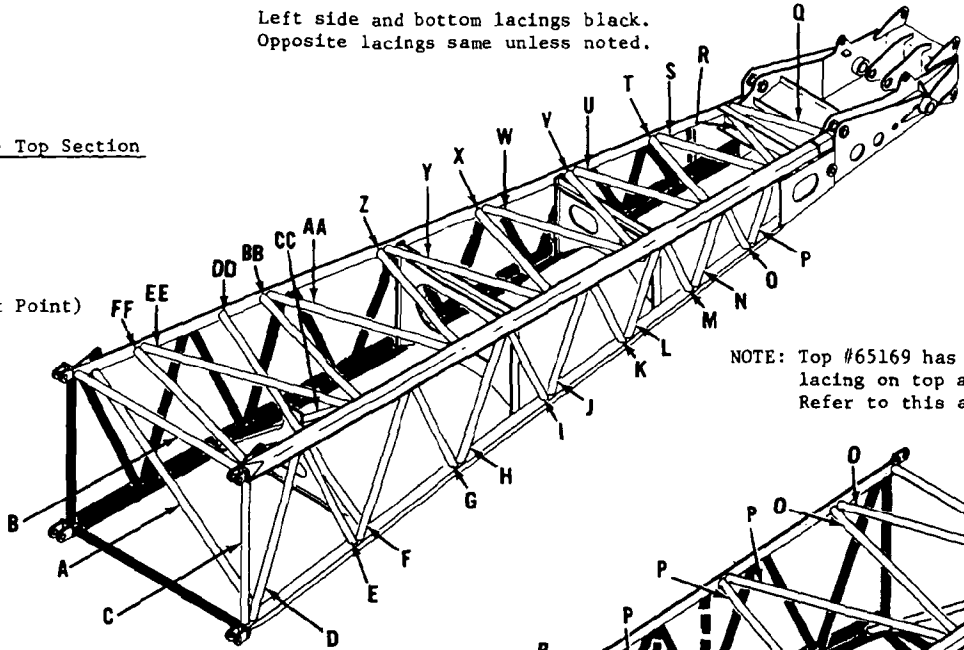
Manitowoc, Wisconsin

Booms #27,28,29

Left side and bottom lacings black.
Opposite lacings same unless noted.

39'6" (12.040) Top Section

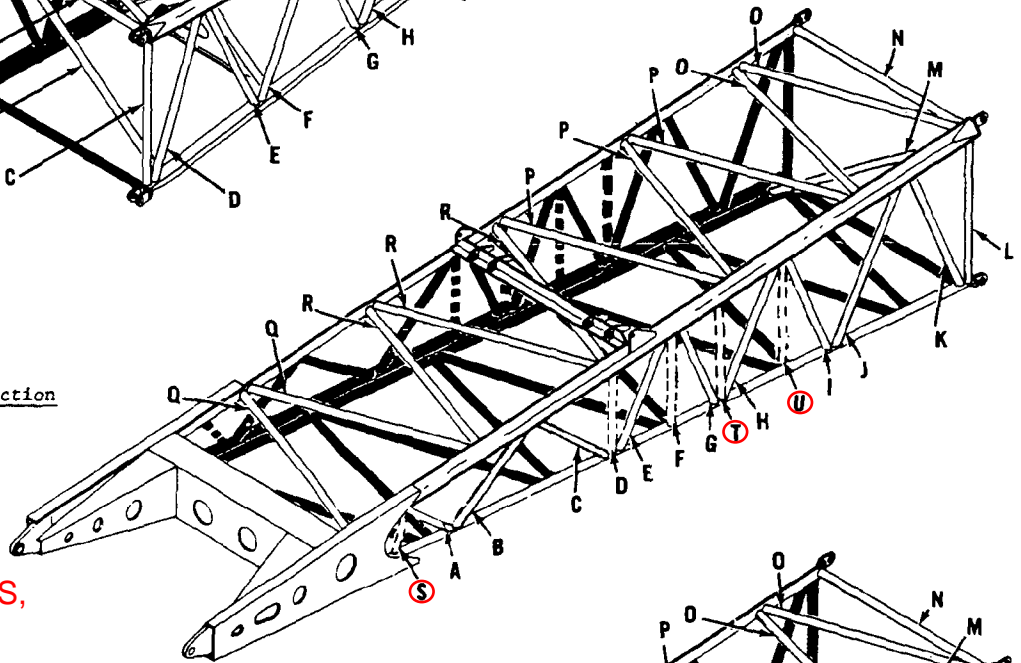
- 50953
- 50958
- 65088
- 65169
- 65332
- 65466
- 190257 (Offset Point)



NOTE: Top #65169 has one additional lacing on top above lacing "q". Refer to this as lacing "gg".

40'6" (12.244) Butt Section

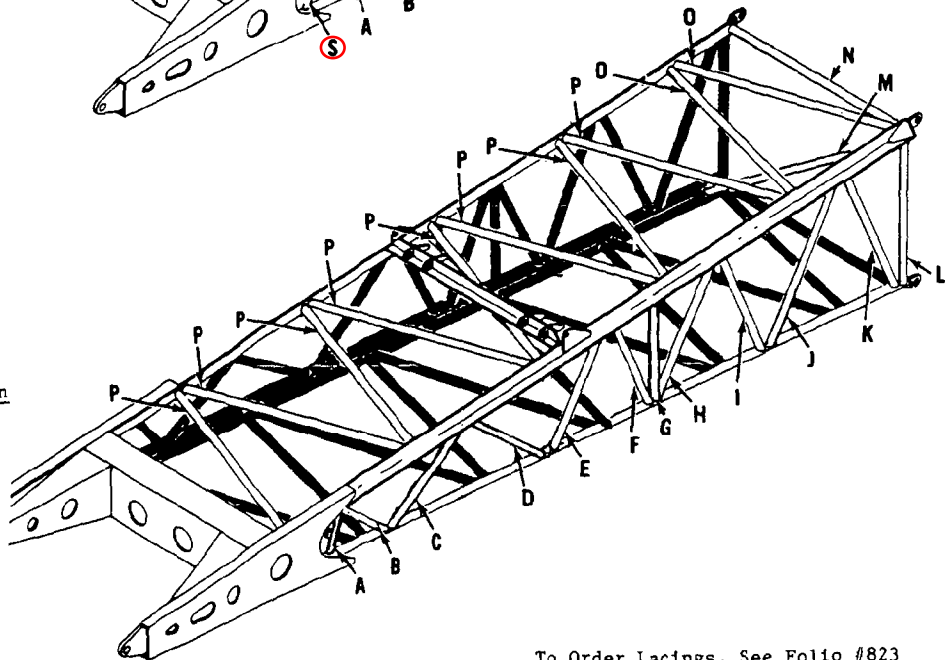
- 50952
- 419466



Lettered Lacings S,
T and U do not
exist on
Manufacturing
Drawing - Please
disregard.

40'6" (12.244m) Butt Section

- 65089



All lacings may not be on any
specified section.

To Order Lacings, See Folio #823

0-511.1

MODEL		
All		
HYDRAULIC VALVES Replacement Parts		
PART #	QTY.	Description of Part
7038870	1	VALVE, Relief
7038876	1	CARTRIDGE
7029005	1	KIT, SEAL
7038880	1	VALVE, Relief
7038886	1	CARTRIDGE
7038885	1	KIT, SEAL
7038920	1	VALVE, Flow Control
5966950	1	O-RING (1.50 SAE Code 61)
7038926	1	CARTRIDGE
7038925	1	KIT, SEAL
7040520	1	VALVE, Solenoid Operated Relief
7040524	1	CARTRIDGE, Relief
7040525	1	KIT, Seal, Relief
7040526	1	CARTRIDGE, Solenoid
7040527	1	COIL
7040730	1	VALVE, Solenoid-Operated Relief Less 704074-0 Cartridge
7040736	1	CARTRIDGE
7040525	1	KIT, Seal, Solenoid-Operated Relief Valve
7040740	1	CARTRIDGE, Solenoid Valve
7040745	1	KIT, Seal, Solenoid Valve
7040750	1	COIL, Solenoid Valve
7040820	1	VALVE, Pressure Reducer
7040826	1	CARTRIDGE, Pressure Reducer
7040825	1	KIT, Seal, Pressure Reducer Valve
7040827	1	VALVE, Check
7040824	1	KIT, Seal, Check Valve
7040830	1	VALVE, Counterbalance
7040836	1	CARTRIDGE, Counterbalance
7026575	1	KIT, Seal
7040840	1	VALVE, Relief
7040846	1	CARTRIDGE
7028595	1	KIT, Seal
7040930	1	VALVE, Sequence
7040936	1	CARTRIDGE, Sequence
7040825	1	KIT, Seal

ASSEMBLY	REVISION
O-750	P

CLICK HERE TO **DOWNLOAD** THE COMPLETE MANUAL

- Thank you very much for reading the preview of the manual.
- You can download the complete manual from: www.heydownloads.com by clicking the link below



- Please note: If there is no response to CLICKING the link, please download this PDF first and then click on it.

CLICK HERE TO **DOWNLOAD** THE COMPLETE MANUAL