



TRADITIONAL CRANE PARTS MANUAL

This manual has been prepared for and is considered part of

4100W

Model

41549

Serial Number

GROUP A = Rotating Structure (Includes rotating bed, operator's cab, cases, fuel tanks, transfer pump, counterweights, guards, platforms, catwalks, machinery enclosure, horn)

GROUP B = Upperworks Machinery (Includes front, rear, and auxiliary drums, boom hoist, swing and drive shafts, hand levers, foot pedals, control linkage, rotation indicators, upperworks hydraulic components, hydraulic piping, hydraulic oil reservoir, lubrication pump and piping, blowers)

GROUP C = Air Components & Electrical (Includes control console, air piping, electric wiring, auxiliary light plant and lighting, TV monitoring, compressor and air tank)

GROUP D = Power Components - Upperworks (Includes engine or motor, radiator, auxiliary power plant, take off converters and piping, controls, VICON power lowering, torque limiter, hydraulic pumps and piping, fuel piping, battery box)

GROUP E = Lower Structure & Control (Includes carbody, crawlers, travel shafts and control, steering travel locks, hydraulic travel, travel power outriggers, carrier, pedestal, lowerworks hydraulic piping, RINGER components, barge mounting and machinery, spud drums)

GROUP F = Attachments (Includes booms, jibs, masts, tower, wire rope guides, equalizer, gantry, fairlead, timber guards, boom angle indicator, block-up limit, tag line, hook block, weight ball, upper and lower boom point, wind speed indicator, crowd and retract dipper sticks, dippers,)

O-NUMBER SECTION = (Includes lacing drawings and purchased component parts drawings referenced in sections A through F)

This manual is arranged in sections as listed above. Sections A through F are arranged by group numerical order with an index after each section tab. An alphabetical index for groups A Through F combined is located after the O-number Section. The O-number section is arranged in numerical order by O-number. Following this cover page are the Basic Specifications, Warranty Information, Tool List (if applicable) Outline Dimensions, Weights, and Dealer Listing.

MANITOWOC CRANES, INC.

2401 South 30th Street • PO Box 70

Manitowoc, WI 54221-0070

Phone: 920-684-6621 • Fax: 920-683-6278

CLICK HERE TO **DOWNLOAD** THE COMPLETE MANUAL

- Thank you very much for reading the preview of the manual.
- You can download the complete manual from: www.heydownloads.com by clicking the link below



- Please note: If there is no response to CLICKING the link, please download this PDF first and then click on it.

CLICK HERE TO **DOWNLOAD** THE COMPLETE MANUAL

B. Ordering Lacings without Lacing Drawings

The parts order must contain the following information to ensure that Manitowoc provides you with the correct lacings:

1. Crane serial number (can be found on builders plate in operator's cab.)
2. Boom or jib identification number.
3. Quantity, lacing location, and lacing number.
4. Boom or jib component name (butt, insert, or top) and part number.

NOTE To obtain the lacing location and number, view the boom or the jib from the butt end looking forward. Identify the side on which the damaged lacing is located: left side, top side, right side, or bottom side. Count each lacing up to and including the damaged lacing, starting with **first lacing nearest butt end** of the component as shown in Figure 3.

Do not count a diagonal lacing as the first lacing. Identify diagonal lacing separately; lower end diagonal lacing or upper end diagonal lacing.

ASSISTANCE

If you are in doubt as to which lacings to order, DO NOT GUESS. Contact your nearest Manitowoc distributor for assistance; doing so may prevent the wrong parts from being shipped.

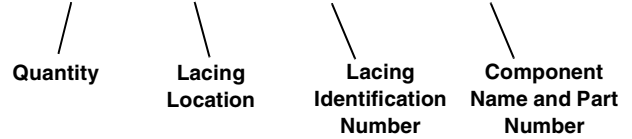
EXAMPLE: Assume you have a number 22 boom and the lacings with circled numbers in Figure 3 are damaged. Your parts order should be similar to the following example:

Crane Serial Number: **00000** (from builders plate).

Boom Identification Number: **#22 Boom**

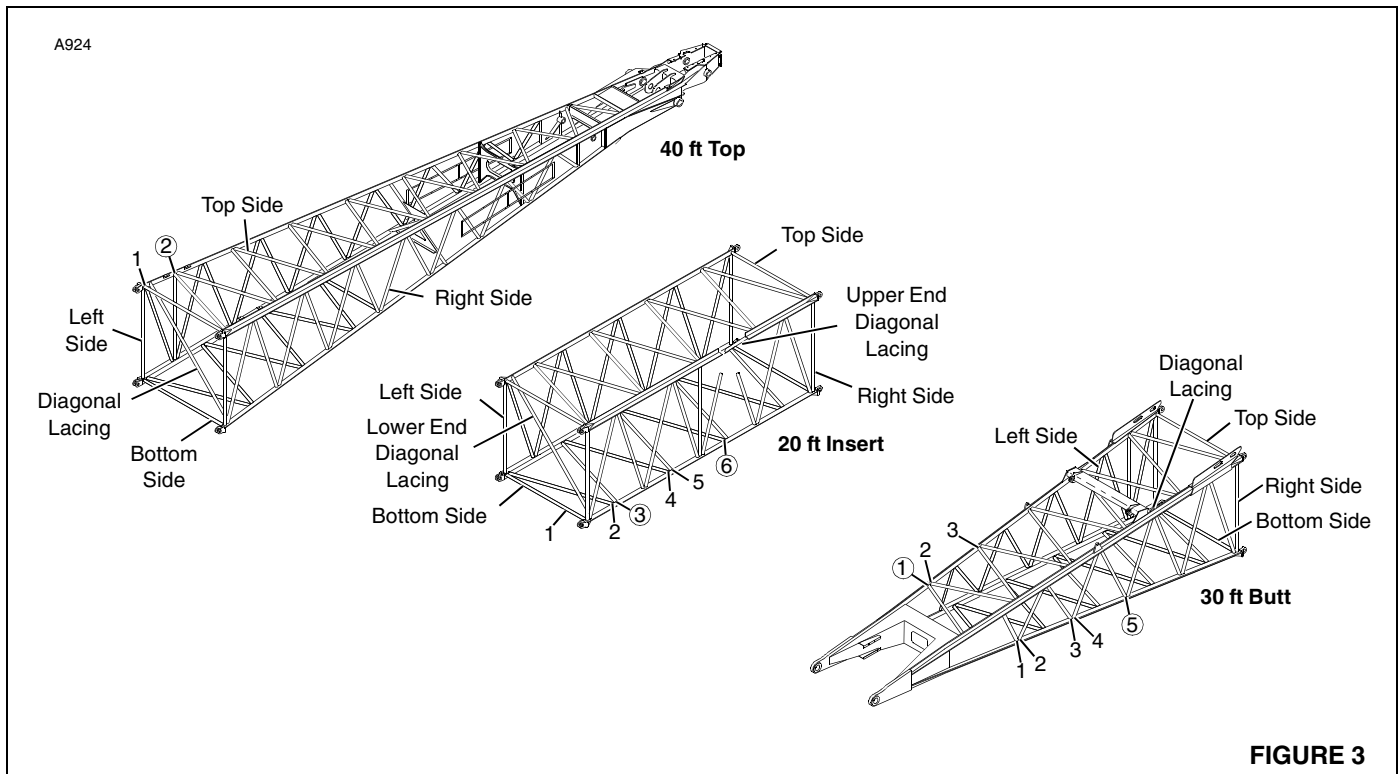
Required:

- 1 each Top Side Lacing (1) for 30 ft Butt 48153-9
- 1 each Right Side Lacing (5) for 30 ft Butt 48153-9
- 1 each Bottom Side Lacing (3) for 20 ft Insert 33426-3
- 1 each Bottom Side Lacing (6) for 20 ft Insert 33426-3
- 1 each Top Side Lacing (2) for 40 ft Top 50453-2



WELDING INSTRUCTIONS

Refer to folio 1316 for welding instructions.



**PARTS MANUAL ALPHABETICAL INDEX
GROUP A - Rotating Structure**

DESCRIPTION	PUBLICATION	REV	START DATE	END DATE	GROUP
"A" Frame	48481	F1	02/25/70	11/02/81	A0101
Cab	65413	B2	12/22/75	05/17/91	A0201
Cab	65413	K1	12/22/75	05/17/91	A0201
Cab	95606	-	09/24/75	08/26/85	A0201
Cab	95772	N/A	01/15/76	01/15/76	A0201
Cab Heater/Air Conditioner	190449	-	03/01/77		A0209
Cab Rear Support	180856	E1	05/14/69	12/06/89	A0103
Catwalk	183582	-	07/20/78	08/03/78	A0801
Catwalk	65454	E1	02/19/76	05/09/78	A0801
Chain & Gear Case	48691	A1	03/25/69		A0401
Chain & Gear Case	48691	G2	03/25/69	02/04/91	A0401
Chain & Gear Case	48691	L1	04/14/72	10/06/81	A0401
Chart Holder	93994	A1	11/15/71	04/08/83	A0212
Chart Holder	95639	-	09/19/75	12/17/84	A0212
Counterweight & Cab Rear	190738	C1	03/06/78	05/19/78	A0301
Counterweight & Cab Rear	49487	G1	10/21/71	12/18/90	A0301
Counterweight & Cab Rear	49487	G1	11/12/71	04/04/80	A0301
Counterweight Handling	48562	A1	12/04/68	05/27/86	A0302
Fuel Tank	48559	K1	12/03/68	07/14/88	A0601
Fuel Transfer Pump	93037	C1	07/28/69	05/27/83	A0602
Guards	49267	K1	08/14/70	01/31/77	A0501
Operator's Station/Pilothouse	137847	-	07/17/69	09/28/94	A0202
Operator's Station/Pilothouse	65386	C2	09/24/75	08/16/90	A0202
Operator's Station/Pilothouse	65386	O1	09/24/75	11/21/86	A0202
Platform	48583	K1	02/27/69	03/22/95	A0701
Rotating Bed Lubrication Piping	183569	-	05/01/78	10/03/78	A0104
Rotating Bed Lubrication Piping	183569	-	05/01/78	10/05/78	A0104
Rotating Bed Lubrication Piping	183576	-	04/26/78		A0104
Rotating Bed Lubrication Piping	65371	D1	06/30/76	04/09/81	A0104
Rotating Bed/Hoist Frame/Transporter Platform	48443	AA1	09/25/75	06/06/84	A0102
Windshield Wiper/Defogger	180880	-	08/04/76		A0210
Windshield Wiper/Defogger	190248	E1	12/17/75	03/02/84	A0210

48559-1 Cont.	REV. K	MODEL 4100W
---------------	--------	-------------

FUEL TANK

REF. NO.	PART NUMBER	QUANTITY REQUIRED	DESCRIPTION OF PART	VENDORS PART NO.
			NOTE 5: Machines w/optional fuel tank drums, delete Ref. 11 and add — (not shown)	
	288770	2	BUSHING, Nut (2" x 1/2")	
	355004	2	STEAMCOCK (1/2")	
	543404	2	NIPPLE, Close (1/2")	

A0601

48559-K1
Cont.

REV. K	48559 - 1
--------	-----------

PLEASE GIVE MACHINE S/N W/ORDER

CPT

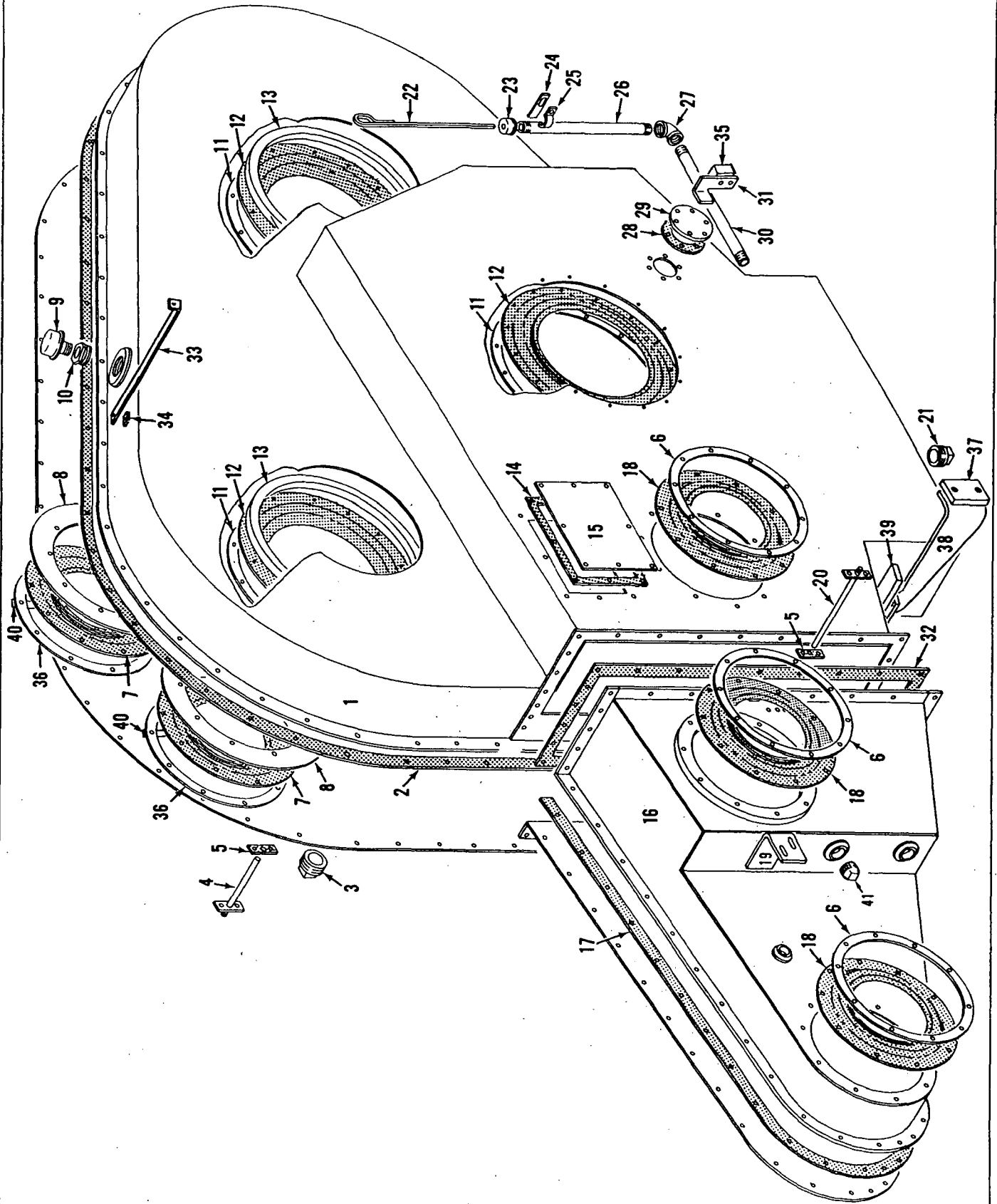
Run as a Front

48559 Cont.

MANITOWOC ENGINEERING CO.

A Division of The Manitowoc Company, Inc.

Manitowoc, Wisconsin

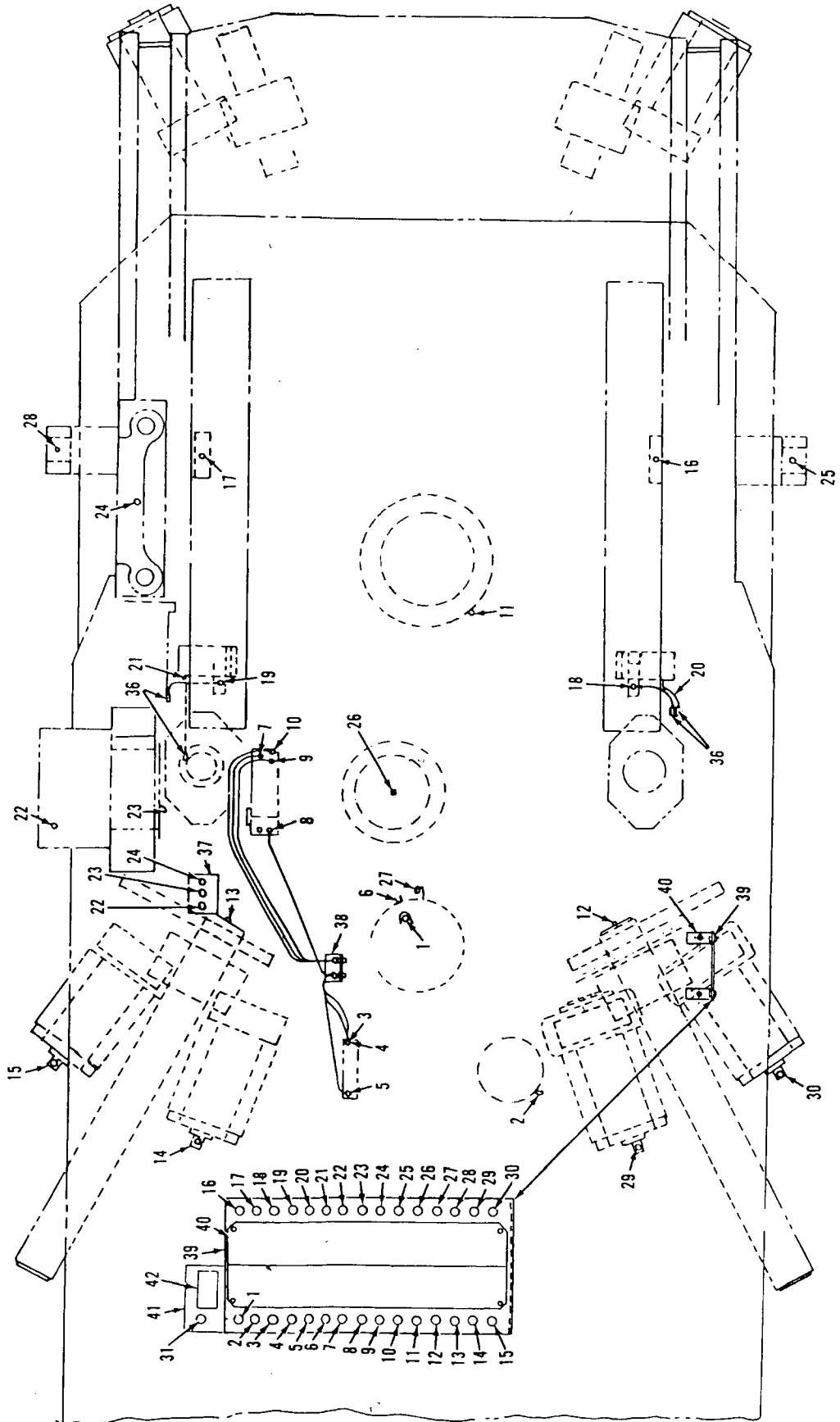


4869111

MATERIAL LIST ON BACK

CHAIN CASE

MASTER

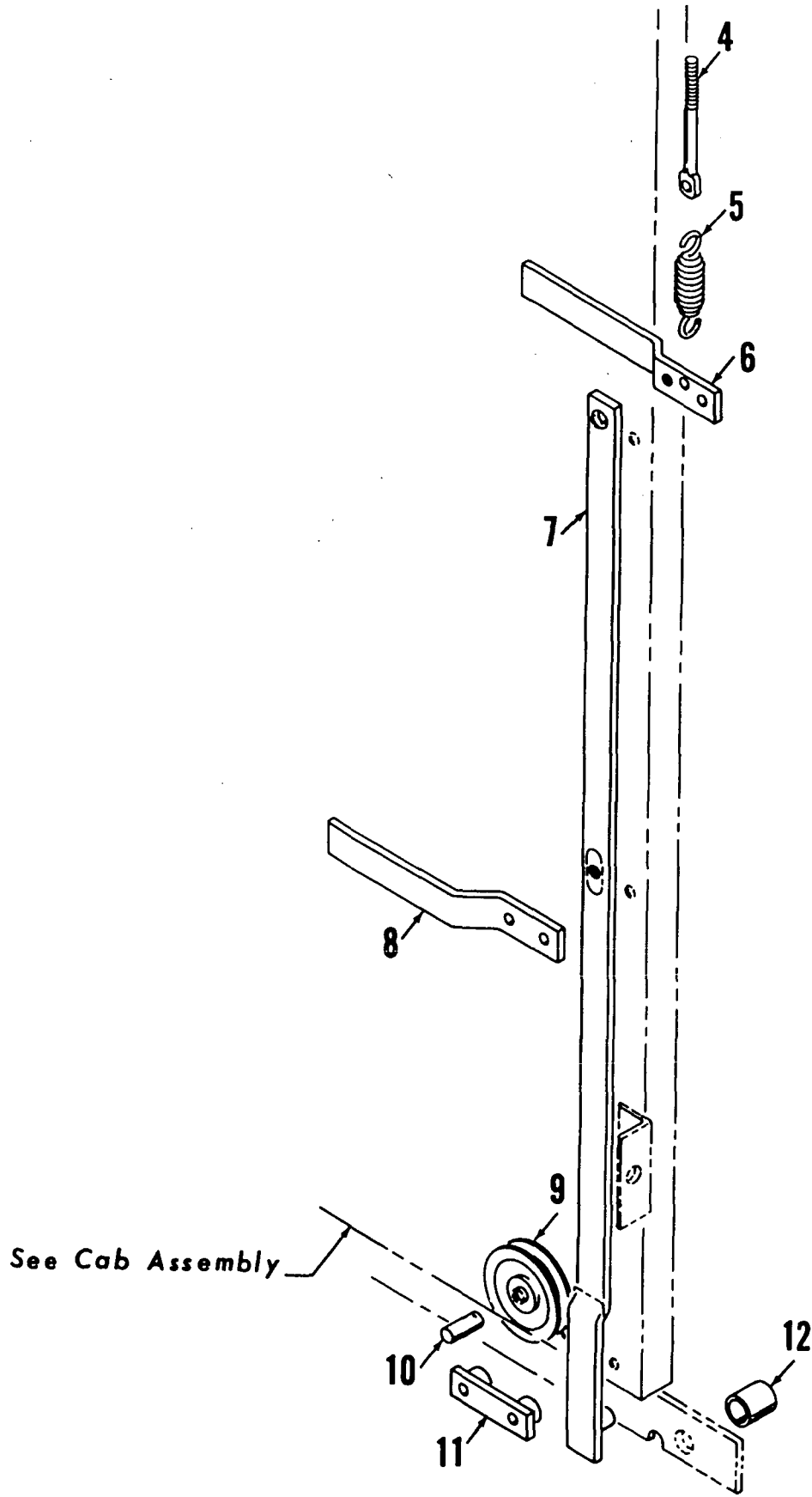


65371D1

MASTER

65413-62 Back

32383-A-2



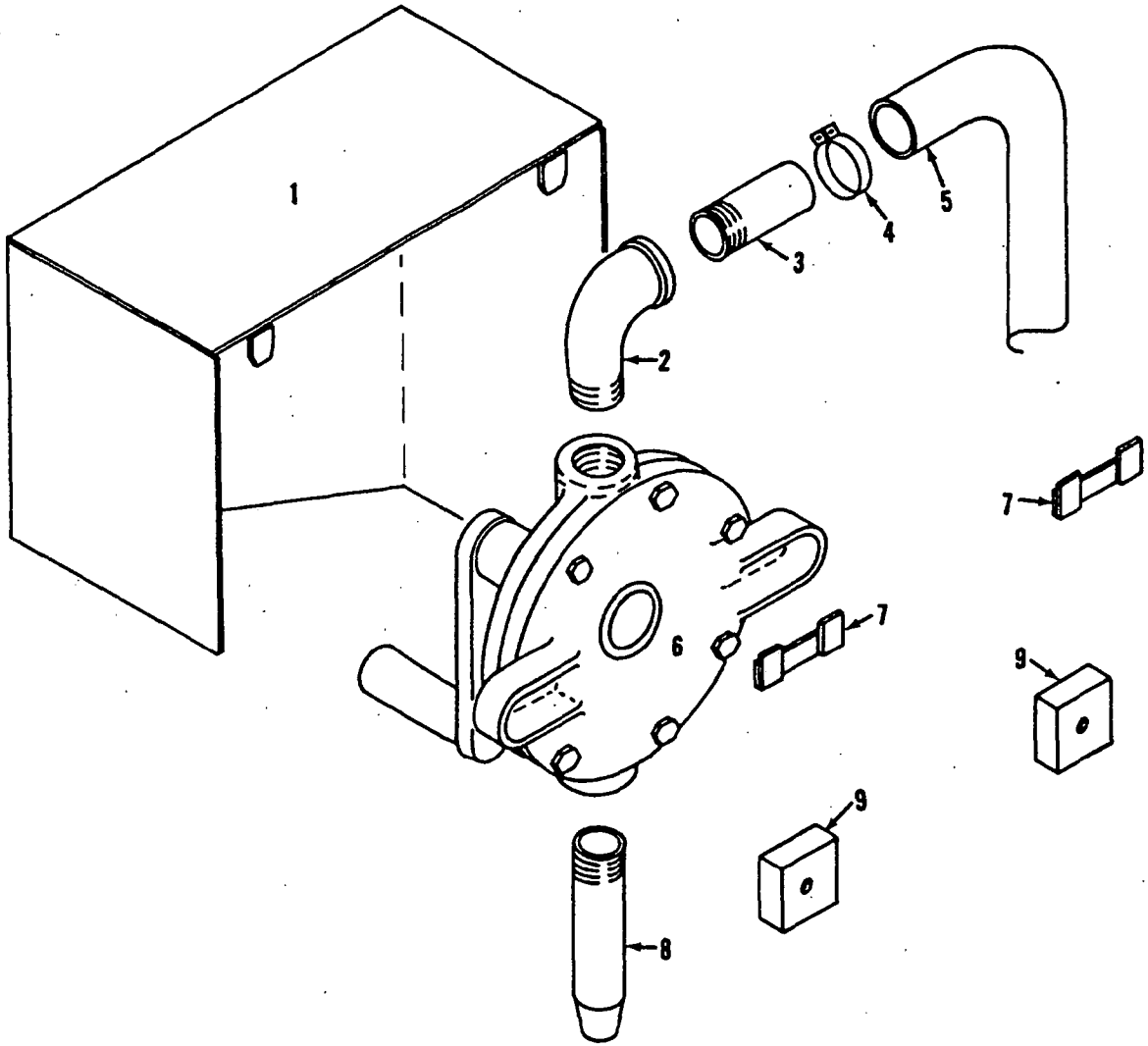
MATERIAL LIST ON BACK

CAB DOOR MECHANISM

MANITOWOC ENGINEERING CO.

A Division of The Manitowoc Company, Inc.

Manitowoc, Wisconsin



MASIEK

FUEL TRANSFER PUMP

93037A1

MATERIAL LIST ON BACK

75031 71

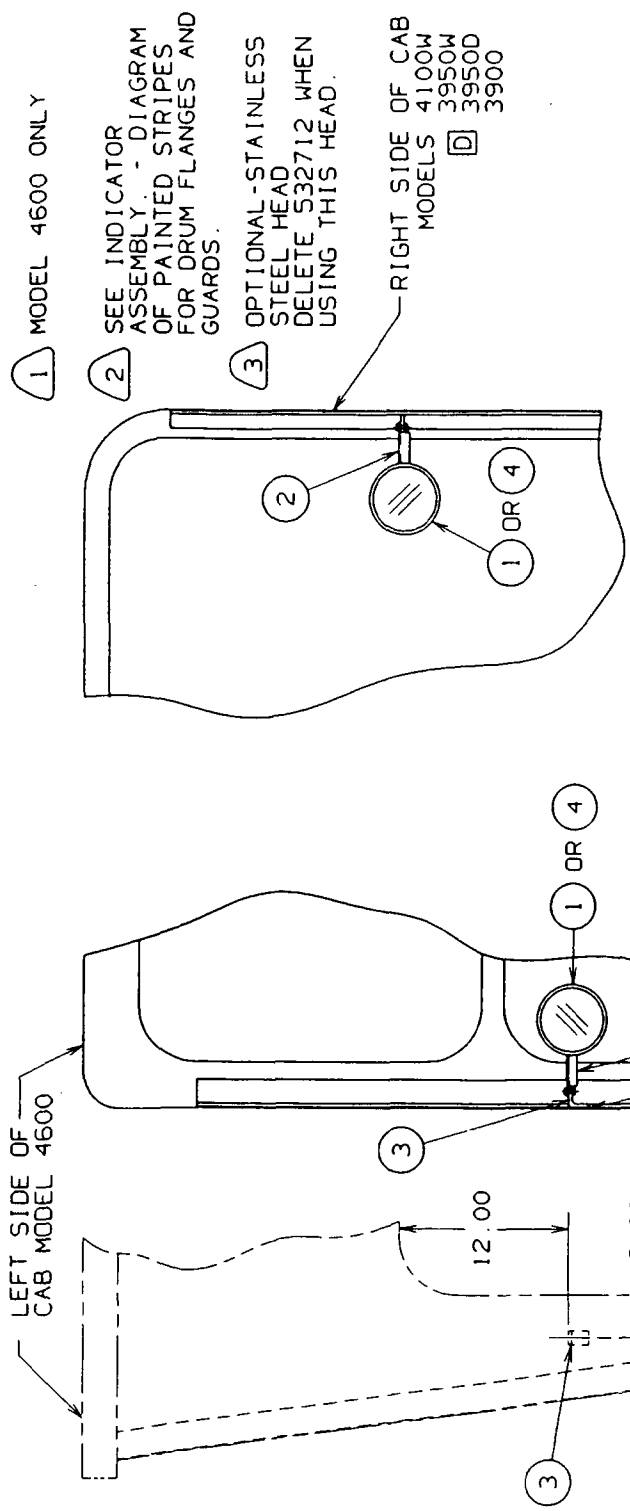
B **E**

BILL OF MATERIAL			
ITEM NO.	SEC. NO.	DESCRIPTION	CODE NO. OR Dwg. NO.
1	1	MIRROR HEAD	532712
2	1	MIRROR ARM	137846
3	1	MIRROR SUPPORT	140554
4	1	MIRROR HEAD	532723

B
E

ASSEMBLIES USED ON	
42206	
50764	
65386	
65401	
65763	
66256	
164639	

B
E



1 MODEL 4600 ONLY

2 SEE INDICATOR ASSEMBLY - DIAGRAM OF PAINTED STRIPES FOR DRUM FLANGES AND GUARDS.

3 OPTIONAL-STAINLESS STEEL HEAD DELETE 532712 WHEN USING THIS HEAD.

RIGHT SIDE OF CAB MODELS 4100W 3950W 3950D 3900

REVISIONS
4-7-72 NGM
A B ADDED
12-14-84 AJF
REDRAW CADAM
CK KGB
APP RJS
C D MODELS
3950W, 3900
3950D ADDED
9-28-94 DP
E ADDED
3 ADDED

D

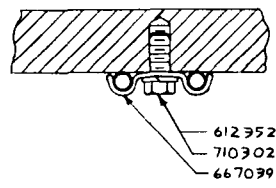
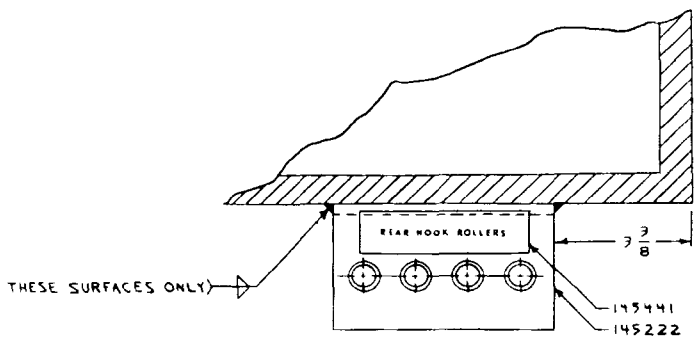
DATE	7-17-69
PATTERN NO	
DWG. NO.	137847

A
C

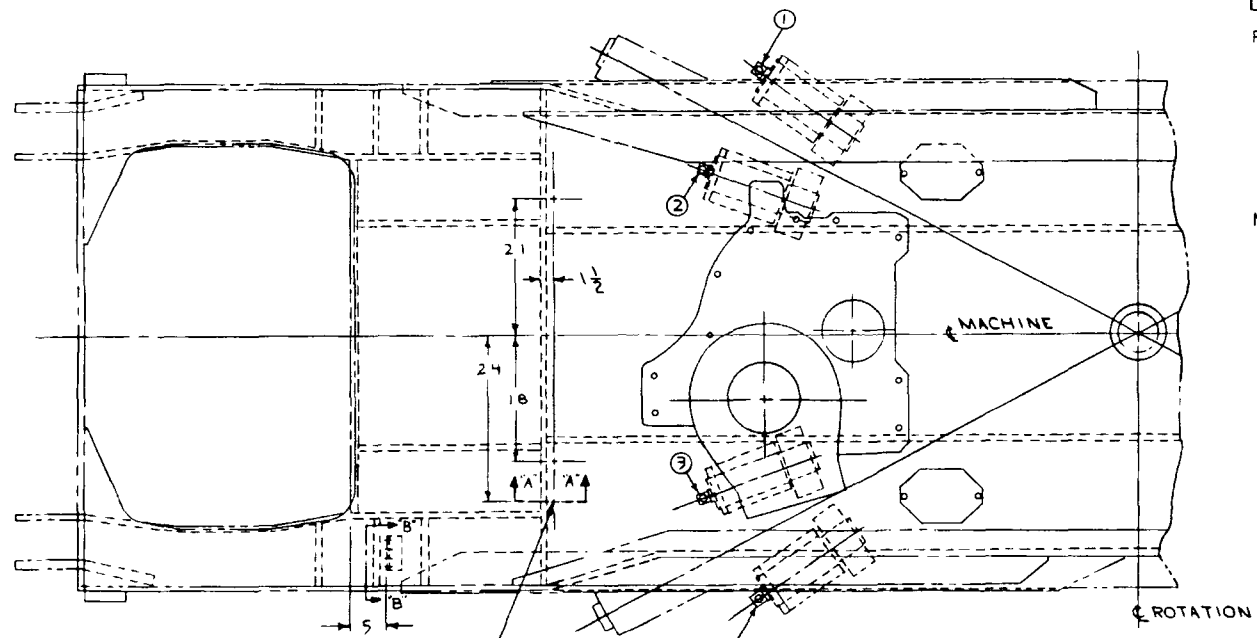
SCALE	1:5=1FT
DR.	LPW
CK.	EHJ
APP.	RJS
MANITOWOC ENGINEERING CO. MANITOWOC, WISCONSIN	
MODEL	4100W, 4600, A
3900, 3950W, 3950D	C
137847	

A **C**

MASTER



SECTION "B-B"



BILL OF MATERIAL						
ITEM NO.	QTY.	DESCRIPTION	LEADER PT.	MATERIAL	CODE NO. OR DWG. NO.	REMARKS
1 LEFT REAR HOOK ROLLER						
AS REQ.	1	1/4 COPPER TUBING			696210	
	1	1/4 x 2 LG. NIPPLE			543557	
	1	1/4 x 1/4 FEMALE ELBOW			429825	
	1	1/4 x 1/4 TUBE CONNECTOR			429364	
	1	1/4 GREASE FITTING			429010	
2 LEFT REAR HOOK ROLLER						
AS REQ.	1	1/4 COPPER TUBING			696210	
	1	1/4 x 2 LG. NIPPLE			543557	
	1	1/4 x 1/4 FEMALE ELBOW			429825	
	1	1/4 x 1/4 TUBE CONNECTOR			429364	
	1	1/4 GREASE FITTING			429010	
3 RIGHT REAR HOOK ROLLER						
AS REQ.	1	1/4 COPPER TUBING			696210	
	1	1/4 x 2 LG. NIPPLE			543557	
	1	1/4 x 1/4 FEMALE ELBOW			429825	
	1	1/4 x 1/4 TUBE CONNECTOR			429364	
	1	1/4 GREASE FITTING			429010	
4 RIGHT REAR HOOK ROLLER						
AS REQ.	1	1/4 COPPER TUBING			696210	
	1	1/4 x 2 LG. NIPPLE			543557	
	1	1/4 x 1/4 FEMALE ELBOW			429825	
	1	1/4 x 1/4 TUBE CONNECTOR			429364	
	1	1/4 GREASE FITTING			429010	

REQ'D	TITLE	DWG. NO.
1	BRACKET	145222
3	1/4 STRAP	667039
1	NAMEPLATE	145441
3	1/4-20UNC-2A x 1/2 LG. CAP SCR.	612352
3	1/4 LOCKWASHER	710302

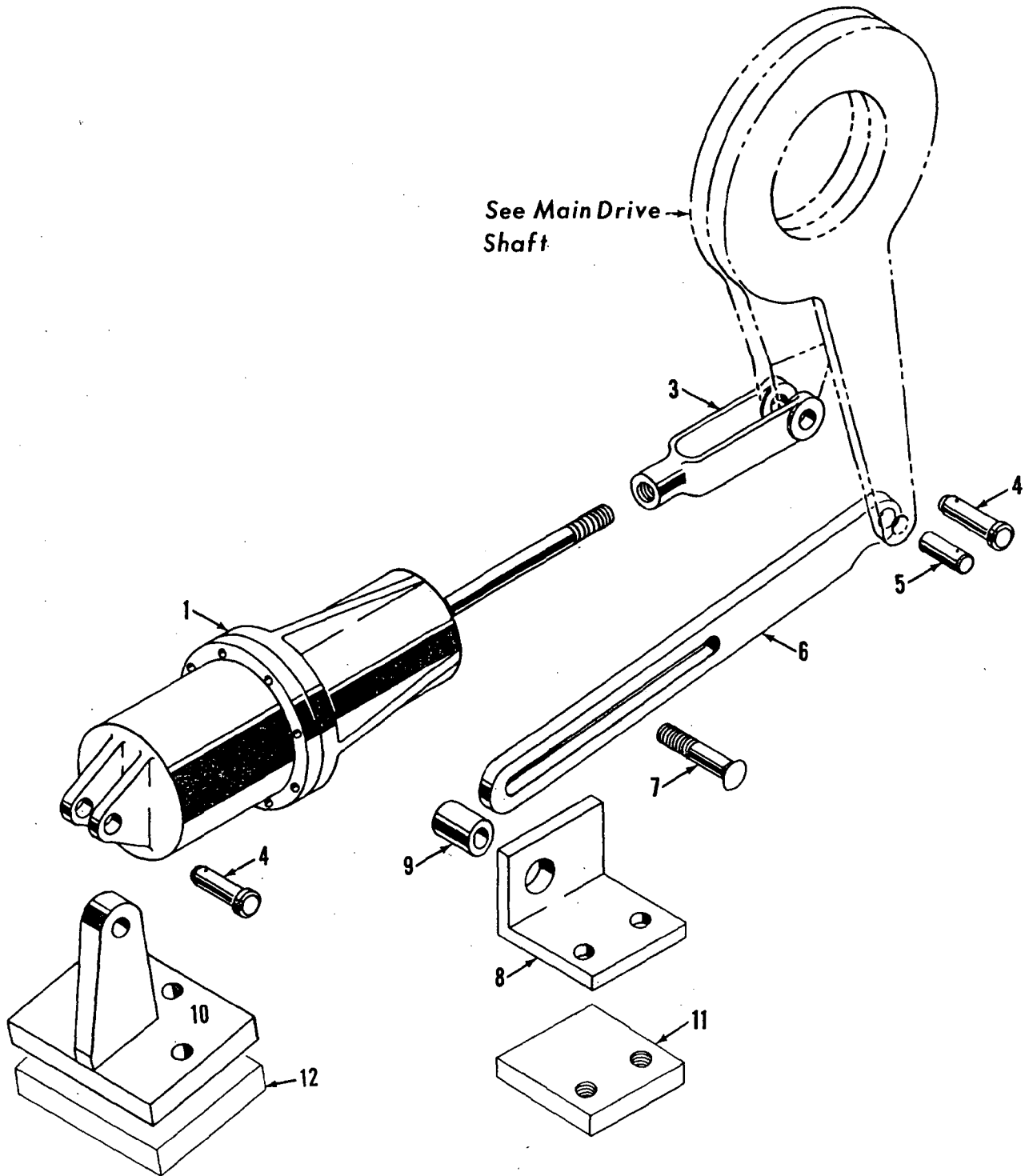
NOTE:1
THIS ASSEMBLY MUST BE USED ON MACHINES EQUIPPED WITH REMOTE GREASING ASSEMBLY 48794, AND 65371 BUILT PRIOR TO 4-26-78 REVISION DATE.

NOTICE
THIS DRAWING IS THE PROPERTY OF
MANITOWOC ENGINEERING CO.
ALL INFORMATION CONTAINED HEREIN IS CONFIDENTIAL AND IS LOANED SUBJECT TO RETURN UNDER STRICTLY CONFIDENTIAL CONDITIONS. ANY DISCLOSURE OR REPRODUCTION OF THIS DRAWING OR ANY PART THEREOF WITHOUT THE WRITTEN PERMISSION OF MANITOWOC ENGINEERING CO. IS STRICTLY PROHIBITED.

DESIGNER RJB	MANITOWOC ENGINEERING CO. MANITOWOC, WISCONSIN	LUB ASSY - REMOTE GREASE PIPING FOR REAR HOOK ROLLERS - (FIELD MODIFICATION)	PATTERN NO.
CHECKER FJZ	MODEL 4100W SERIES 2	SEE NOTE:1	DATE 4-26-78
APPROVED RJS			REVISED 183576

-A14-

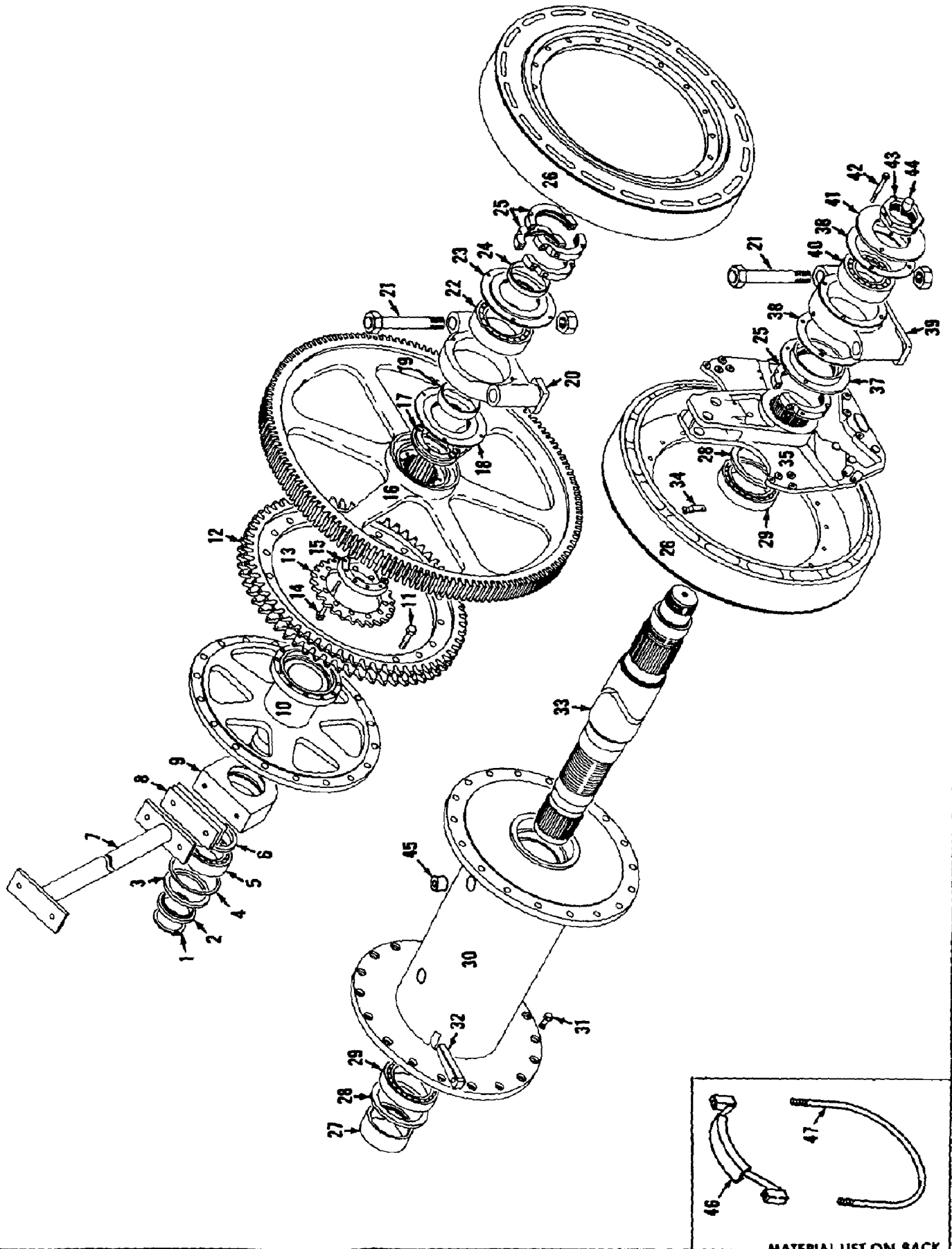
GROUP B - Upperworks Machinery



3234081

MATERIAL LIST ON BACK

LEFT SWING CLUTCH CONTROL



48333D1

MATERIAL LIST ON BACK

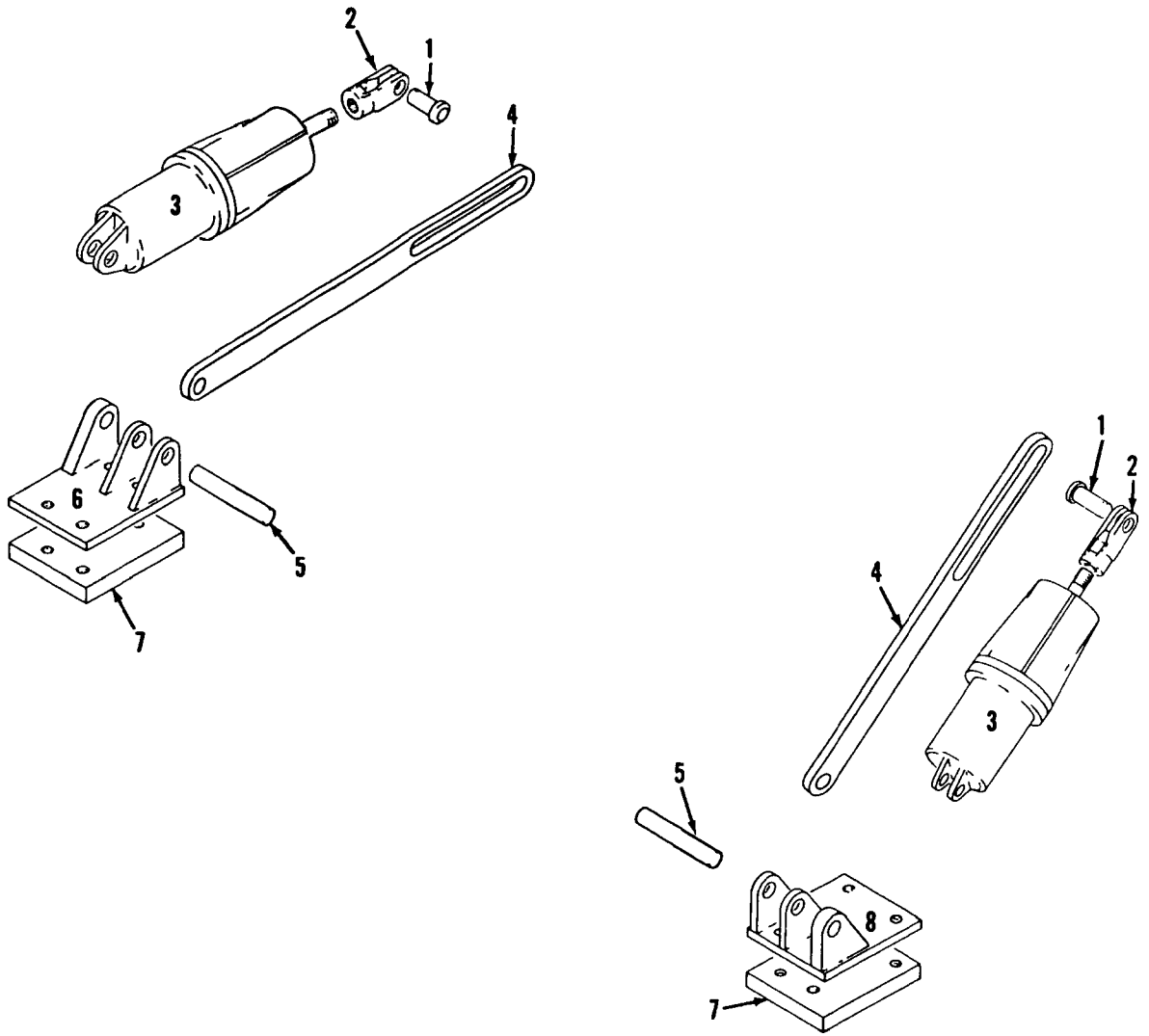
DRUM SHAFT

MANITOWOC ENGINEERING CO

A Division of The Manitowoc Company, Inc.

Manitowoc, Wisconsin

MASTER



484800 D1

484800

MATERIAL LIST ON BACK

MANITOWOC ENGINEERING CO

49428-1 Cont.	REV. E	MODEL 4100W
---------------	--------	-------------

FRONT DRUM BRAKE
(MANUAL)
(RIGHT SIDE SHOWN - LEFT SIDE SAME EXCEPT AS NOTED)

REF. NO.	PART NUMBER	QUANTITY REQUIRED	DESCRIPTION OF PART	VENDORS PART NO.
50	143889	1	PIN w/cotter pin (w/parking brake)	
	709702	1	WASHER, Flat (w/parking brake)	
51	358154	1	COLLAR, Set	
<p><u>NOTE 1:</u> Use washers #144434 and #144435 as required to center band on brake flange.</p>				

Run As Front

34
35
36
38
39
40
41
42

REV. E	49428 - 1
--------	-----------

PLEASE GIVE MACHINE S/N W/ORDER

65097-1Cont.	REV. D	MODEL 4100W
--------------	-----------	----------------

BOOM HOIST HYDRAULIC PIPING
(SUNDSTRAND SYSTEM)

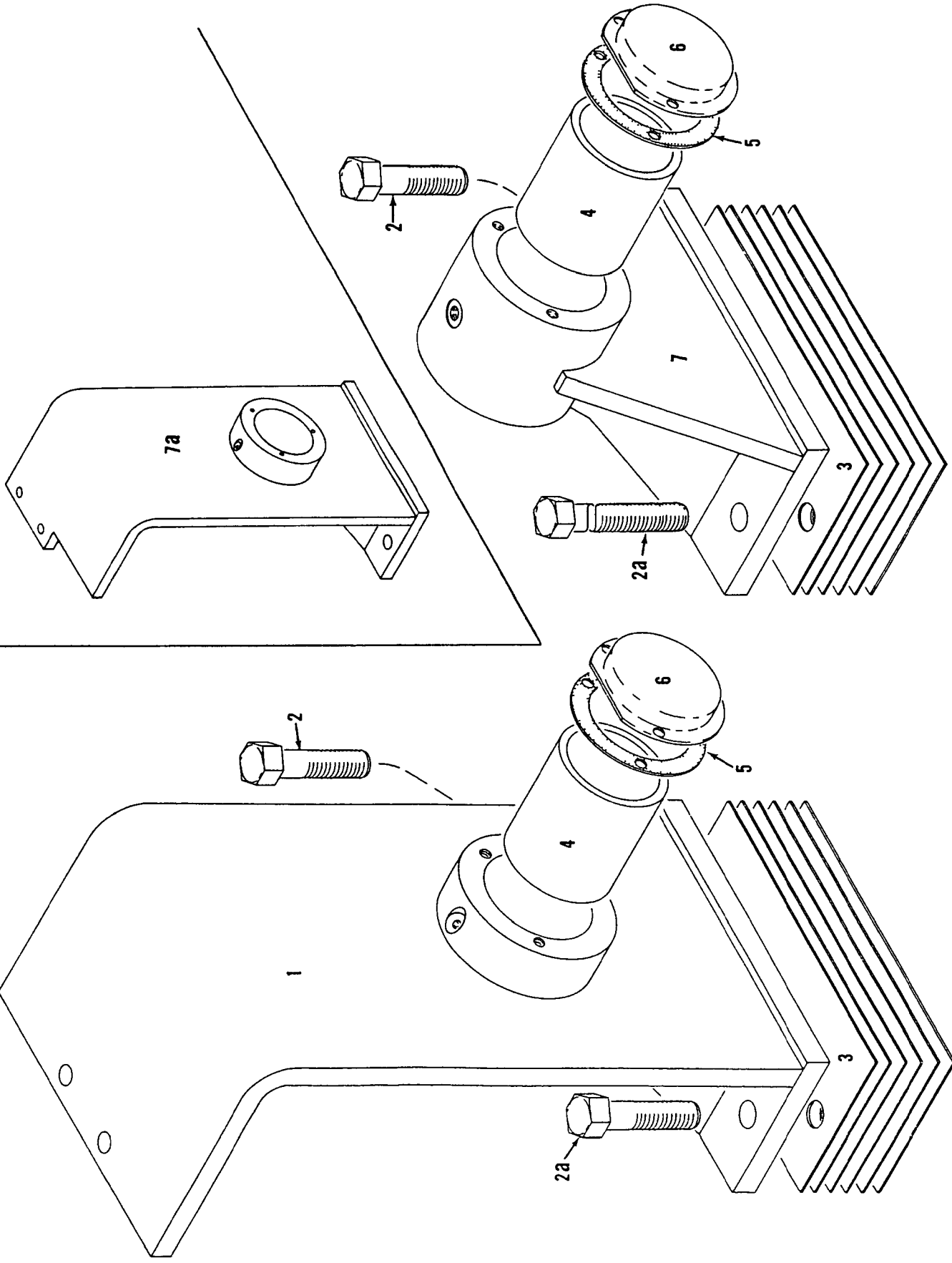
REF. NO.	PART NUMBER	QUANTITY REQUIRED	DESCRIPTION OF PART	VENDORS PART NO.
47	679301	2	TEE, Pipe (1/4")	
48	429618	1	ADAPTER, Fitting	
49	486636	1	HOSE, Flex (2'8" - .813 m)	
50	93059	1	SENDING UNIT, Charge Pressure	
51	543402	1	NIPPLE, Close (1/4")	
52	486647	1	HOSE, Flex (25'0" or 7.620 m)	
53	701037	1	SENDING UNIT, Temperature	
54	288756	1	BUSHING, Reducing (1" x 1/2")	
55	429731	1	ADAPTER	
56	679305	3	TEE, Pipe (1")	
57	406688	2	ELBOW, 45° (1")	
58	70103	1	HOSE, Flex (7'1" - 2.159 m)	
59	571705	1	PLUG, Pipe (1")	
60	288772	2	BUSHING, Reducing (2" x 1")	
61	429581	1	ADAPTER	
62	429232	1	ELBOW, 90° (5/8")	
20	596812	1	RING, "0"	
63	486194	1	HOSE, Flex (9'6" - 2.895 m)	
64	429555	1	ADAPTER	
65	70104	1	HOSE, Flex (6'6" - 1.981 m)	
66	92974	1	DIFFUSER W/hex nut	
67	536264	1	MOTOR, Hyd.	
			NOTE 1: Prior to design change of June 2, 1975, Ref. No. 18 was #181002.	
			0-327	
			Ref. #94149, 93059, 182486 (181002)	
			PLEASE GIVE MACHINE S/N W/ORDER	
				REV. D
				65097 - 1

MASTER

Run as a Cont

65097 D1 cont'd.

MASTER



M4100W

M3900W

OUTBOARD BEARING

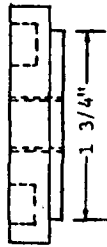
91083C1

MATERIAL LIST ON BACK

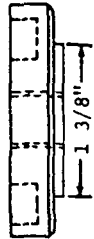
MANITOWOC ENGINEERING CO.

A Division of The Manitowoc Company, Inc.

Manitowoc, Wisconsin

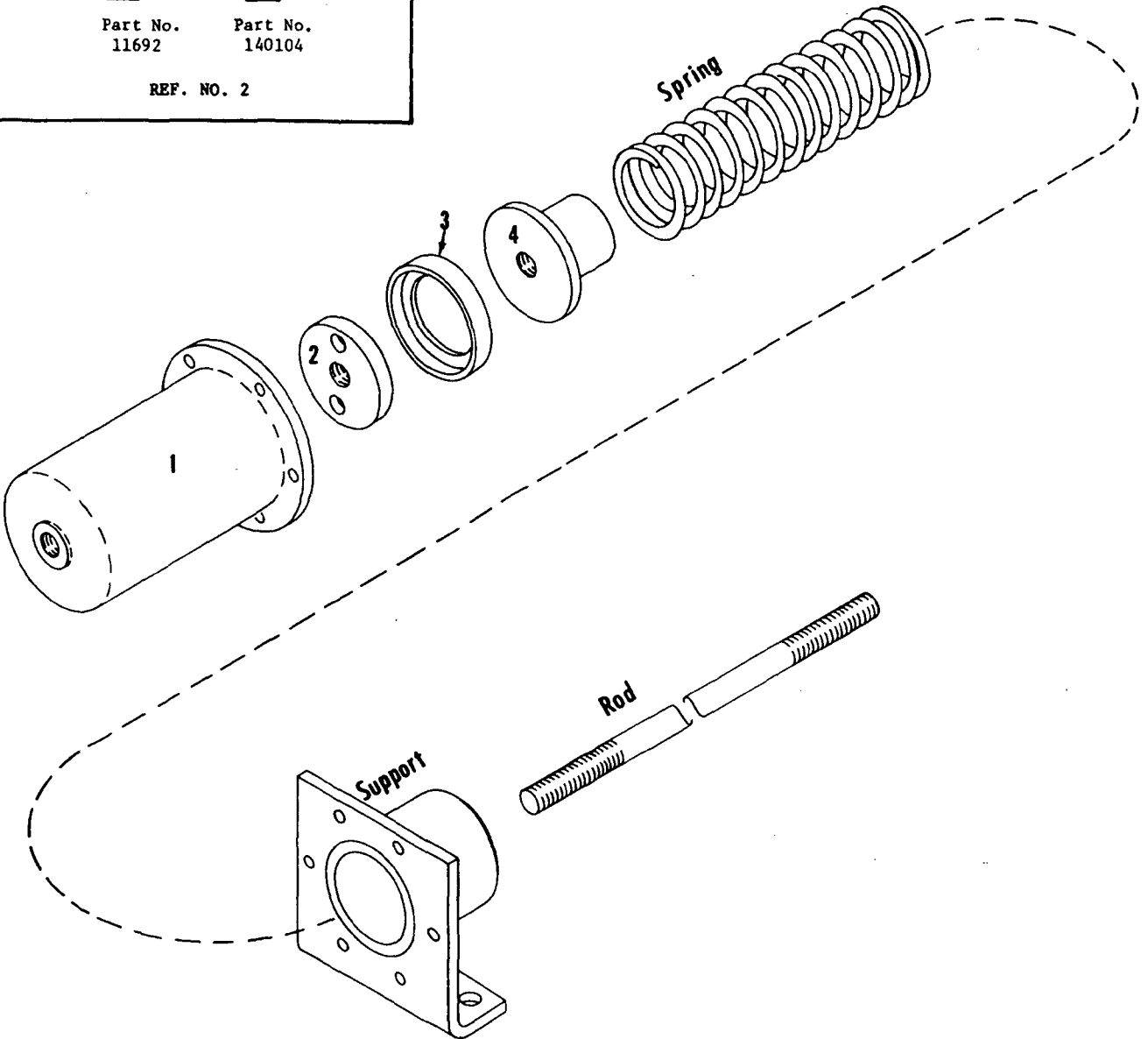


Part No.
11692



Part No.
140104

REF. NO. 2



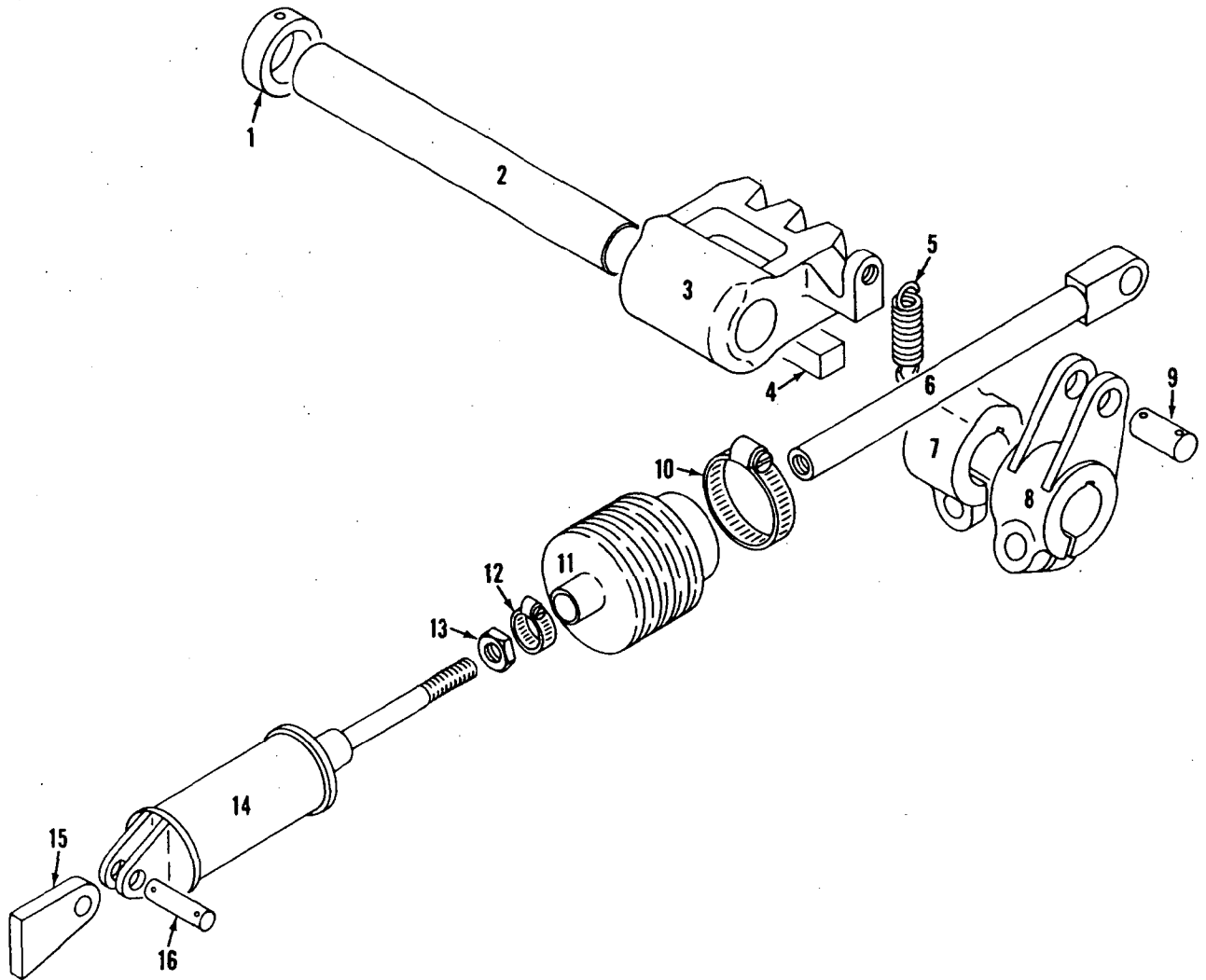
MASTER

9356081

MATERIAL LIST ON BACK

AIR CYLINDER

MASTER



180760C1

MATERIAL LIST ON BACK

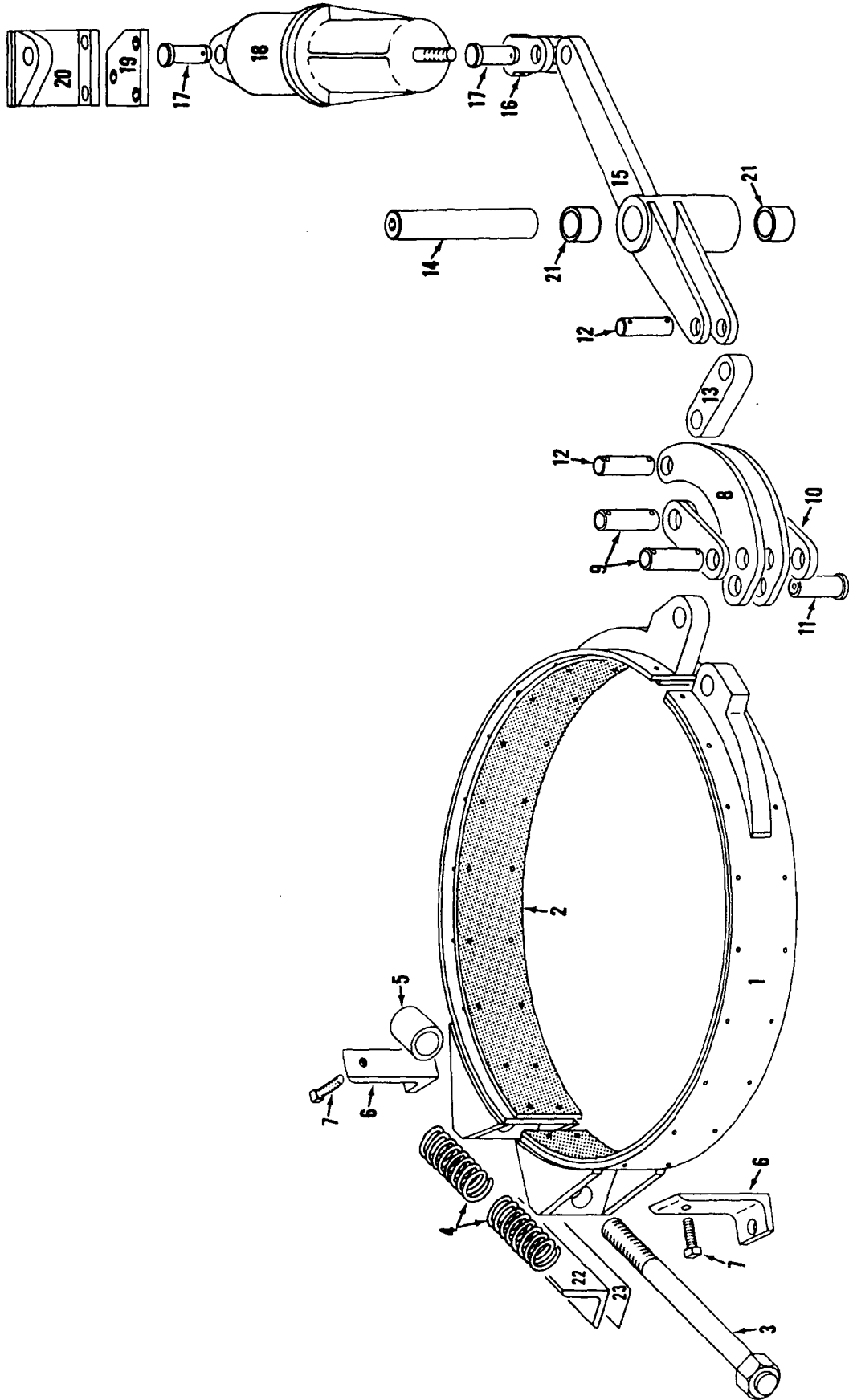
SWING LOCK CONTROL

MANITOWOC ENGINEERING CO.

A Division of The Manitowoc Company, Inc.

Manitowoc, Wisconsin

MASTER

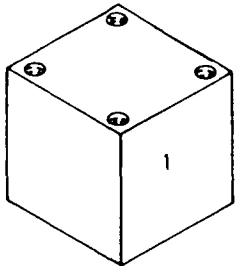
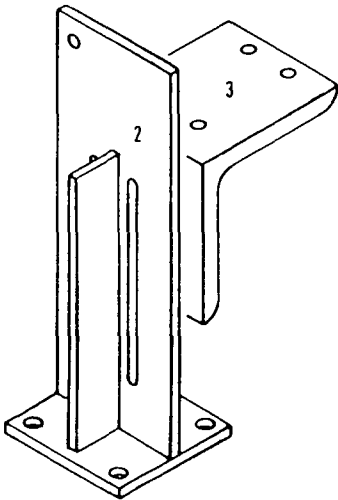
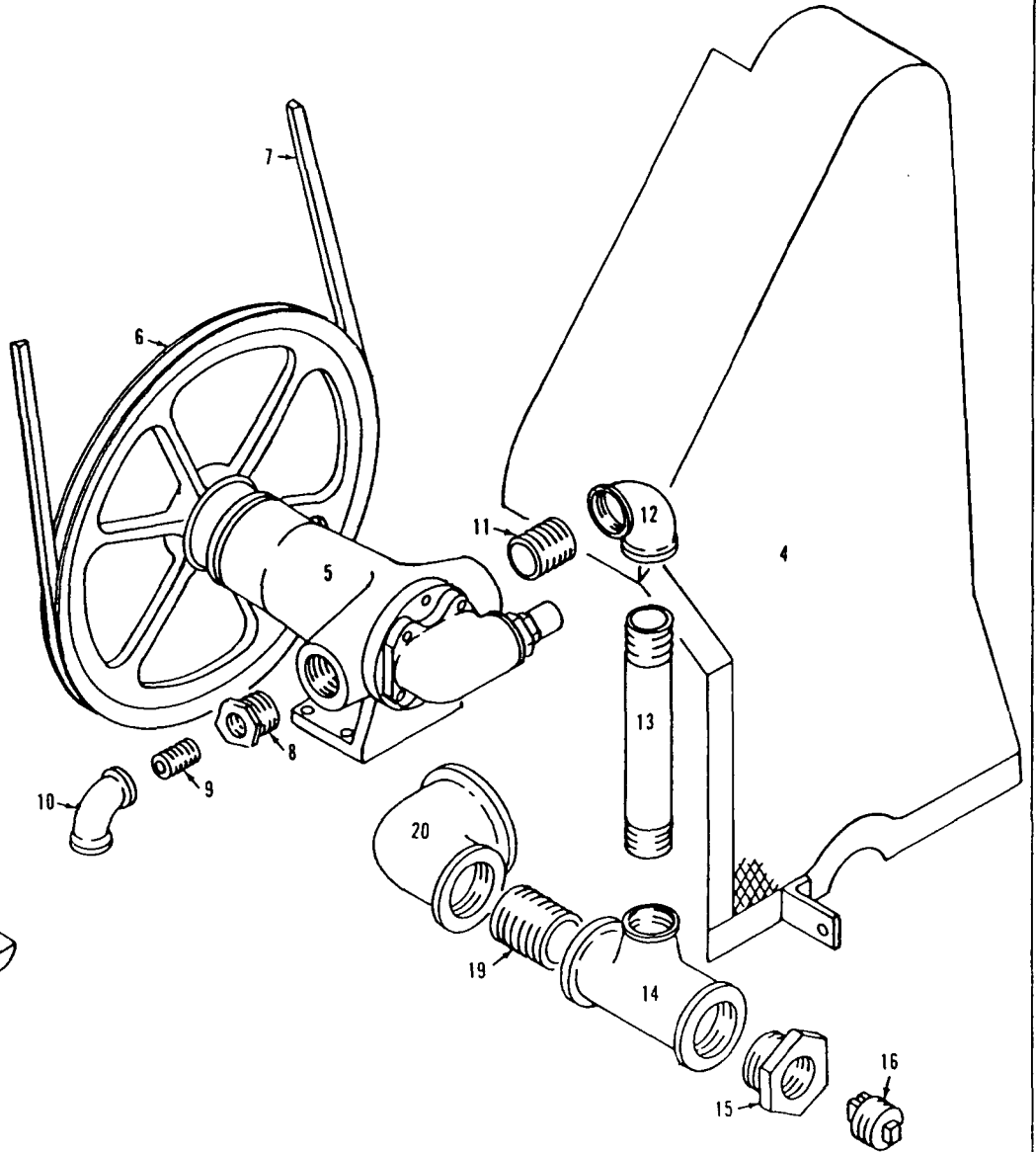
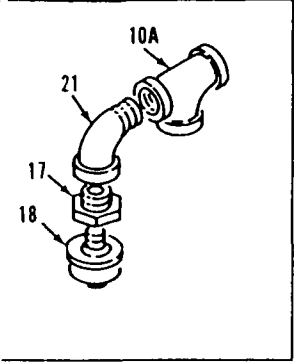
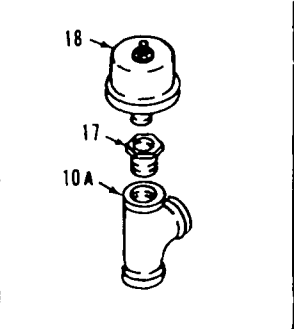


181484C1

MATERIAL LIST ON BACK

SWING BRAKE

Stick



183132C1

MATERIAL LIST ON BACK

OIL PUMP

190463-1 Cont	REV. J	MODEL 4100W
---------------	--------	-------------

LUBRICATION OIL PIPING
(SEE NOTES 1, 4 AND 6)

REF. NO.	PART NUMBER	QUANTITY REQUIRED	DESCRIPTION OF PART	VENDORS PART NO.
46	486065	2	HOSE (2-1/4" I.D. - specify 6" long) (See Note 6)	
47	698494	1	TUBING (2-1/4" O.D. x 3'7-1/2" long) (See Note 6)	
48	71911	4	CONNECTION	
49	345338	4	CLAMP, Hose (No. 28, 1-5/16" - 2-1/4")	
50	486067	2	HOSE, Curved 90° (1-1/4" I.D.)	
51	377209	1	COUPLING (1-1/2")	
52	543423	1	NIPPLE (1-1/2" x 4-1/2")	
53	406959	2	ELBOW (1-1/2")	
54	543436	1	NIPPLE (1-1/2" x 1'1-1/8")	
55	543541	1	NIPPLE (1-1/2" x 3")	
56	543444	1	NIPPLE (1/2" x 1-1/2")	
57	543498	1	NIPPLE (1/2" x 7") (See Note 8)	
58	543405	1	NIPPLE, Close (3/4")	
59	70188	1	HOSE, Flex (1/2" I.D. 9'4" or 2.8448m long) (See Note 6)	
60	667090	2	STRAP, Pipe (for 2" pipe) (See Note 6)	
61	543223	1	NIPPLE (2" x 9") (See Note 6)	
62	543908	1	NIPPLE (2" x 3-1/2") (See Notes 2 and 6)	
63	377216	1	COUPLING (2") (See Note 6)	
64	489442	1	INDICATOR, Flow	
65	288750	1	BUSHING (1/2" x 1/8") (See Note 8)	
66	460113	1	GAUGE, Pressure (See Note 8)	
	147694	1	SUPPORT, Gauge w/hex nuts, capscrews & lockwashers (not shown)	
			NOTE 1: For machines w/hydro-mechanical driven roof mounted third drum, see separate sheet for location of filter. (This first on S/N 41560, 41561, 41562 and 41563.)	
			NOTE 2: Standpipe in boom hoist housing lengthened 1/2" per design change of Jan. 4, 1979. Prior to this change Ref. 62 was 543909 (2" x 4").	
			NOTE 3: Installation prior to change of Oct. 11, 1979. Delete 2 of Ref. 45.	
37A	429652	2	UNION, Swivel Adapter (2")	
38A	486293	1	HOSE, Flex (2" x 4'5" - 1.346m)	
			NOTE 4: For machine w/boom hoist mounted in counterweight, delete Ref. Nos. 42, 43, 44, 47, 61, and 63, rear Ref. No. 46 w/2 of Ref. 45. Install Ref. 62 in remaining Ref. 46 w/Ref. 45 and plug w/pipe cap 304230 (2"). Disconnect Ref. 9 from Ref. 3 at boom hoist and plug Ref. 9 w/pipe plug 571703 (1/2").	
			NOTE 5: Filter bracket on machines after 6/11/81 revision delete Ref. No. 7 and add the following:	
67	147694	1	BRACKET, Filter w/capscrews, hex nuts and lockwashers	
68	139228	1	PLATE, Instruction w/drive screws	
			0-147	

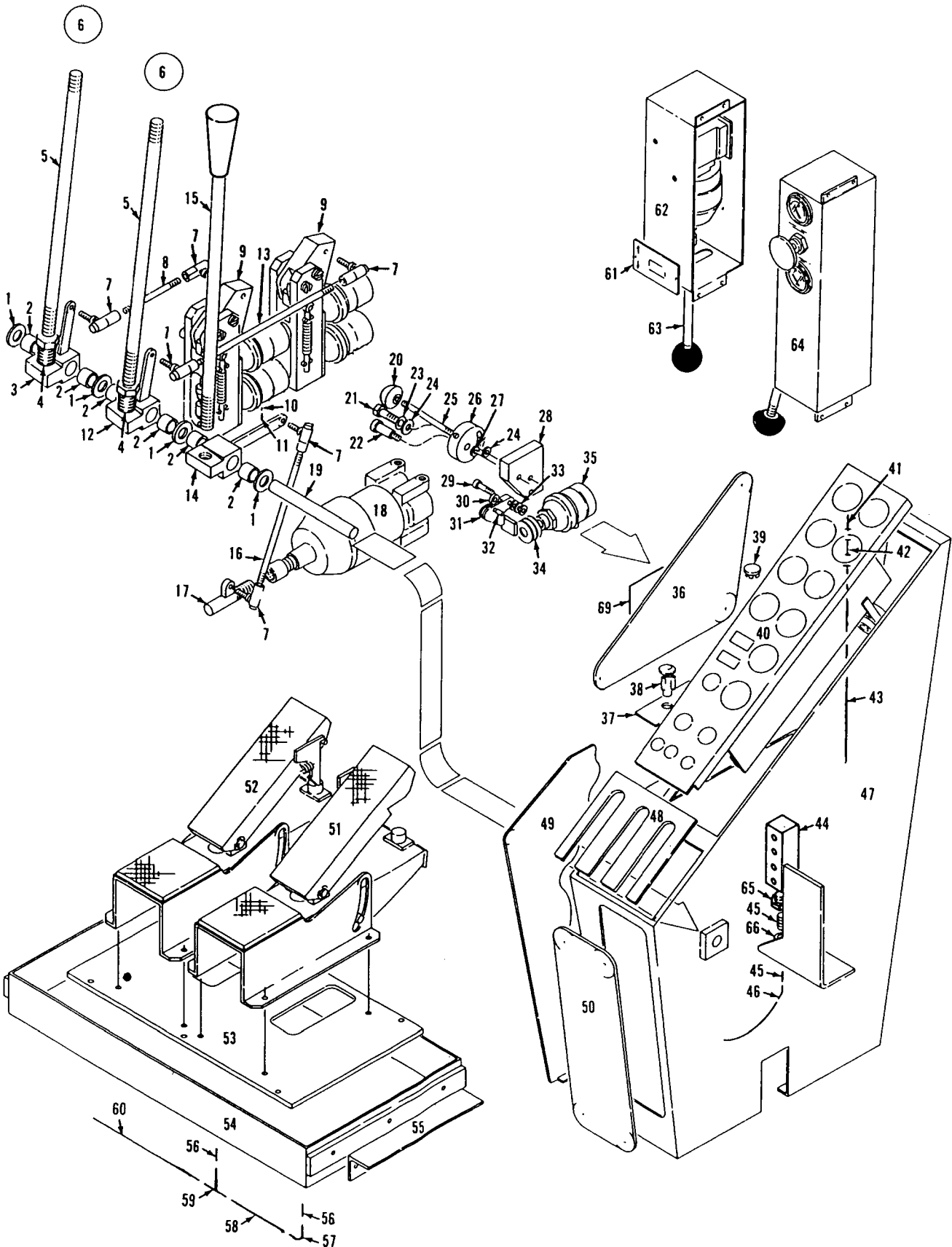
REV. J	190463-1 Cont.
--------	----------------

PLEASE GIVE MACHINE S/N W/ORDER

CPT

Run as a Front

130700 JI 0011. 1



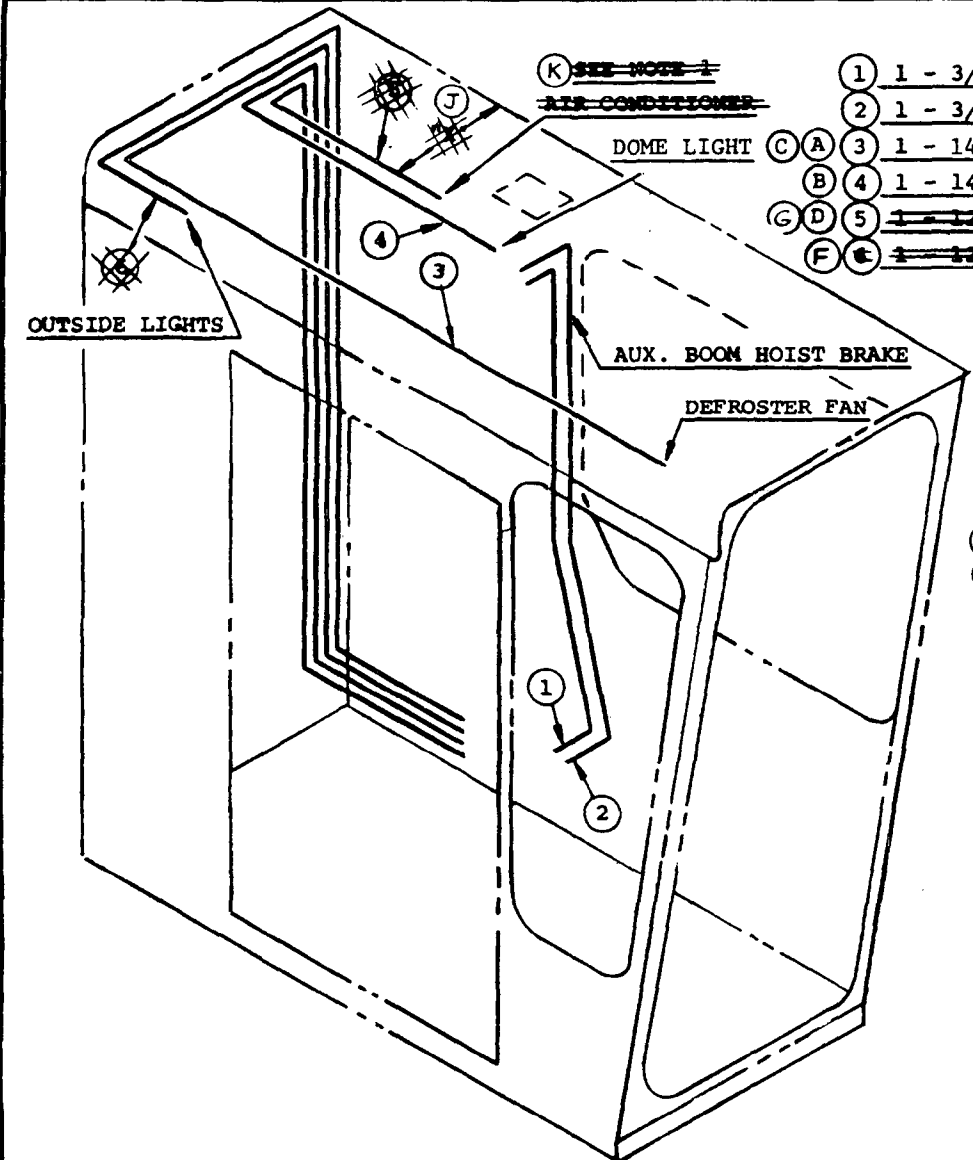
65515C1

MATERIAL LIST ON BACK

Right Control Console

(F)

DWG. NO. 141626	ELECT. & AIR LINE LOCATION	SCALE NONE	MANITOWOC ENGINEERING CO. MANITOWOC, WISCONSIN	DATE 6-20-73
CODE NO.	SUB-ASSEM (IN PILOT	DR. DS		REVISIONS
PATTERN NO.	HOUSE WALLS)	CK. CWH	MATERIAL <i>CWH</i>	6-22-73 DS CORRECTED PRIOR TO MFG.
MODEL 4100W, 4600-S4, 6000W, 3900, 36 FT. PLATFORM RINGER		APP.		6-17-74 JWK (5) & (6) ADDED.



	REQUIRED	CODE NO.
(1)	1 - 3/8" TUBING 8 FT. LG. - - - - -	486056
(2)	1 - 3/8" TUBING 8 FT. LG. - - - - -	486056
(3)	1 - 14-1 CONDUCTOR CABLE 25 FT. LG. - - -	371829
(4)	1 - 14-1 CONDUCTOR CABLE 25 FT. LG. - - -	371829
(5)	1 - 14-2 COND WIRE TYPE "E" 18 FT. LG. - - -	371811
(6)	1 - 14-3 COND WIRE TYPE "C" 18 FT. LG. - - -	371812

WIRE IDENTIFICATION NO.'s

- 31 DOME LIGHT
- 37 CIRCULATING FAN

- (E) ~~NOTE 1~~
- (H) ~~"X" = 2 1/2" APPROX FOR 4100W~~
- ~~"X" = 29" APPROX FOR 4600-S4, 6000W~~
- ~~& 36 FT. PLATFORM RINGER~~

DATE 6-20-73	
REVISIONS	
6-22-73 DS	
CORRECTED PRIOR TO MFG.	
6-17-74	JWK
(5) & (6) ADDED.	
12-12-75	J.C.S.
(A) (B) WAS 22'	
3-4-76	CWH
C WAS 16-2 COND.	
9-22-76	SCHULTZ
D WAS 12-3 Tirex 371812.	
3-16-77	SCHULTZ
E Added.	
2-20-80	JCS
(F) DELETED	
OB-20-93 CPC	
(G)(H)(J)(K) DELETED	

ASSEMBLIES USED ON	
65183	
65386	
65401	
65430	
DWG. NO. 141626	

-C31-

NOTE 1 FOR MACH'S. W/OUT CLAM CLOSING ADD: 1 350319 PLUG BUTTON

NOTE 2 IDENTIFY ALL WIRES THE SAME AS SHOWN ON TERMINAL STRIP

NOTE 3 FOR MACH'S. W/OUT HEATER ADD: 1 137951 COVER

NOTE 4 ERADICATE THE WORD "HOIST" LOCATION MARKED *

NOTE 5 FOR MACH'S. W/OUT GLO PLUG OR ETHER STARTING AID ADD: 1 350317 PLUG BUTTON

NOTE 6 FOR WIRE IDENTIFICATION NUMBERS SEE CHART NO.5605 (MASTER NUMBERING INDEX)

NOTE 7 FOR MACH'S. W/OUT ROOF MOUNTED DRUM ADD: 1 350319 PLUG BUTTON

BILL OF MATERIAL table with columns: NO. REQ'D., DW'G. NO., DESCRIPTION, MATERIAL, CODE NO., ASSEMBLIES USED ON. Includes items like NAMEPLATE, BEEPER, PLUG BUTTON, TEMPERATURE GAUGE, PRESS. GAUGE, LAMPHOLDER, BULB, RESISTOR, TERMINAL STRIP, ROCKER SWITCH, LAMP (BEEDE GAUGE).

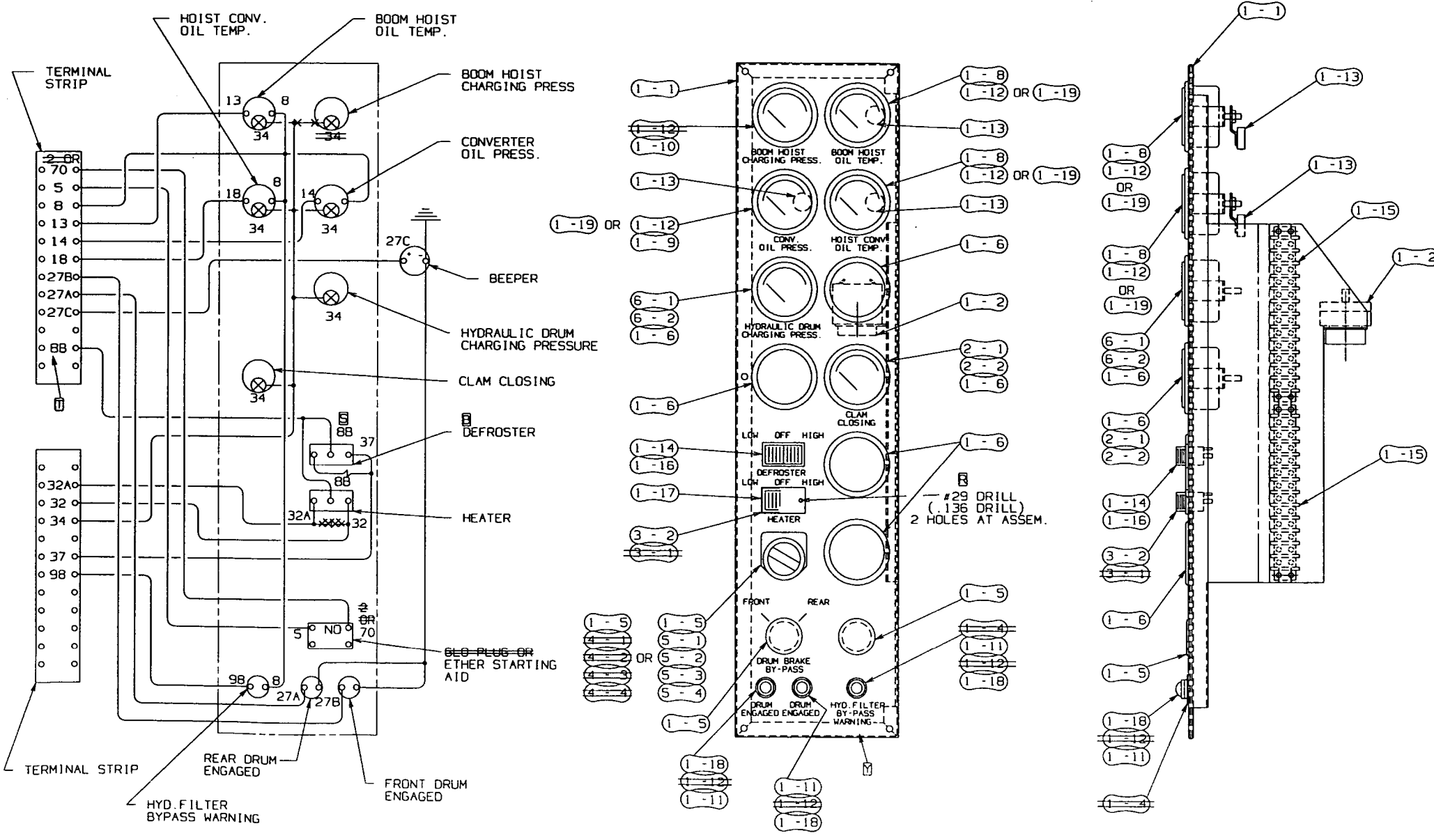
FOR MACHINES W/CLAM CLOSING 2-1 460310 AIR PRESS. GAUGE 2-2 502614 BULB

FOR MACHINES W/HEATER 3-1 594854 RESISTOR 3-2 673244 ROCKER SWITCH

FOR MACHINE W/GLO PLUG (CUMMINS W/ELEV. CAB ONLY) 4-1 500839 KNOB 4-2 539734 NAMEPLATE 4-3 673380 CONTACT BLOCK 4-4 673382 SWITCH OPER.

FOR MACHINE W/ETHER STARTING AID (CUMMINS W/ELEV. CAB ONLY) 5-1 500839 KNOB 5-2 539734 NAMEPLATE 5-3 673380 CONTACT BLOCK 5-4 673382 SWITCH OPER.

FOR MACH'S. W/ROOF MOUNTED DRUM 6-1 460309 PRESS. GAUGE 6-2 502614 BULB (STEWART WARNER GAUGE)



WIRING DIAGRAM-REAR VIEW

MANUFACTURER INFORMATION table with columns: SCALE, PART NO., MANUFACTURER, MODEL, INSTRUMENT PANEL, ASSEM. (R.H.), VOLT, (UNIVERSAL OPER. CAB), DATE, PATTERN NO., 190214

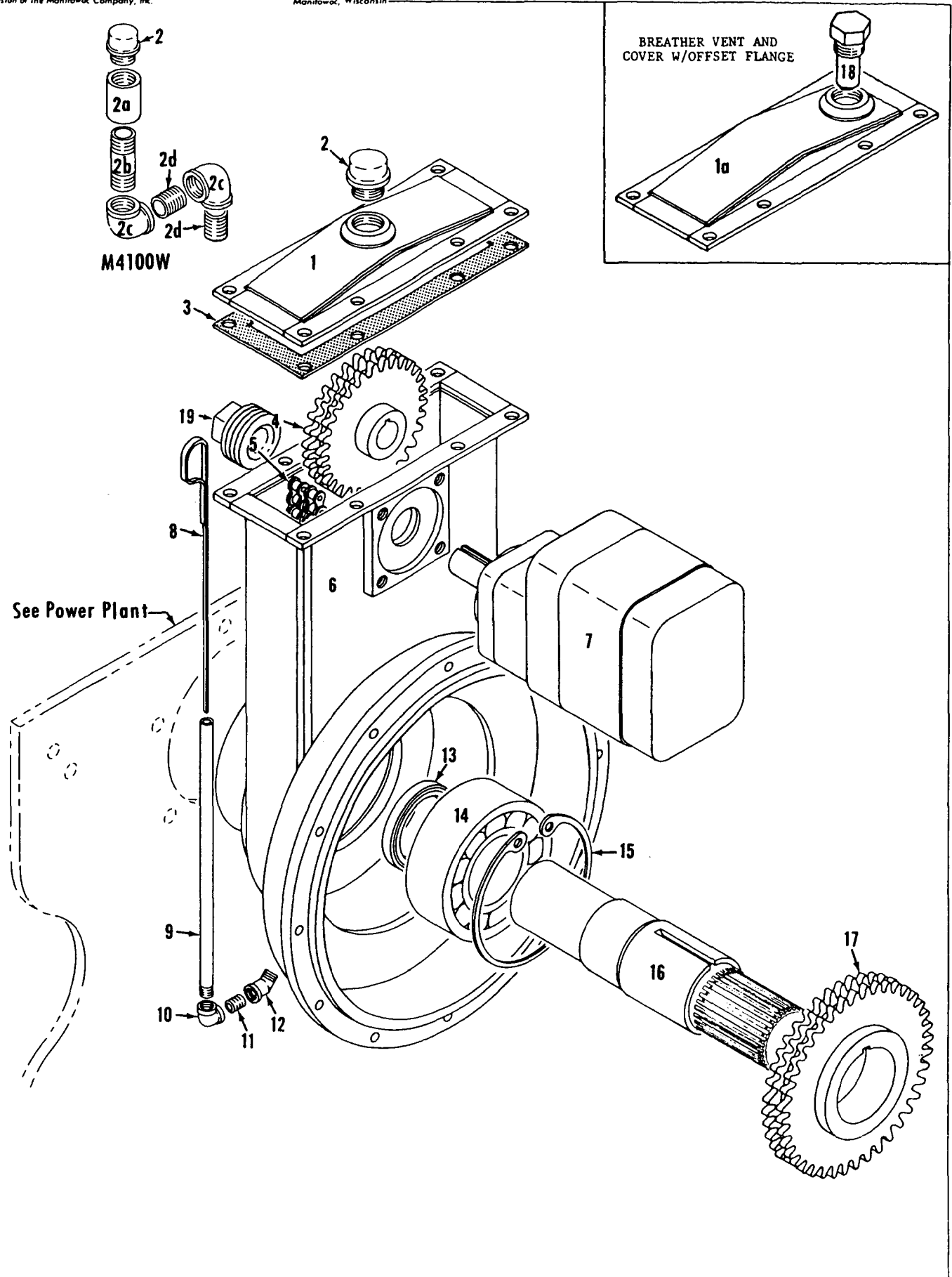
CLICK HERE TO **DOWNLOAD** THE COMPLETE MANUAL

- Thank you very much for reading the preview of the manual.
- You can download the complete manual from: www.heydownloads.com by clicking the link below

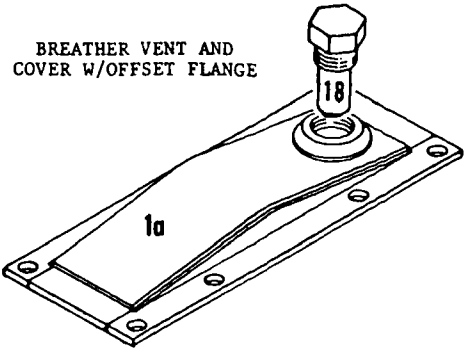


- Please note: If there is no response to CLICKING the link, please download this PDF first and then click on it.

CLICK HERE TO **DOWNLOAD** THE COMPLETE MANUAL



M4100W



See Power Plant

43333E1

MATERIAL LIST ON BACK

FULL RANGE VICON POWER LOAD LOWERING

48738-3 Cont.	REV. E	MODEL 3900W - 4100W
---------------	-----------	------------------------

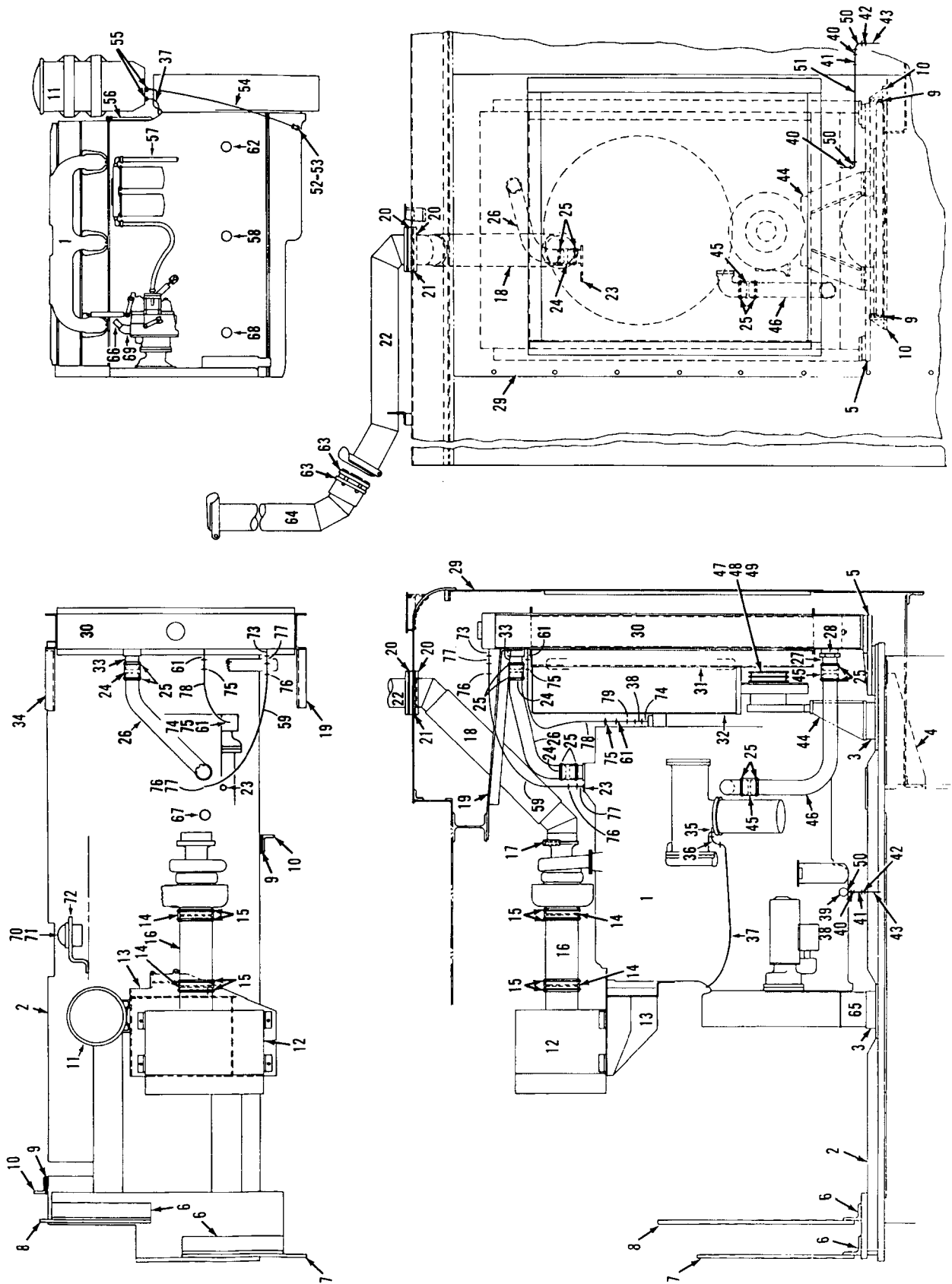
CONVERTER AND HEAT EXCHANGER COOLING PIPING

MASTER

REF. NO.	PART NUMBER	QUANTITY REQUIRED	DESCRIPTION OF PART	VENDORS PART NO.
43	288519	2	BUSHING (1½" x ½" - Steel)	
44	673068	2	SWITCH, Converter Oil Temperature	
45	485994	1	HOSE, Flex (1" I.D. 2'3" - .686 m)	
46	429555	2	FITTING, 90° (1")	
47	70104	1	HOSE, Flex (1" I.D. 6'6" - 1.981 m)	
48	429543	1	FITTING, 45° (1½")	
50	485801	1	HOSE, Flex (1" I.D. 1'10" - .559 m)	

REV. E 48738-3

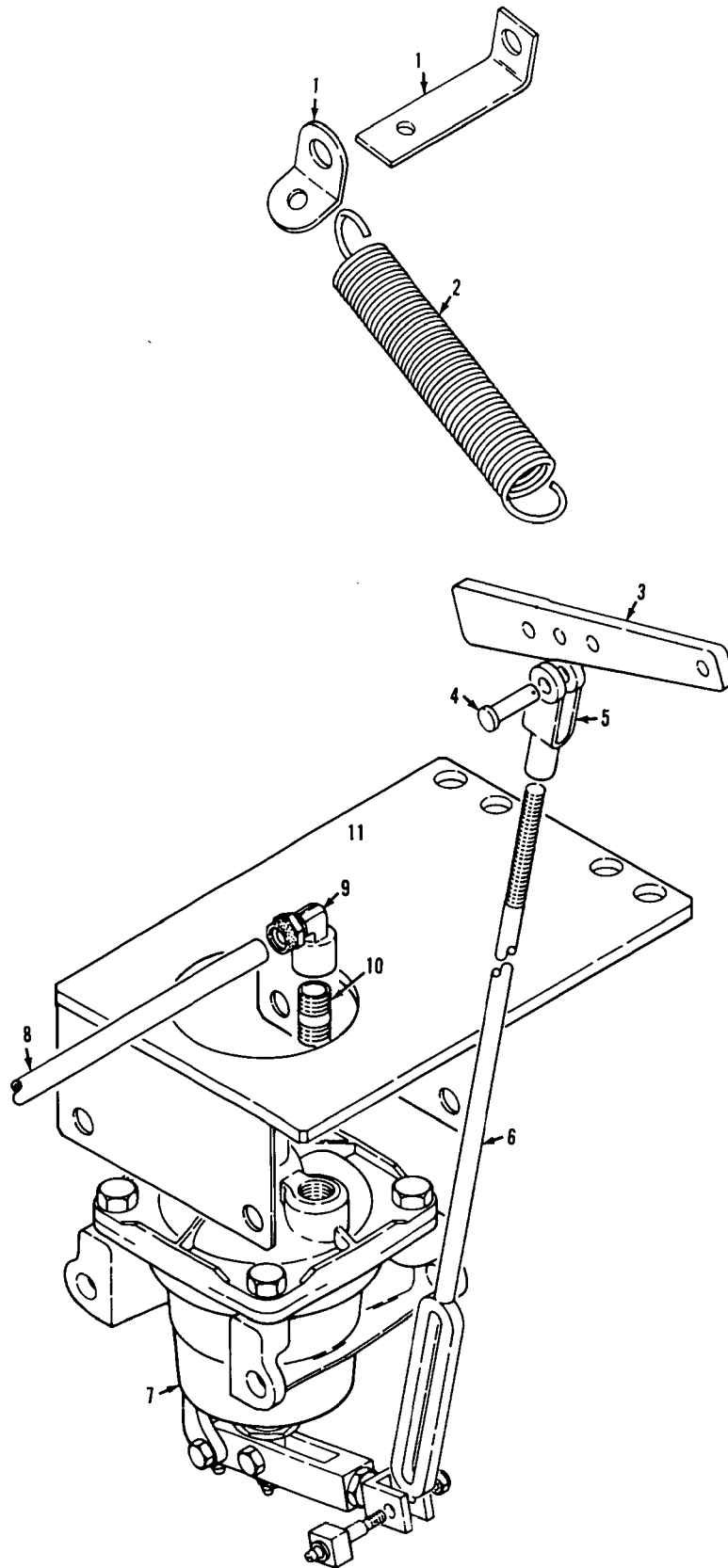
PLEASE GIVE MACHINE S/N W/ORDER



49946F1

MATERIAL LIST ON BACK

POWER PLANT



182793A1

MATERIAL LIST ON BACK

ENGINE THROTTLE CONTROL

PARTS MANUAL ALPHABETICAL INDEX
Group E - Lower Structure & Control

DESCRIPTION	PUBLICATION	REV	START DATE	END DATE	GROUP
Carbody	182854	-	05/21/76	05/23/77	E0101
Carbody	48397	K1	08/02/68	11/24/81	E0101
Carbody Lubrication Piping	190773	-	04/17/78	10/26/84	E0102
Carbody Lubrication Piping	32233	B1	08/07/59	08/03/83	E0102
Crawler Lubrication Piping	180239	C2	03/25/68	04/08/81	E0202
Crawler Lubrication Piping	180239	E1	03/25/68	12/14/84	E0202
Crawler Lubrication Piping	183560	B1	04/20/78	08/07/78	E0202
Crawlers	48384	Q1	08/28/69	08/01/91	E0201
Gantry Mount	65642	D1	04/04/78	03/24/88	E0104
Gantry Mount	65642	D1	04/04/78	03/24/88	E0104
Horizontal Travel Shaft	32907	B1	09/04/63	02/14/84	E0401
King Pin & Vertical Travel Shaft	182709	C1	01/27/76	04/08/80	E0301
Steering Control	190193	D1	08/27/75	01/24/84	E0501
Travel Lock Control	190264	A1	01/28/76	05/20/80	E0601
Travel Lock Control	93560	K1	12/22/70	08/07/85	E0601

48384-1 Cont.	REV. Q	MODEL 4100W
---------------	-----------	----------------

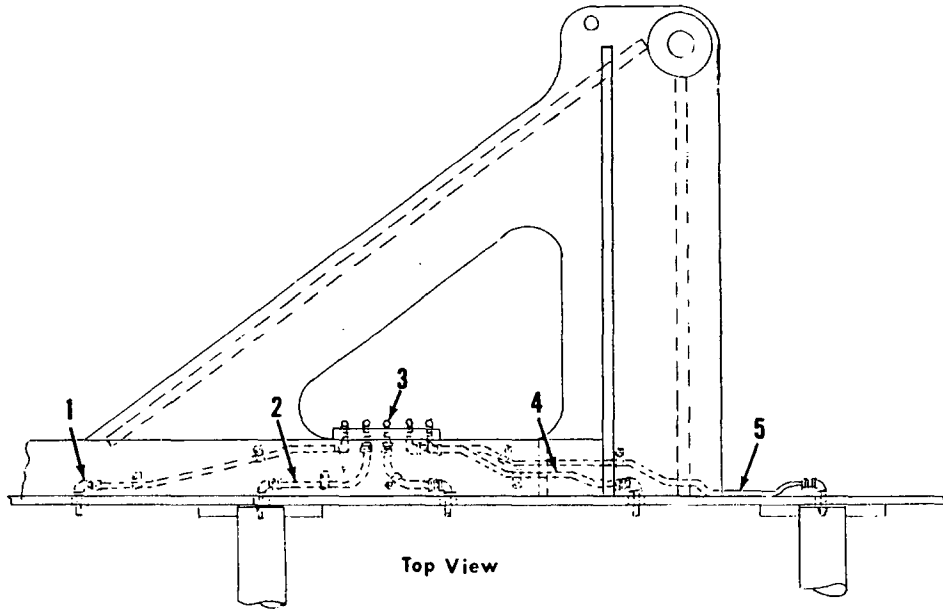
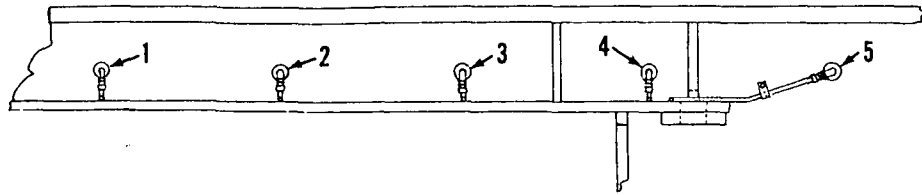
CRAWLERS (26'6")
(QUANTITIES FOR BOTH CRAWLERS)

REF. NO.	PART NUMBER	QUANTITY REQUIRED	DESCRIPTION OF PART	VENDORS PART NO.		
44	74867	4	PLATE, Cover			
45	74864	4	BUMPER			
46	74862	4	CYLINDER, Bumper			
47	74865	4	SPACER			
48	74866	64	SHIM (Use as required)			
NOTE 1: Prior to design change of Aug. 17, 1976 the following guides were used:						
27	138052-2	1	CHAIN GUIDE, Right w/capscrews and lockwashers			
27	138052-3	1	CHAIN GUIDE, Left w/capscrews and lockwashers			
Parts 138052-2 and 138052-3 are 4-1/2" deep at bolt holes. Parts 143969 and 143970 are 4" deep at bolt holes.						
NOTE 2: Oversize pin 147302 (1-13/16" dia.) is available to replace pin 11978 (1-3/4" dia.)						
0-471						
PLEASE GIVE MACHINE S/N W/ORDER				<table border="1"> <tr> <td data-bbox="1203 1976 1330 2041">REV. Q</td> <td data-bbox="1330 1976 1573 2041">48384 - 1</td> </tr> </table>	REV. Q	48384 - 1
REV. Q	48384 - 1					

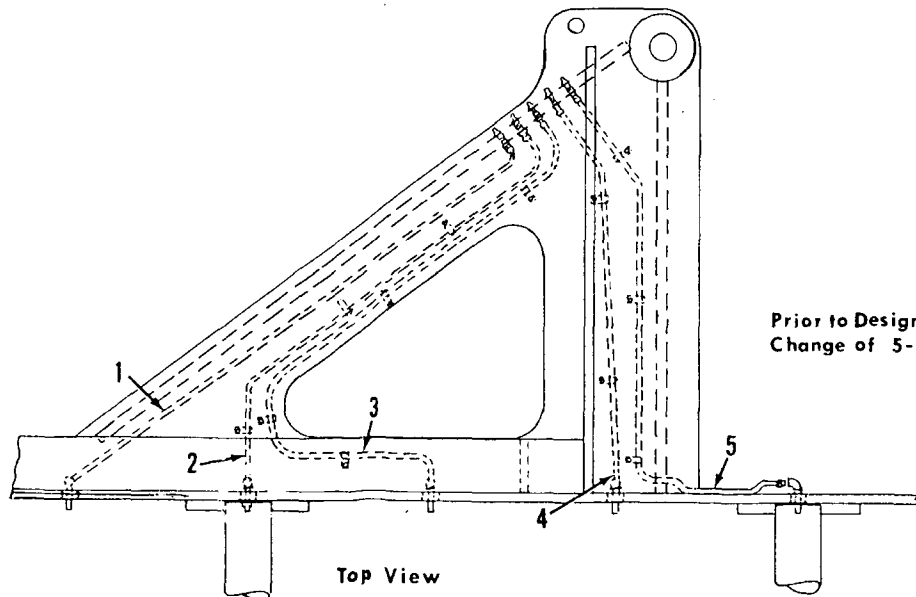
MANITOWOC ENGINEERING CO.

A Division of The Manitowoc Company, Inc.

Manitowoc, Wisconsin



Top View



Prior to Design Change of 5-18-71

Top View

18023982

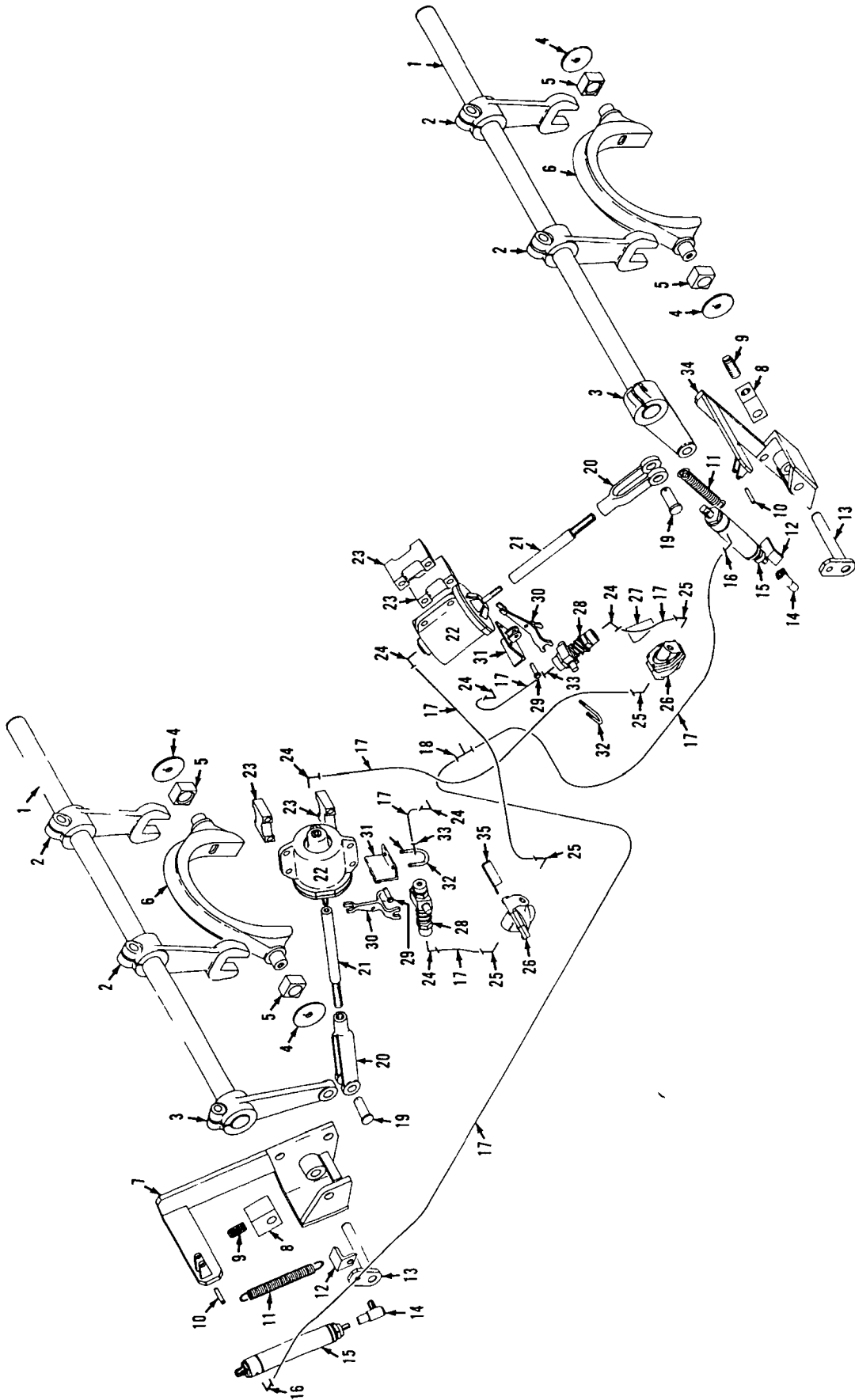
MATERIAL LIST ON BACK

MASTER

18023982

CRAWLER LUB. PIPING

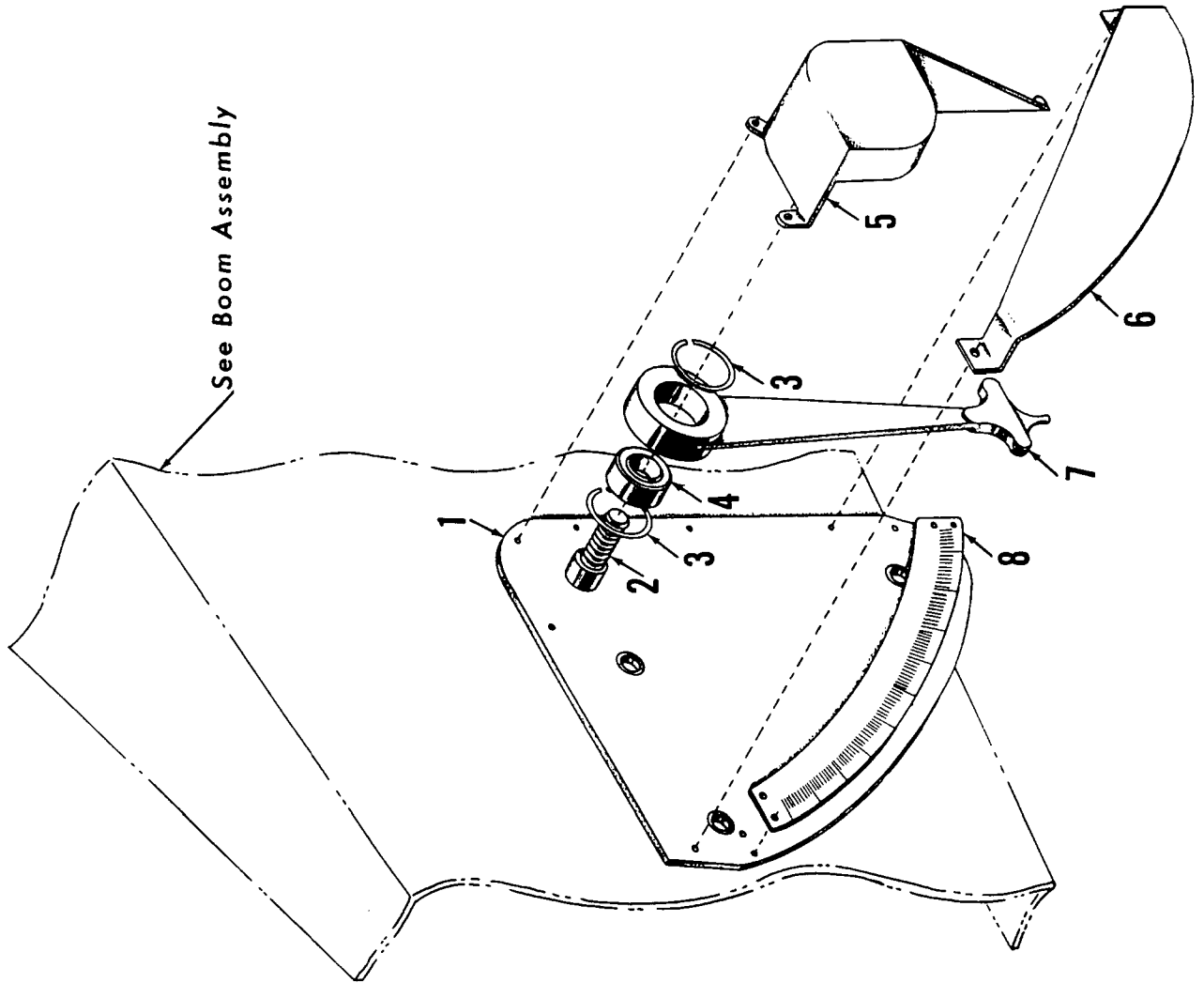
MASTER



19019381

MATERIAL LIST ON BACK

Steering Control



ILLUST. No. 22334-A-1.

MATERIAL LIST ON BACK

BOOM ANGLE INDICATOR

CPT

-F10.1-

49278-1 Cont.	REV. K	MODEL 4100W
---------------	-----------	----------------

GANTRY AND BACKHITCH
(Mach. w/16" Boom Hoist Drums)
(12 Part Boom Hoist Reeving)

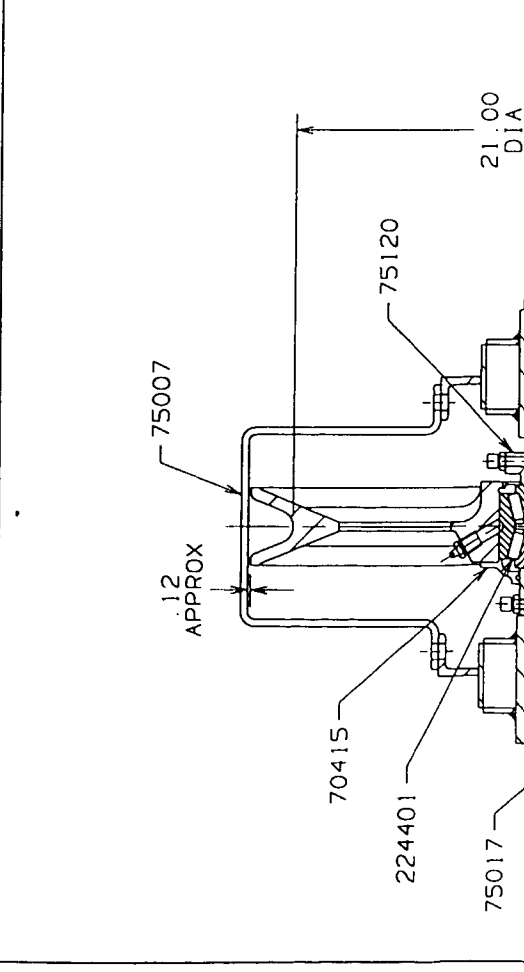
REF. NO.	PART NUMBER	QUANTITY REQUIRED	DESCRIPTION OF PART	VENDORS PART NO.
45	143745	2	PIN, w/grease fitting and snap ring NOTE 1: Mach. w/Series 3 Ringer, delete lower sheaves 77006 Ref. #1, w/Bushings 77005 Ref. #2, Shaft Lock 15275 Ref. #4, Shaft 139480 Ref. #19, Guard 139112 Ref. #20 and also Roller Support 139319 Ref. #36, Roller 72350 Ref. #37 and Shaft 139479 Ref. #38 from both sides of gantry. Add the following:	
36A	139922	2	GUARD, Wire Rope w/capscrews and lockwashers NOTE 2: For Ringer Mast raising, there must be 2 rollers 78576 Ref. #41 in outside position in left guard 182493 Ref. #40A. NOTE 3: Machines after 9-16-91 design change, delete Ref. No's. 29, 30, 31, 32, 33 and add:	
46	171878	4	WIRE ROPE GUIDE	

REV. K	49278-1
-----------	---------

PLEASE GIVE MACHINE S/N W/ORDER

49278 K1

ITEM NO. NO. PRELIM.	SEC. IDENTIFICATION	DESCRIPTION	LENGTH		MATERIAL	CROSS NO. OF Dwg. No.	ASSEMBLIES USED ON
			IN.	IN.			
1		SHEAVE				23557	43197 43730 49348 190149
1		LOCKNUT				75120	
1		BEARING RETAINER				70415	
1		ADAPTOR				70416	
1		BEARING CLOSURE				70451	
1		SHEAVE GUARD				75007	
1		JIB POINT SHAFT				75016	
2		END PLATE				75017	
1		R.H. CHEEK PLATE				75086	7-25-84 DCB REDRAW CADAM CK. RAD APP. MR
1		L.H. CHEEK PLATE				75087	
1		ROLLER BEARING				224401	



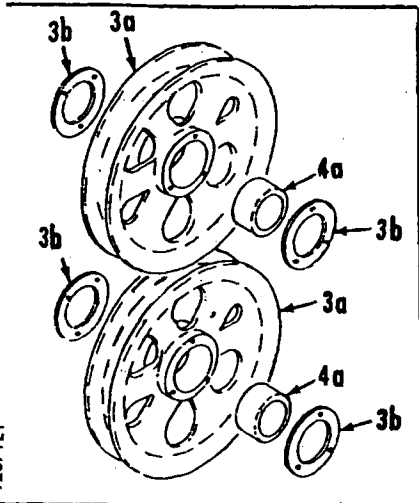
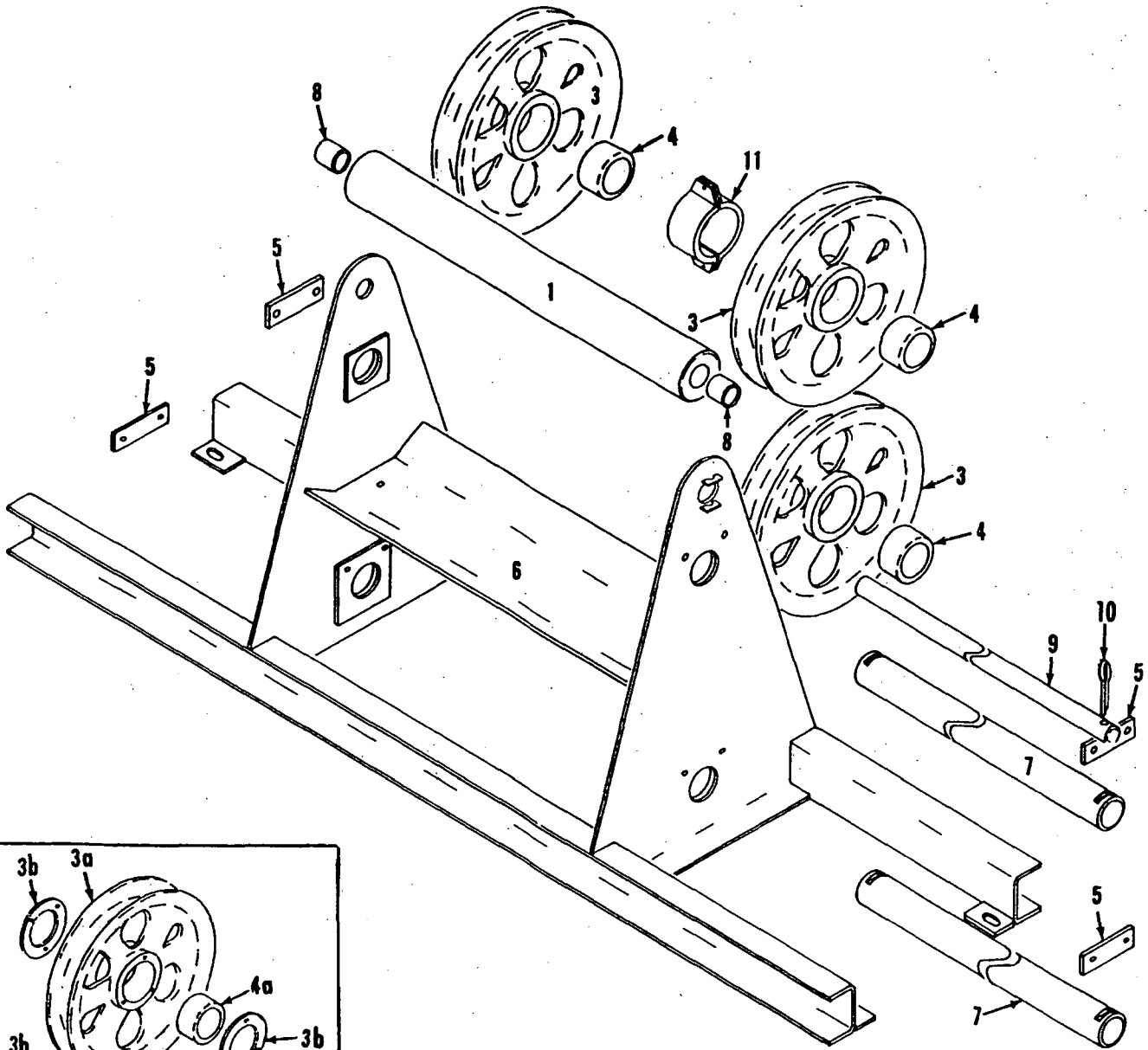
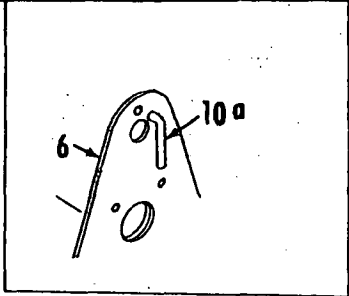
BILL OF MATERIAL		DATE	12-11-63
		PATTERN NO.	
		MANITOWOC ENGINEERING CO.	
		MANITOWOC, WISCONSIN	
		MODEL 3900 THRU 4600	
		JIB POINT SHAFT	
		ASS'Y FOR JIB 123	
		DWG. NO.	90318

SCALE 3 = 1 FT
 DR: WM
 CK: EGT
 APP: 06

MANITOWOC ENGINEERING CO.

A Division of The Manitowoc Company, Inc.

Manitowoc, Wisconsin



92671E1

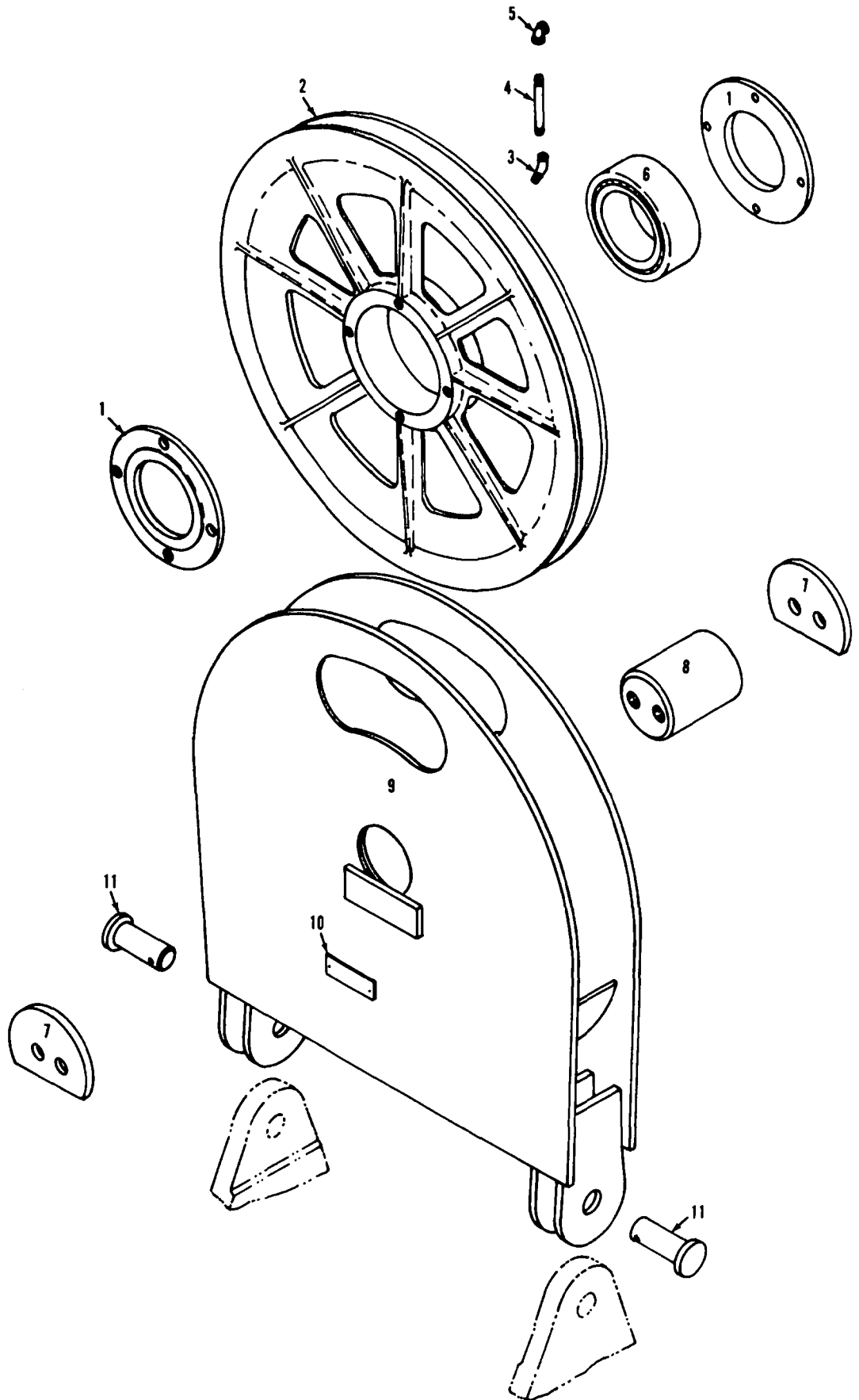
MATERIAL LIST ON BACK

WIRE ROPE GUIDE

MANITOWOC ENGINEERING CO.

A Division of The Manitowoc Company, Inc.

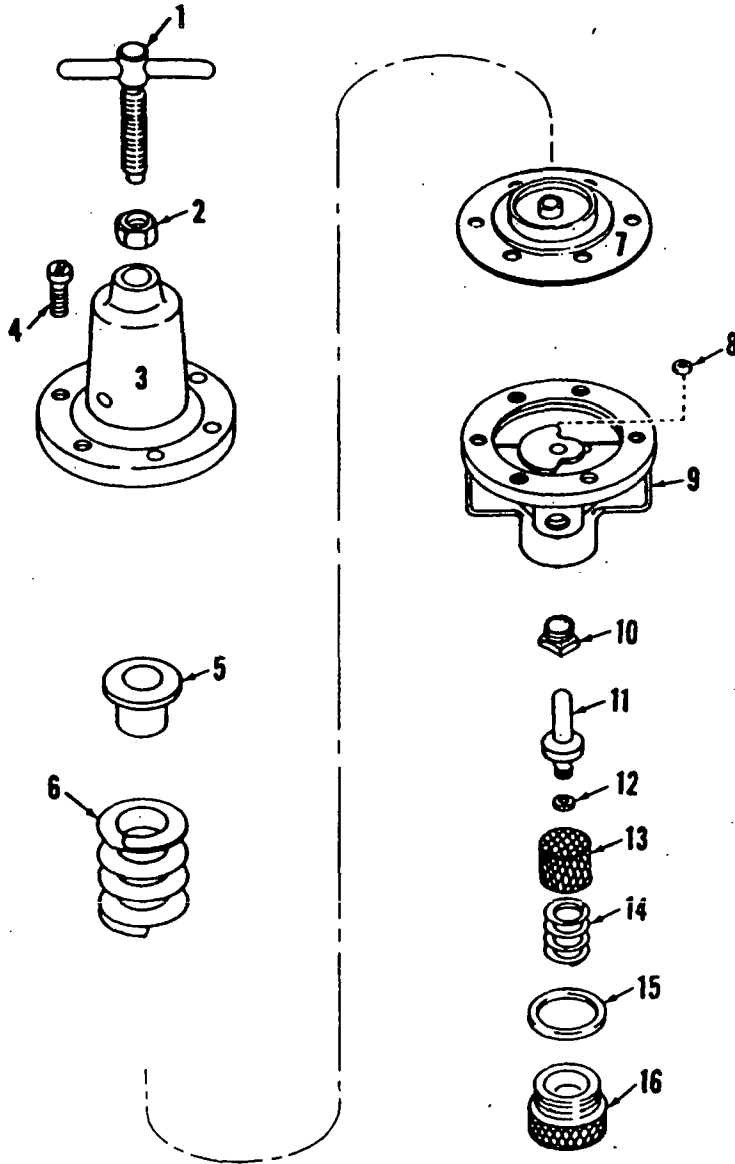
Manitowoc, Wisconsin



97486A1

MATERIAL LIST ON BACK

BLOCK SHEAVE

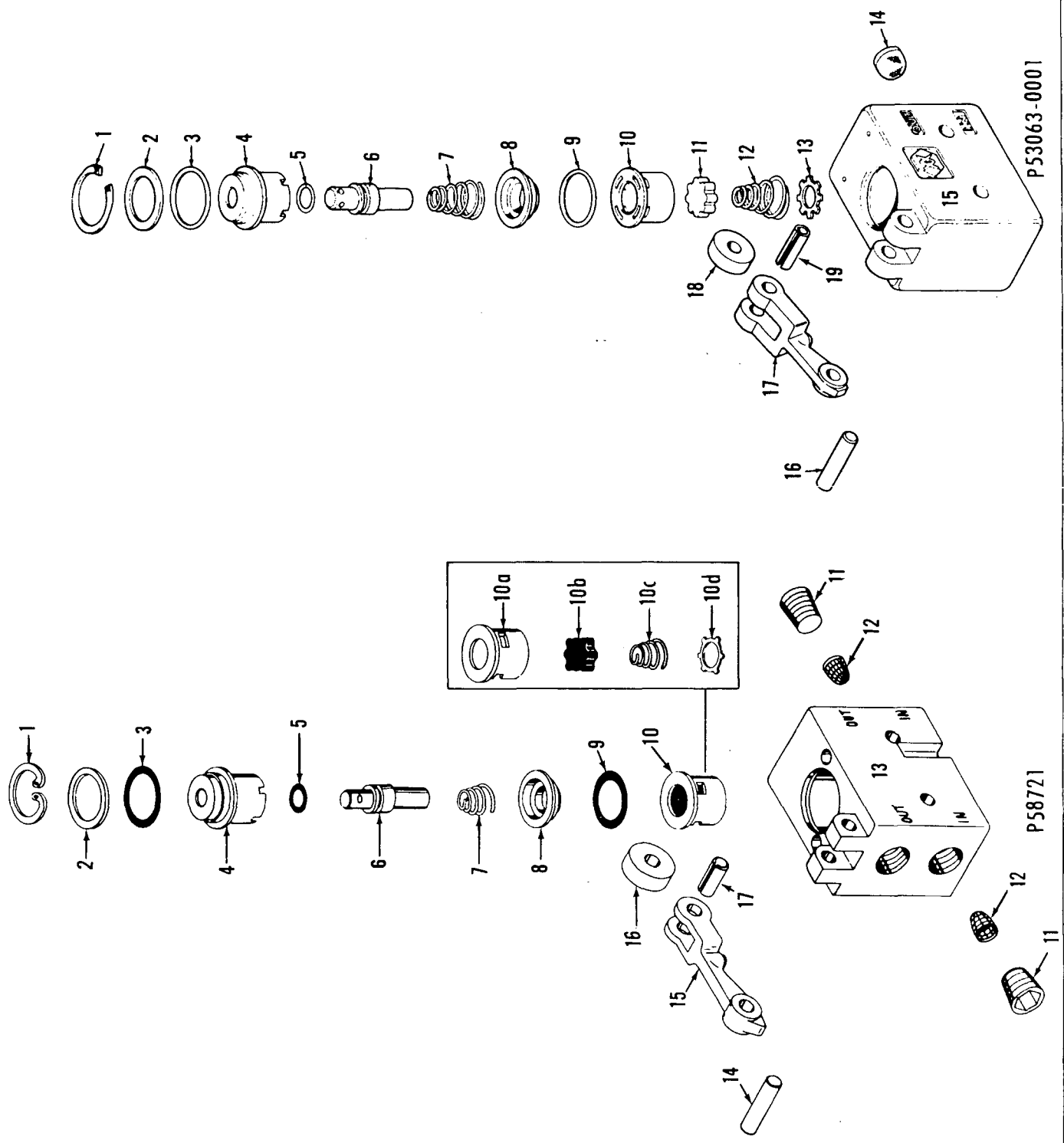


MANITOWOC ENGINEERING CO.

A Division of The Manitowoc Company, Inc.

Manitowoc, Wisconsin

MANITOWOC



P53063-0001

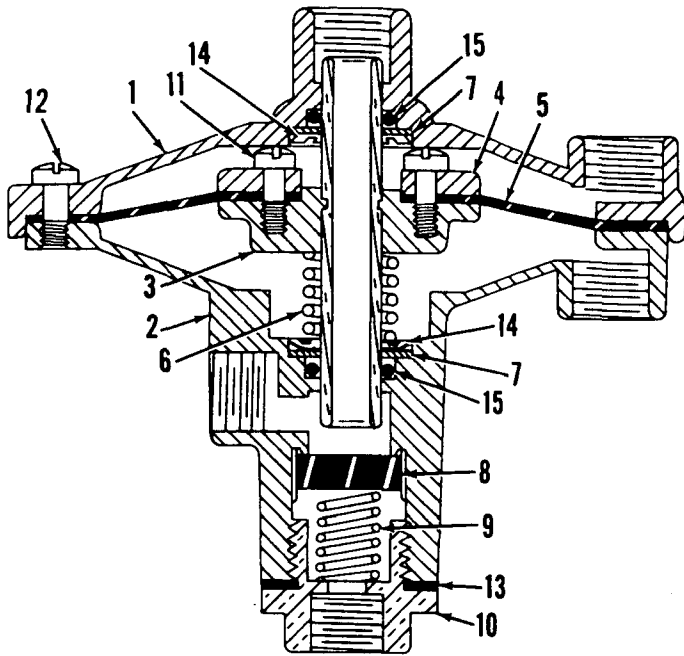
P58721

O-279

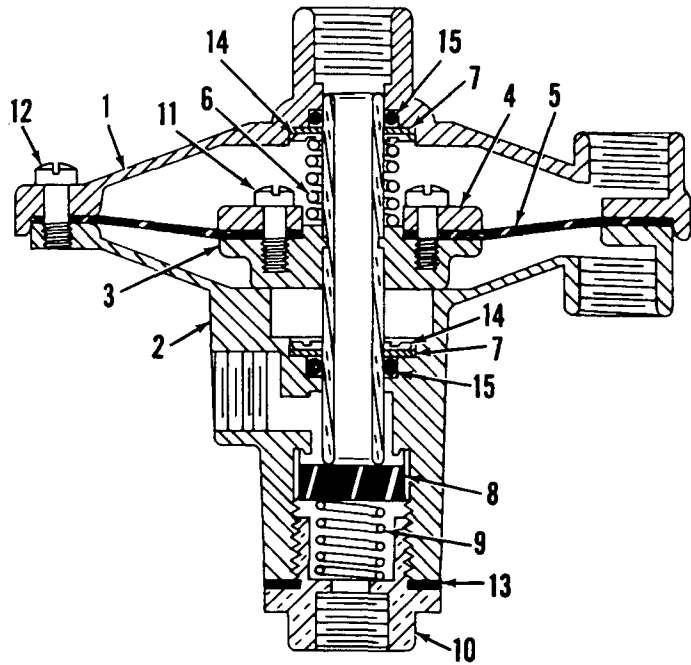
MATERIAL LIST ON BACK

CONTROL VALVE

MASTER



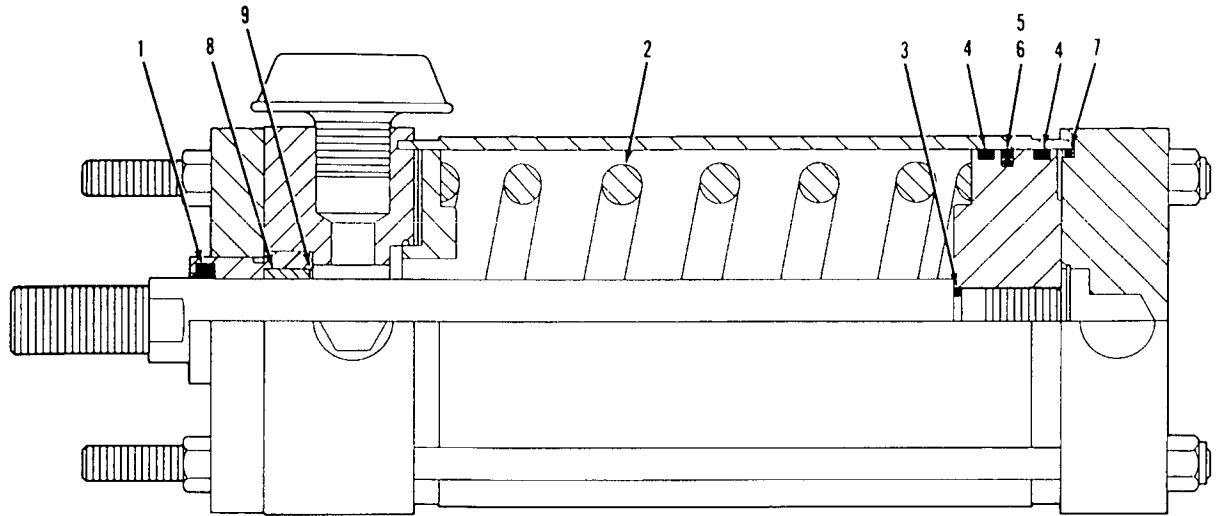
Normally Closed



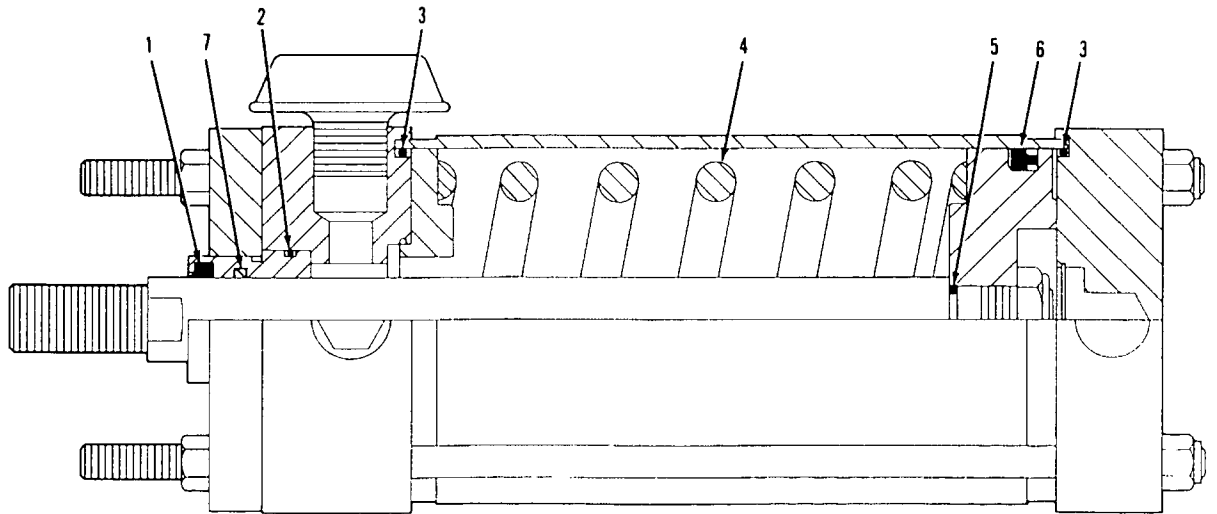
Normally Open

MATERIAL LIST ON BACK

RELAY VALVES



CURRENT PRODUCTION



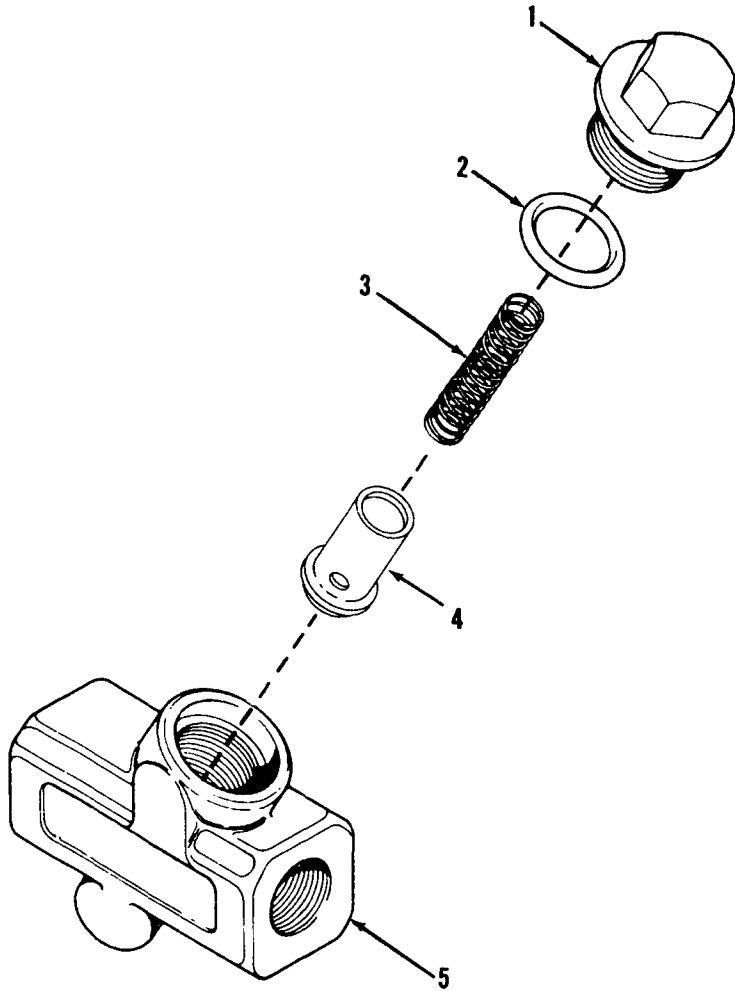
PAST PRODUCTION

MANITOWOC ENGINEERING CO.

A Division of The Manitowoc Company, Inc.

Manitowoc, Wisconsin

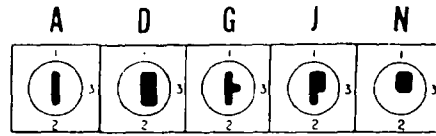
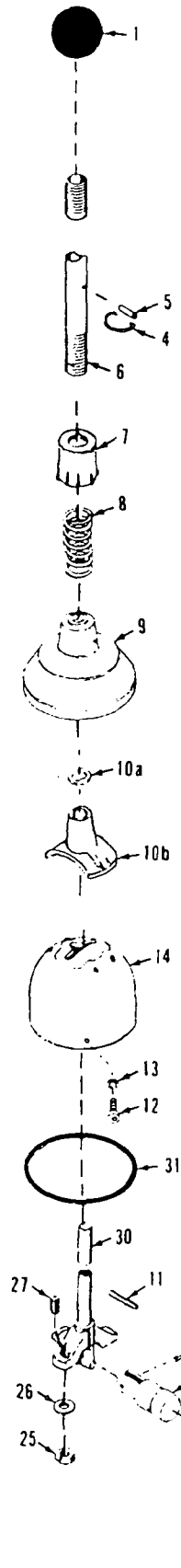
MASTER



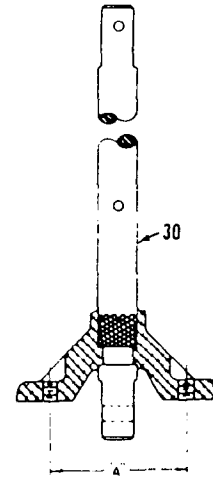
MANITOWOC ENGINEERING CO.

A Division of the Manitowoc Company, Inc.

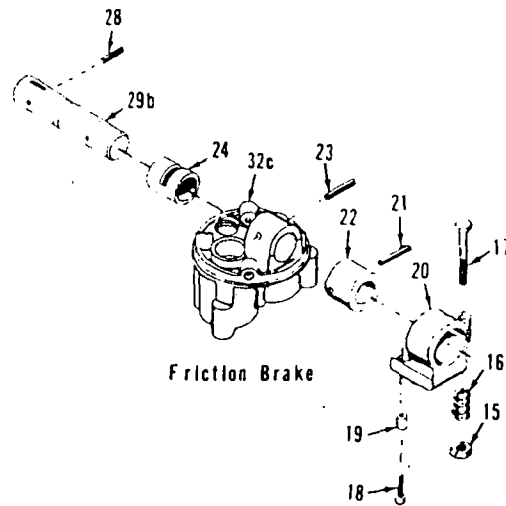
Manitowoc, Wisconsin



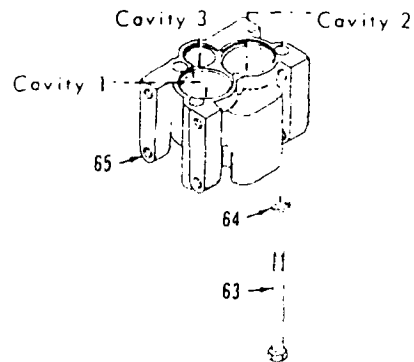
Handle Guide Inserts for Ref. No. 14



Yoke Spacing
Ref. No. 30



Friction Brake



0-441-2B

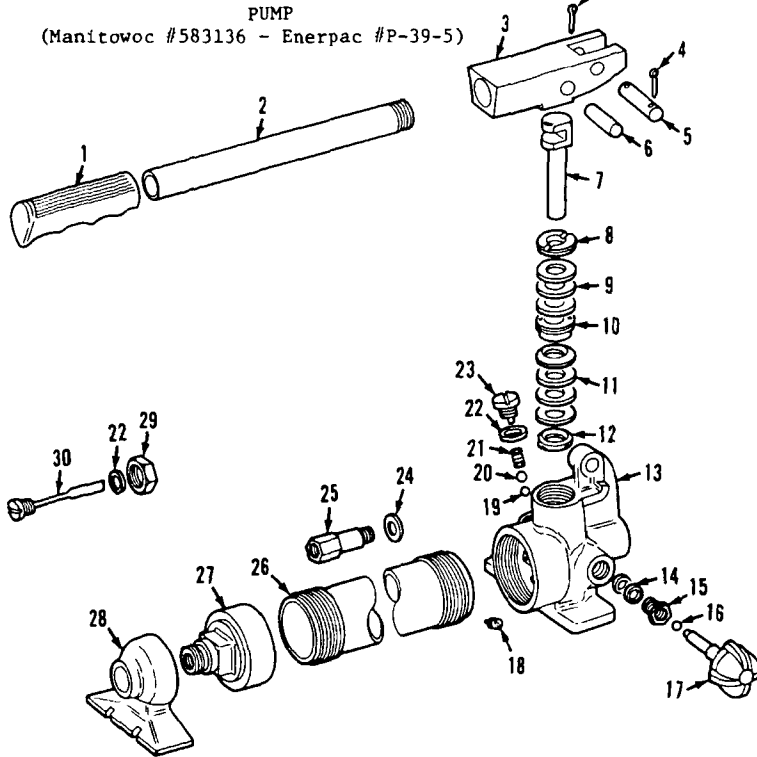
MATERIAL LIST ON BACK

FLEXAIR VALVE OPERATING MECHANISM

MANITOWOC ENGINEERING CO.

A Division of The Manitowoc Company, Inc.

Manitowoc, Wisconsin

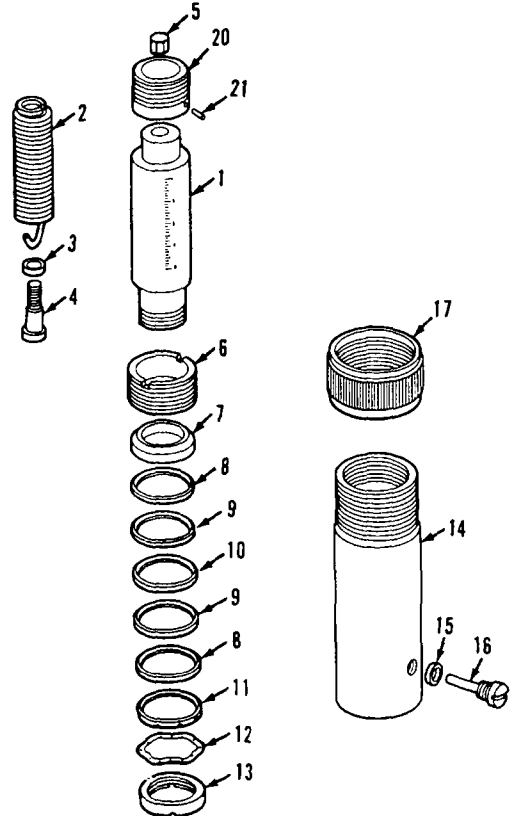


Ref. No.	No. Req.	Description	Part No.
1	1	Grip	C7.550
2	1	Handle	C7.900
3	1	Beam	B113.060-1
4	2	Pin, Cotter	S1.59
5	1	Pin, Beam	P76.63
6	1	Pin, Cross	P75.57
7	1	Plunger, Pump	P16.51
8	1	Nut, Retaining	P16.54
9	3	Packing, Pump	*
10	1	Nut, Cup Ret.	P16.55
11	4	Cup, Pump	*
12	1	Spreader	P1.52-2
13	1	Base	B121.005-1
14	2	Packing	*
15	1	Nut, Packing	MJ11-1
16	1	Ball	*
17	1	Spindle	J435.900
18	1	Screen, Oil	P807.18
19	2	Ball	*
20	1	Ball	*
21	1	Spring	S1.183
22	3	Gasket	*
23	1	Plug, Valve	CB9.185
24	1	Gasket	B159.167
25	1	Valve, By-pass	P182.190-2
26	1	Reservoir	P16.25
27	1	Cap, Reservoir	P75.266-1
28	1	Rest., Pump	P76.267-1
29	1	Nut	P75.181
30	1	Plug, Filler	B110.900
*		Kit	P39K-1

Part numbers are the Venders, Enerpac, Butler, Wis. 54220. Please so Specify if ordering from Manitowoc Engineering Co. When ordering parts, please give Model number and Serial number. See Nameplate for this information.

Ref. No.	No. Req.	Description	Part No.
1	1	Plunger Assembly	R251.900
20	1	Saddle	R251.45
21	1	Pin	R251.61
2	1	Spring	R225.184
3	1	Bearing Thrust	R225.155-1
4	1	Screw, Adjusting	R225.143-1
5	1	Nut	R225.55
6	1	Ring, Stop	R77.44-1
7	1	Disc	R225.71
8	2	Chevron	*
9	2	Separator, Cup	*
10	1	Chevron	*
11	1	Spreader	R77.43-1
12	1	Washer, Spring	*
13	1	Nut, Retaining	R77.35
14	1	Base	R225.05
15	1	Gasket	*
16	1	Screw, Retaining	R225.302
17	1	Protector, Thread	R158.271
	1	Coupler, Half	AR400
	1	Cap, Dust	Z410-1
	1	Decal	*
		Kit, Cylinder Packing	RC251K
		Kit, Coupler Packing	A604K

JACK (Manitowoc #385177 - Enerpac #RSP-251)

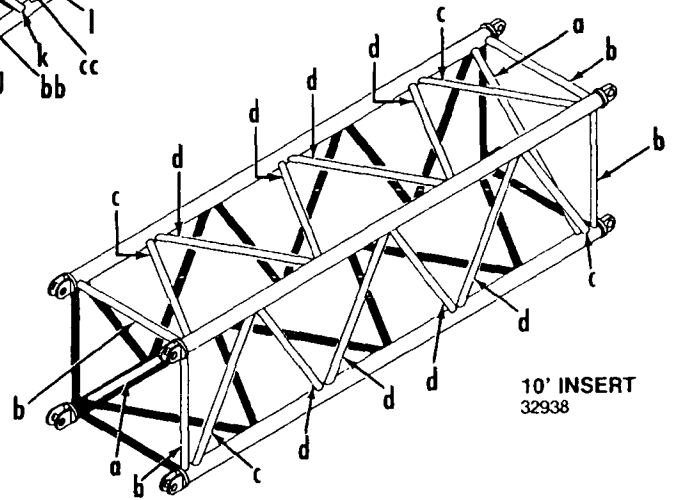
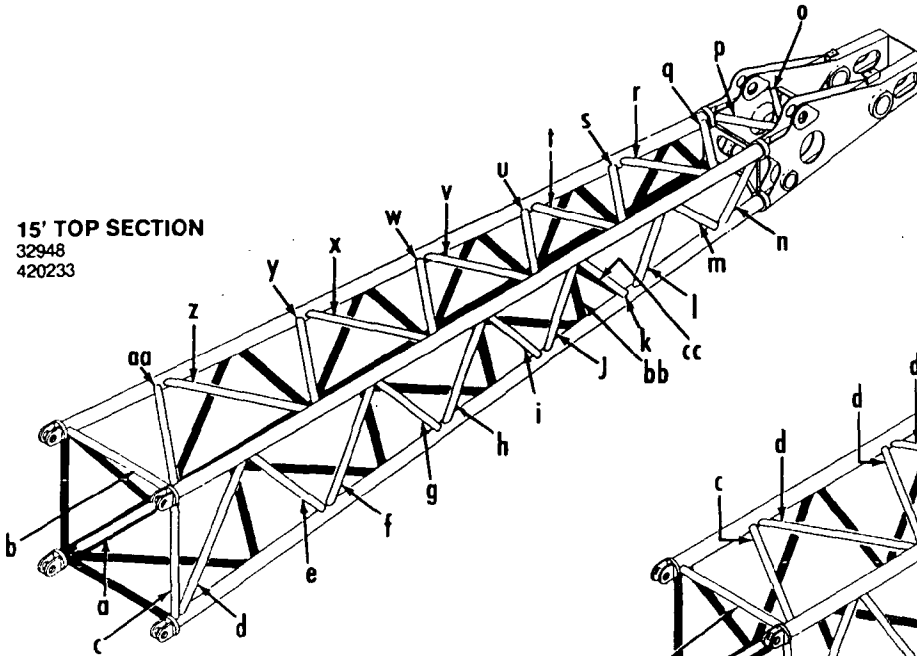


Crawler Adjusting Jack and Pump

#123-123A JIB

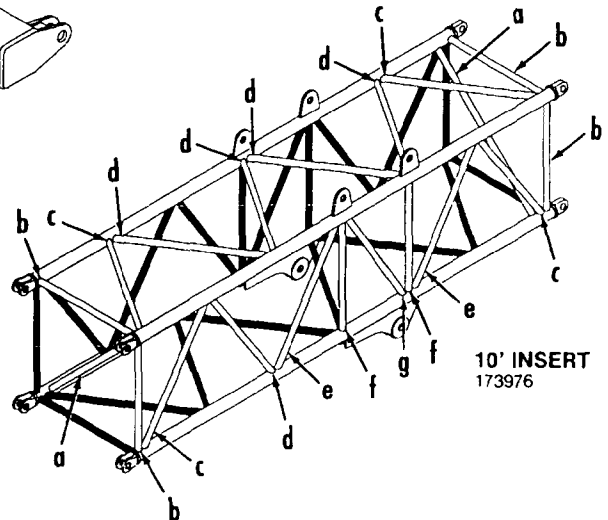
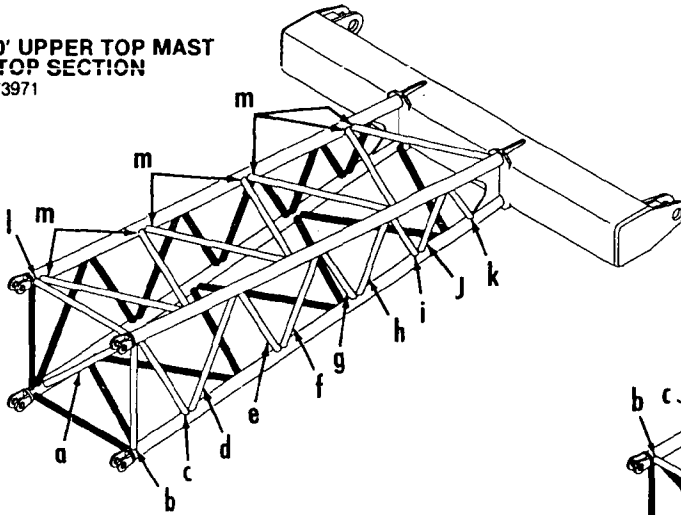
Opposite lacings (black) same unless noted.

15' TOP SECTION
 32948
 420233



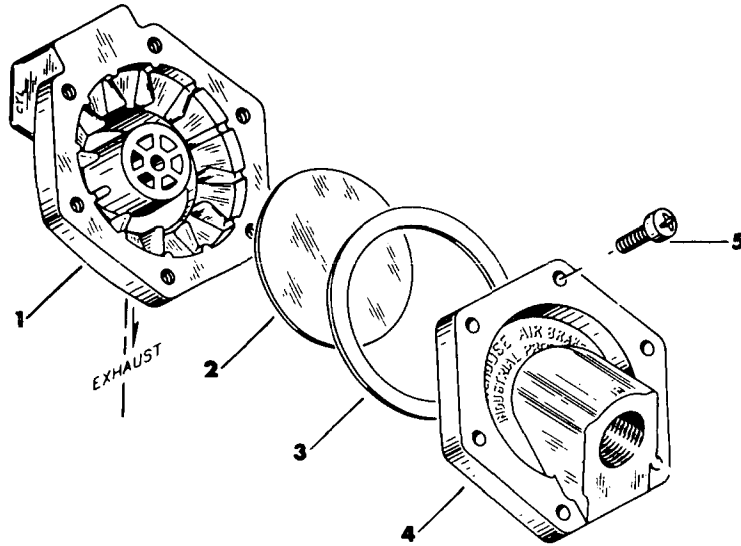
10' INSERT
 32938

10' UPPER TOP MAST STOP SECTION
 173971



10' INSERT
 173976

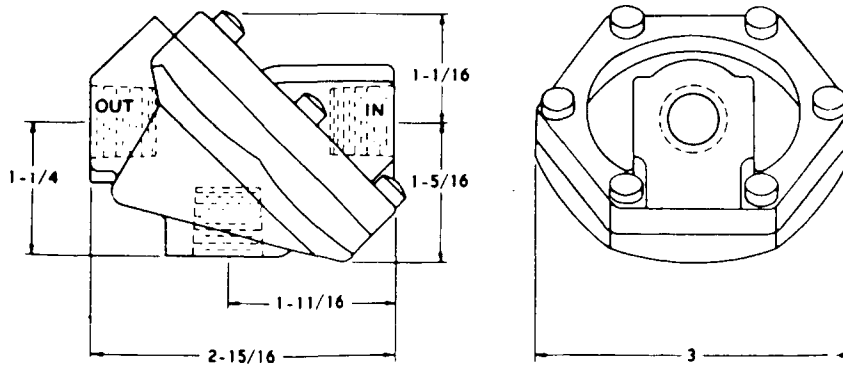
MANITOWOC NO. 714688 - WESTINGHOUSE NO. P52935-3



EXPLODED VIEW

PARTS LIST

Manitowoc Number	Westinghouse Number	Ref. No.	Description
	P52966	1	Body, Valve
714693	P5112	2	Diaphragm
714694	P5111-6	3	Gasket
	P52967	4	Cover, Valve
	P49502	5	Screw, Washer Head



OUTLINE VIEW

Used Approx. 1962 to _____. (See Reverse Side of Sheet)

CLICK HERE TO **DOWNLOAD** THE COMPLETE MANUAL

- Thank you very much for reading the preview of the manual.
- You can download the complete manual from: www.heydownloads.com by clicking the link below



- Please note: If there is no response to CLICKING the link, please download this PDF first and then click on it.

CLICK HERE TO **DOWNLOAD** THE COMPLETE MANUAL