

Manitowoc

TRADITIONAL CRANE PARTS MANUAL

This manual has been prepared for and is considered part of

4100W

Model

41612

Serial Number

GROUP A = Rotating Structure (Includes rotating bed, operator's cab, cases, fuel tanks, transfer pump, counterweights, guards, platforms, catwalks, machinery enclosure, horn)

GROUP B = Upperworks Machinery (Includes front, rear, and auxiliary drums, boom hoist, swing and drive shafts, hand levers, foot pedals, control linkage, rotation indicators, upperworks hydraulic components, hydraulic piping, hydraulic oil reservoir, lubrication pump and piping, blowers)

GROUP C = Air Components & Electrical (Includes control console, air piping, electric wiring, auxiliary light plant and lighting, TV monitoring, compressor and air tank)

GROUP D = Power Components - Upperworks (Includes engine or motor, radiator, auxiliary power plant, take off converters and piping, controls, VICON power lowering, torque limiter, hydraulic pumps and piping, fuel piping, battery box)

GROUP E = Lower Structure & Control (Includes carbody, crawlers, travel shafts and control, steering travel locks, hydraulic travel, travel power outriggers, carrier, pedestal, lowerworks hydraulic piping, RINGER components, barge mounting and machinery, spud drums)

GROUP F = Attachments (Includes booms, jibs, masts, tower, wire rope guides, equalizer, gantry, fairlead, timber guards, boom angle indicator, block-up limit, tag line, hook block, weight ball, upper and lower boom point, wind speed indicator, crowd and retract dipper sticks, dippers,)

O-NUMBER SECTION = (Includes lacing drawings and purchased component parts drawings referenced in sections A through F)

This manual is arranged in sections as listed above. Sections A through F are arranged by group numerical order with an index after each section tab. An alphabetical index for groups A Through F combined is located after the O-number Section. The O-number section is arranged in numerical order by O-number. Following this cover page are the Basic Specifications, Warranty Information, Tool List (if applicable) Outline Dimensions, Weights, and Dealer Listing.

CLICK HERE TO **DOWNLOAD** THE COMPLETE MANUAL

- Thank you very much for reading the preview of the manual.
- You can download the complete manual from: www.heydownloads.com by clicking the link below



- Please note: If there is no response to CLICKING the link, please download this PDF first and then click on it.

CLICK HERE TO **DOWNLOAD** THE COMPLETE MANUAL

MANITOWOC ENGINEERING CO.

Division of The Manitowoc Company, Inc.

Manitowoc, Wisconsin 54220

160299-1

NOTE 1

CRAWLER FRAMES MAY BE REMOVED FOR LOADING, REDUCING ALL HEIGHTS 10'-1/2"

NOTE 2

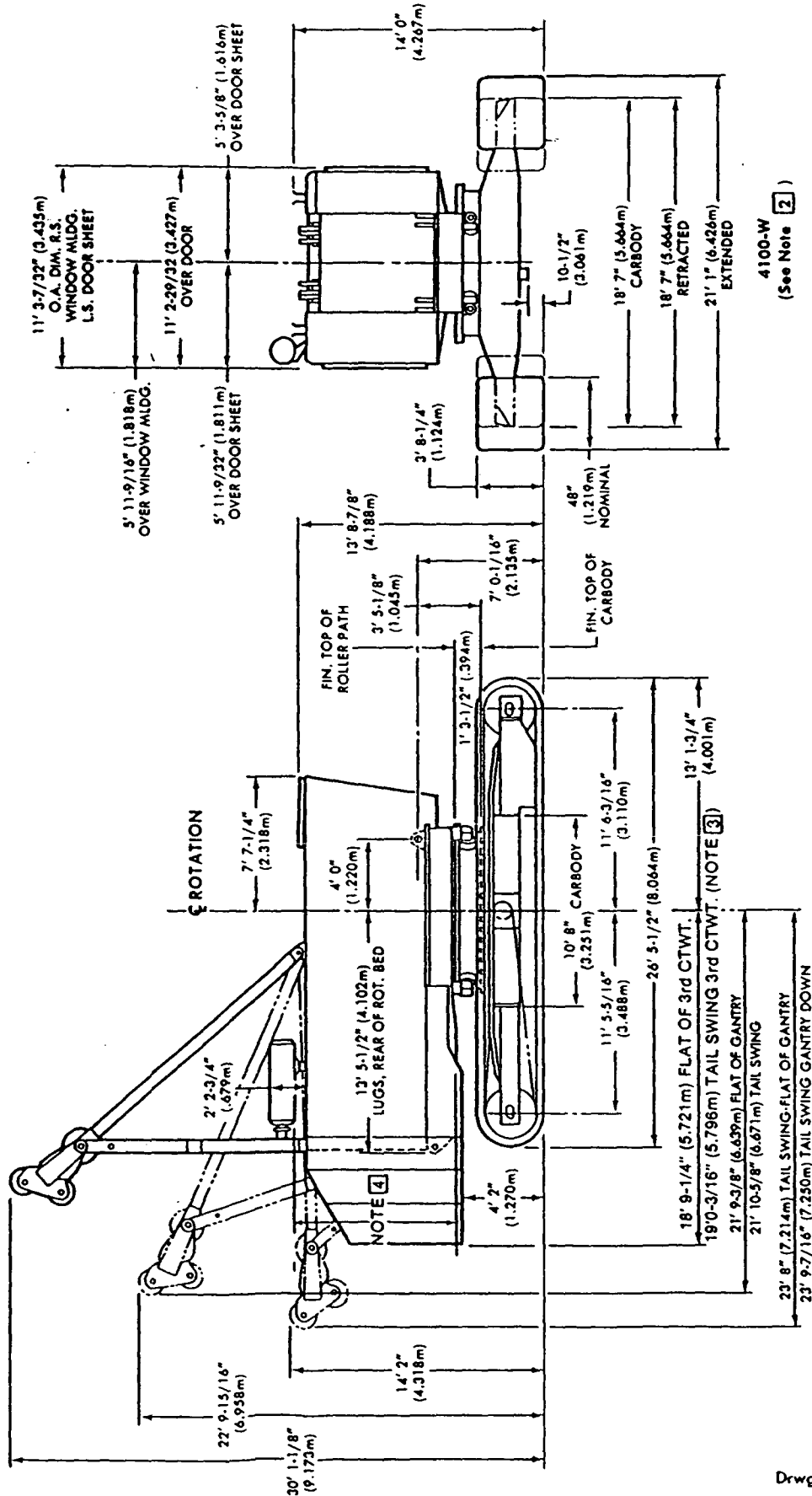
SEE VIEW "A-A" FOR 4100-W SERIES-1 (See page 160299-2) SEE VIEW "B-B" FOR 4100-W SERIES-2 (See page 160299-2)

NOTE 3

20' 11-1/4" TAIL SWING W/CATWALK AROUND REAR OF 3 PIECE CTWT. 4100-W & 4100-W SERIES-1

NOTE 4

9'-3-5/16" (2.827m) BOTTOM OF ROTATING BED SIDE FRAME TO TOP OF TOWER POCKET



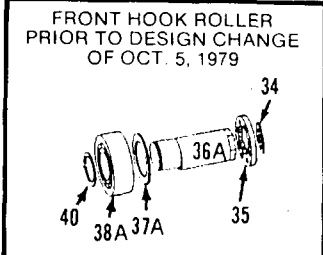
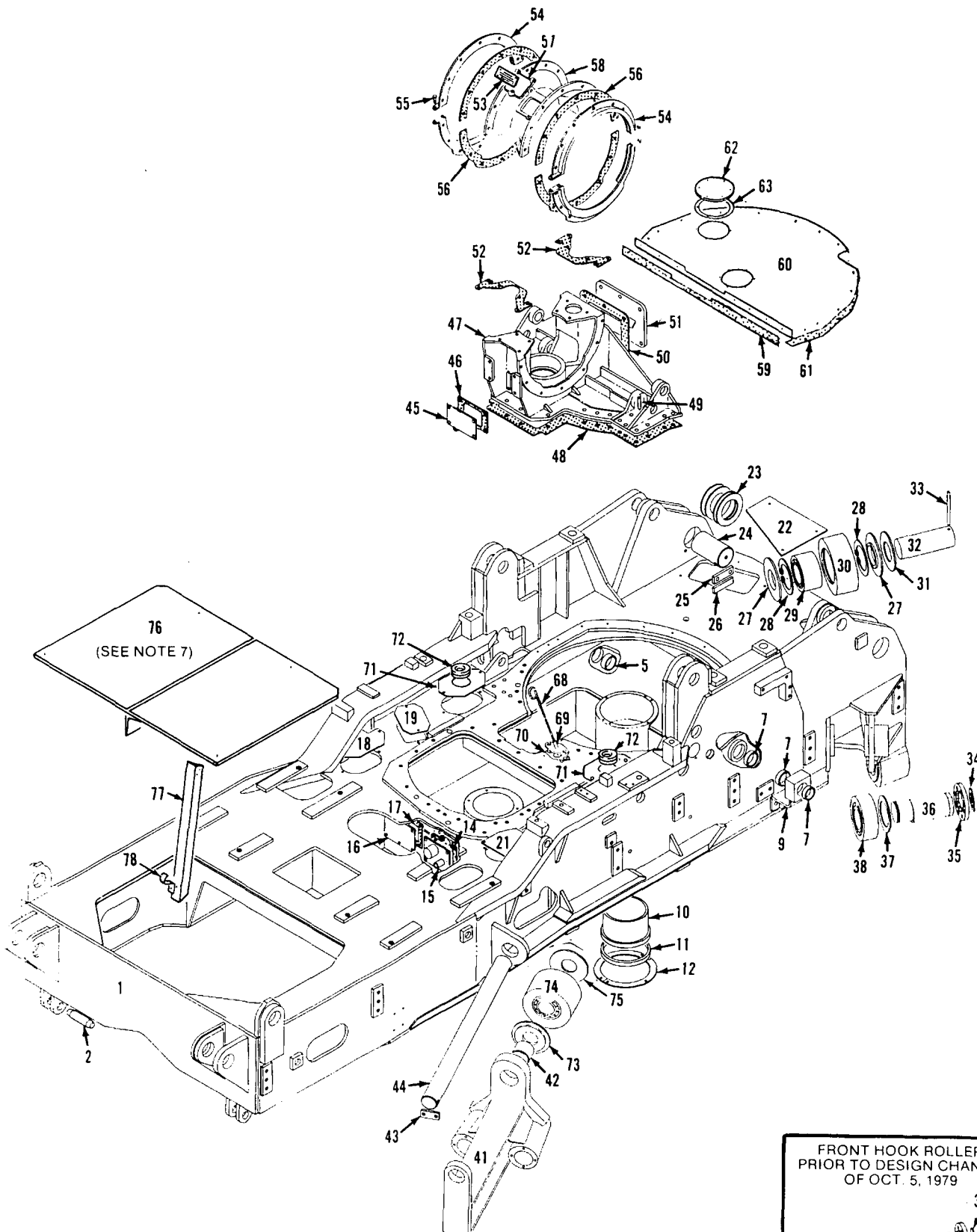
Corr. 7-28-86
3-25-83
3-30-82
3-5-82
Drwg. Date 1-12-82

SUPERSEDES 93597, 97309 & 97308

MODELS: 4100-W, 4100-W SERIES-1 & 4100-W SERIES-2

4100-W
(See Note 2)

OUTLINE DIMENSIONS (Cont'd on back)



48443M1

MATERIAL LIST ON BACK

ROTATING BED

49431-1 Cont	REV. P	MODEL 4100W
--------------	-----------	----------------

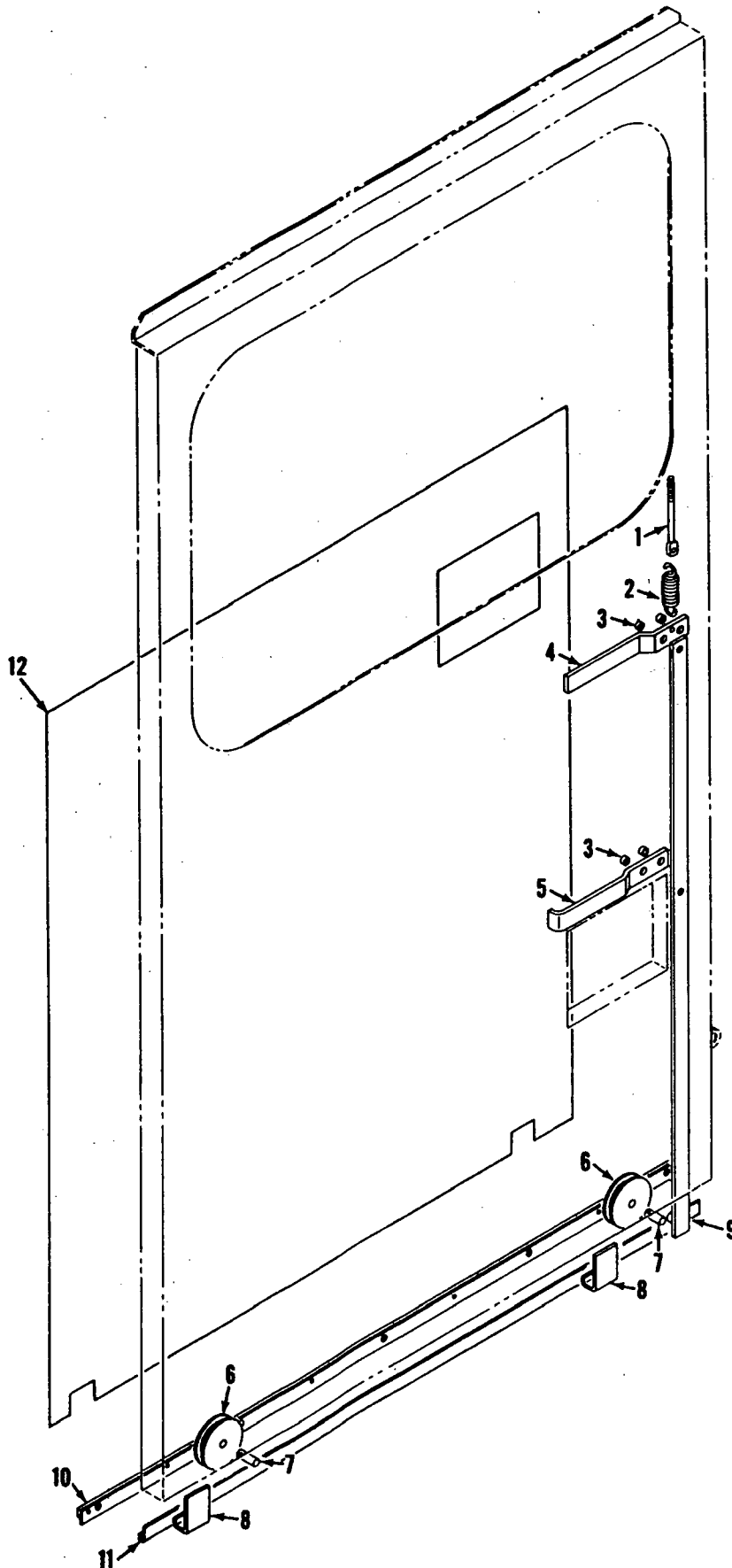
GUARDS
(16" WIDE BOOM HOIST DRUMS - SPLIT REAR DRUM) (see Note 5)

REF. NO.	PART NUMBER	QTY. REQ.	DESCRIPTION OF PART	VENDORS PART NO.
			<p><u>Note 3:</u> Machine w/air chamber actuator on drum brakes. Delete guards 93860 (Ref. 1), 180693 or 184696 (Ref. 2), 93861 (Ref. 6), 180692 or 184695 (Ref. 8), and cover 146144 (Ref. 31) and add:</p>	
1	166686	1	GUARD, Left brake w/capscrews, hex nuts, and lockwashers	
2	166684	1	GUARD, Left brake w/capscrews, hex nuts, lockwashers, and flat washers	
6	166685	1	GUARD, Right brake w/capscrews, hex nuts, and lockwashers	
8	166683	1	GUARD, Right brake w/capscrews, hex nuts, lockwashers, and flat washers	
31	166682	2	COVER, Drum brake guard w/fasteners and retaining washer	
	171734	2	SHEET, Closing w/capscrews, hex nuts, and lockwashers (not shown)	
			<p><u>Note 4:</u> Machine w/remote mounted operators cab and air chamber actuator on drum brakes. Delete guard 180692 or 184695 (Ref. 8) and add:</p>	
8	166757	1	GUARD, Right w/capscrews, hex nuts, lockwashers and flat washers	
	166758	1	COVER w/fasteners and retaining washers (used on Guard 166757 above)	
			<p><u>Note 5:</u> Machine w/air chamber actuated drum brakes add:</p>	
32	167580	1	GUARD, Right Brake w/capscrews and lockwashers	
33	167581	1	GUARD, Left Brake w/capscrews and lockwashers	
34	164733	4	PAD, Mounting	
			PLEASE GIVE MACHINE SERIAL NUMBER WITH ORDER	
			REV. P	49431-1

MANITOWOC ENGINEERING CO.

A Division of The Manitowoc Company, Inc.

Manitowoc, Wisconsin



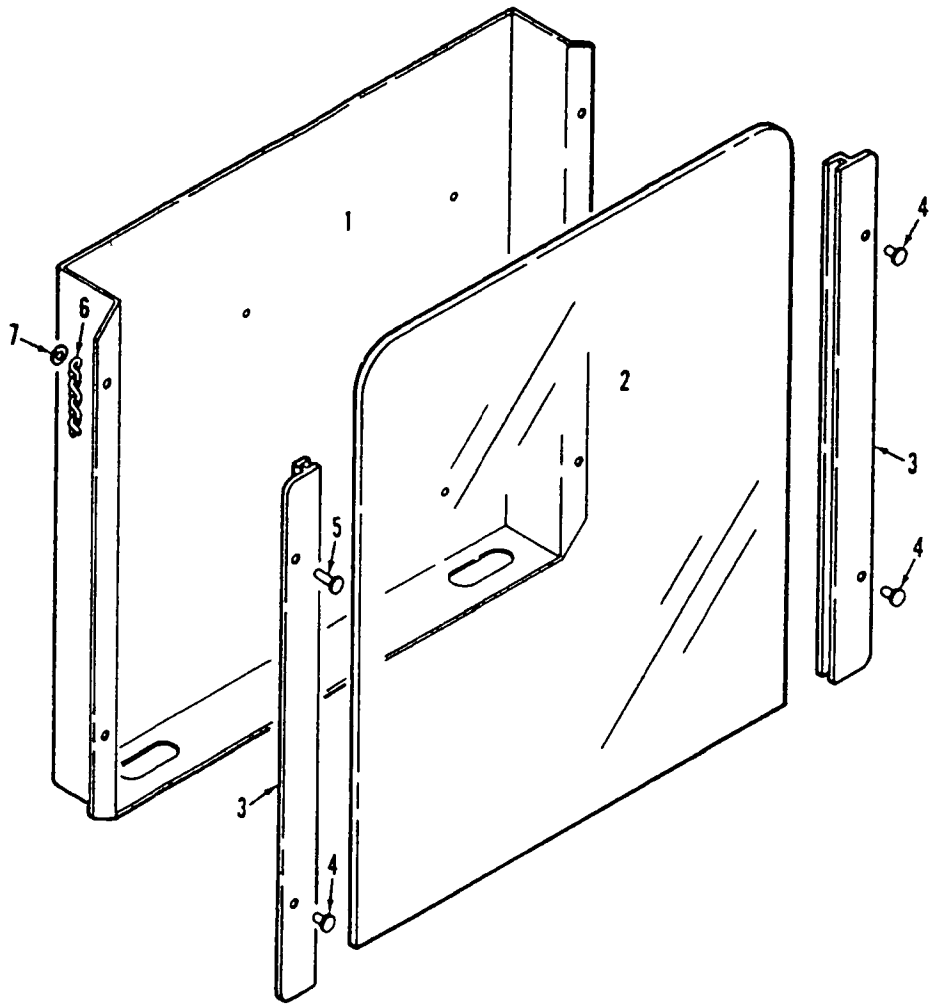
MASTER

6 P3A2

65183A2

MATERIAL LIST ON BACK

DOOR MECHANISM



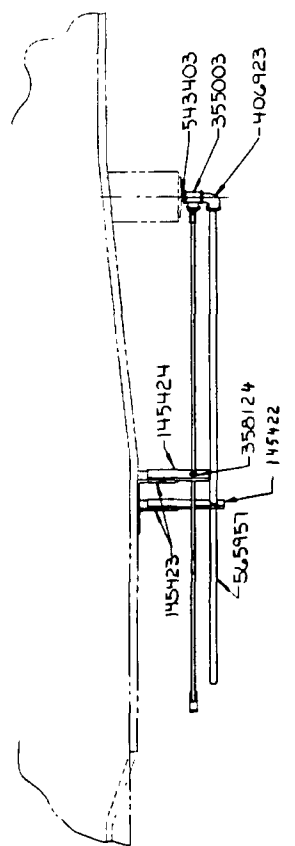
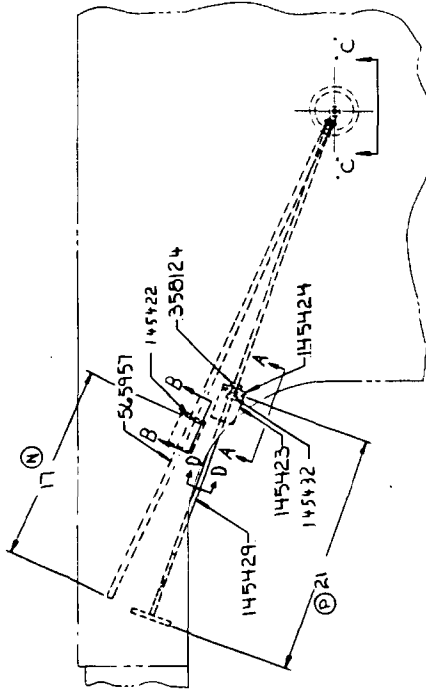
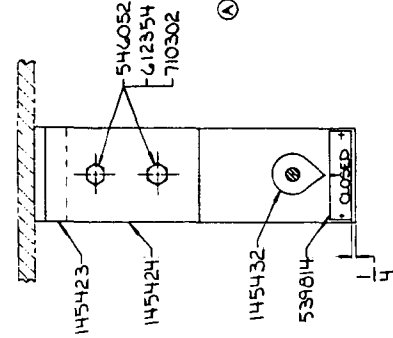
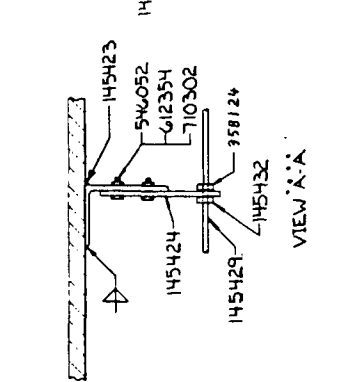
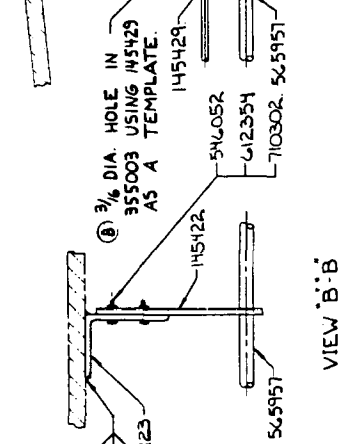
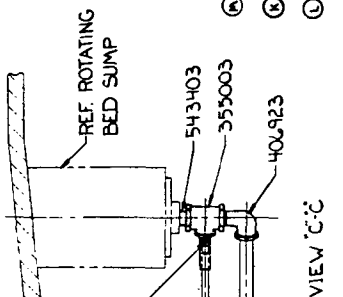
93994A1

MATERIAL LIST ON BACK

CHART HOLDER

ITEM NO.	QUANTITY	DESCRIPTION	MATERIAL	CODE NO. OR PART NO.	REMARKS
1		BRACKET		145422	
2		BRACKET		145423	
1		BRACKET		145424	
1		HANDLE		145429	
1		SET COLLAR		145432	
1		2 3/4 NUT BUSHING		288784	SEE NOTE 1
1		STEAM COCK		355003	
1		1/2 SET COLLAR		358124	
1		1/2 STREET ELBOW		406923	
1		NAME PLATE		539814	REF. 22543
1		3/8 CLOSE NIPPLE		543403	
4		1/4-20UNC-2B HEX NUT		546052	
1		3/8 PIPE THD ONE END		565951	
4		1/4-20UNC-2A 1/2 HEX HD CAPSCR		612354	
4		1/4 LOCKWASHERS		710302	

REVISIONS	DATE	BY	DESCRIPTION
1	5-15-78	MPR	CORRECTED PRIOR TO MANUFACTURE
2	6-28-78	GIP	ADDED
3	8-2-78	LJO	Q10 WAS 2
4	Q10 WAS 3		Q10 WAS 4
5	10-5-78	MPR	Q10 WAS 1 RECD. Q10 WAS 2 RECD. Q10 WAS 3 RECD. Q10 WAS 4 RECD.



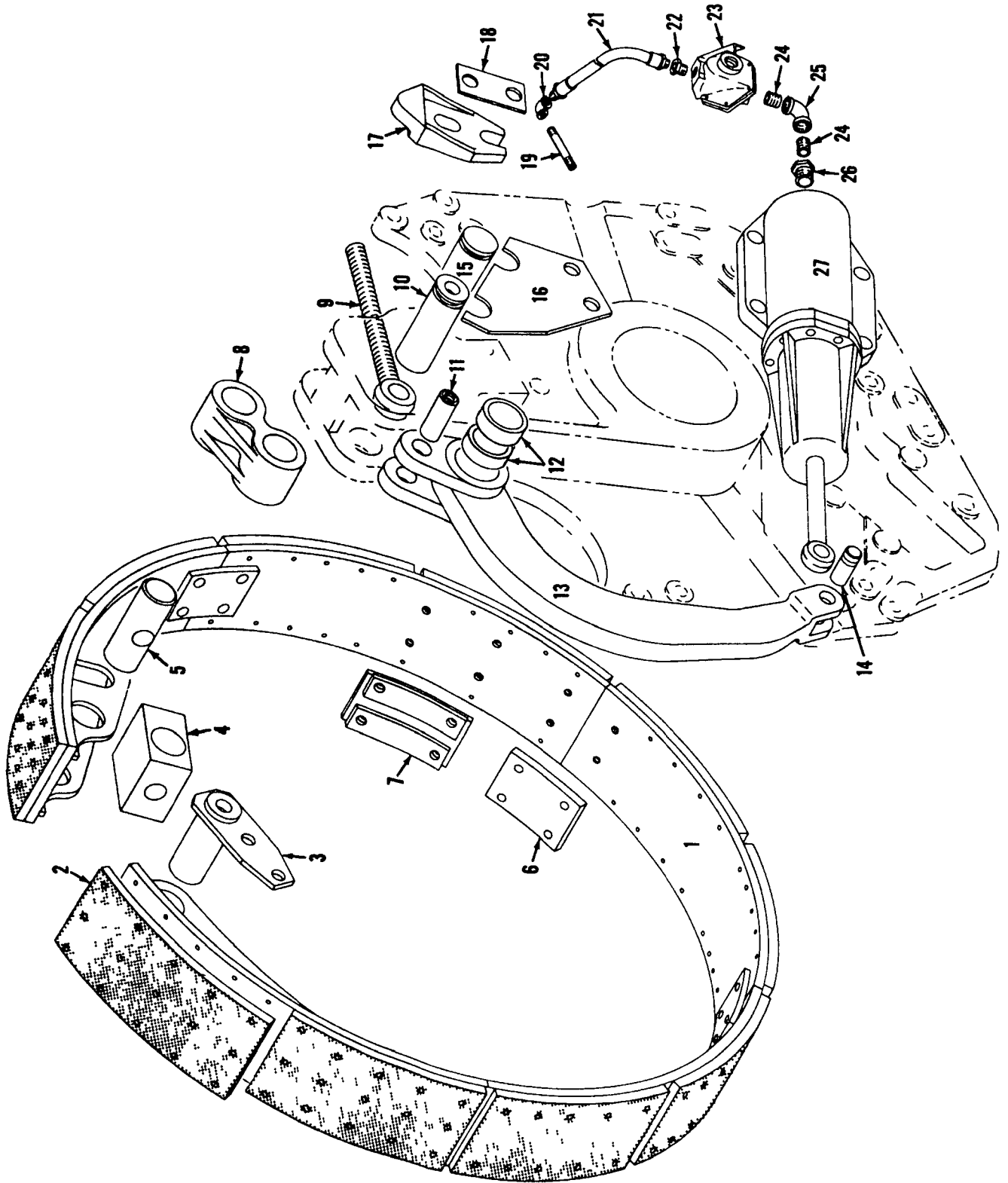
NOTE: FOR FIELD CONVERSION OF MACHINES STARTING WITH S/N 41523 AND AFTER.

NOTICE
 THE FIRST DRAWING FOR RECEIPT OF
 MANITOWOC ENGINEERING CO.
 IS FOR INFORMATION ONLY. CONSULTING ENGINEER & CONTRACTOR
 IS RESPONSIBLE FOR THE DESIGN AND CONSTRUCTION OF THE
 ROT. BED SUMP DRAIN. THE MANITOWOC ENGINEERING CO.
 WILL BE RESPONSIBLE FOR THE DESIGN AND CONSTRUCTION OF THE
 ROT. BED SUMP DRAIN.

SCALE	AS SHOWN
PROJECT	MANITOWOC ENGINEERING CO. OIL PIPING ASSEMBLY
DRAWING NO.	ROT. BED SUMP DRAIN
DATE	5-1-78
BY	MPR
CHECKED BY	
DATE	183569

PARTS MANUAL ALPHABETICAL INDEX
Group B - Upperworks Machinery

DESCRIPTION	PUBLICATION	REV	START DATE	END DATE	GROUP
Boom Hoist Chain Case	190331	I1	12/09/77	11/01/84	B0212
Boom Hoist Control, Independent	93059	D1	08/11/69	06/13/80	B0204
Boom Hoist Control, Independent	93560	K1	12/27/70	08/07/85	B0204
Boom Hoist Control, Independent	190222	G1	11/03/75	03/02/84	B0204
Boom Hoist Hydraulic Motor	48640	L1	02/07/69	06/22/84	B0205
Boom Hoist Hydraulic Piping	65649	H1	11/29/78	03/05/82	B0209
Boom Hoist Hydraulic Piping	183359	-	10/12/77	03/22/91	B0209
Boom Hoist Hydraulic Pump Drive	48639	Q1	02/05/69	07/28/86	B0206
Boom Hoist Hydraulic Pump Drive	92745	A1	01/27/69	08/14/69	B0206
Boom Hoist, Independent	50919	AB1	08/17/70	12/19/85	B0202
Boom Hoist, Independent	97060	A1	03/24/78	03/07/84	B0202
Countershaft, Drum Drive	181195	K1	04/16/70	05/07/93	B0501
Drum Brake - Front	49428	E1	07/23/71	04/01/77	B0603
Drum Rotation Indicator - Front and Rear	65588	G1	03/02/77	09/02/86	B0607
Drum Rotation Indicator - Front and Rear	65588	B2	03/02/77	09/02/86	B0607
Drum Rotation Indicator - Front and Rear	65588	A3	03/02/77	09/02/86	B0607
Drum Rotation Indicator - Front and Rear	95451	-	03/13/75	03/03/77	B0607
Drum Shaft - Front	22596	A	09/03/52	10/08/81	B0601
Drum Shaft - Front	48333	H1	05/17/68	09/04/85	B0601
Drum Shaft - Front	48333	D2	05/17/68	09/04/85	B0601
Foot Pedal Lock	182781	B1	06/07/76	02/18/81	B1203
Foot Pedal Lock	93831	A1	07/20/71		B1203
Foot Pedals	182711	D1	02/15/77	05/18/79	B1202
Independent Swing Control	190692	D1	01/27/78	04/20/84	B0403
Independent Swing Control	190692	C2	01/27/78	04/20/84	B0403
Independent Swing Outboard Bearing	91083	C1	09/17/65	10/30/69	B0406
Independent Swing Shaft, Horizontal	190062	I1	01/02/75	11/04/93	B0401
Independent Swing Shaft, Horizontal	190062	D2	01/02/75	11/04/93	B0401
Independent Swing Shaft, Vertical	180788	D1	11/17/69	12/21/71	B0402
Lubrication Pump & Piping (Sump)	183132	H1	05/20/77	05/16/85	B1401
Lubrication Pump & Piping (Sump)	190463	J1	05/20/77	01/07/91	B1401
Main Drive Shaft	190628	D1	05/10/78	11/13/89	B1301
Main Drive Shaft	190628	C2	03/10/79	11/13/89	B1301
Main Drive Shaft Control	32340	D1	08/15/60	03/02/84	B1302
Rear or Rear Auxiliary Drum	50986	-	06/09/71	01/11/02	B0801
Rear or Rear Auxiliary Drum Brake	65451	C1	02/05/76	05/24/84	B0803
Slide Pinion Shaft (Intermediate Travel or Swing Shaft)	92737	F1	01/23/69	03/02/84	B1601
Swing Brake Control	181484	D1	07/23/71	11/26/90	B1802
Swing Lock Control	180760	I1	09/28/70	10/29/90	B1701
Swing Shaft	182814	C1	04/28/76	02/18/85	B1901
Travel Drive Piping	182251	-	04/08/74	06/17/85	B2004
Travel Drive Transmission	94772	C	06/20/73	04/16/84	B2002



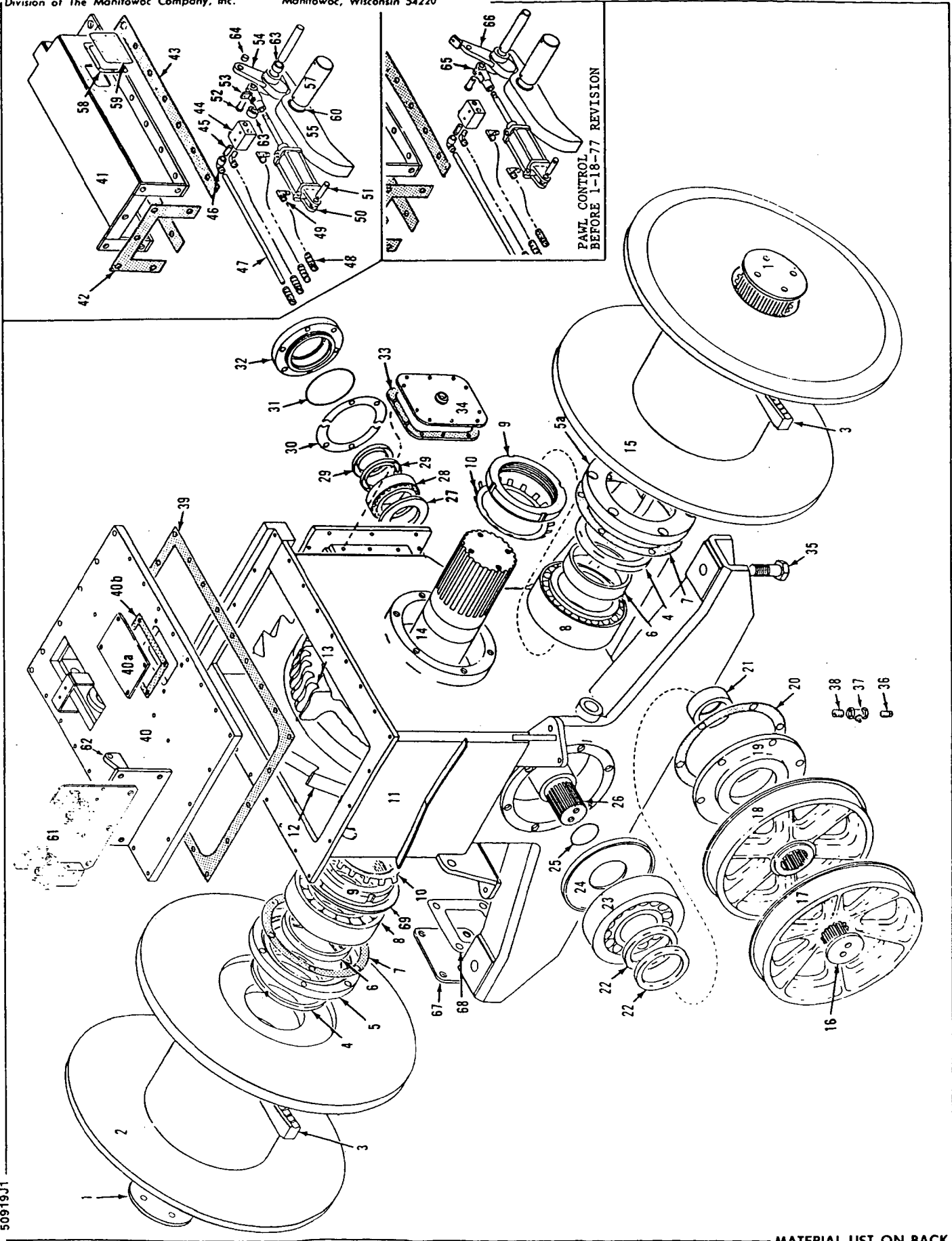
MATERIAL LIST ON BACK

DRUM CLUTCH

4833482

48333-C2 Back

MASTER



50919J1

MATERIAL LIST ON BACK

INDEPENDENT BOOM HOIST

65451-1 Cont.	REV. C	MODEL 4100W
---------------	-----------	----------------

REAR DRUM BRAKE (MANUAL)
(SPLIT DRUM - SINGLE BRAKES)

REF. NO.	PART NUMBER	QUANTITY REQUIRED	DESCRIPTION OF PART	VENDORS PART NO.
52	143561	1	SPACER	
53	140990	1	PLATE, End w/capscrews and lockwashers	
54	396459	4	PIN, Dowel Roll (1/2" x 1 1/4")	
55	140991	1	PLATE, End w/capscrews and lockwashers	
56	143557	1	ROD, Reach w/jam nuts	
57	225556	4	RACE, Inner	
58	93936	1	SUPPORT, Shaft w/capscrews and lockwashers	
59	140009	1	BUSHING	
60	140014	1	PAD, Mounting (Pad is part of "A" frame after 5-25-84 revision)	
61	3412	1	HOSE, Flex (Grease Line)	
62	70656	3	SUPPORT, Grease Line	
63	429363	4	CONNECTOR, Straight (1/4" x 1/8")	
64	696210	2	TUBE, Copper (1/4" - Specify Length)	
65	429000	2	FITTING, Grease (1/8")	
66	429071	1	ELBOW	
67	181838	1	BRACKET w/capscrews, lockwashers and gr. fitting	
54	396459	3	PIN, Dowel Roll (1/2" x 1 1/4")	
68	141031	1	BUSHING	
69	141032	1 set	SHIM (1/16" set)	
70	141033	1	ROD, Mounting	
72	143563	1	ROD, Reach w/jam nuts	
73	143554	2	END, Rod (See Note 1)	
74	143548	2	PIN w/cotter pins (See Note 1)	
<p><u>NOTE 1:</u> Machines w/spring set, air released brakes, delete Ref. Nos. 73 and 74 above and use the following:</p>				
73	143844	2	END, Rod (Slotted)	
74	143889	2	PIN w/cotter pin	
	709702	2	WASHER, Flat (1/2")	
<p><u>PRIOR TO DESIGN CHANGE OF MAY 18, 1979</u> (DELETE REF. NOS. 31, 36 and 1 of REF. NO. 33)</p>				
31A	93816	1	LEVER w/key #498812 (1/4" x 1 1/4" x 1 7/8")	
33A	139793	1	HUB	
36A	139791	1	LEVER w/capscrew, hex nut and lockwasher	
			0-147	
				REV. C 65451 - 1

PLEASE GIVE MACHINE S/N W/ORDER

Run as Front

MASTER

65451 C1 Cont.

65649-1 Cont.	REV. H	MODEL 4100W
---------------	-----------	----------------

BOOM HOIST HYDRAULIC PIPING
(SUNDSTRAND SYSTEM)

REF. NO.	PART NUMBER	QUANTITY REQUIRED	DESCRIPTION OF PART	VENDORS PART NO.
49	486636	1	HOSE, Flex (½" x 2'8" - .813 m)	
50	93059	1	SENDING UNIT, Charge Pressure	
51	543402	1	NIPPLE, Close (½")	
52	486647	1	HOSE, Flex (½" x 25'0" - 7.620 m)	
53	701037	1	SENDING UNIT, Temperature	
54	288756	1	BUSHING, Reducing (1" x ½")	
55	429731	1	ADAPTER	
56	679305	3	TEE, PIPE (1")	
57	406688	1	ELBOW, 45° (1")	
58	70103	1	HOSE, Flex (7'1" or 2.159 m)	
59	571705	1	PLUG, Pipe (1")	
60	288772	2	BUSHING, Reducing (2" x 1")	
61	429581	1	ADAPTER	
62	429232	1	ELBOW, 90° (5/8")	
20	596812	1	RING, "0"	
63	486194	1	HOSE, Flex (9'6" or 2.895 m)	
64	429555	1	ADAPTER	
65	70104	1	HOSE, Flex (6'6" or 1.981 m)	
66	543405	2	NIPPLE, Close (3/4")	
68	583149	1	PUMP, Hydraulic	
69	406955	1	ELBOW, 90° (3/4")	
70	355006	1	STEAMCOCK (3/4")	
71	288500	1	BUSHING, Reducing (3/4" x ½")	
72	429574	1	INSERT	
73	694245	1	TUBE, Preformed (1½")	
74	97117	1	BRACKET	
75	714647	1	VALVE, Shuttle	
76	140502	1	BRACKET	
77	703920	1	VALVE, Regulating	
78	460252	1	GAUGE, Pressure	
			NOTE 1: Machines w/aux. pump device on transmission case, delete 2 of Ref. Nos. 21, 22, 23 and add:	
23	486192	2	HOSE, Flex (1" x 4'2" - 1.270 m)	
22	429950	2	FLANGE ASSEMBLY w/bolts and lockwashers	
	596693	2	RING, "0"	
			NOTE 2: After change of Jan. 5, 1981, the following is used:	
14	427170	1	FILTER (Single cartridge #427171)	
			NOTE 3: After change of Apr. 22, 1981, the following is used:	
14	427173	1	FILTER (Cartridge #427171)	
			NOTE 4: After change of Mar. 5, 1982, Items 25, 26, 27 and 28 are replaced by Tube Clamp Assm. 160385.	
			0-328, 0-63, 0-117B (Ref. #93059, 94772, 183359)	
			REV. H	65649-1

Run as Front

MASTER

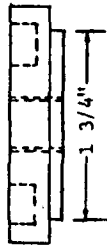
65649-H1 Cont'd.

PLEASE GIVE MACHINE S/N W/ORDER

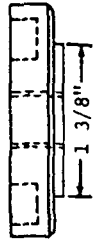
MANITOWOC ENGINEERING CO.

A Division of The Manitowoc Company, Inc.

Manitowoc, Wisconsin

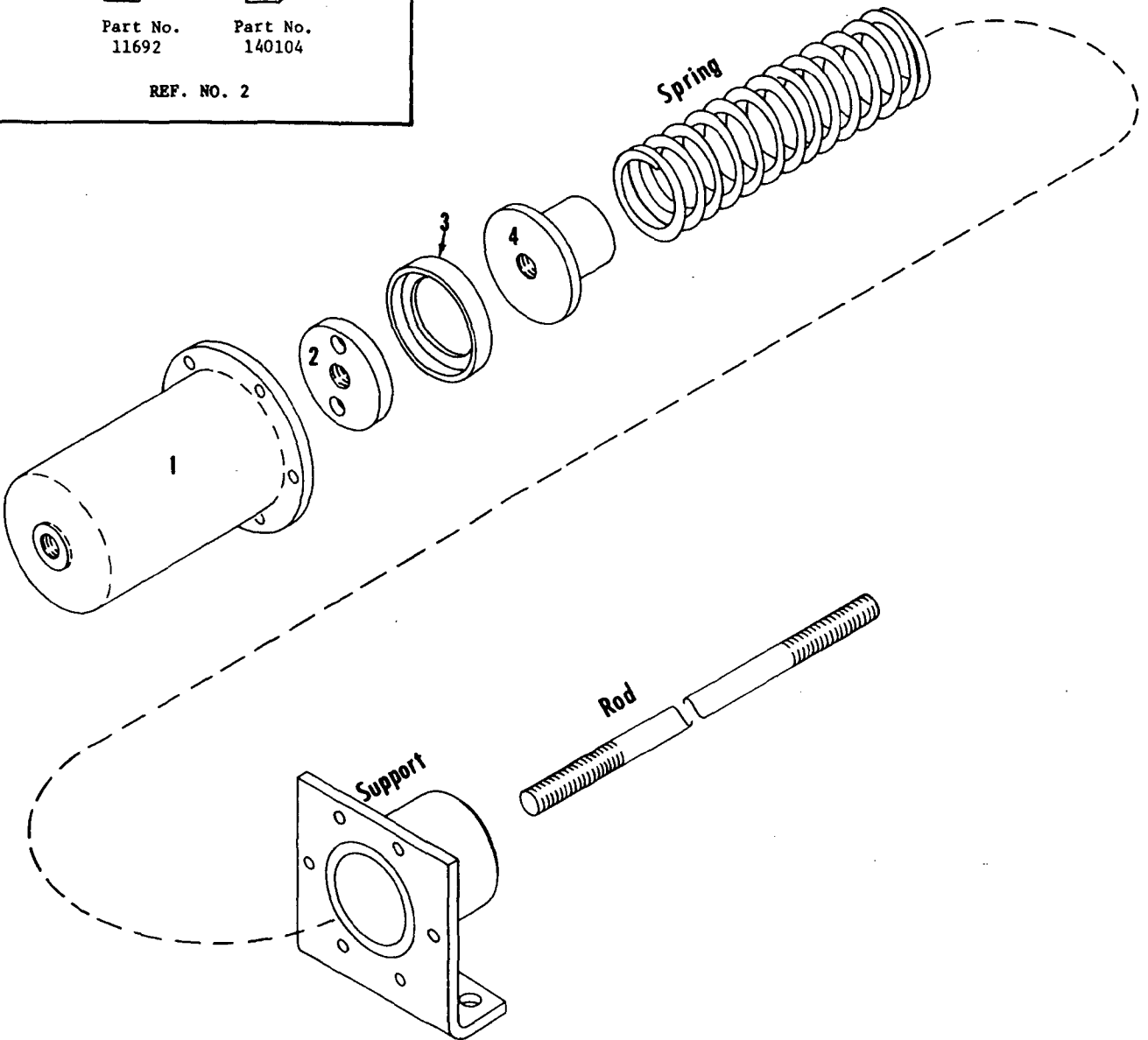


Part No.
11692



Part No.
140104

REF. NO. 2



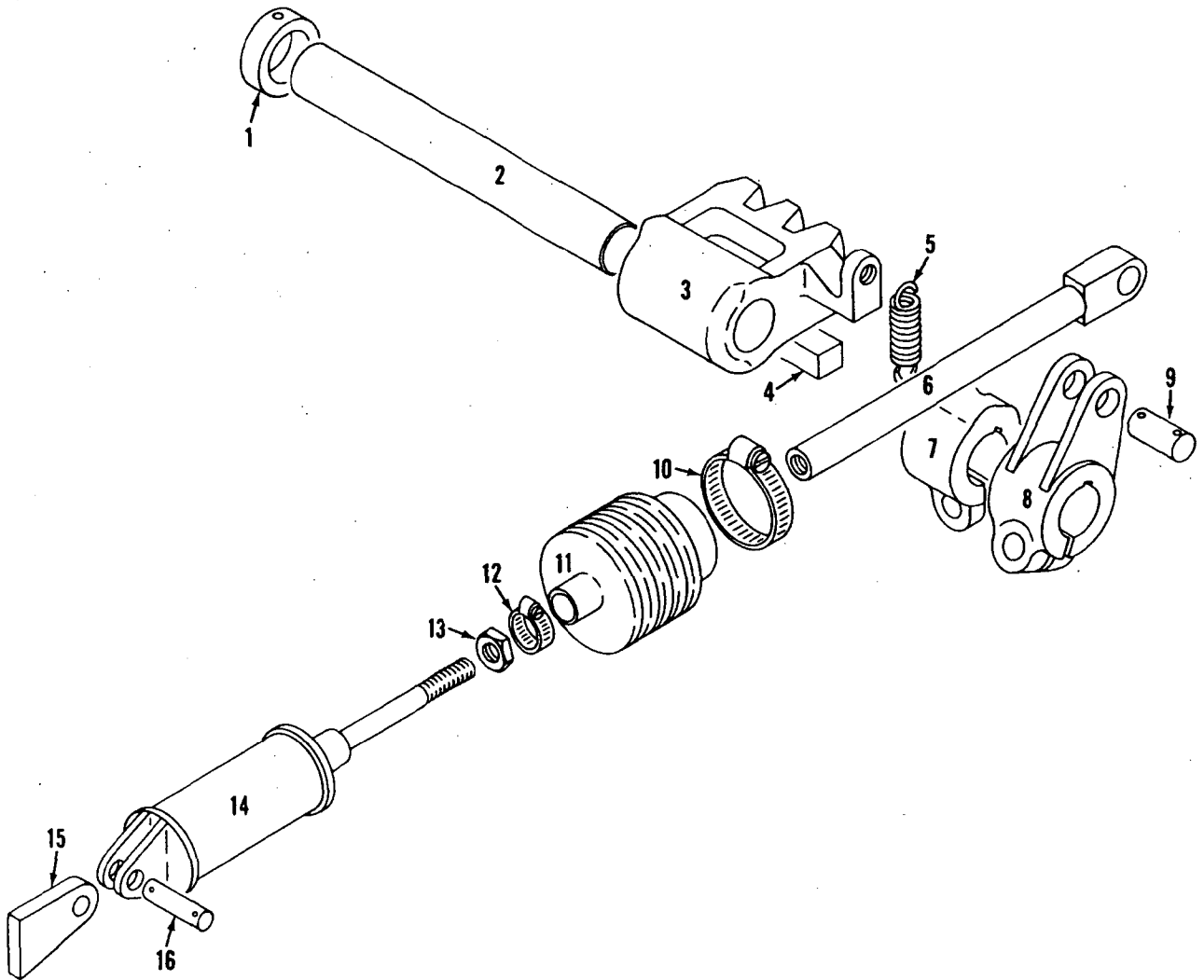
9356081

MATERIAL LIST ON BACK

AIR CYLINDER

MASTER

MASTER



180760C1

MATERIAL LIST ON BACK

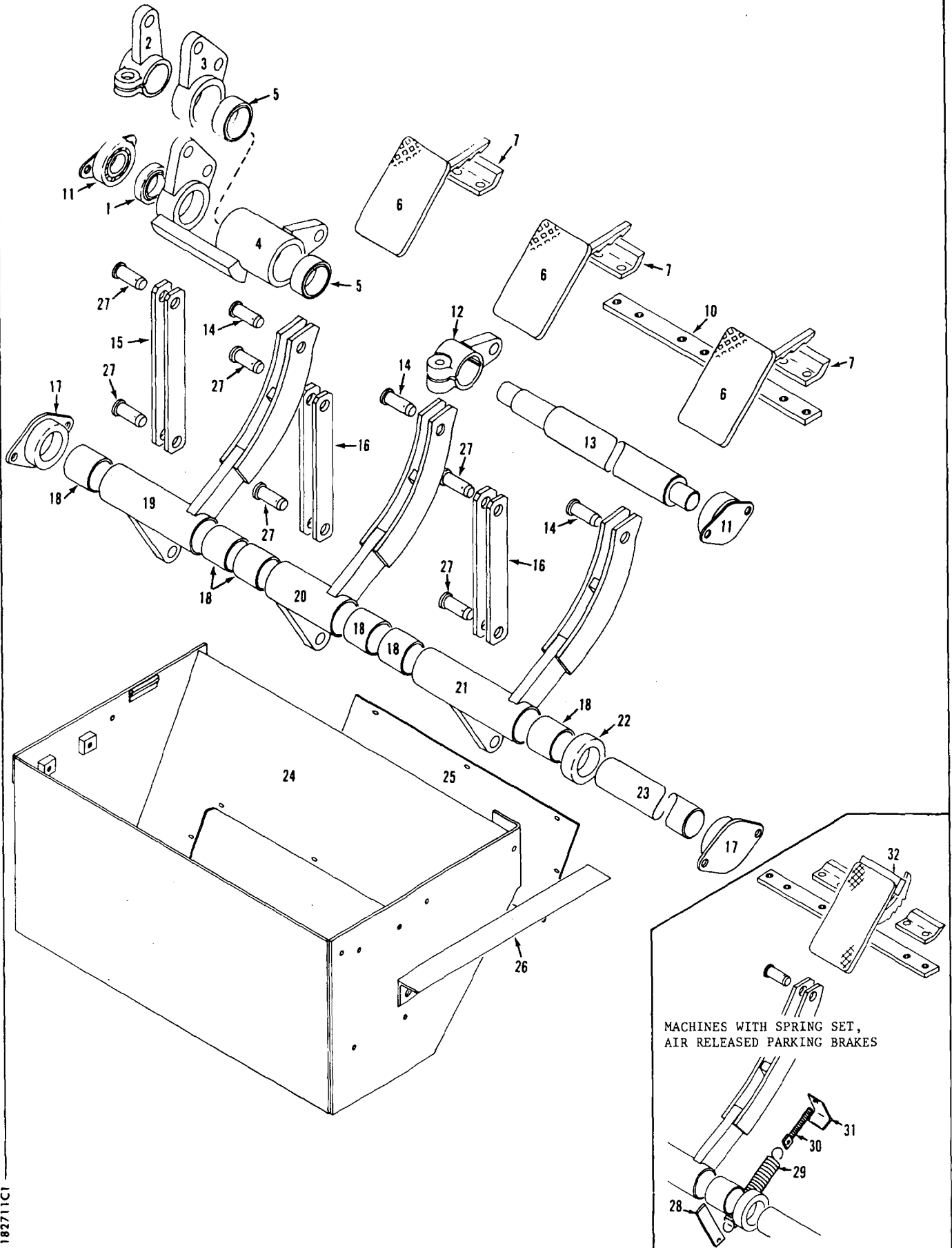
SWING LOCK CONTROL

MANITOWOC ENGINEERING CO.

A Division of The Manitowoc Company, Inc.

Manitowoc, Wisconsin

MASTER



MACHINES WITH SPRING SET,
AIR RELEASED PARKING BRAKES

182711C1

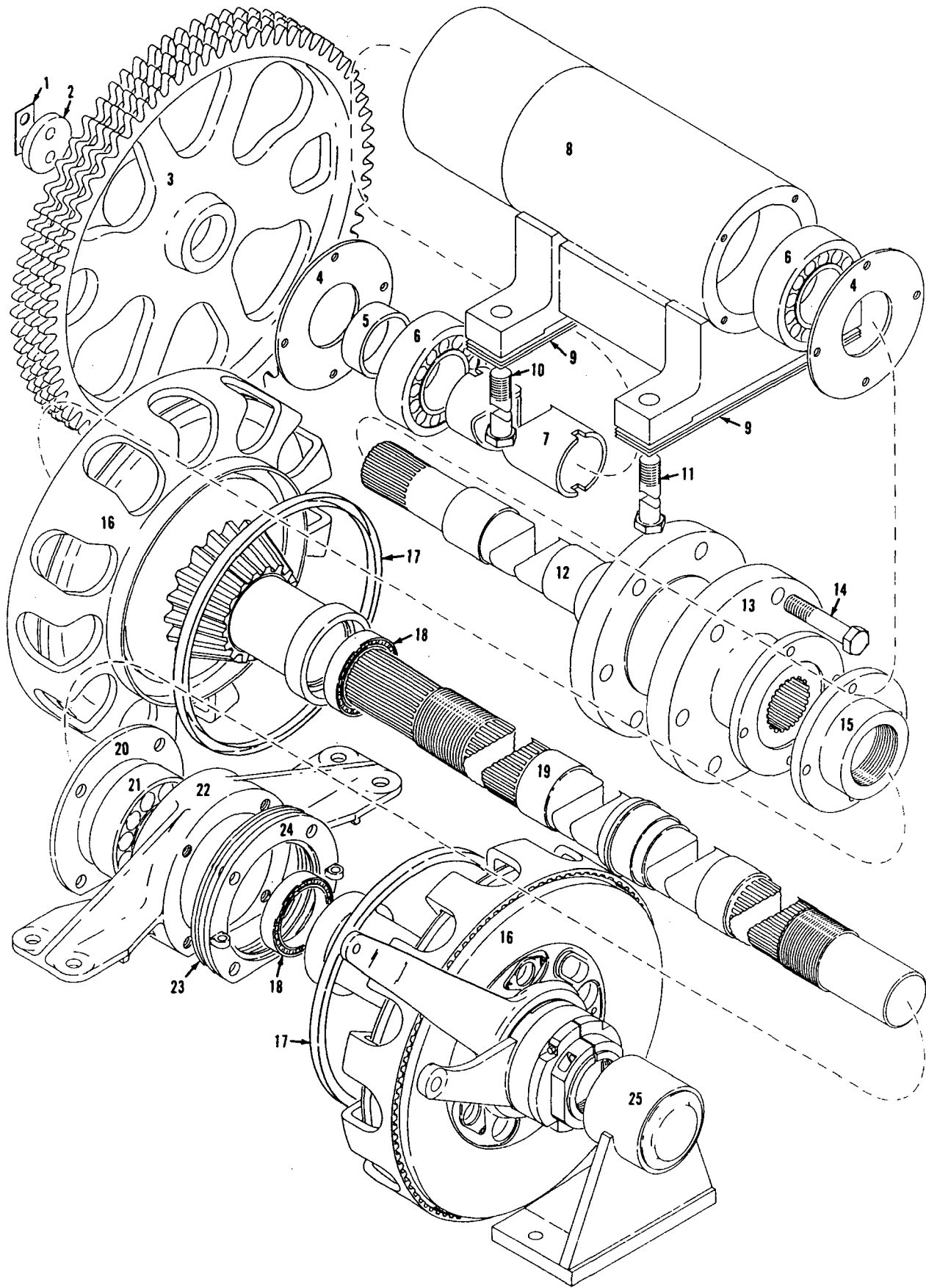
MATERIAL LIST ON BACK

FOOT PEDALS

MANITOWOC ENGINEERING CO.

A Division of The Manitowoc Company, Inc.

Manitowoc, Wisconsin



190062A1

MATERIAL LIST ON BACK

Independent Swing Horiz. Drive Shaft

190463-1 Cont	REV. J	MODEL 4100W
---------------	--------	-------------

LUBRICATION OIL PIPING
(SEE NOTES 1, 4 AND 6)

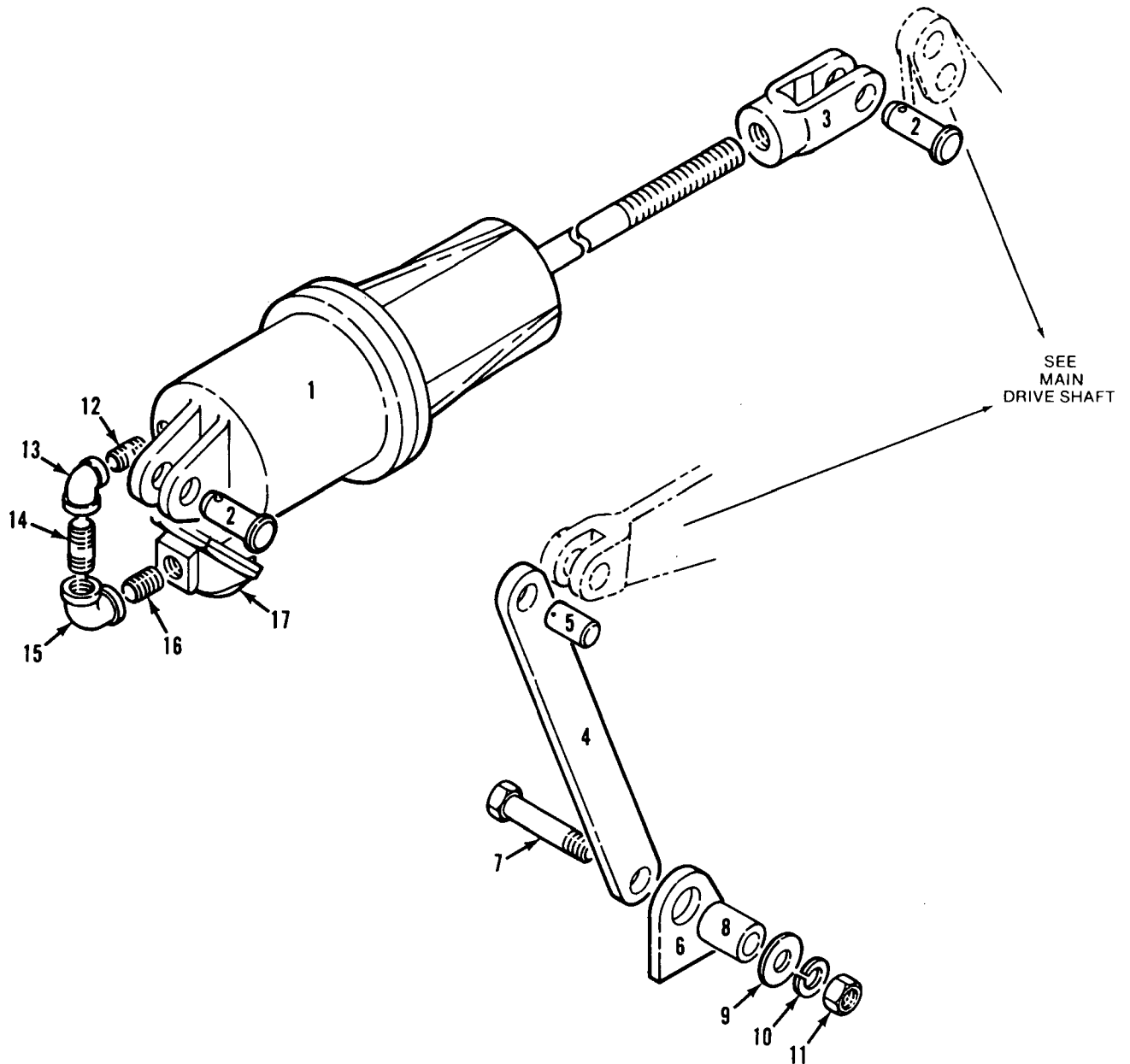
REF. NO.	PART NUMBER	QUANTITY REQUIRED	DESCRIPTION OF PART	VENDORS PART NO.		
46	486065	2	HOSE (2-1/4" I.D. - specify 6" long) (See Note 6)			
47	698494	1	TUBING (2-1/4" O.D. x 3'7-1/2" long) (See Note 6)			
48	71911	4	CONNECTION			
49	345338	4	CLAMP, Hose (No. 28, 1-5/16" - 2-1/4")			
50	486067	2	HOSE, Curved 90° (1-1/4" I.D.)			
51	377209	1	COUPLING (1-1/2")			
52	543423	1	NIPPLE (1-1/2" x 4-1/2")			
53	406959	2	ELBOW (1-1/2")			
54	543436	1	NIPPLE (1-1/2" x 1'1-1/8")			
55	543541	1	NIPPLE (1-1/2" x 3")			
56	543444	1	NIPPLE (1/2" x 1-1/2")			
57	543498	1	NIPPLE (1/2" x 7") (See Note 8)			
58	543405	1	NIPPLE, Close (3/4")			
59	70188	1	HOSE, Flex (1/2" I.D. 9'4" or 2.8448m long) (See Note 6)			
60	667090	2	STRAP, Pipe (for 2" pipe) (See Note 6)			
61	543223	1	NIPPLE (2" x 9") (See Note 6)			
62	543908	1	NIPPLE (2" x 3-1/2") (See Notes 2 and 6)			
63	377216	1	COUPLING (2") (See Note 6)			
64	489442	1	INDICATOR, Flow			
65	288750	1	BUSHING (1/2" x 1/8") (See Note 8)			
66	460113	1	GAUGE, Pressure (See Note 8)			
	147694	1	SUPPORT, Gauge w/hex nuts, capscrews & lockwashers (not shown)			
			<p><u>NOTE 1:</u> For machines w/hydro-mechanical driven roof mounted third drum, see separate sheet for location of filter. (This first on S/N 41560, 41561, 41562 and 41563.)</p> <p><u>NOTE 2:</u> Standpipe in boom hoist housing lengthened 1/2" per design change of Jan. 4, 1979. Prior to this change Ref. 62 was 543909 (2" x 4").</p> <p><u>NOTE 3:</u> Installation prior to change of Oct. 11, 1979. Delete 2 of Ref. 45.</p>			
37A	429652	2	UNION, Swivel Adapter (2")			
38A	486293	1	HOSE, Flex (2" x 4'5" - 1.346m)			
			<p><u>NOTE 4:</u> For machine w/boom hoist mounted in counterweight, delete Ref. Nos. 42, 43, 44, 47, 61, and 63, rear Ref. No. 46 w/2 of Ref. 45. Install Ref. 62 in remaining Ref. 46 w/Ref. 45 and plug w/pipe cap 304230 (2"). Disconnect Ref. 9 from Ref. 3 at boom hoist and plug Ref. 9 w/pipe plug 571703 (1/2").</p> <p><u>NOTE 5:</u> Filter bracket on machines after 6/11/81 revision delete Ref. No. 7 and add the following:</p>			
67	147694	1	BRACKET, Filter w/capscrews, hex nuts and lockwashers			
68	139228	1	PLATE, Instruction w/drive screws			
			0-147			
				<table border="1"> <tr> <td>REV. J</td> <td>190463-1 Cont.</td> </tr> </table>	REV. J	190463-1 Cont.
REV. J	190463-1 Cont.					

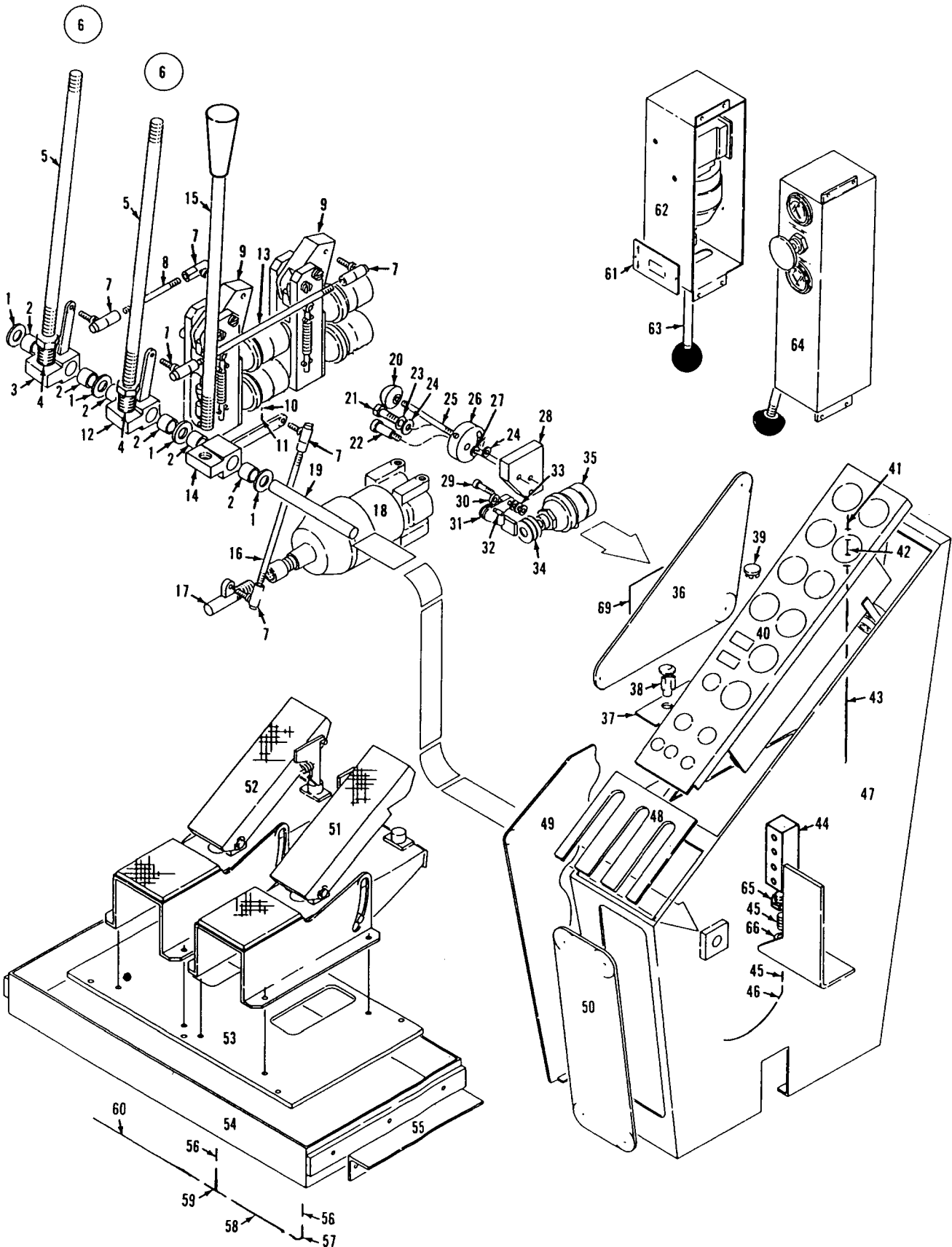
PLEASE GIVE MACHINE S/N W/ORDER

CPT

Run as a Front

130700 JI 0011. 1



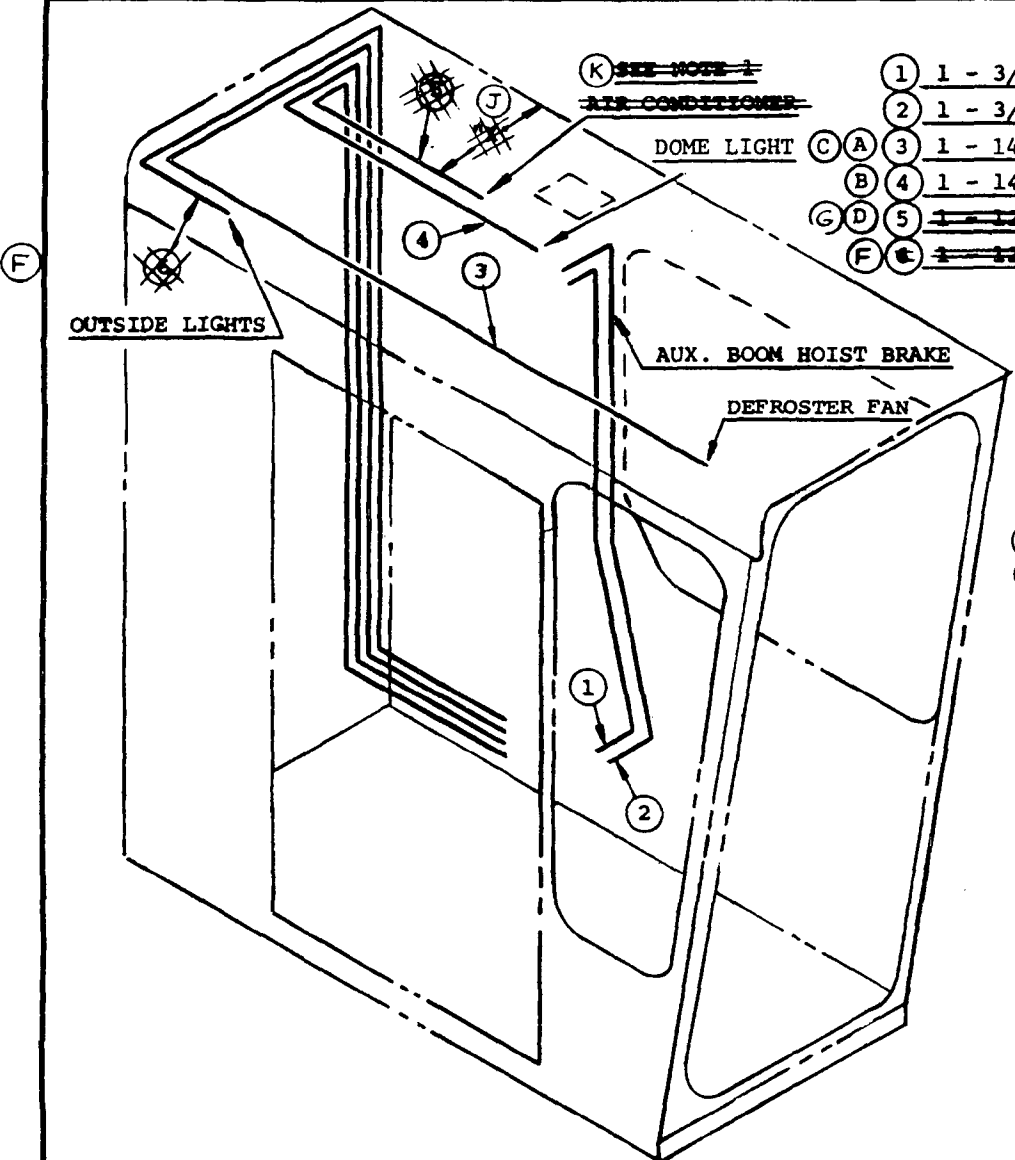


65515C1

MATERIAL LIST ON BACK

Right Control Console

DWG. NO. 141626	ELECT. & AIR LINE LOCATION	SCALE NONE	MANITOWOC ENGINEERING CO. MANITOWOC, WISCONSIN	DATE 6-20-73
CODE NO.	SUB-ASSEM (IN PILOT HOUSE WALLS)	DR. DS		REVISIONS
PATTERN NO.	MODEL 4100W, 4600-S4, 6000W, 3900, 36 FT. PLATFORM RINGER	CK. CWH	MATERIAL <i>CWH</i>	6-22-73 DS CORRECTED PRIOR TO MFG.
		APP.		6-17-74 JWK 5) & 6) ADDED.



	REQUIRED	CODE NO.
1	1 - 3/8" TUBING 8 FT. LG. - - - - -	486056
2	1 - 3/8" TUBING 8 FT. LG. - - - - -	486056
3	1 - 14-1 CONDUCTOR CABLE 25 FT. LG. - - -	371829
4	1 - 14-1 CONDUCTOR CABLE 25 FT. LG. - - -	371829
5	1 - 14-2 COND WIRE TYPE "E" 18 FT. LG. - - -	371811
6	1 - 14-3 COND WIRE TYPE "C" 18 FT. LG. - - -	371812

WIRE IDENTIFICATION NO.'s

- 31 DOME LIGHT
- 37 CIRCULATING FAN

- ~~(E) NOTE 1~~
- ~~(H) "X" = 2 1/2" APPROX FOR 4100W~~
- ~~"X" = 29" APPROX FOR 4600-S4, 6000W~~
- ~~"X" = 36 FT PLATFORM RINGER~~

DATE 6-20-73	
REVISIONS	
6-22-73 DS CORRECTED PRIOR TO MFG.	
6-17-74 JWK	5) & 6) ADDED.
12-12-75 J.C.S.	(A) (B) WAS 22'
3-4-76 CWH	C WAS 16-2 COND.
9-22-76 SCHULTZ	(D) Was 12-3 Tirex 371812.
3-16-77 SCHULTZ	(E) Added.
2-20-80 JCS	(F) DELETED
08-20-93 CPC	(G)(H)(J)(K) DELETED

ASSEMBLIES USED ON	
65183	
65386	
65401	
65430	
DWG. NO. 141626	

CLICK HERE TO **DOWNLOAD** THE COMPLETE MANUAL

- Thank you very much for reading the preview of the manual.
- You can download the complete manual from: www.heydownloads.com by clicking the link below



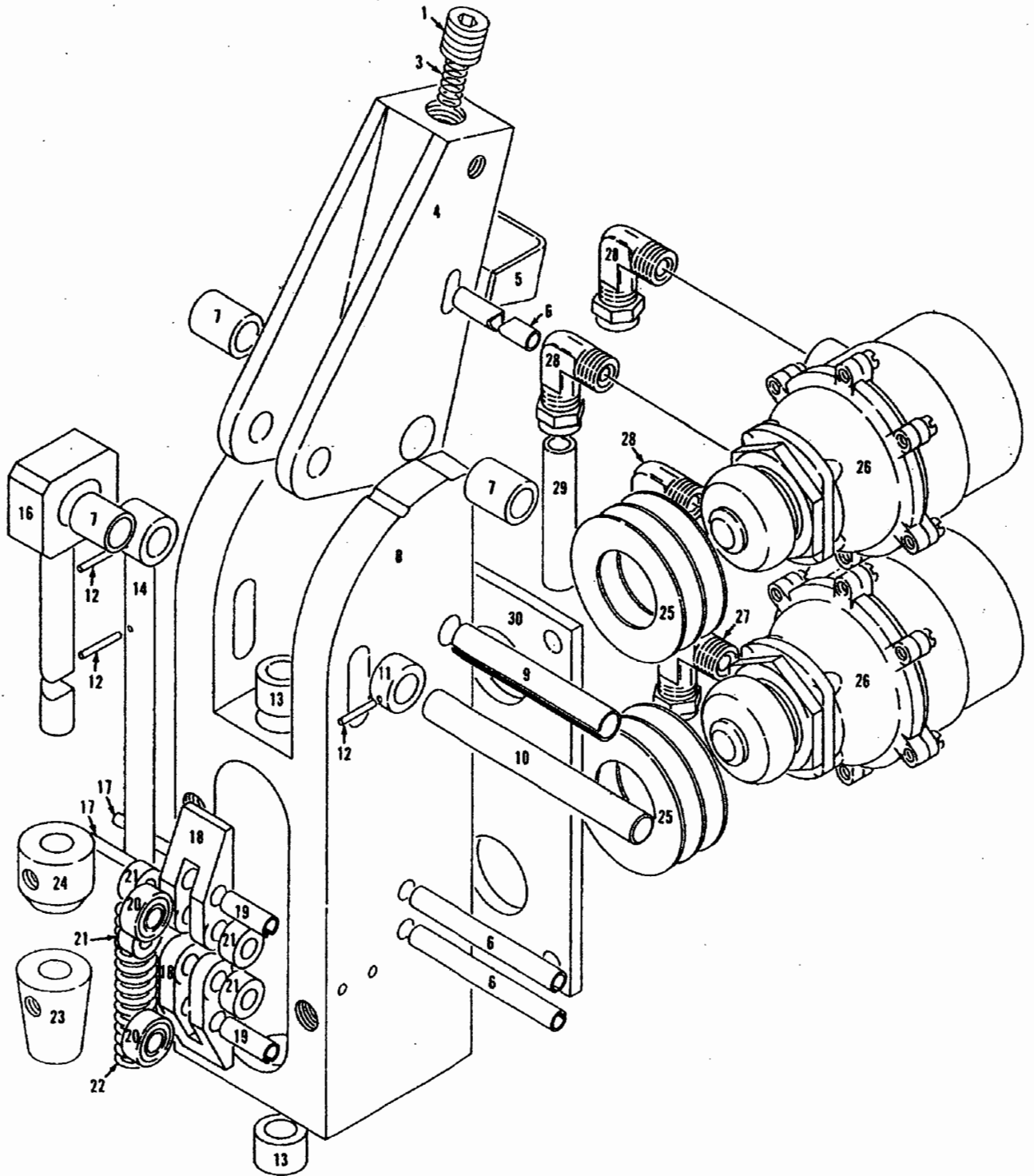
- Please note: If there is no response to CLICKING the link, please download this PDF first and then click on it.

CLICK HERE TO **DOWNLOAD** THE COMPLETE MANUAL

MANITOWOC ENGINEERING CO.

A Division of The Manitowoc Company, Inc.

Manitowoc, Wisconsin



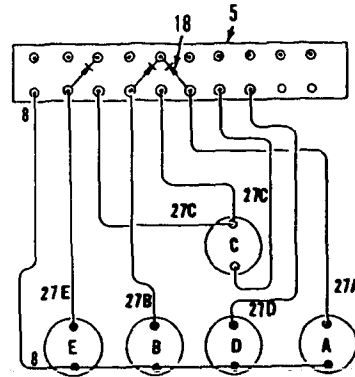
183210C1

MATERIAL LIST ON BACK

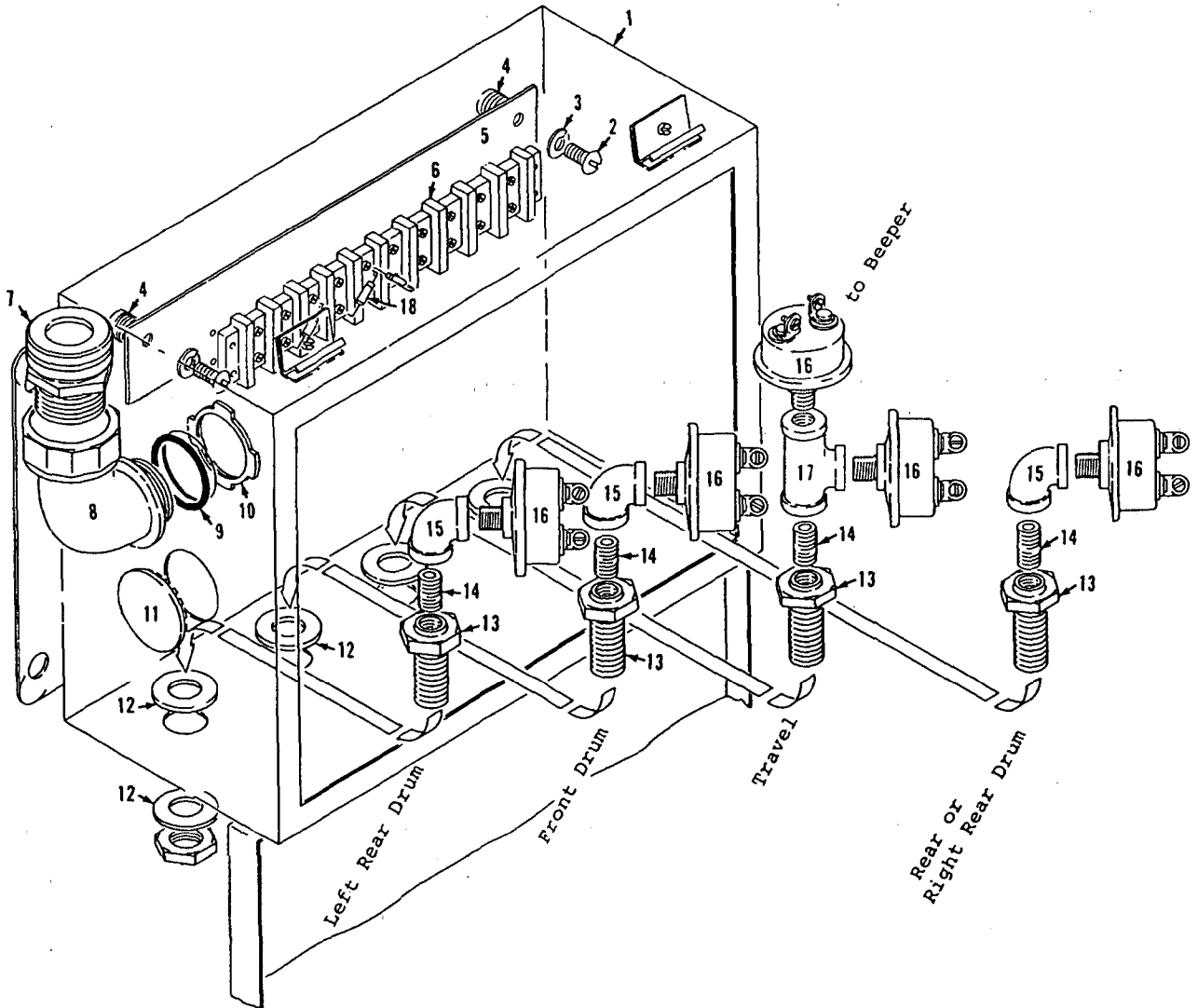
CONTROL VALVE

WIRE IDENTIFICATION NUMBER

- 8 Supply from Eng. Oil Pressure Switch
- 27A Rear or Right Rear Drum Ind. Light
- 27B Front Drum Ind. Light
- 27C Beeper
- 27D Travel Ind. Light
- 27E Left Rear Drum Ind. Light



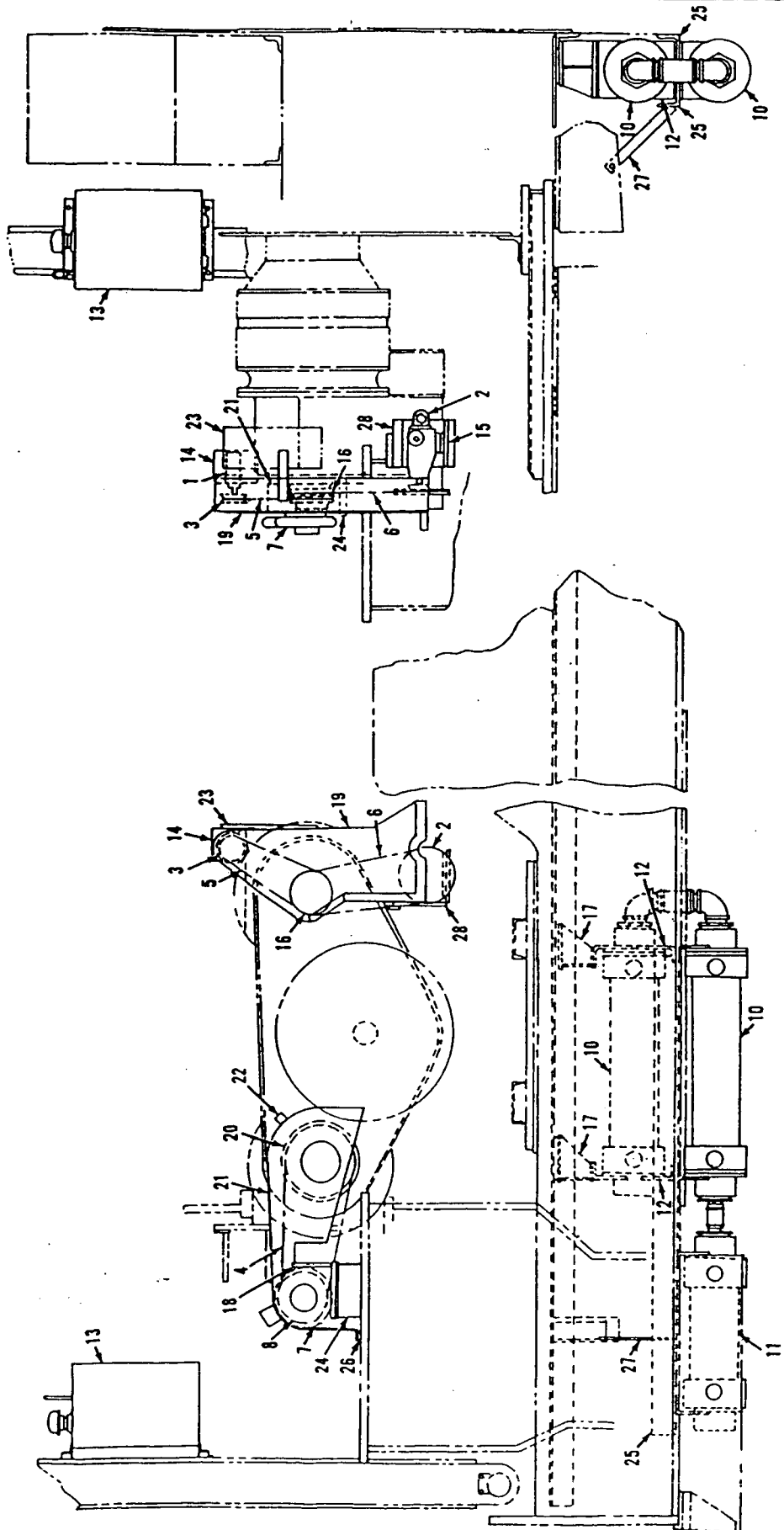
Wiring Diagram



190256A1

MATERIAL LIST ON BACK

Operating Indicators Sensor

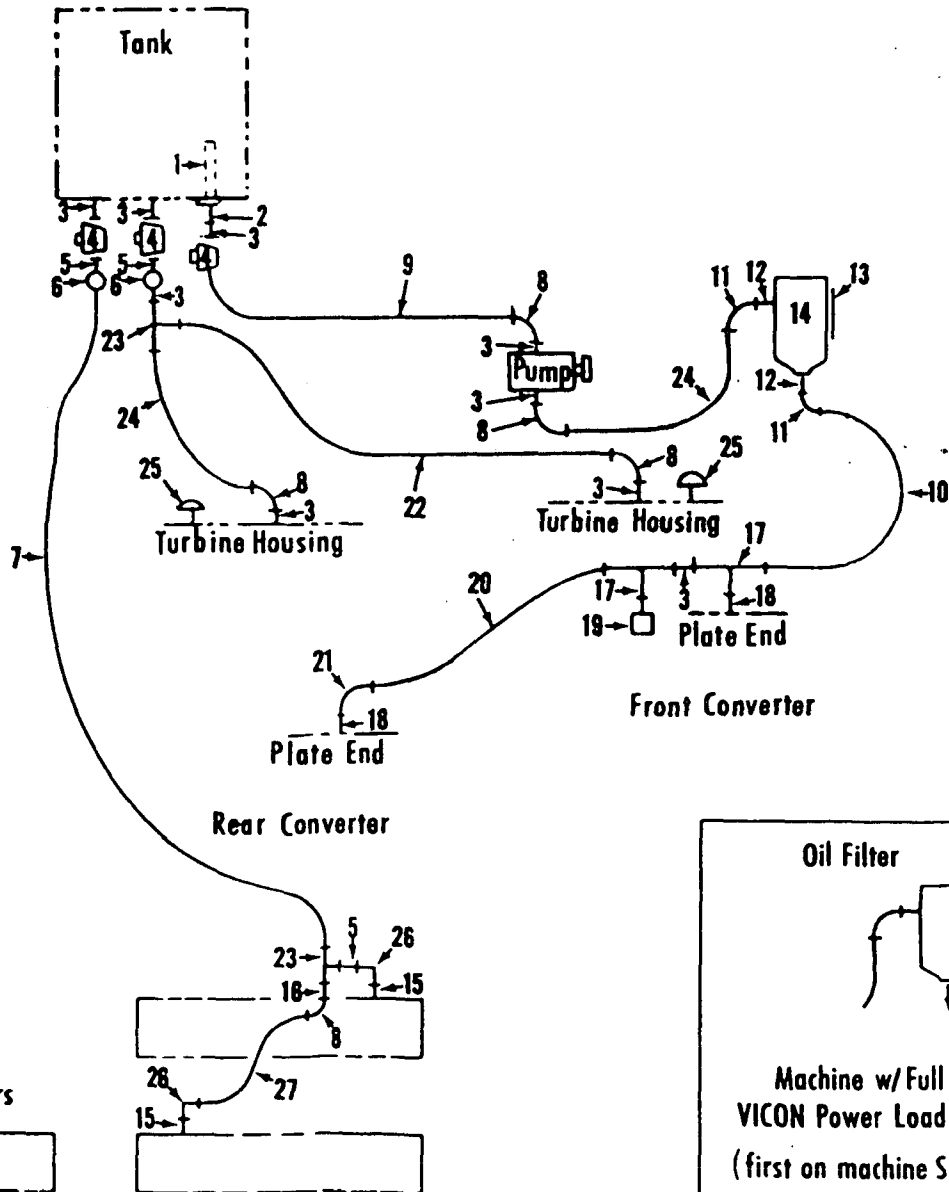


MATERIAL LIST ON BACK

CONVERTER ACCESSORY COMPONENTS

48738H

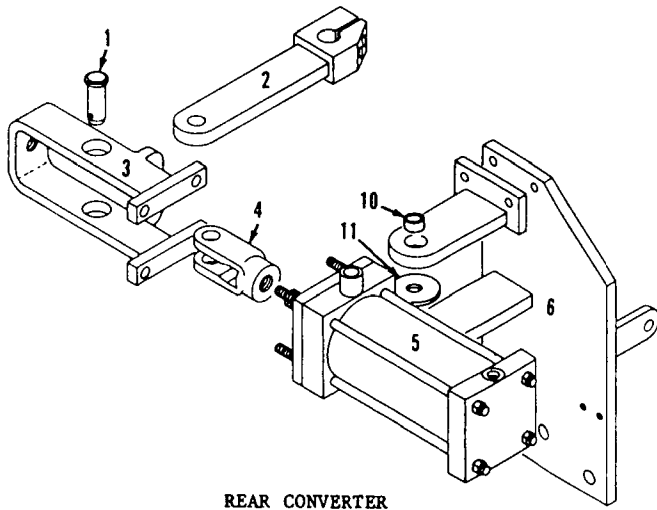
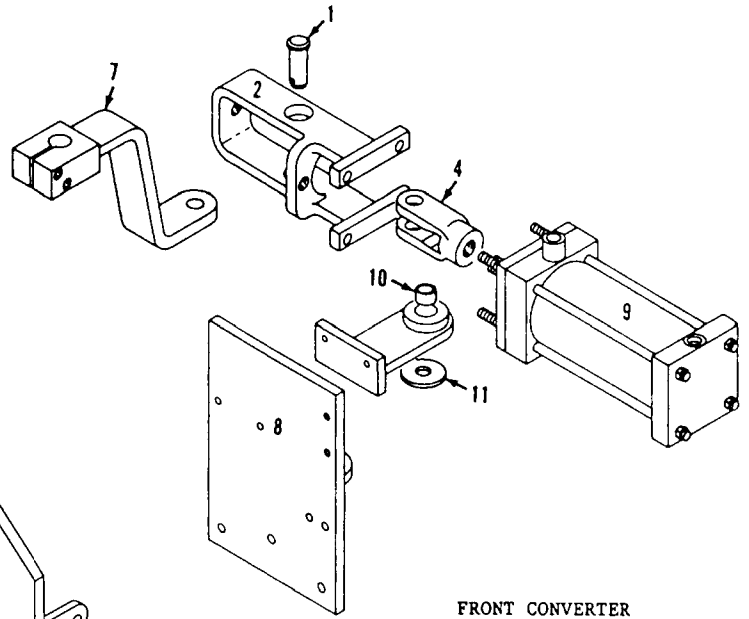
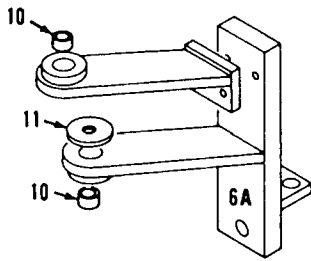
MASTER



48738

48738A4

MASTER



REAR CONVERTER

FRONT CONVERTER

18257381

MATERIAL LIST ON BACK

CONVERTER CONTROL

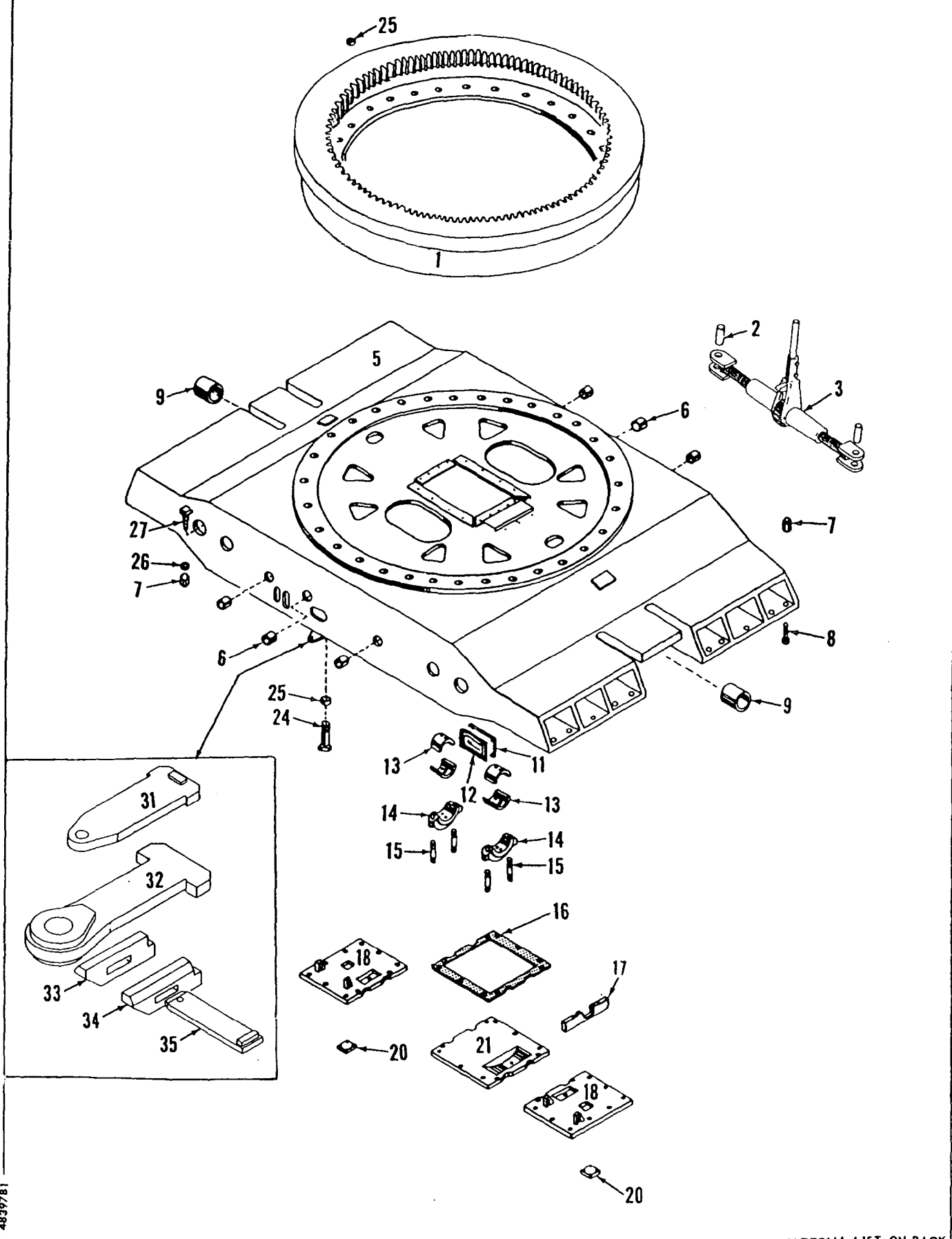
18257381

GROUP E - Lower Structure & Control

MANITOWOC ENGINEERING CO.

A Division of The Manitowoc Company, Inc.

Manitowoc, Wisconsin



4839781

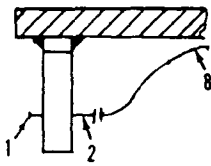
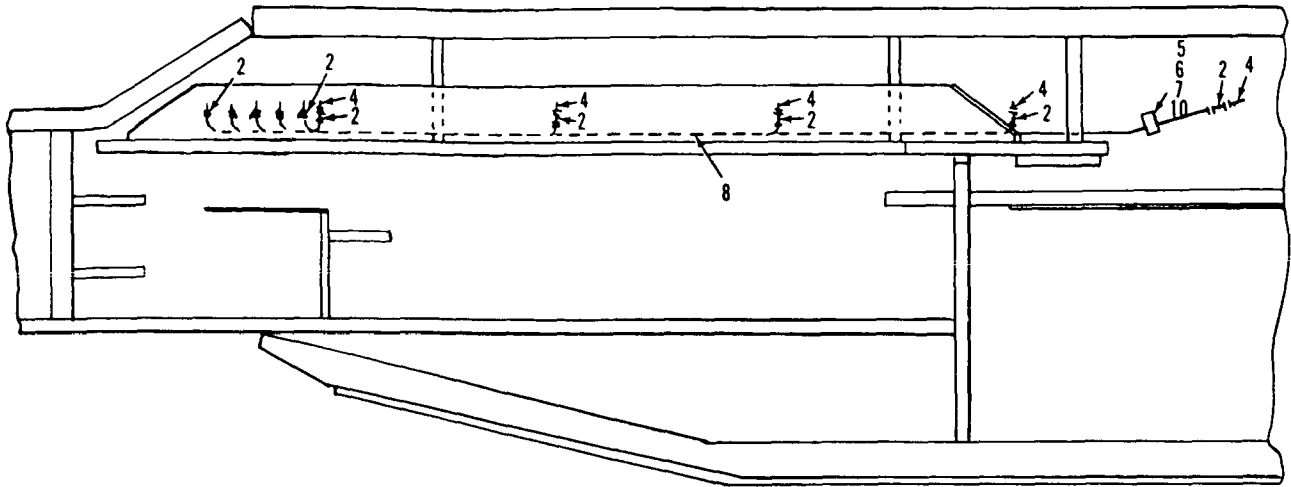
MATERIAL LIST ON BACK

CARBODY

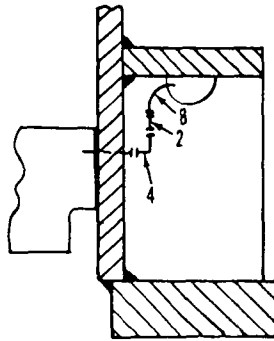
MANITOWOC ENGINEERING CO.

A Division of The Manitowoc Company, Inc.

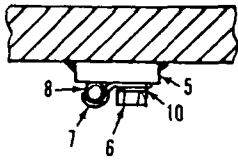
Manitowoc, Wisconsin



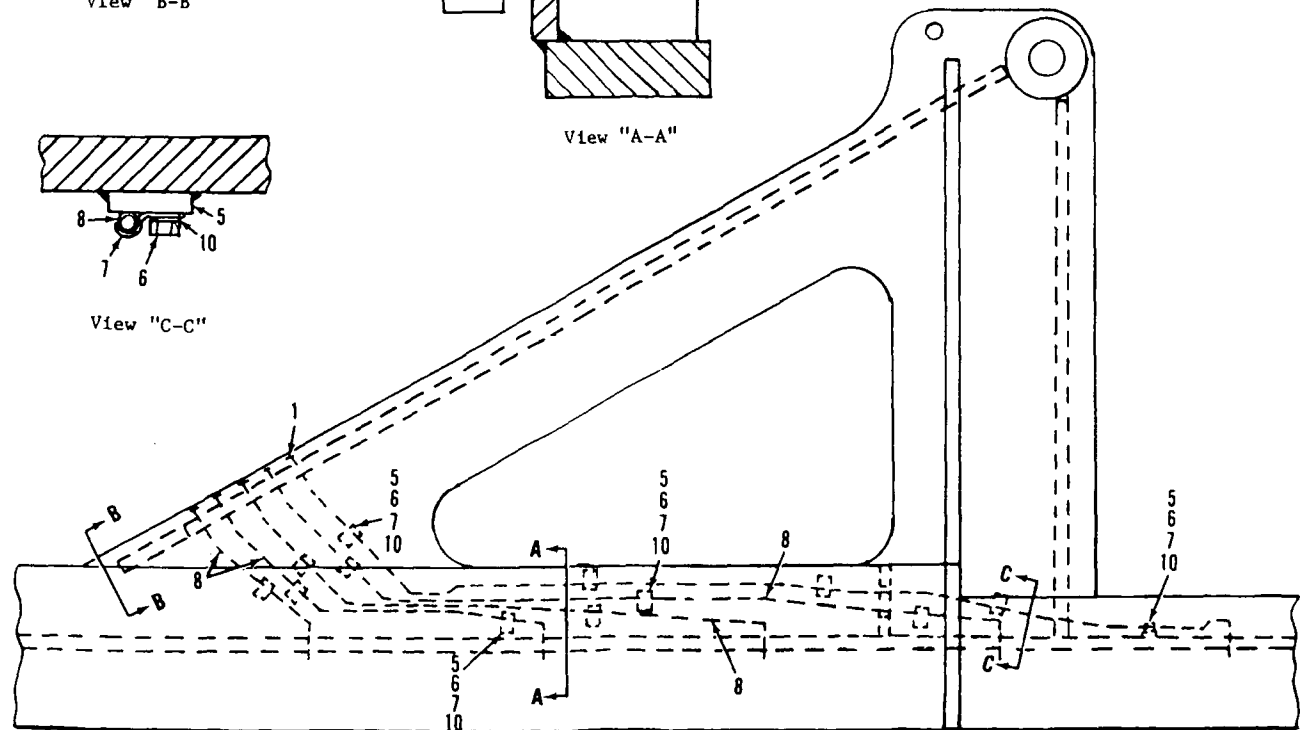
View "B-B"



View "A-A"



View "C-C"



MA

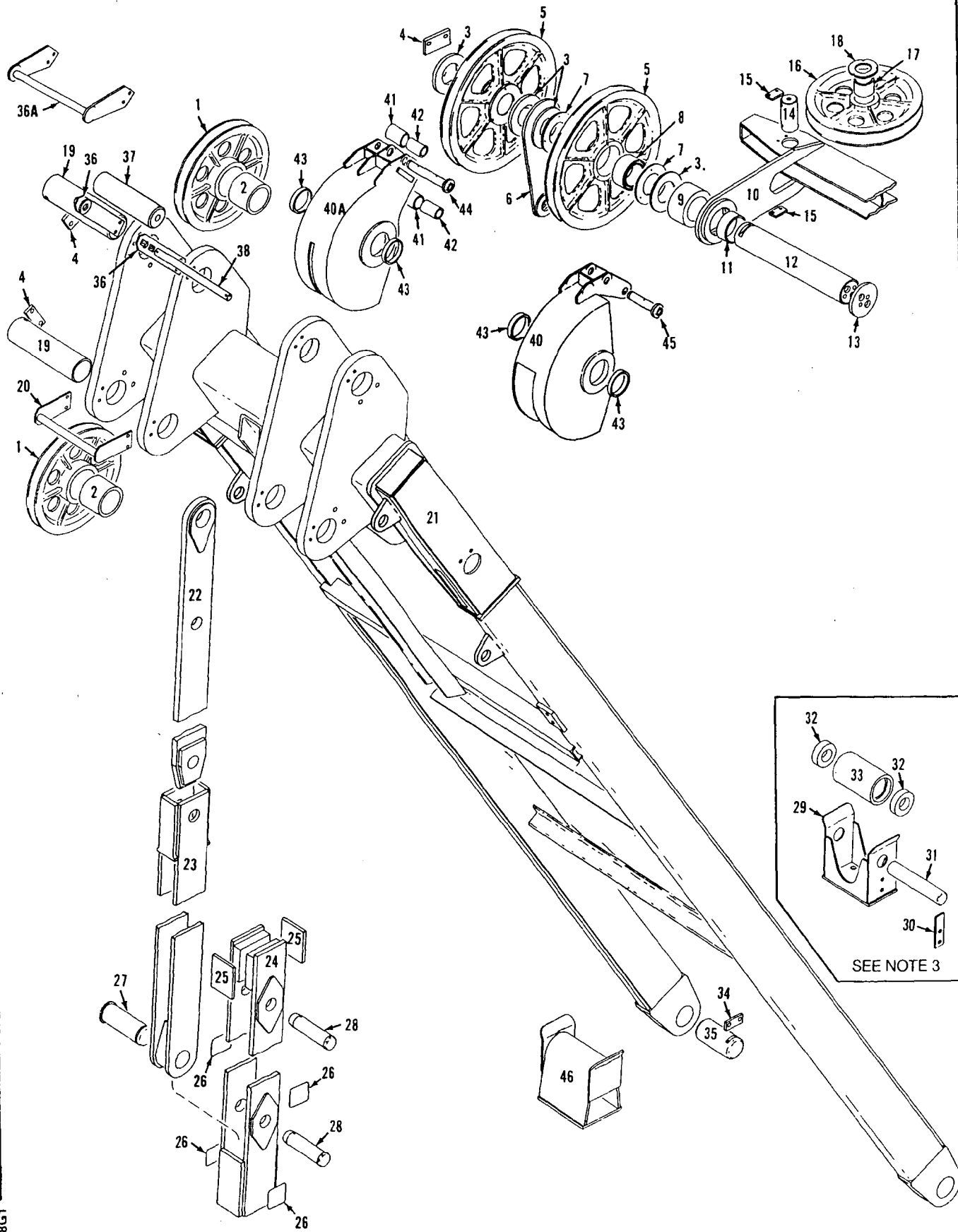
183564B1

MATERIAL LIST ON BACK

CRAWLER LUB.

PARTS MANUAL ALPHABETICAL INDEX
Group F - Attachments

DESCRIPTION	PUBLICATION	REV	START DATE	END DATE	GROUP
Backhitch & Gantry	49278	K1	05/05/75	09/16/91	F1001
Boom	190693	-	03/01/78	09/28/09	F0101
Boom Angle Indicator	22334	B1	01/07/52	09/20/85	F1101
Boom Point	91132	D	11/05/65	03/15/00	F0401
Boom Point	92174	E1	04/24/68	06/04/86	F0401
Boom Stop, Clutch Throw-Out	190192	-	08/27/75	08/16/79	F0201
Boom Stop, Mechanical	48555	E1	11/26/68	11/12/85	F0202
Equalizer/Pull-Out	181055	-	12/12/69	01/25/08	F0601
Gantry Lifting Device	180590	K1	04/23/69	01/18/91	F1002
Guard Rollers On "A" Frame	49654	B1	08/04/72	09/11/72	F0901
Hook & Weight Ball	95111	C1	04/05/74	01/12/96	F1401
Jib	43730	-	10/07/65	02/25/98	F1301
Jib	78169	C1	12/30/66	08/02/84	F1301
Jib Backstay	48659	D1	04/22/69	09/18/84	F1302
Jib Rope Guide/Roller	76643	E1	06/20/61	01/21/98	F1303
Lower Block	182544	A1	06/19/75		F1501
Lower Block	183879	-	12/19/78	03/12/80	F1501
Lower Block	97486	A1	06/20/68	12/15/78	F1501
Wire Rope Guide	92671	G1	01/20/69	09/11/80	F0701
Wire Rope Guide	93972	E1	10/25/71	07/15/82	F0701
Wire Rope Roller Guide	77090	-	09/15/65	01/21/98	F0801
Wire Rope Roller Guide	77090	C1			F0801

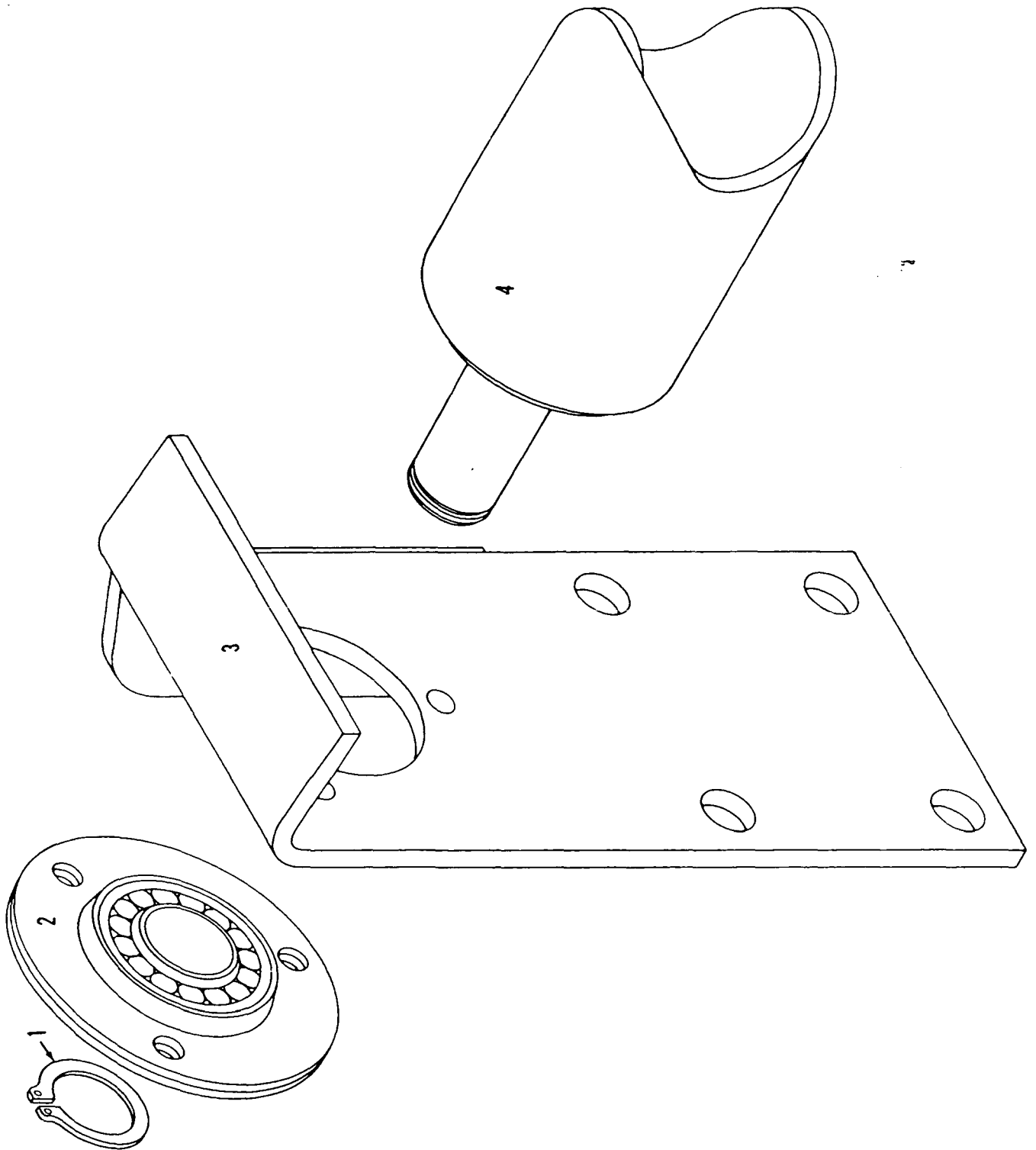


49278G1

MATERIAL LIST ON BACK

GANTRY AND BACKHITCH

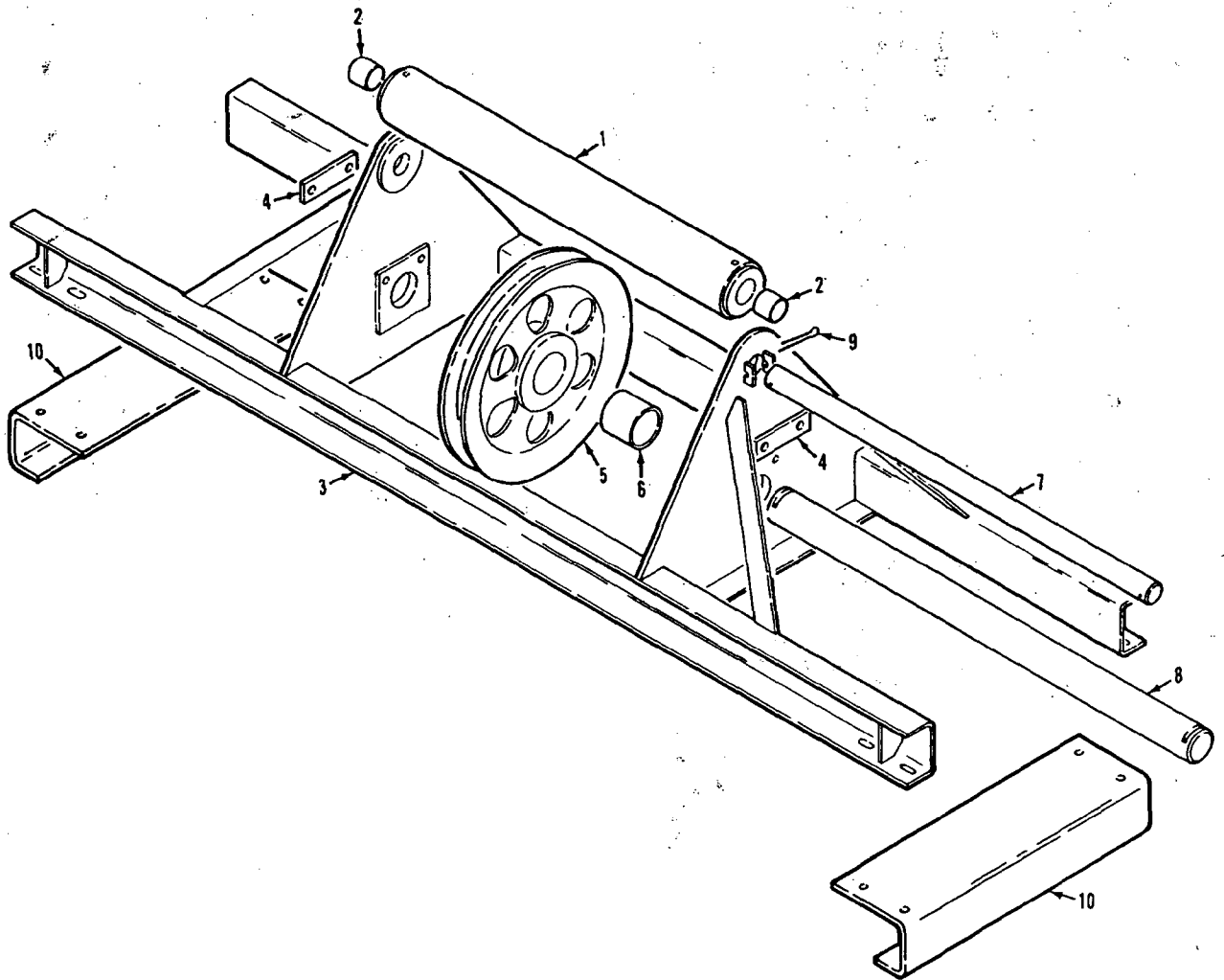
MASTER



77728A1

MATERIAL LIST ON BACK

CABLE ROLLER GUIDE ASSEMBLY



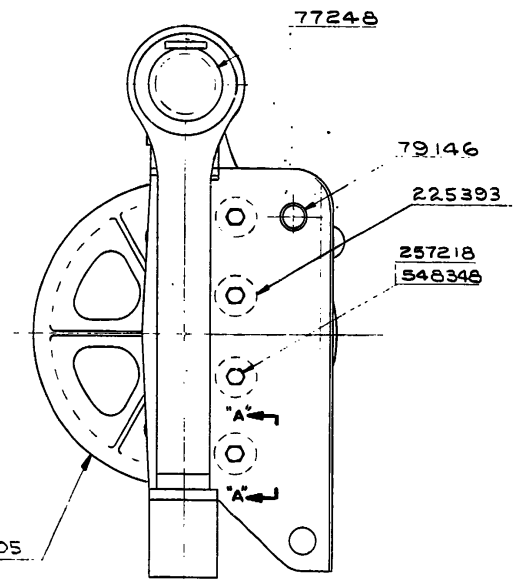
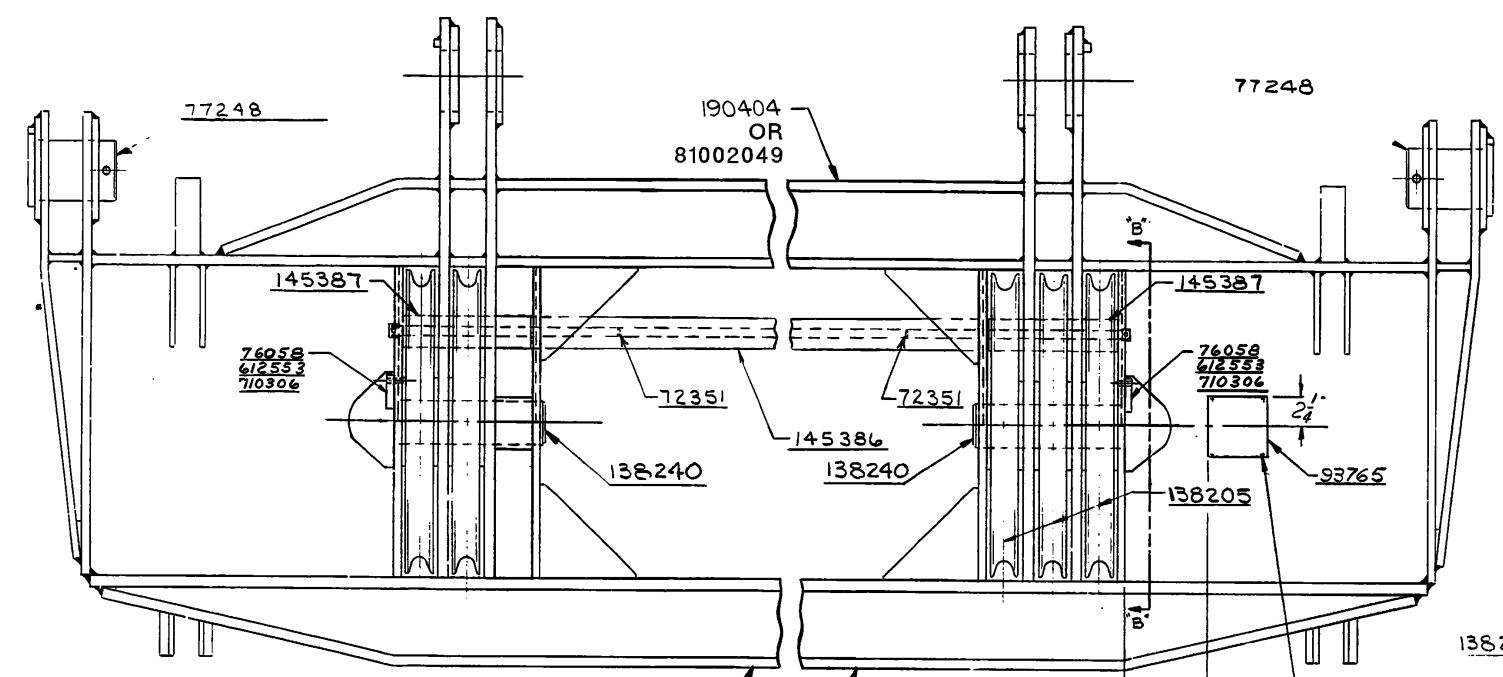
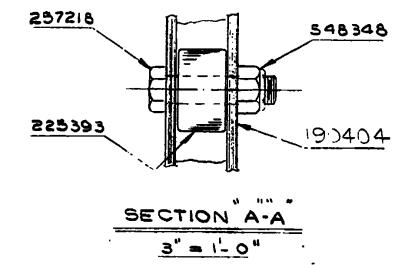
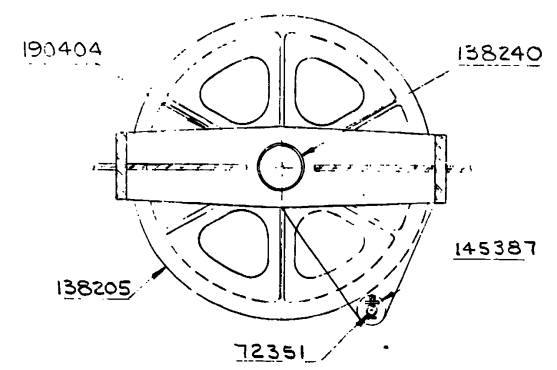
93972C1

MATERIAL LIST ON BACK

WIRE ROPE GUIDE

ASSEMBLIES USED ON	
50935	4237
65170	
67	
49735	
49738	
45741	
46727	
49431	
50805	
10045	
65384	

5-14-78 SPS
 (H) WAS 138338
 (J) WAS 1 REQ'D
 (K) WAS 144238
 (L) ADDED
 01-25-08 BDR
 (M) ADDED



NO REQ'D	DWG. NO	DESCRIPTION	
1	(M) OR 81002049 (B) 190404	EQUALIZER FRAME	
2	76058	KEEPER PLATE	(F) FOR 4100-W & 4100-W RINGER ADD-
(E) 4	138205	SHEAVE ASSEMBLY	2 138205 SHEAVE ASSEMBLY
2	77248	PIN	
2	79146	PIN	
2	138240	PIN	
8	225393	CAM FOLLOWER	(G) FOR 36FT PLATFORM RINGER ADD
8	257218	COUPLING BOLT (DWG. 3653-5)	
8	548348	ELASTIC STOP NUT	
(J) 2	(H) 72351	ROLLER SHAFT	2 72351 SPACER
(D) 2	(K) 145387	ROLLER	
4	612553	1/2"-13NC. HEX SCREW-1" LG.	
4	710306	1/2" LOCKWASHER	
(A) 1	93765	INSTRUCTION PLATE	
1	(L) 145386	ROLLER	

HOLES FOR #6 x 3/8" LG. SELF-TAPPING SCREWS
4 HOLES AT ASSEMBLY

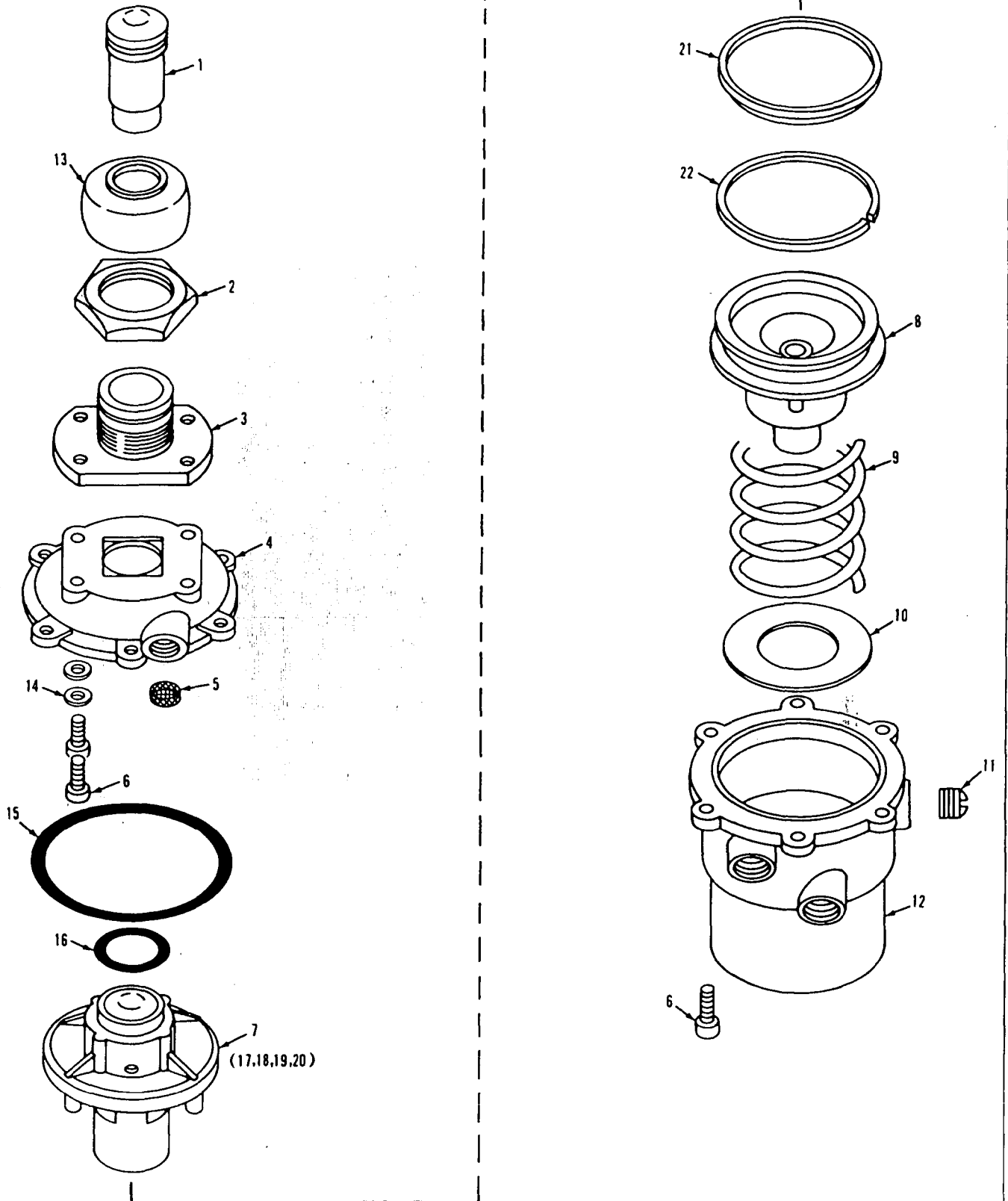
(M)
(B)
(F)
(E)
(C)
(H)
(D)
(K)
(A)
(J)
(L)
(G)

SCALE 1 1/2" = 1'-0"	UNLESS NOTED FRAG. FIN. HOLE DIA. HOLE CENTERS FINISH	MANITOWOC ENGINEERING CO. MANITOWOC, WISCONSIN 4100-RINGER, 4100-W, 36FT. PLATFORM RINGER	EQUALIZER ASSEMBLY FOR #22 A BOOM W/VERTICAL SHEAVE, 12 PART RIGGING	FORMERLY WAS 180666 DATE 12-12-69 PATTERN NO. CODE NO. DWG. NO. 181055
-------------------------	---	---	---	--

DO NOT SCALE THIS DRAWING

O-Number

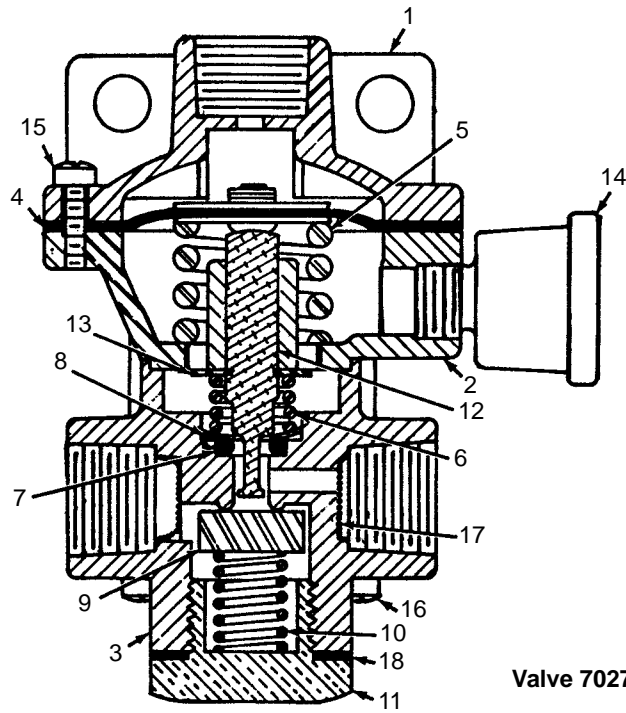
MASTER



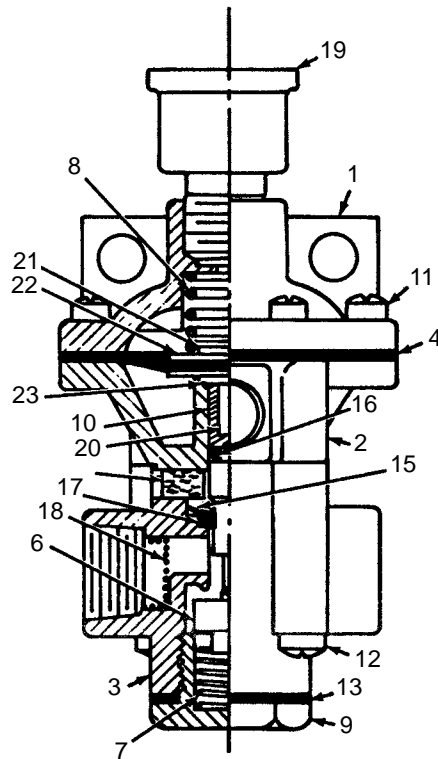
0-247-18

MATERIAL LIST ON BACK

Control Valve



Valve 702755



Valve 702756

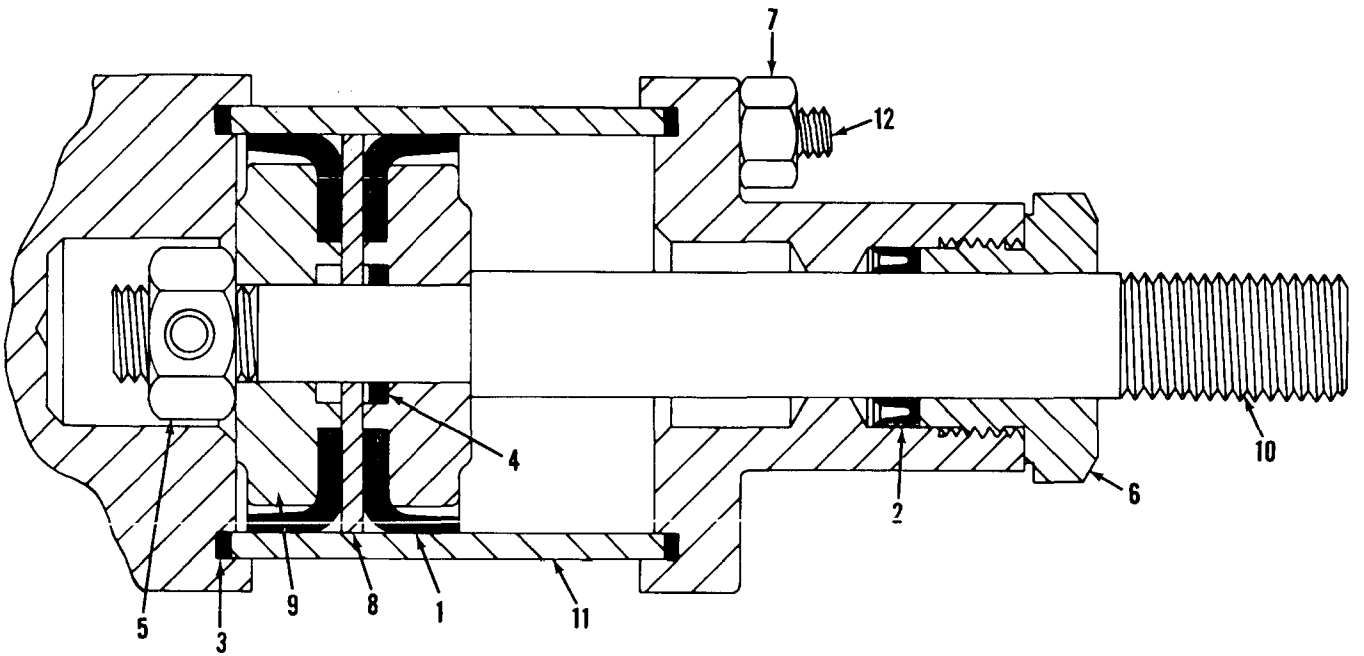
ASSEMBLY	REVISION
O-294	E

RELAY VALVE

MANITOWOC ENGINEERING CO.

A Division of The Manitowoc Company, Inc.

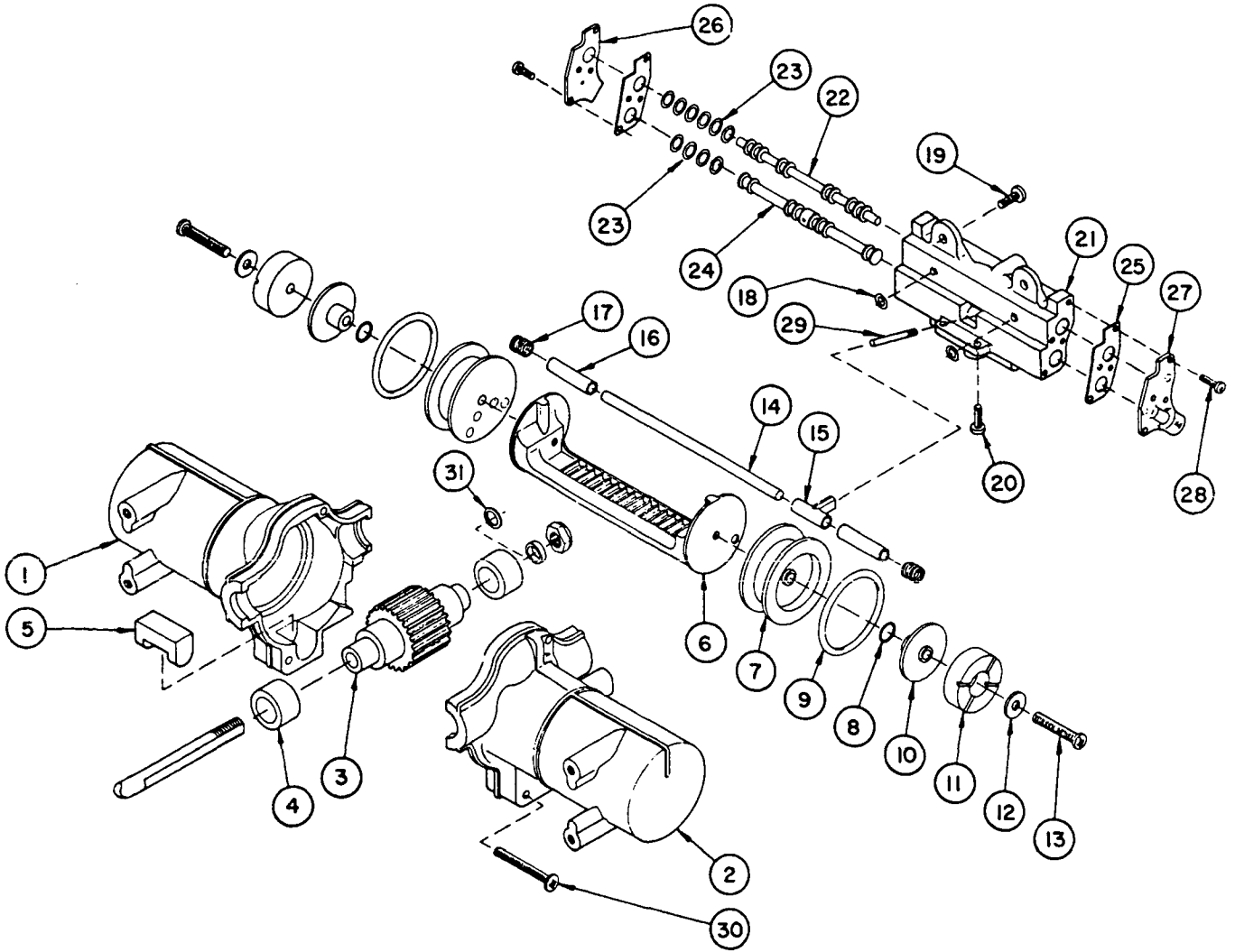
Manitowoc, Wisconsin



MANITOWOC ENGINEERING CO.

A Division of The Manitowoc Company, Inc.

Manitowoc, Wisconsin



MODEL: M-550-1-Deg.

MATERIAL LIST ON BACK

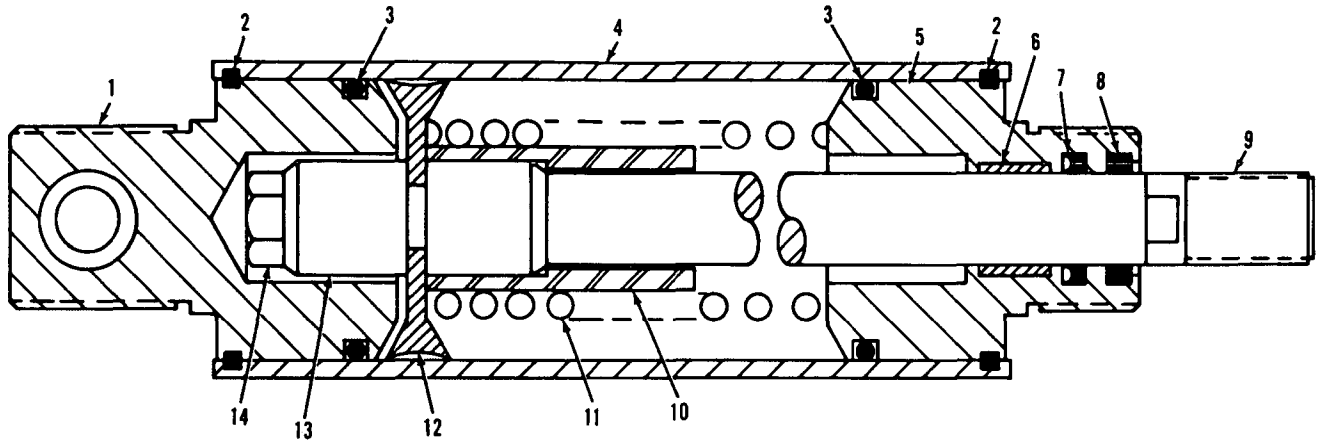
WINDSHIELD WIPER MOTOR

MANITOWOC ENGINEERING CO.

A Division of The Manitowoc Company, Inc.

Manitowoc, Wisconsin

MASTER



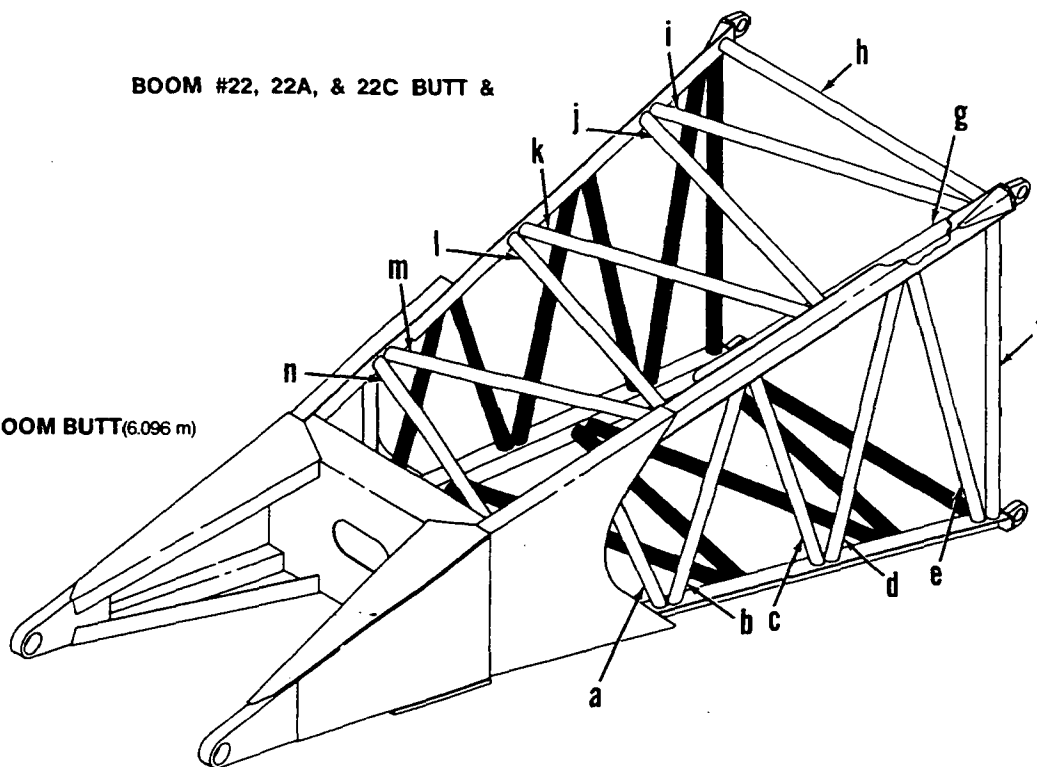
O-466

MATERIAL LIST ON BACK

AIR CYLINDER

BOOM #22, 22A, & 22C BUTT &

20' BOOM BUTT (6.096 m)
49772

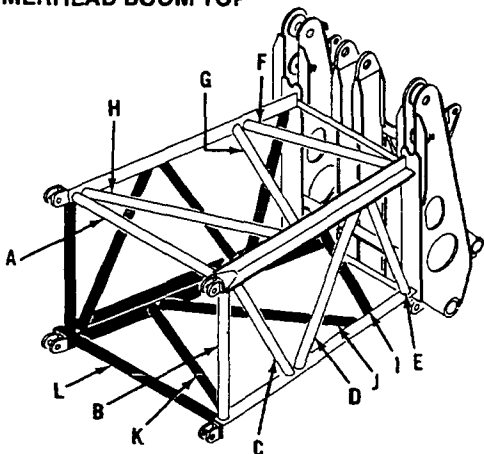


BOOM #22A HAMMERHEAD TOPS

Left side and bottom lacings black. Opposite lacings same unless noted.

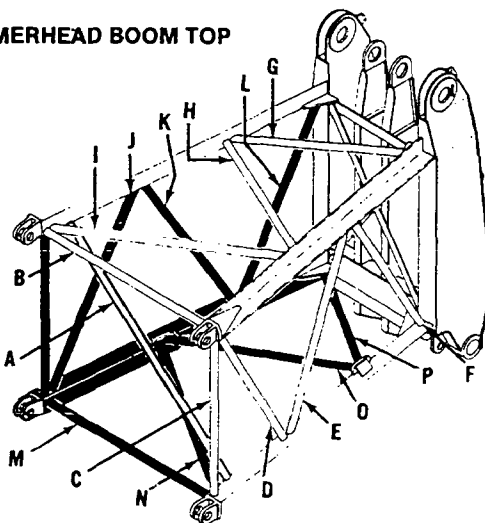
HAMMERHEAD BOOM TOP

50920



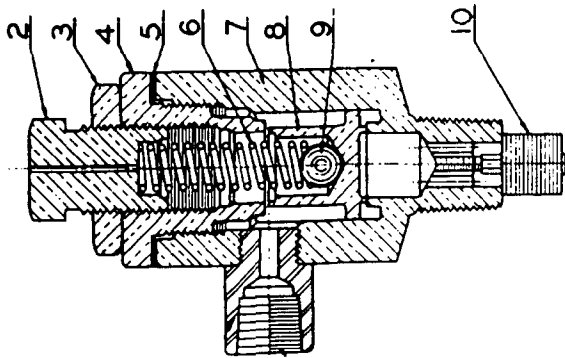
HAMMERHEAD BOOM TOP

50863
419482



To order lacings see Folio #823

15-AUX-525A UNLOADER PILOT AND PARTS LIST



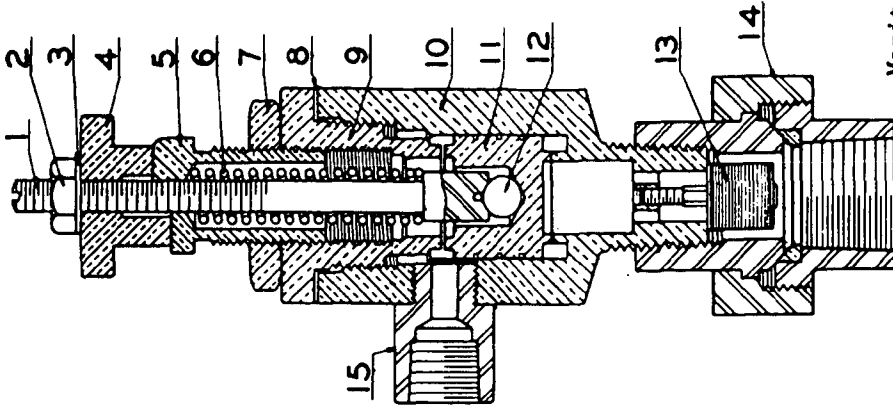
B-37695

Manitowoc #558902

REF. NO.	NAME OF PART	SYMBOL
1	Unloader Outlet Connection	45-AUX-113
2	Adjusting Screw	7-AAB-86
3	Adjusting Nut	AAB-83
4	Unloader Cap	4-AAB-78
5	Unloader Cap Shim	77A133 (10)
6	Unloader Spring	78A236
7	Unloader Body	4-AAB-79
8	Unloader Valve	3-AAB-87
9	Valve Ball	10C4
10	Filter Element	5E2
	Unloader Body Union	64AP4

When ordering repairs give Model Number of Pilot and Symbol of unloader parts desired. (Model Number is stamped on hexagon face near unloader pipe fitting 45-AUX-113.)

5-AUX-525 UNLOADER PILOT AND PARTS LIST



B-37823

Manitowoc #558903

REF. NO.	NAME OF PART	SYMBOL
1	Unloader Spring Carrier	3-AAB-82
2	Hand Unloader Knob Nut	50Y1
3	Hand Unloader Knob Lock Washer	95H1
4	Hand Unloader Knob	AAB-85
5	Adjusting Screw	AAB-86
6	Valve Spring	78A122
7	Adjusting Screw Nut	AAB-83
8	Adjusting Shim	77A133 (10)
9	Unloader Cap	4-AAB-78
10	Unloader Body	4-AAB-79
11	Valve	2-AAB-87
12	Valve Ball	10A6
13	Filter Element	5E2
14	Inlet Union	64AP4
15	Unloader Outlet Connection	45-AUX-113

CLICK HERE TO **DOWNLOAD** THE COMPLETE MANUAL

- Thank you very much for reading the preview of the manual.
- You can download the complete manual from: www.heydownloads.com by clicking the link below



- Please note: If there is no response to CLICKING the link, please download this PDF first and then click on it.

CLICK HERE TO **DOWNLOAD** THE COMPLETE MANUAL