



TRADITIONAL CRANE PARTS MANUAL

This manual has been prepared for and is considered part of

4100W

Model

41526

Serial Number

GROUP A = Rotating Structure (Includes rotating bed, operator's cab, cases, fuel tanks, transfer pump, counterweights, guards, platforms, catwalks, machinery enclosure, horn)

GROUP B = Upperworks Machinery (Includes front, rear, and auxiliary drums, boom hoist, swing and drive shafts, hand levers, foot pedals, control linkage, rotation indicators, upperworks hydraulic components, hydraulic piping, hydraulic oil reservoir, lubrication pump and piping, blowers)

GROUP C = Air Components & Electrical (Includes control console, air piping, electric wiring, auxiliary light plant and lighting, TV monitoring, compressor and air tank)

GROUP D = Power Components - Upperworks (Includes engine or motor, radiator, auxiliary power plant, take off converters and piping, controls, VICON power lowering, torque limiter, hydraulic pumps and piping, fuel piping, battery box)

GROUP E = Lower Structure & Control (Includes carbody, crawlers, travel shafts and control, steering travel locks, hydraulic travel, travel power outriggers, carrier, pedestal, lowerworks hydraulic piping, RINGER components, barge mounting and machinery, spud drums)

GROUP F = Attachments (Includes booms, jibs, masts, tower, wire rope guides, equalizer, gantry, fairlead, timber guards, boom angle indicator, block-up limit, tag line, hook block, weight ball, upper and lower boom point, wind speed indicator, crowd and retract dipper sticks, dippers,)

O-NUMBER SECTION = (Includes lacing drawings and purchased component parts drawings referenced in sections A through F)

This manual is arranged in sections as listed above. Sections A through F are arranged by group numerical order with an index after each section tab. An alphabetical index for groups A Through F combined is located after the O-number Section. The O-number section is arranged in numerical order by O-number. Following this cover page are the Basic Specifications, Warranty Information, Tool List (if applicable) Outline Dimensions, Weights, and Dealer Listing.

MANITOWOC CRANES, INC.

2401 South 30th Street • PO Box 70

Manitowoc, WI 54221-0070

Phone: 920-684-6621 • Fax: 920-683-6278

CLICK HERE TO **DOWNLOAD** THE COMPLETE MANUAL

- Thank you very much for reading the preview of the manual.
- You can download the complete manual from: www.heydownloads.com by clicking the link below



- Please note: If there is no response to CLICKING the link, please download this PDF first and then click on it.

CLICK HERE TO **DOWNLOAD** THE COMPLETE MANUAL

B. Ordering Lacings without Lacing Drawings

The parts order must contain the following information to ensure that Manitowoc provides you with the correct lacings:

1. Crane serial number (can be found on builders plate in operator's cab.)
2. Boom or jib identification number.
3. Quantity, lacing location, and lacing number.
4. Boom or jib component name (butt, insert, or top) and part number.

NOTE To obtain the lacing location and number, view the boom or the jib from the butt end looking forward. Identify the side on which the damaged lacing is located: left side, top side, right side, or bottom side. Count each lacing up to and including the damaged lacing, starting with **first lacing nearest butt end** of the component as shown in Figure 3.

Do not count a diagonal lacing as the first lacing. Identify diagonal lacing separately; lower end diagonal lacing or upper end diagonal lacing.

ASSISTANCE

If you are in doubt as to which lacings to order, DO NOT GUESS. Contact your nearest Manitowoc distributor for assistance; doing so may prevent the wrong parts from being shipped.

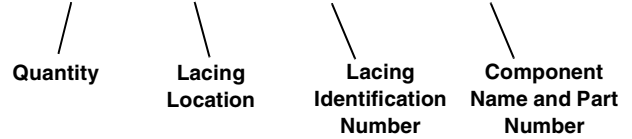
EXAMPLE: Assume you have a number 22 boom and the lacings with circled numbers in Figure 3 are damaged. Your parts order should be similar to the following example:

Crane Serial Number: **00000** (from builders plate).

Boom Identification Number: **#22 Boom**

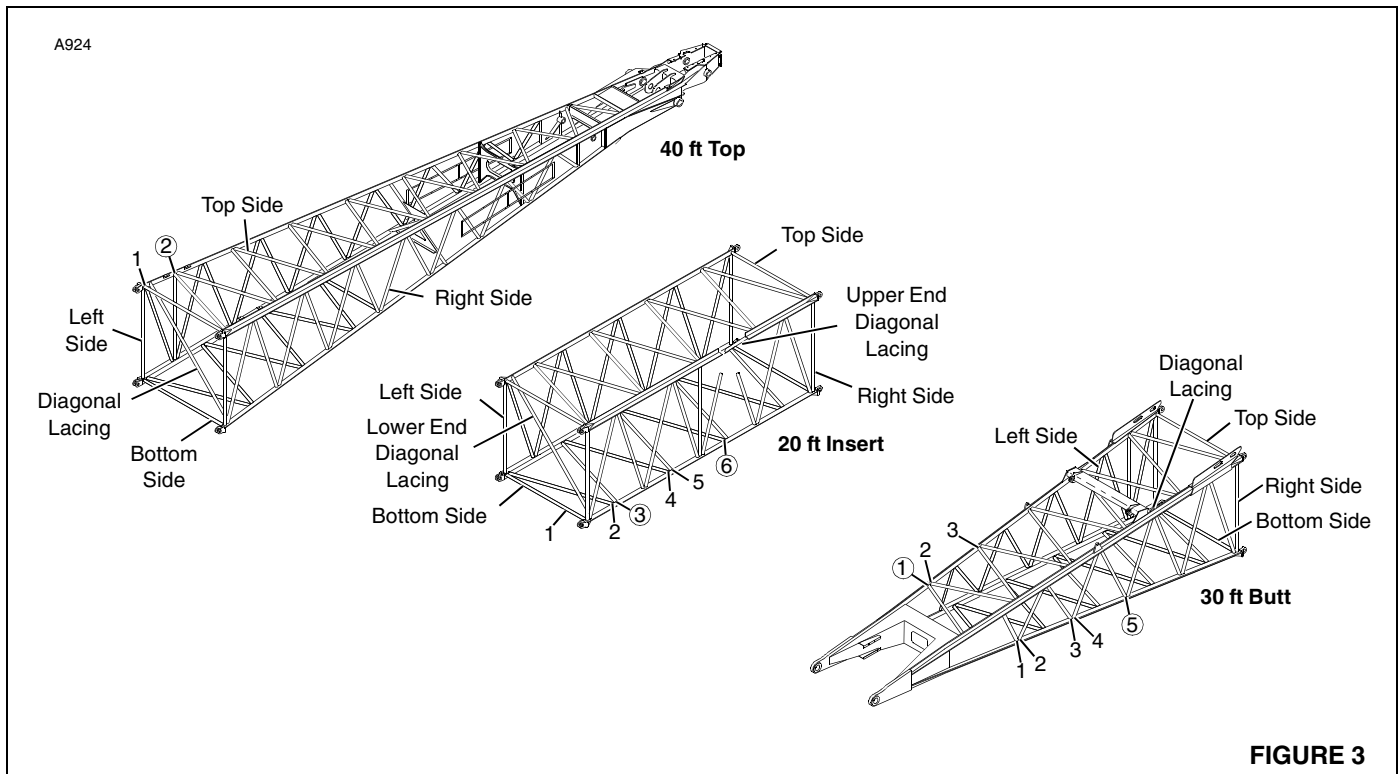
Required:

- 1 each Top Side Lacing (1) for 30 ft Butt 48153-9
- 1 each Right Side Lacing (5) for 30 ft Butt 48153-9
- 1 each Bottom Side Lacing (3) for 20 ft Insert 33426-3
- 1 each Bottom Side Lacing (6) for 20 ft Insert 33426-3
- 1 each Top Side Lacing (2) for 40 ft Top 50453-2



WELDING INSTRUCTIONS

Refer to folio 1316 for welding instructions.



**PARTS MANUAL ALPHABETICAL INDEX
GROUP A - Rotating Structure**

DESCRIPTION	PUBLICATION	REV	START DATE	END DATE	GROUP
"A" Frame	48481	F1	02/25/70	11/02/81	A0101
Cab	65413	B2	12/22/75	05/17/91	A0201
Cab	65413	K1	12/22/75	05/17/91	A0201
Cab	95606	-	09/24/75	08/26/85	A0201
Cab Heater/Air Conditioner	190449	-	03/01/77		A0209
Cab Rear Support	180856	E1	05/14/69	12/06/89	A0103
Chain & Gear Case	48691	A1	03/25/69		A0401
Chain & Gear Case	48691	G2	03/25/69	02/04/91	A0401
Chain & Gear Case	48691	L1	04/14/72	10/06/81	A0401
Chart Holder	93994	A1	11/15/71	04/08/83	A0212
Chart Holder	95639	-	09/19/75	12/17/84	A0212
Counterweight & Cab Rear	190738	C1	03/06/78	05/19/78	A0301
Counterweight & Cab Rear	49487	G1	10/21/71	12/18/90	A0301
Counterweight & Cab Rear	49487	G1	11/12/71	04/04/80	A0301
Fuel Tank	48559	K1	12/03/68	07/14/88	A0601
Guards	49267	K1	08/14/70	01/31/77	A0501
Nameplate/Decal Location	95451	-	03/13/75	03/03/77	A0213
Operator's Station/Pilothouse	137847	-	07/17/69	09/28/94	A0202
Operator's Station/Pilothouse	65386	C2	09/24/75	08/16/90	A0202
Operator's Station/Pilothouse	65386	O1	09/24/75	11/21/86	A0202
Platform	48583	K1	02/27/69	03/22/95	A0701
Rotating Bed Lubrication Piping	183569	-	04/20/81	12/23/87	A0104
Rotating Bed Lubrication Piping	65371	D1	06/30/76	04/09/81	A0104
Rotating Bed/Hoist Frame/Transporter Platform	48443	AA1	09/25/75	06/06/84	A0102
Windshield Wiper/Defogger	190248	E1	12/17/75	03/02/84	A0210
Windshield Wiper/Defogger	180880	-	08/04/76		A0210

48559-1 Cont.	REV. K	MODEL 4100W
---------------	--------	-------------

FUEL TANK

REF. NO.	PART NUMBER	QUANTITY REQUIRED	DESCRIPTION OF PART	VENDORS PART NO.
			NOTE 5: Machines w/optional fuel tank drums, delete Ref. 11 and add — (not shown)	
	288770	2	BUSHING, Nut (2" x 1/2")	
	355004	2	STEAMCOCK (1/2")	
	543404	2	NIPPLE, Close (1/2")	

A0601

48559-K1
Cont.

REV. K	48559 - 1
--------	-----------

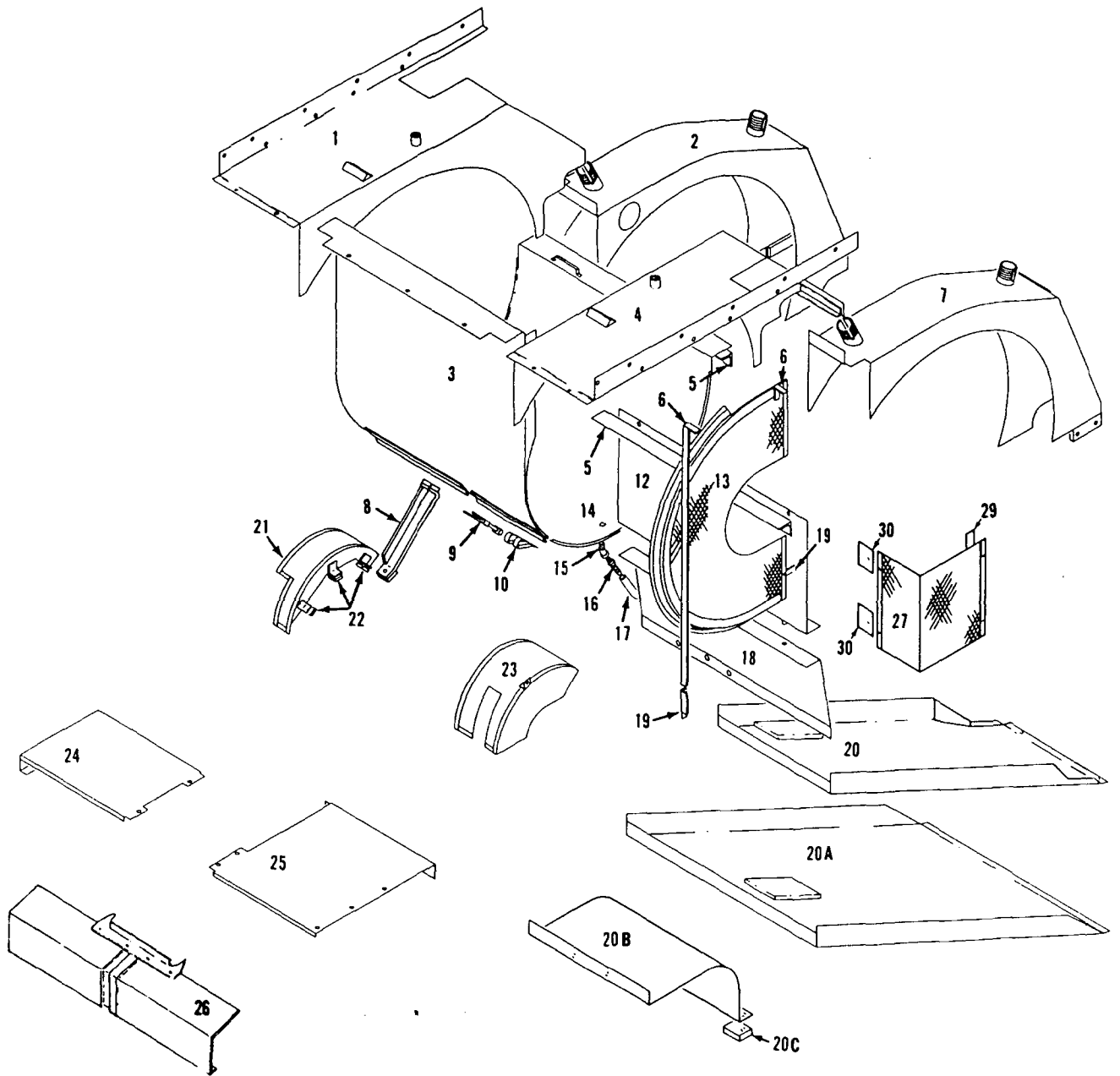
PLEASE GIVE MACHINE S/N W/ORDER

CPT

Run as a Front

48559 Cont.

MASTER



49267E1

MATERIAL LIST ON BACK

GUARDS

65371-1 Cont.	REV. D	MODEL 4100 S1, S2
---------------	-----------	----------------------

UPPERWORKS LUB. PIPING

REF. NO.	PART NUMBER	QUANTITY REQUIRED	DESCRIPTION OF PART	VENDORS PART NO.
	144507	1	NAMEPLATE (w/Ref. 28 only)	
	147575	1	NAMEPLATE (w/Ref. 6 only)	
36	70656	4	SUPPORT, Grease Line	
37	140911	1	BRACKET	
38	137925	1	BRACKET	
39	140631	1	BRACKET	
40	183568	1	NAMEPLATE	
41	147576	1	BRACKET, Nameplate (w/Ref. #31 only)	
42	145819	1	NAMEPLATE (w/Ref. #31 only)	

MASTER

0-147

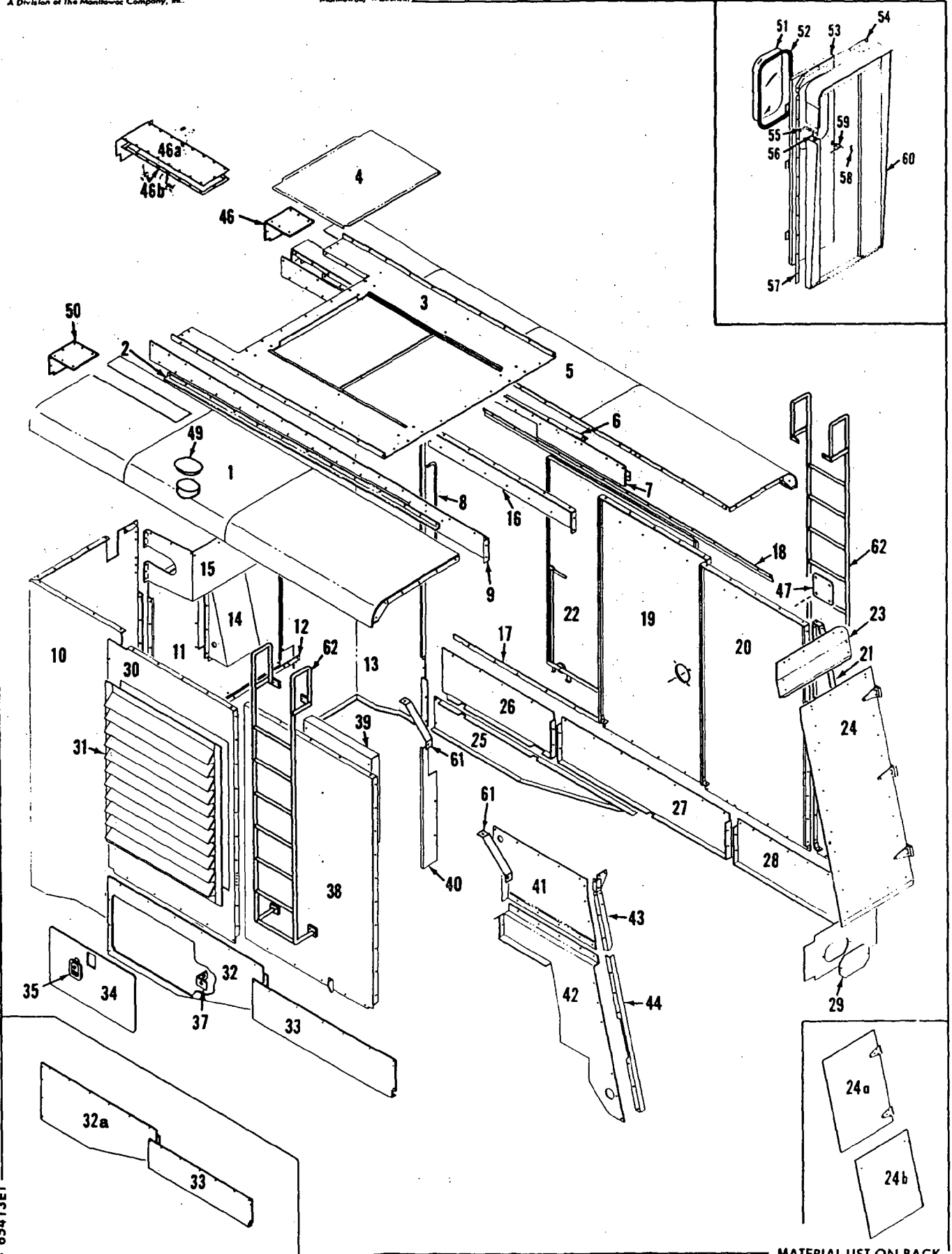
PLEASE GIVE MACHINE S/N W/ORDER

REV. D	65371 - 1
-----------	-----------

MANITOWOC ENGINEERING CO.

A Division of The Manitowoc Company, Inc.

Manitowoc, Wisconsin

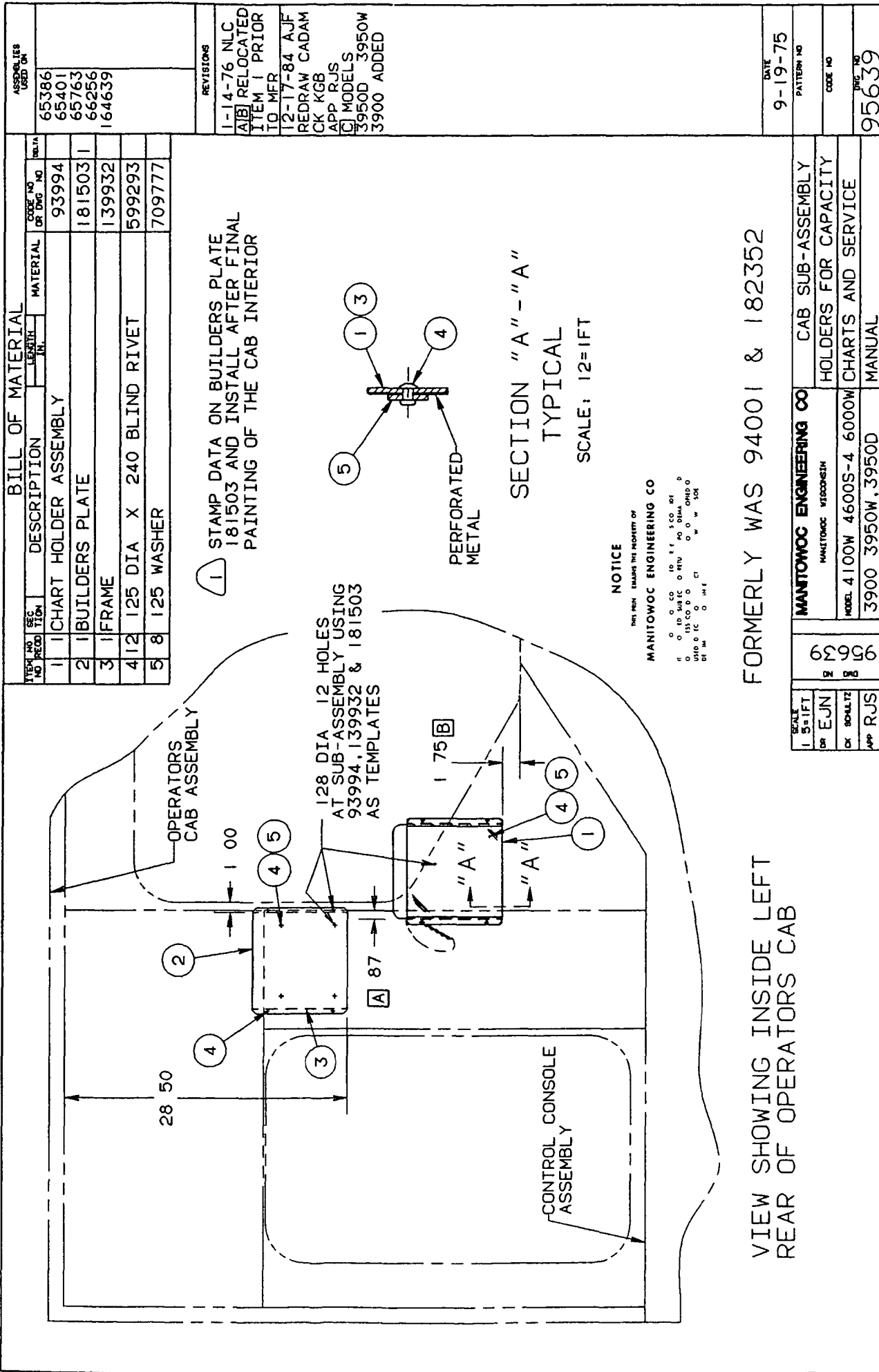


65413E1

MATERIAL LIST ON BACK

CAB

A B



ITEM NO	SEC NO	DESCRIPTION	LENGTH IN.	MATERIAL	CODE NO OR DNG NO	QTY
1		1 CHART HOLDER ASSEMBLY			93994	
2		1 BUILDERS PLATE			181503	1
3		1 FRAME			139932	
4	12	125 DIA X 240 BLIND RIVET			599293	
5	8	125 WASHER			709777	

ASSEMBLIES USED ON	
65386	
65401	
65763	
66256	
164639	

1 STAMP DATA ON BUILDERS PLATE 181503 AND INSTALL AFTER FINAL PAINTING OF THE CAB INTERIOR

128 DIA 12 HOLES AT SUB-ASSEMBLY USING 93994, 139932 & 181503 AS TEMPLATES

PERFORATED METAL
SECTION "A" - "A"
TYPICAL
SCALE: 12=1FT

NOTICE
THIS DRAWING IS THE PROPERTY OF
MANITOWOC ENGINEERING CO
DO NOT REPRODUCE OR TRANSMIT IN ANY MANNER WITHOUT THE WRITTEN PERMISSION OF MANITOWOC ENGINEERING CO

FORMERLY WAS 94001 & 182352

VIEW SHOWING INSIDE LEFT REAR OF OPERATORS CAB

SCALE 1 5=1FT	62	MANITOWOC ENGINEERING CO	CAB SUB-ASSEMBLY
DR EUN	2	MANITOWOC WISCONSIN	HOLDERS FOR CAPACITY
CK SCHLITZ	8	MODEL 4100W 4600S-4 6000W	CHARTS AND SERVICE
APP RJS	16	3900 3950W, 3950D	MANUAL

DATE	9-19-75
PATTERN NO	
CODE NO	
DWG NO	95639

AEIG

DATE	DESCRIPTION	MATERIAL	QTY	UNIT	DATE	BY

DATE	DESCRIPTION	MATERIAL	QTY	UNIT	DATE	BY

NOTICE
 ALL DIMENSIONS ARE IN INCHES UNLESS OTHERWISE SPECIFIED.
 DIMENSIONS IN PARENTHESES ARE FOR INFORMATION ONLY.
 DIMENSIONS IN BRACKETS ARE FOR INFORMATION ONLY.
 DIMENSIONS IN DASHES ARE FOR INFORMATION ONLY.
 DIMENSIONS IN DOTS ARE FOR INFORMATION ONLY.
 DIMENSIONS IN UNDERLINES ARE FOR INFORMATION ONLY.
 DIMENSIONS IN TILDES ARE FOR INFORMATION ONLY.
 DIMENSIONS IN CARETS ARE FOR INFORMATION ONLY.
 DIMENSIONS IN PERCENTS ARE FOR INFORMATION ONLY.
 DIMENSIONS IN PLUS/MINUS ARE FOR INFORMATION ONLY.
 DIMENSIONS IN SQUARE ROOTS ARE FOR INFORMATION ONLY.
 DIMENSIONS IN FRACTIONS ARE FOR INFORMATION ONLY.
 DIMENSIONS IN DECIMALS ARE FOR INFORMATION ONLY.
 DIMENSIONS IN PERCENTS ARE FOR INFORMATION ONLY.
 DIMENSIONS IN PLUS/MINUS ARE FOR INFORMATION ONLY.
 DIMENSIONS IN SQUARE ROOTS ARE FOR INFORMATION ONLY.
 DIMENSIONS IN FRACTIONS ARE FOR INFORMATION ONLY.
 DIMENSIONS IN DECIMALS ARE FOR INFORMATION ONLY.

FIELD REPLACEMENT CHART

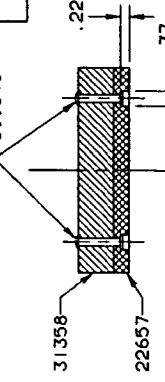
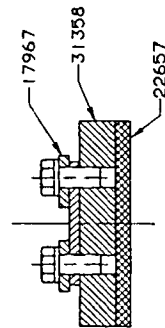
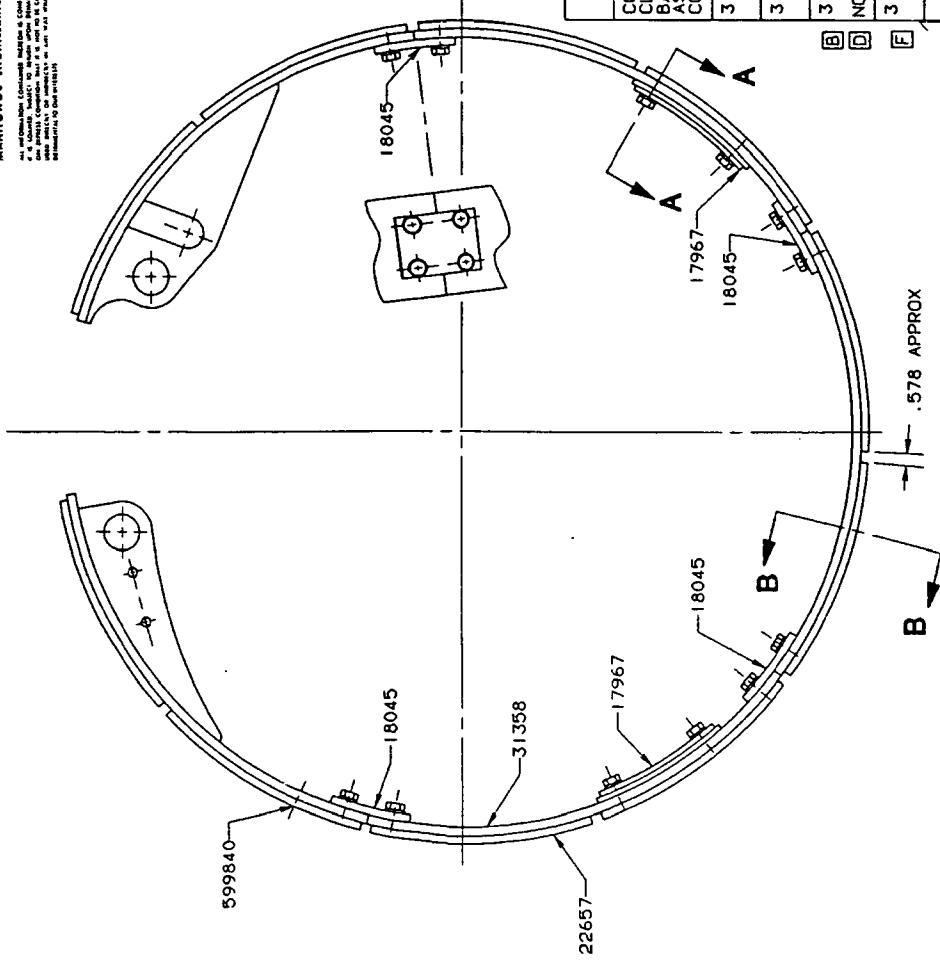
ONE CLUTCH BLOCK ONLY		LINED CLUTCH BAND ONLY	
CLUTCH BLOCK CODE NO.	NO. REQ'D RIVETS	LINED CLUTCH BAND PARTS SALES CODE NO.	LINED CLUTCH BAND PRODUCTION CODE NO.
22657-6	12	31358-6	218758
22657-7	12	31358-7	218711
22657-8	12	31358-8	218715
22657-5	12	31358-5	218783

NOTE: LINED BLOCKS 508411 & 508582 LISTED IN CHARTS ARE APPROVED AND EQUIVALENT TO EACH OTHER BUT USE ONLY SAME TYPE LINING ON A GIVEN MACHINE.

NOTE: 31359-5 IS FOR USE ON 3950D HOIST CLUTCH (REAR DRUM) AND 3950D INTERLOCK CLUTCH (RIGHT SIDE OF FRONT DRUM).

COMPLETE PRODUCTION CHART FOR CLUTCH BAND SUB-ASSEMBLY

COMPLETE CLUTCH BAND SUB-ASSEMBLY CODE NO.	THIS MAT'L MAKES ONE LINED BAND ONLY	NO. REQ'D RIVETS	NO. REQ'D UNLINED CLUTCH BAND	NO. REQ'D LINED BAND ONLY	NO. REQ'D ROLLER GUIDE	NO. REQ'D TIE BAR
31359-3	10 REQ'D 508411	118	1 REQ'D 31358	218758	2	4
31359-4	10 REQ'D 508582	118	1 REQ'D 31358	218711	2	4
31359-5	10 REQ'D 508622	118	1 REQ'D 31358	218715	2	4
31359-6	10 REQ'D 508649	118	1 REQ'D 31358	218783	2	4



SECTION A-A

SECTION B-B

SUPERSEDES 31359 OF 12-17-63

DATE	DESCRIPTION	MATERIAL	QTY	UNIT	DATE	BY

DATE	DESCRIPTION	MATERIAL	QTY	UNIT	DATE	BY

DATE	DESCRIPTION	MATERIAL	QTY	UNIT	DATE	BY

DATE	DESCRIPTION	MATERIAL	QTY	UNIT	DATE	BY

DATE	DESCRIPTION	MATERIAL	QTY	UNIT	DATE	BY

DO NOT SCALE THIS DRAWING

BDF

C

C

-B6.1-

B D E

A G

E

DWG. NO. 31359

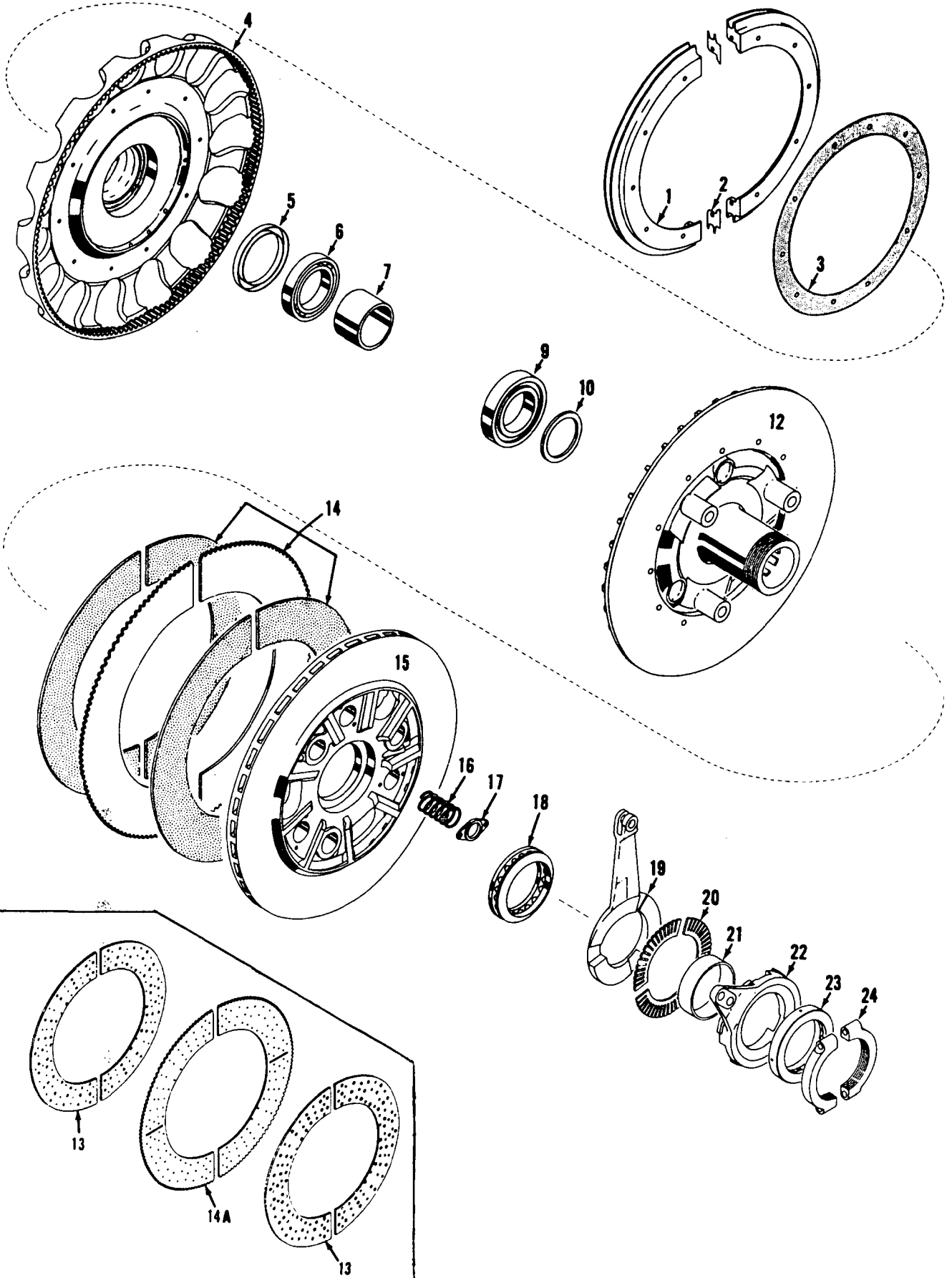
DATE 10-5-76

SEE CHARTS 31359

MANITOWOC ENGINEERING CO.

A Division of The Manitowoc Company, Inc.

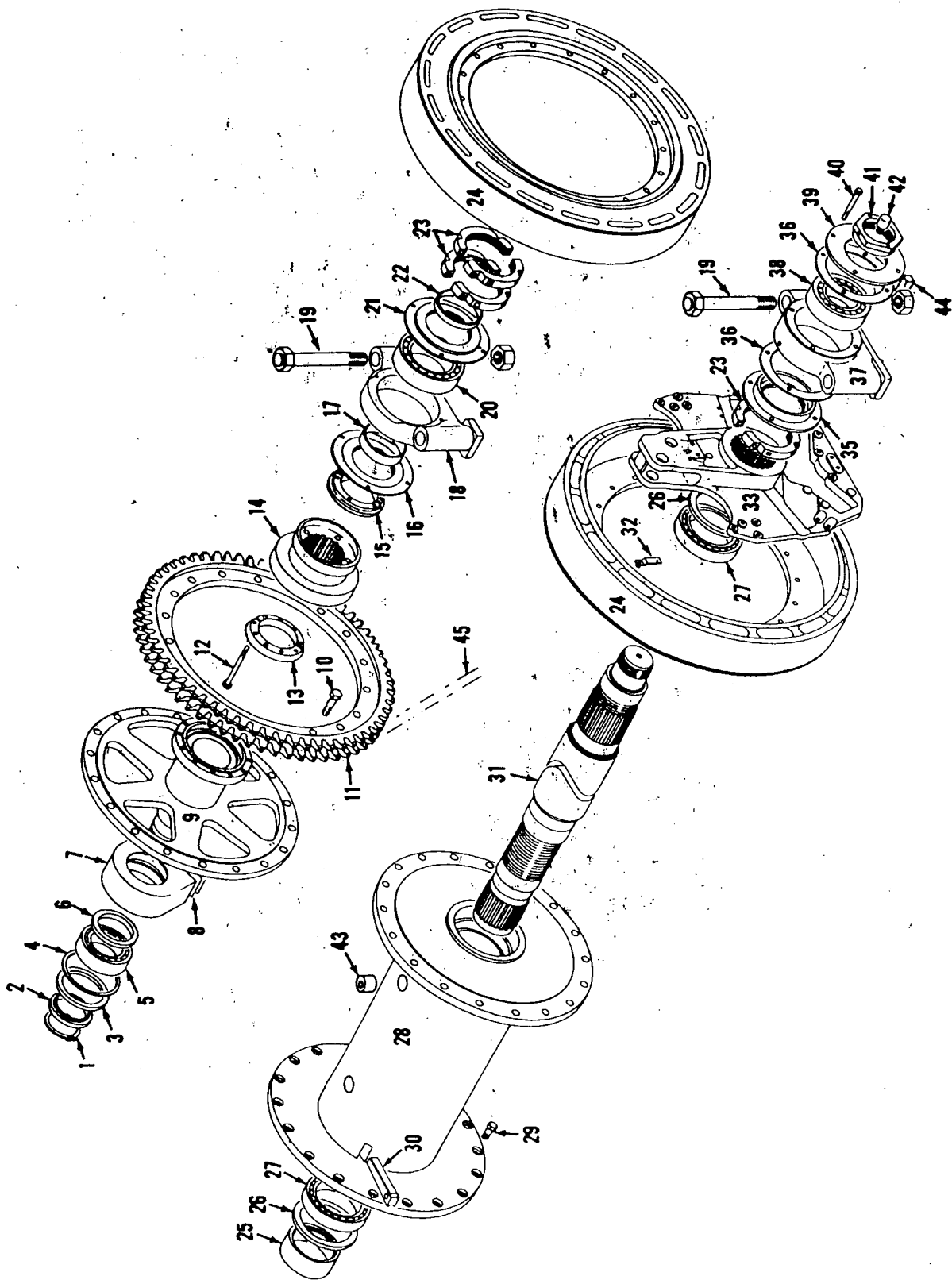
Manitowoc, Wisconsin



4202382

MATERIAL LIST ON BACK

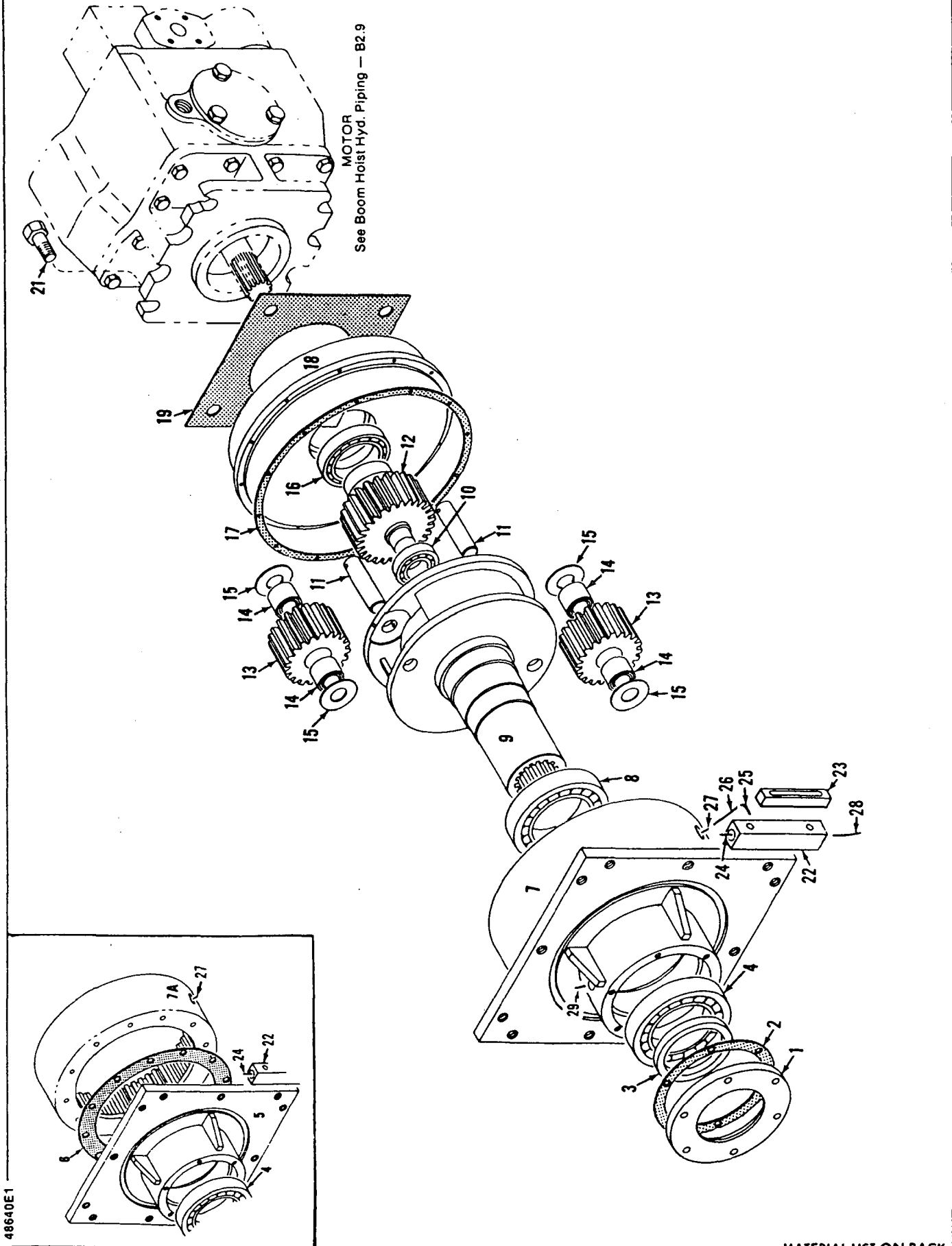
MAIN DRIVE CLUTCH



48334C1

MATERIAL LIST ON BACK

DRUM SHAFT



48640E1

MATERIAL LIST ON BACK

HYD. BOOM HOIST DRIVE

50919-1 Cont.	REV. AB	MODEL 3950W - 4100W - 36' Platform Ringer
---------------	------------	--

IND. BOOM HOIST
(W/RATCHET AND PAWL)

REF. NO.	PART NUMBER	QUANTITY REQUIRED	DESCRIPTION OF PART	VENDORS PART NO.
			<p><u>NOTE 11:</u> Shim pawl 139084 w/flat washers 709782 (2" I.D. - 16 ga.) and 709783 (2" I.D. - 20 ga.) as required to assure full engagement of pawl to ratchet 93486.</p> <p><u>NOTE 12:</u> Shim cam 96261 w/flat washers 709784 (1" I.D. - 24 ga.) and 709785 (1" I.D. - 30 ga.) to assure full contact of cam and pawl 139084.</p> <p><u>NOTE 13:</u> For field installation of drums w/32-1/2" dia. flanges request prints of Drwg. 420228 Sht. 2 for required modification to B.H. Housing.</p> <p>0-71, 0-147, 0-246, 0-318 (Ref. 95401 1/24/75 thru 3/30/77; 97060 3/28/78 on)</p>	

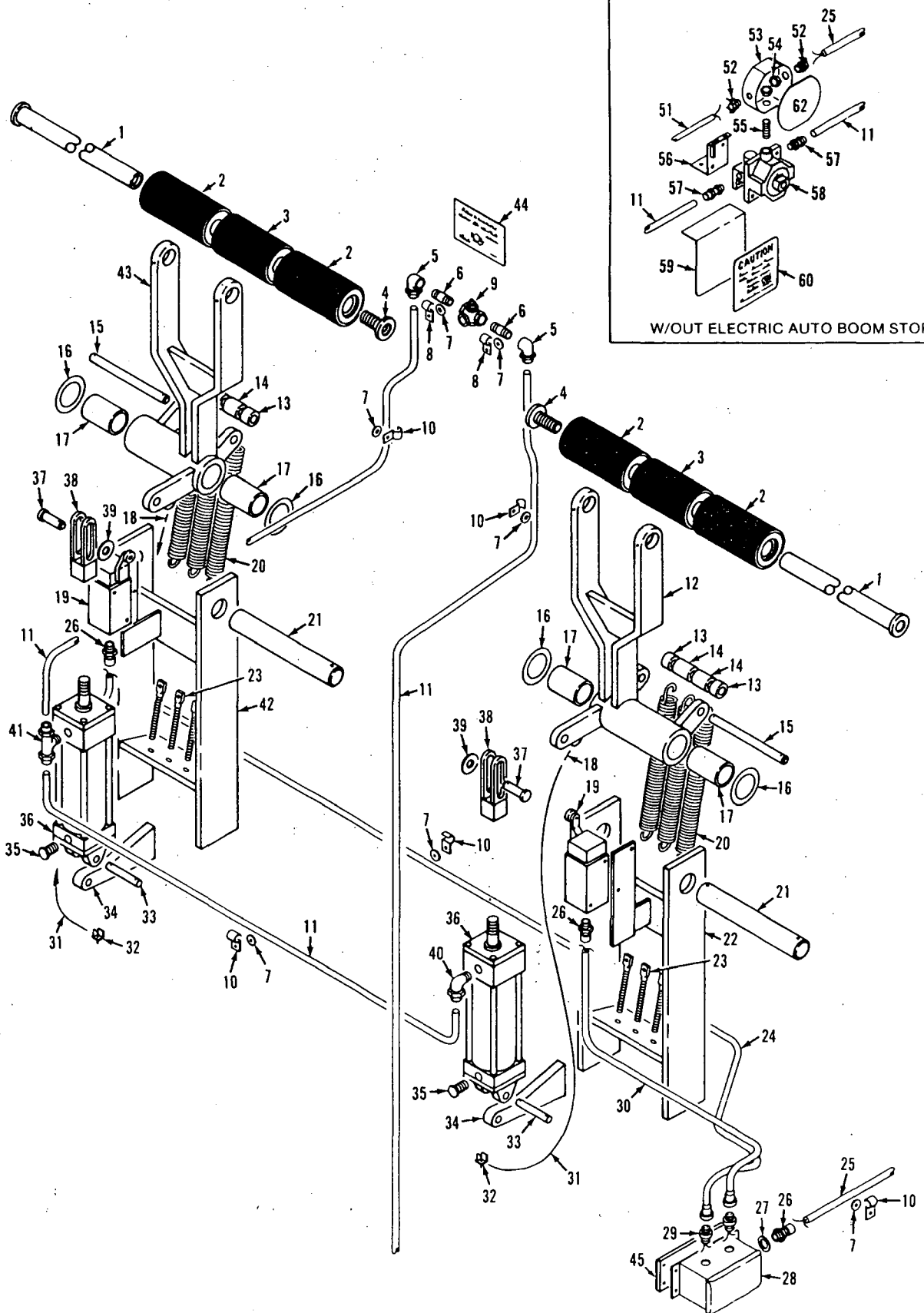
REV. AB	50919 - 1
------------	-----------

PLEASE GIVE MACHINE S/N W/ORDER

CPT

Run as Front

50919 AB1 Cont. - 3



65930B1

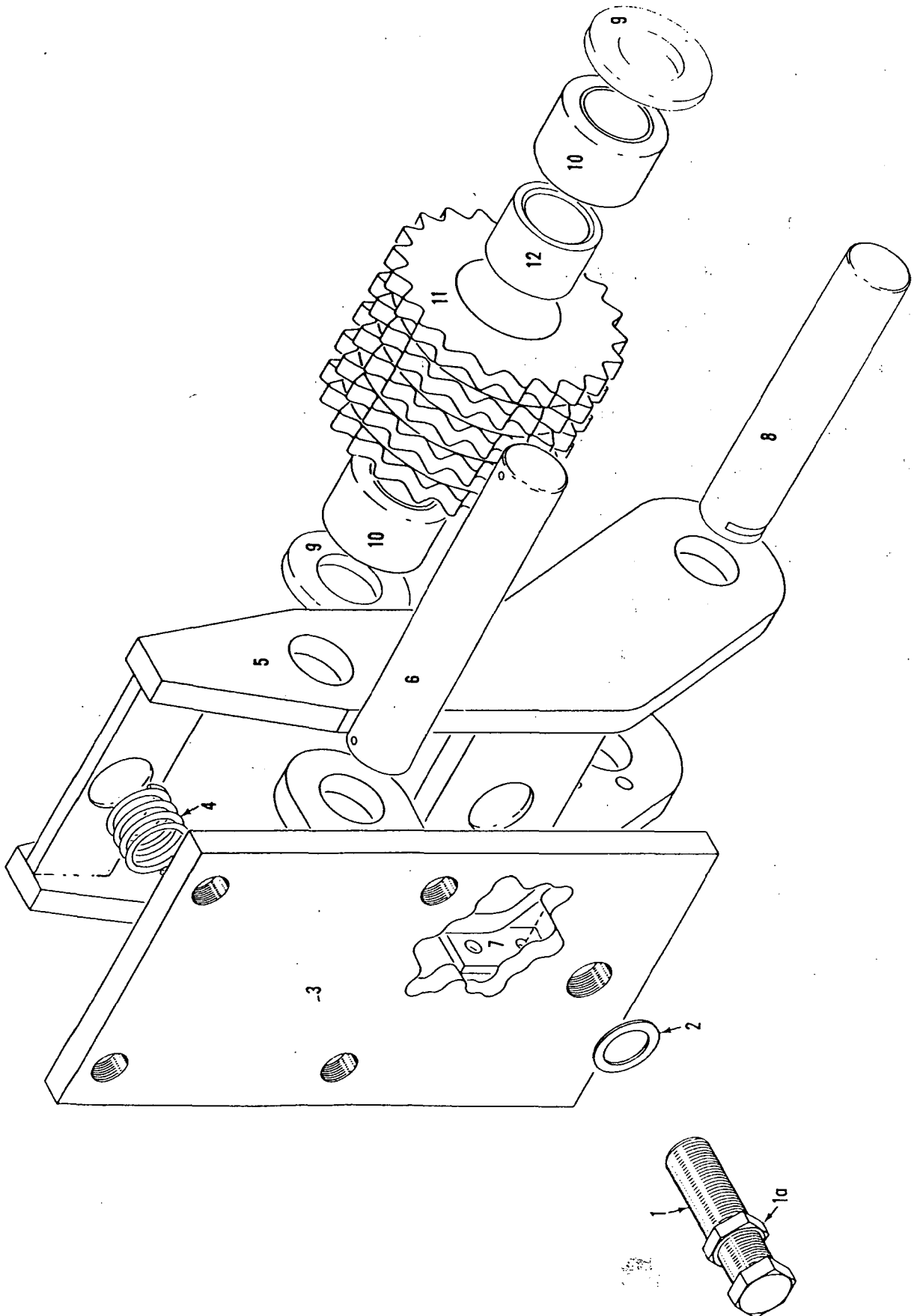
MATERIAL LIST ON BACK

BOOM HOIST WIRE ROPE SPOOLING INDICATOR

MANITOWOC ENGINEERING CO.

A Division of The Manitowoc Company, Inc.

Manitowoc, Wisconsin

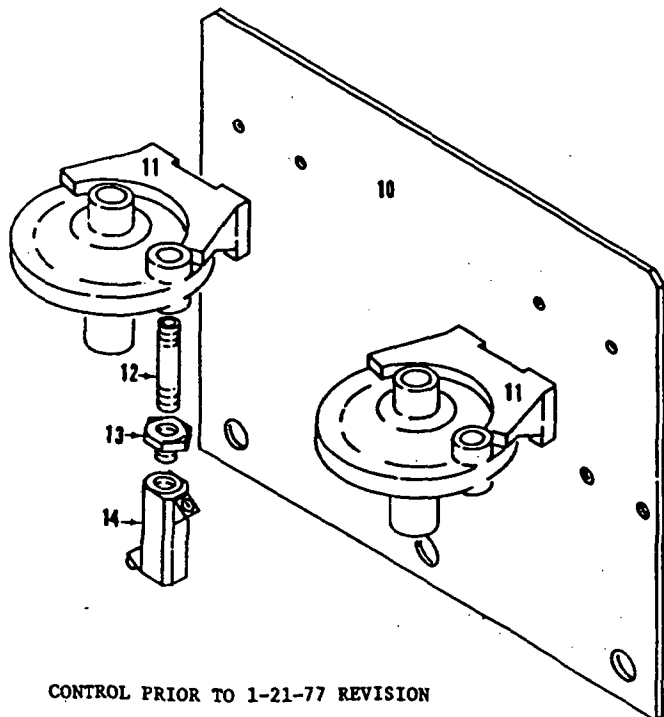
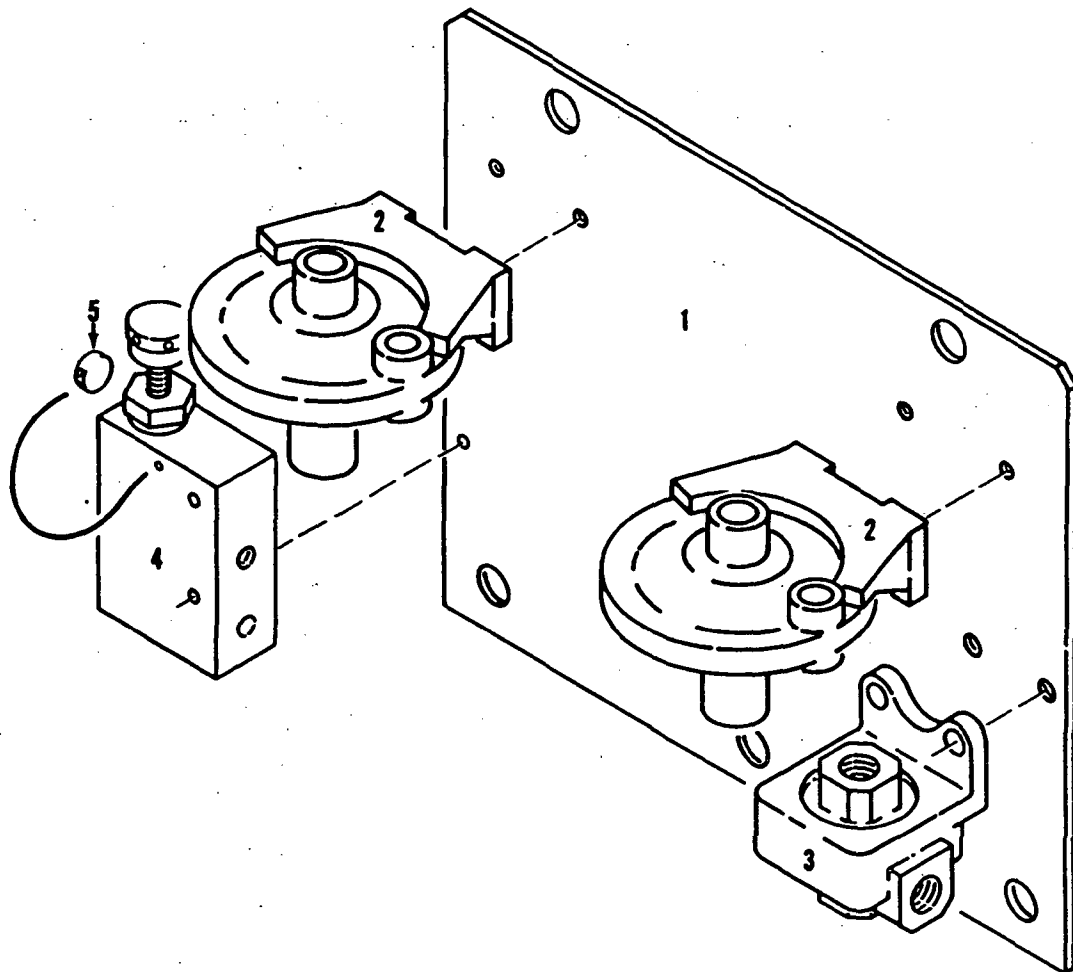


92745A1

MATERIAL LIST ON BACK

IDLER

MASTER



CONTROL PRIOR TO 1-21-77 REVISION

MATERIAL LIST ON BACK

Boom Hoist Pawl Interlock Control

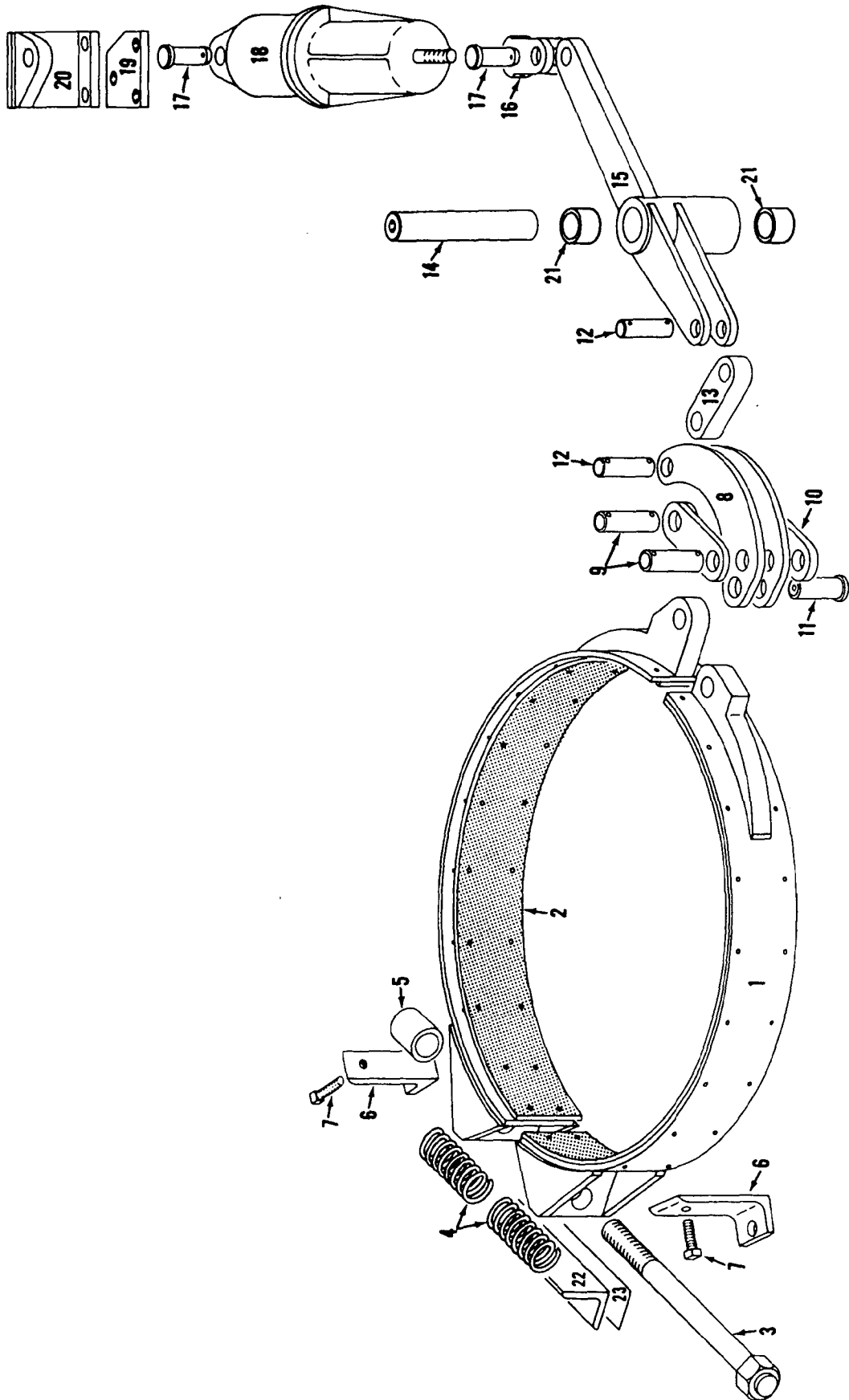
9540181

MANITOWOC ENGINEERING CO.

A Division of The Manitowoc Company, Inc.

Manitowoc, Wisconsin

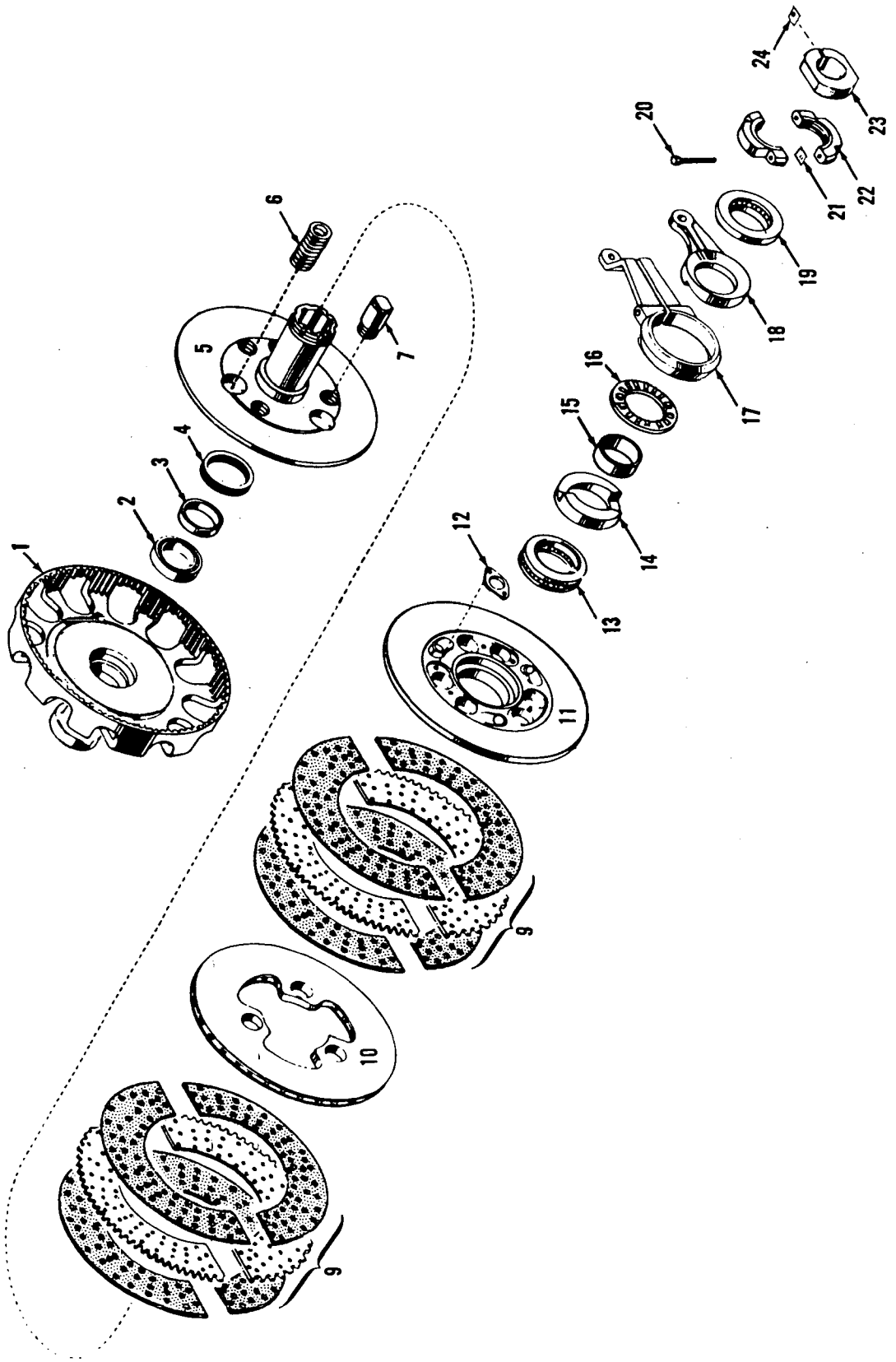
MASTER



181484C1

MATERIAL LIST ON BACK

SWING BRAKE



190062B2

MATERIAL LIST ON BACK

IND. SWING CLUTCH

GROUP C - Air Components & Electrical

65515-1 Cont.	REV. I	MODEL 4100W
---------------	--------	-------------

RIGHT CONSOLE CONTROL

REF. NO.	PART NUMBER	QUANTITY REQUIRED	DESCRIPTION OF PART	VENDORS PART NO.
50	143747	1	COVER W/fasteners and snap rings	
51	182297-2	1	VALVE, Treadle (Rear or Right Rear Drum Brake) (Air Brakes Only)	
52	182297-3	1	VALVE, Treadle (Front Drum Brake) (Air Brakes Only)	
53	95675	1	MOUNTING PLATE, Treadle Valve (Air Brakes Only)	
54	95677	1	ENCLOSURE (Air Brakes Only) W/capscrews, hex nuts and lock-washers	
55	139709	1	ANGLE, Mounting (Air Brakes Only) W/capscrews and lockwashers	
56	542964	2	NIPPLE (3/8" x 3")	
57	406871	1	ELBOW, 90° Reducing (1/2" x 3/8")	
58	485833	1	HOSE, Flex (1/2" x 1'8" - .508 m)	
59	679105	1	TEE (1/2" x 1/2" x 3/8")	
60	485833	1	HOSE, Flex (1/2" x 1'8" - .508 m)	
61	142539	1	NAMEPLATE (Hyd. Winch)	
62	95259	1	BRACKET, Valve	
63	714478	1	VALVE, Hyd. Winch Control (Optional)	
64	182372	1	CONTROL ASSEMBLY, Hyd. Tagline (See Separate Sheet-Optional)	
65	288835	1	BUSHING, Reducing (1/2" x 3/8")	
66	429937	1	ADAPTER, Bulkhead	
67	181964	1	CONTROL ASSEMBLY, Container Handling (Optional-Not Shown)	
68	191095	1	CONTROL, Single Gearmatic Winch (Optional - Not Shown)	
68	191059	1	CONTROL, Dual Gearmatic Winch (Optional - Not Shown)	
69	146550	1	NAMEPLATE	
			NOTE 1: Mach. W/Vicon Power Load Lowering delete knobs #714440 and add the following:	
1	136328	2	KNOB, Handle (W/out Drum Rotation Indicator)	
	139690	2		BUSHING
	293122	2		SWITCH
			NOTE 2: Mach.W/Magnet Control, delete right hand knob #714440 and add the following:	
1	136328	1	KNOB, Handle	
	139690	1		BUSHING
	293122	1		SWITCH
			NOTE 3: See chart #6338 for "Air Line Identification"	
			NOTE 4: Mach. W/Drum Rotation Indicator, see "Drum Rotation Indicator."	
			NOTE 5: All air lines 3/8" O.D. plastic tube except as noted.	
			NOTE 6: Prior to design change of Dec. 28, 1976, delete Ref. Nos. 44, 65, 66 and add:	
44	138648	1	MANIFOLD, Air (CYLINDRICAL) 0-63, 0-147, 0-247, 0-441 (Ref. 182297, 182873, 182372, 181964, 183210, 191059 or 191095)	

REV. I	65515 - 1
--------	-----------

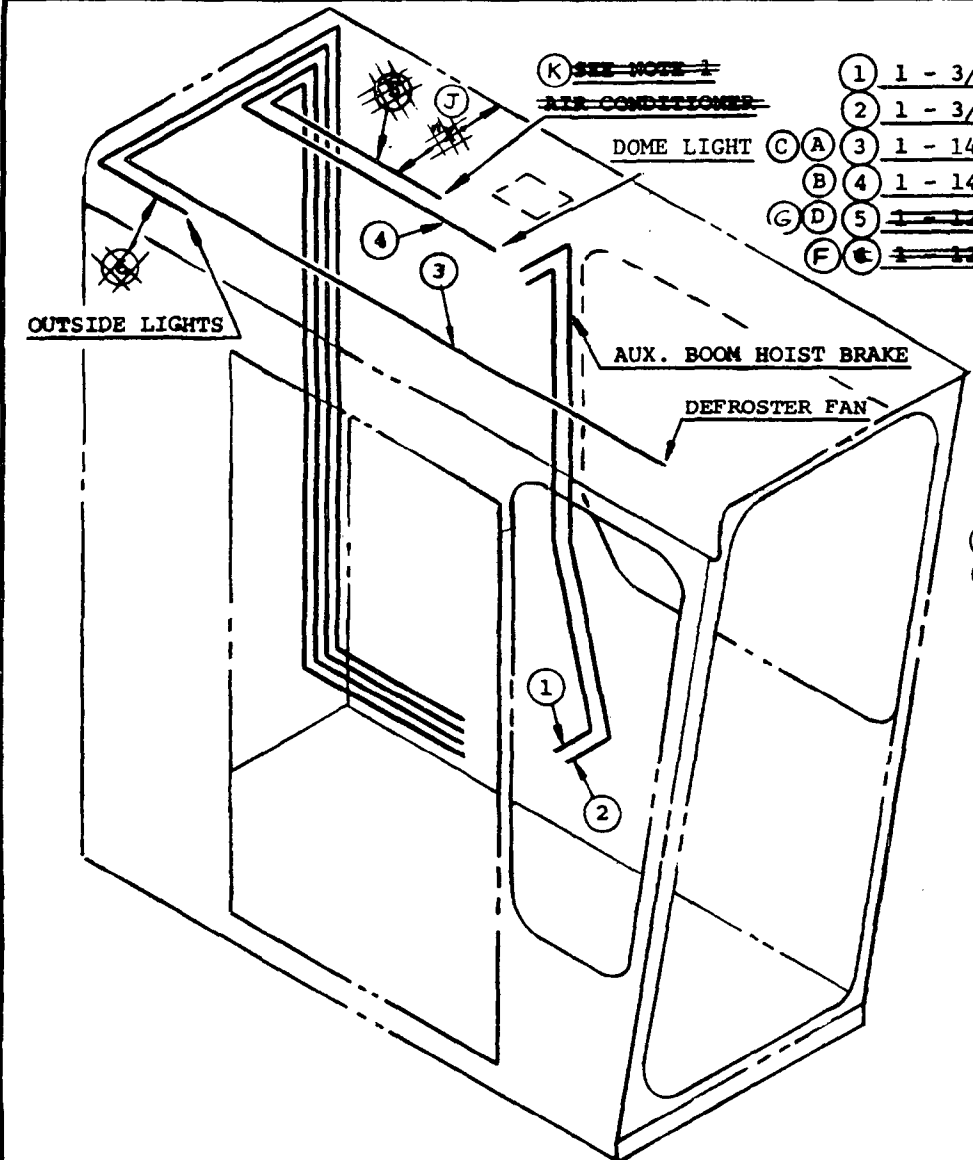
PLEASE GIVE MACHINE S/N W/ORDER

Run as Front

MASTER

65515-1 Cont.

DWG. NO. 141626	ELECT. & AIR LINE LOCATION	SCALE NONE	MANITOWOC ENGINEERING CO. MANITOWOC, WISCONSIN	DATE 6-20-73
CODE NO.	SUB-ASSEM (IN PILOT	DR. DS		REVISIONS
PATTERN NO.	HOUSE WALLS)	CK. CWH	MATERIAL <i>CWH</i>	6-22-73 DS CORRECTED PRIOR TO MFG.
MODEL 4100W, 4600-S4, 6000W, 3900, 36 FT. PLATFORM RINGER		APP.		6-17-74 JWK ⑤ & ⑥ ADDED.



	REQUIRED	CODE NO.
①	1 - 3/8" TUBING 8 FT. LG. - - - - -	486056
②	1 - 3/8" TUBING 8 FT. LG. - - - - -	486056
③	1 - 14-1 CONDUCTOR CABLE 25 FT. LG. - - -	371829
④	1 - 14-1 CONDUCTOR CABLE 25 FT. LG. - - -	371829
⑤	1 - 14-2 COND. WIRE TYPE "E" 18 FT. LG. - - -	371811
⑥	1 - 14-3 COND. WIRE TYPE "C" 18 FT. LG. - - -	371812

WIRE IDENTIFICATION NO.'s

- 31 DOME LIGHT
- 37 CIRCULATING FAN

- ⑤ ~~NOTE 1~~
- ④ ~~"X" = 2 1/2" APPROX FOR 4100W~~
- ~~"X" = 29" APPROX FOR 4600-S4, 6000W~~
- ~~& 36 FT. PLATFORM RINGER~~

DATE 6-20-73	
REVISIONS	
6-22-73 DS CORRECTED PRIOR TO MFG.	
6-17-74 JWK	⑤ & ⑥ ADDED.
12-12-75 J.C.S.	① ② WAS 22'
3-4-76 CWH	C WAS 16-2 COND.
9-22-76 SCHULTZ	③ WAS 12-3 Tirex 371812.
3-16-77 SCHULTZ	④ Added.
2-20-80 JCS	⑤ DELETED
08-20-93 CPC	⑥ ⑦ ⑧ ⑨ DELETED

ASSEMBLIES USED ON	
65183	
65386	
65401	
65430	
DWG. NO. 141626	

CLICK HERE TO **DOWNLOAD** THE COMPLETE MANUAL

- Thank you very much for reading the preview of the manual.
- You can download the complete manual from: www.heydownloads.com by clicking the link below



- Please note: If there is no response to CLICKING the link, please download this PDF first and then click on it.

CLICK HERE TO **DOWNLOAD** THE COMPLETE MANUAL

NOTE 1 FOR MACH'S. W/OUT CLAM CLOSING ADD: 1 350319 PLUG BUTTON

NOTE 2 IDENTIFY ALL WIRES THE SAME AS SHOWN ON TERMINAL STRIP

NOTE 3 FOR MACH'S. W/OUT HEATER ADD: 1 137951 COVER

NOTE 4 ERADICATE THE WORD "HOIST" LOCATION MARKED *

NOTE 5 FOR MACH'S. W/OUT GLO PLUG OR ETHER STARTING AID ADD: 1 350317 PLUG BUTTON

NOTE 6 FOR WIRE IDENTIFICATION NUMBERS SEE CHART NO.5605 (MASTER NUMBERING INDEX)

NOTE 7 FOR MACH'S. W/OUT ROOF MOUNTED DRUM ADD: 1 350319 PLUG BUTTON

BILL OF MATERIAL table with columns: NO. REQ'D., DW'G. NO., DESCRIPTION, MATERIAL, CODE NO., ASSEMBLIES USED ON. Includes items like NAMEPLATE, BEEPER, PLUG BUTTON, TEMPERATURE GAUGE, etc.

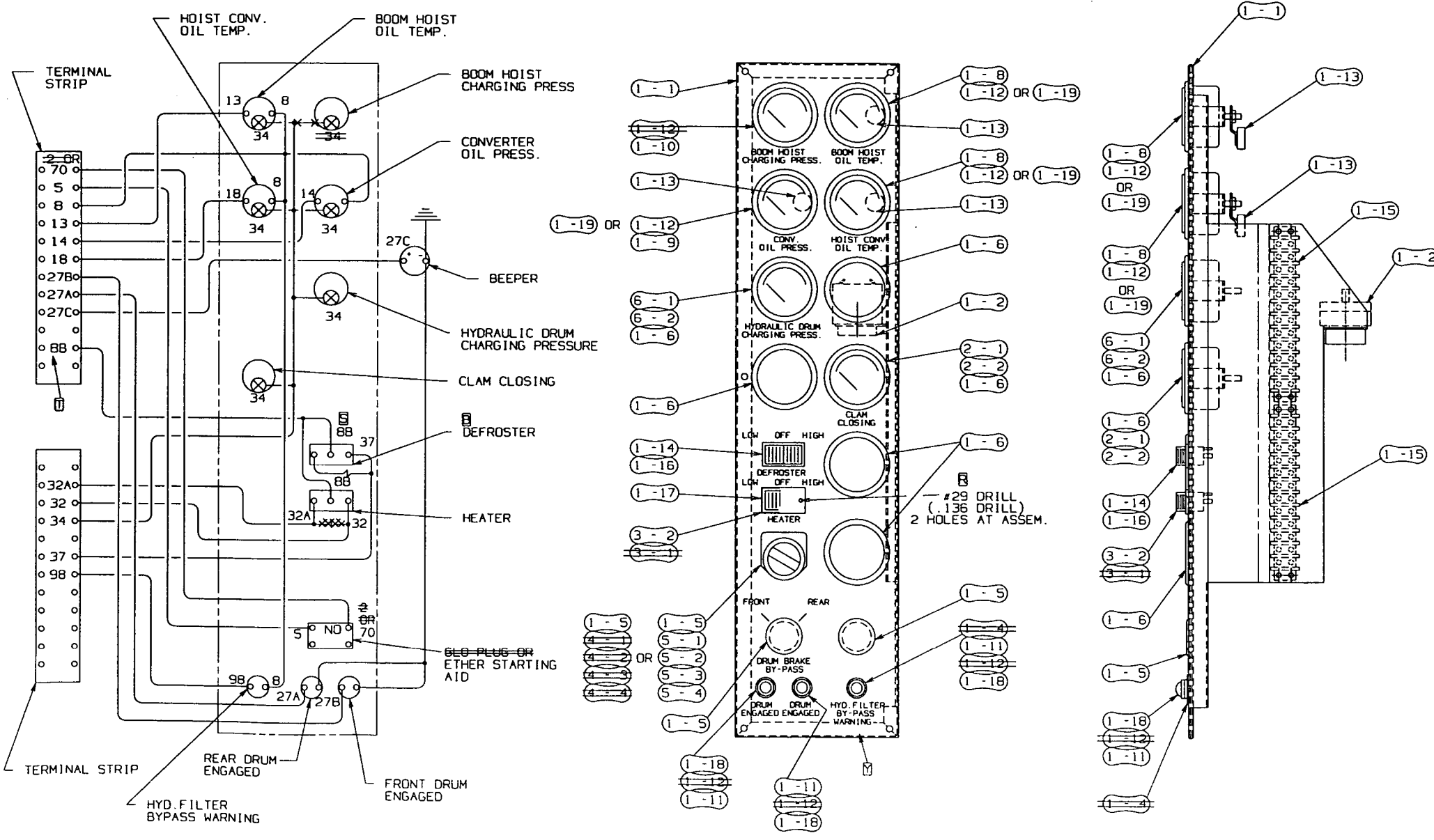
FOR MACHINES W/CLAM CLOSING 2-1 460310 AIR PRESS. GAUGE 2-2 502614 BULB

FOR MACHINES W/HEATER 3-1 594854 RESISTOR 3-2 673244 ROCKER SWITCH

FOR MACHINE W/GLO PLUG (CUMMINS W/ELEV. CAB ONLY) 4-1 500839 KNOB 4-2 539734 NAMEPLATE 4-3 673380 CONTACT BLOCK 4-4 673382 SWITCH OPER.

FOR MACHINE W/ETHER STARTING AID (CUMMINS W/ELEV. CAB ONLY) 5-1 500839 KNOB 5-2 539734 NAMEPLATE 5-3 673380 CONTACT BLOCK 5-4 673382 SWITCH OPER.

FOR MACH'S. W/ROOF MOUNTED DRUM 6-1 460309 PRESS. GAUGE 6-2 502614 BULB (STEWART WARNER GAUGE)

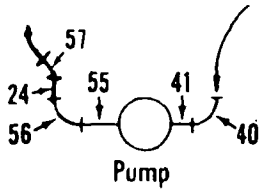


WIRING DIAGRAM-REAR VIEW

Technical drawing header table with fields: SCALE, DATE, DRAWN, CHECKED, APPROVED, TITLE, INSTRUMENT PANEL, ASSEM. (R.H.) 24 VOLT, (UNIVERSAL OPER. CAB), 190214

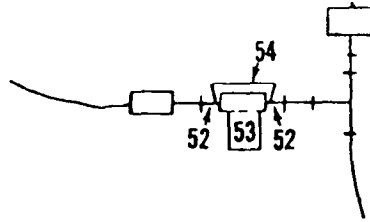
GROUP D - Power Components

Horizontally Mounted Pump



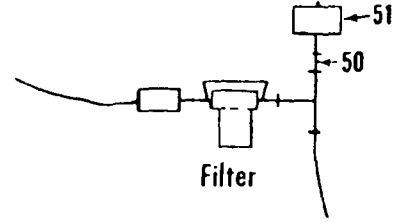
First on machine S. N. 41060

Filter w/1" Ports



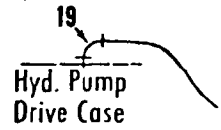
First on machine S.N. 41035

Electrical pressure sending unit

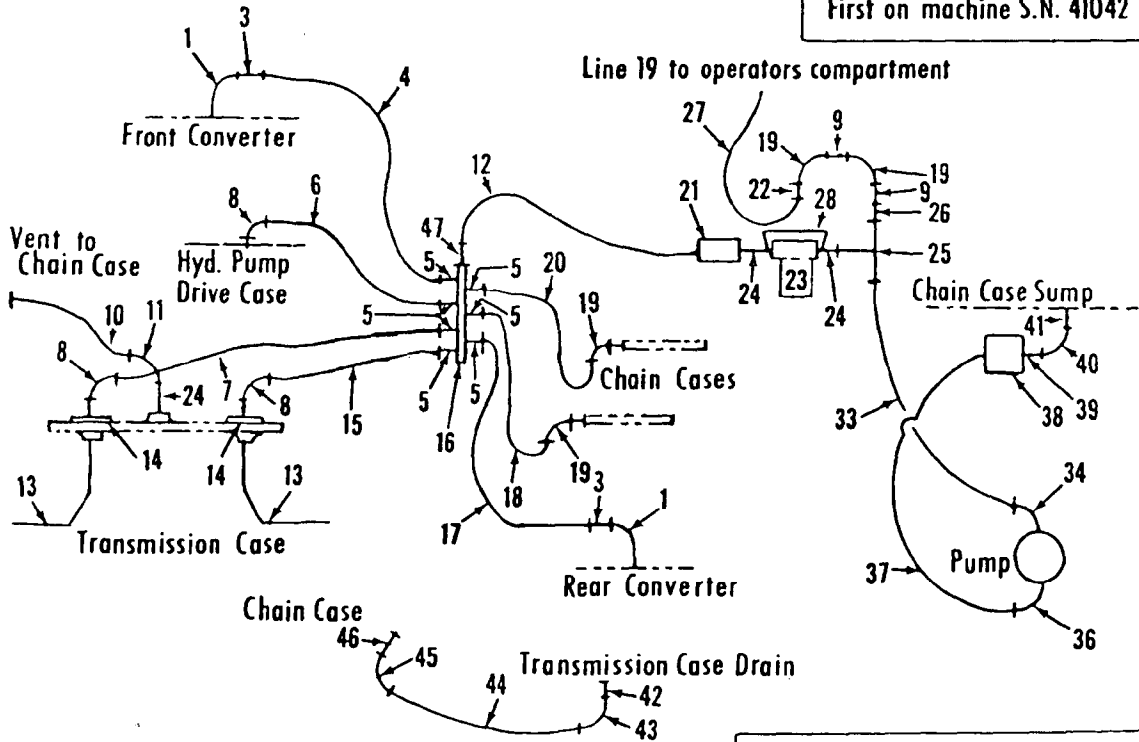


First on machine S.N. 41026

Drive Case w/ 1/4" Lubricator 138892

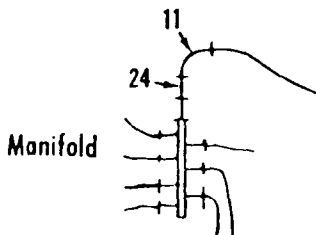


First on machine S.N. 41042

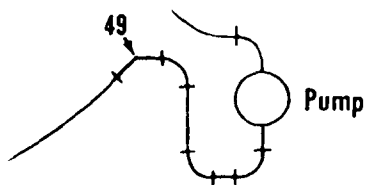


Line 19 to operators compartment

WASIER



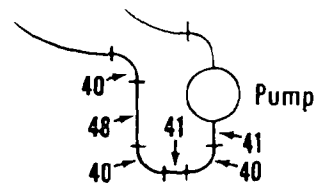
Manifold



Pump

Machine w/ Full Range VICON Power Load Lowering
(first on machine S.N. 41027)

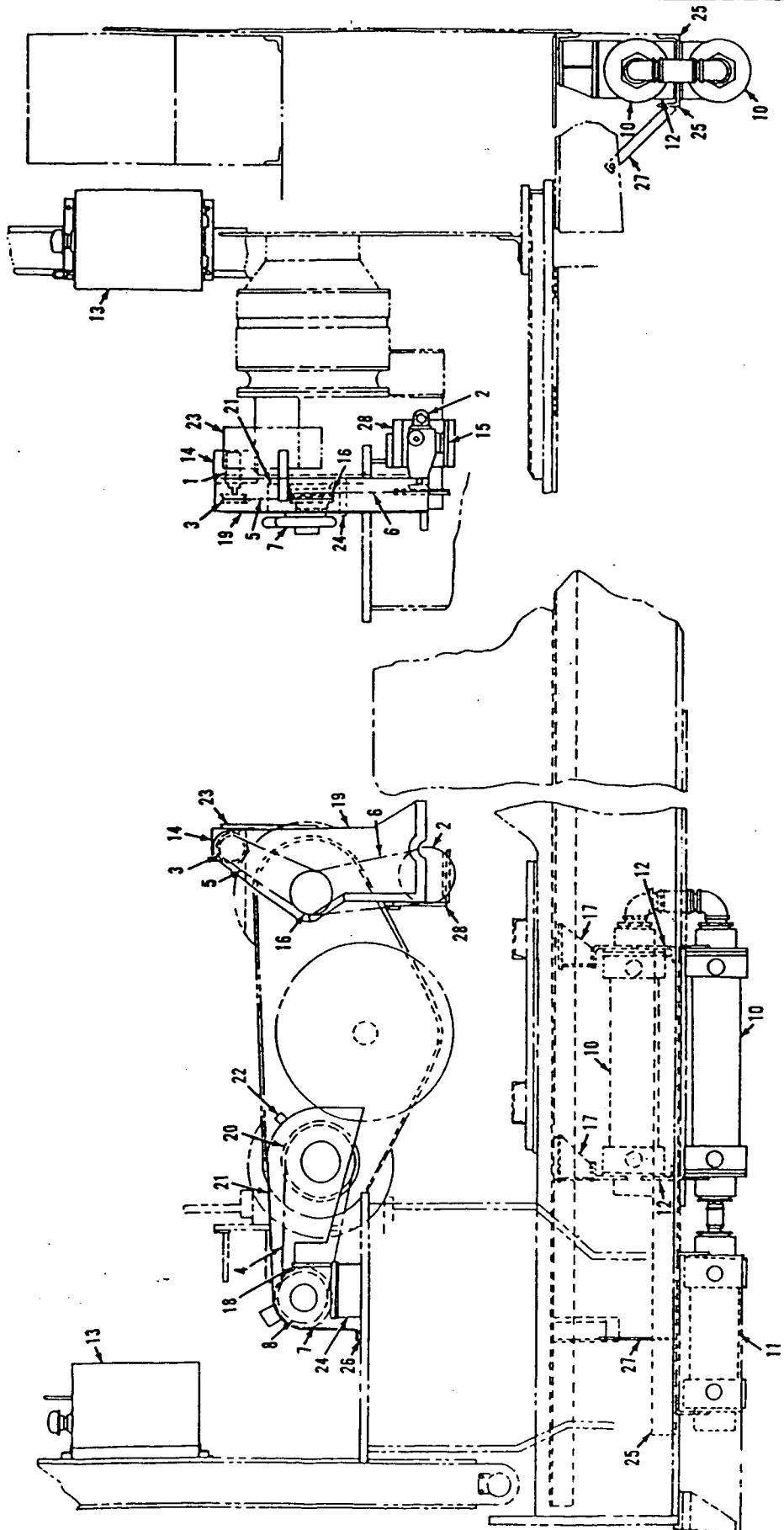
Vertically Mounted Pump w/Oil Trap



First on machine S.N. 41023

LUBRICATING PIPING

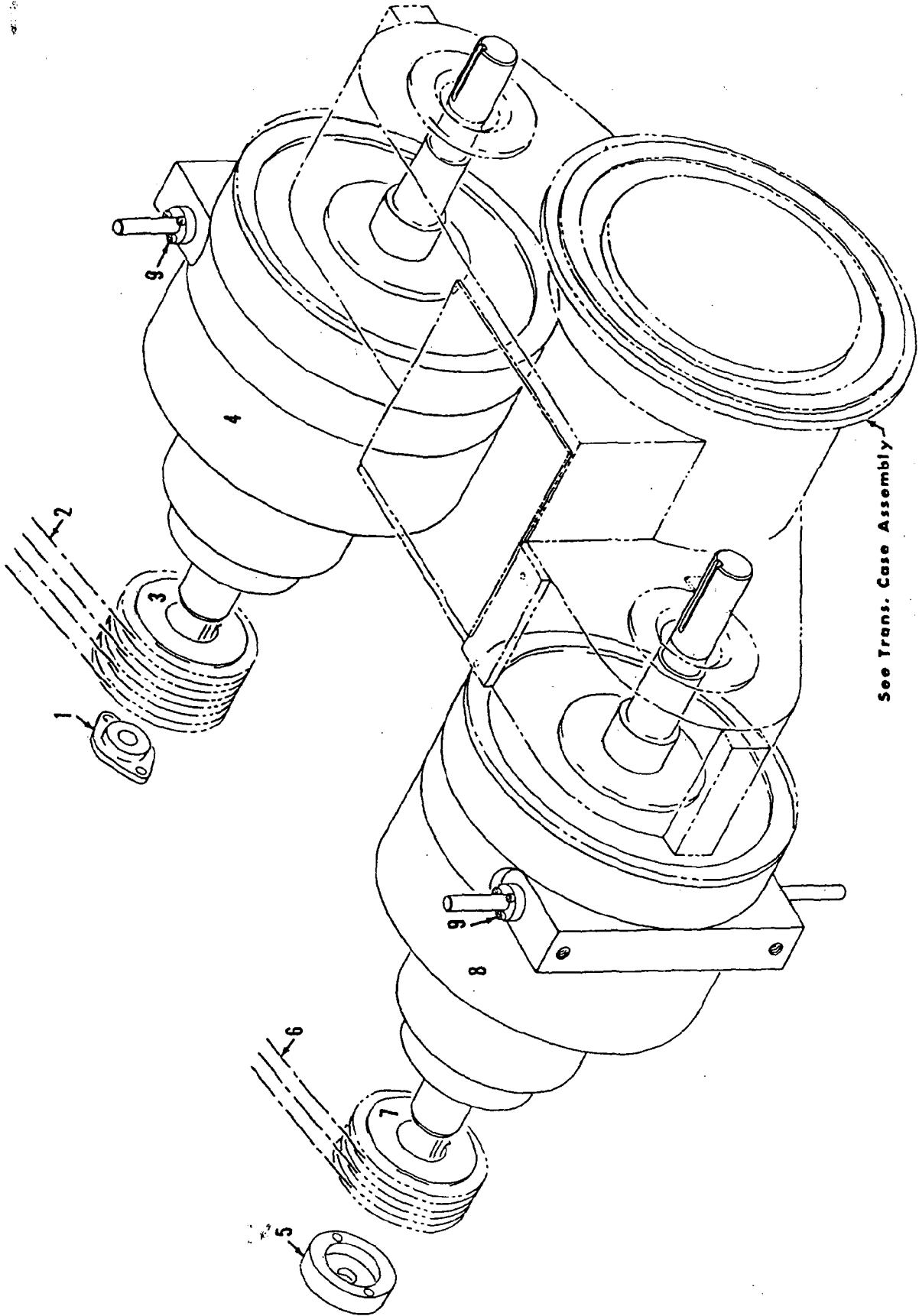
MASTER



MATERIAL LIST ON BACK

CONVERTER ACCESSORY COMPONENTS

MASTER



See Trans. Case Assembly

48384-1 Cont.	REV. Q	MODEL 4100W
---------------	-----------	----------------

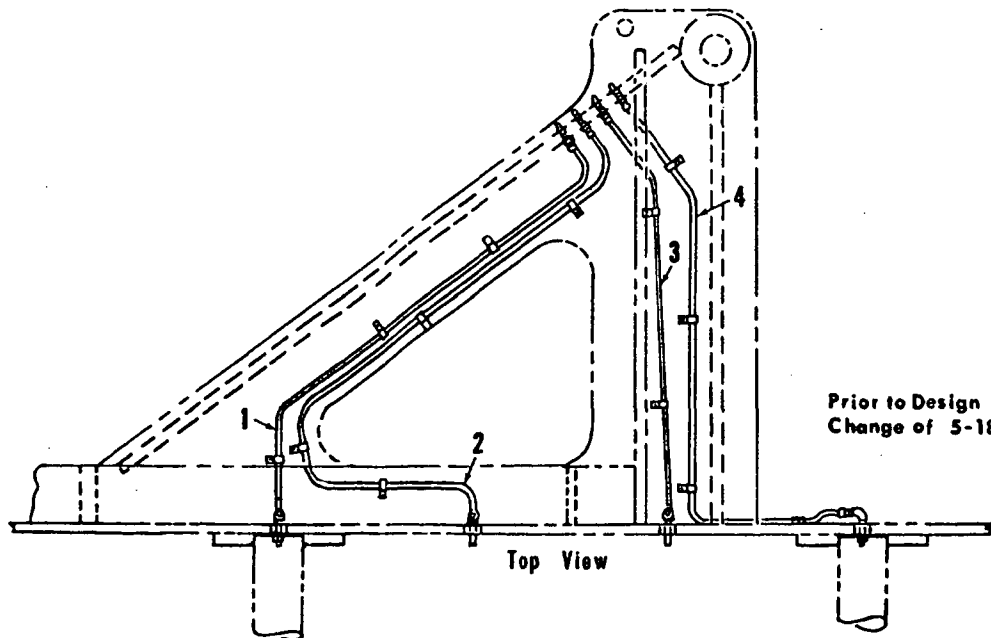
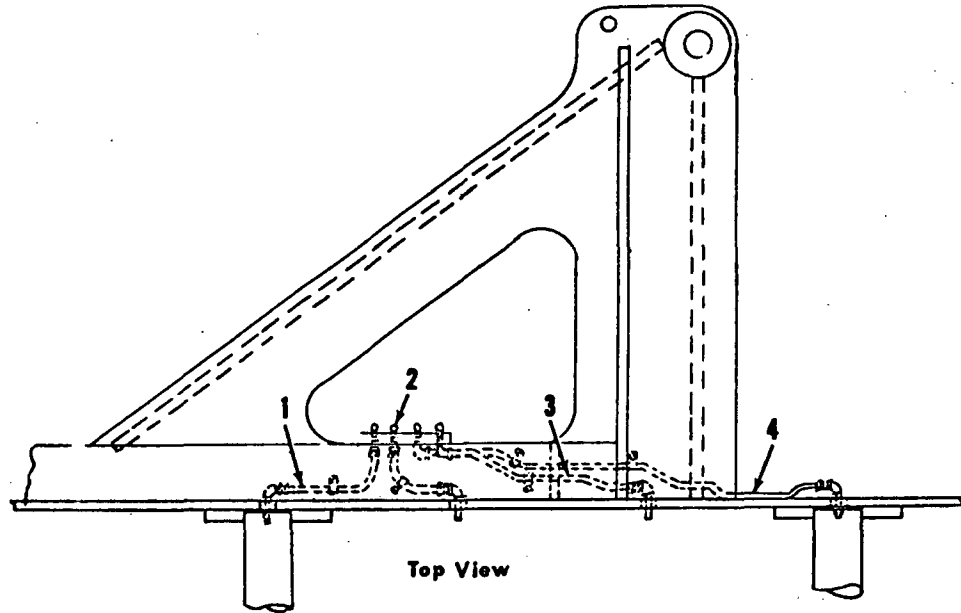
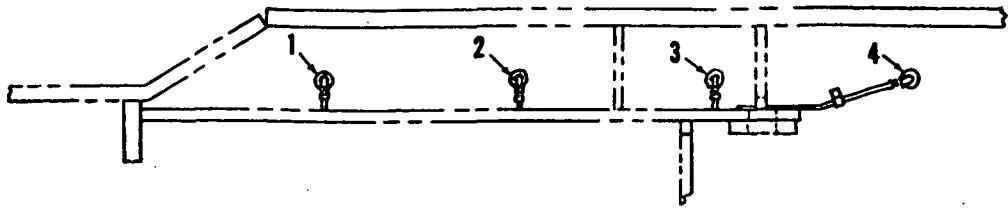
CRAWLERS (26'6")
(QUANTITIES FOR BOTH CRAWLERS)

REF. NO.	PART NUMBER	QUANTITY REQUIRED	DESCRIPTION OF PART	VENDORS PART NO.		
44	74867	4	PLATE, Cover			
45	74864	4	BUMPER			
46	74862	4	CYLINDER, Bumper			
47	74865	4	SPACER			
48	74866	64	SHIM (Use as required)			
NOTE 1: Prior to design change of Aug. 17, 1976 the following guides were used:						
27	138052-2	1	CHAIN GUIDE, Right w/capscrews and lockwashers			
27	138052-3	1	CHAIN GUIDE, Left w/capscrews and lockwashers			
Parts 138052-2 and 138052-3 are 4-1/2" deep at bolt holes. Parts 143969 and 143970 are 4" deep at bolt holes.						
NOTE 2: Oversize pin 147302 (1-13/16" dia.) is available to replace pin 11978 (1-3/4" dia.)						
0-471						
PLEASE GIVE MACHINE S/N W/ORDER				<table border="1"> <tr> <td data-bbox="1203 1976 1330 2043">REV. Q</td> <td data-bbox="1330 1976 1573 2043">48384 - 1</td> </tr> </table>	REV. Q	48384 - 1
REV. Q	48384 - 1					

MANITOWOC ENGINEERING CO.

A Division of The Manitowoc Company, Inc.

Manitowoc, Wisconsin



18023981

MATERIAL LIST ON BACK

LUB. PIPING

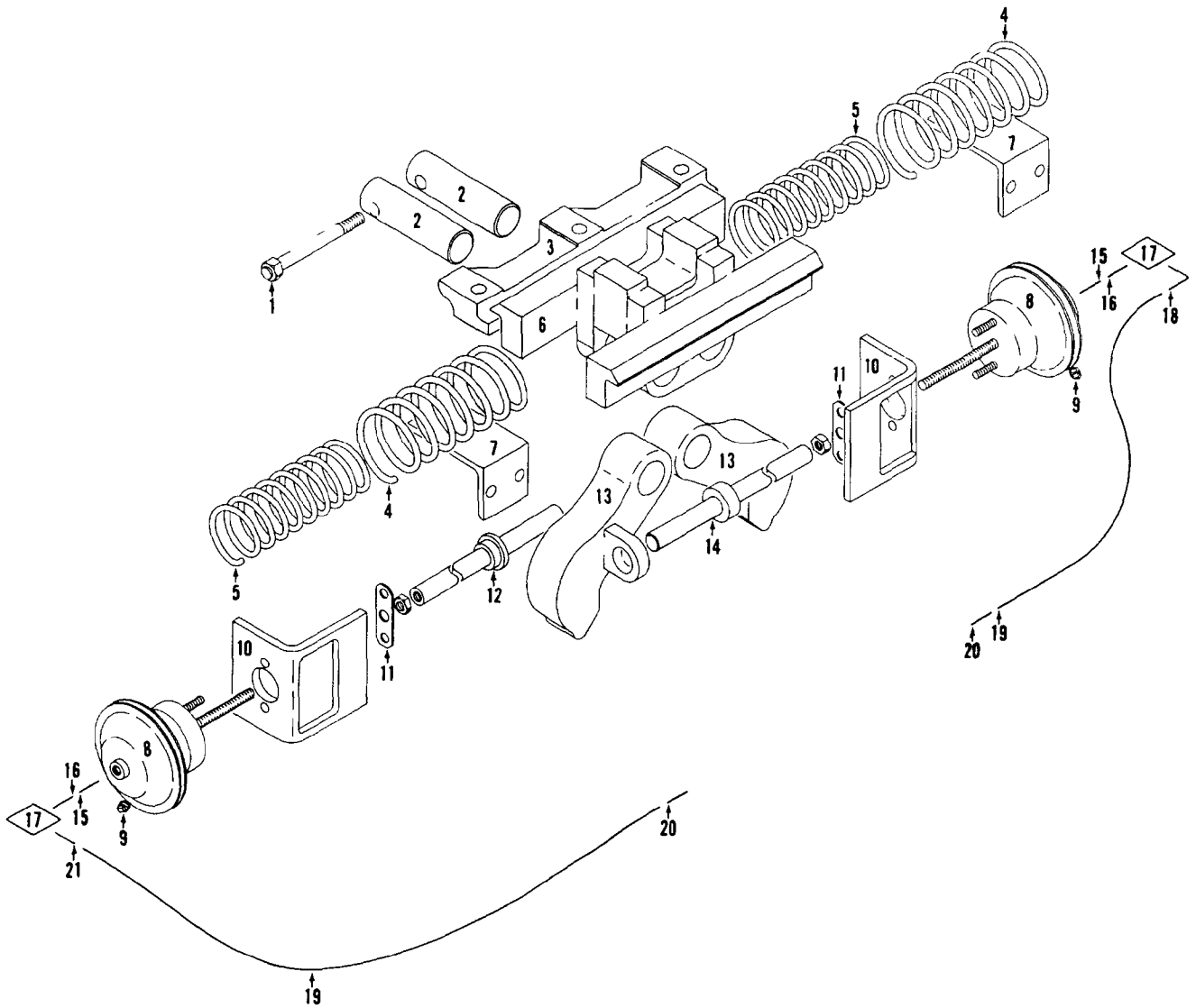
MASTER

18023981 D

MANITOWOC ENGINEERING CO

A Division of The Manitowoc Company, Inc.

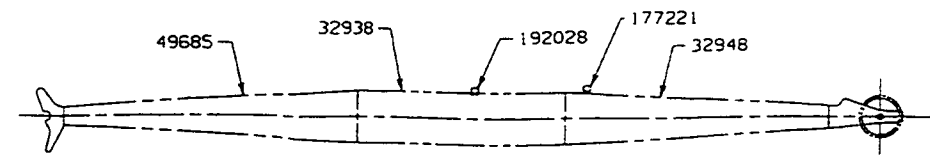
Manitowoc, Wisconsin



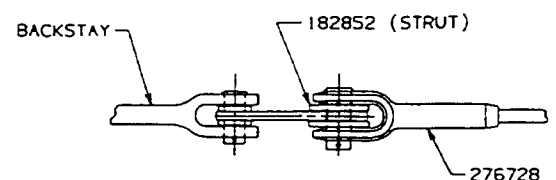
190264A1

MATERIAL LIST ON BACK

TRAVEL LOCK

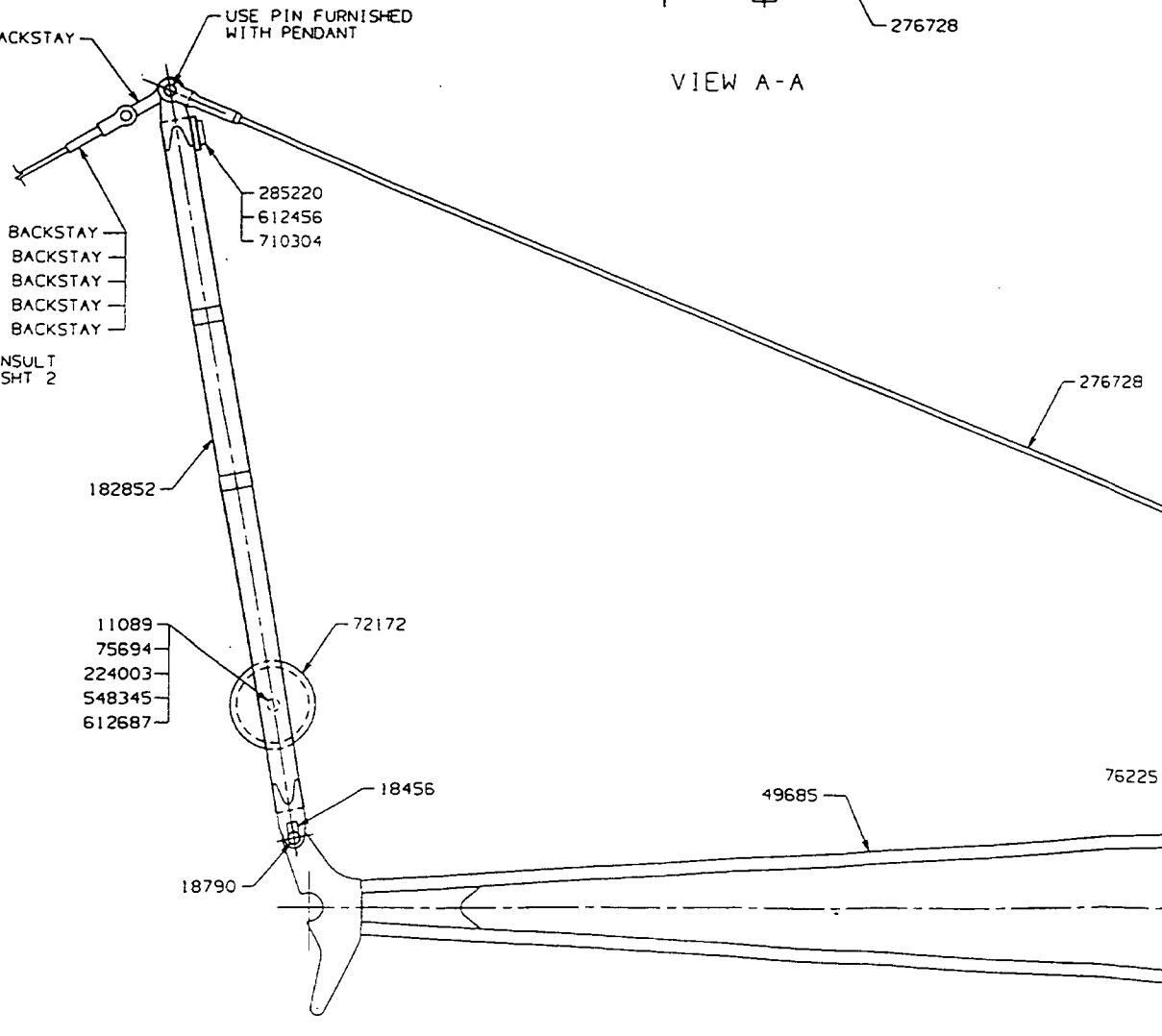


VIEW OF 40' JIB WITH WIRE ROPE ROLLER GUIDE



VIEW A-A

USE PIN FURNISHED WITH PENDANT
SEE JIB BACKSTAY ASSEMBLY



- H 181815 REF PENDANT BACKSTAY
- 75055 REF WIRE ROPE BACKSTAY
- 48659 REF PENDANT BACKSTAY
- 181311 REF PENDANT BACKSTAY
- 181434 REF PENDANT BACKSTAY

FOR BACKSTAY CONSULT PROPER VIEW ON SHIT 2

FOR BOOM 22 & 22A HAMMERHEAD 2 PIECE-50920-ADD		
C	2	LOCKING PLATE 139849
	2	END PLATE 79306
F	2	JIB STOP ASSEMBLY 140408
	2	PIN 139676
FOR BOOM #9-15FT HAMMERHEAD 2 PIECE-ADD		
A	2	LOCKING PLATE 139849
FOR BOOM #9A-3FT HAMMERHEAD DEEP SECTION-ADD		
	6	PIN 13310
D	2	JIB LOCKING PLATE 139058
	2	ADAPTOR 139853
	2	PIN 139193
	4	LINK 139728
G	2	LINK 140507

REQ'D. FOR VARIOUS JIB LENGTHS				
JIB LENGTH	10' INSERT DWG NO. 32938	PENDANT NO. 276729 DWG NO. 74958	JIB JOINT PIN NO. 76225	TIMBER 192028
40FT	1	2	4	1
50FT	2	4	8	2
60FT	3	6	12	3

- T 1 276730 & 276731 ARE ON DWG 75023. USE 276730 WITH 0° JIB ANGLE. USE 276731 WITH 10° AND 20° JIB ANGLE.
- 2 #27 LIFT-CLAM
- 3 3900T ONLY

BILL OF MATERIAL				ASSEMBLIES USED ON
ITEM NO.	QTY	DESCRIPTION	MATERIAL	
BASIC PARTS				
	2	WASHER	11089	
	2	KEEPER	18456	
	2	PIN	18790	
	1	JIB TOP (15'-0")	32948	
	1	STRUT (12'-6")	182852	
	1	JIB BUTT (15'-0")	49685	
	1	TIMBER	177221	
	1	SHEAVE	72172	
	2	PIN	75052	
	1	SHEAVE PIN	75694	
	4	PIN	76225	
	1	UNIVERSAL WIRE ROPE ANCHOR JOINT	90317	
	1	JIB POINT SHAFT	90318	
	1	ROLLER BEARING	224003	
	2	PENDANT (33'-3 3/4" ON DWG. 74958)	276728	
	2	RUBBER BUMPER	285220	
	2	.625-11UNC-28 ELASTIC STOP NUT	548345	
	4	.375-16UNC-2A X 1.25 LG HEX SCREW	612456	
	2	.625-11UNC-2A X 5.50 LG HEX SCREW	612687	
	4	.375 LOCKWASHER	710304	

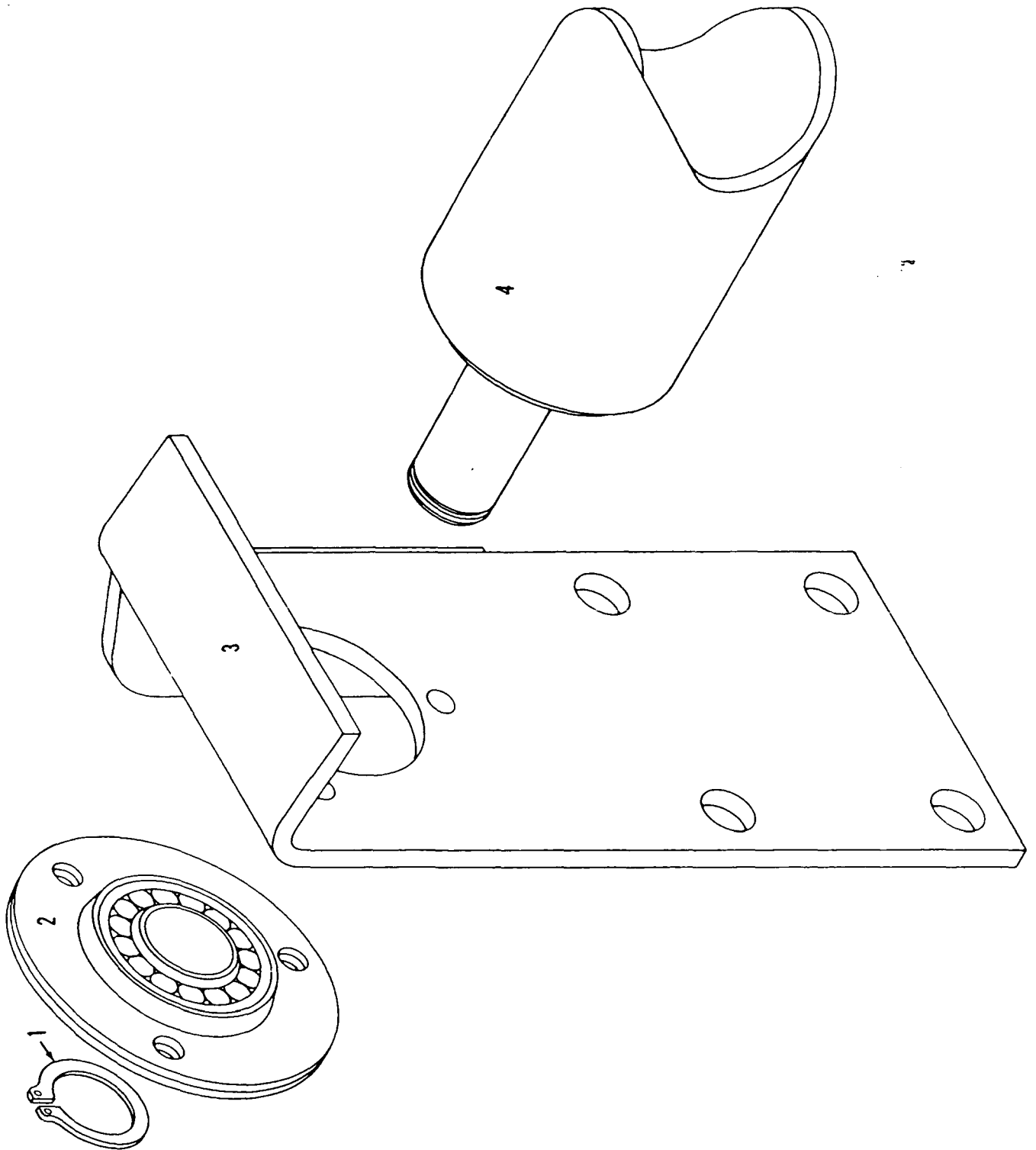
FOR BOOMS #6,7A,8,9,9A,13, 17,22,22A,22C,27,39 & 39A-ADD		
B	2	LOCKING PLATE 139849
K	2	PIN 75025
	4	ADJUSTING LINK 90333
	2	JIB STOP PENDANT 71.25 LG 276730 1
	2	JIB STOP PENDANT 67.62 LG 276731 1
	2	KEEPER 71587 2
M	2	PIN 564093
R	1	STRUT HANDLING ASS'Y FOR 123 JIB 184226 3

FOR BOOM #22 & 22A LIGHT TAPERED TOPS-ADD		
L	2	PIN 75025
	4	ADJUSTING LINK 90333
	2	JIB LOCKING PLATE 139058
E	2	ADAPTOR 139853
	2	PIN 139193
	2	JIB STOP PENDANT 71.25 LG 276730 1
	2	JIB STOP PENDANT 67.62 LG 276731 1
N	2	PIN 564093

SUPERSEDES 43730 OF 1-27-71

43730	Manitowoc Cranes, Inc. Manitowoc, Wisconsin	#123 TUBULAR JIB ASSEMBLY	DATE: 6-30-71
	3900 THRU 4600	SHEET 1 OF 2	PATTERN NO.
			43730

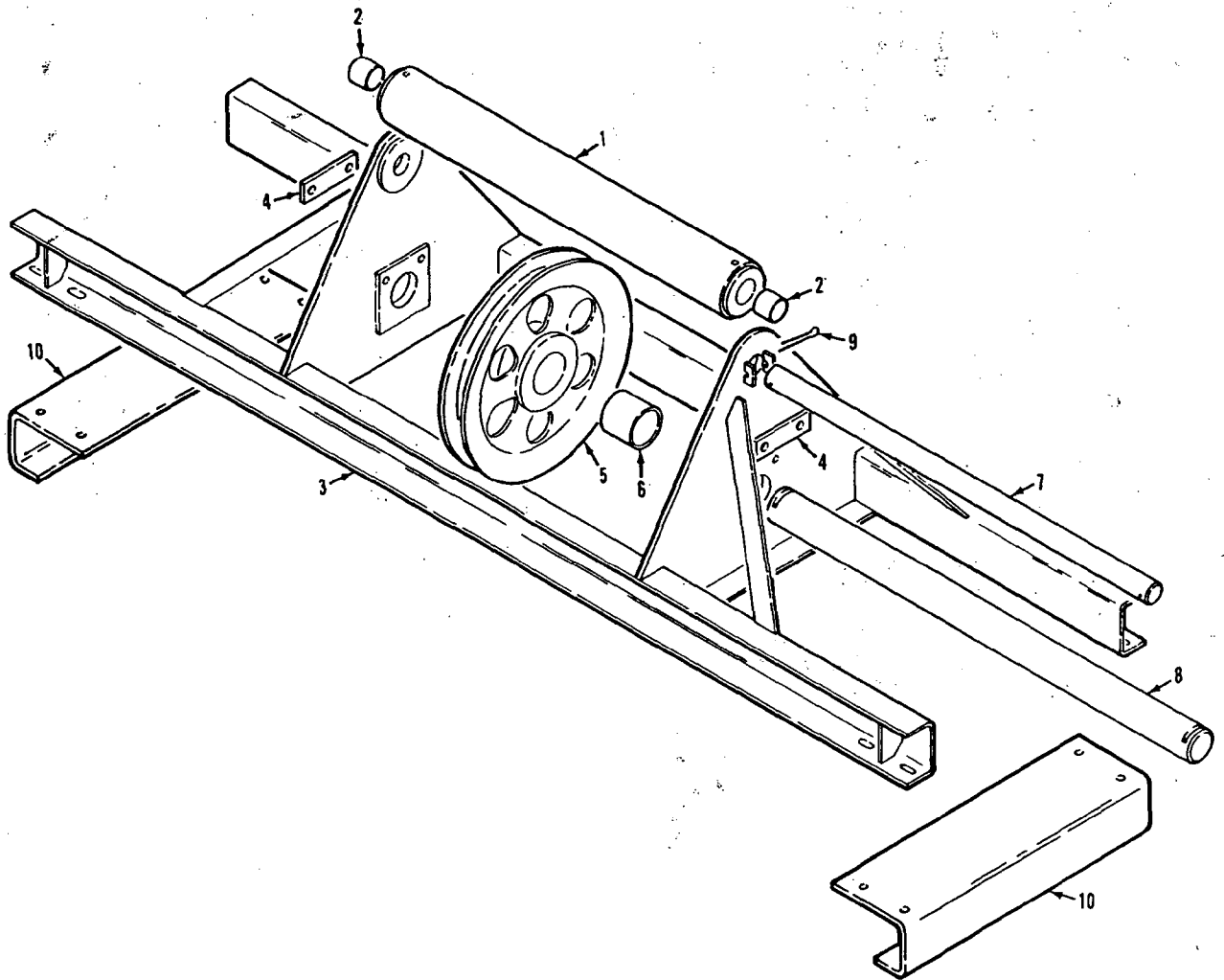
MASTER



77728A1

MATERIAL LIST ON BACK

CABLE ROLLER GUIDE ASSEMBLY



93972C1

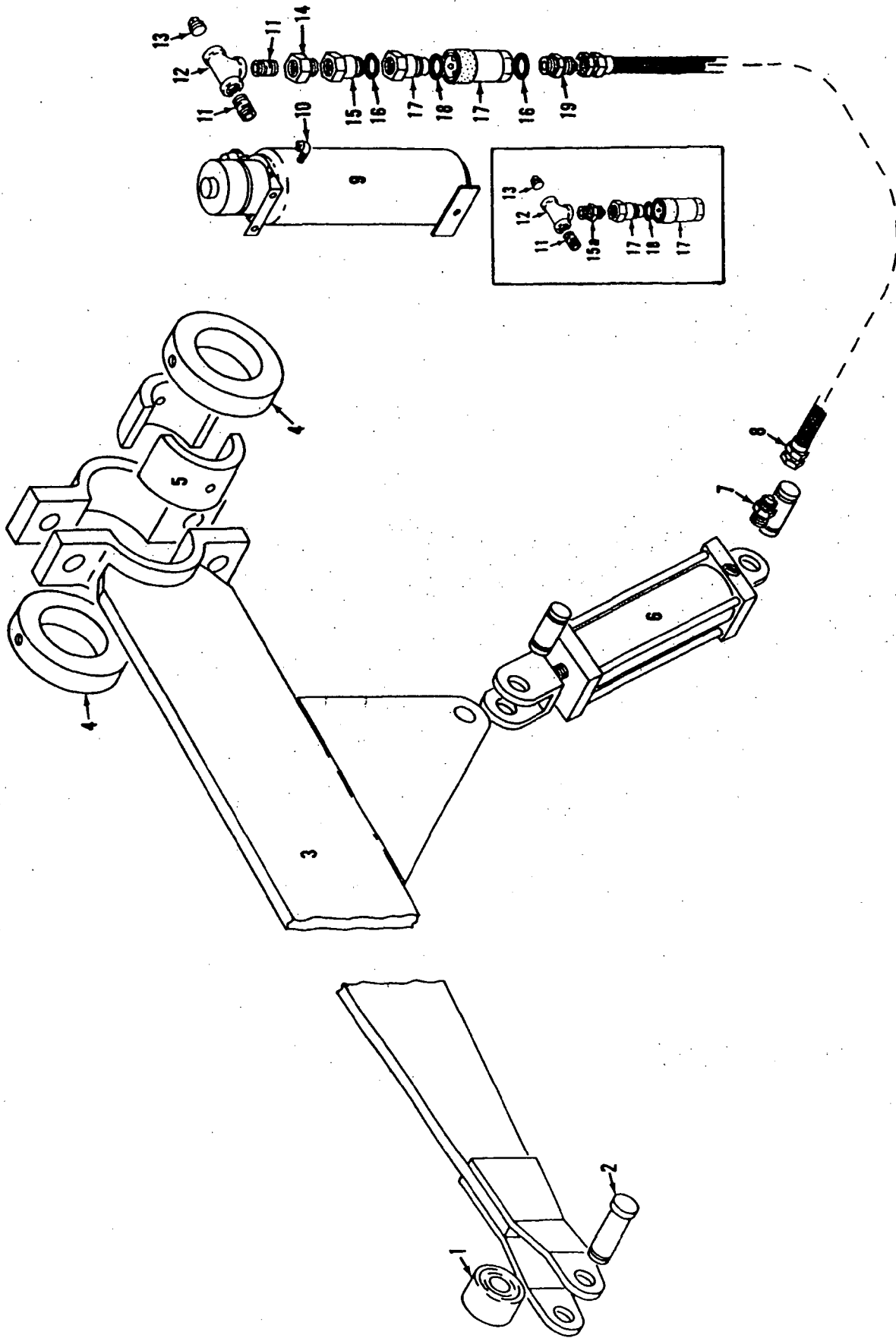
MATERIAL LIST ON BACK

WIRE ROPE GUIDE

MANITOWOC ENGINEERING CO.

A Division of The Manitowoc Company, Inc.

Manitowoc, Wisconsin



GANTRY LIFTING DEVICE

MATERIAL LIST ON BACK

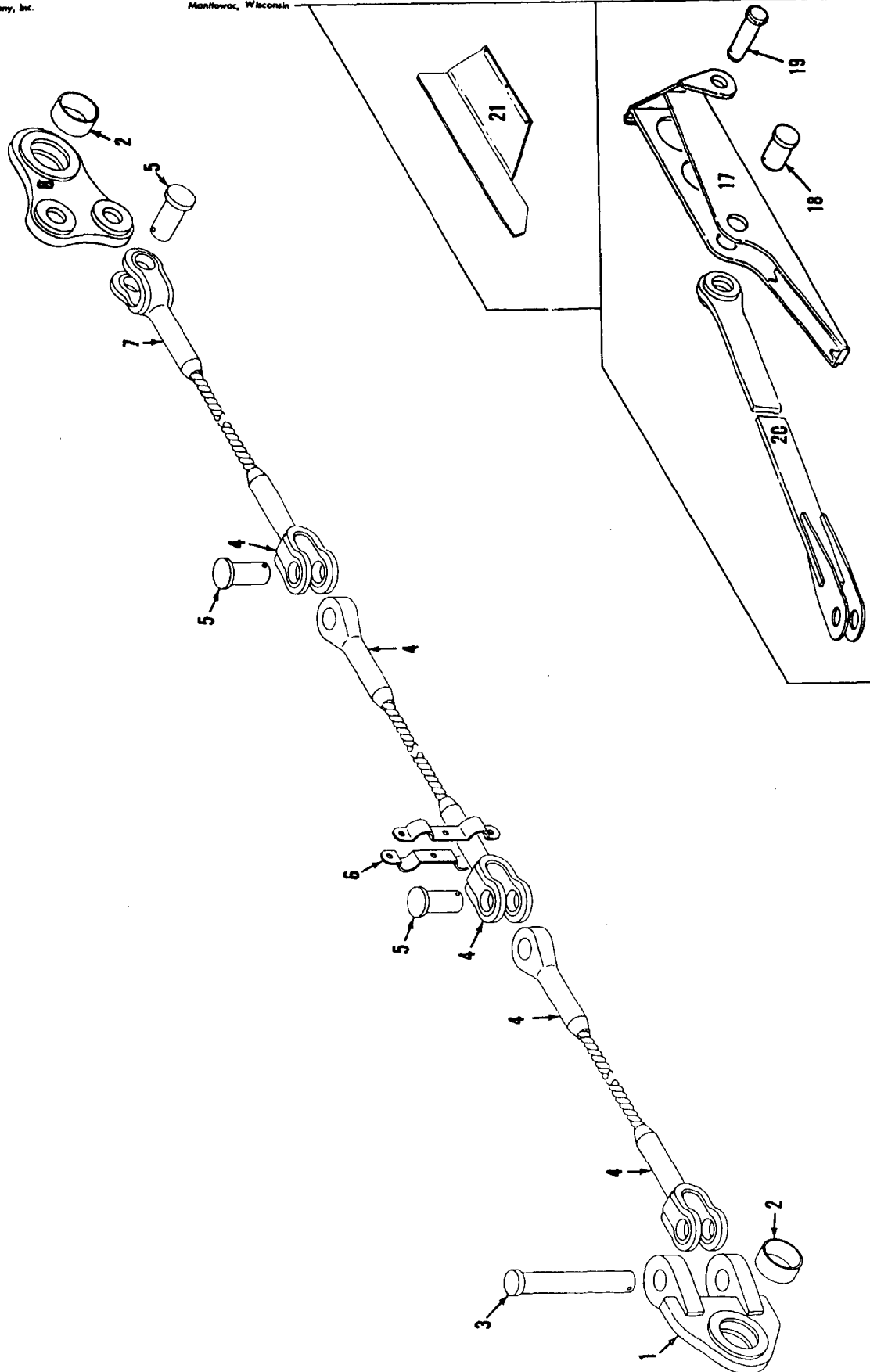
180590 D

18059001

MANITOWOC ENGINEERING CO.

A Division of The Manitowoc Company, Inc.

Manitowoc, Wisconsin



48881A3

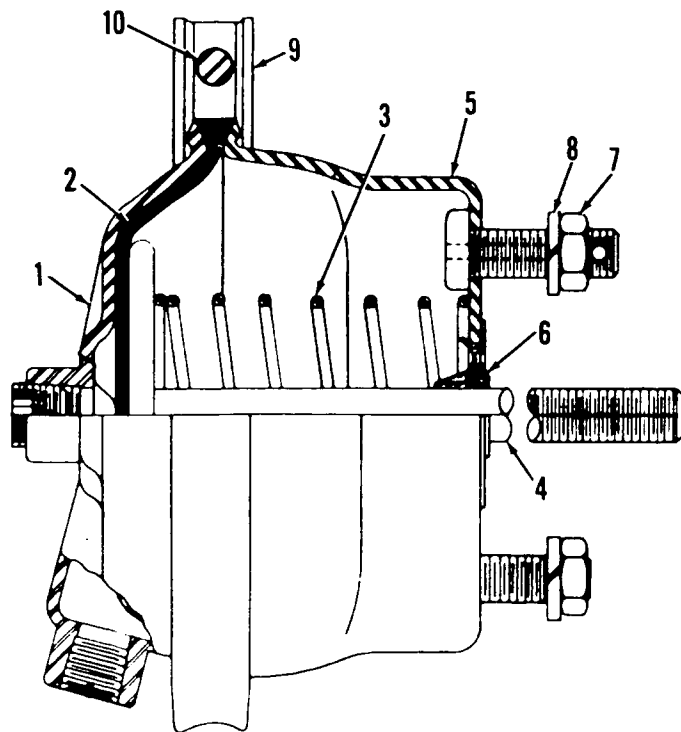
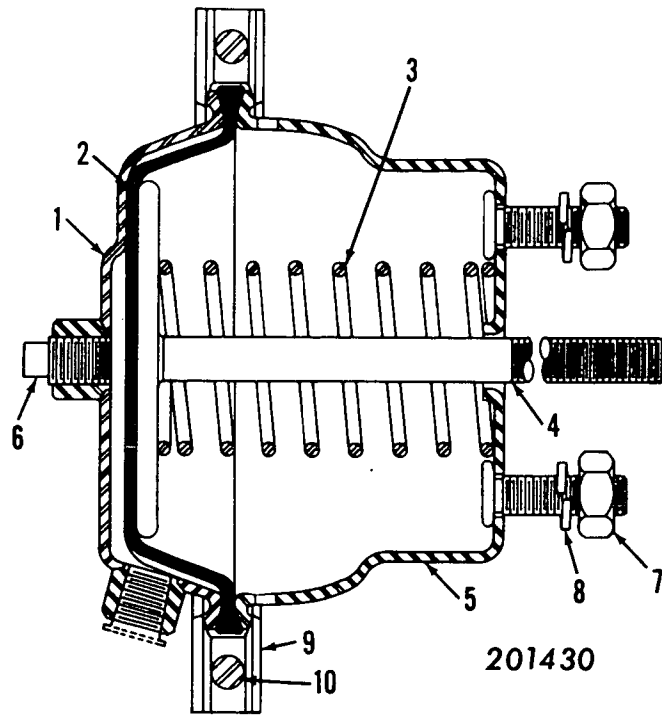
MATERIAL LIST ON BACK

PENDANTS & CONNECTIONS

MASTER

MASTER

48881 A3



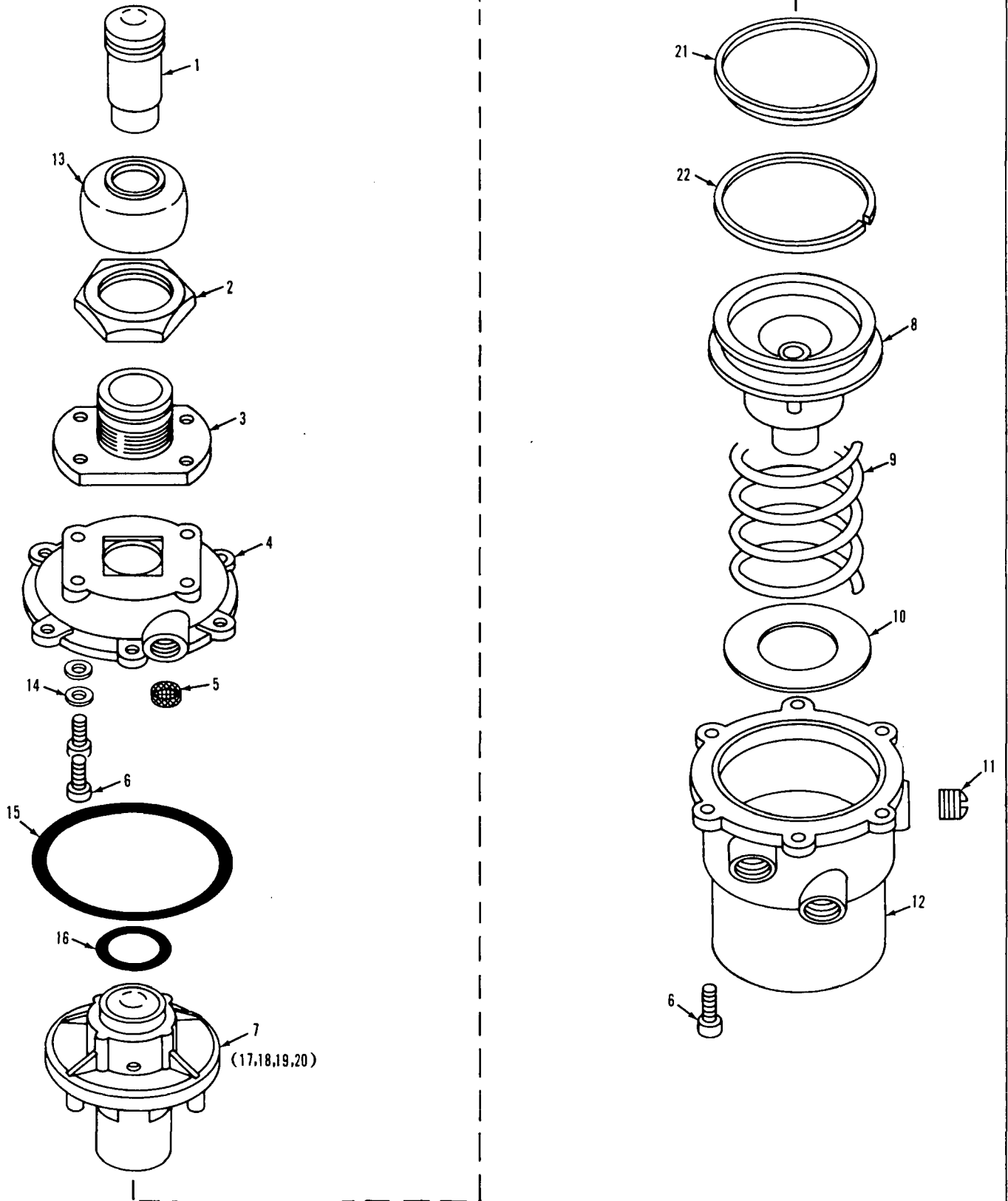
MASTER

MANITOWOC ENGINEERING CO.

A Division of The Manitowoc Company, Inc.

Manitowoc, Wisconsin

MASTER

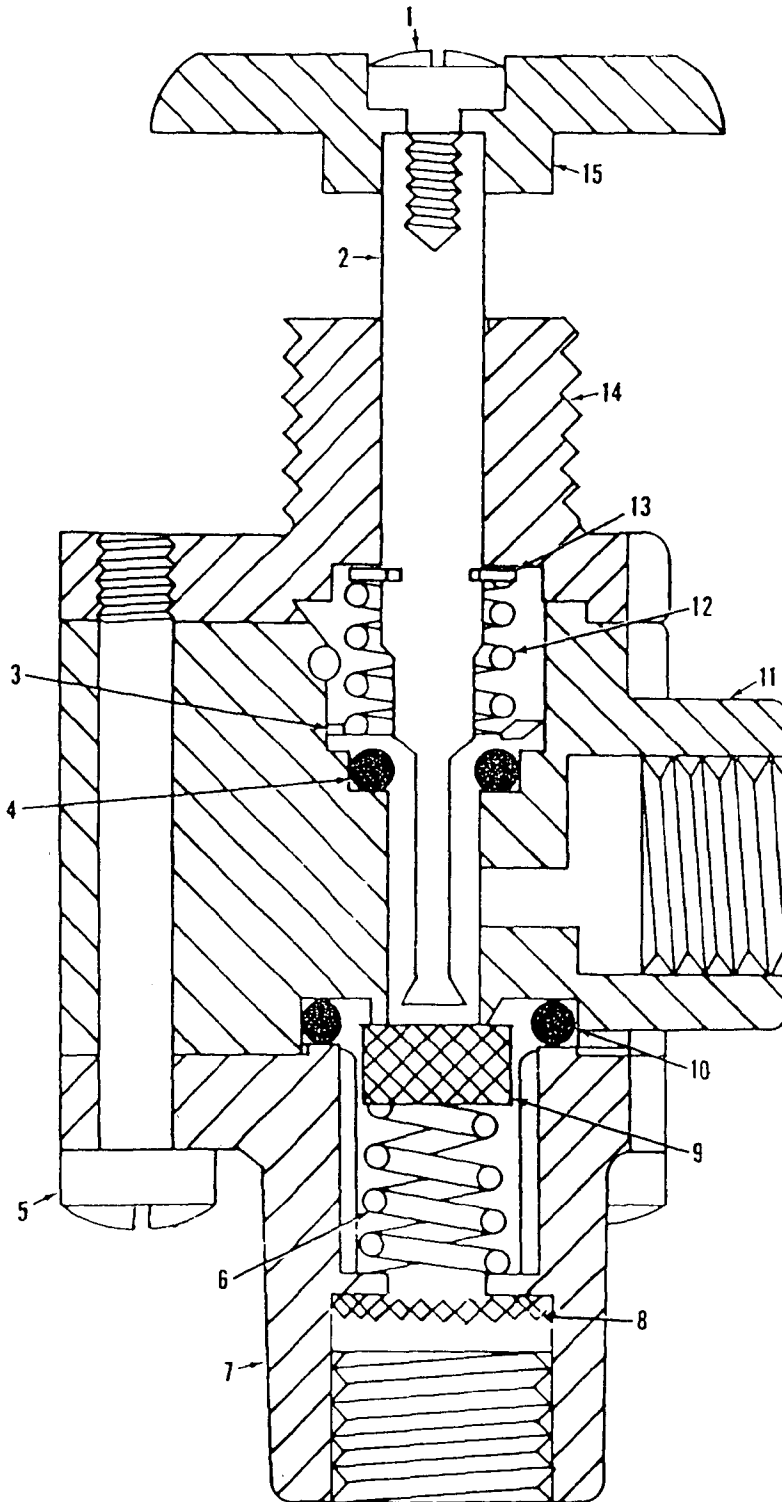


0-247-18

MATERIAL LIST ON BACK

Control Valve

MASTER



0-302

MATERIAL LIST ON BACK

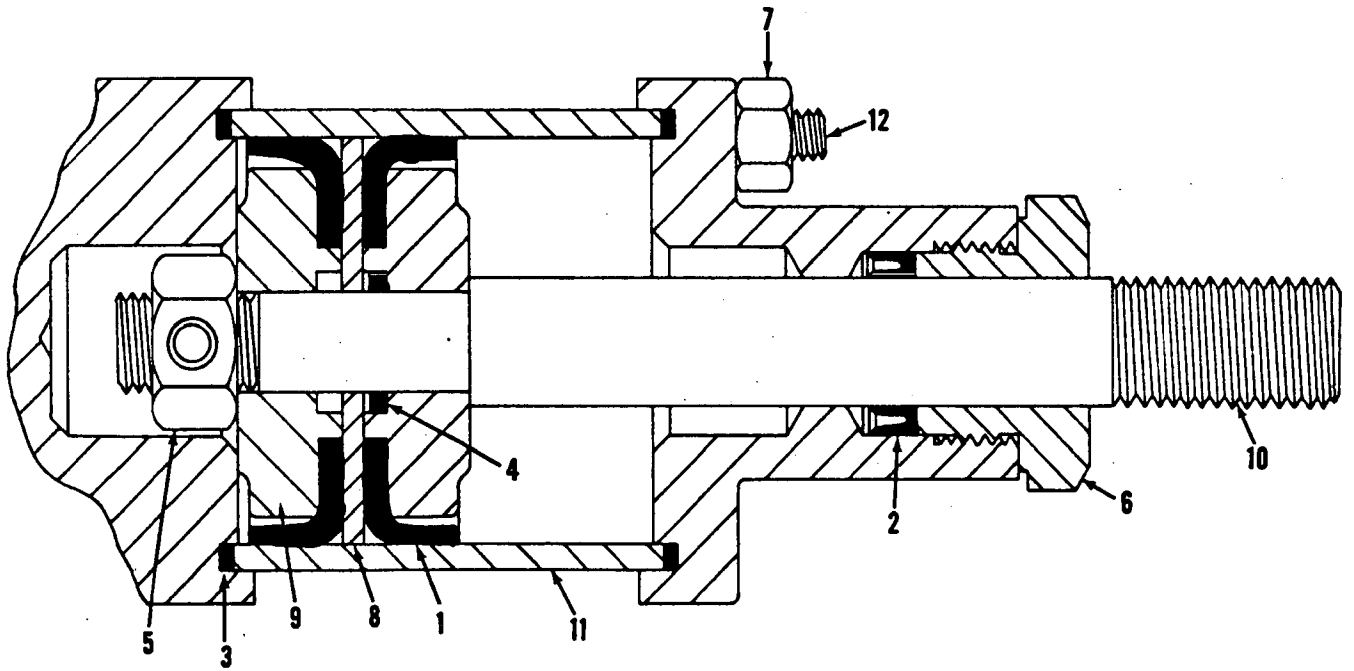
CONTROL VALVE

MANITOWOC ENGINEERING CO.

A Division of The Manitowoc Company, Inc.

Manitowoc, Wisconsin

MASTER



0-318

MATERIAL LIST ON BACK

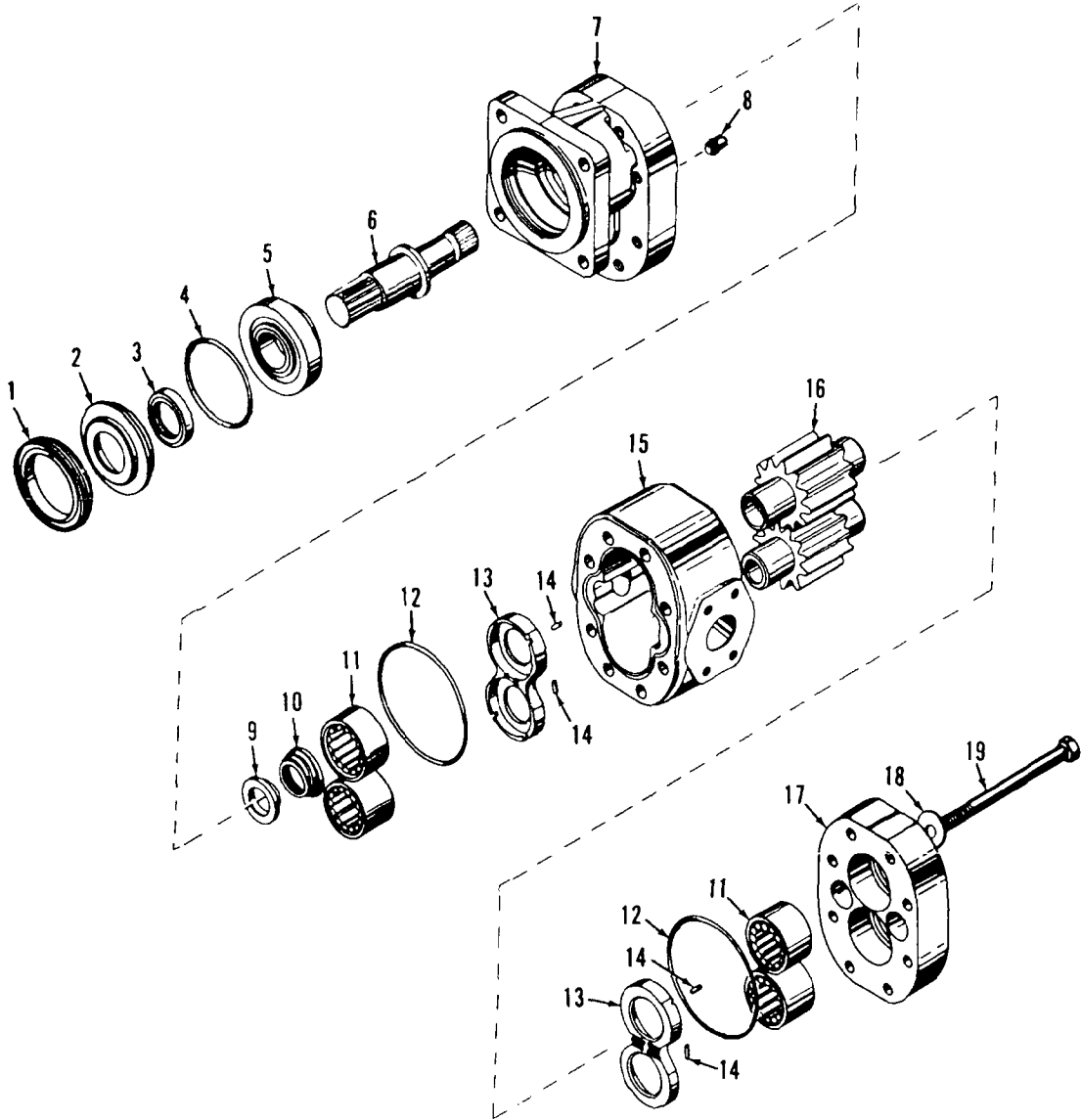
AIR CYLINDER

0-318

MANITOWOC ENGINEERING CO.

A Division of the Manitowoc Company, Inc.

Manitowoc, Wisconsin



MASTER

0-418

MATERIAL LIST ON BACK

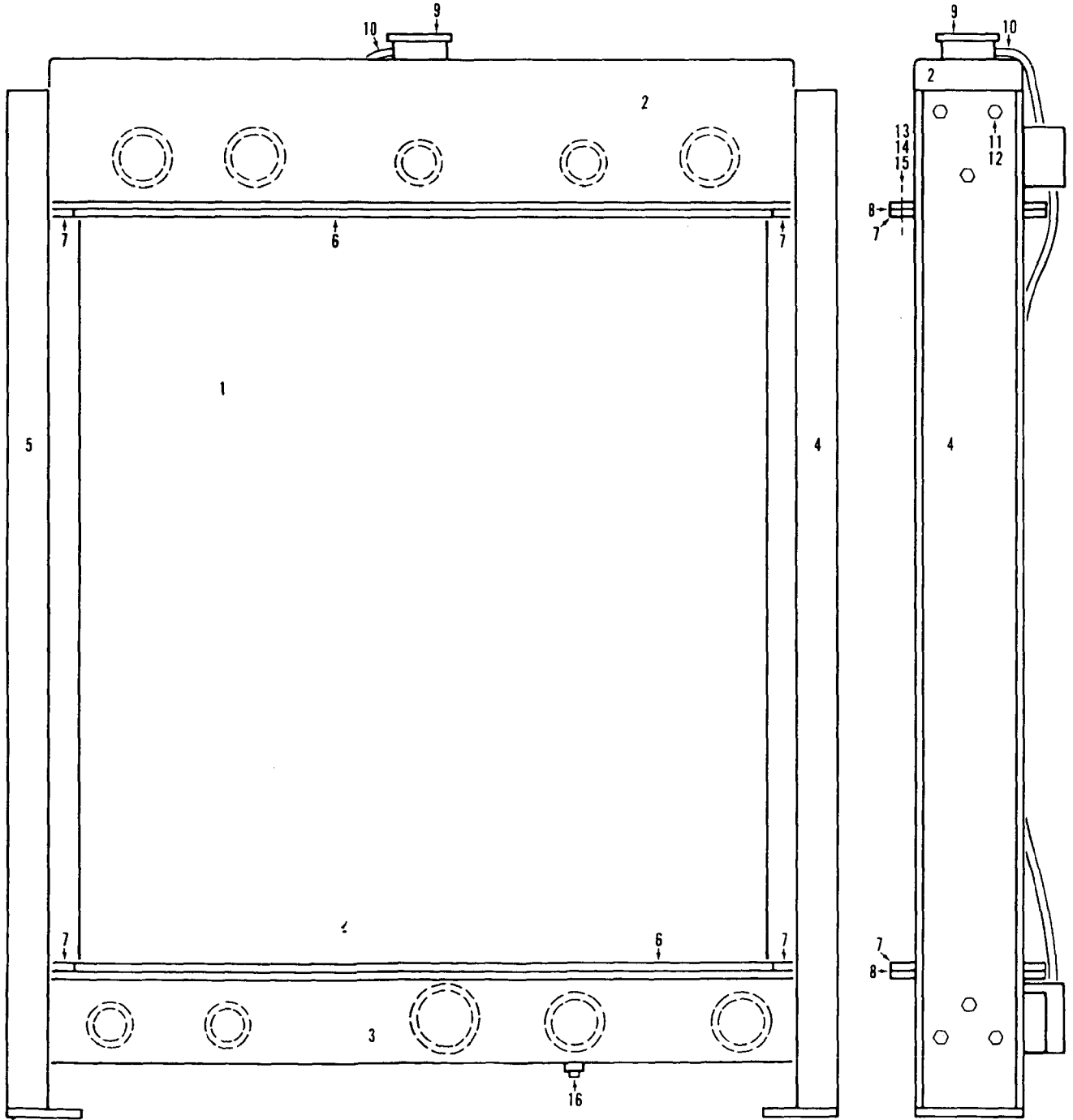
HYDRAULIC PUMP

MANITOWOC ENGINEERING CO.

A Division of The Manitowoc Company, Inc.

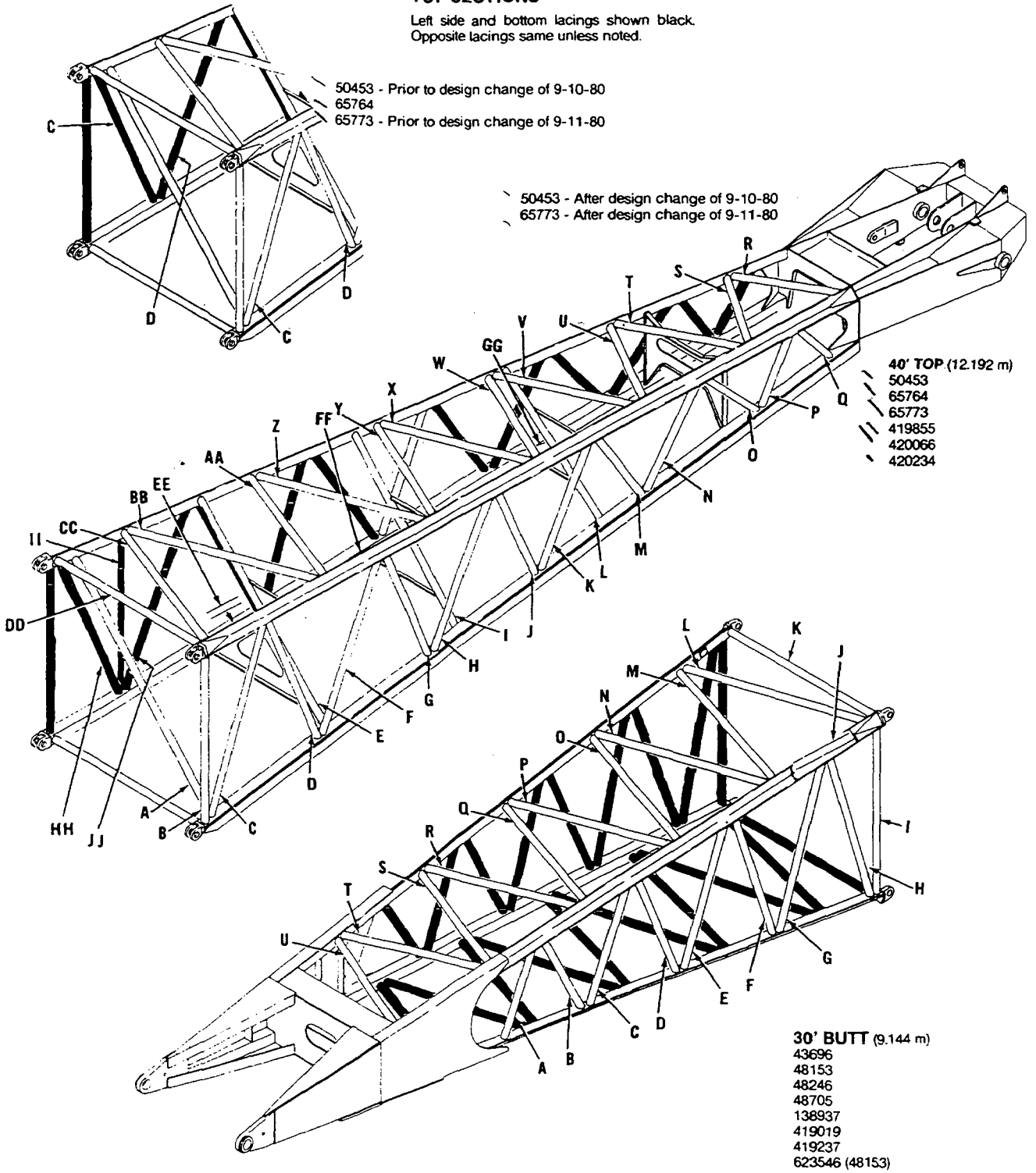
Manitowoc, Wisconsin

MASTER



BOOMS #22, #22A, #22C-BUTT & TOP SECTIONS

Left side and bottom lacings shown black.
Opposite lacings same unless noted.



O-503 C1

To order lacings see Folio #823

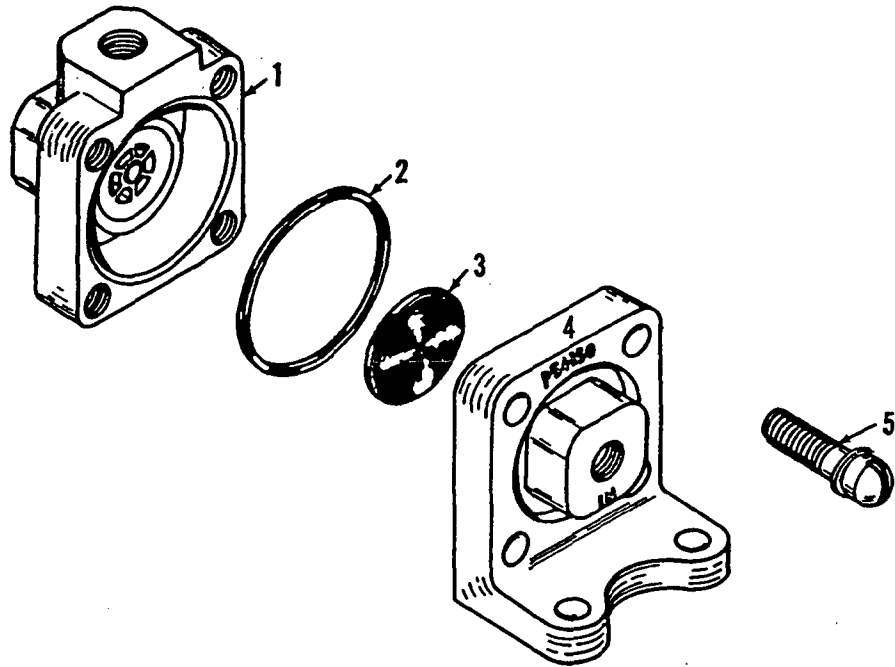
2-13-92
9-91

LACINGS

MANITOWOC ENGINEERING CO.

A Division of The Manitowoc Company, Inc.

Manitowoc, Wisconsin



0-4381

MATERIAL LIST ON BACK

SHUTTLE VALVE ASSEMBLY

CLICK HERE TO **DOWNLOAD** THE COMPLETE MANUAL

- Thank you very much for reading the preview of the manual.
- You can download the complete manual from: www.heydownloads.com by clicking the link below



- Please note: If there is no response to CLICKING the link, please download this PDF first and then click on it.

CLICK HERE TO **DOWNLOAD** THE COMPLETE MANUAL