



TRADITIONAL CRANE PARTS MANUAL

This manual has been prepared for and is considered part of

4100W

Model

41425

Serial Number

GROUP A = Rotating Structure (Includes rotating bed, operator's cab, cases, fuel tanks, transfer pump, counterweights, guards, platforms, catwalks, machinery enclosure, horn)

GROUP B = Upperworks Machinery (Includes front, rear, and auxiliary drums, boom hoist, swing and drive shafts, hand levers, foot pedals, control linkage, rotation indicators, upperworks hydraulic components, hydraulic piping, hydraulic oil reservoir, lubrication pump and piping, blowers)

GROUP C = Air Components & Electrical (Includes control console, air piping, electric wiring, auxiliary light plant and lighting, TV monitoring, compressor and air tank)

GROUP D = Power Components - Upperworks (Includes engine or motor, radiator, auxiliary power plant, take off converters and piping, controls, VICON power lowering, torque limiter, hydraulic pumps and piping, fuel piping, battery box)

GROUP E = Lower Structure & Control (Includes carbody, crawlers, travel shafts and control, steering travel locks, hydraulic travel, travel power outriggers, carrier, pedestal, lowerworks hydraulic piping, RINGER components, barge mounting and machinery, spud drums)

GROUP F = Attachments (Includes booms, jibs, masts, tower, wire rope guides, equalizer, gantry, fairlead, timber guards, boom angle indicator, block-up limit, tag line, hook block, weight ball, upper and lower boom point, wind speed indicator, crowd and retract dipper sticks, dippers,)

O-NUMBER SECTION = (Includes lacing drawings and purchased component parts drawings referenced in sections A through F)

This manual is arranged in sections as listed above. Sections A through F are arranged by group numerical order with an index after each section tab. An alphabetical index for groups A Through F combined is located after the O-number Section. The O-number section is arranged in numerical order by O-number. Following this cover page are the Basic Specifications, Warranty Information, Tool List (if applicable) Outline Dimensions, Weights, and Dealer Listing.

MANITOWOC CRANES, INC.

2401 South 30th Street • PO Box 70

Manitowoc, WI 54221-0070

Phone: 920-684-6621 • Fax: 920-683-6278

CLICK HERE TO **DOWNLOAD** THE COMPLETE MANUAL

- Thank you very much for reading the preview of the manual.
- You can download the complete manual from: www.heydownloads.com by clicking the link below



- Please note: If there is no response to CLICKING the link, please download this PDF first and then click on it.

CLICK HERE TO **DOWNLOAD** THE COMPLETE MANUAL

B. Ordering Lacings without Lacing Drawings

The parts order must contain the following information to ensure that Manitowoc provides you with the correct lacings:

1. Crane serial number (can be found on builders plate in operator's cab.)
2. Boom or jib identification number.
3. Quantity, lacing location, and lacing number.
4. Boom or jib component name (butt, insert, or top) and part number.

NOTE: To obtain the lacing location and number, view the boom or the jib from the butt end looking forward. Identify the side on which the damaged lacing is located: left side, top side, right side, or bottom side. Count each lacing up to and including the damaged lacing, starting with **first lacing nearest butt end** of the component as shown in Figure e3.

Do not count a diagonal lacing as the first lacing. Identify diagonal lacing separately; lower end diagonal lacing or upper end diagonal lacing.

ASSISTANCE

If you are in doubt as to which lacings to order, DO NOT GUESS. Contact your nearest Manitowoc distributor for assistance; doing so may prevent the wrong parts from being shipped.

EXAMPLE: Assume you have a number 22 boom and the lacings with circled numbers in Figure 3 are damaged. Your parts order should be similar to the following example:

Crane Serial Number: **00000** (from builders plate).

Boom Identification Number: **#22 Boom**

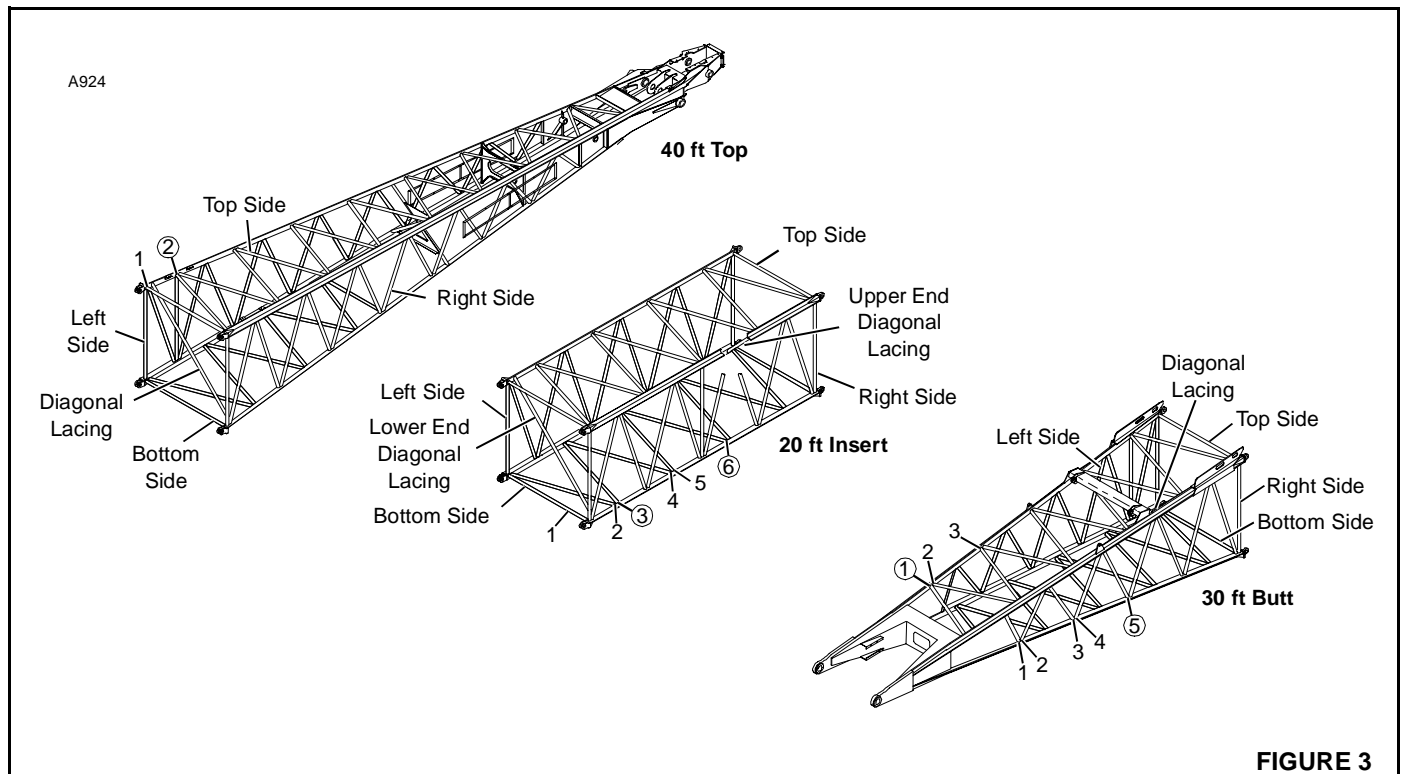
Required:

- 1 each Top Side Lacing (1) for 30 ft Butt 48153-9
- 1 each Right Side Lacing (5) for 30 ft Butt 48153-9
- 1 each Bottom Side Lacing (3) for 20 ft Insert 33426-3
- 1 each Bottom Side Lacing (6) for 20 ft Insert 33426-3
- 1 each Top Side Lacing (2) for 40 ft Top 50453-2

Quantity	Lacing Location	Lacing Identification Number	Component Name and Part Number
1	Top Side	(1)	30 ft Butt 48153-9
1	Right Side	(5)	30 ft Butt 48153-9
1	Bottom Side	(3)	20 ft Insert 33426-3
1	Bottom Side	(6)	20 ft Insert 33426-3
1	Top Side	(2)	40 ft Top 50453-2

WELDING INSTRUCTIONS

Each lacing order is shipped with welding instructions and a copy of Form 00SPFM006 which identifies the chord and lacing material.



**PARTS MANUAL ALPHABETICAL INDEX
GROUP A - Rotating Structure**

DESCRIPTION	PUBLICATION	REV	START DATE	END DATE	GROUP
"A" Frame	48481	F1	02/25/70	11/02/81	A0101
Cab	65413	B2	12/22/75	05/17/91	A0201
Cab	65413	K1	12/22/75	05/17/91	A0201
Cab	95606	-	09/24/75	08/26/85	A0201
Cab	95772	N/A	01/15/76	01/15/76	A0201
Cab Heater/Air Conditioner	190268	-	01/23/76	03/01/77	A0209
Cab Rear Support	180856	E1	05/14/69	12/06/89	A0103
Chain & Gear Case	48691	A1	03/25/69		A0401
Chain & Gear Case	48691	G2	03/25/69	02/04/91	A0401
Chain & Gear Case	48691	L1	04/14/72	10/06/81	A0401
Chart Holder	93994	A1	11/15/71	04/08/83	A0212
Chart Holder	95639	-	09/19/75	12/17/84	A0212
Counterweight & Cab Rear	49487	G1	10/21/71	12/18/90	A0301
Counterweight & Cab Rear	49487	G1	11/12/71	04/04/80	A0301
Fuel Tank	48559	K1	12/03/68	07/14/88	A0601
Guards	49267	K1	08/14/70	01/31/77	A0501
Operator's Station/Pilothouse	137847	-	07/17/69	09/28/94	A0202
Operator's Station/Pilothouse	65386	C2	09/24/75	08/16/90	A0202
Operator's Station/Pilothouse	65386	O1	09/24/75	11/21/86	A0202
Platform	48583	K1	02/27/69	03/22/95	A0701
Rotating Bed Lubrication Piping	48794	-	07/31/69	06/30/76	A0104
Rotating Bed/Hoist Frame/Transporter Platform	48443	AA1	09/25/75	06/06/84	A0102
Windshield Wiper/Defogger	180880	-	04/21/70		A0210
Windshield Wiper/Defogger	190248	E1	12/17/75	03/02/84	A0210

48559-1 Cont.	REV. K	MODEL 4100W
---------------	--------	-------------

FUEL TANK

REF. NO.	PART NUMBER	QUANTITY REQUIRED	DESCRIPTION OF PART	VENDORS PART NO.
			NOTE 5: Machines w/optional fuel tank drums, delete Ref. 11 and add — (not shown)	
	288770	2	BUSHING, Nut (2" x 1/2")	
	355004	2	STEAMCOCK (1/2")	
	543404	2	NIPPLE, Close (1/2")	

A0601

48559-K1
Cont.

REV. K	48559 - 1
--------	-----------

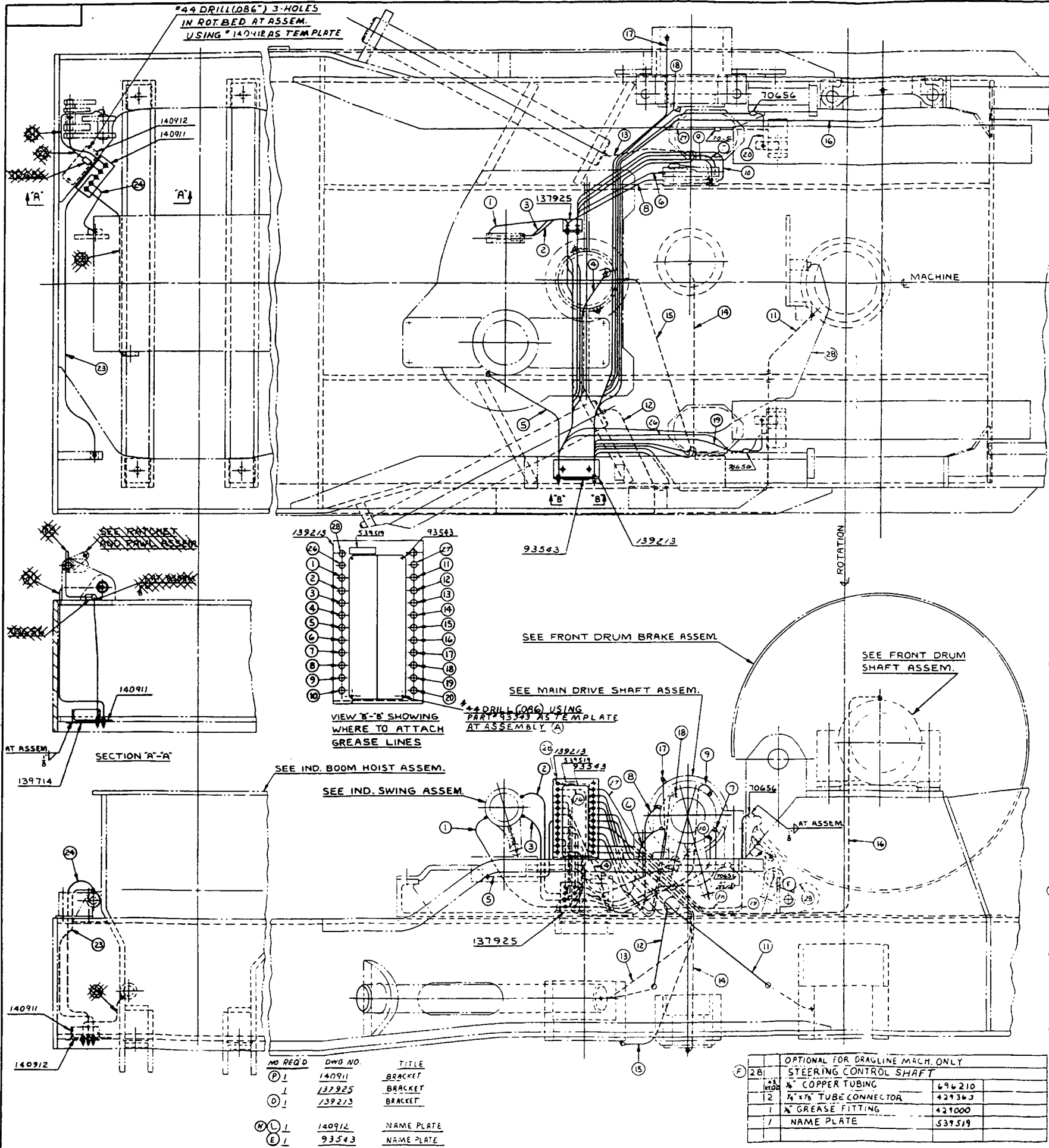
PLEASE GIVE MACHINE S/N W/ORDER

CPT

Run as a Front

48559 Cont.

"44 DRILL (Ø86") 3-HOLES
IN ROT. BED AT ASSEM.
USING "140-1185 TEMPLATE"



NO REQ'D	DWG NO.	TITLE
1	140911	BRACKET
1	137925	BRACKET
1	139213	BRACKET
1	140912	NAME PLATE
1	93543	NAME PLATE

OPTIONAL FOR DRAGLINE MACH. ONLY		
28	STEERING CONTROL SHAFT	
1	1/2" COPPER TUBING	696210
2	1/4" x 1/2" TUBE CONNECTOR	429363
1	1/2" GREASE FITTING	429000
1	NAME PLATE	53519

14	LOWER INTER. VERT. TRAVEL SHAFT BEARING	
1	1/2" COPPER TUBING	696210
1	1/2" x 90° ELBOW	429374
1	1/2" TUBE CONNECTOR	429363
1	1/2" GREASE FITTING	429000
15	LOWER SWING BEARING	
1	1/2" COPPER TUBING	696210
1	1/2" x 90° ELBOW	429374
1	1/2" TUBE CONNECTOR	429363
1	1/2" GREASE FITTING	429000
16	LEFT FRONT DRUM BEARING	
1	1/2" COPPER TUBING	696210
1	1/2" x 90° ELBOW	429374
1	1/2" TUBE CONNECTOR	429363
1	1/2" GREASE FITTING	429000
17	LEFT MAIN DRIVE SHAFT BEARING	
1	1/2" COPPER TUBING	696210
1	1/2" x 90° ELBOW	429380
1	1/2" TUBE CONNECTOR	429363
1	1/2" GREASE FITTING	429000
18	LEFT MAIN DRIVE SHAFT BEARING	
1	1/2" COPPER TUBING	696210
1	1/2" x 90° ELBOW	429374
1	1/2" TUBE CONNECTOR	429363
1	1/2" GREASE FITTING	429000
19	RIGHT FRONT BRAKE LINK	
1	1/2" COPPER TUBING	696210
1	FLEX. HOSE	3412
1	GREASE LINE SUPPORT	70656
2	1/2" TUBE CONNECTOR	429363
1	1/2" GREASE FITTING	429000
20	LEFT FRONT BRAKE LINK	
1	1/2" COPPER TUBING	696210
1	FLEX. HOSE	3412
1	GREASE LINE SUPPORT	70656
2	1/2" TUBE CONNECTOR	429363
1	1/2" GREASE FITTING	429000
21	IND. BOOM HOIST BRAKE	
1	1/2" COPPER TUBING	696210
1	1/2" x 90° ELBOW	429380
1	1/2" TUBE CONNECTOR	429363
1	1/2" GREASE FITTING	429000
22	IND. BOOM HOIST BRAKE	
1	1/2" COPPER TUBING	696210
1	FLEX. HOSE	486088
1	GREASE LINE SUPPORT	70656
1	1/2" TUBE CONNECTOR	429363
1	1/2" TUBE CONNECTOR	429364
1	1/2" GREASE FITTING	429000
23	AUX. BOOM HOIST BRAKE SHAFT	
1	1/2" COPPER TUBING	696210
1	1/2" x 90° ELBOW	429380
1	1/2" TUBE CONNECTOR	429364
1	1/2" GREASE FITTING	429010
24	AUX. BOOM HOIST BRAKE SHAFT	
1	1/2" COPPER TUBING	696210
1	1/2" x 90° ELBOW	429380
1	1/2" TUBE CONNECTOR	429364
1	1/2" GREASE FITTING	429010
25	IND. BOOM HOIST BRAKE CONTROL	
1	1/2" COPPER TUBING	696210
1	1/2" TUBE CONNECTOR	429363
1	1/2" TUBE CONNECTOR	429364
1	1/2" GREASE FITTING	429000
26	RIGHT FRONT BRAKE LEVER	
1	1/2" COPPER TUBING	696210
1	FLEX. HOSE	3412
1	GREASE LINE SUPPORT	70656
2	1/2" TUBE CONNECTOR	429363
1	1/2" GREASE FITTING	429000
27	LEFT FRONT BRAKE LEVER	
1	1/2" COPPER TUBING	696210
1	FLEX. HOSE	3412
1	GREASE LINE SUPPORT	70656
2	1/2" TUBE CONNECTOR	429363
1	1/2" GREASE FITTING	429000

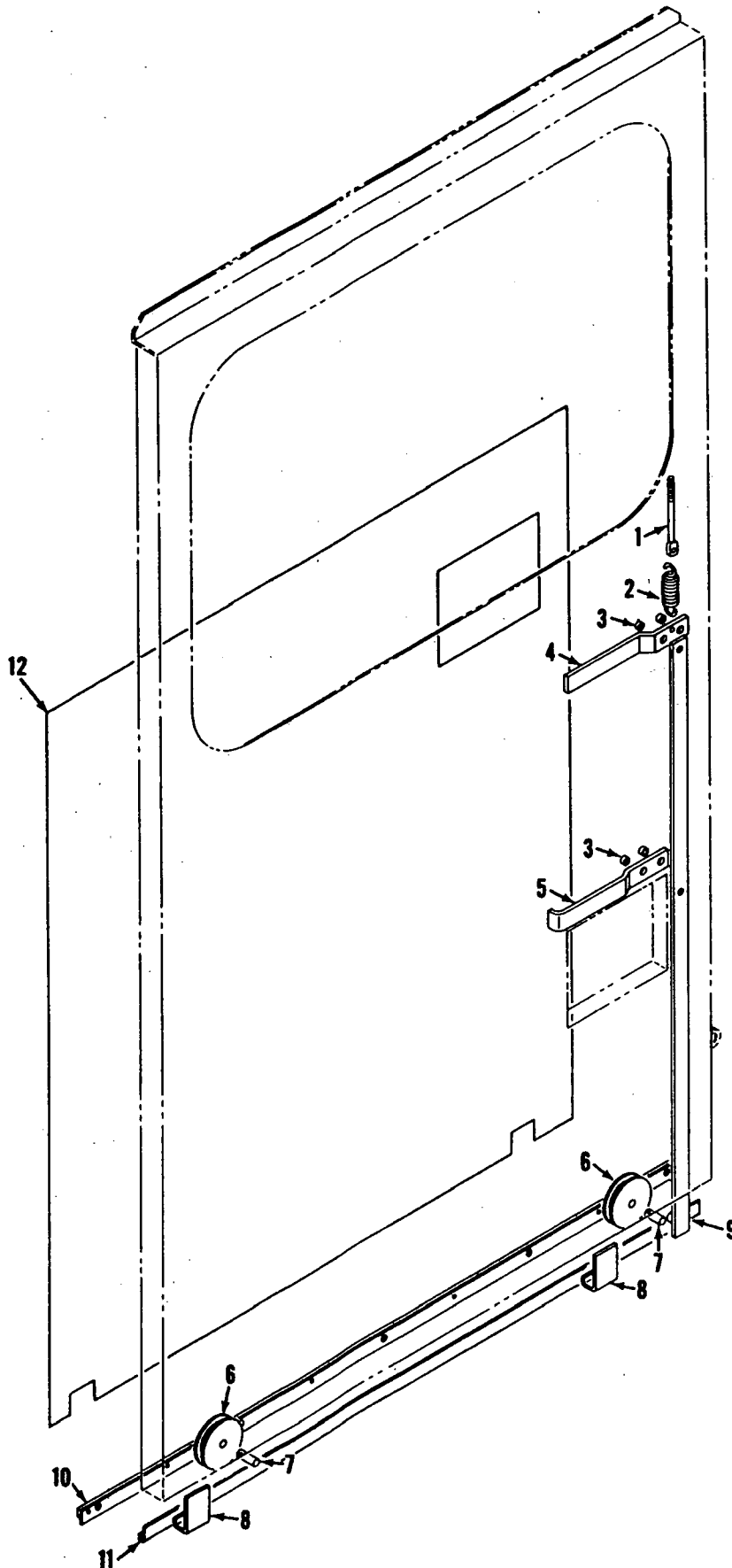
BILL OF MATERIAL						REMARKS	ASSEMBLY USED ON
ITEM NO.	QTY.	DESCRIPTION	SIZE	MATERIAL	QTY. REQ'D		
1	1	IND. SWING MOVEABLE CAM LEVER					
1	1	1/2" COPPER TUBING	696210				
1	1	1/2"-28 N.F. ADAPTOR	429018				
1	1	FLEX. HOSE	486203				
2	2	1/2" TUBE CONNECTOR	429363				
1	1	1/2" GREASE FITTING	429000				
2	2	IND. SWING MOVEABLE CAM LEVER					
1	1	1/2" COPPER TUBING	696210				
1	1	1/2"-28 N.F. x 45° ADAPTOR	429019				
1	1	FLEX. HOSE	486203				
2	2	1/2" TUBE CONNECTOR	429363				
1	1	1/2" GREASE FITTING	429000				
3	3	IND. SWING MOVEABLE CAM LEVER					
1	1	1/2" COPPER TUBING	696210				
1	1	1/2"-28 N.F. ADAPTOR	429018				
1	1	FLEX. HOSE	486203				
2	2	1/2" TUBE CONNECTOR	429363				
1	1	1/2" GREASE FITTING	429000				
4	4	UPPER SWING BEARING					
1	1	1/2" COPPER TUBING	696210				
1	1	1/2" x 90° ELBOW	429380				
1	1	1/2" TUBE CONNECTOR	429363				
1	1	1/2" GREASE FITTING	429000				
5	5	IND. SWING BEARING					
1	1	1/2" COPPER TUBING	696210				
1	1	1/2" x 90° ELBOW	429374				
1	1	1/2" TUBE CONNECTOR	429363				
1	1	1/2" GREASE FITTING	429000				
6	6	M.D.S. MOVEABLE CAM LEVER					
1	1	1/2" COPPER TUBING	696210				
1	1	FLEX. HOSE	486202				
2	2	1/2" TUBE CONNECTOR	429363				
1	1	1/2" GREASE FITTING	429000				
7	7	M.D.S. MOVEABLE CAM LEVER					
1	1	1/2" COPPER TUBING	696210				
1	1	1/2" x 45° ELBOW	429284				
1	1	FLEX. HOSE	486202				
2	2	1/2" TUBE CONNECTOR	429363				
1	1	1/2" GREASE FITTING	429000				
8	8	M.D.S. STATIONARY CAM LEVER					
1	1	1/2" COPPER TUBING	696210				
1	1	1/2"-28 N.F. x 45° ADAPTOR	429019				
1	1	FLEX. HOSE	486202				
2	2	1/2" TUBE CONNECTOR	429363				
1	1	1/2" GREASE FITTING	429000				
9	9	M.D.S. STATIONARY CAM LEVER					
1	1	1/2" COPPER TUBING	696210				
1	1	1/2"-28 N.F. x 45° ADAPTOR	429019				
1	1	FLEX. HOSE	486202				
2	2	1/2" TUBE CONNECTOR	429363				
1	1	1/2" GREASE FITTING	429000				
10	10	M.D.S. STATIONARY CAM LEVER					
1	1	1/2" COPPER TUBING	696210				
1	1	1/2"-28 N.F. x 45° ADAPTOR	429019				
1	1	FLEX. HOSE	486202				
2	2	1/2" TUBE CONNECTOR	429363				
1	1	1/2" GREASE FITTING	429000				
11	11	KING PIN HOUSING					
1	1	1/2" COPPER TUBING	696210				
3	3	1/2" TUBE CONNECTOR	429364				
1	1	1/2" TUBE CONNECTOR	429363				
1	1	1/2" GREASE FITTING	429000				
12	12	RIGHT REAR HOUSE ROLLER					
1	1	1/2" COPPER TUBING	696210				
1	1	1/2" TUBE CONNECTOR	429364				
1	1	1/2" TUBE CONNECTOR	429363				
1	1	1/2" GREASE FITTING	429000				
13	13	LEFT REAR HOUSE ROLLER					
1	1	1/2" COPPER TUBING	696210				
1	1	1/2" TUBE CONNECTOR	429364				
1	1	1/2" TUBE CONNECTOR	429363				
1	1	1/2" GREASE FITTING	429000				

MANITOWOC ENGINEERING CO. LUBRICATING PIPING ASSEMBLY
 REMOTE GREASING OF UPPERWORKS MACHINERY
 4100W

MANITOWOC ENGINEERING CO.

A Division of The Manitowoc Company, Inc.

Manitowoc, Wisconsin



MASTER

6 P3A2

65183A2

MATERIAL LIST ON BACK

DOOR MECHANISM

65413-1 Cont.	REV. K	MODEL 4100W-4100M-SC200
---------------	--------	-------------------------

CAB

REF. NO.	PART NUMBER	QUANTITY REQUIRED	DESCRIPTION OF PART	VENDORS PART NO.
27	92627	1	CLOSING SHEET, Left	
28	92650	1	CLOSING SHEET, Left Front W/mach. screws, hex nuts & lockwashers	
29	136795	1	PLATE, Cover W/mach. screws, hex nuts & lockwashers	
30	180668	1	CLOSING SHEET, Shutter	
31	180667	1	SHUTTER, Radiator W/shackle	
	95772	1	CLOSING SHEET ASM., Rear Right (See Note) (4100W & SC200)	
32	95771	1	CLOSING SHEET, Right Rear W/capscrews, hex nuts & lockwashers	
34	140163	1	DOOR, Battery Compartment	
	482058	2	HINGE, Concealed	
35	510183	1	LOCK, Paddle Handle	
	96124	1	CLOSING SHEET ASM., Rear Right (4100M)	
32	96123	1	CLOSING SHEET, Right Rear W/capscrews, hex nuts & lockwashers	
34	144045	1	DOOR, Battery Compartment	
	482058	2	HINGE, Concealed	
35	510183	1	LOCK, Paddle Handle	
33	143448	1	CLOSING SHEET	
37	138764	1	CLIP	
38	180675	1	PANEL, Right W/stove bolts, hex nuts, capscrews, lockwashers & flatwashers	
39	180112	1	CABINET, Tool W/lock and padlock	
40	137011	1	SHEET, Closing W/capscrews & lockwashers	
	180644-6	1	PANEL, Left Inner (Complete) W/mach. screws, capscrews, hex nuts & lockwashers	
41		1	SHEET, Upper	
42	180644-2	1	SHEET, Lower	
43	208352	1	ANGLE, Corner Upper	
44	208352	1	ANGLE, Corner Lower	
46	145495	1	COVER W/mach. screws, hex nuts & lockwashers	
47	137863	1	COVER W/stove bolts, hex nuts & shakeproof washers	
48				
49	73515	1	CAP, Radiator Roof Opening	
50	137522	1	COVER W/mach. screws, hex nuts & lockwashers	
61	145796	2	SHEET, Closing W/sheet metal screws & lockwashers	
62	184628	1	LADDER (27" wide) (supersedes previous 17-1/2" wide ladder 93898) (See Note 3)	
62	160246	1	LADDER (25-5/8" wide) W/mach. bolt, capscrews & lockwashers (See Note 4)	
			<u>MACH. W/OUTSIDE LIGHT PLANT</u> (Delete Ref. No. 24)	
24A	94265	1	DOOR, Left Front Upper	
24B	94266	1	DOOR, Left Front Lower	
			<u>MACH. W/OUT TOWER POCKETS IN CAB REAR SUPPORT</u>	
46A	94986	2	COVER W/mach. screws, hex nuts & lockwashers	
46B	141995	2	GASKET	
			<u>MACH. W/OUT BATTER BOX - DELETE #95772</u>	
32A	95770	1	CLOSING SHEET, Right Rear W/capscrews, hex nuts & lockwashers (4100W & SC200)	

REV. K	65413-1 Cont.
--------	---------------

PLEASE GIVE MACHINE S/N W/ORDER

Run as Front.

65413-1 Cont'd. 1

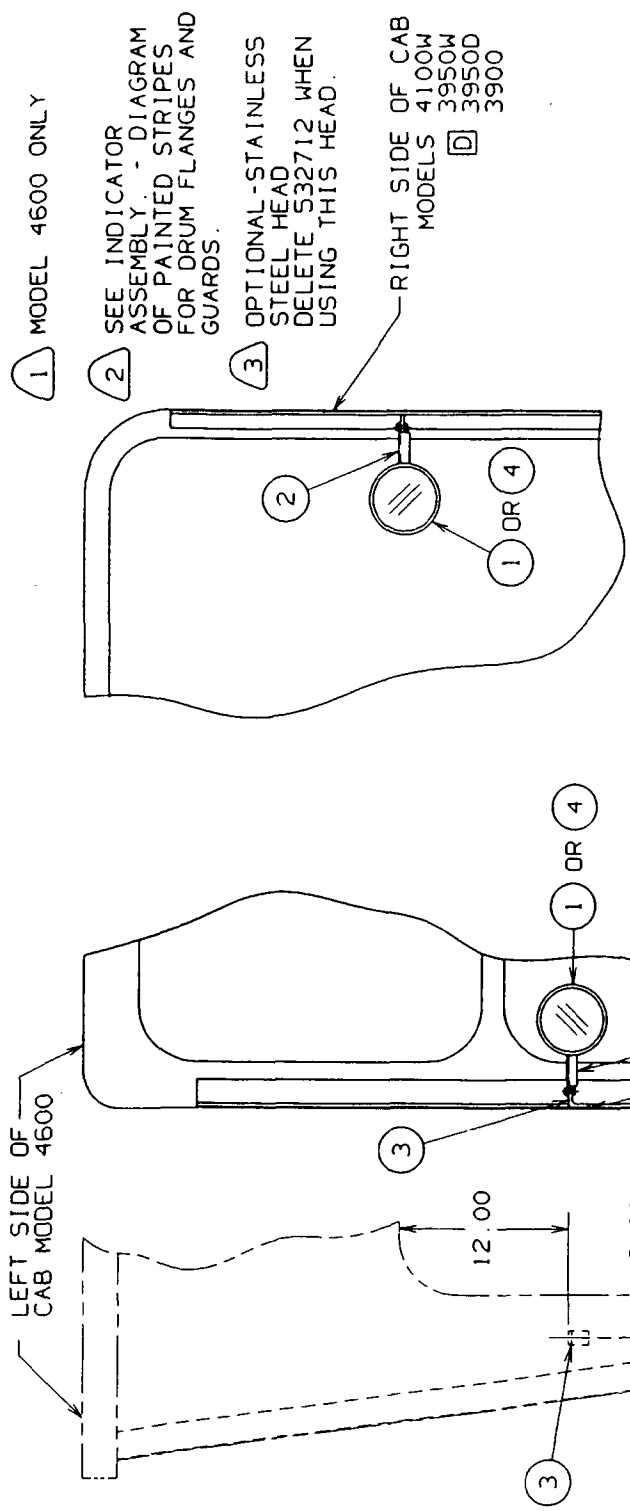
B **E**

BILL OF MATERIAL			
ITEM NO.	SEC. NO.	DESCRIPTION	CODE NO. OR Dwg. NO.
1	1	MIRROR HEAD	532712
2	1	MIRROR ARM	137846
3	1	MIRROR SUPPORT	140554
4	1	MIRROR HEAD	532723

B
E

ASSEMBLIES USED ON	
42206	
50764	
65386	
65401	
65763	
66256	
164639	

B
E



1 MODEL 4600 ONLY

2 SEE INDICATOR ASSEMBLY - DIAGRAM OF PAINTED STRIPES FOR DRUM FLANGES AND GUARDS.

3 OPTIONAL-STAINGLESS STEEL HEAD DELETE 532712 WHEN USING THIS HEAD.

RIGHT SIDE OF CAB MODELS 4100W 3950W 3950D 3900

REVISIONS

4-7-72 NGM
A **B** ADDED
 12-14-84 AJF
 REDRAW CADAM
 CK KGB
 APP RJS
C **D** MODELS
 3950W, 3900
 3950D ADDED
 9-28-94 DP
E ADDED
3 ADDED

D

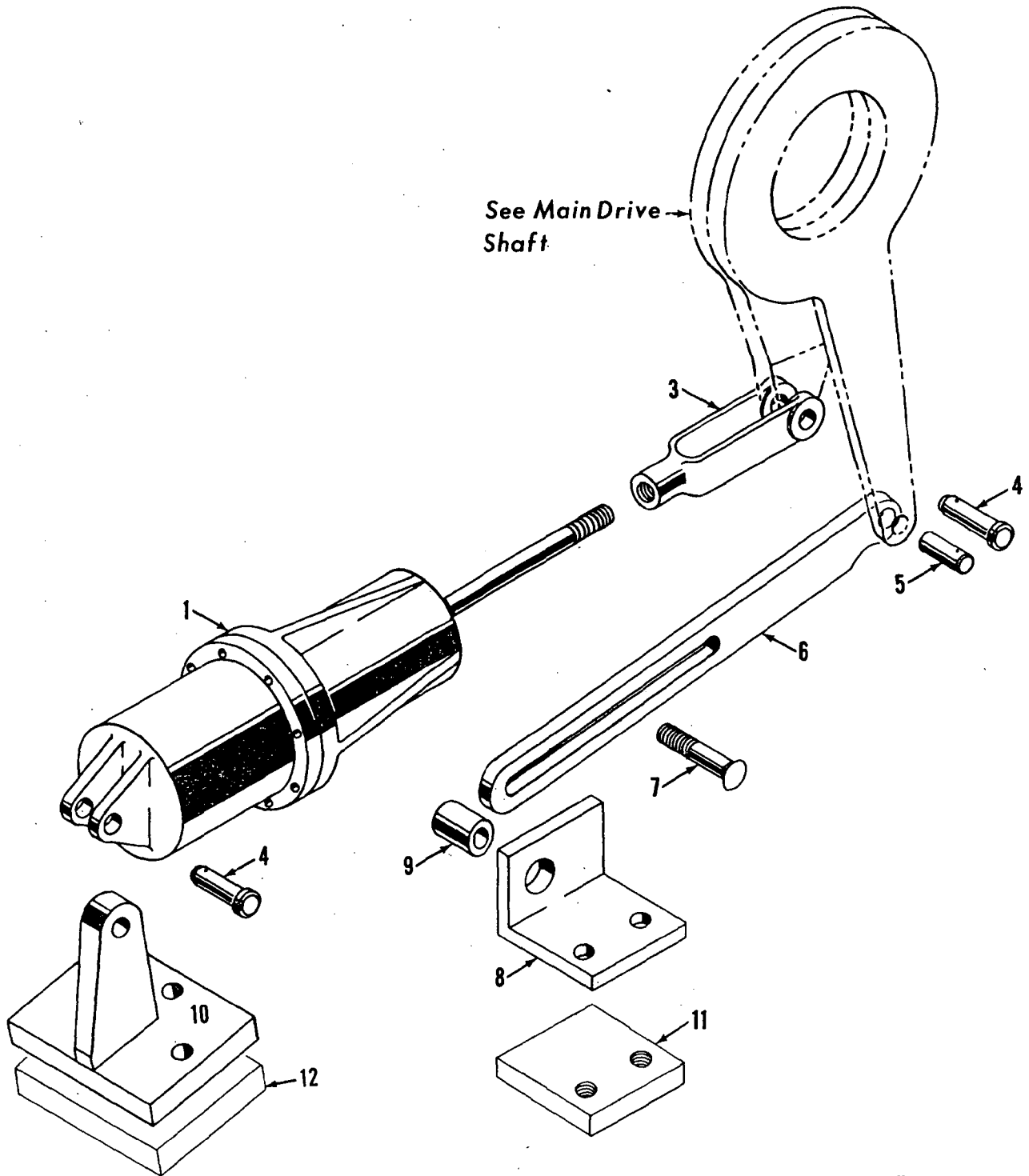
DATE	7-17-69
PATTERN NO	
DWG. NO.	137847

A
C

MANITOWOC ENGINEERING CO. MANITOWOC, WISCONSIN	137847	SCALE 1.5"=1FT
MODEL 4100W, 4600, A	137847	DR. LPW
3900, 3950W, 3950D		CR. EHU
		APP. RJS

A **C**

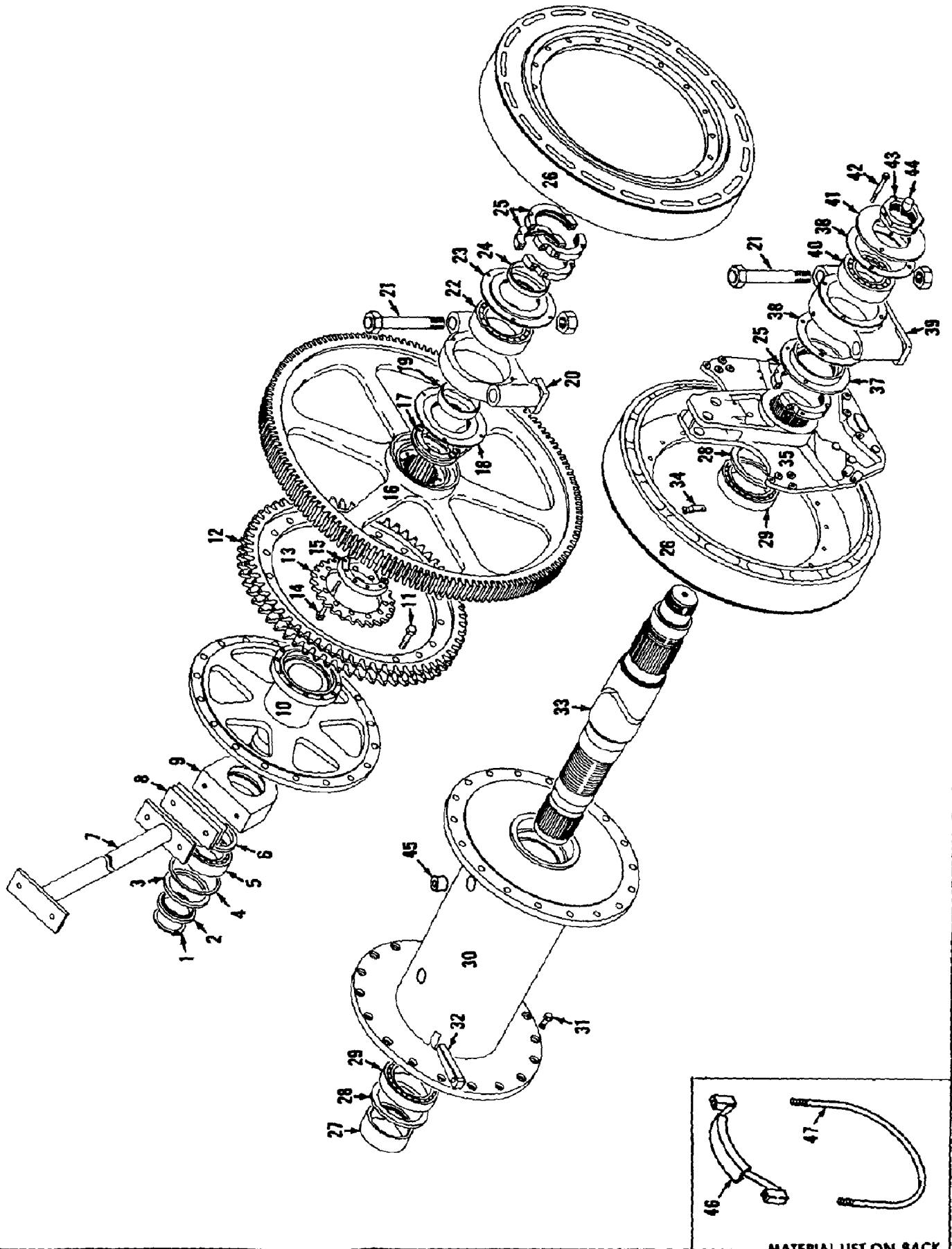
GROUP B - Upperworks Machinery



3234081

MATERIAL LIST ON BACK

LEFT SWING CLUTCH CONTROL



48333D1

MATERIAL LIST ON BACK

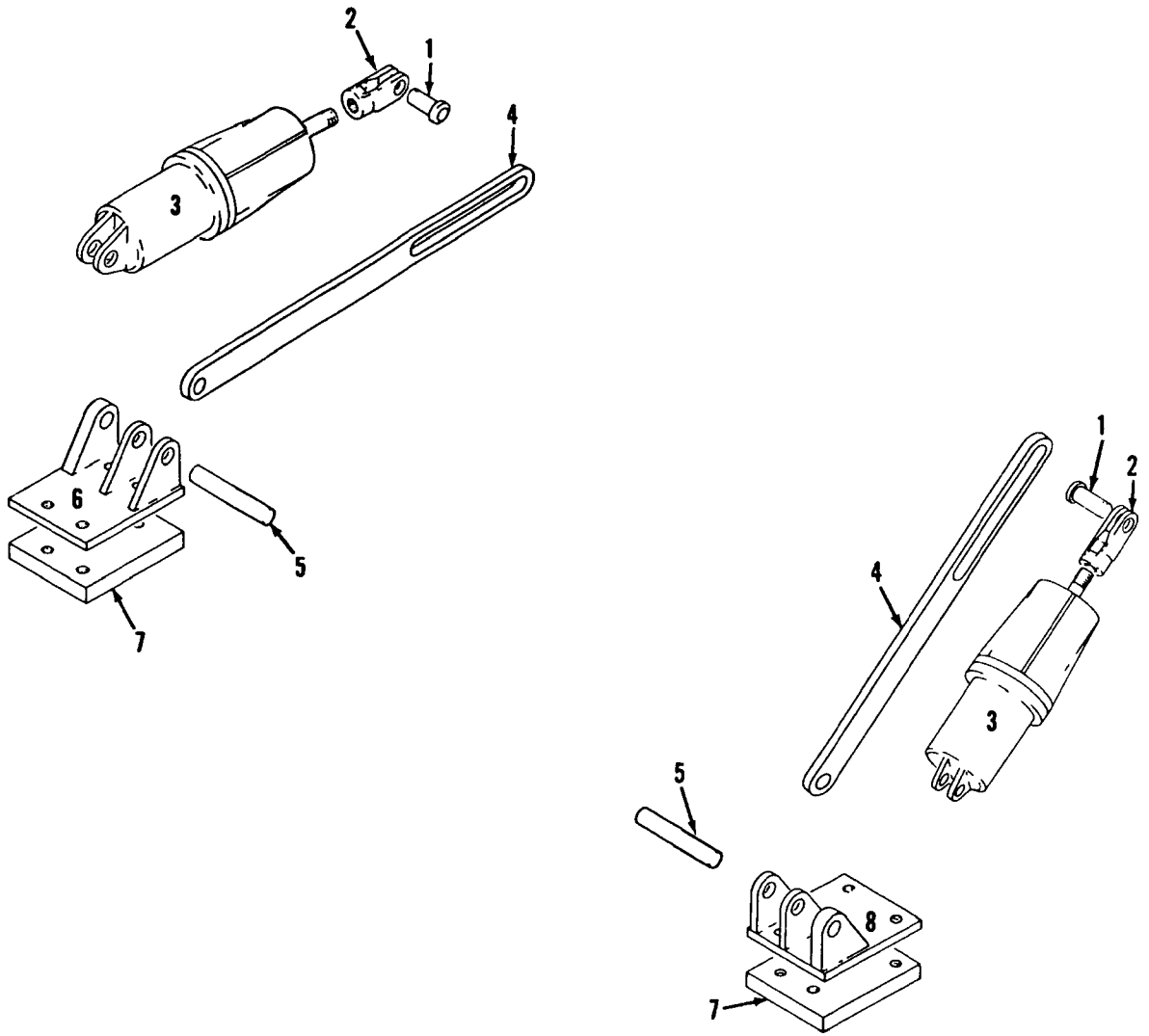
DRUM SHAFT

MANITOWOC ENGINEERING CO

A Division of The Manitowoc Company, Inc.

Manitowoc, Wisconsin

MASTER



4848001

MATERIAL LIST ON BACK

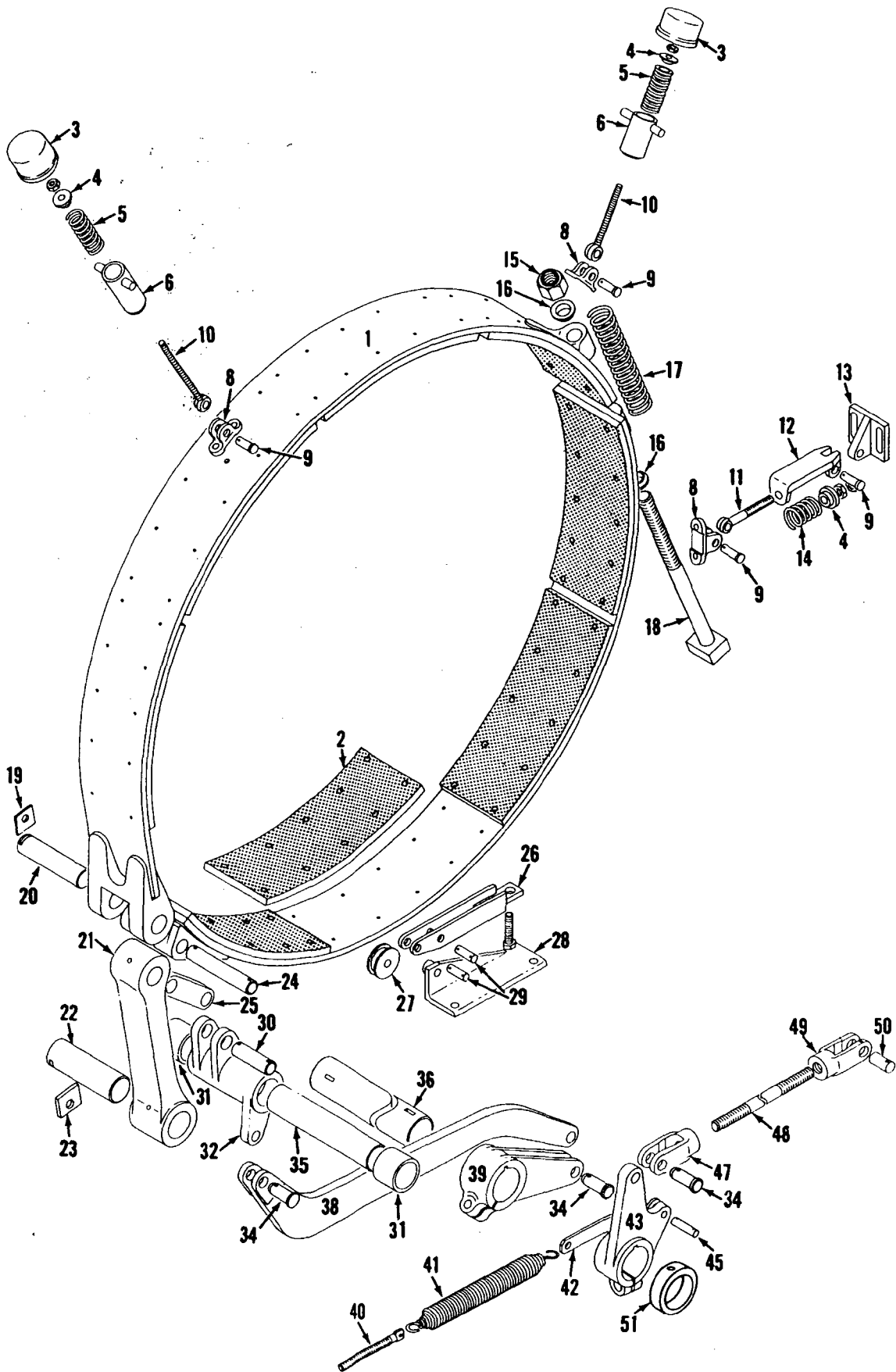
MANITOWOC CLUTCH CONTROL

484800 D1

MANITOWOC ENGINEERING CO.

A Division of The Manitowoc Company, Inc.

Manitowoc, Wisconsin

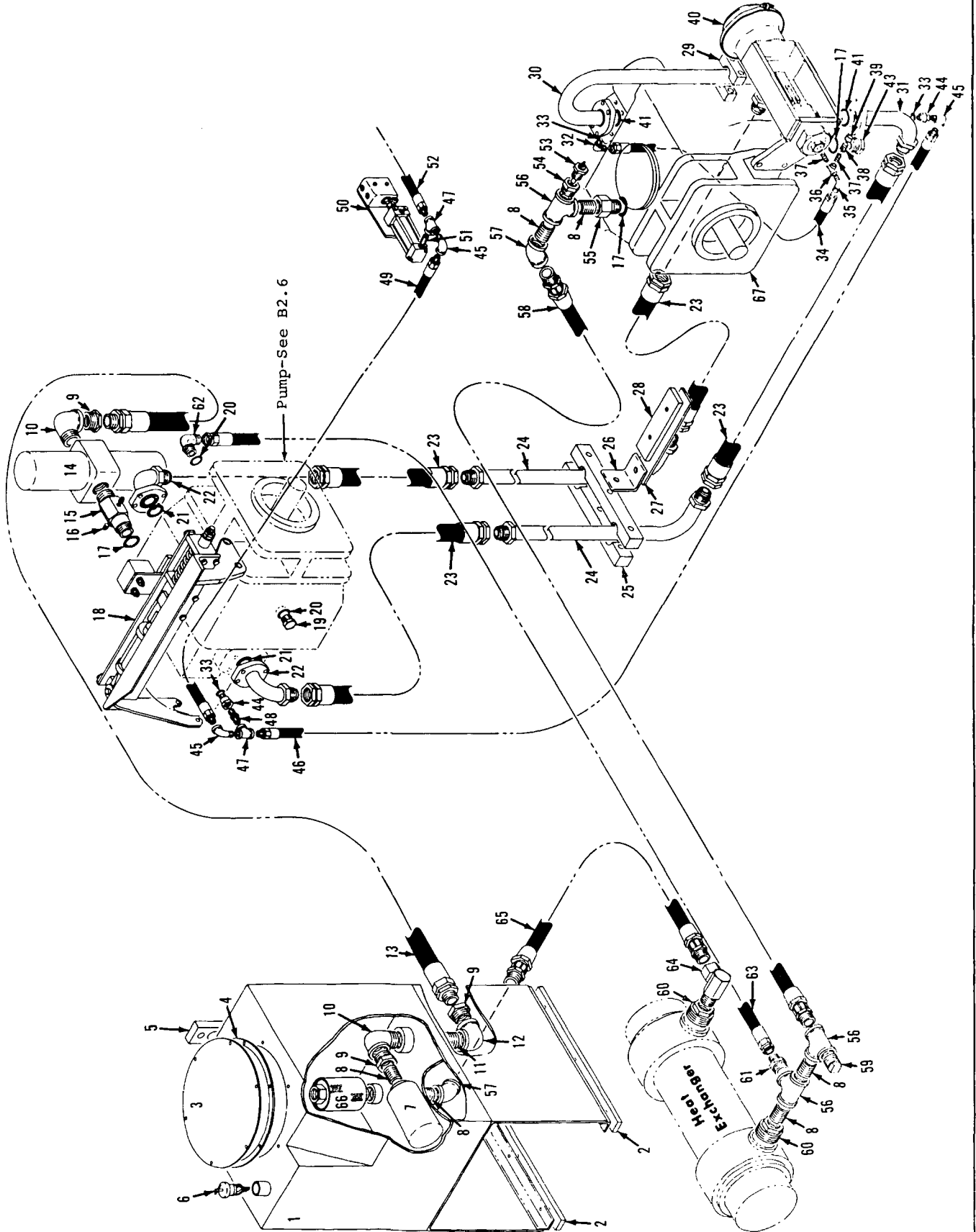


49428C1

MATERIAL LIST ON BACK

DRUM BRAKE

MANITOWOC

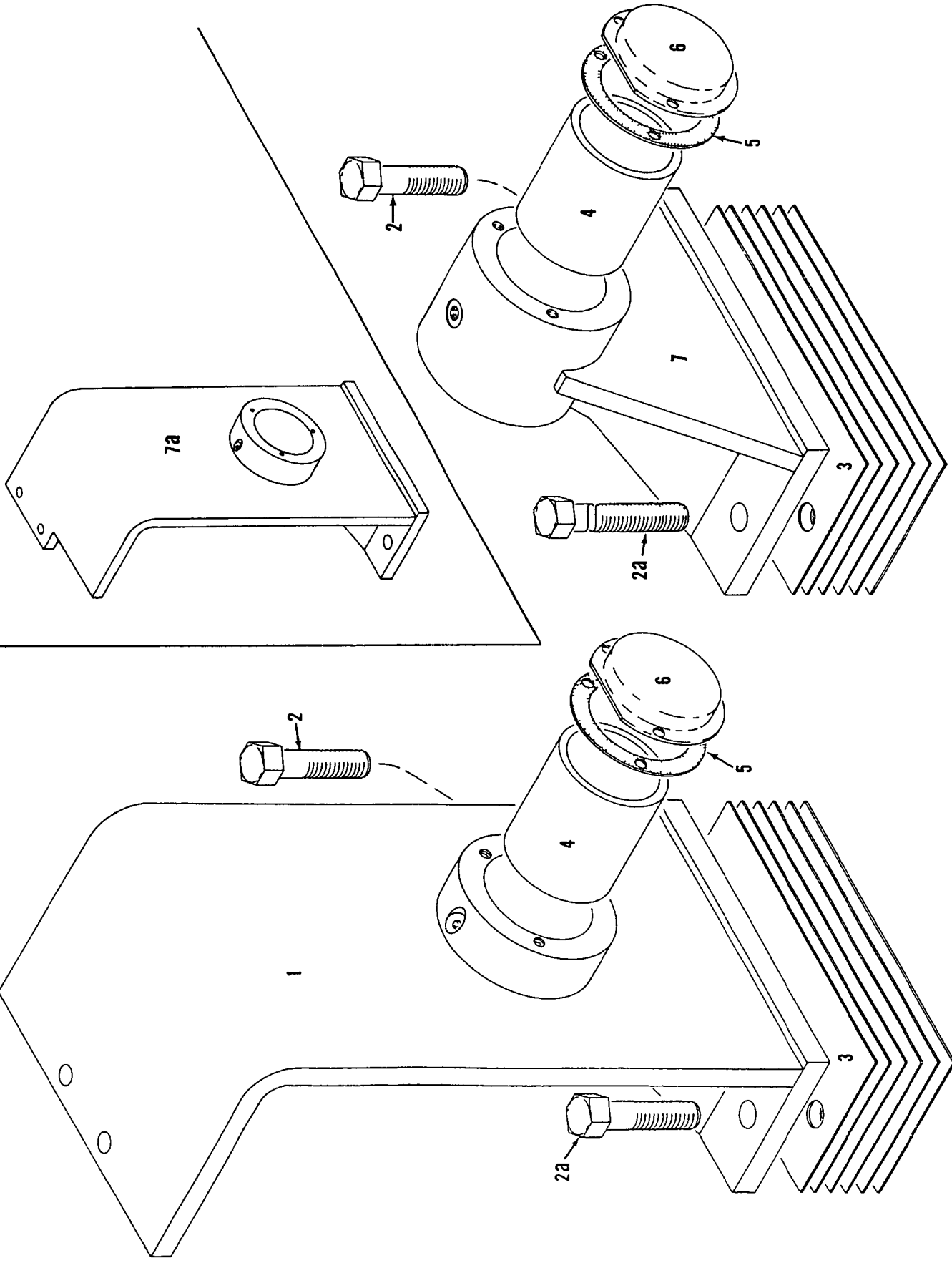


6509781

MATERIAL LIST ON BACK

Boom Hoist Hyd. Piping

MASTER



M4100W

M3900W

OUTBOARD BEARING

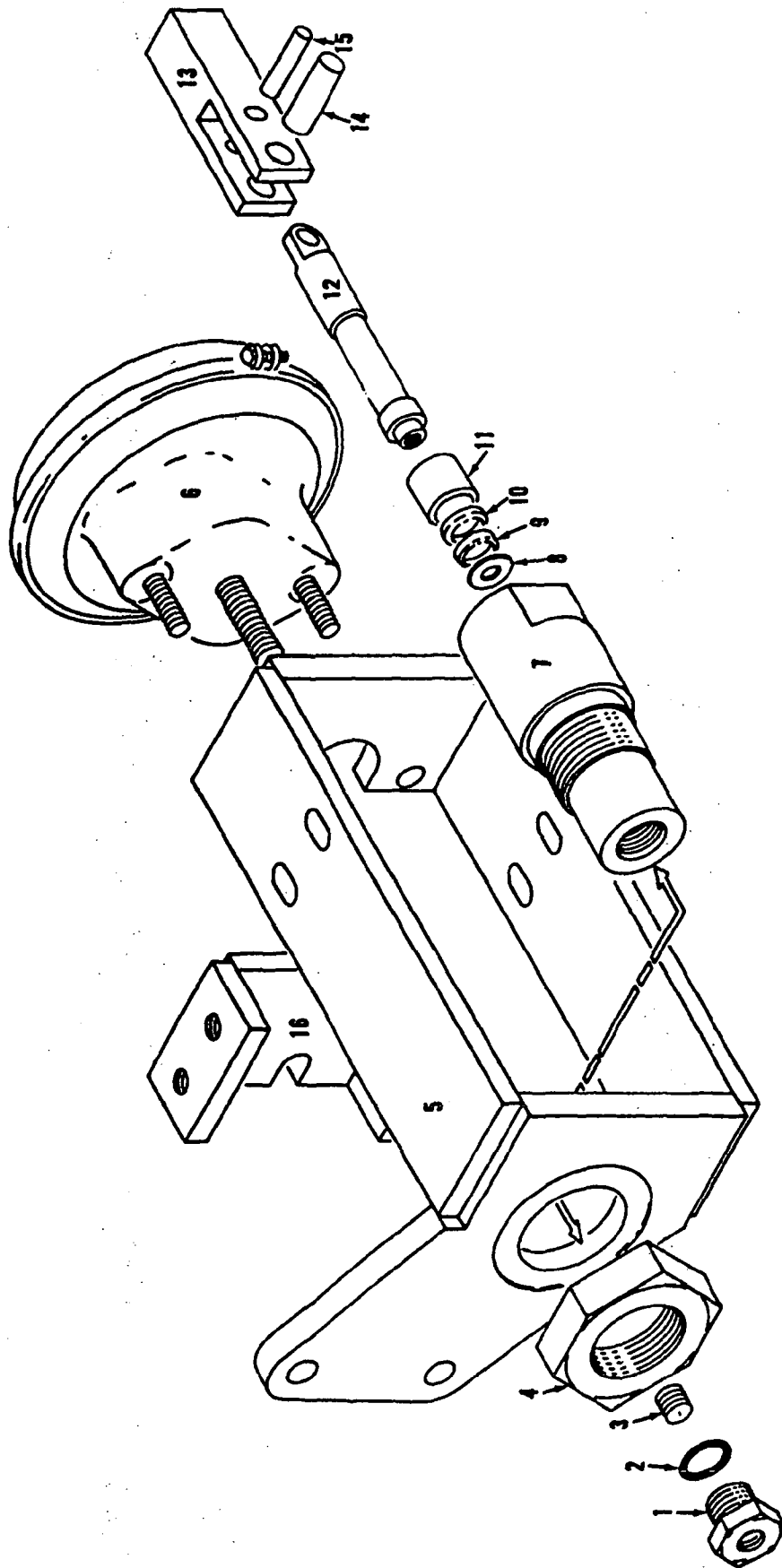
91083C1

MATERIAL LIST ON BACK

MANITOWOC ENGINEERING CO.

A Division of The Manitowoc Company, Inc.

Manitowoc, Wisconsin



MASTER

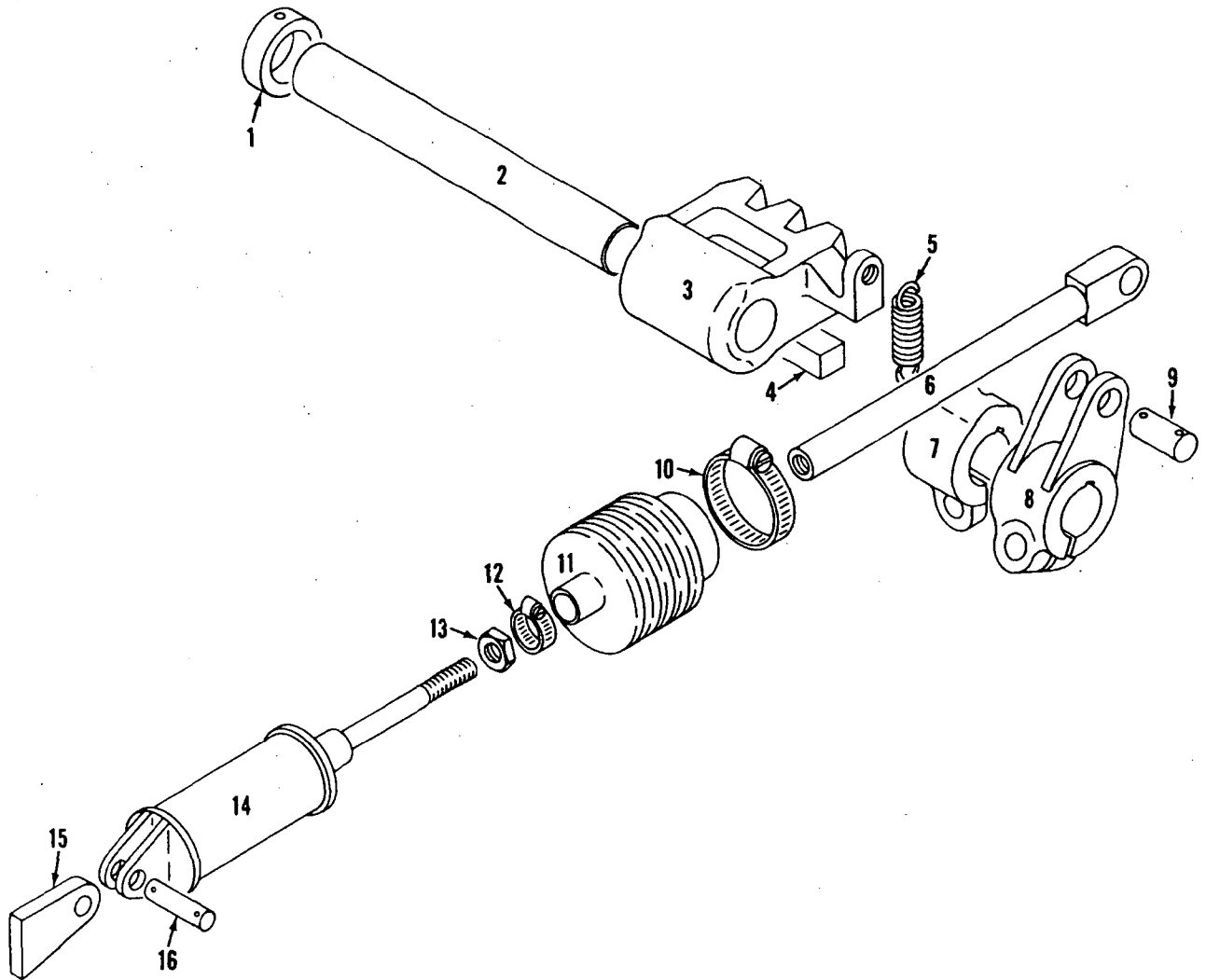
HYD MOTOR COMPENSATING CONTROL

MATERIAL LIST ON BACK

14147 A1

14147 A1

MASTER



180760C1

MATERIAL LIST ON BACK

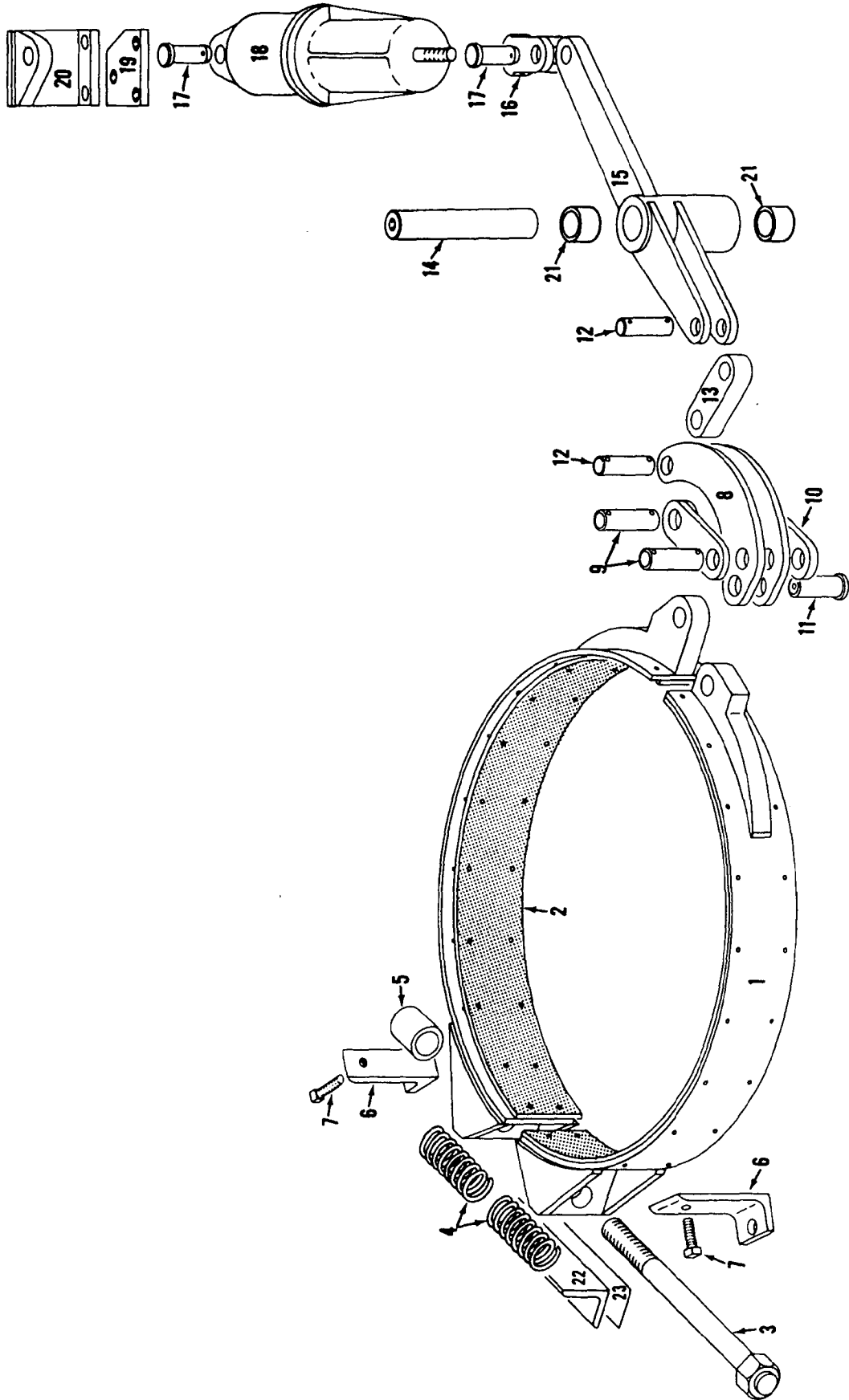
SWING LOCK CONTROL

MANITOWOC ENGINEERING CO.

A Division of The Manitowoc Company, Inc.

Manitowoc, Wisconsin

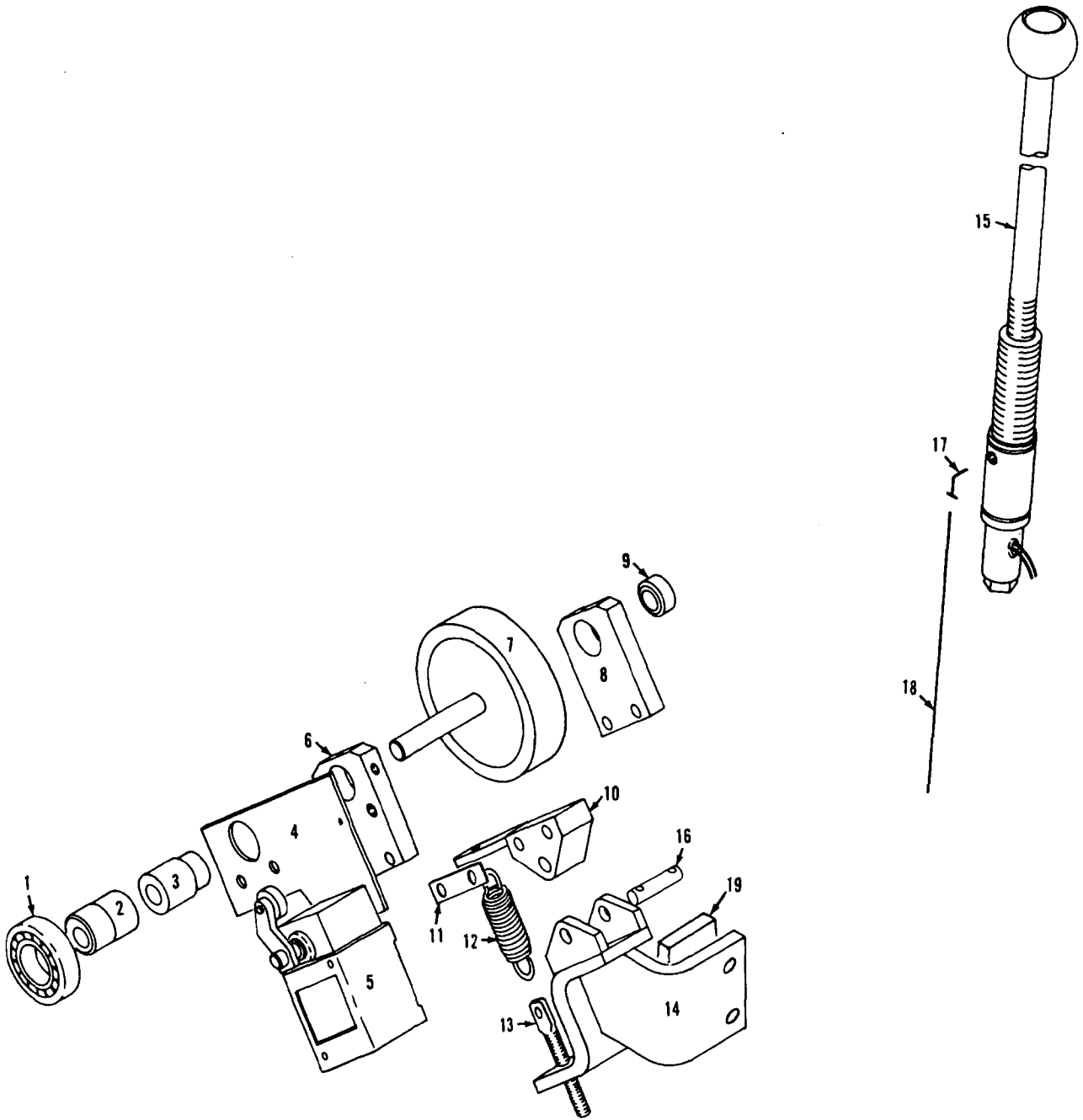
MASTER



181484C1

MATERIAL LIST ON BACK

SWING BRAKE



182637D1

MATERIAL LIST ON BACK

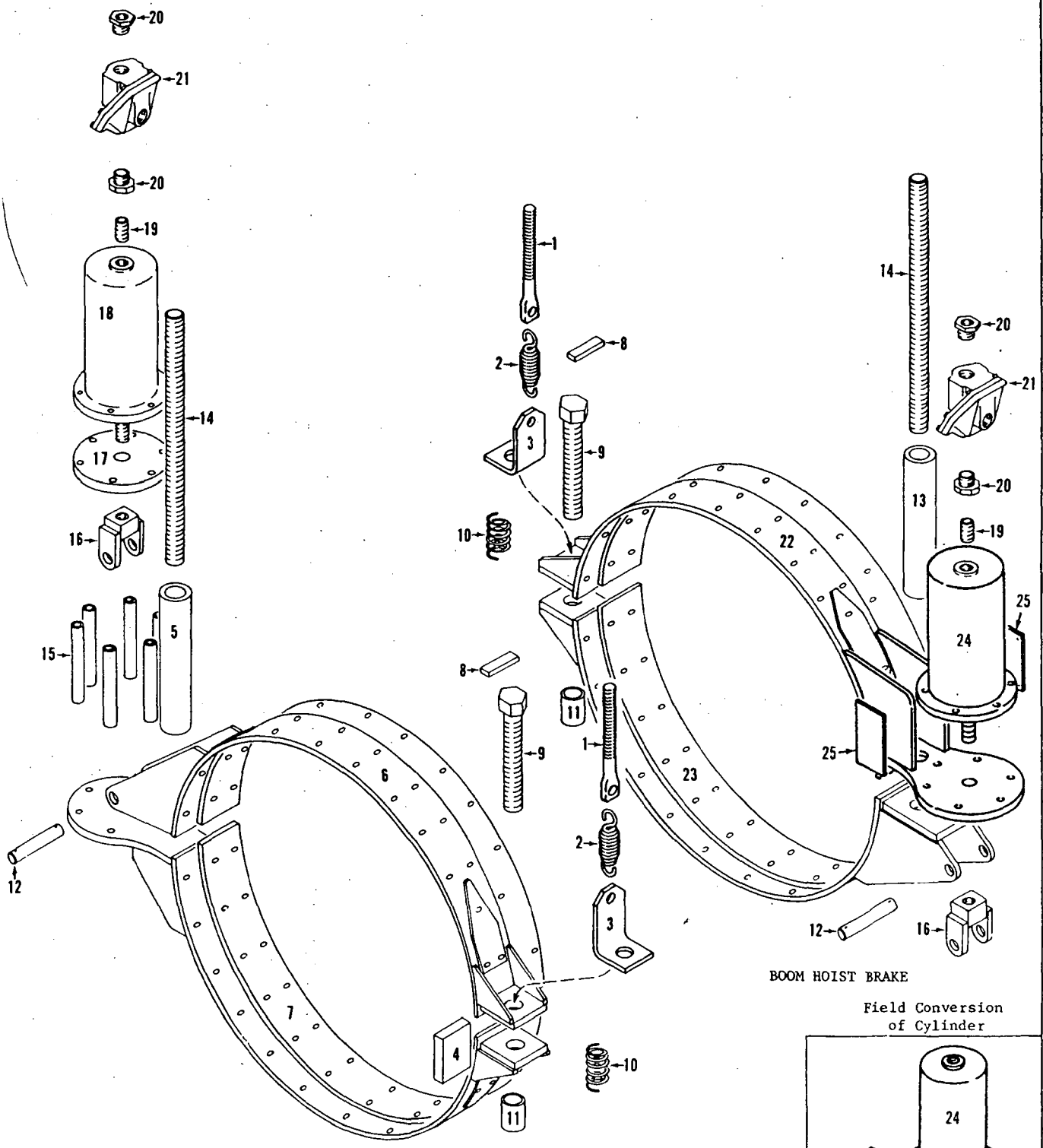
Front Drum Rotation Indicator

MANITOWOC ENGINEERING CO.

A Division of The Manitowoc Company, Inc.

Manitowoc, Wisconsin

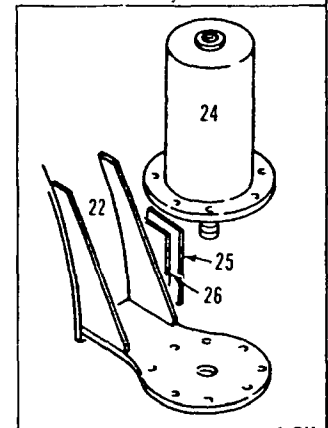
MAST



AUXILIARY BOOM HOIST BRAKE

BOOM HOIST BRAKE

Field Conversion of Cylinder



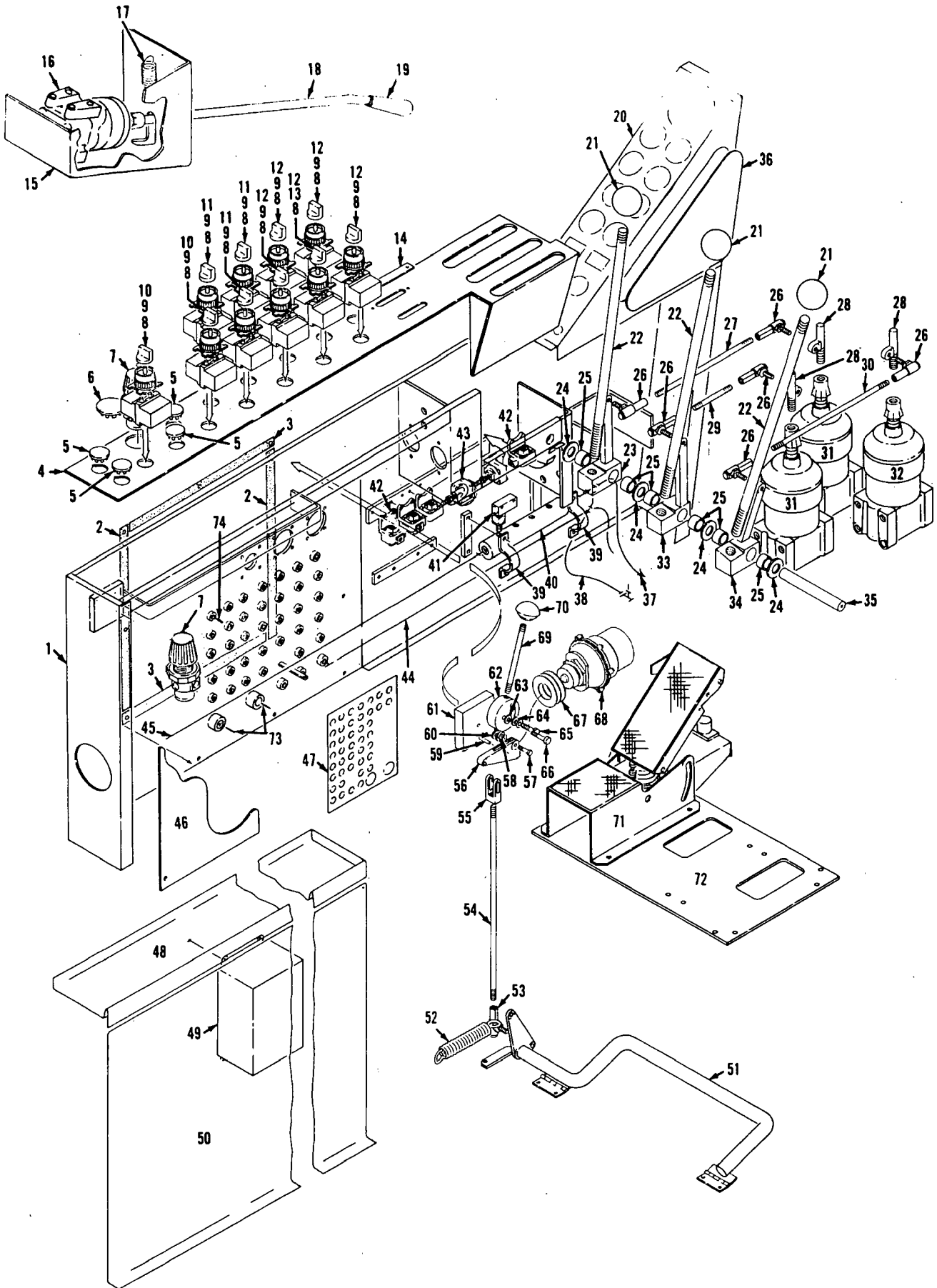
MATERIAL LIST ON BACK

BOOM HOIST BRAKE

MANITOWOC ENGINEERING CO.

A Division of The Manitowoc Company, Inc.

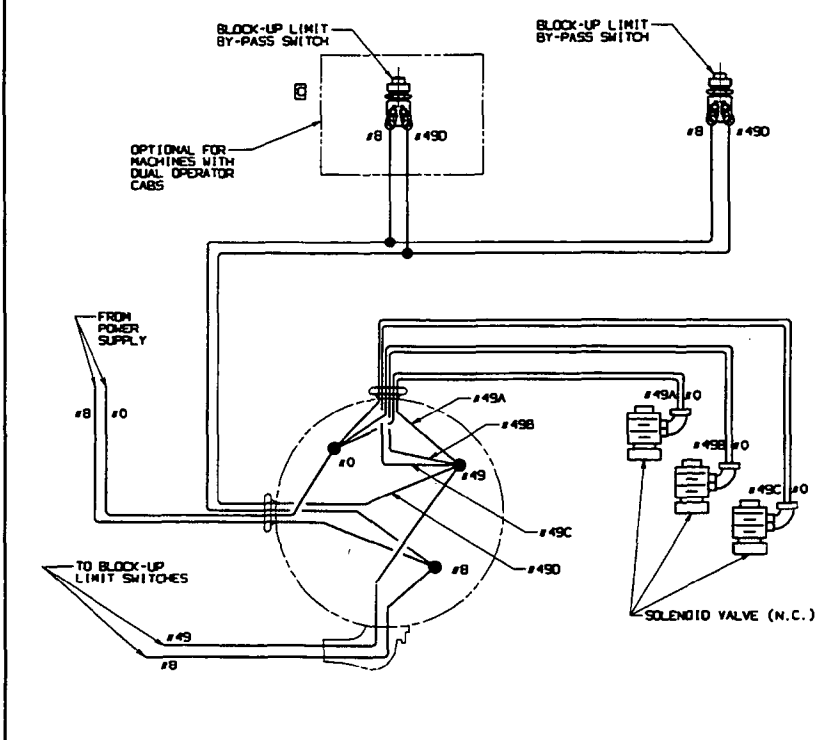
Manitowoc, Wisconsin



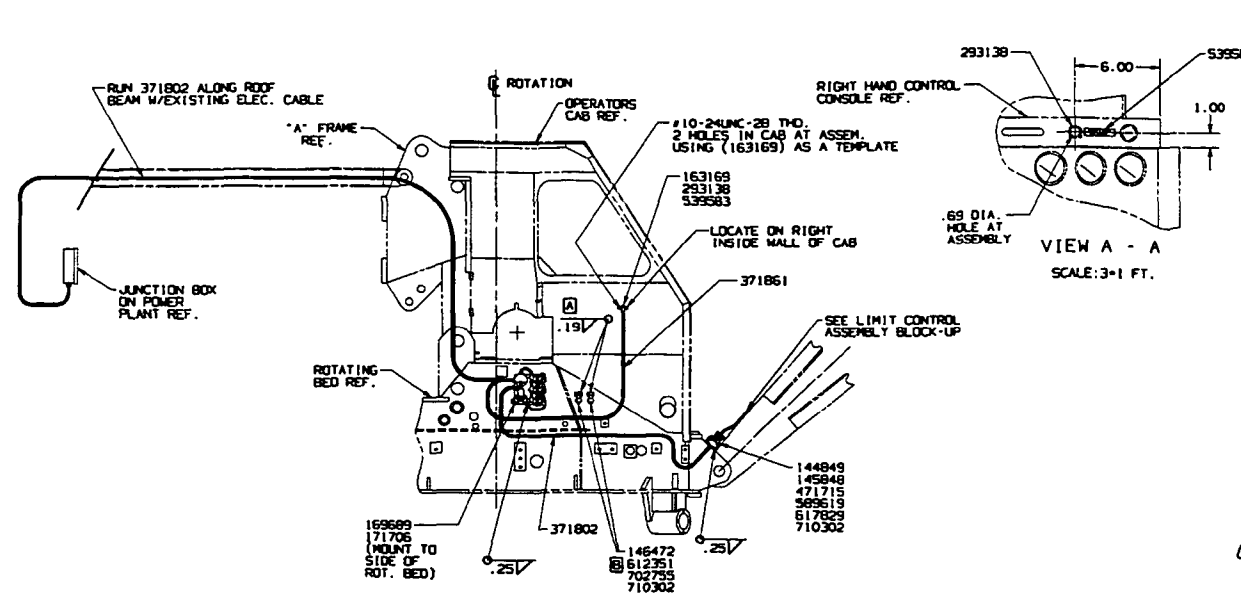
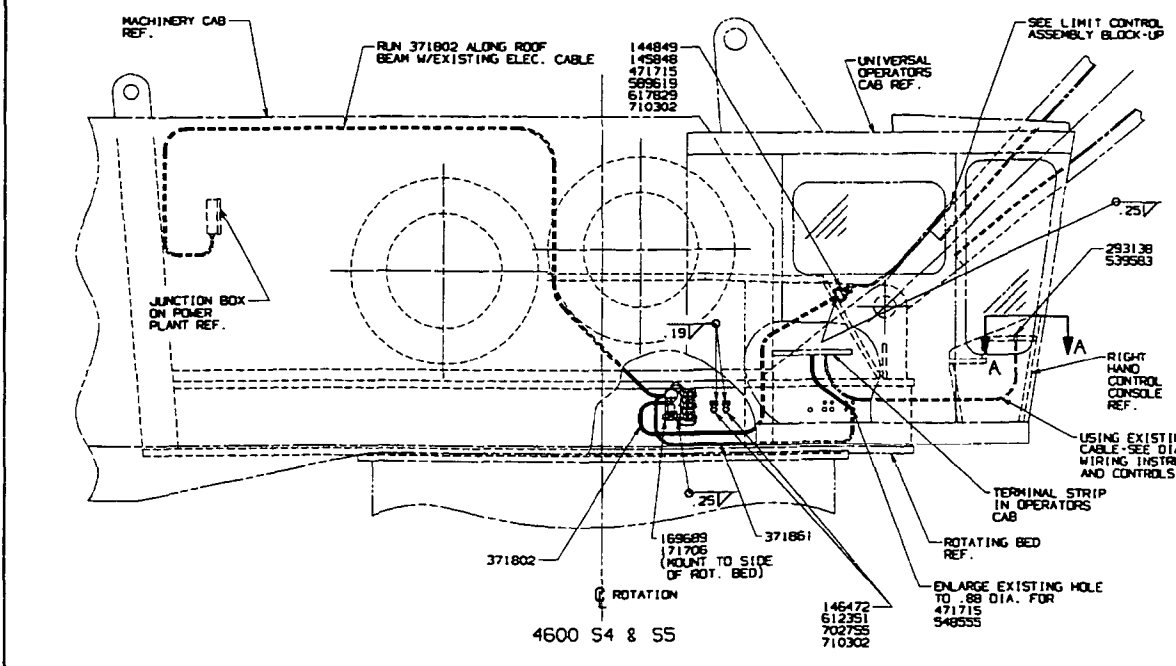
65-404C1

MATERIAL LIST ON BACK

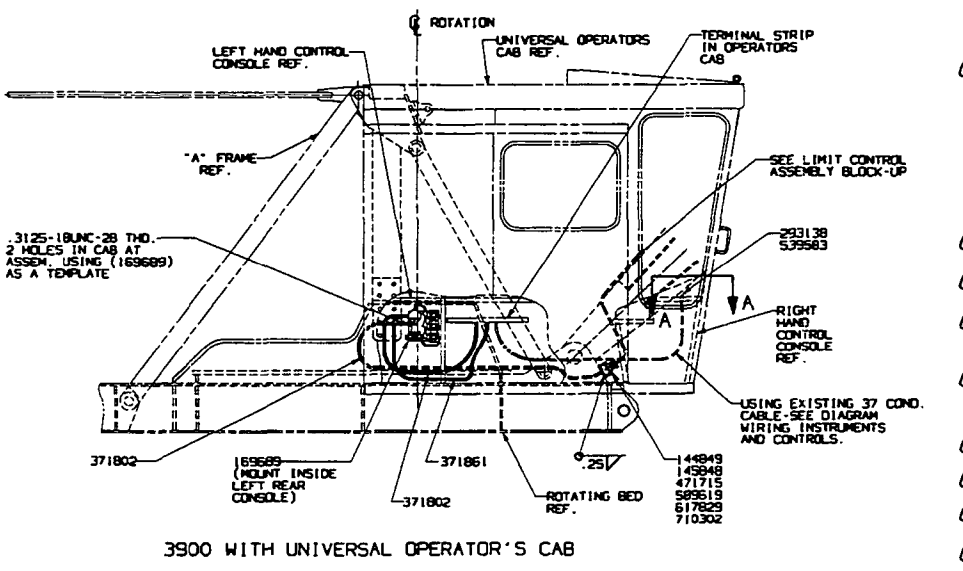
Left Control Console



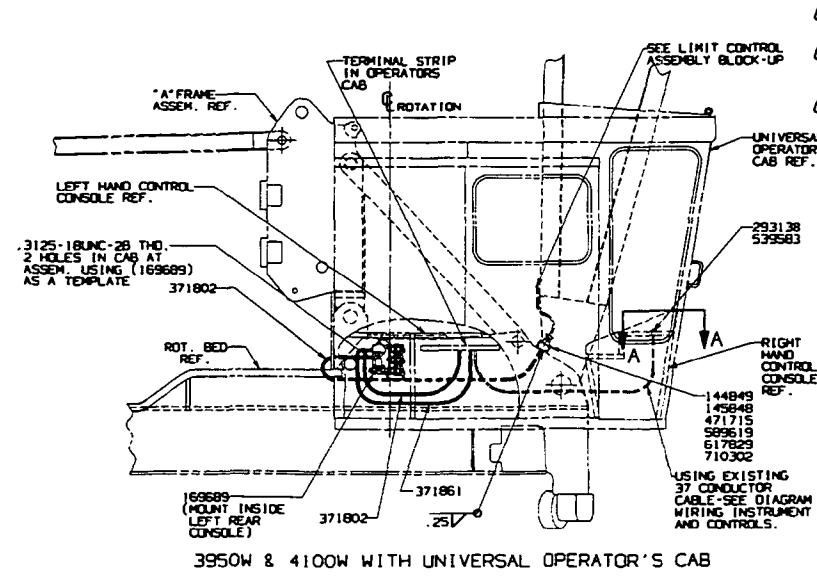
- SCHEMATICS**
- 6312 SHT 80 - LOAD & WHIP LINE BLOCK-UP LIMIT N-3900, 3900T, 3900W & 4000W FOR MACHINES W/OPERS. CAB PART OF MACHINERY HOUSE, VICON M/MANUAL CONV. CONTROL OR NON-VICONS.
 - 6312 SHT 81 - LOAD & WHIP LINE BLOCK-UP LIMIT N-3900, 4100W, 4600S/3.
 - 6312 SHT 89 - LOAD & WHIP LINE BLOCK-UP LIMIT 4600 S4 & S5, 7000 ELEVATED CABS 27 FT.
 - 6312 SHT 94 - WHIP LINE BLOCK-UP LIMIT ON RIGHT REAR DRUM ONLY M-4100W.



3900, 3900W, 3900T & 4000W WITH OPERATOR'S CAB PART OF MACHINERY HOUSE



3900 WITH UNIVERSAL OPERATOR'S CAB



3950W & 4100W WITH UNIVERSAL OPERATOR'S CAB

ITEM NO.	DESCRIPTION	QTY	UNIT	REF.
1	MOUNTING PAD	1	144849	
2	SHORTING PLUG	1	145848	
3	MOUNTING PAD	1	146472	
4	BRACKET	1	163169	
5	VALVE ASSEMBLY	1	169689	
6	MOUNTING PAD	1	171706	
7	SWITCH	1	293138	
8	CORD - PORTABLE 14-2-5	1	371802	
9	CORD TYPE 50 VUTRON 16/2	1	371861	
10	CORD GRIP	1	471715	
11	EXTENSION - 16 FT.	1	477369	
12	EXTENSION - 26 FT.	1	477368	
13	NAMEPLATE - (LOAD LIMIT BY-PASS)	1	539583	
14	LOOKOUT CONDUIT	1	548555	
15	LOCK RECEPTACLE	1	589619	
16	2.25-20UNC-2A X.50 LG. CAPSCREW	1	612351	
17	2.25-20UNC-2A X.75 LG. RD HD CAPSCREW	1	617829	
18	ENTIRE TERMINAL	1	680572	
19	RELAY VALVE	1	702755	
20	2.25 LOCKWASHER	1	710302	
21	4.25 LOCKWASHER	1	710302	

- 1 CABLE LENGTH - 15 FT. - 3900, 3950W & 4100W WITH UNIV. OPER CAB, 4600 S3
 - 25 FT. - 3900, 3900W, 3900T & 4000W WITH OPER. CAB PART OF MACH. HOUSE 3900, 3900W, 3950W ELEV. CAB - SIDE MOUNT 4600 S4 & S5
 - 35 FT. - 4100W WITH ELEVATED UNIV. OPER. CAB
 - 2 CABLE LENGTH - 4 FT. - 3900, 3950W & 4100W WITH UNIV. OPER CAB
 - 10 FT. - 3900, 3900W, 3900T & 4000W WITH OPER. CAB PART OF MACH. HOUSE 3900, 3900W, 3950W ELEV. CAB - SIDE MOUNT, 4600 S3
 - 30 FT. - 4100W WITH ELEVATED UNIV. OPER. CAB 4600 S4 & S5
 - 3 DELETE ON MACHINES W/UNIVERSAL OPERATOR'S CAB
 - 4 DELETE ON MACHINES WITH VALVE ASSEMBLY (169689) MOUNTED IN UNIV. OPERATOR'S CAB.
 - 5 REQUIRED ON MODELS 4100W WITH ELEVATED UNIVERSAL OPERATOR'S CAB & 4600 S4, S5, 3900T, 4000W, AND 3900W WITH FULLY ELEVATED CAB.
 - 6 ADD (1) RELAY VALVE (702755), (1) MOUNTING PAD (146472), (2) CAPSCREWS (612351) & (2) LOCKWASHERS (710302) FOR THREE DRUM MACHINES (FULL FRONT, SPLIT REAR) MODEL 4100W WITH ELEV. UNIV. OPER. CAB
 - 7 FOR 36 FT. RINGER MACHINE
 - 8 FOR 60 FT. RINGER MACHINE
 - 9 NOT USED IN CONJUNCTION WITH DEADMAN, AUTOTROL OR BAIL LIMIT
 - 10 MUST BE USED IN CONJUNCTION WITH SPRING SET PARKING BRAKES.
 - 11 FOR MODELS 4600 S4 & S5 ADD (1) CORD GRIP (471715) AND LOOKOUT (548555).
 - 12 CAP ON SWITCH (293138) MUST BE SCREWED ON ALL THE WAY TO PREVENT BUTTON FROM CATCHING ON LIP OF CAP PRIOR TO TIGHTENING LOCK NUT.
 - 13 FOR MACHINES WITH DUAL OPERATOR CABS ADD:
 - (1) BRACKET - 163169
 - (1) SWITCH - 293138
 - (1) NAMEPLATE - 539583
 - (1) CORD (40 FT LG.) - 371861
- BY-PASS SWITCH TO BE MOUNTED IN UPPER AND LOWER CABS.

SUPERSEDES 184000 OF 10-8-84 AND 184320

REV.	DESCRIPTION	DATE
1	BLOCK-UP LIMIT ELECTRIC WIRING FROM OPER. CAB TO OUTLET ON FRONT OF ROT. BED - SEE 710302	7-17-91

C5083-4117

CLICK HERE TO **DOWNLOAD** THE COMPLETE MANUAL

- Thank you very much for reading the preview of the manual.
- You can download the complete manual from: www.heydownloads.com by clicking the link below



- Please note: If there is no response to CLICKING the link, please download this PDF first and then click on it.

CLICK HERE TO **DOWNLOAD** THE COMPLETE MANUAL

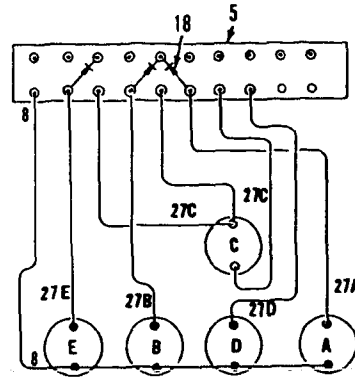
MANITOWOC ENGINEERING CO.

A Division of The Manitowoc Company, Inc.

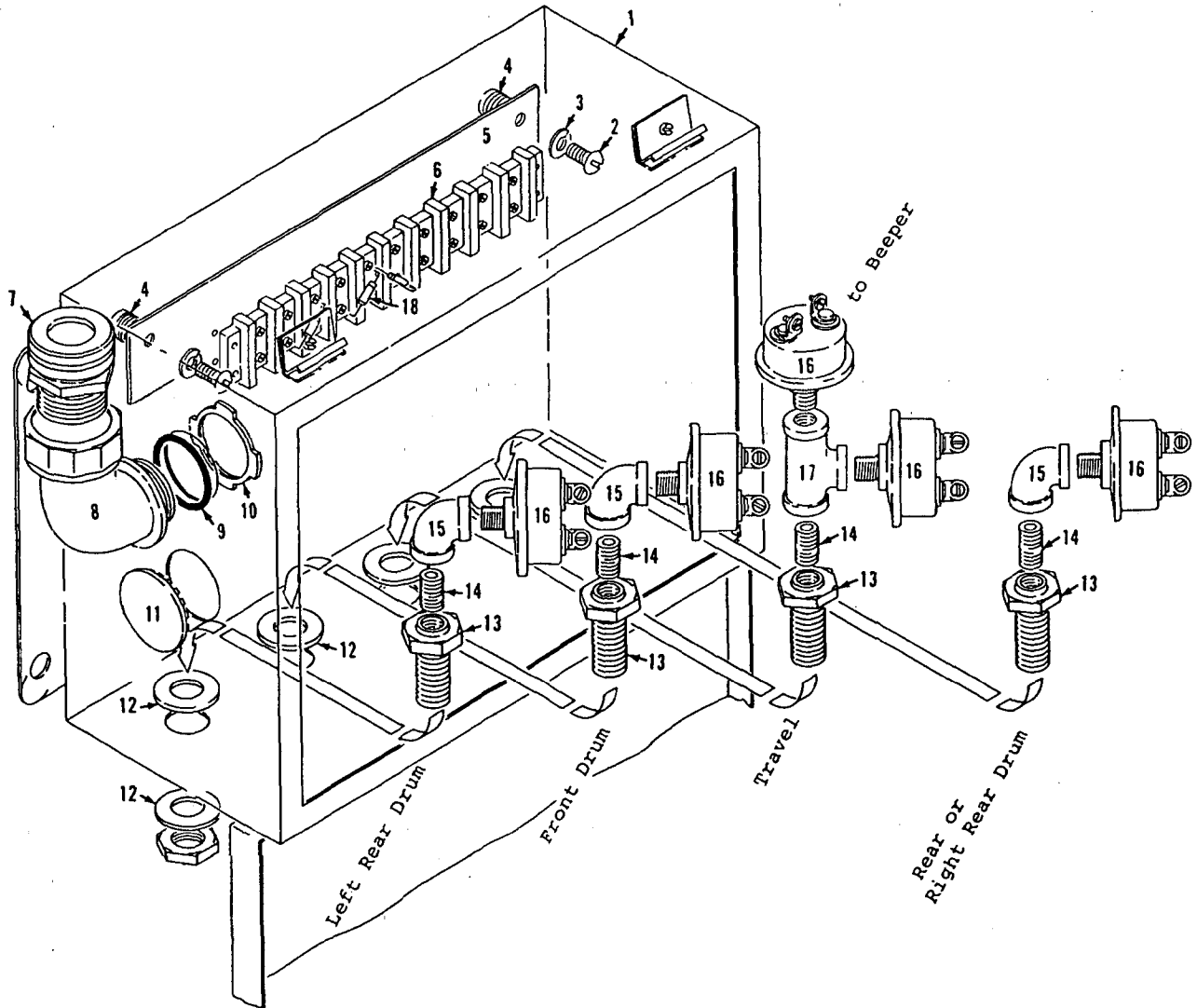
Manitowoc, Wisconsin

WIRE IDENTIFICATION NUMBER

- 8 Supply from Eng. Oil Pressure Switch
- 27A Rear or Right Rear Drum Ind. Light
- 27B Front Drum Ind. Light
- 27C Beeper
- 27D Travel Ind. Light
- 27E Left Rear Drum Ind. Light



Wiring Diagram



190256A1

MATERIAL LIST ON BACK

Operating Indicators Sensor

MODEL

3000W-3600-3900-3900W-3950W-3950D-4000W-4100W

TRANSMISSION CASE
(VICON MACHINE)

ITEM	PART #	QTY.	DESCRIPTION OF PART
			<p><u>Note 3</u> For machines with electric drive, delete Ref. #26-27 above and add:</p>
26	352022	1	SPIDER, Drive
27	352021	1	RING, Drive
	352715	26	BLOCK, Rubber (not shown)
			<p><u>Note 4</u> Clean splines of shafts and sprockets thoroughly with Loctite Safety Solvent (MEC 622296). Apply Loctite Retaining Compound #620 (MEC 622285) to engine shaft and converter input shafts. Allow to cure 24 hours.</p>
			<p align="center">PLEASE GIVE MACHINE SERIAL NUMBER WITH ORDER</p>

ASSEMBLY

42749

PAGE

3 of 3

REV.

P-1

48738-3 Cont.	REV. E	MODEL 3900W - 4100W
---------------	-----------	------------------------

CONVERTER AND HEAT EXCHANGER COOLING PIPING

MASTER

REF. NO.	PART NUMBER	QUANTITY REQUIRED	DESCRIPTION OF PART	VENDORS PART NO.
43	288519	2	BUSHING (1½" x ½" - Steel)	
44	673068	2	SWITCH, Converter Oil Temperature	
45	485994	1	HOSE, Flex (1" I.D. 2'3" - .686 m)	
46	429555	2	FITTING, 90° (1")	
47	70104	1	HOSE, Flex (1" I.D. 6'6" - 1.981 m)	
48	429543	1	FITTING, 45° (1½")	
50	485801	1	HOSE, Flex (1" I.D. 1'10" - .559 m)	

REV. E 48738-3

PLEASE GIVE MACHINE S/N W/ORDER

49946-1 cont.	REV. C	MODEL 4100W
---------------	-----------	----------------

POWER PLANT
(CUMMINS NTA - 855 -C360)

MASTER

Run as from

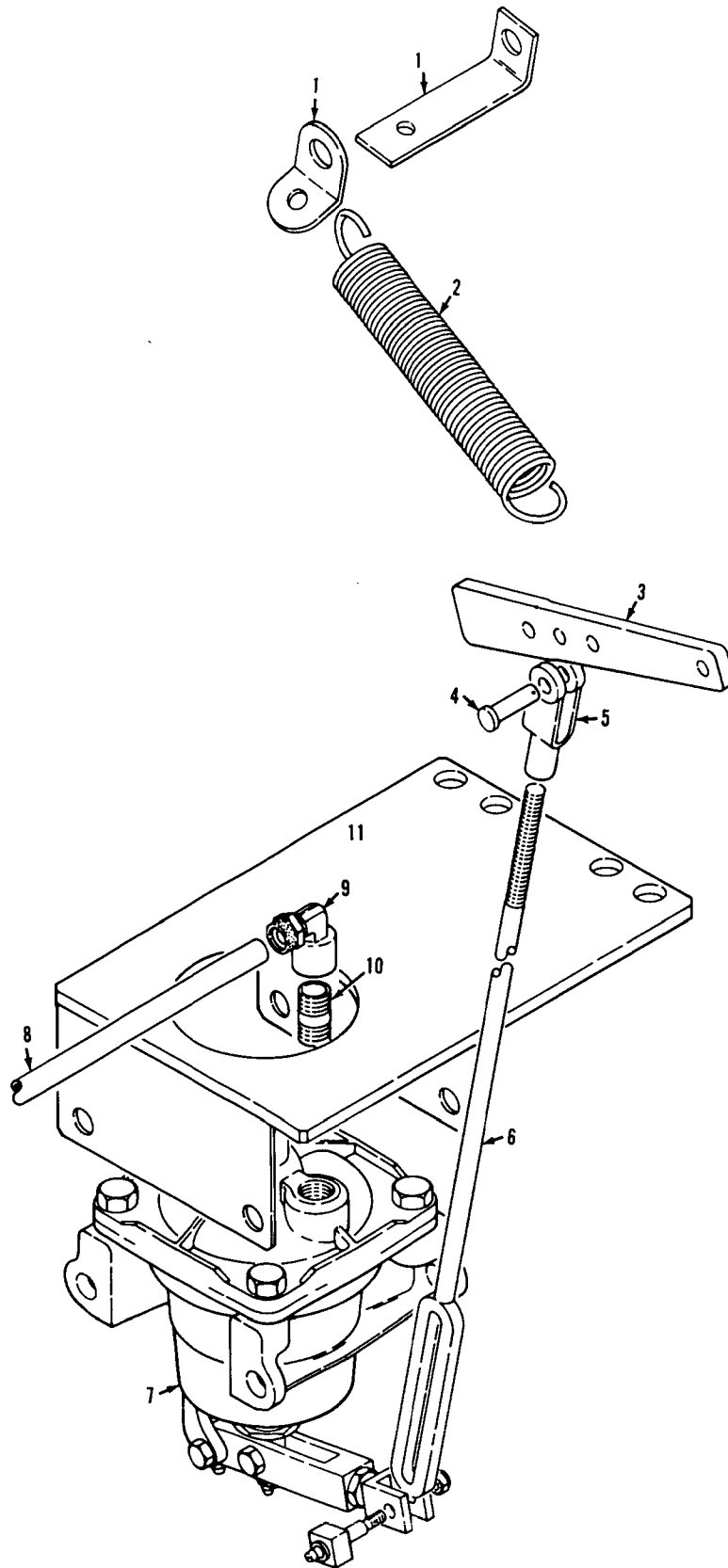
REF. NO.	PART NUMBER	QUANTITY REQUIRED	DESCRIPTION OF PART	VENDORS PART NO.
46	95047	1	TUBE, Water Inlet	
47	94528	1	SHEAVE (W/Eng. Driven Compressor)	
48	569241	3	PLATE, Lock (W/eng. Driven Compressor)	
49	612569	6	CAPSCREWS (1/2" - 13 UNC X 3") (W/Eng. Driven Compressor)	
50	406953	2	ELBOW, 90° (1/2")	
51	542025	1	NIPPLE (1/2" x 17")	
52	543444	1	NIPPLE, Short (1/2")	
53	406895	1	ELBOW, 90° Reducing (1/2" x 1/4")	
54	17845	1	HOSE, Flex (2'3" - .686 m)	
55	288758	2	BUSHING, Reducing (1/2" x 1/4")	
56	485946	1	HOSE, Flex (Return Line) (5'7" - 1.702 m)	
57	486013	1	HOSE, Flex (Supply) (8'6" - 2.590 m)	
58	673200	1	SWITCH, Pressure (Located on engine after 3/10/76 Rev.-See inset for location prior to 3/10/76 Revision.)	
59	406950	2	ELBOW, 90° (1/8") (Machs. before 3/10/76 rev. - see inset)	
60	429617	2	NIPPLE, 1/8" Hex (Machines before 3/10/76 Rev. - see inset)	
61	679300	1	TEE (1/8") (Machs. before 3/10/76 Rev. - See inset)	
62	701017	1	SENDING UNIT, Oil Pressure (Located on Engine After 3/10/76 Rev. See inset for location before 3-10-76.)	
63	345389	2	CLAMP, Pipe	
64	93562	1	EXTENSION, Exhaust Stack (Ringer Only)	
65	543440	1	NIPPLE (1/8" x 1 1/2") (Machs. before 3/10/76 Rev. - see inset)	
66	675752	1	UNIT, Sending (Tachometer) (Machs. after 3/10/76 Revision)	
67	701010	1	SWITCH, Temperature (205° F) (After 3-10-76 Revision)	
68	701034	1	SWITCH, Oil Pressure (10 P.S.I.) (After 3-10-76 Revision)	
69	675757	1	ADAPTER, Tachometer Sending Unit (Use W/Engine 414036 only) (Machs. after 3-10-76 Rev)	
70	531008	1	METER, Hour (Machs. after 3-10-76 Revision)	
71	386001	1	DAMPENER, Vibration (Machines after 3-10-76 Revision)	
72	137458	1	BRACKET	
			BATTERY AND CABLES (Not Shown)	
	223109	2	BATTERY, 12V Heavy Duty	
	296716	1	CABLE, Battery (Positive) (Specify 8'0" W/terminal and eye)	
	296716	1	CABLE, Battery (Negative) (Specify 8'0" W/terminal and eye)	
	296716	1	CABLE, Battery (Interconnector) (Specify 8 1/4" W/terminal both ends)	
			NOTE 1: Engines #414058, 414059, supersede engines 414035, 414036 and are not furnished with rear supports. For these engines the following are necessary:	
73	143910	2	SUPPORT, Engine W/capscrews and lockwashers	

0-451

PLEASE GIVE MACHINE S/N W/ORDER

REV. C	49946 - 1
-----------	-----------

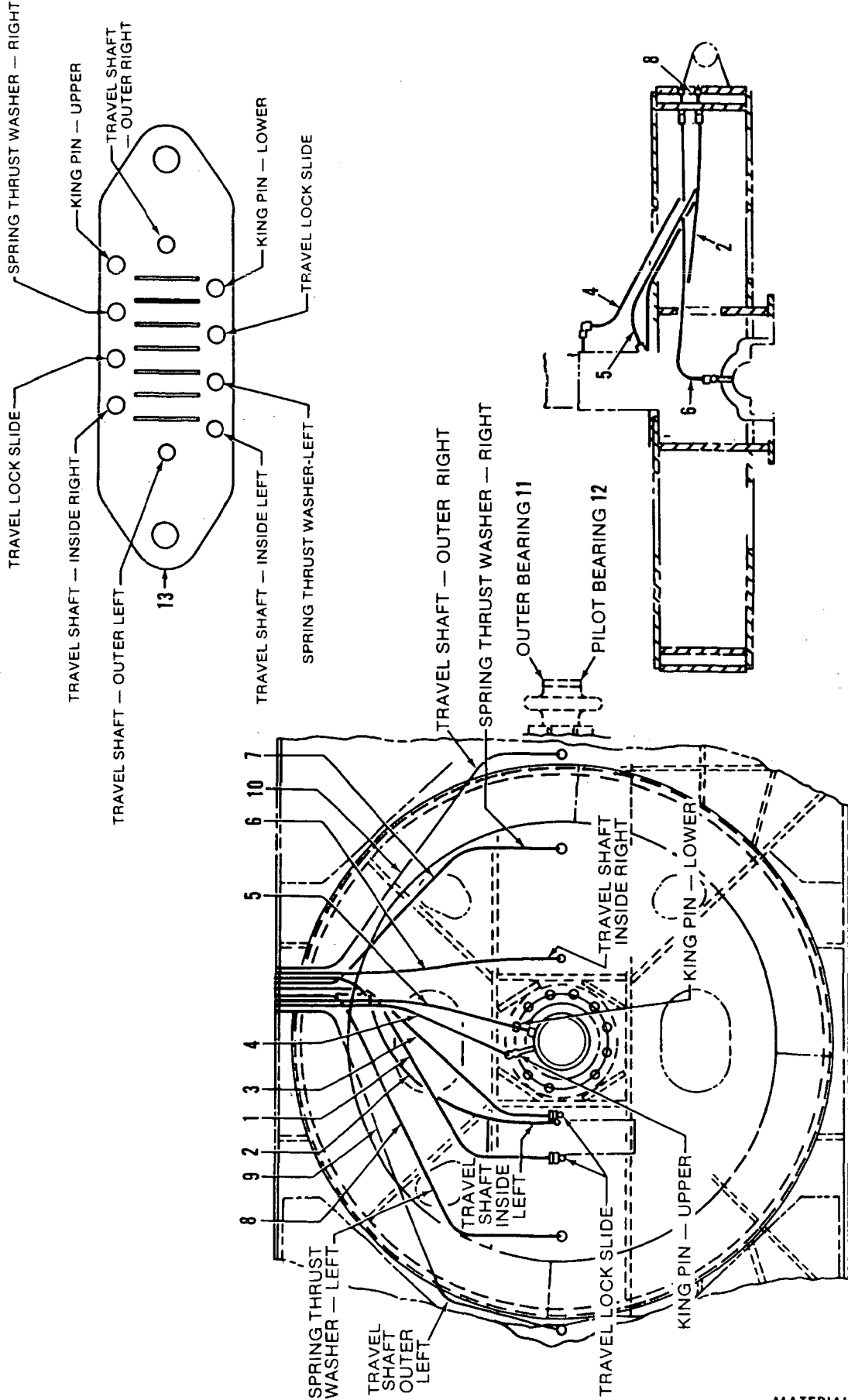
49946-1 Cont'd
C1



182793A1

MATERIAL LIST ON BACK

ENGINE THROTTLE CONTROL



32233B1

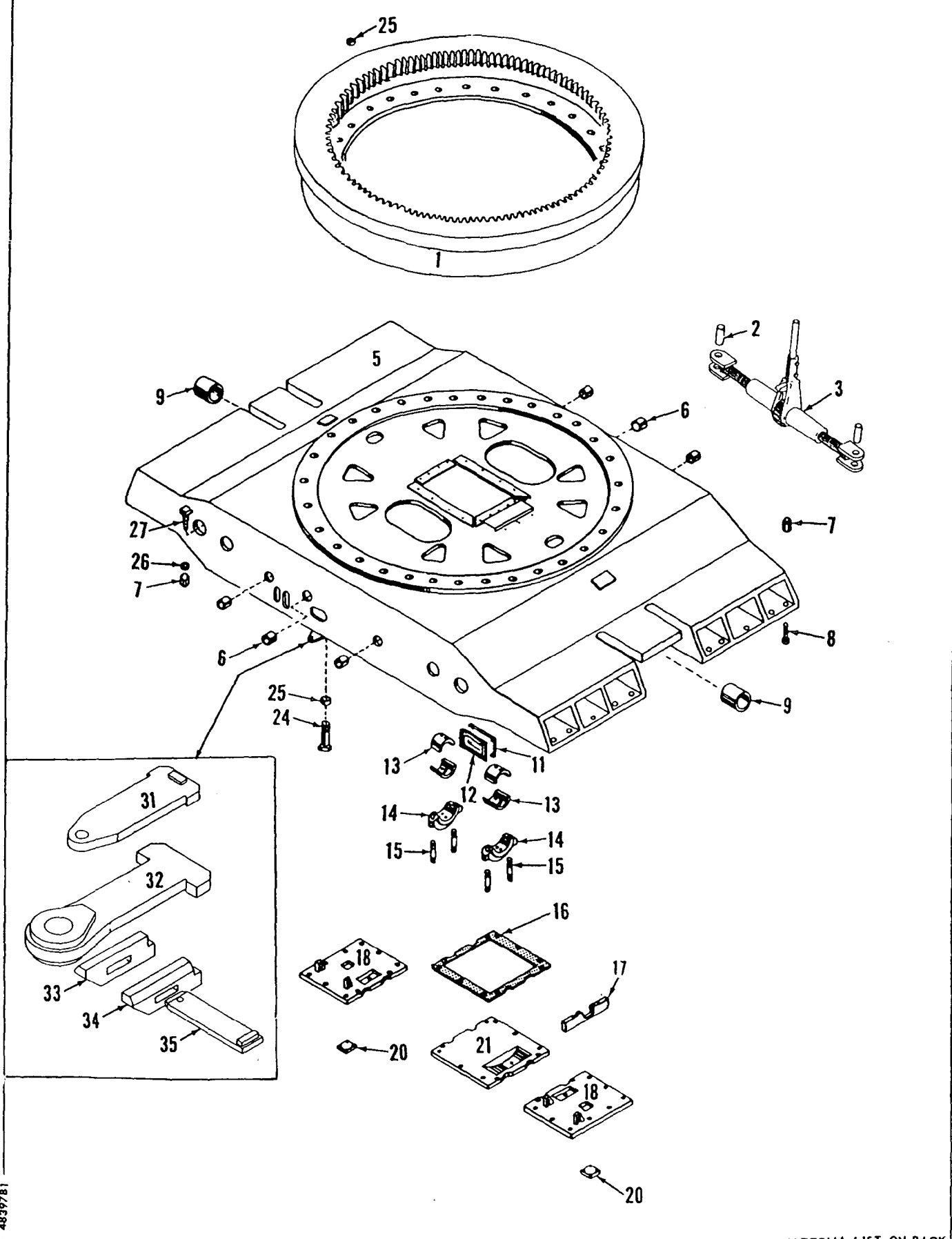
MATERIAL LIST ON BACK

LUBRICATION PIPING ASSM. — CARBODY

MANITOWOC ENGINEERING CO.

A Division of The Manitowoc Company, Inc.

Manitowoc, Wisconsin



4839781

MATERIAL LIST ON BACK

CARBODY

182854

ITEM

-E1.1-

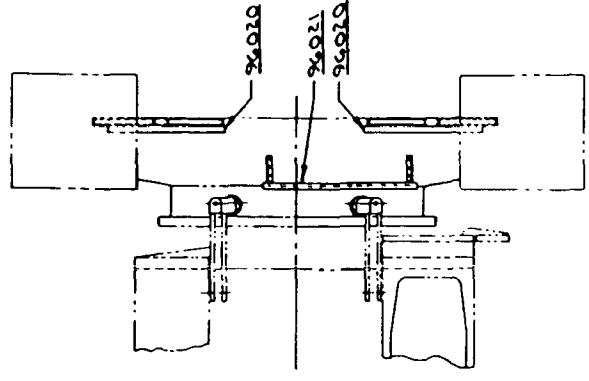
(D)(E)

(C)

10-A-76 LJPB (A) SEE NOTE 1 ADDED (B) ADDED 10-21-76 SCHWAB (C) DELETED OR FRONT SERVICE WALK WAY 5-23-76 JOB (D) NOTE 1 DELETED (E) NOTE 2 ADDED (F) WAS SEE NOTE 1		182854
5-21-76 182854		5-21-76 182854

BILL OF MATERIAL		QUANTITY	DESCRIPTION	UNIT	REMARKS
1	4	STEP	96020		SEE NOTE 2
2	2	STEP	96021		SEE NOTE 2

NOTICE
 See these drawings for reference to
 MANITOWOC ENGINEERING CO.
 1000 W. WISCONSIN ST., MILWAUKEE, WISCONSIN 53233
 1000 W. WISCONSIN ST., MILWAUKEE, WISCONSIN 53233
 1000 W. WISCONSIN ST., MILWAUKEE, WISCONSIN 53233

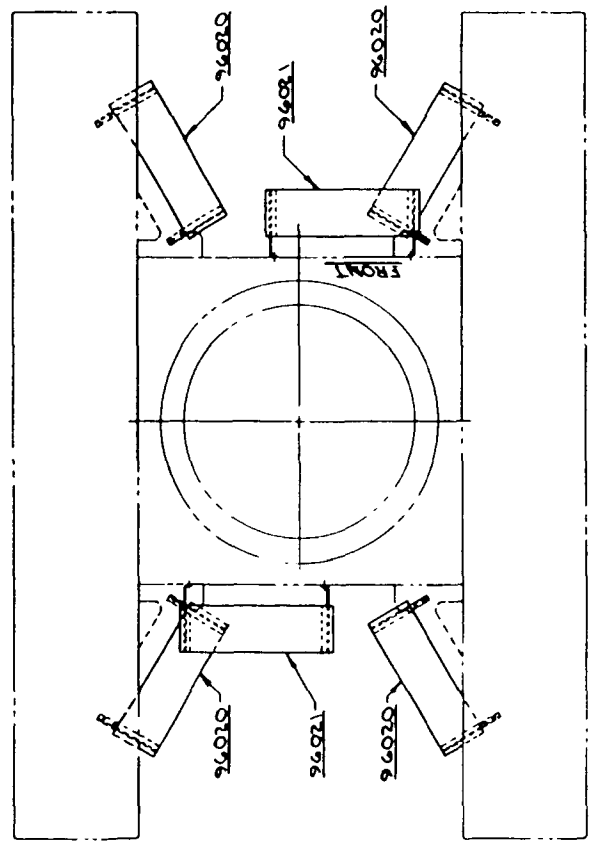


FRONT VIEW

(D)(B) ~~XXXXX~~
 DO NOT USE STEP 96020 ON XTRACURVE
 MACHINES EQUIPPED WITH
 CATWALKS THAT INCLUDE
 1. FRONT CENTER CATWALK
 OR
 2. CATWALK EXTENSION FOR
 ELEVATED CAB

(E) NOTE 2
 DO NOT USE STEP 96020 ON
 MACHINES EQUIPPED WITH
 CATWALKS THAT INCLUDE:
 1. FRONT CENTER CATWALK
 OR
 2. CATWALK EXTENSION FOR
 ELEVATED CAB

FRONT VIEW

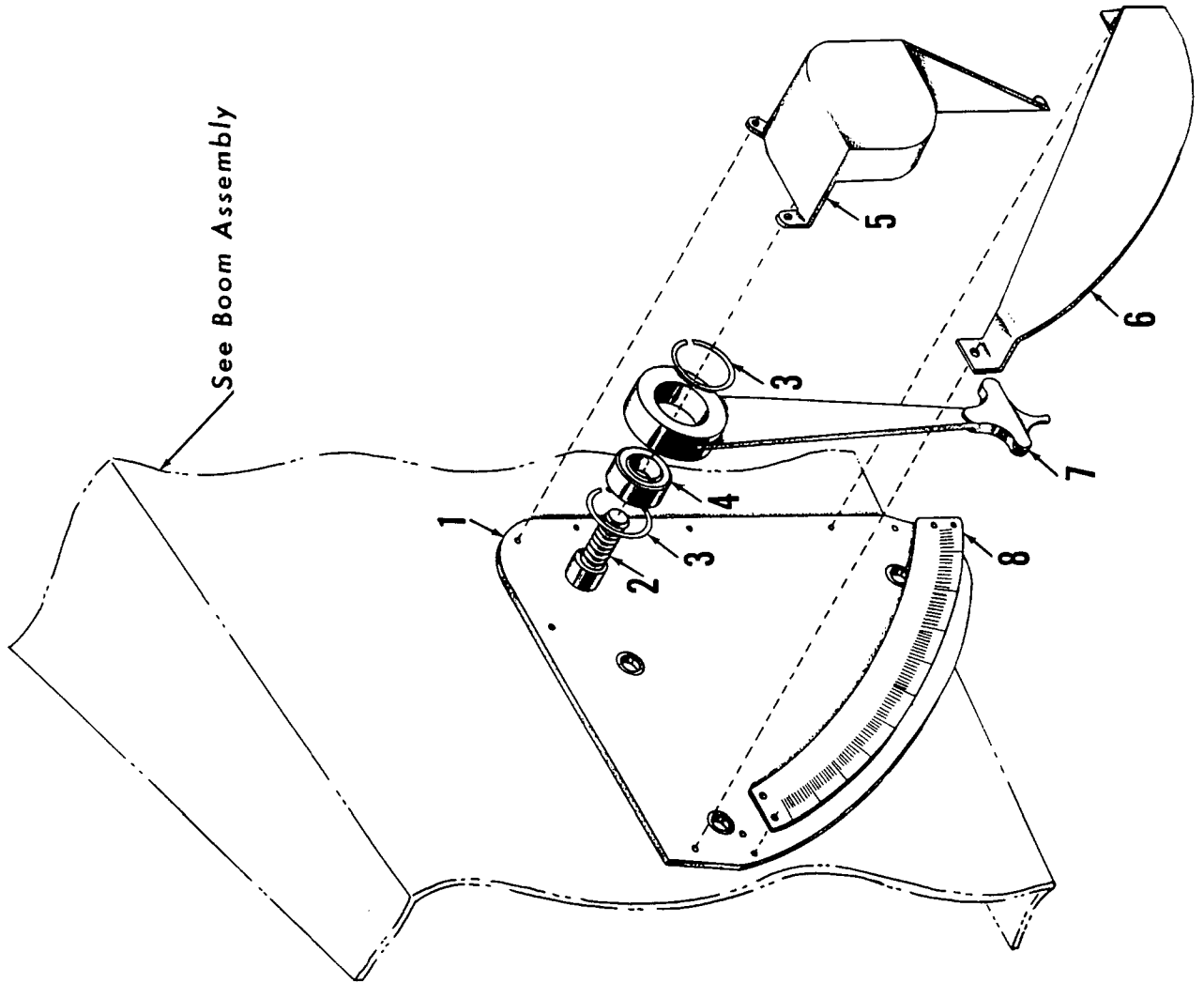


FOR FIELD INSTALLATION SEE 4190G1	
MANITOWOC ENGINEERING CO.	CARBODY STEP ASSEMBLY
1000 W. WISCONSIN ST.	MILWAUKEE, WISCONSIN 53233
1000 W. WISCONSIN ST.	MILWAUKEE, WISCONSIN 53233
1000 W. WISCONSIN ST.	MILWAUKEE, WISCONSIN 53233

(D)(B)

(E)

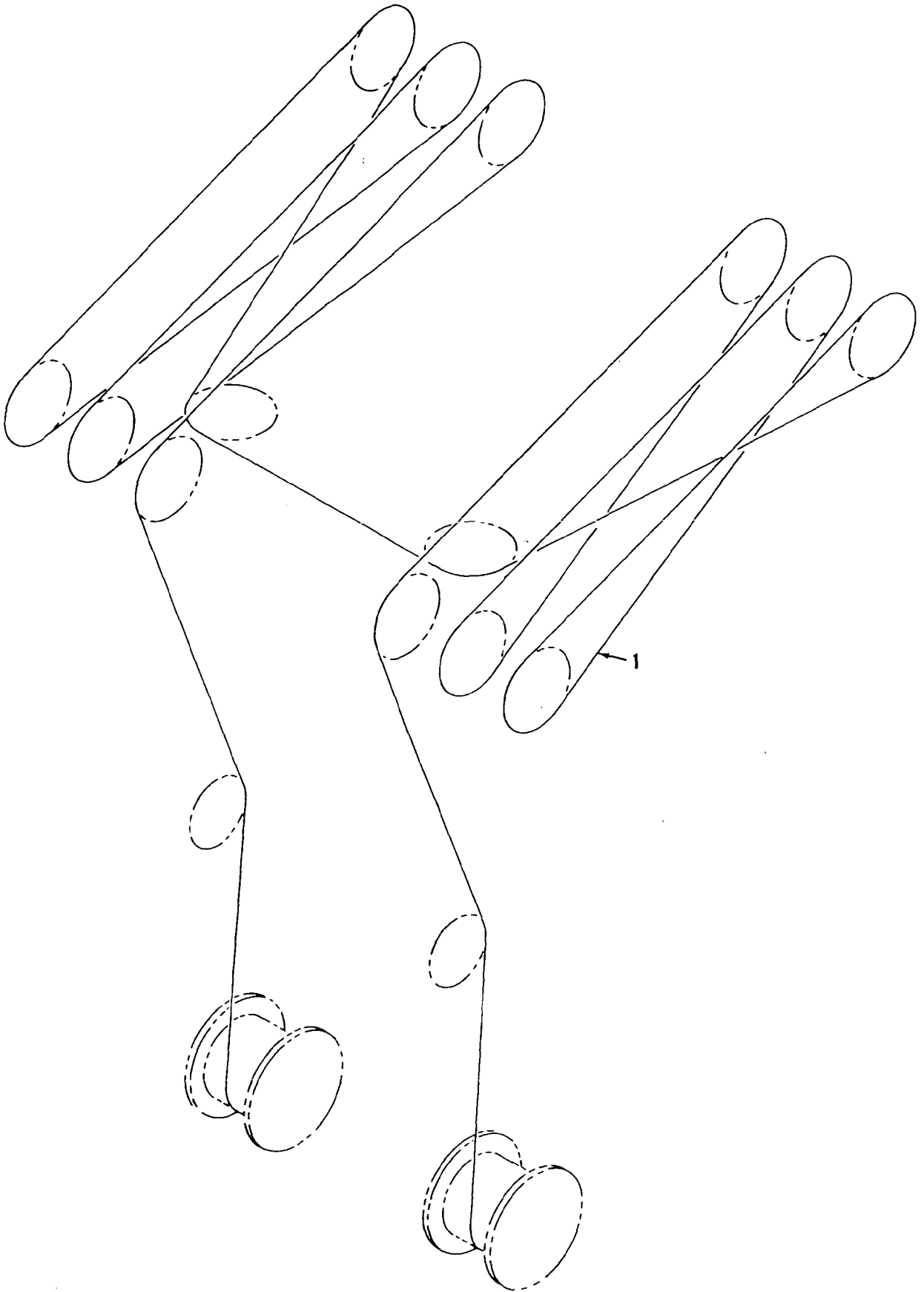
SEE NOTE 2 FOR FIELD INSTALLATION



MANITOWOC ENGINEERING CO.

A Division of The Manitowoc Company, Inc.

Manitowoc, Wisconsin



48598A2

MATERIAL LIST ON BACK

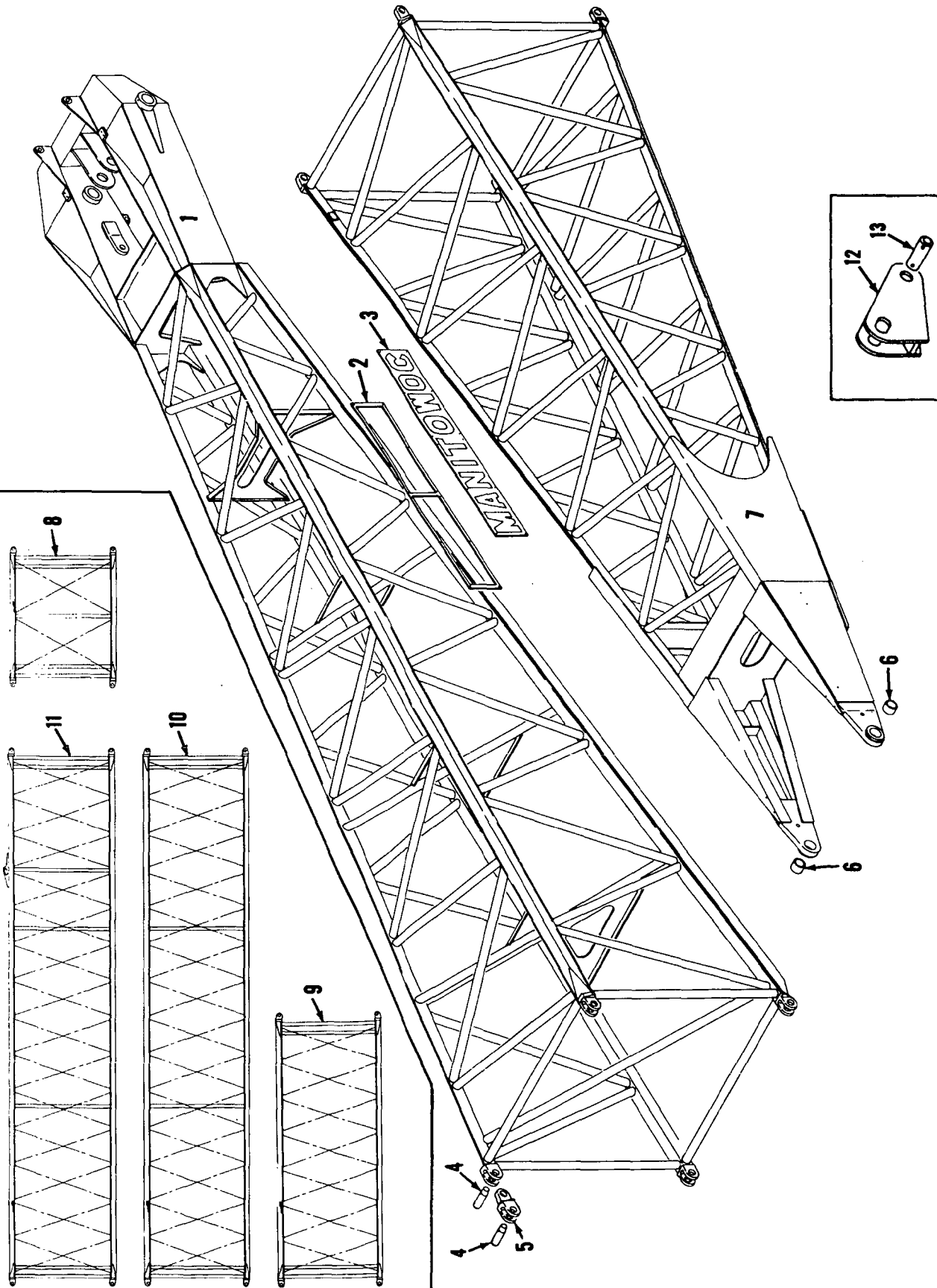
BOOM HOIST REEVING

MANITOWOC ENGINEERING CO.

A Division of The Manitowoc Company, Inc.

Manitowoc, Wisconsin

MASTER



4835284

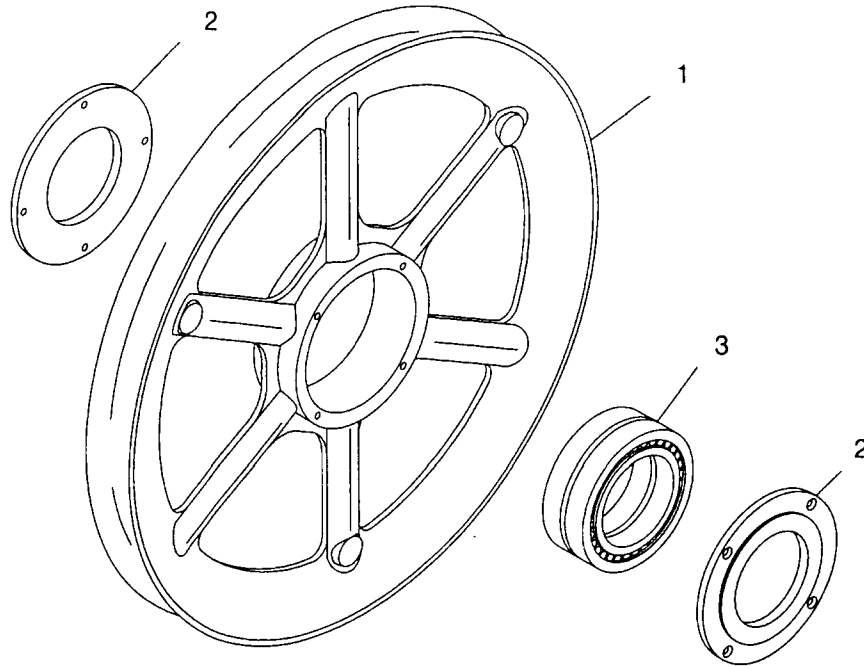
MATERIAL LIST ON BACK

BOOM NO. 22

4-8722-154

MANITOWOC ENGINEERING CO.

Division of The Manitowoc Company, Inc.



MODEL

888

SHEAVE
(for 1-1/8" diameter rope)

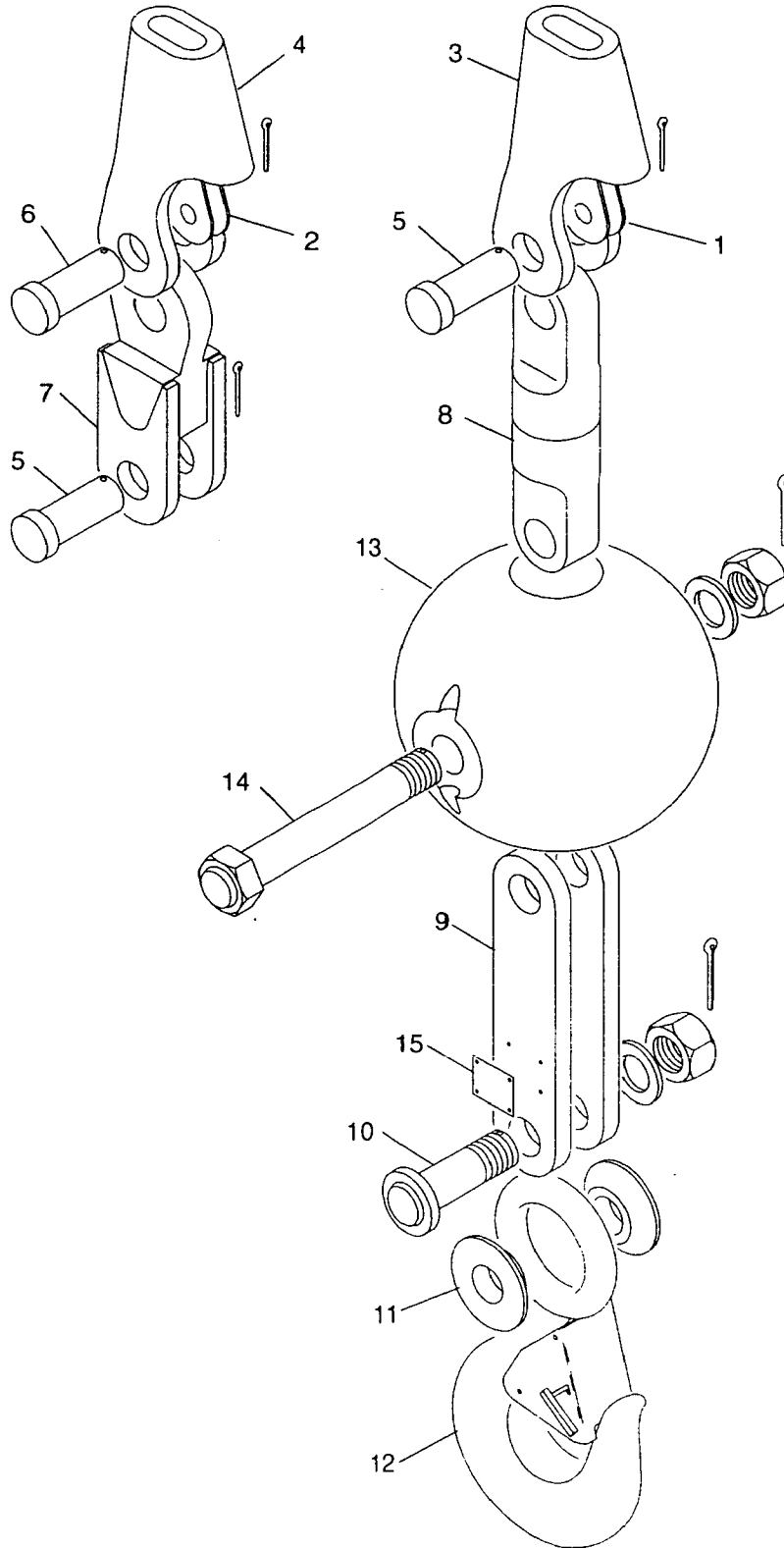
ITEM	PART #	QTY.	DESCRIPTION OF PART
	91130-1	1	SHEAVE ASSEMBLY
1	91129	1	SHEAVE (casting)
	429000	1	FITTING, Grease (1/8")
2	75599	2	PLATE, Retaining
	617648	4	CAPSCREW, Flat Head (5/16-18 UNC-2A x 3/4" long) (see Note)
3	224150	1	BEARING
	91130-3	1	SHEAVE ASSEMBLY
1	97188	1	SHEAVE (fabrication)
2	75599	2	PLATE, Retaining
	617648	4	CAPSCREW, Flat Head (5/16-18 UNC-2A x 3/4" long) (see Note)
3	224150	1	BEARING

Note: Apply LOCTITE #242 (MEC 622293) to both screw and hole threads at assembly.

PLEASE GIVE MACHINE SERIAL NUMBER WITH ORDER

ASSEMBLY 091130	REVISION A
---------------------------	----------------------

SHEAVE



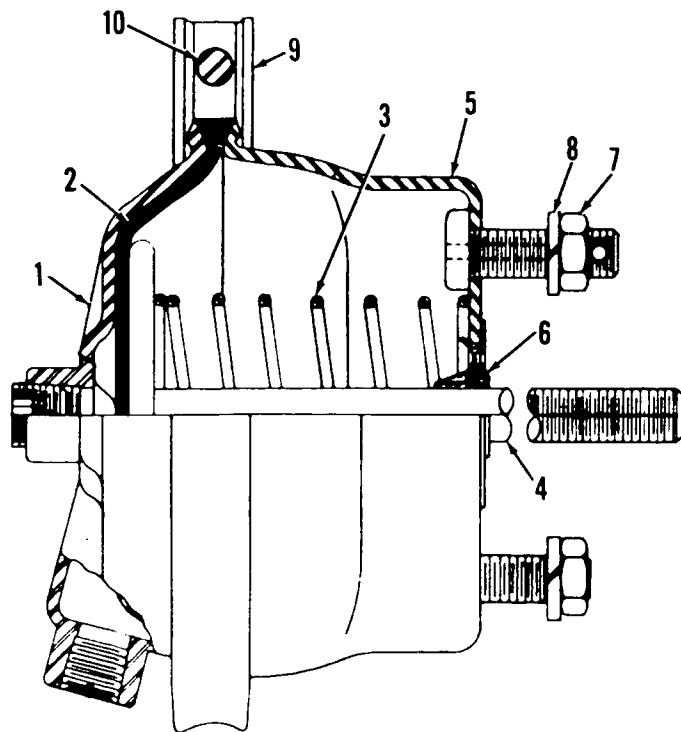
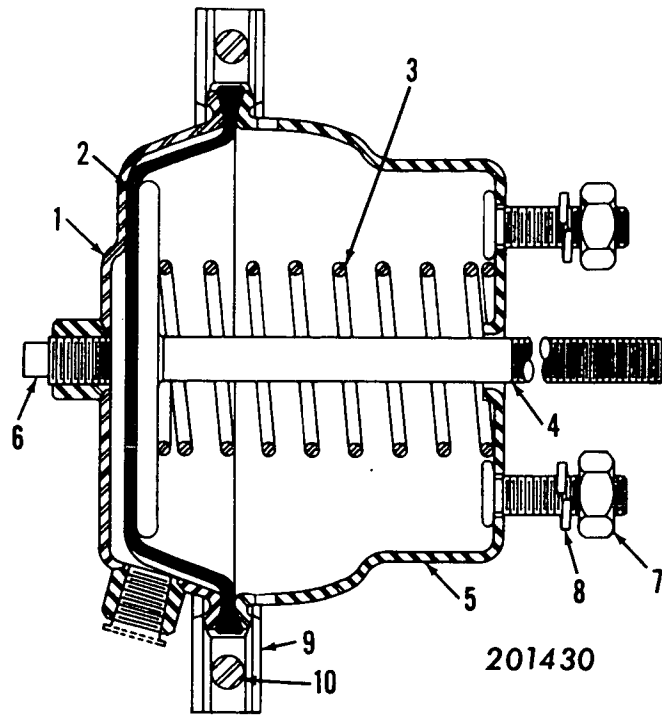
ASSEMBLY
95111

REVISION
C

HOOK & WEIGHT BALL, 15 TON

O-NUMBER NUMERICAL INDEX

PUBLICATION	REV
0-63	B
0-63	B1
0-71	-
0-123	A1
0-123	A2
0-147	D2
0-148	-
0-157	A1
0-246	C1
0-247	B
0-247	B1
0-279	B1
0-286	A
0-288	A1
0-290	E1
0-294	A
0-294	A1
0-294	D1
0-301	A
0-302	A
0-304	G1
0-307	-
0-313	A
0-313	A1
0-318	-
0-318	A1
0-340	E1
0-407	B
0-407	B1
0-439	-
0-441	A4
0-441	B2
0-447	-
0-451	AA1
0-451	CA1
0-469	E1
0-471	A1
0-472	A1
0-503	-
0-512	-



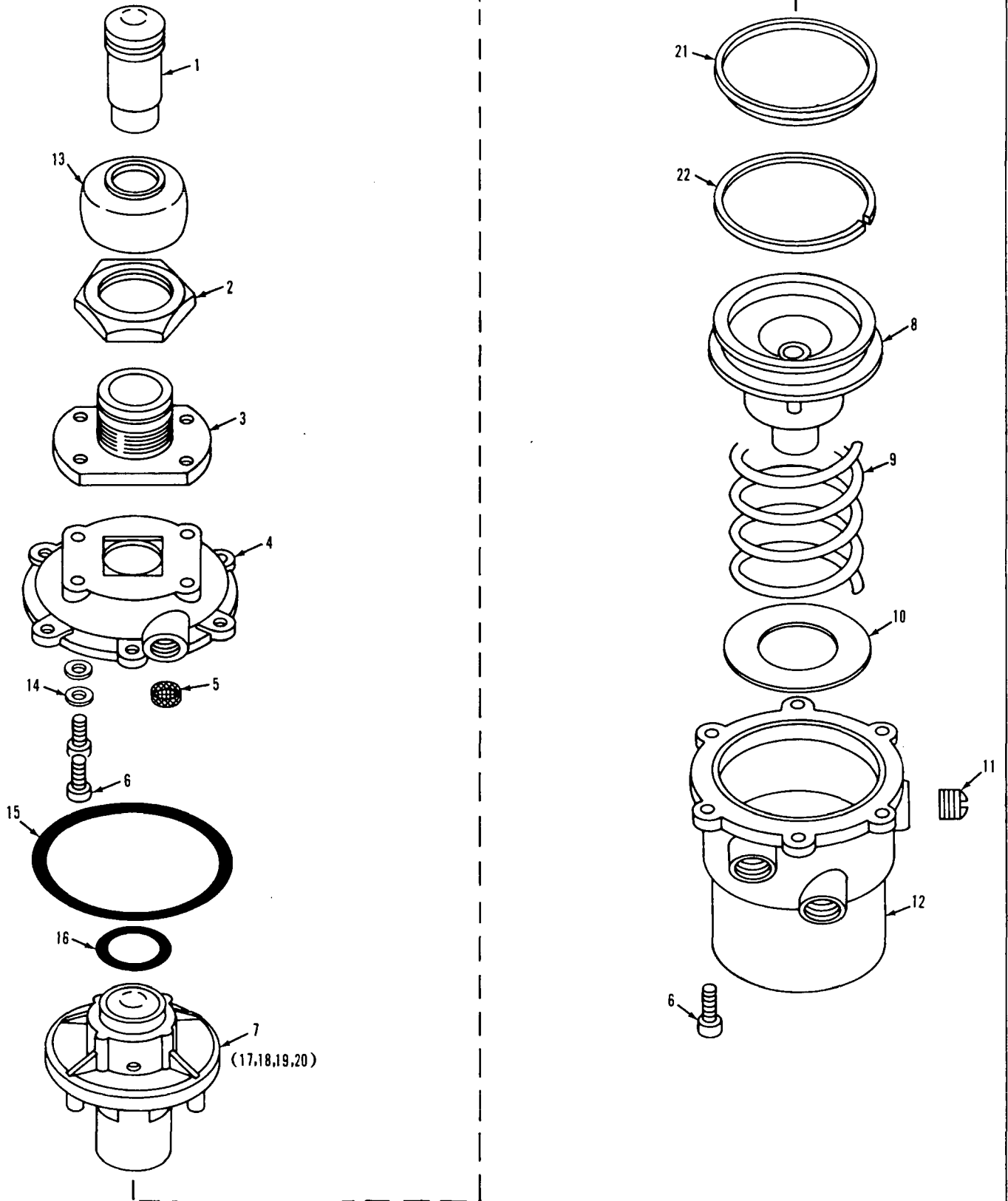
MASTER

MANITOWOC ENGINEERING CO.

A Division of The Manitowoc Company, Inc.

Manitowoc, Wisconsin

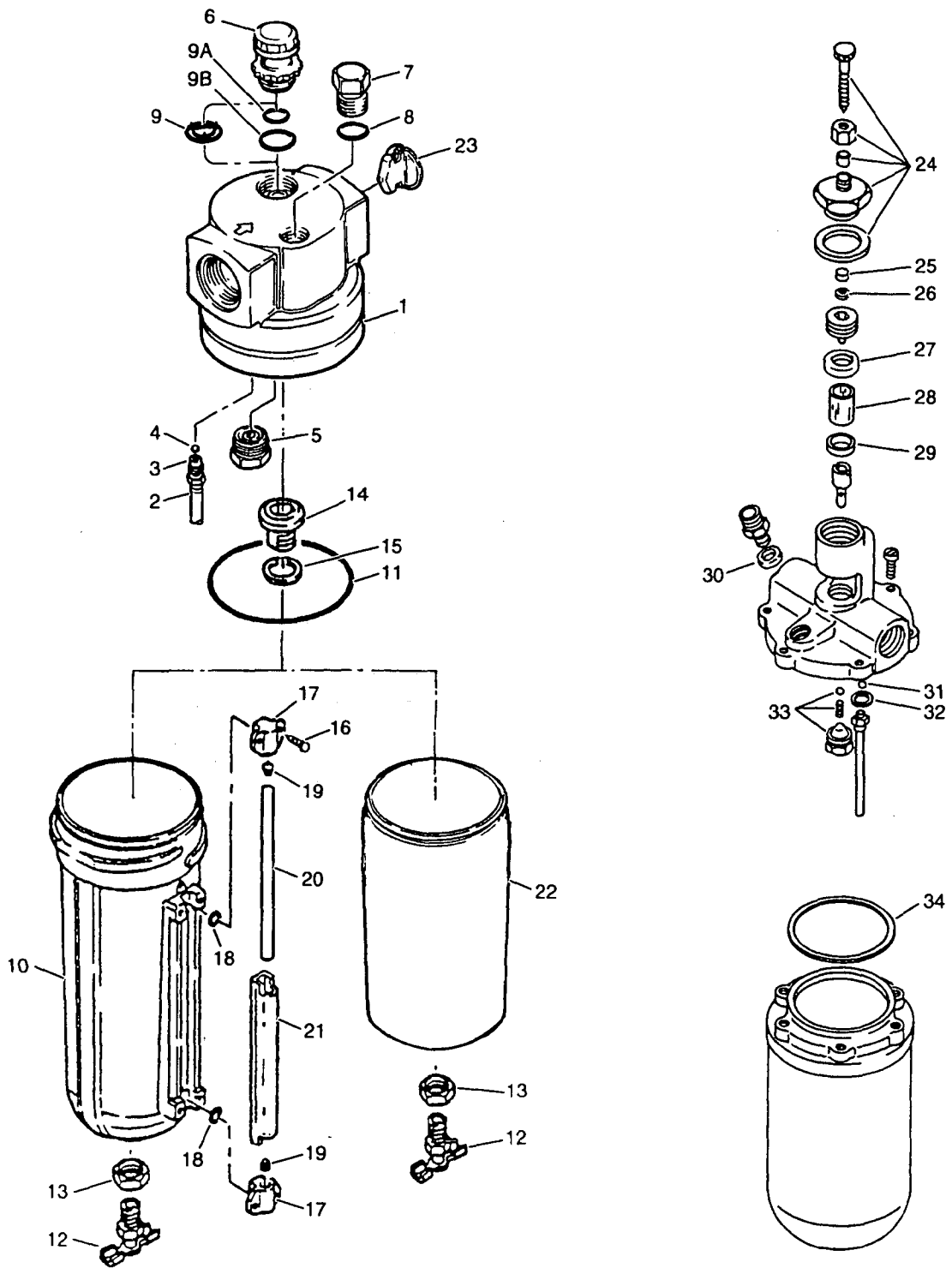
MASTER



0-247-1B

MATERIAL LIST ON BACK

Control Valve



0-301 Cont.	REV. A	MODEL 3000-4600 Incl.
-------------	--------	-----------------------

ENGINE CONTROL ACTUATOR
(Manitowoc #714566 - Westinghouse #P-57086-11)

REF. NO.	PART NUMBER	QUANTITY REQUIRED	DESCRIPTION OF PART	VENDORS PART NO.
15		1	NUT, Pivot Bolt ($\frac{1}{2}$ ")	519787
18		1	NUT, Adjusting	521701
<p>NOTE: Actuator #P-54128 can be converted to P-5708-11 by adding kit #P-61277.</p>				

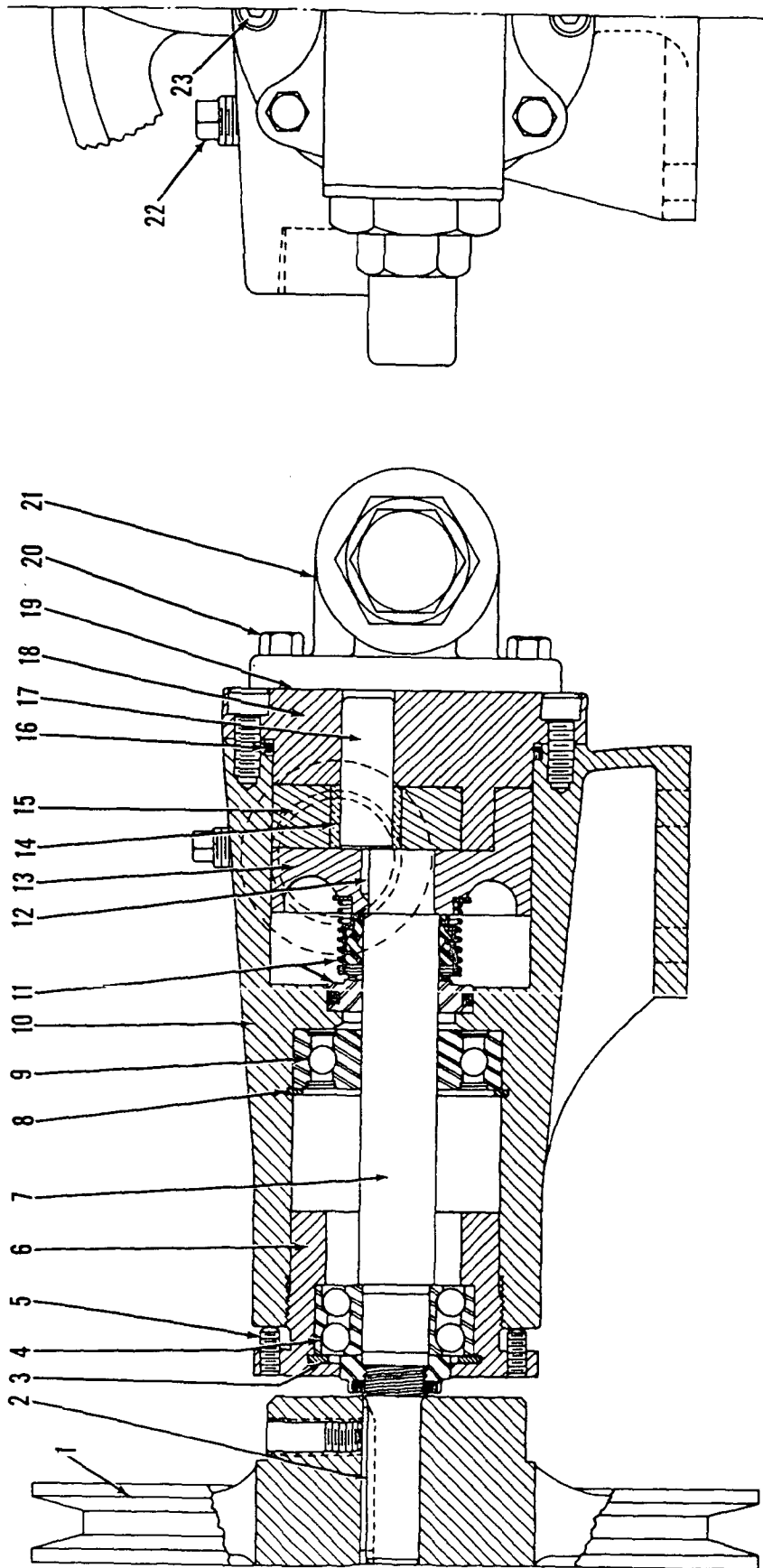
REV. A	0-301
--------	-------

PLEASE GIVE MACHINE S/N W/ORDER

Run As Front

MASTER

MASTER



43051B7

MATERIAL LIST ON BACK

OIL PUMP

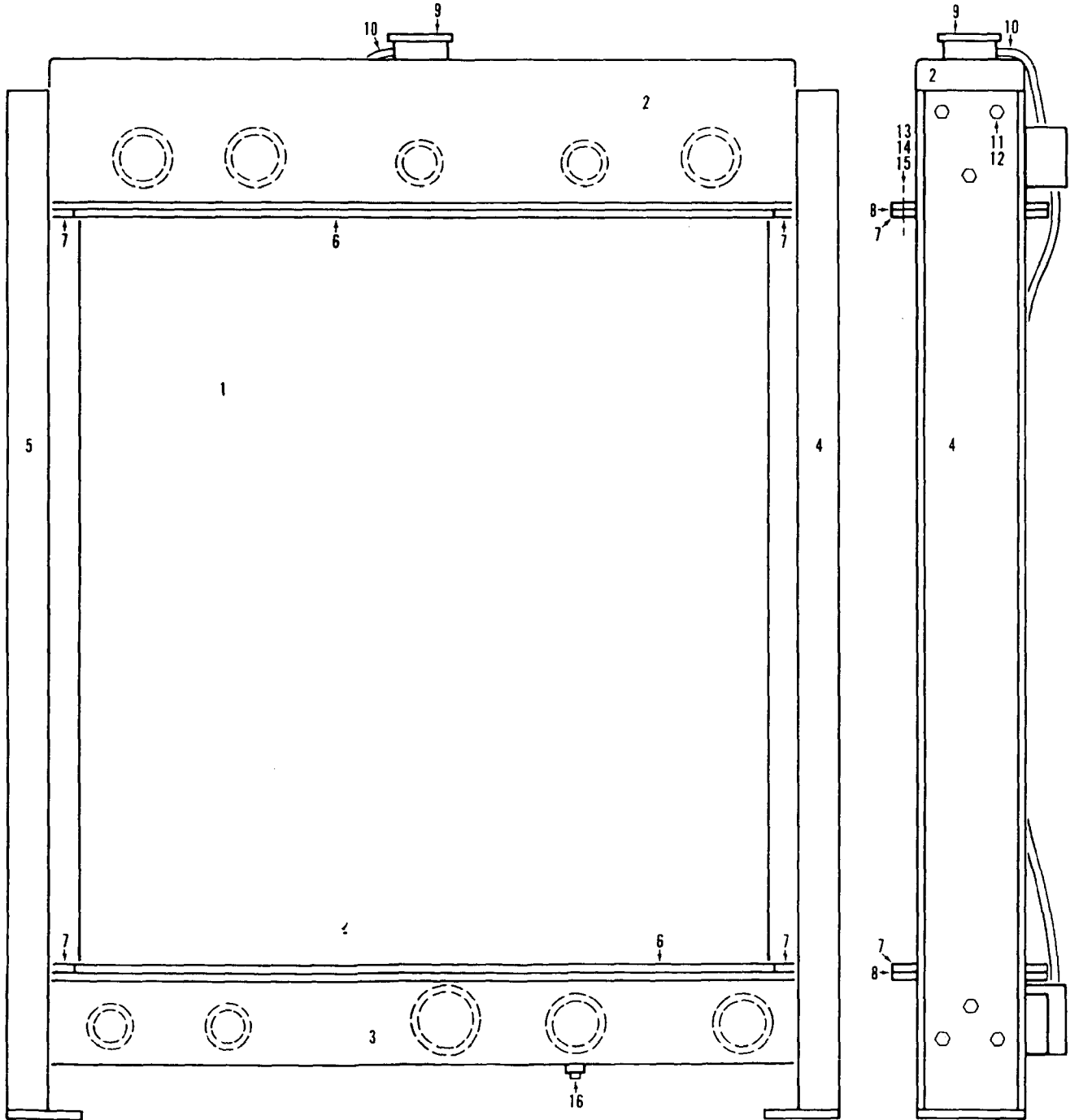
0-407 B7

MANITOWOC ENGINEERING CO.

A Division of The Manitowoc Company, Inc.

Manitowoc, Wisconsin

MASTER



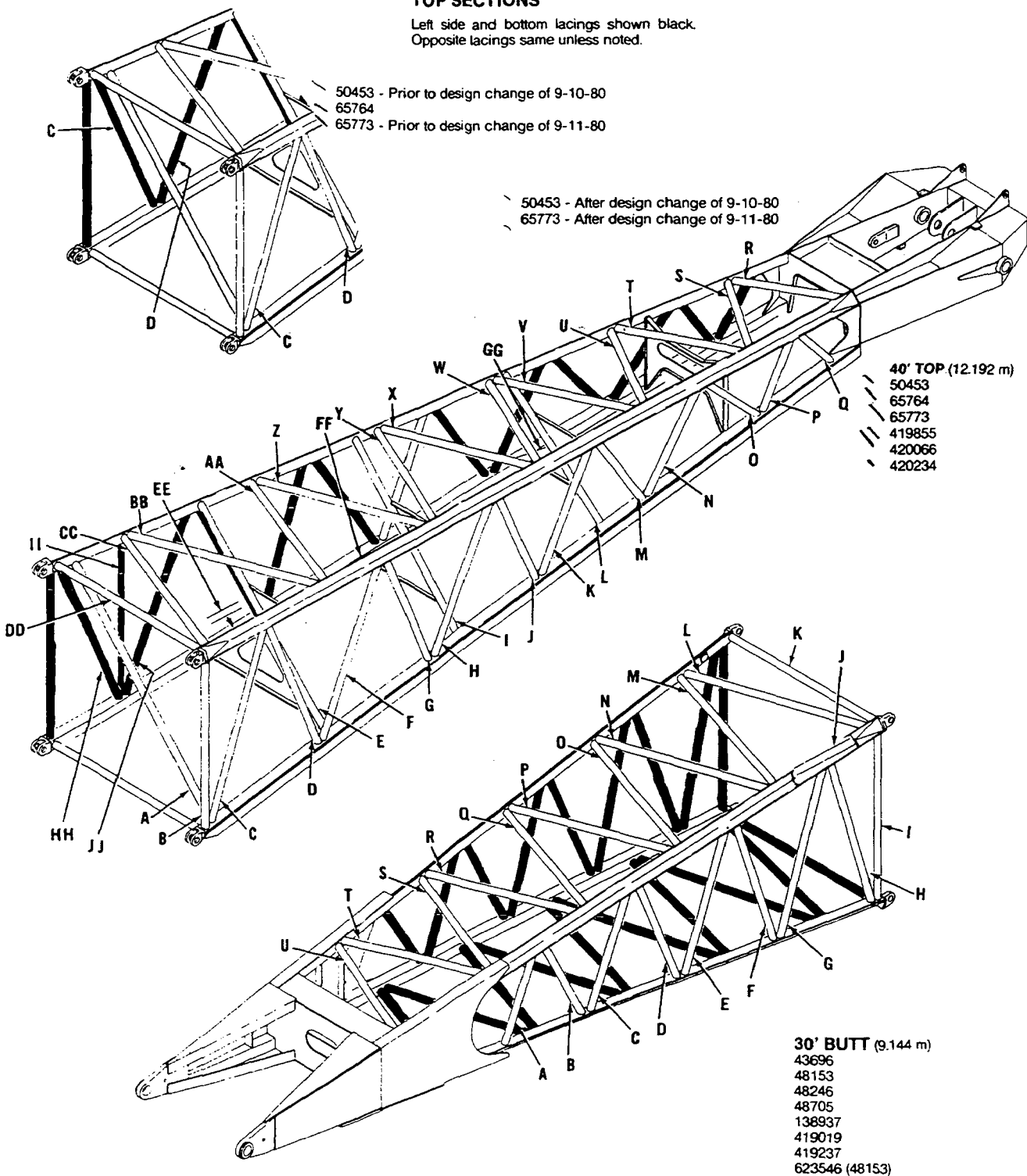
0-451

MATERIAL LIST ON BACK

RADIATOR

BOOMS #22, #22A, #22C-BUTT & TOP SECTIONS

Left side and bottom lacings shown black.
Opposite lacings same unless noted.



50453 - Prior to design change of 9-10-80
65764
65773 - Prior to design change of 9-11-80

50453 - After design change of 9-10-80
65773 - After design change of 9-11-80

40' TOP (12.192 m)
50453
65764
65773
419855
420066
420234

30' BUTT (9.144 m)
43696
48153
48246
48705
136937
419019
419237
623546 (48153)

To order lacings see Folio #823

2-13-92
9-91

O-503 C1

LACINGS

PARTS DRAWINGS REFERENCE

**20729
22596
93059
93560
93831
94149
95401
95822
95823
181002
181195
182455
182486
182873
183210**

CLICK HERE TO **DOWNLOAD** THE COMPLETE MANUAL

- Thank you very much for reading the preview of the manual.
- You can download the complete manual from: www.heydownloads.com by clicking the link below



- Please note: If there is no response to CLICKING the link, please download this PDF first and then click on it.

CLICK HERE TO **DOWNLOAD** THE COMPLETE MANUAL