

Manitowoc

TRADITIONAL CRANE PARTS MANUAL

This manual has been prepared for and is considered part of

4000W

Model

40683

Serial Number

GROUP A = Rotating Structure (Includes rotating bed, operator's cab, cases, fuel tanks, transfer pump, counterweights, guards, platforms, catwalks, machinery enclosure, horn)

GROUP B = Upperworks Machinery (Includes front, rear, and auxiliary drums, boom hoist, swing and drive shafts, hand levers, foot pedals, control linkage, rotation indicators, upperworks hydraulic components, hydraulic piping, hydraulic oil reservoir, lubrication pump and piping, blowers)

GROUP C = Air Components & Electrical (Includes control console, air piping, electric wiring, auxiliary light plant and lighting, TV monitoring, compressor and air tank)

GROUP D = Power Components - Upperworks (Includes engine or motor, radiator, auxiliary power plant, take off converters and piping, controls, VICON power lowering, torque limiter, hydraulic pumps and piping, fuel piping, battery box)

GROUP E = Lower Structure & Control (Includes carbody, crawlers, travel shafts and control, steering travel locks, hydraulic travel, travel power outriggers, carrier, pedestal, lowerworks hydraulic piping, RINGER components, barge mounting and machinery, spud drums)

GROUP F = Attachments (Includes booms, jibs, masts, tower, wire rope guides, equalizer, gantry, fairlead, timber guards, boom angle indicator, block-up limit, tag line, hook block, weight ball, upper and lower boom point, wind speed indicator, crowd and retract dipper sticks, dippers,)

O-NUMBER SECTION = (Includes lacing drawings and purchased component parts drawings referenced in sections A through F)

This manual is arranged in sections as listed above. Sections A through F are arranged by group numerical order with an index after each section tab. An alphabetical index for groups A Through F combined is located after the O-number Section. The O-number section is arranged in numerical order by O-number. Following this cover page are the Basic Specifications, Warranty Information, Tool List (if applicable) Outline Dimensions, Weights, and Dealer Listing.

CLICK HERE TO **DOWNLOAD** THE COMPLETE MANUAL

- Thank you very much for reading the preview of the manual.
- You can download the complete manual from: www.heydownloads.com by clicking the link below



- Please note: If there is no response to CLICKING the link, please download this PDF first and then click on it.

CLICK HERE TO **DOWNLOAD** THE COMPLETE MANUAL

Corrosion and Abrasion

Refer to Figure 3.

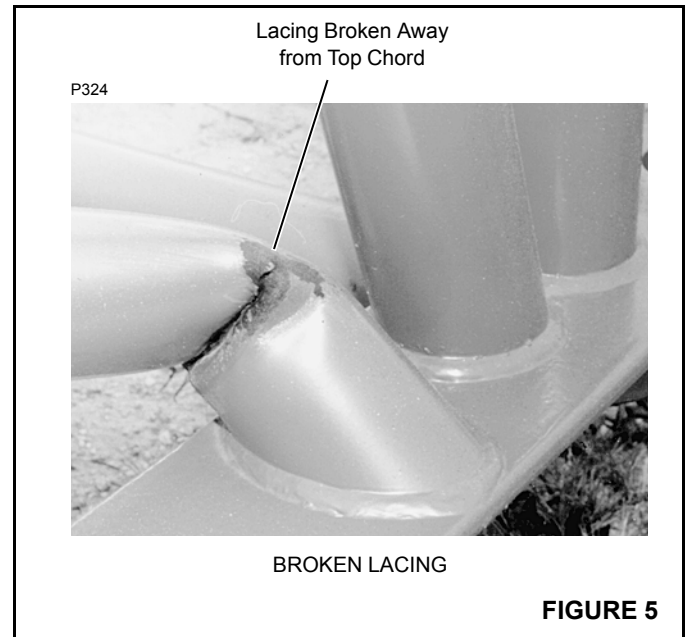
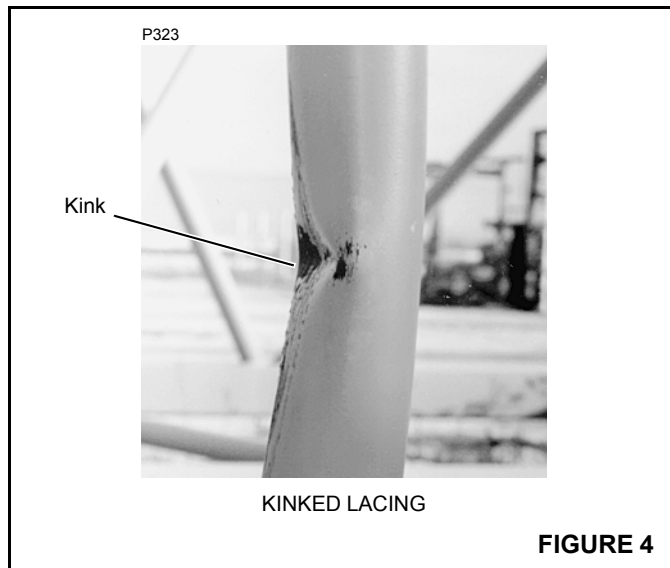
Corrosion and abrasion must not be deeper than 10 percent of the wall thickness, the angle thickness, or the plate thickness.

Kinks

Refer to Figure 4.

Kinked lacings must be replaced; *do not bend kinked lacings back into alignment.*

If any chord or platework is kinked, contact Manitowoc Crane Care for approved repair instructions. *Do not bend kinked chords or platework back into alignment.*



Cracks and Breaks

Refer to Figure 5.

Cracked and broken lacings must be replaced; *do not attempt to repair cracked or broken lacings.*

If any chord or platework is cracked or broken, contact Manitowoc Crane Care for approved repair instructions. *Do not attempt to repair cracked or broken chords or platework.*

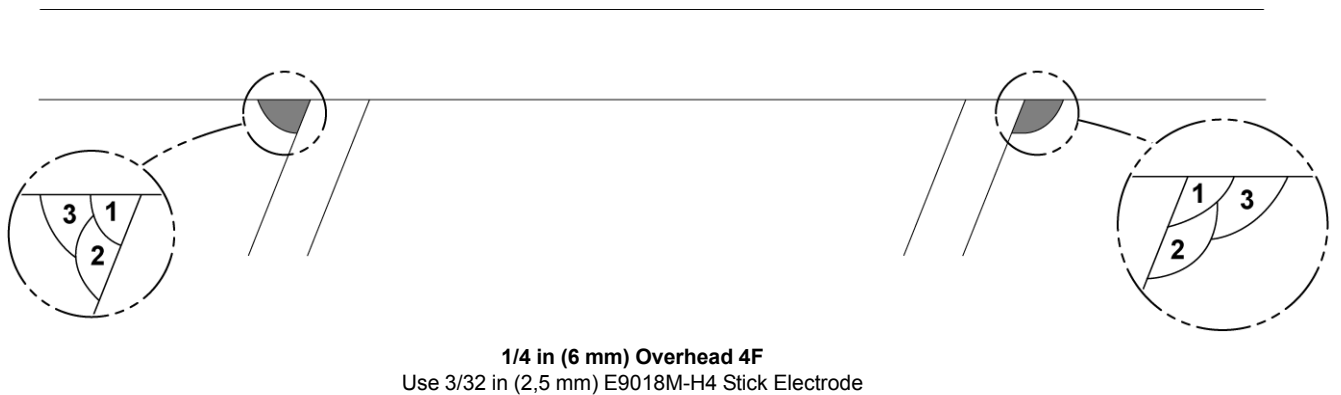
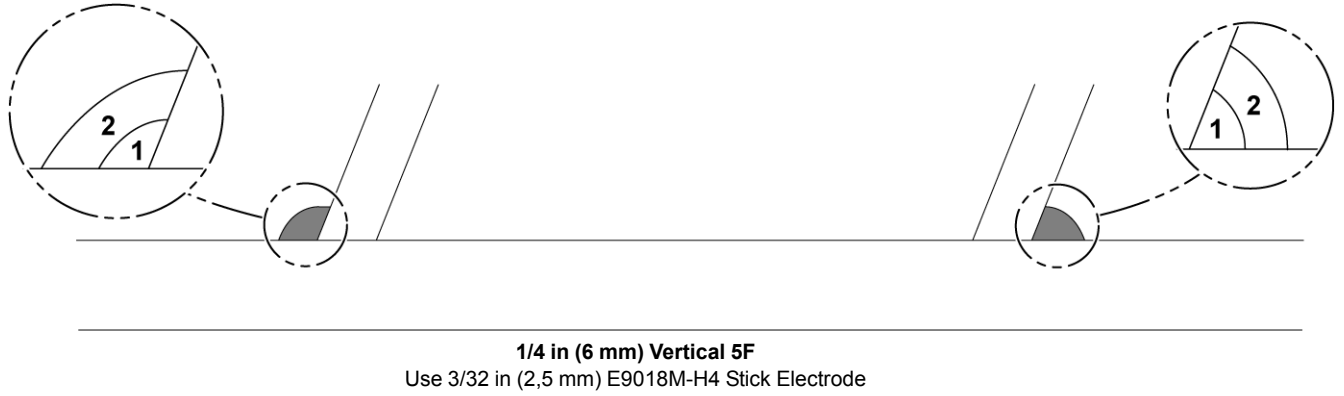
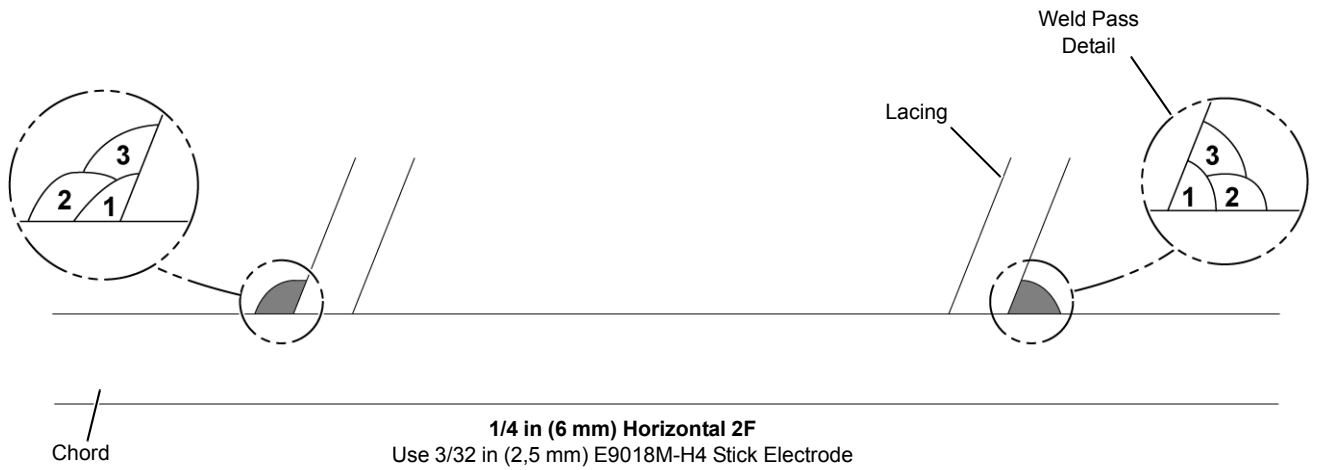


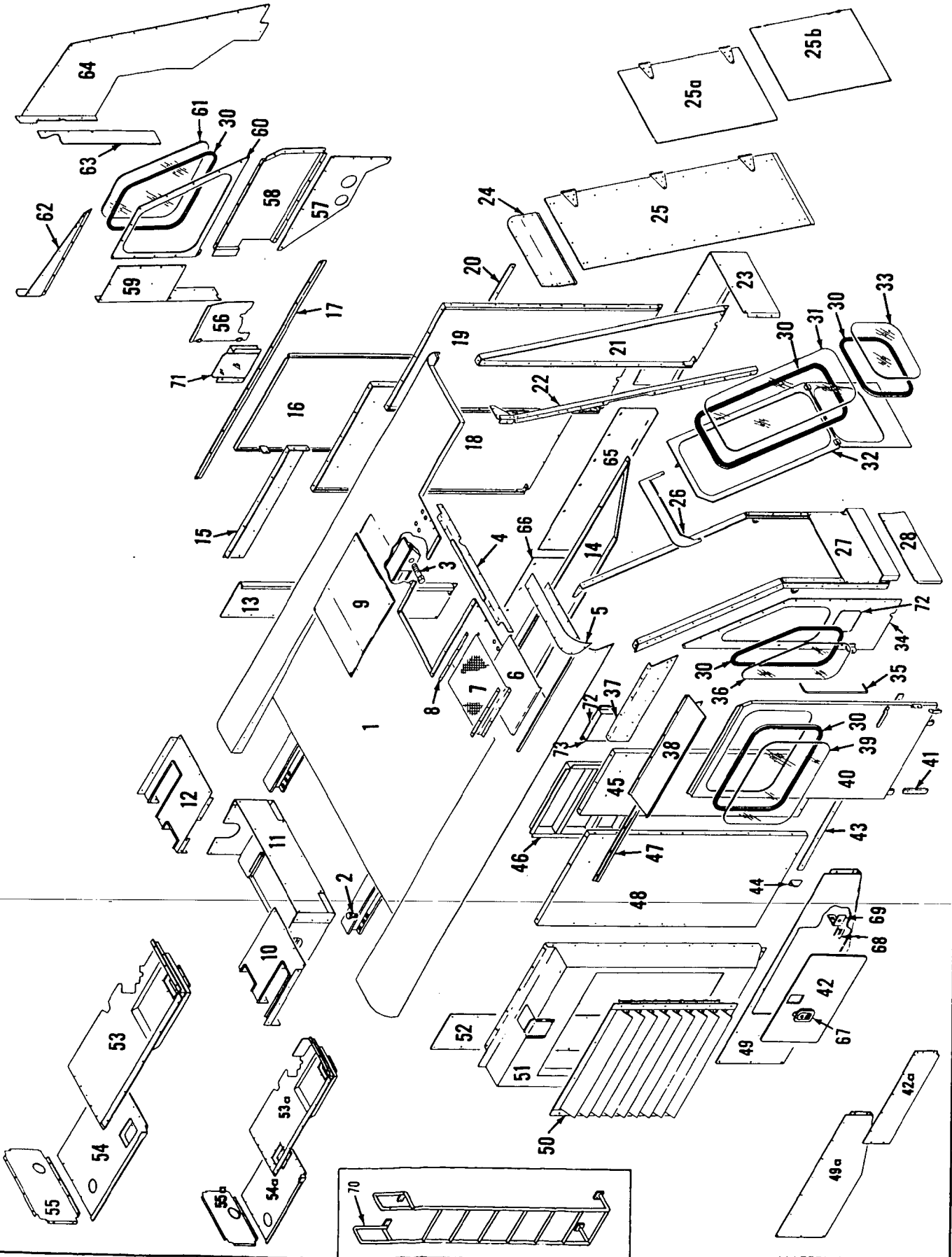
FIGURE 16



WEIGHTS
4000W

DESCRIPTION	APPROXIMATE WEIGHT (POUNDS)
Liftcrane — with 70 feet of Number 22 boom, 104,400 pound crane counterweight, universal gantry with link type backhitch, split front drum with 21" diameter lagging on left drum, independent swing, independent boom hoist with boom hoist wire rope, Cummins NT-855-C310 engine with VICON® controlled converters, 24' crawlers with 48" treads, telescopic air cushioned boom stops, single sheave upper boom point, lower and upper wire rope guides, 15 ton swivel hook and weight ball, and 155 ton load block	312,135 *
Upperworks — with split front drum with 21" diameter lagging on left drum, independent swing, independent boom hoist, Cummins NT-855-C310 engine with VICON controlled converters; LESS crane counterweights, gantry and backhitch, boom, equalizer, boom hoist wire rope, telescopic air cushioned boom stops, wire rope guides, swivel hook and weight ball, and load block	64,930 *
Upperworks — as above with gantry and backhitch, equalizer, boom hoist wire rope, and carbody; LESS crawlers	113,975 *
*Weights do not include hoist line, whip line, fuel. For optional engines ADD the following weights:	
Caterpillar D-343T	800
Caterpillar D-343TA	1,130
Caterpillar 3406DIT	190
Caterpillar 3406DITA	285
Detroit Diesel 12V-71N	1,050
Cummins NTA-855-C360	145
Carbody — with roller path, ring gear, and king pin; LESS crawlers	40,605
Crawlers — 24 feet with 48 inch treads	34,440
Counterweight	
Inner	40,100
Middle	35,800
Outer	28,500
No. 22 Open Throat Boom Top	
Boom Top — 40' (with lower boom point assembly)	8,350
Basic Pendant — 40' 9-3/4" (4)	240 each
Upper Boom Point (single sheave)	1,180
(double sheave)	1,260
Jib Adapter	545
Offset Link (2)	55 each
No. 22 Light Tapered Boom Top	
Tapered Boom Top — 50' (with boom point assembly)	5,980
Tapered Insert — 30'	3,610
Basic Pendant — 40' 9-3/4" (4)	240 each
No. 22 Hammerhead Boom Top	
Boom Top — 10' (with boom point and wire rope guide assembly)	5,440
Tapered Insert — 30'	3,610
Upper Boom Point	275
Basic Pendant — 37'11" (4)	215 each

MASTER

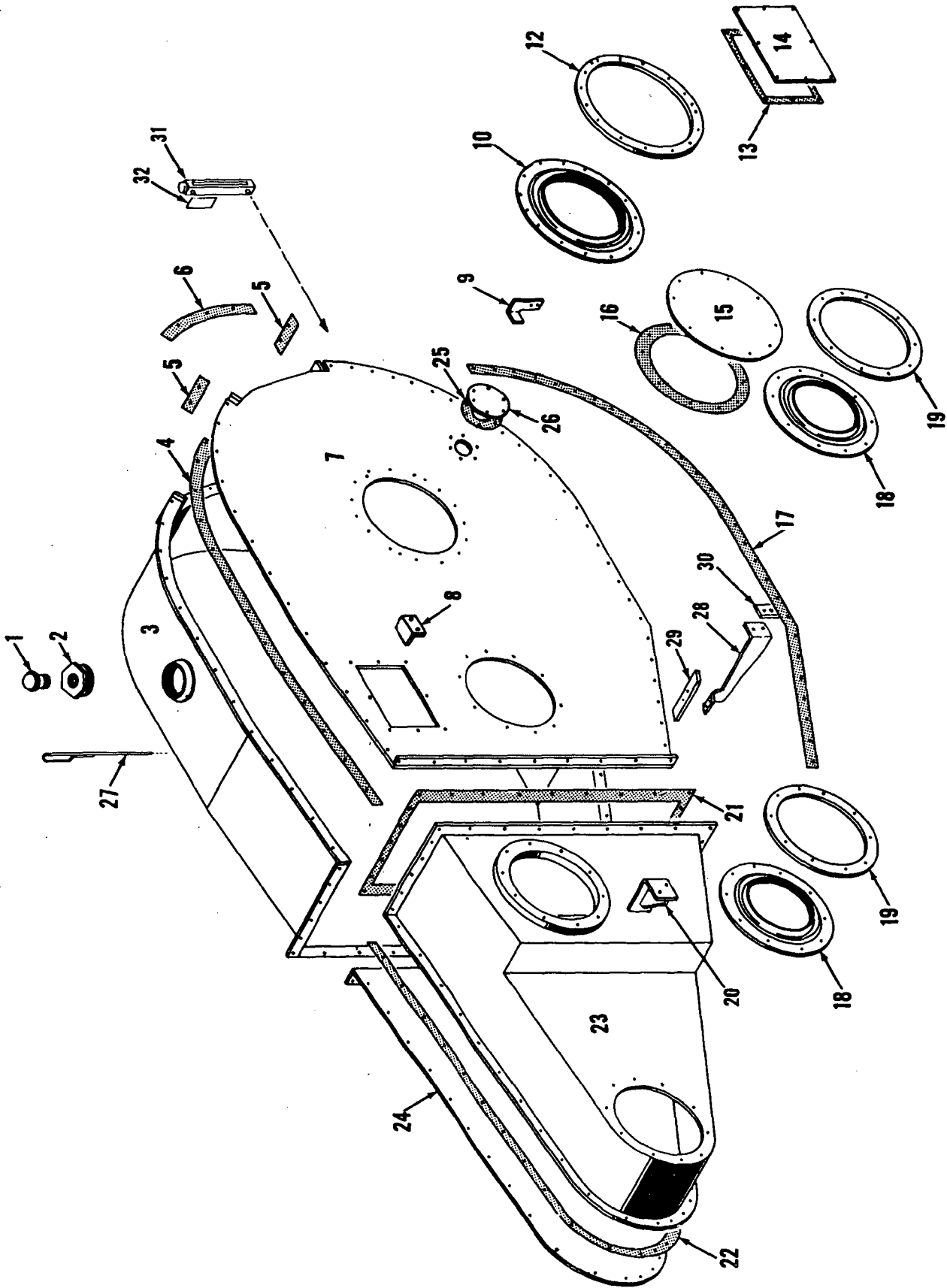


33760F1

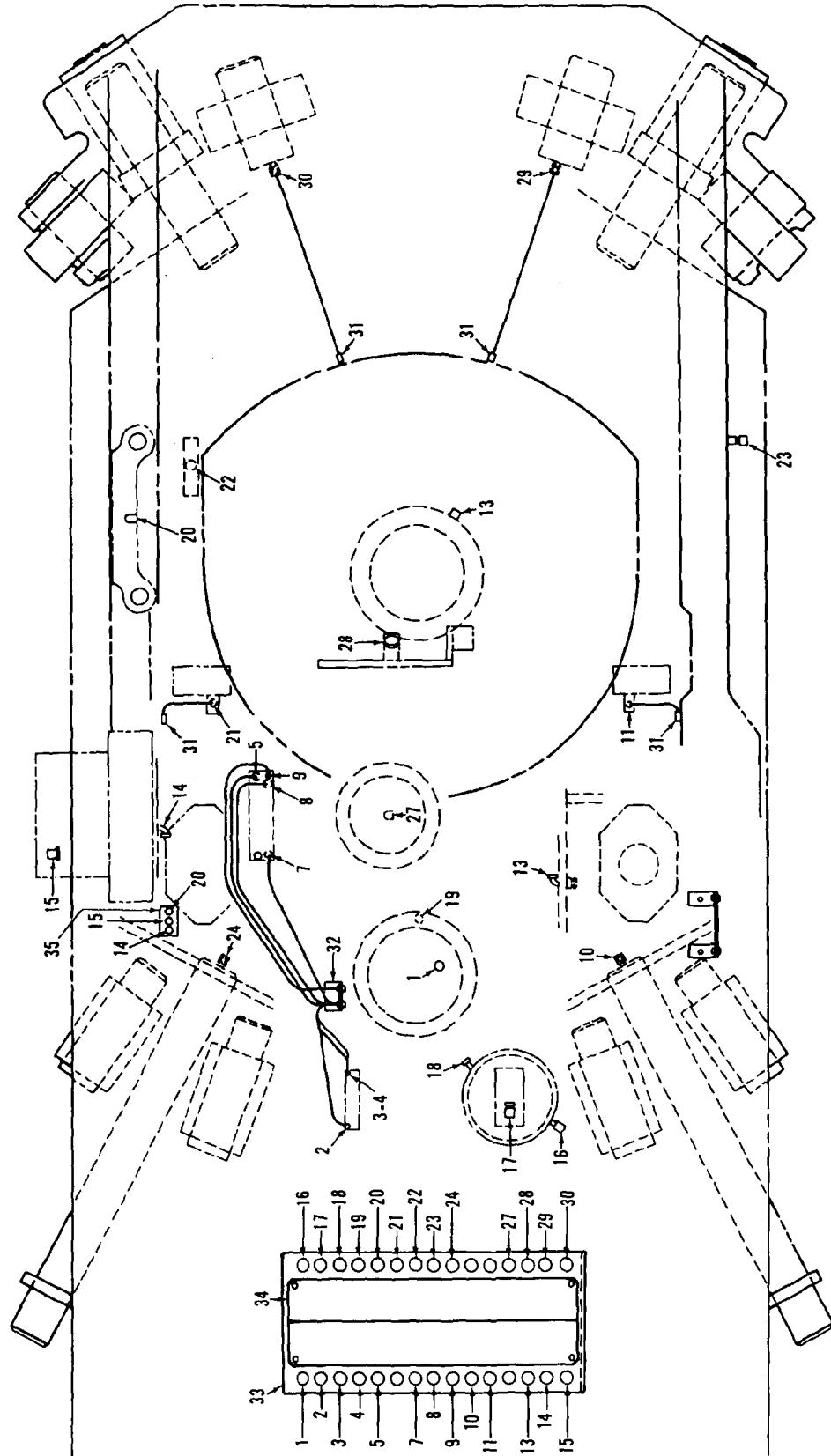
MATERIAL LIST ON BACK

CAB

MADIER



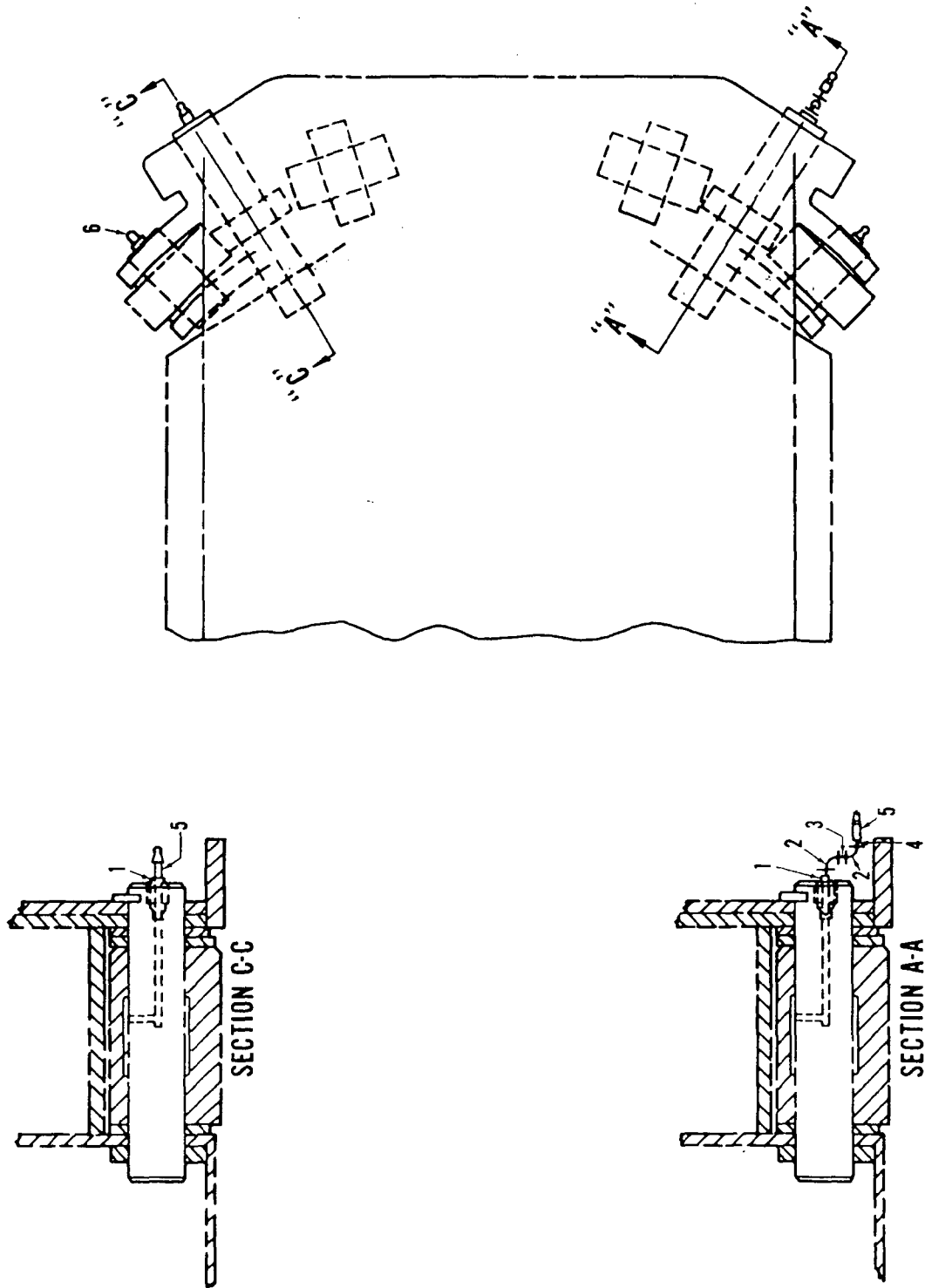
43331 C1



65508A1

MATERIAL LIST ON BACK

UPPERWORKS LUB.



182497A1

MATERIAL LIST ON BACK

LUB. PIPING ASSEMBLY - ROT. BED

190452-A Contd.	REV A	MODEL 3900, 3900T, 3900W, 3950W, 4000W, SC-135
-----------------	----------	---------------------------------------------------

CAB HEATER

REF NO	PART NUMBER	QUANTITY REQUIRED	DESCRIPTION OF PART	VENDORS PART NO
			<u>FOR CATERPILLAR 3408</u>	
	406955	1	ELBOW (3/4" x 90°)	
	543405	1	NIPPLE, Close (3/4" x 1-3/8" Lg)	
	543758	1	NIPPLE (3/4" x 5 1/2" Lg)	
			<u>FOR G M 12V-71 SERIES</u>	
	406687	1	ELBOW (3/4" x 45°)	
	406909	1	ELBOW, Reducing (1" x 3/4" x 90°)	
	543405	1	NIPPLE, Close (3/4" x 1-3/8" Lg)	
	543406	1	NIPPLE (1" x 1 1/2" Lg)	
			<u>FOR G M 8V-71 SERIES</u>	
	406906	2	ELBOW, Reducing (3/4" x 1/2" x 90°)	
	543404	1	NIPPLE, Close (1/2" x 1-1/8" Lg)	
	543536	1	NIPPLE (1/2" x 6" Lg)	

REV A	190452-1
----------	----------

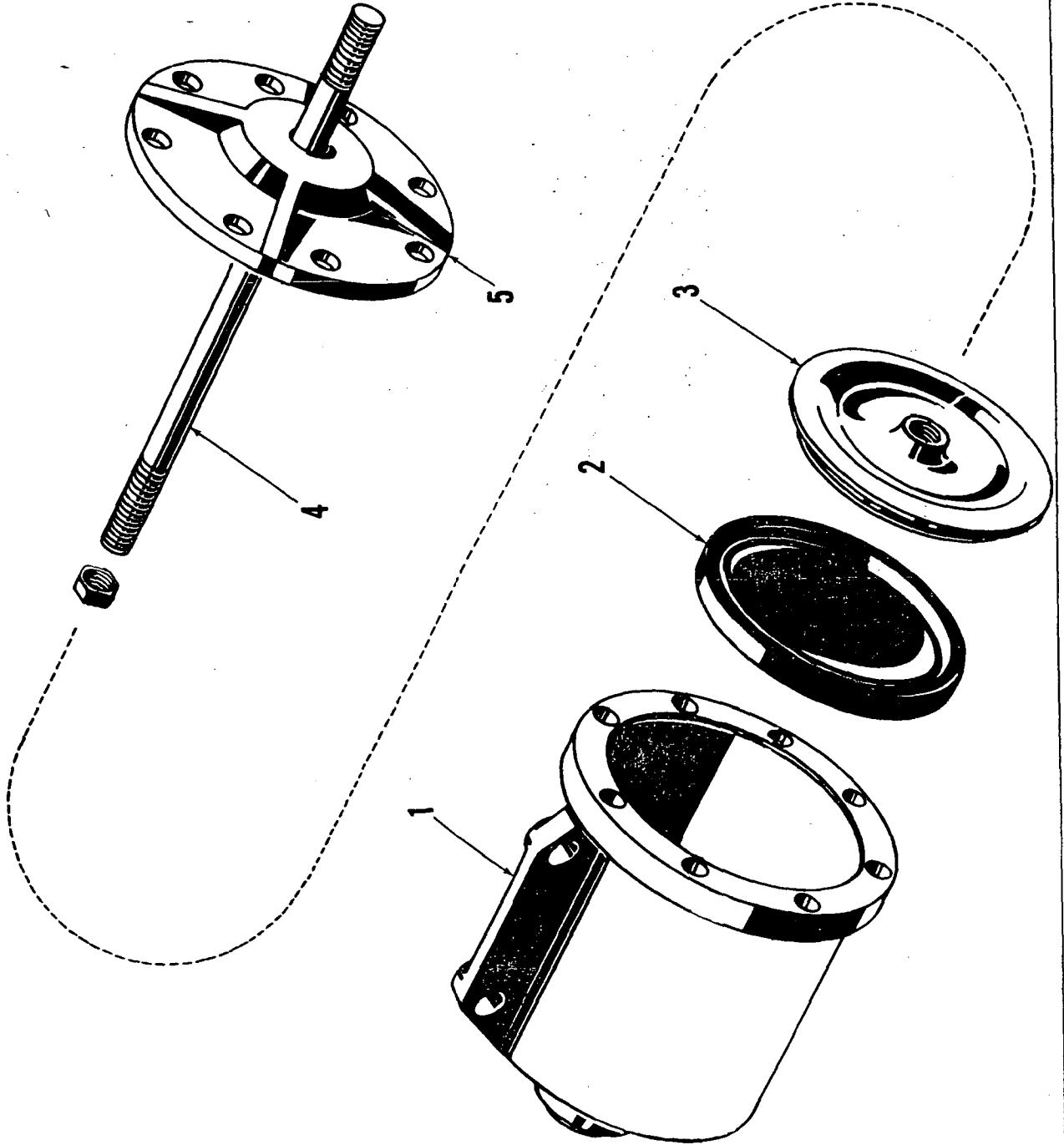
PLEASE GIVE MACHINE S/N W/ORDER

190452A1

MANITOWOC ENGINEERING CO.

A Division of the Manitowoc Company, Inc.

Manitowoc, Wisconsin



ILLUST. No. 20729 -A-1

MATERIAL LIST ON BACK

AIR CYLINDER

207291.

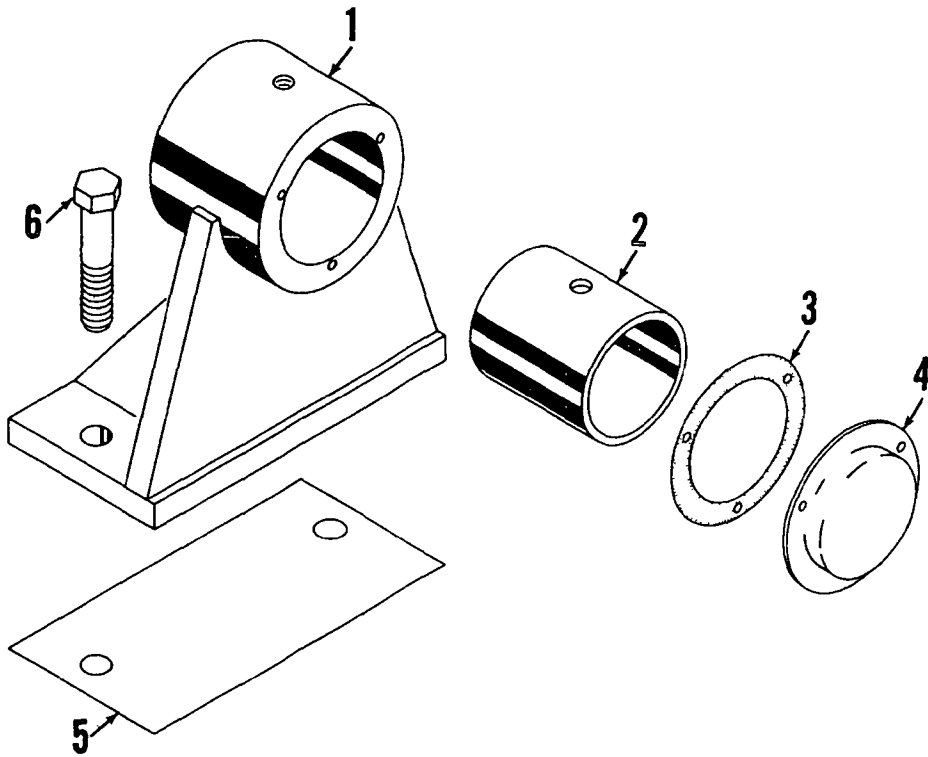
MADE

MANITOWOC ENGINEERING CO

A Division of The Manitowoc Company Inc.

Manitowoc, Wisconsin

MASTER



23806 A-1

ILLUST No 23806-A-1

MATERIAL LIST ON BACK

OUTBOARD BEARING

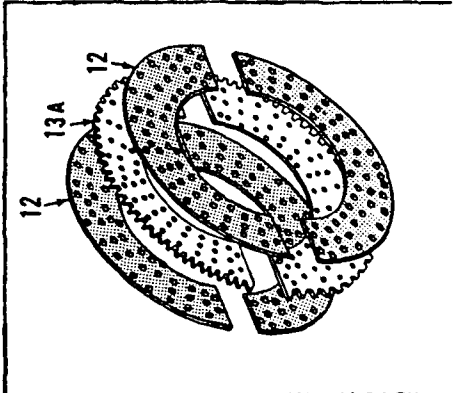
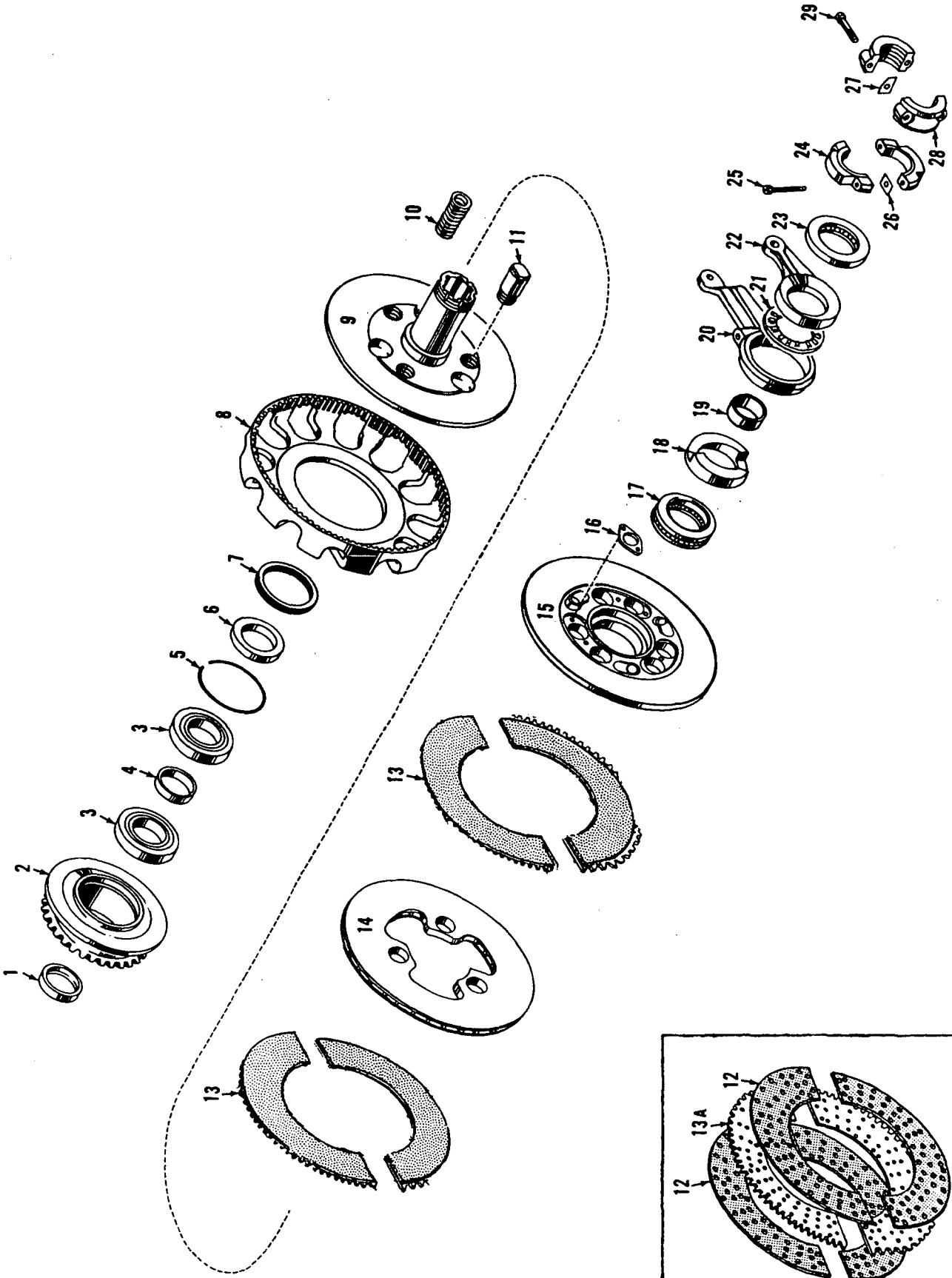
42183-1 Cont'd.	REV. H	MODEL 4000-4000W
-----------------	--------	------------------

RIGHT DRUM BRAKE
(MANUAL)

REF. NO.	PART NUMBER	QUANTITY REQUIRED	DESCRIPTION OF PART	VENDORS PART NO.
44	71670	1	LEVER	
45	71671	1	GUIDE	
46	140199	2	PIN W/cotter pins	
47	145659	1	ROLLER	
	144434	As Req.	WASHER) (To center band on brake flange) (Not shown)	
	144435	As Req.	WASHER)	
48	429071	2	ELBOW, Alemite (1/8" x 90°)	
49	543400	1	NIPPLE, Close (1/8")	
50	377200	1	COUPLING, Pipe (1/8")	
51	3412	1	HOSE, Flexible	
52	70656	1	SUPPORT, Grease Line	
53	429040	1	FITTING, 30° Alemite (1/8")	
<p><u>NOTE 1:</u> Ref. Nos. 48 thru 53 moved to "Upperworks Lube" per change of July 28, 1976. See page "A1.4"</p>				

REV. H	42183-1
--------	---------

MASTER



MATERIAL LIST ON BACK

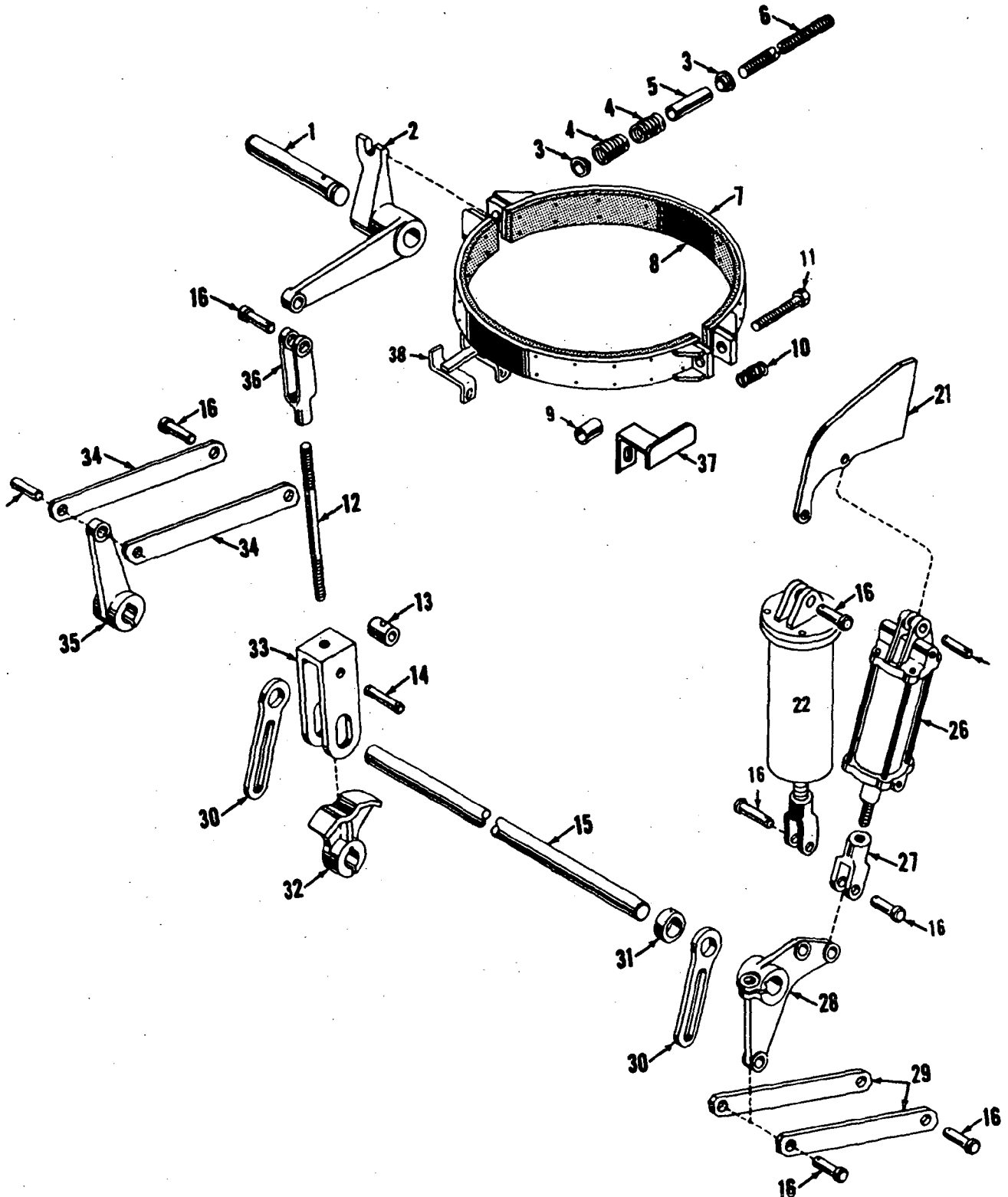
IND. BOOM HOIST CLUTCH

MANITOWOC ENGINEERING CO.

A Division of The Manitowoc Company, Inc.

Manitowoc, Wisconsin

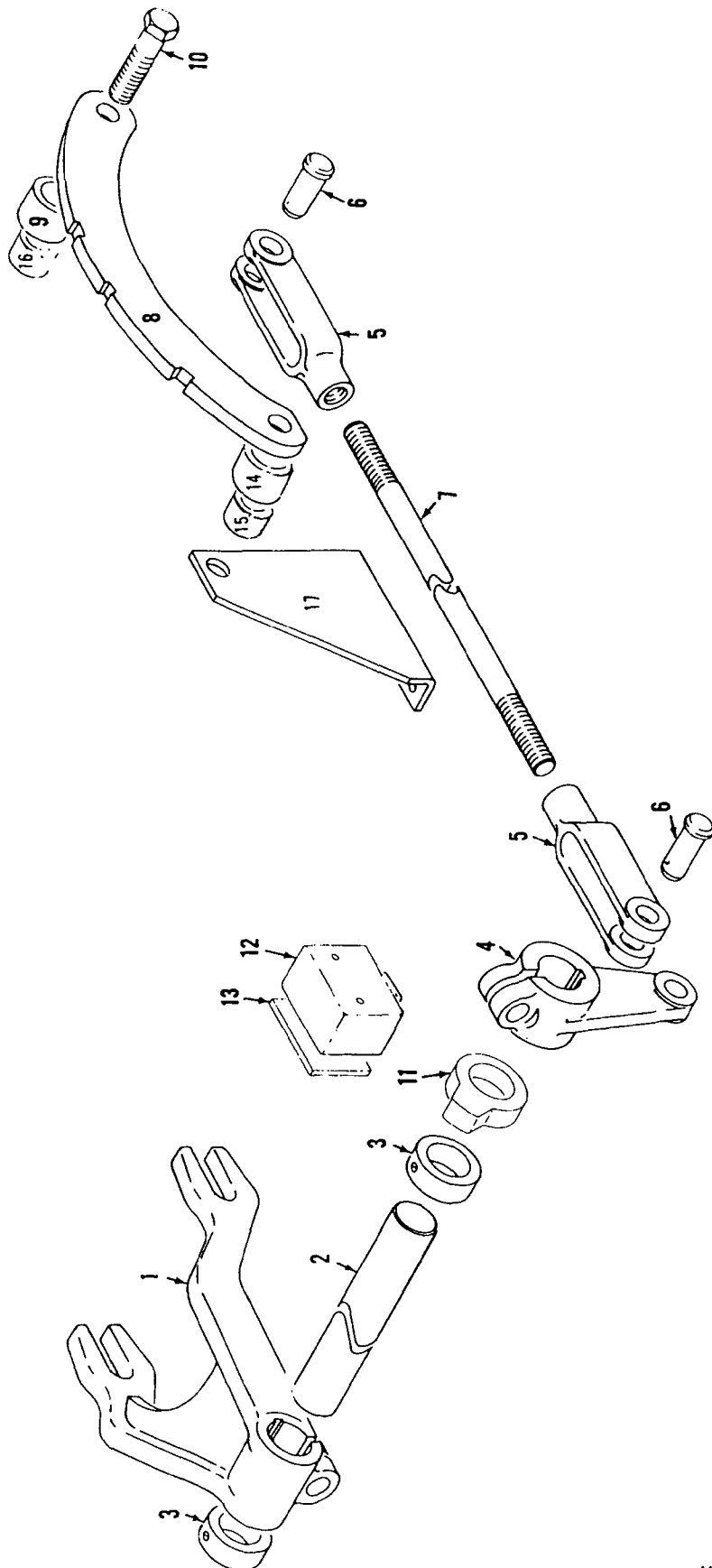
MASTER



4239261

MATERIAL LIST ON BACK

IND. BOOM HOIST CONTROL



48187C1

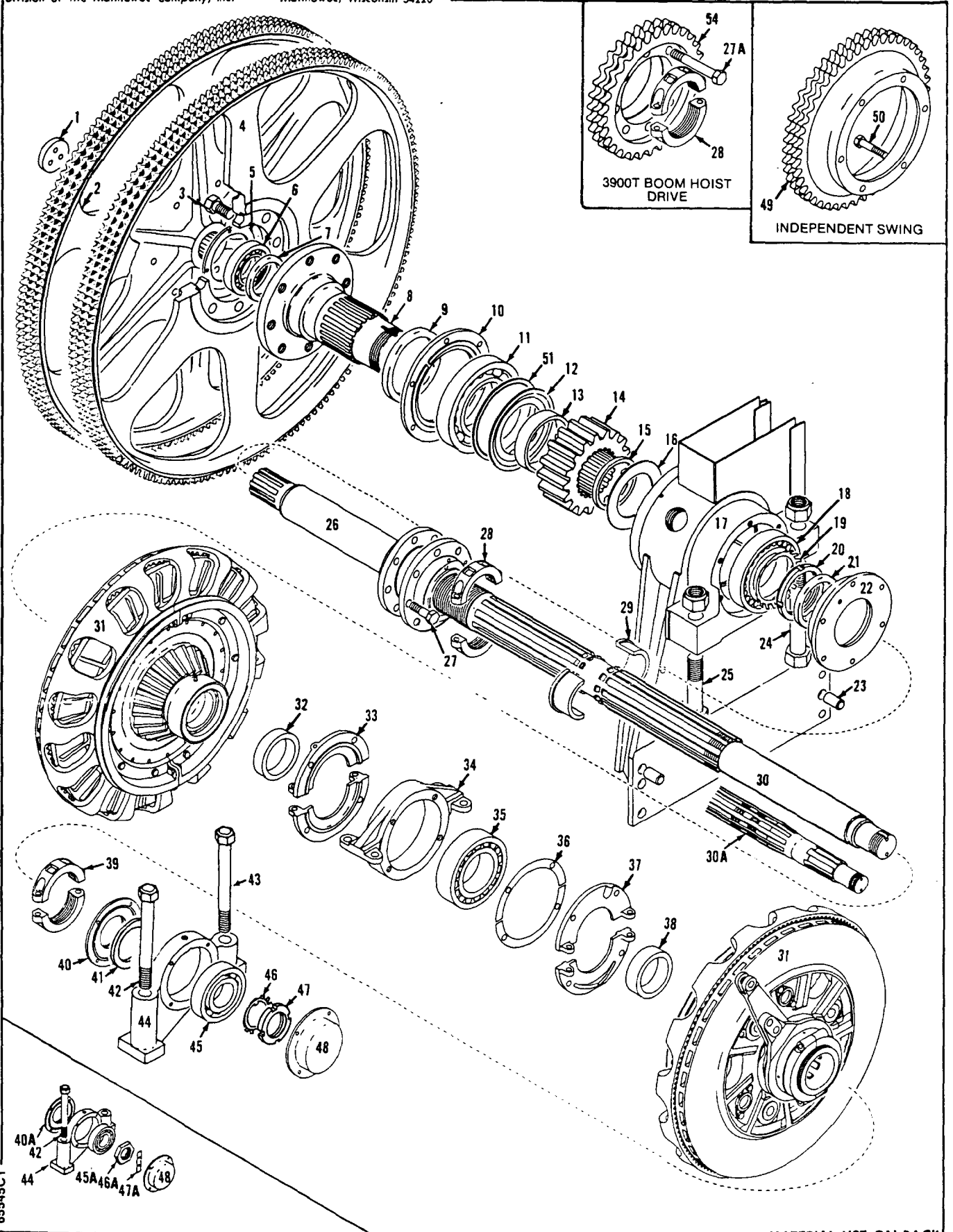
MATERIAL LIST ON BACK

SLIDE PINION CONTROL

MANITOWOC ENGINEERING CO.

Division of The Manitowoc Company, Inc. Manitowoc, Wisconsin 54220

B13.1



65545C1

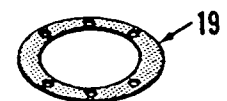
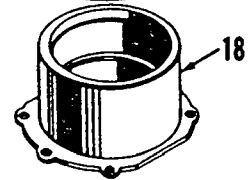
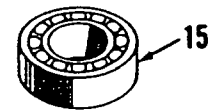
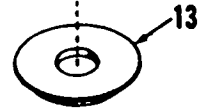
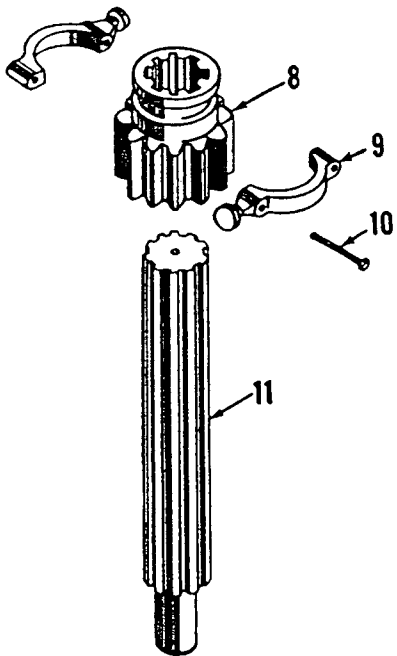
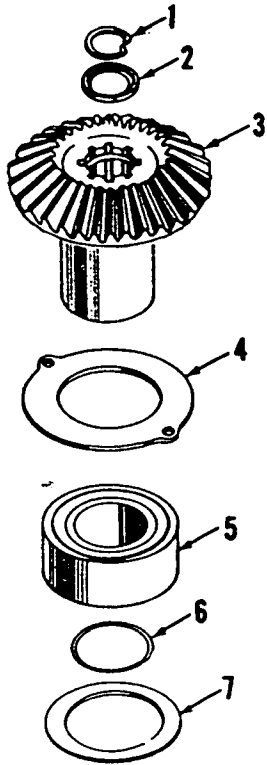
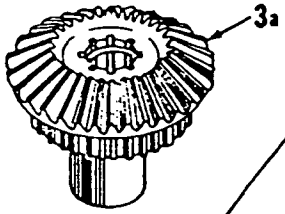
MATERIAL LIST ON BACK

MAIN DRIVE SHAFT

MANITOWOC ENGINEERING CO.

Division of The Manitowoc Company, Inc.

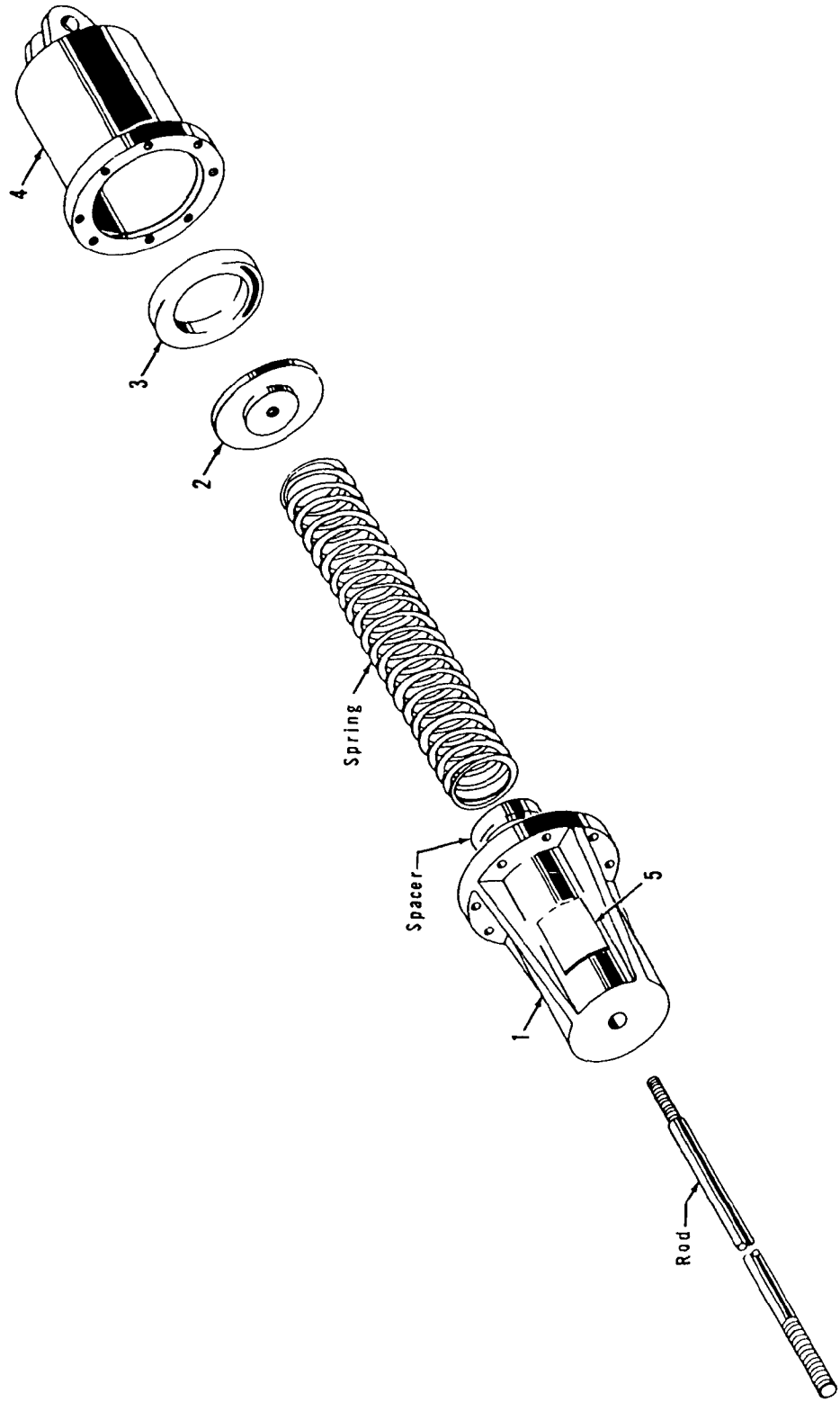
Manitowoc Pumps



90467B1-

MATERIAL LIST ON BACK

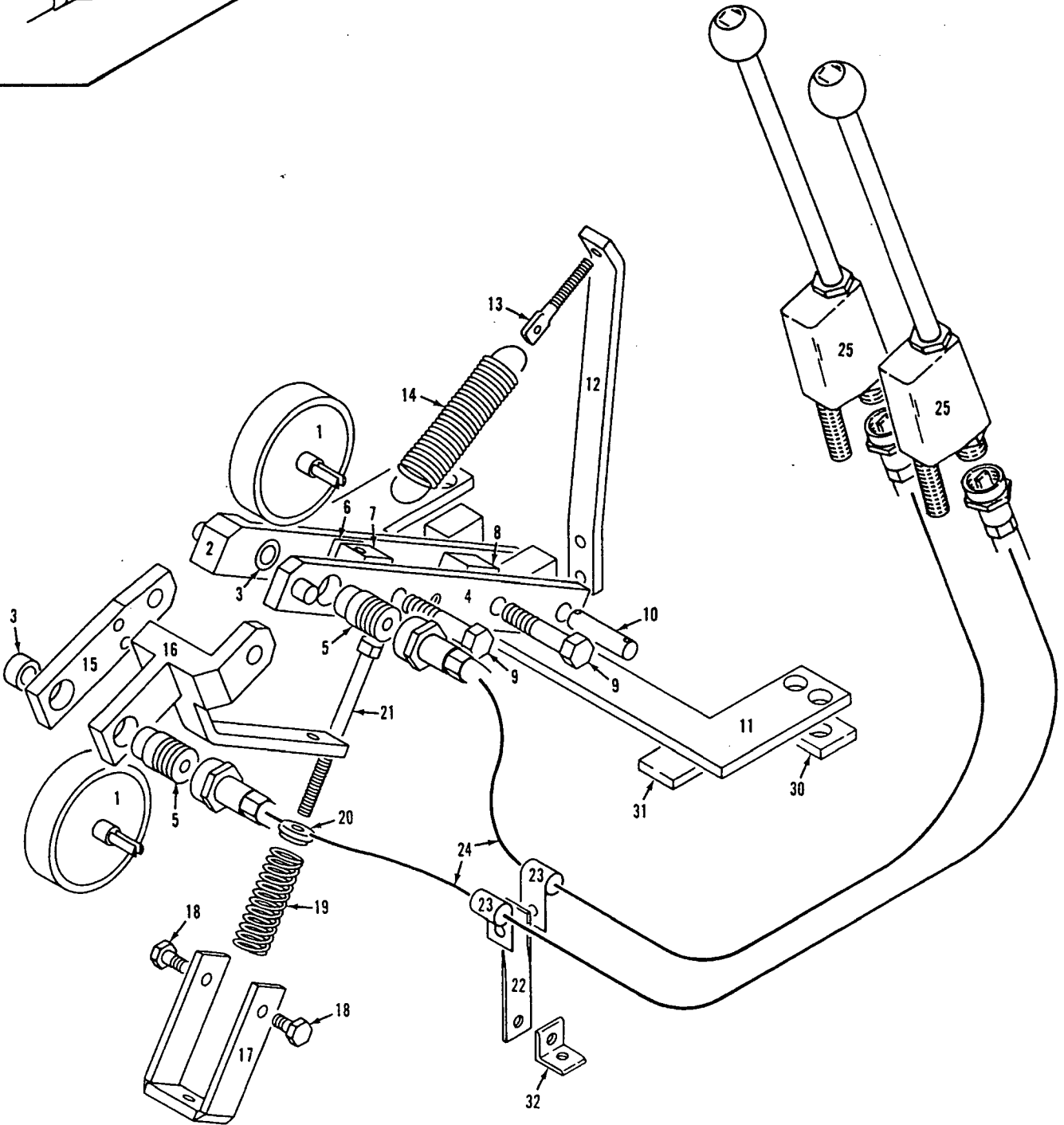
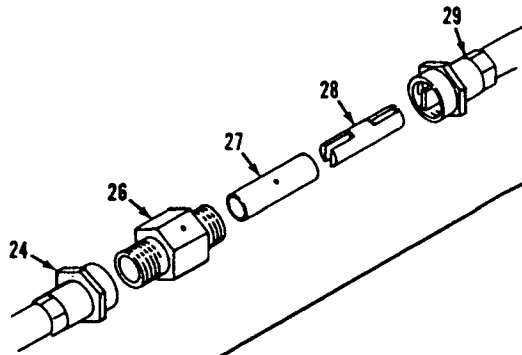
MASTER



18119581

MATERIAL LIST ON BACK

AIR CYLINDER



182303C1

MATERIAL LIST ON BACK

DRUM ROTATION INDICATOR

PARTS MANUAL ALPHABETICAL INDEX
Group C - Air Components & Electrical

DESCRIPTION	PUBLICATION	REV	START DATE	END DATE	GROUP
Air Piping	78327	A1	02/15/67	11/12/76	C0301
Cab Lighting	96848	-	11/07/77	11/30/77	C1301
Compressor & Piping	50949	B1	01/29/71	12/18/72	C0101
Compressor & Piping	50949	E2	01/29/71	10/23/80	C0101
Compressor & Piping	95491	-	01/23/81	07/16/08	C0101
Control Console	48462	Q1	08/20/71	07/07/81	C0201
Light Plant - Alternator - Generator	65488	-	05/18/76		C1101
Magnet Controls	143765	-	05/14/76	03/19/86	C1501
Magnet Controls	190310	-	06/08/78		C1501
Magnet Controls	95954	-	05/14/76	02/01/82	C1501
Magnet Controls	95962	-	05/14/76	12/19/78	C1501
Magnet Controls	95965	-	05/14/76	01/02/82	C1501

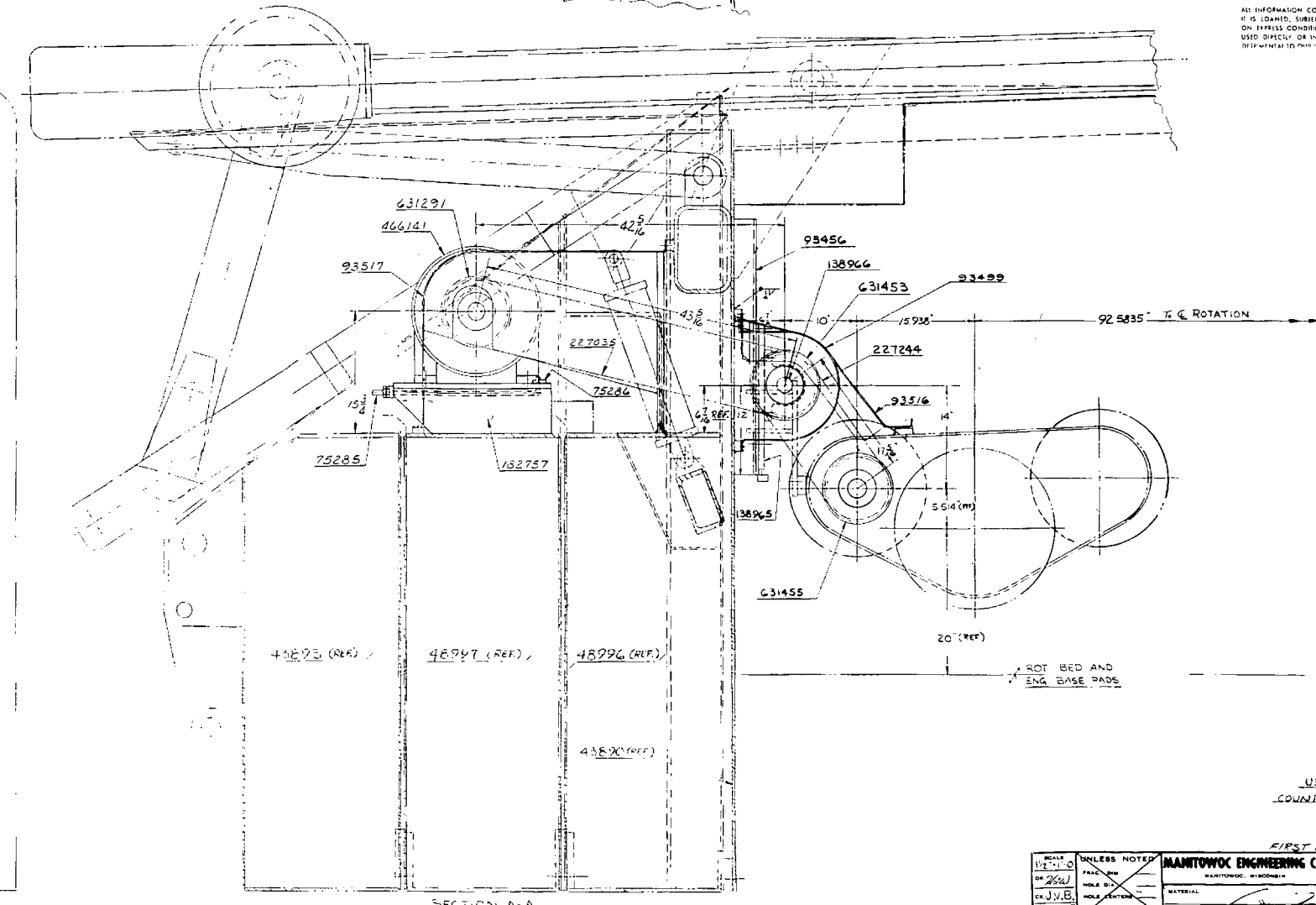
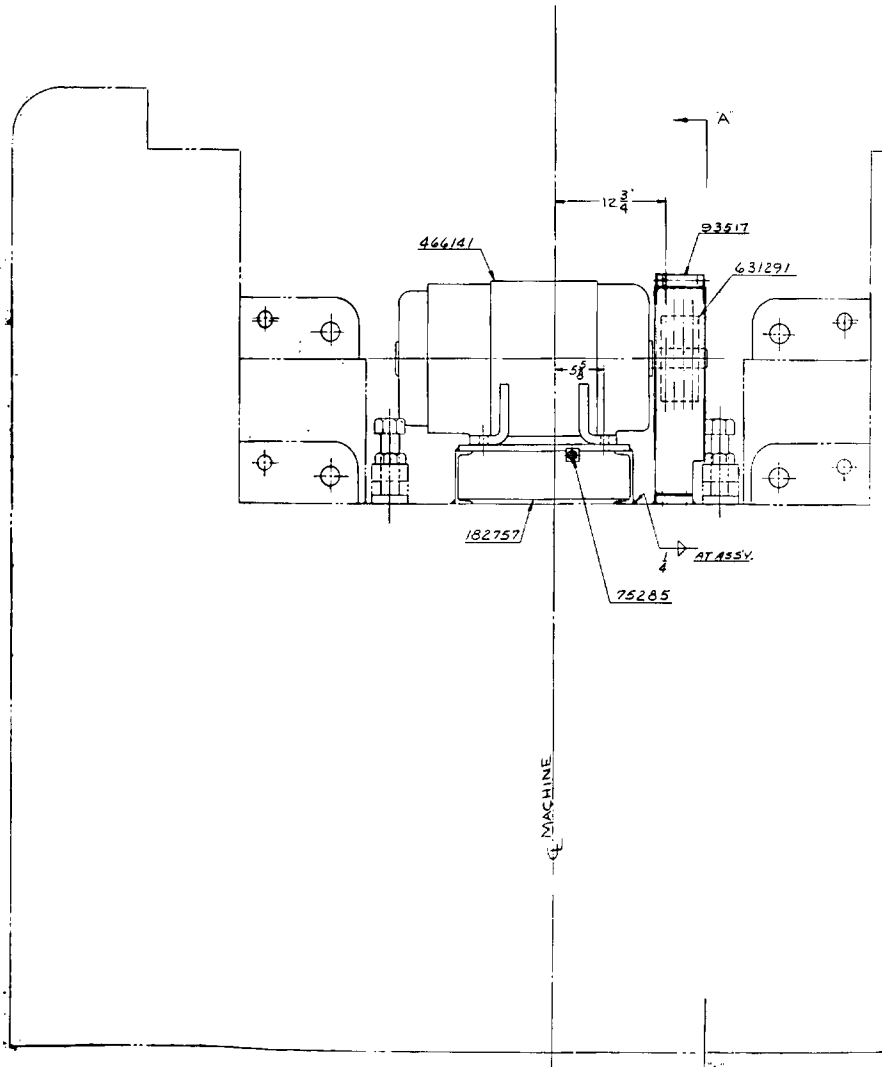
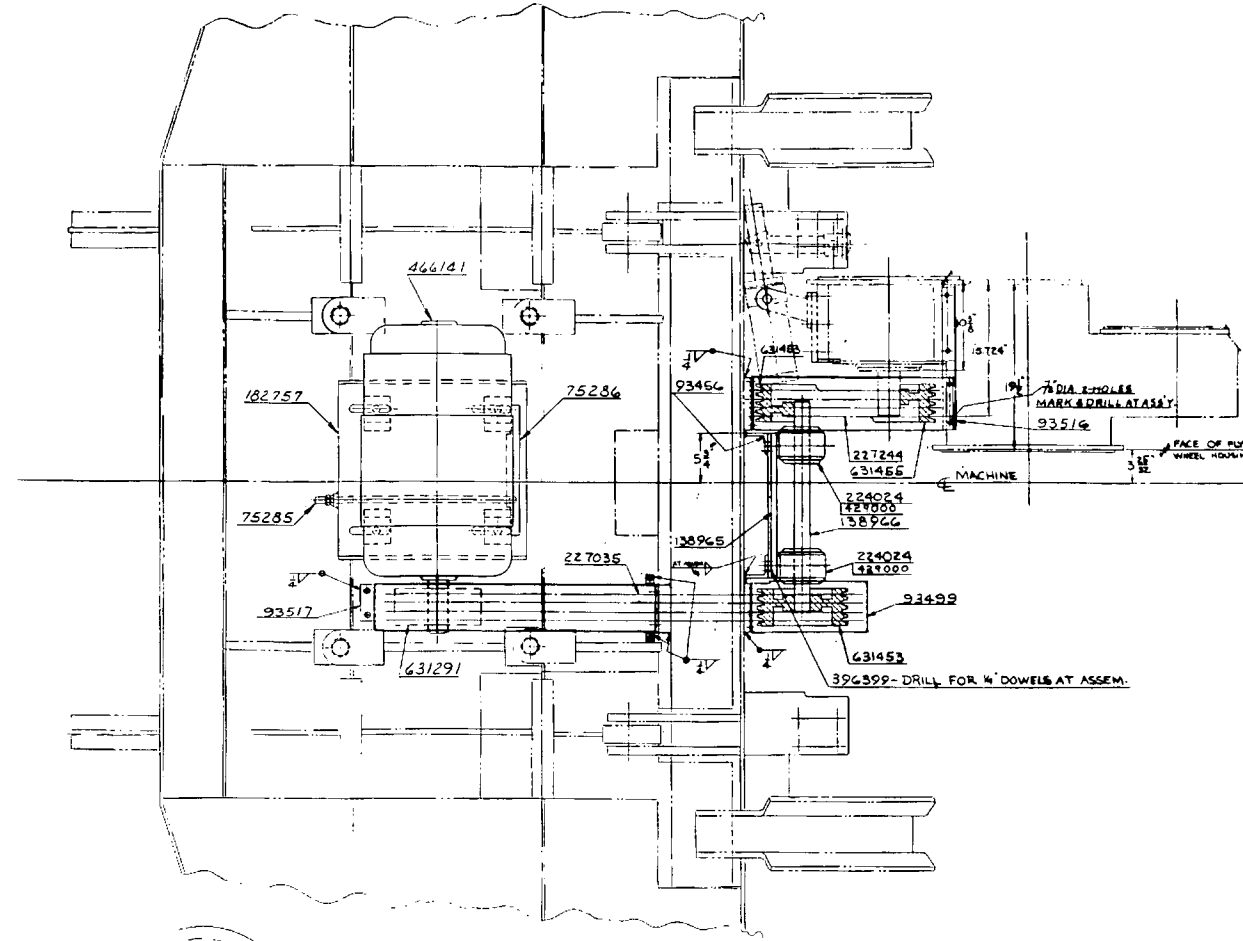
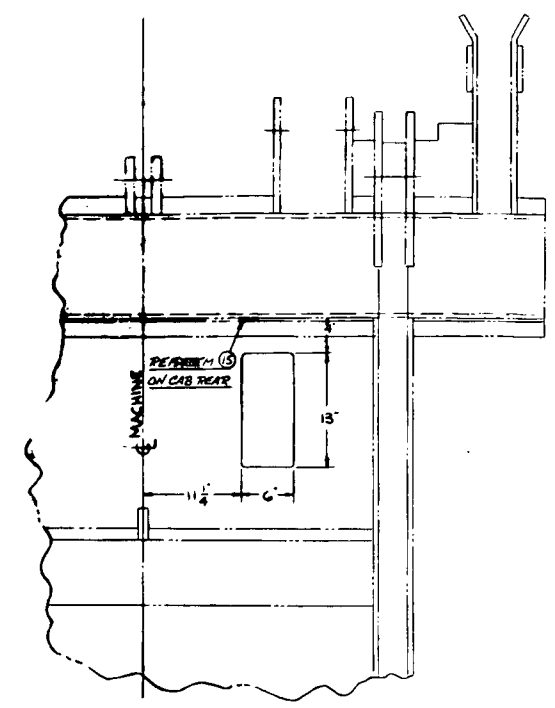
BILL OF MATERIAL				
QTY	SIZE	MATERIAL	QTY	REMARKS
1	SUPPORT	182757		
1	ADJ. BOLT	75285		
1	ADJ. BAR	75286		
1	SUPPORT	138945		
1	SHAFT	138966		
1	SUPPORT	93456		
1	BELT GUARD	93499		
1	BELT GUARD	93516		
1	BELT GUARD	93517		
2	PILLOW BLOCK	224024		
4	V BELT - GOODYEAR CVS. C-112	227035		
4	V BELT - GOODYEAR CVS. C-60	227244		
4	DOWEL	396399		
1	GENERATOR - LOUIS ALLIS 25KW	466141		
2	SHEAVE - GATES TYPE A 4-C GROOVE 9"	631453		
1	SHEAVE - GATES TYPE A 4-C GROOVE 9"	631291		
1	SHEAVE - GATES TYPE A 4-C GROOVE 9"	631455		
2	1/2" GREASE FITTING	429000		

NOTE 1
FOR MACHINES WITH CAT. D-343T ENGINE MOUNT SHEAVE 631455 ON TRANSMISSION BEFORE TRANSMISSION IS BOLTED TO ENGINE.

NOTE 2
FOR WIRING & CONTROL'S SEE MAGNET CONTROL WIRING ASSY.

NOTICE
THIS PRINT REMAINS THE PROPERTY OF
MANITOWOC ENGINEERING CO.

ALL INFORMATION CONTAINED HEREON IS CONFIDENTIAL. IT IS LOANED, SUBJECT TO RETURN UPON DEMAND, AND ON EXPRESS UNDERSTANDING THAT IT IS NOT TO BE COPIED OR USED DIRECTLY OR INDIRECTLY IN ANY WAY WHATSOEVER WITHOUT THE WRITTEN PERMISSION OF MANITOWOC ENGINEERING CO.



USE ON CAB REAR AND COUNTERWEIGHT ASSEM. #48998

UNLESS NOTED OTHERWISE, ALL DIMENSIONS ARE IN INCHES. DIMENSIONS IN PARENTHESES ARE FOR REFERENCE ONLY.

MANITOWOC ENGINEERING CO. GENERATOR MOUNTING FOR LOUIS ALLIS 25 K.W. D.C. GENERATOR 4000 W

DATE: 5-18-74

54888

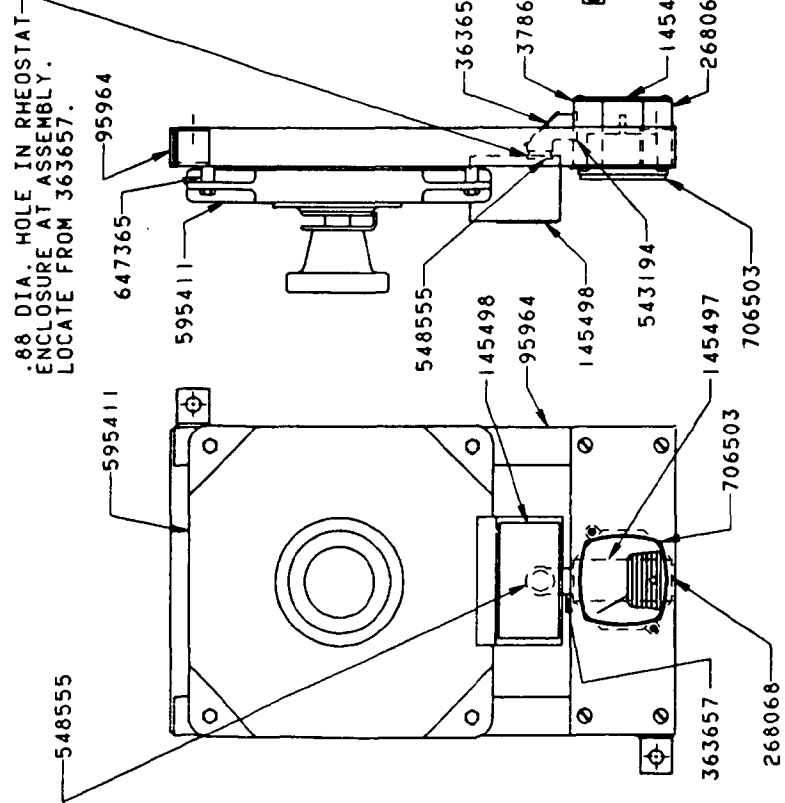
ITEM NO. OR MAT. RECD. FILE NO.		DESCRIPTION	QUANTITY	MATERIAL	COMP. OR DRG. NO.	REV.	ASSEMBLIES USED ON
1		BRACKET			95964		190277 190310 190440
1		NAMEPLATE			145497		
1		NAMEPLATE			145498		
1		BOX			268068		
1		.50 ELBOW, 90° MALE TO FEMALE			363657		
1		COVER			378648		6-8-78 JOK ABC ADDED
1		.50 CHASE NIPPLE			543194		1-2-82 KPR REDRAW CADAM CK. JWK
1		.50 LOCKNUT			548555		APP. GMP
1		RHEOSTAT			595411		
4		SPACER			647365		
1		VOLTMETER			706503		

BILL OF MATERIAL

AB

NOTICE

THIS INVENT REMAINS THE PROPERTY OF
MANITOWOC ENGINEERING CO.
 ALL INFORMATION CONTAINED HEREIN IS CONFIDENTIAL
 AND IS TO BE KEPT AS SUCH. IT IS TO BE RETURNED
 ON DEMAND OR AT THE END OF THE PROJECT. IT IS NOT
 TO BE REPRODUCED, COPIED, OR IN ANY MANNER
 USED DIRECTLY OR INDIRECTLY IN ANY WAY WITHOUT
 PERMISSION OF OUR INTERESTS.



SEE NOTE 2

NOTE 1

THIS ASSEMBLY DESIGNED FOR USE WITH 25KW OR 33KW 250 VOLT D.C. GENERATOR.

NOTE 2

PLACE NAMEPLATES #145497 AND #145498 ON OUTSIDE OF COVERS.

REV.	BY	DATE
3	JLD	10 6 66
	JWK	10 6 66
	JMP	

MANITOWOC ENGINEERING CO.	MAGNET CONTROLS SUB-ASS'Y.
MANITOWOC, WISCONSIN	RHEOSTAT, VOLTMETER
MODEL 3900	AND BRACKET ASSEMBLY

DATE	5-14-76
PATTERN NO.	
CODE NO.	
REV.	
95965	

DO NOT SCALE THIS DRAWING

PARTS MANUAL ALPHABETICAL INDEX
Group D - Power Components

DESCRIPTION	PUBLICATION	REV	START DATE	END DATE	GROUP
Battery Boxes	48960	A1	08/28/70	08/22/74	D0104
Converter Control	32600	F1	02/23/62	07/19/77	D0601
Converter Control	42958	F1	11/12/62	11/29/78	D0601
Converter Piping	48648	D1	02/26/69	08/12/80	D0701
Converter Piping	48648	G2	02/26/69	08/12/80	D0701
Converter Piping	48648	A3	02/26/69	08/12/80	D0701
Converter Piping	48648	E4	02/26/69	08/12/80	D0701
Converter Piping	48648	D5	02/26/69	08/12/80	D0701
Engine & Clutch Control	181633	D1	12/05/72	05/15/81	D0501
Engine Start	182566	-	05/28/75	12/19/79	D0105
Engine Wiring	182787	-	04/02/76	04/24/97	D0106
Engine Wiring	182812	-	04/26/76	04/27/81	D0106
Engine Wiring	182836	-	05/07/76	10/12/79	D0106
Exhaust Stack	94681	A1	04/10/73		D0102
Instrument Panel/Engine	49301	K1	10/25/76	05/23/78	D0301
Power Plant	49592	F1	12/20/76	12/05/78	D0101
Power Take Off - Transmission Case	180623	G1	11/12/68	12/17/84	D0401
Power Take Off - Transmission Case	42749	P1	07/14/62	04/25/94	D0401

CLICK HERE TO **DOWNLOAD** THE COMPLETE MANUAL

- Thank you very much for reading the preview of the manual.
- You can download the complete manual from: www.heydownloads.com by clicking the link below



- Please note: If there is no response to CLICKING the link, please download this PDF first and then click on it.

CLICK HERE TO **DOWNLOAD** THE COMPLETE MANUAL

42958-1 Cont.	REV. F	MODEL 3000W-3600-3900-3900W-4000-4000W
---------------	--------	----------------------------------------

FRONT CONVERTER MANUAL CONTROL

REF. NO.	PART NUMBER	QUANTITY REQUIRED	DESCRIPTION OF PART	VENDORS PART NO.
30	96322	1	LEVER, Hand (Air Control Power Load Lowering)	
30A	93777	1	LEVER, Hand (Air Control Power Load Lowering) (Superseded by #96322)	
30A	93739	1	LEVER, Hand (Air Control Power Load Lowering) (Superseded by #93777)	
30	96323	1	LEVER, Hand (Electric Control Power Load Lowering)	
30A	93778	1	LEVER, Hand (Electric Control Power Load Lowering) (Superseded by #96323)	
30A	24899	1	LEVER, Hand (W/Boom Hoist Control)	
<p>NOTE 1: As shown above for levers #96319, 96322, and 96323. For levers #93735, 90195, 93777, 93739, 93778 and 24899 delete parts #140334, 143985, 138577 and use the following: (See boxed items)</p>				
4	140197	1	PIN W/cotter pin	
21A	140884	1	PIN W/cotter pin	
22A	18937	1	BAR, Roller	
23	10222	1	WASHER	
27A	229	1	SPRING	
<p>Use one of the following as checked - 96322, 93777, 93739, 96323, 93778, 24899</p>				

REV. F	42958 - 1
--------	-----------

PLEASE GIVE MACHINE S/N W/ORDER

MOTOR

Run as Front

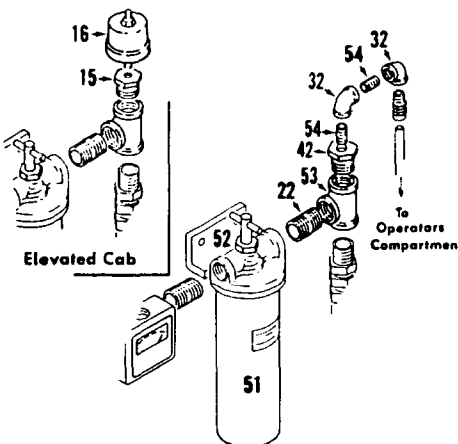
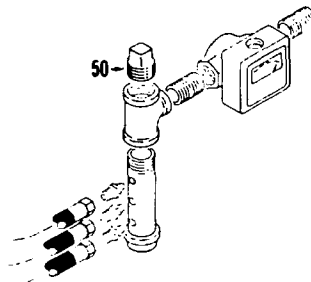
Fl Cont.

MANITOWOC ENGINEERING CO.

A Division of The Manitowoc Company, Inc.

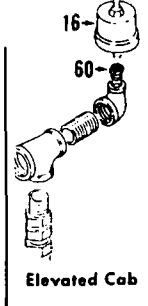
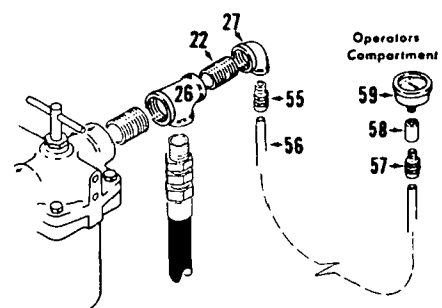
Manitowoc, Wisconsin

Machines w/out Forced Oil Lubrication to Converters

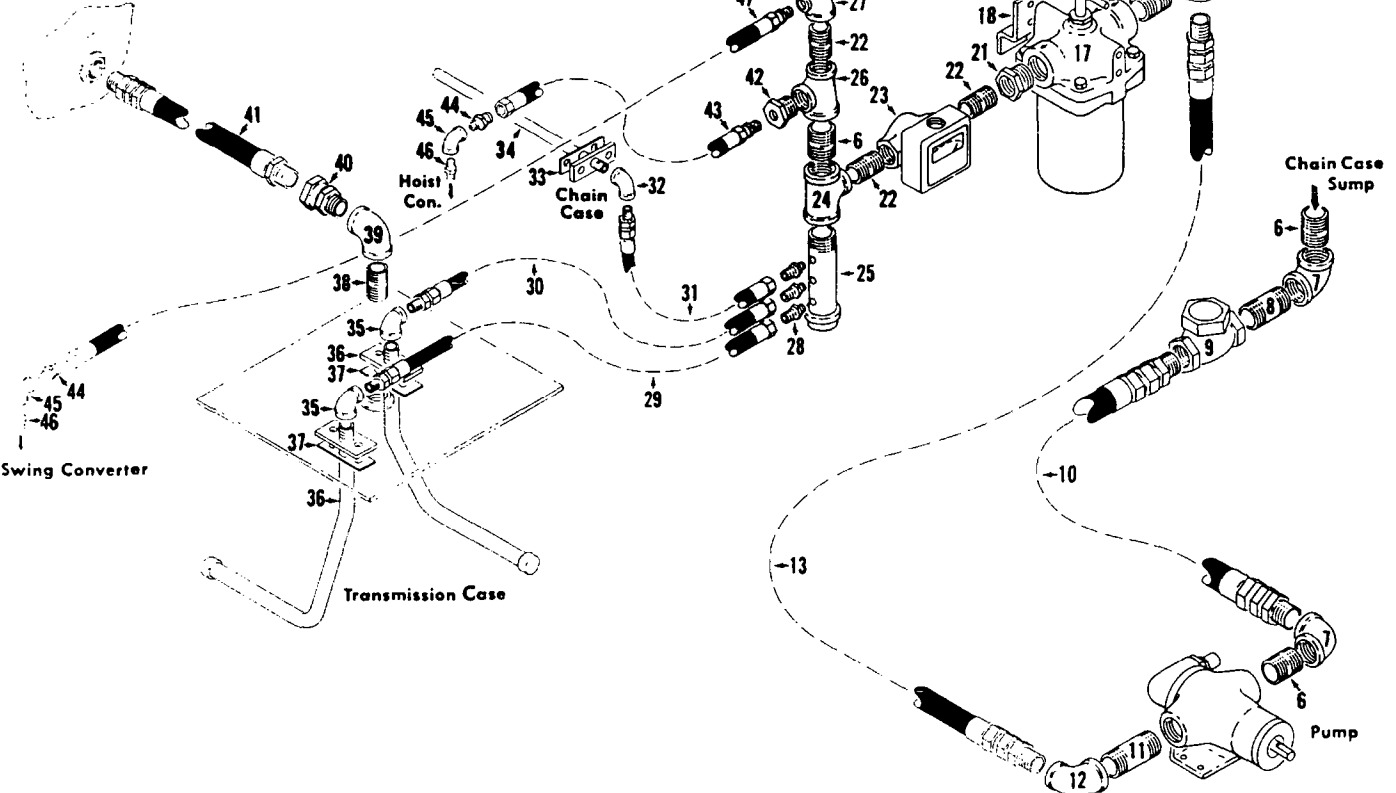


3/4" Port Filter with Direct Reading Gauge

1" Port Filter with Direct Reading Gauge



Chain Case



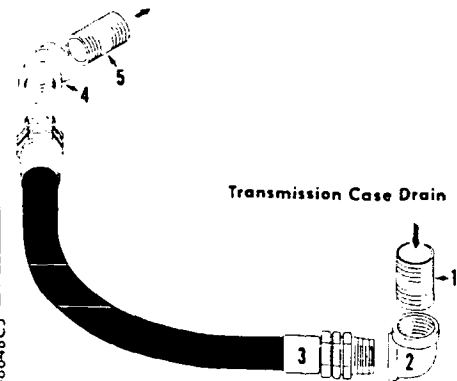
Swing Converter

Transmission Case

Chain Case Sump

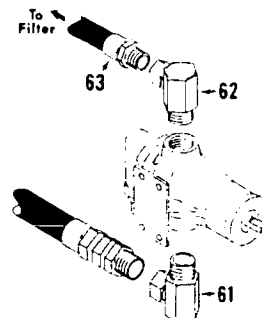
Pump

Chain Case

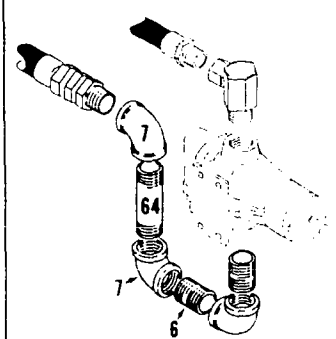


Transmission Case Drain

Machines with Vertically Mounted Oil Pump



Machines with Vertically Mounted Oil Pump w/Oil Trap



48648C5

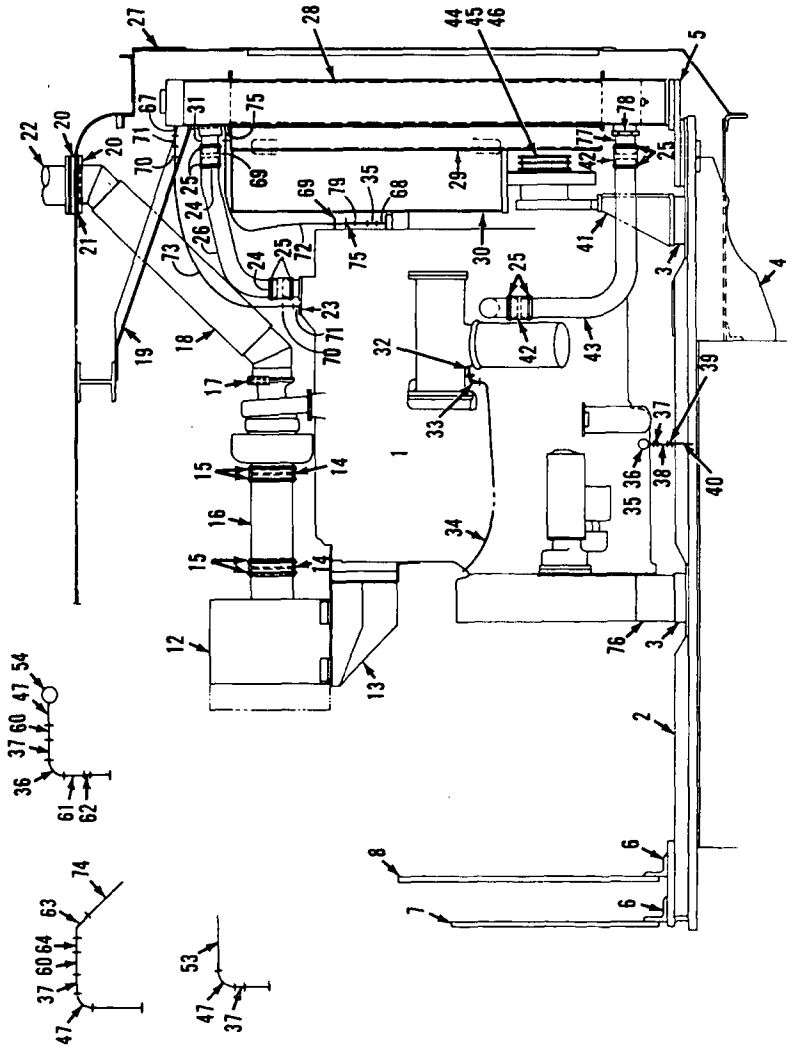
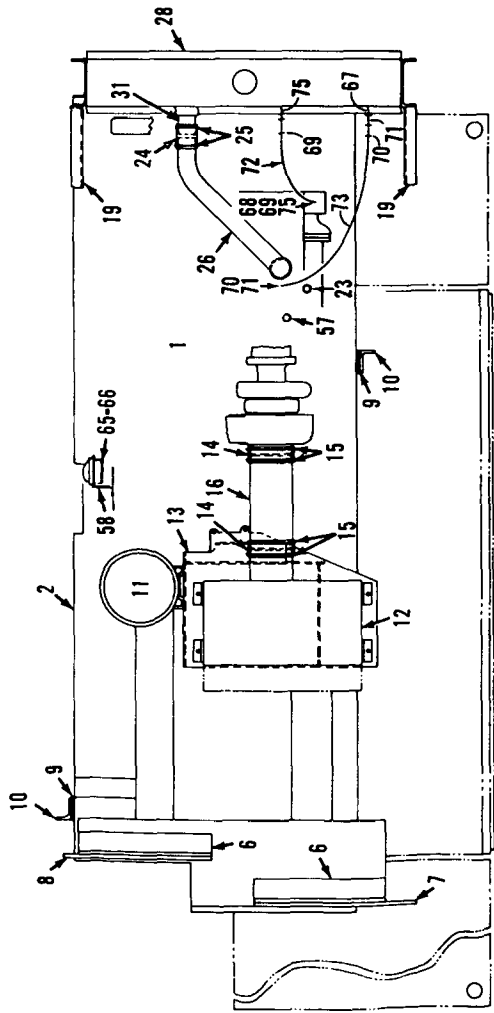
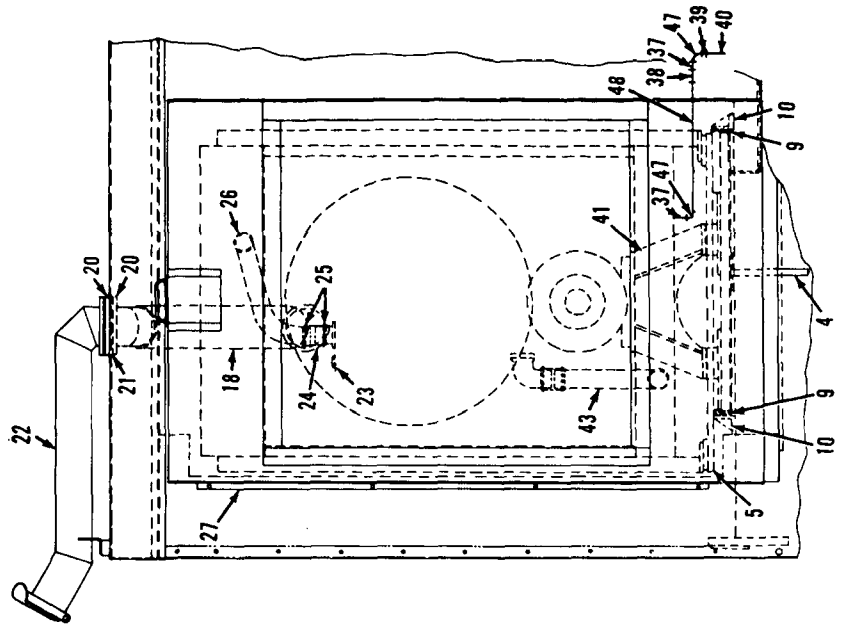
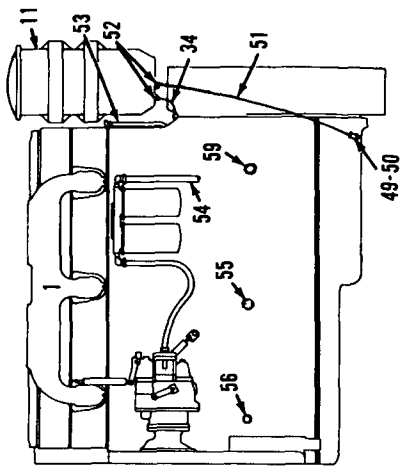
MATERIAL LIST ON BACK

LUBRICATION PIPING

MANITOWOC ENGINEERING CO.

A Division of The Manitowoc Company, Inc.

Manitowoc, Wisconsin



49592F1

MATERIAL LIST ON BACK

POWER PLANT

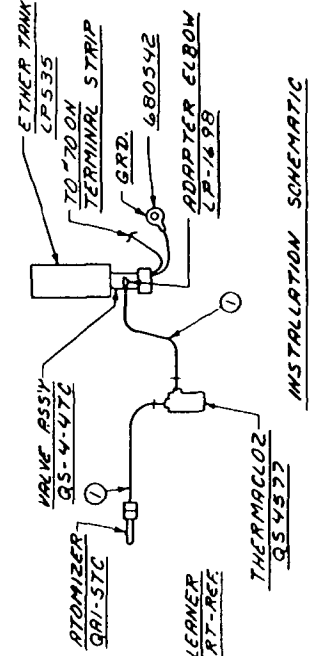
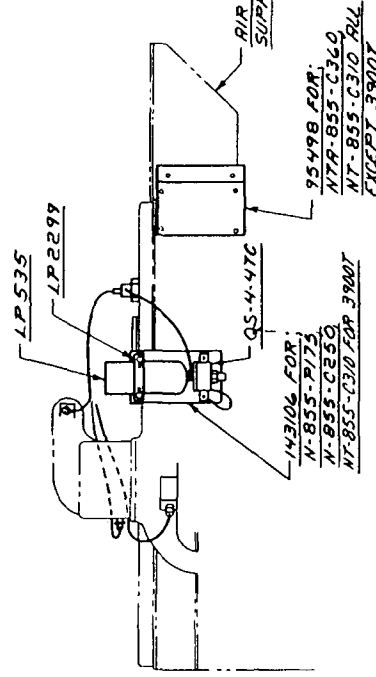
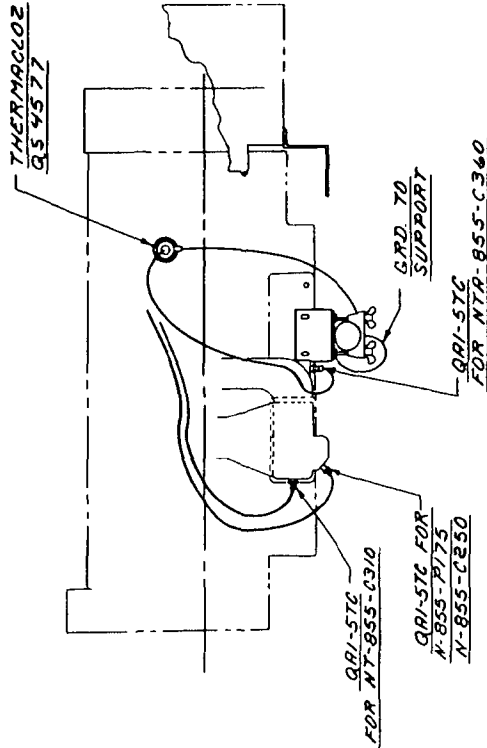
BILL OF MATERIAL				REMARKS	QUANTITY	UNIT	MATERIAL	PART NO.
ITEM NO.	DESCRIPTION	QTY	UNIT					
1	SUPPORT			95498				49349
1	SUPPORT			143106				49514
1	1/2x 3/8 FARE BUSHING			288613				49591
1	ETHER STARTING AID			457338				49873
1	TERM CUS 3/8 STUD-WIRE			680542				49934
1	NYLON TUBING, 1/8 IN. LG			496025				49944

NOTE 1
ITEMS THAT ARE PART OF ETHER STARTING KIT 457338 ARE IDENTIFIED WITH TURNER QUICK START NUMBERS.

NOTE 2
INSTRUCTION PLATE THAT COMES WITH TURNER KIT MUST BE MOUNTED IN OPERATORS CAB.

NOTE 3
TOTAL LENGTH OF TUBING BETWEEN ATOMIZER & VALVE NOT TO EXCEED 48 IN.

NOTE 4
DO NOT USE THIS ASSY. ON AN ENGINE WITH GLO. PLUGS.



INSTALLATION SCHEMATIC

NOTICE
THIS DRAWING IS THE PROPERTY OF
MANTOWOC ENGINEERING CO.
ALL INFORMATION CONTAINED HEREIN IS CONFIDENTIAL
AND IS NOT TO BE DISCLOSED TO ANY OTHER PERSON OR
ORGANIZATION WITHOUT THE WRITTEN PERMISSION OF
MANTOWOC ENGINEERING CO.

SUPERSEDES 182566 OF 7-19-79

DATE	12-19-79
BY	PLATTNER
CHKD BY	
APP'D BY	
SCALE	1/8" = 1"

PARTS MANUAL ALPHABETICAL INDEX
Group E - Lower Structure & Control

DESCRIPTION	PUBLICATION	REV	START DATE	END DATE	GROUP
Carbody	42493	A1	11/19/59	06/03/76	E0101
Carbody	43369	J1	09/21/64	02/07/85	E0101
Carbody Lubrication Piping	32233	B1	08/07/59	08/31/83	E0102
Crawler Lubrication Piping	180239	E1	03/25/68	12/14/84	E0202
Crawler Lubrication Piping	180239	C2	03/25/68	04/25/85	E0202
Crawlers	43148	Q1	09/18/63	01/13/86	E0201
Horizontal Travel Shaft	32907	B1	09/04/63	02/14/84	E0401
King Pin & Vertical Travel Shaft	33098	E1	08/21/64	10/12/81	E0301
Steering Control	20729	A1	05/14/41		E0501
Steering Control	42396	E1	09/15/60	01/24/84	E0501
Steering Control	42396	C2	05/11/59	07/07/81	E0501
Travel Lock Control	31743	I1	08/19/69	07/30/81	E0601

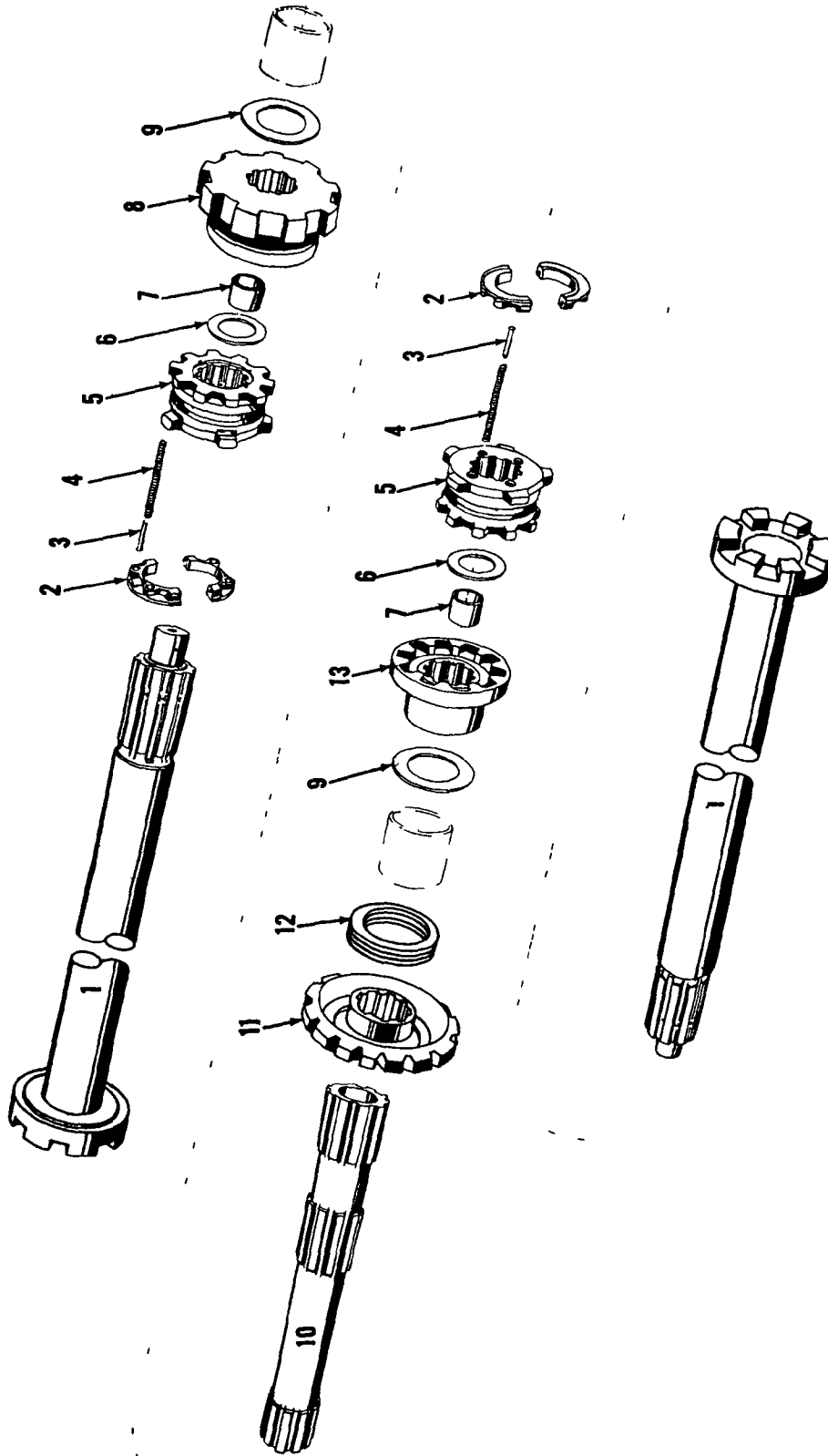
3207 A1

MASTER

MANITOWOC ENGINEERING CO

A Division of The Manitowoc Company Inc.

Manitowoc, Wisconsin

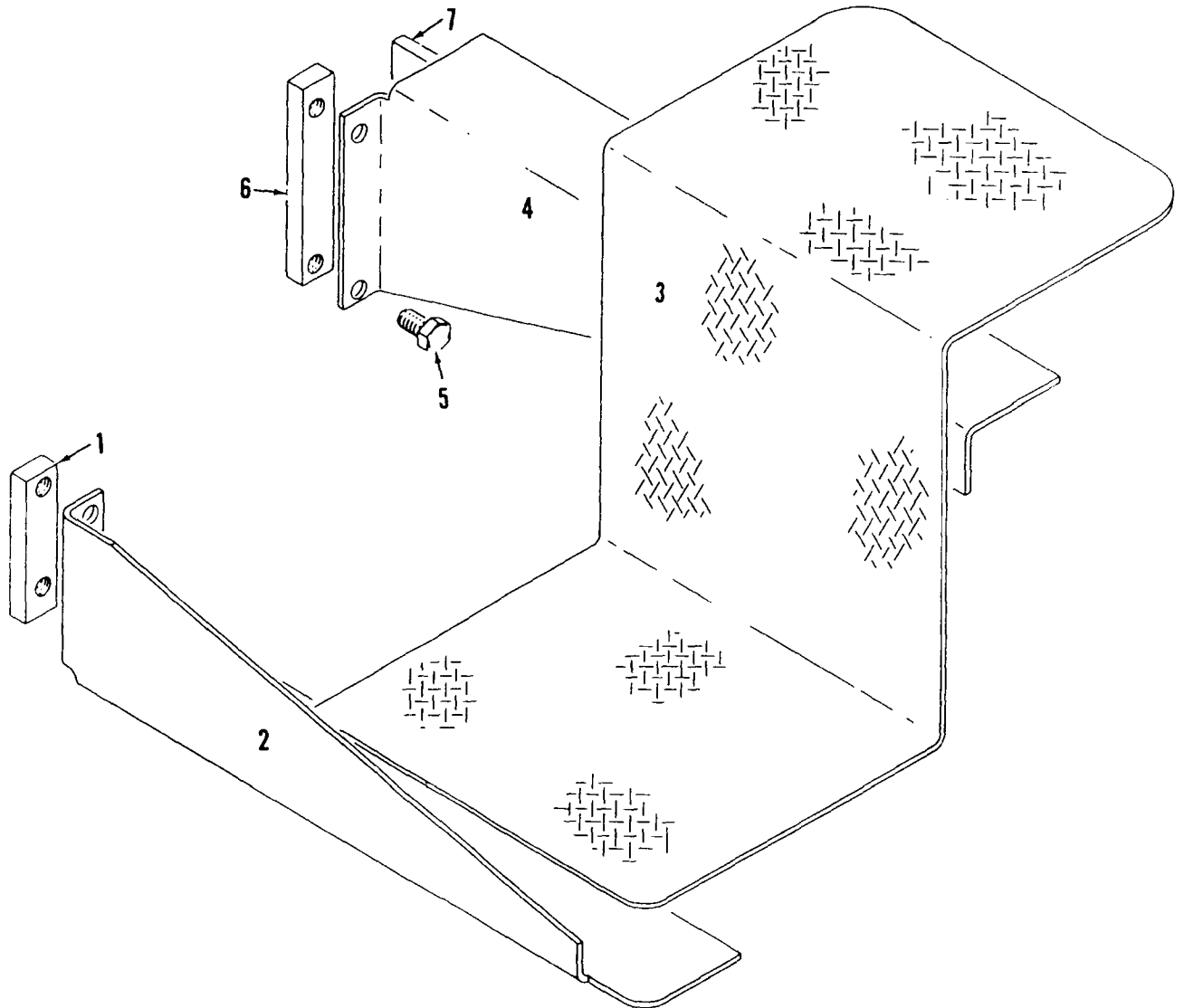


32907A1

MATERIAL LIST ON BACK

HORIZONTAL TRAVEL SHAFT

MASTER



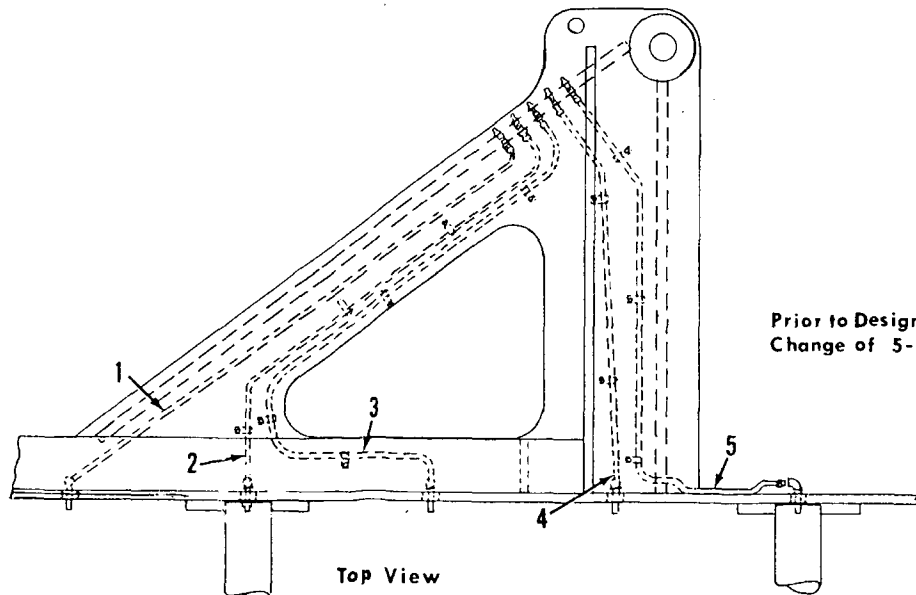
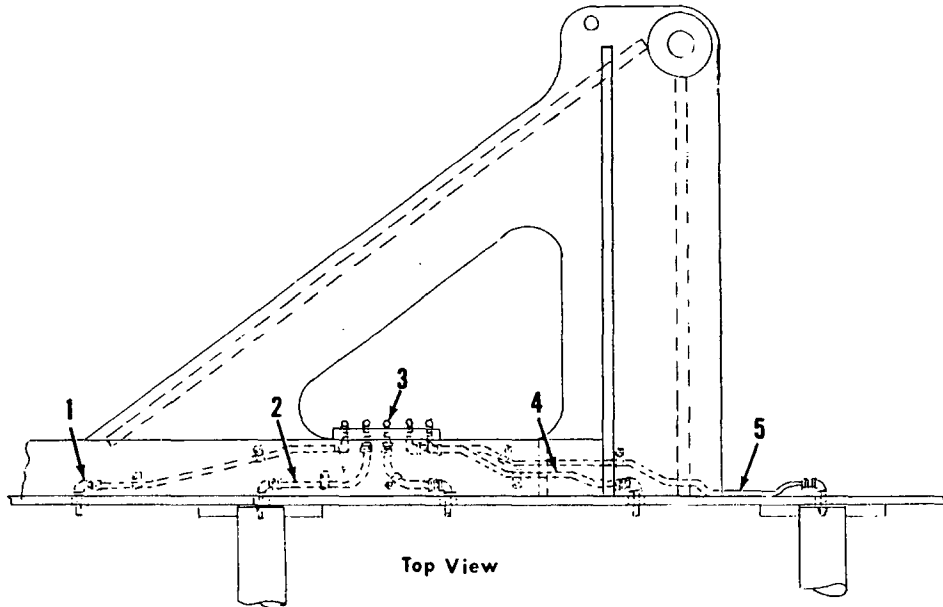
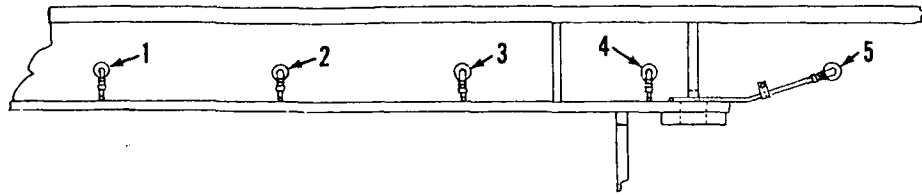
42493 - Al Back
4/26/41

42681A1

MANITOWOC ENGINEERING CO.

A Division of The Manitowoc Company, Inc.

Manitowoc, Wisconsin



18023982

MATERIAL LIST ON BACK

CRAWLER LUB. PIPING

MASTER

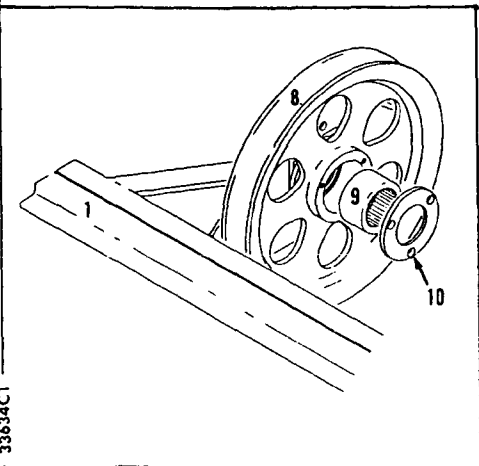
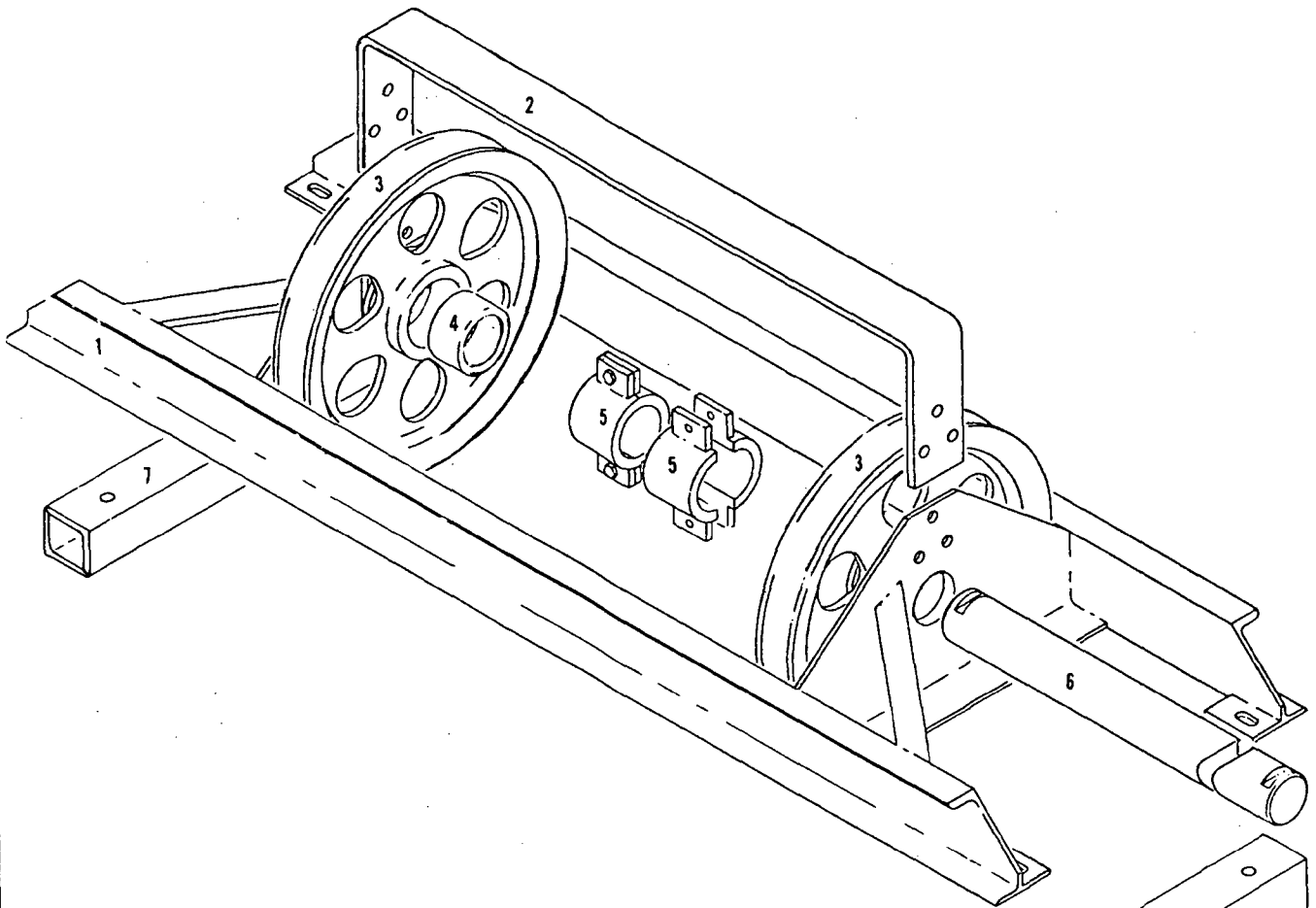
18023982

MANITOWOC ENGINEERING CO.

A Division of The Manitowoc Company, Inc.

Manitowoc, Wisconsin

MASTER



33634C1

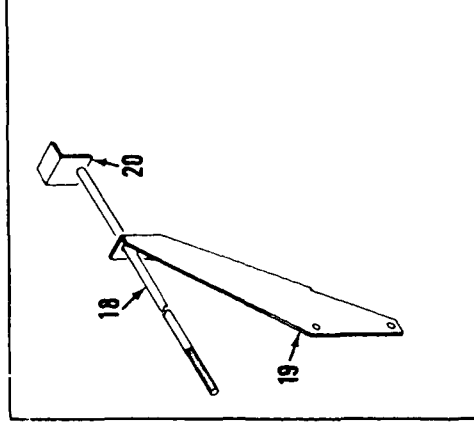
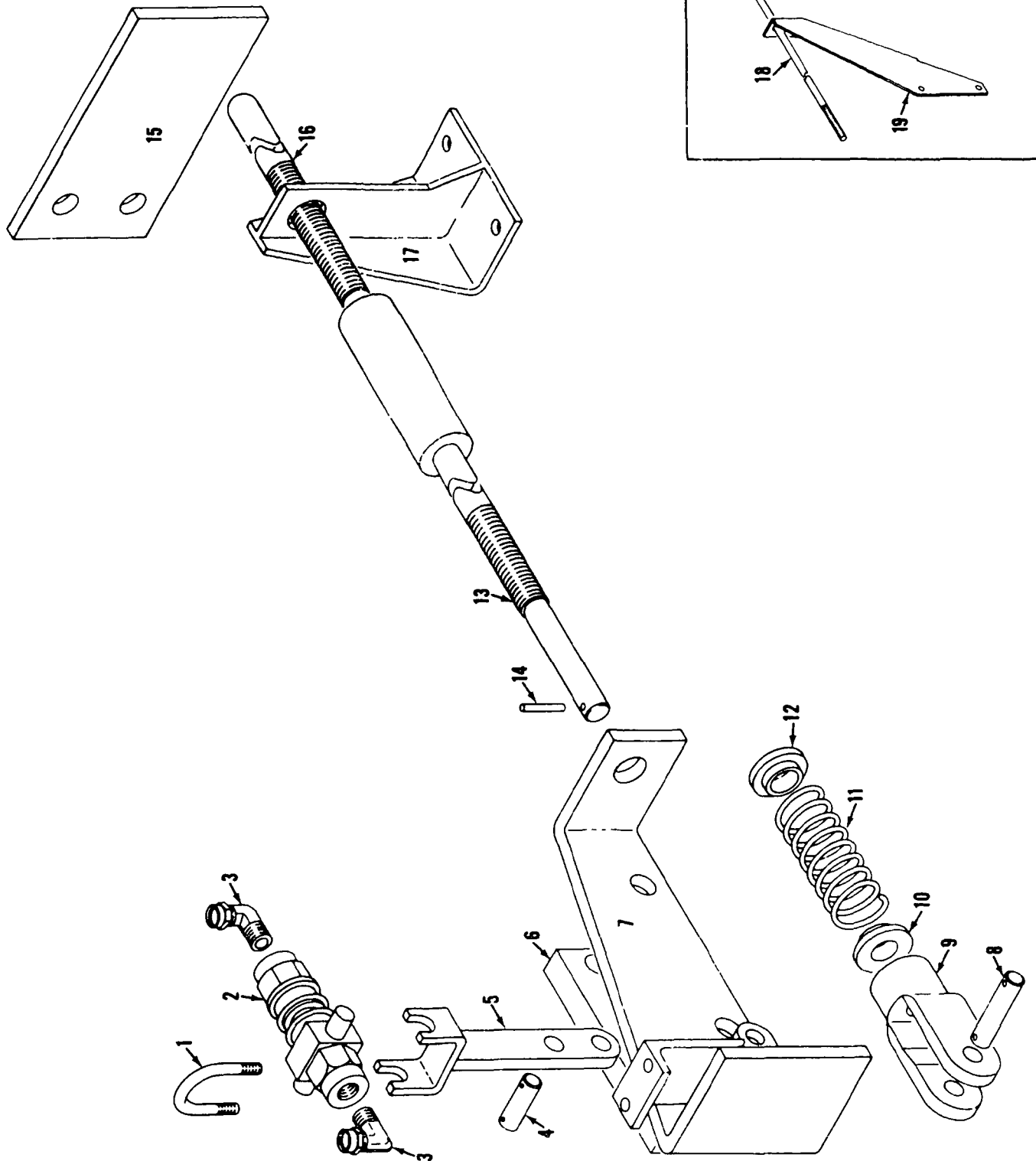
MATERIAL LIST ON BACK

WIRE ROPE GUIDE

MANITOWOC ENGINEERING CO.

A Division of The Manitowoc Company, Inc.

Manitowoc, Wisconsin



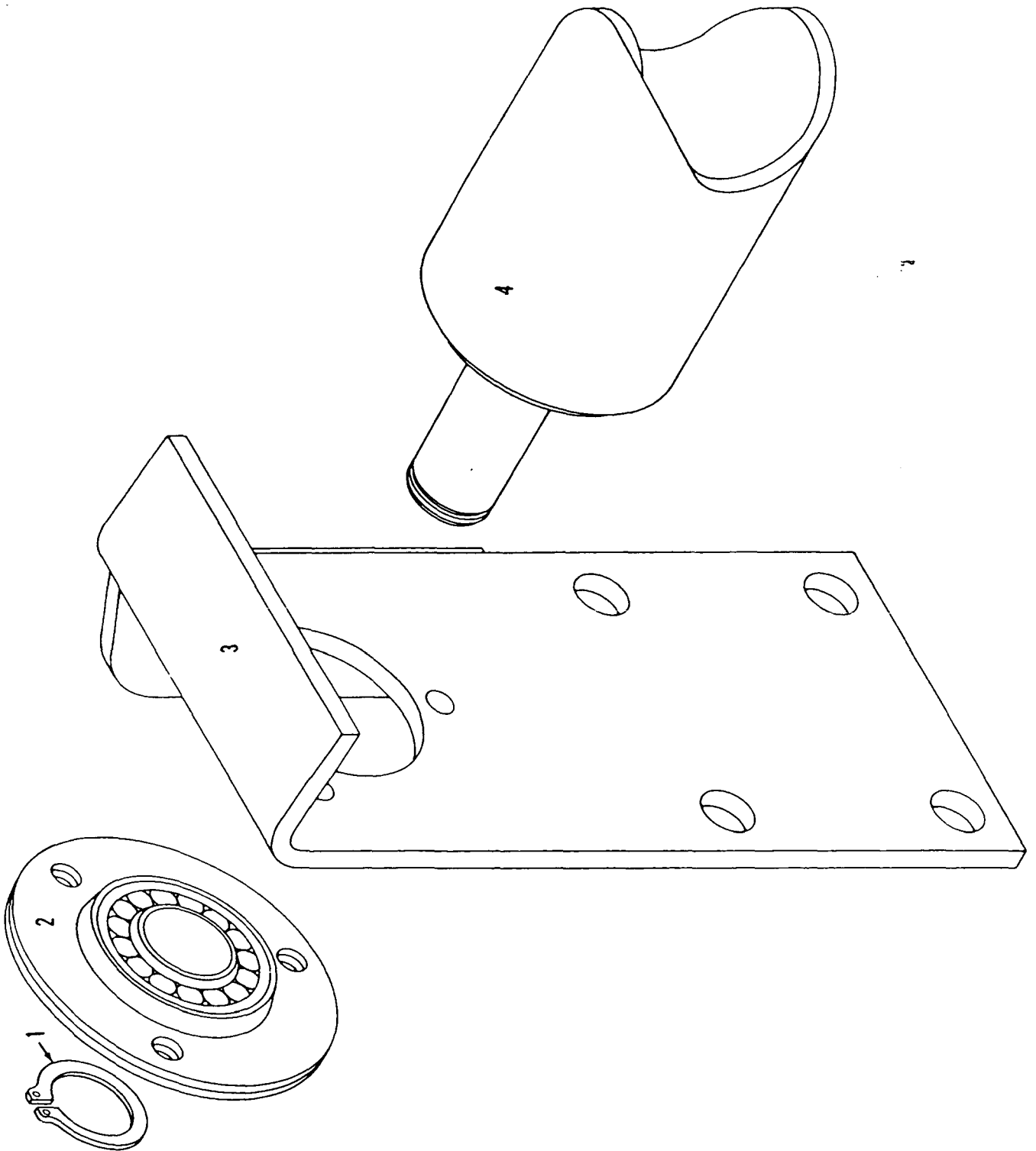
48222A1

MATERIAL LIST ON BACK

BOOM STOP

48222A1

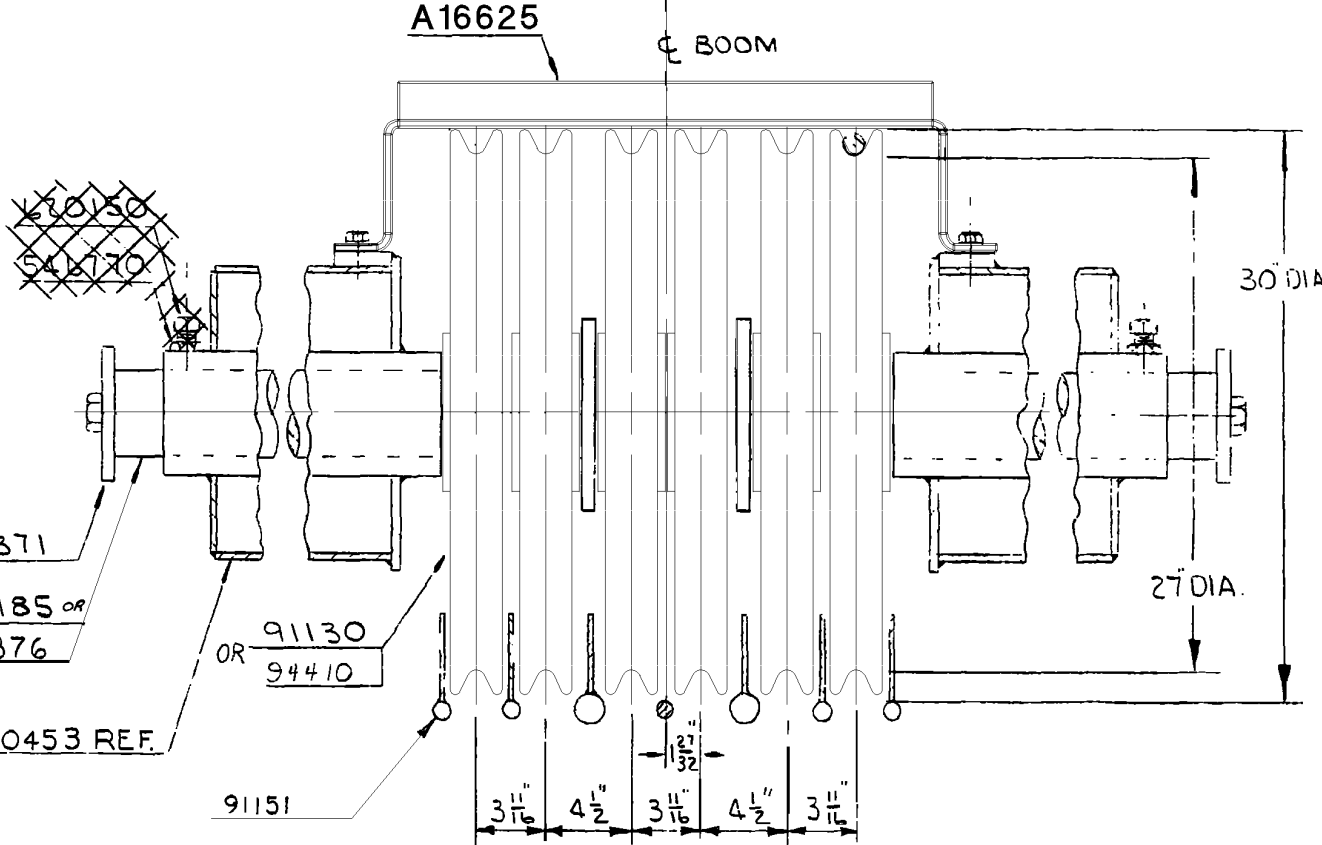
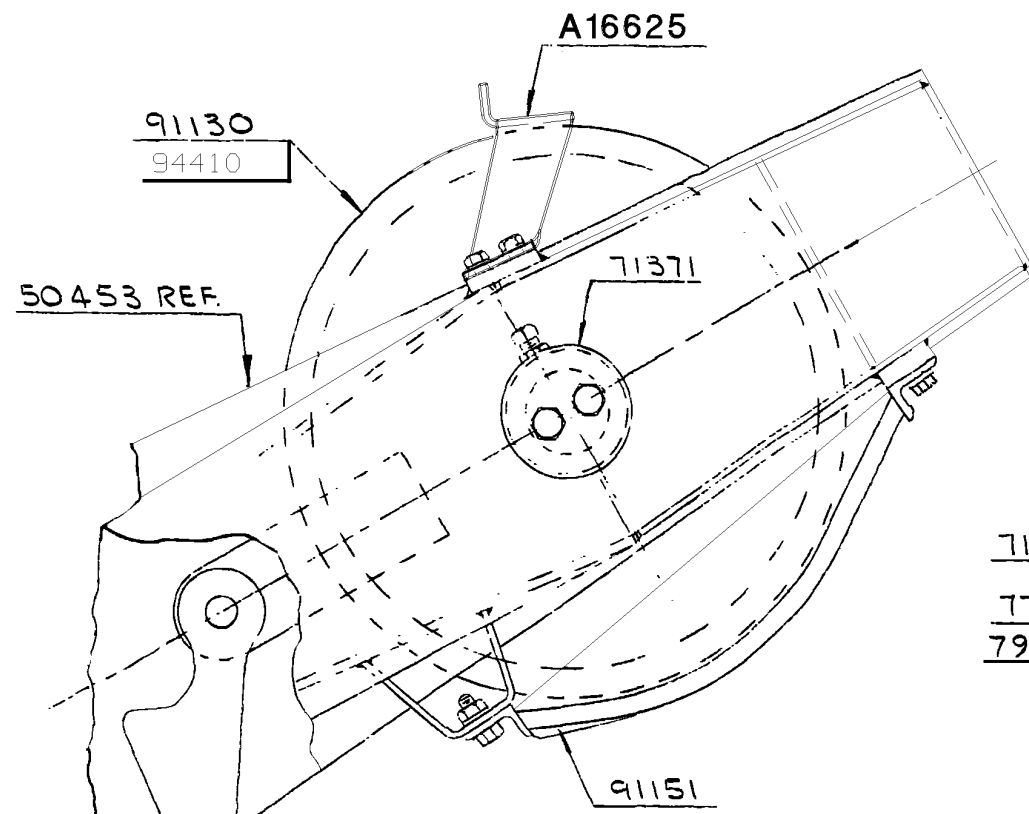
MASTER



77728A1

MATERIAL LIST ON BACK

CABLE ROLLER GUIDE ASSEMBLY



- (M) 646419 W/ PIN 563960 - FOR 1.125" ROPE
- (K) 646415 W/ PIN 3531 - FOR 1.25" ROPE
- (N) 646417 W/ PIN 563960 - FOR 1.00" ROPE
- (M) (K) ~~713266 FOR 1.00" ROT. RES. ROPE~~
- (N) 646246 & 196135 W/PIN 563874 (FOR 1.00" & 26mm ROPE)

(A) NOTE: 1
 SHAFT 79876 REPLACES SHAFT 77185 WHEN SHAFT FOR MOUNTING PILE DRIVER LEADS IS REQ'D. SPACERS 75639 ARE REQ'D. WHEN SHAFT 79876 IS USED WITHOUT PILE DRIVER LEADS

NO REQ'D	DWG NO	TITLE
(H) 1	OR 3531	PIN
1	563960	PIN
2	71371	BOOM POINT SHAFT END
1	77185	SHAFT
(L) 1	A16625	ROPE GUARD
6	OR 91130	SHEAVE ASSEMBLY 1/8" DIA WIRE ROPE
(F) 6	94410	SHEAVE ASSEMBLY 1/4" DIA WIRE ROPE
(D) 2	546770	JAM NUT
(E) 2	620150	SET SCREW SQ HD CUP TYPE
(G) 1	646415	WEDGE SOCKET W/ WEDGE
1	OR 646419	WEDGE SOCKET W/WEDGE
(J) 1	646417	WEDGE SOCKET W/ WEDGE
(B) 1	79876	SHAFT (SEE NOTE 1)
(C) 2	75639	SPACER-4" LG. (SEE NOTE 1)
1	91151	ROPE GUARD

ASSEMBLIES USED ON
49727
65156
49945
48721
48168
48352
49379
43698
48722
63388

5-7-68 JHS
(A)(B)(C) ADDED
9-27-72 DWD
(D)(E) DELETED
4-11-73 RAD
(F)(G)(H) ADDED
12-17-97 JAZ
(J) ADDED
3-15-00 JAZ
(K) ADDED
5-25-06 TMO
(L) WAS 77208
8-9-06 TMO
(M) DELETED
(N) ADDED

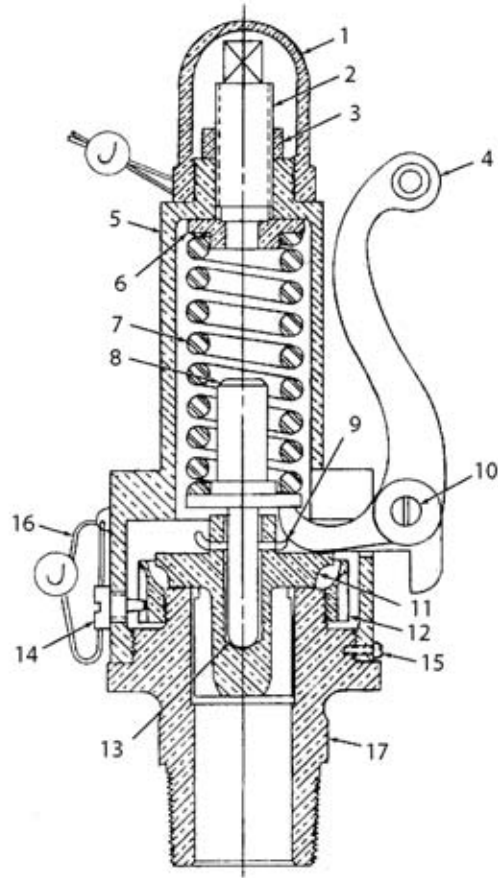
SCALE 1/2"=1'-0"	UNLESS NOTED	DWG NO 91132	MANITOWOC CRANES INC. MANITOWOC, WISCONSIN	BOOM POINT SHAFT ASSEMBLY -		PATTERN NO.
DR Quirk	FRACT. DIM. _____			#22 & #22A BOOM		CODE NO.
CK E.G.T.	HOLE DIA. _____			MODEL 4000W, 4100W, 888		DWG. NO. 91132
APP	HOLE CENTERS _____					
	FINISH _____					

(A) (K) DO NOT SCALE THIS DRAWING

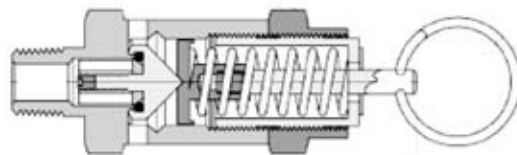
(F)(D)(G)(E)(C)(B)
(H)(J)

O-NUMBER NUMERICAL INDEX

PUBLICATION	REV
0-123	A1
0-123	A2
0-147	D2
0-148	-
0-156	F
0-157	C
0-173	A
0-246	C1
0-247	B
0-247	B1
0-250	A
0-250	A1
0-279	B1
0-284	B
0-286	B
0-289	G
0-290	G1
0-294	A
0-294	E
0-304	L1
0-307	-
0-307	F
0-313	A
0-313	A1
0-337	B
0-340	G
0-407	B
0-407	B1
0-439	-
0-441	A4
0-441	C2
0-451	EA1
0-469	E1
0-471	E
0-503	-
0-63	C
0-64	B
0-69	C
0-71	-
0-72	B
0-96	C1



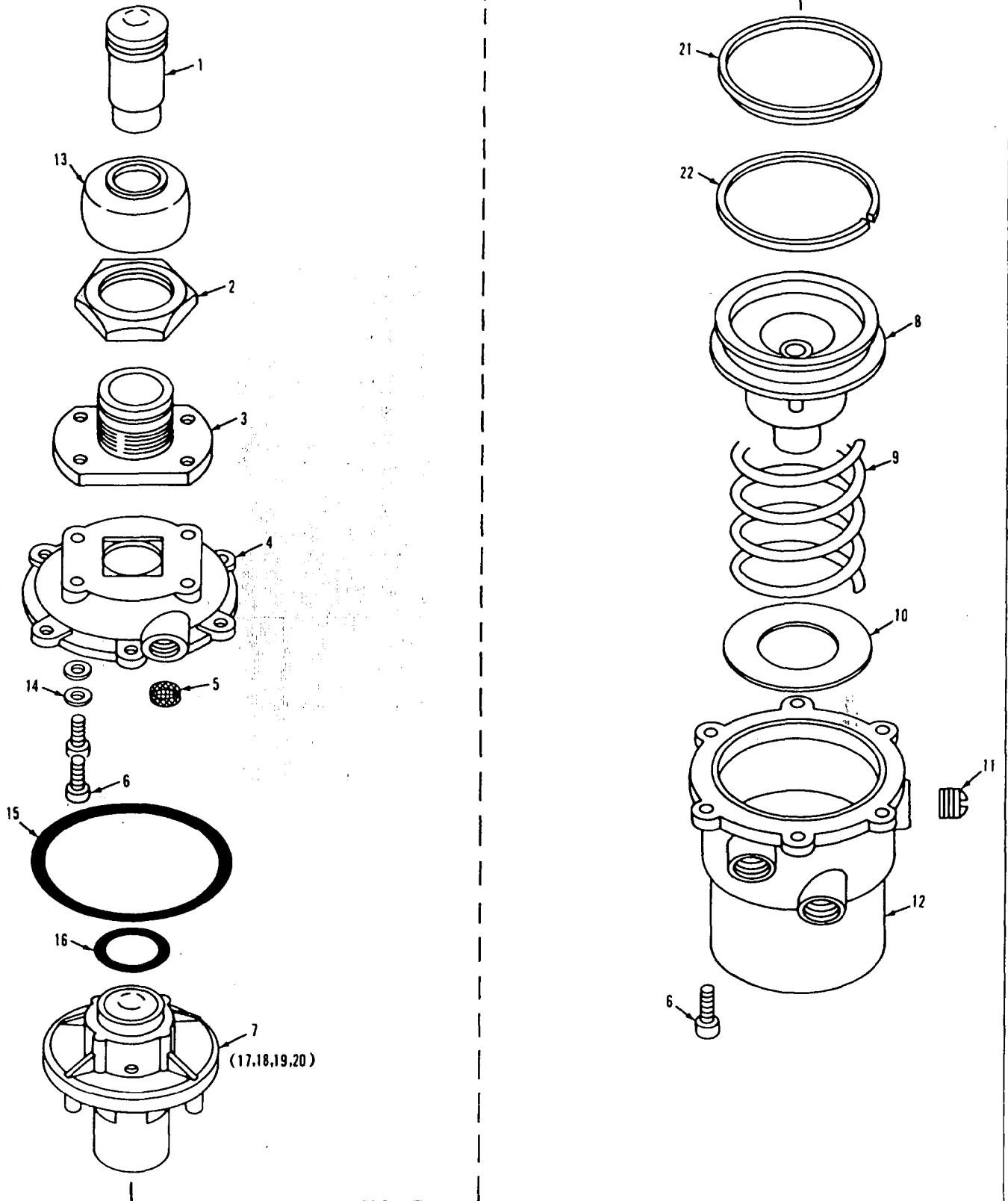
702402, 702740



81004368

ASSEMBLY	REVISION
O-156	F

MASTER



0-247-18

MATERIAL LIST ON BACK

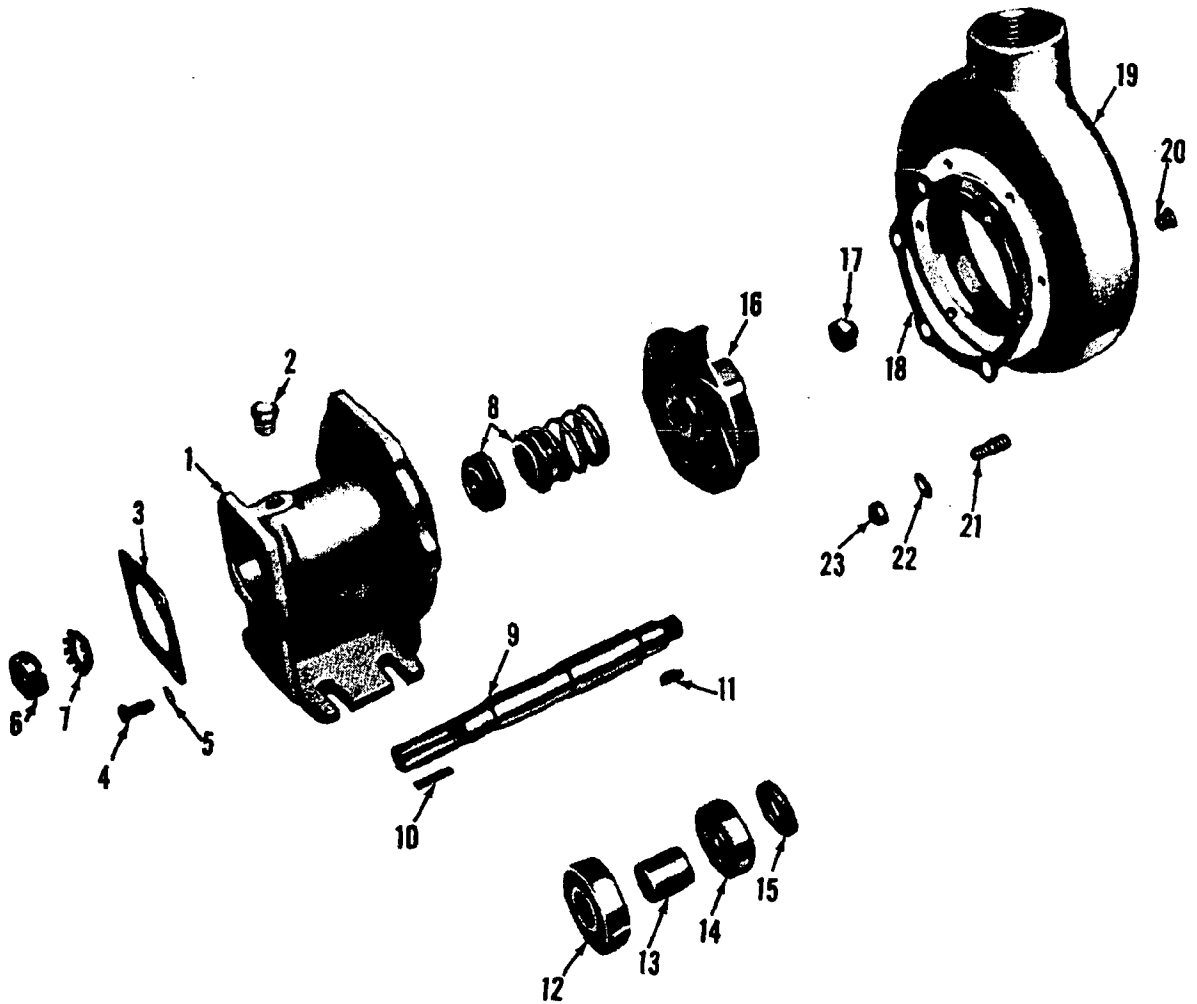
Control Valve

MANITOWOC ENGINEERING CO.

A Division of The Manitowoc Company, Inc.

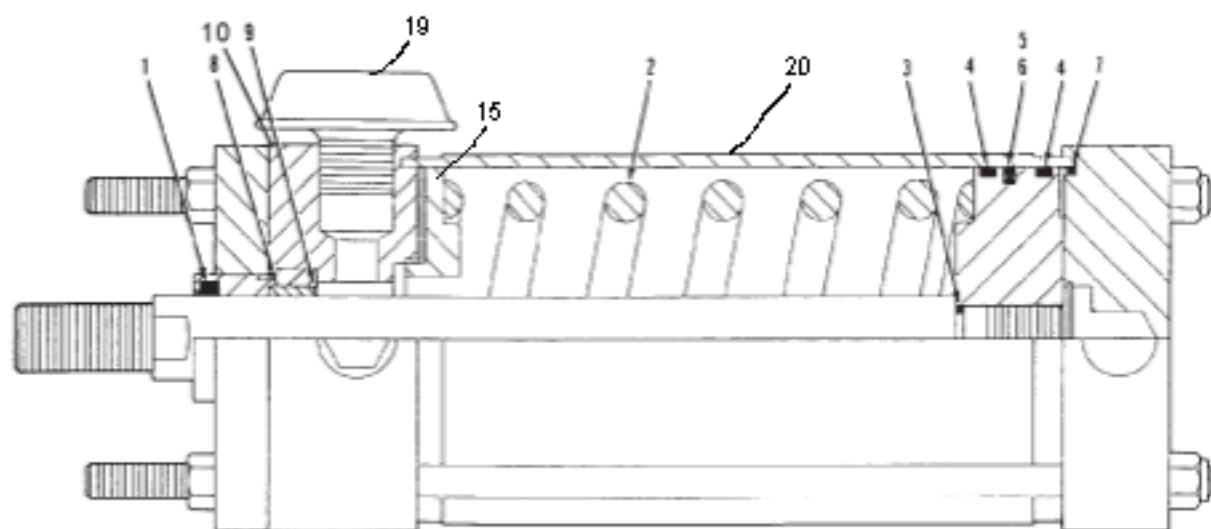
Manitowoc, Wisconsin

MASTER

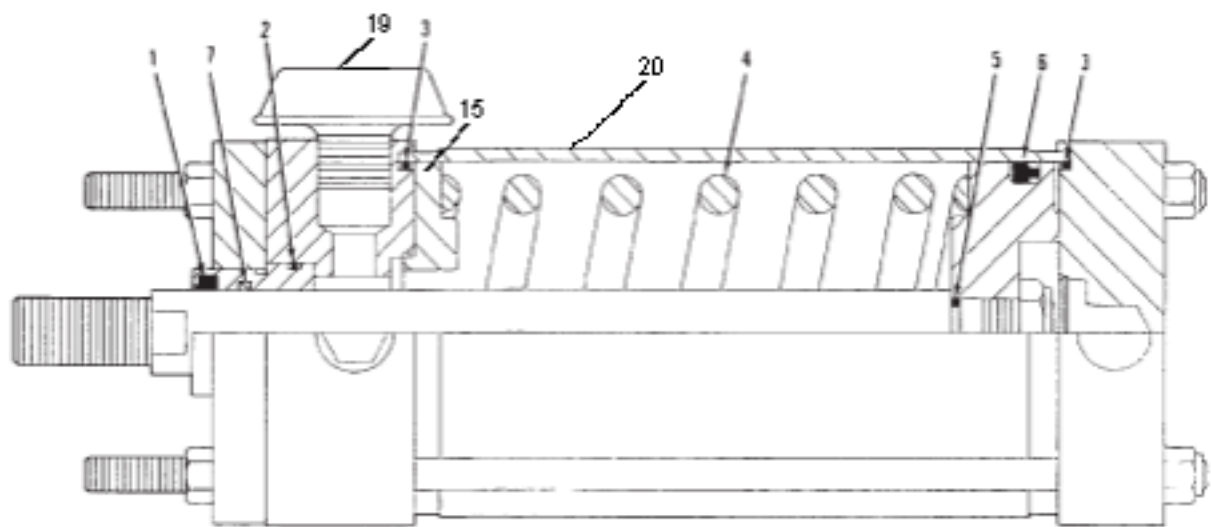


43051A6

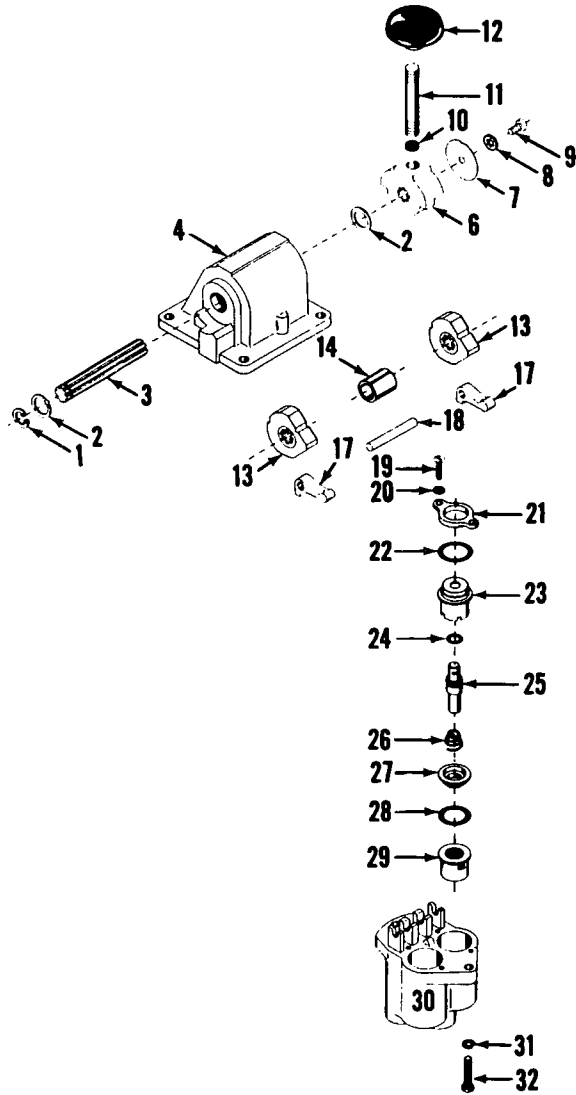
MATERIAL LIST ON BACK



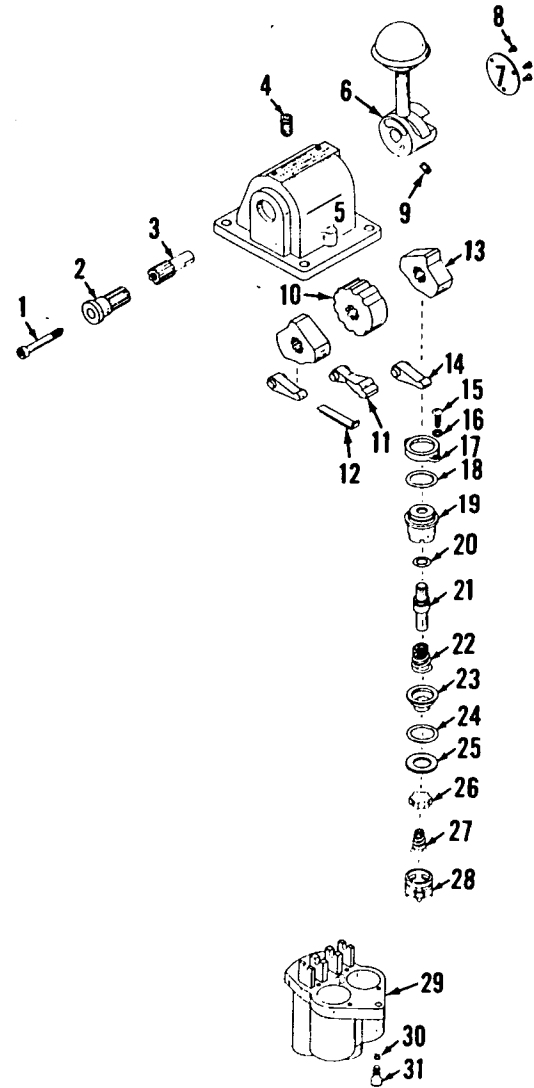
CURRENT PRODUCTION



PAST PRODUCTION



P59340



P54426-0241

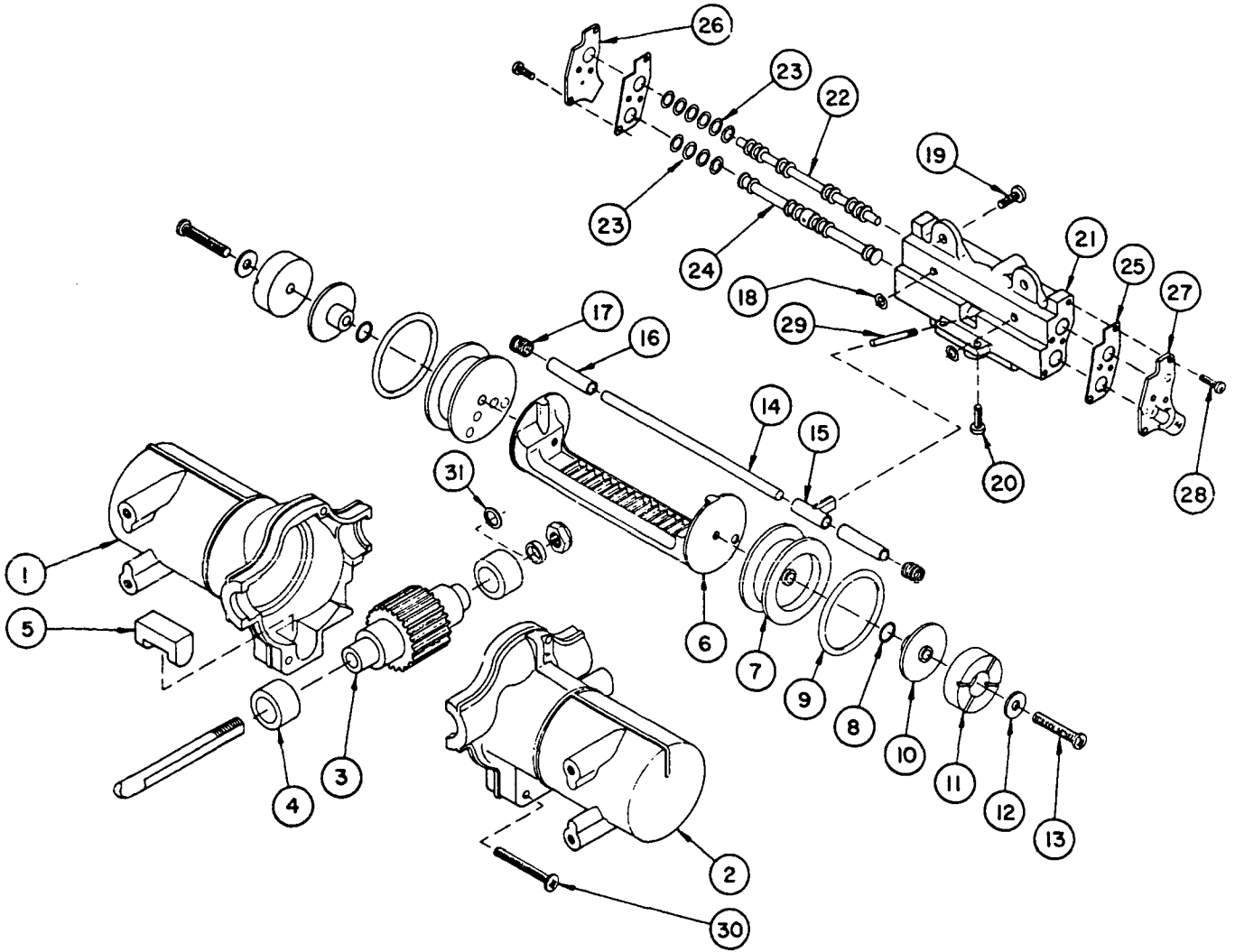
MATERIAL LIST ON BACK

CONTROL VALVE

MANITOWOC ENGINEERING CO.

A Division of The Manitowoc Company, Inc.

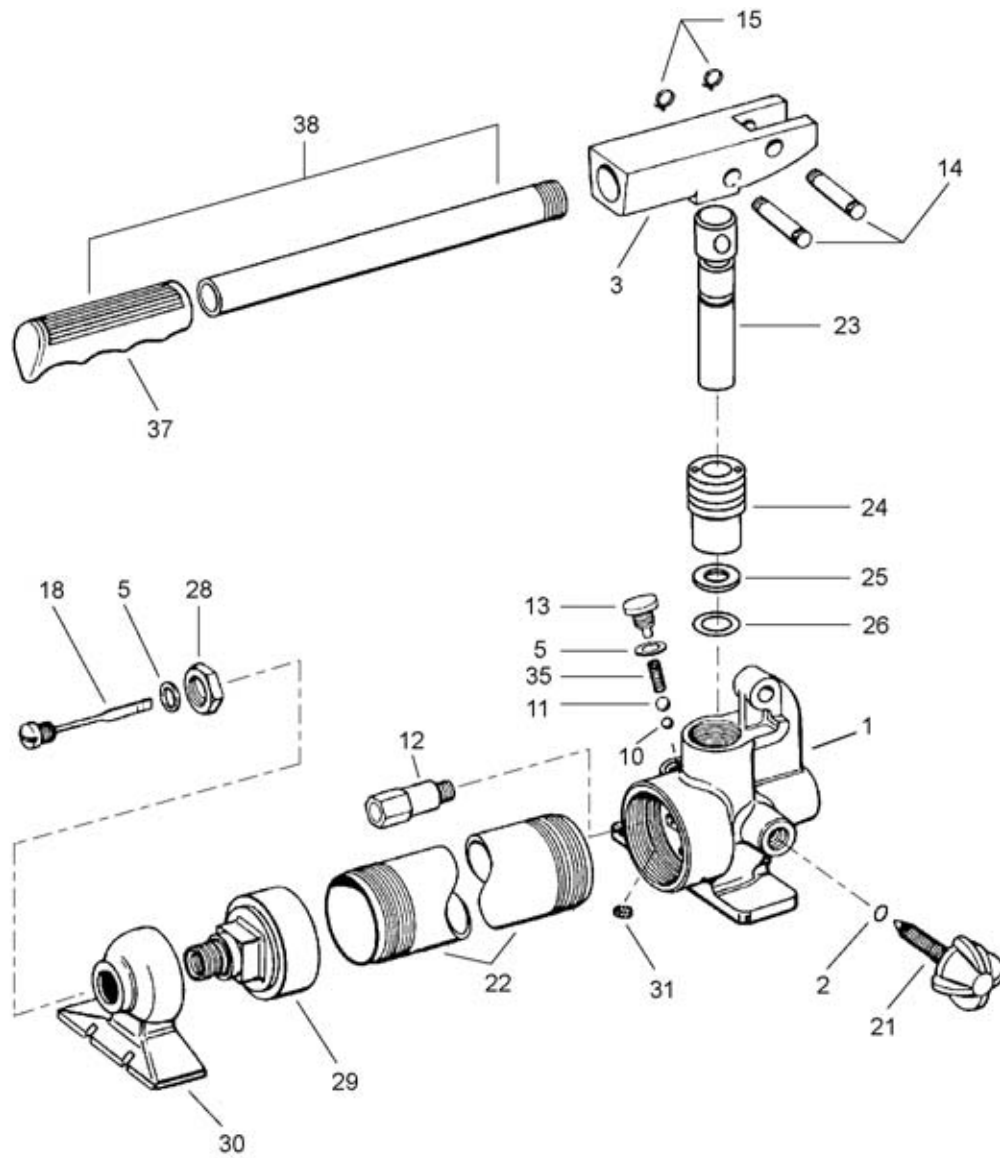
Manitowoc, Wisconsin



MODEL: M-550-1-Deg.

MATERIAL LIST ON BACK

WINDSHIELD WIPER MOTOR



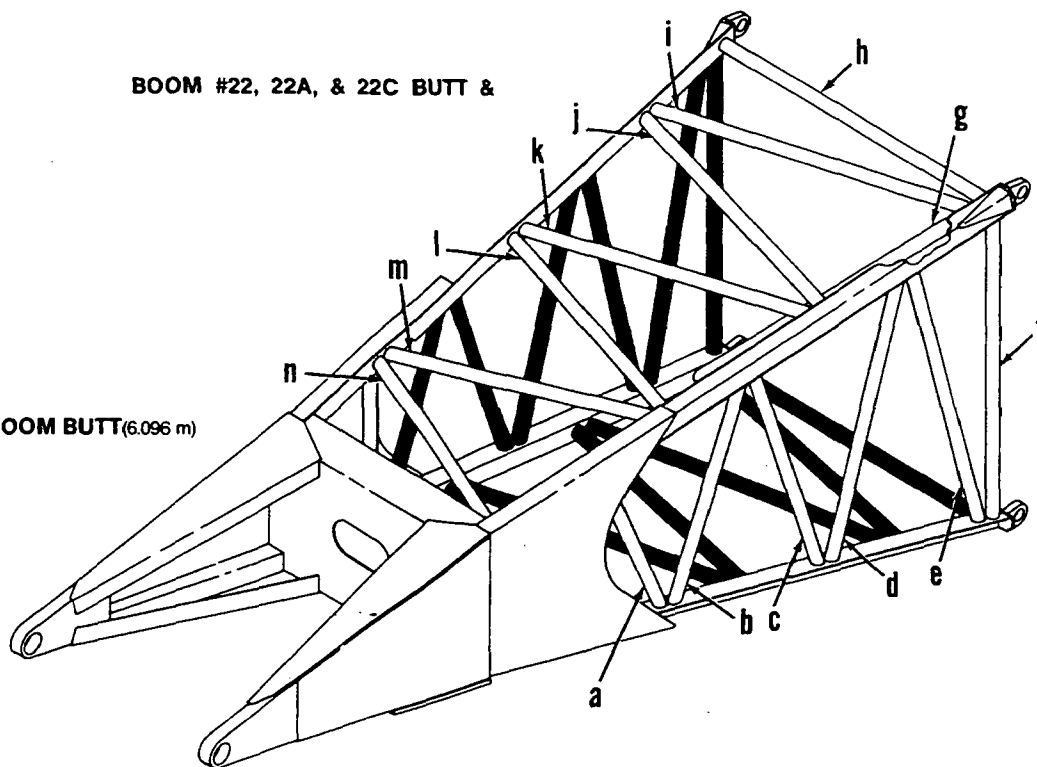
583136

ASSEMBLY	REVISION
O-471	E

CYLINDER, CRAWLER ADJUSTING JACK

BOOM #22, 22A, & 22C BUTT &

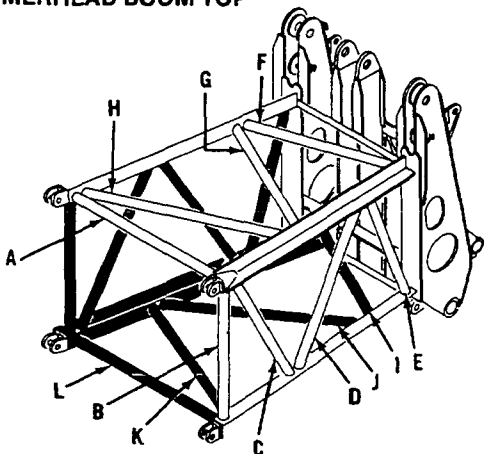
20' BOOM BUTT (6.096 m)
49772



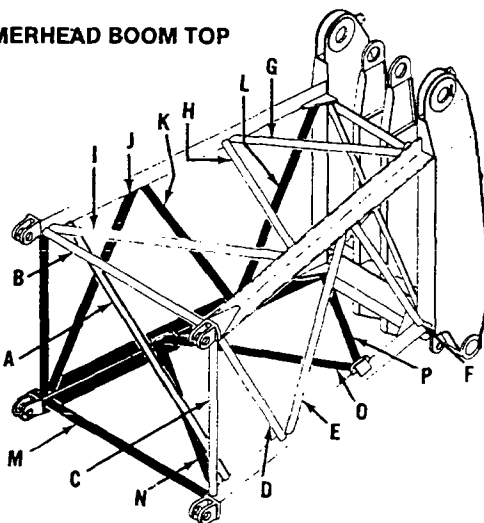
BOOM #22A HAMMERHEAD TOPS

Left side and bottom lacings black. Opposite lacings same unless noted.

HAMMERHEAD BOOM TOP
50920



HAMMERHEAD BOOM TOP
50863
419482

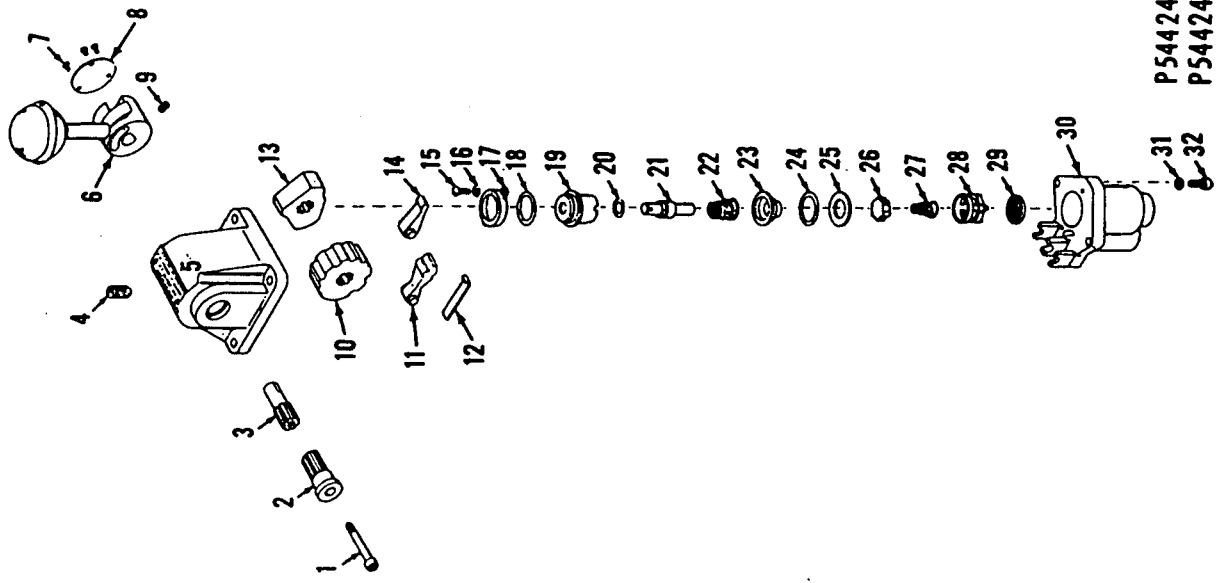


To order lacings see Folio #823

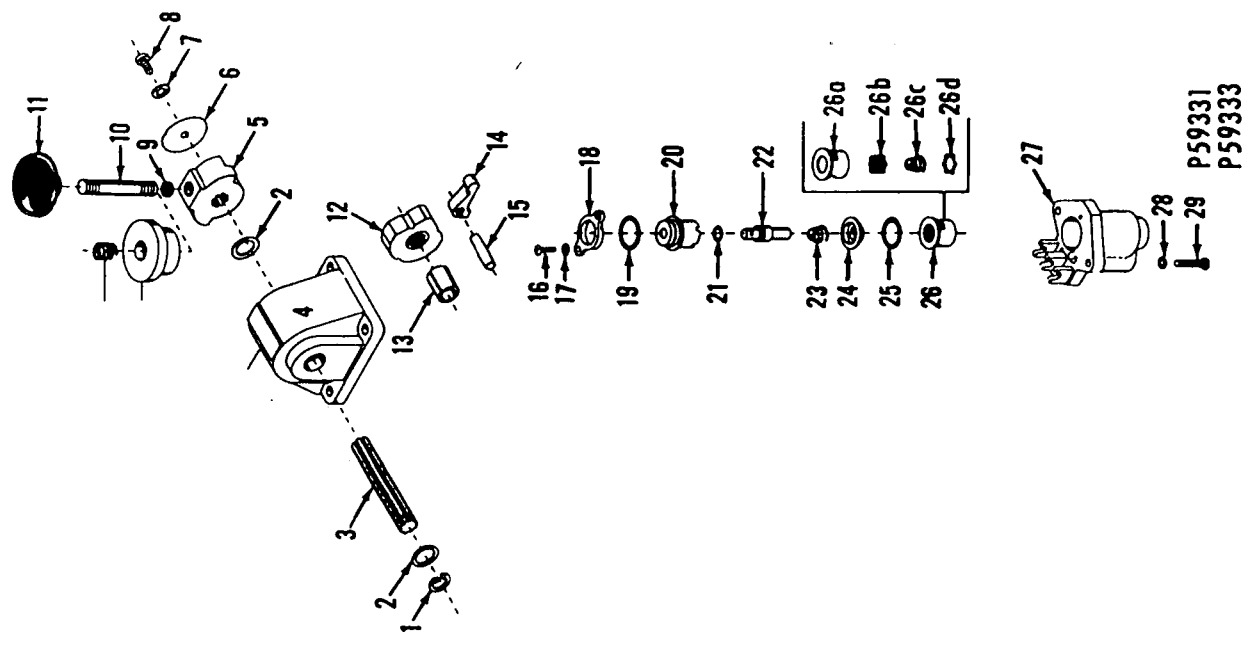
MANITOWOC ENGINEERING CO.

A Division of The Manitowoc Company, Inc.

Manitowoc, Wisconsin



P54424-0101
P54424-0301



P59331
P59333

MATERIAL LIST ON BACK

CONTROL VALVE

0-96 - 1 Cont.	REV. C	MODEL ALL
----------------	--------	-----------

AIR CONTROL VALVE
 (MANITOWOC #714494)
 (WESTINGHOUSE #P59335 - NEW)
 (WESTINGHOUSE #P54426-0312 OLD)

REF. NO.	PART NUMBER	QUANTITY REQUIRED	DESCRIPTION OF PART	VENDORS PART NO.
12	714527	1	SPRING, Detent	P54420
13		2	CAM	P54192
14		2	FOLLOWER, Cam	P54197
15		4	SCREW, Truss Head	P49861-3
16		4	WASHER, Lock	506608
17		2	FLANGE, Valve Retaining	P54463
18	714430	2	RING, "O" (15/16" O.D.)	P49708-16
19		2	GUIDE, Plunger	P54147
20	714506	2	RING, "O" (7/16" O.D.)	P49708-11
21		2	PLUNGER, Valve	P54146
22	714525	2	SPRING, Exhaust Valve	P54144
23		2	SEAT, Inlet Valve	P54145
24	714441	2	RING, "O" (7/8" O.D.)	P49708-115
25		2	WASHER	P53455-3
26	714442	2	VALVE, Inlet	P5125
27	714526	2	SPRING, Inlet Valve	539115
28		2	SPACER, Valve	P54794
29		2	BODY	P54306
30		2	WASHER, Lock	506607
31		2	SCREW	P49835

NOTE: Part numbers at right are Westinghouse. Please so specify if ordering.

Valves changed approx. July 1969. Check nameplate (Ref. #7) for accurate identification of valve.

REV. C	0 - 96 - 1
--------	------------

PLEASE GIVE MACHINE S/N W/ORDER

Run as a Front

0-96 Cont.

CLICK HERE TO **DOWNLOAD** THE COMPLETE MANUAL

- Thank you very much for reading the preview of the manual.
- You can download the complete manual from: www.heydownloads.com by clicking the link below



- Please note: If there is no response to CLICKING the link, please download this PDF first and then click on it.

CLICK HERE TO **DOWNLOAD** THE COMPLETE MANUAL