

Manitowoc

TRADITIONAL CRANE PARTS MANUAL

This manual has been prepared for and is considered part of

4000W

Model

40474

Serial Number

GROUP A = Rotating Structure (Includes rotating bed, operator's cab, cases, fuel tanks, transfer pump, counterweights, guards, platforms, catwalks, machinery enclosure, horn)

GROUP B = Upperworks Machinery (Includes front, rear, and auxiliary drums, boom hoist, swing and drive shafts, hand levers, foot pedals, control linkage, rotation indicators, upperworks hydraulic components, hydraulic piping, hydraulic oil reservoir, lubrication pump and piping, blowers)

GROUP C = Air Components & Electrical (Includes control console, air piping, electric wiring, auxiliary light plant and lighting, TV monitoring, compressor and air tank)

GROUP D = Power Components - Upperworks (Includes engine or motor, radiator, auxiliary power plant, take off converters and piping, controls, VICON power lowering, torque limiter, hydraulic pumps and piping, fuel piping, battery box)

GROUP E = Lower Structure & Control (Includes carbody, crawlers, travel shafts and control, steering travel locks, hydraulic travel, travel power outriggers, carrier, pedestal, lowerworks hydraulic piping, RINGER components, barge mounting and machinery, spud drums)

GROUP F = Attachments (Includes booms, jibs, masts, tower, wire rope guides, equalizer, gantry, fairlead, timber guards, boom angle indicator, block-up limit, tag line, hook block, weight ball, upper and lower boom point, wind speed indicator, crowd and retract dipper sticks, dippers,)

O-NUMBER SECTION = (Includes lacing drawings and purchased component parts drawings referenced in sections A through F)

This manual is arranged in sections as listed above. Sections A through F are arranged by group numerical order with an index after each section tab. An alphabetical index for groups A Through F combined is located after the O-number Section. The O-number section is arranged in numerical order by O-number. Following this cover page are the Basic Specifications, Warranty Information, Tool List (if applicable) Outline Dimensions, Weights, and Dealer Listing.

CLICK HERE TO **DOWNLOAD** THE COMPLETE MANUAL

- Thank you very much for reading the preview of the manual.
- You can download the complete manual from: www.heydownloads.com by clicking the link below



- Please note: If there is no response to CLICKING the link, please download this PDF first and then click on it.

CLICK HERE TO **DOWNLOAD** THE COMPLETE MANUAL

Corrosion and Abrasion

Refer to Figure 3.

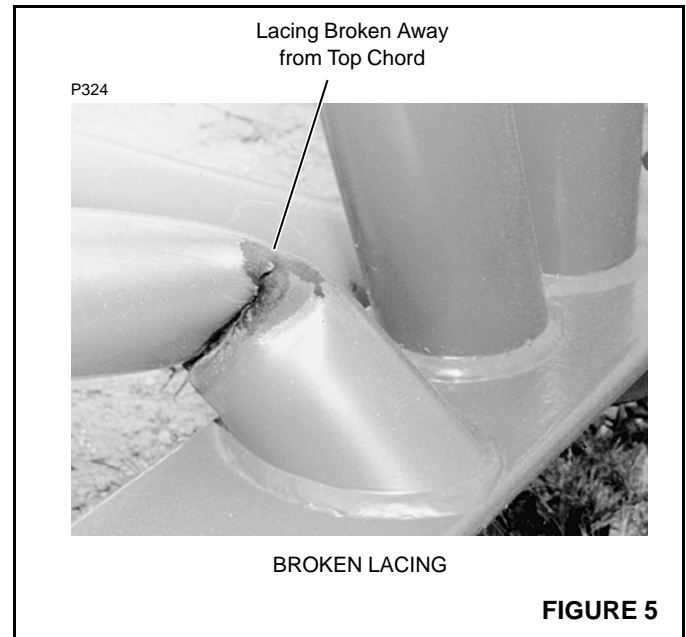
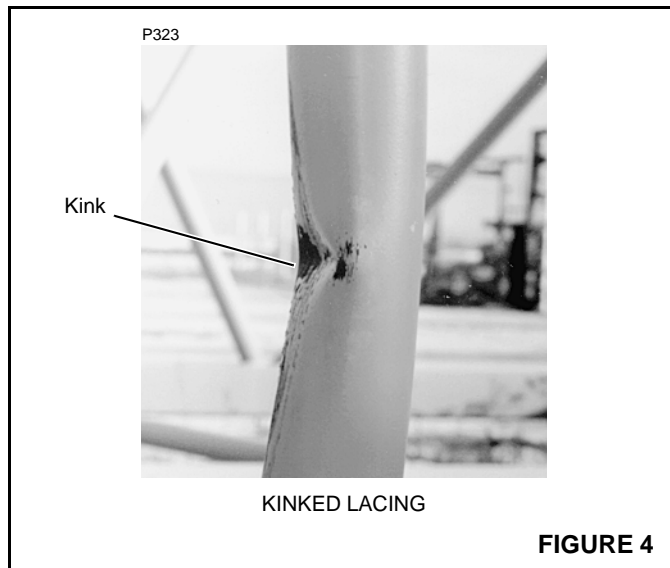
Corrosion and abrasion must not be deeper than 10 percent of the wall thickness, the angle thickness, or the plate thickness.

Kinks

Refer to Figure 4.

Kinked lacings must be replaced; *do not bend kinked lacings back into alignment.*

If any chord or platework is kinked, contact Manitowoc Crane Care for approved repair instructions. *Do not bend kinked chords or platework back into alignment.*



Cracks and Breaks

Refer to Figure 5.

Cracked and broken lacings must be replaced; *do not attempt to repair cracked or broken lacings.*

If any chord or platework is cracked or broken, contact Manitowoc Crane Care for approved repair instructions. *Do not attempt to repair cracked or broken chords or platework.*

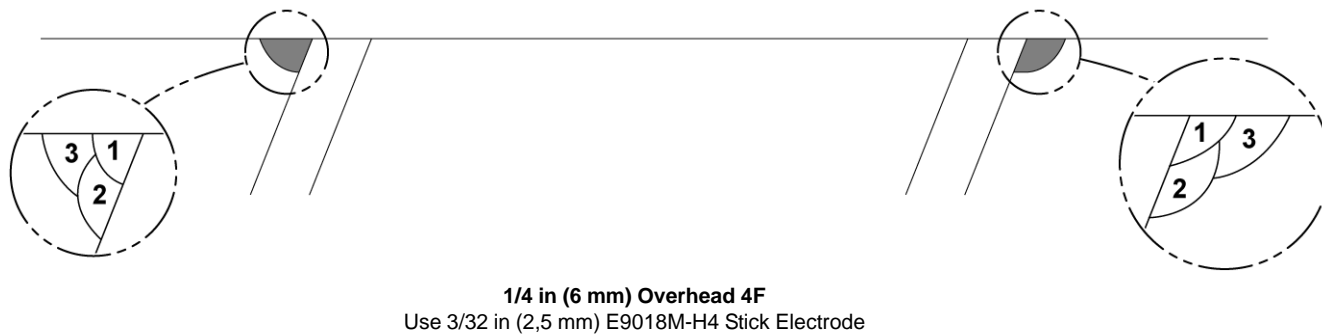
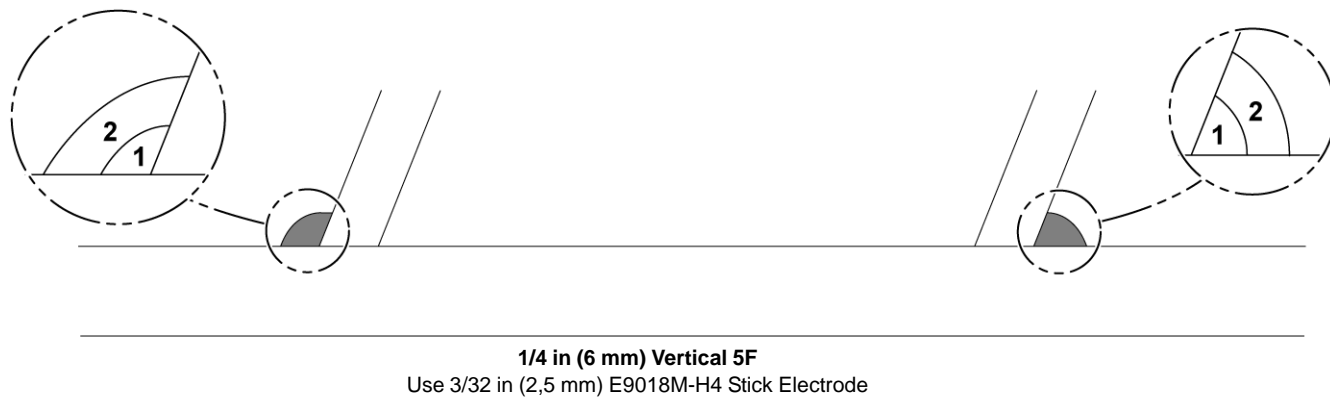
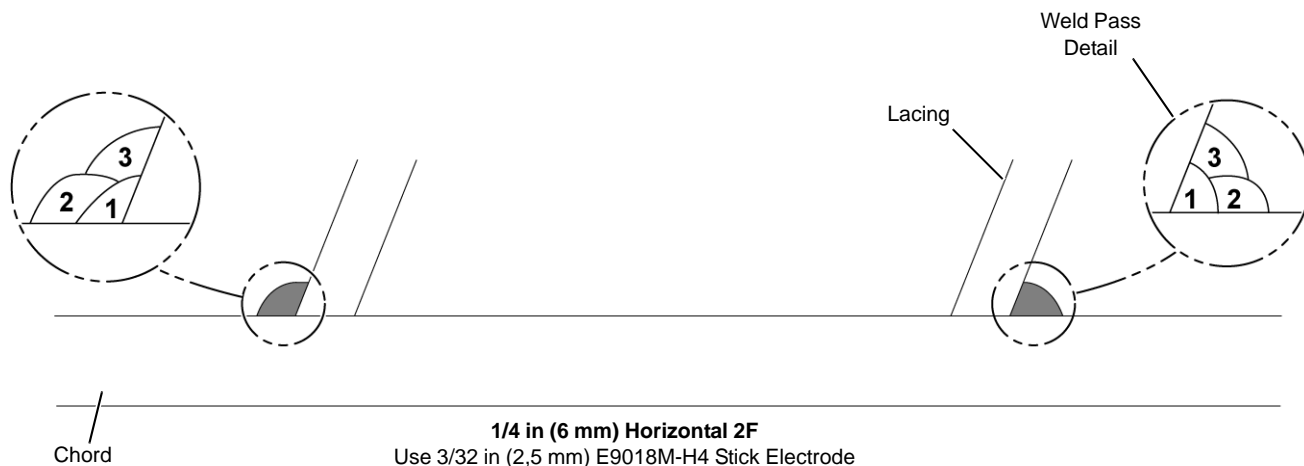


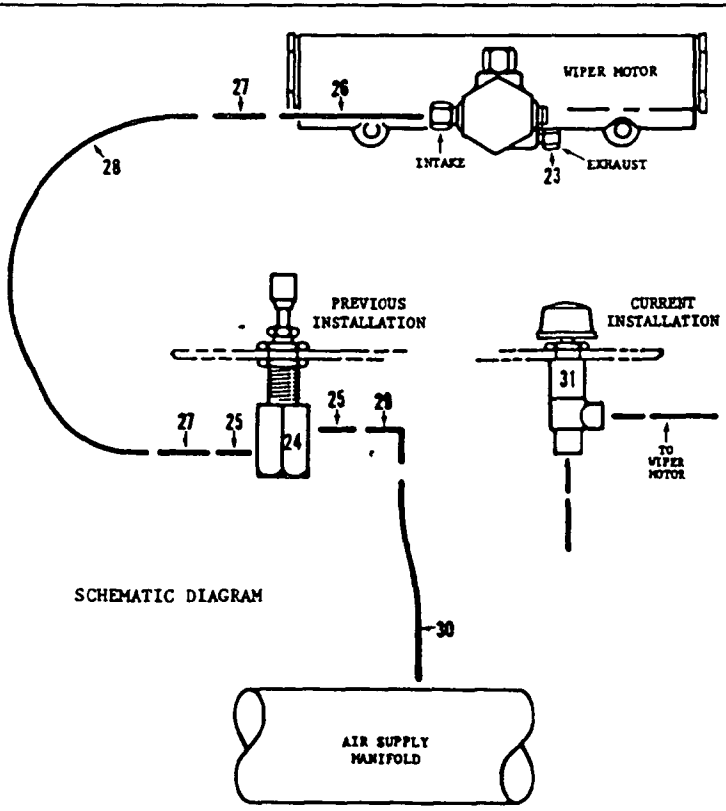
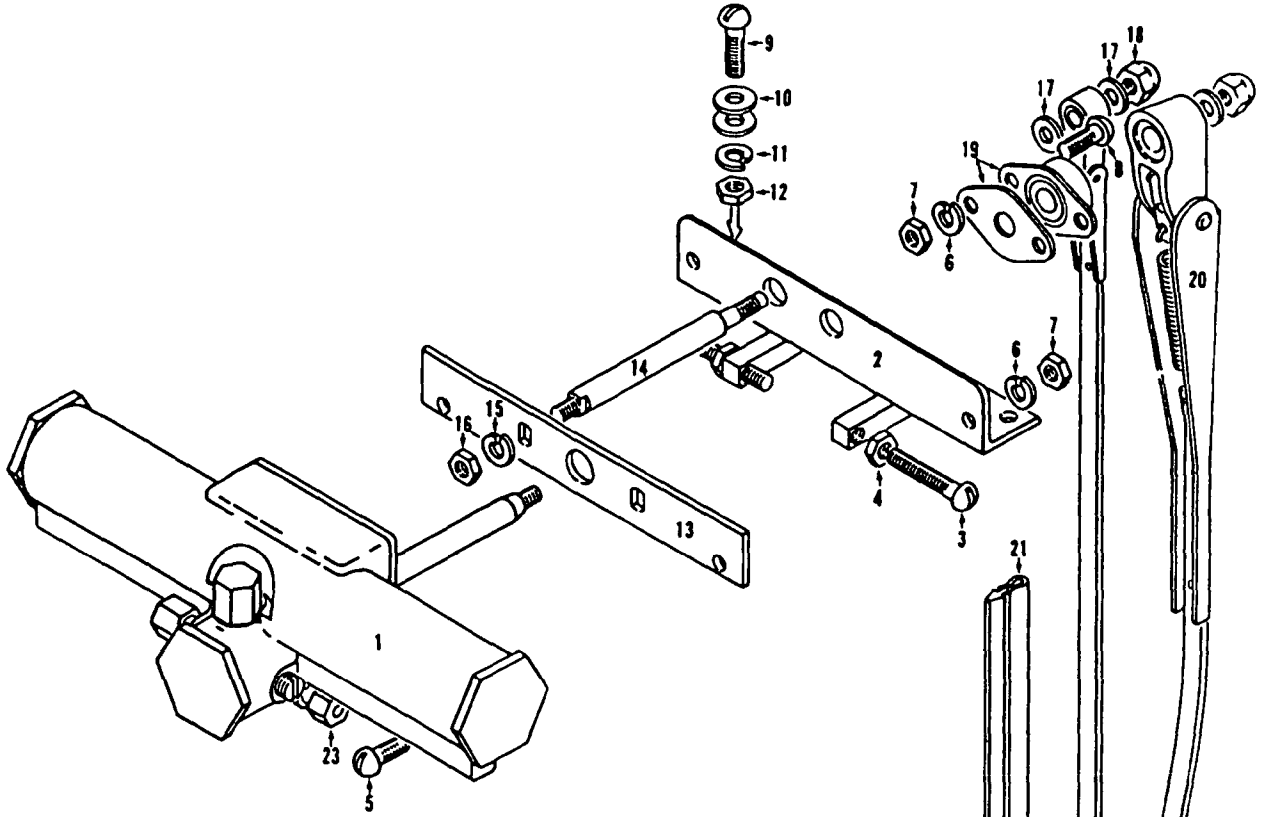
FIGURE 16



WEIGHTS
4000W

DESCRIPTION	APPROXIMATE WEIGHT (POUNDS)
Liftcrane — with 70 feet of Number 22 boom, 104,400 pound crane counterweight, universal gantry with link type backhitch, split front drum with 21" diameter lagging on left drum, independent swing, independent boom hoist with boom hoist wire rope, Cummins NT-855-C310 engine with VICON® controlled converters, 24' crawlers with 48" treads, telescopic air cushioned boom stops, single sheave upper boom point, lower and upper wire rope guides, 15 ton swivel hook and weight ball, and 155 ton load block	312,135 *
Upperworks — with split front drum with 21" diameter lagging on left drum, independent swing, independent boom hoist, Cummins NT-855-C310 engine with VICON controlled converters; LESS crane counterweights, gantry and backhitch, boom, equalizer, boom hoist wire rope, telescopic air cushioned boom stops, wire rope guides, swivel hook and weight ball, and load block	64,930 *
Upperworks — as above with gantry and backhitch, equalizer, boom hoist wire rope, and carbody; LESS crawlers	113,975 *
*Weights do not include hoist line, whip line, fuel. For optional engines ADD the following weights:	
Caterpillar D-343T	800
Caterpillar D-343TA	1,130
Caterpillar 3406DIT	190
Caterpillar 3406DITA	285
Detroit Diesel 12V-71N	1,050
Cummins NTA-855-C360	145
Carbody — with roller path, ring gear, and king pin; LESS crawlers	40,605
Crawlers — 24 feet with 48 inch treads	34,440
Counterweight	
Inner	40,100
Middle	35,800
Outer	28,500
No. 22 Open Throat Boom Top	
Boom Top — 40' (with lower boom point assembly)	8,350
Basic Pendant — 40' 9-3/4" (4)	240 each
Upper Boom Point (single sheave)	1,180
(double sheave)	1,260
Jib Adapter	545
Offset Link (2)	55 each
No. 22 Light Tapered Boom Top	
Tapered Boom Top — 50' (with boom point assembly)	5,980
Tapered Insert — 30'	3,610
Basic Pendant — 40' 9-3/4" (4)	240 each
No. 22 Hammerhead Boom Top	
Boom Top — 10' (with boom point and wire rope guide assembly)	5,440
Tapered Insert — 30'	3,610
Upper Boom Point	275
Basic Pendant — 37'11" (4)	215 each

MASTER



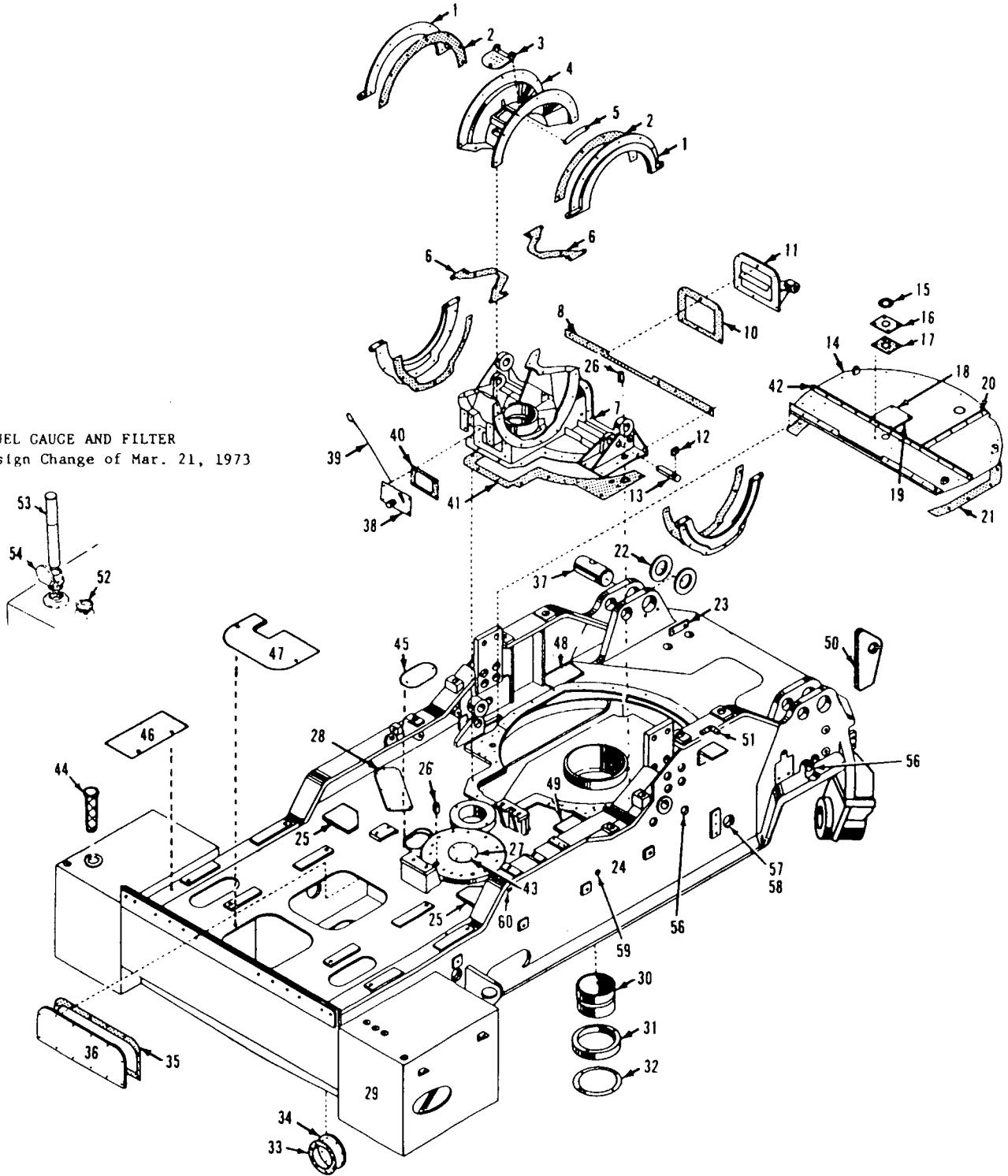
SCHEMATIC DIAGRAM

MATERIAL LIST ON BACK

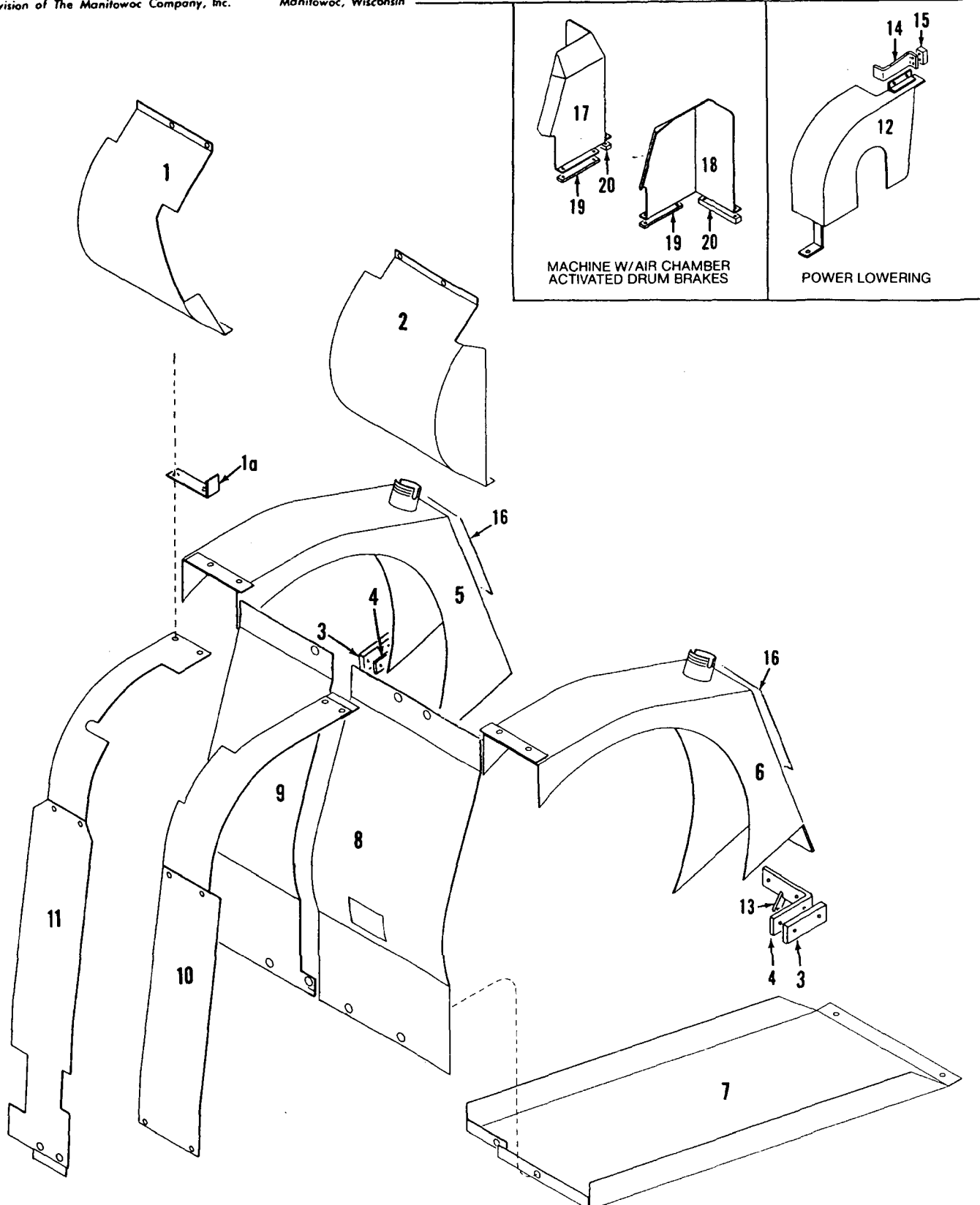
WINDSHIELD WIPER

MASTER

FUEL GAUGE AND FILTER
Design Change of Mar. 21, 1973



42103K1



49530C1

MATERIAL LIST ON BACK

GUARDS

PARTS MANUAL ALPHABETICAL INDEX
Group B - Upperworks Machinery

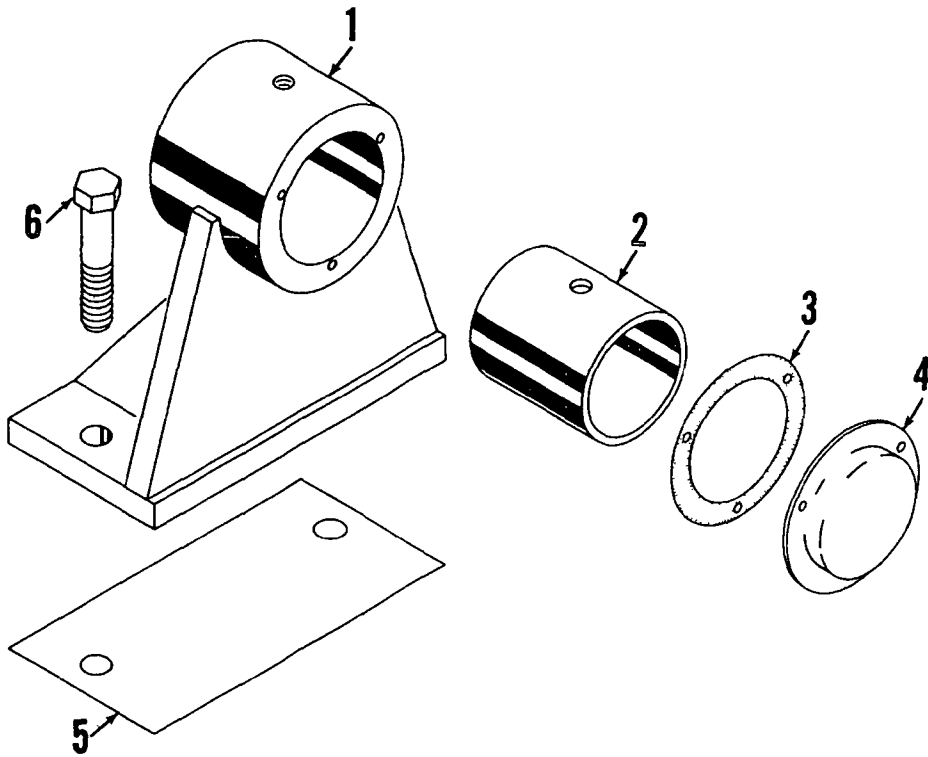
DESCRIPTION	PUBLICATION	REV	START DATE	END DATE	GROUP
Boom Hoist Auxiliary Brake	181526	B1	09/20/71	09/28/76	B0210
Boom Hoist Control, Independent	42392	L1	04/19/72	02/05/80	B0204
Boom Hoist Control, Independent	181533	C1	09/28/71	04/09/85	B0204
Boom Hoist Drive Shaft, Independent	42197	D1	09/19/58	06/09/80	B0207
Boom Hoist Drive Shaft, Independent	42197	I2	10/24/60	11/14/89	B0207
Boom Hoist, Independent	50997	C1	08/02/71	07/29/79	B0202
Boom Hoist, Independent	50997	A2	09/02/71	07/27/79	B0202
Countershaft, Drum Drive	181195	K1	04/16/70	05/07/93	B0501
Drum Brake - Front	42183	H1	10/16/67	04/01/77	B0603
Drum Brake - Front	42183	-	03/31/59	05/19/09	B0603
Drum Brake - Front	42184	H1	10/16/67	04/01/77	B0603
Drum Brake - Front	42184	-	03/31/59	05/19/09	B0603
Drum Brake Booster/Parking Brake	42404	F1	05/26/59	02/21/72	B0604
Drum Rotation Indicator - Front and Rear	33135	F1	09/02/64	03/10/76	B0607
Drum Shaft - Front	22596	A	09/03/52	10/08/81	B0601
Drum Shaft - Front	42385	J1	05/27/64	03/08/78	B0601
Drum Shaft - Front	42385	G2	04/10/59	12/23/92	B0601
Front Auxiliary Drum and/or Power Lowering	42407	F1	05/21/59	07/03/78	B0901
Front Auxiliary Drum and/or Power Lowering	42407	F2	10/24/60	07/13/78	B0901
Front Auxiliary Drum and/or Power Lowering Control	43674	E1	03/01/69	04/18/74	B0902
Hand Levers	32739	A1	02/06/63		B1201
Hand Levers	91921	A1	11/17/71	02/26/76	B1201
Independent Swing Control	42372	C1	05/13/63	09/21/72	B0403
Independent Swing Guards & Lubrication Piping	181861	C1	11/03/72	04/02/85	B0405
Independent Swing Outboard Bearing	23806	A1	06/18/58	05/23/85	B0406
Independent Swing Shaft, Horizontal	48085	H1	05/05/67	11/14/89	B0401
Independent Swing Shaft, Horizontal	48085	E2	05/05/67	04/29/85	B0401
Independent Swing Shaft, Vertical	23439	D1	07/11/56	04/12/85	B0402
Lubrication Pump & Piping (Sump)	33242	D1	04/05/65	05/20/77	B1401
Lubrication Pump & Piping (Sump)	50841	C1	03/29/71	05/20/77	B1401
Main Drive Shaft	43132	F1	08/19/63	09/17/76	B1301
Main Drive Shaft	43132	F2	09/19/63	05/06/74	B1301
Main Drive Shaft	43132	C3	08/09/63	07/13/78	B1301
Main Drive Shaft Control	32340	D1	08/15/60	03/02/84	B1302
Main Drive Shaft Control	42565	C1	06/28/60	02/18/75	B1302
Slide Pinion Control	48187	C1	10/17/67	11/04/74	B1602
Slide Pinion Shaft (Intermediate Travel or Swing Shaft)	90467	C1	04/22/64	04/18/72	B1601
Steering Control	20729	A1	05/14/41		E0501
Swing Brake Control	42394	F1	05/11/59	02/21/79	B1802
Swing Lock Control	48963	E1	04/23/70	04/08/93	B1701
Swing Shaft	23688	C1	05/12/58	06/19/81	B1901

MANITOWOC ENGINEERING CO

A Division of The Manitowoc Company Inc.

Manitowoc, Wisconsin

MASTER



23806 A-1

ILLUST No 23806-A-1

MATERIAL LIST ON BACK

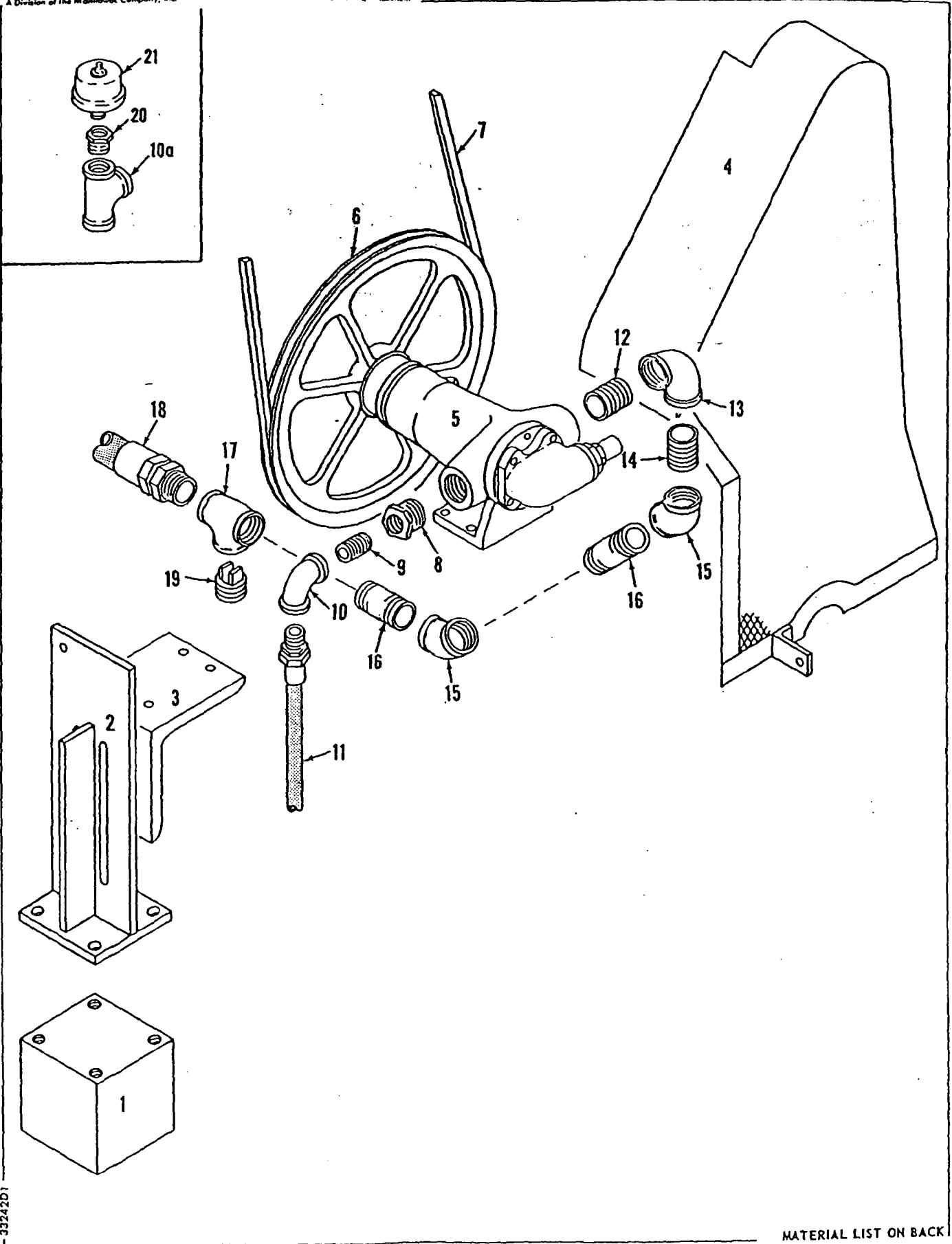
OUTBOARD BEARING

MANITOWOC ENGINEERING CO.

A Division of The Manitowoc Company, Inc.

Manitowoc, Wisconsin

MASTER



3324201

MATERIAL LIST ON BACK

OIL PUMP

42385-1 Cont	REV J	MODEL 3900-4000-4000 -4000W
--------------	----------	--------------------------------

DRUM SHAFT (UNEQUAL DRUMS)
(AIR CONTROL)
(ROLLER BEARING DRUMS AND JOURNALS)

REF NO	PART NUMBER	QUANTITY REQUIRED	DESCRIPTION OF PART	VENDORS PART NO
40	19385	1	REAR AUX DRUM W/OR W/OUT FRONT AUX DRUM OR WINCHHEAD (VICON)	
40	73285	1	SPROCKET W/capscrews and lockwashers (Mach W/Front Aux Drum or Winchhead)	
41	24740	1	SPACER (Mach W/Out Front Aux Door or Winchhead)	
41	24740	1	SPROCKET W/capscrews and (larger hub than shown and W/out small sprocket teeth)	
42	19366	1	GASKET	
43	91345	1	PIPE W/capscrews and lockwasher (W/shaft #33693)	
43	90038	1	PIPE W/capscrews and lockwashers (W/shaft #32137)	
44	700703	1	UNION, Swivel (Deublin #15-3) (Supersedes #35912)	
44	352912	1	UNION, Swivel (Fawick Rotorseal Type B)	
			<u>FOR WINCHHEAD OR FRONT AUX DRUM</u>	
40	19385	1	SPROCKET W/capscrews and lockwashers	
			<u>WEDGES AND LAGGING FOR LEFT DRUM</u>	
18	31082		LAGGING (21" Dia Plain) W/studs, hex nuts and lockwashers	
	31083		LAGGING (22" Dia 1-1/8" Gr) W/studs, hex nut and lockwashers	
	31084		LAGGING (25" Dia 7/8" Gr) W/studs, hex nuts and lockwashers	
	31085		LAGGING (25" Dia 1-1/8" Gr) W/studs, hex nuts and lockwashers	
	31086		LAGGING (27" Dia 7/8" Gr) W/studs, hex nuts and lockwashers	
	31668		LAGGING (27" Dia Plain) W/studs, hex nuts and lockwashers	
	31878		LAGGING (27" Dia 1" Gr) W/studs, hex nuts and lockwashers	
	32746		LAGGING (27" Dia 1" Gr - Power Lowering) W/studs, hex nuts and lockwashers	
	33113		LAGGING (27" Dia 1-1/8" Gr) W/studs, hex nuts and lockwashers	
	182214		LAGGING (27" Dia 3/4" Gr) W/studs, hex nuts and lockwashers	
37	3947		WEDGE (7/8" wire rope)	
	10160		WEDGE (1" wire rope)	
	11966		WEDGE (1-1/8" wire rope)	
	72681		WEDGE (1-1/4" wire rope)	
	74543		WEDGE (3/4" wire rope)	
			<u>WEDGES AND LAGGINGS FOR RIGHT DRUM (SEE NOTE 1)</u>	
18	32288		LAGGING (24" Dia 1-1/4" Gr) W/studs, hex nuts and lockwashers	
	32343		LAGGING (24" Dia 1-1/4" Gr) W/studs, hex nuts and lockwashers and ferrule #424639	
	32636		LAGGING (24" Dia 1-1/4" Gr - Power Lowering) W/studs, hex nuts and lockwashers	
	32637		LAGGING (26" Dia 1" Gr - Power Lowering) W/studs, hex nuts and lockwashers	
	32655		LAGGING (26" Dia 1" Gr) W/studs, hex nuts and lockwashers	
	32721		LAGGING (24" Dia 1" Gr - Power Lowering) W/studs, hex nuts and lockwashers	
	33133		LAGGING (27" Dia 1-1/8" Gr) W/studs, hex nuts and lockwashers	
	180081		LAGGING (27" Dia 1-1/4" Gr) W/studs, hex nuts and lockwashers	
	182213		LAGGING (27" Dia - 7/8" Gr) W/studs, hex nuts and lockwashers	
37	71877		WEDGE (1" Cable)	
	71878		WEDGE (1-1/8" wire rope)	
	71879		WEDGE (1-1/4" wire rope)	
	71876		WEDGE (7/8" wire rope)	
	74544		WEDGE (3/4" wire rope)	

REV J	42385-1 Cont
----------	--------------

PLEASE GIVE MACHINE S/N W/ORDER

Run as Front

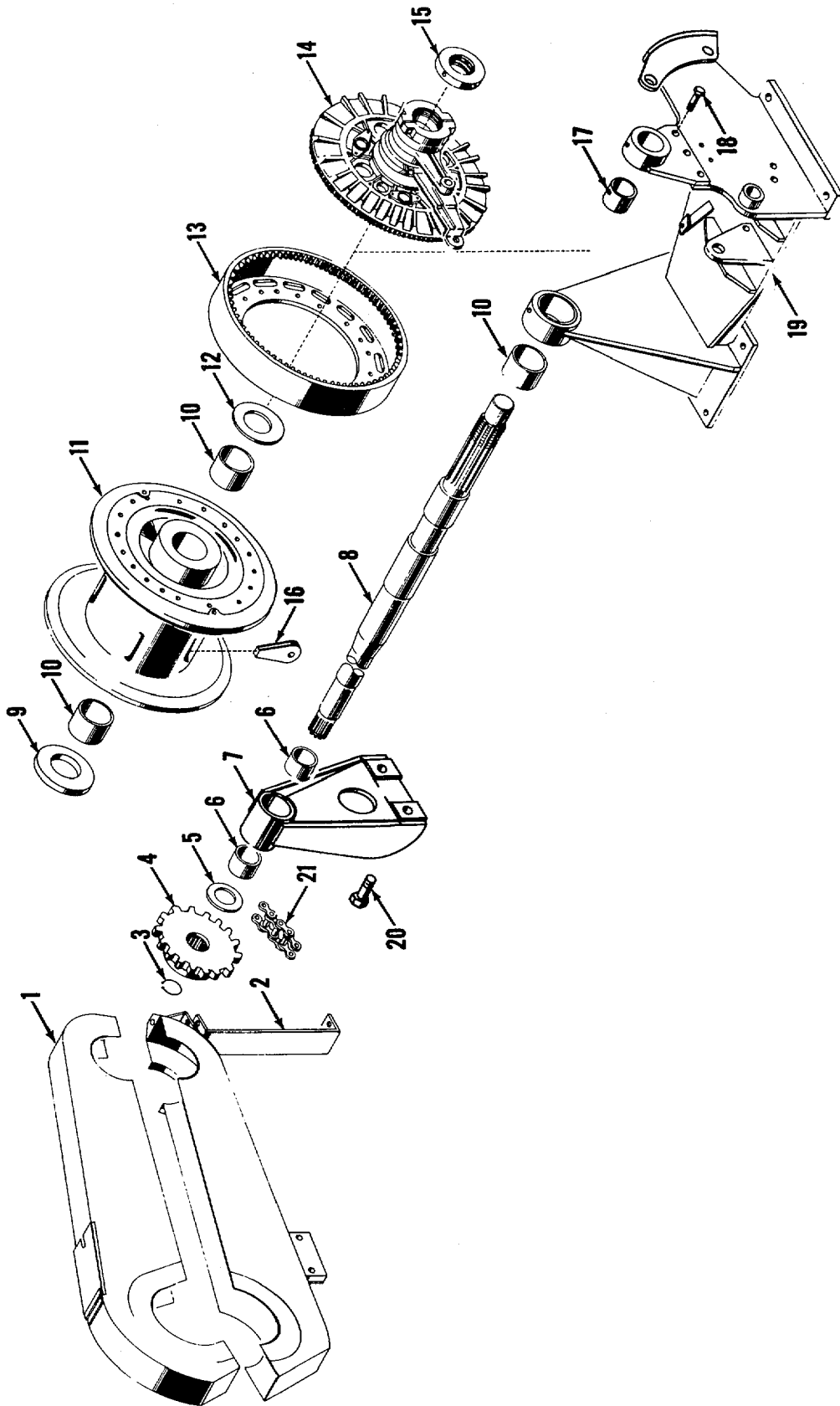
42385 J1 Cont'd

MASTER

MANITOWOC ENGINEERING CO.

A Division of The Manitowoc Company, Inc.

Manitowoc, Wisconsin



42407C1

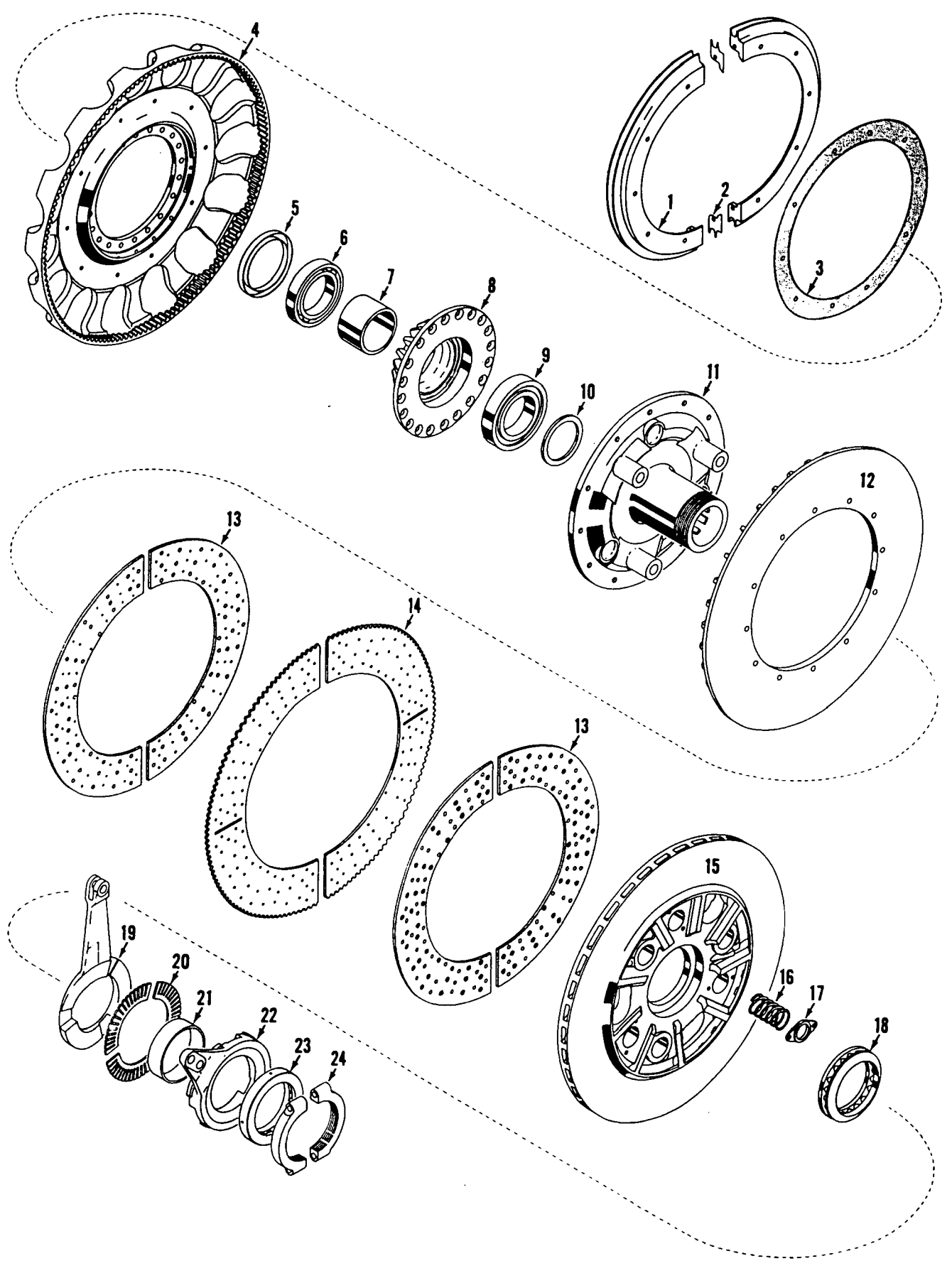
MATERIAL LIST ON BACK

FRONT AUX. DRUM

MANITOWOC ENGINEERING CO.

A Division of The Manitowoc Company, Inc.

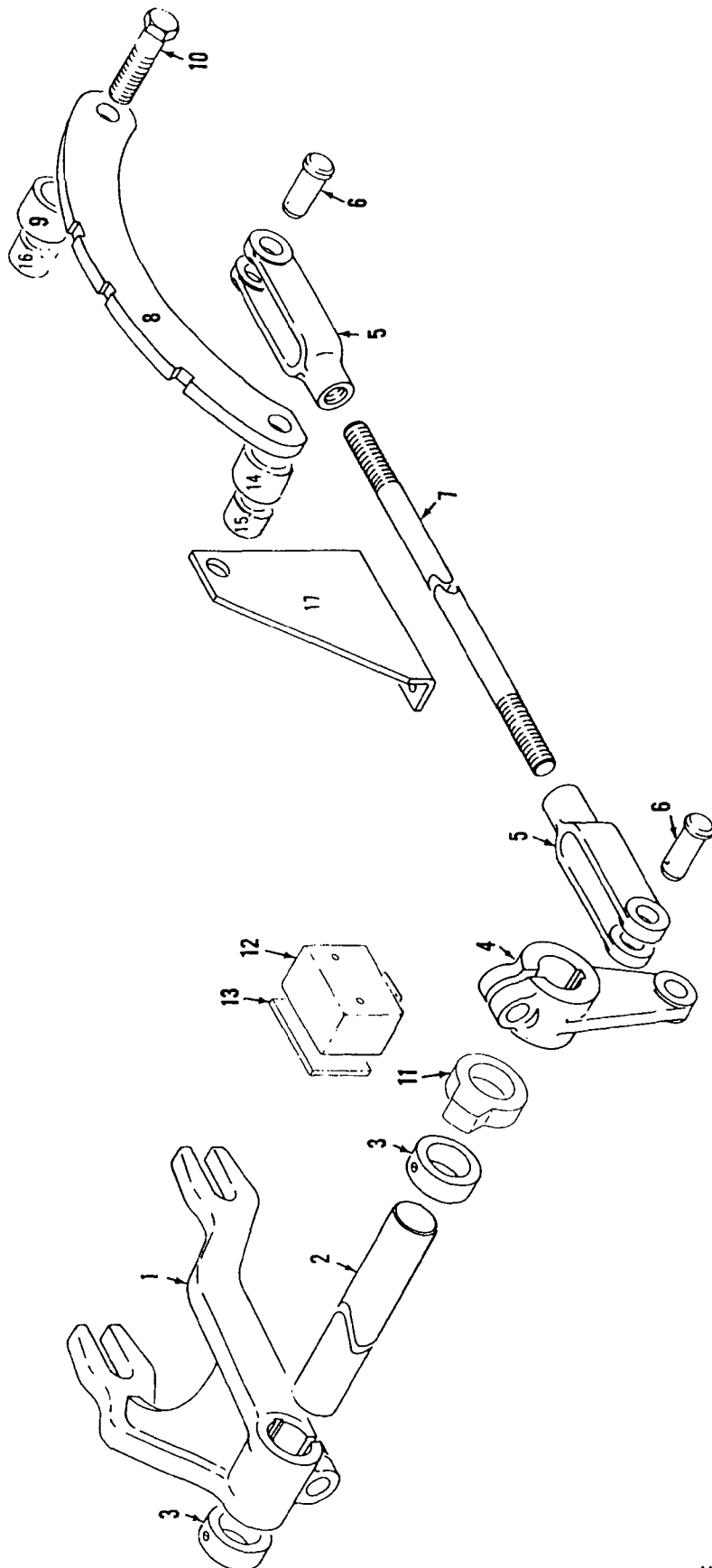
Manitowoc, Wisconsin



43132A2

MATERIAL LIST ON BACK

MAIN DRIVE CLUTCH



48187C1

MATERIAL LIST ON BACK

SLIDE PINION CONTROL

50997-1 Cont.	REV. C	MODEL 3900-4000W-SC150
---------------	--------	------------------------

IND. BOOM HOIST

AAA 5112

Run as Front

REF. NO.	PART NUMBER	QUANTITY REQUIRED	DESCRIPTION OF PART	VENDORS PART NO.
47	225112	1	NUT, Lock	
48	622378	1	SEAL, Oil	
49	71052	1	ADAPTER W/gr. fitting, capscrews and lockwashers	
50	72004	1	COVER, Plate	
51	93680	1	DRUM, Brake (See Note 2)	
52	92179	1	DRUM, Aux. Brake	
53	257238	6	BOLT, Coupling	
	548367	6	NUT, Elastic Stop (5/8" - 18)	
54	17328	1	PLATE, End	
	613875	2	CAPSCREW (1/2" - 13 N.C. x 2" - Gr. 5)	
	710306	2	LOCKWASHER (1/2")	
55	12581	1	SPACER	
56	93819	1	CAM, Pawl	
57	181465	1	RATCHET (12T.)	
58	93837	1	GASKET	
59	181474	1	COVER, Access W/capscrews and lockwashers	
60	539551	1	PLATE, Identification	
			<p><u>NOTE 1:</u> Per design change of June 20, 1975, Drum #182543 will be sent as a replacement for Drum #181437 which was standard for this installation. Drum #182543 will accept a Lebus lagging if desired.</p> <p><u>NOTE 2:</u> For Field Replacement only of Drum #93680 use the following:</p>	
54	144103	1	PLATE, End	
	613875	2	CAPSCREW (1/2" - 13 NC x 2" - Grade 5)	
	612555	4	CAPSCREW (1/2" - 13 NC x 1 1/4")	
	710306	6	LOCKWASHER (1/2")	

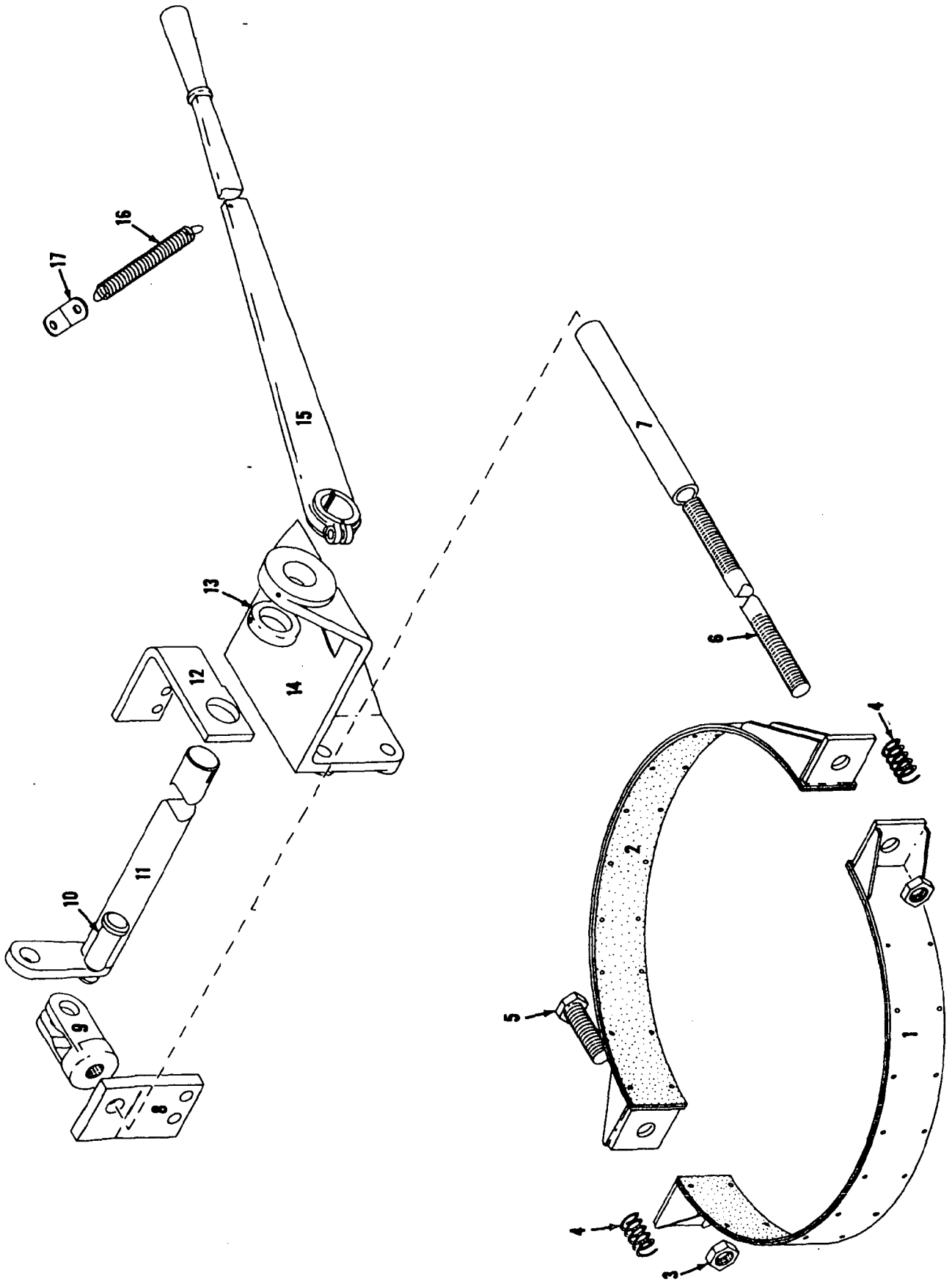
50997 Cont'd.

REV. C	50997 - 1
--------	-----------

MANITOWOC ENGINEERING CO.

A Division of The Manitowoc Company, Inc.

Manitowoc, Wisconsin



181526A1

MATERIAL LIST ON BACK

MASTER

181526 A1

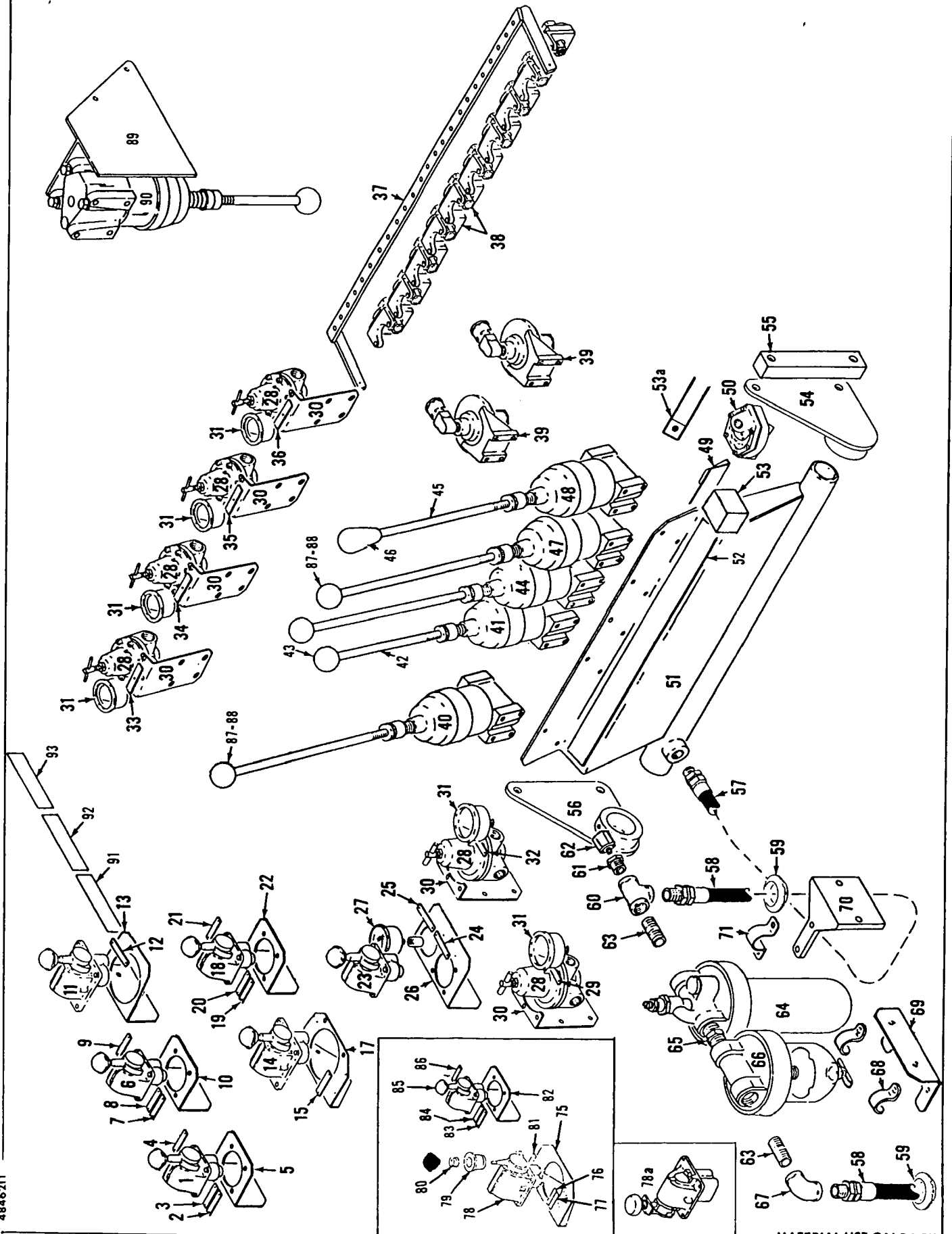
IND. BOOM HOIST AUX. BRAKE

MANITOWOC ENGINEERING CO.

A Division of The Manitowoc Company, Inc.

Manitowoc, Wisconsin

MANITOWOC

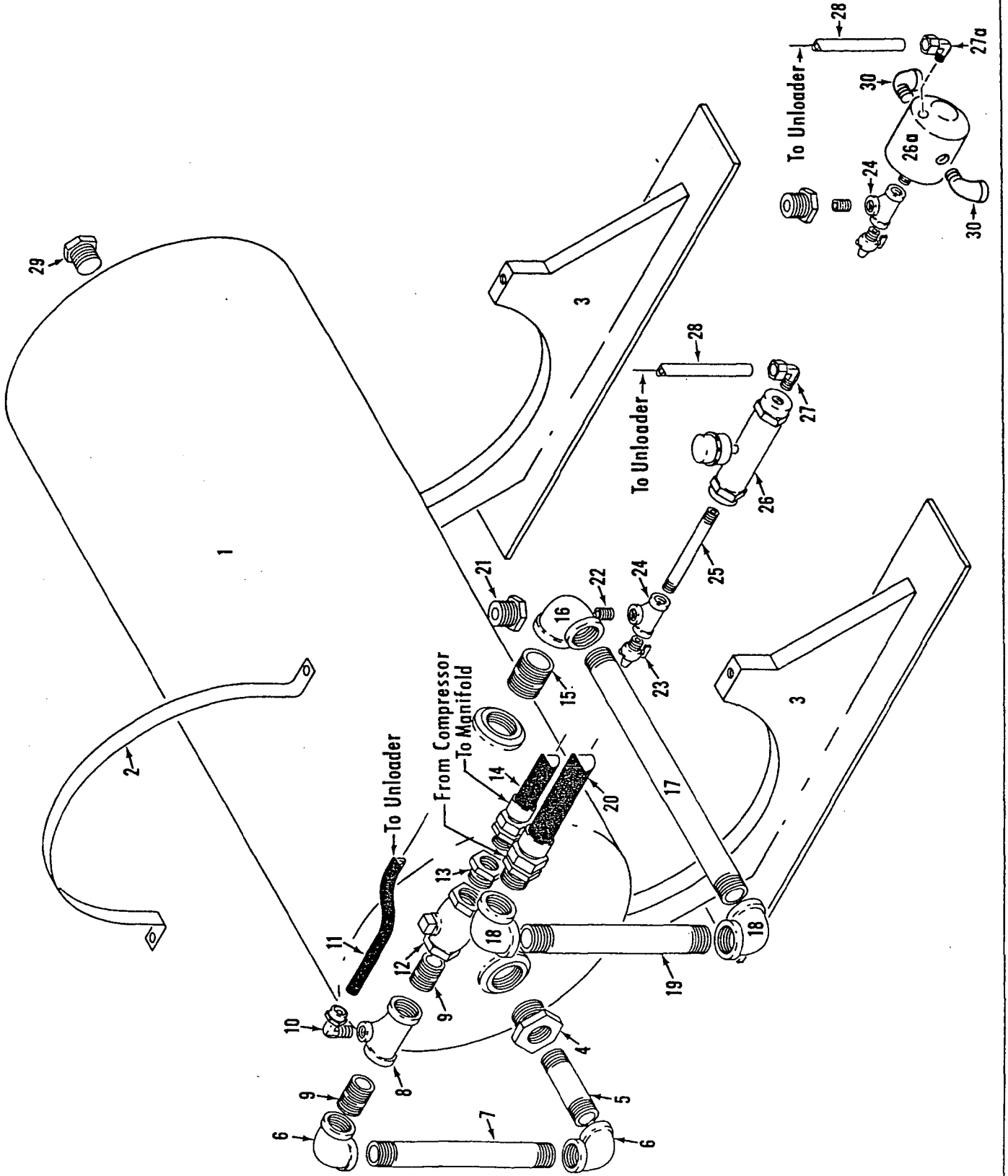


4846211

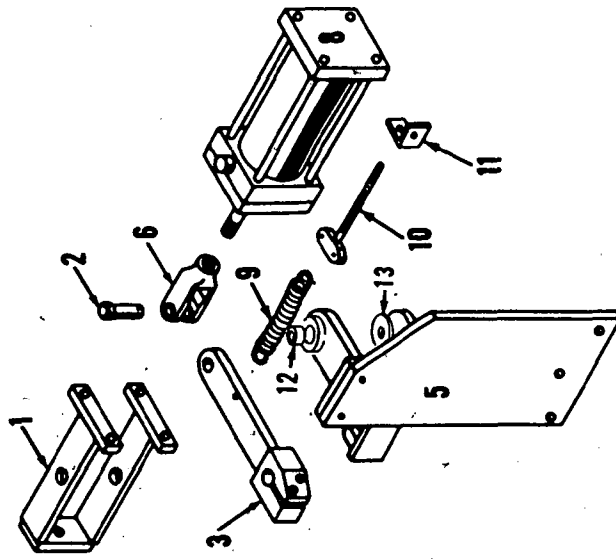
MATERIAL LIST ON BACK

CONTROL CONSOLE

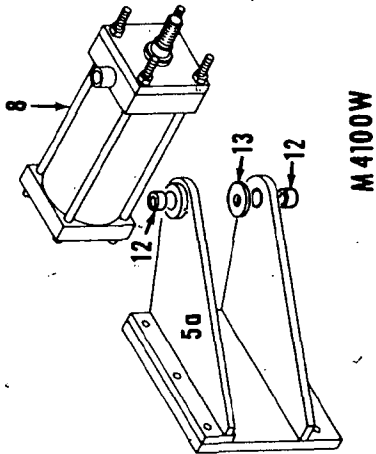
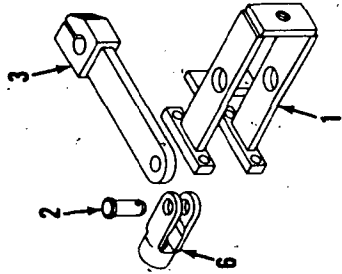
MASTER



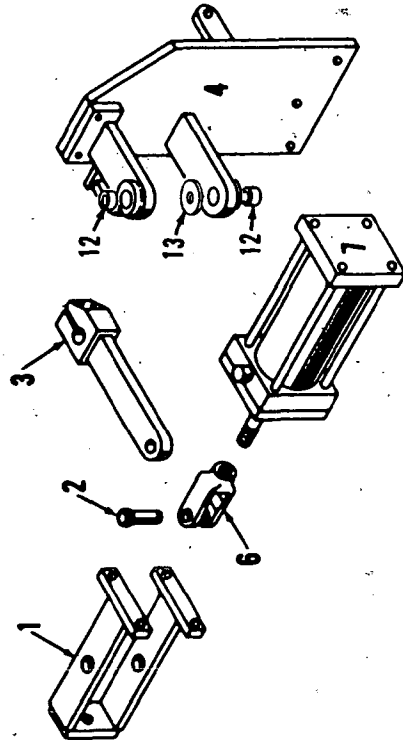
MASTER



M 3000 - 4000W INCL.



M 4100W



CLICK HERE TO **DOWNLOAD** THE COMPLETE MANUAL

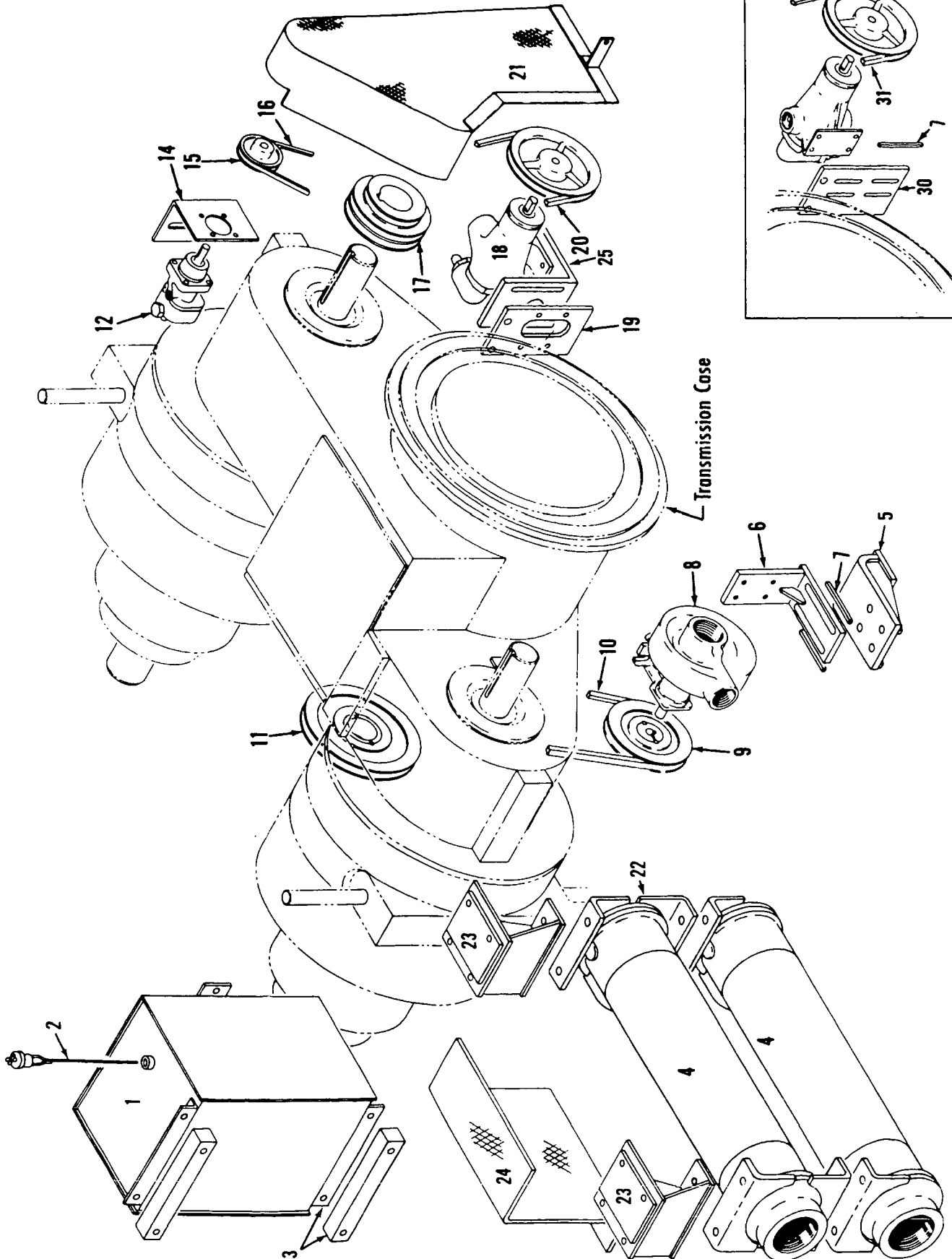
- Thank you very much for reading the preview of the manual.
- You can download the complete manual from: www.heydownloads.com by clicking the link below



- Please note: If there is no response to CLICKING the link, please download this PDF first and then click on it.

CLICK HERE TO **DOWNLOAD** THE COMPLETE MANUAL

MASTER



48648-5 Cont.	REV. D	MODEL 4000W, SC150
---------------	-----------	-----------------------

LUBRICATION PIPING

REF. NO.	PART NUMBER	QUANTITY REQUIRED	DESCRIPTION OF PART	VENDORS PART NO.
50	571705	1	<u>MACHINES W/OUT FORCED OIL LUBRICATION TO CONVERTERS PLUG (1")</u>	
51	427090	1	<u>MACHINES W/3/4" NPT PORT FILTER W/OR W/OUT ELEVATED CAB</u>	
52	73396	1	FILTER, Oil (3/4" NPT Ports)	
22	543740	1	BRACKET W/Mach. screws, hex nuts and lockwashers	
53	543740	1	NIPPLE (3/4" x 1-1/2")	
42	679304	1	TEE (3/4")	
54	288751	1	BUSHING (3/4" x 1/4")	
32	543402	2	NIPPLE, Close (1/4")	
15	406952	2	ELBOW (1/4")	
16	288766	1	BUSHING (3/4" x 1/8")	
	701017	1	UNIT, Pressure Sending	
			<u>MACHINES W/1" NPT PORT FILTER AND DIRECT READING GAUGE W/OR W/OUT ELEVATED CAB</u>	
26	679359	1	TEE (1" x 3/4" x 3/4")	
22	543740	1	NIPPLE (3/4" x 1-1/2")	
27	406645	1	ELBOW (3/4" x 1/4")	
55	429621	1	CONNECTOR, Male (3/8" O.D. Tube 1/4" NPT)	
56	486056	1	TUBING, Plastic (3/8" O.D. - specify length)	
57	429624	1	CONNECTOR, Male (3/8" O.D. Tube 1/8" NPT)	
58	377200	1	COUPLING (1/8")	
59	460113	1	GAUGE, Pressure (in operator's compartment)	
60	288790	1	BUSHING (1/4" x 1/8")	
16	701017	1	UNIT, Pressure Sending	
			<u>MACHINES W/VERTICALLY MOUNTED OIL PUMP</u>	
61	429555	1	UNION, 90° swivel adapter (1" male NPT 1" female NPSM)	
62	429598	1	UNION, 90° swivel adapter (1" male NPT 3/4" female NPSM)	
63	14615	1	HOSE, Flex (3/4" I.D. 4'6" - 1.3716 m)	
			<u>MACHINES W/VERTICALLY MOUNTED OIL PUMP W/OIL TRAP</u>	
7	406956	2	ELBOW (1")	
64	543809	1	NIPPLE (1" x 4")	
6	543406	1	NIPPLE, Close (1")	

#0-147

REV. D	48648 - 5
-----------	-----------

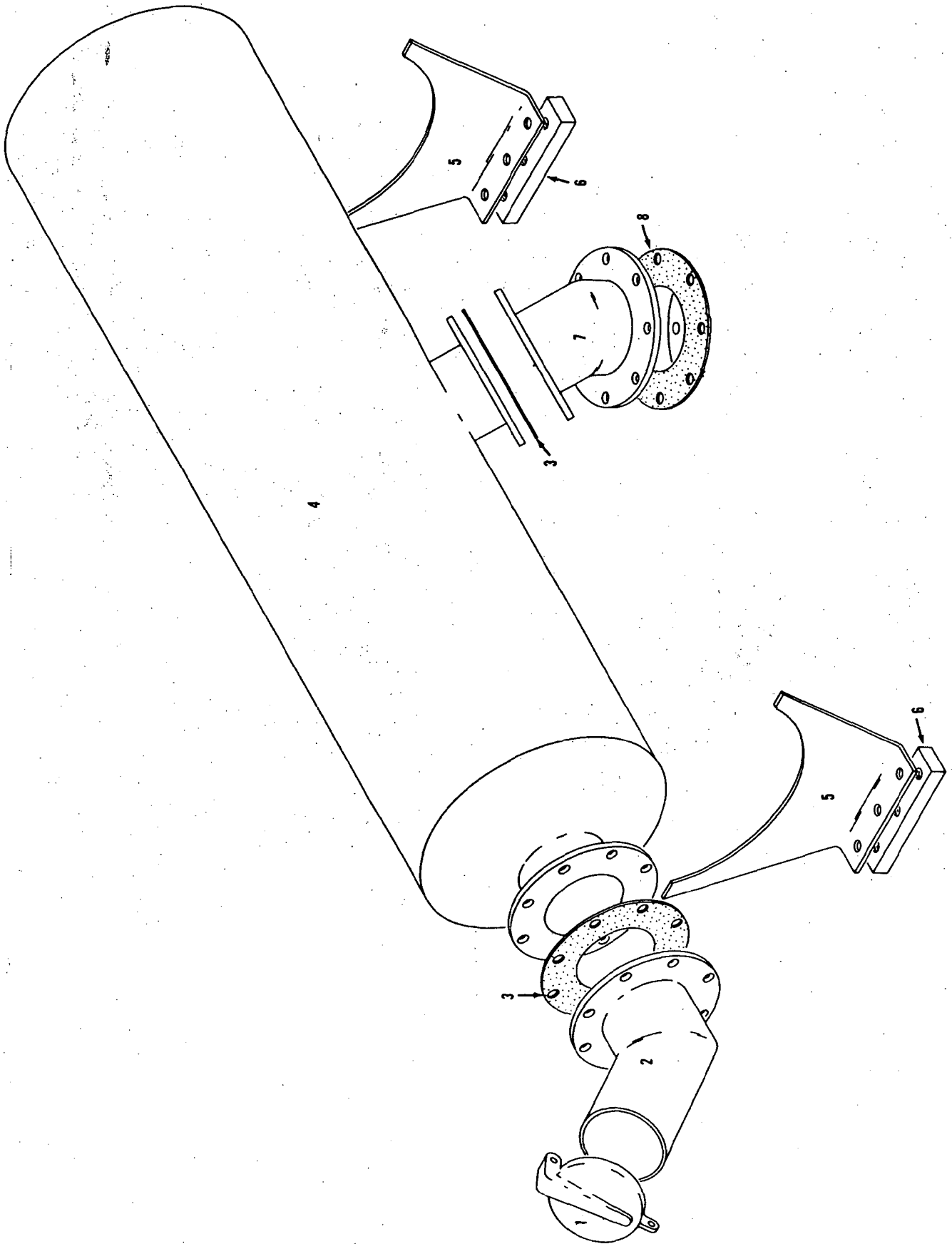
PLEASE GIVE MACHINE S/N W/ORDER

MASIER Run as Front
48648 D5 cont'd.

MANITOWOC ENGINEERING CO.

A Division of The Manitowoc Company, Inc.

Manitowoc, Wisconsin



MASTER

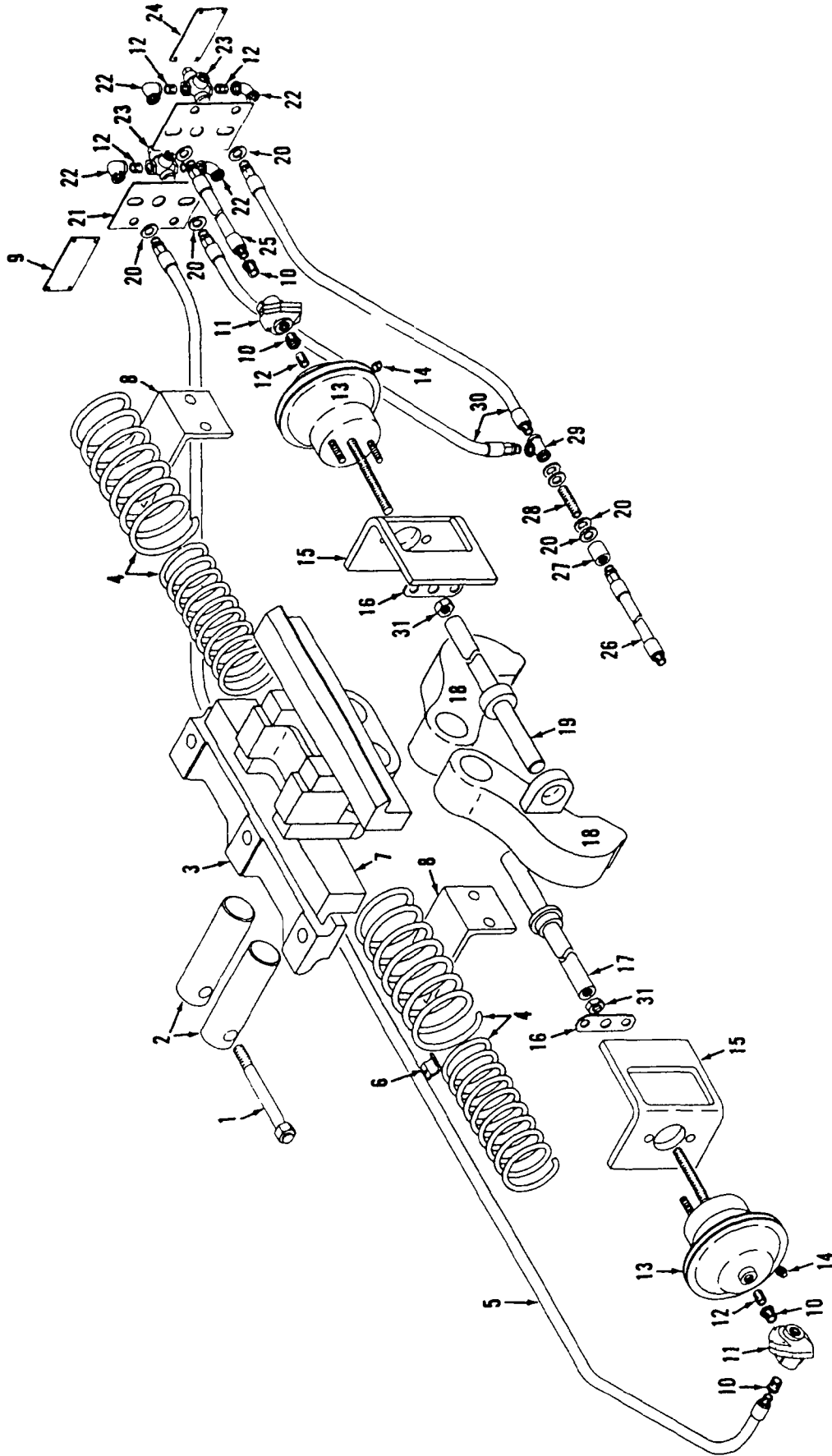
9392 11

93923A1

MATERIAL LIST ON BACK

MUFFLER

MASTER



MATERIAL LIST ON BACK

TRAVEL LOCK

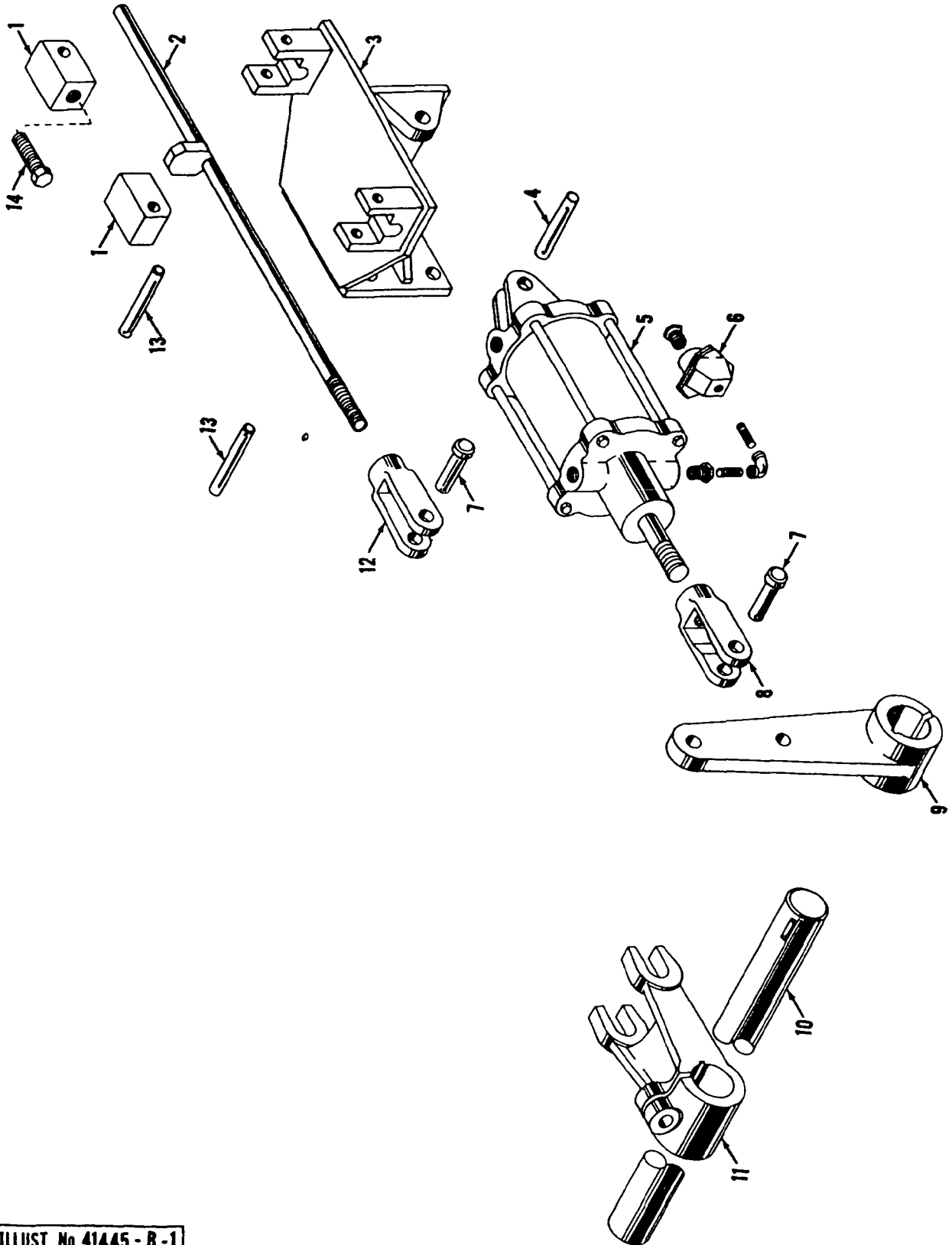
31743-1 Back

50796A1

MANITOWOC ENGINEERING CO

A Division of The Manitowoc Company Inc.

Manitowoc, Wisconsin



MASTER

Back

ILLUST No 41445-B-1

MATERIAL LIST ON BACK

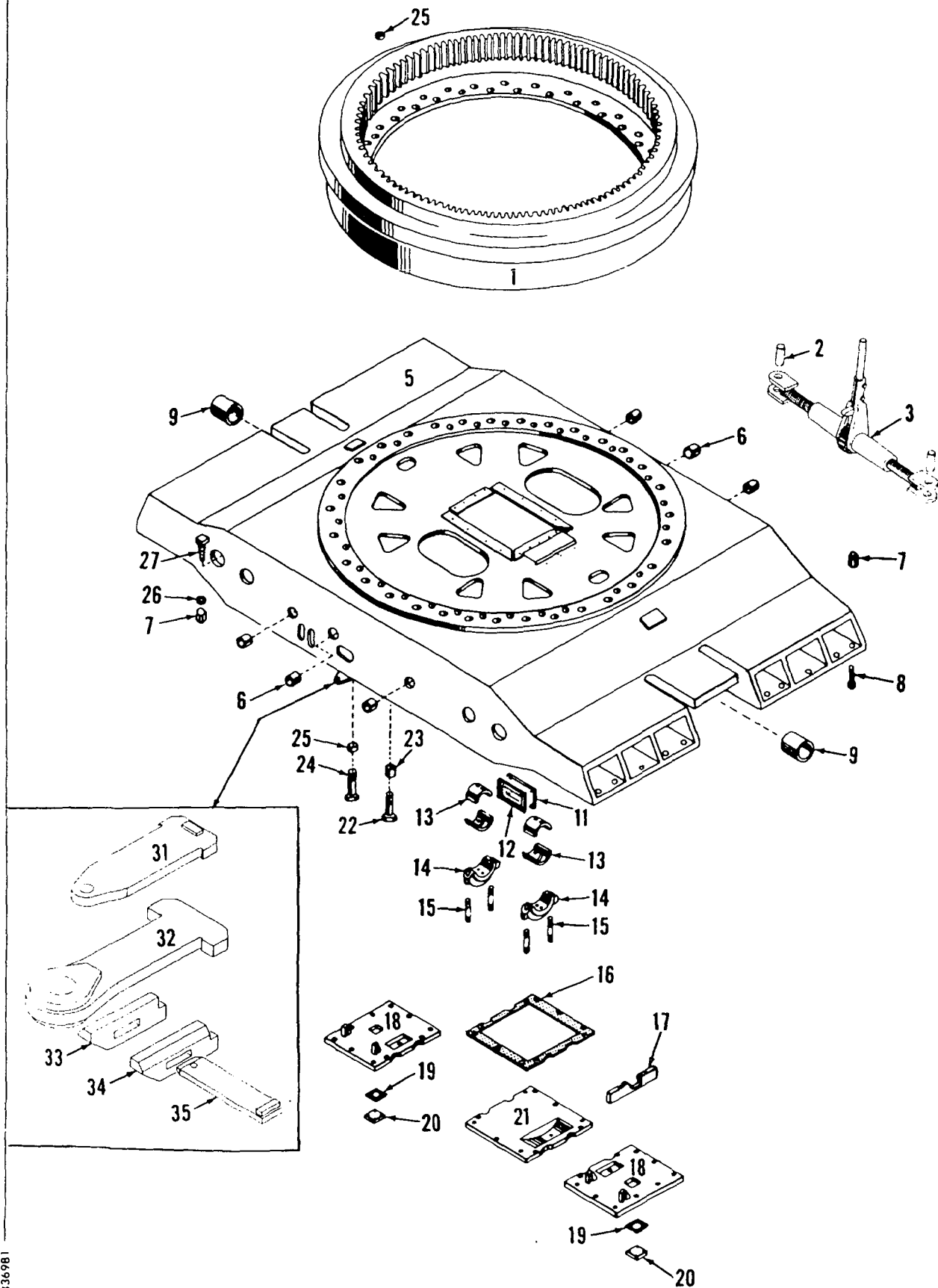
STEERING CONTROL ASSEMBLY - ROTATING BED

17 20
se 42

MANITOWOC ENGINEERING CO.

A Division of the Manitowoc Company, Inc.

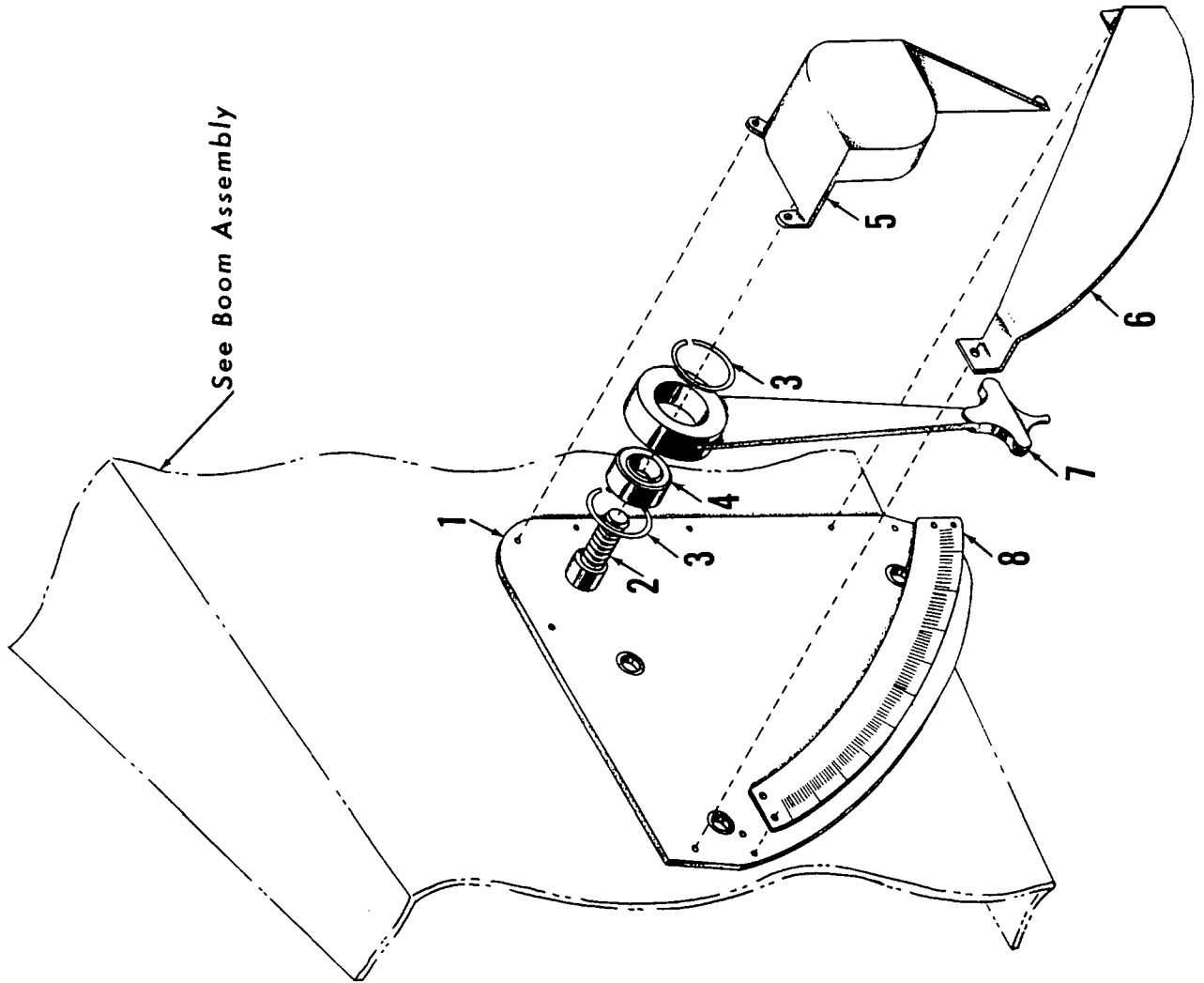
Manitowoc, Wisconsin

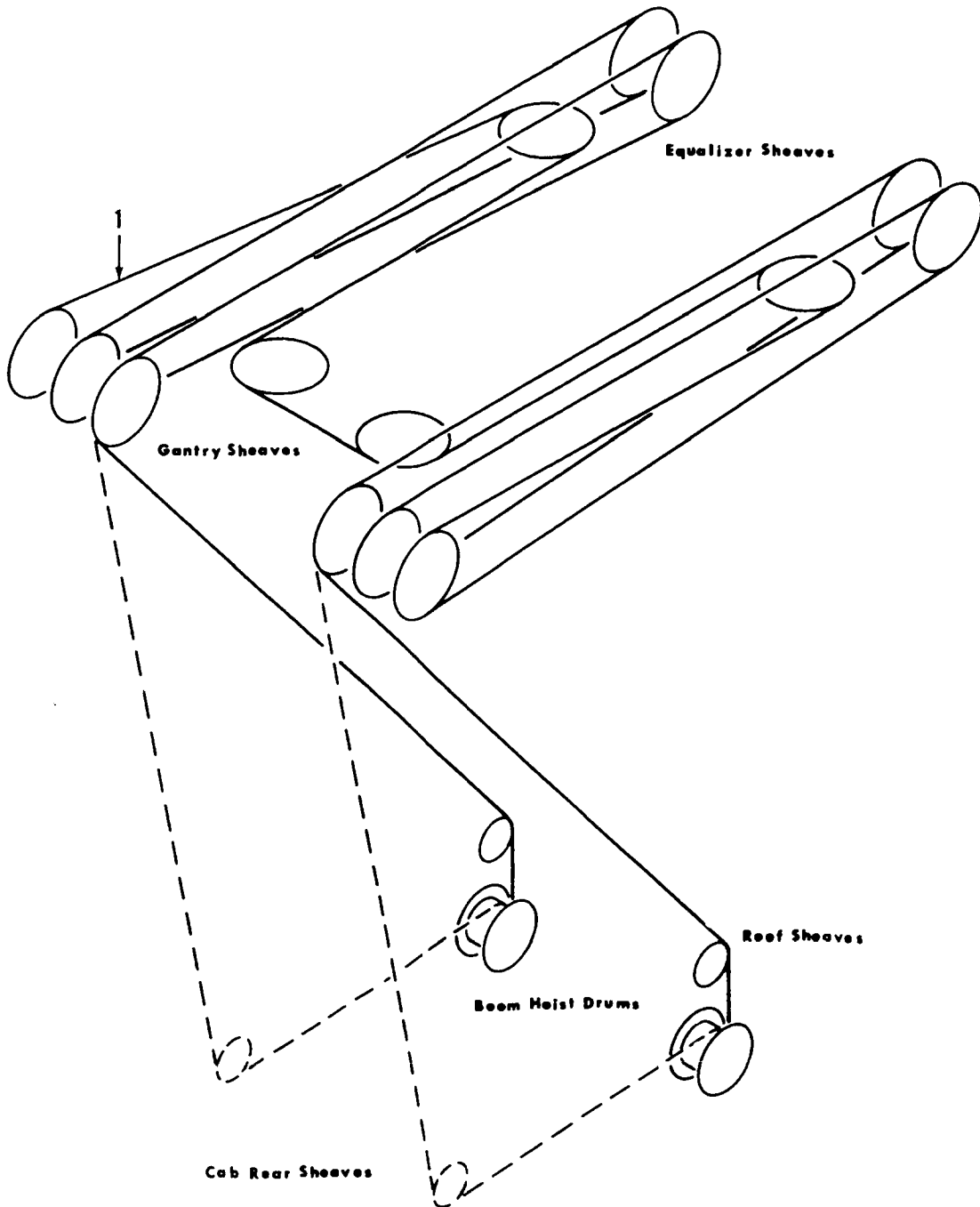


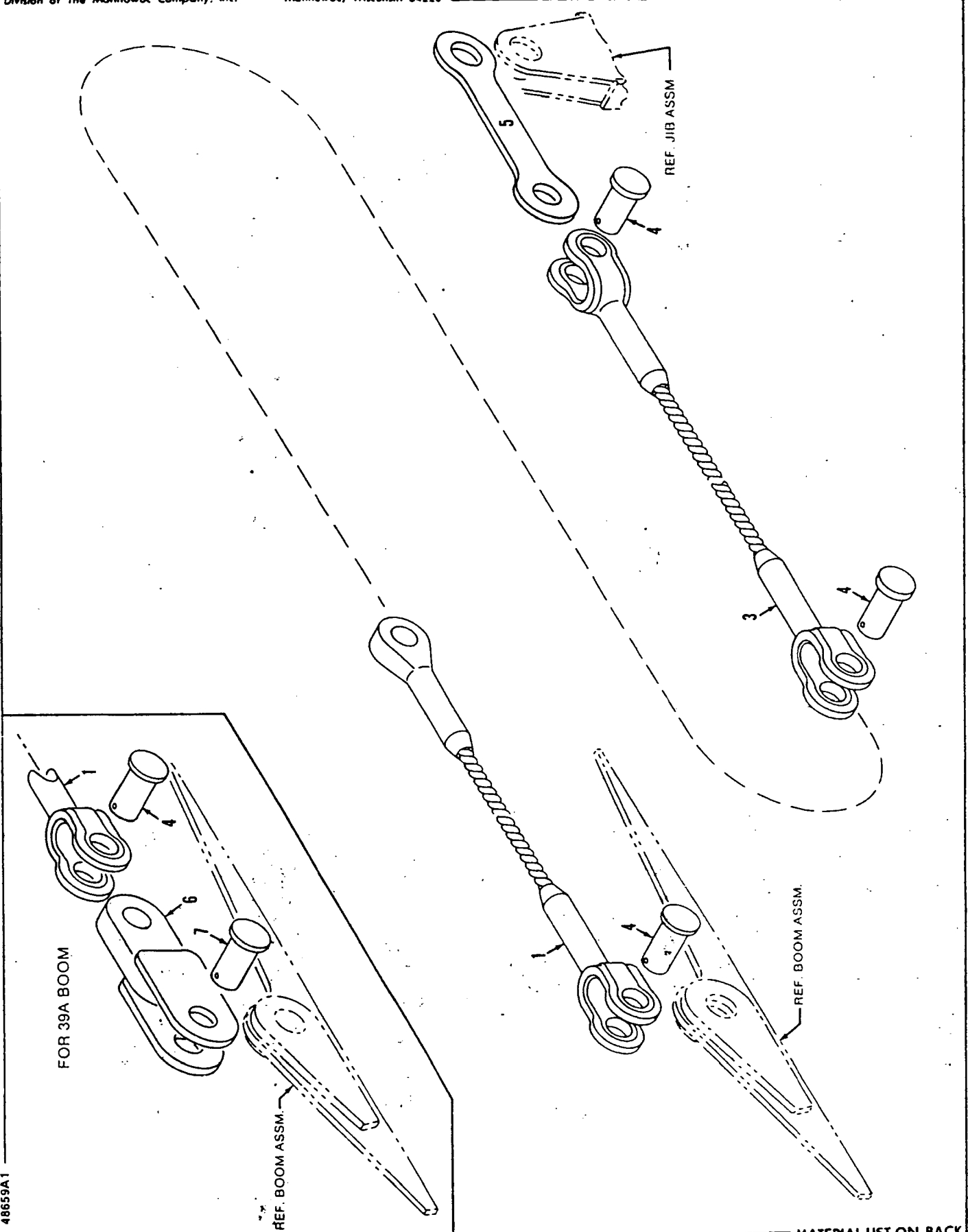
4336981

MATERIAL LIST ON BACK

CARBODY



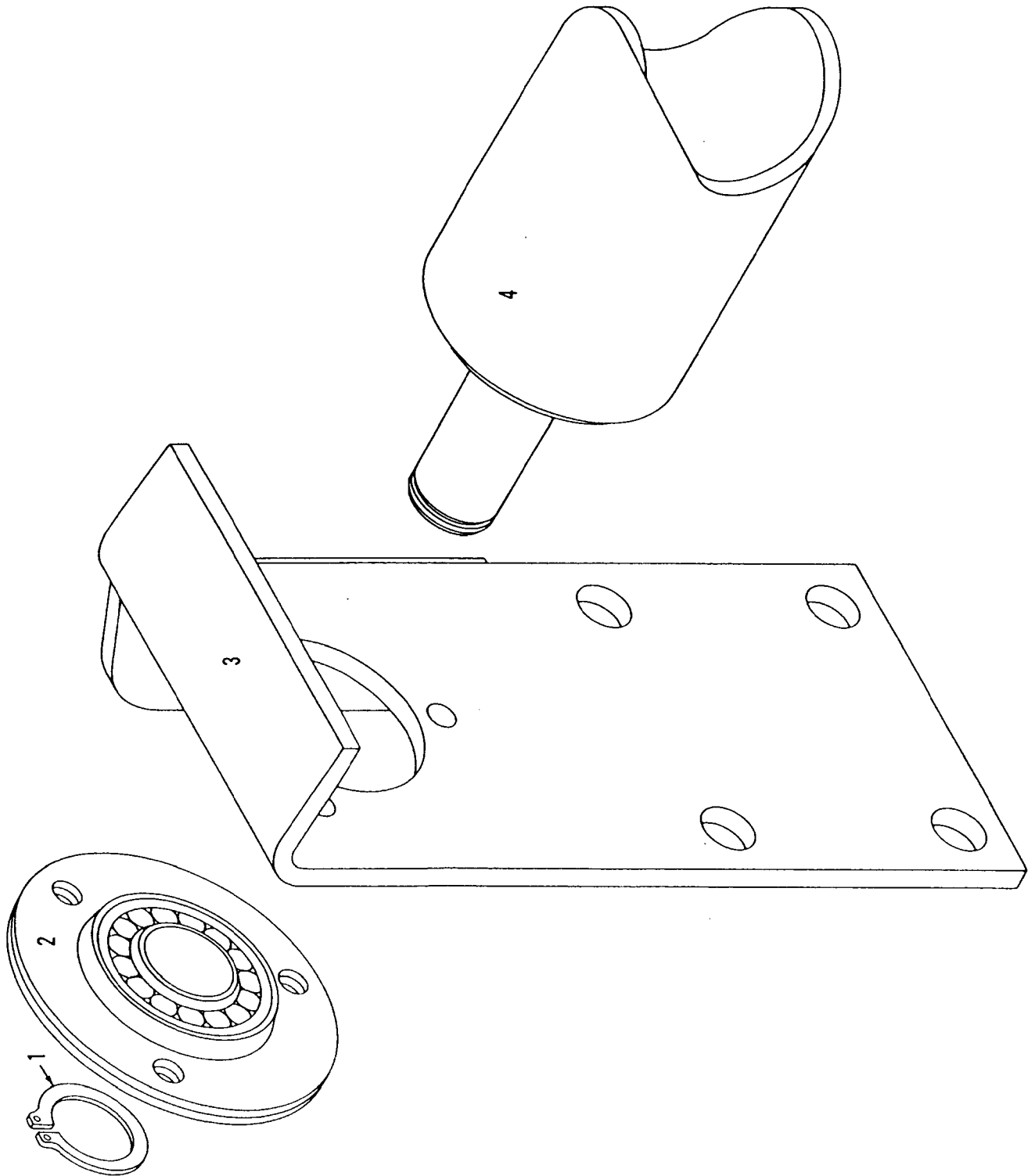




48659A1

MATERIAL LIST ON BACK

JIB BACKSTAY

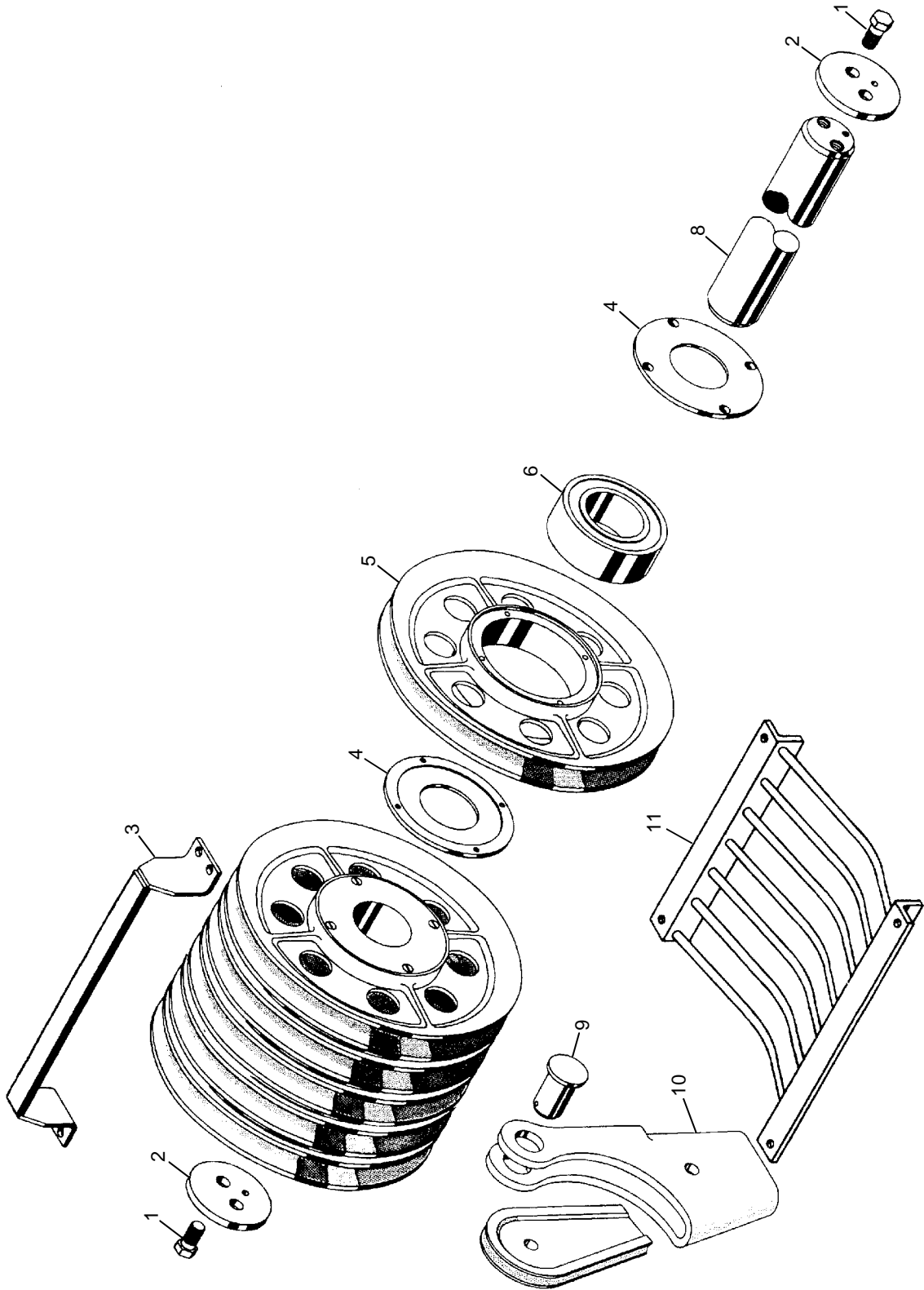


ASIER

77728A1

MATERIAL LIST ON BACK

CABLE ROLLER GUIDE ASSEMBLY



Eng Rev
03-15-00

ASSEMBLY	REVISION
91132	D

BOOM POINT SHAFT, #22 & 22A BOOM

O-NUMBER NUMERICAL INDEX

PUBLICATION	REV
0-63	C
0-64	B
0-69	C
0-71	-
0-72	B
0-96	C1
0-117	C
0-123	A1
0-123	A2
0-147	D2
0-148	-
0-156	F
0-157	C
0-173	A
0-243	A
0-243	A1
0-246	C1
0-247	B
0-247	B1
0-250	A
0-250	A1
0-279	B1
0-284	A
0-286	B
0-289	G
0-290	G1
0-294	A
0-294	E
0-304	L1
0-307	-
0-307	F
0-337	B
0-340	G
0-407	B
0-407	B1
0-414	B
0-415	B1
0-441	A4
0-441	C2
0-451	EA1
0-469	E1
0-471	E
0-503	-
0-512	C

0-69 - 1 Cont.	REV. C.	MODEL 2300-4600 Incl.
----------------	---------	-----------------------

AIR CONTROL VALVE
(MANITOWOC #714493 - WESTINGHOUSE #P59331 NEW : P54424-0101 OLD) (2-HA-1)
(MANITOWOC #714418 - WESTINGHOUSE #P59333 NEW : P54424-0301 OLD) (2-HA-LR)

REF. NO.	PART NUMBER	QUANTITY REQUIRED	DESCRIPTION OF PART	VENDORS PART NO.
13		1	CAM	P54192
14		1	FOLLOWER, Cam	P54197
15		2	SCREW, Truss Head	P49861-3
16		2	LOCKWASHER	506608
17		1	FLANGE, Valve Retaining	P54463
18	714504	1	RING, "0" (15/16" O.D.)*	P49708-16
19		1	GUIDE, Plunger	P54147
20	714506	1	RING, "0" (7/16" O.D.)*	P49708-11
21		1	PLUNGER, Valve	P54146
22	714525	1	SPRING, Exhaust Valve*	P54144
23		1	SEAT, Inlet Valve*	P54145
24	714441	1	RING, "0" (7/8" O.D.)*	P49708-115
25		1	WASHER	P53455-3
26	714442	1	VALVE, Inlet*	P5125
27	714526	1	SPRING, Inlet Valve	539115
28		1	SPACER, Valve	P54794
29		1	SCREEN	P54194
30		1	BODY	P54305
31		2	WASHER	506607
32		2	SCREW, Fillet Head	P49835

*Recommended to be stocked at all times.

NOTE: Part numbers at right are Westinghouse. Please so specify if ordering.
Valve changed approx. July 1969. Check nameplate for identification of valve.

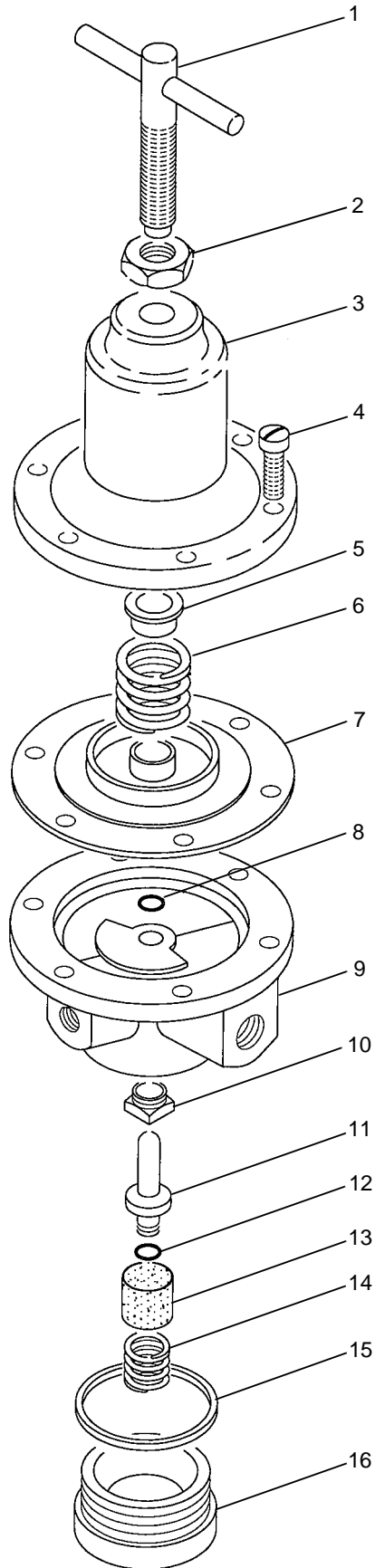
REV. C	0 - 69 -1
--------	-----------

PLEASE GIVE MACHINE S/N W/ORDER

Run as front

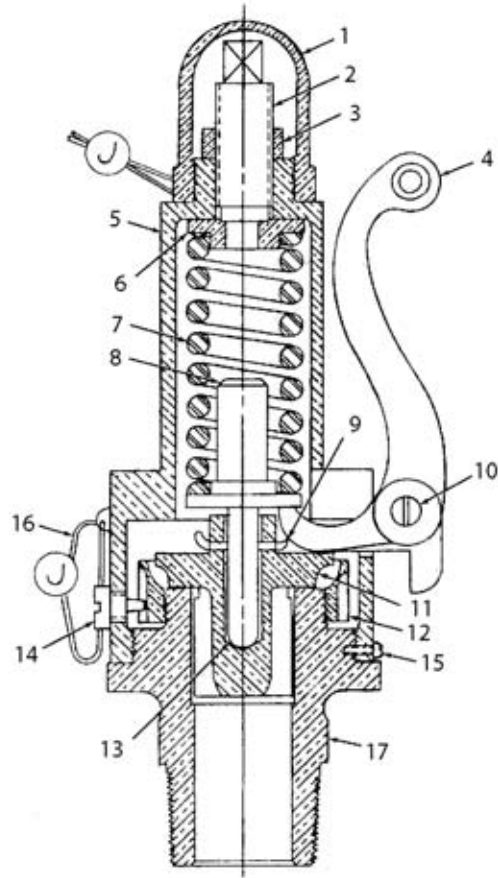
MASTER

0-69 Cont.

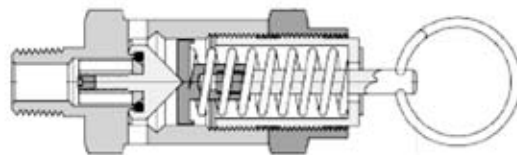


ASSEMBLY	REVISION
O-117	C

VALVE, PRESSURE REGULATING



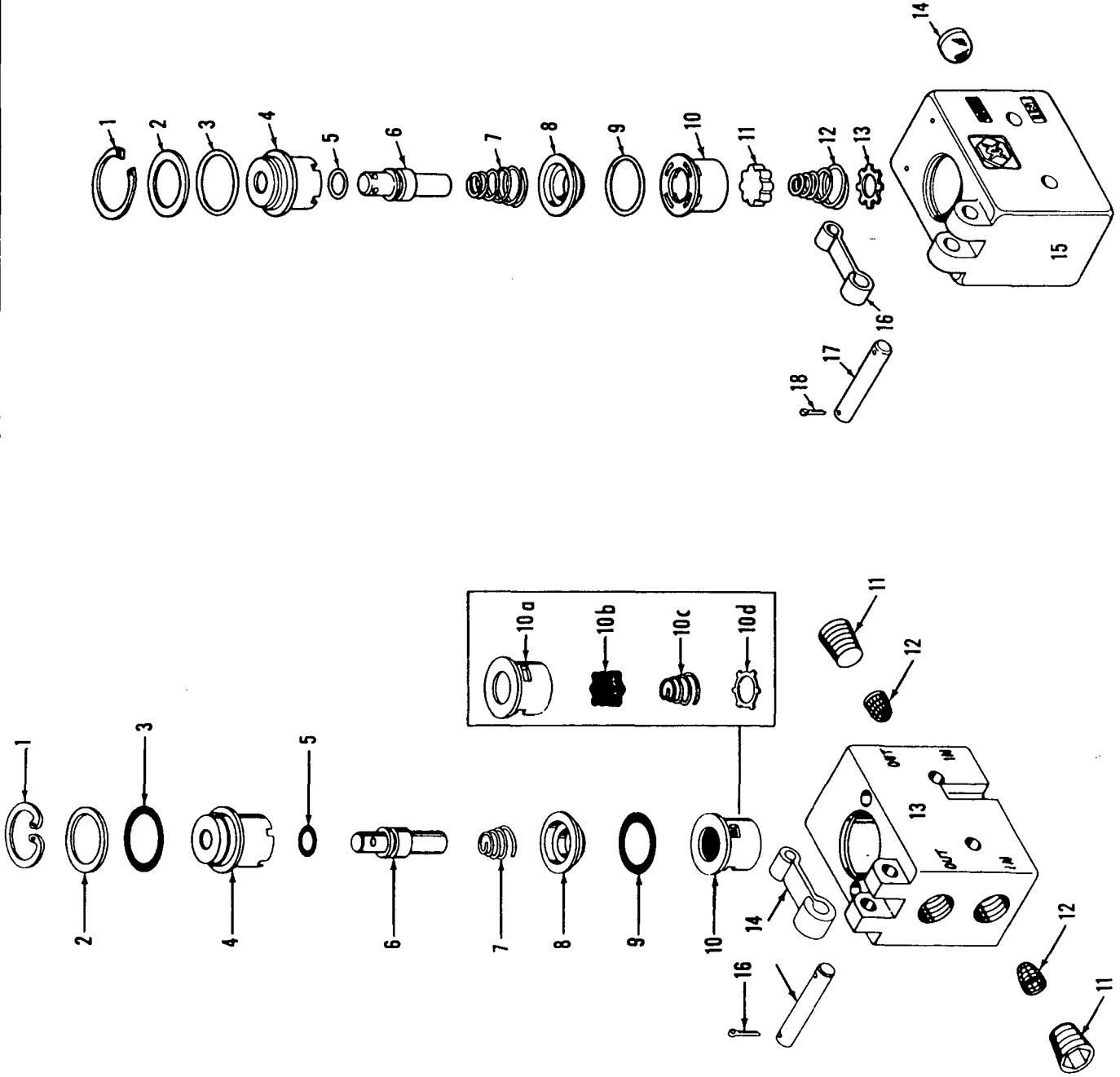
702402, 702740



81004368

ASSEMBLY	REVISION
O-156	F

MASTER

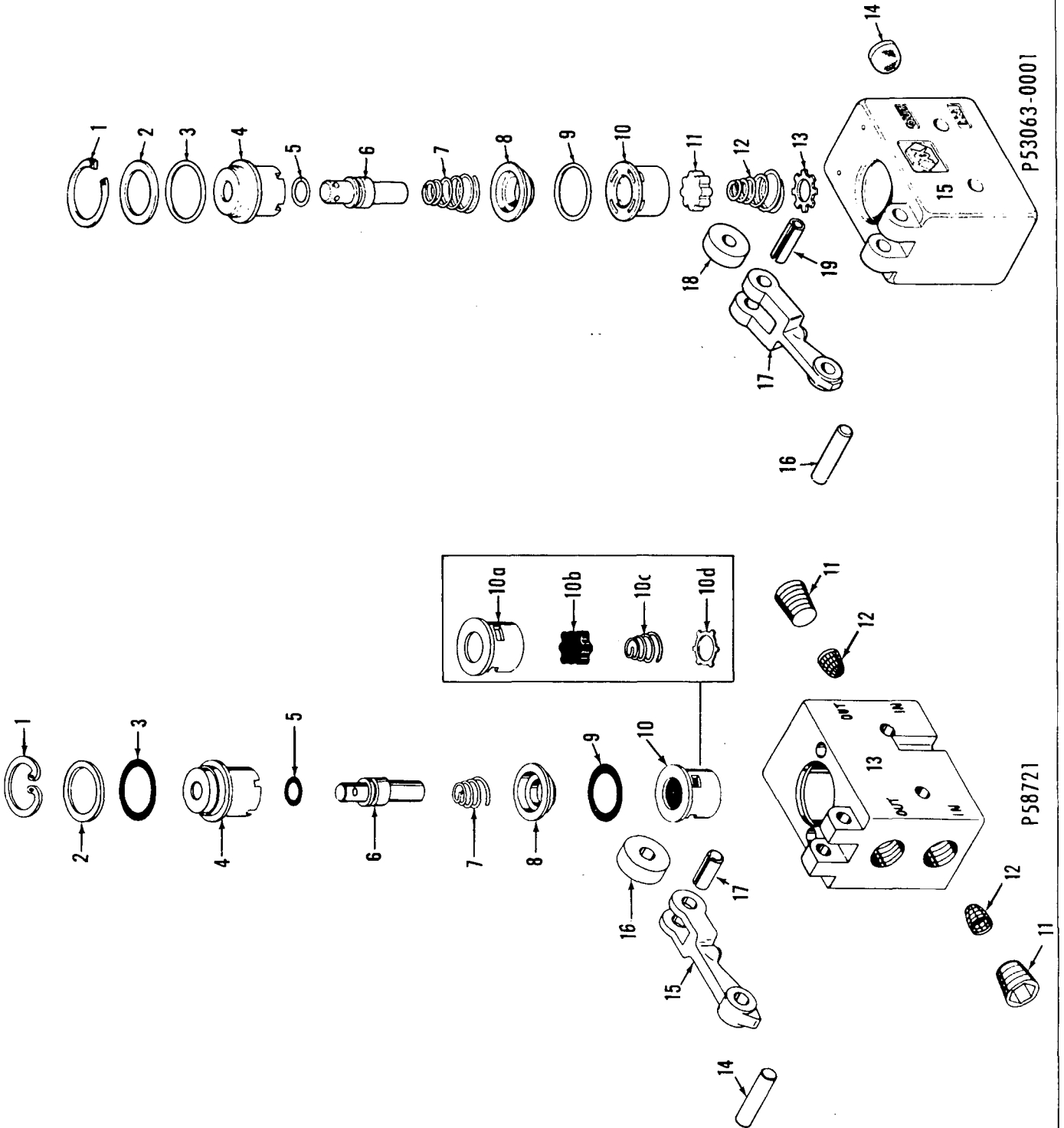


MANITOWOC ENGINEERING CO.

A Division of The Manitowoc Company, Inc.

Manitowoc, Wisconsin

Manitowoc



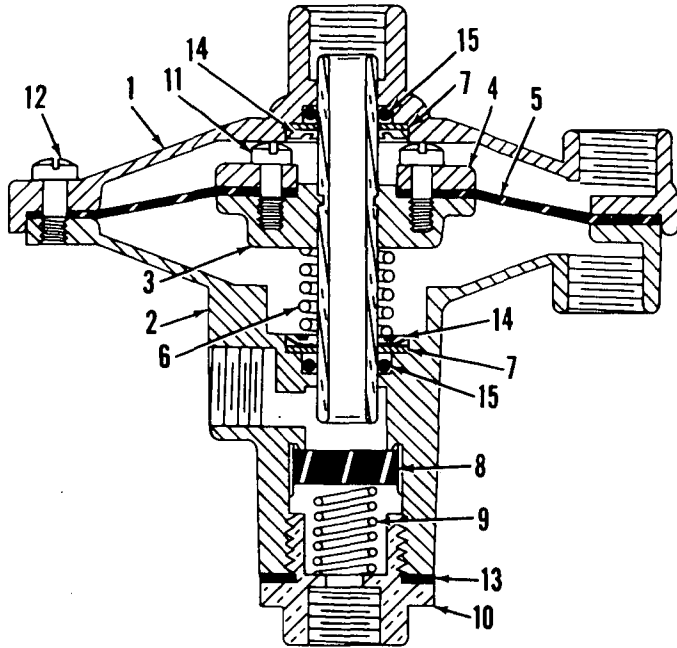
P53063-0001

P58721

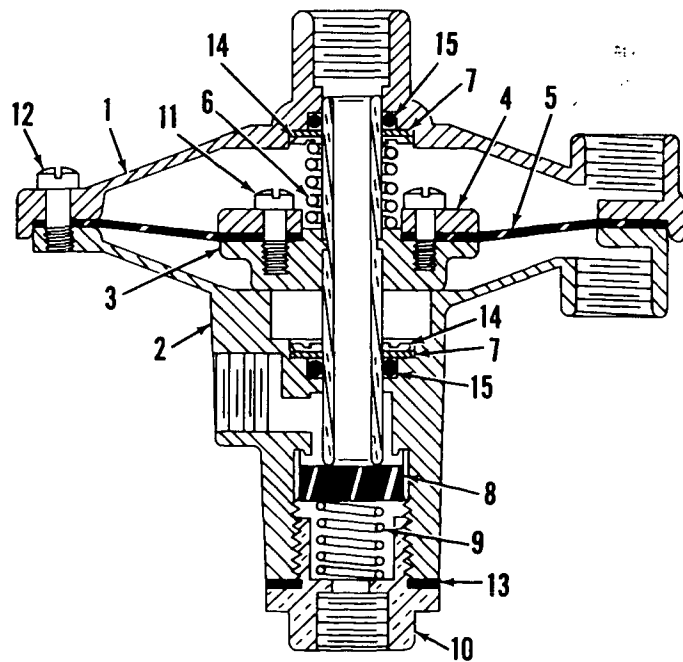
O-279

MATERIAL LIST ON BACK

CONTROL VALVE



Normally Closed

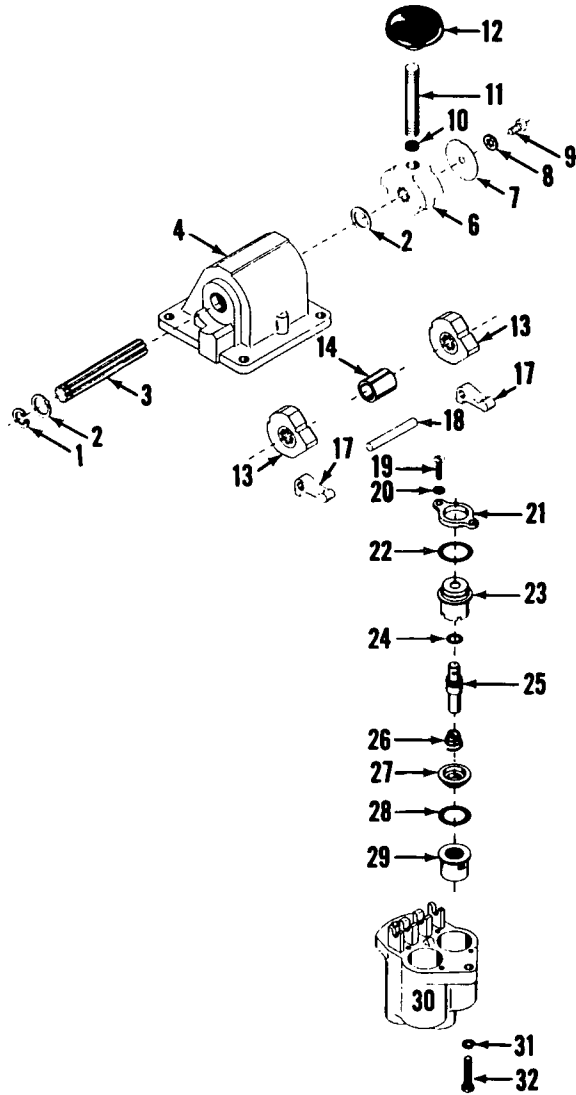


Normally Open

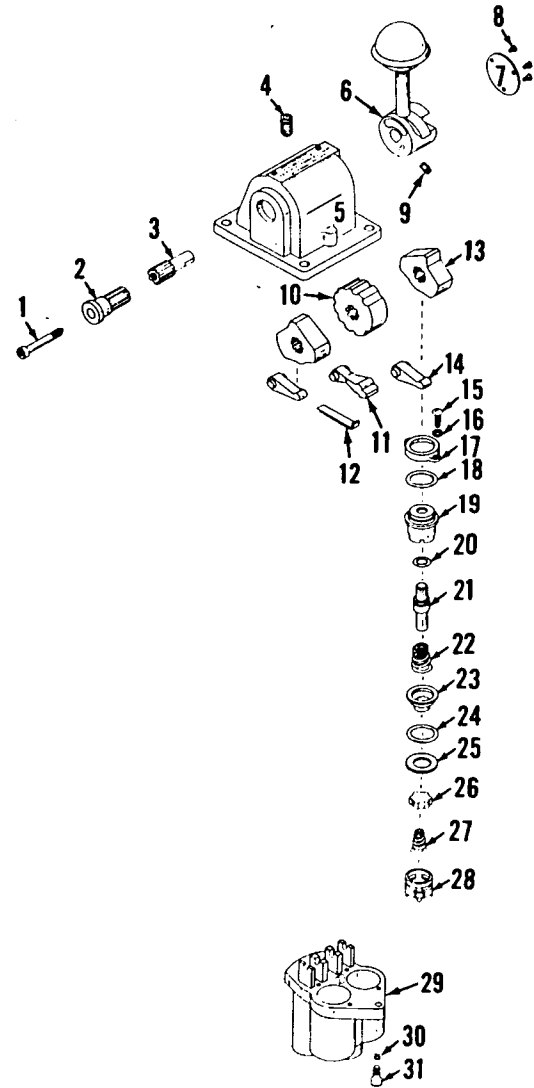
MATERIAL LIST ON BACK

MASTER

RELAY VALVES



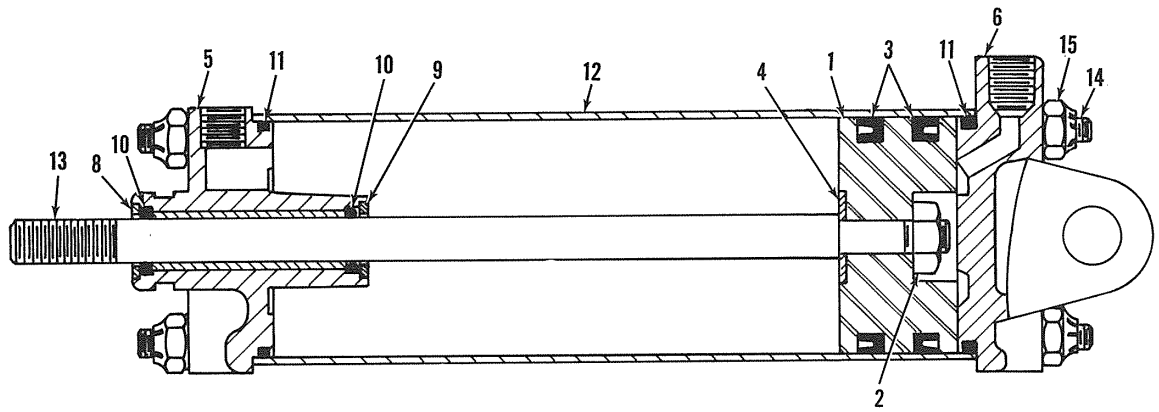
P59340



P54426-0241

MATERIAL LIST ON BACK

CONTROL VALVE



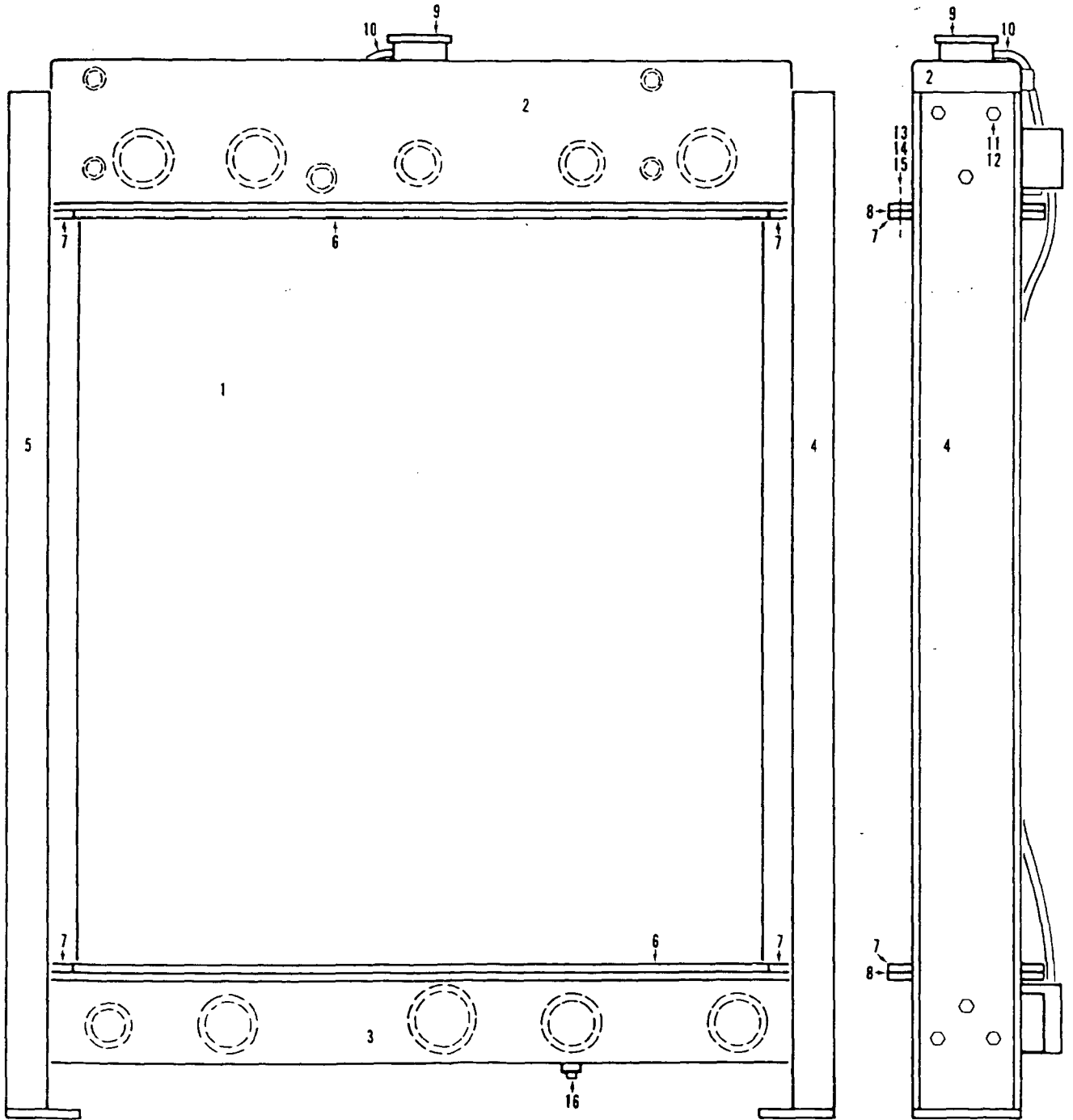
ASSEMBLY	REVISION
O-414	B

AIR CYLINDER

MANITOWOC ENGINEERING CO.

A Division of The Manitowoc Company, Inc.

Manitowoc, Wisconsin



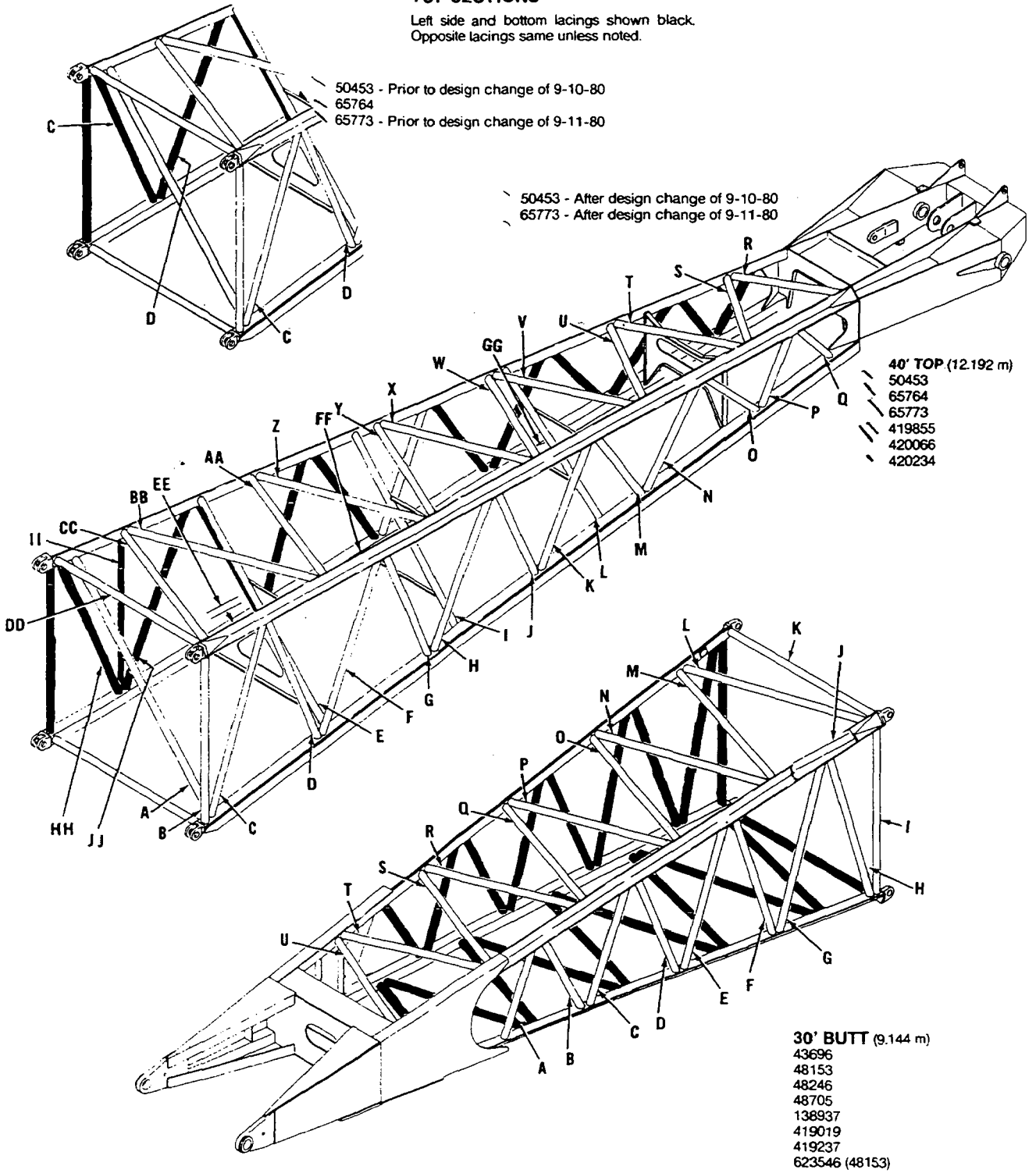
0-45181

MATERIAL LIST ON BACK

RADIATOR

BOOMS #22, #22A, #22C-BUTT & TOP SECTIONS

Left side and bottom lacings shown black.
Opposite lacings same unless noted.



O-503 C1

To order lacings see Folio #823

2-13-92
9-91

LACINGS

CLICK HERE TO **DOWNLOAD** THE COMPLETE MANUAL

- Thank you very much for reading the preview of the manual.
- You can download the complete manual from: www.heydownloads.com by clicking the link below



- Please note: If there is no response to CLICKING the link, please download this PDF first and then click on it.

CLICK HERE TO **DOWNLOAD** THE COMPLETE MANUAL