



TRADITIONAL CRANE PARTS MANUAL

This manual has been prepared for and is considered part of

4000W

Model

40391

Serial Number

GROUP A = Rotating Structure (Includes rotating bed, operator's cab, cases, fuel tanks, transfer pump, counterweights, guards, platforms, catwalks, machinery enclosure, horn)

GROUP B = Upperworks Machinery (Includes front, rear, and auxiliary drums, boom hoist, swing and drive shafts, hand levers, foot pedals, control linkage, rotation indicators, upperworks hydraulic components, hydraulic piping, hydraulic oil reservoir, lubrication pump and piping, blowers)

GROUP C = Air Components & Electrical (Includes control console, air piping, electric wiring, auxiliary light plant and lighting, TV monitoring, compressor and air tank)

GROUP D = Power Components - Upperworks (Includes engine or motor, radiator, auxiliary power plant, take off converters and piping, controls, VICON power lowering, torque limiter, hydraulic pumps and piping, fuel piping, battery box)

GROUP E = Lower Structure & Control (Includes carbody, crawlers, travel shafts and control, steering travel locks, hydraulic travel, travel power outriggers, carrier, pedestal, lowerworks hydraulic piping, RINGER components, barge mounting and machinery, spud drums)

GROUP F = Attachments (Includes booms, jibs, masts, tower, wire rope guides, equalizer, gantry, fairlead, timber guards, boom angle indicator, block-up limit, tag line, hook block, weight ball, upper and lower boom point, wind speed indicator, crowd and retract dipper sticks, dippers,)

O-NUMBER SECTION = (Includes lacing drawings and purchased component parts drawings referenced in sections A through F)

This manual is arranged in sections as listed above. Sections A through F are arranged by group numerical order with an index after each section tab. An alphabetical index for groups A Through F combined is located after the O-number Section. The O-number section is arranged in numerical order by O-number. Following this cover page are the Basic Specifications, Warranty Information, Tool List (if applicable) Outline Dimensions, Weights, and Dealer Listing.

MANITOWOC CRANES, INC.

2401 South 30th Street • PO Box 70

Manitowoc, WI 54221-0070

Phone: 920-684-6621 • Fax: 920-683-6278

CLICK HERE TO **DOWNLOAD** THE COMPLETE MANUAL

- Thank you very much for reading the preview of the manual.
- You can download the complete manual from: www.heydownloads.com by clicking the link below



- Please note: If there is no response to CLICKING the link, please download this PDF first and then click on it.

CLICK HERE TO **DOWNLOAD** THE COMPLETE MANUAL

B. Ordering Lacings without Lacing Drawings

The parts order must contain the following information to ensure that Manitowoc provides you with the correct lacings:

1. Crane serial number (can be found on builders plate in operator's cab.)
2. Boom or jib identification number.
3. Quantity, lacing location, and lacing number.
4. Boom or jib component name (butt, insert, or top) and part number.

NOTE: To obtain the lacing location and number, view the boom or the jib from the butt end looking forward. Identify the side on which the damaged lacing is located: left side, top side, right side, or bottom side. Count each lacing up to and including the damaged lacing, starting with **first lacing nearest butt end** of the component as shown in Figure 3.

Do not count a diagonal lacing as the first lacing. Identify diagonal lacing separately; lower end diagonal lacing or upper end diagonal lacing.

ASSISTANCE

If you are in doubt as to which lacings to order, DO NOT GUESS. Contact your nearest Manitowoc distributor for assistance; doing so may prevent the wrong parts from being shipped.

EXAMPLE: Assume you have a number 22 boom and the lacings with circled numbers in Figure 3 are damaged. Your parts order should be similar to the following example:

Crane Serial Number: **00000** (from builders plate).

Boom Identification Number: **#22 Boom**

Required:

- 1 each Top Side Lacing (1) for 30 ft Butt 48153-9
- 1 each Right Side Lacing (5) for 30 ft Butt 48153-9
- 1 each Bottom Side Lacing (3) for 20 ft Insert 33426-3
- 1 each Bottom Side Lacing (6) for 20 ft Insert 33426-3
- 1 each Top Side Lacing (2) for 40 ft Top 50453-2

Quantity	Lacing Location	Lacing Identification Number	Component Name and Part Number
1	Top Side	(1)	30 ft Butt 48153-9
1	Right Side	(5)	30 ft Butt 48153-9
1	Bottom Side	(3)	20 ft Insert 33426-3
1	Bottom Side	(6)	20 ft Insert 33426-3
1	Top Side	(2)	40 ft Top 50453-2

WELDING INSTRUCTIONS

Each lacing order is shipped with welding instructions and a copy of Form 00SPFM006 which identifies the chord and lacing material.

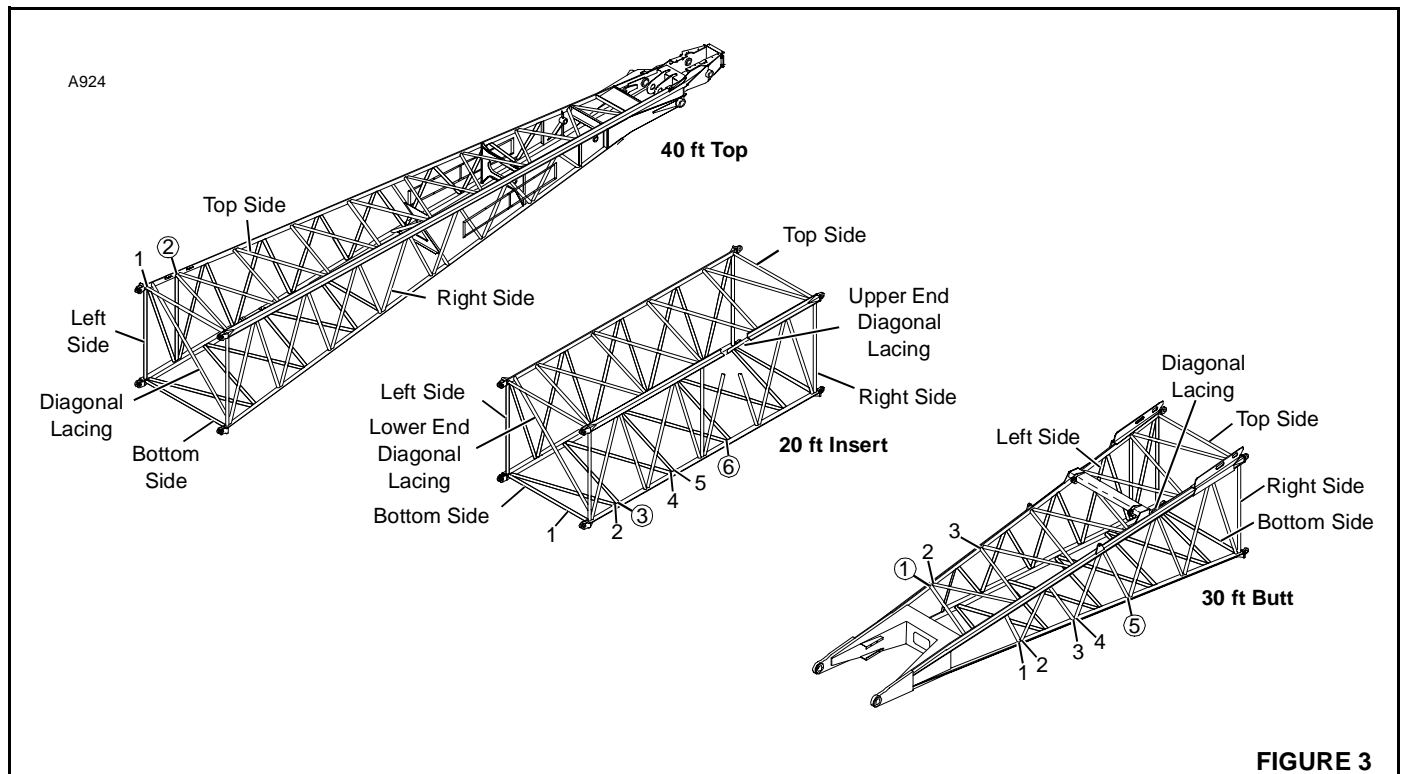


FIGURE 3

**PARTS MANUAL ALPHABETICAL INDEX
GROUP A - Rotating Structure**

DESCRIPTION	PUBLICATION	REV	START DATE	END DATE	GROUP
"A" Frame	42959	-	10/15/62	05/06/77	A0101
Cab	33760	A2	07/18/66	03/24/82	A0201
Cab	33760	S1	07/18/66	08/13/81	A0201
Cab Heater/Air Conditioner	48762	-	06/16/70	04/07/75	A0209
Chain & Gear Case	42058	A2	10/30/58	08/06/70	A0401
Chain & Gear Case	42058	C1	10/30/58	08/06/70	A0401
Counterweight & Cab Rear	43904	L1	07/15/66	04/21/86	A0301
Counterweight Handling	48191	-	10/30/67	03/24/75	A0302
Fuel Transfer Pump	23415	E1	05/22/56	09/26/69	A0602
Guards	42329	I1	01/20/62	03/28/72	A0501
Platform	41946	G1	10/02/58	06/07/71	A0701
Rotating Bed/Hoist Frame/Transporter Platform	42163	F2	01/29/68	10/17/79	A0102
Rotating Bed/Hoist Frame/Transporter Platform	42163	T1	04/23/63	10/17/79	A0102
Windshield Wiper/Defogger	32842	G1	01/31/64	02/03/78	A0210

33760-1 Cont.	REV. S	MODEL 4000T-4000W
---------------	-----------	----------------------

CAB
(SLOPING ROOF)

REF. NO.	PART NUMBER	QUANTITY REQUIRED	DESCRIPTION OF PART	VENDORS PART NO.
28	138440	1	SHEET, Right Front Lower Closing W/stovebolts, hex nut and lockwasher (Use W/Catwalk only)	
31	73227	1	GLASS, Window	
30	605301	1	CHANNEL, Rubber (11'0" - 3.353 m)	
32	97029	1	SASH, Front Window W/hinges (See Note 1)	
33	18972	1	GLASS, Window	
30	605301	1	CHANNEL, Rubber (6'3" - 1.905 m)	
	42313-6	1	PANEL, Right Side (Complete) W/mach. screw, capscrew, stovebolts, hex nuts and lockwasher	
34	632652	1	PANEL, Front	
37	632653	1	PANEL, Upper	
43	587072	1	RAIL, Door	
44	207247	1	STOP, Door	
45	632651	1	PANEL, Center	
46	31590	1	CABINET, Tool	
47	632656	1	GUIDE, Door	
48	42313-2	1	PANEL, Rear	
35	17864	2	RAIL, Hand W/hex nuts	
36	17834	1	GLASS, Window	
30	605301	1	CHANNEL, Rubber (7'4" - 2.236 m)	
38	16031	1	AWNING, Door W/stovebolts, hex nuts and lockwashers	
39	17836	1	GLASS, Window	
30	605301	1	CHANNEL, Rubber (9'5" - 2.870 m)	
40	31631	1	DOOR, Right (See Sheet #2)	
41	70876	1	BAR, Filler (not used W/catwalk)	
	93557	1	CLOSING SHEET ASSEMBLY, Right Rear W/capscrews, elastic stop nuts and chain	
42	140175	1	DOOR	
68	482058	3	HINGE, Concealed	
49	94012	1	SHEET, Closing	
67	510183	1	LOCK	
51	32807	1	EXTENSION, Cab W/mach. screws and lockwashers	
50	32823	1	SHUTTER, Radiator W/pins, cotter pins, capscrews, hex nuts and lockwashers	
52	77158	1	PANEL, Right Rear W/mach. screw, hex nut and lockwasher	
53	91878	1	CLOSING SHEET, Bottom Right Front W/capscrew, hex nut and lockwasher (W/out catwalk)	
53	71299	1	CLOSING SHEET, Bottom Right Front W/capscrews, hex nuts and lockwashers (W/catwalk)	
54	91877	1	CLOSING SHEET, Bottom Right Rear W/capscrew, hex nut and lockwasher	
55	91879	1	CLOSING SHEET, Vertical W/capscrew, hex nut and lockwasher	
	180160-6	1	PANEL, Inner Right W/mach. screws, capscrews, stovebolts, hex nut and lockwasher	
57	632693	1	SHEET, Lower	
58	632692	1	SHEET, Front	
59	180160-2	1	SHEET, Front	
56		1	DOOR W/hinge	
60	633214	1	FRAME, Window	
62	633213	1	SHEET, Upper	

REV. S	33760-1 Cont.
-----------	---------------

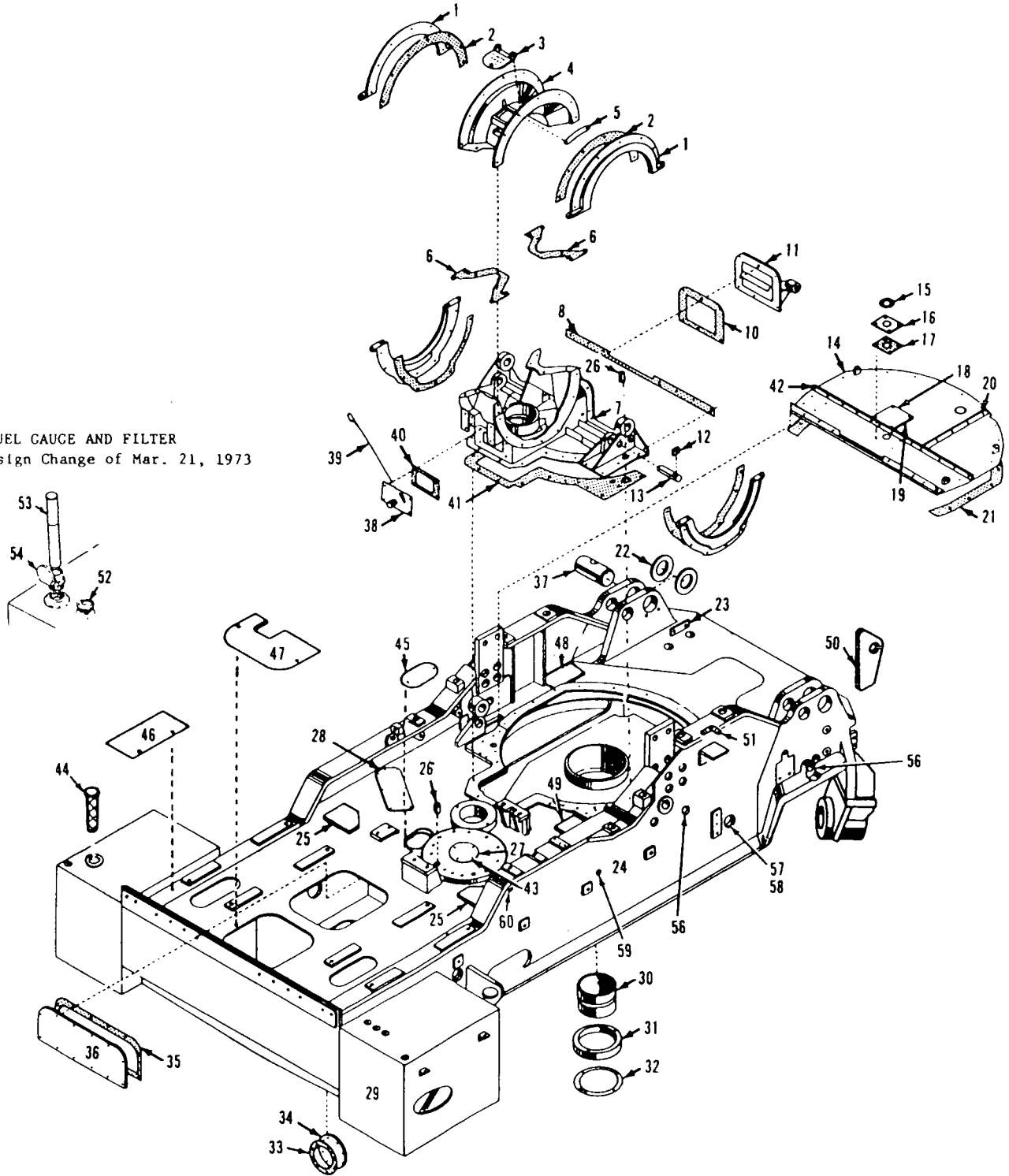
Run as Front

W/OER

33760 S1 Cont'd. -1

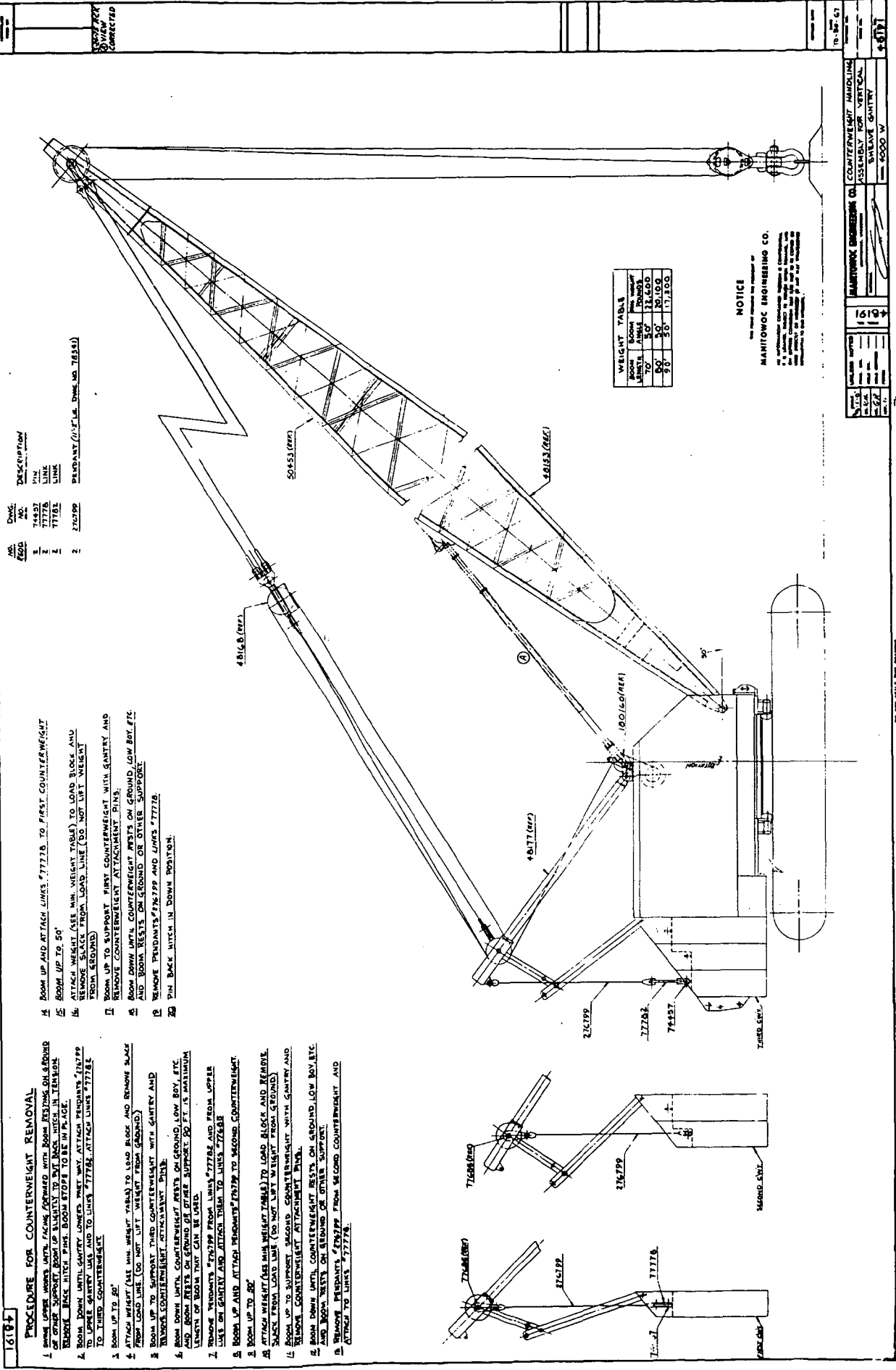
MASTER

FUEL GAUGE AND FILTER
Design Change of Mar. 21, 1973



42103K1

MASTER



10/27/77
CORRECTED

NO.	QTY.	DESCRIPTION
1	1	LINK
2	2	LINK
3	2	LINK
4	2	PREDRILL (1/2" DIA. DRUM NO. 7835)

- 1 BOOM UP AND ATTACH LINKS 7777B TO FIRST COUNTERWEIGHT
- 2 BOOM UP TO 50°
- 3 ATTACH WEIGHT (SEE MIN. WEIGHT TABLE) TO LOAD BLOCK AND REMOVE SLACK FROM LOAD LINE (DO NOT LIFT WEIGHT FROM GROUND)
- 4 BOOM UP TO SUPPORT FIRST COUNTERWEIGHT WITH GANTRY AND REMOVE COUNTERWEIGHT ATTACHMENT PINS
- 5 BOOM DOWN UNTIL COUNTERWEIGHT RESTS ON GROUND/LOW BOY ETC. AND BOOM RESTS ON GROUND OR OTHER SUPPORT
- 6 REMOVE PENDANTS 7777P AND LINKS 7777B
- 7 PIN BACK NUTS IN DOWN POSITION

- 1 REMOVE LOWER LINKS FROM FACE FORWARD WITH BOOM RESTING ON GROUND OR OTHER SUPPORT BOOM UP SLIGHTLY TO PIN BACK NUTS IN UP POSITION
- 2 REMOVE BACK NUTS FROM PINS BOOM STOP TO BE IN PLACE
- 3 BOOM DOWN UNTIL GANTRY LOWERS PINS ATTACH PENDANTS 7777P TO LOWER GANTRY LINK AND TO LINKS 7777B ATTACH LINKS 7777B TO THIRD COUNTERWEIGHT
- 4 BOOM UP TO 50°
- 5 ATTACH WEIGHT (SEE MIN. WEIGHT TABLE) TO LOAD BLOCK AND REMOVE SLACK FROM LOAD LINE (DO NOT LIFT WEIGHT FROM GROUND)
- 6 BOOM UP TO SUPPORT THIRD COUNTERWEIGHT WITH GANTRY AND REMOVE COUNTERWEIGHT ATTACHMENT PINS
- 7 BOOM DOWN UNTIL COUNTERWEIGHT RESTS ON GROUND/LOW BOY ETC. AND BOOM RESTS ON GROUND OR OTHER SUPPORT DO IT'S MAXIMUM LENGTH OF BOOM THAT CAN BE USED
- 8 REMOVE PENDANTS 7777P FROM LINKS 7777B AND FROM UPPER LINKS ON GANTRY AND ATTACH THEM TO LINKS 7777B
- 9 BOOM UP TO 50°
- 10 ATTACH WEIGHT (SEE MIN. WEIGHT TABLE) TO LOAD BLOCK AND REMOVE SLACK FROM LOAD LINE (DO NOT LIFT WEIGHT FROM GROUND)
- 11 BOOM UP TO SUPPORT SECOND COUNTERWEIGHT WITH GANTRY AND REMOVE COUNTERWEIGHT ATTACHMENT PINS
- 12 BOOM DOWN UNTIL COUNTERWEIGHT RESTS ON GROUND/LOW BOY ETC. AND BOOM RESTS ON GROUND OR OTHER SUPPORT
- 13 REMOVE PENDANTS 7777P FROM SECOND COUNTERWEIGHT AND ATTACH TO LINKS 7777B

BOOM LENGTH	BOOM AREA	BOOM WEIGHT	BOOM WEIGHT
50'	30	30,000	17,100
55'	30	30,000	17,100
60'	30	30,000	17,100

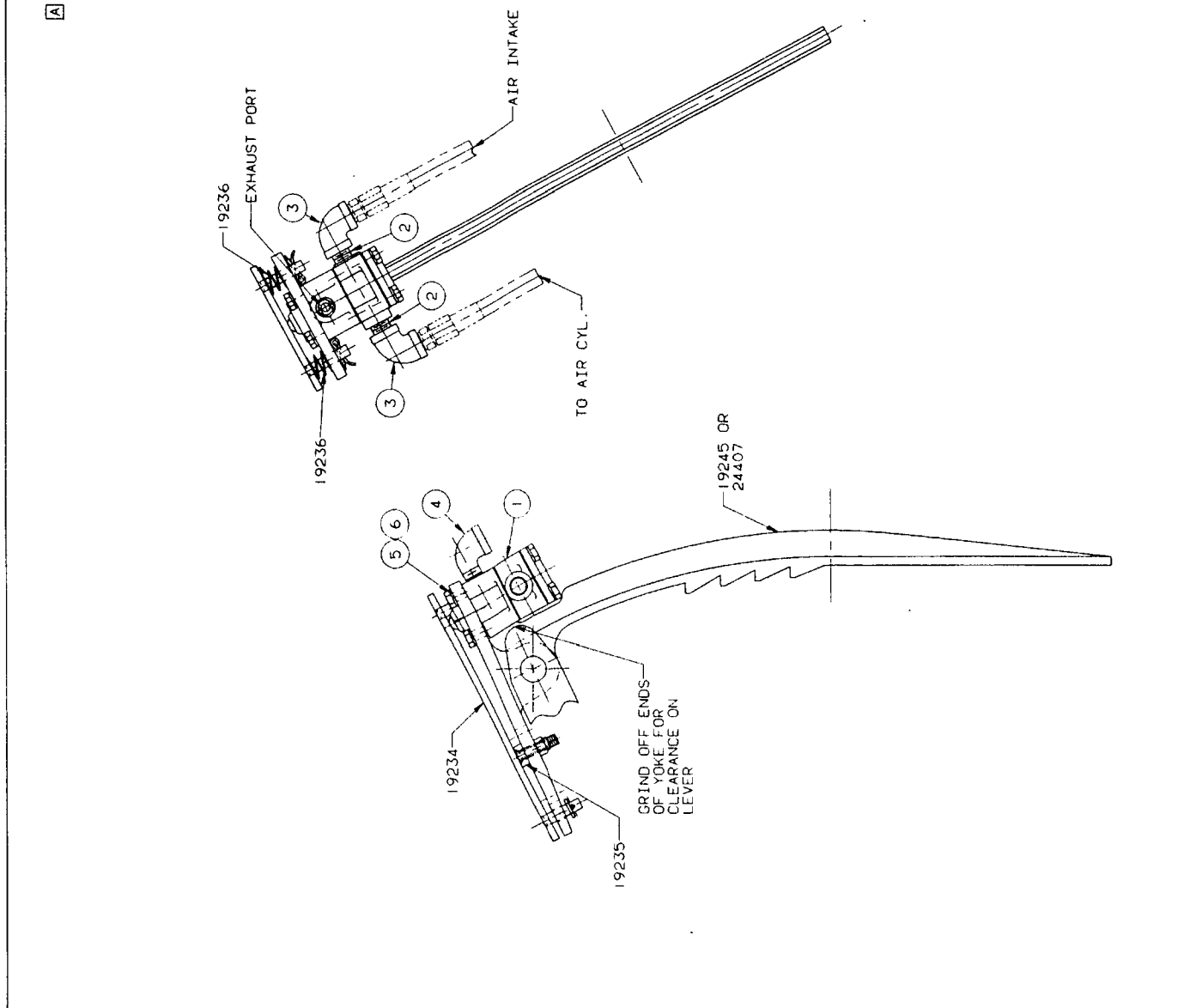
NOTICE
MANITOWOC ENGINEERING CO.

DATE	10/27/77
BY	16187
NO.	567
REV.	
DESCRIPTION	COUNTERWEIGHT HOISTING ASSEMBLY FOR VERTICAL HOISTWAY
SCALE	AS SHOWN
PROJECT	ROOM W

16187

QTY	FIG.	DESCRIPTION	MATERIAL	REF. NO.	REV. NO.	ISSUE DATE
1	IN-2446-A	MIDLAND VALVE		702444		41719 43814
2	.250	CLOSE NIPPLE		543171		42374 43815
3	.250 X 90°	ELBOW		406970		42584 43820
4	1.250 X 90°	STREET ELBOW		406921		43328 43861
5	4.250-28UNF-2A X .75	HEX HD CAPSCREW		613103		43340 48127
6	.250	LOCKWASHER		710302		43721 48128
						43951 48150
						43952 48279
						43953
REVISES						
						6-26-56
						1 WAS N-2474
						9-6-60
						24407 ADDED
						12-2-83 GLP
						REDRAW CADAM
						CK. KGB
						APP. RJS

(1) FOR MODELS 2800 & 2900 ONLY



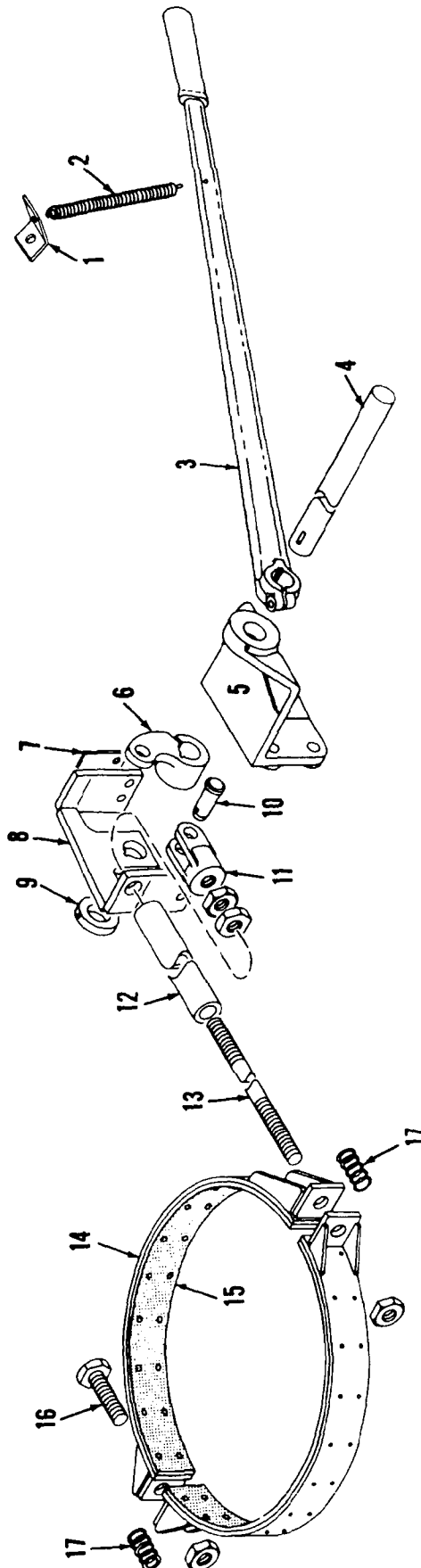
23194
 3-17-55

6	EHJ	MANITOWOC ENGINEERING CO	AIR BOOSTER
5	LMP	MANITOWOC ENGINEERING CO	FOOT BRAKE PEDAL ASSEMBLY
		REV. 2000, 2300, 2800, 2900.	
		3000, 3500, 3900, 3950W	
			23194

MANITOWOC ENGINEERING CO.

A Division of The Manitowoc Company, Inc.

Manitowoc, Wisconsin

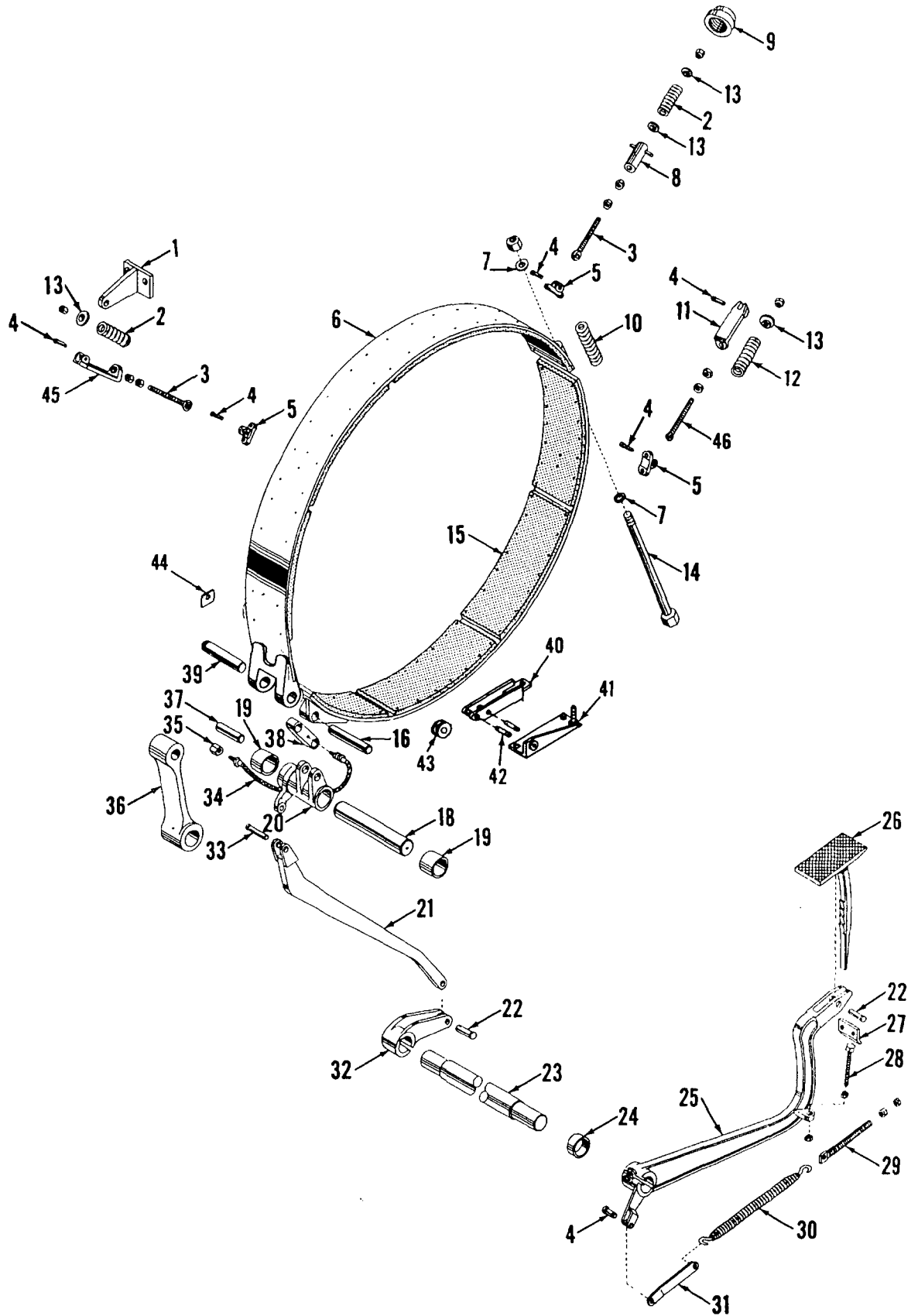


33403B1

MATERIAL LIST ON BACK

IND. BOOM HOIST AUX. BRAKE

MASTER



LEFT DRUM BRAKE

MATERIAL LIST ON BACK

42184C1

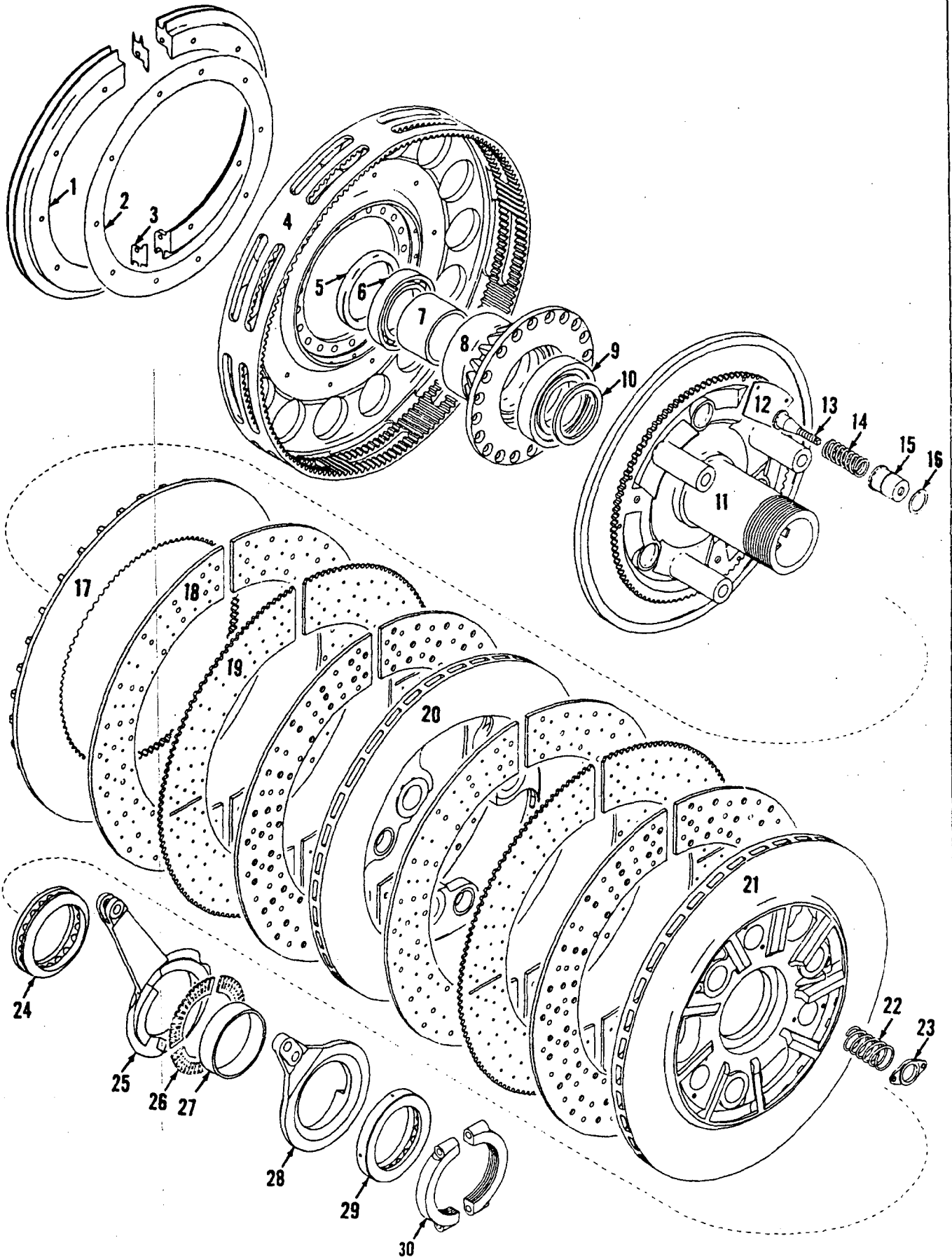
4101 C11

MANITOWOC ENGINEERING CO.

A Division of The Manitowoc Company, Inc.

Manitowoc, Wisconsin

MASTER

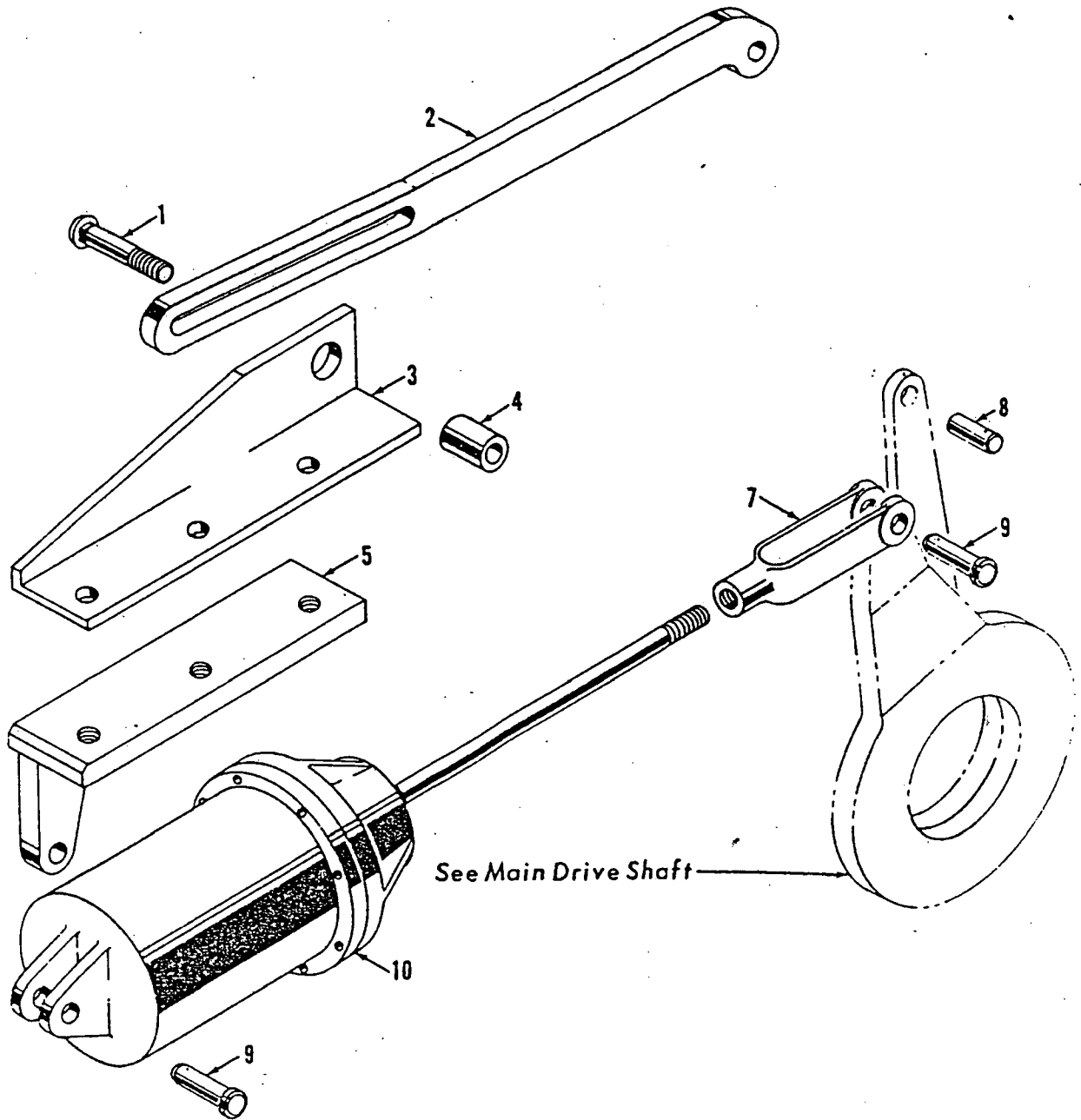


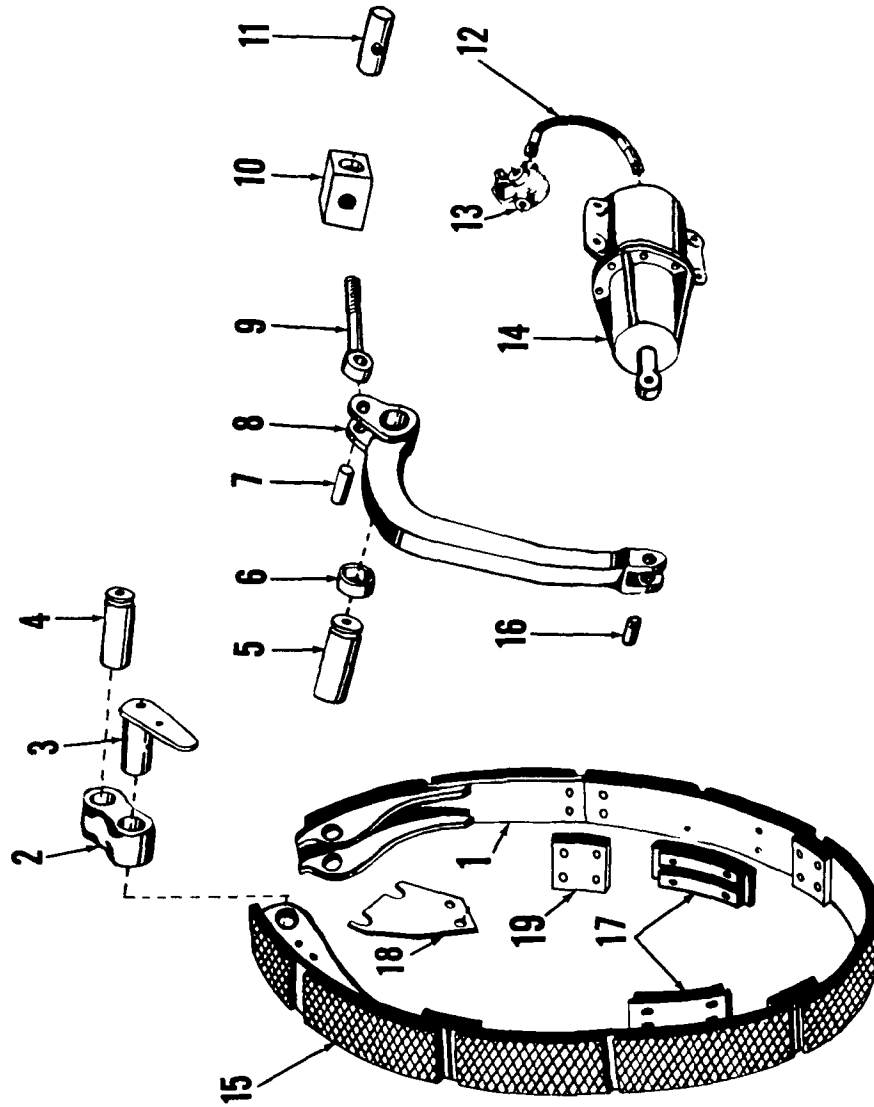
MAIN DRIVE CLUTCH

MATERIAL LIST ON BACK

42024A2

42024 A2





41702B2

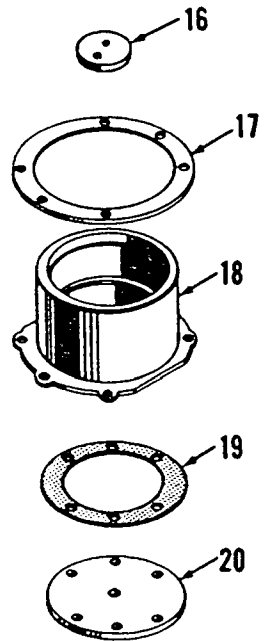
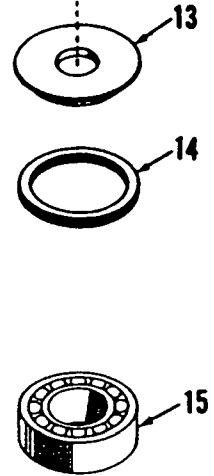
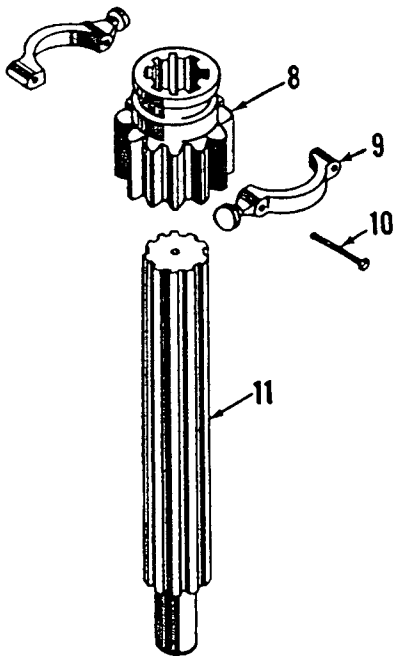
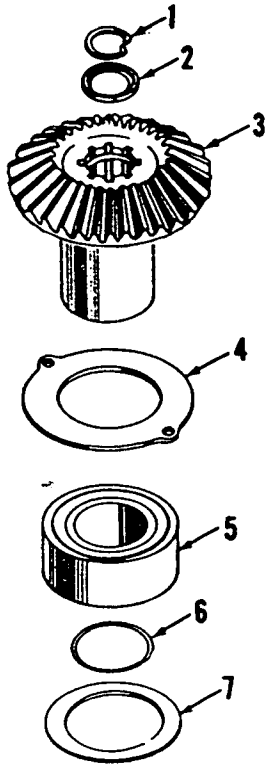
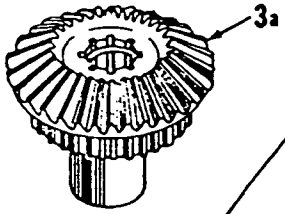
MATERIAL LIST ON BACK

CLUTCH BAND ASSEMBLY

MANITOWOC ENGINEERING CO.

Division of The Manitowoc Company, Inc.

Manitowoc Pumps



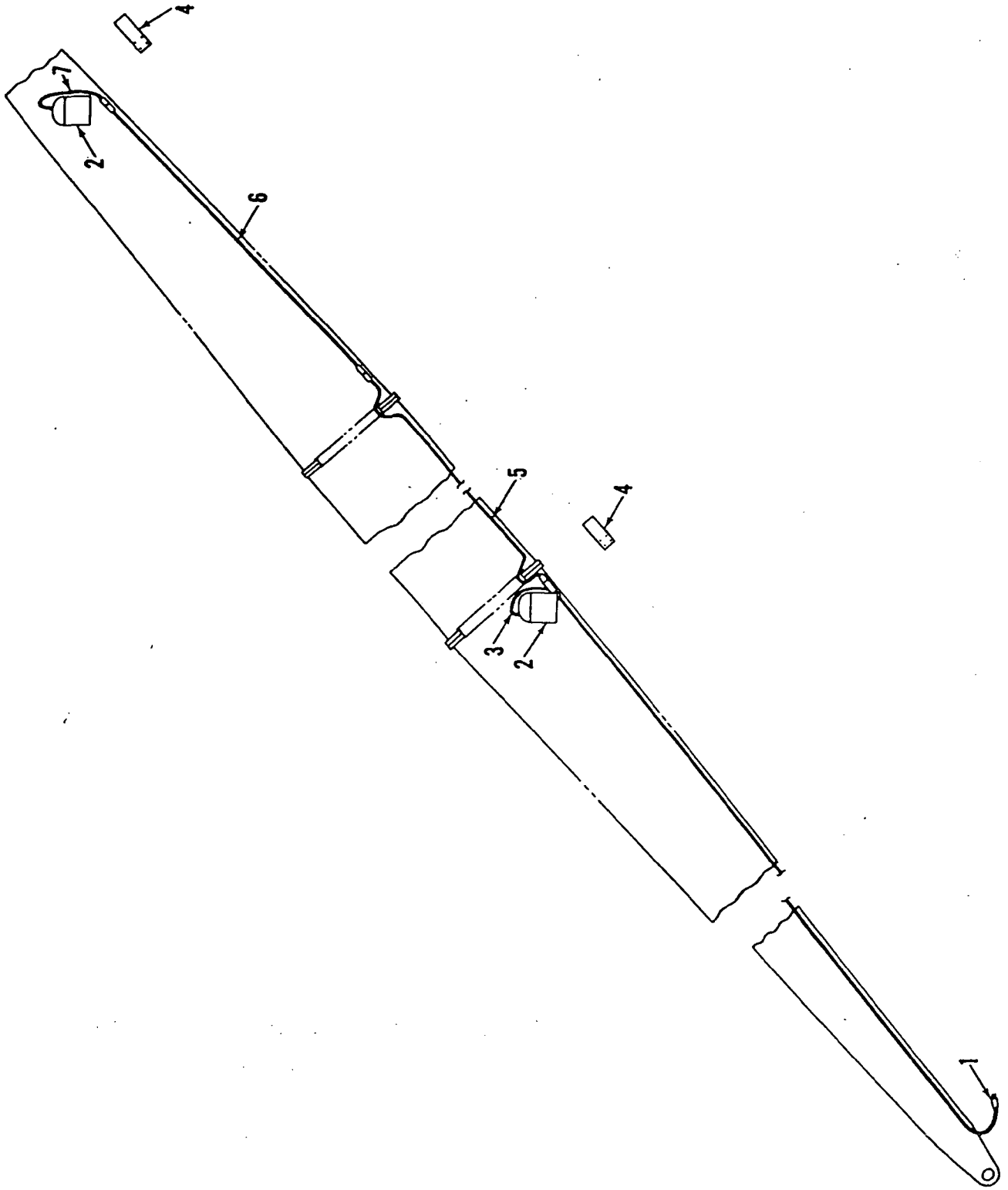
90467B1-

MATERIAL LIST ON BACK

MANITOWOC ENGINEERING CO.

A Division of The Manitowoc Company, Inc.

Manitowoc, Wisconsin



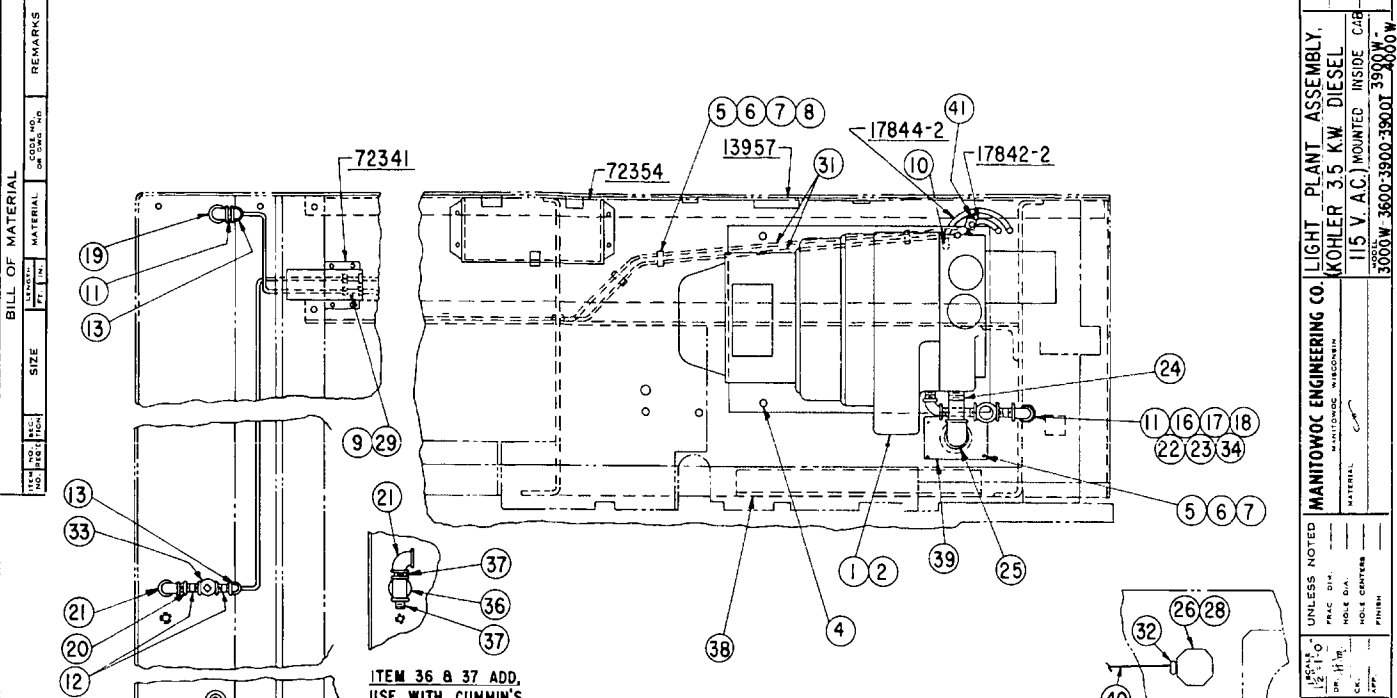
MASTER

3111781

MATERIAL LIST ON BACK

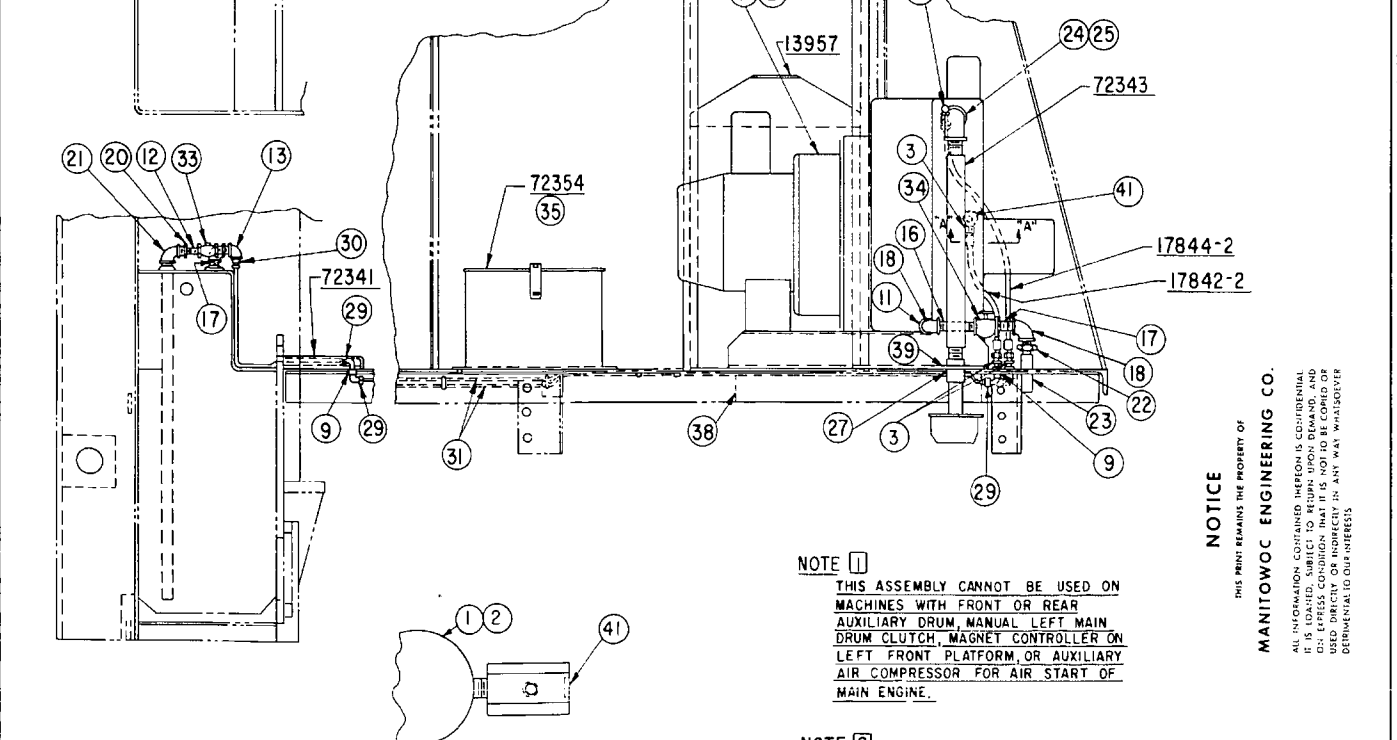
BOOM WIRING

REVISED DATE 3-30-72	DATE 6-21-68	PATTERN NO. 180468
DRAWING NO. 180468		



ITEM 36 & 37 ADD, USE WITH CUMMIN'S POWER PLANT ONLY

CAB OUTER RIGHT SIDE FOR (2) ONLY

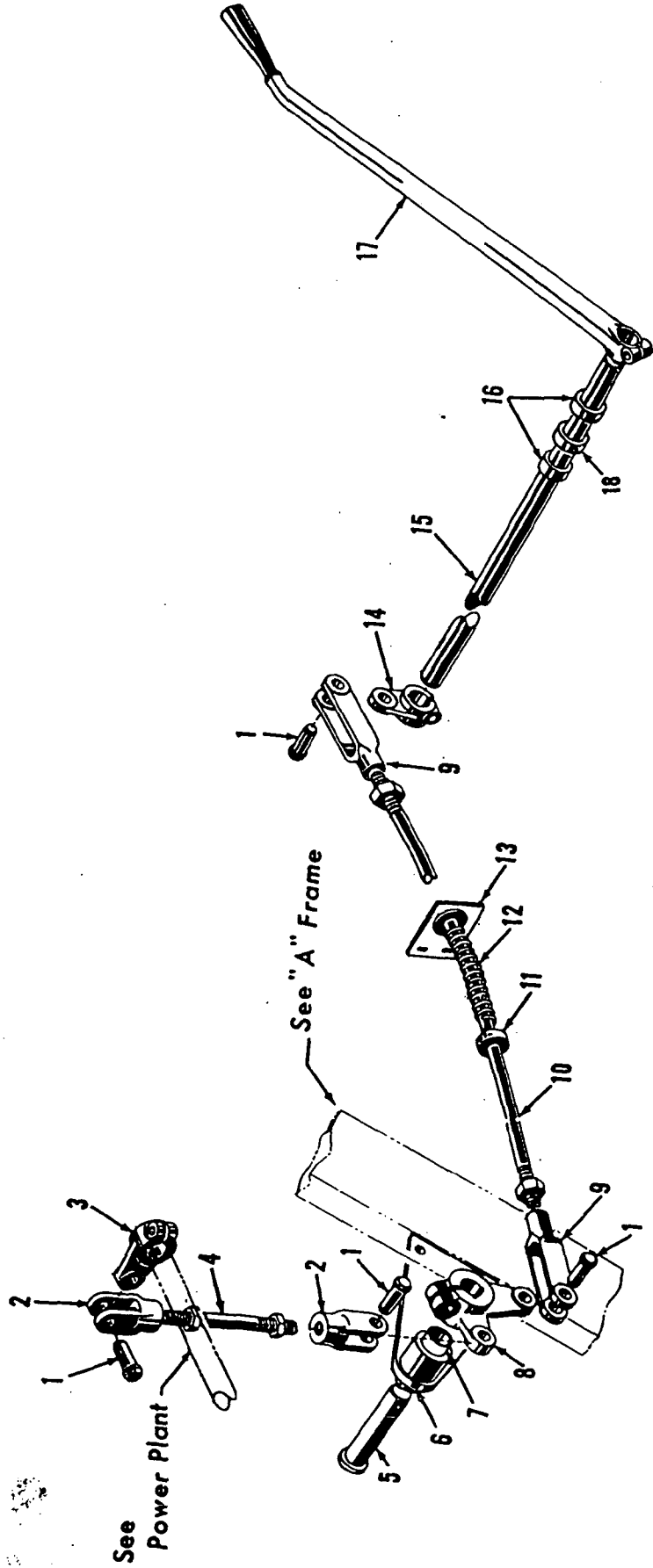


NOTE 1
THIS ASSEMBLY CANNOT BE USED ON MACHINES WITH FRONT OR REAR AUXILIARY DRUM, MANUAL LEFT MAIN DRUM CLUTCH, MAGNET CONTROLLER ON LEFT FRONT PLATFORM, OR AUXILIARY AIR COMPRESSOR FOR AIR START OF MAIN ENGINE.

NOTE 2
REMOTE START SWITCH IS REMOVED FROM LIGHT PLANT 507917 AND MOUNTED INSIDE OUTLET BOX 268521 AT ASSEMBLY.

NOTICE
THIS PRINT REMAINS THE PROPERTY OF
MANITOWOC ENGINEERING CO.
ALL INFORMATION CONTAINED HEREON IS CONFIDENTIAL
IT IS LOANED, SUBJECT TO RETURN UPON DEMAND, AND
IS NOT TO BE COPIED OR REPRODUCED IN ANY MANNER
WITHOUT THE WRITTEN PERMISSION OF MANITOWOC
ENGINEERING CO.

DO NOT SCALE THIS DRAWING



4292381

See Power Plant

See "A" Frame

MATERIAL LIST ON BACK

ENGINE CLUTCH CONTROL

CLICK HERE TO **DOWNLOAD** THE COMPLETE MANUAL

- Thank you very much for reading the preview of the manual.
- You can download the complete manual from: www.heydownloads.com by clicking the link below



- Please note: If there is no response to CLICKING the link, please download this PDF first and then click on it.

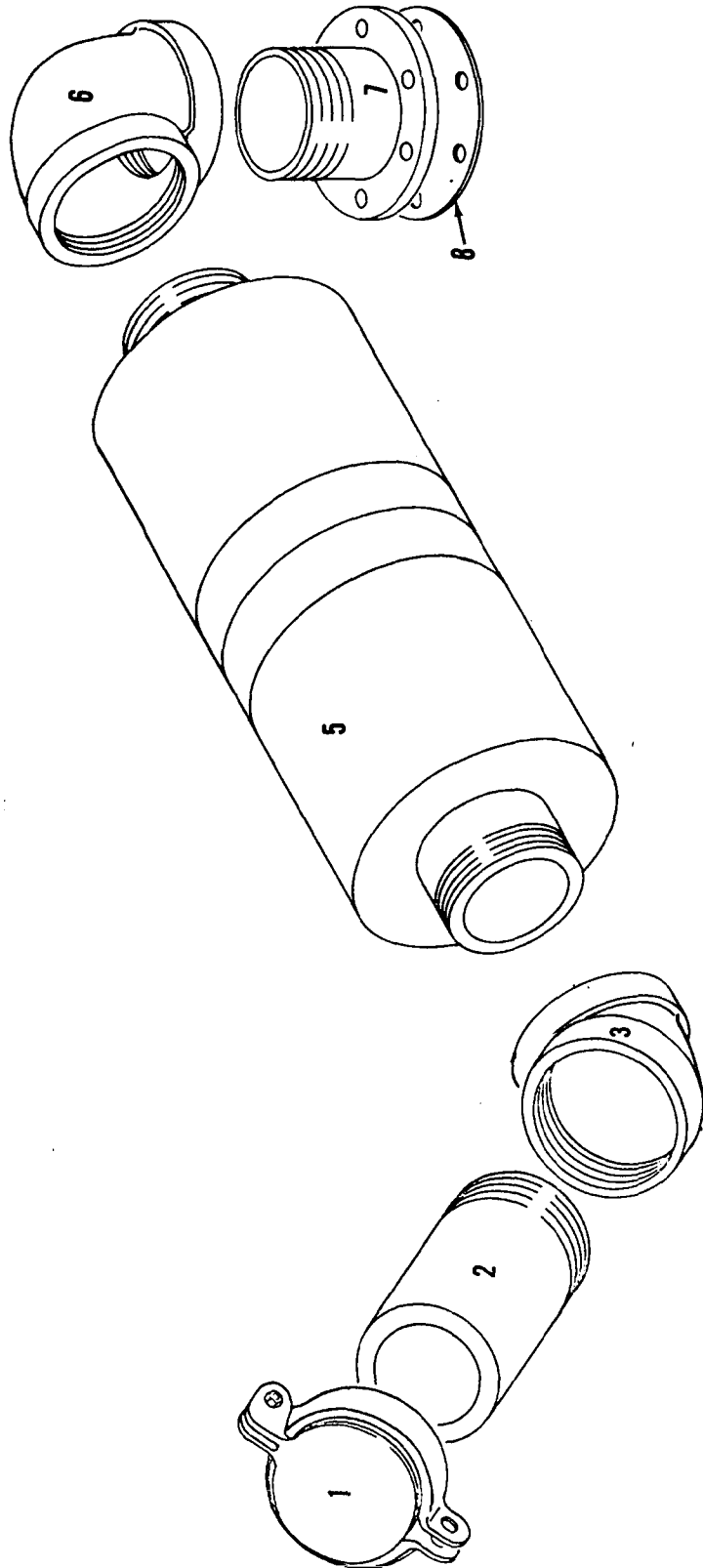
CLICK HERE TO **DOWNLOAD** THE COMPLETE MANUAL

MANITOWOC ENGINEERING CO.

A Division of The Manitowoc Company, Inc.

Manitowoc, Wisconsin

MASTER



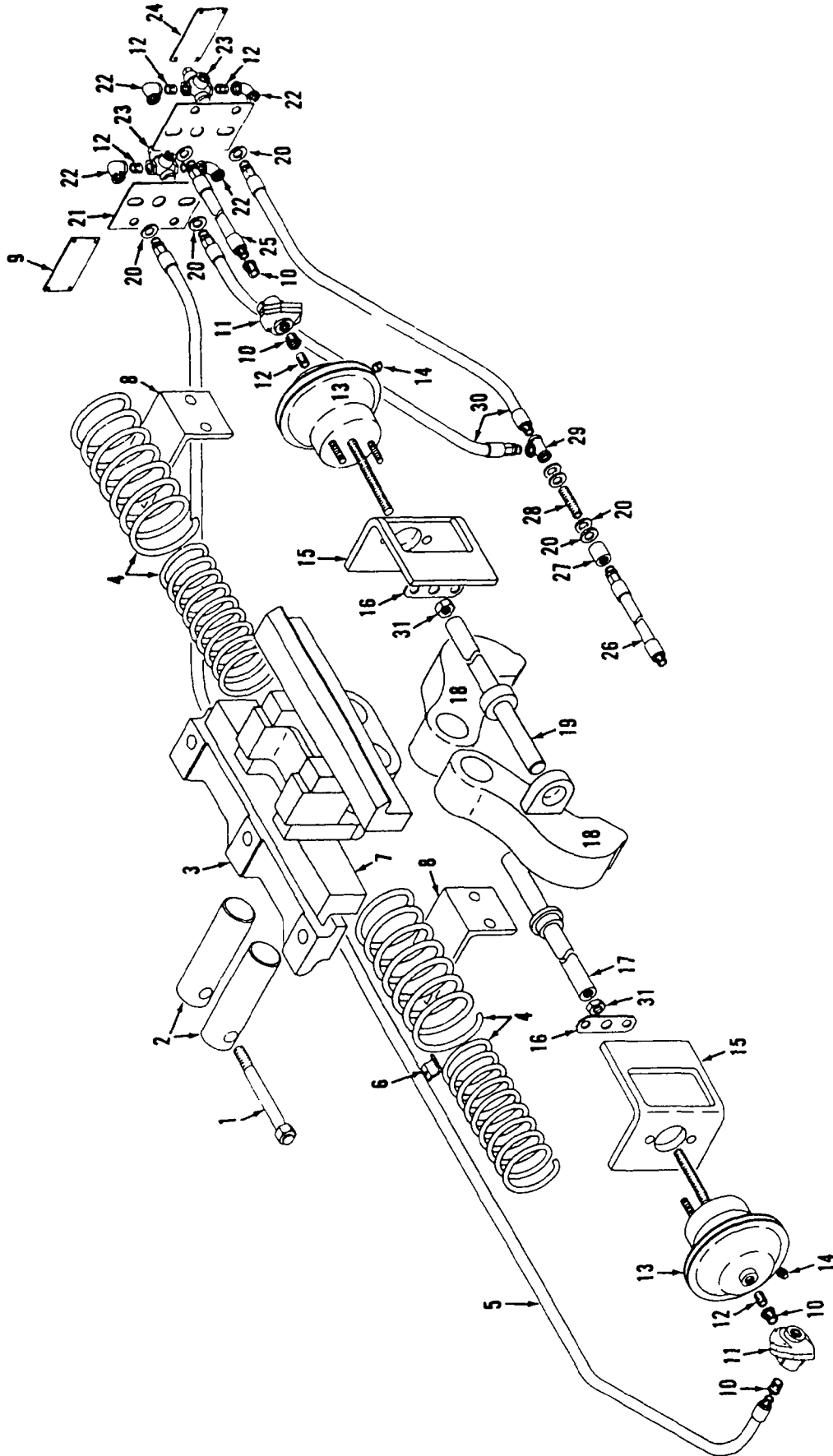
92369 A1

92369A1

MATERIAL LIST ON BACK

MUFFLER

MASTER



MATERIAL LIST ON BACK

TRAVEL LOCK

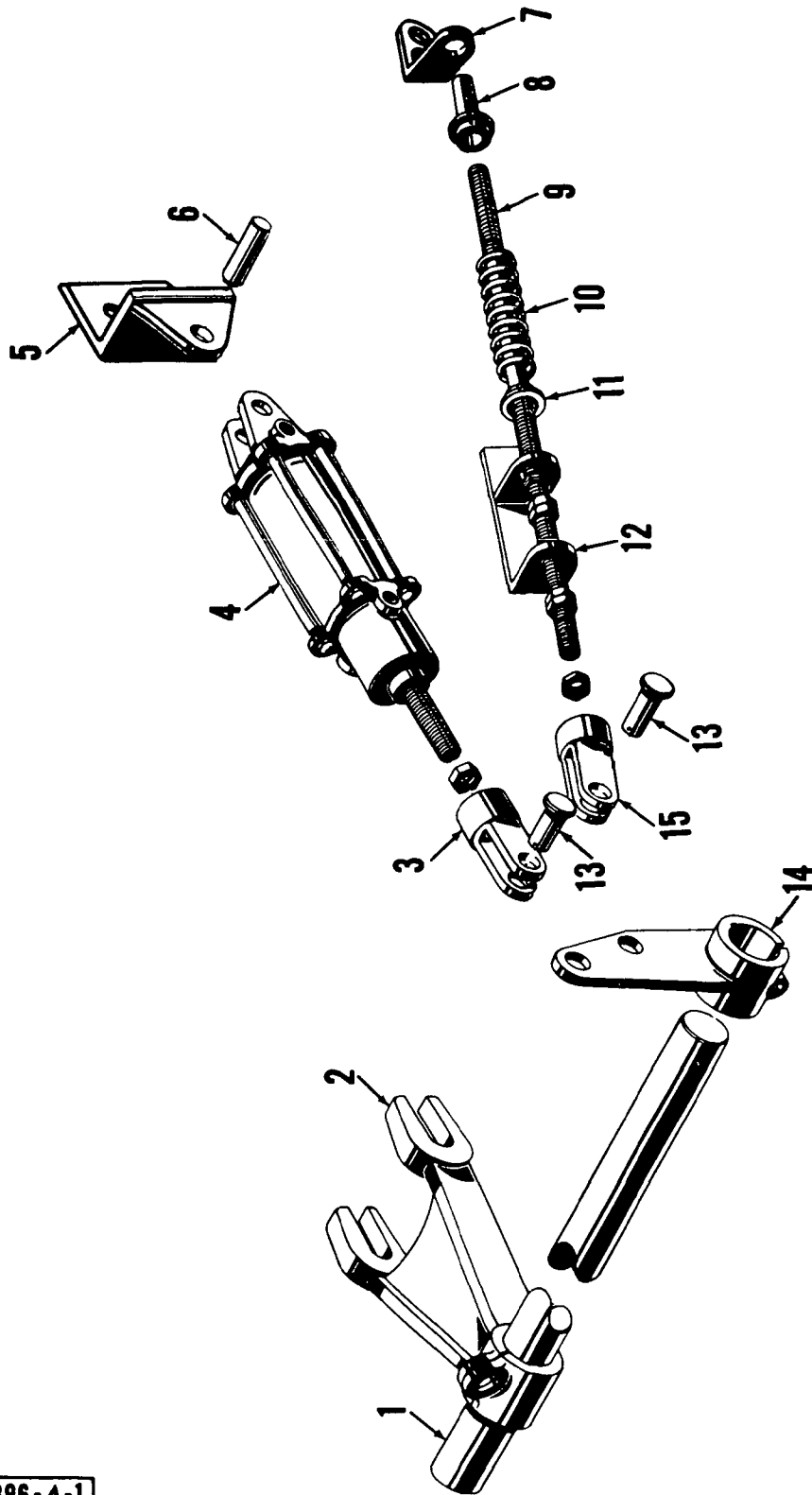
31743-1 Back

50796A1

MANITOWOC ENGINEERING CO

A Division of The Manitowoc Company Inc

Manitowoc, Wisconsin



ILLUST No 42396-A-1

MATERIAL LIST ON BACK

STEERING CONTROL

43148-1 Cont.	REV. Q	MODEL 4000W
---------------	-----------	----------------

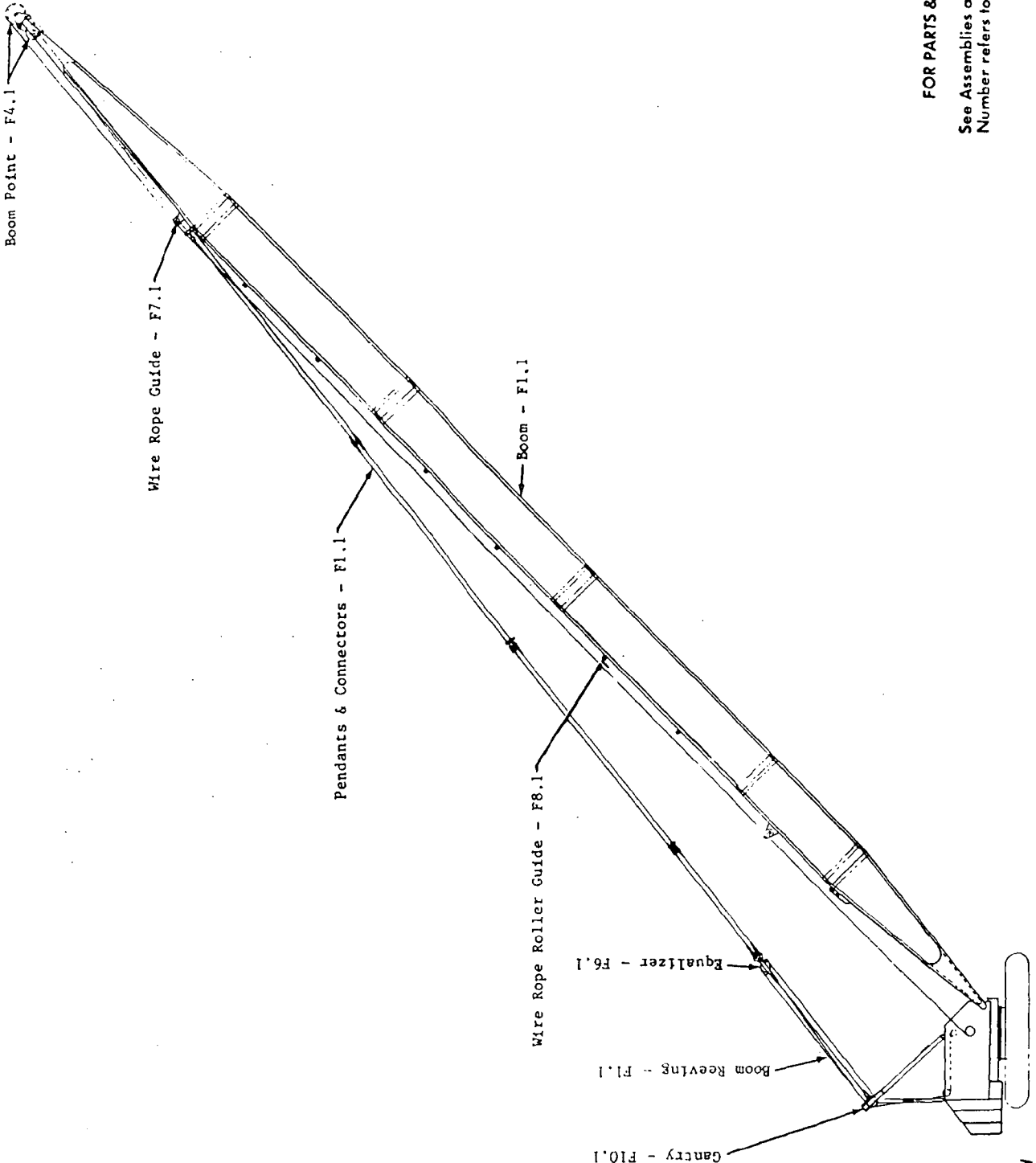
CRAWLERS (24'0")
(QUANTITIES FOR BOTH CRAWLERS)

REF. NO.	PART NUMBER	QUANTITY REQUIRED	DESCRIPTION OF PART	VENDORS PART NO.
37	40246	104	TREAD, Crawler (48")	
38	11978	208	PIN, Tread (See Note 3)	
43	74863	4	PLUNGER, Bumper	
44	74867	4	PLATE, Cover	
45	74864	4	BUMPER	
46	74862	4	CYLINDER, Bumper	
47	74865	4	SPACER	
48	74866	64	SHIM (Use as required)	
<p><u>NOTE 1:</u> Check machine or "Basic Specifications" page for proper chain identification.</p> <p><u>NOTE 2:</u> Bushings #10742, 10757, 17290 and 72090 to have grease groove open end facing centerline of crawler frame.</p> <p><u>NOTE 3:</u> Oversize pin #147302 (1-13/16" dia.) is available to replace pin 111978 (1-3/4" dia.)</p> <p><u>NOTE 4:</u> <u>REPLACEMENT CRAWLER CHAIN LINKS:</u> For 335377 chain use 509077 link For 335378 chain use 508982 link For 335379 chain use 509073 link</p> <p><u>NOTE 5:</u> Optional Roller, 73442 (forged)</p> <p>0-145-1 (Prior to 1967) 0-471 (1974 and on)</p>				
				REV. Q
				43148 - 1

PLEASE GIVE MACHINE S/N W/ORDER

PARTS MANUAL ALPHABETICAL INDEX
Group F - Attachments

DESCRIPTION	PUBLICATION	REV	START DATE	END DATE	GROUP
Backhitch & Gantry	49263	-	07/24/70	12/06/72	F1001
Backhitch & Gantry	49263	B1	07/24/70	12/06/72	F1001
Boom	48168	A1	10/25/67	09/07/79	F0101
Boom	48168	B2	10/25/67	12/27/90	F0101
Boom	48168	F3	10/30/67	01/25/82	F0101
Boom	48168	F4	10/25/67	01/25/86	F0101
Boom Angle Indicator	22334	B1	01/07/52	09/20/85	F1101
Boom Point	91130	A	11/11/65	03/21/85	F0401
Boom Point	91132	D	11/05/65	03/15/00	F0401
Boom Stop, Clutch Throw-Out	48222	A1	04/18/68	04/30/80	F0201
Boom Stop, Mechanical	48179	A1	10/10/67	03/02/70	F0202
Equalizer/Pull-Out	180115	D1	10/13/67	06/07/84	F0601
Equalizer/Pull-Out	73741	-	09/18/62	03/17/83	F0601
Gantry Lifting Device	181193	G1	04/16/70	08/17/82	F1002
Guard Rollers On "A" Frame	181294	C1	10/02/70	09/03/81	F0901
Hook & Weight Ball	75345	C1	03/03/63	03/06/73	F1401
Lower Block	33007	C1	02/11/64	08/09/88	F1501
Lower Block	78825	-	07/20/67	09/29/84	F1501
Wire Rope Guide	33624	C1	01/07/66	06/30/76	F0701
Wire Rope Guide	33634	D1	01/20/66	09/10/80	F0701
Wire Rope Guide	77436	-	02/01/66	11/27/68	F0701
Wire Rope Roller Guide	77090	-	09/15/65	01/21/98	F0801
Wire Rope Roller Guide	77090	C1			F0801
Wire Rope Roller Guide	91142	-	11/11/65	04/23/82	F0801



FOR PARTS & ILLUSTRATIONS

See Assemblies as named.
Number refers to Parts Manual Page

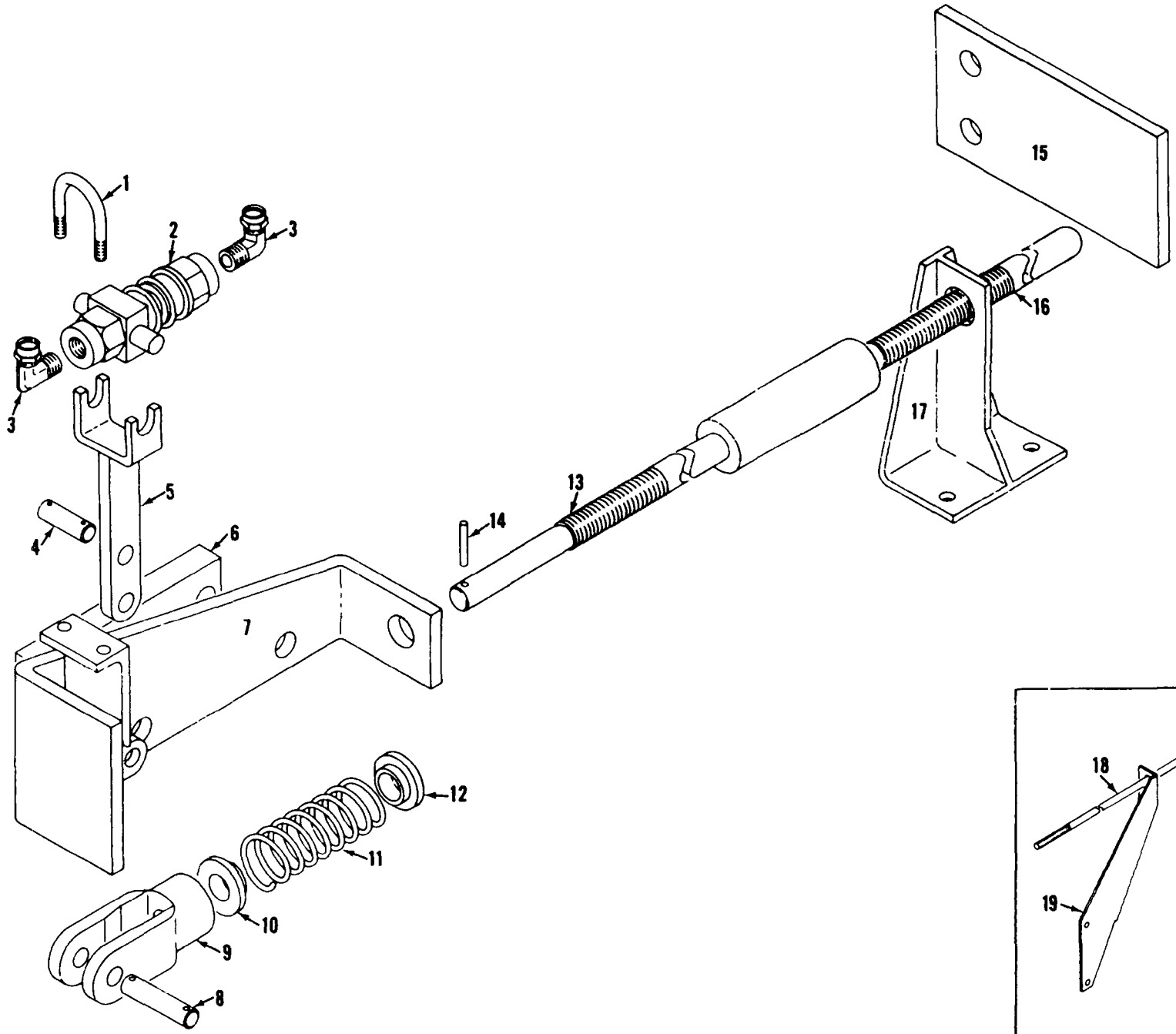
48168A1

4000W

48222A1

48222A1

MANITOWOC ENGINEERING CO.
A Division of The Manitowoc Company, Inc.
Manitowoc, Wisconsin



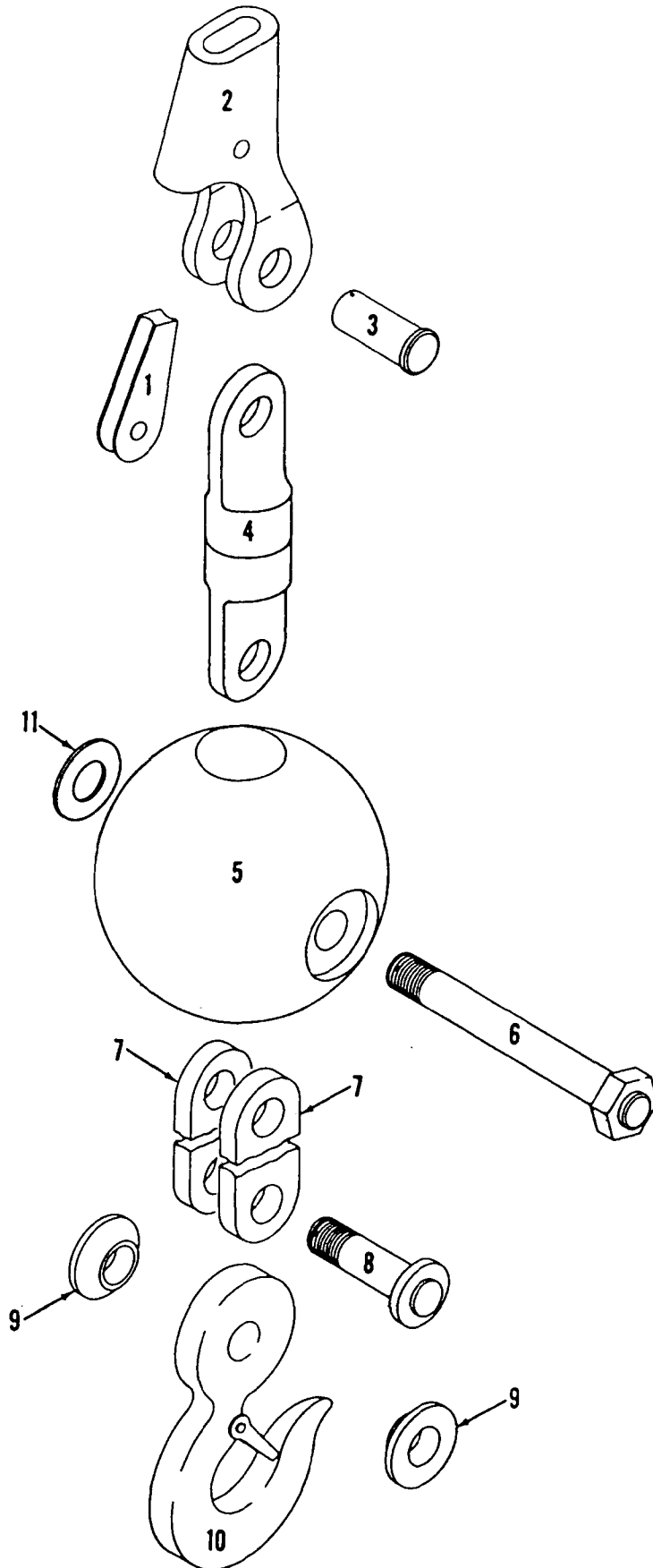
MATERIAL LIST ON BACK

BOOM STOP

MANITOWOC ENGINEERING CO.

A Division of The Manitowoc Company, Inc.

Manitowoc, Wisconsin



MASIEK

115 40 111

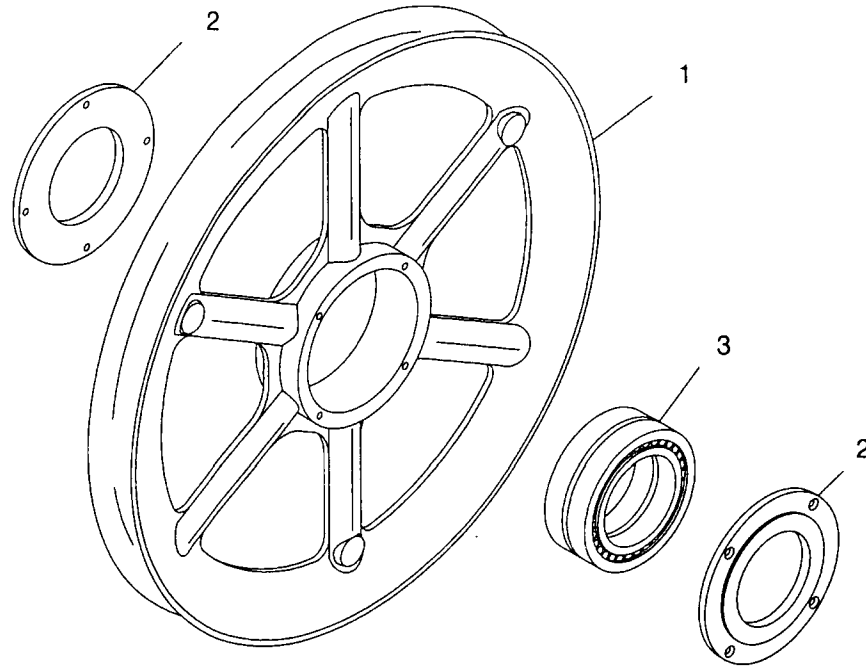
75345A1

MATERIAL LIST ON BACK

HOOK AND WEIGHT BALL

MANITOWOC ENGINEERING CO.

Division of The Manitowoc Company, Inc.



MODEL

888

SHEAVE
(for 1-1/8" diameter rope)

ITEM	PART #	QTY.	DESCRIPTION OF PART
	91130-1	1	SHEAVE ASSEMBLY
1	91129	1	SHEAVE (casting)
	429000	1	FITTING, Grease (1/8")
2	75599	2	PLATE, Retaining
	617648	4	CAPSCREW, Flat Head (5/16-18 UNC-2A x 3/4" long) (see Note)
3	224150	1	BEARING
	91130-3	1	SHEAVE ASSEMBLY
1	97188	1	SHEAVE (fabrication)
2	75599	2	PLATE, Retaining
	617648	4	CAPSCREW, Flat Head (5/16-18 UNC-2A x 3/4" long) (see Note)
3	224150	1	BEARING

Note: Apply LOCTITE #242 (MEC 622293) to both screw and hole threads at assembly.

PLEASE GIVE MACHINE SERIAL NUMBER WITH ORDER

ASSEMBLY 091130	REVISION A
---------------------------	----------------------

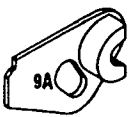
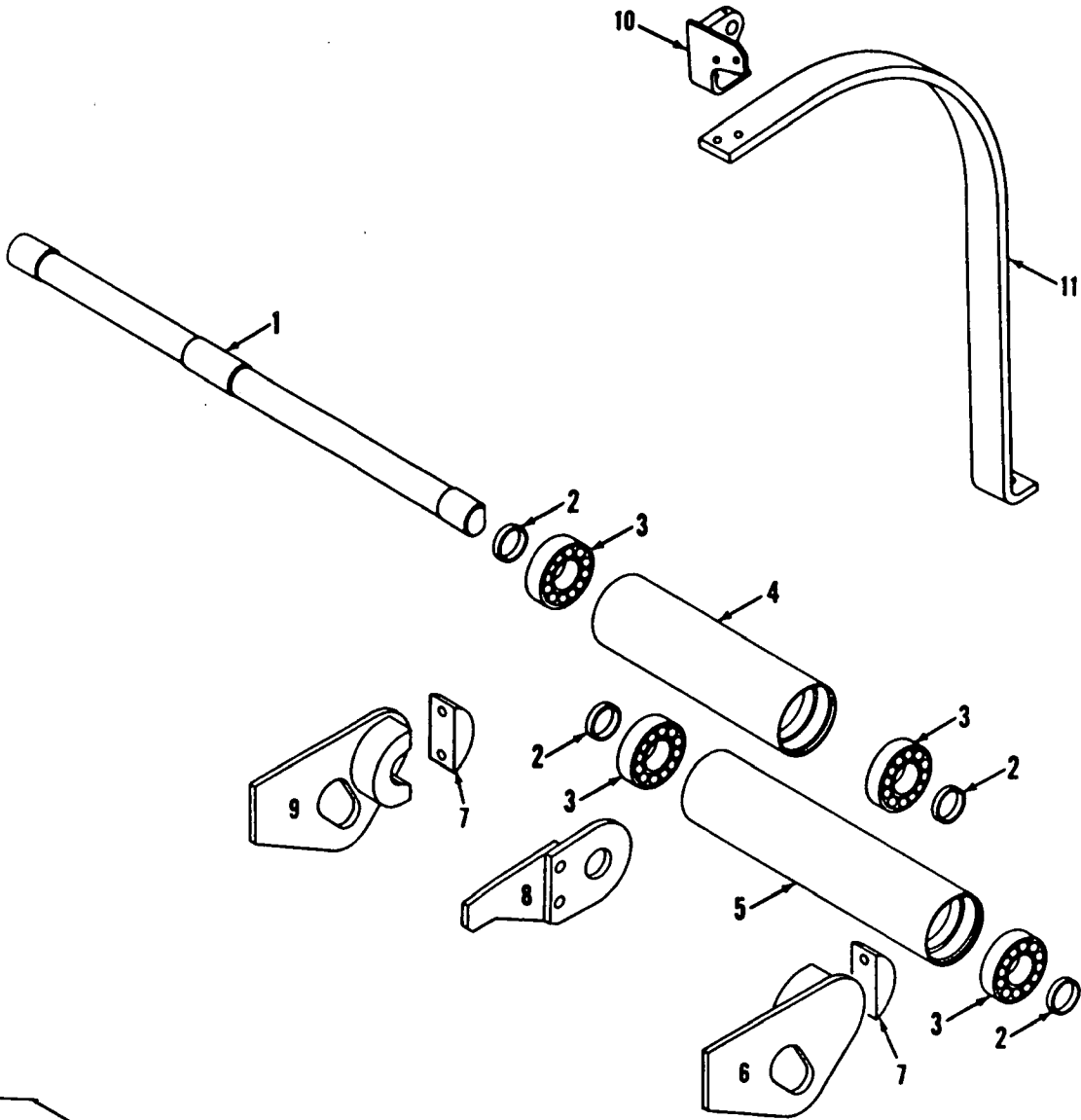
SHEAVE

MANITOWOC ENGINEERING CO.

A Division of The Manitowoc Company, Inc.

Manitowoc, Wisconsin

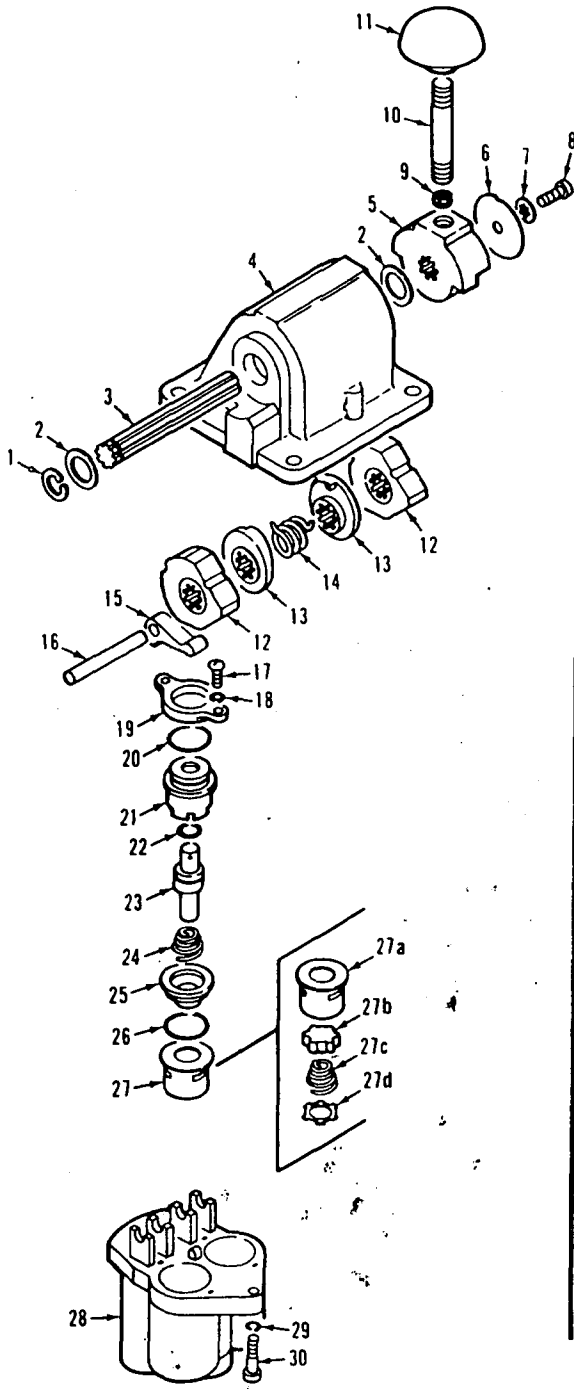
MASTER



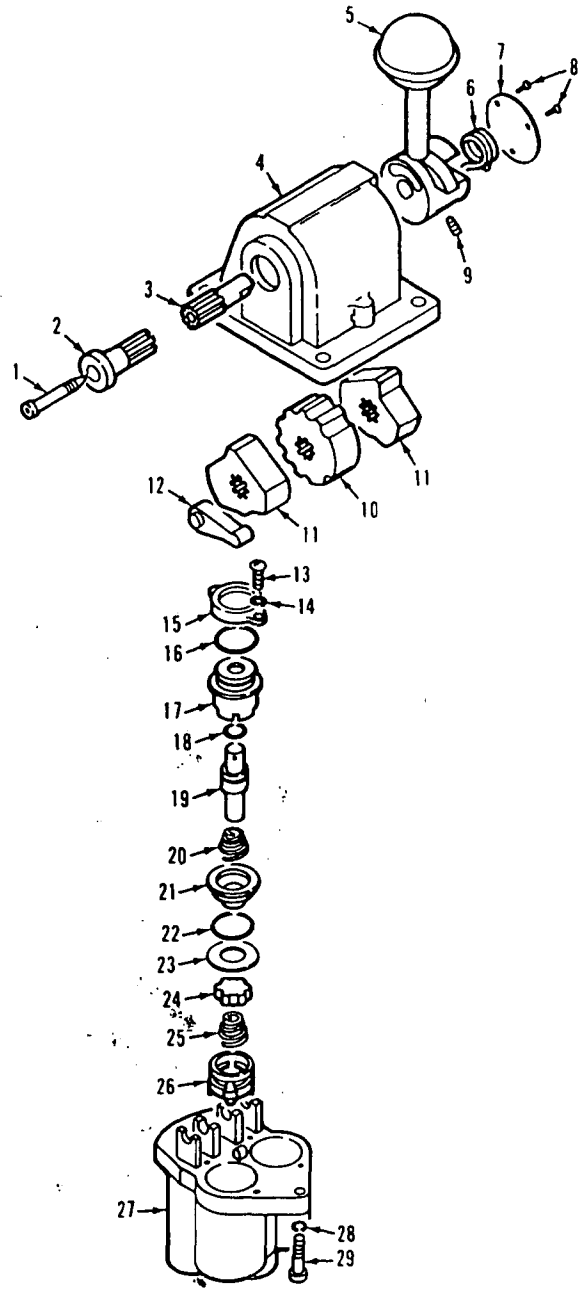
18129481

MATERIAL LIST ON BACK

ROLLER GUIDE



P59339



P54425-0310

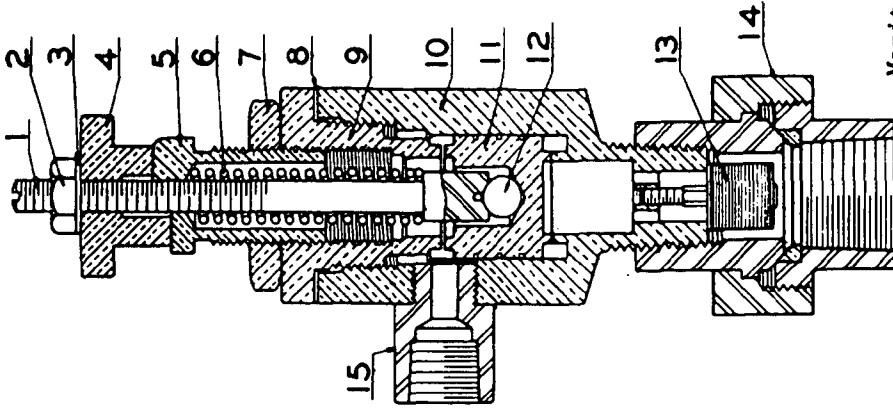
MANITOWOC ENGINEERING CO.

A Division of The Manitowoc Company, Inc.

Manitowoc, Wisconsin

MASTER

5-AUX-525 UNLOADER PILOT AND PARTS LIST

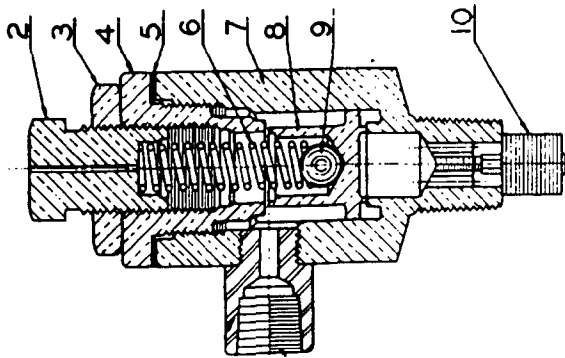


B-37823

Manitowoc #558903

REF. NO.	NAME OF PART	SYMBOL
1	Unloader Spring Carrier	3-AAB-82
2	Hand Unloader Knob Nut	50Y1
3	Hand Unloader Knob Lock Washer	95H1
4	Hand Unloader Knob	AAB-85
5	Adjusting Screw	AAB-86
6	Valve Spring	78A122
7	Adjusting Screw Nut	AAB-83
8	Adjusting Shim	77A133 (10)
9	Unloader Cap	4-AAB-78
10	Unloader Body	4-AAB-79
11	Valve	2-AAB-87
12	Valve Ball	10A6
13	Filter Element	5E2
14	Inlet Union	64AP4
15	Unloader Outlet Connection	45-AUX-113

15-AUX-525A UNLOADER PILOT AND PARTS LIST



B-37695

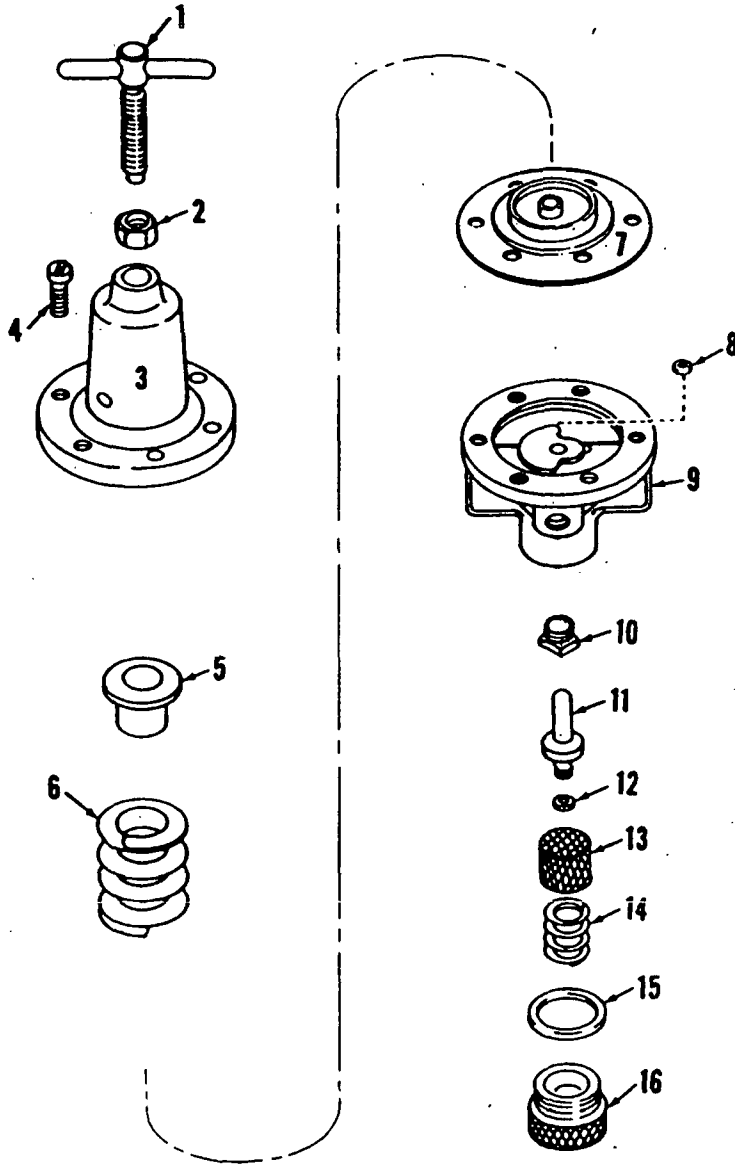
Manitowoc #558902

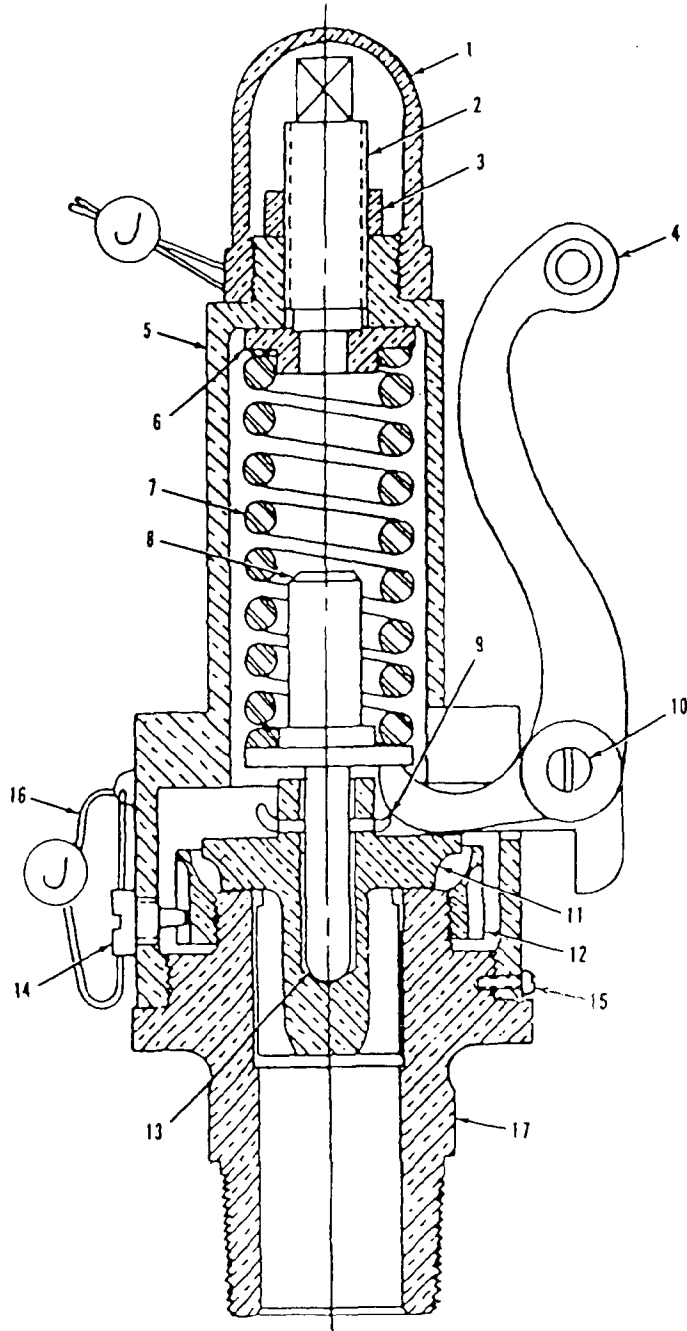
REF. NO.	NAME OF PART	SYMBOL
1	Unloader Outlet Connection	45-AUX-113
2	Adjusting Screw	7-AAB-86
3	Adjusting Nut	AAB-83
4	Unloader Cap	4-AAB-78
5	Unloader Cap Shim	77A133 (10)
6	Unloader Spring	78A236
7	Unloader Body	4-AAB-79
8	Unloader Valve	3-AAB-87
9	Valve Ball	10C4
10	Filter Element	5E2

64AP4

Unloader Body Union

When ordering repairs give Model Number of Pilot and Symbol of unloader parts desired. (Model Number is stamped on hexagon face near unloader pipe fitting 45-AUX-113.)





O-156 C1

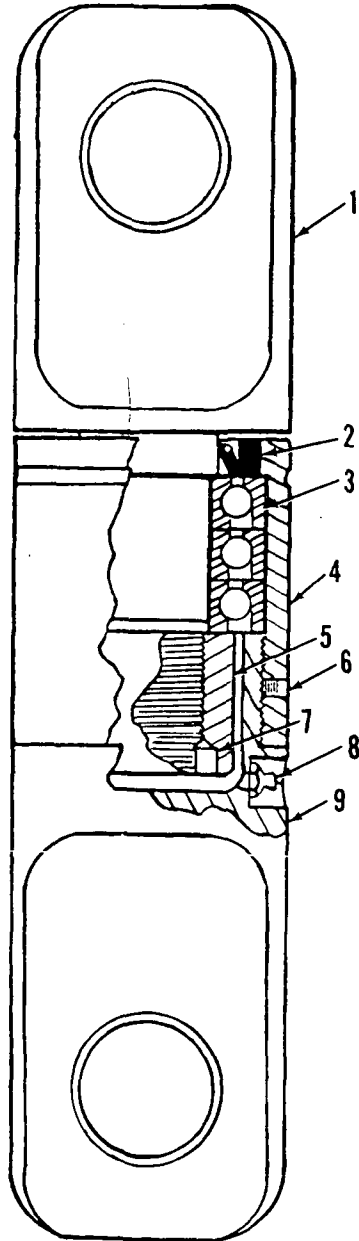
MATERIAL LIST ON BACK

SAFETY VALVE

MANITOWOC ENGINEERING CO.

A Division of The Manitowoc Company, Inc.

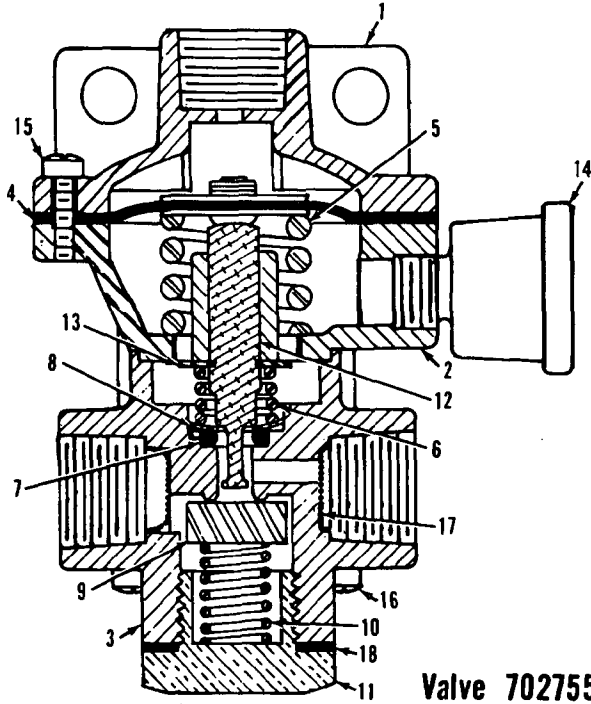
Manitowoc, Wisconsin



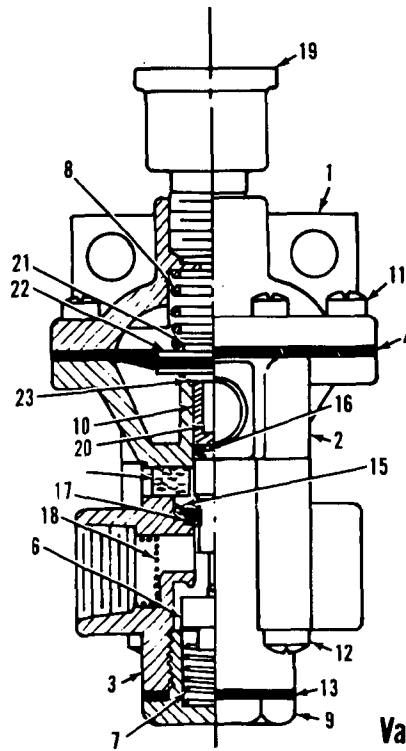
O-288A1

MATERIAL LIST ON BACK

SWIVEL LINK



Valve 702755



Valve 702756

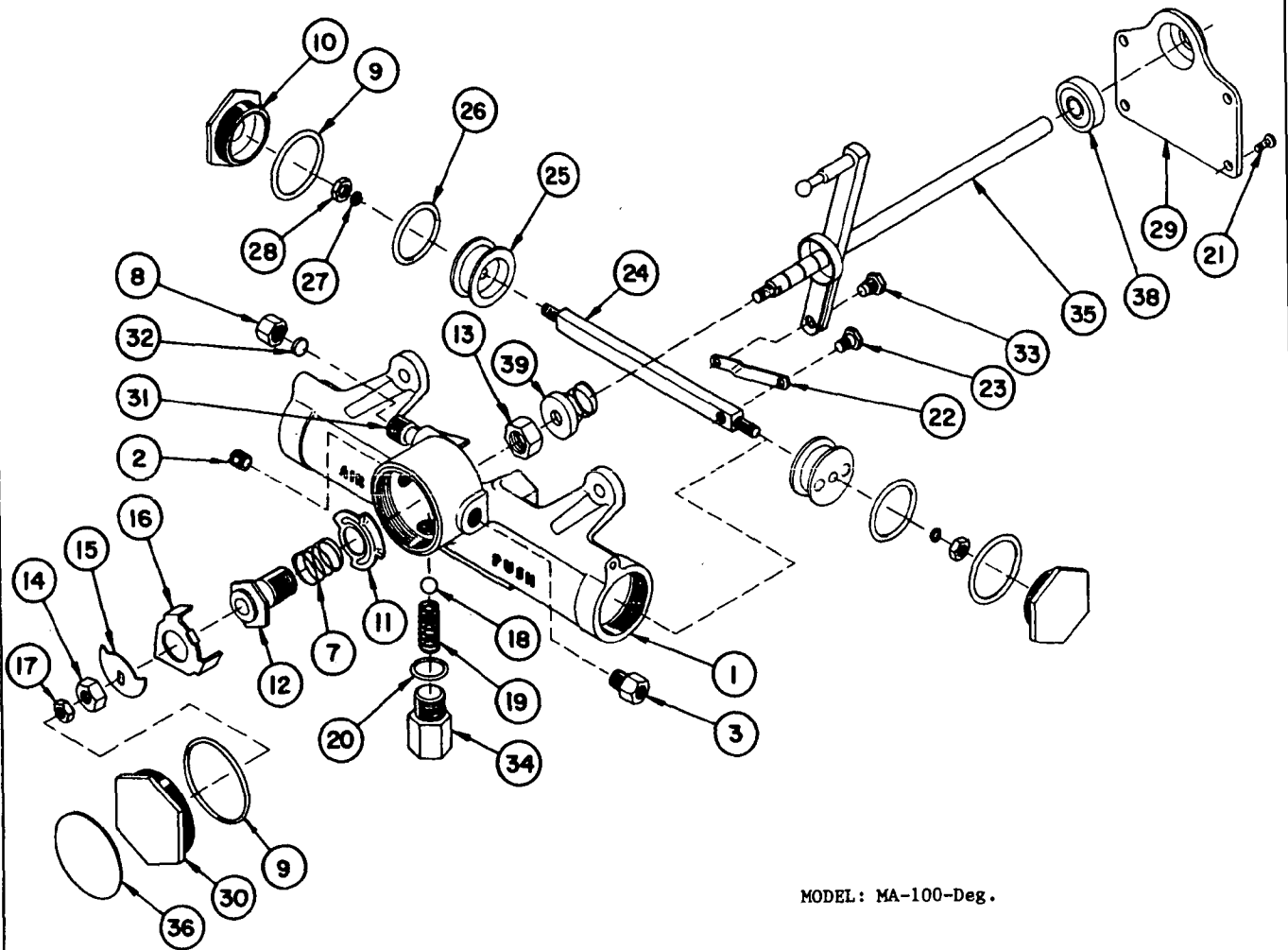
MASTER

MANITOWOC ENGINEERING CO.

A Division of The Manitowoc Company, Inc.

Manitowoc, Wisconsin

MASTER



MODEL: MA-100-Deg.

O-41581

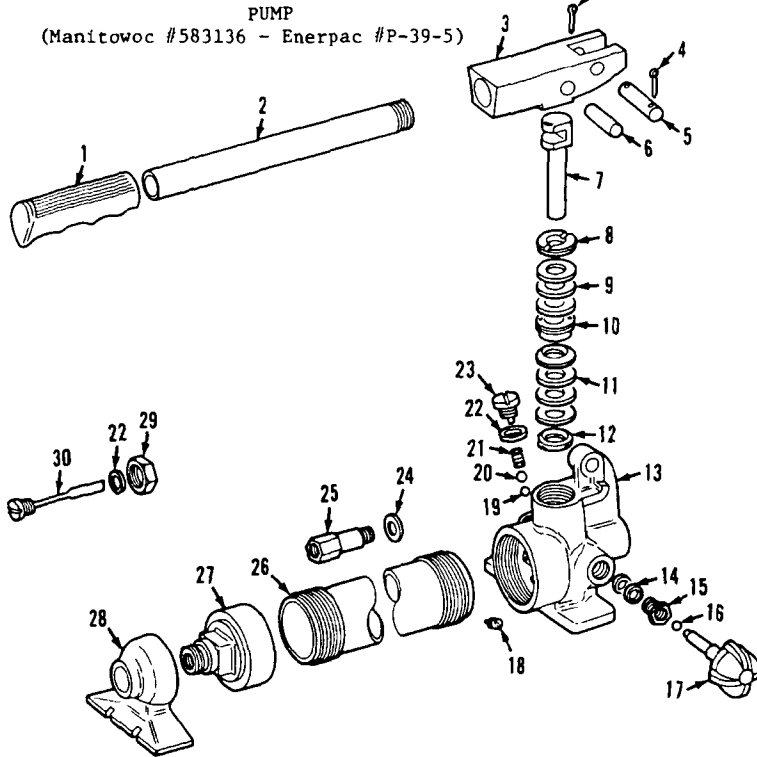
MATERIAL LIST ON BACK

WINDSHIELD WIPER MOTOR

MANITOWOC ENGINEERING CO.

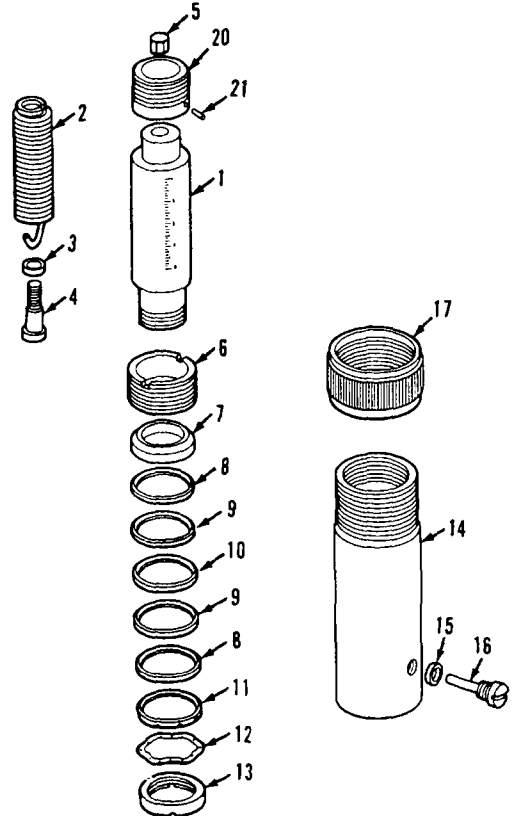
A Division of The Manitowoc Company, Inc.

Manitowoc, Wisconsin



Ref. No.	No. Req.	Description	Part No.
1	1	Grip	C7.550
2	1	Handle	C7.900
3	1	Beam	B113.060-1
4	2	Pin, Cotter	S1.59
5	1	Pin, Beam	P76.63
6	1	Pin, Cross	P75.57
7	1	Plunger, Pump	P16.51
8	1	Nut, Retaining	P16.54
9	3	Packing, Pump	*
10	1	Nut, Cup Ret.	P16.55
11	4	Cup, Pump	*
12	1	Spreader	P1.52-2
13	1	Base	B121.005-1
14	2	Packing	*
15	1	Nut, Packing	MJ11-1
16	1	Ball	*
17	1	Spindle	J435.900
18	1	Screen, Oil	P807.18
19	2	Ball	*
20	1	Ball	*
21	1	Spring	S1.183
22	3	Gasket	*
23	1	Plug, Valve	CB9.185
24	1	Gasket	B159.167
25	1	Valve, By-pass	P182.190-2
26	1	Reservoir	P16.25
27	1	Cap, Reservoir	P75.266-1
28	1	Rest., Pump	P76.267-1
29	1	Nut	P75.181
30	1	Plug, Filler	B110.900
*		Kit	P39K-1

JACK
(Manitowoc #385177 - Enerpac #RSP-251)



Part numbers are the Venders, Enerpac, Butler, Wis. 54220. Please so Specify if ordering from Manitowoc Engineering Co. When ordering parts, please give Model number and Serial number. See Nameplate for this information.

Ref. No.	No. Req.	Description	Part No.
1	1	Plunger Assembly	R251.900
20	1	Saddle	R251.45
21	1	Pin	R251.61
2	1	Spring	R225.184
3	1	Bearing Thrust	R225.155-1
4	1	Screw, Adjusting	R225.143-1
5	1	Nut	R225.55
6	1	Ring, Stop	R77.44-1
7	1	Disc	R225.71
8	2	Chevron	*
9	2	Separator, Cup	*
10	1	Chevron	*
11	1	Spreader	R77.43-1
12	1	Washer, Spring	*
13	1	Nut, Retaining	R77.35
14	1	Base	R225.05
15	1	Gasket	*
16	1	Screw, Retaining	R225.302
17	1	Protector, Thread	R158.271
	1	Coupler, Half	AR400
	1	Cap, Dust	Z410-1
	1	Decal	*
		Kit, Cylinder Packing	RC251K
		Kit, Coupler Packing	A604K

Crawler Adjusting Jack and Pump

CLICK HERE TO **DOWNLOAD** THE COMPLETE MANUAL

- Thank you very much for reading the preview of the manual.
- You can download the complete manual from: www.heydownloads.com by clicking the link below



- Please note: If there is no response to CLICKING the link, please download this PDF first and then click on it.

CLICK HERE TO **DOWNLOAD** THE COMPLETE MANUAL