



# TRADITIONAL CRANE PARTS MANUAL

This manual has been prepared for and is considered part of

**4000W**

Model

**40677**

Serial Number

**GROUP A = Rotating Structure** (Includes rotating bed, operator's cab, cases, fuel tanks, transfer pump, counterweights, guards, platforms, catwalks, machinery enclosure, horn)

**GROUP B = Upperworks Machinery** (Includes front, rear, and auxiliary drums, boom hoist, swing and drive shafts, hand levers, foot pedals, control linkage, rotation indicators, upperworks hydraulic components, hydraulic piping, hydraulic oil reservoir, lubrication pump and piping, blowers)

**GROUP C = Air Components & Electrical** (Includes control console, air piping, electric wiring, auxiliary light plant and lighting, TV monitoring, compressor and air tank)

**GROUP D = Power Components - Upperworks** (Includes engine or motor, radiator, auxiliary power plant, take off converters and piping, controls, VICON power lowering, torque limiter, hydraulic pumps and piping, fuel piping, battery box)

**GROUP E = Lower Structure & Control** (Includes carbody, crawlers, travel shafts and control, steering travel locks, hydraulic travel, travel power outriggers, carrier, pedestal, lowerworks hydraulic piping, RINGER components, barge mounting and machinery, spud drums)

**GROUP F = Attachments** (Includes booms, jibs, masts, tower, wire rope guides, equalizer, gantry, fairlead, timber guards, boom angle indicator, block-up limit, tag line, hook block, weight ball, upper and lower boom point, wind speed indicator, crowd and retract dipper sticks, dippers, )

**O-NUMBER SECTION =** (Includes lacing drawings and purchased component parts drawings referenced in sections A through F)

*This manual is arranged in sections as listed above. Sections A through F are arranged by group numerical order with an index after each section tab. An alphabetical index for groups A Through F combined is located after the O-number Section. The O-number section is arranged in numerical order by O-number. Following this cover page are the Basic Specifications, Warranty Information, Tool List (if applicable) Outline Dimensions, Weights, and Dealer Listing.*

**MANITOWOC CRANES, INC.**

2401 South 30th Street • PO Box 70

Manitowoc, WI 54221-0070

Phone: 920-684-6621 • Fax: 920-683-6278

CLICK HERE TO **DOWNLOAD** THE COMPLETE MANUAL

- Thank you very much for reading the preview of the manual.
- You can download the complete manual from: [www.heydownloads.com](http://www.heydownloads.com) by clicking the link below



- Please note: If there is no response to CLICKING the link, please download this PDF first and then click on it.

CLICK HERE TO **DOWNLOAD** THE COMPLETE MANUAL

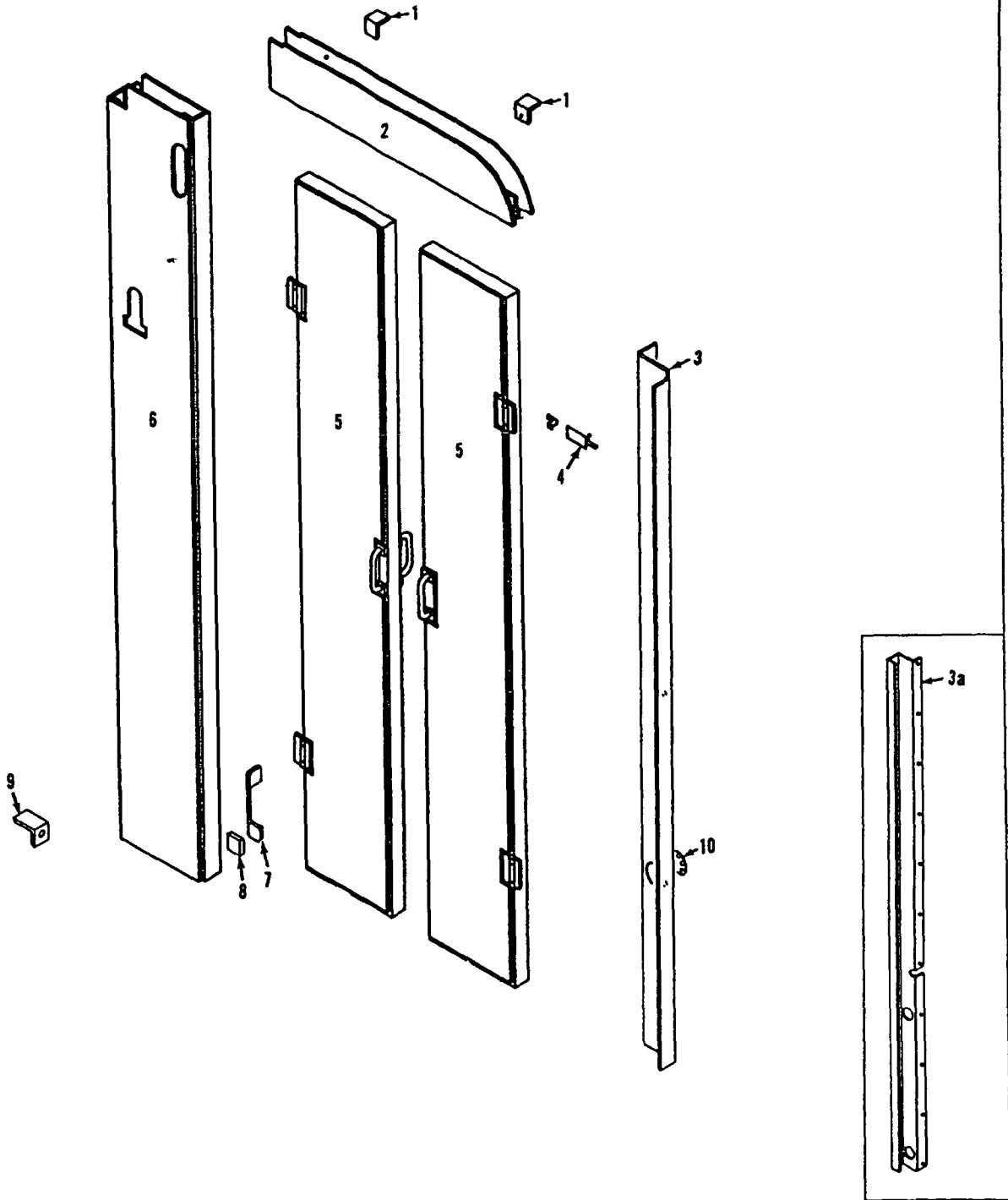


MANITOWOC ENGINEERING CO

A Division of The Manitowoc Company Inc.

Manitowoc, Wisconsin

MASTER

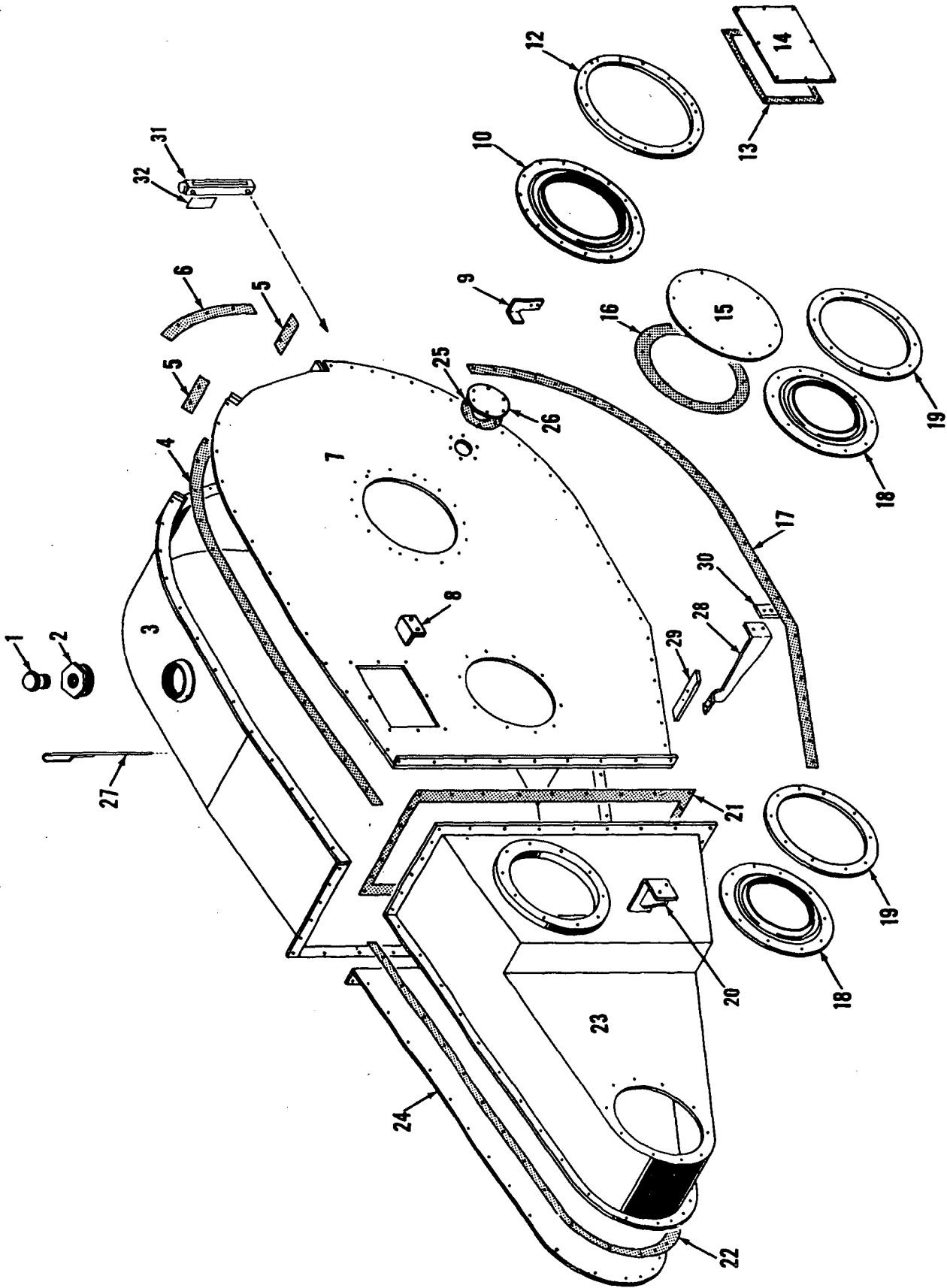


32696D1

MATERIAL LIST ON BACK

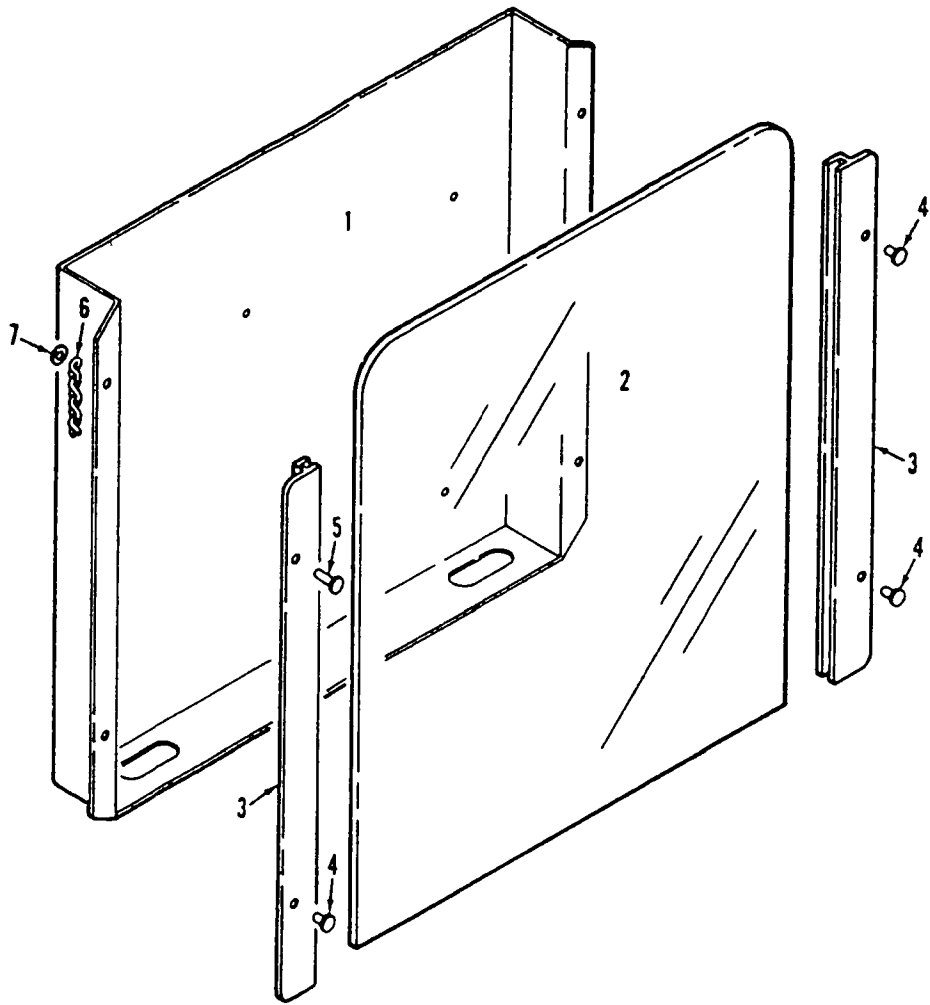
Insulated Door

MAJIER



43331 C1

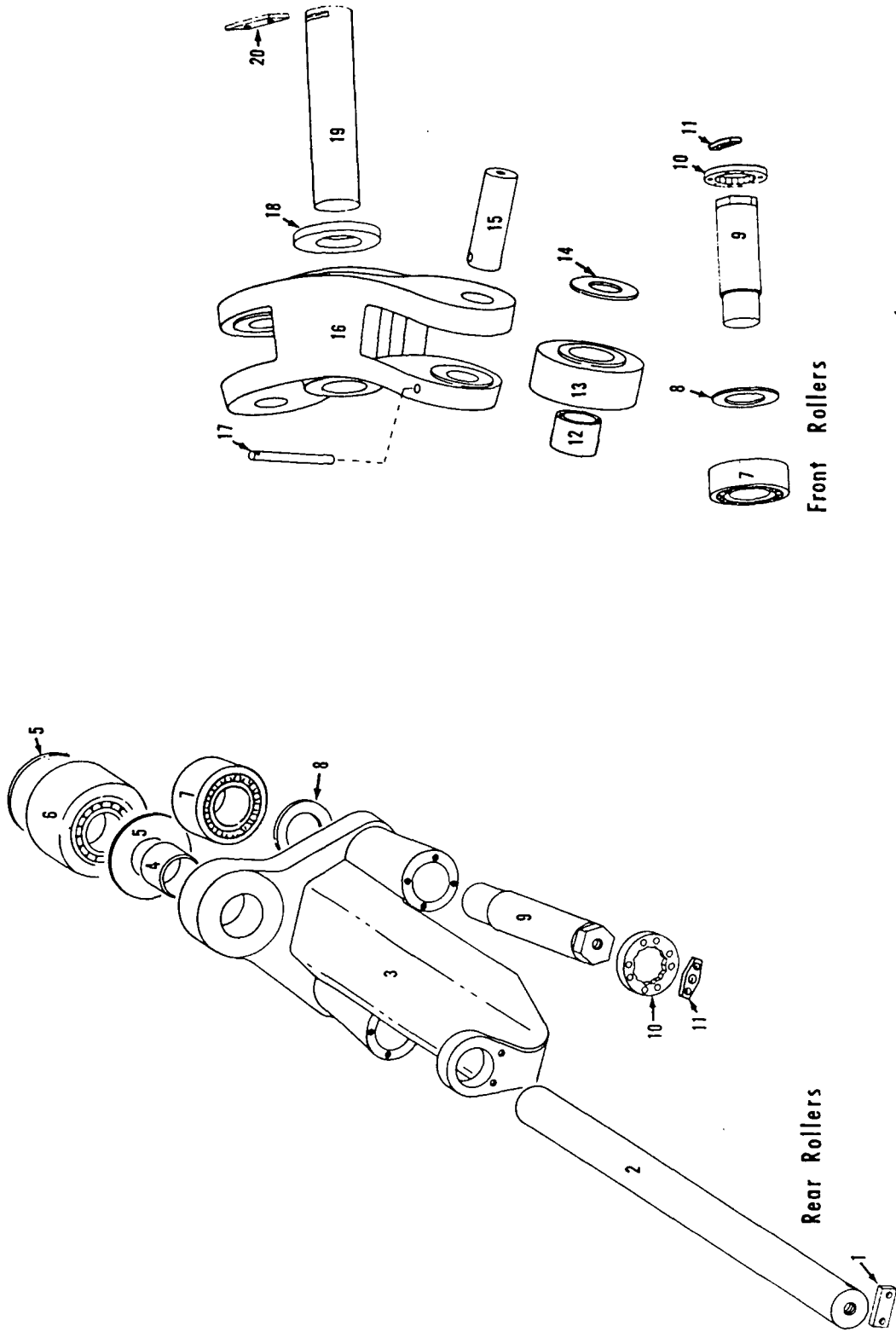




93994A1

MATERIAL LIST ON BACK

CHART HOLDER



Rear Rollers

Front Rollers

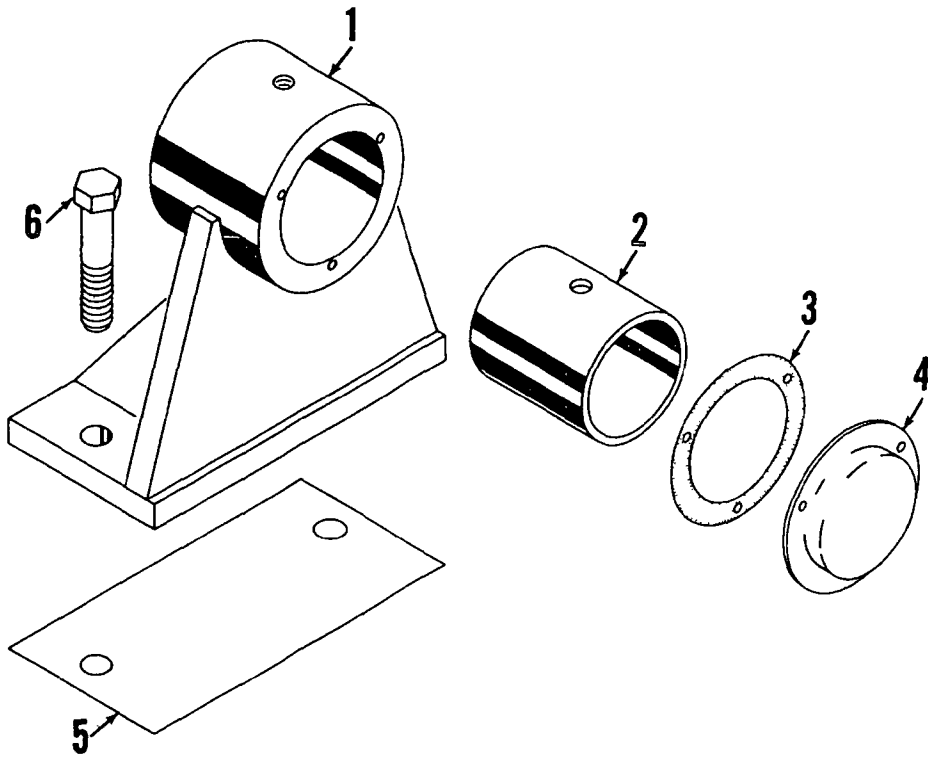
GROUP B - Upperworks Machinery

MANITOWOC ENGINEERING CO

A Division of The Manitowoc Company Inc.

Manitowoc, Wisconsin

MASTER



23806 A-1

ILLUST No 23806-A-1

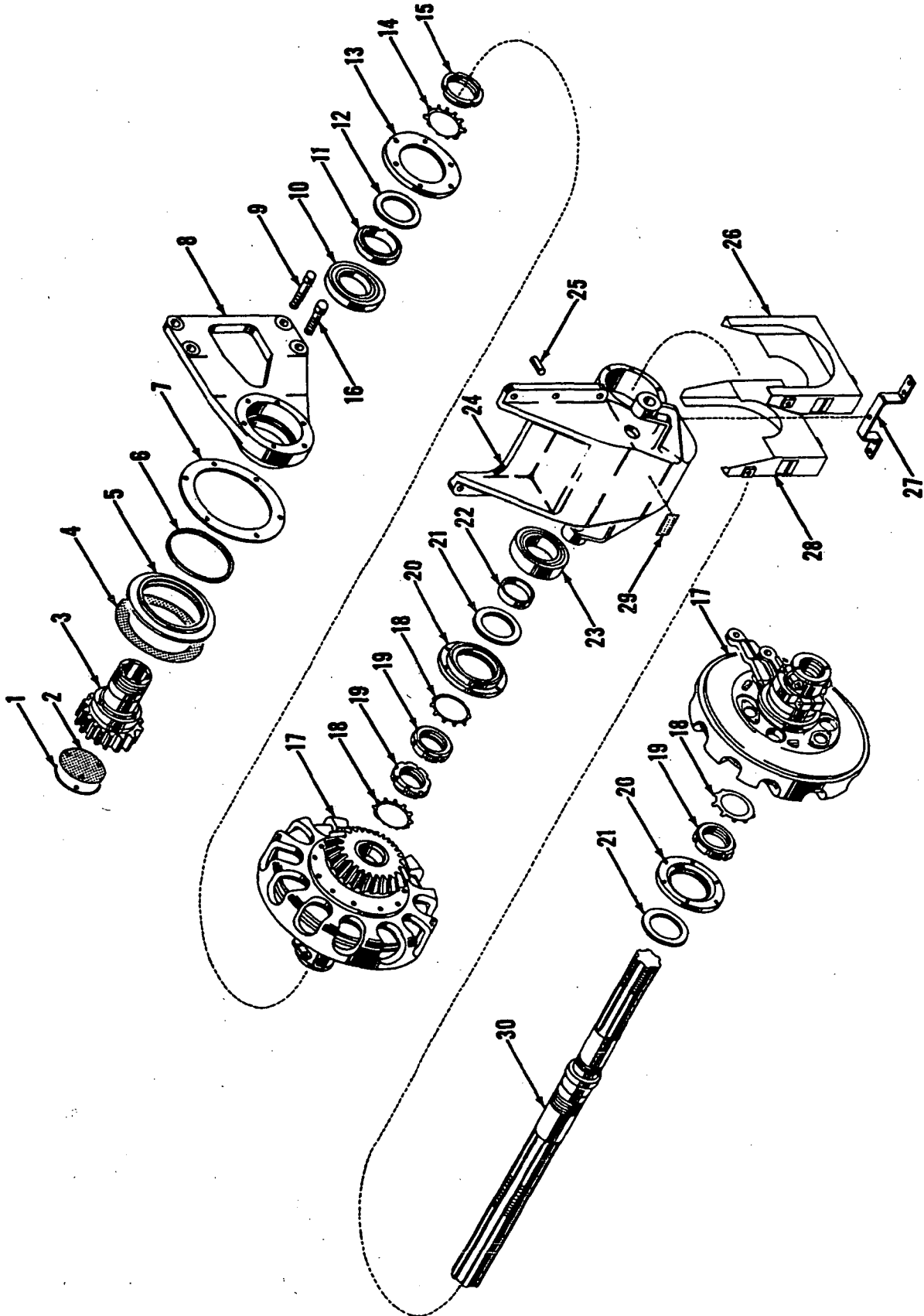
MATERIAL LIST ON BACK

OUTBOARD BEARING

MANITOWOC ENGINEERING CO.

A Division of The Manitowoc Company, Inc.

Manitowoc, Wisconsin



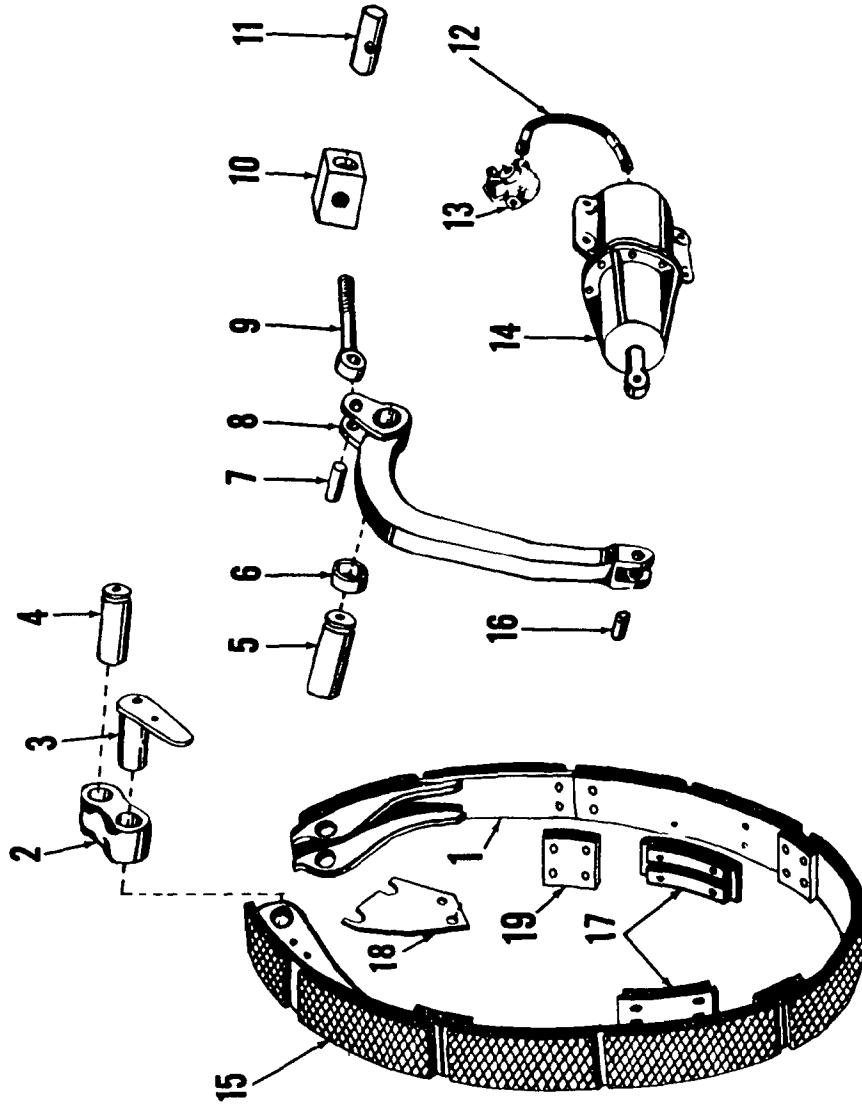
ILLUST. No. 42197 - A-1

MATERIAL LIST ON BACK

CLUTCH SHAFT ASSEMBLY

STER

Use 4238 E2 Back MASTER



4170282

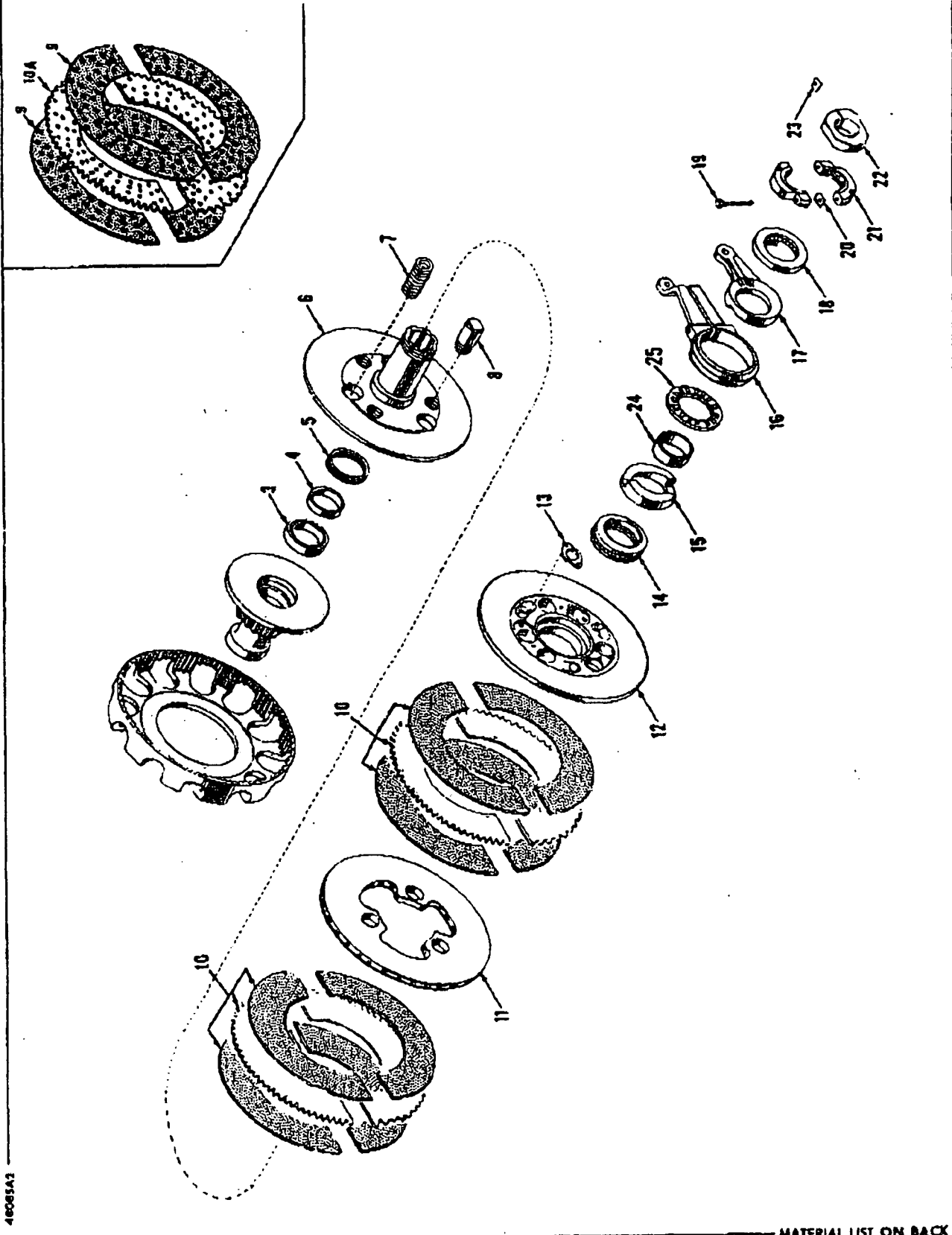
MATERIAL LIST ON BACK

CLUTCH BAND ASSEMBLY

MANITOWOC ENGINEERING CO.

A Division of The Ingersoll Company, Inc.

Manitowoc, Wisconsin



40085A3

MATERIAL LIST ON BACK

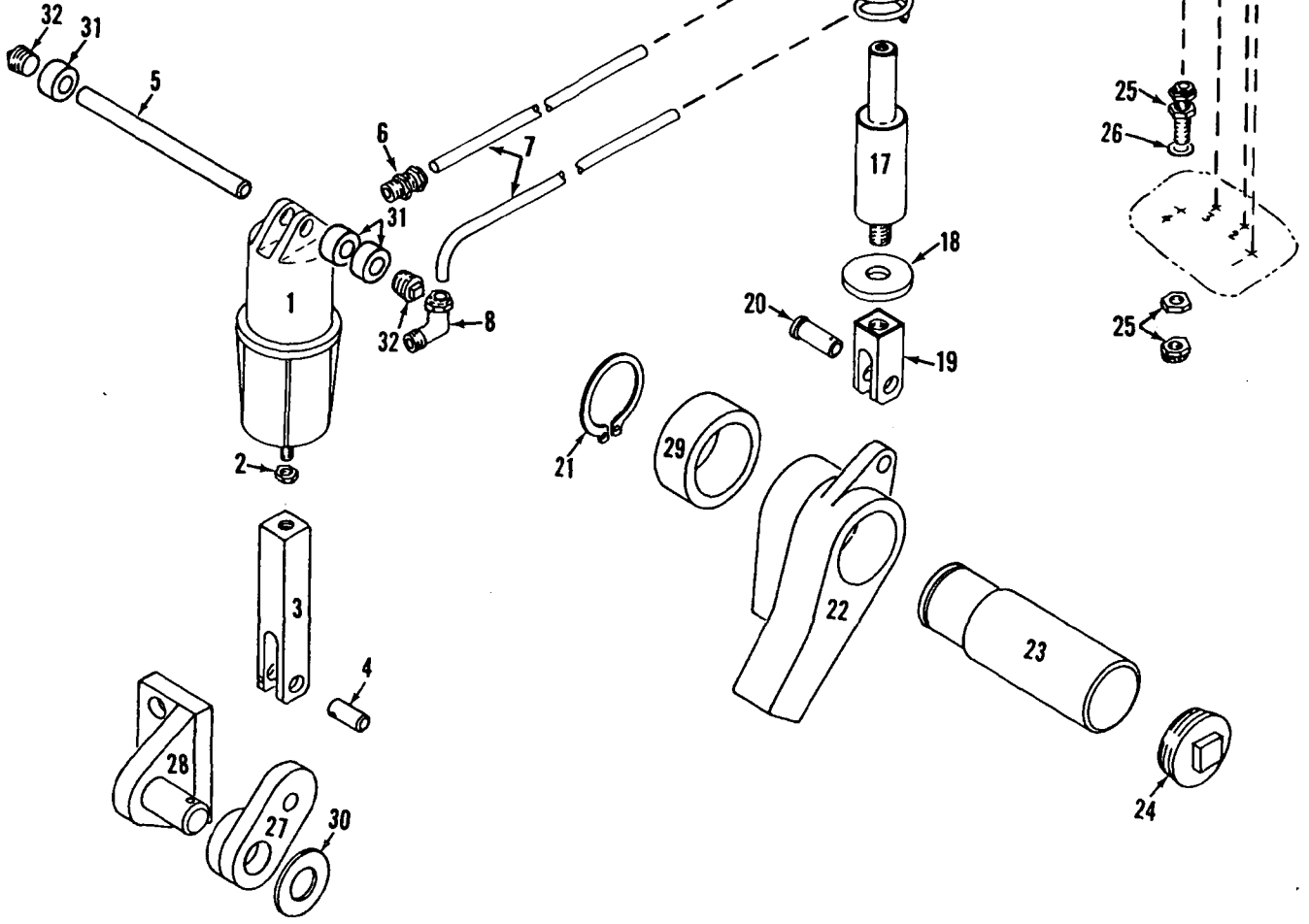
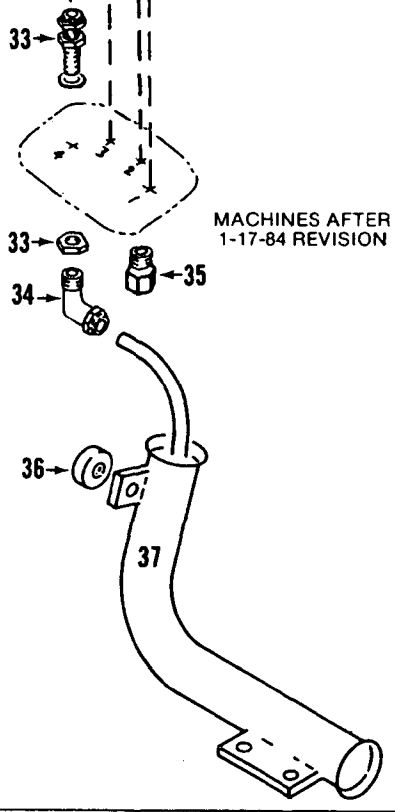
IND. SWING CLUTCH

**MANITOWOC ENGINEERING CO.**

Division of The Manitowoc Company, Inc.

Manitowoc, Wisconsin 54220

B2.2



65195C2

MATERIAL LIST ON BACK

INDEPENDENT BOOM HOIST PAWL

65593-1 cont.	REV. E	MODEL 3900-4000W VICON
---------------	--------	------------------------

LUBE OIL PIPING  
(MODEL 3900 W/UNIVERSAL OPERATOR'S CAB - SEE NOTE 2)

REF. NO.	PART NUMBER	QUANTITY REQUIRED	DESCRIPTION OF PART	VENDORS PART NO.
49	70188	1	HOSE, Flex (½" I.D. 9'4" long - 2.845m)	
50	71911	2	ADAPTER	
51	345338	2	CLAMP, Hose (1-3/4")	
52	486067	1	HOSE, 90° Curved (1-3/4" I.D.)	
53	377209	1	COUPLING(1½")	
54	543423	1	NIPPLE (1½" x 4½")	
55	543425	1	NIPPLE (1½" x 13-1/8")	
56	543543	1	NIPPLE (1½" x 4")	
61	345339	2	CLAMP, Hose (See Note 1 or 3)	
<u>MACH. W/STANDARD BOOM HOIST, USE THE FOLLOWING:</u>				
57	543496	1	NIPPLE (½" x 3")	
59	695565	1	TUBE, Prefab	
58		1	ELBOW, 90° (Formrite #7-10)	
		1	CONNECTOR, Male (Formrite #2-10)	
60	695566	1	TUBE, Prefab	
63		1	CONNECTOR, Male (Upper) (Formrite #2-24)	
		1	CONNECTOR, Male (Lower) (Formrite #24-37-2)	
<u>NOTE 1: INSTALLATION PRIOR TO DESIGN CHANGE OF OCT. 11, 1979</u> (Delete Ref. Nos. 2, 3, 61)				
2A	486293	1	HOSE, Flex (2" x 4'5" - 1.346m)	
3A	429652	2	UNION, Swivel Adapter (2")	
NOTE 2: Model 3900 w/Universal operator's cab, delete Ref. #18 at filter and add the following: (See M3900 Inset)				
64	543404	2	NIPPLE, Close (½")	
65	679303	1	TEE (½")	
66	288750	1	BUSHING, Reducing (½" x 1/8")	
67	460113	1	GAUGE, Oil Pressure	
68	288753	2	BUSHING, Reducing (3/4" x ½")	
69	489442	1	INDICATOR	
<u>NOTE 3: MACHINES SHIPPED AFTER 5-15-85 DESIGN CHANGE:</u>				
70	485257	1	HOSE, Flex (2" x 4'7½" - 1.410m)	
71	429652	2	UNION, Swivel adapter (2")	
				REV. E
				65593-1

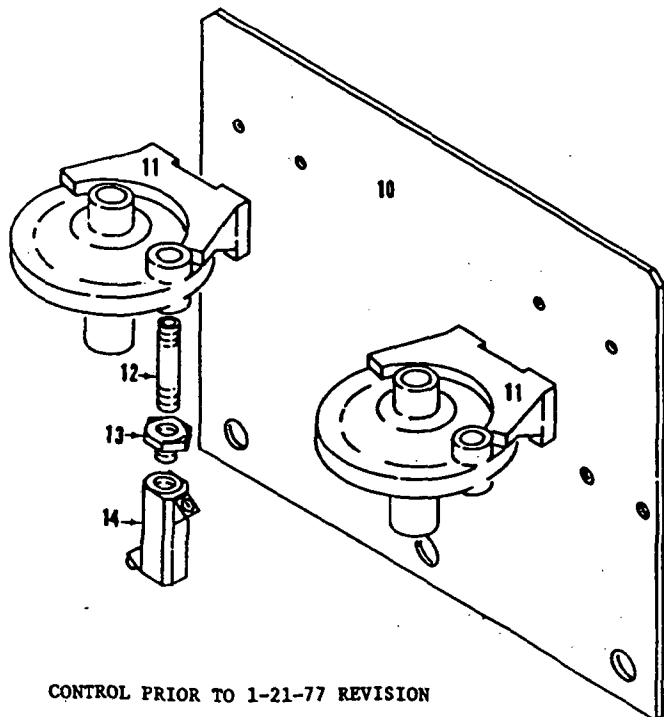
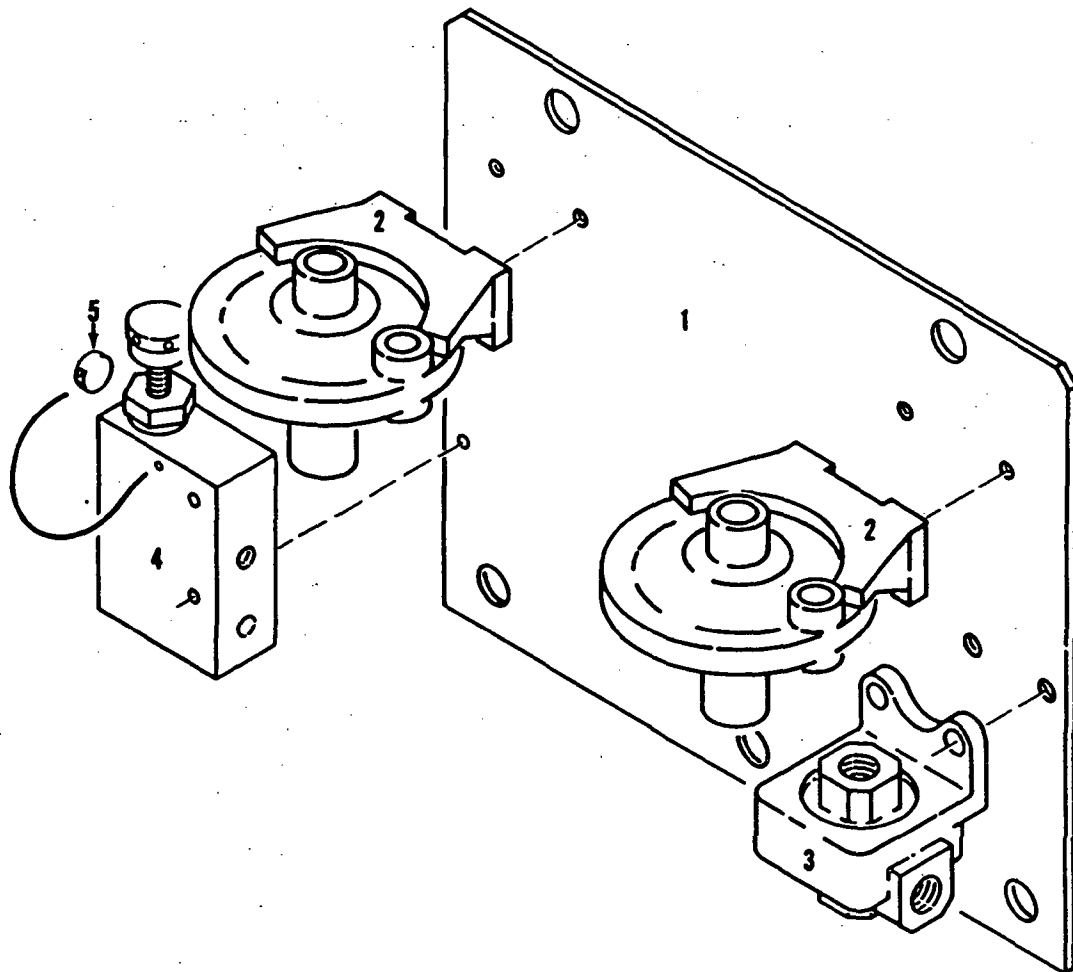
PLEASE GIVE MACHINE S/N W/ORDER

CPT

Run as Front

65593-E1

MASTER

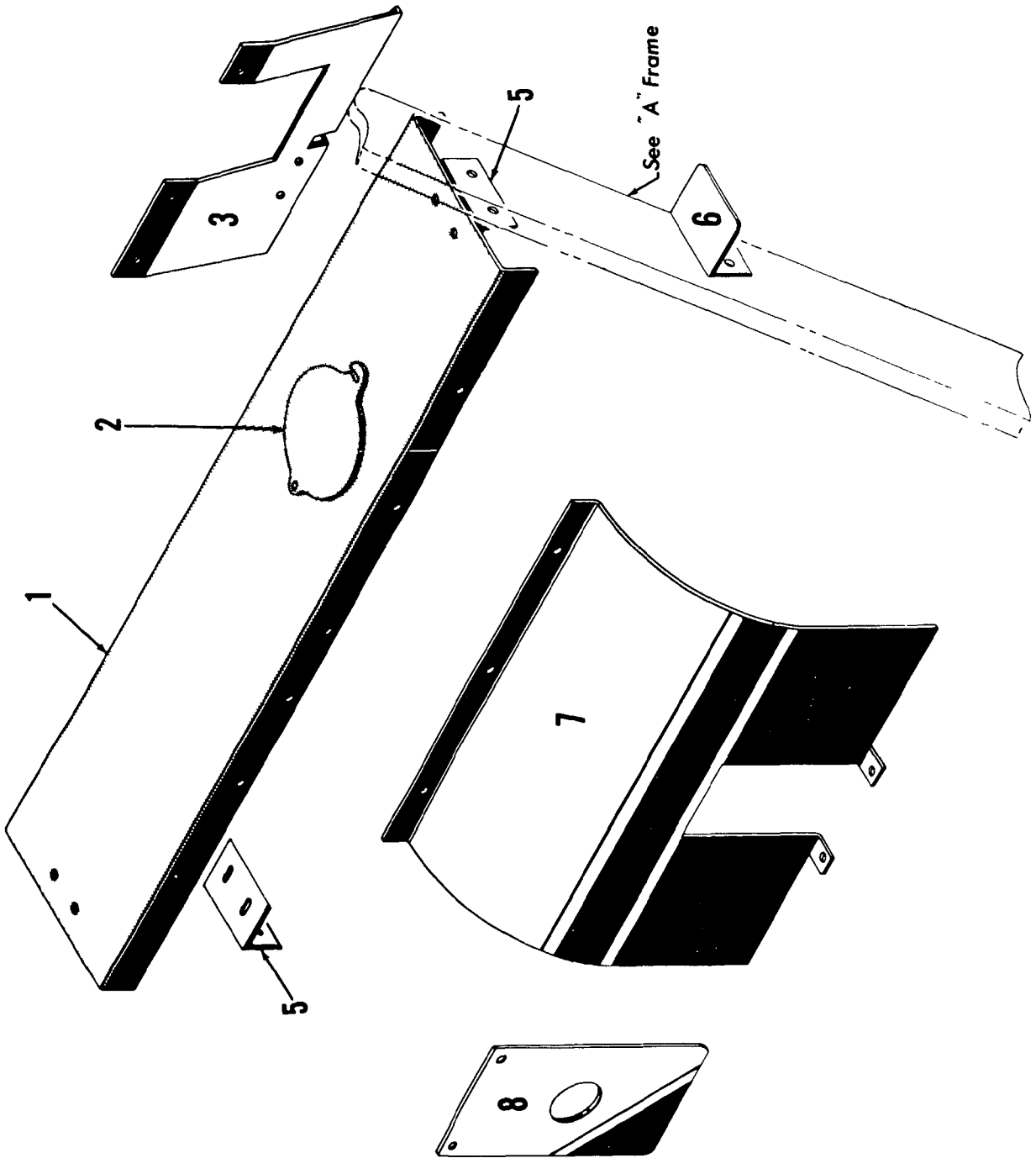


CONTROL PRIOR TO 1-21-77 REVISION

MATERIAL LIST ON BACK

Boom Hoist Pawl Interlock Control

9540181



181861A1

181861A1

**PARTS MANUAL ALPHABETICAL INDEX**  
**Group C - Air Components & Electrical**

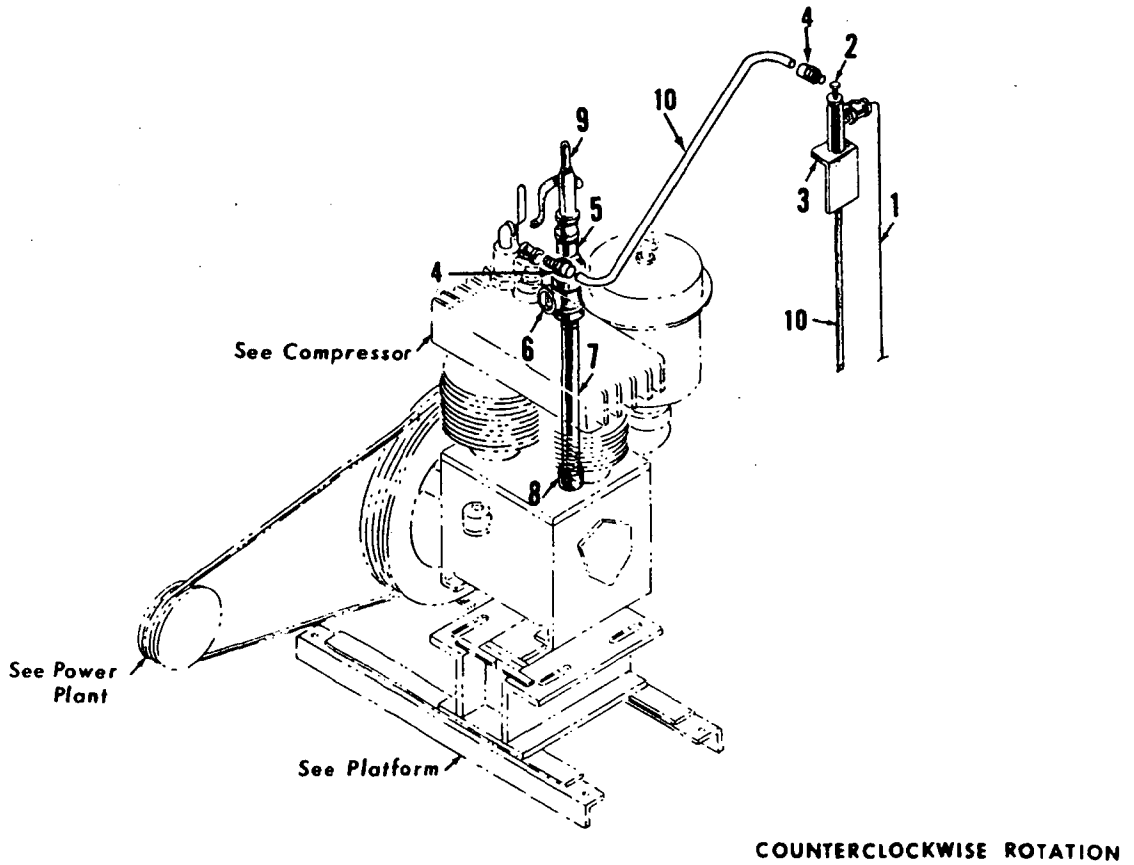
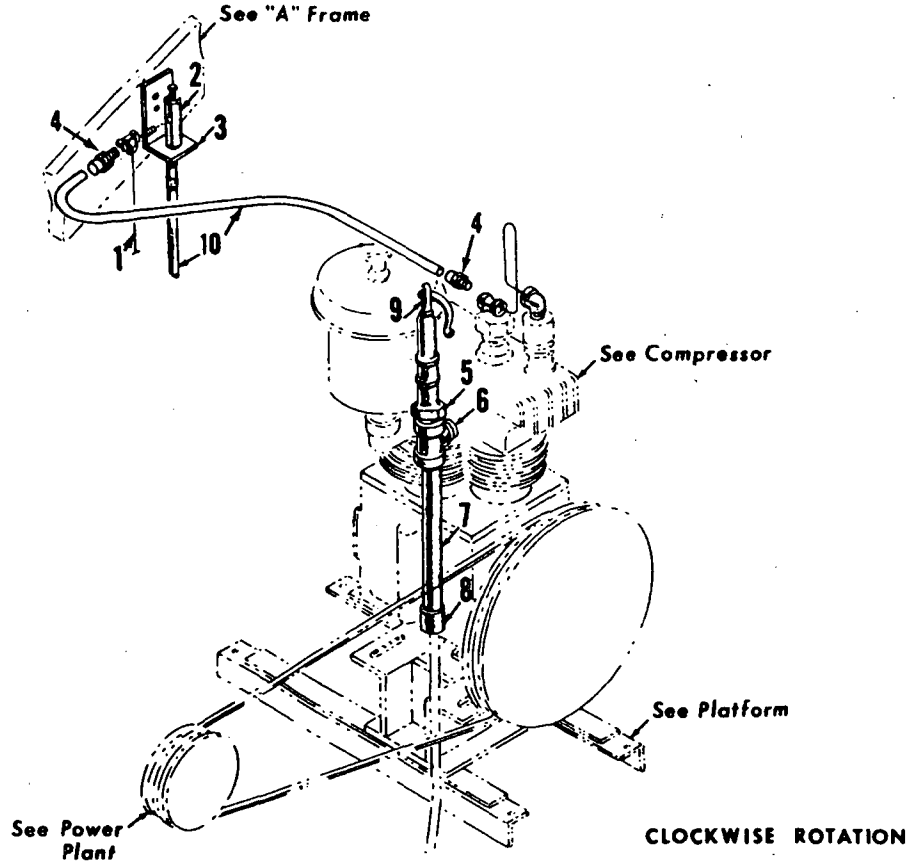
<b>DESCRIPTION</b>	<b>PUBLICATION</b>	<b>REV</b>	<b>START DATE</b>	<b>END DATE</b>	<b>GROUP</b>
Air Piping	78327	A1	02/15/67	11/12/76	C0301
Cab Lighting	96848	-	11/07/77	11/30/77	C1301
Compressor & Piping	50949	B1	01/29/71	12/18/72	C0101
Compressor & Piping	50949	E2	01/29/71	10/23/80	C0101
Compressor & Piping	95491	-	06/15/75	01/23/81	C0101
Control Console	48462	A1	07/31/68	12/09/86	C0201
Control Console	48462	Q1	08/20/71	07/07/81	C0201

MANITOWOC ENGINEERING CO.

A Division of The Manitowoc Company, Inc.

Manitowoc, Wisconsin

MASTER



50949B1

MATERIAL LIST ON BACK

COMPRESSOR PIPING

50949 B1

## GROUP D - Power Components

MODEL

3000W-3600-3900-3900W-3950W-3950D-4000W-4100W

**TRANSMISSION CASE**  
(VICON MACHINE)

ITEM	PART #	QTY.	DESCRIPTION OF PART
			<p><u>Note 3</u> For machines with electric drive, delete Ref. #26-27 above and add:</p>
26	352022	1	SPIDER, Drive
27	352021	1	RING, Drive
	352715	26	BLOCK, Rubber (not shown)
			<p><u>Note 4</u> Clean splines of shafts and sprockets thoroughly with Loctite Safety Solvent (MEC 622296). Apply Loctite Retaining Compound #620 (MEC 622285) to engine shaft and converter input shafts. Allow to cure 24 hours.</p>
			<p align="center">PLEASE GIVE MACHINE SERIAL NUMBER WITH ORDER</p>

ASSEMBLY

42749

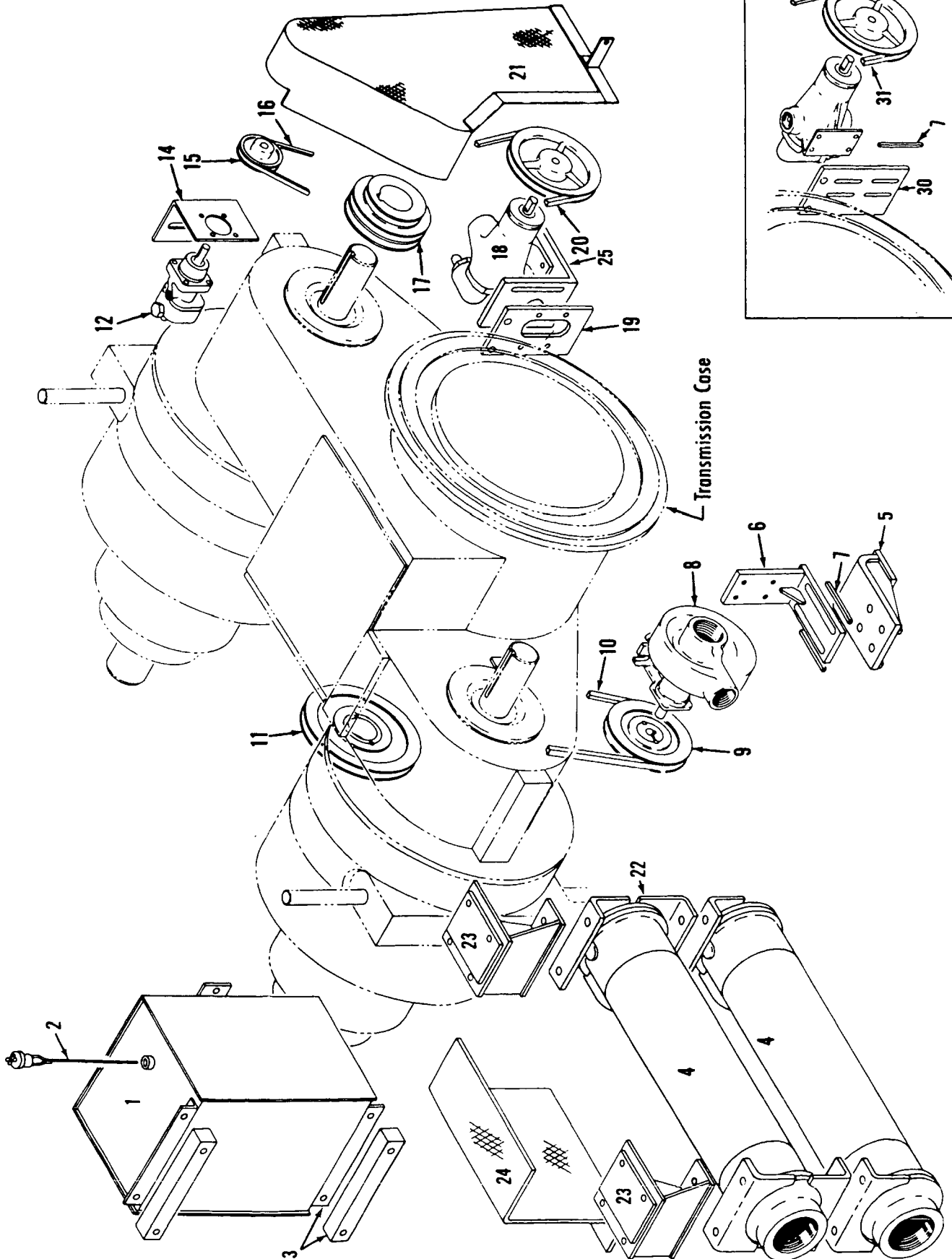
PAGE

3 of 3

REV.

P-1

MASTER



48648-5 Cont.	REV. D	MODEL 4000W, SC150
---------------	-----------	-----------------------

LUBRICATION PIPING

REF. NO.	PART NUMBER	QUANTITY REQUIRED	DESCRIPTION OF PART	VENDORS PART NO.
50	571705	1	<u>MACHINES W/OUT FORCED OIL LUBRICATION TO CONVERTERS PLUG (1")</u>	
51	427090	1	<u>MACHINES W/3/4" NPT PORT FILTER W/OR W/OUT ELEVATED CAB</u>	
52	73396	1	FILTER, Oil (3/4" NPT Ports)	
22	543740	1	BRACKET W/Mach. screws, hex nuts and lockwashers	
53	679304	1	NIPPLE (3/4" x 1-1/2")	
42	288751	1	TEE (3/4")	
54	543402	2	BUSHING (3/4" x 1/4")	
32	406952	2	NIPPLE, Close (1/4")	
15	288766	1	ELBOW (1/4")	
16	701017	1	BUSHING (3/4" x 1/8")	
			UNIT, Pressure Sending	
			<u>MACHINES W/1" NPT PORT FILTER AND DIRECT READING GAUGE W/OR W/OUT ELEVATED CAB</u>	
26	679359	1	TEE (1" x 3/4" x 3/4")	
22	543740	1	NIPPLE (3/4" x 1-1/2")	
27	406645	1	ELBOW (3/4" x 1/4")	
55	429621	1	CONNECTOR, Male (3/8" O.D. Tube 1/4" NPT)	
56	486056	1	TUBING, Plastic (3/8" O.D. - specify length)	
57	429624	1	CONNECTOR, Male (3/8" O.D. Tube 1/8" NPT)	
58	377200	1	COUPLING (1/8")	
59	460113	1	GAUGE, Pressure (in operator's compartment)	
60	288790	1	BUSHING (1/4" x 1/8")	
16	701017	1	UNIT, Pressure Sending	
			<u>MACHINES W/VERTICALLY MOUNTED OIL PUMP</u>	
61	429555	1	UNION, 90° swivel adapter (1" male NPT 1" female NPSM)	
62	429598	1	UNION, 90° swivel adapter (1" male NPT 3/4" female NPSM)	
63	14615	1	HOSE, Flex (3/4" I.D. 4'6" - 1.3716 m)	
			<u>MACHINES W/VERTICALLY MOUNTED OIL PUMP W/OIL TRAP</u>	
7	406956	2	ELBOW (1")	
64	543809	1	NIPPLE (1" x 4")	
6	543406	1	NIPPLE, Close (1")	

#0-147

REV. D	48648 - 5
-----------	-----------

PLEASE GIVE MACHINE S/N W/ORDER

MASIER Run as Front  
48648 D5 cont'd.

CLICK HERE TO **DOWNLOAD** THE COMPLETE MANUAL

- Thank you very much for reading the preview of the manual.
- You can download the complete manual from: [www.heydownloads.com](http://www.heydownloads.com) by clicking the link below



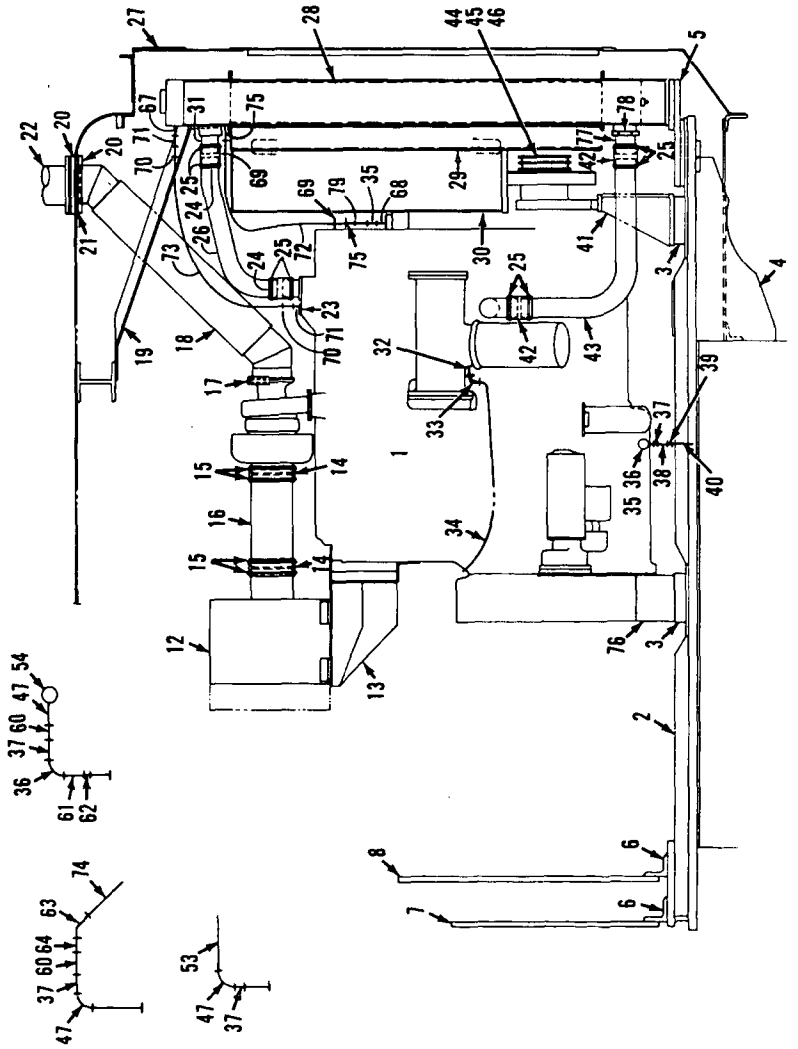
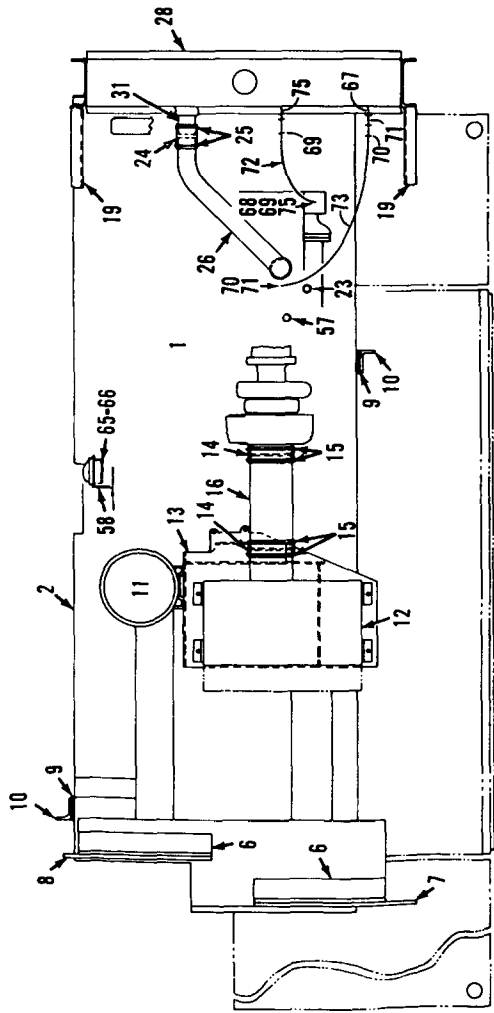
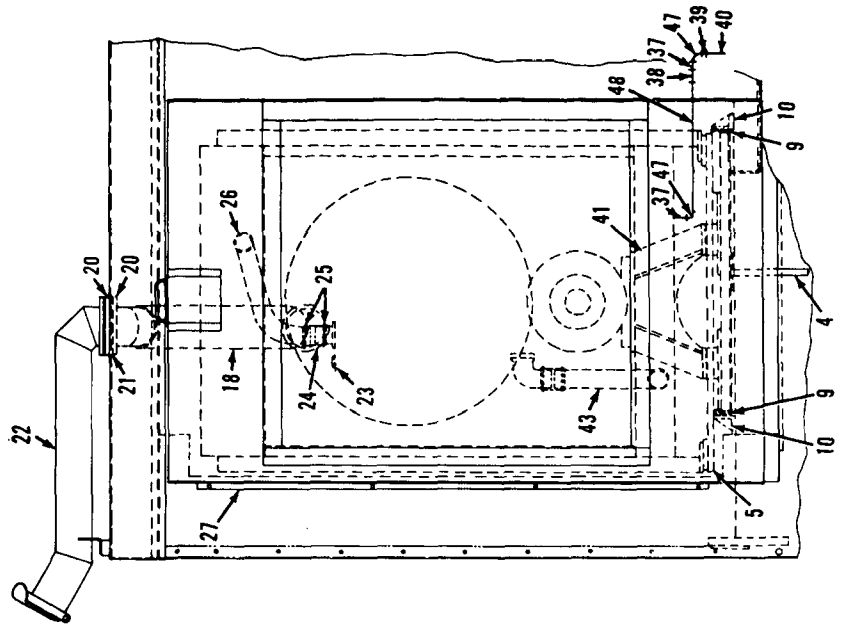
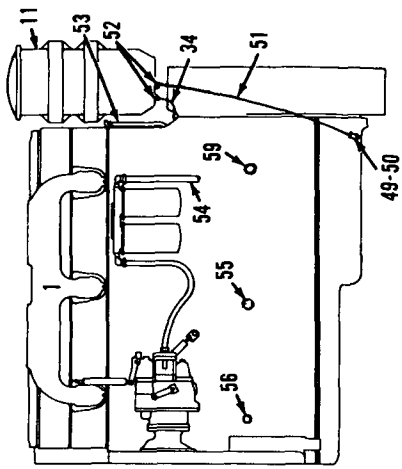
- Please note: If there is no response to CLICKING the link, please download this PDF first and then click on it.

CLICK HERE TO **DOWNLOAD** THE COMPLETE MANUAL

MANITOWOC ENGINEERING CO.

A Division of The Manitowoc Company, Inc.

Manitowoc, Wisconsin

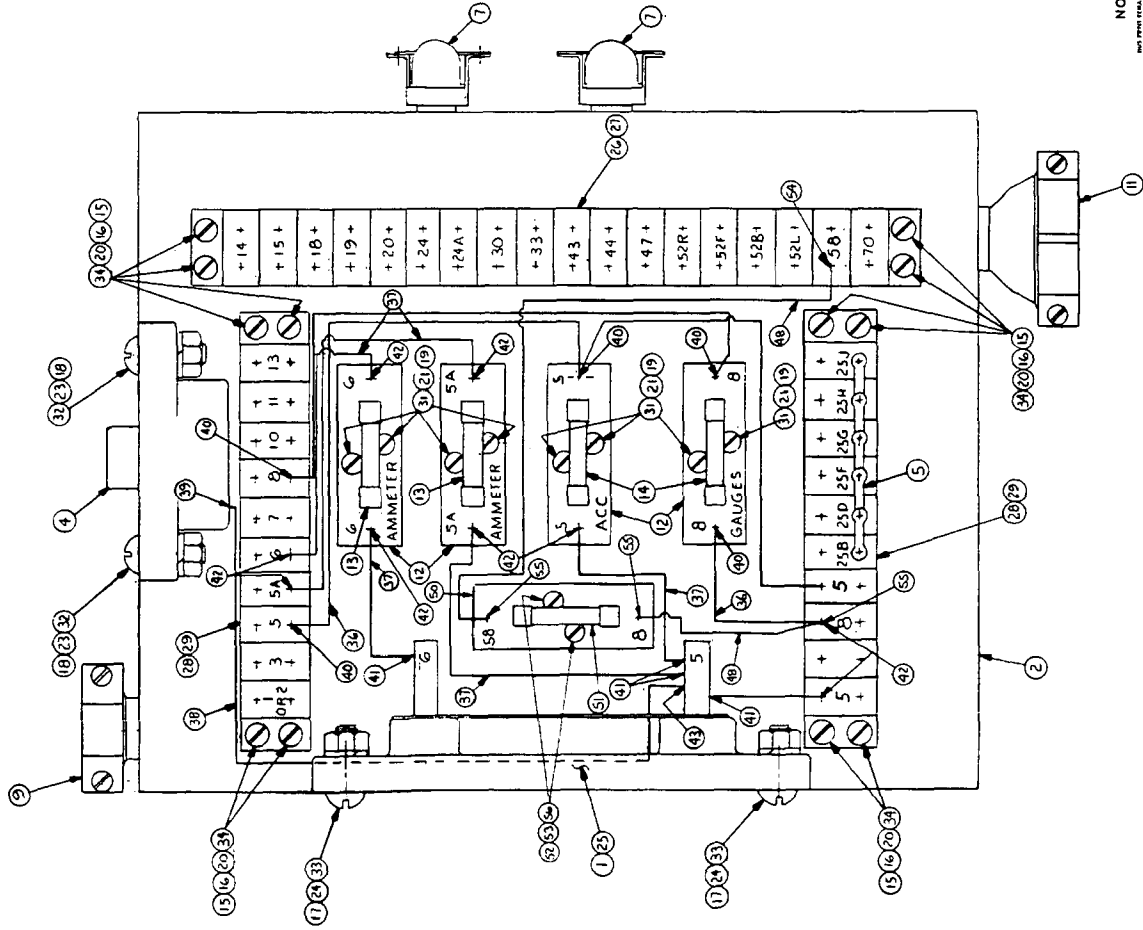


49592F1

MATERIAL LIST ON BACK

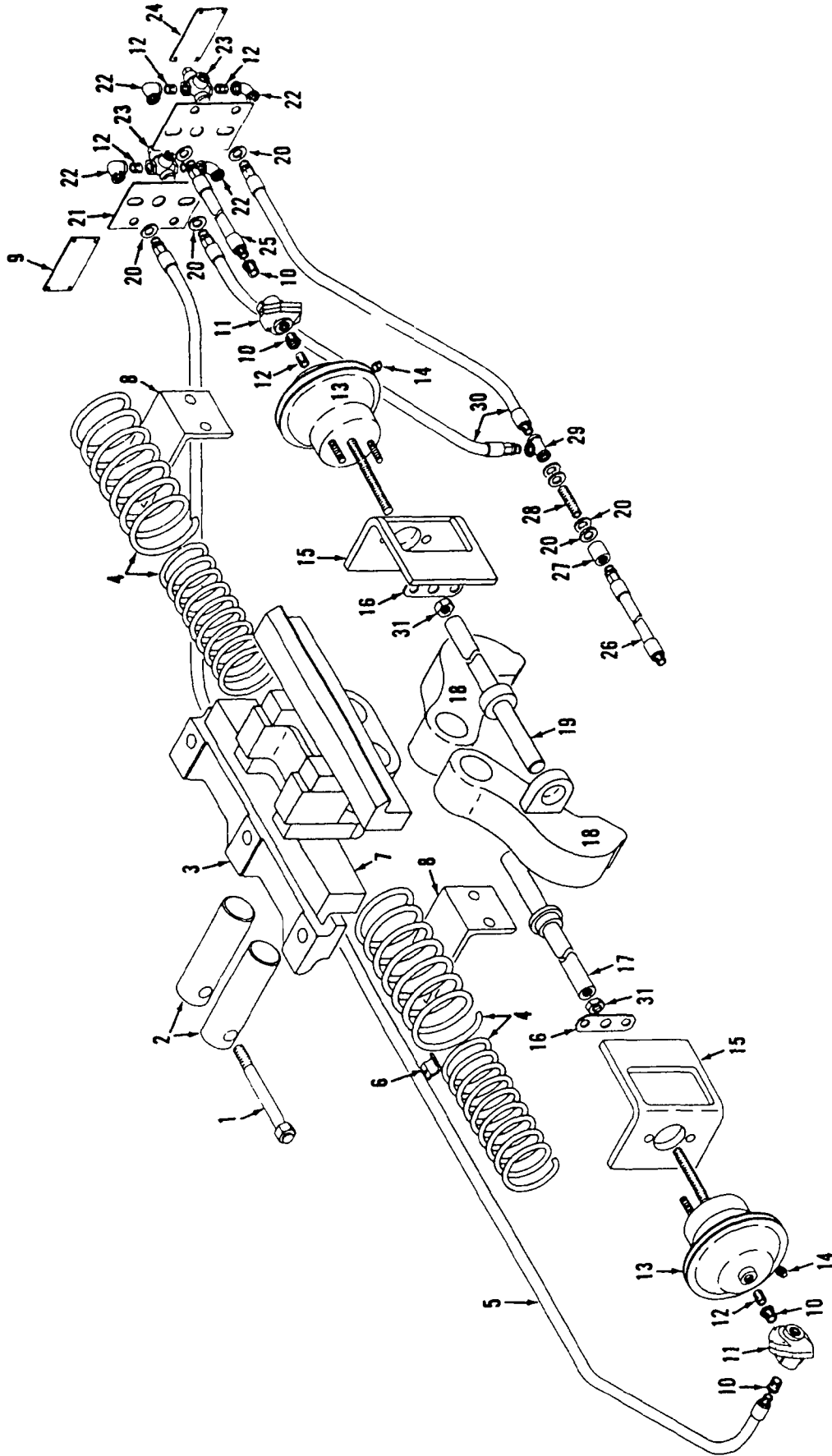
POWER PLANT

NOTE: 1 SEE CHART NO. S805 FOR MEC NUMBER SYSTEM.  
 NOTE: 2 FOR USE W/ OPTIONAL ELECTRICAL EQUIPMENT: MACH CANNOT BE EQUIPPED W/ AIR COND. REMOVE 25A FUSE (453264) AND REPLACE WITH APPROPRIATE FUSE.



ITEM NO.	QTY	DESCRIPTION	UNIT	MATERIAL	CODE NO.	REMARKS
1	1	SHUNT T			95139	ROD FOR
2	1	JUNCTION BOX			95944	ELEVATED CAB
3	1	CIRCUIT BREAKER			344604	
4	5	CONNECTOR JUMPER			369097	
5	1	CONNECTOR 3/8 X 90°			364168	
6	1	CONNECTOR 1/2 X 90°			364175	
7	1	CONNECTOR 3/4 SIR.			364175	
8	1	CONN. DUPLEX 3/8			453164	
9	1	FUSE BLOCK			453203	
10	1	FUSE 1.5 AMP.			453215	
11	1	FUSE 10 AMP.			453215	
12	1	3/8 O.D. PLASTIC TUBE 11.6.			496056	
13	1	8-32 UNC - 2B HEX NUT			546050	
14	1	1/4-20 UNC - 2B HEX NUT			546052	
15	1	10-24 UNC - 2B HEX NUT			546055	
16	1	8-32 UNC - 2B HEX NUT			546075	
17	1	6-32 UNC - 2A X 1/2 LG. MACH SCR			616431	RD. HD
18	1	6-32 UNC - 2A X 1/2 LG. MACH SCR			617543	FL. HD
19	1	10-24 UNC - 2A X 3/4 LG. MACH SCR			617188	RD. HD
20	1	1/4-20 UNC - 2A X 1/2 LG. MACH SCR			617829	RD. HD.
21	1	SHUNT			638350	
22	1	TERMINAL STRIP			667600	1B TERM.
23	1	MARKING STRIP			667601	1B TERM.
24	1	TERMINAL STRIP			667612	10 TERM.
25	1	MARKING STRIP			667621	10 TERM.
26	1	1/2 LOCK WASHER			710300	
27	1	3/8 LOCK WASHER			710301	
28	1	1/4 LOCK WASHER			710302	
29	1	NO. 8 LOCK WASHER			710319	
30	1	1/2 WIRE TYPE THIN			296669	STRANDED
31	1	1/2 WIRE TYPE THIN			296669	STRANDED
32	1	1/2 WIRE TYPE THIN			296681	STRANDED
33	1	1/2 WIRE TYPE THIN			296401	STRANDED
34	1	TERM. LUG 8 WIRE 1/4 SCR			680507	
35	1	TERM. LUG 12-14 WIRE			680573	
36	1	TERM. LUG 12-10 WIRE 1/4 SCR			680584	
37	1	TERM. LUG 12-10 WIRE 1/4 SCR			680591	
38	1	TERM. LUG 8 WIRE 1/4 SCR			680533	
39	1	1/2 LOCK WASHER			710300	
40	1	3/8 LOCK WASHER			710301	
41	1	1/4 LOCK WASHER			710302	
42	1	NO. 8 LOCK WASHER			710319	
43	1	1/2 WIRE TYPE THIN			296669	STRANDED
44	1	1/2 WIRE TYPE THIN			296669	STRANDED
45	1	1/2 WIRE TYPE THIN			296681	STRANDED
46	1	1/2 WIRE TYPE THIN			296401	STRANDED
47	1	TERM. LUG 8 WIRE 1/4 SCR			680507	
48	1	TERM. LUG 12-14 WIRE			680573	
49	1	TERM. LUG 12-10 WIRE 1/4 SCR			680584	
50	1	TERM. LUG 12-10 WIRE 1/4 SCR			680591	
51	1	TERM. LUG 8 WIRE 1/4 SCR			680533	
52	1	1/2 LOCK WASHER			710300	
53	1	3/8 LOCK WASHER			710301	
54	1	1/4 LOCK WASHER			710302	
55	1	NO. 8 LOCK WASHER			710319	
56	1	1/2 WIRE TYPE THIN			296669	STRANDED
57	1	1/2 WIRE TYPE THIN			296669	STRANDED
58	1	1/2 WIRE TYPE THIN			296681	STRANDED
59	1	1/2 WIRE TYPE THIN			296401	STRANDED
60	1	TERM. LUG 8 WIRE 1/4 SCR			680507	
61	1	TERM. LUG 12-14 WIRE			680573	
62	1	TERM. LUG 12-10 WIRE 1/4 SCR			680584	
63	1	TERM. LUG 12-10 WIRE 1/4 SCR			680591	
64	1	TERM. LUG 8 WIRE 1/4 SCR			680533	
65	1	1/2 LOCK WASHER			710300	
66	1	3/8 LOCK WASHER			710301	
67	1	1/4 LOCK WASHER			710302	
68	1	NO. 8 LOCK WASHER			710319	
69	1	1/2 WIRE TYPE THIN			296669	STRANDED
70	1	1/2 WIRE TYPE THIN			296669	STRANDED
71	1	1/2 WIRE TYPE THIN			296681	STRANDED
72	1	1/2 WIRE TYPE THIN			296401	STRANDED
73	1	TERM. LUG 8 WIRE 1/4 SCR			680507	
74	1	TERM. LUG 12-14 WIRE			680573	
75	1	TERM. LUG 12-10 WIRE 1/4 SCR			680584	
76	1	TERM. LUG 12-10 WIRE 1/4 SCR			680591	
77	1	TERM. LUG 8 WIRE 1/4 SCR			680533	
78	1	1/2 LOCK WASHER			710300	
79	1	3/8 LOCK WASHER			710301	
80	1	1/4 LOCK WASHER			710302	
81	1	NO. 8 LOCK WASHER			710319	
82	1	1/2 WIRE TYPE THIN			296669	STRANDED
83	1	1/2 WIRE TYPE THIN			296669	STRANDED
84	1	1/2 WIRE TYPE THIN			296681	STRANDED
85	1	1/2 WIRE TYPE THIN			296401	STRANDED
86	1	TERM. LUG 8 WIRE 1/4 SCR			680507	
87	1	TERM. LUG 12-14 WIRE			680573	
88	1	TERM. LUG 12-10 WIRE 1/4 SCR			680584	
89	1	TERM. LUG 12-10 WIRE 1/4 SCR			680591	
90	1	TERM. LUG 8 WIRE 1/4 SCR			680533	
91	1	1/2 LOCK WASHER			710300	
92	1	3/8 LOCK WASHER			710301	
93	1	1/4 LOCK WASHER			710302	
94	1	NO. 8 LOCK WASHER			710319	
95	1	1/2 WIRE TYPE THIN			296669	STRANDED
96	1	1/2 WIRE TYPE THIN			296669	STRANDED
97	1	1/2 WIRE TYPE THIN			296681	STRANDED
98	1	1/2 WIRE TYPE THIN			296401	STRANDED
99	1	TERM. LUG 8 WIRE 1/4 SCR			680507	
100	1	TERM. LUG 12-14 WIRE			680573	
101	1	TERM. LUG 12-10 WIRE 1/4 SCR			680584	
102	1	TERM. LUG 12-10 WIRE 1/4 SCR			680591	
103	1	TERM. LUG 8 WIRE 1/4 SCR			680533	
104	1	1/2 LOCK WASHER			710300	
105	1	3/8 LOCK WASHER			710301	
106	1	1/4 LOCK WASHER			710302	
107	1	NO. 8 LOCK WASHER			710319	
108	1	1/2 WIRE TYPE THIN			296669	STRANDED
109	1	1/2 WIRE TYPE THIN			296669	STRANDED
110	1	1/2 WIRE TYPE THIN			296681	STRANDED
111	1	1/2 WIRE TYPE THIN			296401	STRANDED
112	1	TERM. LUG 8 WIRE 1/4 SCR			680507	
113	1	TERM. LUG 12-14 WIRE			680573	
114	1	TERM. LUG 12-10 WIRE 1/4 SCR			680584	
115	1	TERM. LUG 12-10 WIRE 1/4 SCR			680591	
116	1	TERM. LUG 8 WIRE 1/4 SCR			680533	
117	1	1/2 LOCK WASHER			710300	
118	1	3/8 LOCK WASHER			710301	
119	1	1/4 LOCK WASHER			710302	
120	1	NO. 8 LOCK WASHER			710319	
121	1	1/2 WIRE TYPE THIN			296669	STRANDED
122	1	1/2 WIRE TYPE THIN			296669	STRANDED
123	1	1/2 WIRE TYPE THIN			296681	STRANDED
124	1	1/2 WIRE TYPE THIN			296401	STRANDED
125	1	TERM. LUG 8 WIRE 1/4 SCR			680507	
126	1	TERM. LUG 12-14 WIRE			680573	
127	1	TERM. LUG 12-10 WIRE 1/4 SCR			680584	
128	1	TERM. LUG 12-10 WIRE 1/4 SCR			680591	
129	1	TERM. LUG 8 WIRE 1/4 SCR			680533	
130	1	1/2 LOCK WASHER			710300	
131	1	3/8 LOCK WASHER			710301	
132	1	1/4 LOCK WASHER			710302	
133	1	NO. 8 LOCK WASHER			710319	
134	1	1/2 WIRE TYPE THIN			296669	STRANDED
135	1	1/2 WIRE TYPE THIN			296669	STRANDED
136	1	1/2 WIRE TYPE THIN			296681	STRANDED
137	1	1/2 WIRE TYPE THIN			296401	STRANDED
138	1	TERM. LUG 8 WIRE 1/4 SCR			680507	
139	1	TERM. LUG 12-14 WIRE			680573	
140	1	TERM. LUG 12-10 WIRE 1/4 SCR			680584	
141	1	TERM. LUG 12-10 WIRE 1/4 SCR			680591	
142	1	TERM. LUG 8 WIRE 1/4 SCR			680533	
143	1	1/2 LOCK WASHER			710300	
144	1	3/8 LOCK WASHER			710301	
145	1	1/4 LOCK WASHER			710302	
146	1	NO. 8 LOCK WASHER			710319	
147	1	1/2 WIRE TYPE THIN			296669	STRANDED
148	1	1/2 WIRE TYPE THIN			296669	STRANDED
149	1	1/2 WIRE TYPE THIN			296681	STRANDED
150	1	1/2 WIRE TYPE THIN			296401	STRANDED
151	1	TERM. LUG 8 WIRE 1/4 SCR			680507	
152	1	TERM. LUG 12-14 WIRE			680573	
153	1	TERM. LUG 12-10 WIRE 1/4 SCR			680584	
154	1	TERM. LUG 12-10 WIRE 1/4 SCR			680591	
155	1	TERM. LUG 8 WIRE 1/4 SCR			680533	
156	1	1/2 LOCK WASHER			710300	
157	1	3/8 LOCK WASHER			710301	
158	1	1/4 LOCK WASHER			710302	
159	1	NO. 8 LOCK WASHER			710319	
160	1	1/2 WIRE TYPE THIN			296669	STRANDED
161	1	1/2 WIRE TYPE THIN			296669	STRANDED
162	1	1/2 WIRE TYPE THIN			296681	STRANDED
163	1	1/2 WIRE TYPE THIN			296401	STRANDED
164	1	TERM. LUG 8 WIRE 1/4 SCR			680507	
165	1	TERM. LUG 12-14 WIRE			680573	
166	1	TERM. LUG 12-10 WIRE 1/4 SCR			680584	
167	1	TERM. LUG 12-10 WIRE 1/4 SCR			680591	
168	1	TERM. LUG 8 WIRE 1/4 SCR			680533	
169	1	1/2 LOCK WASHER			710300	
170	1	3/8 LOCK WASHER			710301	
171	1	1/4 LOCK WASHER			710302	
172	1	NO. 8 LOCK WASHER			710319	
173	1	1/2 WIRE TYPE THIN			296669	STRANDED
174	1	1/2 WIRE TYPE THIN			296669	STRANDED
175	1	1/2 WIRE TYPE THIN			296681	STRANDED
176	1	1/2 WIRE TYPE THIN			296401	STRANDED
177	1	TERM. LUG 8 WIRE 1/4 SCR			680507	
178	1	TERM. LUG 12-14 WIRE				

MASTER



MATERIAL LIST ON BACK

TRAVEL LOCK

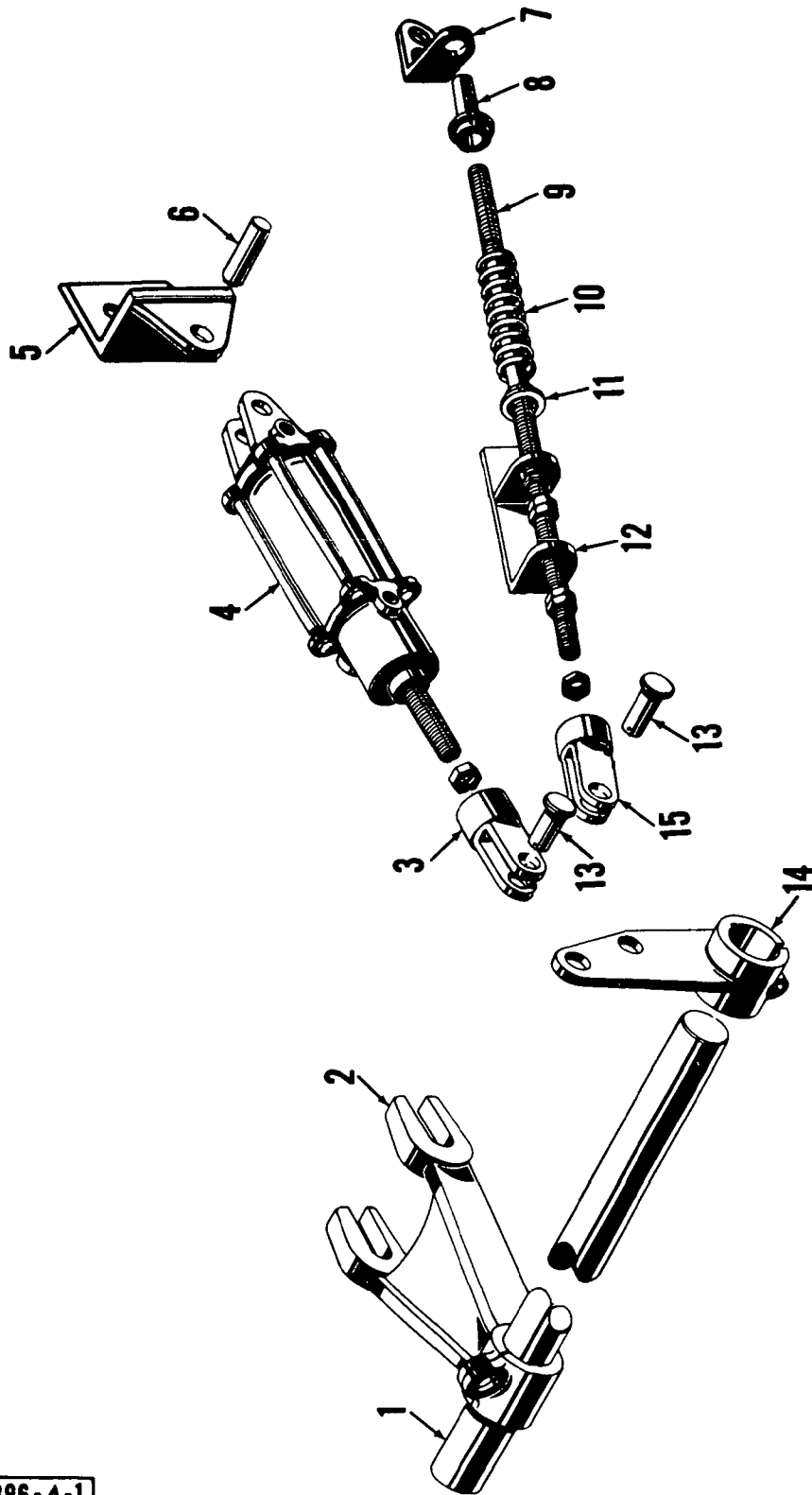
31743-1 Back

50796A1

# MANITOWOC ENGINEERING CO

A Division of The Manitowoc Company Inc

Manitowoc, Wisconsin

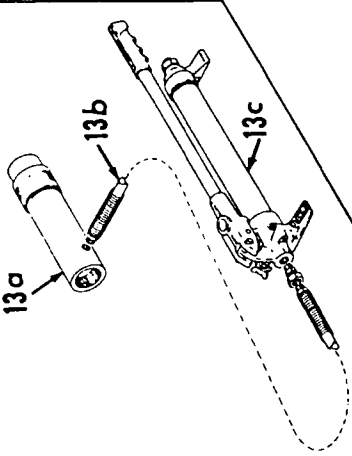
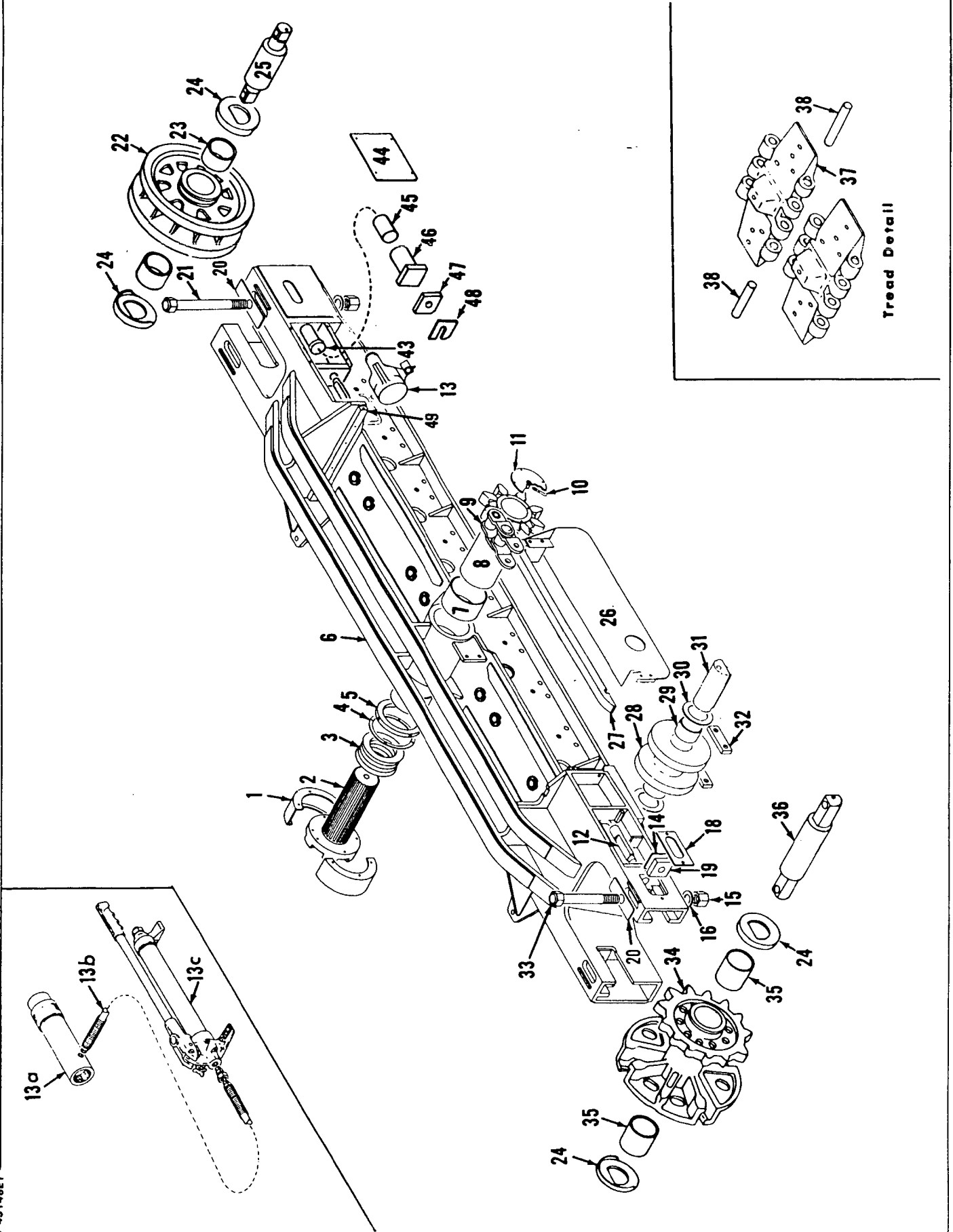


ILLUST No 42396-A-1

MATERIAL LIST ON BACK

STEERING CONTROL

MASTER

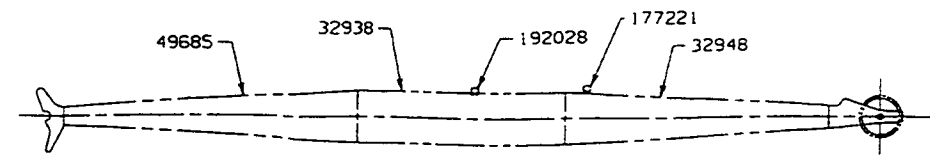


43148E1

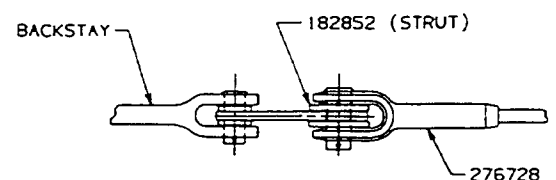
MATERIAL LIST ON BACK

CRAWLERS

GROUP F - Attachments

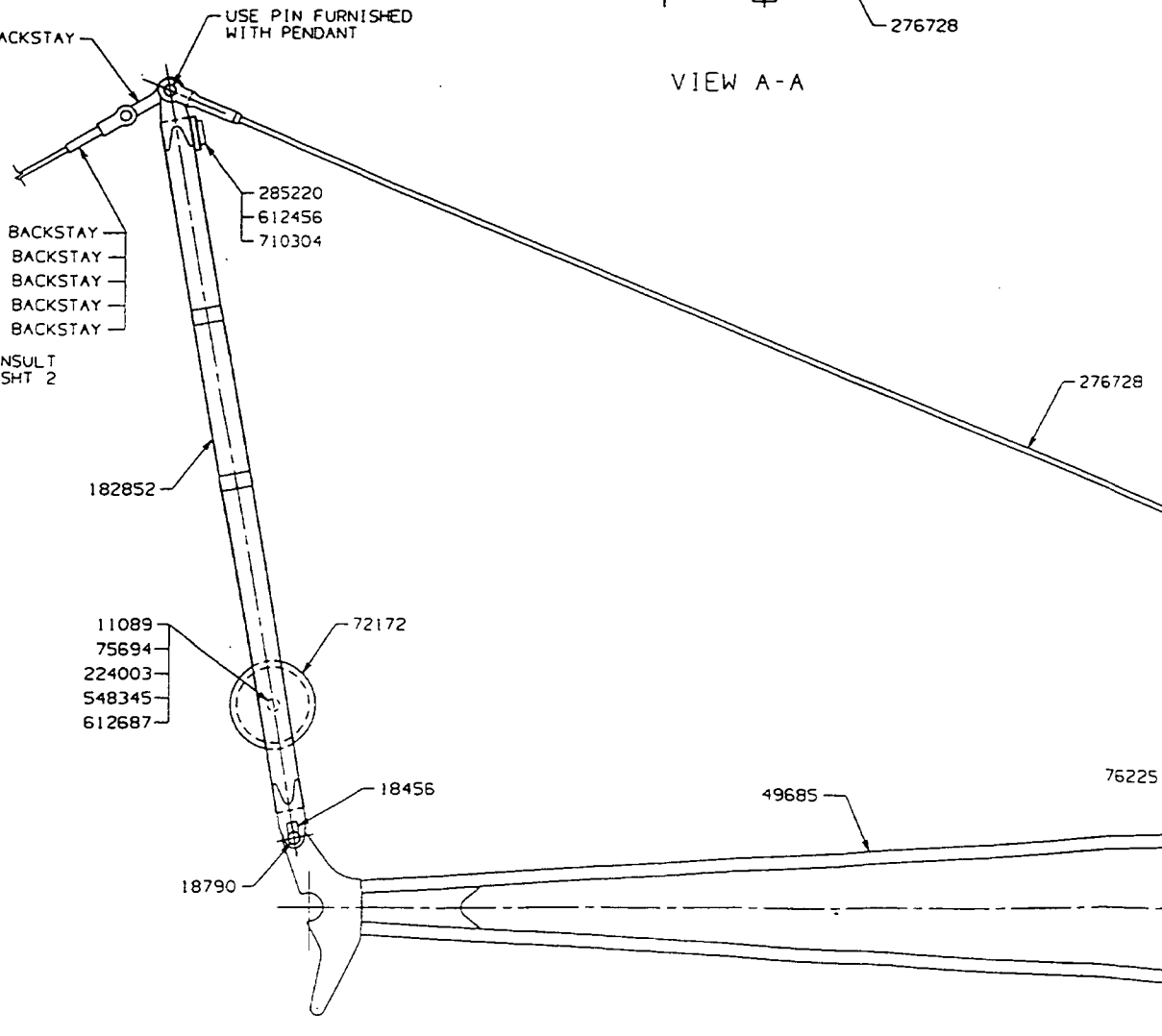


VIEW OF 40' JIB WITH WIRE ROPE ROLLER GUIDE



VIEW A-A

USE PIN FURNISHED WITH PENDANT  
SEE JIB BACKSTAY ASSEMBLY



- H 181815 REF PENDANT BACKSTAY
- 75055 REF WIRE ROPE BACKSTAY
- 48659 REF PENDANT BACKSTAY
- 181311 REF PENDANT BACKSTAY
- 181434 REF PENDANT BACKSTAY

FOR BACKSTAY CONSULT PROPER VIEW ON SHIT 2

FOR BOOM 22 & 22A HAMMERHEAD 2 PIECE-50920-ADD		
C	2	LOCKING PLATE 139849
	2	END PLATE 79306
F	2	JIB STOP ASSEMBLY 140408
	2	PIN 139676
FOR BOOM #9-15FT HAMMERHEAD 2 PIECE-ADD		
A	2	LOCKING PLATE 139849
FOR BOOM #9A-3FT HAMMERHEAD DEEP SECTION-ADD		
	6	PIN 13310
D	2	JIB LOCKING PLATE 139058
	2	ADAPTOR 139853
	2	PIN 139193
	4	LINK 139728
G	2	LINK 140507

REQ'D. FOR VARIOUS JIB LENGTHS				
JIB LENGTH	10' INSERT DWG NO. 32938	PENDANT NO. 276729 DWG NO. 74958	JIB JOINT PIN NO. 76225	TIMBER 192028
40FT	1	2	4	1
50FT	2	4	8	2
60FT	3	6	12	3

- T 1 276730 & 276731 ARE ON DWG 75023. USE 276730 WITH 0° JIB ANGLE. USE 276731 WITH 10° AND 20° JIB ANGLE.
- 2 #27 LIFT-CLAM
- 3 3900T ONLY

BILL OF MATERIAL				ASSEMBLIES USED ON
ITEM NO.	QTY	DESCRIPTION	MATERIAL	
<b>BASIC PARTS</b>				
	2	WASHER	11089	
	2	KEEPER	18456	
	2	PIN	18790	
	1	JIB TOP (15'-0")	32948	
	1	STRUT (12'-6")	182852	
	1	JIB BUTT (15'-0")	49685	
	1	TIMBER	177221	
	1	SHEAVE	72172	
	2	PIN	75052	
	1	SHEAVE PIN	75694	
	4	PIN	76225	
	1	UNIVERSAL WIRE ROPE ANCHOR JOINT	90317	
	1	JIB POINT SHAFT	90318	
	1	ROLLER BEARING	224003	
	2	PENDANT (33'-3 3/4" ON DWG. 74958)	276728	
	2	RUBBER BUMPER	285220	
	2	.625-11UNC-28 ELASTIC STOP NUT	548345	
	4	.375-16UNC-2A X 1.25 LG HEX SCREW	612456	
	2	.625-11UNC-2A X 5.50 LG HEX SCREW	612687	
	4	.375 LOCKWASHER	710304	

FOR BOOMS #6,7A,8,9,9A,13, 17,22,22A,22C,27,39 & 39A-ADD		
B	2	LOCKING PLATE 139849
K	2	PIN 75025
	4	ADJUSTING LINK 90333
	2	JIB STOP PENDANT 71.25 LG 276730 1
	2	JIB STOP PENDANT 67.62 LG 276731 1
	2	KEEPER 71587 2
M	2	PIN 564093
R	1	STRUT HANDLING ASS'Y FOR 123 JIB 184226 3

FOR BOOM #22 & 22A LIGHT TAPERED TOPS-ADD		
L	2	PIN 75025
	4	ADJUSTING LINK 90333
	2	JIB LOCKING PLATE 139058
E	2	ADAPTOR 139853
	2	PIN 139193
	2	JIB STOP PENDANT 71.25 LG 276730 1
	2	JIB STOP PENDANT 67.62 LG 276731 1
N	2	PIN 564093

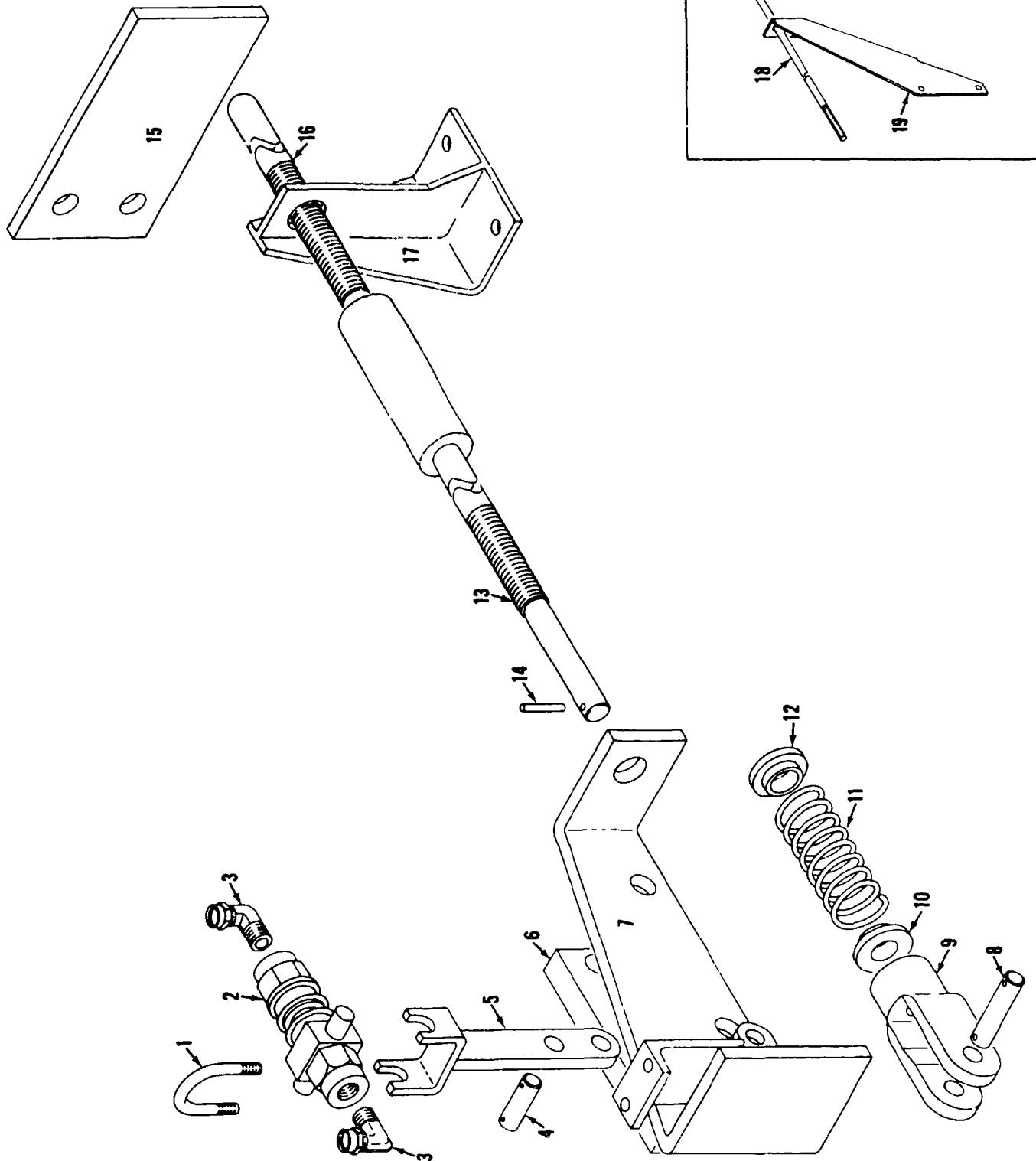
SUPERSEDES 43730 OF 1-27-71

43730	Manitowoc Cranes, Inc. Manitowoc, Wisconsin	#123 TUBULAR JIB ASSEMBLY	DATE: 6-30-71
	3900 THRU 4600	SHEET 1 OF 2	PATTERN NO.
			43730

MANITOWOC ENGINEERING CO.

A Division of The Manitowoc Company, Inc.

Manitowoc, Wisconsin



BOOM STOP

MATERIAL LIST ON BACK

48222A1

48222A1



**A**

**A** NOTE:  
SET SCREWS TO BE REMOVED  
FROM BOTH BEARINGS.

**B**

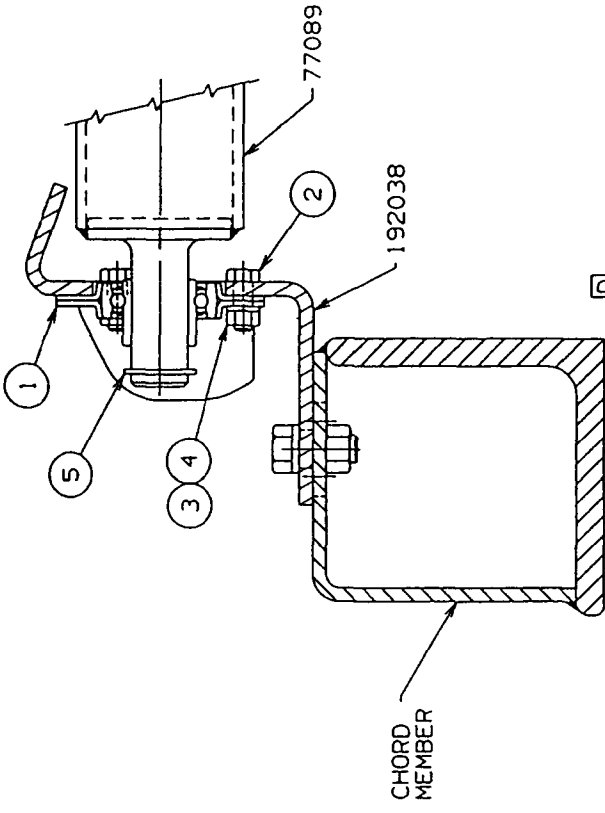
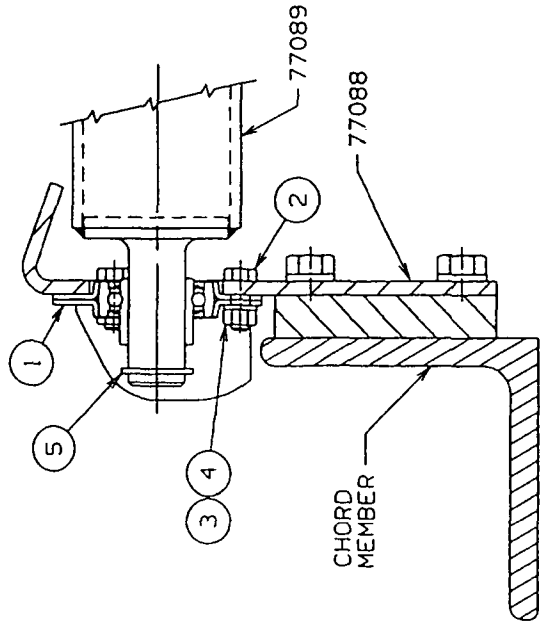
**B** 1 BEARING BRACKET 192038  
REO'D FOR USE ON INSERTS  
33426, 50609, 623525, 623526,  
623527, 623528, 623529, 623530,  
623531, 623532, 623533, 623534,  
623535, 623536, 623537, 623538,  
623545, 623564, 623579, 623580,  
& 623586 WITH TIMBER BRACKETS

**BILL OF MATERIAL**

ITEM NO.	SEC. NO.	DESCRIPTION	LENGTH IN.	MATERIAL	CORE NO. OR Dwg. No.	ASSEMBLIES USED ON
1	2	BEARING. #F116 "NICE"			224218	43698
2	6	SCR. HEX. HD. CAP .312-18UNC-2A X .88 LG.			612404	49368 49377 49727
3	6	NUT, HEX .312-18UNC-2B			546053	65173
4	6	WASHER, LOCK .312			710303	65156 49379
5	2	RING, RET. TRUARC			596823	65388
	1	ROLLER			77089	
	2	BEARING BRACKET			77088	
	2	BEARING BRACKET			192038	

OR

REVISIONS  
10-3-66 CEF  
A NOTE  
REVISED  
PC. S. ADDED  
1-29-68 LJE  
REVERSED  
POSITION  
OF HEX SCR  
7-19-82 CRP  
REDRAW CADAM  
CK:LS  
APP: PWR  
1-21-98 DM  
B/C ADDED  
D VIEW ADDED



SCALE  
5 = 1 FT  
DR: RLT  
DC: EGT  
APP

77090

**Manitowoc Cranes, Inc.**  
Manitowoc, Wisconsin  
MOOD. 4000, 4000W

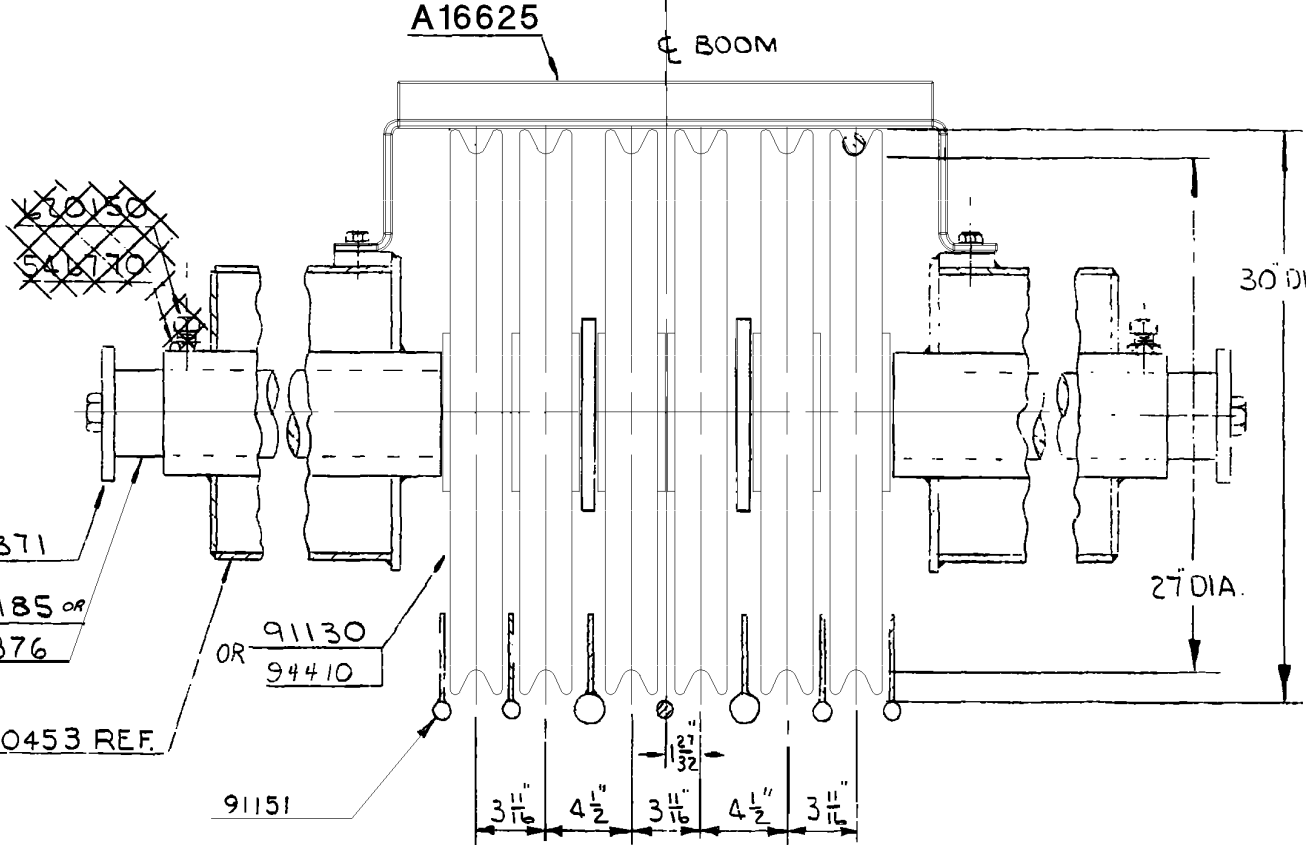
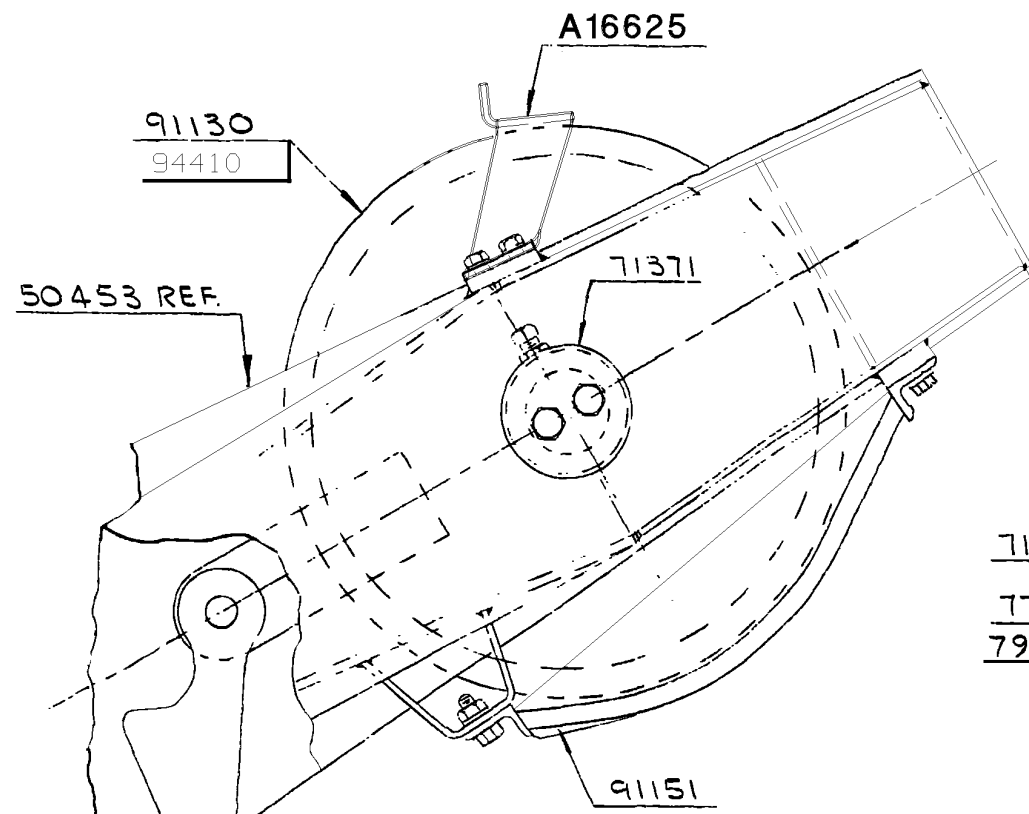
WIRE ROPE ROLLER  
GUIDE ASSEMBLY  
#22 BOOM

DATE  
9-15-65

PATTERN NO.

DWG. NO.  
77090

DO NOT SCALE THIS DRAWING



- (M) 646419 W/ PIN 563960 - FOR 1.125" ROPE
- (K) 646415 W/ PIN 3531 - FOR 1.25" ROPE
- (N) 646417 W/ PIN 563960 - FOR 1.00" ROPE
- (M) (K) ~~713266 FOR 1.00" ROT. RES. ROPE~~
- (N) 646246 & 196135 W/PIN 563874 (FOR 1.00" & 26mm ROPE)

(A) NOTE: 1  
 SHAFT 79876 REPLACES SHAFT 77185 WHEN SHAFT FOR MOUNTING PILE DRIVER LEADS IS REQ'D. SPACERS 75639 ARE REQ'D. WHEN SHAFT 79876 IS USED WITHOUT PILE DRIVER LEADS

NO REQ'D	DWG NO	TITLE
(H) 1	OR 3531	PIN
1	563960	PIN
2	71371	BOOM POINT SHAFT END
1	77185	SHAFT
(L) 1	A16625	ROPE GUARD
6	OR 91130	SHEAVE ASSEMBLY 1/8" DIA WIRE ROPE
(F) 6	94410	SHEAVE ASSEMBLY 1/4" DIA WIRE ROPE
(D) 2	<del>546770</del>	<del>JAM NUT</del>
(E) 2	<del>620150</del>	<del>SET SCREW SQ HD CUP TYPE</del>
(G) 1	OR 646415	WEDGE SOCKET W/ WEDGE
1	OR 646419	WEDGE SOCKET W/WEDGE
(J) 1	646417	WEDGE SOCKET W/ WEDGE
(B) 1	79876	SHAFT (SEE NOTE 1)
(C) 2	75639	SPACER-4" LG. (SEE NOTE 1)
1	91151	ROPE GUARD

ASSEMBLIES USED ON
49727
65156
49945
48721
48168
48352
49379
43698
48722
63388

5-7-68 JHS
(A)(B)(C) ADDED
9-27-72 DWD
(D)(E) DELETED
4-11-73 RAD
(F)(G)(H) ADDED
12-17-97 JAZ
(J) ADDED
3-15-00 JAZ
(K) ADDED
5-25-06 TMO
(L) WAS 77208
8-9-06 TMO
(M) DELETED
(N) ADDED

SCALE 1/2"=1'-0"	UNLESS NOTED	DWG NO 91132	MANITOWOC CRANES INC. MANITOWOC, WISCONSIN	BOOM POINT SHAFT ASSEMBLY - #22 & #22A BOOM MODEL 4000W, 4100W, 888	PATTERN NO.
DR Quirk	FRACT. DIM. _____				CODE NO.
CK E.G.T.	HOLE DIA. _____				DWG. NO. 91132
APP _____	HOLE CENTERS _____				
	FINISH _____				

(A) (K) DO NOT SCALE THIS DRAWING

(F)(D)(G)(E)(C)(B)  
(H)(J)

B

NOTE:  
 SET SCREWS TO BE REMOVED  
 FROM BOTH BEARINGS.

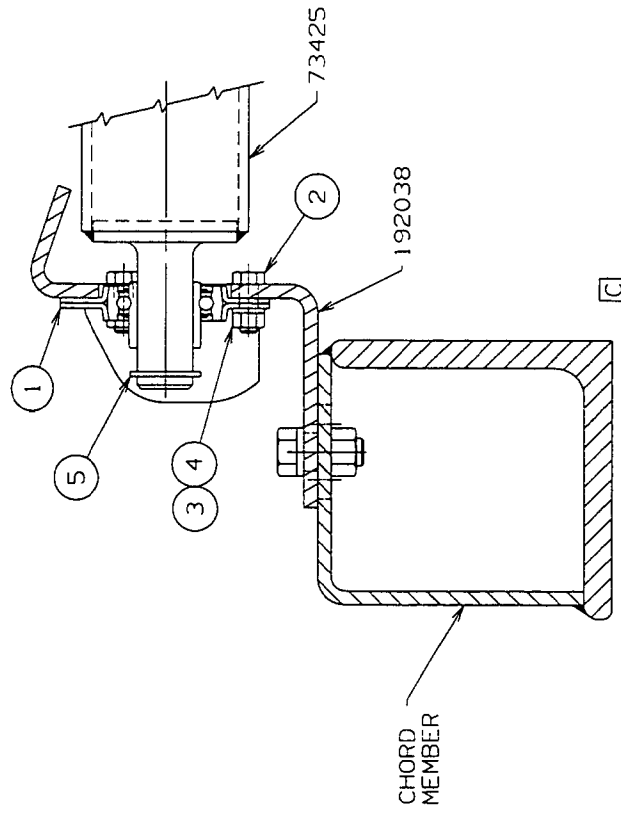
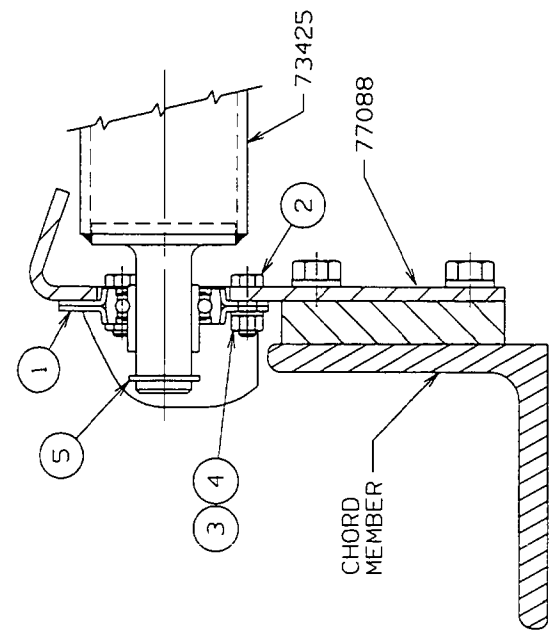
B 1 BEARING BRACKET 192038  
 REQ'D FOR USE ON BOOM TOPS  
 49255, WITH TIMBER BRACKETS

BILL OF MATERIAL				ASSEMBLIES USED ON	
ITEM NO.	SEC. TION	DESCRIPTION	LENGTH IN.	MATERIAL	CODE NO. OR DWG. NO.
1	2	BEARING, #F116 "NICE"			224218
2	6	SCR. HEX. HD. CAP .312-18UNC-2A X .88 LG.			612404
3	6	NUT, HEX .312-18UNC-2B			546053
4	6	WASHER, LOCK .312			710303
5	2	RING, RET. TRUARC			596823
	1	ROLLER			73425
	2	BEARING BRACKET			77088
	2	BEARING BRACKET		A	192038

OR

A

1-21-98 DW  
 REDRAWN ON CAD  
 A/BIADDED  
 C VIEW ADDED



C

SCALE  
 5 = 1 FT  
 OR CRP  
 CK MR  
 APP

Manitowoc Cranes, Inc. Manitowoc, Wisconsin	WIRE ROPE ROLLER GUIDE ASSEMBLY
MODEL 4100W	#22 BOOM & #22-A BOOM

DATE  
 3-12-71

PATTERN NO.

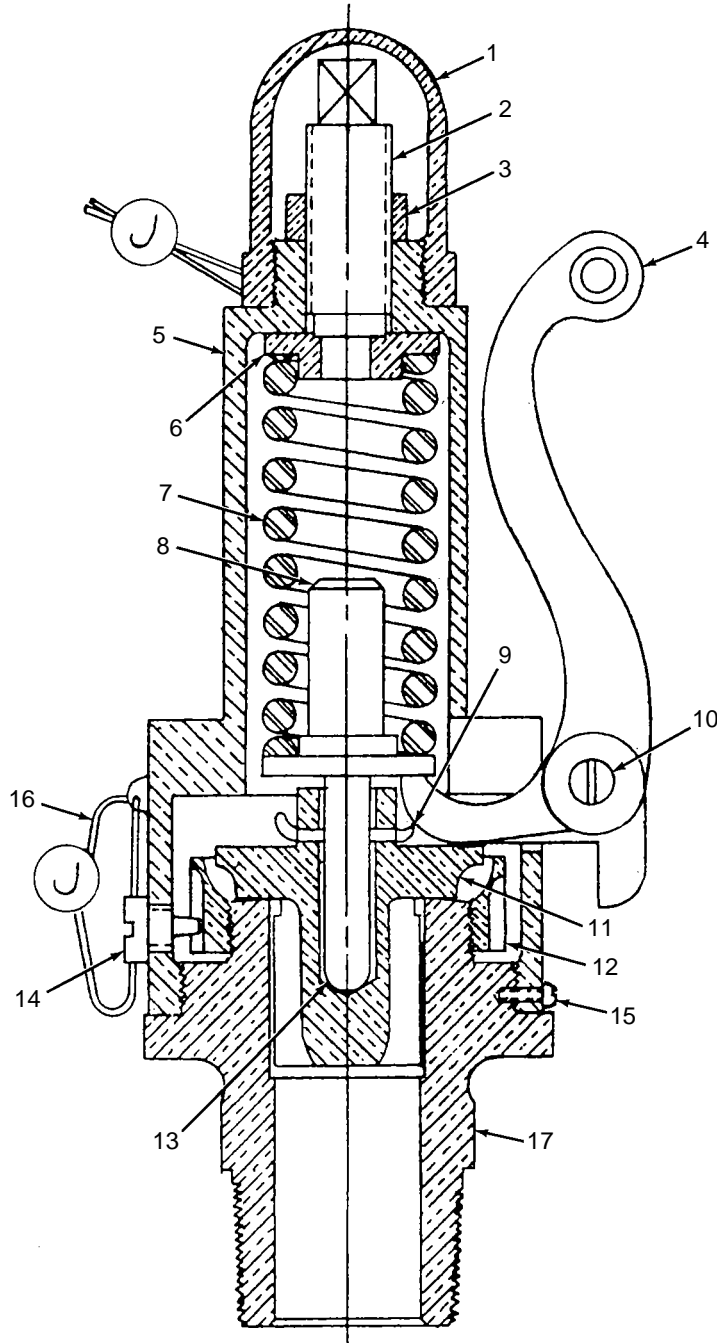
D

DWG. NO.  
 139581

DO NOT SCALE THIS DRAWING

## O-NUMBER NUMERICAL INDEX

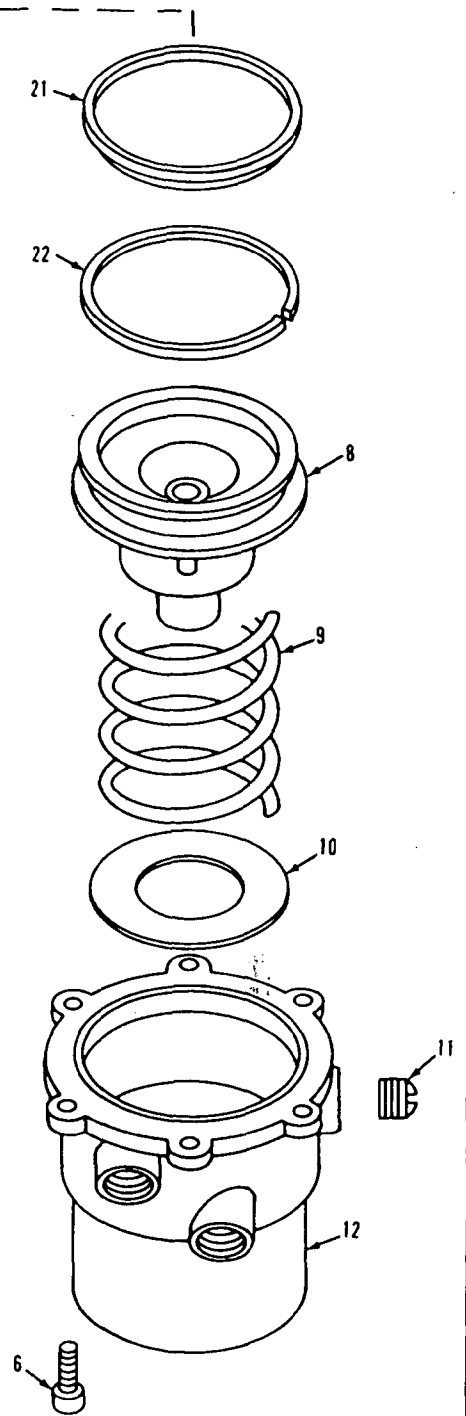
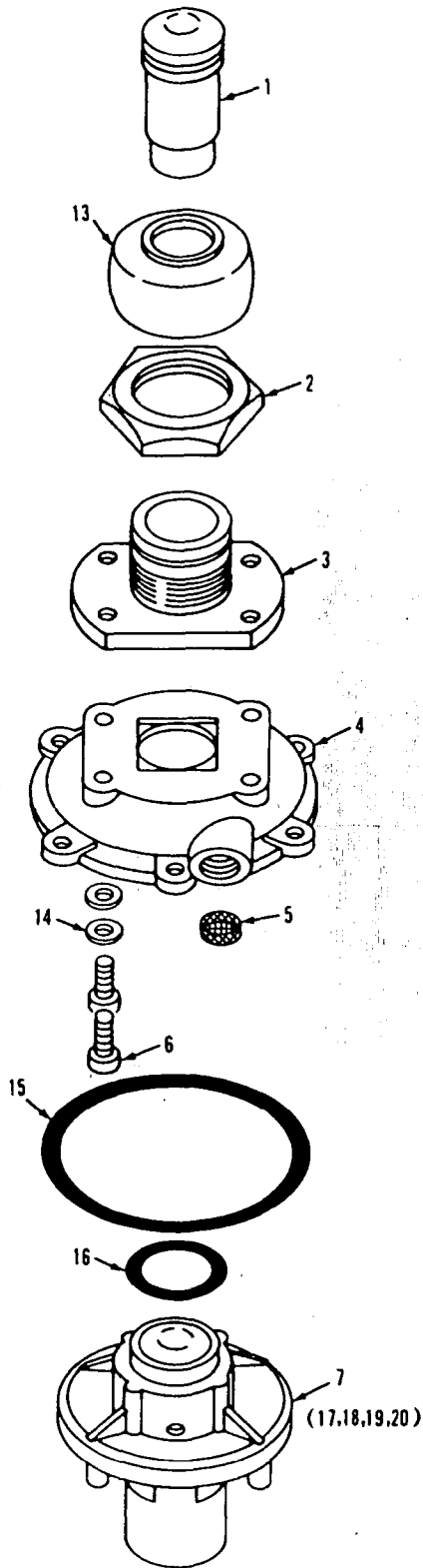
PUBLICATION	REV
0-123	A1
0-123	A2
0-147	D2
0-148	-
0-156	D
0-157	B
0-173	A
0-246	C1
0-247	B
0-247	B1
0-279	B1
0-284	A
0-286	A
0-288	C
0-289	C1
0-290	E1
0-294	A
0-294	E
0-304	G1
0-307	-
0-311	C1
0-313	A
0-313	A1
0-337	B
0-340	E1
0-407	B
0-407	B1
0-418	A
0-420	A
0-439	-
0-441	A4
0-441	B2
0-451	AA1
0-451	CA1
0-469	E1
0-471	A1
0-503	-
0-512	-
0-63	C
0-64	B
0-69	C
0-71	-
0-72	b
0-96	C1

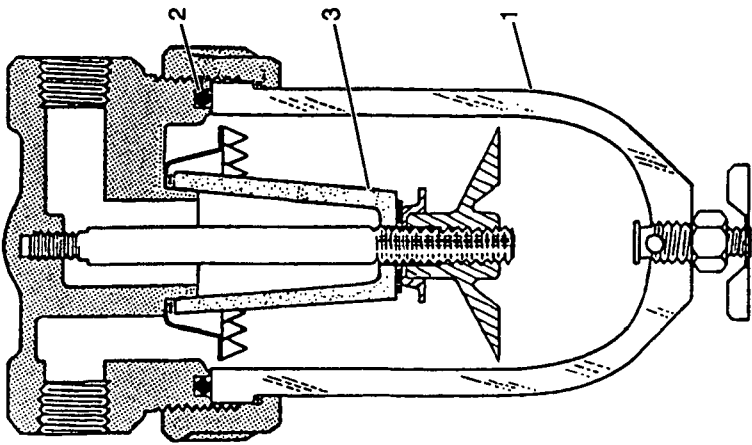
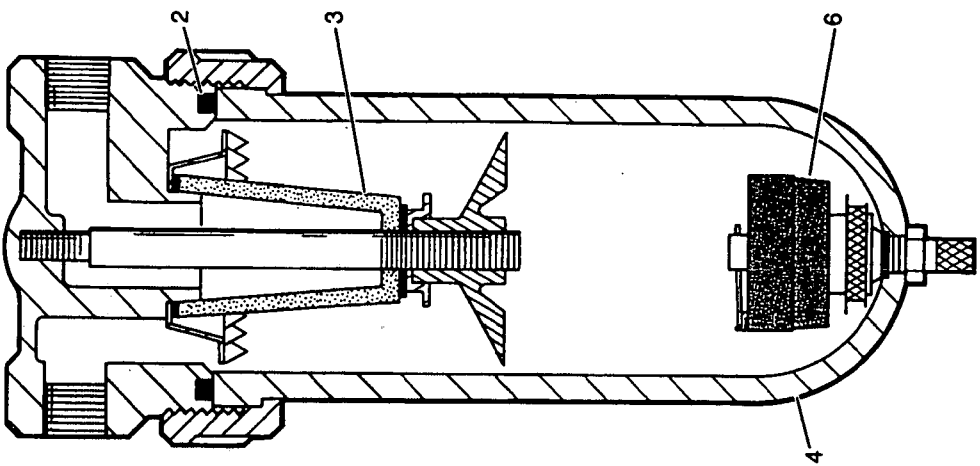
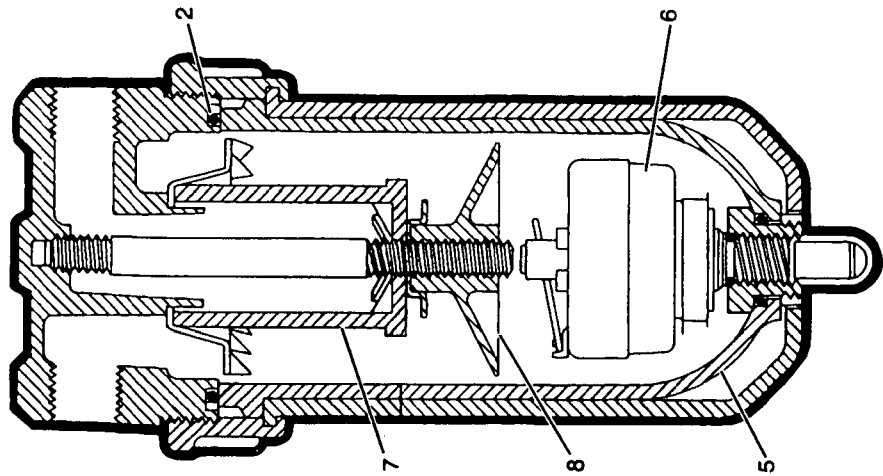


ASSEMBLY	REVISION
<b>O-156</b>	<b>D</b>

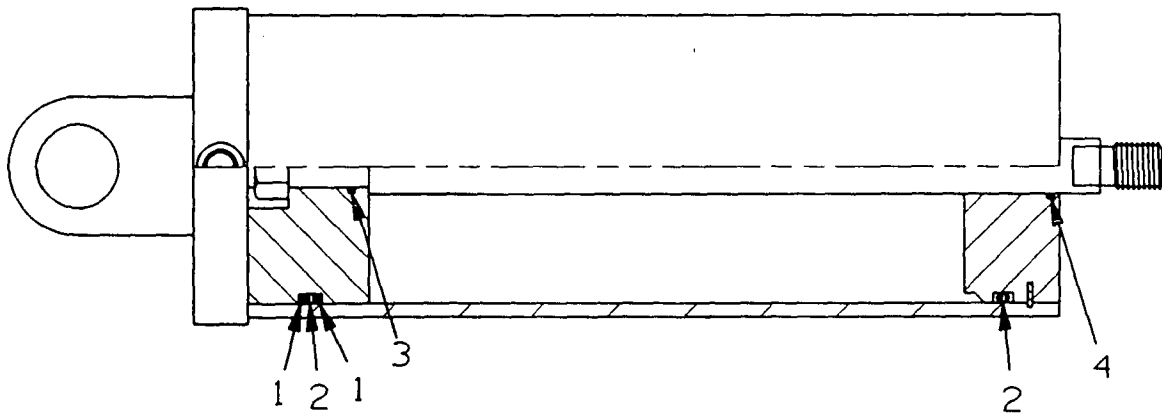
**SAFETY VALVE**

MASTER





ASSEMBLY <b>O-289</b>	REVISION <b>C</b>
--------------------------	----------------------



0-337 - 1 Cont	REV. B	MODEL 4100W-SC600
----------------	--------	-------------------

AIR CONTROL VALVE (2-HA-2Y)  
(MANITOWOC #715531)  
(WESTINGHOUSE #P59340 - OLD #P54426-0241) (See Note 2)

REF. NO.	PART NUMBER	QUANTITY REQUIRED	DESCRIPTION OF PART	VENDORS PART NO.
18	714430	2	RING, "0" (15/16" O.D.)	P49708-16
19		2	GUIDE, Plunger	P54147
20	714506	2	RING, "0" (7/16" O.D.)	P49708-11
21		2	PLUNGER, Valve	P54146
22	714525	2	SPRING, Exhaust Valve	P54144
23		2	SEAT, Inlet Valve	P54145
24	714441	2	RING, "0" (7/8" O.D.)	P49708-115
25		2	WASHER	P53455-3
26	714442	2	VALVE, Inlet	P5125
27	714526	2	SPRING, Inlet Valve	539115
28		2	SPACER, Valve	P54794
29		2	BODY	P54306
30		2	WASHER, Lock	506607
31		2	SCREW	P49835
NOTE 1: Part numbers at right are Westinghouse. Please so specify when ordering.				
NOTE 2: Valves changed approx. July 1969. Check nameplate (Ref. #7) for accurate identification of valve.				

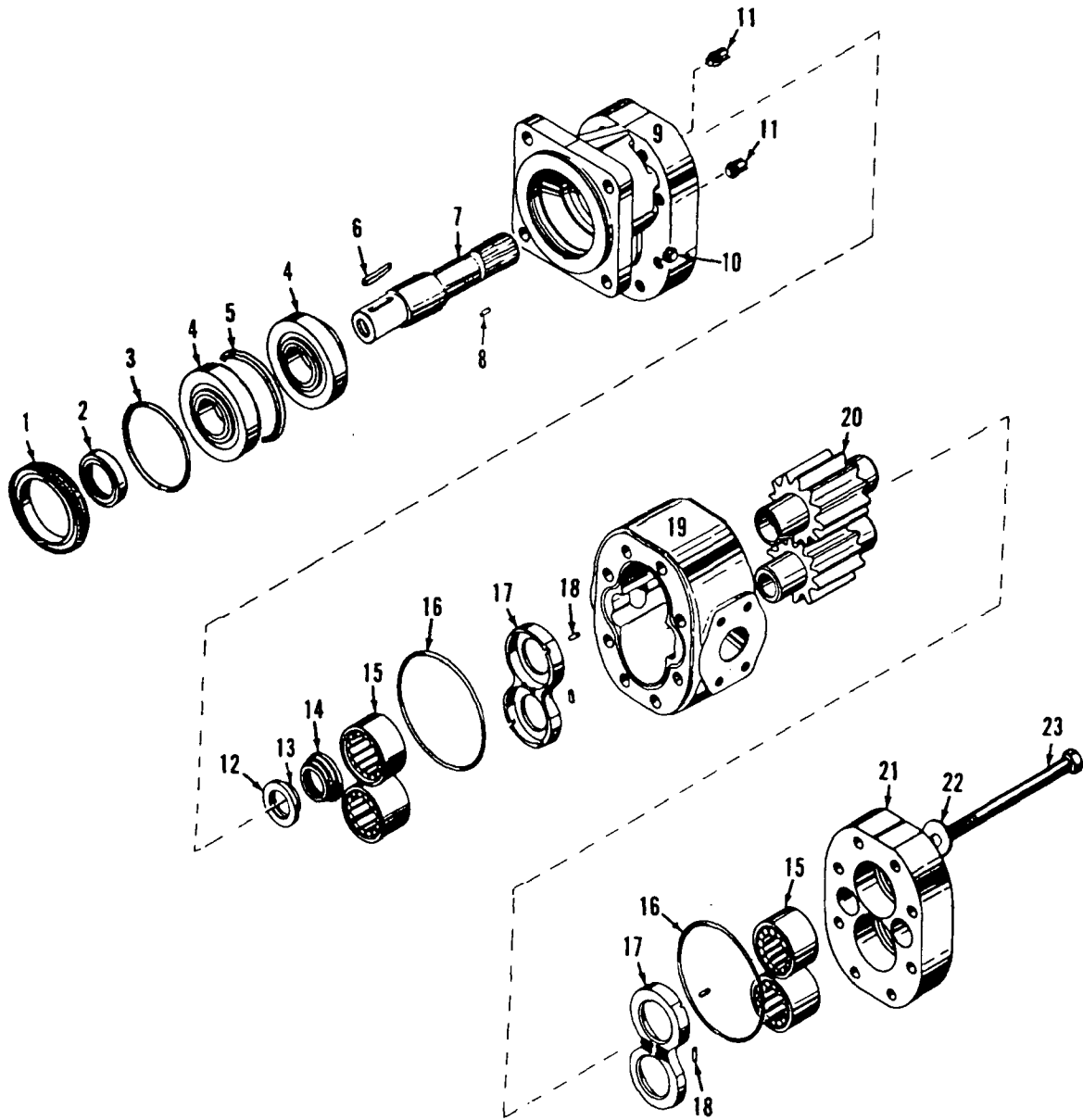
Run as Front

0-337 - 1B Cont.

REV. B	0 - 337 - 1
--------	-------------

PLEASE GIVE MACHINE S/N W/ORDER

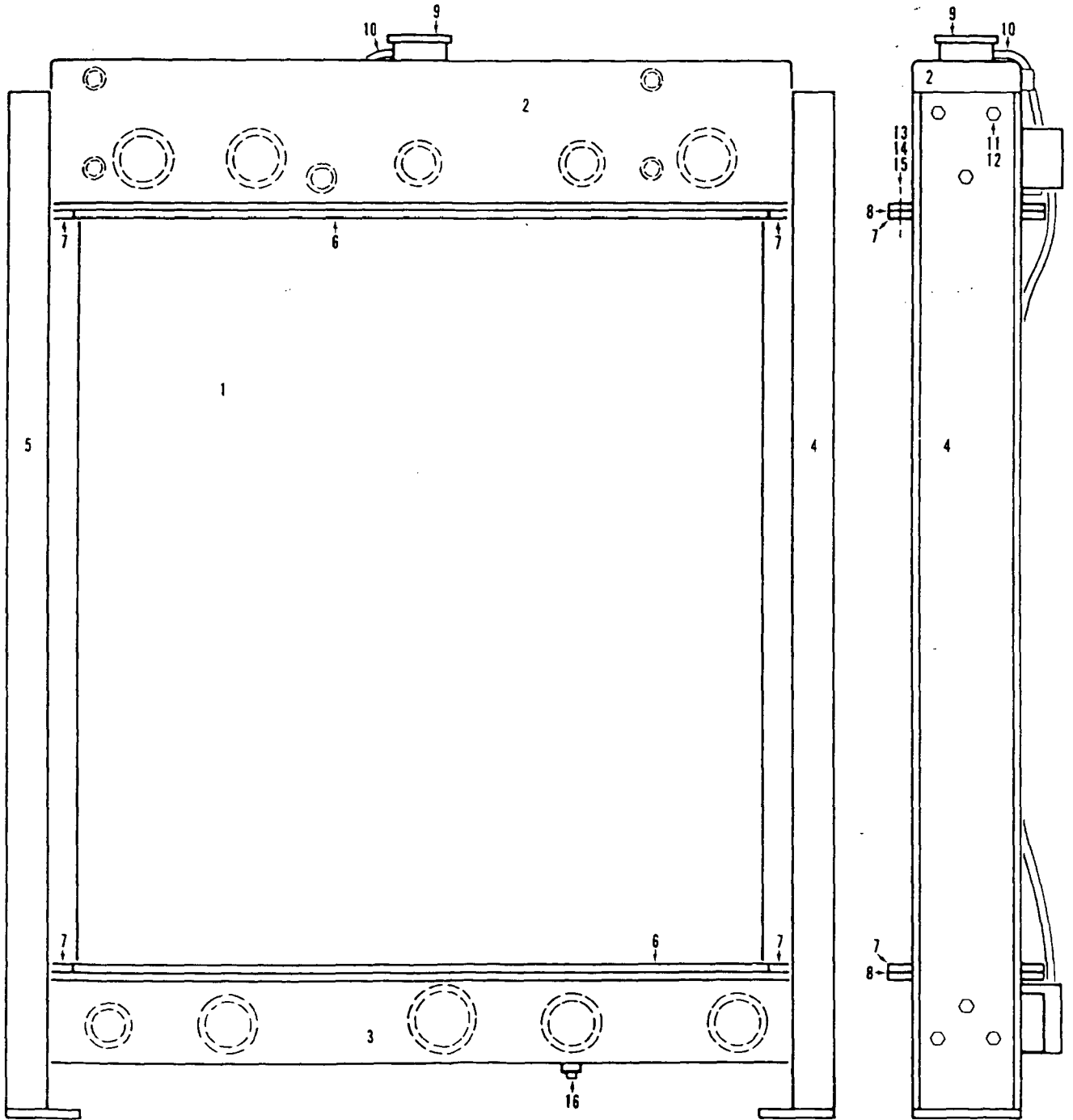
MASTER



MANITOWOC ENGINEERING CO.

A Division of The Manitowoc Company, Inc.

Manitowoc, Wisconsin



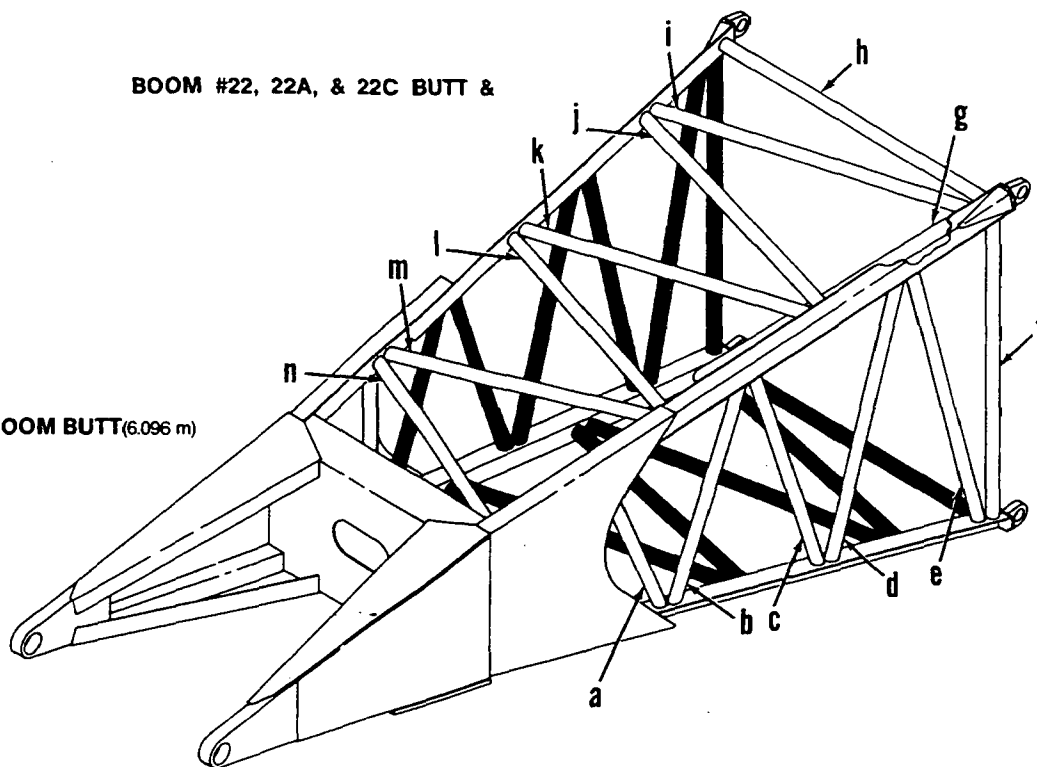
0-45181

MATERIAL LIST ON BACK

RADIATOR

**BOOM #22, 22A, & 22C BUTT &**

**20' BOOM BUTT (6.096 m)**  
49772

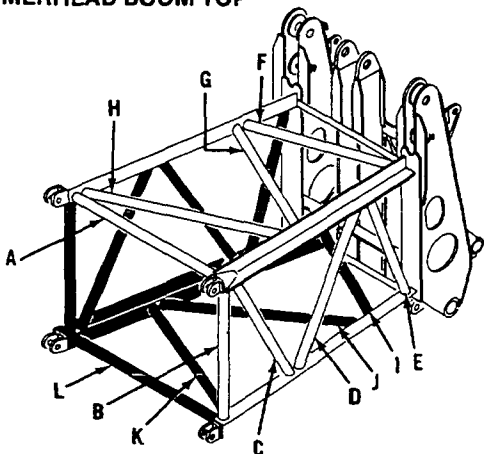


**BOOM #22A HAMMERHEAD TOPS**

Left side and bottom lacings black. Opposite lacings same unless noted.

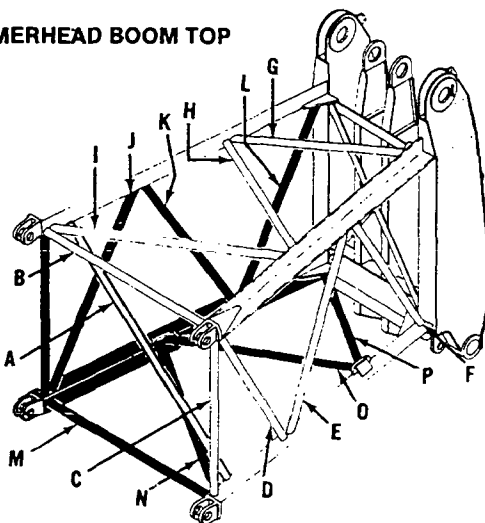
**HAMMERHEAD BOOM TOP**

50920



**HAMMERHEAD BOOM TOP**

50863  
419482



To order lacings see Folio #823

0-64-1 Cont.	REV. B	MODEL 2900-3000-4600 Incl.
--------------	--------	----------------------------

AIR CONTROL VALVE (2HA-2Z)  
 (MANITOWOC #714495)  
 (WESTINGHOUSE #P59339 NEW)  
 (WESTINGHOUSE #P54425-0310 OLD)

REF. NO.	PART NUMBER	QUANTITY REQUIRED	DESCRIPTION OF PART	VENDORS PART NO.
13		4	SCREW, Truss Head	P49861-3
14		4	LOCKWASHER	506608
15		2	FLANGE, Valve Retaining	P54463
16	714504	2	RING, "O" (15/16" O.D.)*	P49708-116
17		2	GUIDE, Plunger	P54147
18	714506	2	RING, "O" (7/16" O.D.)*	P49708-11
19		2	PLUNGER, Valve	P54146
20	714525	2	SPRING, Exhaust Valve*	P54144
21		2	SEAT, Inlet Valve	P54145
22	714441	2	RING, "O" (7/8" O.D.)*	P49708-115
23		2	WASHER	P53455-3
24	714442	2	VALVE, Inlet*	P5125
25		2	SPRING, Inlet Valve	539115
26		2	SPACER, Valve	P54794
27		1	BODY	P54306
28		2	LOCKWASHER	506607
29		2	SCREW, Fillet Head	P49835

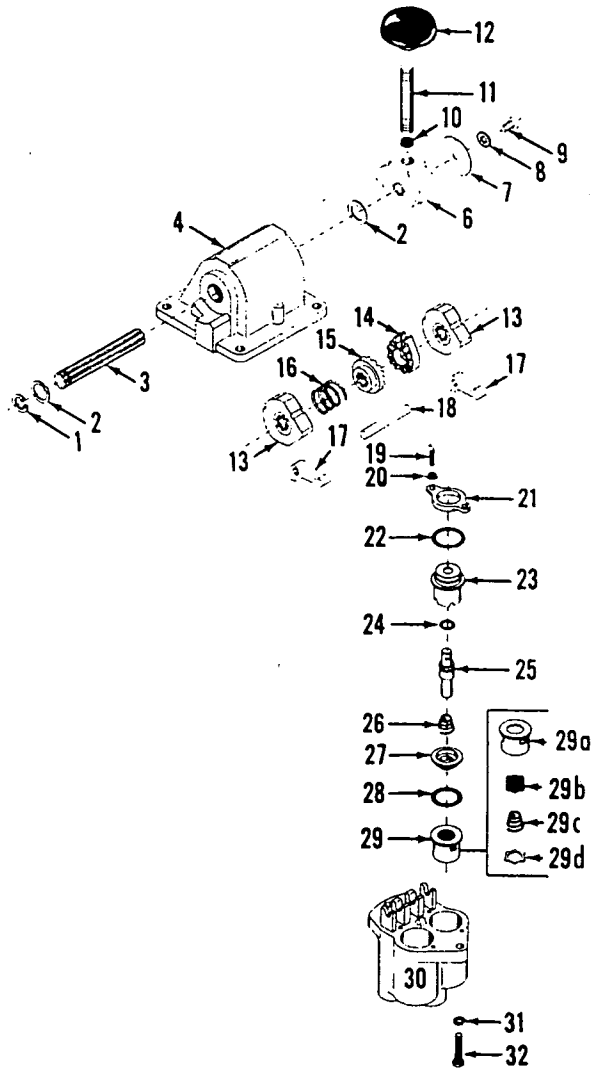
\*Recommended to be stocked at all times.  
 NOTE: Part numbers at right are Westinghouse. Please so specify if ordering.  
 Valve changed approx. July 1969. Check nameplate for correct valve.

Run as a Front

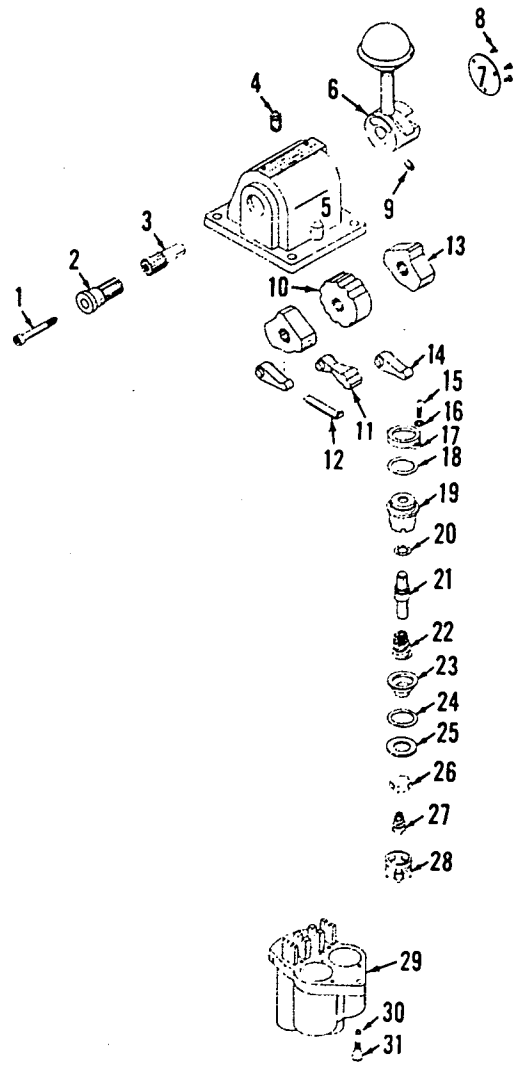
0-64 - 1 B Cont.

MAST

REV. B	0 - 64
--------	--------



P59335



P54426-0312

MATERIAL LIST ON BACK

CONTROL VALVE

CLICK HERE TO **DOWNLOAD** THE COMPLETE MANUAL

- Thank you very much for reading the preview of the manual.
- You can download the complete manual from: [www.heydownloads.com](http://www.heydownloads.com) by clicking the link below



- Please note: If there is no response to CLICKING the link, please download this PDF first and then click on it.

CLICK HERE TO **DOWNLOAD** THE COMPLETE MANUAL