

# Manitowoc

## TRADITIONAL CRANE PARTS MANUAL

This manual has been prepared for and is considered part of

**3900W**

Model

**395168**

Serial Number

**GROUP A = Rotating Structure** (Includes rotating bed, operator's cab, cases, fuel tanks, transfer pump, counterweights, guards, platforms, catwalks, machinery enclosure, horn)

**GROUP B = Upperworks Machinery** (Includes front, rear, and auxiliary drums, boom hoist, swing and drive shafts, hand levers, foot pedals, control linkage, rotation indicators, upperworks hydraulic components, hydraulic piping, hydraulic oil reservoir, lubrication pump and piping, blowers)

**GROUP C = Air Components & Electrical** (Includes control console, air piping, electric wiring, auxiliary light plant and lighting, TV monitoring, compressor and air tank)

**GROUP D = Power Components - Upperworks** (Includes engine or motor, radiator, auxiliary power plant, take off converters and piping, controls, VICON power lowering, torque limiter, hydraulic pumps and piping, fuel piping, battery box)

**GROUP E = Lower Structure & Control** (Includes carbody, crawlers, travel shafts and control, steering travel locks, hydraulic travel, travel power outriggers, carrier, pedestal, lowerworks hydraulic piping, RINGER components, barge mounting and machinery, spud drums)

**GROUP F = Attachments** (Includes booms, jibs, masts, tower, wire rope guides, equalizer, gantry, fairlead, timber guards, boom angle indicator, block-up limit, tag line, hook block, weight ball, upper and lower boom point, wind speed indicator, crowd and retract dipper sticks, dippers, )

**O-NUMBER SECTION =** (Includes lacing drawings and purchased component parts drawings referenced in sections A through F)

*This manual is arranged in sections as listed above. Sections A through F are arranged by group numerical order with an index after each section tab. An alphabetical index for groups A Through F combined is located after the O-number Section. The O-number section is arranged in numerical order by O-number. Following this cover page are the Basic Specifications, Warranty Information, Tool List (if applicable) Outline Dimensions, Weights, and Dealer Listing.*

CLICK HERE TO **DOWNLOAD** THE COMPLETE MANUAL

- Thank you very much for reading the preview of the manual.
- You can download the complete manual from: [www.heydownloads.com](http://www.heydownloads.com) by clicking the link below



- Please note: If there is no response to CLICKING the link, please download this PDF first and then click on it.

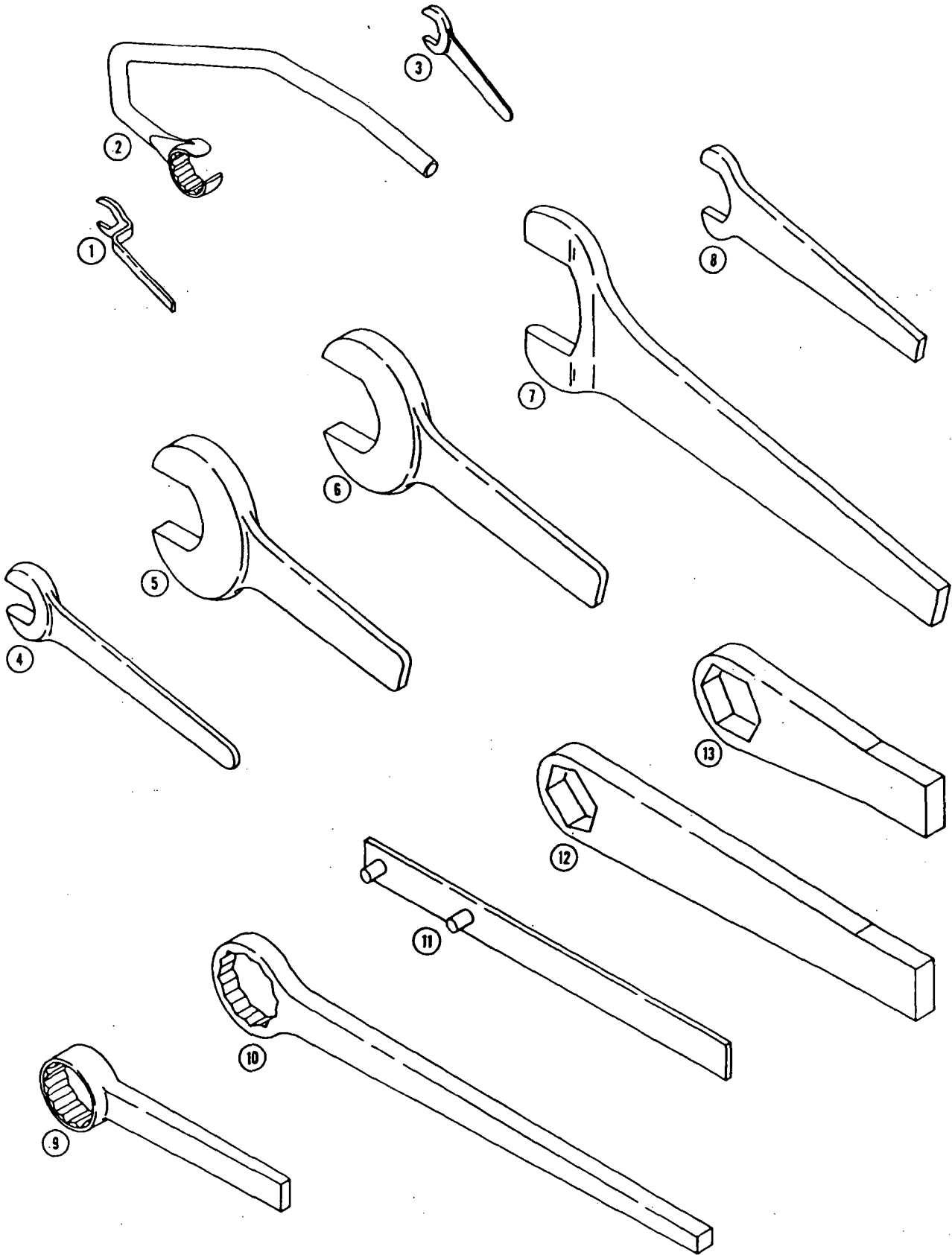
CLICK HERE TO **DOWNLOAD** THE COMPLETE MANUAL

MANITOWOC ENGINEERING CO.

A Division of The Manitowoc Company, Inc.

Manitowoc, Wisconsin

MASTER



0-481-1A

MATERIAL LIST ON BACK

Tool List



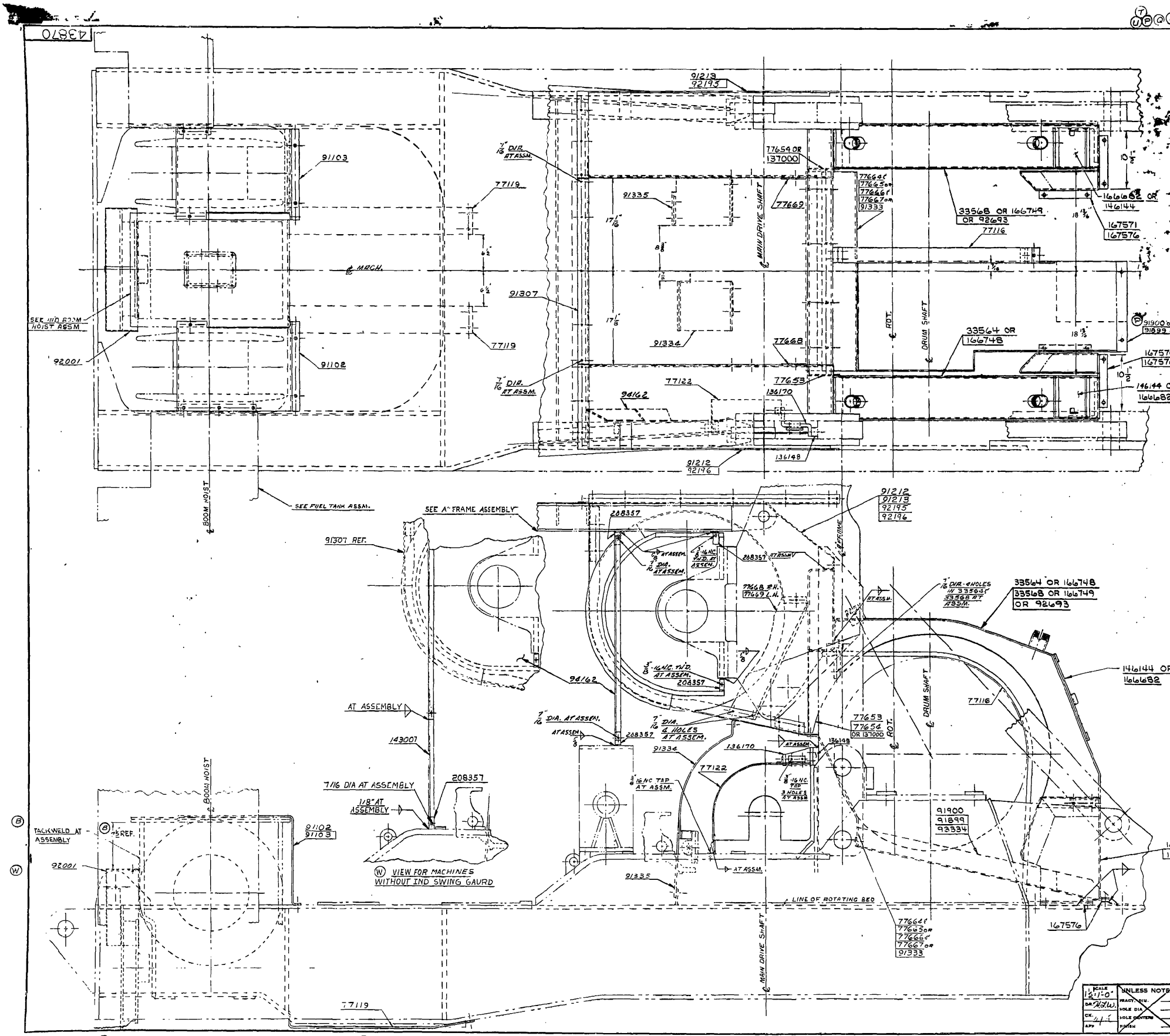
43705-1 Cont	REV. H	MODEL VICON 3900W
--------------	-----------	----------------------

PLATFORM

REF. NO.	PART NUMBER	QUANTITY REQUIRED	DESCRIPTION OF PART	VENDORS PART NO.
			<p>Note 1: Ref. Nos. 22, 23, 30, 31, 32, 33 not used W/catwalk. Ref. Nos. 22, 30 not used W/Front Step, Front Service Walk or Elev. Operator's Station.</p> <p>Note 2: Support #190363 used W/left pedal for Front Drum Brake, and right pedal for Rear Aux. Drum Brake. Support #31999 used W/left pedal for Rear Aux. Drum Brake and right pedal for Front Drum Brake.</p>	

REV. H	43705 - 1
-----------	-----------

MASTER



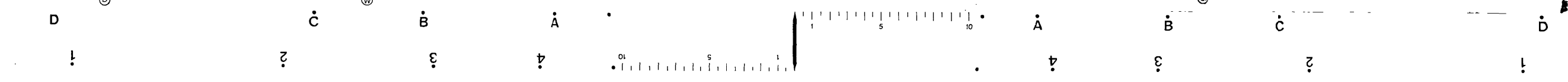
NO. REQD.	DWG. NO.	TITLE
(H) L	91900	DRAGLINE DIRT GUARD (BACK FRONT DRUM)
(M) L	91899	DRAGLINE DIRT GUARD (FOR UNIFORM DRUM ONLY)
(N) L	91334	DRAGLINE DIRT GUARD (FROM EQUAL DRUM ONLY)
(W) L	91335	DRUM BRAKE GUARD R.H.
(V) L	91336	DRUM BRAKE GUARD L.H. FOR 3900 W ONLY
(U) L	92673	CLOSING SHEET FOR SEACRANE 135V ONLY
(T) L	77116	CENTER CABLE GUARD (FOR SPLIT DRUMS ONLY)
(S) L	77119	CLUTCH GUARD FOR USE WITH MACH. (SEE NOTE 1)
(R) L	77122	GUARD FOR POWER LOWERING
(Q) L	77654	GUARD R.H.
(P) L	77653	GUARD L.H.-NOT REQ'D. FOR SEACRANE 135V
(O) L	77664	GUARD R.H. FOR EQUAL DRUMS ONLY
(N) L	77665	GUARD L.H.
(M) L	77666	GUARD R.H. FOR UNEQUAL DRUMS ONLY
(L) L	77667	GUARD L.H.
(K) L	77668	GUARD R.H.
(J) L	77669	GUARD L.H.
(I) L	137000	GUARD L.H.-FOR SEACRANE 135V ONLY
(H) L	91102	DRUM GUARD R.H.
(G) L	91103	DRUM GUARD L.H.
(F) L	143007	SUPPORT FOR USE WITHOUT IND. SWING
(E) L	92001	GUARD
(D) L	91307	GUARD
(C) L	91333	GUARD (FOR FULL WIDTH DRUM ONLY)
(B) L	91334	GUARD R.H. NOT REQ'D. WITH
(A) L	91335	GUARD L.H. (INDEPENDENT SWING)
(Z) L	91212	DRUM BRAKE GUARD R.H. (USE WITH TELESCOPING BOOM STOP FOR 19' BOOMS)
(Y) L	91213	DRUM BRAKE GUARD L.H. (USE WITH TELESCOPING BOOM STOP FOR 19' BOOMS)
(X) L	92195	DRUM BRAKE GUARD L.H. (USE WITH TELESCOPING BOOM STOP FOR 19' BOOMS)
(W) L	92196	DRUM BRAKE GUARD R.H. (USE WITH TELESCOPING BOOM STOP FOR 19' BOOMS)
(V) L	136148	SPACER (FOR POWER LOWERING ONLY)
(U) L	136170	BRACKET (FOR POWER LOWERING ONLY)
(T) L	92162	GUARD
(S) L	208357	2 1/2" x 2 1/2" x 1/4" ANGLE - 1020
(R) L	146144	DRUM BRAKE GUARD COVER
(Q) L	146148	DRUM BRAKE GUARD COVER-SEE NOTE 1
(P) L	166748	DRUM BRAKE GUARD R.H.-SEE NOTE 1
(O) L	166749	DRUM BRAKE GUARD L.H.-SEE NOTE 1
(N) L	167570	GUARD R.H.-SEE NOTE 1
(M) L	167571	GUARD L.H.-SEE NOTE 1
(L) L	167576	MOUNTING PAD-SEE NOTE 1

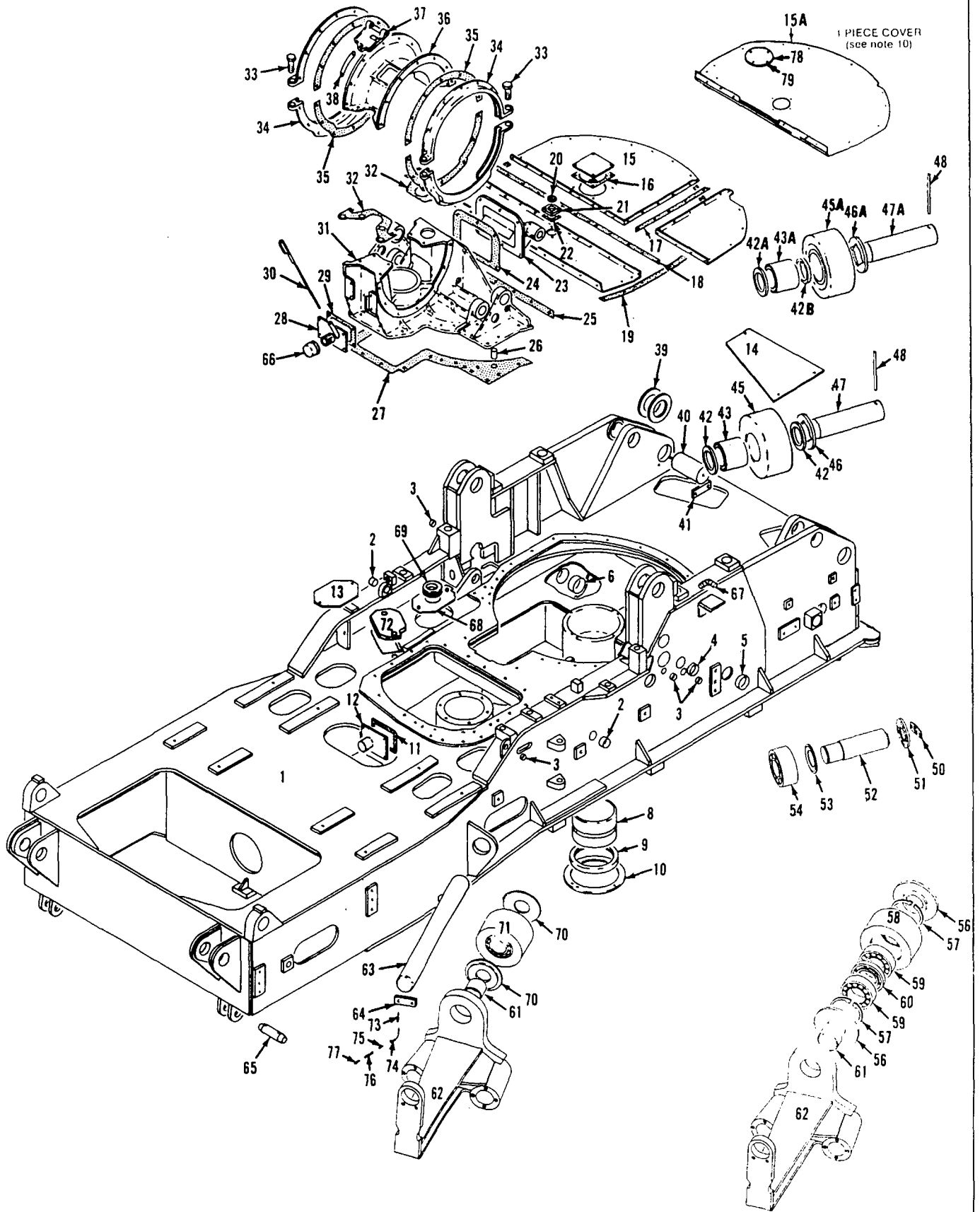
NOTE II  
FOR MACHINES WITH AIR CHAMBER ACTUATED DRUM BRAKES ONLY.

UNLESS NOTED OTHERWISE	MANITOWOC ENGINEERING CO.	PATTERN NO.
SCALE: 1/2" = 1'-0"	MANITOWOC, WISCONSIN	43870
DWG. NO. 43870	GUARD ASSM.	CODE NO.
	USE WITH REAR RUX, DRUM	
	MOOP. 3900-W-56135	43870

43870

REVISED DATE  
5-23-66

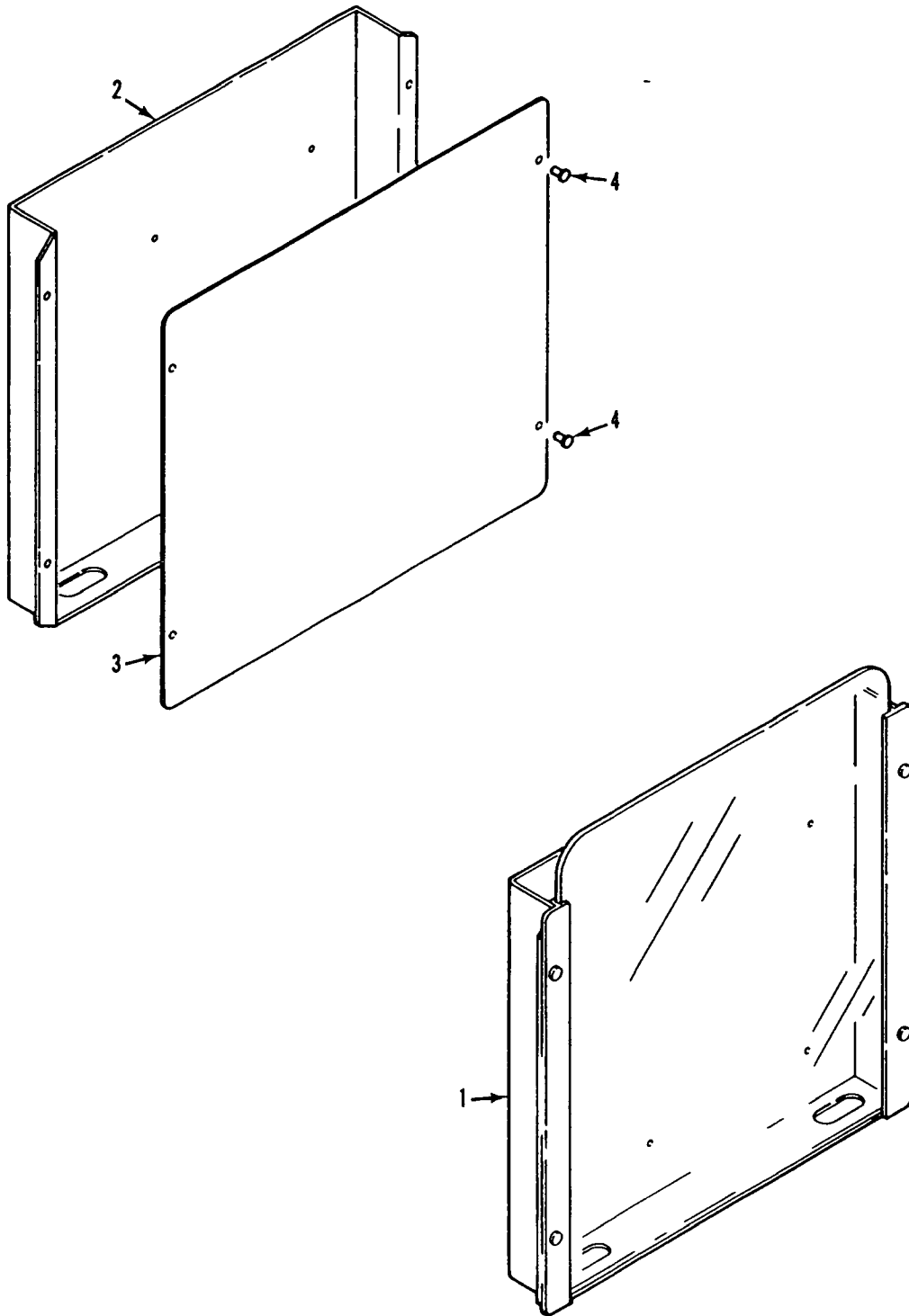




48669H1

MATERIAL LIST ON BACK

ROTATING BED



94017A1

MATERIAL LIST ON BACK

CAPACITY CHART & SERVICE MANUAL HOLDERS

190452-A Contd.	REV A	MODEL 3900, 3900T, 3900W, 3950W, 4000W, SC-135
-----------------	----------	---

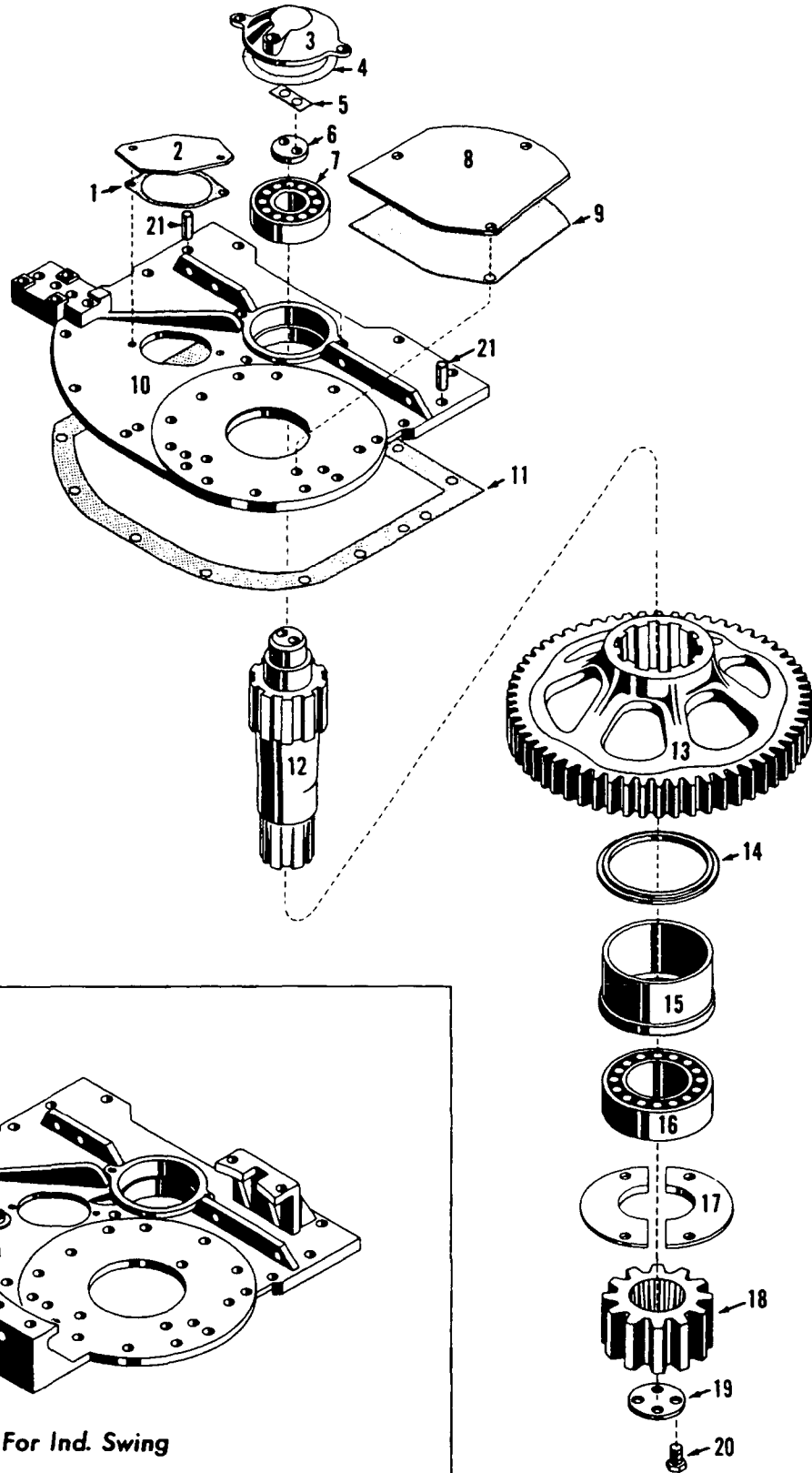
CAB HEATER

REF NO	PART NUMBER	QUANTITY REQUIRED	DESCRIPTION OF PART	VENDORS PART NO
			<u>FOR CATERPILLAR 3408</u>	
	406955	1	ELBOW (3/4" x 90°)	
	543405	1	NIPPLE, Close (3/4" x 1-3/8" Lg )	
	543758	1	NIPPLE (3/4" x 5 1/2" Lg )	
			<u>FOR G M 12V-71 SERIES</u>	
	406687	1	ELBOW (3/4" x 45°)	
	406909	1	ELBOW, Reducing (1" x 3/4" x 90°)	
	543405	1	NIPPLE, Close (3/4" x 1-3/8" Lg )	
	543406	1	NIPPLE (1" x 1 1/2" Lg )	
			<u>FOR G M 8V-71 SERIES</u>	
	406906	2	ELBOW, Reducing (3/4" x 1/2" x 90°)	
	543404	1	NIPPLE, Close (1/2" x 1-1/8" Lg )	
	543536	1	NIPPLE (1/2" x 6" Lg )	

REV A	190452-1
----------	----------

PLEASE GIVE MACHINE S/N W/ORDER

190452A1



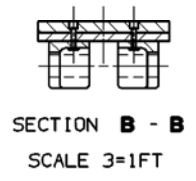
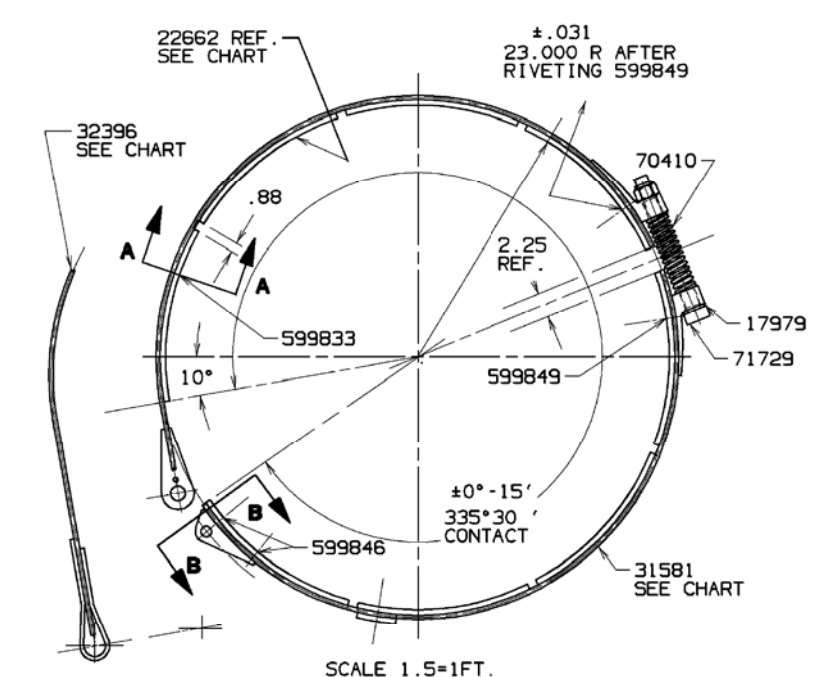
For Ind. Swing

22880C1

MATERIAL LIST ON BACK

SWING SHAFT

BILL OF MATERIAL				ASSEMBLIES USED ON	
ITEM NO.	SEC. NO.	DESCRIPTION	LENGTH	MATERIAL	CODE NO. OR DWG. NO.
43107					43851
43108					43993
43340					48006
43341					48007
43712					48008
43713					48063
43814					48127
43815					48128
43820					48279
43821					CONT'D



BRAKE BLOCK CODE #	LINING CODE #	# REQ'D RIVET 599833	# REQ'D RIVET 599846	# REQ'D RIVET 599849	LINED BRAKE BAND		
					LINED BRAKE BAND CODE #	LINED LIVE END BAND ONLY CODE #	LINED DEAD END BAND HALF ONLY CODE #
22662-3	508456	10	1	1	31581-6	218760	218761
22662-4	508548	10	1	1	31581-5	218725	218726
22662-6	508579	10	1	1	32396-4	218725	218757
22662-8	508634	10	1	1	32396-5	218760	218763
22662-9	508655	10	1	1	353050	218631	218632
					353051	218631	218633
					353061	218779	218780
					353062	218779	218782
					353063	218787	218788
					353065	218787	218789

	1	2	3	4	5	6	7	8	9	10	11	12
MODEL 3900, 3900H, 4000H LEFT & RIGHT FRONT DRUM BRKS. MAN. OR MAN. WITH AIR ASSIST												
MODEL 3900T RIGHT FRONT DRUM BRAKE ONLY MANUAL OR MANUAL WITH AIR ASSIST												
MODEL 3900T LEFT FRONT DRUM BRAKE ONLY MANUAL OR MANUAL WITH AIR ASSIST												
MODEL 3900, 3900T, 3900H & 4000H RIGHT FRONT DRUM BRAKE NON-VICON WITH POWER LOWERING												
MODEL 3900 VICON RIGHT FRONT DRUM BRAKE ONLY WITH MAGNET POWER TAGLINE ASSEMBLY												
MODEL 3900H & SC 135 MANUAL SINGLE FRONT DRUM WITH SINGLE BRAKE BAND												
MODEL 3950W LEFT & RIGHT FRONT DRUM MANUAL BRAKES												
MODEL 3900 & 3950W LEFT & RIGHT FRONT DRUM AIR BRAKES												
MODEL 390, 390E, 3900, 3900H, 3950H, 4000H & 4100H ALL FULL WIDTH DRUMS WITH AIR DBL. BRK.												
MODEL 390, 390E & 4100H ALL SPLIT DRUMS WITH AIR SINGLE BRAKE												
MODEL 390, 390E, 3900, 3900H, 3950H, 4000H & 4100H ALL FULL WIDTH DRUMS WITH MAN. DBL. BRK.												
MODEL 390, 390E & 4100H ALL SPLIT DRUMS WITH MAN. SINGLE BRAKE												

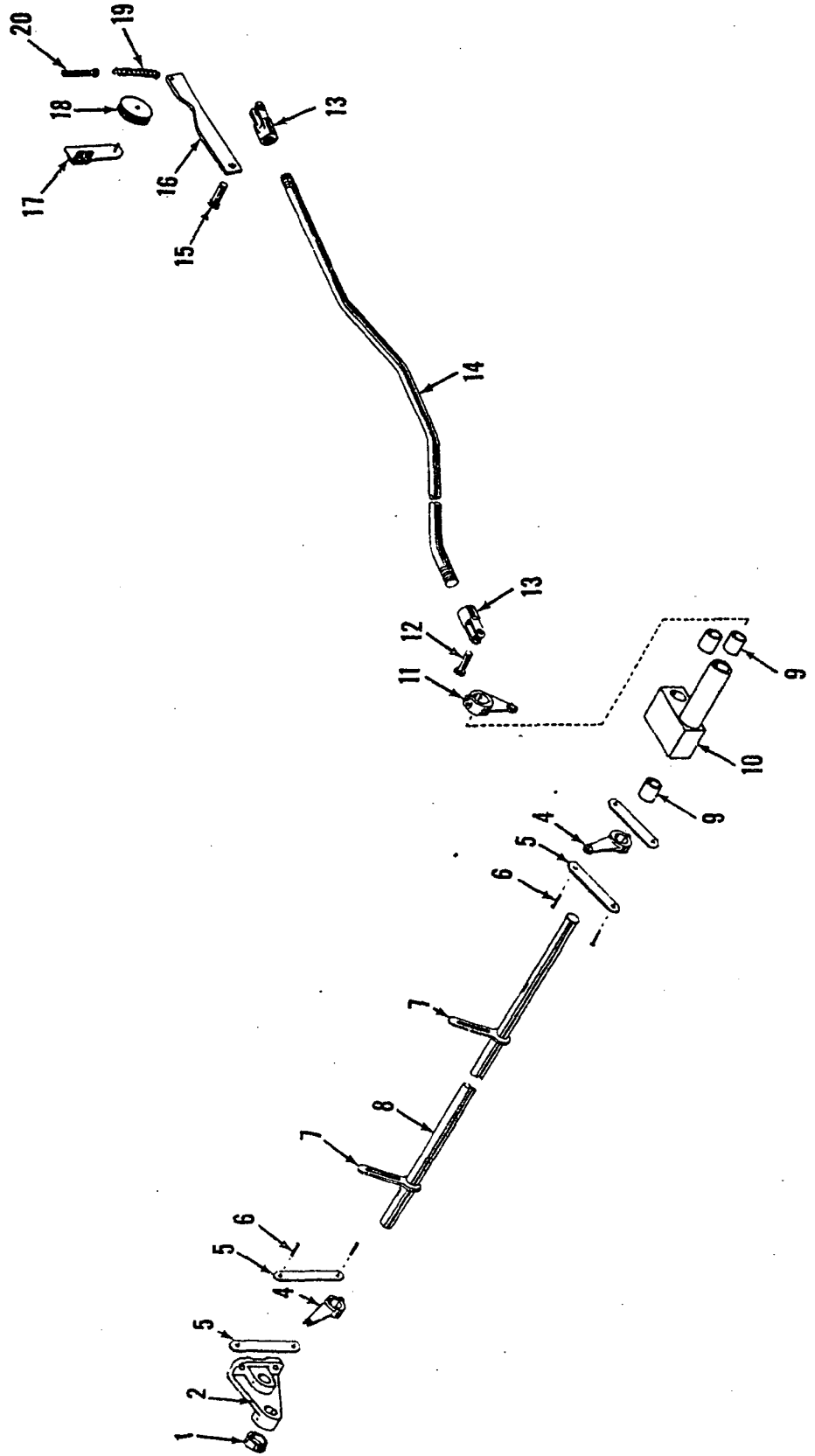
CODE # BRAKE BAND SUB-ASS'Y	THIS MATERIAL MAKES ONE EACH OF BAND HALVES AS DESCRIBED IN COLUMNS A&B					COLUMN "A" CODE # LINED LIVE (SHORT) END BAND HALF ONLY	COLUMN "B" CODE # LINED DEAD (LONG) END BAND HALF ONLY	# REQ'D SPHERICAL WASHER # 17979	# REQ'D ADJUSTING BOLT # 71729	# REQ'D SPRING # 70410	APPLICATION CHART													
	# REQ'D LINING CODE # REF DWG 22662	# REQ'D RIVET 599833	# REQ'D RIVET 599846	# REQ'D RIVET 599849	# REQ'D UNLINED BRAKE BAND						1	2	3	4	5	6	7	8	9	10	11	12		
31360-3	8 REQ'D 508548	72	4	4	1 REQ'D 31581	218725	218726	2	1	1	OPT	OPT												
31360-4	8 REQ'D 508456	72	4	4	1 REQ'D 31581	218760	218761	2	1	1	OPT	OPT												
31360-5	8 REQ'D 508548	72	4	4	1 REQ'D 32396	218725	218757	2	1	1			OPT	OPT	OPT									
31360-6	8 REQ'D 508456	72	4	4	1 REQ'D 32396	218760	218763	2	1	1			OPT	OPT	OPT									
31360-7	8 REQ'D 508579	72	4	4	1 REQ'D 31581	218631	218632	2	1	1	OPT	OPT				OPT								
31360-8	8 REQ'D 508579	72	4	4	1 REQ'D 32396	218631	218633	2	1	1			OPT	OPT	OPT									
31360-0	8 REQ'D 508634	72	4	4	1 REQ'D 31581	218779	218780	2	1	1	OPT	OPT				OPT								
31360-1	8 REQ'D 508634	72	4	4	1 REQ'D 32396	218779	218782	2	1	1			OPT	OPT	OPT									
31360-9	8 REQ'D 508655	72	4	4	1 REQ'D 31581	218787	218788	2	1	1	STD	STD												
31360-2	8 REQ'D 508655	72	4	4	1 REQ'D 32396	218787	218789	2	1	1						STD	STD	STD						

SUPERSEDES 31360 OF 1-6-83

SCALE NONE	DATE 3-28-86	Manitowoc Crane, Inc. Manitowoc, Wisconsin	DRUM BRAKE BAND	DATE 3-28-86
DR. RBK	PATTERN NO.		SUB-ASSEMBLY	SEE CHART
DR. RBK		MODEL 3900-3900T-3900H-SC 135		DWG. NO. 31360
APP AGZ		3950H-4000H-4100H-390-390E		

N M L K C H

DO NOT SCALE THIS DRAWING

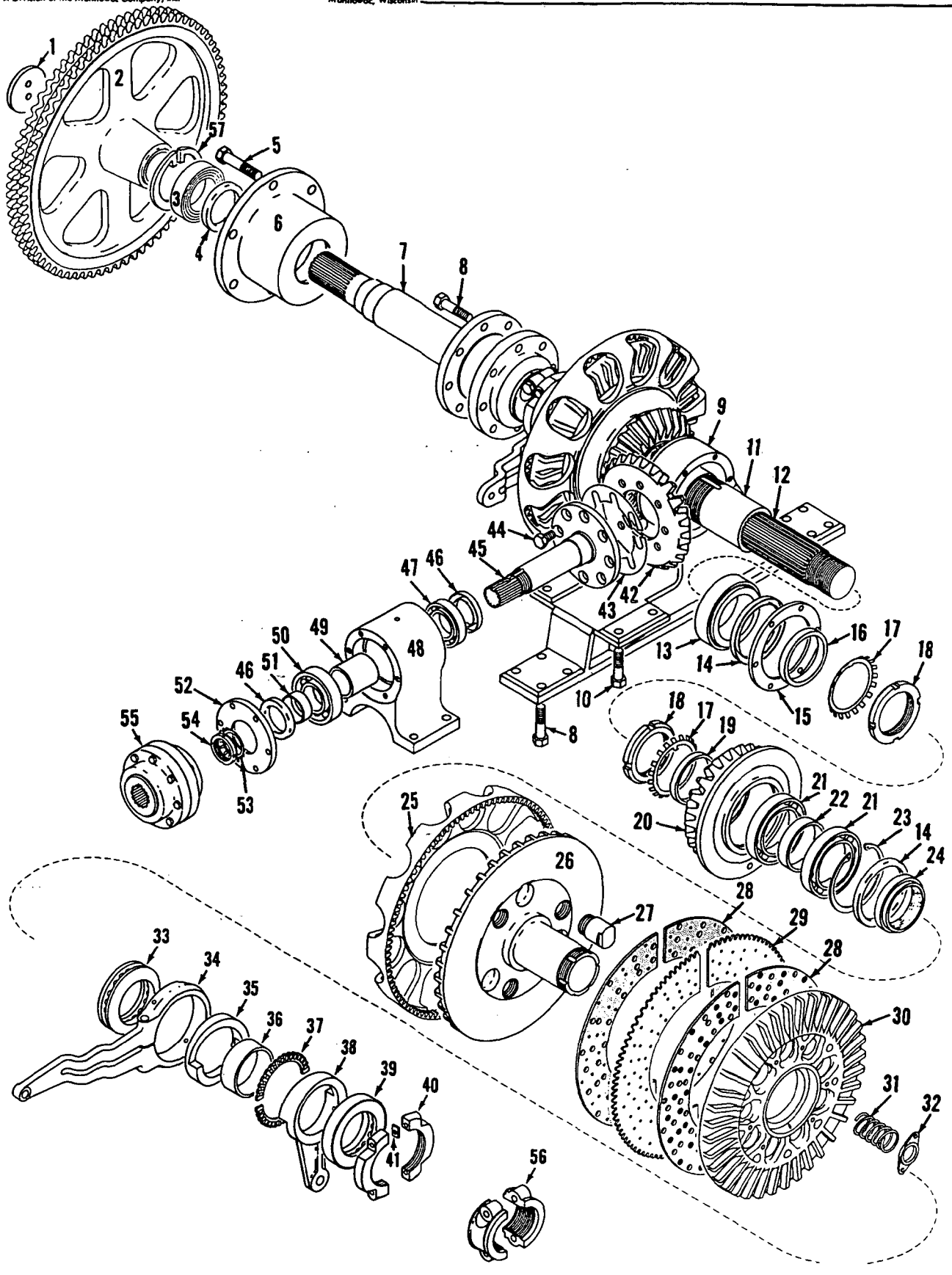


MASTER

MANITOWOC ENGINEERING CO.

A Division of The Manitowoc Company, Inc.

Manitowoc, Wisconsin

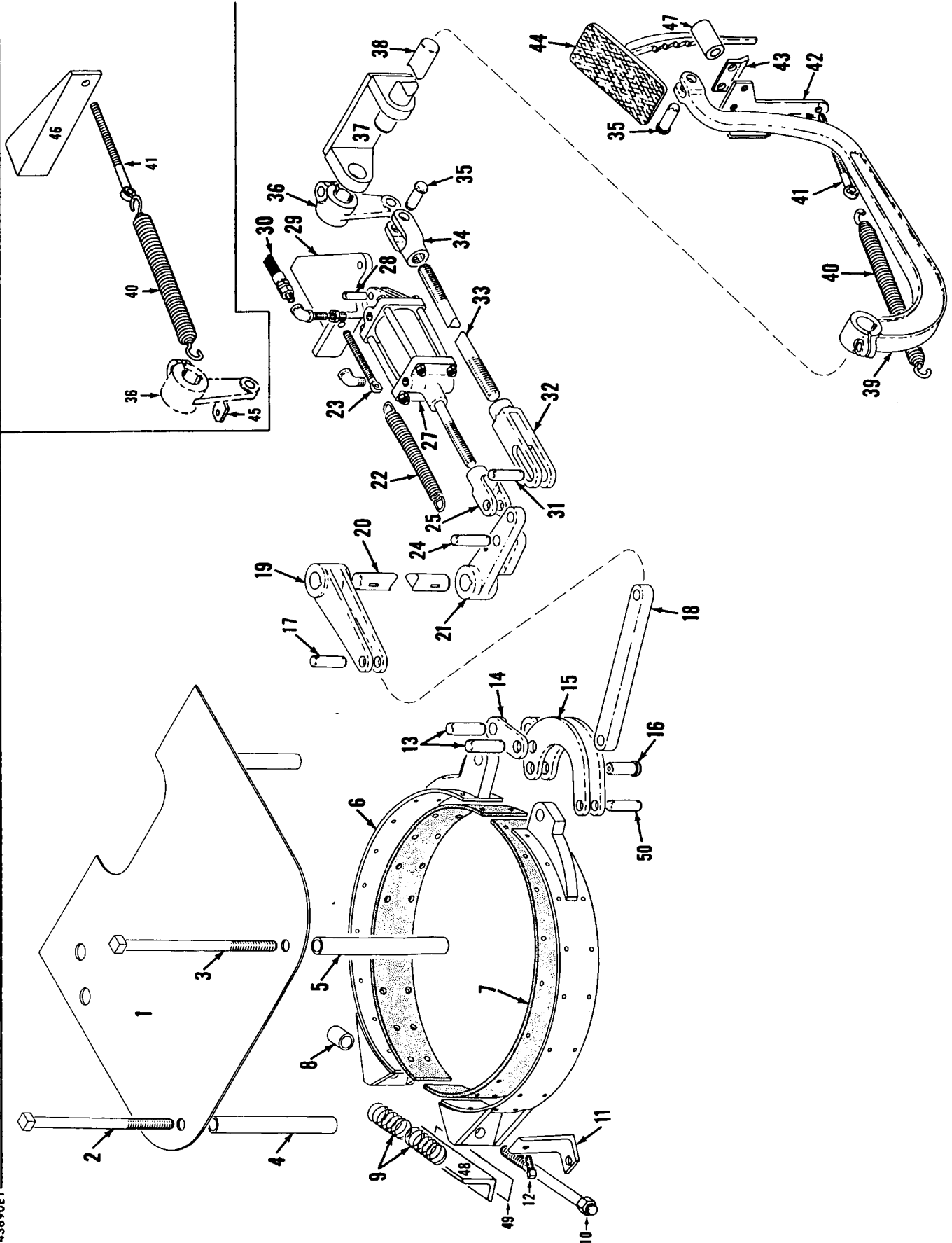


43651F1

MATERIAL LIST ON BACK

IND. BOOM HOIST DRIVE SHAFT

MASTER



43690E1

43712-1 Cont.	REV. E	MODEL 3900W
---------------	-----------	----------------

LEFT DRUM BRAKE  
(MANUAL)

REF. NO.	PART NUMBER	QUANTITY REQUIRED	DESCRIPTION OF PART	VENDORS PART NO.
49	140199	2	PIN w/cotter pins and flatwashers ROLLER, Guide	
50	145659	1		
<p><u>NOTE 1:</u> Mach. w/remote greasing, delete Ref. Nos. 31, 32, 33.</p> <p><u>NOTE 2:</u> Use washers #144434 and 144435 to center band on brake flange.</p>				
				REV. E
				43712-1

PLEASE GIVE MACHINE S/N W/ORDER

MASTER

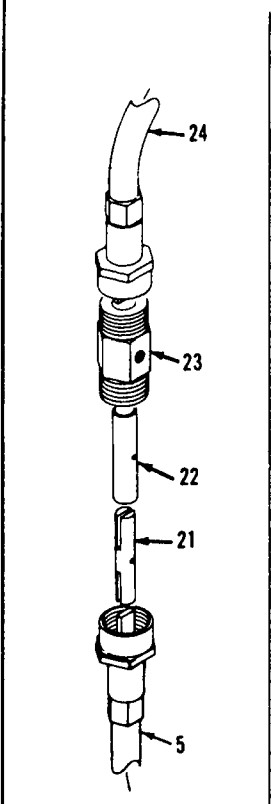
Run as Front

43712 E1 Cont.

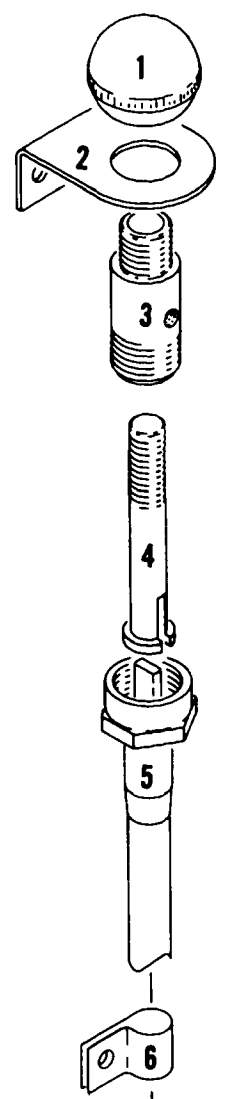
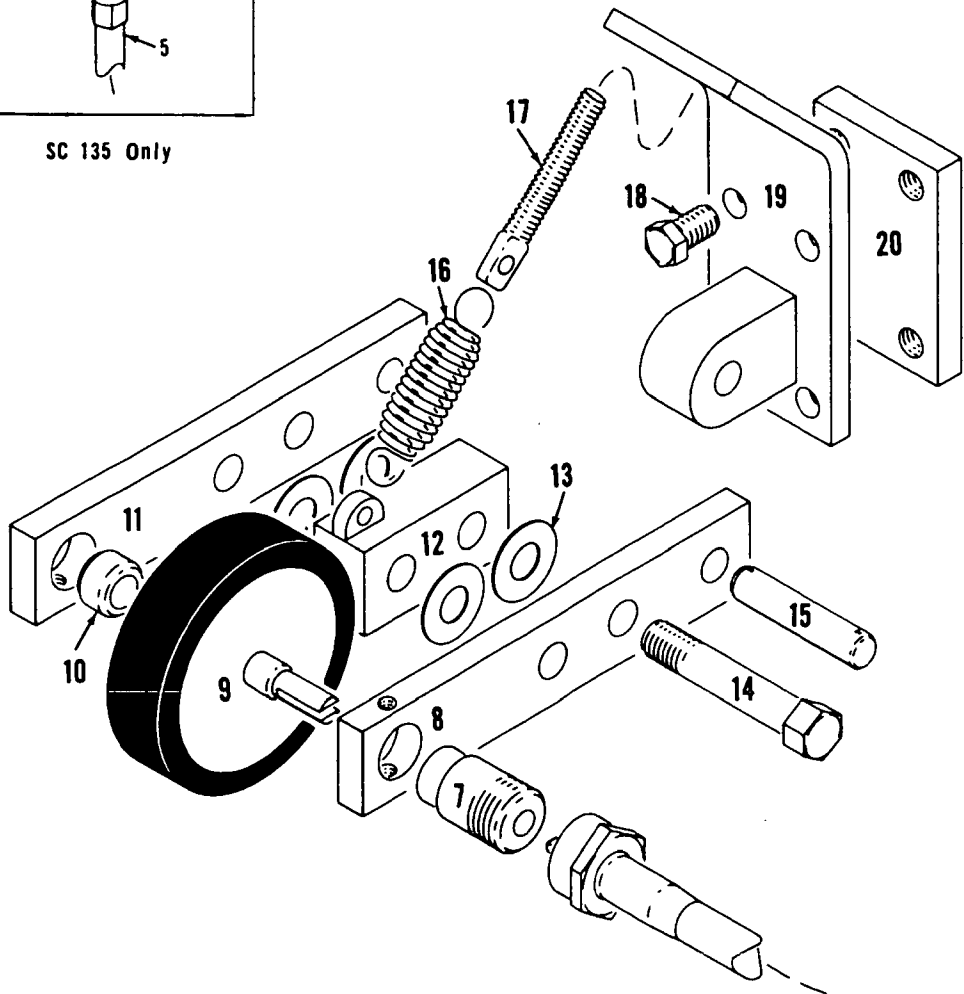
# MANITOWOC ENGINEERING CO.

A Division of The Manitowoc Company, Inc.

Manitowoc, Wisconsin



SC 135 Only



DRUM ROTATION INDICATOR

43770B1

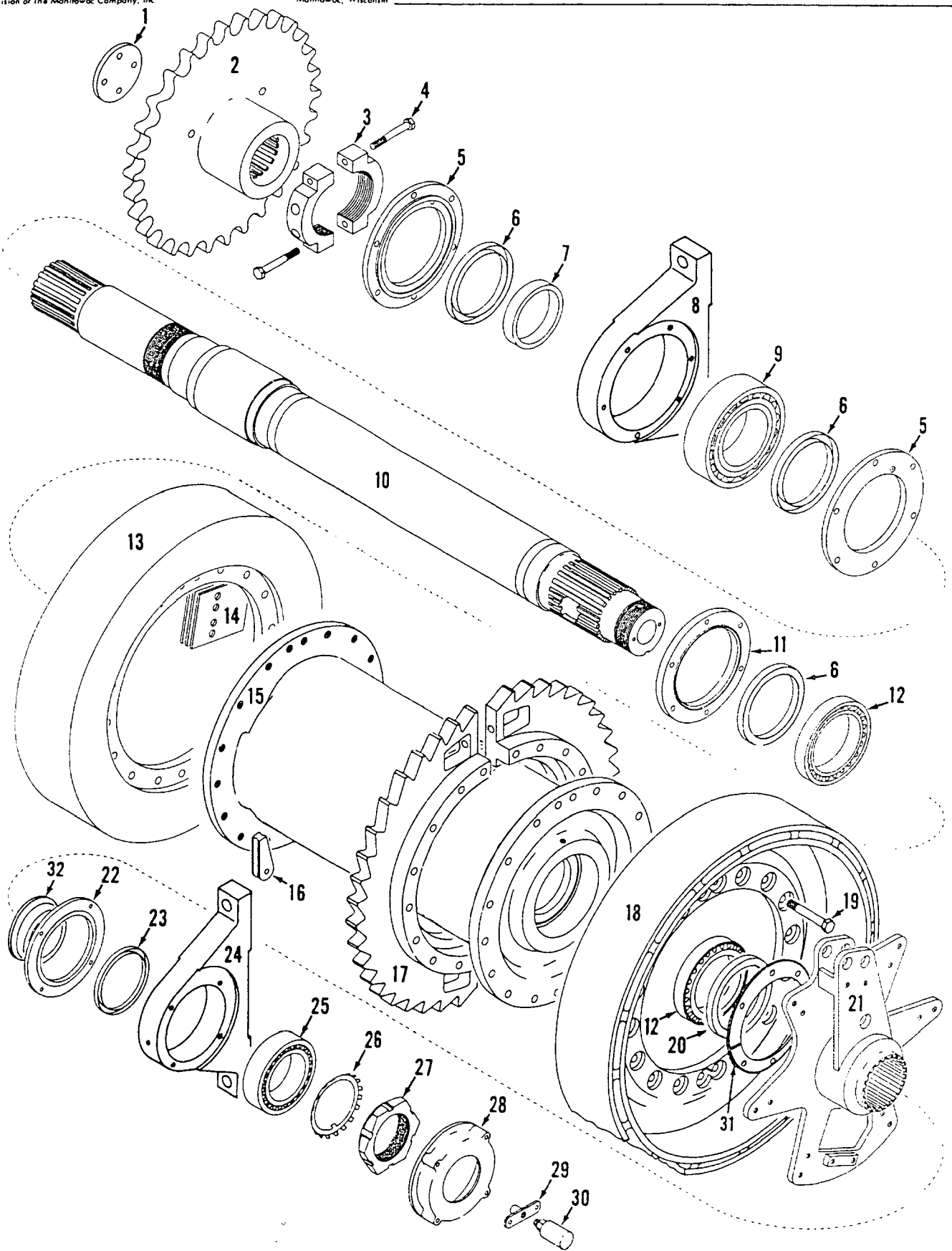
MATERIAL LIST ON BACK

MANITOWOC ENGINEERING CO.

A Division of The Manitowoc Company, Inc.

Manitowoc, Wisconsin

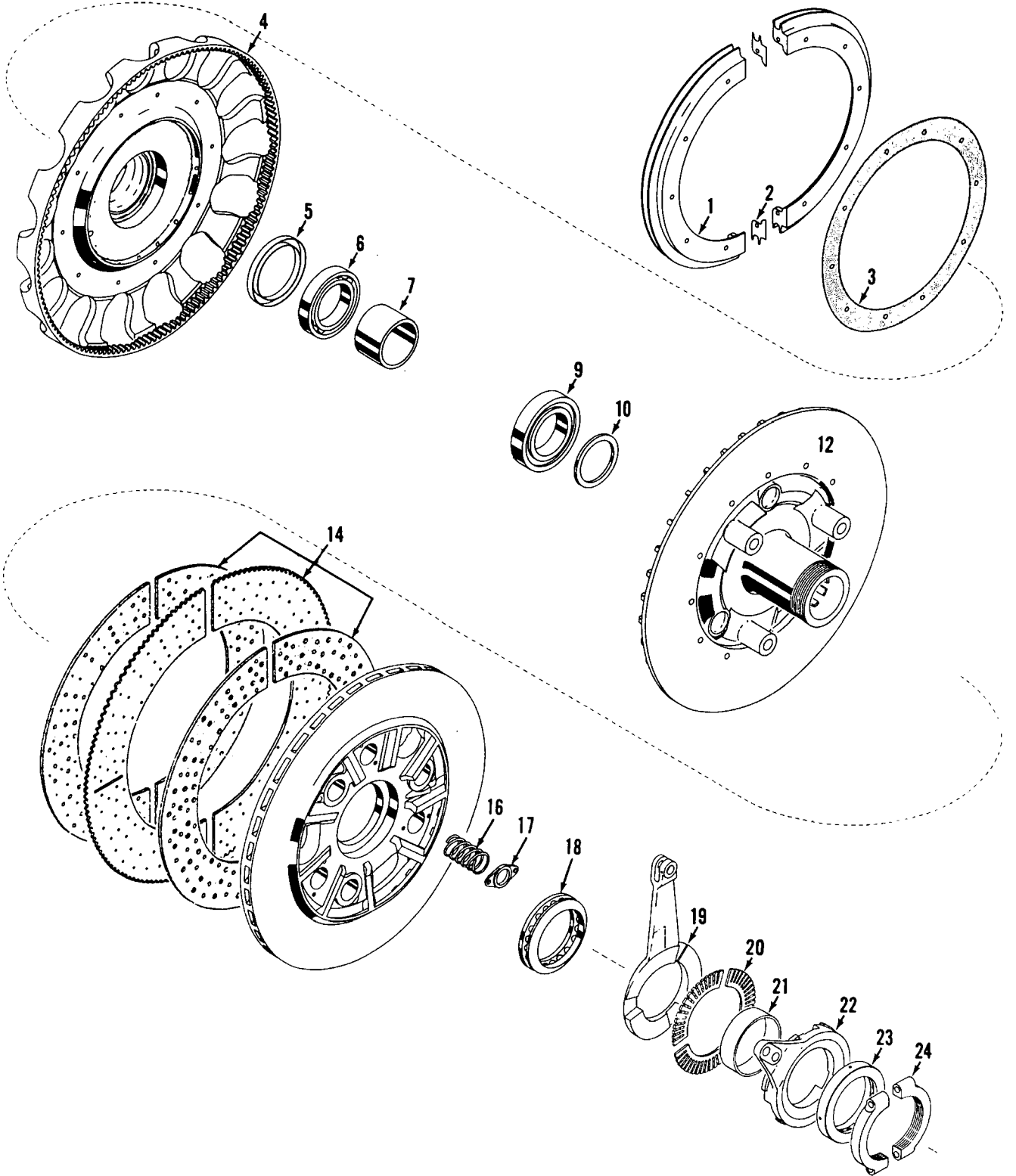
MASTER



4828581

MATERIAL LIST ON BACK

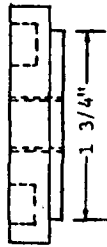
REAR AUX DRIVE



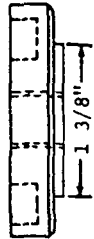
MANITOWOC ENGINEERING CO.

A Division of The Manitowoc Company, Inc.

Manitowoc, Wisconsin

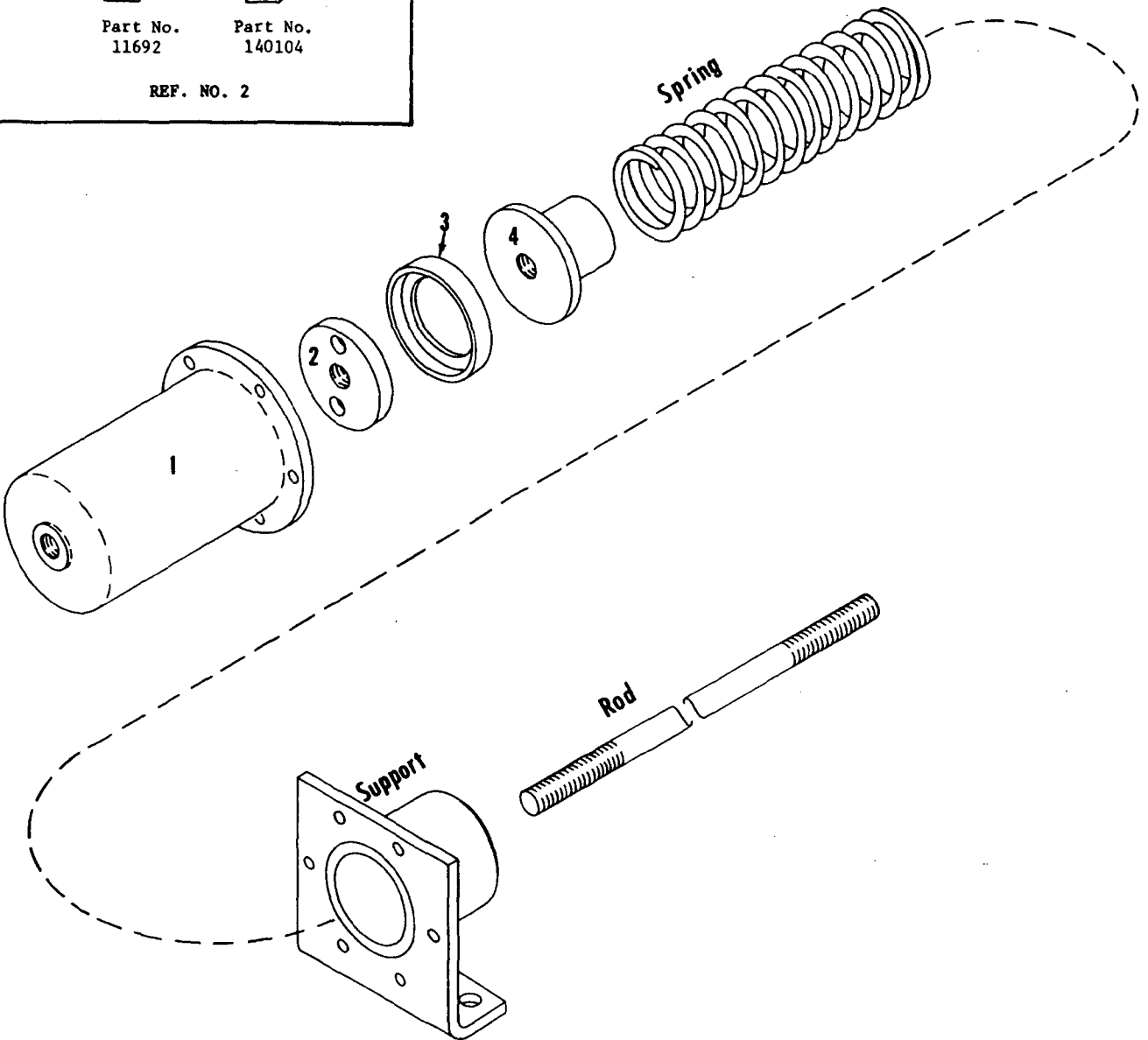


Part No.  
11692



Part No.  
140104

REF. NO. 2



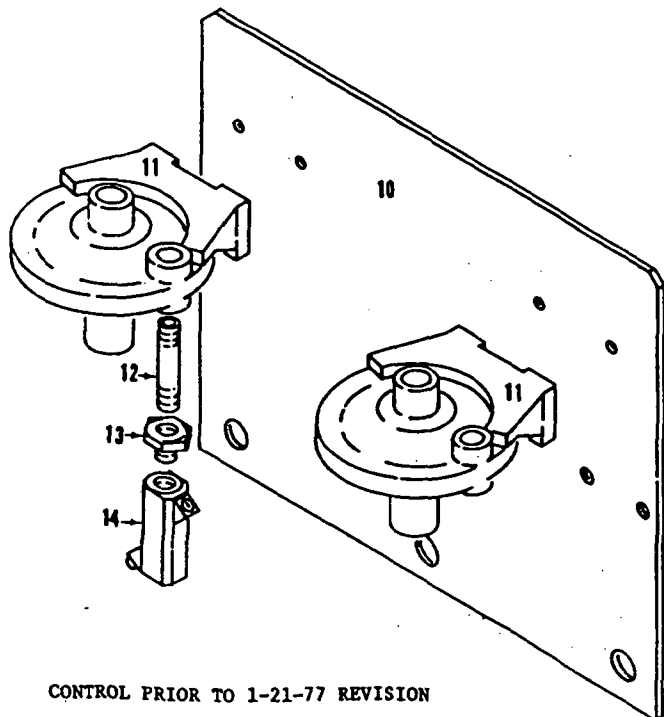
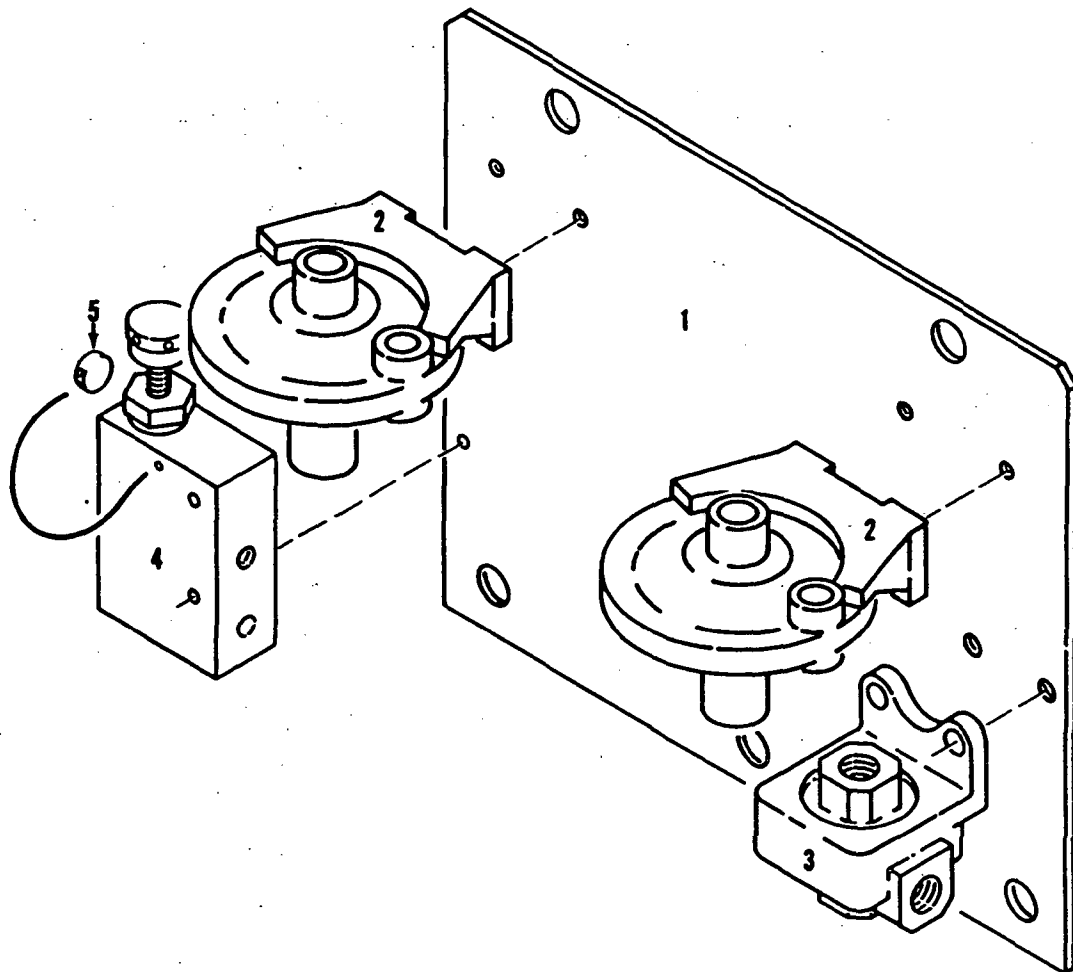
9356081

MATERIAL LIST ON BACK

AIR CYLINDER

MASTER

MASTER



CONTROL PRIOR TO 1-21-77 REVISION

MATERIAL LIST ON BACK

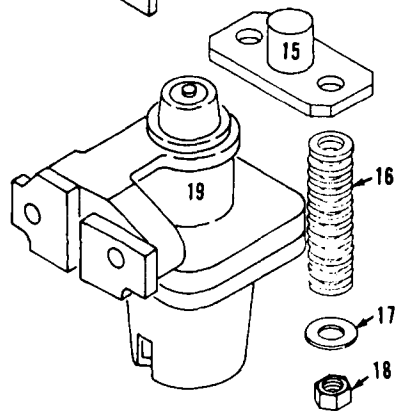
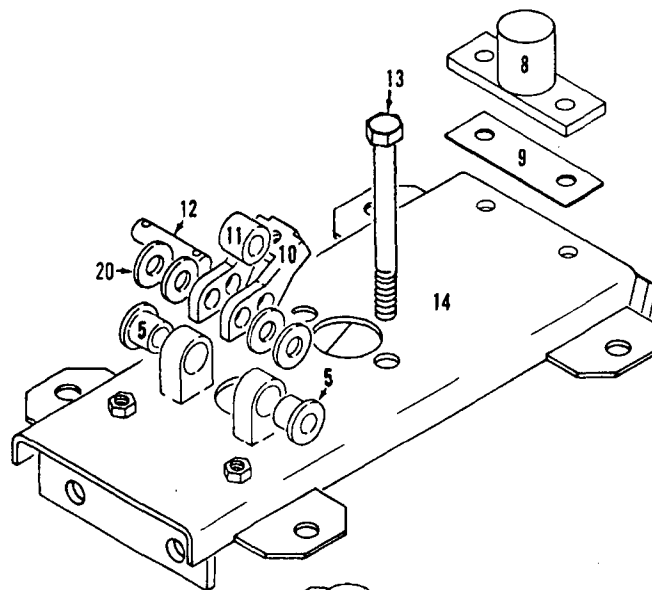
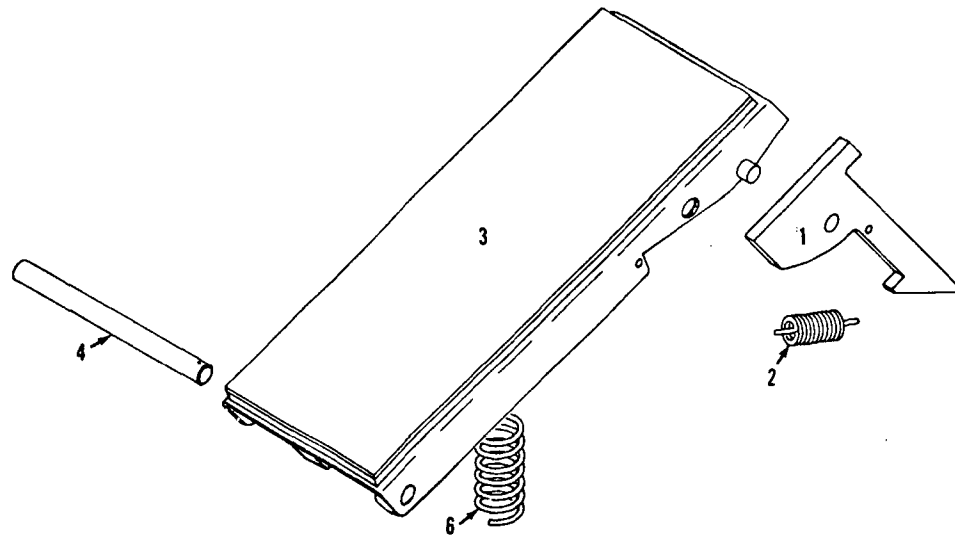
Boom Hoist Pawl Interlock Control

9540181

MANITOWOC ENGINEERING CO.

A Division of The Manitowoc Company, Inc.

Manitowoc, Wisconsin



18232781

MATERIAL LIST ON BACK

FOOT TREADLE

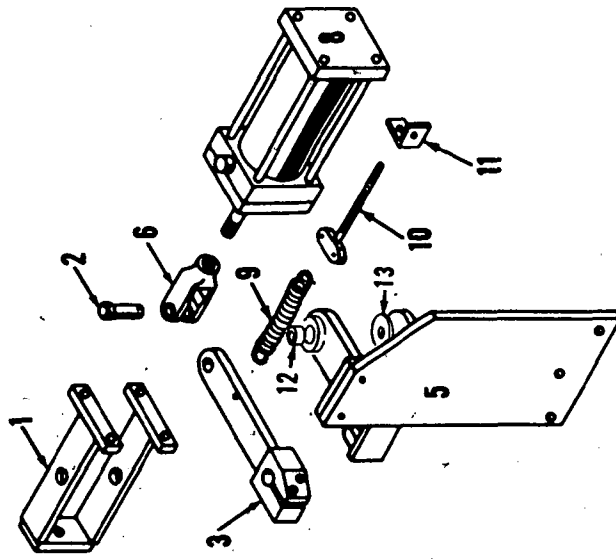
MASTER

**PARTS MANUAL ALPHABETICAL INDEX**  
**Group C - Air Components & Electrical**

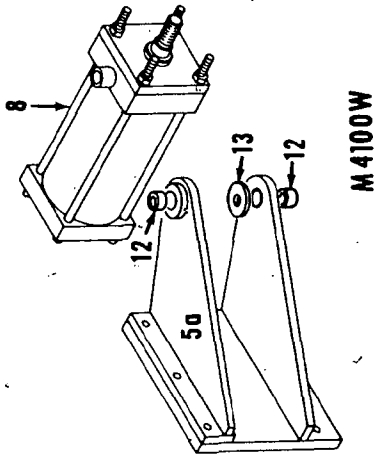
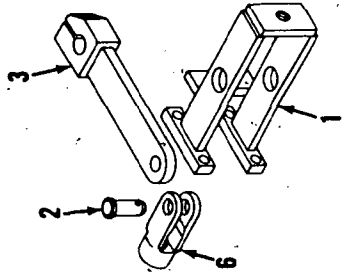
<b>DESCRIPTION</b>	<b>PUBLICATION</b>	<b>REV</b>	<b>START DATE</b>	<b>END DATE</b>	<b>GROUP</b>
Air Piping	78327	A1	02/15/67	11/12/76	C0301
Compressor & Piping	182528	E1	06/15/75	12/14/84	C0101
Compressor & Piping	182536	-	06/15/75	07/16/08	C0101
Compressor & Piping	182536	G1	06/15/75	09/29/93	C0101
Control Console	48462	Q1	08/20/71	07/07/81	C0201



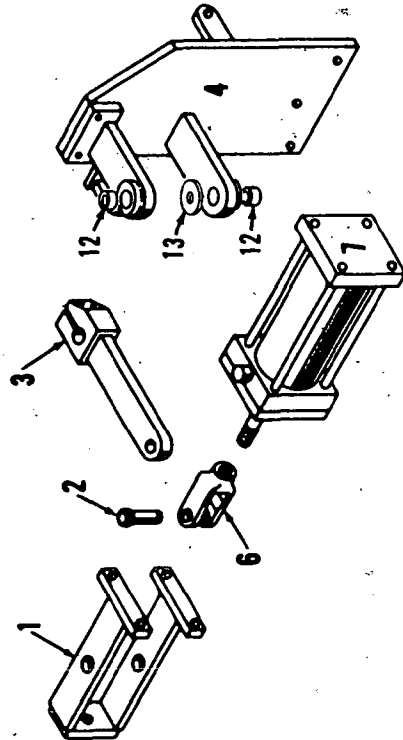
MASTER



M 3000 - 4000W INCL.



M 4100W



CLICK HERE TO **DOWNLOAD** THE COMPLETE MANUAL

- Thank you very much for reading the preview of the manual.
- You can download the complete manual from: [www.heydownloads.com](http://www.heydownloads.com) by clicking the link below



- Please note: If there is no response to CLICKING the link, please download this PDF first and then click on it.

CLICK HERE TO **DOWNLOAD** THE COMPLETE MANUAL

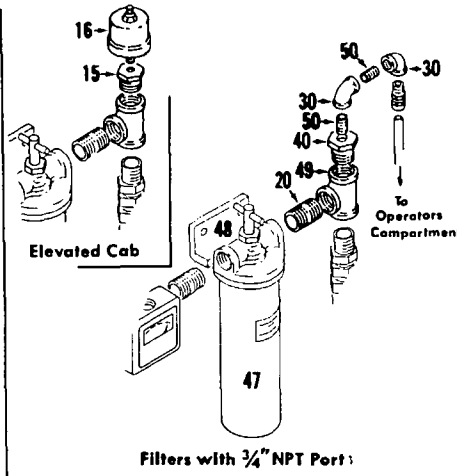
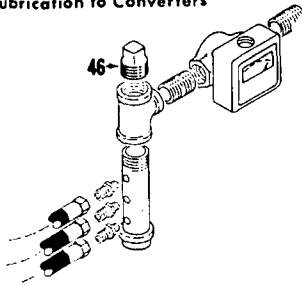


MANITOWOC ENGINEERING CO.

A Division of The Manitowoc Company, Inc.

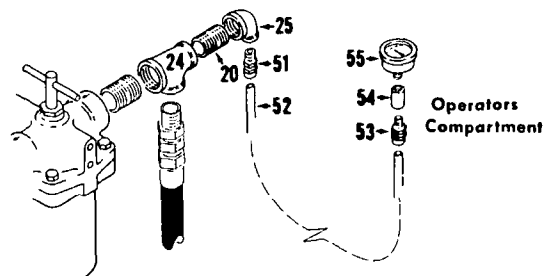
Manitowoc, Wisconsin

Machines w/out Forced Oil Lubrication to Converters

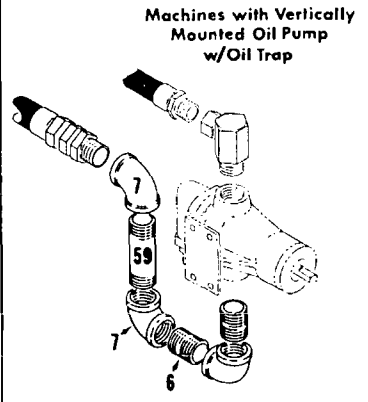
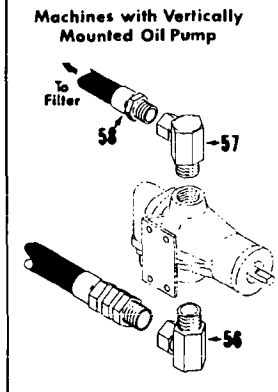
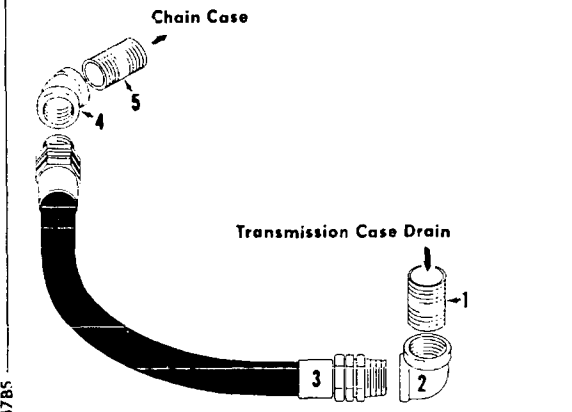
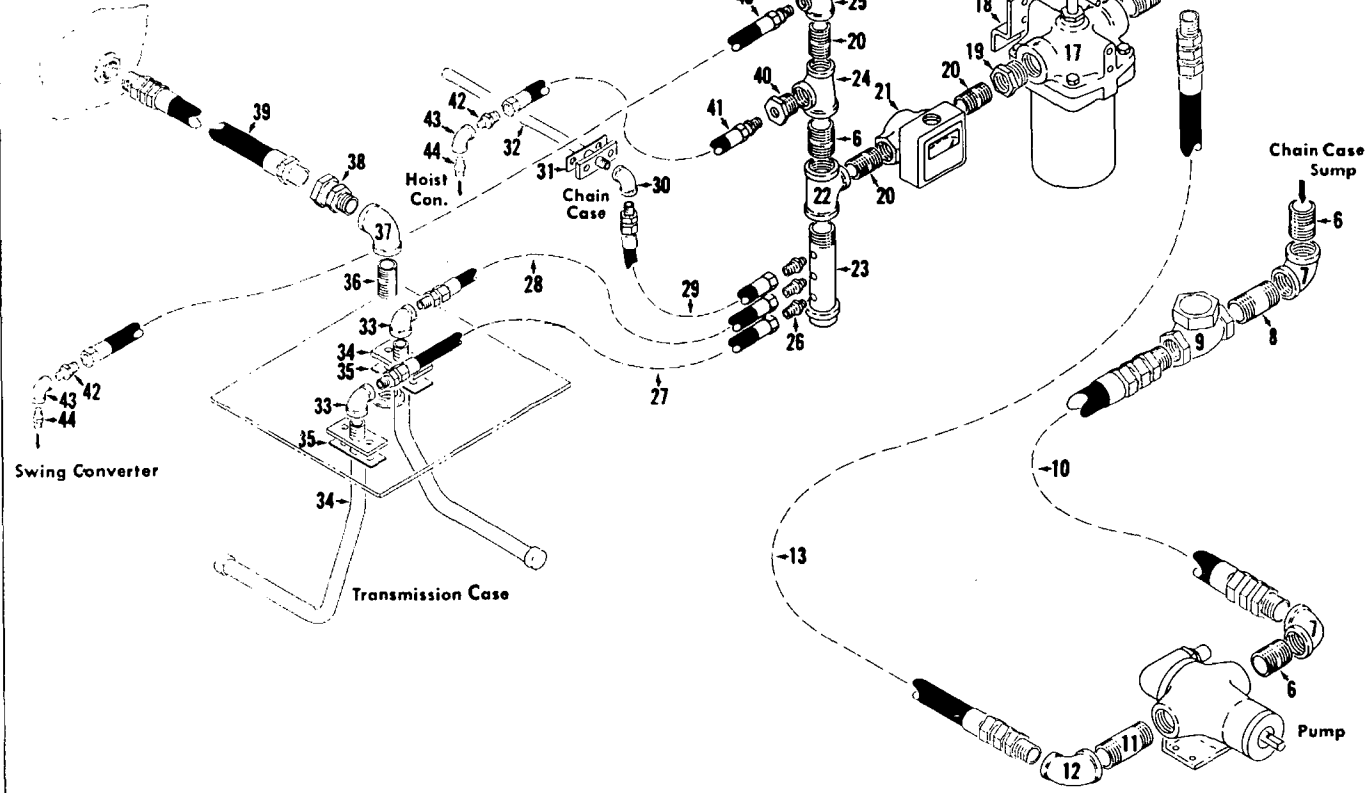


Filters with 3/4" NPT Port

1" Port Filter with Direct Reading Gauge



Chain Case

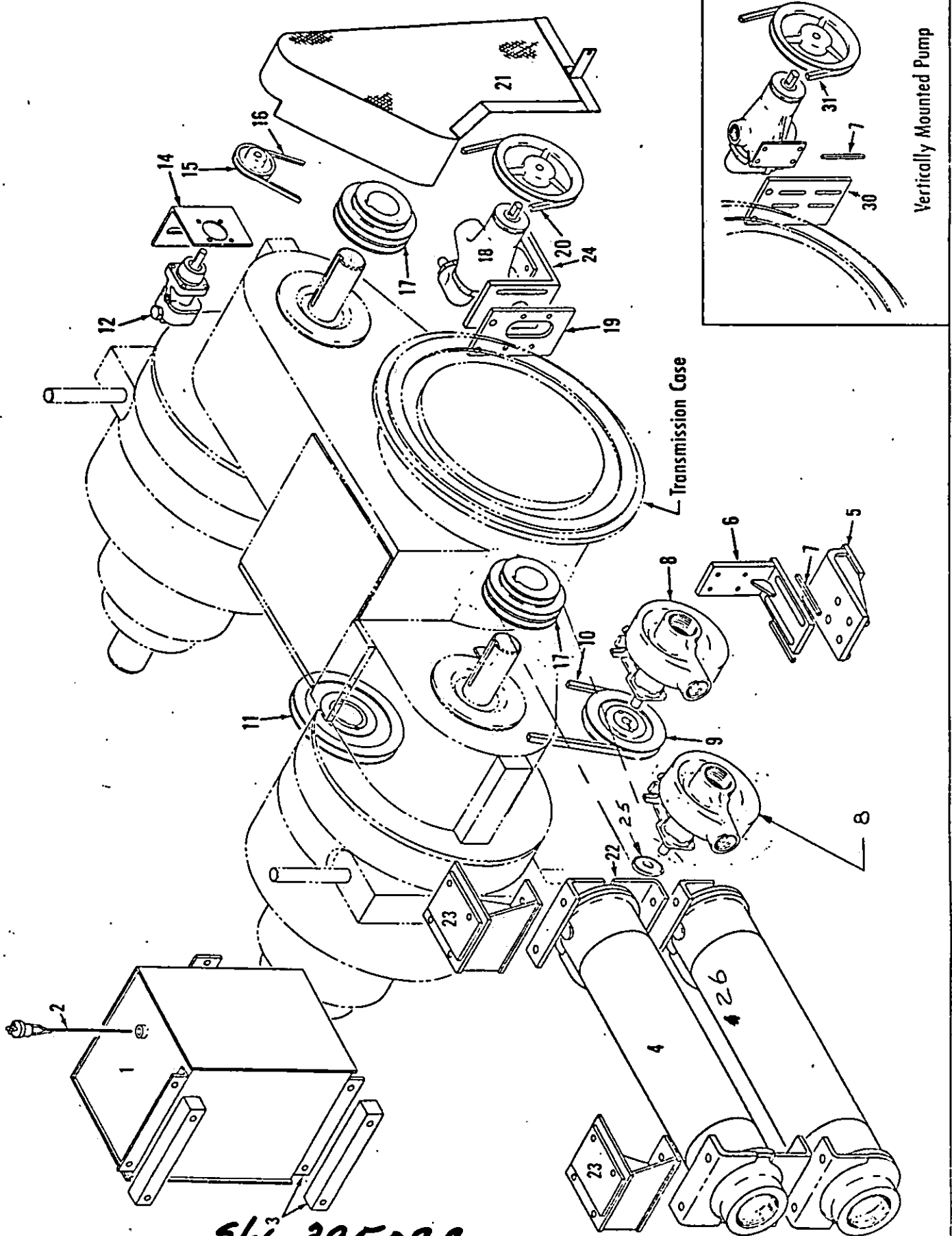


MATERIAL LIST ON BACK

LUBRICATION PIPING

48647BS MASTER

48647BS



4864781

S/N 395099

MARKED PRINT - Do NOT REMOVE FROM FILE

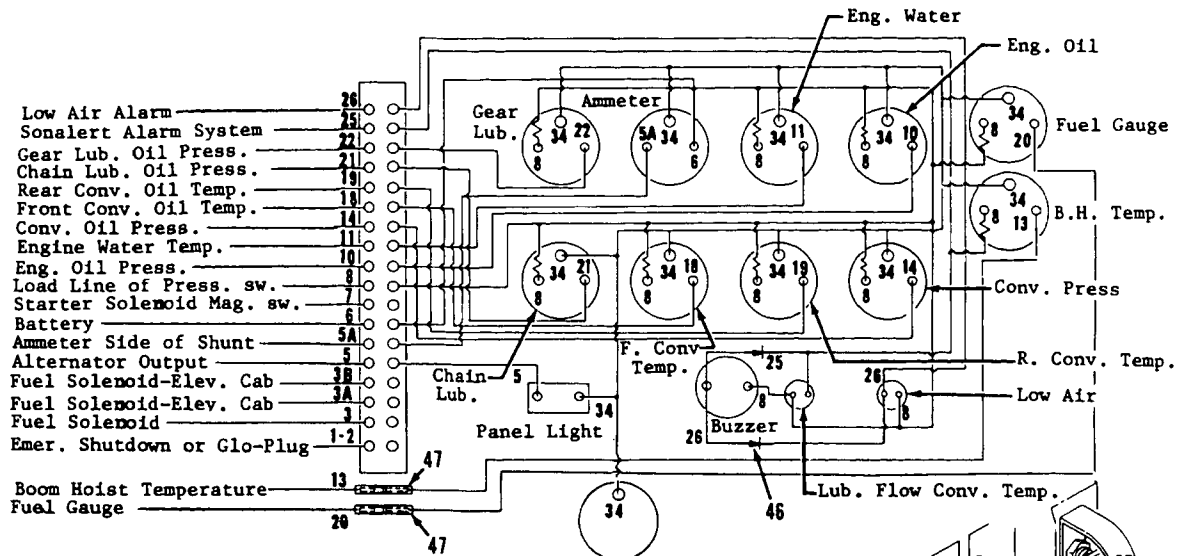
MATERIAL LIST ON BACK

CONVERTER SYSTEM ACCESSORIES

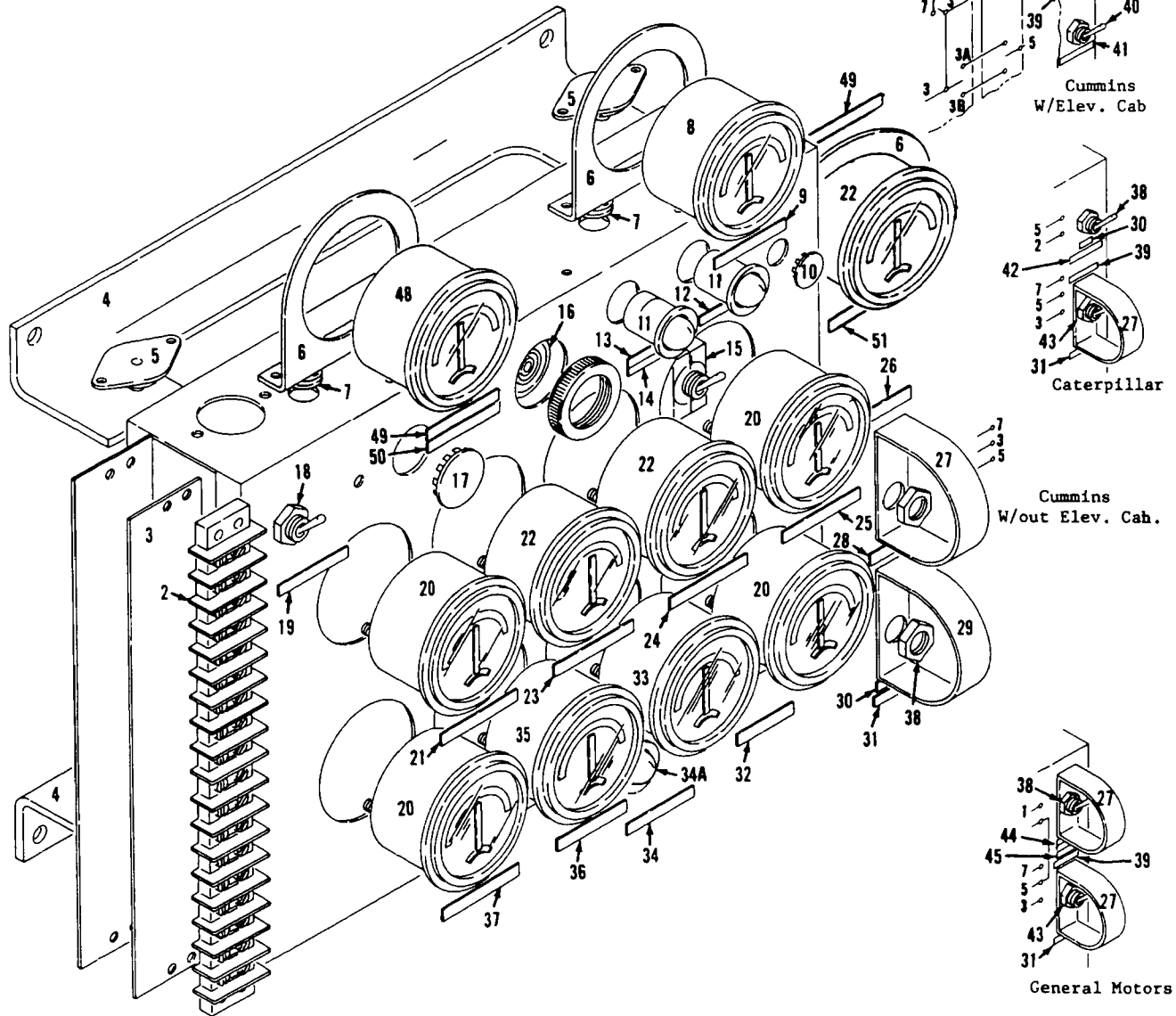
**MANITOWOC ENGINEERING CO.**

A Division of The Manitowoc Company, Inc.

Manitowoc, Wisconsin



WIRING SCHEMATIC - BACK VIEW



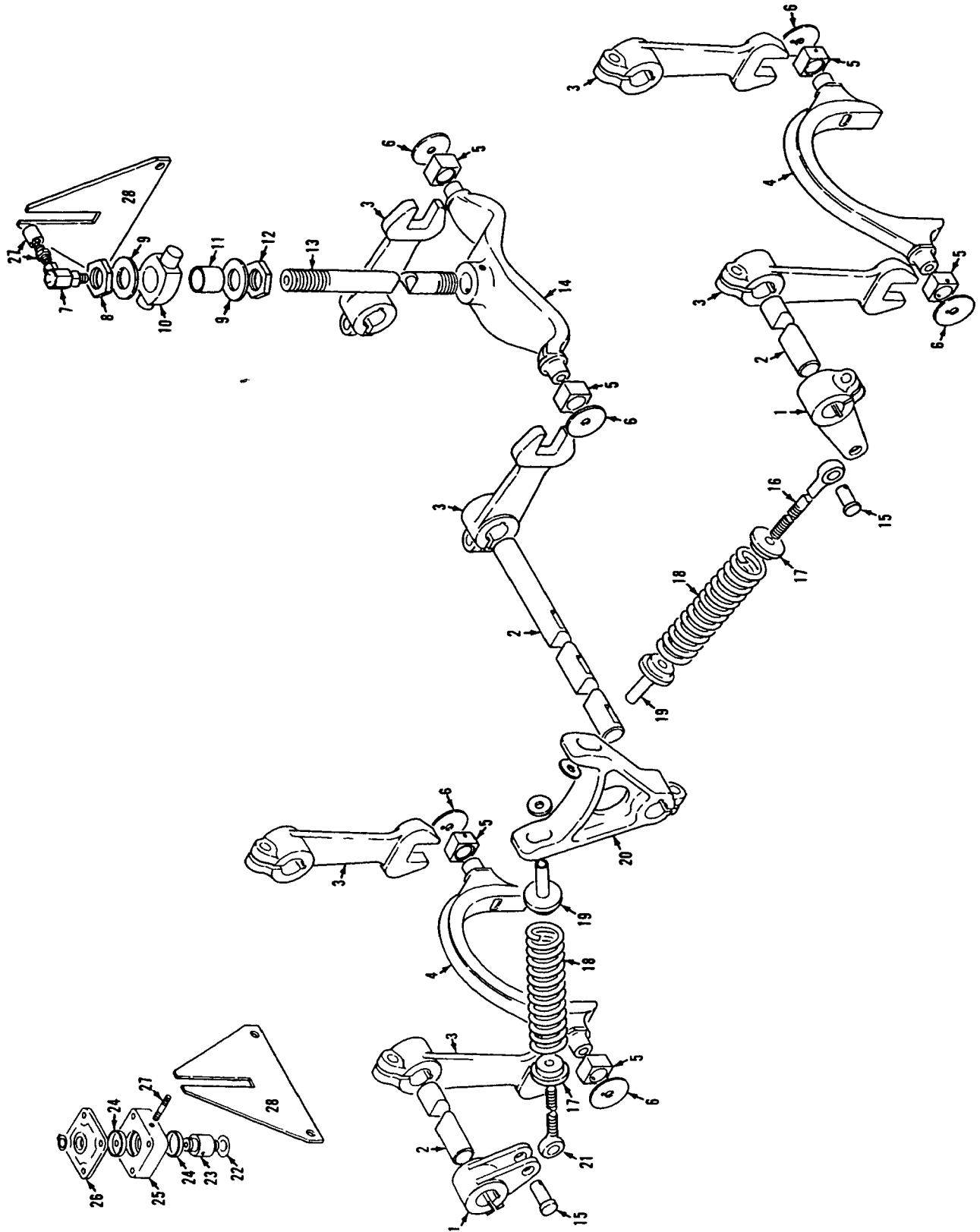
MATERIAL LIST ON BACK

Instrument Panel

49301K1







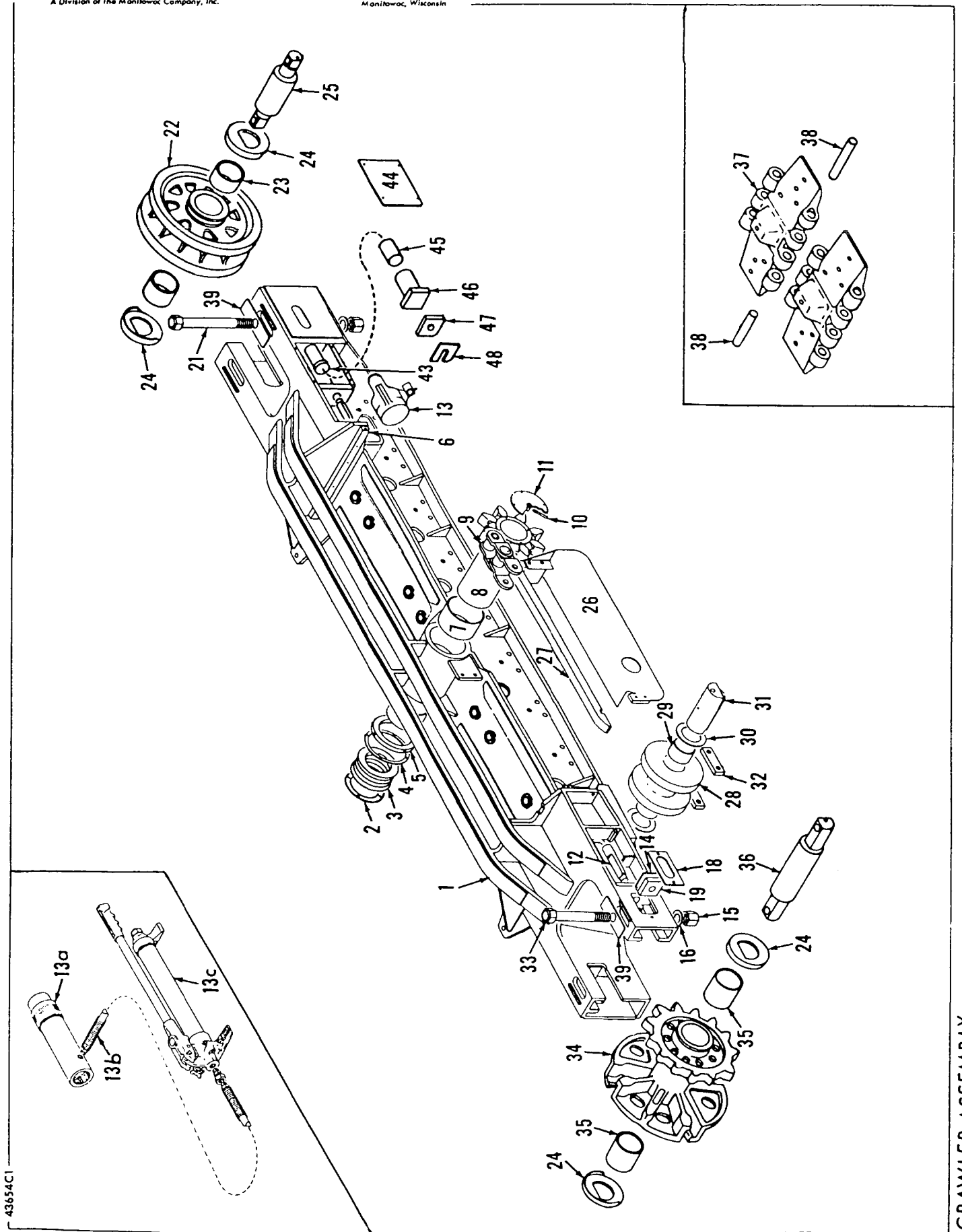
40218B2

MATERIAL LIST ON BACK

Steering Control Carbody

MASTER

436549



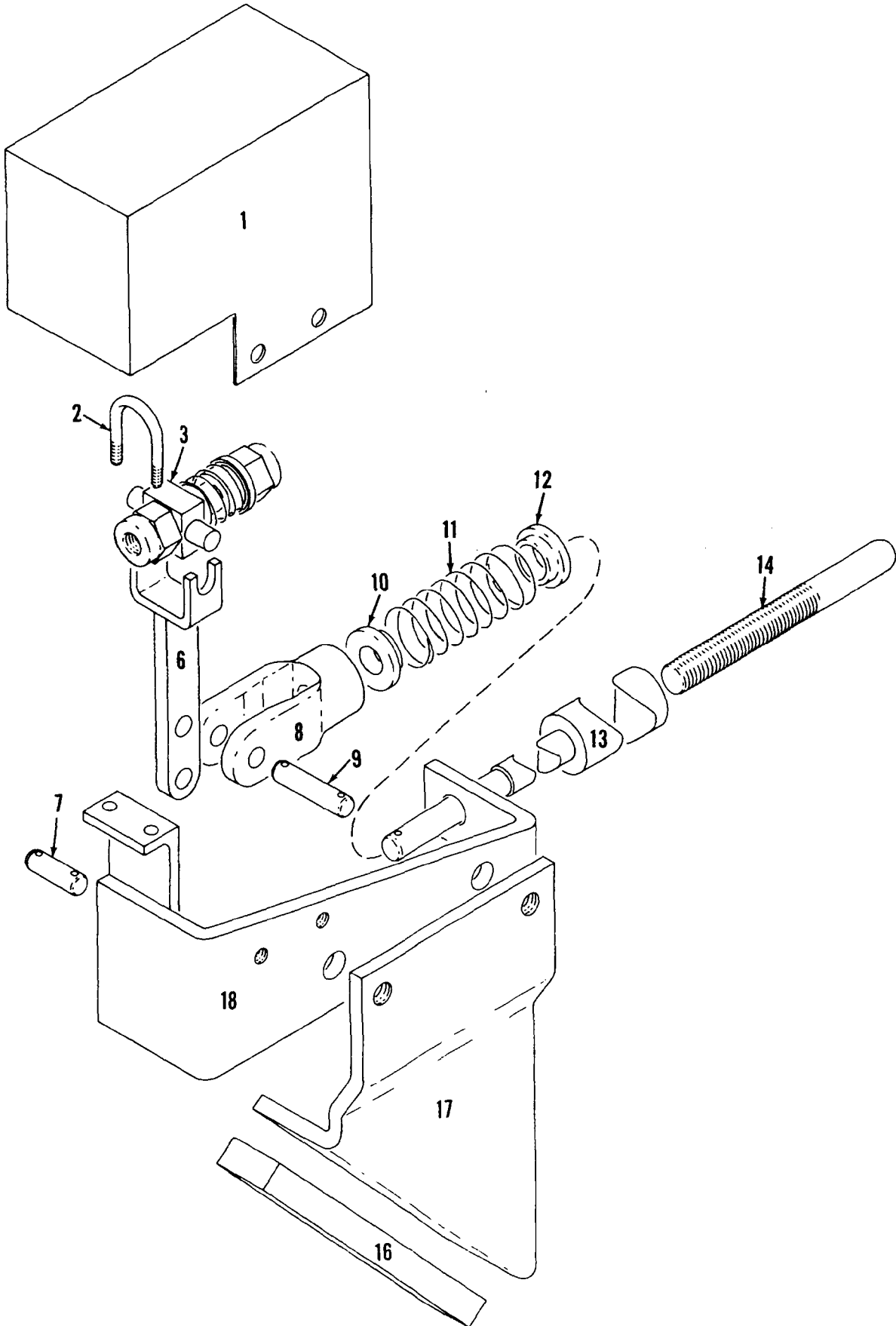
43654C1

MATERIAL LIST ON BACK

CRAWLER ASSEMBLY

**PARTS MANUAL ALPHABETICAL INDEX**  
**Group F - Attachments**

DESCRIPTION	PUBLICATION	REV	START DATE	END DATE	GROUP
Backhitch & Gantry	190126	D1	03/21/75	09/16/91	F1001
Boom	49501	A4	11/23/71	08/24/82	F0101
Boom	49501	B1	11/23/71	08/24/82	F0101
Boom	49501	C2	11/23/71	08/24/82	F0101
Boom	49501	D3	11/23/71	08/24/82	F0101
Boom Angle Indicator	22334	B1	01/07/52	09/20/85	F1101
Boom Point	24166	E1	11/17/59	08/03/82	F0401
Boom Point	98457	-	03/16/84	10/17/84	F0401
Boom Point	98724	A1	03/04/83		F0401
Boom Stop, Clutch Throw-Out	43723	D1	10/06/65	05/06/80	F0201
Boom Stop, Mechanical	43714	J1	09/21/65	11/12/85	F0202
Equalizer/Pull-Out	138205	-	12/12/69	03/21/85	F0601
Equalizer/Pull-Out	138205	-	12/12/69	03/21/85	F0601
Equalizer/Pull-Out	182471	A1	03/18/75	04/02/75	F0601
Equalizer/Pull-Out	73741	-	09/18/62	03/17/83	F0601
Gantry Lifting Device	181186	H1	04/08/71	08/17/82	F1002
Upper Block - Anchor Joint	91392	A1	08/13/66	12/22/67	F1601
Wire Rope Guide	32889	F1	09/20/63	07/31/89	F0701
Wire Rope Roller Guide	73649	-	09/12/62	09/13/79	F0801
Wire Rope Roller Guide	74530	E1	06/28/62	09/13/79	F0801
Wire Rope Roller Guide	91142	-	11/11/65	04/23/82	F0801



MASTEI

43723 6

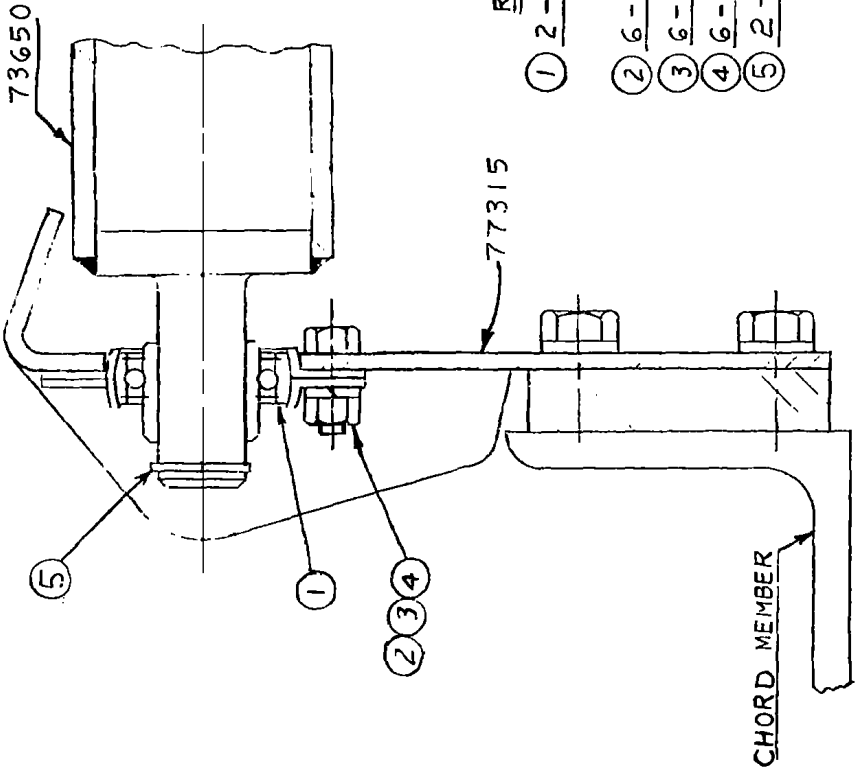
4372381

MATERIAL LIST ON BACK

AUTOMATIC CLUTCH THROW OUT

DWG. NO. <b>73649</b>	WIRE ROPE ROLLER GUIDE	SCALE <b>6" = 1'-0"</b>	UNLESS NOTED FRACT. DIM.	DATE <b>6-30-67</b>
CODE NO.	ASSEMBLY	DR. R/J/L	HOLE DIA.	REVISED DATE <b>9-13-79 JN</b>
PATTERN NO.	# 8 & # 9 BOOMS	CK.	HOLE CENTERS	REVISIONS <b>(A) REVERSED POSITION OF HEX SCREW</b>
	MODEL <b>3900</b>	APP.	FINISH	
			MATERIAL	

**MANITOWOC ENGINEERING CO.**  
MANITOWOC, WISCONSIN



NOTE:  
SET SCREWS TO BE  
REMOVED FROM  
BOTH BEARINGS

REQ'D	CODE NO.
① 2 - # F 116 NICE FLANGE MOUNTED BEARING	<u>224218</u>
② 6 - 5/16" - 18 N.C. - 7/8" HEX SCREW	<u>612404</u>
③ 6 - 5/16" - 18 N.C. HEX NUT	<u>546053</u>
④ 6 - 5/16" LOCKWASHER	<u>710303</u>
⑤ 2 - TRUARC RETAINE RING	<u>596823</u>

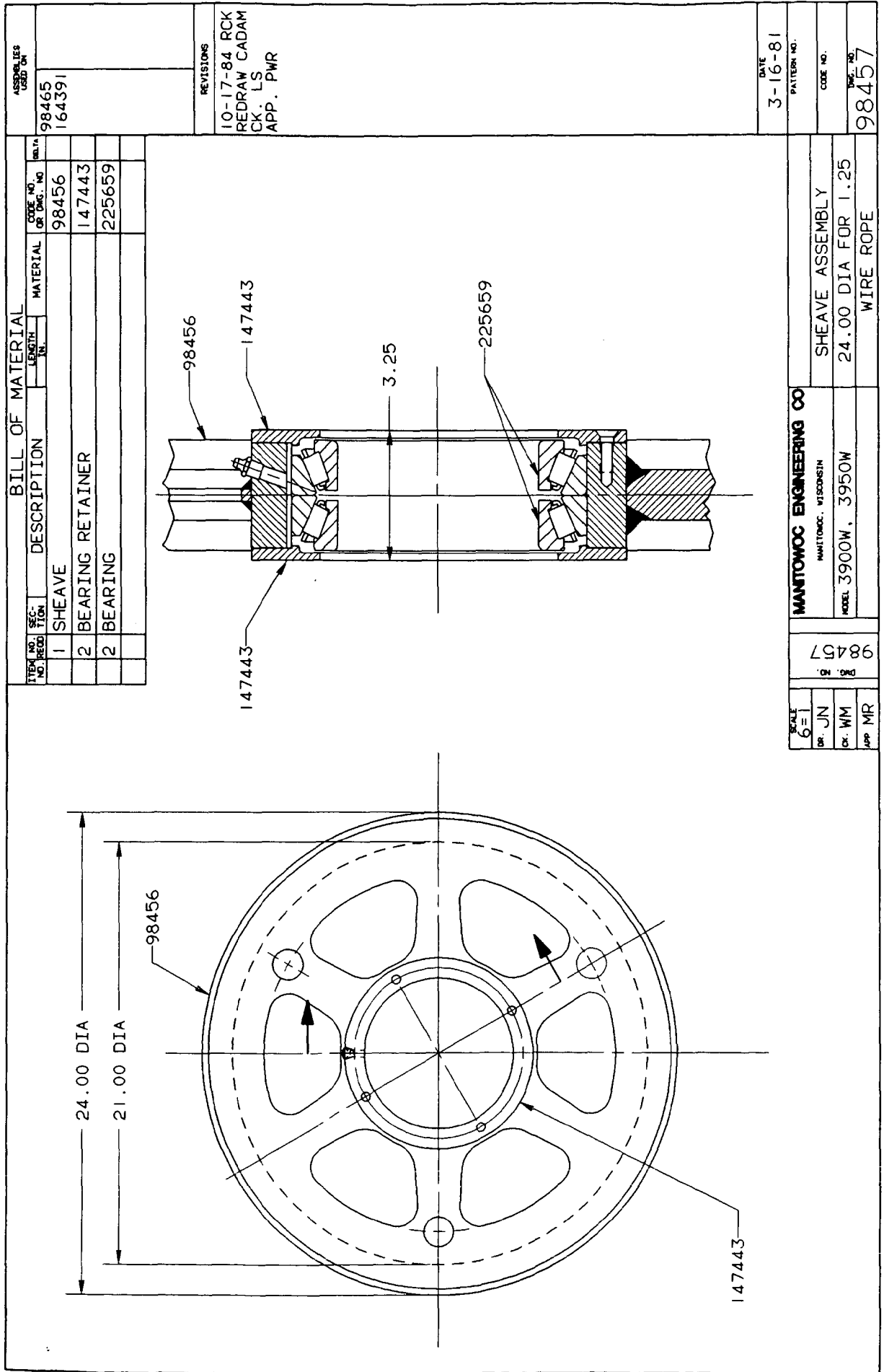
NO REQ'D	DWG NO.	TITLE
<u>1</u>	<u>73650</u>	<u>ROLLER</u>
<u>2</u>	<u>77315</u>	<u>BRG. BRACKET</u>

SUPERSEDES 73649 OF 3-5-65

- 190401
- 65550
- 65541
- 190281
- 47447
- 49761
- 49759
- 65136
- 43991
- 48074
- 42425
- 43258

ASSEMBLIES  
USED ON

DWG. NO.  
**73649**

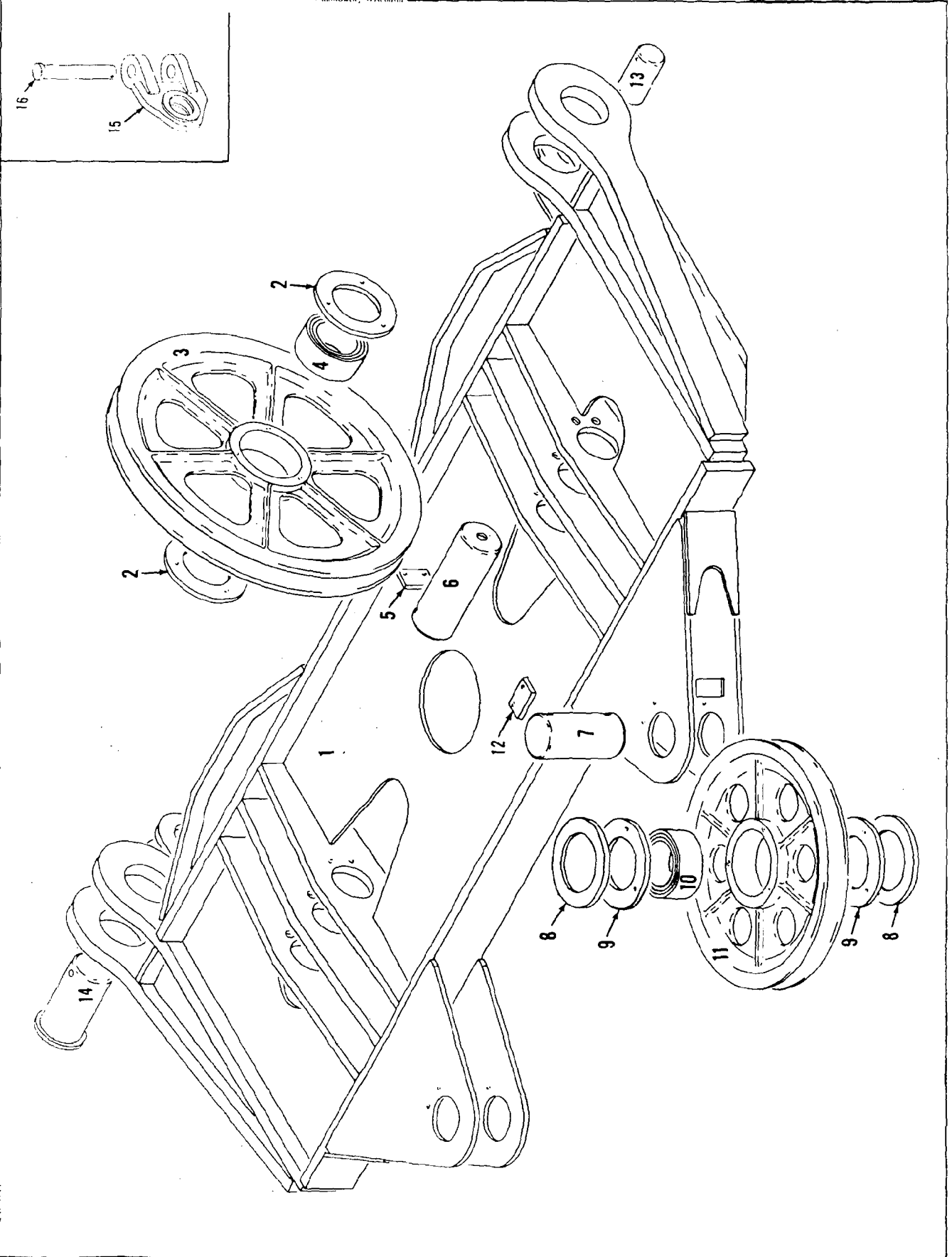


DO NOT SCALE THIS DRAWING

MANITOWOC ENGINEERING CO.

A Division of The Stanley Company, Inc.

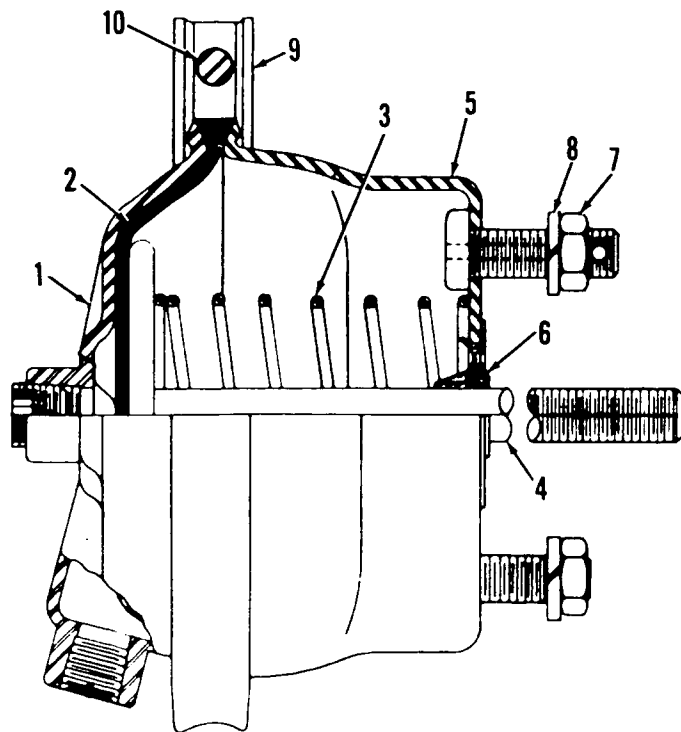
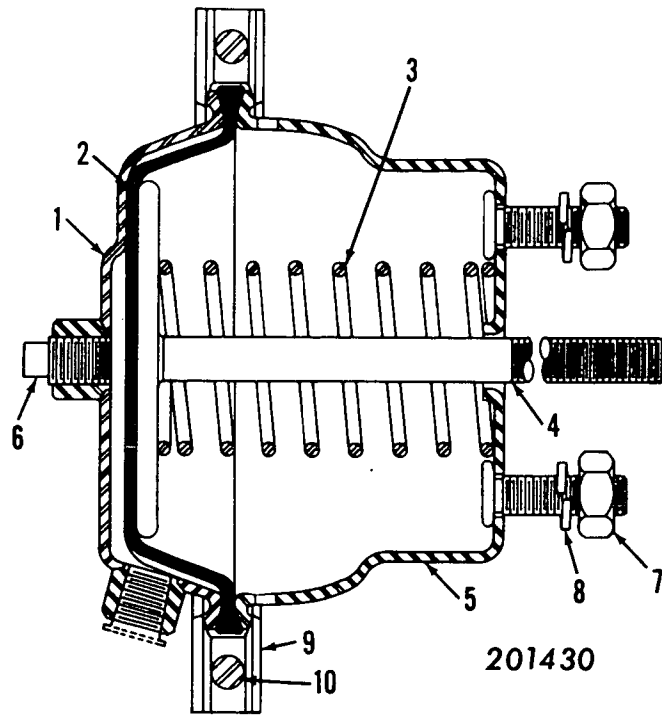
Manitowoc, Wisconsin



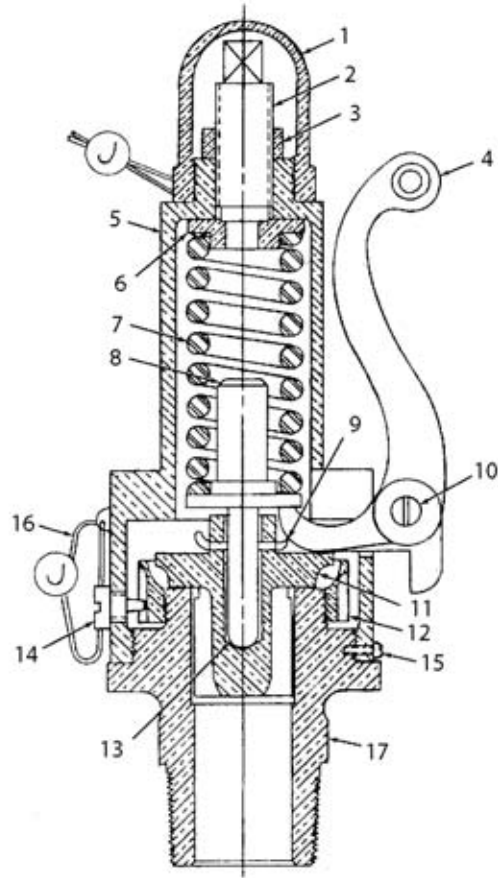
182471A1

MATERIAL LIST ON BACK

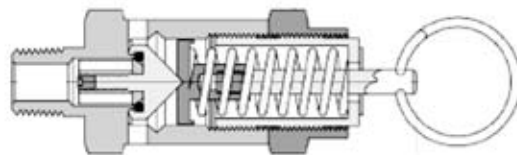
EQUALIZER



MASTER



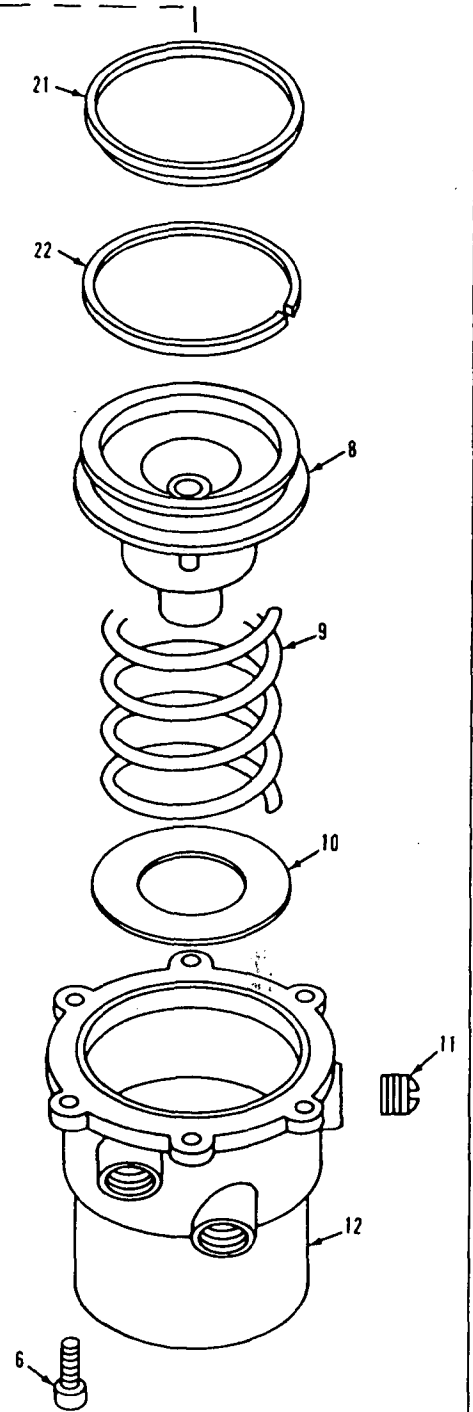
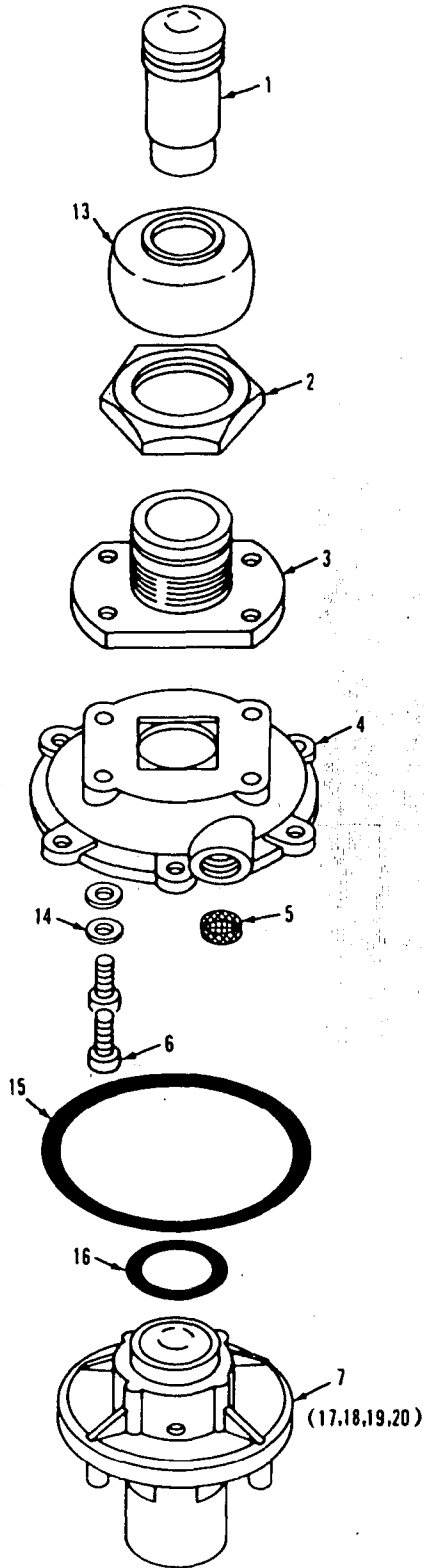
**702402, 702740**



**81004368**

ASSEMBLY	REVISION
<b>O-156</b>	<b>F</b>

MASTER

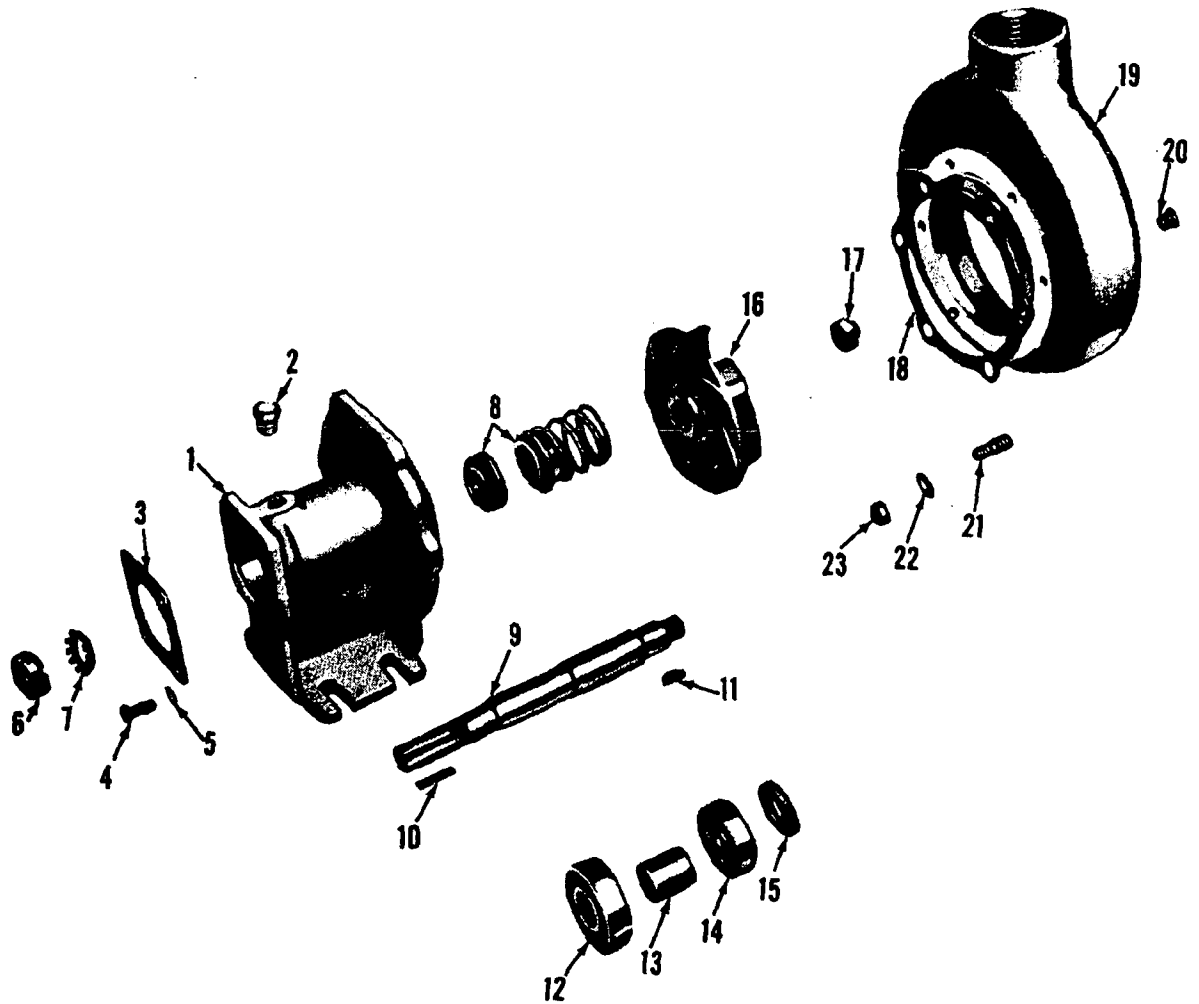


# MANITOWOC ENGINEERING CO.

A Division of The Manitowoc Company, Inc.

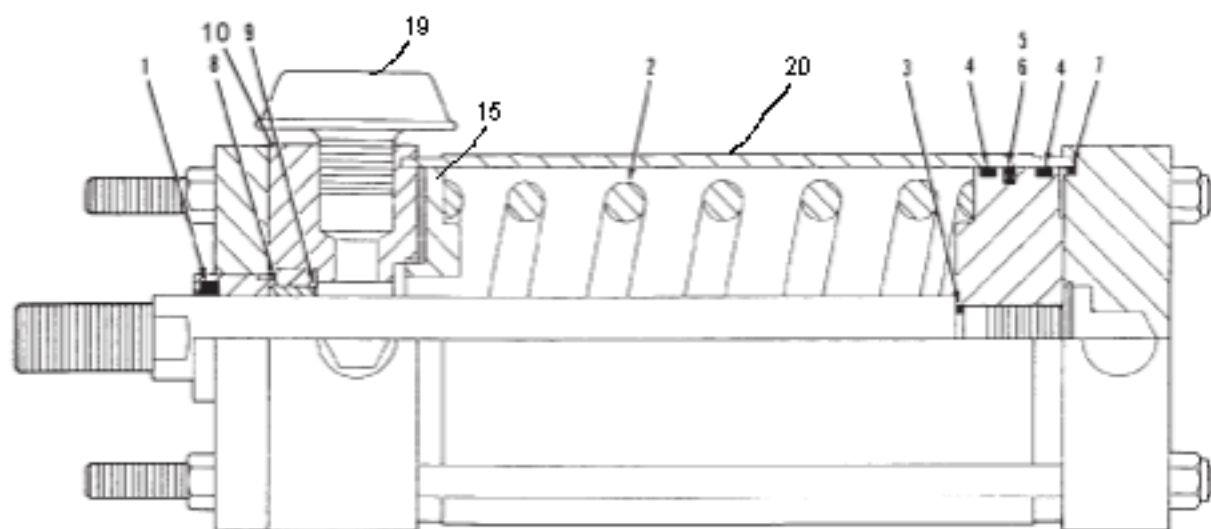
Manitowoc, Wisconsin

MASTER

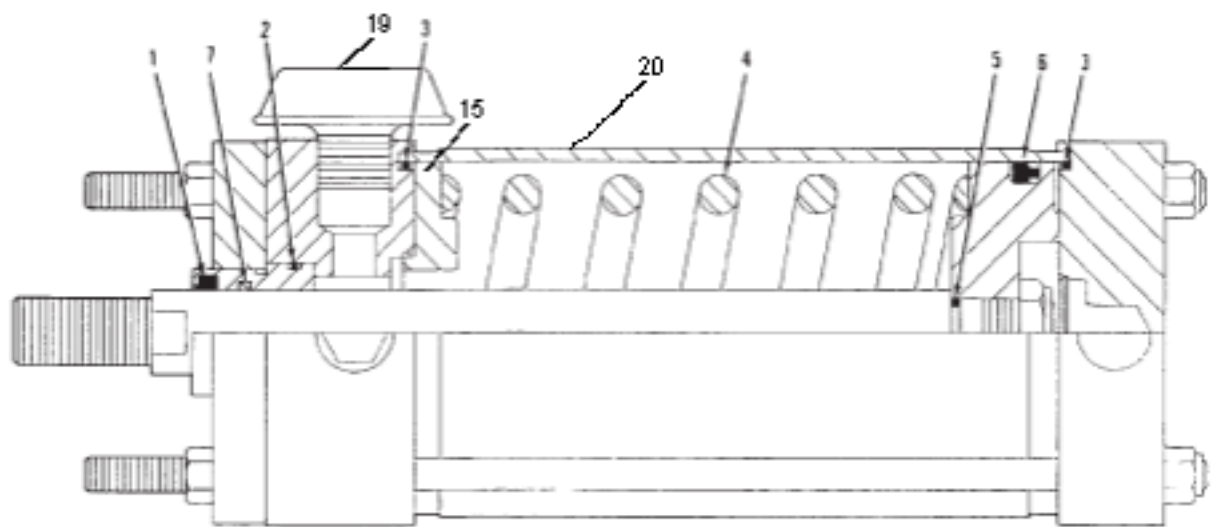


43051A6

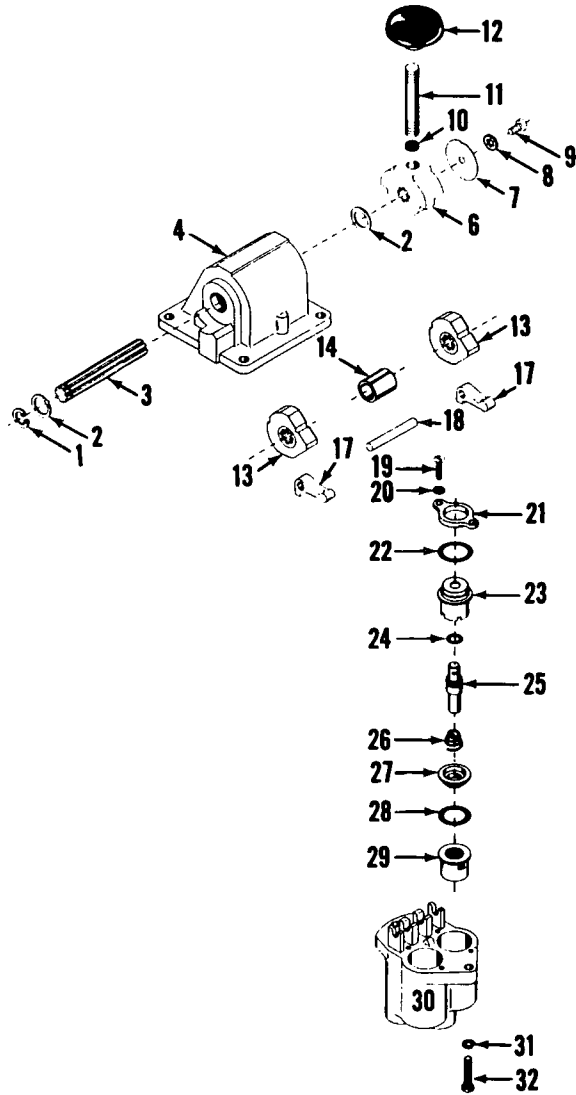
MATERIAL LIST ON BACK



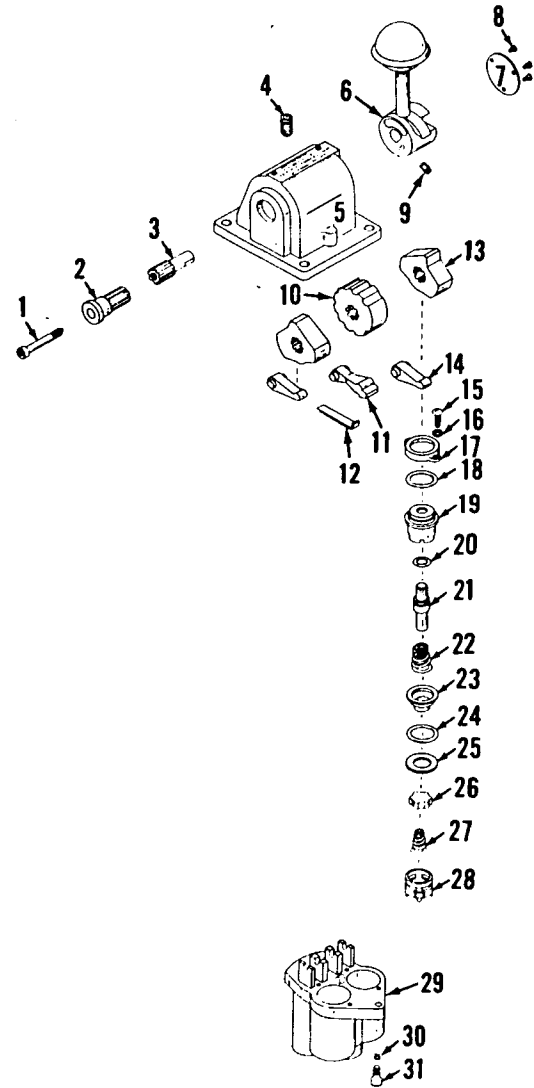
CURRENT PRODUCTION



PAST PRODUCTION



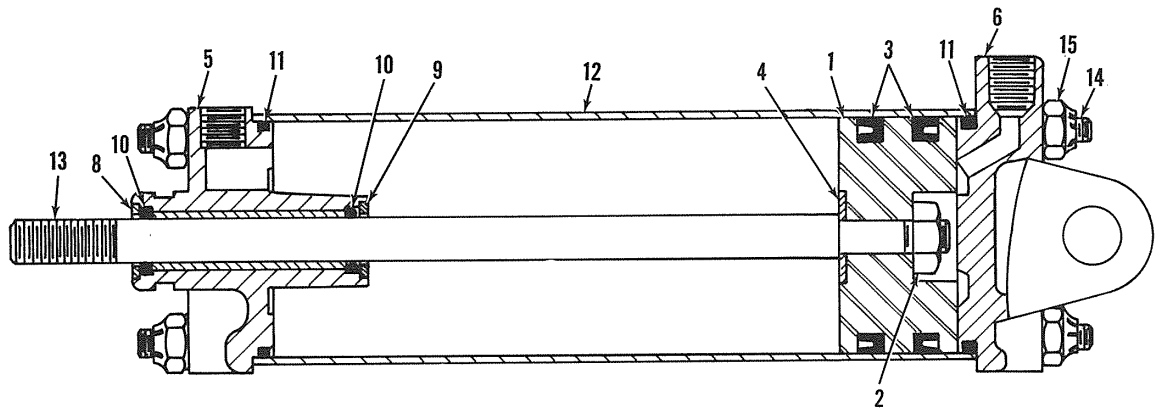
P59340



P54426-0241

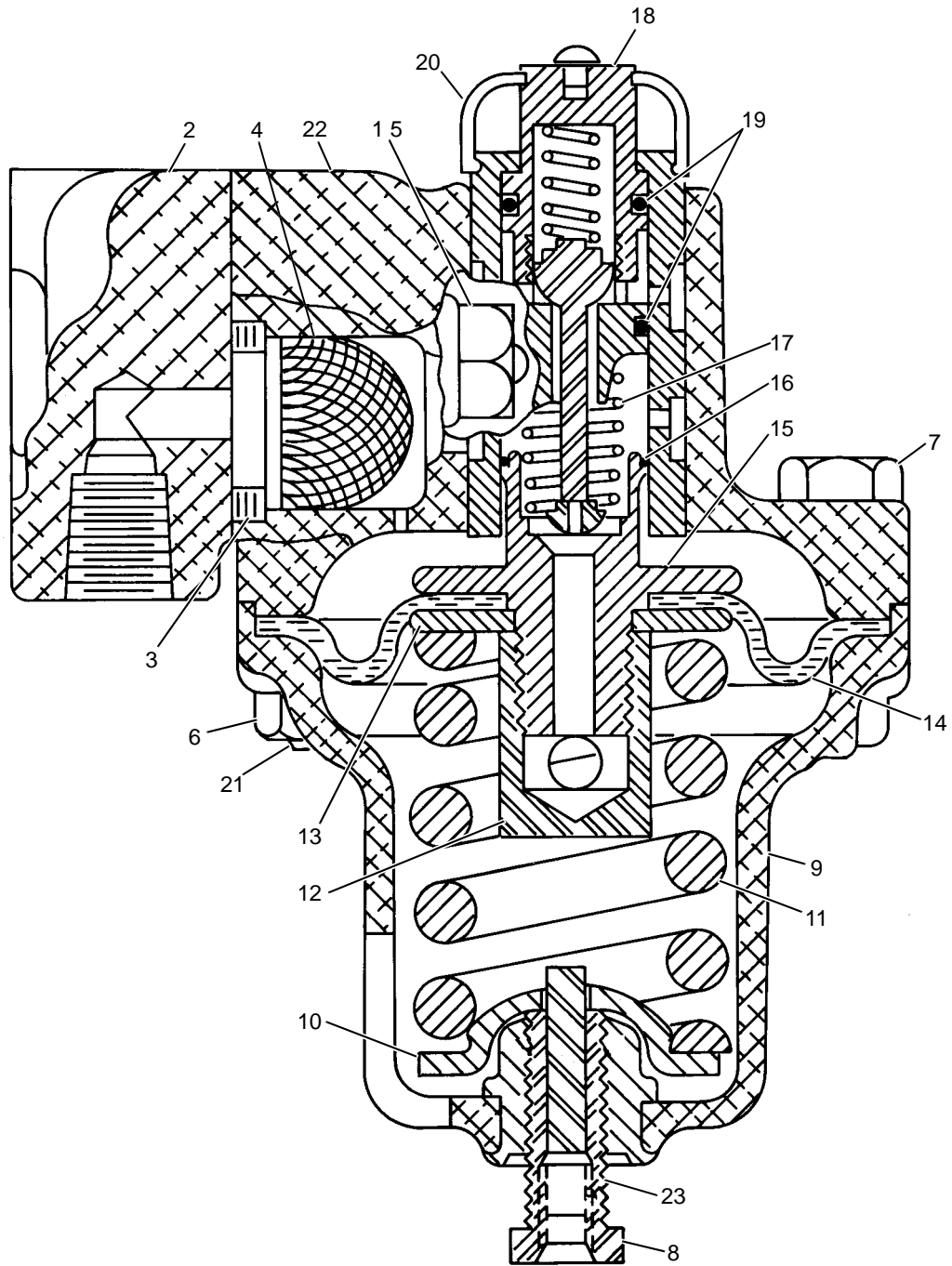
MATERIAL LIST ON BACK

CONTROL VALVE



ASSEMBLY	REVISION
<b>O-414</b>	<b>B</b>

**AIR CYLINDER**



ASSEMBLY	REVISION
<b>O-464</b>	<b>E</b>

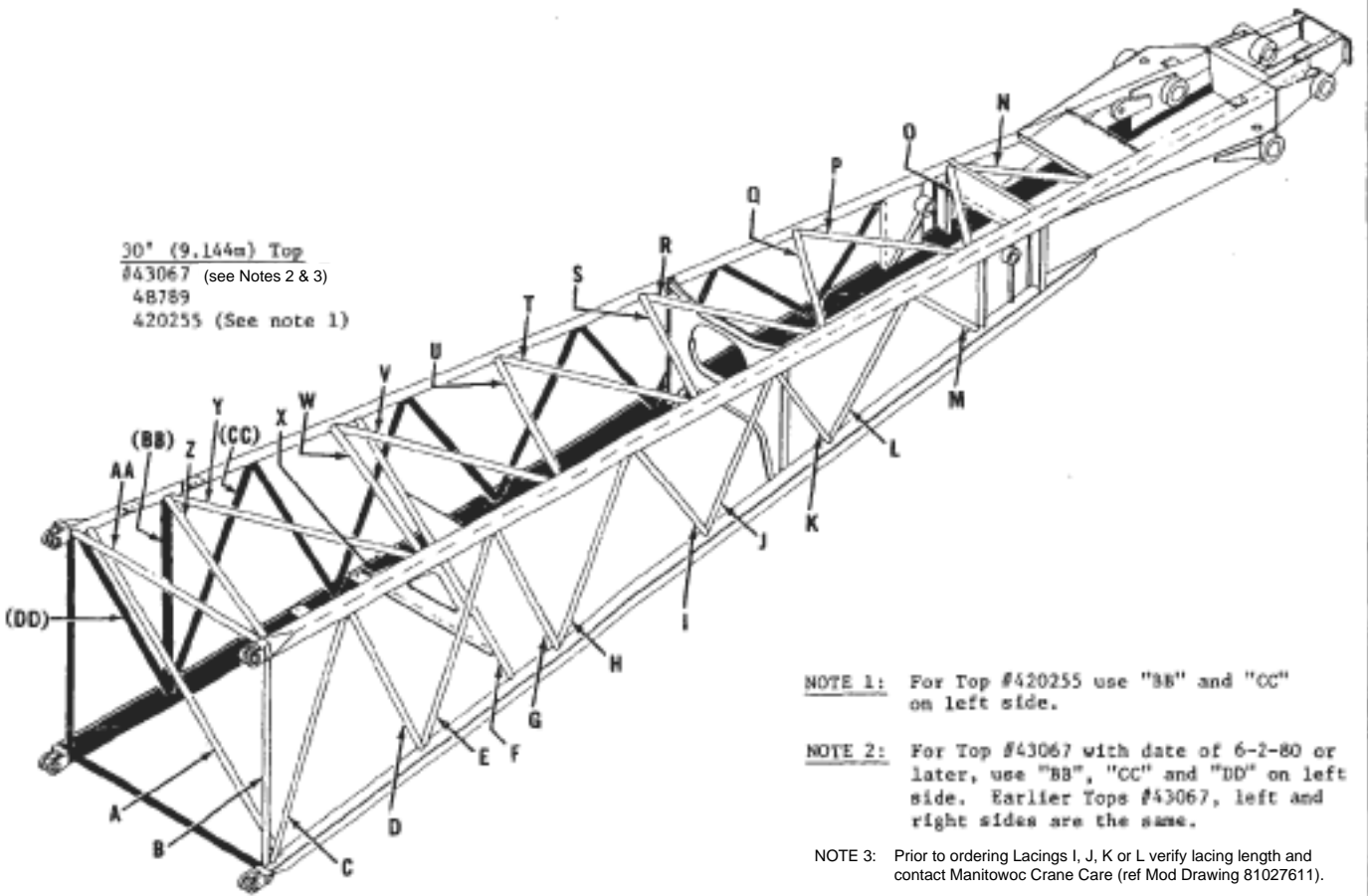
REDUCING VALVE

BOOMS #9 and 9A

Opposite Lacings (Black) same unless noted.

MASTER

30' (9.144m) Top  
#43067 (see Notes 2 & 3)  
48789  
420255 (See note 1)



NOTE 1: For Top #420255 use "BB" and "CC" on left side.

NOTE 2: For Top #43067 with date of 6-2-80 or later, use "BB", "CC" and "DD" on left side. Earlier Tops #43067, left and right sides are the same.

NOTE 3: Prior to ordering Lacings I, J, K or L verify lacing length and contact Manitowoc Crane Care (ref Mod Drawing 81027611).

To Order Lacings see Folio #823

0-64-1 Cont.	REV. B	MODEL 2900-3000-4600 Incl.
--------------	--------	----------------------------

AIR CONTROL VALVE (2HA-2Z)  
 (MANITOWOC #714495)  
 (WESTINGHOUSE #P59339 NEW)  
 (WESTINGHOUSE #P54425-0310 OLD)

REF. NO.	PART NUMBER	QUANTITY REQUIRED	DESCRIPTION OF PART	VENDORS PART NO.
13		4	SCREW, Truss Head	P49861-3
14		4	LOCKWASHER	506608
15		2	FLANGE, Valve Retaining	P54463
16	714504	2	RING, "O" (15/16" O.D.)*	P49708-116
17		2	GUIDE, Plunger	P54147
18	714506	2	RING, "O" (7/16" O.D.)*	P49708-11
19		2	PLUNGER, Valve	P54146
20	714525	2	SPRING, Exhaust Valve*	P54144
21		2	SEAT, Inlet Valve	P54145
22	714441	2	RING, "O" (7/8" O.D.)*	P49708-115
23		2	WASHER	P53455-3
24	714442	2	VALVE, Inlet*	P5125
25		2	SPRING, Inlet Valve	539115
26		2	SPACER, Valve	P54794
27		1	BODY	P54306
28		2	LOCKWASHER	506607
29		2	SCREW, Fillet Head	P49835

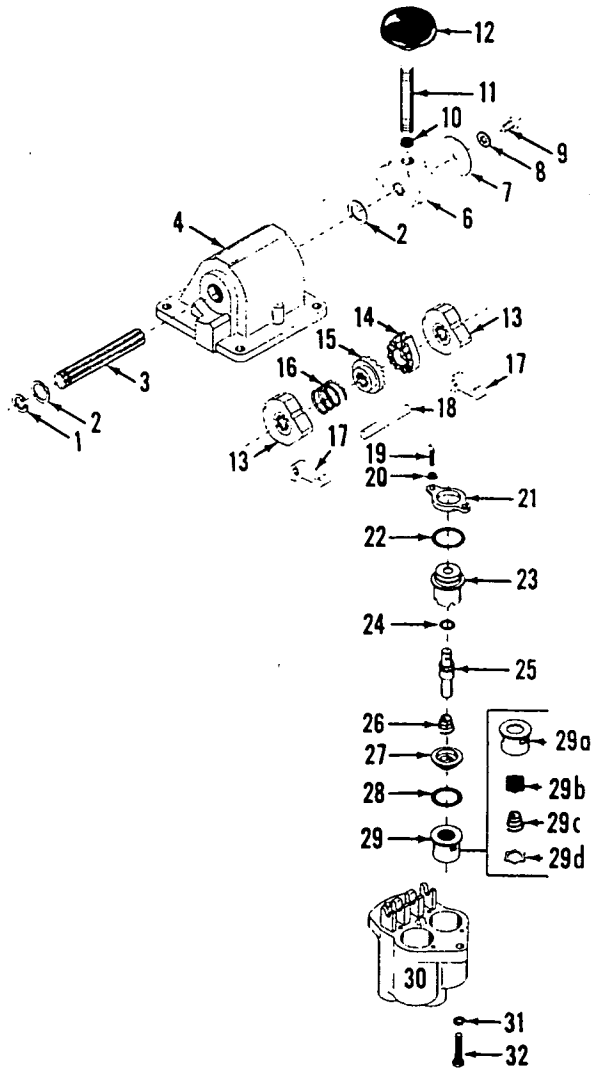
\*Recommended to be stocked at all times.  
 NOTE: Part numbers at right are Westinghouse. Please so specify if ordering.  
 Valve changed approx. July 1969. Check nameplate for correct valve.

Run as a Front

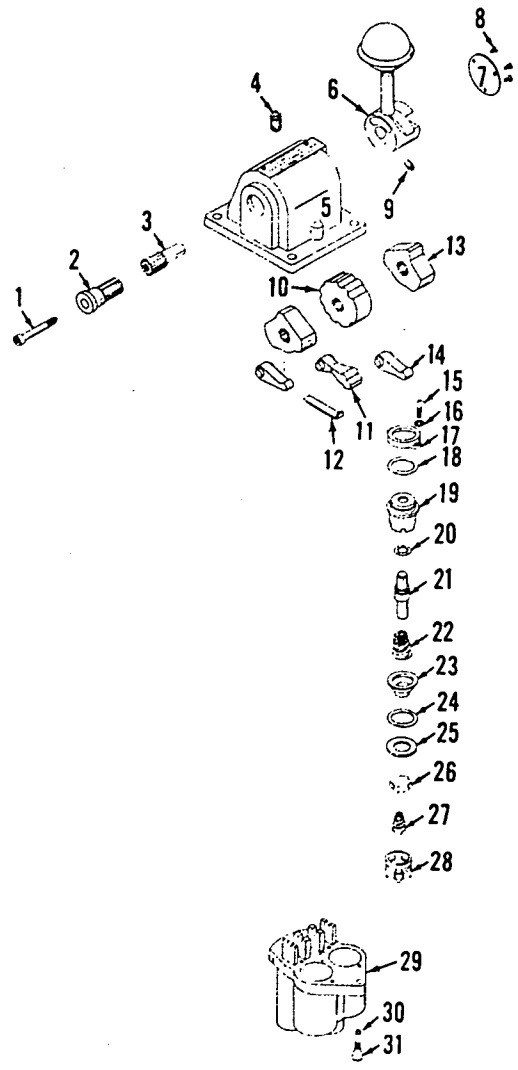
0-64 - 1 B Cont.

MAST

REV. B	0 - 64
--------	--------



P59335



P54426-0312

MATERIAL LIST ON BACK

CONTROL VALVE

CLICK HERE TO **DOWNLOAD** THE COMPLETE MANUAL

- Thank you very much for reading the preview of the manual.
- You can download the complete manual from: [www.heydownloads.com](http://www.heydownloads.com) by clicking the link below



- Please note: If there is no response to CLICKING the link, please download this PDF first and then click on it.

CLICK HERE TO **DOWNLOAD** THE COMPLETE MANUAL