



TRADITIONAL CRANE PARTS MANUAL

This manual has been prepared for and is considered part of

3900

Model

39612

Serial Number

GROUP A = Rotating Structure (Includes rotating bed, operator's cab, cases, fuel tanks, transfer pump, counterweights, guards, platforms, catwalks, machinery enclosure, horn)

GROUP B = Upperworks Machinery (Includes front, rear, and auxiliary drums, boom hoist, swing and drive shafts, hand levers, foot pedals, control linkage, rotation indicators, upperworks hydraulic components, hydraulic piping, hydraulic oil reservoir, lubrication pump and piping, blowers)

GROUP C = Air Components & Electrical (Includes control console, air piping, electric wiring, auxiliary light plant and lighting, TV monitoring, compressor and air tank)

GROUP D = Power Components - Upperworks (Includes engine or motor, radiator, auxiliary power plant, take off converters and piping, controls, VICON power lowering, torque limiter, hydraulic pumps and piping, fuel piping, battery box)

GROUP E = Lower Structure & Control (Includes carbody, crawlers, travel shafts and control, steering travel locks, hydraulic travel, travel power outriggers, carrier, pedestal, lowerworks hydraulic piping, RINGER components, barge mounting and machinery, spud drums)

GROUP F = Attachments (Includes booms, jibs, masts, tower, wire rope guides, equalizer, gantry, fairlead, timber guards, boom angle indicator, block-up limit, tag line, hook block, weight ball, upper and lower boom point, wind speed indicator, crowd and retract dipper sticks, dippers,)

O-NUMBER SECTION = (Includes lacing drawings and purchased component parts drawings referenced in sections A through F)

This manual is arranged in sections as listed above. Sections A through F are arranged by group numerical order with an index after each section tab. An alphabetical index for groups A Through F combined is located after the O-number Section. The O-number section is arranged in numerical order by O-number. Following this cover page are the Basic Specifications, Warranty Information, Tool List (if applicable) Outline Dimensions, Weights, and Dealer Listing.

MANITOWOC CRANES, INC.

2401 South 30th Street • PO Box 70

Manitowoc, WI 54221-0070

Phone: 920-684-6621 • Fax: 920-683-6278

CLICK HERE TO **DOWNLOAD** THE COMPLETE MANUAL

- Thank you very much for reading the preview of the manual.
- You can download the complete manual from: www.heydownloads.com by clicking the link below



- Please note: If there is no response to CLICKING the link, please download this PDF first and then click on it.

CLICK HERE TO **DOWNLOAD** THE COMPLETE MANUAL

B. Ordering Lacings without Lacing Drawings

The parts order must contain the following information to ensure that Manitowoc provides you with the correct lacings:

1. Crane serial number (can be found on builders plate in operator's cab.)
2. Boom or jib identification number.
3. Quantity, lacing location, and lacing number.
4. Boom or jib component name (butt, insert, or top) and part number.

NOTE To obtain the lacing location and number, view the boom or the jib from the butt end looking forward. Identify the side on which the damaged lacing is located: left side, top side, right side, or bottom side. Count each lacing up to and including the damaged lacing, starting with **first lacing nearest butt end** of the component as shown in Figure 3.

Do not count a diagonal lacing as the first lacing. Identify diagonal lacing separately; lower end diagonal lacing or upper end diagonal lacing.

ASSISTANCE

If you are in doubt as to which lacings to order, DO NOT GUESS. Contact your nearest Manitowoc distributor for assistance; doing so may prevent the wrong parts from being shipped.

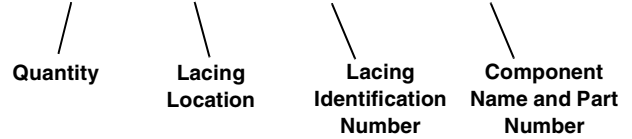
EXAMPLE: Assume you have a number 22 boom and the lacings with circled numbers in Figure 3 are damaged. Your parts order should be similar to the following example:

Crane Serial Number: **00000** (from builders plate).

Boom Identification Number: **#22 Boom**

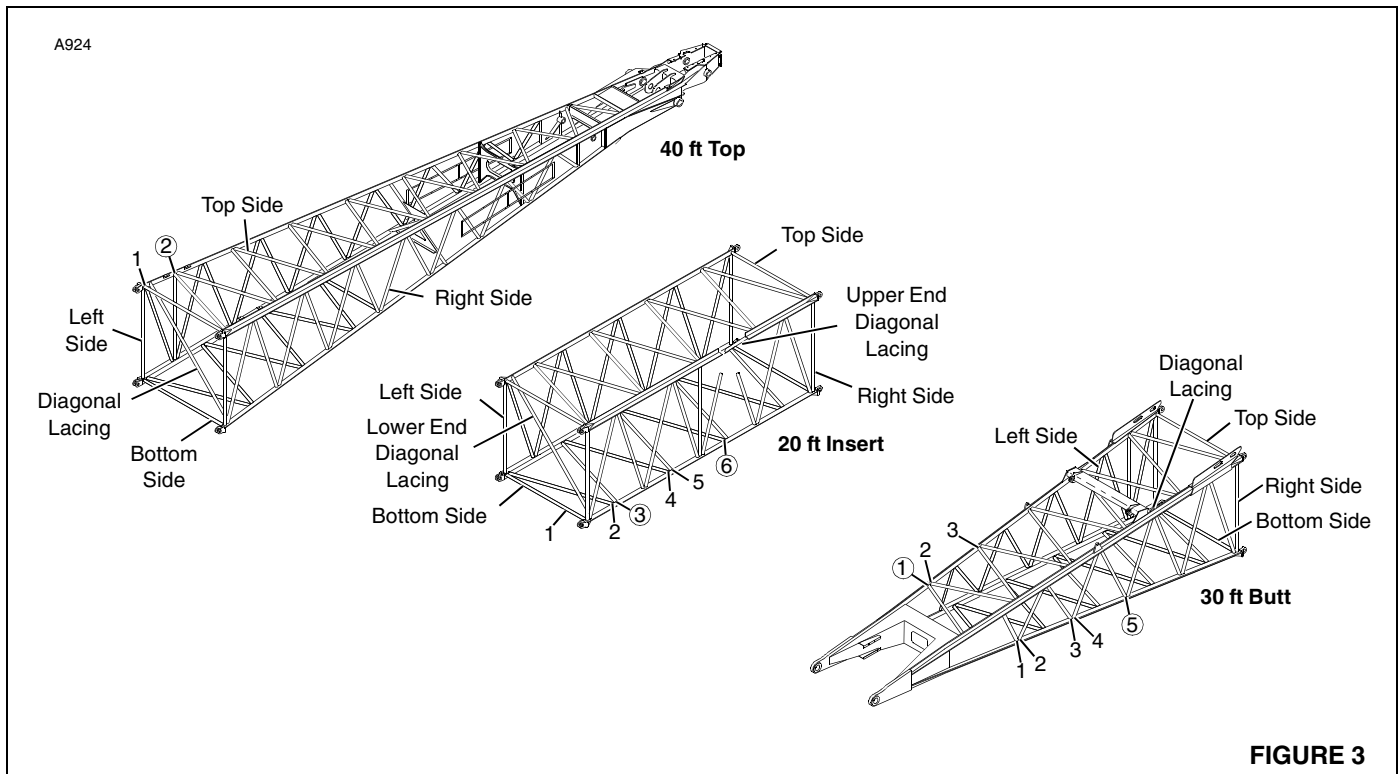
Required:

- 1 each Top Side Lacing (1) for 30 ft Butt 48153-9
- 1 each Right Side Lacing (5) for 30 ft Butt 48153-9
- 1 each Bottom Side Lacing (3) for 20 ft Insert 33426-3
- 1 each Bottom Side Lacing (6) for 20 ft Insert 33426-3
- 1 each Top Side Lacing (2) for 40 ft Top 50453-2



WELDING INSTRUCTIONS

Refer to folio 1316 for welding instructions.



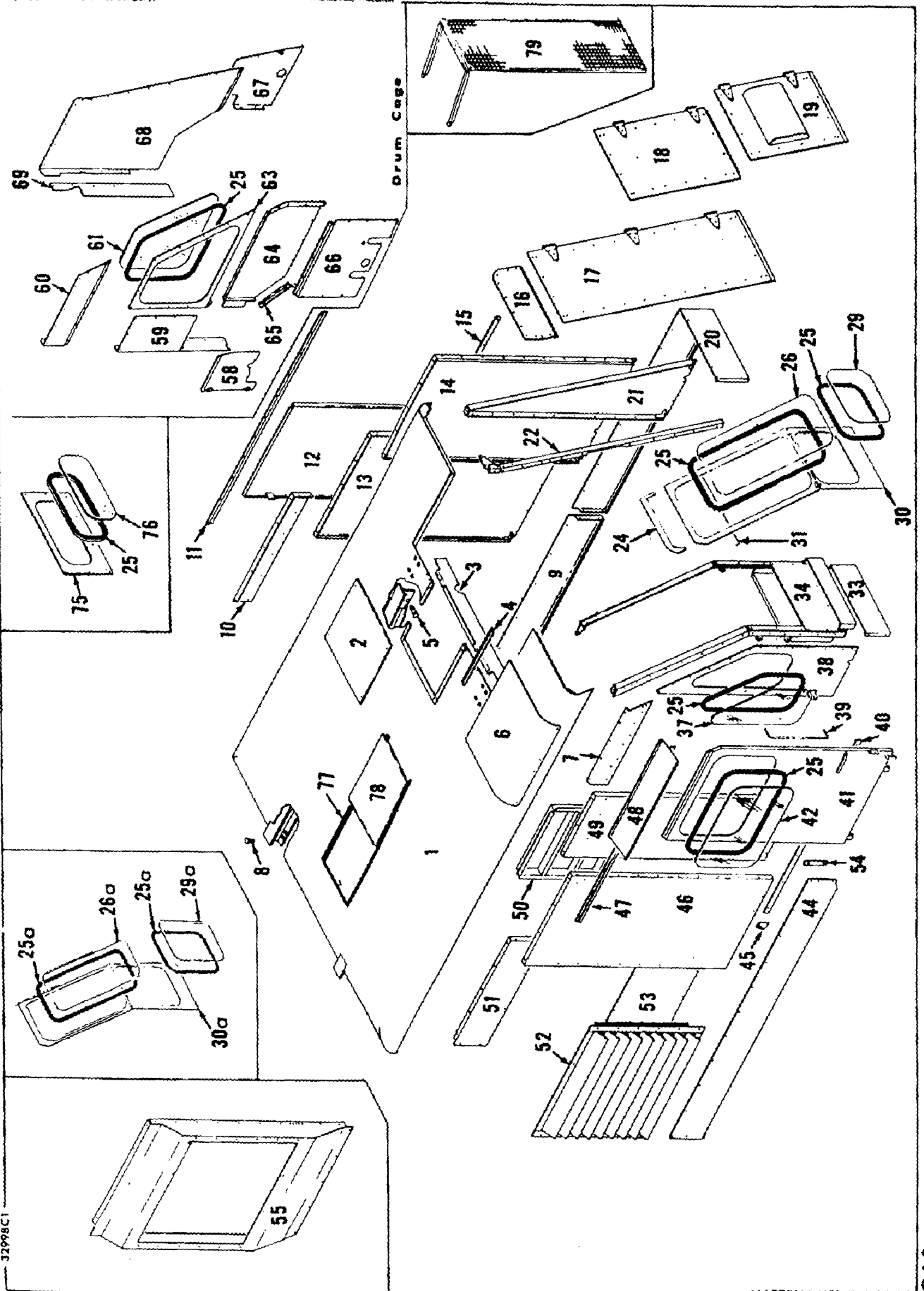
**PARTS MANUAL ALPHABETICAL INDEX
GROUP A - Rotating Structure**

DESCRIPTION	PUBLICATION	REV	START DATE	END DATE	GROUP
"A" Frame	42060	G	12/28/56	03/05/80	A0101
Cab	32998	A2	01/30/64	11/13/80	A0201
Cab	32998	P1	01/30/64	02/02/68	A0201
Chain & Gear Case	43331	E1	07/22/64	10/06/81	A0401
Chain & Gear Case	43331	F2	07/22/64	07/30/93	A0401
Counterweight & Cab Rear	42525	H1	08/12/63	03/01/73	A0301
Counterweight Handling	42536	A2	04/11/60	11/19/61	A0302
Counterweight Handling	42536	B1	04/24/61	10/09/61	A0302
Guards	41625	E1	01/25/62	04/21/67	A0501
Insulated Door	32696	D1	10/31/62	03/01/77	A0204
Platform	42746	M1	12/28/61	01/13/84	A0701
Rotating Bed Lubrication Piping	30375	A1	06/30/41	11/07/72	A0104
Rotating Bed/Hoist Frame/Transporter Platform	42627	E1	01/04/61	02/07/74	A0102
Rotating Bed/Hoist Frame/Transporter Platform	42627	E2	01/04/61	02/07/74	A0102
Tool Box	32621	A1	03/27/62		A0901

MANITOWOC ENGINEERING CO.

A Division of The Manitowoc Company, Inc.

Manitowoc, Wisconsin



32998C1

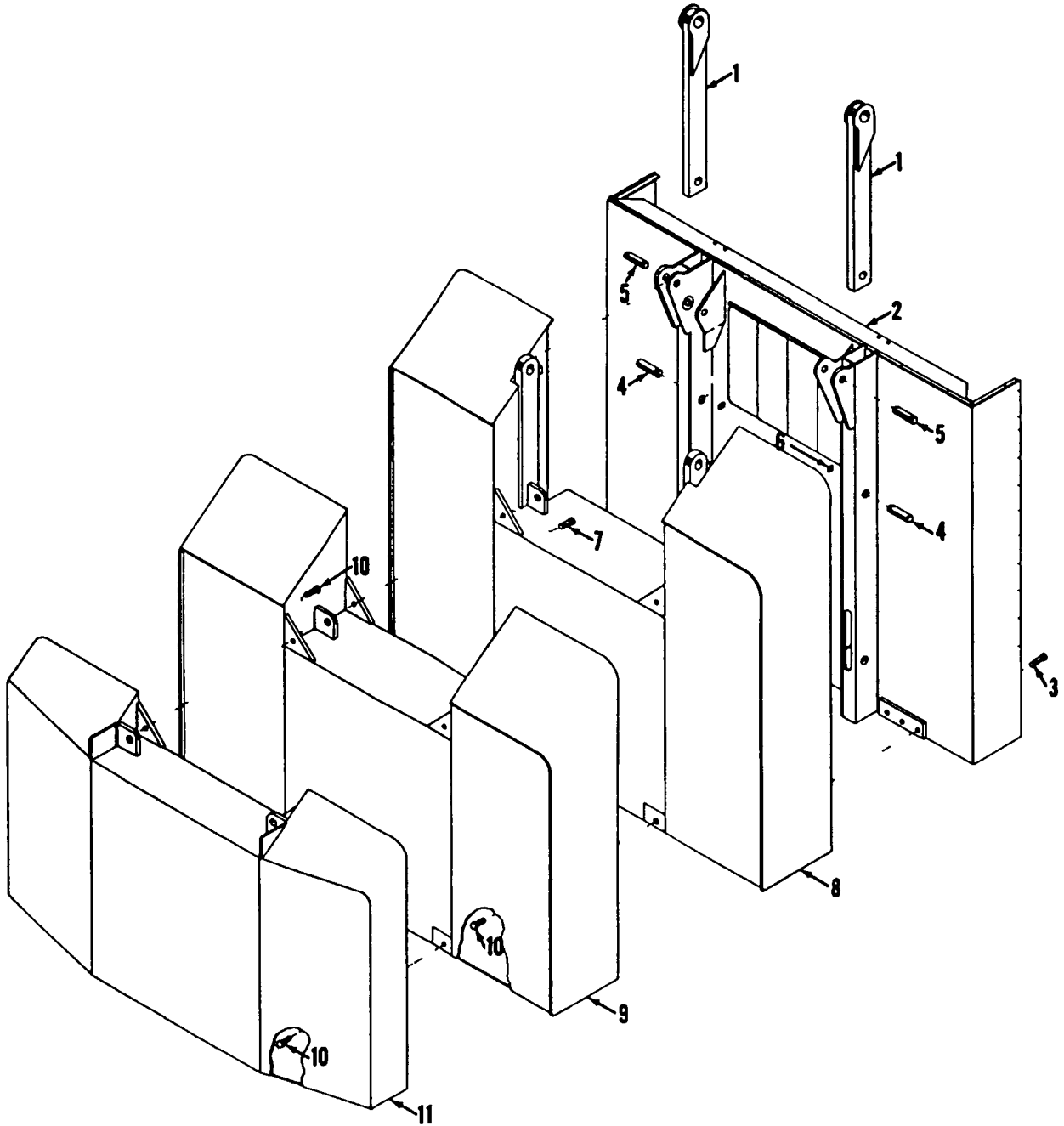
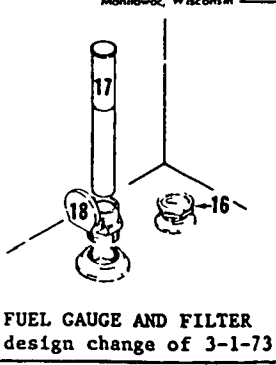
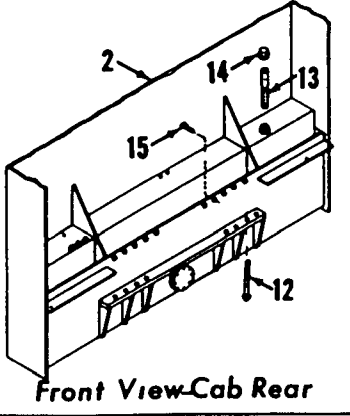
MATERIAL LIST ON BACK

CAB

MANITOWOC ENGINEERING CO

A Division of The Manitowoc Company, Inc

Manitowoc, Wisconsin



4252381

MATERIAL LIST ON BACK

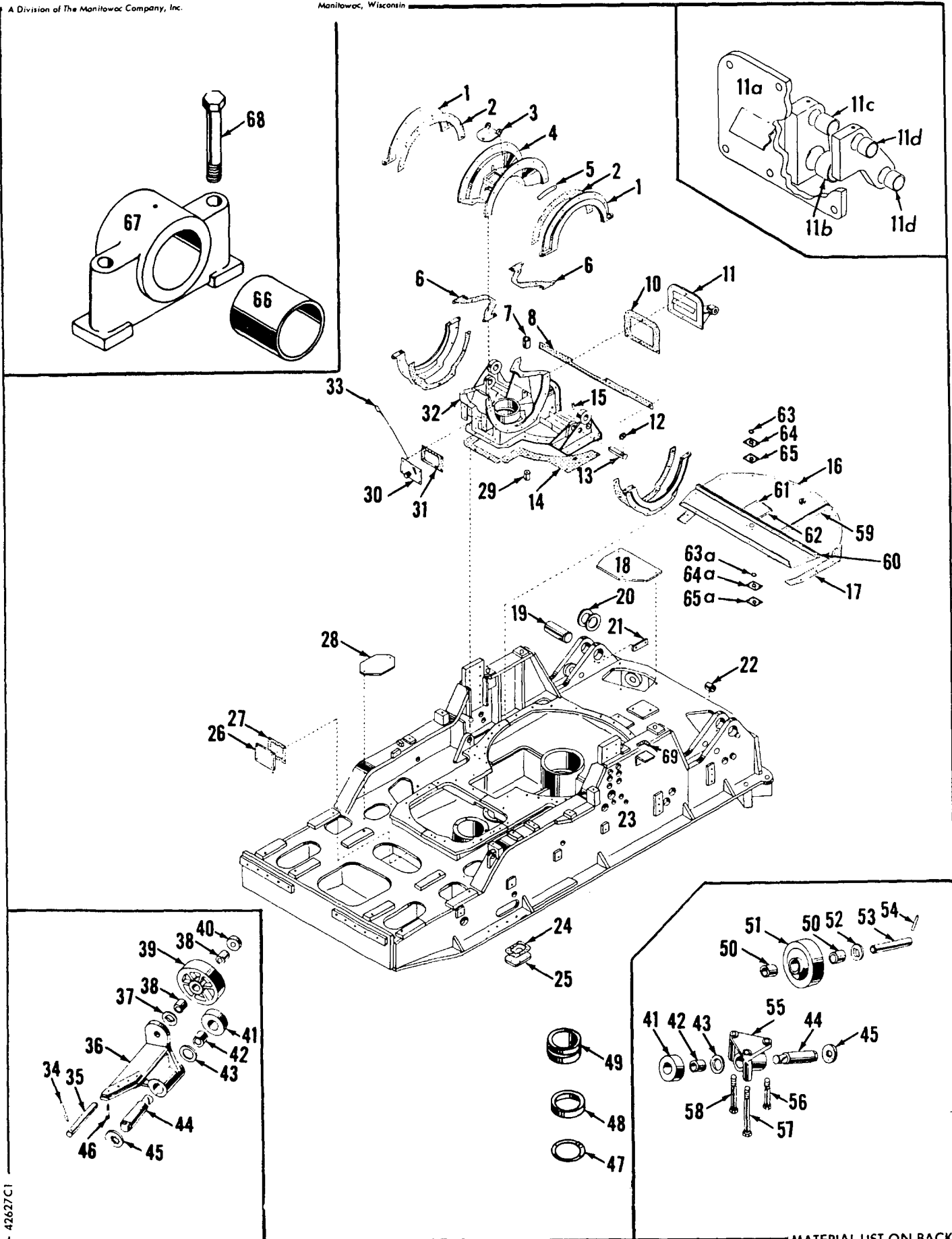
COUNTERWEIGHT

MANITOWOC ENGINEERING CO.

A Division of The Manitowoc Company, Inc.

Manitowoc, Wisconsin

MASTER



42627C1

12607C1

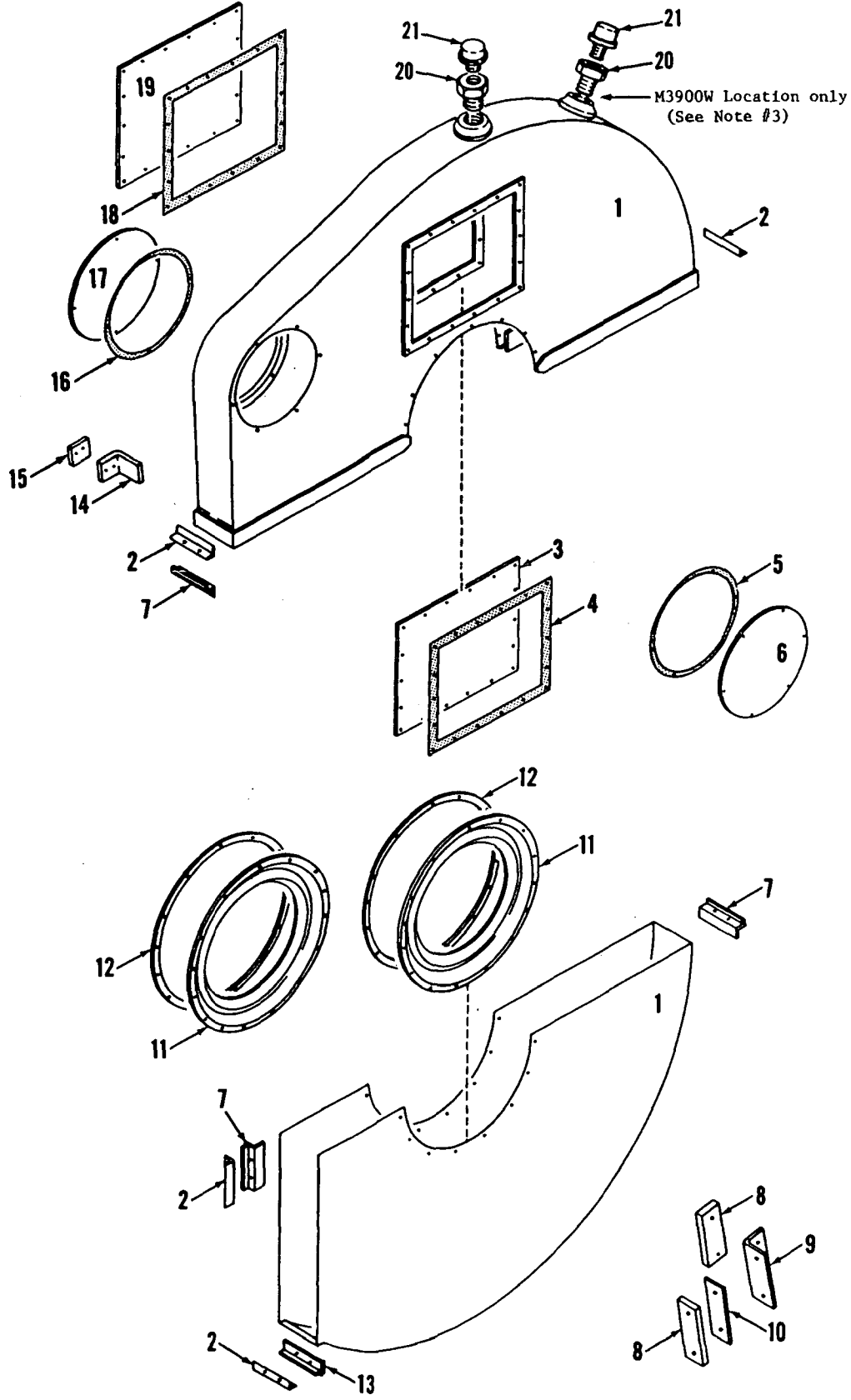
MATERIAL LIST ON BACK

ROTATING BED

MANITOWOC ENGINEERING CO.

A Division of The Manitowoc Company, Inc.

Manitowoc, Wisconsin



CABLE

43331A2

MATERIAL LIST ON BACK

GEAR CASE

22880 - 1 Cont.	REV. J	MODEL 3900, 3900T, 3900W
-----------------	--------	--------------------------

SWING SHAFT

REF. NO.	PART NUMBER	QUANTITY REQUIRED	DESCRIPTION OF PART	VENDORS PART NO.		
			<u>PINIONS FOR MACHS. PRIOR TO DESIGN CHANGE OF JUNE 16, 1964</u>			
18	23012		PINION (std. size)			
18	23017		PINION (3/16" undersize)			
18	23018		PINION (1/4" oversize)			
18	23019		PINION (3/4" oversize)			
18	23027		PINION (1/8" oversize)			
18	23028		PINION (3/8" oversize)			
18	23029		PINION (1/2" oversize)			
18	23030		PINION (5/8" oversize)			
			<p><u>NOTE 1:</u> Machines after design change of 6-19-81 have a shrink fit of the pinion (Ref. No. 18) on the shaft (Ref. No. 12). These machines can be identified by the 6" overall diameter of the pinion retainer (Ref. No. 19). For machines with a pinion which has been shrunk fit delete above Ref. Nos. 17, 19, and 20, and replace with dirt guard 147348 (1/2" thick), pinion retainer 143795 (6" O.D.) and capscrews 621735 (5/8" - 18 NF x 2" lg. w/3/32" hole in hd.).</p> <p>Use Never-seez or equivalent under heads and on threads of capscrews 621730 and torque to 135 ft. lbs. while pinion is still hot.</p>			
				<table border="1"> <tr> <td>REV. J</td> <td>22880 - 1</td> </tr> </table>	REV. J	22880 - 1
REV. J	22880 - 1					

PLEASE GIVE MACHINE S/N W/ORDER

22880

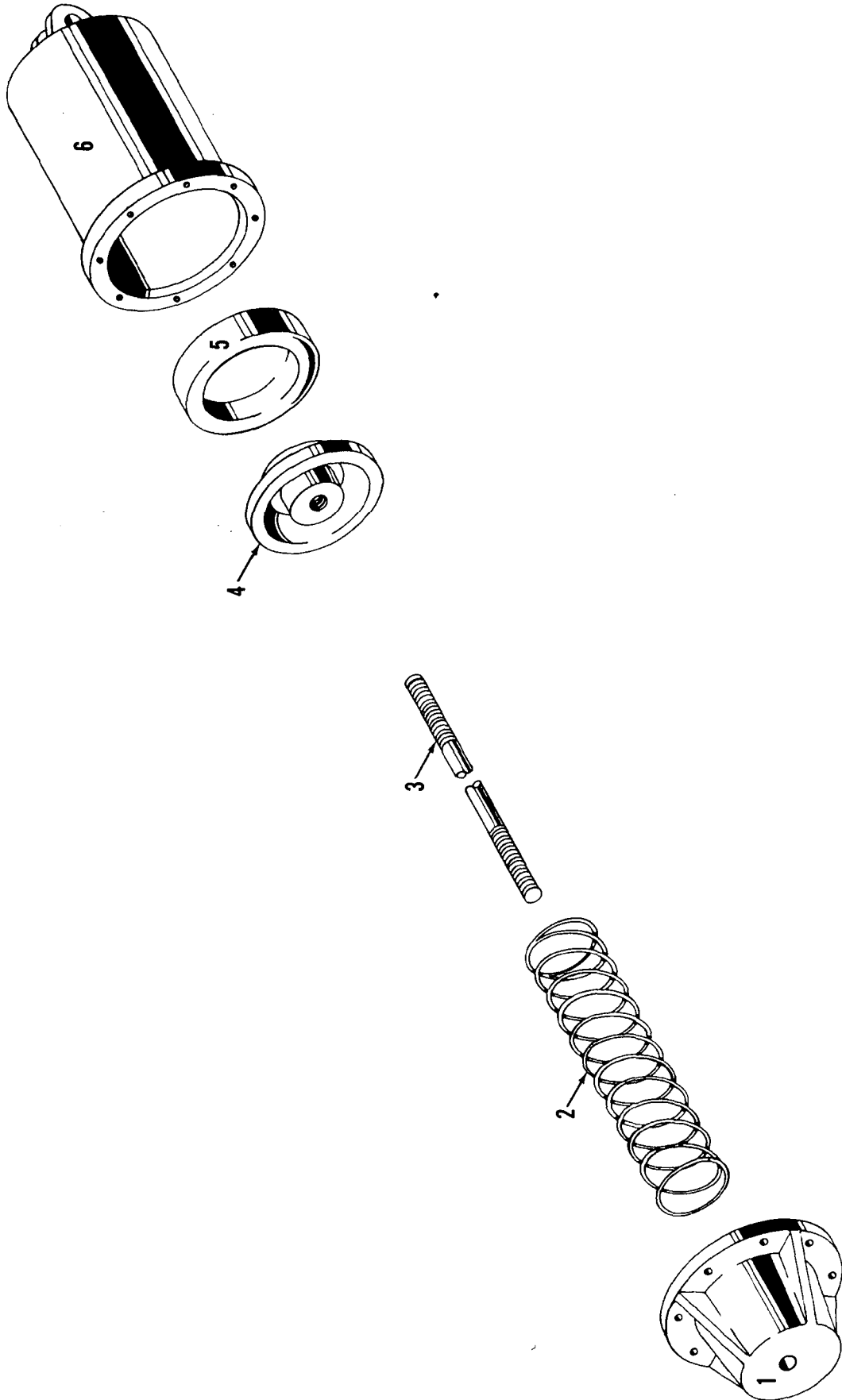
Run As A Cont

22880

14000

14000

14000



2427881

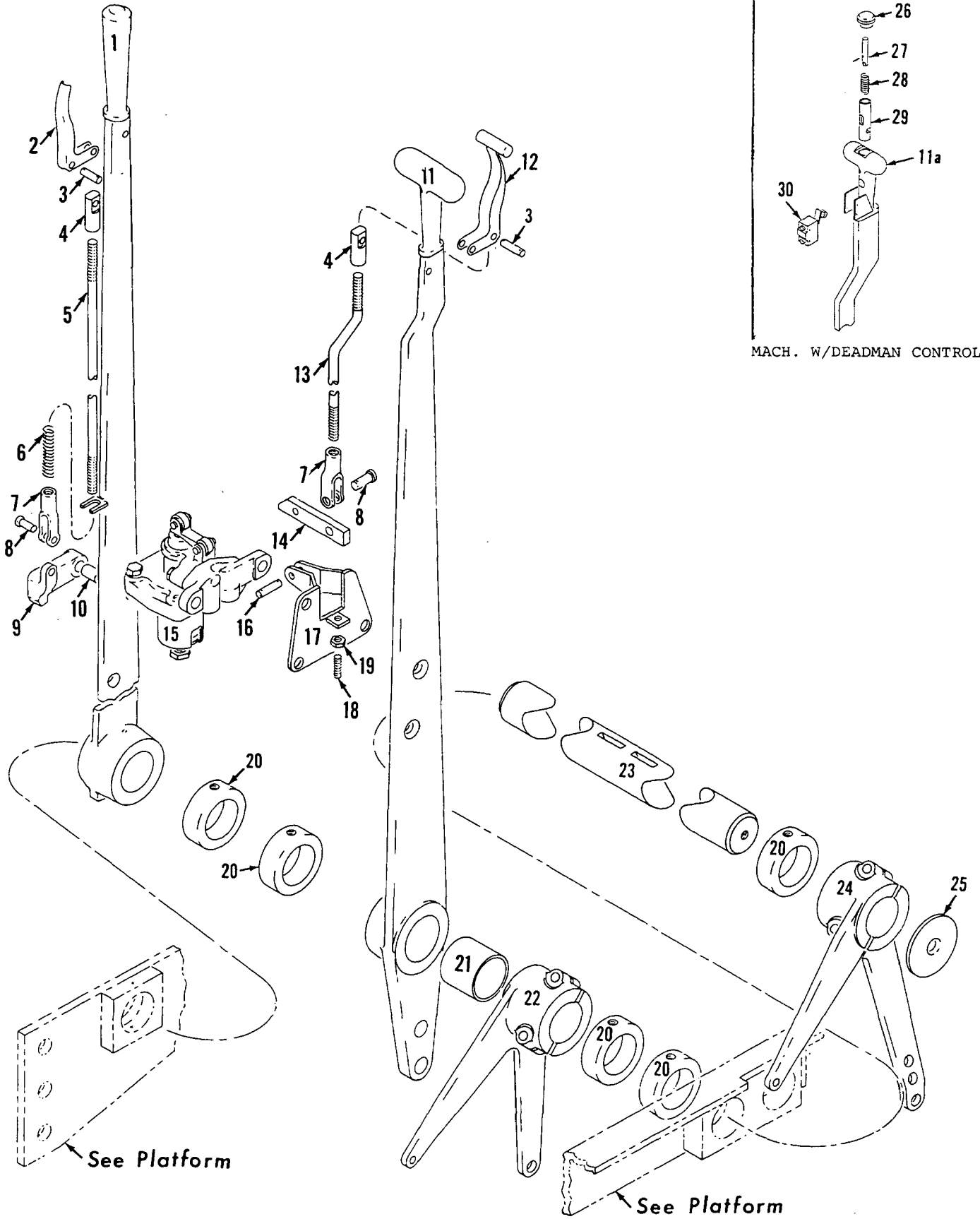
MATERIAL LIST ON BACK

AIR CYLINDER ASSEMBLY

MANITOWOC ENGINEERING CO.

A Division of the Manitowoc Company, Inc.

Manitowoc, Wisconsin



MACH. W/DEADMAN CONTROL

See Platform

See Platform

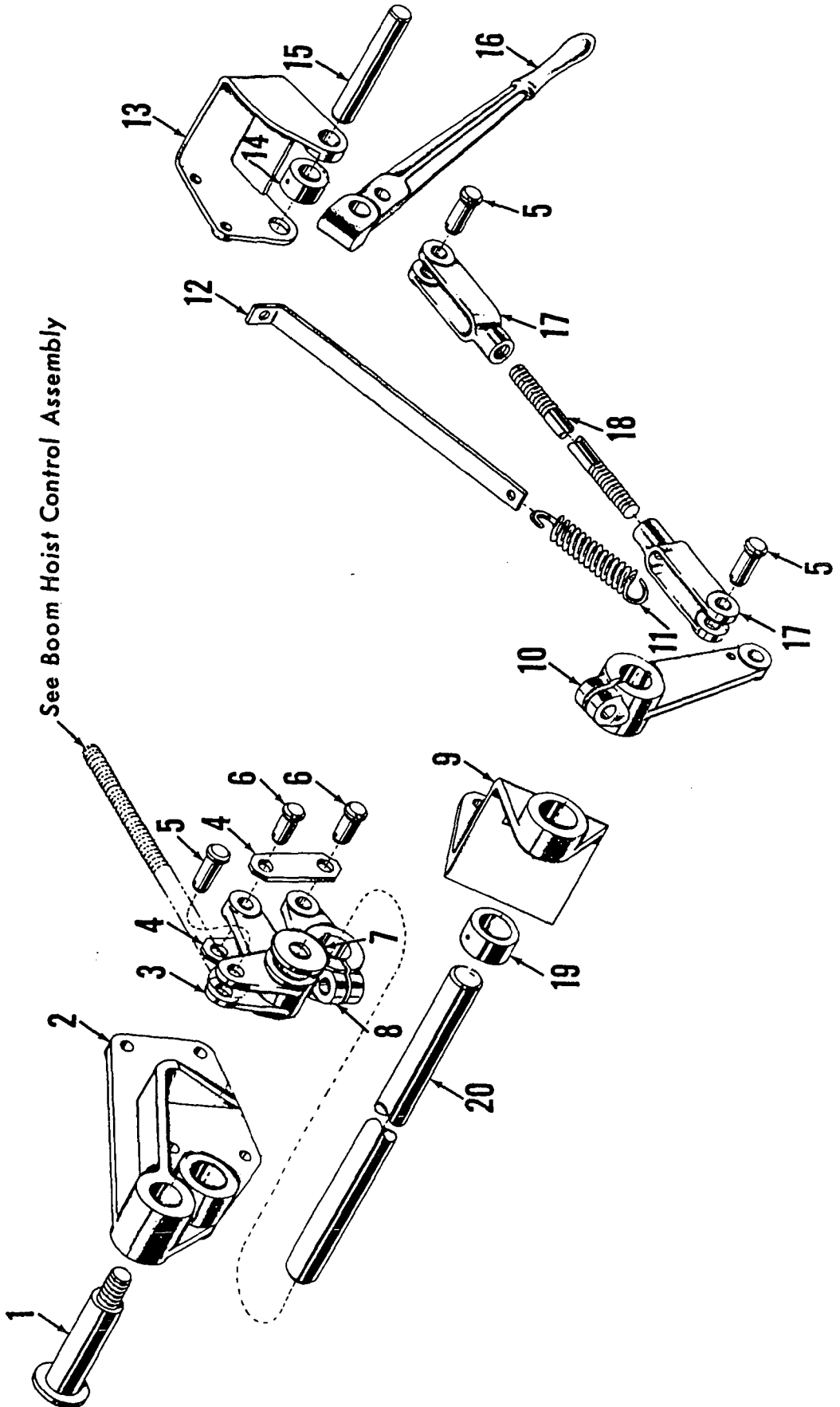
HAND LEVERS

MATERIAL LIST ON BACK

32739A1

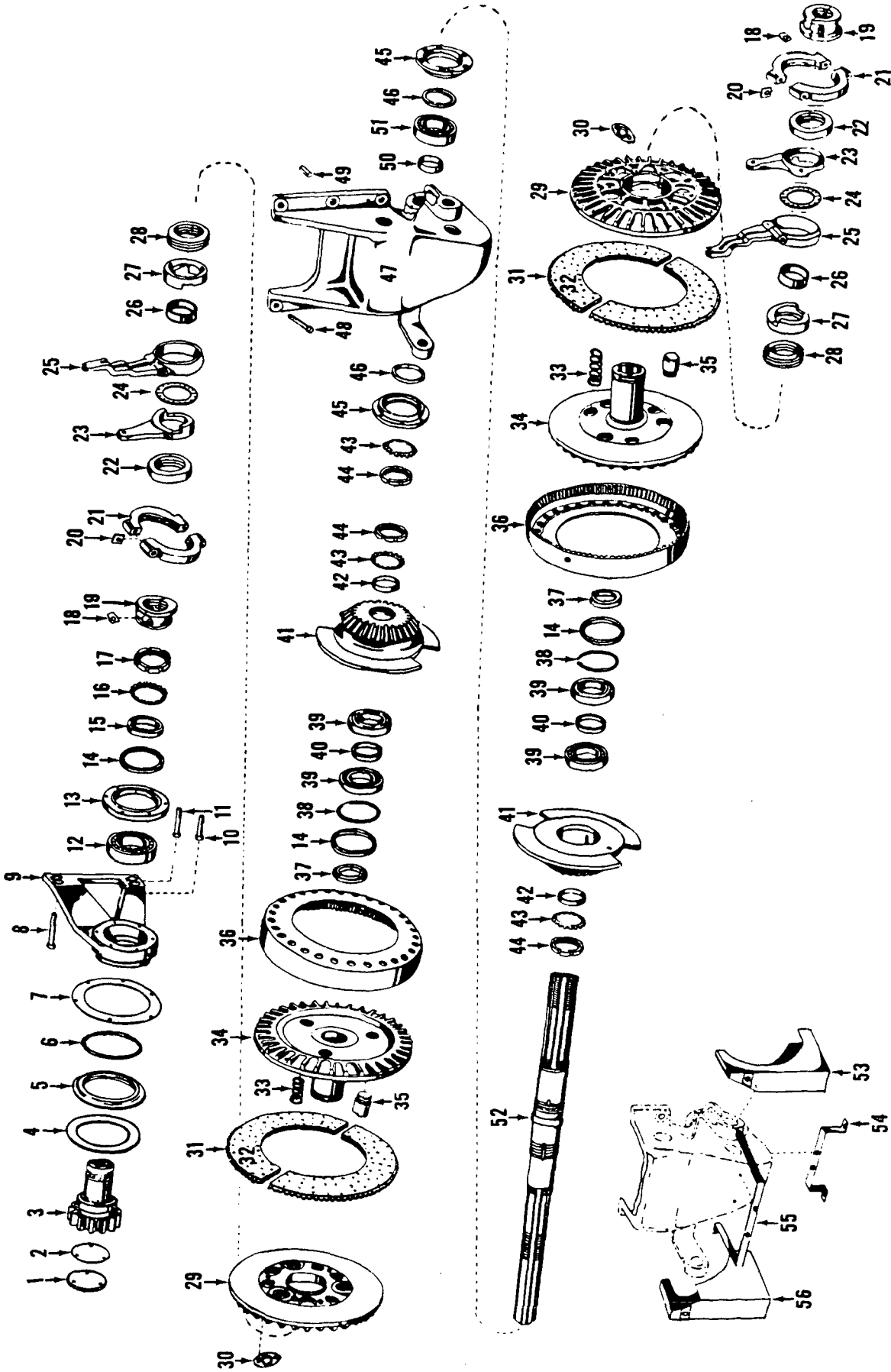
32739A1

MASTER



AUXILIARY BOOM HOIST EMERGENCY BRAKE

713 77 C1



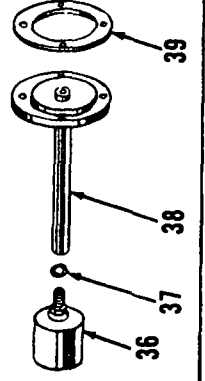
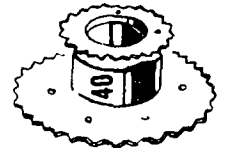
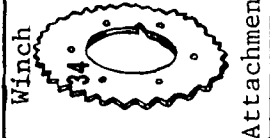
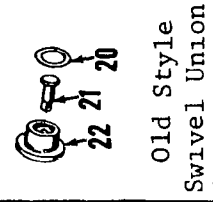
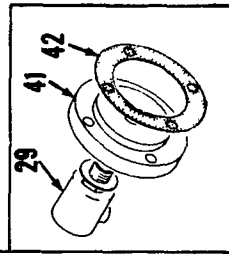
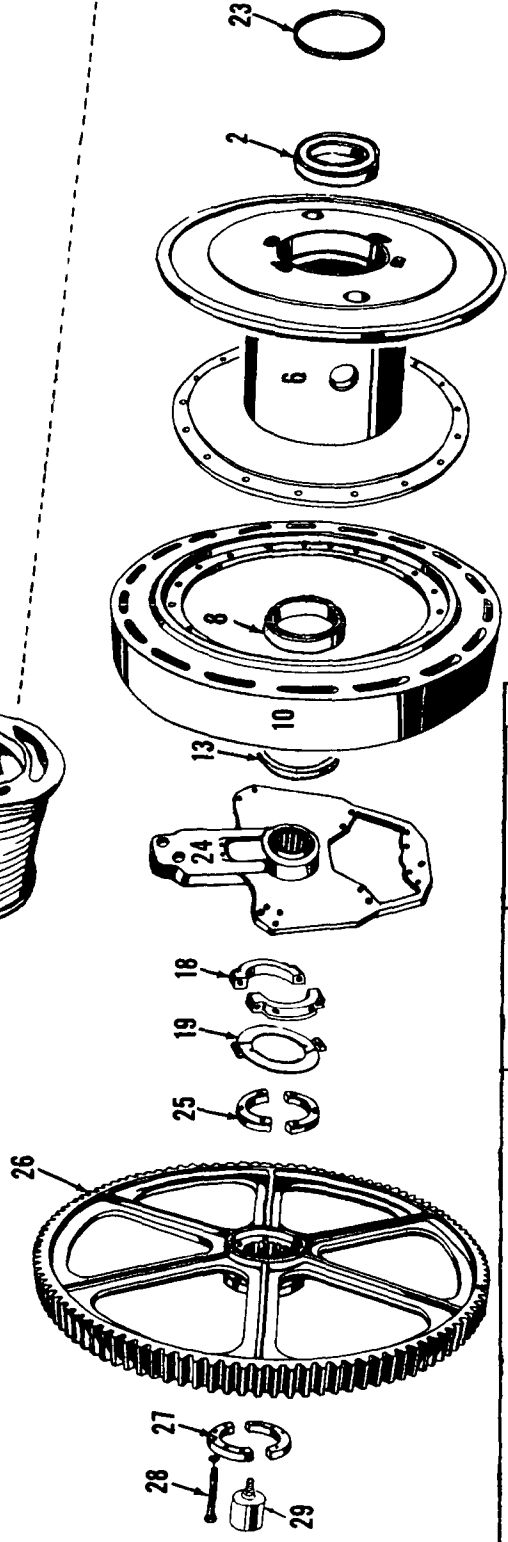
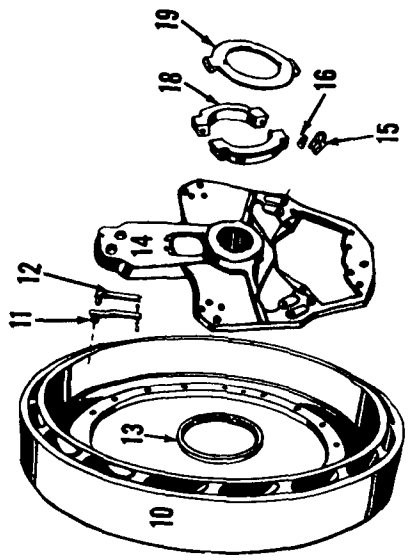
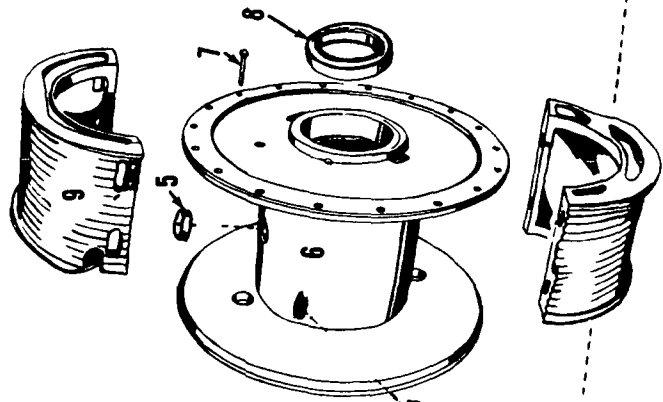
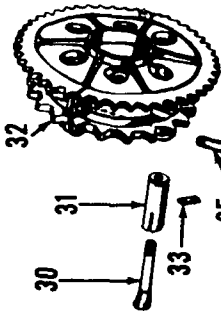
41933G1

MATERIAL LIST ON BACK

IND. BOOM HOIST DRIVE SHAFT

MASTER

Shovel Only



Old Style Attachment Swivel Union

Winch

Aux Rear Drum and Winch

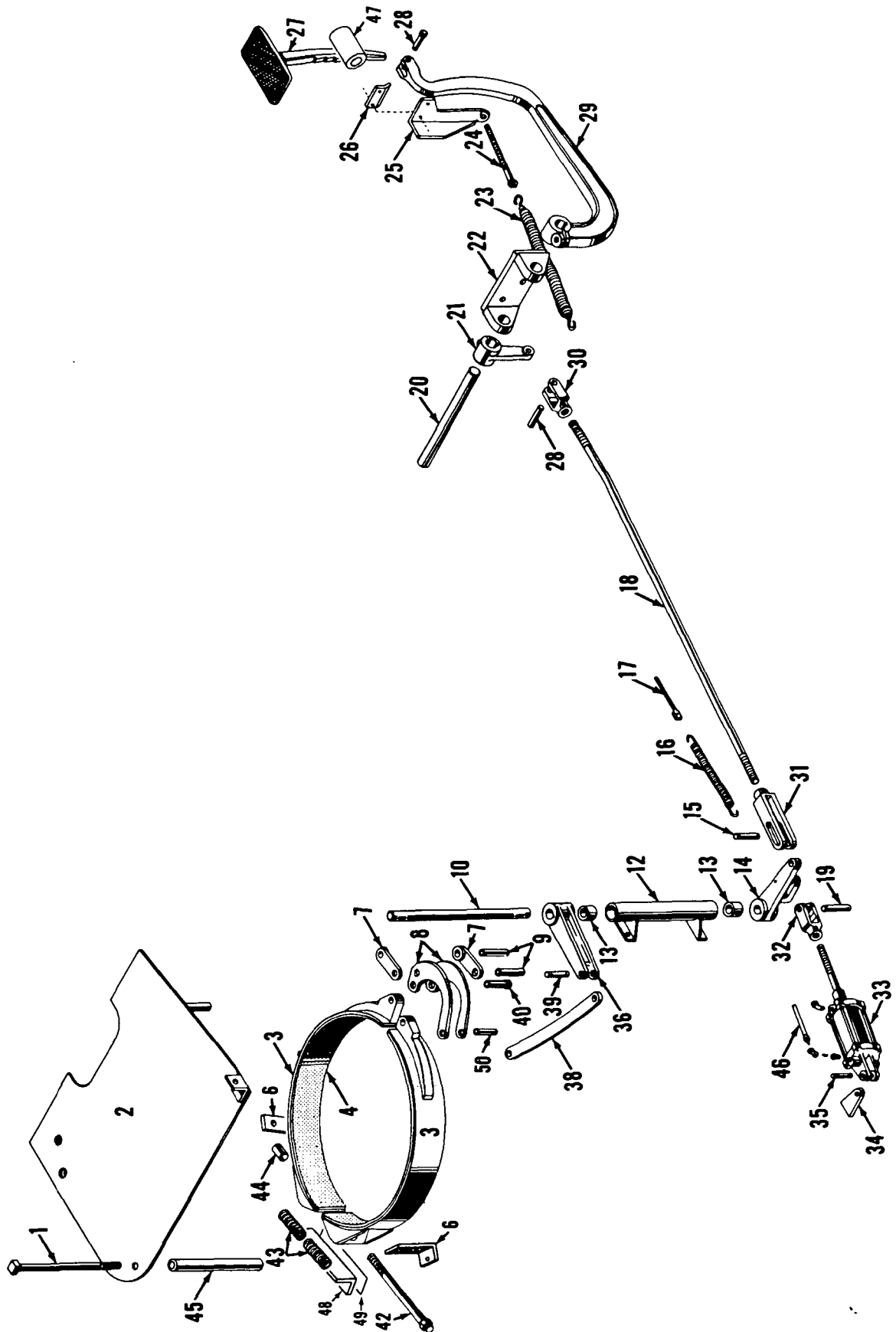
DRUM SHAFT

MATERIAL LIST ON BACK

MANITOWOC ENGINEERING CO.

A Division of The Manitowoc Company, Inc.

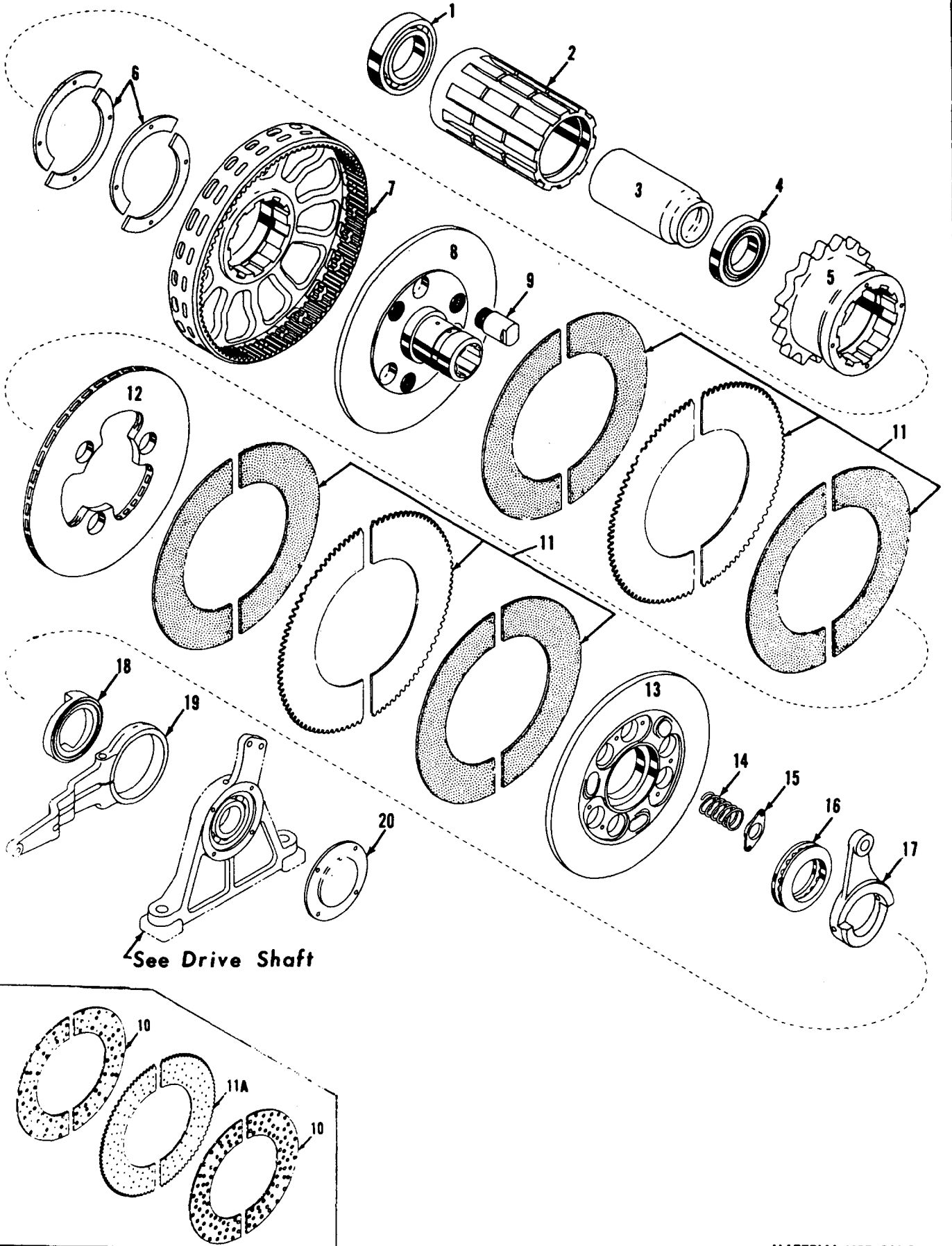
Manitowoc, Wisconsin



4265801

MATERIAL LIST ON BACK

Swing Brake



43137A3

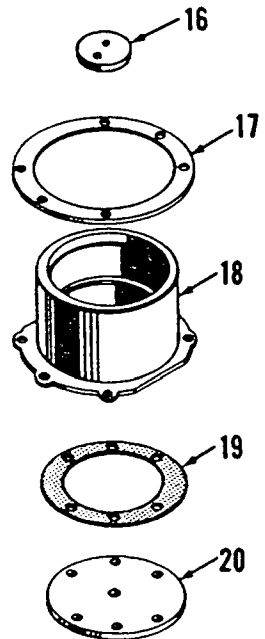
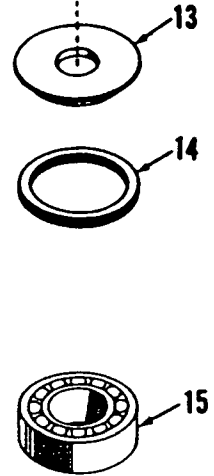
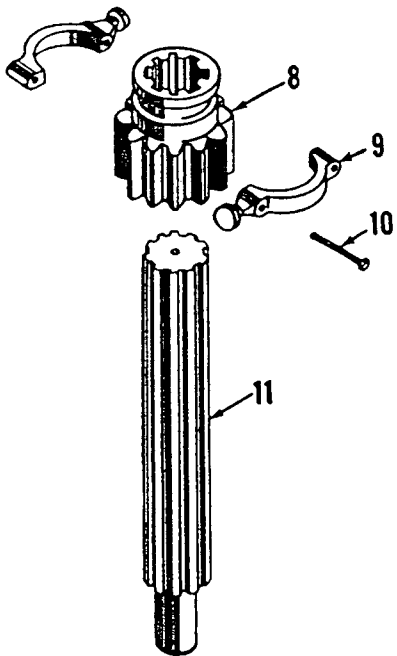
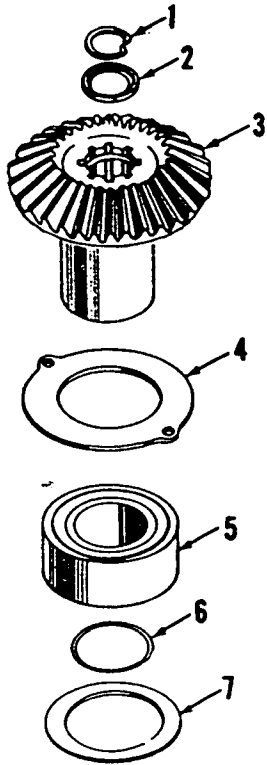
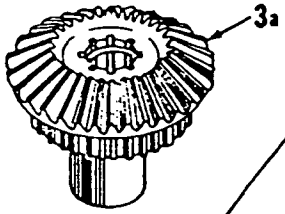
MATERIAL LIST ON BACK

MAIN DRIVE SHAFT

MANITOWOC ENGINEERING CO.

Division of The Manitowoc Company, Inc.

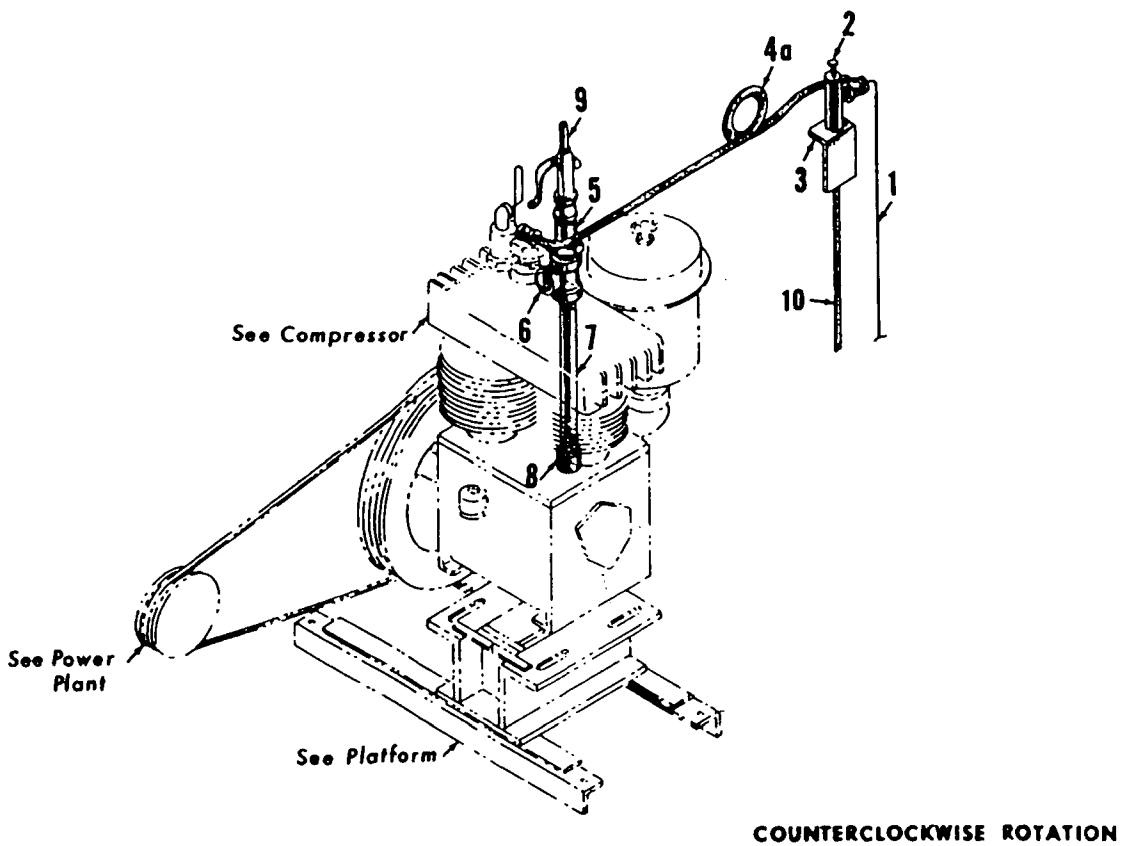
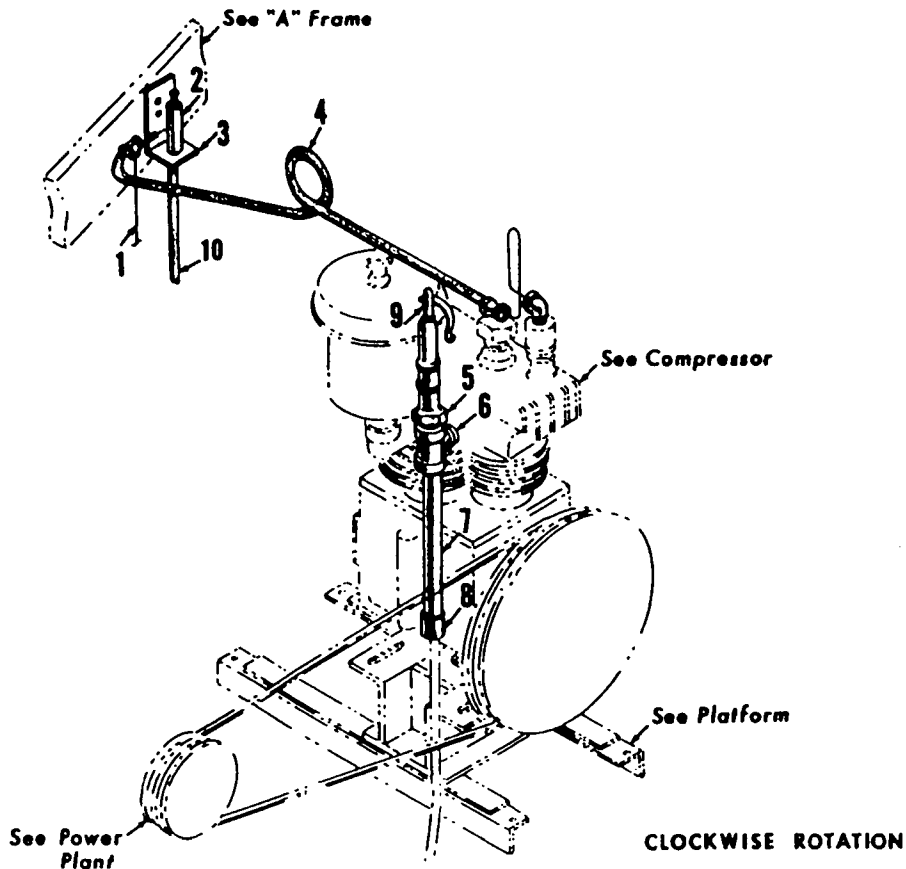
Manitowoc Pumps



MANITOWOC ENGINEERING CO.

A Division of The Manitowoc Company, Inc.

Manitowoc, Wisconsin



50949A1

MATERIAL LIST ON BACK

MANITOWOC ENGINEERING CO.

PARTS MANUAL ALPHABETICAL INDEX
Group D - Power Components

DESCRIPTION	PUBLICATION	REV	START DATE	END DATE	GROUP
Converter Control	24899	A1	10/18/62	04/24/67	D0601
Converter Control	32600	F1	02/23/62	07/19/77	D0601
Converter Control	42958	F1	11/12/62	11/29/78	D0601
Converter Piping	43051	A4	04/10/63	10/05/64	D0701
Converter Piping	43051	A7	03/01/64		D0701
Converter Piping	43051	C3	04/17/64	06/09/69	D0701
Converter Piping	43051	D2	09/22/59	06/09/69	D0701
Converter Piping	43051	E1	04/10/63	06/09/69	D0701
Converter Piping	43051	E5	04/10/63	06/09/69	D0701
Engine & Clutch Control	32498	B1	04/04/63	01/22/65	D0501
Exhaust Stack	23643	B1	12/20/47	04/08/65	D0102
Instrument Panel/Engine	90067	C1	05/27/63	12/27/68	D0301
Power Plant	43233	B3	03/09/64	07/17/75	D0101
Power Plant	43233	C2	03/09/64	07/17/75	D0101
Power Take Off - Transmission Case	42749	P1	07/14/62	04/25/94	D0401

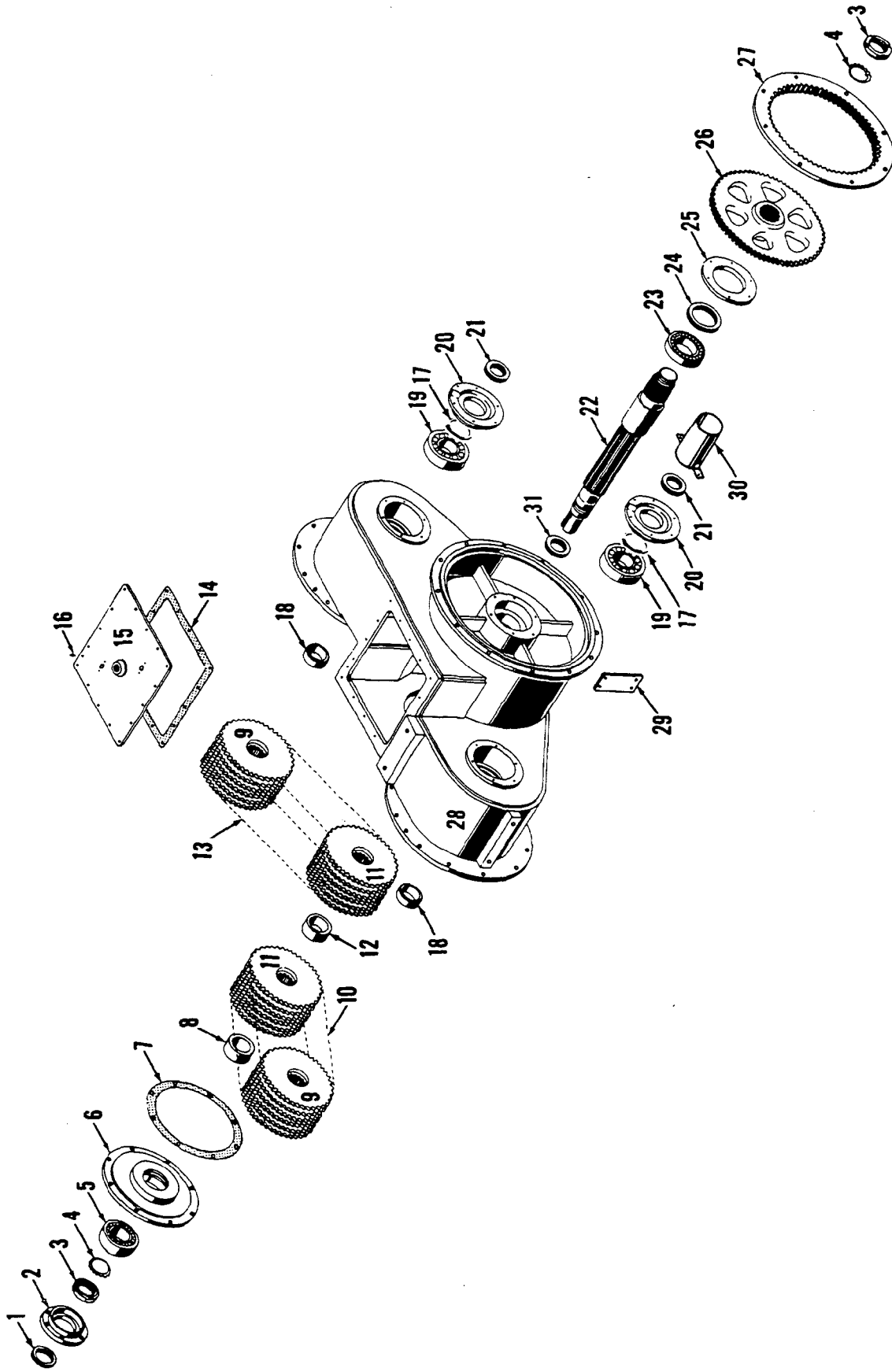
CLICK HERE TO **DOWNLOAD** THE COMPLETE MANUAL

- Thank you very much for reading the preview of the manual.
- You can download the complete manual from: www.heydownloads.com by clicking the link below



- Please note: If there is no response to CLICKING the link, please download this PDF first and then click on it.

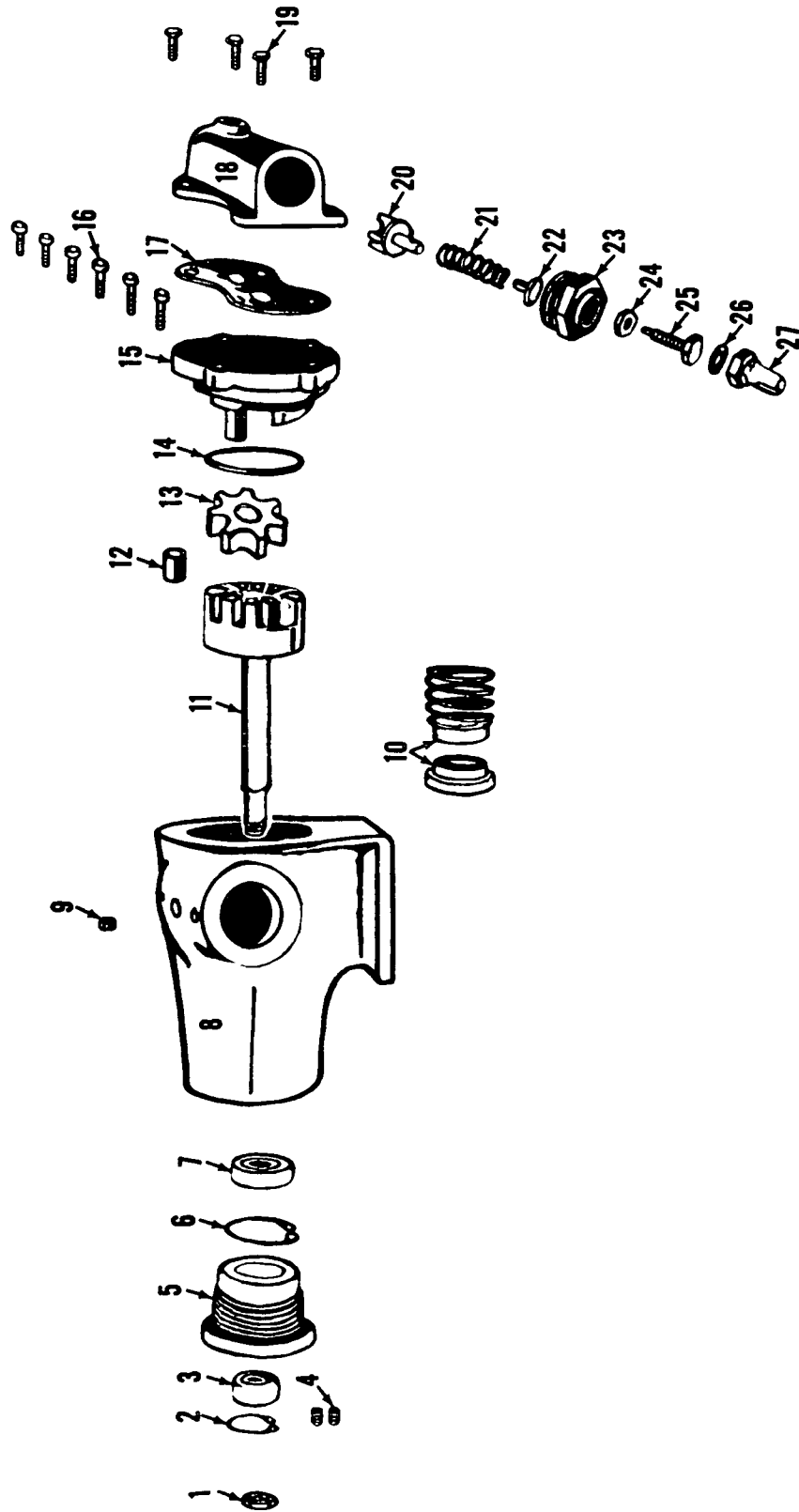
CLICK HERE TO **DOWNLOAD** THE COMPLETE MANUAL



42748G1

MATERIAL LIST ON BACK

TRANSMISSION CASE ASSEMBLY



MASTER

4287785

MATERIAL LIST ON BACK

PUMP

43051-5Cont.	REV. E	MODEL 3000-4000 VICON INCL.
--------------	-----------	--------------------------------

LUBRICATION PIPING

MASTER

REF. NO.	PART NUMBER	QUANTITY REQUIRED	DESCRIPTION OF PART	VENDORS PART NO.
50	429555	1	MACHINES W/OUT OIL TRAP UNDER PUMP UNION, 90° Swivel Adapter (1" Male NPT 1" Female NPSM)	
51	571705	1	MACHINES W/OUT FORCED OIL LUBRICATION TO CONVERTERS PLUG (1")	
52	427090	1	FILTERS WITH 3/4" NPT PORTS FILTER, Oil (3/4" NPT ports)	
53	73396	1	BRACKET W/mach. screws, hex nuts and lockwashers	
54	543740	1	NIPPLE (3/4" x 1 1/2")	
55	679304	1	TEE (3/4")	
56	288751	1	BUSHING (3/4" x 1/2")	
57	543402	2	NIPPLE, Close (1/2")	
58	406952	2	ELBOW (1/2")	
			*Items 24 and 25 are not used with 3900T and 3900W	
			NOTE: For machines W/out alarm system, omit Ref. #27 and one Ref. #15.	
			Use Sheet #0-147	
			REV. E	43051 - 5

PLEASE GIVE MACHINE S/N W/ORDER

PARTS MANUAL ALPHABETICAL INDEX
Group E - Lower Structure & Control

DESCRIPTION	PUBLICATION	REV	START DATE	END DATE	GROUP
Carbody	43248	F1	04/01/64	01/31/89	E0101
Carbody Lubrication Piping	32233	B1	08/07/59	08/03/83	E0102
Crawlers	42572	L1	10/05/64	01/31/89	E0201
Horizontal Travel Shaft	32217	A1	06/24/59		E0401
King Pin & Vertical Travel Shaft	32995	G1	04/01/64	04/08/80	E0301
Steering Control	20729	A1	05/14/41		E0501
Steering Control	42396	A1	05/11/59		E0501
Steering Control	42396	C2	05/11/59	07/07/81	E0501
Steering Control	42396	E1	06/15/60	01/24/84	E0501
Travel Lock Control	31743	H1	07/12/56	04/24/69	E0601

32233-1 Cont.	REV. B	MODEL 3900-4000
---------------	--------	-----------------

LUBRICATING PIPING
(CARBODY)

REF. NO.	PART NUMBER	QUANTITY REQUIRED	DESCRIPTION OF PART	VENDORS PART NO.
7			<u>SPRING THRUST WASHER-RIGHT</u>	
	696216	1	TUBE, Copper (3/8" O.D.) (Specify Length)	
	429020	1	EXTENSION (1/8")	
	429373	1	ELBOW (3/8" x 1/8")	
	429367	2	CONNECTOR (3/8" x 1/4")	
	429010	1	GR. FITTING (1/4")	
	543564	1	NIPPLE (1/4" x 3")	
	377202	2	COUPLING (1/4")	
8			<u>SPRING THRUST WASHER-LEFT</u>	
	696216	1	TUBE, Copper (3/8" O.D.) (Specify Length)	
	429020	1	EXTENSION (1/8")	
	429373	1	ELBOW (3/8" x 1/8")	
	429367	2	CONNECTOR (3/8" x 1/4")	
	429010	1	GR. FITTING (1/4")	
	543564	1	NIPPLE (1/4" x 3")	
	377202	2	COUPLING (1/4")	
9			<u>TRAVEL SHAFT OUTER-LEFT</u>	
	696216	1	TUBE, Copper (3/8" O.D.) (Specify Length)	
	429020	1	EXTENSION (1/8")	
	429373	1	ELBOW (3/8" x 1/8")	
	429367	2	CONNECTOR (3/8" x 1/4")	
	429010	1	FITTING, Grease (1/4")	
	543564	1	NIPPLE (1/4" x 3")	
	377202	2	COUPLING (1/4")	
10			<u>TRAVEL SHAFT OUTER-RIGHT</u>	
	696216	1	TUBE, Copper (3/8" O.D.) (Specify Length)	
	429020	1	EXTENSION (1/8")	
	429373	1	ELBOW (3/8" x 1/8")	
	429367	2	CONNECTOR (3/8" x 1/4")	
	429010	1	FITTING, Grease (1/4")	
	543564	1	NIPPLE (1/4" x 3")	
	377202	2	COUPLING (1/4")	
11			<u>TRAVEL SHAFT (OUTER BEARING) (ONE EACH SIDE)</u>	
	429032	2	BUSHING, Reducing (1/4" x 1/8")	
	429000	2	GR. FITTING (1/8")	
12			<u>TRAVEL SHAFT (PILOT BEARING) (ONE EACH SIDE)</u>	
	429032	2	BUSHING, Reducing (1/4" x 1/8")	
	429000	2	GR. FITTING (1/8")	
13	23935	1	SUPPORT W/capscrews, hex nuts and lockwashers	

0-147

REV. B	32233 - 1
--------	-----------

PLEASE GIVE MACHINE S/N W/ORDER

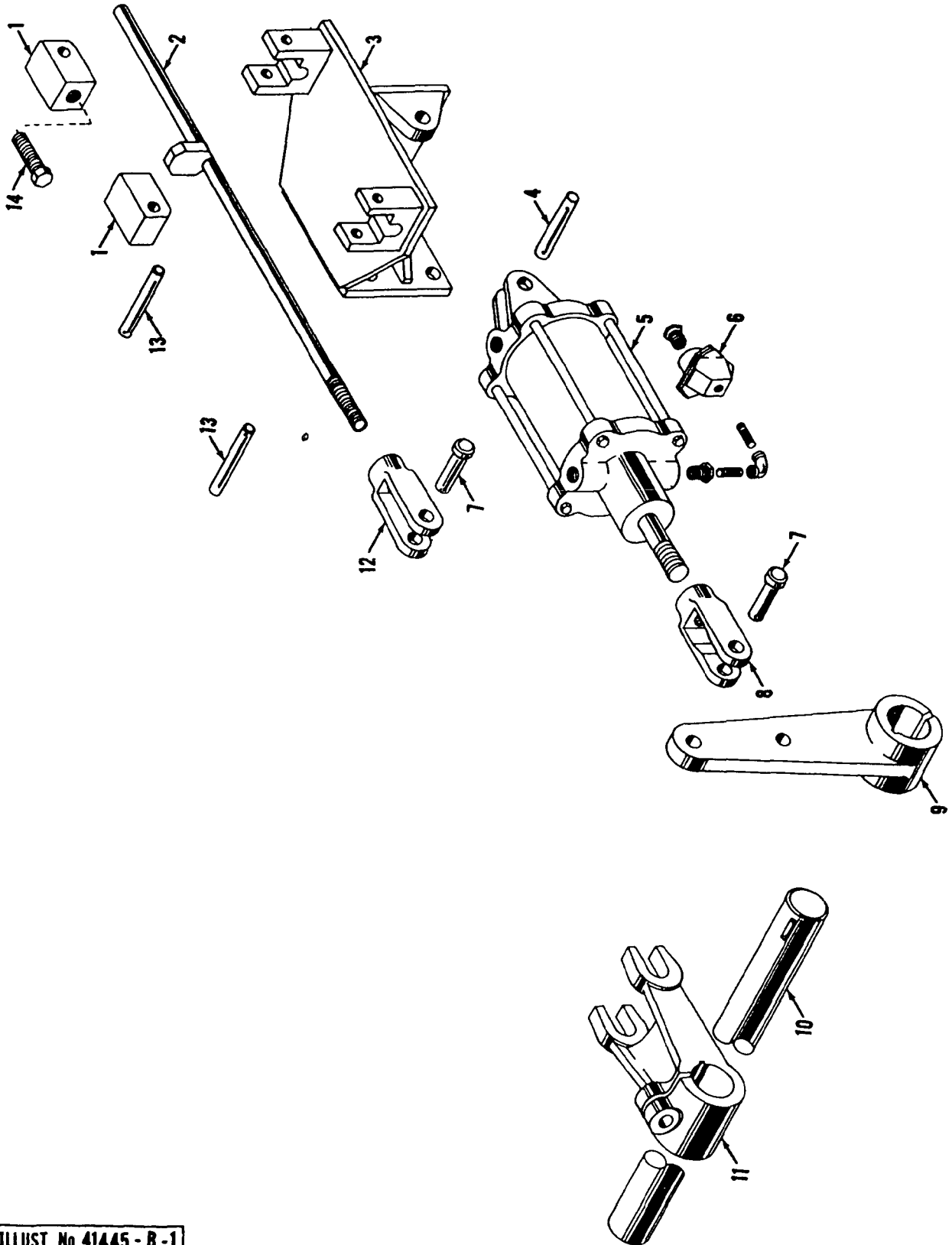
RUN AS FRONT

32233 B1 Cont.

MANITOWOC ENGINEERING CO

A Division of The Manitowoc Company Inc.

Manitowoc, Wisconsin



MASTER

Back

ILLUST No 41445-B-1

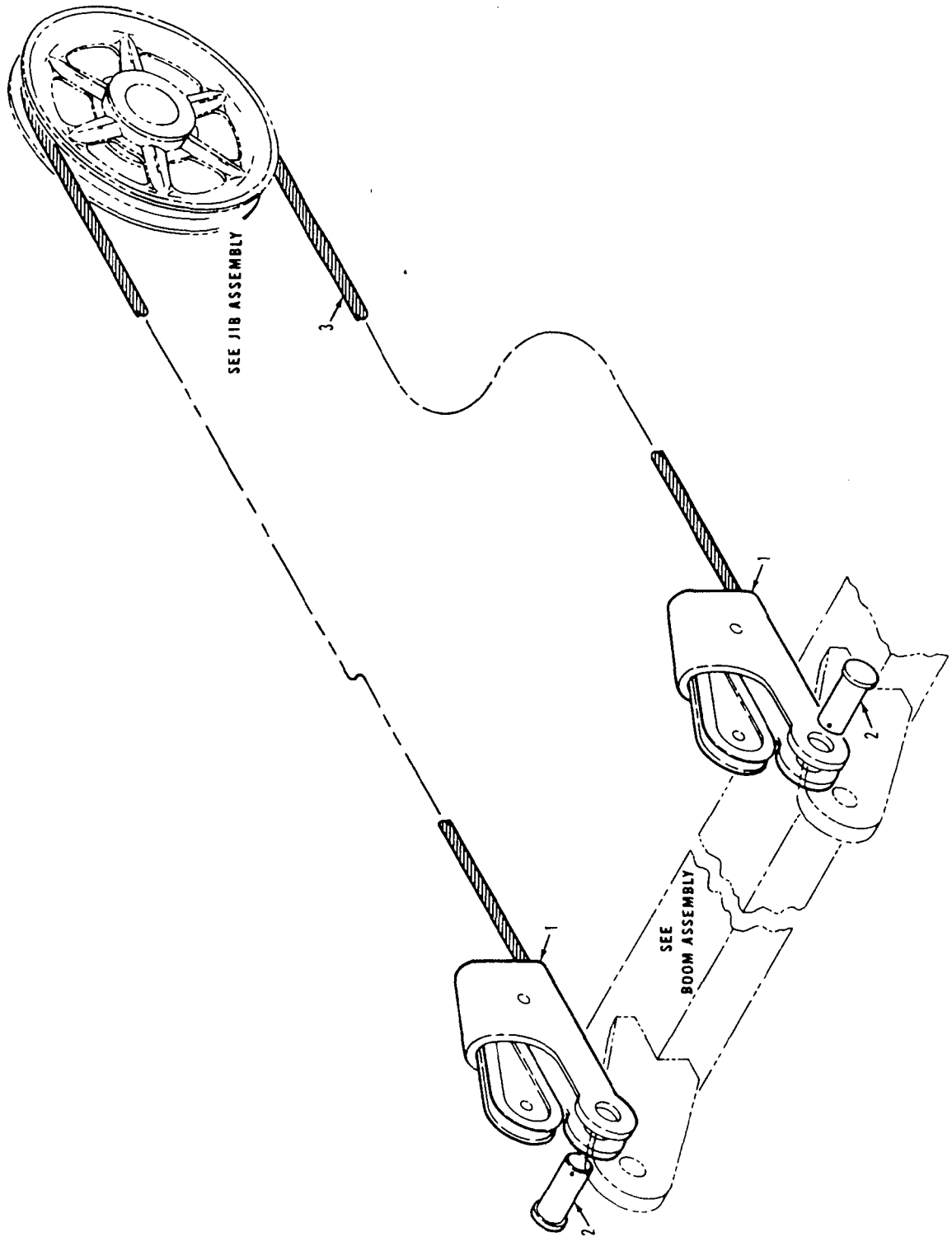
MATERIAL LIST ON BACK

STEERING CONTROL ASSEMBLY - ROTATING BED

17 20
se 42

PARTS MANUAL ALPHABETICAL INDEX
Group F - Attachments

DESCRIPTION	PUBLICATION	REV	START DATE	END DATE	GROUP
Backhitch & Gantry	42533	D1	12/18/62	03/30/64	F1001
Backhitch & Gantry	42533	D1	12/18/62	03/30/64	F1001
Boom	42925	-	09/21/62	08/09/01	F0101
Boom Angle Indicator	22334	B1	01/07/52	09/20/85	F1101
Boom Point	24003	A1	02/27/59		F0401
Boom Point	24003	C1	10/09/59	03/23/60	F0401
Boom Point	90510	-	07/23/64	08/15/80	F0401
Boom Point	90512	C1	07/23/64	06/28/79	F0401
Boom Stop, Clutch Throw-Out	42567	C	06/20/60	02/13/63	F0201
Boom Stop, Mechanical	32679	A1	09/28/62	09/28/71	F0202
Equalizer/Pull-Out	32668	C1	09/17/62	09/15/67	F0601
Equalizer/Pull-Out	73741	-	09/18/62	03/17/83	F0601
Gantry Hold Up	42936	A1	08/07/62	02/19/63	F1003
Guard Rollers On "A" Frame	42938	B1	03/15/62	08/25/71	F0901
Hook & Weight Ball	75343	D1	04/07/64	04/11/74	F1401
Jib	41905	I1	09/05/58	04/24/81	F1301
Jib Backstay	24450	B1	03/06/61	02/27/68	F1302
Jib Rope Guide/Roller	23947	B1	02/13/39	12/01/65	F1303
Wire Rope Guide	32659	D1	09/12/62	09/08/80	F0701
Wire Rope Roller Guide	73649	-	09/12/62	09/13/79	F0801
Wire Rope Roller Guide	73847	D1	03/26/63	09/13/79	F0801

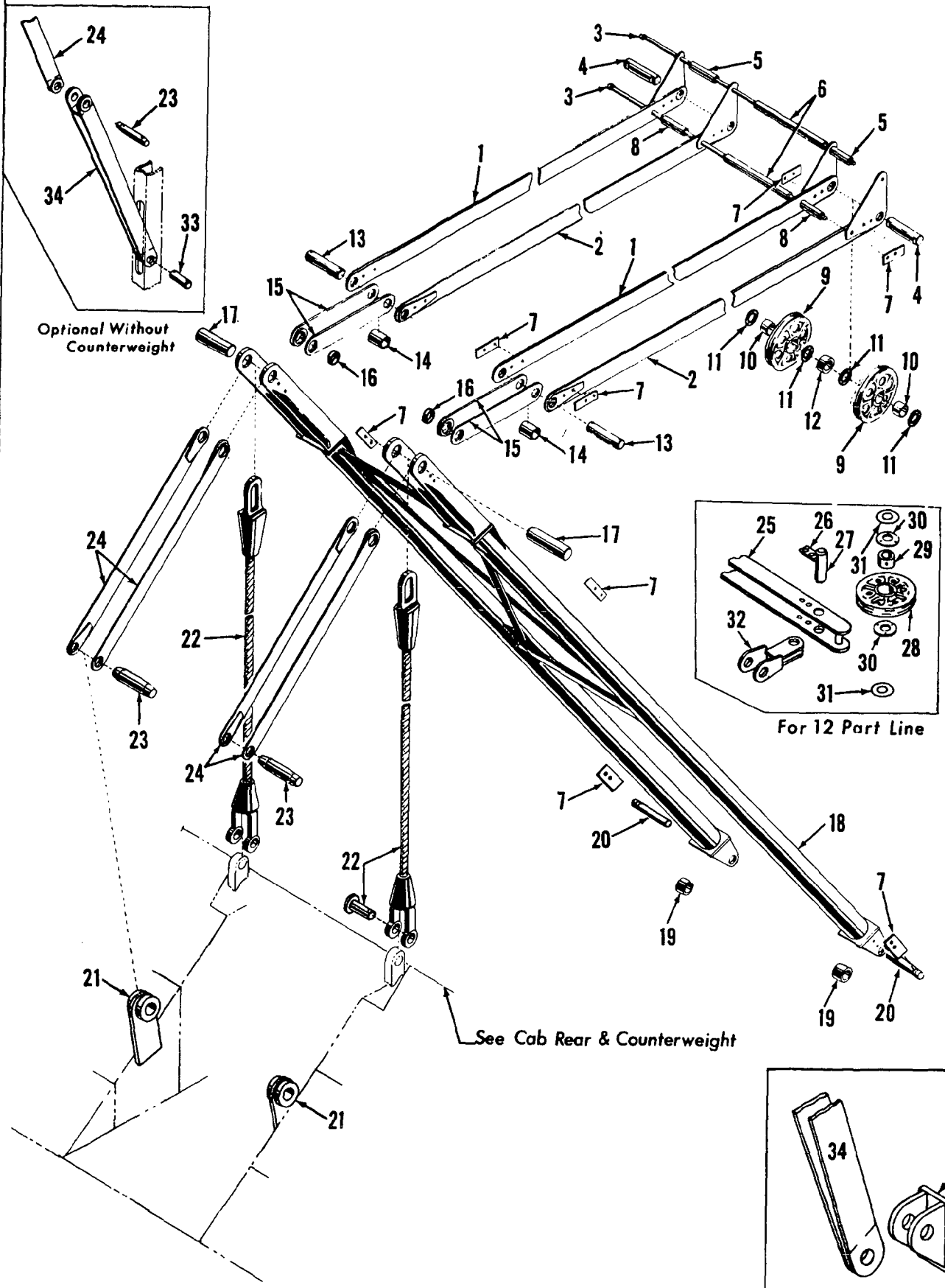


MANITOWOC ENGINEERING CO.

A Division of The Manitowoc Company, Inc.

Manitowoc, Wisconsin

MASTER



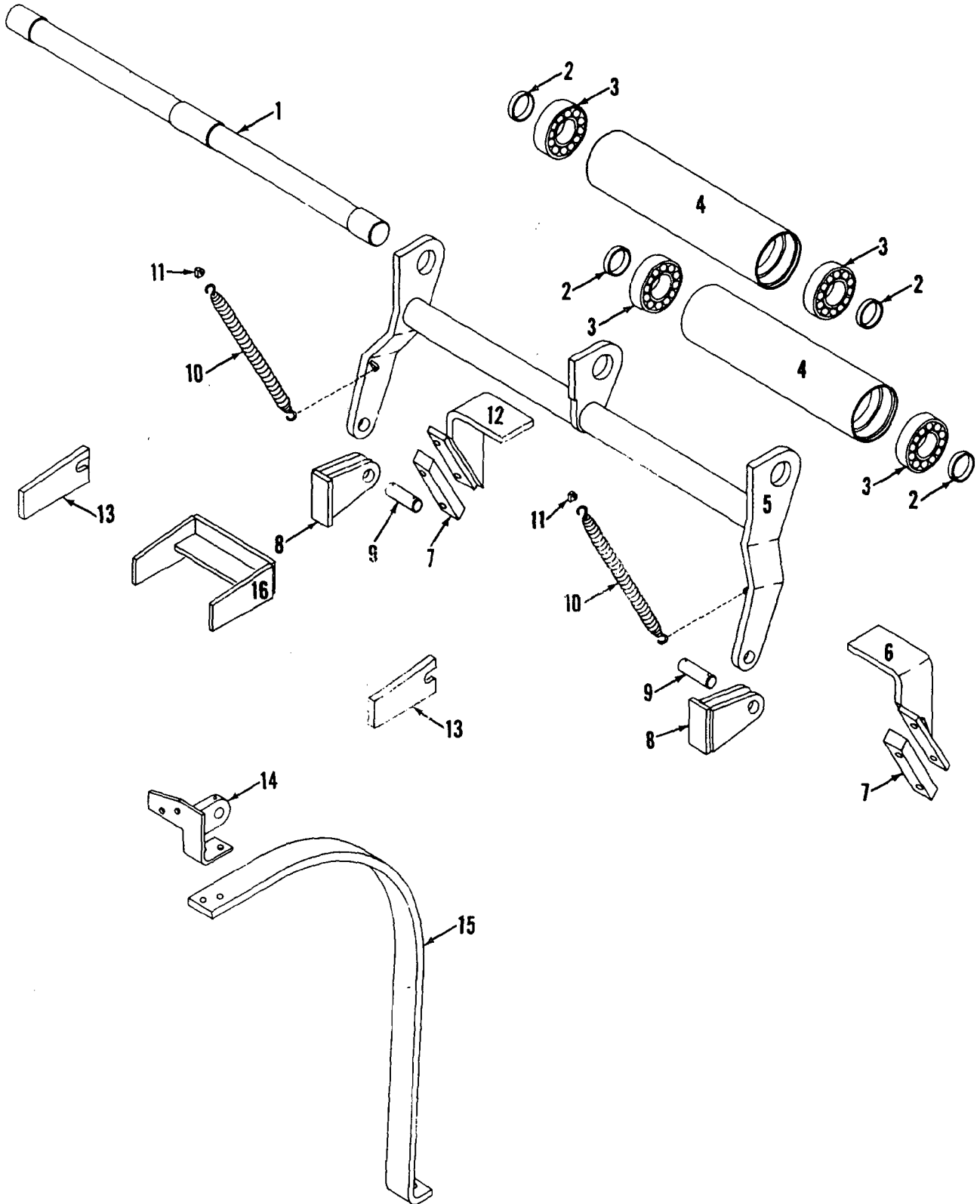
GANTRY & BACK HITCH

MATERIAL LIST ON BACK

42533C1

42533C1

MASTER



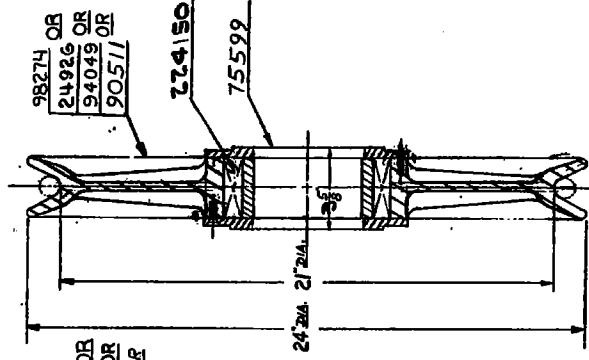
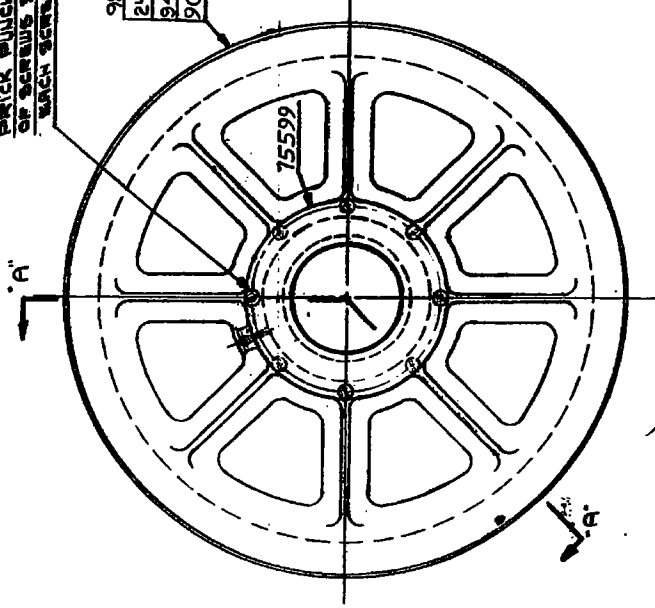
4293881

4293881

01506

APPROVED FOR
90572
90573
180617
98258

PRICK PUNCH HEADS
OF SCREWS IN PLATES
EACH BEARING



SEC. A-A

NO.	QTY.	DESCRIPTION	UNIT
1	1	RETAINING PLATE	
A	1	SHEAVE - FOR 1 1/2" WIRE ROPE	
B	1	SHEAVE - FOR 1 1/4" WIRE ROPE	
C	1	SHEAVE - FOR 1" WIRE ROPE	
	1	BEARING	
	1	SHEAVE - FOR 1 1/8" WIRE ROPE	

MANITOWOC ENGINEERING CO.
SHEAVE ASSEM.
ROLLER BEARING

DATE: 7-29-64
BY: J.H.S.
CHECKED: J.H.S.

PATTERN NO. 90570
CODE NO.
MATERIAL

REVISED DATE: 3-22-74 K.R.W.
ADDED: 11-26-79 CRP
ADDED: 8-15-80 J.N
ADDED

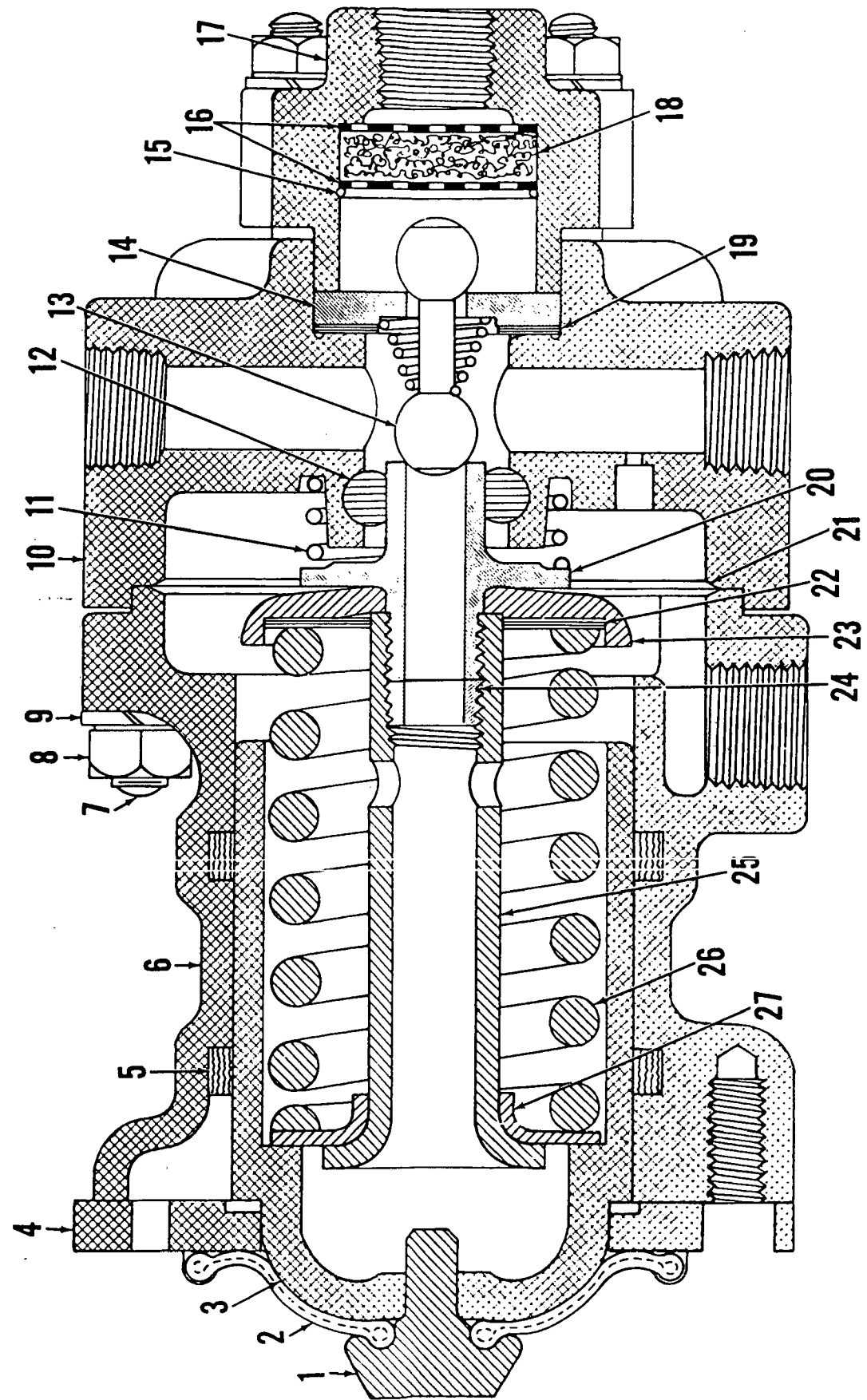
01506

DO NOT SCALE THIS DRAWING

APPROVED FOR
A B C

NUMBER

0116A1



MATERIAL LIST ON BACK

AIR VALVE ASSEMBLY

MANITOWOC ENGINEERING CO.

Division of The Manitowoc Company, Inc.

Manitowoc, Wisconsin 54220



TUBING (soft copper)

Code No.	Tube O.D.
696205	3/16
696210	1/4
696214	5/16
696216	3/8
696218	1/2
696219	5/8
696220	3/4



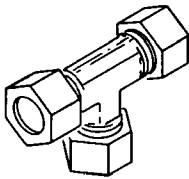
NUT

Code No.	Tube O.D.
424603	3/8
424604	1/2
424605	3/4
424633	5/16
424634	1/4
424635	3/16



FERRULE

Code No.	Tube O.D.
424600	1/4
424601	3/4
424602	3/8
424616	5/16
424617	1/2
424618	1/8
424619	3/16



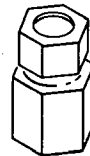
UNION TEE

Code No.	Tube O.D.
429315	1/4
429316	3/8
429317	5/16



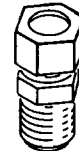
UNION

Code No.	Tube O.D.
429349	3/8
429361	1/4
429362	1/2
429397	5/16



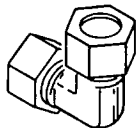
FEMALE CONNECTOR

Code No.	Tube O.D.	Pipe Thread
429312	3/16	1/8
429407	1/4	1/8
429830	1/4	1/4



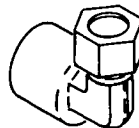
MALE CONNECTOR

Code No.	Tube O.D.	Pipe Thread
429324	3/4	3/4
429328	3/8	1/2
429351	5/16	1/8
429358	1/2	3/4
429359	1/2	3/8
429363	1/4	1/8
429364	1/4	1/4
429365	3/16	1/8
429366	3/8	1/8
429367	3/8	1/4
429368	3/8	3/8



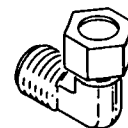
UNION ELBOW

Code No.	Tube O.D.
429372	3/8
429378	1/2
429381	1/4



FEMALE ELBOW

Code No.	Tube O.D.	Pipe Thread
429066	1/4	1/8
429825	1/4	1/4



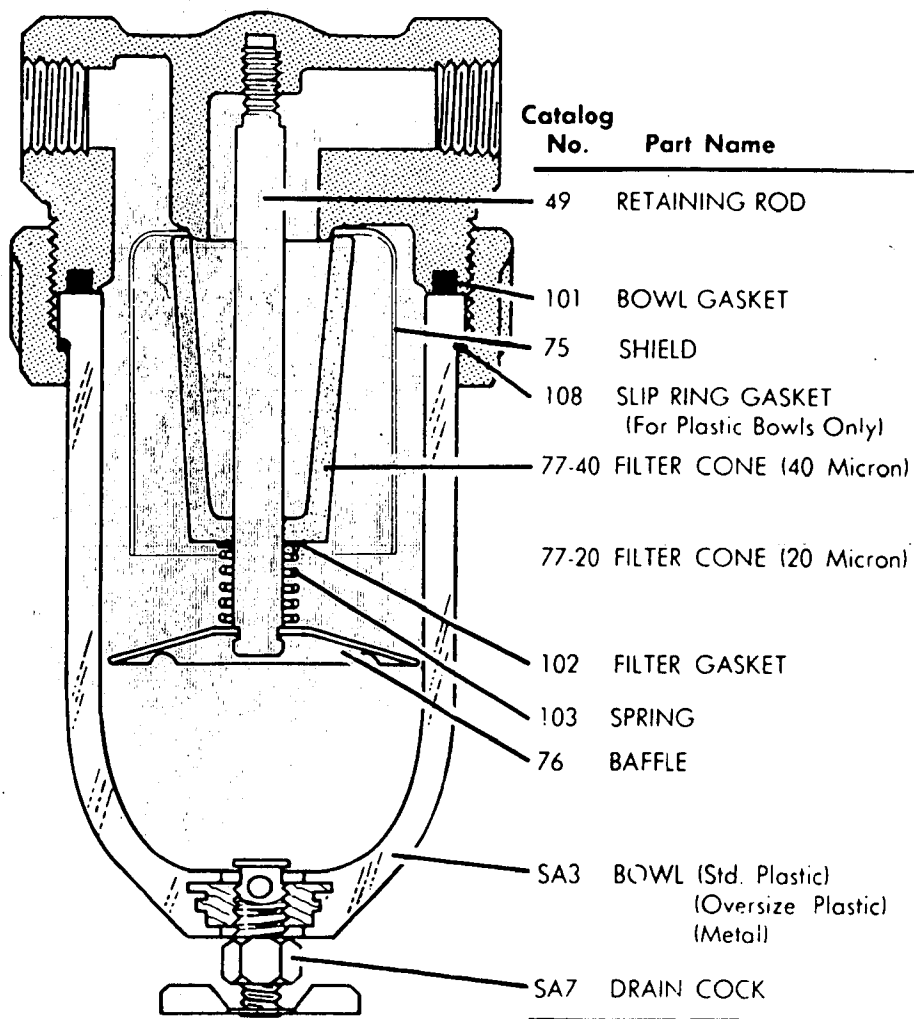
MALE ELBOW

Code No.	Tube O.D.	Pipe Thread
429371	1/2	1/2
429373	3/8	1/8
429374	1/4	1/4
429375	3/8	1/4
429376	1/2	3/8
429380	1/4	1/8
429384	3/8	1/2
429385	5/16	1/8
429386	3/16	1/8
429401	1/2	3/4
429422	3/8	3/8
429453	3/4	3/4

REPLACEMENT PARTS

Watts Air Line Filter Series 602 & 603

IMPORTANT: When ordering parts, be sure to give pipe size of filter; catalog number and name of part; type, model and serial number found on body casting.



INDUSTRIAL DIVISION

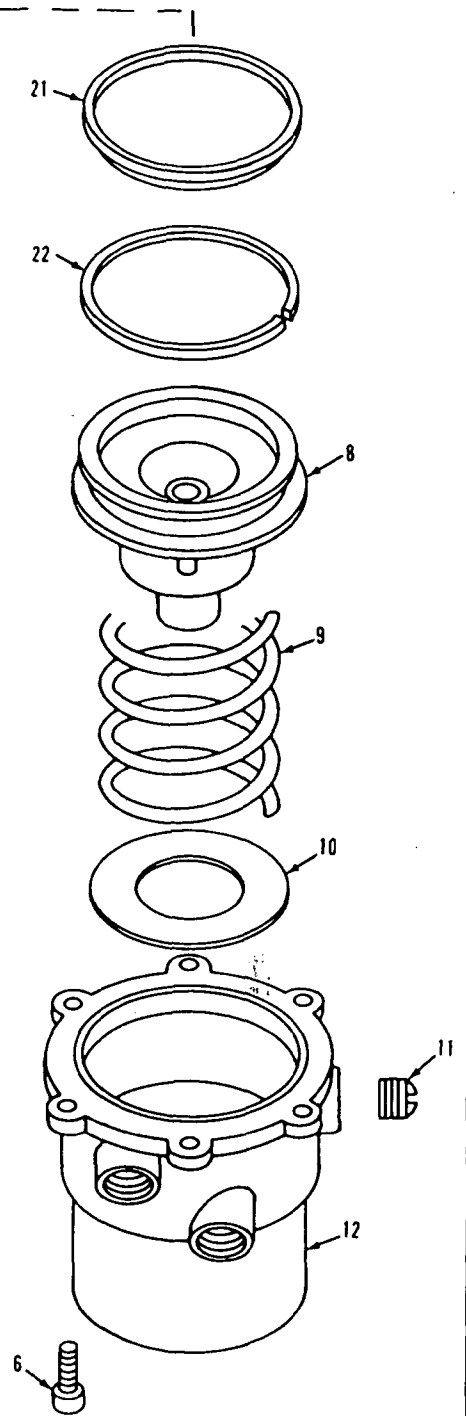
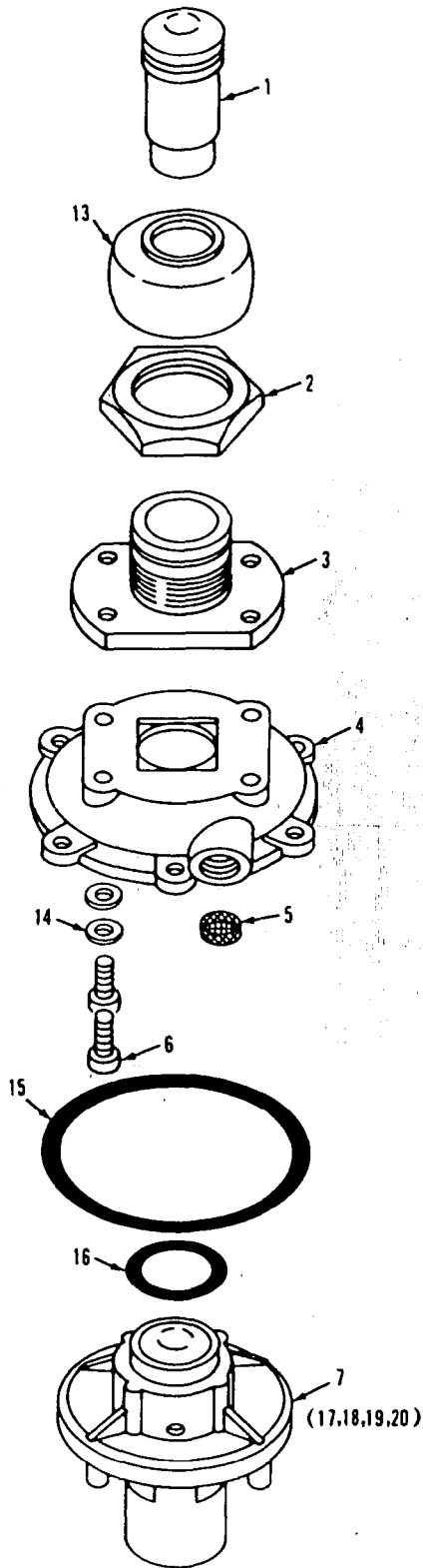
WATTS REGULATOR COMPANY

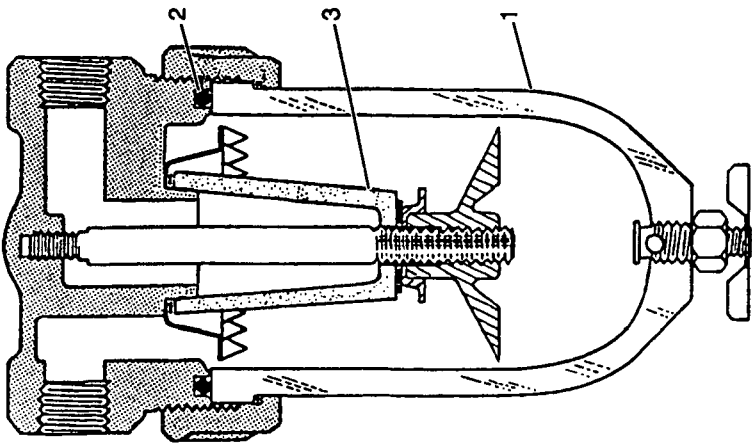
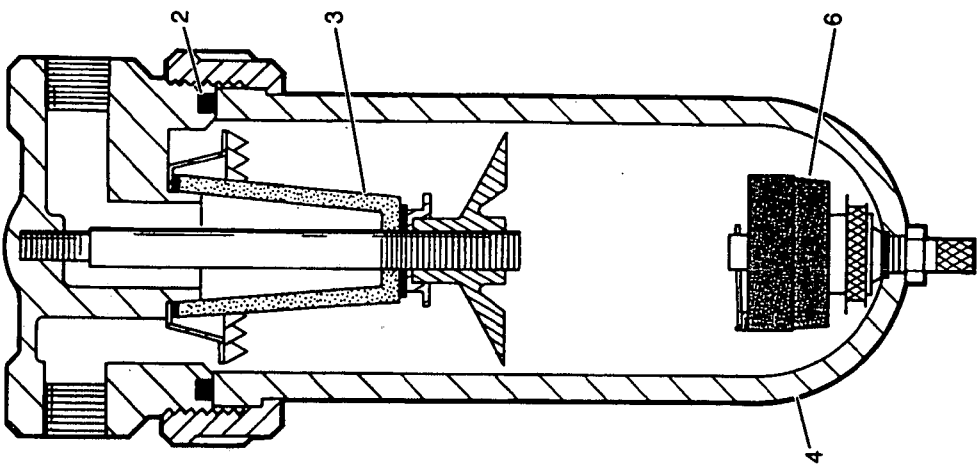
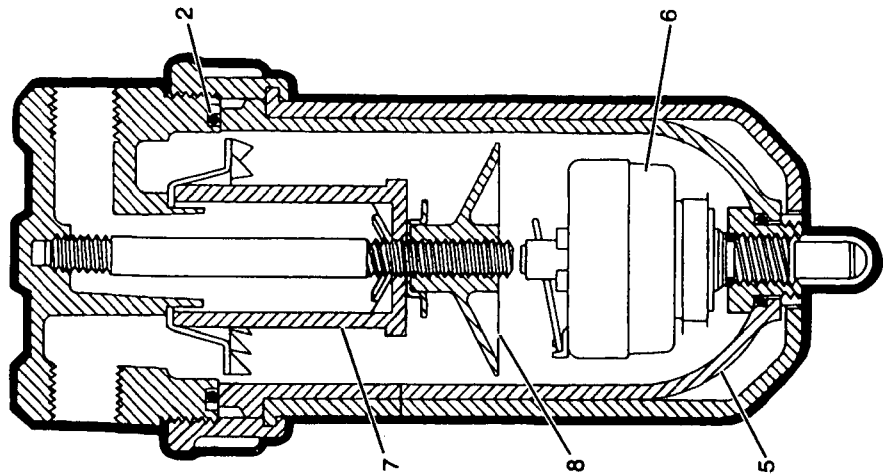
Lawrence, Massachusetts

0-176

211-1

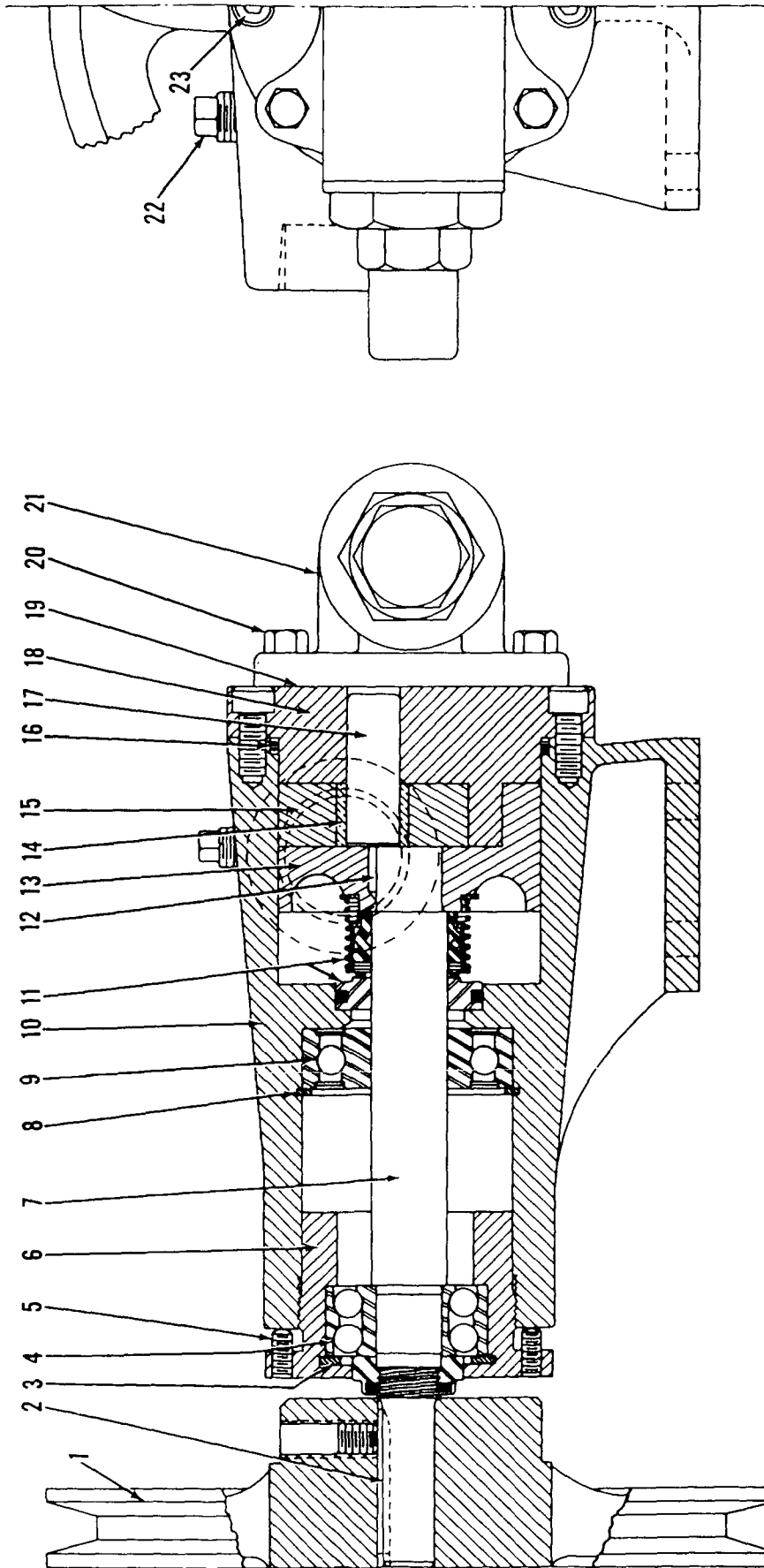
MASTER





ASSEMBLY O-289	REVISION C
--------------------------	----------------------

MASTER



4305187

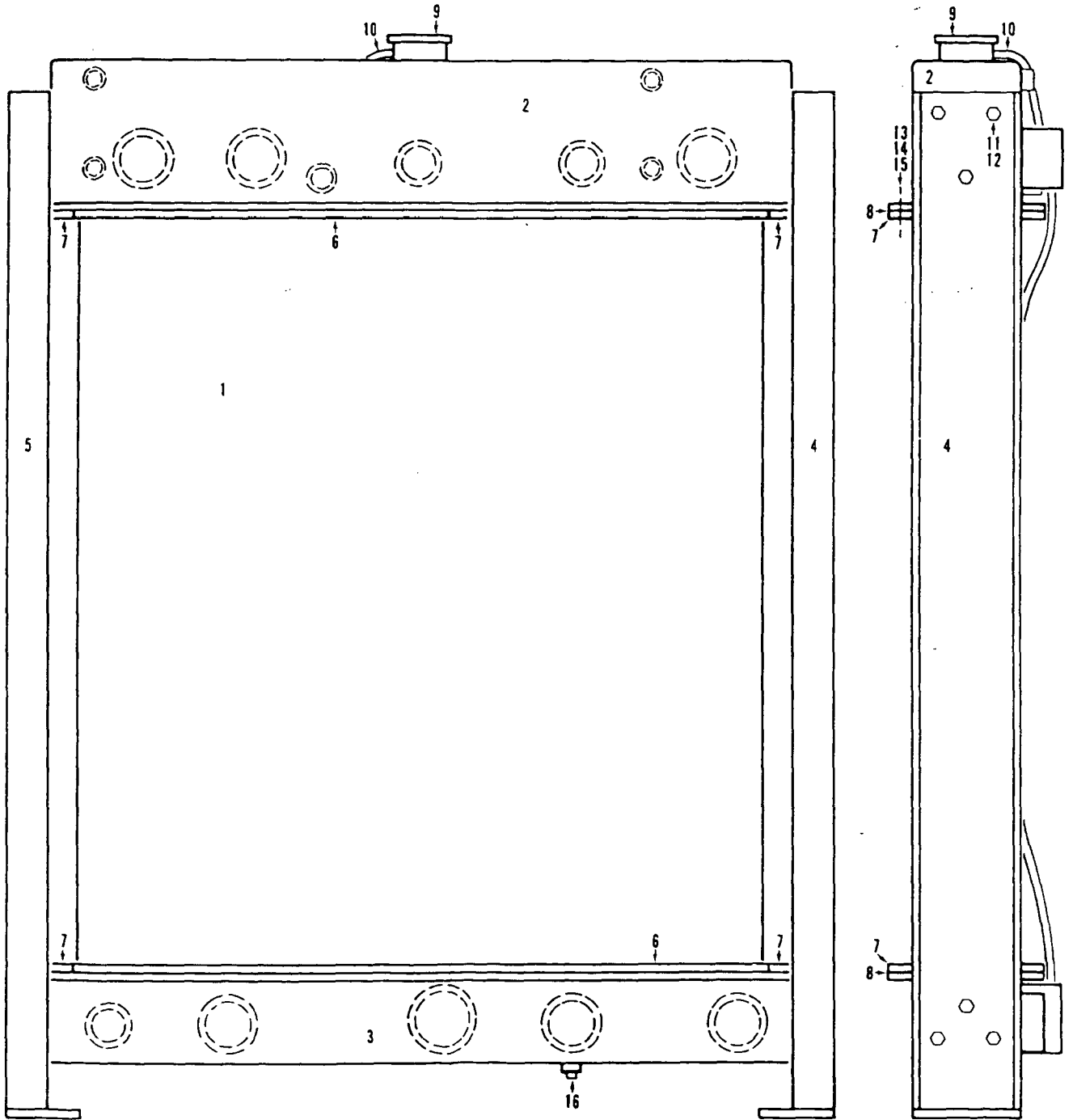
MATERIAL LIST ON BACK

OIL PUMP

MANITOWOC ENGINEERING CO.

A Division of The Manitowoc Company, Inc.

Manitowoc, Wisconsin



0-45181

MATERIAL LIST ON BACK

RADIATOR

0-69 - 1 Cont.	REV. C.	MODEL 2300-4600 Incl.
----------------	---------	-----------------------

AIR CONTROL VALVE
 (MANITOWOC #714493 - WESTINGHOUSE #P59331 NEW : P54424-0101 OLD) (2-HA-1)
 (MANITOWOC #714418 - WESTINGHOUSE #P59333 NEW : P54424-0301 OLD) (2-HA-LR)

REF. NO.	PART NUMBER	QUANTITY REQUIRED	DESCRIPTION OF PART	VENDORS PART NO.
13		1	CAM	P54192
14		1	FOLLOWER, Cam	P54197
15		2	SCREW, Truss Head	P49861-3
16		2	LOCKWASHER	506608
17		1	FLANGE, Valve Retaining	P54463
18	714504	1	RING, "0" (15/16" O.D.)*	P49708-16
19		1	GUIDE, Plunger	P54147
20	714506	1	RING, "0" (7/16" O.D.)*	P49708-11
21		1	PLUNGER, Valve	P54146
22	714525	1	SPRING, Exhaust Valve*	P54144
23		1	SEAT, Inlet Valve*	P54145
24	714441	1	RING, "0" (7/8" O.D.)*	P49708-115
25		1	WASHER	P53455-3
26	714442	1	VALVE, Inlet*	P5125
27	714526	1	SPRING, Inlet Valve	539115
28		1	SPACER, Valve	P54794
29		1	SCREEN	P54194
30		1	BODY	P54305
31		2	WASHER	506607
32		2	SCREW, Fillet Head	P49835

*Recommended to be stocked at all times.

NOTE: Part numbers at right are Westinghouse. Please so specify if ordering.
 Valve changed approx. July 1969. Check nameplate for identification of valve.

REV. C	0 - 69 -1
--------	-----------

PLEASE GIVE MACHINE S/N W/ORDER

Run as front

MASTER

0-69 Cont.

CLICK HERE TO **DOWNLOAD** THE COMPLETE MANUAL

- Thank you very much for reading the preview of the manual.
- You can download the complete manual from: www.heydownloads.com by clicking the link below



- Please note: If there is no response to CLICKING the link, please download this PDF first and then click on it.

CLICK HERE TO **DOWNLOAD** THE COMPLETE MANUAL