

Manitowoc

TRADITIONAL CRANE PARTS MANUAL

This manual has been prepared for and is considered part of

3900

Model

39559

Serial Number

GROUP A = Rotating Structure (Includes rotating bed, operator's cab, cases, fuel tanks, transfer pump, counterweights, guards, platforms, catwalks, machinery enclosure, horn)

GROUP B = Upperworks Machinery (Includes front, rear, and auxiliary drums, boom hoist, swing and drive shafts, hand levers, foot pedals, control linkage, rotation indicators, upperworks hydraulic components, hydraulic piping, hydraulic oil reservoir, lubrication pump and piping, blowers)

GROUP C = Air Components & Electrical (Includes control console, air piping, electric wiring, auxiliary light plant and lighting, TV monitoring, compressor and air tank)

GROUP D = Power Components - Upperworks (Includes engine or motor, radiator, auxiliary power plant, take off converters and piping, controls, VICON power lowering, torque limiter, hydraulic pumps and piping, fuel piping, battery box)

GROUP E = Lower Structure & Control (Includes carbody, crawlers, travel shafts and control, steering travel locks, hydraulic travel, travel power outriggers, carrier, pedestal, lowerworks hydraulic piping, RINGER components, barge mounting and machinery, spud drums)

GROUP F = Attachments (Includes booms, jibs, masts, tower, wire rope guides, equalizer, gantry, fairlead, timber guards, boom angle indicator, block-up limit, tag line, hook block, weight ball, upper and lower boom point, wind speed indicator, crowd and retract dipper sticks, dippers,)

O-NUMBER SECTION = (Includes lacing drawings and purchased component parts drawings referenced in sections A through F)

This manual is arranged in sections as listed above. Sections A through F are arranged by group numerical order with an index after each section tab. An alphabetical index for groups A Through F combined is located after the O-number Section. The O-number section is arranged in numerical order by O-number. Following this cover page are the Basic Specifications, Warranty Information, Tool List (if applicable) Outline Dimensions, Weights, and Dealer Listing.

CLICK HERE TO **DOWNLOAD** THE COMPLETE MANUAL

- Thank you very much for reading the preview of the manual.
- You can download the complete manual from: www.heydownloads.com by clicking the link below



- Please note: If there is no response to CLICKING the link, please download this PDF first and then click on it.

CLICK HERE TO **DOWNLOAD** THE COMPLETE MANUAL

Corrosion and Abrasion

Refer to Figure 3.

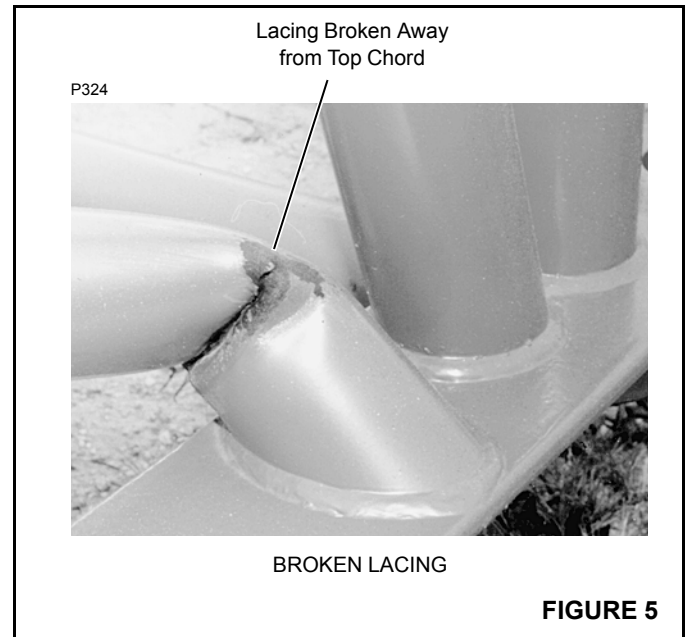
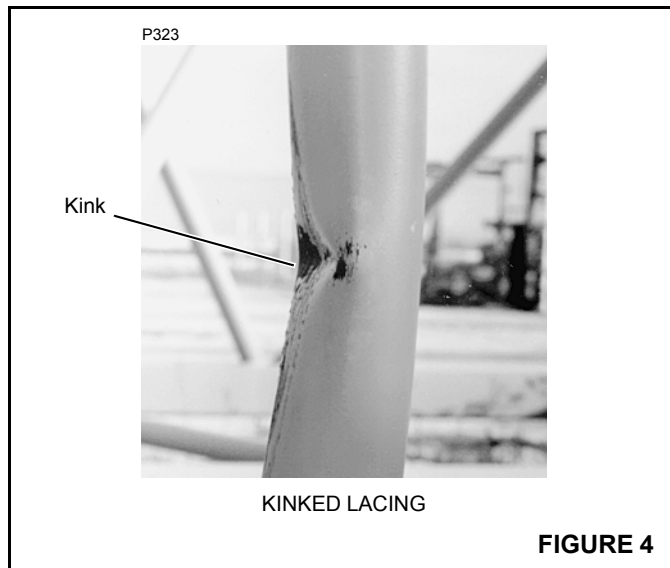
Corrosion and abrasion must not be deeper than 10 percent of the wall thickness, the angle thickness, or the plate thickness.

Kinks

Refer to Figure 4.

Kinked lacings must be replaced; *do not bend kinked lacings back into alignment.*

If any chord or platework is kinked, contact Manitowoc Crane Care for approved repair instructions. *Do not bend kinked chords or platework back into alignment.*



Cracks and Breaks

Refer to Figure 5.

Cracked and broken lacings must be replaced; *do not attempt to repair cracked or broken lacings.*

If any chord or platework is cracked or broken, contact Manitowoc Crane Care for approved repair instructions. *Do not attempt to repair cracked or broken chords or platework.*

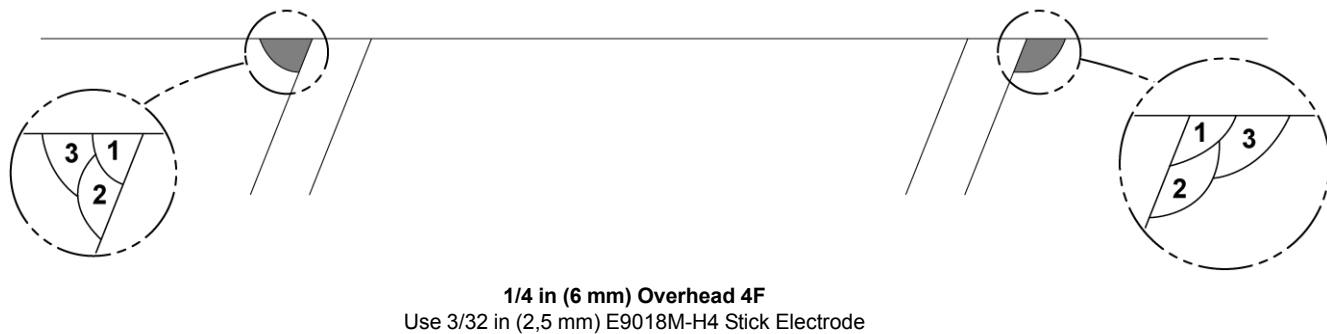
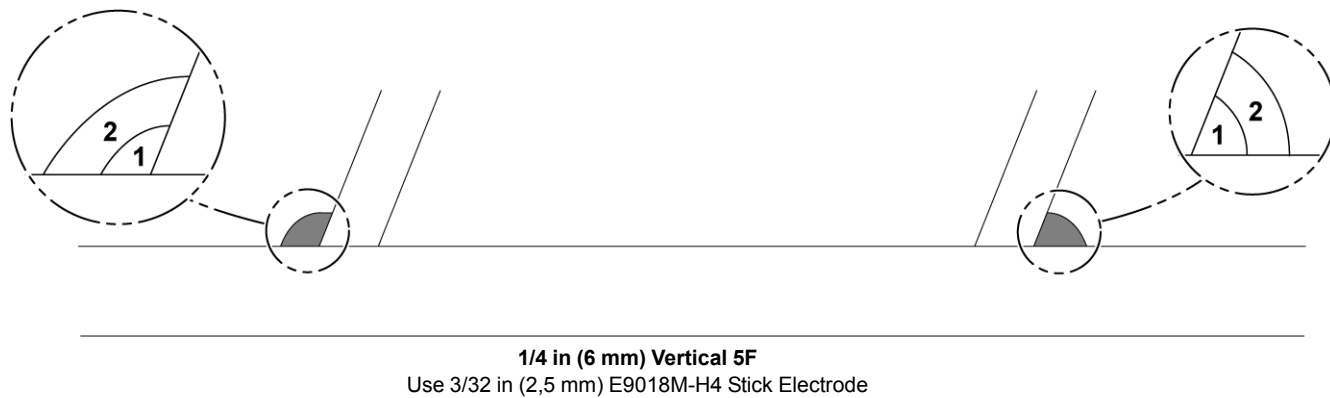
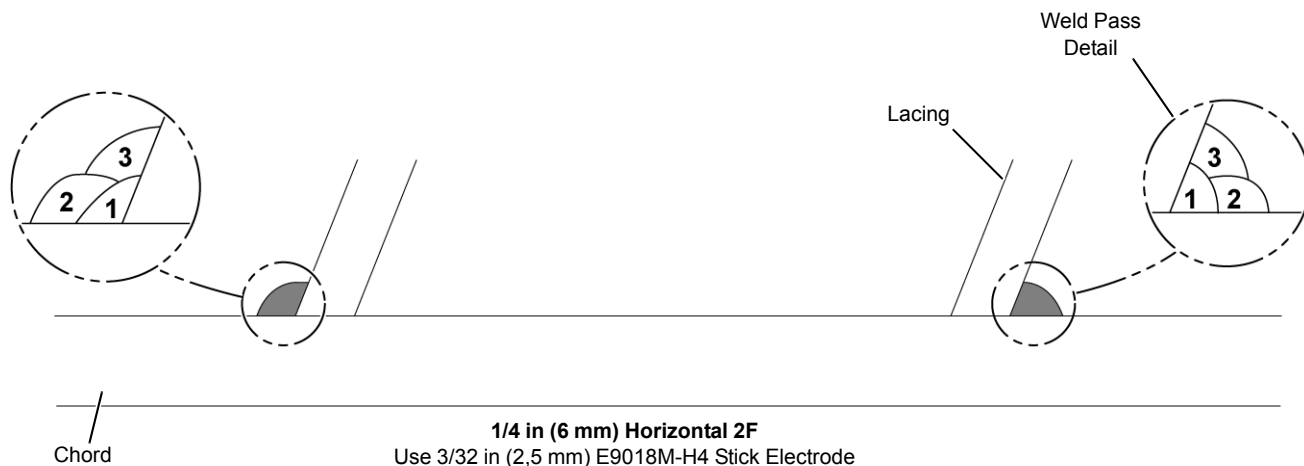


FIGURE 16

adjustments instructions

MANITOWOC ENGINEERING CO.

A Division of The Manitowoc Company, Inc.

Manitowoc, Wisconsin

WEIGHTS

MODEL 3900

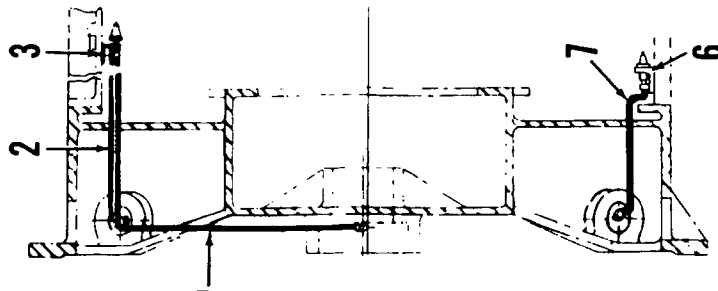
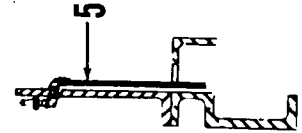
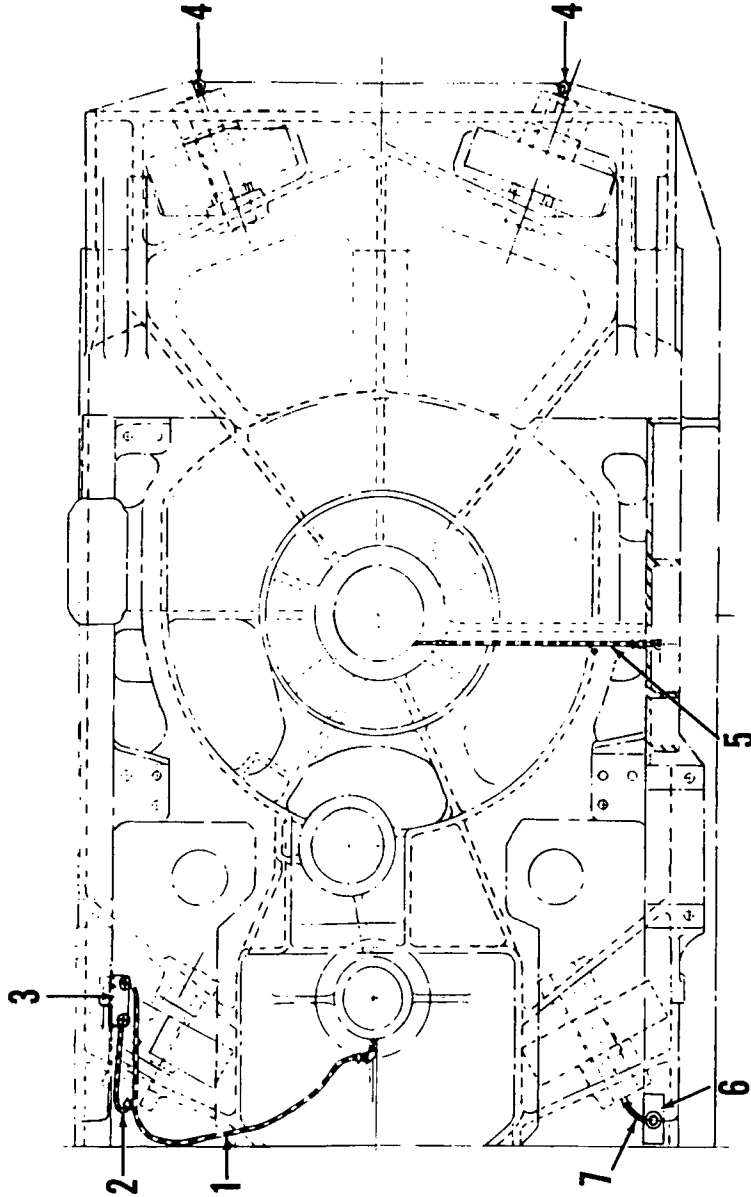
100 TON CAPACITY

Description	Approx. Weight	
LIFTCRANE - ("A" machine) w/38" Treads, outside crawler chains, counterweight, 170' No. 6 boom, gantry & back hitch, block and standard boom hoist	213,375 Lbs.	
LIFTCRANE - ("B" machine) w/48" Treads, counterweight, 170' No. 6 boom, gantry & back hitch, block and standard boom hoist	235,833 Lbs.	
UPPER WORKS - ("A" machine) w/any engine, standard boom hoist. Less boom, gantry & back hitch and block	53,750 Lbs.	
UPPER WORKS - ("B" machine) w/any engine, standard boom hoist. Less boom, gantry & back hitch and block	56,950 Lbs.	
CARBODY with Roller Path, Ring Gear & King Pin, less Crawlers	30,720 Lbs.	
CRAWLERS, 20' 4" w/48" treads (Double weight for two)	23,620 Lbs.	
CRAWLERS, 20' 4" w/38" treads (Double weight for two)	19,317 Lbs.	
NOTE: Outside Crawler Chain - ADD to each Crawler	1,500 Lbs.	
SELF-REMOVING COUNTERWEIGHT (3 piece)		
Inner	28,810 or 32,000 Lbs.	
Middle	22,550 or 26,500 Lbs.	
Outer	11,970 or 15,500 Lbs.	
BOOM NO. 6 - 100 Ton		
Boom Butt	3,700 Lbs.	
Boom Top (Equipped)	5,310 Lbs.	
Boom Insert - 10 Feet	892 Lbs.	
Boom Insert - 20 Feet	1,815 Lbs.	
Boom Insert - 30 Feet	2,548 Lbs.	
BOOM NO. 8 - 100 Ton		
Boom Butt	3,260 Lbs.	
Boom Top (Equipped)	4,930 Lbs.	
Boom Insert - 10 Feet	840 Lbs.	
Boom Insert - 20 Feet	1,750 Lbs.	
Boom Insert - 30 Feet	2,224 Lbs.	
GANTRY AND BACK HITCH STRAPS		3,840 Lbs.
TAGLINE - Model 1248 Plus		754 Lbs.
JIB - 30' w/strut, less cable	1,570 Lbs.	
JIB - 50' Light Sectional w/strut, less cable	1,925 Lbs.	
JIB - 50' Tubular Sectional w/strut, less cable	1,920 Lbs.	
JIB - 40' Heavy Sectional w/strut, less cable	2,950 Lbs.	
INSERT, Jib - Light Sectional - 10 Feet Incl. Pendant & Hardware	210 Lbs.	
INSERT, Jib - Tubular Sectional - 10 Feet Incl. Pendant & Hardware	265 Lbs.	
INSERT, Jib - Heavy Sectional - 10 Feet Incl. Pendant & Hardware	425 Lbs.	
BLOCK ASSEMBLY - 100 Ton	1,455 Lbs.	
DRAGLINE FAIRLEAD w/Guide Rollers, Strut and Dirt Pan	1,850 Lbs.	
DRAGLINE FAIRLEAD w/ Cheek Plates, Strut and Dirt Pan	1,800 Lbs.	
IND. BOOM HOIST in place of Standard - ADD	1,950 Lbs.	
IND. SWING AND SWING LOCK - ADD	1,947 Lbs.	

CRAWLERS

10-0

MASTER



30375-A-1

MATERIAL LIST ON BACK

ROTATING BED PIPING

32998-1 Cont.	REV. P	MODEL 3600-3900
---------------	--------	-----------------

CAB

REF. NO.	PART NUMBER	QUANTITY REQUIRED	DESCRIPTION OF PART	VENDORS PART NO.
45	207247	1	STOP, Door	
46	41766-2	1	SHEET, Rear	
47	632656	1	GUIDE, Door	
49	632651	1	SHEET, Center	
50	180112	1	CABINET, Tool W/padlock	
51	632654	1	SHEET, Upper Rear	
53	632655	1	SHEET, Lower Rear	
48	16031	1	AWNING, Door W/stove bolts, hex nuts and lockwashers	
52	30152	1	SHUTTER, Radiator W/capscrews, hex nuts, lockwashers, mach. screws and cut washers	
	484352	1	HOOK	
	334034	1	CHAIN, Jack (Specify length)	
	31707-6	1	PANEL, Right Inside (Complete) W/mach. screws, capscrews, stove bolts, hex nuts and lockwashers	
59	31707-2	1	SHEET, Rear	
58		1	DOOR, W/hinges	
60	632822	1	SHEET, Upper	
63	632691	1	SHEET, Upper Front	
64	632824	1	SHEET, Center Front W/door button	
65	207328	1	SUPPORT, Angle	
66	632825	1	SHEET, Lower Front	
	32390-6	1	PANEL, Right Inside (Complete) W/mach. screws, capscrews, stove bolts, hex nuts and lockwashers (Mach. W/welded rotating bed)	
59	32390-2	1	SHEET, Rear	
58		1	DOOR, W/hinges	
60	632822	1	SHEET, Upper	
63	632823	1	SHEET, Upper Front	
64	632738	1	SHEET, Center Front	
66	632739	1	SHEET, Lower Front	
61	17833	1	GLASS, Window	
25	605101	1	CHANNEL, Rubber (Specify 8'6" - 2.590 m)	
	31708-6		PANEL, Left Inside (Complete) W/mach. screws, capscrews, hex nuts and lockwashers	
22	207329	1	SUPPORT, Angle	
67	632826	1	SHEET, Lower Front	
68	31708-2	1	SHEET, Upper Front	
69	632657	1	SHEET, Rear	
<u>CLOSING SHEETS M3600 ONLY</u>				
9	70874	1	SHEET, Left Rear W/stove bolts, hex nuts and lockwashers	
20	23675	1	SHEET, Left Front W/stove bolts, hex nuts and lockwashers	
33	70875	1	SHEET, Right Front W/stove bolts, hex nuts and lockwashers	
44	23674	1	SHEET, Right Rear W/stove bolts, hex nuts and lockwashers	
54	70876	1	BAR, Filler	
<u>MACH. W/FRONT AUX. DRUM AND WINCHHEAD (REPLACES 184147)</u>				
	24032-6	1	DOOR, Left Front W/hinges and rivets	
18	395058	1	DOOR, Upper	
19	24032-2	1	DOOR, Lower	

REV. P	32998-1 Cont.
--------	---------------

PLEASE GIVE MACHINE S/N W/ORDER

Run as Front

MASTER

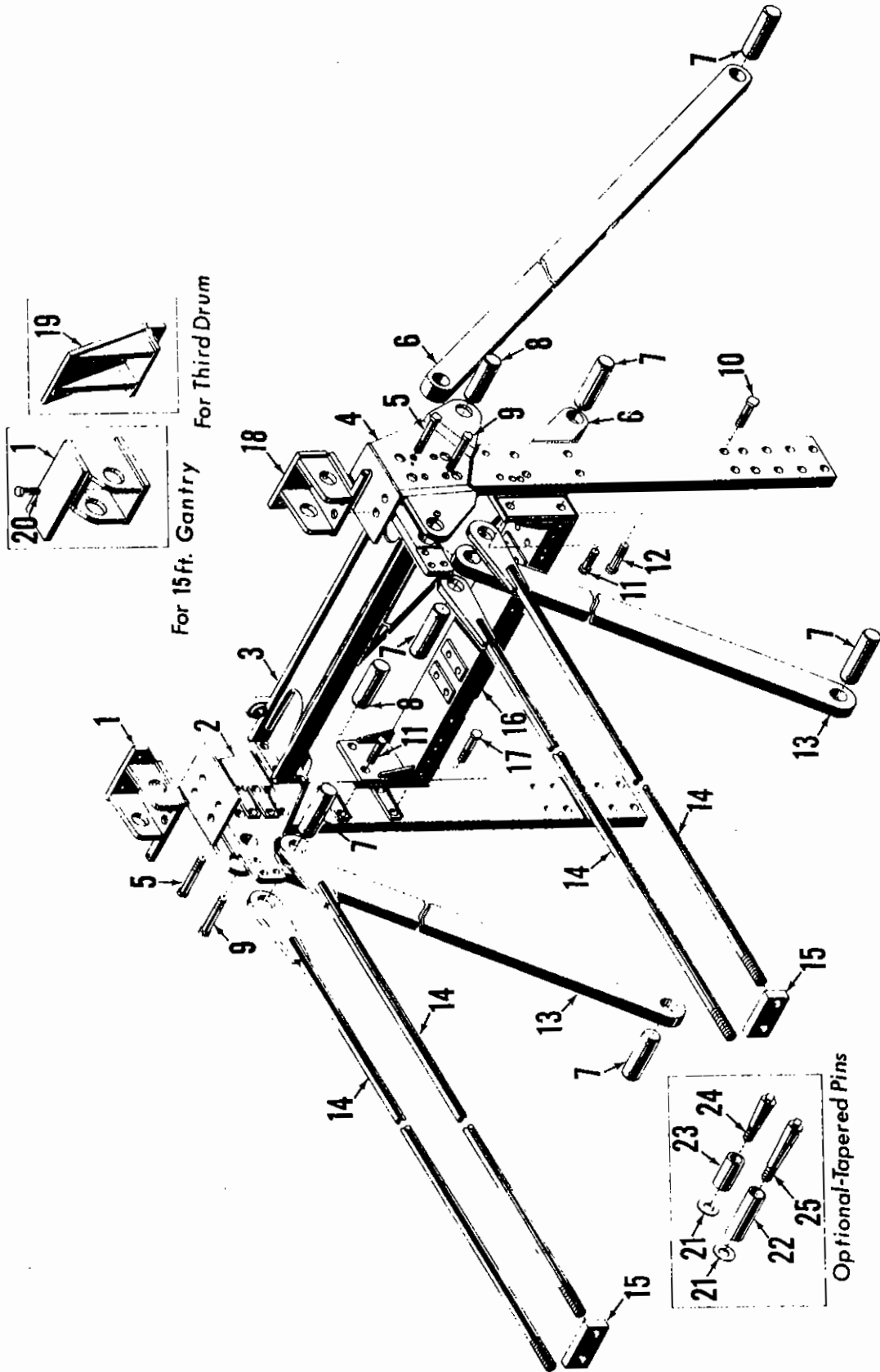
P.1 Cont'd. -1

MANITOWOC ENGINEERING CO.

A Division of The Manitowoc Company, Inc

Manitowoc, Wisconsin

MASTER



ILLUST. No. 42060-A-1

MATERIAL LIST ON BACK

'A' FRAME ASSEMBLY

42060-A-1

42627-1 Cont.	REV. E	MODEL 3900A-3900 WAGON
---------------	--------	------------------------

ROTATING BED

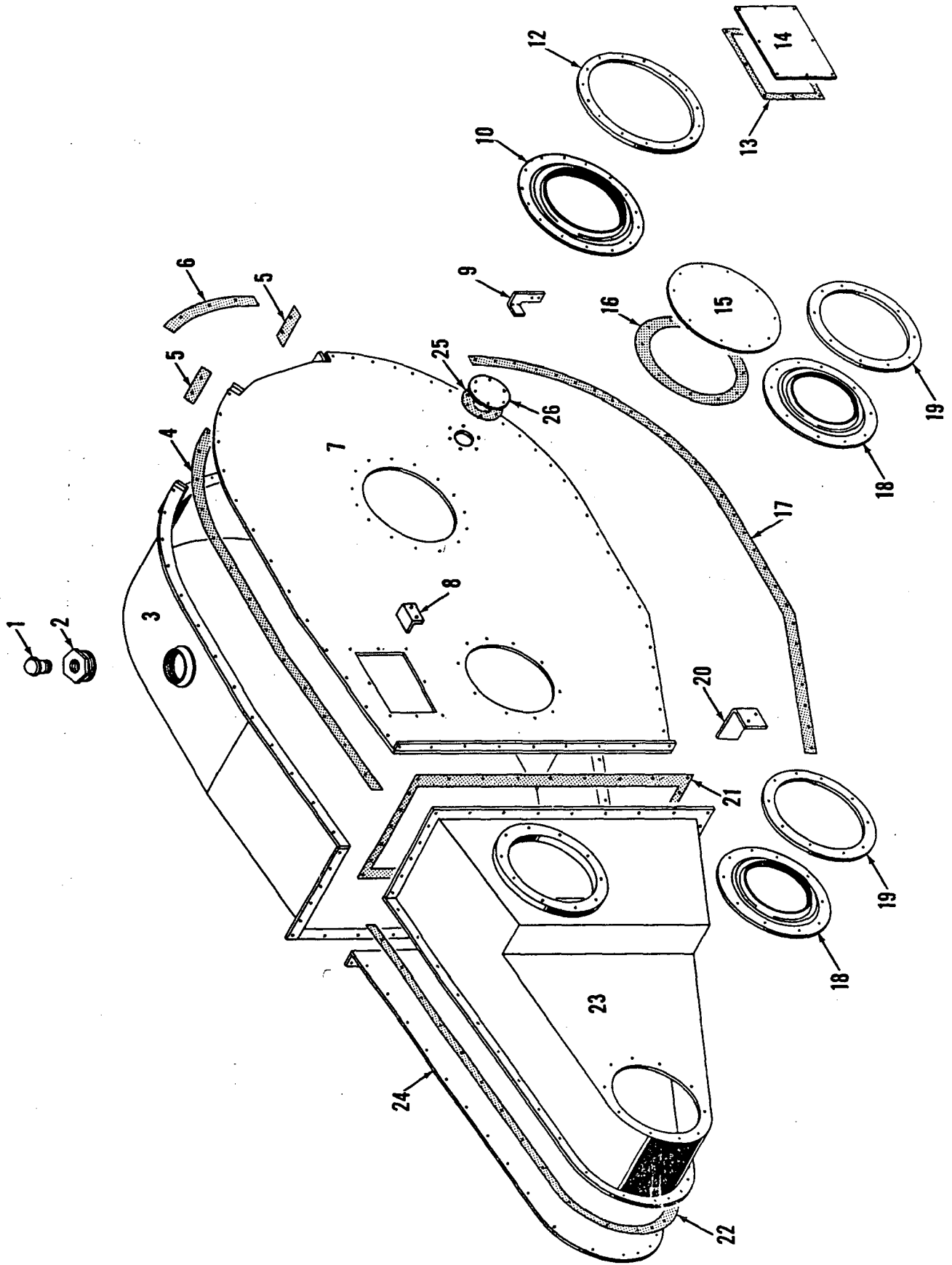
REF. NO.	PART NUMBER	QUANTITY REQUIRED	DESCRIPTION OF PART	VENDORS PART NO.
32	41923	1	HOUSING W/lockwashers, capscrews, hex nuts, gr. fitting, copper tubing and pipe coupling (Ind. Boom Hoist)	
15	17575	2	DOWEL	
33	10448	1	STICK, Dip	
34	12275	2	PIN W/cotter pin	
35	12277	2	SHAFT, Rear House Roller (W/20471-4 roller)	
35	77483	2	SHAFT, Rear House Roller (W/20471-9 roller and all barge mounts W/double hook rollers)	
36	20661	1	HANGER, Rear Left W/hex nuts and lockwashers (Single hook rollers)	
46	612737	4	CAPSCREW	
36	20660	1	HANGER, Rear Right W/hex nuts and lockwashers (Single hook rollers)	
46	612737	4	CAPSCREW	
36	31866	1	HANGER, Left Rear W/gr. fitting, hex nuts and lockwashers (Double hook rollers - Crawler mount)	
46	612737	4	CAPSCREW	
36	33684	1	HANGER, Left Rear W/gr. fitting, hex nuts and lockwashers (Barge mount W/double hook rollers)	
46	612731	4	CAPSCREW	
36	31865	1	HANGER, Right Rear W/gr. fitting, hex nuts and lockwashers (Double hook rollers - crawler mount)	
46	612737	4	CAPSCREW	
36	33683	1	HANGER, Right Rear W/gr. fitting, hex nuts and lockwashers (Barge Mount W/double hook rollers)	
46	612731	4	CAPSCREW	
37	10008	2	WASHER, Bronze	
39	20471-4	2	ROLLER, Rear House	
38	10007	4	BUSHING, Bronze	
39	20471-9	2	ROLLER, Rear House (Optional)	
38	75042	4	BUSHING, Aluminum Bronze	
40	12278	2	SPACER	
41	11906-4	4-6-8	ROLLER, Hook	
42	11907	4-6-8	BUSHING, Bronze	
41	11906-9	4-6-8	ROLLER, Hook (Optional)	
42	70932	4-6-8	BUSHING, Aluminum Bronze	
43	10095	4-6-8	WASHER, Bronze	
44	11904	4-6-8	SHAFT, Hook Roller W/gr. fitting (W/11906-4 roller)	
44	77735	4-6-8	SHAFT, Hook Roller W/gr. fitting (W/11906-9 roller)	
45	11905	4-6-8	PLATE, Lock W/capscrews, hex nuts and lockwashers	
47	11959	1	RETAINER, Oil Seal W/capscrews and lockwashers	
48	622508	1	SEAL, Oil	
49	10017	1	BUSHING W/mach. screw dowel	
51	24088-4	2	ROLLER, Front House	
50	71625	4	BUSHING, Bronze	
51	24088-9	2	ROLLER, Front House (Optional)	
50	77733	4	BUSHING, Aluminum Bronze	
52	71627	2	WASHER, Bronze	
53	71626	2	SHAFT, Front House Roller (W/24088-4 roller)	
54	405	2	PIN W/cotter pins	
53	77734	2	SHAFT, Front House Roller (W/24088-9 roller)	

REV. E	42627-1Cont.
--------	--------------

PLEASE GIVE MACHINE S/N W/ORDER

Run as Front

5213 VTY



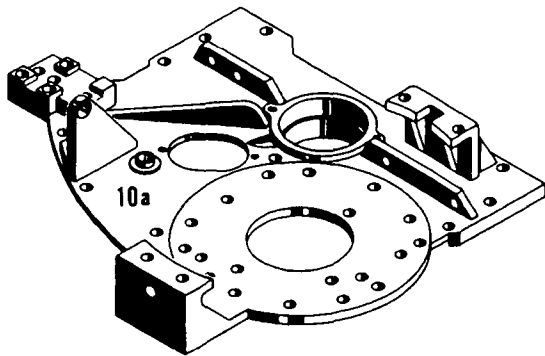
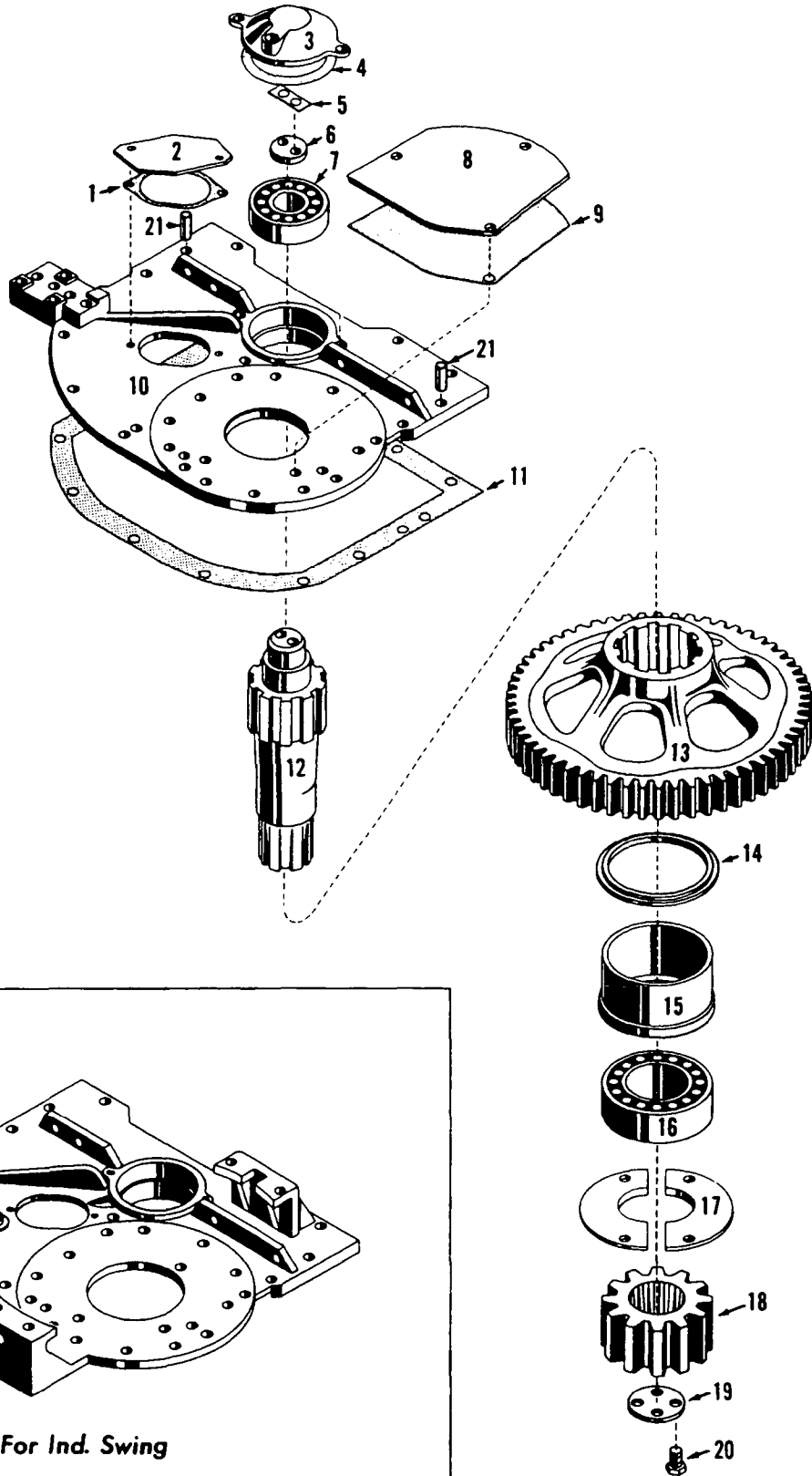
MASTER

42906 A 1

MATERIAL LIST ON BACK

CHAIN CASE

12906 A1



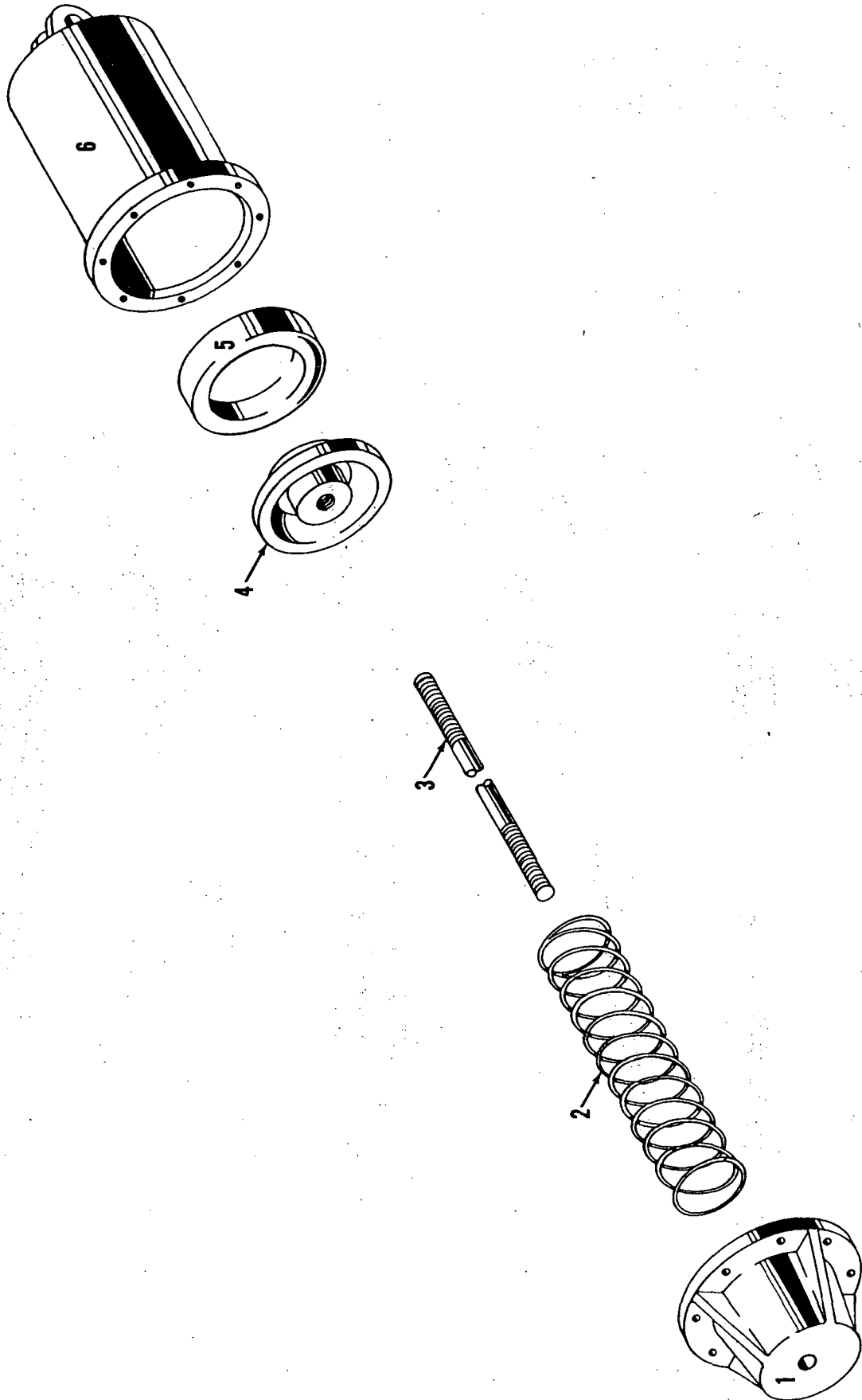
For Ind. Swing

22880C1

MANITOWOC ENGINEERING CO.

A Division of The Manitowoc Company, Inc.

Manitowoc, Wisconsin



2427881

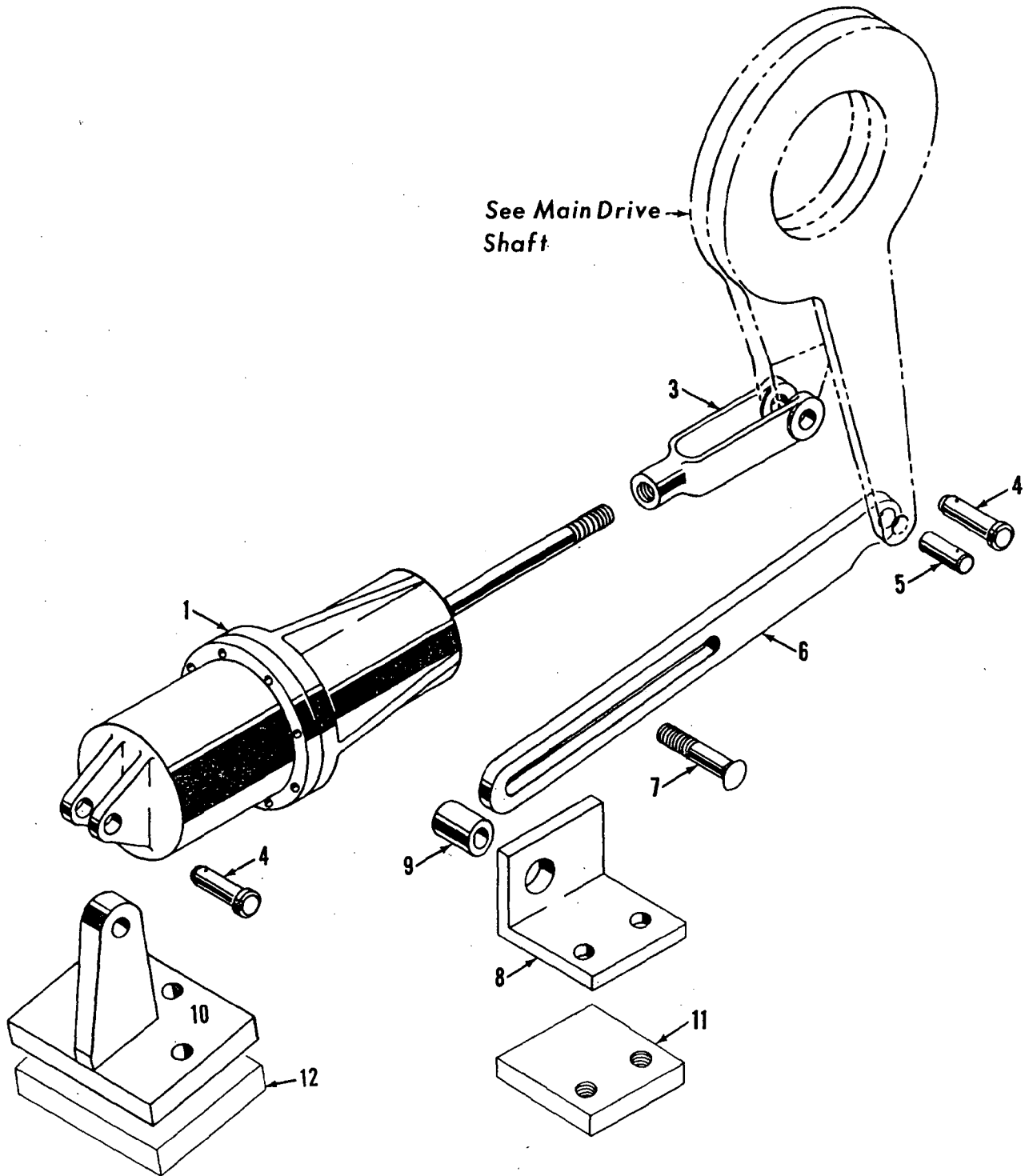
MATERIAL LIST ON BACK

AIR CYLINDER ASSEMBLY

MANITOWOC ENGINEERING CO.

A Division of The Manitowoc Company, Inc.

Manitowoc, Wisconsin



3234081

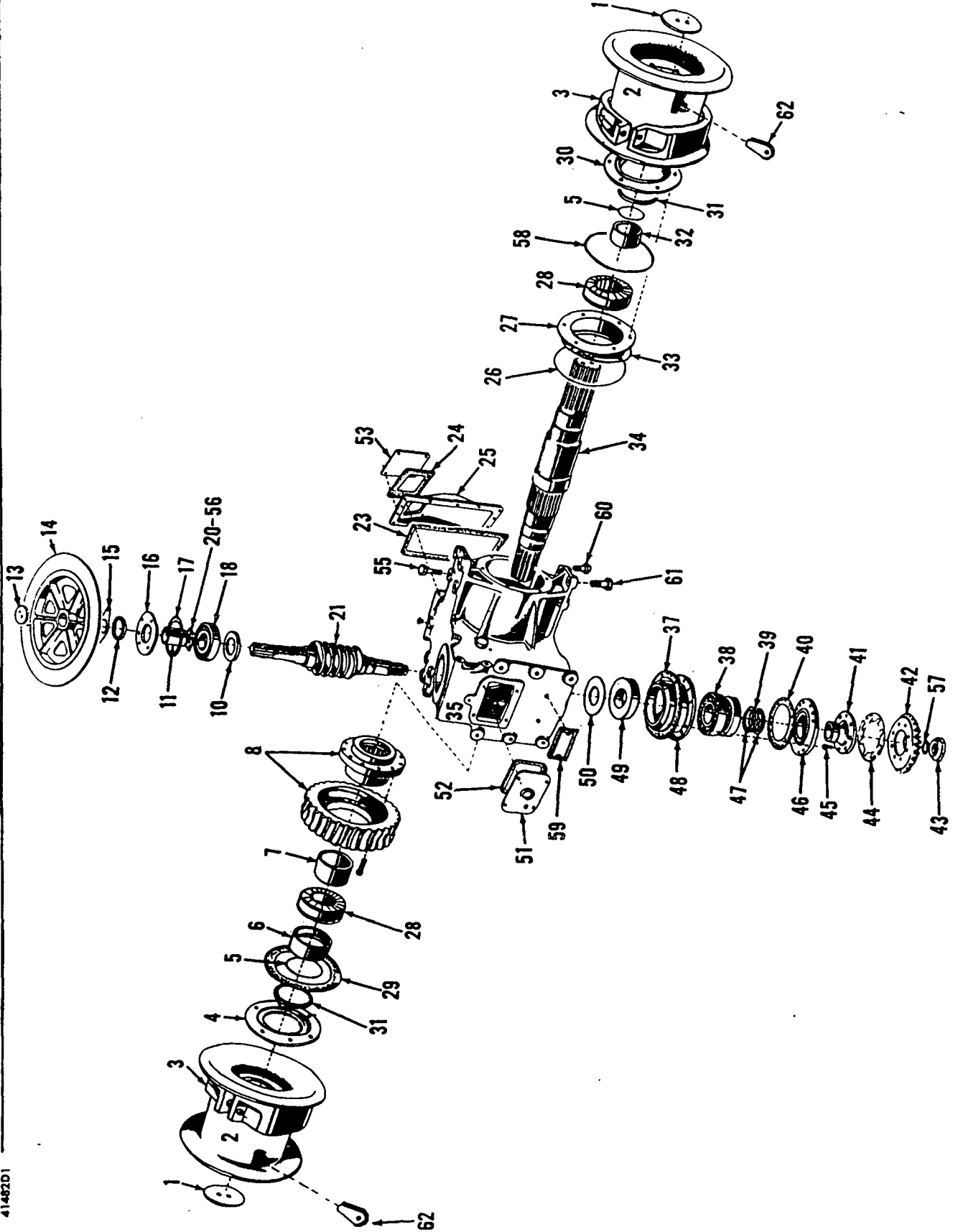
MATERIAL LIST ON BACK

LEFT SWING CLUTCH CONTROL

MASTER

41482-D1

41482D1



41933 - 1	REV. P	MODEL 3000-3000W-3100-3400-3500-3600-3900
-----------	-----------	--

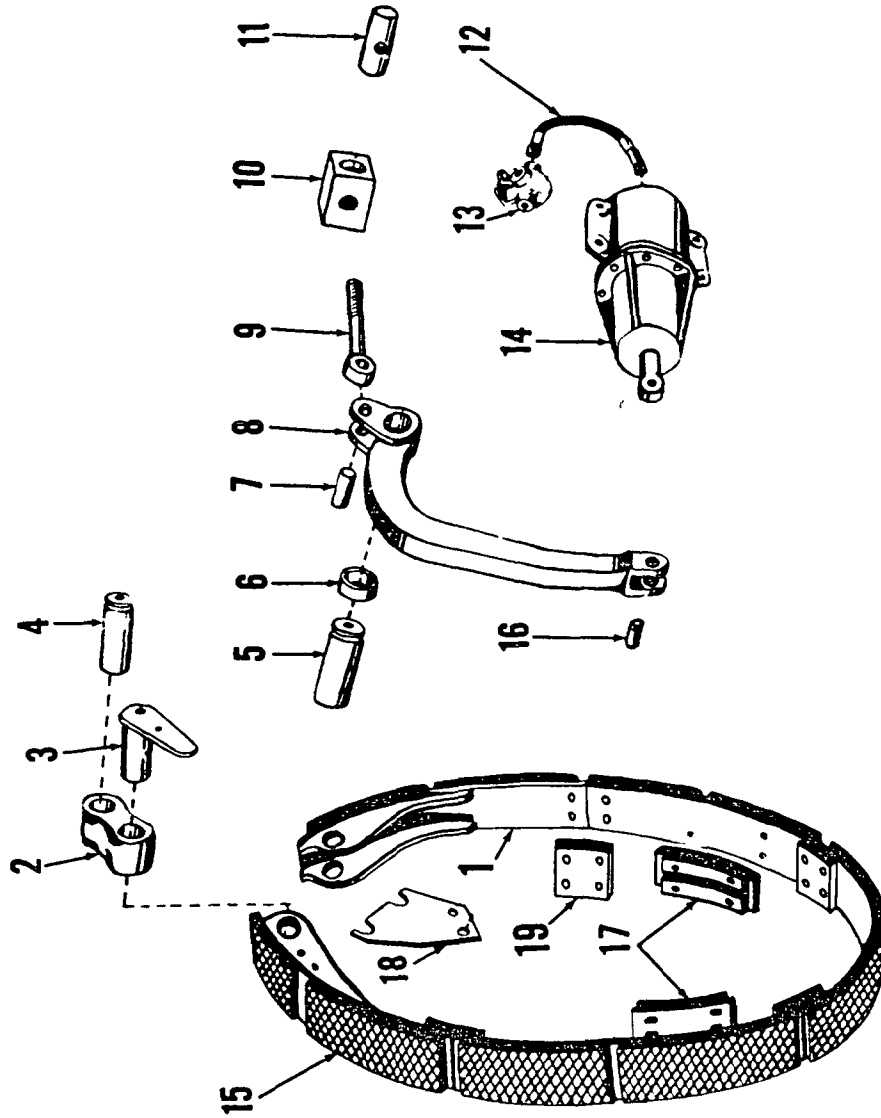
IND. BOOM HOIST DRIVE SHAFT

Run as Front

REF. NO.	PART NUMBER	QUANTITY REQUIRED	DESCRIPTION OF PART	VENDORS PART NO.
38	596674	2	RING, Snap	
39	225314	4	BEARING, Ball	
40	16656	2	SPACER	
42	17624	2	SPACER	
43	225125	3	LOCKWASHER, Bearing Locknut	
45	17324	2	COLLAR, Thrust w/gr. fitting, capscrew and lockwashers	
46	622498	2	SEAL, Oil	
47	32064*		BRACKET, Center Bearing w/gr. fittings, capscrews and lockwashers (w/Dowel #17575 supersedes #31672 per design change of 5-7-64)	
47	31672	1	BRACKET, Center Bearing w/gr. fittings (Superseded by #32064)	
48	257257	6	BOLT, Coupling (Use with bracket #31672)	
49	17575	2	DOWEL (Use with bracket #32064)	
50	17623	1	SPACER	
51	224121	1	BEARING, Roller	
52	23216*	1	SHAFT, Drive	
44	18147	3	NUT, Lock	
53	19779	1	GUARD, Right	
54	18266	1	SUPPORT w/capscrews and lockwashers	
55	18267	1	SUPPORT w/capscrews and lockwashers	
56	19780	1	GUARD, Left	
<p><u>NOTE 1:</u> On Vicon machines parts #17339, 17340, 18939 and 596705 are replaced by oil seal #24778 and retaining ring #73388.</p> <p><u>NOTE 2:</u> Parts marked * not used on machines w/high speed chain driven boom hoist. Center Bracket #32064 is replaced with bracket #33646 and bearing #22345 replaced by bearing #23668. For remainder of parts on these machines see "Ind. Boom Hoist Drive Shaft Extension on Support."</p> <p><u>NOTE 3:</u> Ref. No. 8 not used on M3900 w/internal hoist ratchet and pawl. See "A" Frame.</p> <p><u>NOTE 4:</u> Pinion changed on M3900 only to #95123 per design change of May 6, 1974. All other models changed to pinion #95123 per design change of Aug. 2, 1979. Prior to these changes pinion #17283 was used. Pinion #95123 must be used w/Drum Gear #182159 (Vicon) or #182264 (Non-Vicon). Pinion #17283 must be used w/Drum Gear #32623 (Vicon) or #32229 (Non-Vicon). Gears and pinions are <u>NOT</u> interchangeable as single pieces. If field conversion is made, the Boom Hoist Shaft Pinion, Drum Gear and Main Drive Shaft Pinion must all be changed.</p>				
				REV. P
				41933 - 1

PLEASE GIVE MACHINE S/N W/ORDER

41933 FI Cont.



42658-1 Cont.	REV. E	MODEL 3400-3600-3900
---------------	-----------	-------------------------

SWING BRAKE

REF. NO.	PART NUMBER	QUANTITY REQUIRED	DESCRIPTION OF PART	VENDORS PART NO.
28	140197	2	PIN w/cotter pin	
29	22120	1	LEVER, Foot Pedal w/capscrew, hex nut and lockwasher	
29	183689	1	LEVER w/capscrew, hex nut and lockwasher (w/Drum Parking Brake)	
30	10552	1	END, Rod	
31	10552	1	END, Rod (Manual)	
31	11602	1	END, Rod (Manual and Air) (Shown)	

(0-71, 0-284 Air Only)

REV. E	42658 - 1
-----------	-----------

PLEASE GIVE MACHINE S/N W/ORDER

Run as Front

42658 E1 Cont.

43132-1 cont.	REV. F	MODEL 3000W-3100-3400-3600-3900-3900T-3900W-4000-4000W
---------------	-----------	---

MAIN DRIVE SHAFT
(VICON)

REF. NO.	PART NUMBER	QUANTITY REQUIRED	DESCRIPTION OF PART	VENDORS PART NO.
34	21733	1	COVER, Bearing w/capscrews, hex nuts, lockwashers and gr. fitting	
	257202	2	BOLT, Coupling	
35	22482	1	HOUSING, Bearing w/capscrews, hex nuts and lockwashers	
36	224909	1	BEARING, Roller	
37	15535	1 set	SHIM (1/16" set)	
38	21734	1	COVER, Bearing w/capscrews, hex nuts, lockwashers and gr. fitting	
	257202	2	BOLT, Coupling	
39	15548	1	SPACER	
40	15551	1	NUT, Split w/capscrews and elastic stop nuts	
41	73236	1	SPACER	
45	224323	1	BEARING, Ball	
46	20163	1	HOUSING, Bearing w/gr. fitting (M3000-3600 incl.)	
46	23697	1	HOUSING, Bearing w/gr. fitting (M3900-3900W-3900T-4000-4000W)	
47	11535	1	NUT, Lock	
48	11536	1	PLATE, Locking w/capscrews (See Note 2)	
49	10526	1	COVER, Bearing w/capscrews and lockwashers (See Note 2)	
50	71084	2	BOLT, Coupling w/elastic stop nut (Housing No. 23697-M3900-3900T-4000-4000W)	
50	12020	1	BOLT, Coupling w/hex nuts (Housing No. 23697-M3900W)	
50	71084	1	BOLT, Coupling w/elastic stop nut (Housing No. 23697-M3900W)	
50	16786	2	BOLT, Coupling w/elastic stop nut (Housing No. 20163)	
55	596934	1	RING, Spirolox	
<u>THE FOLLOWING PARTS ARE FOR CRANE, DRAG, CLAM TRENCH HOE ONLY. FOR SHOVEL CLUTCH SEE SH. NO. 3</u>				
42	18872	1	GUARD, Spline	
43	18731	1	SPACER	
44	10525	1	COVER, Bearing w/capscrews and lockwashers	
<u>FOR INDEPENDENT SWING (NOT INCL. M3900T)</u>				
51	24718	1	SPROCKET, Drive (bolt to outer sprocket) (46T.)	
52	256245	6	BOLT, Coupling	
	548367	6	NUT, Elastic Stop	
51	91684	1	SPROCKET, Drive (bolt to outer sprocket) (71T.)	
52	257247	6	BOLT, Coupling	
	548367	6	NUT, Hex	
<u>FOR CHAIN DRIVEN IND. BOOM HOIST (NOT INCL. M3900T)</u>				
51	90618	1	SPROCKET, Drive (1-1/2"P. - 2 strand 59T) (bolt to outer sprocket)	
52	257247	6	BOLT, Coupling	
	548367	6	NUT, Elastic stop	
51	90637	1	SPROCKET, Drive (1-1/4"P. - 2 strand 45T) (bolt to outer sprocket)	
52	257247	6	BOLT, Coupling	
	548367	6	NUT, Elastic Stop	

REV. F	43132-1 cont.
-----------	---------------

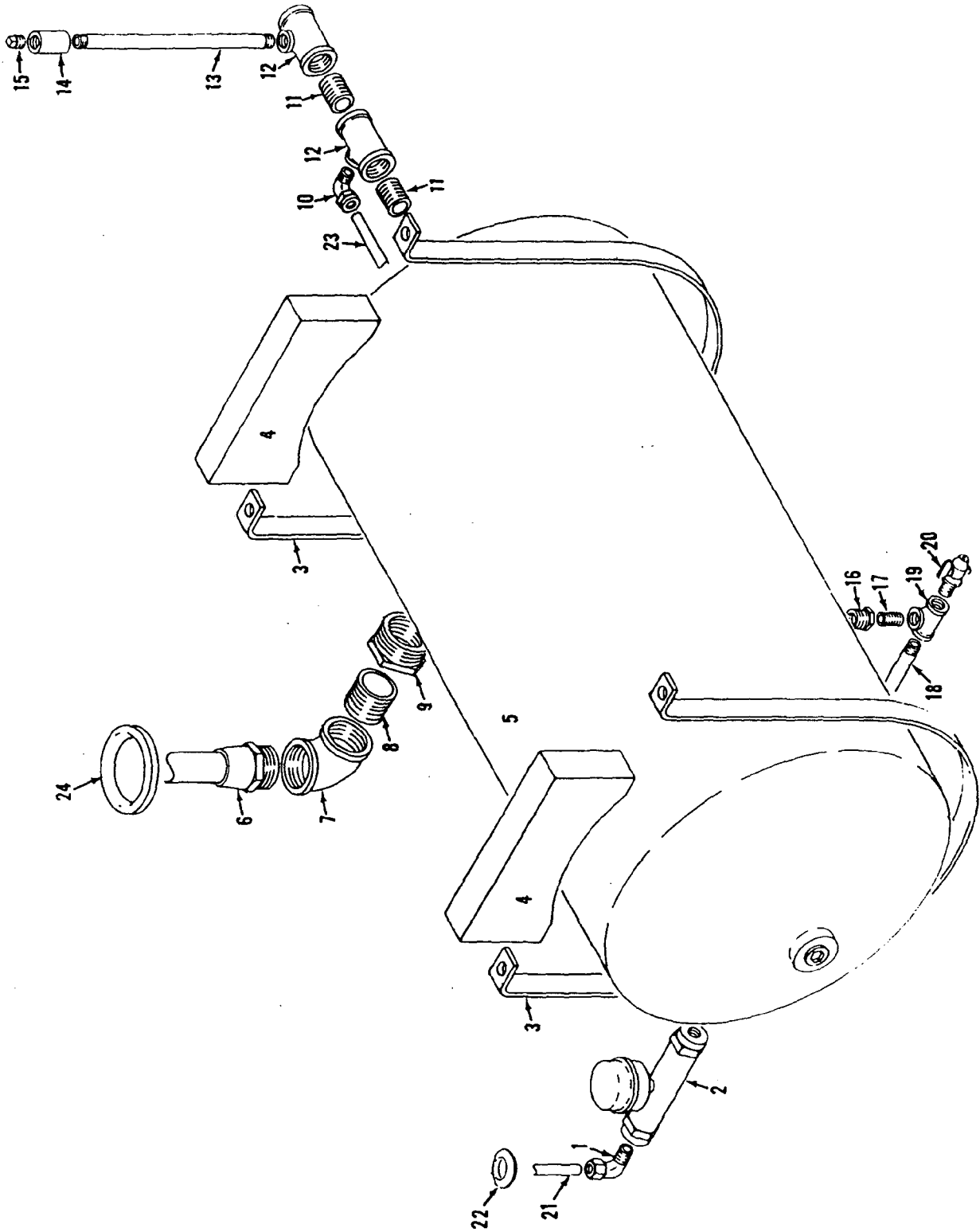
PLEASE GIVE MACHINE S/N W/ORDER

CPT
Run as a Front
43132 Fl Cont -1

PARTS MANUAL ALPHABETICAL INDEX
Group C - Air Components & Electrical

DESCRIPTION	PUBLICATION	REV	START DATE	END DATE	GROUP
Compressor & Piping	42013	B1	03/01/56	06/13/75	C0101
Compressor & Piping	42013	C3	03/01/56	06/13/75	C0101
Compressor & Piping	42748	B1	01/17/62	06/05/75	C0101
Compressor & Piping	42748	B2	09/08/61	06/05/75	C0101
Compressor & Piping	42748	B3	09/08/41	06/05/75	C0101
Control Console	42878	F1	02/23/62	02/14/68	C0201

MASTER



AIR TANK

MATERIAL LIST ON BACK

4201383

4201383

CLICK HERE TO **DOWNLOAD** THE COMPLETE MANUAL

- Thank you very much for reading the preview of the manual.
- You can download the complete manual from: www.heydownloads.com by clicking the link below



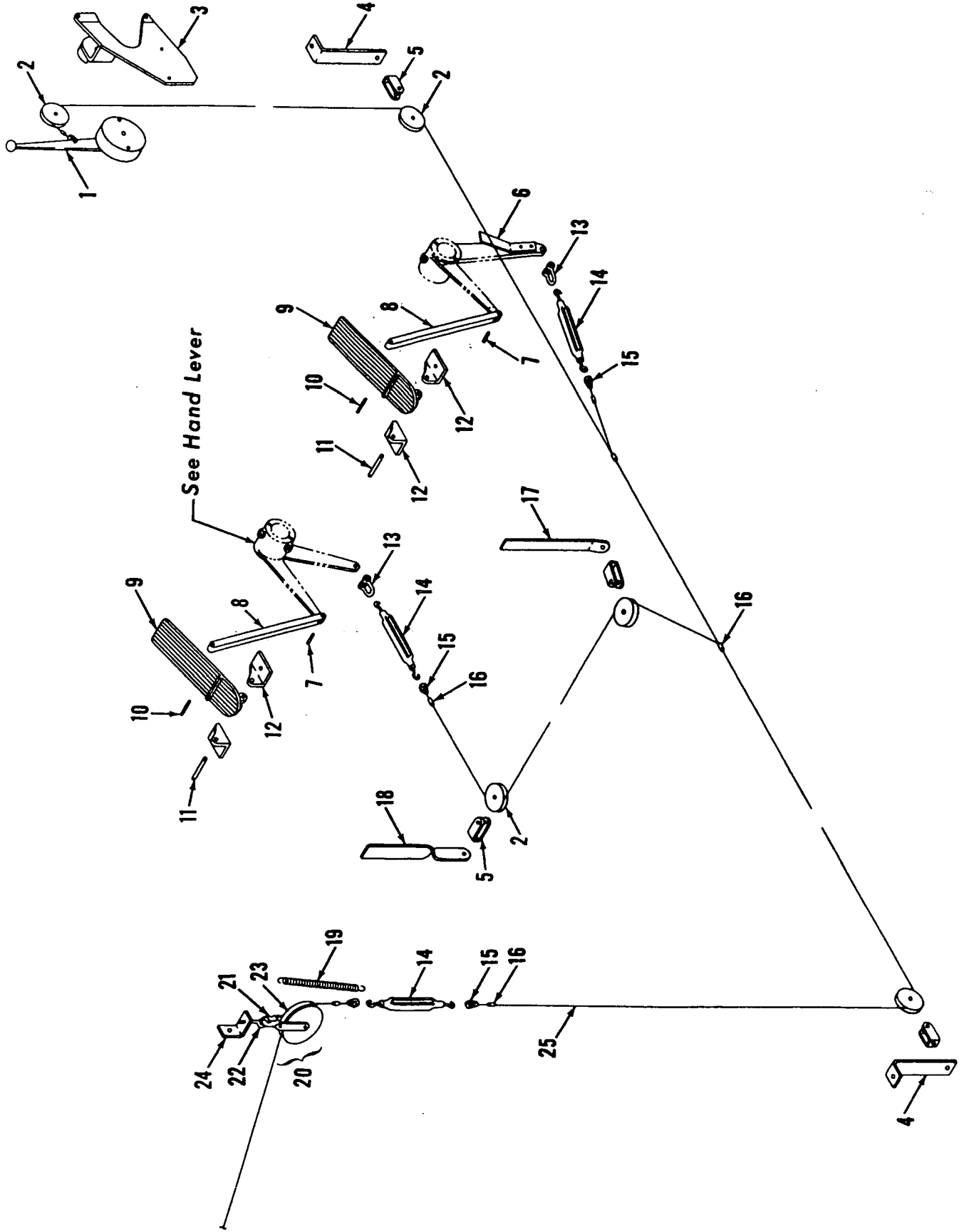
- Please note: If there is no response to CLICKING the link, please download this PDF first and then click on it.

CLICK HERE TO **DOWNLOAD** THE COMPLETE MANUAL

MANITOWOC ENGINEERING CO.

A Division of The Manitowoc Company, Inc.

Manitowoc, Wisconsin



MASTER

324 A1

32498A1

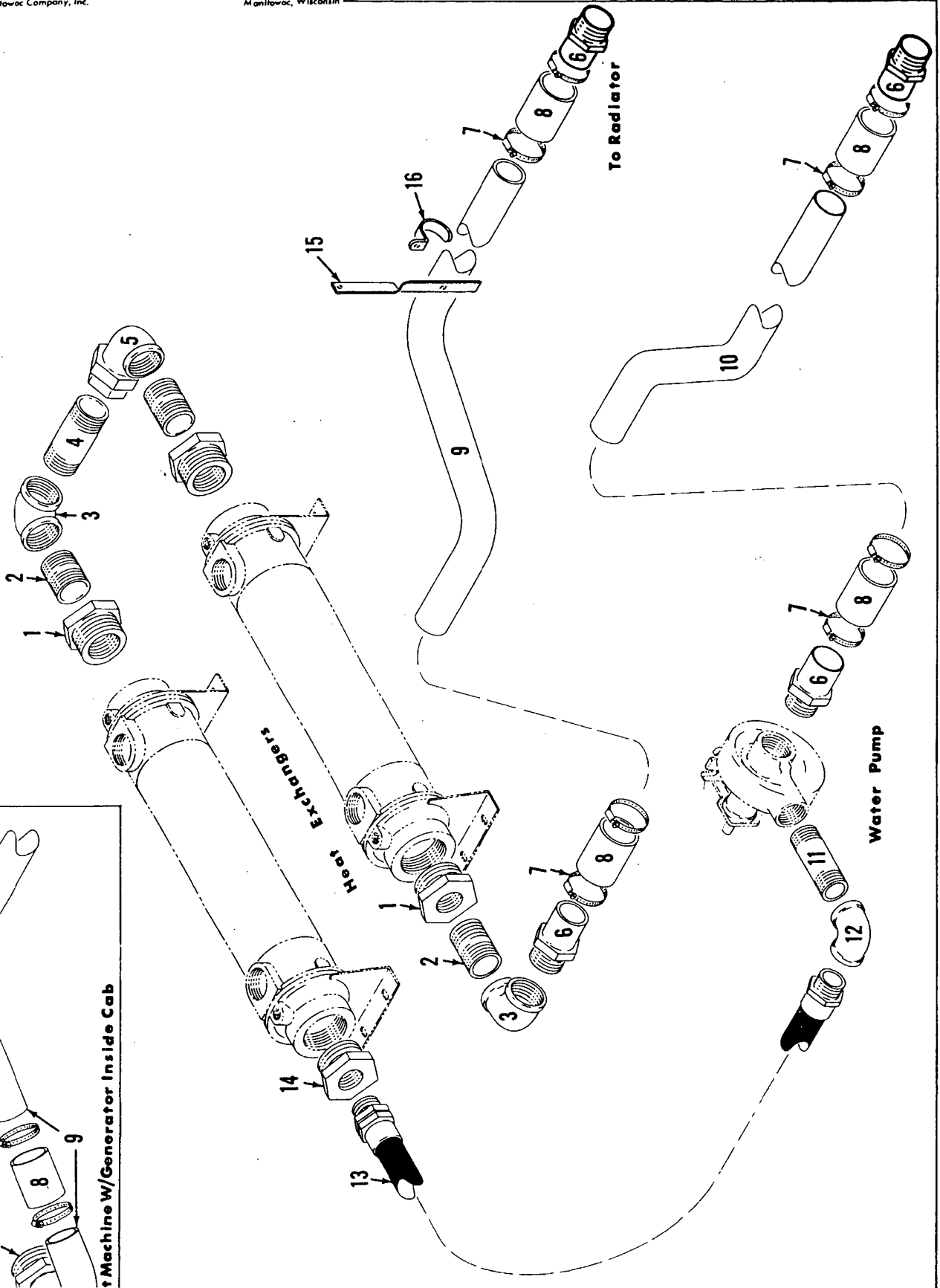
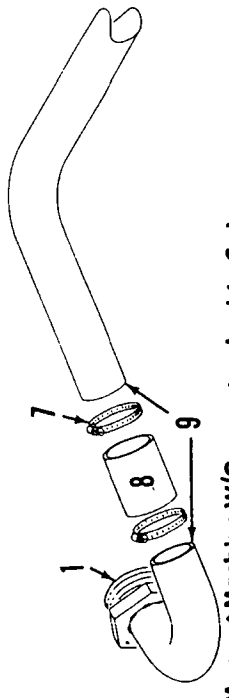
MATERIAL LIST ON BACK

ENGINE CONTROL

MASTER

43051 C2

43051C2



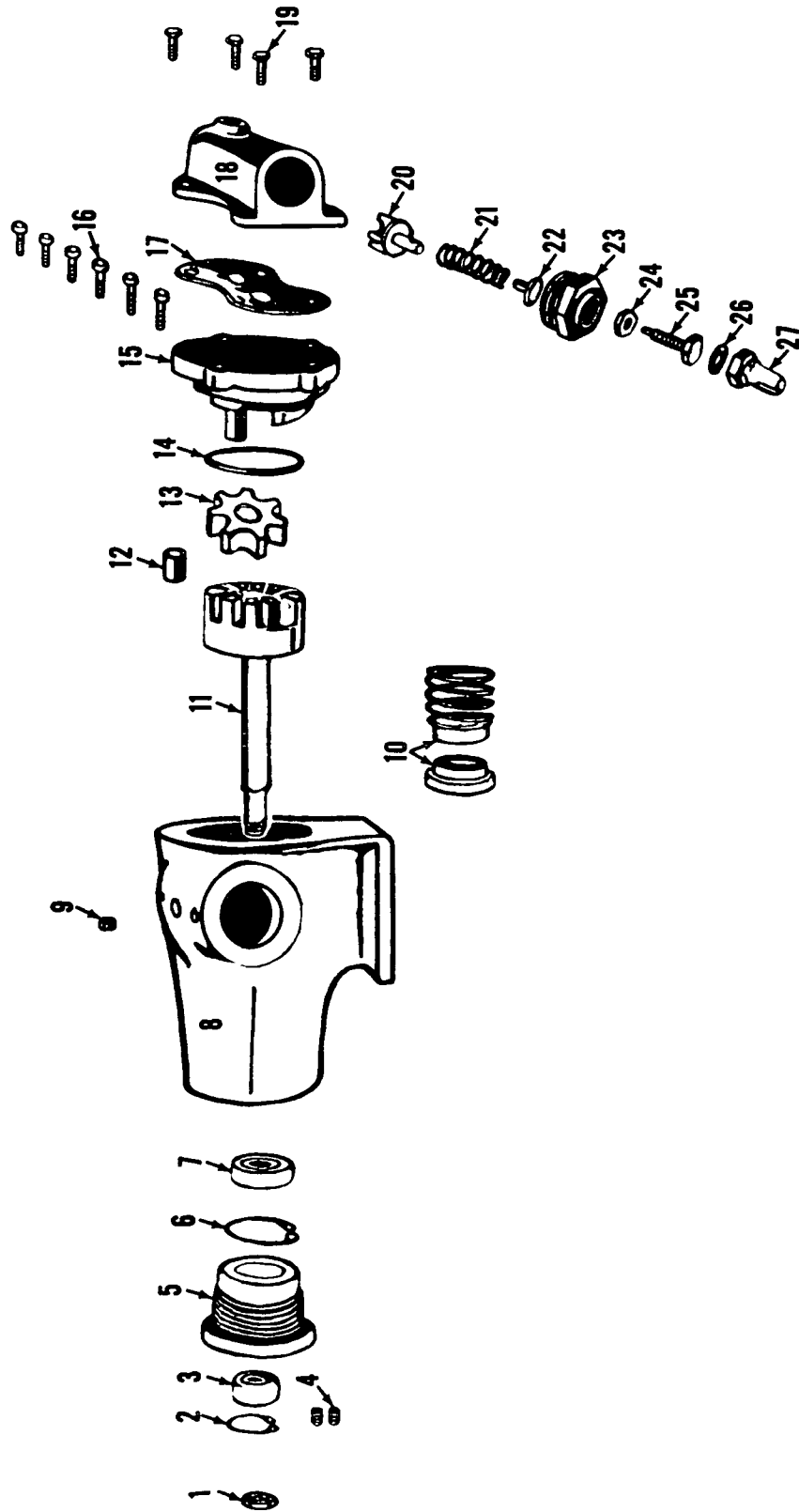
MATERIAL LIST ON BACK

HEAT EXCHANGER COOLING PIPING

MANITOWOC ENGINEERING CO.

A Division of The Manitowoc Company, Inc.

Manitowoc, Wisconsin



MASTER

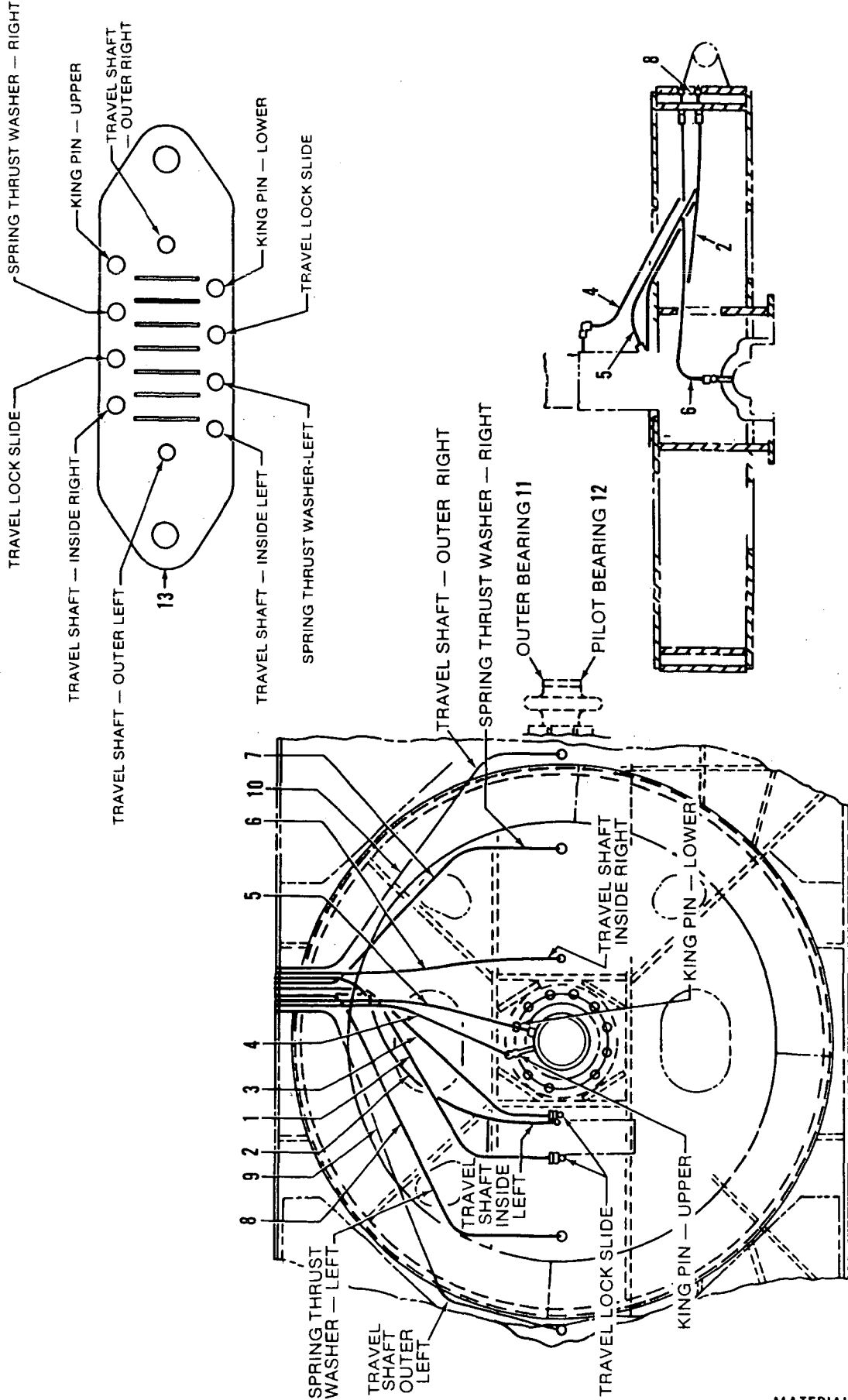
4287785

MATERIAL LIST ON BACK

PUMP

PARTS MANUAL ALPHABETICAL INDEX
Group E - Lower Structure & Control

DESCRIPTION	PUBLICATION	REV	START DATE	END DATE	GROUP
Carbody	42852	A1	01/15/62		E0101
Carbody Lubrication Piping	32233	B1	08/07/59		E0102
Crawlers	42572	A1	09/09/60		E0201
Horizontal Travel Shaft	32217	A1	06/24/59		E0401
King Pin & Vertical Travel Shaft	31608	F1	08/31/54		E0301
Steering Control	20729	A1	05/14/41		E0501
Steering Control	42396	E1	06/15/60		E0501
Steering Control	42396	C2	05/11/59		E0501
Travel Lock Control	31743	H1	07/12/56		E0601



32233B1

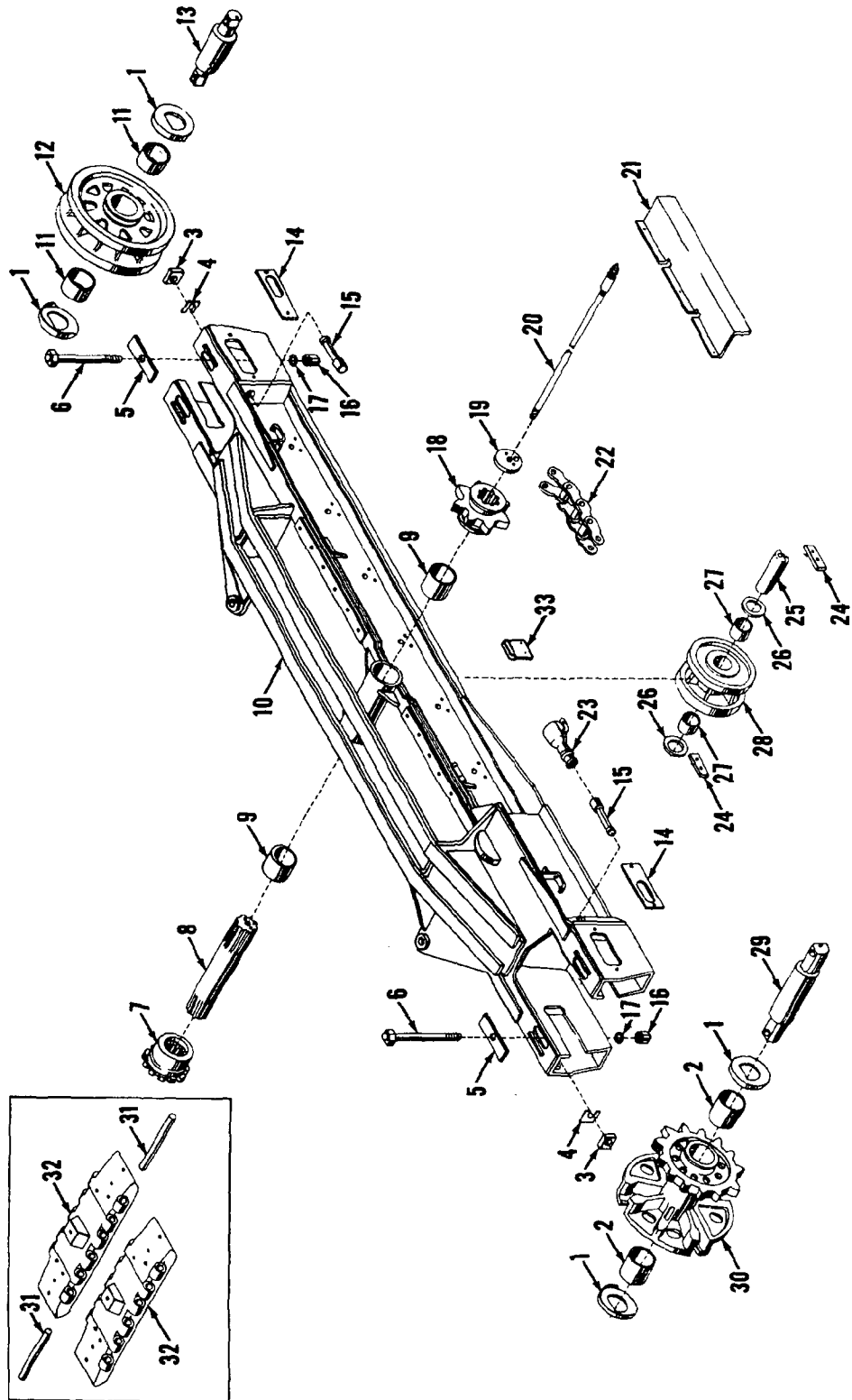
MATERIAL LIST ON BACK

LUBRICATION PIPING ASSM. - CARBODY

MANITOWOC ENGINEERING CO.

A Division of The Manitowoc Company, Inc.

Manitowoc, Wisconsin



ILLUST. No. 42572-A-1

MATERIAL LIST ON BACK

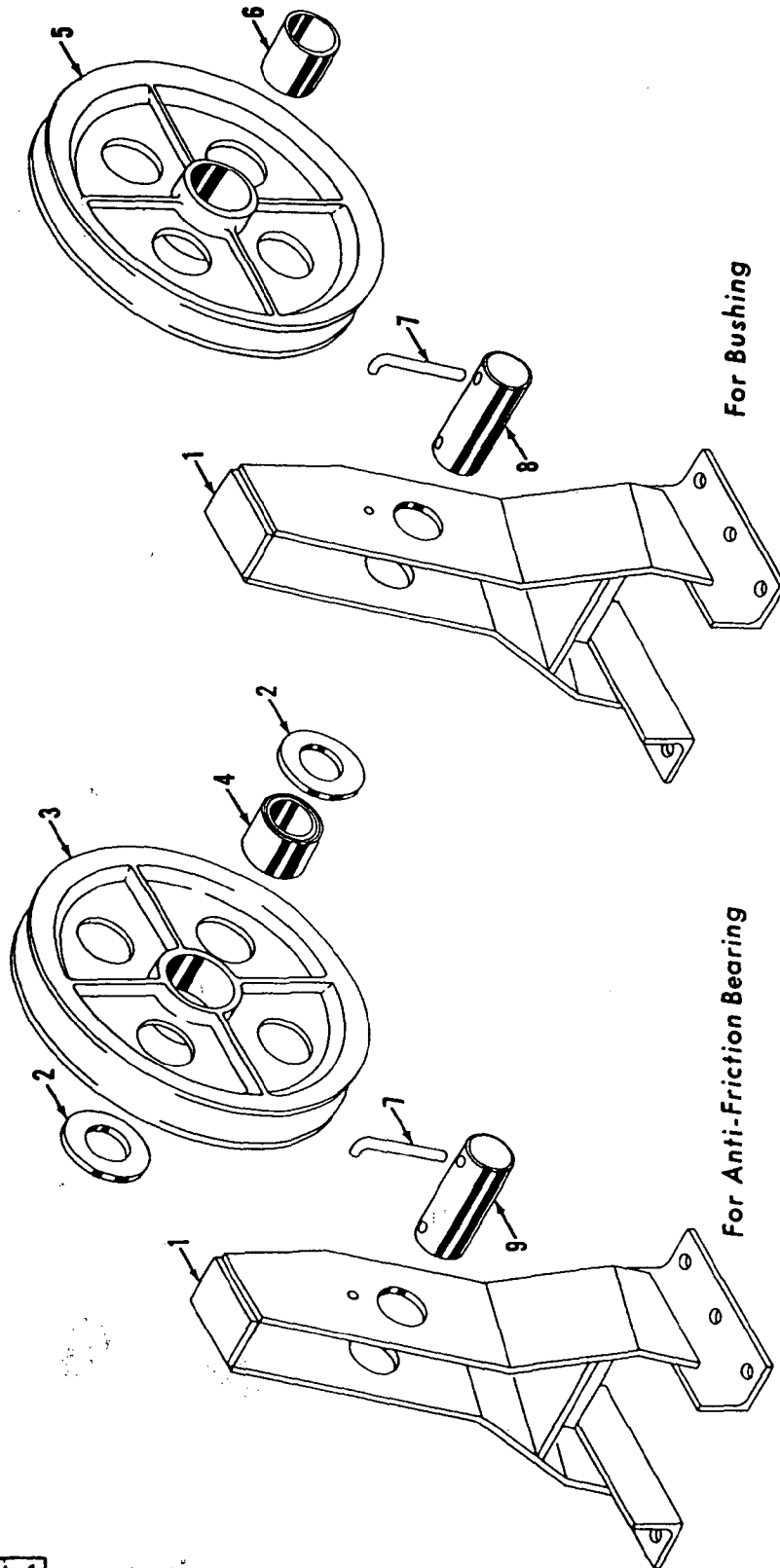
CRAWLER FRAME

MASTER

MANITOWOC ENGINEERING CO.

A Division of The Manitowoc Company, Inc.

Manitowoc, Wisconsin



For Bushing

For Anti-Friction Bearing

ILLUST. No. 23947-A-1

MATERIAL LIST ON BACK

JIB ROPE GUIDE ASSEMBLY

274 / 111

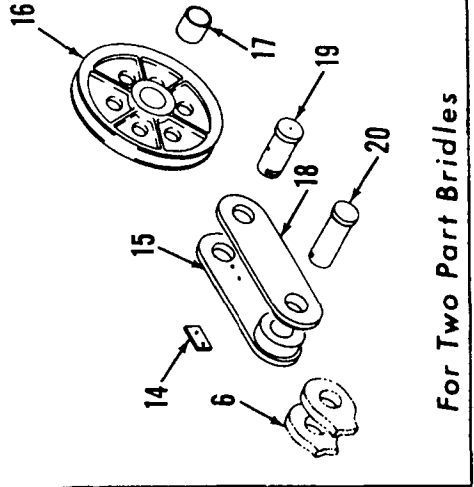
52668 131

MASTER

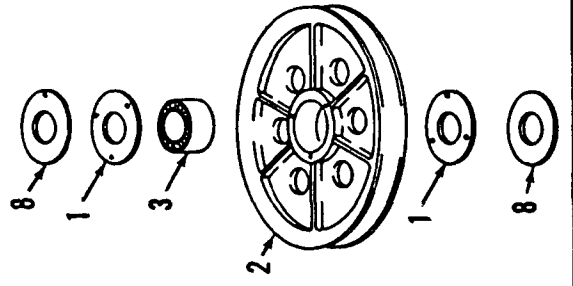
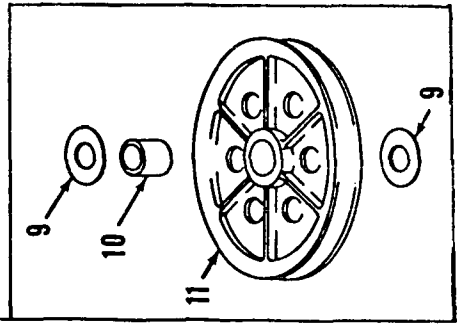
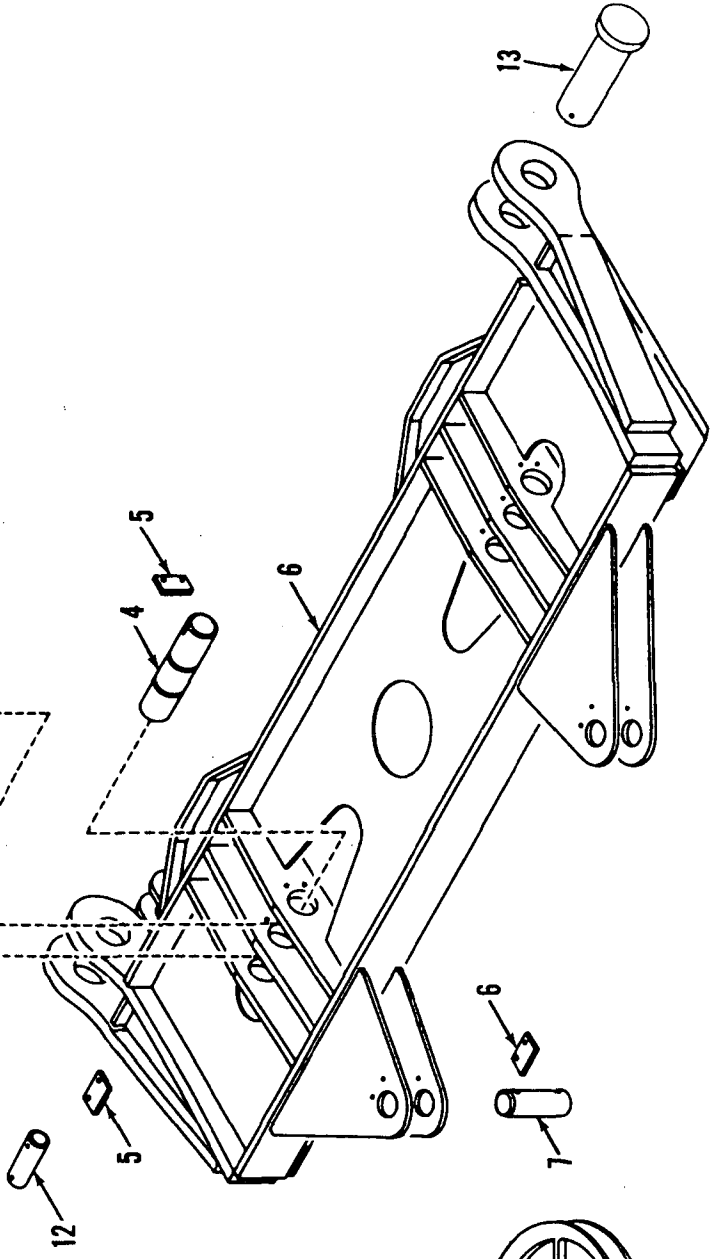
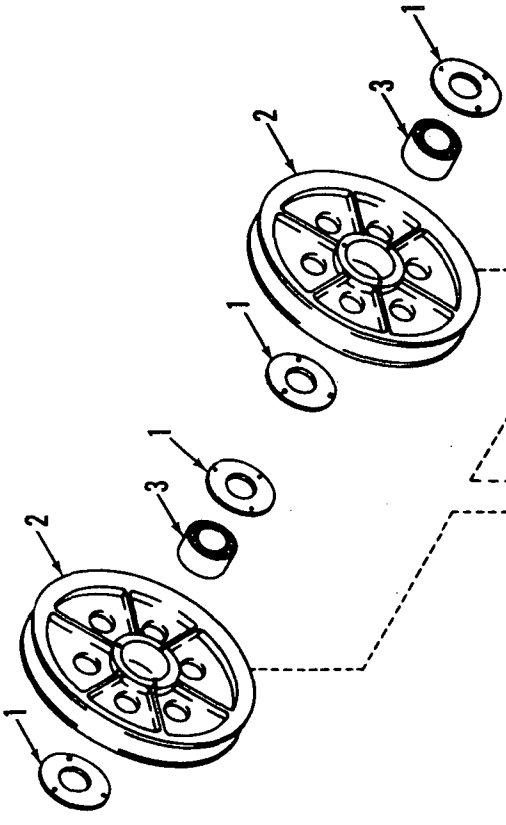
MANITOWOC ENGINEERING CO.

A Division of The Manitowoc Company, Inc.

Manitowoc, Wisconsin



For Two Part Bridles



3266RR1

MATERIAL LIST ON BACK

EQUALIZER

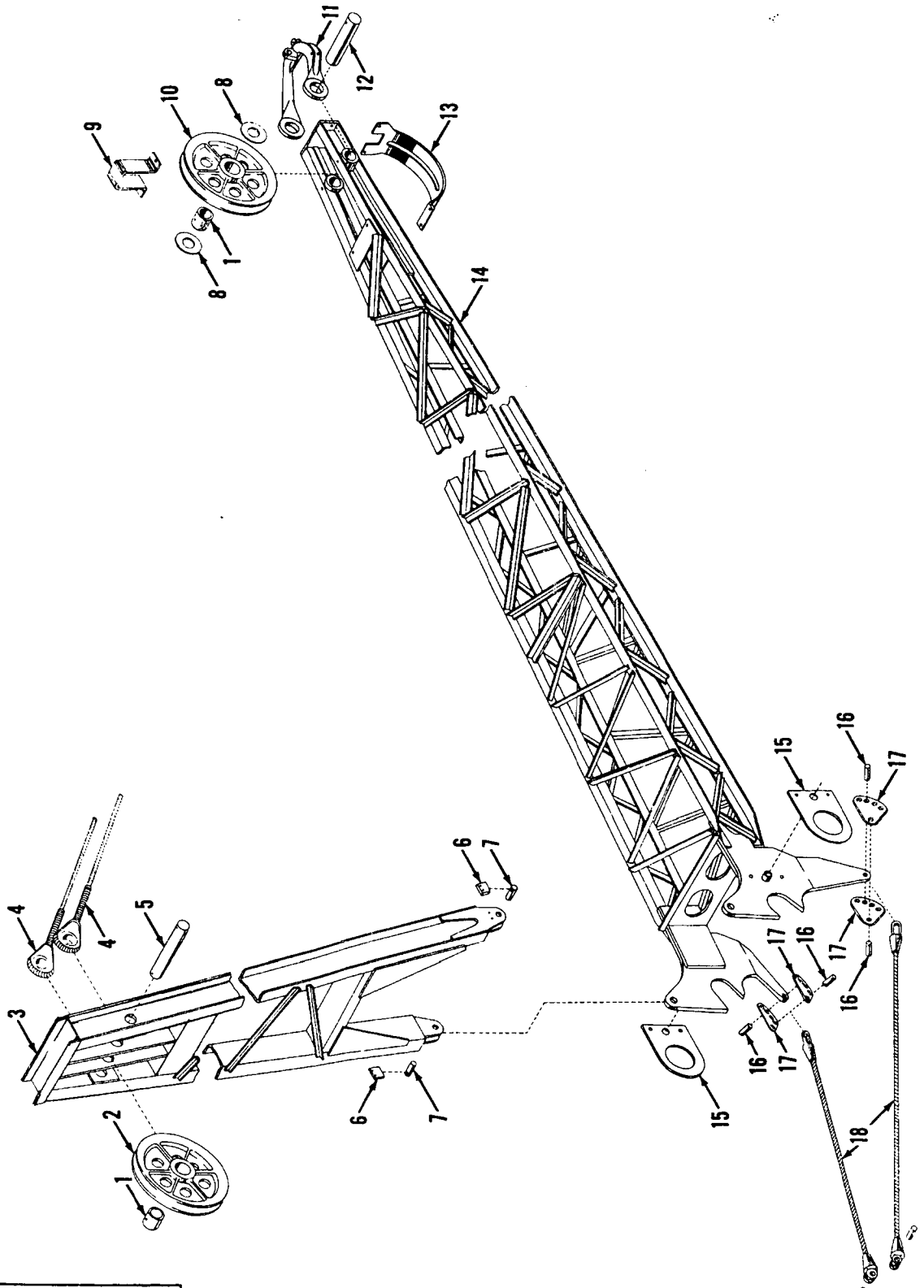
MASTER

MANITOWOC ENGINEERING CO.

A Division of the Manitowoc Company, Inc.

Manitowoc, Wisconsin

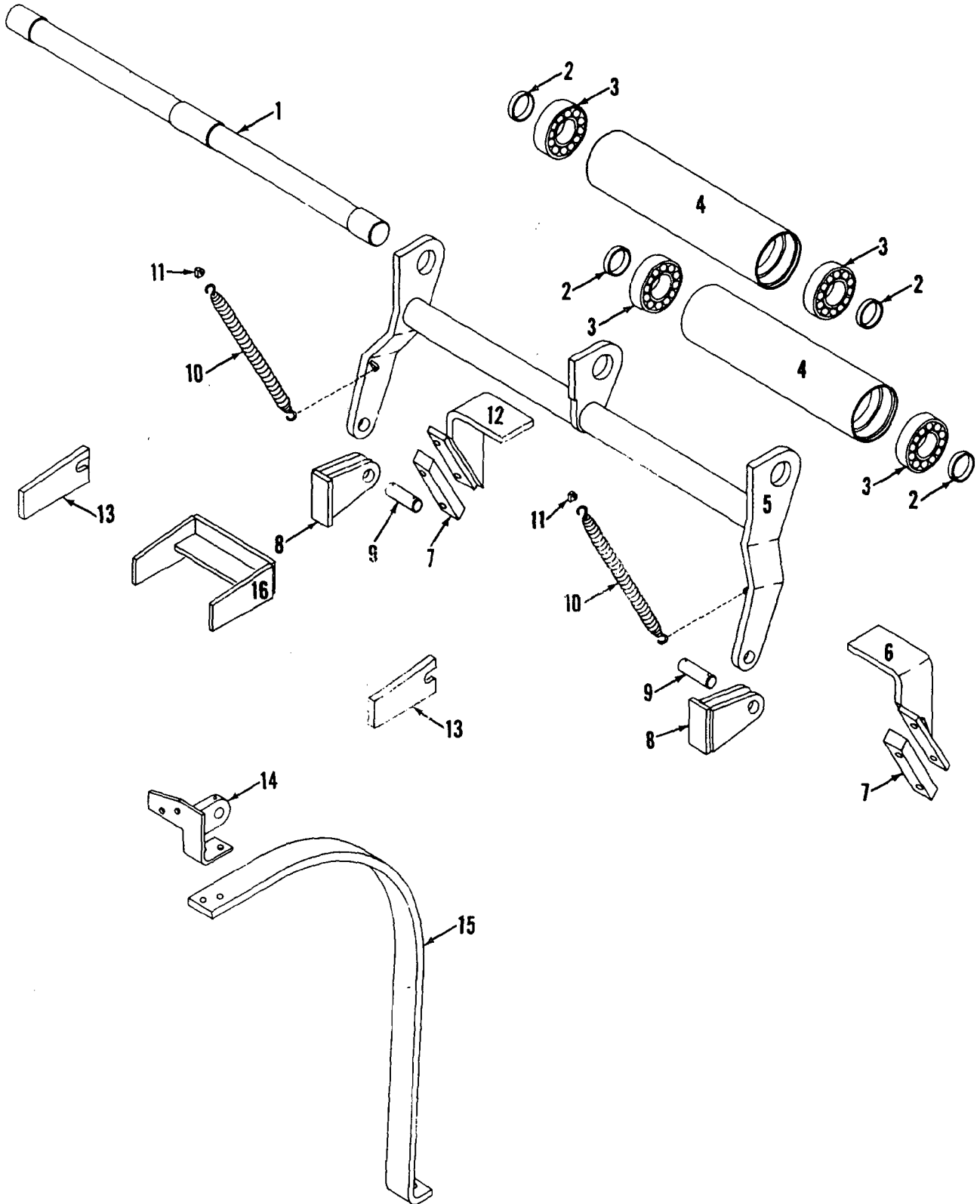
42484 - A-1



ILLUST. No. 42484 - A-1

MATERIAL LIST ON BACK

MASTER

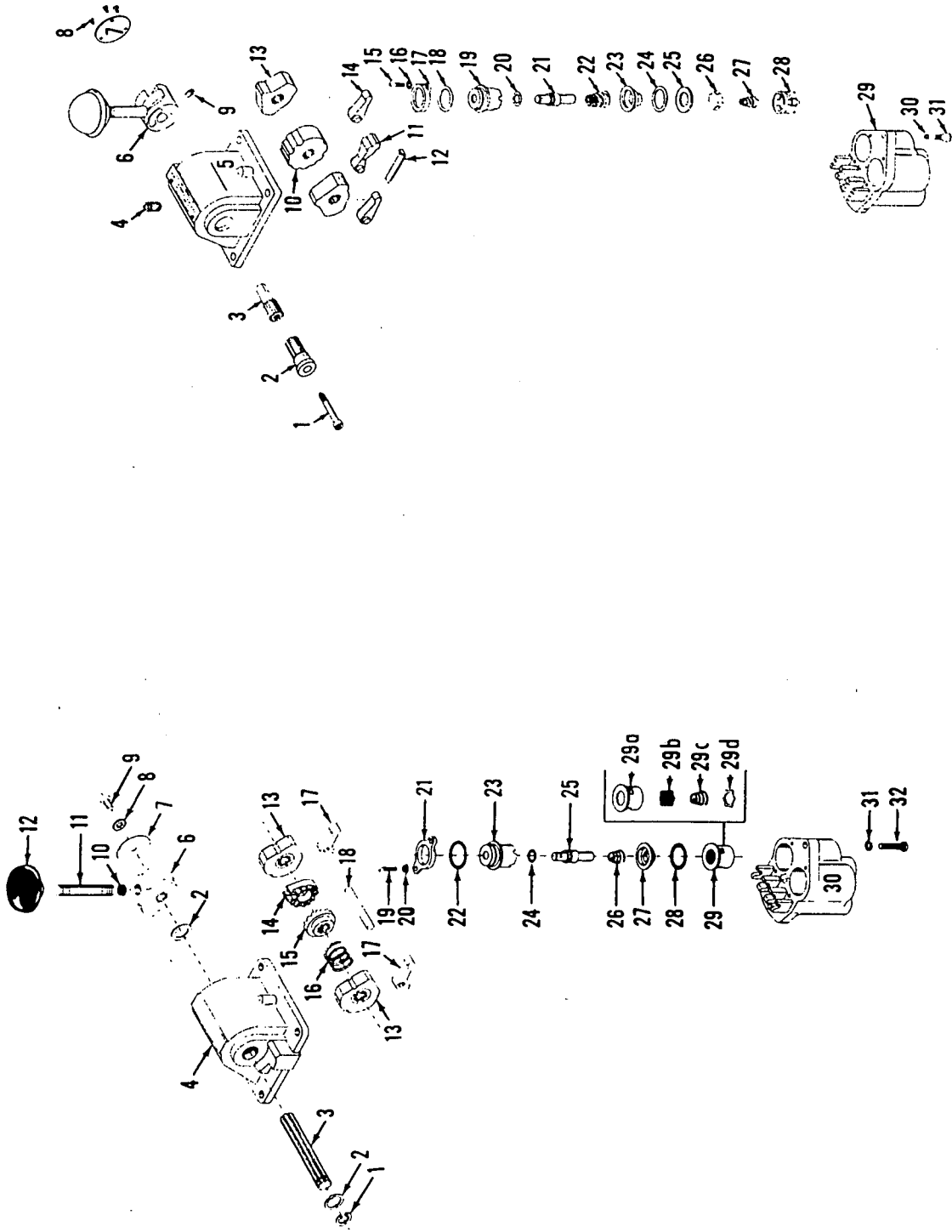


4293881

4293881

O-NUMBER NUMERICAL INDEX

PUBLICATION	REV
0-69	C
0-71	-
0-72	B
0-96	C1
0-116	A
0-116	A1
0-123	A1
0-123	A2
0-145	A1
0-145	A2
0-147	D2
0-148	-
0-156	F
0-157	C
0-173	A
0-176	-
0-243	A
0-243	A1
0-246	C1
0-250	A
0-250	A1
0-280	-
0-284	B
0-286	B
0-289	G
0-290	G1
0-304	L1
0-310	A
0-340	G
0-407	B
0-407	B1
0-415	B1
0-441	A4
0-441	C2
0-451	EA1
0-471	E
0-506	-

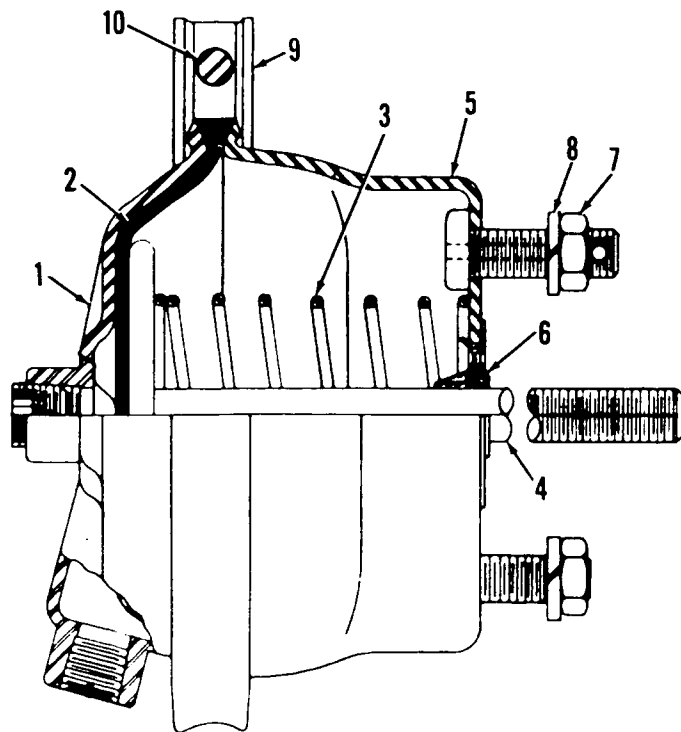
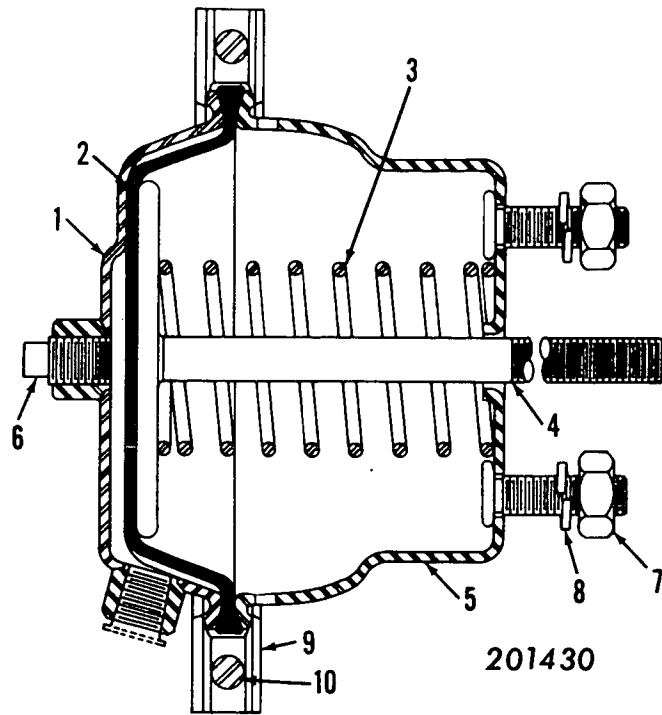


P54426-0312

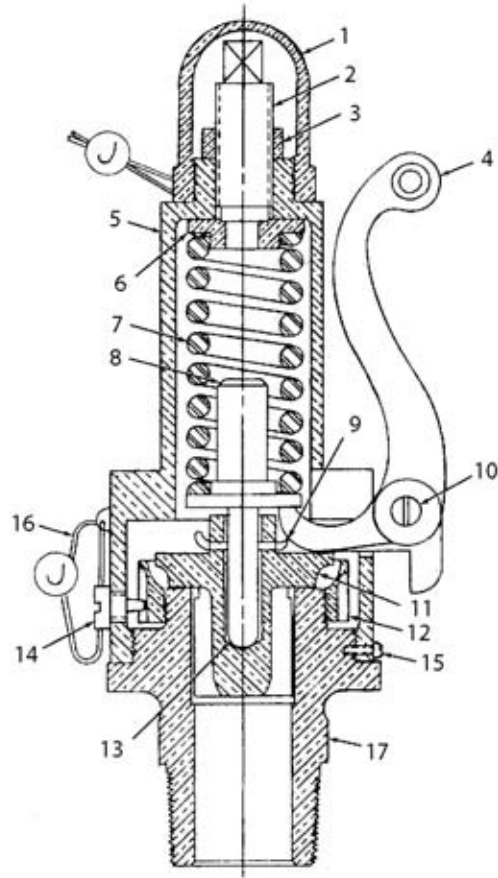
P59335

MATERIAL LIST ON BACK

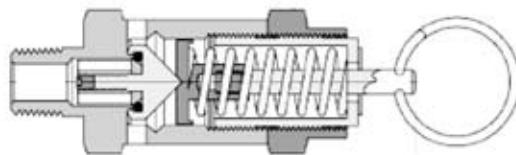
CONTROL VALVE



MASTER



702402, 702740



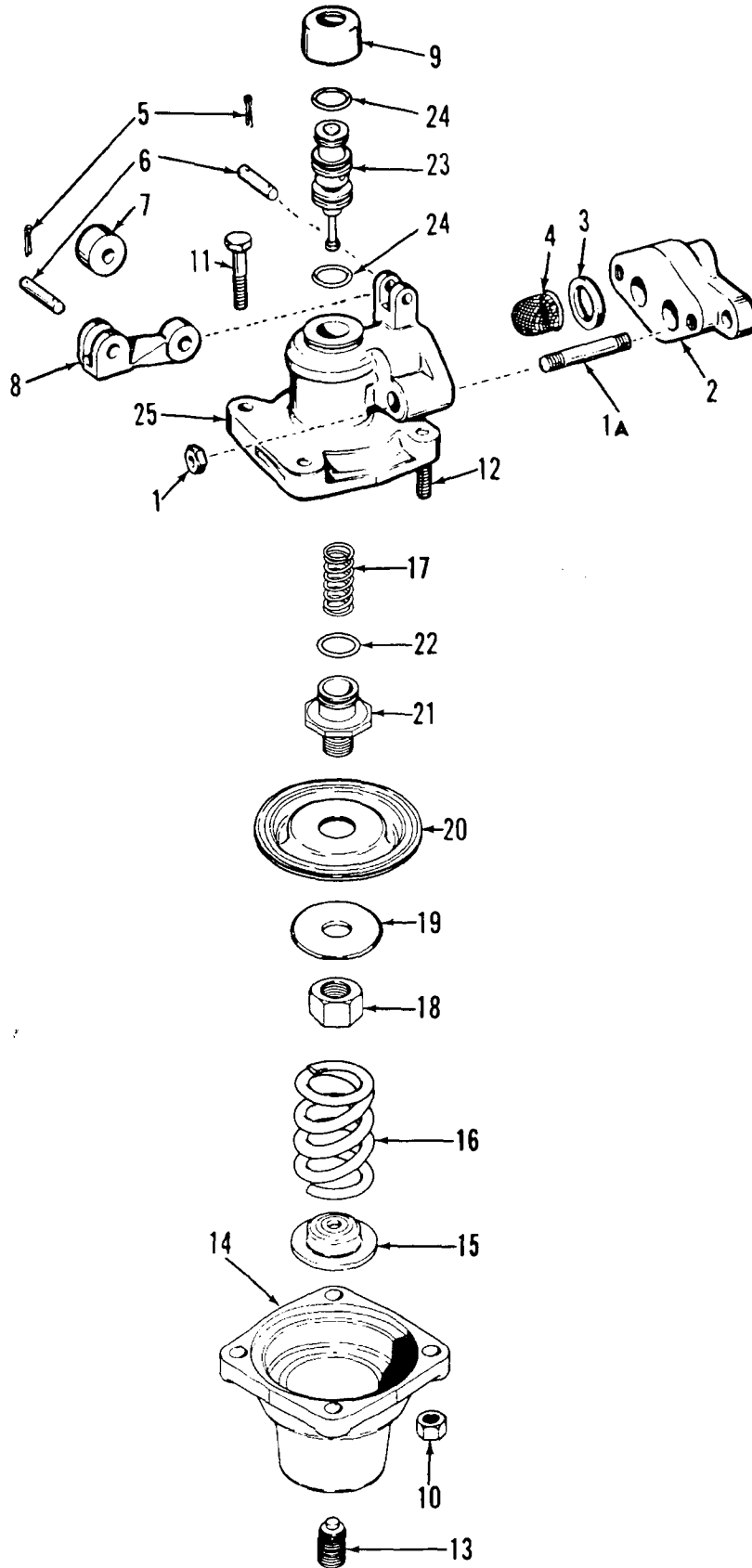
81004368

ASSEMBLY	REVISION
O-156	F

MANITOWOC ENGINEERING CO.

A Division of The Manitowoc Company, Inc.

Manitowoc, Wisconsin

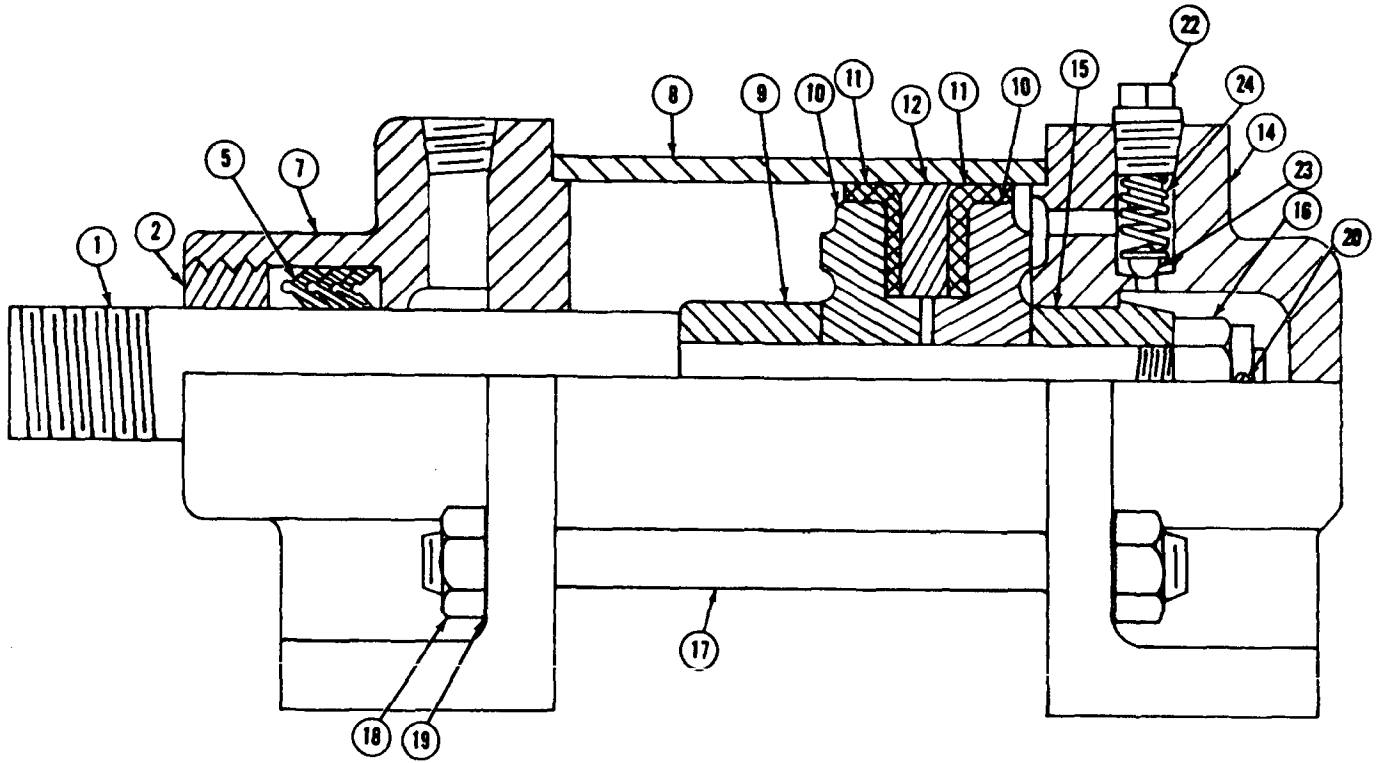


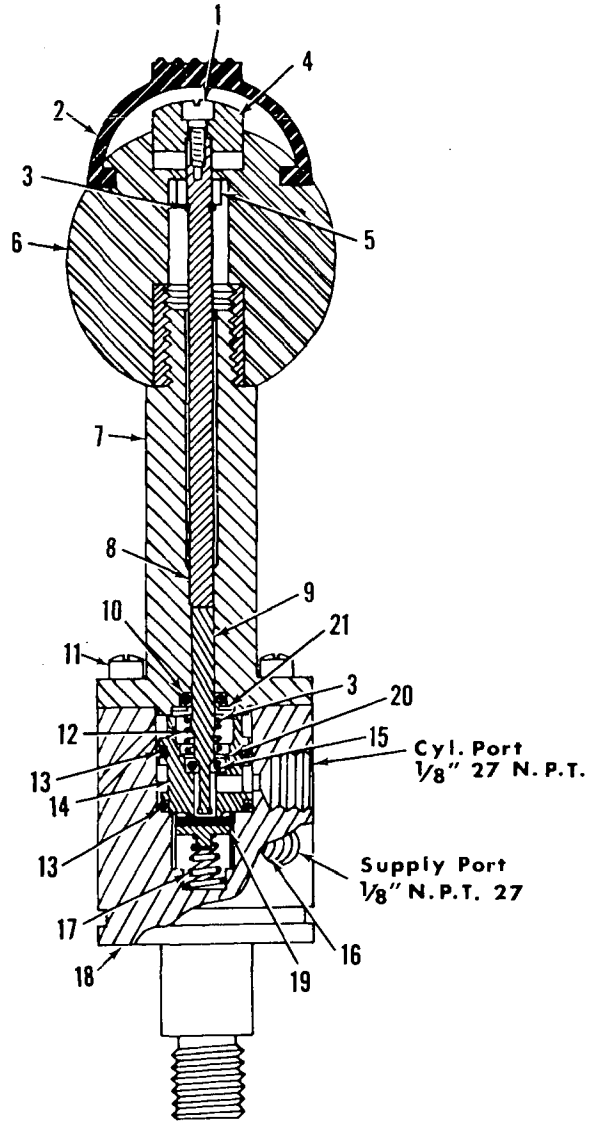
O243

MATERIAL LIST ON BACK

VALVE ASSEMBLY

MASTER





0-415-1 Cont	REV. B	MODEL 2000-4600 Incl., 6400, 36' P.R., 60' P.R., S.C.-240
--------------	-----------	--

(MANITOWOC #717268 - SPRAGUE #MA-100-60 W/GCr - 851-1.5)
(MANITOWOC #717269 - SPRAGUE #MA-100-70 W/GCr - 856 - 4) SEE NOTE 1
(MANITOWOC #717270 - SPRAGUE #MA-100-105 W/GCr- 856 - 4)

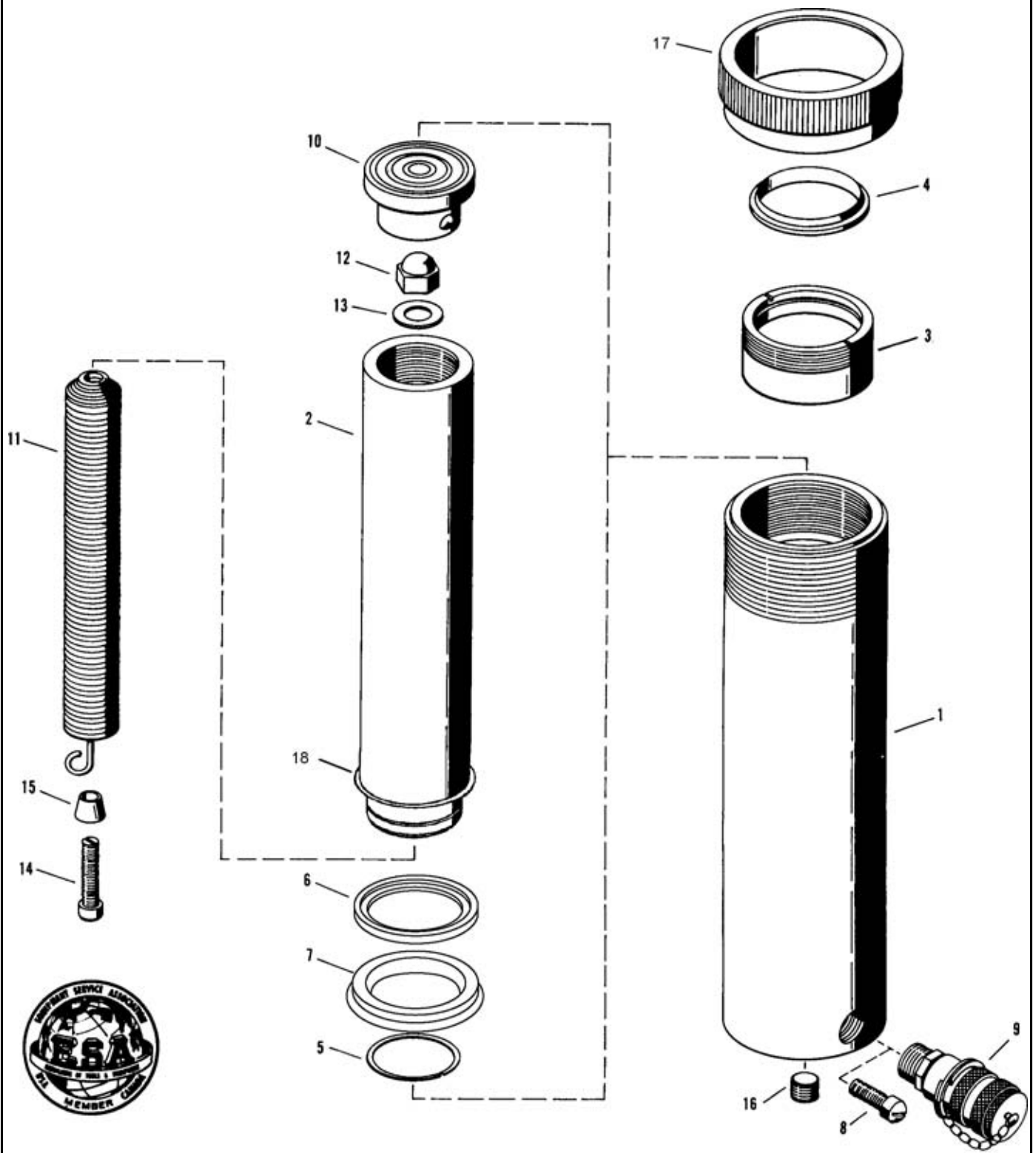
REF. NO.	PART NUMBER	QUANTITY REQUIRED	DESCRIPTION OF PART	VENDORS PART NO.
			<p>The vendor is Sprague Devices, Inc., Michigan City, Indiana. Please so specify if ordering from Manitowoc Engineering Co.</p> <p><u>NOTE 1:</u> Manitowoc Aluminum bodied wiper motors 717268, 717269, 717270 supersede brass bodied wiper motors 717212, 717210, 717203 respectively. All parts listed above can be used to repair the previously used brass bodied motors.</p> <p>* Parts included in Sprague Repair Kit #43.</p> <p>** The suffix - 1.5 or -4 denotes the length in inches that the shaft extends from the motor.</p> <p>*** The suffix -60, -70, -105 designates degree of wiper swing.</p>	

Run as a Front
MASTER

0-415-B1 Cont

REV. B	0-415-1
-----------	---------

PLEASE GIVE MACHINE S/N W/ORDER



385653

ASSEMBLY	REVISION
O-471	E

CLICK HERE TO **DOWNLOAD** THE COMPLETE MANUAL

- Thank you very much for reading the preview of the manual.
- You can download the complete manual from: www.heydownloads.com by clicking the link below



- Please note: If there is no response to CLICKING the link, please download this PDF first and then click on it.

CLICK HERE TO **DOWNLOAD** THE COMPLETE MANUAL