

Manitowoc

TRADITIONAL CRANE

PARTS MANUAL

This manual has been prepared for and is considered part of

2900WC

Model

29541

Serial Number

GROUP A = Rotating Structure (Includes rotating bed, operator's cab, cases, fuel tanks, transfer pump, counterweights, guards, platforms, catwalks, machinery enclosure, horn)

GROUP B = Upperworks Machinery (Includes front, rear, and auxiliary drums, boom hoist, swing and drive shafts, hand levers, foot pedals, control linkage, rotation indicators, upperworks hydraulic components, hydraulic piping, hydraulic oil reservoir, lubrication pump and piping, blowers)

GROUP C = Air Components & Electrical (Includes control console, air piping, electric wiring, auxiliary light plant and lighting, TV monitoring, compressor and air tank)

GROUP D = Power Components - Upperworks (Includes engine or motor, radiator, auxiliary power plant, take off converters and piping, controls, VICON power lowering, torque limiter, hydraulic pumps and piping, fuel piping, battery box)

GROUP E = Lower Structure & Control (Includes carbody, crawlers, travel shafts and control, steering travel locks, hydraulic travel, travel power outriggers, carrier, pedestal, lowerworks hydraulic piping, RINGER components, barge mounting and machinery, spud drums)

GROUP F = Attachments (Includes booms, jibs, masts, tower, wire rope guides, equalizer, gantry, fairlead, timber guards, boom angle indicator, block-up limit, tag line, hook block, weight ball, upper and lower boom point, wind speed indicator, crowd and retract dipper sticks, dippers,)

O-NUMBER SECTION = (Includes lacing drawings and purchased component parts drawings referenced in sections A through F)

This manual is arranged in sections as listed above. Sections A through F are arranged by group numerical order with an index after each section tab. An alphabetical index for groups A Through F combined is located after the O-number Section. The O-number section is arranged in numerical order by O-number. Following this cover page are the Basic Specifications, Warranty Information, Tool List (if applicable) Outline Dimensions, Weights, and Dealer Listing.

CLICK HERE TO **DOWNLOAD** THE COMPLETE MANUAL

- Thank you very much for reading the preview of the manual.
- You can download the complete manual from: www.heydownloads.com by clicking the link below



- Please note: If there is no response to CLICKING the link, please download this PDF first and then click on it.

CLICK HERE TO **DOWNLOAD** THE COMPLETE MANUAL

MASTER

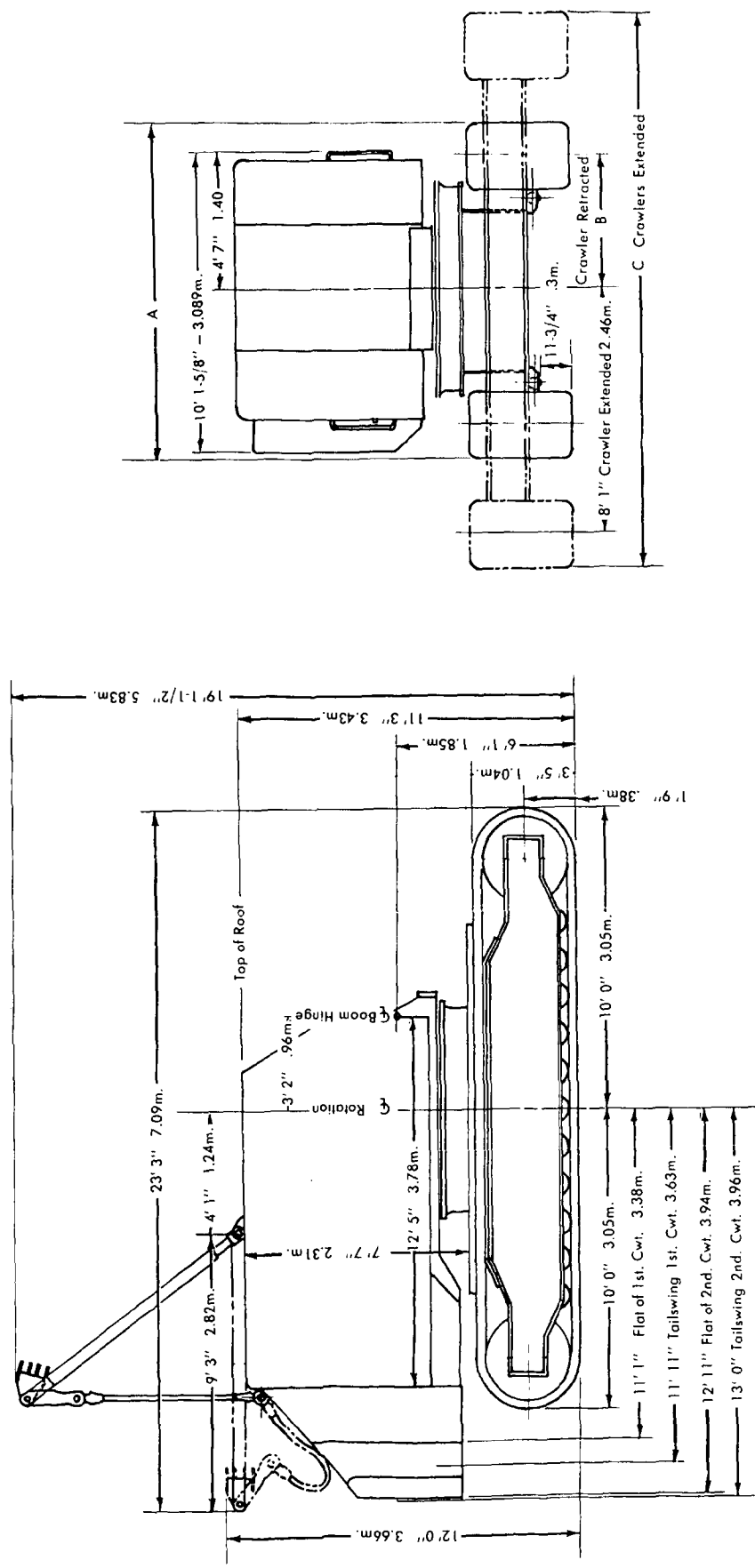
180060

180060

MANITOWOC ENGINEERING CO.

A Division of The Manitowoc Company, Inc.

Manitowoc, Wisconsin



Dimension	30" Treads	36" Treads
A	11' 5" - 3.48m.	12' 5" - 3.78m.
B	4' 5 1/2" - 1.36m.	4' 8 1/2" - 1.44m.
C	18' 8" - 5.69m.	19' 2" - 5.84m.

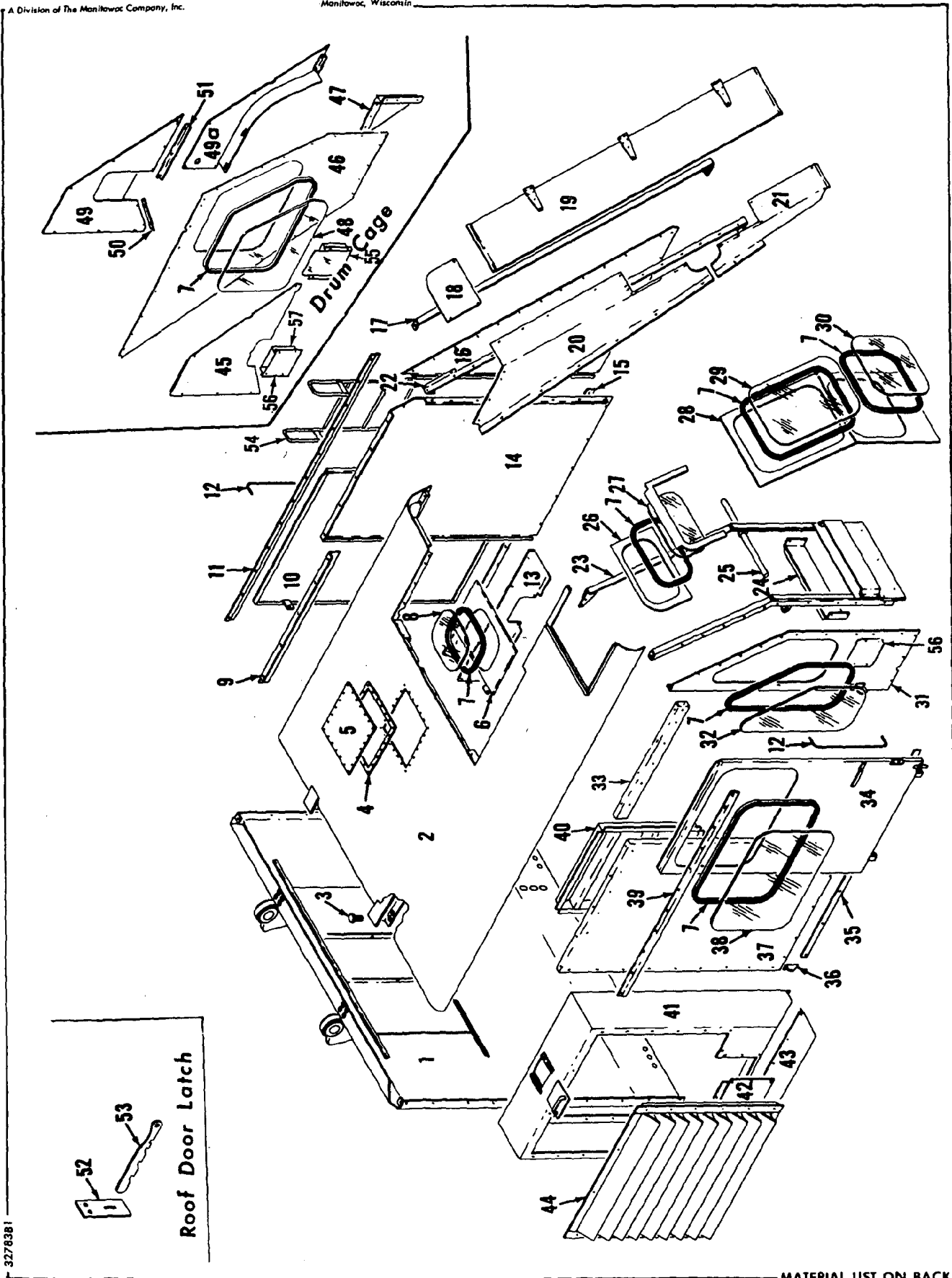
7-26-71
9-14-67
Date 8-25-67

180060

OUTLINE DIMENSIONS - M2900WC

32783 B1

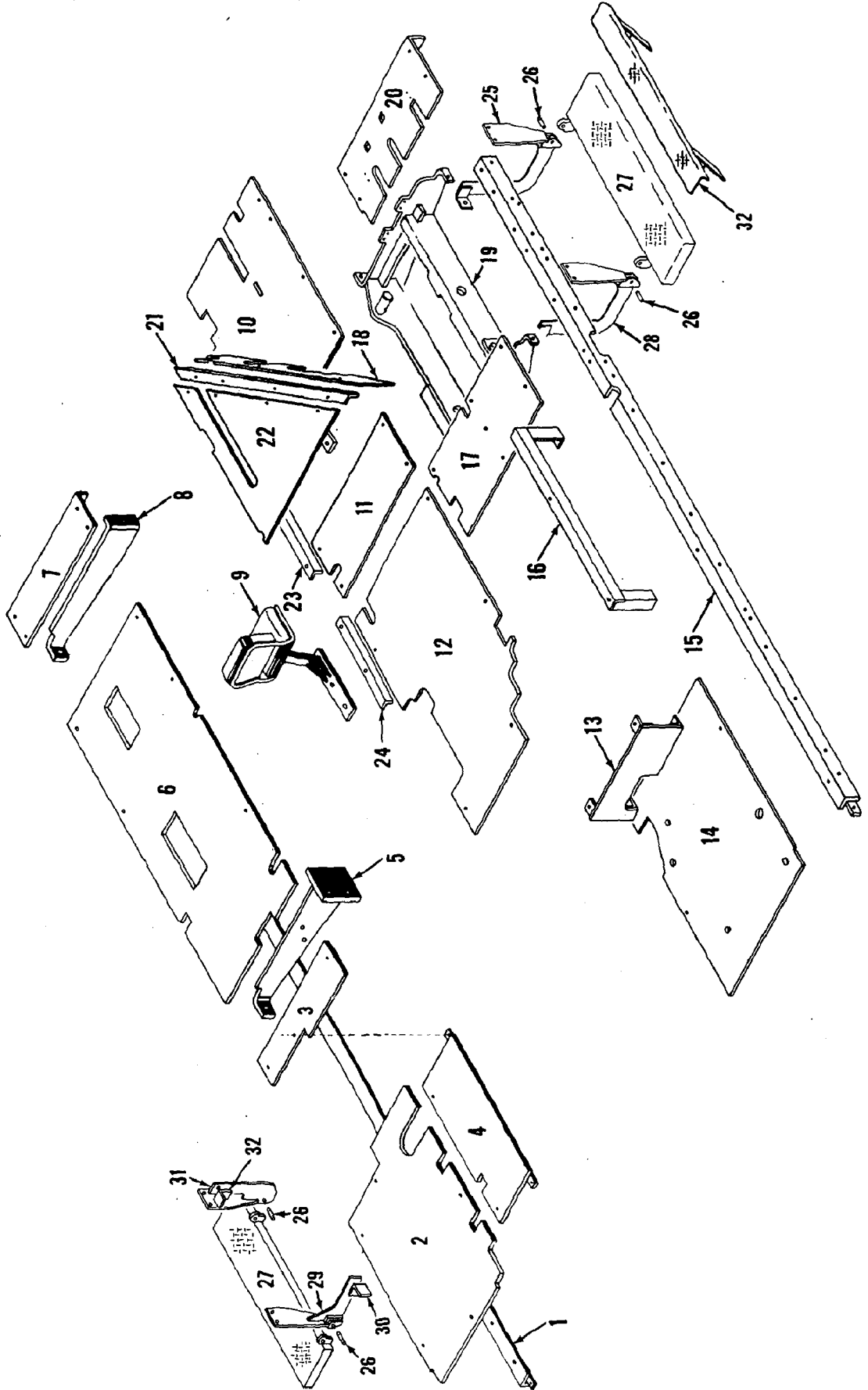
MAOER



MANITOWOC ENGINEERING CO.

A Division of The Manitowoc Company, Inc.

Manitowoc, Wisconsin



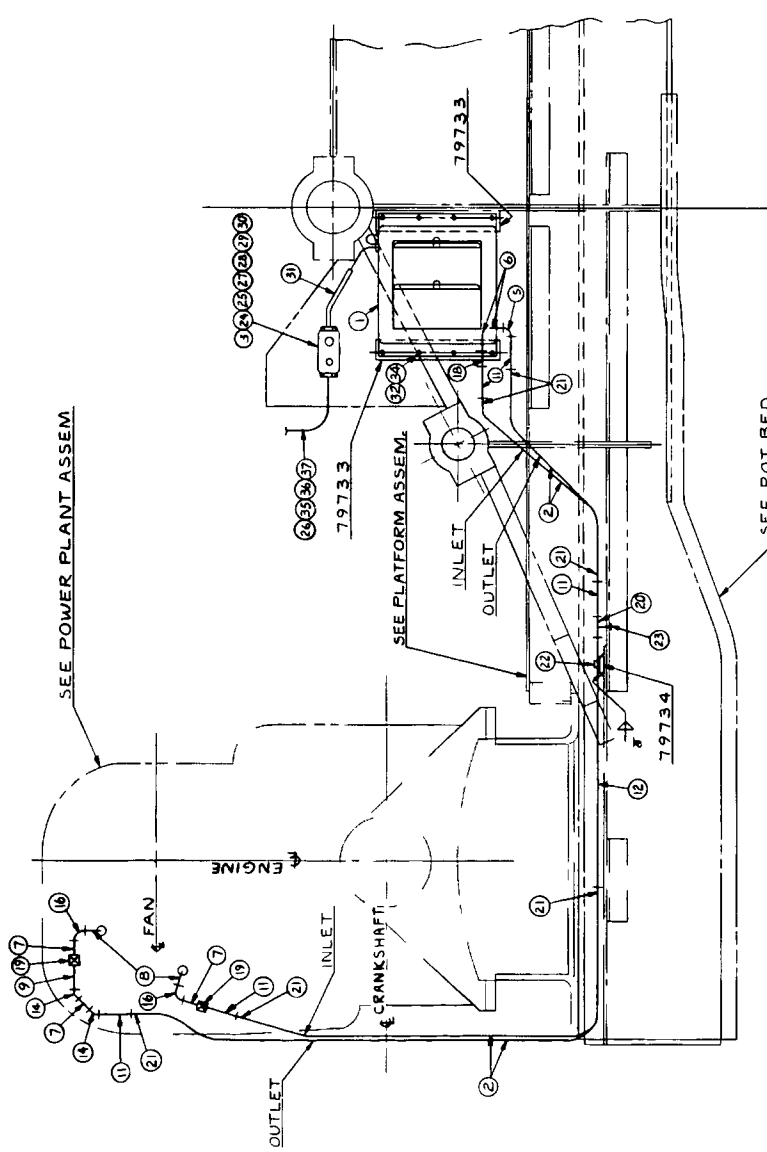
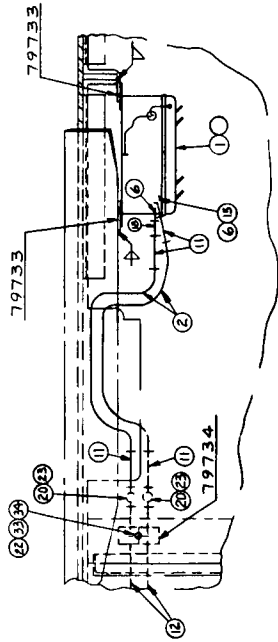
43104G1

MANITOWOC

PLATFORM

REQD DWG NO
 2 79733
 1 79734

DESCRIPTION
 MOUNTING PAD
 MOUNTING PAD



NOTICE
 THIS PRINT REMAINS THE PROPERTY OF
MANITOWOC ENGINEERING CO
 O M O CO ED EREO S CO DENT
 S I O SUB EC TO RETU PO DEM D ND
 O E REAC CD DECL S OI O E COFD OR
 DEP ME L I O O INTERES S W SOE ER

DO NOT SCALE THIS DRAWING

④ ⑥

N ^o	QTY	DESCRIPTION	CODE NO	REMARKS
1	1	KYSOR M-1565 24V HTR	480016	
2	2	1/2 DIA HOSE	485565	
3	1	SWITCH	673557	
4				
5				
6	2	CLOSE NIPPLE	543403	
7	3	CLOSE NIPPLE	543404	
8	2	CLOSE NIPPLE	543405	
9	1	2 CLOSE NIPPLE	543518	
10				
11	6	3 PIPE (THD ONE END)	566120	
12	2	2 X 24 PIPE (THD ONE END)	565925	
13				
14	2	X-45 ELB	406685	
15	1	X-90 RED ELB	406896	
16	2	X-1 RED ELB	406906	
17				
18	1	RED COUPLING	377275	
19	2	STEAM COCK	355004	
20	2	PIPE TEE	679303	
21	8	HOSE CLAMPS	378337	
22	2	PIPE STRAPS	667084	
23	2	PIPE PLUG	571703	
24	1	4 HANDY BOX	268508	
25	2	BX CONNECTOR-STR	364155	
26	1	14-1 TIREX CORD	371809	
27	1	15 AMP GLASS FUSES	453230	
28	1	BLANK COVER	570103	
29	3	TERMINAL AMP-31075	680500	
30	1	FUSE HOLDER	575502	
31	1	LOOM	510706	
32	1	20 NC X 1/8 LG CAPSCREW	612351	
33	7	20N C X 1/8 LG CAPSCREW	612353	
34	10	LOCKWASHER	710302	
35	8	24NC X 1/2 OVEN BOLT	254552	
36	8	24NC HEX NUT	546053	
37	8	24NC STRAP	667202	

NOTE 1 - IMPORTANT
 DO NOT USE EXCESSIVE FORCE IN APPLYING PIPE FITTINGS TO HEATER INLET/OUTLET IF PIPE THREADS IN HEATER ARE OVERSIZE OR DEFECTIVE IN ANYWAY. RETURN HEATER TO VENDOR FOR CORRECTION.

NOTE 2
 FOR 12 VOLT APPLICATION SUBSTITUTE KYSOR 12 VOLT HEATER M E C CODE #480017 FOR ITEM 1

UNLESS NOTED
 D K
 1/8
 1/16
 1/32
 1/64

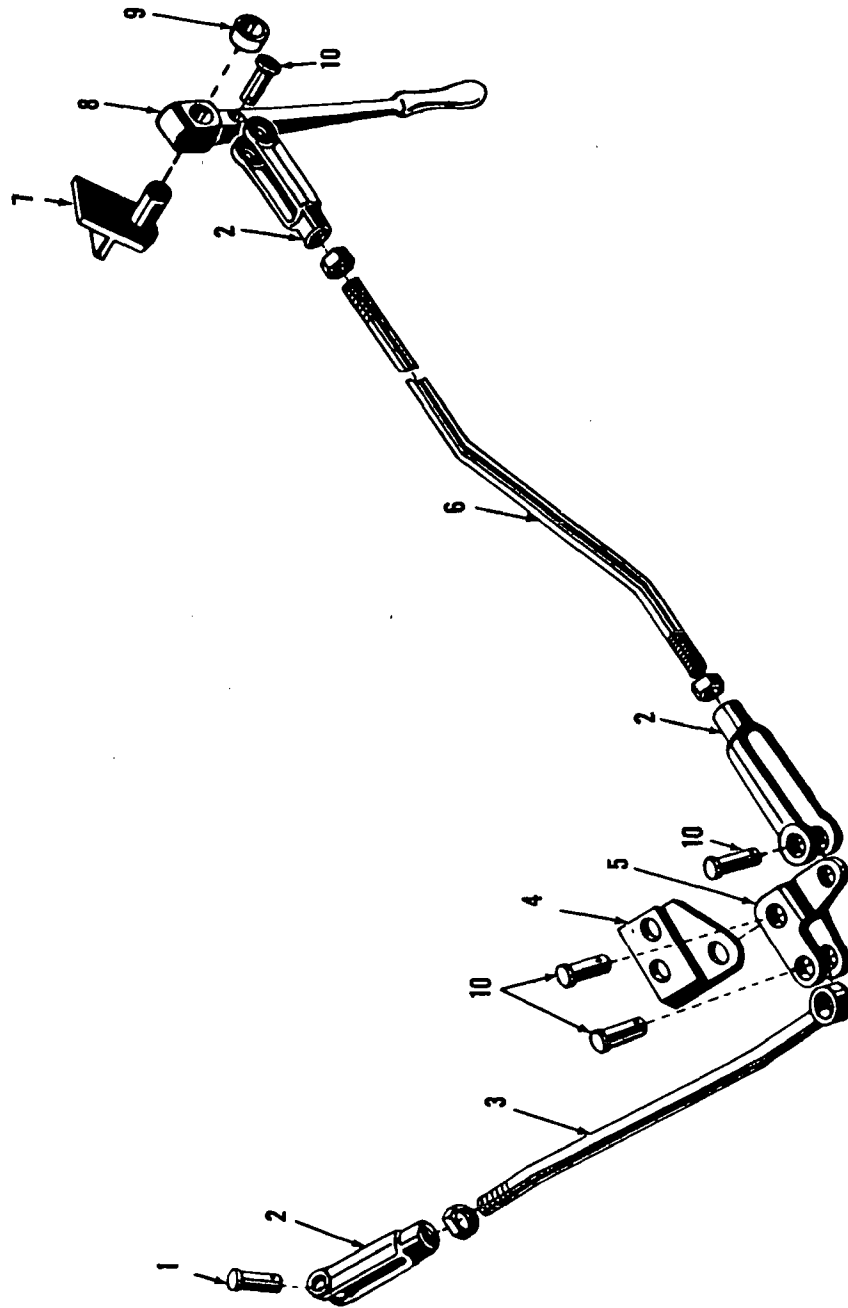
MANITOWOC ENGINEERING CO
 CAB HEATER ASSEM
 FOR CUMMINS ENG
 SEE NOTES 1 & 2
 QTY 2900WC

DATE 4.10.68
 DRAWING NO 180284

MANITOWOC ENGINEERING CO.

A Division of The Manitowoc Company, Inc.

Manitowoc, Wisconsin



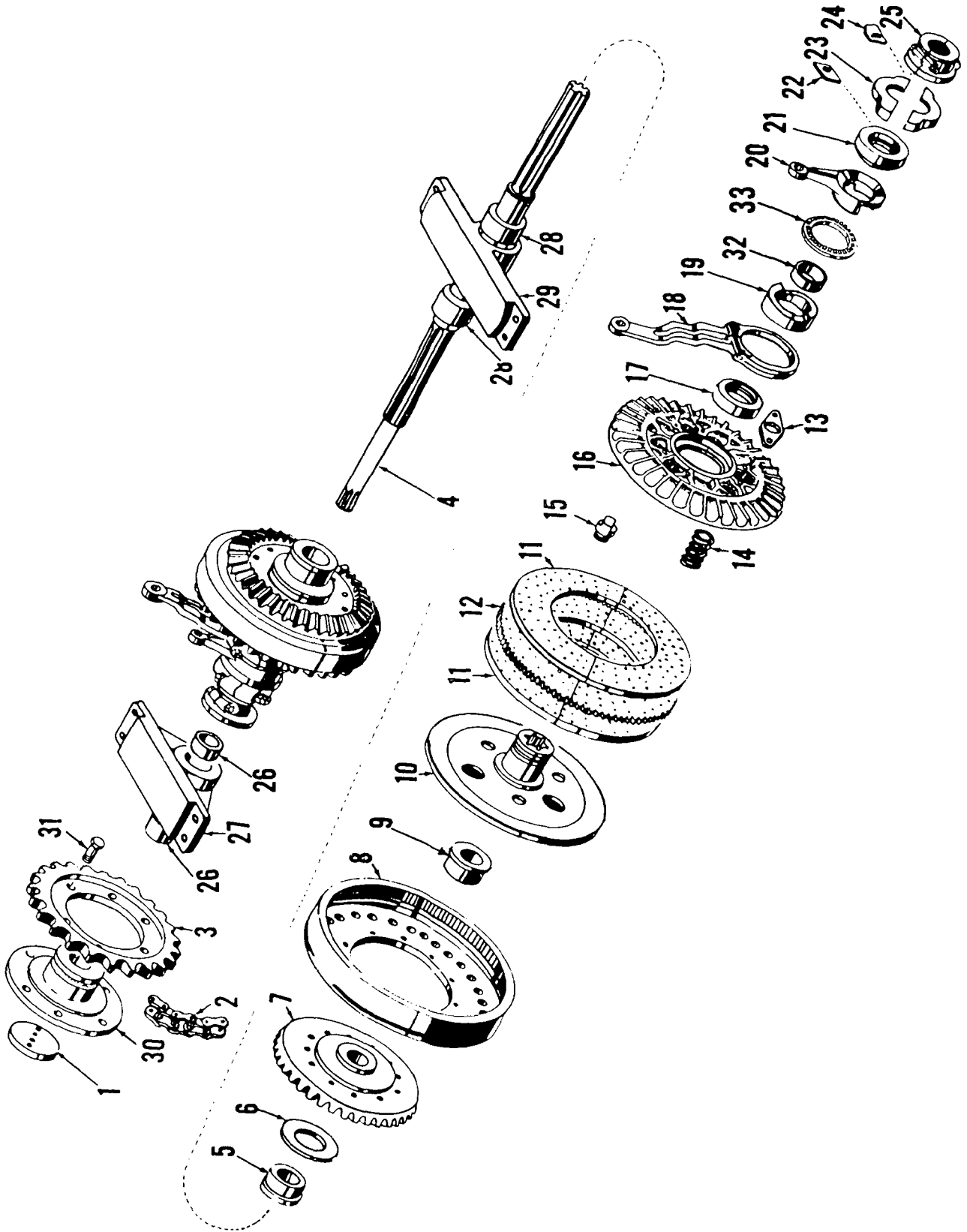
31770C1

MATERIAL LIST ON BACK

IND ROOM HOIST ALLY DDAVT

MASTER

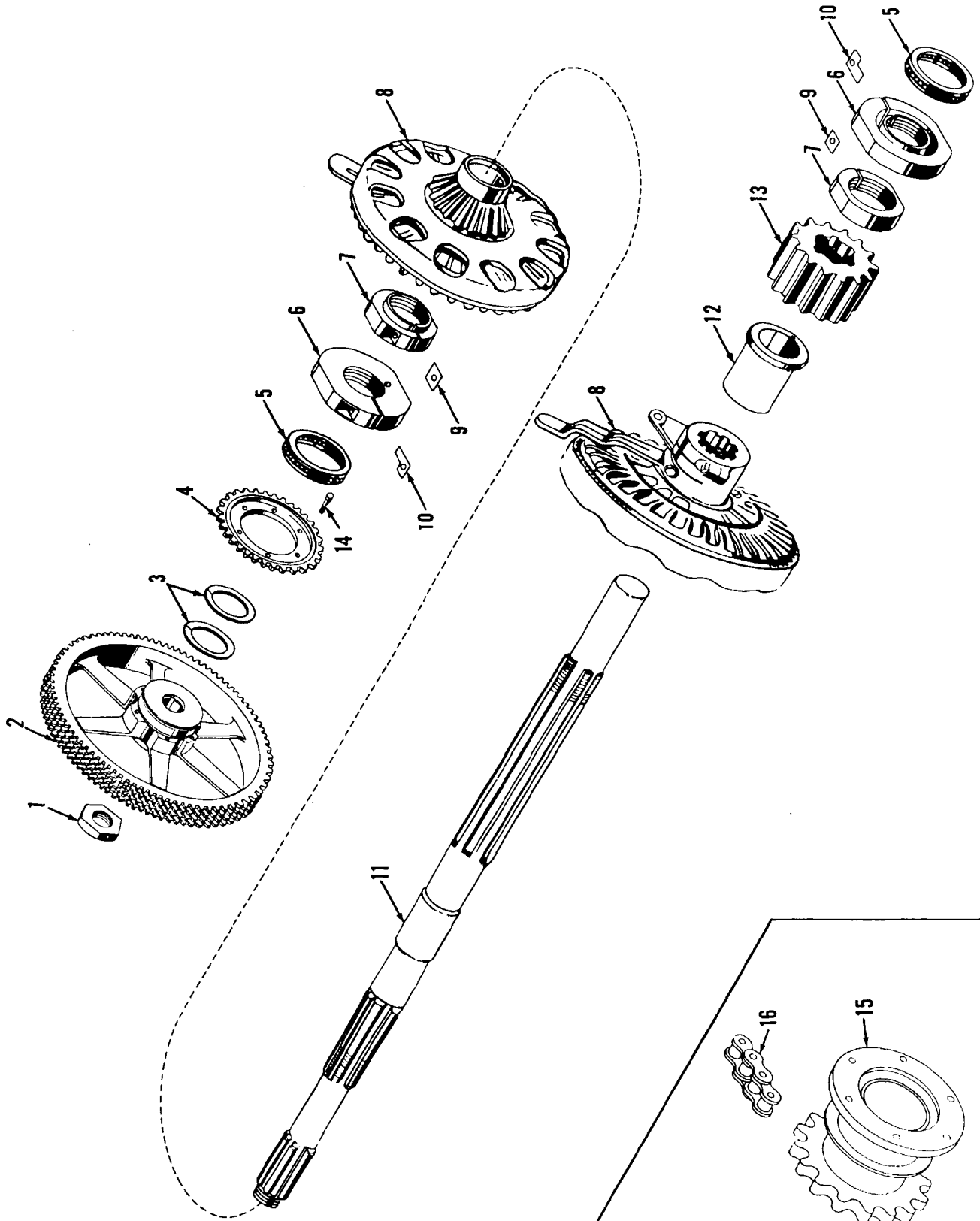
MASTER



42381C1

MATERIAL LIST ON BACK

INDEPENDENT BOOM HOIST DRIVE SHAFT



48034A1

MATERIAL LIST ON BACK

MAIN DRIVE SHAFT

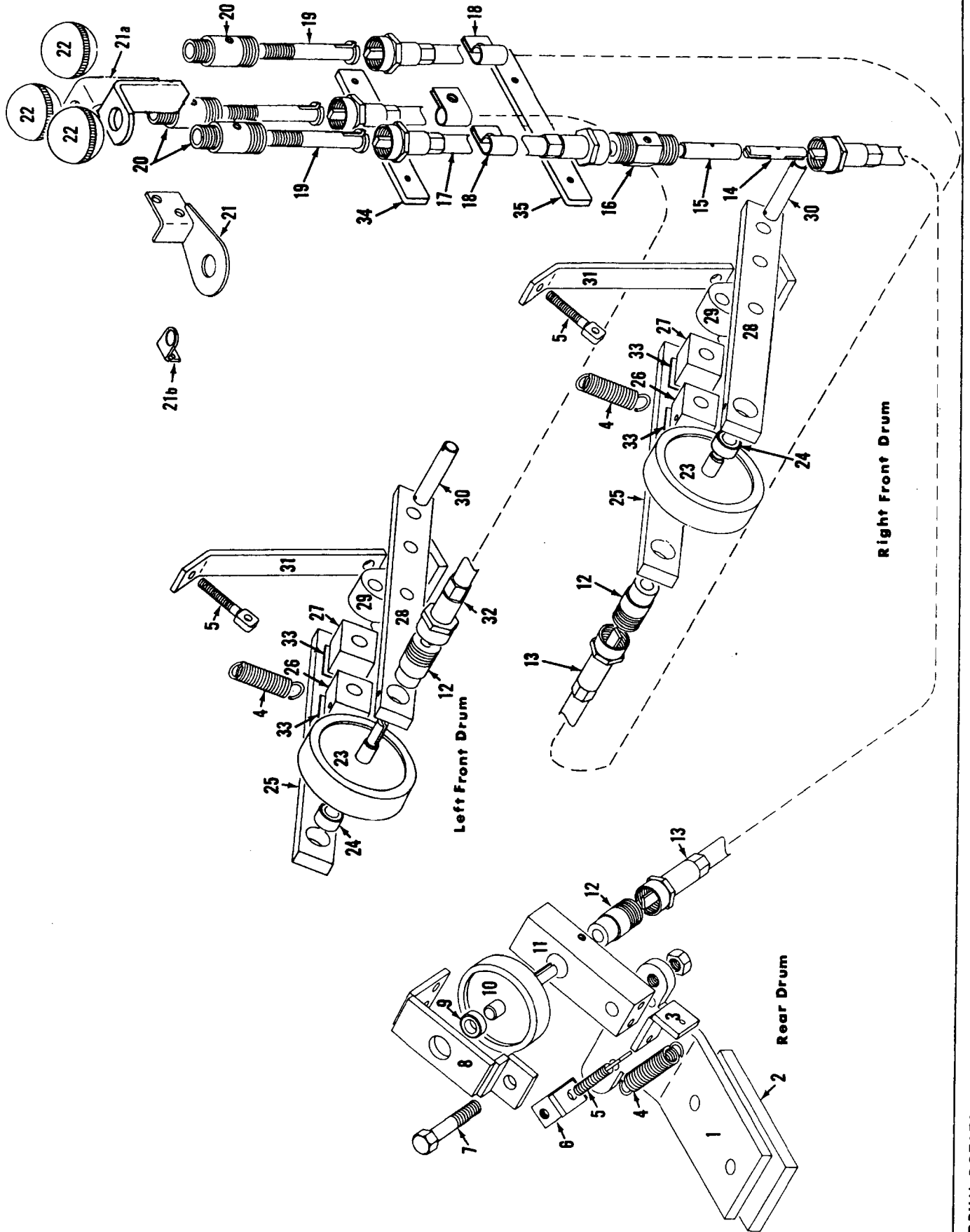
MASTER

MANITOWOC ENGINEERING CO.

A Division of The Manitowoc Company, Inc.

Manitowoc, Wisconsin

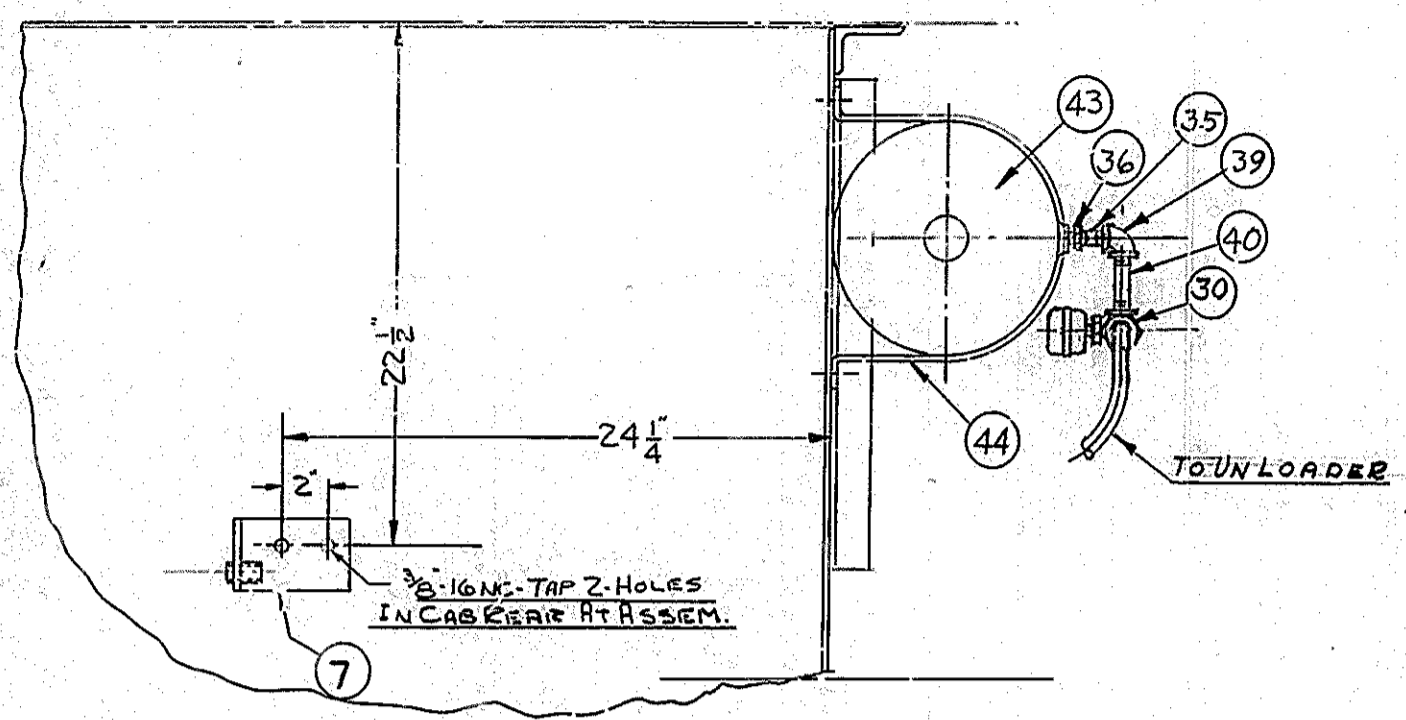
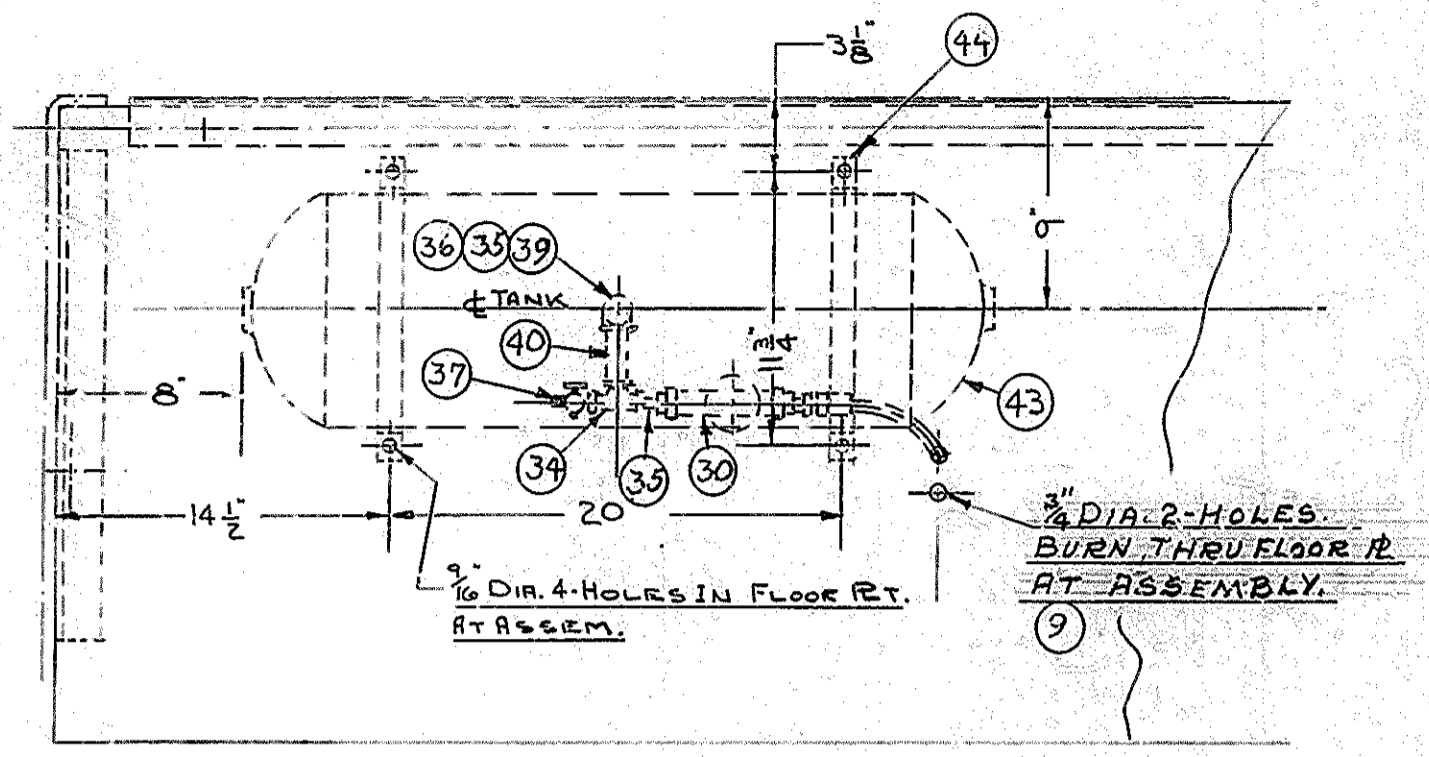
MASTER



48267C1

MATERIAL LIST ON BACK

DRUM ROTATION INDICATOR



B/M FOR UNLOADER CIRCUIT			
ITEM No.	DESCRIPTION	CODE NO.	REMARKS
1	FLEXIBLE HOSE 5/16 I.D.		17843-2
2	1/4 x 1 1/2 NIPPLE	543442	
3	1/4 x 90° ELBOW	406952	
4	1/4 TEE	679301	
5	1/4 CLOSE NIPPLE	543402	
6	AIR GOVERNOR GARONIER DENVER	558902	
7	BRACKET FOR GOV.		11703
8	1/2 x 1/4 RED. BUSH.	288758	
9	2 1/4 COUPLING		
10	2 FLEX HOSE 5/16 I.D.		
11	1 FLEX. HOSE 5/16 I.D.		
12	1 FLEX. HOSE 5/16 I.D.		
13			
14			

B/M FOR COMPRESSOR TO AIR TANK			
ITEM No.	DESCRIPTION	CODE NO.	REMARKS
15	GASKET		15530
16	FLANGE ON COMPR.		15529
17	1/4 x 2 NIPPLE	543445	
18	3/4 TEE	679304	
19	3/4 x 1/2 RED. BUSH.	288753	
20	1/2 SAFETY VALVE 150 LB.	702402	
21	3/4 x 8 1/2 NIPPLE - GALV.	543051	
22	2 3/4 x 45° ELBOW	406687	
23	1 FLEX. HOSE 3/4 I.D.		
24	1 3/4 CLOSE NIPPLE	543405	
25	1 3/4 x 12 NIPPLE		
26			
27			
28			
29			

B/M TANK TO MANIFOLD			
ITEM No.	DESCRIPTION	CODE NO.	REMARKS
56	1 3/4 x 11 HOSE		16738
57	2 3/4 x 90° ELBOW	406955	
58	1 3/4 x 88 LG. STD. PIPE GALV.	542751	
59	3 3/4 x 1/2 RED. BUSH.	288753	
60	1 1/2 x 9'-4 HOSE		70188-2
61	1 1/2 x 4'-11 HOSE		19840-2
62			
63			
64			
65			
66			

TANK TO MOISTURE EJECTOR			
ITEM No.	DESCRIPTION	CODE NO.	REMARKS
30	1 AUTO DRAIN VALVE	702504	
31			
32			
33			
34	1 1/4 TEE	679301	
35	2 1/4 x 1 1/2 NIPPLE		
36	1 1/2 x 1/4 RED. BUSH.	288758	
37	1 1/4 AIR COCK	355452	
38			
39	1 1/4 x 90° ELL		
40	1 1/4 x 3 NIPPLE		
41			
42			

AIR TANK & FITTINGS			
ITEM No.	DESCRIPTION	CODE NO.	REMARKS
43	1 AIR TANK 10x33	714620	
44	2 STRAPS		11178
45	1 3/4 CLOSE NIPPLE	543405	
46	1 1' x 3/4 NUT BUSH	288757	
47	1 3/4 TEE	679304	
48	1 3/4 x 1/4 BUSH.	288751	
49			
50			
51			
52			
53			
54			
55			

ASSEMBLIES USED ON

12-23-65 - JH PIPING REVISED

DWG NO. 32856

REVISED DATE

DATE 6-13-63

PATTERN NO.

CODE NO.

DWG NO. 32856

SCALE 1/2"=1'-0"	UNLESS NOTED	MANITOWOC ENGINEERING CO. MANITOWOC, WISCONSIN	AIR TANK & PIPING ASSEM. FOR	PATTERN NO.
DR. GOS	FRACT. DIM.		GMC 671 WITH ENGINE MTD.	
CK. RW	HOLE DIA.	MATERIAL	COMPRESSOR TO REAR	DWG NO.
APP.	HOLE CENTERS		MODEL 2900WC	32856
	FINISH			

GROUP D - Power Components

MATERIAL ADDED TO ASSEM. WHEN OUTPUT SHAFT GOV. DRIVE IS REQUIRED.

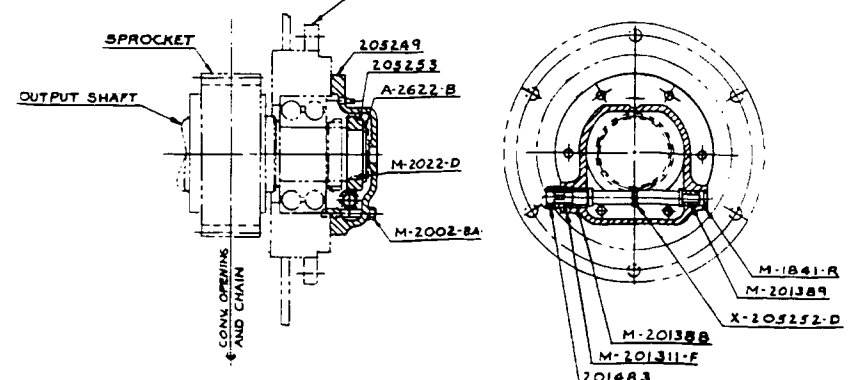
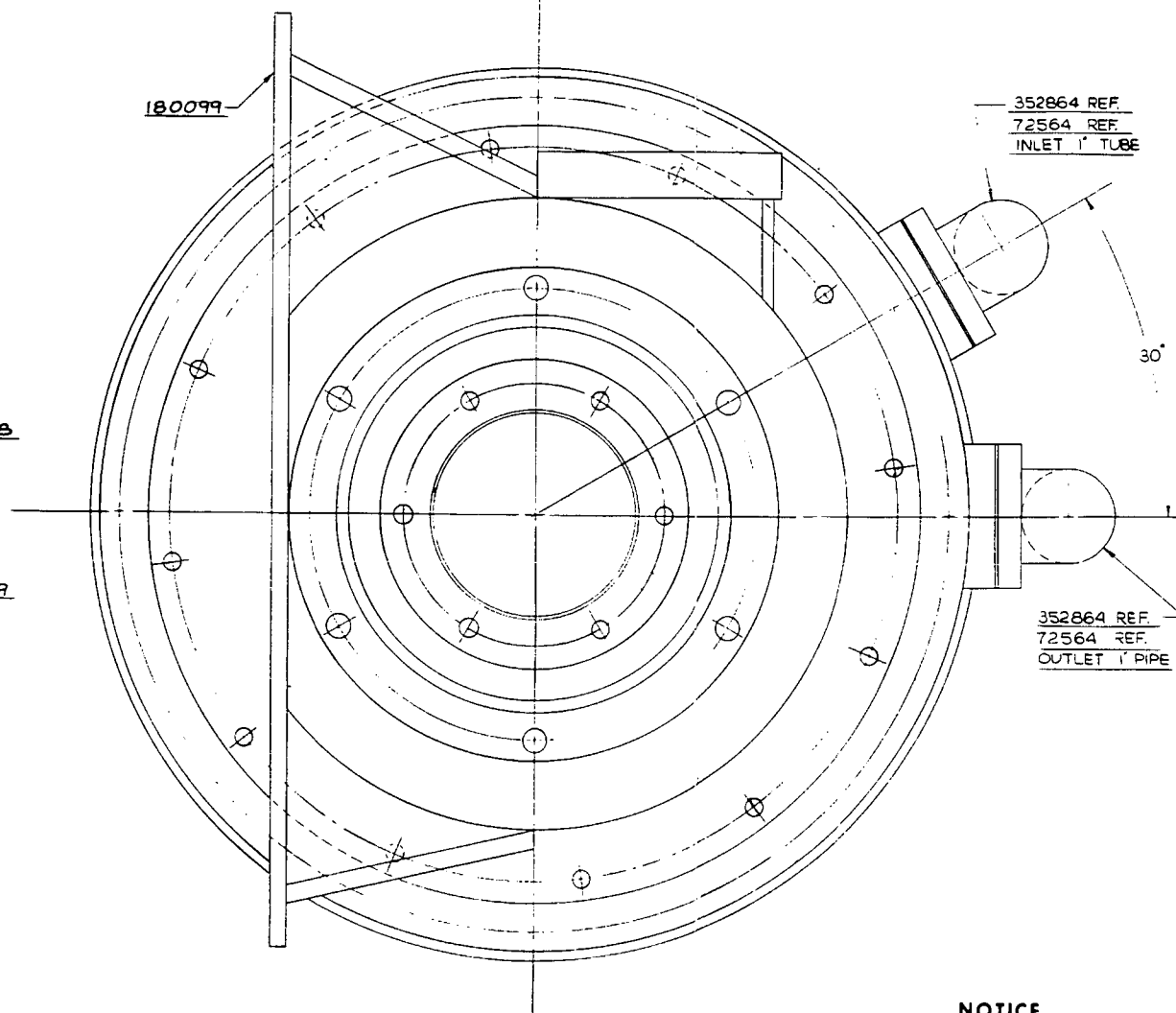
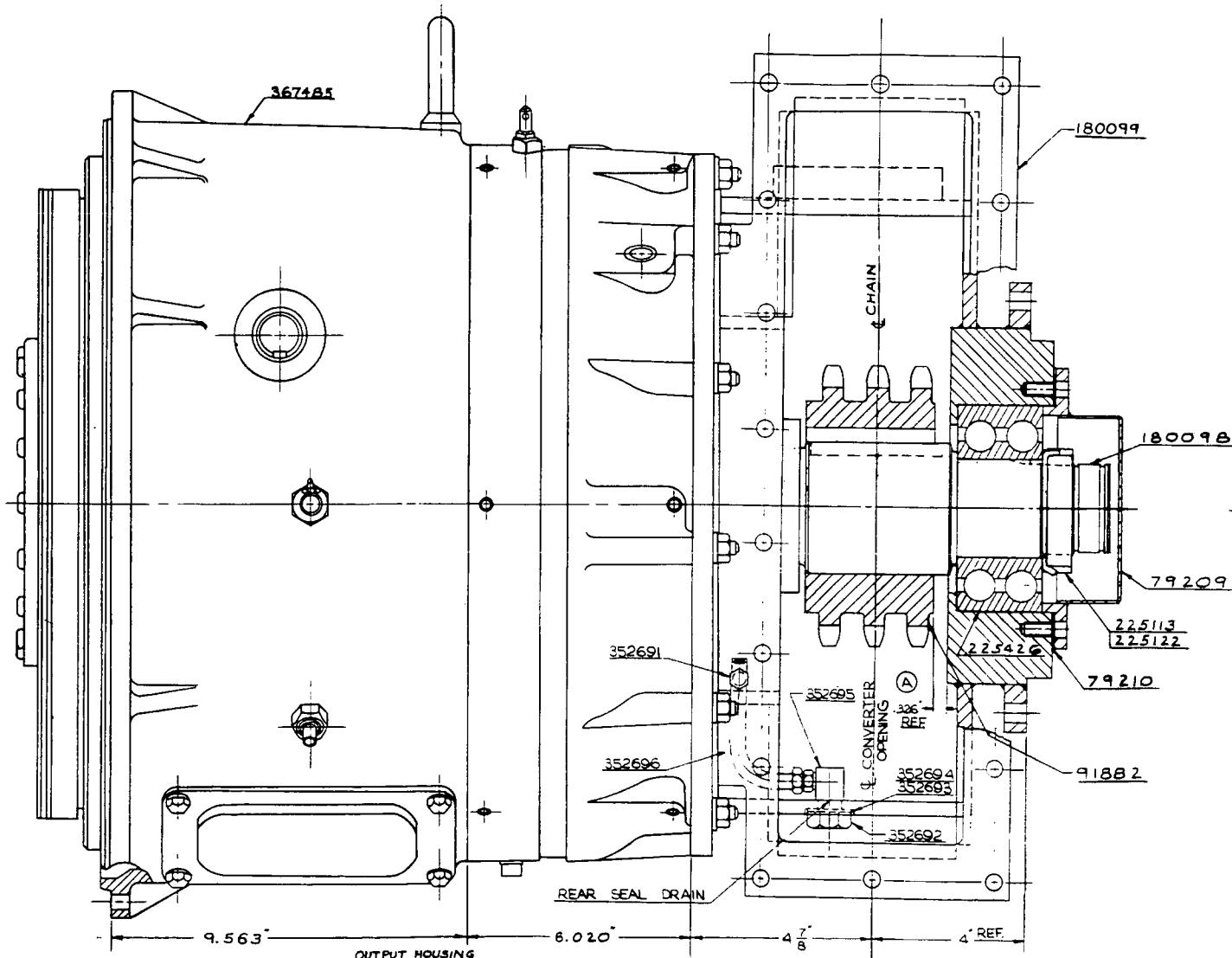
QUAN.	CODE NO.	DESCRIPTION
1	353026	TWIN DISC OUTPUT SHAFT GOV. DRIVE ASSEM.

THE ABOVE ASSEMBLY CONSISTS OF THE FOLLOWING TWIN DISC PARTS:

1	205253	SPIRAL GEAR
2	M-2002-BA	CAP SCREW
1	M-1841-R	PLUG
1	M-201389	BEARING
1	X-205252-D	SHAFT GEAR
1	M-20138B	BEARING
1	H-201311-F	SET SCREW
1	2014B3	ADAPTER
1	205249	HOUSING
1	A-2622-B	SNAP RING
1	M-2022-D	WOODRUFF KEY

QUAN.	NO.	DESCRIPTION
1	225426	BEARING: MRC 5313
1	352692	NUT T.D. M2027-AN
1	352693	WASHER T.D. M299
1	352694	GASKET T.D. 201350
1	352695	HOSE FITTING T.D. 201580
1	352696	HOSE T.D. M201502-E
1	352691	ELBOW T.D. M2055-C
1	367485	TORQUE CONVERTER WITH FREE WHEEL UNIT
1	225113	LOCKNUT
1	225122	LOCKWASHER

1	180098	OUTPUT SHAFT
1	180099	OUTPUT HSG
1	79209	BRG CAP-DELETE WHEN GOV. DRIVE ASSEM. IS USED.
1	79210	GASKET-DELETE WHEN GOV. DRIVE ASSEM. IS USED.
1	91882	SPROCKET 22 T. 1 P. 3 STRAND



OUTPUT SHAFT GOVERNOR DRIVE ASSEMBLY

NOTICE
 THIS PRINT REMAINS THE PROPERTY OF
MANITOWOC ENGINEERING CO.
 ALL INFORMATION CONTAINED THEREON IS CONFIDENTIAL.
 IT IS LOANED, SUBJECT TO RETURN UPON DEMAND, AND
 ON EXPRESS CONDITION THAT IT IS NOT TO BE COPIED OR
 USED DIRECTLY OR INDIRECTLY IN ANY WAY WHATSOEVER
 DETRIMENTAL TO OUR INTERESTS.

NOTE: USE WITH CUMMINS HS-6-B1 ENGINE.

SUPERSEDES 48131 FIRST ON 29512

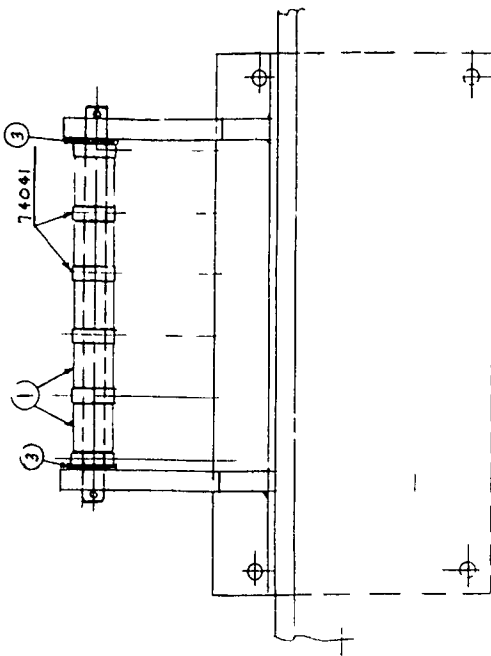
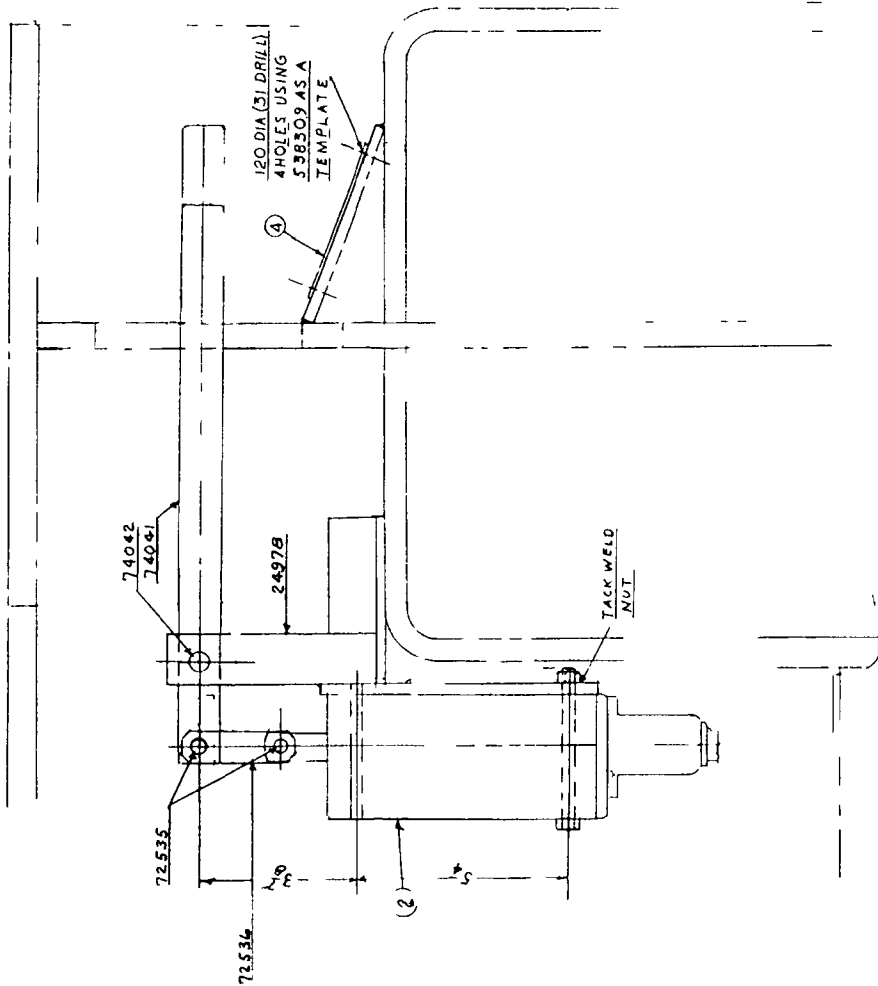
UNLESS NOTED SCALE: 1-1/2\"/>	MANITOWOC ENGINEERING CO. WATKINS, WISCONSIN	TORQUE CONVERTER ASSEMBLY MS 340 FORM 2900 WC	PATTERN NO. CODE NO. DATE 48171
----------------------------------	---	--	--

ASSEMBLER USED ON
48137
49369

REVISED DATE
DATE
10-4-67

48171

- REQD
- 12 72535 PIN
 - 12 72536 LINK
 - 6 74041 LEVER
 - 1 74042 PIN
 - 1 2497B SUPPORT
- ① 5 I.O.D. 18 I.D. ST. TUBE 1 1/2 L
 - ② 1 705872 3306 H. HVSCO C PLUNGER VALVE
 - ③ AS REQD + PLAIN WASHER 709970
 - ④ ① L 538309 NAME PLATE (22543 SHEET 2)



NOTICE

THIS PRINT REMAINS THE PROPERTY OF
MANITOWOC ENGINEERING CO
 ALL INFORMATION CONTAINED HEREIN IS LOANED SUBJECT TO RETURN UPON DEMAND AND ON EXPRESS CONDITION THAT IT IS TO BE CORRECTED OR REPRODUCED AT THE SOLE RISK OF THE USER.

MANITOWOC 1 6 29484

4-6-63 CONTROL VALVE
 6 TITLES ASSEMBLY
 6 ADDED IN CABODY 6 1 0
 1 2465 COL 32484

CLICK HERE TO **DOWNLOAD** THE COMPLETE MANUAL

- Thank you very much for reading the preview of the manual.
- You can download the complete manual from: www.heydownloads.com by clicking the link below



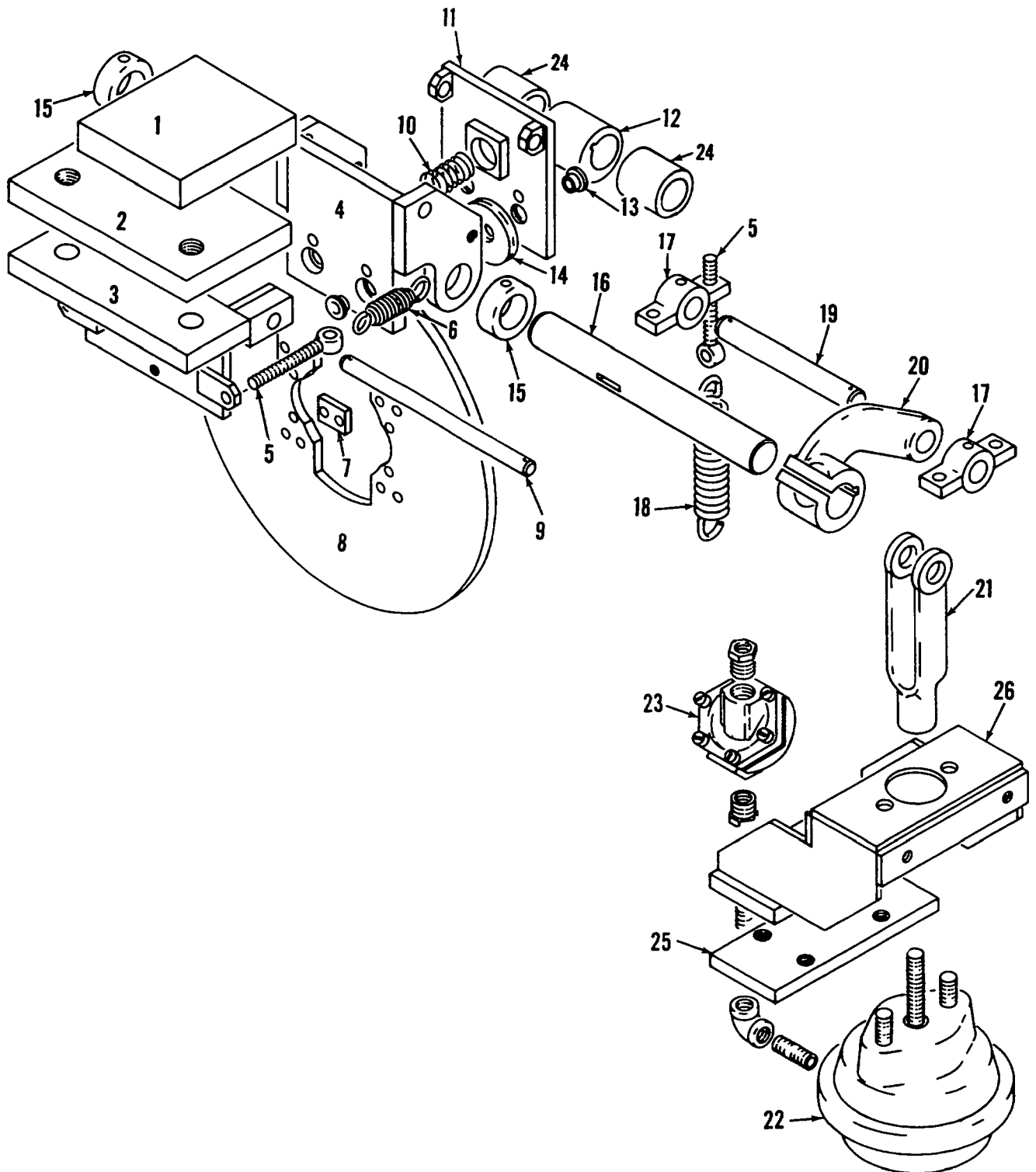
- Please note: If there is no response to CLICKING the link, please download this PDF first and then click on it.

CLICK HERE TO **DOWNLOAD** THE COMPLETE MANUAL

MANITOWOC ENGINEERING CO

A Division of The Manitowoc Company Inc

Manitowoc, Wisconsin



43255B1

MATERIAL LIST ON BACK

TRAVEL BRAKE

NOTE 1

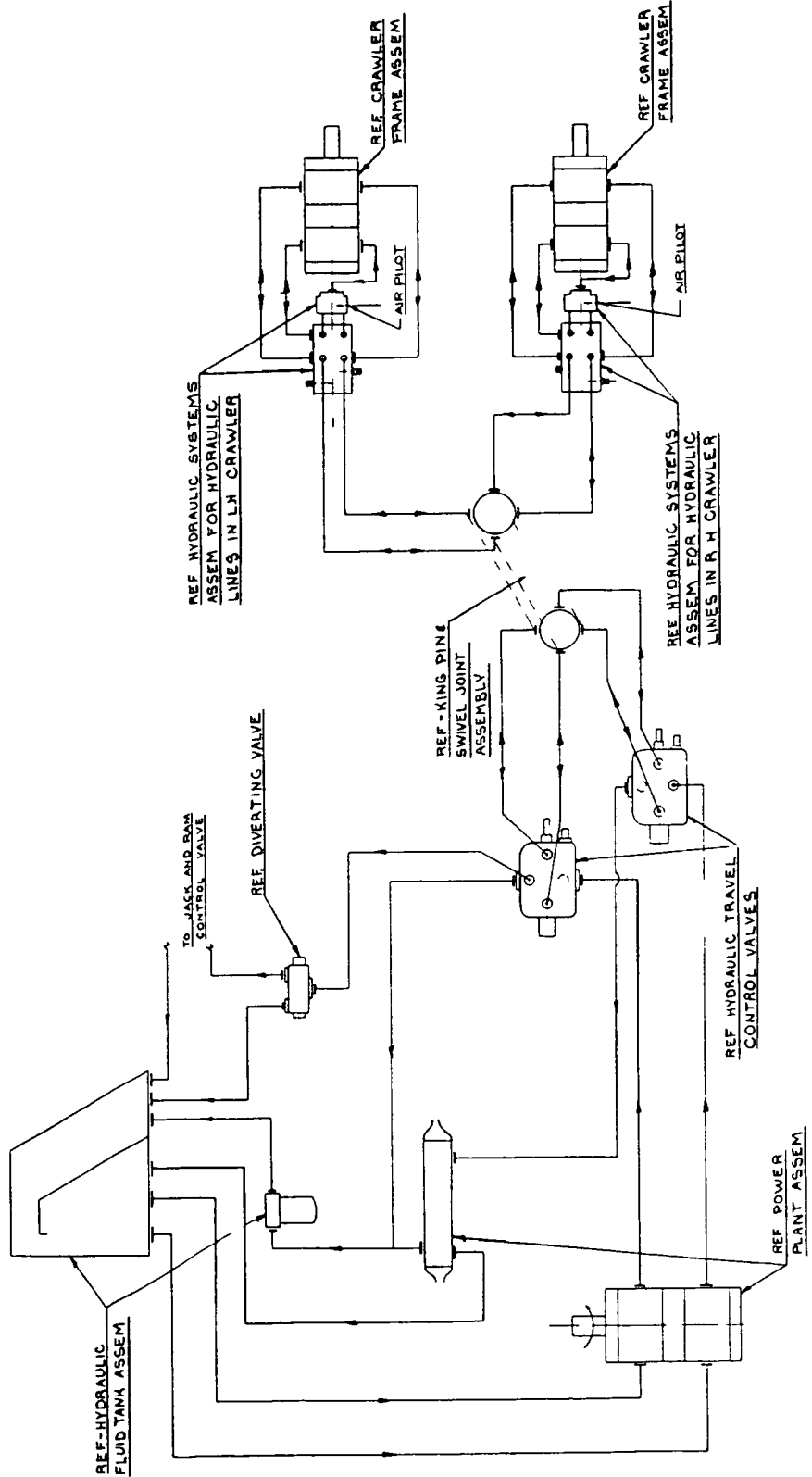
FOR HYDRAULIC LINES USED IN ROTATING BED, SEE HYDRAULIC SYSTEMS ASSEMBLY FOR HYDRAULIC LINES IN ROTATING BED.

NOTICE

THIS DRAWING REMAINS THE PROPERTY OF

MANITOWOC ENGINEERING CO

ALL INFORMATION CONTAINED HEREIN IS CONFIDENTIAL AND IS TO BE KEPT AS SUCH. IT IS NOT TO BE COPIED OR USED, DIRECTLY OR INDIRECTLY, IN ANY MANNER DETRIMENTAL TO OUR INTERESTS.



SUPERSEDES 180134 OF 10 18 68

UNLESS NOTED	MANITOWOC ENGINEERING CO	HYDRAULIC SYSTEMS ASSEM
DATE	DATE	DATE
BY	BY	BY
CHKD	CHKD	CHKD
APP	APP	APP
REV	REV	REV
1	1	1
2	2	2
3	3	3
4	4	4
5	5	5
6	6	6
7	7	7
8	8	8
9	9	9
10	10	10
11	11	11
12	12	12
13	13	13
14	14	14
15	15	15
16	16	16
17	17	17
18	18	18
19	19	19
20	20	20
21	21	21
22	22	22
23	23	23
24	24	24
25	25	25
26	26	26
27	27	27
28	28	28
29	29	29
30	30	30
31	31	31
32	32	32
33	33	33
34	34	34
35	35	35
36	36	36
37	37	37
38	38	38
39	39	39
40	40	40
41	41	41
42	42	42
43	43	43
44	44	44
45	45	45
46	46	46
47	47	47
48	48	48
49	49	49
50	50	50
51	51	51
52	52	52
53	53	53
54	54	54
55	55	55
56	56	56
57	57	57
58	58	58
59	59	59
60	60	60
61	61	61
62	62	62
63	63	63
64	64	64
65	65	65
66	66	66
67	67	67
68	68	68
69	69	69
70	70	70
71	71	71
72	72	72
73	73	73
74	74	74
75	75	75
76	76	76
77	77	77
78	78	78
79	79	79
80	80	80
81	81	81
82	82	82
83	83	83
84	84	84
85	85	85
86	86	86
87	87	87
88	88	88
89	89	89
90	90	90
91	91	91
92	92	92
93	93	93
94	94	94
95	95	95
96	96	96
97	97	97
98	98	98
99	99	99
100	100	100

DO O C

180134

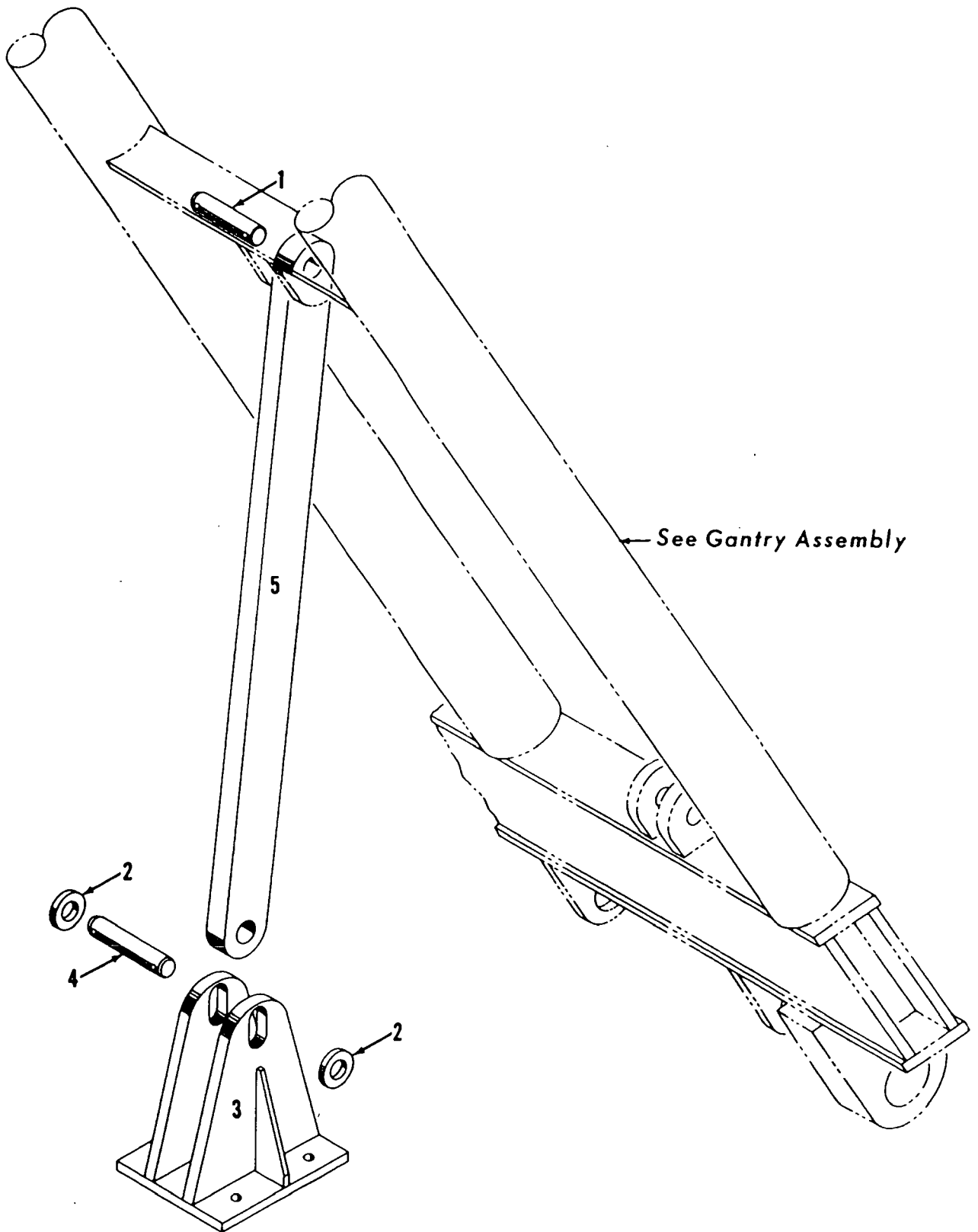
180134

12 2-71
180134

MANITOWOC ENGINEERING CO.

A Division of The Manitowoc Company, Inc.

Manitowoc, Wisconsin



32393-A-1

MATERIAL LIST ON BACK

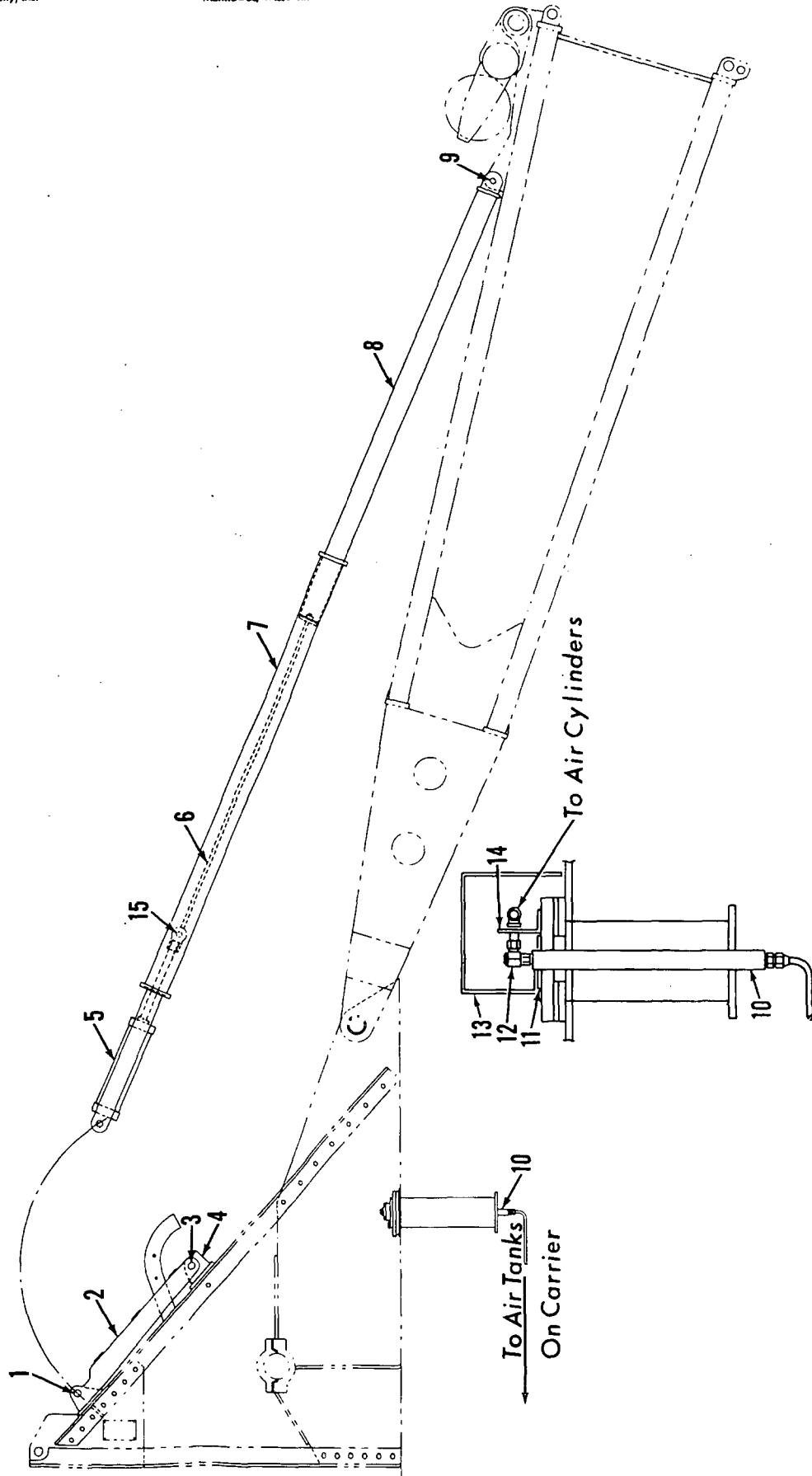
GANTRY HOLD UP ASSEMBLY

MASTER

MANITOWOC ENGINEERING CO.

A Division of The Manitowoc Company, Inc.

Manitowoc, Wisconsin



VIEW of AIR JOINT

4268481

MATERIAL LIST ON BACK

BOOM STOP

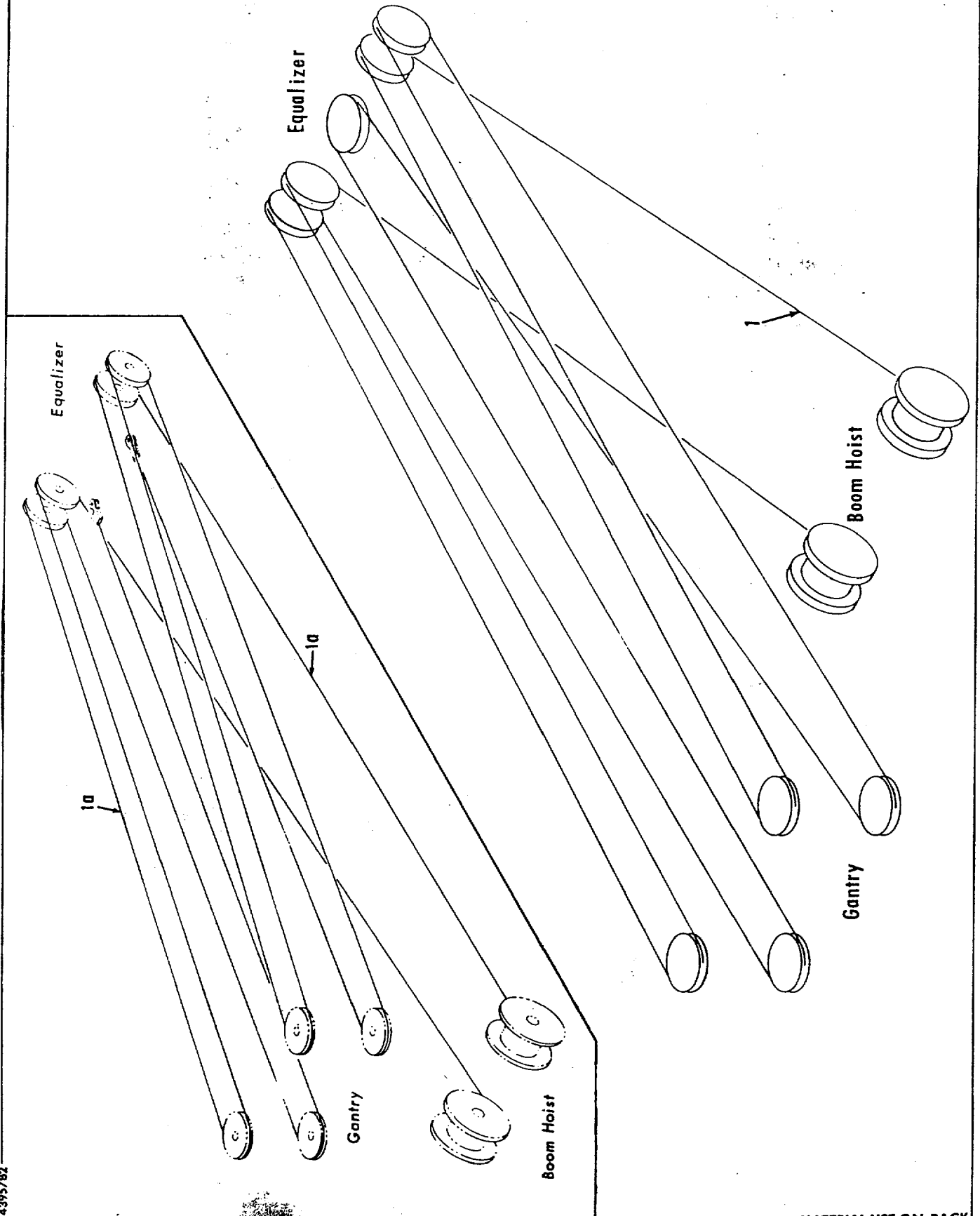
MASTER

42684 B1

MANITOWOC ENGINEERING CO.

A Division of The Manitowoc Company, Inc.

Manitowoc, Wisconsin

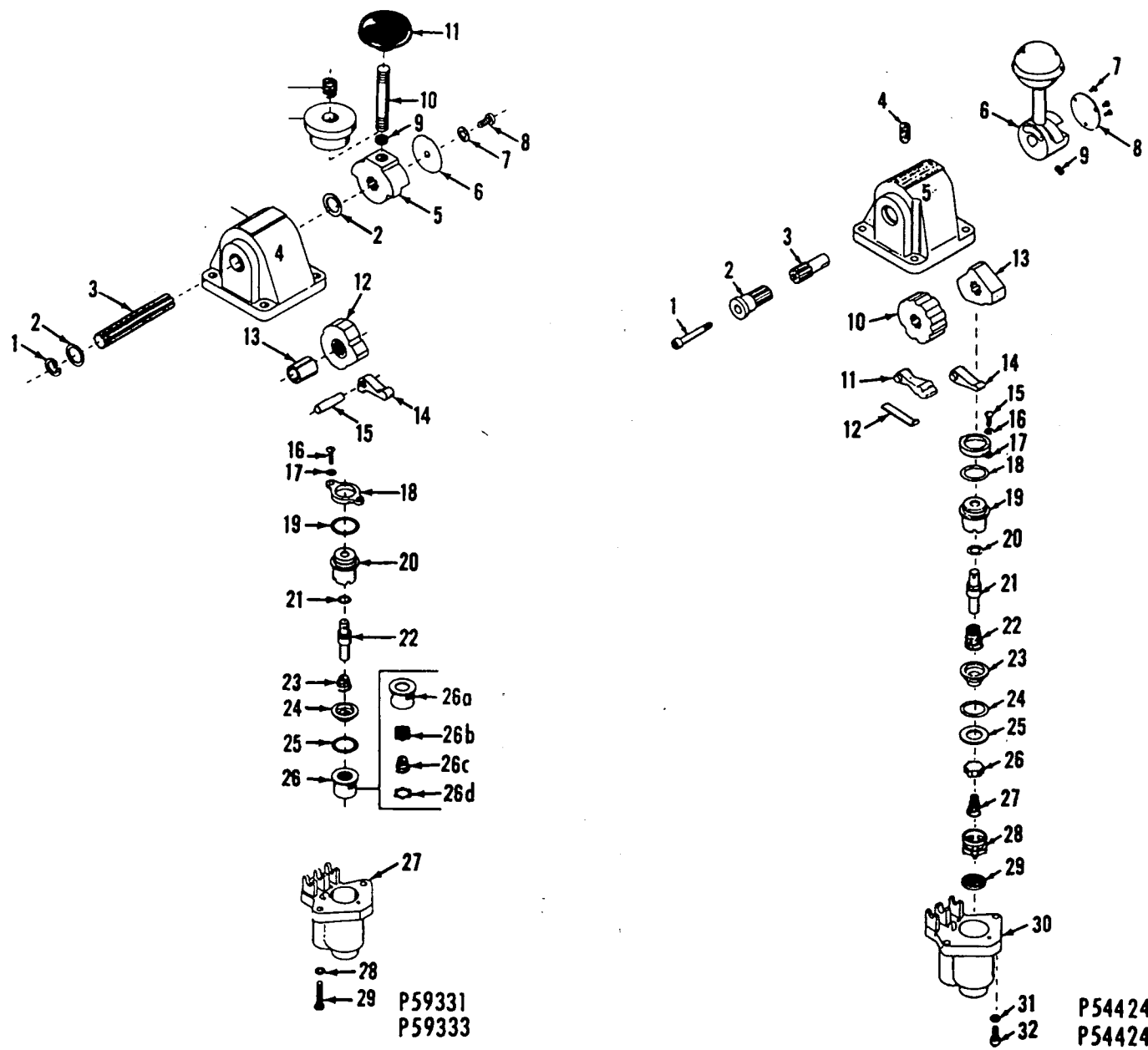


4995782

MATERIAL LIST ON BACK

BOOM HOIST BEARING

O-Number



P59331
P59333

P54424-0101
P54424-0301

MATERIAL LIST ON BACK

CONTROL VALVE

MANITOWOC ENGINEERING CO.

Division of The Manitowoc Company, Inc.

Manitowoc, Wisconsin 54220



TUBING (soft copper)

Code No.	Tube O.D.
696205	3/16
696210	1/4
696214	5/16
696216	3/8
696218	1/2
696219	5/8
696220	3/4



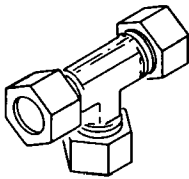
NUT

Code No.	Tube O.D.
424603	3/8
424604	1/2
424605	3/4
424633	5/16
424634	1/4
424635	3/16



FERRULE

Code No.	Tube O.D.
424600	1/4
424601	3/4
424602	3/8
424616	5/16
424617	1/2
424618	1/8
424619	3/16



UNION TEE

Code No.	Tube O.D.
429315	1/4
429316	3/8
429317	5/16



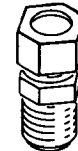
UNION

Code No.	Tube O.D.
429349	3/8
429361	1/4
429362	1/2
429397	5/16



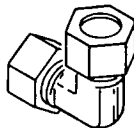
FEMALE CONNECTOR

Code No.	Tube O.D.	Pipe Thread
429312	3/16	1/8
429407	1/4	1/8
429830	1/4	1/4



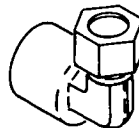
MALE CONNECTOR

Code No.	Tube O.D.	Pipe Thread
429324	3/4	3/4
429328	3/8	1/2
429351	5/16	1/8
429358	1/2	3/4
429359	1/2	3/8
429363	1/4	1/8
429364	1/4	1/4
429365	3/16	1/8
429366	3/8	1/8
429367	3/8	1/4
429368	3/8	3/8



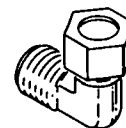
UNION ELBOW

Code No.	Tube O.D.
429372	3/8
429378	1/2
429381	1/4



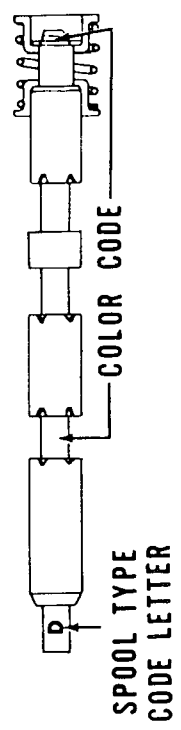
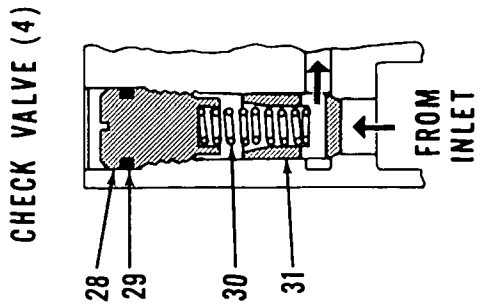
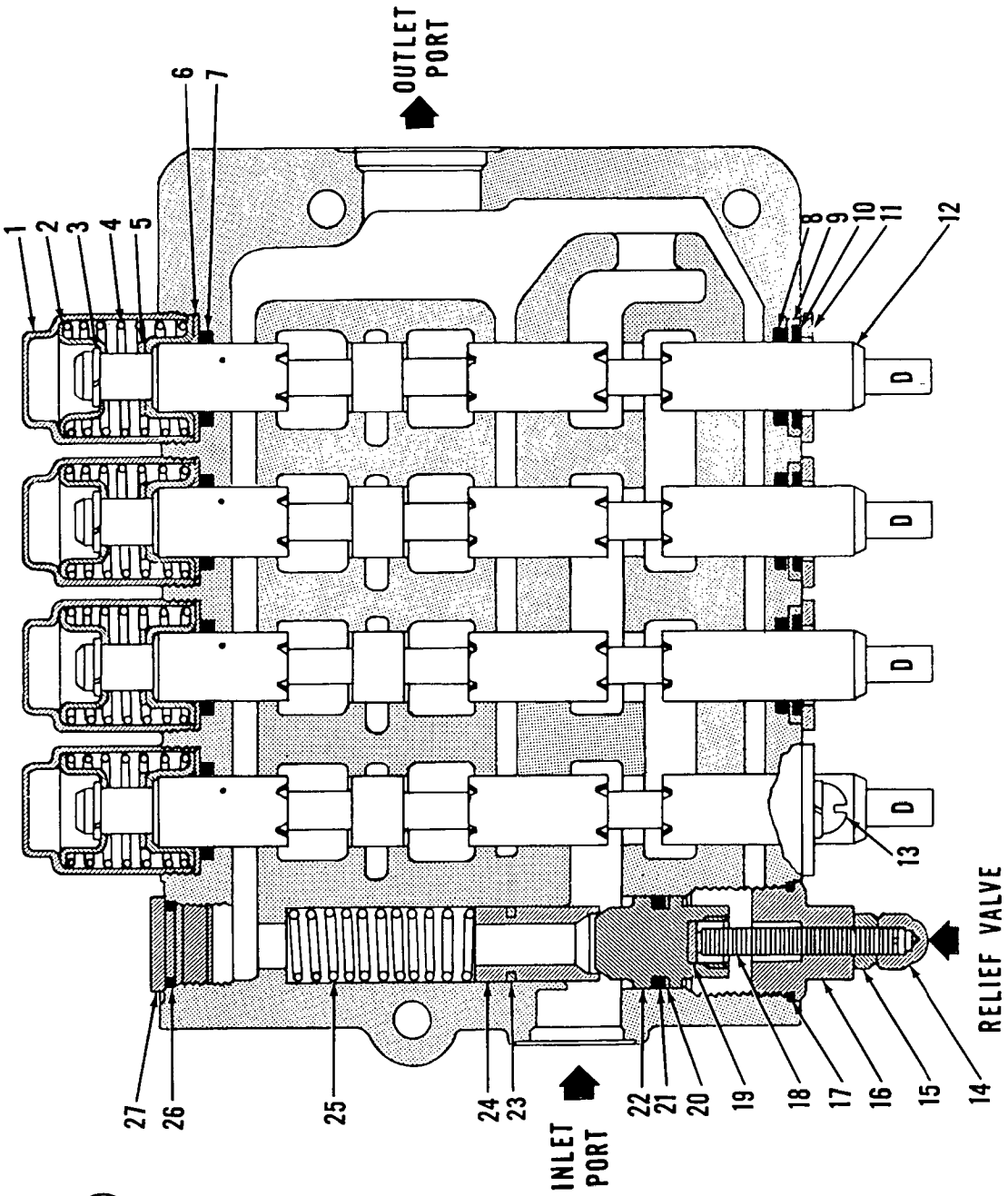
FEMALE ELBOW

Code No.	Tube O.D.	Pipe Thread
429066	1/4	1/8
429825	1/4	1/4



MALE ELBOW

Code No.	Tube O.D.	Pipe Thread
429371	1/2	1/2
429373	3/8	1/8
429374	1/4	1/4
429375	3/8	1/4
429376	1/2	3/8
429380	1/4	1/8
429384	3/8	1/2
429385	5/16	1/8
429386	3/16	1/8
429401	1/2	3/4
429422	3/8	3/8
429453	3/4	3/4

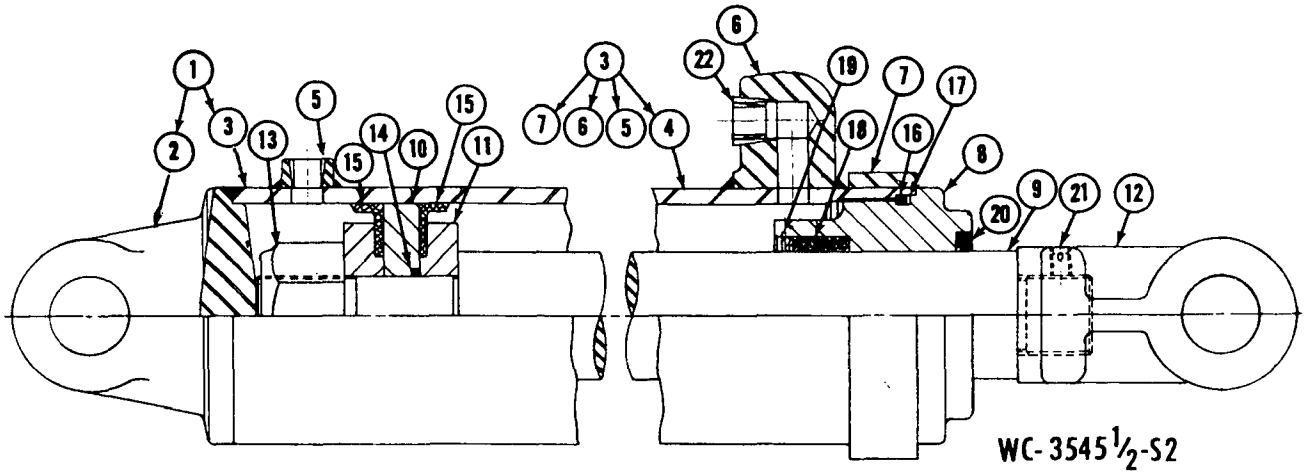


HYDRAULIC CONTROL VALVE

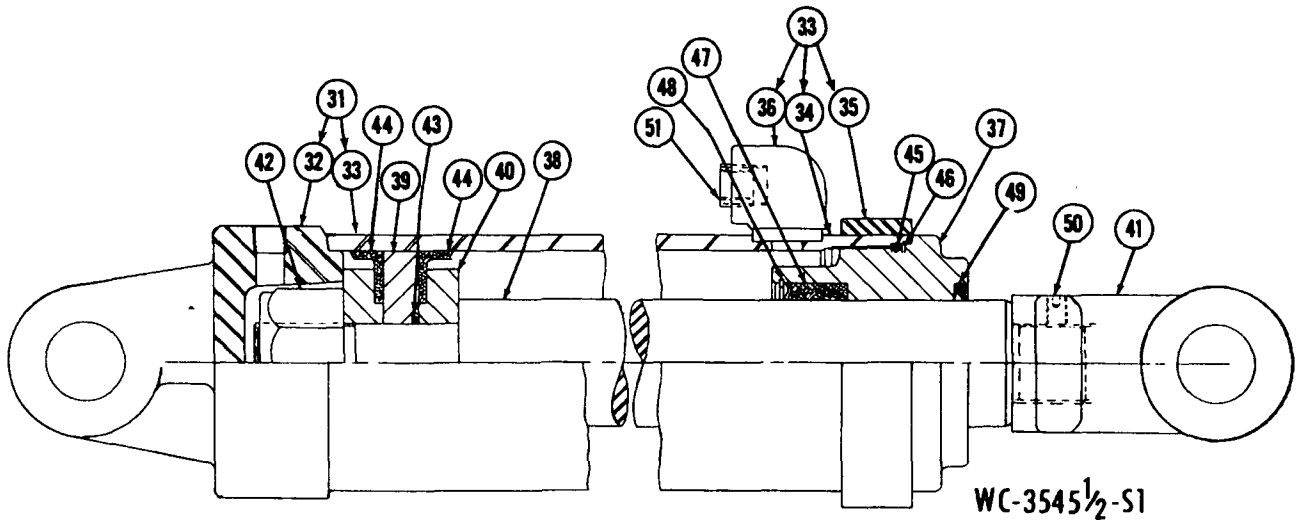
MATERIAL LIST ON BACK

O-244-M1

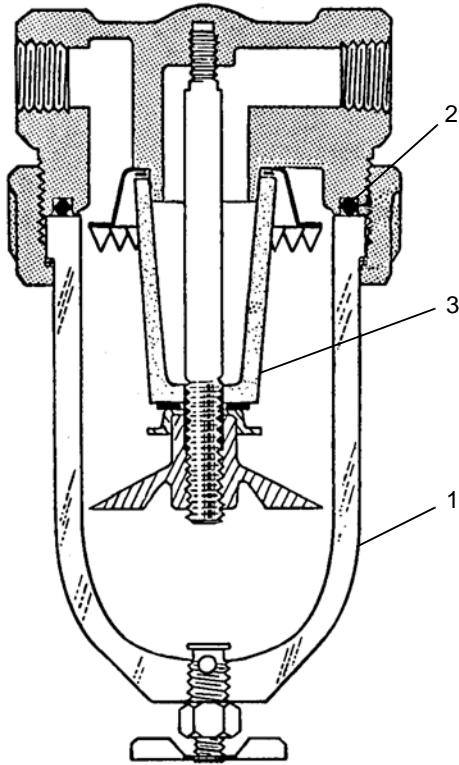
42630-A-5



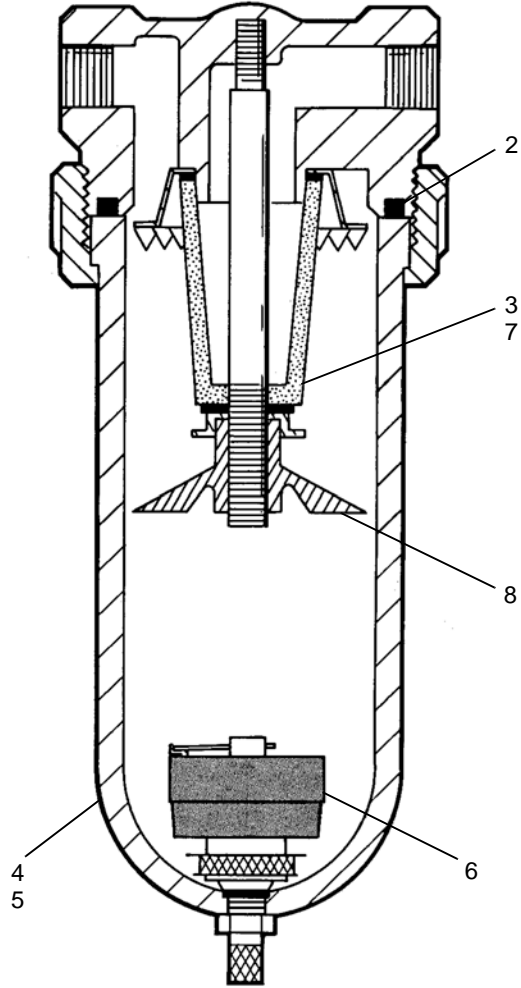
WC-3545 1/2-S2



WC-3545 1/2-S1



427066



427130

ASSEMBLY	REVISION
O-289	F

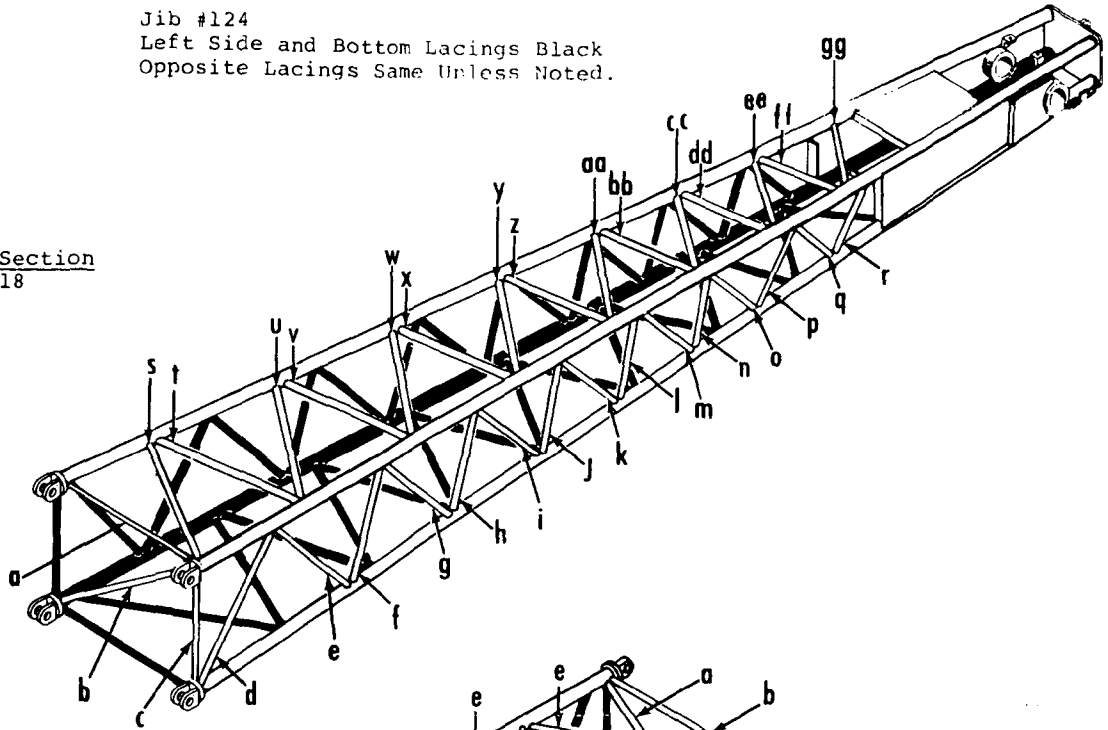
MANITOWOC ENGINEERING CO.

A Division of The Manitowoc Company, Inc.

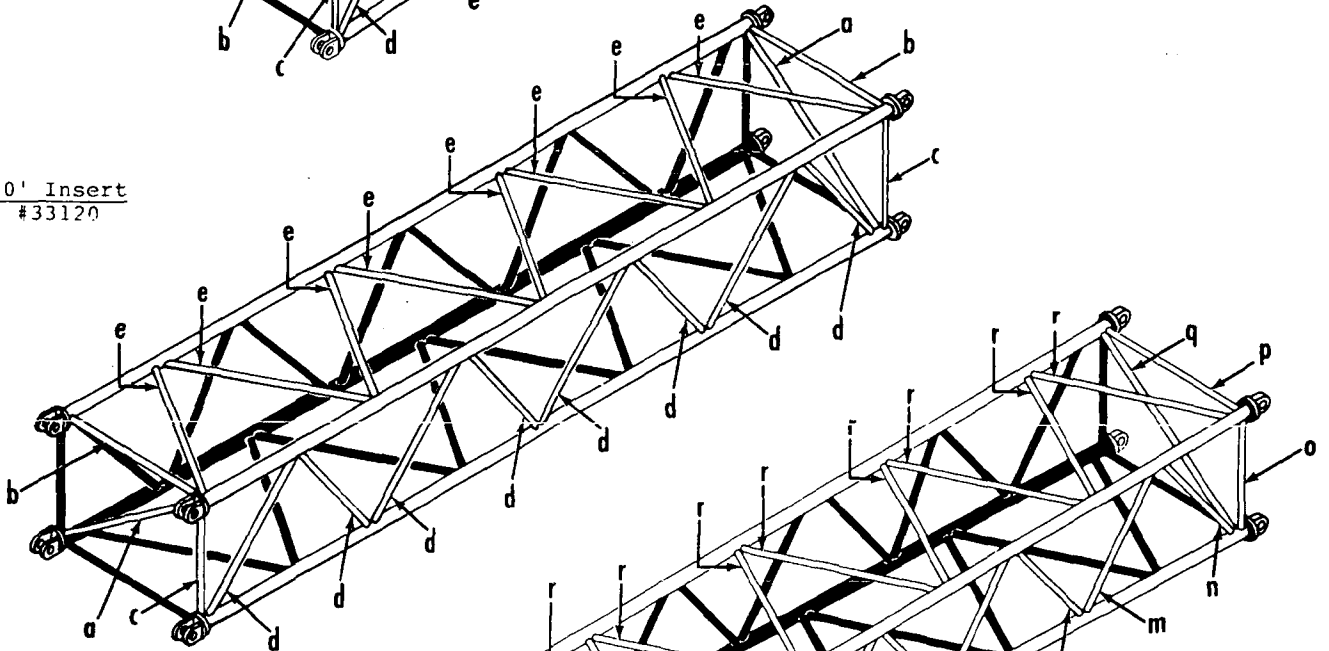
Manitowoc, Wisconsin

Jib #124
Left Side and Bottom Lacings Black
Opposite Lacings Same Unless Noted.

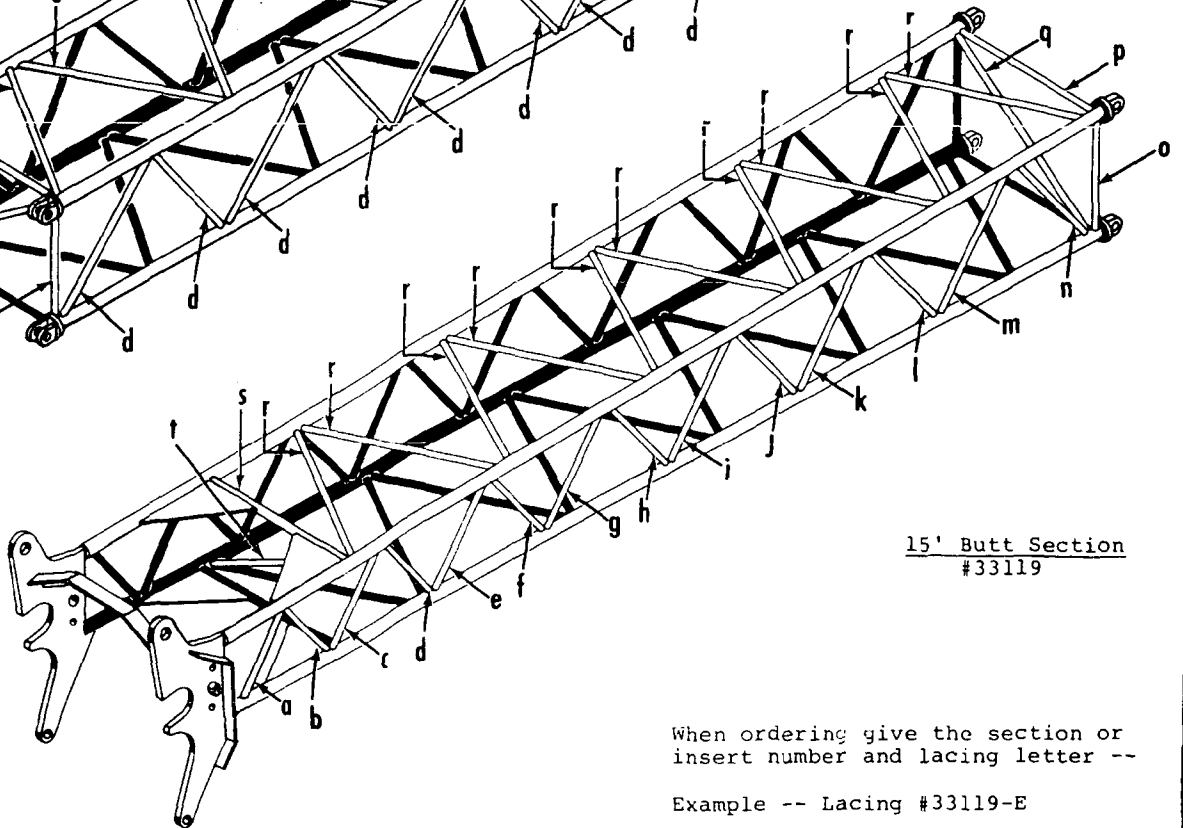
15' Top Section
#33118



10' Insert
#33120



15' Butt Section
#33119



When ordering give the section or insert number and lacing letter --

Example -- Lacing #33119-E

CLICK HERE TO **DOWNLOAD** THE COMPLETE MANUAL

- Thank you very much for reading the preview of the manual.
- You can download the complete manual from: www.heydownloads.com by clicking the link below



- Please note: If there is no response to CLICKING the link, please download this PDF first and then click on it.

CLICK HERE TO **DOWNLOAD** THE COMPLETE MANUAL