



MANITOU NORTH AMERICA, INC.

6401 Imperial Drive
Waco, TX 76712-6803

NOTE: Manitou Forklift Manuals are continually updated and subject to change without prior notice. If your Forklift Model or parts are not found in this manual, please contact your dealer or the Manitou North America Parts Department for the latest information and parts availability.

MT 1155
MANISCOPIC
T-3

PARTS
MANUAL

For Parts Orders contact your Manitou North America Dealer or call: **Manitou North America Parts Dept.** (800) 425-3727 or (254) 799-0232. Parts Dept. Fax (254) 867-6504 Website: www.manitou.com/www.mnadealers.com

CATALOG 809887
R07-10

CLICK HERE TO **DOWNLOAD** THE COMPLETE MANUAL

- Thank you very much for reading the preview of the manual.
- You can download the complete manual from: www.heydownloads.com by clicking the link below



- Please note: If there is no response to CLICKING the link, please download this PDF first and then click on it.

CLICK HERE TO **DOWNLOAD** THE COMPLETE MANUAL

MT Series Dynalift

Filters

All

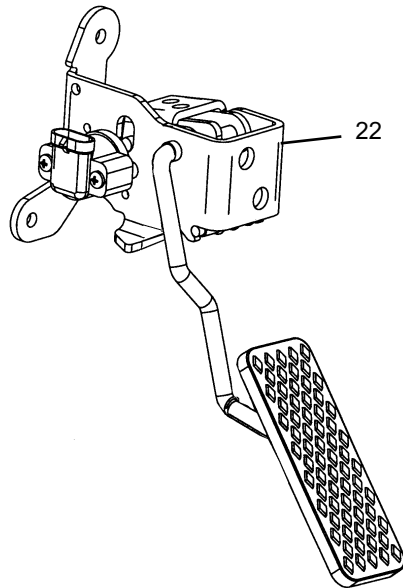
Ref. No.	Part No.	Description	Qty. Req.	Ref. No.	Part No.	Description	Qty. Req.
-- ENGINE OIL FILTER --				-- ENGINE AIR FILTER --			
01 ^a	808000	ENGINE OIL FILTER	1	06	809026	SAFETY AIR FILTER (<i>inner</i>)	1
				07	809825	PRIMARY AIR FILTER (<i>outer</i>)	1
-- ENGINE FUEL FILTER --				-- HYDRAULIC FILTER --			
02	809823	FUEL FILTER (<i>secondary</i>)	1	08	809885	HYDRAULIC FILTER	1
03	809824	FUEL FILTER (<i>primary</i>)	1	-- TRANSMISSION FILTER --			
		(<i>does not include sediment bowl or water sensor</i>)		09	809883	TRANSMISSION FILTER	1
04	809827	SEDIMENT BOWL	1	a Use dust seal P/N 809290 as needed.			
		(<i>does not include water sensor</i>)		b Replace as needed.			
05	809828	WATER SENSOR	1				

Air Conditioner and Heater

Ref. No.	Part No.	Description	Qty. Req.	Ref. No.	Part No.	Description	Qty. Req.
01	808496	VALVE, WATER.....	1	23	813504	WIRE ASSEMBLY.....	1
02	813474	COIL, HEATER.....	1	24	813505	MOUNTING CLIP.....	1
03	813498	CLAMP, HOSE.....	2	25	813488	FILTER HOUSING.....	1
04	813475	GROMMET, 1-3/8"x 1".....	3	26	813489	FILTER.....	1
05	813476	GROMMET, 7/8" x 5/8".....	1	27	813490	HOUSING BULBSEAL.....	1
06	813499	GROMMET, 1-1/4" x 7/8".....	1	28	813506	VALVE, EXPANSION.....	1
07	813478	1/4"-20 x 1/2" BOLT.....	11	29	813507	O-RING #4.....	1
08	809181	FLAT WASHER, 1/4".....	8	30	813508	O-RING #8.....	1
09	809690	LOCK WASHER, 1/4".....	11	31	813509	LOW PRESSURE SWITCH.....	1
10	808545	NUT, 1/4"-20 WHIZ LOCK ZP.....	4	32	813491	HEATER DUCT.....	1
11	813479	WIRE HARNESS.....	1		813367	1/4"-20 x1/2" BOLT.....	3
12	813480	MAIN HOUSING WLDMNT.....	1	33	813339	LOUVER, FIXED VAIN.....	1
13	813481	BRACKET, COIL (<i>left</i>).....	1	34	813492	LOUVER, ROUND 3".....	2
14	813482	BRACKET, COIL (<i>right</i>).....	1	35	813493	COVER, RECIRC FILTER.....	1
15	813483	HOSE, HEATER.....	1	36	813494	RECIRCULATING FILTER.....	1
16	813485	BLOWER ASSEMBLY.....	1				
	813485	FAN MOTOR (<i>one only</i>).....	1				
17	813486	STRIP, WEATHERSTRIP.....	1				
18	813487	STRIP, TRIM.....	1	00	813461	HEATER CONTROL W/CABLE....	1
19	813500	COLD CONTROL, PRE-SET.....	1		809165	KNOB ONLY.....	1
20	813501	EVAPORATOR COIL, 6 ROW.....	1	00	813495	DECAL, HEATER CONTROL.....	1
21	813502	DRAIN FOAM.....	2	00	813496	HEATER HOSE (16 feet).....	1
22	813503	SEMS SCREW.....	2	00	813497	SHUTOFF VALVE.....	1
						(<i>mounted on engine</i>)	
						-- EXTERNAL COMPONENTS NOT SHOWN --	

Pedals - Brake and Throttle

Ref. No.	Part No.	Description	Qty. Req.	Ref. No.	Part No.	Description	Qty. Req.
01	813592	LINK	2	12	813599	BRAKE MODULATING VALVE	1
02	813593	COTTER PIN 1/8" x 1"	2	13	813600	HOSE, -4 A6/A4 102"	1
03	813594	CLEVIS PIN 3/8" x 1-1/4"	2	14	813601	BRAKE LEVER WELD.	1
04	813595	ROD END 3/8"	1	15	813602	RUBBER PAD	1
05	808471	3/8"-24 NUT	1	16	809877	ELECTRIC SWITCH	1
06	808662	5/16"-18 NYLON INSERT NUT	2	17	809689	1/4"-20 x 3-1/2" BOLT	4
07	808883	HOSE, -4 A6/A6 81"	1	18	813603	CLAMP BLOCK AND PLATE	2
08	809773	HOSE, -4 A6/DS6 100"	1	19	813604	CLAMP SPACER	2
09	813596	ADAP., -6ORM -6JICM STR	1	20	813605	BUSHING	1
10	813597	ADAP., -6ORM -6JICM 90°	2	21	813606	LOCK COLLAR	2
11	813598	5/16"-18 x 1" BOLT	2	22	813607	FOOT PEDAL, ELECTRONIC	1



Electronic Throttle

Hose Locator

Ref No.	From Port	To Port
07	BRAKE MODULATING VALVE "T"	HYDRAULIC TANK RETURN MANIFOLD
08	BRAKE MODULATING VALVE "P"	SAHR VALVE "AO"
13	BRAKE MODULATING VALVE "B"	BRAKE MANIFOLD (BOTTOM PORT)

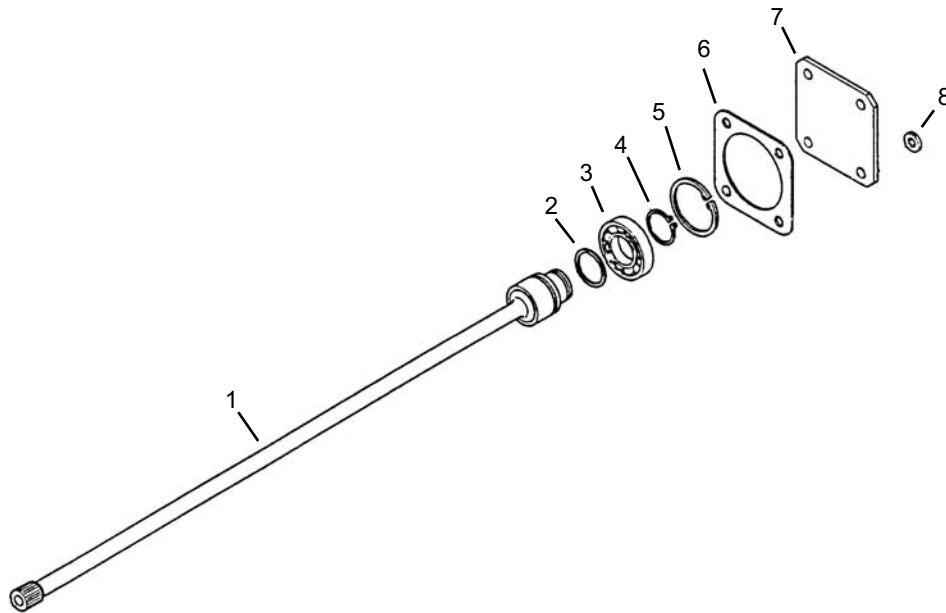
Ref. No.	Part No.	Description	Qty. Req.	Ref. No.	Part No.	Description	Qty. Req.
01	813610	5/16" FLAT WASHER	2	16	808555	5/16"-18 FLARE NUT	2
02	813626	PIN.	1	17	808919	TAIL LIGHT W CONNECTOR	2
03	813593	1/8" x 1" COTTER PIN	2		808505	RUBBER MOUNTING BEZEL	2
04	808900	CAMLOCK.....	1	18L	808936	BACKUP LIGHT	1
	809106	KEY ONLY (CH751).....	1		808558	RUBBER MOUNTING BEZEL	1
05	813627	LATCH ASY. HANDLE.....	1		808078	JUMPER - BACKUP LIGHT.....	1
06	813628	5/16"-24 NUT.....	4	19	813635	LATCH.....	1
07	813629	5/16"-24 BALL JOINT	2		809106	KEY ONLY (CH751).....	1
08	813630	LINKAGE ROD	1	20	813636	1/2"-13 x 1-1/2" CARRIAGE. BOLT. 2	
09	813631	REAR DOOR	1	21	813637	LATCH MOUNT.....	1
10	813632	PLUG, REAR HOOD	1	22	813638	BUSHING	1
11	808665	1/2"-13 NYLON INSERT NUT.....	3	23	813591	3/8" FLAT WASHER	1
12	813337	1/2" FLAT WASHER	3	24	808663	3/8"-16 NYLON INSERT NUT.....	2
13	813633	1/2"-13 x 3" BOLT	1	25	813639	LATCH ROD ASY	1
14	813634	BACKUP ALARM.....	1	26	813640	COMPRESSION SPRING.....	1
15	808498	5/16"-18X3/4" BOLT	2				
						-- ITEMS NOT SHOW --	
				00	813373	SINGLE DIODE	AR
						(located in the wire harness near tail lights)	

Ref. No.	Part No.	Description	Qty. Req.	Ref. No.	Part No.	Description	Qty. Req.
01	813693	FUEL TANK	1	13	813678	1/2-14 MAGNETIC PLUG	1
02	809386	ADAP., -24NPTM -24JICM STR . . .	1	14	813701	HOSE, -6 A6/A5 56" FUEL LINE. . .	1
03	813694	FUEL FILL TUBE.	1	15	813702	PLUG, 1/2" NPT.	1
04	809878	FILLER CAP ASSEMBLY	1	16	813677	3/8"-16 x 3/4" BOLT.	4
05	813667	GASKET	1	17	808793	3/8"-16 CLIP RETAINING NUT	4
06	813695	FILLER CAP MOUNT	1	18	813703	BREATHER VALVE ASSEMBLY . . .	1
07	813696	FUEL FILL MOUNT	1	19	813704	ADAP., -12JICFS -12JICM 90° . . .	1
08	808471	3/8"-16 FLARE NUT	1	20	813705	BREATHER HOSE	1
09	813697	3/8"-16 x 1-1/2" BOLT	1	21	813663	ADAP., -12JICM -12NPTM 90° . . .	1
10	813698	1-7/8"-12 JAM NUT	1	22	813321	TANK BREATHER.	1
11	813699	HOSE-4 A6 100" FUEL LINE	1	23	813706	SENDER, FUEL 11" DEPTH	1
12	813700	ADAP., -8ORM -6JICM STR	2				

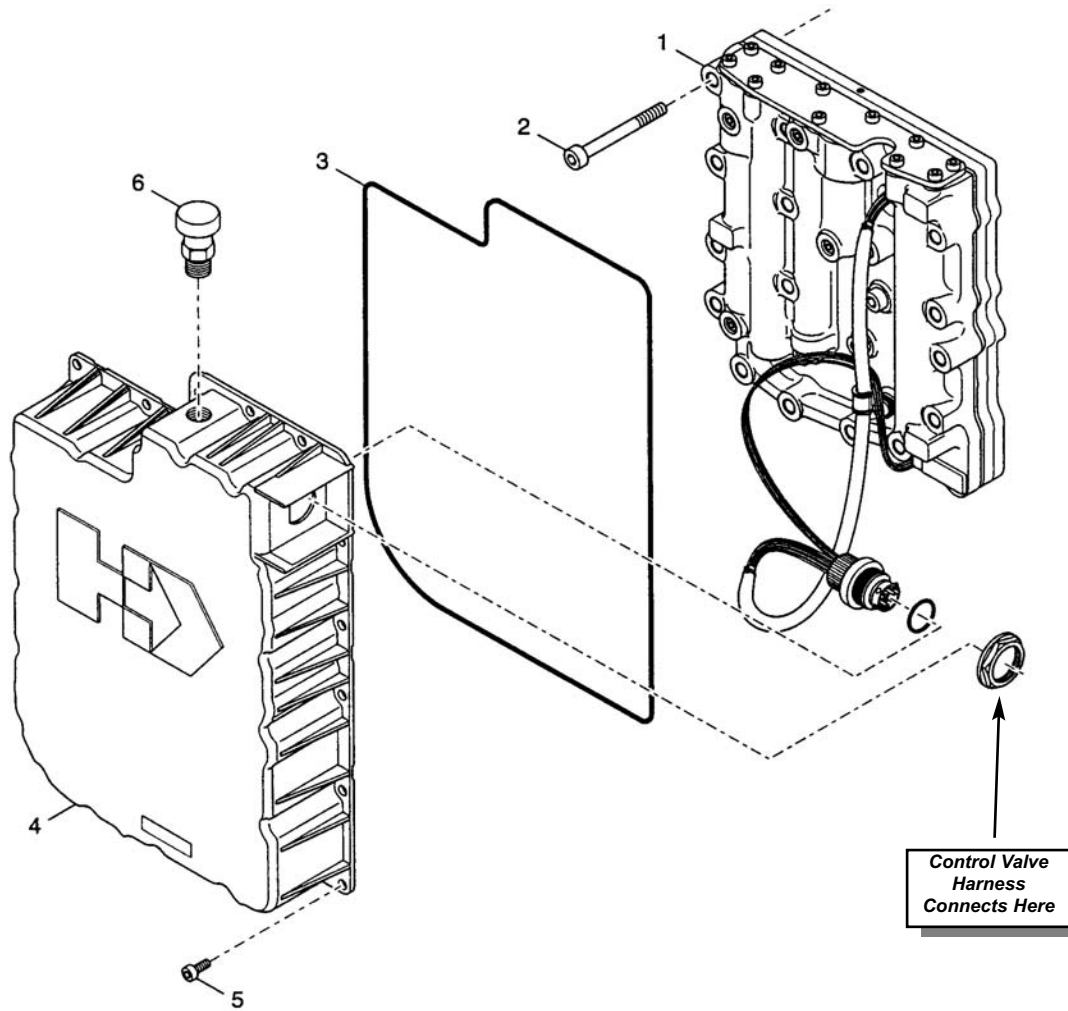
Radiator and Cooler Group (Part 3 of 3)

Ref. No.	Part No.	Description	Qty. Req.	Ref. No.	Part No.	Description	Qty. Req.
01	813755	CHARGE AIR COOLER (<i>section</i>) . . .	1	11	813761	CLAMP, HOSE TENSION #32	6
02	813756	RADIATOR (<i>section</i>)	1	12	813762	HOSE, SILICONE 2.25"	2
03	813757	HYDRAULIC OIL COOLER (<i>sect.</i>) . . .	1	13	813763	HOSE, 2" ID x 2-1/4" ID	1
04	813758	TRANSMISSION COOLER (<i>sect.</i>) . . .	1	14	813764	TUBE, LOWER CHARGE AIR	1
05	808106	RADIATOR CAP, 10 p.s.i.	1	15	813765	TUBE, UPPER CHARGE AIR	1
06 ^a	NSS	FITTING (<i>radiator</i>)	1		813766	GASKET (<i>not shown</i>)	1
07 ^a	NSS	HOSE.	1	16 ^a	NSS	FITTING (<i>engine</i>)	1
08	808947	CLAMP, HOSE SAE #32	4				
09	813759	HOSE, LOWER RADIATOR	1	a	<i>No longer used; remove hose and replace with the following two plugs: 813767 M12 o-ring plug (engine) and 813768 1/4" NPT plug (radiator).</i>		
10	813760	HOSE, UPPER RADIATOR.	1				

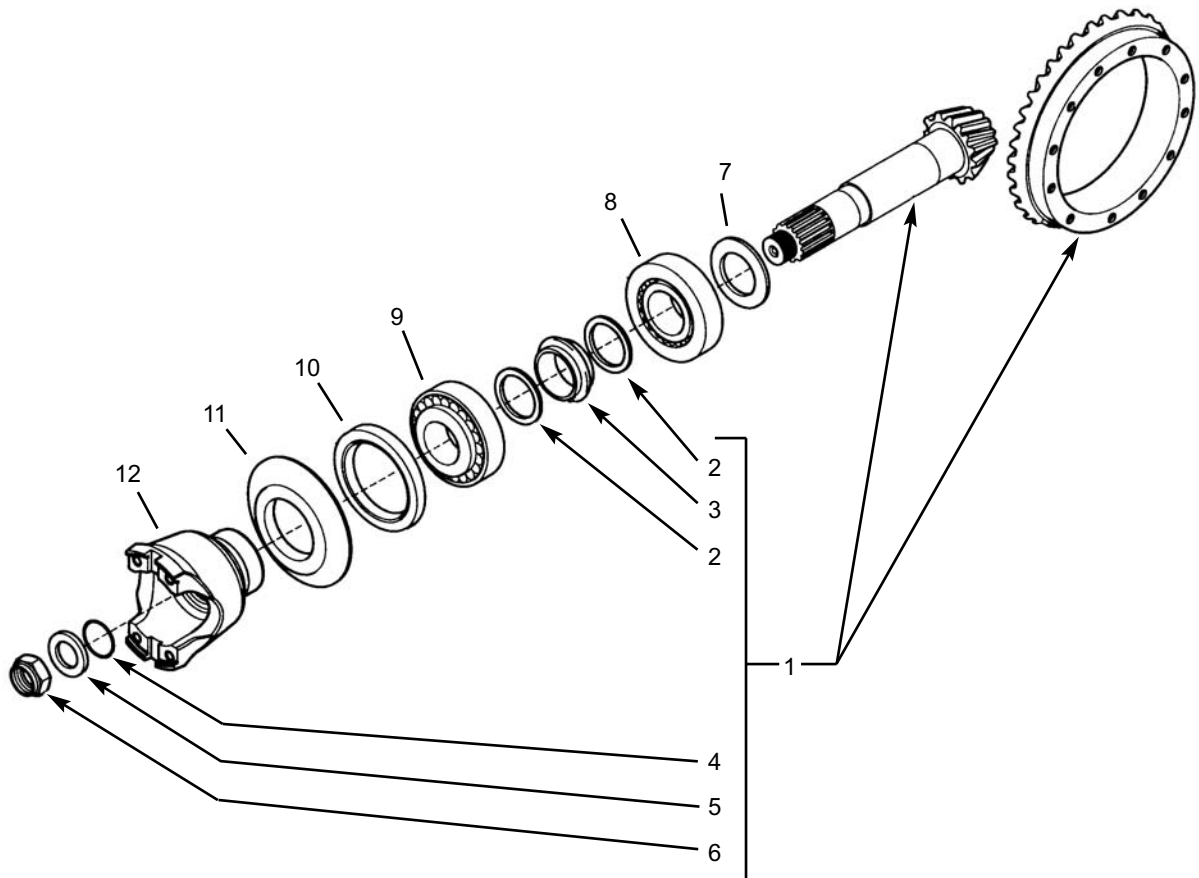
Ref. No.	Part No.	Description	Qty. Req.	Ref. No.	Part No.	Description	Qty. Req.
01	813820	HIGH TEMP. VITON SEAL	2	12	813831	IDLER SPACER.	4
02	813821	BEARING CONE	8	13	813832	LH GEAR (79 TEETH)	2
03	813822	BEARING CUP	8	14	813833	IDLER SHAFT	2
04	813823	OUTER SPACER	2	15	NSS	HOUSING SUB-ASY	1
05	813824	RH GEAR (84 TEETH)	2	16	813834	1/2" NPT PLUG	3
06	813825	KEY	4	17	813835	1/2" NPT MAGNETIC PLUG	1
07	813826	OUTPUT SHAFT	1	18	813836	EXPANSION PLUG	1
08	813827	KEY	1	19	813837	INPUT SHAFT	1
09	813828	BREATHER	1	20	813791	SHAFT ADAPTER	1
10	813829	3/8" x 3/4" BUSHING	1	21	813819	EXTERNAL RETAINER RING	2
11	813830	3/4" NPT STREET ELBOW	1				



Ref. No.	Part No.	Description	Qty. Req.	Ref. No.	Part No.	Description	Qty. Req.
01	813914	PUMP DRIVE SHAFT	1	05	813917	BEARING RETAINING RING	1
02	813915	PISTON RING	1	06	813918	HOLE COVER GASKET	1
03	813916	DRIVE SHAFT BEARING	1	07	813919	HOLE COVER	1
04	809132	BEARING SNAP RING	1	08	813920	STUD NUT LOCKWASHER	4



Ref. No.	Part No.	Description	Qty. Req.	Ref. No.	Part No.	Description	Qty. Req.
01	814001	CONTROL VALVE ASSEMBLY.	1	05	814005	COVER SCREW	20
02	814002	VALVE MOUNTING SCREW	2	06	808953	AIR BREATHER	1
03	814003	PROTECTION COVER SEAL	1			(part of item 4)	
04	814004	PROTECTION COVER ASY.	1				
		(includes item 6)					

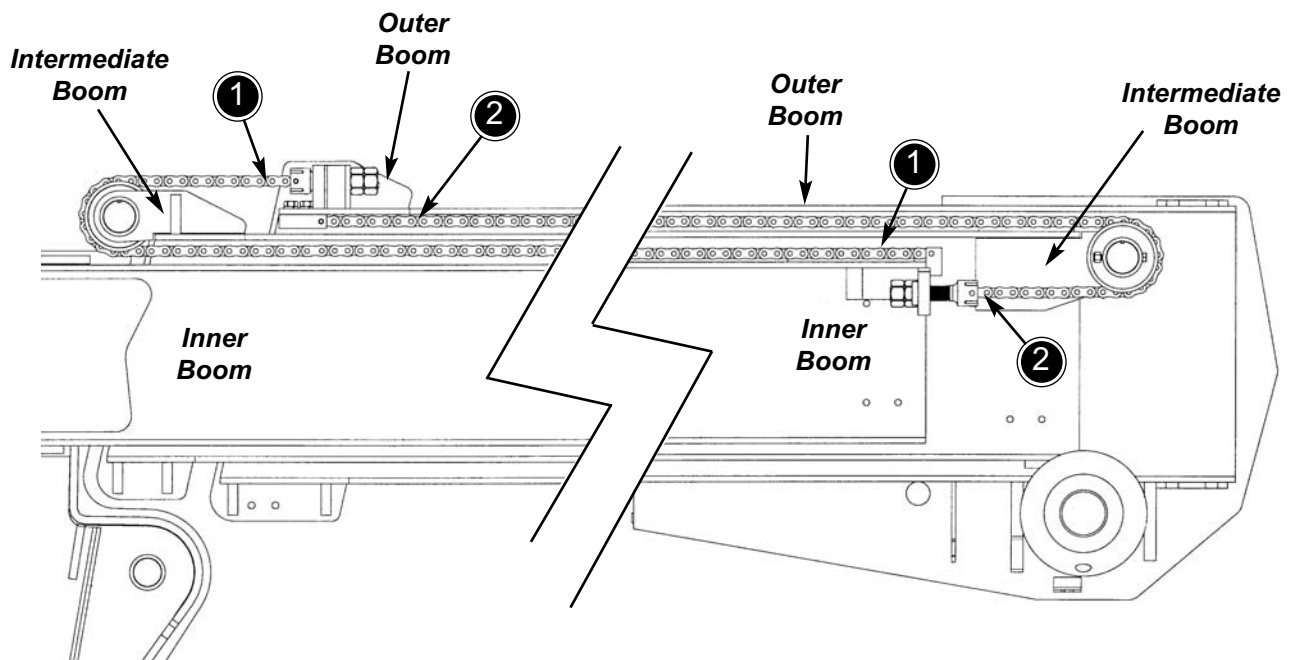


Ref. No.	Part No.	Description	Qty. Req.	Ref. No.	Part No.	Description	Qty. Req.
01	814129	BEVEL GEAR / PINION Z10/36 . . .	1	08	814125	BEARING.	1
02	814111	WASHER.	2	09	814126	BEARING.	1
03	814112	COLLAPSIBLE SPACER.	1	10	814127	SEAL RING	1
04	814113	O-RING	1	11	814130	PROTECTING COVER	1
05	814114	WASHER.	1	12	814131	FLANGE	1
06	814115	NUT M30x2	1				
07	814116	SHIM 2.5mm.	AR				
	809420	SHIM 2.6mm.	AR				
	814117	SHIM 2.7mm	AR				
	814118	SHIM 2.8mm.	AR				
	814119	SHIM 2.9mm.	AR				
	814120	SHIM 3.0mm.	AR				
	814121	SHIM 3.1mm.	AR				
	814122	SHIM 3.2mm.	AR				
	814123	SHIM 3.3mm.	AR				
	814124	SHIM 3.4mm.	AR				

Ref. No.	Part No.	Description	Qty. Req.	Ref. No.	Part No.	Description	Qty. Req.
01 ^a		LEAF CHAIN	2	08	808931	CHAIN SHEAVE WASHER	2
	814189	40' BOOM (257 Pitches - 192-3/4")		09	808478	INNER RING	1
	814190	44' BOOM (277 Pitches - 207-3/4")		10	808477	ROLLER BEARING	1
02 ^a		LEAF CHAIN	1	11	808754	CHAIN SHEAVE	1
	814189	40' BOOM (257 Pitches - 192-3/4")		12	808761	PIN, FIXED CLEVIS	1
	814190	44' BOOM (277 Pitches - 207-3/4")			808673	3/32" x 1-1/4" COTTER PIN	2
03	808424	1/4"-28 ZERK, STR	1	13	808760	CLEVIS PIN	1
04	808663	3/8"-16 NYLON INSERT NUT	1	14	808753	ADJUSTABLE CLEVIS	1
05	808932	PIN, SHEAVE	1	15	808584	1"-8 NUT	2
06	813711	3/8"-16 x 3" BOLT	1				
07	808429	THRUST WASHER	3				

a The three-section boom uses a total of three chains, all of which are identified on this page and the previous page. When ordering boom chains, be careful to not duplicate these quantities.

Three-Section Boom



Ref. No.	Part No.	Description	Qty. Req.	Ref. No.	Part No.	Description	Qty. Req.
01		INTERMEDIATE WELDMENT	1	06	808747	0.50" x 3" x 4" SHIM	2
	814203	40' High Boom		07	813574	3/8"-16 x 1" BOLT	8
	814204	44' High Boom		08	813849	3/8" LOCK WASHER	8
02	808696	FLAT-BOLT LOCK	6	09	808693	SLIDE PAD	6
03	814029	3/8"-16 x 1-3/4" BOLT	4	10	809501	SLIDE PAD	2
04	808701	0.06" x 3" x 4" SHIM	6	11	813677	3/8"-16 x 3/4" BOLT	8
05	808745	3/8" PAD SPACER	2				

Ref. No.	Part No.	Description	Qty. Req.	Ref. No.	Part No.	Description	Qty. Req.
01	814221	FIRST INTERM. SECT. WELD.....	1	11	814229	THRUST WASHER.....	1
02	9808693	BOTTOM SLIDE PAD 3" x 4".....	2	12	809882	SHEAVE.....	1
03	808696	BOLT FLAT LOCK.....	2	13	808477	ROLLER BEARING.....	1
	814211	3/8"-16 x 7/8" BOLT.....	4	14	808478	INNER RING.....	1
04	808693	SIDE SLIDE PAD 3" x 4".....	4	15	808423	GREASE ZERK 90° 1/4"-28.....	1
05	808702	SHIM 0.105" x 3" x 4".....	4	16	808932	REAR SHEAVE PIN.....	1
06	809505	SHIM 0.06" x 3" x 4".....	4		813711	3/8"-16 x 3" BOLT.....	1
07	808696	BOLT FLAT LOCK.....	4		808663	NYLON INSERT NUT 3/8".....	1
	813677	3/8"-16 x 3/4" BOLT.....	8	17	808691	SLIDE PAD.....	1
08	814210	TOP SLIDE PAD 4" x 6".....	2		813677	3/8"-16 x 3/4" BOLT.....	1
09	809504	SHIM 0.105" x 4" x 6".....	2		813849	3/8" LOCK WASHER.....	1
10	808696	BOLT FLAT LOCK.....	4	18	814222	HOSE TRAY WELDMENT.....	1
	813697	3/8"-16 x 1-1/2" BOLT.....	8	19	814223	SPACER.....	2

Ref. No.	Part No.	Description	Qty. Req.	Ref. No.	Part No.	Description	Qty. Req.
01		INNER WELDMENT	1	06		INNER TRAY WELDMENT	1
	814237	40' High Boom			814239	40' High Boom	
	814238	44' High Boom			814240	44' High Boom	
	814236	55' High Boom		07	813849	3/8" LOCK WASHER	1
02	808662	5/16"-18 NYLON INSERT NUT	2	08	813677	3/8"-16 x 3/4" BOLT	1
03	808870	INNER TRAY BRACKET	1	09	808949	HOSE CLAMP ASSEMBLY	1
	814205	CUSHION, MNT PLATE (<i>weld on</i>)		10	808497	5/16"-18 FLARE NUT	1
04	808497	5/16" LOCK WASHER	2	11	808691	SLIDE PAD	1
05	814206	5/16"-18 x 5/8" BOLT	4	12	814241	BUSHING	2

CLICK HERE TO **DOWNLOAD** THE COMPLETE MANUAL

- Thank you very much for reading the preview of the manual.
- You can download the complete manual from: www.heydownloads.com by clicking the link below

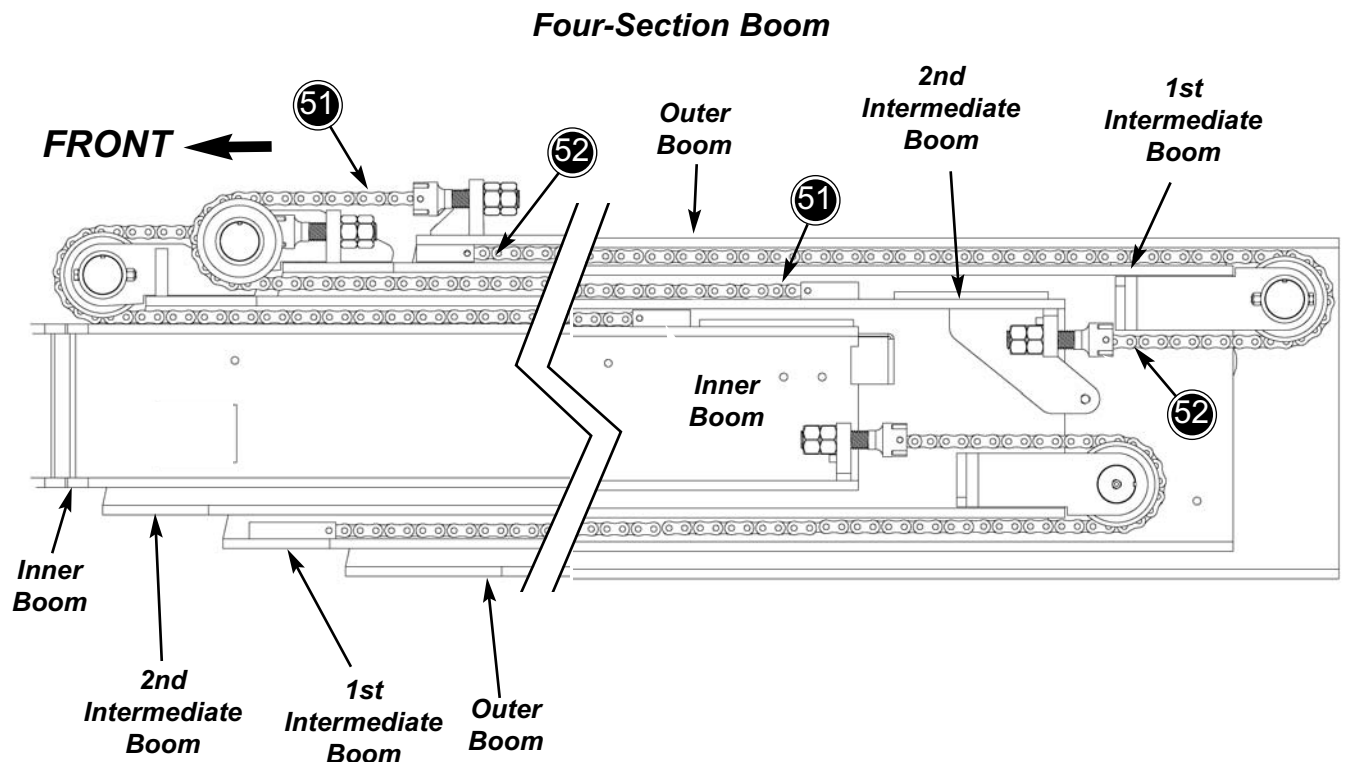


- Please note: If there is no response to CLICKING the link, please download this PDF first and then click on it.

CLICK HERE TO **DOWNLOAD** THE COMPLETE MANUAL

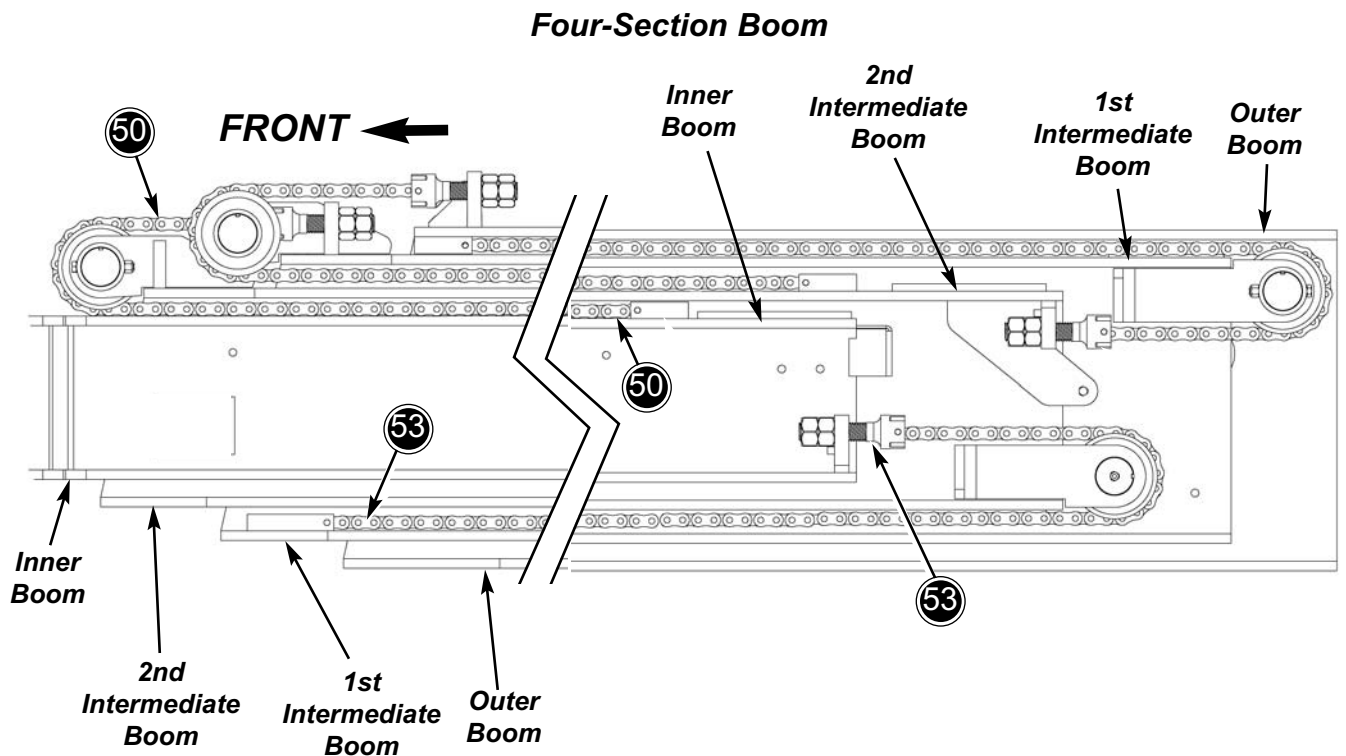
Ref. No.	Part No.	Description	Qty. Req.	Ref. No.	Part No.	Description	Qty. Req.
01	814270	OUTER SECTION WELDMENT.....	1	14	814214	FIXED CLEVIS	1
02	808693	SIDE SLIDE PAD 3" x 4".....	4		814215	SET SCREW #10-24" x 3/4"	2
	813677	3/8"-16 x 3/4" BOLT.....	8		808619	1/2"-20 x 1-1/4" GR8 BOLT.....	3
03	808701	SHIM 0.06" x 3" x 4"	4		813805	LOCKWASHER 1/2"	AR
04	808702	SHIM 0.105 x 3" x 4"	4	15	814216	CLEVIS PIN.....	1
05	814210	BOTTOM SLIDE PAD 4" x 6"	2	18	814217	CLEVIS PIN.....	2
06	808696	BOLT FLAT LOCK.....	4		808673	COTTER PIN 3/32" x 1-1/4"	4
	814211	3/8"-16 x 7/8" BOLT.....	8	19	814218	ADJUSTABLE CLEVIS	2
07	808693	TOP SLIDE PAD 3" x 4"	2	20	808902	THREADED INSERT.....	2
08	808702	SHIM 0.105" x 3" x 4"	2	21	808584	HEX NUT 1"-8	4
09	808747	SHIM 0.50" x 3" x 4"	2	22	814271	BUMPER SUPPORT PAD.....	1
10	808696	BOLT FLAT LOCK.....	2	23	813713	3/8"-16 x 1-3/4" BOLT	2
	813697	3/8"-16 x 1-1/2" BOLT	4	-----			
11	814272	RETAINER	2	51a	814219	LEAF CHAIN (extend)	2
12	808800	MOUNT PLATE.....	1	52a	814220	LEAF CHAIN (retract)	1
	808669	BUTT. HD. BOLT 5/16"-18 x 1"	2				
	813610	PLAIN WASHER 5/16"	2				
13	808799	ANGLE INCLINOMETER	1				
	808624	RD. HD. SCREW #8-32" x 5/8".....	2				

a This parts manual shows the same chain(s) on multiple pages. Before ordering chains, refer to the illustration below to avoid ordering the incorrect chain(s) or incorrect quantities.



Ref. No.	Part No.	Description	Qty. Req.	Ref. No.	Part No.	Description	Qty. Req.
01	814277	INNER WELDMENT	1	12	814217	CHAIN PIN	1
02	814233	BOTTOM SLIDE PAD 1.5" x 4"	2		808673	3/32" x 1-1/4" COTTER PIN	2
03	808696	BOLT FLAT LOCK	2	14	814217	CHAIN PIN	1
	814211	3/8" x 7/8" BOLT	4		808673	3/32" x 1-1/4" COTTER PIN	2
04	809502	SLIDE PAD 3" x 4"	2	16	808584	1" NUT	2
05	808701	SHIM 0.06" x 3" x 4"	2	17	814218	ADJUSTABLE CLEVIS	1
06	808702	SHIM 0.105" x 3" x 4"	2				
07	808696	BOLT FLAT LOCK	2				
	813574	3/8" x 1" BOLT	4	50 ^a	814231	LEAF CHAIN (<i>extend</i>)	1
08	814235	SLIDE PAD 3" x 8"	2	53 ^a	814220	LEAF CHAIN (<i>retract</i>)	1
09	808819	SHIM 0.105" x 3" x 8"	2				
10L	808696	BOLT FLAT LOCK	4				
	813697	3/8" x 1-1/2" BOLT	8				
11	814218	ADJUSTABLE CLEVIS	1				

a This parts manual shows the same chain(s) on multiple pages. Before ordering chains, refer to the illustration below to avoid ordering the incorrect chain(s) or incorrect quantities.



Ref. No.	Part No.	Description	Qty. Req.	Ref. No.	Part No.	Description	Qty. Req.
01	814289	LIFT CYLINDER (right) 1 (Model DL-7)	1	10	808424	1/4"-28 GREASE ZERK STR 4	4
	814290	LIFT CYLINDER (right) 1 (Model DL-9, DL11 and DL-12)	1	11	814300	PLUG -4ORM 2	2
02	814291	ADAP., -10ORM -10JICM STR 4	4	12	814301	LIFT/SLAVE TUBE ASSEMBLY . . . 1	1
03	814292	HOSE, -8 A10/DS10 24" 2	2	13	808832	DOUBLE TUBE CUSHION 4	4
04	814293	HOSE, -8 A10/DS10 23" 2	2	14	808727	TWIN CUSHION TOP PLATE 2	2
05	814294	HOSE, -12 A12/DS10 36" 2	2	15	808497	5/16" LOCK WASHER 2	2
06	814295	ADAP., -12ORM -12JICM 90°LNG . 2	2	16	814302	5/16"-18 x 1-3/4" BOLT 2	2
07	814296	BUSHING 2" x 2.25" x 3.5" 2	2	17	808663	3/8"-16 NYLON INSERT NUT 4	4
08	814297	LIFT PIN (rod end) 2	2	18	814303	LIFT PIN (base end) 2	2
09	814298	LIFT CYLINDER (left) 1 (Model DL-7)	1	19	813711	3/8"-16 x 3" BOLT 4	4
	814299	LIFT CYLINDER (left) 1 (Model DL-9, DL11 and DL-11)	1	20	808858	BUSHING 2	2
				21	814304	LIFT/SLAVE TUBE ASSEMBLY . . . 1	1
				22	808662	5/16"-18 NYLON INSERT NUT 2	2
				23	809493	5/16"-18 x 2-1/4" STUD 2	2

Hose Locator

Ref No.	From Port	To Port
03	LIFT CYLINDER/MANIFOLD "A"	LIFT/SLAVE TUBE ASSEMBLY "A" (as shown)
04	LIFT CYLINDER/MANIFOLD "B"	LIFT/SLAVE TUBE ASSEMBLY "B" (as shown)
05	LIFT/SLAVE TUBE ASSEMBLY "A & B"	VALVE "A & B" (as shown)

Boom Extend Cylinder Group - Three-Section High Boom

Ref. No.	Part No.	Description	Qty. Req.	Ref. No.	Part No.	Description	Qty. Req.
01	808597	5/8" LOCK WASHER	10	16	814399	TRUNNION MOUNT (<i>left</i>)	1
02	814392	5/8"-11 x 1-1/2" BOLT	10			(<i>Includes item 23</i>)	
03	813664	ADAP., -12ORM -12JICM 90°	2	17		EXTEND CYLINDER	1
04	808631	3/16" x 4" COTTER PIN	2		814400	40' High Boom	
05	808888	EXTEND CYLINDER PIN	1		814401	44" High Boom	
06	808429	THRUST WASHER	2	18	808693	SLIDE PAD	1
07	814195	EXT CYL MOUNT WELDMENT	1	19	813849	3/8" LOCK WASHER	2
08	814194	3/4-10 x 2-1/2" BOLT	8	20	813677	3/8-16 x 3/4" BOLT	2
09	808626	3/4"-10 NYLON INSERT NUT	8	21	814402	EXTEND CYLINDER TUBE (<i>right</i>)	1
10	808904	TRUNNION SHIM	1	22	814403	TRUNNION MOUNT (<i>right</i>)	1
11	814393	EXTEND CYLINDER TUBE (<i>left</i>)	1			(<i>Includes item 23</i>)	
12	814394	ADAP., -12JICM BLKHD 90°	4	23	808475	BUSHING 2" I.D. x 1"	2
13 ^a	814395	BOOM EXTEND TUBE (<i>short</i>)	1	24	814404	BOOM EXTEND TUBE (<i>long</i>)	1
	814396	ADAP., PORT RESTRICTOR	1				
	814397	RESTRICTOR, WORK PORT	1				
14	814326	ADAP., -12ORM -12JICM STR.	2	a	<i>This side of the valve also uses a port restrictor adapter (814396) and port restrictor (814397), not shown.</i>		
15	814398	HOSE, -12 A12/DS12 42"	2				

Boom Auxiliary Hydraulics Group - Four-Section Low Boom

Ref. No.	Part No.	Description	Qty. Req.	Ref. No.	Part No.	Description	Qty. Req.
01	814378	HOSE ASSEMBLY -12 x 53"	2	24L	808729	TWIN WIDE TOP PLATE.	1
02	808423	GREASE ZERK 90° 1/4"-28	2	25	814382	5/16"-18 x 2-1/4" BOLT	2
03	814372	HOSE RETAINER BOLT	2	266	808497	LOCK WASHER 5/16"	2
04	814373	PLAIN WASHER 0.75"	2	27	814346	TWIN TUBE CUSHION 0.50"	1
05	814374	HOSE RETAINER SPACER	2	28	814381	TWIN CUSHION TOP PLATE	1
06	814377	HOSE GUIDE	1	29	809493	STUD 5/16"-18 x 2-1/4"	6
07	814376	SHEAVE PIN WASHER.	2	30L	808662	NYLON INSERT NUT 5/16"-18	7
08	814234	REAR SHEAVE PIN	1	31	814361	TWIN HOSE CUSHION.	2
09	814323	ADAP., -10JICM BLKHD 90°	2	32	814350	STUD 5/16"-18 x 4-1/2"	2
10	814422	HOSE ASSEMBLY -8 x 248"	1	33	814389	HOSE, -8 x 268"	2
11	814421	AUX. INNER BOTTOM TUBE.	1		814364	HOSE SLEEVE	1
12	814420	AUX. INNER TOP TUBE.	1	34	808555	NUT	1
13	814379	FORWARD BOOM TUBE	2	35	814366	CLAMP BOTTOM	1
14	814345	VINYL CLAMP	10	36	814367	CLAMP TOP	1
15	813386	1/4"-20 x 5/8"	5	37L	809619	TOP PLATE	1
16L	808880	DBL. TUBE CLAMP 0.63"	4	38	814368	5/16"-18 x 2" BOLT	1
17	808881	TWIN TUBE TOP PLATE	4	39	814425	REAR RIGHT TUBE	1
18	814344	5/16"-18 x 1-1/4" BOLT	1	40	814426	REAR LEFT TUBE	1
19	814424	HOSE, -8 x 15"	2	41	814321	SGL. TUBE CUSHION 0.63"	4
20	814419	ADAP., -8ORM -10JICM STR	2	42	814322	SGL. CUSHION TOP PLATE	2
21L	808796	COUPLER SET	1	43	814375	HOSE GUIDE	1
23L	808730	TWIN CUSHION 0.88"	AR				

Axle - Steering and Brake Lines Group

Ref. No.	Part No.	Description	Qty. Req.	Ref. No.	Part No.	Description	Qty. Req.
01	813708	ADAP., -8ORM-8JICM STR.	4	09	814477	TEE, BULKHEAD -4JICM	1
02	814474	ADAP., -6ORM -4JICM STR	4	10	814478	HOSE, -4 A4/A4 45"	1
03	814431	ADAP., -4ORM-6JICM 90°	1				
04	814472	HOSE, -6 A6/NS8 40"	2	a	<i>Early units with the 26.48 axles used a smaller HOSE, -4 (1/4"). If this unit is equipped with the smaller hose, order replacement P/N 430177 Hose kit, which includes (1) hose, P/N #814475 and (2) adapters, P/N 814431 (item #3)</i>		
05	814472	HOSE, -6 A6/NS8 40"	2				
06 ^a	814475	HOSE, -6 A6/DS6 104"	1				
07	814476	HOSE, -4 A4/NS4 108"	2				
08	814476	HOSE, -4 A4/NS4 108"	2				

Hose Locator

Ref No.	From Port	To Port
04	STEER CYLINDER FRONT AXLE BOTH SIDES	STEER/BRAKE MANIFOLD (TOP FRONT PORTS)
05	STEER CYLINDER REAR AXLE (LEFT SIDE)	STEER SELECT VALVE "B"
	STEER CYLINDER REAR AXLE (RIGHT SIDE)	STEER SELECT VALVE "A"
06	FRONT AXLE PARK BRAKE CALIPER	HYDRAULIC PRESSURE INTENSIFIER
07	FRONT AXLE BRAKE PORTS (BOTH SIDES)	STEER/BRAKE MANIFOLD (MIDDLE/SIDE PORTS)
08	REAR AXLE BRAKE PORTS (BOTH SIDES)	BULKHEAD TEE ABOVE REAR AXLE
10	BULKHEAD TEE ABOVE REAR AXLE	TEE ON THE BRAKE LINES MANIFOLD

Ref. No.	Part No.	Description	Qty. Req.	Ref. No.	Part No.	Description	Qty. Req.
01		MAIN CONTROL VALVE	1	17	814325	TUBE, TILT SECTION	2
	814492	<i>Note a - (not shown)</i>		18	814295	ADAP. -12JICM -12ORM 90° LNG .	2
	814493	<i>Note b - (shown)</i>		19	814294	HOSE, -12 A12/DS10 36"	2
02	814328	3/8"-16 x 3-1/2" BOLT	2	20	814326	ADAP., -12ORM -12JICM STR. . .	AR
03	813849	3/8" LOCK WASHER	2	21	814396	ADAPTER, PORT RESTRICTOR . .	1
04	813338	1/2"-13 x 1-1/4" BOLT	2	22	814397	RESTRICTOR, WORK PORT	1
05	813337	1/2" FLAT WASHER	2	23	813743	ADAP., -16JICM -16ORM 90° . . .	1
06	814494	VALVE MOUNT PLATE	1	24	814428	HOSE, -16 A16/A16 60"	1
07	808409	ADAPTER, JOYSTICK	AR				
		<i>(1/4BSP -6JICM STR)</i>					
08	814314	HOSE, -8 A12/DS10 50"	2	a		<i>The three-section valve does not include the auxiliary hydraulics work section. To add the auxiliary hydraulics work section to the main valve order</i>	
09	813704	ADAP. -12JICM -12JICFS 90°	2			<i>(1) P/N 814496 Valve Section and (4) P/N</i>	
10	814306	ADAP., -12JICM BLKHD RUN TEE. 2				<i>808367 Tie Rod Kit.</i>	
11	814394	ADAP., -12JICM BLKHD 90°	AR	b		<i>Four-section valve, includes auxiliary hydraulics work section.</i>	
12	813751	HOSE, -16 A16/DS16 78"	1				
13	814495	ADAP., -16JICM -16ORM STR. . . .	1	c		<i>Used when equipped with optional auxiliary hydraulics valve section.</i>	
14 ^c	814418	TUBE, AUXILIARY SECTION	2				
15	814404	TUBE, BOOM IN/OUT (long).	1				
16	814395	TUBE, BOOM IN/OUT (short)	1				

Dual-Function (Two-Button) Manifold - w/Auxiliary Hydraulics

Ref. No.	Part No.	Description	Qty. Req.	Ref. No.	Part No.	Description	Qty. Req.
01	814500	ADAP., -6JICM BLKHEAD TEE	1	13	814439	ADAP., -6ORM PLUG	1
02	813680	HOSE, -4 A6/DS6 84"	1	14	813597	ADAP., -6ORM -6JICM 90°	6
03	813596	ADAP., -6ORM -6JICM STR	16	15	813679	HOSE, -4 A6/A6 40"	1
04	814510	STUD	2	16 ^a	809766	HOSE, -4 A6/DS6 130"	1
05	814508	PILOT APPLY MANIFOLD	2	17	808882	HOSE, -4 A6/DS6 17"	1
06	808882	HOSE, -4 A6/DS6 17"	1	18	814501	HOSE, -4 A6/DS6 20"	1
07	814501	HOSE, -4 A6/DS6 20"	1	19 ^a	809773	HOSE, -4 A6/A6 110"	1
08 ^a	809773	HOSE, -4 A6/A6 110"	1	20	814501	HOSE, -4 A6/DS6 20"	1
09	813679	HOSE, -4 A6/A6 40"	1	21	808882	HOSE, -4 A6/DS6 17"	1
10	814501	HOSE, -4 A6/DS6 20"	1	22	808409	ADAP., 1/4BSP -6JICM	AR
11	808882	HOSE, -4 A6/DS6 17"	1				
12 ^a	809766	HOSE, -4 A6/DS6 130"	1				

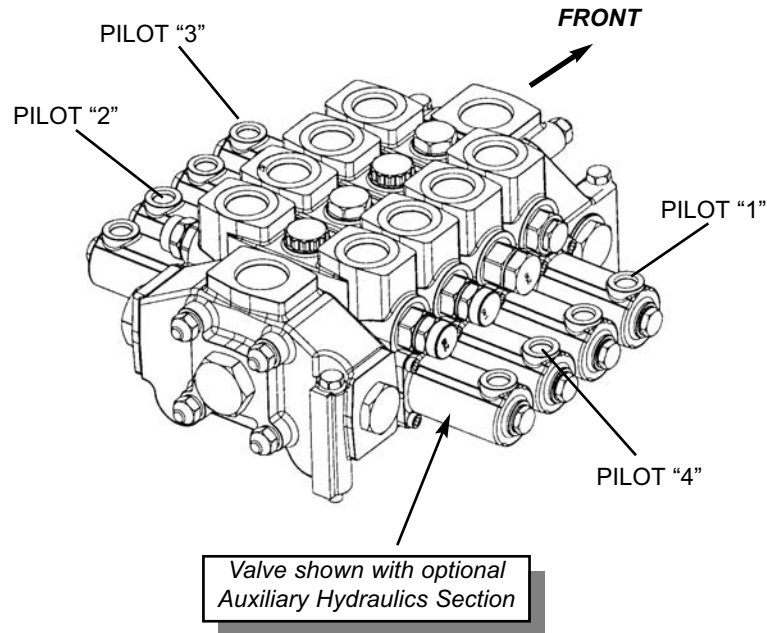
a Hoses connect to the dual-function controller (joystick). Refer to "Dual-function Controller" for more information.

Hose Locator

Ref No.	From Port	To Port
02	BULKHEAD TEE (ABOVE VALVE)	HYDRAULIC TANK RETURN MANIFOLD
06	AUXILIARY PILOT APPLY MANIFOLD "2"	PILOT VALVE (as shown)
07	AUXILIARY PILOT APPLY MANIFOLD "4"	PILOT VALVE (as shown)
08	AUXILIARY PILOT APPLY MANIFOLD "B"	JOYSTICK "2"
09	AUXILIARY PILOT APPLY MANIFOLD "T1"	BULKHEAD TEE (ABOVE VALVE)
10	STANDARD PILOT APPLY MANIFOLD "2"	PILOT VALVE (as shown)
11	STANDARD PILOT APPLY MANIFOLD "4"	PILOT VALVE (as shown)
12	STANDARD PILOT APPLY MANIFOLD "B"	JOYSTICK "1"
15	STANDARD PILOT APPLY MANIFOLD "T2"	BULKHEAD TEE (ABOVE VALVE)
16	STANDARD PILOT APPLY MANIFOLD "A"	JOYSTICK "3"
17	STANDARD PILOT APPLY MANIFOLD "1"	PILOT VALVE (as shown)
18	STANDARD PILOT APPLY MANIFOLD "3"	PILOT VALVE (as shown)
19	STANDARD PILOT APPLY MANIFOLD "A"	JOYSTICK "4"
20	AUXILIARY PILOT APPLY MANIFOLD "1"	PILOT VALVE (as shown)
21	AUXILIARY PILOT APPLY MANIFOLD "3"	PILOT VALVE (as shown)

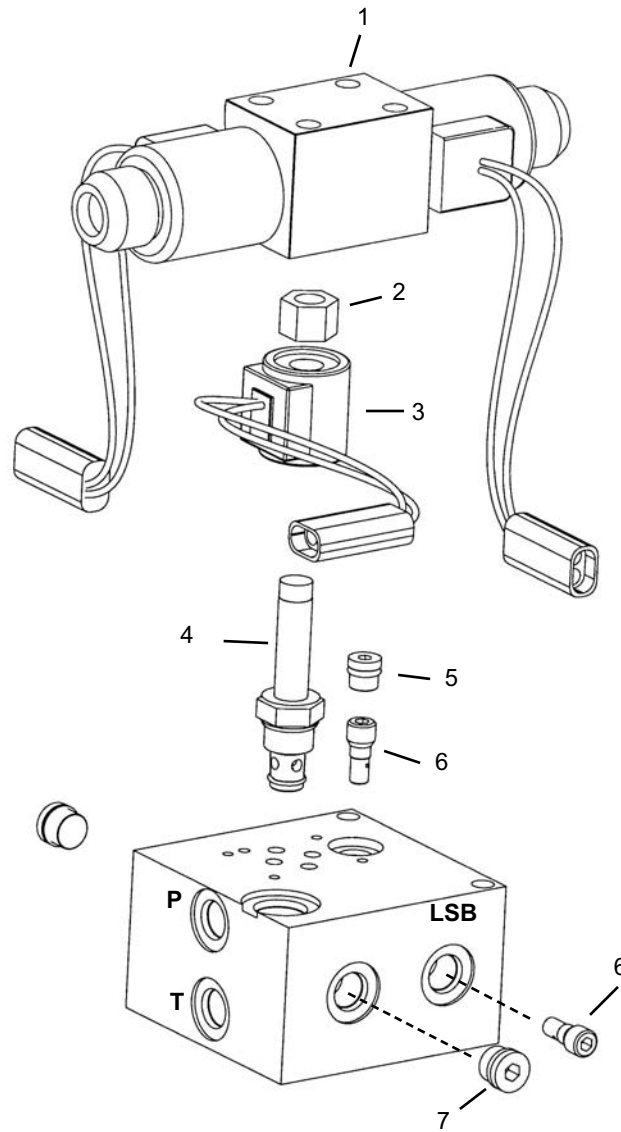
Tri-Function (Four-Button) Controller

Ref. No.	Part No.	Description	Qty. Req.	Ref. No.	Part No.	Description	Qty. Req.
02	813570	1/4"-20 x 3/4" BOLT	4	07	808884	HOSE, -4 A6/A6 25"	1
03	808545	1/4"-20 FLANGE NUT	4	08	809616	HOSE, -4 A6/A6 46"	1
04	813596	ADAP., -6ORM -6ORM STR	6	09	809773	HOSE, -4 A6/A6 110"	1
05	809773	HOSE, -4 A6/A6 110"		10	809773	HOSE, -4 A6/A6 110"	1
06	809773	HOSE, -4 A6/A6 110"	1				



Hose Locator

Ref No.	From Port	To Port
05	JOYSTICK "3"	PILOT "3"
06	JOYSTICK "2"	PILOT "2"
07	JOYSTICK "T"	HYDRAULIC TANK RETURN MANIFOLD
08	JOYSTICK "P"	SAHR VALVE "P2"
09	JOYSTICK "1"	PILOT "1"
10	JOYSTICK "4"	PILOT "4"



Ref. No.	Part No.	Description	Qty. Req.	Ref. No.	Part No.	Description	Qty. Req.
00	814488	LEVEL VALVE	1	04	814535	2 WAY SOLENOID VALVE	1
		<i>(includes all parts shown.)</i>				<i>(includes item 2.)</i>	
01	814533	VALVE, WEATHERPAK	1		809156	SEAL KIT	1
	814534	SEAL KIT	1	05	809155	PLUG -4 NWD	1
02	NSS	NUT	2	06	814536	SHUTTLE VALVE	2
		<i>(included with item 4.)</i>		07	814537	PLUG -6 NWD	2
03	809151	COIL, WEATHERPAK 12VDC	1				

Ref. No.	Part No.	Description	Qty. Req.	Ref. No.	Part No.	Description	Qty. Req.
00	814512	OUTRIGGER VALVE <i>(complete)</i> . . .	1	06	809400	LOAD CHECK PLUG	4
01	814546	INLET COVER HOUSING	1	07 ^a	809401	HRO ACTUATOR "B" PORT	2
02	809398	RELIEF CARTRIDGE	1		814549	SEAL KIT, ACTUATOR	AR
	809620	RELIEF SEAL KIT	1	08	814550	WORK SECTION <i>(includes 5-7)</i> . . .	2
03	814547	OUTLET COVER HOUSING	1	09 ^a	809397	SECTION SEAL KIT	1
04	814548	STUD ASSEMBLY KIT	1	10	814552	DUST BOOT	AR
05 ^a	809402	HRO ACTUATOR "A" PORT	2				
	814549	SEAL KIT, ACTUATOR	AR	a		<i>Items in seal kits are not shown</i>	

Ref. No.	Part No.	Description	Qty. Req.	Ref. No.	Part No.	Description	Qty. Req.
00	809513	FRAME LEVEL CYLINDER.	1	09	809062	OIL LINE TUBE ASSEMBLY.	1
01	808708	BUSHING 2.0X2.25X2.5"	1	10	808424	1/4"-28 GREASE ZERK.	1
02	808423	1/4"-28 GREASE ZERK STR	1	11	808756	BUSHING 2.0" x 2.25" x 2.0".	1
03	809059	ROD WELDMENT.	1	12	809618	COUNTER BALANCE VALVE.	2
04	809128	1-1/4"-12 UNF LOCKNUT	1		808965	SEAL KIT (CBV)	1
05	809068	PISTON	1	13 ^a	809060	CYLINDER SEAL KIT	1
06	809061	HEAD GLAND	1	14	NSS	CYLINDER TUBE WELDMENT	1
07	809067	HEAD GLAND CAP	1				
08	809136	5/16"-18 x 1/4" SET SCREW	1	a		<i>Items included in the seal kit are not shown.</i>	

Hydraulic Components
Boom Extend Cylinder - Three-Section Boom

Ref. No.	Part No.	Description	Qty. Req.	Ref. No.	Part No.	Description	Qty. Req.
00		BOOM EXTEND CYLINDER.	1	06	814603	5/16"-18 x 5/16" SET SCREW.	1
	814400	<i>Used with 40' High Boom</i>		07	809100	HEAD GLAND	1
	814401	<i>Used with 44' High Boom</i>		08	814607	ROD SPACER	1
01	808756	BUSHING (rod end).	1	09	809143	5/16"-18 x 5/8" SET SCREW.	1
02	808424	1/4"-28 GREASE ZERK.	1	10	809142	PISTON	1
03	808903	COUNTER BALANCE VALVE.	1	11	NSS	CYLINDER TUBE WELDMENT	1
	809162	CBAL VALVE SEAL KIT	1	12 ^a	809141	CYLINDER SEAL KIT	1
04		ROD WELDMENT	1				
	814604	<i>Used with 40' High Boom</i>					
	814605	<i>Used with 44' High Boom</i>					
05	814606	HEAD GLAND CAP.	1				

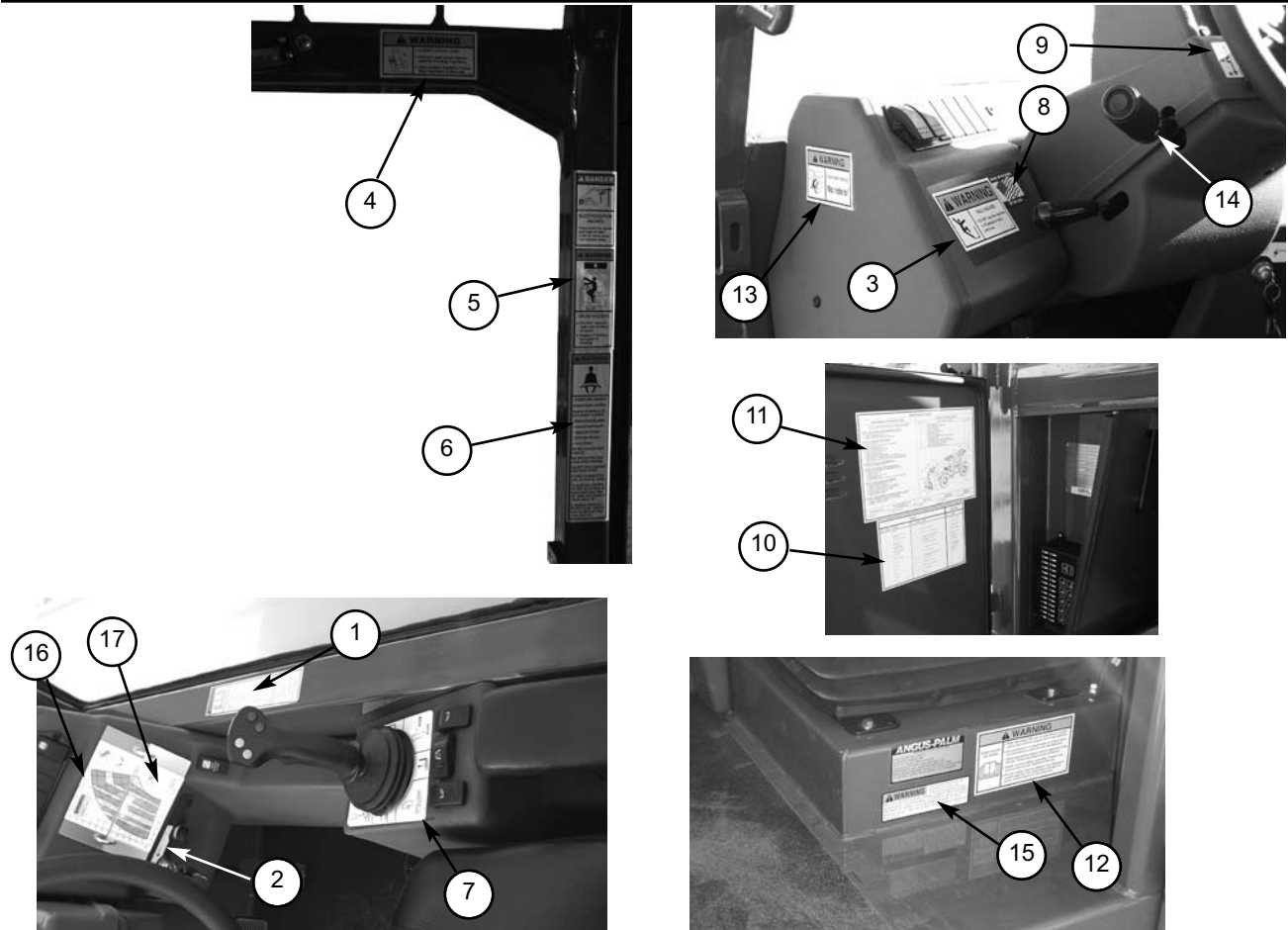
a Items included in the seal kit are not shown.

Ref. No.	Part No.	Description	Qty. Req.	Ref. No.	Part No.	Description	Qty. Req.
-- 2" FORK SHAFT DIAMETER --				-- 2-1/2" FORK SHAFT DIAMETER --			
		(42" long)				(48" long)	
01	814622	FORK, 42"x4"x2" (8,400 lbs.)	2	10 ^{bd}	814631	FORK, 48"x2"x2" (12,600 lbs.)	2
		(48" long)		11 ^d	814632	FORK, 48"x6"x2" (12,600 lbs.)	2
02 ^{ac}	814623	FORK, 48"x2"x2" (4,200 lbs.)	4	12 ^d	814633	FORK, 48"x4"x2-1/4" (12,000 lbs.)	2
03 ^c	814624	FORK, 48"x4"x2" (8,400 lbs.)	2			(60" long)	
04	814625	FORK, 48"x4"x2-1/4" (12,000 lbs.)	2	13 ^d	814634	FORK, 60"x6"x2" (12,600 lbs.)	2
05 ^c	814626	FORK, 48"x5"x1-3/4" (8,500 lbs.)	2	14 ^d	814635	FORK, 60"x6"x2-1/4" (12,000 lbs.)	2
06	814627	FORK, 48"x5"x2" (10,500 lbs.)	2			(72" long)	
		(60" long)		15 ^d	814636	FORK, 72"x6"x2" (12,600 lbs.)	2
07	814628	FORK, 60"x5"x2" (10,500 lbs.)	2				
08	814629	FORK, 60"x6"x2-1/4" (12,000 lbs.)	2				
		(72" long)					
09	814630	FORK, 72"x5"x2" (10,500 lbs.)	2				

NOTE: Ratings are based on 2 forks and the load is 24" on center, except for item #2; where 4 forks are required, and item #10; where 6 forks are required.

 **WARNING**

When ordering forks, select forks with a rating capacity that meets or exceeds the lifting capacity of the machine; failure to use the correct forks could result in injury or death. For more information contact dealer (or manufacturer).



REF. NO.	DESCRIPTION	MT1155
01	WARNING - SEAT BELT AND PARK BRAKE	813273
02	IGNITION	814663
03	DANGER - PERSONAL INJURY (units w/o PWP)	813272
04	WARNING - CARRY LOAD LOW	814664
05	DANGER - HI-VOLT/MOVING PARTS	813279
06	WARNING - TILT HAZARD/GENL. OPER.	813280
07	JOYSTICK CONTROL (dual function w/ two buttons)	814665
	JOYSTICK CONTROL (tri-function w/ four buttons)	814666
08	MADE IN USA	808060
09	F-N-R SHIFTER	808059
10	FUSES/RELAYS REFERENCE	814667
11	MAINTENANCE CHART	814668
12	OPERATOR MANUAL	813281
13	WARNING - NO RIDERS	813271
14	SHIFTER 1,2,3,4	814669
15	ROPS FOPS WARNING	814670
16	LOAD ZONE CHARTS	See Note
17	PWP LOADCHART USAGE (units w/o PWP)	814671

Part No.	Page No.	Ref. No.	Part No.	Page No.	Ref. No.	Part No.	Page No.	Ref. No.	Part No.	Page No.	Ref. No.
813391	17	1	813439	23	24	813476	27	5	813506	29	28
813391	19	2	813440	23	25	813476	29	5	813507	29	29
813392	17	0	813441	23	26	813477	27	6	813508	29	30
813394	17	0	813442	23	27	813478	27	7	813509	29	31
813394	19	1	813443	23	28	813478	29	7	813510	31	0
813395	19	5	813444	25	1	813479	27	11	813511	31	1
813396	19	19	813445	25	2	813479	29	11	813512	31	2
813397	19	0	813446	25	3	813480	27	12	813513	31	3
813398	20	1	813447	25	5	813480	29	12	813514	31	4
813399	20	2	813448	25	7	813481	27	13	813515	31	5
813400	20	3	813449	25	8	813481	29	13	813516	31	9
813401	20	8	813450	25	9	813482	27	14	813517	31	10
813402	21	0	813451	25	10	813482	29	14	813518	31	11
813403	21	3	813451	41	19	813483	27	15	813519	31	0
813404	21	11	813452	25	12	813483	29	15	813520	31	0
813405	21	12	813453	25	13	813484	27	16	813521	31	0
813406	21	13	813454	25	14	813485	27	16	813522	33	1
813407	21	15	813455	25	17	813485	29	16	813523	33	2
813408	22	0	813456	25	19	813485	29	16	813524	33	3
813409	22	1	813457	25	23	813486	27	17	813525	33	4
813410	22	4	813458	25	29	813486	29	17	813526	33	5
813411	22	7	813459	25	30	813487	27	18	813527	33	5
813412	22	8	813460	25	30	813487	29	18	813528	33	6
813412	23	5	813461	25	35	813488	27	19	813529	33	6
813413	22	10	813461	27	27	813488	29	25	813530	33	7
813414	22	11	813461	29	0	813489	27	20	813531	33	7
813414	23	7	813462	25	36	813489	29	26	813531	33	8
813415	22	12	813462	41	20	813490	27	21	813531	65	2
813416	22	13	813463	25	37	813490	29	27	813532	33	9
813416	23	13	813463	41	21	813491	27	22	813533	33	10
813417	22	14	813464	25	38	813491	29	32	813534	33	11
813418	22	15	813464	41	22	813492	27	24	813535	33	12
813419	22	18	813465	25	39	813492	29	34	813536	33	13
813420	22	19	813465	25	0	813493	27	25	813537	33	13
813421	22	20	813466	25	0	813493	29	35	813538	33	14
813422	22	21	813466	25	0	813494	27	26	813539	33	15
813423	23	0	813466	63	0	813494	29	36	813540	33	16
813424	23	4	813467	25	0	813495	27	28	813541	33	17
813425	23	8	813467	41	0	813495	29	0	813542	33	18
813426	23	9	813468	25	0	813496	27	29	813543	33	0
813427	23	10	813469	25	0	813496	29	0	813543	63	7
813428	23	11	813470	13	14	813497	27	30	813544	33	0
813429	23	12	813470	25	0	813497	29	0	813545	33	8
813430	23	14	813471	13	14	813497	63	15	813546	35	1
813431	23	15	813471	25	0	813498	29	3	813547	35	4
813432	23	16	813472	25	0	813499	29	6	813548	35	5
813433	23	17	813472	63	0	813500	29	19	813549	35	7
813434	23	18	813473	63	0	813501	29	20	813549	125	11
813435	23	19	813474	27	2	813502	29	21	813550	35	8
813436	23	21	813474	29	2	813503	29	22	813550	153	13
813437	23	22	813475	27	4	813504	29	23	813550	175	13
813438	23	23	813475	29	4	813505	29	24	813550	215	2

A

A/C Dryer 33
 A/C Wire Harness 33
 Accumulator 205, 247
 Accumulator Discharge 319
 Accumulator, Piston Type 201, 205
 Adapter, Joystick 219
 Adapter, Port Restrictor 219
 Air Breather 99
 Air Cleaner 71
 Air Conditioner 31
 Air Filter 9, 71
 Air Inlet Pipe 71
 Angle Inclinator 137, 159
 Antenna, Radio 13
 APC120 Controller And Display 83
 Arm Rest 39
 Auxiliary Hydraulics Work Section 253
 Axle, Differential 109
 Axle, Front 103
 Axle, Rear 103

B

Backup Alarm 49
 Backup Light 49
 Baffle, Cooler Top 65
 Baffle, Rear 51
 Bar, Mirror Mount 13
 Battery 53
 Battery Cable 53
 Bell Crank 171
 Bellows, Seat 39
 Bezel, Dash 25
 Bezel, Joystick 263, 265
 Binary Switch 33
 Blower Motor 27, 29
 Boom 121, 123, 125, 146, 165, 167
 Boom Chain 117, 119, 125, 137, 141, 143, 149, 163, 165, 169
 Boom Extend Cylinder 189, 191, 193, 281
 Boom Lift Cylinder 273
 Boom Light 125
 Boom Side Cover 157

CLICK HERE TO **DOWNLOAD** THE COMPLETE MANUAL

- Thank you very much for reading the preview of the manual.
- You can download the complete manual from: www.heydownloads.com by clicking the link below



- Please note: If there is no response to CLICKING the link, please download this PDF first and then click on it.

CLICK HERE TO **DOWNLOAD** THE COMPLETE MANUAL