



**MANITOU ITALIA S.r.l.**  
**Via Cristoforo Colombo, 2**  
**Località Cavazzona**  
**41013 CASTELFRANCO EMILIA (MO)**  
**ITALIA**  
**Tel. +39 059 959811**

**REF: 648633 (09/2012)**

**MRT 1840**  
**360°**  
**E3**



**CATALOGO RICAMBI**  
**CATALOGUE PIECES**  
**PARTS CATALOGUE**  
**ERSATZTEILKATALOG**  
**CATALOGO PIEZAS**

CLICK HERE TO **DOWNLOAD** THE COMPLETE MANUAL

- Thank you very much for reading the preview of the manual.
- You can download the complete manual from: [www.heydownloads.com](http://www.heydownloads.com) by clicking the link below

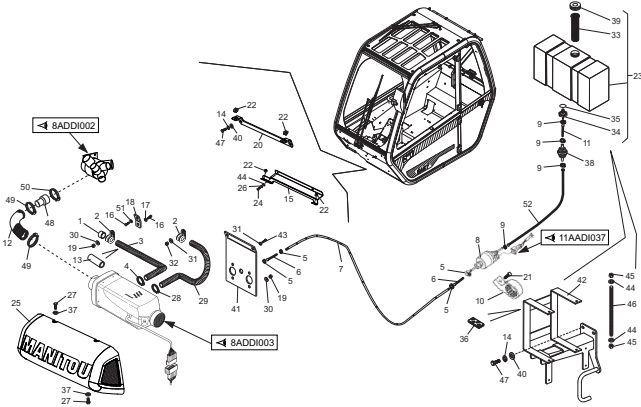


- Please note: If there is no response to CLICKING the link, please download this PDF first and then click on it.

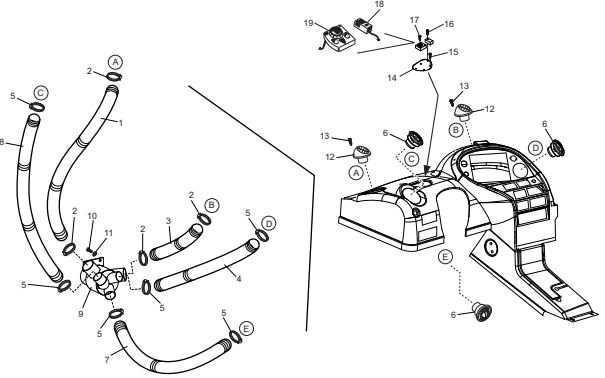
CLICK HERE TO **DOWNLOAD** THE COMPLETE MANUAL

# INDEX

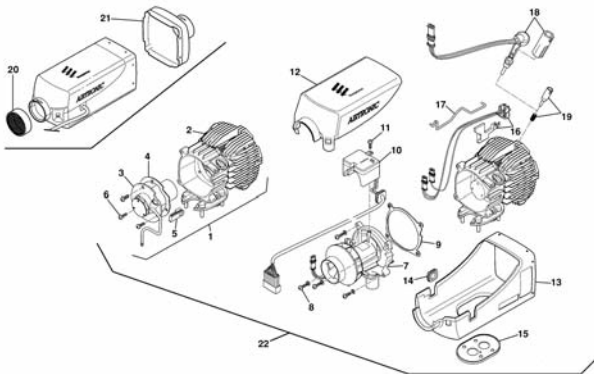
## 8ADDI001



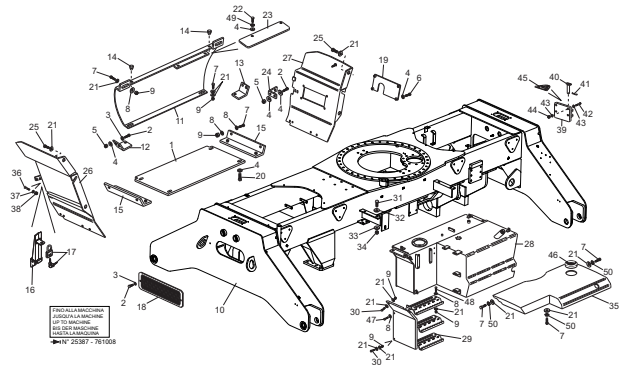
## 8ADDI002



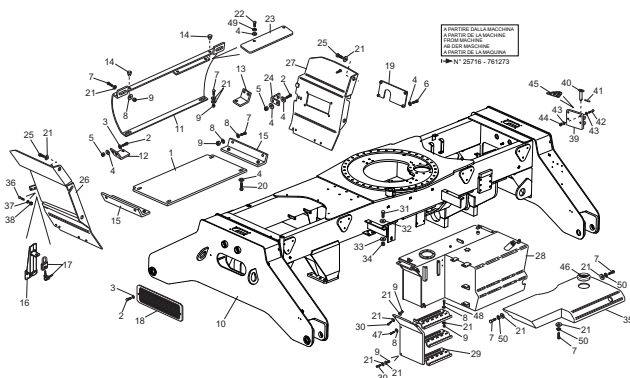
## 8ADDI003



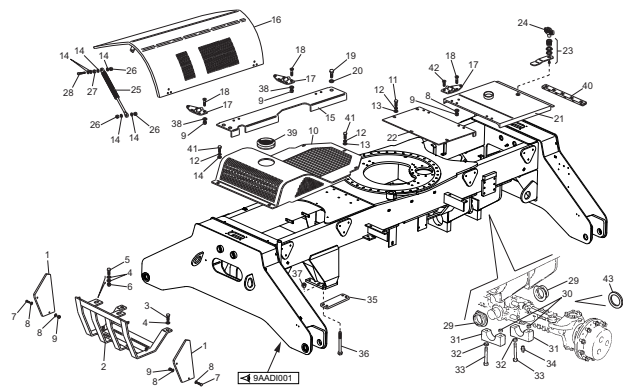
## 9AADI001



## 9AADIA001

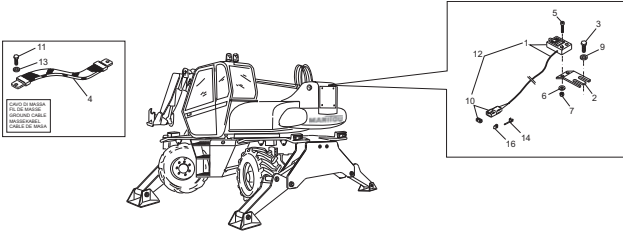


## 9AADI002

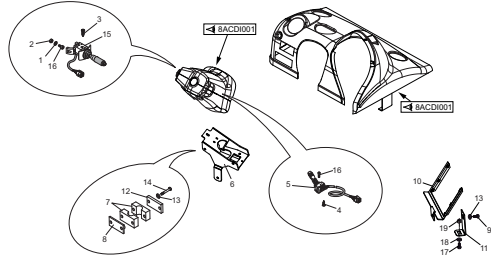


# INDEX

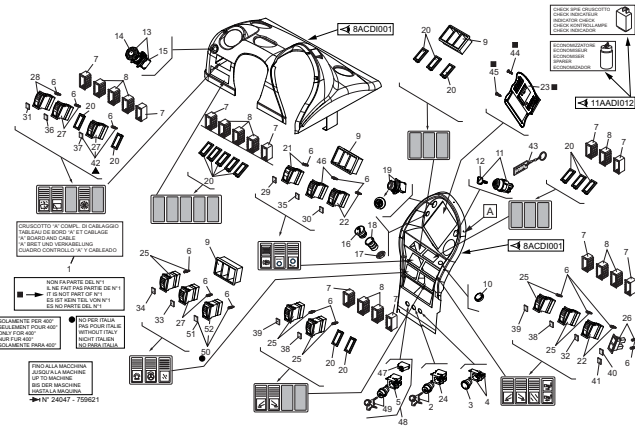
11AADI004



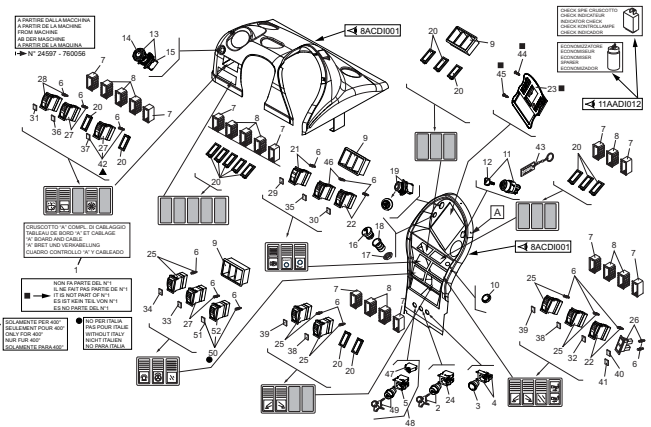
11AADI006



11AADI007

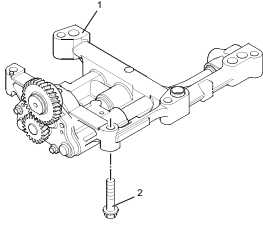


11AADIA007

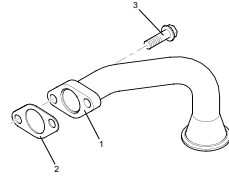


# INDEX

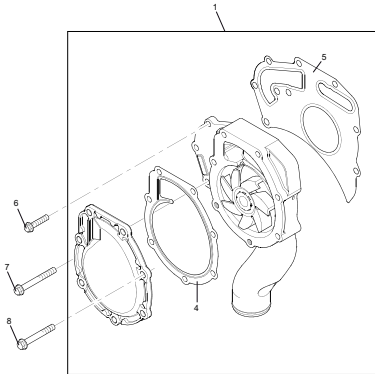
**APDI128**



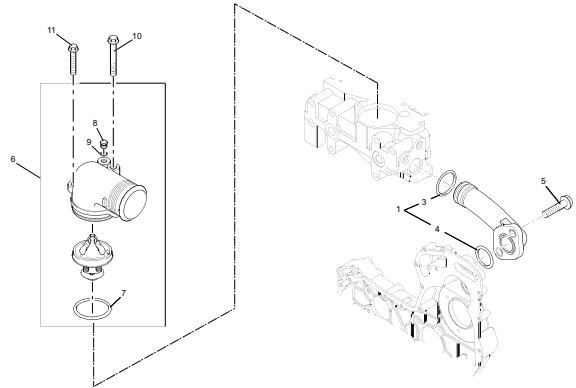
**APDI129**



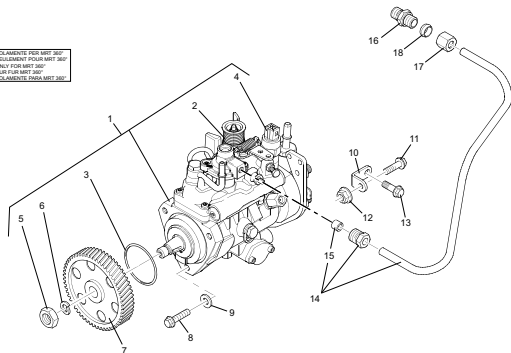
**APDI135**



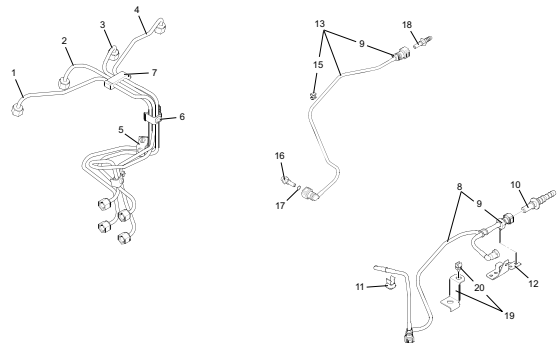
**APDI136**



**APDI140**



**APDI141**



# INDEX

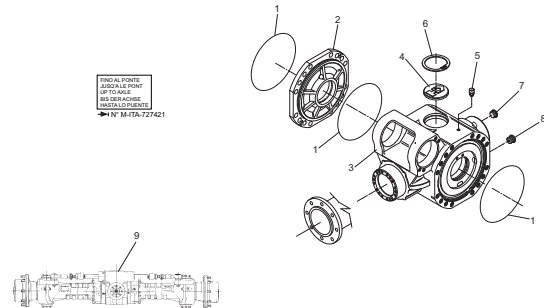
## AXDI500

### ASSALE POSTERIORE ESSIEU ARRIERE - REAR AXLE HINTERACHSE - EJE TRASERO

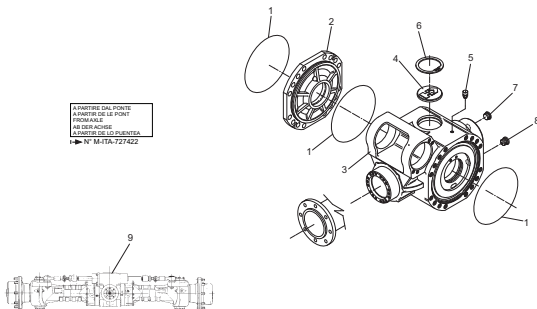
TIPO - TYPE  
TYPE - TYPEN 212-665  
TIPO

NUMERO - REFERENCE  
NUMBER - NUMMER 729958

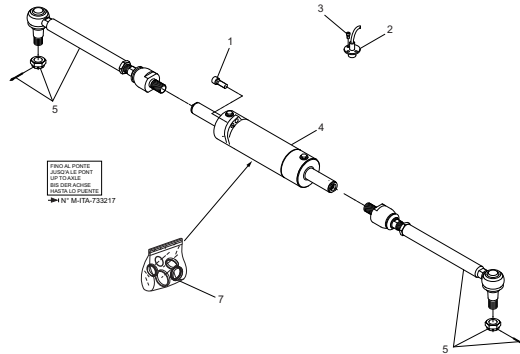
NUMERO



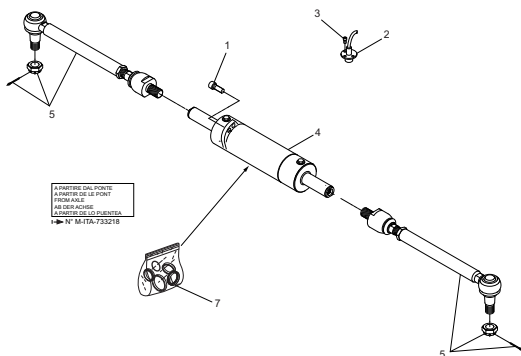
## AXDIA500



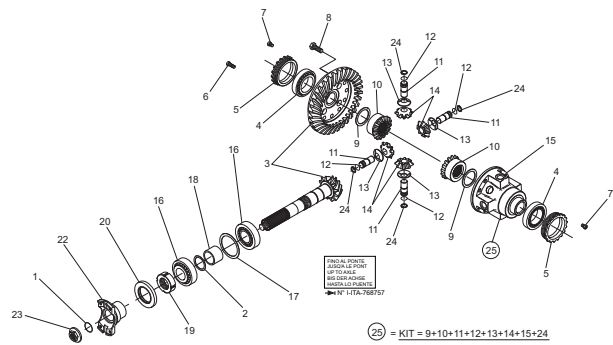
## AXDI501



## AXDIA501



## AXDI502

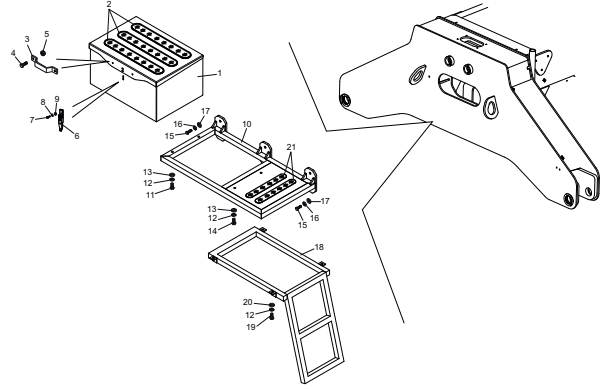


# INDEX

9AADI100

## OPTIONS

KIT BOITE PORTE-OUTILS  
(779072)





| 1/4 | 648633 | <b>TRASMISSIONE IDROSTATICA E BLOCCO ASSALE POSTERIORE</b><br>CIRCUIT TRANSMISSION HYDROSTATIQUE ET BLOCAGE ESSIEU ARRIERE<br>HYDROSTATIC TRANSMISSION CIRCUIT AND REAR AXLE LOCK<br>HYDROSTATIK GETRIEBEKREIS UND HINTERACHSE VERRIEGELUNG<br>TRANSMISION HIDROSTATICA Y BLOQUE EJE TRASERO |                |                 |                  |                 | Quantità<br>Quantity<br>Quantité |             |          |  | <b>4ABDIA</b><br><b>001</b> |  |  |
|-----|--------|--|----------------|-----------------|------------------|-----------------|----------------------------------|-------------|----------|--|-----------------------------|--|--|
|     |        | Rep Item   | Part. Number   | DESCRIZIONE     | DESIGNATION      | DESCRIPTION     | BEZEICHNUNG                      | DESCRIPCION | MRT 1840 |  |                             |  |  |
| 1   | 484785 | filtro completo  | filtre complet | complete filter | filter, komplett | filtro completo | 1                                |             |          |  |                             |  |  |
| 2   | 485695 | cartuccia  | cartouche      | cartridge       | patrone          | cartucho        | 1                                |             |          |  |                             |  |  |
| 3   | 577709 | fascetta   | collier        | clamp           | schelle          | abrazadera      | 4                                |             |          |  |                             |  |  |
| 4   | 499656 | curva  | manchon        | elbow           | kruemmer         | curva           | 2                                |             |          |  |                             |  |  |
| 5   | 482664 | raccordo   | raccord        | pipe fitting    | rohrverbindung   | conexion        | 3                                |             |          |  |                             |  |  |
| 6   | 725451 | tubo   | tuyau          | hose            | schlauch         | tubo            | 1                                |             |          |  |                             |  |  |
| 7   | 488527 | raccordo   | raccord        | pipe fitting    | rohrverbindung   | conexion        | 1                                |             |          |  |                             |  |  |
| 8   | 510015 | tubo   | tuyau          | hose            | schlauch         | tubo            | 2                                |             |          |  |                             |  |  |
| 9   | 485972 | semiflangia  | demi flasque   | half flange     | halbflansch      | semibrida       | 4                                |             |          |  |                             |  |  |
| 10  | 479016 | vite   | vis            | screw           | schraube         | tornillo        | 8                                |             |          |  |                             |  |  |
| 11  | 499320 | rondella   | rondelle       | washer          | unterlegscheibe  | arandela        | 8                                |             |          |  |                             |  |  |
| 12  | 510008 | tubo   | tuyau          | hose            | schlauch         | tubo            | 1                                |             |          |  |                             |  |  |
| 13  | 527408 | tubo   | tuyau          | hose            | schlauch         | tubo            | 1                                |             |          |  |                             |  |  |
| 14  | 501677 | tubo   | tuyau          | hose            | schlauch         | tubo            | 1                                |             |          |  |                             |  |  |
| 15  | 578947 | tubo   | tuyau          | hose            | schlauch         | tubo            | 1                                |             |          |  |                             |  |  |
| 16  | 657322 | tubo   | tuyau          | hose            | schlauch         | tubo            | 1                                |             |          |  |                             |  |  |
| 17  | 512599 | tubo   | tuyau          | hose            | schlauch         | tubo            | 1                                |             |          |  |                             |  |  |
| 18  | 501031 | curva  | manchon        | elbow           | kruemmer         | curva           | 1                                |             |          |  |                             |  |  |
| 19  | 485973 | semiflangia  | demi flasque   | half flange     | halbflansch      | semibrida       | 4                                |             |          |  |                             |  |  |
| 20  | 448267 | tappo  | bouchon        | plug            | stopfen          | tapon           | 1                                |             |          |  |                             |  |  |
| 21  | 478501 | guarnizione  | joint          | seal            | dichtung         | guarnicion      | 2                                |             |          |  |                             |  |  |
| 22  | 484943 | rondella   | rondelle       | washer          | unterlegscheibe  | arandela        | 1                                |             |          |  |                             |  |  |
| 23  | 501657 | tubo   | tuyau          | hose            | schlauch         | tubo            | 2                                |             |          |  |                             |  |  |
| 24  | 510014 | tubo   | tuyau          | hose            | schlauch         | tubo            | 1                                |             |          |  |                             |  |  |
| 25  | 478572 | vite   | vis            | screw           | schraube         | tornillo        | 8                                |             |          |  |                             |  |  |

26/09/2012

| 1/1 | 648633 | CIRCUITO TRASMISSIONE IDROSTATICA (Circuito cambio di velocità)<br>CIRCUIT TRANSMISSION HYDROSTATIQUE (Circuit changement vitesse)<br>HYDROSTATIC TRANSMISSION CIRCUIT (Speed changer circuit)<br>HYDROSTATICK GETRIEBEKREIS (Kardanwelle und halter differential support)<br>CIRCUITO TRANSMISION HIDROSTATICA (Circuito cambio de velocidad) |                    |                |                 |                | Quantità<br>Quantity<br>Quantité |             |          |  | 4ABDI<br>020 |  |  |
|-----|--------|--|--------------------|----------------|-----------------|----------------|----------------------------------|-------------|----------|--|--------------|--|--|
|     |        | Rep Item   | Part. Number       | DESCRIZIONE    | DESIGNATION     | DESCRIPTION    | BEZEICHNUNG                      | DESCRIPCION | MRT 1840 |  |              |  |  |
| 1   | 576886 | tubo   | tuyau              | hose           | schlauch        | tubo           | 1                                |             |          |  |              |  |  |
| 2   | 509284 | tubo   | tuyau              | hose           | schlauch        | tubo           | 1                                |             |          |  |              |  |  |
| 3   | 487381 | raccordo   | raccord            | pipe fitting   | rohrverbindung  | conexion       | 2                                |             |          |  |              |  |  |
| 4   | 528086 | tubo   | tuyau              | hose           | schlauch        | tubo           | 1                                |             |          |  |              |  |  |
| 5   | 513075 | raccordo   | raccord            | pipe fitting   | rohrverbindung  | conexion       | 1                                |             |          |  |              |  |  |
| 6   | 569257 | bobina   | bobine             | reel           | rolle           | bobina         | 2                                |             |          |  |              |  |  |
| 7   | 569309 | elettrovalvola   | soupape electrique | solenoid valve | elektroventil   | electrovalvula | 1                                |             |          |  |              |  |  |
| 8   | 657314 | tubo   | tuyau              | hose           | schlauch        | tubo           | 1                                |             |          |  |              |  |  |
| 9   | 501220 | guarnizione  | joint              | seal           | dichtung        | guarnicion     | 12                               |             |          |  |              |  |  |
| 10  | 658178 | tubo   | tuyau              | hose           | schlauch        | tubo           | 2                                |             |          |  |              |  |  |
| 11  | 882330 | vite   | vis                | screw          | schraube        | tornillo       | 2                                |             |          |  |              |  |  |
| 12  | 487366 | raccordo   | raccord            | pipe fitting   | rohrverbindung  | conexion       | 10                               |             |          |  |              |  |  |
| 13  | 455018 | rondella   | rondelle           | washer         | unterlegscheibe | arandela       | 2                                |             |          |  |              |  |  |
| 14  | 471402 | dado   | ecrou              | nut            | mutter          | tuerca         | 2                                |             |          |  |              |  |  |
| 15  | 882915 | distanziale  | entretoise         | spacer         | abstandstuck    | separador      | 1                                |             |          |  |              |  |  |

| 2/2      | 648633       | BRACCIO TELESCOPICO (Braccio principale)   |                 |               |                 |                   | Quantità |       |  | 5BADIA |  |  |  |
|----------|--------------|--|-----------------|---------------|-----------------|-------------------|----------|-------|--|--------|--|--|--|
|          |              | BRAS TELESCOPIQUE (Bras principal)<br>TELESCOPIC BOOM (Main boom)<br>TELESKOPUSLEGER (Hauptasleger)<br>AGUILON TELESCOPICO (Brazo principal) |                 |               |                 |                   | Quantity | Menge |  | 001    |  |  |  |
| Rep Item | Part. Number | DESCRIZIONE  | DESIGNATION     | DESCRIPTION   | BEZEICHNUNG     | DESCRIPCION       | MRT 1840 |       |  |        |  |  |  |
| 26       | 609566       | dado   | ecrou           | nut           | mutter          | tuerca            | 4        |       |  |        |  |  |  |
| 27       | 737599       | dado   | ecrou           | nut           | mutter          | tuerca            | 2        |       |  |        |  |  |  |
| 28       | 584805       | tirante  | jeu tirant      | tie rod kit   | spannstangesatz | kit tirante       | 2        |       |  |        |  |  |  |
| 29       | 569535       | perno  | pivot           | pin           | bolzen          | perno             | 1        |       |  |        |  |  |  |
| 30       | 479726       | boccola  | douille         | bushing       | buchse          | buje              | 2        |       |  |        |  |  |  |
| 31       | 687980       | vite   | vis             | screw         | schraube        | tornillo          | 1        |       |  |        |  |  |  |
| 32       | 470719       | ingrassatore   | graisseur       | grease nipple | fettbuechse     | engrasador        | 1        |       |  |        |  |  |  |
| 33       | 448215       | copiglia   | goupille        | cotter pin    | splint          | clavija           | 2        |       |  |        |  |  |  |
| 41       | 882341       | grano  | pivot de repere | dowel pin     | stift           | perno de centrado | 7        |       |  |        |  |  |  |
| 43       | 658554       | supporto   | support         | support       | lager           | soporte           | 1        |       |  |        |  |  |  |
| 44       | 448492       | vite   | vis             | screw         | schraube        | tornillo          | 3        |       |  |        |  |  |  |
| 45       | 471326       | rondella   | rondelle        | washer        | unterlegscheibe | arandela          | 3        |       |  |        |  |  |  |
| 46       | 585922       | distanziale  | entretoise      | spacer        | abstandstuck    | separador (1 mm)  | x        |       |  |        |  |  |  |
| 46       | 585923       | distanziale  | entretoise      | spacer        | abstandstuck    | separador (2 mm)  | x        |       |  |        |  |  |  |
| 46       | 585924       | distanziale  | entretoise      | spacer        | abstandstuck    | separador (3 mm)  | x        |       |  |        |  |  |  |

26/09/2012

| 3/3      | 648633       | BRACCIO TELESCOPICO (2° sfilo)  |                    |               |             |                  | Quantità |       |  |  | 5BADI |  |  |
|----------|--------------|---|--------------------|---------------|-------------|------------------|----------|-------|--|--|-------|--|--|
|          |              | BRAS TELESCOPIQUE (2° telescopage)<br>TELESCOPIC BOOM (2° telescope)<br>TELESKOPPAUSLEGER (2° zusammenstroll)<br>AGUILON TELESCOPICO (2° telescopaje) |                    |               |             |                  | Quantity | Menge |  |  | 003   |  |  |
| Rep Item | Part. Number | DESCRIZIONE   | DESIGNATION        | DESCRIPTION   | BEZEICHNUNG | DESCRIPCION      | MRT 1840 |       |  |  |       |  |  |
| 51       | 732653       | vite  | vis                | screw         | schraube    | tornillo         | 2        |       |  |  |       |  |  |
| 52       | 479153       | vite  | vis                | screw         | schraube    | tornillo         | 2        |       |  |  |       |  |  |
| 53       | 448215       | copiglia  | goupille           | cotter pin    | splint      | clavija          | 5        |       |  |  |       |  |  |
| 54       | 471320       | dado  | ecrou              | nut           | mutter      | tuerca           | 1        |       |  |  |       |  |  |
| 55       | 710697       | pattino   | bloc de glissement | sliding block | gleitstueck | patin            | 1        |       |  |  |       |  |  |
| 56       | 710696       | pattino   | bloc de glissement | sliding block | gleitstueck | patin            | 1        |       |  |  |       |  |  |
| 57       | 710714       | spessore  | epaisseur          | thickness     | staerke     | espesor (1 mm)   | x        |       |  |  |       |  |  |
| 58       | 710715       | spessore  | epaisseur          | thickness     | staerke     | espesor (3 mm)   | x        |       |  |  |       |  |  |
| 59       | 711777       | spessore  | epaisseur          | thickness     | staerke     | espesor (1 mm)   | x        |       |  |  |       |  |  |
| 60       | 711778       | spessore  | epaisseur          | thickness     | staerke     | espesor (0,5 mm) | x        |       |  |  |       |  |  |

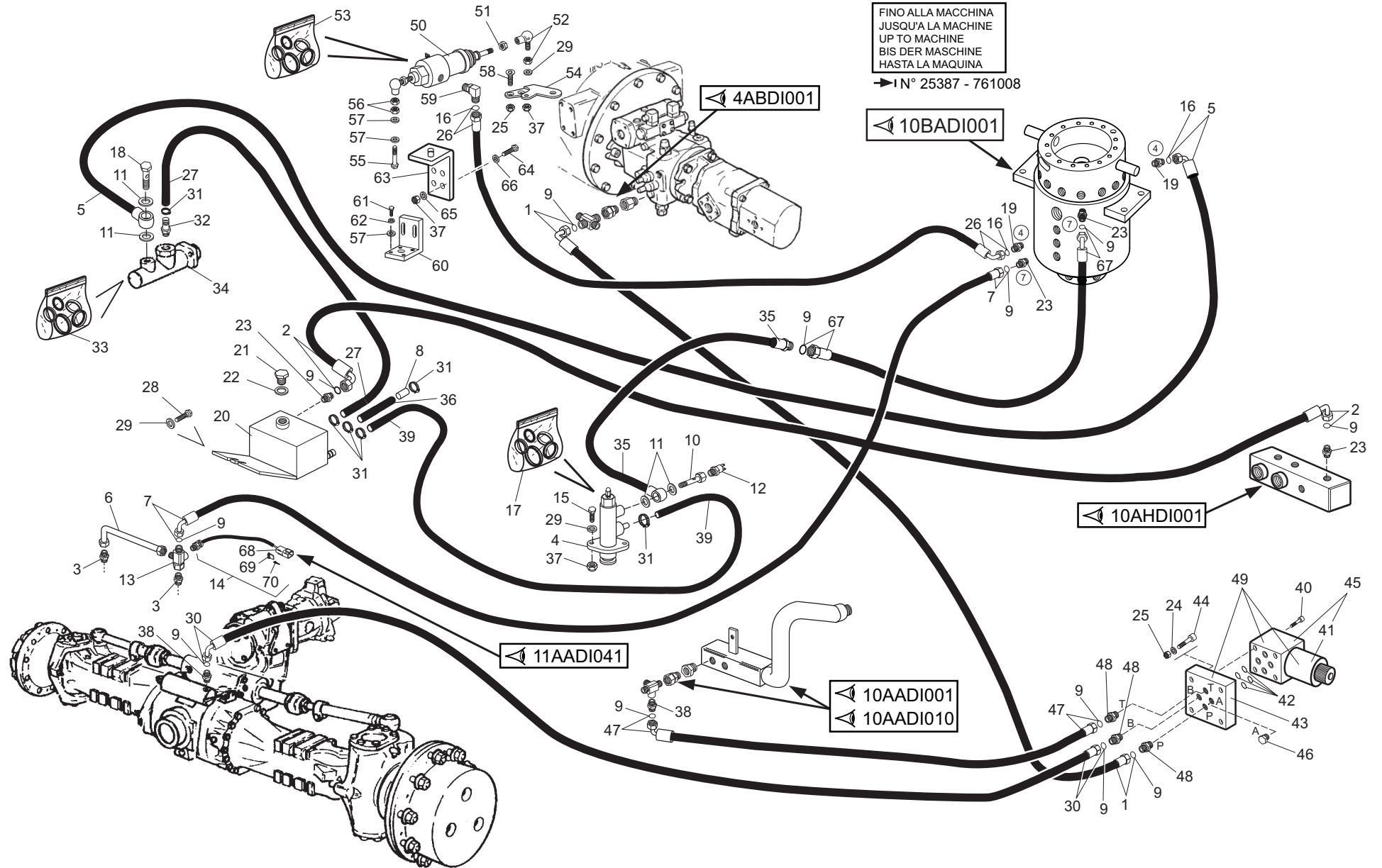
| 2/2      | 648633       | BRACCIO TELESCOPICO (3° sfilo)  |                |                  |                 |                | Quantità |       |  |  | 5BADIA |  |  |
|----------|--------------|---|----------------|------------------|-----------------|----------------|----------|-------|--|--|--------|--|--|
|          |              | BRAS TELESCOPIQUE (3° telescopage)<br>TELESCOPIC BOOM (3° telescope)<br>TELESKOPPAUSLEGER (3° zusammenstroll)<br>AGUILON TELESCOPICO (3° telescopaje) |                |                  |                 |                | Quantity | Menge |  |  | 004    |  |  |
| Rep Item | Part. Number | DESCRIZIONE   | DESIGNATION    | DESCRIPTION      | BEZEICHNUNG     | DESCRIPCION    | MRT 1840 |       |  |  |        |  |  |
| 26       | 887007       | pernetto  | pivot          | pin              | zapfen          | perno          | 1        |       |  |  |        |  |  |
| 27       |              |   |                |                  |                 |                |          |       |  |  |        |  |  |
| 28       | 732653       | vite  | vis            | screw            | schraube        | tornillo       | 1        |       |  |  |        |  |  |
| 29       | 658468       | supporto  | support        | support          | lager           | soporte        | 1        |       |  |  |        |  |  |
| 30       | 567494       | vite  | vis            | screw            | schraube        | tornillo       | 6        |       |  |  |        |  |  |
| 31       | 449522       | rondella  | rondelle       | washer           | unterlegscheibe | arandela       | 6        |       |  |  |        |  |  |
| 32       | 777203       | attacco rapido  | attaque rapide | quich connection | schnellkupplung | enclaje rapido | 1        |       |  |  |        |  |  |
| 33       | 886836       | perno   | pivot          | pin              | bolzen          | perno          | 1        |       |  |  |        |  |  |
| 34       | 882405       | copiglia  | goupille       | cotter pin       | splint          | clavija        | 1        |       |  |  |        |  |  |
| 35       | 479722       | boccola   | douille        | bushing          | buchse          | buje           | 2        |       |  |  |        |  |  |
| 36       | 480449       | perno   | pivot          | pin              | bolzen          | perno          | 1        |       |  |  |        |  |  |
| 37       | 478859       | vite  | vis            | screw            | schraube        | tornillo       | 1        |       |  |  |        |  |  |
| 38       | 455820       | dado  | ecrou          | nut              | mutter          | tuerca         | 1        |       |  |  |        |  |  |
| 39       | 470719       | ingrassatore  | graisseur      | grease nipple    | fettbuechse     | engrasador     | 1        |       |  |  |        |  |  |
| 40       | 448215       | copiglia  | goupille       | cotter pin       | splint          | clavija        | 2        |       |  |  |        |  |  |
| 41       | 544149       | spessore  | epaisseur      | thickness        | staerke         | espesor (3 mm) | x        |       |  |  |        |  |  |
| 42       | 544150       | spessore  | epaisseur      | thickness        | staerke         | espesor (2 mm) | x        |       |  |  |        |  |  |

6BADI  
001

IMPIANTO IDRAULICO FRENANTE E ACCELERATORE  
CIRCUIT FREINAGE ET ACCELERATEUR  
BRAKES CIRCUIT AND ACCELERATOR  
BREMSEKREIS UND GASSYSTEM  
CIRCUITO FREINADO Y ACCELERADOR

MRT 1840  
Easy - E3

FINO ALLA MACCHINA  
JUSQU'A LA MACHINE  
UP TO MACHINE  
BIS DER MASCHINE  
HASTA LA MAQUINA  
→ I N° 25387 - 761008



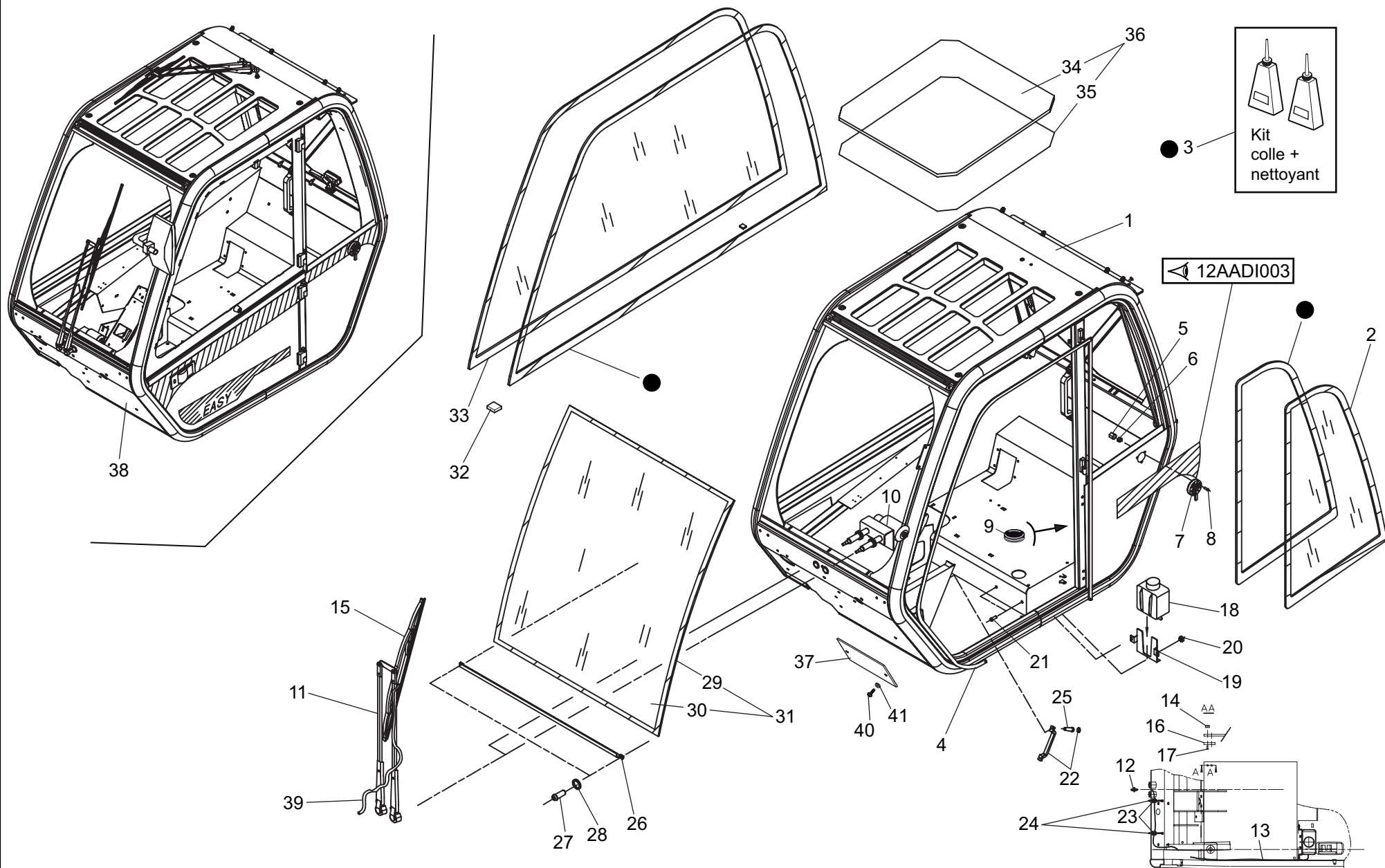
26/09/2012

| 2/3 | 648633 | IMPIANTO IDRAULICO FRENANTE E ACCELERATORE<br>CIRCUIT FREINAGE ET ACCELERATEUR<br>BRAKES CIRCUIT AND ACCELERATOR<br>BREMSEKREIS UND GASSYSTEM<br>CIRCUITO FREINADO Y ACCELERADOR |                    |                |                 |                     | Quantità<br>Quantity<br>Quantité |             |          |  | Menge<br>Quantità |  | 6BADIB<br>001 |  | 26/09/2012 |
|-----|--------|--|--------------------|----------------|-----------------|---------------------|----------------------------------|-------------|----------|--|-------------------|--|---------------|--|------------|
|     |        | Rep<br>Item  | Part. Number       | DESCRIZIONE    | DESIGNATION     | DESCRIPTION         | BEZEICHNUNG                      | DESCRIPCION | MRT 1840 |  |                   |  |               |  |            |
| 26  | 658271 | tubo   | tuyau              | hose           | schlauch        | tubo                | 1                                |             |          |  |                   |  |               |  |            |
| 27  | 504803 | tubo   | tuyau              | hose           | schlauch        | tubo                | 1                                |             |          |  |                   |  |               |  |            |
| 28  | 471388 | vite   | vis                | screw          | schraube        | tornillo            | 2                                |             |          |  |                   |  |               |  |            |
| 29  | 471360 | rondella   | rondelle           | washer         | unterlegscheibe | arandela            | 7                                |             |          |  |                   |  |               |  |            |
| 30  | 887811 | tubo   | tuyau              | hose           | schlauch        | tubo                | 1                                |             |          |  |                   |  |               |  |            |
| 31  | 744427 | collare  | collier            | collar         | stellring       | brida               | 6                                |             |          |  |                   |  |               |  |            |
| 32  | 504663 | raccordo   | raccord            | pipe fitting   | rohrverbindung  | conexion            | 1                                |             |          |  |                   |  |               |  |            |
| 33  | 508619 | kit guarnizioni  | kit joints         | seal kit       | dichtungssatz   | junta de repuesto   | 1                                |             |          |  |                   |  |               |  |            |
| 34  | 717449 | pompa  | pompe              | pump           | verstellpumpe   | bomba hidrostática  | 1                                |             |          |  |                   |  |               |  |            |
| 35  | 882489 | tubo   | tuyau              | hose           | schlauch        | tubo                | 1                                |             |          |  |                   |  |               |  |            |
| 36  | 499541 | tubo   | tuyau              | hose           | schlauch        | tubo                | 1                                |             |          |  |                   |  |               |  |            |
| 37  | 471320 | dado   | ecrou              | nut            | mutter          | tuerca              | 5                                |             |          |  |                   |  |               |  |            |
| 38  | 487366 | raccordo   | raccord            | pipe fitting   | rohrverbindung  | conexion            | 2                                |             |          |  |                   |  |               |  |            |
| 39  | 512548 | tubo   | tuyau              | hose           | schlauch        | tubo                | 1                                |             |          |  |                   |  |               |  |            |
| 40  | 513075 | raccordo   | raccord            | pipe fitting   | rohrverbindung  | conexion            | 1                                |             |          |  |                   |  |               |  |            |
| 41  | 908829 | bobina   | bobine             | reel           | rolle           | bobina              | 1                                |             |          |  |                   |  |               |  |            |
| 42  | 715536 | raccordo   | raccord            | pipe fitting   | rohrverbindung  | conexion            | 1                                |             |          |  |                   |  |               |  |            |
| 43  |        |  |                    |                |                 |                     |                                  |             |          |  |                   |  |               |  |            |
| 44  | 060845 | vite   | vis                | screw          | schraube        | tornillo            | 2                                |             |          |  |                   |  |               |  |            |
| 45  |        |  |                    |                |                 |                     |                                  |             |          |  |                   |  |               |  |            |
| 46  | 514434 | tappo  | bouchon            | plug           | stopfen         | tapon               | 1                                |             |          |  |                   |  |               |  |            |
| 47  | 657315 | tubo   | tuyau              | hose           | schlauch        | tubo                | 1                                |             |          |  |                   |  |               |  |            |
| 48  | 657371 | raccordo   | raccord            | pipe fitting   | rohrverbindung  | conexion            | 3                                |             |          |  |                   |  |               |  |            |
| 49  | 887657 | elettrovalvola   | soupape électrique | solenoid valve | elektroventil   | electrovalvula      | 1                                |             |          |  |                   |  |               |  |            |
| 50  | 717448 | cilindro   | bloc cylindre      | cylinder block | zylinderblock   | bloque del cilindro | 1                                |             |          |  |                   |  |               |  |            |

8ABDI  
001

CABINA (Particolari)  
CABINE (Details)  
CAB (Details)  
KABINE (Einzelteile)  
CABINA (Detalles)

MRT 1840  
Easy - E3



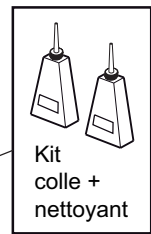
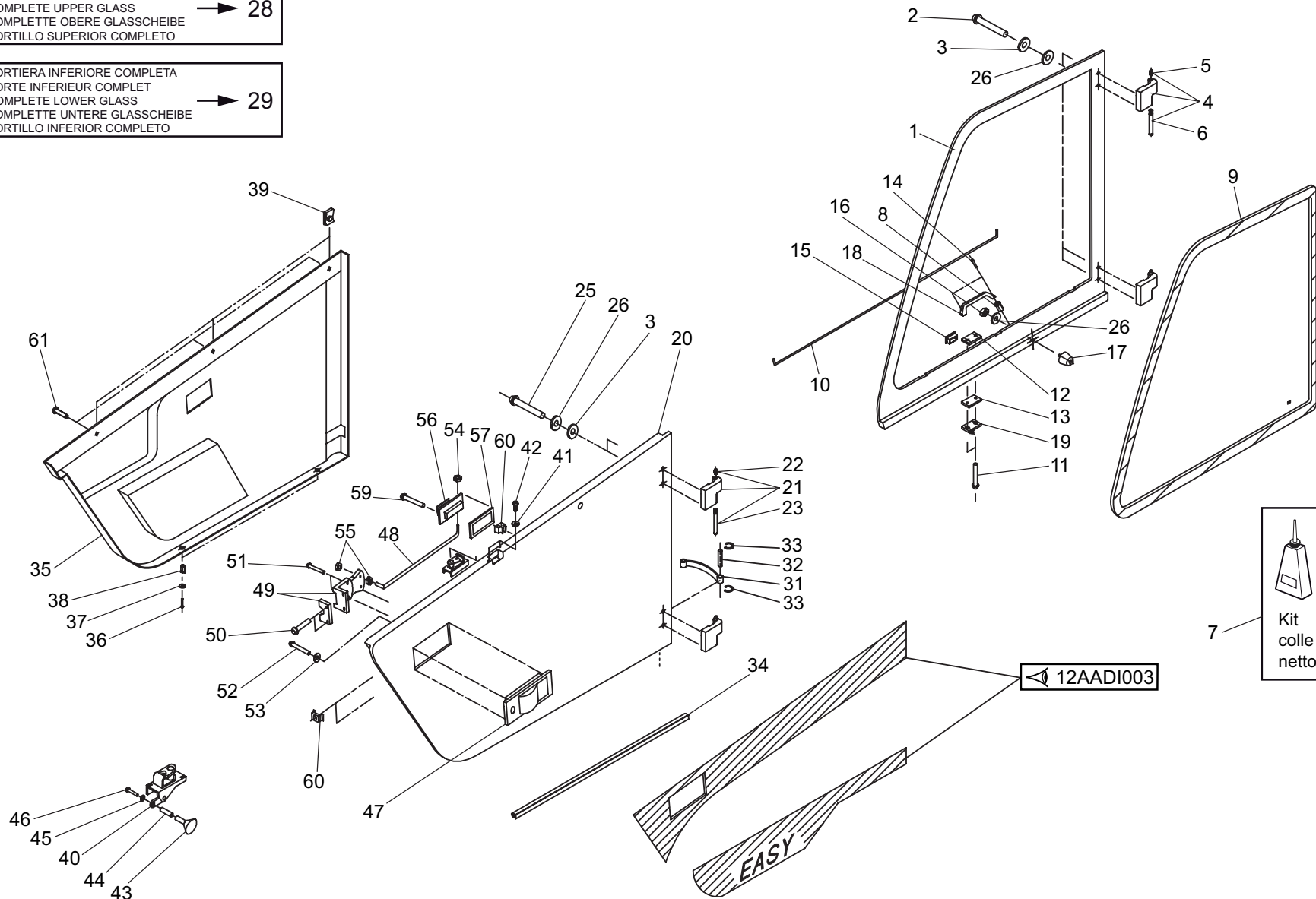
8ABDI  
004

CABINA (Particolari)  
CABINE (Details)  
CAB (Details)  
KABINE (Einzelteile)  
CABINA (Detalles)

MRT 1840  
Easy - E3

PORTIERA SUPERIORE COMPLETA  
PORTE SUPERIEUR COMPLET  
COMPLETE UPPER GLASS  
KOMPLETTE OBERE GLASSCHEIBE  
PORTILLO SUPERIOR COMPLETO → 28

PORTIERA INFERIORE COMPLETA  
PORTE INFERIEUR COMPLET  
COMPLETE LOWER GLASS  
KOMPLETTE UNTERE GLASSCHEIBE  
PORTILLO INFERIOR COMPLETO → 29

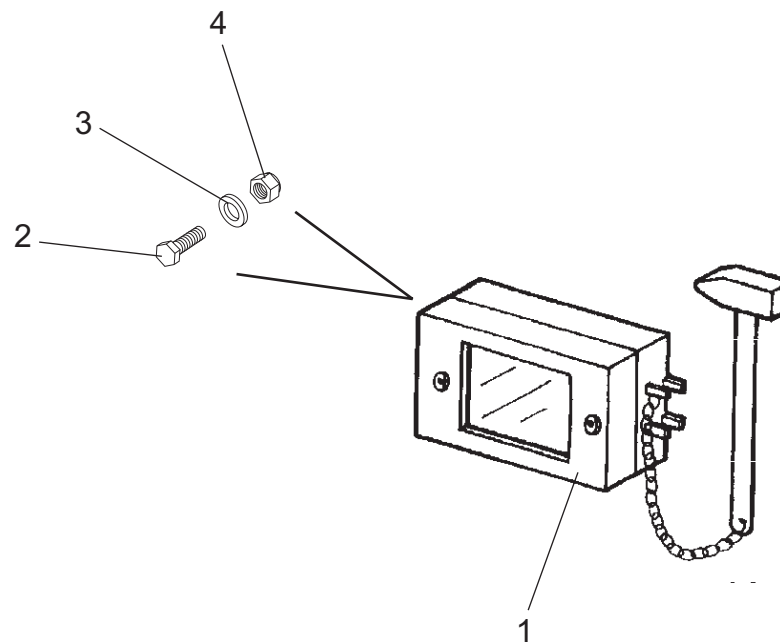


7 Kit  
colle +  
nettoyant

8ACDI  
005

**CABINA (Dispositivo di sicurezza)**  
CABINE (Sisteme de securite)  
CAB (Safety system)  
KABINE (Sicherheitsvorrichtung)  
CABINA (Dispositivo de seguridad)

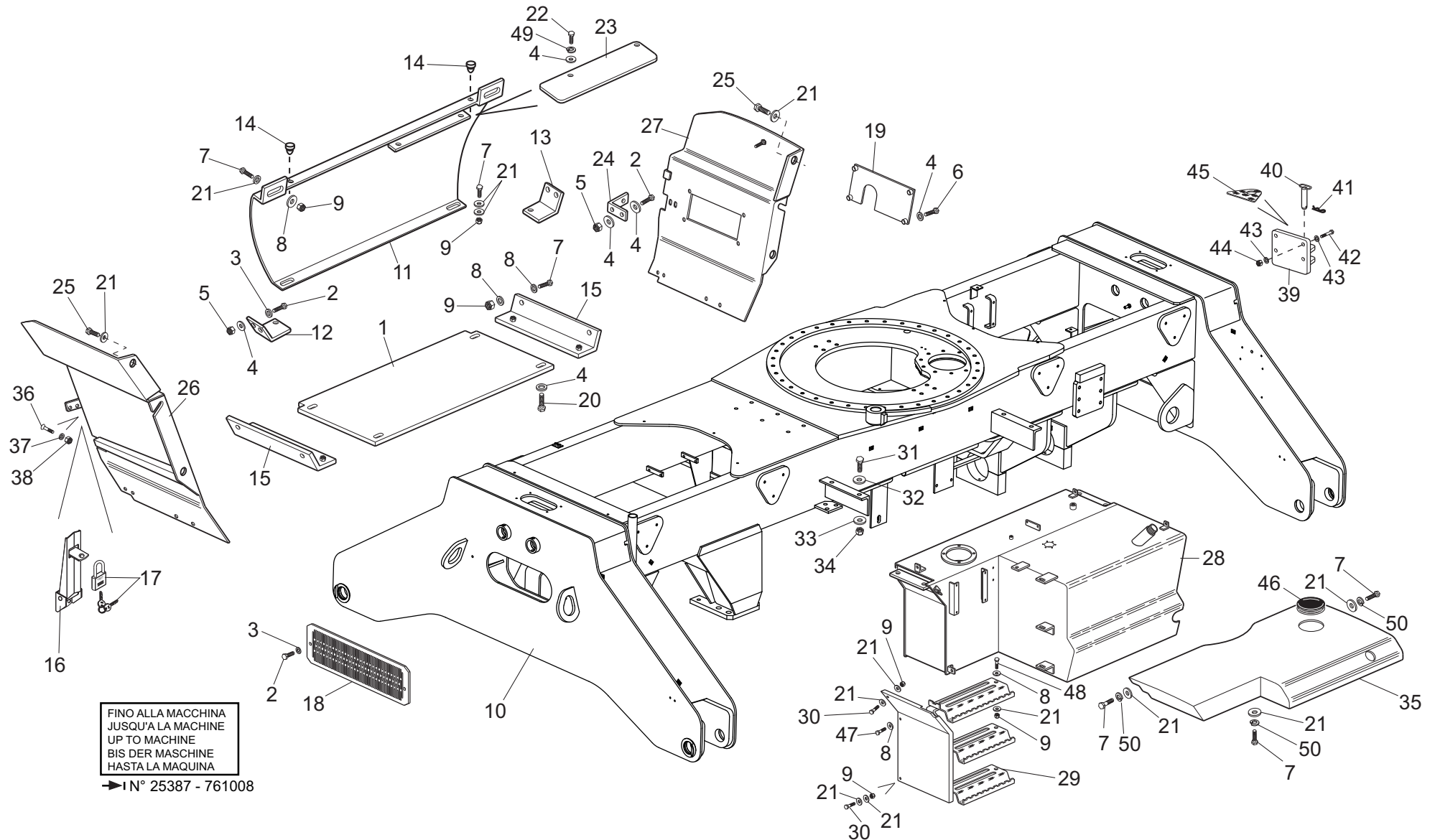
**MRT 1840**  
Easy - E3



9AADI  
001

CARROZZERIA - TELAIO  
CARROSSERIE - CHASSIS  
BODY - FRAME  
KARROSSERIE - GESTELL  
CARROCERIA - BASTIDOR

MRT 1840  
Easy - E3



FINO ALLA MACCHINA  
JUSQU'A LA MACHINE  
UP TO MACHINE  
BIS DER MASCHINE  
HASTA LA MAQUINA

→ I N° 25387 - 761008

26/09/2012

648633

| 1/1      | 648633       | CARROZZERIA - TELAIO<br>CARROSSERIE - CHASSIS<br>BODY - FRAME<br>KARROSSERIE - GESTELL<br>CARROCERIA - BASTIDOR |             |             |                 |             | Quantità |  | 9AADI |  |  |  |
|----------|--------------|---|-------------|-------------|-----------------|-------------|----------|--|-------|--|--|--|
|          |              | Quantity  | Menge       | Quantity    |                 | 003         |          |  |       |  |  |  |
| Rep Item | Part. Number | DESCRIZIONE   | DESIGNATION | DESCRIPTION | BEZEICHNUNG     | DESCRIPCION | MRT 1840 |  |       |  |  |  |
| 1        | 883186       | supporto  | support     | support     | lager           | soporte     | 1        |  |       |  |  |  |
| 2        | 488633       | vite  | vis         | screw       | schraube        | tornillo    | 2        |  |       |  |  |  |
| 3        | 448484       | rondella  | rondelle    | washer      | unterlegscheibe | arandela    | 2        |  |       |  |  |  |
| 4        | 884725       | cofano  | coffre      | bonnet      | motorhaube      | cofre       | 1        |  |       |  |  |  |
| 5        | 884593       | supporto  | support     | support     | lager           | soporte     | 1        |  |       |  |  |  |
| 6        | 883188       | supporto  | support     | support     | lager           | soporte     | 1        |  |       |  |  |  |
| 7        | 883187       | supporto  | support     | support     | lager           | soporte     | 1        |  |       |  |  |  |
| 8        | 448677       | vite  | vis         | screw       | schraube        | tornillo    | 2        |  |       |  |  |  |
| 9        | 448285       | rondella  | rondelle    | washer      | unterlegscheibe | arandela    | 4        |  |       |  |  |  |
| 10       | 471360       | rondella  | rondelle    | washer      | unterlegscheibe | arandela    | 4        |  |       |  |  |  |
| 11       | 566538       | vite  | vis         | screw       | schraube        | tornillo    | 2        |  |       |  |  |  |
| 12       | 508549       | gabbietta   | cage        | retainer    | kaefig          | caja-jaula  | 2        |  |       |  |  |  |
| 13       | 885129       | coperchio   | couvercle   | cover       | deckel          | tapa        | 1        |  |       |  |  |  |
| 14       | 499773       | vite  | vis         | screw       | schraube        | tornillo    | 2        |  |       |  |  |  |
| 15       | 708315       | dado  | ecrou       | nut         | mutter          | tuerca      | 3        |  |       |  |  |  |
| 16       | 739304       | rondella  | rondelle    | washer      | unterlegscheibe | arandela    | 5        |  |       |  |  |  |
| 17       | 907670       | scaletta  | rampes      | ladder      | leiter          | escala      | 1        |  |       |  |  |  |
| 18       | 673716       | elastico  | elastique   | rubber band | elastische      | elastico    | 1        |  |       |  |  |  |

26/09/2012

| 2/4         | 648633       | IMPIANTO IDRAULICO (Circuito principale)  |             |               |                 |             | Quantità |       |          | 10AADIA<br>001 | 26/09/2012 |
|-------------|--------------|---|-------------|---------------|-----------------|-------------|----------|-------|----------|----------------|------------|
|             |              | HYDRAULIQUE (Circuit principal)<br>HYDRAULIC (Principal circuit)<br>HYDRAULIK (Hauptkreis)<br>HIDRAULICO (Circuito principal) |             |               |                 |             | Quantity | Menge | Quantità |                |            |
| Rep<br>Item | Part. Number | DESCRIZIONE   | DESIGNATION | DESCRIPTION   | BEZEICHNUNG     | DESCRIPCION | MRT 1840 |       |          |                |            |
| 26          | 584875       | vite  | vis         | screw         | schraube        | tornillo    | 3        |       |          |                |            |
| 27          | 471360       | rondella  | rondelle    | washer        | unterlegscheibe | arandela    | 3        |       |          |                |            |
| 28          | 471320       | dado  | ecrou       | nut           | mutter          | tuerca      | 3        |       |          |                |            |
| 29          | 448282       | raccordo  | raccord     | pipe fitting  | rohrverbindung  | conexion    | 1        |       |          |                |            |
| 30          | 484829       | rondella  | rondelle    | washer        | unterlegscheibe | arandela    | 8        |       |          |                |            |
| 31          | 658099       | filtro  | filtre      | filter        | filter          | filtro      | 1        |       |          |                |            |
| 32          | 659292       | cartuccia   | cartouche   | cartridge     | patrone         | cartucho    | 1        |       |          |                |            |
| 33          | 659446       | indicatore  | indicateur  | indicator     | zeiger          | indicador   | 1        |       |          |                |            |
| 34          | 659444       | testata   | culasse     | cylinder head | zylinderkopf    | cabezera    | 1        |       |          |                |            |
| 35          | 659445       | contenitore   | container   | container     | behaelter       | contenedor  | 1        |       |          |                |            |
| 36          | 471336       | vite  | vis         | screw         | schraube        | tornillo    | 3        |       |          |                |            |
| 37          | 479841       | rondella  | rondelle    | washer        | unterlegscheibe | arandela    | 3        |       |          |                |            |
| 38          | 488598       | rondella  | rondelle    | washer        | unterlegscheibe | arandela    | 3        |       |          |                |            |
| 39          | 887593       | tubo  | tuyau       | hose          | schlauch        | tubo        | 1        |       |          |                |            |
| 40          | 577708       | collare   | collier     | collar        | stellring       | brida       | 2        |       |          |                |            |
| 41          | 577709       | collare   | collier     | collar        | stellring       | brida       | 4        |       |          |                |            |
| 42          | 658707       | tubo  | tuyau       | hose          | schlauch        | tubo        | 1        |       |          |                |            |
| 43          | 512599       | tubo  | tuyau       | hose          | schlauch        | tubo        | 1        |       |          |                |            |
| 44          | 513709       | tubo  | tuyau       | hose          | schlauch        | tubo        | 1        |       |          |                |            |
| 45          | 480158       | raccordo  | raccord     | pipe fitting  | rohrverbindung  | conexion    | 1        |       |          |                |            |
| 46          | 482535       | vite  | vis         | screw         | schraube        | tornillo    | 8        |       |          |                |            |
| 47          | 501855       | flangia   | flasque     | flange        | flansch         | brida       | 1        |       |          |                |            |
| 48          | 479662       | guarnizione   | joint       | seal          | dichtung        | guarnicion  | 2        |       |          |                |            |
| 49          | 513711       | tappo   | bouchon     | plug          | stopfen         | tapon       | 1        |       |          |                |            |
| 50          | 487589       | valvola   | soupape     | valve         | ventil          | valvula     | 1        |       |          |                |            |

| 2/2      | 648633       | IMPIANTO IDRAULICO (Circuito ventola)<br>HYDRAULIQUE (Circuit ventilateur)<br>HYDRAULIC (Fan circuit)<br>HYDRAULIK (Lufte)<br>HIDRAULICO (Circuito ventilador) |                    |                |                 |                     | Quantità |  | 10AADIA |  | 26/09/2012 |
|----------|--------------|--|--------------------|----------------|-----------------|---------------------|----------|--|---------|--|------------|
|          |              | Quantity   | Menge              | Quantité       |                 |                     |          |  | 010     |  |            |
| Rep Item | Part. Number | DESCRIZIONE  | DESIGNATION        | DESCRIPTION    | BEZEICHNUNG     | DESCRIPCION         | MRT 1840 |  |         |  |            |
| 26       | 657988       | valvola  | soupape            | valve          | ventil          | valvula             | 1        |  |         |  |            |
| 27       | 499341       | vite   | vis                | screw          | schraube        | tornillo            | 2        |  |         |  |            |
| 28       | 499535       | piatto   | plateau            | plate          | teller          | plato               | 2        |  |         |  |            |
| 29       | 455015       | tassello   | goujon             | block          | duebel          | clavija             | 4        |  |         |  |            |
| 30       | 710238       | distanziale  | entretoise         | spacer         | abstandstuck    | separador           | 2        |  |         |  |            |
| 31       | 471320       | dado   | ecrou              | nut            | mutter          | tuerca              | 2        |  |         |  |            |
| 32       | 455271       | vite   | vis                | screw          | schraube        | tornillo            | 2        |  |         |  |            |
| 33       | 508434       | vite   | vis                | screw          | schraube        | tornillo            | 2        |  |         |  |            |
| 34       | 711988       | rondella   | rondelle           | washer         | unterlegscheibe | arandela            | 4        |  |         |  |            |
| 35       | 455029       | tassello   | goujon             | block          | duebel          | clavija             | 2        |  |         |  |            |
| 36       | 448057       | dado   | ecrou              | nut            | mutter          | tuerca              | 2        |  |         |  |            |
| 37       | 482664       | raccordo   | raccord            | pipe fitting   | rohrverbindung  | conexion            | 1        |  |         |  |            |
| 38       | 501225       | guarnizione  | joint              | seal           | dichtung        | guarnicion          | 1        |  |         |  |            |
| 39       | 578582       | raccordo   | raccord            | pipe fitting   | rohrverbindung  | conexion            | 1        |  |         |  |            |
| 40       | 688130       | elemento olio  | element d'huile    | oil element    | oel element     | elemento del aceite | 1        |  |         |  |            |
| 41       | 731689       | elemento acqua   | element d'eau      | water element  | wasserelement   | elemento del agua   | 1        |  |         |  |            |
| 42       | 737601       | tappo  | bouchon            | plug           | stopfen         | tapon               | 1        |  |         |  |            |
| 43       | 488329       | protezione   | protection         | guard          | schutz          | proteccion          | 1        |  |         |  |            |
| 44       | 503921       | raccordo   | raccord            | pipe fitting   | rohrverbindung  | conexion            | 1        |  |         |  |            |
| 45       | 884298       | tubo   | tuyau              | hose           | schlauch        | tubo                | 1        |  |         |  |            |
| 46       | 883807       | elettrovalvola   | soupape electrique | solenoid valve | elektroventil   | electrovalvula      | 1        |  |         |  |            |
| 47       | 885636       | bobina   | bobine             | reel           | rolle           | bobina              | 1        |  |         |  |            |
| 48       | 884296       | supporto   | support            | support        | lager           | soporte             | 1        |  |         |  |            |
| 49       | 488516       | vite   | vis                | screw          | schraube        | tornillo            | 2        |  |         |  |            |



| 1/2      | 648633       | IMPIANTO IDRAULICO (Circuito braccio telescopico)  |             |              |                 |             | Quantità |       |  |  | 10AEDI |  |  |
|----------|--------------|--|-------------|--------------|-----------------|-------------|----------|-------|--|--|--------|--|--|
|          |              | HYDRAULIQUE (Circuit fleche)<br>HYDRAULIC (Jib circuit)<br>HYDRAULIK (Ausleger kreis)<br>HIDRAULICO (Circuito aguilon) |             |              |                 |             | Quantity | Menge |  |  | 005    |  |  |
| Rep Item | Part. Number | DESCRIZIONE  | DESIGNATION | DESCRIPTION  | BEZEICHNUNG     | DESCRIPCION | MRT 1840 |       |  |  |        |  |  |
| 1        | 576025       | tubo   | tuyau       | hose         | schlauch        | tubo        | 1        |       |  |  |        |  |  |
| 2        | 576026       | tubo   | tuyau       | hose         | schlauch        | tubo        | 1        |       |  |  |        |  |  |
| 3        | 501224       | guarnizione  | joint       | seal         | dichtung        | guarnicion  | 9        |       |  |  |        |  |  |
| 4        | 576029       | tubo   | tuyau       | hose         | schlauch        | tubo        | 1        |       |  |  |        |  |  |
| 5        | 576030       | tubo   | tuyau       | hose         | schlauch        | tubo        | 2        |       |  |  |        |  |  |
| 6        | 690667       | tubo   | tuyau       | hose         | schlauch        | tubo        | 2        |       |  |  |        |  |  |
| 7        | 690668       | tubo   | tuyau       | hose         | schlauch        | tubo        | 3        |       |  |  |        |  |  |
| 8        | 505311       | collare  | collier     | collar       | stellring       | brida       | 3        |       |  |  |        |  |  |
| 9        | 487981       | vite   | vis         | screw        | schraube        | tornillo    | 10       |       |  |  |        |  |  |
| 10       | 501730       | tubo   | tuyau       | hose         | schlauch        | tubo        | 1        |       |  |  |        |  |  |
| 11       | 504559       | tubo   | tuyau       | hose         | schlauch        | tubo        | 1        |       |  |  |        |  |  |
| 12       | 484202       | piastra  | plaque      | plate        | platte          | plancha     | 1        |       |  |  |        |  |  |
| 13       | 586427       | raccordo   | raccord     | pipe fitting | rohrverbindung  | conexion    | 2        |       |  |  |        |  |  |
| 14       | 199263       | valvola  | soupape     | valve        | ventil          | valvula     | 1        |       |  |  |        |  |  |
| 15       | 503974       | guarnizione  | joint       | seal         | dichtung        | guarnicion  | 2        |       |  |  |        |  |  |
| 16       | 505442       | vite   | vis         | screw        | schraube        | tornillo    | 4        |       |  |  |        |  |  |
| 17       | 471326       | rondella   | rondelle    | washer       | unterlegscheibe | arandela    | 4        |       |  |  |        |  |  |
| 18       | 543622       | piatto   | plateau     | plate        | teller          | plato       | 2        |       |  |  |        |  |  |
| 19       | 485529       | vite   | vis         | screw        | schraube        | tornillo    | 4        |       |  |  |        |  |  |
| 20       | 484100       | rondella   | rondelle    | washer       | unterlegscheibe | arandela    | 4        |       |  |  |        |  |  |
| 21       | 487777       | collare  | collier     | collar       | stellring       | brida       | 1        |       |  |  |        |  |  |
| 22       | 471339       | vite   | vis         | screw        | schraube        | tornillo    | 1        |       |  |  |        |  |  |
| 23       | 609518       | perno  | pivot       | pin          | bolzen          | perno       | 1        |       |  |  |        |  |  |
| 24       | 609517       | perno  | pivot       | pin          | bolzen          | perno       | 2        |       |  |  |        |  |  |
| 25       | 585032       | anello   | bague       | ring         | ring            | anillo      | 2        |       |  |  |        |  |  |

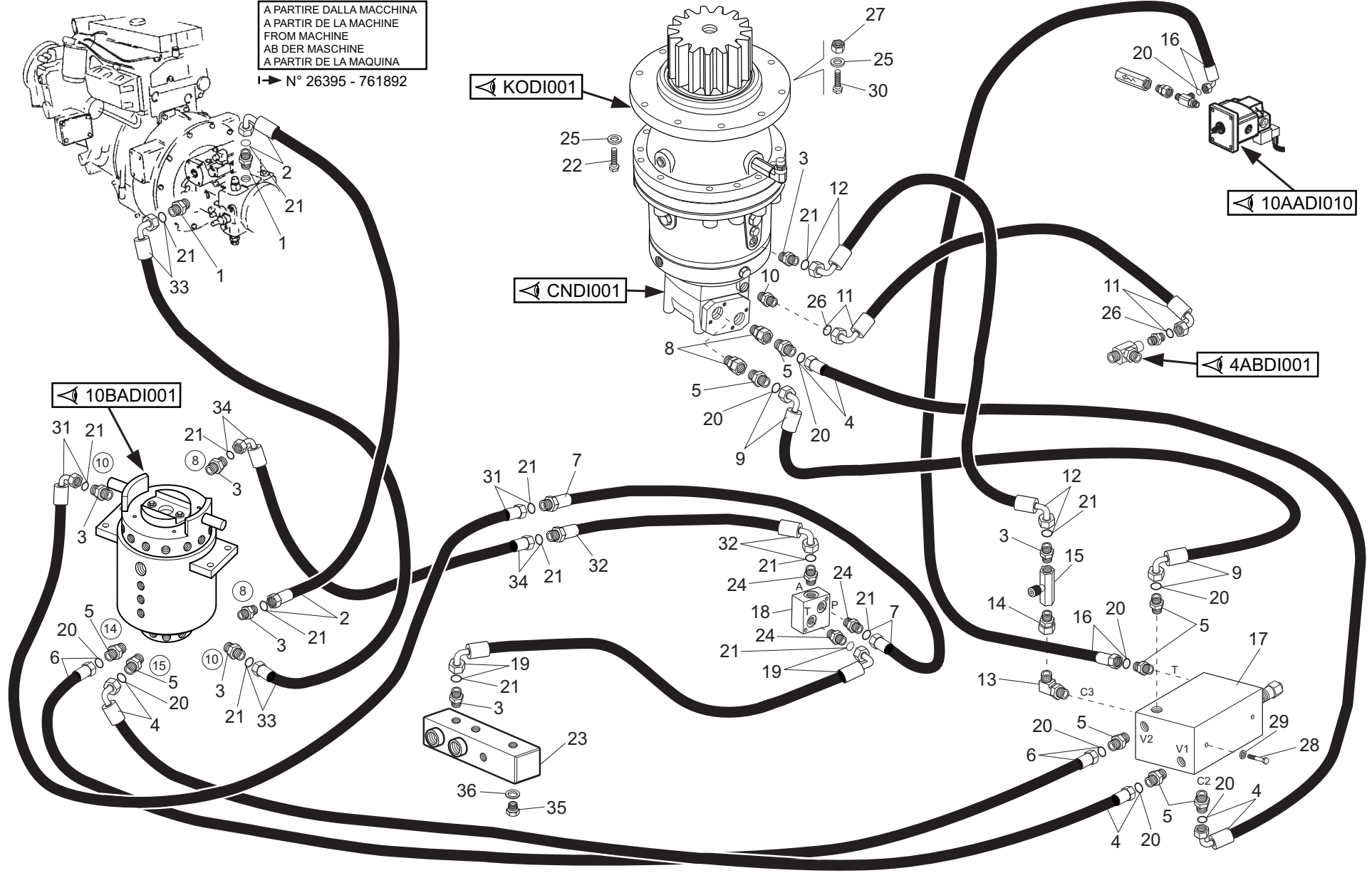
| 1/2      | 648633       | IMPIANTO IDRAULICO (Circuito stabilizzatori)   |                    |                |                 |                   | Quantità |       |  |  | 10AGDI |  |  |
|----------|--------------|--|--------------------|----------------|-----------------|-------------------|----------|-------|--|--|--------|--|--|
|          |              | HYDRAULIQUE (Circuit stabilisateurs)<br>HYDRAULIC (Stabilizer circuit)<br>HYDRAULIK (Stabilizerkreis)<br>HIDRAULICO (Circuito estabilizador) |                    |                |                 |                   | Quantity | Menge |  |  | 020    |  |  |
| Rep Item | Part. Number | DESCRIZIONE  | DESIGNATION        | DESCRIPTION    | BEZEICHNUNG     | DESCRIPCION       | MRT 1840 |       |  |  |        |  |  |
| 1        | 884841       | valvola  | soupape            | valve          | ventil          | valvula           | 2        |       |  |  |        |  |  |
| 2        | 482745       | vite   | vis                | screw          | schraube        | tornillo          | 16       |       |  |  |        |  |  |
| 3        | 471360       | rondella   | rondelle           | washer         | unterlegscheibe | arandela          | 17       |       |  |  |        |  |  |
| 4        | 672969       | bobina   | bobine             | reel           | rolle           | bobina            | 8        |       |  |  |        |  |  |
| 5        | 738592       | kit guarnizioni  | kit joints         | seal kit       | dichtungssatz   | junta de repuesto | 4        |       |  |  |        |  |  |
| 6        | 503921       | raccordo   | raccord            | pipe fitting   | rohrverbindung  | conexion          | 8        |       |  |  |        |  |  |
| 7        | 505245       | rondella   | rondelle           | washer         | unterlegscheibe | arandela          | 4        |       |  |  |        |  |  |
| 8        | 508442       | tubo   | tuyau              | hose           | schlauch        | tubo              | 2        |       |  |  |        |  |  |
| 9        | 486830       | raccordo   | raccord            | pipe fitting   | rohrverbindung  | conexion          | 1        |       |  |  |        |  |  |
| 10       | 501467       | guarnizione  | joint              | seal           | dichtung        | guarnicion        | 8        |       |  |  |        |  |  |
| 11       | 508807       | piatto   | plateau            | plate          | teller          | plato             | 1        |       |  |  |        |  |  |
| 12       | 505352       | raccordo   | raccord            | pipe fitting   | rohrverbindung  | conexion          | 5        |       |  |  |        |  |  |
| 13       | 737436       | elettrovalvola   | soupape electrique | solenoid valve | elektroventil   | electrovalvula    | 4        |       |  |  |        |  |  |
| 14       | 568552       | blocco   | bloc               | block          | block           | bloque            | 1        |       |  |  |        |  |  |
| 15       | 737437       | piastra  | plaque             | plate          | platte          | plancha           | 1        |       |  |  |        |  |  |
| 16       | 514433       | tappo  | bouchon            | plug           | stopfen         | tapon             | 2        |       |  |  |        |  |  |
| 17       | 471360       | rondella   | rondelle           | washer         | unterlegscheibe | arandela          | 1        |       |  |  |        |  |  |
| 18       | 471320       | dado   | ecrou              | nut            | mutter          | tuerca            | 2        |       |  |  |        |  |  |
| 19       | 471377       | vite   | vis                | screw          | schraube        | tornillo          | 4        |       |  |  |        |  |  |
| 20       | 480158       | raccordo   | raccord            | pipe fitting   | rohrverbindung  | conexion          | 7        |       |  |  |        |  |  |
| 21       | 501660       | tubo   | tuyau              | hose           | schlauch        | tubo              | 1        |       |  |  |        |  |  |
| 22       | 501224       | guarnizione  | joint              | seal           | dichtung        | guarnicion        | 24       |       |  |  |        |  |  |
| 23       | 501659       | tubo   | tuyau              | hose           | schlauch        | tubo              | 1        |       |  |  |        |  |  |
| 24       | 509982       | tubo   | tuyau              | hose           | schlauch        | tubo              | 2        |       |  |  |        |  |  |
| 25       | 512631       | tubo   | tuyau              | hose           | schlauch        | tubo              | 2        |       |  |  |        |  |  |

10AHDIA  
001

**IMPIANTO IDRAULICO (Circuito rotazione torretta)**  
HYDRAULIQUE (Circuit rotation tourelle)  
HYDRAULIC (Rotation turret circuit)  
HYDRAULIK (Drehbar turmkreis)  
HIDRAULICO (Circuito rotacion torre)

**MRT 1840**  
Easy - E3

A PARTIRE DALLA MACCHINA  
A PARTIR DE LA MACHINE  
FROM MACHINE  
AB DER MASCHINE  
A PARTIR DE LA MAQUINA  
→ N° 26395 - 761892



26/09/2012

| 1/2         | 648633       | IMPIANTO IDRAULICO (Circuito sterzo)   |                    |                |                 |                | Quantità |       |          |  | 10BADIB<br>001 | 26/09/2012 |
|-------------|--------------|--|--------------------|----------------|-----------------|----------------|----------|-------|----------|--|----------------|------------|
|             |              | HYDRAULIQUE (Circuit direction)<br>HYDRAULIC (Steering circuit)<br>HYDRAULIK (Lenkungkreis)<br>HIDRAULICO (Circuito direcciòn) |                    |                |                 |                | Quantity | Menge | Quantità |  |                |            |
| Rep<br>Item | Part. Number | DESCRIZIONE  | DESIGNATION        | DESCRIPTION    | BEZEICHNUNG     | DESCRIPCION    | MRT 1840 |       |          |  |                |            |
| 1           | 487809       | tubo   | tuyau              | hose           | schlauch        | tubo           | 1        |       |          |  |                |            |
| 2           | 528089       | tubo   | tuyau              | hose           | schlauch        | tubo           | 2        |       |          |  |                |            |
| 3           | 528086       | tubo   | tuyau              | hose           | schlauch        | tubo           | 1        |       |          |  |                |            |
| 4           | 060845       | vite   | vis                | screw          | schraube        | tornillo       | 2        |       |          |  |                |            |
| 5           | 609643       | tubo   | tuyau              | hose           | schlauch        | tubo           | 1        |       |          |  |                |            |
| 6           | 487366       | raccordo   | raccord            | pipe fitting   | rohrverbindung  | conexion       | 4        |       |          |  |                |            |
| 7           | 487364       | raccordo   | raccord            | pipe fitting   | rohrverbindung  | conexion       | 4        |       |          |  |                |            |
| 8           | 485398       | raccordo   | raccord            | pipe fitting   | rohrverbindung  | conexion       | 4        |       |          |  |                |            |
| 9           | 501718       | tubo   | tuyau              | hose           | schlauch        | tubo           | 1        |       |          |  |                |            |
| 10          | 448285       | rondella   | rondelle           | washer         | unterlegscheibe | arandela       | 2        |       |          |  |                |            |
| 11          |              |  |                    |                |                 |                |          |       |          |  |                |            |
| 12          | 887661       | elettrovalvola   | soupape electrique | solenoid valve | elektroventil   | electrovalvula | 1        |       |          |  |                |            |
| 13          | 887814       | tubo   | tuyau              | hose           | schlauch        | tubo           | 1        |       |          |  |                |            |
| 14          | 716344       | tubo   | tuyau              | hose           | schlauch        | tubo           | 1        |       |          |  |                |            |
| 15          | 729500       | tubo   | tuyau              | hose           | schlauch        | tubo           | 1        |       |          |  |                |            |
| 16          |              |  |                    |                |                 |                |          |       |          |  |                |            |
| 17          |              |  |                    |                |                 |                |          |       |          |  |                |            |
| 18          | 485398       | raccordo   | raccord            | pipe fitting   | rohrverbindung  | conexion       | 2        |       |          |  |                |            |
| 19          | 576884       | tubo   | tuyau              | hose           | schlauch        | tubo           | 1        |       |          |  |                |            |
| 20          | 528092       | tubo   | tuyau              | hose           | schlauch        | tubo           | 1        |       |          |  |                |            |
| 21          | 485397       | raccordo   | raccord            | pipe fitting   | rohrverbindung  | conexion       | 4        |       |          |  |                |            |
| 22          | 487588       | idroguida  | direction hydraul. | power steering | hydrolenkung    | hidroguia      | 1        |       |          |  |                |            |
| 23          | 448291       | rondella   | rondelle           | washer         | unterlegscheibe | arandela       | 4        |       |          |  |                |            |
| 24          | 478861       | vite   | vis                | screw          | schraube        | tornillo       | 4        |       |          |  |                |            |
| 25          | 885063       | colonna  | colonnette         | stud           | schraubbolzen   | esparrago      | 1        |       |          |  |                |            |

| 2/2      | 648633       | IMPIANTO IDRAULICO (Cilindro sfilo)  |             |             |                 |             | Quantità |       |  | 10CCDI |  |  |  |
|----------|--------------|--|-------------|-------------|-----------------|-------------|----------|-------|--|--------|--|--|--|
|          |              | HYDRAULIQUE (Vérin telescopage)<br>HYDRAULIC (Telescope cylinder)<br>HYDRAULIK (Telescop zylinder)<br>HIDRAULICO (Cilindro de telescopaje) |             |             |                 |             | Quantity | Menge |  | 001    |  |  |  |
| Rep Item | Part. Number | DESCRIZIONE  | DESIGNATION | DESCRIPTION | BEZEICHNUNG     | DESCRIPCION | MRT 1840 |       |  |        |  |  |  |
| 26       | 486604       | vite   | vis         | screw       | schraube        | tornillo    | 1        |       |  |        |  |  |  |
| 27       | 478861       | vite   | vis         | screw       | schraube        | tornillo    | 4        |       |  |        |  |  |  |
| 28       | 448291       | rondella   | rondelle    | washer      | unterlegscheibe | arandela    | 4        |       |  |        |  |  |  |
| 29       | 471320       | dado   | ecrou       | nut         | mutter          | tuerca      | 1        |       |  |        |  |  |  |
| 30       | 609519       | perno  | pivot       | pin         | bolzen          | perno       | 1        |       |  |        |  |  |  |

| 1/1         | 648633       | IMPIANTO IDRAULICO (Cilindro blocco assale posteriore)  |                 |                   |                     |                   | Quantità |       |  |  | 10CHDI<br>001 |  |
|-------------|--------------|---|-----------------|-------------------|---------------------|-------------------|----------|-------|--|--|---------------|--|
|             |              | HYDRAULIQUE (Vérin blocage essieu arriere)<br>HYDRAULIC (Rear axle lock cylinder)<br>HYDRAULIK (Hinterachse verriegelung zylinder)<br>HIDRAULICO (Cilindro de bloque eje trasero) |                 |                   |                     |                   | Quantity | Menge |  |  |               |  |
| Rep<br>Item | Part. Number | DESCRIZIONE   | DESIGNATION     | DESCRIPTION       | BEZEICHNUNG         | DESCRIPCION       | MRT 1840 |       |  |  |               |  |
| 1           | 738919       | cilindro completo   | cyindre complet | complete cylinder | kompletter zylinder | martinete compl.  | 2        |       |  |  |               |  |
| 2           | 742589       | camicia   | chemise         | cylinder liner    | laufbuchse          | camisa            | 1        |       |  |  |               |  |
| 3           | 579849       | guarnizione   | joint           | seal              | dichtung            | guarnicion        | 1        |       |  |  |               |  |
| 4           | 579848       | guarnizione   | joint           | seal              | dichtung            | guarnicion        | 1        |       |  |  |               |  |
| 5           | 579847       | guarnizione   | joint           | seal              | dichtung            | guarnicion        | 1        |       |  |  |               |  |
| 6           | 579846       | guarnizione   | joint           | seal              | dichtung            | guarnicion        | 1        |       |  |  |               |  |
| 7           | 579844       | stelo   | tige            | rod               | spindel             | vastago           | 1        |       |  |  |               |  |
| 8           | 742592       | kit guarnizioni   | kit joints      | seal kit          | dichtungssatz       | junta de repuesto | 1        |       |  |  |               |  |
| 9           | 742590       | guarnizione   | joint           | seal              | dichtung            | guarnicion        | 1        |       |  |  |               |  |
| 10          | 742591       | guarnizione   | joint           | seal              | dichtung            | guarnicion        | 1        |       |  |  |               |  |







| 1/3 | 648633 | ELETTRICITA' (Cruscotto e strumentazione)<br>ELECTRICITE (Tableau de bord et instruments)<br>ELECTRICITY (Instrumentation and instrum.board)<br>ELEKTRIZITAT (Instrumentierung und instrumentbrett)<br>ELECTRICIDAD (Instrumentacion y cuadro controllo) |                 |                           |                     |                            | Quantità<br>Quantity Menge<br>Quantité Quantità |             |          |  | 11AADIA<br>007 |  |  |
|-----|--------|--|-----------------|---------------------------|---------------------|----------------------------|---|-------------|----------|--|----------------|--|--|
|     |        | Rep Item   | Part. Number    | DESCRIZIONE               | DESIGNATION         | DESCRIPTION                | BEZEICHNUNG                                     | DESCRIPCION | MRT 1840 |  |                |  |  |
| 1   | 907809 | cruscotto e strumenti  | tableau de bord | dashboard and instruments | instrumentenbrett   | salpicadero e instrumentos | 1   |             |          |  |                |  |  |
| 2   | 675472 | selettore  | selecteur       | selector                  | wahlschalter        | selector                   | 1   |             |          |  |                |  |  |
| 3   | 729412 | pulsante   | bouton poussoir | push button               | druckknopf          | pulsador                   | 1   |             |          |  |                |  |  |
| 4   | 508585 | contatto   | contact         | contact                   | kontakt             | contacto                   | 1   |             |          |  |                |  |  |
| 5   | 776586 | contatto   | contact         | contact                   | kontakt             | contacto                   | 1   |             |          |  |                |  |  |
| 6   | 510118 | lampadina  | lampe           | bulb                      | birne               | lamparilla                 | 16  |             |          |  |                |  |  |
| 7   | 606743 | supporto   | support         | support                   | lager               | soporte                    | 10  |             |          |  |                |  |  |
| 8   | 606744 | supporto   | support         | support                   | lager               | soporte                    | 11  |             |          |  |                |  |  |
| 9   | 501404 | supporto   | support         | support                   | lager               | soporte                    | 3   |             |          |  |                |  |  |
| 10  | 885753 | tappo  | bouchon         | plug                      | stopfen             | tapon                      | 1   |             |          |  |                |  |  |
| 11  | 729352 | interruttore   | interrupteur    | switch                    | schalter            | interruptor                | 1   |             |          |  |                |  |  |
| 12  | 606749 | chiave   | clef            | key                       | schlüssel           | llave                      | 1   |             |          |  |                |  |  |
| 13  | 773536 | pulsante   | bouton poussoir | push button               | druckknopf          | pulsador                   | 1   |             |          |  |                |  |  |
| 14  | 674923 | pulsante   | bouton poussoir | push button               | druckknopf          | pulsador                   | 1   |             |          |  |                |  |  |
| 15  | 674924 | contatto   | contact         | contact                   | kontakt             | contacto                   | 1   |             |          |  |                |  |  |
| 16  | 741495 | accendisigari  | briquet         | cigarette lighter         | zigarettenanzuender | encendedor cigarros        | 1   |             |          |  |                |  |  |
| 17  | 741496 | ghiera   | frette          | ring nut                  | verschraubung       | abrazadera                 | 1   |             |          |  |                |  |  |
| 18  | 741497 | supporto   | support         | support                   | lager               | soporte                    | 1   |             |          |  |                |  |  |
| 19  | 741493 | pulsante   | bouton poussoir | push button               | druckknopf          | pulsador                   | 1   |             |          |  |                |  |  |
| 20  | 606742 | tappo  | bouchon         | plug                      | stopfen             | tapon                      | 15  |             |          |  |                |  |  |
| 21  | 672047 | interruttore   | interrupteur    | switch                    | schalter            | interruptor                | 1   |             |          |  |                |  |  |
| 22  | 609761 | interruttore   | interrupteur    | switch                    | schalter            | interruptor                | 2   |             |          |  |                |  |  |
| 23  | 882793 | display  | ecran           | display                   | anzeigevorrichtung  | display                    | 1   |             |          |  |                |  |  |
| 24  | 675473 | contatto   | contact         | contact                   | kontakt             | contacto                   | 1   |             |          |  |                |  |  |
| 25  | 606746 | interruttore   | interrupteur    | switch                    | schalter            | interruptor                | 5   |             |          |  |                |  |  |

| 2/2      | 648633       | ELETTRICITA' (Cablaggio cruscotto)  |             |             |               |             | Quantità |       |  |  | 11AADI |  |  |
|----------|--------------|---|-------------|-------------|---------------|-------------|----------|-------|--|--|--------|--|--|
|          |              | ELECTRICITE (Cablage tableau de bord)<br>ELECTRICITY (Instrum. board cable)<br>ELEKTRIZITAT (Verkabelung instrumentbret)<br>ELECTRICIDAD (Cableado cuadro de controllo) |             |             |               |             | Quantity | Menge |  |  | 014    |  |  |
| Rep Item | Part. Number | DESCRIZIONE   | DESIGNATION | DESCRIPTION | BEZEICHNUNG   | DESCRIPCION | MRT 1840 |       |  |  |        |  |  |
| 26       | 568969       | connettore  | connecteur  | connector   | verbindung    | conector    | 1        |       |  |  |        |  |  |
| 27       | 773542       | cappuccio   | capuchon    | cover       | kappe         | capucha     | 1        |       |  |  |        |  |  |
| 28       |              |   |             |             |               |             |          |       |  |  |        |  |  |
| 29       | 687975       | connettore  | connecteur  | connector   | verbindung    | conector    | 1        |       |  |  |        |  |  |
| 30       | 505187       | terminale   | borne       | terminal    | endverschluss | terminal    | x        |       |  |  |        |  |  |

| 1/2      | 648633       | ELETTRICITA' (Scatola fusibili e rele' cruscotto)  |                  |               |                 |                  | Quantità |       |  | 11AADI |  |     |  |
|----------|--------------|--|------------------|---------------|-----------------|------------------|----------|-------|--|--------|--|-----|--|
|          |              | ELECTRICITE (Boite a fusible et relais tableau de bord)<br>ELECTRICITY (Instrum. board-fuse and relay box)<br>ELEKTRIZITAT (Instrumentbrett-sicherungsdose und relais)<br>ELECTRICIDAD (Caya de fusibles y relevador caya controllo) |                  |               |                 |                  | Quantity | Menge |  |        |  | 021 |  |
| Rep Item | Part. Number | DESCRIZIONE  | DESIGNATION      | DESCRIPTION   | BEZEICHNUNG     | DESCRIPCION      | MRT 1840 |       |  |        |  |     |  |
| 1        | 882336       | supporto   | support          | support       | lager           | soporte          | 1        |       |  |        |  |     |  |
| 2        | 177739       | fusibile   | fusible          | fuse          | sicherung       | fusible (10 A)   | 16       |       |  |        |  |     |  |
| 3        | 656965       | fusibile   | fusible          | fuse          | sicherung       | fusible (30 A)   | 1        |       |  |        |  |     |  |
| 4        | 205805       | fusibile   | fusible          | fuse          | sicherung       | fusible (15 A)   | 6        |       |  |        |  |     |  |
| 5        | 739304       | rondella   | rondelle         | washer        | unterlegscheibe | arandela         | 1        |       |  |        |  |     |  |
| 6        | 505168       | vite   | vis              | screw         | schraube        | tornillo         | 1        |       |  |        |  |     |  |
| 7        | 731359       | rondella   | rondelle         | washer        | unterlegscheibe | arandela         | 4        |       |  |        |  |     |  |
| 8        | 479801       | vite   | vis              | screw         | schraube        | tornillo         | 4        |       |  |        |  |     |  |
| 9        | 719253       | vite   | vis              | screw         | schraube        | tornillo         | 2        |       |  |        |  |     |  |
| 10       | 499773       | vite   | vis              | screw         | schraube        | tornillo         | 2        |       |  |        |  |     |  |
| 11       | 508549       | gabbietta  | cage             | retainer      | kaefig          | caja-jaula       | 2        |       |  |        |  |     |  |
| 12       | 885172       | scatola fusibili   | boite a fusibles | fuse box      | sicherungsdose  | caja de fusibles | 1        |       |  |        |  |     |  |
| 13       | 606667       | coperchio  | couvercle        | cover         | deckel          | tapa             | 5        |       |  |        |  |     |  |
| 14       | 882126       | rele   | relais           | relay         | relais          | relé             | 1        |       |  |        |  |     |  |
| 15       | 585398       | intermittenza  | intermittence    | intermittence | relais          | intermitencia    | 1        |       |  |        |  |     |  |
| 16       | 708178       | rele   | relais           | relay         | relais          | relé             | 13       |       |  |        |  |     |  |
| 17       | 606653       | pinza  | pince            | pincers       | zange           | pinza            | 1        |       |  |        |  |     |  |
| 18       | 659994       | connettore   | connecteur       | connector     | steckverbindung | conectador       | 1        |       |  |        |  |     |  |
| 19       | 657182       | connettore   | connecteur       | connector     | steckverbindung | conectador       | 1        |       |  |        |  |     |  |
| 20       | 499764       | fusibile   | fusible          | fuse          | sicherung       | fusible (7,5 A)  | 8        |       |  |        |  |     |  |
| 21       | 656964       | fusibile   | fusible          | fuse          | sicherung       | fusible (20 A)   | 2        |       |  |        |  |     |  |
| 22       | 501390       | connettore   | connecteur       | connector     | verbindung      | conector         | 1        |       |  |        |  |     |  |
| 23       | 508654       | base   | base             | base          | base            | base             | 2        |       |  |        |  |     |  |
| 24       | 716405       | diodo  | diode            | diode         | diode           | diodo (3 A)      | 14       |       |  |        |  |     |  |
| 25       | 657204       | terminale  | borne            | terminal      | endverschluss   | terminal         | x        |       |  |        |  |     |  |

CLICK HERE TO **DOWNLOAD** THE COMPLETE MANUAL

- Thank you very much for reading the preview of the manual.
- You can download the complete manual from: [www.heydownloads.com](http://www.heydownloads.com) by clicking the link below



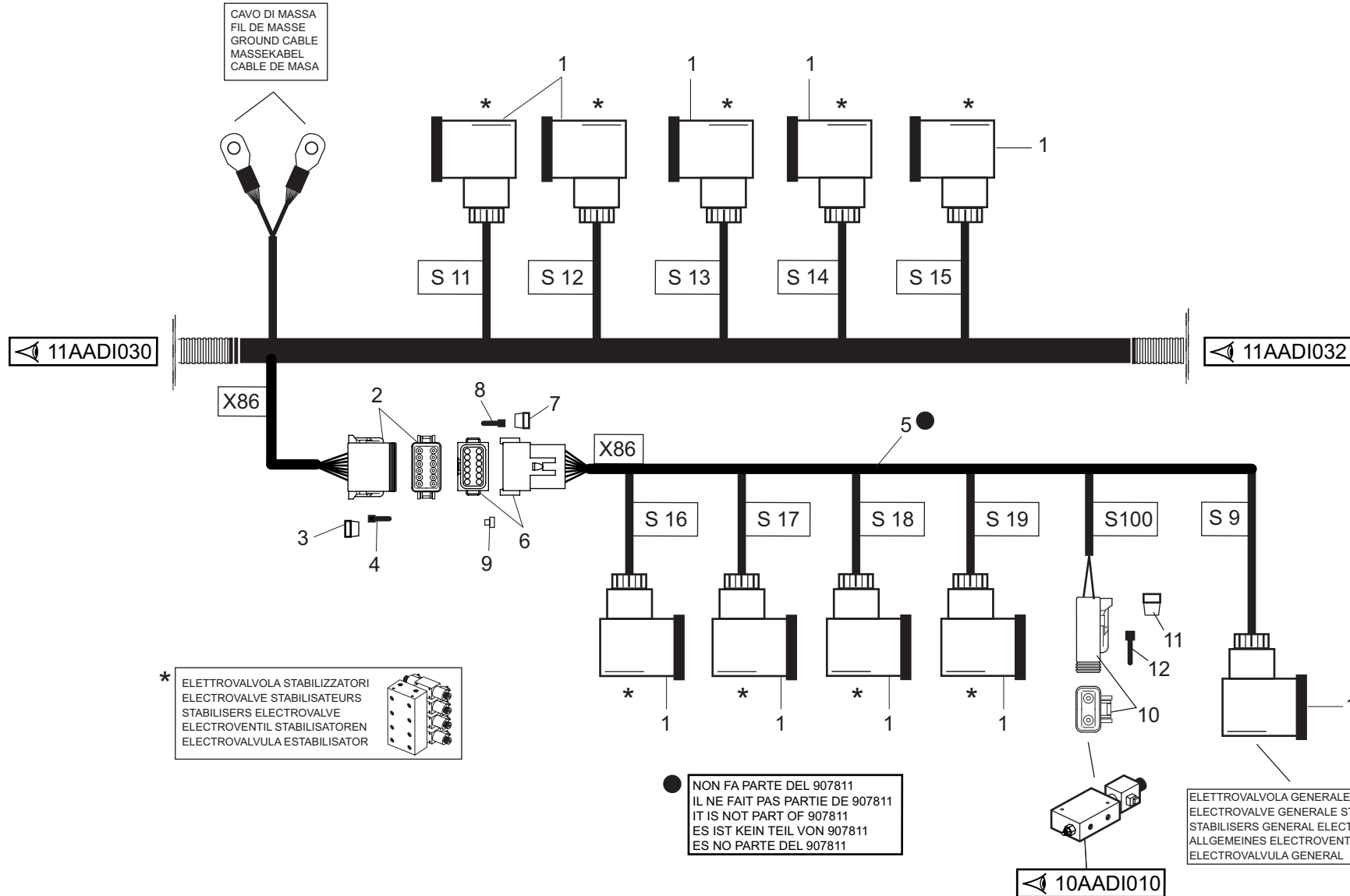
- Please note: If there is no response to CLICKING the link, please download this PDF first and then click on it.

CLICK HERE TO **DOWNLOAD** THE COMPLETE MANUAL

11AADI  
031

ELETRICITA' (Cablaggio anteriore)  
ELECTRICITE (Cablage avant)  
ELECTRICITY (Front cable)  
ELEKTRIZITAT (Vorn verkabelung)  
ELECTRICIDAD (Cableado delantero)

MRT 1840  
Easy - E3



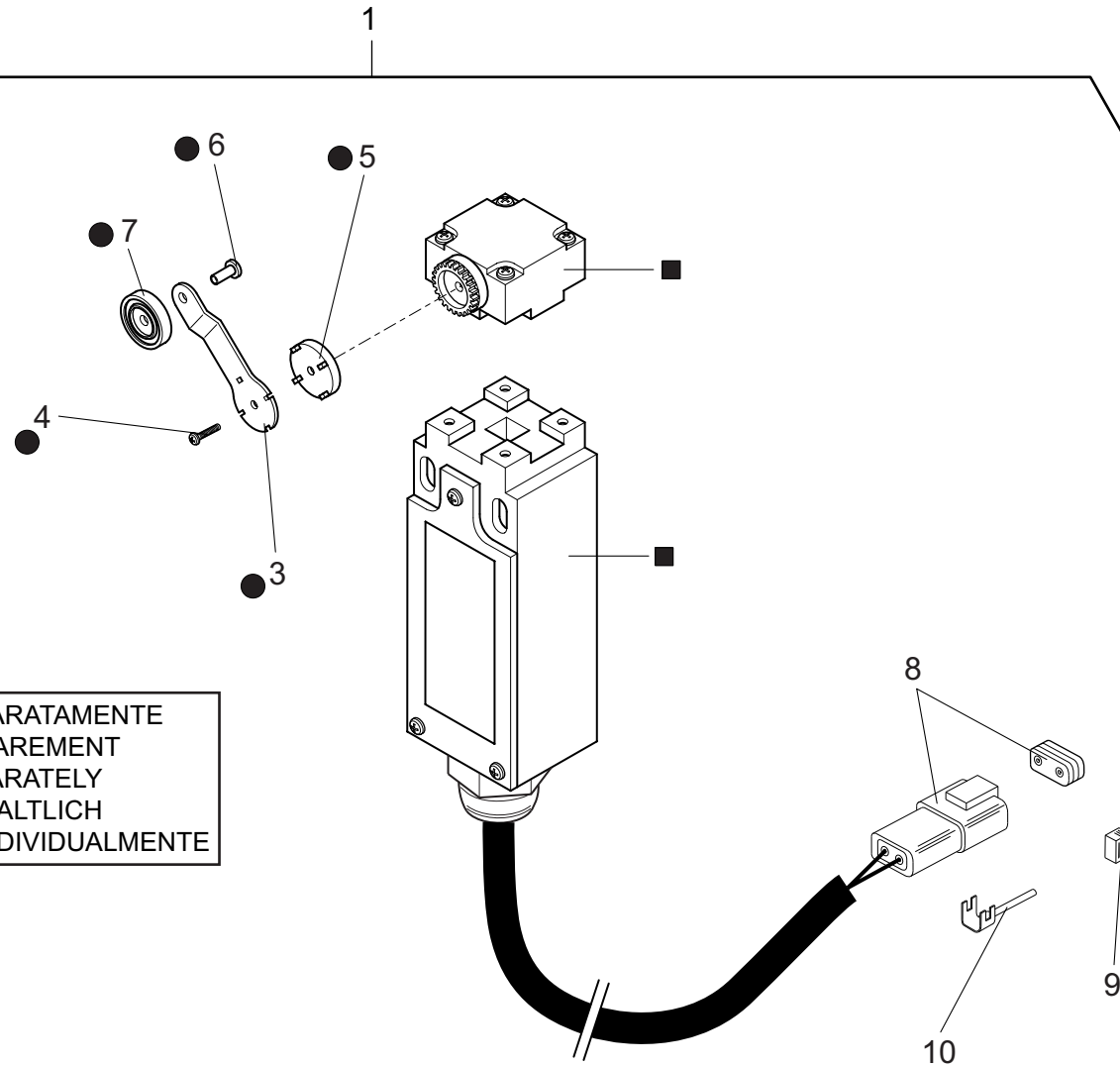


11AADIA  
045

ELETRICITA' (Microinterruttore)  
ELECTRICITE (Micro-interrupteur)  
ELECTRICITY (Microswitch)  
ELEKTRIZITAT (Mikroschalter)  
ELECTRICIDAD (Microinterruptor)

MRT 1840  
Easy - E3

● → KIT → 2



■ → ELEMENTI NON VENDUTI SEPARATAMENTE  
ELEMENTS NON VENDUS SEPARÈMENT  
ELEMENTS NON AVAIBLE SEPARATELY  
ELEMENTE NICHT EINEIN ERHALTLICH  
ELEMENTOS NO VENDIDOS INDIVIDUALMENTE

A PARTIRE DALLA MACCHINA  
A PARTIR DE LA MACHINE  
FROM MACHINE  
AB DER MASCHINE  
A PARTIR DE LA MAQUINA

I → N° 25198 - 760712



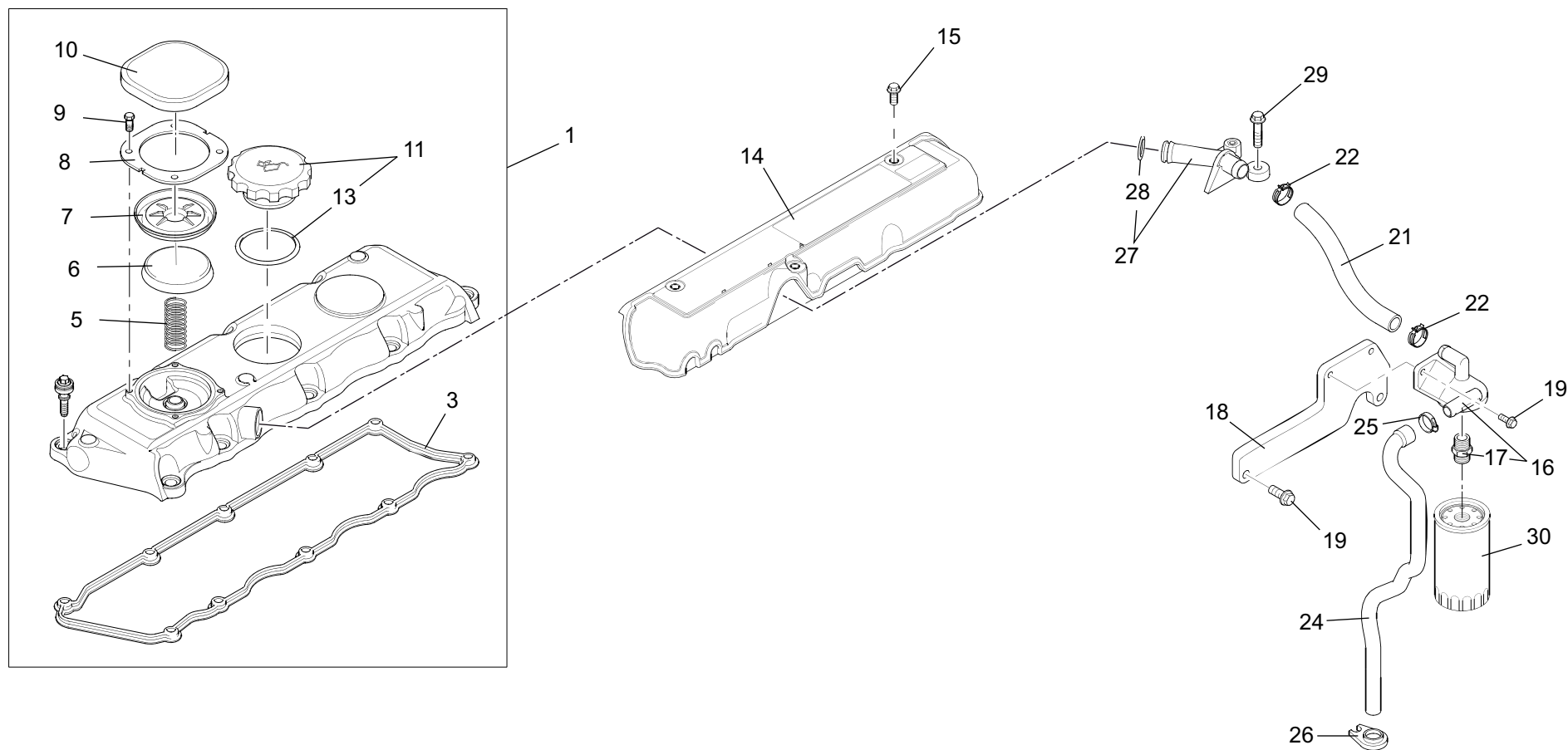
| 1/1 | 648633 | TARGHETTE<br>ADHESIFS<br>ADHESIVES<br>KLEBSTOFF<br>ADHESIVO |              |             |             |             | Quantità<br>Quantity<br>Menge<br>Quantità |             |          |  | 12AADI<br>004 |  | 26/09/2012 |  |
|-----|--------|---|--------------|-------------|-------------|-------------|---|-------------|----------|--|---------------|--|------------|--|
|     |        | Rep<br>Item   | Part. Number | DESCRIZIONE | DESIGNATION | DESCRIPTION | BEZEICHNUNG                               | DESCRIPCION | MRT 1840 |  |               |  |            |  |
| 1   |        |   |              |             |             |             |   |             |          |  |               |  |            |  |
| 2   | 240794 | targhetta   | plaquette    | name plate  | schild      | tarjeta     |   | 1           |          |  |               |  |            |  |
| 3   | 729575 | targhetta   | plaquette    | name plate  | schild      | tarjeta     |   | 1           |          |  |               |  |            |  |
| 4   | 716928 | targhetta   | plaquette    | name plate  | schild      | tarjeta     |   | 1           |          |  |               |  |            |  |
| 5   | 499933 | targhetta   | plaquette    | name plate  | schild      | tarjeta     |   | 3           |          |  |               |  |            |  |
| 6   | 607845 | targhetta   | plaquette    | name plate  | schild      | tarjeta     |   | 1           |          |  |               |  |            |  |
| 7   | 716927 | targhetta   | plaquette    | name plate  | schild      | tarjeta     |   | 1           |          |  |               |  |            |  |
| 8   | 239594 | targhetta   | plaquette    | name plate  | schild      | tarjeta     |   | 1           |          |  |               |  |            |  |
| 9   | 716929 | targhetta   | plaquette    | name plate  | schild      | tarjeta     |   | 1           |          |  |               |  |            |  |
| 10  | 716930 | targhetta   | plaquette    | name plate  | schild      | tarjeta     |   | 2           |          |  |               |  |            |  |
| 11  | 716922 | targhetta   | plaquette    | name plate  | schild      | tarjeta     |   | 4           |          |  |               |  |            |  |
| 12  | 716923 | targhetta   | plaquette    | name plate  | schild      | tarjeta     |   | 4           |          |  |               |  |            |  |
| 13  | 884838 | targhetta   | plaquette    | name plate  | schild      | tarjeta     |   | 1           |          |  |               |  |            |  |
| 14  | 724319 | targhetta   | plaquette    | name plate  | schild      | tarjeta     |   | 2           |          |  |               |  |            |  |
| 15  | 724318 | targhetta   | plaquette    | name plate  | schild      | tarjeta     |   | 1           |          |  |               |  |            |  |
| 16  | 737049 | targhetta   | plaquette    | name plate  | schild      | tarjeta     |   | 1           |          |  |               |  |            |  |
| 17  | 740765 | targhetta   | plaquette    | name plate  | schild      | tarjeta     |   | 1           |          |  |               |  |            |  |



**APDI**  
**120**

**TAPPO SFIATATOIO - TAPPO RIEMPIMENTO**  
RAMPLISSEUR RENIFLARD - RAMPLISSEUR D'HUILE  
LUBRICATING BREATHER - LUBRICATING OIL PLUG  
ENTLUEFTUNG - DELEINFUELLSTUTZEN  
RENIFLARD DEL ACEITE LUBRICANTE - LLENADO DEL ACEITE LUBRICANTE

**MRT 1840**  
Easy - E3







| 1/1      | 648633       | BULBI - PRESSOSTATI             |             |             |                  |             | Quantità |       |  | APDI |  |  |  |
|----------|--------------|---------------------------------|-------------|-------------|------------------|-------------|----------|-------|--|------|--|--|--|
|          |              | BOULE - PRESSOSTAT              |             |             |                  |             | Quantity | Menge |  | 150  |  |  |  |
|          |              | BULB - PRESSURE SWITCH          |             |             |                  |             | MRT 1840 |       |  |      |  |  |  |
|          |              | THERMOMETERKUGEL - DRUCKWÄCHTER |             |             |                  |             |          |       |  |      |  |  |  |
|          |              | BULBO - PRESÓSTATO              |             |             |                  |             |          |       |  |      |  |  |  |
| Rep Item | Part. Number | DESCRIZIONE                     | DESIGNATION | DESCRIPTION | BEZEICHNUNG      | DESCRIPCION |          |       |  |      |  |  |  |
| 1        | 604928       | bulbo                           | boule       | bulb        | thermometerkugel | bulbo       | 1        |       |  |      |  |  |  |
| 2        | 702126       | cavo                            | cabie       | cabie       | kabel            | cabie       | 1        |       |  |      |  |  |  |
| 3        | 711835       | bulbo                           | boule       | bulb        | thermometerkugel | bulbo       | 1        |       |  |      |  |  |  |
| 4        |              |                                 |             |             |                  |             |          |       |  |      |  |  |  |
| 5        | 745801       | bulbo                           | boule       | bulb        | thermometerkugel | bulbo       | 1        |       |  |      |  |  |  |





| 1/1 | 648633 | CARTER ASSALE ANTERIORE<br>CARTER ESSIEU AVANT<br>FRONT AXLE CASING<br>VORNACHSE GEHAEUSE<br>CARTER EJE DELANTERO |                   |              |                 |                  | Quantità<br>Quantity Menge<br>Quantité Quantità |             |          |  | AXDI<br>001 |  |  |
|-----|--------|---|-------------------|--------------|-----------------|------------------|---|-------------|----------|--|-------------|--|--|
|     |        | Rep<br>Item   | Part. Number      | DESCRIZIONE  | DESIGNATION     | DESCRIPTION      | BEZEICHNUNG                                     | DESCRIPCION | MRT 1840 |  |             |  |  |
| 1   | 106533 | guarnizione   | joint             | seal         | dichtung        | guarnicion       | 3   |             |          |  |             |  |  |
| 2   | 562531 | coperchio intermedio  | couvercle interm. | middle cover | mittlere deckel | tapa intermedio  | 1   |             |          |  |             |  |  |
| 3   | 708975 | scatola   | boite             | housing      | gehaeuse        | caja             | 1   |             |          |  |             |  |  |
| 4   | 602293 | coperchio   | couvercle         | cover        | deckel          | tapa             | 1   |             |          |  |             |  |  |
| 5   | 562470 | sfiato  | event             | breather     | entluefter      | respiradero      | 1   |             |          |  |             |  |  |
| 6   | 133044 | seeger  | arretoir          | circlip      | seeger-ring     | circlip          | 1   |             |          |  |             |  |  |
| 7   | 603638 | tappo   | bouchon           | plug         | stopfen         | tapon            | 1   |             |          |  |             |  |  |
| 8   | 702418 | tappo   | bouchon           | plug         | stopfen         | tapon            | 1   |             |          |  |             |  |  |
| 9   | 729957 | ponte anteriore   | pont avant        | front axle   | vorderachse     | puente delantero | 1   |             |          |  |             |  |  |

| 1/3         | 648633       | RIDUZIONE EPICICLOIDALE ASSALE ANTERIORE   |              |               |             |              | Quantità |       |          |  | AXDI<br>003 |  |
|-------------|--------------|--|--------------|---------------|-------------|--------------|----------|-------|----------|--|-------------|--|
|             |              | REDUCTEURS ESSIEU AVANT<br>FRONT AXLE REDUCTION GEAR<br>VORNACHSE REDUKTIONSGETRIEBE<br>REDUCTOR EJE DELANTERO |              |               |             |              | Quantity | Menge | Quantità |  |             |  |
| Rep<br>Item | Part. Number | DESCRIZIONE  | DESIGNATION  | DESCRIPTION   | BEZEICHNUNG | DESCRIPCION  | MRT 1840 |       |          |  |             |  |
| 1           | 133090       | dado   | ecrou        | nut           | mutter      | tuerca       | 2        |       |          |  |             |  |
| 2           | 562750       | vite   | vis          | screw         | schraube    | tornillo     | 2        |       |          |  |             |  |
| 3           | 562751       | braccio  | bras         | arm           | arm         | brazo        | 2        |       |          |  |             |  |
| 4           | 702138       | vite   | vis          | screw         | schraube    | tornillo     | 32       |       |          |  |             |  |
| 5           |              |  |              |               |             |              |          |       |          |  |             |  |
| 6           | 563903       | bussola  | douille      | bushing       | buchse      | buje         | 2        |       |          |  |             |  |
| 7           | 108100       | anello   | bague        | ring          | ring        | anillo       | 2        |       |          |  |             |  |
| 8           | 105101       | cuscinetto   | coussinet    | bearing       | lagerschale | cojinete     | 2        |       |          |  |             |  |
| 9           | 105424       | anello   | bague        | ring          | ring        | anillo       | 2        |       |          |  |             |  |
| 10          | 562752       | guarnizione  | joint        | seal          | dichtung    | guarnicion   | 2        |       |          |  |             |  |
| 11          | 562493       | giunto   | joint        | joint         | kupplung    | junta        | 2        |       |          |  |             |  |
| 12          | 477847       | bronzina   | coussinet    | bushing       | bronzelager | buje         | 2        |       |          |  |             |  |
| 13          | 603651       | boccola  | douille      | bushing       | buchse      | buje         | 2        |       |          |  |             |  |
| 14          | 562475       | vite   | vis          | screw         | schraube    | tornillo     | 20       |       |          |  |             |  |
| 15          | 600559       | coperchio  | couvercle    | cover         | deckel      | tapa         | 2        |       |          |  |             |  |
| 16          | 107796       | tappo  | bouchon      | plug          | stopfen     | tapon        | 4        |       |          |  |             |  |
| 17          | 133103       | ingrassatore   | graisseur    | grease nipple | fettbuechse | engrasador   | 4        |       |          |  |             |  |
| 18          | 564903       | perno  | pivot        | pin           | bolzen      | perno        | 2        |       |          |  |             |  |
| 19          | 564898       | perno  | pivot        | pin           | bolzen      | perno        | 2        |       |          |  |             |  |
| 20          | 562499       | anello   | bague        | ring          | ring        | anillo       | 4        |       |          |  |             |  |
| 21          | 562500       | snodo  | articulation | articulation  | gelenk      | articulacion | 2        |       |          |  |             |  |
| 22          | 600767       | scatola  | boite        | housing       | gehaeuse    | caja         | 1        |       |          |  |             |  |
| 23          | 603653       | anello   | bague        | ring          | ring        | anillo       | 2        |       |          |  |             |  |
| 24          |              |  |              |               |             |              |          |       |          |  |             |  |
| 25          | 702418       | tappo  | bouchon      | plug          | stopfen     | tapon        | 2        |       |          |  |             |  |

| 3/3         | 648633       | RIDUZIONE EPICICLOIDALE ASSALE ANTERIORE   |             |             |             |             | Quantità |       |          |  | AXDIB<br>003 |  |
|-------------|--------------|--|-------------|-------------|-------------|-------------|----------|-------|----------|--|--------------|--|
|             |              | REDUCTEURS ESSIEU AVANT<br>FRONT AXLE REDUCTION GEAR<br>VORNACHSE REDUKTIONSGETRIEBE<br>REDUCTOR EJE DELANTERO |             |             |             |             | Quantity | Menge | Quantità |  |              |  |
| Rep<br>Item | Part. Number | DESCRIZIONE  | DESIGNATION | DESCRIPTION | BEZEICHNUNG | DESCRIPCION | MRT 1840 |       |          |  |              |  |
| 57          | 564679       | spessore   | epaisseur   | thickness   | staerke     | espesor     | 2        |       |          |  |              |  |
| 57          | 564680       | spessore   | epaisseur   | thickness   | staerke     | espesor     | 2        |       |          |  |              |  |
| 57          | 564681       | spessore   | epaisseur   | thickness   | staerke     | espesor     | 2        |       |          |  |              |  |
| 60          | 706354       | kit supporto   | support kit | kit support | haltersatz  | kit soporte | 2        |       |          |  |              |  |
| 65          | 603696       | scatola  | boite       | housing     | gehaeuse    | caja        | 1        |       |          |  |              |  |
| 66          | 603819       | scatola  | boite       | housing     | gehaeuse    | caja        | 1        |       |          |  |              |  |
| 72          | 703528       | vite   | vis         | screw       | schraube    | tornillo    | 4        |       |          |  |              |  |
| 76          | 706355       | kit supporto   | support kit | kit support | haltersatz  | kit soporte | 2        |       |          |  |              |  |

| 2/2 | 648633 | FRENO IDRAULICO ASSALE ANTERIORE<br>FREIN HYDRAULIQUE-ESSIEU AVANT<br>FRONT AXLE HYDRAULIC BRAKE<br>HYDRAULIK BREMSE-VORNACHSE<br>FRENO HIDRAULICO-EJE DELANTERO |              |               |                 |                   | Quantità<br>Quantity<br>Quantité |             |          |  | Menge<br>Quantità |  | AXDIA<br>004 |  |  |
|-----|--------|--|--------------|---------------|-----------------|-------------------|----------------------------------|-------------|----------|--|-------------------|--|--------------|--|--|
|     |        | Rep<br>Item  | Part. Number | DESCRIZIONE   | DESIGNATION     | DESCRIPTION       | BEZEICHNUNG                      | DESCRIPCION | MRT 1840 |  |                   |  |              |  |  |
| 26  | 563905 | pistone  | piston       | piston        | kolben          | piston            | 1                                |             |          |  |                   |  |              |  |  |
| 27  | 564233 | leva   | levier       | lever         | hebel           | palanca           | 1                                |             |          |  |                   |  |              |  |  |
| 28  | 133030 | anello   | bague        | ring          | ring            | anillo            | 1                                |             |          |  |                   |  |              |  |  |
| 29  | 477835 | ingrassatore   | graisseur    | grease nipple | fettbuechse     | engrasador        | 2                                |             |          |  |                   |  |              |  |  |
| 30  | 564220 | rondella   | rondelleq    | washer        | unterlegscheibe | arandela          | 2                                |             |          |  |                   |  |              |  |  |
| 31  | 564218 | anello   | bague        | ring          | ring            | anillo            | 1                                |             |          |  |                   |  |              |  |  |
| 32  | 564237 | bussola  | douille      | bushing       | buchse          | buje              | 1                                |             |          |  |                   |  |              |  |  |
| 33  | 477692 | molla  | ressort      | spring        | feder           | resorte           | 1                                |             |          |  |                   |  |              |  |  |
| 34  | 717037 | perno  | pivot        | pin           | bolzen          | perno             | 1                                |             |          |  |                   |  |              |  |  |
| 35  | 564222 | sfera  | bille        | ball          | kugel           | bola              | 4                                |             |          |  |                   |  |              |  |  |
| 36  | 564238 | bussola  | douille      | bushing       | buchse          | buje              | 1                                |             |          |  |                   |  |              |  |  |
| 37  | 564239 | supporto   | support      | support       | lager           | soporte           | 1                                |             |          |  |                   |  |              |  |  |
| 38  | 564217 | anello   | bague        | ring          | ring            | anillo            | 1                                |             |          |  |                   |  |              |  |  |
| 39  | 108515 | dado   | ecrou        | nut           | mutter          | tuerca            | 1                                |             |          |  |                   |  |              |  |  |
| 40  | 717038 | cilindro   | cylindre     | cylinder      | zylinder        | cilindro          | 1                                |             |          |  |                   |  |              |  |  |
| 41  | 564236 | bussola  | douille      | bushing       | buchse          | buje              | 1                                |             |          |  |                   |  |              |  |  |
| 42  | 133041 | anello   | bague        | ring          | ring            | anillo            | 1                                |             |          |  |                   |  |              |  |  |
| 43  | 108045 | distanziale  | entretoise   | spacer        | abstandstuck    | separador         | 1                                |             |          |  |                   |  |              |  |  |
| 44  | 562517 | pistone  | piston       | piston        | kolben          | piston            | 1                                |             |          |  |                   |  |              |  |  |
| 45  | 600558 | pistone  | piston       | piston        | kolben          | piston            | 1                                |             |          |  |                   |  |              |  |  |
| 46  | 602007 | guarnizione  | joint        | seal          | dichtung        | guarnicion        | 2                                |             |          |  |                   |  |              |  |  |
| 47  | 565650 | kit guarnizioni  | kit joints   | seal kit      | dichtungssatz   | junta de repuesto | 1                                |             |          |  |                   |  |              |  |  |

26/09/2012

| 1/3 | 648633 | RIDUTTORE DELLE VELOCITA'<br>BOITE DE VITESSE ET DE TRANSFER<br>TRANSFER AND GEAR BOX<br>RADER UND GETRIEBEKASTEN<br>CAJA DE VELOCIDADES |              |             |                 |             | Quantità<br>Quantity<br>Quantité |             |          |  | Menge<br>Quantità |  | AXDIA<br>007 |  |
|-----|--------|--|--------------|-------------|-----------------|-------------|----------------------------------|-------------|----------|--|-------------------|--|--------------|--|
|     |        | Rep<br>Item  | Part. Number | DESCRIZIONE | DESIGNATION     | DESCRIPTION | BEZEICHNUNG                      | DESCRIPCION | MRT 1840 |  |                   |  |              |  |
| 1   | 564073 | guarnizione  | joint        | seal        | dichtung        | guarnicion  | 1                                |             |          |  |                   |  |              |  |
| 2   | 552524 | sfciato  | event        | breather    | entluefter      | respiradero | 1                                |             |          |  |                   |  |              |  |
| 3   | 564076 | coperchio  | couvercle    | cover       | deckel          | tapa        | 1                                |             |          |  |                   |  |              |  |
| 4   | 552509 | anello   | bague        | ring        | ring            | anillo      | 1                                |             |          |  |                   |  |              |  |
| 5   | 133136 | spessore   | epaisseur    | thickness   | staerke         | espesor     | x                                |             |          |  |                   |  |              |  |
| 5   | 133138 | spessore   | epaisseur    | thickness   | staerke         | espesor     | x                                |             |          |  |                   |  |              |  |
| 5   | 478022 | spessore   | epaisseur    | thickness   | staerke         | espesor     | x                                |             |          |  |                   |  |              |  |
| 5   | 552515 | spessore   | epaisseur    | thickness   | staerke         | espesor     | x                                |             |          |  |                   |  |              |  |
| 5   | 562427 | spessore   | epaisseur    | thickness   | staerke         | espesor     | x                                |             |          |  |                   |  |              |  |
| 6   | 105101 | cuscinetto   | coussinet    | bearing     | lagerschale     | cojinete    | 1                                |             |          |  |                   |  |              |  |
| 7   | 563497 | coperchio  | couvercle    | cover       | deckel          | tapa        | 1                                |             |          |  |                   |  |              |  |
| 9   | 105491 | cuscinetto   | coussinet    | bearing     | lagerschale     | cojinete    | 1                                |             |          |  |                   |  |              |  |
| 10  | 564223 | spina  | cheville     | pin         | stift           | pernio      | 2                                |             |          |  |                   |  |              |  |
| 11  | 552518 | spina  | cheville     | pin         | stift           | pernio      | 3                                |             |          |  |                   |  |              |  |
| 12  | 600570 | scatola  | boite        | housing     | gehaeuse        | caja        | 1                                |             |          |  |                   |  |              |  |
| 13  | 106842 | vite   | vis          | screw       | schraube        | tornillo    | 20                               |             |          |  |                   |  |              |  |
| 14  | 475059 | guarnizione  | joint        | seal        | dichtung        | guarnicion  | 1                                |             |          |  |                   |  |              |  |
| 16  | 552514 | rondella   | rondelle     | washer      | unterlegscheibe | arandela    | 1                                |             |          |  |                   |  |              |  |
| 17  | 552522 | vite   | vis          | screw       | schraube        | tornillo    | 1                                |             |          |  |                   |  |              |  |
| 18  | 552547 | distanziale  | entretoise   | spacer      | abstandstuck    | separador   | 1                                |             |          |  |                   |  |              |  |
| 19  | 105131 | vite   | vis          | screw       | schraube        | tornillo    | 2                                |             |          |  |                   |  |              |  |
| 20  | 737240 | rondella   | rondelle     | washer      | unterlegscheibe | arandela    | 2                                |             |          |  |                   |  |              |  |
| 21  | 737031 | lamiera  | feuille      | plate       | blech           | chapa       | 1                                |             |          |  |                   |  |              |  |
| 22  | 552513 | cuscinetto   | coussinet    | bearing     | lagerschale     | cojinete    | 4                                |             |          |  |                   |  |              |  |
| 23  | 564244 | albero   | arbre        | shaft       | welle           | arbol       | 1                                |             |          |  |                   |  |              |  |

| 3/3         | 648633       | RIDUTTORE DELLE VELOCITA'   |                   |                    |                     |                   | Quantità |       |  |  |  | AXDIC<br>007 |  |
|-------------|--------------|---|-------------------|--------------------|---------------------|-------------------|----------|-------|--|--|--|--------------|--|
|             |              | BOITE DE VITESSE ET DE TRANSFER<br>TRANSFER AND GEAR BOX<br>RADER UND GETRIEBEKASTEN<br>CAJA DE VELOCIDADES |                   |                    |                     |                   | Quantity | Menge |  |  |  |              |  |
| Rep<br>Item | Part. Number | DESCRIZIONE   | DESIGNATION       | DESCRIPTION        | BEZEICHNUNG         | DESCRIPCION       | MRT 1840 |       |  |  |  |              |  |
| 49          | 552532       | forcella  | fourchette        | fork               | gabel               | horquilla         | 1        |       |  |  |  |              |  |
| 50          | 477474       | rondella  | rondelle          | washer             | unterlegscheibe     | arandela          | 1        |       |  |  |  |              |  |
| 52          | 552510       | anello  | bague             | ring               | ring                | anillo            | 1        |       |  |  |  |              |  |
| 53          | 133027       | guarnizione   | joint             | seal               | dichtung            | guarnicion        | 1        |       |  |  |  |              |  |
| 56          | 133276       | tappo   | bouchon           | plug               | stopfen             | tapon             | 1        |       |  |  |  |              |  |
| 57          | 549890       | guarnizione   | joint             | seal               | dichtung            | guarnicion        | 1        |       |  |  |  |              |  |
| 58          | 552528       | coperchio   | couvercle         | cover              | deckel              | tapa              | 1        |       |  |  |  |              |  |
| 59          | 564248       | flangia   | flasque           | flange             | flansch             | brida             | 1        |       |  |  |  |              |  |
| 60          | 562485       | dado  | ecrou             | nut                | mutter              | tuerca            | 1        |       |  |  |  |              |  |
| 61          | 729511       | lamiera   | feuille           | plate              | blech               | chapa             | 1        |       |  |  |  |              |  |
| 65          | 108556       | rondella  | rondelle          | washer             | unterlegscheibe     | arandela          | 18       |       |  |  |  |              |  |
| 66          | 737952       | riduttore completo  | réducteur complet | complete reduction | aggregat reduzierer | reductor completo | 1        |       |  |  |  |              |  |

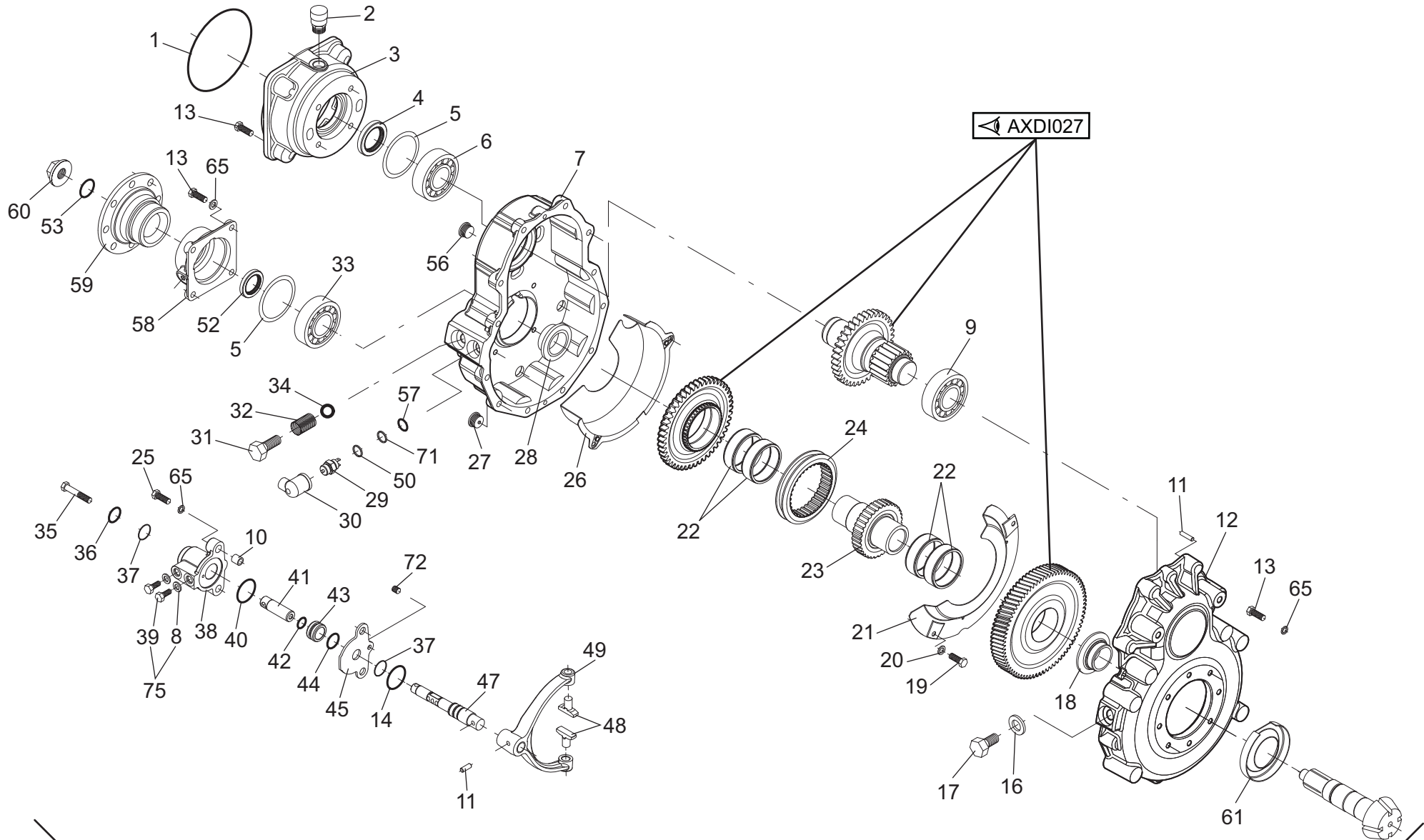
| 2/2 | 648633 | DIFFERENZIALE ASSALE ANTERIORE<br>DIFFERENTIAL ESSIEU AVANT<br>FRONT AXLE DIFFERENTIAL<br>VORNACHSE DIFFERENTIAL<br>DIFERENCIAL EJE DELANTERO |              |                |                      |                    | Quantità<br>Quantity<br>Quantité |             |          |  | Menge<br>Quantità |  | AXDI<br>021 |  |  |
|-----|--------|---|--------------|----------------|----------------------|--------------------|----------------------------------|-------------|----------|--|-------------------|--|-------------|--|--|
|     |        | Rep<br>Item   | Part. Number | DESCRIZIONE    | DESIGNATION          | DESCRIPTION        | BEZEICHNUNG                      | DESCRIPCION | MRT 1840 |  |                   |  |             |  |  |
| 19  | 477846 | anello  | bague        | ring           | ring                 | anillo             | 1                                |             |          |  |                   |  |             |  |  |
| 20  | 133044 | anello  | bague        | ring           | ring                 | anillo             | 1                                |             |          |  |                   |  |             |  |  |
| 21  | 105101 | cuscinetto  | coussinet    | bearing        | lagerschale          | cojinete           | 1                                |             |          |  |                   |  |             |  |  |
| 22  | 564219 | dado  | ecrou        | nut            | mutter               | tuerca             | 8                                |             |          |  |                   |  |             |  |  |
| 23  | 564225 | prigioniero   | goujon       | stud bolt      | stiftschraube        | tornillo esparrago | 8                                |             |          |  |                   |  |             |  |  |
| 24  | 775309 | satellite   | satellite    | planetary gear | planetenrad          | satelite           | 4                                |             |          |  |                   |  |             |  |  |
| 27  | 747047 | differenziale   | differentiel | differential   | differentialgetriebe | diferencial        | 1                                |             |          |  |                   |  |             |  |  |

26/09/2012

AXDI  
026

RIDUTTORE DELLE VELOCITA'  
BOITE DE VITESSE ET DE TRANSFER  
TRANSFER AND GEAR BOX  
RADER UND GETRIEBEKASTEN  
CAJA DE VELOCIDADES

MRT 1840  
Easy - E3



| 1/1 | 648633 | CARTER ASSALE POSTERIORE<br>CARTER ESSIEU ARRIERE<br>REAR AXLE CASING<br>HINTERACHSE GEHAEUSE<br>CARTER EJE TRASERO |                   |              |                 |                 | Quantità<br>Quantity Menge<br>Quantité Quantità |             |          |  | AXDIA<br>500 |  |  |
|-----|--------|---|-------------------|--------------|-----------------|-----------------|---|-------------|----------|--|--------------|--|--|
|     |        | Rep<br>Item   | Part. Number      | DESCRIZIONE  | DESIGNATION     | DESCRIPTION     | BEZEICHNUNG                                     | DESCRIPCION | MRT 1840 |  |              |  |  |
| 1   | 106533 | guarnizione   | joint             | seal         | dichtung        | guarnicion      | 3   |             |          |  |              |  |  |
| 2   | 562531 | coperchio intermedio  | couvercle interm. | middle cover | mittlere deckel | tapa intermedio | 1   |             |          |  |              |  |  |
| 3   | 603821 | scatola   | boite             | housing      | gehaeuse        | caja            | 1   |             |          |  |              |  |  |
| 4   | 602293 | coperchio   | couvercle         | cover        | deckel          | tapa            | 1   |             |          |  |              |  |  |
| 5   | 881383 | sfiato  | event             | breather     | entluefter      | respiradero     | 1   |             |          |  |              |  |  |
| 6   | 133044 | seeger  | arretoir          | circlip      | seeger-ring     | circlip         | 1   |             |          |  |              |  |  |
| 7   | 603638 | tappo   | bouchon           | plug         | stopfen         | tapon           | 1   |             |          |  |              |  |  |
| 8   | 702418 | tappo   | bouchon           | plug         | stopfen         | tapon           | 1   |             |          |  |              |  |  |
| 9   | 729958 | ponte posteriore  | pont arriere      | rear axle    | hinten achse    | trompeta        | 1   |             |          |  |              |  |  |



| 2/3      | 648633       | RIDUZIONE EPICICLOIDALE ASSALE POSTERIORE   |                    |                |               |                    | Quantità |       |  | AXDIA |     |  |
|----------|--------------|---|--------------------|----------------|---------------|--------------------|----------|-------|--|-------|-----|--|
|          |              | REDUCTEURS ESSIEU ARRIERE<br>REAR AXLE REDUCTION GEAR<br>HINTERACHSE REDUKTIONSGETRIEBE<br>REDUCTOR EJE TRASERO |                    |                |               |                    | Quantity | Menge |  |       | 503 |  |
| Rep Item | Part. Number | DESCRIZIONE   | DESIGNATION        | DESCRIPTION    | BEZEICHNUNG   | DESCRIPCION        | MRT 1840 |       |  |       |     |  |
| 26       | 603638       | tappo   | bouchon            | plug           | stopfen       | tapon              | 4        |       |  |       |     |  |
| 27       | 600768       | scatola   | boite              | housing        | gehaeuse      | caja               | 1        |       |  |       |     |  |
| 28       | 604656       | anello  | bague              | ring           | ring          | anillo             | 2        |       |  |       |     |  |
| 29       | 562504       | cuscinetto  | coussinet          | bearing        | lagerschale   | cojinete           | 4        |       |  |       |     |  |
| 30       | 729564       | colonna   | colonnnette        | stud           | schraubbolzen | esparrago          | 16       |       |  |       |     |  |
| 31       | 601246       | mozzo ruota   | moyeu de roue      | wheel hub      | rad nabe      | cubo de rueda      | 2        |       |  |       |     |  |
| 32       | 106533       | guarnizione   | joint              | seal           | dichtung      | guarnicion         | 2        |       |  |       |     |  |
| 33       | 564133       | corona  | couronne           | crown wheel    | kranz         | corona             | 2        |       |  |       |     |  |
| 34       | 565998       | supporto  | support            | support        | lager         | soporte            | 2        |       |  |       |     |  |
| 35       | 562508       | tenuta  | bague d'étanchéité | sealing ring   | dichtring     | anillo de retén    | 8        |       |  |       |     |  |
| 36       | 562509       | satellite   | satellite          | planetary gear | planetenrad   | satelite           | 8        |       |  |       |     |  |
| 37       | 562510       | cuscinetto  | coussinet          | bearing        | lagerschale   | cojinete           | 8        |       |  |       |     |  |
| 38       | 729683       | dado  | ecrou              | nut            | mutter        | tuerca             | 16       |       |  |       |     |  |
| 40       | 600670       | vite  | vis                | screw          | schraube      | tornillo           | 4        |       |  |       |     |  |
| 41       | 729508       | supporto  | support            | support        | lager         | soporte            | 2        |       |  |       |     |  |
| 42       | 562512       | prigioniero   | goujon             | stud bolt      | stiftschraube | tornillo esparrago | 16       |       |  |       |     |  |
| 43       | 562513       | dado  | ecrou              | nut            | mutter        | tuerca             | 16       |       |  |       |     |  |
| 44       | 562514       | anello  | bague              | ring           | ring          | anillo             | 2        |       |  |       |     |  |
| 45       | 602219       | vite  | vis                | screw          | schraube      | tornillo           | 4        |       |  |       |     |  |
| 46       | 474313       | dado  | ecrou              | nut            | mutter        | tuerca             | 4        |       |  |       |     |  |
| 48       | 600560       | braccio   | bras               | arm            | arm           | brazo              | 1        |       |  |       |     |  |
| 49       | 562515       | lamiera   | feuille            | plate          | blech         | chapa              | 2        |       |  |       |     |  |
| 50       | 133044       | anello  | bague              | ring           | ring          | anillo             | 2        |       |  |       |     |  |

**ASSALE POSTERIORE  
ESSIEU ARRIERE - REAR AXLE  
HINTERACHSE - EJE TRASERO**

**TIPO - TYPE**

**TYPE - TYPEN 212-665**

**TIPO**

**NUMERO - REFERENCE**

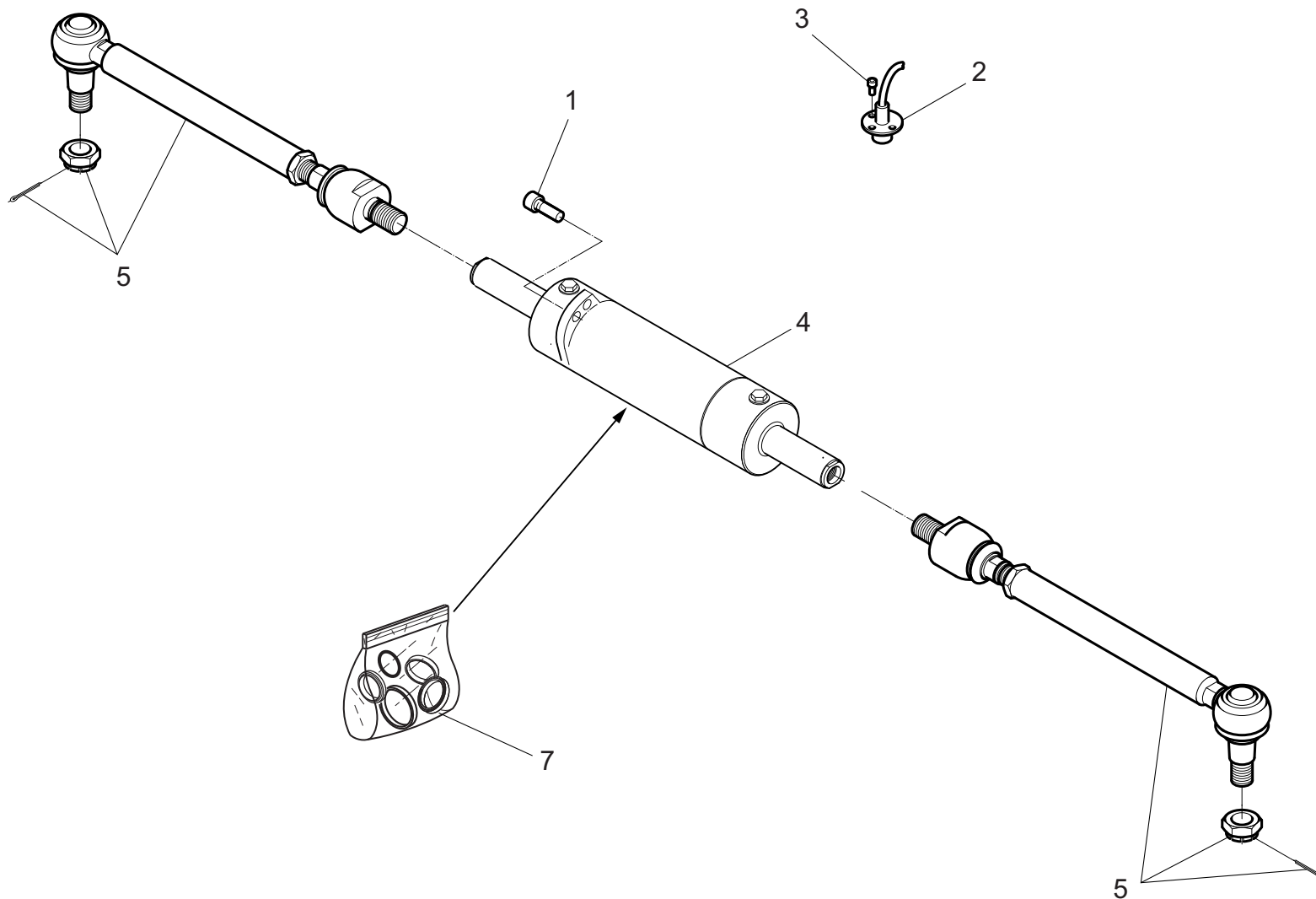
**NUMBER - NUMMER 910277**

**NUMERO**

AXDI  
524

BARRA DI STERZO ASSALE POSTERIORE  
SYSTEME DIRECTION ESSIEU ARRIERE  
REAR AXLE STEERING SYSTEM  
HINTERACHSE LENKSYSTEM  
CONJUNTO DIRECCION EJE TRASERO

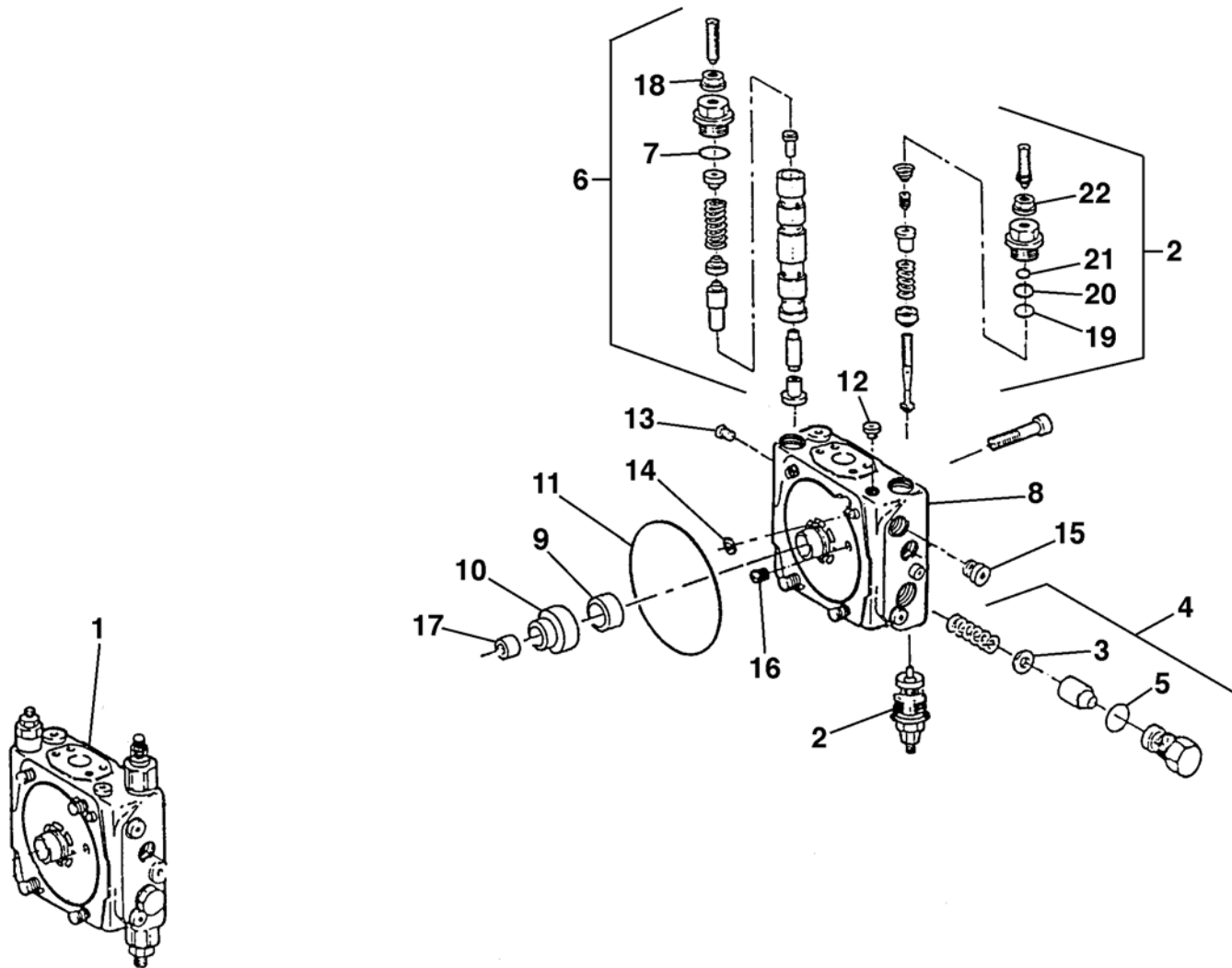
MRT 1840  
Easy - E3



BCDI  
005

PIASTRA DI RACCORDO CON LIMITATORE  
PLAQUE DE RACCORDEMENT AVEC LIMITEUR  
CONNECTION PLATE WITH RELIEF VALVE  
ANSCHLUSSPLATTE DRUCKBEGRENZUNGSVENTIL  
PLACA DE COINEXION Y LIMITADOR

MRT 1840  
Easy - E3



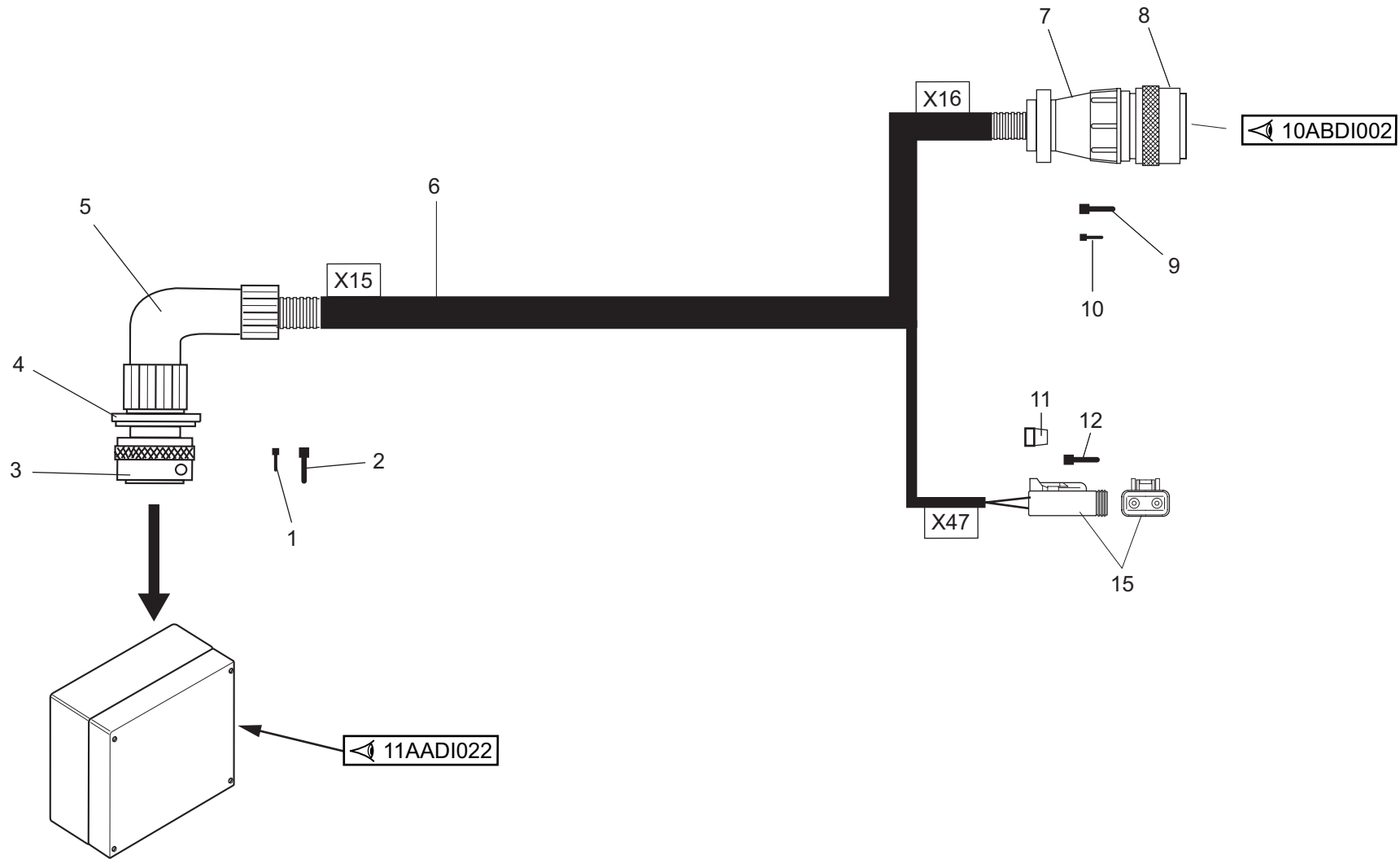


10ABDI  
001

PREDISPOSIZIONE CESTELLO  
PREDISPOSITION NACELLE  
BASKET PREDISPOSITION  
KORB VORBEREITUNG  
PREDISPOSICION CESTO

PREDISPOSITION  
NACELLE

MRT 1840  
Easy - E3



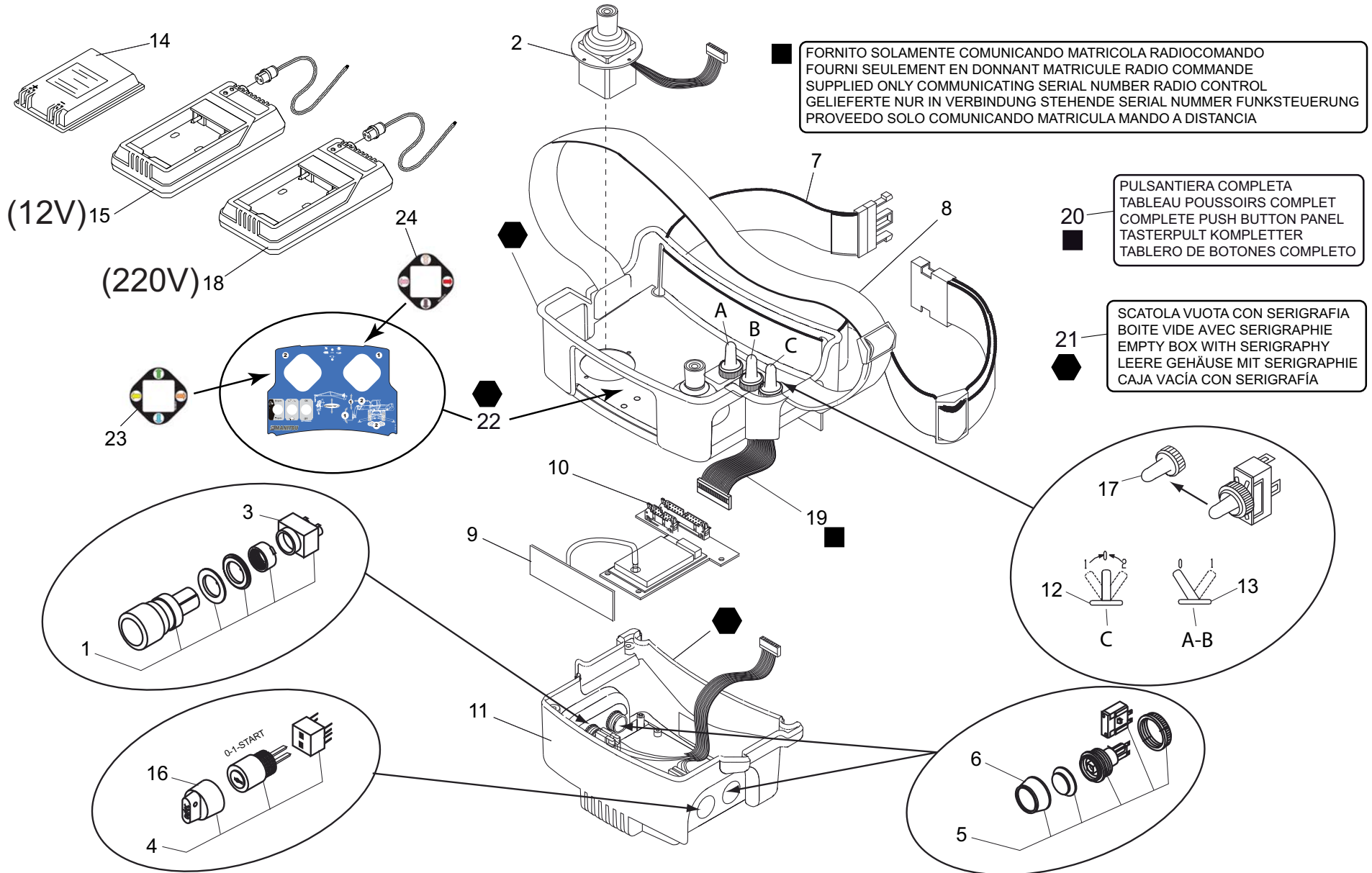


11CBDI  
001

RADIOCOMANDO (TRASMETTITORE)  
RADIO COMMANDE (TRANSMETTEUR)  
RADIO CONTROL (TRANSMITTER)  
FUNKSTEUERUNG (SENDER)  
MANDO A DISTANCIA (TRANSMISOR)

RADIO COMMANDE  
726579

MRT 1840  
Easy - E3



26/09/2012



# OPTIONS

**RADIO COMMANDE (909530)**

**MRT 1840**

**360° - E3**



**CATALOGO RICAMBI  
CATALOGUE PIECES  
PARTS CATALOGUE  
ERSATZTEILKATALOG  
CATALOGO PIEZAS**

| 1/1 | 648633 | RADIOCOMANDO (DETTAGLI)<br>RADIO COMMANDE (DETAILS)<br>RADIO CONTROL (DETAILS)<br>FUNKSTEUERUNG (EINZELTEILE)<br>MANDO A DISTANCIA (DETALLES) |              |             |             |               | Quantità<br>Quantity<br>Quantité |             |          |  | Menge<br>Quantità |  | 11CBDI<br>054 |  | 26/09/2012 |
|-----|--------|---|--------------|-------------|-------------|---------------|----------------------------------|-------------|----------|--|-------------------|--|---------------|--|------------|
|     |        | Rep<br>Item   | Part. Number | DESCRIZIONE | DESIGNATION | DESCRIPTION   | BEZEICHNUNG                      | DESCRIPCION | MRT 1840 |  |                   |  |               |  |            |
| 1   | 708219 | vetrino   | vitre        | glass       | glas        | barniz vitreo | 1                                |             |          |  |                   |  |               |  |            |
| 2   | 672047 | interruttore  | interrupteur | switch      | schalter    | interruptor   | 1                                |             |          |  |                   |  |               |  |            |
| 3   | 510118 | lampadina   | lampe        | bulb        | birne       | lamparilla    | 2                                |             |          |  |                   |  |               |  |            |
| 4   | 672142 | vetrino   | vitre        | glass       | glas        | barniz vitreo | 1                                |             |          |  |                   |  |               |  |            |
| 5   | 609761 | interruttore  | interrupteur | switch      | schalter    | interruptor   | 1                                |             |          |  |                   |  |               |  |            |
| 6   | 659191 | interruttore  | interrupteur | switch      | schalter    | interruptor   | 1                                |             |          |  |                   |  |               |  |            |
| 7   | 659192 | interruttore  | interrupteur | switch      | schalter    | interruptor   | 1                                |             |          |  |                   |  |               |  |            |

# INDEX CATALOG n°648633

\*\*\*\*\*

| P.N.   | Page       | Item | Q.ty | P.N.   | Page       | Item | Q.ty | P.N.   | Page       | Item | Q.ty |
|--------|------------|------|------|--------|------------|------|------|--------|------------|------|------|
| 477473 | AXDI026    | 57   | 1    | 478778 | 10AEDIA002 | 26   | 1    | 479764 | 9AADI001   | 44   | 4    |
| 477474 | AXDI007    | 50   | 1    | 478778 | 4AADI010   | 1    | 2    | 479764 | 9AADIA001  | 34   | 4    |
| 477474 | AXDI026    | 50   | 1    | 478787 | 4AADI001   | 72   | 2    | 479764 | 9AADIA001  | 44   | 4    |
| 477474 | AXDIA007   | 50   | 1    | 478859 | 10AGDI010  | 14   | 4    | 479795 | 10AEDI002  | 43   | 1    |
| 477474 | AXDIB007   | 50   | 1    | 478859 | 10AGDIA010 | 14   | 4    | 479795 | 10AEDIA002 | 43   | 1    |
| 477474 | AXDIC007   | 50   | 1    | 478859 | 5BADI004   | 37   | 1    | 479795 | 11CBDI004  | 16   | 1    |
| 477476 | AXDI007    | 30   | 1    | 478859 | 5BADIA004  | 37   | 1    | 479801 | 11AADI006  | 16   | 4    |
| 477476 | AXDI026    | 30   | 1    | 478860 | 9AADI002   | 33   | 4    | 479801 | 11AADI021  | 8    | 4    |
| 477476 | AXDIA007   | 30   | 1    | 478861 | 10AADI001  | 7    | 4    | 479802 | 10ABDI002  | 11   | 1    |
| 477476 | AXDIB007   | 30   | 1    | 478861 | 10AADIA001 | 7    | 4    | 479802 | 10EADI001  | 21   | 8    |
| 477476 | AXDIC007   | 30   | 1    | 478861 | 10AADIB001 | 7    | 4    | 479802 | 11AADI001  | 32   | 4    |
| 477692 | AXDI004    | 33   | 1    | 478861 | 10AHD1001  | 28   | 2    | 479802 | 11AADI002  | 38   | 4    |
| 477692 | AXDI023    | 33   | 1    | 478861 | 10AHDIA001 | 28   | 2    | 479802 | 11AADI006  | 1    | 2    |
| 477692 | AXDIA004   | 33   | 1    | 478861 | 10BADI001  | 24   | 4    | 479802 | 11AADIA001 | 32   | 4    |
| 477760 | APDI146    | 11   | 1    | 478861 | 10BADIA001 | 24   | 4    | 479802 | 11AADIA002 | 38   | 4    |
| 477781 | APDI129    | 2    | 1    | 478861 | 10BADIB001 | 24   | 4    | 479802 | 11AADIB002 | 38   | 4    |
| 477835 | AXDI004    | 29   | 2    | 478861 | 10CCDI001  | 27   | 4    | 479802 | 11CBDI004  | 9    | 1    |
| 477835 | AXDI023    | 29   | 2    | 478861 | 9AADI001   | 47   | 1    | 479802 | 11CBDI053  | 9    | 1    |
| 477835 | AXDIA004   | 29   | 2    | 478861 | 9AADI001   | 47   | 1    | 479802 | 9AADI001   | 37   | 8    |
| 477846 | AXDI002    | 19   | 1    | 478861 | 9AADI006   | 5    | 24   | 479802 | 9AADIA001  | 37   | 8    |
| 477846 | AXDI021    | 19   | 1    | 478861 | 9AADI100   | 15   | 6    | 479841 | 10AADI001  | 37   | 3    |
| 477846 | AXDIA002   | 19   | 1    | 478975 | 11AADI002  | 46   | 3    | 479841 | 10AADIA001 | 37   | 3    |
| 477847 | AXDI003    | 12   | 2    | 478975 | 11AADIA002 | 46   | 3    | 479841 | 10AADIB001 | 37   | 3    |
| 477847 | AXDI022    | 12   | 2    | 478975 | 11AADIB002 | 46   | 3    | 479841 | 9AADI001   | 21   | 23   |
| 477847 | AXDI503    | 12   | 2    | 478975 | 11CCDI001  | 28   | 2    | 479841 | 9AADI006   | 6    | 24   |
| 477847 | AXDI522    | 12   | 2    | 478975 | 8ADDI002   | 13   | 6    | 479841 | 9AADIA001  | 21   | 23   |
| 477847 | AXDIA003   | 12   | 2    | 479016 | 4AADI010   | 31   | 3    | 479845 | 10AADI010  | 19   | 1    |
| 477847 | AXDIA503   | 12   | 2    | 479016 | 4ABDI001   | 10   | 8    | 479845 | 10AADIA010 | 19   | 1    |
| 477847 | AXDIB003   | 12   | 2    | 479016 | 4ABDIA001  | 10   | 8    | 479845 | 10AADIB010 | 19   | 1    |
| 477847 | AXDIB503   | 12   | 2    | 479016 | 4ABDIB001  | 10   | 8    | 479937 | 10AHD1001  | 27   | 6    |
| 477847 | AXDIC003   | 12   | 2    | 479126 | 5BADI003   | 20   | 2    | 479937 | 10AHDIA001 | 27   | 6    |
| 477847 | AXDIC503   | 12   | 2    | 479126 | 5BADIA003  | 20   | 2    | 480141 | 10AEDIA006 | 29   | 1    |
| 477967 | 10DADI001  | 4    | 1    | 479141 | 10ABDI002  | 7    | 2    | 480141 | 10AGDI010  | 23   | 4    |
| 477967 | 10DADIA001 | 4    | 1    | 479141 | 11AADI002  | 58   | 1    | 480141 | 10AGDIA010 | 23   | 4    |
| 477967 | 10DADIB001 | 4    | 1    | 479141 | 11AADIA002 | 58   | 1    | 480158 | 10AADI001  | 45   | 3    |
| 477968 | 10DADI001  | 5    | 1    | 479141 | 11AADIB002 | 58   | 1    | 480158 | 10AADI010  | 12   | 4    |
| 477968 | 10DADIA001 | 5    | 1    | 479141 | 4ABDI001   | 80   | 2    | 480158 | 10AADIA001 | 45   | 1    |
| 477968 | 10DADIB001 | 5    | 1    | 479141 | 4ABDIA001  | 80   | 2    | 480158 | 10AADIA010 | 12   | 5    |
| 477969 | 10DADI001  | 7    | 1    | 479141 | 4ABDIB001  | 80   | 2    | 480158 | 10AADIB001 | 45   | 1    |
| 477969 | 10DADIA001 | 7    | 1    | 479153 | 5BADI003   | 52   | 2    | 480158 | 10AADIB010 | 12   | 5    |
| 477969 | 10DADIB001 | 7    | 1    | 479153 | 5BADIA003  | 52   | 2    | 480158 | 10AEDI001  | 24   | 2    |
| 478022 | AXDI007    | 5    | X    | 479159 | 8ADDI002   | 2    | 4    | 480158 | 10AEDI002  | 2    | 9    |
| 478022 | AXDI026    | 5    | X    | 479450 | 5BADI003   | 31   | 1    | 480158 | 10AADIA001 | 24   | 2    |
| 478022 | AXDIA007   | 5    | X    | 479450 | 5BADIA003  | 31   | 1    | 480158 | 10AEDIA002 | 2    | 9    |
| 478022 | AXDIB007   | 5    | X    | 479467 | 6AADI001   | 23   | 4    | 480158 | 10AGDI020  | 20   | 7    |
| 478022 | AXDIC007   | 5    | X    | 479467 | 6AADIA001  | 23   | 4    | 480158 | 10AGDIA020 | 20   | 4    |
| 478501 | 4ABDI001   | 21   | 2    | 479467 | 6AADIB001  | 23   | 4    | 480158 | 10AHD1001  | 5    | 9    |
| 478501 | 4ABDIA001  | 21   | 2    | 479656 | 4AADI010   | 3    | 4    | 480158 | 10AHDIA001 | 5    | 9    |
| 478501 | 4ABDIB001  | 21   | 2    | 479662 | 10AADI001  | 48   | 2    | 480158 | 10BADI001  | 36   | 6    |
| 478512 | 10CFDI016  | 5    | 1    | 479662 | 10AADIA001 | 48   | 2    | 480158 | 10BADIA001 | 36   | 6    |
| 478512 | 10CFDIA016 | 5    | 1    | 479662 | 10AADIB001 | 48   | 2    | 480158 | 10BADIB001 | 36   | 6    |
| 478560 | 4AADI001   | 30   | 2    | 479722 | 10AGDI010  | 2    | 8    | 480161 | 8ABDI003   | 21   | 2    |
| 478560 | 5BADI002   | 41   | 1    | 479722 | 10AGDIA010 | 2    | 8    | 480283 | 4AADI001   | 39   | 4    |
| 478560 | 5BADIA002  | 41   | 1    | 479722 | 5BADI004   | 35   | 2    | 480304 | 4AADI001   | 70   | 1    |
| 478567 | 8ABDI003   | 22   | 2    | 479722 | 5BADIA004  | 35   | 2    | 480366 | 5BADI003   | 47   | 2    |
| 478570 | 9AADI001   | 25   | 6    | 479726 | 5BADI001   | 30   | 2    | 480366 | 5BADI004   | 14   | 4    |
| 478570 | 9AADI002   | 19   | 3    | 479726 | 5BADIA001  | 30   | 2    | 480366 | 5BADIA003  | 47   | 2    |
| 478570 | 9AADIA001  | 25   | 6    | 479762 | 10AADI001  | 74   | 6    | 480366 | 5BADIA004  | 14   | 4    |
| 478572 | 4ABDI001   | 25   | 8    | 479762 | 10AADIA001 | 74   | 6    | 480449 | 5BADI004   | 36   | 1    |
| 478572 | 4ABDIA001  | 25   | 8    | 479762 | 10AADIB001 | 74   | 6    | 480449 | 5BADIA004  | 36   | 1    |
| 478572 | 4ABDIB001  | 25   | 8    | 479762 | 9AADI001   | 31   | 4    | 482430 | 11AADI002  | 2    | 1    |
| 478572 | 9AADI001   | 30   | 2    | 479762 | 9AADIA001  | 31   | 4    | 482430 | 11AADIA002 | 2    | 1    |
| 478572 | 9AADIA001  | 30   | 2    | 479764 | 10AADI001  | 78   | 4    | 482430 | 11AADIB002 | 2    | 1    |
| 478639 | 6BADI001   | 44   | 2    | 479764 | 10AADIA001 | 78   | 4    | 482535 | 10AADI001  | 46   | 8    |
| 478647 | 10AADI001  | 26   | 3    | 479764 | 10AADIB001 | 78   | 4    | 482535 | 10AADIA001 | 46   | 8    |
| 478778 | 10AEDI002  | 26   | 1    | 479764 | 9AADI001   | 34   | 4    | 482535 | 10AADIB001 | 46   | 8    |

# INDEX CATALOG n°648633

\*\*\*\*\*

| P.N.   | Page       | Item | Q.ty | P.N.   | Page       | Item | Q.ty | P.N.   | Page       | Item | Q.ty |
|--------|------------|------|------|--------|------------|------|------|--------|------------|------|------|
| 564244 | AXDIB007   | 23   | 1    | 564771 | 8ABDI004   | 31   | 1    | 568687 | 11AADIA001 | 30   | 1    |
| 564244 | AXDIC007   | 23   | 1    | 564801 | 8ABDI002   | 35   | 1    | 568688 | 11AADI001  | 29   | 1    |
| 564245 | AXDI007    | 38   | 1    | 564801 | 8ABDI005   | 31   | 2    | 568688 | 11AADIA001 | 29   | 1    |
| 564245 | AXDI026    | 38   | 1    | 564898 | AXDI003    | 19   | 2    | 568752 | 11AADI004  | 2    | 1    |
| 564245 | AXDIA007   | 38   | 1    | 564898 | AXDI022    | 19   | 2    | 568968 | 10ABDI001  | 15   | 1    |
| 564245 | AXDIB007   | 38   | 1    | 564898 | AXDI503    | 19   | 2    | 568968 | 10ABDI009  | 14   | 1    |
| 564245 | AXDIC007   | 38   | 1    | 564898 | AXDI522    | 19   | 2    | 568968 | 11AADI012  | 25   | 1    |
| 564246 | AXDI007    | 43   | 1    | 564898 | AXDIA003   | 19   | 2    | 568968 | 11AADI014  | 19   | 1    |
| 564246 | AXDI026    | 43   | 1    | 564898 | AXDIA503   | 19   | 2    | 568968 | 11AADI016  | 13   | 1    |
| 564246 | AXDIA007   | 43   | 1    | 564898 | AXDIB003   | 19   | 2    | 568968 | 11AADI031  | 10   | 1    |
| 564246 | AXDIB007   | 43   | 1    | 564898 | AXDIB503   | 19   | 2    | 568968 | 11AADI032  | 1    | 6    |
| 564246 | AXDIC007   | 43   | 1    | 564898 | AXDIC003   | 19   | 2    | 568968 | 11AADI035  | 6    | 2    |
| 564247 | AXDI007    | 41   | 1    | 564898 | AXDIC503   | 19   | 2    | 568968 | 11AADI037  | 1    | 3    |
| 564247 | AXDI026    | 41   | 1    | 564903 | AXDI003    | 18   | 2    | 568968 | 11AADI041  | 5    | 2    |
| 564247 | AXDIA007   | 41   | 1    | 564903 | AXDI022    | 18   | 2    | 568968 | 11AADI042  | 1    | 7    |
| 564247 | AXDIB007   | 41   | 1    | 564903 | AXDI503    | 18   | 2    | 568968 | 11AADI105  | 14   | 1    |
| 564247 | AXDIC007   | 41   | 1    | 564903 | AXDI522    | 18   | 2    | 568968 | 11AADIA037 | 1    | 3    |
| 564248 | AXDI007    | 59   | 1    | 564903 | AXDIA003   | 18   | 2    | 568968 | 11CBDI053  | 16   | 1    |
| 564248 | AXDIA007   | 59   | 1    | 564903 | AXDIA503   | 18   | 2    | 568968 | 11CCDI001  | 33   | 4    |
| 564248 | AXDIB007   | 59   | 1    | 564903 | AXDIB003   | 18   | 2    | 568968 | 11CDDI001  | 11   | 2    |
| 564248 | AXDIC007   | 59   | 1    | 564903 | AXDIB503   | 18   | 2    | 568969 | 10ABDI009  | 10   | 2    |
| 564250 | AXDI007    | 31   | 1    | 564903 | AXDIC003   | 18   | 2    | 568969 | 11AADI001  | 14   | 2    |
| 564250 | AXDI026    | 31   | 1    | 564903 | AXDIC503   | 18   | 2    | 568969 | 11AADI002  | 54   | 1    |
| 564250 | AXDIA007   | 31   | 1    | 564907 | 8ABDI003   | 17   | 1    | 568969 | 11AADI004  | 10   | 1    |
| 564250 | AXDIB007   | 31   | 1    | 565485 | 8ABDI005   | 7    | 2    | 568969 | 11AADI012  | 14   | 1    |
| 564250 | AXDIC007   | 31   | 1    | 565650 | AXDI004    | 47   | 1    | 568969 | 11AADI014  | 26   | 1    |
| 564551 | APDI173    | 4    | 2    | 565650 | AXDI023    | 47   | 1    | 568969 | 11AADI035  | 18   | 1    |
| 564584 | AXDI503    | 3    | 1    | 565650 | AXDIA004   | 47   | 1    | 568969 | 11AADI041  | 10   | 1    |
| 564584 | AXDIA503   | 3    | 1    | 565998 | AXDI003    | 34   | 2    | 568969 | 11AADI045  | 8    | 1    |
| 564584 | AXDIB503   | 3    | 1    | 565998 | AXDI022    | 34   | 2    | 568969 | 11AADI105  | 24   | 1    |
| 564584 | AXDIC503   | 3    | 1    | 565998 | AXDI503    | 34   | 2    | 568969 | 11AADIA001 | 14   | 2    |
| 564594 | 8ABDI002   | 41   | 2    | 565998 | AXDI522    | 34   | 2    | 568969 | 11AADIA002 | 54   | 1    |
| 564618 | 8ABDI001   | 3    | 1    | 565998 | AXDIA003   | 34   | 2    | 568969 | 11AADIA045 | 8    | 1    |
| 564618 | 8ABDI004   | 7    | 1    | 565998 | AXDIA503   | 34   | 2    | 568969 | 11AADIB002 | 54   | 1    |
| 564679 | AXDI003    | 57   | 2    | 565998 | AXDIB003   | 34   | 2    | 568969 | 11CBDI004  | 11   | 1    |
| 564679 | AXDI022    | 57   | 2    | 565998 | AXDIB503   | 34   | 2    | 568969 | 11CBDI053  | 11   | 2    |
| 564679 | AXDI503    | 57   | 2    | 565998 | AXDIC003   | 34   | 2    | 568969 | 6BADI001   | 68   | 1    |
| 564679 | AXDI522    | 57   | 2    | 565998 | AXDIC503   | 34   | 2    | 568969 | 6BADIA001  | 68   | 1    |
| 564679 | AXDIA003   | 57   | 2    | 566248 | 11AADI007  | 51   | 1    | 568969 | 6BADIB001  | 68   | 1    |
| 564679 | AXDIA503   | 57   | 2    | 566248 | 11AADIA007 | 51   | 1    | 568970 | 10ABDI009  | 18   | 2    |
| 564679 | AXDIB003   | 57   | 2    | 566270 | 12AADI002  | 5    | 1    | 568970 | 11AADI001  | 12   | 2    |
| 564679 | AXDIB503   | 57   | 2    | 566353 | 6BBDI001   | 42   | 1    | 568970 | 11AADI002  | 55   | 1    |
| 564679 | AXDIC003   | 57   | 2    | 566538 | 9AADI003   | 11   | 2    | 568970 | 11AADI004  | 16   | 1    |
| 564679 | AXDIC503   | 57   | 2    | 567116 | 10AHD1001  | 16   | 1    | 568970 | 11AADI012  | 15   | 1    |
| 564680 | AXDI003    | 57   | 2    | 567116 | 10AHDIA001 | 16   | 1    | 568970 | 11AADI014  | 22   | 1    |
| 564680 | AXDI022    | 57   | 2    | 567494 | 5BADI002   | 26   | 4    | 568970 | 11AADI035  | 19   | 1    |
| 564680 | AXDI503    | 57   | 2    | 567494 | 5BADI003   | 35   | 6    | 568970 | 11AADI041  | 12   | 1    |
| 564680 | AXDI522    | 57   | 2    | 567494 | 5BADI004   | 30   | 6    | 568970 | 11AADI045  | 9    | 1    |
| 564680 | AXDIA003   | 57   | 2    | 567494 | 5BADIA002  | 26   | 4    | 568970 | 11AADI105  | 25   | 1    |
| 564680 | AXDIA503   | 57   | 2    | 567494 | 5BADIA003  | 35   | 6    | 568970 | 11AADIA001 | 12   | 2    |
| 564680 | AXDIB003   | 57   | 2    | 567494 | 5BADIA004  | 30   | 6    | 568970 | 11AADIA002 | 55   | 1    |
| 564680 | AXDIB503   | 57   | 2    | 567794 | 10ABDI007  | 1    | 1    | 568970 | 11AADIA045 | 9    | 1    |
| 564680 | AXDIC003   | 57   | 2    | 567867 | 9AADI001   | 1    | 1    | 568970 | 11AADIB002 | 55   | 1    |
| 564680 | AXDIC503   | 57   | 2    | 567867 | 9AADIA001  | 1    | 1    | 568970 | 11CBDI004  | 13   | 1    |
| 564681 | AXDI003    | 57   | 2    | 567868 | 9AADI001   | 15   | 2    | 568970 | 11CBDI053  | 13   | 2    |
| 564681 | AXDI022    | 57   | 2    | 567868 | 9AADIA001  | 15   | 2    | 568970 | 6BADI001   | 69   | 1    |
| 564681 | AXDI503    | 57   | 2    | 568272 | 10ABDI009  | 7    | 6    | 568970 | 6BADIA001  | 69   | 1    |
| 564681 | AXDI522    | 57   | 2    | 568272 | 11AADI002  | 8    | 4    | 568970 | 6BADIB001  | 69   | 1    |
| 564681 | AXDIA003   | 57   | 2    | 568272 | 11AADI004  | 6    | 2    | 568971 | 10ABDI001  | 11   | 1    |
| 564681 | AXDIA503   | 57   | 2    | 568272 | 11AADIA002 | 8    | 4    | 568971 | 10ABDI009  | 16   | 1    |
| 564681 | AXDIB003   | 57   | 2    | 568272 | 11AADIB002 | 8    | 4    | 568971 | 11AADI012  | 37   | 1    |
| 564681 | AXDIB503   | 57   | 2    | 568272 | 8ACDI005   | 3    | 2    | 568971 | 11AADI014  | 20   | 1    |
| 564681 | AXDIC003   | 57   | 2    | 568330 | 11AADI012  | 12   | 1    | 568971 | 11AADI016  | 21   | 1    |
| 564681 | AXDIC503   | 57   | 2    | 568552 | 10AGDI020  | 14   | 1    | 568971 | 11AADI031  | 11   | 1    |
| 564744 | 11AADI001  | 35   | 2    | 568686 | 11AADI022  | 22   | 1    | 568971 | 11AADI032  | 3    | 6    |
| 564744 | 11AADIA001 | 35   | 2    | 568687 | 11AADI001  | 30   | 1    | 568971 | 11AADI035  | 17   | 2    |

CLICK HERE TO **DOWNLOAD** THE COMPLETE MANUAL

- Thank you very much for reading the preview of the manual.
- You can download the complete manual from: [www.heydownloads.com](http://www.heydownloads.com) by clicking the link below



- Please note: If there is no response to CLICKING the link, please download this PDF first and then click on it.

CLICK HERE TO **DOWNLOAD** THE COMPLETE MANUAL