



**250X3 - EX
EXCAVATOR
PARTS MANUAL**

**250X3 - EX
EXCAVATOR
PARTS MANUAL**

Book Number: 2254
Printed in USA



CLICK HERE TO **DOWNLOAD** THE COMPLETE MANUAL

- Thank you very much for reading the preview of the manual.
- You can download the complete manual from: www.heydownloads.com by clicking the link below



- Please note: If there is no response to CLICKING the link, please download this PDF first and then click on it.

CLICK HERE TO **DOWNLOAD** THE COMPLETE MANUAL

7. Part number
8. Part name
9. Quantity of the part required per assembly
10. Inner parts breakdown, an asterisk (*) appears in this column if there is a page in the inner part section
11. Manufacturer's serial number for which the part is used
12. Interchangeability of a part

Interchangeability between the part in the part number column and that in the replaceable part column is defined with the symbols as shown below:

- = : Replaceable part (13) can be used in lieu of the part entered in the part no (7). Part entered in the part no can be also used in lieu of the replaceable part
- < : Replaceable part (13) can be used in lieu of the part entered in the part no (7). Part entered in the part no cannot be used in lieu of the replaceable part
- / : Replaceable part (13) can be used in lieu of the part entered in the part no (7). Replaceable part cannot be used in lieu of the part entered in the part no
- X : Part entered in the part no (7) cannot be used in lieu of the replaceable part (13). Replaceable part cannot be used in lieu of the part entered in the part no

13. Replacement part
14. Parts manual machine number
15. Page number

Title	Parts Page Code	Rev Level	Serial #	Part #	OPT	Series	Page #
-------	-----------------	-----------	----------	--------	-----	--------	--------

LOWERS

GROUSER SHOES 3-BAR (600MM) SEALED	DA0219L0011-00	003	01101 -			EX	2
GROUSER SHOES 3-BAR (700MM) SEALED	DA0221L0005-00	004	01101 -			EX	4
GROUSER SHOES 3-BAR (800MM) SEALED	DA02A5L0005-00	004	01101 -			EX	6
LOWER UNDER COVER	DA0301L0012-00	001	01101 -			EX	8
CENTER GUARD	DA0501L0006-00	003	01101 -			EX	10
TRACK GUARD (TRIPLE)	DA3805L0003-00	003	01101 -			EX	12
CENTER JOINT	DA8901L0028-00	002	01101 -			EX	14
RECOIL SPRINGS	DA9401L0039-00	001	01101 -			EX	16
TRACTION EQUIPMENT	DAA801L0035-00	000	01101 -			EX	18
LOWER FRAME	DAE901L0074-00	005	01101 -			EX	20
TRACTION MOTOR LINES	DAK301L0009-00	001	01101 -			EX	22
UPPER ROLLERS	DAN401L0014-00	005	01101 -			EX	24
TAKE-UP ROLLERS	DAN701L0022-00	000	01101 -			EX	26
LOWER ROLLERS	DAP201L0024-00	003	01101 -			EX	28

CENTER GUARD	DA0501L0006-00	003
--------------	----------------	-----

EX - 250 X3 EXCAVATOR 01101

Item	Parent	Part No.	Description	Qty	BKD	Serial	ICA	Replacement
1		KRA13770	GUARD;CENTER	2		01002 -		
2		105R018Y060R	BOLT;SEMS	8		01002 -		

--	--

LOWER FRAME	DAE901L0074-00	005
-------------	----------------	-----

EX - 250 X3 EXCAVATOR 01101

Item	Parent	Part No.	Description	Qty	BKD	Serial	ICA	Replacement
1		KBA13430	FRAME;LOWER	1		01002 -		
2		M01X0831	PLUG	1		01101 -		
3		KRA1553	COVER;MOTOR	2		01101 -		
4		KHN1398	BOLT(WITH WASHER)	8		01101 -		

--	--

Title	Parts Page Code	Rev Level	Serial #	Part #	OPT	Series	Page #
-------	-----------------	-----------	----------	--------	-----	--------	--------

SWING FRAMES

COUNTER WEIGHT	DB0199L0163-00	001	01101 -			EX	32
UPPER UNDERCOVERS	DB0201L0103-00	000	01101 -			EX	34
TURN TABLE BEARING	DB1001L0025-00	000	01101 -			EX	36
REVOLVING FRAME (LR)	DBA201L0159-00	002	01101 -			EX	38

Title	Parts Page Code	Rev Level	Serial #	Part #	OPT	Series	Page #
-------	-----------------	-----------	----------	--------	-----	--------	--------

REVOLVING SHAFTS AND EQUIPMENT

REVOLVING EQUIPMENT	DC4501L0048-00	001	01101 -			EX	42
---------------------	----------------	-----	---------	--	--	----	----

This page intentionally left blank.

AIR CLEANER (W/ PRE CLEANER)	DH0602L0056-00	000
------------------------------	----------------	-----

EX - 250 X3 EXCAVATOR 01101

Item	Parent	Part No.	Description	Qty	BKD	Serial	ICA	Replacement
1		KRH13530	CLEANER;AIR	1		01101 -		
2	1	KBH0921	ELEMENT;AIR CLEANER	1		01101 -		
3	1	KBH0922	ELEMENT;AIR CLEANER	1		01101 -		
4	1	KBH0923	COVER	1		01101 -		
5	1	KBH0924	VALVE;SPL	1		01101 -		
6	1	KTH0581	LABEL;SPL	1		01101 -		
7	1	KSH0935	NIPPLE	1		01101 -		
8		105R010Y025R	BOLT;SEMS	4		01101 -		
9		KHH13870	ELBOW	1		01101 -		
10		KHH10330	SENSOR;VACUUM	1		01101 -		
11		KRH13600	HOSE;AIR	1		01101 -		
12		KSJ0159	CLIP;JUBILEE	2		01101 -		
13		KRH13610	BRACKET	1		01101 -		
14		KHH14100	BOLT;SPL	2		01101 -		
15		182-004SR	WASHER;PLAIN	2		01101 -		
16		KHN1079	BOLT(WITH WASHER)	2		01101 -		
17		KRH13620	HOSE;AIR	1		01101 -		
18		KSJ0159	CLIP;JUBILEE	1		01101 -		
19		KHH13210	CLAMP;HOSE	1		01101 -		
20		KHH13120	CLEANER;PRE (BLACK)	1		01101 -		
21		KRH12040	HOSE;AIR	1		01101 -		
22		UHA0316	CLIP	2		01101 -		
23		KBH12210	BRACKET	1		01101 -		
24		KHN1079	BOLT(WITH WASHER)	4		01101 -		
25		KRH12050	SEAL;CUSHION	1		01101 -		

--	--

Title	Parts Page Code	Rev Level	Serial #	Part #	OPT	Series	Page #
-------	-----------------	-----------	----------	--------	-----	--------	--------

CONTROL & LINES

SINGLE PEDAL CONTROL	DJ4101L0003-00	001	01101 -			EX	74
SERVICE VALVE CONTROL (R)	DJ5801L0021-00	000	01101 -			EX	76
JOYSTICK CONTROLS	DJ6201L0097-00	002	01101 -			EX	78
DRAIN LINES	DJAH01L0145-00	001	01101 -			EX	80
BUCKET & ARM LINES	DJAQ01L0049-00	000	01101 -			EX	82
PILOT PRESSURE & RETURN LINES	DJBC01L0169-00	001	01101 -			EX	84
BOOM LINES	DJBV01L0057-00	000	01101 -			EX	94
SUMP TANK	DJE701L0031-00	006	01101 -			EX	96
RETURN & OIL COOLER LINES	DJEE01L0083-00	002	01101 -			EX	100
CONTROL VALVE MOUNTING (STD)	DJG201L0141-00	000	01101 -			EX	102
CONTROL VALVE MOUNTING (W/ 2ND OPT.)	DJG201L0142-00	000	01101 -			EX	104
FREE SWING LINES	DJGX01L0020-00	001	01101 -			EX	106
PILOT CONTROL LINES (HBCV)	DJHC01L0212-00	001	01101 -			EX	110
PILOT CONTROL LINES (W/ SELECTOR VALVE)	DJHC01L0213-00	001	01101 -			EX	112
2ND OPT. AUX. HYD. LINES (W/ SOLENOID VLV.)	DJHF02L0005-00	001	01101 -			EX	122
PLUG	DJK401L0295-00	000	01101 -			EX	126
PLUG STD	DJK401L0601-00	000	01101 -			EX	128
PLUG	DJK401L0602-00	000	01101 -			EX	130
PLUG	DJK401L0604-00	000	01101 -			EX	132
PLUG	DJK401L0609-00	000	01101 -			EX	134
PLUG	DJK401L0610-00	000	01101 -			EX	136
PLUG	DJK401L0611-00	000	01101 -			EX	138
PLUG	DJK401L0612-00	000	01101 -			EX	140
PLUG	DJK401L0624-00	000	01101 -			EX	142
SINGLE ACTING AUX. HYD. LINES (PEDAL)	DJKX01L0084-00	000	01101 -			EX	144
SINGLE ACTING AUX. HYD. LINES (JOYSTICK)	DJKX01L0085-00	000	01101 -			EX	150
DOUBLE ACTING AUX. HYD. LINES (JOYSTICK)	DJKY01L0073-00	000	01101 -			EX	156
MULTI-ACTING AUX. HYD. LINES	DJKZ01L0101-00	001	01101 -			EX	162
MULTI-ACTING AUX. HYD. LINES (IN CAB PRES. CTRL)	DJKZ01L0132-00	000	01101 -			EX	168
HYDRAULIC PUMP MOUNTING (STD)	DJL901L0125-00	001	01101 -			EX	176
HYDRAULIC PUMP MOUNTING (W/ 2ND OPT.)	DJL901L0128-00	000	01101 -			EX	178
FLOOR MAT (STD)	DJM101L0102-00	000	01101 -			EX	180
FLOOR MAT (W/ SERVICE VALVE)	DJM101L0103-00	000	01101 -			EX	182
PRESSURE LINES	DJP801L0067-00	000	01101 -			EX	184

DRAIN LINES	DJAH01L0145-00	001
-------------	----------------	-----

EX - 250 X3 EXCAVATOR 01101

Item	Parent	Part No.	Description	Qty	BKD	Serial	ICA	Replacement
1		KHJ0344	ELBOW	1		01101 -		
2	1	UBJ0158	O-RING	1		01101 -		
3		KAJ2420	HOSE;HYD	1		01101 -		
4		KNJ0605	ADAPTER;HOSE	1		01101 -		
5	4	UBJ0158	O-RING	1		01101 -		
6		KHJ0350	ELBOW	1		01101 -		
7	6	UBJ0157	O-RING	1		01101 -		
8		CPJ0734	HOSE;HYD	1		01101 -		
9		KHJ1024	TEE	1		01101 -		
10	9	UBJ0157	O-RING	1		01101 -		
11		KNJ2338	HOSE;HYD	1		01101 -		
12		KHJ0350	ELBOW	1		01101 -		
13	12	UBJ0157	O-RING	1		01101 -		

--	--

PILOT PRESSURE & RETURN LINES	DJBC01L0169-00	001
-------------------------------	----------------	-----

EX - 250 X3 EXCAVATOR 01101

Item	Parent	Part No.	Description	Qty	BKD	Serial	ICA	Replacement
77		KNJ0758	ADAPTER;HOSE	2		01101 -		
78	77	UEJ0360	O-RING	2		01101 -		
79		KAJ2176	ADAPTER;HOSE	1		01101 -		
80	79	BRP0007	O-RING	1		01101 -		
81		KBJ14770	HOSE ASSY	1		01101 -		
82	81	KHJ2163	HOSE;NYLON	1		01101 -		
83	81	KHJ2190	HOSE;NYLON	1		01101 -		
84	81	KHJ2309	HOSE;NYLON	1		01002 -		
85	81	KHJ11170	HOSE;NYLON	1		01101 -		
86		KHR2584	CLAMP	1		01101 -		
87		KHJ1215	BOLT M8X25(WITH WASHER)	1		01101 -		
88		KHR10220	CLAMP;SPL	1		01101 -		
89		KHH0142	BAND;HARNESS	4		01002 -		
90		KHH0143	BAND;HARNESS	1		01101 -		
91		KHJ12530	TEE	1		01101 -		
92		KHJ0341	ELBOW	1		01101 -		
93	92	UEJ0360	O-RING	1		01101 -		
94		KHJ0348	ELBOW	1		01101 -		
95	94	UEJ0360	O-RING	1		01101 -		
96		KBJ15440	HOSE ASSY	1		01101 -		
97	96	KHJ2692	HOSE;HYD	1		01101 -		
98	96	KHJ1231	HOSE;HYD	1		01101 -		
99		KHJ0341	ELBOW	1		01101 -		
100	99	UEJ0360	O-RING	1		01101 -		
101		KHJ0348	ELBOW	1		01101 -		
102	101	UEJ0360	O-RING	1		01101 -		
103		KRJ16150	BRACKET	1		01101 -		
104		105R008Y020R	BOLT;SEMS	2		01101 -		
105		KHR2581	CLAMP	5		01002 -		
106		KHJ1215	BOLT M8X25(WITH WASHER)	5		01101 -		
107		KHH0142	BAND;HARNESS	3		01101 -		
108		KBJ16600	HOSE ASSY	1		01002 -		
109	108	KHJ2167	HOSE;NYLON	1		01002 -		
110	108	KHJ2134	HOSE;NYLON	1		01002 -		
111		CNA0584	NIPPLE	1		01002 -		
112		KHJ0341	ELBOW	1		01002 -		
113	112	UEJ0360	O-RING	1		01002 -		
114		KNJ0758	ADAPTER;HOSE	1		01002 -		

--	--

RETURN & OIL COOLER LINES	DJEE01L0083-00	002
---------------------------	----------------	-----

EX - 250 X3 EXCAVATOR 01101

Item	Parent	Part No.	Description	Qty	BKD	Serial	ICA	Replacement
1		KRJ10950	TUBE;ASSY	1		01101 -		
2	1	KHJ0363	PLUG	1		01101 -		
3	2	UEJ0360	O-RING	1		01101 -		
4		BCJ0528	O-RING	1		01101 -		
5		KRJ3515	VALVE;CHECK	1		01101 -		
6		108R010Y060R	BOLT;HEX SOC HD	4		01101 -		
7		KSJ0837	HOSE	1		01101 -		
8		KEJ0335	CLIP;JUBILEE	4		01101 -		
9		KBJ16410	TUBE;ASSY	1		01002 -		
10		UBA0151	O-RING	1		01101 -		
11		KRJ3823	VALVE;CHECK	1		01101 -		
12		108R010Y060R	BOLT;HEX SOC HD	4		01101 -		
13		KBJ16400	TUBE;ASSY	1		01002 -		
14		KEA0121	O-RING	1		01101 -		
15		108R012Y030R	BOLT;HEX SOC HD	2		01101 -		
18		KSJ0837	HOSE	1		01002 -		
19		KHH0307	CLAMP;HOSE	4		01101 -		
20		KBJ16440	TUBE;ASSY	1		01002 -		
21		105R010Y020R	BOLT;SEMS	2		01101 -		
22		KSJ0837	HOSE	1		01101 -		
23		KHH0307	CLAMP;HOSE	4		01002 -		
24		KBJ16430	TUBE;ASSY	1		01002 -		
25		108R012Y030R	BOLT;HEX SOC HD	2		01101 -		
26		KEA0121	O-RING	1		01101 -		
27		KHJ1547	HOSE	1		01002 -		
28		KHH0308	CLAMP;HOSE	4		01002 -		

--	--

PILOT CONTROL LINES (HBCV)	DJHC01L0212-00	001
----------------------------	----------------	-----

EX - 250 X3 EXCAVATOR 01101

Item	Parent	Part No.	Description	Qty	BKD	Serial	ICA	Replacement
1		KHJ11560	TEE	3		01002 –		
1.01		KHJ12530	TEE	1		01002 –		
1.02		KHJ0915	ADAPTER;HOSE	1		01002 –		
1.03	1.02	UEJ0360	O-RING	1		01002 –		
2		KBJ15450	HOSE ASSY	1		01101 –		
3	2	KHJ24280	HOSE;HYD	1		01101 –		
	2	KHJ25720	HOSE;HYD	1		01101 –		
4	2	KHJ24290	HOSE;HYD	1		01101 –		
5		KBJ15460	HOSE ASSY	1		01101 –		
6	5	KHJ23750	HOSE;HYD	1		01101 –		
	5	KHJ25710	HOSE;HYD	1		01101 –		
7	5	KHJ24270	HOSE;HYD	1		01101 –		
8		KHH0142	BAND;HARNESS	4		01101 –	<	KHH0142
		KHH0142	BAND;HARNESS	6		01101 –		
9		KAR0017	BAND;HARNESS	14		01101 –		

--	--

PILOT CONTROL LINES (W/ SELECTOR VALVE)	DJHC01L0213-00	001
---	----------------	-----

EX - 250 X3 EXCAVATOR 01101

Item	Parent	Part No.	Description	Qty	BKD	Serial	ICA	Replacement
156		KHJ13640	STUD	1		01101 –		
157		KHJ1178	ELBOW	1		01101 –		
158		KHJ0626	STUD	1		01002 –		
15801	158	UEJ0360	O-RING	1		01002 –		
161		KHJ0341	ELBOW	1		01002 –		
162	161	UEJ0360	O-RING	1		01101 –		
163		KHR2581	CLAMP	2		01101 –		
164		KHJ1215	BOLT M8X25(WITH WASHER)	2		01101 –		
165		KHH0143	BAND;HARNESS	1		01101 –		
166		KHH0142	BAND;HARNESS	4		01002 –		

--	--

PLUG	DJK401L0602-00	000
------	----------------	-----

EX - 250 X3 EXCAVATOR 01101

Item	Parent	Part No.	Description	Qty	BKD	Serial	ICA	Replacement
1		BRJ0190	PLUG	1		01101 -		
2	1	UBJ0157	O-RING	1		01101 -		
3		KAJ2434	ADAPTER;HOSE	1		01101 -		
4	3	BHJ0795	O-RING	1		01101 -		
5		KAJ2177	ADAPTER;HOSE	1		01101 -		
6	5	UEJ0360	O-RING	1		01101 -		
7		KHJ2249	HOSE;NYLON	1		01101 -		
8		KHJ0341	ELBOW	2		01101 -		
9	8	UEJ0360	O-RING	2		01101 -		
10		KHR0319	CLAMP;MOUNT	3		01101 -		
11		145N006S008R	SCREW;PAN HD	3		01101 -		
12		KHH0142	BAND;HARNESS	3		01101 -		
13		KHR28600	HARNESS;WIRE	1		01101 -		
14		KHR0319	CLAMP;MOUNT	4		01101 -		
15		145N006S008R	SCREW;PAN HD	4		01101 -		
16		KHH0142	BAND;HARNESS	4		01101 -		
17		KHR1317	CLIP	4		01101 -		
18		105R008Y016R	BOLT;SEMS	4		01101 -		
19		KHJ15060	CAP;SCREW	4		01101 -		
20		KHJ15080	CAP;SCREW	1		01101 -		

--	--

PLUG	DJK401L0612-00	000
------	----------------	-----

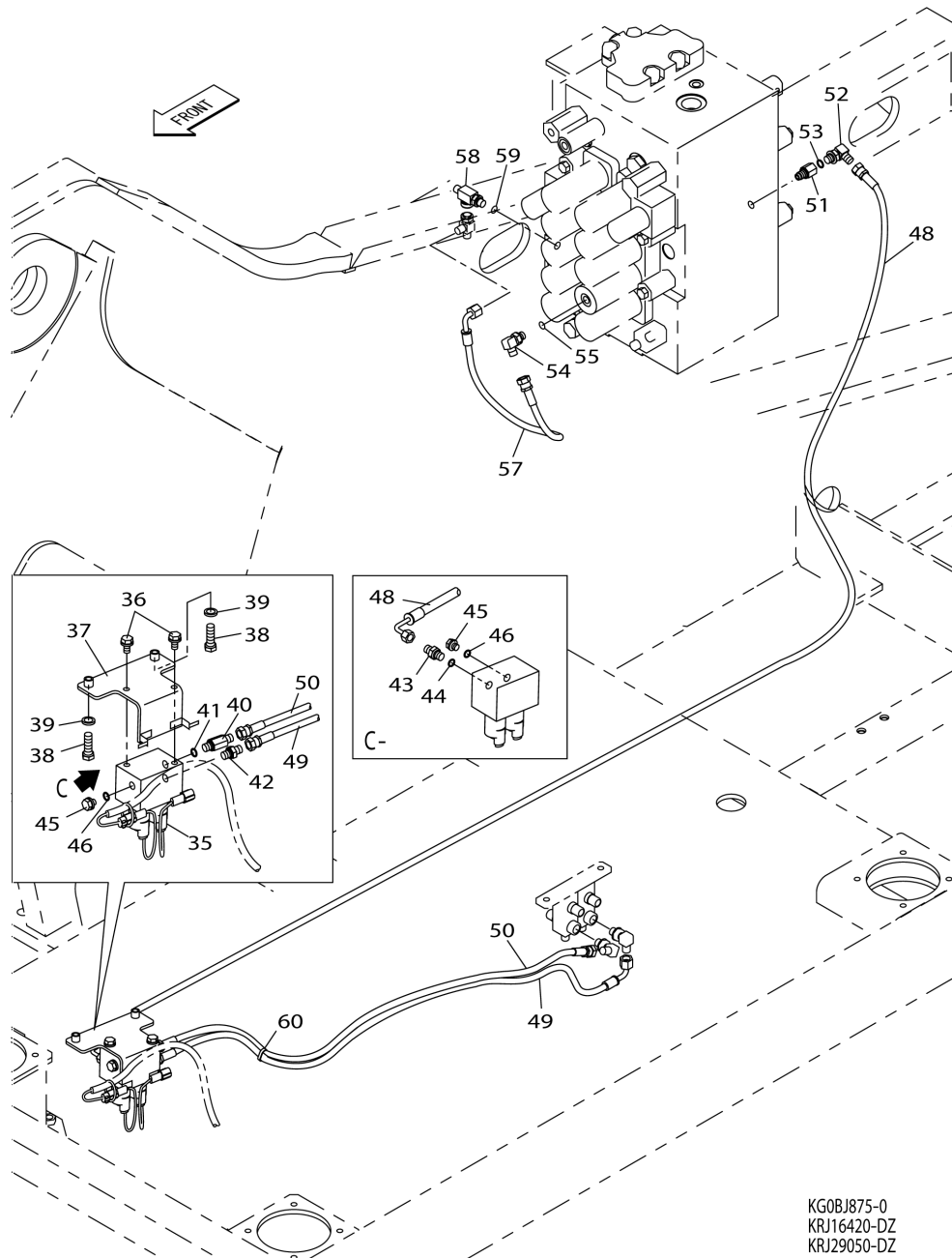
EX - 250 X3 EXCAVATOR 01101

Item	Parent	Part No.	Description	Qty	BKD	Serial	ICA	Replacement
1		KHJ0869	TEE	2		01101 -		
2	1	UEJ0360	O-RING	2		01101 -		
3		KHR0319	CLAMP;MOUNT	3		01101 -		
4		145N006S008R	SCREW;PAN HD	3		01101 -		
5		KHH0142	BAND;HARNESS	3		01101 -		
6		KHR28610	HARNESS;WIRE	1		01101 -		
7		KHR0319	CLAMP;MOUNT	4		01101 -		
8		145N006S008R	SCREW;PAN HD	4		01101 -		
9		KHH0142	BAND;HARNESS	5		01101 -		
10		KHR1317	CLIP	2		01101 -		
11		105R008Y016R	BOLT;SEMS	2		01101 -		
12		KHJ15060	CAP;SCREW	4		01101 -		
13		KHJ15080	CAP;SCREW	3		01101 -		
14		KHJ23010	TEE	1		01101 -		

--	--

EX - 250 X3 EXCAVATOR 01101

47 [48 - 50] 56 [57]



KG0BJ875-0
KRJ16420-DZ
KRJ29050-DZ

DOUBLE ACTING AUX. HYD. LINES (JOYSTICK)	DJKY01L0073-00	000
--	----------------	-----

EX - 250 X3 EXCAVATOR 01101

Item	Parent	Part No.	Description	Qty	BKD	Serial	ICA	Replacement
77	74	KHJ2343	HOSE;NYLON	1		01101 -		
78	74	KHJ21880	HOSE;NYLON	1		01101 -		
79		KHH0142	BAND;HARNESS	1		01101 -		
80		BRP0110	VALVE;RELIEF	2		01002 -		

--	--

MULTI-ACTING AUX. HYD. LINES (IN CAB PRES. CTRL)	DJKZ01L0132-00	000
---	----------------	-----

EX - 250 X3 EXCAVATOR 01101

Item	Parent	Part No.	Description	Qty	BKD	Serial	ICA	Replacement
1		KBJ15870	HOSE;HYD	1		01101 -		
2		KHJ0914	O-RING	1		01101 -		
3		KRJ2682	FLANGE;SPLIT	2		01101 -		
4		108R010Y030R	BOLT;HEX SOC HD	4		01101 -		
5		KHJ1361	O-RING	1		01101 -		
6		KHJ11370	ELBOW	1		01101 -		
7	6	BHJ0795	O-RING	1		01101 -		
8		KHJ22630	VALVE;RELIEF	1		01101 -		
9		KRJ29360	BRACKET	1		01101 -		
10		105R012Y030R	BOLT;SEMS	6		01101 -		
11		KHJ1349	ADAPTER;HOSE	1		01101 -		
12	11	BHJ0795	O-RING	1		01101 -		
13		KHJ1361	O-RING	2		01101 -		
14		KRJ29370	HOSE;HYD	1		01101 -		
15		KHJ1361	O-RING	2		01101 -		
16		KRJ11510	HOSE;HYD	1		01101 -		
17		KHJ1349	ADAPTER;HOSE	1		01101 -		
18	17	BHJ0795	O-RING	1		01101 -		
19		KHJ10420	VALVE;DIRECTION	1	*	01101 -		
20		KRJ16050	BRACKET	1		01101 -		
21		105R012Y030R	BOLT;SEMS	6		01101 -		
22		KHJ22660	TEE	1		01101 -		
23	22	BHJ0795	O-RING	1		01101 -		
24		KHJ1360	O-RING	2		01101 -		
25		KRJ29390	HOSE;HYD	1		01101 -		
26		KHJ1804	ELBOW	1		01101 -		
27	26	UBJ0158	O-RING	1		01101 -		
28		KHJ1361	O-RING	1		01101 -		
29		KBJ15660	HOSE;HYD	1		01101 -		
30		KHJ0914	O-RING	1		01101 -		
31		KRJ2682	FLANGE;SPLIT	2		01101 -		
32		108R010Y030R	BOLT;HEX SOC HD	4		01101 -		
33		KBJ15670	BRACKET	1		01101 -		
34		105R010Y025R	BOLT;SEMS	2		01101 -		
35		KRJ11450	CLAMP;HOSE	2		01101 -		
36		KRJ10800	PLATE	1		01101 -		
37		105R010Y025R	BOLT;SEMS	2		01101 -		
38		KNJ1936	SOCKET	1		01101 -		

--	--

FLOOR MAT (STD)	DJM101L0102-00	000
-----------------	----------------	-----

EX - 250 X3 EXCAVATOR 01101

Item	Parent	Part No.	Description	Qty	BKD	Serial	ICA	Replacement
1		KHJ24600	MAT;FLOOR	1		01101 -		
2		KHJ13860	REST;FOOT	2		01101 -		
3		105R010Y025R	BOLT;SEMS	4		01101 -		
4		KHJ14550	GROMMET;RUBBER	2		01101 -		

--	--

TRACTION LINES	DJY901L0025-00	001
----------------	----------------	-----

EX - 250 X3 EXCAVATOR 01101

Item	Parent	Part No.	Description	Qty	BKD	Serial	ICA	Replacement
1		KHJ0913	O-RING	4		01101 -		
2		KRJ10611	TUBE;ASSY	1		01002 -		
3		KRJ10621	TUBE;ASSY	1		01002 -		
4		108R010Y055R	BOLT;HEX SOC HD	8		01101 -		
5		KRJ10632	TUBE;ASSY	1		01002 -		
6		KRJ10642	TUBE;ASSY	1		01002 -		
7		108R010Y030R	BOLT;HEX SOC HD	8		01101 -		
8		KRJ10720	PLATE	1		01101 -		
9		KRJ0727	CLAMP;PIPE	2		01101 -		
10		105R012Y060R	BOLT;SEMS	2		01101 -		
11		KBJ10430	HOSE;HYD	4		01101 -		
12		KHJ11060	STUD	2		01101 -		
13	12	UBJ0158	O-RING	2		01101 -		
14		KHH0143	BAND;HARNESS	2		01101 -		

--	--

CAB GUARDING (FRONT) (BAR) (LEVEL 2)	DN0601L0027-00	000
--------------------------------------	----------------	-----

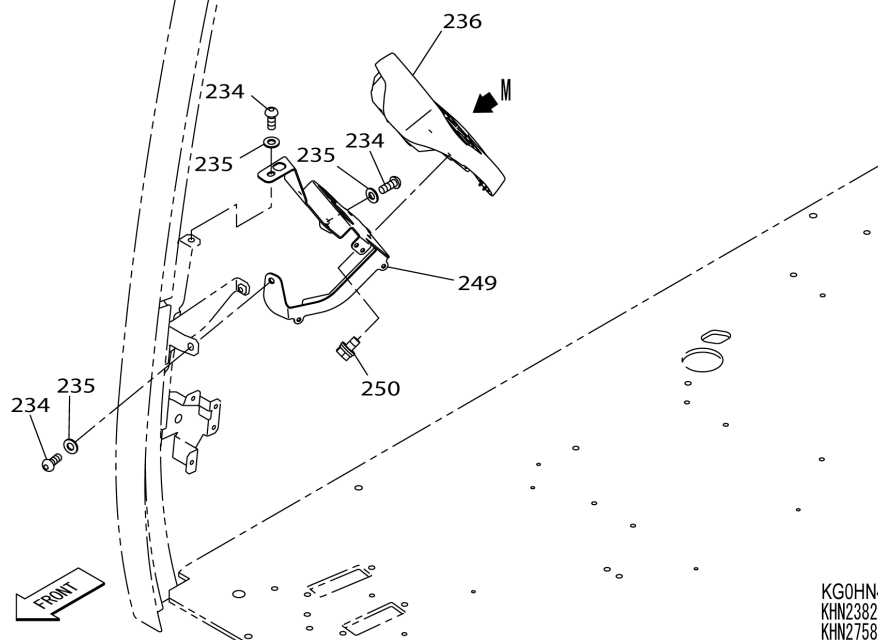
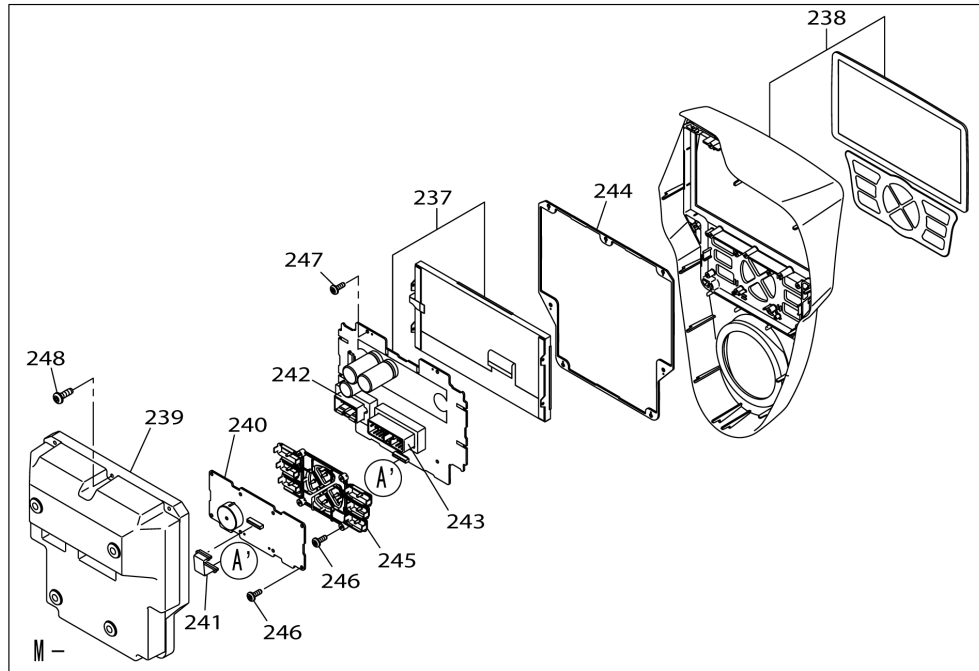
EX - 250 X3 EXCAVATOR 01101

Item	Parent	Part No.	Description	Qty	BKD	Serial	ICA	Replacement
1		KHN28830	GUARD	1		01101 -		
2		105R010Y025R	BOLT;SEMS	4		01101 -		
3		102R012Y025R	BOLT;HIGH STRENGTH	4		01101 -		
4		KHN0296	WASHER;HIGH STRENGTH	4		01101 -		

--	--

EX - 250 X3 EXCAVATOR 01101

1 [2 - 257] 2 [3 - 229] 3 [4 - 142] 108 [109 - 112] 143 [144 - 184]
144 [145 - 148] 148 [149 - 153] 185 [186 - 202] 186 [187 - 199]
203 [204 - 222] 223 [224 - 229] 251 [252 , 253] 265 [266 - 271]
268 [269 , 270]



KG0HN494-0
KHN23820 -DZ
KHN27580 -DZ

This page intentionally left blank.

HOUSE (STD)	DN7301L0325-00	002
-------------	----------------	-----

EX - 250 X3 EXCAVATOR 01101

Item	Parent	Part No.	Description	Qty	BKD	Serial	ICA	Replacement
135		KHN1079	BOLT(WITH WASHER)	5		01101 -		
136		KRN12370B1	COVER	1		01101 -		
137		KHN1079	BOLT(WITH WASHER)	2		01101 -		
138		KRN12790	CUSHION;RUBBER	1		01101 -		
139		KHN12710G3	COVER;SIDE	1		01101 -		
140		KHN12720	BRACKET	1		01101 -		
141		KHN1079	BOLT(WITH WASHER)	5		01101 -		
142		105R012Y030R	BOLT;SEMS	1		01101 -		
143		KSN0921	WASHER;SPL	1		01101 -		
144		KHN2061	WASHER;RUB.	1		01101 -		
145		KHN12681B1	STAY	1		01101 -		
146		KHN12690	CLAMP	3		01101 -		
147		KHN12700	CLAMP	6		01101 -		
148		KHN1079	BOLT(WITH WASHER)	6		01101 -		
149		KHN12020	BOLT;SPL	6		01001 -		
150		KHN12020	BOLT;SPL	5		01101 -		
151		KHN12020	BOLT;SPL	7		01101 -		
152		KHN12020	BOLT;SPL	8		01101 -		
153		KHN10940	PLATE;RUBBER	2		01101 -		
154		KHN13510B1	COVER	2		01101 -		
155		KHN13540	BOLT;SPL	8		01101 -		
156		KBJ0525	RUBBER;GROMMET	1		01101 -		
157		KAR0152	RUBBER;GROMMET	2		01101 -		
159		KRN20360	SEAL;CUSHION	1		01101 -		
160		KRN22560	SEAL;CUSHION	2		01002 -		
161		KRN22400	INSULATION;ACOUSTIC	2		01002 -		
163		KRN22440	INSULATION;ACOUSTIC	1		01002 -		
164		KRN22450	INSULATION;ACOUSTIC	1		01002 -		
165		KRN22480	INSULATION;ACOUSTIC	2		01002 -		
166		KRN22570	SEAL;CUSHION	1		01002 -		
167		KMN1909	SEAL;CUSHION	1		01101 -		
168		KRN20320	SEAL;CUSHION	1		01101 -		
169		102R008Y040R	BOLT;HIGH STRENGTH	4		01101 -		
170		182-008SR	WASHER;PLAIN	4		01101 -		
171		KHH0358	RETAINER;SEAL	4		01101 -		
172		KRN20330	INSULATION;ACOUSTIC	1		01101 -		
173		KRN13360	SEAL;CUSHION	1		01101 -		
174		KRN22720	SEAL;CUSHION	1		01002 -		

--	--

HOUSE (W/ AIR FILTER PRE-CLEANER)	DN7301L0388-00	000
-----------------------------------	----------------	-----

EX - 250 X3 EXCAVATOR 01101

Item	Parent	Part No.	Description	Qty	BKD	Serial	ICA	Replacement
77		KHN1079	BOLT(WITH WASHER)	6		01101 -		
78		KHN14830	TRIM;SPONGE	1		01101 -		
79		KBN14770	SEAL;CUSHION	1		01101 -		
80		KRN22530	INSULATION;ACOUSTIC	1		01101 -		
81		KRN22520	INSULATION;ACOUSTIC	2		01101 -		
82		KRN22510	GLASS WOOL	1		01101 -		
83		KTN1090	PLATE	5		01101 -		
84		105R008Y020R	BOLT;SEMS	5		01101 -		
85		KRN23190	INSULATION;ACOUSTIC	1		01101 -		
86		KRN23180	INSULATION;ACOUSTIC	1		01101 -		
87		KBN15020	INSULATION;ACOUSTIC	1		01101 -		
88		KBN15000	INSULATION;ACOUSTIC	2		01101 -		
89		KSN0285	CATCH;SPL	2		01101 -		
90		105R008Y020R	BOLT;SEMS	4		01101 -		
91		KHN29240	DAMPER (GAS)	2		01101 -		
92		KHN24170	BALL;SPL	4		01101 -		
93		KBN13290	BRACKET	1		01101 -		
94		105R008Y020R	BOLT;SEMS	2		01101 -		
95		KBN13320	BRACKET	1		01101 -		
96		105R010Y025R	BOLT;SEMS	2		01101 -		
97		KBN14140	PIPE;TAIL	1		01101 -		
98		105R010Y020R	BOLT;SEMS	4		01101 -		
99		KBN15050	STAY	1		01101 -		
100		KBN15060	BRACKET	1		01101 -		
101		KHN1079	BOLT(WITH WASHER)	2		01101 -		
102		KEH0117	WASHER;HIGH STRENGTH	1		01101 -		
103		KHN2373	PIN;HAIR CLIP	1		01101 -		
104		KRN20230	COVER	1		01101 -		
105		105R008Y020R	BOLT;SEMS	1		01101 -		
106		KRN20340	SEAL;CUSHION	2		01101 -		
107		KRN14540	SEAL;CUSHION	1		01101 -		
108		KRN16001	COVER	1		01101 -		
109		KHN1079	BOLT(WITH WASHER)	4		01101 -		
110		KRN20150	COVER;CENTER	1		01101 -		
111		KHN1079	BOLT(WITH WASHER)	2		01101 -		
112		KRN10780	SEAL;CUSHION	1		01101 -		
113		KRN10790	SEAL;CUSHION	1		01101 -		
114		KRN20170	COVER;CENTER	1		01101 -		

--	--

CONSOLE BOX & SEAT	DN9901L0081-00	003
--------------------	----------------	-----

EX - 250 X3 EXCAVATOR 01101

Item	Parent	Part No.	Description	Qty	BKD	Serial	ICA	Replacement
1		KHN11470	SEAT;OPERATORS	1		01101 -		
2	1	KHN17690	SEAT;OPERATORS	1		01101 -		
3	2	KHN17730	SEAT;OPERATORS	1		01101 -		
4	2	KHN2194	SEAT;OPERATORS	1		01101 -		
5	2	KHN2195	SEAT;OPERATORS	1		01101 -		
6	2	KHN2196	SEAT;OPERATORS	1		01101 -		
7	2	KHN17760	SEAT;OPERATORS	1		01101 -		
8	7	KHN17770	SEAT;OPERATORS	1		01101 -		
9	2	KHN2199	SEAT;OPERATORS	1		01101 -		
10	2	KHN17720	SEAT;OPERATORS	1		01101 -		
11	1	KHN2130	REST;HEAD	1		01101 -		
12	1	KHN17850	SEAT;OPERATORS	1		01101 -		
13	1	KHN17860	SEAT;OPERATORS	1		01101 -		
14	1	KHN17870	SEAT;OPERATORS	1		01101 -		
15	1	KHN17880	SEAT;OPERATORS	1		01101 -		
16	1	KHN17780	SEAT;OPERATORS	1		01101 -		
17	16	KHN17790	SEAT;OPERATORS	1		01101 -		
18	16	KHN17800	SEAT;OPERATORS	1		01101 -		
19	16	KHN17810	SEAT;OPERATORS	1		01101 -		
20	16	KHN17820	SEAT;OPERATORS	1		01101 -		
21	16	KHN17830	SEAT;OPERATORS	1		01101 -		
22	16	KHN17890	SEAT;OPERATORS	1		01101 -		
23	1	KHN17840	SEAT;OPERATORS	1		01101 -		
24	1	KHN17900	SEAT;OPERATORS	1		01101 -		
25	1	KHN17910	SEAT;OPERATORS	1		01101 -		
26		KHN13531	PLATE	2		01101 -		
27		105R008Y020R	BOLT;SEMS	4		01101 -		
28		108R008Y020R	BOLT;HEX SOC HD	4		01101 - 01105	<	KHN26570
		KHN26570	BOLT;HEX SOC HD	4		01106 -	<	KHN26570
29		184-008VR	WASHER;SPRING	4		01101 - 01105	<	KHN26580
		KHN26580	WASHER;SPRING	4		01106 -	<	KHN26580
30		KHN27560	REST;ARM (4INCH)	2		01101 -		
31		KHN17270	BOLT;SPL	4		01101 -		
32		KHN23130	BOX;CONSOLE	1		01101 - 01114	<	KHN23131
		KHN23131	BOX;CONSOLE	1		01115 -	<	KHN23131
33	32	KHN23880	BRKT;SEAT	1		01101 - 01114		
	32	KHN23881	BRKT;SEAT	1		01115 -		
34	33	KHN24071	BASE;SPL	1		01001 -		

--	--

CONSOLE BOX & SEAT (AIR SUSPENSION)	DN9901L0082-00	003
-------------------------------------	----------------	-----

EX - 250 X3 EXCAVATOR 01101

Item	Parent	Part No.	Description	Qty	BKD	Serial	ICA	Replacement
1		KHN13560	SEAT;OPERATORS	1		01101 -		
2	1	KHN17690	SEAT;OPERATORS	1		01101 -		
3	2	KHN17730	SEAT;OPERATORS	1		01101 -		
4	2	KHN2194	SEAT;OPERATORS	1		01101 -		
5	2	KHN2195	SEAT;OPERATORS	1		01101 -		
6	2	KHN2196	SEAT;OPERATORS	1		01101 -		
7	2	KHN17760	SEAT;OPERATORS	1		01101 -		
8	7	KHN17770	SEAT;OPERATORS	1		01101 -		
9	2	KHN2199	SEAT;OPERATORS	1		01101 -		
10	2	KHN17720	SEAT;OPERATORS	1		01101 -		
11	1	KHN2130	REST;HEAD	1		01101 -		
12	1	KHN17850	SEAT;OPERATORS	1		01101 -		
13	1	KHN17860	SEAT;OPERATORS	1		01101 -		
14	1	KHN17870	SEAT;OPERATORS	1		01101 -		
15	1	KHN17880	SEAT;OPERATORS	1		01101 -		
16	1	KHN17920	SEAT;OPERATORS	1		01101 -		
17	16	KHN17930	SEAT;OPERATORS	1		01101 -		
18	16	KHN17940	SEAT;OPERATORS	1		01101 -		
19	16	KHN17810	SEAT;OPERATORS	1		01101 -		
20	16	KHN17820	SEAT;OPERATORS	1		01101 -		
21	16	KHN17950	SEAT;OPERATORS	1		01101 -		
22	16	KHN17960	SEAT;OPERATORS	1		01101 -		
23	16	KHN17980	SEAT;OPERATORS	1		01101 -		
24	23	KHN17970	SEAT;OPERATORS	1		01101 -		
25	16	KHN17990	SEAT;OPERATORS	1		01101 -		
26	16	KHN18000	SEAT;OPERATORS	1		01101 -		
27	1	KHN17840	SEAT;OPERATORS	1		01101 -		
28	1	KHN17900	SEAT;OPERATORS	1		01101 -		
29	1	KHN17910	SEAT;OPERATORS	1		01101 -		
30		KHN13531	PLATE	2		01101 -		
31		105R008Y020R	BOLT;SEMS	4		01101 -		
32		108R008Y020R	BOLT;HEX SOC HD	4		01101 - 01105	<	KHN26570
		KHN26570	BOLT;HEX SOC HD	4		01106 -	<	KHN26570
33		184-008VR	WASHER;SPRING	4		01101 - 01105	<	KHN26580
		KHN26580	WASHER;SPRING	4		01106 -	<	KHN26580
34		KHN27560	REST;ARM (4INCH)	2		01101 -		
35		KHN17270	BOLT;SPL	4		01101 -		
36		KHN23130	BOX;CONSOLE	1		01101 - 01114	<	KHN23131

--	--

CAB RAIN DEFLECTOR (FOR USE W/ LIGHTS)	DNC701L0005-00	001
--	----------------	-----

EX - 250 X3 EXCAVATOR 01101

Item	Parent	Part No.	Description	Qty	BKD	Serial	ICA	Replacement
1		KHN26780	REFLECTOR	1		01101 –		
2		KHN26791	BRACKET	1		01002 –		
3		KHN26800	HOLDER;SPL	1		01101 –		
4		KHJ13590	SEAL;CUSHION	1		01101 –		
5		102R010Y020R	BOLT;HIGH STRENGTH	4		01002 –		
5.01		182-010SR	WASHER;PLAIN	4		01002 –		
6		102R008Y020R	BOLT;HIGH STRENGTH	4		01101 –		
7		182-008SR	WASHER;PLAIN	4		01101 –		
8		183-108VR	WASHER;SPRING	4		01101 –		

--	--

This page intentionally left blank.

NAMEPLATE (KNOB CONTROLS W/ LH AUX)	DP0210L0207-00	000
-------------------------------------	----------------	-----

EX - 250 X3 EXCAVATOR 01101

Item	Parent	Part No.	Description	Qty	BKD	Serial	ICA	Replacement
1		KHP11720	LABEL;OPR	1		01101 -		

--	--

TOOLS	DPF001L0018-00	002
-------	----------------	-----

EX - 250 X3 EXCAVATOR 01101

Item	Parent	Part No.	Description	Qty	BKD	Serial	ICA	Replacement
1		KHH10880	TOOL(FUEL FILTER WRENCH)	1		01101 -		
2		KHP11340	TOOL	1		01101 -		
3		KHP11330	PLUG	1		01101 -		
4	3	KHP10510	PLUG	1		01101 -		
5	3	KEJ0330	CLIP;JUBILEE	1		01101 -		
6	3	KHP11320	HOSE;RUBBER	1		01101 -		
7		KHP16180	GUN;GREASE	1		01002 -		
13	7	KHP16190	GUN;GREASE	1		01002 -		
14	7	KMP0077	CARTRIDGE;GREASE	1		01002 -		
15	7	KHP16160	NOZZLE	1		01002 -		

--	--

AIR CONDITIONER (CAB)	DR0205L0078-00	003
-----------------------	----------------	-----

EX - 250 X3 EXCAVATOR 01101

Item	Parent	Part No.	Description	Qty	BKD	Serial	ICA	Replacement
1		-----	AIR CONDITIONER	1		01101 -		
2	1	KHR27160	UNIT	1		01101 -		
3	2	KHR27440	HEATER CORE ASM	1		01101 -		
4	2	KHR27450	CASE INTAKE	1		01101 -		
5	2	KHR27460	LEVER INTAKE MAL	1		01101 -		
6	2	KHR27510	LEVER INTAKE	1		01101 -		
7	2	KHR27480	DAMPER;INTAKE ASSY	1		01101 -		
8	2	KHR27490	SENSOR;THERMO	1		01101 -		
9	2	KHR27500	BRKT;HARNESS	1		01101 -		
10	2	KHR27520	THREDED SCREW;M4X16	35		01101 -		
11	2	KHR27530	MOTOR;ACTUATOR	3		01101 -		
12	2	KHR27540	FILTER;AIR	1		01101 -		
13	2	KHR27550	COVER FILTER	1		01101 -		
14	2	KHR27560	PACKING DUCT OUTLET A	4		01101 -		
15	2	KHR2836	RELAY;SPL	2		01101 -		
16	2	KHR27570	COVER LINK	1		01101 -		
17	2	KHR27580	PACKING DUCT OUTLET B	1		01101 -		
18	2	KHR27590	NUT;SPL	1		01101 -		
19	2	KHR27600	CASE HEATER R	1		01101 -		
20	2	KHR27610	CASE HEATER L	1		01101 -		
21	2	KHR27620	DAMPER;MODE ASSY A	3		01101 -		
22	2	KHR27630	DAMPER;MODE ASSY B	2		01101 -		
23	2	KHR27640	DAMPER;AIR MIX ASSY	1		01101 -		
24	2	KHR27650	SENSOR;THERMO	1		01101 -		
25	2	KHR27660	HOLDER;HARNESS	1		01101 -		
26	2	KHR27670	HOLDER;SENSOR	1		01101 -		
27	2	KHR27680	COOLER PARTS EVAPORATOR FULASM	1		01101 -		
27.01	27	KHR29380	COOLER PARTS EVAPORATOR	1		01002 -		
27.02	27	KHR27690	VALVE;EXPANTION	1		01002 -		
27.03	27	KHR27700	BOLT;HEX SOC HD	2		01002 -		
27.04	27	KHR29390	BRACKET TXV	1		01002 -		
27.05	27	KHR15860	COVER	1		01002 -		
30	2	KHR27710	LEVER;VENT	1		01101 -		
31	2	KHR27720	LEVER;FACE	1		01101 -		
32	2	KHR27730	LEVER; FOOT	1		01101 -		
33	2	KHR27740	LEVER;DEF	1		01101 -		
34	2	KHR27750	JOINT;VENT	1		01101 -		
35	2	KHR27760	JOINT;FOOT	1		01101 -		

--	--

WORKING LIGHTS (CAB) (STD)	DR1801L0048-00	000
----------------------------	----------------	-----

EX - 250 X3 EXCAVATOR 01101

Item	Parent	Part No.	Description	Qty	BKD	Serial	ICA	Replacement
1		KHR16240	LAMP;WORKING	2		01101 -		
2	1	KHR1172	BULB;LAMP	2		01101 -		
3	1	KHR3556	BOLT;SPL	4		01101 -		
4		KHR28240	BRACKET CAB LIGHT (L)	1		01101 -		
5		KHR28250	BRACKET CAB LIGHT (R)	1		01101 -		
6		KHH0142	BAND;HARNESS	2		01101 -		
7		102R010Y020R	BOLT;HIGH STRENGTH	4		01101 -		
8		182-010SR	WASHER;PLAIN	4		01101 -		
9		KHN17130	HARNESS;WIRE	2		01101 -		

--	--

COVER (CONSOLE SWITCH BLANK COVERS)	DR5901L0004-00	000
-------------------------------------	----------------	-----

EX - 250 X3 EXCAVATOR 01101

Item	Parent	Part No.	Description	Qty	BKD	Serial	ICA	Replacement
1		KHR10390	CAP	1		01101 -		

--	--

SIDEVIEW CAMERA (RH) (CCD)	DRJ401L0374-00	000
----------------------------	----------------	-----

EX - 250 X3 EXCAVATOR 01101

Item	Parent	Part No.	Description	Qty	BKD	Serial	ICA	Replacement
1		KHR23830	CAMERA;CCD	1		01101 -		
2		KHR28650	HARNESS;WIRE	1		01101 -		
3		KHN2132	BOLT;HIGH STRENGTH	2		01101 -		
4		KHR28630B1	BRACKET	1		01101 -		
5		105R008Y025R	BOLT;SEMS	2		01101 -		
6		KHR1445	CLAMP;SPL	1		01101 -		
7		KHN2132	BOLT;HIGH STRENGTH	1		01101 -		
8		KHR28640	COVER	1		01101 -		
9		KHN2132	BOLT;HIGH STRENGTH	2		01101 -		
10		KHR28660	PLATE	1		01101 -		
11		KHR10220	CLAMP;SPL	2		01101 -		
12		KHH0142	BAND;HARNESS	16		01101 -		

--	--

CLICK HERE TO **DOWNLOAD** THE COMPLETE MANUAL

- Thank you very much for reading the preview of the manual.
- You can download the complete manual from: www.heydownloads.com by clicking the link below



- Please note: If there is no response to CLICKING the link, please download this PDF first and then click on it.

CLICK HERE TO **DOWNLOAD** THE COMPLETE MANUAL

ELECTRIC PARTS (FRAME)	DRJ401L0376-00	002
------------------------	----------------	-----

EX - 250 X3 EXCAVATOR 01101

Item	Parent	Part No.	Description	Qty	BKD	Serial	ICA	Replacement
72		KHR1445	CLAMP;SPL	1		01001 -		
73		KHR1828	BOLT;SPL	1		01001 -		
74		KHR1667	CAP;TERMINAL	1		01101 -		
75		186-106ZR	WASHER;TOOTHED	1		01101 -		
76		KHR1252	BOLT(WITH WASHER M6X12)	1		01101 -		
77		KHR4114	PROTECTOR	1		01101 -		
78		KHR1311	CLAMP;SPL	1		01101 -		
79		KHJ1213	BOLT M8X16(WITH WASHER)	1		01101 -		
80		162R008VR	NUT;HIGH STRENGTH	1		01101 -		
81		KHR1667	CAP;TERMINAL	1		01101 -		
82		KHH0142	BAND;HARNESS	2		01101 -		
83		186-110ZR	WASHER;TOOTHED	1		01101 -		
84		KHJ2298	BOLT;SPL	1		01101 -		
85		KHR10220	CLAMP;SPL	2		01101 -		
86		KHH0142	BAND;HARNESS	2		01101 -		
87		KRR18380	BRACKET	1		01101 -		
88		105R008Y025R	BOLT;SEMS	2		01101 -		
89		KHR1325	CLAMP;SPL	1		01001 -		
90		KHR1253	BOLT(WITH WASHER M6X16)	1		01001 -		
90.01		KHR1307	CLAMP;SPL	2		01001 -		
90.02		KHJ1213	BOLT M8X16(WITH WASHER)	2		01001 -		
91		KHH0142	BAND;HARNESS	2		01101 -		
92		KHR10290	SENSOR;PRESS.	2		01101 -		
93	92	UCP0101	O-RING	2		01101 -		
94		KHR26940	SENSOR;PRESS.	1		01101 -		
94.01	94	UEJ0360	O-RING	1		01002 -		
95		KHR2433	SENSOR;THERMO	1		01101 -		
96		KHR1957	CLIP	1		01101 -		
97		KHR1252	BOLT(WITH WASHER M6X12)	1		01101 -		
98		KHR2584	CLAMP	4		01101 -		
99		KHJ1215	BOLT M8X25(WITH WASHER)	4		01101 -		
100		KHH0142	BAND;HARNESS	6		01101 -		
101		KHR2584	CLAMP	1		01101 -		
102		KHJ1215	BOLT M8X25(WITH WASHER)	1		01101 -		
103		KHR16450	CLIP	1		01101 -		
104		KHJ1213	BOLT M8X16(WITH WASHER)	1		01101 -		
105		KHR10220	CLAMP;SPL	3		01101 -		
106		KHH0142	BAND;HARNESS	3		01101 -		

--	--

This page intentionally left blank.

This page intentionally left blank.

ARM (LONG) (3.52M) (11'7")	DV0210L0148-00	000
----------------------------	----------------	-----

EX - 250 X3 EXCAVATOR 01101

Item	Parent	Part No.	Description	Qty	BKD	Serial	ICA	Replacement
1		KBV23130	ARM;LONG	1		01101 -		
2	1	KBV23231	ARM;LONG	1		01101 -		
3	2	KBV23360	BOSS;CASTED	1		01101 -		
4	2	KBV23350	BOSS;CASTED	1		01101 -		
5	2	KRV11490	BAR;BASE	2		01101 -		
6	1	KBV15850	ARM;BACK-HOE	1		01101 -		
7	6	KBV17370	BUSH;STEEL	2		01101 -		
8	6	KBV14210	BUSH;STEEL	2		01101 -		
9	6	KHV0103	SEAL;DUST	2		01101 -		
10	6	KBV1359	BUSH;OILLESS	2		01101 -		
11	6	KHV0101	SEAL;DUST	4		01101 -		
12	6	KBV1360	BUSH;OILLESS	2		01101 -		
13	6	KHV0105	SEAL;DUST	4		01101 -		
14	1	KBV23280	ARM ADDITION	1		01101 -		
15	14	KHV10950	BAR;BASE	2		01101 -		
16	14	KHV10540	BAR;BASE	4		01101 -		
17		M01X0812	NIPPLE;GREASE	2		01101 -		

--	--

ARM (SHORT) (2.5M) (8'2") W/ 2ND OPT. BAR BASES	DV0230L0166-00	000
---	----------------	-----

EX - 250 X3 EXCAVATOR 01101

Item	Parent	Part No.	Description	Qty	BKD	Serial	ICA	Replacement
1		KBV23100	ARM;SHORT (2.5M)	1		01101 -		
2	1	KBV23221	ARM;SHORT	1		01101 -		
3	2	KBV23360	BOSS;CASTED	1		01101 -		
4	2	KBV23350	BOSS;CASTED	1		01101 -		
5	2	KRV11490	BAR;BASE	2		01101 -		
6	1	KBV15850	ARM;BACK-HOE	1		01101 -		
7	6	KBV17370	BUSH;STEEL	2		01101 -		
8	6	KBV14210	BUSH;STEEL	2		01101 -		
9	6	KHV0103	SEAL;DUST	2		01101 -		
10	6	KBV1359	BUSH;OILLESS	2		01101 -		
11	6	KHV0101	SEAL;DUST	4		01101 -		
12	6	KBV1360	BUSH;OILLESS	2		01101 -		
13	6	KHV0105	SEAL;DUST	4		01101 -		
14	1	KBV23260	ARM ADDITION	1		01101 -		
15	14	KHV10950	BAR;BASE	2		01101 -		
16	14	KHV10540	BAR;BASE	2		01101 -		
17	1	KBV23270	ARM ADDITION	1		01101 -		
18	17	KHV10940	BAR;BASE	3		01101 -		
19	17	KHV10560	BAR;BASE	2		01101 -		
20		M01X0812	NIPPLE;GREASE	2		01101 -		

--	--

AUX. HYD. LINES (FOR SHORT ARM) (2.5M) (8'2")	DV0601L0154-00	000
---	----------------	-----

EX - 250 X3 EXCAVATOR 01101

Item	Parent	Part No.	Description	Qty	BKD	Serial	ICA	Replacement
1		BRJ0174	PLUG	2		01101 -		
2	1	BHJ0795	O-RING	2		01101 -		
3		KHV10430	VALVE;STOP	2	*	01101 -		
4		102R012Y085R	BOLT;HIGH STRENGTH	4		01101 -		
5		KHN0296	WASHER;HIGH STRENGTH	4		01101 -		
6		KHJ1349	ADAPTER;HOSE	2		01101 -		
7	6	BHJ0795	O-RING	2		01101 -		
8		KBV24200R1	TUBE;ASSY	1		01101 -		
9		KBV23640	HOSE;HYD	1		01101 -		
10		KHJ1361	O-RING	3		01101 -		
11		KBV24210R1	TUBE;ASSY	1		01101 -		
12		KBV23640	HOSE;HYD	1		01101 -		
13		KHJ1361	O-RING	3		01101 -		

--	--

ARM CYLINDER LINE (EMS HBCV)	DV4601L0231-00	001
------------------------------	----------------	-----

EX - 250 X3 EXCAVATOR 01101

Item	Parent	Part No.	Description	Qty	BKD	Serial	ICA	Replacement
1		KBV11100	CYL;ARM	1	*	01101 -		
2		KRV11120	VALVE;HOLDING	1	*	01101 -		
3		KHJ0914	O-RING	2		01101 -		
4		108R012Y070R	BOLT;HEX SOC HD	4		01101 -		
5		KBV12220R1	TUBE;ASSY	1		01101 -		
6		108R012Y035R	BOLT;HEX SOC HD	4		01101 -		
7		KBV11541	PIN;ATT	1		01101 -		
8		KBV23371	PIN;ATT	1		01101 -		
9		KBV0764	SHIM;PLATE	2		01101 -		
10		102R012Y025R	BOLT;HIGH STRENGTH	2		01101 -		
11		KBN0298	WASHER;HIGH STRENGTH	2		01101 -		
12		KBV23530	HOSE;HYD	1		01101 -		
13		KBV23511R1	TUBE;ASSY	1		01101 -		
14		KHJ1360	O-RING	1		01101 -		
15		KHJ1361	O-RING	1		01101 -		
16		KRV25341	HOSE;HYD	1		01101 -		
17		KBV23521R1	TUBE;ASSY	1		01101 -		
18		KHJ1361	O-RING	2		01101 -		
19		KNJ1106	ADAPTER;HOSE	1		01101 -		
20	19	UEJ0360	O-RING	1		01101 -		
20.01		KHJ0894	STUD	1		01109 -		
20.02	20.01	UEJ0360	O-RING	1		01109 -		
21		KBV25620R1	TUBE;ASSY	1		01101 - 01113	<	KBV25621R1
		KBV25621R1	TUBE;ASSY	1		01114 -	<	KBV25621R1
22		KNJ0759	ADAPTER;HOSE	1		01101 -		
23	22	BRP0007	O-RING	1		01101 -		
24		KBV25620R1	TUBE;ASSY	1		01101 - 01113	<	KBV25621R1
		KBV25621R1	TUBE;ASSY	1		01114 -	<	KBV25621R1
25		KBV25670	HOSE SPL	1		01101 -		
26	25	KHJ1865	HOSE;HYD	1		01101 -		
27	25	KHJ17480	HOSE;HYD	1		01101 -		
28		KHH0142	BAND;HARNESS	8		01101 -		

--	--

BUCKET CYLINDER LINES (STD ARM) (3.0M) (9'10")	DV5601L0250-00	000
--	----------------	-----

EX - 250 X3 EXCAVATOR 01101

Item	Parent	Part No.	Description	Qty	BKD	Serial	ICA	Replacement
1		KBV24080	CYL;BUCKET	1	*	01101 -		
2		KBV11530	PIN;ATT	1		01101 -		
3		KRV1197	SHIM;PLATE	2		01101 -		
4		102R012Y025R	BOLT;HIGH STRENGTH	1		01101 -		
5		KBN0298	WASHER;HIGH STRENGTH	1		01101 -		
6		KHJ1348	ADAPTER;HOSE	1		01101 -		
7	6	UBJ0158	O-RING	1		01101 -		
8		KBV23580	HOSE;HYD	1		01101 -		
9		KHJ1360	O-RING	2		01101 -		
10		KHJ15840	ADAPTER;HOSE	1		01101 -		
11		KBV23590	HOSE;HYD	1		01101 -		
12		KHJ1361	O-RING	2		01101 -		

--	--

BOOM CYLINDER LINES (STD) (5.85M) (19'2")	DV6001L0157-00	000
---	----------------	-----

EX - 250 X3 EXCAVATOR 01101

Item	Parent	Part No.	Description	Qty	BKD	Serial	ICA	Replacement
1		KBV25220	CYL;BOOM	1	*	01101 -		
2		KBV25230	CYL;BOOM	1	*	01101 -		
3		KBV11570	PIN;ATT	2		01101 -		
4		102R012Y025R	BOLT;HIGH STRENGTH	2		01101 -		
5		KBN0298	WASHER;HIGH STRENGTH	2		01101 -		
6		KBV11560	PIN;ATT	1		01101 -		
7		KBV0837	SHIM;PLATE	4		01101 -		
8		KBV0727	LOCK RING;SPL	2		01101 -		
9		132R020Y180R	BOLT;HIGH STRENGTH	2		01101 -		
10		172R020VR	NUT;HIGH STRENGTH	4		01101 -		

--	--

CLAMPS (STD ARM) (9'10") (FOR AUX. HYD. LINES)	DV9901L0034-00	000
--	----------------	-----

EX - 250 X3 EXCAVATOR 01101

Item	Parent	Part No.	Description	Qty	BKD	Serial	ICA	Replacement
1		KHV10630	CLAMP;PIPE	8		01101 -		
2		105R012Y030R	BOLT;SEMS	8		01101 -		

--	--

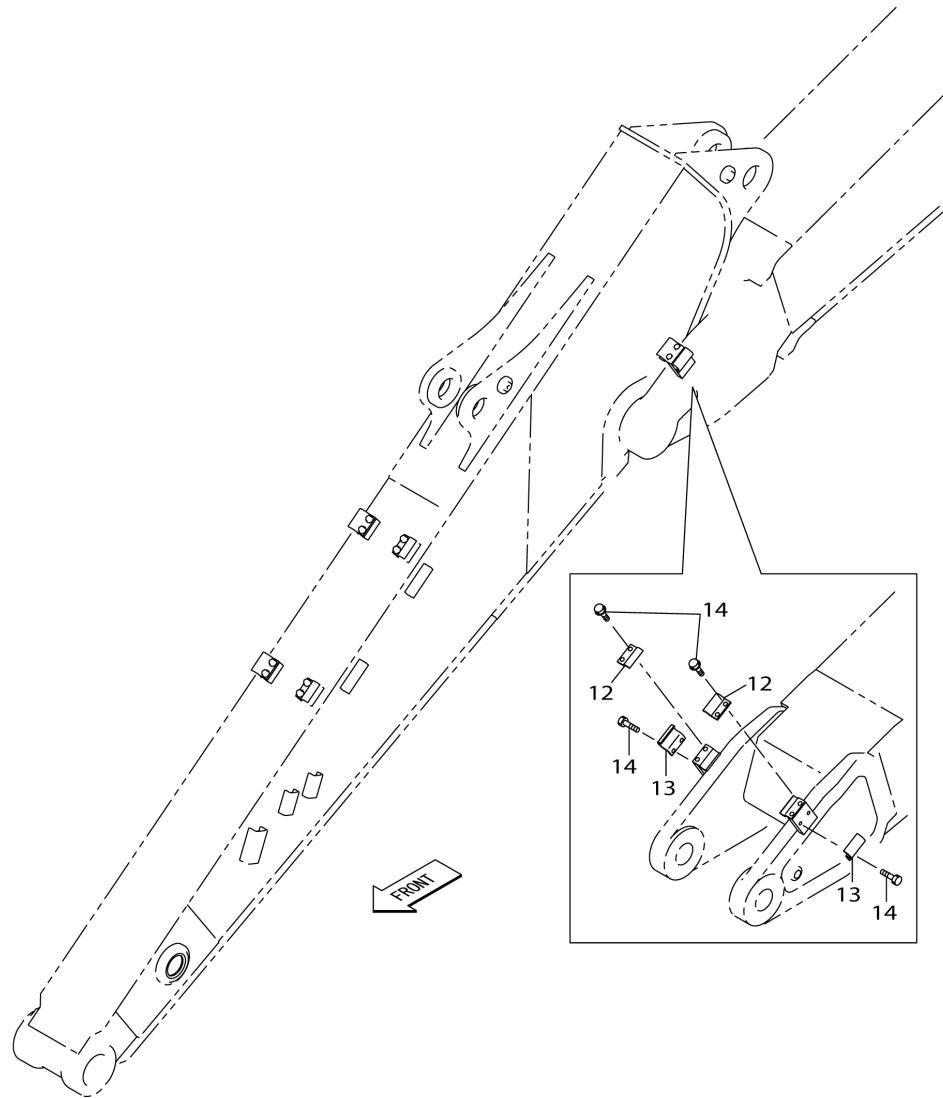
CLAMPS (STD & LONG ARMS)(W/O AUX HYD LINES)	DV9901L0104-00	001
---	----------------	-----

EX - 250 X3 EXCAVATOR 01101

Item	Parent	Part No.	Description	Qty	BKD	Serial	ICA	Replacement
1		KHV12270	CAP;SCREW	8		01101 -		

--	--

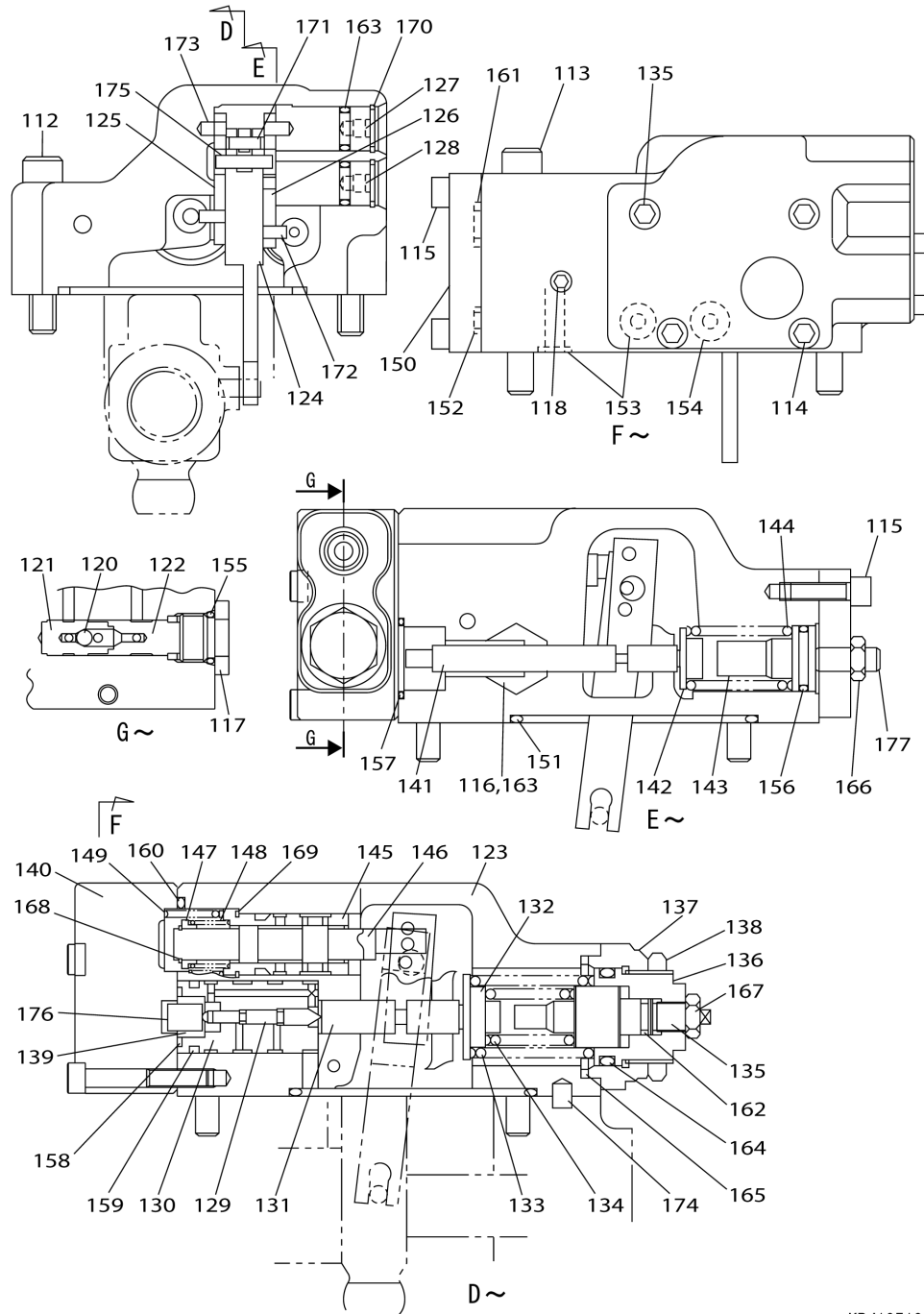
EX - 250 X3 EXCAVATOR 01101



KG1BV130 -0
KBV23790 -DZ
KBV23840 -CZ

EX - 250 X3 EXCAVATOR

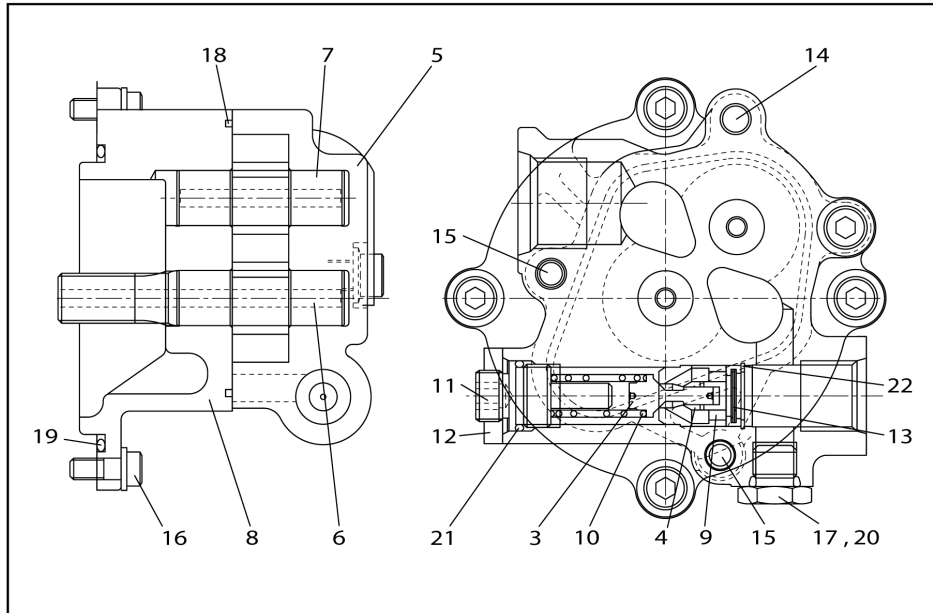
111 [112 ~ 177] 119 [120 ~ 122]



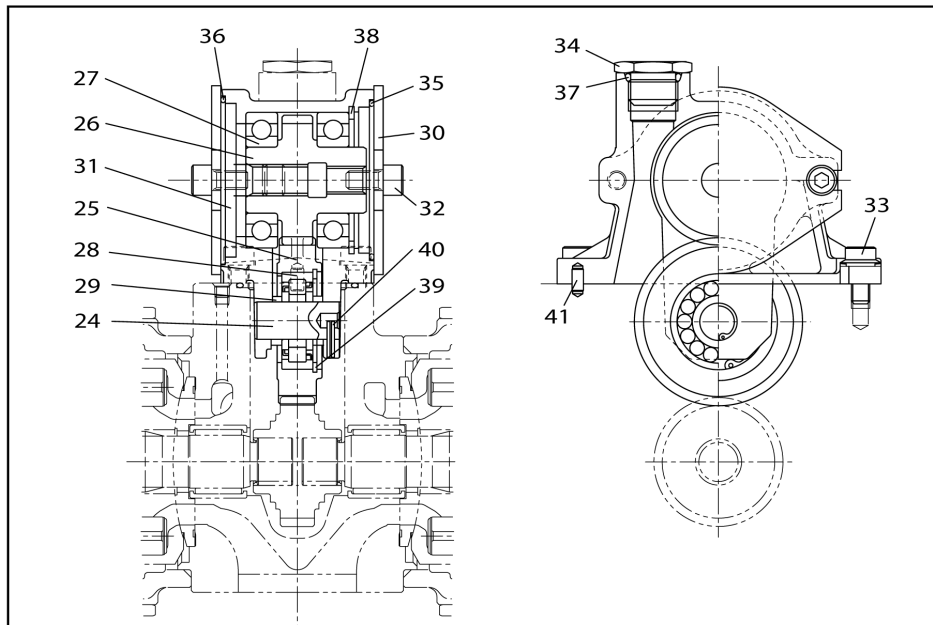
KBJ10510

EX - 250 X3 EXCAVATOR

1 [2 ~ 22] 2 [3 ~ 8]



23 [24 ~ 41]



KBJ12360

HYDRAULIC PUMP (W/ 2ND OPT. PUMP) (Part# KBJ12360)	ZAJ010L0059	000
--	-------------	-----

EX - 250 X3 EXCAVATOR

Item	Parent	Part No.	Description	Qty	BKD	Serial	ICA	Replacement
228	195	-----	PIN;SPL	1				
229	195	-----	SPRING;SPL	1				
230	195	-----	SLEEVE	1				
231	195	-----	SPOOL	1				
232	195	-----	SEAT;SPRING	1				
233	195	-----	SPRING;SPL	1				
234	195	-----	SPRING;SPL	1				
235	195	-----	COVER;SPL	1				
236	195	LE013390	O-RING	1				
237	195	LE013460	O-RING	3				
238	195	LE013470	O-RING	9				
239	195	LE013400	O-RING	1				
240	195	LE013490	O-RING	1				
241	195	LE01177	O-RING	1				
242	195	LE00608	O-RING	1				
243	195	LE013420	O-RING	1				
244	195	LE013550	O-RING	4				
245	195	LE013380	O-RING	1				
246	195	LE013520	O-RING	1				
247	195	LE013540	O-RING	1				
248	195	LE013410	O-RING	3				
249	195	LE013450	O-RING	1				
250	195	LE01176	O-RING	1				
251	195	LA00065	NUT;JAM	1				
252	195	LA010640	NUT;JAM	1				
253	195	370A0100Z	RING;SNAP	1				
254	195	LMM0597	RING;SNAP	1				
255	195	380A0150Z	RING;SNAP	2				
256	195	-----	PIN;SPL	1				
257	195	-----	PIN;SPL	2				
258	195	-----	PIN;SPL	2				
259	195	-----	PIN;SPL	1				
260	195	-----	PIN;SPL	1				
261	195	-----	PIN;SPL	1				
262	195	LA00759	BOLT;SPL	1				
263	195	-----	VALVE;SPL	1				
264	263	-----	SPOOL	1				
265	263	-----	SLEEVE	1				

--	--

TRACTION MOTOR (Part# KBA10290)	ZAJ121L0031	002
---------------------------------	-------------	-----

EX - 250 X3 EXCAVATOR

Item	Parent	Part No.	Description	Qty	BKD	Serial	ICA	Replacement
70	1	LE014680	SEAL;OIL	1				
71	1	LR015020	PLATE;SPL	3				
72	1	LPM0146	PLATE;SPL	2				
73	1	LJ014600	PISTON	1				
74	1	LBM0123	RING;SPL	1				
75	1	LBM0124	RING	1				
76	1	LSM0092	SPRING;COMPRESSION	8				
77	1	LMM0519	PIN;SPL	4				
78	1	LSM0120	SPRING;SPL	2				
79	1	LR015030	PLATE	1				
80	1	LBQ0102	O-RING	4				
81	1	LBQ6273	O-RING	1				
82	1	-----	NAMEPLATE;CO.	1				
83	1	-----	SCREW	2				
84	1	-----	PLUG	2				
85	1	-----	PLUG	1				
86	1	-----	PLUG	1				
87	0	LE01126	SEAL;FLOATING	2				
88	0	LB00548	BEARING;ROLLING	2				
89	0	-----	HOUSING;SPL	1				
90	0	LH00254	SHIM;PLATE	1				
91	90	-----	SHIM;PLATE	1				
92	90	-----	SHIM;PLATE	1				
93	90	-----	SHIM;PLATE	1				
94	90	-----	SHIM;PLATE	1				
95	90	-----	SHIM;PLATE	1				
96	0	LS003340	HOLDER	1				
97	0	LA00702	WASHER	8				
98	0	LA00703	BOLT;SPL	8				
99	0	LR00583	PLATE;THRUST	4				
100	0	LB00549	RACE;BRG INNER	4				
101	0	LB011790	BRG;NEEDLE	4				
102	0	LC00163	GEAR;PLANETARY	4				
103	0	LR015040	PLATE;THRUST	4				
104	0	LA00704	BOLT;SPL	4				
105	0	LC002880	GEAR;SUN	1				
106	0	LA00705	RING;SNAP	1				
107	0	LS003350	HOLDER	1				

--	--

This page intentionally left blank.

SWING MOTOR (Part# KBC10020)	ZAJ122L0030	001
------------------------------	-------------	-----

EX - 250 X3 EXCAVATOR

Item	Parent	Part No.	Description	Qty	BKD	Serial	ICA	Replacement
		KBC10020	MOTOR;SWING	1	*			
1	0	TJ00196	PISTON	1				
2	1	-----	PISTON	9				
3	1	-----	SHOE	9				
4	0	LW005080	CASE	1				
5	4	-----	CASE	1				
6	4	-----	PIN;SPL	2				
7	0	LB011850	SHAFT;DRIVE	1				
8	0	TJ00195	CYL;SPL	1				
9	0	TG00069	SPRING;SPL	1				
10	0	TR00130	PLATE	1				
11	0	LR015160	PLATE;SHOE	1				
12	0	TR00129	PLATE;SPL	1				
13	0	LW005090	CASE	1				
14	0	LJ00529	PLUNGER	2				
15	0	LG00237	SPRING;COMPRESSION	2				
16	0	TM00046	NAMEPLATE;SPL	1				
17	0	LA00027	RIVET;SPL	2				
18	0	108R020Y045R	BOLT;HEX SOC HD	4				
19	0	LB011860	BRG;ROLLER	1				
20	0	LB011870	BRG;ROLLER	1				
21	0	LK00346	PLUG	2				
22	0	LE014720	O-RING	1				
23	0	LBQ0342	O-RING	2				
24	0	CDP0936	SEAL;OIL	1				
25	0	LJ00748	PISTON	1				
26	0	LE015110	O-RING	1				
27	0	BCP0169	O-RING	1				
28	0	LSM0109	SPRING;COMPRESSION	14				
29	0	TR00128	PLATE;SPL	3				
30	0	TR00127	PLATE;SPL	4				
31	0	LK005660	PLUG	2				
32	0	LK005670	PLUG	1				
33	0	LK00025	PLUG	1				
34	0	LK005680	PLUG	1				
35	0	LJ00910	VALVE;RELIEF	2				
36	35	LBQ0303	O-RING	4				
37	0	LJ01281	VALVE;SPL	1				

--	--

BOOM CYLINDER (STD) (RH) (Part# KBV25220)	ZAJ221L0293	000
---	-------------	-----

EX - 250 X3 EXCAVATOR

Item	Parent	Part No.	Description	Qty	BKD	Serial	ICA	Replacement
		KBV25220	CYL;BOOM	1	*			
1	0	LR019250	TUBE;CYL S/A	1				
2	1	LR019240	TUBE;CYL	1				
3	1	KBV1363	BUSH;OILLESS	1				
4	0	LB014280	ROD;PISTON S/A	1				
5	4	LB014270	ROD;PISTON	1				
6	4	KBV1363	BUSH;OILLESS	1				
7	0	LU00085	HEAD;CYL	1				
8	7	LU00116	HEAD;CYL	1				
9	7	LKU0118	BUSH;SPL	1				
10	7	LMU0200	RING	1				
11	0	LE014990	RING;SPL	1				
12	0	LE015000	U-RING	1				
13	0	LBU0074	RING;BACK-UP	1				
14	0	LAU0192	RING;WIPER	1				
15	0	LBQ1253	O-RING	1				
16	0	LE00433	RING;BACK-UP	1				
17	0	108R018Z080N	BOLT;HEX SOC HD	12				
18	0	LAU0193	RING	1				
19	0	LE00707	SEAL;CUSHION	1				
20	0	LJ014810	PISTON	1				
21	0	LEU0046	SEAL RING;SPL	1				
22	0	LBU0103	RING;BACK-UP	2				
23	0	LE013640	SLIDE RING	2				
24	0	LEU0042	RING	2				
25	0	LV000480	SCREW;SPL	1				
26	0	LPU0074	BALL	1				
27	0	KHV0239	RING;WIPER	4				
28	0	LR015430	PIPE	1				
29	0	LR015400	PIPE	1				
30	0	LBQ0302	O-RING	2				
31	0	108R010Z030N	BOLT;HEX SOC HD	8				
32	0	LD001540	BAND;SPL	1				
33	0	LD00042	BAND;SPL	1				
34	0	LUU0137	BOLT;SPL	2				
35	0	LUU0105	WASHER	2				
36	0	LMU0143	HOLDER	2				
37	0	KTV0059	BOLT;HIGH STRENGTH	1				

--	--

This page intentionally left blank.

ARM CYLINDER (Part# KBV11100)	ZAJ222L0103	000
-------------------------------	-------------	-----

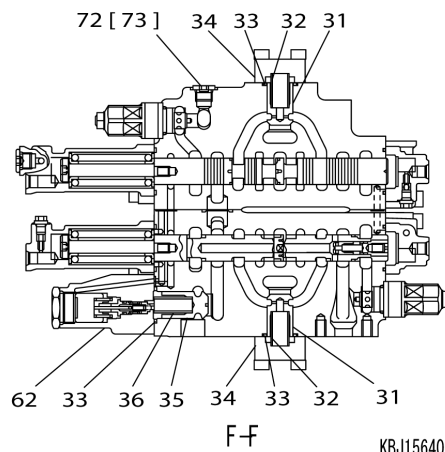
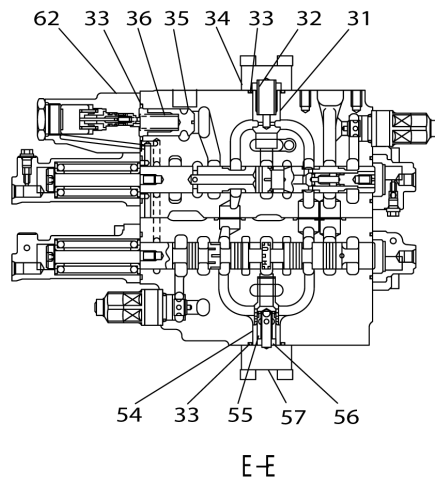
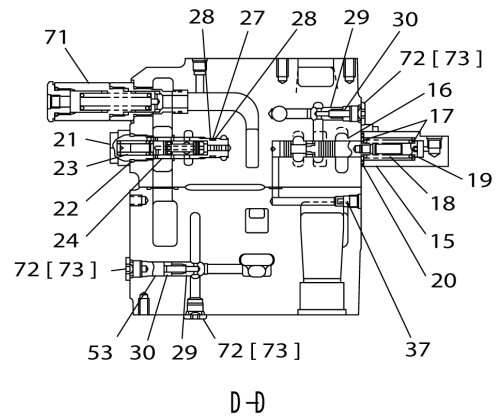
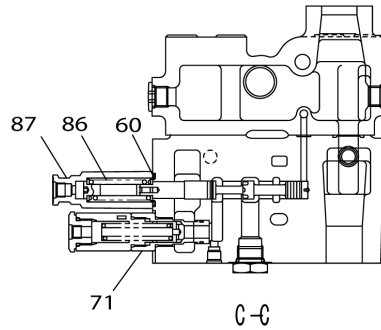
EX - 250 X3 EXCAVATOR

Item	Parent	Part No.	Description	Qty	BKD	Serial	ICA	Replacement
		KBV11100	CYL;ARM	1	*			
1	0	KBV11110	CYL;ARM	1				
2	1	LU00191	HEAD;CYL	1				
3	2	LU00192	HEAD;CYL	1				
4	2	LKU0106	BUSH;SPL	1				
5	2	LMU0188	RING	1				
6	1	LE012550	RING	1				
7	1	LE012320	U-RING	1				
8	1	LE00738	RING;BACK-UP	1				
9	1	LAU0174	RING;WIPER	1				
10	1	LBQ1403	O-RING	1				
11	1	LE00739	RING;BACK-UP	1				
12	1	108R020Z080N	BOLT;HEX SOC HD	10				
13	1	LE00740	CUSHION RING	1				
14	1	LE00741	SEAL;CUSHION	1				
15	1	LJ014420	PISTON	1				
16	1	LE00742	SEAL RING;SPL	1				
17	1	LE00743	RING;BACK-UP	2				
18	1	LE013620	SLIDE RING	2				
19	1	LE00745	SLIDE RING	2				
20	1	LMU0371	SHIM;SPL	1				
21	1	LA010880	NUT;SPL	1				
22	1	LUU0106	SCREW;SPL	1				
23	1	LPU0078	STEEL BALL	1				
24	1	LKU0131	CUSHION RING	1				
25	1	LE00746	SEAL;CUSHION	1				
26	1	LMU0359	STOPPER	2				
27	1	LMU0361	RING;SNAP	1				
28	1	KHV0239	RING;WIPER	4				
29	1	LJ014170	JOINT;SPL	1				
30	1	LBQ0342	O-RING	1				
31	1	108R012Y035N	BOLT;HEX SOC HD	4				
32	1	LD001410	BAND;SPL	1				
33	1	LD001400	BAND;SPL	1				
34	1	LUU0137	BOLT;SPL	2				
35	1	LUU0105	WASHER	2				
36	1	LMU0207	HOLDER	1				
37	1	102R012Y055N	BOLT;HIGH STRENGTH	1				

--	--

EX - 250 X3 EXCAVATOR

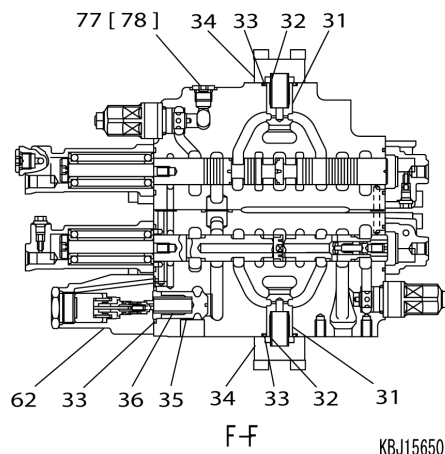
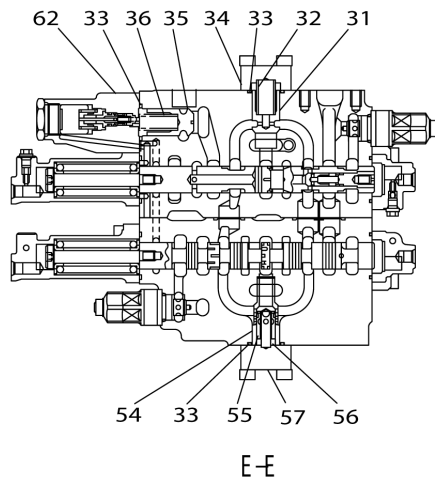
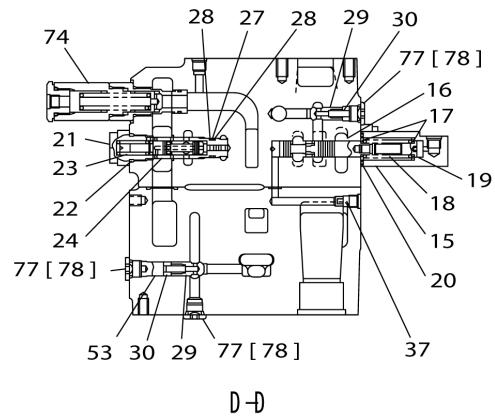
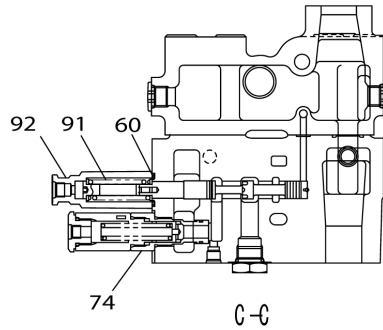
63 [64] 65 [66 , 67] 68 [69 , 70] 72 [73] 74 [75 , 76] 92 [93 , 94]
 95 [96 - 99]



KBJ15640

EX - 250 X3 EXCAVATOR

63 [64] 65 [66, 67] 68 [69, 70] 71 [72, 73] 75 [76] 77 [78]
 79 [80, 81] 97 [98, 99] 100 [101 - 104] 109 [110, 111]



KBJ15650

SOLENOID VALVE (5 STACK) (Part# KHJ14520)	ZAJ314L0014	000
---	-------------	-----

EX - 250 X3 EXCAVATOR

Item	Parent	Part No.	Description	Qty	BKD	Serial	ICA	Replacement
		KHJ14520	VALVE;SOLENOID	1	*			
1	0	-----	BODY	1				
2	0	-----	SPOOL	3				
3	0	-----	SPOOL	1				
4	0	-----	SPOOL	1				
5	0	LG006010	SPRING;COMPRESSION	3				
6	0	LG006020	SPRING;COMPRESSION	2				
7	0	LR015080	ADPT;SPL	5				
8	0	LA010960	RING;SNAP	5				
9	0	-----	NAMEPLATE;SPL	1				
10	0	LA010970	WASHER;SPRING	10				
11	0	LD001470	BAND;HARNESS	1				
12	0	LD001450	BAND;HARNESS	1				
13	0	LD001440	BAND;HARNESS	1				
14	0	LD001490	BAND;HARNESS	1				
15	0	LD001460	BAND;HARNESS	1				
16	0	LL001140	SOLENOID	5				
17	16	LBQ5022	O-RING	5				
18	16	LBQ0182	O-RING	5				
19	0	LBQ0102	O-RING	5				
20	0	LA010980	BOLT;HEX SOC HD	10				
21	0	LK005630	PLUG	6				
22	0	LK005640	PLUG	11				
23	0	-----	RIVET;SPL	2				

--	--

REMOTE CONTROL VALVE (PEDAL) (Part# KHJ19270)	ZAJ316L0027	001
---	-------------	-----

EX - 250 X3 EXCAVATOR

Item	Parent	Part No.	Description	Qty	BKD	Serial	ICA	Replacement
		KHJ19270	VALVE;REMOTE CONT	1	*			
1	0	-----	CASE	1				
2	0	-----	CASE	1				
3	0	LZC0158	COVER	2				
4	0	LLC0128	PLUG	4				
5	0	LWC0004	CUP;GREASE	4				
6	0	LEC0025	PACKING;SPL	4				
7	0	LBQ0082	O-RING	2				
8	0	LBQ6025	O-RING	4				
9	0	LE012930	O-RING	4				
10	0	LJC0010	ROD;PUSH	4				
11	0	LA00056	WASHER	8				
12	0	LA00057	WASHER	4				
13	0	LSC0237	SEAT	4				
14	0	108R006Y040R	BOLT;HEX SOC HD	2			<	108R006Y045R
	0	108R006Y045R	BOLT;HEX SOC HD	2			<	108R006Y045R
15	0	LPC0203	PISTON	4				
16	0	LPC0204	STEEL BALL	12				
17	0	108R012Y060R	BOLT;HEX SOC HD	2				
18	0	-----	SPOOL	4				
19	0	LSC0238	SEAT	4				
20	0	LUC0104	WASHER	4				
21	0	LG00330	SPRING;COMPRESSION	4			<	LG00331
	0	LG00331	SPRING;COMPRESSION	4			<	LG00331
22	0	LSC0214	SPRING;SPL	4				
23	0	LSC0239	SPRING;SPL	4				
24	0	LSC0240	SPRING;SPL	4				
25	0	LKC0001	BUSH;SPL	4				
26	0	LJC0003	SHAFT;CAM	2				
27	0	LMC0085	CAM	2				
28	0	LUC0103	SCREW	2				
29	0	LUC0102	SCREW	4				
30	0	LUC0101	NUT;SPL	4				
31	0	LCC0014	BELLOWS	2				

--	--

STOP VALVE (2ND OPT AUX. HYD.) (Part# KHV10440)	ZAJ322L0004	000
---	-------------	-----

EX - 250 X3 EXCAVATOR

Item	Parent	Part No.	Description	Qty	BKD	Serial	ICA	Replacement
		KHV10440	VALVE;STOP	1	*			
1	0	-----	BODY	1				
2	0	-----	DISK	1				
3	0	-----	STOPPER;SPL	1				
4	0	-----	NAMEPLATE;SPL	1				
5	0	-----	PIN;S	1				
6	0	-----	PIN;S	1				
7	0	-----	RING;SNAP	1				
8	0	-----	RING;SNAP	1				
9	0	LBB0252	RING;BACK-UP JIS B2407 T2-P25	1				
10	0	LBB0212	RING;BACK-UP	1				
11	0	LBQ0252	O-RING	2				
12	0	LBQ0212	O-RING	2				
13	0	-----	RIVET;SPL	2				

--	--

RELIEF VALVE (Part# KHJ15050)	ZAJ351L0003	001
-------------------------------	-------------	-----

EX - 250 X3 EXCAVATOR

Item	Parent	Part No.	Description	Qty	BKD	Serial	ICA	Replacement
		KHJ15050	VALVE;RELIEF	1	*			
1	0	-----	NAMEPLATE;SPL	1				
2	0	LG005580	STOPPER	2				
3	0	-----	BODY	1				
	0	-----	BODY	1				
4	0	LLS0044	PLUG	1				
5	0	LA00769	RIVET;SPL	2				
6	0	LBQ0142	O-RING	1				
7	0	LBQ0182	O-RING	2				
8	0	KHJ15850	VALVE;RELIEF	1				
9	8	-----	SPRING;COMPRESSION	1				
10	8	-----	ADPT;SPL	1				
11	8	-----	BODY	1				
12	8	-----	POPPET	1				
13	8	-----	POPPET	1				
14	8	-----	SPRING;SPL	1				
15	8	-----	SPRING;SPL	1				
16	8	-----	VALVE;NEEDLE	1				
17	8	-----	RING;BACK-UP	2				
18	8	-----	RING;BACK-UP	2				
19	8	-----	PIN;SPL	1				
20	8	-----	SCREW;SPL	1				
21	8	174R012SN	NUT;JAM	1				
22	8	LBQ0102	O-RING	1				
23	8	LBQ6912	O-RING	2				
24	8	LBQ0086	O-RING JIS B2401 4D-P8	1				
25	8	LBQ0156	O-RING JIS B2401 4D-P15	1				

--	--

RADIATOR & OIL COOLER (Part# KBH12220)	ZAN320L0072	000
--	-------------	-----

EX - 250 X3 EXCAVATOR

Item	Parent	Part No.	Description	Qty	BKD	Serial	ICA	Replacement
		KBH12220	RADIATOR	1	*			
1	0	LN002850	RADIATOR S/A	1				
2	1	LN002860	RADIATOR CORE	1				
3	1	LE019280	PACKING 20X20X950	1				
4	1	LE015640	PACKING	2				
5	1	LE019290	PACKING 25X30X112	2				
6	1	TR00521	CAP;SPL	1				
7	1	LLG0006	COCK;DRAIN	1				
8	1	LK005540	HOSE;VINYL	1				
9	1	LA00804	CLIP	1				
10	0	LG005900	CUSHION;SPL	2				
11	0	LG005620	CUSHION;SPL	2				
12	0	LN002870	COOLER;OIL S/A	1				
13	12	LN002880	COOLER;OIL	1				
14	12	LE019300	PACKING 30X30X1000	1				
15	12	LE019310	PACKING 30X45X1010	1				
16	0	LT002230	FRAME;SPL	1				
17	16	LT002240	FRAME;SPL	1				
18	16	LE019320	PACKING 20X30X535	2				
19	16	LE019330	PACKING 20X25X410	2				
20	16	LE019340	PACKING 45X30X50	1				
21	0	LA011800	BOLT;SEMS	4				
22	0	LA011260	WASHER	4				
23	0	LG005910	CUSHION;SPL	4				
24	0	LH004680	COLLAR	4				
25	0	LA012850	BOLT;SEMS	2				
26	0	LA012850	BOLT;SEMS	2				
27	0	LW006310	SHROUD;FAN S/A	1				
28	27	LW006320	SHROUD;FAN	1				
29	27	LE019350	PACKING 25X50X490	2				
30	27	LE019360	PACKING 15X20X310	1				
31	27	LE019370	PACKING 15X10X100	1				
32	27	LE019380	PACKING 20X20X40	1				
33	27	LE019390	PACKING 10X10X400	1				
34	0	LA011830	BOLT;SPL	8				
35	0	LG007290	PROTECTOR ASSY	1				
36	0	LA013290	PIN;SPL	2				
37	0	LA013300	WASHER	2				

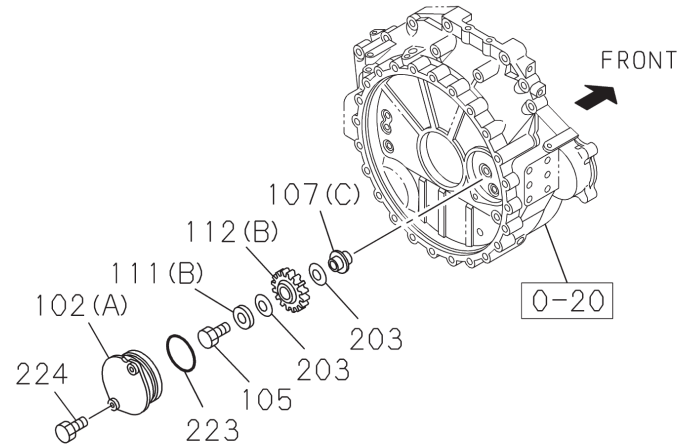
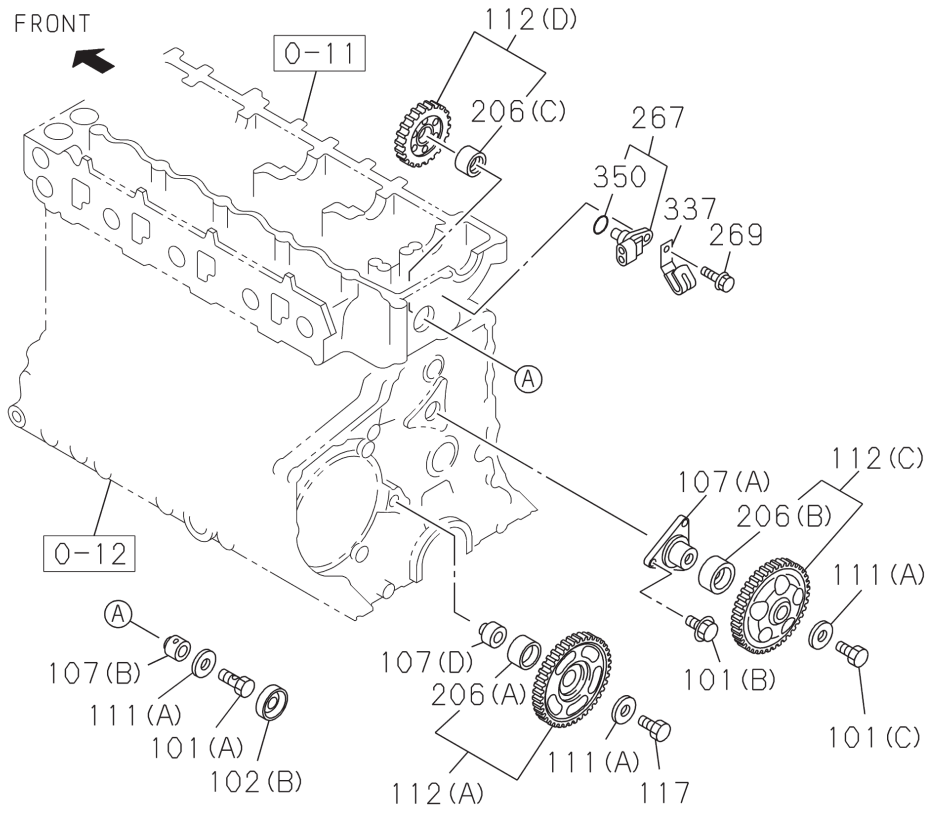
--	--

CYLINDER HEAD	83-51274-011	000
---------------	--------------	-----

Item	Parent	Part No.	Description	Qty	BKD	Serial	ICA	Replacement
1		8981706190	HEAD ASM; CYL	1				
2		8981142560	GASKET; CYL HD [IN GASKET SET(ENG & HEAD)]	1				
3(A)		8943995540	BOLT; CYL HD TO BLOCK [M10X73]	1				
3(B)		8943995550	BOLT; CYL HD TO BLOCK [M10X43]	1				
3(C)		8970776380	BOLT; CYL HD TO BLOCK [M14X115]	18				
4		8973767192	GUIDE; VLV	16				
5(A)		8980288740	SEAT; VLV INSERT [ID=32 INLET]	8				
5(B)		8980288750	SEAT; VLV INSERT [ID=31 EXH]	8				
7(A)		8970968210	CUP; SEALING.CYL HEAD [OD=32]	5				
7(B)		1096000160	CUP; SEALING.CYL HEAD [OD=25]	4				
7(C)		9111291280	CUP; SEALING.CYL HEAD [OD=20]	7				
7(D)		5111290060	CUP; SEALING.CYL HEAD [OD=16]	5				
10		8943907776	PLUG; GLOW	4				
11		8973323582	CONNECTOR; GLOW PLUG	1				
12		9117776121	HANGER; ENG.RR	1				
13		0281510200	BOLT; HANGER [M10X20 FLANGE]	2				
14		8943972860	STUD; EXH MANIF [M10X60 L=75]	2				
15		0281512300	BOLT; HANGER.FRT [M12X30 FLANGE]	2				
23		0911802080	NUT; CAM BRKT [M8 FLANGE]	10				
24(A)		8943225132	STUD; CM/SHF BRKT [M8X41 L=66]	8				
24(B)		8943225122	STUD; CM/SHF BRKT [M8X54 L=79]	2				
25		8980034160	PLUG; CYL HD [M8X10]	1				
47		0491408600	STUD; CYL HD [M8X60 L=72]	2				
57		8976066610	SLEEVE; NOZZLE HOLDER	4				
58(A)		8980041870	GASKET;SLEEVE.NOZZLE HOLDER[GSKT SET-ENG&HEAD]	4				
58(B)		8976049160	GASKET;HOLDER [IN GASKET SET (ENG & HEAD)]	4				
59		8973816031	GUIDE;BRIDGE	8				
71		0280508350	BOLT;CAM BRKT [M8X35 FLANGE]	2				
109(A)		8981125582	BRACKET; ENG HANGER	1				
109(B)		8981161402	BRACKET; ENG HANGER	1				
110(A)		0281510500	BOLT; BRKT.ENG HANGER [M10X50 FLANGE]	1				
110(B)		0281510800	BOLT; BRKT.ENG HANGER [M10X80 FLANGE]	1				
110(C)		0281512500	BOLT; BRKT.ENG HANGER [M12X50 FLANGE]	3				
122		8973313601	GASKET; COVER [IN GASKET SET(ENG & HEAD)]	1				

--	--

CAMSHAFT AND VALVE 83-51274-014



014A0251274

TIMING GEAR CASE AND FLYWHEEL HOUSING	83-51274-020	000
---------------------------------------	--------------	-----

Item	Parent	Part No.	Description	Qty	BKD	Serial	ICA	Replacement
2(B)		8980746120	HOUSING; FLYWHEEL	1				
62(A)		0286508350	BOLT; COVER [M8X35 FLANGE]	12				
62(B)		1090440721	BOLT; COVER [M8X65 FLANGE]	2				
62(C)		0280508160	BOLT; COVER [M8X16 FLANGE]	2				
100(A)		8970287481	GASKET; FRT COVER [ALSO IN GASKET SET(ENGINE)]	1				
100(B)		9095613180	GASKET; FRT COVER [ALSO IN GASKET SET(ENGINE)]	1				
103		8973829550	SEAL; OIL.CR/SHF.FRT[ALSO IN GASKET SET(ENGINE)]	1				
175		8972093423	SEAL; OIL.CR/SHF.RR [ALSO IN GASKET SET(ENGINE)]	1				
211(A)		0287510400	BOLT; HSG [M10X40 FLANGE]	1				
		0287510400	BOLT; HSG [M10X40 FLANGE]	1				
211(B)		8971147790	BOLT; HSG [M12X70 FLANGE]	11				
		8971147790	BOLT; HSG [M12X70 FLANGE]	11				
211(C)		8971354190	BOLT; HSG [M12X30 FLANGE]	1				
		8971354190	BOLT; HSG [M12X30 FLANGE]	1				
224		0440112300	STUD; STARTER [M12X30 L=48]	2				
		0440112300	STUD; STARTER [M12X30 L=48]	2				
225		0410108180	STUD; OIL PAN [M8X18 L=30]	2				
237(B)		9092023080	PLUG; FLYWHEEL HSG	1				
268		8981173600	COVER; FRT	1				
297(B)		1096300820	GASKET; PLUG.HSG [ALSO IN GASKET SET(ENGINE)]	1				
356		8943706630	GASKET; COVER	1				
478		8941745290	COVER; FLYWHEEL HSG	1				
480		0280808140	BOLT; COVER [M8X14 FLANGE]	3				
		0280808140	BOLT; COVER [M8X14 FLANGE]	3				

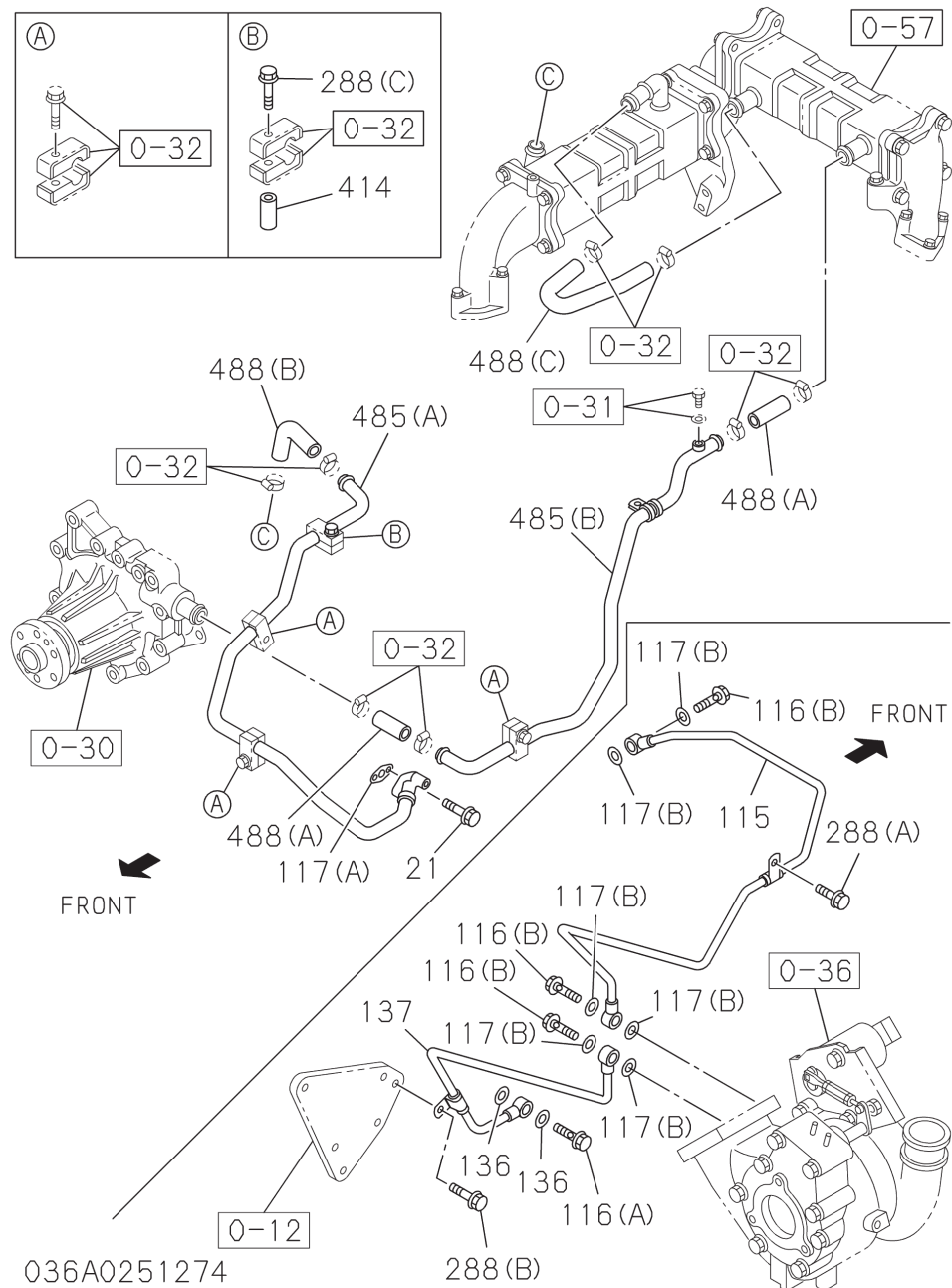
--	--

THERMOSTAT AND HOUSING	83-51274-031	000
------------------------	--------------	-----

Item	Parent	Part No.	Description	Qty	BKD	Serial	ICA	Replacement
1(A)		8973007902	THERMOSTAT [82 DEGREES C]	1				
1(B)		8973007872	THERMOSTAT [85 DEGREES C]	1				
14		5096050050	PLUG; SW [PT 3/8]	1				
15		8943425740	PIPE; BYPASS	1				
49		8943905201	PIPE; WATER OUTLET	1				
58		8980727120	PLUG; WATER OUTLET PIPE [M10X9]	1				
59		9095714100	GASKET; PLUG [ALSO IN GASKET SET(ENGINE)]	1				
66		8973007930	GASKET;THERMOSTAT HSG[ALSO IN GSKT SET-ENG&HEAD]	2				
112		8943905270	PLUG	1				
119		1096605041	PIPE; HTR	1				
193		8942311150	CAP; RUBBER [ID=15 L=42]	1				
230		8941258621	CLIP; CAP.HEATER PIPE [ID=20.8]	1				

--	--

TURBOCHARGER SYSTEM 83-51274-036



FUEL FILTER AND BRACKET	83-51274-041	000
-------------------------	--------------	-----

Item	Parent	Part No.	Description	Qty	BKD	Serial	ICA	Replacement
1		8981627470	FILTER ASM; FUEL	1				
2		8980742901	CASE; FUEL FILTER	1				
8		8973834270	PIPE; FUEL	2				
9		8980088420	GASKET; CASE TO BODY.FUEL FILTER	1				
11		8980742920	PLUG; DRAIN. FUEL FILTER	1				
17		8980864330	SENSOR	1				
56		8980088490	FLOAT; FUEL FILTER	1				
66		8981527370	ELEMENT KIT; FUEL FILTER	1				
69		8980088471	PLUG; FUEL FILTER	1				
94		8980742970	GASKET; PLUG. FUEL FILTER	1				
105		1096750951	BOLT; EYE.FUEL FILTER [M16X30 FLANGE]	2				
106		8980864340	COVER; FUEL FILTER	1				
119		1096300860	GASKET; EYE JOINT [ID=16.2]	4				
135		8980088460	VALVE; FUEL FILTER	1				

--	--

EMISSION PIPING	83-51274-057	000
-----------------	--------------	-----

Item	Parent	Part No.	Description	Qty	BKD	Serial	ICA	Replacement
1		8981705911	VALVE; EGR	1				
2(A)		0280508250	BOLT; EGR VLV [M8X25 FLANGE]	4				
2(B)		0280508600	BOLT; EGR VLV [M8X60 FLANGE]	2				
2(C)		0280508350	BOLT; EGR VLV [M8X35 FLANGE]	1				
4(A)		8980010240	GASKET; EGR VLV [ALSO IN GASKET SET(ENGINE)]	1				
4(B)		8980010230	GASKET; EGR VLV [ALSO IN GASKET SET(ENGINE)]	1				
4(C)		8980461921	GASKET; EGR VLV [ALSO IN GASKET SET(ENGINE)]	1				
7		8973745170	GASKET; ADAPTER [ALSO IN GASKET SET(ENGINE)]	1				
8		0281510300	BOLT; EGR ADAPTER [M10X30 FLANGE]	2				
9		0911801100	NUT; EGR ADAPTER [M10 FLANGE]	2				
16(A)		8941558690	STUD; EGR VLV [M8X72 L=86]	1				
16(B)		8973780670	STUD; EGR VLV [M8X43 L=54]	2				
45		1093021590	STUD; ADAPTER.EGR [M10X135 L=150]	2				
238		8981263510	PROTECTOR; HEAT.EGR	1				
270		0280508500	BOLT [M8X50 FLANGE]	4				
676		8973636440	GASKET; PIPE [ALSO IN GASKET SET(ENGINE)]	1				
685		8973628341	CASE; INLET.EGR	1				
703(A)		8981217690	DUCT; EGR	1				
703(B)		8981232500	DUCT; EGR	1				
703(C)		8981232511	DUCT; EGR	1				
703(D)		8981232520	DUCT; EGR	1				
704(A)		8981078573	COOLER ASM; EGR	1				
704(B)		8981222261	COOLER ASM; EGR	1				
709(A)		0281512600	BOLT; EGR COOLER [M12X60 FLANGE]	1				
709(B)		0286608250	BOLT; EGR COOLER [M8X25 FLANGE]	1				
710		8981727350	BRACKET; EGR COOLER	1				
720		8981493530	GASKET; COOLER [ALSO IN GASKET SET(ENGINE)]	4				
736		8970614011	NUT; DUCT.EGR VLV [M8 FLANGE]	3				
767(A)		0280508300	BOLT; DUCT.EGR [M8X30 FLANGE]	2				
767(B)		0280508350	BOLT; DUCT.EGR [M8X35 FLANGE]	4				
767(C)		0280508900	BOLT; DUCT.EGR [M8X90 FLANGE]	2				
767(D)		0281510500	BOLT; DUCT.EGR [M10X50 FLANGE]	1				
767(E)		0281510700	BOLT; DUCT.EGR [M10X70 FLANGE]	2				
767(F)		583308300	BOLT; DUCT.EGR [M8X30 HEX SOCKET]	4				
767(G)		8980435280	BOLT; DUCT.EGR [M8X28 FLANGE]	4				

--	--

GENERATOR	83-51274-066	000
-----------	--------------	-----

Item	Parent	Part No.	Description	Qty	BKD	Serial	ICA	Replacement
1		8981318050	COVER ASM; RR.GEN	1				
2		8973828690	ROTOR; GEN	1				
3(A)		1812297230	BEARING; ROTOR.GEN	1				
3(B)		1812297580	BEARING; ROTOR.GEN	1				
4		8973828840	TERMINAL; BRUSH.GEN	1				
6		8980923990	REGULATOR ASM; VOLTAGE.GEN	1				
10		8973828790	RECTIFIER; GEN	1				
14		8973828700	COLLAR; STEEL	2				
15		1812297601	RETAINER; ROTOR.GEN	1				
17		8973828720	COVER ASM; FRT.GEN	1				
18		1812294740	NUT; PULLEY.GEN	1				
19		8973828730	PULLEY; GEN	1				
20		8973828740	FAN; GEN	1				
21		1812293820	BOLT;THROUGH.GEN	3				
22		8973828710	STATOR; GEN	1				
23		8980362950	COIL; ROTOR GEN	1				
39		8973828821	COVER; END.RR COVER.GEN	1				
43		1812297330	SCREW; RR END COVER	3				
49(A)		8973828800	BUSHING; RECTIFIER.GEN	1				
49(B)		1812297280	BUSHING; RECTIFIER.GEN	1				
62		1811180110	CLIP; TERMINAL.BRUSH.GEN	1				
65		1841320120	CONDENSER; GEN	1				
71		8970290590	HOLDER; TERMINAL.GEN	1				
87		1812294790	WASHER; PULLEY.GEN	1				
88		1812294780	WASHER; PL.PULLEY GEN	1				
89		8973828810	BOLT; RECTIFIER.GEN	1				

--	--

MANUAL TRANSMISSION ASM AND CASE	83-51274-220	000
----------------------------------	--------------	-----

Item	Parent	Part No.	Description	Qty	BKD	Serial	ICA	Replacement
71(B)		8980238241	COVER; SIDE.TRANS CASE	1				
73(B)		8943941860	GASKET; SIDE COVER TO TRANS CASE [ID=110]	1				

--	--

Part Index

-----35, 213, 218, 219, 220, 227, 228, 239, 240, 253, 263, 311, 312, 313, 315, 327, 473, 474, 475, 476, 477, 478, 479, 485, 486, 487, 488, 489, 490, 491, 492, 495, 499, 500, 501, 502, 507, 508, 509, 510, 515, 516, 517, 521, 527, 565, 567, 575, 577, 579, 581, 583, 585, 587, 589, 591, 593, 595, 597, 599, 601, 603, 605, 607, 609, 611, 613, 615 0015583000.....719 0035743000.....673 0169564600.....643 0208010160.....685 0239514250.....643 0280506120.....639, 644, 683, 709, 715, 719 0280506160.....719 0280508000.....673 0280508120.....632, 673, 715 0280508160.....639, 644, 651, 653, 657, 677, 678, 6 8 9 , 7 1 5 0280508200.....637, 685, 719 0280508250.....673, 678, 691 0280508300.....653, 691 0280508350.....631, 691 0280508400.....643, 677, 685, 7 0 9 0280508450.....632 0280508500.....663, 673, 677, 6 9 1 0280508600.....691, 707 0280508700.....653 0280508900.....691 0280510200.....707 0280510350.....707 0280510500.....707 0280558110.....707 0280606200.....683 0280608120.....657, 689 0280608160.....643, 687 0280608250.....687 0280608700.....659 0280610200.....697 0280808140.....651 0281510000.....687 0281510160.....657, 715 0281510200.....631, 655, 657, 6 6 7 0281510250.....685 0281510300.....691 0281510500.....631, 677, 691 0281510700.....659, 691 0281510800.....631, 697 0281510900.....685 0281512000.....677 0281512300.....631 0281512500.....631 0281512600.....691 0281512700.....677 0281560130.....707 0286506350.....709 0286508200.....719 0286508300.....653, 677	0286508350.....627, 651, 709 0286510250.....707 0286608250.....691 0287510400.....651 0350504080.....627 0410106300.....677 0410108180.....651 0410108200.....689 0440112300.....651 0491408600.....631 0505406160.....673 0506408160.....667 0911105080.....639 0911105100.....655 0911115100.....643 0911801060.....677 0911801080.....627, 653, 659, 6 8 5 , 6 8 9 0911801100.....677, 691 0911801120.....667 0911802080.....631 0911802100.....667 0911802120.....697 0915105140.....697 0915108080.....639 0916105140.....697 0916107120.....667 0916147100.....707 0920024160.....719 0952355360.....697 0952358560.....697 102R006Y016R.....109, 160 102R008Y020R.....271, 273 102R008Y025R.....25 102R008Y030R.....37 102R008Y035R.....53 102R008Y040R.....56, 69, 231, 232, 243, 244 102R008Y060R.....337 102R008Y075R.....69 102R008Y110R.....50 102R010Y016N.....25 102R010Y016R.....528 102R010Y020R.....203, 205, 271, 273, 321 102R010Y035R.....89, 123, 153, 160, 166, 172 102R010Y040R.....49 102R010Y045R.....295, 297 102R010Y055R.....49 102R010Y080R.....205 102R010Y090R.....75 102R010Y100R.....89 102R012Y020R.....203, 205 102R012Y025R.....197, 199, 201, 393, 395, 411, 413, 417, 419, 421, 4 2 7 , 4 3 1 102R012Y035R.....53 102R012Y050R.....53 102R012Y055N.....548, 551, 555 102R012Y075R.....219 102R012Y085R.....401, 403, 407 102R012Y120R.....315 102R016Y025R.....203 102R016Y030R.....195 102R016Y035R.....319 102R016Y070R.....65, 99, 195 102R016Y110R.....205 102R016Y130R.....50 102R024Y120R.....37 102R027Y130N.....219	105R008Y016R.....37, 56, 89, 118, 131, 135, 137, 139, 141, 143, 230, 242, 313, 350, 359, 3 6 7 105R008Y020R.....91, 118, 119, 203, 205, 227, 229, 230, 232, 239, 241, 242, 244, 251, 261, 325, 339, 363 105R008Y025R.....341, 351 105R010Y016R.....253, 263 105R010Y020R.....17, 37, 75, 99, 101, 119, 123, 153, 160, 166, 167, 172, 173, 197, 199, 229, 230, 241, 242, 3 1 5 105R010Y025R.....50, 55, 59, 61, 65, 77, 79, 83, 123, 159, 165, 171, 181, 183, 197, 199, 201, 229, 241, 315 105R010Y030R.....53, 99, 118, 177, 179, 185, 227, 2 3 9 105R012Y030R.....15, 53, 89, 95, 118, 147, 153, 159, 165, 171, 219, 228, 231, 240, 243, 295, 297, 441, 443, 445, 447, 449, 457, 4 5 9 , 4 6 3 105R012Y045R.....15 105R012Y060R.....95, 191, 230, 242, 433, 435, 439, 4 5 7 105R016Y040R.....53, 55, 103, 1 0 5 105R016Y050R.....17, 49 105R016Y060R.....17, 19 105R018Y060R.....11, 13 105R018Y075R.....29 105R020Y050R.....3, 5, 7 105R020Y065R.....25 105R024Y070R.....43 105R024Y080R.....37 108R006Y016R.....99 108R006Y020R.....359 108R006Y025R.....79 108R006Y040R.....591 108R006Y045R.....591 108R006Y060R.....474, 486 108R006Z020N.....476, 477, 4 8 8 , 4 9 0 108R006Z040R.....476, 477, 4 8 8 , 4 9 0 108R008Y016R.....252, 262 108R008Y020N.....475, 487 108R008Y020R.....251, 261 108R008Y025N.....603 108R008Y025R.....15 108R008Y045R.....603 108R008Z050N.....475, 477, 4 8 8 , 4 9 0 108R008Z055N.....522, 528 108R008Z070N.....476, 477, 4 8 8 , 4 9 0 108R010Y016R.....77 108R010Y020N.....475, 485	108R010Y030R.....83, 95, 147, 153, 159, 165, 171, 179, 185, 189, 191 108R010Y035R.....95, 427 108R010Y055R.....191 108R010Y060R.....101 108R010Y070R.....427 108R010Z016N.....502 108R010Z020N.....502, 510, 518 108R010Z030N.....531, 535, 539, 543, 555 108R010Z040B.....567, 577 108R010Z055B.....567, 577 108R012Y020R.....252, 262 108R012Y025R.....593 108R012Y030R.....101, 187 108R012Y035N.....548, 551 108R012Y035R.....411 108R012Y040R.....185 108R012Y060R.....591 108R012Y070R.....411 108R012Z040N.....499, 507, 516 108R014Z035N.....500, 508, 516 108R016Y040R.....299 108R016Z130B.....567, 577 108R018Y040N.....529 108R018Z080N.....531, 535, 539, 543, 555 108R020Y045R.....521, 527 108R020Y055R.....177, 179 108R020Z080N.....547, 551 1090001331.....697 1090091141.....667 1090440721.....627, 651 1090440730.....685 1093021590.....691 1093050050.....637 1093370170.....707 1095560150.....655 1095870811.....647 1096000160.....631, 637 1096050250.....685 1096050500.....685 1096233550.....639 1096234230.....644 1096234620.....673 1096234690.....639 1096235650.....657 1096236850.....687 1096300820.....651 1096300830.....637, 677 1096300850.....637, 673, 678, 6 8 5 , 6 9 7 1096300860.....681 1096300900.....639 1096390340.....632 1096605041.....661 1096750371.....677 1096750951.....681 1097006071.....697 1097006731.....697 1097007041.....657 1097009090.....697 1097009911.....697 1097071320.....663 1097071500.....657 1113691230.....639 1113691570.....673 1117401811.....657 1117770870.....632 1125280280.....644 1131003133.....687
--	--	---	--

CLICK HERE TO **DOWNLOAD** THE COMPLETE MANUAL

- Thank you very much for reading the preview of the manual.
- You can download the complete manual from: www.heydownloads.com by clicking the link below



- Please note: If there is no response to CLICKING the link, please download this PDF first and then click on it.

CLICK HERE TO **DOWNLOAD** THE COMPLETE MANUAL