



Bendi

**Bendi B55AC Series 6
Parts Manual**



LANDOLL COMPANY, LLC

1900 North Street

Marysville, Kansas 66508

(785) 562-5381

800-428-5655 ~ WWW.LANDOLL.COM

CLICK HERE TO **DOWNLOAD** THE COMPLETE MANUAL

- Thank you very much for reading the preview of the manual.
- You can download the complete manual from: www.heydownloads.com by clicking the link below



- Please note: If there is no response to CLICKING the link, please download this PDF first and then click on it.

CLICK HERE TO **DOWNLOAD** THE COMPLETE MANUAL

Parking Brake Caliper Assembly

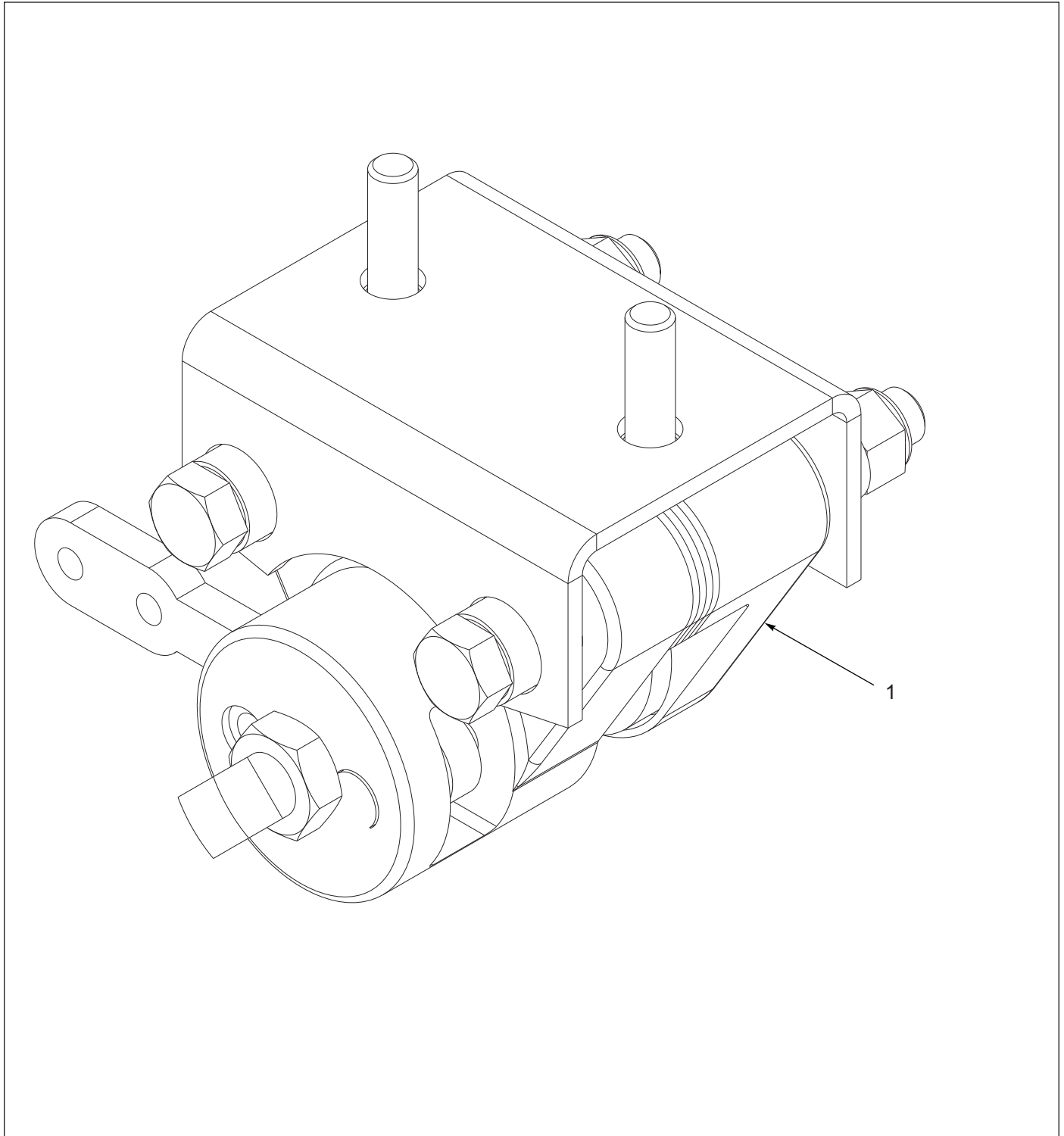


Figure 1-5: Parking Brake Caliper Assembly

Parking Brake Caliper Assembly

ITEM	PART NUMBER	DESCRIPTION	QTY.
1	0012325	CALIPER ASSEMBLY BENDI	1
2	100503	FRICION PAD KIT,PARK BRAKE (NOT SHOWN)	1

Counterweights

ITEM	PART NUMBER	DESCRIPTION	QTY.
1	157520	COUNTERWEIGHT, B55 REAR	1
2	1-654-010125-13	SCREW, HX CP, 1-8UNC X 4, GR8	4
3	1-654-010125-18	SCREW, HX CP, 1-8UNC X 6-1/2, GR8	3
4	1-861-010034-21	WASHER, LKG HEL SPRG 1IN	7
5	110-7389	WASHER, FLAT 1 IN SAE, ZP	4
6	157518	COUNTERWEIGHT, B55 LH	1
7	157519	COUNTERWEIGHT, B55 RH	1
8	206098	FRAME WLDMT B55-6/56	1

Decals



Figure 3-4: Decals (1 of 2)

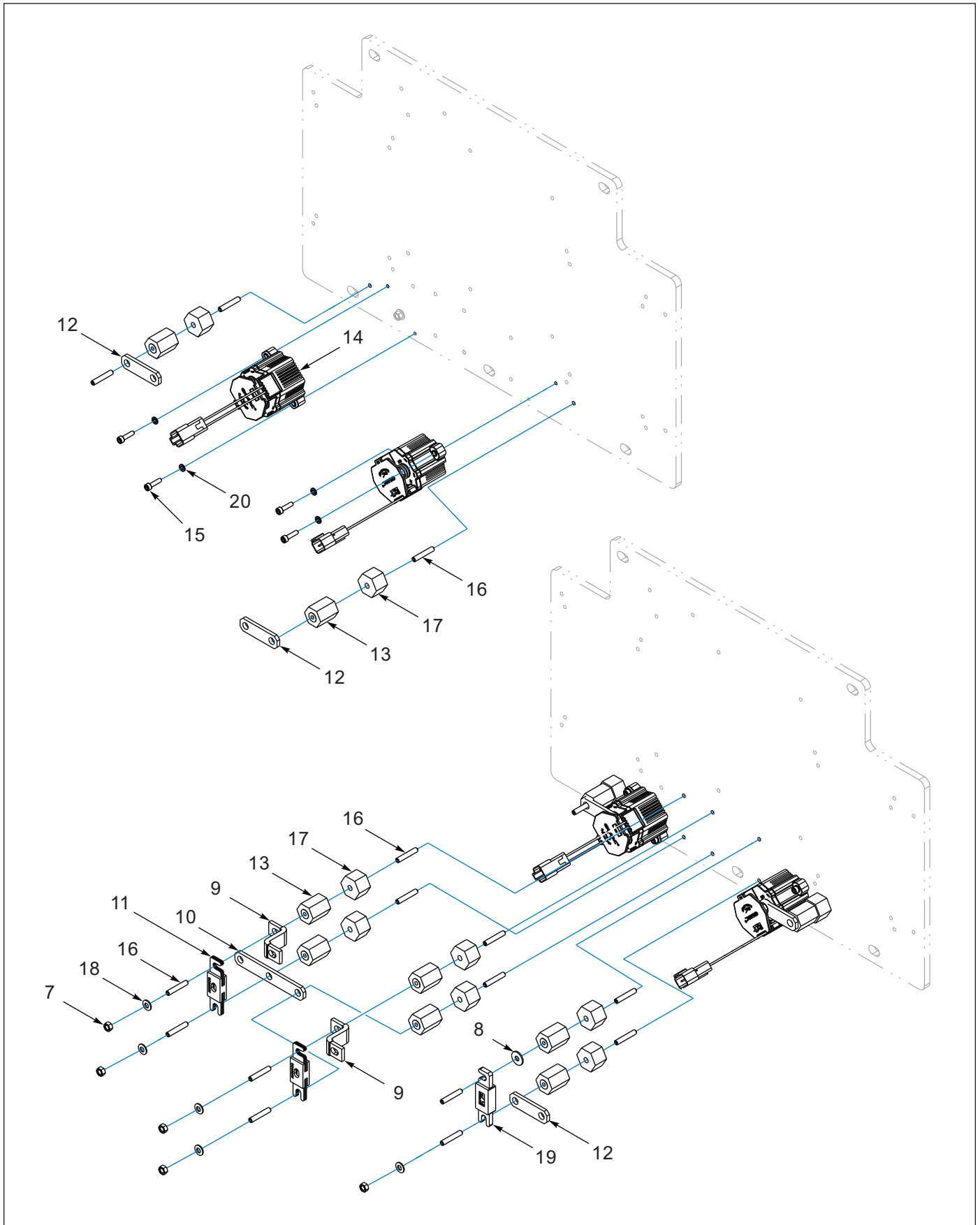


Figure 4-4: Control Panel Assembly - Before 06/03/2019 (2 of 4)

Control Panel Assembly - After 06/03/2019

ITEM	PART NUMBER	DESCRIPTION	QTY.
45	18EM613ER	WASHER, FLAT M6 NRW ZP	3
46	197228	SHIELD,PANEL HARNESS	1
47	1CM616ER	SCREW, M6-1.0X16 HCS 8.8 ZP	8
48	202928	CLAMP,PART CUSH ALUM,1-1/4	3
49	206435	FUSE BLOCK, 4 PSTN BLOCK	2
50	206461	DECAL,BT-6 FUSE	1
51	206462	DECAL,BT-6 POWER FUSE	1
52	221806	BRACKET,BT6 FUSE/CNTR MNT	1
53	221809	SCREW,M4-0.7X10 HCS 8.8 ZP	4
54	27CM308ER	SCREW M3 X 0.5-8 BUTTON	4
55	40DM6ER	LOCKNUT HX HD M6 CL10 ZP	3
56	6EM60ER	WASHER, LKG HLCL SPR M6 ZP	5

Pump Motor Installation

ITEM	PART NUMBER	DESCRIPTION	QTY.
1	1-512-010005-05	NUT, HX, SLFLKG GRB 3/8-16	4
2	1-861-010032-10	WASHER, FLAT 3/8 N, ZP/CD	4
3	104917	WASHER, FLAT D-SHAPE CLIPPED 3/8	2
4	6EM100ER	LOCKWASHER, M10, ZP	6
5	154015	WASHER, 3/8 X 1-1/2 X 1/8 FENDER	4
6	154016	MOUNT, BT/AC HYD MTR ANTI-VIB	4
7	163960	MOTOR, SCH 20KW AC LIFT PUMP	1
8	171510	PUMP, 25CC, SAE A, 9TOOTH, ROTARY (SEE PAGE 5-8)	1
9	181497	MOUNT WLDMT, BT-5 PUMP MOTOR	1
10	188403	SCREW, STUD 3/8-16 X 3 GR B7	4
11	18EM1019ER	WASHER, FL HS M10 PLATED	4
12	1CM1030ER	SCREW, M10-1.50 X 30 HCS 8.8, ZP	2
13	1CM1035ER	SCREW, M10-1.5 X 35 HCS 8.8, ZP	4

Note: Not all lighting options will be present on all forklifts.

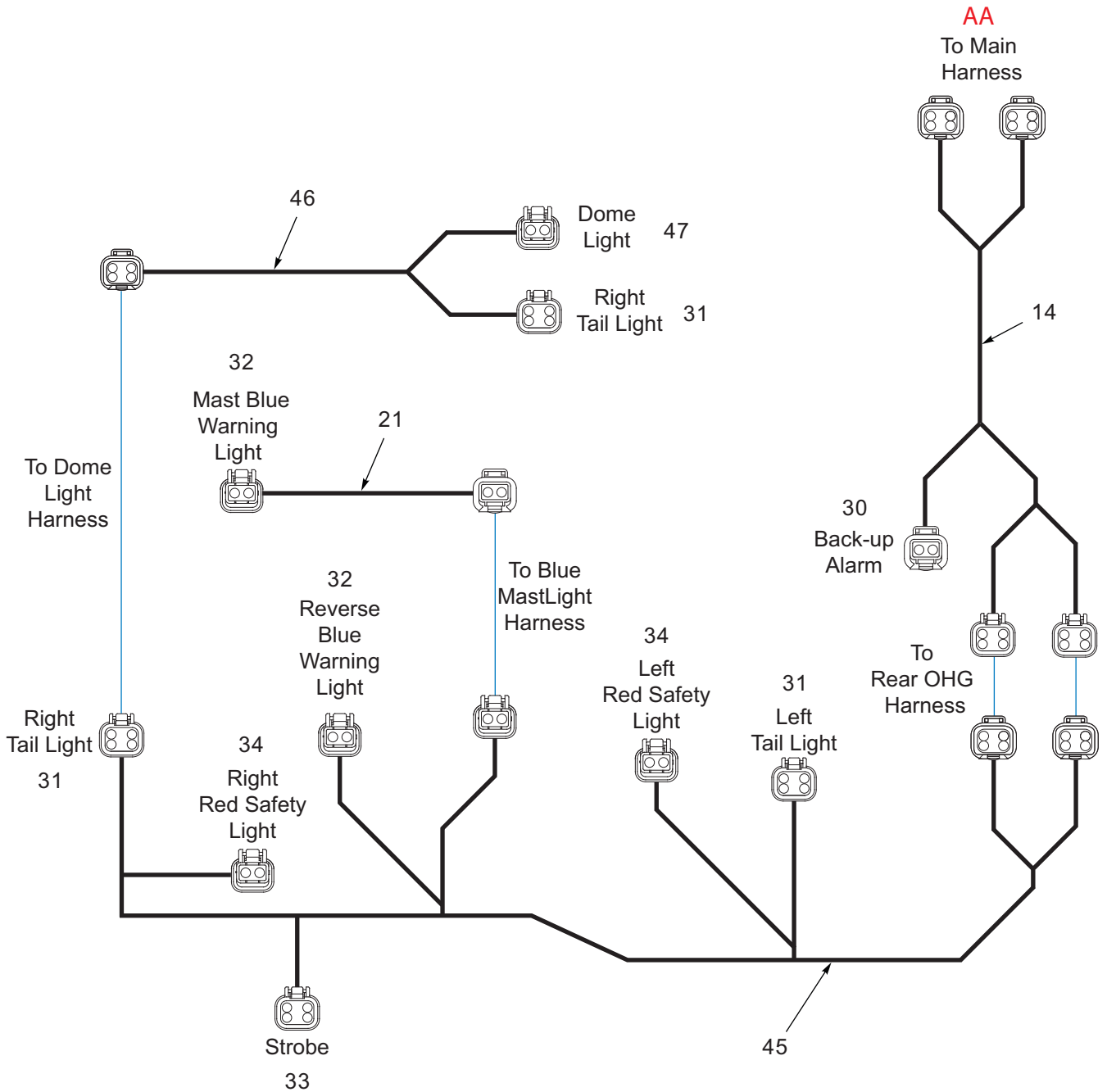


Figure 4-26: Electrical Diagram (6 of 6)

CLICK HERE TO **DOWNLOAD** THE COMPLETE MANUAL

- Thank you very much for reading the preview of the manual.
- You can download the complete manual from: www.heydownloads.com by clicking the link below



- Please note: If there is no response to CLICKING the link, please download this PDF first and then click on it.

CLICK HERE TO **DOWNLOAD** THE COMPLETE MANUAL

Pump

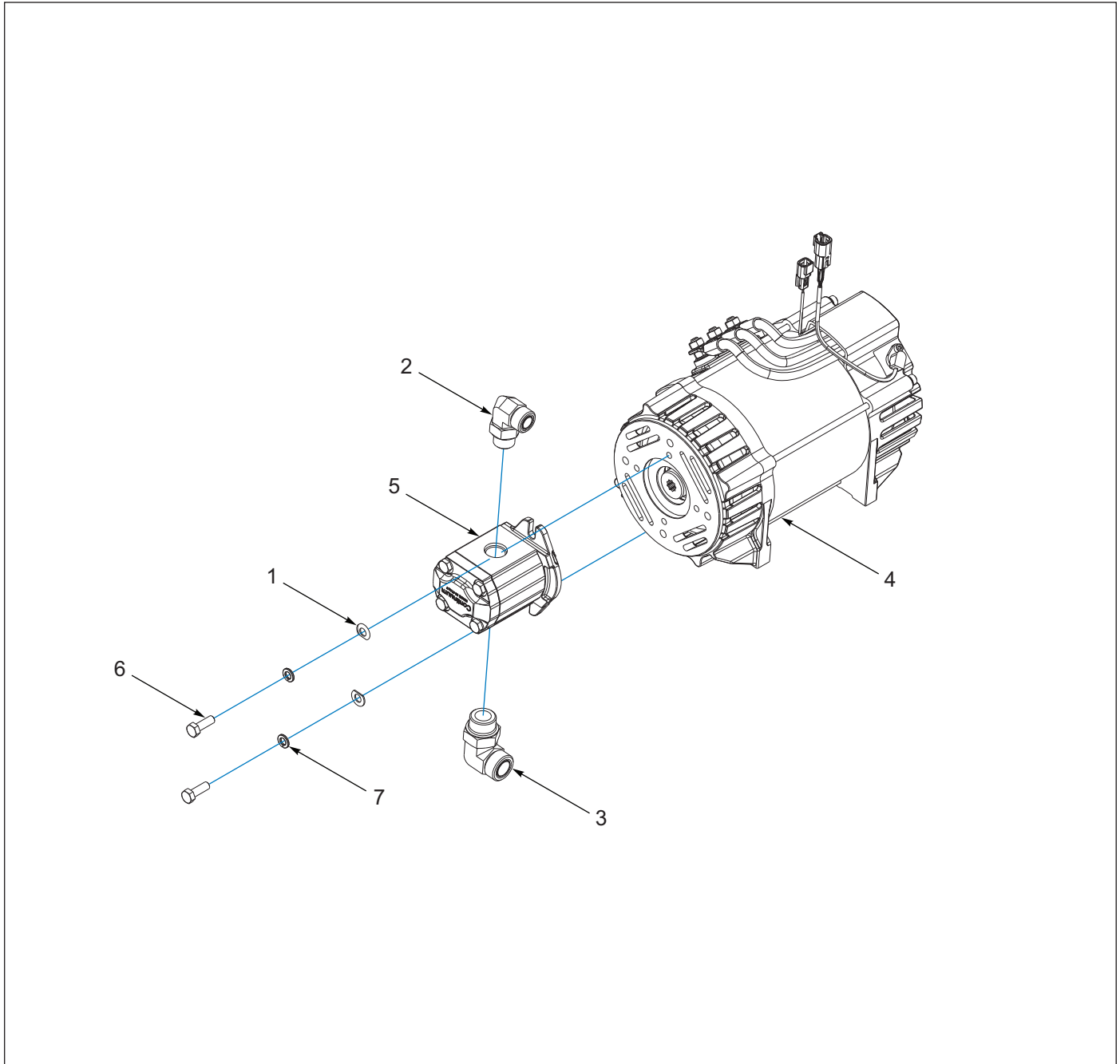


Figure 5-6: Pump

Pump

ITEM	PART NUMBER	DESCRIPTION	QTY.
1	104917	WASHER, FLAT D-SHAPE CLIPPED 3/8	2
2	110116	ADAPTER, 12ORB X 12ORS 90DEG	1
3	130595	ADAPTER, 16ORS X 16ORB, 90 ELB	1
4	163960	MOTOR, SCH 20KW AC LIFT PUMP	1
5	171510	PUMP, 25CC, SAE A, 9TOOTH, ROTARY	1
6	1CM1030ER	SCREW, M10-1.50 X 30 HCS 8.8, ZP	2
7	6EM120ER	WASHER, LOCK SPR M12, ZP	2

Valve Installation

ITEM	PART NUMBER	DESCRIPTION	QTY.
1	154004	VALVE, 3SPL HUSCO AX30454-180	1
2	106429	SCREW,HX SKTCTSK3/8-16X1-1/4	3
3	107470	NUT, SPIRALOCK 3/8-16HX	3
4	152120	ADAPTER, #10ORB X #10ORS ST	1
5	127621	ADAPTER,#4 ORS X #8 ORB CONN	1
6	127165	ADAPTER 6-8 ORS/ORB, 45	1
7	154541	ADAPTER, #8ORS X #10ORB,45ELB	4
8	154542	ADAPTER,#10ORS X #10ORB,45ELB	1
9	0018119	ADAPTER,#12ORS X #10ORB, 90ELB	1

Load Backrest

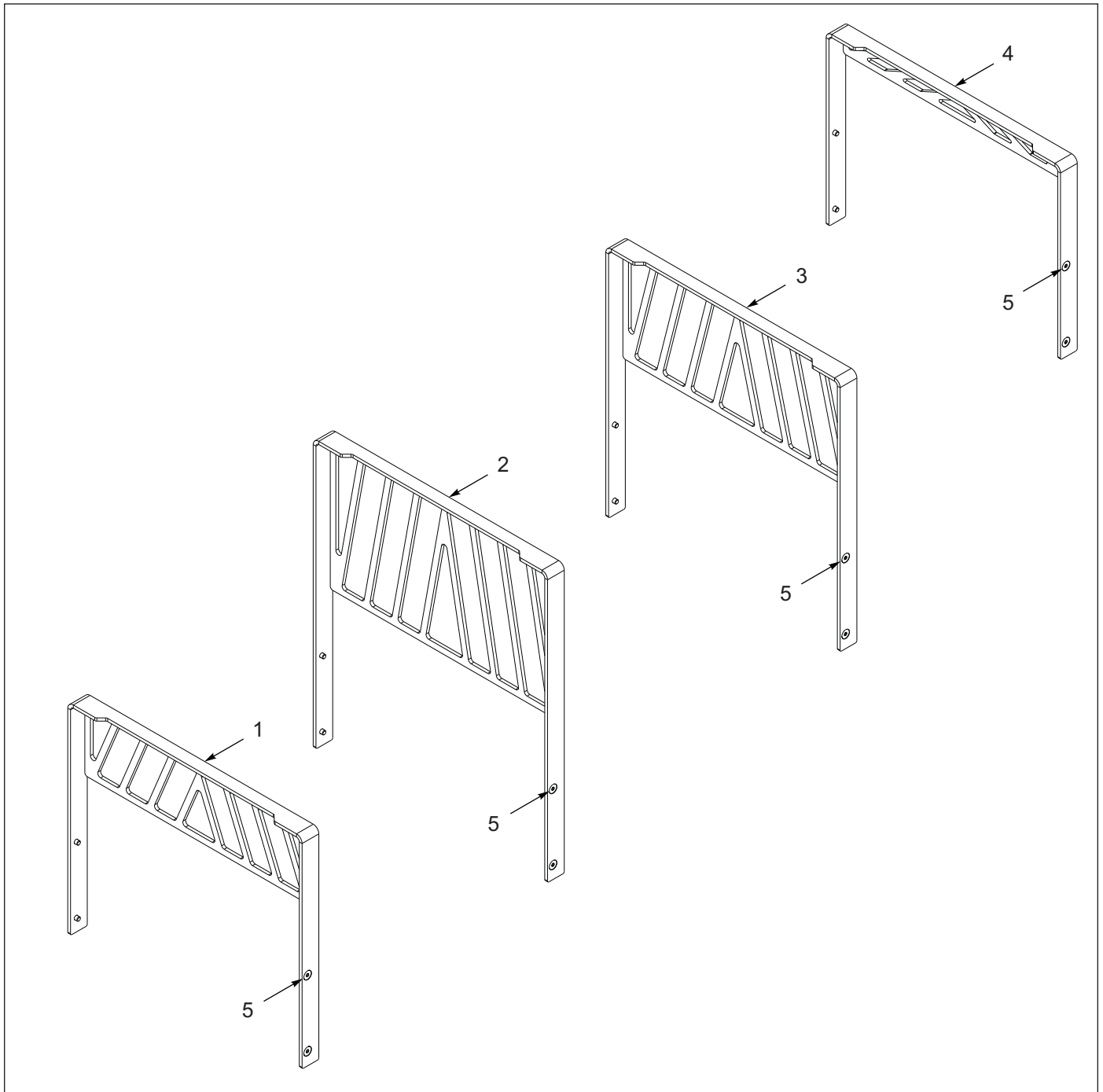


Figure 6-8: Load Backrest

Load Backrest

ITEM	PART NUMBER	DESCRIPTION	QTY.
1	153250	WELDMENT, 41 X 36 LBR	1
2	153366	WELDMENT, 41 X 48 LBR	1
3	161427	WELDMENT, 41 X 42 LBR	1
4	204890	WELDMENT, 41 X 30 LBR	1
5	118180	SCREW, 5X0.8 X 25 CTSK 8.8 ZP	4

Overhead Guard Installation

ITEM	PART NUMBER	DESCRIPTION	QTY.
1	0010931	LATCH, COVER HOLD-UP	1
2	0011269	MIRROR REAR VIEW	1
3	1-512-010003-05	NUT, HX SLFLKG W/NYL 10-32	2
4	1-861-010032-04	WASHER, FLAT 3/16, ZP	2
5	1-861-010032-06	WASHER, FLAT 1/4 N, ZP/CD	3
6	10-32X1	SCREW, MACH HX SLOT HEAD STL	2
7	158927	SHIM, B55 OHG	1
8	106534	NUT, HX FLG 5/8-11, GR8, ZP	4
9	106954	SCREW, BHSC 1/4-20UNC X 5/8	3
10	106955	SCREW, BHSC 1/4-20UNC X 3/4	3
11	107920	LATCH, RELEASE KNOB	1
12	108151	SCREW, 5/8-11 UNC X 1-1/2 FLG HD	4
13	108417	NUT, SPIRAL 1/4-20HX FG	3
14	108797	WASHER, 1/4 LKG INT TOOTH	3
15	110470	SURFACE RACEWAY	16
16	111360	SCREW, BHSC 5/8-11UNC X 3	4
17	158931	BASE WLDMT, B55 OHG	1
18	183201	NUT, T-SLOT, 5/8-11 X 3/4	2
19	202922	CLAMP, PART CUSH ALUM, 1/21	1
20	206541	PLATE, BT-6 OHG WIRING COVER	1
21	206544	OHG WLDMT, B50HL/DR-6, B55-6 (AFTER 12/01/2017)	1
21	158963	OHG WLDMT, B55 (BEFORE 12/01/2017)	1

Steering Column and Orbital Installation

ITEM	PART NUMBER	DESCRIPTION	QTY.
1	1-654-010051-07	SCREW, HEX CAP, 3/8-16UNC X 1-1/2	4
2	100006	PLATE, STRG COLUMN BELLOWS RTNR	2
3	107470	NUT, SPIRALOCK 3/8-16HX	4
4	131015	SCREW, HXSKT CAP M10-1.50 X 20, ZP	4
5	158957	ORBITAL, B55 LOAD SENSING	1
6	201909	STEERING COLUMN ASSY,BT/HL-6 (SEE PAGE 7-19)	1
7	M10SLW ZP	WASHER, SPLIT LK METRIC 10MM, ZP	4

Load Wheels

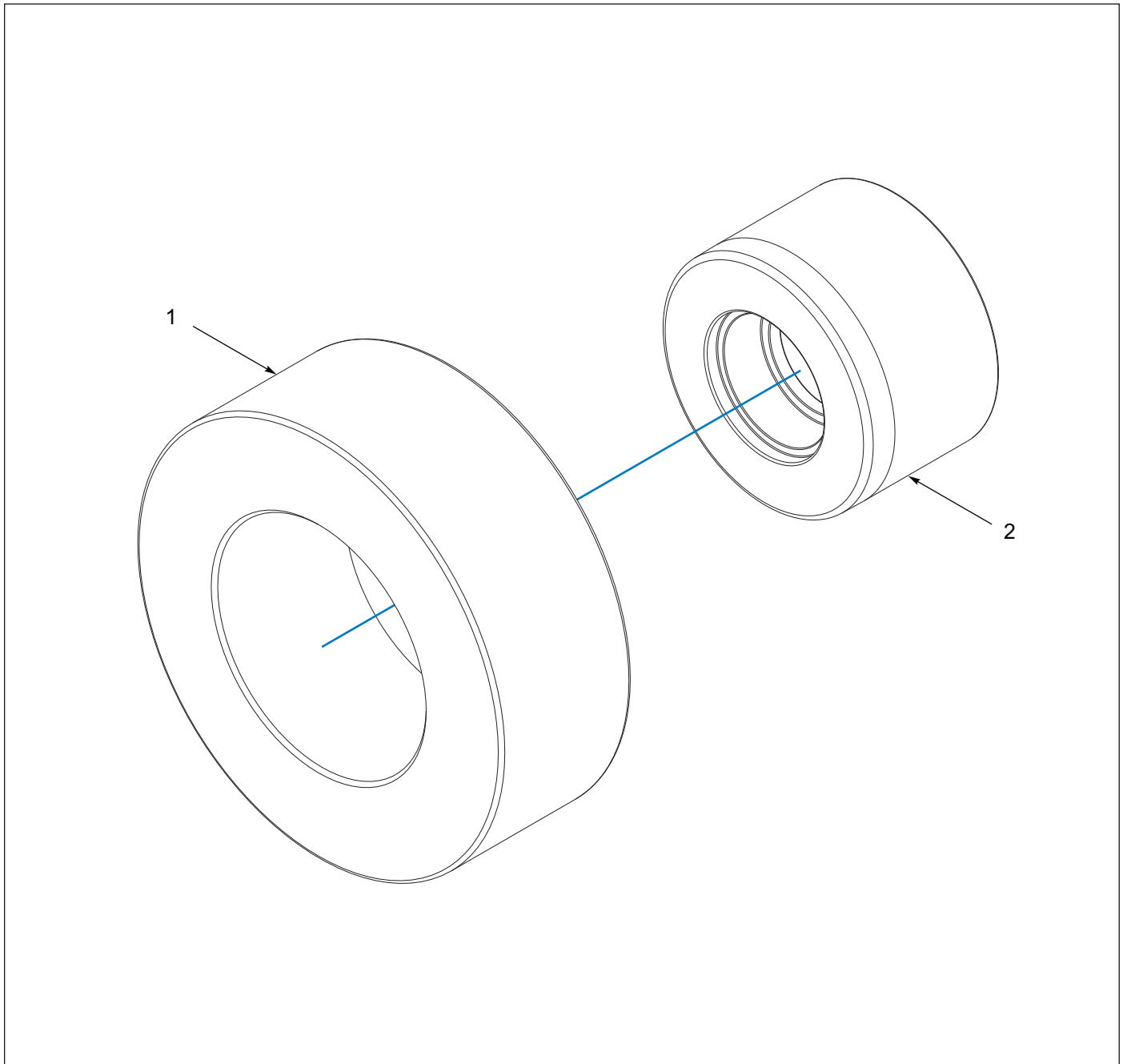


Figure 8-5: Load Wheels

Load Wheels

ITEM	PART NUMBER	DESCRIPTION	QTY.
1	109091	TIRE, BENDI 14X5X8	2
1	175509	TIRE, 14X5X8 POLY, SOLIDEAL	2
1	157482	TIRE, B55 14 X 8 X 11-1/4 B	2
1	195969	TIRE, B55 14X8X11-1/4 CLEAR PLY	2
2	130733	WHEEL, CAST FRONT LOAD HUB	2
2	157483	WHEEL, B55 FRONT LOAD	2
3	0022007	BEARING, CUP LOAD WHL, BENDI48 (NOT SHOWN)	2

Overhead Guard with Door and Mesh

ITEM	PART NUMBER	DESCRIPTION	QTY.
1	0010931	LATCH, COVER HOLD-UP	1
2	0600-250-01000	1/4X1 ROLL PIN ZP	4
3	1-512-010007-05	NUT, HEX 1/4-20 GR2 ZP	8
4	1-513-010002-05	NUT,METRIC HEX M6X1.0	4
5	1-654-010121-06	SCREW HEX SKT CTSK,5/16X1-1/4	2
6	1-861-010032-06	WASHER, FLAT 1/4 N ZP/CD	8
7	1-861-010032-18	WASHER, FLAT 5/8 N ZP/CD	2
8	1-861-010034-09	WASHER, LKG HLCL SPR, 1/4	8
9	10232PR	RUBBER WASHER,#14 ID,5/8 OD	8
10	106784	WASHER, 5/16 NYLON ---- BLACK	2
11	106954	SCREW,BHSC 1/4-20UNCX5/8	2
12	106955	SCREW,BHSC 1/4-20UNCX3/4	16
13	107920	LATCH RELEASE KNOB	2
14	108797	WASHER 1/4 LKG INT TOOTH	2
15	109394	SCREW, BHSC #10-24UNCX5/8	1
16	111859	PIN, 5/16X1-1/2,RD LOCKING	1
17	12412409	SEAL, FLEXIBLE, SELF-GRIPPING	9
18	12412476-08	NUT,SELF-LOCKING,HEX-5/16-18	2
19	149460	WASHER, FLAT M8 NRW ZP	22
20	169109	NUT,HEX FLANGE 10-24 SPIRAL	1
21	18EM613ER	WASHER, FLAT M6 NRW ZP	4
22	193696	DUAL STAGE ROTARY LATCH LH	1
23	1CM616ER	SCREW HX HD M6X16MM CL8.8 ZP	4
24	1CM820ER	SCREW HX HD M8X1.25-20,CL8.8	22
25	216940	B55 OHG ASSY W/MESH	1
26	216943	HINGE, B55 OHG	2
27	216944	B55 OHG WINDSHIELD	1
28	216947	SNAP-DOWN ARM LATCH	1
29	216948	WLDMT, B55 OHG DOOR	1
30	217018	PLATE, B55 OHG DOOR LATCH	2
31	217020	WLDMT, OHG LH LWR HINGE	1
32	217022	WLDMT, OHG LH UPR HINGE	1
33	217024	WLDMT, B55 OHG LWR DOOR HINGE	1
34	217026	WLDMT, B55 OHG RH UPR HINGE	1
35	217028	CLAMP KIT, B55 OHG DOOR HINGE	5
36	217035	BEARING, 5/8 IGUS FLANGE	4
37	217036	WLDMT, LEFT B55 OHG DOOR	1
38	217037	WLDMT, RIGHT B55 OHG DOOR	1
39	217719	TAB, OHG DOOR CHECK	2
40	217721	WLDMT, TOP OHG DOOR CHECK	1
41	217723	WLDMT, BOTTOM OHG DOOR CHECK	1
42	6EM60ER	WASHER LOCK SPRING M6 ZP	4
43	6EM80ER	WASHER LOCK SPRING M8	22
44	217027	CLAMP, OHG 2X2 POST DOOR MNT	2
45	27CM620ER	SCREW,M6-1.0X20 BHSC 8.8	2

119548	7-4	128086	7-21
119704	2-10	128088	7-21
119734	1-2, 2-10, 6-9	128089	7-21
119741	2-2	128090	7-21
11EM30ER	4-9, 4-15	128091	7-21
121300	7-15	128092	7-21
121422	2-10, 3-10	128093	4-37, 7-21
123391	7-11	128297	1-2
123893	10-2	128306	2-2
123906	5-3, 5-10, 6-5	128757	2-2
12412409	10-10	128838	2-2
12412476-08	10-10	129673	8-5
124845	6-10	130149	5-12
125436	7-15	130150	4-18
125526	3-4	130345	2-10
125527	3-4	130405	2-2, 9-8
125528	3-4	130406	2-2
125892	1-4, 7-11	130412	2-2
126088	5-3, 5-12	130413	2-2
126193	7-21	130414	2-2
126357	1-10	130415	2-2
126575	8-5	130451	1-2
127080	7-11	130595	5-3, 5-8
127082	7-11	130602	3-4, 3-8
127083	7-11	130603	3-4, 3-8
127084	7-11	130604	2-2
127097	2-2	130667	4-18, 4-37
127165	5-3, 5-10, 5-18	130733	8-6
127356	7-2	131015	7-18
127621	5-3, 5-10, 5-18	131080	2-2
127627	2-10	131206	9-2
127648	1-4	131213	1-8
127649	1-4	131395	9-4
127759	5-12	131396	9-4
127769	9-8	131397	9-4
128077	8-1	131398	9-4
128082	7-21	131427	9-4
128085	4-37, 7-21	131429	9-8

CLICK HERE TO **DOWNLOAD** THE COMPLETE MANUAL

- Thank you very much for reading the preview of the manual.
- You can download the complete manual from: www.heydownloads.com by clicking the link below



- Please note: If there is no response to CLICKING the link, please download this PDF first and then click on it.

CLICK HERE TO **DOWNLOAD** THE COMPLETE MANUAL