



B3/30 AC Series 5

**Articulated Counterbalance Forklift
Parts Manual**



LANDOLL COMPANY, LLC

1900 North Street

Marysville, Kansas 66508

(785) 562-5381

800-428-5655 ~ WWW.LANDOLL.COM

CLICK HERE TO **DOWNLOAD** THE COMPLETE MANUAL

- Thank you very much for reading the preview of the manual.
- You can download the complete manual from: www.heydownloads.com by clicking the link below



- Please note: If there is no response to CLICKING the link, please download this PDF first and then click on it.

CLICK HERE TO **DOWNLOAD** THE COMPLETE MANUAL

Brake Pedal and Line Installation

ITEM	PART NUMBER	DESCRIPTION	QTY.
1	1-654-010047-06	SCREW, HEX CP 1/4 - 20 UNC X 1, GR5	4
2	1-861-010032-07	WASHER, FLAT 1/4, ZP	4
3	1-861-010034-09	WASHER, LKG HLCL SPR, 1/4	4
4	108417	NUT SPIRAL 1/4-20HEX FG	6
5	10K2	FITTING, TEE SAE37	1
6	129609	BRAKE LINE ASSEMBLY, B3-4 LH	1
7	129610	BRAKE LINE ASSEMBLY, B3-4 RH	1
8	199676	BRAKE LINE ASSEMBLY, B3-5 CTR	1
9	162290	CLAMP, CABLE 1/4 SST	6
10	167017	PEDAL ASSEMBLY, B3-3 BRAKE (SEE PAGE 1-7)	1

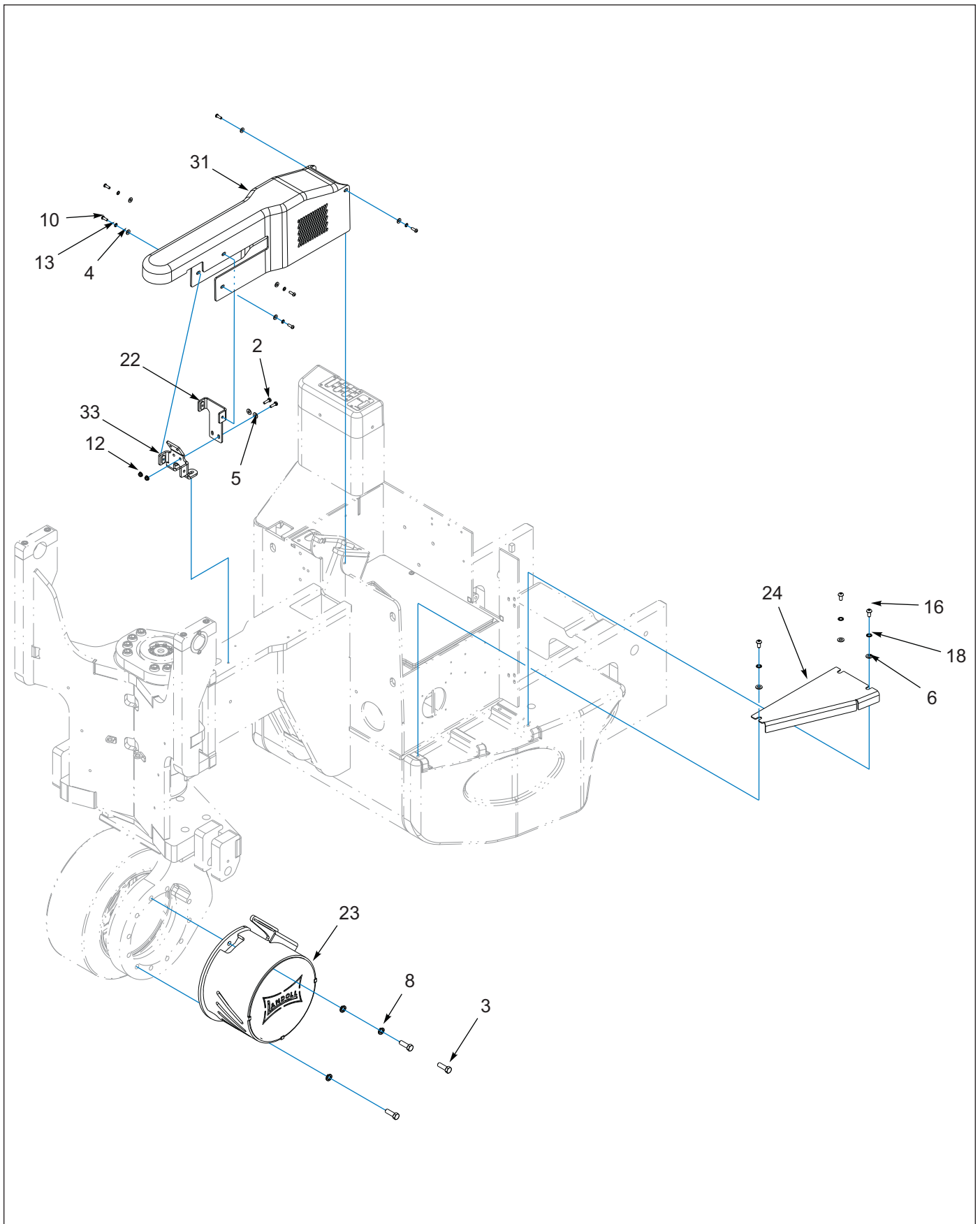


Figure 2-5: Covers Installation (2 of 3)

Controller - Pump (After 06/18/2019)

ITEM	PART NUMBER	DESCRIPTION	QTY.
1	1-654-010165-03	SCREW, HHC M4 X 0 7 X 12, GR5	2
2	1-654-010166-04	SCREW, M8-1 25 X 20 HCS 8.8, ZP	5
3	1-861-010032-07	WASHER,FLAT 1/4 ZP	3
4	101375	SCREW HEX,SKT 1/4-20X5/8	1
5	107-0984	SCREW,SET 3/8-16UNCX.75KNRLCPT	1
6	108417	NUT SPIRAL 1/4-20HX FG	1
7	143547	MOUNT,SW CONTACTOR B3-2	1
8	146072	SCREW, HEX/SKT, 1/4-20X1-1/4	1
9	146613	WASHER, 5/16-M8, PLAIN DS	5
10	146632	STANDOFF, FUSE INSULATOR	1
11	149439	WASHER,FLAT M4 STD ZP	2
12	149441	WASHER, LOCKING HLCL SPR M4, ZP	2
13	152144	CONTACTOR,SW60 48V DC ENCLSD	1
14	161963	CONTACTOR,SW200 24V DUST SHLD	1
15	182627	FUSE, 700A ANN	1
16	18EM1019ER	WASHER FL HS M10 PLATED	2
17	197217	CONTROLLER, 36-48V 600A 1236SE	1
18	1CM612ER	SCREW HX HD M6X12MM CL8.8 ZP	2
19	1CM630ER	SCREW, HEX HEAD, M6 X 1.0-30, CL 8.8	4
20	40-0933	INSULATOR, POWER FUSE	1
21	6EM60ER	WASHER, LOCK SPRING M6, ZP	6

Pump Motor Assembly

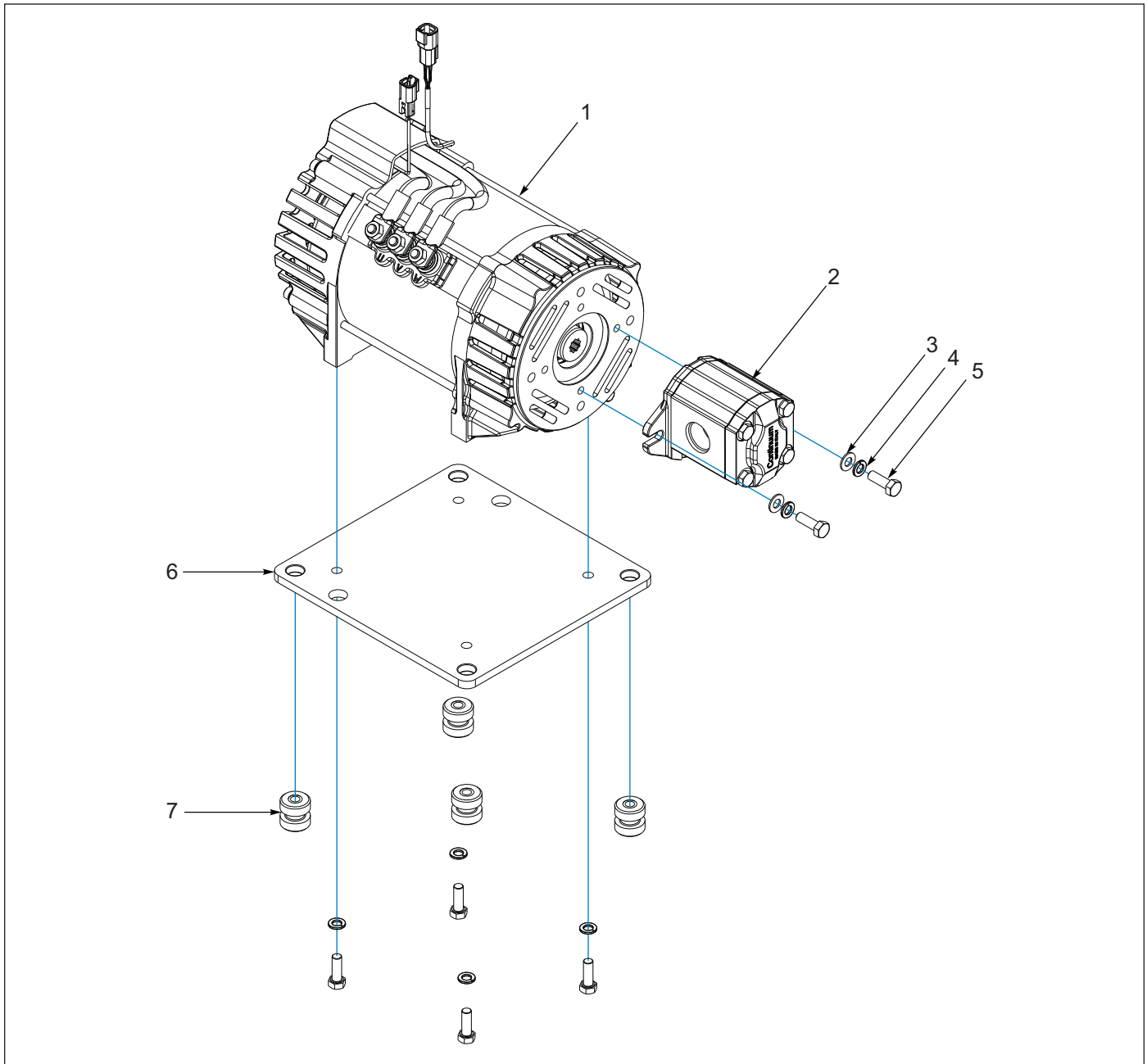


Figure 4-12: Pump Motor Assembly

Pump Motor Assembly

ITEM	PART NUMBER	DESCRIPTION	QTY.
	201923	PUMP/MOTOR ASSEMBLY 20KW/25CC (SEE PAGE 5-9)	--
1	163960	MOTOR, SCH 20KW AC LIFT PUMP (SEE PAGE 1-54)	1
2	171510	PUMP, 25CC, SAE A, 9 TOOTH, ROTARY	1
3	1-861-010032-10	WASHER, FLAT 3/8 N, ZP/CD	2
4	6EM100ER	LOCKWASHER, M10, ZP	6
5	7CM1030ER	SCREW, M10-1.5 X 30 HCS 10.9, ZP	6
6	165738	PLATE, PUMP MOTOR MOUNT SL	1
7	154016	MOUNT, BT/AC HYDRAULIC MOTOR ANTI-VIB	

Wiring Diagram

ITEM	PART NUMBER	DESCRIPTION	QTY.
47	219689	LIGHT,12-48V,W/SW,DOME (SEE PAGE 4-17)	REF
48	217718	HARNESS,BT-6 SGL HT LIFT LIMIT	REF
49	219672	SWITCH,30MM LVR, COMPACT LIMIT (SEE PAGE 10-4)	REF
50	211830	ADAPTER, B3-5 CE STR CLMN HRNS	REF
51	175484	HARNESS ASM SLAC RR WORK LIGHT (NOT SHOWN)	REF

CLICK HERE TO **DOWNLOAD** THE COMPLETE MANUAL

- Thank you very much for reading the preview of the manual.
- You can download the complete manual from: www.heydownloads.com by clicking the link below



- Please note: If there is no response to CLICKING the link, please download this PDF first and then click on it.

CLICK HERE TO **DOWNLOAD** THE COMPLETE MANUAL

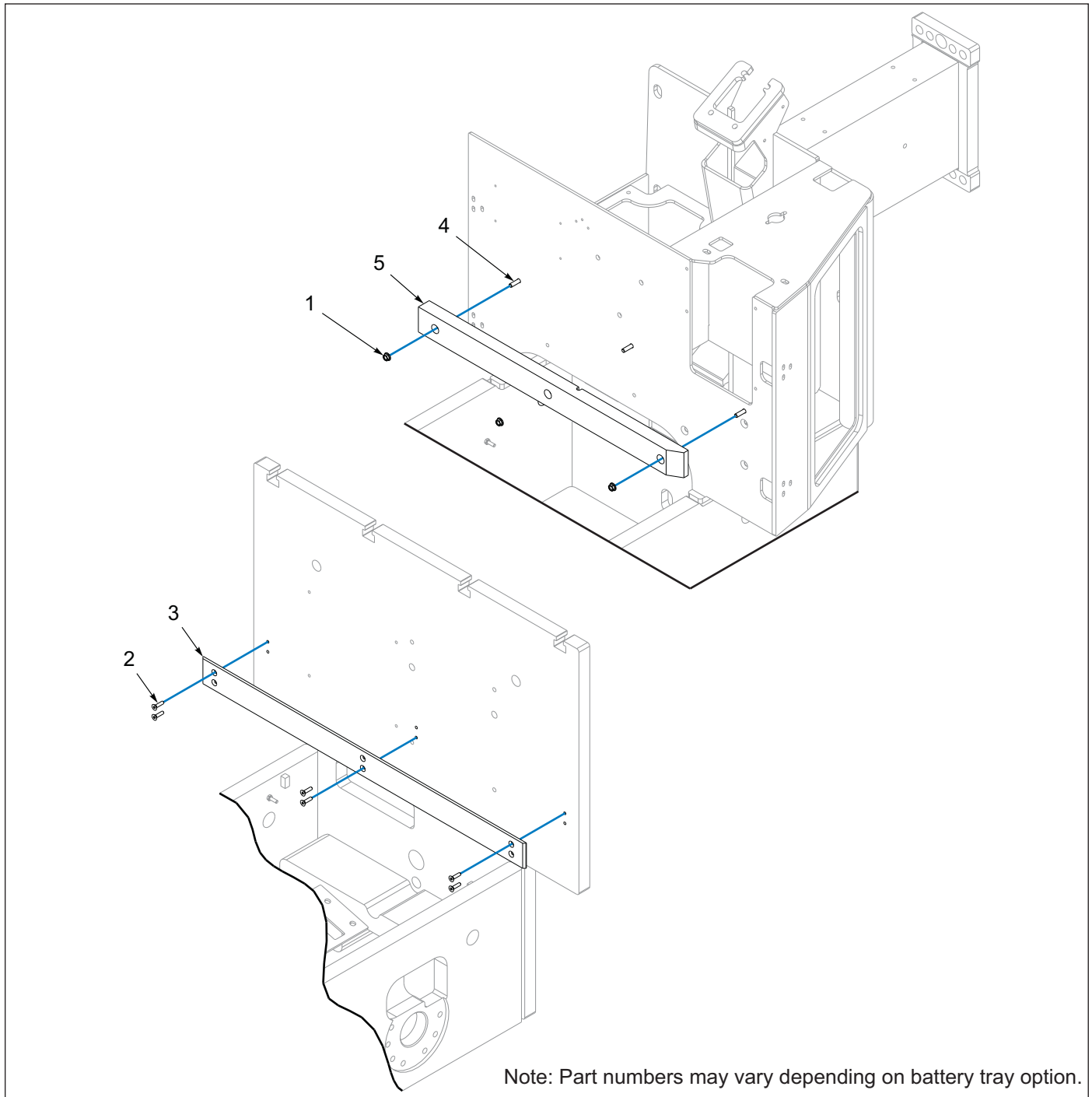
Valve Installation

ITEM	PART NUMBER	DESCRIPTION	QTY.
1	154004	VALVE, 3SPL HUSCO AX30454-180	1
2	106429	SCREW,HX SKTCTSK3/8-16X1-1/4	3
3	107470	NUT,SPIRALOCK 3/8-16HX	3
4	152120	ADAPTER, #10ORB X #10ORS ST	1
5	127621	ADAPTER,#4 ORS X #8 ORB CONN	1
6	127165	ADAPTER 6-8 ORS/ORB, 45	1
7	154541	ADAPTER, #8ORS X #10ORB,45ELB	4
8	154542	ADAPTER,#10ORS X #10ORB,45ELB	1
9	0018119	ADAPTER,#12ORS X #10ORB, 90ELB	1

Overhead Guard Installation

ITEM	PART NUMBER	DESCRIPTION	QTY.
1	0010931	LATCH, COVER HOLD-UP	1
2	0011269	MIRROR REAR VIEW	1
3	1-512-010003-05	NUT, HEX SLFLKG W/NYL 10-32	2
4	1-861-010032-04	WASHER, FLAT 3/16, ZP	2
5	1-861-010032-06	WASHER, FLAT 1/4 N, ZP/CD	3
6	10-32X1	SCREW, MACH HEX SLOT HEAD STL	2
7	101909	SHIM, BT SERIES III OHG	1
8	106534	NUT, HEX FLG 5/8-11, GR8, ZP	4
9	106954	SCREW, BHSC 1/4 - 20 UNC X 5/8	4
10	106955	SCREW, BHSC 1/4 - 20 UNC X 3/4	3
11	107920	LATCH RELEASE KNOB	1
12	108151	SCREW, 5/8 - 11UNC X 1-1/2 FLG HD	4
13	108417	NUT SPIRAL 1/4 - 20 HEX FG	3
14	108797	WASHER, 1/4 LKG INT TOOTH	4
15	110470	SURFACE RACEWAY	1
16	111360	SCREW, BHSC 5/8-11UNC X 3	4
17	118710	BASE WLDMT, B40-4 OHG	1
18	183201	NUT, T-SLOT, 5/8-11 X 3/4	2
19	202922	CLAMP, PART CUSH ALUM, 1/2	1
20	206515	PLATE, BT-6 OHG WIRING COVER	1
21	206520	OHG WELDMENT, B 30/40 - 6	1

Battery Guides Installation



Note: Part numbers may vary depending on battery tray option.

Figure 9-2: Battery Guides Installation

Battery Guides Installation

ITEM	PART NUMBER	DESCRIPTION	QTY.
1	1-510-010004-03	NUT, HEX FLANGE, 5/16-18, GR8	3
2	1-654-010079-6	SCREW, SKT FL C/SUNK 1/4-20 X 1	6
3	108456	BAR, B30 RR UHMW BATTERY GUIDE	1
4	131206	SCREW, BHSC 5/16-18UNC X 1-1/4	3
5	201899	BAR, B3-6 FRT UHMW BATTERY GUIDE	1

Lift Limit Switch

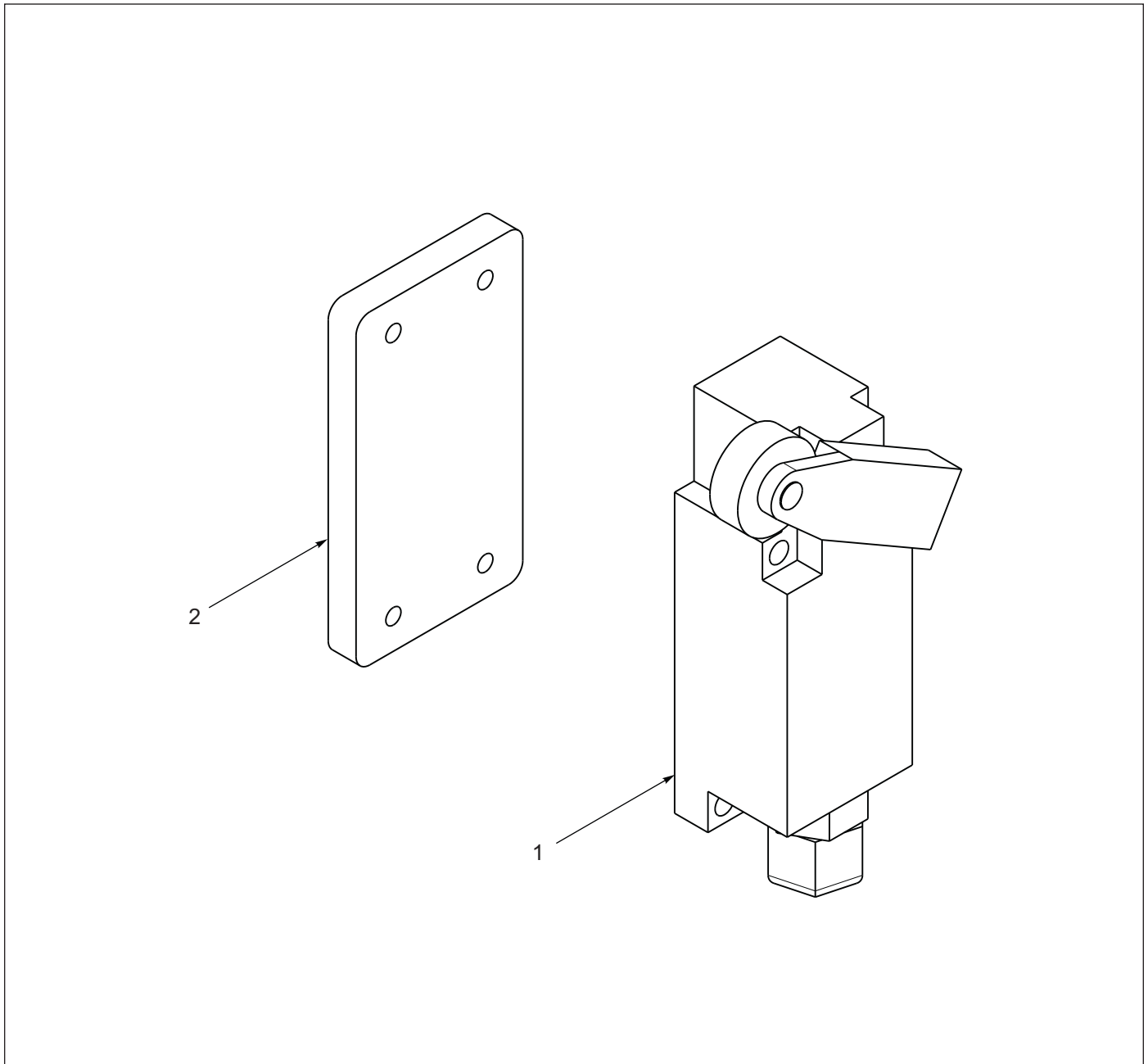


Figure 10-2: Lift Limit Switch

Lift Limit Switch

ITEM	PART NUMBER	DESCRIPTION	QTY.
	219676	KIT,B3-5 SGL HT LIFT LIMIT	1
1	219672	SWITCH,30MM LVR, COMPACT LIMIT	1
2	219675	PLATE,219672 MOUNT	1
3	189871	SPACER,LIFT INT RAMP MOUNT	1
4	217718	HARNESS,BT-6 SGL HT LIFT LIMIT (SEE PAGE 4-25)	1
5	189870	PLATE,LIFT INT SWITCH CAM	1
6	85G808E	SCREW,PAN.HD., 8-32 X 1/2	4
7	110470	SURFACE RACEWAY	REF

R

RH Righthand
RND Round

S

SER Series
SHCS Socket Head Cap Screw
SHLD Shield
SKT Socket
SLFLKG Selflocking
SOC Socket
SPDT Single Pole Double Throw
SPR Spring

SQ Square
SRTD Serrated
SSCR Setscrew
SST Stainless Steel
STD Standard

U

UPR Upper

W

WHL Wheel
WLD OR WLDMT Weldment

CLICK HERE TO **DOWNLOAD** THE COMPLETE MANUAL

- Thank you very much for reading the preview of the manual.
- You can download the complete manual from: www.heydownloads.com by clicking the link below



- Please note: If there is no response to CLICKING the link, please download this PDF first and then click on it.

CLICK HERE TO **DOWNLOAD** THE COMPLETE MANUAL