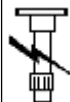


ACCESSORIES MECHANICAL

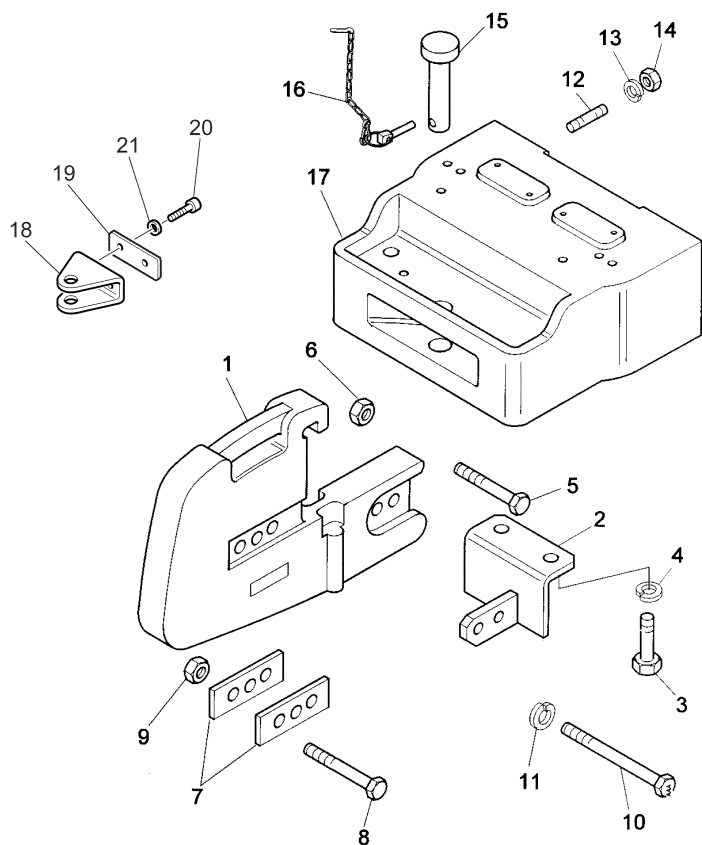
**X-48  
01**



X4801

Ghibli New TIER2 85

WEIGHT FRAME AND WEIGHTS - FRONT HOOK - UP TO SERIAL N. ...



1	3660177M1	C		9	BALLAST WE
1	3660177M1	A		5	BALLAST WE
1	3660177M1	B		7	BALLAST WE
		T-A 0:25			
2	3652445M92	●	3652445M94 (1)	1	STIRRUP
3	391120X1		M16X45	2	SCREW
4	339377X1			2	LOCK WASHER
5	390864X1	◀▶	80MM	2	SCREW
6	339034X1			2	NUT
7	3660400M1			2	PLATE
8	339616X1	◀▶	120MM	1	SCREW
9	392368X1			1	NUT
10	1442666X1	◀▶	180MM B	2	BOLT
10	391327X1	◀▶	145MM A	2	SCREW
10	392461X1	●	3019928X1 (2) ◀▶ 220MM C	2	SCREW
11	1441664X1			2	LOCK WASHER
12	3015246X1		M20X60	4	STUD
13	339378X1			4	LOCK WASHER
14	339035X1	●	3009747X1 (4)	4	NUT
15	3553319M92			1	PIN
16	1699608M91			1	KIT
17	3652509M1	●	3652509M2 (1)	1	BASKET
		T-A 1:0			
18	4204529M1	●	4204529M2 (1)	1	HOOK

CLICK HERE TO **DOWNLOAD** THE COMPLETE MANUAL

- Thank you very much for reading the preview of the manual.
- You can download the complete manual from: [www.heydownloads.com](http://www.heydownloads.com) by clicking the link below



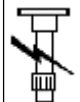
- Please note: If there is no response to CLICKING the link, please download this PDF first and then click on it.

CLICK HERE TO **DOWNLOAD** THE COMPLETE MANUAL

ACCESSORIES MECHANICAL

**X-48**  
**10**

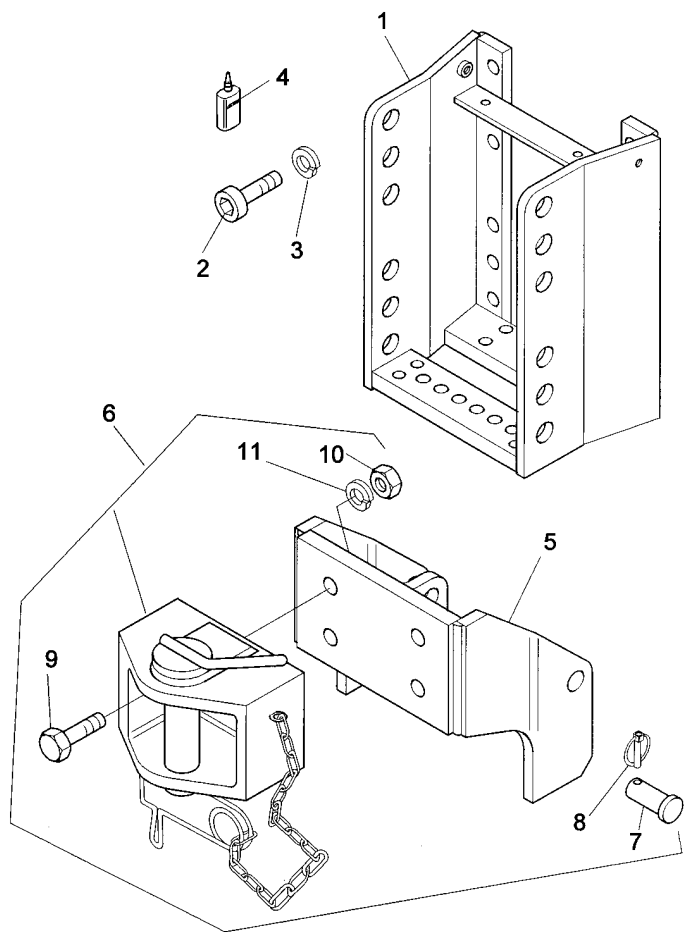
HOOK PULL - REAR



X4810

Ghibli New TIER2 85

4-AQ19-030-A



1	3670763M91	⊕		1	ARMATURE
2	390419X1		T-A 0:50	12	SCREW
3	391414X1		M16X40	12	LOCK WASHER
4	1427801M2			1	LOCTITE
5			C	1	SUPPORT
6	3650974M91		A	1	HOOK
7		!	T-A 0:25	4	PIN
8		! 6	REF.N.6	4	RETAINER
9		!	C	4	SCREW
10		!	C	4	NUT
11		!	C	4	LOCK WASHER
		!	C		
!	THIS IS A COMPONENT OF AN ASSEMBLY				
➡	NOT SERVICED, ORDER				
⊕	FOR ITALY ONLY				
A	CATEGORY "D"				
C	TO BE ADVISED				
T-A	Replacement				

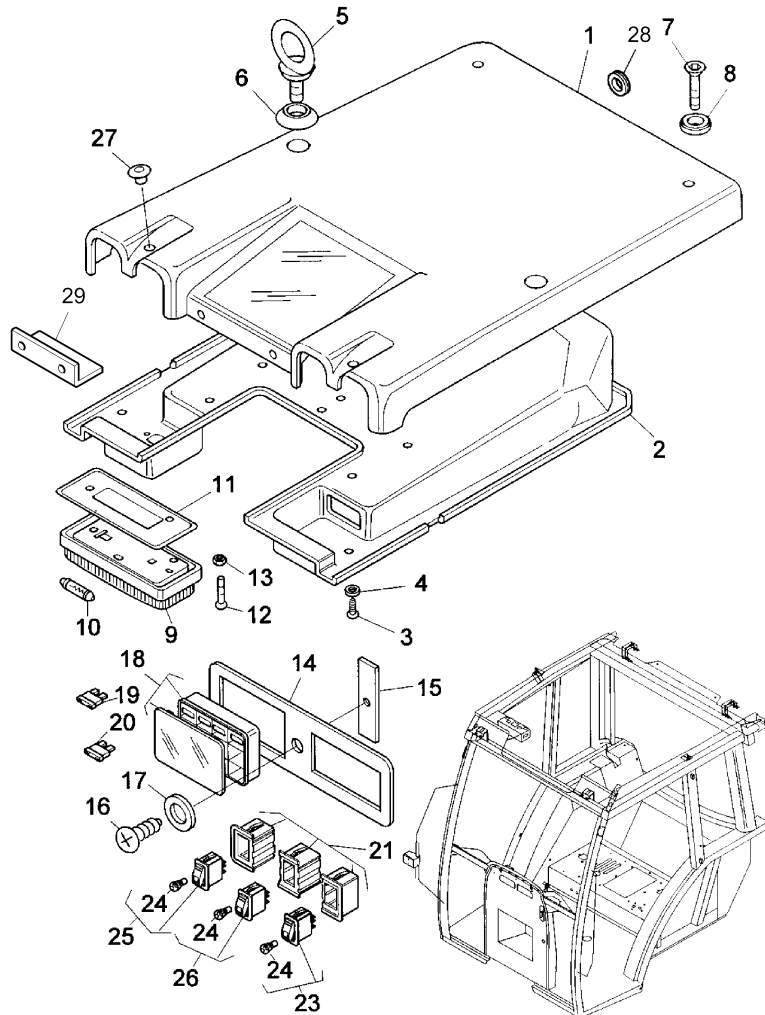
TRACTOR CAB

U-47  
02

TRACTOR CAB - "ROOF" - CLADDING PANEL

Ghibli New TIER2 85

U4702



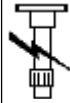
1	3660198M91		1	ROOF
2	3659449M1	T-A 1:0	1	FACING
3	3015127X1	T-A 1:0	13	SCREW
4	3659451M1	M4,9X19	13	BOSS
5	3660112M1		2	EYE BOLT
6	3660115M1		2	SPACER
7	3009445X1		4	SCREW
8	3660113M1		2	BUSH
9	3540331M91		1	ROOF LIGHT
10	3659453M1		1	FLASHER
11		T-A 0:25	1	FACING
		9		
		REF.N.9		
		M4X20		
12	3019032X1		2	SCREW
13	1443615X1		2	NUT
14	3659458M1		1	SKIRT
15	3659459M1		1	STIRRUP
16	3015153X1	M6X20	1	SCREW
17	391038X1		1	WASHER
18	3661262M1		1	BOX
19		! 18	1	FUSE
		B		
20		! 18	1	FUSE
		B		
21	3559524M1		2	SKIRT
22	3559525M1		1	SKIRT
23	3559519M91	A	1	SWITCH,IND
		T-A 0:25		

TRACTOR CAB

U-47  
08

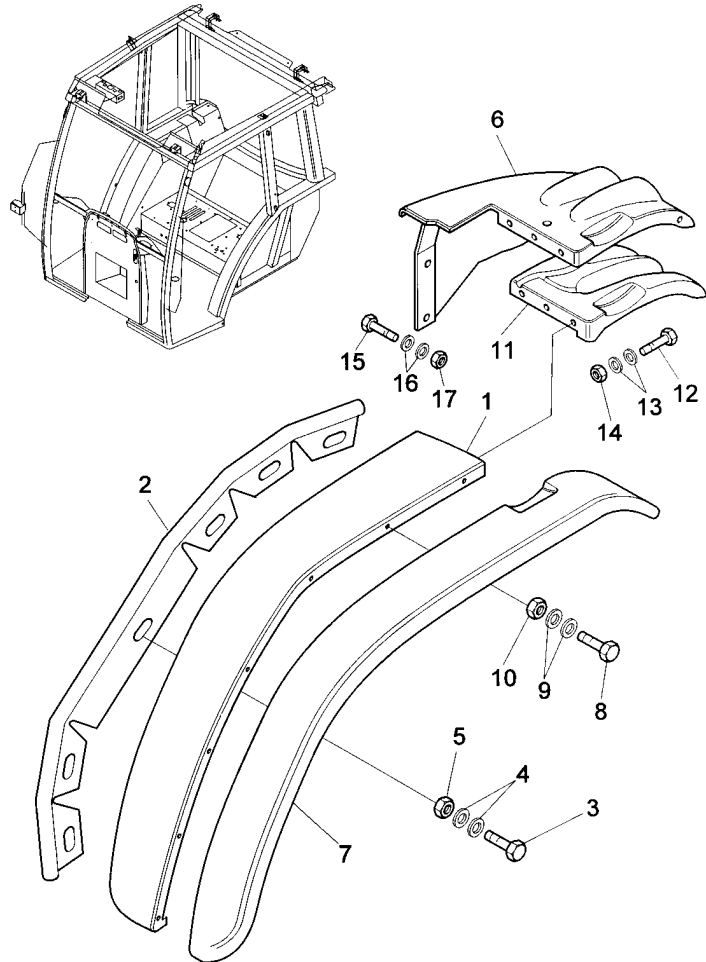
TRACTOR CAB - "FENDERS" - FENDER EXTENSION

Ghibli New TIER2 85



U4708

4-AU07-001-A

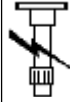


1	3551806M1	●	3551806M2 (1)	1	FENDER
		▼	T-A 0:25		
1	3551807M1	●	3551807M2 (1)	1	FENDER
		▼			
2	3553503M1			2	GASKET
3	1441914X1		M6X18	14	SCREW
4	391038X1			28	WASHER
5	1442021X1			14	NUT
6	3655363M1	▶		1	EXTENSION
			T-A 0:25		
6	3657482M1	◀		1	EXTENSION
7	3655364M1	▶		1	EXTENSION
			T-A 0:25		
7	3657483M1	◀		1	EXTENSION
8	339666X1			18	SCREW
9	391038X1			36	WASHER
10	1442021X1			18	NUT
11	3658685JA	▶		1	GUARD
11	3658686JA	◀		1	GUARD
12	339761X1			10	SCREW
13	390972X1			20	WASHER
14	3000193X1			10	NUT
15	339666X1			6	SCREW
16	391038X1			12	WASHER
17	1441500X1			6	NUT
18	3655370JA	▼		1	FACING

- B NOT ILLUSTRATED  
 ▼ LOWER COMPONENT  
 ◀ LEFT HAND  
 ▶ RIGHT HAND  
 T-A Replacement

TRACTOR CAB

U-47  
17

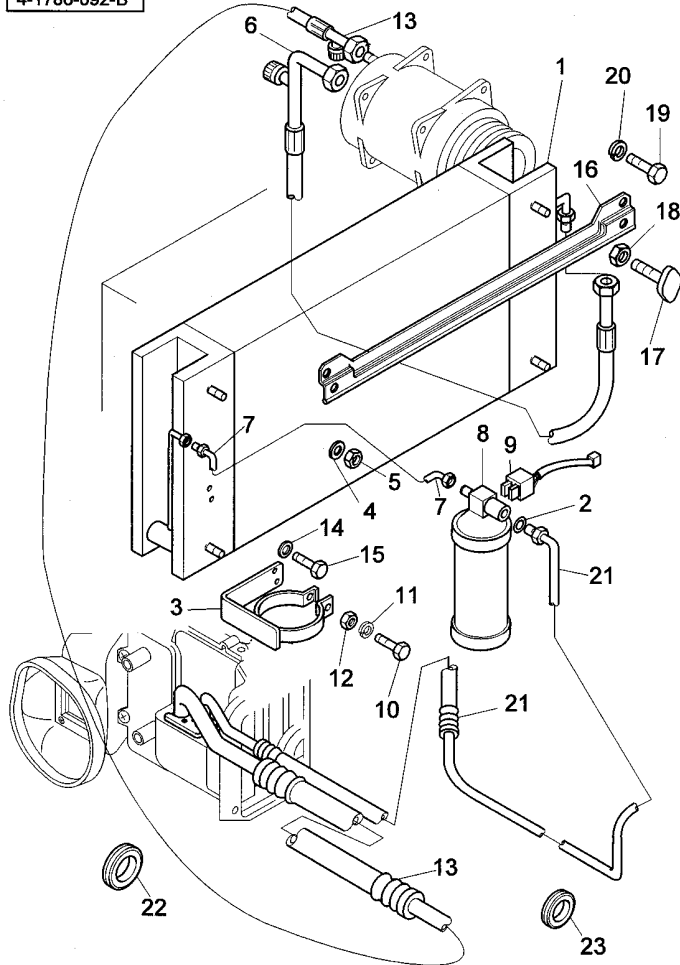


U4717

TRACTOR CAB - "AIR CONDITIONER" - COMPRESSOR AND CONDENSER

Ghibli New TIER2 85

4-1786-092-B



- |     |            |                   |   |       |
|-----|------------|-------------------|---|-------|
| 21  | 3657833M91 | 5/16"<br>T-A 0:25 | 1 | PIPE  |
| 22  | 3559623M1  |                   | 1 | CHOCK |
| 23  | 3559630M1  |                   | 1 | CHOCK |
| T-A |            | Replacement       |   |       |



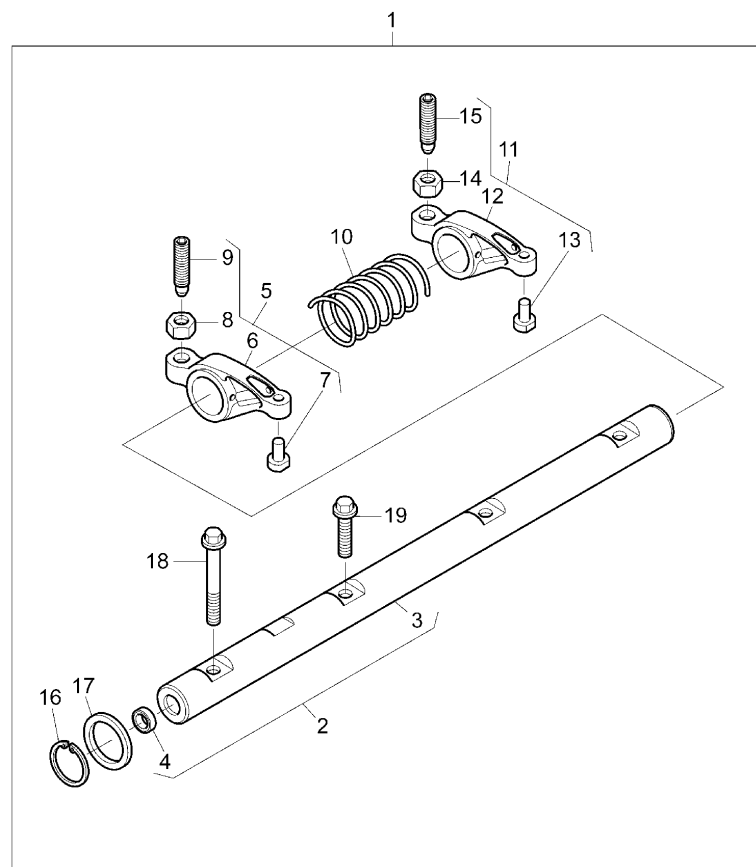
ENGINE

A-05  
05

ROCKER SHAFT

Ghibli New TIER2 85

A0505

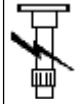


- |    |          |     |   |   |                                    |
|----|----------|-----|---|---|------------------------------------|
| 18 | 2316A901 | !   | 1 | 1 | SCREW                              |
| 19 | 2316A902 | !   | 1 | 2 | SCREW                              |
|    |          | !   |   |   | THIS IS A COMPONENT OF AN ASSEMBLY |
|    |          | ➡   |   |   | NOT SERVICED, ORDER                |
|    |          | T-A |   |   | Replacement                        |

ENGINE

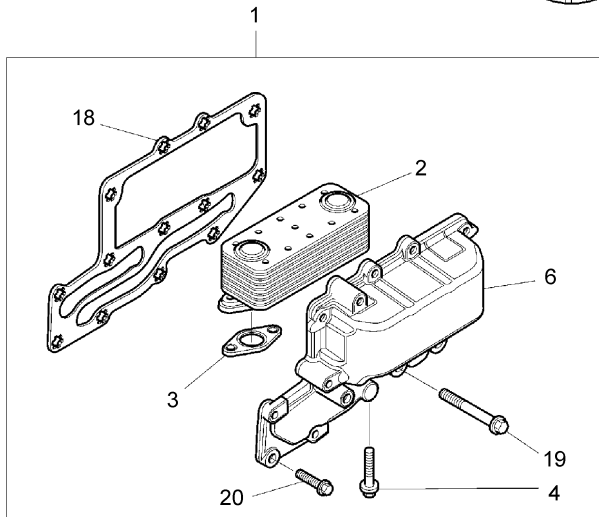
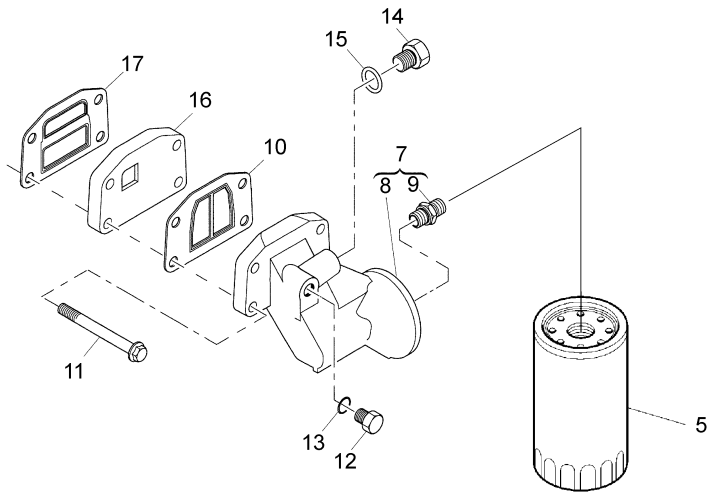
A-05  
11

HEAT EXCHANGER AND LUBRICATING OIL FILTER



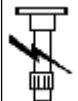
A0511

Ghibli New TIER2 85



1	4134W003		1	HEAD
2	2486A215	! 1	1	RADIATOR
		T-A 0:50		
		T-A 1:0		
3	3685A025	! 1	2	RING
		T-A 1:0		
4	2314H006	! 1	4	SCREW
5	2654407		1	FILTER
		T-A 0:25		
6		! 1	1	ADAPTOR
		REF. N. 1		
7	4134E057	● 3773A071 (1)	1	HEAD
		T-A 0:50		
8		! 7	1	HEAD
		REF. N. 7		
9	33554128	! 7	1	UNION
10	3688A041		1	RING
11	2314H038		4	SCREW
12	3278A007		1	PLUG
13	2415H009			O RING
14	3278A004		1	PLUG
15	2415H002		1	RING
16	3773A081		1	ADAPTOR
17	3688A039		1	GASKET
18	3685A024	! 1	1	RING
19	2314K161	! 1	3	SCREW
20	2314H004	! 1	10	SCREW
!	THIS IS A COMPONENT OF AN ASSEMBLY			
▣	NOT SERVICED, ORDER			
T-A	Replacement			

## ENGINE ANCILLARY EQUIPMENT

C-32  
05

C3205

## HAND AND FOOT THROTTLE CONTROLS - PITMAN

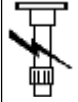
Ghibli New TIER2 85

1	3556542M91		1	PEDAL
		T-A 0:75		
2	3546579M92		1	FLOOR
3	3009694X1		1	NUT
4	3556479M94		1	SHAFT
		T-A 0:75		
5	3557737M2		1	SPRING
6	3532821M1		2	BUSH
		T-A 0:75		
7	1441722X1		1	DOWEL
8	3546580M92		1	SUPPORT
		T-A 0:75		
9	1440947X1	M6X12	2	SCREW
10	339804X1	M6X25	1	SCREW
11	339030X1	● 1441500X1 (1)	1	NUT
12	3300129M1		1	PAD
13	3300393M1		1	GUARD
14		◁ C-32 13 9	1	CABLE
15	3554117M2		1	YOKE
16	390995X1		1	NUT
17	3558351M1		1	PIN
18	390972X1		1	WASHER
19	1442957X1	● 390508X1 (1)	1	LINCH PIN
20	3558717M92	● 3558717M93 (1)	1	CABLE
		T-A 0:50		
21	1424838M1		2	SPACER

ENGINE ANCILLARY EQUIPMENT

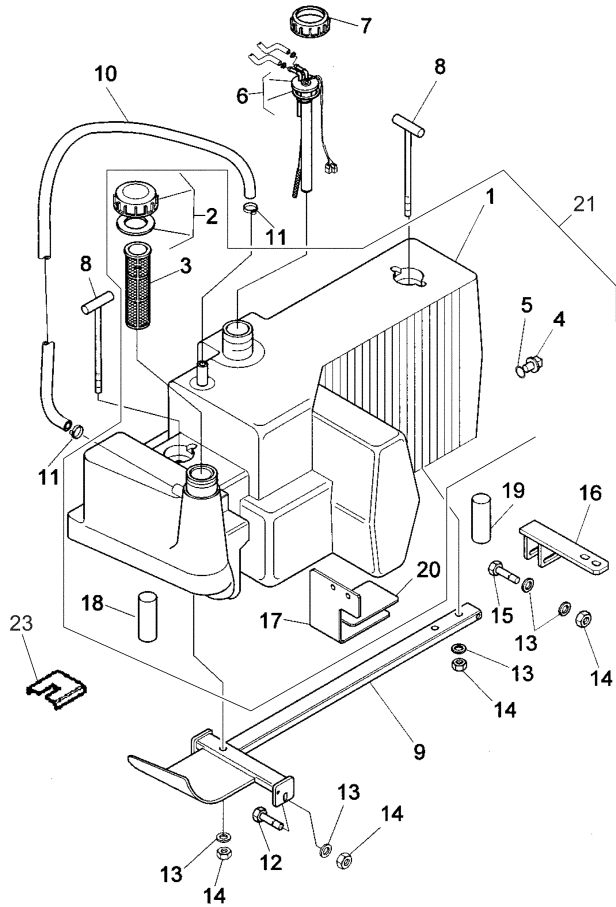
C-32  
10

FUEL TANK - FUEL SYSTEM AND ATTACHMENTS



C3210

Ghibli New TIER2 85



- |     |                                    |   |         |   |          |
|-----|------------------------------------|---|---------|---|----------|
| 20  | 3660360M1                          | ! | 21      | 1 | GASKET   |
| 21  | 3660368M94                         |   |         | 1 | TANK     |
|     |                                    |   | T-A 1:0 |   |          |
| 23  | 3534138M1                          |   |         | 2 | ABUTMENT |
| !   | THIS IS A COMPONENT OF AN ASSEMBLY |   |         |   |          |
| C   | TO BE ADVISED                      |   |         |   |          |
| D   | FRONT                              |   |         |   |          |
| ◄   | LENGTH                             |   |         |   |          |
| T-A | Replacement                        |   |         |   |          |
| Y   | REAR                               |   |         |   |          |

FENDERS FOOTSTEPS AND PLATFORM

S-22  
03

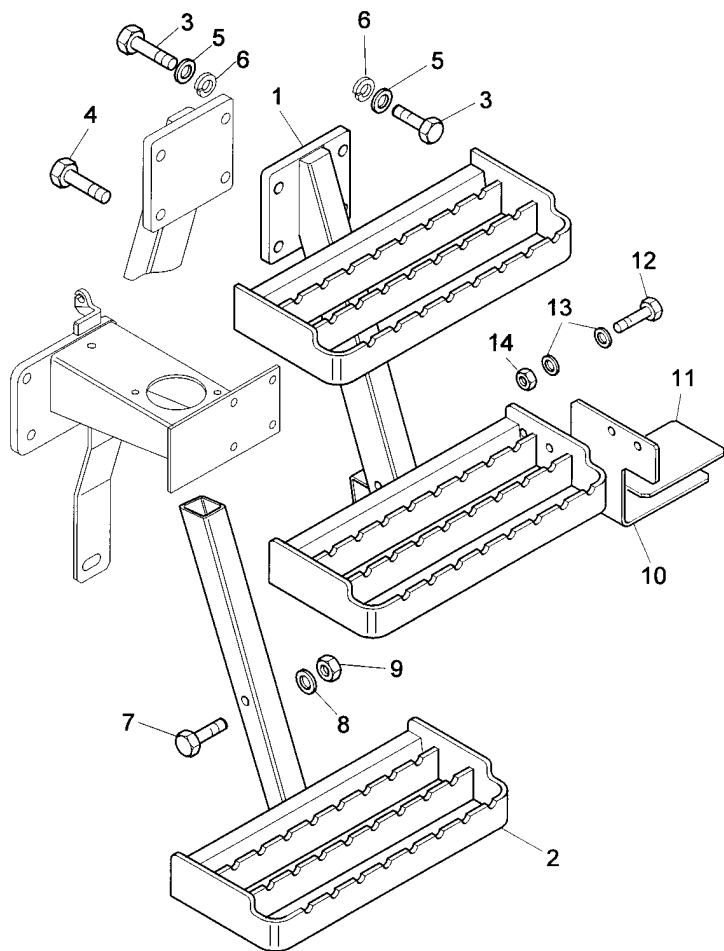
FLOOR PLATFORM - RAILS LADDER

Ghibli New TIER2 85

S2203



4-AS02-006-A



- |     |            |   |                         |   |             |
|-----|------------|---|-------------------------|---|-------------|
| 1   | 3657591J9C | ▶ |                         | 1 | LADDER      |
| 1   | 3660348M92 | ◀ | T-A 0:25                | 1 | LADDER      |
| 2   | 3655406J9B |   |                         | 2 | STEP        |
| 3   | 3009506X1  | ● | 339299X1 (7)<br>M12X30  | 7 | SCREW       |
| 4   | 339208X1   | ● | 1440718X1 (1)<br>M12X45 | 1 | SCREW       |
| 5   | 390735X1   |   |                         | 8 | WASHER      |
| 6   | 339369X1   |   |                         | 8 | LOCK WASHER |
| 7   | 1440352X1  |   | M10X60                  | 2 | SCREW       |
| 8   | 390734X1   |   |                         | 2 | WASHER      |
| 9   | 1440329X1  |   |                         | 2 | NUT         |
| 10  |            |   | A                       | 1 | STIRRUP     |
| 11  |            |   | A                       | 1 | GASKET      |
| 12  | 3009493X1  |   |                         | 2 | SCREW       |
| 13  | 390734X1   |   |                         | 4 | WASHER      |
| 14  | 1441932X1  |   |                         | 2 | NUT         |
| A   |            |   | TO BE ADVISED           |   |             |
| ◀   |            |   | LEFT HAND               |   |             |
| ▶   |            |   | RIGHT HAND              |   |             |
| T-A |            |   | Replacement             |   |             |

FRONT AXLE AND STEERING

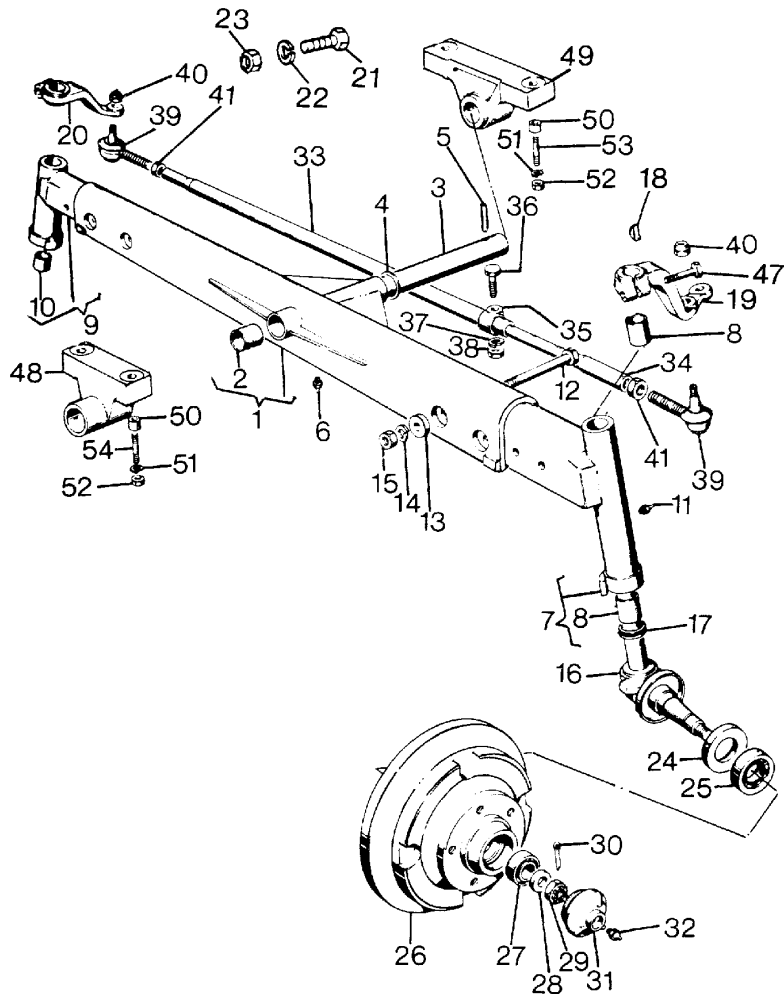
J-09  
02

FRONT AXLE 2 WHEEL DRIVE - AXLE SUPPORT



J0902

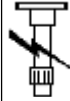
Ghibli New TIER2 85



31	1433401M1		2	COVER
32	339608X1		2	GREASER
33	982074M1		1	BAR
34	978149M3		1	ROD
35	974353M1		1	RETAINER
36	3009512X1	M12X60	1	SCREW
37	1440315X1		1	LOCK WASHER
38	1440200X1		1	NUT
39	1821234M91		2	UNIVERSAL
40	393565X1		2	NUT
41	392817X1		2	NUT
47	3015050X1	◀	1	SCREW
48	1427371M1	M12X60 D	1	SUPPORT
49	3655274M1	Y	1	SUPPORT
50	1823569M1		4	BUSH
51	1440317X1		4	LOCK WASHER
52	392335X1		4	NUT
53	394252X1	M18X90	2	STUD
54	394251X1	M18X85	2	STUD
!	THIS IS A COMPONENT OF AN ASSEMBLY			
D	FRONT			
◀	LEFT HAND			
▶	RIGHT HAND			
T-A	Replacement			
T-B	Overhaul			
Y	REAR			

FRONT AXLE AND STEERING

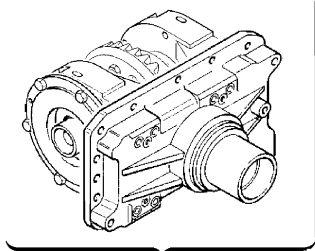
J-09  
09



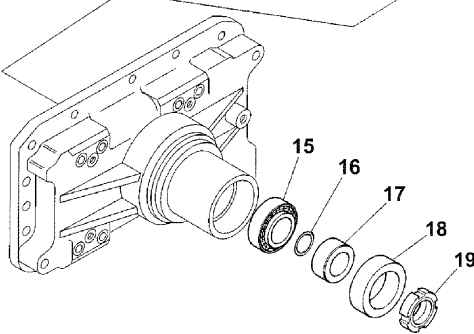
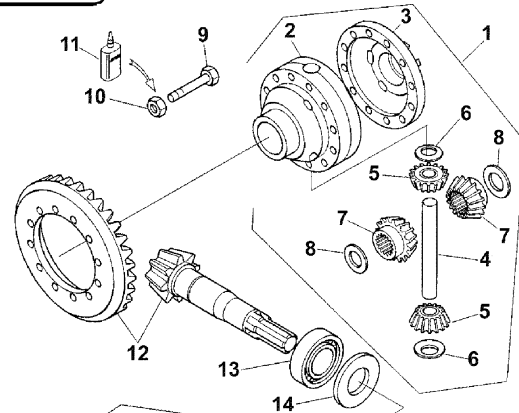
J0909

Ghibli New TIER2 85

FRONT AXLE 4 WHEEL DRIVE - DIFFERENTIAL - WITH DIFFERENTIAL "HYDROLOCK"



20



1	3557998M91	!	20		1	DIFFERENTIAL
			T-A 6:0			
2	3654305M91	!	1		1	BOX
3	3557950M1	!	1		1	FLANGE
4	3654312M1	!	1		1	PIN
5	3654309M1	●	3677822M1 (2)		2	GEAR
		!	1			
			T-A 6:0			
6	3654311M1	!	1		2	WASHER
7	3654308M1	!	1		2	GEAR
			T-A 6:0			
8	3654310M1	!	1		2	WASHER
9	3427302M1	!	20		12	SCREW
			M10X75			
10	3019947X1	!	20		12	NUT
11	1427801M2				1	LOCTITE
12	3654302M91	!	20		1	KIT
			T-A 6:50			
13	1440642X1	!	20		1	BEARING
			T-A 6:0			
14	3537191M1	↓	20		999	SHIM
		▲	1MM.			
			T-A 6:0			
14	3537195M1	↓	20		999	SHIM
		▲	1,20MM.			
14	3537196M1	↓	20		999	SHIM
		▲	1,25MM.			
14	3537197M1	↓	20		999	SHIM
		▲	1,30MM.			

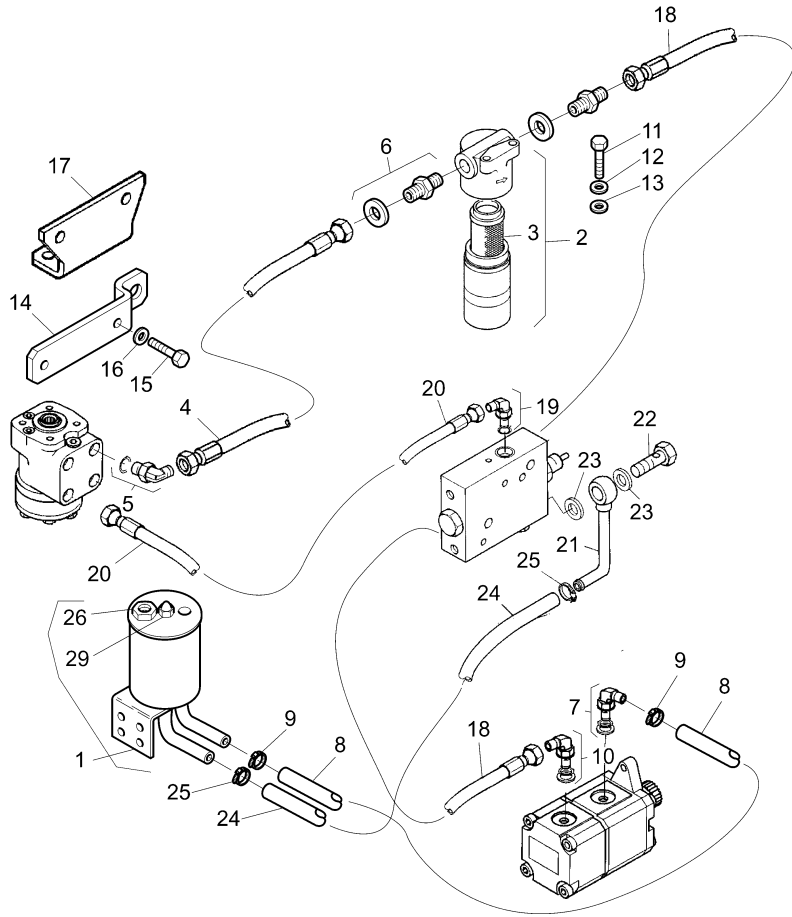
FRONT AXLE AND STEERING

J-09  
15

STEERING HYDRAULIC LINES - OIL TANK AND POWER STEERING

Ghibli New TIER2 85

J0915



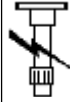
22	394200X1		1	UNION	
23	3554595M1		2	WASHER	
24	3661136M1		1	PIPE	
25	394300X1	●	3530490M91 (2)	2	RETAINER
26		!	1	NUT	
			B		
27	4204162M91	!	1	PLUG	
			A		
28	3015023X1	!	1	O RING	
			A		
29	1823603M91	!	1	PLUG	
30	1444744X1	!	1	RING	
			2		
			A		

! THIS IS A COMPONENT OF AN ASSEMBLY  
 A NOT ILLUSTRATED  
 B TO BE ADVISED  
 T-A Replacement

FRONT AXLE AND STEERING

J-09  
20

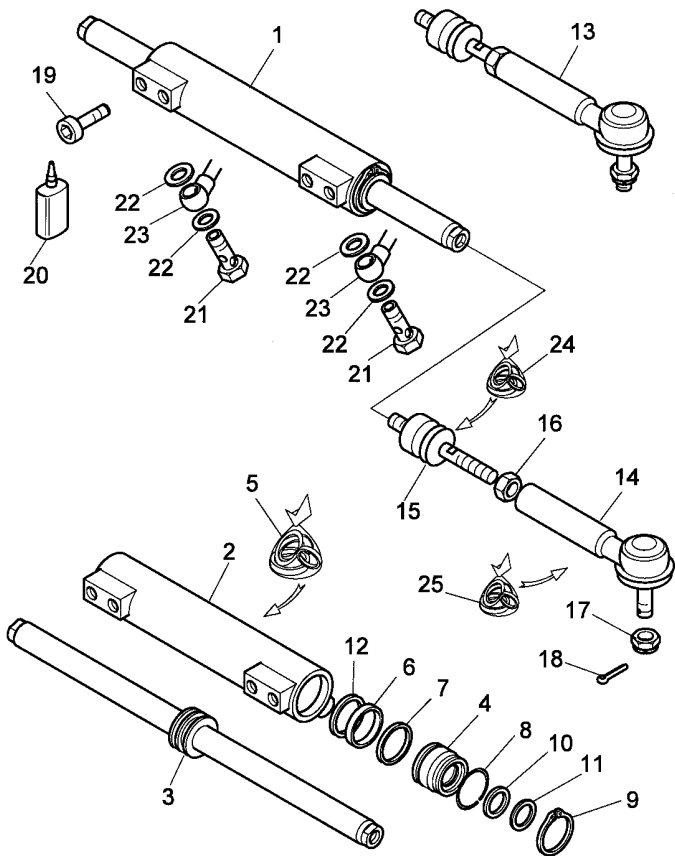
STEERING CYLINDER - "4 WHEEL DRIVE"



J0920

Ghibli New TIER2 85

4-1317-058-B

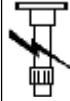


16	3428887M1	!	13	1	NUT
17	339617X1	!	13	1	NUT
18	391423X1	!	13	1	LINCH PIN
19	3015495X1		M14X50	4	SCREW
20	3303219M1			1	LOCTITE
21		⊕	J-09 16 7	2	UNION
22		⊕	J-09 16 8	4	GASKET
23		⊕	J-09 16 5	1	PIPE
		⊕	J-09 16 6		
24	3658019M91	●	3311576M91 (1)	1	KIT
		!	15		
25	3311576M91	!	14	1	KIT
!	THIS IS A COMPONENT OF AN ASSEMBLY				
⊕	SEE PAGE - REFERENCE NUMBER				
🚫	NOT SERVICED, ORDER				
T-A	Replacement				
T-B	Overhaul				

HYDRAULICS AND LINKAGE

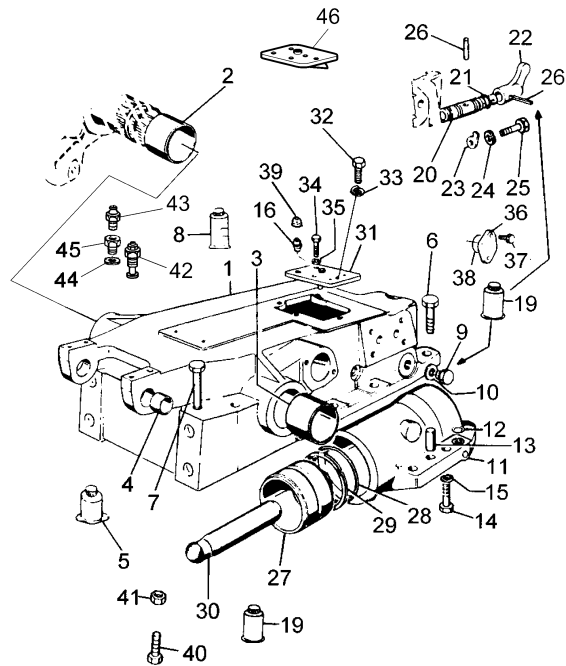
P-42  
04

HYDRAULIC LIFT - LIFT ARMS



P4204

Ghibli New TIER2 85



22	D	1 SLEEVE
23	D	1 RETAINER
24	D	1 LOCK WASHER
25	D	1 SCREW
26	D	2 DOWEL
27	1825284M1	1 PISTON
28	T-A 7:50	1 O RING
29	3019929X1	1 O RING
30	T-A 7:50	1 RING
31	395590X1	1 STRUT
32	1425326M1	1 COVER
33	3307672M95	2 SCREW
34	339081X1	2 LOCK WASHER
35	1440314X1	2 SCREW
36	339124X1	2 LOCK WASHER
37	1440313X1	1 COVER
38	3533177M2	2 SCREW
39	339761X1	1 O RING
40	3019918X1	1 GUARD
41	3426772M1	2 SCREW
42	1425359M1	2 NUT
43	392310X1	1 VALVE
44	3549952M91	1 VENT
45	3309059M91	1 WASHER
46	1440702X1	1 UNION
	3549158M1	1 COVER
	3670183M91	

CLICK HERE TO **DOWNLOAD** THE COMPLETE MANUAL

- Thank you very much for reading the preview of the manual.
- You can download the complete manual from: [www.heydownloads.com](http://www.heydownloads.com) by clicking the link below



- Please note: If there is no response to CLICKING the link, please download this PDF first and then click on it.

CLICK HERE TO **DOWNLOAD** THE COMPLETE MANUAL

HYDRAULICS AND LINKAGE

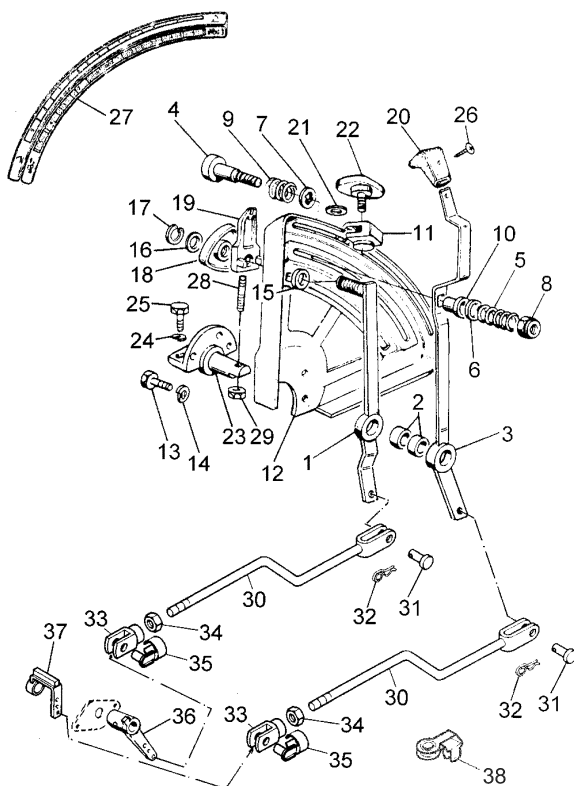
P-42  
09

MECHANISM CONTROL LIFT - DRAFT, POSITION AND INTERMIX



P4209

Ghibli New TIER2 85

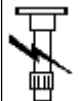


1	3545914M92	C	
		B	1 LEVER
		T-A 0:75	
2	3534439M1		2 BUSH
		T-A 0:75	
3	3545898M92	A	1 LEVER
		T-A 0:75	
4	3532802M3		1 PIN
5	1824211M1		1 SPRING
6	1825350M1		1 WASHER
7	3532803M1		2 DISC
8	394376X1		1 NUT
9	3532805M2		1 SPRING
10	3532801M2		1 BUSH
11	3532800M91		1 SLIDER
12	3546376M2	● 3546376M3 (1)	1 SECTOR
		T-A 0:75	
13	339228X1	M8X12	3 SCREW
14	1440313X1	● 339374X1 (3)	3 LOCK WASHER
15	3532804M1		1 SPACER
16	1440273X1		1 WASHER
17	1440522X1		1 RING
18	3532806M91		1 GRIP
19	3532799M1		1 SLIDER
20	3303876M2		1 GRIP
21	3532803M1		1 DISC
22	3532807M91		1 KNOB
23	3546375M1		1 SUPPORT
		T-A 0:50	

HYDRAULICS AND LINKAGE

P-42  
13

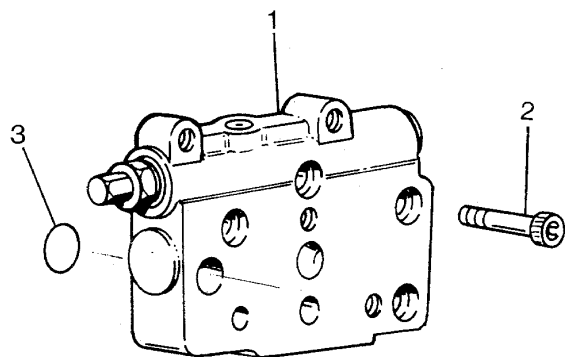
PLATE FOR AUXILIARY HYDRAULIC VALVE - - "HIDROIRMA" TYPE



P4213

Ghibli New TIER2 85

- |     |                                    |   |                |   |        |
|-----|------------------------------------|---|----------------|---|--------|
| 1   | 3547487M91                         | ● | 3547487M93 (1) | 1 | PLATE  |
|     |                                    |   | A              |   |        |
|     |                                    |   | T-A 1:0        |   |        |
| 2   | 1441612X1                          |   |                | 3 | SCREW  |
| 3   | 1441514X1                          | ! | 1              | 2 | O RING |
| !   | THIS IS A COMPONENT OF AN ASSEMBLY |   |                |   |        |
| A   | WITHOUT FLOW DIVIDER SLICE         |   |                |   |        |
| T-A | Replacement                        |   |                |   |        |



HYDRAULICS AND LINKAGE

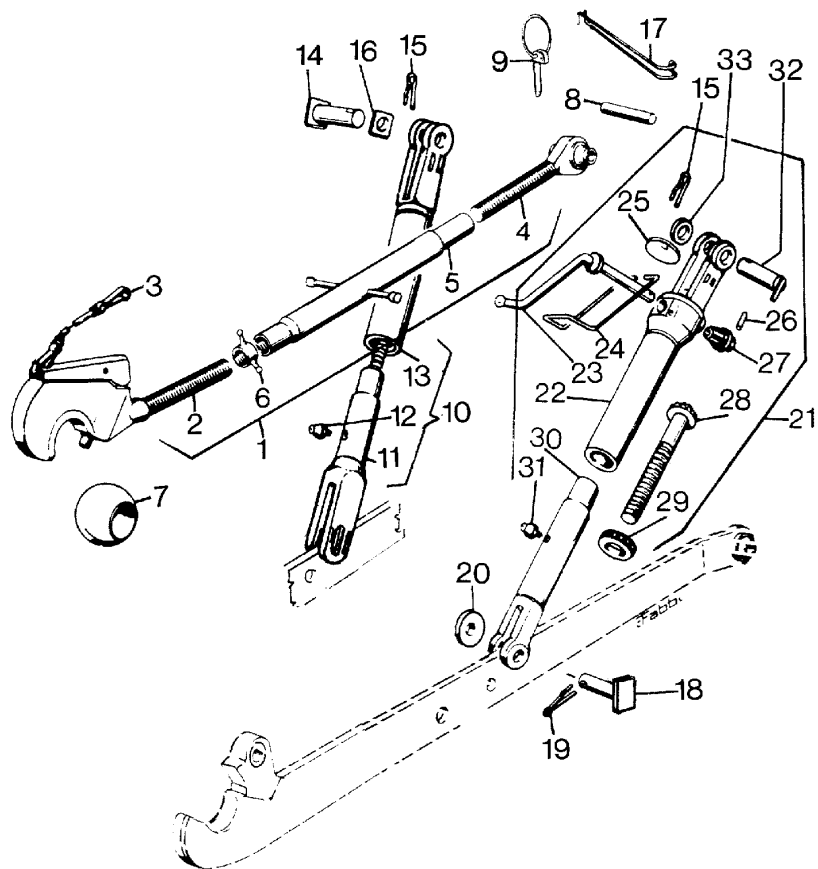
P-42  
20

LINKAGE - "STRUT AND LINKAGE" - QUICK ATTACH



P4220

Ghibli New TIER2 85

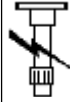


1	3308290M94	CBM T-A 0:25	1	STRUT
1	3536275M92	● 3308290M94 (1) WALTERSCHEID	1	STRUT
2	3306267M92	! 1 CBM	1	STRUT
2	3536273M91	● 3306267M92 (1) ! 1 WALTERSCHEID	1	STRUT
3	3302622M91	! 2	1	CABLE
4	1825403M91	! 1	1	STRUT
5	1423995M92	! 1	1	SLEEVE
6	1825401M1	! 1	1	NUT
7	3306255M1	CBM	1	BALL
7	3536307M1	● 3306255M1 (1) WALTERSCHEID	1	TOGGLE
8		C	1	PIN
9		C	1	RETAINER
10	3538205M91	◀ T-A 0:25	1	ROD
11	3538207M91	! 10 ▼	1	YOKE
13	3532616M91	! 10	1	ROD
14	3667799M91		1	PIN
15	3670719M91		2	CLIP
16	3300764M2		2	PLATE
17	3655213M1		1	HOOK
18	3667795M91		2	PIN
19	974303M1		4	SPRING
20		C	4	WASHER
21	3670219M92	▶	1	ROD
22	3302154M91	● N.L.S. (1) ! 21	1	YOKE

LIGHTING EQUIPMENT

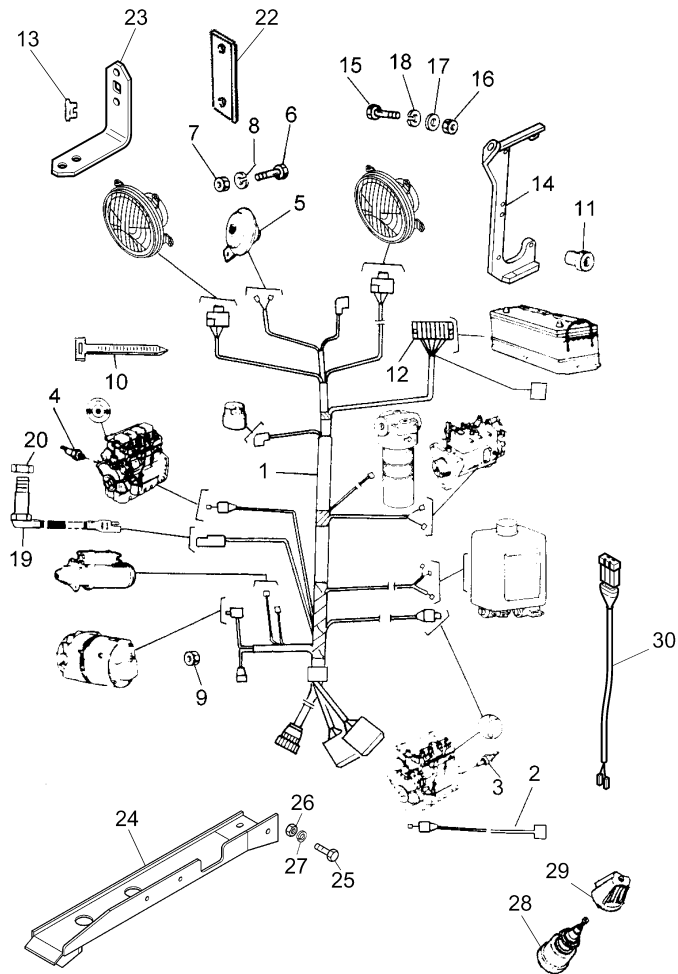
D-00  
02

ELECTRICAL WIRING - "FRONT"



D0002

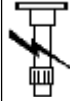
Ghibli New TIER2 85



- |     |                                    |          |   |             |
|-----|------------------------------------|----------|---|-------------|
| 17  | 390971X1                           |          | 7 | WASHER      |
| 18  | 339375X1                           |          | 7 | LOCK WASHER |
| 19  | 3648187M91                         | D        | 1 | SENSOR      |
|     |                                    | T-A 0:25 |   |             |
| 20  | 339592X1                           |          | 1 | NUT         |
| 21  | 3539382M2                          |          | 1 | STIRRUP     |
| 22  | 3547696M1                          |          | 1 | STIRRUP     |
| 23  | 3675974M2                          |          | 1 | SUPPORT     |
| 24  | 3656737M2                          | ●        | 1 | TRUNKING    |
| 25  | 339666X1                           |          | 1 | SCREW       |
| 26  | 339030X1                           | ●        | 1 | NUT         |
| 27  | 339375X1                           |          | 1 | LOCK WASHER |
| 28  | 3619446M1                          | D        | 1 | SWITCH      |
|     |                                    | T-A 0:25 |   |             |
| 29  | 3619180M3                          |          | 1 | KNOB        |
| 30  | 3670748M91                         | D        | 1 | HARNESS     |
| !   | THIS IS A COMPONENT OF AN ASSEMBLY |          |   |             |
| ⚡   | ALTERNATIVE                        |          |   |             |
| 🔧   | NOT SERVICED, ORDER                |          |   |             |
| A   | WATER TEMPERATURE SWITCH           |          |   |             |
| C   | OIL TEMPERATURE SWITCH             |          |   |             |
| D   | FOR P.T.O.                         |          |   |             |
| E   | TO BE ADVISED                      |          |   |             |
| T-A | Replacement                        |          |   |             |

LIGHTING EQUIPMENT

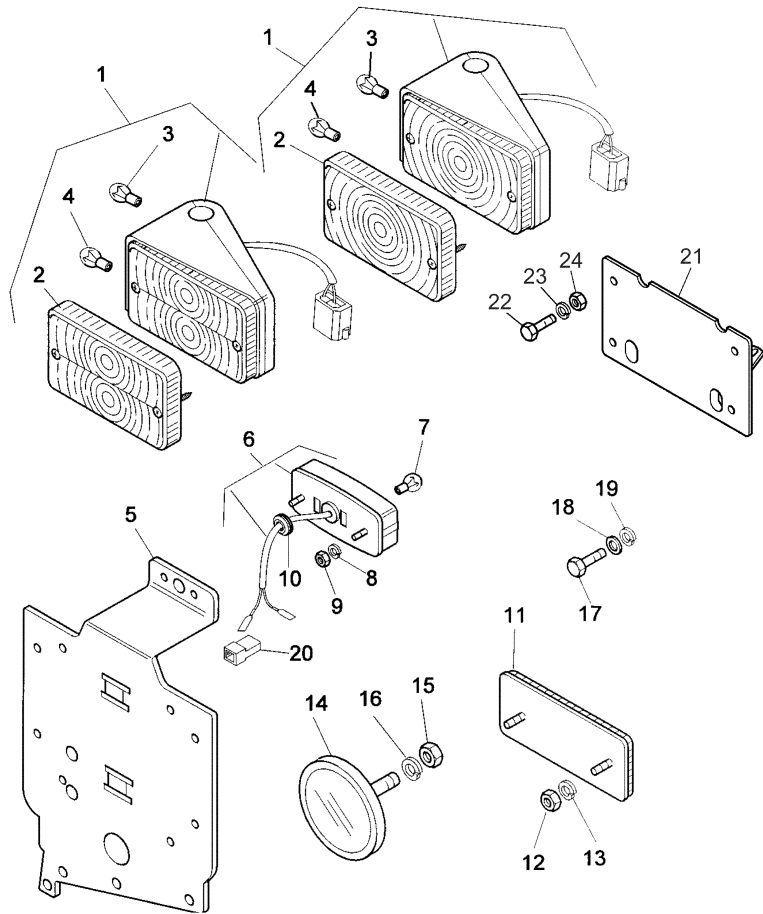
D-00  
10



D0010

Ghibli New TIER2 85

LIGHTING EQUIPMENT



1	▶		1 LIGHT
		C	
		C	
1	▶		1 LIGHT
		C	
		C	
1	▶		1 HEADLAMP
		B	
		C	
1	▶		1 HEADLAMP
		B	
		C	
2	!	1	1 GLASS
		B	
		C	
3	!	1	1 LAMP
		B	
		C	
4	!	1	1 LAMP
		B	
		C	
5		B	1 PLATE
6			1 LIGHT
		T-A 0:25	
7	!	6	1 LAMP
8	!	6	2 LOCK WASHER
9	!	6	2 NUT
10			1 RING
11			2 CAT EYE
12			4 NUT
13			4 LOCK WASHER
14			2 CAT EYE
15	!	14	1 NUT

REAR AXLE AND REAR BRAKES

G-40  
03

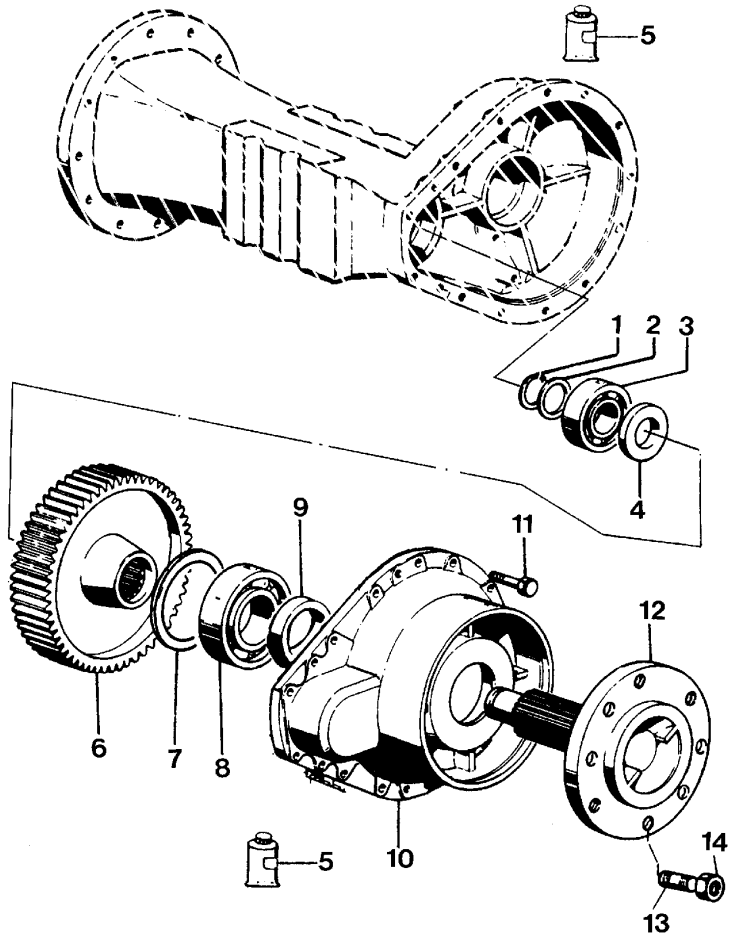


G4003

REAR AXLE - HOUSING AND WHEEL HUB - FINAL DRIVE

Ghibli New TIER2 85

4-AG13-126-A

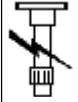


1	1443812X1		2	RING
2	3531906M1	T-A 1:75	2	SPACER
3	339439X1		2	BEARING
		T-A 1:75		
4	3531905M2		2	SPACER
5	3308788M1		1	LOCTITE
6	3531902M1	▶	1	CROWNWHEEL
		T-A 1:75		
6	3531903M1	▲	1	CROWNWHEEL
7	3534126M1	▲	999	SHIM
		0,9MM		
		T-A 1:75		
7	3534127M1	▲	999	SHIM
		1,0MM		
7	3534128M1	▲	999	SHIM
		1,1MM		
7	3534129M1	▲	999	SHIM
		1,2MM		
7	3534130M1	▲	999	SHIM
		1,3MM		
7	3534131M1	▲	999	SHIM
		1,4MM		
7	3534132M1	▲	999	SHIM
		1,5MM		
7	3534133M1	▲	999	SHIM
		1,6MM		
7	3534134M1	▲	999	SHIM
		1,7MM		
7	3662868M1	▲	999	SHIM
		0,7MM		
7	3662869M1	▲	999	SHIM
		0,8MM		
8	1441406X1		2	BEARING
		T-A 2:25		
9	3019954X1	B	2	SEAL
		T-A 2:25		
9	3539750M91	C	2	SEAL
10	3531908M2	B	2	COVER
		T-A 1:25		
		T-B 2:25		

REAR AXLE AND REAR BRAKES

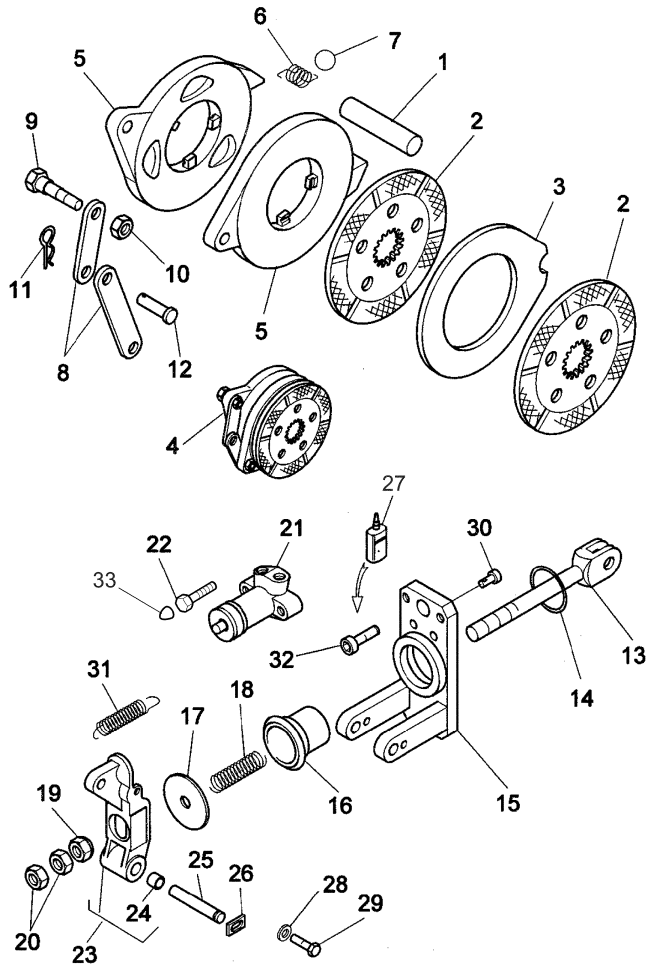
G-40  
08

HYDRAULIC STEERING - LINKAGE



G4008

Ghibli New TIER2 85



15	3531277M91		2	SUPPORT
16	1860959M1		2	GUARD
17	3304657M1		2	DISC
18	3302489M1		2	SPRING
19	3304807M1		2	REGISTER
20	1441158X1		2	NUT
21	3537812M91		2	CYLINDER
		T-A 0:50		
22	339351X1	M6X25	4	SCREW
23	3304805M92		2	LEVER
		T-A 0:25		
24	1427369M1	!	2	BUSH
25	3300073M1		2	PIN
26	3300126M1		2	PLATE
27	3308788M1		1	LOCTITE
28	339585X1		2	WASHER
29	390379X1	M8X18	2	SCREW
30	1427357M1		2	PIN
31	1427356M1		2	SPRING
32	390580X1	M10X25	4	SCREW
33	3539976M1		2	GUARD

! THIS IS A COMPONENT OF AN ASSEMBLY  
 ✂ ALTERNATIVE  
 🛑 NOT SERVICED, ORDER  
 T-A Replacement



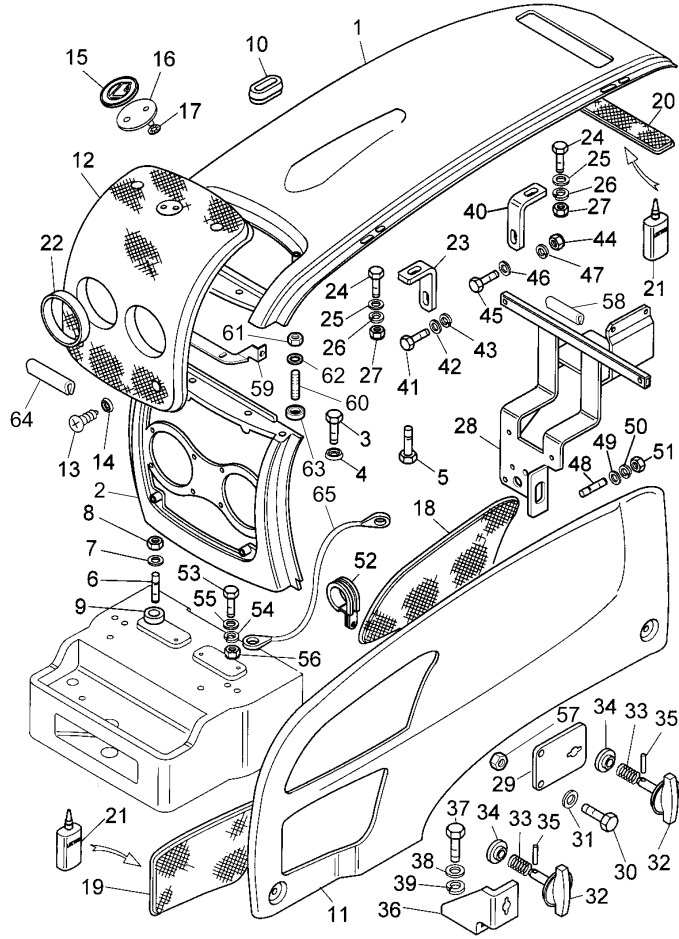
SHEET METAL

R-20  
01

SHEET METAL - "HOOD"

Ghibli New TIER2 85

R2001



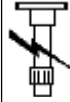
- 65 3649822M91 2 CABLE
- B REAR
- 4 WHEEL DRIVE
- C FOR TRACTOR "N.A.O." VERSION
- D WITH FRONT LIFTING DEVICE
- ▲ TOP
- ▼ LOWER COMPONENT
- ◀ LEFT HAND
- ▶ RIGHT HAND
- ∅ DIAMETER
- T-A Replacement

TRANSMISSION

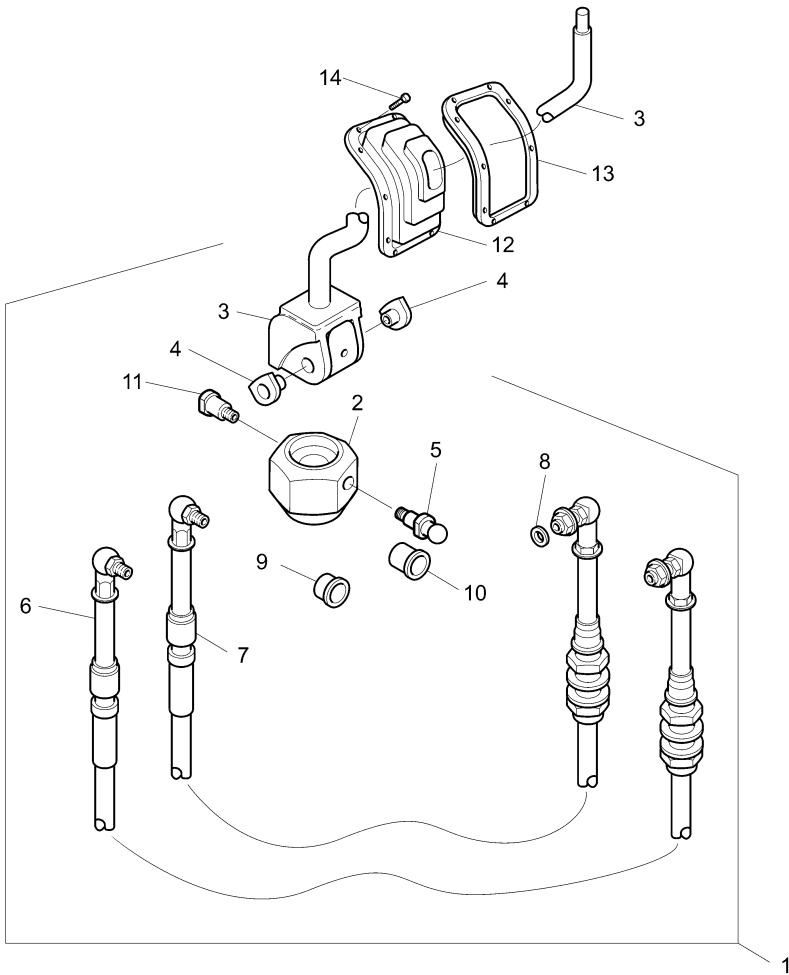
E-04  
02

REVERSE GEAR KIT

Ghibli New TIER2 85



E0402



1	3662701M92		1	KIT
2	3659606M1	!	1	1 BALL JOINT
3	3662785M91	!	1	1 LEVER
4	3659609M1	!	3	2 BUSH
5	3659604M1	!	1	1 PIN
6	3661060M93	!	1	1 CABLE
			A	
7	3661080M93	!	1	1 CABLE
			B	
8	3659593M1	!	1	1 WASHER
9	3659601M1	!	1	1 THIMBLE
10	3659602M1	!	1	1 THIMBLE
11	3659603M1	!	1	1 PIN
12	3661326M1		1	1 BELLOWS
13	3661342M1		1	1 SKIRT
14	3015560X1	M4X18	7	SCREW
!	THIS IS A COMPONENT OF AN ASSEMBLY			
A	REVERSOMATIC CONTROL			
B	CREEPER CONTROL			
T-A	Replacement			

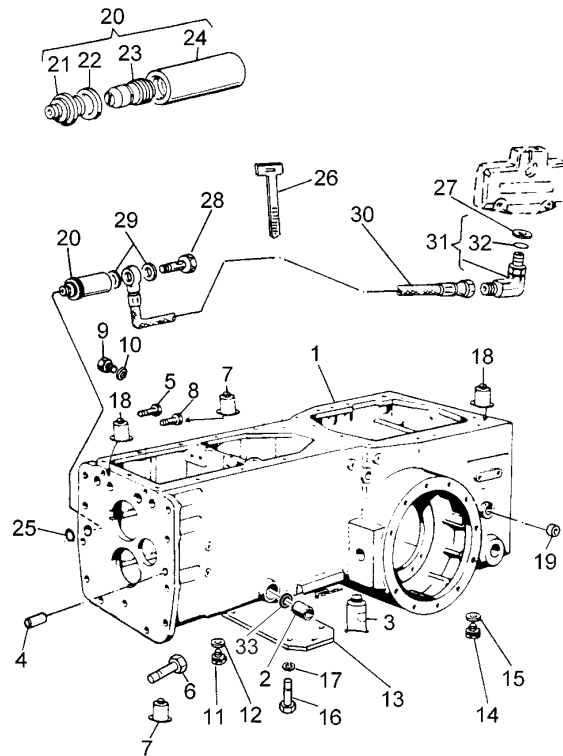
TRANSMISSION

E-04  
08

TRANSMISSION - "HOUSING"

Ghibli New TIER2 85

E0408

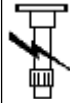


1	3657111M91		1	HOUSING
		T-A 10:0 T-B 20:0		
2	1423482M1		2	BUSH
3	3536801M1	II	1	LOCTITE
4	1440693X1		2	DOWEL
5	1441310X1	M12X160	1	SCREW
6	1440718X1	M12X45	10	SCREW
7	3545546M1		1	LOCTITE
8	1441310X1	M12X160	1	SCREW
9	392798X1	M12	2	PLUG
10	1444746X1		1	WASHER
11	392757X1	M10	1	PLUG
12	1444745X1		1	RING
13	3532175M1	II	1	COVER
14	3532632M91		5	PLUG
15	1440702X1		5	WASHER
16	3015039X1	II M10X30	2	SCREW
16	339401X1	II M10X25	4	SCREW
17	1440314X1	II	6	LOCK WASHER
18	3308788M1		1	LOCTITE
19	3006020X1		1	PLUG
20	3648012M91		1	VALVE
		T-A 0:50		
21	3648013M1	! 20	1	UNION
22	1442694X1	! 20	1	WASHER
23	3550900M91	! 20	1	CARTRIDGE
24	3556467M91	! 20	1	VALVE
25	831519M1		1	O RING
26	3533937M1		3	CLAMP
27	3548877M1		1	WASHER
28	394209X1		1	UNION

TRANSMISSION

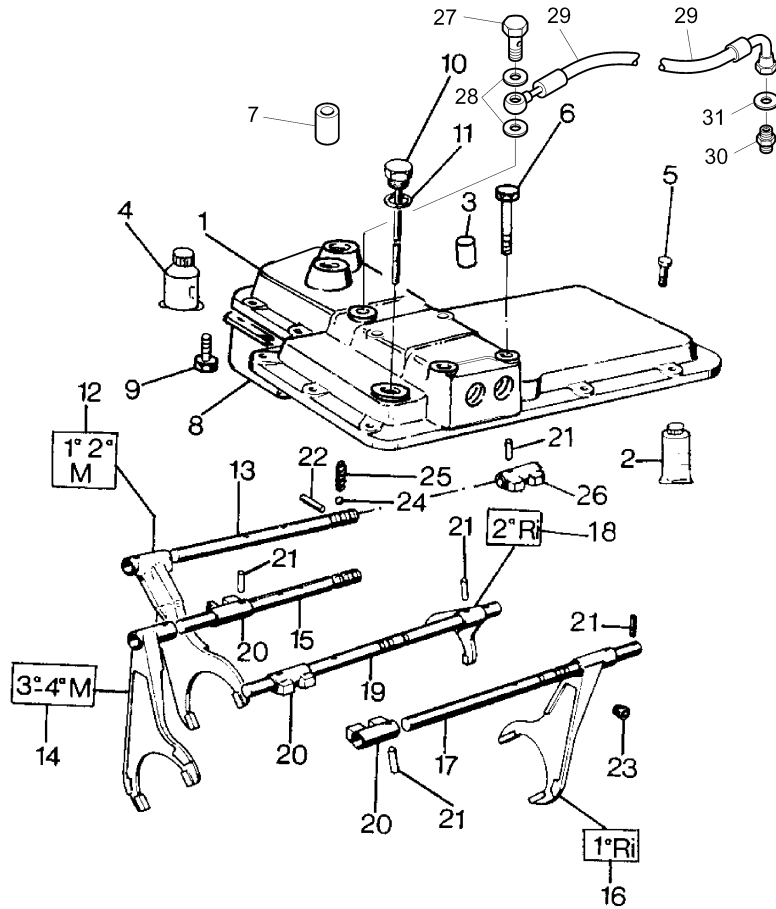
E-04  
12

GEAR BOX: CONTROLS - RODS AND YOKES - COVER



E0412

Ghibli New TIER2 85



19	3534369M1		1	ROD
20	3532938M2	T-A 7:50	3	GUIDE
21	1441736X1		8	DOWEL
22	1824702M1		2	PIN
23	1442560X1		2	PLUG
24	361031X1		4	BALL
25	3305061M1		4	SPRING
26	3532938M2		1	GUIDE
27	3537542M1		1	FILLER
28	106967/A	● VP110423B (2)	2	WASHER
29	3656553M92	T-A 0:50	1	PIPE
30	1426279M1		1	UNION
31	106967/A	● VP110423B (1)	1	WASHER

◀ LENGTH  
T-A Replacement

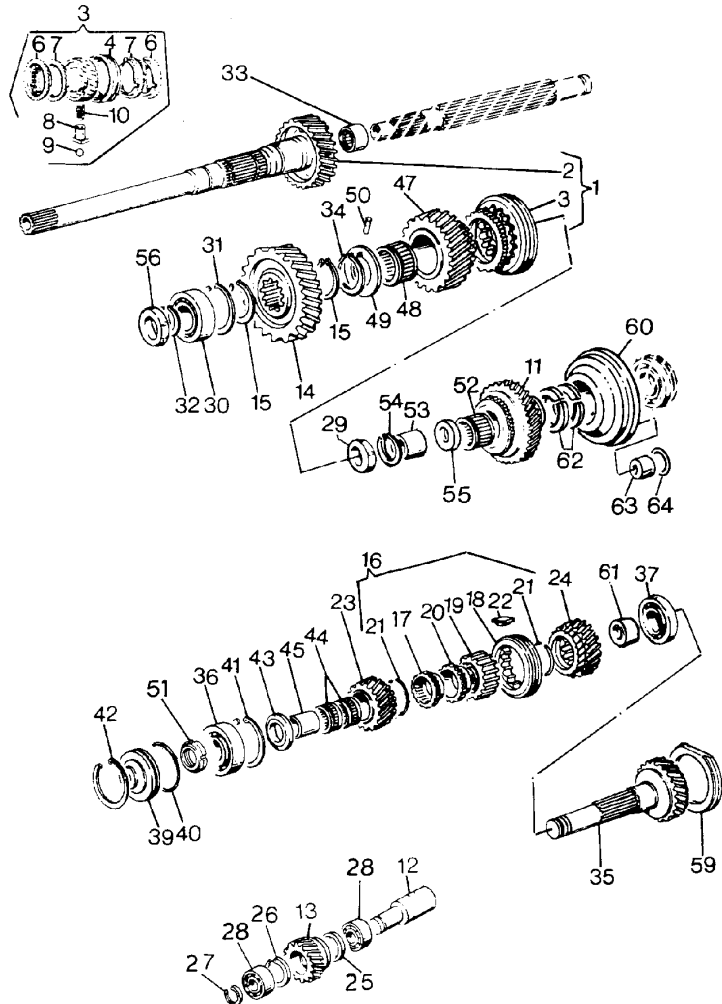
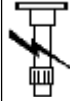
TRANSMISSION

E-04  
17

REDUCER OPTION - GEARBOX - UNDERDRIVE AND SHUTTLE VERSION

Ghibli New TIER2 85

E0417

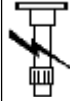


1	3550785M91	●	3550786M91 (1)	1	SHAFT
		! 3	3550786M91 A		
			T-A 17:0		
1	3550786M91	! 3	3550785M91 B	1	SHAFT
2	3550787M1	! 1	27	1	SHAFT
			T-A 17:0		
3	3538468M92	! 1	3538468M92 (1) A	1	SYNCHRO GEAR
			T-A 17:0		
3	3549749M91	! 1	B	1	SYNCHRO GEAR
4	3538584M1	●	3538468M92 (1) ! 3 A	1	SLEEVE
4	3549750M1	! 3	B	1	SLEEVE
6	3538531M1	! 3	A	2	CROWNWHEEL
6	3539428M1	! 3	B	2	CROWNWHEEL
7	3549754M1	! 3	B	2	RING
8	3538529M1	! 3	A	3	SKATE
8	3539424M1	! 3	B	3	SKATE
9	1444586X1	! 3		3	BALL
10	3533975M1	! 3	A	3	SPRING

TRANSMISSION

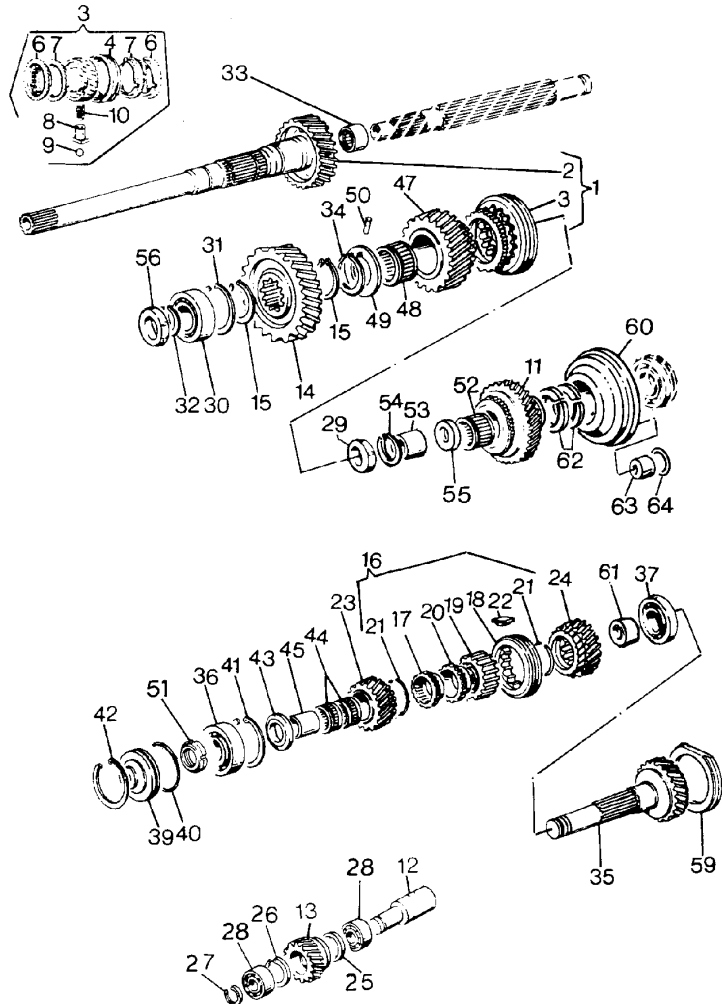
E-04  
19

REDUCER OPTION - GEARBOX - OVERDRIVE AND SHUTTLE VERSION



E0419

Ghibli New TIER2 85

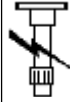


10	3539425M1	!	3 B	3	SPRING
11	3548316M1		T-A 17:0	1	GEAR
12	3533979M1		T-A 17:0	1	SHAFT
13	3309363M1		T-A 17:0	1	GEAR
14	3534343M1		T-A 17:0	1	GEAR
15	339470X1			2	RING
16	3534574M91	⚙	3535785M91 B T-A 17:0	1	SYNCHRO GEAR
16	3535785M91	●	3534574M91 (1) 3534574M91 A	1	SYNCHRO GEAR
17	3534569M1	●	3535786M1 (1) !	1	CROWNWHEEL 16
17	3535786M1	!	16 A	1	CROWNWHEEL A
18	3533959M1	!	16 A	1	SLEEVE A
18	3534575M1	●	3533959M1 (1) !	1	SLEEVE 16
19	3533960M1	!	16 A	1	HUB A
19	3534576M1	●	3533960M1 (1) !	1	HUB 16 B

TRANSMISSION

E-04  
22

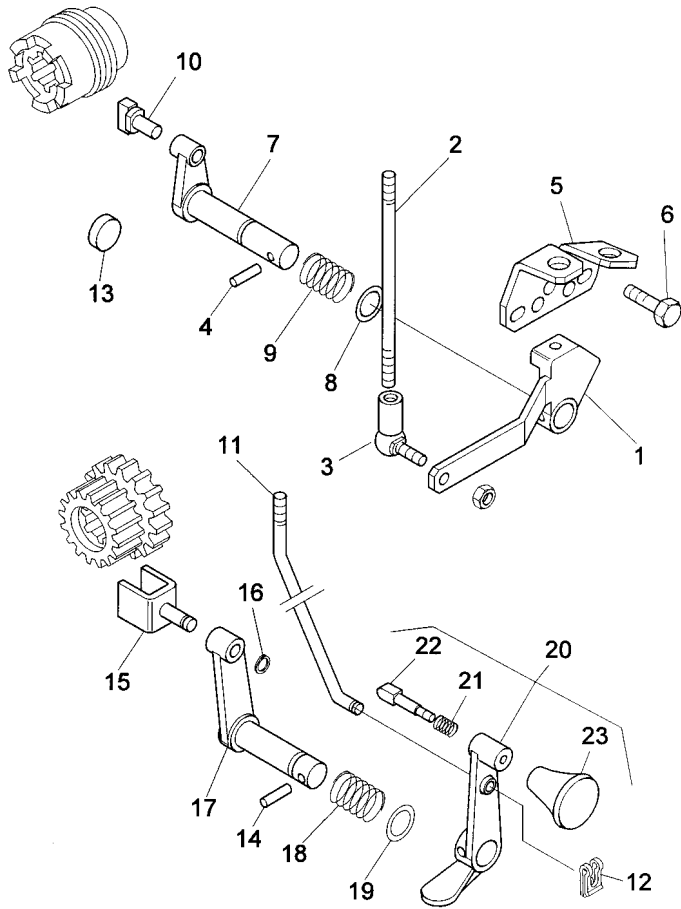
PTO-CONTROL - SELECTOR 540-750-1000 R.P.M.



E0422

Ghibli New TIER2 85

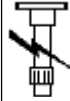
4-1055-057-A



- |    |            |         |    |          |
|----|------------|---------|----|----------|
| 20 | 3534086M92 | B       | 1  | LEVER    |
|    |            | E       |    |          |
|    |            | T-A 1:0 |    |          |
| 21 | 1426515M1  | !       | 20 | 1 SPRING |
| 22 | 3532657M1  | !       | 20 | 1 PIN    |
| 23 | 3654296M1  | !       | 20 | 1 KNOB   |
- ! THIS IS A COMPONENT OF AN ASSEMBLY
- ◇ SEE PAGE - REFERENCE NUMBER
- A TO BE ADVISED
- B 540/750 R.P.M.
- E 540/1000 R.P.M.
- T-A Replacement

TRANSMISSION

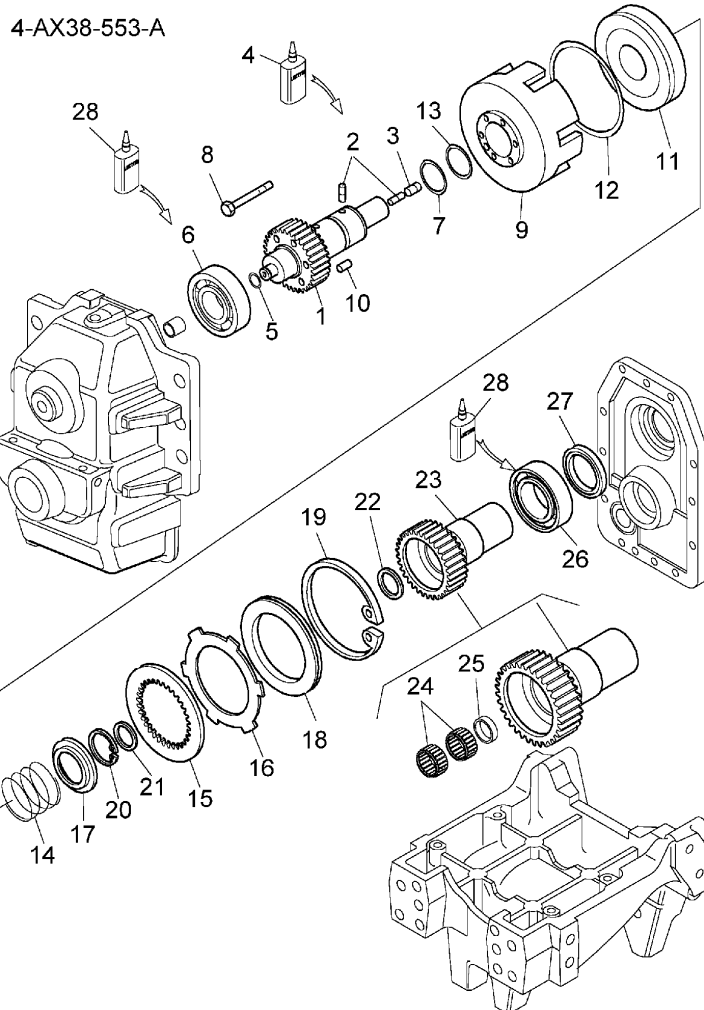
E-04  
29



E0429

"FRONT" PTO DRIVE SHAFT

Ghibli New TIER2 85



1	3666276M91	▲	1	SHAFT
2	3666275M1	!	1	SCREW
		A		
3	3549514M2	!	2	SCREW
		A		
4	3663814M1	●	1	LOCTITE
5	3539902M1	●	1	RING
6	831789M1	B	1	BEARING
		T-A 3:0		
7	364525X1		1	RING
8	1441798X1	●	6	SCREW
		339011X1 (6)		
		M8X45		
9	3652571M1		1	CRANKCASE
		T-A 3:0		
10	1440688X1		1	DOWEL
11	3652590M2		1	PISTON
		T-A 3:0		
12	3004922X1		1	RING
		T-A 3:0		
13	3019920X1		1	O RING
		T-A 3:0		
14	3554663M1	●	1	SPRING
15	3559826M2		5	DISC
		T-A 3:0		

CLICK HERE TO **DOWNLOAD** THE COMPLETE MANUAL

- Thank you very much for reading the preview of the manual.
- You can download the complete manual from: [www.heydownloads.com](http://www.heydownloads.com) by clicking the link below



- Please note: If there is no response to CLICKING the link, please download this PDF first and then click on it.

CLICK HERE TO **DOWNLOAD** THE COMPLETE MANUAL