

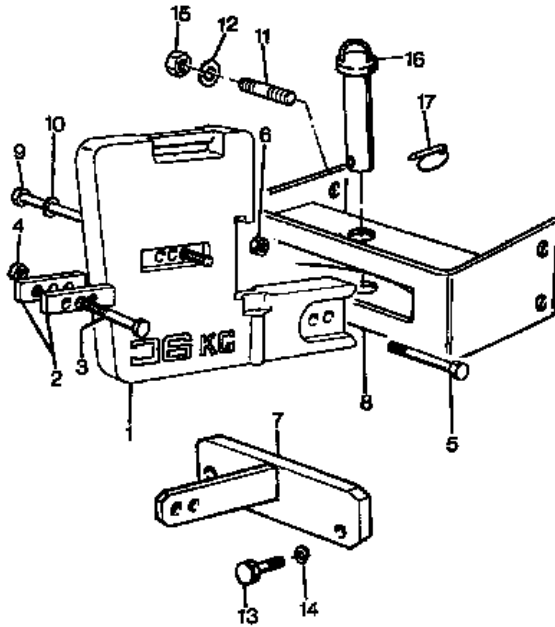
ACCESSORIE S MECHANICAL

X-48
01

WEIGHT FRAME AND WEIGHTS - FRONT HOOK - UP TO SERIAL N.A27033

60 8860-8860HC

X4801



- | | | | |
|----|-------------|---|-------------|
| 1 | 3545835M 2 | 6 | BALLAST WE |
| 1 | 3545835M 2 | 8 | BALLAST WE |
| 2 | 1426054M 1 | 2 | PLATE |
| 3 | 339616X1 | 1 | BOLT |
| 4 | 392368X1 | 1 | NUT |
| 5 | 339805X1 | 2 | SCREW |
| 6 | 339034X1 | 2 | NUT |
| 7 | 3531786M 91 | 1 | SUPPORT |
| 8 | 3531778M 92 | 1 | SUPPORT |
| 9 | 1441804X1 | 2 | SCREW |
| 9 | 392462X1 | 2 | SCREW |
| 10 | 1441664X1 | 2 | LOCK WASHER |
| 11 | 392223X1 | 4 | SCREW |
| 12 | 391414X1 | 4 | LOCK WASHER |
| 13 | 391120X1 | 2 | SCREW |
| 14 | 391414X1 | 2 | LOCK WASHER |
| 15 | 339034X1 | 4 | NUT |
| 16 | 1426023M 91 | 1 | PIN |
| 17 | 1699608M 91 | 1 | KIT |
- ◀ LENGTH

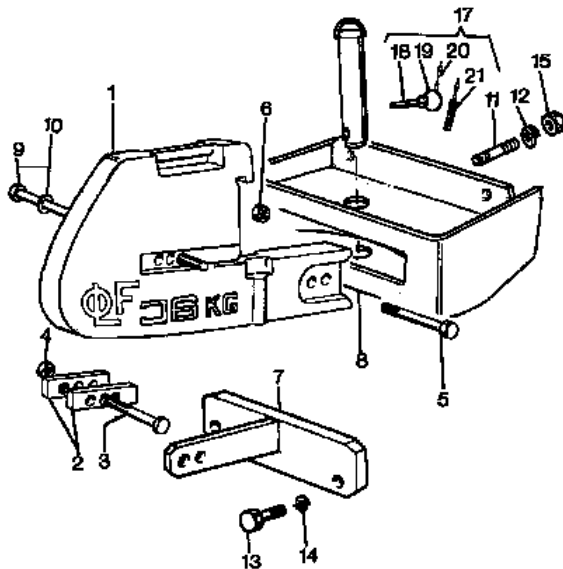
ACCESSORIE S MECHANICAL

X-48
02

WEIGHT FRAME AND WEIGHTS - FRONT HOOK - FROM SERIAL N.A27034

60 8860-8860HC

X4802



- | | | | | | |
|----|-------------|---|-----------------|----|-------------|
| 1 | 3545835M 1 | ● | 3545835M 2 (8) | 8 | BALLAST WE |
| 1 | 3545835M 1 | ● | 3545835M 2 (10) | 10 | BALLAST WE |
| 1 | 3545835M 1 | ● | 3545835M 2 (6) | 6 | BALLAST WE |
| 2 | 1426054M 1 | | | 2 | PLATE |
| 3 | 339616X1 | | | 1 | BOLT |
| 4 | 392368X1 | | | 1 | NUT |
| 5 | 339805X1 | | | 2 | SCREW |
| 6 | 339034X1 | | | 2 | NUT |
| 7 | 3545839M 91 | | | 1 | SUPPORT |
| 8 | 3532307M 91 | ⊙ | | 1 | SUPPORT |
| 8 | 3545838M 91 | ⊙ | | 1 | SUPPORT |
| 9 | 1441804X1 | ◀ | 200MM. | 2 | SCREW |
| 9 | 3300171M 1 | ◀ | 310MM | 2 | SCREW |
| 9 | 392462X1 | ◀ | 250MM | 2 | TIE ROD |
| 10 | 1441664X1 | | | 2 | LOCK WASHER |
| 11 | 392223X1 | | | 4 | SCREW |
| 12 | 391414X1 | | | 4 | LOCK WASHER |
| 13 | 391120X1 | | | 2 | SCREW |
| 14 | 391414X1 | | | 2 | LOCK WASHER |
| 15 | 339034X1 | | | 4 | NUT |
| 16 | 1426023M 91 | | | 1 | PIN |
| 17 | 1699608M 91 | | | 1 | KIT |
| 18 | 1426056M 91 | ! | 17 | 1 | RETAINER |
| 19 | | ! | 17 | 1 | RING |
| | | ! | REF.N.17 | | |
| 20 | 1699417M 1 | ● | 4203653M 91 (1) | 1 | CHAIN |
| | | ! | 17 | | |
| | | ! | 646027M 1 | | |
| 21 | 354074X1 | ! | 17 | 1 | RETAINER |

CLICK HERE TO **DOWNLOAD** THE COMPLETE MANUAL

- Thank you very much for reading the preview of the manual.
- You can download the complete manual from: www.heydownloads.com by clicking the link below



- Please note: If there is no response to CLICKING the link, please download this PDF first and then click on it.

CLICK HERE TO **DOWNLOAD** THE COMPLETE MANUAL

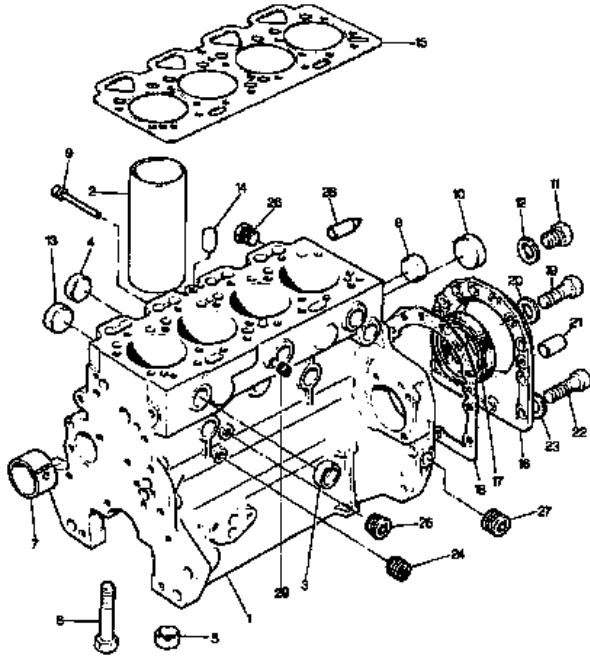
ENGINE

A-05
03

CYLINDER BLOCK - - A4.248 ENGINE

60 8860-8860HC

A0503



1	ZZ50227	●	ZZ50227/S (1)	1	KIT
2	3135X033	!	1	4	LINER
			A		
2	3135X034		B	999	LINER
			(X) 0.4.4.8		
3	0650710	!	1	6	PLUG
4	32418122	!	1	4	PLUG
5	33142111		RTS CODE 511300	10	SLEEVE
			TIME 5,00		
6	32166329		RTS CODE 511300	10	SCREW
			TIME 5,00		
7	31134165	!	1	1	BUSH
8	0650710	!	1	2	PLUG
9	2485A204	!	1	1	PLUG
10	32416119	!	1	1	PLUG
11	32168212	●	0650582 (1)	1	PLUG
			1		
12	3311R003	●	2415D108 (1)	1	WASHER
			1		
13	32416118	!	1	4	PLUG
14	32417134		RTS CODE 510900	1	PLUG
			TIME 0,50		
15	3681E034		(X) 0.1.2.4	1	GASKET
			0746211 (2)		
16	4142V064	●	3681T018 (2)	1	FLANGE
			390972X1 (1)		
			4142V066 (1)		
			3627P042 (1)		
17	2418F475	!	16	1	SEAL
			(X) 0.1.4.8		
18	3681T012	●	3681T018 (1)	1	GASKET
19	0746211			10	SCREW
20	390972X1			10	WASHER

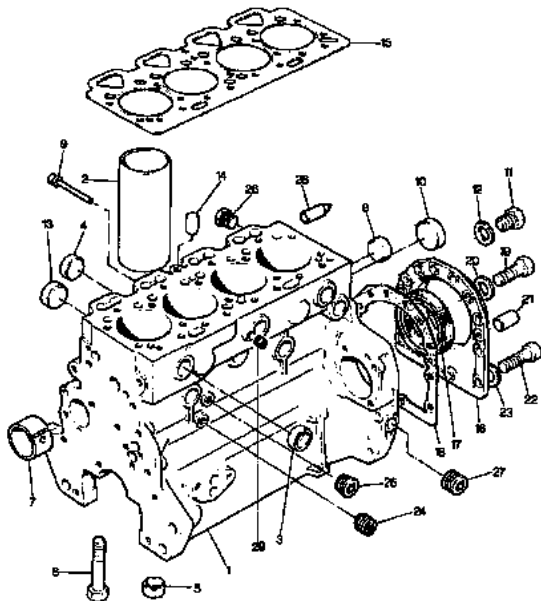
ENGINE

A-05
03

CYLINDER BLOCK - - A4.248 ENGINE

60 8860-8860HC

A0503



21	0350009			2	DOWEL
22	2172530			2	SCREW
23	33112111			2	WASHER
24	0650594			1	PLUG
25	0650588			2	PLUG
26	32161114			2	PLUG
27	0650588			1	PLUG
28	32452113			1	PIN
29	32114143			1	PLUG
!			THIS IS A COMPONENT OF AN ASSEMBLY		
A			PRESS FIT		
B			SLIP FIT		
(X)			QTY PER TRACTORS SOLD (AA,BBB,C,CC,DDD) (AA) FOR 1,(BBB) 2-10 (CCC) 11-25 (DDD) 26-50		

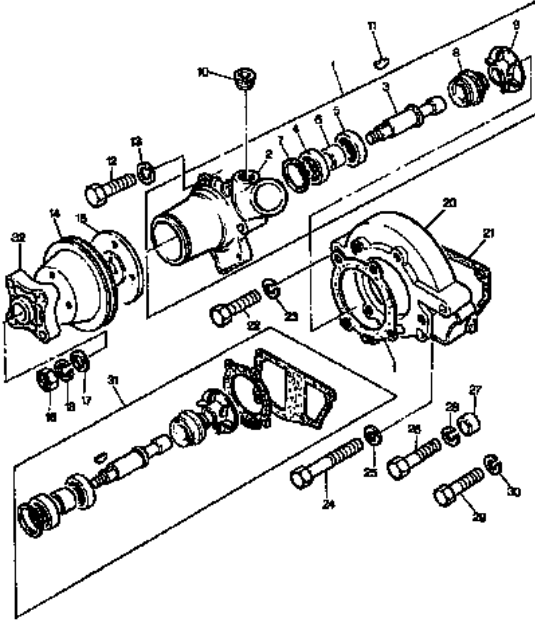
ENGINE

**A-05
12**

WATER PUMP, THERMOSTAT AND HEAT EXCHANGER - - A4.248 ENGINE

60 8860-8860HC

A0512



- | | | | | |
|-----|----------|--|-----|-------------|
| 22 | 0096401 | | 1 | SCREW |
| 23 | 0920054 | | 1 | LOCK WASHER |
| 24 | 0096443 | | 1 | SCREW |
| 25 | 0920054 | | 1 | LOCK WASHER |
| 26 | 0096440 | | 1 | SCREW |
| 27 | 0920465 | | 1 | SPACER |
| 28 | 0920054 | | 1 | LOCK WASHER |
| 29 | 0096439 | B | 1 | SCREW |
| 30 | 0920054 | B | 1 | LOCK WASHER |
| 31 | U7LW0100 | E | 999 | KIT |
| 31 | U7LW0110 | ● USMW0105 (999) | 999 | KIT |
| | | C | | |
| | | (X) 0.1.2.4 | | |
| 31 | U7LW0110 | ● USMW0105 (999) | 999 | KIT |
| | | F | | |
| 32 | 3748W212 | ● 355997M 1 (1) | 1 | SUPPORT |
| I | | THIS IS A COMPONENT OF AN ASSEMBLY | | |
| ■ | | NOT SERVICED, ORDER | | |
| A | | ALSO INCLUDED IN REPAIR KIT | | |
| B | | ALSO SECURES ALTERNATOR LEVER | | |
| C | | USED ONLY WITH 4131A013/41313225/41313232 | | |
| E | | USED ONLY WITH 4131A021 | | |
| F | | USED ONLY WITH 41313232/41313225 | | |
| (X) | | QTY PER TRACTORS SOLD (AA,BBB,CCC,DDD) (AA) FOR 1,(BBB) 2-10 (CCC) 11-25 (DDD) 26-50 | | |

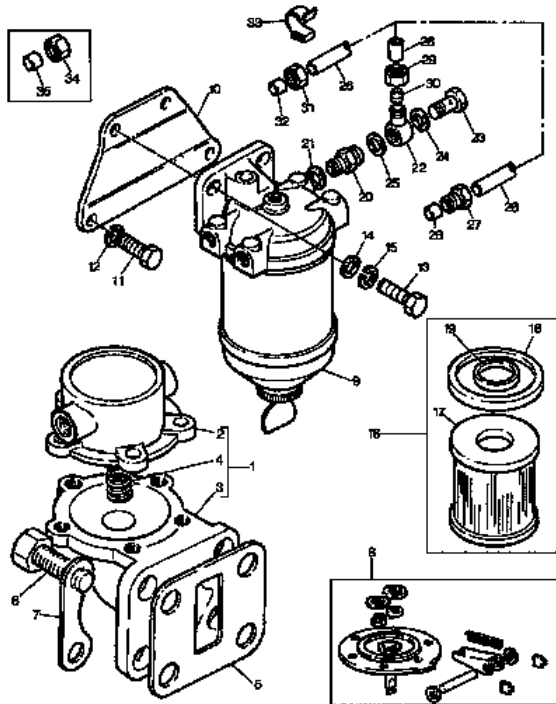
ENGINE

**A-05
13**

FUEL SYSTEM AND FILTER - A4.248 ENGINE

60 8860-8860HC

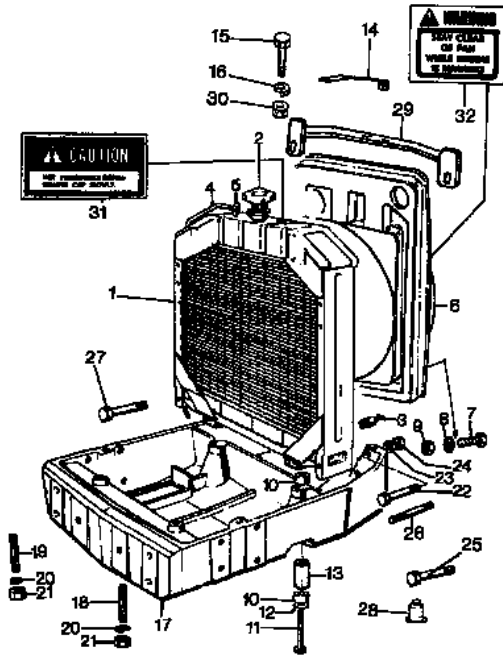
A0513



- | | | | | |
|----|------------|-------------------|-----|-------------|
| 1 | 2641A053 | ● 3685R007 (5) | 1 | PUMP |
| | | 390972X1 (1) | | |
| | | ULPK0003 (1) | | |
| | | (X) 0.1.2.6 | | |
| 2 | | 1 | 1 | COVER |
| 3 | | ! REF.1 | 1 | BODY |
| 4 | | ! REF.1 | 1 | SPRING |
| 5 | 3685R007 | ! REF.1 | 1 | GASKET |
| | | (X) 0.1.2.6 | | |
| 6 | 2182429 | | 4 | SCREW |
| 7 | 36241316 | | 2 | PLATE |
| 8 | ULPR0005 | | 999 | KIT |
| 9 | 2656615 | (X) 0.1.2.6 | 1 | FILTER |
| 10 | | (X) 0.1.2.4 | | |
| | | B | | |
| 11 | 353537X1 | | 2 | SCREW |
| 12 | 0920054 | | 2 | LOCK WASHER |
| 13 | 0746454 | | 2 | SCREW |
| 14 | 0920004 | | 2 | WASHER |
| 15 | 0920054 | | 2 | LOCK WASHER |
| 16 | 3541160M 1 | ● E3541160M 1 (1) | 1 | CARTRIDGE |
| | | (X) 4.20.40.60 | | |
| 17 | | ! 16 | 1 | BODY |
| | | ! REF.16 | | |
| 18 | 0490786 | ! 16 | 2 | RING |
| 19 | 26560014 | ! 16 | 2 | RING |
| 20 | 2658207 | A | 1 | VALVE |
| 21 | 0920154 | A | 1 | WASHER |

60 8860-8860HC

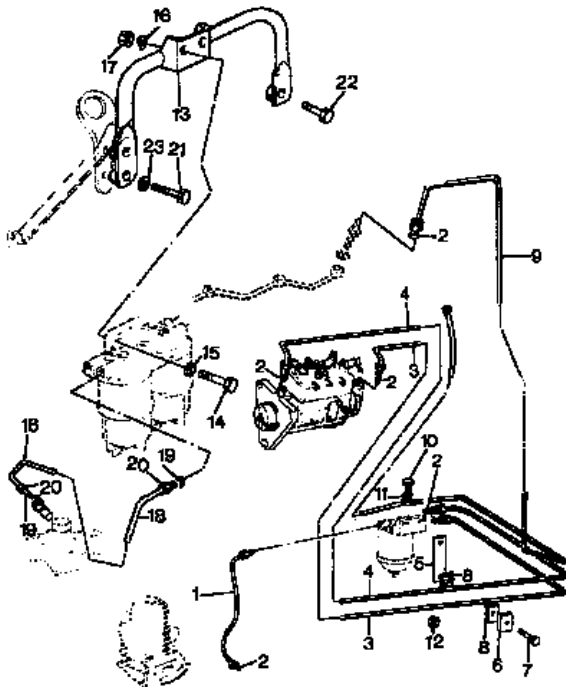
C3208



- 33 339030X1 ● 1441500X1 (4) 4 NUT
G
THIS IS A COMPONENT OF AN ASSEMBLY
FROM SERIAL OR ENGINE NUMBER
UP TO SERIAL OR ENGINE NUMBER
REPAIRS AND REPLACES
ALTERNATIVE
A PART NUMBER MUST BE ORDERED WITH ITS SAFETY DECAL.
B FIRA TYPE
B SEE SAFETY DECAL.
E FOR TROPICAL CLIMAT
G WITH SHIELD FAN
◄ LENGTH
⊕ FOR EXPORT EUROPE
⊕ FOR UNITED STATES OF AMERICA
⊕ WITHOUT FOR SOUTH AFRICA
QTY PER TRACTORS SOLD (AA BBB.CCC.DDD) (AA) FOR
1,(BBB) 2-10 (CCC) 11-25 (DDD) 26-50

60 8860-8860HC

C3209



- | | | | |
|----|--------------|----------------|---------------|
| 1 | 3308755M92 ● | 3308755M93 (1) | 1 PIPE |
| 1 | 3547921M91 ⊕ | | 1 STANDPIPE |
| 2 | 376525X1 | | 7 SPINNER |
| 3 | 3533213M91 | | 1 PIPE |
| 3 | 3547923M91 ⊕ | | 1 PIPE |
| 4 | 3533212M91 | | 1 PIPE |
| 4 | 3547924M91 ⊕ | | 1 PIPE |
| 5 | 3533276M91 | | 1 STIRRUP |
| 6 | 36511123 ● | 733869M1 (1) | 1 PLATE |
| 6 | 36511123 ● | 733869M1 (3) | 3 PLATE |
| | ⊕ | | |
| 7 | 391883X1 | | 2 BOLT |
| 7 | 391883X1 | | 1 BOLT |
| 8 | 1425980M1 ⊕ | | 4 STIRRUP |
| 8 | 36844116 ● | 733868M1 (2) | 2 BLOCK |
| 9 | 3534546M91 ⊕ | | 1 PIPE |
| 9 | 3537563M91 ● | 3537563M92 (1) | 1 PIPE |
| 10 | 3302623M1 | | 1 UNION |
| 11 | 1440993X1 ● | 1444744X1 (2) | 2 GASKET |
| 12 | 1441494X1 ⊕ | | 1 NUT |
| 13 | 3548259M91 ● | 3548259M92 (1) | 1 SUPPORT |
| | ⊕ | | |
| 14 | 3009495X1 ● | 339018X1 (2) | 2 SCREW |
| | ⊕ | | |
| 15 | 390734X1 ⊕ | | 2 WASHER |
| 16 | 1440314X1 ⊕ | | 2 LOCK WASHER |
| 17 | 3009693X1 ● | 339402X1 (2) | 2 NUT |
| | ⊕ | | |
| 18 | 3547926M1 ⊕ | | 1 PIPE |

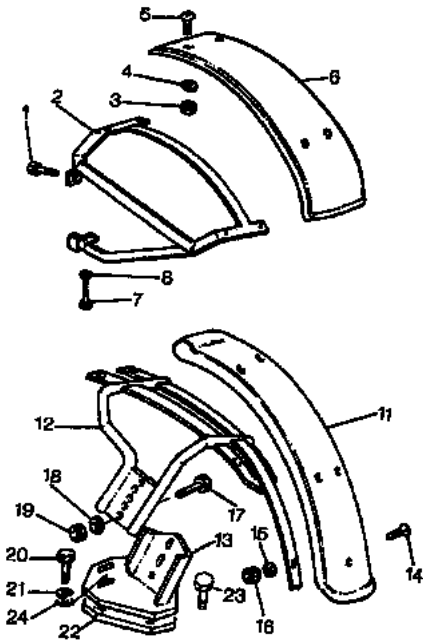
FENDERS FOOTSTEPS AND PLATFORM

S-22
02

FENDERS - FRONT

60 8860-8860HC

S2202



- 24 390734X1 A 6 WASHER
- A FOR USE WITH 7.50X18 8PLY TYRES
- A FOR USE WITH 6.50-16;7.50-16 TYRES
- A FOR USE WITH 380/70 R24 TYRES
- A WITH FRONT BRAKING
- B FOR USE WITH 9.5/9-24;9.5/28;11.2R20;11.2/10-24 TYRES
- B WITHOUT FRONT BRAKING
- II 4 WHEEL DRIVE
- C FOR USE WITH 9.00-16 TYRES
- II 2 WHEEL DRIVE
- ◀ LEFT HAND
- G FOR USE WITH 14.9-LR20 TYRES
- G FOR USE WITH 7.50-18 TYRES
- ▶ RIGHT HAND
- I FOR USE WITH 12.4/11-24; 12.4-R20; 13.6/12-24; 14.9-LR20 TYRES
- ◀▶ WIDTH

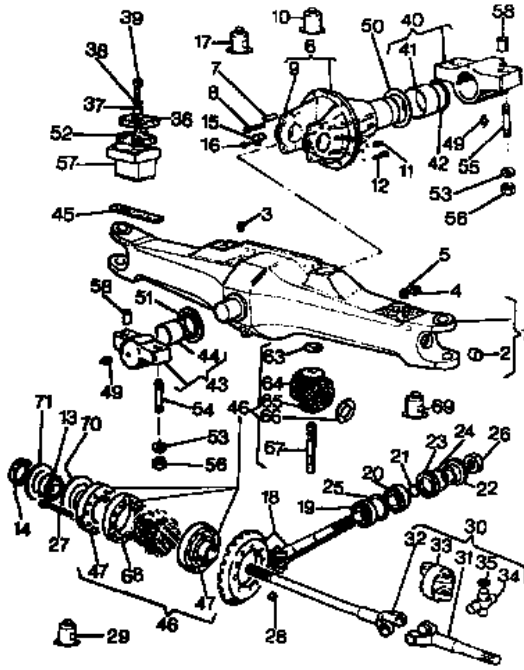
FRONT AXLE AND STEERING

J-09
04

FRONT AXLE 4 WHEEL DRIVE - DIFFERENTIAL - WITH HYDRAULIC BLOCKING

60 8860-8860HC

J0904



66	3427461M	!	46	2	WASHER
67	3427091M	3	3428408M (1)	1	PIN
		!	46		
68	3427837M	2	46	1	FLANGE
			(X) 0.1.2.4		
69	3303219M	1		999	LOCTITE
70	3427079M	1	6	1	SPACER
71	3427281M	1	0,10MM.	999	SHIM
71	3427282M	1	0,15MM.	999	SHIM
71	3427283M	1	0,30MM.	999	SHIM
71	3427284M	1	0,50MM.	999	SHIM
71	3427285M	1	0,70MM.	999	SHIM
71	3427286M	1	3427284M (1998)	999	SHIM
		!	1,00MM.		

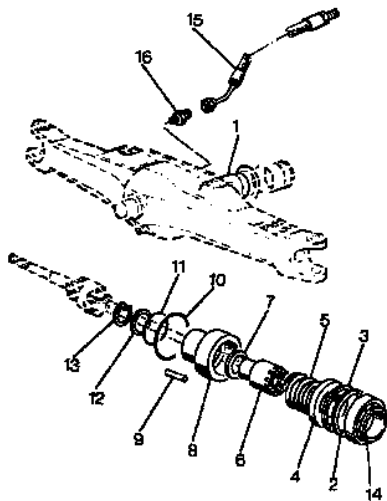
FRONT AXLE AND STEERING

J-09
05

FRONT AXLE 4 WHEEL DRIVE - DIFFERENTIAL LOCK MECHANISM - WITH HYDRAULIC BLOCKING

60 8860-8860HC

J0905



1	A			1	SUPPORT
2	A			1	SPACER
3	3427079M	!	1	1	SPACER
			A		
4	3427839M	!	1	1	GUIDE
5	3427313M	!	1	1	SPRING
6	3427838M	!	1	1	SLEEVE
			(X) 0.1.2.4		
7	3427443M	!	1	1	WASHER
8	3427460M	!	1	1	PISTON
9	3427444M	!	8	1	DOWEL
10	359236X1	!	1	1	O RING
			(X) 0.4.8.16		
11	3019927X1	!	1	1	O RING
			(X) 0.4.8.16		
12	3427463M	!	1	1	WASHER
13	1442697X1	!	1	1	RING
14	A			1	BEARING
15	3535705M	92		1	HYDR HOSE
16	3535560M	92		1	UNION
!	THIS IS A COMPONENT OF AN ASSEMBLY				
A	FOR DETAIL SEE PAGE APPROPRIATE				
(X)	QTY PER TRACTORS SOLD (AA,BBB,CCC,DDD) (AA) FOR 1,(BBB) 2-10 (CCC) 11-25 (DDD) 26-50				

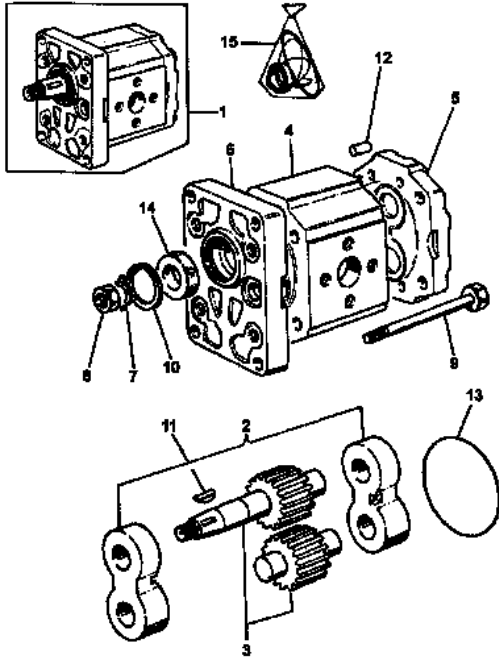
FRONT AXLE AND STEERING

J-09
14

STEERING - PUMP - STEERING PUMP - TUROLLO TYPE - FROM SERIAL NO. R31001

60 8860-8860HC

J0914



1	3539858M 91	3546160M 91	1	PUMP
		(X) 0.1.2.4		
2	3311768M 1	N.L.A. (2)	2	BUSH
3	3311524M 91	N.L.S. (1)	1	KIT
4			1	BODY
5		REF.N.1	1	FLANGE
6		REF.N.1	1	WASHER
7	3302053M 1		1	NUT
8	1442576X1		1	SCREW
9	339582X1		4	RING
10	1441597X1	339361X1 (1)	1	KEY
11	3311771M 1		1	DOWEL
12	3006307X1		4	RING
13	3311522M 91		999	KIT
14	1421318M 1	(X) 0.2.4.6	13	RING
15	394869X1	(X) 0.2.4.6	13	RING
		(X) 0.1.2.4		

! THIS IS A COMPONENT OF AN ASSEMBLY
ALTERNATIVE
NOT SERVICED, ORDER
QTY PER TRACTORS SOLD (AA,BBB,CCC,DDD) (AA) FOR
1,(BBB) 2-10 (CCC) 11-25 (DDD) 26-50

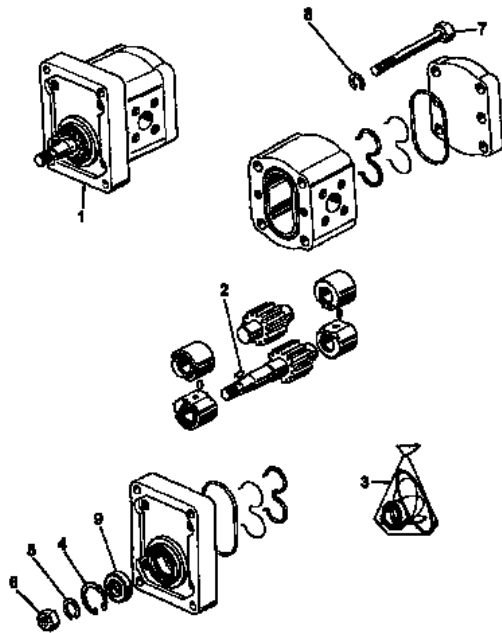
FRONT AXLE AND STEERING

J-09
15

STEERING - PUMP - STEERING PUMP - BOSCH TYPE - FROM SERIAL NO. R31001

60 8860-8860HC

J0915



1	3546160M 91	3539858M 91	1	PUMP
		(X) 0.1.2.4		
2	1440358X1		1	TONGUE
3	3100439M 91		1	KIT
4	1442486X1	(X) 0.1.2.4	1	CIRCLIP
5	3104969M 1		1	WASHER
6	3009696X1		1	NUT
7	3008860X1		4	SCREW
8	1440314X1		4	LOCK WASHER
9	1718961M 1		3	SEAL
		(X) 0.2.4.6		

! THIS IS A COMPONENT OF AN ASSEMBLY
ALTERNATIVE
QTY PER TRACTORS SOLD (AA,BBB,CCC,DDD) (AA) FOR
1,(BBB) 2-10 (CCC) 11-25 (DDD) 26-50

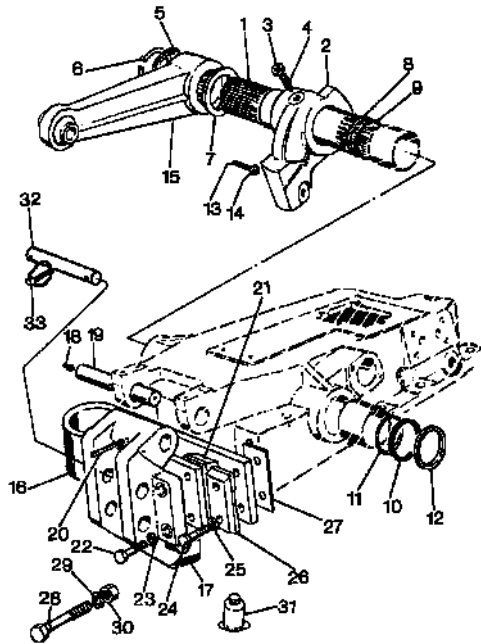
HYDRAULICS AND LINKAGE

P-42
10

HYDRAULIC LIFT - LIFT ARMS

60 8860-8860HC

P4210



- | | | | | |
|----|-------------|--------------------|-----|-------------|
| 25 | 391414X1 | | 2 | LOCK WASHER |
| 26 | 1825301M 1 | | 1 | STIRRUP |
| 27 | 1825302M 1 | | 1 | SHIM |
| 28 | 1825298M 1 | | 1 | SCREW |
| 29 | 1440317X1 | | 1 | LOCK WASHER |
| 30 | 3384600M 2 | | 1 | NUT |
| 31 | 3303220M 1 | ● 3303220M 2 (999) | 999 | LOCTITE |
| 32 | 1825297M 1 | A | 1 | PIN |
| 33 | 1426056M 91 | A | 1 | RETAINER |
- ▬ FROM SERIAL OR ENGINE NUMBER
 ▬ UP TO SERIAL OR ENGINE NUMBER
 A WITH THREE POINT LINKAGE
 A WITH TELESCOPIC ARM OR LIFT CYLINDER SUPPLEMENTARY
 C "STANDARD" VERSION
 ▲ LEFT HAND
 ▼ RIGHT HAND

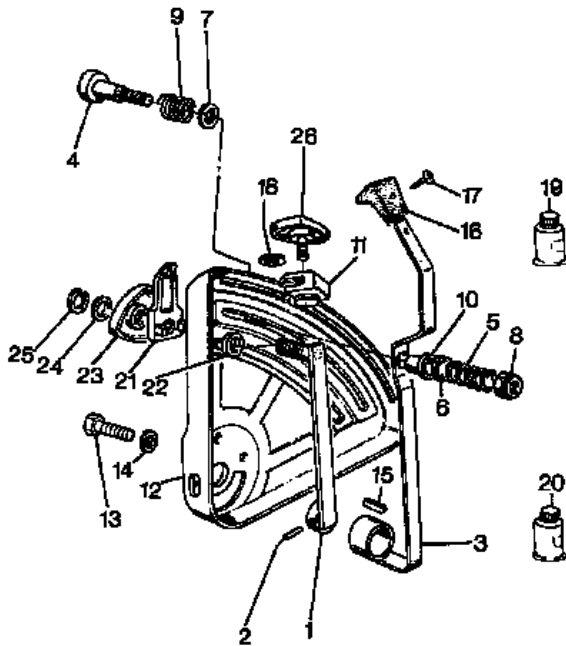
HYDRAULICS AND LINKAGE

P-42
11

MECHANICAL CONTROL LIFT - DRAFT , POSITION AND INTERMIX

60 8860-8860HC

P4211



- | | | | | |
|----|-------------|--|---|-------------|
| 1 | 3532796M 91 | | 1 | LEVER |
| 2 | 1441725X1 | | 1 | DOWEL |
| 3 | 3532795M 92 | | 1 | LEVER |
| 4 | 3532802M 3 | | 1 | PIN |
| 5 | 1824211M 1 | | 1 | SPRING |
| 6 | 1825350M 1 | | 1 | WASHER |
| 7 | 3532803M 1 | | 2 | DISC |
| 8 | 394376X1 | | 1 | NUT |
| 9 | 3532805M 2 | | 1 | SPRING |
| 10 | 3532801M 2 | | 1 | BUSH |
| 11 | 3532800M 91 | | 1 | SLIDER |
| 12 | 3532797M 92 | | 1 | SECTOR |
| 13 | 339123X1 | | 3 | SCREW |
| 14 | 339374X1 | | 3 | LOCK WASHER |
| 15 | 1440371X1 | | 1 | KEY |
| 16 | 3303876M 2 | | 1 | GRIP |
| 17 | 3002104X1 | | 1 | SCREW |
| 18 | 3532803M 1 | | 1 | DISC |
| 19 | 3303220M 2 | | 1 | LOCTITE |
| 20 | 3308788M 1 | | 1 | LOCTITE |
| 21 | 3532799M 1 | | 1 | SLIDER |
| 22 | 3532804M 1 | | 1 | SPACER |
| 23 | 3532806M 91 | | 1 | GRIP |
| 24 | 1440273X1 | | 1 | WASHER |
| 25 | 1440522X1 | | 1 | RING |
| 26 | 3532807M 91 | | 1 | KNOB |

CLICK HERE TO **DOWNLOAD** THE COMPLETE MANUAL

- Thank you very much for reading the preview of the manual.
- You can download the complete manual from: www.heydownloads.com by clicking the link below



- Please note: If there is no response to CLICKING the link, please download this PDF first and then click on it.

CLICK HERE TO **DOWNLOAD** THE COMPLETE MANUAL

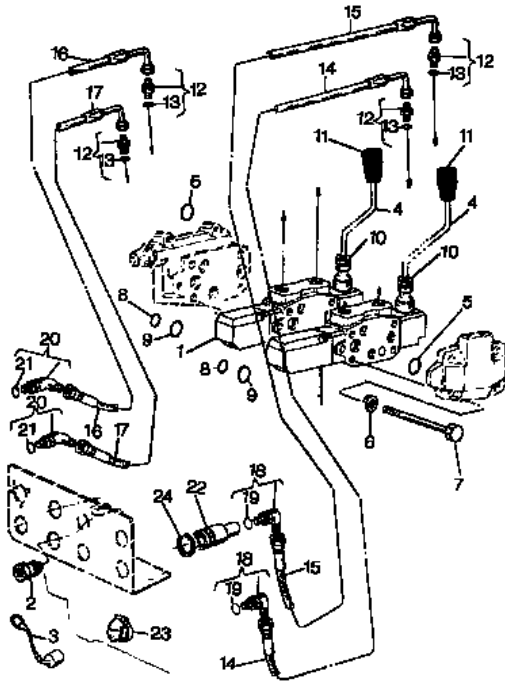
HYDRAULICS AND LINKAGE

P-42
22

AUXILIARY HYDRAULIC VALVE LINES - O.M.C - OMC TYPE FROM SERIAL N.S02043

60 8860-8860HC

P4222



1	◇ P-42 31 1	2 DISTRIBUTOR
	◇ P-42 32 1	
2	3304415M 91	4 UNION
3	3304008M 1	4 PLUG
4	3305467M 1	1 LEVER
4	3532772M 1	1 LEVER
4	3532781M 1	999 LEVER
5	1441514X 1	5 O RING
6	391037X 1	4 LOCK WASHER
7	3015074X 1	4 SCREW
7	3015075X 1	999 SCREW
8	1441122X 1	3 RING
9	1441114X 1	9 O RING
10	3305185M 1	2 NUT
10	339402X 1	999 NUT
11	3304484M 1	2 KNOB
12	3304467M 93	4 UNION
13	3015165X 1 ! 12	4 O RING
14	3305356M 91 B31016	1 HYDR HOSE
14	3531885M 91 B31015	999 HYDR HOSE
14	3531891M 91 B31015	3 PIPE
15	3309006M 91 B31016	1 PIPE
15	3532510M 91 B31015	1 PIPE
16	3531884M 91	999 PIPE
16	3531884M 91 B31016	1 PIPE
17	3531891M 91	999 HYDR HOSE
17	3545967M 91 B31016	1 PIPE
18	1424962M 92	4 ELBOW
19	831497M 1 ! 18	4 RING
20	1426727M 91	999 ELBOW
21	831497M 1 ! 20	999 RING
22	3534687M 91 B19141	4 UNION
22	3546441M 91 B19142	4 HITCH
23	3530933M 91 ● 3530933M 92 (4)	4 PLUG

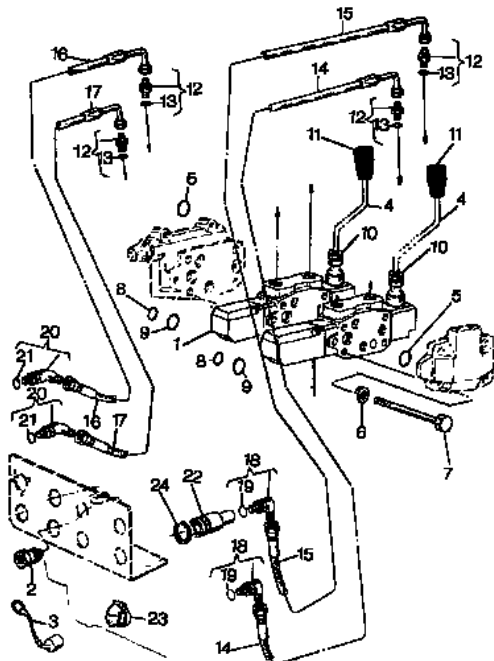
HYDRAULICS AND LINKAGE

P-42
22

AUXILIARY HYDRAULIC VALVE LINES - O.M.C - OMC TYPE FROM SERIAL N.S02043

60 8860-8860HC

P4222



24	3015132X 1 B19142	8 RING
24	392759X 1 ● 339820X 1 (8) B19141	8 RING
!	THIS IS A COMPONENT OF AN ASSEMBLY	
	FROM SERIAL OR ENGINE NUMBER	
	UP TO SERIAL OR ENGINE NUMBER	
◇	SEE PAGE - REFERENCE NUMBER	

HYDRAULICS AND LINKAGE

P-42
33

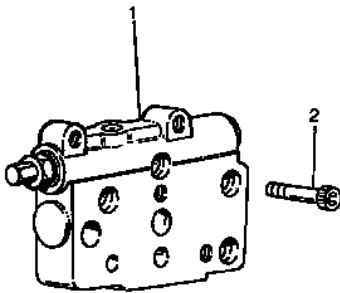
HYDRAULICS EQUIPMENT - PIPINGS AND PUMP - HIDROIRMA TYPE FROM SERIAL N.S02043

60 8860-8860HC



P4233

- | | | | | | |
|---|------------|---|----------------|---|-------|
| 1 | 3547487M91 | ● | 3547487M93 (1) | 1 | PLATE |
| 2 | 1441612X1 | | | 3 | SCREW |



HYDRAULICS AND LINKAGE

P-42
34

AUXILIARY STANDARD DISTRIBUTOR - HIDROIRMA TYPE FROM SERIAL N.S02043

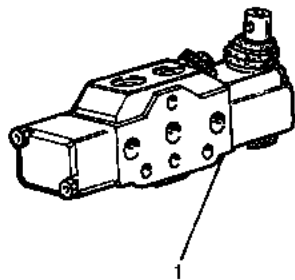
60 8860-8860HC



P4234

- | | | | | | |
|---|------------|---|----------------|---|-------------|
| 1 | 3547485M92 | ● | 3547485M93 (1) | 1 | DISTRIBUTOR |
| 2 | 3540185M91 | ● | 3689697M91 (1) | 1 | KIT |
| | | | ! | 1 | |
| 3 | 1441514X1 | ! | 2 | 3 | O RING |
| | | | A | | |
| 4 | 3019915X1 | ! | 2 | 2 | O RING |
| | | | A | | |
| 5 | 3019926X1 | ! | 2 | 1 | O RING |
| | | | A | | |
| 6 | 363510X1 | ! | 2 | 1 | RING |
| | | | A | | |
| 7 | 359291X1 | ! | 2 | 1 | O RING |
| | | | A | | |
| 8 | 3540288M1 | ! | 1 | 1 | BELLOWS |
| | | | A | | |

! THIS IS A COMPONENT OF AN ASSEMBLY
A NOT ILLUSTRATED



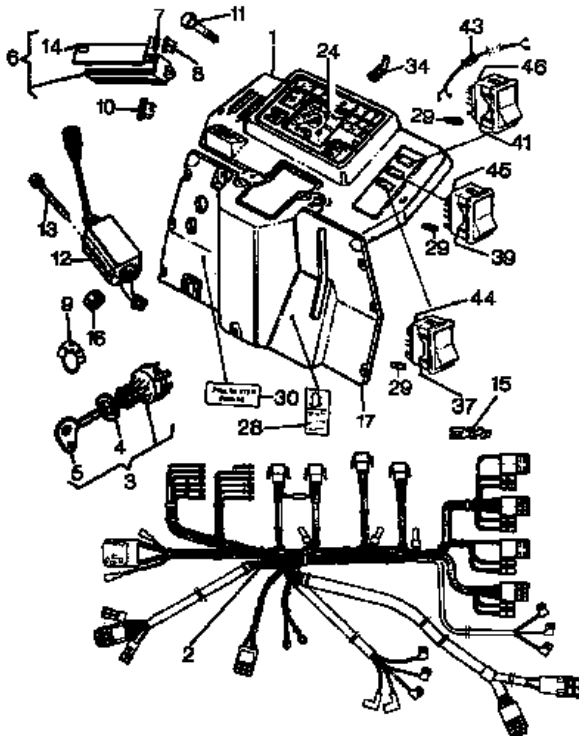
LIGHTING EQUIPMENT

D-00
04

INSTRUMENT PANEL - EQUIPMENT INSTRUMENT

60 8860-8860HC

D0004



1	R-20 05 17	1	PANEL
2	D-00 02 1	1	HARNESS
3	1446116M 91	1	SWITCH,IND
3	3547633M 91	Z	1 STARTING AID
4	1443606X1	B (X) 0.2.4.8	1 WASHER
5	1695447M 1	3 3666665M 1 (1) 3 (X) 1.4.8.16	1 KEY
6	3533900M 91	3	2 BOX
7	3533928M 91	7.5AMP (X) 2.10.20.30	5 FUSE
8	3536581M 91	10AMP (X) 2.10.20.30	4 FUSE
9	3300554M 1		1 DECAL
10	3534038M 91	20AMP (X) 2.10.20.30	2 FUSE
11	3015002X1		4 SCREW
12	3533174M 92		1 SWITCH,IND
12	3536226M 92	C	1 SWITCH,IND
13	3015030X1	D	3 SCREW
14	3311512M 1	6	2 COVER
15	3311901M 1		999 TERMINAL
16	3019139X1		3 NUT
17		R-20 05 18 A	1 PANEL
24		D-00 05 1	1 QUADRANT
28	3545525M 1	17	1 DECAL

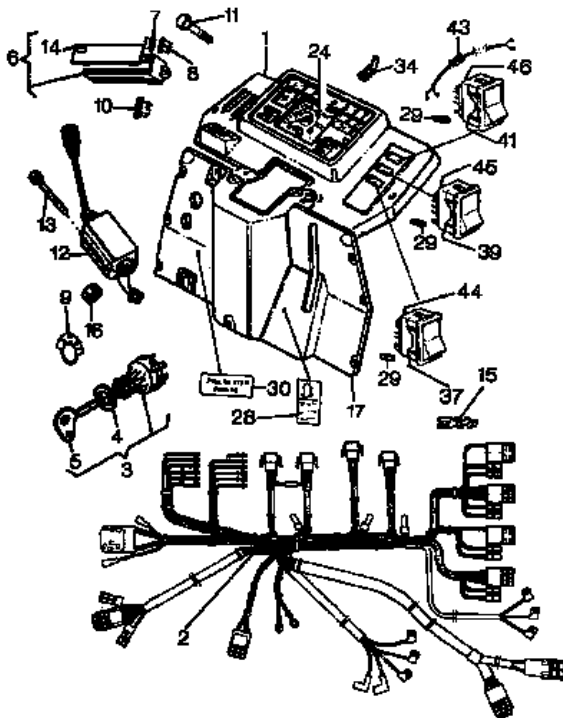
LIGHTING EQUIPMENT

D-00
04

INSTRUMENT PANEL - EQUIPMENT INSTRUMENT

60 8860-8860HC

D0004



29	3310618M 1		3 LAMP
30	3303283M 1	(X) 0.10.20.30 17	1 DECAL
34	3536709M 1		1 JUNCTION
37	3533924M 91	B	1 SWITCH,IND
37	3534537M 91	D B C	1 SWITCH,IND
39	3534534M 91	C C	1 SWITCH,IND
39	3537502M 91	C C 3534590M 91 (1)	1 SWITCH,IND
41	3533922M 91	D D	1 SWITCH,IND
41	3534531M 91	D C D	1 COMMUTATOR
43	3534650M 91	D	1 CABLE
43	3534651M 91	C	1 CABLE
44	3534628M 1	37 B C	1 CONNECTION
44	3534629M 1	37 B D	1 CONNECTION
45	3534628M 1	D 39	1 CONNECTION
45	3534630M 1	C C C	1 CONNECTION
46	3534628M 1	39 C D D	1 CONNECTION

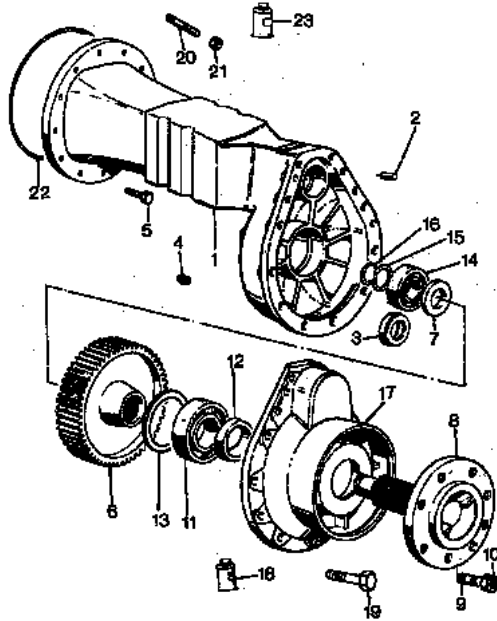
REAR AXLE AND REAR BRAKES

G-40
03

REAR AXLE - HOUSING AND WHEEL HUB - "HIGH CLEARANCE" VERSION

60 8860-8860HC

G4003



16	1443812X1		2	RING
17	3531908M2	B	2	COVER
17	3539755M1	→ S29134 C	2	COVER
18	3308788M1		999	LOCTITE
19	1440718X1	(X) 0.2.4.6	26	SCREW
20	3304695M1		4	SCREW
21	339079X1		4	NUT
22	3304650M1		2	RING
23	3308788M1	(X) 0.4.8.16	999	LOCTITE
		(X) 0.2.4.6		
→	FROM SERIAL OR ENGINE NUMBER			
A	WITH CAST IRON DISCS			
↔	SHIM			
B	WITH "STANDARD SEAL"			
C	"RICELAND SEAL" VERSION			
◀	LEFT HAND			
▶	RIGHT HAND			
	QTY PER TRACTORS SOLD (AA,BBB,CCC,DDD) (AA) FOR 1,(BBB) 2-10 (CCC) 11-25 (DDD) 26-50			

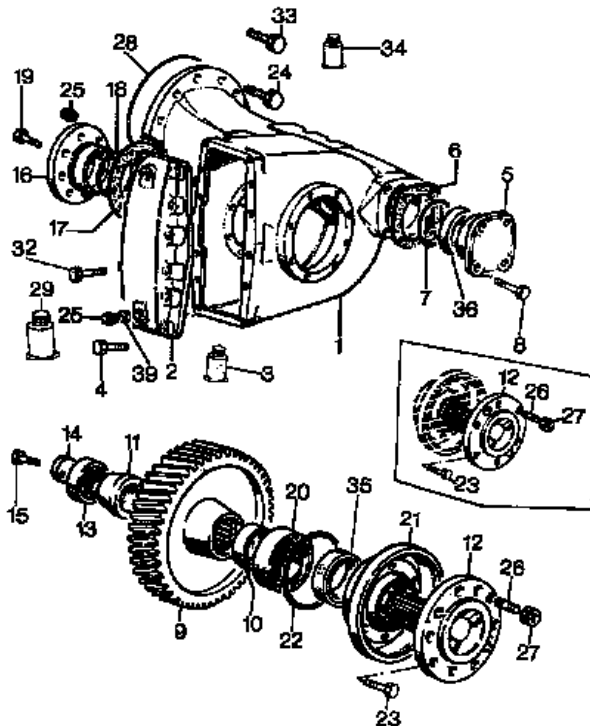
REAR AXLE AND REAR BRAKES

G-40
04

REAR AXLE - HOUSING AND WHEEL HUB - SOUTH-AFRICA

60 8860-8860HC

G4004



1	3304838M1	● N.L.A. (1) N46007	1	HOUSING
1	3304839M1	● N.L.A. (1) N46007	1	HOUSING
1	3531496M2	● 3531496M6 (1) N46008	1	HOUSING
1	3531497M2	● 3531497M6 (1) N46008	1	HOUSING
2	3300803M1	● N46007	2	COVER
2	3536980M1	● N46008	2	COVER
3	3300804M1	● 3308788M1 (2) N46007	2	GASKET
3	3308788M1	● N46008	1	LOCTITE
3	3536801M1	● F (X) 0.2.4.8	1	LOCTITE
4	3009494X1	● N46008	8	SCREW
4	339282X1	● F	24	SCREW
4	339401X1	● N46007	8	SCREW
5	3304840M1	● G	2	FLANGE
6	3300817M1	● 0,1MM.	999	SHIM
6	3300818M1	● 0,3MM.	999	SHIM
6	3300819M1	● 0,5MM.	999	SHIM
7	1441787X1		2	RING
8	339401X1		8	SCREW
9	3300808M1	● 73	2	GEAR

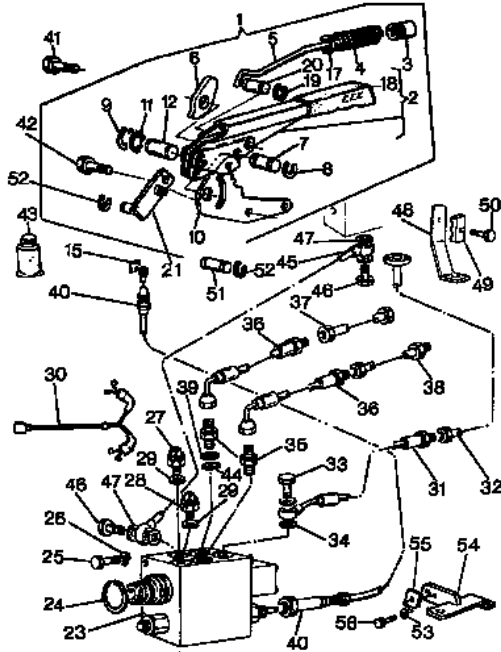
REAR AXLE AND REAR BRAKES

G-40
12

BRAKES - "HANDBRAKE" - FROM SERIAL NO S31185 - INDEPENDENT AND FRONT

60 8860-8860HC

G4012



- | | | | |
|----|-------------|---|-------------|
| 35 | 3300775M 93 | 2 | UNION |
| 36 | 3547034M 92 | 2 | HYDR HOSE |
| 37 | 3547037M 91 | 1 | PIPE |
| 38 | 3547036M 91 | 1 | PIPE |
| 39 | 3548879M 1 | 2 | WASHER |
| 40 | 3546843M 92 | 1 | CABLE |
| 41 | 339299X1 | 1 | SCREW |
| 42 | 3009493X1 | 1 | SCREW |
| 43 | 1427801M 1 | 1 | LOCTITE |
| 44 | 3015165X1 | 2 | O RING |
| 45 | 3545923M 91 | 1 | PIPE |
| 46 | 394209X1 | 2 | UNION |
| 47 | 1440993X1 | 4 | GASKET |
| 48 | 3547040M 1 | 1 | STIRRUP |
| 49 | 3542558M 1 | 1 | STIRRUP |
| 50 | 339804X1 | 1 | SCREW |
| 51 | 3547201M 1 | 1 | PIN |
| 52 | 1441923X1 | 4 | RING |
| 53 | 339375X1 | 1 | LOCK WASHER |
| 54 | 3547119M 91 | 1 | STIRRUP |
| 55 | 3547117M 1 | 1 | PLATE |
| 56 | 391074X1 | 1 | SCREW |
- ! THIS IS A COMPONENT OF AN ASSEMBLY
 B TO SHUT-OFF VALVE
 D HYDRAULIC LIFT
 D HYDRAULIC PUMP

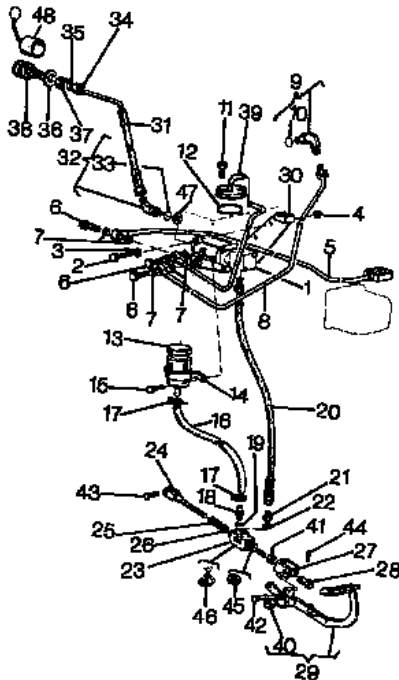
REAR AXLE AND REAR BRAKES

G-40
13

TRAILER BRAKES - PIPES AND FITTINGS - UP TO SERIAL NUMBER S31184.

60 8860-8860HC

G4013



- | | | | |
|----|-------------|---|-------------|
| 1 | 1676468M 91 | 1 | DISTRIBUTOR |
| 2 | 339368X1 | 2 | SCREW |
| 3 | 339374X1 | 2 | LOCK WASHER |
| 4 | 339169X1 | 2 | NUT |
| 5 | 3535246M 91 | 1 | PIPE |
| 5 | 3536746M 91 | 1 | PIPE |
| 6 | 394202X1 | 3 | UNION |
| 7 | 1440702X1 | 6 | WASHER |
| 8 | 3534721M 91 | 1 | PIPE |
| 9 | 3304523M 93 | 1 | UNION |
| 10 | 851134M 1 | 1 | RING |
| 11 | 339761X1 | 2 | SCREW |
| 12 | 3019918X1 | 1 | O RING |
| 13 | 3308235M 91 | 1 | TANK |
| 14 | 3308671M 1 | 1 | CLAMP |
| 15 | 339228X1 | 1 | SCREW |
| 16 | 3534498M 1 | 1 | PIPE |
| 17 | 3307756M 92 | 2 | CLAMP |
| 18 | 3308682M 1 | 1 | UNION |
| 19 | 734414M 1 | 1 | GASKET |
| 20 | 3300749M 91 | 1 | PIPE |
| 21 | 1426274M 1 | 1 | UNION |
| 22 | 1440993X1 | 1 | GASKET |
| 23 | 1660506M 92 | 1 | DISTRIBUTOR |
| 24 | 3308667M 2 | 1 | TIE ROD |
| 25 | 3308707M 1 | 1 | SPRING |
| 26 | 392364X1 | 1 | NUT |

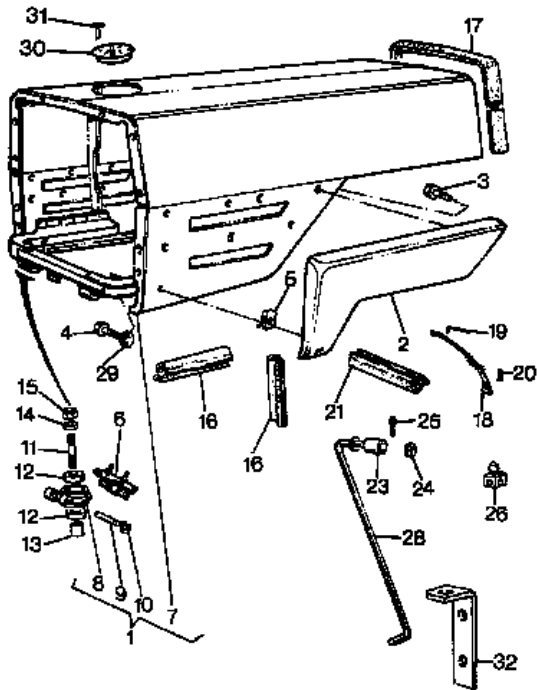
SHEET METAL

R-20
03

SHEET METAL - HOOD - FROM SERIAL N.A27034

60 8860-8860HC

R2003



28	3546188M91	1	ROD
29	1443775X1	17	WASHER
30	3547061M 1	1	COVER
31	3547062M 1	3	RIVET
32	3547194M 1	1	STIRRUP

- ! THIS IS A COMPONENT OF AN ASSEMBLY
- ▢ NOT SERVICED, ORDER
- B WITH DRY AIR CLEANER
- ▲ TOP
- ▼ LOWER COMPONENT
- ◀ LEFT HAND
- ▶ RIGHT HAND
- ↔ LENGTH
- M USED ONLY WITH DRY AIR CLEANER

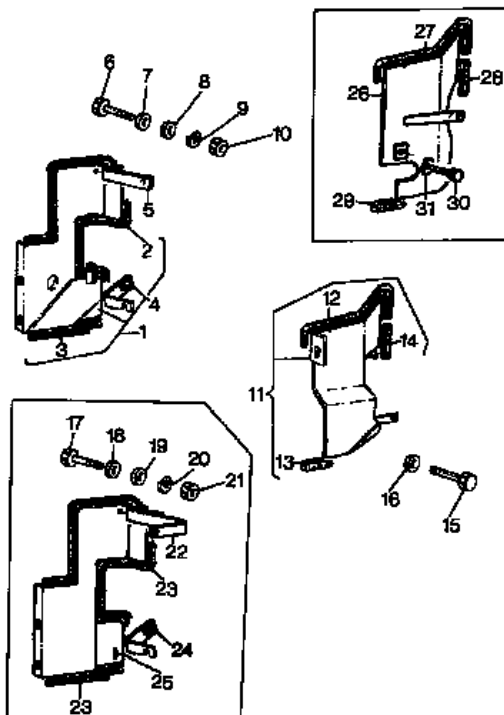
SHEET METAL

R-20
04

SIDE COVER - SHIELD FAN

60 8860-8860HC

R2004



1	3546295M92	●	3650652M93 (1)	1	GUARD
			3650647M93 (1)		
2	3308556M 1	!	A	1	SKIRT
4	3306458M92	A	A	1	FRAME
5	3534337M 1	A	A	1	SQUARE
6	339560X1	A	A	2	SCREW
7	339588X1	A	A	1	WASHER
8	390971X1	A	A	2	WASHER
9	339375X1	A	A	2	LOCK WASHER
10	339169X1	●	394367X1 (1)	1	NUT
			A		
11	3546611M91	◀	A	1	GUARD
			A		
12	3300789M 1	!	11	1	GASKET
			A		
13	3308101M 1	●	3306466M 1 (1)	1	SKIRT
			11		
			A		
14	3306465M 1	!	11	1	SKIRT
			A		
			A		
15	339262X1	A	A	1	SCREW
16	390971X1	A	A	1	WASHER
17	339560X1	N	N	2	SCREW
18	339588X1	N	N	1	WASHER
19	390971X1	N	N	2	WASHER
20	339375X1	N	N	2	LOCK WASHER
21	339030X1	●	1441500X1 (1)	1	NUT
			N		
22	3534337M 1	▲	N	1	SQUARE
			N		
23	3306453M 2	N	N	1	SKIRT
24	3306458M92	▼	N	1	FRAME
			N		

TRANSMISSION

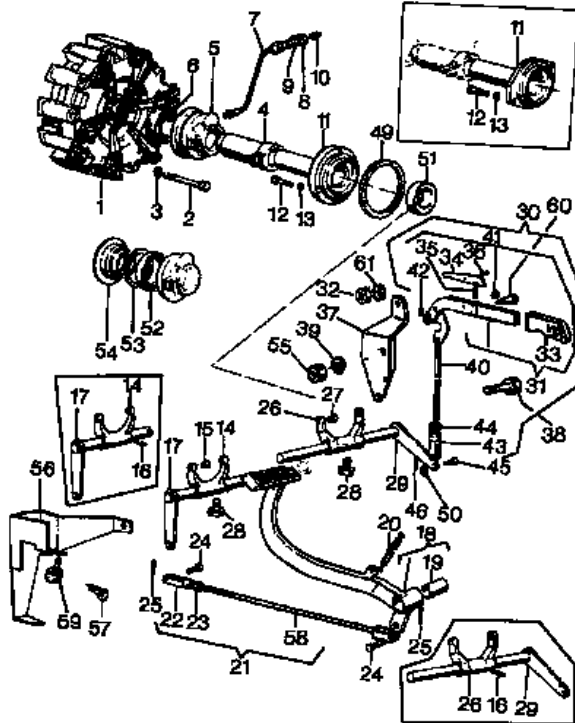
E-04
06

CLUTCH PEDAL AND LINKAGE

60 8860-8860HC



E 0406



41	3536973M 1	!	30	1	PIN
			P51096		
42	1440474X1	!	30	1	RING
43	1824305M 2	!	30	1	YOKE
44	1442577X1	!	30	1	NUT
45	975528M 1			1	PIN
46	390446X1			1	LINCH PIN
49	3305041M 2	B		1	GASKET
		(X) 0.2.4.8			
50	390734X1			1	WASHER
51	973454M 1	B		1	SEAL
		(X) 0.2.4.8			
52	1442381X1	!	5	1	BEARING
		(X) 0.2.4.8			
53	1821722M 1	!	5	1	DISC
54	1423472M 1	!	1423472M 2 (1)	1	DISC
			5		
55	1440087X1	!	1440099X1 (2)	2	NUT
			B		
56	3535525M 2	!	3107036M 1 (1)	1	PLATE
57	339401X1			2	SCREW
58	3532858M 92	!	3537819M 91 (1)	1	TIE ROD
			H		
58	3537818M 1	!	3537819M 91 (1)	1	TIE ROD
			21		
			I		
59	3533749M 2			1	PAD
60	1423495M 1	!	P51095	1	PIN
60	3009495X1	!	339018X1 (1)	1	SCREW
			P51096		
61	390734X1			1	WASHER

TRANSMISSION

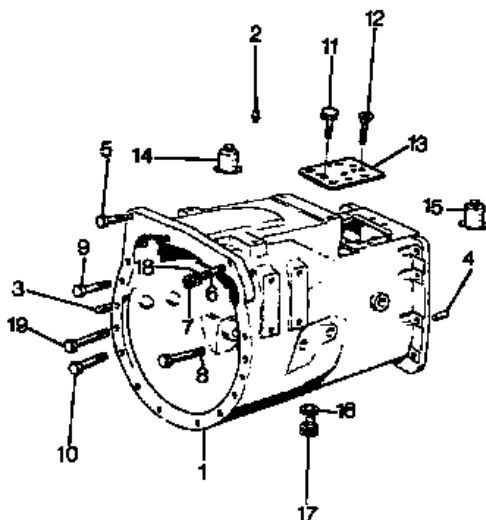
E-04
07

CENTRE AXLE HOUSING AND TRANSMISSION HOUSING -

60 8860-8860HC



E 0407



1	3531421M 3	C		1	AXLE
1	3532482M 3	!	02/88	1	AXLE
			E		
1	3533880M 2	!	3533880M 3 (1)	1	AXLE
			03/88		
			B		
2	1823603M 91			1	PLUG
3	0350018			2	DOWEL
4	3538774M 1			1	DOWEL
5	391934X1	!	35MM	1	SCREW
6	3003996X1			1	SCREW
7	339643X1			1	NUT
8	391929X1	!	60MM	3	SCREW
9	1442899X1	!	65MM	2	SCREW
10	3001933X1	!	70MM	4	SCREW
11	1441456X1			1	SCREW
11	1441456X1	!	02/88	2	SCREW
			E		
12	339123X1			4	SCREW
13	3305042M 91			1	COVER
14	3536801M 1			999	LOCTITE
15	3308788M 1			999	LOCTITE
16	1440702X1			1	WASHER
17	3532632M 91			1	PLUG
18	390735X1			1	WASHER
19	1440718X1	!	45MM	2	SCREW
!					FROM SERIAL OR ENGINE NUMBER
!					UP TO SERIAL OR ENGINE NUMBER
B					FOR OPTIONS VERSION ONLY
C					STANDARD TRANSMISSION
E					USED WITH STD REDUCER 5,3:1
!					LENGTH

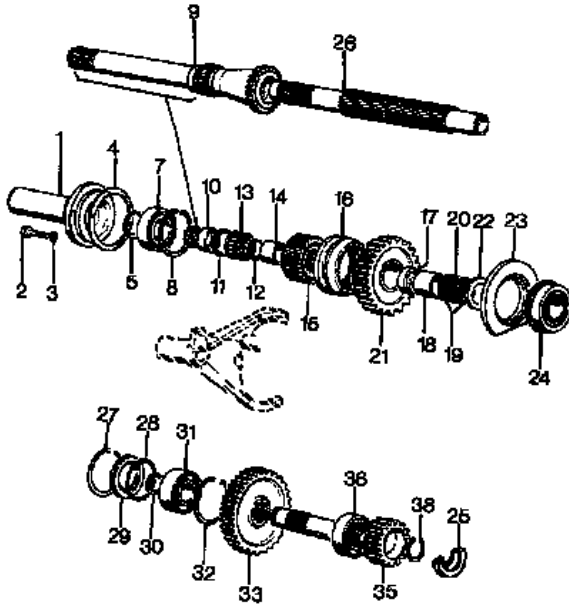
TRANSMISSION

E-04
15

REDUCER OPTION - GEARBOX - UP TO SERIAL NO....02/88 (5.3:1)

60 8860-8860HC

E 0415



1	3305040M2	●	3305040M 4 (1)	1	SUPPORT
2	339761X1			3	SCREW
3	1440314X1			3	LOCK WASHER
4	3305041M2			1	GASKET
5	392759X1	●	339820X1 (1)	1	RING
7	339818X1			1	BEARING
8	339437X1			1	RING
9	3305046M1			1	SHAFT
10	1442903X1			1	SEAL
11	3305063M1			1	SPACER
12	3006803X1			1	RING
13	3304944M1			1	BEARING
14	3305062M1	●	(X) 0.2.4.8 3305062M 2 (1)	1	RING
15	3305060M1	▲	27	1	HUB
16	3305093M2			2	SLEEVE
17	3305059M1			1	SPACER
18	392517X1			1	RING
19	3305055M1			2	BEARING
20	3305056M1			1	SPACER
21	3305054M1	▲	40	1	GEAR
22	2714111M1			1	WASHER
23	3309350M1			1	DISC
24	831789M1			1	BEARING
25	3532198M1			1	KEY
26	3530901M1			1	SHAFT
27	1443524X1			1	RING
28	3305049M1			1	RING
29	3305048M2			1	COVER
30	339469X1			1	RING
31	339818X1			1	BEARING

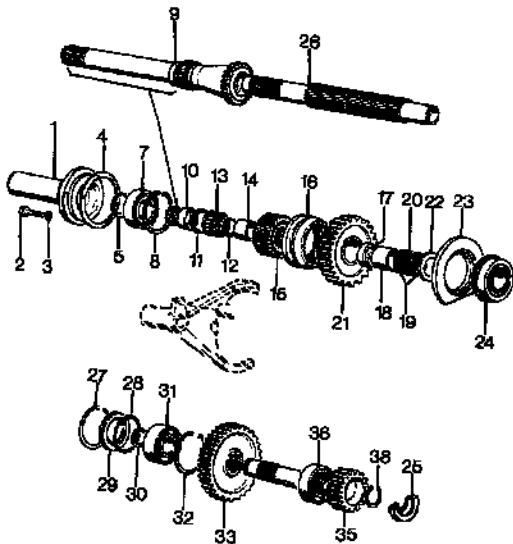
TRANSMISSION

E-04
15

REDUCER OPTION - GEARBOX - UP TO SERIAL NO....02/88 (5.3:1)

60 8860-8860HC

E 0415



32	339437X1			1	RING
33	3305050M1	▲	52	1	GEAR
35	3308067M1	▲	23	1	SHAFT
36	339436X1			1	BEARING
38	392759X1	●	339820X1 (1)	1	RING

NUMBER OF TEETH/SPLINES

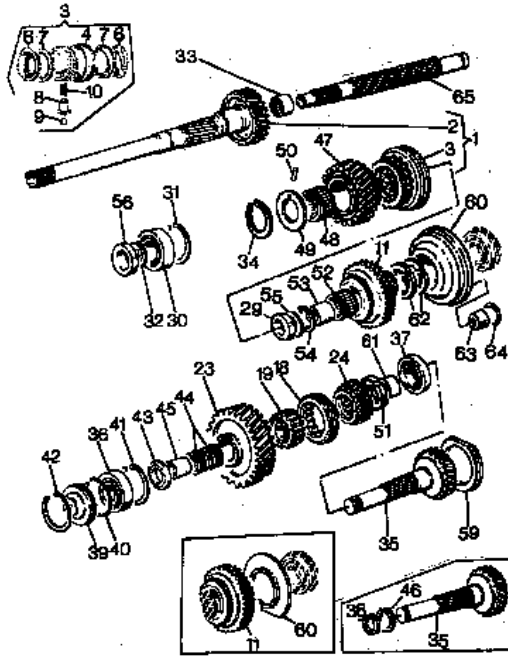
QTY PER TRACTORS SOLD (AA,BBB,CCC,DDD) (AA) FOR 1,(BBB) 2-10 (CCC) 11-25 (DDD) 26-50

TRANSMISSION

E-04
22

60 8860-8860HC

E 0422



REDUCER OPTION - GEARBOX - OVERDRIVE AND CREEPER VERSION

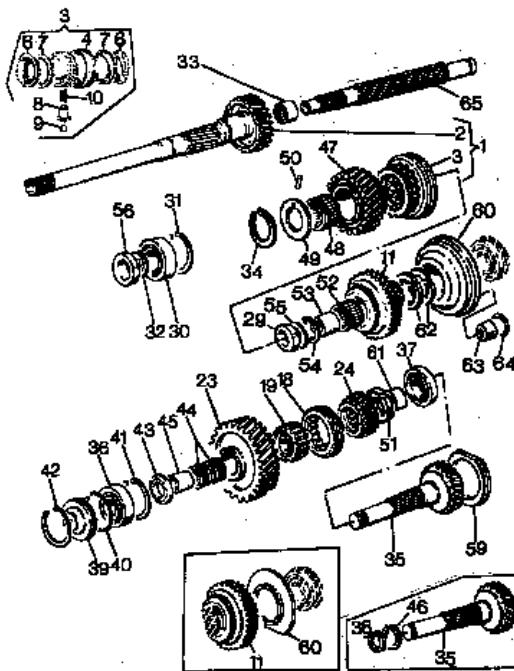
8	3538529M 1	!	3	GRAZIANO	3	SKATE
8	3539424M 1	!	3	CATTINI	3	SKATE
9	1444586X 1	!	3		3	BALL
10	3533975M 1	!	3	GRAZIANO	2	SPRING
10	3539425M 1	!	3	CATTINI	2	SPRING
11	3533978M 1	!	1	C23028	1	GEAR
11	3548316M 1	!	1	C23029	1	GEAR
18	3533959M 1		1		1	SLEEVE
19	3533960M 1		1		1	HUB
23	3533965M 1		1		1	GEAR
24	3534908M 2		1		1	GEAR
29	1441802X 1	!	1	C23029	1	SEAL
29	1442903X 1	!	1	C23028	1	SEAL
30	339818X 1		1		1	BEARING
31	339437X 1		1		1	RING
32	392759X 1	●	1	339820X 1 (1)	1	RING
33	3533946M 1		1		1	CAGE
34	390232X 1		1		1	RING
35	3533954M 2	! O	1	3305048M 2 (1) 3544705M 1 (1) 3544709M 1 (1) 392771X 1 (1) A22112	1	SHAFT
35	3544705M 1	!	1	A22113	1	SHAFT
36	339436X 1		1	D	1	BEARING
37	339818X 1		1	Y	1	BEARING
39	3305048M 2		1		1	COVER
40	3305049M 1		1		1	RING
41	339437X 1		1		1	RING

TRANSMISSION

E-04
22

60 8860-8860HC

E 0422



REDUCER OPTION - GEARBOX - OVERDRIVE AND CREEPER VERSION

42	1443524X 1		1		1	RING
43	3533955M 2	!	1	A22112	1	SPACER
43	3544708M 1	!	1	3544708M 2 (1) A22113	1	SPACER
44	1440618X 1		2		2	CAGE
45	3533957M 1		1		1	RING
47	3534540M 1	!	1	C23028	1	GEAR
47	3550829M 1	!	1	C23029	1	GEAR
48	392519X 1	●	1	3647577M 1 (1)	1	BEARING
49	3309354M 1		1		1	DISC
50	3535083M 1		1		1	PIN
51	339469X 1	!	1	A22112	1	FERRULE
51	392771X 1	!	1	A22113	1	RING
52	3304944M 1	!	1		1	BEARING
53	3305062M 2	!	1	C23028	1	BUSH
53	3548467M 1	!	1	C23029	1	RING
54	3006803X 1	!	1		1	RING
55	3305063M 1	!	1	C23028	1	SPACER
55	3548402M 1	!	1	C23029	1	WASHER
56	973454M 1		1		1	SEAL
59	3309349M 1		1		1	DISC
60	3309350M 1	!	1	P47062	1	DISC
60	3538775M 2	!	1	P47063 C23028	1	FLANGE
60	3548466M 2	!	1	3548466M 3 (1) C23029	1	DISC
61	3544709M 1	!	1	A22113	1	SPACER
61	392759X 1	!	2	339820X 1 (2) A22112	2	RING
62	3548395M 1	!	1	C23029	1	RING
63	3548398M 1	!	1	C23029	1	PIPE
64	831519M 1	!	1	C23029	1	O RING
65	3533956M 1	!	1	C23028	1	SHAFT

CLICK HERE TO **DOWNLOAD** THE COMPLETE MANUAL

- Thank you very much for reading the preview of the manual.
- You can download the complete manual from: www.heydownloads.com by clicking the link below



- Please note: If there is no response to CLICKING the link, please download this PDF first and then click on it.

CLICK HERE TO **DOWNLOAD** THE COMPLETE MANUAL