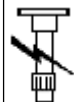
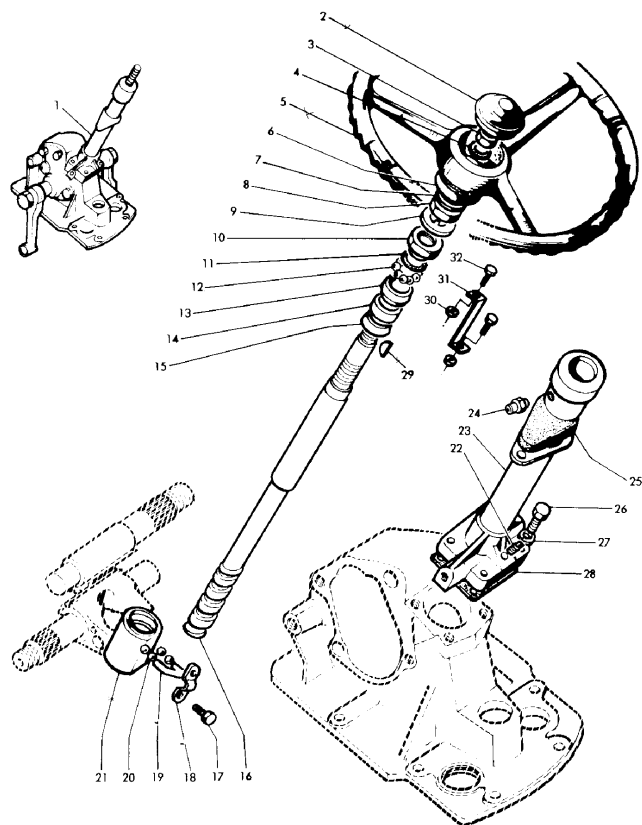


ACCESSORIES AND APPLICATION MISCELLANEOUS



505 5505

COLONNE DIRECTION (A) N° W 184 026 →
 STEERING COLUMN (B) N° E 286 010 →
 MANTELROHR LENKUNG (E) N° E 304 101 →
 ALLO STERZO



STEERING COLUMN (A) W184028 (B) E286010 (E) E304101

1809067M93	O	1	SHAFT
1809068M93	Y1 Z20	1	WHEEL
1809069M93	● N.L.A. (1) Y	1	STEERING W
1809444M91	● N.L.A. (1) Y1 Z1	1	COLLAR
1889566M91	● N.L.A. (1) O	1	CAP
1889570M91	● N.L.A. (1) Y1 Z6	1	CAP
1889571M91	Y1 Z20 Z6	1	HOUSING
907288M91	● N.L.A. (1) Y1 Z1	1	HOUSING
961239M1	Y	1	HOUSING
961714M1	Y1	1	COLUMN
962245M91	● 3759758M92 (1) Y1	1	COLUMN
962324M91	● N.L.A. (1)	1	RING
1 1809066M93	Y	1	HOUSING
2 965503M1		1	RING
3 353429X1		1	NUT UNF
4 353433X1	● 391414X1 (1)	1	LOCK WASHER
5 960305M91	● Y Z1	1	WHEEL
6 827209M1	● 1864867M1 (1)	1	CAP

CLICK HERE TO **DOWNLOAD** THE COMPLETE MANUAL

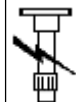
- Thank you very much for reading the preview of the manual.
- You can download the complete manual from: www.heydownloads.com by clicking the link below



- Please note: If there is no response to CLICKING the link, please download this PDF first and then click on it.

CLICK HERE TO **DOWNLOAD** THE COMPLETE MANUAL

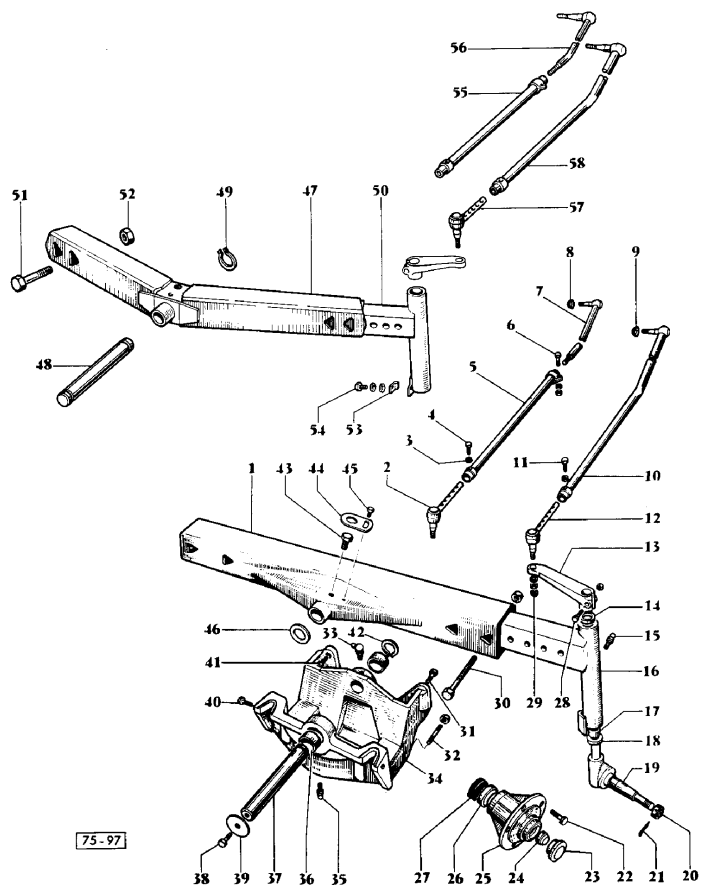
ACCESSORIES AND APPLICATION MISCELLANEOUS



505 5505

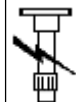
FRONT AXLE

ESSIEU AVANT
FRONT AXLE
VORDERACHSE
BARRA ANTERIORE



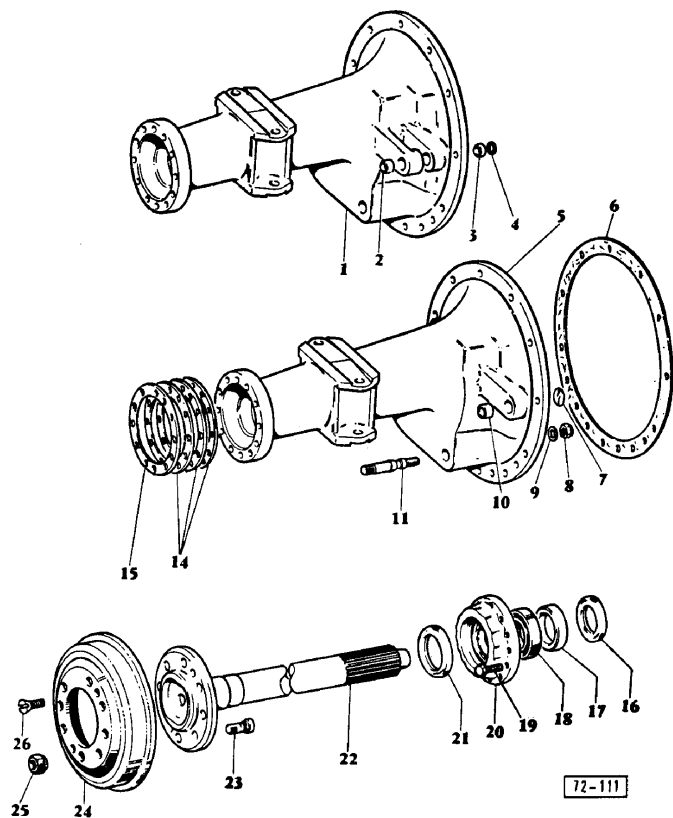
353426X1	●	0576054 (2)	2	SHAFT
353432X1			2	SHIM
353433X1	●	391414X1 (4)	4	SHIM
353434X1	●	0920054 (1)	1	SHIM
		Y1		
353441X1		Y1	2	SPINDLE
353446X1	●	0920053 (1)	1	SPINDLE
		Y1		
		Y1		
353754X1		Y1	2	SPINDLE
353754X1			999	STEM
353916X1		Y1	1	WASHER
		Y1		
354263X1	●	0746459 (1)	1	WASHER
		Y1		
354370X1	●	893373M91 (2)	2	WASHER
355566X1		Y1	1	LOCK WASHER
		Y1		
362467X1		Y1	1	LOCK WASHER
		Y1		
368748X1	●	377641X1 (2)	2	LOCK WASHER
375109X1		Y1	1	LOCK WASHER
831055M1	●	895322M91 (2)	2	LOCK WASHER
832370M1		Y1	2	CLEVIS PIN
907159M91	●	N.L.A. (2)	2	CLEVIS PIN
		Y1		
		Z11		
907309M92	●	N.L.A. (1)	1	TIE ROD

ACCESSORIES AND APPLICATION MISCELLANEOUS



505 5505

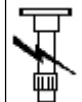
TROMPETTE (POUR FREINS TAMBOURS)
 REAR AXLE (FOR DRUMBRAKES)
 HINTERACHSTRICHTER
 CAPANA (FRENI A TAMBURO)



REAR AXLE

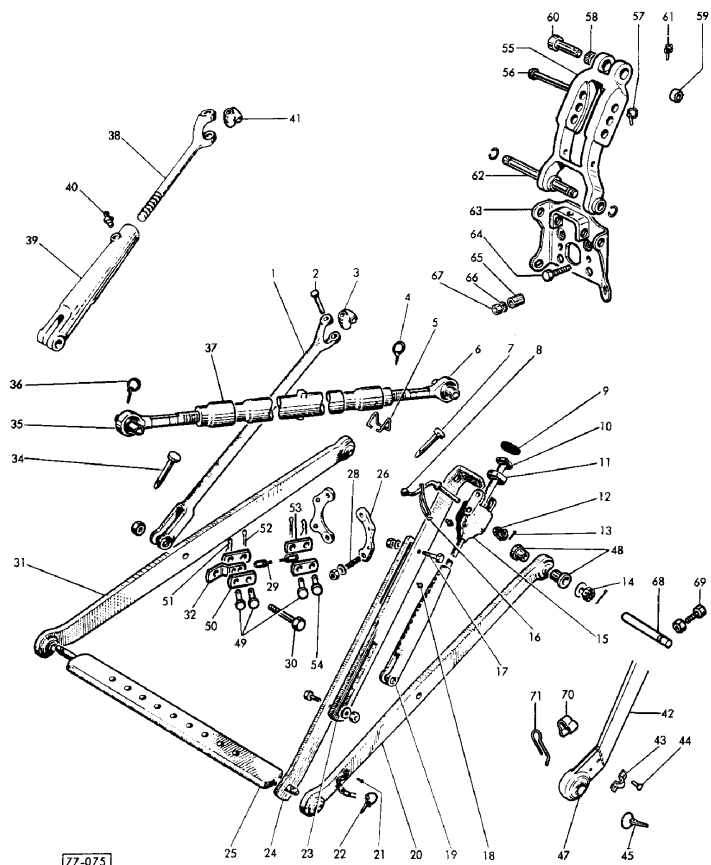
- | | | | |
|----|-----------|------------------|-------------|
| 14 | 183259M1 | | 999 SHIM |
| 15 | 965584M1 | | 999 SHIM |
| 16 | 195678M2 | | 2 SEAL |
| 17 | 969287M1 | ● 180596M1 (2) | 2 BUSH |
| 18 | 300975M1 | ● 1850088M91 (2) | 2 CUP |
| 19 | 353567X1 | A | 20 BOLT UNF |
| | | Y | |
| 20 | 183255M2 | ● 183256M92 (2) | 2 HUB |
| 21 | 195677M1 | | 2 SEAL |
| 22 | 897038M91 | Y | 2 SHAFT |
| | | Z1 | |
| 23 | 185400M1 | ● 185400M2 (16) | 16 BOLT |
| 24 | 827707M2 | ● 827707M5 (2) | 2 HOUSING |
| 25 | 180004M1 | | 16 NUT |
| 26 | 182278M1 | | 4 BOLT |
- A PROVISION SIDE PTO
 A FOR GERMANY ONLY
 D WITHOUT SPEED LIMITATION
 ◀ LEFT HAND
 ▶ RIGHT HAND
 O VINEYARD
 Y STANDARD
 Y NARROW
 Z1 INCL. NO. 23
 Z11 INCL. NO. 17 TO 23
 Z2 INCL. REF. 2 TO 4
 Z5 INCL. NO. 7, 10 (RACE) 185776M1

ACCESSORIES AND APPLICATION MISCELLANEOUS



505 5505

ATTELAGE - STANDARD
 UPPER AND LOWER LINKS AND RELATED PARTS - STANDARD
 OBERE UND UNTERE LENKER - STANDARD
 ATTACCO A TRE PUNTI - NORMALE



UPPER AND LOWER LINKS AND RELATED PARTS

1869954M91	B Z35	1 NUT
195396M1	● N.L.A. (2) F Y Z20	2 PIPE
22042X	F Y Z20	2 RIVET
353426X1	● 0576054 (4)	4 RIVET
353429X1		4 SEGMENT
353430X1	F Y Z20	2 SHAFT
353432X1	F Y Z20	2 SHAFT
353439X1	● 1440316X1 (4)	4 WASHER
353627X1	A	2 WASHER
353760X1		2 WASHER
353762X1	B	2 LOCK WASHER
353772X1		8 LOCK WASHER
353928X1	B	2 STRAP
354057X1		2 CLEVIS PIN
354059X1		2 CLEVIS PIN
354066X1	F Y Z20	2 TOGGLE
354068X1		4 TOGGLE
354068X1	B	2 BOLT UNF
363627X1	● 0576005 (4)	4 NUT UNF

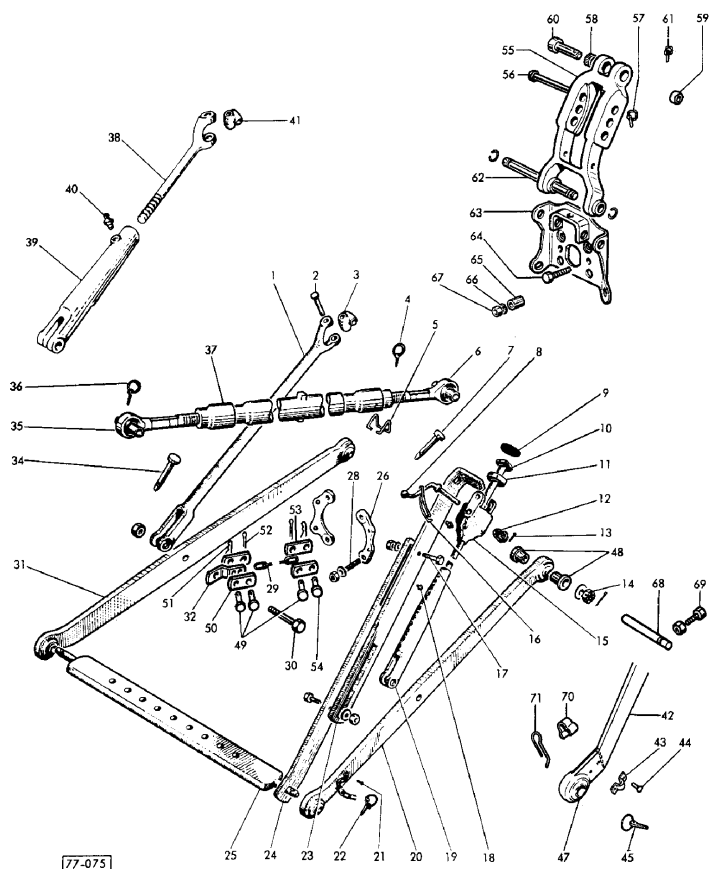
ACCESSORIES AND APPLICATION MISCELLANEOUS

505 5505



UPPER AND LOWER LINKS AND RELATED PARTS

ATTELAGE - STANDARD
 UPPER AND LOWER LINKS AND RELATED PARTS - STANDARD
 OBERE UND UNTERE LENKER - STANDARD
 ATTACCO A TRE PUNTI - NORMALE



- A WITH REAR WHEELS 11X28
- A CAT. 1
- B FROM SERIAL OR ENGINE NUMBER
- C WITH REAR WHEELS 12, 4 X 28
- D WITH REAR WHEELS 12X28
- F WITH REAR WHEELS 11X32
- ▲ LEFT HAND
- ▼ RIGHT HAND
- H ALTERNATIVE
- I CAT. 2
- J WITH REAR WHEELS 13, 6 X 28
- L UP TO SERIAL OR ENGINE NUMBER E306035
- M FROM SERIAL OR ENGINE NUMBER E306036
- Y GERMANY
- Z12 INCL. NO. 20, 2 NO. 21, 1 NO. 22
- Z13 135E - 140
- Z16 INCL. NO. 17, 23, 24
- Z2 133 - 135F
- Z20 INCL. NO. 32, 49 TO 53, 184377M1
- Z20 148 - 152
- Z24 INCL. 2 NO. 21, 1 NO. 22, 31
- Z30 INCL. NO. 5, 6, 34 TO 37
- Z32 INCL. NO. 5, 6, 34 TO 37, 184225M91
- Z35 INCL. NO. 5, 6, 184225M91, 831513M1
- Z36 INCL. NO. 2, 38, 39, 40, 41, 907981M91
- Z37 INCL. NO. 2, 38, 39, 40, 41, 828410M92
- Z40 INCL. NO. 2, 38 TO 41, 897683M92

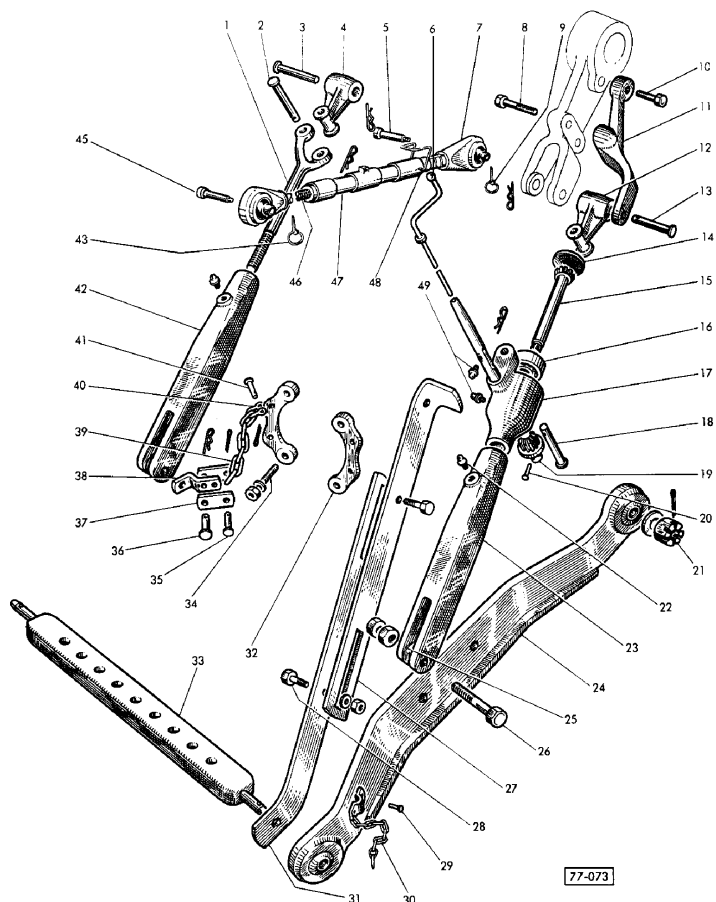
ACCESSORIES AND APPLICATION MISCELLANEOUS

505 5505



UPPER AND LOWER LINKS AND RELATED PARTS

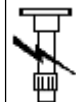
ATTELAGE - VIGNERON
 UPPER AND LOWER LINKS AND RELATED PARTS - VINEYARD
 OBERE UND UNTERE LENKER - WEINBERG
 ATTACCO A TRE PUNTI - VIGNETO



77-073

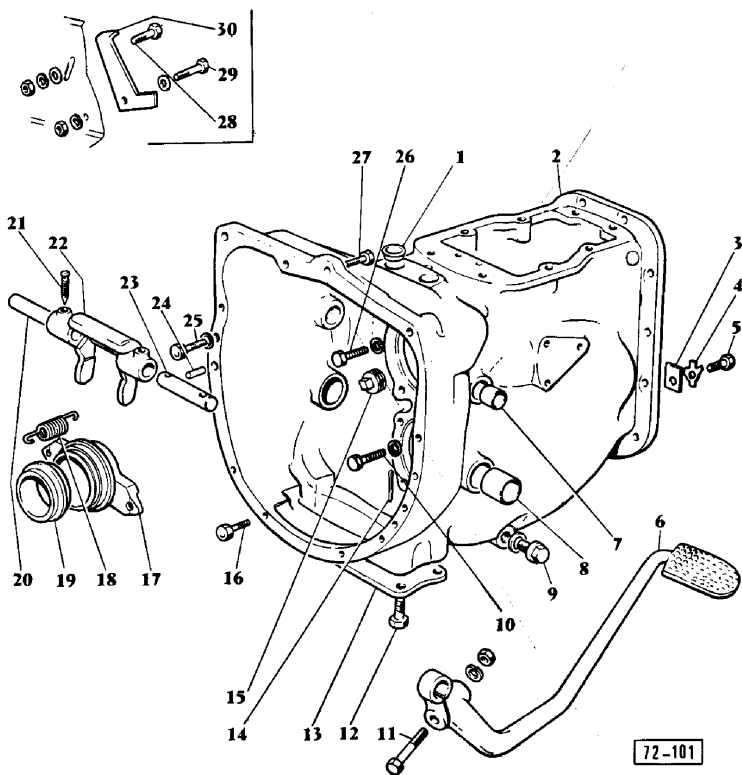
- | | | | | |
|----|-----------|-----------------|-----|------------|
| 18 | 180860M1 | | 1 | PIN |
| 18 | 400060M2 | | 1 | CLEVIS PIN |
| 19 | 181345M1 | ● 181345M2 (1) | 1 | GEAR |
| 20 | 195648M1 | | 2 | RIVET |
| 21 | 353760X1 | | 2 | WASHER |
| 21 | 353927X1 | | 2 | NUT UNF |
| 21 | 354059X1 | | 2 | PIN |
| 22 | 13811X | | 2 | GREASER |
| 23 | 969771M1 | ▶ | 1 | YOKE |
| 24 | 961163M91 | ▲ | 1 | LINK |
| | | Z2 | | |
| 24 | 961164M91 | ● N.L.A. (1) | 1 | LINK |
| | | ▶ | | |
| | | Z2 | | |
| 24 | 961165M91 | ▲ | 1 | LINK |
| 24 | 961166M91 | ▶ | 1 | LINK |
| 25 | 969773M1 | ● N.L.A. (999) | 999 | WASHER |
| 25 | 969774M1 | | 999 | WASHER |
| 25 | 969775M1 | | 999 | WASHER |
| 26 | 353429X1 | | 4 | NUT UNF |
| 26 | 831515M2 | ● 1863267M1 (2) | 2 | BOLT |
| 27 | 181986M1 | ● N.L.A. (2) | 2 | DRAWBAR |
| 27 | 968228M91 | ▶ | 1 | DRAWBAR |
| | | Z4 | | |
| 27 | 968229M91 | Z4 | 1 | TIE ROD |
| 28 | 353426X1 | ● 0576054 (4) | 4 | NUT UNF |
| 28 | 353561X1 | ● 0746610 (4) | 4 | WASHER |
| 28 | 353772X1 | | 4 | SCREW |

ACCESSORIES AND APPLICATION MISCELLANEOUS



505 5505

CARTER DE BOITE DE VITESSES }
 TRANSMISSION HOUSING } MULTI-POWER
 GETRIEBEGEHAEUSE }
 ALLOGGIAMENTO TRANSMISSIONE }



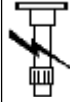
TRANSMISSION HOUSING

180474M1	●	3427185M1 (1)	1 STOP
1866453M1		B	1 WASHER
		P	
1867503M92		B	1 LOCK WASHER
		Z1	
195681M1		B	1 LOCK WASHER
353432X1			1 LOCK WASHER
353434X1	●	0920054 (1)	1 BOLT UNC
		B	
353441X1		B	1 GASKET
353710X1			2 WASHER
353754X1		B	1 CATCH
363619X1	●	0576001 (1)	1 CATCH
		B	
363623X1	●	2188135 (1)	1 HOUSING
		B	
363625X1	●	0576054 (1)	1 NUT
881084M91	●	0746051 (1)	1 NUT
		0920052 (2)	
		0920054 (1)	
		2188135 (1)	
		353754X1 (1)	
		N.L.A. (1)	
		B	
		Z4	
886771M91	●	892862M3 (1)	1 NUT
		Z3	
1		894683M1	2 PLUG
2	●	1867502M92	1 CASE
		N.L.A. (1)	
		B	
		Z1	
3		184789M1	1 STOP

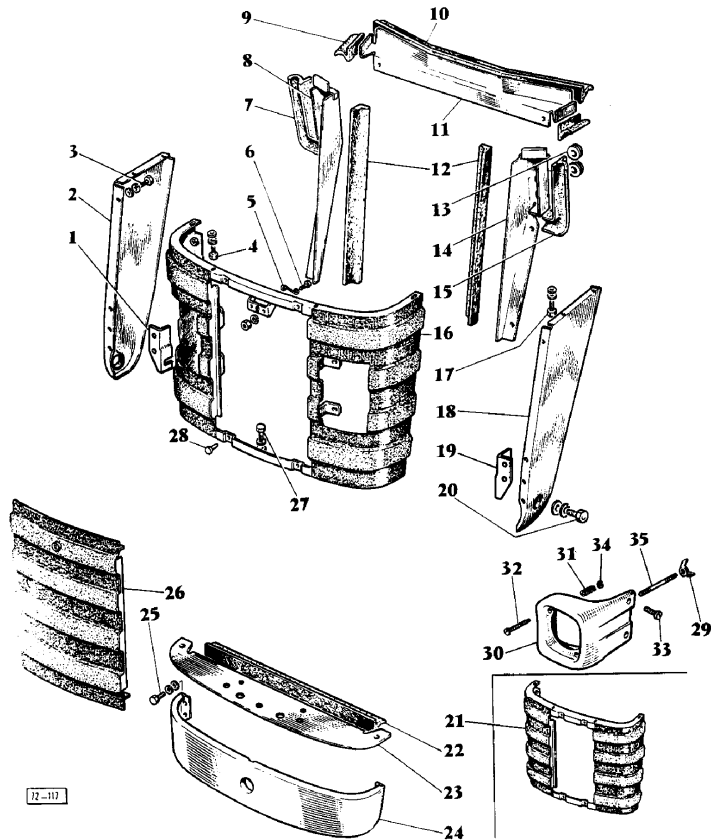
ACCESSORIES AND APPLICATION MISCELLANEOUS

SHEET METAL

505 5505



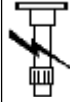
CALANDRE
SHEET METAL
VALANGIUM
CALANDRA



- | | | | | | |
|---|-----------|---|----------------|---|-------------|
| 1 | 897824M91 | ● | 1871727M91 (1) | 1 | SUPPORT |
| | | ▶ | Y | | |
| | | | Y | | |
| 1 | 961143M91 | ▶ | | 1 | SUPPORT |
| 2 | 1809348M1 | ▶ | O | 1 | PANEL |
| | | | O | | |
| 2 | 897822M1 | ● | N.L.A. (1) | 1 | PANEL |
| | | ▶ | Y | | |
| 2 | 961045M1 | ▶ | Y | 1 | PANEL |
| 3 | 353441X1 | | | 7 | SCREW |
| 3 | 353502X1 | ● | 0746052 (7) | 7 | WASHER |
| 3 | 353754X1 | | | 7 | LOCK WASHER |
| 4 | 353441X1 | | | 4 | LOCK WASHER |
| 4 | 353501X1 | ● | 0746051 (4) | 4 | BOLT UNF |
| 4 | 353617X1 | | | 4 | WASHER |
| 4 | 353754X1 | | | 2 | SCREW |
| 5 | 828224M1 | | | 1 | SPRING |
| 6 | 353445X1 | | | 2 | NUT UNF |
| 6 | 357515X1 | | | 2 | LOCK WASHER |
| 6 | 375373X1 | | | 2 | SCREW |
| 7 | 880231M1 | ● | N.L.A. (1) | 1 | STRIP |
| 8 | 962159M92 | ● | 962230M1 (1) | 1 | PANEL |
| | | ▶ | N.L.A. (2) | | |
| | | | Y | | |
| | | | Z3 | | |
| 8 | 962163M91 | ● | N.L.A. (1) | 1 | PANEL |
| | | ▶ | O | | |
| | | | Z4 | | |

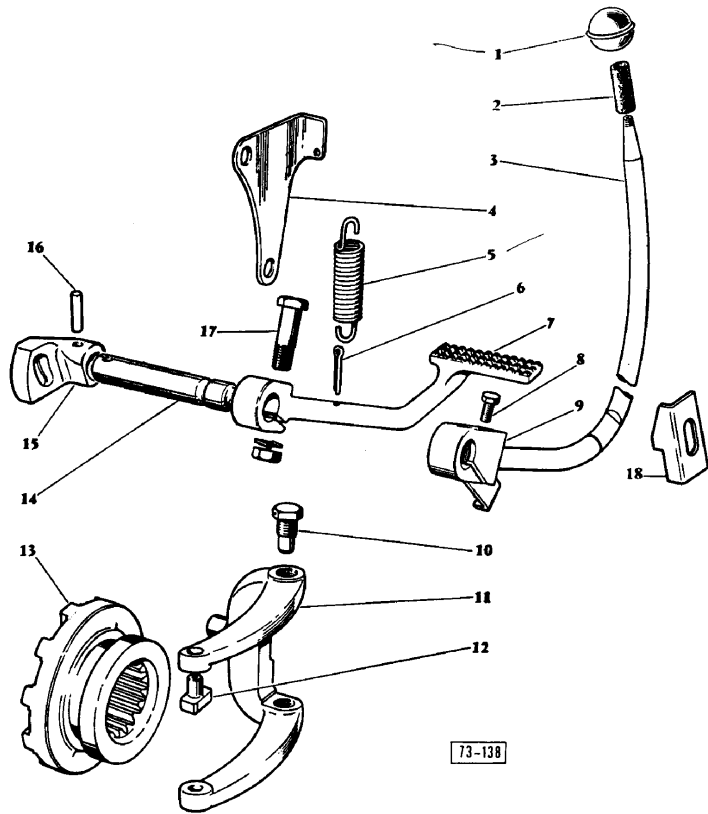
ACCESSORIES AND APPLICATION MISCELLANEOUS

505 5505



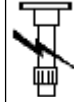
DIFFERENTIAL LOCK MECHANISM

COMMANDE DE BLOCAGE DE DIFFERENTIEL
DIFFERENTIAL LOCK MECHANISM
DIFFERENTIAL SPERRE
COMANDO BLOCCAGGIO DIFFERENZIALE



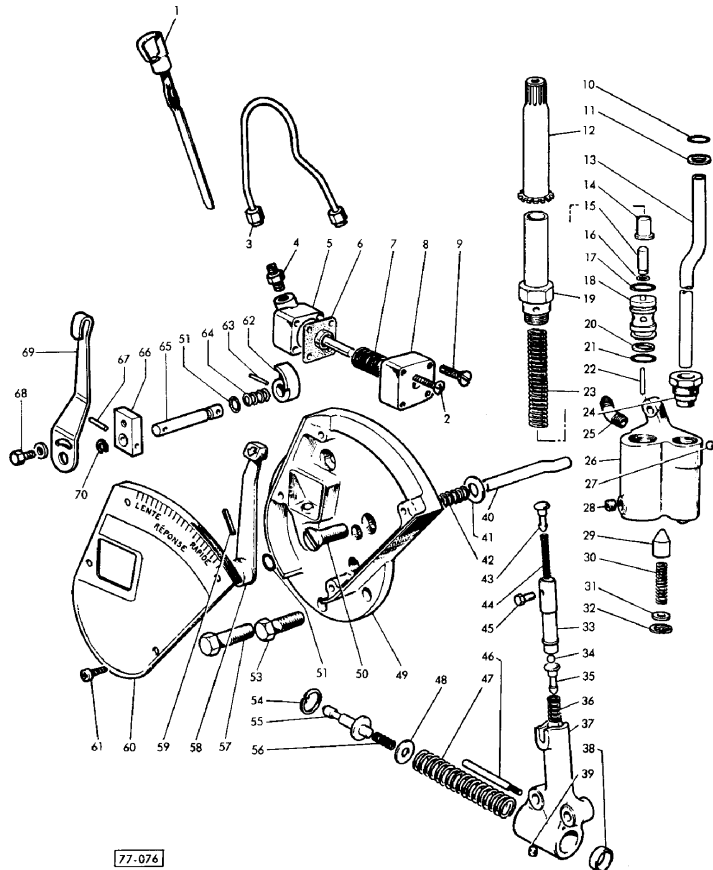
	190960M92	Z2	1	CAM
	353439X1	● 1440316X1 (1)	1	HANDLE
		A		
		C		
	363627X1	● 0576005 (1)	1	NUT
		A		
		C		
	907803M91	C	1	TREADLE
	961225M92	O	1	LOCK WASHER
		Z1		
1	963781M1	● 1682623M1 (1)	1	KNOB
		O		
2	969934M1	● N.L.A. (1)	1	CATCH
		O		
3	961226M2	O	1	HANDLE
4	894349M1	● N.L.A. (1)	1	SUPPORT
5	190978M1		1	SPRING
6	354076X1		1	PIN
7	191172M91	● 1870594M94 (1)	1	PEDAL
		191221M1 (1)		
		195562M1 (1)		
		353213X1 (1)		
		358724X91 (1)		
		3760665M1 (1)		
		3382343M2 (1)		
		3797573M1 (1)		
		A		
8	196058M1	● 353430X1 (1)	1	SCREW
		377169X1 (1)		
		O		
9	969709M91	O	1	HUB
10	190981M1		2	PIN
11	190968M1		1	FORK

ACCESSORIES AND APPLICATION MISCELLANEOUS



505 5505

MODULATION DE PRESSION - REPONSE
 PRESSURE CONTROL - RESPONSE
 DRUCKREGELUNG - REAKTION
 CONTROLLO PRESSIONE - RISPOSTA



77-076

PRESSURE CONTROL - RESPONSE

10	359291X1	P Z13 Z20	1 RING
11	361160X1	P Z13 Z20	1 WASHER
12	884562M91	● N.L.A. (1) P Z13 Z20	1 PIPE
13	883790M2	P Z13 Z20	1 PIPE
14	504149M1	P Z13 Z20	1 GUIDE
15	886561M1	P Z13 Z20	1 PLUNGER
16		P Z13 Z20	1 RING
17	831461M1	P Z13 Z20	1 O RING
18	884262M92	● N.L.A. (1) P Z13 Z20	1 VALVE
19	884565M91	● N.L.A. (1) P Z13 Z20	1 VALVE
20	361163X1	P Z13 Z20	1 WASHER

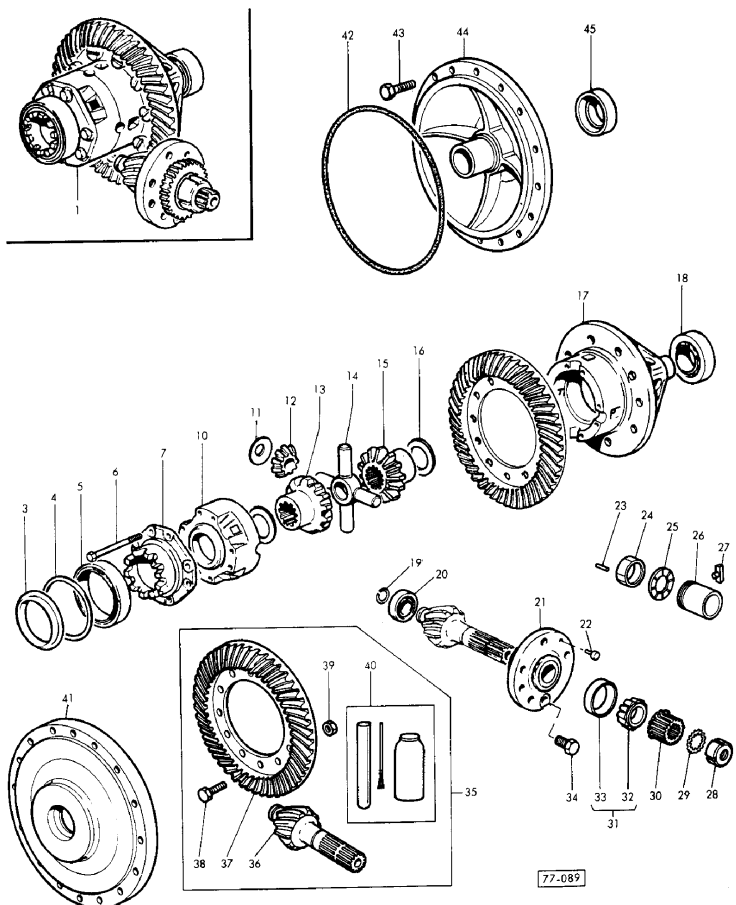
ACCESSORIES AND APPLICATION MISCELLANEOUS

505 5505



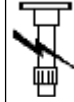
DIFFERENTIAL

DIFFERENTIEL
DIFFERENTIAL
DIFFERENTIAL
DIFFERENZIALE



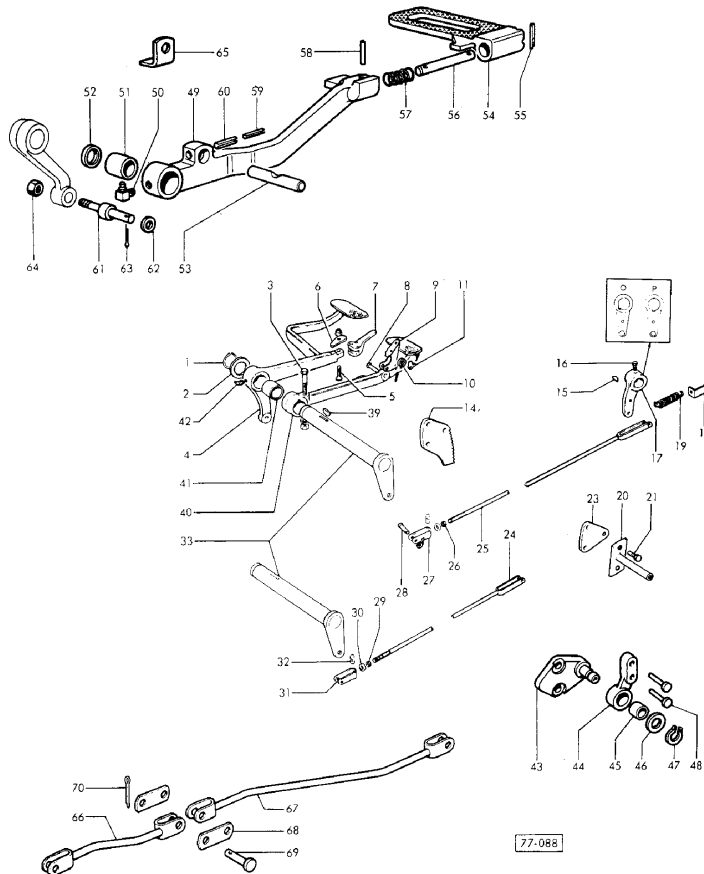
	Ø 45	1 BEARING
	A	
	Z	
180455M1	H	1 NUT
	Z1	
180456M1	H	1 REDUCER
	Z1	
180798M1	H	1 RIVET
	Z1	
1808743M91	Y	1 SHIELD
	Z	
	Z	
185251M1	● 1850909M91 (1)	1 SHIELD
185252M1	● 1850909M91 (1)	1 SHIELD
185775M1	● 1851533M91 (1)	1 SHIELD
185776M1	● 1851533M91 (1)	1 SHIELD
1866896M91	Z	1 SHIM
	Z28	
1868355M91	A	1 WASHER
	Z	
	Z34	
191124M1	Z	999 CUP
882118M1	● N.L.A. (999)	999 CUP
	Z	
887179M1		12 PINION
888358M91	● 1664255M92 (1)	1 KIT
	Z1	
	Z34	
892170M1	● 892170M2 (999)	999 CONE

ACCESSORIES AND APPLICATION MISCELLANEOUS



505 5505

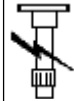
COMMANDE DE FREINS A TAMBOUR
SINGLE BRAKES CONTROL
FUSSBREMSGESTÄNGE
COMANDO FRENI A TAMBURI



SINGLE BODY - DUAL BODY REMOTE DISTRIBUTOR

16	355434X1	Y Y Z	2	SCREW
17	880034M1	● N.L.A. (1) ▼ Z	1	LEVER
18	183310M1	Y Y Z	2	CLIP
19	964492M91	● N.L.A. (2) Y Y Z	2	BEARER
20	964492M91	● N.L.A. (2) E Y Y	2	BEARER
21	362475X1	● 353699X1 (4)	4	SCREW
23	180870M1	E Y	1	PLATE
24	907934M91	● N.L.A. (2) Y Z Z32	2	STEM
25	894536M91	G Y1 Z Z38	2	ROD
26	353430X1	Z	2	NUT UNF
27	884751M1	● N.L.A. (2) Z	2	YOKE
28	832813M1	● 195609M1 (4) Z	4	CLEVIS PIN

ACCESSORIES AND APPLICATION MISCELLANEOUS

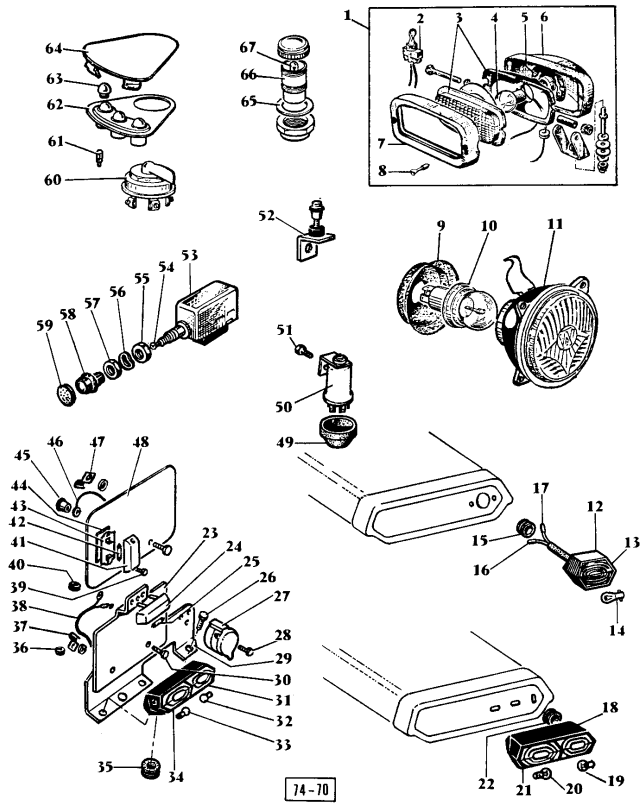


505 5505

HEAD LAMPS AND TAIL LAMPS

PHARES ET FEUX ROUGES
HEAD LAMPS AND TAIL LAMPS
SCHEINWERFER UND BLINKLEUCHTEN
FARI E LAMPADA ROSSA

STANDARD

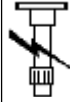


9	962842M2	Z5	1	LAMP SOCKET
10	965465M1	● 1426618M1 (2) B	1	BULB
11	960870M91	● 1426618M1 (1) ▲ 1672769M91 (2)	1	LIGHT
12	1869942M91	▶ B Z3 Z5 F Y1 Z25	1	LAMP
13	1630902M1	● 1869942M91 (1) ▼ F Y1	1	COVER
14	908543M1	F	1	BULB
15	1645967M1	● N.L.A. (1) F Y1	1	GROMMET
16	1630907M1	C F Y1	1	WIRE
17	1630908M1	● N.L.A. (1) ▼ F Y1 Z27	1	WIRE
18	1808839M92	● 1678991M91 (1) ▲ C Z30	1	LIGHT
19	621235M1	● 395551X1 (1) C	1	BULB

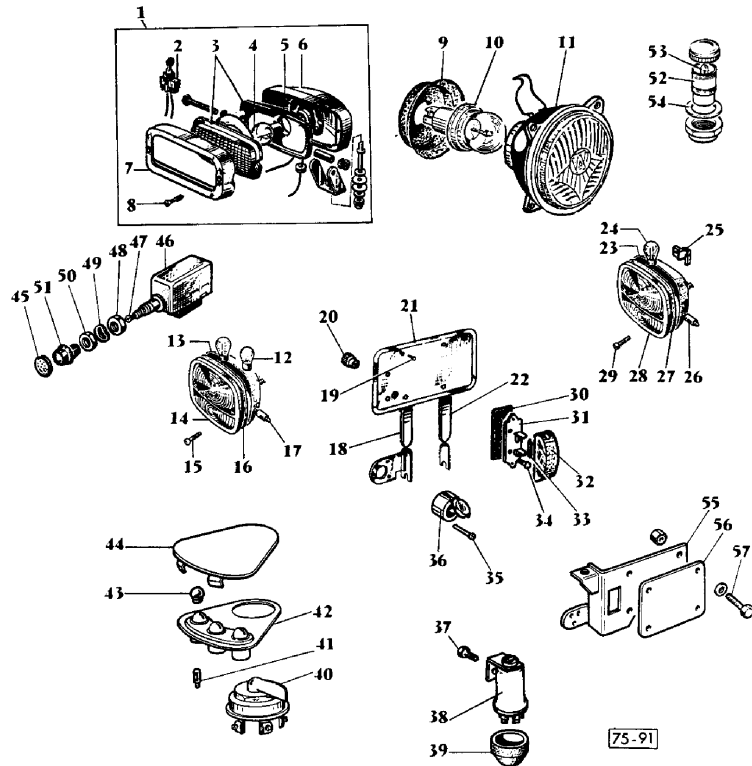
ACCESSORIES AND APPLICATION MISCELLANEOUS

HEAD LAMPS AND TAIL LAMPS

505 5505

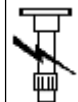


PHARE ET FEUX ROUGES - ETROIT
 HEAD LAMPS AND TAIL LAMPS - NARROW
 SCHEINWERFER UND BLINKLEUCHTEN - SCHMALSPUR
 FARI E LAMPADA ROSSA - STRETTO



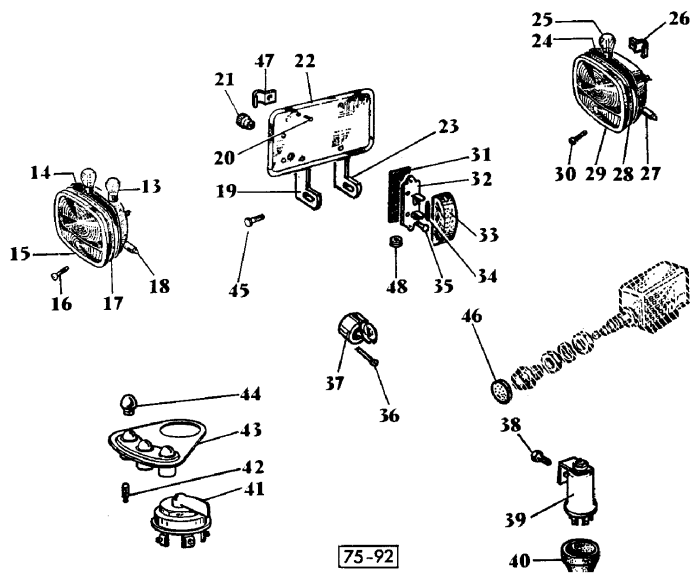
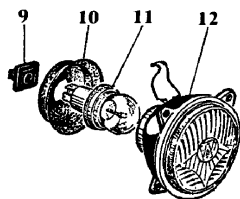
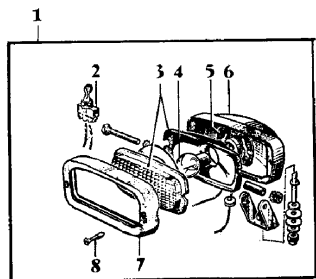
15	1806421M1	Z5		2	SCREW
16	1806422M1	Z5		2	GASKET
17	621234M1			2	BULB
18	908873M1	●	908873M91 (1)	1	SUPPORT
		▲			
19	390958X1			4	SCREW
20	1800065M1		Y1	1	CAP
21	962848M1	●	962848M2 (1)	1	PLATE
22	960659M1	●	N.L.A. (1)	1	SUPPORT
		▼			
23	1806420M1		Z5	2	BODY
24	621235M1	●	395551X1 (2)	2	BULB
25	326891M1			4	STRAP
26	621234M1			2	BULB
27	1806422M1		Z5	2	GASKET
28	1806417M1	●	3383204M1 (2)	2	LENS
			Z5		
29	1806421M1		Z5	4	SCREW
30	1805058M1		Y1	1	GASKET
31	1805062M1		Y1	1	PLATE
32	1805057M1	●	960852M91 (1)	1	GLASS
			Y1		
33	950831M1	●	621324M1 (1)	1	BULB
34	1442030X1	●	N.L.A. (2)	2	SCREW
35	357450X1			3	SCREW
36	409965M1			1	PLUG SOCKET
37	353501X1	●	0746051 (1)	1	SCREW
38	1808478M1	●	3533171M92 (1)	1	BLINKER
			903078M1 (1)		

ACCESSORIES AND APPLICATION MISCELLANEOUS



505 5505

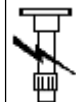
PHARES ET FEUX ROUGES - VIGNERON - SANS WARNING
 HEAD LAMPS AND TAIL LAMPS - VINEYARD - WITHOUT WARNING
 SCHEINWERFER UND BLINKLEUCHTE - WEINBERG - OHNE WARNING
 FARI E LAMPADA ROSSA - VIGNETO - SENZA WARNING



HEAD LAMPS AND TAIL LAMPS

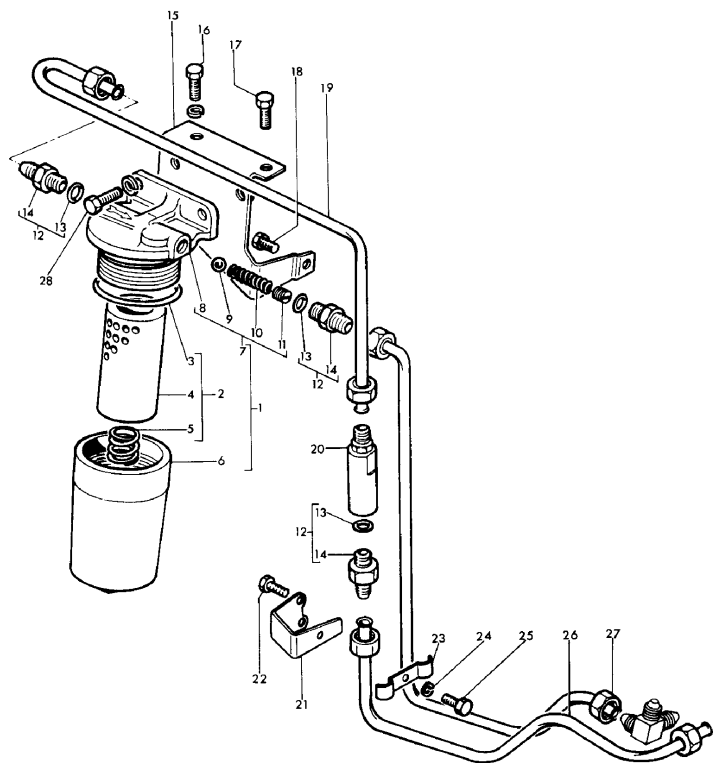
- 47 968266M1 1 STRAP
- 48 824145M1 2 GROMMET
- A WHITE BULB
- B YELLOW BULB
- ◀ LEFT HAND
- ▶ RIGHT HAND
- H ALTERNATIVE
- Y1 NOTA PAGINA ANOMALA
- Z1 INCL. NO. 1 TO 8
- Z10 INCL. NO. 9, 10, 11 AND 963718M1
- Z12 INCL. NO. 14 TO 17
- Z12 MARCHAL
- Z13 INCL. NO. 13 TO 18
- Z15 INCL. NO. 24, 28 TO 30
- Z16 INCL. NO. 24, 25, 27 TO 30
- Z17 INCL. NO. 21, 31, 32, AND 1805057M1
- Z18 INCL. NO. 31 TO 34
- Z2 INCL. NO. 44
- Z21 INCL. NO. 42, 43
- Z3 INCL. NO. 2, 3, 5 TO 8
- Z4 INCL. NO. 9, 10, 11 AND 963437M1
- Z5 AUTEROCHE
- Z6 INCL. NO. 9, 10, 11 AND 963717M1
- Z8 INCL. NO. 9, 10, 11 AND 963436M1

ACCESSORIES AND APPLICATION MISCELLANEOUS



505 5505

FILTRE MICRONIQUE
MICRONIC FILTER
MICRONIKFILTER
FILTER MICRONICO



75-94

MICRONIC FILTER

23	1863488M1		1	BRIDLE
24	353441X1		1	LOCK WASHER
25	353502X1	● 0746052 (1)	1	SCREW
26	1872820M91		1	PIPE
27	1871592M91	● N.L.A. (1)	1	PIPE
		A		
27	1872818M91	Y1	1	PIPE
28	353538X1	● 0746454 (2)	2	SCREW

▶ NOT SERVICED, ORDER

A UP TO SERIAL OR ENGINE NUMBER NO., FROM SERIAL OR ENGINE NUMBER NO.

Y1 NOTA PAGINA ANOMALA

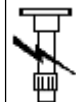
Z INCL. NO. 3, 4, 5

Z1 INCLUDES REFERENCE NO.2 TO 11.

Z3 INCL. NO. 8 TO 11

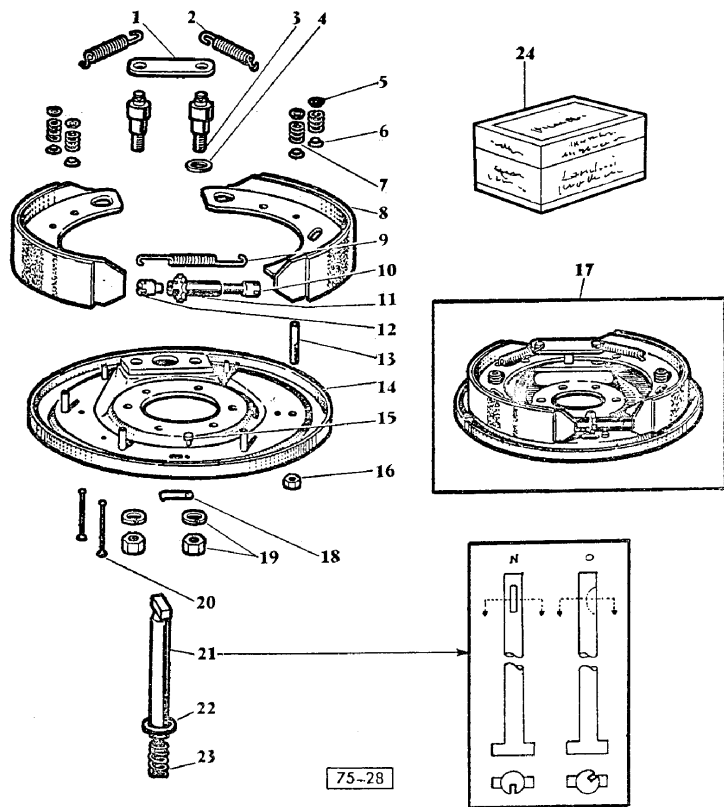
Z4 INCL. NO. 13, 14

ACCESSORIES AND APPLICATION MISCELLANEOUS



505 5505

FREINS A TAMBOURS
DRUMBRAKES
BREMSSE
FRENI A TAMBURI

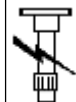


75-28

DRUMBRAKES

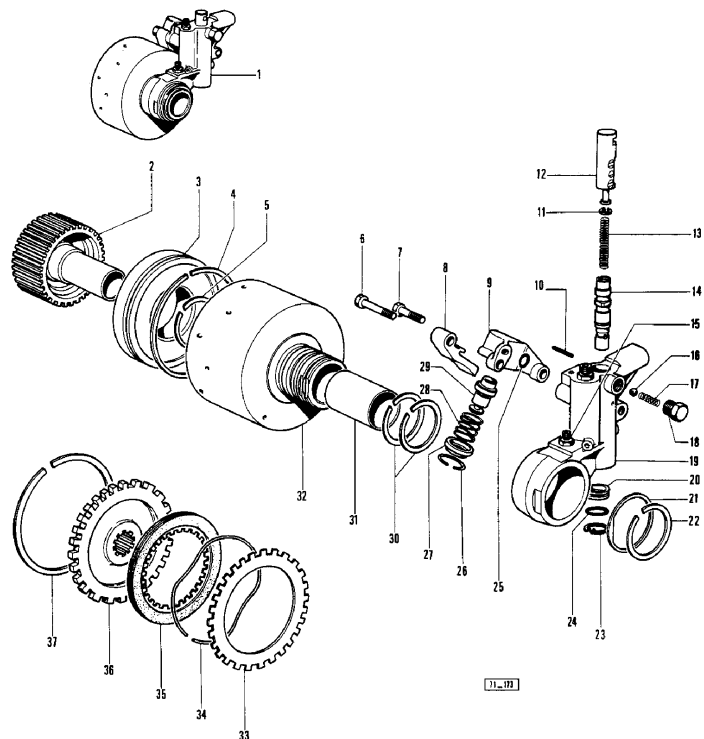
- | | | | | |
|----|------------|-----------------------------------|---|------------|
| 16 | 1851210M1 | | 4 | NUT |
| 17 | 827143M92 | ● 827143M96 (2)
Z
Z1
Z30 | 2 | BRAKE |
| 18 | 1850209M1 | ● N.L.A. (2)
H
Z
Z1 | 2 | PLATE |
| 19 | 353435X1 | ● 353436X1 (4) | 4 | NUT UNF |
| 20 | 1850207M1 | ● 1810029M91 (8) | 8 | PIN |
| 21 | 880033M1 | E
Y
Z
Z1 | 1 | CAMSHAFT |
| 22 | 825040M1 | ● N.L.A. (2) | 2 | PLATE |
| 23 | 825041M1 | ● | 2 | SPRING |
| 24 | 1810029M91 | Z52 | 1 | KIT,REPAIR |

ACCESSORIES AND APPLICATION MISCELLANEOUS



505 5505

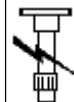
EMBRAYAGE ET DISTRIBUTEUR DE PRISE DE FORCE INDEPENDANTE
 CLUTCH AND VALVE INDEPENDENT P.T.O.
 KUPPLUNG UND VENTIL UNABHAENIGIGE ZAPFWELLE
 FRIZIONE E DISTRIBUTORE DI PRESA DI FORZA INDEPENDENTE



CLUTCH AND VALVE, INDEPENDENT PTO

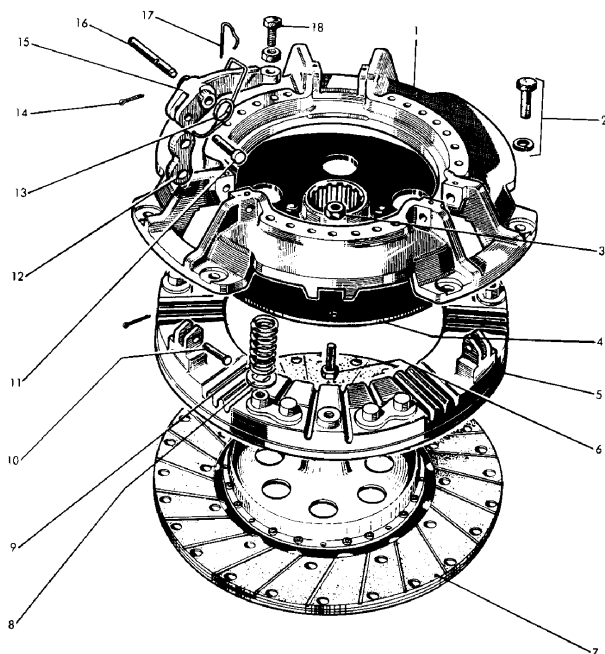
9	888717M93	Z5	1	CASING
10	375007X1		1	PIN
11	377223X1		1	CIRCLIP
12	888604M3	● N.L.A. (1)	1	PLUNGER
13	1866097M2		1	SPRING
14	1685110M5		1	VALVE
15	22257X		1	UNION
16	13535X	●	1	BALL
17	1866868M1	● 1661671M1 (1)	1	SPRING
18	888703M2		1	PLUG
19	888716M98	● N.L.S. (1) Z6	1	VALVE
20	1865111M1	● 1865111M3 (1)	1	SLEEVE
21	513176M1		1	WASHER
22	358876X1		1	CIRCLIP
23	22554X		1	CIRCLIP
24	831528M1		1	O RING
25	762191M1		1	GASKET
26	377227X1		1	RING
27	888734M1	● N.L.A. (1)	1	GUIDE
28	888736M1	● N.L.A. (1)	1	SPRING
29	888735M2		1	PISTON
30	1866260M1		2	CLAMP
31	1870547M1		1	BUSH
32	888619M93	O Y Z7	1	HOUSING
33	513242M1	● 1870860M1 (7)	7	PLATE

ACCESSORIES AND APPLICATION MISCELLANEOUS



505 5505

EMBRAYAGE SIMPLE	GROSSES CANNELURES	} 12"
SINGLE CLUTCH	LARGE SPLINES	
EINFACHE SCHEIBENKUPPLUNG	GROSS RIEFEN	
FRIZIONE SEMPLICE	GROSSA SCANALATURE	



77-102

SINGLE CLUTCH

15221X	H	3 CLUTCH
1808877M92	C	1 KIT
	Z4	
1808878M92	B	1 KIT
	Z3	
1866668M91	C	1 HUB
1867388M91	● 3478569M92 (1)	1 HUB
	B	
1867388M91	● 3478569M92 (1)	1 SHAFT
	C	
1867389M91	B	1 SHAFT
19752X		6 NUT UNF
353430X1		3 PIN
354046X1	● 390511X1 (3)	3 PIN
	H	
887870M91	Z1	1 LOCK WASHER
887895M1		1 COVER
1 887871M91	● N.L.A. (1)	1 COVER
	Z2	
2 887891M1		6 BOLT
3 885931M1		3 NUT
4 887899M91	● 887899M93 (1)	1 HUB
5 887907M1	● 3477544M1 (1)	1 PLATE
6 885930M1		3 BOLT
7 887889M92		1 DISC
8 1763751M1		12 WASHER
9 887909M1	● 886396M1 (12)	12 SPRING
10 887893M1		3 PIN
11 887897M1		3 PIN
12 887894M1	● 3900547M1 (3)	3 LINK

CLICK HERE TO **DOWNLOAD** THE COMPLETE MANUAL

- Thank you very much for reading the preview of the manual.
- You can download the complete manual from: www.heydownloads.com by clicking the link below

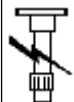


- Please note: If there is no response to CLICKING the link, please download this PDF first and then click on it.

CLICK HERE TO **DOWNLOAD** THE COMPLETE MANUAL

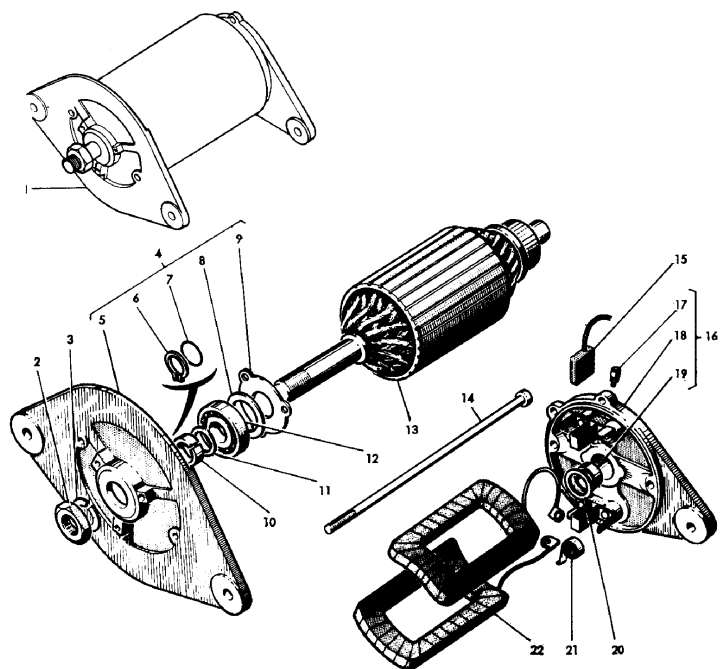
ACCESSORIES AND APPLICATION MISCELLANEOUS

505 5505



ELECTRICAL EQUIPMENT

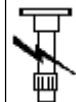
DYNAMO
DYNAMO
LICHTMASCHINE } LUCAS
DINAMO



75-307

- | | | | | | |
|----|------------|---|--------------------------------|---|-----------|
| 1 | 897104M92 | ● | 2871182 (1) | 1 | DYNAMO |
| 2 | 1802033M1 | | | 1 | NUT |
| 3 | 1805203M1 | | | 1 | WASHER |
| 4 | 1805197M91 | ● | N.L.A. (1)
Z3 | 1 | BEARING |
| 5 | | | A | 1 | SUPPORT |
| 6 | 1805199M1 | | | 1 | CIRCLIP |
| 7 | 1805202M1 | | | 1 | UNIVERSAL |
| 8 | 1805201M1 | | | 1 | WASHER |
| 9 | 1805200M1 | | | 1 | PLATE |
| 10 | 1802035M1 | | | 1 | BUSH |
| 11 | 1802032M1 | | | 1 | WASHER |
| 12 | 1802027M1 | | | 1 | BEARING |
| 13 | 1802967M1 | | | 1 | COIL |
| 14 | 1802037M1 | | | 2 | SCREW |
| 15 | 1802961M1 | | | 2 | WIPER |
| 16 | 1805196M91 | | Z4 | 1 | BEARING |
| 17 | 1802963M1 | | | 1 | GREASER |
| 18 | | | B | 1 | BEARING |
| 19 | 1802020M1 | | | 1 | BUSH |
| 20 | 1802036M1 | | | 1 | WASHER |
| 21 | 1802964M1 | ● | N.L.A. (2) | 2 | SPRING |
| 22 | 1802968M1 | | | 2 | COIL |
| A | | | NOT SERVICED, ORDER 1805197M91 | | |
| B | | | NOT SERVICED, ORDER 1805196M91 | | |
| Z3 | | | INCL. NO 5 TO 9 | | |
| Z4 | | | INCL. NO 17, 18, 19 | | |

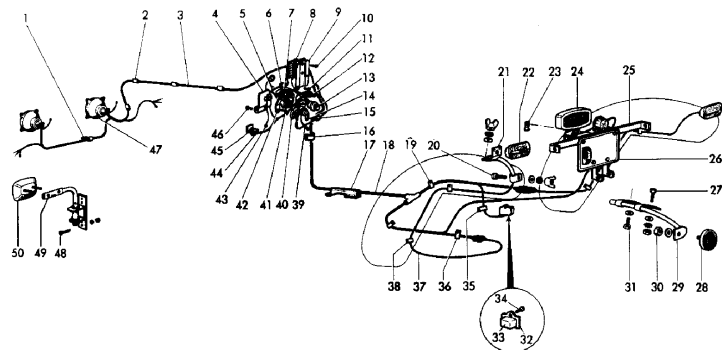
ACCESSORIES AND APPLICATION MISCELLANEOUS



505 5505

LIGHTING - NARROW (C)

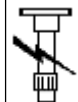
ECLAIRAGE - VIGNERON } (A)
 LIGHTING - VINEYARD }
 BELEUCHTUNG - WEINBERG }
 IMPIANTO ELETTRICO FANALERIA - VIGNETO }



77-062

- | | | |
|------------|-----------------|---------------|
| 14731X | ● N.L.A. (2) | 2 SOCKET |
| 1807121M91 | Z2 | 1 STRAP |
| 1807122M1 | | 999 SUPPORT |
| 1807123M1 | ● N.L.A. (1) | 1 WASHER |
| 1807124M1 | ● 1806263M1 (1) | 1 WASHER |
| 1809352M91 | ▶ | 1 WASHER |
| 1809479M91 | ◀ | 1 LOCK WASHER |
| 1871519M91 | ● N.L.A. (1) | 1 LOCK WASHER |
| | ▲ | |
| 339106X1 | ● N.L.A. (2) | 2 LOCK WASHER |
| 339111X1 | ● 1443615X1 (2) | 2 LOCK WASHER |
| 339382X1 | | 2 LOCK WASHER |
| 353431X1 | ● 2188135 (1) | 1 LOCK WASHER |
| 353434X1 | ● 0920054 (1) | 1 SWITCH |
| 353441X1 | | 2 NUT UNF |
| 353445X1 | | 2 NUT UNF |
| 353446X1 | ● 0920053 (2) | 2 NUT UNF |
| 353446X1 | ● 0920053 (4) | 4 NUT BSF |
| 353755X1 | ● 0920497 (2) | 2 CLIP |
| 353755X1 | ● 0920497 (4) | 4 COVER |
| 353916X1 | | 2 BEARER |
| 353916X1 | | 4 FUSE |
| 963128M1 | ● N.L.A. (1) | 1 FUSE |
| | C | |

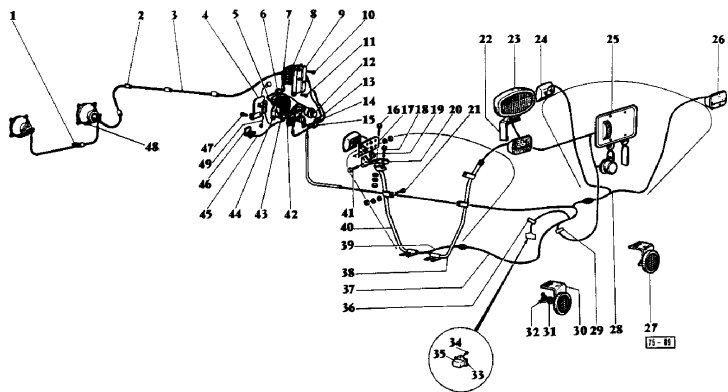
ACCESSORIES AND APPLICATION MISCELLANEOUS



505 5505

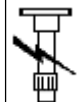
LIGHTING - NARROW (C)

ECLAIRAGE - ETROIT
 LIGHTING - NARROW
 BELEUCHTUNG - SCHMALSPUR
 IMPIANTO ELETTRICO FANALERIA - STRETTO } (C)



- | | | | | |
|----|------------------------------------|---------------|---|------------|
| 44 | 969083M1 | | 1 | SUPPORT |
| 45 | 908453M1 | | 1 | CABLE |
| 46 | 908431M92 | | 1 | CONNECTION |
| 47 | 353502X1 | ● 0746052 (2) | 2 | SCREW |
| 48 | | A | 2 | LIGHT |
| 49 | 963423M1 | Z1 | 1 | WIRE |
| A | SEE PAGE - REFERENCE NUMBER 311-11 | | | |
| A | NOT ILLUSTRATED | | | |
| ◀ | LEFT HAND | | | |
| G | WITHOUT LIGHTING | | | |
| ▶ | RIGHT HAND | | | |
| Z1 | 152 | | | |
| Z1 | INCL. NO. 27, 30 TO 32 | | | |

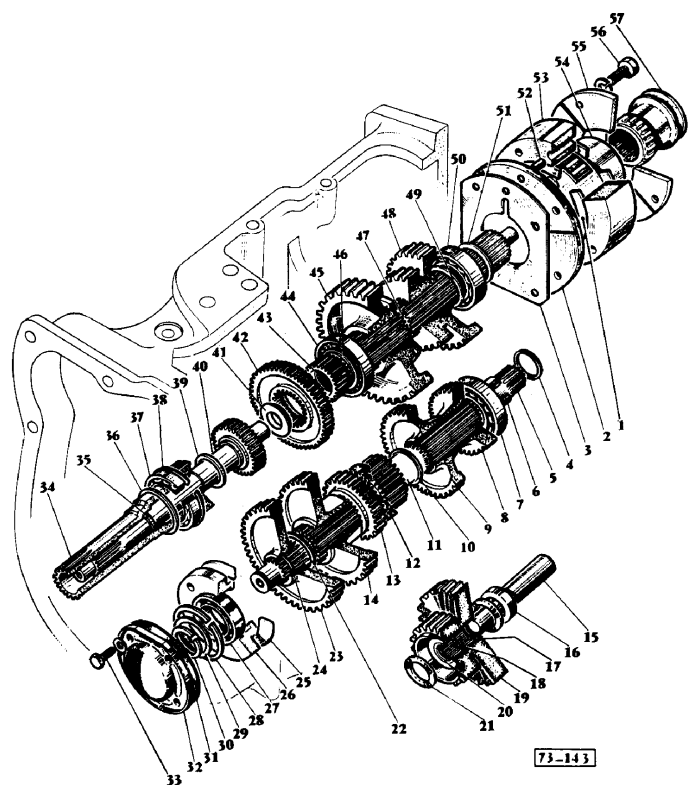
ACCESSORIES AND APPLICATION MISCELLANEOUS



505 5505

BOITE DE VITESSES
SPEED GEAR BOX
VORWARTSGANGE GETRIEBE
SCATOLA TRANSMISSIONE

8

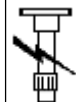


73-143

SPEED LIMITATION

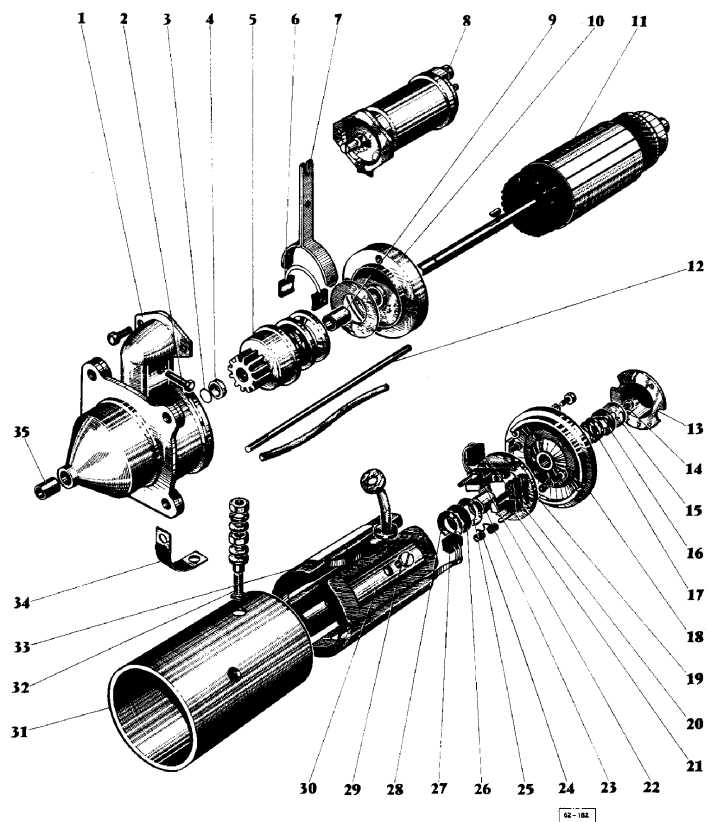
- A FOR GERMANY ONLY
- B DUAL CLUTCH
- E LARGE SPLINES
- F SMALL SPLINES
- H ALTERNATIVE
- L INDEPENDENT P.T.O.
- ☛ NUMBER OF TEETH/SPLINES
- Y1 NOTA PAGINA ANOMALA
- Z 148, 133 - 135F
- Z 148
- Z1 135F - 140
- Z1 INCL. REF. 6
- Z12 148, 135E - 140
- Z13 135E - 140
- Z14 INCL. NO. 35
- Z2 133 - 135F
- Z3 INCL. REF. 43

ACCESSORIES AND APPLICATION MISCELLANEOUS



505 5505

DEMARREUR
STARTER
ANLASSER
MOTORINO D'AVVIAMENTO } PARIS-RHONE 968 296 M1

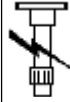


STARTER

16	1804979M91	●	N.L.A. (1)	1	WASHER
17	1601865M1	●	N.L.A. (1)	1	SPRING
18	1802134M91	●	N.L.A. (1)	1	BEARING
19	1802135M91	●	1802135M92 (1)	1	WASHER
			Z6		
20			Z7		
21			A	2	WIPER
22				2	HOLDER
23	1601044M1	●	N.L.A. (1)	2	HOLDER
24	1601566M1	●	N.L.A. (4)	1	BUSH
25	1802139M1	●	N.L.A. (1)	4	SPRING
26	1601863M1	●	N.L.A. (1)	1	WASHER
27			A	1	WASHER
28	1601862M1	●	N.L.A. (1)	2	WIPER
29	1804225M1	●	N.L.A. (4)	1	WASHER
30	1802137M1	●	N.L.A. (4)	4	SCREW
31	1802492M1	●	N.L.A. (1)	4	WEIGHT
32	1802141M1	●	N.L.A. (1)	1	CYLINDER HEAD
33	1802136M1	●	N.L.A. (1)	1	CONNECTION
34	1802142M1			1	INDUCTOR
35	1601858M1	●	N.L.A. (1)	1	UNION
				1	BUSH
A					NOT SERVICED, ORDER 1630865M91
Z1					INCL. REF. 6
Z3					INCL. REF. 35
Z3					INCL. NO 9
Z6					INCL. NO 19, 23, 24
Z7					INCL. NO 21, 22, 24
Z8					INCL. 14 TO 17, 25, 26, 28

ACCESSORIES AND APPLICATION MISCELLANEOUS

505 5505

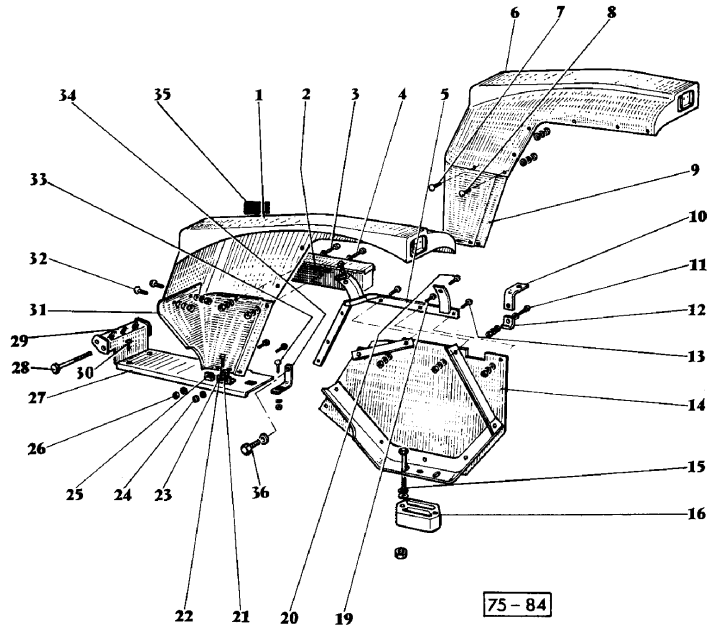


FENDERS - FOOTSTEPS

AILES - MARCHEPIEDS
 FENDERS - FOOTSTEPS
 KOTFLUEGEL - TRITTSRETTER
 PARAFANGHI - PEDANE

ETROIT
 NARROW
 SCHMALSPUR
 STRETTD

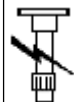
(A)



- | | | | | | |
|---|-----------|---|-----------------------------|---|-------------------|
| 1 | 908515M92 | ◀ | | 1 | FENDER |
| 1 | 908549M92 | ◀ | C | 1 | FENDER |
| 1 | 909327M91 | ◀ | G
Z13 | 1 | FENDER |
| 1 | 909329M91 | ◀ | C
Z3
908515M92 | 1 | FENDER |
| 2 | 909357M2 | ● | G
Z13
Z3
908549M92 | 1 | BOOT |
| 3 | 353446X1 | ● | N.L.A. (1) | 1 | NUT UNF |
| 3 | 353517X1 | ● | 0920053 (1) | 1 | LOCK WASHER |
| 3 | 353755X1 | ● | 0920497 (1) | 1 | SCREW |
| 3 | 353916X1 | | | 1 | WASHER |
| 4 | 353446X1 | ● | 0920053 (1) | 1 | WASHER |
| 4 | 353519X1 | ● | 0746211 (1) | 1 | LOCK WASHER |
| 4 | 353755X1 | ● | 0920497 (1) | 1 | NUT UNF |
| 4 | 353916X1 | | | 1 | SCREW |
| 5 | 909331M91 | ▶ | | 1 | REINFORCEME
NT |
| 5 | 909332M91 | ▶ | | 1 | SUPPORT |
| 6 | 908516M92 | ▶ | N.L.A. (1) | 1 | FENDER |
| | | | C | | |

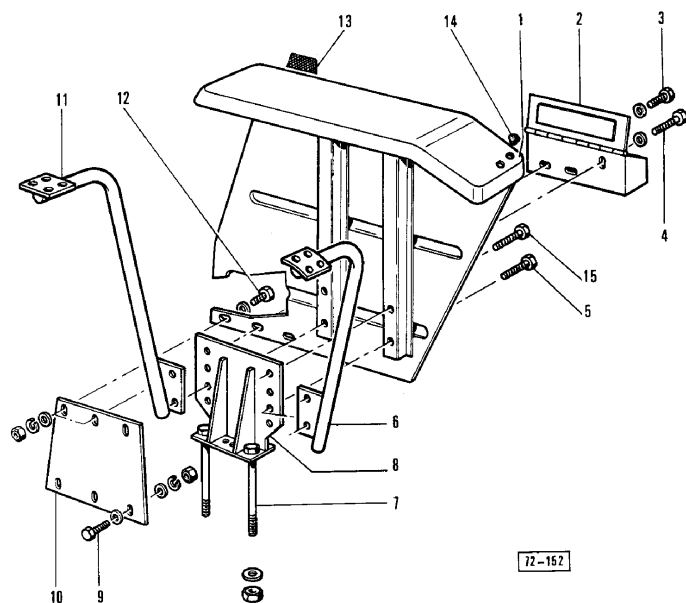
ACCESSORIES AND APPLICATION MISCELLANEOUS

505 5505



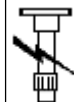
FENDERS - FOOTSTEPS - VINEYARD (A)

AILES - STANDARD
 FENDERS - NORMAL WIDTH
 KOTFLUEGEL - STANDARD
 PARAFANGHI - STANDARD



- | | | | | | |
|---|------------|---|----------------|---|-------------|
| 1 | 1808649M93 | ● | 3533440M93 (1) | 1 | FENDER |
| 1 | 1808650M93 | ● | 3533442M92 (1) | 1 | FENDER |
| 1 | 1808859M96 | ▲ | | 1 | FENDER |
| | | | A | | |
| 1 | 1808860M96 | ▶ | | 1 | FENDER |
| | | | A | | |
| 2 | 909616M92 | ● | N.L.A. (1) | 1 | TOOL BOX |
| 3 | 353446X1 | ● | 0920053 (2) | 2 | WASHER |
| 3 | 353518X1 | ● | 2183205 (2) | 2 | LOCK WASHER |
| 3 | 353755X1 | ● | 0920497 (4) | 4 | SCREW |
| 3 | 353916X1 | | | 2 | NUT UNF |
| 4 | 353437X1 | ● | 0576005 (1) | 1 | NUT UNF |
| 4 | 353439X1 | ● | 1440316X1 (1) | 1 | BOLT UNF |
| 4 | 353887X1 | | | 1 | BOLT UNF |
| 4 | 353890X1 | | A | 1 | LOCK WASHER |
| 4 | 355621X1 | | | 1 | WASHER |
| 5 | 353437X1 | ● | 0576005 (3) | 3 | LOCK WASHER |
| 5 | 353437X1 | ● | 0576005 (4) | 4 | LOCK WASHER |
| | | | G | | |
| | | | Z13 | | |
| | | | Z2 | | |
| 5 | 353439X1 | ● | 1440316X1 (4) | 4 | BOLT UNF |
| | | | G | | |
| | | | Z13 | | |
| | | | Z2 | | |

ACCESSORIES AND APPLICATION MISCELLANEOUS

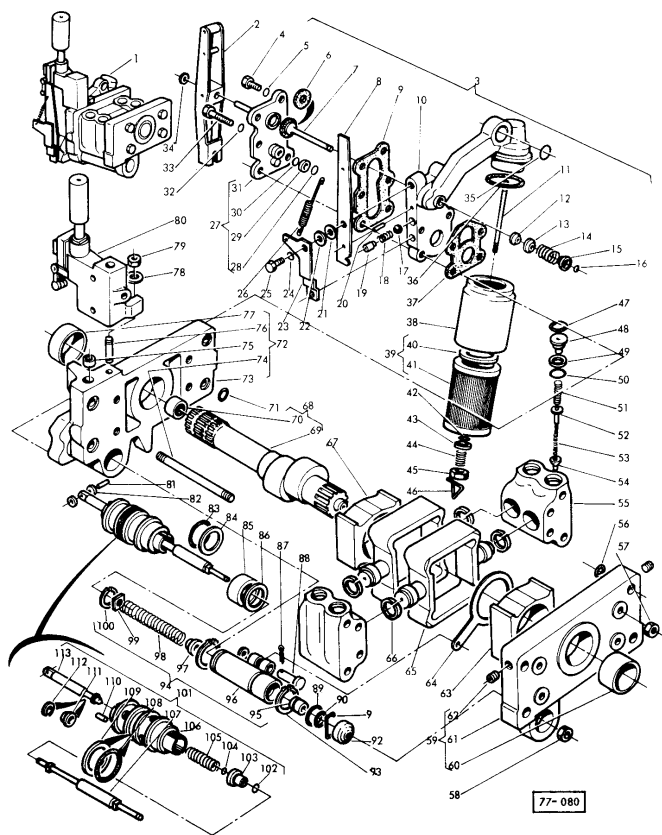


505 5505

LIFT HYDRAULIC PUMP

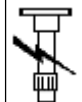
POMPE HYDRAULIQUE DE RELEVAGE
LIFT HYDRAULIKPUMPE
HYDRAULIK PUMPE
POMPA DE SOLLEVATORE IDRAULICO

MKIII



- | | | | | |
|-----|------------|---|---|----------------|
| 98 | 180940M1 | | 1 | SPRING |
| 99 | 1869830M2 | | 1 | DISC |
| 100 | 1442622X1 | | 1 | SNAPRING |
| 101 | 1870763M92 | ● | 1 | DISTRIBUTOR |
| | | | | 1681786M1 (1) |
| | | | | 1681789M91 (1) |
| | | | | 3000261X1 (1) |
| | | | | Z8 |
| 102 | 359290X1 | ● | 1 | GASKET |
| 103 | 1870752M1 | ● | 1 | CLAMP |
| 104 | 358932X1 | | 1 | RING |
| 105 | 520610M1 | | 1 | SPRING |
| 106 | 1870764M92 | ● | 1 | VALVE |
| | | | | 1681786M1 (1) |
| | | | | 1681789M91 (1) |
| | | | | 3000261X1 (1) |
| 107 | 1870766M2 | ● | 1 | ROD |
| 108 | 377502X1 | | 1 | O RING |
| 109 | 377497X1 | | 1 | WASHER |
| 110 | 377492X1 | H | 1 | PIN |
| 111 | 897513M1 | ● | 1 | WASHER |
| 112 | 897512M1 | | 1 | RING |
| 113 | 1868478M2 | | 1 | VALVE |

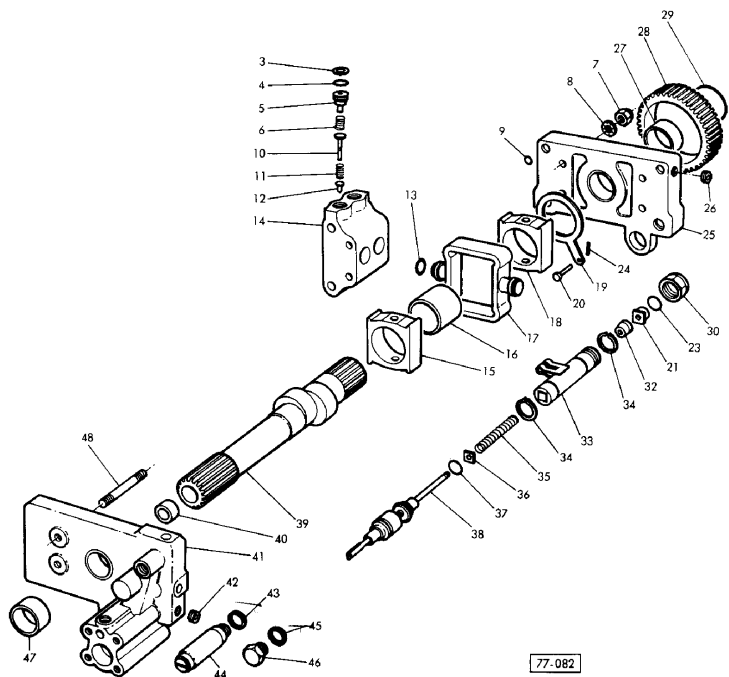
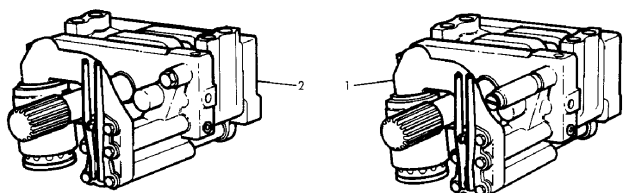
ACCESSORIES AND APPLICATION MISCELLANEOUS



505 5505

POMPE HYDRAULIQUE DE RELEVAGE
LIFT HYDRAULIKPUMPE
HYDRAULIKPUMPE
POMPA DE SOLLEVATORE IDRAULICO

MK11



77-082

LIFT HYDRAULIC PUMP

1000251M1	A D Z Z12	1 VALVE
1660491M92	C Z	1 WASHER
1860126M91		1 O RING
1868546M91	● 1000251M1 (2) 1684621M1 (1) B C Z Z1 Z12	1 OSCILLATOR
1870849M1		4 BEARING
363623X1	● 2188135 (4) B C D Z Z Z12	4 CAMSHAFT
535225M92	A Z12	1 NUT
828927M91	● 828927M92 (1) C D Z Z	1 PUMP
831528M1		4 PUMP
1 1660214M92	D Z	1 PUMP
2 1660490M92	B Z12	1 PUMP

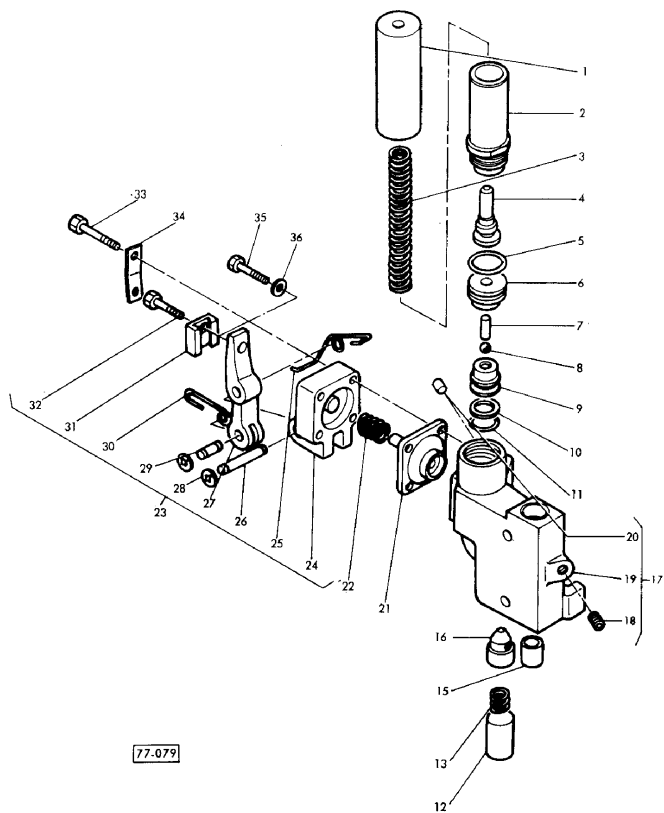
ACCESSORIES AND APPLICATION MISCELLANEOUS

505 5505



OIL PUMP

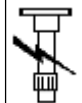
VALVE DE MODULATION } POMPE MK III
 MODULATION VALVE } PUMP MK III
 VENTIL MODULATION } PUMP MK III
 VALVOLA MODULAZIONE } POMPA MK III



- | | | | | | |
|----|-----------|---|----------------|---|--------|
| 27 | 1870293M1 | ● | 1868503M93 (1) | 1 | LEVER |
| 28 | 377493X1 | | | 4 | RING |
| 29 | 1870834M1 | | | 1 | PIN |
| 30 | 1868854M1 | ● | 1868503M93 (1) | 1 | LINK |
| 31 | 1870835M1 | ● | N.L.A. (1) | 1 | TIE |
| | | | H | | |
| 32 | 377556X1 | | H | 1 | SCREW |
| 33 | 377474X1 | | | 4 | SCREW |
| 34 | 1872015M1 | ● | N.L.A. (2) | 2 | SPRING |
| | | | H | | |
| 35 | 377606X1 | | H | 1 | NUT |
| 36 | 377666X1 | ● | N.L.A. (1) | 1 | WASHER |
| | | | H | | |

H ALTERNATIVE
 Z1 INCLUDES REFERENCE NO.18 TO 20.
 Z2 INCL. NO. 24 TO 32

ACCESSORIES AND APPLICATION MISCELLANEOUS

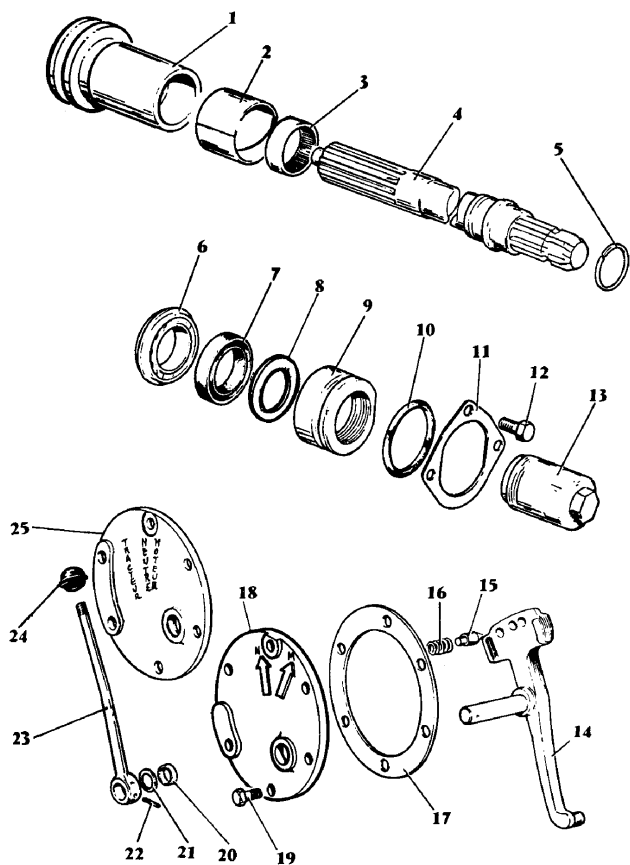


505 5505

P.T.O. SHIFTER MECHANISM {2} W113088

PRISE DE FORCE MECANIQUE
P.T.O. SHIFTER MECHANISM
ZAPFWELLENSCHALTUNG
PRESA DI POTENZA

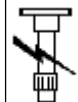
N° W 113 088



72-104

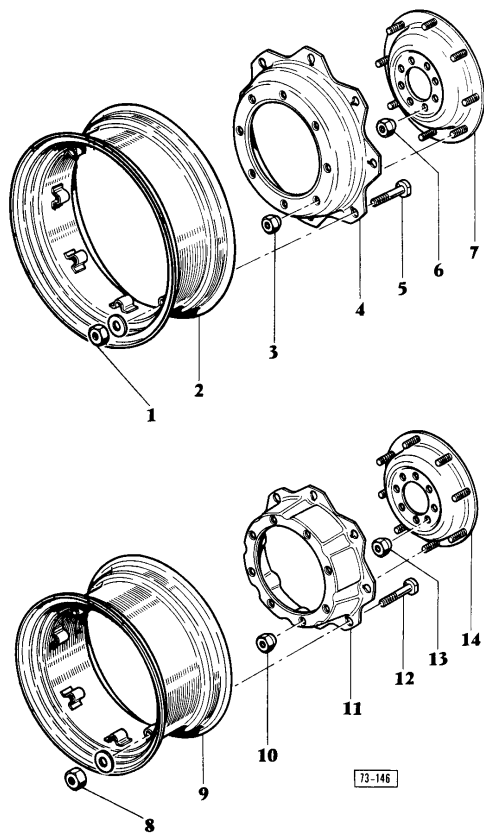
5	195284M1		1	RING
6	195498M1		1	BEARING
7	907738M1		1	BUSH
8	908446M1		1	DEFLECTOR
9	882240M92	● 180465M1 (1) 70923936 (1) 907738M1 (1) 908446M1 (1)	1	HOUSING
		Z5		
10	195522M1	● 70923936 (1)	1	RING
11	180460M1		1	RETAINER
12	362471X1	● 353697X1 (3)	3	SCREW
13	180313M1	● 1868778M1 (1)	1	CAP
		D Y		
14	1869025M92	● N.L.A. (1)	1	FORK
		E L		
14	899156M92	● N.L.A. (1)	1	FORK
		E K		
15	180418M1	● 3382343M2 (1) 3797573M1 (1)	1	PLUNGER
16	191221M1		1	SPRING
17	181217M1	● 181217M3 (1)	1	GASKET
18	906011M1	● 899150M2 (1)	1	GATE
		▲		
19	362475X1	● 353699X1 (5)	5	SCREW
20	894307M1		1	SEAL

ACCESSORIES AND APPLICATION MISCELLANEOUS



505 5505

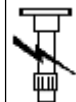
ROUES
WHEELS
RADE
RUOTE



RIM & TIRES

4	963652M91	Y1	2	DISC
		Y1		
5	828217M1		16	BOLT UNF
6	184273M1	● 881162M2 (16)	16	NUT
		Y1		
		Y1		
7	963653M1	Y1	2	DISC
		Y1		
8	353427X1	Y1	16	NUT UNF
		Y1		
9	963746M91	● N.L.A. (2)	2	WHEEL
		Y1		
		Y1		
10	180004M1	Y1	16	NUT
		Y1		
11	963640M1	● 1883123M1 (2)	2	DISC
		Y1		
		Y1		
12	828217M1	Y1	16	BOLT UNF
		Y1		
14	963641M91	● 3600266M1 (2)	2	DISC
		Y1		
		Y1		
Y1	NOTA PAGINA ANOMALA			
Z3	INCL NO 1 TO 5, 7			
Z4	INCL 8 TO 12, 14			

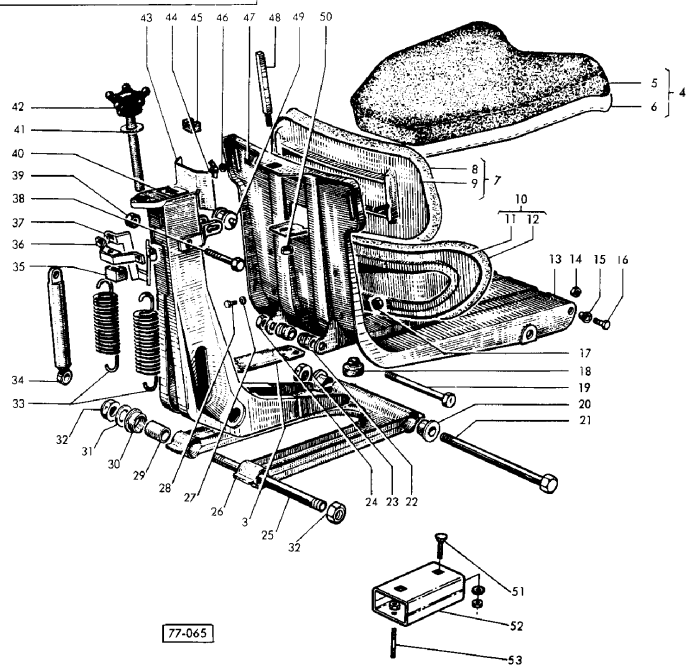
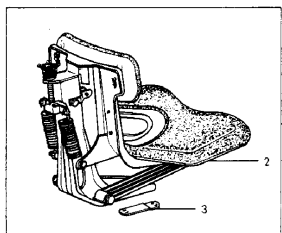
ACCESSORIES AND APPLICATION MISCELLANEOUS



505 5505

SEAT DE LUXE

SIEGE }
SEAT }
SITZ }
SEDILLE }
SABLE



- | | | | | |
|----|------------|----------------|---|----------|
| 41 | 1804991M1 | | 1 | WASHER |
| 42 | 1804996M1 | | 1 | KNOB |
| 43 | 1806718M1 | ● N.L.A. (1) | 1 | SUPPORT |
| 44 | 1804946M1 | ● N.L.A. (2) | 2 | NUT |
| 45 | 1806704M1 | | 1 | SHOE |
| 46 | 1806697M1 | ● N.L.A. (2) | 2 | WASHER |
| 47 | 1638417M1 | | 1 | DECAL |
| 48 | 1806705M1 | | 1 | ROD |
| 49 | 1639392M91 | | 1 | ROLLER |
| 50 | 1638385M1 | ● 394367X1 (1) | 1 | NUT |
| 51 | 353828X1 | | 2 | BOLT UNF |
| 52 | 906906M91 | ● N.L.A. (1) | 1 | SUPPORT |
| 53 | 893029M1 | | 2 | STUD |

- A NOT SERVICED, ORDER 1633180M1
 B NOT SERVICED, ORDER 1638376M91
 C NOT SERVICED, ORDER 1645997M91

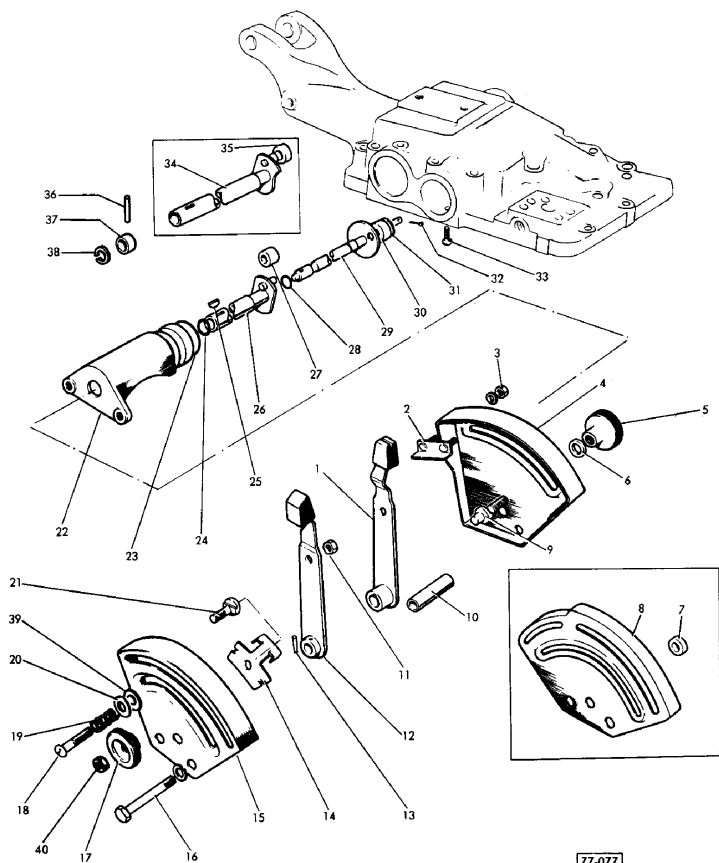
ACCESSORIES AND APPLICATION MISCELLANEOUS

DRAFT CONTROL - STANDARD AND NARROW

505 5505



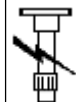
SECTEUR DE RELEVAGE - STANDARD ET ETROIT
 DRAFT CONTROL - STANDARD AND NARROW
 HYDRAULIKBETAETIGUNG - STANDARD UND SCHMALSPUR
 SETTORE CONTROLLO - NORMALE E STRETTO



77-077

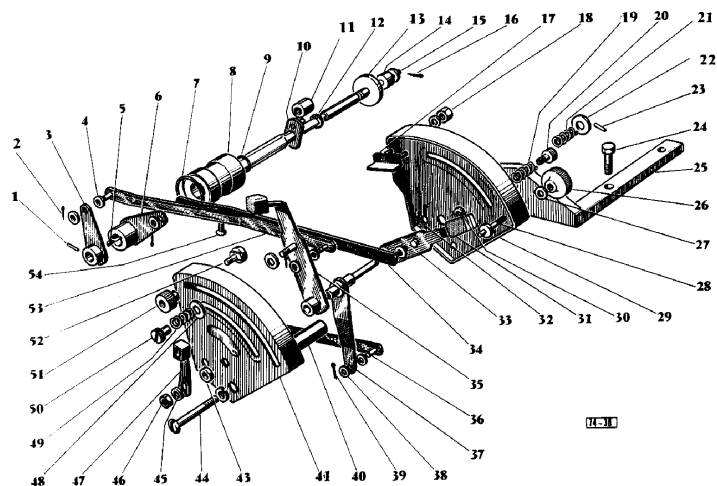
- | | | | | |
|------------|---|----------------|---|--------|
| 1870365M92 | ● | 1870220M93 (1) | 1 | SHAFT |
| | | 1870225M1 (1) | | |
| | | 1870243M92 (1) | | |
| | | 1870244M1 (1) | | |
| | | 1870363M1 (1) | | |
| | | 358945X1 (1) | | |
| | | 364281X1 (1) | | |
| | | 832268M1 (1) | | |
| | | 898189M2 (1) | | |
| | | B | | |
| | | Y | | |
| | | Y | | |
| | | Z20 | | |
| | | Z53 | | |
| 1872240M1 | | S | 2 | SCREW |
| | | Y | | |
| 194560M1 | ● | 3760613M1 (1) | 1 | SHAFT |
| | | A | | |
| | | C | | |
| | | Y | | |
| | | Z13 | | |
| | | Z20 | | |
| 353434X1 | ● | 0920054 (2) | 2 | SHAFT |
| | | B | | |
| | | Y | | |
| | | Y | | |
| | | Z20 | | |
| 353434X1 | ● | 0920054 (2) | 2 | SLIDE |
| 353441X1 | | A | 2 | SPRING |
| 353538X1 | ● | 0746454 (2) | 2 | SPRING |
| | | B | | |
| | | Y | | |
| | | Y | | |
| | | Z20 | | |

ACCESSORIES AND APPLICATION MISCELLANEOUS



505 5505

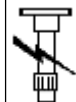
SECTEUR DE RELEVAGE - VIGNERON
 DRAFT CONTROL - VINEYARD
 HYDRAULIKBETÄTIGUNG - WEINBERG
 SETTORE CONTROLLO - VIGNETO



DRAFT CONTROL - VINEYARD

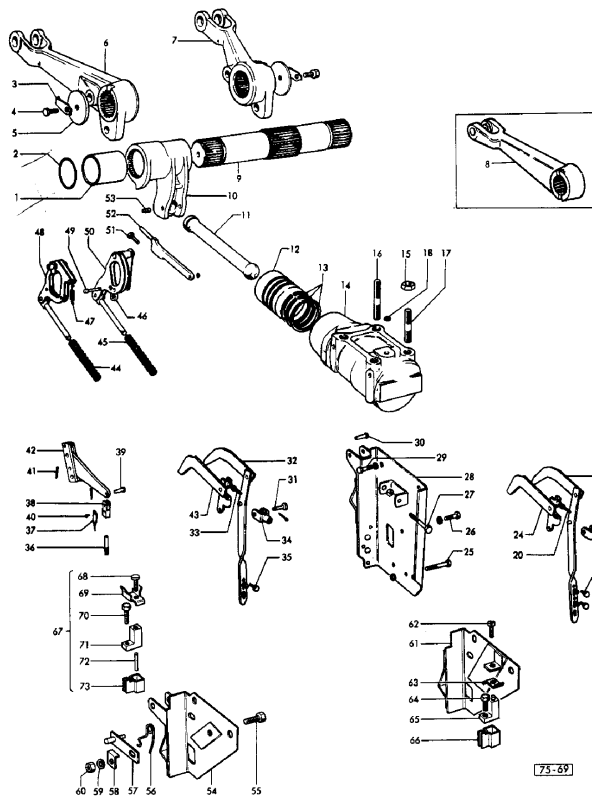
- | | | | | |
|----|-----------|----------------|---|-------------|
| 13 | 961289M91 | Z3 | 1 | SHAFT |
| 14 | 898196M1 | ● 898196M2 (1) | 1 | ROLLER |
| 15 | 376473X1 | ● 353754X1 (1) | 1 | WASHER |
| 16 | 354039X1 | ● 0610031 (1) | 1 | COTTER |
| 17 | 961401M91 | ● N.L.A. (1) | 1 | SLIDE |
| 18 | 353441X1 | | 2 | LOCK WASHER |
| 19 | 961369M1 | | 1 | SPRING |
| 20 | 961469M1 | ● N.L.A. (1) | 1 | KNOB |
| 21 | 180689M1 | | 1 | SPRING |
| 22 | 353756M1 | | 1 | WASHER |
| 23 | 354048X1 | | 1 | PIN |
| 24 | 362485X1 | | 2 | SCREW |
| 25 | 961470M1 | ● N.L.A. (1) | 1 | BEARER |
| 26 | 960970M1 | | 1 | NUT |
| 27 | 353754X1 | | 1 | WASHER |
| 28 | 962896M1 | ● N.L.A. (1) | 1 | STOP |
| 29 | 961374M1 | | 1 | SECTOR |
| 30 | 181041M1 | | 2 | WASHER |
| 31 | 962900M91 | | 1 | LEVER |
| 32 | 354039X1 | ● 0610031 (2) | 2 | COTTER |
| 33 | 353754X1 | | 4 | WASHER |
| 34 | 961480M91 | | 1 | STEM |
| 35 | 962903M91 | | 1 | LEVER |
| 36 | 961485M91 | | 1 | STEM |
| 37 | 961473M91 | | 1 | LEVER |
| 38 | 353754X1 | | 4 | WASHER |

ACCESSORIES AND APPLICATION MISCELLANEOUS



505 5505

BRAS DE RELEVAGE
LIFT ARMS
HUBWELLE
BRACCIO SOLLEVAMENTO

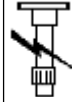


73-69

LIFT ARMS

354120X1	A	1	SCREW
354120X1	B	1	SUPPORT
	Z13		
	Z20		
354120X1	B	1	SUPPORT
	Z		
	Z20		
361472X1		1	LOCK WASHER
362429X1	● N.L.A. (2)	2	LOCK WASHER
	A		
362429X1	● N.L.A. (1)	1	LOCK WASHER
	B		
	Z13		
	Z20		
362433X1	● 0748522 (1)	1	LOCK WASHER
	B		
	Z13		
	Z20		
884561M91	B	1	LINKAGE
	Z13		
	Z20		
	Z44		
884568M91	● 0610031 (1)	1	SPACER
	354186X1 (1)		
	882514M91 (1)		
	884561M91 (1)		
	B		
	Z13		
	Z20		
	Z61		
888701M1	B	1	ROD
	Z13		
	Z20		
897559M92	● 1665737M91 (1)	1	BEARER
	1667579M2 (1)		
	897560M3 (2)		
	N.L.A. (2)		
	Z4		

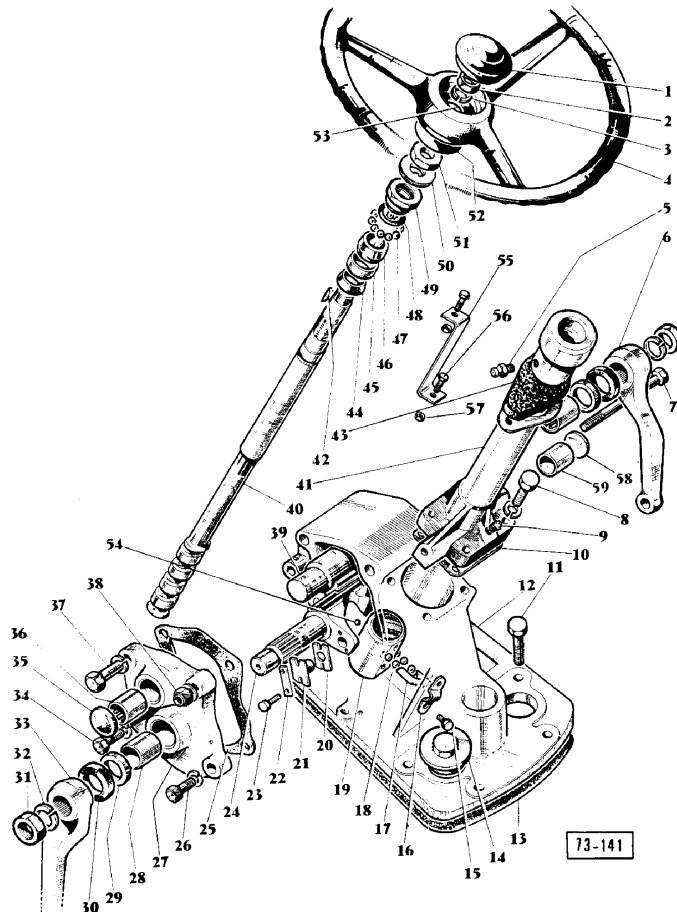
ACCESSORIES AND APPLICATION MISCELLANEOUS



STEERING (A) {1} 495083, {2} W184027 (B) {1} 459014, {2} E268009 (K) {1} 434076, {2} E304100

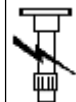
505 5505

DIRECTION }
 STEERING (A) R. 495 083 → N° W 184 027
 LENKUNG (B) R. 459 014 → N° E 268 009
 STERZO (K) R. 434 076 → N° E 304 100



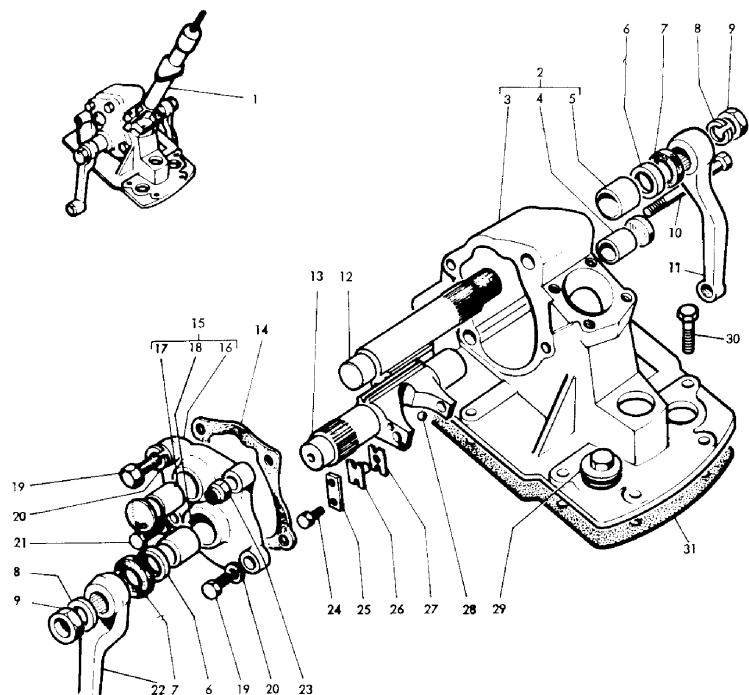
1638452M91	Y1 Z	1	ARM
1638453M91	● N.L.A. (1) O Z18	1	ARM
1809066M91	● N.L.A. (1) Y	1	HOUSING
1809067M91	O	1	LUBRICATOR
1809068M91	Y1 Z	1	RING
1809069M91	● N.L.A. (1) Y	1	SCREW
1809444M91	● N.L.A. (1) Y1 Z3	1	SCREW
1850043M1	● 353432X1 (4)	4	SCREW
1850043M1	● 353432X1 (1)	1	SCREW
1866904M1		999	SHAFT
1866905M1		999	WASHER
2684X1		1	WASHER
29958X	● N.L.A. (1) H	1	WASHER
353759X1		1	SHIM
362477X1	● 353700X1 (8) C	8	SHIM
362477X1	● 353700X1 (6) O	6	WASHER
362477X1	● 353700X1 (7) C	7	WHEEL
362481X1	● N.L.A. (1) C Z20	1	STEERING W

ACCESSORIES AND APPLICATION MISCELLANEOUS



505 5505

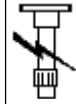
BOITIER DIRECTION } (A) N° W 184 028 →
 STEERING BOX } (B) N° E 268 010 →
 LENKGEHÄUSE } (E) N° E 304 101 →
 STERZO ALLOGGIAMENTO }



STEERING BOX (A) W184028 (B) E268010 (E) E304101

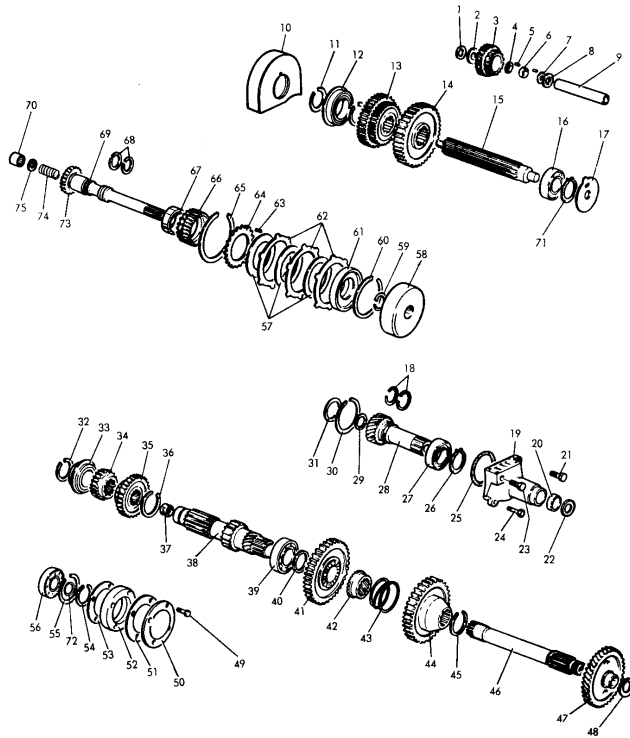
1866904M1		999 ARM
1866905M1		999 SHIM
2684X1		1 SHIM
353759X1		1 WASHER
362477X1	● 353700X1 (8)	8 WASHER
	C	
362477X1	● 353700X1 (6)	6 NUT UNF
	O	
362477X1	● 353700X1 (7)	7 ARM
	C	
377084X1		1 SCREW
968026M1	O	1 SCREW
968027M1	O	1 SCREW
1	H	1 STEERING
2	1851998M3	1 BOX
3	F	1 BOX
4	1850018M1	● 021910014 (1)
5	1889563M1	1 BUSH
6	1850019M1	● 1893623M1 (2)
7	1850020M1	2 SEAL
8	391235X1	● 353443X1 (2)
		N.L.A. (2)
9	363658X1	● 355647X1 (2)
		2 NUT
10	1862793M1	1 BOLT
11	1850022M1	Y1
		1 ARM
12	1850017M1	1 SHAFT
13	1889567M1	1 SHAFT
14	1850041M1	1 GASKET
15	1850040M1	Z1
		1 PLATE
16	G	1 COVER

ACCESSORIES AND APPLICATION MISCELLANEOUS



505 5505

BOITE DE VITESSES }
 TRANSMISSION } MULTI-POWER
 GETRIEBE }
 TRASMISSIONE }



77-098

TRANSMISSION

70	195873M1		1 BEARING
71	352972X1		1 RING
72	881122M2		1 RING
73	1868906M1	17 B	1 PINION
74	886352M1	B	1 SPRING
75	886353M1	B	1 ABUTMENT
A	FOR GERMANY ONLY		
B	WITH R.S.L.D		
B	WITH DUAL CLUTCH		
B	WITH SINGLE CLUTCH		
C	WITH R.S.L.D. (BELGIUM)		
E	LARGE SPLINES		
F	SMALL SPLINES		
H	ALTERNATIVE		
K	WITH REDUCTION GEAR HEAVY DUTY		
M	SEE PAGE - REFERENCE NUMBER 88-91		
▲	NUMBER OF TEETH/SPLINES		
Z1	INCL. REF. 20 TO 22		
Z4	INCL. REF. 29		
Z5	INCL. NO. 37		
Z6	INCL. NO. 67		
Z8	INCL. NO. 70 AND WASHER		
Z9	INCL. NO. 80, 84, 85		

CLICK HERE TO **DOWNLOAD** THE COMPLETE MANUAL

- Thank you very much for reading the preview of the manual.
- You can download the complete manual from: www.heydownloads.com by clicking the link below



- Please note: If there is no response to CLICKING the link, please download this PDF first and then click on it.

CLICK HERE TO **DOWNLOAD** THE COMPLETE MANUAL