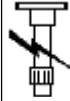
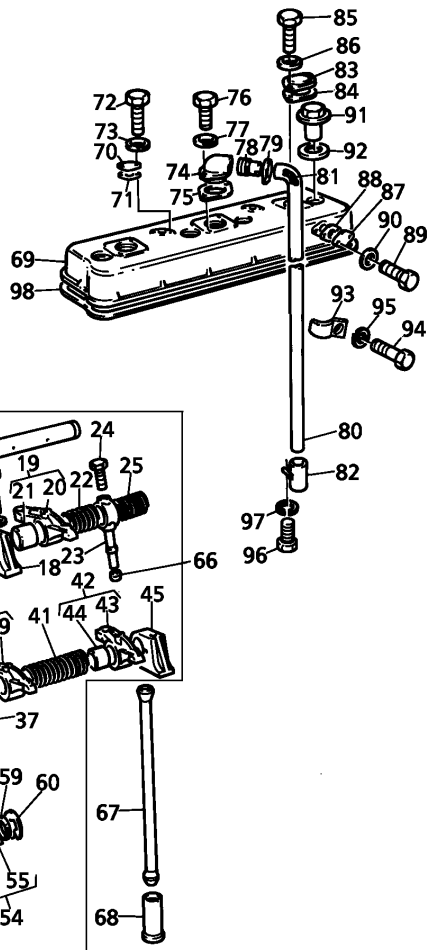


ACCESSORIES AND APPLICATION MISCELLANEOUS

Large 14500



T-0569-14M-A



ROCKER SHAFT

1	ZZ 90036	● ZZ90036 (1)	1	AXLE
		● 62843		
2	ZZ 90046	● ZZ90046 (1)	1	SHAFT
		! 1		
		● 58768		
3		! 2	1	SHAFT
		▢ REF.2		
4	0650507	! 2	2	PLUG
5	0170151	! 1	1	CIRCLIP
6	33117434	! 1	1	WASHER
		● 33117415		
7	41151482	● 4115R305 (1)	1	ROCKERARM
		! 1		
		▼		
8		! 7	1	LEVER
		▢ REF.7		
9	2511425	! 7	1	BUSH
10	37521471	! 1	1	SUPPORT
		● 37521431		
11	41151481	● 4115R306 (1)	1	ROCKERARM
		! 1		
		▲		
12		! 11	1	LEVER
		▢ REF.11		
13	2511425	! 11	1	BUSH
14	31744123	! 1	1	SPRING
15	41151482	● 4115R305 (1)	1	ROCKERARM
		! 1		
		▼		
16		! 15	1	LEVER
		▢ REF.15		
17	2511425	! 15	1	BUSH
18	37521471	! 1	1	SUPPORT
		● 37521431		

CLICK HERE TO **DOWNLOAD** THE COMPLETE MANUAL

- Thank you very much for reading the preview of the manual.
- You can download the complete manual from: [www.heydownloads.com](http://www.heydownloads.com) by clicking the link below



- Please note: If there is no response to CLICKING the link, please download this PDF first and then click on it.

CLICK HERE TO **DOWNLOAD** THE COMPLETE MANUAL

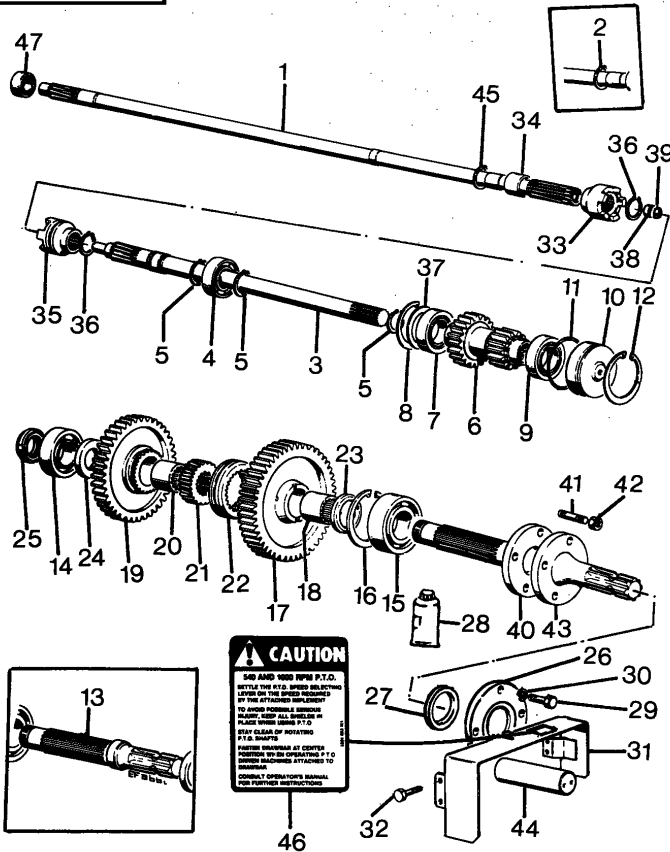
ACCESSORIES AND APPLICATION MISCELLANEOUS

Large 14500



"FRONT" PTO DRIVE SHAFT

4-AX18-080-A



22	3303179M1	●	3303179M2 (1) 1240233	1	SYNCHRO GEAR
22	3303179M2	▲	2241420	1	SYNCHRO GEAR
23	1425175M1	▲		1	RING
24	1425192M2	▲		1	RING
25	1425102M1	▲		1	NUT
26	1425176M1	●	3534516M1 (1) 1240068	1	COVER
26	1425176M1	●	3534516M1 (1) 2240681	1	COVER
26	3534516M1	▲	2240682	1	COVER
26	3534516M1	▲	1240069	1	COVER
27	1440986X1	●	3015247X1 (1)	1	SEAL
28	3308788M1			999	LOCTITE
29	339299X1			4	SCREW
30	1440315X1			4	WASHER
31	1425550M91	●	3545580M91 (1) B	1	COWL
32	339124X1			4	SCREW
33	1425187M4	●	3557791M2 (1)	1	SLEEVE
34	1426436M1			1	SPACER
35	1425188M3			1	SLEEVE
36	339469X1			2	SEGMENT
37	1426411M1	●	N.L.A. (999) 2MM.	999	SPACER
37	1426412M1	●	N.L.A. (999) 3MM.	999	CHOCK

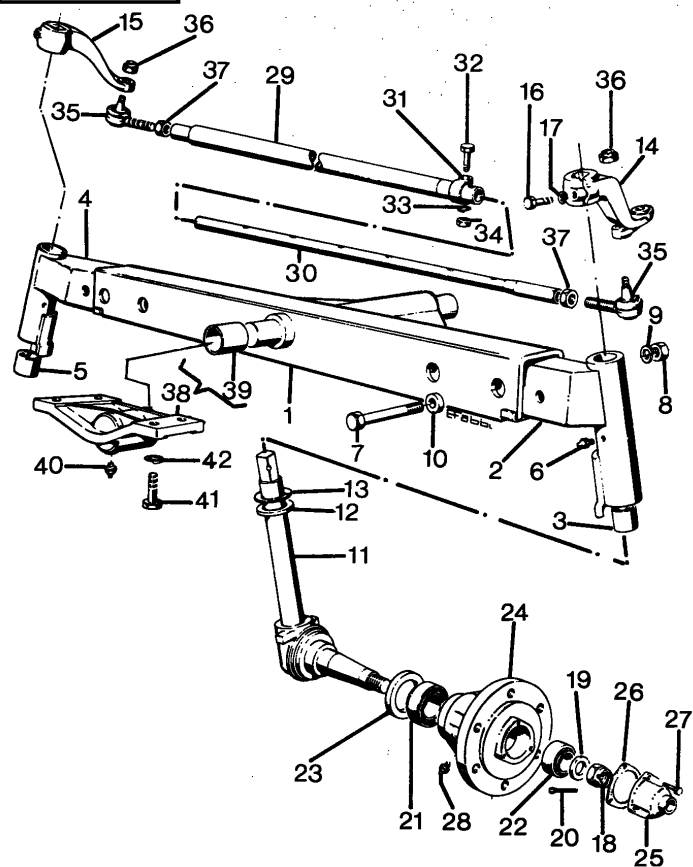
ACCESSORIES AND APPLICATION MISCELLANEOUS

Large 14500



FRONT AXLE 2 WHEEL DRIVE- AXLE SUPPORT

4-AJ03-010-A

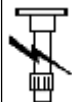


- |    |            |   |               |
|----|------------|---|---------------|
| 33 | 1440315X1  | 1 | WASHER        |
| 34 | 1440200X1  | 1 | NUT BSF       |
| 35 | 3426773M2  | ● | 3426773M3 (2) |
| 36 | 392842X1   | ! | 35            |
| 37 | 392842X1   | 2 | NUT BSF       |
| 38 | 1425533M91 | 2 | BEARER        |
| 39 | 2714131M3  | ! | 38            |
| 40 | 339608X1   | 2 | GREASER       |
| 41 | 391888X1   | 8 | BOLT          |
| 42 | 391414X1   | 8 | WASHER        |

- ! THIS IS A COMPONENT OF AN ASSEMBLY
- ➔ FROM SERIAL OR ENGINE NUMBER
- ➔ UP TO SERIAL OR ENGINE NUMBER
- ▲ TOP
- ▼ LOWER COMPONENT
- ◀ LEFT HAND
- ▶ RIGHT HAND

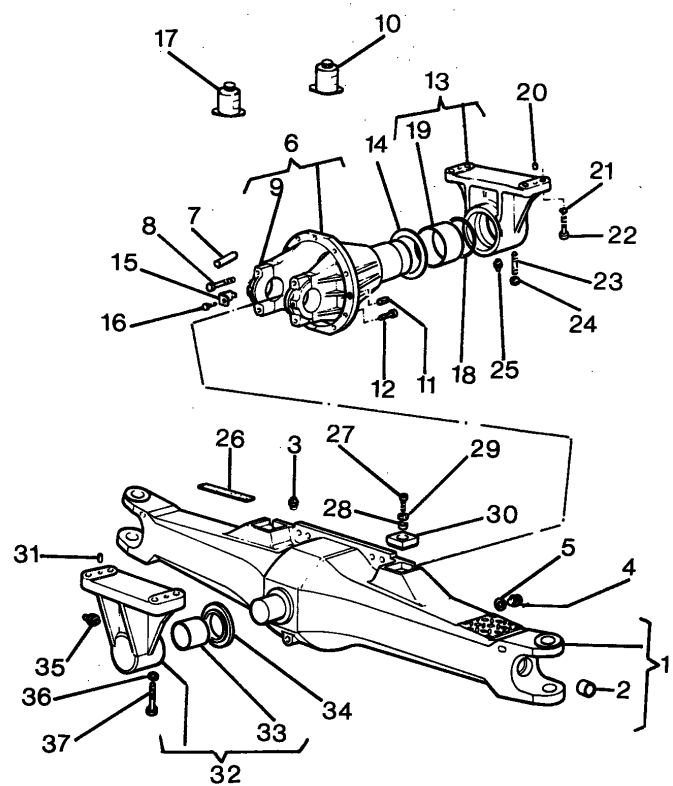
ACCESSORIES AND APPLICATION MISCELLANEOUS

Large 14500



FRONT AXLE 4 WHEEL DRIVE - HOUSING

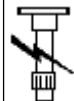
4-AK03-007-A



- |    |                |   |         |
|----|----------------|---|---------|
| 31 | 1440694X1      | 2 | PIN     |
| 32 | 3309491M92     | 1 | HOLDER  |
| 33 | 3309490M1 ! 32 | 1 | BUSH    |
| 34 | 3426677M1      | 1 | DISC    |
| 35 | 339608X1       | 1 | GREASER |
| 36 | 391414X1       | 4 | WASHER  |
| 37 | 391888X1       | 4 | BOLT    |

! THIS IS A COMPONENT OF AN ASSEMBLY  
 ➔ FROM SERIAL OR ENGINE NUMBER  
 ⬇ UP TO SERIAL OR ENGINE NUMBER  
 ◊ SEE PAGE - REFERENCE NUMBER  
 ⬇ NOT SERVICED, ORDER

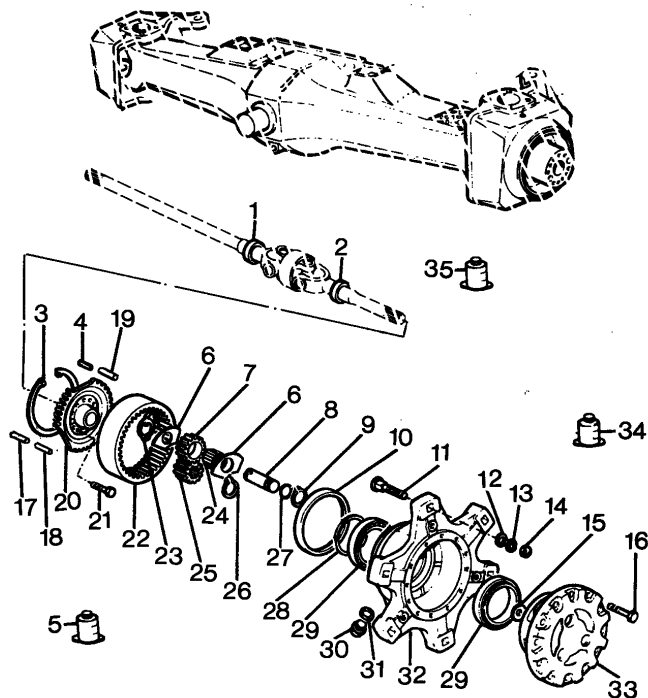
ACCESSORIES AND APPLICATION MISCELLANEOUS



Large 14500

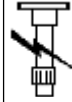
FRONT AXLE 4 WHEEL DRIVE - FINAL DRIVE

4-AK05-025-A



1	3429001X1		2	RING
2	3019957X1		2	SEAL
3	3426868M1		2	SEGMENT
4	3006438X1	➔ 200 A	4	DOWEL
4	3427398M1	● 3427398M2 (4) ➔ 201 A	4	PIN
5	3304303M1	● 3308788M1 (999)	999	GASKET
6	3426958M1	➔ 203 A	12	BASE PLATE
6	3427431M1	➔ 204 A	12	BASE PLATE
7	3426768M1	▲ 19	6	GEAR
8	3426962M1	● 3659661M1 (6)	6	CLEVIS PIN
9	392152X1		6	SEGMENT
10	3019960X1		2	SEAL
11	3304220M1		12	SCREW
12	390974X1		12	WASHER
13	1440317X1		12	WASHER
14	3009749X1	● 3384600M2 (12)	12	NUT
15	3426771M1		2	BASE PLATE
16	3002009X1	● 3428397M1 (24)	24	SCREW
17	339248X1	➔ 200 A	4	PIN
18	339193X1	➔ 200 A	4	PIN
19	3001410X1	➔ 200 A	4	PIN
20	3426874M2	➔ 200 A	2	FLANGE

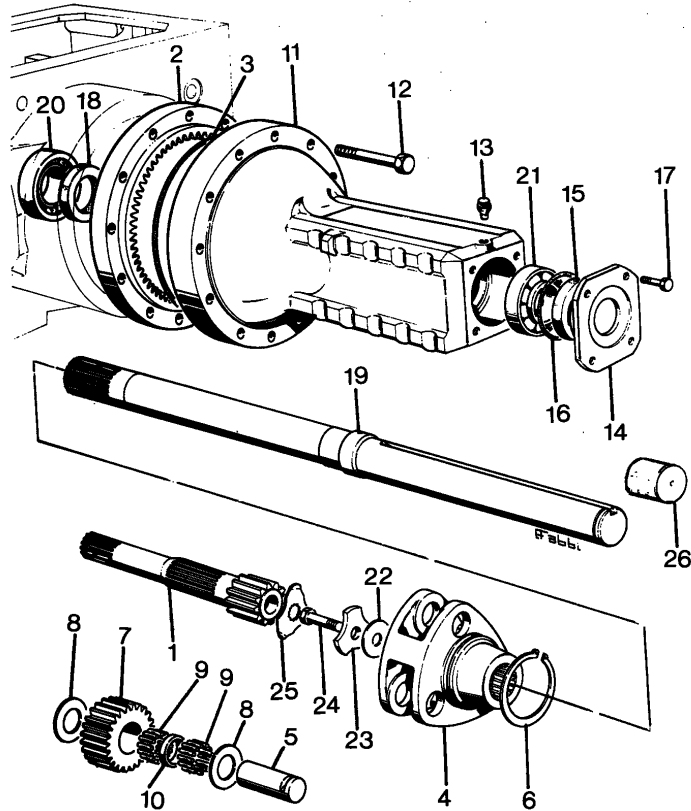
ACCESSORIES AND APPLICATION MISCELLANEOUS



Large 14500

REAR AXLE

4-AG01-002-A

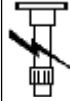


1	1425042M2	↖	12400049	2	PINION
		↖	22400366		
1	3307844M1	↖	12400050	2	SHAFT
		↖	22400367		
2	1425043M2	↖	3307844M1 (2)	2	SUN GEAR
		↖	3307845M2 (2)		
		↖	3307846M1 (2)		
		↖	3307847M1 (6)		
		↖	3307848M1 (6)		
		↖	3307849M1 (6)		
		↖	12400049		
		↖	22400366		
2	3307845M2	↖	12400050	2	CROWNWHEEL
		↖	22400367		
3	1425044M1	↖	12400049	4	GASKET
		↖	22400366		
4	1425032M1	↖	12400049	2	PLANET CAR
		↖	22400366		
4	3307846M1	↖	12400050	2	HUB
		↖	22400267		
5	1425033M2	↖	12400049	6	PIN
		↖	22400366		
5	3307847M1	↖	12400050	6	PIN
		↖	22400367		
6	392117X1	↖	12400049	2	CLIP
		↖	22400366		
7	1425034M1	↖	12400049	6	GEAR
		↖	22400366		
7	3307848M1	↖	12400050	6	PINION
		↖	22400367		
8	1427250M1	↖	12400049	12	WASHER
		↖	22400366		
9	392115X1	↖	12400050	300	BEARING
		↖	22400367		
10	1425036M1	↖	12400049	6	BUSH
		↖	22400366		
10	3307849M1	↖	12400050	6	SPACER
		↖	22400367		

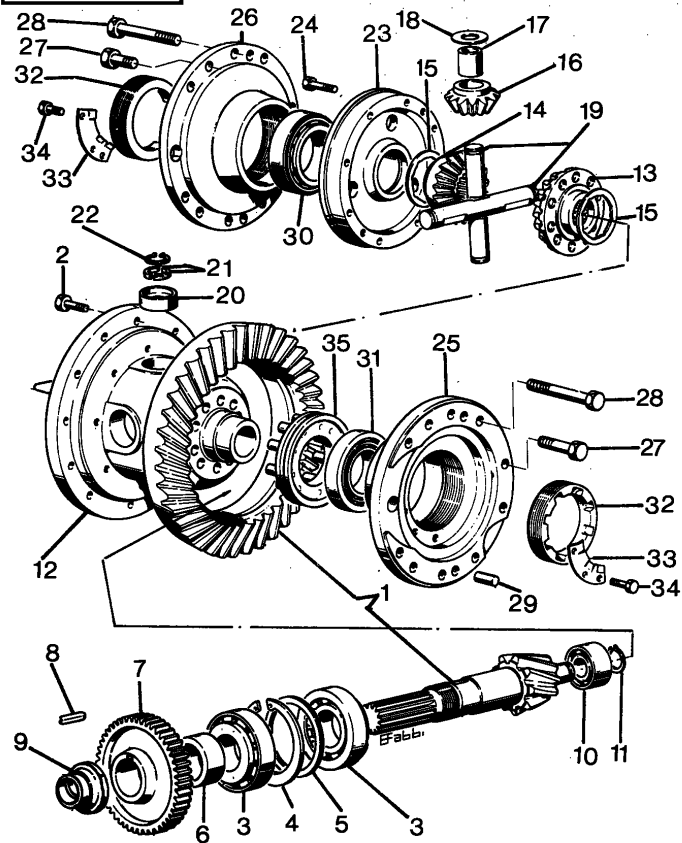
ACCESSORIES AND APPLICATION MISCELLANEOUS

REAR AXLE - DIFFERENTIAL

Large 14500

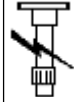


4-AG09-024-A



7	3304578M1	➔	22400136	1	GEAR
8	1425059M1	⌘		1	KEY
9	1426643M1	⌘	12400013	1	NUT
9	1426643M1	⌘	22400135	1	NUT
9	3302832M1	➔	12400014	1	NUT
9	3302832M1	⌘	22400136	1	NUT
10	392111X1			1	BEARING
11	392758X1			1	RING
12	1425018M1	●	1425018M2 (1)	1	HOUSING
13	1425020M2			1	PINION
14	1425019M2			1	PINION
15	1425021M2			2	RING
16	1425022M91			4	PINION
17	1425024M1			4	BUSH
18	1425025M2			4	RING
19	1425026M1			2	CLEVIS PIN
20	1425027M1			4	BUSH
21	1425028M1			8	RING
22	339323X1			4	RING
23	1425054M1			1	FLANGE
24	339018X1			8	BOLT
25	1425099M1	●	3531356APM1 (1)	1	SUPPORT
		⌘	2424R37147		
		⌘	2425R37147		
25	3531356M1	⌘	2424R37148	1	BEARER
		⌘	2425R37148		

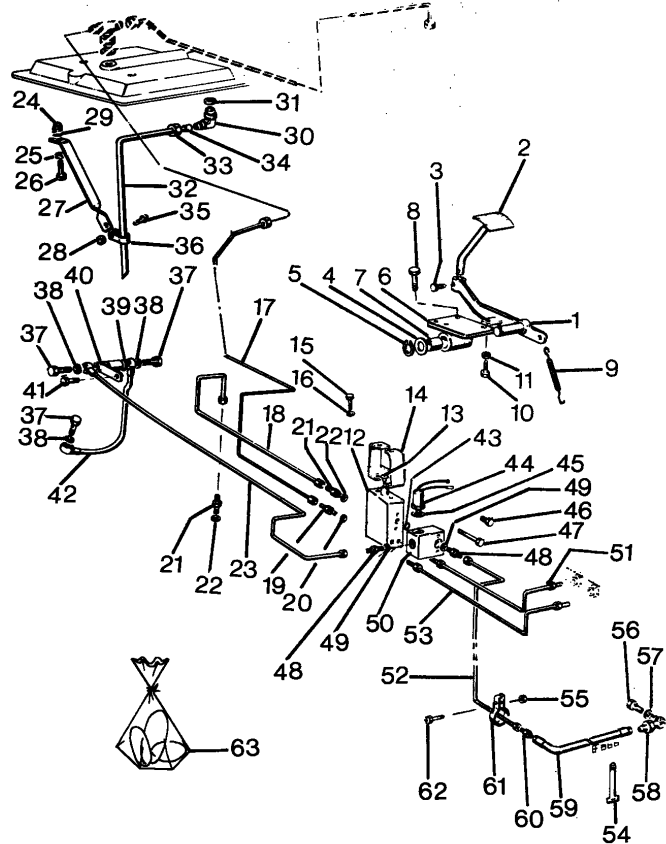
ACCESSORIES AND APPLICATION MISCELLANEOUS



Large 14500

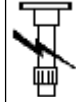
REAR AXLE - DIFFERENTIAL LOCK PEDAL

4-AG43-012-A



47	394023X1		2	SCREW	
48	1426279M1	II	1	UNION	
48	1426279M1	II	2	UNION	
49	2411105	●	376590X1 (2)	2	WASHER
50	1426234M1	II	1240132	1	UNION
		II	2241149		
50	3300752M91	II	1240133	1	BLOCK
		II	2241150		
51	1426282M91	II	1240132	1	PIPE
		II	2241149		
51	3300519M91	●	N.L.A. (1)	1	PIPE
		II	1240133		
		II	2241150		
52	1426278M91	II	1240132	1	PIPE
		II	2241149		
52	3300520M91	II	1240133	1	PIPE
		II	2241150		
53	1426281M91	II	1240132	1	PIPE
		II	2241149		
53	3300518M91	II	1240133	1	PIPE
		II	2241150		
54	395528X1	●	3307667M91 (2)	2	RETAINER
55	339169X1	●	394367X1 (1)	1	NUT BSF
		II			
56	394210X1	II		1	SCREW
57	3007188X1	II		2	GASKET
58	1426294M2	II		1	UNION
59	1426286M91	II	1240132	1	PIPE
		II	2241149		

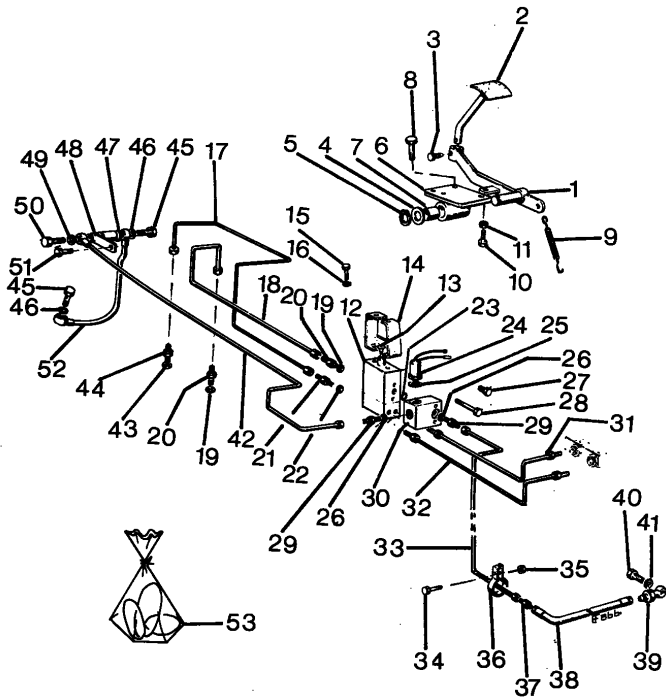
ACCESSORIES AND APPLICATION MISCELLANEOUS



Large 14500

REAR AXLE - DIFFERENTIAL LOCK PEDAL

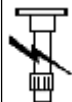
4-AG43-005-A



30	1426234M1	1240132	1	UNION
		2241149		
30	3300752M91	1240133	1	BLOCK
		2241150		
31	1426282M91	1240132	1	PIPE
		2241149		
31	3300519M91	N.L.A. (1)	1	PIPE
		1240133		
		2241150		
32	1426281M91	1240132	1	PIPE
		2241149		
32	3300518M91	1240133	1	PIPE
		2241150		
33	1426278M91	2241149	1	PIPE
33	3300520M91	2241150	1	PIPE
34	339761X1		1	SCREW
35	339169X1	394367X1 (1)	1	NUT BSF
36	1426332M2	N.L.A. (1)	1	RETAINER
37	1426283M1		1	UNION
38	1426286M91	2241149	1	PIPE
38	3300779M91	2241150	1	PIPE
39	1426294M2		1	UNION
40	394210X1		1	SCREW
41	3007188X1		2	GASKET
42	1426280M91	N.L.A. (1)	1	PIPE
		1240132		
		2241149		
42	3300521M92	1240133	1	PIPE
		2241150		

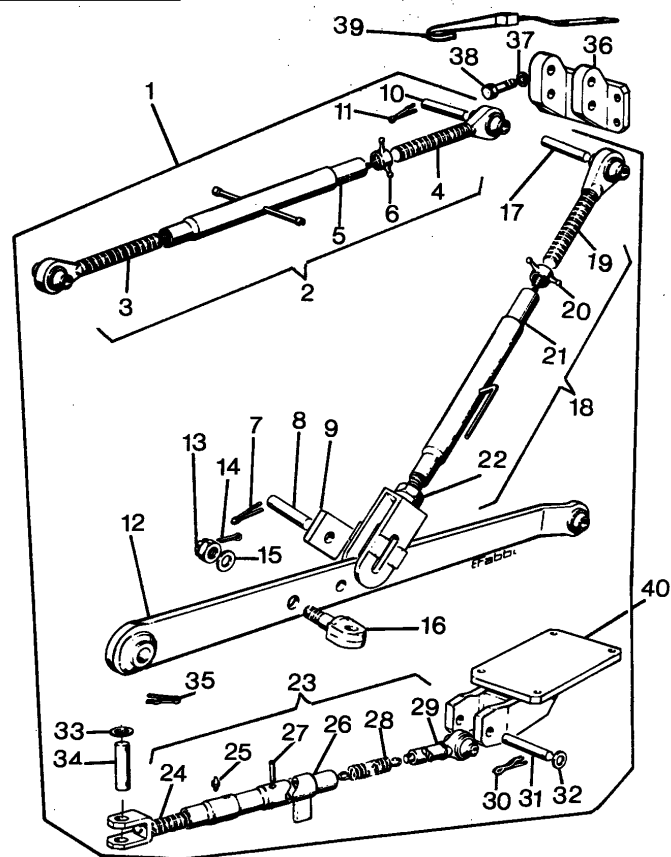
ACCESSORIES AND APPLICATION MISCELLANEOUS

Large 14500



LIFT HITCH

4-5275-013-A

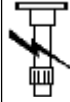


1	3306970M92	●	N.L.A. (1)	1	HITCH
			C		
2	1426045M93	!	1	1	STRUT
3	1426039M92	!	2	1	END
4	1426041M92	!	2	1	TOGGLE
5	1426044M92	●	1426044M93 (1)	1	BAR
			!	2	
6	1426046M1	!	2	1	NUT
7	974303M1	!	1	8	PIN
8	3301711M1	●	3301711M2 (2)	2	PIN
			!	1	
9	3302770M1	!	1	4	PLATE
10	3300660M1	!	1	1	PIN
11	1426056M91	!	1	1	PIN
12	3306489M91	!	1	2	BAR
13	392312X1	●	1440867X1 (2)	2	NUT
			!	1	
14	391407X1	●	N.L.A. (2)	2	PIN
			!	1	
15	3301691M1	!	1	2	SPACER
16	3301693M1	●	1426033M2 (2)	2	PIN
			!	1440867X1 (2)	
			!	1	
17	1426034M1	!	1	2	CLEVIS PIN
18	3301721M92	!	1	2	ROD
19	3301687M91	!	18	2	ROD
20	3301703M1	!	18	2	NUT
21	3301676M92	!	18	2	PIPE
22	3301681M91	!	18	2	FORK
23	3304616M91	!	1	2	STABILISER
24	3304624M91	!	23	2	FORK
25	1440838X1	!	23	2	NIPPLE
26	3300250M92	!	23	2	PIPE
27	339290X1	●	3001410X1 (2)	2	PIN
			!	23	

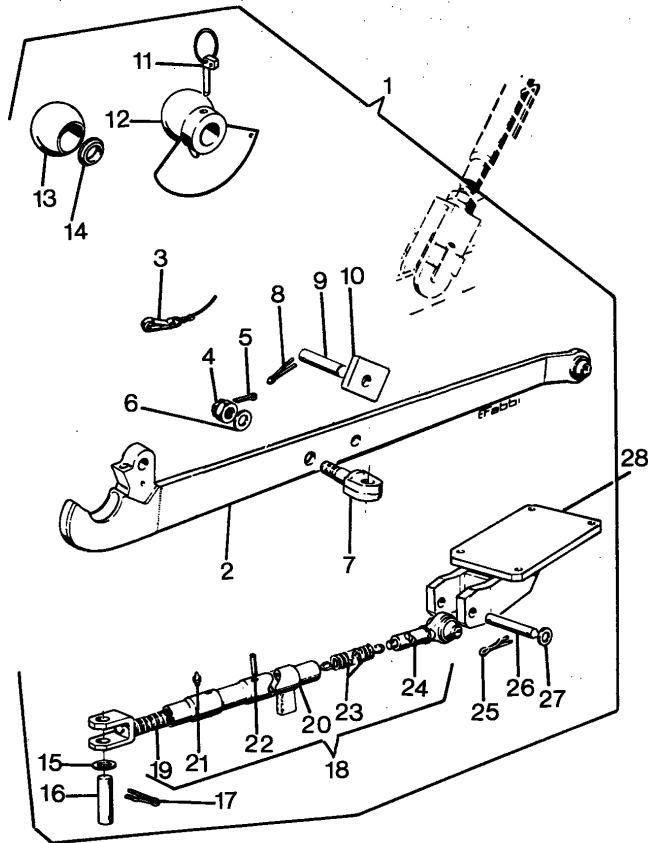
ACCESSORIES AND APPLICATION MISCELLANEOUS

LIFT HITCH

Large 14500



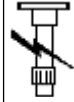
4-5275-017-A



- |    |            |   |                |   |         |
|----|------------|---|----------------|---|---------|
| 27 | 391393X1   | ! | 1              | 4 | WASHER  |
| 28 | 1425328M93 | ● | 1425328M94 (1) | 1 | SUPPORT |
| 28 | 1425329M93 | ● | 1425329M94 (1) | 1 | SUPPORT |
| 28 | 3305768M91 | ⊙ |                | 1 | SUPPORT |
| 28 | 3305769M91 | ⊙ |                | 1 | SUPPORT |

- !
  - ➔
  - ➞
  - ⊙
  - A
  - B
  - C
  - D
  - ◀
  - ▶
- THIS IS A COMPONENT OF AN ASSEMBLY FROM SERIAL OR ENGINE NUMBER UP TO SERIAL OR ENGINE NUMBER FOR GERMANY ONLY INCLUDED IN KIT 3306973M93, FOR DETAIL SEE PAGE, WITH HOLE 5,5MM FOR LYNCH, WITH NUT LOCKNUT LEFT HAND RIGHT HAND

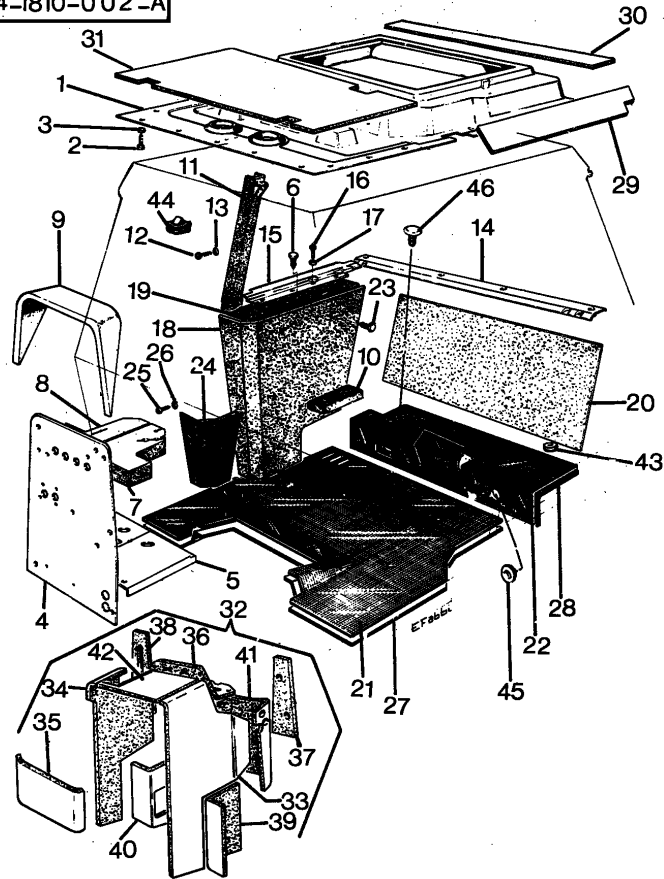
ACCESSORIES AND APPLICATION MISCELLANEOUS



Large 14500

TRACTOR CAB - CAB INSULATION

4-1810-0 02 -A

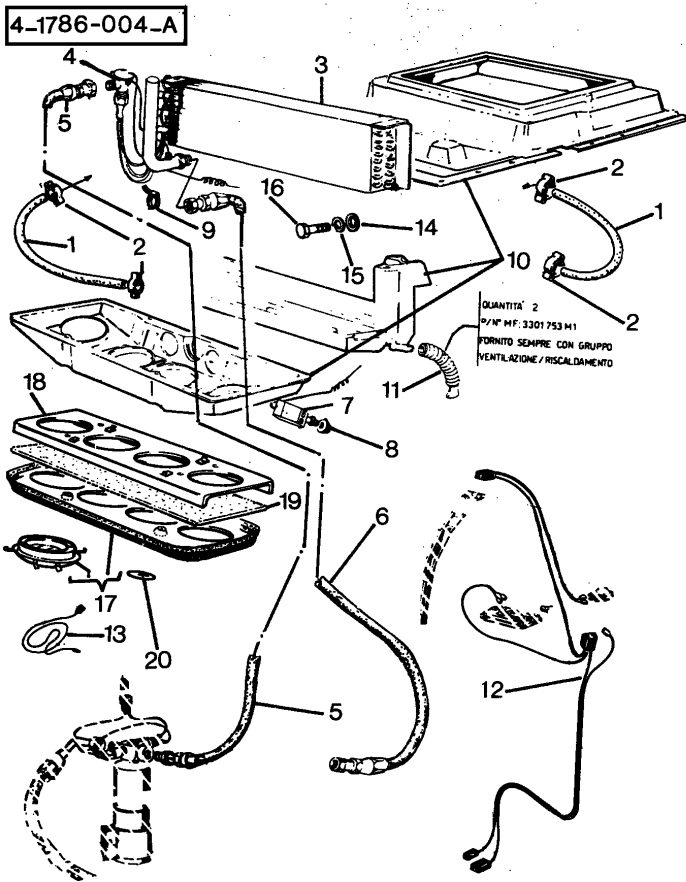


1	1427667M1	●	3385820M1 (1)	1	OVERLAY
		↑	3385821M1 (2)		
		↓	3531752M1 (1)		
			2424U50001		
			2425V08003		
1	3531752M1	↑	2424U50002	1	FACING
		↓	2425V08004		
1	3536390M1		C	1	PANEL
2	392403X1	●	3015126X1 (26)	26	SCREW
2	392403X1	●	3015126X1 (22)	22	SCREW
3	1427000M1		C	26	WASHER
3	1427000M1			22	WASHER
4	1427189M1			1	PANEL
5	1427190M1			1	PANEL
6	1427156M1			14	BUTTON
7	1427191M1	▶		1	PANEL
8	1427192M1	◀		1	PANEL
9	1427193M1	●	N.L.A. (1)	1	PANEL
10	1427194M1			1	PANEL
11	1427001M1	●	3536391M1 (1)	1	FACING
		▼			
11	1427002M1	●	3536392M1 (1)	1	FACING
		▼			
11	3536391M1	▼		1	CLADDING
			C		
11	3536392M1	▲		1	CLADDING
			C		
12	392403X1	●	3015126X1 (12)	12	SCREW
13	1427000M1			12	WASHER
14	1427195M1	●	N.L.A. (1)	1	PANEL

ACCESSORIES AND APPLICATION MISCELLANEOUS

TRACTOR CAB - AIR CONDITIONER

Large 14500

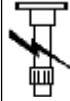


- |    |            |                  |   |                   |
|----|------------|------------------|---|-------------------|
| 1  | 3536385M1  |                  | 2 | PIPE              |
| 2  | 3530490M91 |                  | 4 | TIE               |
| 3  | 1690927M2  |                  | 1 | EVAPORATOR        |
| 4  | 1690928M1  | ● 3551655M91 (1) | 1 | VALVE             |
| 5  |            | ◊ 177/5          | 1 | PIPE              |
| 6  |            | ◊ 177/6          | 1 | PIPE              |
| 7  | 3310669M91 |                  | 1 | THERMOSTAT        |
| 8  | 3310671M1  |                  | 1 | KNOB              |
| 9  | 0180069    | ● 21825199 (2)   | 2 | CLIP              |
| 10 | 3302782M94 | ● N.L.A. (1)     | 1 | HEATER            |
| 11 | 3301753M1  |                  | 2 | HYDR HOSE         |
| 12 | 3536381M91 |                  | 1 | HARNES            |
| 13 | 3536384M91 |                  | 1 | CABLE             |
| 14 | 3301745M1  | ● 391039X1 (6)   | 6 | WASHER            |
| 15 | 1440313X1  | ● 339374X1 (6)   | 6 | WASHER            |
| 16 | 339169X1   | ● 394367X1 (6)   | 6 | NUT BSF           |
| 17 | 3536386M91 |                  | 1 | PANEL             |
| 18 | 3536387M91 |                  | 1 | REINFORCEME<br>NT |
| 19 | 3536388M1  |                  | 1 | FELT              |
| 20 | 3536389M1  |                  | 4 | SPRING            |
- ◊ SEE PAGE - REFERENCE NUMBER

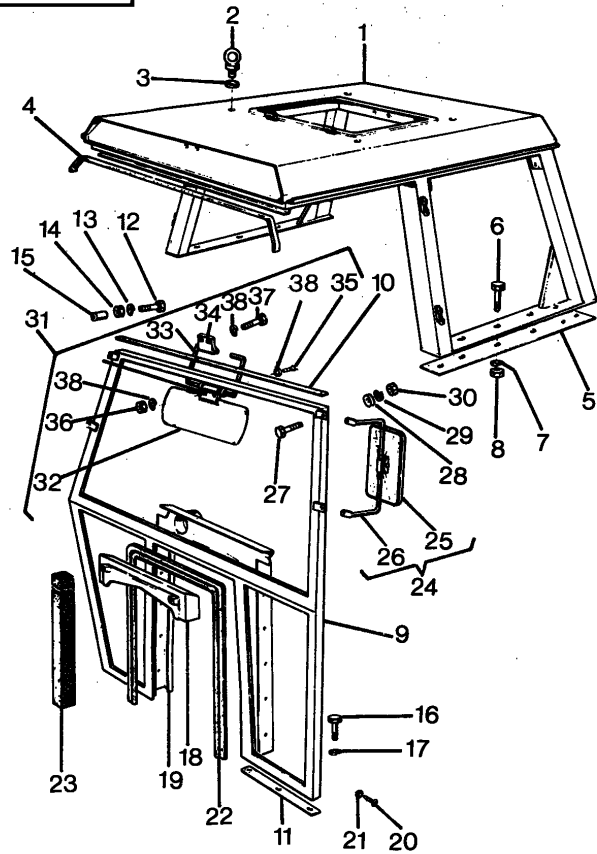
ACCESSORIES AND APPLICATION MISCELLANEOUS

CAB - FRAME

Large 14500



4-AU03-003.A



- |    |            |   |     |                |
|----|------------|---|-----|----------------|
| 13 | 390972X1   |   | 4   | WASHER         |
| 14 | 1440313X1  | ● | 4   | WASHER         |
| 15 | 1427024M1  | ● | 4   | NUT            |
| 16 | 339401X1   |   | 6   | SCREW          |
| 17 | 390734X1   |   | 6   | WASHER         |
| 18 | 1427052M1  |   | 1   | COWL           |
| 19 | 1427053M1  | ● | 1   | COWL           |
| 20 | 392403X1   | ● | 11  | SCREW          |
| 21 | 1427000M1  |   | 11  | WASHER         |
| 22 | 1427054M1  | ● | 1   | FACING         |
| 23 | 1427055M1  |   | 999 | FACING         |
| 24 | 1427058M91 | ● | 1   | MIRROR         |
| 24 | 1427059M91 | ▶ | 1   | MIRROR         |
| 25 | 1427251M91 | ! | 1   | MIRROR         |
| 26 |            | ! | 1   | FRAME          |
|    |            | ▣ |     | REF.N.24       |
| 27 | 339123X1   |   | 4   | SCREW          |
| 28 | 390972X1   |   | 4   | WASHER         |
| 29 | 1440313X1  | ● | 4   | WASHER         |
| 30 | 339169X1   | ● | 4   | NUT BSF        |
| 31 | 1426747M91 | ● | 1   | KIT            |
|    |            |   |     | 1427209M1 (4)  |
|    |            |   |     | 1441494X1 (2)  |
|    |            |   |     | 3301049M91 (1) |
|    |            |   |     | 390971X1 (8)   |
|    |            |   |     | 392415X1 (2)   |
|    |            |   |     | 392774X1 (4)   |

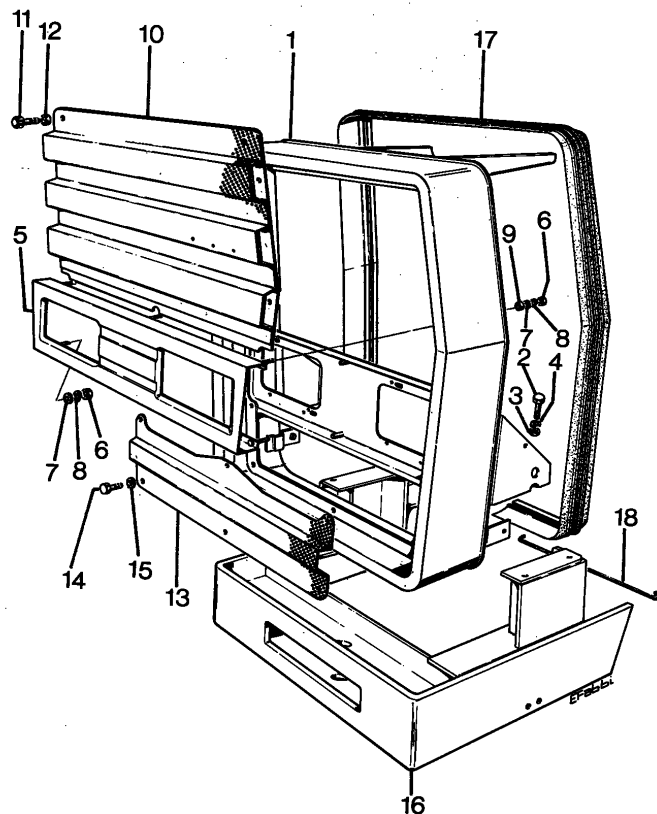
ACCESSORIES AND APPLICATION MISCELLANEOUS

SHEET METAL - GRILLE

Large 14500



4-AR02-020-A

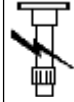


- |    |            |                                   |   |          |
|----|------------|-----------------------------------|---|----------|
| 1  | 1426144M93 |                                   | 1 | CHASSIS  |
| 2  | 339299X1   |                                   | 4 | SCREW    |
| 3  | 390735X1   |                                   | 4 | WASHER   |
| 4  | 1440315X1  |                                   | 4 | WASHER   |
| 5  | 1426151M91 |                                   | 1 | GRILLE   |
| 6  | 390995X1   |                                   | 6 | NUT BSF  |
| 7  | 390469X1   |                                   | 6 | WASHER   |
| 8  | 1440312X1  |                                   | 6 | WASHER   |
| 9  | 392322X1   | ● 390353X1 (6)                    | 2 | SPACER   |
| 10 | 1426152M94 | ▲                                 | 1 | GRILLE   |
| 11 | 1823866M92 | ● 1823817M93 (2)<br>1823819M1 (2) | 2 | SCREW    |
| 12 | 1823819M1  |                                   | 4 | RING     |
| 13 | 1426153M2  | ▼                                 | 1 | GRILLE   |
| 14 | 339721X1   |                                   | 3 | SCREW    |
| 15 | 390469X1   |                                   | 3 | WASHER   |
| 16 | 1425558M94 |                                   | 1 | SUPPORT  |
| 17 | 1425996M2  |                                   | 1 | GASKET   |
| 18 | 1426242M1  |                                   | 1 | FASTENER |

▲ TOP  
▼ LOWER COMPONENT

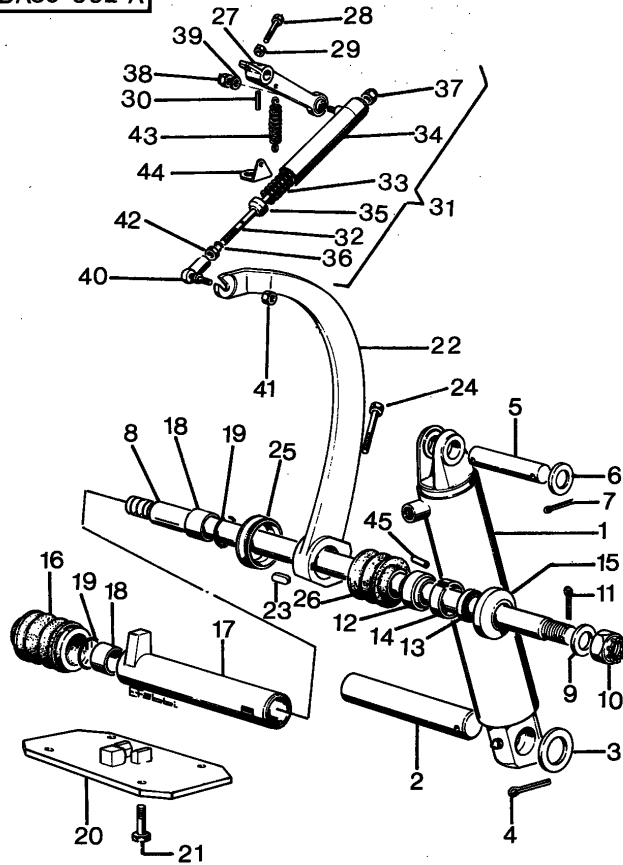
ACCESSORIES AND APPLICATION MISCELLANEOUS

Large 14500



HYDRAULIC CYLINDER- PALLET HANDLER

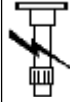
4-DA30-002-A



- |    |                |   |            |
|----|----------------|---|------------|
| 1  | 125/1          | 2 | CYLINDER   |
| 2  | 1425377M1      | 2 | CLEVIS PIN |
| 3  | 1425394M1      | 2 | WASHER     |
| 4  | 391446X1       | 2 | PIN        |
| 5  | 1425378M1      | 2 | CLEVIS PIN |
| 6  | 1425432M1      | 4 | WASHER     |
| 7  | 339039X1       | 4 | PIN        |
| 8  | 1425330M2      | 1 | SHAFT      |
| 9  | 1425334M1      | 2 | WASHER     |
| 10 | 391274X1       | 2 | NUT BSF    |
| 11 | 339040X1       | 2 | PIN        |
| 12 | 392283X1       | 2 | BLOCK      |
| 13 | 392210X1       | 2 | RING       |
| 14 | 1425335M1      | 2 | SPACER     |
|    | 1240061        |   |            |
|    | 2240506        |   |            |
| 14 | 1427441M1      | 2 | BUSH       |
|    | 1240062        |   |            |
|    | 2240507        |   |            |
| 15 | 1425336M1      | 2 | SPACER     |
| 16 | 1425338M1      | 1 | PROTECTOR  |
| 17 | 1426681M91     | 1 | PIPE       |
| 18 | 1425344M1      | 2 | BUSH       |
| 19 | 390898X1       | 2 | RING       |
| 20 | 1425339M92     | 1 | PLATE      |
| 21 | 339139X1       | 4 | SCREW      |
| 22 | 1426682M91     | 1 | LEVER      |
| 23 | 392212X1       | 1 | KEY        |
| 24 | 339475X1       | 1 | BOLT       |
| 25 | 1426683M1      | 1 | GASKET     |
| 26 | 1425347M1      | 1 | PROTECTOR  |
| 27 | 1425440M91     | 1 | LEVER      |
|    | 1425377M2 (2)  |   |            |
|    | 1426682M93 (1) |   |            |
|    | 391927X1 (1)   |   |            |
|    | 1425440M92 (1) |   |            |

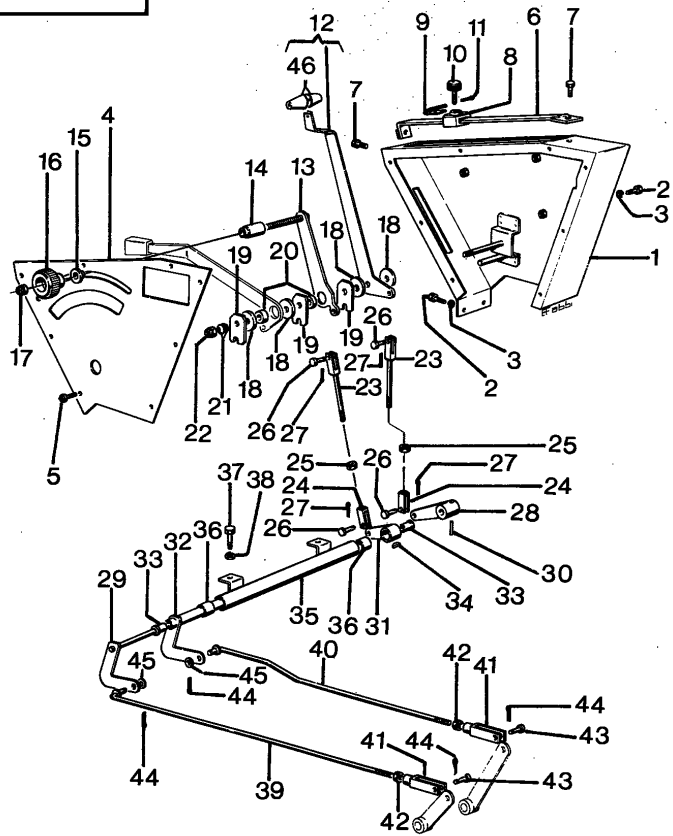
ACCESSORIES AND APPLICATION MISCELLANEOUS

Large 14500



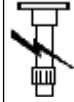
REAR CONTROLS- DRAFT AND POSITION

4-AP13-030-A



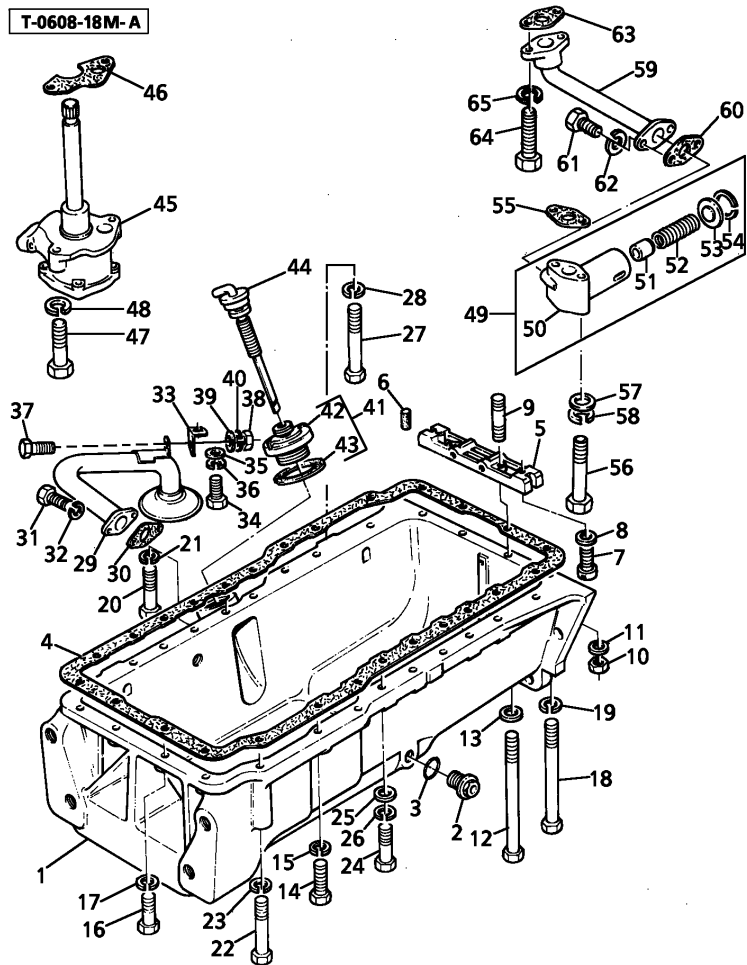
- |    |            |                 |   |         |
|----|------------|-----------------|---|---------|
| 1  | 1425629M91 |                 | 1 | BEARER  |
| 2  | 339230X1   |                 | 5 | SCREW   |
| 3  | 391130X1   | ● 339375X1 (5)  | 5 | WASHER  |
| 4  | 3305919M1  |                 | 1 | PLATE   |
| 5  | 339359X1   | ● 3007934X1 (8) | 8 | SCREW   |
| 6  | 1425631M91 |                 | 1 | BEARER  |
| 7  | 339230X1   |                 | 2 | SCREW   |
| 8  | 1425632M2  |                 | 1 | SLIPPER |
| 9  | 1425633M1  |                 | 1 | SPRING  |
| 10 | 1425634M91 |                 | 1 | SCREW   |
| 11 | 1442956X1  |                 | 1 | PIN     |
| 12 | 3300680M91 |                 | 1 | LEVER   |
| 13 | 1425636M91 |                 | 1 | LEVER   |
| 14 | 1425637M1  |                 | 1 | SPACER  |
| 15 | 1425638M1  |                 | 1 | WASHER  |
| 16 | 1425639M91 |                 | 1 | BUTTON  |
| 17 | 390881X1   |                 | 1 | NUT BSF |
| 18 | 973078M1   | ● 973078M2 (4)  | 4 | DISC    |
| 19 | 1425640M1  |                 | 3 | PLATE   |
| 20 | 1425641M1  |                 | 2 | SPACER  |
| 21 | 1441075X1  |                 | 2 | SPRING  |
| 22 | 390881X1   |                 | 1 | NUT BSF |
| 23 | 1425642M91 |                 | 2 | STEM    |
| 24 | 981782M2   | ● 392463X1 (2)  | 2 | FORK    |
| 25 | 1440085X1  |                 | 2 | NUT BSF |
| 26 | 981783M1   |                 | 4 | PIN     |
| 27 | 1442956X1  |                 | 4 | PIN     |
| 28 | 1425643M91 | ● N.L.A. (1)    | 1 | LEVER   |
| 29 | 1425644M91 |                 | 1 | SHAFT   |

ACCESSORIES AND APPLICATION MISCELLANEOUS



Large 14500

T-0608-18M-A



LUBRICATING OIL SUMP

1	37171956	●	37171954	1	SUMP
2	32186405			1	PLUG
3	2415714			1	O RING
4	36816725	●	36816733 (1)	1	UNIVERSAL
		●	36816707		
5	3627P011	●	3627P042 (1)	1	BRIDGE PIECE
		●	36277825		
		●	41474024		
		●	41474004		
6	32811408	●	N.L.A. (2)	2	UNIVERSAL
7	2172514	●	2176369	2	SCREW
8	0920521			2	WASHER
9	0826287		B	2	STUD
9	2217105		C	2	STUD
10	0576002	●	353916X1 (2)	2	NUT
11	0920053		C	2	WASHER
11	2411152		B	2	WASHER
12	32146306	●	32146311 (2)	2	SCREW
			B		
			C		
12	32146311			2	SCREW
13	0920053			2	WASHER
14	0746261			10	SETSCREW
15	0920053			10	WASHER
16	0096231	●	0746258 (2)	2	SETSCREW
17	0920053			2	WASHER
18	32146306	●	32146311 (2)	2	SCREW
19	0920053			2	WASHER
20	0096238			2	BOLT
21	0920053			2	WASHER
22	0096242			2	BOLT



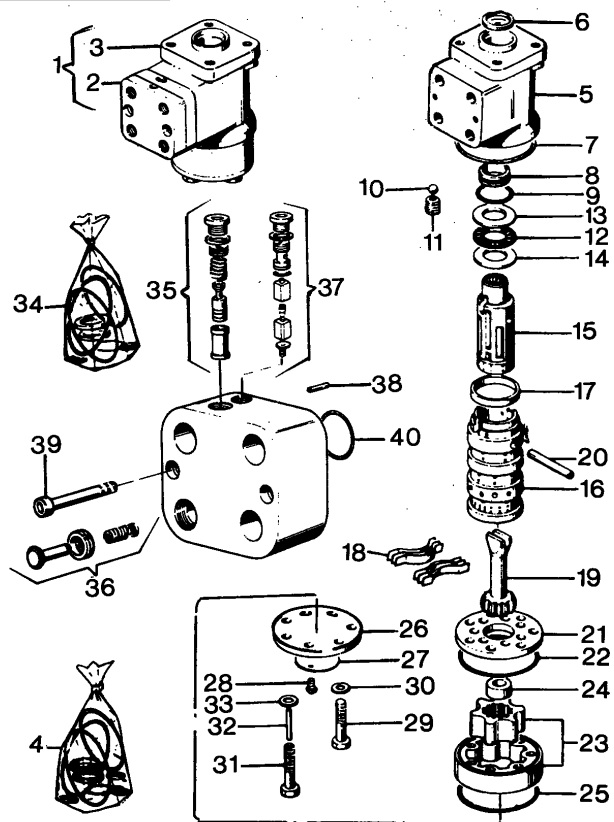
ACCESSORIES AND APPLICATION MISCELLANEOUS

Large 14500



STEERING CONTROL VALVE

4-1310-005-A



1	1426745M91	●	1426746M92 (1)	1	DISTRIBUTOR
		◇	1809696M91 (1)		
		◇	101/14		
			102/1		
2	1426746M92	!	1	1	VALVE
3	1809696M91	!	1	1	DISTRIBUTOR
4	1810640M91	!	2	999	KIT SEAL
			C		
5	1887731M91	●	1809696M91 (1)	1	HOUSING
		!	3		
6	1887719M1	!	3	1	SEAL
			D		
7	1806314M1	!	3	1	SEAL
			D		
8	1887718M1	!	3	1	SEAL
			D		
9	1887717M1	!	3	1	SEAL
			D		
10	1806311M1	!	3	1	BALL
11	1806313M1	!	3	1	SEAT
12	1887721M1	!	3	1	BEARING
13	1887720M1	!	3	1	WASHER
14	1887722M1	!	3	1	RACE
15		!	5	1	VALVE
		▣	REF.N.23		
16		!	5	1	VALVE
		▣	REF.N.23		
17	1806303M1	!	3	1	BUSH
18	1894415M1	!	3	6	SPRING
19	1806416M1	!	3	1	SHAFT
20	1806310M1	!	3	1	PIN
21	1806319M1	!	3	1	PLATE
22	1806315M1	!	3	1	SEAL
			D		

CLICK HERE TO **DOWNLOAD** THE COMPLETE MANUAL

- Thank you very much for reading the preview of the manual.
- You can download the complete manual from: [www.heydownloads.com](http://www.heydownloads.com) by clicking the link below

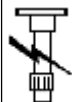


- Please note: If there is no response to CLICKING the link, please download this PDF first and then click on it.

CLICK HERE TO **DOWNLOAD** THE COMPLETE MANUAL

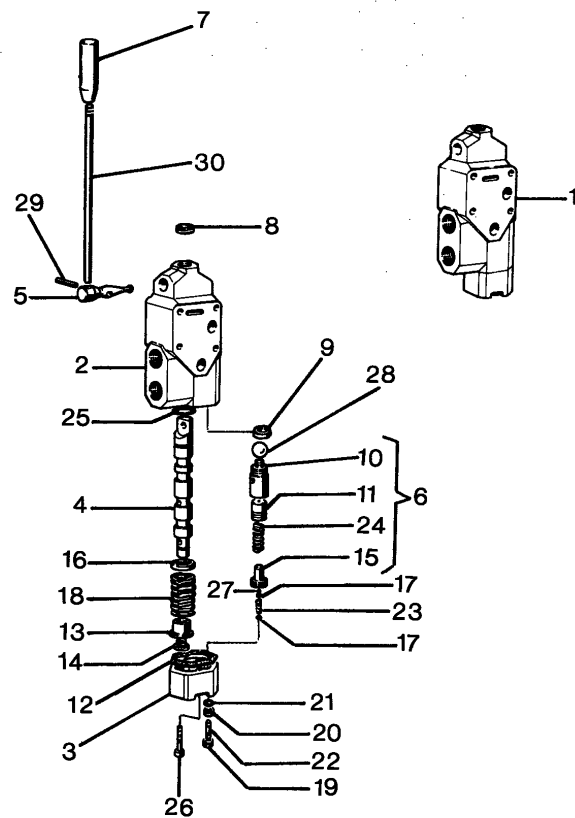
ACCESSORIES AND APPLICATION MISCELLANEOUS

Large 14500



AUXILIARY DISTRIBUTOR

4-AQ25-030-A

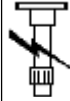


17	1426570M1	!	1	2 SEAT
18	1426571M1	●	N.L.A. (1)	1 SPRING
		!	1	
19	3005908X1	!	1	1 NUT
20	392309X1	!	1	1 NUT BSF
21	3005043X1	●	391376X1 (2)	2 GASKET
		!	1	
22	1440265X1	!	1	1 SCREW
23	1426572M1	●	N.L.A. (1)	1 SPRING
		!	1	
24	1426573M1	●	N.L.A. (1)	1 SPRING
		!	6	
25	851134X1	●	851134M1 (1)	1 O RING
		!	1	
26	391136X1	!	1	2 SCREW
27	16495X	!	1	1 BALL
28	979449M1	!	1	1 BALL
29	1426574M1	●	391725X1 (1)	1 CENTRALISER
30	1426560M1	◄	380MM.	1 LEVER
30	3302429M1	●	N.L.A. (1)	1 STEM
		◄	430MM.	

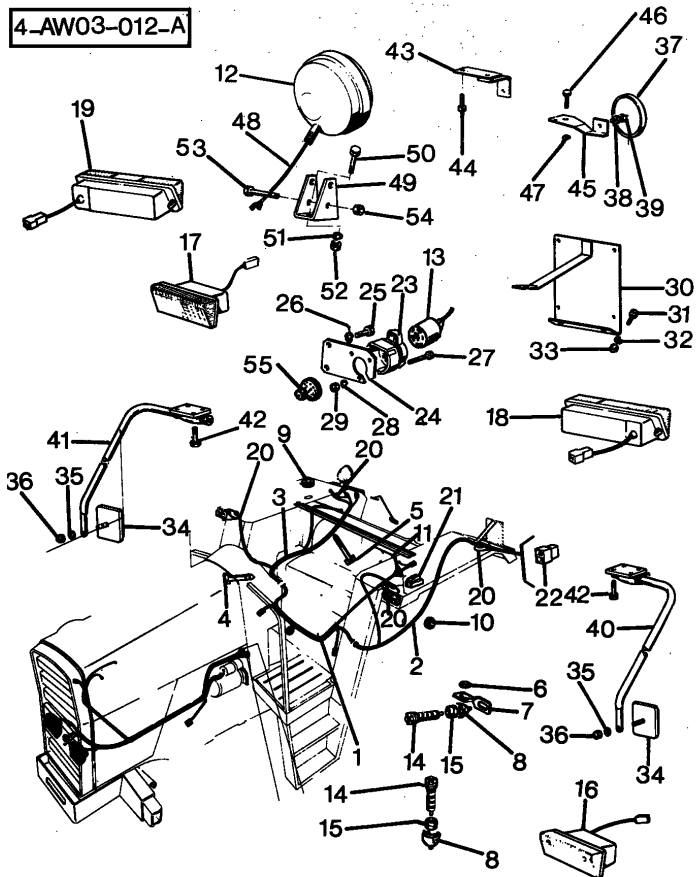
- ! THIS IS A COMPONENT OF AN ASSEMBLY
- ➔ UP TO SERIAL OR ENGINE NUMBER
- 👁 SEE PAGE - REFERENCE NUMBER
- 🚫 NOT SERVICED, ORDER
- ⚙ 4 WHEEL DRIVE
- ⚙ 2 WHEEL DRIVE
- ◄ LENGTH

ACCESSORIES AND APPLICATION MISCELLANEOUS

Large 14500



LIGHTING EQUIPMENT - REAR



31	339124X1	⊕		2	SCREW
31	339124X1			3	SCREW
32	1440313X1	●	339374X1 (2)	2	WASHER
		⊕			
32	1440313X1	●	339374X1 (3)	3	WASHER
32	390468X1	⊕		4	WASHER
33	339111X1	●	1443615X1 (4)	4	NUT BSF
		⊕			
33	339169X1	●	394367X1 (2)	2	NUT BSF
		⊕			
33	339169X1	●	394367X1 (3)	3	NUT
34	1432882M92			2	REFLECTOR
35	1440270X1	!	34	1	WASHER
36	339111X1	●	1443615X1 (1)	1	NUT
		!	34		
37	1426901M92			4	REFLECTOR
38	390995X1	!	37	1	NUT BSF
39	339381X1	!	37	1	LOCK WASHER
40	1425856M91	●	N.L.A. (1)	1	BEARER
		▲			
41	1425857M91	●	N.L.A. (1)	1	BEARER
		▼			
42	3004566X1	●	3001271X1 (6)	6	SCREW
43	3300048M1	●	N.L.A. (2)	2	BEARER
		▲			
44	339560X1			4	SCREW
45	3300820M1	●	3300820M2 (2)	2	SUPPORT
		▼			
46	391074X1			4	SCREW
47	391130X1	●	339375X1 (4)	4	WASHER

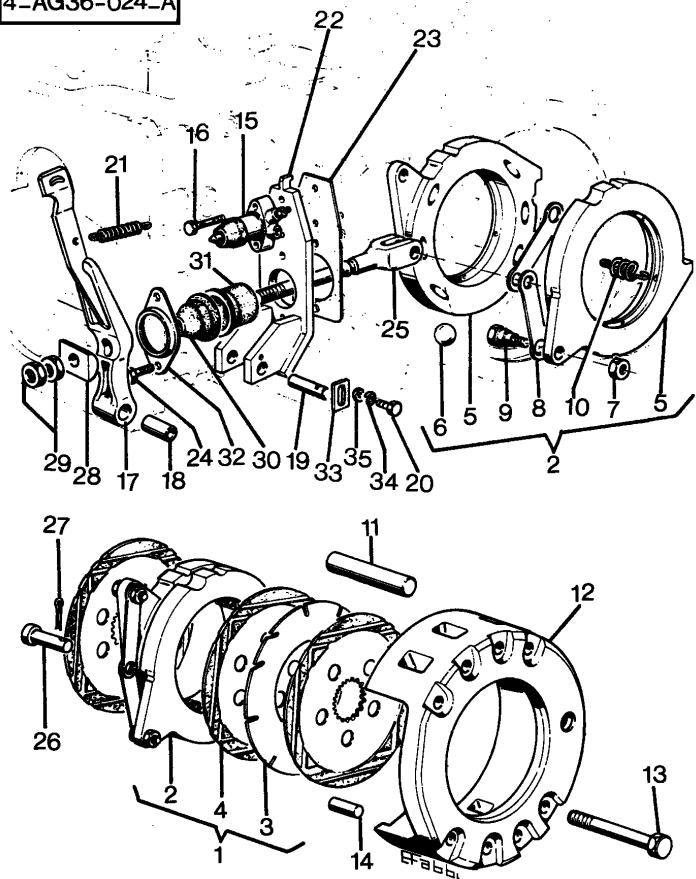
ACCESSORIES AND APPLICATION MISCELLANEOUS

Large 14500



BRAKES AND CONTROLS

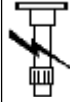
4-AG36-024-A



18	1432778M1	!	17	2	BUSH
19	1425293M91	●	0920053 (2)	2	CLEVIS PIN
		↑	3300126M1 (2)		
		↓	339585X1 (2)		
			390379X1 (2)		
			390972X1 (2)		
			3300066M2 (2)		
			1240066		
			2240662		
19	3300066M1	●	3300066M2 (2)	2	PIN
		↑	1240067		
		↓	2240663		
20	390379X1			2	BOLT
21	1425298M1			2	SPRING
22	1425295M91	▶		1	BEARER
22	1425296M91	◀		1	BEARER
23	1425297M1	●	3536801M1 (2)	2	GASKET
24	339761X1			4	SCREW
25	1425289M2			2	CLEVIS
26	1425291M1	●	N.L.A. (2)	2	CLEVIS PIN
27	391403X1			2	PIN
28	1425290M1			2	PLATE
29	339070X1			4	NUT
30	1425294M1			2	COWL
31	1860959M1			2	SEAL
32	1425299M1			2	COVER
33	3300126M1			2	PLATE
34	339585X1			2	WASHER
35	390972X1			2	WASHER

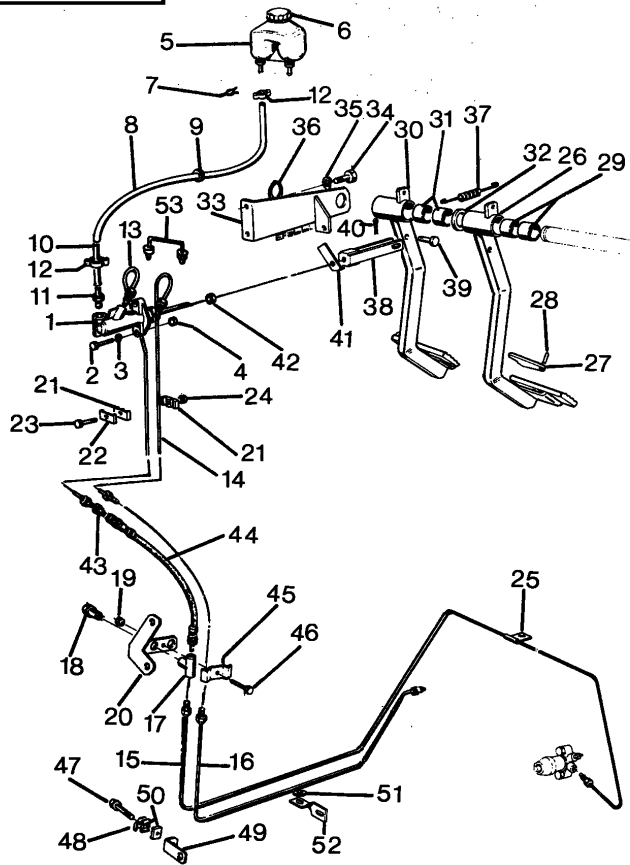
ACCESSORIES AND APPLICATION MISCELLANEOUS

Large 14500



BRAKES- PEDALS AND LINKAGE

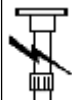
4-AG41-006-A



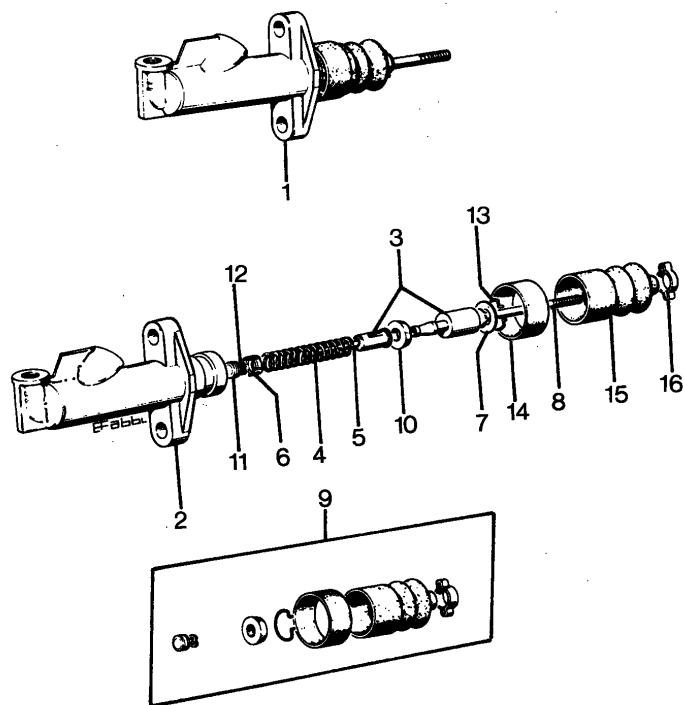
- |    |            |                |   |         |
|----|------------|----------------|---|---------|
| 45 | 1427433M1  |                | 1 | BEARER  |
| 46 | 339262X1   |                | 1 | BOLT    |
| 47 | 391883X1   |                | 1 | SCREW   |
| 48 | 36511123   | ● 733869M1 (1) | 1 | PLATE   |
| 49 | 3300755M91 | ● N.L.A. (1)   | 1 | SUPPORT |
| 50 | 36844116   | ● 733868M1 (2) | 2 | BRIDLE  |
| 51 | 390734X1   |                | 1 | WASHER  |
| 52 | 3300429M1  |                | 1 | PLATE   |
| 53 | 3305889M91 | A              | 1 | LEAD    |
- ! THIS IS A COMPONENT OF AN ASSEMBLY
- ➔ FROM SERIAL OR ENGINE NUMBER
- ➡ UP TO SERIAL OR ENGINE NUMBER
- ◊ SEE PAGE - REFERENCE NUMBER
- A WITH MECHANICAL DIFFERENTIAL LOCK
- ◀ LEFT HAND
- ▶ RIGHT HAND

ACCESSORIES AND APPLICATION MISCELLANEOUS

Large 14500



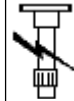
4-AG18-008-A



BRAKES- MASTER CYLINDER

1	1874957M91	◇	73/1	1	CYLINDER
			◇	74/1	
2		!	1	1	BODY
3		▣	REF.N.1	1	VALVE
		!	1		
4		▣	REF.N.1	1	SPRING
		!	1		
5		▣	REF.N.1	1	STEM
		!	1		
6		▣	REF.N.1	1	PISTON
		!	1		
7		▣	REF.N.1	1	LOCK WASHER
		!	1		
8		▣	REF.N.1	1	ROD
		!	1		
9	1810596M91			999	KIT SEAL
10	1890242M1	!	9	1	GASKET
11	1890243M1	●	N.L.A. (1)	1	GASKET
		!	9		
12		!	9	1	KIT
		▣	REF.N.9		
13	1890245M1	!	9	1	CLIP
14		!	9	1	KIT
		▣	REF.N.9		
15		!	9	1	KIT
		▣	REF.N.9		
16	1852964M1	●	N.L.A. (1)	1	SLEEVE
		!	9		
!	THIS IS A COMPONENT OF AN ASSEMBLY				
◇	SEE PAGE - REFERENCE NUMBER				
▣	NOT SERVICED, ORDER				

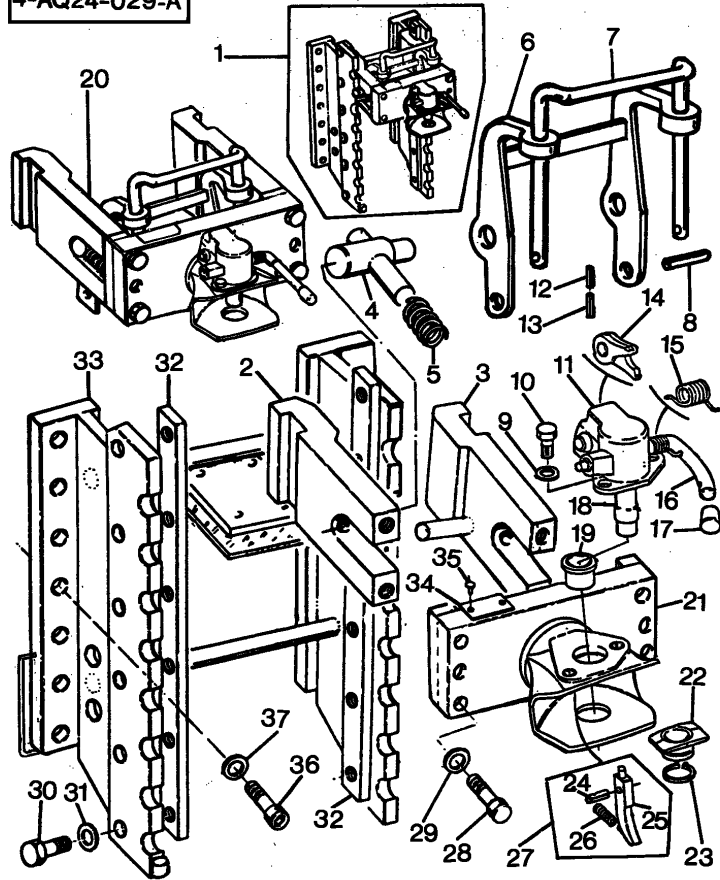
ACCESSORIES AND APPLICATION MISCELLANEOUS



Large 14500

REAR HOOK- ADJUSTABLE

4-AQ24-029-A

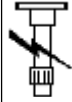


26	3103105M1	●	3103105M3 (1)	1	SPRING
		!	24		
27	3002158X1	!	24	1	PIN
28	3001968X1	!	3	2	SCREW
28	3001968X1	!	20	2	SCREW
29	3004804X1	●	390975X1 (2)	2	WASHER
		!	20		
29	3004804X1	●	390975X1 (2)	2	WASHER
		!	3		
30	3104861M91	!	1	1	FRAME
31	3105144M1	!	30	14	SCREW
32	1440267X1	!	30	14	WASHER
33	3105931M1	!	30	2	SLAT
34		!	11	1	NOTE PLATE
			A		
35	1441574X1	!	34	3	PIN
36	3306129M2			8	SCREW
37	391414X1			8	WASHER
38	1425538M1	●	3552741M1 (2)	2	SCREW
39	391414X1			2	WASHER
!					THIS IS A COMPONENT OF AN ASSEMBLY
A					NOT SUPPLIED
▲					LEFT HAND
▼					RIGHT HAND

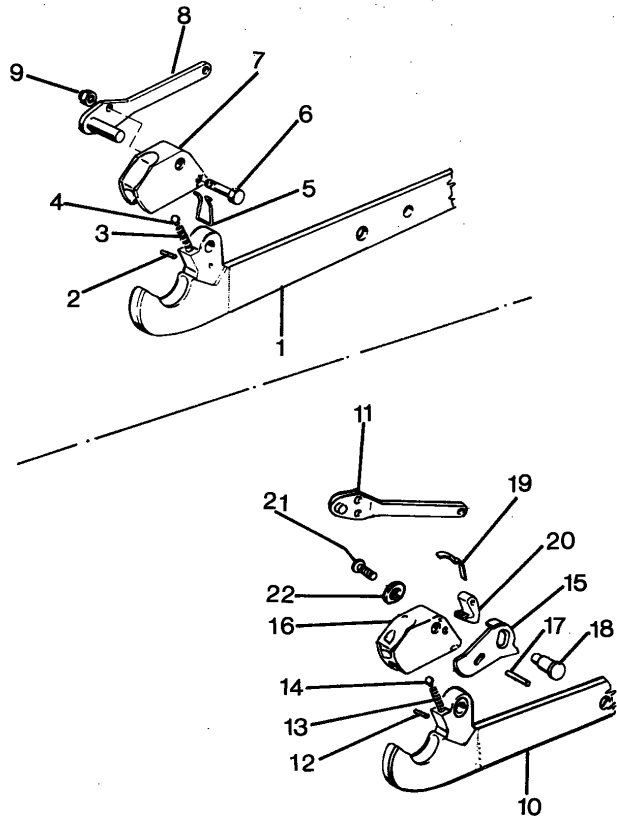
ACCESSORIES AND APPLICATION MISCELLANEOUS

HOSE COUPLINGS AND ADAPTORS

Large 14500

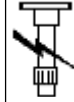


4\_9979-002-A



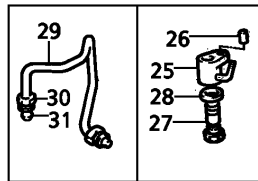
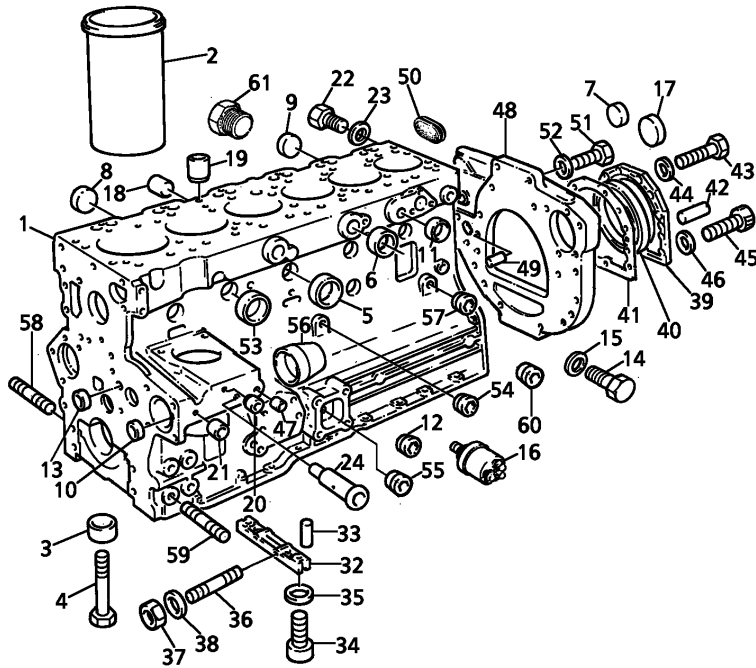
1	2424P23015	2	TIE ROD	
	2425P23015			
	143/2			
2	974303M1	1	PIN	
3	3302712M1	3311387M1 (2)	2	SPRING
		1		
4	3302752M1	1	2	GUIDE
5	3301698M1	1	2	SPRING
6	339019X1	3009497X1 (2)	2	BOLT
		1		
7	3302708M1	1	2	TRAP
8	3302711M91	N.L.A. (2)	2	LEVER
		1		
9	3302704M1	1	2	NUT
10	2424P23016	2	TIE ROD	
	2425P23016			
	143/2			
11	3311668M1	10	1	LEVER
11	3311669M1	10	1	LEVER
12	390401X1	393393X1 (2)	2	DOWEL
		10		
13	3311387M1	10	2	SPRING
14	3302752M1	10	2	GUIDE
15	3311676M1	10	1	TINE
15	3311677M1	10	1	TINE
16	3311670M1	10	1	CAM
16	3311671M1	10	1	CAM
17	391725X1	10	2	DOWEL

ACCESSORIES AND APPLICATION MISCELLANEOUS



Large 14500

T-0560-17M-A

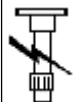


CYLINDER BLOCK

1	ZZ 50008	● ZZ50233 (1)	1	KIT
		● ZZ50043		
2	31358393	! 1	6	LINER
		A		
2	31358394	B	999	LINER
2	31358398	● 31358403	999	LINER
		◆ (+ 0.010"		
		▲ (+ 0.25MM		
3	33142111	! 1	14	THIMBLE
4	32166329	! 1	14	BOLT
5	32416116	! 1	5	PLUG
		● 32417155		
		● 32416116		
6	0650710	! 1	4	PLUG
7	32418117	! 1	2	PLUG
		● 0650618		
8	32418117	! 1	5	PLUG
		● 0650618		
9	0650577	● 32416118 (6)	6	PLUG
		! 1		
10	32417115	! 1	1	PLUG
11	0650692	! 1	1	PLUG
12	2431A054	● 0650586 (1)	1	PLUG
		! 1		
		● 0650586		
13	0650566	! 1	2	PLUG
14	0650582	! 1	1	PLUG
		C		
15	0920130	! 1	1	WASHER
		C		
16	2848062	● 4172E054 (1)	1	SWITCH
		D		
17	32416105	● 32416119 (1)	1	PLUG

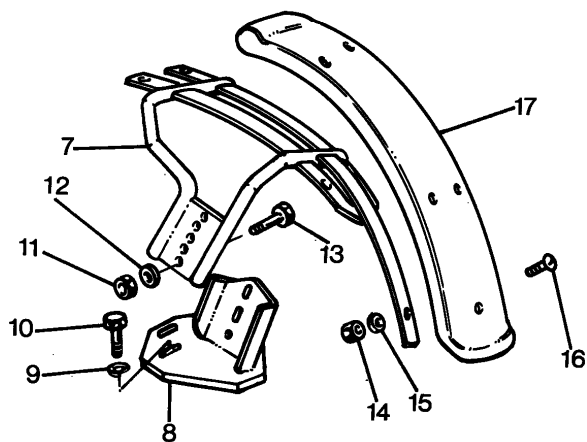
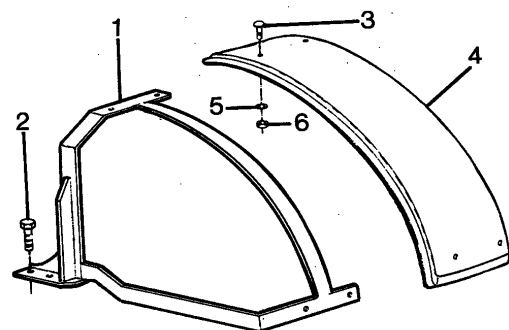
ACCESSORIES AND APPLICATION MISCELLANEOUS

Large 14500



FRONT FENDERS

4-AS18-014 -A



- |    |           |   |              |    |         |
|----|-----------|---|--------------|----|---------|
| 11 | 339054X1  | ● | 392294X1 (4) | 4  | NUT BSF |
| 12 | 390735X1  | ⇨ | 224E00050    | 4  | WASHER  |
| 13 | 391375X1  | ⇨ | 224E00050    | 4  | SCREW   |
| 14 | 392310X1  | ⇨ | 224E00050    | 12 | NUT BSF |
| 15 | 390734X1  | ⇨ | 224E00050    | 12 | WASHER  |
| 16 | 3001197X1 | ⇨ | 224E00050    | 12 | SCREW   |
| 17 | 3305981M2 | ⇨ | 224E00050    | 2  | FENDER  |

⇨ FROM SERIAL OR ENGINE NUMBER

⇩ UP TO SERIAL OR ENGINE NUMBER

◀ LEFT HAND

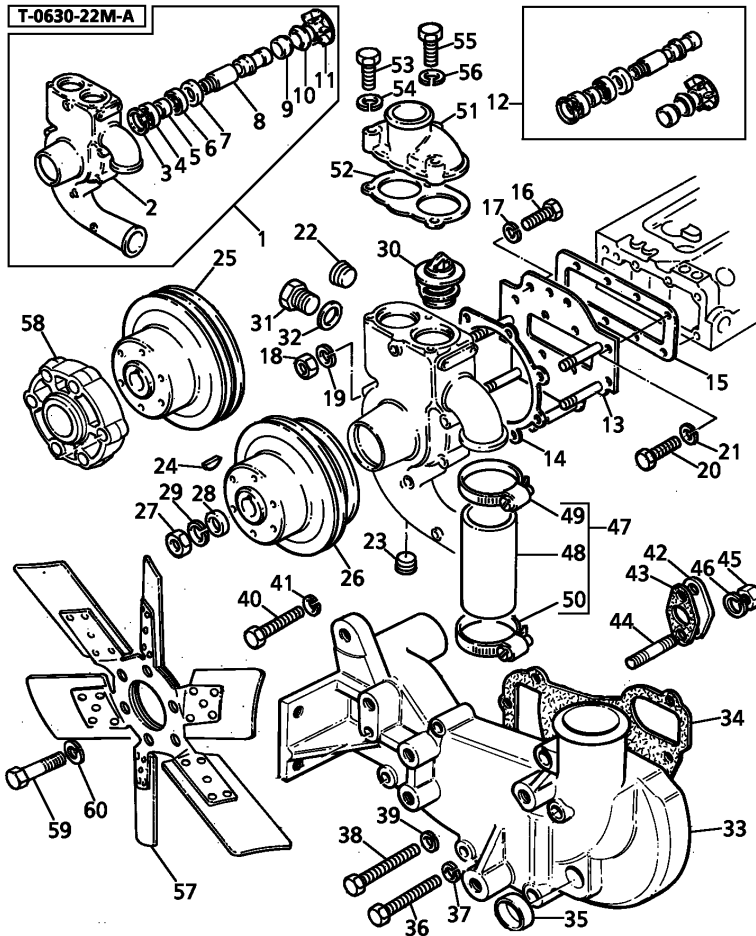
▶ RIGHT HAND

ACCESSORIES AND APPLICATION MISCELLANEOUS

Large 14500



WATER PUMP, THERMOSTAT AND HEAT EXCHANGER



1	41313027	● U5MW0133 (1)	1 PUMP
2		! 1	1 BODY
		▣ REF.1	
3	2721A530	! 1	1 CIRCLIP
		A	
4		! 1	1 BEARING
		▣ REF.12	
5		! 1	1 SPACER
		▣ REF.12	
6		! 1	1 BEARING
		▣ REF.12	
7	33814115	● N.L.A. (1)	1 SEAL
		B	
8		! 1	1 SHAFT
		▣ REF.12	
9	2415213	! 1	1 SEAL
		A	
10	2417204	● N.L.A. (1)	1 SEAL
		! 1	
		A	
11		! 1	1 IMPELLER
		▣ REF.12	
12	U7LW0015	● N.L.A. (999)	999 KIT,REPAIR
13	38611406		1 PLATE
14	36867173	● 36867213 (1)	1 UNIVERSAL
15	3684R003	● 3684R005 (1)	1 UNIVERSAL
16	0746254	● 353517X1 (2)	2 SETSCREW
17	0920053		2 WASHER
18	0576002	● 353916X1 (5)	5 NUT

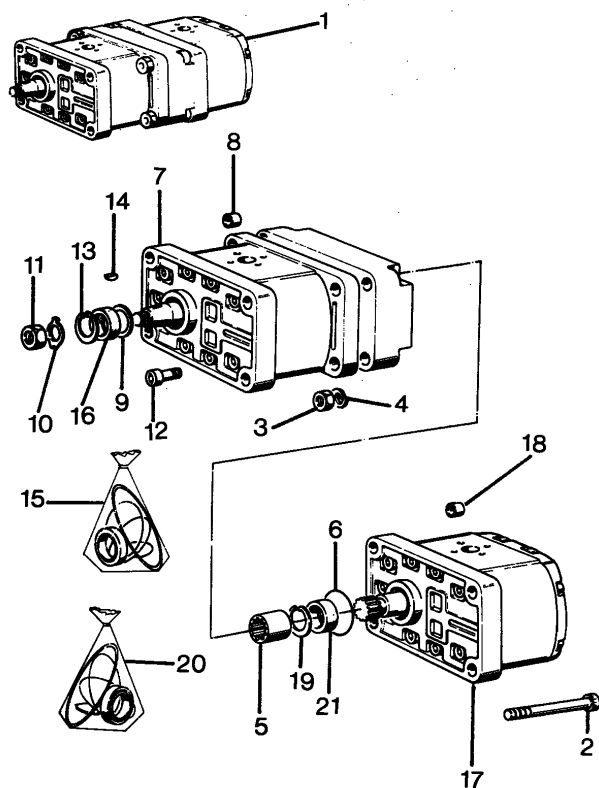
ACCESSORIES AND APPLICATION MISCELLANEOUS

Large 14500



HYDRAULIC PUMP

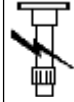
4-1390-010 -A



1	3300465M91	●	1441531X1 (4)	1	HIDRAULIC
		◊	3019918X1 (1)		
			339374X1 (4)		
			3530247M91 (1)		
			3540438M92 (1)		
			60/1		
2	1441763X1	!	1	4	SCREW
3	339169X1	●	394367X1 (4)	4	NUT BSF
		!	1		
4	1440313X1	●	339374X1 (4)	4	WASHER
		!	1		
5	3302050M1	!	1	1	SLEEVE
6	1443511X1	!	1	2	RING
7	3301993M91	●	N.L.S. (1)	1	HIDRAULIC
		!	1		
8	3302051M1	!	7	8	DOWEL
9	3302052M1	●	N.L.A. (1)	1	RING
		!	7		
10	3302053M1	!	7	1	WASHER
11	1442576X1	!	7	1	NUT BSF
12	390796X1	!	7	16	SCREW
13	339361X1	!	7	1	CIRCLIP
14	1440360X1	!	7	1	KEY DOOR
15	1493859M91	●	1421318M1 (999)	999	KIT SEAL
		!	3540159M91 (999)		
			7		
16	1421318M1	!	15	1	SEAL
17	3301994M91	●	3540440M91 (1)	1	HIDRAULIC
		!	1		
18	3302051M1	!	17	8	DOWEL
19	339361X1	!	17	1	CIRCLIP
20	1493867M91	●	3540159M91 (999)	999	KIT SEAL
		!	17		
21	1429586M1	!	20	1	RING

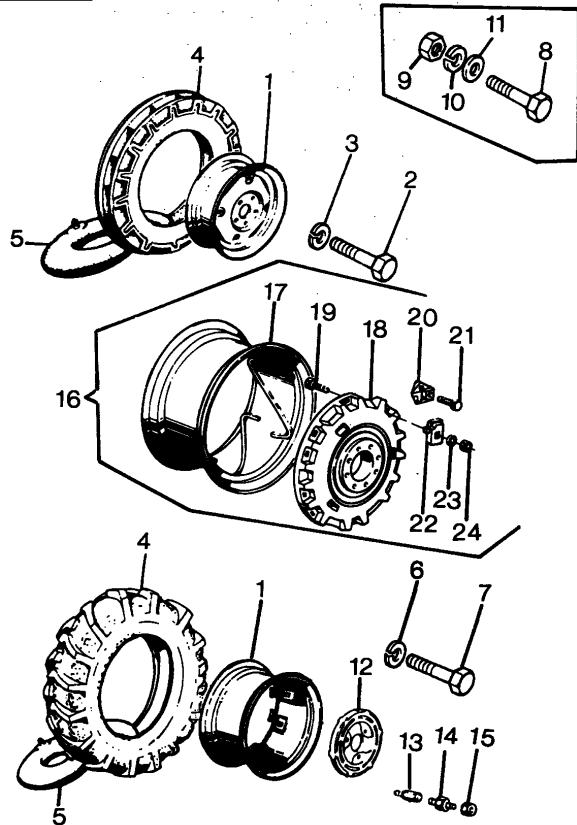
! THIS IS A COMPONENT OF AN ASSEMBLY  
 ◊ SEE PAGE - REFERENCE NUMBER

ACCESSORIES AND APPLICATION MISCELLANEOUS



Large 14500

4-AL01-030-A



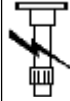
FRONT WHEELS

2	392340X1	II		12	SCREW
3	1440317X1	II		12	WASHER
4	1425315M1	II		2	TYRE
			A		
			11.00-16 8PR		
4	1434765M1	● II	3535119M1 (2)	2	TYRE
			B		
			12.4/11-28 6PR		
4	1434773M1	● II	3535109M1 (2)	2	TYRE
			D		
			13.6/12-28 6PR		
4	3304240M1	● II	3535119M1 (2)	2	TYRE
			A		
			C		
			12.4/11-28 8PR		
4	3307479M1	II		2	TYRE
			L		
			16.9 R24 6PR		
4	3536566M1	II		2	TYRE
			I		
			16.9/14-28 6PR		
4	975228M1	● II	3535101M1 (2)	2	TYRE AND TUBE
			C		
			14.9/13-28 6PR		
5	1425316M91	II		2	CHAMBER
			A		
5	1434774M91	II		2	CHAMBER
			D		
5	1824313M91	II		2	CHAMBER
			I		

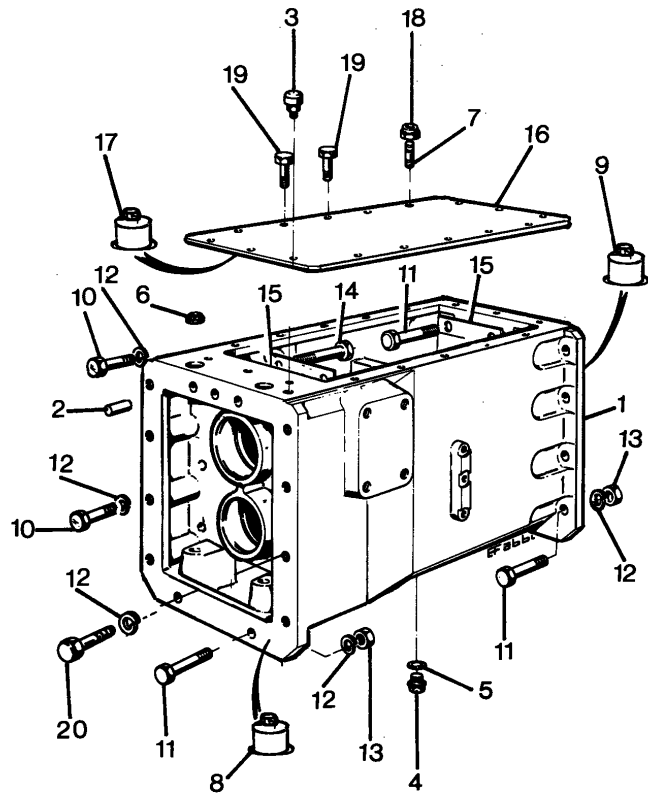
ACCESSORIES AND APPLICATION MISCELLANEOUS

TRANSFER GEAR BOX

Large 14500



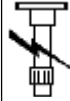
4\_1960-002\_A



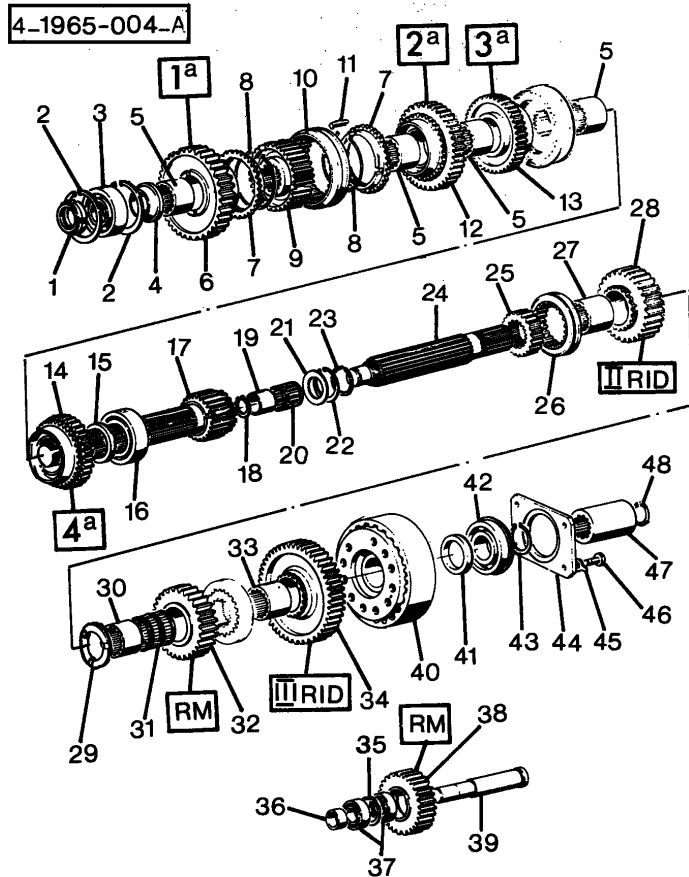
1	1425195M5		1	HOUSING
2	392125X1		4	DOWEL
3	3303486M91	→	1	BREATHER
		→		
3	3303486M91	→	1	BREATHER
		→		
3	392735X1	→	1	PLUG
		→		
3	392735X1	→	1	PLUG
		→		
4	973172M91		1	PLUG
5	1440784X1		1	GASKET
6	3009856X1		2	SEAL
7	1440026X1	●	11	STUD
8	3308788M1		999	LOCTITE
9	3308788M1		999	LOCTITE
10	391930X1	L	4	BOLT
10	391930X1	→	2	BOLT
		A		
11	3002877X1		10	SCREW
12	391414X1		20	WASHER
13	1440202X1		8	NUT BSF
14	3307425M1		2	SCREW
15	1425103M1		2	PLATE
16	1425198M3		1	COVER
17	3536801M1		999	LOCTITE
18	1425854M1		11	NUT
19	391375X1		2	SCREW
20	391334X1	L	8	SCREW
20	391334X1	→	10	SCREW
		A		

ACCESSORIES AND APPLICATION MISCELLANEOUS

Large 14500



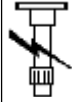
TRANSFER GEAR BOX - GEARS



1	1425102M1		1	NUT	
2	390613X1		2	CIRCLIP	
3	1440546X1		1	BEARING BALL	
4	1425134M1		1	WASHER	
5	1425130M2		4	BUSH	
6	1425126M1	L	1	PINION	
6	1425127M1	B	1	PINION	
		L			
7	981899M1		4	RING	
8	981917M1		4	SPRING	
9	1425131M2	●	3305176M1 (2)	2	HUB
		⊖	2241528		
9	1425131M2	●	3305176M1 (2)	2	HUB
		⊖	1240278		
9	3305176M1	⊖	1240279	2	HUB
9	3305176M1	⊖	2241529	2	HUB
10	1425132M2	●	3305177M1 (2)	2	SYNCHRO GEAR
		⊖	1240278		
		⊖	2241528		
10	3305177M1	⊖	12400013	2	SYNCHRO GEAR
		⊖	22400217		
		B			
10	3305177M1	⊖	1240279	2	SYNCHRO GEAR
		⊖	2241529		
10	3305177M1	⊖	1240307	2	SYNCHRO GEAR
		⊖	2241704		
10	3305177M1	⊖	224E00049	2	RING
		⊖			
		B			
10	3308805M1	⊖	224E00050	2	RING
		⊖			
		B			

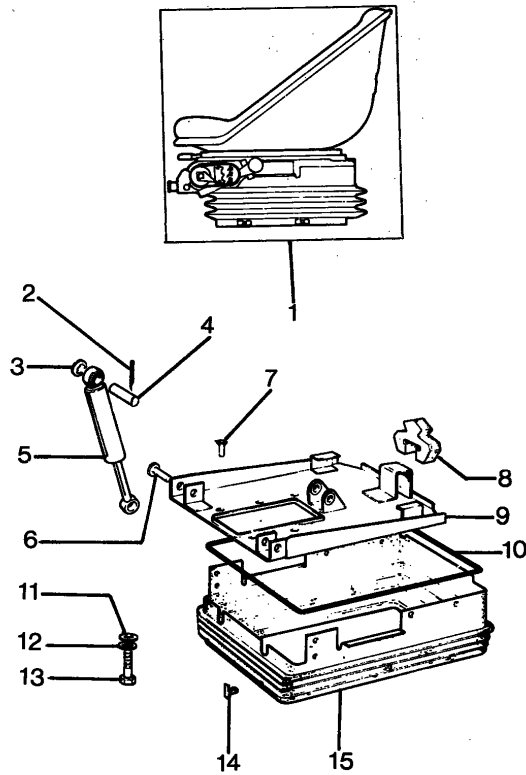
ACCESSORIES AND APPLICATION MISCELLANEOUS

Large 14500



SEAT- BOSTROM

4-AV05-006-A



1	⊕ 157/1	1 SEAT
	⊕ 158/1	
2	! 1	2 PIN
3	! 1	2 CIRCLIP
4	! 1	2 PIN
5	! 1	1 DAMPER
6	● N.L.A. (4)	4 PIN
	! 1	
7	! 1	4 RIVET
8	! 1	1 BUMPER
9	● N.L.S. (1)	1 PLATE
	! 1	
10	! 1	1 CHASSIS
11		2 WASHER
12	● 339374X1 (4)	4 WASHER
13		4 SCREW
14	! 1	16 SPRING
15	● N.L.A. (1)	1 PROTECTOR
	! 1	

! THIS IS A COMPONENT OF AN ASSEMBLY  
 ⊕ SEE PAGE - REFERENCE NUMBER

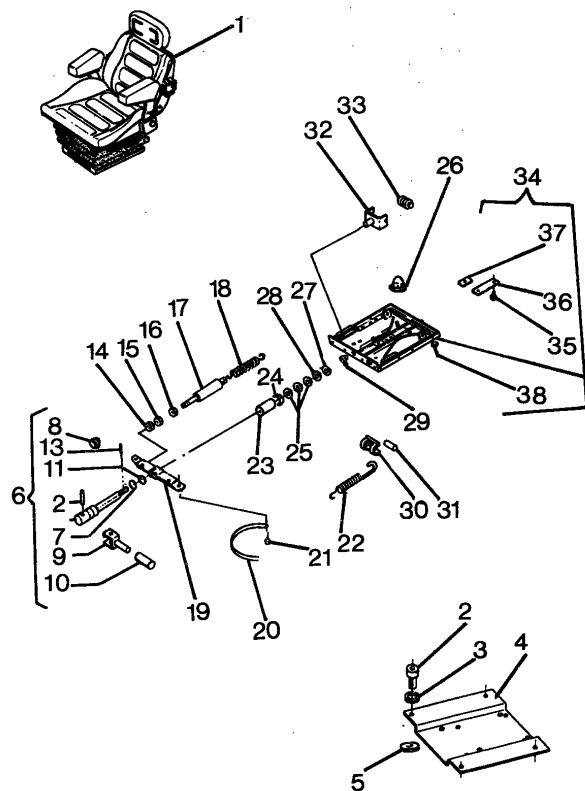
ACCESSORIES AND APPLICATION MISCELLANEOUS

SEAT- GRAMMER

Large 14500



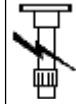
4-AV01-051 -A



- |    |            |   |    |   |         |
|----|------------|---|----|---|---------|
| 34 | 3101458M91 | ! | 1  | 1 | SUPPORT |
| 35 | 339083X1   | ! | 34 | 2 | RIVET   |
| 36 | 1719919M1  | ! | 34 | 1 | BAR     |
| 37 | 1719917M1  | ! | 34 | 1 | PLATE   |
| 38 | 390972X1   | ! | 34 | 4 | WASHER  |

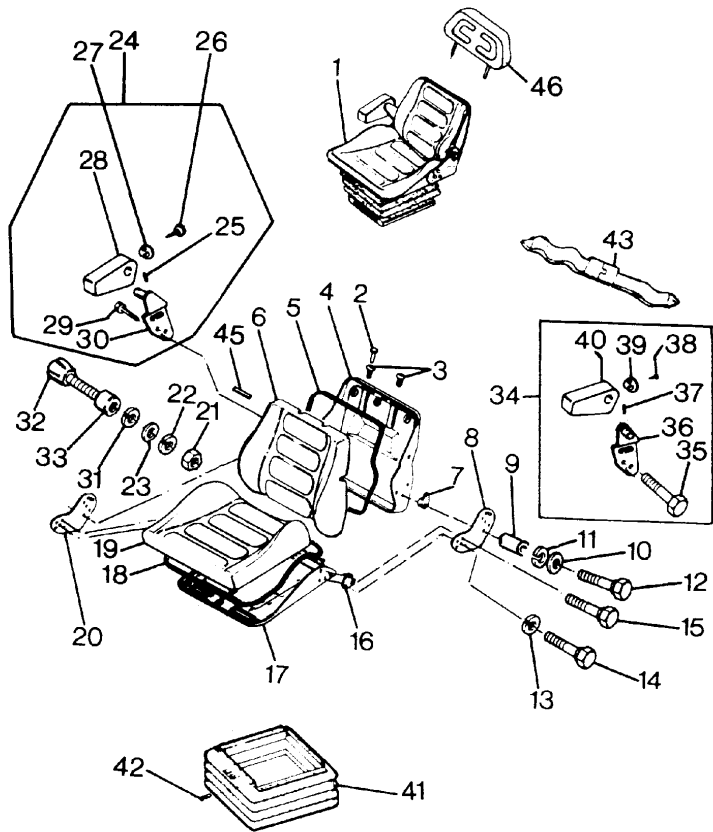
! THIS IS A COMPONENT OF AN ASSEMBLY  
 <img alt="eye icon" data-bbox="455 405 470 420"/> SEE PAGE - REFERENCE NUMBER

ACCESSORIES AND APPLICATION MISCELLANEOUS



Large 14500

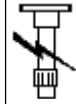
4-AV01-039-B



SEAT- GRAMMER

- |    |            |   |                |   |             |
|----|------------|---|----------------|---|-------------|
| 1  | 3302385M92 | ● | 339124X1 (4)   | 1 | CUSHION     |
|    |            | ◇ | 3546859M91 (1) |   |             |
|    |            | ◇ | 3549755M91 (4) |   |             |
|    |            |   | 390972X1 (1)   |   |             |
|    |            |   | 165/1          |   |             |
|    |            |   | 166/1          |   |             |
|    |            |   | A              |   |             |
| 1  | 3302385M92 | ● | 339124X1 (4)   | 1 | CUSHION     |
|    |            | ● | 3546859M91 (1) |   |             |
|    |            | ◇ | 3549755M91 (4) |   |             |
|    |            | ◇ | 390972X1 (1)   |   |             |
|    |            |   | 3300118M91     |   |             |
|    |            |   | 163/1          |   |             |
|    |            |   | 164/1          |   |             |
|    |            |   | A              |   |             |
| 1  | 3543678M91 | ● | 339124X1 (4)   | 1 | SEAT        |
|    |            |   | 3546435M91 (1) |   |             |
|    |            |   | 3546859M91 (1) |   |             |
|    |            |   | 390972X1 (4)   |   |             |
|    |            |   | A              |   |             |
| 2  | 3101653M1  | ! | 1              | 2 | CAP         |
| 3  | 3101494M1  | ! | 1              | 2 | BUSH        |
| 4  | 3101989M1  | ! | 1              | 1 | FRAME       |
| 5  | 3101465M1  | ! | 1              | 1 | CLAMP       |
| 6  | 3101659M1  | ! | 1              | 1 | BACK REST   |
| 7  | 3101508M1  | ! | 1              | 1 | SPACER      |
| 8  | 3101507M1  | ● | N.L.A. (1)     | 1 | STRAP       |
|    |            | ! | 1              |   |             |
| 9  | 3101509M1  | ! | 1              | 4 | PIPE        |
| 10 | 3101663M1  | ! | 1              | 4 | WASHER      |
| 11 | 0920003    | ● | 390972X1 (4)   | 4 | WASHER      |
|    |            | ! | 1              |   |             |
| 12 | 339337X1   | ! | 1              | 4 | SCREW       |
| 13 | 3101522M1  | ! | 1              | 2 | LOCK WASHER |

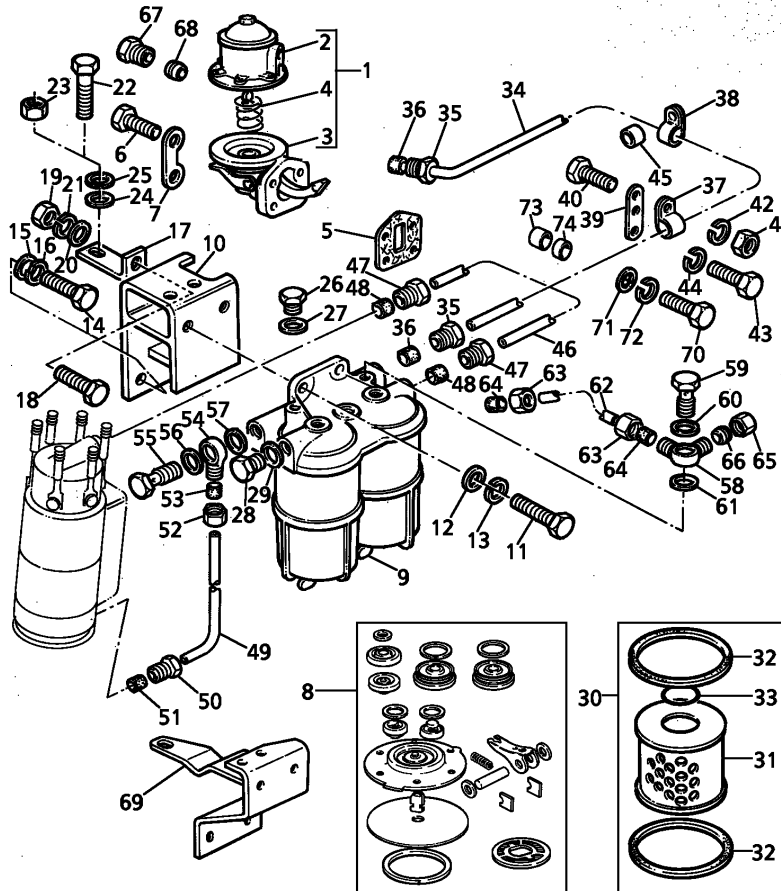
ACCESSORIES AND APPLICATION MISCELLANEOUS



LOW PRESSURE FUEL SYSTEM

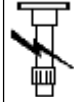
Large 14500

T-0670-21M-A



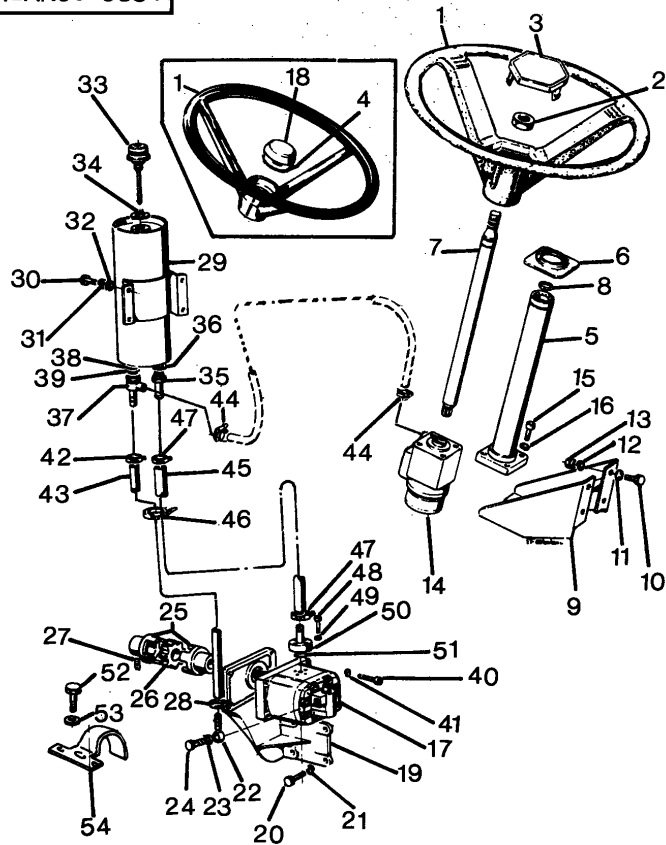
49	4122A003		1	FUEL PIPE
50	33532129	! 49	1	NUT
51	33811114	● 376526X1 (1) ! 49	1	OLIVE
52	33225414		1	NUT
53	33811114	● 376526X1 (1)	1	OLIVE
54	0201501		1	CONNECTION
55	32184414	● 32184427	1	BOLT
56	0920127	D	1	WASHER
56	0920154	A	1	WASHER
57	0920127	D	1	WASHER
57	0920154	A	1	WASHER
58	0201397		1	CONNECTION
59	0095344	● 3302623M1 (1)	1	BOLT
60	0920155		1	WASHER
61	0920155		1	WASHER
62	34256132	● 3435H007 (1)	1	PIPE
63	33225412	● 376521X1 (2)	2	NUT BSF
64	33811112		2	OLIVE
65	0576112		1	NUT
66	0566003		1	OLIVE
67	33532129		1	NUT
68	0566004		1	OLIVE
69	3827C007	E	1	SUPPORT
70	0746456	F	1	SCREW
71	0920004	F	1	WASHER
72	0920054	F	1	WASHER
73	33134418	F	1	SPACER
74	2131467	F	1	SPACER

ACCESSORIES AND APPLICATION MISCELLANEOUS



Large 14500

4-AN06-033-A

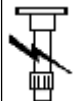


STEERING HYDRAULIC LINES

1	1426684M91	●	3303415M91 (1)	1	WHEEL
		→	12400000		
		→	22400000		
1	3303415M91	→	12400001	1	STEERING W
		→	22400001		
2	1441246X1			1	NUT BSF
3		→	1	1	COVER
		→	12400001		
		→	22400001		
			E		
4	1423621M1	→	12400000	1	CLIP
		→	22400000		
5	1424230M92			1	PIPE
6	1425871M1			1	GASKET
7	1424232M91			1	SHAFT
8	1440476X1			2	CIRCLIP
9	1425504M92	●	1425504M93 (1)	1	BEARER
10	339081X1			4	SCREW
11	390734X1			4	WASHER
12	339376X1	●	1440314X1 (4)	4	LOCK WASHER
13	339402X1			4	NUT BSF
14		◇	105/1	1	DISTRIBUTOR
15	195326M1			4	SCREW
16	0920054			4	WASHER
17		→	1240062	1	PUMP
		→	2240542		
		◇	113/1		
			C		
17		→	1240061	1	PUMP
		→	2240541		
		◇	112/1		
			C		

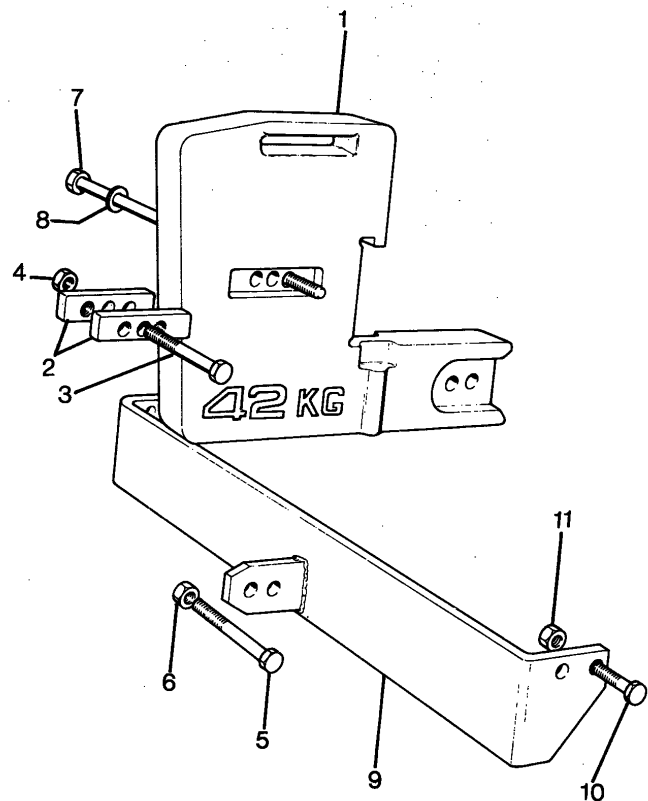
ACCESSORIES AND APPLICATION MISCELLANEOUS

Large 14500



WEIGHT FRAME AND WEIGHTS

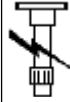
4-3306-012-A



- |    |            |   |                |    |         |
|----|------------|---|----------------|----|---------|
| 1  | 1426022M1  | ● | 1426022M2 (14) | 14 | WEIGHT  |
| 2  | 1426054M1  |   |                | 2  | PLATE   |
| 3  | 339805X1   |   |                | 1  | BOLT    |
| 4  | 339495X1   | ● | 392368X1 (1)   | 1  | NUT     |
| 5  | 390864X1   |   |                | 2  | BOLT    |
| 6  | 339034X1   |   |                | 2  | NUT BSF |
| 7  | 3534926M1  |   |                | 2  | SCREW   |
| 8  | 1441664X1  |   |                | 2  | WASHER  |
| 9  | 1426050M91 |   |                | 1  | BEARER  |
| 10 | 390419X1   |   |                | 4  | BOLT    |
| 11 | 339034X1   |   |                | 4  | NUT BSF |

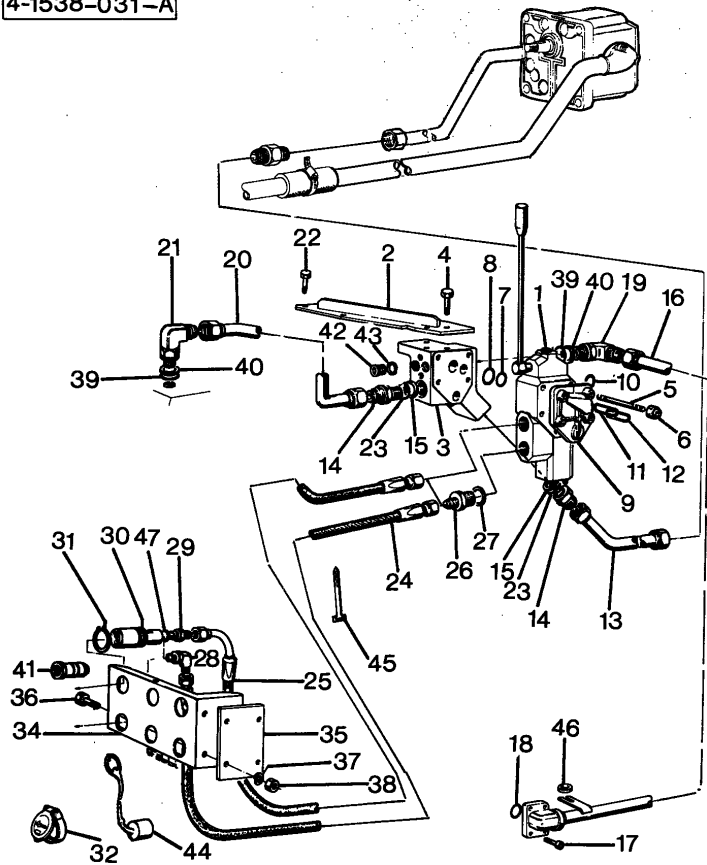
ACCESSORIES AND APPLICATION MISCELLANEOUS

Large 14500



PIPING AUXILIARY VALVE

4-1538-031-A



14	1426103M2	➔	1240157	2	UNION
		➔	2241215		
14	3300969M2	➔	1240158	2	UNION
		➔	2241216		
15	1443848X1			2	GASKET
16	1425958M93	➔	1240157	1	PIPE
		➔	2241215		
			A		
16	3300828M93	➔	1240158	1	PIPE
		➔	2241216		
			A		
17	390871X1			4	SCREW
18	762026M1			1	O RING
19	1426263M92			1	UNION
20	1425957M91	➔	1240157	1	PIPE
		➔	2241215		
20	3300834M91	➔	1240158	1	PIPE
		➔	2241216		
21	1426263M92			1	UNION
22	339053X1			3	BOLT
23	364776X1			2	O RING
24	1426100M91			1	HYDR HOSE
25	1426285M91			1	HYDR HOSE
26	1426102M2			2	UNION
27	391265X1			2	GASKET
28	1424962M92			1	UNION
29	1426267M91	●	1426267M92 (1)	1	UNION
30	3534687M91			2	HITCH
31	392759X1	●	339820X1 (4)	4	CLIP
32	3530933M91	●	3530933M92 (2)	2	PLUG
34	1426098M1	●	3301516M93 (1)	1	BEARER
			339761X1 (2)		

CLICK HERE TO **DOWNLOAD** THE COMPLETE MANUAL

- Thank you very much for reading the preview of the manual.
- You can download the complete manual from: [www.heydownloads.com](http://www.heydownloads.com) by clicking the link below



- Please note: If there is no response to CLICKING the link, please download this PDF first and then click on it.

CLICK HERE TO **DOWNLOAD** THE COMPLETE MANUAL