

Instructions for Parts Books

The heading at the top of the page will be the same for the picture of the parts as it is for the page with the part numbers.

Definition of column headings on part number pages:

REF.No → The number referring to the part on the picture page of the parts book.

Part No. → The number assigned to this part at the time of printing the parts book.

Description → Description of part.

Q'ty → Quantity of part used on that page.

S.No. → Serial number range of the equipment that this part will fit.

>= Your serial number should be greater than or equal to the number shown.

<= Your serial number should be lesser than or equal to the serial number shown.

I/C → Interchangeability of part shown.

↔ The part shown will work for the older and later serial number.

The part shown is not interchangeable with the other serial number.

← new for old

→ old for new

Remarks → Notes about this particular part. Sometimes this may say except [FR] or [CA]

Note about Country Codes:

The parts books we use in the United States of America may also contain information about a part that would be different in another country. It is important that you are aware of the country codes in some instances.

Symbol	Country
A	United States of America
CA	Canada
FR	France
GR	Greece
PO	Portugal
AU	Australia

If the remarks column says for example EXCEPT [FR] this part works in all countries except France. That means it will work here in the USA.

CLICK HERE TO **DOWNLOAD** THE COMPLETE MANUAL

- Thank you very much for reading the preview of the manual.
- You can download the complete manual from: www.heydownloads.com by clicking the link below



- Please note: If there is no response to CLICKING the link, please download this PDF first and then click on it.

CLICK HERE TO **DOWNLOAD** THE COMPLETE MANUAL



GEAR CASE

↔ Interchangeable; ≠ not interchangeable; ← new for old; → old for new

REF.No	Part No.	Description	Q'ty	S.No.	I/C	REMARKS	Weight (kgf)	Weight (lb)
001	15321-04020	ASSY CASE,GEAR	1	<=14147			4.8	10.56
001	15341-04020	ASSY CASE,GEAR	1	>=14148			4.25	9.35
002	99999-99999	BLANK	0			ORDER BY REF.No.001	0	0
003	15221-33620	PLUG,PIN	2				0.002	0.0044
004	15221-33640	PLUG,PIN	1	<=14147			0.003	0.0066
004	15221-33660	PLUG,PIN	2	>=14148			0.004	0.0088
005	15221-03490	CAP,SEALING	1	<=14147			0.02	0.044
006	15321-96260	CAP,SEALING	1				0.014	0.0308
007	15221-72880	PIPE,WATER	1				0.115	0.253
008	04811-00150	O RING	3				0.001	0.0022
009	15221-56280	PIN,START SPRING	1				0.006	0.0132
010	15321-73340	PIPE,WATER RETURN	1				0.016	0.0352
011	15221-04130	GASKET,GEAR CASE	1	<=14147			0	0
011	15601-04130	GASKET,GEAR CASE	1	>=14148			0	0
012	01053-50885	BOLT	1	<=14147			0.031	0.0682
012	01153-50885	BOLT	4	>=14148			0.031	0.0682
013	15221-91040	BOLT	10	<=14147			0	0
013	15521-91010	BOLT	10	>=14148			0	0
014	15321-91010	BOLT	3	<=14147			0.03	0.066
014	01153-50870	BOLT	7	>=14148			0.026	0.0572
015	04512-50080	WASHER,SPRING	14	<=14147			0	0
015	04512-50080	WASHER,SPRING	15	>=14148			0	0
016	04012-50080	WASHER,PLAIN	14	<=14147			0.001	0.0022
017	07715-00803	BALL	1				0.004	0.0088
018	15221-38440	SPRING	1				0.004	0.0088
019	15221-38420	CAP	1				0.025	0.055
020	04811-00100	O RING	1				0.001	0.0022
021	04811-40240	O RING	1				0.002	0.0044
022	37150-34660	ASSY UNIT,HOUR METER	1				0.32	0.704
023	15221-88130	GASKET	1				0	0
024	15221-88210	STUD	4				0.005	0.011
025	02056-50060	NUT	4				0.002	0.0044
026	04512-50060	WASHER,SPRING	4				0	0
027	04012-50060	WASHER,PLAIN	4	<=14147			0.001	0.0022
028	05012-00612	PIN,STRAIGHT	2	>=14148			0.003	0.0066

**MUFFLER [L245]**

↔ Interchangeable; ≠ not interchangeable; ← new for old; → old for new

REF.No	Part No.	Description	Q'ty	S.No.	I/C	REMARKS	Weight (kgf)	Weight (lb)
001	35110-62100	ASSY MUFFLER	1				9	19.8
002	34159-62190	MUFFLER	1				2.29	5.038
003	35110-62110	PIPE,MUFFLER 1	1				2	4.4
004	15221-12370	GASKET,M-FLANGE	1				0	0
005	15221-12130	BAND,MUFFLER	1				0	0
006	01153-50878	BOLT	1				0.029	0.0638
007	02156-50080	NUT	1				0.004	0.0088
008	04512-50080	WASHER,SPRING	1				0	0
009	04012-50080	WASHER,PLAIN	2				0.001	0.0022
010	35110-62130	PIPE,MUFFLER 2	1				0.16	0.352
011	15221-12430	BAND,PIPE	1				0	0
012	01153-50865	BOLT	1				0.025	0.055
013	02053-50080	NUT	1	<=10005			0	0
013	02156-50080	NUT	1	>=10006			0.004	0.0088
013	02156-50080	NUT	1	>=50001			0.004	0.0088
014	04512-50080	WASHER,SPRING	1				0	0
015	04012-50080	WASHER,PLAIN	2				0.001	0.0022
016	35110-62160	SUPPORT,MUFFLER	1	<=10005			0	0
016	35110-62164	SUPPORT,MUFFLER	1	>=10006			0	0
016	35110-62164	SUPPORT,MUFFLER	1	>=50001			0	0
017	35110-62170	BOLT,MUFFLER	1				0.05	0.11
018	02054-50080	NUT	1				0.005	0.011
019	04512-50080	WASHER,SPRING	1				0	0
020	34159-62150	COVER,MUFFLER	1				0.47	1.034
021	04512-50100	WASHER,SPRING	2				0	0
022	01173-51022	BOLT	2				0.019	0.0418
023	04512-50080	WASHER,SPRING	2				0	0
024	04012-50080	WASHER,PLAIN	2				0.001	0.0022
025	01153-50812	BOLT	2				0.008	0.0176
026	01517-51025	STUD	2				0	0
027	15021-12260	NUT	2				0.013	0.0286
028	04512-50100	WASHER,SPRING	2				0	0
029	02176-50100	NUT	2				0.005	0.011
030	15321-12310	MANIFOLD,EXHAUST	1				1.46	3.212
031	15221-12360	GASKET,EX-MANIFOLD	1	<=14147			0	0
032	15221-12350	GASKET,EX-MANIFOLD	2				0	0
032	15521-12350	GASKET,EX-MANIFOLD	3	>=1001			0	0
033	15221-91530	STUD	6				0.011	0.0242
034	02056-50080	NUT	6				0.005	0.011
034	02156-50080	NUT	6	>=1001			0.004	0.0088
035	04512-50080	WASHER,SPRING	6				0	0
036	04013-50080	WASHER,PLAIN	1	<=13205		FP,TP	0	0
036	04013-50080	WASHER,PLAIN	1	<=11580		DTP	0	0
036	04013-50080	WASHER,PLAIN	1	>=50001		FP,TP,DTP	0	0



FLYWHEEL

↔ Interchangeable; ≠ not interchangeable; ← new for old; → old for new

REF.No	Part No.	Description	Q'ty	S.No.	I/C	REMARKS	Weight (kgf)	Weight (lb)
001	15331-25010	ASSY FLYWHEEL	1				0	0
002	99999-99999	BLANK	0			ORDER BY REF.No.001	0	0
003	15221-63820	GEAR,RING	1				1.2	2.64
004	15321-25160	BOLT,FLYWHEEL	6				0.05	0.11
005	15321-25170	WASHER,FLYWHEEL	3				0.01	0.022
006	15341-04600	ASSY HOUSING,FLYWHEE	1				10.4	22.88
007	99999-99999	BLANK	0			ORDER BY REF.No.006	0	0
008	05012-01025	PIN,STRAIGHT	2				0.016	0.0352
009	31220-14290	PLUG	4				0.002	0.0044
010	31220-14170	COVER	1				0.014	0.0308
011	01053-50812	BOLT	1				0.009	0.0198
011	01153-50812	BOLT	1	>=1001			0.008	0.0176
012	04512-50080	WASHER,SPRING	1				0	0
013	01073-51030	BOLT	11				0.028	0.0616
014	04512-50100	WASHER,SPRING	11				0	0
015	01073-51240	BOLT	2				0.049	0.1078
016	04512-50120	WASHER,SPRING	2				0	0
017	15321-63010	ASSY STARTER	1				0	0
018	01173-51030	BOLT	1				0.023	0.0506
018	01133-51030	BOLT	1	>=1001			0.025	0.055
019	01517-51025	STUD	1				0	0
020	02176-50100	NUT	1				0.005	0.011
021	04512-50100	WASHER,SPRING	2				0	0
021	04512-50100	WASHER,SPRING	1	>=1001			0	0
022	02114-50080	NUT	1				0.005	0.011
023	04512-50080	WASHER,SPRING	1				0	0

**DYNAMO**

↔ Interchangeable; ≠ not interchangeable; ← new for old; → old for new

REF.No	Part No.	Description	Q'ty	S.No.	I/C	REMARKS	Weight (kgf)	Weight (lb)
001	15321-64010	ASSY DYNAMO	1				0	0
002	15221-91010	BOLT	1				0	0
002	15521-91030	BOLT	1	≧1001			0	0
003	01053-50835	BOLT	1				0.016	0.0352
003	01153-50835	BOLT	1	≧1001			0.016	0.0352
004	04512-50080	WASHER,SPRING	4				0	0
004	04512-50080	WASHER,SPRING	2	≧1001			0	0
005	04012-50080	WASHER,PLAIN	2				0.001	0.0022
005	04012-50080	WASHER,PLAIN	1	≧1001			0.001	0.0022
006	02056-50060	NUT	1				0.002	0.0044
007	04512-50060	WASHER,SPRING	1				0	0
008	15321-64350	SUPPORT,DYNAMO	1				0.29	0.638
009	01053-50825	BOLT	2				0.014	0.0308
009	01123-50825	BOLT	2	≧1001			0.013	0.0286
010	15321-64420	STAY,DYNAMO	1				0.1	0.22
011	15321-74110	FAN	1				0.3	0.66
012	01053-50610	BOLT	4				0.004	0.0088
013	15321-74230	WASHER,FAN	1				0.005	0.011
014	15321-74240	WASHER,FAN	1				0.004	0.0088
015	15321-74280	PULLEY,FAN DRIVE	1				0	0
016	05712-00720	KEY,FEATHER	1				0.008	0.0176
017	15321-72530	BELT,FAN	1				0.09	0.198
018	15221-23360	NUT,CRANKSHAFT	1				0.11	0.242
019	15221-23380	WASHER,CRANKSHAFT	1				0.02	0.044
020	34260-13860	COVER,BELT LH	1				0	0
021	04013-50080	WASHER,PLAIN	1	≧14148			0	0

**STARTER**

↔ Interchangeable; ≠ not interchangeable; ← new for old; → old for new

REF.No	Part No.	Description	Q'ty	S.No.	I/C	REMARKS	Weight (kgf)	Weight (lb)
001	99999-99999	BLANK	0				0	0
002	15321-63030	DRIVE END FRAME	1				1.47	3.234
003	15321-96160	PLUG,BELCH	1				0.001	0.0022
004	17016-63250	BUSH	1				0.006	0.0132
005	15321-91370	BOLT,SET	1				0	0
006	15221-91020	BOLT	2				0.01	0.022
007	15221-63050	LEVER,DRIVE	1				0.044	0.0968
008	15321-63020	CLUTCH,MAGNET	1				0.65	1.43
009	15321-63040	CLUTCH	1				0.314	0.6908
010	15321-63070	ARMATURE	1				2.2	4.84
011	15221-94820	PIN,SNAP	1				0.001	0.0022
012	15321-63231	COLLAR	1				0	0
013	15321-63080	YOKE	1				2.62	5.764
014	15221-91380	BOLT,SET	2				0.008	0.0176
014	15321-91390	BOLT,SET	2				0.009	0.0198
015	15321-96680	GASKET	1				0.004	0.0088
016	15321-63090	COIL,FIELD	1				0.64	1.408
017	15321-63370	BRUSH	2				0.008	0.0176
018	15321-63360	BRUSH	2				0.008	0.0176
019	15321-63380	HOLDER,BRUSH	1				0.103	0.2266
020	15221-63390	SPRING,BRUSH	4				0.003	0.0066
021	15321-63320	BOLT,THROUGH	2				0.03	0.066
021	15341-63320	BOLT,THROUGH	2				0.035	0.077
022	15321-63200	END FRAME	1				0.28	0.616
022	15341-63200	END FRAME	1	>=1001			0	0
023	15221-63250	BUSH	1				0.006	0.0132
023	15321-63970	BUSH	1				0.006	0.0132
023	15321-63980	BUSH	1				0.006	0.0132
024	15221-96670	GASKET	1				0.001	0.0022
025	15321-63490	SPRING,RETURN	1				0.006	0.0132
026	15321-94030	WASHER	1				0.002	0.0044
027	15321-63510	CAP,END FRAME	1				0.01	0.022
028	15321-63480	HOLDER,SPRING	1				0.005	0.011
029	15321-63060	BEARING,CENTER	1				0.17	0.374
029	15341-63060	BEARING,CENTER	1	>=1001			0	0
030	15321-94010	WASHER,PLAIN	1				0.001	0.0022



FRONT WHEEL DRIVE

↔ Interchangeable; ≠ not interchangeable; ← new for old; → old for new

REF.No	Part No.	Description	Q'ty	S.No.	I/C	REMARKS	Weight (kgf)	Weight (lb)
001	34220-11210	ARM KNUCKLE RH	1				1.3	2.86
002	34220-11220	ARM KNUCKLE LH	1				1.9	4.18
003	32240-11270	BOLT	2				0.066	0.1452
004	04512-50120	WASHER SPRING	2				0	0
005	02174-50120	NUT	2				0.01	0.022
006	35210-12200	ASSY LINK DRAG	1				2.2	4.84
007	35210-12210	LINK DRAG	1				1	2.2
008	32150-12600	ASSY END TIE ROD RH	1				0	0
009	06613-10675	NIPPLE GREASE	1				0.003	0.0066
010	02370-50100	NUT SLOTTED	1	←=13205			0	0
010	32350-12830	NUT SLOTTED	1	≧=50001			0.015	0.033
011	05511-50222	PIN SPLIT	1				0.001	0.0022
012	02172-50160	NUT	1				0.017	0.0374
013	32150-12700	ASSY END TIE ROD LH	1				0.287	0.6314
014	06613-10675	NIPPLE GREASE	1				0.003	0.0066
015	32350-12830	NUT SLOTTED	1				0.015	0.033
016	05511-50222	PIN SPLIT	1				0.001	0.0022
017	32240-12280	NUT	1				0.017	0.0374
018	35210-12400	ASSY ROD TIE	1	←=50150			2.25	4.95
018	35210-12403	ASSY ROD TIE	1	≧=50151			0	0
019	35210-12410	TIE ROD MIDDLE	1				1	2.2
020	34150-12840	NIPPLE GREASE	1				0.003	0.0066
020	06613-10675	NIPPLE GREASE	1	←=13205			0.003	0.0066
021	02372-50100	NUT SLOTTED	1				0.005	0.011
021	32350-12830	NUT SLOTTED	1	≧=50001			0.015	0.033
022	05511-50222	PIN SPLIT	1				0.001	0.0022
023	34220-12450	TIE ROD OUTER	1	←=50150			0.8	1.76
023	35210-12450	TIE ROD OUTER	1	≧=50151			0.9	1.98
024	32210-12470	CLAMP	1				0	0
025	32210-12480	BOLT	1				0.03	0.066
026	04512-50100	WASHER SPRING	1				0	0
027	02118-50100	NUT	1				0.005	0.011
028	32150-12600	ASSY END TIE ROD RH	1				0	0
029	34150-12840	NIPPLE GREASE	1				0.003	0.0066
030	32350-12830	NUT SLOTTED	1				0.015	0.033
031	05511-50222	PIN SPLIT	1				0.001	0.0022
032	02172-50160	NUT	1				0.017	0.0374

CLICK HERE TO **DOWNLOAD** THE COMPLETE MANUAL

- Thank you very much for reading the preview of the manual.
- You can download the complete manual from: www.heydownloads.com by clicking the link below



- Please note: If there is no response to CLICKING the link, please download this PDF first and then click on it.

CLICK HERE TO **DOWNLOAD** THE COMPLETE MANUAL



CLUTCH PEDAL

↔ Interchangeable; ≠ not interchangeable; ← new for old; → old for new

REF.No	Part No.	Description	Q'ty	S.No.	I/C	REMARKS	Weight (kgf)	Weight (lb)
001	34150-15630	JOINT FORKED	1				0.095	0.209
002	05112-50822	PIN JOINT	1				0.01	0.022
003	04012-50080	WASHER PLAIN	1				0.001	0.0022
004	05511-50220	PIN SPLIT	1				0.001	0.0022
005	34150-15640	ROD CLUTCH	1				0.195	0.429
006	02172-50120	NUT	1				0.01	0.022
007	04013-50120	WASHER PLAIN	1				0	0
008	05511-50425	PIN SPLIT	1				0.003	0.0066
009	37150-15710	PEDAL CLUTCH	1				1.4	3.08
010	34150-28430	BUSH	2				0.04	0.088
011	06613-10675	NIPPLE GREASE	1				0.003	0.0066
012	37150-15840	SPRING	1				0.06	0.132
013	34159-15900	ASSY PIECE DISTANCE	1				0.05	0.11
014	31220-15970	MARK SPACER	1				0.001	0.0022
015	32170-15930	LABEL PEDAL A	1				0.001	0.0022
016	32140-15940	CARD INSTRUCTION	1			L245	0	0
016	35170-15940	CARD INSTRUCTION	1			L245DT	0.015	0.033

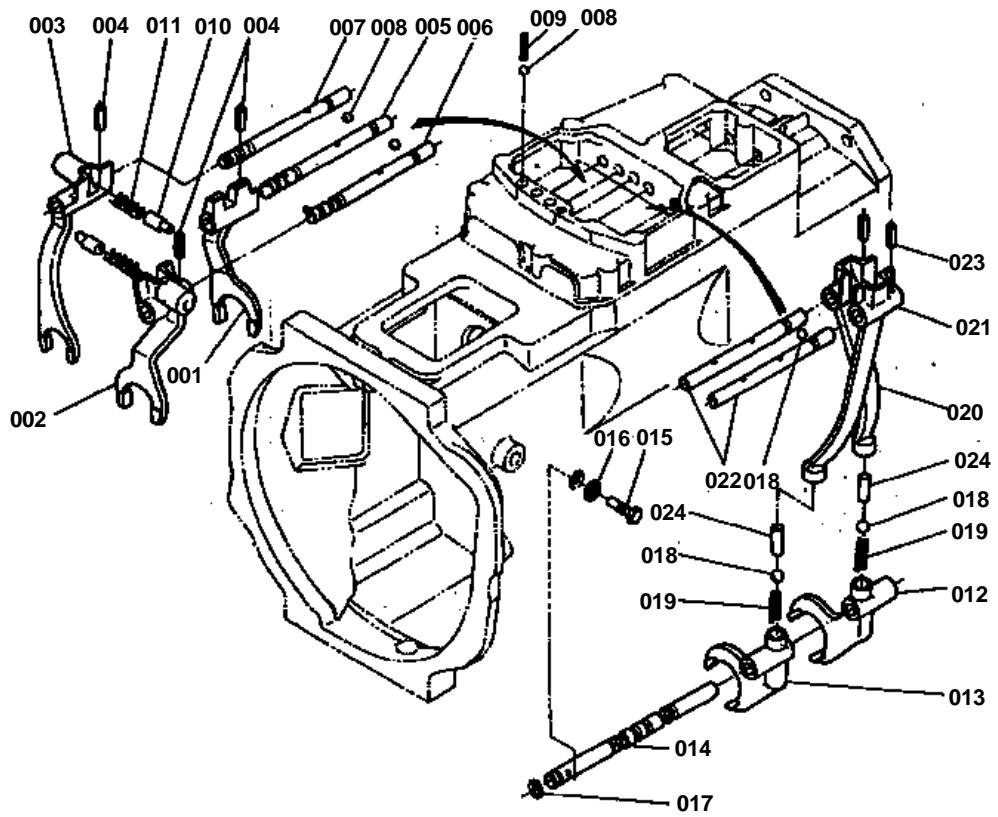


SEAT

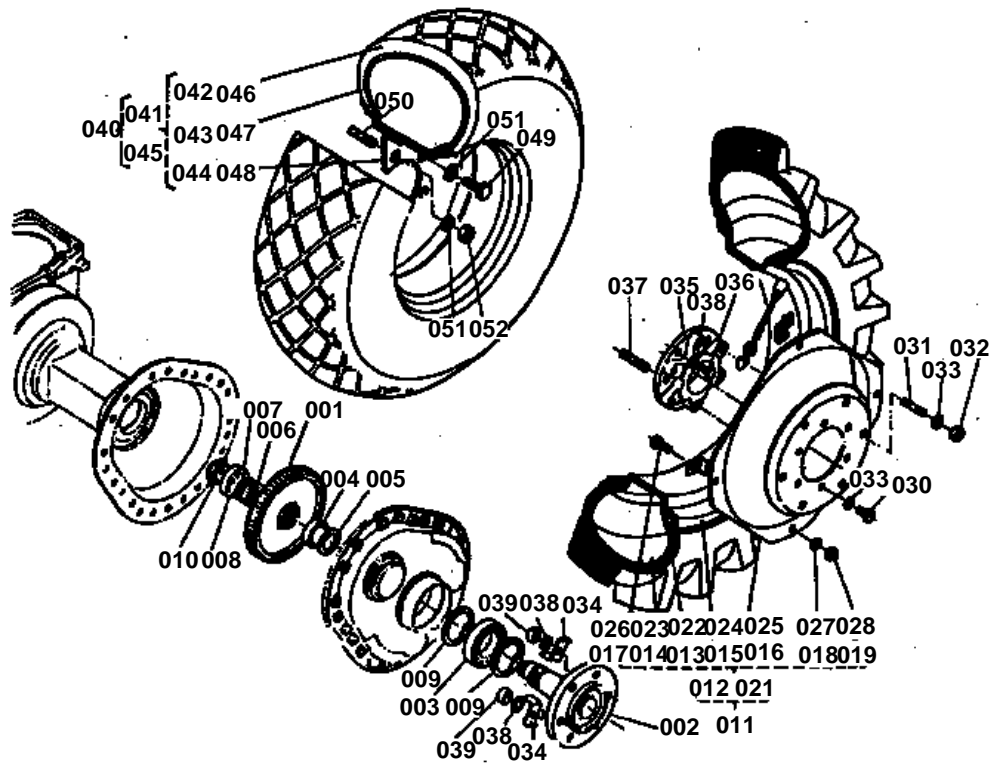
↔ Interchangeable; ≠ not interchangeable; ← new for old; → old for new

REF.No	Part No.	Description	Q'ty	S.No.	I/C	REMARKS	Weight (kgf)	Weight (lb)
001	35110-85010	ASSY SEAT	1				0	0
002	99999-99999	BLANK	0			ORDER BY REF.No.001	0	0
003	99999-99999	BLANK	0			ORDER BY REF.No.001	0	0
004	99999-99999	BLANK	0			ORDER BY REF.No.001	0	0
005	32140-18470	MARK KUBOTA	1				0.002	0.0044
006	32160-18440	CUSHION	2				0.013	0.0286
007	34269-18400	ASSY SUSPENSION SEAT	1	<=10885			0	0
007	35110-18400	ASSY SUSPENSION SEAT	1	>=10886			4.3	9.46
007	35110-18400	ASSY SUSPENSION SEAT	1	>=50001			4.3	9.46
008	99999-99999	BLANK	0			ORDER BY REF.No.007	0	0
009	99999-99999	BLANK	0			ORDER BY REF.No.007	0	0
010	35258-18430	ARM 1	1				0.67	1.474
011	99999-99999	BLANK	0			ORDER BY REF.No.007	0	0
012	34119-18450	SPRING SEAT	2				0.117	0.2574
013	34269-18460	BOLT ADJUSTING	1				0.075	0.165
013	35258-18460	BOLT ADJUSTING	1				0.08	0.176
014	34269-18490	PIN	4				0.06	0.132
015	02118-50100	NUT	1				0.005	0.011
016	02116-50100	NUT	1				0.004	0.0088
017	04013-50100	WASHER PLAIN	8				0	0
018	05511-50222	PIN SPLIT	8				0.001	0.0022
019	01130-51020	BOLT	2				0	0
020	01130-51030	BOLT	2				0	0
021	35110-18460	SPACER	1				0.2	0.44
022	35110-18470	BOLT	2				0.012	0.0264
023	02114-50080	NUT	2				0.005	0.011
024	35110-99100	ASSY COVER SEAT	1	>=54808			0.52	1.144
025	35110-85050	EYE-LET	4	>=54808		SERVICE PARTS.	0.005	0.011
026	35110-85060	PROTECTOR	3	>=54808		SERVICE PARTS.	0.01	0.022
027	35258-18480	ROLLER	2	>=54808			0.005	0.011
028	35320-18480	BRACKET PLATE	1	>=53488		L245-3	0.22	0.484
029	03014-50616	BOLT	2	>=53488		L245-3	0.003	0.0066
030	02014-50060	NUT	2	>=53488		L245-3	0.003	0.0066
031	04512-50060	WASHER SPRING	2	>=53488		L245-3	0	0
032	04012-50060	WASHER PLAIN	2	>=53488		L245-3	0.001	0.0022

SPEED CHANGE SYSTEM 1



REAR AXLE



REF. No. 04011 - 50160
04011 - 50160



029
020

Discontinua.



FENDER [U.S.A]

↔ Interchangeable; ≠ not interchangeable; ← new for old; → old for new

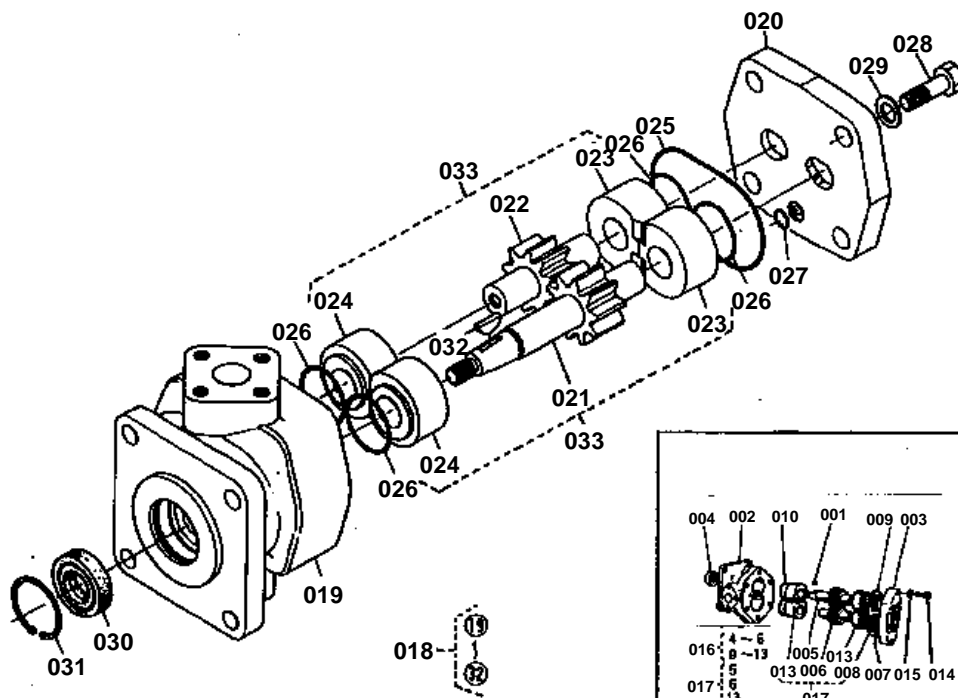
REF.No	Part No.	Description	Q'ty	S.No.	I/C	REMARKS	Weight (kgf)	Weight (lb)
001	34350-34100	ASSY LAMP TAIL	2				0.13	0.286
002	99999-99999	BLANK	0			ORDER BY REF.No.001	0	0
003	34350-34120	LENS TAIL LAMP	2				0.05	0.11
004	34350-34140	BULB TAIL LAMP	2				0.008	0.0176
005	34350-34190	HOLDER TAIL LAMP	2				0.107	0.2354
006	02014-50060	NUT	4				0.003	0.0066
007	04512-50060	WASHER SPRING	4				0	0
008	35170-33700	FLASHER UNIT	1	>=53788			0.06	0.132
009	01202-50616	BOLT	1				0.006	0.0132
010	35450-75010	ASSY LAMP HAZARD FLA	2				0.3	0.66
011	35450-75022	VALVE HAZARD FLASHER	2				0.008	0.0176
012	35170-34360	CABLE 6	1				0.025	0.055
013	35170-34370	CABLE 7	1				0.035	0.077
014	35112-29110	ASSY FENDER RH	1				7.5	16.5
015	35112-29120	ASSY FENDER LH	1				7	15.4
016	33251-83910	CUSHION	1				0.001	0.0022
017	34150-29170	BALUSTRIDE	2				0.695	1.529
018	32260-29180	CUSHION	4				0.005	0.011
019	04013-50140	WASHER PLAIN	4				0	0
020	04512-50140	WASHER SPRING	4				0	0
021	02174-50140	NUT	4				0.014	0.0308
022	04512-50100	WASHER SPRING	1				0	0
023	02114-50100	NUT	1				0.005	0.011
024	37150-29110	ASSY FENDER RH	1	<=53786			6.9	15.18
025	37150-29120	ASSY FENDER LH	1	<=53786			7	15.4
026	34159-34290	PLUG	4	<=53786			0.004	0.0088
027	53143-61240	ASSY REFLECTOR	2	<=53786			0.009	0.0198
028	04512-50050	WASHER SPRING	2	<=53786			0	0
029	02014-50050	NUT	2	<=53786			0.002	0.0044

**FUEL FILTER**

↔ Interchangeable; ≠ not interchangeable; ← new for old; → old for new

REF.No	Part No.	Description	Q'ty	S.No.	I/C	REMARKS	Weight (kgf)	Weight (lb)
001	34200-35530	ASSY PIPE FUEL	1				0.055	0.121
002	99999-99999	BLANK	0			ORDER BY REF.No.001	0	0
003	14301-42750	CLIP PIPE	4				0.005	0.011
004	99999-99999	BLANK	0				0	0
005	14111-42410	JOINT FUEL PIPE	1				0.025	0.055
006	34150-35540	PIPE FUEL	1				0.008	0.0176
007	10244-42320	CLIP PIPE	2				0.001	0.0022
008	15221-43010	ASSY FILTER FUEL	1	<=13205			0.556	1.2232
008	15291-43010	ASSY FILTER FUEL	1	>=50001			0.555	1.221
009	15221-43210	COVER FILTER	1	<=13205			0.25	0.55
009	15291-43210	COVER FILTER	1	>=50001			0.23	0.506
010	15221-43080	ELEMENT FILTER	1				0	0
011	14102-43280	PLUG FILTER BREATHER	1				0	0
012	15108-43290	O RING	1				0.001	0.0022
013	15221-87790	MARK FORM	1	<=13205			0.001	0.0022
013	15291-87760	MARK FORM	1	>=50001			0.005	0.011
014	37150-35810	BRACKET FILTER	1	<=53487			0.3	0.66
014	35114-35810	BRACKET FILTER	1	>=53488		(L245-3)	0.335	0.737
015	01120-50822	BOLT	2				0	0
016	01120-50816	BOLT	2				0	0
017	02114-50080	NUT	2				0.005	0.011
018	37150-35500	ASSY PIPE FUEL	1				0.05	0.11
019	99999-99999	BLANK	0			ORDER BY REF.No.018	0	0
020	15291-87760	MARK	1				0.005	0.011

OIL PRESSURE PUMP



REF. No. ②, ③, ④, ⑤
Adapted according to
changed DUMP oil pressure.

REF. No. ⑥
Discontinance

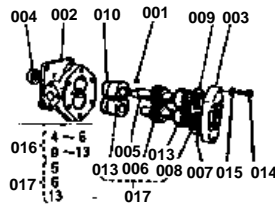
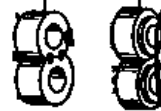
011



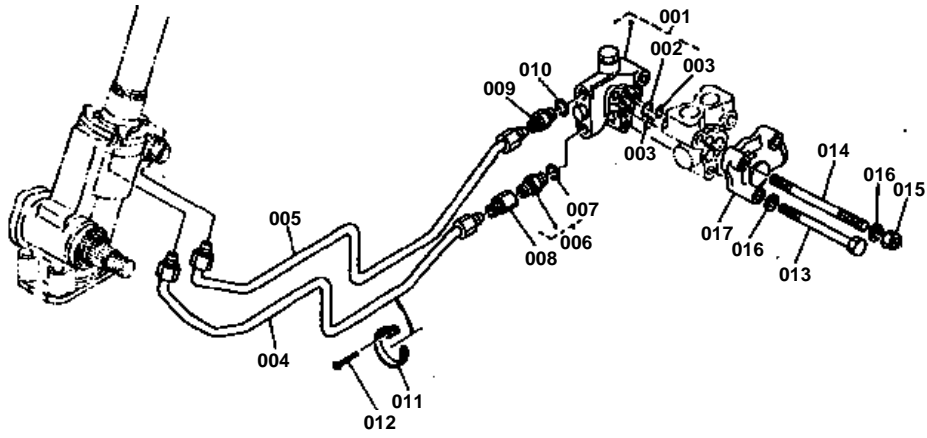
REF. No. ⑦ 32270-3615-0
⑧ 32270-3616-0
Discontinance

013

012



REF. No. ⑨ 32270-3621-0
⑩ 37150-3611-0
⑪ 37150-3616-0
⑫ 37150-3621-0
⑬ 37150-3612-0
⑭ 32270-3613-0
⑮ 32270-3624-0
⑯ 32270-3625-0
⑰ 32270-3622-0
⑱ 32270-3626-0
⑲ 01311-10825
⑳ 32270-3615-0
㉑ 37150-3610-0
㉒ 01156-50825
㉓ 04612-60000
㉔ 34150-2611-0
㉕ 37150-3620-0



CLICK HERE TO **DOWNLOAD** THE COMPLETE MANUAL

- Thank you very much for reading the preview of the manual.
- You can download the complete manual from: www.heydownloads.com by clicking the link below



- Please note: If there is no response to CLICKING the link, please download this PDF first and then click on it.

CLICK HERE TO **DOWNLOAD** THE COMPLETE MANUAL