

Instructions for Parts Books

The heading at the top of the page will be the same for the picture of the parts as it is for the page with the part numbers.

Definition of column headings on part number pages:

REF.No → The number referring to the part on the picture page of the parts book.

Part No. → The number assigned to this part at the time of printing the parts book.

Description → Description of part.

Q'ty → Quantity of part used on that page.

S.No. → Serial number range of the equipment that this part will fit.

>= Your serial number should be greater than or equal to the number shown.

<= Your serial number should be lesser than or equal to the serial number shown.

I/C → Interchangeability of part shown.

↔ The part shown will work for the older and later serial number.

The part shown is not interchangeable with the other serial number.

← new for old

→ old for new

Remarks → Notes about this particular part. Sometimes this may say except [FR] or [CA]

Note about Country Codes:

The parts books we use in the United States of America may also contain information about a part that would be different in another country. It is important that you are aware of the country codes in some instances.

Symbol	Country
A	United States of America
CA	Canada
FR	France
GR	Greece
PO	Portugal
AU	Australia

If the remarks column says for example EXCEPT [FR] this part works in all countries except France. That means it will work here in the USA.

CLICK HERE TO **DOWNLOAD** THE COMPLETE MANUAL

- Thank you very much for reading the preview of the manual.
- You can download the complete manual from: www.heydownloads.com by clicking the link below



- Please note: If there is no response to CLICKING the link, please download this PDF first and then click on it.

CLICK HERE TO **DOWNLOAD** THE COMPLETE MANUAL

**BOOM**

↔ Interchangeable; ≠ not interchangeable; ← new for old; → old for new

REF.No	Part No.	Description	Q'ty	S.No.	I/C	REMARKS	Weight (kgf)	Weight (lb)
010	7K501-90120	BOOM(LABEL)	1				0	0
020	75595-75170	LABEL WARNING	2				0.004	0.0088
030	TD060-80930	LABEL KUBOTA	2				0.007	0.0154
040	78620-21450	RING INNER	2				0.065	0.143
050	75596-21510	PIN	1				1.12	2.464
060	01173-51070	BOLT	1				0.044	0.0968
070	02574-50100	NUT LOCK	1				0.007	0.0154
080	75599-81520	FITTING GREASE	1				0.003	0.0066
090	75595-14220	PIN LOCK	1				1.06	2.332
100	7K501-22010	ASSY CYLINDER BOOM	1				0	0
110	K6072-63660	ADAPTER	2				0.043	0.0946
120	78620-22410	BUSH	4				0.025	0.055
130	75596-52060	ASSY TUBE HYDRAULIC	1				0.15	0.33
135	75595-43510	CLAMP HOSE	1				0.04	0.088
140	75598-23112	PIN	1				0.6	1.32
150	75599-81520	FITTING GREASE	1				0.003	0.0066
160	01173-51075	BOLT	1				0.047	0.1034
170	02574-50100	NUT LOCK	1				0.007	0.0154
180	75596-23150	PIN	1				1.03	2.266
190	75599-81520	FITTING GREASE	1				0.003	0.0066
200	01173-51065	BOLT	1				0.04	0.088
210	02574-50100	NUT LOCK	1				0.007	0.0154

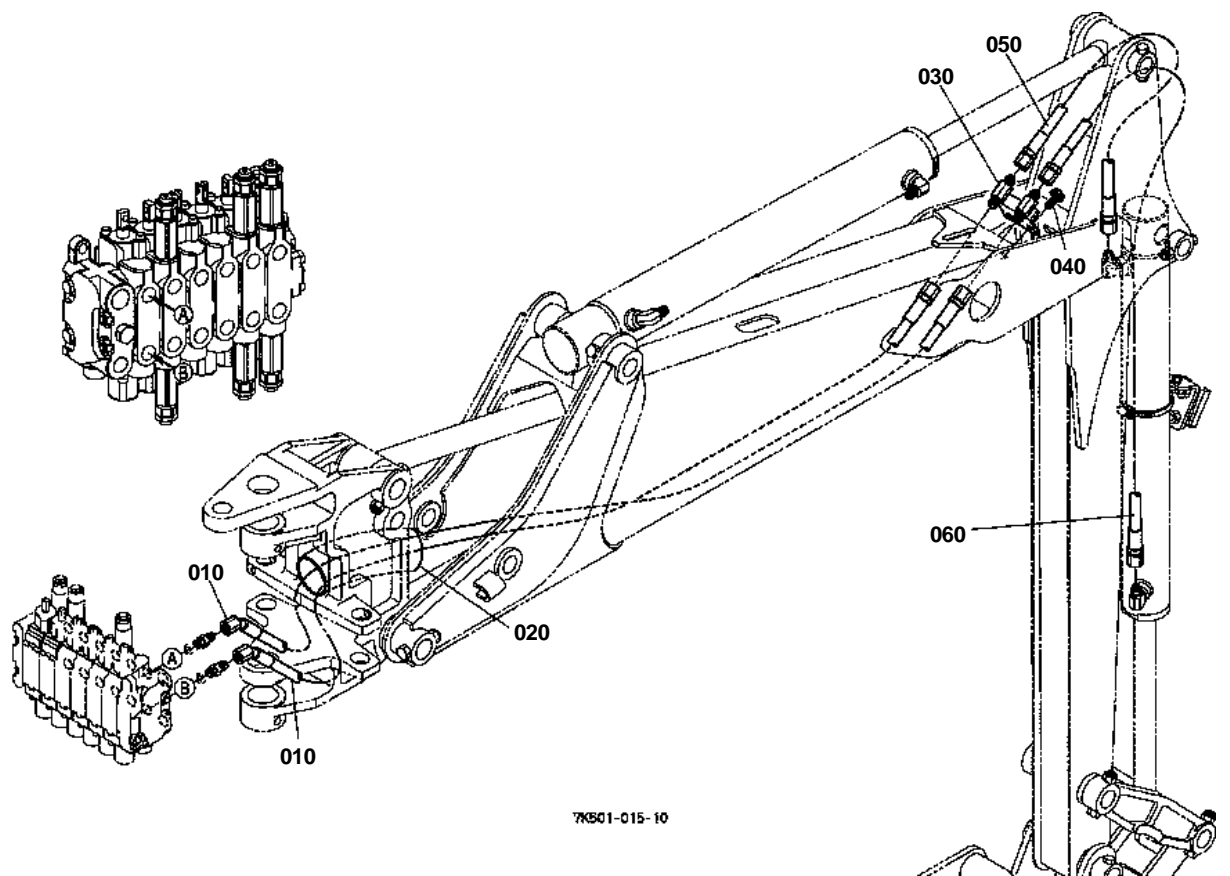


CONTROL VALVE

↔ Interchangeable; ≠ not interchangeable; ← new for old; → old for new

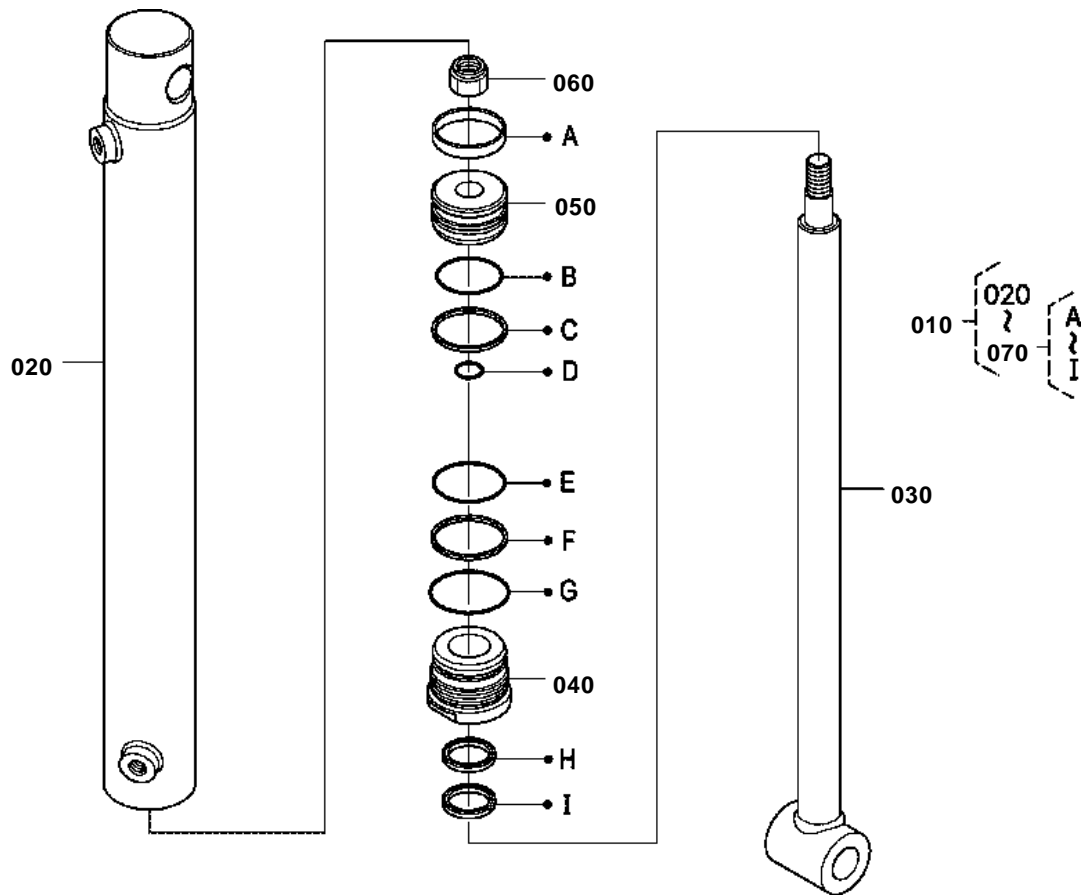
REF.No	Part No.	Description	Q'ty	S.No.	I/C	REMARKS	Weight (kgf)	Weight (lb)
010	7K501-63010	ASSY VALVE CONTROL	1				0	0
020	75560-61950	ASSY ELBOW 2 ADJUSTA	1				0.14	0.308
030	75540-61820	O-RING	1				0.001	0.0022
040	7K500-63800	ASSY JOINT STRAIGHT	10				0.034	0.0748
050	75595-64220	O-RING	10				0.001	0.0022
060	75595-64200	ASSY ELBOW ADJUSTA	3				0.52	1.144
065	75595-64220	O-RING	3				0.001	0.0022
070	7K501-61240	STAY VALVE	1				0	0
080	01774-51055	BOLT FLANGE	2				0.04	0.088
090	01774-51030	BOLT FLANGE	5				0.02	0.044
100	04512-60100	WASHER SPRING	7				0.002	0.0044
110	02118-50100	NUT	7				0.005	0.011

HYDRAULIC HOSE(BUCKET)

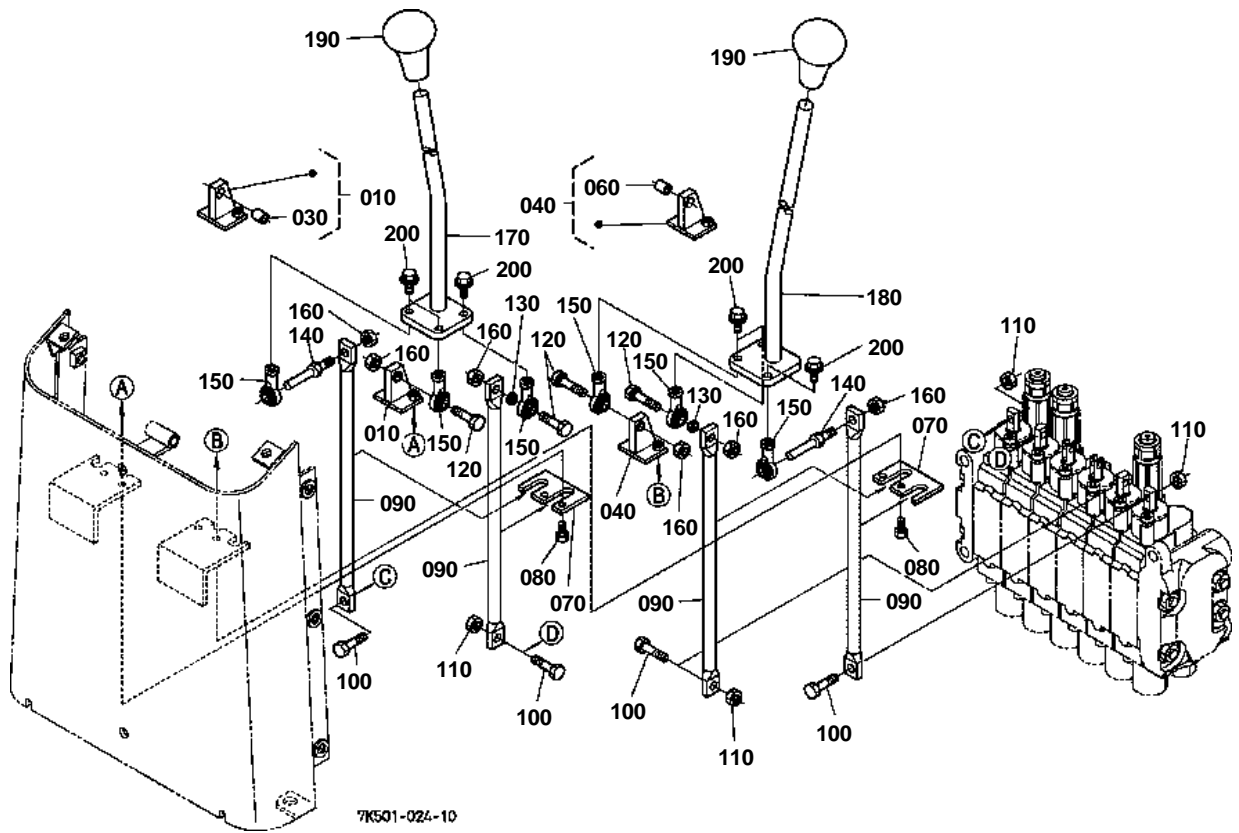


7KS01-015-10

CYLINDER(BUCKET) [COMPONENT PARTS]



CONTROL LEVER 1



CLICK HERE TO **DOWNLOAD** THE COMPLETE MANUAL

- Thank you very much for reading the preview of the manual.
- You can download the complete manual from: www.heydownloads.com by clicking the link below



- Please note: If there is no response to CLICKING the link, please download this PDF first and then click on it.

CLICK HERE TO **DOWNLOAD** THE COMPLETE MANUAL