

Instructions for Parts Books

The heading at the top of the page will be the same for the picture of the parts at it is for the page with the part numbers. B7100HST-D is 4WD model B7100HST-E is 2WD model

Definition of column headings on part number pages:

REF.No → The number referring to the part on the picture page of the parts book.

Part No. → The number assigned to this part at the time of printing the parts book.

Description → Discription of part.

Q'ty → Quantity of part used on that page.

S.No. → Serial number range of the equipment that this part will fit.

>= Your serial number should be greater than or equal to the number shown.

<= Your serial number should be lesser than or equal to the serial number shown.

I/C → Interchangeability of part shown.

↔ The part shown will work for the older and later serial number.

The part shown is not interchangeable with the other serial number.

← new for old

→ old for new

Remarks → Notes about this particulart part. Sometimes this may say except [FR] or [CA]

Note about Country Codes:

The parts books we use in the United States of America may also contain information about a part that would be different in another country. It is important that you are aware of the country codes in some instances.

Symbol	Country
A	United States of America
CA	Canada
FR	France
GR	Greece
PO	Portugal
AU	Australia

If the remarks column says for example EXCEPT [FR] this part works in all countries except France. That means it will work here in the USA.

CLICK HERE TO **DOWNLOAD** THE COMPLETE MANUAL

- Thank you very much for reading the preview of the manual.
- You can download the complete manual from: www.heydownloads.com by clicking the link below



- Please note: If there is no response to CLICKING the link, please download this PDF first and then click on it.

CLICK HERE TO **DOWNLOAD** THE COMPLETE MANUAL



↔ Interchangeable; ≠ not interchangeable; ← new for old; → old for new

REF.No	Part No.	Description	Q'ty	S.No.	I/C	REMARKS	Weight (kgf)	Weight (lb)
010	15261-21110	PISTON	3			STD	0.304	0.6688
010	15261-21910	PISTON	3			+0.50MM	0.3	0.66
020	15271-21050	ASSY PISTON RING	3			STD	0.026	0.0572
020	15271-21090	ASSY PISTON RING	3			+0.50MM	0.04	0.088
030	15261-21310	PIN PISTON	3				0.102	0.2244
040	15261-21330	CIR CLIP PISTON PIN	6				0.001	0.0022
050	15694-22010	ASSY CONNECTING ROD	3				0.5	1.1
060	15261-21980	BUSH PISTON PIN	3				0.012	0.0264
070	15381-22140	BOLT CONNECTING ROD	6				0.02	0.044
080	15694-22310	METAL CRANKPIN	3			SET STD	0.02	0.044
080	15694-22970	METAL CRANKPIN	3			SET -0.20MM	0.025	0.055
080	15694-22980	METAL CRANKPIN	3			SET -0.40MM	0.02	0.044
090	15532-23010	COMP.CRANKSHAFT	1				8	17.6
100	09400-14247	SEAL OIL	1				0.004	0.0088
110	07715-03207	BALL	3				0.001	0.0022
120	66621-14120	BEARING DRY	1				0.006	0.0132
130	19215-23280	SLEEVE CRANKSHAFT	1				0.05	0.11
140	15261-24110	GEAR CRANKSHAFT	1				0.164	0.3608
150	05712-00515	KEY FEATHER	1				0.003	0.0066
160	15261-23310	SLINGER OIL	1				0.008	0.0176
170	15532-23250	COLLAR CRANKSHAFT	1				0.029	0.0638
180	04811-10220	O RING	1				0.001	0.0022
190	15694-23470	METAL CRANKSHAFT	1			STD	0.035	0.077
190	15694-23910	METAL CRANKSHAFT	1			-0.20MM	0.04	0.088
190	15694-23920	METAL CRANKSHAFT	1			-0.40MM	0.045	0.099
200	15694-23480	METAL CRANKSHAFT	3			SET STD	0.04	0.088
200	15694-23930	METAL CRANKSHAFT	3			SET -0.20MM	0.05	0.11
200	15694-23940	METAL CRANKSHAFT	3			SET -0.40MM	0.046	0.1012
210	15261-23530	METAL SIDE	2			STD	0.006	0.0132
210	15261-23950	METAL SIDE	2			+0.20MM	0.006	0.0132
210	15261-23960	METAL SIDE	2			+0.40MM	0.007	0.0154
220	15261-23540	METAL SIDE	2			STD	0.007	0.0154
220	15261-23970	METAL SIDE	2			+0.20MM	0.006	0.0132
220	15261-23980	METAL SIDE	2			+0.40MM	0.007	0.0154



↔ Interchangeable; ≠ not interchangeable; ← new for old; → old for new

REF.No	Part No.	Description	Q'ty	S.No.	I/C	REMARKS	Weight (kgf)	Weight (lb)
010	15371-42502	ASSY PIPE OVER FLOW	1				0.065	0.143
020	15241-51650	COVER INJECTION PUMP	1				0.082	0.1804
030	15231-05130	GASKET BREATHER	1				0	0
040	01053-50614	BOLT	2				0.005	0.011
050	01053-50616	BOLT	2				0.005	0.011
060	04512-50060	WASHER SPRING	4				0	0
070	66711-43290	SUPPORT RELEASE ROD	1				0.039	0.0858
080	15261-53020	ASSY HOLDER NOZZLE	3	<=821125		REFER TO L.No.0B05-R0 FOR COMPONENTS.	0	0
080	19202-53020	ASSY HOLDER NOZZLE	3	>=821126	↔	REFER TO L.No.0B05-R0 FOR COMPONENTS.	0.25	0.55
090	17011-53620	GASKET	3				0.003	0.0066
100	15261-53710	PIPE INJECTION	1				0.103	0.2266
110	15261-53720	PIPE INJECTION	1				0.1	0.22
120	15381-53730	PIPE INJECTION	1				0.102	0.2244
130	15841-53850	CLAMP PIPE	2				0.01	0.022
140	15841-53860	CLAMP PIPE	2				0.009	0.0198
150	03024-50520	SCREW WITH WASHER	2				0.004	0.0088
160	15261-65510	PLUG GLOW	3				0.03	0.066
170	15261-65560	CORD GLOW PLUG	2				0.005	0.011



↔ Interchangeable; ≠ not interchangeable; ← new for old; → old for new

REF.No	Part No.	Description	Q'ty	S.No.	I/C	REMARKS	Weight (kgf)	Weight (lb)
010	15381-16010	ASSY CAMSHAFT	1				1.045	2.299
020	15381-16110	COMP. CAMSHAFT	1				0.965	2.123
030	15261-96880	PLUG BLIND	2				0.002	0.0044
040	15261-16510	GEAR CAMSHAFT	1				0.354	0.7788
050	05712-00515	KEY FEATHER	1				0.003	0.0066
060	15261-16270	STOPPER CAMSHAFT	1				0.034	0.0748
070	04612-00180	CIR CLIP EXTERNAL	1				0.001	0.0022
080	01023-50614	BOLT	2				0.005	0.011
090	15741-24010	COMP.GEAR IDLE	1				0.64	1.408
100	15741-24980	BUSH IDLE GEAR	1				0.03	0.066
110	15741-24360	COLLAR IDLE GEAR	1				0.04	0.088
120	15741-24370	COLLAR IDLE GEAR	1				0.015	0.033
130	15741-24320	CIR CLIP IDLE GEAR	1				0.01	0.022
140	15741-24250	SHAFT IDLE GEAR	1				0.35	0.77
150	01023-50616	BOLT	3				0.005	0.011
160	15261-15550	TAPPET	6				0.03	0.066
170	15261-15110	PUSH ROD	6				0.022	0.0484



↔ Interchangeable; ≠ not interchangeable; ← new for old; → old for new

REF.No	Part No.	Description	Q'ty	S.No.	I/C	REMARKS	Weight (kgf)	Weight (lb)
010	15371-54020	APPARATUS FUEL LIMIT	1				0.055	0.121
020	15371-54030	APPARATUS FUEL LIMIT	1				0.031	0.0682
030	14301-54430	SCREW SET	1				0.001	0.0022
040	15261-54370	NUT LOCK	1				0.007	0.0154
050	15109-33660	GASKET	2				0.001	0.0022
060	15261-54220	NUT CAP	1				0.02	0.044
070	14301-54420	CAP	1				0.005	0.011
080	15261-54090	ASSY APPARATUS I/D.	1				0.027	0.0594
090	15261-54100	ASSY BOLT ADJUSTING	1				0.008	0.0176
100	15261-92020	NUT	1				0.004	0.0088
110	15261-92330	NUT CAP	1				0.01	0.022
120	15021-33660	GASKET	2				0.001	0.0022
130	15261-54270	CAP	1				0.002	0.0044
140	15971-57000	PLATE SPEED CONTROL	1				0.14	0.308
150	15261-56023	COMP.LEVER GOVERNOR	1				0.02	0.044
160	15371-57152	LEVER SPEED CONTROL	1				0.04	0.088
170	05712-00410	KEY FEATHER	1				0.001	0.0022
180	04811-00070	O RING	1				0.001	0.0022
190	04013-50060	WASHER PLAIN	1				0	0
200	02012-50060	NUT	2				0	0
210	15261-94010	WASHER PLAIN	1				0.002	0.0044
220	15261-57110	PLATE SPEED CONTROL	1				0.06	0.132
230	15261-57210	GASKET	1				0	0
240	01023-50620	BOLT	4				0.006	0.0132



↔ Interchangeable; ≠ not interchangeable; ← new for old; → old for new

REF.No	Part No.	Description	Q'ty	S.No.	I/C	REMARKS	Weight (kgf)	Weight (lb)
010	15372-64010	ASSY DYNAMO	1				1.7	3.74
020	15372-64040	ROTOR	1				0.95	2.09
030	15372-64290	ASSY STATOR	1				0.23	0.506
040	15261-93010	SCREW ROUND HEAD	2				0.003	0.0066
050	15372-64362	BASE STATOR	1				0.4	0.88
060	15531-74180	BEARING BALL	1				0.04	0.088
070	15261-64140	COLLAR	1				0.025	0.055
080	15261-64150	COLLAR	1				0.02	0.044
090	15261-95470	CIR CLIP INTERNAL	1				0.002	0.0044
100	15372-74140	SHAFT FAN	1				0.22	0.484
110	15261-94020	WASHER PLAIN	1				0.007	0.0154
120	15261-94070	WASHER SPRING	1				0.003	0.0066
130	15261-92030	NUT	1				0.01	0.022



↔ Interchangeable; ≠ not interchangeable; ← new for old; → old for new

REF.No	Part No.	Description	Q'ty	S.No.	I/C	REMARKS	Weight (kgf)	Weight (lb)
010	15372-11010	ASSY CLEANER AIR	1				0	0
020	15241-11150	BODY AIR CLEANER	1				0.69	1.518
030	15221-94430	WASHER WITH RUBBER	1				0.004	0.0088
040	15221-92620	BOLT WING	1				0.04	0.088
050	15221-11410	COVER BAFFLE	1				0.104	0.2288
060	15221-11170	GASKET A/C COVER	1				0.01	0.022
070	15241-11160	COVER AIR CLEANER	1				0.255	0.561
080	66704-85820	HOOK A/C COVER	1				0.009	0.0198
090	15241-11350	CAP AIR CLEANER	1				0.48	1.056
100	15372-87452	LABEL AIR CLEANER	1				0.001	0.0022
110	15222-11220	ELEMENT AIR CLEANER	1				0.344	0.7568
120	15227-87480	LABEL ELEMENT A/C	1				0.004	0.0088
130	15381-11250	BAND AIR CLEANER	1	<=63115			0.21	0.462
130	15371-11252	BAND AIR CLEANER	1	>=63116	←		0.21	0.462
140	15371-11870	CUSHION	1				0.025	0.055
150	01222-50830	BOLT	1				0.013	0.0286
160	04512-50080	WASHER SPRING	1				0.001	0.0022
170	01123-50816	BOLT	2				0.011	0.0242
180	02114-50080	NUT	1				0.005	0.011
190	15371-11620	PIPE INLET	1				0.2	0.44
200	15221-11720	BAND PIPE	2				0.03	0.066
210	66711-54310	STAY AIR CLEANER	1				0.306	0.6732
220	01123-50820	BOLT	2				0.011	0.0242



↔ Interchangeable; ≠ not interchangeable; ← new for old; → old for new

REF.No	Part No.	Description	Q'ty	S.No.	I/C	REMARKS	Weight (kgf)	Weight (lb)
010	66711-51340	BOLT RADIATOR	2				0.032	0.0704
020	04013-50100	WASHER PLAIN	2				0	0
030	15111-72200	WASHER	4				0.013	0.0286
040	15111-72180	CUSHION	2				0.015	0.033
050	05515-51000	PIN SNAP	2				0	0
060	66204-51450	NET DUSTPROOF	1				0.96	2.112
070	66204-85220	TAPE NET	2				0.002	0.0044
080	66204-51460	STAY LH	1				0.1	0.22
090	66204-51470	STAY RH	1				0.1	0.22
100	66204-51480	SPRING	2				0.004	0.0088
110	66204-51490	PLATE SPRING	2				0.04	0.088
120	01202-50612	BOLT	8				0.005	0.011
130	66204-51510	TAPE	1				0.009	0.0198
140	66204-51520	TAPE	2				0.004	0.0088
150	15553-72060	ASSY RADIATOR	1				6	13.2
160	15371-74470	COVER FAN	1				0.4	0.88
170	15101-72030	CAP RADIATOR	1				0.075	0.165
180	15401-72710	PIPE WATER OVER FLOW	1				0.032	0.0704
190	66204-58710	COOLER OIL	1				0.38	0.836
200	01202-50612	BOLT	2				0.005	0.011
210	66204-58730	TAPE RADIATOR	1				0.01	0.022
220	14301-73110	COCK DRAIN	1				0.094	0.2068
230	15371-72850	PIPE WATER	1				0.21	0.462
240	15371-72940	PIPE WATER	1				0.164	0.3608
250	15108-72870	BAND	4				0.027	0.0594
260	66204-58750	WHISTLE STEAM	1				0.028	0.0616
270	66706-58810	LABEL RADIATOR	1				0.001	0.0022
280	66706-58820	LABEL	1				0.001	0.0022



↔ Interchangeable; ≠ not interchangeable; ← new for old; → old for new

REF.No	Part No.	Description	Q'ty	S.No.	I/C	REMARKS	Weight (kgf)	Weight (lb)
010	66416-55810	ASSY SWITCH SAFETY	1				0.11	0.242
020	66611-55190	SUPPORT CORD	1				0.001	0.0022
030	66213-55110	PANEL	1				1.2	2.64
040	66706-55120	ASSY SWITCH STARTER	1				0.256	0.5632
050	66711-55240	KEY START	1				0.02	0.044
060	66706-55150	LABEL STARTER SWITCH	1				0.001	0.0022
070	66711-55290	ASSY LAMP OIL	1				0.016	0.0352
080	34150-34590	BULB	2				0.001	0.0022
090	15231-65950	INDICATOR GLOW PLUG	1				0.045	0.099
100	01053-50512	BOLT	2				0.002	0.0044
110	02054-50050	NUT	2				0.002	0.0044
120	04512-50050	WASHER SPRING	2				0	0
130	66204-55162	ASSY WIRE HARNESS	1				0.61	1.342
140	66204-55170	WIRE HARNESS	1				0.285	0.627
150	66204-55182	WIRE HARNESS	1				0.2	0.44
160	66711-55190	WIRE HARNESS	1				0.017	0.0374
170	66204-55192	WIRE HARNESS	1				0.095	0.209
180	01202-50612	BOLT	2				0.005	0.011
190	15372-64602	ASSY REGULATOR	1				0.01	0.022
200	01053-50640	BOLT	2				0.011	0.0242
210	66704-55260	RUBBER	1				0.009	0.0198
220	02014-50060	NUT	2				0.003	0.0066
230	04013-50060	WASHER PLAIN	2				0	0
240	04512-50060	WASHER SPRING	2				0	0
250	15272-67580	CLAMP CORD	1				0.021	0.0462
260	55311-41120	SWITCH LIGHT	1				0.05	0.11
270	67401-99120	ASSY KNOB LIGHT SW.	1				0.005	0.011
280	35110-32420	PLUG	3				0.002	0.0044
290	13151-67160	PLUG STOP SWITCH	2	<=65175			0.01	0.022
290	38240-29570	PLUG	2	>=65176	↔		0.001	0.0022
300	01123-50818	BOLT	4				0.012	0.0264
310	04013-50080	WASHER PLAIN	4				0	0
320	66711-55470	CLAMP CORD	1				0.001	0.0022
330	66704-55510	BAND CORD	1				0.002	0.0044
340	66704-55310	METER TRACTOR	1				0.22	0.484
350	66611-55190	SUPPORT CORD	6				0.001	0.0022
360	66591-55520	ASSY FUSE RESERVE	1				0.004	0.0088
370	34670-33700	UNIT FLASHER	1				0.025	0.055
380	66204-55822	STAY UNIT	1				0.005	0.011
390	66706-55220	SUPPORT CORD	10				0.002	0.0044

CLICK HERE TO **DOWNLOAD** THE COMPLETE MANUAL

- Thank you very much for reading the preview of the manual.
- You can download the complete manual from: www.heydownloads.com by clicking the link below



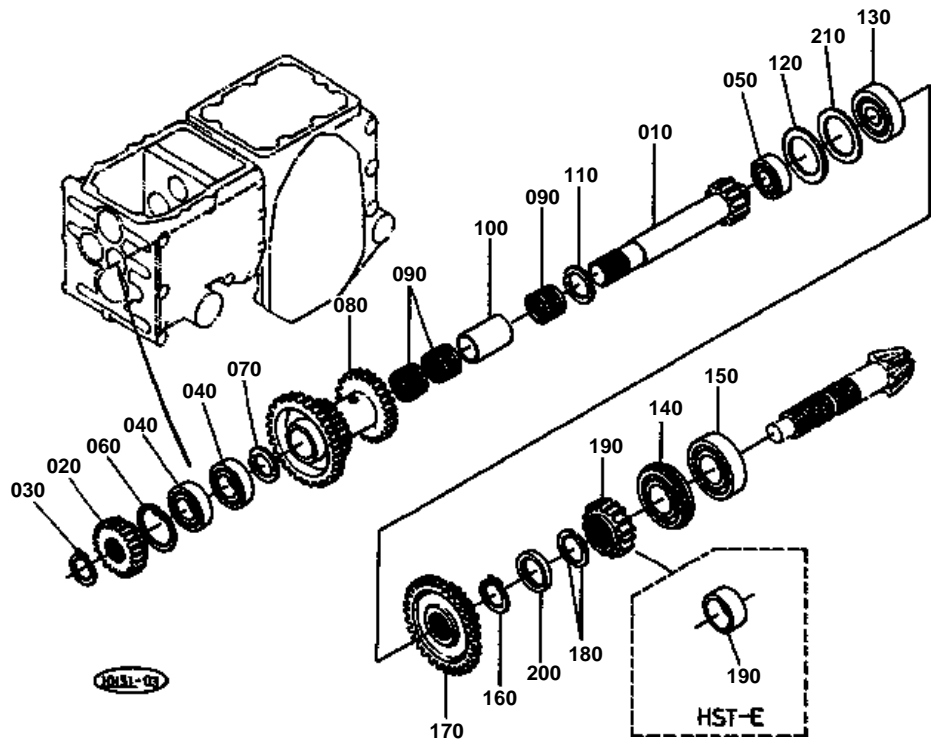
- Please note: If there is no response to CLICKING the link, please download this PDF first and then click on it.

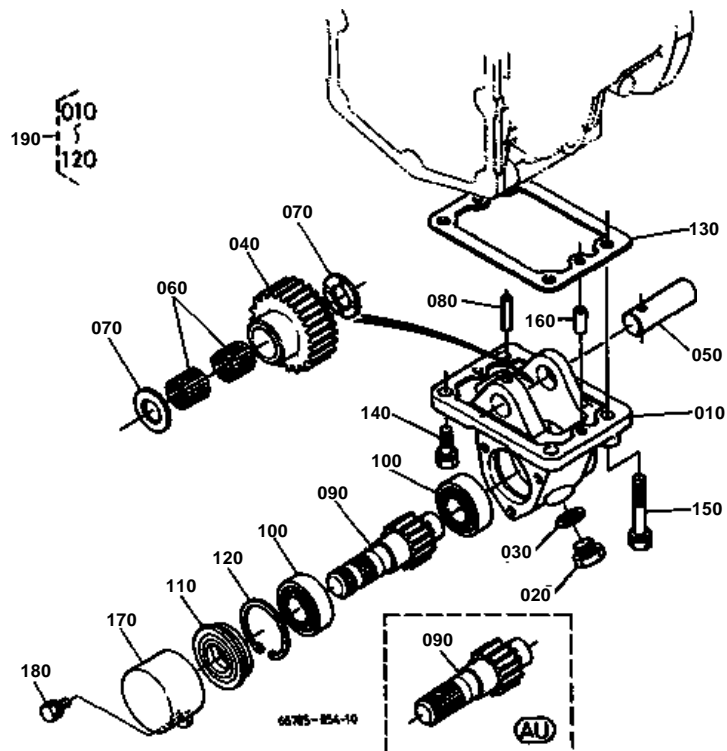
CLICK HERE TO **DOWNLOAD** THE COMPLETE MANUAL

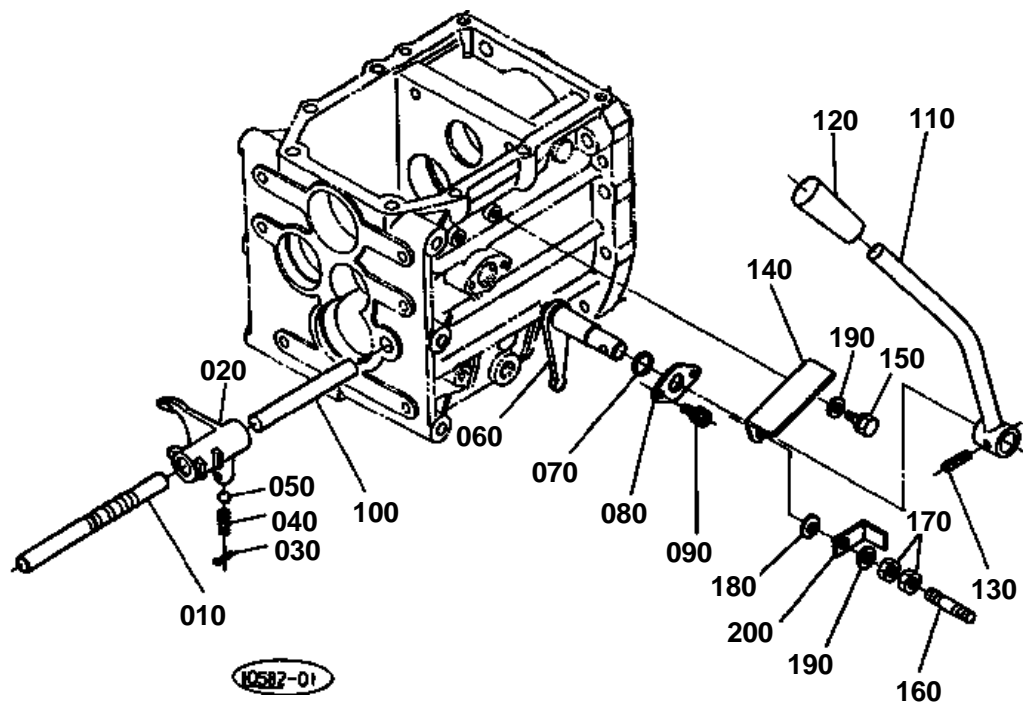


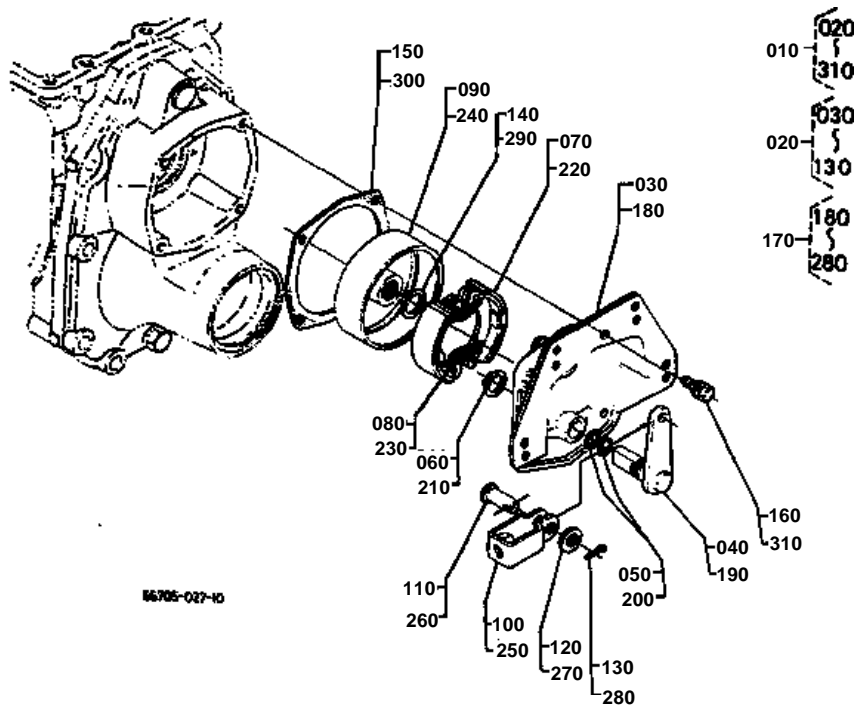
↔ Interchangeable; ≠ not interchangeable; ← new for old; → old for new

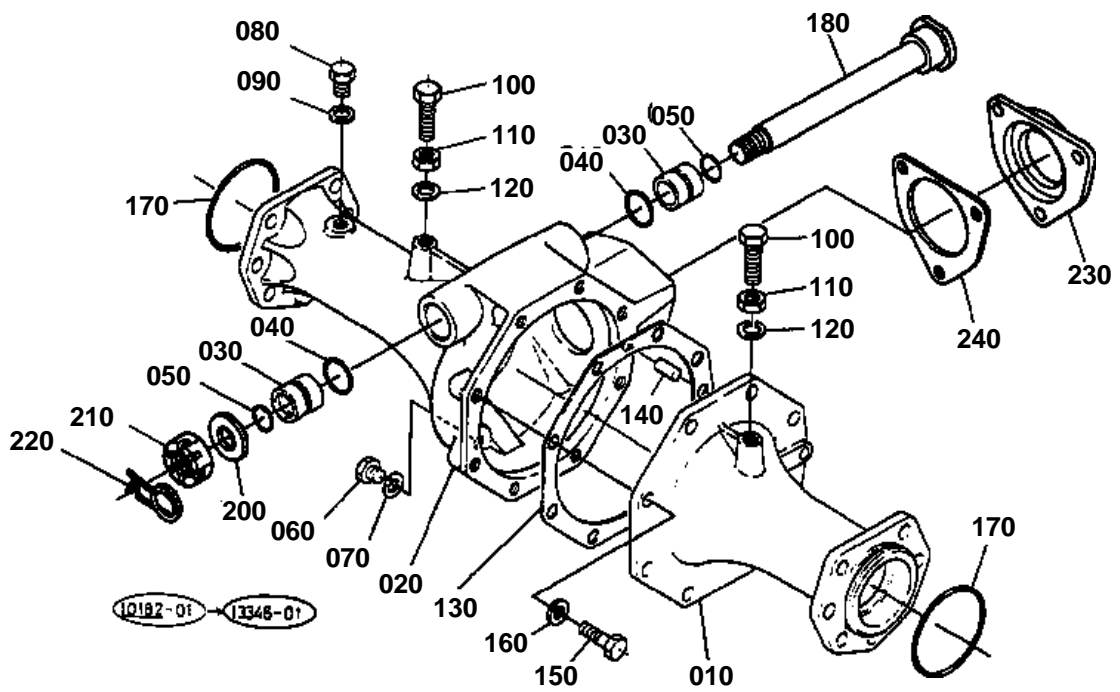
REF.No	Part No.	Description	Q'ty	S.No.	I/C	REMARKS	Weight (kgf)	Weight (lb)
010	66704-11214	COVER PTO	1				1.5	3.3
020	01123-51235	BOLT	6				0.041	0.0902
030	66611-11510	HOLDER DIFF.BRG.LH	1				0.78	1.716
040	01123-50822	BOLT	4				0.012	0.0264
050	66611-11812	HOLDER DIFF.BRG.RH	1				0.72	1.584
060	01123-50822	BOLT	4				0.012	0.0264

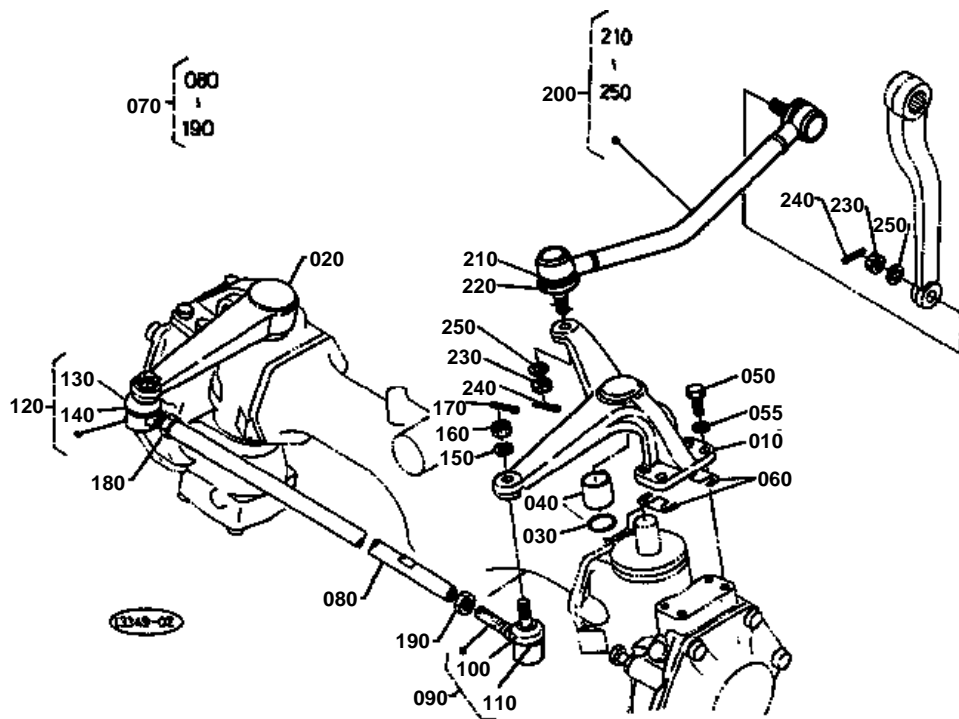


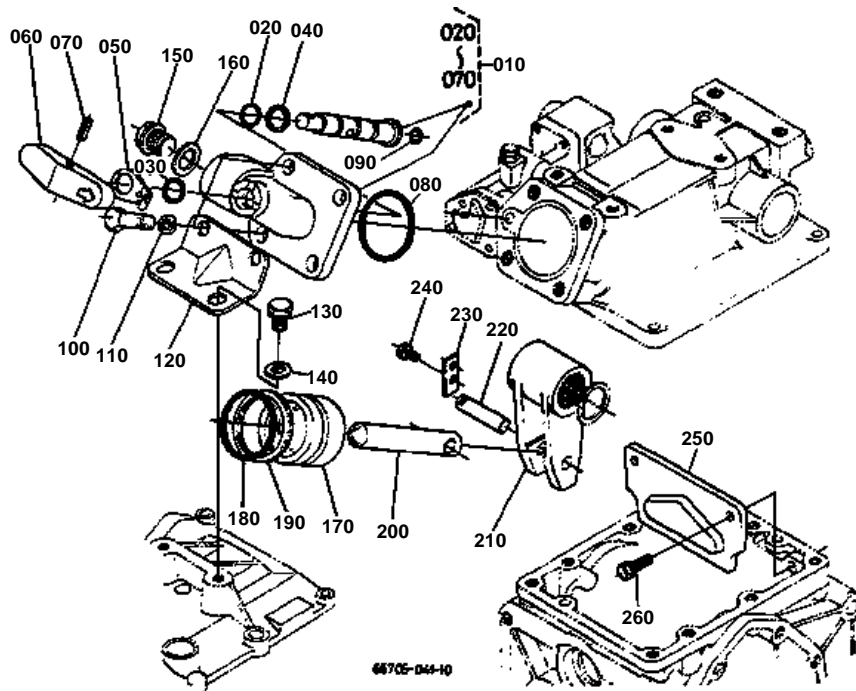


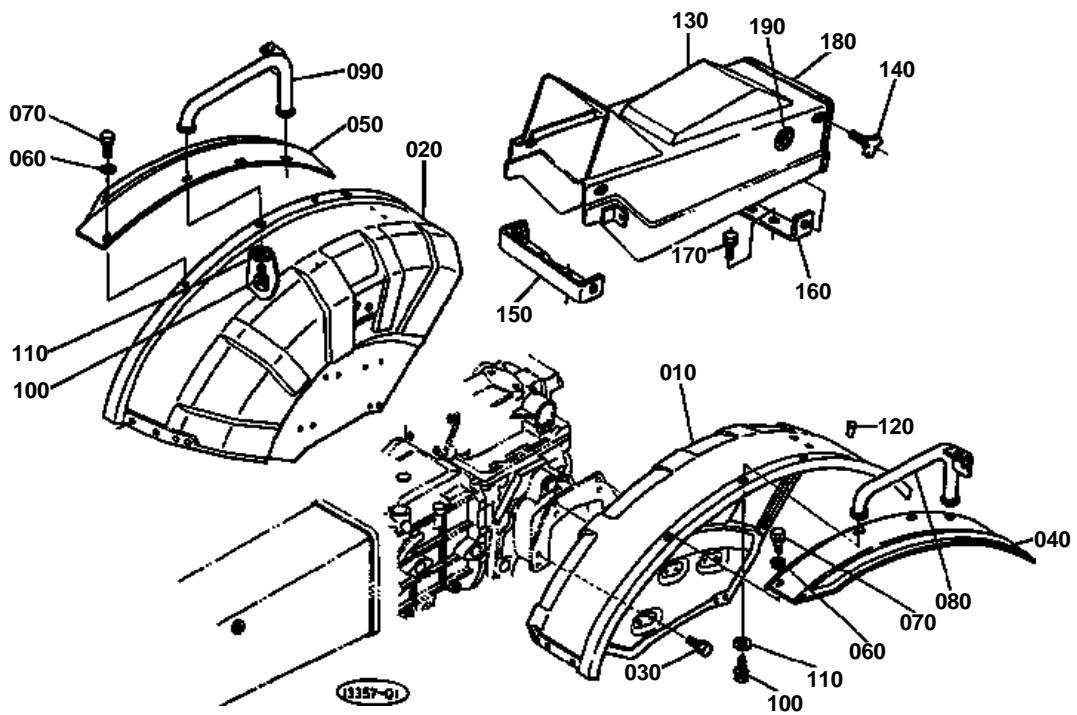












CLICK HERE TO **DOWNLOAD** THE COMPLETE MANUAL

- Thank you very much for reading the preview of the manual.
- You can download the complete manual from: www.heydownloads.com by clicking the link below



- Please note: If there is no response to CLICKING the link, please download this PDF first and then click on it.

CLICK HERE TO **DOWNLOAD** THE COMPLETE MANUAL