

# Instructions for Parts Books

The heading at the top of the page will be the same for the picture of the parts as it is for the page with the part numbers.

Definition of column headings on part number pages:

**REF.No** → The number referring to the part on the picture page of the parts book.

**Part No.** → The number assigned to this part at the time of printing the parts book.

**Description** → Description of part.

**Q'ty** → Quantity of part used on that page.

**S.No.** → Serial number range of the equipment that this part will fit.

>= Your serial number should be greater than or equal to the number shown.

<= Your serial number should be lesser than or equal to the serial number shown.

**I/C** → Interchangeability of part shown.

↔ The part shown will work for the older and later serial number.

# The part shown is not interchangeable with the other serial number.

← new for old

→ old for new

**Remarks** → Notes about this particular part. Sometimes this may say except [FR] or [CA]

## Note about Country Codes:

The parts books we use in the United States of America may also contain information about a part that would be different in another country. It is important that you are aware of the country codes in some instances.

Symbol	Country
A	United States of America
CA	Canada
FR	France
GR	Greece
PO	Portugal
AU	Australia

If the remarks column says for example EXCEPT [FR] this part works in all countries except France. That means it will work here in the USA.

CLICK HERE TO **DOWNLOAD** THE COMPLETE MANUAL

- Thank you very much for reading the preview of the manual.
- You can download the complete manual from: [www.heydownloads.com](http://www.heydownloads.com) by clicking the link below



- Please note: If there is no response to CLICKING the link, please download this PDF first and then click on it.

CLICK HERE TO **DOWNLOAD** THE COMPLETE MANUAL

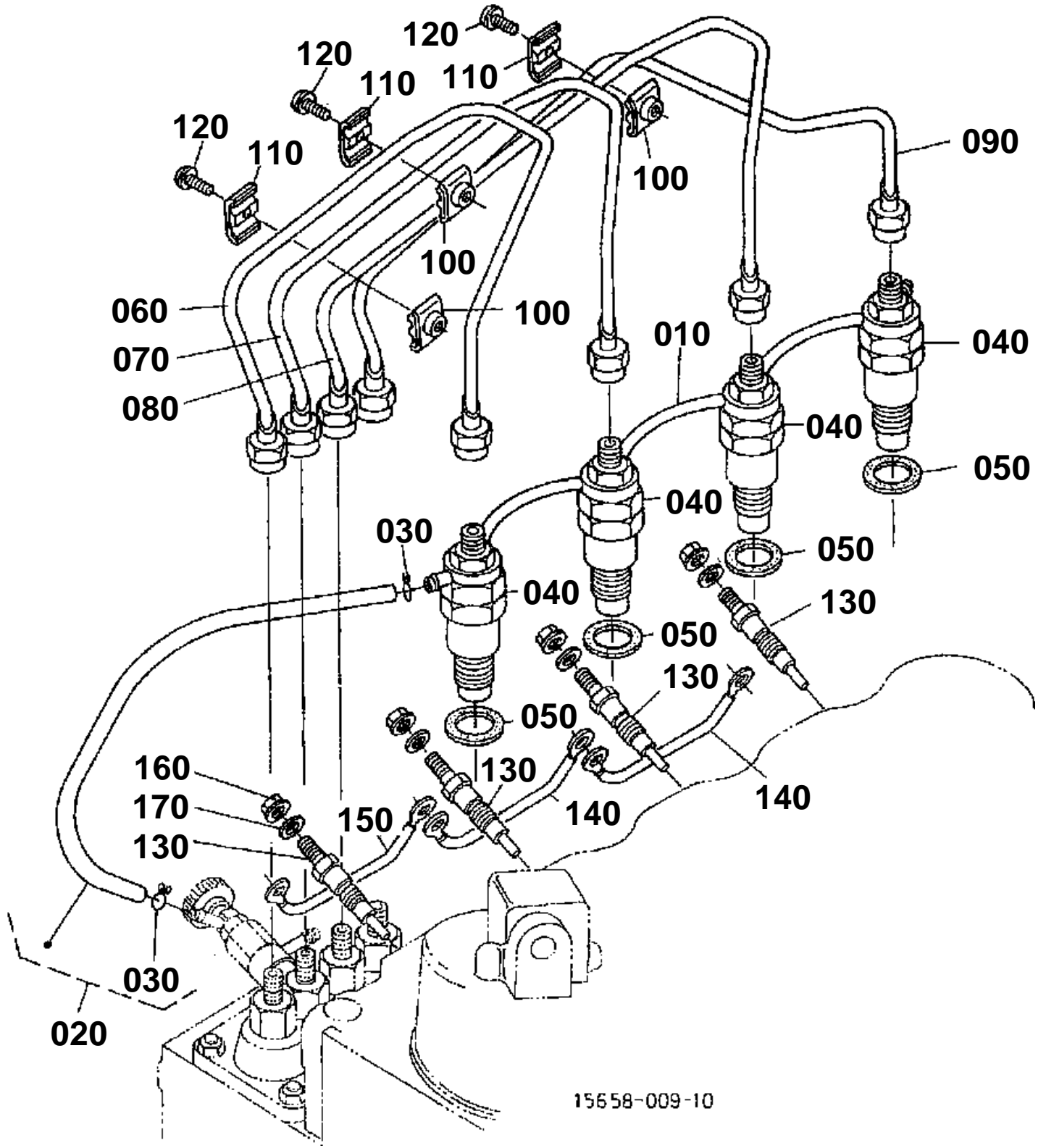


PISTON/CRANKSHAFT

↔ Interchangeable; ≠ not interchangeable; ← new for old; → old for new

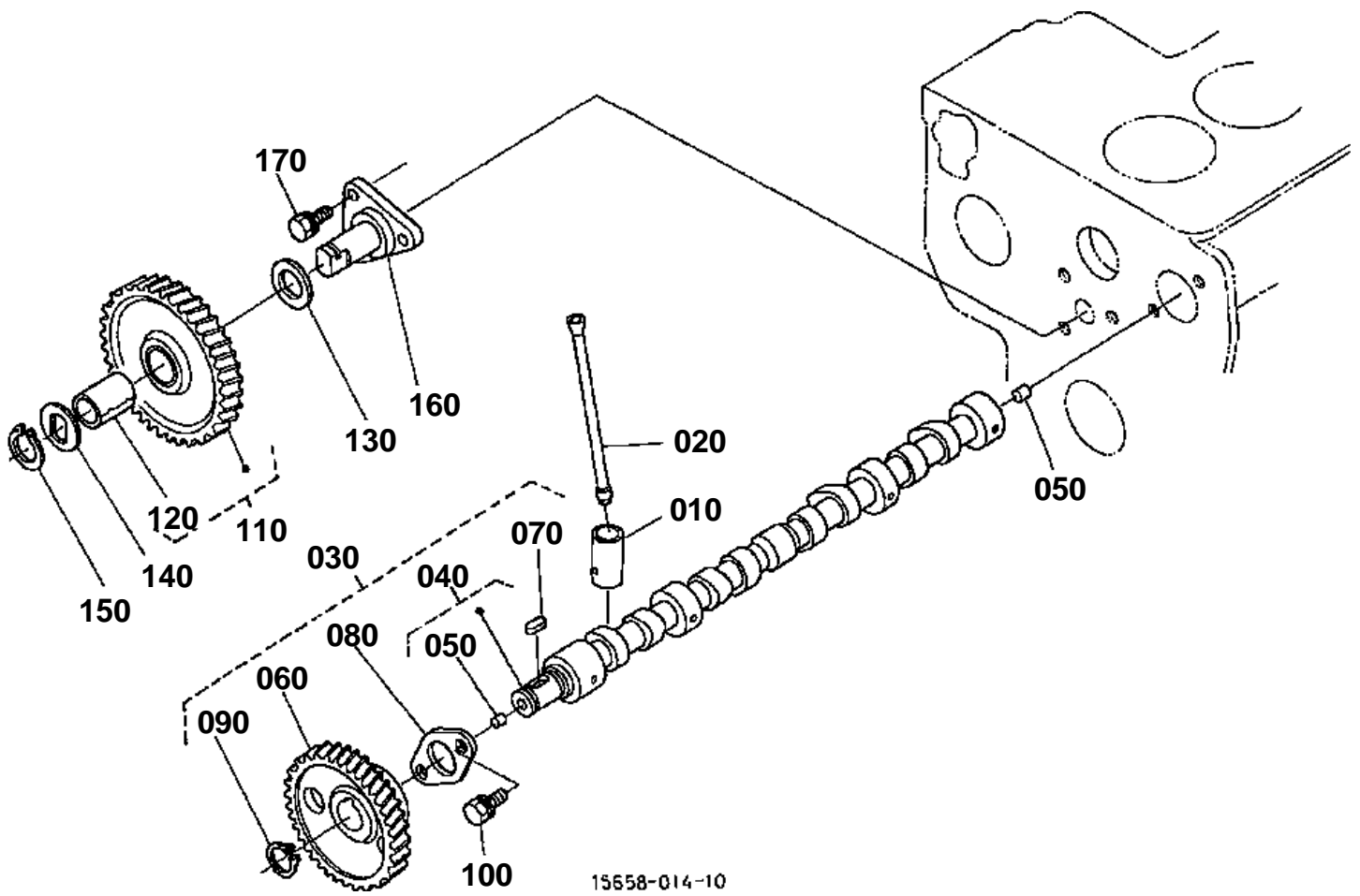
REF.No	Part No.	Description	Q'ty	S.No.	I/C	REMARKS	Weight (kgf)	Weight (lb)
010	15532-21110	PISTON	2			STD	0.365	0.803
010	15532-21910	PISTON	2			+0.5MM	0.365	0.803
020	15531-21123	PISTON	2			STD	0.35	0.77
020	15531-21922	PISTON	2			+0.5MM	0.37	0.814
030	15442-21050	ASSY PISTON RING	4			STD	0.04	0.088
030	15442-21090	ASSY PISTON RING	4			+0.5MM	0.03	0.066
040	15261-21310	PIN PISTON	4				0.102	0.2244
050	15261-21330	CIRCLIP PISTON PIN	8				0.001	0.0022
060	15381-22010	ASSY CONNECTING ROD	4	≤755815			0	0
060	15694-22010	ASSY CONNECTING ROD	4	≥755816	↔		0.5	1.1
070	15261-21980	BUSH PISTON PIN	4				0.012	0.0264
080	15381-22140	BOLT CONNECTING ROD	8				0.02	0.044
090	15531-22310	METAL CRANKPIN	4	≤755815		STD	0	0
090	15694-22310	METAL CRANKPIN	4	≥755816	↔	STD	0.02	0.044
090	15531-22970	METAL CRANKPIN	4	≤755815		-0.2MM	0	0
090	15694-22970	METAL CRANKPIN	4	≥755816	↔	-0.2MM	0.025	0.055
090	15531-22980	METAL CRANKPIN	4	≤755815		-0.4MM	0	0
090	15694-22980	METAL CRANKPIN	4	≥755816	↔	-0.4MM	0.02	0.044
100	15741-23010	COMP.CRANKSHAFT	1				8	17.6
110	07715-00401	BALL	4	≤763260			0.001	0.0022
110	07715-03207	BALL	4	≥763261	≠		0.001	0.0022
120	19215-23280	SLEEVE CRANKSHAFT	1				0.05	0.11
130	09400-14247	SEAL OIL	1				0.004	0.0088
140	66621-14120	BEARING DRY	1				0.006	0.0132
150	15752-24110	GEAR CRANK	1				0.046	0.1012
160	05712-00515	KEY FEATHER	1				0.003	0.0066
170	15752-23310	SLINGER OIL	1				0.002	0.0044
180	15752-23250	COLLAR CRANKSHAFT	1				0.043	0.0946
190	04811-05230	O RING	1				0.001	0.0022
200	15261-23470	METAL CRANKSHAFT	1	≤755815		STD	0	0
200	15694-23470	METAL CRANKSHAFT	1	≥755816	↔	STD	0.035	0.077
200	15261-23910	METAL CRANKSHAFT	1	≤755815		-0.2MM	0	0
200	15694-23910	METAL CRANKSHAFT	1	≥755816	↔	-0.2MM	0.04	0.088
200	15261-23920	METAL CRANKSHAFT	1	≤755815		-0.4MM	0	0
200	15694-23920	METAL CRANKSHAFT	1	≥755816	↔	-0.4MM	0.045	0.099
210	15261-23480	METAL CRANKSHAFT	4	≤755815		STD	0	0
210	15694-23480	METAL CRANKSHAFT	4	≥755816	↔	STD	0.04	0.088
210	15261-23930	METAL CRANKSHAFT	4	≤755815		-0.2MM	0	0
210	15694-23930	METAL CRANKSHAFT	4	≥755816	↔	-0.2MM	0.05	0.11
210	15261-23940	METAL CRANKSHAFT	4	≤755815		-0.4MM	0	0
210	15694-23940	METAL CRANKSHAFT	4	≥755816	↔	-0.4MM	0.046	0.1012
220	15261-23530	METAL SIDE	2			STD	0.006	0.0132
220	15261-23950	METAL SIDE	2			+0.2MM	0.006	0.0132
220	15261-23960	METAL SIDE	2			+0.4MM	0.007	0.0154
230	15261-23540	METAL SIDE	2			STD	0.007	0.0154
230	15261-23970	METAL SIDE	2			+0.2MM	0.006	0.0132
230	15261-23980	METAL SIDE	2			+0.4MM	0.007	0.0154
240	07916-28290	KIT PISTON-RING	2			STD	0.512	1.1264
240	07916-26610	KIT PISTON-RING	2			+0.5MM	0.52	1.144
250	07916-28300	KIT PISTON-RING	2			STD	0.2	0.44
250	07916-26620	KIT PISTON-RING	2			+0.5MM	0.54	1.188
260	07916-28140	KIT METAL ENGINE	1			STD	0.29	0.638

NOZZLE HOLDER



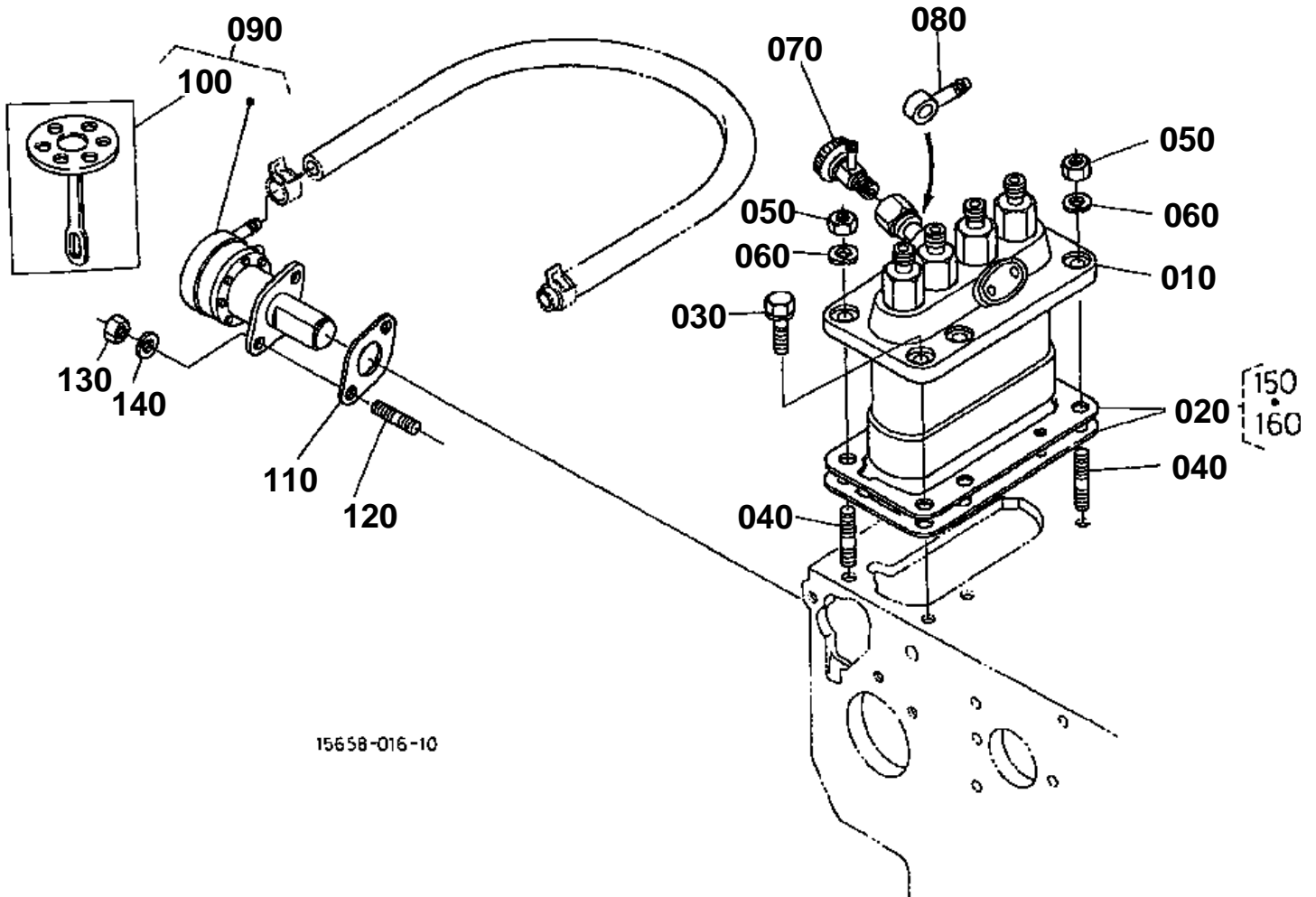
15658-009-10

CAMSHAFT



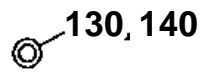
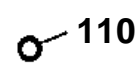
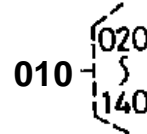
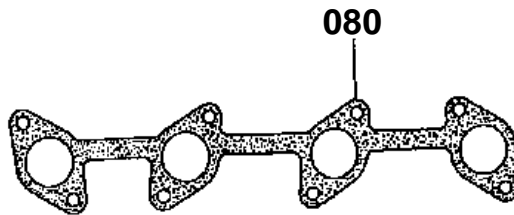
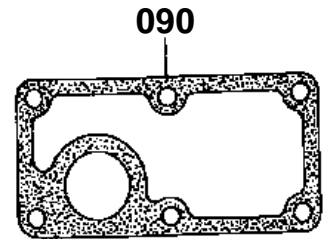
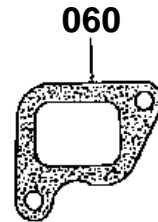
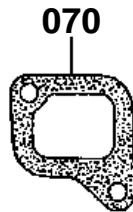
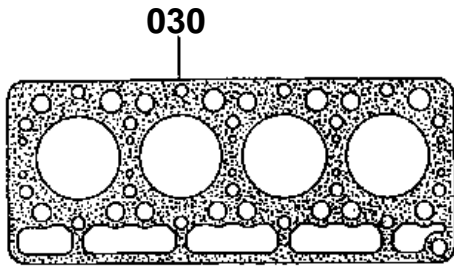
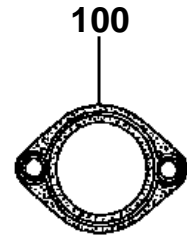
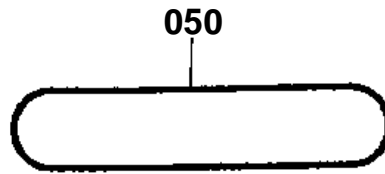
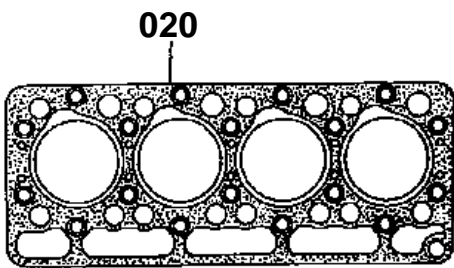
15658-014-10

INJECTION PUMP

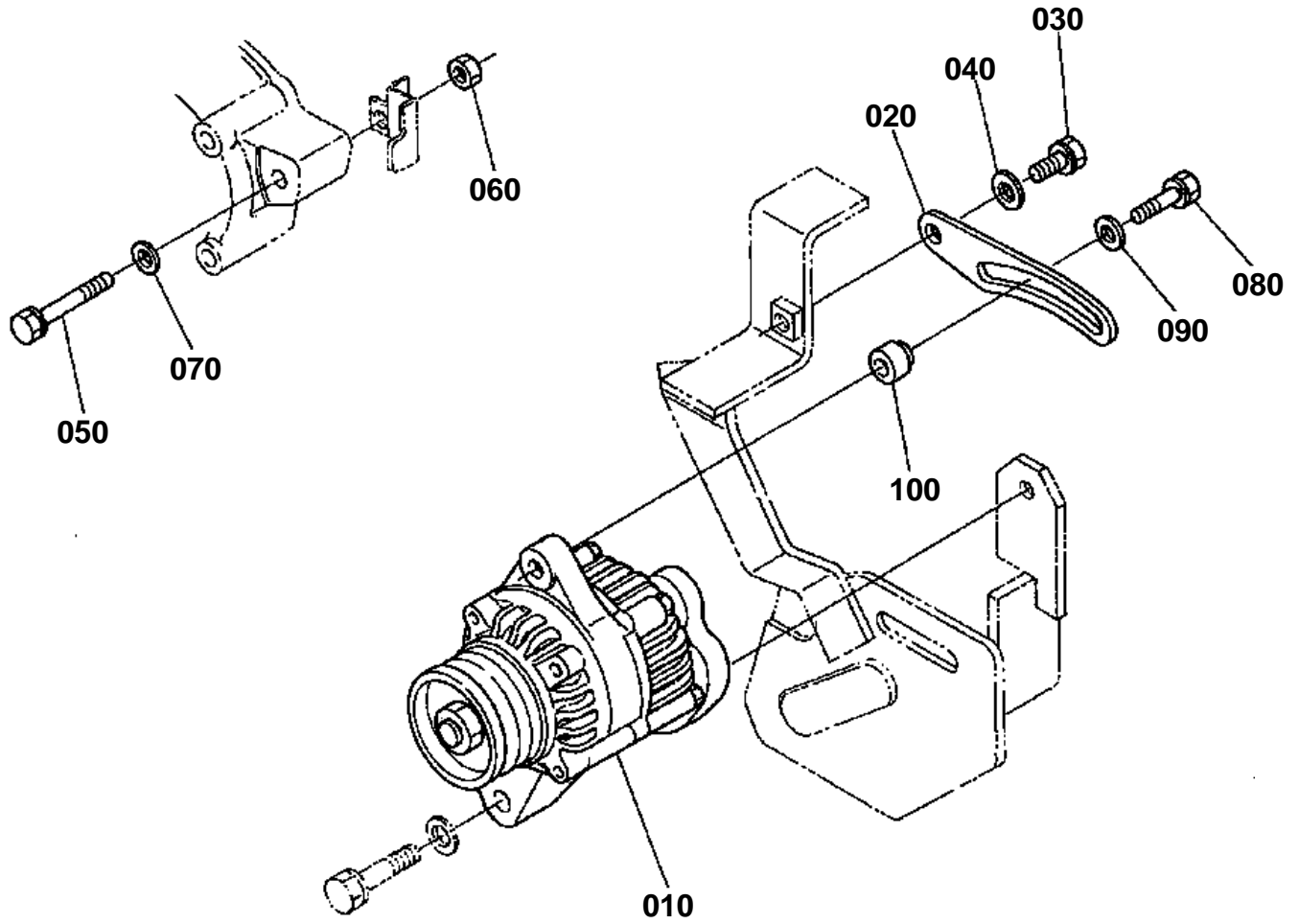


15658-016-10

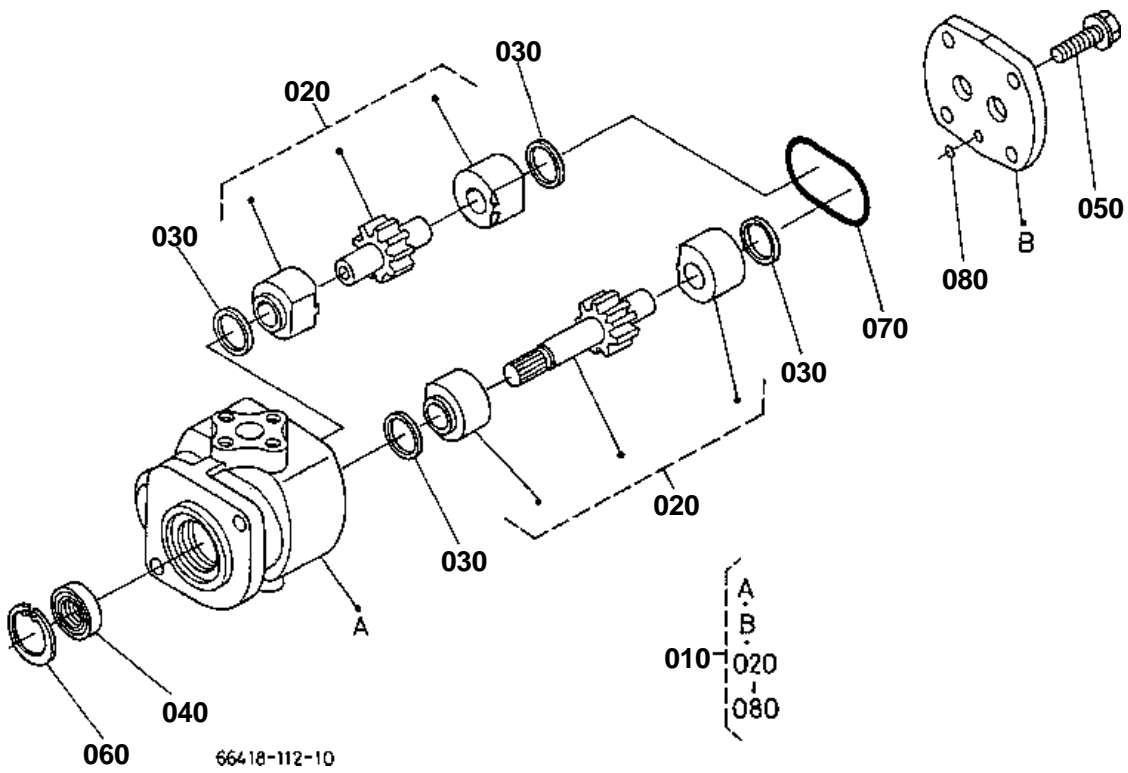
UPPER GASKET KIT



15658-021-10



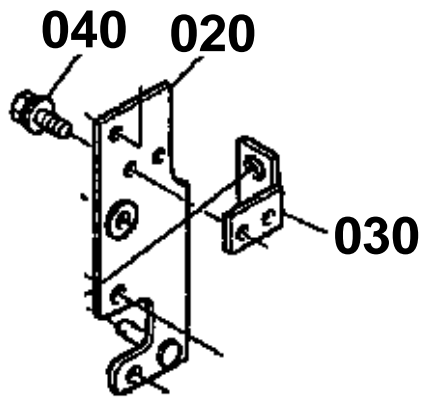
15892-002-10



020 66375-5395-0

030 66375-5397-0

040 01125-50612



66417-800-10

**FUEL FILTER**

↔ Interchangeable; ≠ not interchangeable; ← new for old; → old for new

REF.No	Part No.	Description	Q'ty	S.No.	I/C	REMARKS	Weight (kgf)	Weight (lb)
010	15751-43010	ASSY FILTER FUEL	1				0.41	0.902
020	15531-43110	COMP.BODY COCK	1				0.255	0.561
030	14301-43522	LEVER COCK	1				0.024	0.0528
040	14301-43820	SPRING VALVE	1				0.001	0.0022
050	14301-43830	SCREW SET	1				0.001	0.0022
060	14301-43840	O RING LEVER	1				0.001	0.0022
070	19204-43100	ASSY CUP FILTER	1	>=57498			0.02	0.044
075	15000-34832	CUP FILTER	1	<=57497			0.07	0.154
075	15393-43580	CUP FILTER	1	>=57498	↔		0.01	0.022
080	14301-43590	RING RETAINING	1				0.054	0.1188
090	14301-43650	O RING FILTER CUP	1				0.001	0.0022
100	15231-43560	ASSY ELEMENT	1				0.03	0.066
110	04811-00100	O RING FILTER	1				0.001	0.0022
120	66706-58310	LABEL FUEL FILTER	1	<=57497			0.001	0.0022
120	16689-88430	LABEL FUEL	1	>=57498	↔		0.001	0.0022

**STARTER [COMPONENT PARTS]**

↔ Interchangeable; ≠ not interchangeable; ← new for old; → old for new

REF.No	Part No.	Description	Q'ty	S.No.	I/C	REMARKS	Weight (kgf)	Weight (lb)
010	15741-63010	ASSY STARTER	1				4.15	9.13
020	15501-63080	YOKE	1				0.675	1.485
030	15501-63370	BRUSH	2				0.01	0.022
040	15501-63070	ARMATURE	1				0.78	1.716
050	15504-63500	BEARING BALL	1				0.02	0.044
060	15504-63530	BEARING BALL	1				0.04	0.088
070	15504-63040	CLUTCH	1				0.725	1.595
080	15504-63030	HOUSING	1				0.385	0.847
090	15504-63020	SWITCH MAGNETIC	1				0	0
100	15501-63380	HOLDER BRUSH	1				0.075	0.165
110	15401-63390	SPRING BRUSH	4				0.003	0.0066
120	15501-63200	FRAME END	1				0.08	0.176
130	11233-63280	GEAR	1				0.1	0.22
140	19212-63100	ROLLER	5				0.002	0.0044
150	19212-63110	RETAINER	1				0.002	0.0044
160	19212-97130	BALL	1				0.003	0.0066
170	19212-63120	SPRING	1				0.004	0.0088
180	15501-96670	WASHER FELT	1				0.005	0.011
190	15501-93310	SCREW	2				0.01	0.022
200	15501-63320	BOLT THROUGH	2				0.03	0.066
210	15501-91020	BOLT	2				0.01	0.022
220	13963-92010	NUT HEXAGON	1				0.005	0.011
230	15504-63120	COVER CORD	1				0.06	0.132



PANEL/SWITCH

↔ Interchangeable; ≠ not interchangeable; ← new for old; → old for new

REF.No	Part No.	Description	Q'ty	S.No.	I/C	REMARKS	Weight (kgf)	Weight (lb)
010	37410-59110	ASSY SWITCH STARTER	1				0.32	0.704
015	37410-55180	CAP STARTER SWITCH	1				0.003	0.0066
020	37410-55150	KEY STARTER	1				0.025	0.055
025	66416-55170	WASHER	1				0.001	0.0022
026	66416-55170	WASHER	1				0.001	0.0022
030	35110-32420	PLUG	1	<=56246			0.002	0.0044
030	66416-47170	LABEL COVER	1	>=56247	↔		0.001	0.0022
040	67156-55210	SWITCH COMBINATION	1				0.095	0.209
042	67156-55230	NUT RING	1				0.003	0.0066
043	67156-55240	LEVER FLASHER	1				0.004	0.0088
044	67156-55250	KNOB LIGHT	1				0.004	0.0088
050	31351-31410	TIMER	1	<=56617			0	0
050	T0070-31410	TIMER KEY STOP	1	>=56618	←		0.065	0.143
060	19267-64600	ASSY REGULATOR	1	<=52061		[A] [AU] [NZ]	0	0
060	19267-64602	ASSY REGULATOR	1	>=52062	←	[A] [AU] [NZ]	0.188	0.4136
060	RP201-53710	ASSY REGULATOR	1	>=58872	↔	[A] [AU] [NZ]	0.185	0.407
070	03014-50625	SCREW	2			[A] [AU] [NZ]	0	0
080	04012-50060	WASHER PLAIN	2			[A] [AU] [NZ]	0.001	0.0022
090	04512-60060	WASHER SPRING	2			[A] [AU] [NZ]	0.001	0.0022
100	32430-33700	ASSY HAZARD UNIT	1				0.095	0.209
110	32430-94260	BODY HAZARD UNIT	1				0.045	0.099
120	32430-94270	BRACKET HAZARD UNIT	1				0.015	0.033
130	32430-94280	HARNES HAZARD UNIT	1				0.02	0.044
140	01202-50620	BOLT	1				0.007	0.0154
150	04013-60060	WASHER PLAIN	1				0.001	0.0022
160	66416-55810	ASSY SWITCH SAFETY	1				0.11	0.242
170	01023-50610	BOLT	1				0.005	0.011
180	66416-55120	ASSY PANEL GAUGE	1	<=52260		REFER TO L.No.0C11-L0 FOR COMPONENTS.	0	0
180	66416-55122	ASSY PANEL GAUGE	1	>=52261	←	REFER TO L.No.0C11-L0 FOR COMPONENTS.	1.74	3.828
190	31351-18790	BOLT FLANGE	4				0.007	0.0154
200	31351-18860	WASHER	4				0.002	0.0044
210	66416-55310	CABLE HOUR METER	1				0.18	0.396
220	66446-55260	BOX RELAY	1			[CA]	0.03	0.066
230	01023-50610	BOLT	2				0.005	0.011



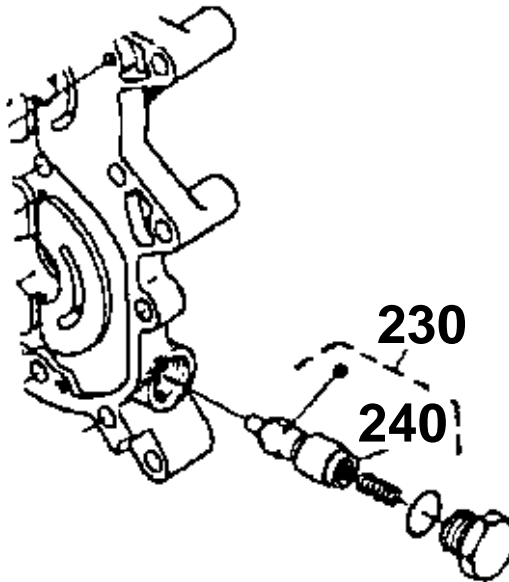
## CLUTCH PEDAL

↔ Interchangeable; ≠ not interchangeable; ← new for old; → old for new

REF.No	Part No.	Description	Q'ty	S.No.	I/C	REMARKS	Weight (kgf)	Weight (lb)
010	66419-44110	PEDAL CLUTCH	1				1.76	3.872
020	67111-44120	ROD CLUTCH MIDDLE	1				0.06	0.132
030	67311-42830	U-JOINT	1				0.05	0.11
040	02112-50080	NUT	1				0.003	0.0066
050	05122-50822	PIN JOINT	2				0.01	0.022
060	04012-50080	WASHER PLAIN	2				0.001	0.0022
070	05511-50215	PIN SPLIT	2				0.001	0.0022
080	67800-44130	SPRING RETURN	1				0.065	0.143
090	67111-44250	NIPPLE GREASE	1				0.005	0.011

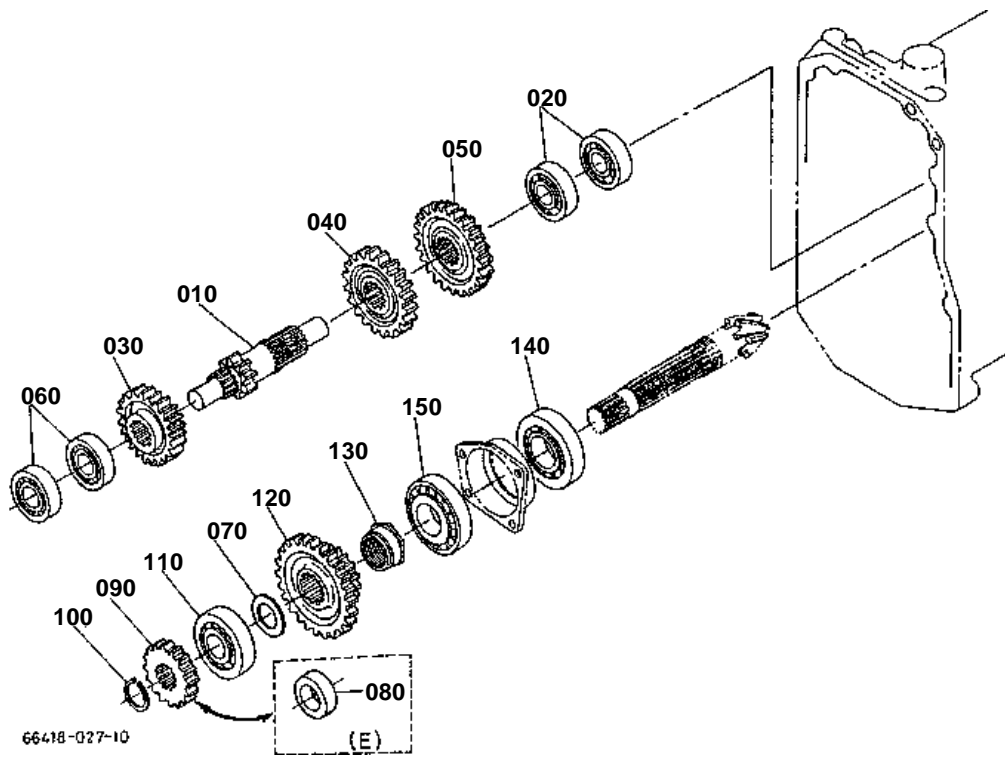
230 66363-8380-2

240 04810-00050



66418-802-10

# 4TH SHAFT



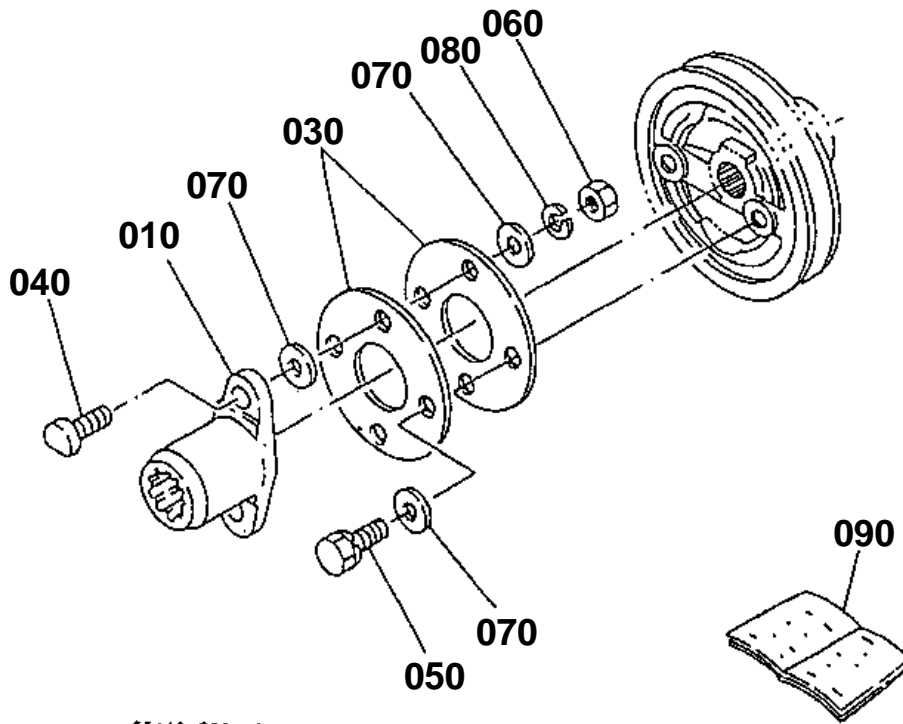
CLICK HERE TO **DOWNLOAD** THE COMPLETE MANUAL

- Thank you very much for reading the preview of the manual.
- You can download the complete manual from: [www.heydownloads.com](http://www.heydownloads.com) by clicking the link below



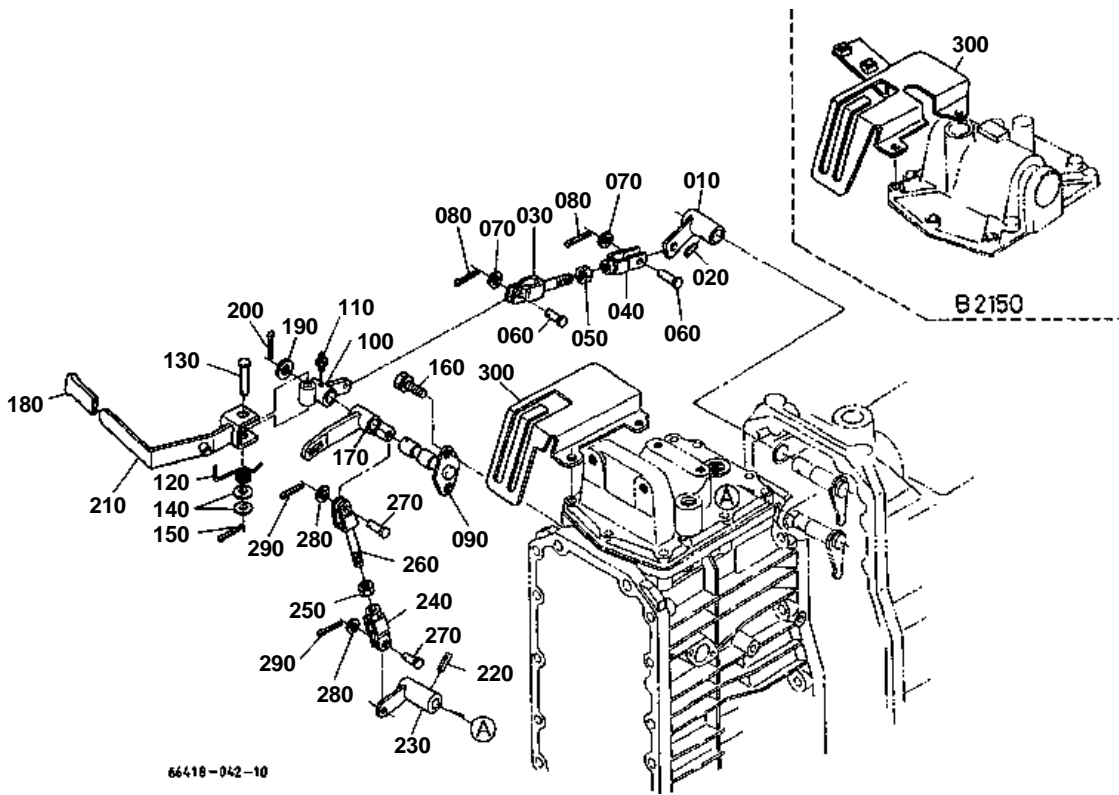
- Please note: If there is no response to CLICKING the link, please download this PDF first and then click on it.

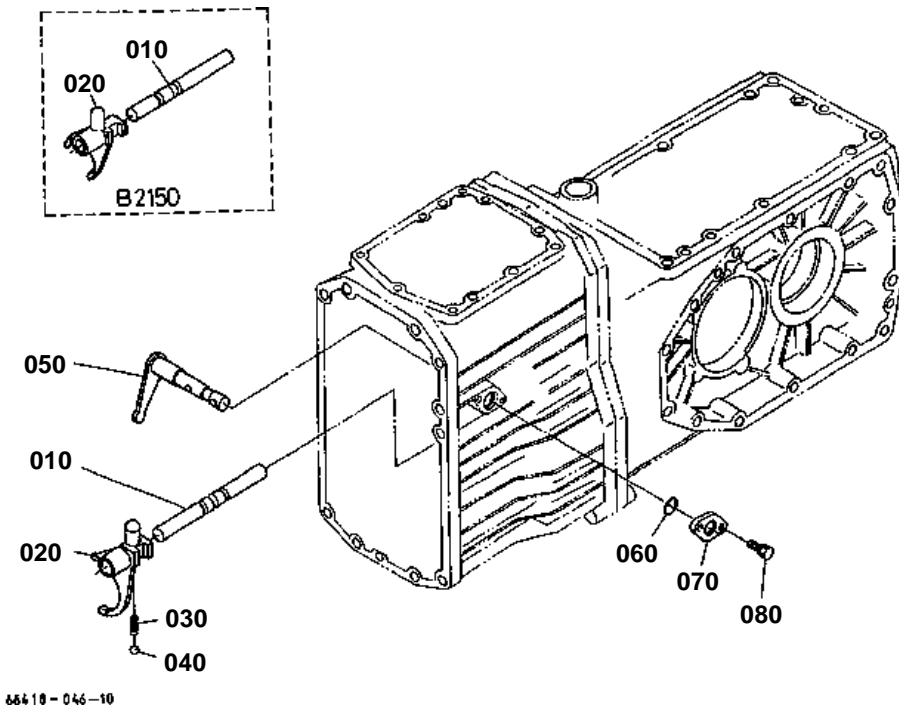
CLICK HERE TO **DOWNLOAD** THE COMPLETE MANUAL



66418-035-10

RANGE GEAR SHIFT LEVER







## REAR AXLE CASE

↔ Interchangeable; ≠ not interchangeable; ← new for old; → old for new

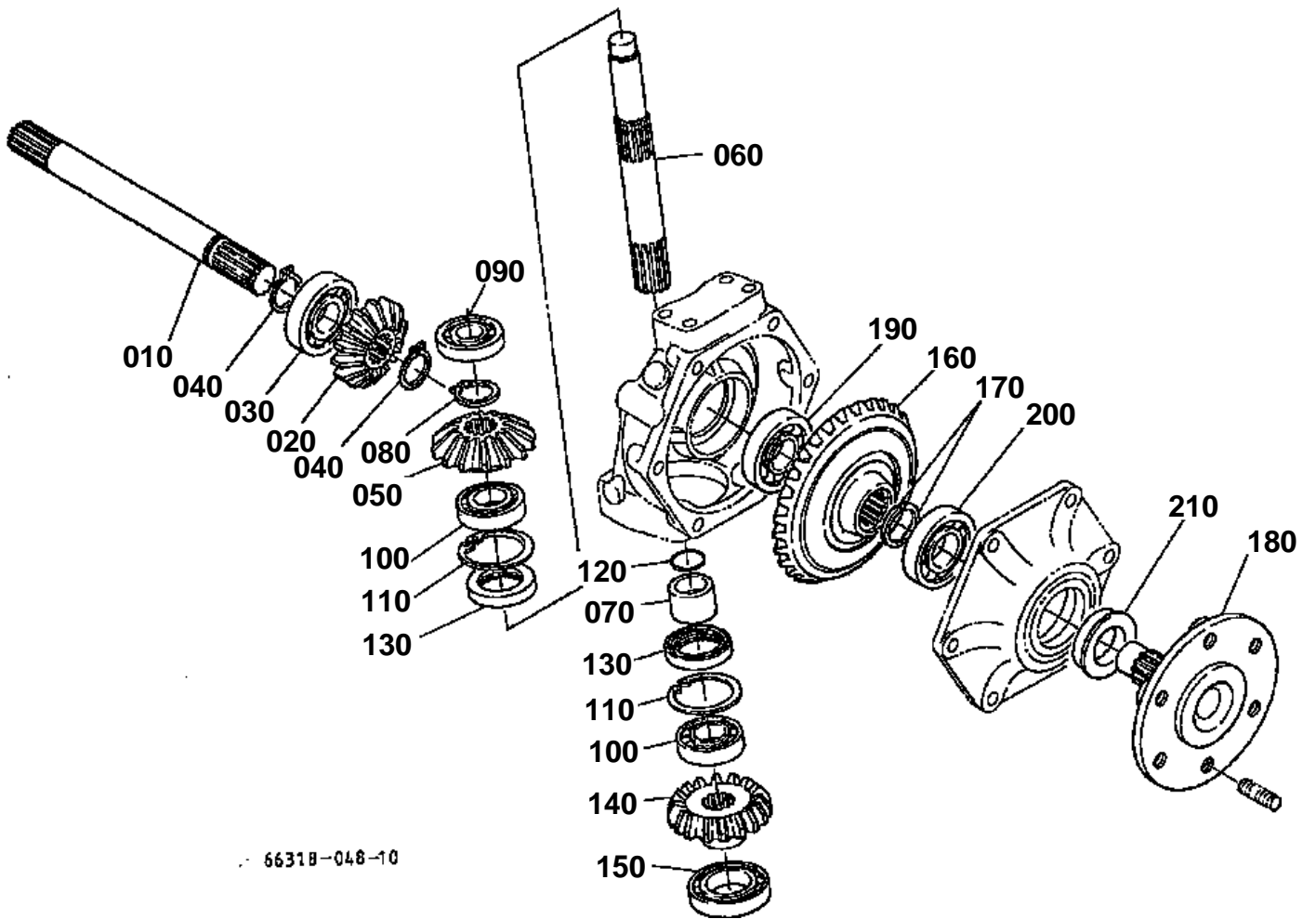
REF.No	Part No.	Description	Q'ty	S.No.	I/C	REMARKS	Weight (kgf)	Weight (lb)
010	67111-12612	HOLDER DIFF.BRG.LH	1				0.6	1.32
020	67111-12640	SHIM	2			0.8MM	0.01	0.022
020	67111-12660	SHIM	2			0.2MM	0.001	0.0022
030	67111-12623	HOLDER DIFF.BRG.RH	1				1	2.2
040	67111-12670	SHIM	2			0.8MM	0.01	0.022
040	67111-12690	SHIM	2			0.2MM	0.002	0.0044
050	01123-50825	BOLT	8				0.013	0.0286
060	67800-12710	CASE AXLE LH	1				16	35.2
070	67800-12720	CASE AXLE RH	1				16	35.2
080	01123-51045	BOLT	6				0.032	0.0704
090	01123-51035	BOLT	10				0.025	0.055
100	04512-60100	WASHER SPRING	4				0.002	0.0044
110	02118-50100	NUT	4				0.005	0.011
120	05012-00818	PIN STRAIGHT	4				0.008	0.0176
130	66418-12710	STUD	4				0.02	0.044
140	66385-12750	GASKET	2				0.01	0.022
150	66418-12720	STUD	4				0.04	0.088
160	67111-12780	PLATE SPRING HOOK	1				0.075	0.165
170	67211-11140	PLUG	10				0.001	0.0022

**REAR WHEEL (13.6-16)**

↔ Interchangeable; ≠ not interchangeable; ← new for old; → old for new

REF.No	Part No.	Description	Q'ty	S.No.	I/C	REMARKS	Weight (kgf)	Weight (lb)
010	66428-17610	ASSY REAR WHEEL	2			OBTAINED LOCALLY	0	0
020	32701-27950	WHEEL	2			OBTAINED LOCALLY	0	0
030	66428-17630	TIRE	2			OBTAINED LOCALLY	0	0
040	66428-17640	LABEL TIRE	2			OBTAINED LOCALLY	0	0
050	01073-51635	BOLT	8				0.086	0.1892
060	01517-51632	STUD	4				0.076	0.1672
070	02076-50160	NUT	4				0.03	0.066
080	04512-60160	WASHER SPRING	12				0.01	0.022
090	04011-60160	WASHER PLAIN	12				0.01	0.022

BEVEL GEAR SHAFT



66318-048-10



## FRONT DIFFERENTIAL [W/O BI-SPEED TURN]

↔ Interchangeable; ≠ not interchangeable; ← new for old; → old for new

REF.No	Part No.	Description	Q'ty	S.No.	I/C	REMARKS	Weight (kgf)	Weight (lb)
010	66371-99120	ASSY GEAR BEVEL	1			7-34T	1	2.2
020	08711-30305	BEARING TAPER-ROLLER	1				0.266	0.5852
030	08711-32005	BEARING TAPER-ROLLER	1	>=60146			0.115	0.253
030	6A100-56680	BEARING TAPER-ROLLER	1	>=60147	↔		0.11	0.242
040	67521-56630	SPACER	1				1.56	3.432
050	04811-50550	O RING	1				0.002	0.0044
060	67521-56640	SHIM	2			0.5MM	0.005	0.011
060	67521-56650	SHIM	2			0.3MM	0.003	0.0066
060	67521-56660	SHIM	2			0.2MM	0.001	0.0022
070	01133-51030	BOLT	3				0.025	0.055
080	66591-56420	BUSH	1				0.021	0.0462
090	67211-14952	SEAL OIL	1				0.015	0.033
100	67810-56770	NUT	1				0.04	0.088
110	66371-99220	ASSY DIFF. FRONT	1				5.2	11.44
120	67521-56620	CASE FRONT DIFF.	1				0.825	1.815
130	67111-16620	BUSH	1				0.035	0.077
140	67111-16650	SHAFT DIFF.PINION	1				0.15	0.33
150	67111-16630	COMP.PINION DIFF.	2			12T	0.07	0.154
160	67111-16690	BUSH	2				0.009	0.0198
170	67111-16670	COLLAR PINION THRUST	2				0.008	0.0176
180	67521-56730	GEAR DIFF.SIDE	2			15T	0.275	0.605
190	67111-16740	SHIM	2			1.2MM	0.014	0.0308
190	67111-16750	SHIM	2			1.0MM	0.011	0.0242
190	67111-16760	SHIM	2			0.8MM	0.01	0.022
200	67111-16782	PIN STRAIGHT	2				0.01	0.022
210	67810-56680	BOLT UBS	6				0.013	0.0286
220	08101-06010	BEARING BALL	2				0.262	0.5764
230	67521-56670	SHIM	2			0.5MM	0.005	0.011
230	37650-43140	SHIM	2			0.2MM	0.005	0.011
230	37650-43170	SHIM	2			0.1MM	0.004	0.0088

**SHIFT LEVER [WITH BI-SPEED TURN]**

↔ Interchangeable; ≠ not interchangeable; ← new for old; → old for new

REF.No	Part No.	Description	Q'ty	S.No.	I/C	REMARKS	Weight (kgf)	Weight (lb)
010	66418-58170	LEVER SHIFT	1	≤54954			0.2	0.44
010	66418-58173	LEVER BI-SPEED TURN	1	≥54955	←		0	0
010	66418-58174	LEVER SHIFT	1	≥55294	≠		0.34	0.748
020	66418-57910	CAM SHIFT	1	≤55293			0	0
020	66418-57913	CAM SHIFT	1	≥55294	←		0.135	0.297
030	41252-42840	COLLAR	1				0.002	0.0044
040	04811-00140	O RING	1	≤55293			0.001	0.0022
040	04811-00180	O RING	1	≥55294	≠		0.001	0.0022
050	04612-00160	CIRCLIP EXTERNAL	1				0.001	0.0022
060	67950-76710	FORK CHANGE	1				0.1	0.22
070	66418-58180	LEVER BI-S.T.CHANGE	1				0.11	0.242
080	05411-00525	PIN SPRING	1	≤55856			0.002	0.0044
080	05411-00522	PIN SPRING	1	≥55857	≠		0.002	0.0044
090	04811-06100	O RING	1				0.001	0.0022
100	66021-56210	END ROD RH	1				0.055	0.121
110	02118-50100	NUT	1				0.005	0.011
120	66021-56220	END ROD LH	1				0.11	0.242
130	55311-31550	NUT	1				0.007	0.0154
140	04512-60100	WASHER SPRING	2				0.002	0.0044
150	02118-50100	NUT	2				0.005	0.011
160	66418-58190	ROD BI-S.T.SHIFT	1				0.14	0.308
170	66418-99500	KIT LEVER SHIFT	1				0.8	1.76



## FRONT WHEEL (24 X 8.50-12)

↔ Interchangeable; ≠ not interchangeable; ← new for old; → old for new

REF.No	Part No.	Description	Q'ty	S.No.	I/C	REMARKS	Weight (kgf)	Weight (lb)
010	66418-57500	ASSY FRONT WHEEL	1				32	70.4
020	66418-57510	ASSY FRONT WHEEL LH	1				16	35.2
030	67810-57530	TIRE	1				7.6	16.72
040	34159-11850	VALVE TIRE	1				0.013	0.0286
050	66418-57560	ASSY WHEEL	1	<=57497			8	17.6
050	32711-57420	WHEEL	1	>=57498	←		8	17.6
060	66418-57540	LABEL TIRE LH	1				0.002	0.0044
070	66418-57570	ASSY FRONT WHEEL RH	1				16	35.2
080	67810-57530	TIRE	1				7.6	16.72
090	34159-11850	VALVE TIRE	1				0.013	0.0286
100	66418-57560	ASSY WHEEL	1	<=57497			8	17.6
100	32711-57420	WHEEL	1	>=57498	←		8	17.6
110	66418-57550	LABEL TIRE RH	1				0.001	0.0022
120	66519-56564	BOLT STUD	12				0	0
130	04013-60120	WASHER PLAIN	12				0.01	0.022
140	04512-50120	WASHER SPRING	12				0.003	0.0066
150	02174-50120	NUT	12				0.01	0.022
160	66418-57520	WHEEL	1	<=57497			8	17.6
170	67800-57540	RIM	1	<=57497			3.88	8.536
180	67800-57550	RIM	1	<=57497			3.92	8.624
190	35260-11860	GASKET	1	<=57497			0.065	0.143
200	01173-51022	BOLT	8	<=57497			0.019	0.0418
210	04512-60100	WASHER SPRING	8	<=57497			0.002	0.0044
220	02118-50100	NUT	8	<=57497			0.005	0.011
230	66418-57520	WHEEL	1	<=57497			8	17.6
240	67800-57540	RIM	1	<=57497			3.88	8.536
250	67800-57550	RIM	1	<=57497			3.92	8.624
260	35260-11860	GASKET	1	<=57497			0.065	0.143
270	01173-51022	BOLT	8	<=57497			0.019	0.0418
280	04512-60100	WASHER SPRING	8	<=57497			0.002	0.0044
290	02118-50100	NUT	8	<=57497			0.005	0.011

↔ Interchangeable; ≠ not interchangeable; ← new for old; → old for new

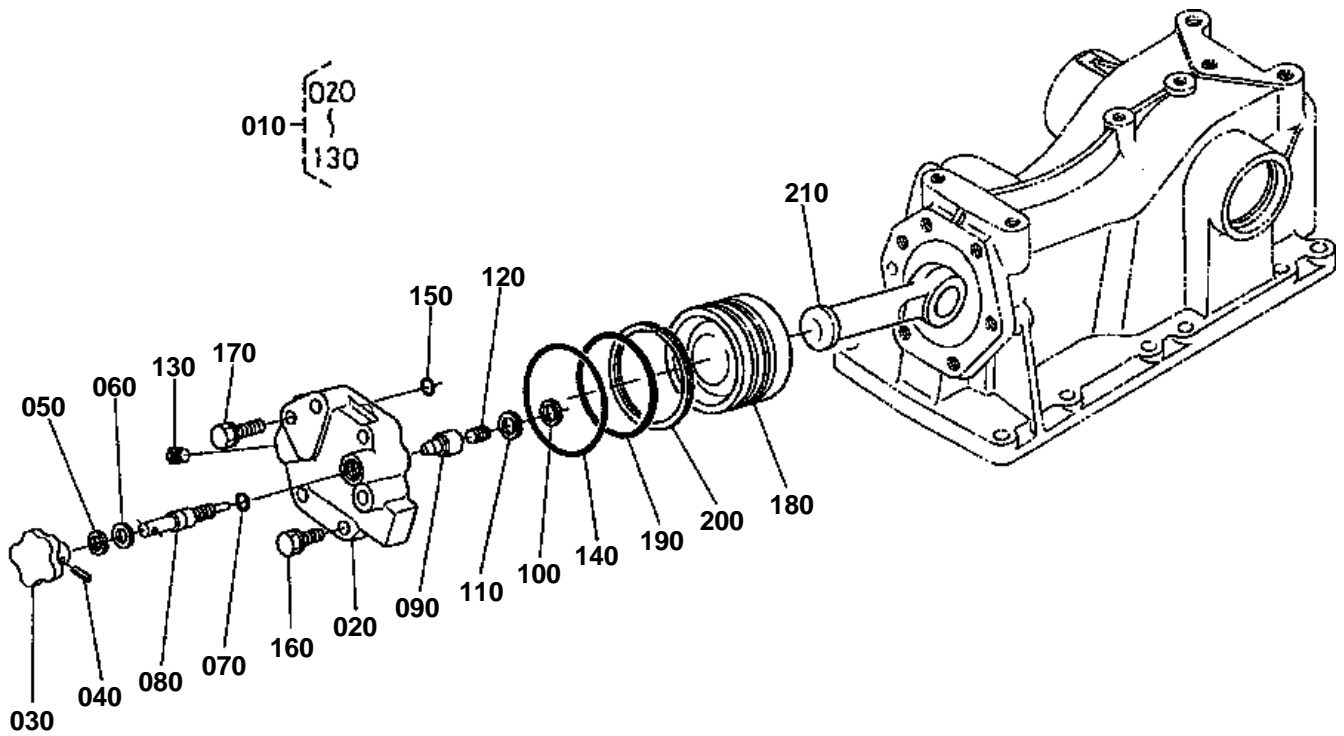
REF.No	Part No.	Description	Q'ty	S.No.	I/C	REMARKS	Weight (kgf)	Weight (lb)
010	66361-41102	ASSY STEERING	1			REFER TO L.No.0F06-R0 FOR COMPONENTS.	7	15.4
020	01517-51035	STUD	2				0.028	0.0616
030	01517-51080	STUD	2				0.053	0.1166
040	02176-50100	NUT	4				0.005	0.011
050	04512-60100	WASHER SPRING	4				0.002	0.0044
060	66150-41450	ASSY WHEEL STEERING	1	>=52261			2.7	5.94
065	37410-41460	WHEEL STEERING	1				2	4.4
070	37410-41470	ASSY PAD	1	<=52260			0	0
070	67148-41470	ASSY PAD	1	>=52261	←		0.06	0.132
080	37410-41490	MARK	1	<=52260			0.005	0.011
080	67148-41490	MARK	1	>=52261	←		0.005	0.011
090	04512-50120	WASHER SPRING	1				0.003	0.0066
100	02174-50120	NUT	1				0.01	0.022
110	66361-41410	ARM PITMAN	1			0.9	1.98	
120	66301-41150	COVER SHAFT	1			0.07	0.154	
130	38240-16390	SEAL OIL	1			0.03	0.066	



## HYDRAULIC PIPE (SUCTION)

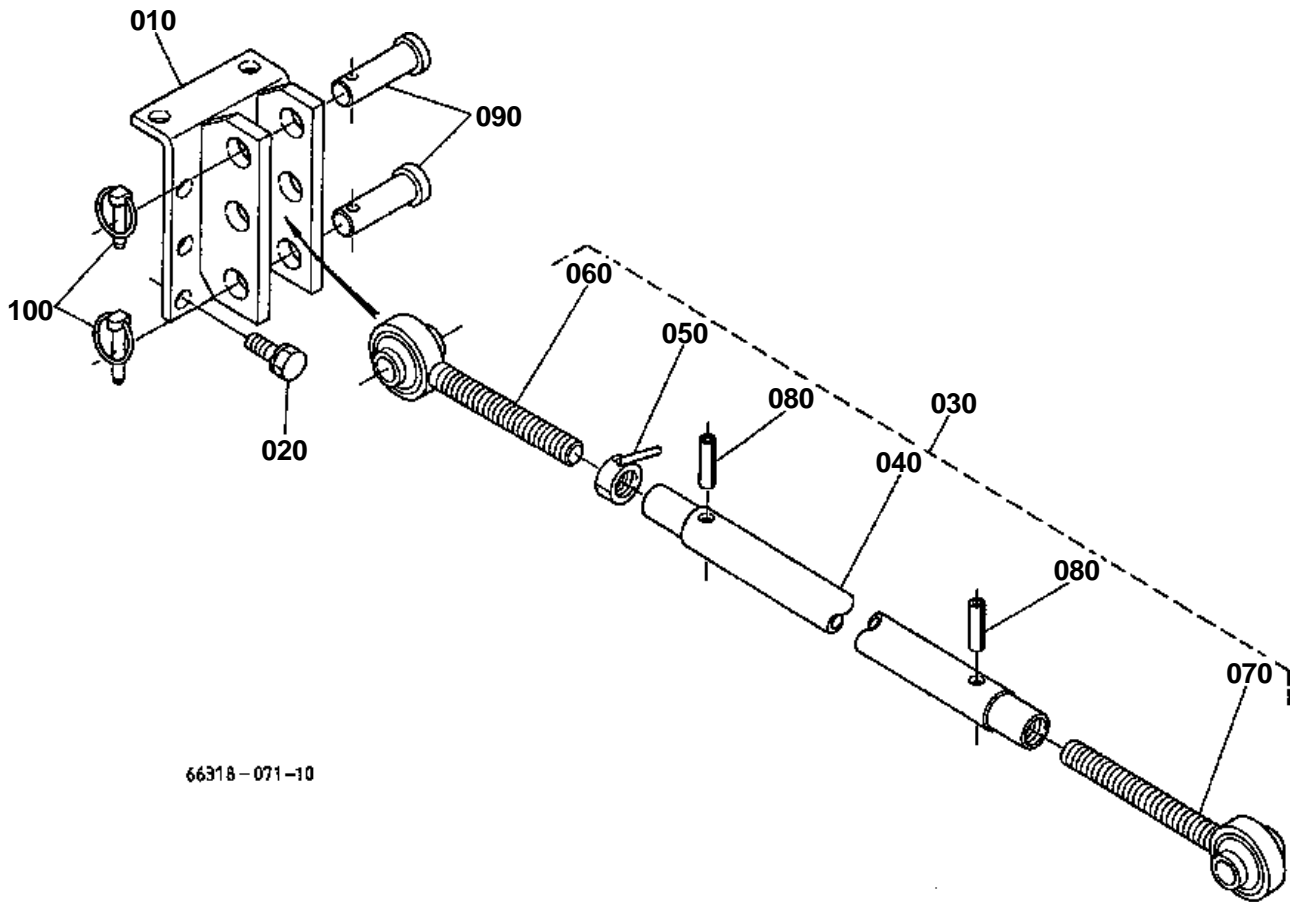
↔ Interchangeable; ≠ not interchangeable; ← new for old; → old for new

REF.No	Part No.	Description	Q'ty	S.No.	I/C	REMARKS	Weight (kgf)	Weight (lb)
010	66361-37112	PIPE SUCTION FRONT	1				0.78	1.716
020	66301-37130	PIPE SUCTION REAR	1				0.73	1.606
030	67800-37142	HOSE	1				0.06	0.132
040	09318-89036	CLAMP HOSE	2				0.025	0.055
050	01123-50845	BOLT	2				0.02	0.044
060	04811-00200	O RING	1				0.001	0.0022
070	67800-37120	FILTER OIL	1				0.35	0.77
080	04811-10400	O RING	2				0.001	0.0022



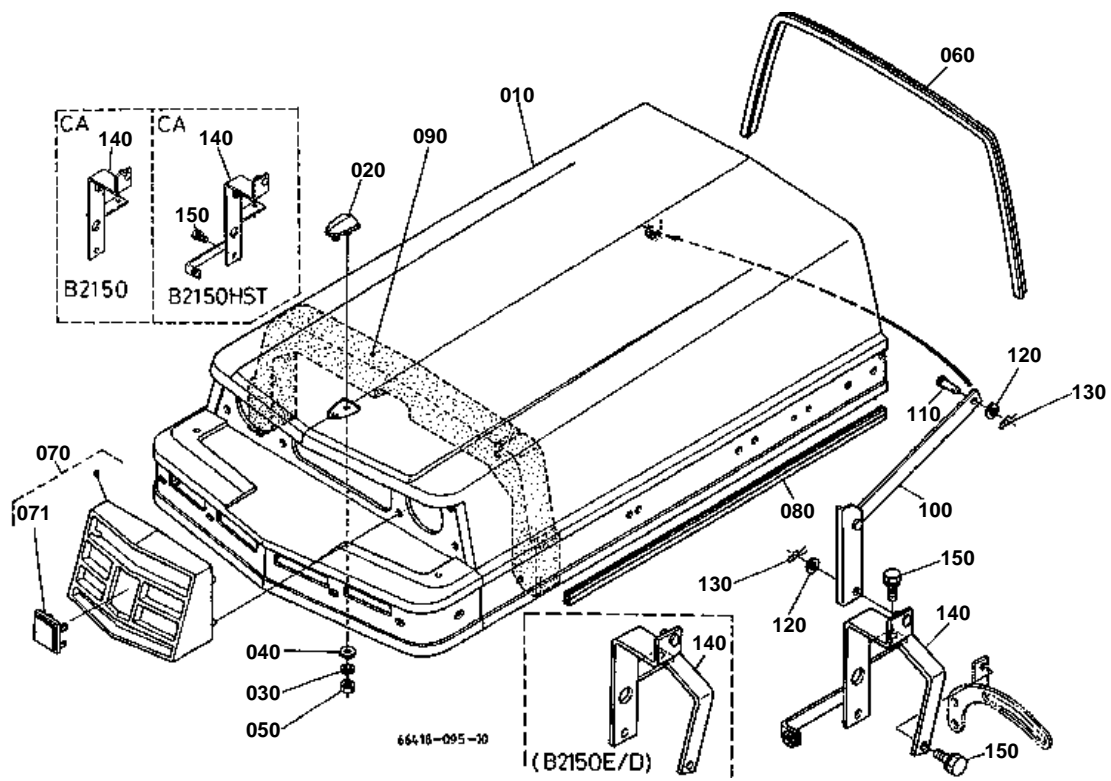
66378-065-10

TOP LINK



66318-071-10

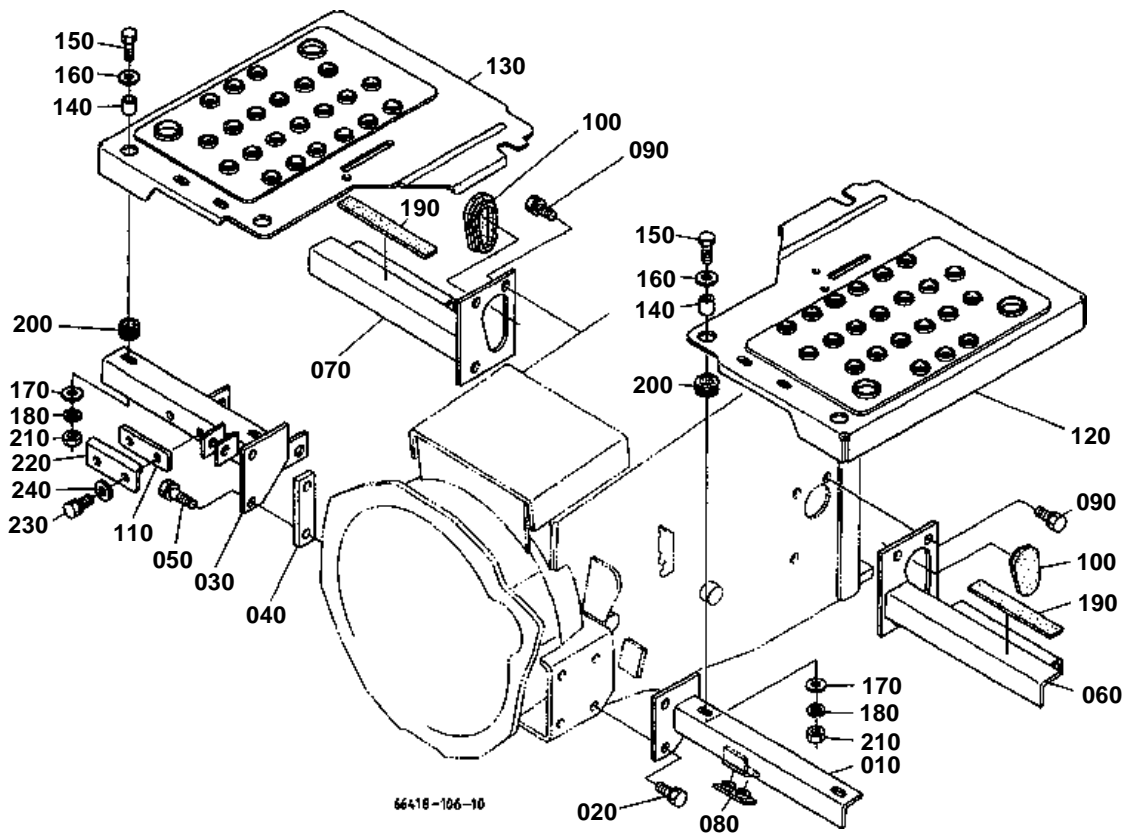
# HOOD (BONNET)



**HOOD (BONNET) SIDE**

↔ Interchangeable; ≠ not interchangeable; ← new for old; → old for new

REF.No	Part No.	Description	Q'ty	S.No.	I/C	REMARKS	Weight (kgf)	Weight (lb)
010	66416-51480	TRIM SIDE COVER LH	2				0.03	0.066
020	66416-51310	COVER SIDE LH	1	<=50615			0	0
020	66416-51314	COVER SIDE LH	1	>=50616	←		1.1	2.42
030	66417-51390	TRIM COVER REAR	1				0.07	0.154
040	01820-50615	BOLT KNOB	2				0.017	0.0374
050	01811-50615	BOLT WING	4				0.015	0.033
060	66417-51455	COVER	1				0.09	0.198
070	01125-50820	BOLT	1	<=50458			0.014	0.0308
070	01125-50820	BOLT	2	>=50459			0.014	0.0308
080	67401-52790	SPRING PLATE	1	<=50458			0.002	0.0044
090	01811-50615	BOLT WING	1	<=50458			0.015	0.033
100	66416-51320	COVER SIDE RH	1				1.33	2.926
110	66361-58220	CUSHION	1				0.001	0.0022
120	66417-51380	TRIM COVER FRONT	2				0.015	0.033
130	67156-54470	CUSHION	2				0.003	0.0066
140	67156-54480	RUBBER KNOB	2				0.001	0.0022
150	66418-99110	RUBBER PROTECTOR	1				0.01	0.022



CLICK HERE TO **DOWNLOAD** THE COMPLETE MANUAL

- Thank you very much for reading the preview of the manual.
- You can download the complete manual from: [www.heydownloads.com](http://www.heydownloads.com) by clicking the link below



- Please note: If there is no response to CLICKING the link, please download this PDF first and then click on it.

CLICK HERE TO **DOWNLOAD** THE COMPLETE MANUAL