



93309-00351

July 2009

1

80ZV-2

CUMMINS QSC8.3

# ***PARTS CATALOG***

***WHEEL LOADER***

## ***80ZV-2***

GGB,GYN

93309-00351

FOR EXPORT

Powered by CUMMINS QSC8.3 Engine

Serial No. 80C5-0101 ~

CLICK HERE TO **DOWNLOAD** THE COMPLETE MANUAL

- Thank you very much for reading the preview of the manual.
- You can download the complete manual from: [www.heydownloads.com](http://www.heydownloads.com) by clicking the link below



- Please note: If there is no response to CLICKING the link, please download this PDF first and then click on it.

CLICK HERE TO **DOWNLOAD** THE COMPLETE MANUAL

## ⑫ REMARKS

The other major remarks are shown below:

- (1) REF 618 : Indicates the section No. 618.
- (2) FR LH : Indicates the left side toward the machine forward direction.
- (3) FR RH : Indicates the right side toward the machine forward direction.
- (4) D80×185L : Indicates "diameter = 80 mm, length = 185 mm".
- (5) (01) ~ : Indicates a component of a repair kit Y01~ of the section No. 391.
- (6) (K1) ~ : Indicates a component of a repair kit QK1~ of the section No. 391.
- (7) (K) : Indicates a component of the section No. 391.
- (8) Old parts No. • reference parts No., etc.

### (Note)

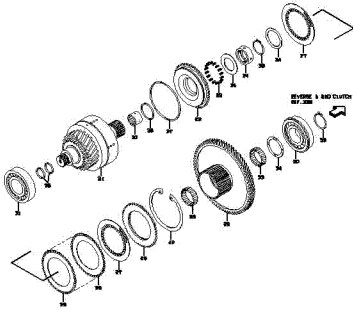
- 1. Parts without an item or symbol number in illustrations cannot be supplied in the form of single parts.
- 2. Parts shown in this catalog may be deleted, changed or specified as "not for sale" without prior notice.

### WARNING :

- 1. The purpose in issuing this parts catalog is to use for clarifying the parts and for placing the parts order to your Kawasaki loader dealer.
- 2. You also can use this parts catalog to exchange parts information between you and your Kawasaki loader dealer for clarifying the parts.
- 3. You must not perform any repair, disassembly and reassembly work on the machine. Contact your Kawasaki loader dealer and ask him to do the above work.

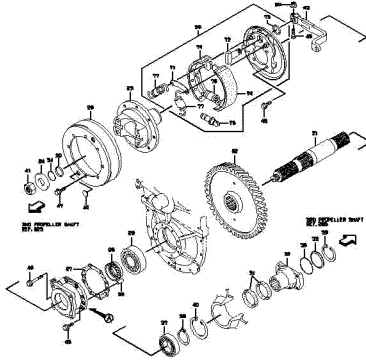
**1ST CLUTCH**  
.....p.127

EXPLOSION VIEW INDICATES THE TRANSMISSION SERIAL NUMBER.



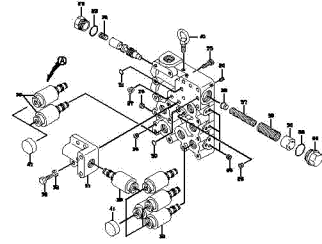
**OUTPUT SHAFT GROUP**  
.....p.129

EXPLOSION VIEW INDICATES THE TRANSMISSION SERIAL NUMBER.



**TRANSMISSION CONTROL VALVE**  
.....p.131

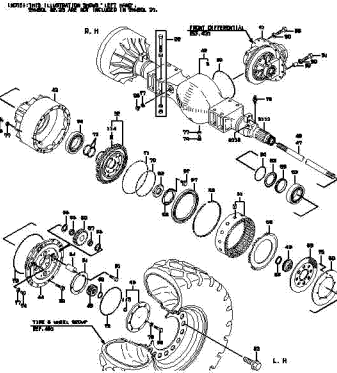
EXPLOSION VIEW INDICATES THE TRANSMISSION SERIAL NUMBER.



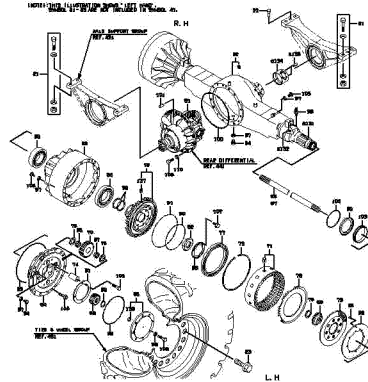
**REPAIR KIT**  
.....p.133

LIST ONLY

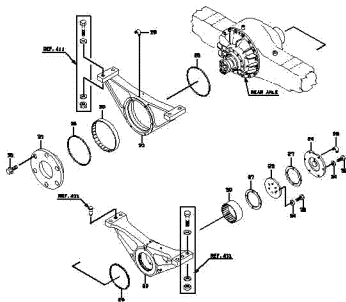
**FRONT AXLE GROUP**  
.....p.135



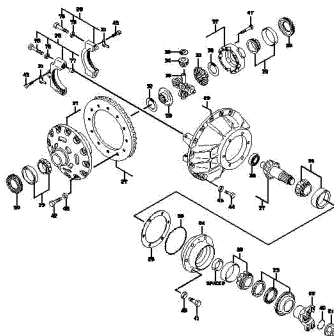
**REAR AXLE GROUP**  
.....p.137



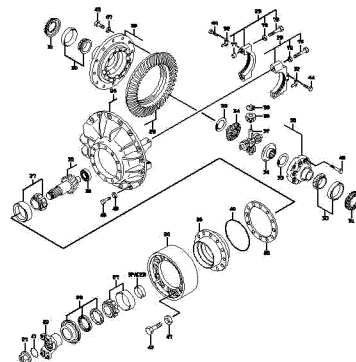
**AXLE SUPPORT GROUP**  
.....p.139



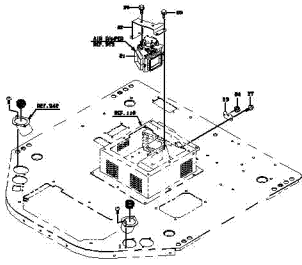
**FRONT DIFFERENTIAL**  
.....p.141



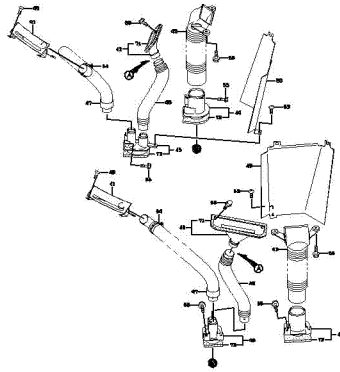
**REAR DIFFERENTIAL**  
.....p.143



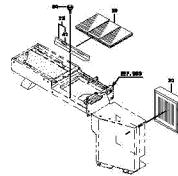
**AIR DUCT MOUNT**  
.....p.307



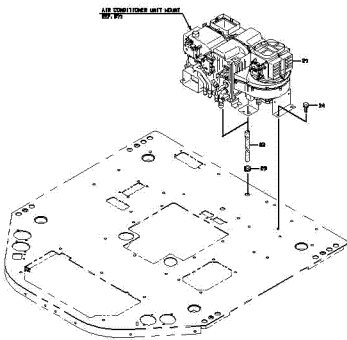
**AIR DUCT MOUNT**  
.....p.308



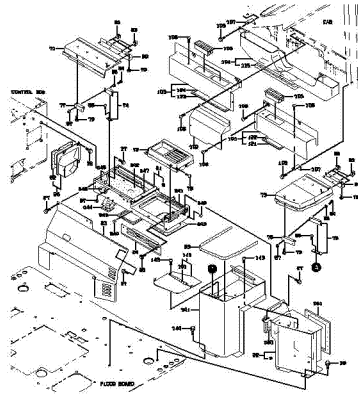
**FILTER MOUNT**  
.....p.311



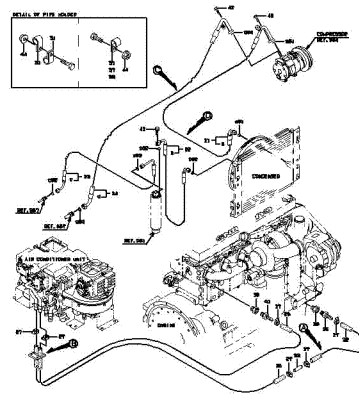
**AIR CONDITIONER MOUNT**  
.....p.313



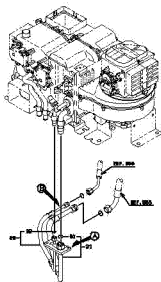
**AIR CONDITIONER COVER GROUP**  
.....p.315



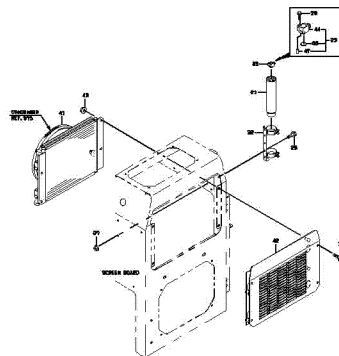
**AIR CONDITIONER LINE - REAR CHASSIS**  
.....p.317



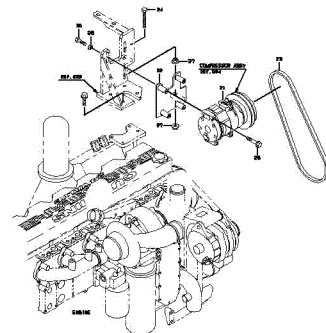
**AIR CONDITIONER LINE - FLOOR BOARD**  
.....p.319



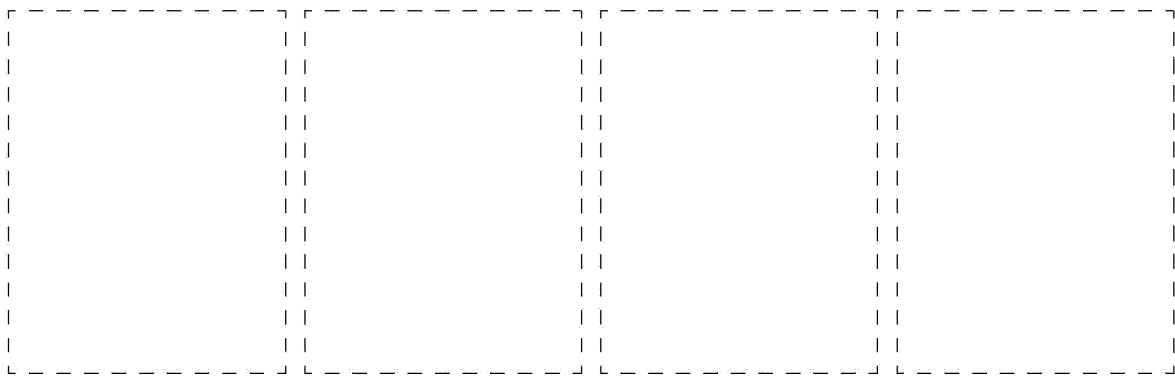
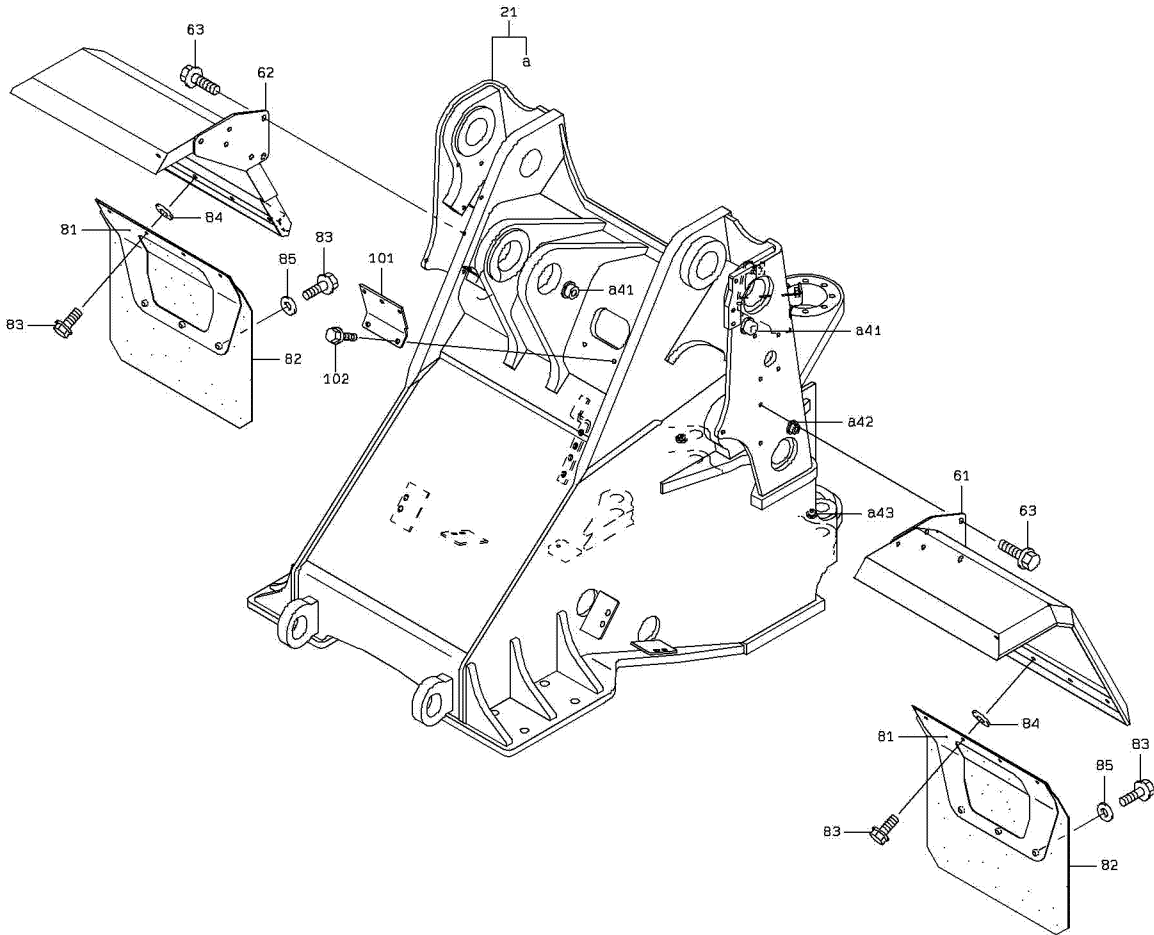
**CONDENSER & COVER MOUNT**  
.....p.321



**COMPRESSOR MOUNT**  
.....p.323

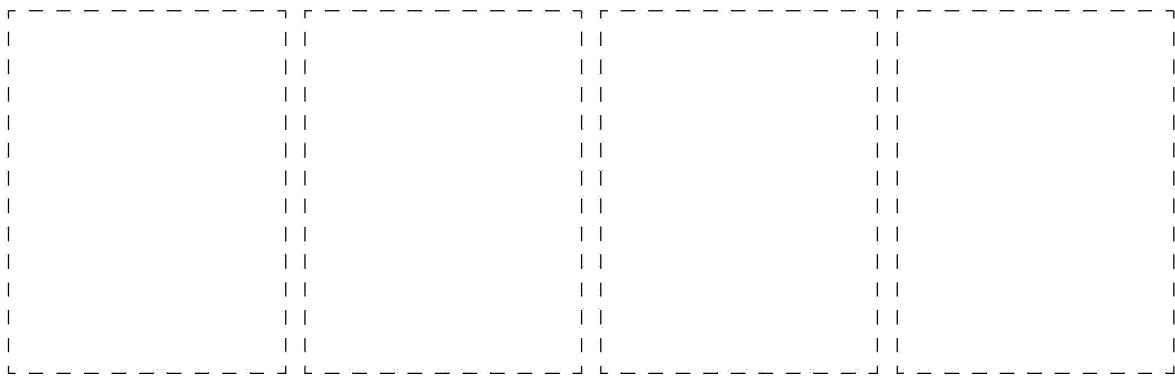
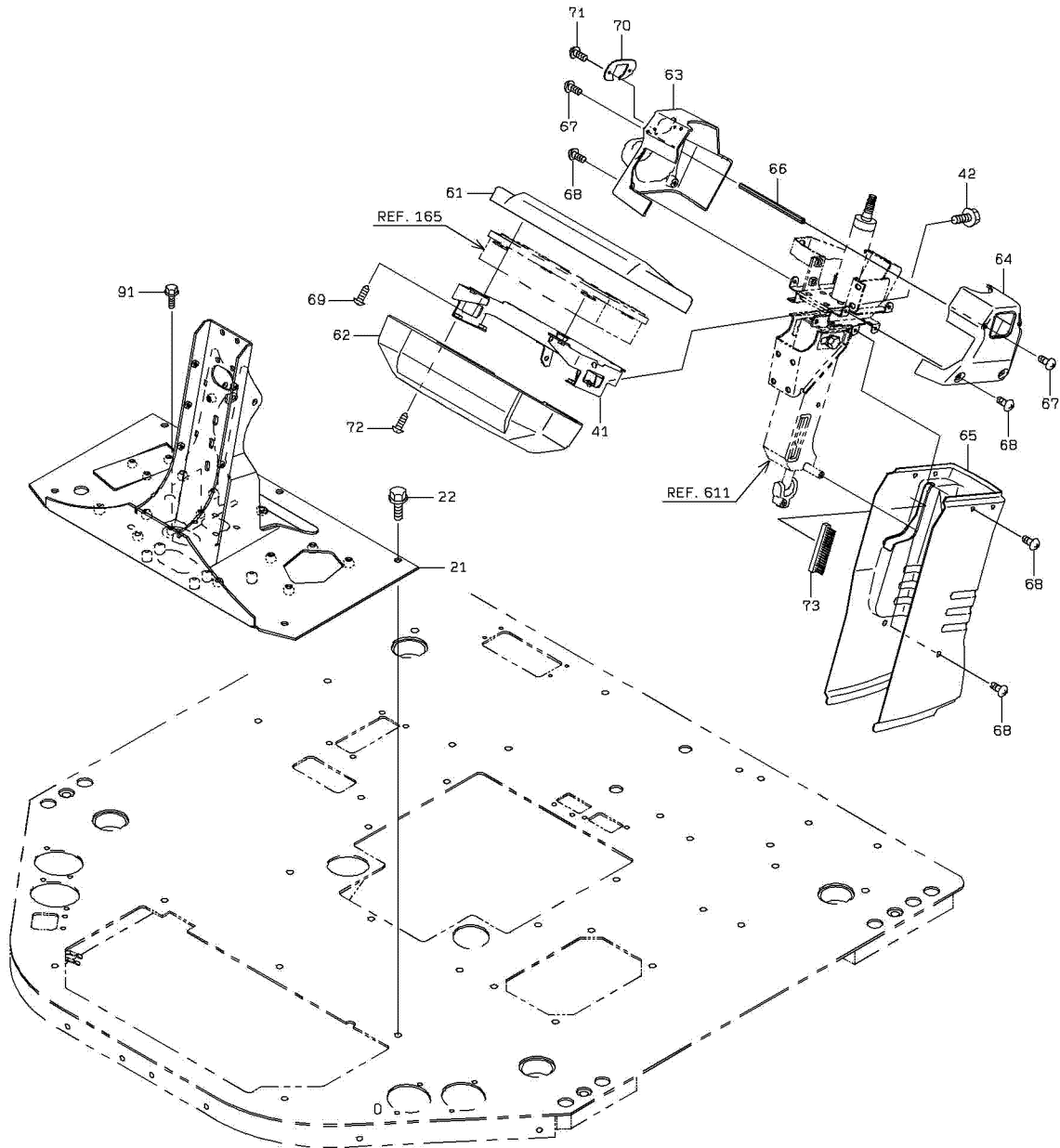


# FRONT CHASSIS GROUP





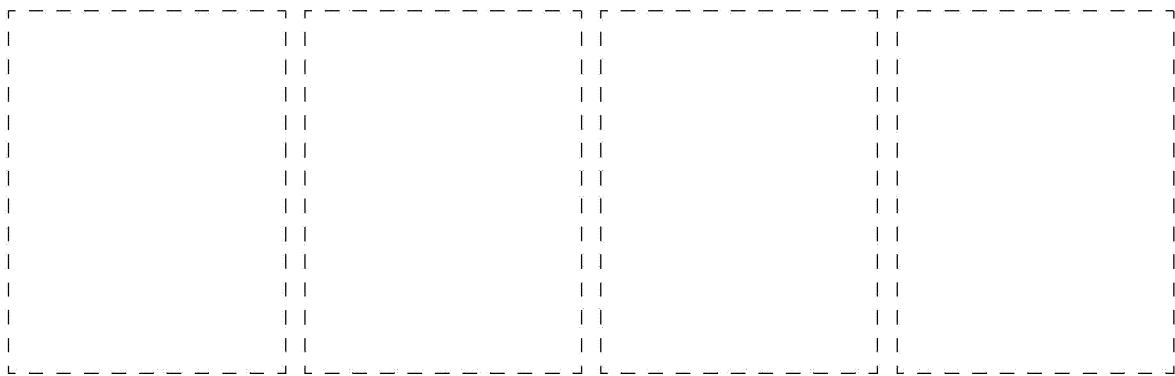
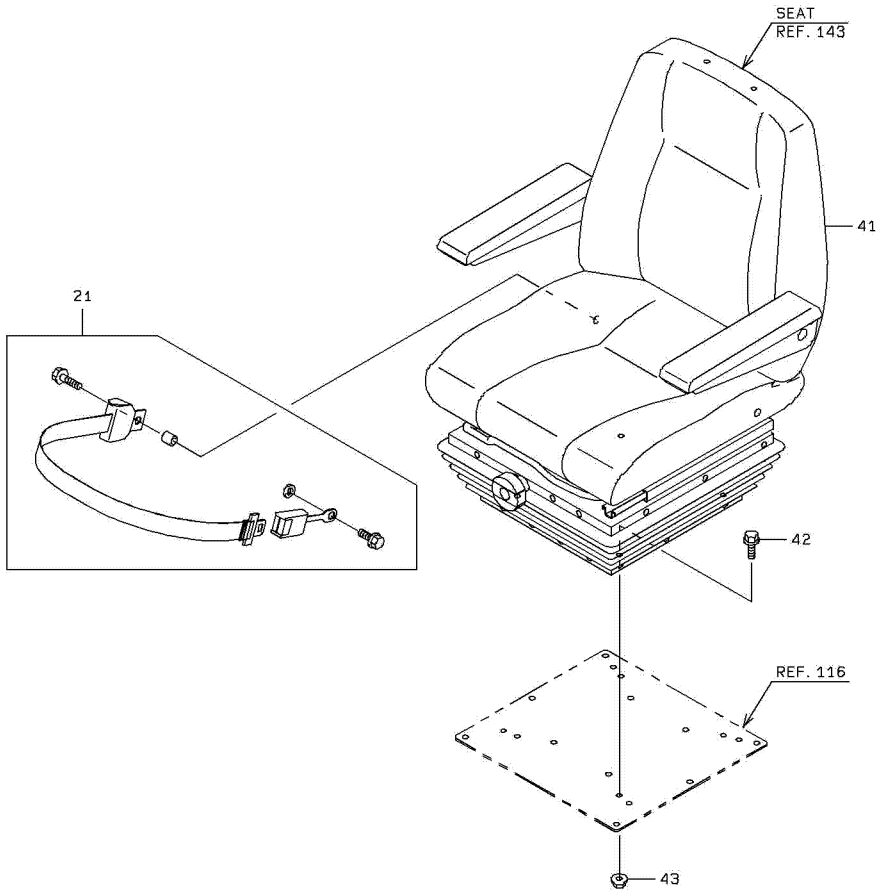
# OPERATION STAND GROUP



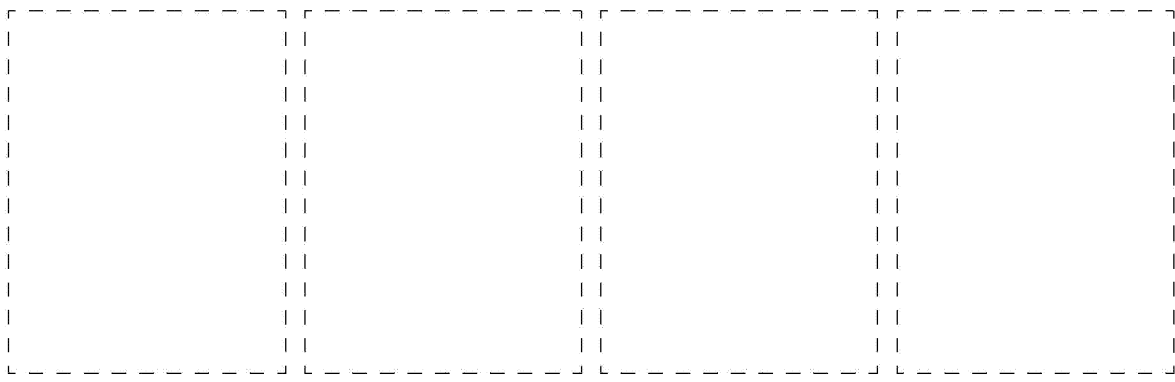
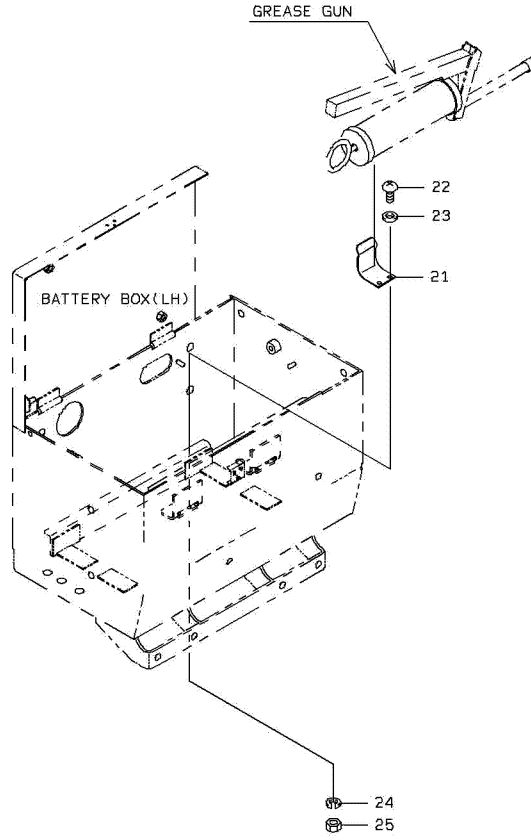
ENGINE ROOM MOUNT

SYM-BOL	PART NUMBER	PART NAME	UNIT Q,TY	SERIAL		REMARKS								
				(A)	(B)	N	P	D	(A)	(B)	(C)	(D)	REMARK	
21A	38171-37510	BAR,ROUND	2	168	-									
22A	63813-00010	RING,SNAP	4	168	-									
23A	32110-60010	LOCK	2	168	-									
24A	41609-51250	PLATE	2	168	-									
25A	61033-10020	BOLT	8	168	-									WELDING
26A	61802-06020	BOLT,FLANGED	4	168	-									
27A	62401-81061	NUT	4	168	-									
28A	62701-40121	WASHER,PLANE	2	168	-									
29A	46011-20190	WASHER,PLANE	8	168	-									
30A	62710-18061	WASHER,PLANE	4	168	-									
31A	44822-21510	RUBBER,CUSHION	4	168	-									
32A	46011-21300	WASHER,PLANE	4	168	-									
33A	62480-21101	NUT,FLANGED	8	168	-									
51A	31264-22330	COVER ASSY,SIDE	1	168	-	300			Y01					
51B	31264-22690	COVER ASSY,SIDE	1	301	-		B		Y01					
52A	31264-22340	COVER ASSY,SIDE	1	168	-	300				Y02				
52B	31264-22700	COVER ASSY,SIDE	1	301	-		B			Y02				
53A	40151-20610	HOOD ASSY	1	168	-									
71A	39890-70010	HINGE	2	168	-				01					WELDING
72A	32153-60180	CATCH,DOOR	1	168	-				01					WELDING
81A	39890-70010	HINGE	2	168	-					02				WELDING
82A	32153-60180	CATCH,DOOR	1	168	-					02				WELDING
111A	34041-20230	STRIP, SEAL	6	168	-									
112A	44822-20660	RUBBER,CUSHION	2	168	-									
113A	33713-26140	SHEET,RUBBER	2	168	-									
114A	34041-26300	STRIP, SEAL	2	168	-									
115A	34041-26310	STRIP, SEAL	2	168	-									
131A	45980-27690	WIRE	2	168	-									
132A	41612-36550	PLATE	4	168	-									
133A	35700-20570	SPACER	4	168	-									
134A	45980-24540	WIRE	2	168	-	300								
134B	45980-24060	WIRE	2	301	-	308	B							
134C	45980-29760	WIRE	2	309	-		C							
135A	61802-08020	BOLT,FLANGED	4	168	-									
136A	62480-21081	NUT,FLANGED	2	168	-									
151A	39890-22950	HINGE	1	168	-				01					WELDING
152A	39890-22960	HINGE	1	168	-					02				WELDING

# SEAT GROUP

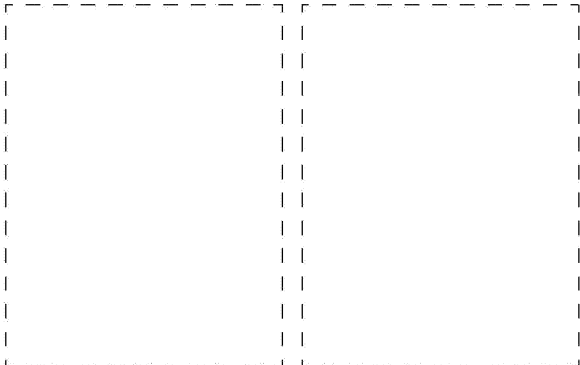
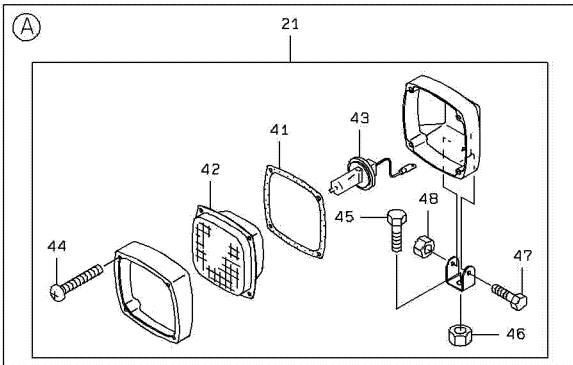
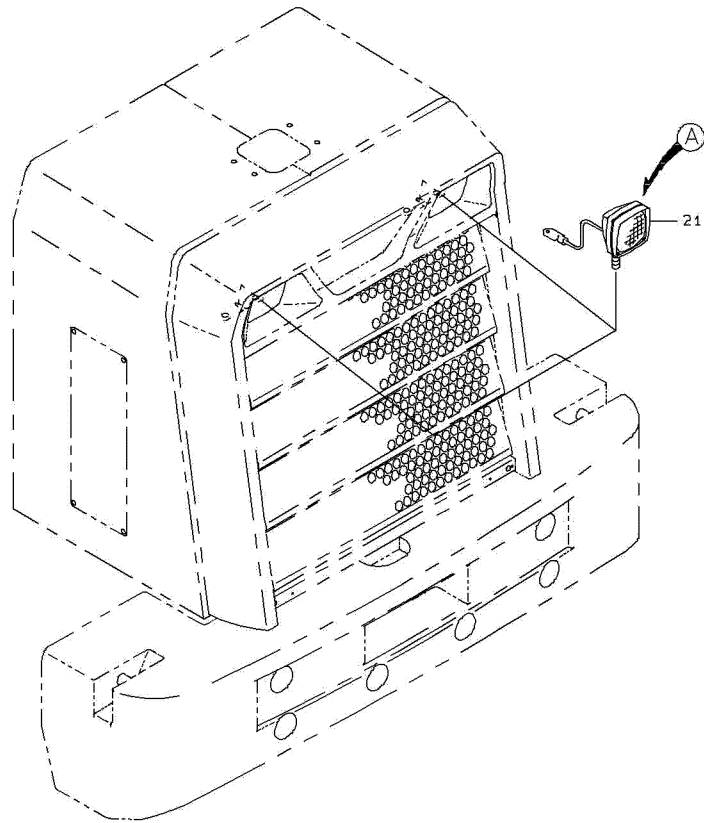


# GREASE GUN MOUNT



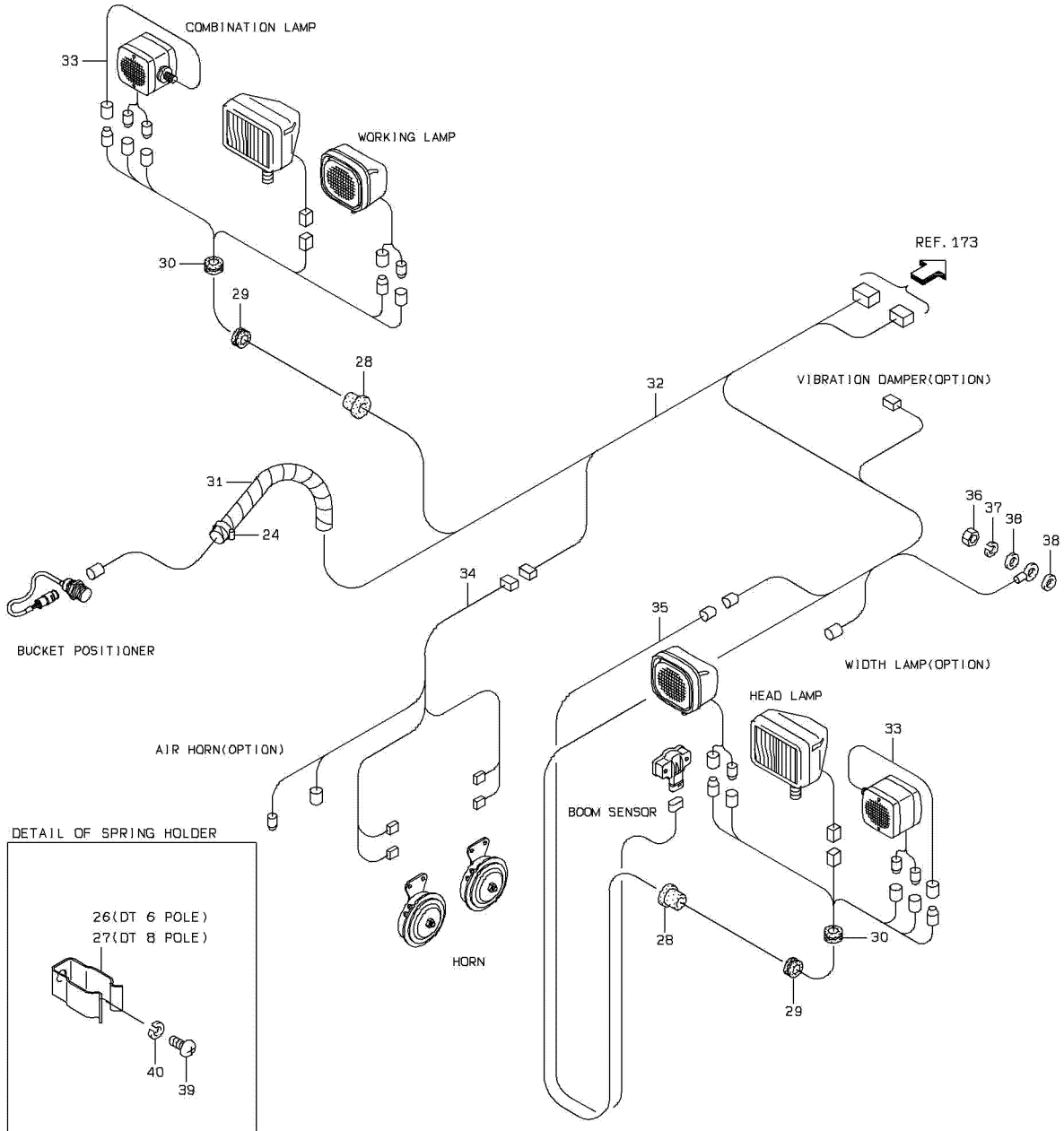
1-A

# WORKING LAMP MOUNT

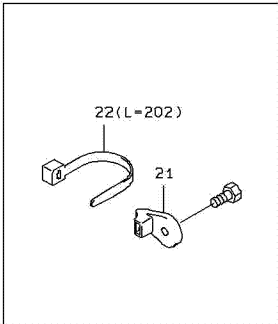


1-A

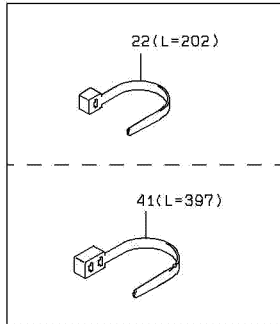
# ELECTRICAL WIRING - FRONT CHASSIS



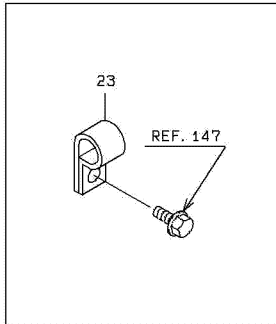
DETAIL OF STUD MOUNT



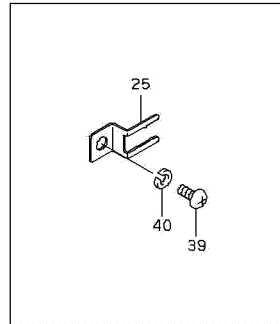
DETAIL OF CLAMP



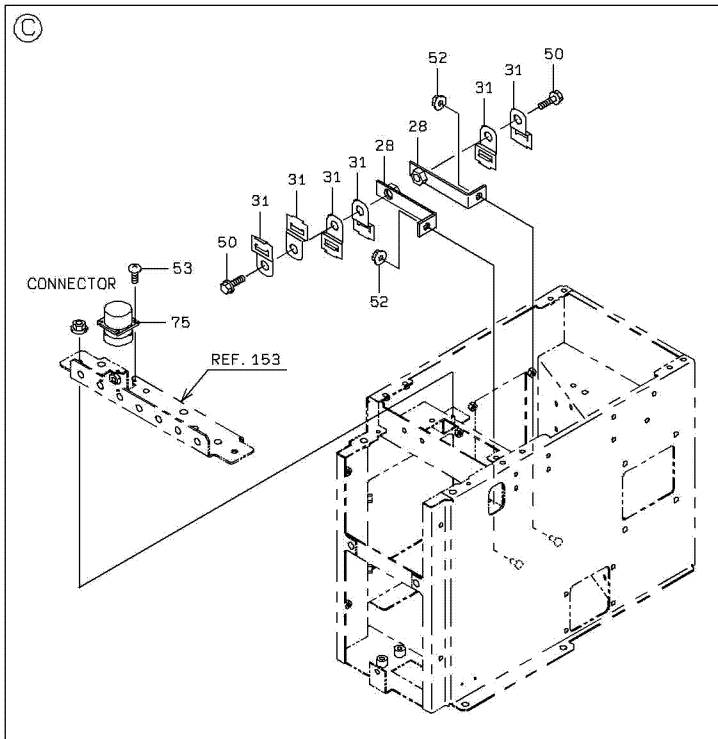
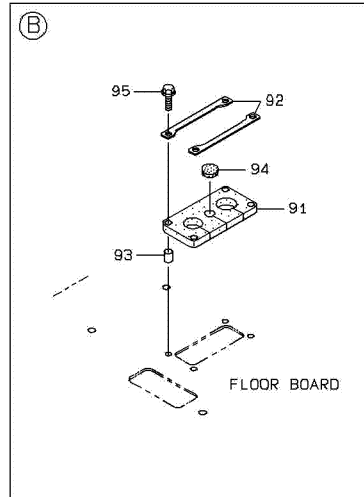
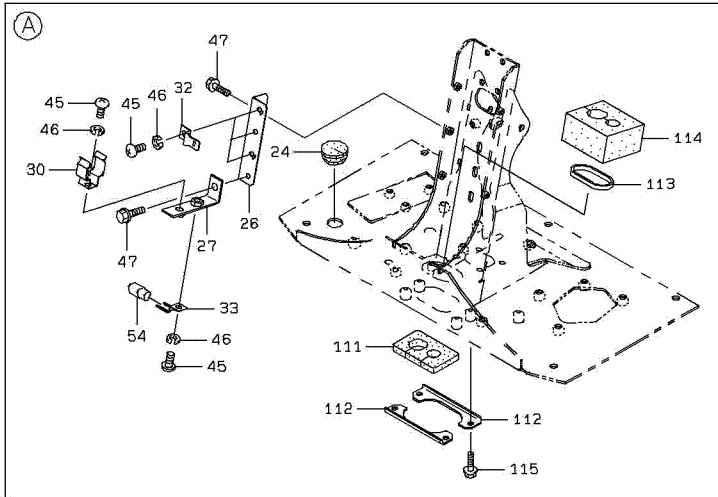
DETAIL OF PIPE HOLDER



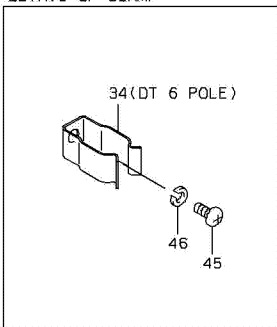
DETAIL OF HOLDER



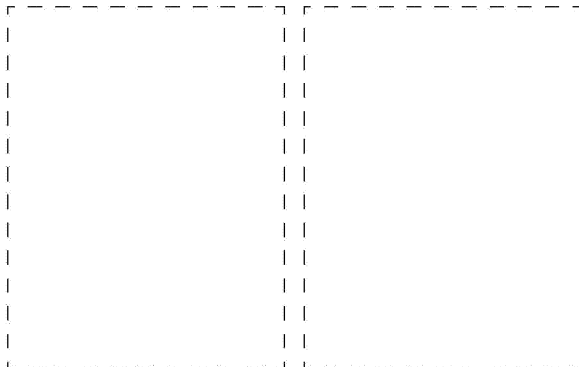
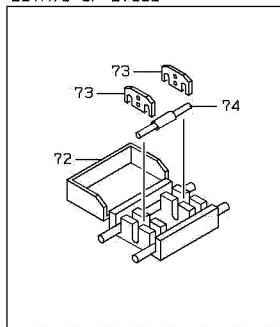
# ELECTRICAL WIRING - FLOOR BOARD



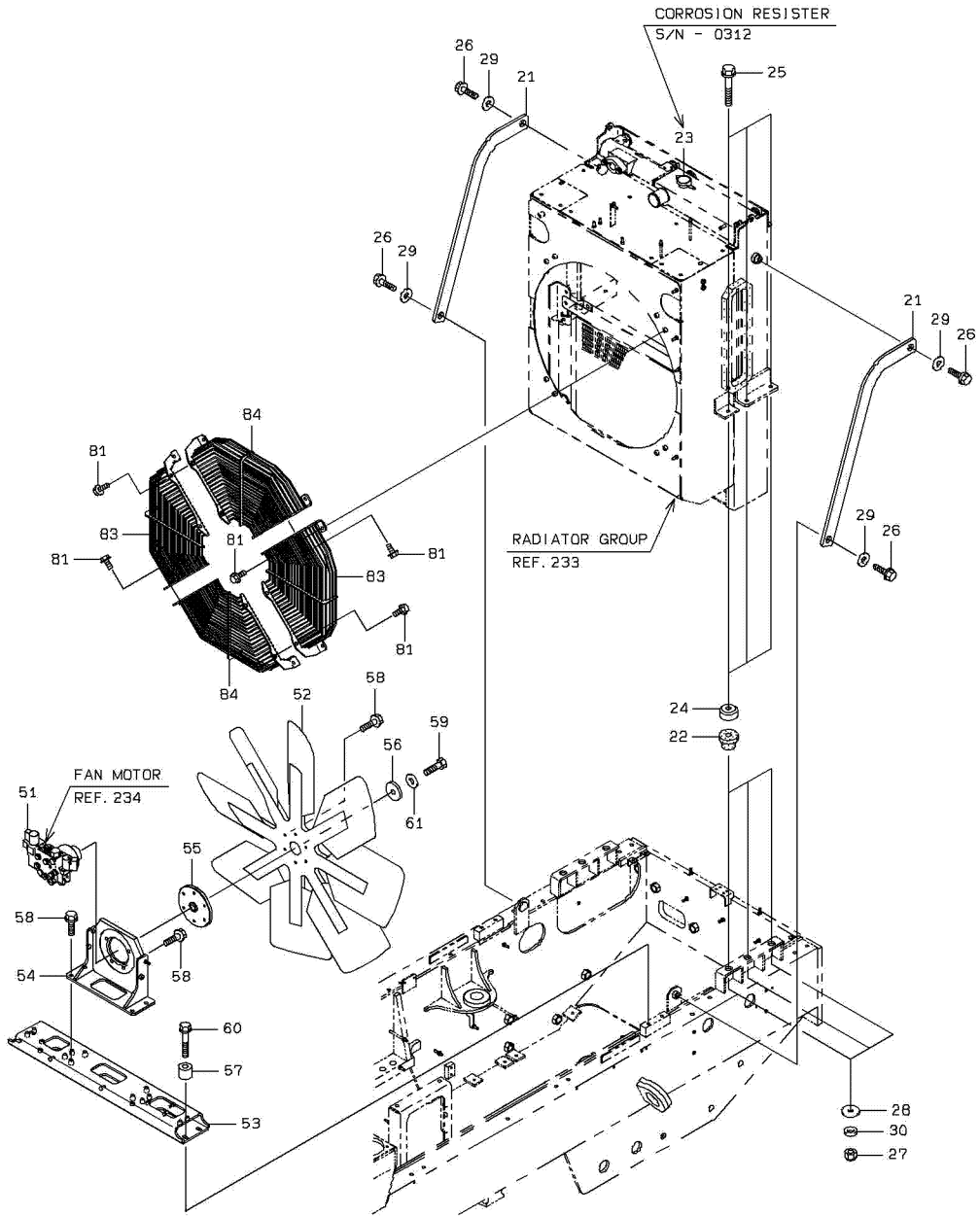
DETAIL OF CLAMP



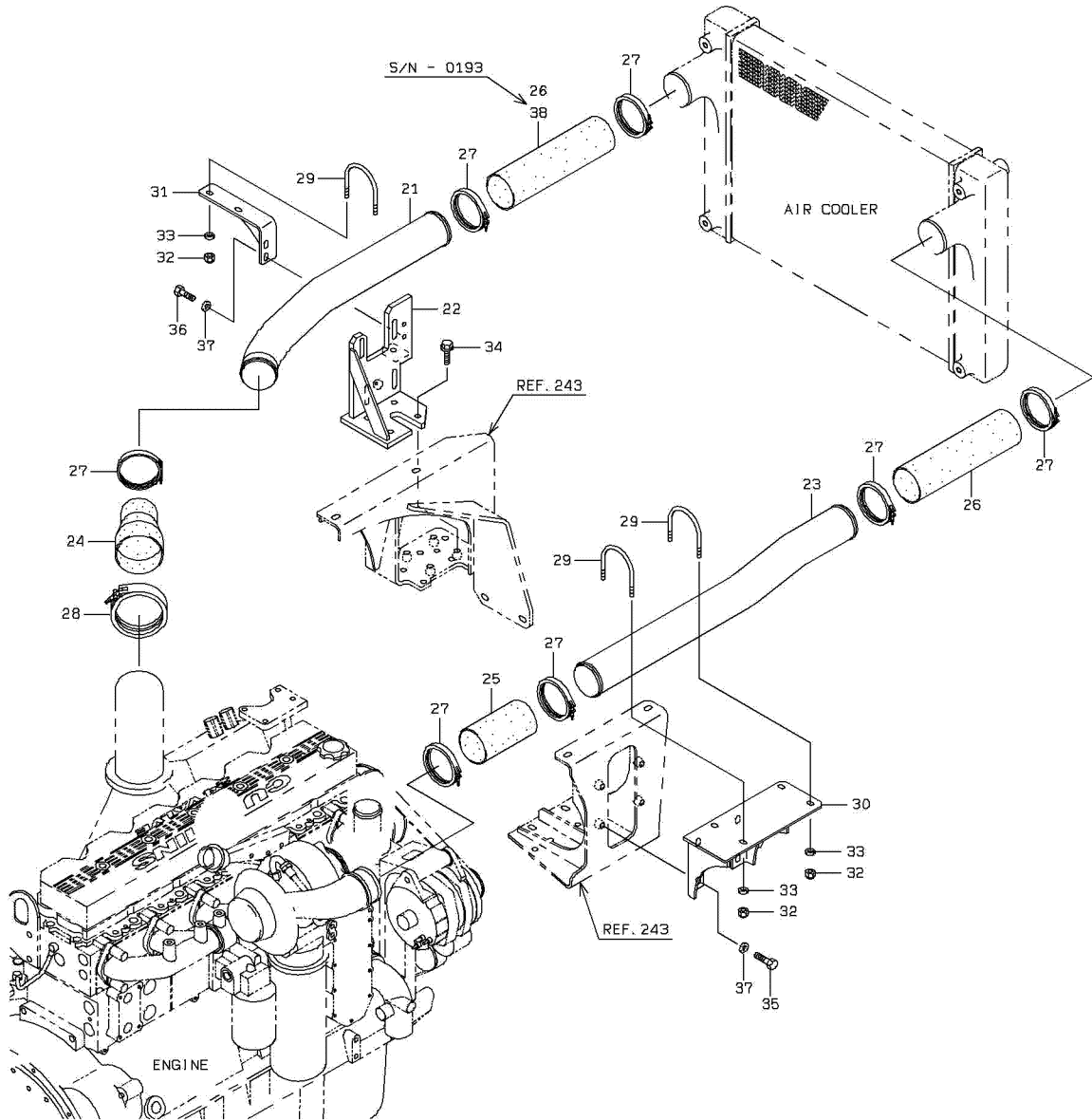
DETAIL OF DIODE



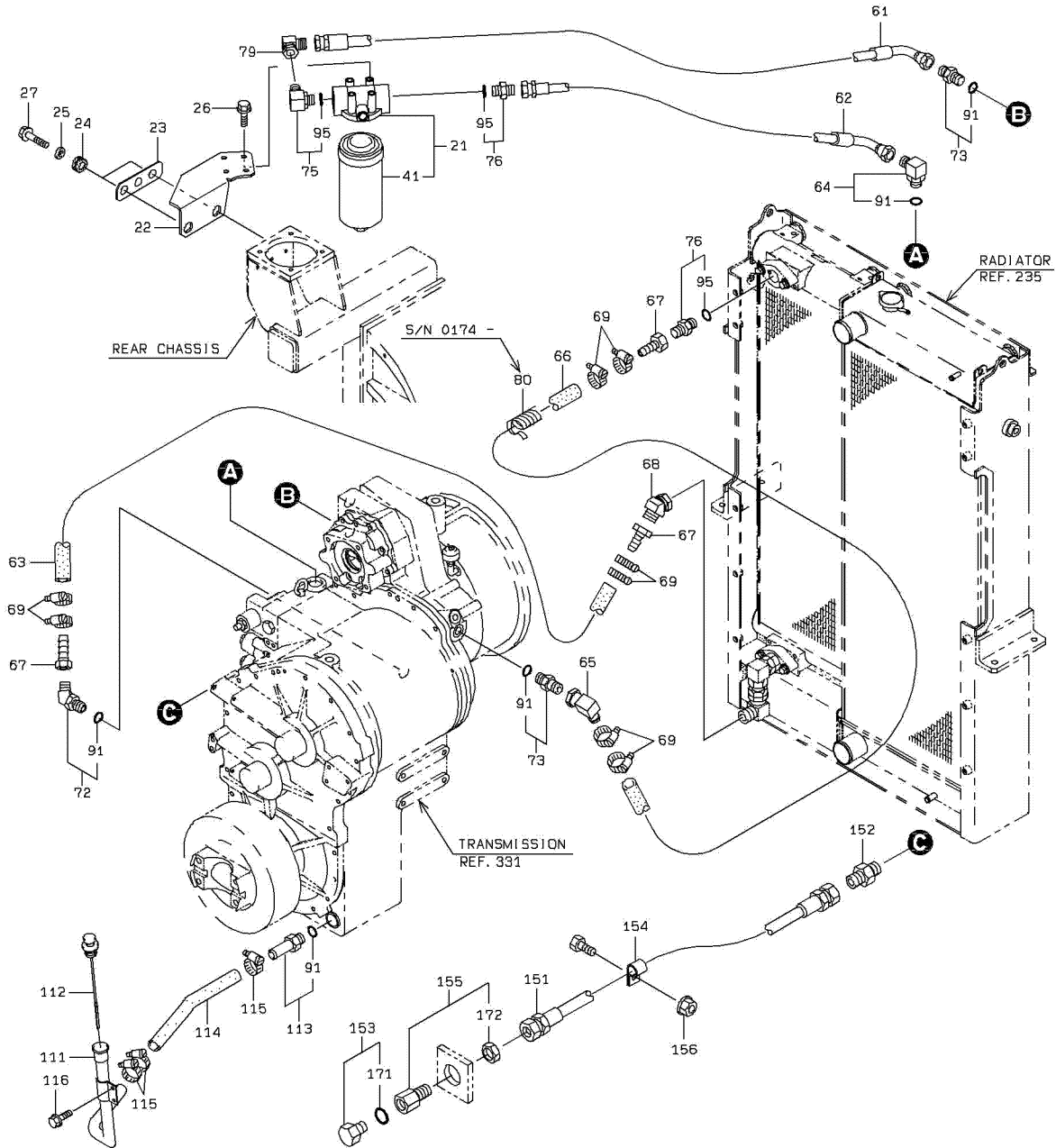
# RADIATOR MOUNT



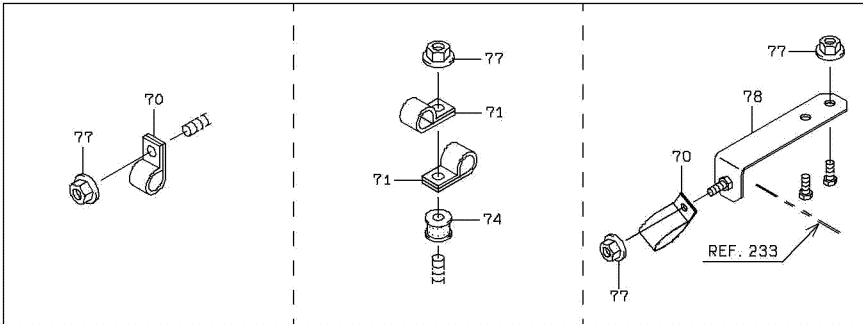
# AIR COOLER LINE



# TRANSMISSION HYDRAULIC LINE

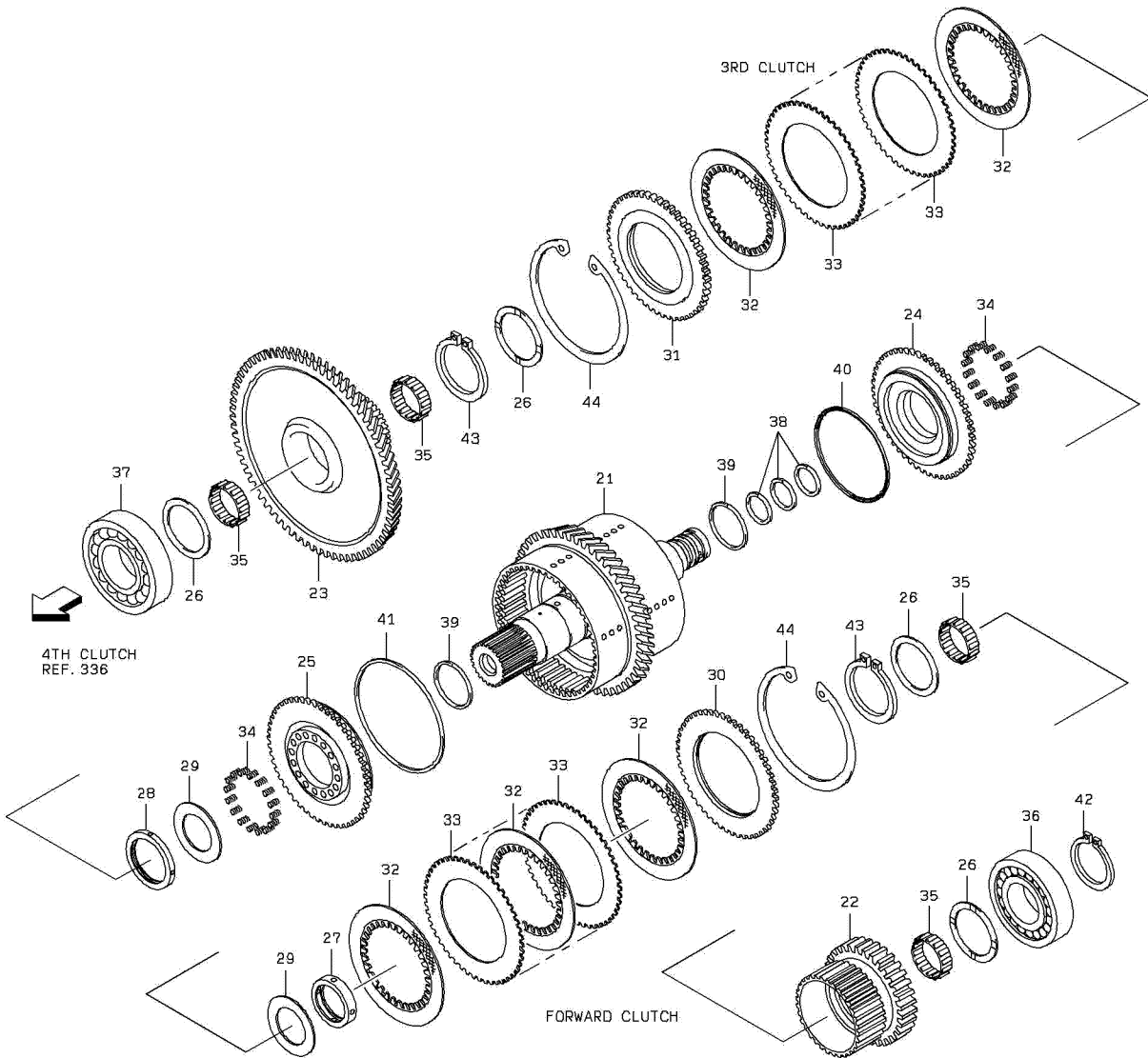


DETAIL OF PIPE HOLDER



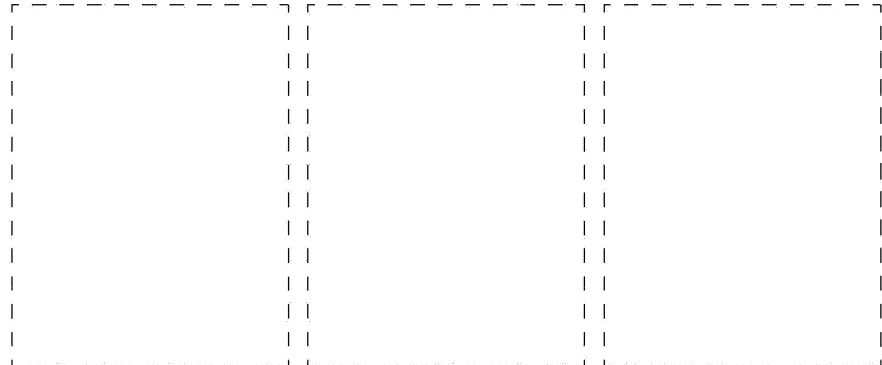
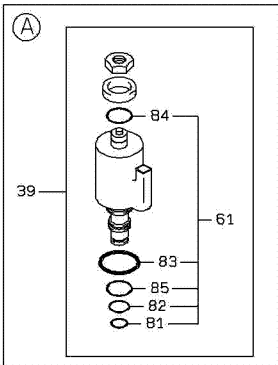
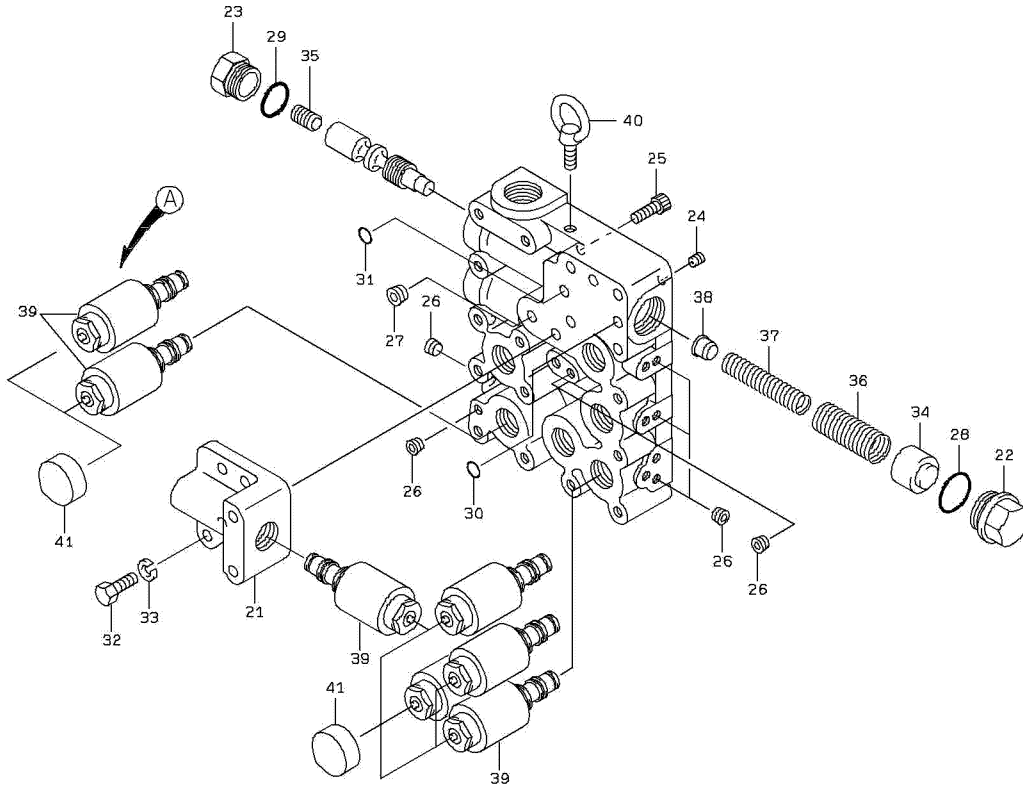
# FORWARD & 3RD CLUTCH

(NOTE): SERIAL NUMBER INDICATES THE TRANSMISSION SERIAL NUMBER.

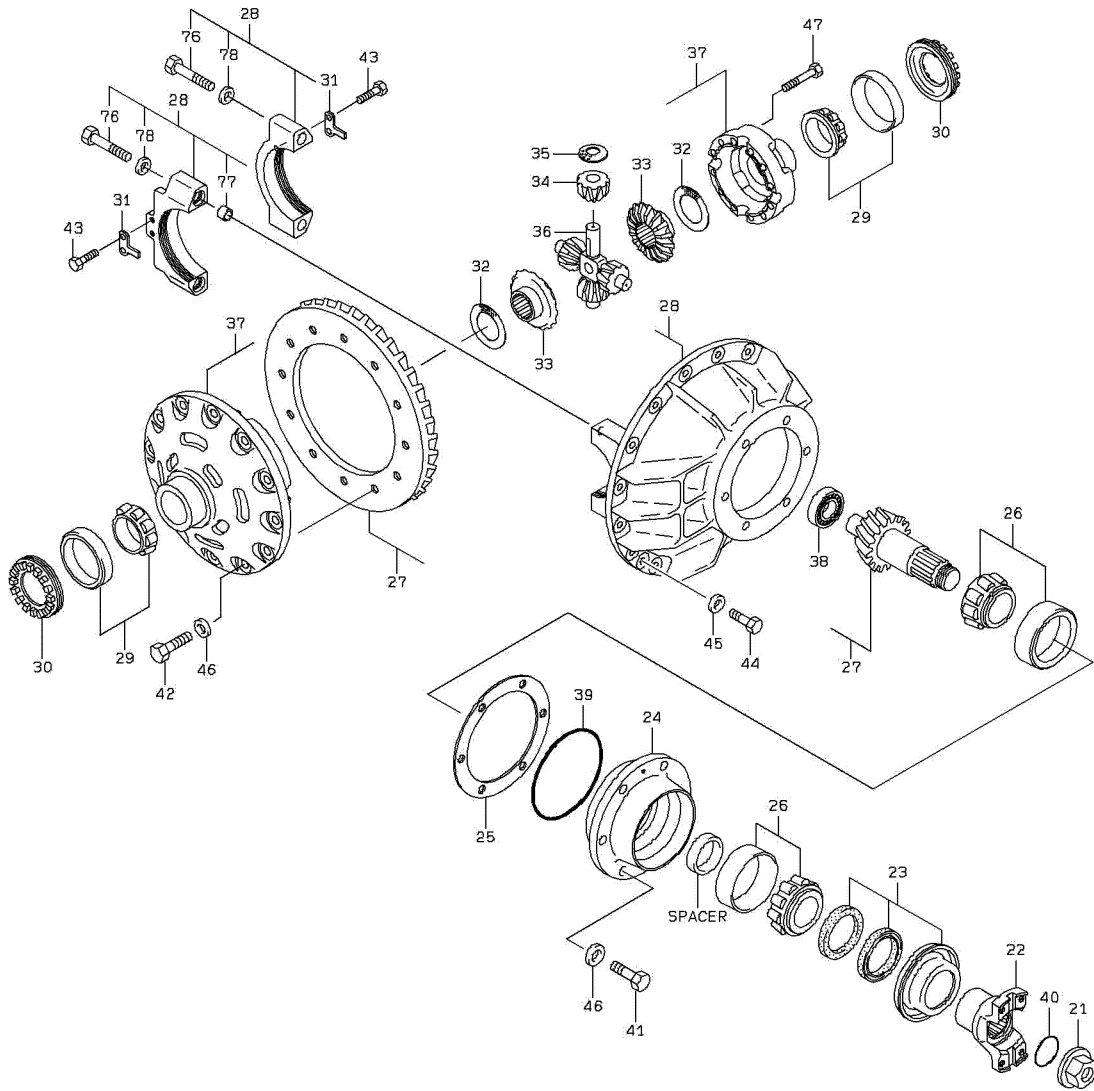


# TRANSMISSION CONTROL VALVE

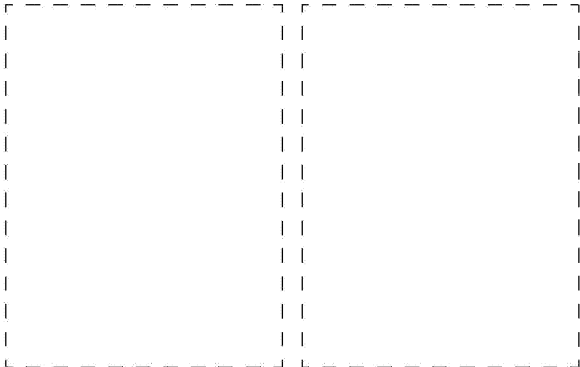
(NOTE): SERIAL NUMBER INDICATES THE TRANSMISSION SERIAL NUMBER.



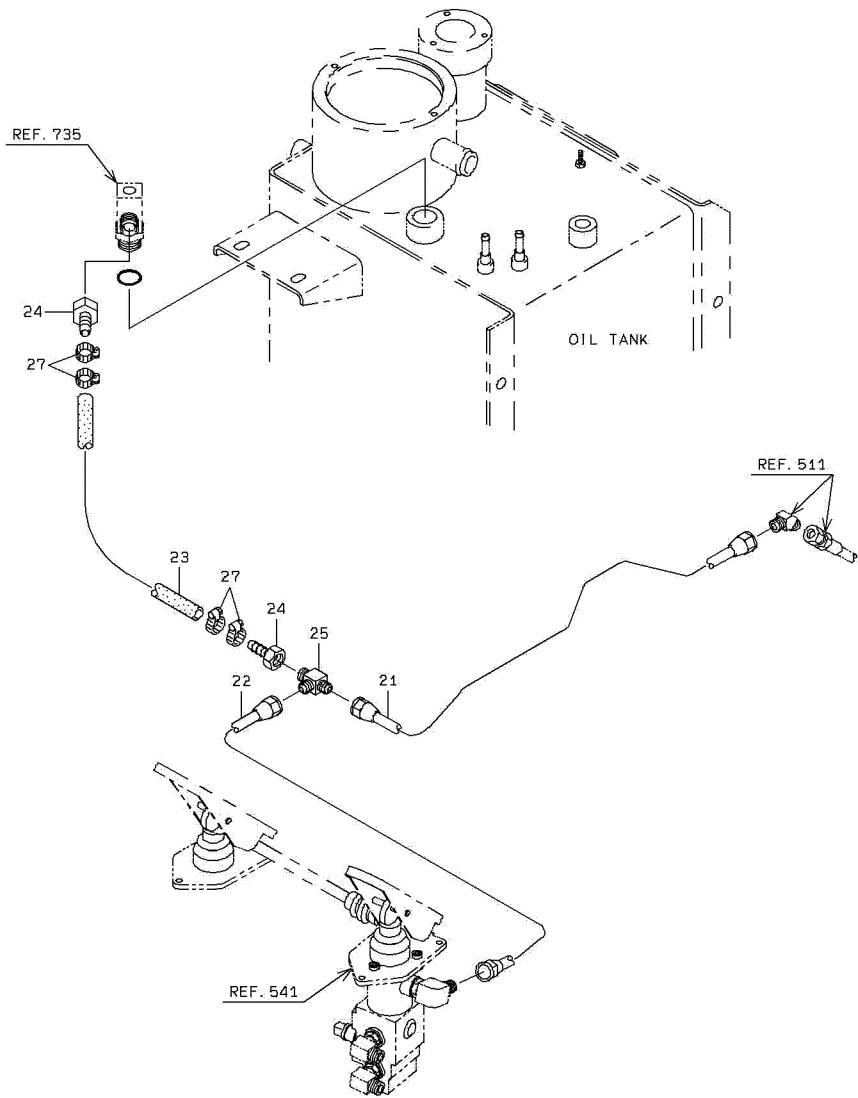
# FRONT DIFFERENTIAL



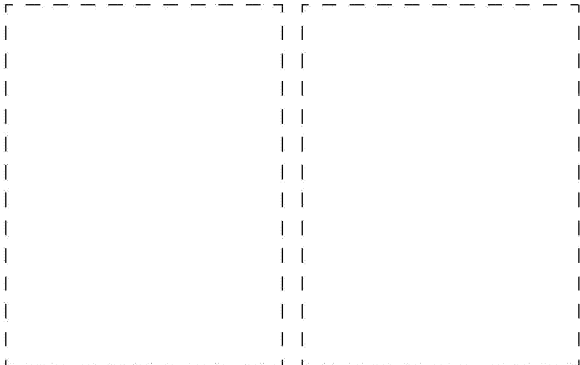
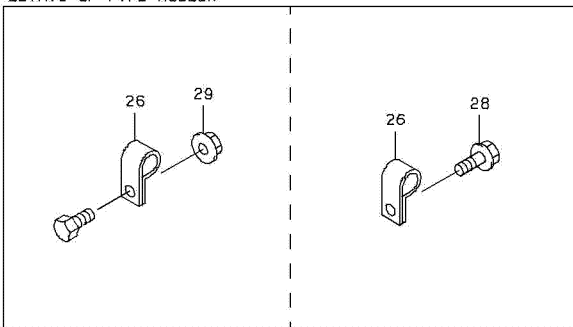
SPACER			
61	T=16.70	69	T=16.88
62	T=16.72	70	T=16.90
63	T=16.74	71	T=16.92
64	T=16.76	72	T=16.94
65	T=16.78	73	T=16.96
66	T=16.80	74	T=16.98
67	T=16.82	75	T=16.86
68	T=16.84		



# BRAKE LINE - FLOOR BOARD(HOSE)

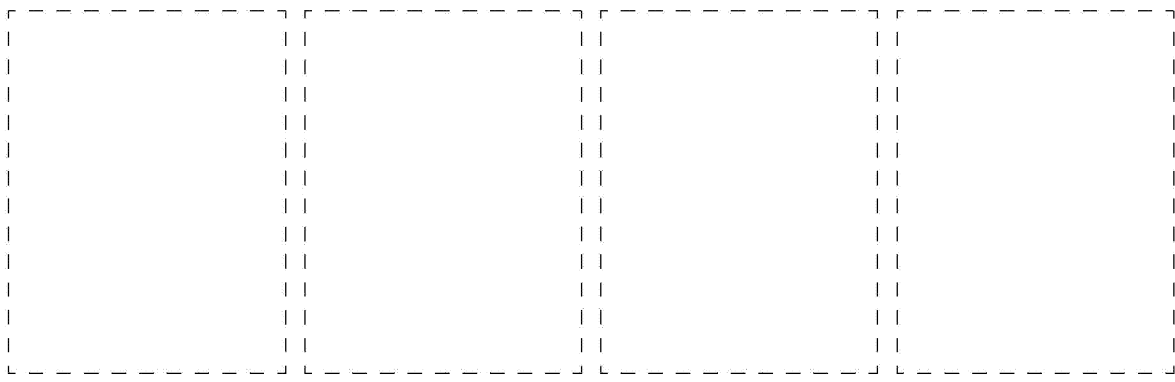
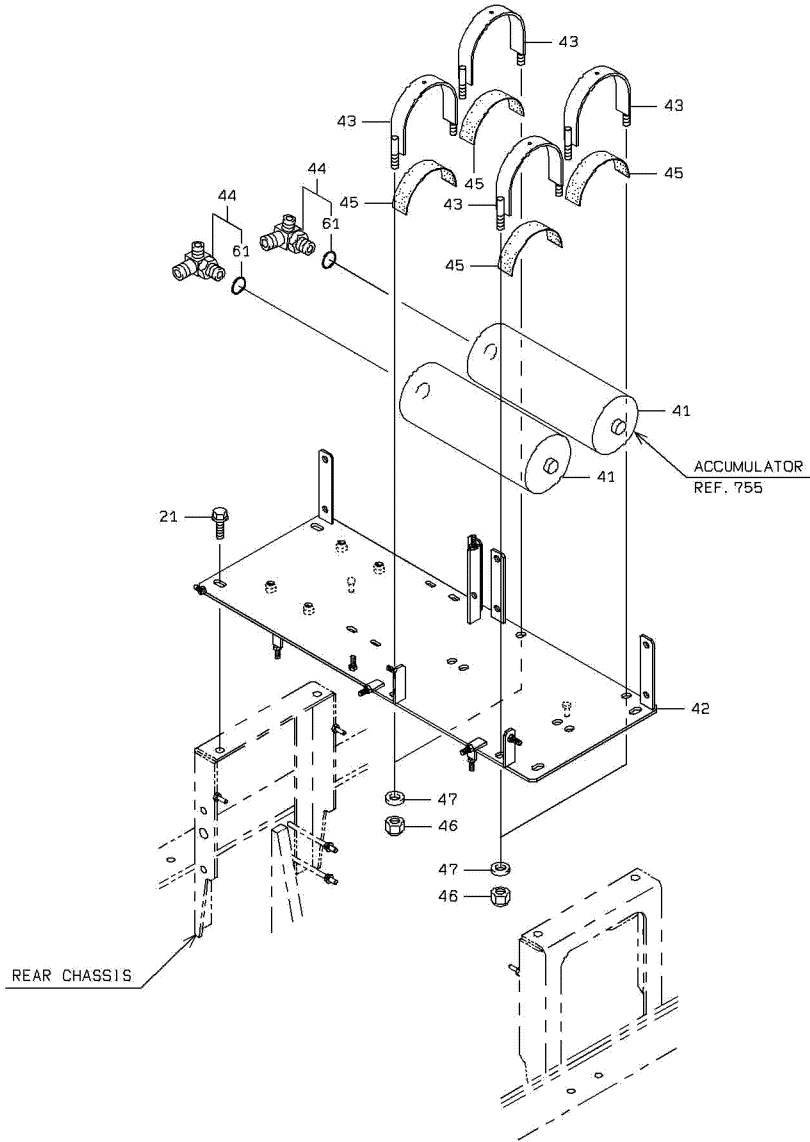


DETAIL OF PIPE HOLDER



1-A

# BRAKE LINE - ACCUMULATOR



CLICK HERE TO **DOWNLOAD** THE COMPLETE MANUAL

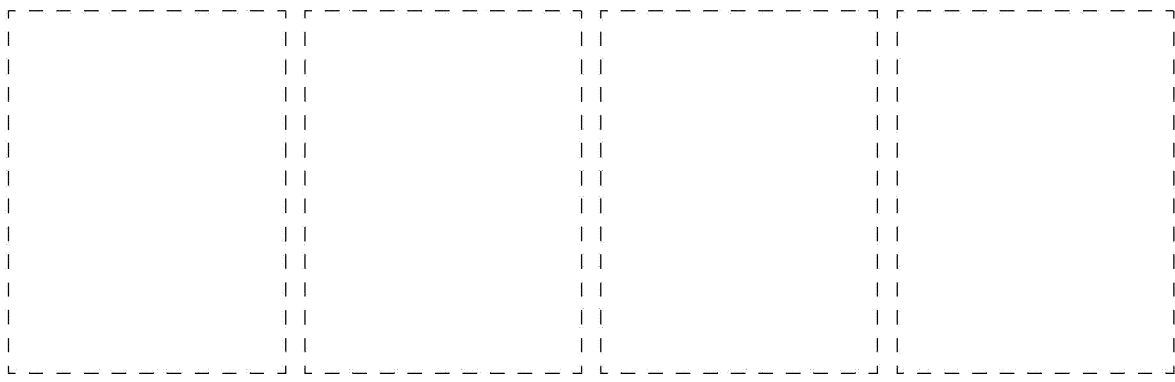
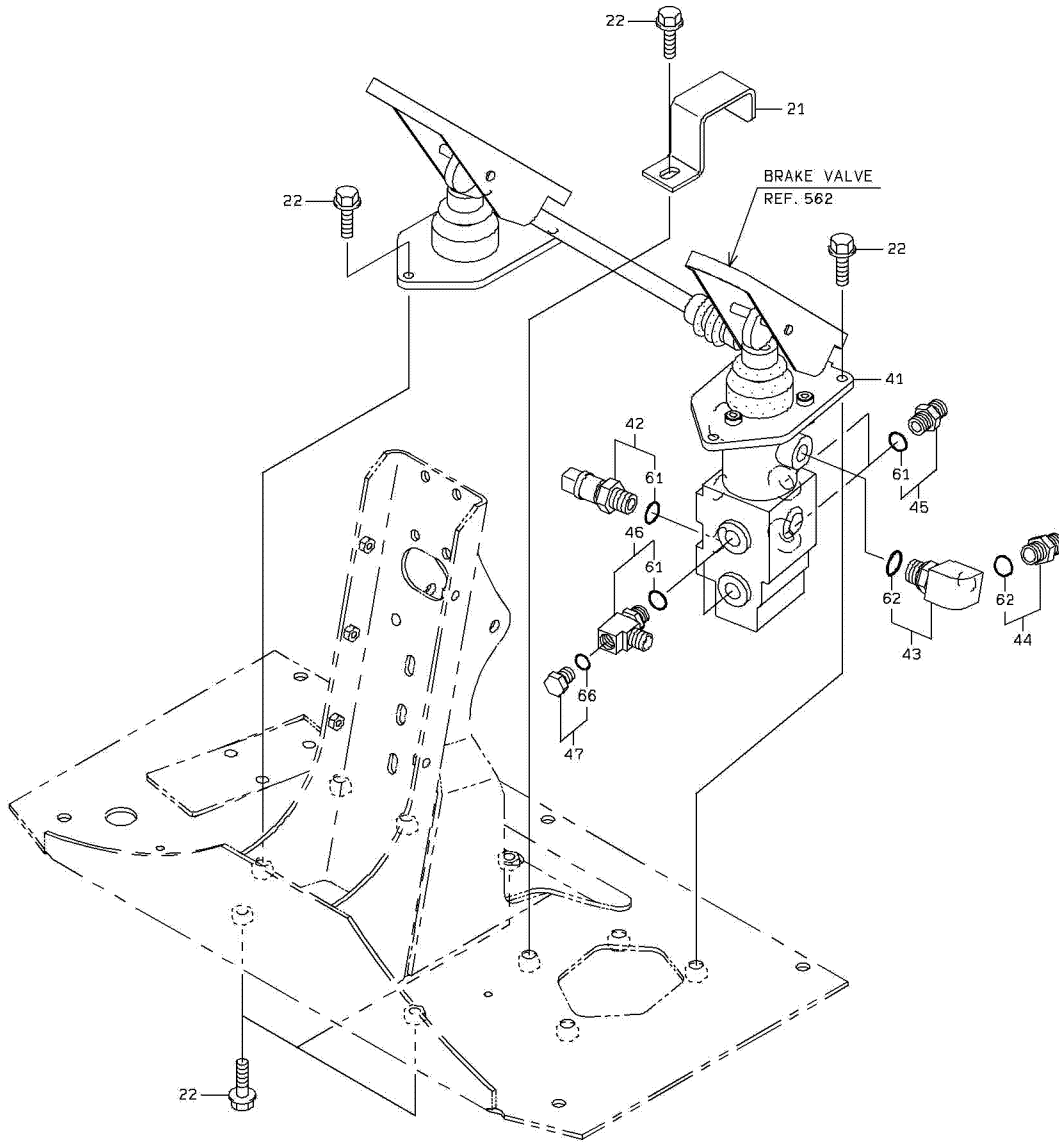
- Thank you very much for reading the preview of the manual.
- You can download the complete manual from: [www.heydownloads.com](http://www.heydownloads.com) by clicking the link below



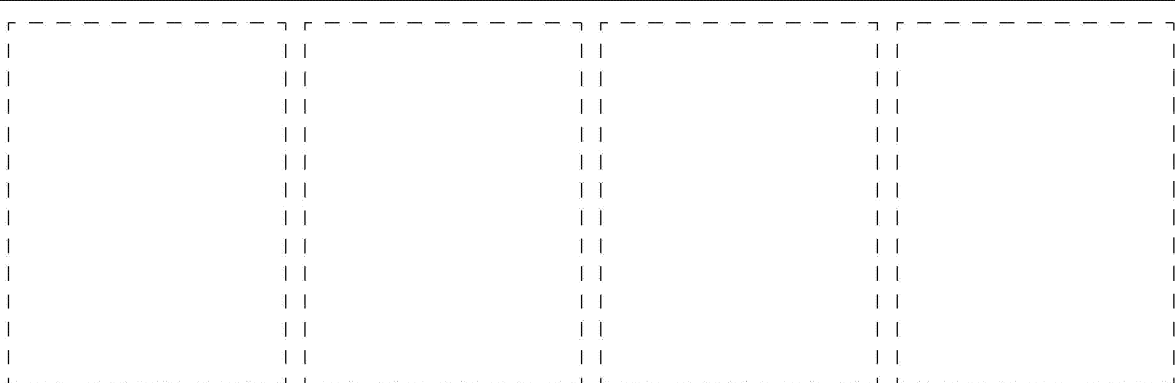
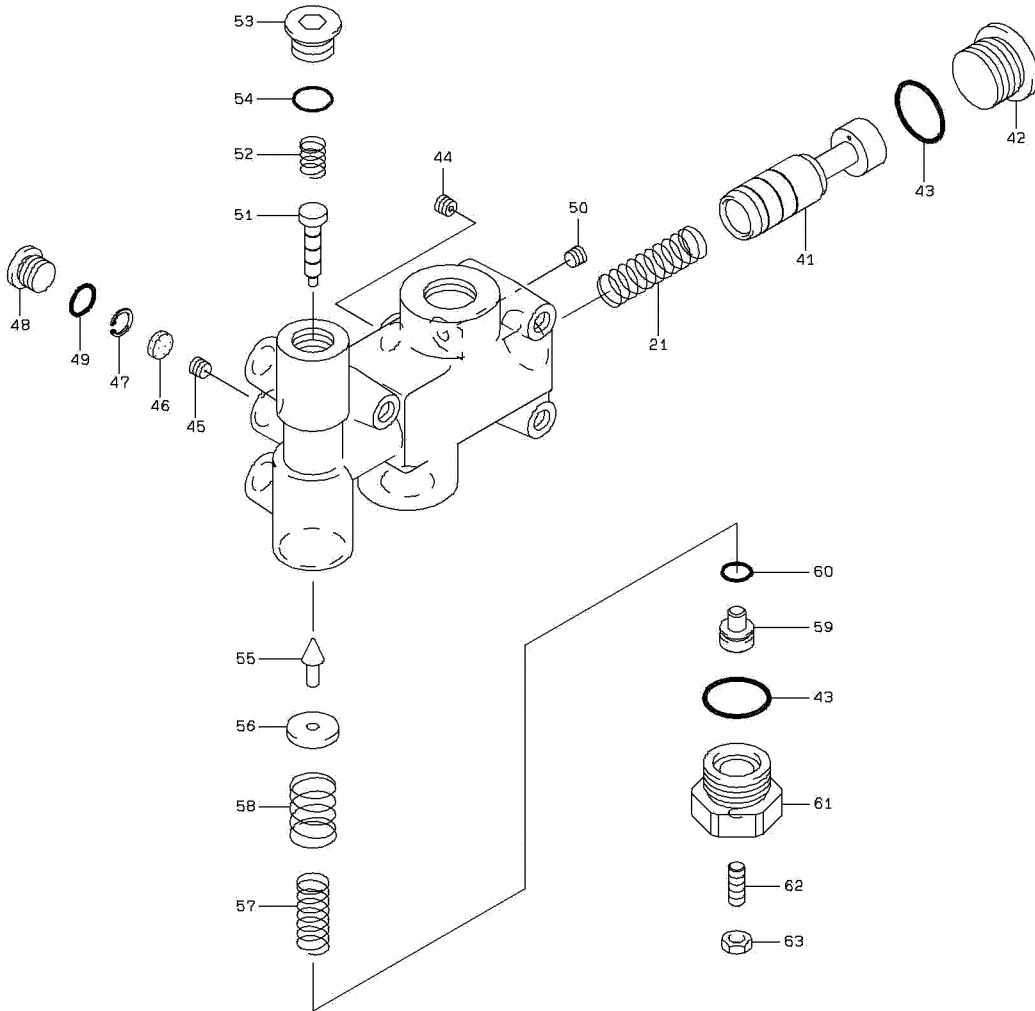
- Please note: If there is no response to CLICKING the link, please download this PDF first and then click on it.

CLICK HERE TO **DOWNLOAD** THE COMPLETE MANUAL

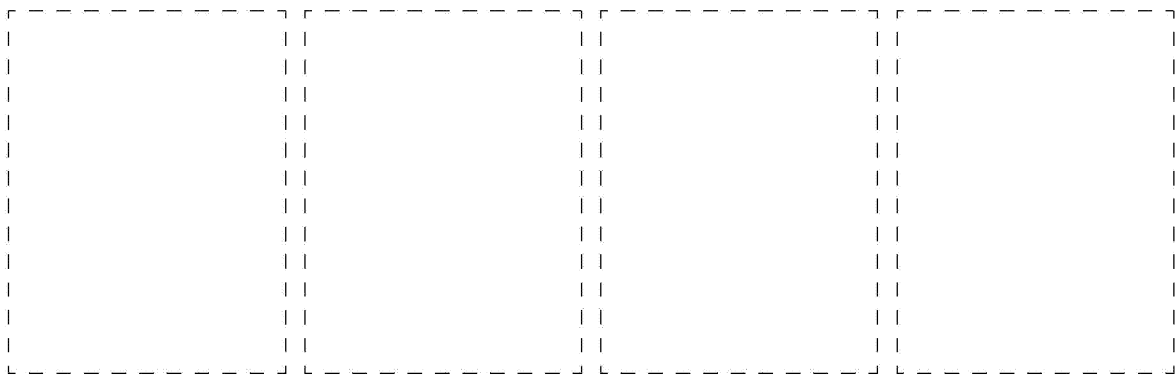
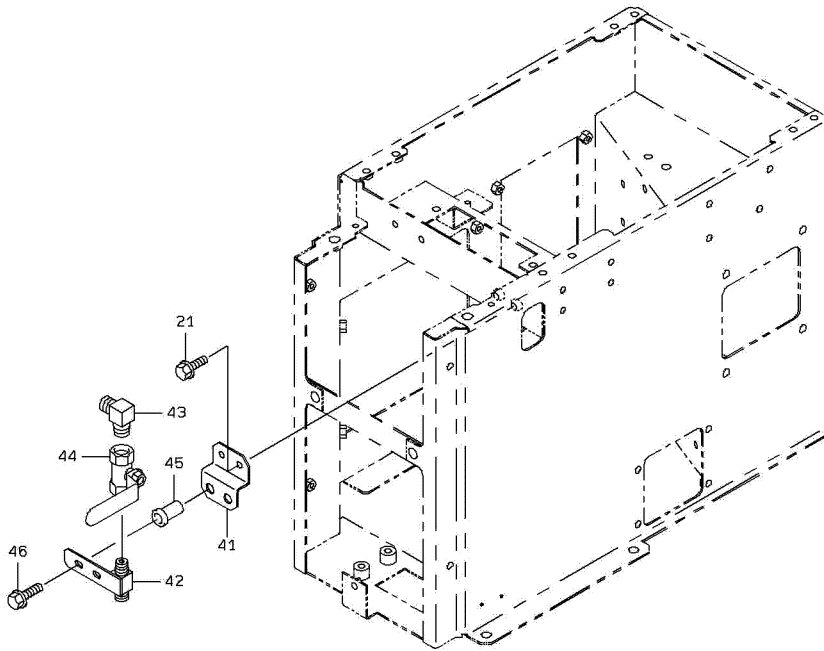
# BRAKE VALVE GROUP



# UNLOADER VALVE

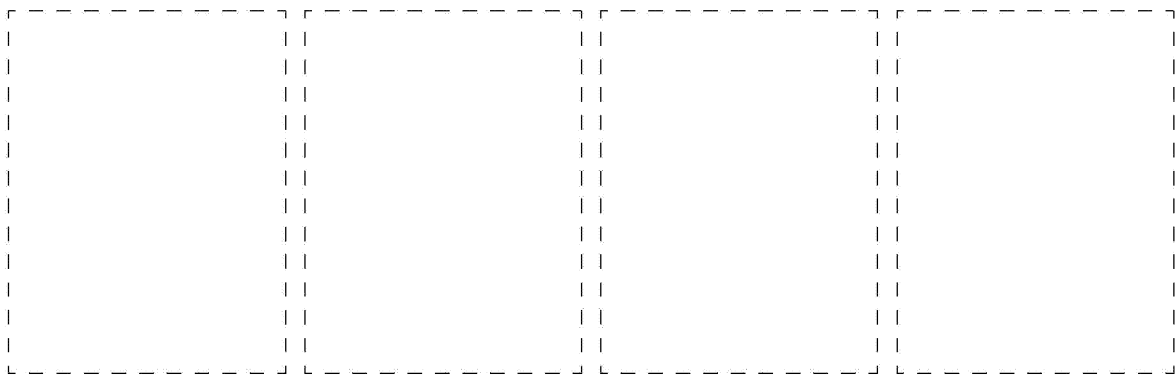
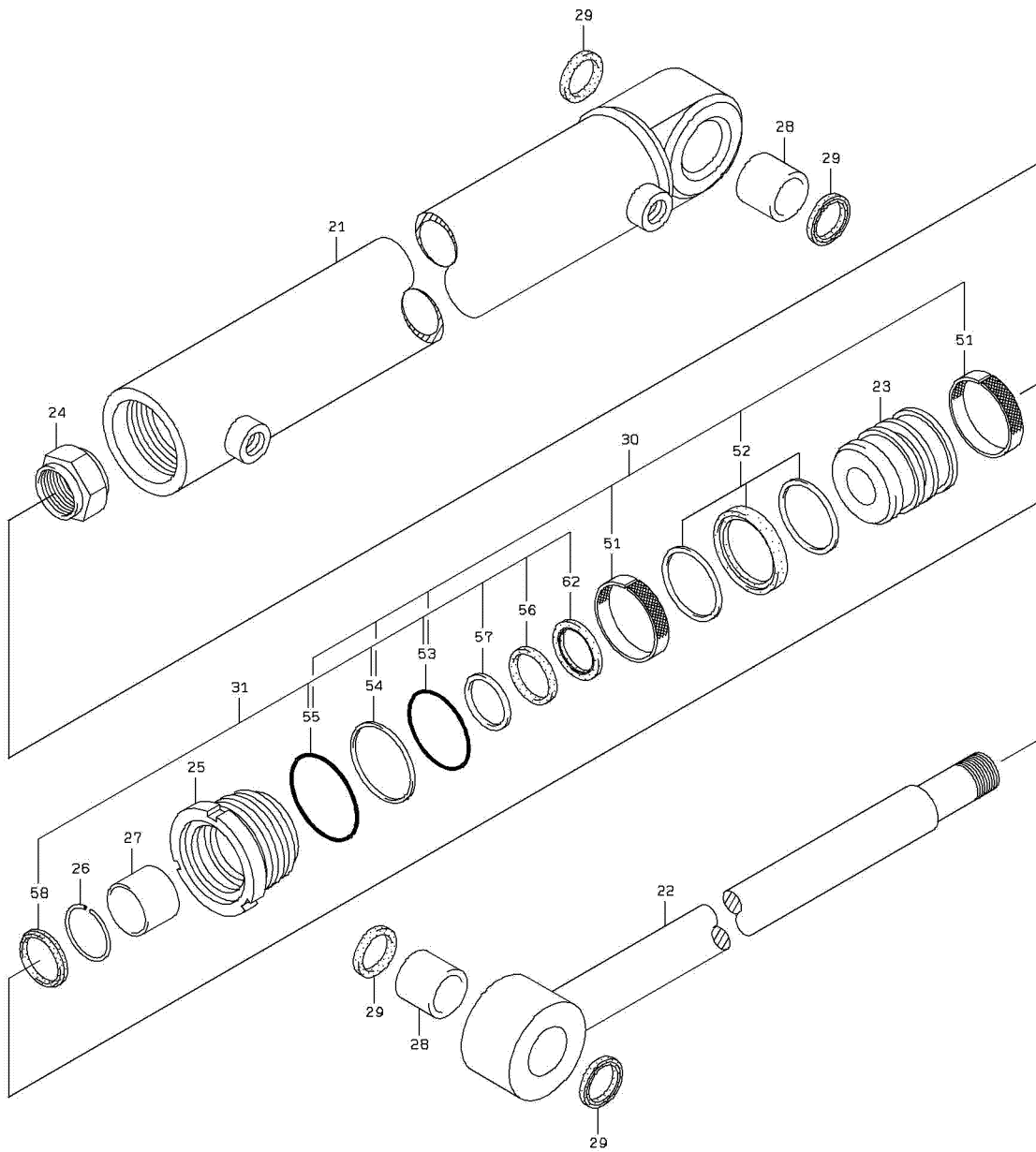


# SAFETY DEVICE ASSY



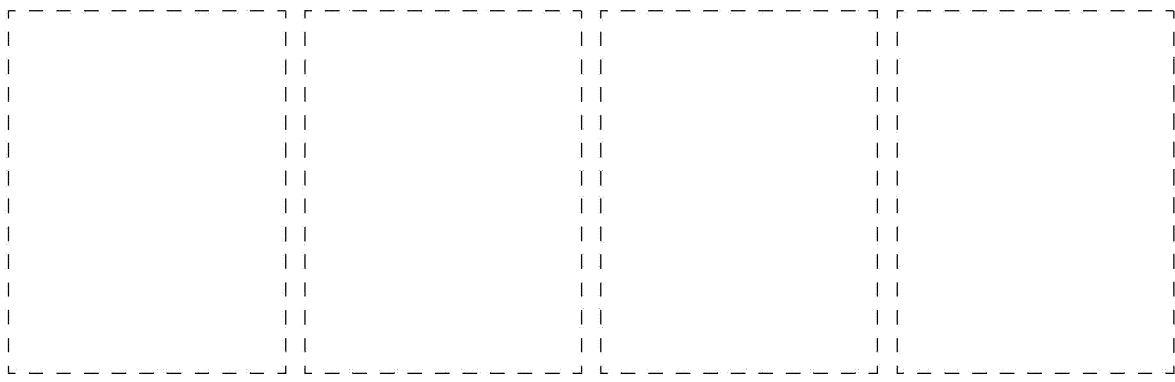
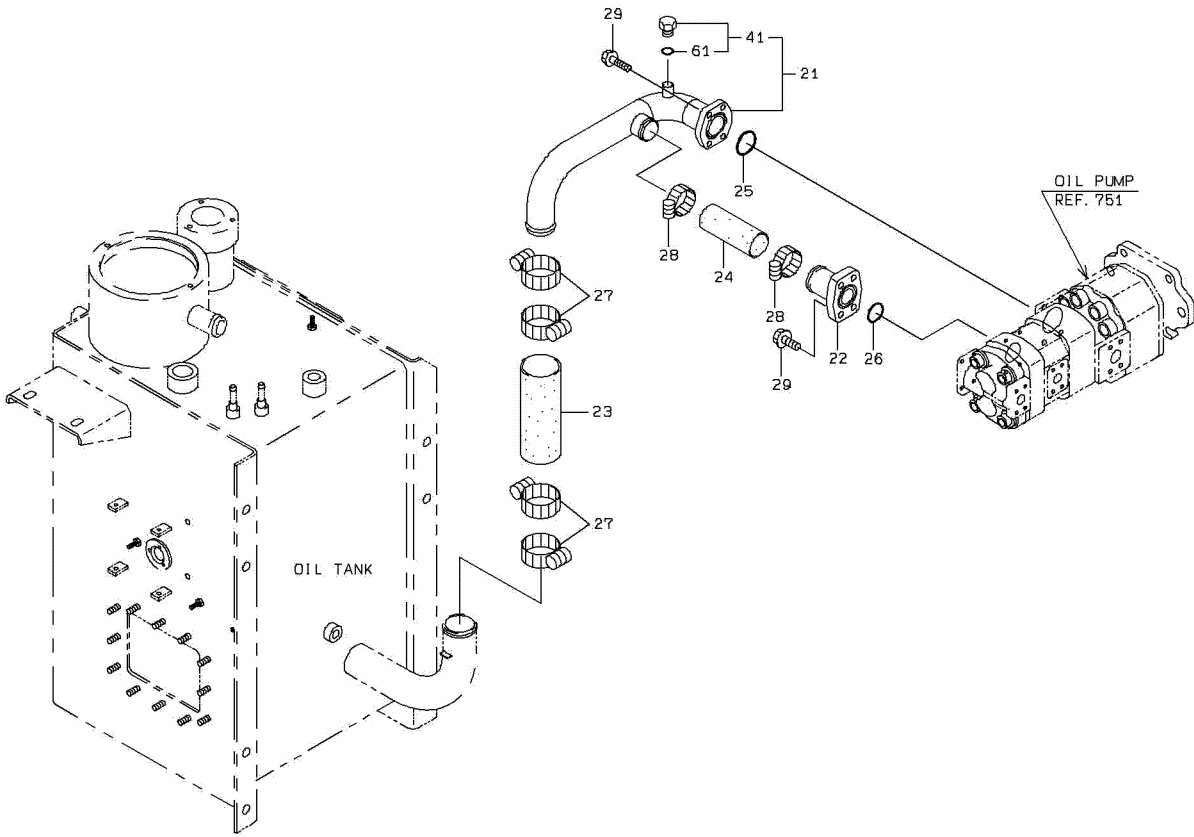
1-A

# STEERING CYLINDER

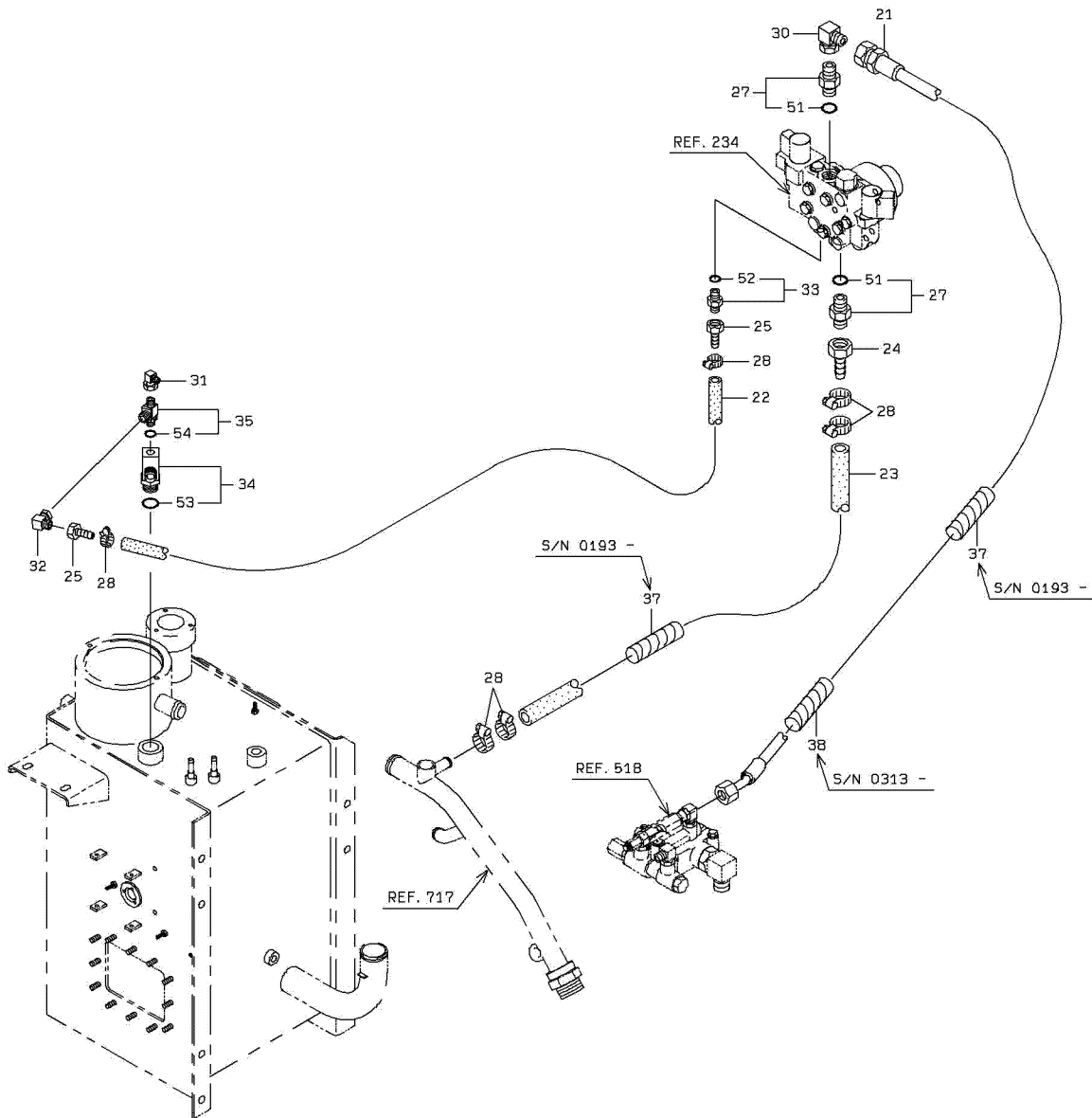


1-A

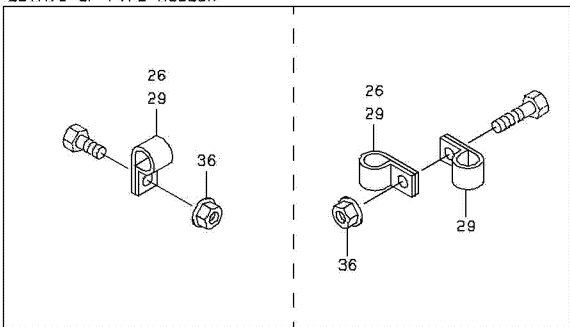
# LOADING HYDRAULIC LINE - REAR CHASSIS(FOR SUCTION)



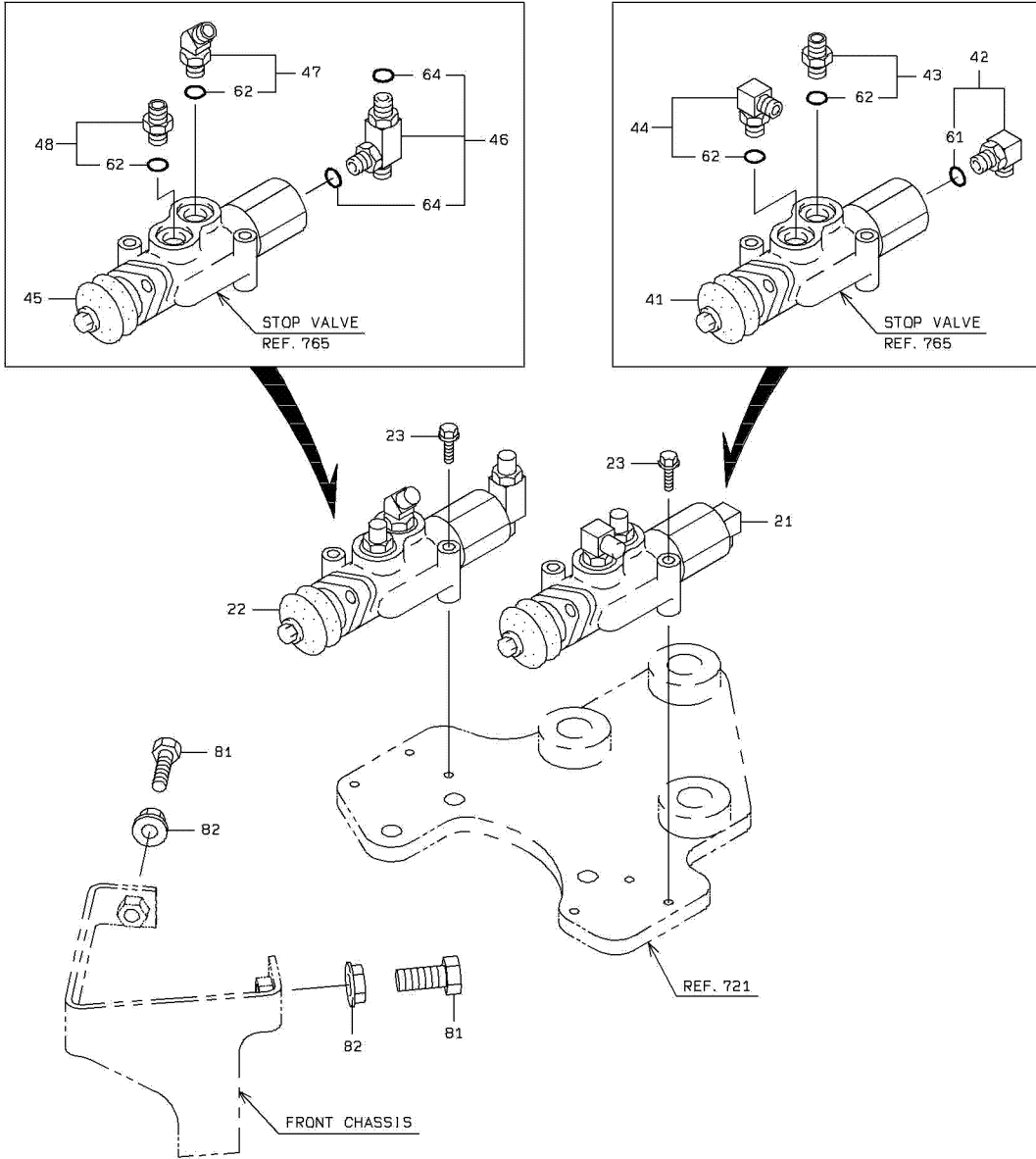
# HYDRAULIC LINE - FAN MOTOR



## DETAIL OF PIPE HOLDER



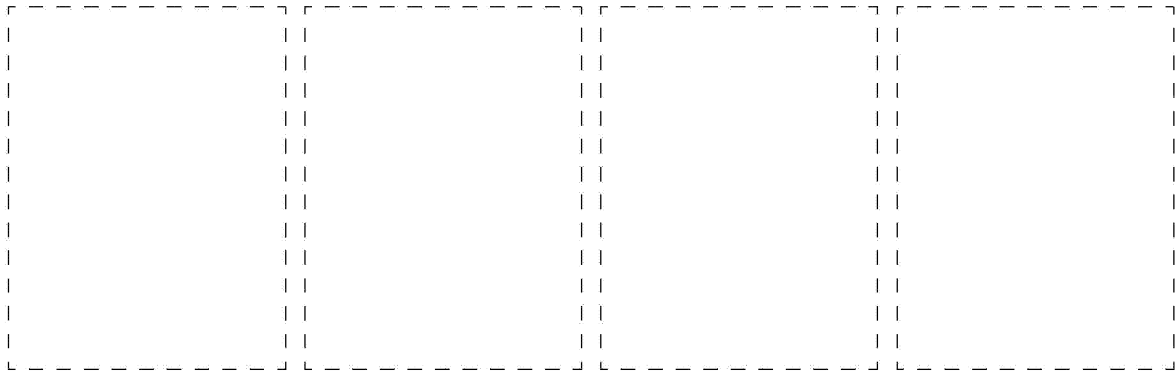
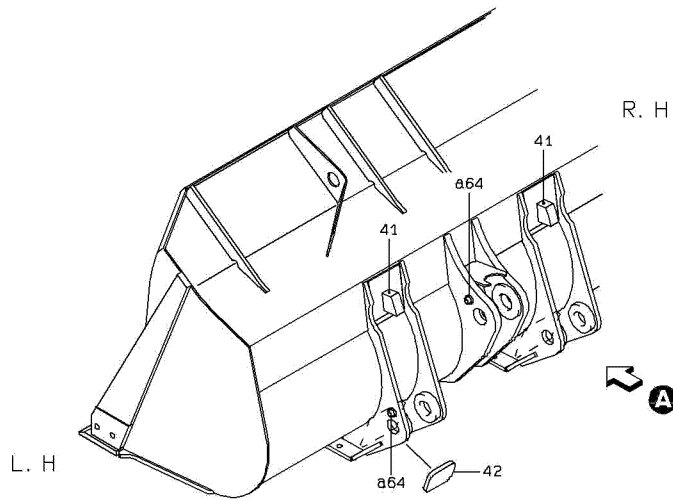
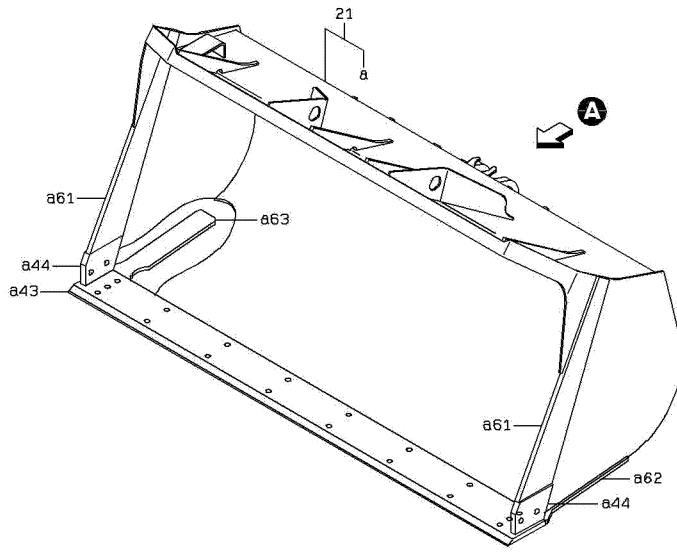
# STOP VALVE MOUNT



## PILOT VALVE

SYM-BOL	PART NUMBER	PART NAME	UNIT Q,TY	SERIAL		REMARKS							
				(A)	(B)	N	P	D	(A)	(B)	(C)	(D)	REMARK
000A	38560-60700	VALVE,PILOT	1	168	-	306							
000B	38560-60810	VALVE,PILOT	1	307	-		C						
21A	41681-70180	PLATE,VALVE	1	168	-								
22A	41600-71740	PLATE	2	168	-								
23A	47131-76900	RING,O	2	168	-								
24A	65210-12014	RING,O	4	168	-								
25A	61101-08020	BOLT,SOCKET	4	168	-								
26A	40840-73020	BUSHING	2	168	-								
27A	41530-75290	PLUG	1	168	-								
28A	61101-08090	BOLT,SOCKET	2	168	-								
29A	62401-61081	NUT	2	168	-								
30A	41530-75260	PLUG	4	168	-								
31A	45887-70390	ROD,PUSH	4	168	-								
32A	34000-71020	SEAL	4	168	-								
33A	65210-12020	RING,O	4	168	-								
34A	46000-71780	WASHER	4	168	-								
35A	33930-71020	SEAT,SPRING	2	168	-								
36A	35600-77700	SPRING	2	168	-								
37A	35600-77510	SPRING	2	168	-								
38A	35600-77600	SPRING	2	168	-								
39A	35600-77710	SPRING	2	168	-								
40A	35600-77540	SPRING	2	168	-								
41A	33930-71000	SEAT,SPRING	2	168	-								
42A	33930-71010	SEAT,SPRING	2	168	-								
43A	35700-71970	SPACER	2	168	-								
44A	31210-70320	COVER	2	168	-								
45A	45600-70480	LEVER	2	168	-								
46A	41610-70010	PLATE	2	168	-								
47A	35600-76620	SPRING	4	168	-								
48A	35104-70180	SCREW,SET	4	168	-								
49A	37600-72680	NUT	4	168	-								
50A	40840-73080	BUSHING	4	168	-								
51A	35600-77550	SPRING	2	168	-								
52A	45200-71570	RING	2	168	-								
53A	43751-70470	BALL	8	168	-								
54A	40840-72670	BUSHING	5	168	-								
55A	35110-70050	SCRAPER	4	168	-								
56A	43956-71340	BOLT,SOCKET	1	168	-								
57A	32925-70020	CLAMP,CABLE	1	168	-								
58A	65219-12012	RING,O	4	168	-								
59A	34500-70790	SHAFT	2	168	-								
60A	61131-06008	BOLT,SOCKET	2	168	-								
61A	40840-73040	BUSHING	4	168	-								
62A	43956-71350	BOLT,SOCKET	8	168	-								
63A	40790-70560	BOOT	2	168	-								
64A	33100-70890	CASE	1	168	-								
65A	33100-70900	CASE	1	168	-								
66A	45887-70400	ROD,PUSH	2	168	-								
67A	45887-70410	ROD,PUSH	1	168	-								
68A	45887-70420	ROD,PUSH	1	168	-								
69A	35910-70430	SOLENOID	1	168	-								
70A	35910-70410	SOLENOID	1	168	-								
71A	35910-70420	SOLENOID	1	168	-								
72A	41600-71750	PLATE	2	168	-								
73A	41600-71760	PLATE	2	168	-								

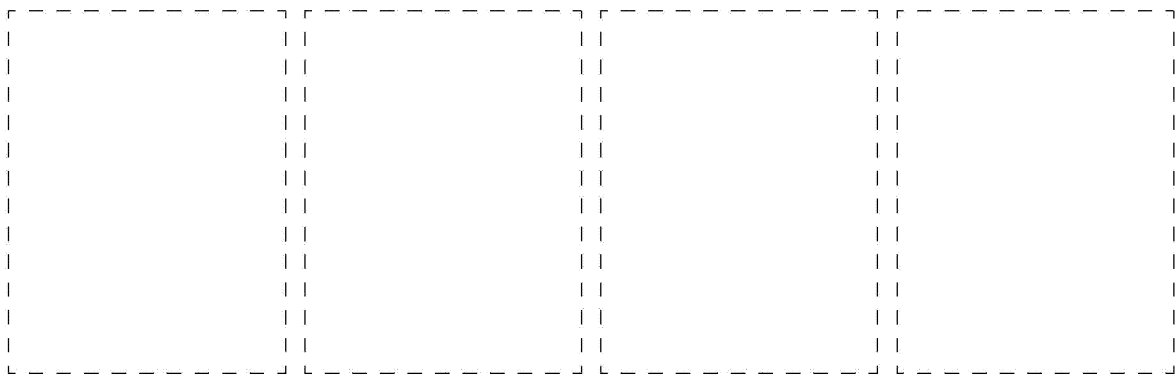
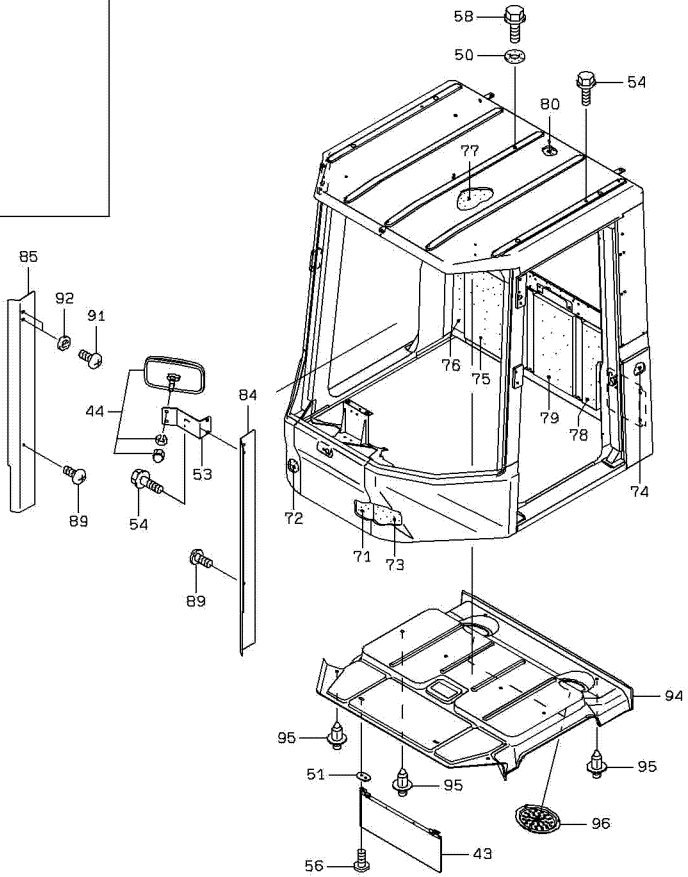
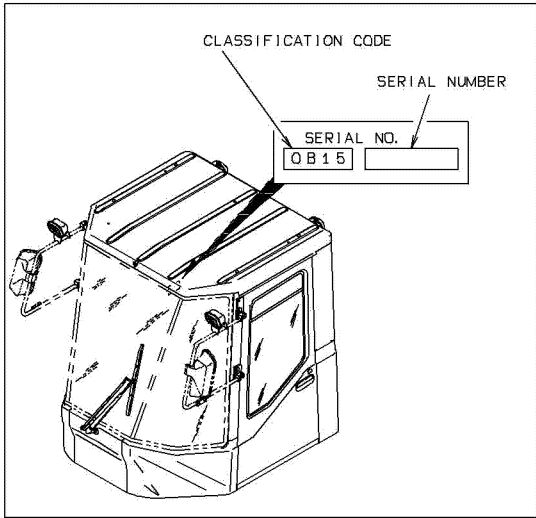
# BUCKET (FOR GENERAL PURPOSE)



## BUCKET OPTION PARTS

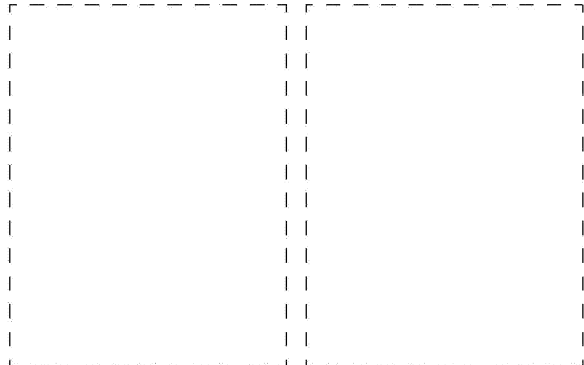
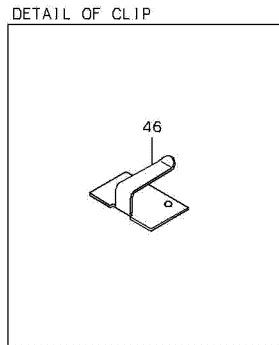
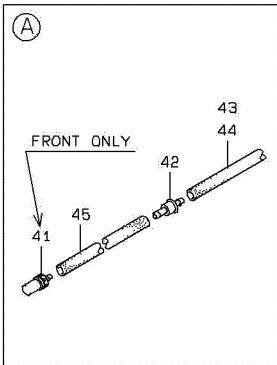
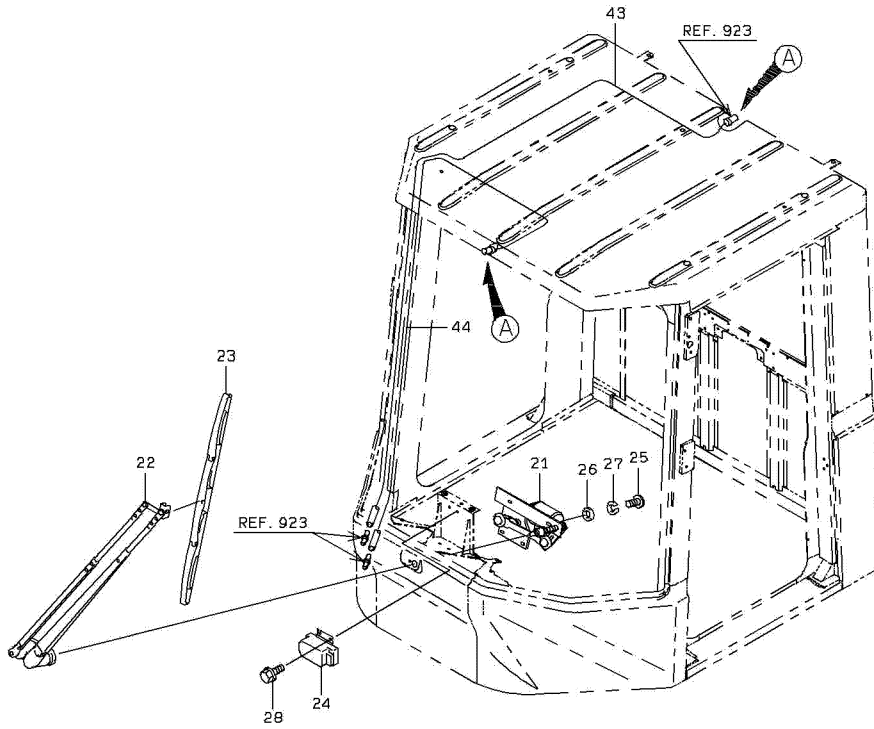
SYM-BOL	PART NUMBER	PART NAME	UNIT Q,TY	SERIAL		REMARKS						
				(A)	(B)	N	P	D	(A)	(B)	(C)	(D)
21A	30935-20390	EDGE,WEAR	2	168	-							FR GS,LS
22A	30935-20100	EDGE,WEAR	2	168	-							FR RS,GS
23A	43925-20490	BOLT SET	12	168	-							FR G,R
43A	43925-20530	BOLT SET	12	168	-							
61A	36800-20510	TOOTH	1	168	-				05			
62A	30245-20360	ADAPTER,TOOTH	1	168	-				05			
63A	40000-33360	PIN	1	168	-				05			
81A	36800-20510	TOOTH	1	168	-					06		
82A	30245-20370	ADAPTER,TOOTH	1	168	-					06		
83A	40000-33360	PIN	1	168	-					06		
101A	36805-20200	TOOTH ASSY	6	168	-			Y01				
102A	43925-20510	BOLT SET	16	168	-							FR GS,HS
103A	36810-20230	TOOTH ASSY,CORNER	1	168	-				Y02			
104A	36810-20240	TOOTH ASSY,CORNER	1	168	-					Y03		
105A	41621-20550	PLATE	4	168	-							
121A	36800-60040	TOOTH	1	168	-				01			
122A	30245-60030	ADAPTER,TOOTH	1	168	-				01			
123A	40000-60020	PIN	1	168	-				01			
124A	36800-60040	TOOTH	1	168	-					02		
125A	30245-60010	ADAPTER,TOOTH	1	168	-					02		
126A	40000-60020	PIN	1	168	-					02		
127A	36800-60040	TOOTH	1	168	-						03	
128A	30245-60020	ADAPTER,TOOTH	1	168	-						03	
129A	40000-60020	PIN	1	168	-						03	
141A	36800-20370	TOOTH	6	168	-							
142A	43925-20510	BOLT SET	16	168	-							FR GS,HS
143A	36815-20170	TOOTH,CORNER	1	168	-							
144A	36815-20180	TOOTH,CORNER	1	168	-							
145A	41621-20550	PLATE	4	168	-							
161A	36800-20330	TOOTH	6	168	-							
162A	43925-20500	BOLT SET	12	168	-							
163A	43925-20510	BOLT SET	4	168	-							
164A	36815-20130	TOOTH,CORNER	1	168	-							
165A	36815-20140	TOOTH,CORNER	1	168	-							
166A	41621-20540	PLATE	4	168	-							
181A	30930-20820	EDGE	1	168	-							
182A	30936-20040	EDGE,SPACE	7	168	-							
183A	43925-20490	BOLT SET	14	168	-							FR G,R
201A	30930-20810	EDGE	1	168	-							
202A	30936-20040	EDGE,SPACE	7	168	-							
203A	43925-20530	BOLT SET	14	168	-							
221A	30930-20390	EDGE	1	168	-							
222A	30936-20040	EDGE,SPACE	7	168	-							
223A	43925-20530	BOLT SET	14	168	-							
241A	36805-20230	TOOTH ASSY	6	168	-					Y04		
242A	43925-20500	BOLT SET	12	168	-							
243A	43925-20510	BOLT SET	4	168	-							
244A	36810-20210	TOOTH ASSY,CORNER	1	168	-			Y05				
245A	36810-20220	TOOTH ASSY,CORNER	1	168	-				Y06			
246A	41621-20540	PLATE	4	168	-							
251A	41656-20440	PLATE,WEAR	2	168	-							T=25
252A	43925-20520	BOLT SET	4	168	-							
261A	36800-20510	TOOTH	1	168	-						04	
262A	30245-20350	ADAPTER,TOOTH	1	168	-						04	
263A	40000-33360	PIN	1	168	-						04	

(NOTE): SERIAL NUMBER INDICATES THE CAB SERIAL NUMBER.



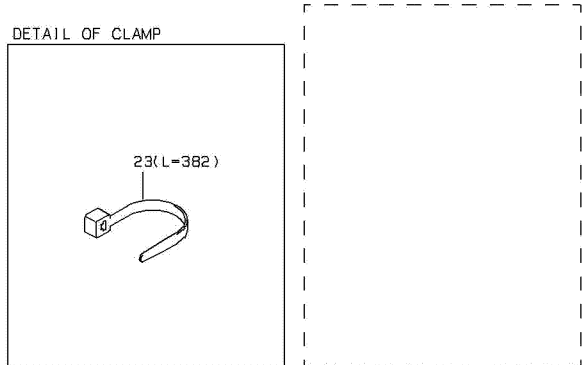
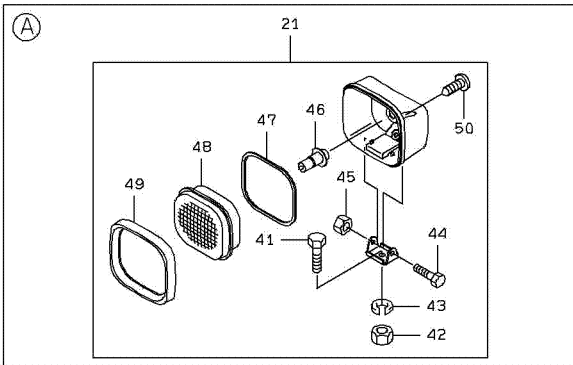
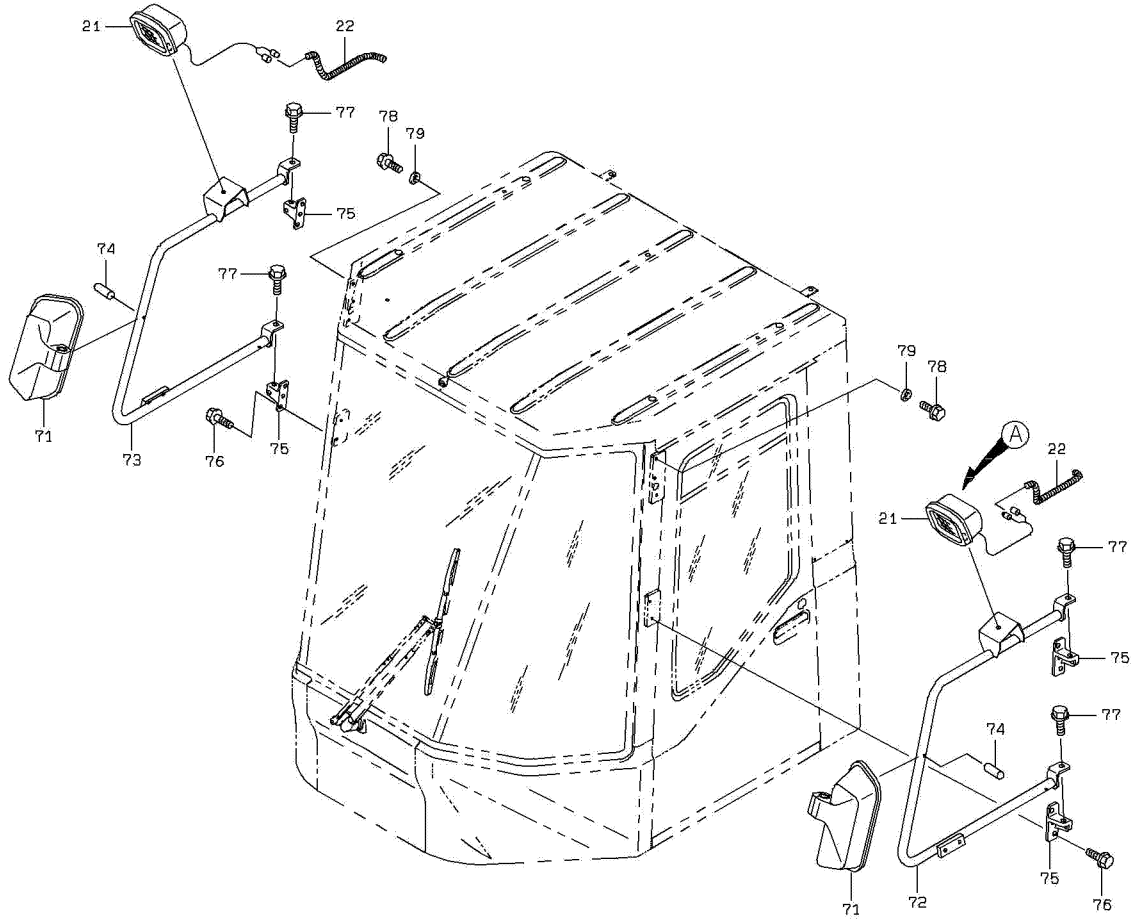
# FRONT WIPER & WINDOW WASHER GROUP

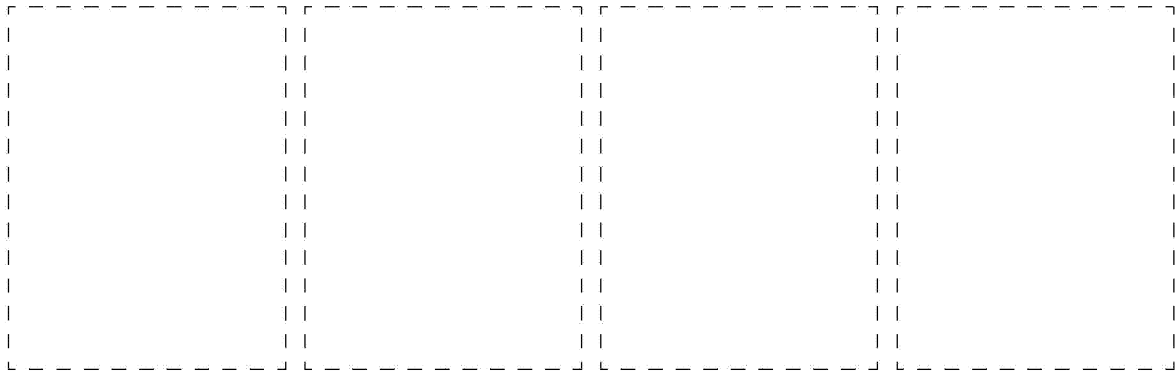
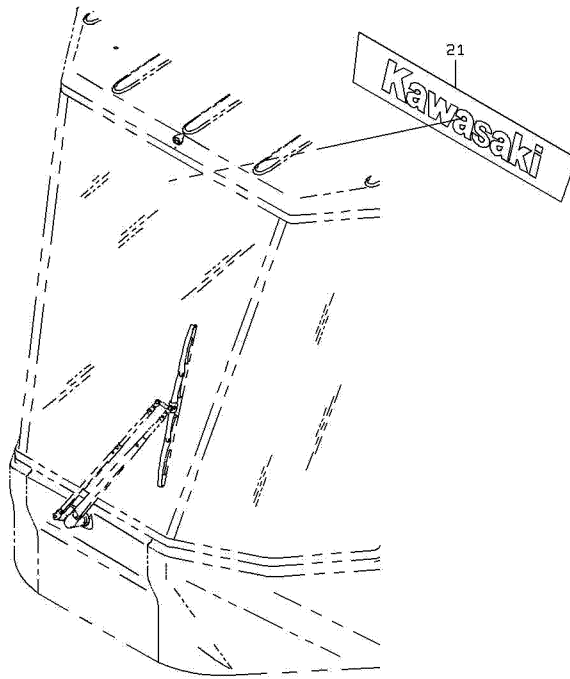
(NOTE): SERIAL NUMBER INDICATES THE CAB SERIAL NUMBER.



1-A

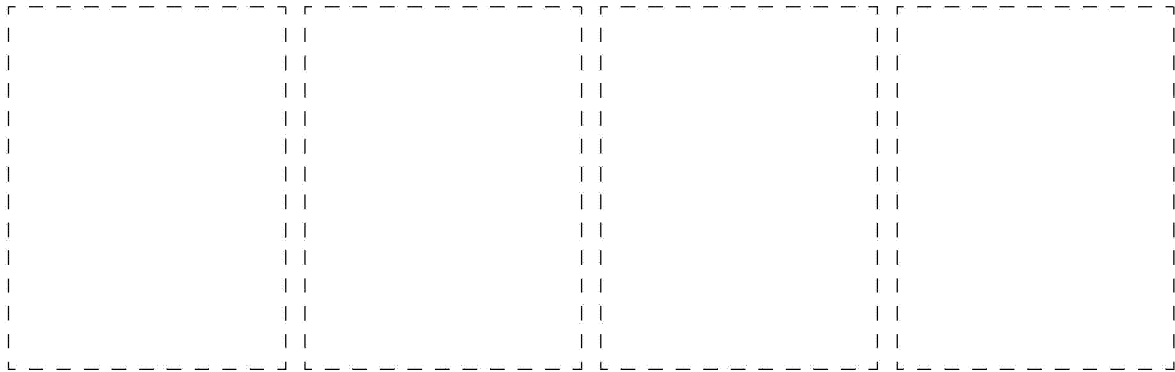
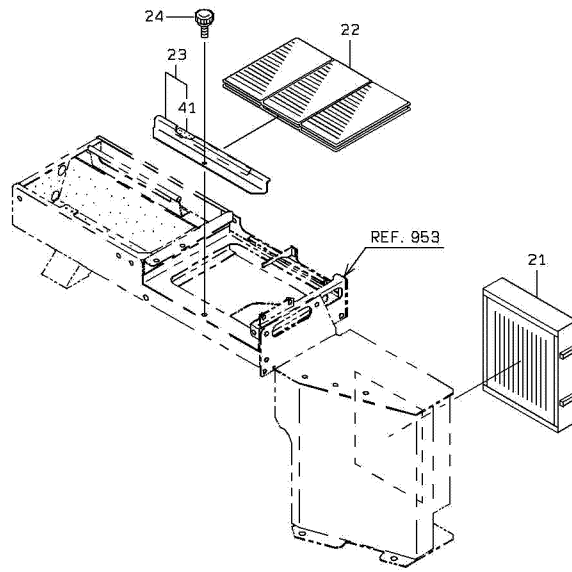
# MIRROR GROUP





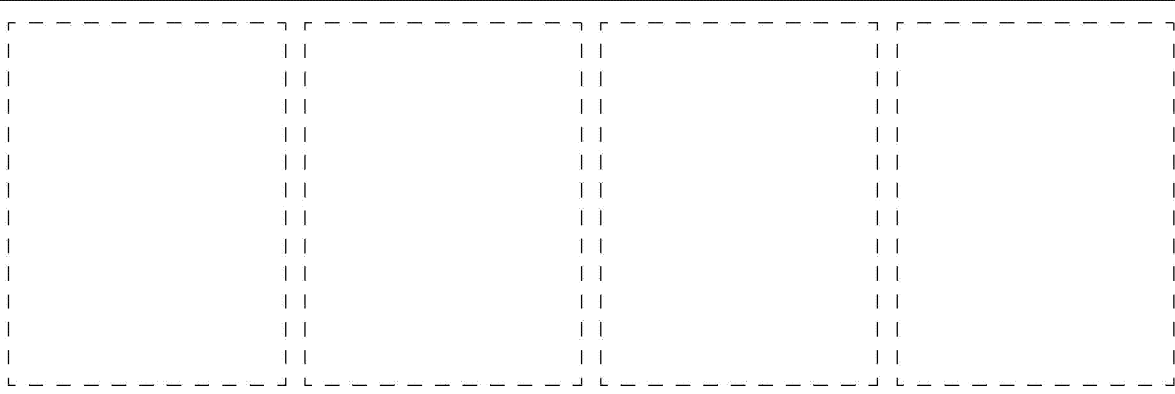
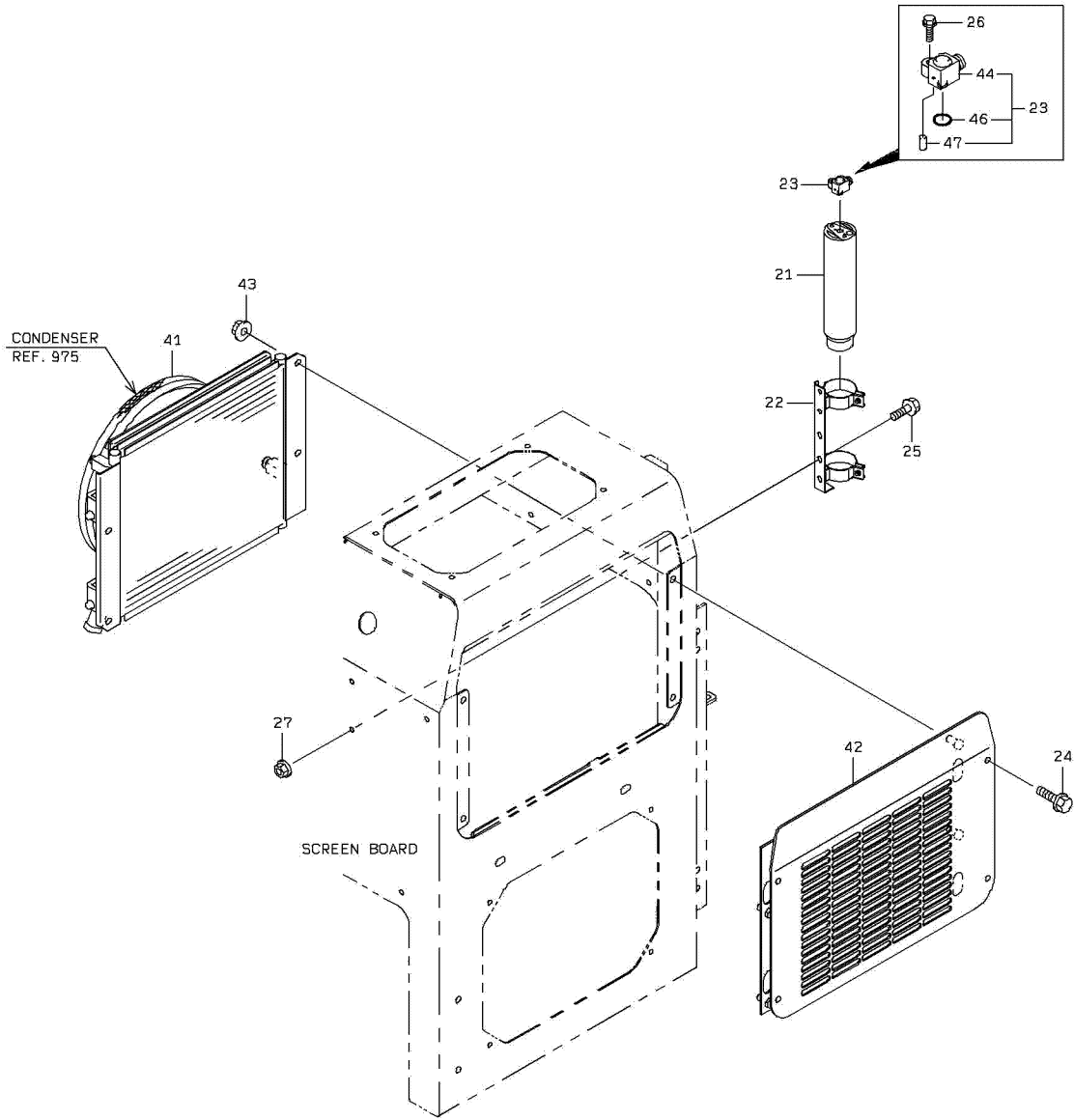
1-A

# FILTER MOUNT



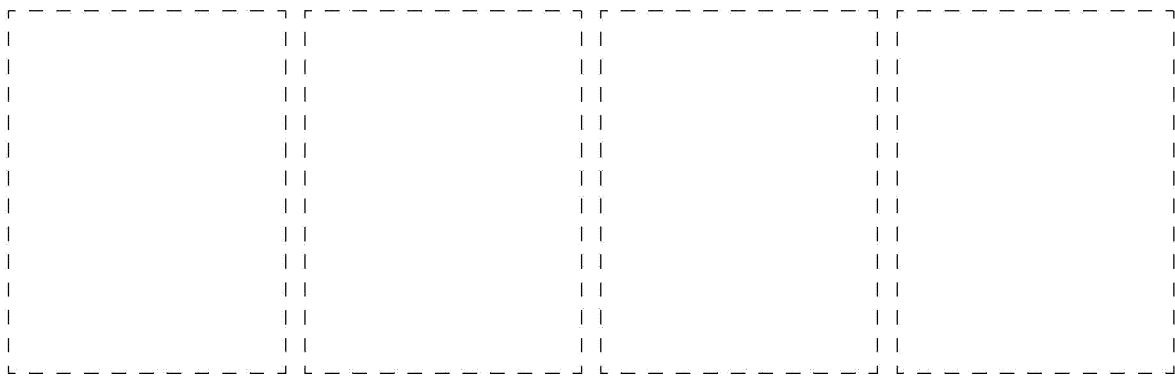
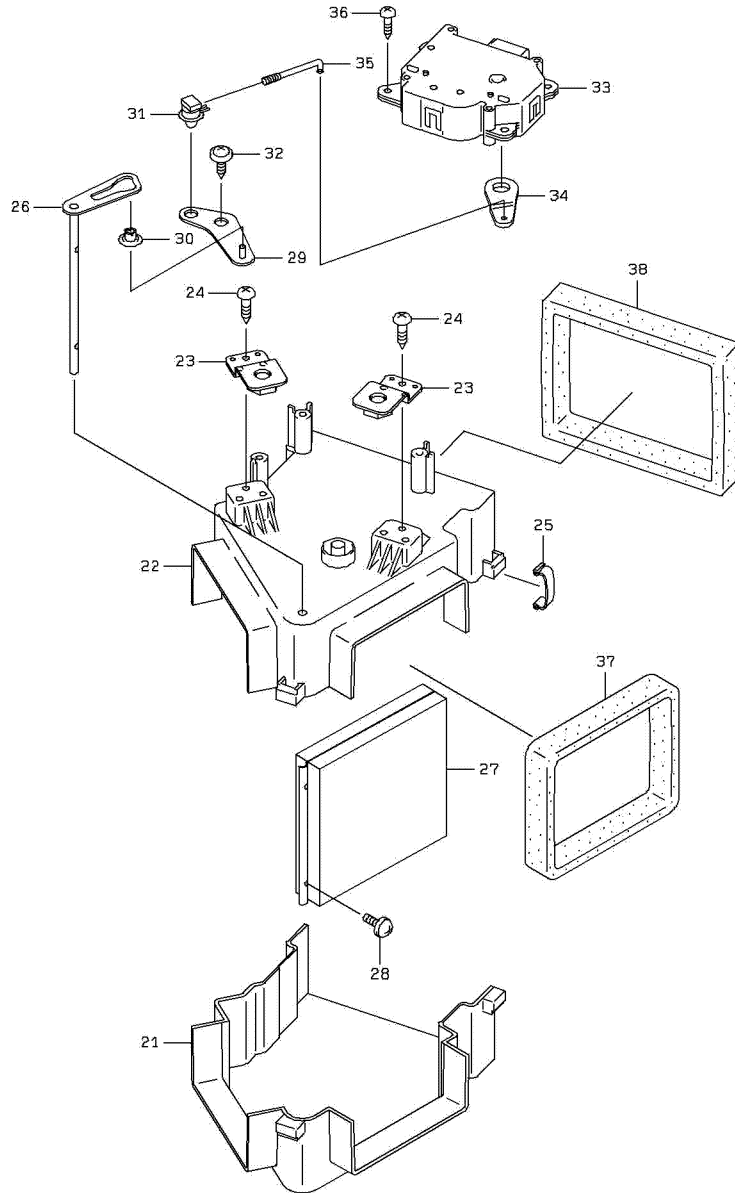
1-A

# CONDENSER & COVER MOUNT

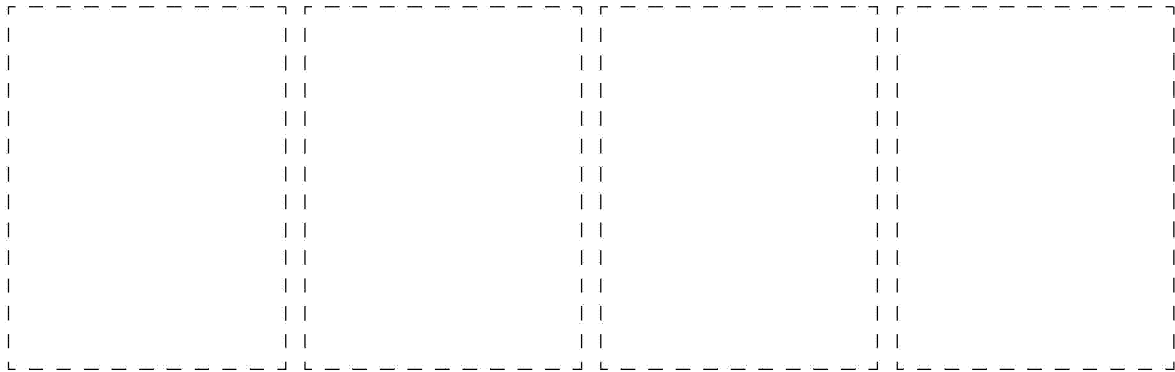
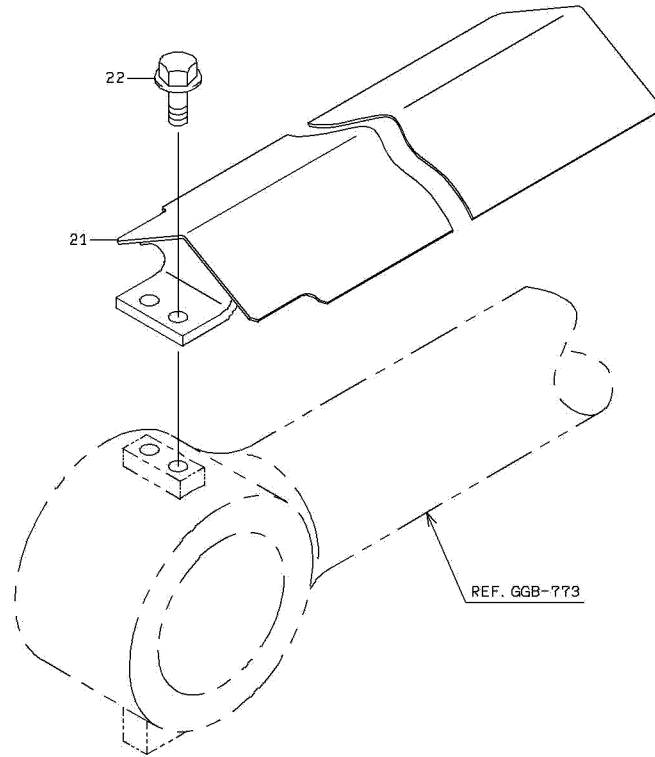


# AIR DAMPER

(NOTE): SERIAL NUMBER INDICATES THE AIR DAMPER SERIAL NUMBER.

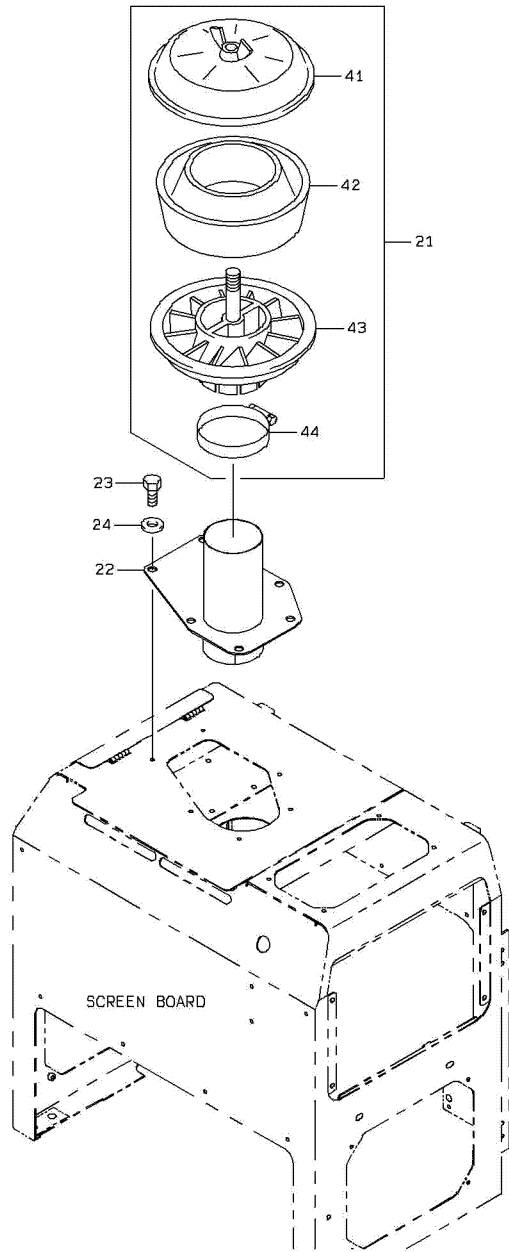


# TILT CYLINDER COVER(FOR SINGLE TILT CYLINDER)



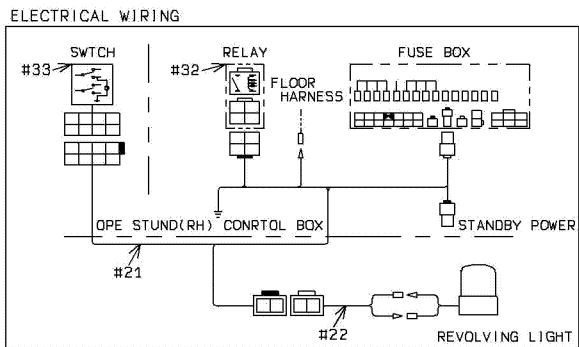
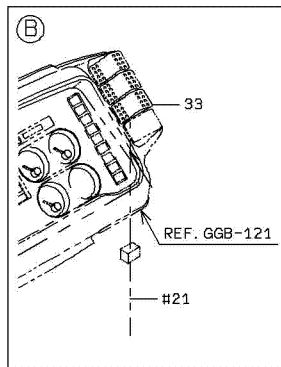
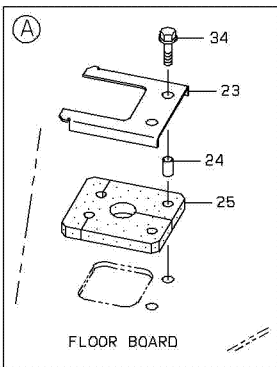
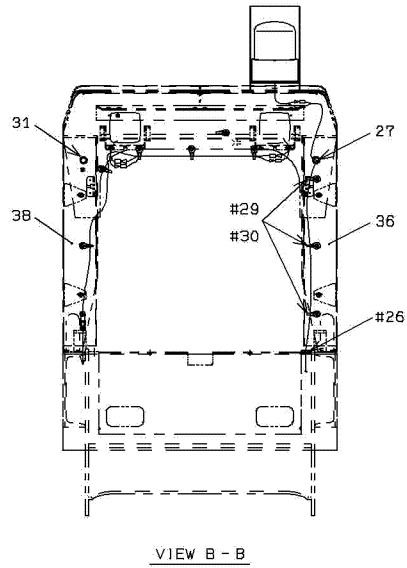
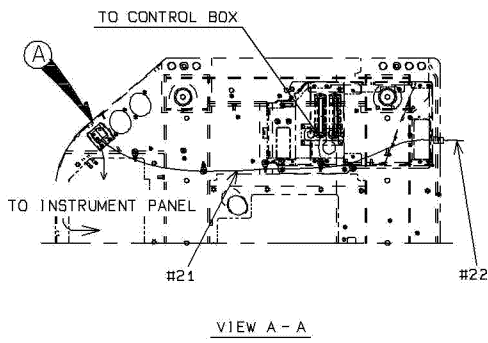
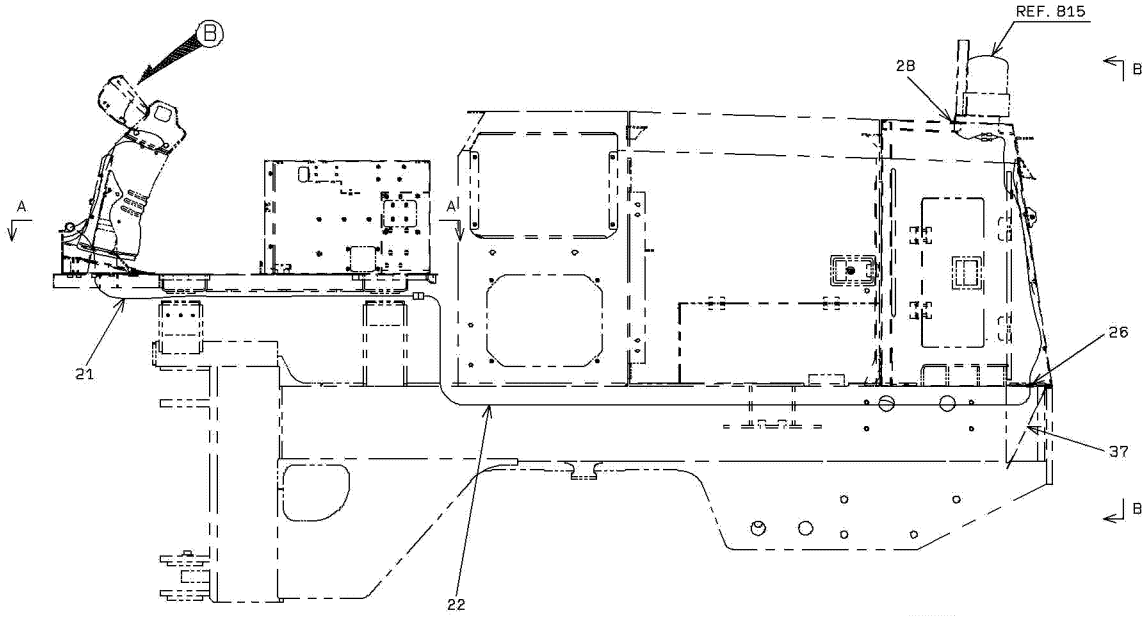
1-A

# PRECLEANER MOUNT





# CABLE MOUNT (WARNING LAMP)



## PARTS No. INDEX

PART NUMBER	PAGE-SYM	PART NUMBER	PAGE-SYM	PART NUMBER	PAGE-SYM	PART NUMBER	PAGE-SYM				
00500	-07530	16- 21A	30510	-60240	286- 21A	31200	-72090	132- 21A	31990	-22060	134- 44A
03501	-74740	362- 29A	30582	-20460	136- 111A		-72750	238- 21A		-22690	114- 41A
	-77210	368- 29A		-20460	138- 131A		-72760	238- 26A		-22690	134- 50A
	-85770	373- 36A	30641	-70010	46- 46A		-72960	198- 22A		-23410	116- 106A
	-85780	373- 37A	30721	-20030	116- 26A		-72970	198- 23A		-23410	134- 46A
	-92660	373- 38A	30725	-20130	116- 23A		-73220	336- 27A		-27420	114- 26A
30021	-20890	290- 21A	30771	-60010	296- 41A		-73240	238- 24A		-27420	134- 41A
30035	-60040	296- 22A	30780	-23610	8- 141A		-73240	364- 23A		-27450	114- 30A
	-60060	282- 22A		-23650	8- 142A		-73250	238- 25A		-27450	134- 49A
30040	-23150	348- 21A		-23660	8- 143A		-73370	364- 24A		-27480	114- 24A
	-23230	4- 41A		-23690	344- 21A		-73450	176- 31A		-27480	134- 48A
30062	-60050	20- 61A	30890	-60080	314- 21A	31205	-42330	316- 102A		-27490	116- 54A
	-70420	44- 28A		-60080	328- 000A		-47160	316- 23A		-27490	134- 43A
	-70430	44- 29A	30930	-20390	261- 221A		-55030	24- 28A		-27500	116- 61A
30100	-60650	162- 41A		-20760	254- 43A		-55040	24- 52A		-27500	134- 42A
	-60650	236- 000A		-20770	256- 43A		-55050	24- 71A		-27510	120- 39A
30111	-21210	136- 21A		-20780	252- 43A		-55730	40- 21A		-27510	134- 47A
30112	-22170	138- 41A		-20780	258- 43A		-56260	322- 42A		-27520	130- 27A
30212	-70020	130- 75A		-20810	261- 201A		-57290	28- 61A		-27520	134- 45A
	-70060	46- 41A		-20820	261- 181A		-57420	206- 21A		-28430	114- 26B
	-70070	46- 45A	30935	-20100	261- 22A		-58120	34- 63A		-28430	134- 41B
30230	-20150	229- 130A		-20390	261- 21A		-70120	68- 41A		-71300	58- 44A
	-20910	112- 152A	30936	-20040	261- 182A		-70220	366- 22A		-71580	62- 41A
	-21720	192- 42A		-20040	261- 202A		-70240	96- 36A		-71750	58- 54A
	-21780	155- 62A		-20040	261- 222A		-70250	96- 31A		-71750	293- 47A
	-21900	130- 80A	30938	-21100	254- 44A	31206	-21540	316- 102B		-71750	293- 117A
	-22130	362- 33A		-21100	256- 44A	31210	-20990	14- 42A		-71760	60- 51A
	-22300	225- 24A		-22700	252- 44A		-22490	60- 21A		-71760	60- 60A
	-22340	155- 43A		-22700	258- 44A		-22640	10- 23A	32011	-21500	298- 41A
	-22340	158- 26A	30981	-70330	14- 112A		-23210	376- 21A		-21690	298- 21A
	-23900	225- 26A		-70720	166- 87A		-70320	241- 44A		-21700	298- 22A
	-24360	112- 155A		-70720	229- 66A	31231	-20880	36- 21A		-60240	276- 21A
	-26330	166- 67A		-70820	104- 42A		-20900	316- 103A		-60250	278- 21A
	-26720	108- 28A		-70830	104- 43A		-20910	316- 101A		-60260	276- 22A
	-27330	166- 64A	30999	-70120	330- 22A		-70150	352- 41A		-60260	278- 22A
	-28470	222- 33A	31003	-62420	84- 21A		-70170	14- 111A	32110	-20030	116- 53A
30241	-20150	166- 65A		-62810	84- 21B	31236	-24960	316- 142A		-60010	31- 23A
	-21320	168- 41A	31050	-60610	186- 22A		-25040	312- 23A		-70170	66- 81A
	-22380	172- 43A		-60610	200- 000A		-30450	273- 42A	32150	-20210	20- 35A
	-25430	246- 50A	31053	-20010	110- 25A	31241	-20390	136- 45A		-20390	273- 47A
	-60070	229- 46A		-70080	176- 29A		-20390	138- 65A		-20440	36- 23A
30242	-20020	222- 30A		-70200	182- 44A		-70230	44- 26A		-60030	273- 46A
	-20060	112- 68A		-70300	132- 24A		-70280	104- 44A		-60050	8- 103A
	-20060	220- 24A		-70650	198- 24A	31264	-22330	31- 51A		-60050	8- 115A
	-20160	94- 26A		-70700	182- 45A		-22340	31- 52A		-60050	28- 66A
	-20160	112- 79A	31102	-60040	379- 21A		-22690	31- 51B	32151	-60100	36- 22A
	-20190	108- 31A	31115	-70010	112- 41A		-22700	31- 52B	32153	-60140	34- 62A
	-20190	222- 31A	31140	-60010	276- 33A	31265	-60150	250- 24A		-60180	31- 72A
	-20190	225- 25A		-60010	278- 33A		-60150	350- 24A		-60180	31- 82A
	-20190	229- 127A	31200	-26300	12- 51A	31267	-20090	116- 21A	32155	-70020	316- 74A
	-20220	222- 32A		-30130	342- 21A	31275	-70130	44- 47A		-70100	316- 75A
30244	-20020	229- 121A		-36650	120- 27A	31281	-20290	116- 101A	32210	-20310	114- 40A
30245	-20350	261- 262A		-36730	120- 31A	31289	-20630	248- 24A		-70360	76- 84A
	-20360	261- 62A		-36740	120- 32A		-71090	180- 24A		-70360	76- 86A
	-20370	261- 82A		-42130	22- 65A	31600	-70020	366- 61A		-70450	77- 87A
	-60010	261- 125A		-42450	206- 23A	31605	-70010	366- 44A		-71370	66- 82A
	-60020	261- 128A		-60030	22- 61A	31611	-70040	366- 40A		-72120	236- 26A
	-60030	261- 122A		-60040	22- 62A	31701	-70770	176- 49A		-72330	180- 25A
30246	-20040	218- 43A		-60060	22- 64A		-70780	176- 55A		-72760	82- 75A
	-20120	218- 44A		-60100	304- 23A		-70950	98- 25A		-72790	98- 56A
	-21520	222- 35A		-60140	20- 21A		-70960	98- 29A	32211	-70250	110- 51A
	-23060	358- 29A		-60300	304- 21A	31812	-20940	34- 43A		-70330	14- 90A
	-24130	222- 34A		-60310	304- 22A	31823	-23290	92- 83A	32215	-20040	76- 82A
	-24850	358- 27A		-60340	22- 63A		-23300	92- 84A		-20040	76- 85A
	-25060	172- 46A		-60380	316- 71A	31828	-20600	58- 25A		-20050	76- 81A
	-60030	168- 45A		-60390	316- 72A	31990	-20020	12- 43A		-20050	76- 83A
30250	-20080	94- 27A		-60400	316- 73A		-20020	14- 49A		-70040	77- 88A
30320	-60030	20- 41A		-60420	20- 22A		-20550	214- 22A		-70050	77- 98A
30502	-40320	204- 22A		-60450	20- 24A		-22060	114- 44A		-70060	77- 95A

CLICK HERE TO **DOWNLOAD** THE COMPLETE MANUAL

- Thank you very much for reading the preview of the manual.
- You can download the complete manual from: [www.heydownloads.com](http://www.heydownloads.com) by clicking the link below



- Please note: If there is no response to CLICKING the link, please download this PDF first and then click on it.

CLICK HERE TO **DOWNLOAD** THE COMPLETE MANUAL