

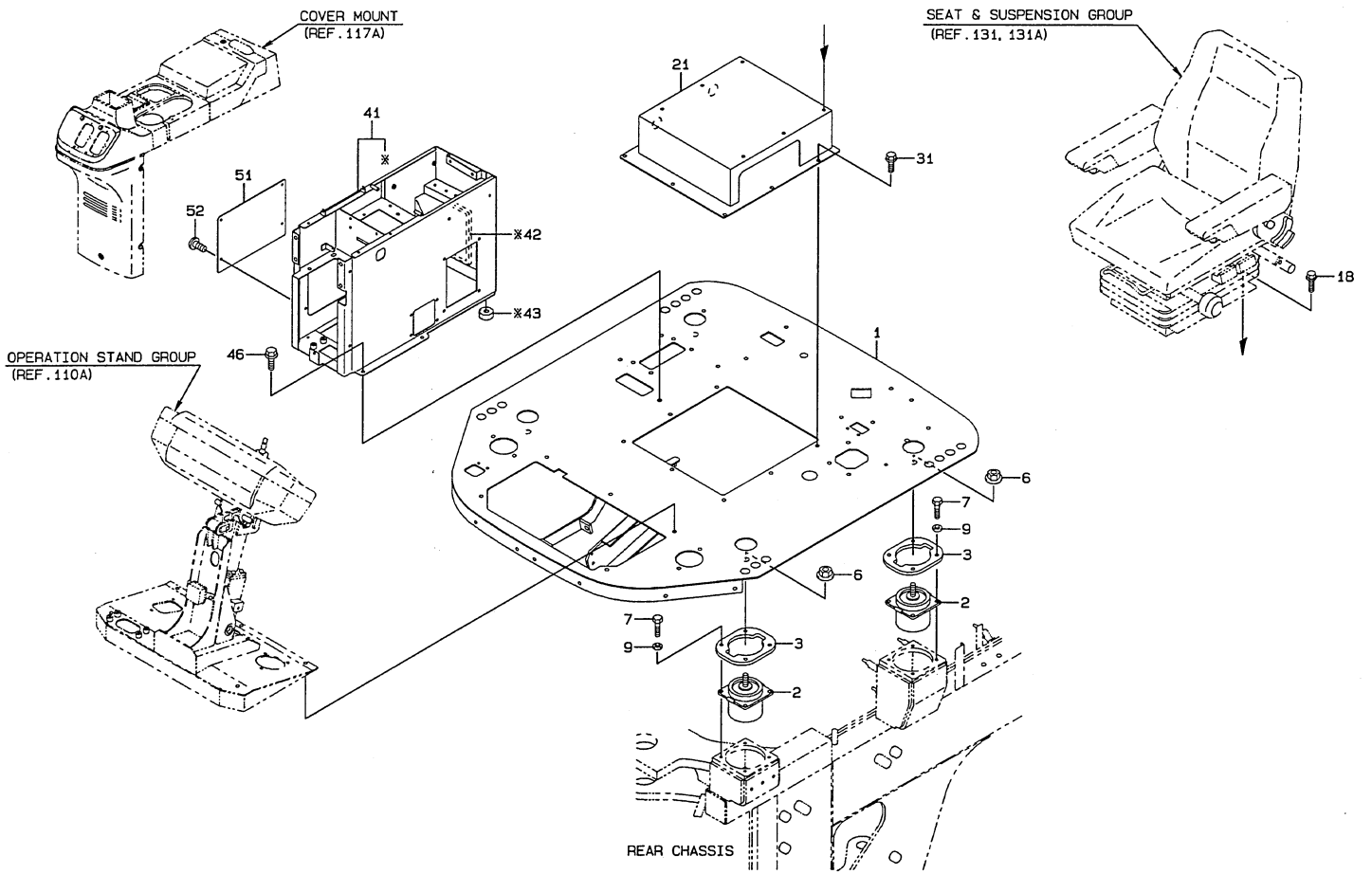
CLICK HERE TO **DOWNLOAD** THE COMPLETE MANUAL

- Thank you very much for reading the preview of the manual.
- You can download the complete manual from: www.heydownloads.com by clicking the link below



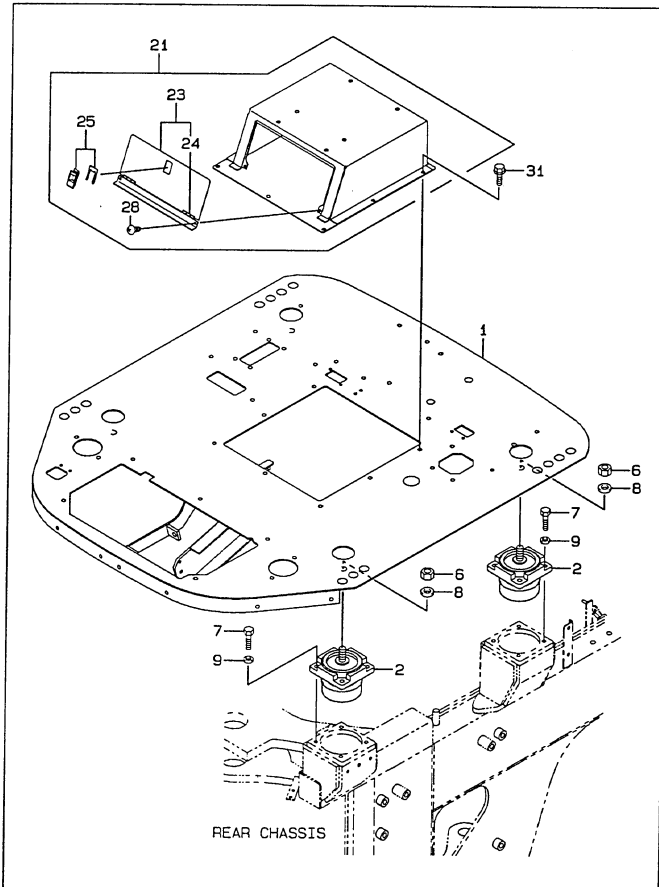
- Please note: If there is no response to CLICKING the link, please download this PDF first and then click on it.

CLICK HERE TO **DOWNLOAD** THE COMPLETE MANUAL

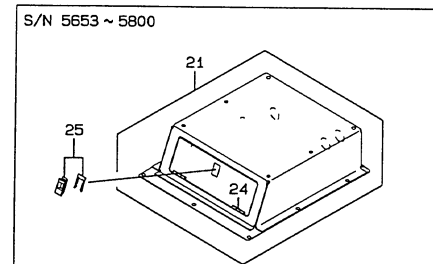


1-C

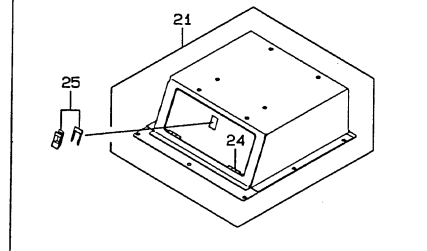
S/N ~ 5600

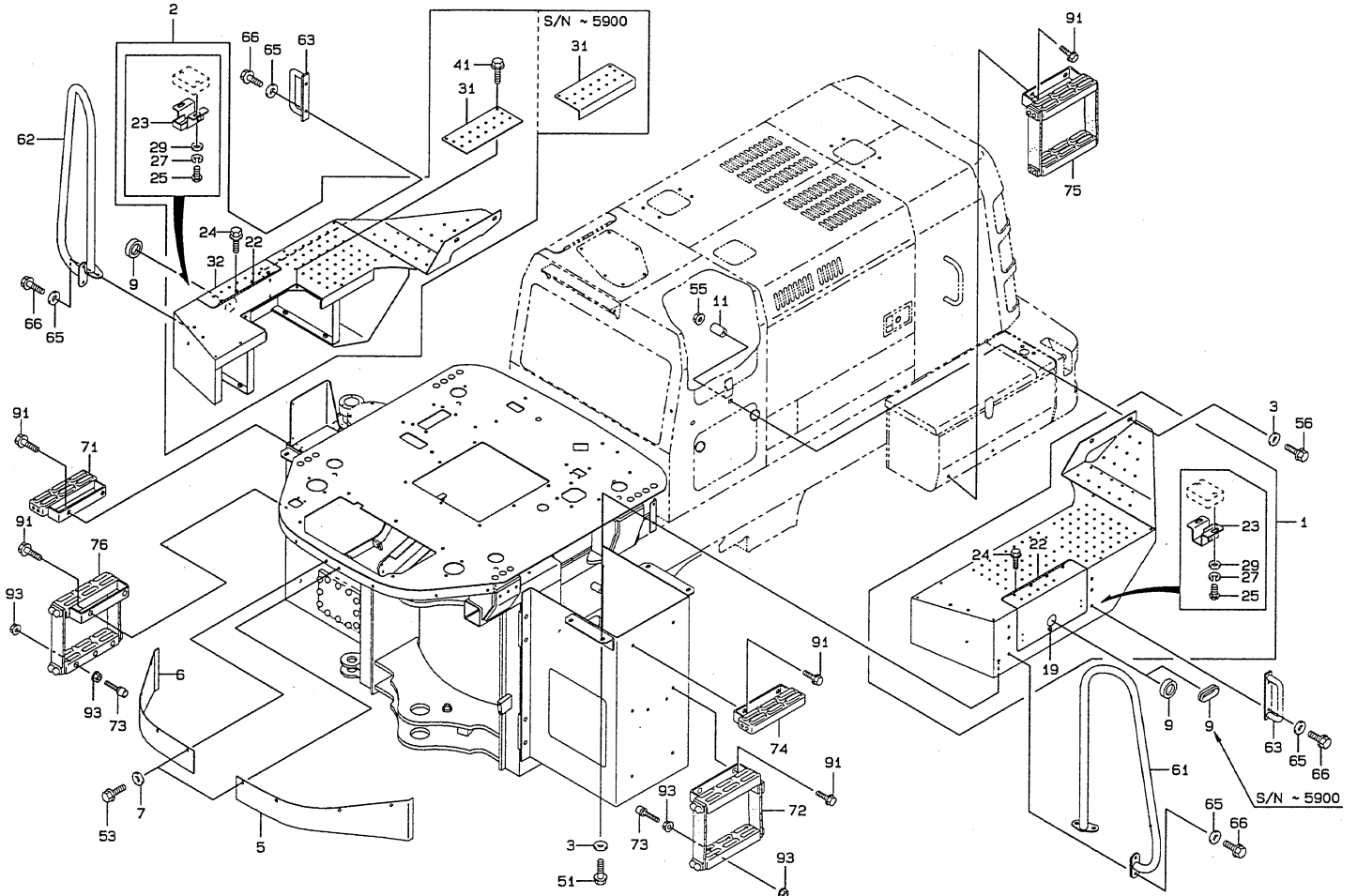


S/N 5653 ~ 5800

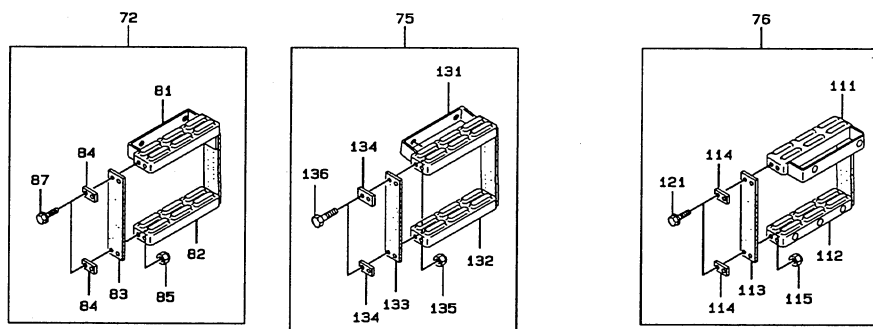


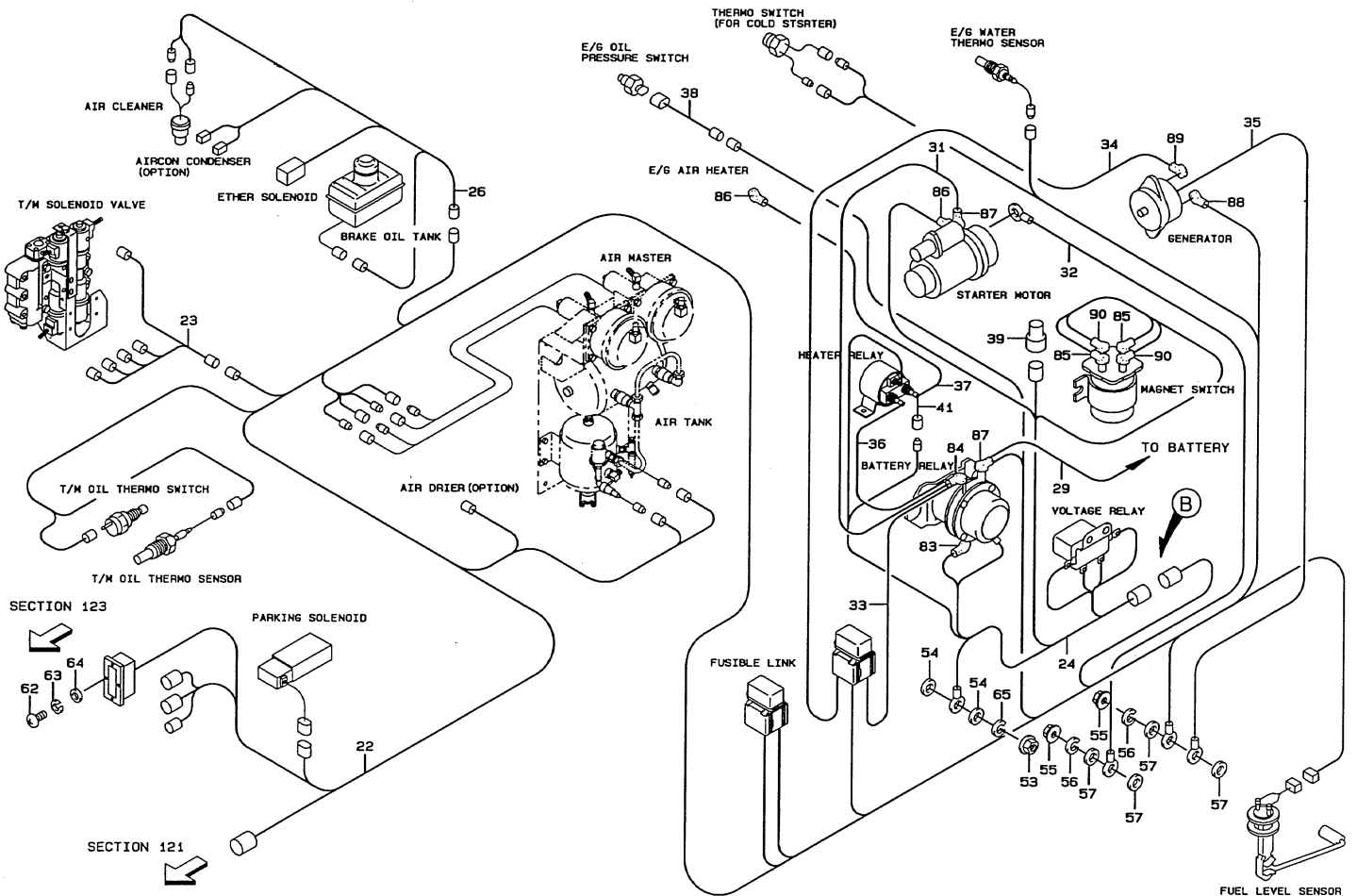
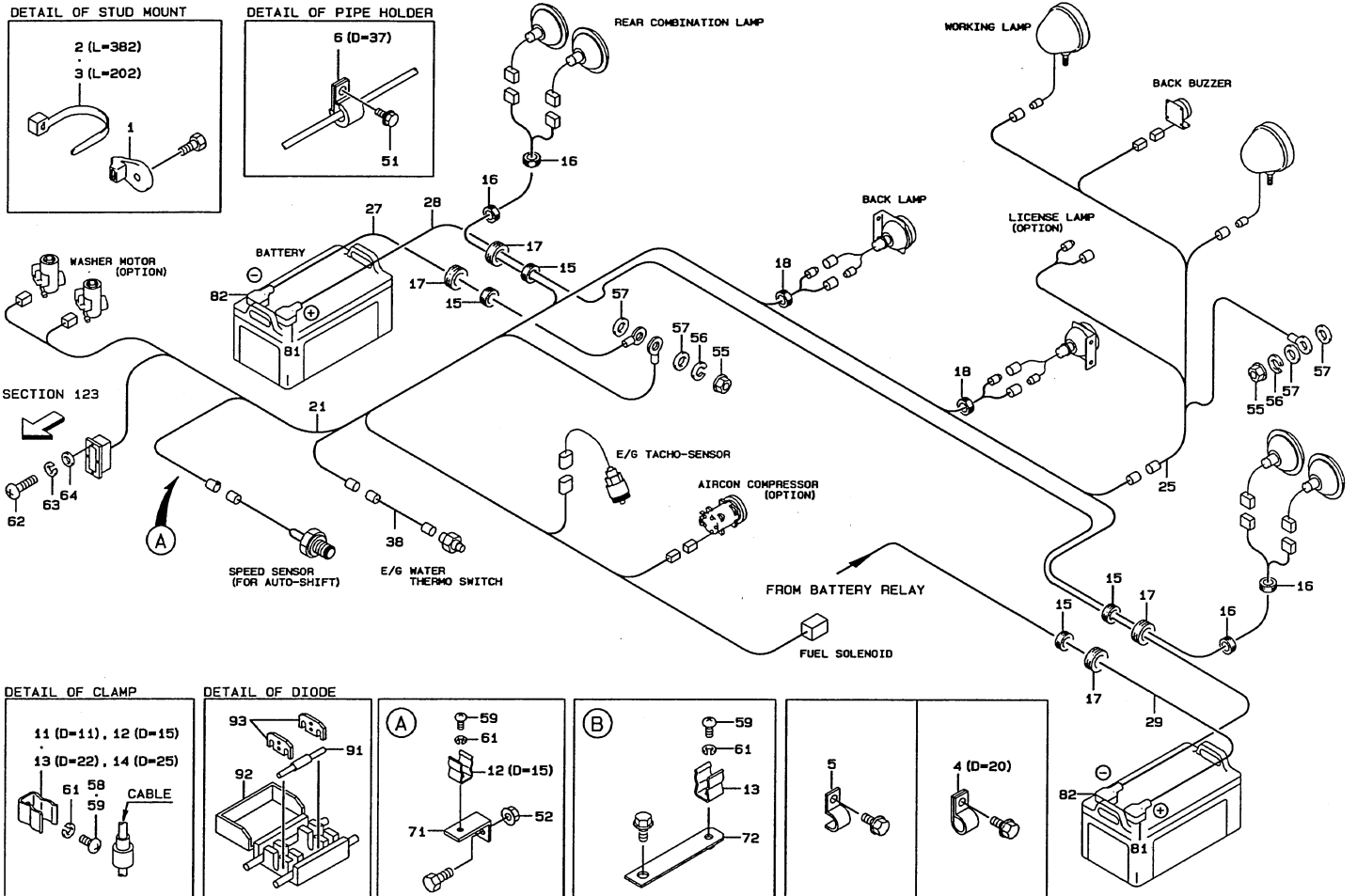
S/N 5601 ~ 5652

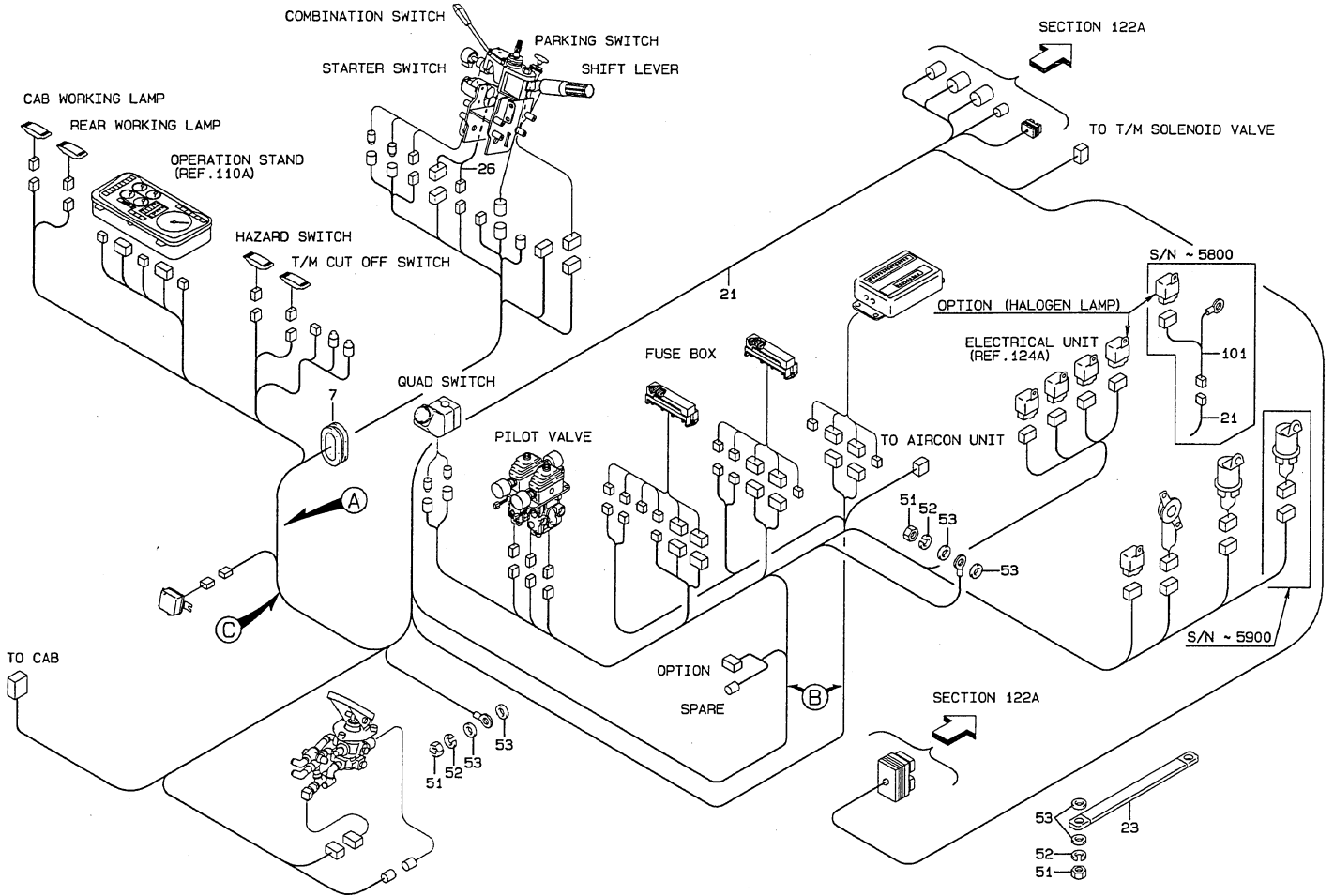




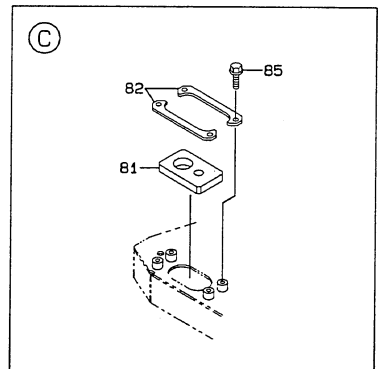
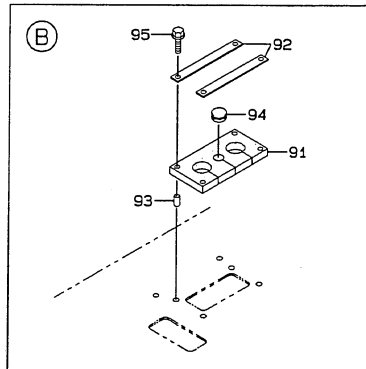
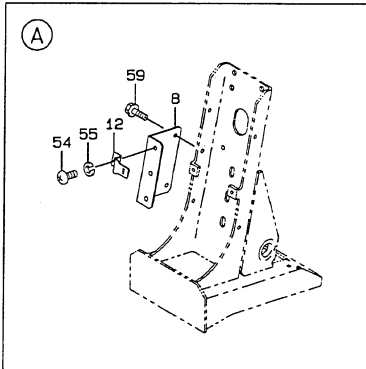
1-B



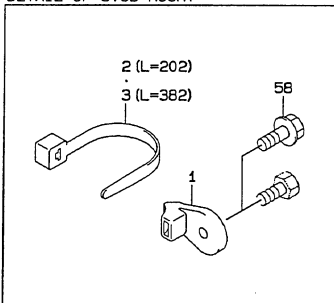




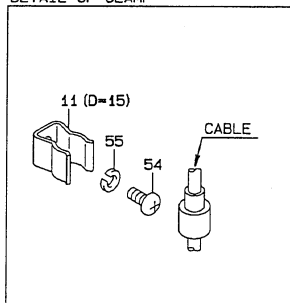
1-E



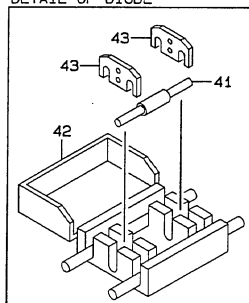
DETAIL OF STUD MOUNT

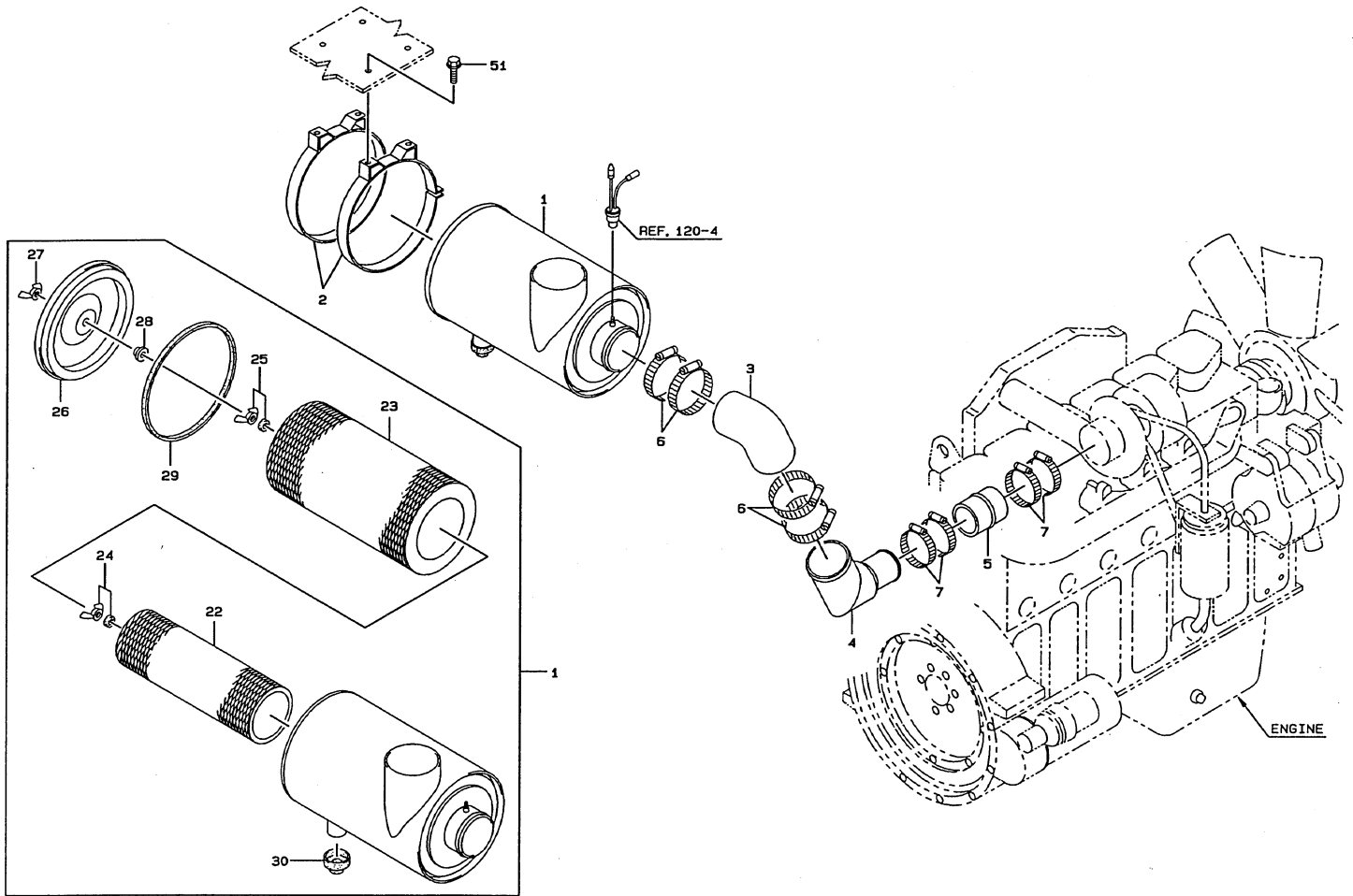


DETAIL OF CLAMP

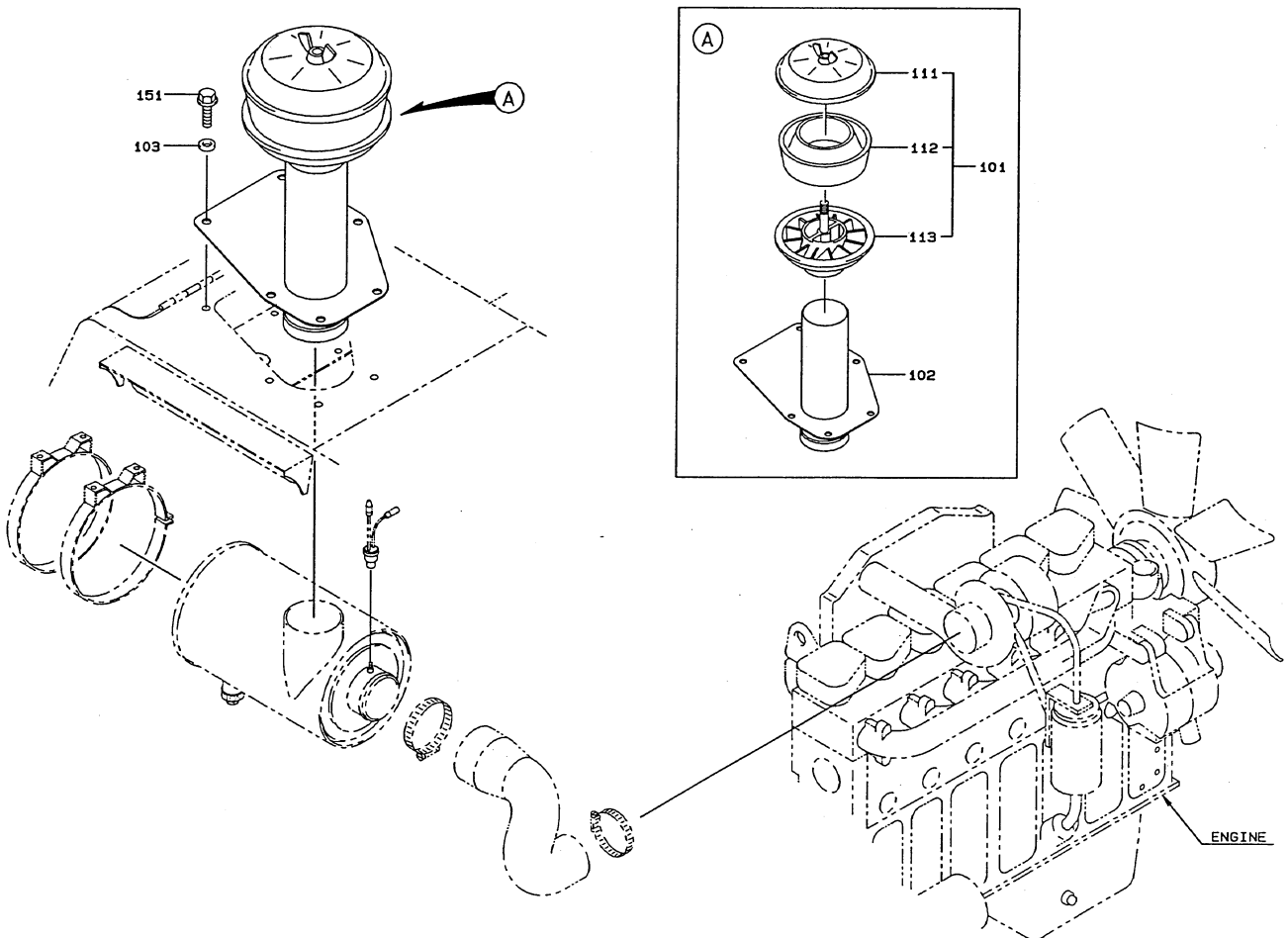


DETAIL OF DIODE

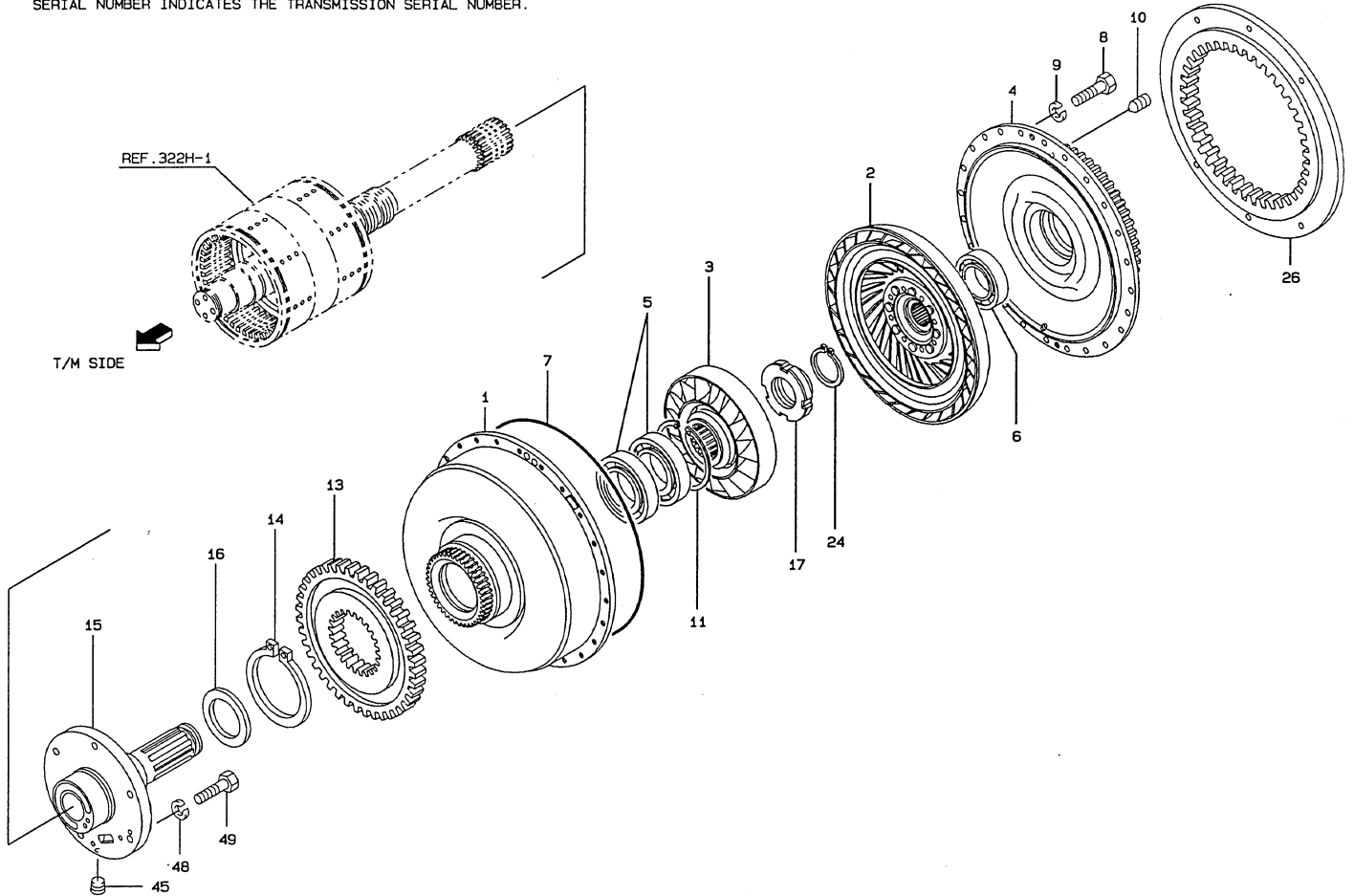




1-A



SERIAL NUMBER INDICATES THE TRANSMISSION SERIAL NUMBER.



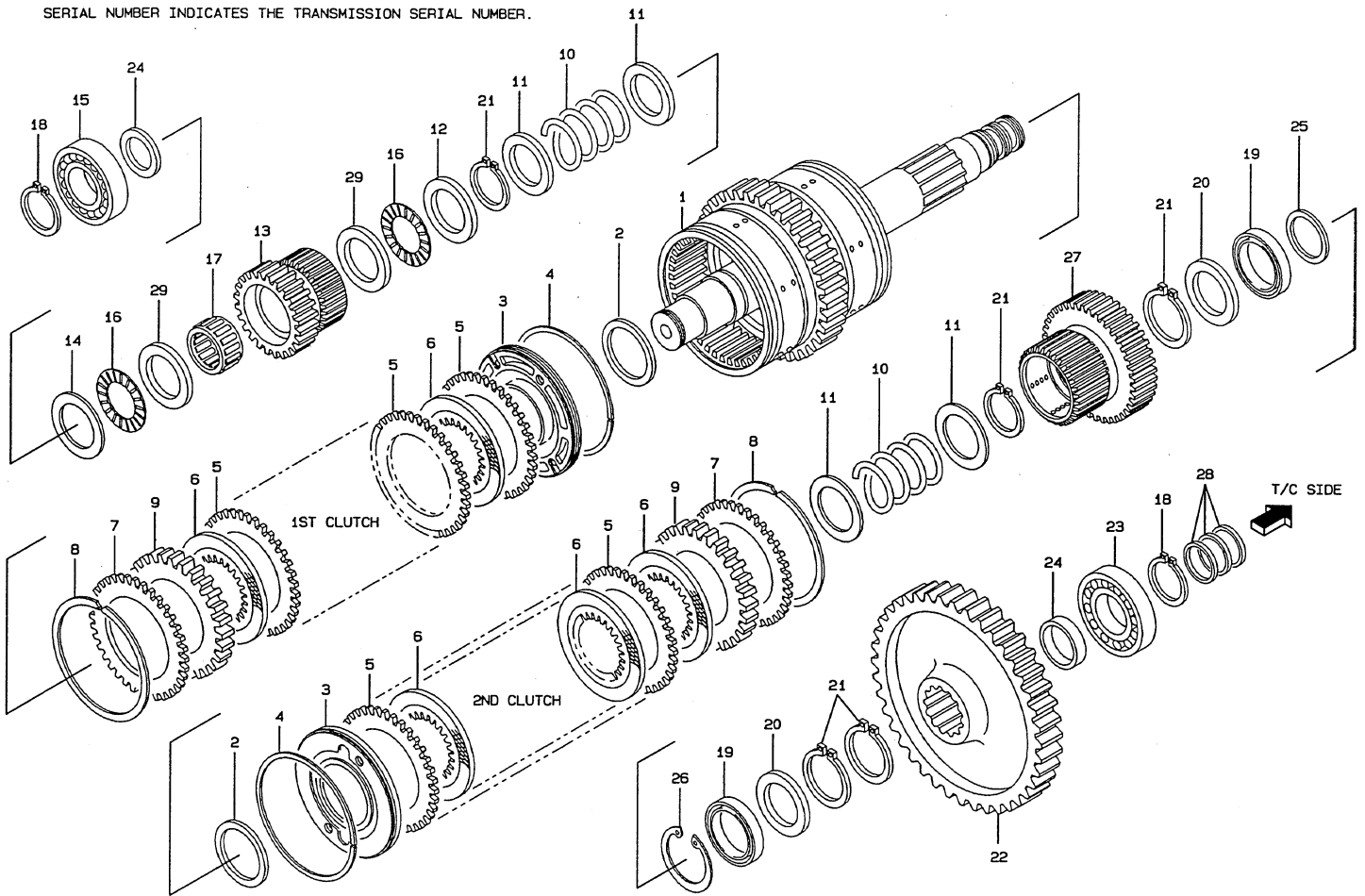
1-C

YH8-312

312-2

SYM BOL	PART NUMBER	PART NAME	UNIT Q, TY	SERIAL		***** R E M A R K S ***** N P D (A) (B) (C) (D) (E) REMARK
				(A)	(B)	
O01A	52301-03420	IMPELLER ASSY, PUMP	1	1-		
O02A	52301-03430	IMPELLER ASSY, TURBINE	1	1-		
O03A	52301-03440	STATOR	1	1-		
O04A	52301-03450	COVER, DRIVE	1	1-		
O05A	78101-06212	BEARING, BALL	2	1-		
O06A	52301-02380	BEARING, BALL	1	1-		
O07A	52301-02500	RING, O	1	1-		(K)
O08A	61005-08025	BOLT	24	1-		
O09A	46013-70010	WASHER, SPRING	24	1-		
O10A	52301-03460	PLUG	2	1-		
O11A	63812-00110	RING, SNAP	1	1-		
O13A	52301-03140	GEAR	1	1-		
O14A	63811-00120	RING, SNAP	1	1-		
O15A	52301-03160	SHAFT, STATOR	1	1-		
O16A	52301-03150	SEAL	1	1-		(K)
O17A	52301-03170	NUT	1	1-		(K)
O24A	63811-00040	RING, SNAP	1	1-		
O26A	52301-02450	GEAR	1	1-		
O45A	52301-03360	PLUG	1	1-		
O48A	52301-01170	WASHER, SPRING	6	1-		
O49A	61005-10035	BOLT	6	1-		

SERIAL NUMBER INDICATES THE TRANSMISSION SERIAL NUMBER.



1-C

YH8-324

324-2

SYM BOL	PART NUMBER	PART NAME	UNIT Q.TY	SERIAL		***** R E M A R K S ***** N P D (A) (B) (C) (D) (E) R E M A R K
				(A)	(B)	
000A	52301-03500	CLUTCH ASSY	1	1-		
001A	52301-04140	SHAFT ASSY	1	1-		
002A	52301-00280	RING, PISTON	2	1-		(K)
003A	52301-00310	PISTON ASSY	2	1-		
004A	52301-00290	RING, PISTON	2	1-		(K)
005A	52301-00550	PLATE, CLUTCH(B)	16	1-		
006A	52301-04150	DISC	16	1-		
007A	52301-00520	PLATE	2	1-		
008A	52301-01300	RING, SNAP	2	1-		
009A	52301-04160	PLATE, BACK	2	1-		
010A	52301-04170	SPRING	2	1-		
011A	52301-04180	WASHER	4	1-		
012A	52301-04190	WASHER, THRUST	1	1-		
013A	52301-04200	GEAR	1	1-		FR 1ST
014A	52301-04210	WASHER, THRUST	1	1-		
015A	52301-04220	BEARING, ROLLER	1	1-		
016A	52301-04230	BEARING, THRUST	2	1-		
017A	52301-04240	BEARING, NEEDLE	1	1-		
018A	63811-00045	RING, SNAP	2	1-		
019A	52301-02440	BEARING, BALL	2	1-		
020A	52301-04250	WASHER	2	1-		
021A	63811-00060	RING, SNAP	5	1-		
022A	52301-04260	GEAR	1	1-		
023A	52301-01210	BEARING, BALL	1	1-		
024A	52301-01040	WASHER	2	1-		
025A	52301-04270	WASHER	1	1-		

MEMO

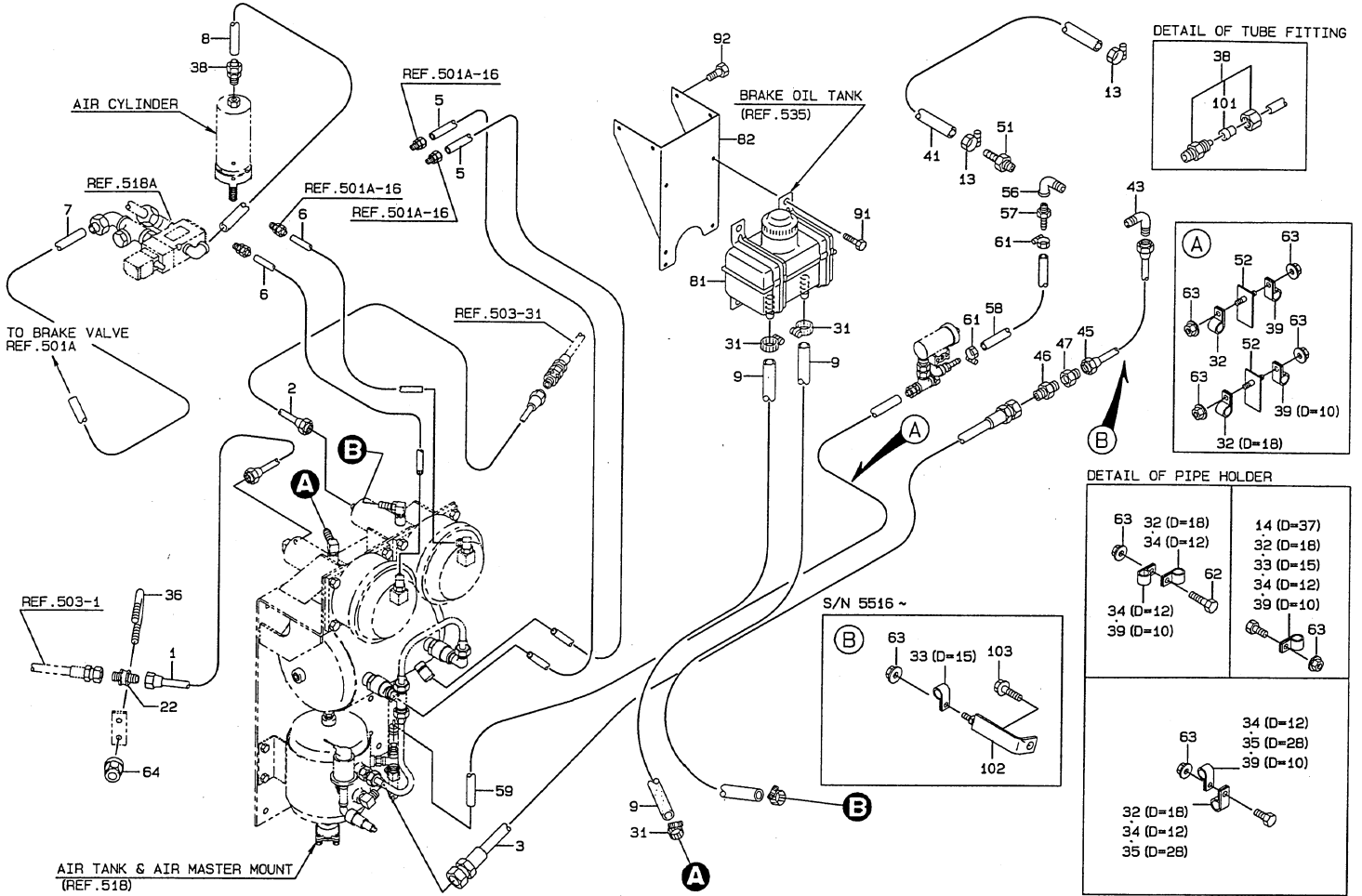
CLICK HERE TO **DOWNLOAD** THE COMPLETE MANUAL

- Thank you very much for reading the preview of the manual.
- You can download the complete manual from: www.heydownloads.com by clicking the link below



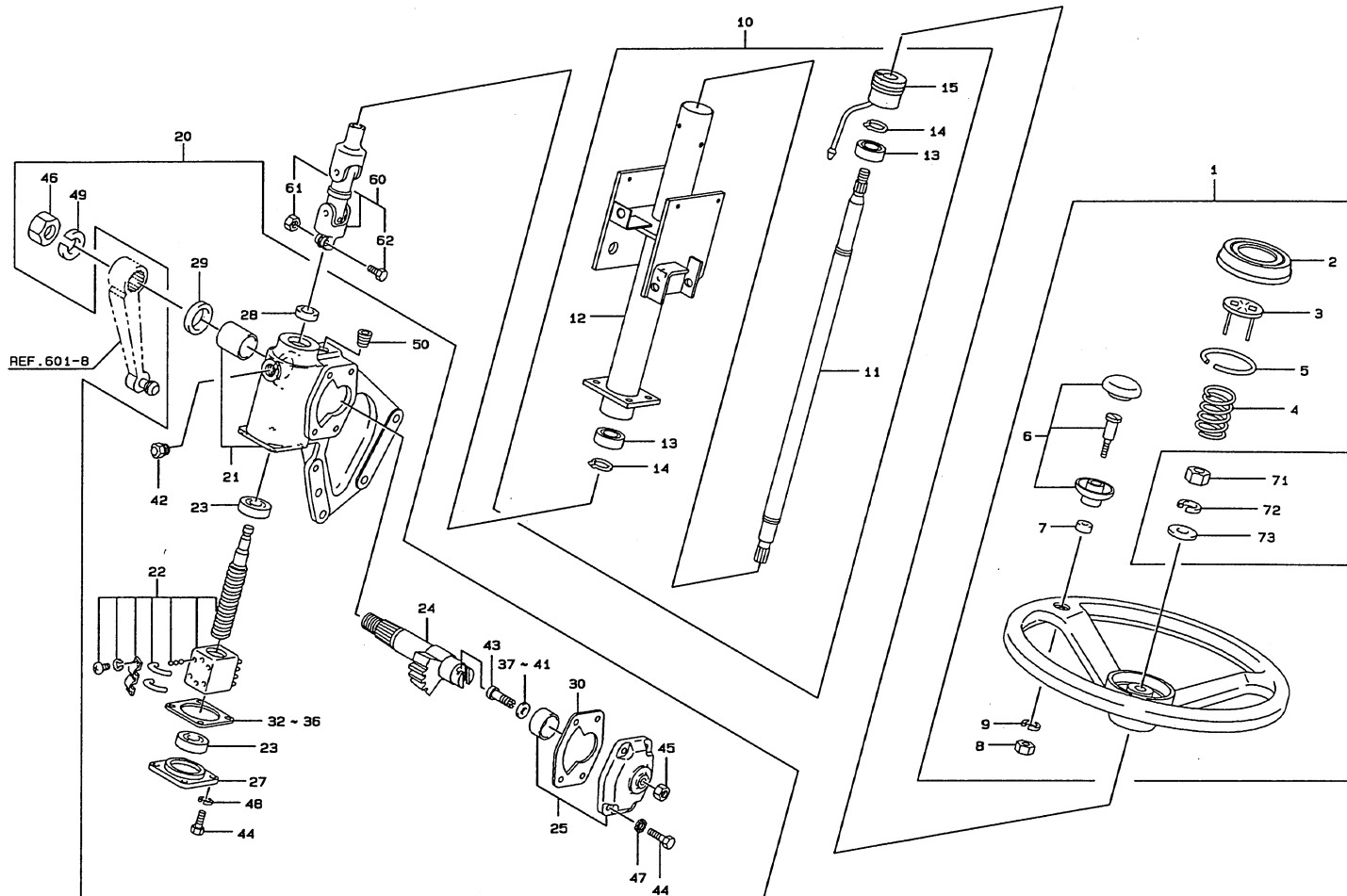
- Please note: If there is no response to CLICKING the link, please download this PDF first and then click on it.

CLICK HERE TO **DOWNLOAD** THE COMPLETE MANUAL



SYM BOL	PART NUMBER	PART NAME	UNIT Q, TY	SERIAL		***** R E M A R K S ***** N P D (A) (B) (C) (D) (E) R E M A R K
				(A)	(B)	
001A	38705-35070	PIPE ASSY, FLARED	1	5501-	5900	
002A	38705-33850	PIPE ASSY, FLARED	1	5501-	5900	
003A	68055-30280	HOSE, HIGH PRESSURE	1	5501-	5900	
005A	67001-80000	TUBE, NYLON	3M	5501-	5900	L=1400 X Q'TY 2
006A	67001-80000	TUBE, NYLON	2M	5501-	5900	L=500 X Q'TY 2
007A	67001-60000	TUBE, NYLON	1M	5501-	5900	L=900
008A	67001-60000	TUBE, NYLON	1M	5501-	5900	L=530
009A	67040-15000	HOSE, HEAT RESISTING LP	2M	5501-	5900	L=1500 X Q'TY 2
013A	69002-03800	BAND, HOSE	A/R	5501-	5900	(D=38)
014A	72010-37000	HOLDER, HOSE	A/R	5501-	5900	(D=37)
022A	40735-20030	FLARED FITTING, CONNECTOR	1	5501-	5900	
031A	69002-03100	BAND, HOSE	4	5501-	5900	(D=31)
032A	72001-11800	HOLDER, PIPE	A/R	5501-	5900	(D=18)
033A	72001-11500	HOLDER, PIPE	A/R	5501-	5900	(D=15)
034A	72001-11200	HOLDER, PIPE	A/R	5501-	5900	(D=12)
035A	72010-28000	HOLDER, HOSE	A/R	5501-	5900	(D=28)
036A	43962-20120	BOLT, U	1	5501-	5900	
038A	69021-10604	TUBE FITTING	1	5501-	5900	YO1
039A	72001-11000	HOLDER, PIPE	A/R	5501-	5900	(D=10)
041A	67040-25000	HOSE, HEAT RESISTING LP	1M	5501-	5900	L=1000
043A	69100-21500	FLARED FITTING, ELBOW	1	5501-	5900	
045A	38705-40270	PIPE ASSY, FLARED	1	5501-	5900	
046A	88201-00908	ADAPTER	1	5501-	5900	
047A	69100-71500	FLARED FITTING, CONNECTOR	1	5501-	5900	
051A	69010-06000	NIPPLE, HOSE	1	5501-	5900	
052A	41612-38890	PLATE	2	5501-	5900	

MEMO



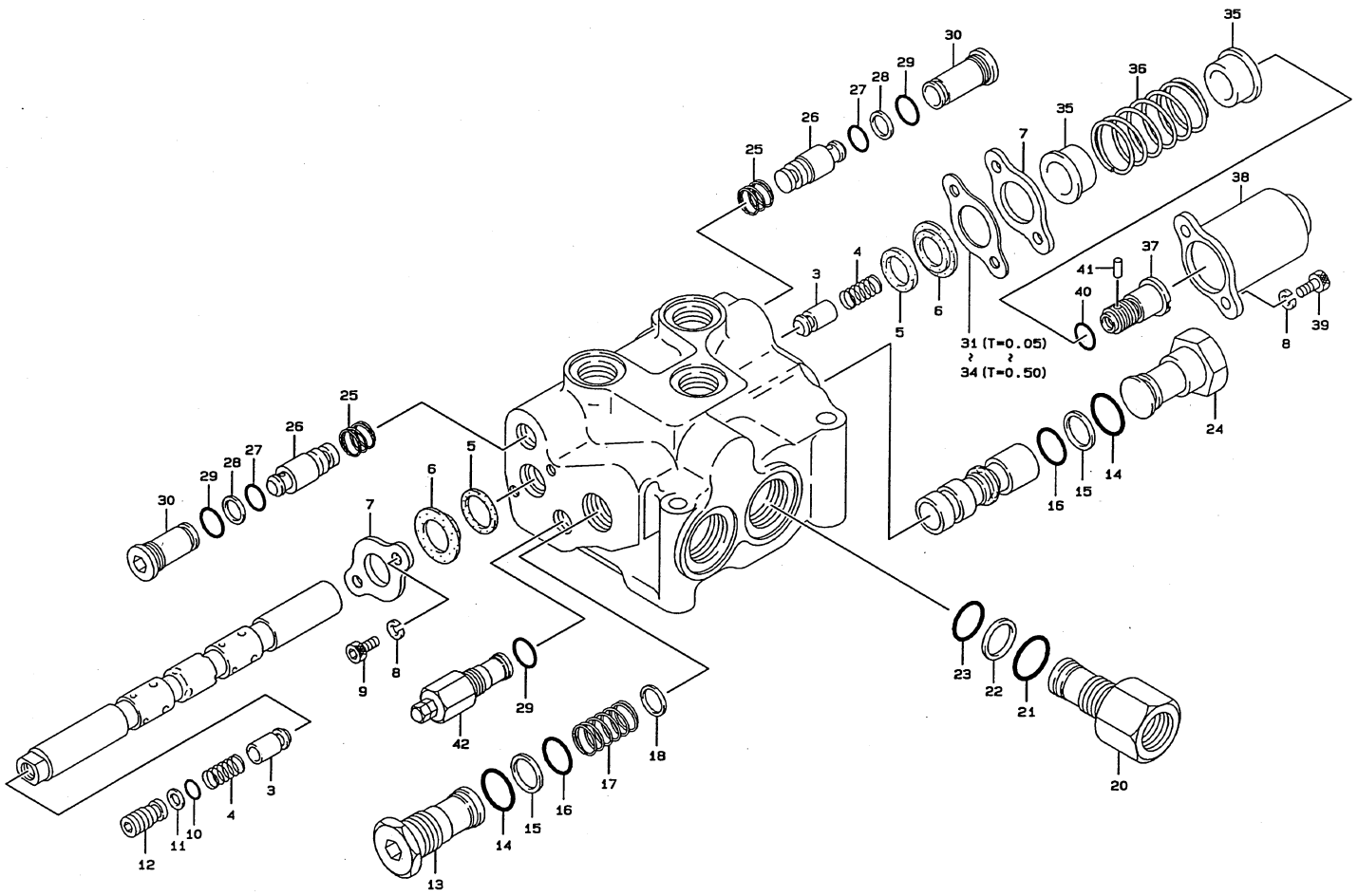
1-A

YH8-605

605-2

SYM BOL	PART NUMBER	PART NAME	UNIT Q, TY	SERIAL		***** R E M A R K S ***** N P D (A) (B) (C) (D) (E) REMARK
				(A)	(B)	
001A	43415-20010	WHEEL ASSY, STEERING	1	5301-	5500	Y01
002A	32210-70050	CAP	1	5301-	5500	O1
003A	33351-70010	CONTACTOR	1	5301-	5500	O1
004A	35600-70130	SPRING	1	5301-	5500	O1
005A	35600-70140	SPRING	1	5301-	5500	O1
006A	37810-70030	KNDB	1	5301-	5500	O1
007A	40840-70020	BUSHING	1	5301-	5500	O1
008A	62401-81081	NUT	1	5301-	5500	O1
009A	62721-08100	WASHER, SPRING	1	5301-	5500	O1
010A	34501-20660	SHAFT ASSY	1	5301-	5500	Y02
011A	34500-20130	SHAFT	1	5301-	5500	O2
012A	38730-23080	PIPE	1	5301-	5500	O2
013A	78109-06904	BEARING, BALL	2	5301-	5500	O2
014A	63811-00020	RING, SNAP	2	5301-	5500	O2
015A	40845-70040	BUSHING, COLUMN	1	5301-	5500	O2
020A	32406-60020	GEAR ASSY, STEERING	1	5301-	5500	Y03
021A	33110-70020	CASE ASSY	1	5301-	5500	O3
022A	34501-70040	SHAFT ASSY	1	5301-	5500	O3
023A	42001-70090	BEARING, BALL	2	5301-	5500	O3
024A	34524-70010	SHAFT, SECTOR	1	5301-	5500	O3
025A	31264-70010	COVER ASSY, SIDE	1	5301-	5500	O3
027A	31200-70070	COVER	1	5301-	5500	O3
028A	34042-70070	SEAL, OIL	1	5301-	5500	O3
029A	34042-70080	SEAL, OIL	1	5301-	5500	O3
030A	39600-70060	PACKING	1	5301-	5500	O3
032A	34200-70050	SHIM	A/R	5301-	5500	O3

T=0.05



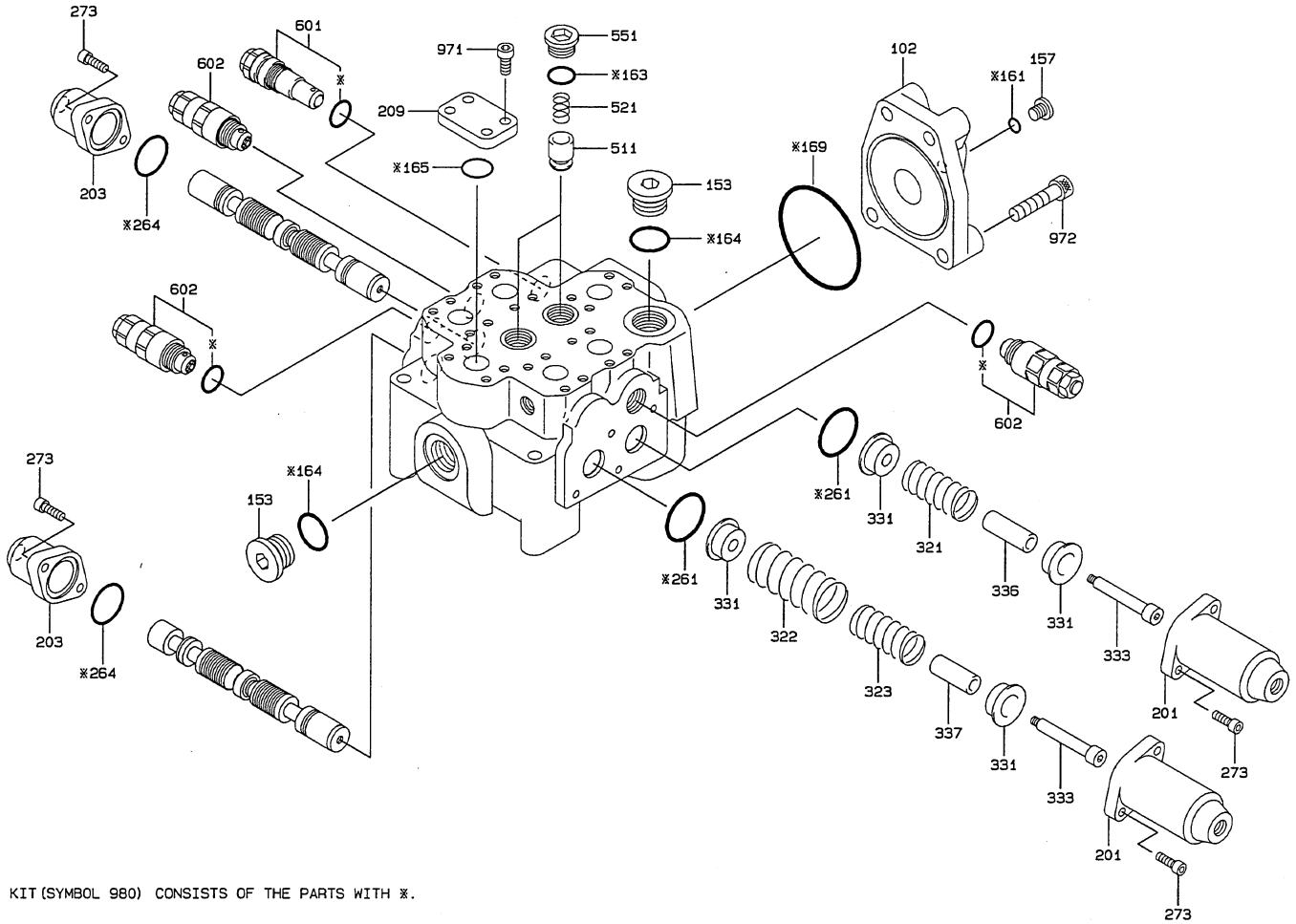
1-A

YH8-615

615-2

SYM BOL	PART NUMBER	PART NAME	UNIT Q, TY	SERIAL		***** R E M A R K S ***** N P D (A) (B) (C) (D) (E) REMARK
				(A)	(B)	
000A	38523-60190	VALVE ASSY, STEERING	1	5301-		
003A	38554-70100	VALVE, CHECK	2	5301-		
004A	35600-70490	SPRING	2	5301-		
005A	34049-70010	SEAL, AX	2	5301-		
006A	45970-70010	WIPER	2	5301-		
007A	44950-70050	RETAINER	2	5301-		
008A	46013-70120	WASHER, SPRING	4	5301-		
009A	43900-70370	BOLT	2	5301-		
010A	47131-70640	RING, O	1	5301-		(GRBPO10A)
011A	47194-70170	RING, BACK-UP	1	5301-		(GB2BPO10A)
012A	32210-70220	CAP	1	5301-		
013A	32210-70400	CAP	1	5301-		
014A	47131-70420	RING, O	2	5301-		
015A	47194-70160	RING, BACK-UP	2	5301-		(GB2BPO22)
016A	47131-70670	RING, O	2	5301-		(GRBPO22)
017A	35600-70470	SPRING	1	5301-		
018A	35700-70100	SPACER	A/R	5301-		
020A	35750-70100	SLEEVE	1	5301-		
021A	47131-70680	RING, O	1	5301-		(GRBPO29)
022A	47194-70080	RING, BACK-UP	1	5301-		(MS28744-120)
023A	47131-70410	RING, O	1	5301-		(MS9021-120)
024A	32210-70240	CAP	1	5301-		
025A	35600-70460	SPRING	2	5301-		
026A	38565-70150	VALVE, RELIEF	2	5301-		
027A	47131-70400	RING, O	2	5301-		(MS9021-016)
028A	47194-70050	RING, BACK-UP	2	5301-		(MS28774-016)

MEMO

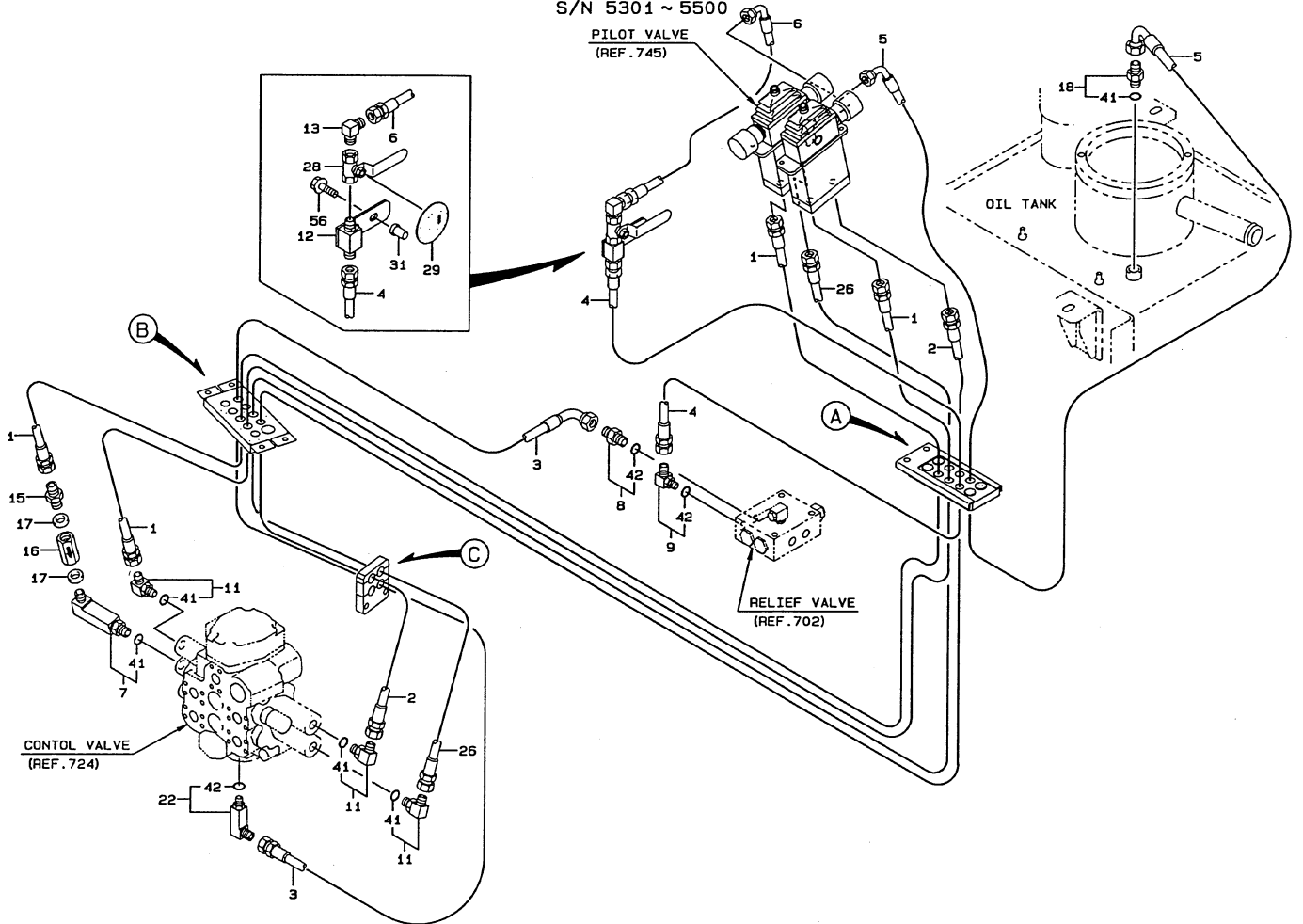


KIT (SYMBOL 980) CONSISTS OF THE PARTS WITH *.

YH8-724A

SYM BOL	PART NUMBER	PART NAME	UNIT Q, TY	SERIAL		***** R E M A R K S ***** N P D (A) (B) (C) (D) (E) REMARK
				(A)	(B)	
000A	38532-61300	VALVE ASSY, MULTIPLE CONT	1	5839-		
102A	31200-72750	COVER	1	5839-		
153A	41530-74150	PLUG	2	5839-		
157A	41530-72790	PLUG	1	5839-		
161A	65210-12011	RING, O	1	5839-		K1
163A	65210-12024	RING, O	2	5839-		K1
164A	65210-12029	RING, O	2	5839-		K1
165A	65210-22030	RING, O	1	5839-		K1
169A	65210-22110	RING, O	1	5839-		K1
201A	31200-72770	COVER	2	5839-		
203A	31200-72760	COVER	2	5839-		
209A	40510-70700	FLANGE	1	5839-		
261A	47131-75370	RING, O	2	5839-		K1
264A	65210-22040	RING, O	2	5839-		K1
273A	61101-08025	BOLT, SOCKET	8	5839-		
321A	35600-75270	SPRING	1	5839-		
322A	35600-75280	SPRING	1	5839-		
323A	35600-75290	SPRING	1	5839-		
331A	33930-70690	SEAT, SPRING	4	5839-		
333A	43900-73540	BOLT	2	5839-		
336A	35440-70610	STOPPER	1	5839-		
337A	35440-70620	STOPPER	1	5839-		
511A	44074-70390	POPPET	2	5839-		
521A	35600-75300	SPRING	2	5839-		
551A	41530-74160	PLUG	2	5839-		
601A	38536-70150	VALVE ASSY, RELIEF	1	5839-		

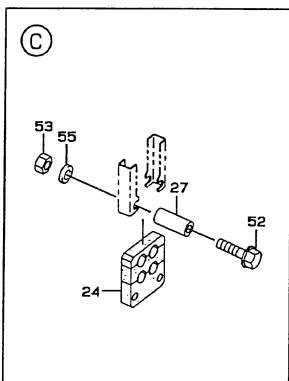
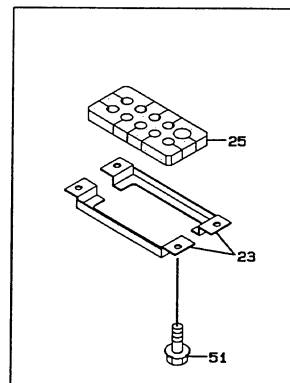
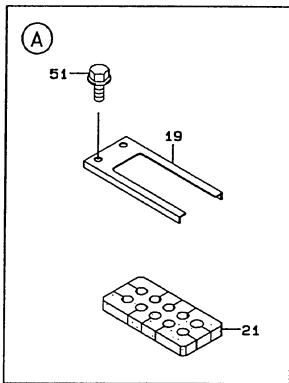
YH8-751 PILOT HYDRAULIC LINE (1/2)
S/N 5301 ~ 5500



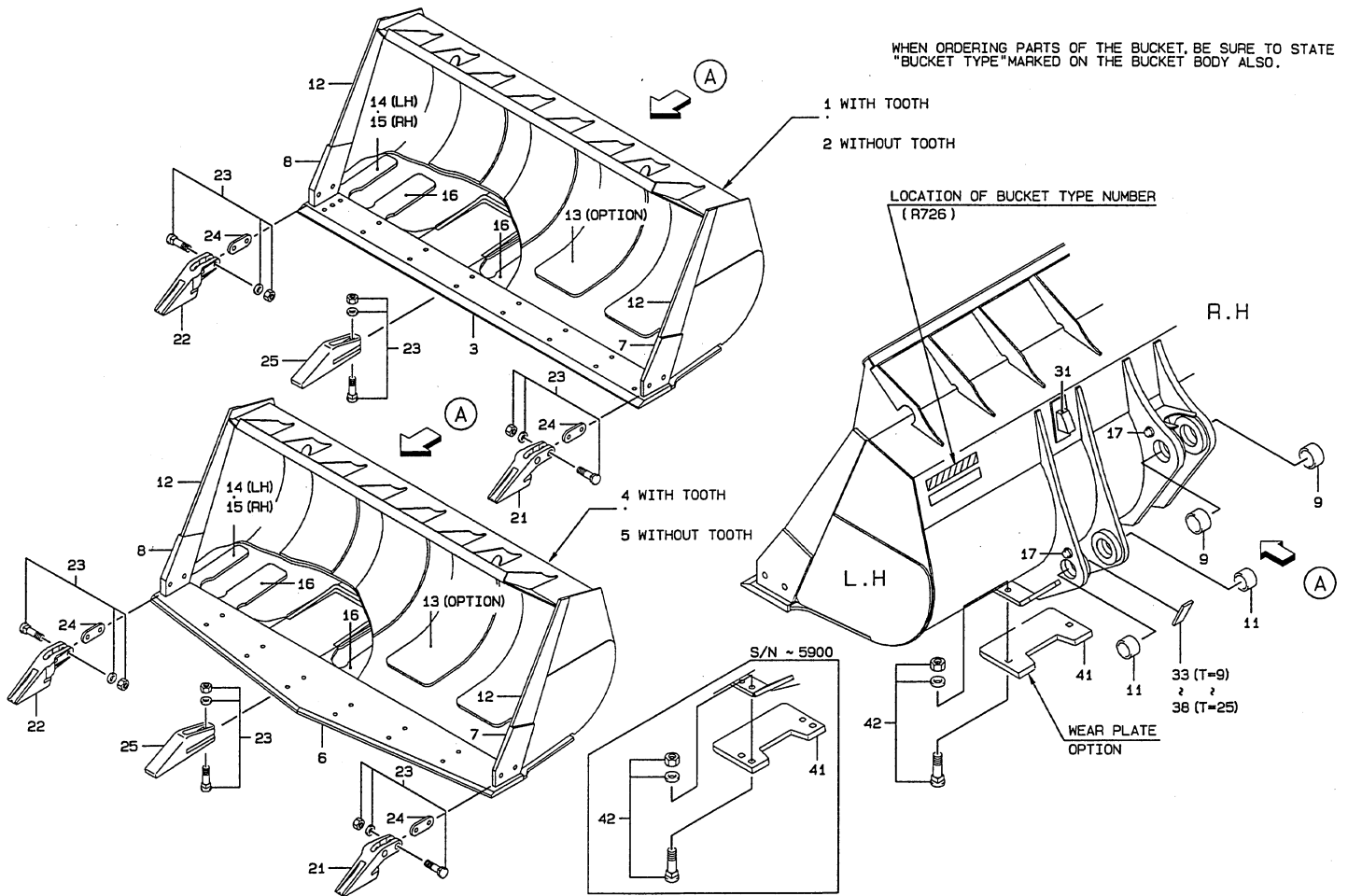
1-A

YH8-751 PILOT HYDRAULIC LINE (2/2)
S/N 5301 ~ 5500

751-2



YH8 - 848	Vibration damper—electrical wiring(option) (S/N 5301~5500)	848-1
YH8 - 848A	Vibration damper—electrical wiring—option (S/N 5501~)	848A-1
YH8 - 860	Front chassis group—high lift spec. (option)	860-1
YH8 - 871	Bucket(for general purpose)	871-1
YH8 - 872	Bucket(for rock)	872-1
YH8 - 881	Chassis hydraulic line (for 3—way piping)—option .	881-1
YH8 - 884	Valve control link group (for 3—way piping)—option (S/N 5301~5500)	884-1
YH8 - 884A	Valve control link group (for 3—way piping)—option (S/N 5501~)	884A-1
YH8 - 885	Swivel joint (for 3—way piping)—option	885-1
YH8 - 887	Pilot valve (for 3—way piping)—option	887-1
YH8 - 888	Control valve (for 3—way piping)—option (S/N 5301~5806)	888-1
YH8 - 888A	Control valve (for 3—way piping)—option (S/N 5807~)	888A-1
YH8 - 889	Option parts (for bucket)	889-1
YH8 - 895	Repair & maintenance parts	895-1



WHEN ORDERING PARTS OF THE BUCKET, BE SURE TO STATE "BUCKET TYPE" MARKED ON THE BUCKET BODY ALSO.

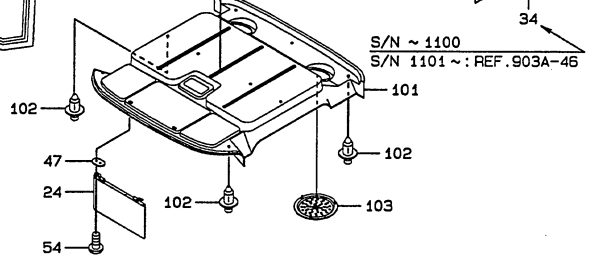
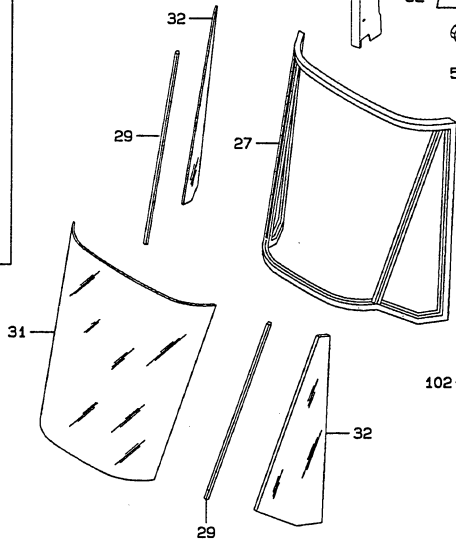
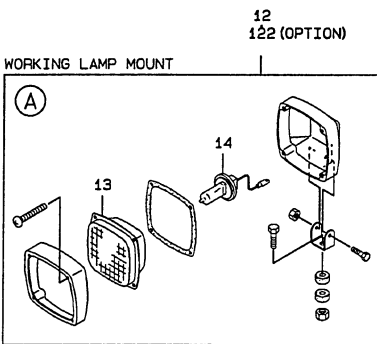
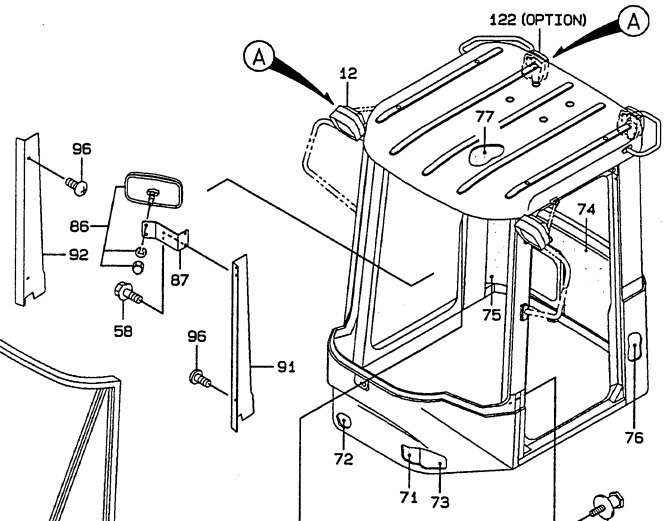
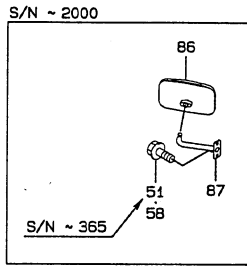
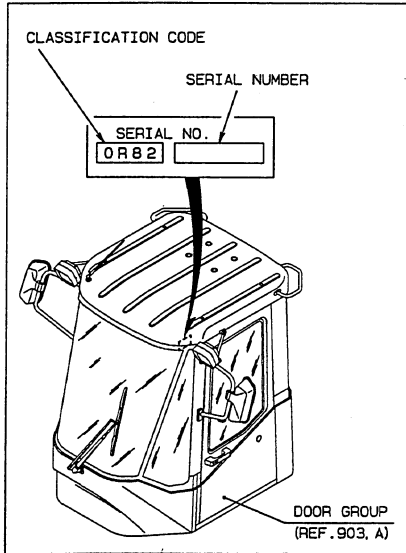
1-B

YH8-872

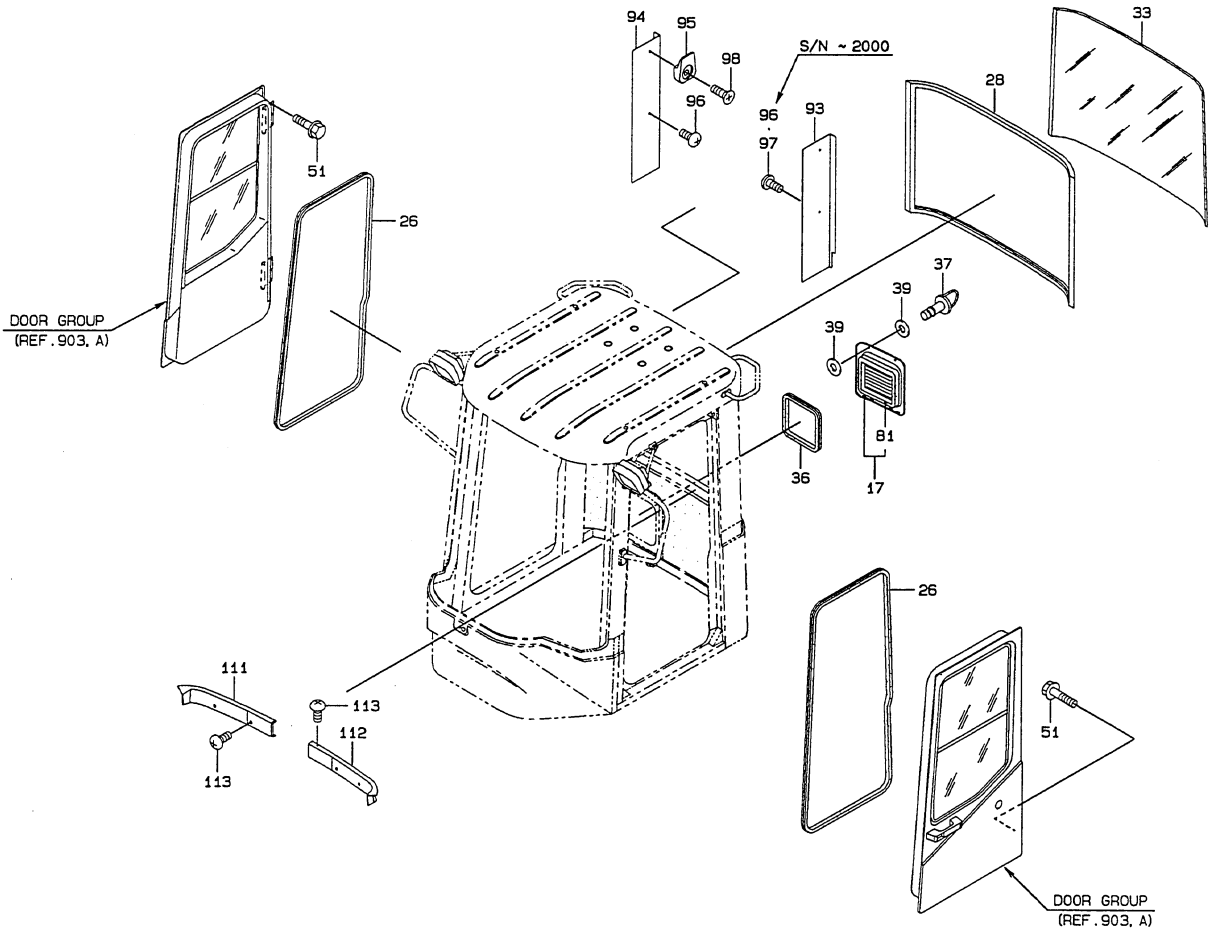
872-2

SYM BOL	PART NUMBER	PART NAME	UNIT Q.TY	SERIAL		***** R E M A R K S *****										
				(A)	(B)	N	P	D	(A)	(B)	(C)	(D)	(E)	REMARK
001A	38311-24010	BUCKET ASSY	1	5301-	5500	D										RST 726
002A	38311-90490	BUCKET ASSY	1	5301-	5500				O1	Y02						RSN 726
002B	38311-27120	BUCKET ASSY	1	5501-	5600	B				Y02						RSN 726
002C	38311-27760	BUCKET ASSY	1	5601-	5900	B				Y02						RSN 726
002D	38311-29490	BUCKET ASSY	1	5901-		C				Y02						RSN 727
003A	30930-20850	EDGE	1	5301-						O2						T=32(STRAIGHT)
004A	38311-24020	BUCKET ASSY	1	5301-	5500	D				Y03						RVT 726
005A	38311-90500	BUCKET ASSY	1	5301-	5500					O3	Y04					RVN 726
005B	38311-27130	BUCKET ASSY	1	5501-	5600	B				Y04						RVN 726
005C	38311-27780	BUCKET ASSY	1	5601-	5900	B				Y04						RVN 726
005D	38311-29510	BUCKET ASSY	1	5901-		C				Y04						RVN 727
006A	30930-20620	EDGE	1	5301-									O4			T=32(V-SHAPED)
007A	30938-20110	EDGE, SIDE	1	5301-						O2		O4				T=32 (LH)
008A	30938-20120	EDGE, SIDE	1	5301-						O2		O4				T=32 (RH)
009A	40840-23790	BUSHING	2	5301-	5600	D		O2			O4					
011A	63422-40490	BUSHING	4	5301-	5600	D		O2			O4					
012A	39953-20110	BIT, SIDE	2	5301-				O2			O4					T=18
013A	41600-90990	PLATE	4	5301-				OPT	O2		O4					T=6
014A	41635-90210	PLATE	1	5301-					O2		O4					T=18 (LH)
015A	41635-90220	PLATE	1	5301-					O2		O4					T=18 (RH)
016A	41600-20160	PLATE	3	5301-					O2		O4					T=10
017A	41621-20320	BOSS	3	5301-					O2		O4					
021A	36815-20170	TOOTH, CORNER	1	5301-					O1		O3					NO.22 (LH)
022A	36815-20180	TOOTH, CORNER	1	5301-					O1		O3					NO.22 (RH)
023A	43925-20510	BOLT SET	16	5301-					O1		O3					
024A	41621-20550	PLATE	A/R	5301-					O1		O3					T=0.3

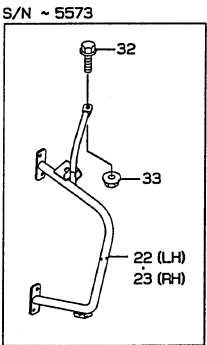
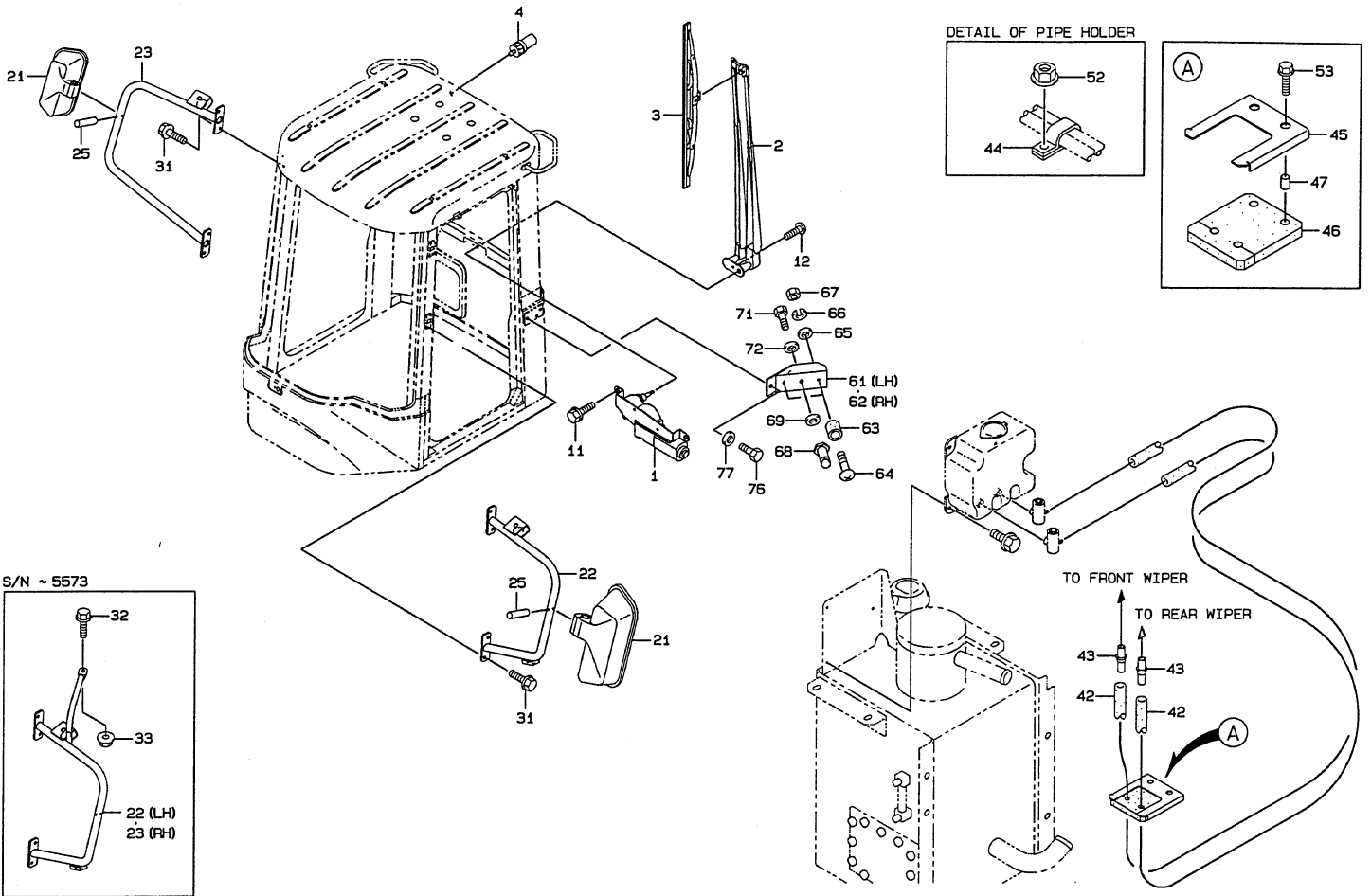
(NOTE): SERIAL NUMBER INDICATES THE CAB SERIAL NUMBER.



(CAB CLASSIFICATION CODE ... OR82)

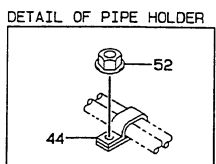
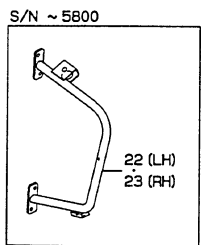
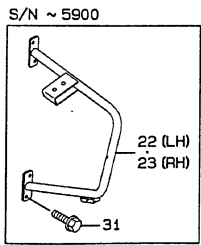
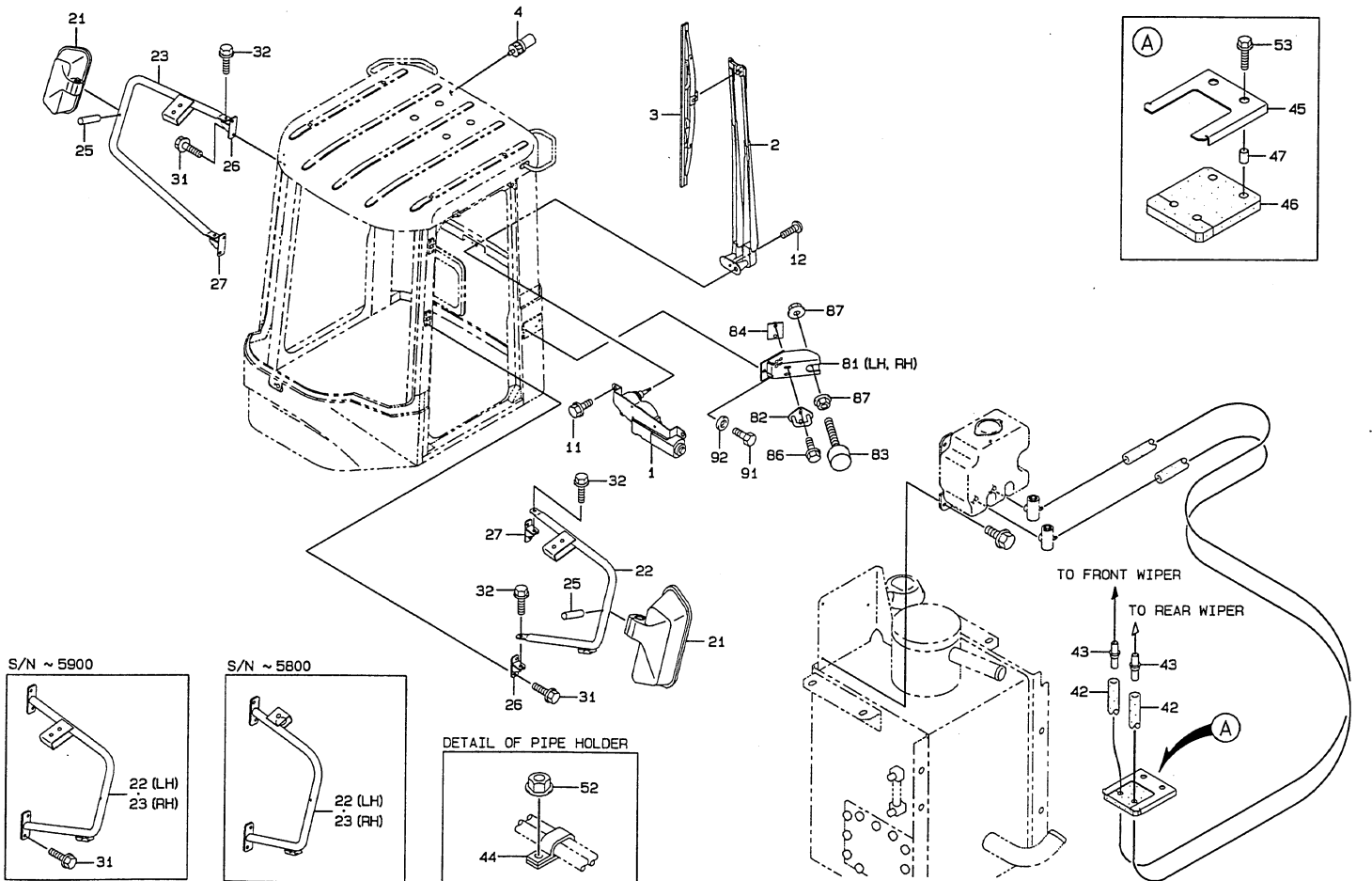


YHB-905 REAR WIPER & MIRROR GROUP
S/N 5501 ~ 5658



1-C

YHB-905 REAR WIPER & MIRROR GROUP
S/N 5659 ~



CLICK HERE TO **DOWNLOAD** THE COMPLETE MANUAL

- Thank you very much for reading the preview of the manual.
- You can download the complete manual from: www.heydownloads.com by clicking the link below



- Please note: If there is no response to CLICKING the link, please download this PDF first and then click on it.

CLICK HERE TO **DOWNLOAD** THE COMPLETE MANUAL