

**870D AND 872D
MOTOR GRADERS**



JOHN DEERE

PARTS CATALOG

**870D AND 872D
MOTOR GRADERS**

PC9450 (Jan-07) English

Worldwide Construction and Forestry Division

Worldwide Edition
Litho in U.S.A. (Revised)
COPYRIGHT © 2007
DEERE & COMPANY
Moline, Illinois
All rights reserved

CLICK HERE TO **DOWNLOAD** THE COMPLETE MANUAL

- Thank you very much for reading the preview of the manual.
- You can download the complete manual from: www.heydownloads.com by clicking the link below



- Please note: If there is no response to CLICKING the link, please download this PDF first and then click on it.

CLICK HERE TO **DOWNLOAD** THE COMPLETE MANUAL

ALPHABETICAL INDEX - CONTINUED

	PAGE		PAGE
BLADE SLIDE CYLINDER.....	3460-10	BRAKE PEDAL	1060-2
BLADE SLIDE CYLINDER HYDRAULIC HOSES	3460-22	BRAKE PISTON HOUSING, HFWD MOTOR	0250-4
BLADE SLIDE CYLINDER SEAL KIT	3460-10	BRAKE SEPARATOR PLATE	1011-2
BLADE TILT AND SLIDE CYLINDER HYDRAULIC HOSES.....	3460-22	BRAKE VALVE	1060-2
BLADE TILT CYLINDER	3460-12	BRAKE VALVE HOSES.....	1060-4
BLADE TILT CYLINDER HYDRAULIC HOSES.....	3460-22	BRAKE VALVE/PEDAL MOUNTING BRACKET	1060-2
BLADE TILT CYLINDER SEAL KIT	3460-12	BRAKES, SERVICE	1011-2
BLADE TILT FRAME.....	3440-4	BREATHER, DIFFERENTIAL LOCK.....	0260-34
BLADE TILT FRAME WEAR INSERTS	3440-4	BULB (CAB), DOMELIGHT AND	1810-18
BLADE TILT VALVE SECTION	2160-18	BULB, CAB ROOF LIGHT.....	1673-10
BLADE, FAN	0512-2	BULB, CAB WORK LIGHT	1673-10
BLADE, FRONT WINDSHIELD WIPER.....	1810-4	BULB, FRONT DRIVE LIGHT	1673-12
BLADE, KIT, DOZER	4240-5A	BULB, FRONT SIGNAL LIGHT	1673-4
BLADE, LOWER FRONT WINDSHIELD WIPER	1810-8	BULB, MID-FRAME WORK LIGHT	1673-14
BLADE, REAR WINDOW WIPER.....	1810-6	BULB, REAR WORK LIGHT	1673-14
BLOCK ASSEMBLY, ENGINE SHORT	0404-4	BULB, UNDER CAB WORK LIGHT	1673-14
BLOCK, CYLINDER, HFWD PUMP	0260-14	BULKHEAD TO ENGAGEMENT VALVE HFWD HOSES (SN -XXXXXX).....	0260-22
BLOCK, PUSH.....	1747-2	BULKHEAD TO ENGAGEMENT VALVE HFWD HOSES (SN XXXXXX-).....	0260-23A
BLOCK, PUSH (OPTION) (2000 LBS) (907 KG).....	1747-4	BUMPER, DOOR, SERVICE	1910-2
BOOT, LEFT CONTROL LEVERS.....	1810-42	BUSHING, BLADE LIFT CYLINDER	3440-6
BOOT, RIGHT CONTROL LEVERS.....	1810-44	BUSHING, CAMSHAFT	0402-1
BOTTOM GUARD (W/O RIPPER).....	1746-2	BUSHING, TURBO OIL DRAIN LINE	0416-2
BOTTOM GUARD KIT (W/O RIPPER).....	1746-2		
BOTTOM GUARD SIDE SHIELD.....	1746-4	C	
BOTTOM GUARD SIDE SHIELD KIT	1746-4	CAB (COMPLETE).....	1810-2
BOTTOM GUARD SIDE SHIELDS (WITH RIPPER)	1746-6	CAB AND CANOPY (COMPLETE).....	1810-2
BOTTOM GUARDS AND SIDE SHIELDS (WITH RIPPER).....	1746-6	CAB B-POST HEATER AND AIR CONDITIONER DUCT.....	1830-8
BOTTOM GUARDS AND SIDE SHIELDS KIT (WITH RIPPER).....	1746-6	CAB B-POST HEATER AND AIR CONDITIONER DUCT LOUVER.....	1830-8
BRACKET, AIR CONDITIONING COMPRESSOR.....	1830-16	CAB CONTROL LEVER CONSOLE (SN -609201).....	1810-40
BRACKET, ALTERNATOR	0423-2	CAB CONTROL LEVER CONSOLE (SN 609202-).....	1810-41A
BRACKET, ALTERNATOR MOUNTING.....	1672-2	CAB CONTROL LEVER CONSOLE (SN 609202-).....	1810-41C
BRACKET, BACK-UP ALARM MOUNTING.....	2004-4	CAB CONTROL LEVER CONSOLE COVER (SN -609201).....	1810-40
BRACKET, BEACON LIGHT	1673-8	CAB CONTROL LEVER CONSOLE COVER (SN 609202-).....	1810-41A
BRACKET, BLADE IMPACT VALVE MOUNTING	3460-18	CAB CONTROL LEVER CONSOLE COVER (SN 609202-).....	1810-41C
BRACKET, BOTTOM GUARD	1746-2	CAB CONTROL LEVERS (LEFT).....	1810-42
BRACKET, BRAKE VALVE/PEDAL MOUNTING	1060-2	CAB CONTROL LEVERS (RIGHT).....	1810-44
BRACKET, CAB STEP.....	1822-2	CAB DOOR HOLD OPEN LATCH (LEFT)	1810-34
BRACKET, CONVERTER MOUNTING (CAB).....	1810-30	CAB DOOR HOLD OPEN LATCH (RIGHT).....	1810-32
BRACKET, CONVERTER MOUNTING (CANOPY).....	1810-28	CAB DOOR, LEFT	1810-34
BRACKET, EXTERIOR MIRROR.....	2002-4	CAB DOOR, RIGHT	1810-32
BRACKET, FLC MOUNTING (CAB).....	1810-30	CAB FLOORMAT	1810-26
BRACKET, FLC MOUNTING (CANOPY).....	1810-28	CAB FRESH AIR FILTER.....	1830-10
BRACKET, FRONT MOUNTED SCARIFIER	4240-2	CAB FRESH AIR FILTER HOUSING.....	1830-10
BRACKET, FUEL FILTER	0420-2	CAB HEATER HOSES	1830-2
BRACKET, HFWD ENGAGEMENT MANIFOLD MOUNTING.....	0260-36	CAB INTERIOR PANELS.....	1810-18
BRACKET, MAIN MANIFOLD VALVE MOUNTING.....	2160-4	CAB INTERIOR WIRING HARNESS.....	1674-8
BRACKET, RADIO	2001-2	CAB INTERIOR WIRING HARNESS (IGC).....	1674-32
BRACKET, SADDLE LOCK PIN	3440-6	CAB ISOLATORS.....	1810-10
BRACKET, TRANSMISSION CONTROL UNIT MOUNTING.....	0315-2	CAB KREMNUTS.....	1810-2
BRACKET, TRAVEL WARNING ALARM	2004-4	CAB MONITOR	1674-8
BRACKETS, HFWD PUMP.....	0260-12	CAB MONITOR CONSOLE	1810-36
BRACKETS, MAIN CONTROL VALVE MOUNTING.....	2160-44	CAB MONITOR UNIT WIRING HARNESS.....	1674-26
BRACKETS, SEAT (AIR)	1821-2	CAB MOUNT ISOLATORS.....	1810-10
BRACKETS, SEAT (MECHANICAL).....	1821-6	CAB POWER WIRING HARNESS.....	1674-8
BRACKETS, SNOW LIGHTS.....	1673-2	CAB POWER WIRING HARNESS (IGC).....	1674-32
BRAKE ACCUMULATOR.....	1060-4		
BRAKE ACCUMULATOR HOSES	1060-4		
BRAKE DISK	1011-2		
BRAKE DISK, SECOND STAGE PINION, HFWD MOTOR	0250-4		
BRAKE HOSES, PARK	1111-2		
BRAKE LIGHT SWITCH	1060-2		

ALPHABETICAL INDEX - CONTINUED

	PAGE		PAGE
MAIN HYDRAULIC CONTROL VALVE INLET SECTION (LEFT)	2160-28	MOTOR HOSES, BULKHEAD TO ENGAGEMENT VALVE (SN -XXXXXX).....	0260-22
MAIN HYDRAULIC CONTROL VALVE INLET SECTION (RIGHT) (SN -XXXXXX).....	2160-26	MOTOR HOSES, BULKHEAD TO ENGAGEMENT VALVE (SN -XXXXXX-).....	0260-23A
MAIN HYDRAULIC CONTROL VALVE INLET SECTION (RIGHT) (SN -XXXXXX-).....	2160-27A	MOTOR HOSES, ENGAGEMENT VALVE TO HFWD (SN -XXXXXX).....	0260-20
MAIN HYDRAULIC CONTROL VALVE OUTLET SECTION (LEFT)	2160-28	MOTOR HOSES, ENGAGEMENT VALVE TO HFWD (SN -XXXXXX-).....	0260-21A
MAIN HYDRAULIC CONTROL VALVE OUTLET SECTION (RIGHT) (SN -XXXXXX).....	2160-26	MOTOR HOUSING, HFWD.....	0260-6
MAIN HYDRAULIC CONTROL VALVE OUTLET SECTION (RIGHT) (SN -XXXXXX-).....	2160-27A	MOTOR, CIRCLE DRIVE	3460-4
MAIN HYDRAULIC CONTROL VALVE TIE RODS	2160-12	MOTOR, FRONT WINDSHIELD WIPER	1810-4
MAIN HYDRAULIC FILTER	2164-2	MOTOR, HEATER AND A/C BLOWER.....	1830-12
MAIN HYDRAULIC MANIFOLD VALVE.....	2160-6	MOTOR, HFWD (COMPLETE)	0260-2
MAIN HYDRAULIC MANIFOLD VALVE HOSES (870D).....	2163-6	MOTOR, STARTING	0422-2
MAIN HYDRAULIC MANIFOLD VALVE HOSES (870D).....	2163-7A	MOUNT, FRONT FENDER (HFWD)	1927-2
MAIN HYDRAULIC MANIFOLD VALVE HOSES (872D).....	2160-8	MOUNT, FRONT FENDER (NFWD)	1927-4
MAIN HYDRAULIC MANIFOLD VALVE HOSES (872D).....	2163-8	MOUNT, FRONT FENDER KIT (HFWD).....	1927-6
MAIN HYDRAULIC PLUMBING (870D).....	2163-6	MOUNT, FRONT FENDER KIT (NFWD).....	1927-8
MAIN HYDRAULIC PLUMBING (870D).....	2163-7A	MOUNTING BRACKET, MAIN MANIFOLD VALVE.....	2160-4
MAIN HYDRAULIC PLUMBING (872D).....	2160-8	MOUNTING BRACKETS, MAIN CONTROL VALVE	2160-44
MAIN HYDRAULIC PLUMBING (872D).....	2163-8	MOUNTING PIN, BLADE SIDESHIFT CYL ROD END.....	3401-2
MAIN HYDRAULIC PUMP	2160-2	MOUNTING, DIFF LOCK PUMP	0260-32
MAIN HYDRAULIC PUMP FITTINGS (870D).....	2163-6	MOUNTING, MAIN HYD FILTER	2164-2
MAIN HYDRAULIC PUMP FITTINGS (870D).....	2163-7A	MOUNTS, ENGINE	0540-2
MAIN HYDRAULIC PUMP FITTINGS (872D).....	2160-8	MUFFLER	0530-2
MAIN HYDRAULIC PUMP FITTINGS (872D).....	2163-8	MUFFLER SUCTION HOSE TO AIR CLEANER PRE-CLEANER.....	0520-2
MAIN HYDRAULIC PUMP LOAD SENSE HOSE	2163-2	N	
MAIN HYDRAULIC PUMP SEAL KIT	2160-2	NEUTRAL CHARGE PRESSURE REGULATING VALVE	0260-28
MAIN HYDRAULIC PUMP SUCTION HOSE (870D).....	2163-6	NOZZLE, COLD WEATHER STARTING AID.....	0505-4
MAIN HYDRAULIC PUMP SUCTION HOSE (870D).....	2163-7A	NOZZLE, FUEL INJECTION.....	0413-2
MAIN HYDRAULIC PUMP SUCTION HOSE (872D).....	2160-8	O	
MAIN HYDRAULIC PUMP SUCTION HOSE (872D).....	2163-8	O-RING, WATER PUMP	0417-2
MAIN MANIFOLD VALVE.....	2160-6	OIL COOLER BYPASS TUBES AND ADAPTER, ENGINE.....	0407-10
MAIN MANIFOLD VALVE MOUNTING BRACKET	2160-4	OIL COOLER HOSES, HYDRAULIC (870D) (SN 599561-).....	2163-5A
MAIN MANIFOLD VALVE SEAL KIT	2160-6	OIL COOLER HOSES, HYDRAULIC (872D)	2163-4
MAIN WIRING HARNESS (FRONT).....	1674-2	OIL COOLER HOSES, TRANSMISSION	0363-2
MAIN WIRING HARNESS (REAR).....	1674-4	OIL COOLER, ENGINE	0419-1
MANIFOLD VALVE, MAIN.....	2160-6	OIL COOLER, HYDRAULIC.....	0510-4
MANIFOLD, EXHAUST	0410-1	OIL COOLER, HYDRAULIC.....	0510-6
MANIFOLD, FUEL INJECTION.....	0413-2	OIL DIPSTICK, ENGINE	0407-1
MANIFOLD, HFWD ENGAGEMENT	0260-38	OIL FILTER, ENGINE.....	0407-8
MANIFOLD, INTAKE	0414-1	OIL FILTER, TRANSMISSION	0360-2
MANIFOLD, ROTARY.....	3460-2	OIL LINE, DIFFERENTIAL CASE	0210-9
MANIFOLD, A/C.....	1830-14	OIL LINE, DIFFERENTIAL LOCK	0260-30
MID-FRAME WORK LIGHTS.....	1673-14	OIL LINE, TURBOCHARGER.....	0416-2
MIRROR BRACKET, EXTERIOR.....	2002-4	OIL PAN, ENGINE.....	0407-2
MIRROR, EXTERIOR	2002-4	OIL PLUG, HFWD.....	0250-4
MIRROR, EXTERIOR HEATED	2002-4	OIL PRESSURE SENSOR, ENGINE.....	0578-5
MIRROR, INTERIOR REARVIEW	2002-2	OIL PUMP INTAKE, ENGINE.....	0407-6
MODULE, SSM.....	1674-24	OIL PUMP, ENGINE	0407-5
MODULE, TRANSMISSION SWITCH BOX.....	0315-4	OIL SEAL, AXLE HOUSING	0250-6
MOISTURE SENSOR, FUEL.....	0420-2	OIL SEAL, FRONT	0402-6
MOISTURE SENSOR, FUEL.....	0578-2	OIL SEAL, REAR	0433-2
MOLDBOARD EXTENSION (24" MOLDBOARD)	3401-6	ONE HAND BLADE LIFT CONTROL.....	2160-38
MOLDBOARD EXTENSION (27" MOLDBOARD)	3401-8	OPENABLE SIDE WINDOWS	1810-16
MOLDBOARD EXTENSION KIT (24" MOLDBOARD).....	3401-6	OPENABLE WINDOWS (LOWER FRONT).....	1810-14
MOLDBOARD EXTENSION KIT (27" MOLDBOARD).....	3401-8	OPENABLE WINDOWS (SIDE).....	1810-16
MOLDBOARD OVERLAYS	3401-4		
MOLDBOARDS AND CUTTING EDGES	3401-2		
MONITOR	1674-8		
MONITOR CONSOLE, CAB	1810-36		

0110-3

WHEELS AND TIRES 1

POWERED WHEELS, TIRES AND FASTENINGS 0110
WHEEL (10 INCH X 24 INCH SPLIT RIM)
ROUE (10 POUCE X 24 POUCE JANTE DIVISEE)
RUEDA (10 PULG. X 24 PULG. ARO DIVIDIDO)

KEY	PART NO.	PART NAME	QTY.	SERIAL NO.	REMARKS
					8 8
					7 7
					0 2
					D D
1	AT25226	TIRE VALVE STEM	1		X X
2	AT43231	WHEEL	1		X 254 MM X 610 MM (10" X 24") (13-14 X 24 TIRE) (QUANTITY OF 6 PER MACHINE)
	AT43231	WHEEL	1		X 254 MM X 610 MM (10" X 24") (13-14 X 24 TIRE) (QUANTITY OF 4 PER MACHINE) (REAR WHEEL ONLY)
3	T27183	WHEEL RING	1		X X
4	T59932	O-RING	1		X X
5	T27184	WHEEL RING	1		X X
6	19H3158	CAP SCREW	14		X X 3/4" X 2"
7	T151797	WASHER	14		X X 0.812" X 1-7/8" X 0.245"

0110-13

WHEELS AND TIRES 1

POWERED WHEELS, TIRES AND FASTENINGS 0110
FRONT WHEEL (10 INCH X 24 INCH SPLIT RIM)
ROUE AVANT (10 POUCE X 24 POUCE JANTE DIVISEE)
RUEDA MOTRIZ DELANTERA (10 PULG. X 24 PULG. ARO DIVIDIDO)

KEY	PART NO.	PART NAME	QTY.	SERIAL NO.	8 8 7 7 0 2 D D	REMARKS
1	AT197613	TIRE VALVE STEM	1		X	
2	AT193866	WHEEL	1		X	254 MM X 610 MM (10" X 24") (13-14 X 24 TIRE)
3	T27183	WHEEL RING	1		X	
4	T59932	O-RING	1		X	
5	T27184	WHEEL RING	1		X	
6	T151797	WASHER	14		X	
7	19H3158	CAP SCREW	14		X	3/4" X 2"

0201-5

AXLES AND SUSPENSION SYSTEMS 2

DRIVE AXLE HOUSING AND SUPPORT 0201

**FINAL DRIVE AND TANDEM PIVOT
REDUCTION FINALE ET PIVOT DE TANDEM
MANDO FINAL Y PIVOTE EN TANDEM**

KEY	PART NO.	PART NAME	QTY.	SERIAL NO.	8 8 7 7 0 2 D D	REMARKS
1	T157952	SNAP RING	3		X X	
2	T157945	DRIVE SPROCKET	1		X X	
3	JD8989	BEARING CONE	2		X X	
4	JD8272	BEARING CUP	2		X X	
5	19M7417	CAP SCREW	16		X X	M16 X 65
6	24M7338	WASHER	16		X X	
7	T157944	RETAINER	1		X X	
8	T158335	SHIM	AR		X X	.07 MM
9	T158334	SHIM	AR		X X	.2 MM
10	T158492	THRUST WASHER	3		X X	
11	T157943	PIVOT	1		X X	
12	T71306	ORIFICE	1		X X	
13	JD7781	LUBRICATION FITTING	1		X X	
14	R135543	WASHER	22		X X	
15	19M7488	CAP SCREW	22		X X	M16 X 40
16	T158332	BUSHING	2		X X	
17	T157942	DRIVE SHAFT	1		X X	
18	T158492	THRUST WASHER	3		X X	
19	T206434	O-RING	2		X X	
20	T157941	HOUSING	1		X X	
21	19M8190	CAP SCREW	12		X X	M16 X 180
22	R135543	WASHER	12		X X	
23	U17409	O-RING	1		X X	
24	T78662	DRAIN PLUG	1		X X	
25	AR75527	SEAL	1		X X	
26	T41677	O-RING	1		X X	
27	19M7889	CAP SCREW	4		X X	M24 X 80
28	24M7294	WASHER	4		X X	
29	19M7892	CAP SCREW	3		X X	M20 X 80
30	24M7242	WASHER	3		X X	

0210-11

AXLES AND SUSPENSION SYSTEMS 2

DIFFERENTIAL OR BEVEL DRIVE 0210

**DIFFERENTIAL
DIFFERENTIAL
DIFERENCIAL**

KEY	PART NO.	PART NAME	QTY.	SERIAL NO.	8 8 7 7 0 2 D D	REMARKS
1	400R	BALL	2		X X	
2	34H328	SPRING PIN	3		X X	
3	YZ120398	SPRING	3		X X	
4	YZ120913	HOUSING	1		X X	(ALSO ORDER 34M7224) (MARKED YZ120859)
5	R34858	CLUTCH PLATE	5		X X	
6	RE53823	DISK	5		X X	
7	R34857	CLUTCH PLATE	1		X X	
8	R60038	PACKING	2		X X	
9	34M7224	SPRING PIN	1		X X	(USE WITH COVER MARKED YZ120858 AND HOUSING MARKED YZ120859)
10	R95116	PISTON	1		X X	
11	YZ120912	COVER	1		X X	(MARKED YZ120859)
12	R116214	SELF-LOCKING SCREW	12		X X	
13	R93623	THRUST WASHER	2		X X	
14	YZ120386	BEVEL GEAR	1		X X	
15	R70111	PINION SHAFT	2		X X	
16	YZ120471	RING	4		X X	
17	R70113	THRUST WASHER	4		X X	
18	R134726	PINION	1		X X	
19	R70115	NEEDLE ROLLER	26		X X	
20	R70112	THRUST WASHER	4		X X	
21	R59460	THRUST WASHER	4		X X	
22	YZ120909	SPRING PIN	1		X X	
23	YZ120690	HOUSING	1		X X	(MARKED YZ120503)
24	H871R	BALL	2		X X	(SUB FOR H871) (ALSO ORDER YZ120909)
25	24H1111	WASHER	8		X X	
26	19H2668	CAP SCREW	8		X X	
27	R59289	BEVEL GEAR	1		X X	
28	R112210	ADAPTER FITTING	1		X X	
29	PLUG	1		X X	(R116373 NLA) (ORDER 15H563)
30	U17409	O-RING	1		X X	
31	R132574	STRUCTURAL TUBING	1		X X	
32	R85226	WASHER	12		X X	
33	19H3718	CAP SCREW	12		X X	
34	R130036	DEFLECTOR	1		X X	
35	T106596	SCREW	2		X X	

0240-3

AXLES AND SUSPENSION SYSTEMS 2

POWERED WHEEL AXLE 0240

**FRONT AXLE AND MOUNTING PIN (872D)
 ESSIEU AVANT ET AXE DE MONTAGE (872D)
 EJE DELANTERO Y PASADOR DE MONTAJE (872D)**

KEY	PART NO.	PART NAME	QTY.	SERIAL NO.	8 8 7 7 0 2 D D	REMARKS
1	19M7489	CAP SCREW	1		X	M16 X 45
2	24H1595	WASHER	2		X	1/4"
3	28H3401	SPACER	1		X	
4	AT194405	HYDRAULIC HOSE	2		X	
5	AT313340	AXLE	1	-611295	X	
	AT334044	AXLE	1	611296-	X	
6	40M1863	SNAP RING	4		X	
7	AT101224	BUSHING	2		X	
8	T33933	BUSHING	2		X	
9	AT313362	PIN	1		X	
10	E12379	NUT	5		X	
11	JD7759	LUBRICATION FITTING	4		X	
12	JD7797	LUBRICATION FITTING	5		X	
13	T146246	WASHER	1		X	
14	T209581	SHIM	3		X	
15	T75644	ADAPTER FITTING	5		X	
16	AT57326	HYDRAULIC HOSE	3		X	

0250-9

AXLES AND SUSPENSION SYSTEMS 2

AXLE SHAFT, BEARINGS, REDUCTION GEARS 0250
TANDEM DRIVE AND PLANETARY
ENTRAINEMENT TANDEM ET TRAIN PLANETAIRE
MANDO TANDEM Y PLANETARIOS

KEY	PART NO.	PART NAME	QTY.	SERIAL NO.	8 8	REMARKS
					D D	
1	R77664	SHAFT	3		X X	
2	R112079	THRUST WASHER	6		X X	
3	R108997	PLANET PINION	3		X X	
4	R63575	NEEDLE ROLLER	144		X X	
5	R71929	WASHER	3		X X	
6	R72430	SNAP RING	1		X X	
7	R131113	PLANET PINION CARRIER	1		X X	
8	R94546	SPACER	1		X X	
9	R81162	BOLT	1		X X	
10	R94545	LOCK PLATE	1		X X	
11	F3171R	O-RING	3		X X	
12	R131114	PINION SHAFT	1		X X	
13	R93937	GEAR	1		X X	
14	R54380	DOWEL PIN	2		X X	
15	R27315	DOWEL PIN	2		X X	
16	R52389	SHIM	1		X X	

0260-11

AXLES AND SUSPENSION SYSTEMS 2

AXLES, DIFFERENTIAL AND SUSPENSION SYSTEM HYDRAULICS 0260
HFWD MOTOR SWASH PLATE, BEARINGS, AND SPEED SENSOR
PLATEAU OSCILLANT DE MOTEUR DE TAH, ROULEMENTS ET CAPTEUR DE VITESSE
PLACA OSCILANTE DEL MOTOR DE TDH, COJINETES Y SENSOR DE VELOCIDAD

KEY	PART NO.	PART NAME	QTY.	SERIAL NO.	8 8 7 7 0 2 D D	REMARKS
1	N306880	VALVE	1		X	
2	R726R	DOWEL PIN	2		X	
3	T64769	DRAIN PLUG	2		X	(SUB FOR AT214801)
4	T59014	O-RING	2		X	
5	F37030250	O-RING	1		X	
7	N306881	PLATE	1		X	
8	AT173174	SEAL	1		X	
9	T187896	O-RING	1		X	
10	N306885	SNAP RING	2		X	
11	N306886	SNAP RING	1		X	
12	N306887	GASKET	1		X	
13	AT195723	SEAL	1		X	
14	AN208024	SHAFT	1		X	
15	AT319115	PISTON RING KIT	1		X	
16	AT194596	GROUND SPEED SENSOR	1		X	
17	M74600	O-RING	1		X	
18	T214111	SCREW	1		X	
19	AT319117	SEAL KIT	1		X	

0260-21

AXLES AND SUSPENSION SYSTEMS 2

AXLES, DIFFERENTIAL AND SUSPENSION SYSTEM HYDRAULICS 0260
 HFWD HOSES (HFWD ENGAGEMENT VALVE TO HFWD MOTORS) (SN -611295)
 FLEXIBLES DU HFWD (SOUPAPE D'ENGAGEMENT VERS MOTEURS) (SN -611295)
 MANGUERAS DEL HFWD (VALVULA DE ENGRANE A MOTORES) (SN -611295)

KEY	PART NO.	PART NAME	QTY.	SERIAL NO.	8 8 7 7 0 2 D D	REMARKS
1	AT196253 T188182	HYDRAULIC HOSE - FABRICATE HOSE GUARD	1 AR		X	(RIGHT HFWD MOTOR FORWARD) X (PROTECTIVE SLEEVE FOR HFWD HOSES) (NOT ILLUSTRATED)
2	AT196249 T188182	HYDRAULIC HOSE - FABRICATE HOSE GUARD	1 AR		X	(LEFT HFWD MOTOR FORWARD) X (PROTECTIVE SLEEVE FOR HFWD HOSES) (NOT ILLUSTRATED)
3	AT196254 T188182	HYDRAULIC HOSE - FABRICATE HOSE GUARD	1 AR		X	(RIGHT HFWD MOTOR REVERSE) X (PROTECTIVE SLEEVE FOR HFWD HOSES) (NOT ILLUSTRATED)
4	AT196250 T188182	HYDRAULIC HOSE - FABRICATE HOSE GUARD	1 AR		X	(LEFT HFWD MOTOR REVERSE) (SUB FOR AT196250, THIS APPLICATION) X (PROTECTIVE SLEEVE FOR HFWD HOSES) (NOT ILLUSTRATED)
5	AT197098 T188182	HYDRAULIC HOSE - FABRICATE HOSE GUARD	2 AR		X	(HFWD MOTOR CASE DRAIN) X (PROTECTIVE SLEEVE FOR HFWD HOSES) (NOT ILLUSTRATED)
6	AT308073	HYDRAULIC HOSE - FABRICATE	2		X	(RIGHT AND LEFT HFWD MOTOR FLUSHING HOSE)
7	AT196256	HYDRAULIC HOSE - FABRICATE	1		X	(RIGHT HFWD BRAKE HOSE)
8	AT196252	HYDRAULIC HOSE - FABRICATE	1		X	(LEFT HFWD BRAKE HOSE)
9	38H1094	ELBOW FITTING	2		X	
10	T77613	O-RING	5		X	
11	38H1205	TEE FITTING	1		X	

0260-27

AXLES AND SUSPENSION SYSTEMS 2

AXLES, DIFFERENTIAL AND SUSPENSION SYSTEM HYDRAULICS 0260
HFWD CHARGE PUMP
POMPE DE GAVAGE DE HFWD
BOMBA DE CARGA DEL HFWD

KEY	PART NO.	PART NAME	QTY.	SERIAL NO.	8 8 7 7 0 2 D D	REMARKS
1	AT317637	HYDRAULIC PUMP	1		X	
	AT317595	SEAL KIT	1		X	
2	E55662	FLANGE NUT	2	-597330	X	3/8"
3A	T20052	STUD	2	-597330	X	
3B	19H3771	SCREW	2	597331-	X	
4	U42702	O-RING	1		X	

0260-37

AXLES AND SUSPENSION SYSTEMS 2

AXLES, DIFFERENTIAL AND SUSPENSION SYSTEM HYDRAULICS 0260
HFWD ENGAGEMENT MANIFOLD FITTINGS AND TEMPERATURE SENSOR
RACCORDS DE TUBULURE ET CAPTEURS DE TEMPERATURE DE TAH
SENSOR DE TEMPERATURA Y ADAPTADORES DEL COLECTOR DE ENGRANE DE TDH

KEY	PART NO.	PART NAME	QTY.	SERIAL NO.	8 8 7 7 0 2 D D	REMARKS
1	19M7662	CAP SCREW	2		X	M10 X 30
2	19M8011	CAP SCREW	2		X	M12 X 30
3	24M7226	WASHER	2		X	
4	24M7266	WASHER	2		X	
5	38H1007	ELBOW FITTING	2		X	
6	T77858	O-RING	8		X	
7	U12547	O-RING	10		X	
8	38H1070	FITTING	1		X	
9	38H1161	ADAPTER FITTING	1		X	
10	R26375	O-RING	1		X	
11	T77857	O-RING	1		X	
12	38H1163	ADAPTER FITTING	6		X	
13	T77932	O-RING	2		X	
14	AH125760	HYD. QUICK-CONNECT COUPLER	4		X	
15	AT191639	ADAPTER FITTING	2		X	
16	AT195285	TEE FITTING	2		X	
17	AT302927	TRANSDUCER	2		X	(HFWD PUMP PRESSURE SENSOR)
18	R26287	O-RING	1		X	
19	AT307707	SWITCH	1	-611295	X	(HFWD TEMPERATURE SWITCH) (INCLUDES O-RING)
	AT183823	SENDER	1	611296-	X	(HFWD TEMPERATURE SWITCH) (ALSO ORDER R26375)
	R26375	O-RING	1	611296-	X	
20	AT326642	BRACKET	1		X	(SUB FOR AT310959)
21	R26448	O-RING	6		X	
22	R77175	COVER	4		X	
23	T77613	O-RING	4		X	
24	38H1577	ELBOW FITTING	2		X	

0315-7

TRANSMISSION 3

CONTROLS 0315

INCHING PEDAL
PEDALE D'APPROCHE LENTE
PEDAL DE AVANCE LENTO

KEY	PART NO.	PART NAME	QTY.	SERIAL NO.	8 8 7 7 0 2 D D	REMARKS
1	19M7865	SCREW	3		X X	M8 X 16
2	AT307200	PEDAL	1		X X	
3	21M7292	SCREW	1		X X	M6 X 16
4	T209947	COVER	1		X X	
5	24H1821	WASHER	1		X X	

0350-5

TRANSMISSION 3

GEARS, SHAFTS, BEARINGS AND POWER SHIFT CLUTCH 0350
CONTROL VALVE (YZ104537)
DISTRIBUTEUR (YZ104537)
VALVULA CONTROL (YZ104537)

KEY	PART NO.	PART NAME	QTY.	SERIAL NO.	REMARKS
1	YZ104198	HOUSING	1		VALVE
2	YZ250249	REGULATOR	1		VALVE ASSEMBLY
3	YZ106316	PRESSURE RELIEF VALVE	1		
4	YZ501931	VALVE	8		
5	U44115	FITTING PLUG	12		
6	F85006	FITTING PLUG	2		
	F37060906	O-RING	2		
7	RE38310	SENSOR	1		
8	R26286	O-RING	1		
9	R28782	O-RING	12		
10	YZ101612	O-RING	1		
11	F37010016	O-RING	1		
12	F37060910	O-RING	1		
13	YZ502227	O-RING	2		
14	YZ105886	SOLENOID VALVE	1		24V COIL
15	YZ502169	NUT	1		
16	F37020122	O-RING	1		
17	F37020123	O-RING	1		
18	F37020124	O-RING	1		
19	F37060916	O-RING	1		
20	YZ501813	SHIM	AR		(AS NEEDED)

0350-15

TRANSMISSION 3

GEARS, SHAFTS, BEARINGS AND POWER SHIFT CLUTCH 0350
TRANSMISSION REAR HOUSING (YZ106015)
CARTER ARRIERE DE TRANSMISSION (YZ106015)
CAJA TRASERA DE LA TRANSMISION (YZ106015)

KEY	PART NO.	PART NAME	QTY.	SERIAL NO.	8 8 7 7 0 2 D D	REMARKS
1	4008024	SLEEVE	1		X X	
2	4008023	SLEEVE	4		X X	
3	4009395	BEARING CUP	1		X X	
4	F85112	DRAIN PLUG	1		X X	
	F37060912	O-RING	1		X X	
5	F7400011D	BALL	7		X X	
6	YZ250262	PRESSURE RELIEF VALVE	1		X X	
7	YZ101353	PLUG	1		X X	
8	YZ104087	BEARING CUP	2		X X	
9	F85006	FITTING PLUG	1		X X	
	F37060906	O-RING	1		X X	
10	F85003	FITTING PLUG	1		X X	
11	HOUSING	1		X X	YZ105928-REAR HOUSING NON-SERVICEABLE
	YZ106209	HOUSING	1		X X	REAR HSG KIT

0350-25

TRANSMISSION 3

GEARS, SHAFTS, BEARINGS AND POWER SHIFT CLUTCH 0350
REAR TRANSMISSION CASE WITHOUT PUMP DRIVE (YZ106019)
BOITE DE TRANSMISSION ARRIERE SANS ENTRAINEMENT DE POMPE (YZ106019)
CAJA DE LA TRANSMISION TRASERA SIN MANDO DE LA BOMBA (YZ106019)

KEY	PART NO.	PART NAME	QTY.	SERIAL NO.	REMARKS
1	RE519144	SENSOR	1		
	51M7044	O-RING	1		
2	F37020159	O-RING	1		
3	19M3160	CAP SCREW	4		M12 X 20
4	YZ105354	SEAL	1		
5	YZ105724	PLATE	1		
6	19M3164	CAP SCREW	1		M12 X 40
7	YZ501829	SPRING	1		
8	F37030273	O-RING	1		
9	YZ501845	SEAL	1		
10	YZ501846	SEAL	1		
11	YZ100952	CLUTCH PLATE	7		
12	YZ501864	DISK	6		
13	19M7807	SCREW	7		M10 X 60
14	YZ501844	SPACER	1		
15	YZ501881	O-RING	1		
16	YZ501848	TUBE	1		
17	R10093	O-RING	2		
18	YZ501988	SOLENOID VALVE	1		
	YZ501919	KIT	1		
19	YZ501855	VALVE	1		
	YZ501921	KIT	1		(INCLUDES F37060910, F37010014 AND YZ501926)
20	YZ103146	BEARING CUP	1		
21	F7400011D	BALL	1		
22	38H1004	ELBOW FITTING	1		
	R26448	O-RING	1		
	T77613	O-RING	1		
23	YZ105970	PISTON	1		
24	AT223537	PRESSURE SWITCH	1		

0350-35

TRANSMISSION 3

GEARS, SHAFTS, BEARINGS AND POWER SHIFT CLUTCH 0350
TRANSMISSION FIFTH STAGE ASSEMBLY (YZ105954)
CINQUIEME ETAGE DE TRANSMISSION (YZ105954)
CONJUNTO DE QUINTA ETAPA DE TRANSMISION (YZ105954)

KEY	PART NO.	PART NAME	QTY.	SERIAL NO.	REMARKS
1	YZ250078	SEAL	2		
2	R116030	O-RING	2		
3	YZ250321	PISTON	2		
4	YZ101359	WASHER	2		
5	YZ250273	DISK SPRING	12		
6	F81800	SNAP RING	2		
7	YZ250060	RETAINER	2		
9	YZ105465	SNAP RING	2		
10	YZ250170	BALL BEARING	4		
11	YZ103268	BALL BEARING	2		
12	F811129R	SNAP RING	2		
13	YZ250161	SEAL	3		
14	YZ106060	CLUTCH DISK	18		
15	YZ250373	RETAINER	2		
16	YZ106213	PLATE	22		
17	YZ106559	SHAFT	1		(SUB FOR YZ106055)
18	YZ105947	GEAR	1		
19	YZ106147	GEAR	1		

0360-3

TRANSMISSION 3

TRANSMISSION HYDRAULICS 0360

**TRANSMISSION FILTER AND HOSES
 FILTRE A HUILE DE TRANSMISSION ET FLEXIBLES
 FILTRO Y MANGUERAS DE TRANSMISION**

KEY	PART NO.	PART NAME	QTY.	TRANSMISSION SERIAL NO.	8 8	REMARKS
					7 7	
					0 2	
					D D	
1	19M7402	CAP SCREW	5		X X	M10 X 25
2	24M7239	WASHER	5		X X	
3	T204678	PLATE	1		X X	
4	38H1007	ELBOW FITTING	2		X X	
5	T77858	O-RING	6		X X	
6	U12547	O-RING	3		X X	
7	38H1052	ELBOW FITTING	1		X X	
8	R29936	O-RING	2		X X	
9	38H1163	ADAPTER FITTING	1		X X	
10	38H1438	TEE FITTING	1		X X	
11	AT307581	HYDRAULIC HOSE - FABRICATE	1		X X	
12	AT307582	HYDRAULIC HOSE - FABRICATE	1		X X	
13	AT307588	HYDRAULIC HOSE - FABRICATE	1		X X	
14	AT305048	FILTER HEAD	1		X X	
15	AT307045	PRESSURE SWITCH	1		X X	
16	P46051	O-RING	1		X X	
17	AT305049	HYDRAULIC FILTER	1		X X	

0402-3

ENGINE 4

CAMSHAFT AND VALVE ACTUATING MEANS 0402

ROCKER ARMS, SHAFT AND PUSH RODS
CULBUTEURS, ARBRE DES CULBUTEURS ET TIGES DE CULBUTEURS
BALANCINES, EJE Y VARILLAS DE EMPUJE

KEY	PART NO.	PART NAME	QTY.	ENGINE SERIAL NO.	8 8	REMARKS
					D D	
1	19H3833	SCREW	12		X X	5/16" X 1-3/4"
2	U17408	RING	2		X X	
3	24H1384	WASHER	2		X X	49/64" X 1-1/16" X 0.036"
4	R27443	SET SCREW	2		X X	
5	14H1080	NUT	2		X X	3/8"
6	RE24046	ROCKER ARM	1		X X	(A) (1I, 2E, 3I, 4E, 5I, 6E) (LH)
7	RE24045	ROCKER ARM	1		X X	(A) (1E, 2I, 3E, 4I, 5E, 6I) (RH)
8	RE521278	KIT	6		X X	
9	R85027	PUSH ROD	12		X X	
10	R110126	FOLLOWER	12		X X	
11	CYLINDER HEAD	1		X X	

(A) - E (EXHAUST VALVE) - I (INTAKE VALVE)
(A) - E (SOUPAPE D'ECHAPPEMENT), I - (SOUPAPE D'ADMISSION)
(A) - E (VALVULA DE ESCAPE), I - (VALVULA DE ADMISION)

0404-7

ENGINE 4

CYLINDER BLOCK 0404

**ENGINE OVERHAUL KIT
JEU POUR LA REVISION DU MOTEUR
CONJUNTO DE REACONDICIONAMIENTO DEL MOTOR**

KEY	PART NO.	PART NAME	QTY.	ENGINE	8 8	REMARKS
				SERIAL NO.	7 7	
				0 2	D D	
1	RE526727	ENGINE OVERHAUL KIT	1		X X	(PISTON MARKED RE70688) (CONTAINS (6) RE64509 PISTON/LINERS, RE527551 GASKET KIT, STD BEARINGS, FRONT/REAR SEALS, AND SNAP RINGS) (ALSO ORDER (6) R57771, (6) RE522977 AND R520583) (SUB FOR RE521154)

0407-9

ENGINE 4

ENGINE OILING SYSTEM 0407

**OIL FILTER AND HOUSING
FILTRE ET CARTER D'HUILE MOTEUR
CAJA Y FILTRO DE ACEITE DEL MOTOR**

KEY	PART NO.	PART NAME	QTY.	ENGINE		REMARKS
				SERIAL NO.	D D	
				8	8	
				7	7	
				0	2	
				D	D	
1	RE57561	ADAPTER FITTING	1		X X	
2	R128694	BASE	1		X X	
3	R500055	VALVE	1		X X	
4	R98064	SPRING	1		X X	
5	U17409	O-RING	1		X X	
6	R117073	FITTING PLUG	1		X X	
7	R47153	O-RING	4		X X	
8	R86063	TUBE	2		X X	
9	R43660	PACKING	1		X X	
10	RE521420	OIL FILTER	1		X X	(MARKED RE520628)
11	19H3239	CAP SCREW	1		X X	3/8" X 1-1/4"
12	R119847	GASKET	1		X X	
13	R124186	PRESSURE RELIEF VALVE	1		X X	
14	R500330	SPRING	1		X X	
15	U17409	O-RING	1		X X	
16	R129821	FITTING PLUG	1		X X	
17	19H3445	CAP SCREW	2		X X	3/8" X 3-3/4"
18	R129820	HOUSING	1		X X	
19	R518382	ADAPTER FITTING	1		X X	
20	19H3104	CAP SCREW	1		X X	7/16" X 1-1/4"
	19H3205	CAP SCREW	1		X X	7/16" X 1-1/2"
21	24H1886	WASHER	1		X X	15/32" X 1-1/8" X 0.180", (USE WITH 19H3205)
22	RE71255	PIPE PLUG	2		X X	1/8"-27NPT
23	RE504581	ELBOW FITTING	1		X X	45°

0413-3

ENGINE 4

FUEL INJECTION SYSTEM 0413

FUEL INJECTION SYSTEM
CIRCUIT D'INJECTION DE CARBURANT
SISTEMA DE INYECCION DE COMBUSTIBLE

KEY	PART NO.	PART NAME	QTY.	ENGINE		REMARKS
				SERIAL NO.	D D	
					8 8	
					7 7	
					0 2	
					D D	
1	19H3218	CAP SCREW	6			X X 3/8" X 1-3/4"
2	R63845	WASHER	6			X X
3	R502602	CLAMP	6			X X
4	R134920	NUT	12			X X
5	RE518726	INJECTION NOZZLE	6			X X (HPCR G2 1800) (BLUE DOT)
6	R503578	PACKING	6			X X
7	R131051	WASHER	6			X X
8	R505570	O-RING	8			X X 0.339" X 0.094"
9	RE509416	FITTING	6			X X
10	RE515524	FUEL LINE	1			X X (NO.6)
11	RE504017	FUEL LINE	1			X X (NO.5)
12	RE504016	FUEL LINE	1			X X (NO.4)
13	RE504015	FUEL LINE	1			X X (NO.3)
14	RE504014	FUEL LINE	1			X X (NO.2)
15	RE504013	FUEL LINE	1			X X (NO.1)
16	RE502655	CLAMP	2			X X (INCLUDES (2) 19M7502 AND (2) 24M7027)
17	RE509012	CLAMP	1			X X (INCLUDES (3) 19M7502 AND (3) 24M7027)
18	RE509013	CLAMP	1			X X (INCLUDES (4) 19M7502 AND (4) 24M7027)
19	RE502650	FITTING	6			X X 1/2"-24UNS X 1/8"-27NPT
20	R51936	SEALING WASHER	8			X X
21	R51937	TUBE NUT	6			X X
22	R63548	O-RING	AR			X X 0.364" X 0.070"
23	RE521476	FUEL LINE	1			X X
24	38H1415	FITTING	AR			X X 11/16"-16UN
25	RE521477	FUEL LINE	1			X X LEAK-OFF
26	RE507003	LINE	1			X X
27	RE506624	ADAPTER FITTING	1			X X M10X1.0 X 1/2"-24UNS
28	R515454	SHIM	1			X X
29	RE516335	PRESSURE RELIEF VALVE	1			X X M10X1.0 X M18X1.5, (MARKED 0161)
30	RE515636	RESTRICTOR	6			X X M14X1.5 X M18X1.5, (MARKED 0220)
31	RE520930	SENSOR	1			X X M22X1.5, (MARKED 6140)
32	RE521433	RAIL	1			X X (MARKED 0273)
33	19H2699	CAP SCREW	2			X X 7/16" X 2-1/4"
34	RE502654	CLAMP	1			X X (INCLUDES 19M7502 AND 24M7027)
35	RE505155	FUEL LINE	1			X X
36	RE505154	FUEL LINE	1			X X
37	R519759	O-RING	1			X X
38	RE522834	VALVE	1			X X M14X1.5 X (2) 11/16"-16ORFS, (INCLUDES R77175)
39	RE503059	ADAPTER FITTING	1			X X M10X1.0 X 7/16"-24UNS

THIS PARTS LISTING IS CONTINUED

0418-3

ENGINE 4

THERMOSTATS, HOUSINGS AND WATER PIPING 0418

**THERMOSTAT HOUSING AND COVER
BATI ET COUVERCLE DE THERMOSTAT
CAJA DEL THERMOSTATO Y CUBIERTA**

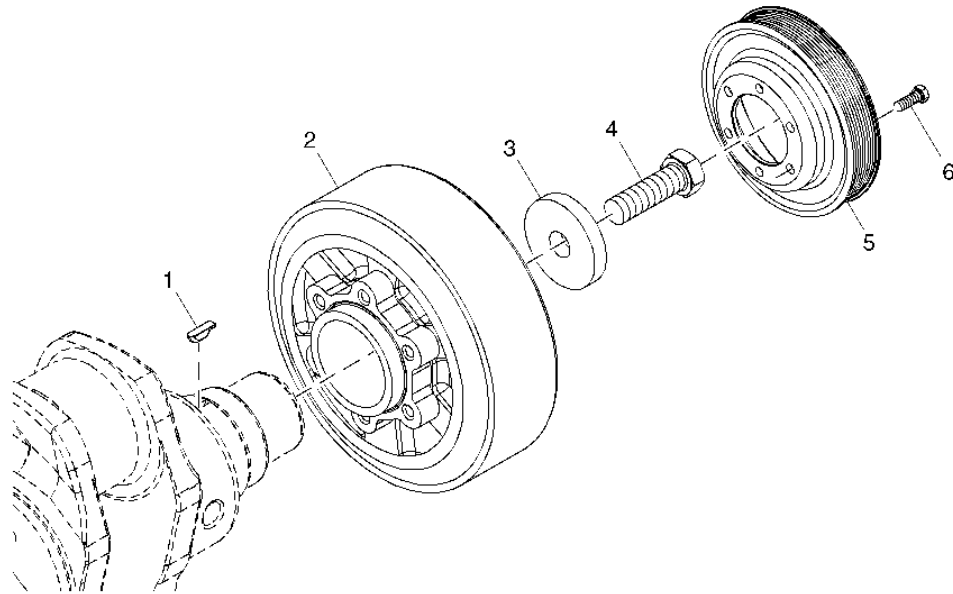
KEY	PART NO.	PART NAME	QTY.	ENGINE	REMARKS
				SERIAL NO.	
				8 8	
				7 7	
				0 2	
				D D	
1A	R136151	SEAL	1		X X (USE WITH RE502570)
1B	R124607	GASKET	1		X X (USE WITH R86007)
2A	RE502570	COVER	1		X X (SUB R86007)
2B	R86007	COVER	1		X X (SUB FOR RE502570)
3	T53268	SCREW	3		X X 3/8" X 0.870", (USE WITH RE502570)
	19H3683	SCREW	3		X X 3/8" X 1-1/2", (USE WITH R86007)
4	AR48675	THERMOSTAT	1		X X 82°C (180°F)
5	R100671	PLUG	1		X X
6	R519578	MANIFOLD	1		X X
7	RE57836	PIPE PLUG	2		X X 1/2"-14NPT
8	R133998	SCREW	2		X X 3/8" X 3.635"
9	19H3772	SCREW	1		X X 3/8" X 1-3/4"
10	R72328	O-RING	1		X X 0.737" X 0.103"
11	R504810	O-RING	1		X X 47/64" X 0.139"
12	RE509095	TUBE	1		X X
13	34H329	SPRING PIN	1		X X 5/16" X 1-1/4"
14	R86062	GASKET	1		X X
15	15H690	PIPE PLUG	1		X X 3/4"-14NPT

0429-1

ENGINE 4
FAN DRIVE 0429

**CRANKSHAFT PULLEY AND DAMPENER
POULIE DE VILEBREQUIN ET AMORTISSEUR
POLEA Y AMORTIGUADOR DEL CIGUENAL**

RGP11875 -UN-13APR06



RGP11875

KEY	PART NO.	PART NAME	QTY.	ENGINE SERIAL NO.	REMARKS
				8 8	
				7 7	
				0 2	
				D D	
1	R116311	KEY	1		X X
2	RE57603	TORSIONAL DAMPER	1		X X
3	R26333	WASHER	1		X X
4	R79846	CAP SCREW	1		X X
5	R106998	PULLEY	1		X X OD 206.5MM
6	19H3219	CAP SCREW	6		X X 3/8" X 1-3/8"

0505-3

ENGINE AUXILIARY SYSTEMS 5
COLD WEATHER STARTING AIDS 0505

**ENGINE AIR HEATER
CHAUFFAGE D'AIR DU MOTEUR
CALEFACTOR DE AIRE DEL MOTOR**

KEY	PART NO.	PART NAME	QTY.	SERIAL NO.	8 8 7 7 0 2 D D	REMARKS
1	AT196516	WIRING HARNESS	1		X X	
2	H77698	TIE BAND	AR		X X	
3	AT145341	RELAY	1		X X (24V)	
4	AT184618	WIRE	1		X X (FUSE TO RELAY)	
5	AT203566	FUSE	1		X X (125A)	
6	AT206818	FUSE HOLDER	1		X X	
7	14M7303	FLANGE NUT	2		X X M6	
8	AT191008	WIRE	1		X X	(ENGINE AIR HEATER GROUND TERMINAL TO STARTER GROUND STUD)
9	RE515331	INTAKE MANIFOLD	1		X X	(AIR INTAKE)
10	R130573	GASKET	3		X X	
11	T160333	NUT	4		X X	
12	19M7862	SCREW	4		X X M6 X 20	
13	24M7139	WASHER	2		X X	
14	RE66693	CABLE	2		X X	

0510-7

ENGINE AUXILIARY SYSTEMS 5
ENGINE COOLING SYSTEMS 0510

RADIATOR AND CHARGE AIR COOLER HOSES AND TUBES
FLEXIBLES ET TUYAUX DU REFROIDISSEUR D'AIR DE SURALIMENTATION ET DU RADIATEUR
MANGUERAS Y TUBOS DEL ENFRIADOR DE AIRE DE CARGA Y RADIADOR

KEY	PART NO.	PART NAME	QTY.	SERIAL NO.	REMARKS
					8 8
					7 7
					0 2
					D D
1	15H625	PIPE BUSHING	1		X X
2	19H1900	CAP SCREW	1		X X
3	19M7402	CAP SCREW	1		X X M10 X 25
4	19M8600	CAP SCREW	1		X X M10 X 50
5	24M7238	WASHER	1		X X
6	AH89557	CLIP	1		X X
7	AR21836	CLAMP	6		X X
8	AR21839	CLAMP	2		X X
9	AR21841	CLAMP	2		X X
10	14M7274	NUT	4		X X M10
11	AR40418	HOSE CLAMP	6		X X
12	AT173610	FILLER CAP	3		X X
13	TANK	1		X X (SUB AT339744) (AT181162 NA)
	AT339744	TANK	1		
	T107141	O-RING	1		
	T162965	GAUGE	1		
	AT339745	ADAPTER KIT	1		X X SIGHT GAUGE, (FOR USE WITH AT181162)
14	AT307083	AIR FLOW TUBE	1		X X
15	R164193	HOSE	2		X X
16	AT307343	TUBE	1		X X
17	19M7662	CAP SCREW	8		X X M10 X 30
18	19M7938	CAP SCREW	4		X X M10 X 20
19	24M7239	WASHER	17		X X
20	BULK HOSE	17		X X (CUT TO LENGTH) (MAKE FROM T79477)
21	BULK HOSE	4		X X (CUT TO LENGTH) (MAKE FROM T139131)
22	H77698	TIE BAND	1		X X (CUT TO LENGTH) (MAKE FROM T79477)
23	M40509	SPACER	1		X X (CUT TO LENGTH) (MAKE FROM T139131)
24	R43583	FITTING	1		X X
25	RE52702	CLAMP	8		X X
26	T13254	CLAMP	5		X X
	TY22462	CLAMP	3		X X WORM GEAR
27	T158436	SPACER	1		X X
28	T160608	CLAMP	7		X X
29	T160609	CLAMP	2		X X
30	T162575	CLAMP	1		X X
31	T164031	BRACKET	1		X X
32	T185030	HOSE	1		X X
33	T202242	TUBE	1		X X
34	T202634	HOSE	1		X X
35	T202768	RADIATOR HOSE	1		X X
36	T205480	RADIATOR HOSE	1		X X
37	T205652	FITTING	1		X X
38	T205818	RADIATOR HOSE	1		X X
39	T206005	RADIATOR HOSE	1		X X
40	T206594	TUBE	1		X X
41	T210550	TUBE	1		X X
42	T217194	HOSE	1		X X (SUB FOR T210564)
43	T72856	HOSE	1		X X
44	19M8977	SCREW	1		X X
45	28H3399	SPACER	1		X X
46	AH77714	CLIP	1		X X
47	HOSE	1		X X (MAKE FROM T79477) (CTL, 19.7"(500 MM))

0520-3

ENGINE AUXILIARY SYSTEMS 5

INTAKE SYSTEM 0520

**AIR CLEANER AND PRE-CLEANER
FILTRE A AIR ET PREFILTRE
FILTRO DE AIRE Y PREFILTRO**

KEY	PART NO.	PART NAME	QTY.	SERIAL NO.	8 8 7 7 0 2 D D	REMARKS
1	19M7785	SCREW	4		X X	M10 X 25, (SUB FOR 19M7402, THIS APPLICATION)
2	24M7296	WASHER	4		X X	10.500 X 30 X 2.500 MM (0.413" X 1.181" X 0.098")
3	RE19429	CLAMP	1		X X	
4	T164303	SUCTION HOSE	1		X X	
5	TT208828	CLAMP	1		X X	(SUB FOR AT53440)
6	T76691	HOSE	1		X X	
7	AR21839	CLAMP	2		X X	
8	AT189052	CLAMP	1		X X	(NLA)
10	AT183636	COVER	1		X X	
11	RE51630	FILTER ELEMENT	1		X X	SECONDARY
12	RE51629	FILTER ELEMENT	1		X X	PRIMARY
13	AT211206	CLAMP	2		X X	(SUB FOR AT202864)
14	AR44361	FITTING	1		X X	
15	AT178542	AIR RESTRICTION SENSOR	1		X X	
16	AT183375	AIR CLEANER	1		X X	
17	AT183377	PRECLEANER	1		X X	

0575-3

ENGINE AUXILIARY SYSTEMS 5
AUTOMATIC CONTROL CIRCUITS 0575

ENGINE CONTROL UNIT
UNITE D'COMMANDE DU MOTEUR
UNIDAD DE CONTROL DEL MOTOR

KEY	PART NO.	PART NAME	QTY.	SERIAL NO.	8 8 7 7 0 2 D D	REMARKS
1	19M8786	SCREW	4		X X	M6 X 70
2	24M7250	WASHER	4		X X	
3	RE522516	ENGINE CONTROLLER	1		X X	

0930-3

STEERING SYSTEMS 9
EMERGENCY STEERING 0930

**SECONDARY STEERING
DIRECTION AUXILIAIRE
DIRECCION AUXILIAR**

KEY	PART NO.	PART NAME	QTY.	SERIAL NO.	8 8 7 7 0 2 D D	REMARKS
1	19M7786	SCREW	2		X X	M10 X 30
2	38H1418	FITTING	1		X X	
3	38H1005	ELBOW FITTING	1		X X	
4	R26375	O-RING	1		X X	
5	T77857	O-RING	2		X X	
6	38H1037	ELBOW FITTING	1		X X	
7	R29936	O-RING	1		X X	
8	T76938	O-RING	2		X X	
9	38H1096	ELBOW FITTING	1		X X	
10	T77932	O-RING	2		X X	
11	38H1098	ELBOW FITTING	1		X X	
12	38H1483	REDUCER	1		X X	
13	T77858	O-RING	2		X X	
14	AT186653	CLAMP	2		X X	
15	AT227717	HYDRAULIC ACCUMULATOR	1		X X	
16	AT313352	PRESSURE SWITCH	1		X X	
17	AT313541	HYDRAULIC HOSE - FABRICATE	1		X X	
18	AT313542	HYDRAULIC HOSE - FABRICATE	1		X X	
19	RE211000	CHECK VALVE	1		X X	
20	T72414	BUSHING	2		X X	
21	T164124	LABEL	1		X X	
22	AT313338	KIT	1		X X	(WHOLEGOODS)

0960-11

STEERING SYSTEMS 9

POWER STEERING HYDRAULIC SYSTEM 0960

**FRONT STEERING CYLINDER HOSES
FLEXIBLES DE VERIN DE DIRECTION AVANT
MANGUERAS DE CILINDRO DE DIRECCION DELANTERO**

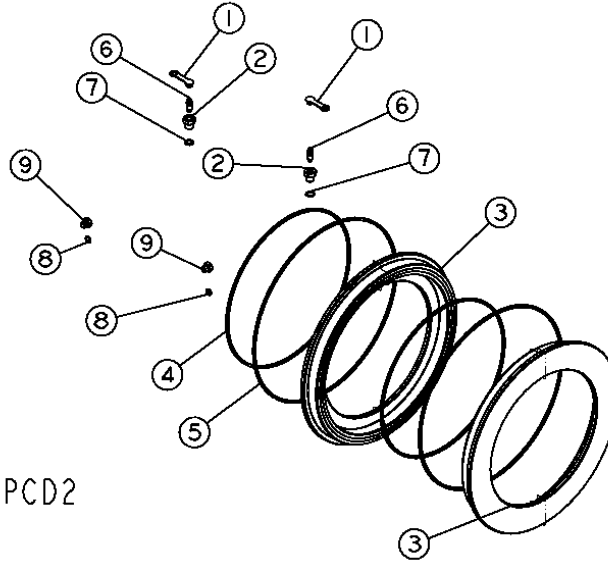
KEY	PART NO.	PART NAME	QTY.	SERIAL NO.	8 8 7 7 0 2 D D	REMARKS
1	38H1023	TEE FITTING	2		X X	
2	R26448	O-RING	3	-XXXXXX	X X	
	R26448	O-RING	4	XXXXXX-	X X	
3	T77613	O-RING	9	-XXXXXX	X X	
	T77613	O-RING	10	XXXXXX-	X X	
4	38H1045	ELBOW FITTING	1		X X	
5	38H1046	ELBOW FITTING	1		X X	
6	R26375	O-RING	1		X X	
7	T77857	O-RING	1		X X	
8	38H1160	ADAPTER FITTING	2		X X	
10	AT180301	HYDRAULIC HOSE - FABRICATE	2		X	
	AT192380	HYDRAULIC HOSE - FABRICATE	2		X	
11	AT304794	HYDRAULIC HOSE - FABRICATE	2		X X	
12	AT305768	HYDRAULIC HOSE - FABRICATE	1		X X	
13	AT309952	HYDRAULIC HOSE - FABRICATE	1		X X	
14	38H1094	ELBOW FITTING	2		X X	
15	AT225573	CHECK VALVE	1	600847-	X X	
16	38H1621	ADAPTER FITTING	1	600847-	X X	

1011-1

BRAKES (RE655559)
 FREINS (RE655559)
 FRENOS (RE655559)

RE65559PCD2

-UN-26JUN06



RE65559PCD2

KEY	PART NO.	PART NAME	QTY.	SERIAL NO.	REMARKS
1	YZ120455	PLUG	2		
2	R106789	BUSHING	2		
3	R129458	PISTON	2		
4	R131477	SEAL	2		
5	R131478	SEAL	2		
6	R21612	BLEED VALVE	2		
7	R26448	O-RING	2		
8	R28782	O-RING	2		
9	R51031	FITTING	2		

1320-3

MISCELLANEOUS VEHICLE 13
VEHICLE FINISH AND TRIM 1320

TRADEMARKS AND LABELS (ENGLISH)
MARQUES DEPOSEES ET ETIQUETTES (ANGLAIS)
MARCAS REGISTRADAS Y ETIQUETAS (INGLESE)

KEY	PART NO.	PART NAME	QTY.	SERIAL NO.	REMARKS
					8 8
					7 7
					0 2
					D D
1	H21259	MAT	4		X X (15.5" X 6") (ANTI-SKID)
2	JD5756	LABEL	1		X X (LEAPING DEERE) (MAIN FRAME COWL COVER)
3	JD5822	LABEL	2		X X (LEAPING DEERE) (REAR GRILLE)
4	JD5921	REFLECTOR	8		X X (AMBER)
5	M118611	LABEL	1		X X WARNING (HOT SURFACE)
6	T103395	MAT	4		X X (8" X 6") (ANTI-SKID)
7	T146605	LABEL	1		X X (AIR CLEANER)
8	T153680	LABEL	6		X X (TIE DOWN)
9	T155572	SAFETY SIGN	1		X X (ACCUMULATOR)
10	T161674	LABEL	1		X X (HYDRAULIC RESERVOIR/ FUEL TANK CAPS)
11	T162050	LABEL	1		X X WARNING (BRAKE COVER REMOVAL)
12	T163658	LABEL	1		X X (TRANSMISSION OIL LEVEL)
13	T175744	LABEL	1		X X (ISO CERTIFICATION)
14	T186793	LABEL	2		X X (GRAY CIRCULAR COVER)
15	T187757	LABEL	2		X X WARNING (FAN)
16	T190212	LABEL	1		X X (OIL REQUIREMENTS)
17	T215268	LABEL	1		X X (BRAKE COVER) (HYDRAULIC OIL LEVEL)
18	T206088	LABEL	1	-XXXXXX	X X (PERIODIC MAINTENANCE)
	T225754	LABEL	1	XXXXXX-	X X (PERIODIC MAINTENANCE)
19	T206091	LABEL	2		X X DEERE
20	T206097	LABEL	2		X 870D
21	T206098	LABEL	2		X 872D
22	T206289	SAFETY SIGN	2		X X (CAUTION-PARK BRAKE)
23	T210871	SAFETY SIGN	1		X X (ARTICULATION LOCK)
24	T210933	SAFETY SIGN	2		X X (WARNING-ARTICULATION)
25	T182184	LABEL	1		X X JOHN DEERE (SUNSCREEN)
26	T206295	LABEL	1		X X (START/STOP PROCEDURE)
27	T205368	LABEL	1		X X (ROPS/FOPS CERTIFICATION)
28	T205367	LABEL	1		X X (SHIFT PATTERN)
29	T160152	LABEL	1		X X (CAUTION-SHUTDOWN)
30	T146097	LABEL	1		X X WARNING (SEAT BELT)
31	JD5938	REFLECTOR	2		X X (RED)
32	T218154	LABEL	1		X X CLEAN-OUT COVER
33	T226966	LABEL	1		X X DRIVE SHAFT

CLICK HERE TO **DOWNLOAD** THE COMPLETE MANUAL

- Thank you very much for reading the preview of the manual.
- You can download the complete manual from: www.heydownloads.com by clicking the link below



- Please note: If there is no response to CLICKING the link, please download this PDF first and then click on it.

CLICK HERE TO **DOWNLOAD** THE COMPLETE MANUAL

1369-5

MISCELLANEOUS VEHICLE 13

GREASES, OIL, FUELS AND COOLANTS 1369

FLUID SAMPLING FITTINGS
RACCORDS D'ECHANTILLONNAGE DES LIQUIDES
ADAPTADORES PARA MUESTREO DE FLUIDO

KEY	PART NO.	PART NAME	QTY.	SERIAL NO.	8 8 7 7 0 2 D D	REMARKS
1	19M8600	CAP SCREW	4		X X	M10 X 50
2	T147891	BUSHING	4		X X	
3	AT306111	FITTING	3		X X	(HYDRAULIC OIL, TRANSMISSION OIL, AND DIFFERENTIAL OIL)
4	R26448	O-RING	3		X X	
5	15H518	PIPE BUSHING	1		X X	
6	T213462	TEE FITTING	1		X X	
7	T77857	O-RING	1		X X	
9	AT306133	FITTING	2		X X	(COOLANT AND ENGINE OIL)
13	T210739	TEE FITTING	1		X X	
14	T77858	O-RING	1		X X	
15	U12547	O-RING	1		X X	
16	R63016	ADAPTER FITTING	1		X X	

1673-3

ELECTRICAL SYSTEMS 16
VEHICLE LIGHTING SYSTEM 1673

**SNOW LIGHT BRACKETS
SUPPORTS D'ECLAIRAGE POUR LA NEIGE
ESCUADRAS PARA LUCES DE NIEVE**

KEY	PART NO.	PART NAME	QTY.	SERIAL NO.	8 8 7 7 0 2 D D	REMARKS
1	14M7313	LOCK NUT	4		X X	M12
2	14M7277	NUT	4		X X	M20
3	19M3167	CAP SCREW	4		X X	M12 X 60
4	19M7949	CAP SCREW	4		X X	M12 X 100
5	24M7047	WASHER	8		X X	
6	T83426	WASHER	8		X X	
7	AT306612	BRACKET	1		X X	(RH)
8	AT306632	BRACKET	1		X X	(LH)
9	AT307780	WIRING HARNESS	2		X X	(FRONT WORKLIGHT EXTENSION)
10	M86690	GROMMET	2		X X	
11	28H3387	BUSHING	4		X X	

1673-13

ELECTRICAL SYSTEMS 16
VEHICLE LIGHTING SYSTEM 1673

FRONT DRIVING LIGHTS
FEUX DE CONDUITE AVANT
LUCES DE CONDUCCION DELANTERAS

KEY	PART NO.	PART NAME	QTY.	SERIAL NO.	8 8 7 7 0 2 D D	REMARKS
1	14M7275	NUT	4		X X	M12
2	19M7403	CAP SCREW	4		X X	M12 X 35
3	24M7240	WASHER	8		X X	
4	AT324486	FLOODLAMP	4		X X	(AT305932 NLA)
5	19M7550	CAP SCREW	1		X X	M10 X 35
6	AT135758	BULB	1		X X	
7	T80394	SCREW	4		X X	
8	AT315249	BRACKET	1		X X	
9	AT315250	BRACKET	1		X X	
10	24M7239	WASHER	4		X X	
11	14M7274	NUT	4		X X	M10

1674-9

ELECTRICAL SYSTEMS 16

WIRING HARNESS AND SWITCHES 1674

**CAB INTERIOR WIRING HARNESS
FAISCEAU DE FILS INTERIEURS DE CABINE
ARNES DE ALAMBRADO INTERIOR DE LA CABINA**

KEY	PART NO.	PART NAME	QTY.	SERIAL NO.	8 8 7 7 0 2 D D	REMARKS
1	19M7863	SCREW	4		X X	M6 X 25
2	19M7865	SCREW	2		X X	M8 X 16
3	19M7867	SCREW	4		X X	M8 X 25
4	19M7868	SCREW	2		X X	M8 X 30
5	19M9224	CAP SCREW	1		X X	M4 X 14, (SUB FOR 21M7250)
6	24M7087	WASHER	7		X X	
7	37M7095	SCREW	2		X X	
8	37M7218	SCREW	2		X X	
9	57M8035	NUT	4		X X	
10	AT317063	RELAY	1		X X	(IGNITION-100 AMP)
11	T200363	ANGLE	2		X X	
12	AT302638	MONITOR	1	-611295	X X	(CMU)
	AT335277	MONITOR	1	611296-	X X	(CMU)
13	AT304953	BRACKET	1		X X	
14	AT305385	CAB WIRING HARNESS	1		X	(INTERIOR HARNESS)
	AT305386	CAB WIRING HARNESS	1	-611295	X	(INTERIOR HARNESS HFWD)
	AT330328	CAB WIRING HARNESS	1	611296-	X	(INTERIOR HARNESS HFWD)
15	AT306180	RADIO SPEAKER WRG HARNESS	1		X X	
16	AT307810	CAB WIRING HARNESS	1		X X	(CAB POWER HARNESS)
17	ISOLATOR	1		X X	(CUT TO LENGTH) (MAKE FROM T63019)
18	GY20126	SOCKET OUTLET	2		X X	(12V)
19	L155075	PLATE	1		X X	
20	R44302	TIE BAND	10		X X	105MM 5MM
	H77698	TIE BAND	7		X X	360MM 5MM
21	T182909	CLIP	2		X X	
22	T185769	SCREW	1		X X	
23	T187394	ANCHOR	1		X X	
24	T196077	NUT	5		X X	
25	T196079	NUT	6		X X	
26	T209627	CLAMP	5		X X	(SUB FOR T205819)
27	T205829	COVER	1	-611295	X X	
	T227257	COVER	1	611296-	X X	
28	T206106	LABEL	AR		X X	(66.5 M)(2.62 IN)
	T186793	LABEL	AR		X X	(38.0 M)(1.50 IN)
29	T210672	BRACKET	1		X X	
30	T82791	SCREW	4		X X	
31	T82792	NUT	4		X X	
33	N198631	CLAMP	1		X	
34	57M7477	ELECTRICAL CONNECTOR ASSY	1		X X	(COVER FOR SERVICE EXPERT CONNECTOR)

1674-19B

ELECTRICAL SYSTEMS 16

WIRING HARNESS AND SWITCHES 1674

HFWD CONTROL UNIT AND SWITCHES (SN 611296-)
 UNITE DE COMMANDE DE TRACTION AVANT HYDROSTATIQUE ET INTERRUPTEURS (SN 611296-)
 INTERRUPTORES Y UNIDAD DE CONTROL TDH (SN 611296-)

KEY	PART NO.	PART NAME	QTY.	SERIAL NO.	8 8 7 7 0 2 D D	REMARKS
1	19M7799	SCREW	2		X	M8 X 45
2	AL58295	KNOB	2		X	
3	AT303859	ROTARY SWITCH	2		X	
4	AT304024	SWITCH	1		X	(INCHING MODE)
5	AT307844	BRACKET	1		X	
6	AT317920	VEHICLE CONTROLLER	1		X	
7	AT330783	SWITCH	1		X	
8	T225756	INSTRUMENT PANEL	1		X	
9	T225757	LABEL	1		X	(AGRESSIVENESS DIAL)

1674-29

ELECTRICAL SYSTEMS 16

WIRING HARNESS AND SWITCHES 1674

POWER CONVERTER (24 VOLT TO 12 VOLT)
CONVERTISSEUR D'ALIMENTATION (24 VOLTS A 12 VOLTS)
CONVERTIDOR DE ALIMENTACION (24 VOLTIOS A 12 VOLTIOS)

KEY	PART NO.	PART NAME	QTY.	SERIAL NO.	REMARKS
					8 8
					7 7
					0 2
					D D
1	19M9224	CAP SCREW	3		X X M4 X 14, (SUB FOR 21M7250)
2	24M7087	WASHER	3		X X
3	AT224894	CONVERTER	1		X X (10 AMP)
4	AT302797	CONVERTER	1		X X (25 AMP)

1740-5

FRAMES, CHASSIS OR SUPPORTING STRUCTURE 17

FRAME INSTALLATION 1740

**ENGINE FRAME
CHASSIS DE MOTEUR
BASTIDOR DEL MOTOR**

KEY	PART NO.	PART NAME	QTY.	SERIAL NO.	8 8 7 7 0 2 D D	REMARKS
1	AT305404	FRAME	1		X X	(CA)
2	14M7291	FLANGE NUT	1		X X	M16
3	T72414	BUSHING	10		X X	
4	T205546	BUSHING	1		X X	
5	T42843	BUSHING	1		X X	

1747-3

FRAMES, CHASSIS OR SUPPORTING STRUCTURE 17

BUMPERS,VEHICLE 1747

**PUSH BLOCK
BLOC DE POUSSEE
BLOQUE DE EMPUJE**

KEY	PART NO.	PART NAME	QTY.	SERIAL NO.	8 8 7 7 0 2 D D	REMARKS
1	AT164240	FRAME	1		X X	
2	19H3307	CAP SCREW	10		X X	3/4" X 6"
3	T83426	WASHER	20		X X	
4	14H1058	NUT	10		X X	
5	T10510	WASHER	10		X X	
6	AT158292	KIT	1		X X	(WHOLE GOODS) (FRONT PUSH BLOCK KIT)

1810-7

OPERATOR'S STATION 18
OPERATOR ENCLOSURE 1810

REAR WINDSHIELD WIPER
ESSUIE-GLACE ARRIERE
LIMPIADOR DE PARABRISAS TRASERO

KEY	PART NO.	PART NAME	QTY.	SERIAL NO.	8 8 7 7 0 2 D D	REMARKS
1	19M7775	SCREW	1		X X	M6 X 16
3	AL153661	WIPER BLADE	1		X X	
	AL153660	WIPER BLADE	1		X X	(A)
4	AT116970	ELBOW FITTING	1		X X	(B)
5	AT173192	PUMP	1		X X	
6	AT304630	WIPER MOTOR	1	-604987	X X	(A) (B)
	AT329095	WIPER MOTOR	1	604988-	X X	(A) (B)
7	AT304633	WIPER ARM	1		X X	(B)
	AT304634	WIPER ARM	1		X X	(B)
8	BULK HOSE	1		X X	(CUT TO LENGTH) (MAKE FROM R120653)
9	T182909	CLIP	1		X X	

(A) FULL HEIGHT
(A) HAUTEUR TOTALE
(A) ALTURA TOTAL

(B) LOW PROFILE
(B) BASSE SECTION
(B) BAJO PERFIL

1810-15

OPERATOR'S STATION 18
OPERATOR ENCLOSURE 1810

OPENABLE WINDOWS (LOWER FRONT)
GLACES OUVRABLES (PARTIE INFERIEURE AVANT)
VENTANAS QUE SE PUEDEN ABRIR (DELANTERO INFERIOR)

KEY	PART NO.	PART NAME	QTY.	SERIAL NO.	8 8 7 7 0 2 D D	REMARKS
1	AT304098	WINDOW	1		X X	LH LOWER OPENABLE-COMPLETE
2	24H1288	WASHER	1		X X	
3	AT196522	LATCH	1		X X	
4	A48970	DUAL LOCK FASTENER	2		X X	
5	T119153	LATCH	1		X X	
6	AT315903	GAS OPERATED CYLINDER	1		X X	
7	AT315906	HINGE	1		X X	
8	AT315909	WINDOW	1		X X	
9	T188806	SCREW	1		X X	
10	T211943	ISOLATOR	1		X X	
11	T213917	BUSHING	4		X X	
12	T76833	WASHER	1		X X	
13	AT304099	WINDOW	1		X X	RH LOWER OPENABLE-COMPLETE
14	AT315910	WINDOW	1		X X	

1810-25

OPERATOR'S STATION 18
OPERATOR ENCLOSURE 1810

**CAB ROOF
TOIT DE CABINE
TECHO DE CABINA**

KEY	PART NO.	PART NAME	QTY.	SERIAL NO.	8 8 7 7 0 2 D D	REMARKS
1	14M7296	FLANGE NUT	4		X X	M10
2	19M7805	SCREW	4		X X	M10 X 45
3	19M7807	SCREW	7		X X	M10 X 60
4	19M7810	SCREW	1		X X	M10 X 80
5	19M7866	SCREW	6		X X	M8 X 20
6	24M7296	WASHER	4		X X	
7	H140461	BUSHING	11		X X	(SUB FOR 28H3436)
8	AT317562	PLATE	1		X X	
9	H173411	NUT	8		X X	
10	T185664	SEALING WASHER	3		X X	
11	T203896	ROOF	1		X X	
12	T204319	PLATE	1		X X	
13	T205066	ISOLATOR	1		X X	
14	T205068	SEALING WASHER	5		X X	
15	24H1334	WASHER	4			

1810-35

OPERATOR'S STATION 18
OPERATOR ENCLOSURE 1810

LEFT SIDE CAB DOOR
PORTIERE DE CABINE LATERALE GAUCHE
PUERTA DE LA CABINA LADO IZQUIERDO

KEY	PART NO.	PART NAME	QTY.	SERIAL NO.	REMARKS
					8 8
					7 7
					0 2
					D D
1	14H786	NUT	2		X X 1/4"
2	14M7165	LOCK NUT	4		X X M6
3	14M7298	FLANGE NUT	2		X X M8
4	19M7933	CAP SCREW	12		X X M6 X 25
5	21M7289	SCREW	4		X X M6 X 40
6	21M7326	SCREW	4		X X M6 X 20
7	24H1646	WASHER	4		X X 17/64" X 3/4" X 0.060"
8	24M7293	WASHER	12		X X 6.500 X 13 X 1.600 MM
9	37M7059	SCREW	4		X X M5 X 12
10	AT306181	HANDLE	2		X X
11	AT317981	BELLCRANK	2		X X
12	AT317982	LATCH	1		X X
14	AT317984	LATCH	1		X X
16	H110232	WASHER	2		X X
17	T160017	SPACER	4		X X
18	T160020	PIN	8		X X
19	T175675	WASHER	8		X X
21	T202654	WINDOWPANE	1		X X (LH LOW PROFILE)
	T202656	WINDOWPANE	1		X X (LH FULL HEIGHT)
22	T204599	GASKET	2		X X
23	T205901	WASHER	2		X X
24	T205902	SPACER	2		X X
25	T210101	YOKE	2		X X
26	T210102	PIN FASTENER	2		X X
27	T210103	RING	2		X X
28	T210106	SPRING	2		X X
30	T213167	LEVER	1		X X
31	T213443	ROD	2		X X
32	T213444	CLEVIS	2		X X
33	T213445	GROMMET	2		X X
34	L152397	GROMMET	6		X X (SUB FOR T213447)
35	T213448	STRAP	2		X X
36	T213450	ROD	2		X X (LOW PROFILE)
	T213449	ROD	2		X X (FULL HEIGHT)
37	T213451	ROD	2		X X
38	T213452	COVER	2		X X
39	14M7274	NUT	2		X X M10
40	14M7275	NUT	2		X X M12
41	19M7402	CAP SCREW	8		X X M10 X 25
42	24M7296	WASHER	10		X X 10.500 X 30 X 2.500 MM
44	AT303745	DOOR	1		X X (LH LOW PROFILE)
	AT303749	DOOR	1		X X (LH FULL HEIGHT)
45	AT307096	STRIKER	2		X X
46	T201880	STUD	2		X X
47	AT322428	ISOLATOR	2		X X
48	AT317979	BUMPER	2		X X
50	R70663	WASHER	2		X X
51	T196079	NUT	4		X X
52	T205499	GUARD	2		X X

1810-41D

OPERATOR'S STATION 18
OPERATOR ENCLOSURE 1810

CAB CONTROL LEVER CONSOLE (SN 609202-)
CONSOLE DE LEVIERS DE COMMANDE DE LA CABINE (SN 609202-)
CONSOLA DE PALANCAS DE CONTROL DE CABINA (SN 609202-)

KEY	PART NO.	PART NAME	QTY.	SERIAL NO.	6 6 7 7 0 2 D D	REMARKS
26	T224405	ADAPTER FITTING	1		X X	
27	T224404	LEVER	1		X X	
29	M145875	EXTENSION SPRING	2		X X	
30	R69166	PIN	1		X X	
32	T203569	SHAFT	1		X X	
33	T203576	SPACER	5		X X	
34	T203871	SPACER	1		X X	
35	ISOLATOR	1		X X	(CTL, 7.5"(190 MM)) (MAKE FROM T58056)
36	T81012	CAP	1		X X	
37	N31296	PIN FASTENER	1		X X	
38	ISOLATOR	1		X X	(CTL, 3.471'(1.06 M)) (MAKE FROM T59938)
39	H173411	NUT	4		X X	
40	M84972	NUT	4		X X	
41	T133674	SELF-LOCKING SCREW	4		X X	
42	T134895	SELF-LOCKING SCREW	4		X X	
43	T185769	SCREW	4		X X	
44	T196078	NUT	4		X X	
46	T204301	COVER	1		X X	
47	AT330487	GAS OPERATED CYLINDER	1		X X	
48	11M7015	COTTER PIN	1		X X	3.200 X 25 MM
49	19M7865	SCREW	2		X X	M8 X 16
50	24H1296	WASHER	2		X X	11/32" X 1-3/8" X 0.134"
51	AT330485	BRACKET	1		X X	RH
52	AT330486	BRACKET	1		X X	LH
53	19M7784	SCREW	4		X X	M10 X 20
88	CONSOLE	1		X X	LH, (COMPONENTS LISTED ON FOLLOWING PAGES)
89	CONSOLE	1		X X	RH, (COMPONENTS LISTED ON FOLLOWING PAGES)
90	AT330484	CONSOLE	1	-611295	X X	
	AT335674	CONSOLE	1	611296-	X X	

THIS PARTS LISTING IS CONTINUED

1821-7

OPERATOR'S STATION 18
SEAT AND SEAT BELTS 1821

**MECHANICAL SUSPENSION SEAT
SIEGE A SUSPENSION MECANIQUE
ASIENTO CON SUSPENSION MECANICA**

KEY	PART NO.	PART NAME	QTY.	SERIAL NO.	8 8 7 7 0 2 D D	REMARKS
1	14H785	NUT	4		X X	5/16"
2	19H3569	CAP SCREW	2		X X	
3	AT308199	SEAT BELT	1		X X	
4	T105740	WASHER	4		X X	
5	T163962	COVER	1		X X	
6	AT195440	SEAT	1		X X	GRAY CLOTH
7	AT195441	ARMREST KIT	1		X X	(R.H.)
	AT315715	PAD	1		X X	
8	AT195442	ARMREST KIT	1		X X	(L.H.)
	AT315761	PAD	1		X X	
9	AT209020	KIT	1		X X	SLIDE PUCK KIT
10	AT209021	KIT	1		X X	SLIDE SPRING KIT
11	R72655	SNAP RING	4		X X	
12	T163334	SPRING	1		X X	
13	T163335	SPRING	1		X X	
14	T163336	TORSION SPRING	1		X X	
15	AT209022	HOSE KIT	1		X X	SLIDE CONTROL KIT
17	AT209024	KIT	1		X X	LUMBAR KNOB KIT
18	34H262	SPRING PIN	1		X X	
19	AT209025	KIT	1		X X	RECLINER KNOB KIT
20	37H121	SCREW	1		X X	
21	AT209026	KIT	1		X X	LUMBAR SERVICE KIT
22	34H387	SPRING PIN	2		X X	
23	AT209225	KIT	1		X X	RECLINER SERVICE KIT (INCLUDES RECLINER KNOB KIT AND TORSION SPRING)
24	M453T	LOCK NUT	3		X X	
25	AT308795	CUSHION	1		X X	(SUB FOR AT221019) GRAY CLOTH
26	AT308796	CUSHION	1		X X	(SUB FOR AT221020) GRAY CLOTH
27	T171686	CLIP	4		X X	
28	AT308797	CUSHION	1		X X	(SUB FOR AT221021) GRAY CLOTH
29	N119177	GROMMET	1		X X	(NOT ILLUSTRATED)
30	AT180126	SEAT SUSPENSION	1		X X	(MECHANICAL)(COMPONENTS ON SEPARATE PAGE)
31	CONTROL	1		X X	
32	AT303518	PEDESTAL	1	-XXXXXX	X X	
	AT340135	PEDESTAL	1	XXXXXX-	X X	
	AT340136	PEDESTAL	1	XXXXXX-	X X	USE WITH AIR RIDE SUSPENSION
33	H173411	NUT	4		X X	
34	19M7805	SCREW	4		X X	M10 X 45
35	AT280583	PAN	1		X X	
36	AT181392	KIT	2		X X	
37	14M7296	FLANGE NUT	2		X X	M10
38	19M7804	SCREW	2		X X	M10 X 40
39	24H1887	WASHER	4		X X	
40	28H3425	SPACER	2		X X	

1830-9

OPERATOR'S STATION 18

HEATING AND AIR CONDITIONING 1830

**HEATER AND AIR CONDITIONER DUCTS
CONDUITS DE CHAUFFAGE ET CLIMATISEUR
CONDUCTOS DEL CALEFACTOR Y ACONDICIONADOR DE AIRE**

KEY	PART NO.	PART NAME	QTY.	SERIAL NO.	8 8 7 7 0 2 D D	REMARKS
1	14M7298	FLANGE NUT	1		X X	M8
2	19M7774	SCREW	2		X X	M6 X 12
3	19M7775	SCREW	4		X X	M6 X 16
4	19M7799	SCREW	1		X X	M8 X 45
5	19M7867	SCREW	1		X X	M8 X 25
6	19M7897	SCREW	2		X X	M8 X 35
8	19M8403	CAP SCREW	1		X X	M8 X 75
9	T196079	NUT	1		X X	
10	24H1296	WASHER	2		X X	
11	24M7100	WASHER	3		X X	
14	28H3450	SPACER	2		X X	
15	37M7333	SCREW	32		X X	
16	AR62936	CLAMP	4		X X	
19	AT227668	LOUVER	10		X X	
20	AT227669	LOUVER	3		X X	
22	AT308017	AIR DUCT	1		X X	
23	AT305524	GATE	1		X X	
24	AT305869	DOOR	1		X X	
25	T184345	RIVET	3		X X	
32	AT308314	HOSE SUPPORT	1		X X	
33	AT308935	ISOLATOR	1		X X	
34	AT309837	BRACKET	1		X X	
39	N189220	TIE BAND	2		X X	
41	21M7292	SCREW	1		X X	M6 X 16
42	24H1646	WASHER	3		X X	(SUB FOR T134530)
46	T196079	NUT	9		X X	
47	T201561	AIR DUCT	1		X X	
48	T201562	AIR DUCT	1		X X	
49	T201566	AIR DUCT	1		X X	
50	T201568	AIR DUCT	1		X X	
54	T202743	ISOLATOR	1		X X	
55	T202744	ISOLATOR	1		X X	
60	T203560	AIR DUCT	1		X X	
66	T206718	PLATE	1		X X	
69	T206985	SEAL	1		X X	
70	T215319	CLAMP	1		X X	

1830-19

OPERATOR'S STATION 18

HEATING AND AIR CONDITIONING 1830

**HEATER AND AIR CONDITIONER LINES AND CONTROLS
CONDUITES ET COMMANDES DE CHAUFFAGE ET CLIMATISATION
LINEAS DE ACONDICIONADOR DE AIRE Y CALEFACTOR Y CONTROLES**

KEY	PART NO.	PART NAME	QTY.	SERIAL NO.	8 8 7 7 0 2 D D	REMARKS
1	14M7298	FLANGE NUT	1		X X	M8
2	19M7774	SCREW	2		X X	M6 X 12
3	19M8403	CAP SCREW	2		X X	M8 X 75
4	19M9224	CAP SCREW	2		X X	M4 X 14, (SUB FOR 21M7250)
5	24M7087	WASHER	2		X X	5.500 X 10 X 1 MM
6	24M7298	WASHER	4		X X	8.400 X 25 X 2 MM
7	37M7131	SCREW	1		X X	M6 X 20
8	AL76568	KNOB	3		X X	
9	AT303467	LINE	1		X X	
10	AT303469	LINE	1		X X	
11	AT303865	TOGGLE/ROCKER SWITCH	1		X X	(A/C AND HEATER ON/OFF)
12	AT305547	AC COMPRESSOR WRG HARNESS	1		X X	
13	AT306056	SWITCH	1		X X	
14	AT310795	PUSH PULL CABLE	1		X X	
15	AT310810	PUSH PULL CABLE	1		X X	
16	WEATHERSTRIP	4		X X	(MAKE FROM T58056) (CUT TO LENGTH)
17	E46066	NUT	2		X X	
18	R10093	O-RING	2		X X	
19	R117721	CLAMP	2	-XXXXXX	X X	
	R117721	CLAMP	5	XXXXXX-	X X	
20	R125223	PLATE	1		X X	
21	R192109	PUSH NUT	1		X X	
22	R31654	CLAMP	1		X X	
23	RE157329	SWITCH	1		X X	
24	RE43497	SWITCH	1		X X	
25	RE46742	CONTROL	1		X X	(A/C AND HEAT TEMPERATURE)
	12H292	LOCK WASHER	1		X X	1/2"
	14H934	NUT	1		X X	7/16"
26	RE46743	CONTROL	1		X X	(FAN SPEED)
27	24H1646	WASHER	4		X X	17/64" X 3/4" X 0.060", (SUB FOR T134530)
28	21M7310	SCREW	4		X X	M6 X 25
29	T143169	O-RING	1		X X	
30	T160492	ELEC. CONNECTOR ACCESSORY	2		X X	
31	T166297	GROMMET	1		X X	
32	T184924	HOSE CLAMP	2		X X	
33	T196079	NUT	2		X X	
34	T202034	HOSE	1		X X	
35	T202035	HOSE	1		X X	
36	T202800	INSTRUMENT PANEL	1		X X	
37	T204124	PAD	1		X X	
38	T204274	ARM	1		X X	
39	T205370	LABEL	1		X X	
40	12H325	LOCK WASHER	2		X X	(NLA)
41	14H934	NUT	2		X X	(NLA)
42	L57881	CLIP	1		X X	
43	24M7100	WASHER	3		X X	6.600 X 22 X 2 MM
44	37M7104	SCREW	3		X X	M6 X 30
45	19M8553	SCREW	1		X X	M6 X 16
46	R203687	NUT	2		X X	
47	T202742	SEAL	1		X X	
48	E90729	FITTING	1	XXXXXX-	X X	
49	BULK HOSE	1	XXXXXX-	X X	(MAKE FROM TY22328) (CUT TO LENGTH)
50	R115893	TEE FITTING	1	XXXXXX-	X X	
51	R99254	HOSE	1	XXXXXX-	X X	
52	AR21837	CLAMP	1	XXXXXX-	X X	
53	BULK HOSE	1	XXXXXX-	X X	(MAKE FROM TY22328) (CUT TO LENGTH)
54	AT162863	RELAY	2		X X	

1927-3

SHEET METAL AND STYLING 19

FENDERS 1927

FRONT FENDERS (HFWD)
AILES AVANT (HFWD)
GUARDABARROS DELANTERO (HFWD)

KEY	PART NO.	PART NAME	QTY.	SERIAL NO.	8 8 7 7 0 2 D D	REMARKS
1	14M7299	FLANGE NUT	7		X	M12
2	19M7813	SCREW	8		X	M12 X 45
3	19M7866	SCREW	12		X	M8 X 20
4	19M8112	SCREW	4		X	
5	AT316709	BRACKET	1		X	
6	AT316710	BRACKET	1		X	
7	R214344	CLAMP	6		X	(FENDER SUPPORT)
8	RE223406	FENDER	1		X	(L.H.) (NARROW)
	RE223408	FENDER	1		X	(L.H.) (WIDE) (ORDER WITH 550 TIRE)
9	RE223407	FENDER	1		X	(R.H.) (NARROW)
	RE223409	FENDER	1		X	(R.H.) (WIDE) (ORDER WITH 550 TIRE)

2002-3

SAFETY, CONVENIENCE AND MISCELLANEOUS 20

MIRROR 2002

INTERIOR REARVIEW MIRROR RETROVISEUR L'INTERIEUR RETROVISOR DEL INTERIOR

KEY	PART NO.	PART NAME	QTY.	SERIAL NO.	8 8 7 7 0 2 D D	REMARKS
1	14M7298	FLANGE NUT	2		X X	M8
2	19M7897	SCREW	2		X X	M8 X 35
3	24M7239	WASHER	1		X X	
4	24M7298	WASHER	2		X X	
5	28H3450	SPACER	2		X X	
6	AT157226	REAR VIEW MIRROR	1		X X	
7	T11234	LOCK NUT	2		X X	
8	T145360	PLATE	1		X X	

2005-3

SAFETY, CONVENIENCE AND MISCELLANEOUS 20

TOOLBOX 2005

**TOOL BOX
BOITE A OUTILS
CAJA DE HERRAMIENTAS**

KEY	PART NO.	PART NAME	QTY.	SERIAL NO.	8 8	REMARKS
					7 7	
					0 2	
					D D	
1	99M7039	HOOK	1		X X	
2	AT22070	TOOLBOX	1		X X	
3	AT22073	HOLDER	1		X X	
4	T23027	PIN	1		X X	

2160-5

MAIN HYDRAULIC SYSTEM 21

VEHICLE HYDRAULICS 2160

**MAIN MANIFOLD VALVE MOUNTING BRACKET
SUPPORT DE MONTAGE DE DISTRIBUTEUR PRINCIPAL
ESCUADRA DE MONTAJE DE VALVULA DE COLECTOR PRINCIPAL**

KEY	PART NO.	PART NAME	QTY.	SERIAL NO.	8 8	REMARKS
					7 7	
					0 2	
					D D	
1	19M7402	CAP SCREW	5		X X	M10 X 25
2	24M7239	WASHER	5		X X	
3	T205720	PLATE	1		X X	

2160-19

MAIN HYDRAULIC SYSTEM 21

VEHICLE HYDRAULICS 2160

BLADE TILT, ARTICULATION, CIRCLE SIDE SHIFT AND WHEEL LEAN VALVE SECTIONS
SECTIONS DISTRIB. INCLIN. DE LAME, ARTICUL., D'PLACT. LAT'RAL DU PLATEAU ET INCLIN. DES ROUES
SECCIONES DE VALV. DE INCLINACION DE HOJA, ARTIC., DESPL. LATERAL CIRC. E INCLINACION DE RUEDAS

KEY	PART NO.	PART NAME	QTY.	SERIAL NO.	8 8 7 7 0 2 D D	REMARKS
1	19H2924	SCREW	2		X X	1/4" X 3/4"
2	AT337941	CHECK VALVE	2		X X	(SUB FOR AT317328)
3	R111238	SPRING	1		X X	
4	R76578	O-RING	3		X X	
5	R95493	DISK	1		X X	
6	T118712	SCREW	2		X X	
7	T190767	SPRING	1		X X	
8	T213022	O-RING	2		X X	
9	T213023	O-RING	2		X X	
10	T213025	O-RING	1		X X	
11	T213034	VALVE SPOOL	2		X X	
12	T213033	HOUSING	1		X X	
13	AT317305	PART NOT CODED	1		X X	(USE WITH BLADE TILT VALVE SECTION)
	AT317304	PART NOT CODED	1		X X	(USE WITH ARTICULATION, CIRCLE SIDE SHIFT AND WHEEL LEAN VALVE SECTIONS)
14	AT317315	CONTROL VALVE	1		X X	(BLADE TILT VALVE SECTION)
	AT317316	CONTROL VALVE	1		X X	(ARTICULATION VALVE SECTION)
	AT317317	CONTROL VALVE	1		X X	(CIRCLE SIDE SHIFT VALVE SECTION)
	AT317318	CONTROL VALVE	1		X X	(WHEEL LEAN VALVE SECTION)

2160-27B

MAIN HYDRAULIC SYSTEM 21

VEHICLE HYDRAULICS 2160

RIGHT MAIN HYDRAULIC CONTROL VALVE INLET AND OUTLET SECTIONS (SN XXXXXX-)
SECTIONS D'ENTREE ET DE SORTIE DE DISTRIBUTEUR HYDRAULIQUE PRINCIPAL DROIT (SN XXXXXX-)
SECCIONES ENTRADA Y SALIDA DE VALVULA DE CONTROL HIDRAULICO PRINCIPAL DERECHA (SN XXXXXX-)

KEY	PART NO.	PART NAME	QTY.	SERIAL NO.	8 8 7 7 0 2 D D	REMARKS
1	AT327176	HOUSING	1		X X	
2	R76578	O-RING	4		X X	
3	T213025	O-RING	2		X X	
6	R95493	DISK	2		X X	
7	AT317329	HOUSING	1		X X	
8	AT317331	HOUSING	1		X X	
9	38H1160	ADAPTER FITTING	3		X X	
10	T77613	O-RING	3		X X	
11	R26448	O-RING	3		X X	

2160-37

MAIN HYDRAULIC SYSTEM 21

VEHICLE HYDRAULICS 2160

**ADDITIONAL HYDRAULIC CONTROL VALVE KIT
KIT DE DISTRIBUTEUR HYDRAULIQUE SUPPLEMENTAIRE
JUEGO DE VALVULA DE CONTROL HIDRAULICO ADICIONAL**

KEY	PART NO.	PART NAME	QTY.	SERIAL NO.	REMARKS
					8 8
					7 7
					0 2
					D D
1	AT317287	KIT	1		X X (RIGHT 5TH FUNCTION CONTROL VALVE KIT)
	AT317288	KIT	1		X X (LEFT 5TH FUNCTION CONTROL VALVE KIT)
	AT317289	KIT	1		X X (RIGHT 6TH FUNCTION CONTROL VALVE KIT)
	AT317290	KIT	1		X X (LEFT 6TH FUNCTION CONTROL VALVE KIT)
	AT317291	KIT	1		X X (RIGHT 7TH FUNCTION CONTROL VALVE KIT)
	AT317293	KIT	1		X X (LEFT 7TH FUNCTION CONTROL VALVE KIT)

2160-45

MAIN HYDRAULIC SYSTEM 21

VEHICLE HYDRAULICS 2160

**MAIN CONTROL VALVE MOUNTING BRACKETS
SUPPORTS DE MONTAGE DE DISTRIBUTEUR PRINCIPAL
ESCUADRAS DE MONTAJE DE VALVULA DE CONTROL PRINCIPAL**

KEY	PART NO.	PART NAME	QTY.	SERIAL NO.	8 8	REMARKS
					7 7	
					0 2	
					D D	
1	19M7785	SCREW	6		X X	M10 X 25
2	19M7800	SCREW	6		X X	M8 X 50
3	24M7024	WASHER	12		X X	
4	AT303129	BRACKET	1		X X	
5	AT303678	BRACKET	1		X X	
6	T196080	NUT	6		X X	
7	U42208	ISOLATOR	6		X X	

2163-7B

MAIN HYDRAULIC SYSTEM 21
HYDRAULIC LINES AND HOSES 2163

MAIN HYDRAULIC PLUMBING (870D)
CONDUITES HYDRAULIQUES PRINCIPALES (870D)
TUBERIA HIDRAULICA PRINCIPAL (870D)

KEY	PART NO.	PART NAME	QTY.	SERIAL NO.	8 8 7 7 0 2 D D	REMARKS
41	AT304147	HYDRAULIC HOSE - FABRICATE	1		X	
42	AT304888	HYDRAULIC HOSE - FABRICATE	1		X	
43	AT305277	HYDRAULIC HOSE - FABRICATE	1		X	
44	HYDRAULIC HOSE - FABRICATE	1		X	(SUB AT330284 AND 38H1007) (AT305916 NA)
	AT330284	HYDRAULIC HOSE - FABRICATE	1		X	
45	AT307299	HYDRAULIC HOSE - FABRICATE	1		X	
46	AT307300	HYDRAULIC HOSE - FABRICATE	1		X	
47	AT308909	HYDRAULIC HOSE - FABRICATE	1	-599560	X	
48	AT309711	HOSE SUPPORT	2		X	
49	AT311425	HYDRAULIC HOSE	1		X	
50	AT37477	HOSE CLAMP	1		X	
51	RE52702	CLAMP	1		X	
52	BULK HOSE	1		X	(MAKE FROM T78497) (CUT TO LENGTH)
53	R27175	DRAIN PLUG	3		X	
54	R27474	DRAIN PLUG	1		X	
55	R36636	FITTING PLUG	1	-599560	X	
	R36636	FITTING PLUG	2	599561-	X	
56	R77175	COVER	1		X	
57	RE60700	DIAGNOSTIC COUPLING	1		X	
58	T158298	LINE	1		X	
59	AH77714	CLIP	1		X	
60	T164030	CLAMP	2		X	
61	T185826	CLAMP	2		X	
62	T210520	SUCTION HOSE	1		X	(SUB FOR T187526)
63	T190892	HOSE FITTING	1		X	
64	H134114	SPACER	1		X	
65	38H1160	ADAPTER FITTING	1	XXXXXX-	X	
66	38H1309	ADAPTER FITTING	1	XXXXXX-	X	
67	R26448	O-RING	2	XXXXXX-	X	
68	T77613	O-RING	2	XXXXXX-	X	
69	AT326509	HOSE	1	XXXXXX-	X	

3401-3

GRADING DEVICE 34

BLADES 3401

**MOLDBOARDS AND CUTTING EDGES (FIVE HOLE END BIT)
 VERSOIRS ET TRANCHANTS (MECHE CINQ TROUS)
 VERTEDERAS Y BORDES CORTANTES (PUNTA CON 5 AGUJEROS)**

KEY	PART NO.	PART NAME	QTY.	SERIAL NO.	8 8 7 7 0 2 D D	REMARKS
1	T66703	DURA-MAX TM CUTTING EDGE	AR		X X	DURA-MAX THROUGH HARDENED DOUBLE BEVEL EDGE, 19 MM X 203 MM X 1 829 MM (3/4" X 8" X 6')
	T66704	DURA-MAX TM CUTTING EDGE	AR		X X	DURA-MAX THROUGH HARDENED DOUBLE BEVEL EDGE, 19 MM X 203 MM X 2 134 MM (3/4" X 8" X 7')
	T74773	DURA-MAX TM CUTTING EDGE	AR		X X	DURA-MAX THROUGH HARDENED DOUBLE BEVEL EDGE, 19 MM X 203 MM X 2 438 MM (3/4" X 8" X 8')
2	T202876	CUTTING EDGE	2		X X	(USED ON 16FT MOLDBOARD) (REQUIRES 3/4" HARDWARE)
	T218922	CUTTING EDGE	2		X X	
3	AT303296	MOLDBOARD	1		X X	25 MM X 3963 MM (1" X 13' X 27")
	AT303301	MOLDBOARD	1		X X	25MM X4268MM (1" X 14' X 27")
	AT310278	MOLDBOARD	1		X X	25 MM X 3648 MM (1" X 12' X 27")
	AT326995	MOLDBOARD	1		X X	(16')
4	09H1759	BOLT	40		X X	5/8" X 2-1/4", (WITH 14' MOLDBOARD)
	09H1759	BOLT	38		X X	5/8" X 2-1/4", (WITH 13' MOLDBOARD)
	09H1759	BOLT	36		X X	5/8" X 2-1/4"
	T70286	BOLT	44		X X	3/4" X 2-1/2", (USE WITH 16' MOLDBOARD)
5	14H800	NUT	40		X X	5/8", (WITH 14" MOLDBOARD)
	14H800	NUT	38		X X	5/8", (WITH 13' MOLDBOARD)
	14H800	NUT	36		X X	5/8"
	14H1092	NUT	44		X X	3/4", (USE WITH 16' MOLDBOARD)

3440-5

GRADING DEVICE 34

GRADING DEVICE FRAMES 3440

**BLADE TILT FRAME
BATI D'INCLINAISON DE LAME
BASTIDOR DE INCLINACION DE HOJA**

KEY	PART NO.	PART NAME	QTY.	SERIAL NO.	8 8 7 7 0 2 D D	REMARKS
1	19H3255	CAP SCREW	6		X X	7/8" X 4"
2	AT226520	FRAME	1		X X	(BLADE TILT FRAME)
3	T143929	BUSHING	4		X X	
4	T124382	STRAP	6		X X	
5	T212793	KIT	2		X X	
6	T19572	WASHER	6		X X	
7	T158027	STRAP	2		X X	
8	T183474	INSERT	8		X X	(EXTENDED LIFE INSERTS)(IF REPLACING T185579 STD. INSERTS, ALSO ORDER 24 19M7572)
	T185579	INSERT	8		X X	(STANDARD INSERTS)
9	19M7572	CAP SCREW	24		X X	M10 X 45, (USE WITH EXTENDED LIFE INSERTS)
	19M7662	CAP SCREW	24		X X	M10 X 30, (USE WITH STANDARD INSERTS)
10	24M7239	WASHER	24		X X	

3460-3

GRADING DEVICE 34
HYDRAULIC SYSTEM 3460

ROTARY MANIFOLD
COLLECTEUR ROTATIF
COLECTOR GIRATORIO

KEY	PART NO.	PART NAME	QTY.	SERIAL NO.	8 8	REMARKS
					7 7	
					0 2	
					D D	
1	19H3771	SCREW	4		X X	3/8" X 1"
2	24M7296	WASHER	4		X X	
3	AT169948	MANIFOLD	1		X X	(ROTARY)
	AT169949	SEAL KIT	1		X X	
4	12H301	LOCK WASHER	2		X X	1/2"
5	19H2676	CAP SCREW	2		X X	3/8" X 1"

3460-13

GRADING DEVICE 34
HYDRAULIC SYSTEM 3460

**BLADE TILT CYLINDER
VERIN D'INCLINAISON DE LAME
CILINDRO DE INCLINACION DE HOJA**

KEY	PART NO.	PART NAME	QTY.	SERIAL NO.	8 8 7 7 0 2 D D	REMARKS
1	AH205062	PISTON	1		X X	
2	AH146557	SEAL	1		X X	
3	AH146561	SEAL	1		X X	
4	H208995	HYDR. CYLINDER ROD GUIDE	1		X X	
5	F950R	O-RING	1		X X	
6	H152203	SEAL	1		X X	
7	H180080	SNAP RING	1		X X	
8	H180094	SNAP RING	1		X X	
9	H208987	WEAR RING	1		X X	
10	O-RING	1		X X	(SUB AH212102)
11	R81862	BACK-UP RING	1		X X	
12	AH212812	HYDRAULIC CYLINDER BARREL	1		X X	
13	R81968	BUSHING	1		X X	
14	H145175	WASHER	1		X X	
15	RE28364	HYDRAULIC CYLINDER ROD	1		X X	
16	R82960	BUSHING	1		X X	
17	19M8353	CAP SCREW	1		X X	M30 X 80
18	H168248	WASHER	1		X X	
19	H168249	WASHER	1		X X	
20	AH210484	HYDRAULIC CYLINDER KIT	1		X X	(ROD SEAL KIT)
21	AH212102	HYDRAULIC CYLINDER KIT	1		X X	(BORE SEAL KIT)
22	H154856	WEAR RING	1		X X	(WIPER INSTALLATION TOOL) (NOT ILLUSTRATED)
23	AH212811	HYDRAULIC CYLINDER	1		X X	(BLADE TILT)
24	40M7166	SNAP RING	2		X X	
25	40M7180	SNAP RING	2		X X	
26	JD7798	LUBRICATION FITTING	1		X X	
27	JD7799	LUBRICATION FITTING	1		X X	
28	T151953	PIN	1		X X	
29	T77067	PIN FASTENER	1		X X	

3460-23

GRADING DEVICE 34

HYDRAULIC SYSTEM 3460

**BLADE TILT AND SLIDE CYLINDER HYDRAULIC HOSES
FLEXIBLES DE VERINS D'INCLINAISON ET DE FLOTTEMENT DE LAME
MANGUERAS DE CILINDRO DE INCLINACION Y DESLIZAMIENTO DE HOJA**

KEY	PART NO.	PART NAME	QTY.	SERIAL NO.	8 8 7 7 0 2 D D	REMARKS
1	19H3136	CAP SCREW	1		X X	1/2" X 5-3/4"
2	24M7240	WASHER	2		X X	
3	38H1004	ELBOW FITTING	2		X X	
4	R26448	O-RING	8		X X	
5	T77613	O-RING	13		X X	
6	38H1094	ELBOW FITTING	1		X X	
7	38H1160	ADAPTER FITTING	4		X X	
8	38H1161	ADAPTER FITTING	2		X X	
9	R26375	O-RING	8		X X	
10	T77857	O-RING	4		X X	
11	38H1171	ADAPTER FITTING	4		X X	
12	38H1173	ADAPTER FITTING	2		X X	
13	AT166150	HYDRAULIC HOSE - FABRICATE	2		X X	
14	AT179875	HYDRAULIC HOSE - FABRICATE	1		X X	
15	AT304373	GUARD	1		X X	
16	AT306446	HYDRAULIC HOSE - FABRICATE	2		X X	
17	AT307845	HYDRAULIC HOSE - FABRICATE	2		X X	
18	AT309961	HYDRAULIC HOSE - FABRICATE	1		X X	
19	K40014	LOCK NUT	1		X X	
20	M40509	SPACER	2		X X	
21	T151806	U-BOLT	1		X X	
22	T16464	LOCK NUT	2		X X	
23	T82612	ADAPTER FITTING	2		X X	

4240-5

GROUND CONDITIONING TOOL 42

FRAME 4240

**SCARIFIER CYLINDER
VERIN DE SCARIFICATEUR
CILINDRO DE ESCARIFICADOR**

KEY	PART NO.	PART NAME	QTY.	SERIAL NO.	8 8 7 7 0 2 D D	REMARKS
1	AH168884	PISTON	1		X X	
2	AH146558	SEAL	1		X X	
3	AH146562	SEAL	1		X X	
4	H152204	SEAL	1		X X	
5	H152795	WEAR RING	1		X X	
6	R83578	O-RING	1		X X	
7	H179659	SNAP RING	1		X X	
8	H180100	SNAP RING	1		X X	
9	H210841	HYDR. CYLINDER ROD GUIDE	1		X X	
10	R79001	BACK-UP RING	1		X X	
11	U10746	O-RING	1		X X	
12	AH212657	HYDRAULIC CYLINDER BARREL	1		X X	
13	R82075	BUSHING	1		X X	
14	ROD	1		X X	(SUB AH212650)
15	R82076	BUSHING	1		X X	
16	H170541	LOCK NUT	1		X X	
17	H155630	SEAL	1		X X	(WIPER INSTALLATION TOOL) (NOT ILLUSTRATED)
18	AH149814	HYDRAULIC CYLINDER KIT	1		X X	(ROD SEAL KIT)
19	AH212650	HYDRAULIC CYLINDER	1		X X	(SCARIFIER CYLINDER)
20	JD7799	LUBRICATION FITTING	2		X X	
21	24H1697	WASHER	2		X X	

4260-7

GROUND CONDITIONING TOOL 42

HYDRAULIC SYSTEM 4260

**FRONT MOUNTED EQUIPMENT HYDRAULIC HOSES
FLEXIBLES HYDRAULIQUES D'EQUIPEMENT MONTE A L'AVANT
MANGUERAS HIDRAULICAS DEL EQUIPO DE MONTAJE DELANTERO**

KEY	PART NO.	PART NAME	QTY.	SERIAL NO.	8 8 7 7 0 2 D D	REMARKS
1	38H1171	ADAPTER FITTING	2		X X	
2	R26375	O-RING	2		X X	
3	T77613	O-RING	4		X X	
4	38H1278	UNION FITTING	1		X X	
5	AT305770	HYDRAULIC HOSE - FABRICATE	1		X X	
6	AT305771	HYDRAULIC HOSE - FABRICATE	1		X X	

00II-5

870D/872D MOTOR GRADER

NUMERICAL INDEX - CONTINUED

PART NO.	KEY	PAGE	PART NO.	KEY	PAGE	PART NO.	KEY	PAGE
AT307054	9	0505-9	AT308314	32	1830-9	AT313362	6	0230-3
AT307061	13	0510-5	AT308399	32	0512-3	AT313362	9	0240-3
AT307062	19	1830-17	AT308628	5	1674-23	AT313425	11	0363-3
AT307083	14	0510-7	AT308795	25	1821-3	AT313541	17	0930-3
AT307090	6	1673-5	AT308795	25	1821-7	AT313542	18	0930-3
AT307090	5	1673-7	AT308796	26	1821-3	AT313691	38	0512-3
AT307096	45	1810-33	AT308796	26	1821-7	AT314363	11	1810-19
AT307096	45	1810-35	AT308797	28	1821-3	AT314364	12	1810-19
AT307165	5	0363-3	AT308797	28	1821-7	AT314364	12	1810-21
AT307200	2	0315-7	AT308908	27	1910-3	AT314624	19	0230-3
AT307220	10	2163-5	AT308909	47	2160-9	AT314624	25	0960-3
AT307220	10	2163-5B	AT308909	47	2163-7B	AT314624	6	0960-5
AT307231	11	2163-5	AT308909	47	2163-9	AT314667	7	1674-19
AT307231	11	2163-5B	AT308935	33	1830-9	AT314814	2	0515-5
AT307263	6	2163-5	AT308941	11	1810-21	AT314827	11	1060-3
AT307275	6	1740-7	AT309043	35	0512-3	AT315249	8	1673-13
AT307279	10	0505-9	AT309136	8	1674-15	AT315250	9	1673-13
AT307292	7	2164-5	AT309234	6	2160-11	AT315334	6	2008-3
AT307299	45	2160-9	AT309235	5	2160-11	AT315341	1	2008-3
AT307299	45	2163-7B	AT309379	15	1921-3	AT315465	37	1830-11
AT307299	45	2163-9	AT309380	13	1921-3	AT315712	14	3440-7
AT307300	46	2160-9	AT309550	1	1673-5	AT315715	7	1821-3
AT307300	46	2163-7B	AT309672	27	1830-11	AT315715	7	1821-7
AT307300	46	2163-9	AT309711	19	0260-35	AT315761	8	1821-3
AT307326	12	3440-7	AT309711	48	2160-9	AT315761	8	1821-7
AT307343	16	0510-7	AT309711	48	2163-7B	AT315844	2	1810-17
AT307351	6	2004-5	AT309711	48	2163-9	AT315881	25	3460-19
AT307361	8	0560-3	AT309837	34	1830-9	AT315896	3	1810-17
AT307458	10	4260-11	AT309911	11	0510-11	AT315903	6	1810-15
AT307459	11	4260-11	AT309952	13	0960-11	AT315906	7	1810-15
AT307501	21	1830-11	AT309953	10	0960-19	AT315909	8	1810-15
AT307581	11	0360-3	AT309957	27	0260-25	AT315910	14	1810-15
AT307582	12	0360-3	AT309959	28	0260-25	AT315980	18	3460-19
AT307588	13	0360-3	AT309961	18	3460-23	AT316249	13	0960-19
AT307628	1	1674-27	AT310272	29	0260-25	AT316267	4	1810-17
AT307650	10	1810-19	AT310278	3	3401-3	AT316321	3	1913-3
AT307650	10	1810-21	AT310373	1	1810-3	AT316322	4	1913-3
AT307668	10	0510-11	AT310374	1	1810-3	AT316323	7	1913-3
AT307707	19	0260-37	AT310375	1	1810-3	AT316324	8	1913-3
AT307723	12	1921-3	AT310377	1	0110-21	AT316661	11	1910-3
AT307730	1	3401-7	AT310795	14	1830-19	AT316709	5	1927-3
AT307731	1	3401-7	AT310810	15	1830-19	AT316709	5	1927-7
AT307732	1	3401-9	AT310939	9	0520-5	AT316710	6	1927-3
AT307733	1	3401-9	AT310959	20	0260-37	AT316710	6	1927-7
AT307760	16	0260-13	AT311425	49	2160-9	AT316715	13	1910-5
AT307775	19	0260-13	AT311425	49	2163-7B	AT316746	1	1511-3
AT307779	11	1810-9	AT311425	49	2163-9	AT317063	10	1674-9
AT307780	9	1673-3	AT311438	8	1910-3	AT317166	31	0260-25
AT307807	11	1674-3	AT311872	20	0510-5	AT317215	4	1927-5
AT307807	12	1674-3	AT311916	14	1910-3	AT317215	4	1927-9
AT307810	16	1674-9	AT312053	7	1910-3	AT317216	5	1927-5
AT307811	1	2160-7	AT312058	23	1830-17	AT317216	5	1927-9
AT307844	5	1674-19B	AT312106	4	0360-5	AT317287	1	2160-37
AT307845	17	3460-23	AT312106	4	1674-31	AT317288	1	2160-37
AT307847	20	1830-17	AT312107	5	0360-5	AT317289	1	2160-37
AT307888	21	1830-17	AT312107	5	1674-31	AT317290	1	2160-37
AT307889	22	1830-17	AT312431	5	1746-7	AT317291	1	2160-37
AT308017	22	1830-9	AT312607	4	0315-3	AT317293	1	2160-37
AT308073	6	0260-21	AT312910	15	0260-29	AT317304	13	2160-19
AT308073	13	0260-21B	AT312912	16	0260-29	AT317304	16	2160-25
AT308110	14	1921-3	AT312995	3	0510-3	AT317304	16	2160-31
AT308196	1	1810-3	AT312997	17	3460-19	AT317304	19	2160-33
AT308197	1	1810-3	AT312998	30	0260-25	AT317304	18	2160-35
AT308199	3	1821-3	AT313338	22	0930-3	AT317305	13	2160-19
AT308199	3	1821-7	AT313340	5	0240-3	AT317305	14	2160-21
AT308274	7	2164-3	AT313342	4	0230-3	AT317305	13	2160-23
AT308283	26	1830-11	AT313352	16	0930-3	AT317305	16	2160-25

CLICK HERE TO **DOWNLOAD** THE COMPLETE MANUAL

- Thank you very much for reading the preview of the manual.
- You can download the complete manual from: www.heydownloads.com by clicking the link below



- Please note: If there is no response to CLICKING the link, please download this PDF first and then click on it.

CLICK HERE TO **DOWNLOAD** THE COMPLETE MANUAL