

**544J UTILITY LOADER
TIER 3 (S.N. 611800-)**



JOHN DEERE

PARTS CATALOG

**544J UTILITY LOADER
TIER 3 (S.N. 611800-)**

PC10028 (Jun-09) English

Worldwide Construction and Forestry Division

Worldwide Edition
Litho in U.S.A (Revised)
COPYRIGHT © 2009
DEERE & COMPANY
Moline, Illinois
All rights reserved

CLICK HERE TO **DOWNLOAD** THE COMPLETE MANUAL

- Thank you very much for reading the preview of the manual.
- You can download the complete manual from: www.heydownloads.com by clicking the link below



- Please note: If there is no response to CLICKING the link, please download this PDF first and then click on it.

CLICK HERE TO **DOWNLOAD** THE COMPLETE MANUAL

JOHN DEERE 1400 SERIES TEAMMATE IV AXLE ORDER CODES TO BUILDING BLOCKS

BASE MACHINE NUMBER = 2515P

- A. PRIMARY INPUT ROTATION & AXLE TRAVEL =A1 - CW -TOWARD INPUT - 1111
=A2 - CW - AWAY FROM INPUT - 1112
=A3 - CCW - TOWARD INPUT - 1113
=A4 - CCW - AWAY FROM INPUT - 1114
- B. SPIRAL BEVEL REDUCTION =B1 - - 1201
=B2 - 4.778:1 SPIRAL BEVEL SET - 1202
=B3 - 5.143:1 SPIRAL BEVEL SET - 1203
=B4 - 5.143:1 SPIRAL BEVEL SET PREMIUM MATERIAL - 1204
=B1 - 4.364:1 SPIRAL BEVEL SET - 1211
=B2 - 4.778:1 SPIRAL BEVEL SET - 1212
=B3 - 5.143:1 SPIRAL BEVEL SET - 1213
- C. INPUT YOKE SIZE AND STYLE =C1 - INPUT YOKE 1550 W/SLINGER - 1301
=C2 - INPUT YOKE 1610 W/SLINGER - 1302
=C3 - INPUT YOKE 7C - 1303
=C4 - INPUT YOKE 8.5C - 1304
- D. FLANGE TO FLANGE =D1 - NONE(NO AXLE SHAFTS/HSGS) - 1401
=D2 - 76.9" (1953 MM) 7/8" THREADED, NO MTG HOLES, NO DIPSTICK - 1402
=D2 - 76.9" (1953 MM) 7/8" THREADED, W/MTG HOLES,NO DIPSTICK - 1412
=D3 - 76.9" (1953 MM), M20 THREADED, W/MTG HOLES - 1403
=D3 - 76.9" (1953 MM), M20 THREADED NO MTG HOLES -1413
=D4 - 76.9" (1953 MM), 7/8" THREADED W/MTG HOLES, (81.2" (2063 IF 6.4:1 FINAL DRIVE)- 1404
=D4 - 76.9" (1953 MM), 7/8" THREADED, NO MTG HOLES, (81.2" (2063) IF 6.4:1 FINAL DRIVE) - 1414
=D5-SWEDA100"(2540 MM),7/8"THREADED,W/MTG HOLES,NO DIPSTICK- 1405
=D6 - SWEDA 100"(2540 MM),7/8"THREADED,W/MTG HOLES - 1406
=D6 -SWEDA 100" (2540 MM), 7/8"THREADED, NO MTG HOLES- 1416
=D7 -SWEDA 100" (2540 MM), 7/8"THREADED, W/MTG HOLES (CS)- 1407
=D7- SWEDA 100" (2540 MM),7/8"THREADED,NO MTG HOLES (CS) -1417
- E.INPUT HSG & AUXILIARY BRAKE =E1 - INPUT HOUSING, OSCILLATION MOUNTING, DUCTILE - 1501
=E1 -INPUT HOUSING, OSCILLATION MOUNTING- 1511
=E1 - INPUT HOUSING, FIXED MOUNTING - 1521
=E2 - INPUT HOUSING, OSCILLATION MOUNTING HD - 1502
=E2- INPUT HOUSING, FIXED MOUNTING HD - 1512
- F.MOUNTING TYPE =F1 - FIXED MOUNTING - 1601
=F2 - OSCILLATION, CENTER PIVOT, NO THRUST WASHER - 1602
=F3 - OSCILLATION, CENTER PIVOT, W/BRACKETS -1603
- G.BRAKE TYPE =G1 - DUAL BRAKES, USE WITH 4.800:1 FINAL DRIVE - 1701
=G1 - DUAL BRAKES, USE WITH 6.400:1 FINAL DRIVE - 1711
=G1 - DUAL BRAKES, USE WITH 7.640:1 FINAL DRIVE - 1721
- H.DIFFERENTIAL TYPE =H1 - STANDARD DIFFERENTIAL - 1821
=H2 - CLOSED CIRCUIT HYDRAULIC DIFFERENTIAL LOCK - 1802
- I. DIFFERENTIAL CASE =I1 - DIFFERENTIAL CASE, GEAR ON LEFT, OSCILLATION - 1901
=I2 - DIFFERENTIAL CASE, GEAR ON RIGHT, OSCILLATION - 1902
=I3 - DIFFERENTIAL CASE, GEAR ON LEFT, FIXED - 1903
- J.FINAL DRIVE =J1 - NO FINAL DRIVE - 2001
=J2 - 4.800:1 FINAL DRIVE ASSY - 2002
=J3- 6.400:1 FINAL DRIVE HD - 2003
=J4 - 6.400:1 FINAL DRIVE ED - 2004
=J5 - 6.400:1 FINAL DRIVE ED SWEDA - 2005
=J6 - 7.640:1 FINAL DRIVE - 2006
- K. TRIM =K1 - NOTHING (INTERFACTORY) - 2101
=K2 - INDUSTRIAL YELLO PAINT - 2102
=K3 - LOW GLOSS BLACK PAINT - 2103
- L. MISC PARTS =L1 - ID TAGE - 2201

ALPHABETICAL INDEX - CONTINUED

	PAGE		PAGE
COOLING PACKAGE, REVERSING FAN DRIVE VALVE (COMPONENTS)	0510-8	CUTTING EDGE, BUCKET (NEVERGREASE) (S.N. 618134-)	3102-3E
COOLING SYSTEM ACCESS PANELS	1910-6	CUTTING EDGE, BUCKET (POWERLLEL)	3102-2
COOLING SYSTEM HOSES	0510-4	CUTTING EDGE, BUCKET (S.N. -618133)	3102-3A
COUNTERWEIGHT ACCESS DOOR	1749-2	CUTTING EDGE, BUCKET (STD.) (S.N. 618134-)	3102-3C
COUNTERWEIGHT, LINKAGE COUPLER	1520-2	CYLINDER BLOCK (4644) (HDW70)	0400-40
COUNTERWEIGHT, MAIN	1749-2	CYLINDER BUSHINGS, STEERING (S.N. 618134-)	0960-9A
COUPLER HYDRAULIC CYLINDER, ATTACHMENT (BOLT-ON PINS)	3104-10	CYLINDER GREASE LINES, STEERING (S.N. 618134-)	0960-9A
COUPLER HYDRAULIC CYLINDER, ATTACHMENT (CLIP-ON PINS)	3104-12	CYLINDER HEAD (HDW70)	0400-50
COUPLER, ATTACHMENT (Z-BAR LINKAGE)	3104-2	CYLINDER HEAD BOLTS 6 CYL, PT-E, T3 (HDW70)	0400-83
COUPLER, POWERLLEL LINKAGE	3104-4	CYLINDER HEAD GASKET (5123) (HDW70)	0400-50
COVER, A/C DELETE	1830-10	CYLINDER HEAD, GASKET KIT (9901) (HDW70)	0400-84
COVER, AUXILIARY DRIVE (HDW70)	0400-52	CYLINDER LINER (4839) (HDW70)	0400-44
COVER, CAB LEFT SIDE CONSOLE	1816-2	CYLINDER LINER PACKING (PARTS)	0400-87
COVER, CONSOLE SWITCH	1816-4	CYLINDER LOCK, BOOM	3140-2
COVER, DRIVE DAMPER	0350-40	CYLINDER, ATTACHMENT COUPLER (CLIP-ON PINS)	3104-12
COVER, FNR SWITCH	1674-10	CYLINDER, ATTACHMENT COUPLER (POWERLLEL LINKAGE)	3104-4
COVER, FRESH AIR HOUSING	1816-8	CYLINDER, ATTACHMENT COUPLER (Z-BAR LINKAGE)	3104-2
COVER, GEARBOX HOUSING (S.N. -619719)	0350-8	CYLINDER, ATTACHMENT COUPLER (BOLT-ON PINS)	3104-10
COVER, GEARBOX HOUSING (S.N. 619720-)	0350-9A	CYLINDER, ATTACHMENT HI-VIS COUPLER (POWERLLEL AND Z-BAR LINKAGE)	3104-14
COVER, HI-VIS LINKAGE ATTACHMENT COUPLER (POWERLLEL)	3104-6	CYLINDER, BOOM (FOR USE WITH POWERLLEL LINKAGE)	3165-10
COVER, HI-VIS LINKAGE ATTACHMENT COUPLER (Z-BAR) (NEVERGREASE) (S.N. 618134-)	3104-9C	CYLINDER, BOOM (S.N. -618133)	3165-4
COVER, HI-VIS LINKAGE ATTACHMENT COUPLER (Z-BAR) (S.N. -618133)	3104-8	CYLINDER, BOOM (S.N. 618134-)	3165-5A
COVER, HI-VIS LINKAGE ATTACHMENT COUPLER (Z-BAR) (STD.) (S.N. 618134-)	3104-9A	CYLINDER, BUCKET (FOR USE WITH POWERLLEL LINKAGE)	3165-12
COVER, INPUT (YZ120710)	0210-14	CYLINDER, BUCKET (S.N. -618133)	3165-6
COVER, ROCKER ARM (1135) (HDW70)	0400-2	CYLINDER, BUCKET (S.N. 618134-)	3165-7A
COVER, STEERING COLUMN	0962-6	CYLINDER, HI-VIS LINKAGE ATTACHMENT COUPLER (POWERLLEL)	3104-6
COVER, THERMOSTAT (2158) (HDW70)	0400-19	CYLINDER, HI-VIS LINKAGE ATTACHMENT COUPLER (Z-BAR) (S.N. -618133)	3104-8
COVER, TIMING GEAR (4430) (HDW70)	0400-38	CYLINDER, HI-VIS LINKAGE ATTACHMENT COUPLER (Z-BAR) (STD.) (S.N. 618134-)	3104-9A
COVER, TORQUE CONVERTER (S.N. -619719)	0350-4	CYLINDER, HI-VIS LINKAGE ATTACHMENT COUPLER (Z-BAR) (NEVERGREASE) (618134-)	3104-9C
COVER, TORQUE CONVERTER (S.N. 619720-)	0350-5A	CYLINDER, POWERLLEL LINKAGE COUPLER	3104-4
COVER, TRANSMISSION	0350-14	CYLINDER, STEERING (S.N. -618133)	0960-10
COVER, TRANSMISSION HOUSING (S.N. -619719)	0350-8	CYLINDER, STEERING (S.N. 618134-)	0960-12
COVER, TRANSMISSION HOUSING (S.N. 619720-)	0350-9A	CYLINDER, Z-BAR ATTACHMENT COUPLER	3104-2
COVER, VANDAL	1810-18		
COVERS, BATTERY	1671-4		
CRANK SPEED SENSOR CONNECTOR	1674-26		
CRANKSHAFT / BEARINGS (4712) (HDW70)	0400-42		
CRANKSHAFT POSITION SENSOR (6730) (HDW70)	0400-64		
CRANKSHAFT PULLEY (1324) (HDW70)	0400-6		
CUPHOLDER CONSOLE	1816-4		
CUSHION, BACKREST	1821-2		
CUSHION, SEAT	1821-2		
CUSHIONS, STEERING, ENGINE FRAME	1740-4		
CUTTING EDGE (JAGZ)	3101-6		
CUTTING EDGE, AUXILIARY	3101-2		
CUTTING EDGE, LOADER BUCKET (NEVERGREASE) (S.N. 618134-)	3102-3E		
CUTTING EDGE, LOADER BUCKET (S.N. -618133)	3102-3A		
CUTTING EDGE, LOADER BUCKET (POWERLLEL)	3102-2		
CUTTING EDGE, LOADER BUCKET (STD.) (S.N. 618134-)	3102-3C		
CUTTING EDGE, BUCKET (ATTACHMENT COUPLER)	3102-4		
		D	
		DAMPER, DRIVE AND COVER	0350-40
		DASH MODULE, WIRING, JOYSTICK	1674-10
		DASH, WIRING	1674-10
		DASH, WIRING JOYSTICK	1674-10
		DECALS AND LABELS (CANOPY)	1322-10
		DECALS AND LABELS (FRENCH)	1322-6
		DECALS AND LABELS (SPANISH)	1322-8
		DECALS AND LABELS, CAB	1322-4

0110-1

WHEELS 01

POWERED WHEELS, TIRES AND FASTENINGS 0110

MEMORANDA
MEMORANDA
MEMORANDA

0210-5

AXLES, DIFFERENTIALS AND SUSPENSION SYSTEMS 02

DIFFERENTIAL OR BEVEL DRIVE 0210

**REAR AXLE WITH STD DIFFERENTIAL
ESSIEU ARRIERE AVEC DIFFERENTIEL STD
EJE TRASERO CON DIFERENCIAL ESTANDAR**

KEY	PART NO.	PART NAME	QTY.	AXLE SERIAL NO.	REMARKS
1	15H511	PIPE BUSHING	1		
2	15H84	COUPLING	1		
3	19M7865	SCREW	2		M8 X 16
4	AT207022	HYDRAULIC HOSE	1		
5	AT208411	PRESSURE RELIEF VALVE	1		
6	PG200424	REAR AXLE	1		(SUB FOR AT342295) (YZ18993 NLA)
	PG200415	REAR AXLE	1		REMAN
7	T56112	ELBOW FITTING	1		
8	T75276	CLAMP	2		

0210-13

AXLES, DIFFERENTIALS AND SUSPENSION SYSTEMS 02

DIFFERENTIAL OR BEVEL DRIVE 0210

KEY	PART NO.	PART NAME	QTY.	AXLE SERIAL NO.	REMARKS
1	F2380R	THRUST WASHER	2		
2	JD8248	BEARING CUP	2		
3	JD9018	BEARING CONE	2		
4	JD9055	BEARING CONE	2		
5	JD9118	BEARING CUP	2		
6	YZ121062	SEAL	2		
7	R48437	WASHER	2		
8	R59439	SHIM	12		0.127 MM
9	R59440	SHIM	4		0.508 MM
10	R61461	SHIM	4		0.051 MM
11	R79989	SHIM	4		0.178 MM
12	YZ121220	DIPSTICK	1		
13	YZ120704	HOUSING	1		(SUB FOR YZ120703)
14	F3171R	O-RING	1		
	R27175	DRAIN PLUG	1		
15	RE58664	PLUG	1		
16	15H558	PIPE PLUG	2		
17	YZ120687	HALF AXLE	2		

0210-23

AXLES, DIFFERENTIALS AND SUSPENSION SYSTEMS 02

DIFFERENTIAL OR BEVEL DRIVE 0210

KEY	PART NO.	PART NAME	QTY.	AXLE SERIAL NO.	REMARKS
1	YZ120886	HOUSING	1		
2	YZ120984	HOUSING	1		
3	YZ120939	BEVEL GEAR	2		
4	R93623	THRUST WASHER	2		
5	R67811	THRUST WASHER	4		
6	YZ120982	THRUST WASHER	8		
7	YZ120938	PINION	4		
8	YZ120931	NEEDLE ROLLER	136		
9	YZ120929	PIN FASTENER	1		
10	YZ120930	PIN FASTENER	2		
11	W30317	SPRING PIN	3		
12	YZ120940	HUB	1		
13	YZ120895	BEARING HOUSING W/O BEARING	1		
14	JD8206	BEARING CUP	1		
15	JD8946	BEARING CONE	1		
16	YZ120894	BEARING HOUSING W/O BEARING	1		
17	YZ121015	LOCK PLATE	2		
18	R88246	CAP SCREW	4		
19	19M7944	SCREW	16	M10 X 120	
20	R47172	WASHER	20		
	R85866	CAP SCREW	20		
21	YZ120936	BEARING CONE	1		
22	YZ120935	NEEDLE BEARING	1		

0242-7

AXLES, DIFFERENTIALS AND SUSPENSION SYSTEMS 02

AXLE MOUNTING PARTS 0242

DIFFERENTIAL SUPPORTS AND LUBRICATION LINES
SUPPORTS ET CONDUITES GRAISSAGE DIFFERENTIEL
SOPORTES DEL DIFERENCIAL Y LINEAS DE LUBRICACION

KEY	PART NO.	PART NAME	QTY.	SERIAL NO.	REMARKS
1	AT206794	SEAL	2		
2	AT207022	HYDRAULIC HOSE	1		
3	AT210606	REAR AXLE SUPPORT	1		
5	T167837	BUSHING	1		
6	AT314290	REAR AXLE SUPPORT	1		
11	T212855	BUSHING	1		
12	AT49859	SEAL	1		
13	AT53541	HYDRAULIC HOSE	1		
14	E12379	NUT	2		3.175 MM
15	JD7797	LUBRICATION FITTING	2		
16	M45937	ELBOW FITTING	1		
17	R36311	FITTING	2		
18	T157056	COVER	1		
19	T167924	THRUST BEARING	6		
20	T169329	O-RING	1		
21	T174463	BUSHING	4		
22	T208791	DISK	1		
23	T56112	ELBOW FITTING	3		
24	14M7277	NUT	12		M20
25	19M7719	CAP SCREW	4		M16 X 70
26	19M7778	CAP SCREW	4		M20 X 220
27	19M7779	CAP SCREW	8		M20 X 240
28	19M7813	SCREW	6		M12 X 45
29	19M8639	CAP SCREW	4		M20 X 70
30	24M7242	WASHER	28		21.400 X 42 X 5 MM

0342-3

TRANSMISSION 03

TRANSMISSION MOUNTING PARTS 0342

**TRANSMISSION MOUNTING BRACKETS
SUPPORTS DE MONTAGE DE TRANSMISSION
ESCUADRAS DE MONTAJE DE TRANSMISION**

KEY	PART NO.	PART NAME	QTY.	SERIAL NO.	REMARKS
1	AT209221	SUPPORT	1		
2	AT209996	SUPPORT	1		
3	AT209997	SUPPORT	1		
4	14M7277	NUT	3	M20	
5	19M7488	CAP SCREW	4	M16 X 40	
6	19M7487	CAP SCREW	4	M20 X 50	
7	19M7883	SCREW	2	M20 X 120	
8	19M7968	CAP SCREW	1	M20 X 130	
9	24M7241	WASHER	4	17 X 34 X 4 MM	
10	24M7242	WASHER	7	21.400 X 42 X 5 MM	
11	AT165288	ISOLATOR	3		
12	AT222049	GUIDE	1		
13	T42977	WASHER	3		

0350-5B

TRANSMISSION 03

GEARS, SHAFTS, BEARINGS AND POWER SHIFT CLUTCHES 0350
TORQUE CONVERTER (S.N. 619720-)
CONVERTISSEUR DE COUPLE (S.N. 619720-)
CONVERTIDOR DE PAR (S.N. 619720-)

KEY	PART NO.	PART NAME	QTY.	TRANSMISSION SERIAL NO.	REMARKS
1	14M7274	NUT	12		M10
2	19M7179	CAP SCREW	12		M10 X 50
3	19M7742	CAP SCREW	18		M10 X 65
4	19M8397	CAP SCREW	2		M8 X 50
5	T116516	SPACER	1		
6	T172812	DIAPHRAGM	1		
7	T174407	CAP SCREW	16		
8	T179276	HOUSING	1		
9	T195240	HOUSING	1		
10	T195242	BALL BEARING	1		
11	T195243	SNAP RING	1		
12	T242406	SHAFT	1		
13	T179944	UNIVERSAL JOINT YOKE	1		
14	T196792	SCREEN	1		
15	PG200532	TORQUE CONVERTER	1		(SUB FOR AT357738)
	PG200385	TORQUE CONVERTER	1		(REMAN)

0350-11

TRANSMISSION 03

GEARS, SHAFTS, BEARINGS AND POWER SHIFT CLUTCHES 0350
TRANSMISSION SPEED SENSOR
CAPTEUR DE VITESSE DE TRANSMISSION
SENSOR DE VELOCIDAD DE LA TRANSMISION

KEY	PART NO.	PART NAME	QTY.	TRANSMISSION SERIAL NO.	REMARKS
1	AT210773	SENSOR	3		
2	19M7932	CAP SCREW	1		M8 X 16
3	T179510	SENSOR	1		
4	T176796	O-RING	1		
5	AT175750	PLUG	1		
6	R104558	O-RING	3		
7	R73599	O-RING	1		
8	T174236	O-RING	1		
9	T173217	FITTING PLUG	1		

0350-17B

TRANSMISSION 03

GEARS, SHAFTS, BEARINGS AND POWER SHIFT CLUTCHES 0350
TRANSMISSION INTERNAL OIL LINES (S.N. 619720-)
CONDUITES D'HUILE INTERNES DE TRANSMISSION (S.N. 619720-)
LINEAS INTERNAS DE ACEITE DE LA TRANSMISION (S.N. 619720-)

KEY	PART NO.	PART NAME	QTY.	TRANSMISSION SERIAL NO.	REMARKS
1	19M7964	CAP SCREW	7		M8 X 12
2	T174234	O-RING	4		
3	T197459	LINE	1		
4	T197460	LINE	1		
5	T244797	TUBE	1		

0350-23

TRANSMISSION 03

GEARS, SHAFTS, BEARINGS AND POWER SHIFT CLUTCHES 0350
TRANSMISSION OUTPUT SHAFT (S.N. -619719)
ARBRE DE SORTIE DE TRANSMISSION (S.N. -619719)
EJE DE SALIDA DE LA TRANSMISION (S.N. -619719)

KEY	PART NO.	PART NAME	QTY.	TRANSMISSION SERIAL NO.	REMARKS
1	19M7407	CAP SCREW	4		M8 X 25
2	T116460	SPACER	2		
3	T172350	YOKE WITH SHAFT	2		
4	T141386	SEAL	2		
5	T171126	BEARING	1		IMPORTANT-HIGH TOLERANCE BEARING REQUIRED IN THIS LOCATION. DO NOT SUBSTITUTE STANDARD BEARING.
6	T244802	SHAFT	1		(T171181 NLA)
7	T171126	BEARING	1		IMPORTANT-HIGH TOLERANCE BEARING REQUIRED IN THIS LOCATION. DO NOT SUBSTITUTE STANDARD BEARING.
8	T116481	WASHER	2		TAB
9	T123707	O-RING	2		

0350-27B

TRANSMISSION 03

GEARS, SHAFTS, BEARINGS AND POWER SHIFT CLUTCHES 0350
POWER TAKE-OFF (S.N. 619720-)
PRISE DE FORCE (S.N. 619720-)
TOMA DE FUERZA (S.N. 619720-)

KEY	PART NO.	PART NAME	QTY.	TRANSMISSION SERIAL NO.	REMARKS
1	40M1872	SNAP RING	1		
2	T171140	BALL BEARING	1		
3	T172118	PISTON RING	1		
4	T174529	O-RING	1		
5	T196851	CAP SCREW	2		
6	T201811	PINION SHAFT	1		

0350-33

TRANSMISSION 03

GEARS, SHAFTS, BEARINGS AND POWER SHIFT CLUTCHES 0350
FIRST GEAR CLUTCH ASSEMBLY (S.N. -619719)
EMBAYAGE DE PREMIERE VITESSE (S.N. -619719)
CONJUNTO DE EMBRAGUE DE PRIMERA MARCHA (S.N. -619719)

KEY	PART NO.	PART NAME	QTY.	TRANSMISSION SERIAL NO.	REMARKS
1	AT331639	CLUTCH	1		
2	T172104	DISK	2		
3	T172129	THRUST BEARING	2		
4	T172130	THRUST WASHER	2		
5	T195260	GEAR	1		
6	T179594	NEEDLE BEARING	1		
7	T173036	SNAP RING	1		
8	T171156	BEARING	2		IMPORTANT-HIGH TOLERANCE BEARING REQUIRED IN THIS LOCATION. DO NOT SUBSTITUTE STANDARD BEARING.
9	T172115	PISTON RING	2		
10	T172816	UNIVERSAL DRIVESHAFT	1		
11	T171153	STUD	1		

0350-37B

TRANSMISSION 03

GEARS, SHAFTS, BEARINGS AND POWER SHIFT CLUTCHES 0350
THIRD GEAR CLUTCH ASSEMBLY (S.N. 619720-)
EMBAYAGE DE TROISIEME VITESSE (S.N. 619720-)
CONJUNTO DE EMBRAGUE DE TERCERA MARCHA (S.N. 619720-)

KEY	PART NO.	PART NAME	QTY.	TRANSMISSION SERIAL NO.	REMARKS
1	AT179498	NEEDLE BEARING	2		
2	AT357741	CLUTCH	1		
3	T116486	COMPRESSION SPRING	1		
4	T116579	RING	2		
5	T170712	O-RING	1		
6	T171126	BEARING	1		IMPORTANT-HIGH TOLERANCE BEARING REQUIRED IN THIS LOCATION. DO NOT SUBSTITUTE STANDARD BEARING.
7	T171153	STUD	1		
8	T171156	BEARING	1		IMPORTANT-HIGH TOLERANCE BEARING REQUIRED IN THIS LOCATION. DO NOT SUBSTITUTE STANDARD BEARING.
9	T171212	PINION SHAFT	1		
10	T172115	PISTON RING	2		
11	T172136	DISK	2		
12	T172138	THRUST WASHER	2		
13	T172139	NEEDLE BEARING	2		
14	T172275	GEAR	1		
15	T172299	SNAP RING	1		
16	T173640	DISK WITH OUTER SPLINE	7		
17	T173641	DISK WITH OUTER SPLINE	2		
18	T173642	DISK WITH INNER SPLINE	8		
19	T173643	SOLID SHIM	1		
20	T173965	O-RING	1		
21	T178280	PISTON	1		
22	T153941	SNAP RING	1		2.4 MM (.095")
	T181878	SNAP RING	1		2.7 MM (.106")
	T181879	SNAP RING	1		3.0 MM (.118")
	T181880	SNAP RING	1		3.3 MM (.123")
	T172265	SNAP RING	1		3.60 MM (.141")
	T172269	SNAP RING	1		4.20 MM (.165")
23	T244799	CLUTCH	1		

0400-3

ENGINE 04
6068HDW70 0400

KEY	PART NO.	PART NAME	QTY.	ENGINE SERIAL NO.	REMARKS
1	R521401	MEDALLION	1		
2	RE527858	SCREW	3		
3	R522410	HEAT SHIELD	1		
4	H23125	PLUG	6		
5	R123574	NUT	6		
6	R123575	O-RING	6		
7	19M7862	SCREW	1		
8	R524469	GASKET	1		
9	RE528742	DEFLECTOR	1		
10	R520731	VALVE COVER	1		

0400-13

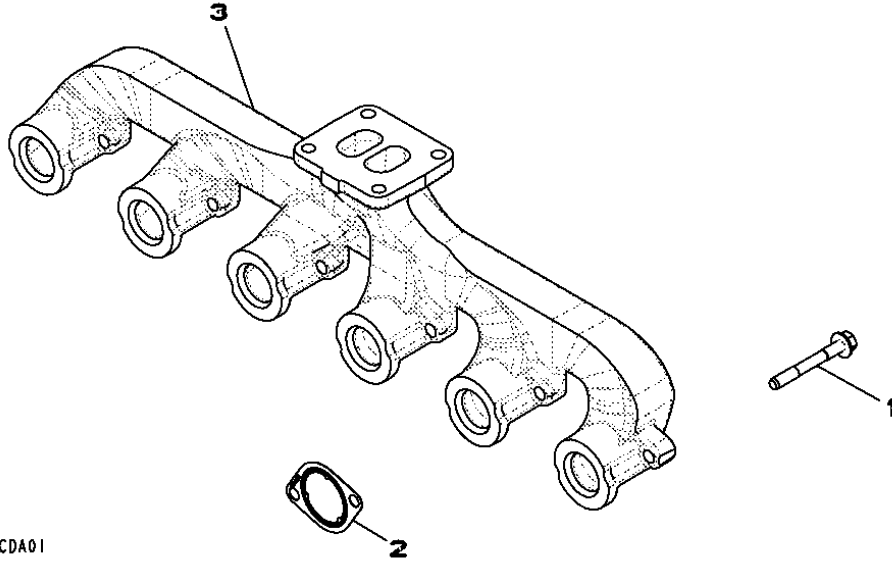
ENGINE 04
6068HDW70 0400

KEY	PART NO.	PART NAME	QTY.	ENGINE SERIAL NO.	REMARKS
1	RE531210	INJECTION NOZZLE	6		
	SE501928	INJECTION NOZZLE REMAN	6		(JOHN DEERE REMAN)
2	R134920	NUT	12		
3	RE528588	ELECTRICAL CONNECTOR CAP	6		
4	R516647	O-RING	6		
5	R523499	SEALING WASHER	6		
6	R520813	CLAMP	6		
7	RE528096	SCREW WITH WASHER	6		
8	RE526694	FUEL LINE	2		
9	RE526693	FUEL LINE	2		
10	RE526692	FUEL LINE	2		
11	R521159	STUD	3		
12	RE520928	RAIL	1		
13	RE516335	PRESSURE RELIEF VALVE	1		
14	RE515636	RESTRICTOR	6		
15	RE520930	SENSOR	1		
16	RE527528	FUEL INJECTION PUMP	1		
	SE501916	FUEL INJECTION PUMP REMAN	1		(JOHN DEERE REMAN)
17	RE534109	CONTROL VALVE	1		(SUB FOR RE531235)
18	RE516336	FUEL TEMPERATURE SENSOR	1		
19	R524234	O-RING	1		
20	RE516999	SCREEN	1		
21	14M7298	FLANGE NUT	3		M8
22	R504577	ADAPTER FITTING	1		
23	R55453	O-RING	1		
24	R116031	O-RING	1		
25	RE517370	FITTING	1		
26	51M7044	O-RING	1		
27	R516125	O-RING	1		
28	RE527055	FUEL LINE	1		(SUB FOR RE507538)
29	RE527054	FUEL LINE	1		(SUB FOR RE507537)
30	R504239	BRACKET	1		
31	19M7785	SCREW	2		M10 X 25
32	RE528609	WIRING HARNESS	1		
33	19M7774	SCREW	4		M6 X 12
34	AH80916	CLIP	2		
35	R520930	BRACKET	1		
36	R523048	BRACKET	1		
37	RE524730	CAP SCREW	1		

0400-23

ENGINE 04
6068HDW70 0400

2889 (EXHAUST MANIFOLD)
2889 (COLLECTEUR D'ÉCHAPPEMENT)
2889 (COLECTOR DE ESCAPE)
RE529091PCDA01 -UN-04FEB08



KEY	PART NO.	PART NAME	QTY.	ENGINE SERIAL NO.	REMARKS
1	R522554	CAP SCREW	12		
2	R519488	GASKET	6		
3	R132203	EXHAUST MANIFOLD	1		

0400-33

ENGINE 04
6068HDW70 0400

MEMORANDA
MEMORANDA
MEMORANDA

0400-43

ENGINE 04
6068HDW70 0400

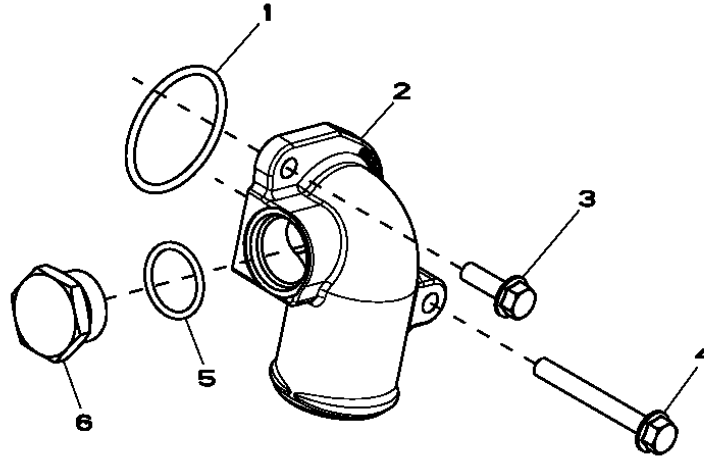
MEMORANDA
MEMORANDA
MEMORANDA

0400-53

ENGINE 04
6068HDW70 0400

5728 (WATER PUMP INLET)
5728 (ENTREE DE LA POMPE A EAU)
5728 (ENTRADA DE BOMBA DE AGUA)

RE530087PCDA02 -UN-31JAN06



RE530087PCDA02

KEY	PART NO.	PART NAME	QTY.	ENGINE SERIAL NO.	REMARKS
1	R89944	O-RING	1		
2	R522686	ELBOW FITTING	1		
3	19M7867	SCREW	1		M8 X 25
4	19M7802	SCREW	1		M8 X 65
5	U17409	O-RING	1		
6	R82718	DRAIN PLUG	1		

0400-63

ENGINE 04
6068HDW70 0400

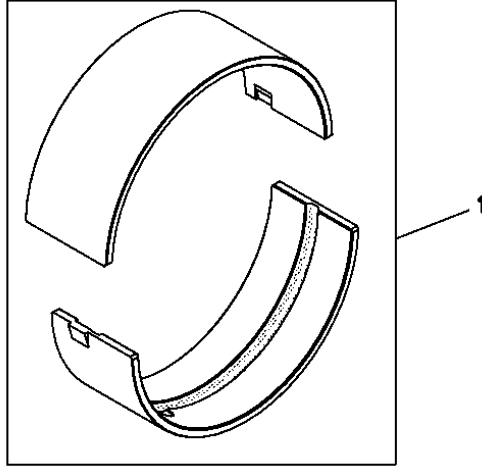
MEMORANDA
MEMORANDA
MEMORANDA

0400-73

ENGINE 04
6068HDW70 0400

9901 (BEARING - KIT)
9901 (COUSSINETS - JEU DE PIECES)
9901(COJINETE - JUEGO)

RE65165PCDA01 -UN-31JAN08



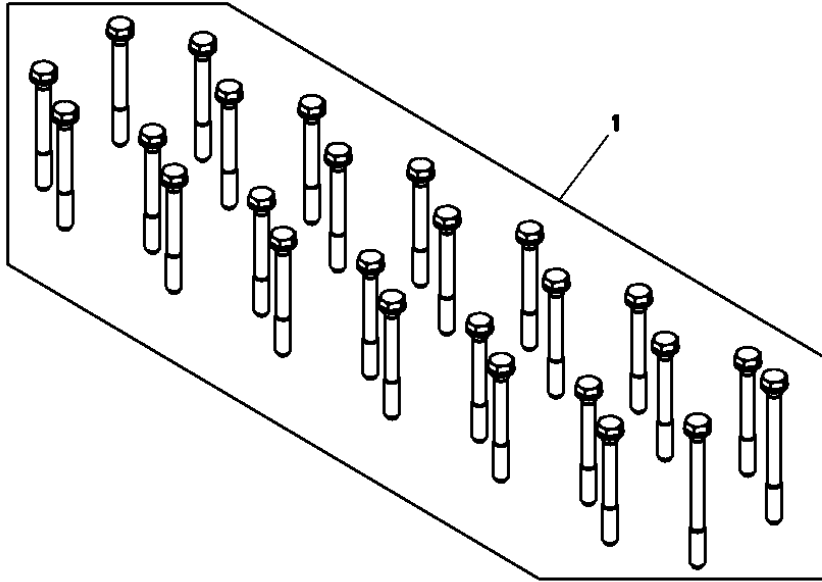
RE65165PCDA01

KEY	PART NO.	PART NAME	QTY.	ENGINE SERIAL NO.	REMARKS
1	RE65165	BEARING KIT	1		

0400-83

ENGINE 04
6068HDW70 0400

9902 (SERVICE KIT CYLINDER HEAD BOLTS)
 9902 (JEU D'ENTRETIEN, VIS DE CULASSE)
 9902 (CONJUNTO DE SERVICIO PARA TORNILLOS DE LA CULATA DEL CILINDRO)
 RE532993PCDA01 -UN-14APR08



RE532993PCDA01

KEY	PART NO.	PART NAME	QTY.	ENGINE SERIAL NO.	REMARKS
1	RE532993	BOLT KIT	1		CYLINDER HEAD BOLT,6 CYL, PT-E, T3

0400-93

ENGINE 04
6068HDW70 0400

KEY	PART NO.	PART NAME	QTY.	ENGINE SERIAL NO.	REMARKS
1	RE532634	ENGINE OVERHAUL KIT	1		(ALSO ORDER (12) R501124 AND RE532993)

0505-5

ENGINE AUXILIARY SYSTEM 05

COLD WEATHER STARTING AIDS 0505

**ENGINE COOLANT HEATER
CHAUFFE-BLOC MOTEUR
CALEFACTOR DE REFRIGERANTE DE MOTOR**

KEY	PART NO.	PART NAME	QTY.	SERIAL NO.	REMARKS
1	AR50411	WIRING LEAD	1		
2	R54123	ADAPTER FITTING	1		
3	RE524676	HEATING ELEMENT	1		
4	U13639	O-RING	1		37.465 X 2.997 MM
5	R206883	WASHER	1		25.800 X 31.750 X 1.600 MM

0510-11

ENGINE AUXILIARY SYSTEM 05

ENGINE/COOLING/SYSTEMS 0510

DOOR WITH FAN AND FAN GUARD (SN -619285)
PORTIERE AVEC VENTILATEUR ET PROTECTION VENTILATEUR (SN -619285)
PUERTA CON VENTILADOR Y PROTECTOR DEL VENTILADOR (SN -619285)

KEY	PART NO.	PART NAME	QTY.	SERIAL NO.	REMARKS
1	14M7298	FLANGE NUT	6		M8
2	14M7299	FLANGE NUT	1		M12
3	14M7397	LOCK NUT	4		M6
4	14M7540	LOCK NUT	1		M14
5	19M7785	SCREW	4		M10 X 25
6	19M7833	SCREW	4		M6 X 35
7	19M7866	SCREW	16		M8 X 20
8	19M7867	SCREW	6		M8 X 25
9	24M7139	WASHER	4		6.400 X 18 X 1.600 MM
10	24M7296	WASHER	4		10.500 X 30 X 2.500 MM
11	24M7298	WASHER	16		8.400 X 25 X 2 MM
12	AT210712	HUB	1		
13	AT227579	GUARD	1		
14	AT301711	STRIKER	1		
15	AT306930	LATCH	1		
16	AT306931	LATCH	1		
17	AT313598	FRAME	1		
18	19M7786	SCREW	4		M10 X 30
19	24M7296	WASHER	4		10.500 X 30 X 2.500 MM
20	FRAME	1		(SUB AT353400 AND AT354275) (AT318797 NLA)
21	AT318945	FAN	1		
22	T148409	NUT	8		
23	T195424	GUARD	1		
24	T201546	GROMMET	4		
25	T225606	ISOLATOR	1		
26	T225608	ISOLATOR	2		

0515-3

ENGINE AUXILIARY SYSTEM 05
ENGINE SPEED CONTROLS 0515

**ENGINE SPEED CONTROL AND SENSORS
COMMANDE ET CAPTEURS REGIME MOTEUR
CONTROL DE VELOCIDAD DEL MOTOR Y SENSORES**

KEY	PART NO.	PART NAME	QTY.	SERIAL NO.	REMARKS
1	AT306702	ACCELERATOR	1		
2	T174634	BOOT	1		
3	AT323307	SENSOR	1		
4	M113243	SCREW	3		
5	T172927	GASKET	1		

0560-3

ENGINE AUXILIARY SYSTEM 05

EXTERNAL FUEL SUPPLY SYSTEM 0560

FUEL TANK AND LINES RESERVOIR ET CONDUITES DE CARBURANT TANQUE DE COMBUSTIBLE Y TUBERIAS

KEY	PART NO.	PART NAME	QTY.	SERIAL NO.	REMARKS
1	14M7396	LOCK NUT	1		M8
2	19M7785	SCREW	1		M10 X 25
3	19M7866	SCREW	1		M8 X 20
4	38H5008	ADAPTER FITTING	1		
5	51M7040	O-RING	1		9.300 X 2.200 MM
6	T77613	O-RING	1		9.250 X 1.780 MM
7	AT223493	FUEL FILTER	1		
8	AT227936	FUEL SENDER	1		
9	19M7317	SCREW	5		M5 X 30
10	24M7027	WASHER	5		5.300 X 10 X 1 MM
11	T196733	GASKET	1		
12	AT228627	HYDRAULIC HOSE - FABRICATE	1		13/16" X 54-1/2" X 1/4"
13	AT323720	HYDRAULIC HOSE - FABRICATE	1		13/16" X 25" X 11/16"
14	BULK HOSE	3		(MAKE FROM T79477) (CTL 2.0')
15	AT361039	FUEL TANK	1		(SUB FOR AT316140)
16	AH159448	LINK CHAIN	1		
17	AH162914	STRAINER	1		
18	AH165079	ADAPTER FITTING	1		
19	H172014	GASKET	1		
20	AR21839	CLAMP	1		
21	TY22467	CLAMP	2		
22	AT346094	CAP	1		(SUB FOR RE234193 OR RE255763)
23	H174831	ANCHOR	1		
24	R193666	FITTING	1		
25	R194311	COMPRESSION SPRING	1		
26	RE179976	CHECK VALVE	1		
27	RE194040	FITTING	1		
28	T164203	SCREW	1		
29	R184863	HOSE CLAMP	2		
30	R44302	TIE BAND	1		
31	RE52504	BREATHER	1		
32	T13254	CLAMP	2		
33	T242677	HOSE CLAMP	1		
34	T75197	CLAMP	2		
35	T75276	CLAMP	1		

0960-7

STEERING SYSTEM 09

POWER/STEERING/HYDRAULIC/SYSTEM 0960
STEERING CYLINDER HYDRAULIC HOSES (SN -618425)
FLEXIBLES HYDRAULIQUES DE VERIN DE DIRECTION (SN -618425)
MANGUERAS HIDRAULICAS DE CILINDROS DE LA DIRECCION (SN -618425)

KEY	PART NO.	PART NAME	QTY.	SERIAL NO.	REMARKS
1	AT332441	HYDRAULIC HOSE - FABRICATE	1		1-3/16" X 32" X 1-3/16"
2	AT331840	HYDRAULIC HOSE - FABRICATE	1		13/16" X 43-1/4" X 1"
3	AT222561	HYDRAULIC HOSE - FABRICATE	2		13/16" X 59" X 13/16"
4	AT334083	HYDRAULIC HOSE - FABRICATE	2		11/16" X 48-3/4" X 13/16"
5	AT314734	HYDRAULIC HOSE - FABRICATE	1		9/16" X 78-3/4" X 9/16"
10	AT226808	HYDRAULIC HOSE - FABRICATE	1		1-3/16" X 33-1/2" X 1-3/16"
11	AT325889	HYDRAULIC HOSE - FABRICATE	1		11/16" X 42-1/2" X 11/16"

0960-13

STEERING SYSTEM 09

POWER:STEERING:HYDRAULIC:SYSTEM 0960

STEERING CYLINDER (S.N. 618134-)
VERIN DE DIRECTION (S.N. 618134-)
CILINDRO DE LA DIRECCION (S.N. 618134-)

KEY	PART NO.	PART NAME	QTY.	SERIAL NO.	REMARKS
1	H155358	PISTON	1		
2	H155359	SCRAPER RING	1		
3	RE27205	SEAL	1		
4	AH148608	SEAL	1		
5	AH150453	SEAL	1		
6	H155655	SEAL	1		
7	H157897	WEAR RING	1		
8	H164982	SNAP RING	1		
9	H211093	HYDR. CYLINDER ROD GUIDE	1		
10	H211156	SNAP RING	1		
11	H63262	O-RING	1		
12	U13461	BACK-UP RING	1		
13	H170536	NUT	1		
14	SEAL	1		
15	BACK-UP RING	1		
16	SEAL	1		
17	SEAL	1		
18	BACK-UP RING	1		
19	AH227104	ROD	1		(ALSO ORDER T225516 AND (2) T225565)
30	AH227102	HYDRAULIC CYLINDER	1		(ALSO ORDER T225515, T225516, (2) T225564, (2) T225565)
32	AH149194	HYDRAULIC CYLINDER KIT	1		ROD SEAL KIT
34	AH212087	HYDRAULIC CYLINDER KIT	1		BORE SEAL KIT

1062-3

SERVICE BRAKES 10
SERVICE BRAKE VALVE 1062

BRAKE VALVE, PEDALS AND LINKAGE
SOUPAPE, PEDALES ET TRINGLERIE DE FREIN
VALVULA DE FRENOS, PEDALES Y VARILLAJE

KEY	PART NO.	PART NAME	QTY.	SERIAL NO.	REMARKS
1	19M7657	SCREW	2		
2	24M7313	WASHER	2		
3	T38282	HOSE FITTING	1		
4	AT181313	CHECK VALVE	2		(INCLUDES R26448 AND T77613)
6	AT323790	PEDAL	1		(RH)
7	AT208088	PUSH ROD	1		
8	T157212	CLIP	6		
9	T157258	PIN	2		
10	T174634	BOOT	2		
11	AT208085	KIT	1		(LH)
12	AT314267	SUPPORT	1		
13	R53317	LOCK NUT	4		
14	T157211	PIN	2		
15	T157220	CLAMP	2		
16	T170180	SNAP RING	4		
17	T170181	LOCK WASHER	4		
18	AT208086	HOSE KIT	1		(RH)
20	T157257	PIN	1		
21	T175236	ROLLER	1		
22	AT323792	PEDAL	1		(LH)
23	AT208163	PUSH ROD	1		
25	AT208089	ROCKER ARM	1		
26	T157223	BEARING	2		
28	AT207529	CHECK VALVE	1		
29	AT210291	CLUTCH KIT	1		(CLUTCH CUTOFF)
31	14H631	NUT	2		4.826 MM
32	21H1390	SCREW	2		
33	A4365R	O-RING	1		6.071 X 1.778 MM
34	AT210877	LINKAGE	1		
36	21H985	SCREW	1		
37	AH108055	LINK END	1		
38	P48347	O-RING	2		
39	R72654	SNAP RING	2		
40	R86457	SUPPORT	1		
41	RE24468	SHAFT	1		
42	RE261356	SENSOR	1		
43	T172274	SUPPORT	1		
44	AT335786	FLOW CONTROL HYD. VALVE	1		
45	AT325225	SEAL KIT	1		(NOT ILLUSTRATED)
46	T77814	O-RING	1		
47	R26375	O-RING	1		
48	M113243	SCREW	6		
49	N203905	LOCK NUT	1		
50	R26287	O-RING	1		
51	R28782	O-RING	1		
52	R26448	O-RING	3		
54	T172927	GASKET	2		
55	T176108	SPRING	1		
56	T176111	SPRING	1		
57	T77613	O-RING	4		
59	AT223535	PRESSURE SWITCH	1		(STD)
	AT222372	SWITCH	1		(HARSH ENVIRONMENT)
60	AT314266	SUPPORT	1		
61	12M7060	WASHER	4		5.300 MM
62	R72653	SNAP RING	1		
63	38H1159	ADAPTER FITTING	1		
64	AT322982	TRANSDUCER	1		
65	AT326970	FITTING	1		

1100-9

PARKING BRAKES 11

PARKING BRAKES 1100

**PARK BRAKE SOLENOID VALVE
ELECTROVANNE DE FREIN DE STATIONNEMENT
VALVULA DE SOLENOIDE DE FRENO DE ESTACIONAMIENTO**

KEY	PART NO.	PART NAME	QTY.	SERIAL NO.	REMARKS
1	19M7820	SCREW	2		M12 X 100
2	38H1010	ELBOW FITTING	1		
3	R26375	O-RING	2		16.358 X 2.210 MM
4	T77613	O-RING	3		9.250 X 1.780 MM
5	38H1160	ADAPTER FITTING	1		
6	R26448	O-RING	2		11.887 X 1.981 MM
7	AT223538 AT222367	PRESSURE SWITCH SWITCH	1 1		HARSH ENVIRONMENT
8	38H1171	ADAPTER FITTING	1		
9	38H1094	ELBOW FITTING	1		
10	R27218	FITTING PLUG	1		
11	38H1404	ELBOW FITTING	1		
12	T77932	O-RING	1		15.600 X 1.780 MM
13	U12547	O-RING	1		23.470 X 2.946 MM
14	AT315072	VALVE	1		
15	AT307301 AT224873	FLOW CONTROL HYD. VALVE SEAL KIT	1 1		
16	AT307302 AT224873	FLOW CONTROL HYD. VALVE SEAL KIT	1 1		
17	AT323128 AT314326	CHECK VALVE SEAL KIT	1 1		

1322-9

MISCELLANEOUS VEHICLE 13
DECALS AND TRADEMARKS 1322

**DECALS AND LABELS (SPANISH)
AUTOCOLLANTS (ESPAGNOLE)
ETIQUETAS Y CALCOMANIAS (ESPAÑOL)**

KEY	PART NO.	PART NAME	QTY.	SERIAL NO.	REMARKS
1	T241448	LABEL	1		(SUB FOR T227298) (PERIODIC MAINTENANCE)
2	T200818	LABEL	1		(START/STOP SWITCH PAD)
3	T197324	LABEL	1		(HYDRAULIC RESERVOIR SIGHT GAUGE)
4	T146504	SAFETY SIGN	1		(WARNING - ARTICULATION JOINT)
5	T146180	SAFETY SIGN	1		(DANGER - BOOM)
6	T146502	SAFETY SIGN	1		(CAUTION - SECONDARY STEERING)
7	T146106	SAFETY SIGN	1		(STARTER BYPASS START)
8	T102620	LABEL	1		(HYDRAULIC OIL)
9	T146098	SAFETY SIGN	1		(WARNING - SEAT BELT)
10	T195858	LABEL	1		(BOOM LOCK)
11	T200057	LABEL	1		(TRANSMISSION OIL CHECK)
12	T146606	LABEL	1		(AIR CLEANER)
13	T146911	LABEL	1		(WARNING - ACCUMULATOR)
14	T160769	SAFETY SIGN	1		(WARNING - PARK BRAKE)
15	T200814	LABEL	1		(ROPS)
16	T207751	LABEL	1		(PARK BRAKE OVERFILL)
17	T200060	LABEL	1		(TRANSMISSION SIGHT GAUGE)
19	T146503	SAFETY SIGN	2		(CAUTION - DUAL BATTERIES)
20	T171751	LABEL	1		(PARK BRAKE SWITCH)
21	T171757	LABEL	1		(RADIATOR CAP)
22	T63225	LABEL	1		(BATTERY DISCONNECT)
23	T64217	LABEL	1		(OIL FILTER ELEMENT)
24	T208086	SAFETY SIGN	1		(CAUTION - ENGINE AIR HEATER)
25	T205719	LABEL	1		(VEHICLE)
26	T195559	LABEL	1		(ENGINE START-STOP)
28	T208376	LABEL	1		(AIR CLEANER)
29	T208377	LABEL	1		(AIR CLEANER)
30	T208795	LABEL	1		(FILL COOLANT AT SURGE TANK)
31	T215157	LABEL	2		(WARNING-ACCUMULATOR, SPANISH)
32	T215160	LABEL	1		(WARNING-ACCUMULATOR, SPANISH)
33	T215217	LABEL	1		(WARNING-ACCUMULATOR, SPANISH)
34	T240636	LABEL	2		(LIFT TO OPEN)

1520-3

EQUIPMENT ATTACHING 15

HITCHES AND HITCH PINS 1520

HITCH ASSEMBLY ATTELAGE CONJUNTO DE ENGANCHE

KEY	PART NO.	PART NAME	QTY.	SERIAL NO.	REMARKS
1	19M7921	CAP SCREW	6		M20 X 150
2	24M7242	WASHER	6		21.400 X 42 X 5 MM
3	AR83396	QUICK LOCK PIN	1		
4	T215611	HITCH	1		
5	T224369	PIN FASTENER	1		38.100 X 225.200 MM
6	AT324507	FIELD INSTALLATION KIT	1		(WHOLEGOODS)
7	19M7921	CAP SCREW	6		(WITH COUNTERWEIGHT)
	19M8639	CAP SCREW	6		(WITHOUT COUNTERWEIGHT)
9	AR83396	QUICK LOCK PIN	1		(SUB FOR AA21292, THIS APPLICATION)
10	AT227738	DRAWBAR	1		
11	AT315002	COUNTERWEIGHT	1		
12	T23914	PIN	1		34.798 X 148.844 MM

CLICK HERE TO **DOWNLOAD** THE COMPLETE MANUAL

- Thank you very much for reading the preview of the manual.
- You can download the complete manual from: www.heydownloads.com by clicking the link below



- Please note: If there is no response to CLICKING the link, please download this PDF first and then click on it.

CLICK HERE TO **DOWNLOAD** THE COMPLETE MANUAL

1672-5

ELECTRICAL SYSTEM 16

ALTERNATOR, REGULATOR AND CHARGING SYSTEM WIRING 1672
HARSH ENVIRONMENT ALTERNATOR MOUNTING BRACKETS AND BELT (100 AMP)
SUPPORTS ET COURROIE MONTAGE ALTERNATEUR ENVIRONNEMENT DIFFICILE (100 AMP)
ALTERNADOR DE AMBIENTE CORROSIVO, ESCUADRAS DE MONTAJE Y CORREA (100 AMP)

KEY	PART NO.	PART NAME	QTY.	SERIAL NO.	REMARKS
1	14M7296	FLANGE NUT	3		M10
2	19M7804	SCREW	3		M10 X 40
3	AT226924	ALTERNATOR	1		
4	R128859	PULLEY	1		
5	T205944	STRAP	1		
6	T208891	V-BELT	1		WITH A/C
	R135609	V-BELT	1		(SUB FOR T186776) WITHOUT A/C

1673-7

ELECTRICAL SYSTEM 16
VEHICLE LIGHTING SYSTEM 1673

STOP, TURN, AND TAIL LIGHT
FEUX DE STOP, CLIGNOTANTS ET FEUX ARRIERE
LUZ DE PARE, VIRAJE Y COLA

KEY	PART NO.	PART NAME	QTY.	SERIAL NO.	REMARKS
1	T178947	TURN SIGNAL LAMP	2		STANDARD (AMBER)
	T246236	TURN SIGNAL LAMP	2		(SUB FOR T180074) HEAVY-DUTY (AMBER)
2	T178948	RETAINER	4		
3	T178946	TAIL LAMP	2		STANDARD (RED)
	T246237	TAIL LAMP	2		(SUB FOR T180075) HEAVY-DUTY (RED)
4	AT223807	WIRING HARNESS	2		LED JUMPER (USE WITH HEAVY DUTY) (NOT ILLUSTRATED)

1674-7

ELECTRICAL SYSTEM 16

WIRING HARNESS AND SWITCHES 1674

**CAB WIRING HARNESS
FAISCEAU DE CABINE
ARNES DE CABINA**

KEY	PART NO.	PART NAME	QTY.	SERIAL NO.	REMARKS
1	14M7360	LOCK NUT	4		M5
2	14M7396	LOCK NUT	2		M8
3	19M7784	SCREW	1		M10 X 20
4	19M8504	CAP SCREW	2		M8 X 80
5	21M7250	SCREW	10		M4 X 12
6	24H1441	WASHER	1		1-1/64" X 1-1/2" X 0.048"
7	24H1500	WASHER	1		1-9/32" X 2-1/2" X 0.060"
8	24M7027	WASHER	4		5.300 X 10 X 1 MM
9	24M7100	WASHER	2		6.600 X 22 X 2 MM
10	24M7239	WASHER	1		10.700 X 21 X 2.500 MM
11	24M7298	WASHER	3		8.400 X 25 X 2 MM
17	57M8736	ELEC. CONNECTOR ACCESSORY	9		
18	AT195301	SWITCH	1		
19	AT195302	KEY	1		
21	AT301498	PLATE	1		
22	AT304026	SWITCH	1		
24	AT311903	VEHICLE CONTROLLER	1		
25	AT360650	WIRING HARNESS	1		
26	AT317063	RELAY	1		
27	AT320724	PUSH SWITCH	1		
28	AT327727	WIRING HARNESS	1		
29	AT328223	VEHICLE CONTROLLER	1		
30	AT347178	HOUSING	1		(SUB FOR AT334711)
31	AT336601	TRANSMISSION CONTROLLER	1		
32	M115279	PLUG	1		
33	RE526588	ENGINE CONTROLLER	1		
34	T102934	CLAMP	2		
35	T167775	BUSHING	2		
36	T181604	PLATE	1		
37	T181605	PLATE	1		
38	T200363	ANGLE	2		
39	T206624	PLUG	2		
40	T211678	SEAL	1		
41	T224069	PLUG	1		
42	T46876	GROMMET	1		
43	T74416	CLAMP	3		
44	14M7298	FLANGE NUT	4		M8
45	14M7303	FLANGE NUT	6		M6
46	19M7774	SCREW	4		M6 X 12
47	19M7865	SCREW	14		M8 X 16
48	19M7866	SCREW	6		M8 X 20
49	19M8538	CAP SCREW	4		M6 X 45
50	24M7054	WASHER	4		6.400 X 12 X 1.600 MM
52	57M8035	NUT	2		
53	AT145341	RELAY	1		
54	H77698	TIE BAND	3		
55	R44302	TIE BAND	2		
57	AP22660	GROUND CABLE	1		

1674-17

ELECTRICAL SYSTEM 16

WIRING HARNESS AND SWITCHES 1674

CONVERTER (10 AMP) (24 VOLT TO 12 VOLT)
CONVERTISSEUR (10 AMP) (24V A 12V)
CONVERTIDOR (10 AMP) (24V A 12V)

KEY	PART NO.	PART NAME	QTY.	SERIAL NO.	REMARKS
1	14M7100	NUT	4		M4
2	AT224894	CONVERTER	1		(10 AMP)
3	GY20126	SOCKET OUTLET	2		(POWER PLUG)
4	AT306828	CONVERTER	1		WHOLE GOODS

1674-27

ELECTRICAL SYSTEM 16

WIRING HARNESS AND SWITCHES 1674

**ENGINE WIRING HARNESS
FAISCEAU CABLAGE PRINCIPAL
ARNES DE ALAMBRADO PRINCIPAL**

KEY	PART NO.	PART NAME	QTY.	SERIAL NO.	REMARKS
1	57M8407	ELEC. CONNECTOR HOUSING	1		(FUEL RAIL PRESSURE)
	57M8135	ELEC. CONNECTOR TERMINAL	3		
	57M7833	ELEC. CONNECTOR SEAL	3		
	57M8417	ELEC.CONNECT LOCKING DEVICE	1		
2	57M7850	ELEC. CONNECTOR HOUSING	5		(COOLANT TEMPERATURE, CRANK SPEED, CAM SPEED, MANIFOLD AIR TEMPERATURE, AMBIENT AIR TEMPERATURE)
	57M7829	ELEC. CONNECTOR TERMINAL	10		
3	57M8400	ELECTRICAL CONNECTOR ASSY	1		(FUEL TEMPERATURE)
	57M8402	ELEC. CONNECTOR TERMINAL	2		
	57M7833	ELEC. CONNECTOR SEAL	2		
4	57M8403	ELEC. CONNECTOR HOUSING	1		(FUEL PUMP CONTROL VALVE)
	57M8404	ELEC. CONNECTOR TERMINAL	2		
5	57M7796	ELEC. CONNECTOR HOUSING	1		(OIL PRESSURE)
	R104701	ELEC. CONNECTOR TERMINAL	3		
6	57M8746	ELEC. CONNECTOR HOUSING	1		(FUEL INJECTORS)
	ELEC.CONNECT LOCKING DEVICE	8		
	57M8011	ELEC.CONNECT LOCKING DEVICE	1		
7	57M8998	ELEC.CONNECT LOCKING DEVICE	1		
8	R78053	ELECTRICAL CONNECTOR ASSY	2		
	57M7251	ELEC. CONNECTOR TERMINAL	2		(A/C CLUTCH)
	R78061	ELEC. CONNECTOR TERMINAL	2		(AIR FILTER RESTRICTION SWITCH)
	R78059	ELEC. CONNECTOR SEAL	4		
9	ELEC. CONNECTOR TERMINAL	4		
10	ELEC. CONNECTOR TERMINAL	1		
11	AR94101	DIODE	1		(A/C CLUTCH DIODE)
12	ELECTRICAL CONNECTOR ASSY	1		(TO LOAD CENTER)
	ELEC. CONNECTOR TERMINAL	1		
	ELEC. CONNECTOR TERMINAL	30		
	57M8263	ELEC. CONNECTOR TERMINAL	4		(GOLD)
	R78069	ELEC. CONNECTOR CAVITY PLUG	5		
13	ELEC. CONNECTOR TERMINAL	1		
14	RE12363	ELECTRICAL CONNECTOR ASSY	1		(TRANSMISSION)
15	57M8960	ELEC. CONNECTOR HOUSING	1		(ALTERNATOR EXCITATION)
	57M7259	ELEC. CONNECTOR CAVITY PLUG	3		
	57M8961	ELECTRICAL CONNECTOR CAP	1		
16	R78052	ELECTRICAL CONNECTOR ASSY	1		(RELAY EXCITATION)
17	RE12362	ELECTRICAL CONNECTOR ASSY	1		(SECONDARY STEERING)
	R78060	ELEC. CONNECTOR TERMINAL	1		
	R78059	ELEC. CONNECTOR SEAL	1		
18	AT323452	WIRING HARNESS	1		(ENGINE)
19	57M8021	ELECTRICAL CONNECTOR ASSY	1		(LOW PRESSURE FUEL PUMP)
	ELEC. CONNECTOR TERMINAL	2		
	57M8022	ELEC.CONNECT LOCKING DEVICE	1		
20	57M7254	ELECTRICAL CONNECTOR ASSY	1		(WATER IN FUEL SENSOR)

1746-5

FRAME, CHASSIS OR SUPPORTING STRUCTURE 17

FRAME;BOTTOM;GUARDS;(IF;SPECIAL) 1746

**TRANSMISSION BOTTOM,FRONT BOTTOM,BOOM GUARDS
PROTECTION INFERIEURE DE TRANSMISSION ET PROTECTION INFERIEURE AVANT
PROTECTOR INFERIOR DE LA TRANSMISION Y PROTECTOR INFERIOR DELANTERO**

KEY	PART NO.	PART NAME	QTY.	SERIAL NO.	REMARKS
1	19M7791	BOLT	17		M12 X 40
2	19M7818	SCREW	2		M12 X 80
3	24M7226	WASHER	6		13 X 35 X 5 MM
4	AT207432	SUPPORT	1		(LH)
6	AT207433	SUPPORT	1		(RH)
9	AT221332	GUARD	1		(EXTENSION)
10	T20217	WASHER	9		12.954 X 43.942 X 6.350 MM
11	T197569	BUSHING	8		
12	T177255	STRAP	1		
13	AT317161	GUARD	1		
15	AT317098	GUARD	1		
16	24M7226	WASHER	4	-XXXXXX	13 X 35 X 5 MM
	T20217	WASHER	4	XXXXXX-	12.954 X 43.942 X 6.350 MM
31	TY22494	HOSE CLAMP	2		
32	AR85327	CLAMP	4		
33	AT222012	COVER	2		

1810-9

OPERATOR'S STATION 18
OPERATOR ENCLOSURE 1810

**FRONT AND REAR CAB MOUNTS
MONTAGES CABINE AVANT ET ARRIERE
SOPORTES DE LA CABINA TRASERO Y DELANTERO**

KEY	PART NO.	PART NAME	QTY.	SERIAL NO.	REMARKS
1	14M7278	NUT	2		M24
2	24M7243	WASHER	6		25.400 X 50 X 6 MM
3	T153535	WASHER	4		
4	AT170005	ISOLATOR	4		
5	19M7781	CAP SCREW	2		M24 X 150
6	19M7903	CAP SCREW	2		M24 X 120

1810-19

OPERATOR'S STATION 18
OPERATOR ENCLOSURE 1810

**CANOPY TRIM, SEAT BASE AND FIRE EXTINGUISHER
GARNITURE AUVENT, BASE SIEGE ET EXTINCTEUR
ADORNOS DEL DOSEL, BASE DEL ASIENTO Y EXTINGUIDOR DE INCENDIOS**

KEY	PART NO.	PART NAME	QTY.	SERIAL NO.	REMARKS
2	19M7866	SCREW	2		M8 X 20
3	21M7247	SCREW	2		M6 X 35
4	T172991	PLATE	1		
5	T172992	GROMMET	1		
6	19M7868	SCREW	5		M8 X 30
7	T182876	PLUG	1	XXXXXX-	(NOT ILLUSTRATED)
8	AT151931	LATCH	1		
9	AT224237	FLOOR	1		
10	SEALING TRIM	1		(MAKE FROM T180533) (CTL)
11	SEAL	12		(MAKE FROM H81330) (CTL)
14	T180408	PLUG	1		
19	28H3423	BUSHING	2		0.364" X 0.540" X 7/8"
20	AT189390	BRACKET	1		
21	AT189487	FIRE EXTINGUISHER	1		
22	T182888	SCREW	3		

1814-9

OPERATOR'S STATION 18
WINDSHIELD & WIPERS 1814

**WINDOW WASHER AND HOSES
LAVEUR DE GLACE ET FLEXIBLES
MANGUERAS Y LAVAPARABRISAS**

KEY	PART NO.	PART NAME	QTY.	SERIAL NO.	REMARKS
1	AT209947	TANK	1		(ASSY)
3	HOSE	AR		(MAKE FROM R120653) (CUT TO LENGTH)
4	R44302	TIE BAND	2		
5	AT106365	PUMP	2		
6	HOSE	AR		(MAKE FROM R120653) (CUT TO LENGTH)
7	24M7139	WASHER	4		6.400 X 18 X 1.600 MM, TO BOSSES ON ACCESS DOOR
8	T147618	TANK	1		
9	AT173193	CAP	1		
10	14M7303	FLANGE NUT	4		

1821-3

OPERATOR'S STATION 18
SEAT AND SEAT BELTS 1821

**SEAT AND SEAT SUSPENSION
SIEGE ET SUSPENSION DE SIEGE
ASIENTO Y SUSPENSION DEL ASIENTO**

KEY	PART NO.	PART NAME	QTY.	SERIAL NO.	REMARKS
1	19M7866	SCREW	4		
2	19H3569	CAP SCREW	2		
3	AT308199	SEAT BELT	1		
4	T105740	WASHER	4		
5	T163962	COVER	1		
6	AT311919	SEAT	1		GRAY VINYL
	AT310435	SEAT	1		GRAY CLOTH
7	AT195441	ARMREST KIT	1		(R.H.)
	AT350317	PAD	1		(SUB FOR AT315715)
8	AT195442	ARMREST KIT	1		(L.H.)
	AT350316	PAD	1		(SUB FOR AT315761)
9	AT209020	KIT	1		SLIDE PUCK KIT
10	AT209021	KIT	1		SLIDE SPRING KIT
11	R72655	SNAP RING	4		
12	T163334	SPRING	1		
13	T163335	SPRING	1		
14	T163336	TORSION SPRING	1		
15	AT209022	SEAT KIT	1		SLIDE CONTROL KIT
17	AT209024	KIT	1		LUMBAR KNOB KIT
18	34H262	SPRING PIN	1		
19	AT209025	SEAT KNOB KIT	1		RECLINER KNOB KIT
20	37H121	SCREW	1		
21	AT209026	KIT	1		LUMBAR SERVICE KIT
22	34H387	SPRING PIN	2		
23	AT209225	SEAT KNOB KIT	1		RECLINER SERVICE KIT (INCLUDES RECLINER KNOB KIT AND TORSION SPRING)
24	M453T	LOCK NUT	3		
25	AT221015	SEAT	1		GRAY VINYL
	AT308795	CUSHION	1		GRAY CLOTH
26	AT221016	PAD	1		GRAY VINYL
	AT308796	CUSHION	1		GRAY CLOTH
27	T171686	CLIP	4		
28	AT221017	CUSHION	1		GRAY VINYL
	AT308797	CUSHION	1		GRAY CLOTH
29	T182870	ISOLATOR	1		
30	AT311918	SEAT SUSPENSION	1		
31	CONTROL	1		

1830-3

OPERATOR'S STATION 18

HEATING AND AIR CONDITIONING 1830

**HVAC MODULE
MODULE CHAUFFAGE, VENTILATION ET CLIMATISATION
MODULO DE CLIMATIZACION**

KEY	PART NO.	PART NAME	QTY.	SERIAL NO.	REMARKS
1	R203687	NUT	1		
2	14M7298	FLANGE NUT	2	M8	
3	19M7862	SCREW	4	M6 X 20	
4	19M7866	SCREW	3	M8 X 20	
5	19M8318	SCREW	2	M8 X 45	
6	24M7139	WASHER	2	6.400 X 18 X 1.600 MM	
7	24M7296	WASHER	1	10.500 X 30 X 2.500 MM	
8	H86981	RIVET	4		
9	R121465	LATCH	2		
10	T167945	AIR DUCT	1		
11	T168220	AIR FILTER	1		
	AT321942	ACTIVATED CARBON AIR FILTER	1		(ODOR REDUCING)
12	T170053	SEAL	1		
13	T171459	AIR DUCT	1		
14	AT209668	AIR DUCT	1		
15	AT210561	LINE	1		
16	AT306913	TUBE	1		
17	AT220953	KNOB	1		
18	AT226249	JUMPER	1		
19	Z59685	HOSE	1		(4.5 LIN. FT.)
20	H114865	CLAMP	4		
21	H77698	TIE BAND	4		
22	L57881	CLIP	1		
23	R10093	O-RING	1		
24	AL76568	KNOB	1		
25	RE46742	CONTROL	1		
26	12H292	LOCK WASHER	1	1/2"	
28	RE58614	PUSH PULL CABLE	1		
29	T143169	O-RING	1		
30	T167676	SEAL	1		
31	T174427	CLAMP	1		
32	T182852	SEALING WASHER	1		
33	T182858	GASKET	1		
34	T182870	ISOLATOR	1		
35	T182871	ISOLATOR	1		
36	T182906	PLATE	1		

1831-3

OPERATOR'S STATION 18

HEATER, HOSES & CONTROLS 1831

**CAB MONITOR CONSOLE
CONSOLE MONITEUR CABINE
CONSOLA DE MONITOR DE CABINA**

KEY	PART NO.	PART NAME	QTY.	SERIAL NO.	REMARKS
1	37M7333	SCREW	26		
2	AT227668	LOUVER	5		
3	AT227669	LOUVER	4		
4	SEAL	2		(MAKE FROM H81330) (CTL)
5	R117845	GROMMET	1		
6	T196471	CONSOLE	1		
7	T82791	SCREW	4		
8	T82792	NUT	4		

1832-3

OPERATOR'S STATION 18

AIR/COND/SYSTEM/COMPRESSOR/& DRIVE 1832

**A/C COMPRESSOR
CONDENSEUR DE CLIMATISATION
COMPRESOR DE ACONDICIONADOR DE AIRE**

KEY	PART NO.	PART NAME	QTY.	SERIAL NO.	REMARKS
1	14M7298	FLANGE NUT	1		M8
2	19M7784	SCREW	3		M10 X 20
3	19M7785	SCREW	1		M10 X 25
4	19M7788	SCREW	1		M12 X 25
5	19M7798	SCREW	1		M8 X 40
6	19M7913	SCREW	3		M8 X 90
7	28H2659	BUSHING	1		0.423" X 0.675" X 2-3/4"
8	34M7189	SPRING PIN	2		11 X 8 MM
9	R56171	CLIP	2		
10	T223616	BRACKET	1		
11	R115742	SEAL	1		
13	R115743	COVER	1		(NOT ILLUSTRATED)
14	R136508	SCREW	1		M10 X 95
16	RE52454	COMPRESSOR	1		
17	RE52506	FLOW CONTROL HYD. VALVE	1		
19	RE52508	KIT	1		(CLUTCH AND PULLEY) (INCLUDES (6) R77390)
	R77390	SCREW	6		
21	RE55423	MANIFOLD	1		
22	AT226273	COMPRESSOR	1		
	SE501819	COMPRESSOR REMAN	1		
	AT163872	KIT	1		STATOR (NOT ILLUSTRATED)
	RE52507	KIT	1		HARDWARE (NOT ILLUSTRATED)
	RE52509	SEAL KIT	1		SHAFT SEAL (NOT ILLUSTRATED)
23	AT227754	REFRIGERANT HOSE	1		7/8" X 1 870 MM X 1-1/16"
24	AT227755	REFRIGERANT HOSE	1		3/4" X 2 992 MM X 3/4"
25	R113050	O-RING	2		10.820 X 1.778 MM
26	R33259	O-RING	1		13.995 X 1.778 MM
27	T143169	O-RING	1		17.170 X 1.778 MM
30	T76252	CLAMP	1		
31	T64784	CLIP	1		
35	R78057	ELEC. CONNECTOR TERMINAL	2		(NOT ILLUSTRATED)
36	R78059	ELEC. CONNECTOR SEAL	2		(NOT ILLUSTRATED)
37	RE12363	ELECTRICAL CONNECTOR ASSY	1		
38	19M7877	CAP SCREW	1		M14 X 30
39	T153974	CLAMP	1		

1913-3

SHEET METAL AND STYLING 19

MISCELLANEOUS SHIELDS 1913

**TRANSMISSION SHIELDS
PROTECTIONS DE TRANSMISSION
ESCUDOS DE LA TRANSMISION**

KEY	PART NO.	PART NAME	QTY.	SERIAL NO.	REMARKS
1	19M7814	SCREW	2		M12 X 50
2	24M7180	WASHER	2		13 X 37 X 3 MM
3	AT323687	COVER	1		
4	AT227073	COVER	1		(LH)

1927-7

SHEET METAL AND STYLING 19

FENDERS 1927

**FULL COVERAGE FRONT FENDERS
AILES AVANT PLEINE COUVERTURE
GUARDABARROS DELANTEROS DE COBERTURA TOTAL**

KEY	PART NO.	PART NAME	QTY.	SERIAL NO.	REMARKS
1	03M7195	BOLT	2		M10 X 45
2	03M7195	BOLT	12		M10 X 45
3	14M7152	NUT	12		M10
4	14M7400	LOCK NUT	25		M10, (SUB FOR 14M7167, THIS APPLICATION)
5	14M7400	LOCK NUT	2		M10
6	19M7788	SCREW	6		M12 X 25
7	19M7808	SCREW	2		M10 X 65
8	19M7835	SCREW	11		M10 X 35
9	24M7239	WASHER	8		10.700 X 21 X 2.500 MM
10	24M7296	WASHER	2		10.500 X 30 X 2.500 MM
11	24M7296	WASHER	25		10.500 X 30 X 2.500 MM
12	T173779	STRAP	2		
13	T176357	ANGLE	2		
14	T178368	SUPPORT	6		
15	T203075	FENDER	2		
16	T203077	SPLASH GUARDS	2		
17	T204701	SPLASH GUARDS	1		
18	T204744	PLATE	1		
19	T22381	WASHER	18		
20	19M7812	SCREW	2		M10 X 100
21	T147891	BUSHING	2		
22	AT311823	KIT	1		FENDER (WHOLEGOODS)

2003-3

SAFETY, CONVENIENCE AND MISCELLANEOUS 20

FIRE EXTINGUISHER 2003

**FIRE EXTINGUISHER
EXTINCTEUR
EXTINGUIDOR DE INCENDIOS**

KEY	PART NO.	PART NAME	QTY.	SERIAL NO.	REMARKS
1	28H3423	BUSHING	2		
2	AT189390	BRACKET	1		
3	AT189487	FIRE EXTINGUISHER	1		

2008-3

SAFETY, CONVENIENCE AND MISCELLANEOUS 20

FLECTORS AND SLOW MOVING VEHICLE 2008

**SLOW MOVING VEHICLE EMBLEM
SIGNAL DE VEHICULE LENT
ETIQUETA DE VEHICULO DE MOVIMIENTO LENTO**

KEY	PART NO.	PART NAME	QTY.	SERIAL NO.	REMARKS
1	14M7397	LOCK NUT	2		M6
2	14M7396	LOCK NUT	2		M8
3	AT301913	FIELD INSTALLATION KIT	1		(WHOLE GOODS)
4	AT301914	BRACKET	1		
5	JD5929	SMV EMBLEM	1		
6	24M7088	WASHER	2		6.600 X 12 X 1.600 MM
7	19M7862	SCREW	2		M6 X 20
8	24M7298	WASHER	2		8.400 X 25 X 2 MM

2160-7B

MAIN HYDRAULIC SYSTEM 21

VEHICLE HYDRAULICS 2160

**PRESSURE REGULATOR VALVE COMPONENTS
COMPOSANTS DU REGULATEUR DE PRESSION
COMPONENTES DE LA VALVULA REGULADORA DE PRESION**

KEY	PART NO.	PART NAME	QTY.	SERIAL NO.	REMARKS
1	AT224570	CHECK VALVE	1		
	AT224862	SEAL KIT	1		
2	AT332497	HYDRAULIC PRESSURE VALVE	1		(SUB FOR AT313708)
	AT196943	SEAL KIT	1		
3	AT309494	SOLENOID VALVE	1		
4	AT307315	SOLENOID VALVE	1		
5	AT333811	SOLENOID VALVE COIL	1		
6	T225291	NUT	1		12.700 MM
7	AT318788	SOLENOID VALVE	1		
	AT224873	SEAL KIT	1		
10	AH125760	HYD. QUICK-CONNECT COUPLER	2		
11	R77175	COVER	2		
12	R26448	O-RING	1		11.887 X 1.981 MM
20	AT333904	HYDRAULIC PRESSURE VALVE	1		

3101-3

LOADER 31

CUTTING EDGE 3101

**LOADER BUCKET CUTTING EDGES
DENTS ET PORT-DENTS DE BENNE DE CHARGEUR
DIENTES Y VASTAGOS DEL CUCHARON DE LA CARGADORA**

KEY	PART NO.	PART NAME	QTY.	SERIAL NO.	REMARKS
1	14H1058	NUT	12		3/4"
2	T146672	CUTTING EDGE	2		
3	T146934	BOLT	12		
4	T157311	CUTTING EDGE	2		(FOR USE WITH 2.5 YD BUCKETS) (100.4 INCHES WIDE)
	T157492	CUTTING EDGE	2		(FOR USE WITH 3.0 YD BUCKETS) (105.9 INCHES WIDE)
5	AT208833	FIELD INSTALLATION KIT	1		(FOR USE WITH 2.5 YD BUCKETS)
	AT209155	FIELD INSTALLATION KIT	1		(FOR USE WITH 3.0 YD BUCKETS)

3102-3D

LOADER 31

BUCKET 3102

LOADER BUCKET, CUTTING EDGE AND BUCKET PINS (STD.) (S.N. 618134-)
 BENNE DE CHARGEUR, TRANCHANT ET AXES BENNE (STD.) (S.N. 618134-)
 CUCHARON DE CARGADORA, BORDE CORTANTE Y PASADORES CUCHARON (ESTD.) (S.N. 618134-)

KEY	PART NO.	PART NAME	QTY.	SERIAL NO.	REMARKS
1	19M7489	CAP SCREW	3		M16 X 45
2	AT301543	PIN	2		
3	AT308031	PIN	1		
4	AT340088	LOADER BUCKET	1		(CONVENIENCE ASSEMBLY) (3.0 YARD BUCKET) (2550 MM CUTTING EDGE WIDTH)
	AT340089	LOADER BUCKET	1		(CONVENIENCE ASSEMBLY) (3.0 YARD BUCKET) (2690 MM CUTTING EDGE WIDTH)
5	T157282	CUTTING EDGE	1		(2550 MM CUTTING EDGE WIDTH)
	T157465	CUTTING EDGE	1		(2690 MM CUTTING EDGE WIDTH)
6	T217625	SKID PLATE	2		
7	JD7759	LUBRICATION FITTING	2		
8	T176064	BUSHING	3		
9	T213143	LABEL	1		
10	T225429	SHIM	2		
11	T225431	SHIM	6		
12	T225433	SHIM	6		(USE WITH AT340088)
	T225433	SHIM	7		(USE WITH AT340089)

3103-5

LOADER 31

FORKS 3103

HI-VIS PALLET FORKS
FOURCHE A PALETTES HI-VIS
HORQUILLAS PARA TARIMAS DE HI-VIS

KEY	PART NO.	PART NAME	QTY.	SERIAL NO.	REMARKS
1	AT308067	LOCK	2		
2	AT326640	TINE	2		(48 INCH) (CA)
	AT326190	TINE	2		(60 INCH) (CA)
3	AT326184	FRAME	1		(60 INCH) (CA)
	AT326203	FRAME	1		(90 INCH) (CA)
4	AT326792	FIELD INSTALLATION KIT	1		(WHOLE GOODS) (60 INCH FRAME WITH 60 INCH TINES)
	AT326793	FIELD INSTALLATION KIT	1		(WHOLE GOODS) (60 INCH FRAME WITH 48 INCH TINES)
	AT326794	FIELD INSTALLATION KIT	1		(WHOLE GOODS) (90 INCH FRAME WITH 60 INCH TINES)
	AT326795	FIELD INSTALLATION KIT	1		(WHOLE GOODS) (90 INCH FRAME WITH 48 INCH TINES)
5	T227914	LABEL	1		

3104-9

LOADER 31

ATTACHMENT COUPLER 3104

HI-VIS COUPLER Z-BAR LINKAGE ATTACHMENT (S.N. -618133)
ACCESSOIRE TRINGLERIE CINEMATIQUE EN Z COUPLEUR HI-VIS (S.N. -618133)
SUJECION DEL VARILLAJE DE BARRA EN Z DEL ACOPLADOR DE HI-VIS (S.N. -618133)

KEY	PART NO.	PART NAME	QTY.	SERIAL NO.	REMARKS
1	19M7489	CAP SCREW	3		M16 X 45
2	T61226	SNAP RING	2		
3	19M7790	SCREW	3		M12 X 35
4	24M7240	WASHER	3		13 X 25 X 3 MM
5	AH222122	HYDRAULIC CYLINDER	1		(COMPONENTS LISTED ON SEPARATE PAGES)
6	AT322729	QUICK COUPLER	1		
7	AT308024	PIN	1		
8	AT320165	PIN FASTENER	2		
9	AT324271	COVER	1		
10	H89151	DOWEL PIN	2		
11	JD7759	LUBRICATION FITTING	2		
12	24H1240	WASHER	2		3-1/32" X 4-1/2" X 0.105"
13	T176064	BUSHING	3		
14	T214207	PIN FASTENER	2		
15	T102171	WASHER	8		
16	AT326785	FIELD INSTALLATION KIT	1		(WHOLEGOODS)

3104-15

LOADER 31

ATTACHMENT COUPLER 3104

**ATTACHMENT HI-VIS COUPLER HYDRAULIC CYLINDER
VERIN HYDRAULIQUE ACCOUPLEMENT ACCESSOIRE HI-VIS
SUJECION DEL CILINDRO HIDRAULICO DEL ACOPLADOR DE HI-VIS**

KEY	PART NO.	PART NAME	QTY.	SERIAL NO.	REMARKS
1	H154514	SEAL	2		
2	H156058	WEAR RING	2		
3	H156586	SEAL	2		
4	H219217	ROD	2		
5	H170535	NUT	2		
6	R93633	O-RING	2		
7	H164982	SNAP RING	2		
8	H211156	SNAP RING	2		
9	AH142159	PISTON	2		
10	H210874	HYDR. CYLINDER ROD GUIDE	2		
11	H63262	O-RING	2		
12	U13461	BACK-UP RING	2		
13	AH222122	HYDRAULIC CYLINDER	1		

3140-5D

LOADER 31

FRAMES 3140

LOADER FRAME (NEVERGREASE) (S.N. 618134-)
BATI DE CHARGEUR (NEVERGREASE) (S.N. 618134-)
BASTIDOR DE CARGADORA (NEVERGREASE) (S.N. 618134-)

KEY	PART NO.	PART NAME	QTY.	SERIAL NO.	REMARKS
1	19M7488	CAP SCREW	2		M16 X 40
2	19M7489	CAP SCREW	4		M16 X 45
3	19M7496	CAP SCREW	12		M12 X 45
4	19M7786	SCREW	4		M10 X 30
5	19M8029	CAP SCREW	1		M16 X 30
6	24M7240	WASHER	12		13 X 25 X 3 MM
7	24M7296	WASHER	4		10.500 X 30 X 2.500 MM
8	AT203483	BEARING	2		
9	AT206735	FRAME	1		
10	14M7443	FLANGE NUT	8		M12
11	T133290	STRAP	1		
12	AT207321	PIN	1		
13	AT308024	PIN	2		
14	AT333778	PIN	2		
15	AT345967	PIN	2		
16	JD7759	LUBRICATION FITTING	2		
17	T130057	SHIM	4		
18	T130058	SHIM	2		
19	T130059	SHIM	2		
20	T146246	WASHER	1		
21	T157029	SEAL	2		
22	T157030	SPACER	2		
23	T157234	COVER	1		
24	T176064	BUSHING	6		
25	T182265	BUSHING	1		
26	T182571	PIN	1		
27	T200888	COVER	2		
28	T225433	SHIM	4		
29	T225434	SHIM	6		
30	T236612	SEAL	4		
31	T60752	SEAL	2		

3140-9F

LOADER 31

FRAMES 3140

LOADER BOOM (NEVERGREASE) (S.N. 618134-)
FLECHE CHARGEUR (NEVERGREASE) (S.N. 618134-)
AGUILON DE LA CARGADORA (NEVERGREASE) (S.N. 618134-)

KEY	PART NO.	PART NAME	QTY.	SERIAL NO.	REMARKS
1	19M7488	CAP SCREW	1		M16 X 40
2	AT207317	PIN	1		
3	AT333860	LOADER BOOM	1		CONVENIENCE ASSEMBLY
4	T72414	BUSHING	3		
5	AT350465	BUSHING	2		
6	AT350468	BUSHING	2		
7	AT350472	BUSHING	2		
8	T176064	BUSHING	1		
9	T223721	WASHER	2		

3140-13D

LOADER 31

FRAMES 3140

LOADER LINKAGE (NEVERGREASE) (S.N. 618134-)
TRINGLERIE CHARGEUR (NEVERGREASE) (S.N. 618134-)
VARILLAJE DE LA CARGADORA (NEVERGREASE) (S.N. 618134-)

KEY	PART NO.	PART NAME	QTY.	SERIAL NO.	REMARKS
1	15H558	PIPE PLUG	1		
2	19M7489	CAP SCREW	2		M16 X 45
3	AT207321	PIN	2		
4	AT333867	BELLCRANK	1		(CONVENIENCE ASSEMBLY)
5	AT350480	BUSHING	1		
6	AT333869	LINK	1		(CONVENIENCE ASSEMBLY)
	AT338851	LINK	1		(HIGH LIFT) (CONVENIENCE ASSEMBLY)
7	AT350471	BUSHING	2		
8	AT336321	CLAMP	2		
9	24M7027	WASHER	4		5.300 X 10 X 1 MM
10	T176064	BUSHING	2		
11	T225433	SHIM	4		

3160-9

LOADER 31

HYDRAULIC SYSTEM 3160

**INLET VALVE SECTION WITH RELIEF VALVE
SECTION DISTRIBUTEUR ENTREE AVEC CLAPET DECHARGE
SECCION DE VALVULA DE ENTRADA CON VALVULA DE ALIVIO**

<i>KEY</i>	<i>PART NO.</i>	<i>PART NAME</i>	<i>QTY.</i>	<i>SERIAL NO.</i>	<i>REMARKS</i>
1	AT314008	VALVE	1		
	AT314017	SEAL KIT	1		(INLET SECTION AND INTERFACE)
2	AT314015	PRESSURE RELIEF VALVE	1		
3	AT314016	ORIFICE	1		(NOT ILLUSTRATED)

3160-19

LOADER 31

HYDRAULIC SYSTEM 3160

**ELECTRIC FIFTH FUNCTION
CINQUIEME FONCTION ELECTRIQUE
QUINTA FUNCION ELECTRICA**

KEY	PART NO.	PART NAME	QTY.	SERIAL NO.	REMARKS
1	AT166149	HYDRAULIC HOSE - FABRICATE	2		11/16" X 975 MM X 11/16"
2	AT207096	HYDRAULIC HOSE - FABRICATE	2		11/16" X 2 550 MM X 11/16"
3	AT211219	WIRING HARNESS	1		(NOT ILLUSTRATED)
4	AT219757	TOGGLE/ROCKER SWITCH	1		
	AT202786	SWITCH	1		
	AT220526	SWITCH	1		
5	AT314013	SEAL KIT	1		(NOT ILLUSTRATED)
6	AT316315	SOLENOID VALVE	1		
	AT325146	STUD	4		
	AT326581	MFWD SOLENOID WRG HARNESS	2		
7	AT318917	HYDRAULIC HOSE - FABRICATE	1		1-7/16" X 890 MM X 1-3/16", (NOT ILLUSTRATED)
8	38H1418	FITTING	2		
9	38H1030	TEE FITTING	4		
10	38H1094	ELBOW FITTING	2		
11	38H1163	ADAPTER FITTING	2		
12	38H1309	ADAPTER FITTING	2		
13	38H1160	ADAPTER FITTING	2		
14	T77613	O-RING	14		9.250 X 1.780 MM
15	T77858	O-RING	2		18.770 X 1.780 MM
16	R26448	O-RING	2		11.887 X 1.981 MM
17	U12547	O-RING	2		23.470 X 2.946 MM
18	R28782	O-RING	2		8.915 X 1.829 MM
19	AT318916	HYDRAULIC HOSE - FABRICATE	1		1-7/16" X 965 MM (38") X 1-3/16", (NOT ILLUSTRATED)
20	AT318915	HYDRAULIC HOSE - FABRICATE	1		1-7/16" X 1 115 MM (44") X 1-3/16"
50	AT318912	MOUNTING PARTS	1		(WHOLE GOODS)

3160-37

LOADER 31

HYDRAULIC SYSTEM 3160

THIRD AND FOURTH FUNCTION AUXILIARY HYDRAULICS (FOR USE WITH POWERLLEL LINKAGE™)
 CIRCUIT HYDRAULIQUE AUXILIAIRE TROISIEME QUATRIEME FONCTION (UTILISER AVEC TRINGLERIE POWERLLEL™)
 SISTEMA HIDRAULICO AUXILIAR DE TERCERA Y CUARTA FUNCION (PARA USO CON VARILLAJE POWERLLEL™)

KEY	PART NO.	PART NAME	QTY.	SERIAL NO.	REMARKS
1	19M7786	SCREW	4		M10 X 30
2	38H1276	ADAPTER FITTING	4		
3	38H1418	FITTING	4		
4	T77858	O-RING	13		18.770 X 1.780 MM
5	AT322446	OIL LINE	1		
6	AT322466	OIL LINE	1		
7	AT313424	HYDRAULIC HOSE - FABRICATE	4		13/16" X 1 550 MM X 13/16"
8	AT322501	OIL LINE	2		
9	AT322445	OIL LINE	4		
10	HYDRAULIC HOSE - FABRICATE	1		(AT316332 NLA) (SUB AT353231, THIS APPLICATION) (ALSO ORDER 38H1609 AND T77858)
	AT353231	HYDRAULIC HOSE - FABRICATE	1		1-3/16" X 1 101 MM X 1-7/16"
11	T215434	CLAMP	4		
12	T174275	LOCK WASHER	4		30.950 MM
13	T78707	NUT	4		30.175 MM
14	T210447	PLATE	2		
15	14M7400	LOCK NUT	2		M10
16	19M7804	SCREW	2		M10 X 40, (SUB FOR 19M7805)
17	28H3383	BUSHING	2		12.522 X 17.145 X 19.050 MM
18	U46753	HOSE CLAMP	4		
19	38H1609	ADAPTER FITTING	1		

3160-57

LOADER 31

HYDRAULIC SYSTEM 3160

**AUXILIARY CONTROLLER TO JOYSTICK PILOT CONTROLLER
 CONTROLEUR PILOTE MANCHE BALAI AVEC AUXILIAIRE
 UNIDAD DE CONTROL PILOTO DE LA PALANCA CON MANDO AUXILIAR**

KEY	PART NO.	PART NAME	QTY.	SERIAL NO.	REMARKS
1	14M7397	LOCK NUT	4		M6
2	19M7805	SCREW	1		M10 X 45
3	38H1418	FITTING	2		
4	38H1023	TEE FITTING	1		
5	R26448	O-RING	1		11.887 X 1.981 MM
6	T77613	O-RING	1		9.250 X 1.780 MM
7	38H1160	ADAPTER FITTING	1		
8	38H1163	ADAPTER FITTING	1		
9	T77858	O-RING	7		18.770 X 1.780 MM
10	U12547	O-RING	1		23.470 X 2.946 MM
11	38H1276	ADAPTER FITTING	1		
12	63H1001	FITTING	2		
13	AT191285	HYDRAULIC HOSE - FABRICATE	2		1-3/16" X 1 295 MM X 1-3/16"
15	AT226132	OIL LINE	1		
17	AT226133	OIL LINE	1		
19	AT226615	HYDRAULIC HOSE - FABRICATE	2		(ALSO ORDER 62H1042 AND T77613)
20	AT228250	HYDR./PILOT CONTROL VALVE	1		
26	AT228261	PLATE	1		
27	AT314046	VALVE	1		
	AT314013	SEAL KIT	1		
	AT314021	HYDRAULIC CYLINDER CAP	1		(PILOT END CAP SEAL KIT)
28	AT209750	PRESSURE RELIEF VALVE	2		
	AT209748	SEAL KIT	1		
30	AT314011	VALVE	1		
31	AT314012	VALVE	1		
34	AT314959	OIL LINE	1		
36	AT314960	OIL LINE	1		
38	HYDRAULIC HOSE - FABRICATE	1		(AT316332 NLA) (SUB AT353231, THIS APPLICATION) (ALSO ORDER 38H1609 AND T77858)
	AT353231	HYDRAULIC HOSE - FABRICATE	1		1-3/16" X 1 101 MM X 1-7/16"
39	T160549	CLAMP	1		
40	T174275	LOCK WASHER	2		30.950 MM
41	T77858	O-RING	2		18.770 X 1.780 MM
42	T78707	NUT	2		30.175 MM
43	38H1609	ADAPTER FITTING	1		
50	AT316539	FIELD INSTALLATION KIT	1		(WHOLE GOODS)

3160-73

LOADER 31

HYDRAULIC SYSTEM 3160

RIDE CONTROL VALVE
VANNE DE COMMANDE DE SUSPENSION
VALVULA DE CONTROL DE SUSPENSION

KEY	PART NO.	PART NAME	QTY.	SERIAL NO.	REMARKS
1	AT224866	SOLENOID VALVE	1		
	AT224706	SEAL KIT	1		
	AT333811	SOLENOID VALVE COIL	1		
	T225291	NUT	1		12.700 MM
2	AT224573	SOLENOID VALVE	1		
	AT333809	SOLENOID VALVE COIL	1		
	AT224862	SEAL KIT	1		
	T181306	NUT	1		
3	AT224705	FLOW CONTROL HYD. VALVE	1		
	AT333809	SOLENOID VALVE COIL	1		
	AT224706	SEAL KIT	1		
	T181306	NUT	1		
4	AT224867	FLOW CONTROL HYD. VALVE	1		
	AT224868	SEAL KIT	1		
5	AT225082	FLOW CONTROL HYD. VALVE	1		
	F433299	SEAL KIT	1		
6	AT225084	FLOW CONTROL HYD. VALVE	1		
	AT225085	SEAL KIT	1		
	AT316532	KIT	1		(LOCKDOWN KIT)
7	AT332291	HYD ACTUATED CONTROL VALVE	1		
8	AN207183	CHECK VALVE	2		
	AN207184	SEAL KIT	1		

3160-83

LOADER 31

HYDRAULIC SYSTEM 3160

**BOOM TO COUPLER PIN DISCONNECT HYDRAULIC HOSES
FLEXIBLES HYDRAULIQUES DECONNEXION FLECHE AXE ACCOUPLEMENT
AGUILON MANGUERAS HIDRAULICAS DESCONEXION PASADOR ACOPLADOR**

KEY	PART NO.	PART NAME	QTY.	SERIAL NO.	REMARKS
1	12H327	LOCK WASHER	2		3/4"
2	19M7785	SCREW	2		M10 X 25
3	38H1285	UNION FITTING	1		
4	T77613	O-RING	2		9.250 X 1.780 MM
6	AT336825	HYDRAULIC HOSE - FABRICATE	1		11/16" X 18" X 11/16"
7	AT336826	HYDRAULIC HOSE - FABRICATE	1		11/16" X 20-1/4" X 11/16"
8	AT336880	CABLE	1		
	AT336881	CABLE	1		(HIGH LIFT)
9	AT336883	HYDRAULIC HOSE - FABRICATE	2		
	AT336882	HYDRAULIC HOSE - FABRICATE	2		11/16" X 50-1/2" X 11/16", (HIGH LIFT)
10	AT62123	CLAMP	1		
11	HOSE GUARD	AR		(FURNISH PARKER PG-188) (CUT TO 30 INCHES)
	HOSE GUARD	AR		(HIGH LIFT) (FURNISH PARKER PG-188) (CUT TO 45 INCHES)
12	T204315	PLATE	1		
13	T81029	NUT	2		11/16"
17	AT336884	FIELD INSTALLATION KIT	1		(WHOLEGOODS)
	AT336885	FIELD INSTALLATION KIT	1		(WHOLEGOODS) (FOR USE WITH HIGH LIFT MODELS ONLY)

3162-11

LOADER 31

CONTROL & LOAD HOLDING VALVES 3162

AUXILIARY JOYSTICK PILOT CONTROLLER COMPONENTS
COMPOSANTS CONTROLEUR PILOTE MANCHE BALAI AUXILIAIRE
COMPONENTES DE LA UNIDAD DE CONTROL PILOTO DE LA PALANCA AUXILIAR

KEY	PART NO.	PART NAME	QTY.	SERIAL NO.	REMARKS
1	AT172629	GRIP	1		(ALSO ORDER H77698 AND AT208911)
2	AT210145	LEVER	1		
3	T170269	NUT	1		M12
4	AT208911	RETAINER	1		
5	T172986	NUT	1		
6	T172988	BOOT	1		
7	H77698	TIE BAND	1		
8	T172985	NUT	1		
9	T172987	SNAP RING	1		
10	PLATE	1		
11	AT119378	RETAINER	1		
12	BALL	1		
13	HOUSING	1		UPPER
14	T131617	RING	4		
15	RETAINER	4		
16	SEAL	4		
17	T102958	PLUNGER	4		
18	SPOOL	4		
19	T131624	SPRING	4		
20	AT49216	FITTING PLUG	1		
21	R26448	O-RING	1		11.887 X 1.981 MM (0.468" X 5/64")
22	HOUSING	1		LOWER
23	12M7133	LOCK WASHER	4		6 MM
24	19M7966	SCREW	4		M6 X 25
25	T102961	DOWEL PIN	1		3.183 X 15.875 MM (0.125" X 5/8")
26	SEAL	1		
27	T102963	PIN FASTENER	1		ANTI-ROTATION
28	AT208760	ELECTRONIC CONTROL UNIT	1		
90	AT210247	SEAL KIT	1		

3163-7

LOADER 31

LINES, HOSES & FITTINGS 3163

**HI-VIS COUPLER HYDRAULIC HOSES
FLEXIBLES HYDRAULIQUES COUPLEUR HI-VIS
MANGUERAS HIDRAULICAS DEL ACOPLADOR DE HI-VIS**

KEY	PART NO.	PART NAME	QTY.	SERIAL NO.	REMARKS
1	12H327	LOCK WASHER	2		
2	19M7785	SCREW	2		M10 X 25
4	38H1004	ELBOW FITTING	2		
5	R26448	O-RING	2		
6	T77613	O-RING	5		9.250 X 1.780 MM
7	38H1016	TEE FITTING	1		
8	38H1285	UNION FITTING	1		
9	AT323757	HYDRAULIC HOSE - FABRICATE	1		11/16" X 600 MM X 11/16"
10	AT323756	HYDRAULIC HOSE - FABRICATE	1		11/16" X 810 MM X 11/16"
11	AT323817	HYDRAULIC HOSE - FABRICATE	1		11/16" X 317 MM X 11/16"
12	AT324137	CABLE	1		(USE WITH AT330154)
	AT325194	CABLE	1		(USE WITH AT330155)
13	AT324641	HYDRAULIC HOSE - FABRICATE	2		(USE WITH AT330154)
	AT325201	HYDRAULIC HOSE - FABRICATE	2		11/16" X 1 260 MM X 11/16", (USE WITH AT330155)
	AT327951	HYDRAULIC HOSE - FABRICATE	2		13/16" X 870 MM X 11/16"
14	AT62123	CLAMP	1		
15	T204315	PLATE	1		
16	HOSE GUARD	AR		(ORDER PARKER PG-188) CUT TO LENGTH
17	T81029	NUT	2		11/16"
25	AT330154	KIT	1		(WHOLE GOODS)
	AT330155	KIT	1		(WHOLE GOODS) USE WITH HIGH LIFT Z-BAR LINKAGE

3165-9

LOADER 31

HYDRAULIC CYLINDERS 3165

POWERLLEL™ LINKAGE BOOM AND TILT CYLINDER PINS AND FITTINGS
AXES ET RACCORDS VERIN INCLINAISON ET FLECHE TRINGLERIE POWERLLEL™
AGUILON DE VARILLAJE POWERLLEL™, ADAPTADORES Y PASADORES DEL CILINDRO DE INCLINACION

KEY	PART NO.	PART NAME	QTY.	SERIAL NO.	REMARKS
1	19M7489	CAP SCREW	2		M16 X 45
2	38H1006	ELBOW FITTING	2		
3	R26906	O-RING	2		19.177 X 2.464 MM
4	T77932	O-RING	2		15.600 X 1.780 MM
5	38H1037	ELBOW FITTING	1		
6	R29936	O-RING	2		29.743 X 2.946 MM
7	T76938	O-RING	3		23.520 X 1.780 MM
8	38H1052	ELBOW FITTING	1		
9	T77858	O-RING	1		18.770 X 1.780 MM
10	38H1305	ELBOW FITTING	2		
11	U12547	O-RING	2		23.470 X 2.946 MM
12	AT207052	PIN	2		
13	AT307996	HYDRAULIC HOSE	3		1/8" X 1 524 MM X 1/8"
14	JD7797	LUBRICATION FITTING	1		
15	E12379	NUT	3		1/8"
16	H77698	TIE BAND	2		
17	JD7763	LUBRICATION FITTING	2		45° X 22.606 MM LONG
18	T102137	SEAL	4		
19	T102171	WASHER	6		66.500 X 108 X 3 MM
20	T157276	SEAL	4		
21	T176064	BUSHING	2		

3165-19

LOADER 31

HYDRAULIC CYLINDERS 3165

LOADER BUCKET AND BOOM CYLINDER PINS AND FITTINGS (NEVERGREASE) (S.N. 618134-)
AXES ET RACCORDS DE VERIN DE BENNE ET DE FLECHE DE CHARGEUR (NEVERGREASE) (S.N. 618134-)
CUCHARON DE CARGADORA Y PASADORES DEL CILINDRO DEL AGUILON Y ADAPTADORES (NEVERGREASE)(S.N.618134-

KEY	PART NO.	PART NAME	QTY.	SERIAL NO.	REMARKS
1	15H558	PIPE PLUG	2		3.175 MM
2	19M7489	CAP SCREW	2		
3	38H1006	ELBOW FITTING	1		
4	R26906	O-RING	1		
5	T77932	O-RING	1		
6	38H1007	ELBOW FITTING	1		
7	T77858	O-RING	1		
8	U12547	O-RING	1		
9	38H1305	ELBOW FITTING	3		
10	T76938	O-RING	3		
11	AH227096	HYDRAULIC CYLINDER	2		(ALSO ORDER AT350469) (COMPONENTS ON ANOTHER PAGE)
12	AH227099	HYDRAULIC CYLINDER	1		(ALSO ORDER (2) AT350470) (COMPONENTS ON ANOTHER PAGE)
13	AT333779	PIN	1		
14	AT350469	BUSHING	2		
15	AT350470	BUSHING	2		
16	T176064	BUSHING	2		
17	T225432	SHIM	4		

00II-1

544J UTILITY LOADER TIER 3 (S.N. 611800-)

NUMERICAL INDEX

PART NO.	KEY	PAGE	PART NO.	KEY	PAGE	PART NO.	KEY	PAGE
AA21292	9	1520-3	AH214857	7	3165-11	AR85327	32	1746-5
AA21292	4	1913-5	AH215586	4	3165-13	AR85327	7	3160-31
AA46694	7	0510-5	AH216299	19	3165-13	AR85327	9	3160-35
AH108055	37	1062-3	AH217541	16	3104-13	AR89602	8	3160-31
AH114109	44	2160-11	AH222122	5	3104-7	AR89602	17	3160-51
AH121227	9	1810-5	AH222122	5	3104-9	AR91896	7	1810-3
AH125760	10	2160-7B	AH222122	4	3104-9B	AR94101	11	1674-27
AH138083	2	3165-5	AH222122	4	3104-9D	AT103107	8	3165-15
AH138083	8	3165-5B	AH222122	13	3104-15	AT103107	12	3165-17
AH142159	10	3104-11	AH223400	8	3104-3	AT103440	2	3160-13
AH142159	13	3104-13	AH223400	8	3104-5	AT103919	5	2002-5
AH142159	9	3104-15	AH224521	2	3165-13	AT104051	2	3160-13
AH146559	3	3165-5	AH225345	21	3165-13	AT105438	50	3160-5
AH146559	1	3165-5B	AH226589	8	3104-3	AT106365	5	1814-9
AH146559	6	3165-11	AH226589	8	3104-5	AT116162	9	0962-5
AH146563	4	3165-5	AH227096	1	3165-5	AT116162	6	1064-3
AH146563	2	3165-5B	AH227096	30	3165-5B	AT116373	33	0930-3
AH146563	13	3165-11	AH227096	10	3165-17	AT116970	6	1814-3
AH147740	1	0960-11	AH227096	11	3165-19	AT119378	11	3162-11
AH148608	7	0960-11	AH227097	5	3165-5	AT120461	1	2004-5
AH148608	4	0960-13	AH227097	13	3165-5B	AT124574	4	3160-13
AH148823	14	3104-11	AH227099	30	3165-7B	AT124574	15	3160-29
AH148823	15	3104-13	AH227099	11	3165-17	AT133204	8	1740-3
AH149194	32	0960-11	AH227099	12	3165-19	AT133204	24	3140-5
AH149194	32	0960-13	AH227100	8	3165-7B	AT135758	15	1673-3
AH149815	24	3165-5	AH227101	9	3165-7B	AT135758	7	1673-5
AH149815	32	3165-5B	AH227102	15	0960-9	AT13740	15	0510-3
AH149815	18	3165-11	AH227102	6	0960-9B	AT139694	6	0962-3
AH149847	23	3165-5	AH227102	16	0960-11	AT141527	23	0930-3
AH149847	34	3165-5B	AH227102	30	0960-11	AT143577	2	1740-5
AH149848	23	3165-7	AH227102	30	0960-13	AT145341	53	1674-7
AH149848	32	3165-7B	AH227104	1	0960-11	AT145650	24	2160-11
AH150453	8	0960-11	AH227104	19	0960-13	AT151931	8	1810-19
AH150453	5	0960-13	AH64349	21	2160-11	AT151931	8	1810-21
AH151896	2	3165-7	AH75159	13	0510-3	AT152180	18	1369-3
AH152445	18	3165-13	AH75162	7	0360-3	AT152180	28	1369-3
AH152446	1	3165-13	AH75162	14	0510-3	AT152180	37	1369-3
AH153596	3	3165-7	AH75162	22	2160-11	AT156896	6	0962-5
AH153596	1	3165-7B	AH80916	34	0400-13	AT157226	1	2002-5
AH153597	4	3165-7	AH89557	14	1674-3	AT158098	4	2160-9
AH153597	2	3165-7B	AL153660	7	1814-3	AT158103	5	2160-9
AH153771	7	3165-7	AL76568	1	1674-15	AT160480	1	1674-13
AH154570	24	3165-7	AL76568	24	1830-3	AT160662	18	0962-3
AH154570	34	3165-7B	AL76568	6	1830-7	AT161638	38	2160-11
AH156874	20	3165-13	AM39653	23	2160-11	AT162114	6	1671-5
AH159448	16	0560-3	AN207183	8	3160-73	AT162719	14	0962-3
AH162914	17	0560-3	AN207184	8	3160-73	AT162848	4	1833-3
AH163671	19	3165-11	AP22660	57	1674-7	AT163872	22	1832-3
AH165079	18	0560-3	AR104650	6	0400-59	AT165288	11	0342-3
AH170895	8	0510-5	AR21837	10	1100-11	AT166149	1	3160-19
AH170895	20	2160-11	AR21837	31	1369-3	AT167553	3	1060-9
AH172986	1	3165-7	AR21839	9	0360-3	AT167553	9	3160-77
AH206281	1	3165-5	AR21839	9	0510-5	AT167553	12	3160-79
AH208215	20	3165-11	AR21839	31	0510-7	AT167553	13	3160-81
AH208222	2	3165-11	AR21839	24	0510-13	AT169849	5	0962-3
AH208337	5	3165-5	AR21839	27	0510-13B	AT170005	4	1810-9
AH211316	16	0960-11	AR21839	20	0560-3	AT170759	3	0505-3
AH211379	15	0960-9	AR21839	3	2160-9	AT171162	9	0505-3
AH211379	30	0960-11	AR21839	24	2160-11	AT171539	5	0505-3
AH212087	34	0960-11	AR21999	4	0505-3	AT172629	18	3160-63
AH212087	34	0960-13	AR50411	1	0505-5	AT172629	1	3162-11
AH212088	15	3104-11	AR65507	3	0400-45	AT173193	9	1814-9
AH212088	14	3104-13	AR65507	3	0400-81	AT173313	2	1821-5
AH212348	6	3165-5	AR65507	1	0400-87	AT173313	17	1821-5
AH212348	12	3165-5B	AR83396	3	1520-3	AT173313	18	1821-5
AH212349	16	3104-11	AR83396	9	1520-3	AT173313	19	1821-5
AH212350	13	3104-11	AR85327	4	0520-5	AT173314	3	1821-5

00II-11

544J UTILITY LOADER TIER 3 (S.N. 611800-)

NUMERICAL INDEX - CONTINUED

PART NO.	KEY	PAGE	PART NO.	KEY	PAGE	PART NO.	KEY	PAGE
RE65978	11	0400-61	R120467	2	0400-25	R134920	3	0400-86
RE67231	1	0400-55	R120631	2	0400-42	R134954	14	0360-3
RE67238	6	0400-4	R120638	2	0400-48	R135509	3	0400-26
RE67238	1	0400-5	R120653	16	1814-3	R135510	2	0400-26
RE67238	10	0400-55	R120653	3	1814-9	R135535	6	0210-15
RE67238	2	0400-70	R120653	6	1814-9	R135535	7	0210-17
RE67240	8	0400-4	R121038	1	0400-18	R135543	7	0210-15
RE67240	4	0400-5	R121043	15	0400-41	R135543	20	0210-17
RE68234	6	0400-61	R121376	6	0400-48	R135543	9	0210-27
RE68255	15	0520-3	R121465	9	1830-3	R135609	6	1672-5
RE68255	14	0520-5	R121465	9	1830-7	R135757	2	0400-52
RE68323	18	1369-3	R121664	39	1830-5	R135918	8	0400-7
RE68323	28	1369-3	R121664	63	1830-5	R135918	..	0400-8
RE69243	2	0400-36	R121664	25	1830-9	R135918	5	0400-42
RE70678	4	0400-26	R121664	49	1830-9	R136110	14	0530-3
RE70682	5	0400-26	R121666	40	1830-5	R136110	22	1674-3
RE70756	7	0400-26	R121666	27	1830-9	R136110	24	1674-5
RE71143	3	0400-17	R122849	3	0210-19	R136475	4	0400-31
RE71255	22	0400-41	R123226	13	0400-35	R136495	4	0400-4
RE71255	15	0400-51	R123226	13	0400-39	R136495	3	0400-5
RE71256	6	0400-26	R123271	10	0400-47	R136495	42	0510-15
R10093	23	1830-3	R123324	11	0400-35	R136508	14	1832-3
R10093	9	1833-3	R123417	5	0400-39	R136514	23	0510-15
R101225	15	0400-31	R123501	4	0400-55	R184863	29	0560-3
R104558	6	0350-11	R123514	7	0400-47	R186228	10	1910-3
R104592	22	0400-41	R123558	3	0400-4	R193666	24	0560-3
R104701	4	1674-23	R123558	8	0400-4	R194311	25	0560-3
R104701	5	1674-27	R123561	7	0400-42	R203687	1	1830-3
R104846	3	1674-19	R123562	7	0400-42	R203687	19	1830-7
R104846	5	1674-19	R123563	4	0400-42	R206883	5	0505-5
R104846	5	1674-21	R123564	4	0400-42	R26121	1	0400-87
R104846	10	1674-23	R123565	8	0400-47	R26125	4	0400-51
R104846	7	1674-25	R123570	4	0400-61	R26227	8	0210-15
R105415	17	0360-3	R123572	14	0400-61	R26227	3	0210-17
R105415	19	0360-3	R123574	5	0400-3	R26228	9	0210-15
R107731	9	0400-47	R123575	6	0400-3	R26228	4	0210-17
R109123	1	0210-27	R123616	3	0400-21	R26229	10	0210-15
R109124	2	0210-27	R125223	14	1830-5	R26229	5	0210-17
R109128	4	0210-27	R128859	4	1672-5	R26286	9	0263-7
R111137	16	0400-41	R129110	15	1830-5	R26286	2	1674-28
R11151	15	3166-5	R129110	7	1830-9	R26286	50	2160-11
R11151	17	3166-9	R130574	4	0400-42	R26287	50	1062-3
R112078	3	0210-27	R130575	4	0400-42	R26287	31	3160-69
R112210	10	0210-20	R130576	7	0400-42	R26375	5	0210-20
R113050	25	1832-3	R130577	7	0400-42	R26375	10	0263-7
R113419	24	1369-3	R131182	21	0400-41	R26375	5	0510-13
R114082	9	0400-45	R131283	11	0400-31	R26375	5	0510-13B
R114193	13	0400-31	R131425	13	0400-41	R26375	9	0510-15
R114194	14	0400-31	R131769	4	0400-7	R26375	10	0930-3
R115350	19	0510-5	R132203	2	0400-22	R26375	5	0960-3
R115742	11	1832-3	R132203	3	0400-23	R26375	9	0960-9
R115743	13	1832-3	R132518	6	0400-41	R26375	2	0960-9B
R116031	3	0400-11	R132574	9	0210-20	R26375	47	1062-3
R116031	24	0400-13	R132615	4	0210-19	R26375	7	1100-5
R116296	5	0400-4	R133303	5	0400-41	R26375	6	1100-7
R116296	2	0400-5	R133303	2	0400-95	R26375	3	1100-9
R116296	15	0510-15	R133405	2	0400-32	R26375	1	1100-11
R116466	8	0400-41	R133643	16	1672-3	R26448	11	0210-15
R116516	19	0400-51	R133643	16	1672-3B	R26448	21	0210-17
R117721	13	1830-5	R133643	18	1672-7	R26448	4	0263-3
R117721	62	1830-5	R133643	17	1672-7B	R26448	6	0510-7
R117721	6	1830-9	R134403	1	0400-25	R26448	12	0510-15
R117845	5	1831-3	R134465	22	0510-13	R26448	4	1062-3
R117845	2	1831-5	R134465	41	0510-15	R26448	52	1062-3
R119171	45	1830-5	R134518	3	0400-31	R26448	4	1064-3
R119171	26	1830-9	R134920	38	0400-11	R26448	6	1100-9
R119874	11	0400-41	R134920	2	0400-13	R26448	6	1100-11

CLICK HERE TO **DOWNLOAD** THE COMPLETE MANUAL

- Thank you very much for reading the preview of the manual.
- You can download the complete manual from: www.heydownloads.com by clicking the link below



- Please note: If there is no response to CLICKING the link, please download this PDF first and then click on it.

CLICK HERE TO **DOWNLOAD** THE COMPLETE MANUAL