

JLG[®]

GRADALL[®]

PART MANUAL

GRADALL[®]

544

9104-1280

August 25, 2006
Starting Serial No.
8655105G

CORPORATE OFFICE

JLG INDUSTRIES, INC.
1 JLG DRIVE
McConnellsburg, PA
17233-9533
USA
Telephone: (717) 485-5161
Fax: (717) 485-6417

GRADALL DIVISION

JLG INDUSTRIES, INC.
406 Mill Avenue S.W.
New Philadelphia, OH
44663
USA
Telephone: (330) 339-2211
Fax: (330) 339-8458

CLICK HERE TO **DOWNLOAD** THE COMPLETE MANUAL

- Thank you very much for reading the preview of the manual.
- You can download the complete manual from: www.heydownloads.com by clicking the link below

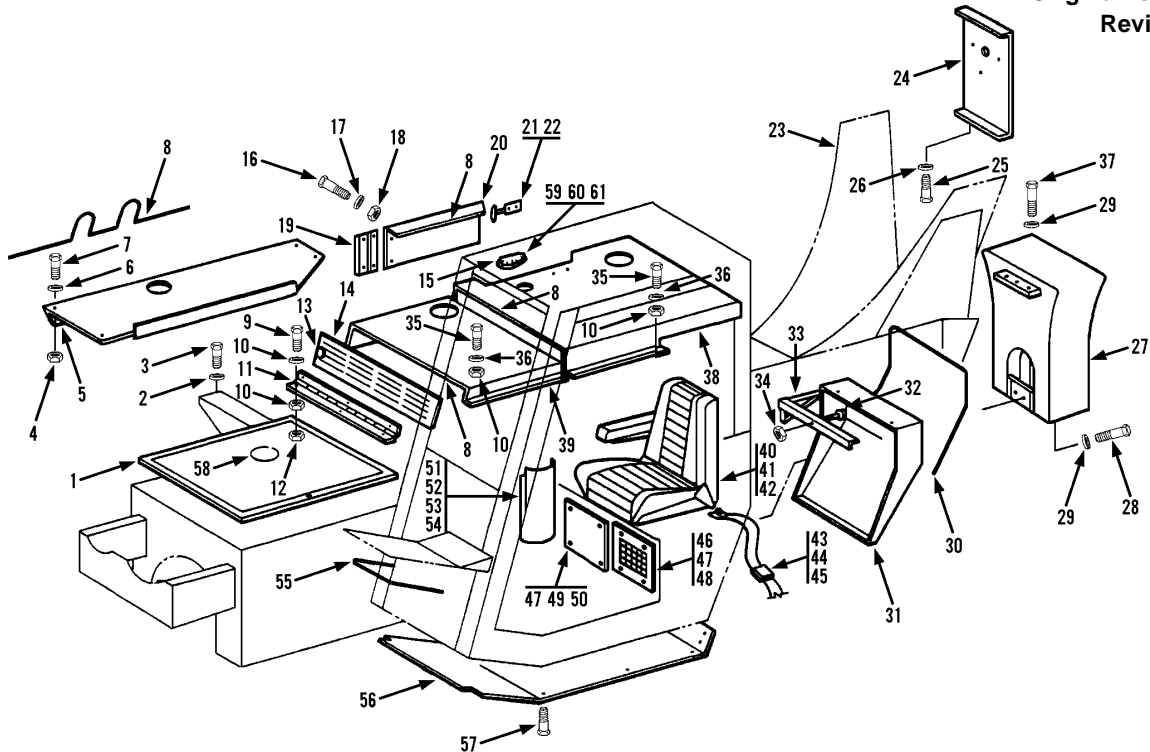


- Please note: If there is no response to CLICKING the link, please download this PDF first and then click on it.

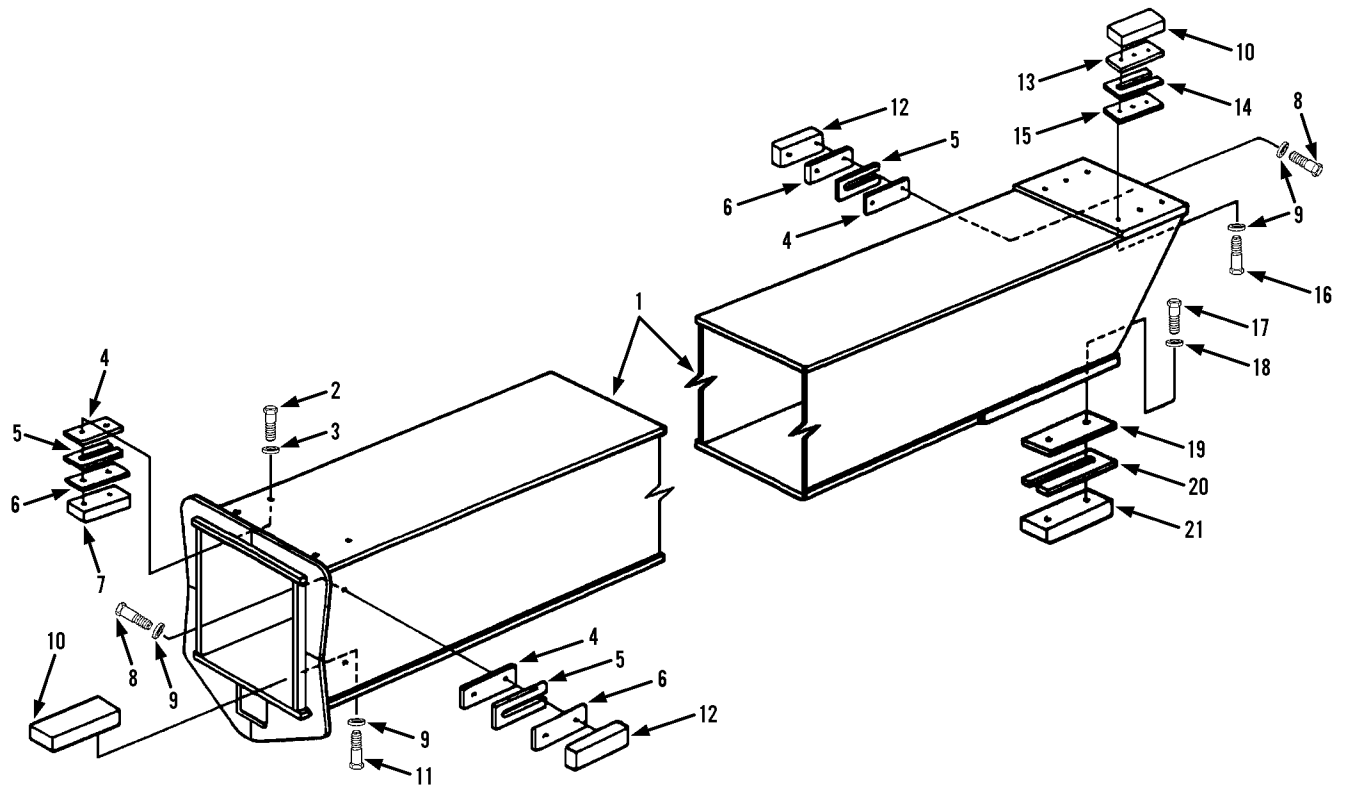
CLICK HERE TO **DOWNLOAD** THE COMPLETE MANUAL

STABILIZER CYLINDER	10-8
STABILIZER CYLINDER HYDRAULIC CIRCUIT	9-17
STABILIZER VALVE	10-15
STARTER BUTTON	11-1
STARTER MOTOR	5-3
STARTER SOLENOID	5-1
STEERING COLUMN	7-4
STEERING CYLINDER	10-7
STEERING CYLINDER HYDRAULIC CIRCUIT	9-7
STEERING KNUCKLES	2-5
STEERING ORBITROL	7-4
STEERING WHEEL	7-4
SUPPLY HYDRAULIC CIRCUIT	9-1, 9-2
SWAY CONTROL HANDLE & LINKAGE	7-2
SWAY CYLINDER	10-6
SWAY CYLINDER HYDRAULIC CIRCUIT	9-14
THIRD BOOM SECTION	3-3
TIE ROD ARM	2-5
TILT CONTROL HANDLE & LINKAGE	7-2
TILT CYLINDER	10-4
TILT CYLINDER HYDRAULIC CIRCUIT	9-11, 9-12, 9-13
TORQUE CONVERTER	6-2
TRANSMISSION	6-1
TRANSMISSION CASE & CONVERTER HOUSING	6-3, 6-4
TRANSMISSION CHARGE PUMP	6-5
TRANSMISSION CLUTCH ASSEMBLIES	6-8
TRANSMISSION CLUTCH & GEARING (Forward, Output & Third)	6-7
TRANSMISSION CLUTCH & GEARING (Reverse, Second & Low)	6-6
TRANSMISSION CONTROL VALVE	6-10
TRANSMISSION DISCONNECT SWITCH	8-3
TRANSMISSION DRIVE GEARING	6-5
TRANSMISSION FLEX PLATE & TORQUE CONVERTER	6-2
TRANSMISSION MODULATOR VALVE	6-9
TRANSMISSION TEMPERATURE GAUGE	11-1
TRAVEL ALARM	11-4
V-BELT	5-3
WATER SEPARATOR	5-4
WATER TEMPERATURE GAUGE	11-1
WATER TEMPERATURE SENDER	5-2

Part Number	Page	Part Number	Page	Part Number	Page
9020-5783	9-1, 9-2	9020-6427	10-10	9020-7360	8-4
9020-5792	9-1, 9-2, 9-10	9020-6542	2-5	9020-7365	9-3, 9-4
9020-5793	9-3, 9-4	9020-6544	6-11	9020-7370	9-5
9020-5846	2-2	9020-6545	6-11	9020-7372	9-5, 9-6
9020-5870	4-2	9020-6546	6-11	9020-7376	9-5
9020-5886	2-2	9020-6548	10-11	9020-7377	9-5
9020-5888	2-2	9020-6549	10-11	9020-7386	9-11, 9-12
9020-5891	2-4	9020-6550	10-11	9020-7387	9-11, 9-12
9020-5918	5-5	9020-6552	10-11	9020-7393	13-2
9020-5973	7-1	9020-6553	10-11	9020-7411	8-2
9020-5981	13-3	9020-6554	10-11	9020-7419	2-5
9020-5983	13-3, 13-17	9020-6555	10-11	9020-7458	2-1
9020-6003	9-7	9020-6556	10-11	9020-7464	13-2, 13-9
9020-6023	2-2	9020-6557	10-11	9020-7470	13-16
9020-6025	2-2	9020-6558	10-11	9020-7484	2-5
9020-6042	10-6	9020-6559	10-11	9020-7485	2-5
9020-6045	13-3	9020-6560	10-11	9020-7488	12-1
9020-6100	2-2	9020-6561	10-11	9020-7491	9-5
9020-6124	5-2	9020-6562	10-11	9020-7497	5-1, 5-3
9020-6128	13-17	9020-6564	10-11	9020-7532	9-10
9020-6131	2-3	9020-6606	5-8	9020-7533	10-5
9020-6133	2-3	9020-6613	2-2	9020-7534	10-5
9020-6134	2-3	9020-6737	10-12	9020-7535	10-5
9020-6194	2-1, 12-1	9020-6738	10-13	9020-7536	10-5
9020-6196	2-1	9020-6739	10-14	9020-7539	10-5
9020-6200	2-1, 5-7, 13-16	9020-6748	10-24	9020-7541	10-5
9020-6222	13-17	9020-6750	9-5	9020-7542	10-5
9020-6262	5-2, 5-8	9020-6762	7-4	9020-7543	10-5
9020-6316	5-6	9020-6793	10-1, 10-4	9020-7544	10-5
9020-6347	13-17	9020-6846	2-5	9020-7567	9-5
9020-6376	6-5	9020-6847	2-4, 9-13	9020-7599	9-3, 9-4
9020-6377	6-5	9020-6859	7-2, 13-3	9020-7622	5-5
9020-6378	6-2	9020-6861	7-2, 13-3	9020-7634	13-17
9020-6379	6-2	9020-6892	9-8, 9-11, 9-12	9020-7645	13-17
9020-6382	6-5	9020-6895	2-5	9020-7661	13-16, 13-17
9020-6384	6-5	9020-6896	2-5	9020-7690	9-1, 9-2
9020-6385	6-2	9020-6897	2-5	9020-7711	13-16, 13-17
9020-6386	6-2	9020-6976	3-6	9020-7716	13-17
9020-6387	6-2	9020-7029	3-2, 3-3	9020-7719	9-1, 9-2
9020-6394	6-7	9020-7041	9-10, 9-11,	9020-7727	9-13
9020-6395	6-7		9-12, 11-3	9020-7728	9-13
9020-6396	6-7	9020-7046	3-6	9020-7729	9-13
9020-6403	6-8	9020-7219	6-1	9020-7730	9-13
9020-6415	10-12	9020-7256	6-1	9020-7801	7-3, 8-3
9020-6417	10-10	9020-7257	6-1	9020-7821	13-14
9020-6419	10-10	9020-7258	6-1	9020-7822	13-14
9020-6421	10-10	9020-7290	9-5, 9-6	9020-7872	6-10, 9-1, 9-2
9020-6422	10-12	9020-7314	10-15	9020-7882	13-10
9020-6423	10-12	9020-7352	3-1	9020-7894	3-6



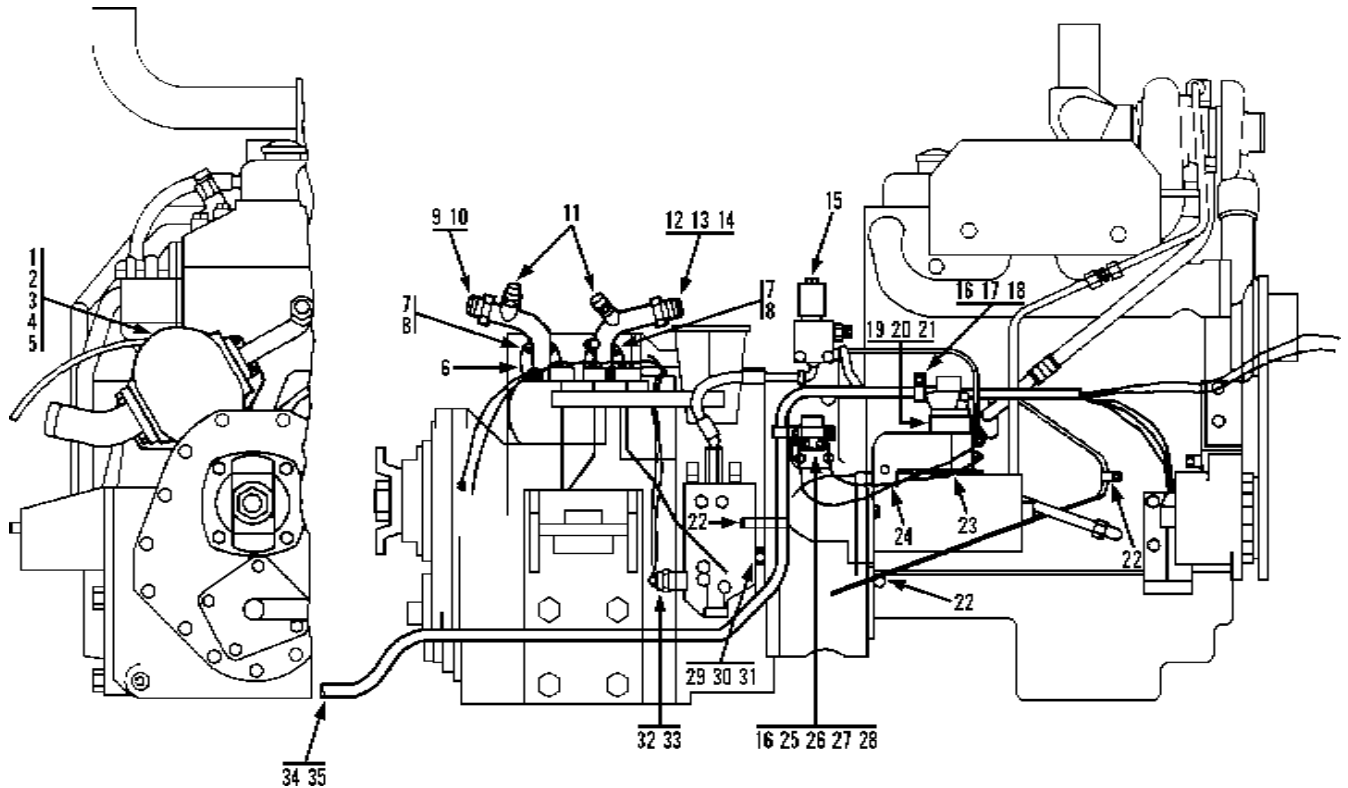
Item	Part No.	Qty.	Description Of Part	Item	Part No.	Qty.	Description Of Part
1	9103-5096	1	DECK ASSY	32	7714-3004	3	LOCK SCREW
2	8855-1010	2	LOCKWASHER, 5/16	33	9060-2885	1	BRACKET
3	8820-1021	2	HEX HD CAPSCREW, 5/16-18X1-1/4, GR5	34	7714-3006	3	LOCK NUT
4	8852-1308	4	HEX LOCKNUT, 1/2-13	35	8820-1003	8	HEX HD CAPSCREW, 1/4-20X3/4, GR5
5	9103-1260	1	TANK COVER	36	8855-1009	8	LOCKWASHER, 1/4
6	8540-1340	4	HARDENED WASHER	37	8820-1118	2	HEX HD CAPSCREW, 3/4-10X3-3/4, GR5
7	8820-1066	4	HEX HD CAPSCREW, 1/2-13X1-1/4, GR5	38	9104-5027	1	REAR HOOD ASSY
8	9020-6196	AR	TRIM, 11'	39	9103-6016	1	FRONT HOOD ASSY
9	8826-1017	6	SOCKET BUTTON HD CAPSCREW, 1/4-20X7/8	40	9104-3063	1	SEAT
10	8856-1107	16	FLAT WASHER, 1/4	9104-3237	1	SEAT W/BELTS (optional)	
11	9103-1075	1	HINGE	41	8667-1164	2	SPACER
12	8852-1304	6	HEX LOCKNUT, 1/4-20	42	7714-3006	4	LOCK NUT
13	8368-3311	2	PAWL LATCH	43	9103-3029	1	SEAT BELT
14	9103-1074	1	FRONT SERVICE DOOR	44	8820-1050	2	HEX HD CAPSCREW, 7/16-14X1, GR5
15	9103-3320	1	LEVEL GAUGE	45	8850-1007	2	HEX NUT, 7/16-14
16	8820-1003	4	HEX HD CAPSCREW, 1/4-20X3/4, GR5	46	9020-5746	1	HEATER COVER
17	8855-1009	4	LOCKWASHER, 1/4	47	7714-3003	8	LOCK SCREW
18	8692-1163	2	FLAT WASHER	48	7714-3006	4	LOCK NUT
19	9103-3077	1	HINGE	49	7710-3044	4	CLIP NUT
20	9103-1067	1	SIDE SERVICE DOOR	50	9020-5730	1	VALVE COVER
21	9020-7458	2	DRAW LATCH	51	9104-6056	1	JOYSTICK COVER
22	9002-8951	8	POP RIVET	52	8820-1018	2	HEX HD CAPSCREW, 5/16-18X3/4, GR5
23	9104-6032	1	FRAME WELDMENT	53	8855-1010	2	LOCKWASHER, 5/16
24	9104-1080	1	BOOM COVER	54	8850-1005	2	HEX NUT, 5/16-18
25	8820-1031	2	HEX HD CAPSCREW, 3/8-16X1/2, GR5	55	9020-6196	AR	TRIM, 4'
26	8856-1109	2	FLAT WASHER, 3/8	56	9103-1363	1	CAB BOTTOM COVER
27	9104-0002	1	COUNTERWEIGHT	57	7714-3003	7	LOCK SCREW
28	8820-1115	3	HEX HD CAPSCREW, 3/4-10X3, GR5	58	9020-6200	1	TRIM, 15.7" LONG
29	8856-1009	3	FLAT WASHER, 3/4	59	8820-4912	1	HEX HD CAPSCREW, 1/4-20X1, GR5
30	9020-6194	AR	TRIM, 8'	60	8856-1107	1	FLAT WASHER, 1/4
31	9103-6079	1	REAR CAB COVER	61	8852-1204	1	HEX LOCKNUT, 1/4-20



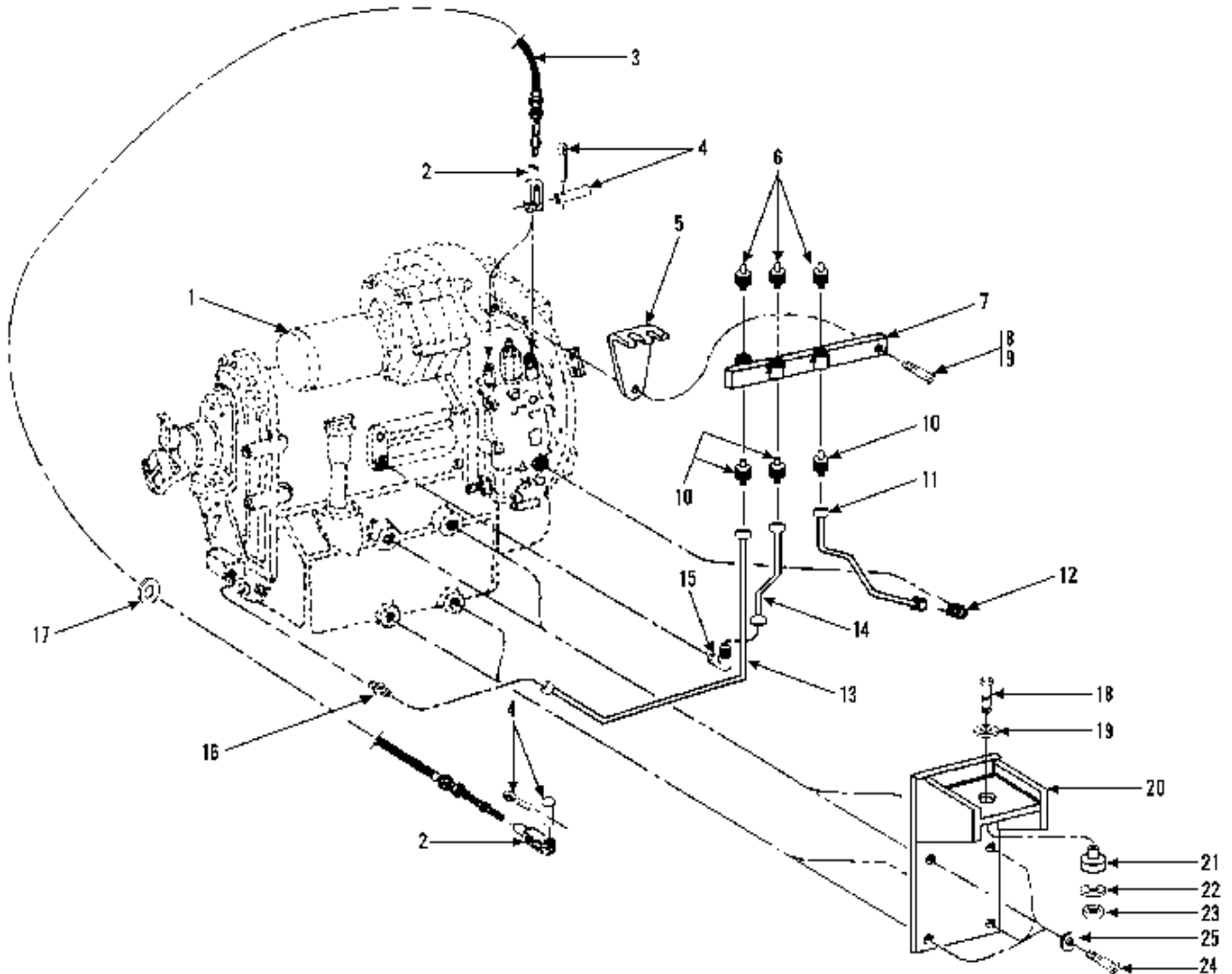
Item	Part No.	Qty.	Description Of Part	Item	Part No.	Qty.	Description Of Part
1	9104-6019	1	THIRD BOOM SECTION WELDMENT	12	9104-3177	8	BEARING PAD
2	8820-1563	4	HEX HD CAPSCREW, 1/2-20X7/8, GR5 (lubricate and torque to 68-78 ft. lbs.)	13	9104-1265	2	SPACER
3	1238-1025	8	HARDENED WASHER	14	9104-1006	4	SHIM
4	9104-1277	10	SPACER	15	9104-1007	2	SPACER
5	9104-1276	12	SHIM	16	8820-1656	6	HEX HD CAPSCREW, 1/2-20X1-1/4, GR5 (lubricate and torque to 68-78 ft. lbs.)
6	9104-1278	10	SPACER	17	8820-1535	4	HEX HD CAPSCREW, 3/8-24X1-1/4, GR5 (lubricate and torque to 30-35 ft. lbs.)
7	9104-3180	2	BEARING PAD	18	1200-1234	4	HARDENED WASHER
8	8820-1562	16	HEX HD CAPSCREW, 1/2-20X3/4, GR5 (lubricate and torque to 68-78 ft. lbs.)	19	9103-1234	2	SHIM
9	1238-1025	24	HARDENED WASHER	20	9020-7029	6	SHIM
10	9104-3164	4	BEARING PAD	21	9103-3188	2	BEARING PAD
11	8820-1567	6	HEX HD CAPSCREW, 1/2-20X1-3/4, GR5 (lubricate and torque to 68-78 ft. lbs.)				

GRADALL®
MATERIAL HANDLER
544

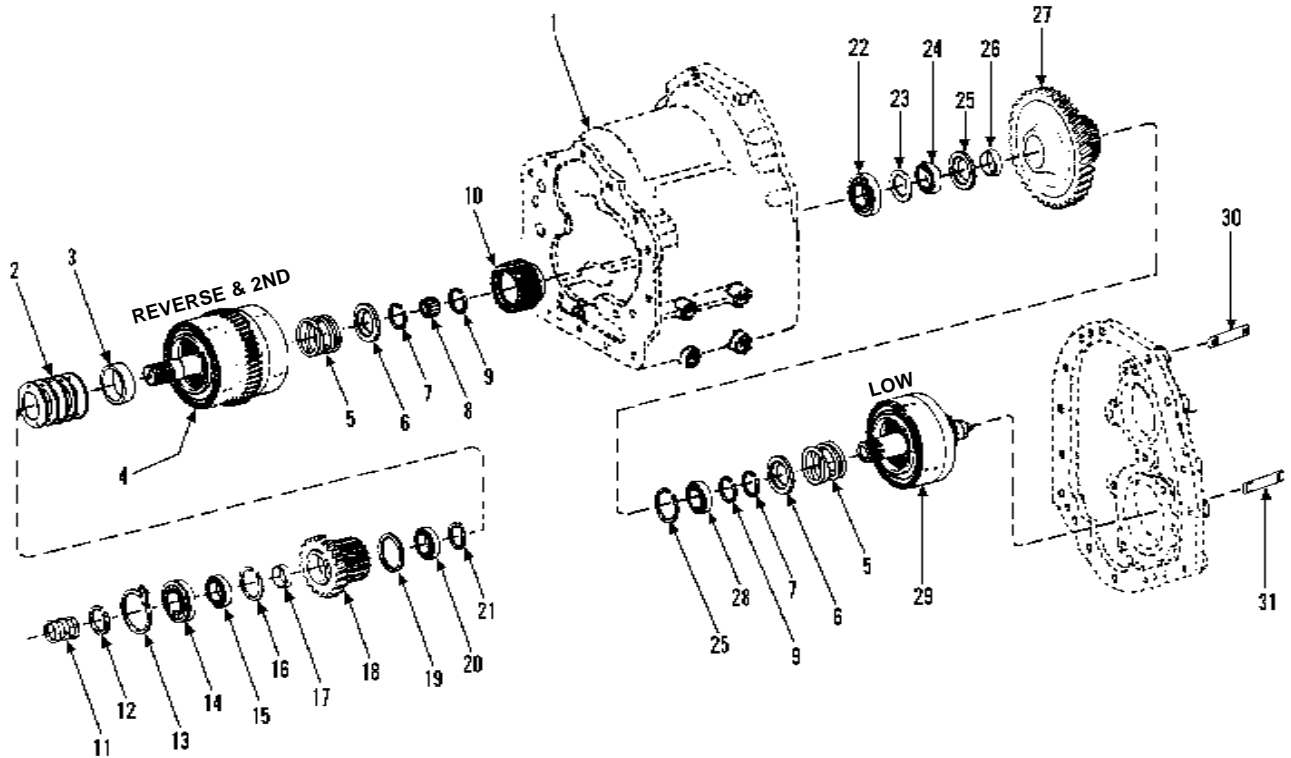
ENGINE & ATTACHING PARTS
Engine Left Side View
 Starting Serial No. 8655105G
 Original Issue 5-86
 Revised 11-86



Item	Part No.	Qty.	Description Of Part	Item	Part No.	Qty.	Description Of Part
1		Ref	MAIN HYDRAULIC PUMP ASSY (see page 10-22 for details)	18	8856-1109	1	FLAT WASHER, 3/8
2	7713-4059	1	PUMP GASKET	19		1	HOSE, 5/16 O.D., 8' LONG
3	8820-1067	2	HEX HD CAPSCREW, 1/2-13X1-1/2, GR5	20	9103-3131	1	CONNECTOR
4	8540-1340	2	HARDENED WASHER	21	8348-3497	1	CLAMP
5	8855-1013	2	LOCK WASHER, 1/2	22	8594-1017	3	HOSE CLAMP
6	8471-1369	2	FLANGE HALF	23	9020-5205	1	JUMPER WIRE
7	8820-1036	8	HEX HD CAPSCREW, 3/8-16X1-1/4, GR5	24	9020-7497	1	JUMPER WIRE
8	8855-1011	8	LOCK WASHER, 3/8	25	9040-2427	1	STARTER SOLENOID
9	9105-3345	1	TUBE LINE	26	8820-1001	2	HEX HD CAPSCREW, 1/4-20X1/2, GR5
10	8503-1525	1	O-RING	27	8856-1107	2	FLAT WASHER, 1/4
11	7713-3089	2	MINI-CHECKING COUPLING	28	8855-1009	2	LOCK WASHER, 1/4
12	8471-1333	2	FLANGE HALF	29	9020-5002	1	STUD
13	8366-1304	1	O-RING	30	8850-1006	1	HEX NUT, 3/8-16
14	9105-3344	1	TUBE LINE	31	8855-1011	1	LOCK WASHER, 3/8
15		Ref	SOLENOID VALVE ASSY (see page 10-14 for details)	32	8998-1036	2	PAN HD MACHINE SCREW, #8-32X3/8
16	8652-1144	2	SUPPORT CLAMP	33	8855-1006	2	LOCK WASHER, 3/8
17	8820-1031	1	HEX HD CAPSCREW, 3/8-16X1/2, GR5	34	9103-3079	1	WIRING HARNESS
				35	9002-7187	5	NYLON TY-RAP

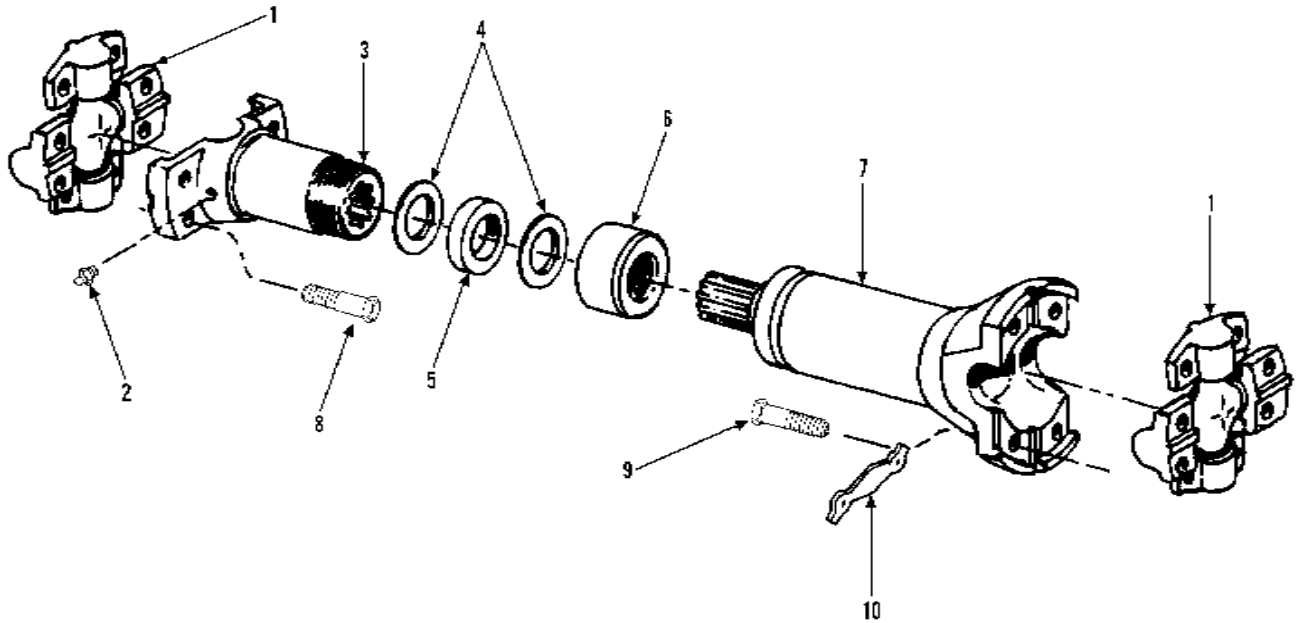


Item	Part No.	Qty.	Description Of Part	Item	Part No.	Qty.	Description Of Part
*	9103-4326	1	TRANSMISSION O-RING KIT	15	8874-3055	1	MALE ELBOW, 90 DEGREES, 1/4X1/4 TUBE
*	9103-4327	1	TORQUE CONVERTER O-RING KIT	16	9002-8750	1	ADAPTER
1	9020-5166	1	TRANSMISSION ASSY (includes all items shown on pages 6-2 thru 6-10)	17	9020-2303	2	CABLE GROMMET
2	8882-1003	4	ADJUSTABLE YOKE END, 5/16-24	18	8820-1120	2	HEX HD CAPSCREW, 3/4-10X4-1/4, GR5
3	9020-3374	2	CONTROL CABLE	19	9020-7219	2	WASHER
4	9002-7720	4	CLEVIS & COTTER PIN	20	9103-6008	2	MOUNTING BRACKET
5	9040-2642	1	CABLE MOUNTING BRACKET	21	9060-0097	2	SHOCK MOUNT
6	9103-5112	3	PRESSURE SWITCH ASSY	22	8855-1115	2	FLAT WASHER, 3/4
7	9040-3349	1	SWITCH BRACKET	23	8850-1012	2	HEX NUT, 3/4-10
8	8820-1066	1	HEX HD CAPSCREW, 1/2-13X1-1/4, GR5	24	8820-1110	8	HEX HD CAPSCREW, 3/4-10X1-3/4, GR5
9	8855-1013	1	LOCKWASHER, 1/2	25	8855-1016	8	LOCKWASHER, 3/4
10	8874-3000	3	MALE ADAPTER, 1/8X1/4 TUBE	*26	9103-3283	1	TRANS. TEMP. SENDER (not shown) (see page 5-2 for details)
11	9020-7258	1	TUBE LINE	*27	9103-3282	1	TRANS. TEMP. GAGE (not shown) (see page 11-1 for details)
12	8874-3041	1	MALE ELBOW, 90 DEGREES, 1/8X1/4 TUBE				
13	9020-7256	1	TUBE LINE				
14	9020-7257	1	TUBE LINE				



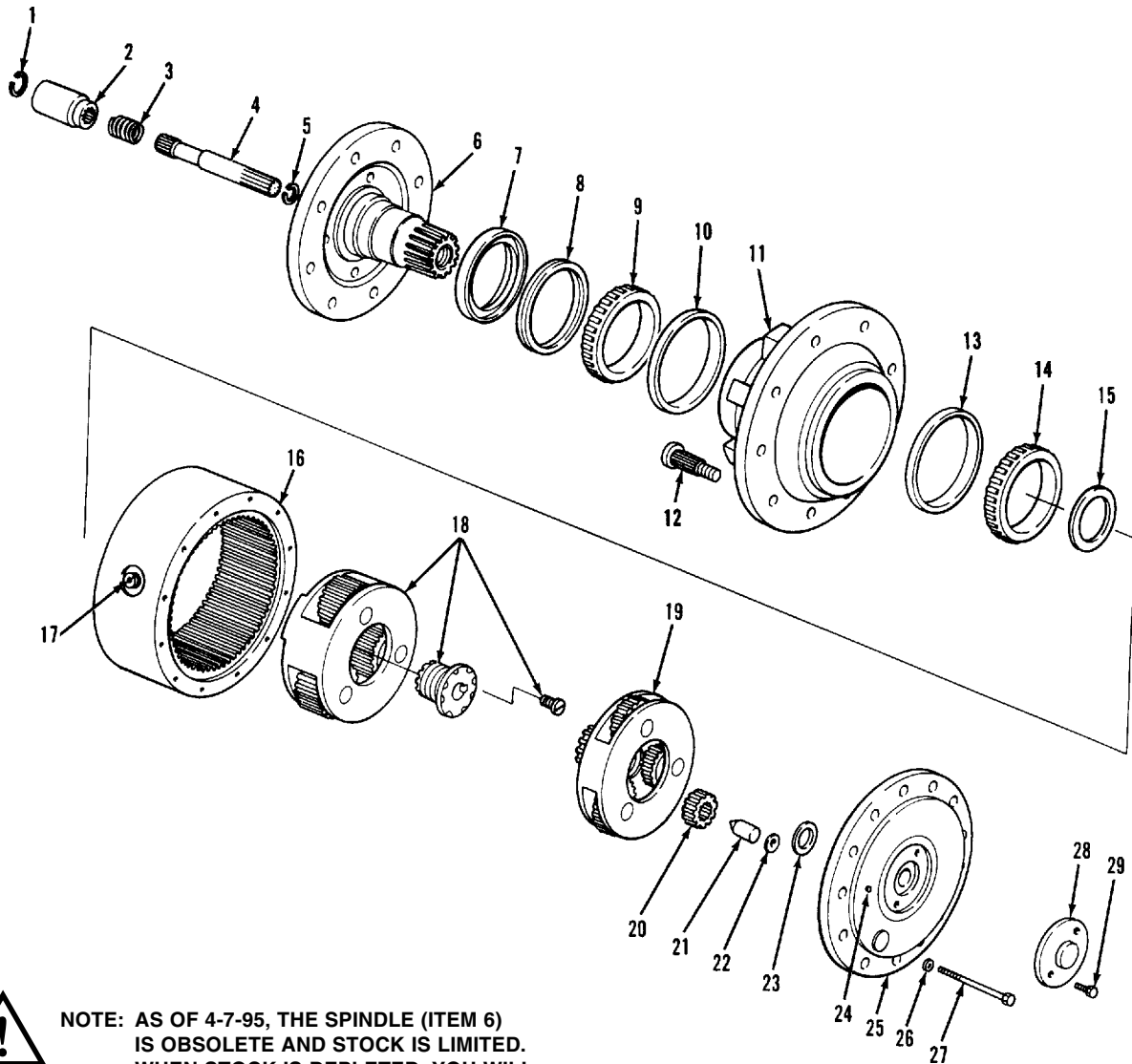
Item	Part No.	Qty.	Description Of Part
1		Ref	TRANSMISSION CASE ASSY (see page 6-4 for details)
2	7710-4207	5	PISTON RETURN SPRING
3	7710-4208	1	RETURN SPRING SPACER
4		Ref	REVERSE & 2ND SHAFT DRUM & PLUG ASSY (see page 6-8 for details)
5	7710-4187	1	PISTON RETURN SPRING
6	7710-4186	2	SPRING RETAINER
7	7710-4185	2	SNAP RING
8	7710-4231	1	REVERSE & 2ND SHAFT REAR BEARING
9	7710-4184	2	RETAINING RING
10	7710-4232	1	CLUTCH DISC HUB
11	7710-4219	3	PISTON RING
12	7710-4220	1	RETAINING RING
13	7710-4221	1	SNAP RING
14	7710-4222	1	REVERSE & 2ND SHAFT FRONT BEARING
15	7710-4223	1	CLUTCH DRIVEN GEAR BEARING
16	7710-4224	1	RETAINING RING

Item	Part No.	Qty.	Description Of Part
17	7710-4225	1	SPACER
18	7710-4226	1	REVERSE CLUTCH GEAR & HUB ASSY
19	7710-4224	1	RETAINING RING
20	7710-4227	1	CLUTCH DRIVEN GEAR BEARING
21	7710-4206	1	SNAP RING
22	7710-4158	1	LOW SPEED SHAFT FRONT BEARING
23	7710-4179	1	SPACER
24	7710-4180	1	LOW SPEED GEAR BEARING
25	7710-4181	2	LOCATING RING
26	7710-4182	1	SPACER
27	9020-4874	1	LOW GEAR & HUB ASSY
28	7710-4180	1	LOW SPEED GEAR BEARING
29		Ref	LOW CLUTCH DRUM & BLEED VALVE ASSY (see page 6-8 for details)
30	7710-4177	4	BEARING CAP STUD
31	7710-4203	4	BEARING CAP STUD



Item	Part No.	Qty.	Description Of Part
	9104-3032	1	DRIVE SHAFT ASSY (includes all items)
1	9020-1058	2	SPIDER & BEARING ASSY
* 2	8867-1008	1	LUBE FITTING, STRAIGHT, 1/4-28
3	9104-4008	1	SLIP YOKE ASSY (includes items 4, 5, 6)
4	9020-6545	2	WASHER
5	9020-6546	1	FELT SEAL
6	9020-6544	1	CAP
7		1	TUBE ASSY
8	9104-4009	8	HEX HD CAPSCREW
9	9104-4010	8	HEX HD CAPSCREW
10	9103-1194	8	LOCKSTRAP
			NOTE: ONLY ITEMS WITH PART NUMBERS ARE AVAILABLE FOR SERVICE.

* Changed part number on item 2.



NOTE: AS OF 4-7-95, THE SPINDLE (ITEM 6) IS OBSOLETE AND STOCK IS LIMITED. WHEN STOCK IS DEPLETED, YOU WILL NEED TO PURCHASE A NEW WHEEL DRIVE ASSEMBLY, P/N 9104-3489.

Item	Part No.	Qty.	Description Of Part
	9104-3277	2	WHEEL DRIVE ASSY, (includes all items)
1	9104-4276	1	RETAINING RING
2	9104-4277	1	COUPLING
3	9104-4278	1	SPRING
4	9104-4279	1	INPUT SHAFT
5	9104-4099	1	RETAINING RING
6	9104-4280	1	SPINDLE
7	9104-4088	1	SEAL
8	9104-4281	1	OIL SEAL
9	9104-4090	1	OUTER BEARING CONE
10	9104-4091	1	OUTER BEARING CUP
11	9104-4310	1	HUB, (includes items 10, 12 & 13)
12	9104-4311	10	WHEEL BOLT
13	9106-4005	1	INNER BEARING CUP
14	9106-4006	1	INNER BEARING CONE
15	9106-4007	1	THRUST WASHER
16	9104-4100	1	RING GEAR

Item	Part No.	Qty.	Description Of Part
17	9104-4101	1	MAGNETIC PLUG
18	9104-4282	1	SECONDARY CARRIER ASSY
19	9104-4103	1	PRIMARY CARRIER ASSY
20	9104-4104	1	PRIMARY SUN GEAR
21	9104-4106	1	PLUNGER
22	9104-4107	1	O-RING
23	9104-4105	1	THRUST WASHER
24	9104-4108	1	PIPE PLUG
25	9104-4109	1	COVER
26	9104-4110	12	FLAT WASHER
27	9104-4111	12	HEX HD CAPSCREW
28	9104-4112	1	DISENGAGE COVER
29	9104-4113	2	HEX HD CAPSCREW
			NOTE: QUANTITIES SHOWN ARE FOR ONE WHEEL DRIVE ASSY ONLY.

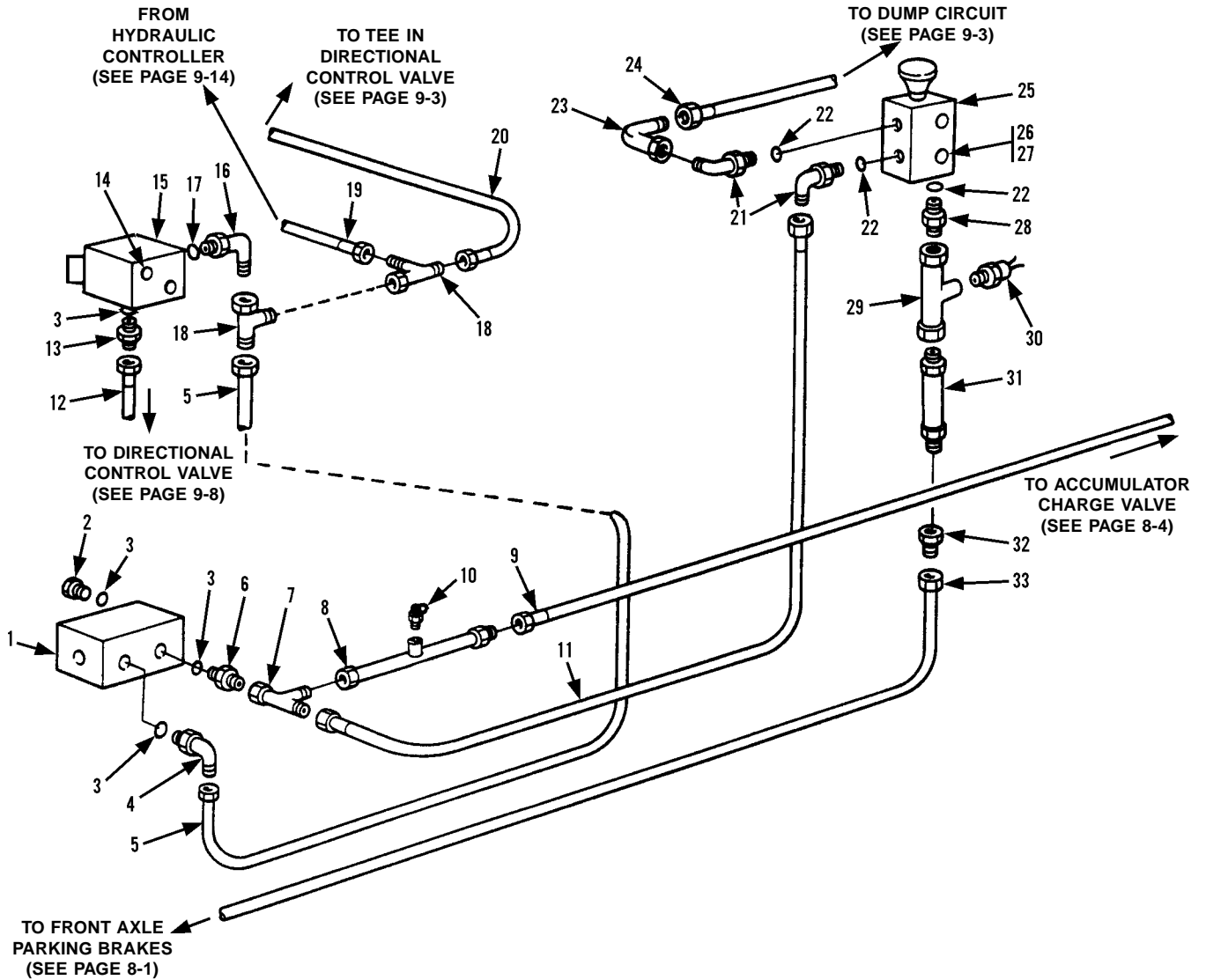
CLICK HERE TO **DOWNLOAD** THE COMPLETE MANUAL

- Thank you very much for reading the preview of the manual.
- You can download the complete manual from: www.heydownloads.com by clicking the link below

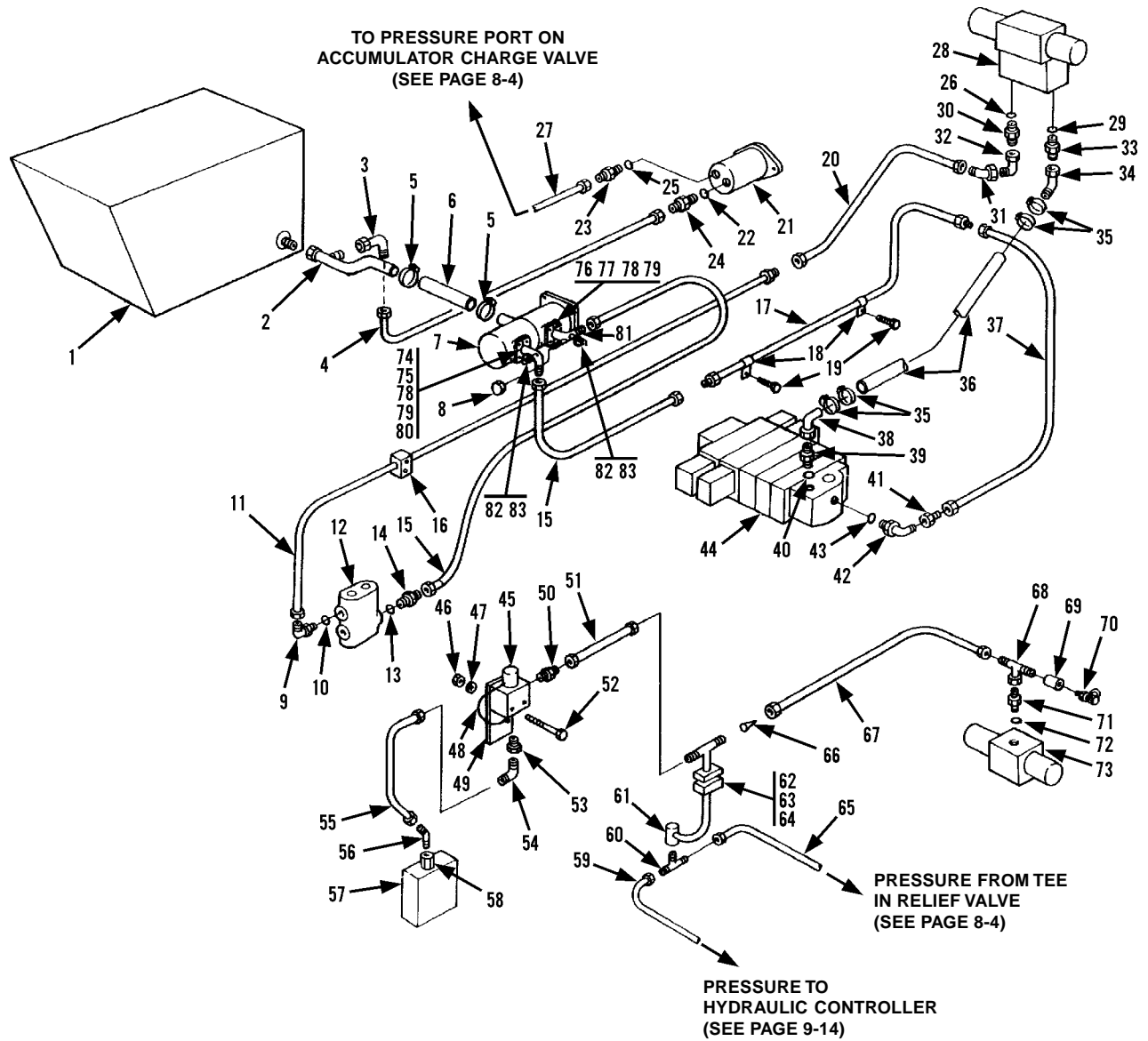


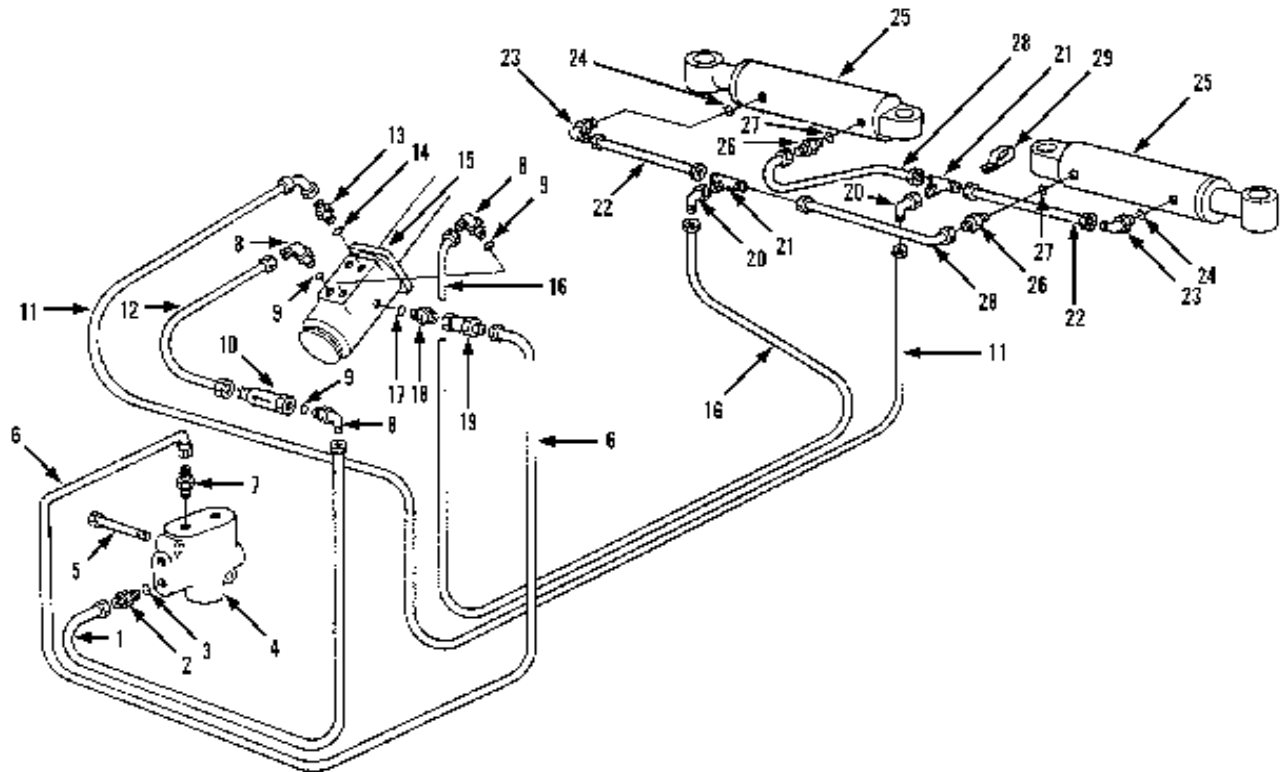
- Please note: If there is no response to CLICKING the link, please download this PDF first and then click on it.

CLICK HERE TO **DOWNLOAD** THE COMPLETE MANUAL

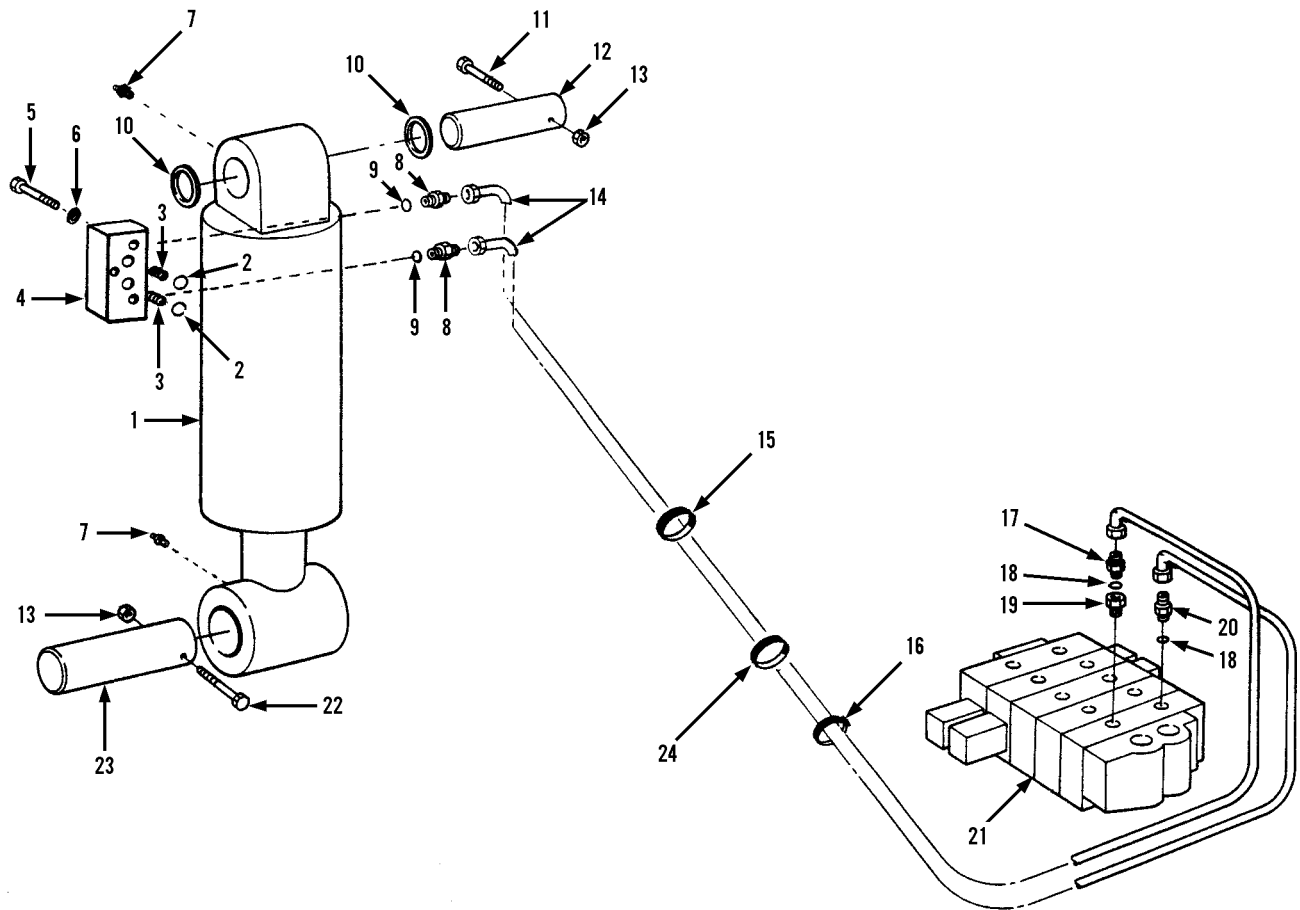


Item	Part No.	Qty.	Description Of Part	Item	Part No.	Qty.	Description Of Part
1		Ref	BRAKE VALVE ASSY (see page 10-19 for details)	17	8859-1204	1	O-RING
2	8866-2174	1	HEX HD PLUG (includes item 3)	18	8866-2239	2	SWIVEL NUT RUN TEE, 3/8 TUBE
3	8859-1204	4	O-RING	19	8471-7341	1	HOSE ASSY
4	8866-2064	1	ELBOW, 90 DEGREES (includes item 3)	20	8471-7466	1	HOSE ASSY
5	9020-7411	1	HOSE ASSY	21	8866-2065	2	ELBOW, 90 DEGREES (includes item 22)
6	8866-2005	1	CONNECTOR (includes item 3)	22	8859-1205	3	O-RING
7	8866-2239	1	SWIVEL NUT RUN TEE, 3/8 TUBE	23	8866-2105	1	ELBOW, 90 DEGREES (swivel nut)
8	9104-3163	1	TUBE ASSY	24	7713-3198	1	HOSE ASSY
9		Ref	HOSE ASSY (see page 8-4 for details)	25		Ref	PARK BRAKE VALVE (see page 10-20 for details)
10	7713-3089	1	MINI-CHECK COUPLING	26	8826-1021	2	SOCKET BUTTON HD CAPSCREW, 5/16-18X5/8
11	8471-7508	1	HOSE ASSY	27	8855-1009	2	LOCK WASHER, 5/16
12	7713-3342	1	HOSE ASSY	28	8866-2018	1	CONNECTOR (includes item 22)
13	8866-2005	1	CONNECTOR (includes item 3)	29	9104-3131	1	TUBE ASSY
14	8821-2228	2	SOCKET HD CAPSCREW, 5/16-18X1-1/4, GR5	30	9104-3077	1	PRESSURE SWITCH
15	9103-3096	1	INCHING VALVE ASSY	31	9104-3143	1	CHECK VALVE
	9103-4018	1	VALVE SEAL KIT	32	8866-1342	1	TUBE END REDUCER, 1/2X3/8
16	8866-2064	1	ELBOW, 90 DEGREES (includes item 17)	33		Ref	HOSE ASSY (see page 8-1 for details)

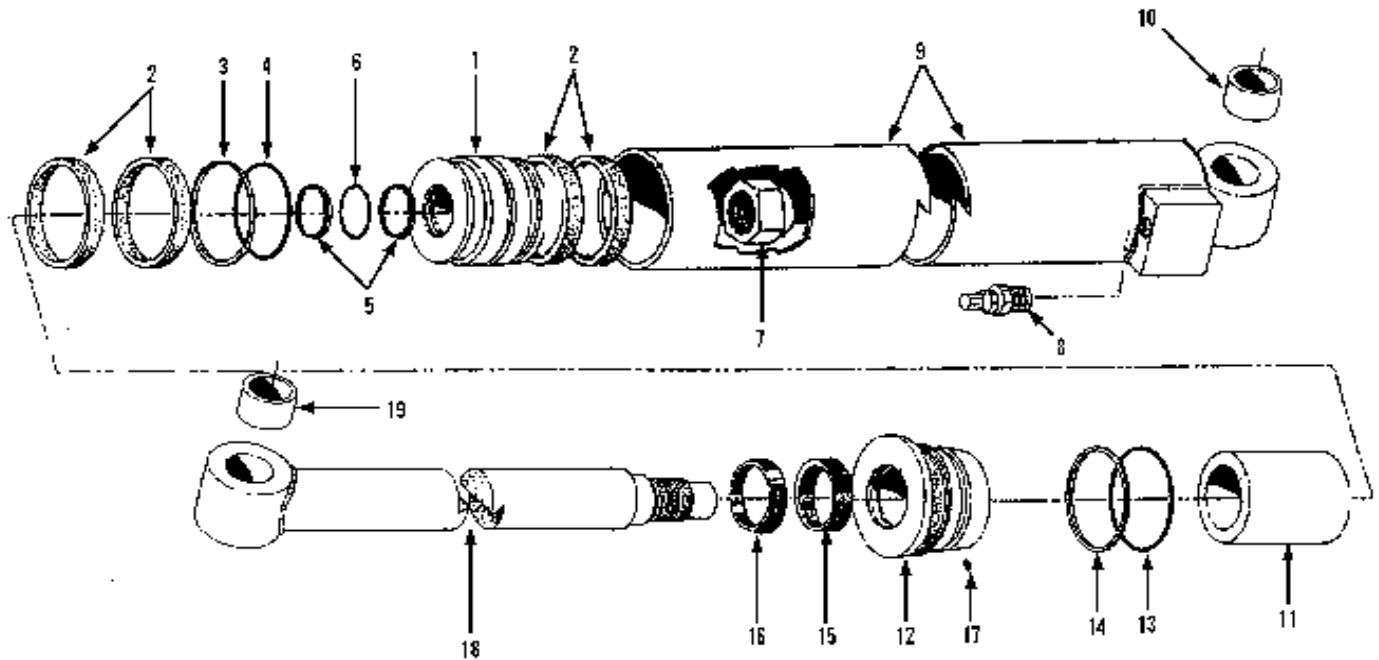




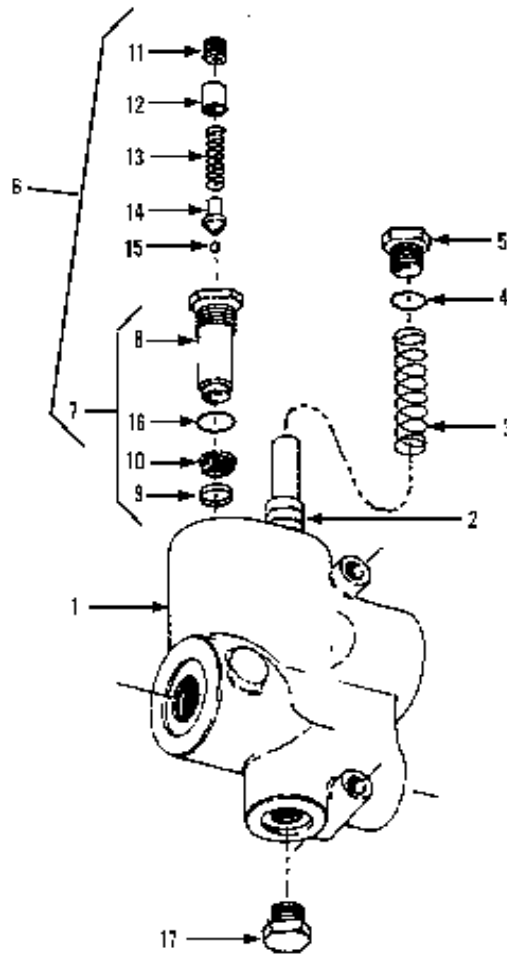
Item	Part No.	Qty.	Description Of Part	Item	Part No.	Qty.	Description Of Part
1	8471-7550	1	HOSE ASSY	15		Ref	ORBITROL (see page 7-4 for details)
2	8866-2007	1	CONNECTOR (includes item 3)	16	8471-7549	1	HOSE ASSY
3	8859-1206	1	O-RING	17	8859-1204	1	O-RING
4		Ref	PRIORITY FLOW CONTROL VALVE (see page 10-11 for details)	18	8866-2035	1	CONNECTOR (includes item 17)
5	8820-1028	2	HEX HD CAPSCREW, 5/16-18X3, GR5	19	8656-1131	1	REDUCER
6	8471-7547	1	HOSE ASSY	20	8866-2106	2	ELBOW, 90 DEGREES (swivel nut)
7	8366-1316	1	CONNECTOR	21	8866-1306	2	UNION TEE
8	8866-2065	3	ELBOW, 90 DEGREES (includes item 9)	22	8471-7525	2	HOSE ASSY
9	8859-1205	3	O-RING	23	8866-2064	2	ELBOW, 90 DEGREES (includes item 24)
10	9020-2926	1	CHECK VALVE	24	8859-1204	2	O-RING
11	8471-7548	1	HOSE ASSY	25		Ref	STEERING CYLINDER (see page 10-7 for details)
12	9020-6003	1	TUBE ASSY	26	8866-2005	2	CONNECTOR (includes item 27)
13	8866-2006	1	CONNECTOR (includes item 14)	27	8859-1204	2	O-RING
14	8859-1205	1	O-RING	28	8471-7546	2	HOSE ASSY
				29	8584-1150	1	HOSE CLAMP



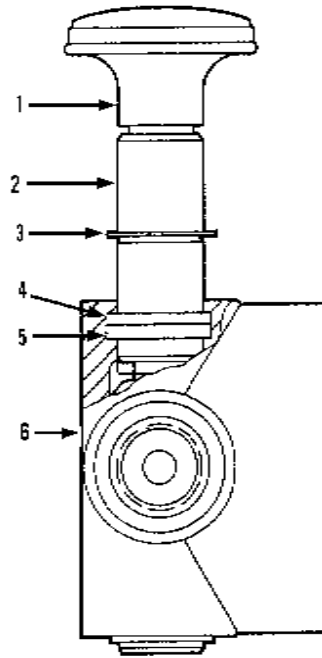
Item	Part No.	Qty.	Description Of Part	Item	Part No.	Qty.	Description Of Part	
1	9104-5032	1	SWAY CYLINDER ASSY (includes items 1 thru 9)	11	8820-1104	1	HEX HD CAPSCREW, 5/8-11X3-3/4, GR5	
		Ref	SWAY CYLINDER (see page 10-6 for details)	12	9040-2876	1	PIN	
	2	8859-1012	2	O-RING	13	8850-1010	2	HEX NUT, 5/8-11
	3	9104-1387	2	ORIFICE PLUG	14	9103-3224	2	HOSE ASSY
	4	9105-3354	1	DUAL P.O. CHECK VALVE (includes item 2, see page 10-31 for details)	15	9104-3227	1	GROMMET
5	8820-1041	3	HEX HD CAPSCREW, 3/8-16X2-1/2, GR5	16	9002-7187	AR	NYLON HOSE TIE	
6	8855-1011	3	LOCK WASHER, 3/8	17	8866-2008	1	CONNECTOR (includes item 18)	
7	8867-1008	2	LUBE FITTING, STRAIGHT, 1/4-28	18	8859-1207	2	O-RING	
8	8866-2006	2	CONNECTOR (includes item 9)	19	8365-1133	1	REDUCER	
9	8859-1205	2	O-RING	20	8866-2020	1	CONNECTOR (includes item 18)	
10	9020-7727	AR	SHIM (20 gauge)	21		Ref	MAIN CONTROL VALVE ASSY (see page 10-10 for details)	
	9020-7728	AR	SHIM (16 gauge)					
	9020-7729	AR	SHIM (10 gauge)					
	9020-7730	AR	SHIM (1/4" gauge)					
22	8820-1106	1	HEX HD CAPSCREW, 5/8-11X4-1/2, GR5	22	8820-1106	1	HEX HD CAPSCREW, 5/8-11X4-1/2, GR5	
23	9020-6847	1	PIN	23	9020-6847	1	PIN	
24	6847-3227	1	GROMMET	24	6847-3227	1	GROMMET	



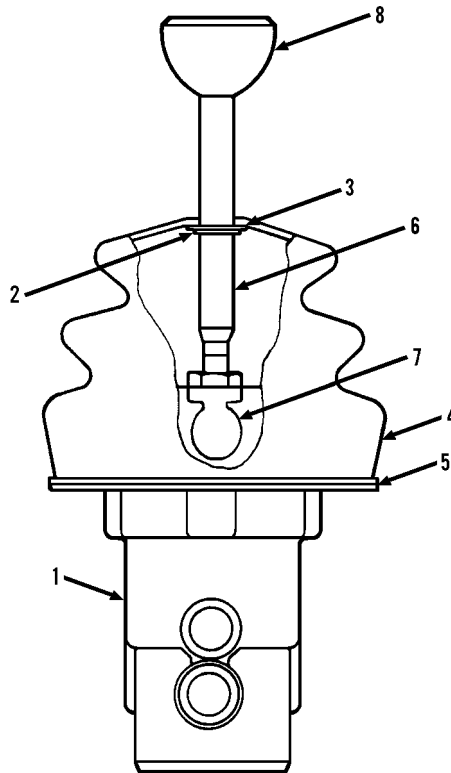
Item	Part No.	Qty.	Description Of Part	Item	Part No.	Qty.	Description Of Part
1	9104-3030	1	CROWD EXTENSION CYLINDER ASSY (includes all items)	10	9104-4034	1	BUSHING
	9104-4029	1	SEAL KIT (includes items 2, 3, 4, 5, 6, 13, 14, 15, 16)	11	9104-4035	1	STROKE LIMITER
	9104-4030	1	PISTON ASSY (includes items 2 thru 6)	12	9104-4036	1	ROD BEARING ASSY (includes items 13 thru 16)
	2	4	WEAR RING	13		1	O-RING
	3	1	PISTON SEAL	14		1	BACK-UP RING
	4	1	O-RING	15		1	ROD SEAL
	5	2	BACK-UP RING	16		1	WIPER
	6	1	O-RING	17	9104-4016	1	HEX HD SELF TAPPING SCREW
	7	9104-4031	1	PISTON NUT (lubricate and torque to 250-300 ft. lbs.)	18	9104-4037	1
8	9104-4032	1	COUNTERBALANCE VALVE	19	9104-4038	1	BUSHING
9	9104-4033	1	BARREL ASSY (includes item 10)				NOTE: ONLY ITEMS WITH PART NUMBERS ARE AVAILABLE FOR SERVICE.



Item	Part No.	Qty.	Description Of Part
	9103-3240	1	PRIORITY FLOW CONTROL VALVE (includes all items; 2,500 PSI relief valve setting)
1	9020-6548	1	HOUSING ASSY (includes item 2)
2	9020-6549	1	SPOOL
3	9020-6550	1	SPRING
4	8859-1206	1	O-RING
5	9020-6552	1	PLUG
6	9020-6553	1	RELIEF CARTRIDGE (includes items 7 thru 16)
7	9020-6554	1	RELIEF VALVE SUB BODY (includes items 8 thru 10)
8	9020-6555	1	BODY
9	9020-6556	1	RING
10	9020-6557	1	SCREW
11	9020-6558	1	RELIEF VALVE ADJUSTING SCREW
12	9020-6559	1	SPRING GUIDE
13	9020-6560	1	SPRING
14	9020-6561	1	BALL HOLDER
15	9020-6562	1	BALL
16	8859-1205	1	O-RING
17	9020-6564	1	PLUG

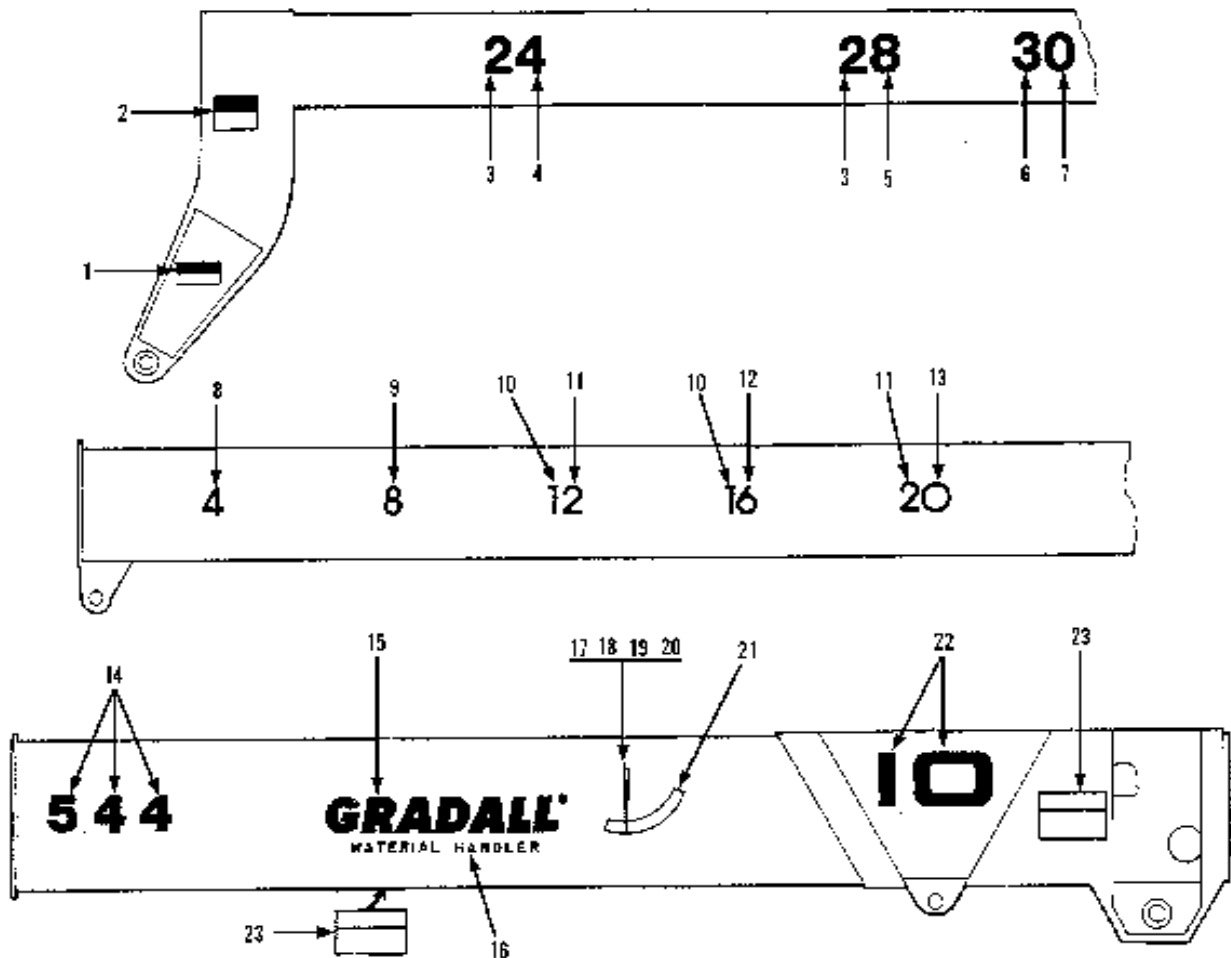


Item	Part No.	Qty.	Description Of Part
	9104-3090	1	PARKING BRAKE VALVE ASSY (includes items 1 thru 6)
1	9104-4297	1	KNOB
2	9104-4126	1	SPOOL
3	9104-4127	1	RETAINING RING
4	9104-4128	1	BACK-UP RING
5	9104-4129	1	O-RING
6	9104-4130	1	HOUSING
7	9103-3378	1	RUBBER BOOT (not shown)

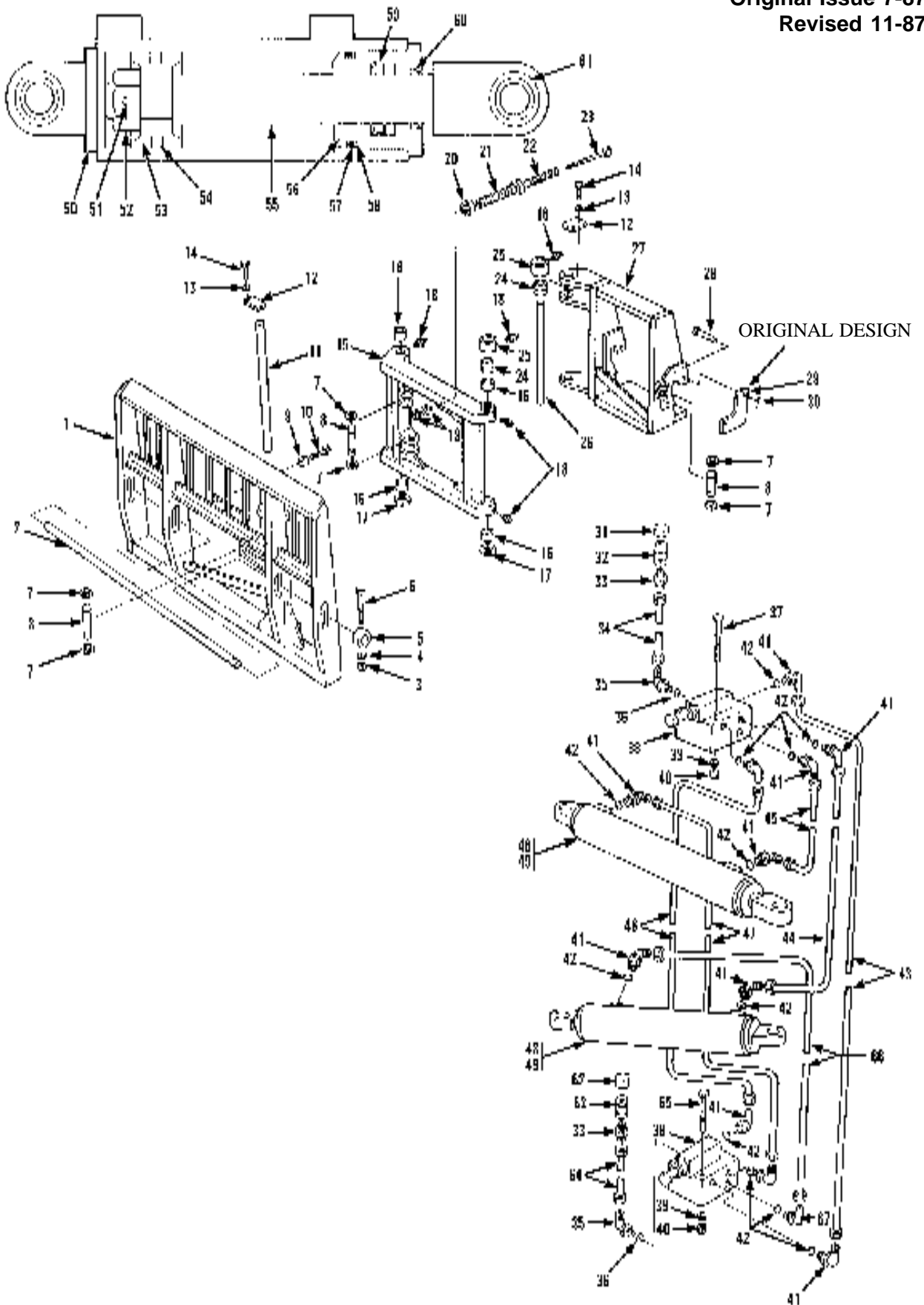


Item	Part No.	Qty.	Description Of Part
	9104-3064	1	HYDRAULIC CONTROLER ASSY (includes all items)
	9900-7524	4	PLUNGER SEAL KIT (includes one each of the following; u-cup, o-ring seal, retainer & o-ring)
1	9104-4131	1	HYDRAULIC CONTROLLER
2	9104-4132	1	RETAINING RING
3	9104-4133	1	WASHER
4	9104-4134	1	BOOT
5	9104-4135	1	RETAINER
6	9104-4136	1	HANDLE ASSY (includes knob, handle rod & hex jam nut)(lubricate & tighten jam nut to 12-15 ft. lbs.)
7	9104-4474	1	BALL ASSY (includes ball pivot race, ball pivot, cam plate, handle adapter & top mounting plate)
*8	9104-4525	1	KNOB

* Added item 8.



Item	Part No.	Qty.	Description Of Part	Item	Part No.	Qty.	Description Of Part
1	9103-3023	1	WARNING DECAL	12	9104-3137	1	"6" DECAL, BLACK
2	8360-1011	1	DANGER DECAL	9100-3025	1	"6" DECAL, WHITE	
3	9104-3042	2	"2" DECAL, BLACK	13	9104-3133	1	"0" DECAL, BLACK
9104-3043	2	"2" DECAL, WHITE	9100-3014	1	"0" DECAL, WHITE		
4	9104-3046	1	"4" DECAL, BLACK	14	9104-3037	2	"544" DECAL, BLACK
9104-3048	1	"4" DECAL, WHITE	9104-3036	2	"544" DECAL, WHITE		
5	9104-3049	1	"8" DECAL, BLACK	15	9104-3132	2	GRADALL DECAL, BLACK
9104-3050	1	"8" DECAL, WHITE	9100-3006	2	GRADALL DECAL, WHITE		
6	9104-3044	1	"3" DECAL, BLACK	16	9104-3038	2	MATERIAL HANDLER DECAL, BLACK
9104-3045	1	"3" DECAL, WHITE	9104-3039	2	MATERIAL HANDLER DECAL, WHITE		
7	9104-3051	1	"0" DECAL, BLACK	17	9020-0445	1	PENDULUM
9104-3052	1	"0" DECAL, WHITE	18	9020-0688	1	BEARING	
8	9104-3136	1	"4" DECAL, BLACK	19	9002-6491	1	SHOULDER BOLT
9100-3020	1	"4" DECAL, WHITE	20	8856-1108	1	FLAT WASHER, 5/16	
9	9104-3138	1	"8" DECAL, BLACK	21	9100-3031	1	ANGLE INDICATOR DECAL
9100-3027	1	"8" DECAL, WHITE	22	9104-3035	2	"10" DECAL, BLACK	
10	9104-3134	2	"1" DECAL, BLACK	9104-3034	2	"10" DECAL, WHITE	
9100-3016	2	"1" DECAL, WHITE	23	7702-3009	7	WARNING DECAL	
11	9104-3135	2	"2" DECAL, BLACK				



CLICK HERE TO **DOWNLOAD** THE COMPLETE MANUAL

- Thank you very much for reading the preview of the manual.
- You can download the complete manual from: www.heydownloads.com by clicking the link below



- Please note: If there is no response to CLICKING the link, please download this PDF first and then click on it.

CLICK HERE TO **DOWNLOAD** THE COMPLETE MANUAL