



Illustrated Parts Manual

Model
34HA

P/N
3120804

June 27, 2011



CLICK HERE TO **DOWNLOAD** THE COMPLETE MANUAL

- Thank you very much for reading the preview of the manual.
- You can download the complete manual from: www.heydownloads.com by clicking the link below



- Please note: If there is no response to CLICKING the link, please download this PDF first and then click on it.

CLICK HERE TO **DOWNLOAD** THE COMPLETE MANUAL

SECTION 1 - FRAME

ITEM	PART NUMBER	QTY	DESCRIPTION	REV
158	7018612	AR	Present) Repair Kit - 0920117 & 0920119 Brakes (Includes Case Seal, Piston Inner and Outer O-Rings and Back-up Rings, Stator Disc, Rotor Disc, Return Plate, Springs, Oil Seal, Bearing, 2 Retaining Rings and 2 Mounting Face Gaskets) (1 Per Assembly)	
158	7000731	AR	Gasket, Mounting Face (Note: No Other Parts Available)	
159	3311801	4	Nut 1/2in-13NC	
160	0100011	AR	Loctite #242 (Not Shown)	
161	4751800	4	Flatwasher 1/2in	
162	0100019	AR	Loctite #271 (Not Shown)	

SECTION 1 - FRAME

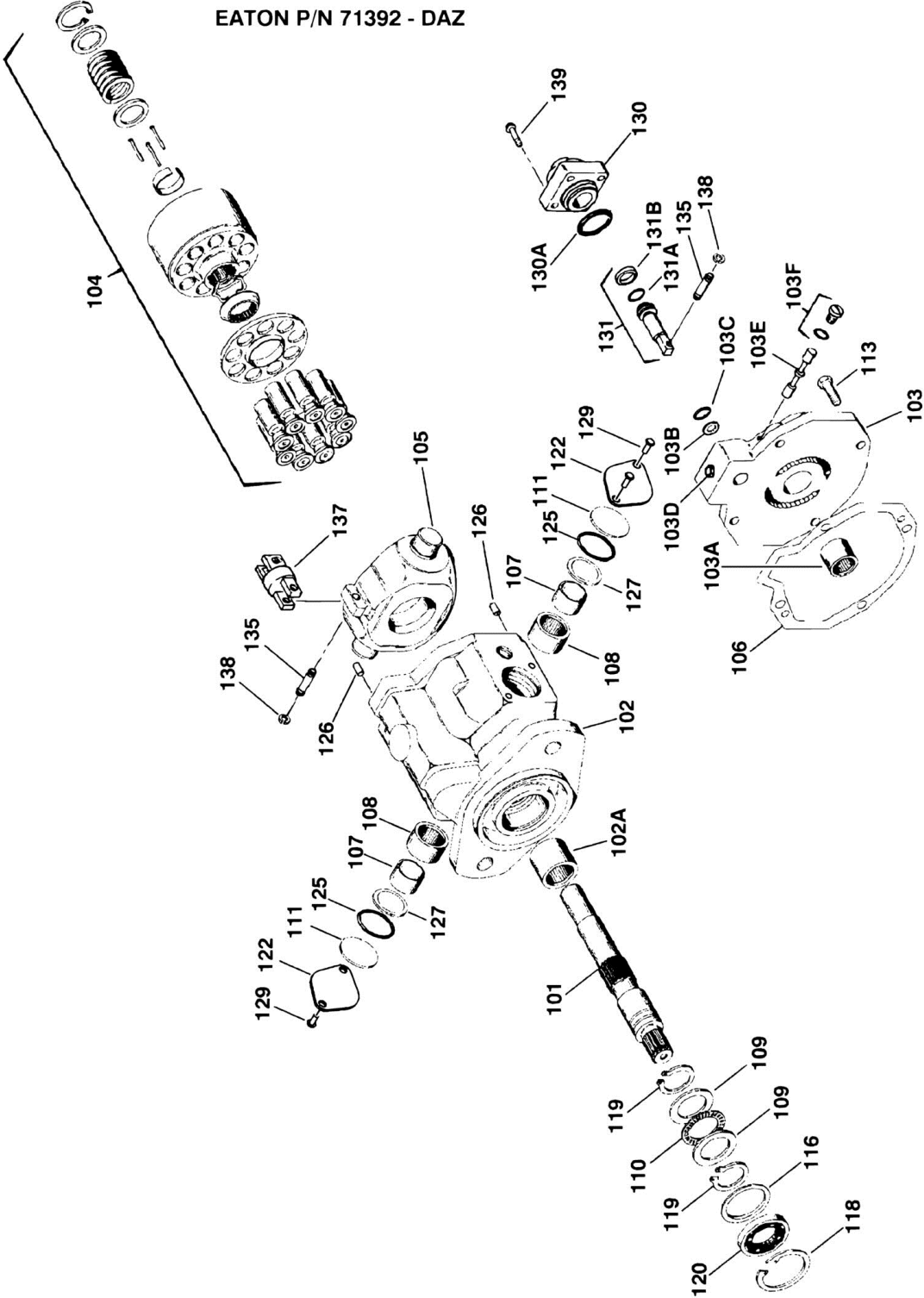
ITEM	PART NUMBER	QTY	DESCRIPTION	REV
160	0920072	2	Drive Brake Assembly (Prior to December 1991) (See DRIVE BRAKE ASSEMBLY for Breakdown)	
160	0920084	2	Drive Brake Assembly (December 1991 to SN 33475) (See DRIVE BRAKE ASSEMBLY for Breakdown)	
160	0920110	2	Drive Brake Assembly (See DRIVE BRAKE ASSEMBLY for Breakdown) (SN 33476 through 56991)	
160	0920119	2	Drive Brake Assembly (was p/n 0920117) (SN 56992 to Present)	
160	7018612	AR	Repair Kit - 0920117 & 0920119 Brakes (Includes Case Seal, Piston Inner and Outer O-Rings and Back-up Rings, Stator Disc, Rotor Disc, Return Plate, Springs, Oil Seal, Bearing, 2 Retaining Rings and 2 Mounting Face Gaskets) (1 Per Assembly)	
160	7000731	AR	Gasket, Mounting Face (Note: No Other Parts Available)	

SECTION 1 - FRAME

ITEM	PART NUMBER	QTY	DESCRIPTION	REV
514	7014113	1	Expander	
	2900816	1	Brake O-Ring Kit (Includes Items 505-508 & 511)	
	7010473	Ref	BRAKE ASSEMBLY - 4WD MACHINES WITH I.D. PLATE (ITEM 309) STAMPED JULY 1992 OR LATER	
601	7014126	1	Spindle	
602	7010475	1	Brake Lining Kit	
603	7010476	1	Brake O-Ring Kit	
604	7010477	1	Brake Spring Repair Kit	
605	7010478	1	Brake Piston Repair Kit	
	2900754	1	Seal Kit (Includes Items 5,17,102,306 & 307)	

SECTION 1 - FRAME

EATON P/N 71392 - DAZ



SECTION 2 - TURNTABLE

FIGURE 2-1. CONTROL VALVES INSTALLATIONS

ITEM	PART NUMBER	QTY	DESCRIPTION	REV
		Ref	CONTROL VALVES INSTALLATIONS	
	0250459	Ref	Ford With Rotator (Prior to May 1992)	E
	0253178	Ref	Ford With Rotator (May 1992 to Present)	A
	0250460	Ref	Ford Without Rotator (Prior to May 1992)	C
	0253179	Ref	Ford Without Rotator (May 1992 to Present)	-
	0250615	Ref	Deutz With Rotator (Prior to May 1992)	D
	0253180	Ref	Deutz With Rotator (May 1992 to Present)	A
	0250616	Ref	Deutz Without Rotator (Prior to May 1992)	B
	0253181	Ref	Deutz Without Rotator (May 1992 to Present)	-
	0251016	Ref	Electric With Rotator (Prior to May 1992)	D
	0253182	Ref	Electric With Rotator (May 1992 to Present)	A
	0251017	Ref	Electric Without Rotator (Prior to May 1992)	A
	0253183	Ref	Electric Without Rotator (May 1992 to Present)	-
1		Ref	Control Valve Assembly Options: (See CONTROL VALVE ASSEMBLY - 3 & 4 SECTION RACINE BANGBANG for Breakdown)	
1	4640645	1	4 Section Racine Bang-Bang (With Rotator) (Prior to October 1994)	
1	4640909	1	4 Section Racine Bang-Bang (With Rotator) (October 1994 to Present)	
1	4640646	1	3 Section Racine Bang-Bang (Without Rotator)	
2	4640601	1	Control Valve Assembly - 3 Section Racine Bang-Bang (See CONTROL VALVE ASSEMBLY - 3 SECTION RACINE BANGBANG for Breakdown)	
3	2120122	1	Filter, Pressure (Ford and Deutz Only)	
3A	2120125	1	Element	
4	4640123	1	Valve, Solenoid (Prior to May 1992)	
4	7000558	1	Coil - 12VDC (FPS Version)	
4	7004368	1	Coil - 12VDC (Hydroforce Version)	
4	4640758	1	Valve, Solenoid (May 1992 to Present)	
4	7012906	1	Coil - 12VDC (Hydroforce Version)	
4	7012907	1	Seal Kit	
5	4761400	8	Lockwasher 1/4in	
6	0641406	2	Bolt 1/4in-20NC x 3/4in	
7	4300042	6	Stud (Welded on Part) (Not Shown)	
8	3311405	10	Locknut 1/4in-20NC	
9	4751400	10	Flatwasher 1/4in	
10	0641514	4	Bolt 5/16in-18NC x 1 3/4in	
11	4751500	20	Flatwasher 5/16in	
12	4761500	12	Lockwasher 5/16in	
13	3311501	16	Nut 5/16in-18NC	
14	4640543	1	Valve, Dump	
14	7004368	1	Coil - 12VDC (Hydroforce Version)	
14	7009745	1	Coil - 12VDC (Modular Controls Version)	
15		Ref	Valve, Flow Control Options:	
15	4640627	1	Valve, Flow Control (Prior to May 1992)	
15	4640623	1	Valve, Flow Control (May 1992 to Present)	
16		Ref	Fitting Options:	
16	2220444	1	With Rotator	
16	2220444	1	Without Rotator	
16	2180029	1	With and Without Rotator (Prior to April 1992)	

SECTION 2 - TURNTABLE

FIGURE 2-4. VALVE ASSEMBLY - SINGLE STACK RACINE

ITEM	PART NUMBER	QTY	DESCRIPTION	REV
	4640570	Ref	VALVE ASSEMBLY	
1	7004894	1	Drive Section - Complete	
2	7003825	2	Seat, Washer	
3	7002348	2	Spring	
4	7003828	2	Nameplate	
4	7004896	2	Solenoid Assembly	
5	7002339	4	Screw	
6	7002338	1	Plate, End	
7	7000418	1	Coil	
8	7002335	1	Case, Solenoid	
9	7002336	1	Sleeve, Outer Flux	
10	7002334	1	Spring	
11	7002333	1	Sleeve, Inner Flux	
12	7004821	1	Guide Tube Assembly	
13	7000470	1	Tube, Guide	
14	7002344	1	Plunger	
15	7002346	1	Pin, Push	
16	7003830	1	Cone Assembly	
16	7002345	1	Cone	
16	Kit	1	O-Ring 1 1/16in O.D.	
16	Kit	1	O-Ring 3/4in O.D.	
17	7003831	1	Pin and Guide Assembly	
17	7002340	1	Guide	
17	Kit	1	O-Ring 11/16in O.D.	
18	7003829	1	Pin Assembly	
18	Kit	1	Seal, Pin	
	7002347	1	O-Ring 3/4in O.D. (Use Between Sections - Not Shown)	
	7000448	1	O-Ring 1 1/16in O.D. (Use Between Sections - Not Shown)	
	7000437	4	Seal Kit - Valve Section	

SECTION 2 - TURNTABLE

FIGURE 2-8. SWING MOTOR ASSEMBLY (MACHINES BUILT PRIOR TO 1993)

ITEM	PART NUMBER	QTY	DESCRIPTION	REV
	3160147	Ref	SWING MOTOR ASSEMBLY	
1	Kit	2	Seal	
2	7009901	1	Seal	
3	7009902	1	Flange, Mounting	
4	7009903	1	Drive	
5	Kit	3	O-Ring	
6	7009904	1	Geroler	
7	7009905	1	Drive, Valve	
8	7009906	1	Plate, Valve	
9	Kit	1	Seal	
10	7009908	1	Valve	
11	7009909	1	Ring, Balance	
12	Kit	1	Seal, Face-Inner	
13	Kit	1	Seal, Face-Outer	
14	7009912	2	Pin	
15	7009913	2	Spring	
16	7009914	4	Bolt	
17	7009915	1	Housing	
18	7002157	1	Plug Assembly	
18	Kit	1	O-Ring	
19	7002159	2	Check Plug Assembly	
19	Kit	2	O-Ring	
20	7000192	2	Spring	
21	7000191	2	Ball, Steel	
	2900686	1	Seal Kit (Includes all seals except Item 2)	

SECTION 2 - TURNTABLE

ITEM	PART NUMBER	QTY	DESCRIPTION	REV
502	7019958	1	Wire - Spark Plug #4	
	0255476	Ref	COLD WEATHER INSTALLATION (OPTIONAL)	
601	2580026	1	Heater - Not Shown (Located in Engine Block)	
603	2580001	1	Pad, Heater - Not Shown (Located on Battery)	

SECTION 2 - TURNTABLE

FIGURE 2-14. GENERATOR INSTALLATION - 110V (FORD)

ITEM	PART NUMBER	QTY	DESCRIPTION	REV
	0250668	Ref	GENERATOR INSTALLATION	G
1	0480057	1	V-Belt	
2	4340569	1	Support	
3	3580134	1	Pulley (Attaching Hardware Supplied with Generator) (Prior to June 1995)	
4	2460011	1	Generator and Control Box Assembly	
4A	7012558	1	Generator	
4A	7026199	1	Armature with Slip Rings	
4A	7012513	4	Cap, Brush Holder	
4A	7020108	4	Brush	
4A	7020109	4	Holder, Brush	
4A	7012514	1	Fan	
4A	7020110	1	Bell, Front	
4A	7020111	1	Bell Rear	
4A	7020190	2	Bearing	
4B	7003657	1	Box, Control	
		Ref	Note: Replacement 110V Control Box comes with 2 std Receptacles p/n 4460190. Optional Industrial Twist Lock Receptacles p/n 4460027 must be ordered separately.	
4B	4360542	1	Breaker, Circuit (was p/n 7020194)	
4B	2920162	1	Lamp	
4B	7020191	1	Switch, Toggle	
4B	3520028	1	Plug, Hole	
4C	2420203	1	Voltmeter (was p/n 7010699)	
4D	3580134	1	Pulley	
5	7027887	1	Key, Woodruff	
6	0641511	1	Bolt 5/16in-18NC x 1 3/8in	
7	4751500	2	Flatwasher 5/16in	
8	4761500	2	Lockwasher 5/16in	
9		Ref	Bracket, Mounting Options:	
9	0901774	1	Bracket, Mounting (Prior to May 1991)	
9	0901650	1	Bracket, Mounting (May 1991 to Present)	
11	4761600	4	Lockwasher 3/8in	
12	3311601	2	Nut 3/8in-16NC	
13	0961247	1	Bushing	
14	0641507	1	Bolt 5/16in-18NC x 7/8in	
15	0901633	1	Bracket, Mounting - Box	
16	4300068	2	Stud (Welded on Part)	
17	4751400	4	Flatwasher 1/4in	
18	4761400	4	Lockwasher 1/4in	
19	3311401	4	Nut 1/4in-20NC	
20	0721006	2	Screw, Machine #10-24NC x 3/4in	
21	4460023	1	Connector	
22	3251476	1	Decal - Generator	
24	4751000	2	Flatwasher #10	
25	4761000	2	Lockwasher #10	
26	3311001	2	Nut #10-24NC	
27	4460027	1	Connector	
28	4751600	3	Flatwasher 3/8in (July 1991 to Present)	
29	0681610	2	Bolt 3/8in-16NC x 1 1/4in (Grade 8) (June 1992 to Present)	

SECTION 2 - TURNTABLE

FIGURE 2-20. PUMP ASSEMBLY - SUNSTRAND (GAS AND DIESEL MACHINES)

ITEM	PART NUMBER	QTY	DESCRIPTION	REV
		Ref	PISTON PUMP ASSEMBLY	
	3600164	Ref	13 Tooth Pump Spline (Prior to SN 27991)	A
	3600260	Ref	15 Tooth Pump Spline (SN 27991 to Present)	-
1	7007413	1	Shim Kit - Relief Valve	
2	7007414	1	Plug	
3	Kit	1	O-Ring	
4	7007416	1	Spring, Relief Valve	
5	7007417	1	Valve, Relief	
6	Kit	2	O-Ring	
7	7007419	2	Plug	
10	7007420	2	Plug	
11	7007208	2	Plug	
12	7007421	10	Screw	
14	Kit	2	Gasket, Servo Cover	
15	7007423	1	Nut, Special	
16	7007424	1	Cover, Adjustment	
18	7007425	1	Bearing, Needle	
19	Kit	1	Ring, Retaining	
20	Kit	1	Washer	
21	Kit	1	Spring	
23	Kit	1	Washer	
24	Kit	1	Retainer	
25	Kit	3	Pin, Slipper Hold-Down	
26	Kit	7	Piston Assembly	
27	Kit	1	Guide, Slipper	
28	Kit	1	Guide, Retainer	
29	7007435	1	Pin, Spring	
30	7007436	1	Screw - 12 Point Head	
31	7007437	1	Bearing, Ball	
32	7007438	2	Ring	
33	7007439	2	Ring	
34	7007440	2	Pin, Spring	
35	7007441	1	Handle, Pin	
36	7007442	1	Sleeve, Bearing	
37	Kit	1	Gasket, Front Cover	
38	7007444	1	Pin	
39	7007445	1	Plug, Expansion	
40	Kit	1	Pin	
41	Kit	1	O-Ring	
42	Kit	1	Ring, Load Temper	
43	7007449	1	Housing, Pump	
44	Kit	1	Ring, Back-up	
45	Kit	1	O-Ring	
46	Kit	1	Cover, Gerotor	
47	7007453	3	Bolt	
48	7007208	1	Plug	
49	7007454	1	Cover, Front	
50	Kit	1	Block, Cylinder	
51	7007456	6	Screw - 12 Point Head	
52	7001438	10	Washer	

SECTION 2 - TURNTABLE

FIGURE 2-24. TANK INSTALLATION

ITEM	PART NUMBER	QTY	DESCRIPTION	REV
		Ref	TANK INSTALLATIONS	
	0250327	Ref	Fuel and Hydraulic Tanks Installation (Standard/Gas and Diesel Machines) (Prior to SN 30537)	E
	0257432	Ref	Fuel and Hydraulic Tanks Installation (Standard/Gas and Diesel Machines) (SN 30537 to Present)	1
	0250660	Ref	Fuel and Hydraulic Tanks Installation (With Heaters/Gas and Diesel Machines)	C
	0251014	Ref	Hydraulic Tanks Installation (Electric Machines - Not Shown)	C
	0251420	Ref	Hydraulic Tanks Installation (LP Only Machines - Not Shown)	A
2		Ref	Tank, Fuel Options:	
2	4400273	1	Tank, Fuel (Prior to SN 30537)	
2	4400402	1	Tank, Fuel (SN 30537 to Present)	
3	1120362	1	Cap, Fuel	
4	0641611	4	Bolt 3/8in-16NC x 1 3/8in	
5	4761600	4	Lockwasher 3/8in	
6	4751600	4	Flatwasher 3/8in	
7		Ref	Fitting, Nipple Options:	
7	2220341	1	Fitting, Nipple (Gas, Diesel and LP Only)	
7	2180644	1	Fitting, Nipple (Electric - Not Shown)	
8	0100020	AR	Sealant	
9		Ref	Fitting	
9	2220077	1	Fitting (Gas, Diesel and LP Only)	
9	2200447	1	Fitting (Electric - Not Shown)	
10	0100027	AR	Sealant	
11	2120109	1	Filter	
11A	2120110	1	Element	
12		Ref	Plug Options:	
12	2220202	3	Plug, Pipe (Prior to June 1991)	
12	2200202	3	Plug, Pipe (June 1991 to Present)	
13	2220805	1	Fitting 90 Barbed (Prior to June 1991)	
14		Ref	Hardware Options:	
14	4300078	4	Stud (Welded on Part) (Prior to June 1992)	
14	0641514	4	Bolt 5/16in-18NC x 1 3/4in (June 1992 to Present)	
15	4751500	4	Flatwasher 5/16in	
16	4761500	4	Lockwasher 5/16in	
17	3311501	4	Nut 5/16in-18NC	
18	4070679	4	Shim	
20	1340046	1	Breather	
21	2220273	1	Fitting, Reducer (Prior to June 1991)	
		Ref	TANK HYDRAULIC ASSEMBLIES	
	4400279	Ref	Standard/Gas/Diesel and LP Only	-
	4400307	Ref	With Heaters/Gas and Diesel	-
	4400241	Ref	Electric - Not Shown	D
101		Ref	Tank Weldment Options:	
101	4400296	1	Standard/Gas/Diesel and LP Only	
101	4400306	1	With Heaters/Gas and Diesel	
101	4400242	1	Electric - Not Shown	
102		Ref	Cover Options:	
102	1670446	1	Gas and Diesel	
102	3532064	1	Electric - Not Shown	

CLICK HERE TO **DOWNLOAD** THE COMPLETE MANUAL

- Thank you very much for reading the preview of the manual.
- You can download the complete manual from: www.heydownloads.com by clicking the link below



- Please note: If there is no response to CLICKING the link, please download this PDF first and then click on it.

CLICK HERE TO **DOWNLOAD** THE COMPLETE MANUAL

SECTION 3 - BOOM

SECTION 4 - PLATFORM

ITEM	PART NUMBER	QTY	DESCRIPTION	REV
220	4070585	AR	Shim.010	
221	4070585	AR	Shim.005	
222	4070587	AR	Shim.002	
223	0100019	AR	Loctite #271 (Not Shown)	
224	0100021	AR	Primer (Not Shown)	
225	2160001	1	Fitting, Grease	
226	3020025	AR	Grease (Not Shown)	
		Ref	PLATFORM ASSEMBLIES	
		Ref	Note: Replacement Decals must be Purchased - See DECALS SECTION.	
301		Ref	Platform Options:	
301	3510308	1	Standard - 91.4cm X 121.9cm	A
301	3510309	1	Standard - 91.4cm X 152.4cm	A
301	3510310	1	Standard - 91.4cm X 182.9cm	A
302	1780254	1	Door	
302	2600143	2	Hinge	
302	3311805	2	Locknut 1/2in-13NC	
302	2160006	2	Fitting, Grease	
303	2940006	1	Latch	
303	3911016	4	Screw, Round Head #10-24NC x 1in	
303	4751000	4	Flatwasher #10	
303	4761000	4	Lockwasher #10	
303	3311001	4	Nut #10-24NC	
303	2560010	1	Handle, Latch	
	0237963	Ref	FOOTSWITCH INSTALLATION	7
401	0641408	3	Bolt 1/4in-20NC x 1in	
401	3311405	3	Locknut 1/4in-20NC	
401	4740362	3	Flatwasher 1/4in	
401	4360031	1	Footswitch	
401	7000625	2	Block, Contact	
401	4460071	1	Contacto	

SECTION 4 - PLATFORM

FIGURE 4-5. PLATFORM CONSOLE BOX ASSEMBLY

ITEM	PART NUMBER	QTY	DESCRIPTION	REV
		Ref	PLATFORM CONSOLE BOX ASSEMBLY OPTIONS:	
	0860689	Ref	Gas and Diesel	H
	0860693	Ref	Electric	F
1	4842892	1	Box, Console	
2		Ref	Lid, Box Options:	
2	3252053	1	Lid, Box (Prior to March 1994)	
2	3252379	1	Lid, Box (March 1994 to Present)	
3	4360202	7	Switch, Toggle	
4	4060229	8	Guard, Switch	
5	3790012	11	O-Ring	
6	4360200	1	Switch, Toggle (Auxiliary Power)	
7	4360199	3	Switch, Toggle	
8	3740049	3	Relay	
9		Ref	Controller - PQ Options:	
9	1600116	1	Gas and Diesel	
9	7003702	1	Housing Assembly	
9	7003700	1	Handle Assembly	
9	7003783	1	Electrical Assembly	
9	1600127	1	Electric	
9	7003702	1	Housing Assembly	
9	7003700	1	Handle Assembly	
9	7003798	1	Electrical Assembly	
10	2560041	1	Knob	
11	4360274	AR	Switch, Push Button	
12	3790015	AR	O-Ring	
13	2920015	1	Lamp	
14	0751006	6	Screw Pan Head #10-24NC x 3/4in	
15	3300177	6	Nut, Tinnerman	
16	4420008	1.3 m	Tape, Insulation (Not Shown)	
17	0140001	1	Horn	
18	4460052	3	Connector	
19	3300047	3	Nut, Conduit	
20	0960239	3	Bushing	
21	4460051	1	Connector	
22	3300048	1	Nut, Conduit	
23	0960238	1	Bushing	
24	4360209	1	Breaker, Circuit 20Amp	
25	4761000	1	Lockwasher #10	
26	3311001	1	Nut #10-24NC	
28	4360132	1	Switch, Push-Pull (Emergency Stop)	
29	4360108	1	Block, Contact	
30	4360131	1	Lens, Red	
31	4760600	6	Lockwasher #6	
32	3910608	4	Screw Pan Head #6-32NC x 1/2in	
33	3640500	1	Rail	
34	3910606	2	Screw Pan Head #6-32NC x 3/8in	
35	3310601	6	Nut #6-32NC	
36	4460299	2	Stop, Terminal	
37	4120013	1	Socket, Relay	
38	3740058	1	Relay	

SECTION 5 - CYLINDER

SECTION 5 - CYLINDER

FIGURE 5-5. STEER CYLINDER ASSEMBLY - 2WD - DOUBLE ROD

ITEM	PART NUMBER	QTY	DESCRIPTION	REV
	1681814	Ref	STEER CYLINDER ASSEMBLY (Prior to SN 31941)	A
1	1680654	1	Barrel Weldment	
2	Kit	2	O-Ring	
3	1120229	2	Head	
4	Kit	2	Seal	
5	Kit	2	Seal, Wiper	
6	1120228	2	Head, Retainer	
7	4563681	2	Spacer, Tube	
8	3760141	2	Ring, Retaining	
9	3480098	1	Piston	
10	Kit	1	T-Seal	
11	3840561	1	Rod	
12	Kit	1	O-Ring	
13	Not Required	0	Not Required	
14	0100011	AR	Loctite (Not Shown)	
	2900099	1	Seal Kit (Includes Items 2, 4, 5, 10 & 12)	
	1683511	Ref	STEER CYLINDER ASSEMBLY (SN 31941 to Present)	2
1	1680654	1	Barrel Weldment	
2	Kit	2	O-Ring	
3	1682364	2	Head	
4	Kit	2	Seal	
5	Kit	2	Seal, Wiper	
6	1120387	2	Head, Retainer	
7	4563681	2	Spacer, Tube	
8	3760141	2	Ring, Retaining	
9	3480098	1	Piston	
10	Kit	1	T-Seal	
11	3840561	1	Rod	
12	Kit	1	O-Ring	
13	Kit	2	Ring, Wear	
14	0100011	AR	Loctite (Not Shown)	
	2901178	1	Seal Kit (Includes Items 2, 4, 5, 10, 12 & 13)	

SECTION 6 - HYDRAULIC

SECTION 6 - HYDRAULIC

FIGURE 6-3. HYDRAULIC DIAGRAM - DRIVE (4WD)

ITEM	PART NUMBER	QTY	DESCRIPTION	REV
		Ref	HYDRAULIC DIAGRAMS - DRIVE (4WD)	
	2791885	Ref	4WD - Ford and Deutz (With Swivel)	B
1	2210003	1	Fitting, Barbed	
2	1320033	4	Clamp	
3	2720357	1	Hose, Suction	
4	2220468	1	Fitting, Straight	
5	2210014	1	Fitting, 90 Barbed	
6	2220578	3	Fitting, Straight	
7	2751614	2	Hose	
8	2220408	2	Fitting, Straight	
9	2751427	1	Hose	
10	2220469	1	Fitting,	
11	2220582	2	Fitting, Straight	
12	2220493	1	Fitting, 90	
13	2751409	2	Hose	
14	2220451	7	Fitting, Straight	
15	2220385	1	Fitting, Tee	
16	2220618	1	Fitting, Reducer	
17	2220605	1	Fitting, Tee	
18	2751010	1	Hose	
20	2220472	1	Fitting, 90	
21	2750760	1	Hose	
22	2220365	2	Fitting, 45	
23	2752322	1	Hose	
24	2220348	2	Fitting, Straight	
25	2220355	1	Fitting, 45	
26	2220684	1	Fitting, Tee	
27	2220414	1	Fitting, Straight	
28	2751021	4	Hose	
29	2220504	2	Fitting, Tee	
30	2751484	1	Hose	
31	2751014	1	Hose	
32	2220466	2	Fitting, 90	
33	2750777	2	Hose	
34	2220415	2	Fitting, Straight	
35	2220345	1	Fitting, Straight	
36	2751490	1	Hose	
37	2752240	2	Hose	
38	2752249	1	Hose	
39	2750976	1	Hose	
40	2220362	2	Fitting, Tee	
41	2750979	1	Hose	
42	2220600	4	Fitting, Straight	
43	2220375	5	Fitting, Straight	
44	2220481	2	Fitting, Tee	
45	2220622	2	Fitting, Reducer	
46	2220407	1	Fitting, 90	
47	2220366	2	Fitting	
48	2752236	1	Hose	
49	2220363	1	Fitting, Tee	

SECTION 6 - HYDRAULIC

FIGURE 6-7. HYDRAULIC DIAGRAM - STANDARD (FORD - DEUTZ)

ITEM	PART NUMBER	QTY	DESCRIPTION	REV
	2791963	Ref	HYDRAULIC DIAGRAMS - FORD	C
	2791961	Ref	HYDRAULIC DIAGRAMS - DEUTZ	C
1	2720356	1	Hose, Suction - 3/4in x 67in (Deutz)	
2	2220408	1	Fitting, Straight	
3	1320030	4	Clamp	
4	2180491	1	Fitting, Modified	
5	2220820	1	Fitting, 90	
6	2220429	1	Cap, Dust	
7	2220428	1	Fitting, Quick Disconnect	
8		Ref	Ford and Deutz Options:	
8	2220651	1	Fitting, Straight (Ford)	
8	2752469	1	Hose (Deutz)	
9		Ref	Fitting Options:	
9	Not Required	0	Ford	
9	2220372	1	Deutz	
10	4640776	1	Valve, Check	
11	2180540	2	Fitting, Modified	
12	2220618	4	Fitting, Reducer	
13		Ref	Hose Options:	
13	2752444	1	Ford	
13	2752443	1	Deutz	
14	2220602	2	Fitting, Tee	
15		Ref	Hose Options:	
15	2752472	1	Ford	
15	2752470	1	Deutz	
16	2752434	3	Hose	
17	2220472	4	Fitting, 90	
18	2220371	6	Fitting	
19	2752461	2	Hose	
20	2752436	2	Hose	
21	2220726	1	Fitting, 90	
22	2750759	1	Hose	
23	2220659	1	Fitting, 90	
24	2220468	3	Fitting, Straight	
25	2220497	2	Fitting, Reducer	
26	2220609	6	Fitting, Reducer	
27	2752432	2	Hose	
28	4640574	1	Valve, Shuttle	
29	2220591	3	Fitting, Reducer	
30	2180380	2	Fitting, Orifice (.062)	
31		Ref	Hose Options:	
31	2752471	1	Ford	
31	2752474	1	Deutz	
32	2210008	1	Fitting, 90	
33	2752437	3	Hose	
34		Ref	Fitting Options:	
34	Not Required	0	Ford	
34	2220619	1	Deutz	
35	4640817	2	Valve, Restrictor (.40)	
36	2220579	1	Fitting, Tee	

SECTION 6 - HYDRAULIC

FIGURE 6-10. HYDRAULIC DIAGRAM - TOW

ITEM	PART NUMBER	QTY	DESCRIPTION	REV
		Ref	HYDRAULIC DIAGRAMS	
	2791788	Ref	1.75m Frame	B
	2791789	Ref	2m Frame	B
16	2220605	2	Fitting, Tee	
17	2220468	3	Fitting, Straight	
18		Ref	Hose Options:	
18	2751391	1	1.75m Frame	
18	2751410	1	2m Frame	
19		Ref	Hose Options:	
19	2751428	2	1.75m Frame	
19	2751010	2	2m Frame	
21	2220385	1	Fitting, Tee	
22	2220619	1	Fitting, Reducer	
23	2220635	1	Fitting, Swivel	
24	2220609	1	Fitting, Reducer	

SECTION 7 - ELECTRICAL

ITEM	PART NUMBER	QTY	DESCRIPTION	REV
	4921792	1	Harness - Engine (July 1995 to Present)	
	3990010	7	Diode - 6 Amp	
	3730003	1	Resistor (December 1996 to Present)	
	4932378	Ref	GROUND CONTROL ELECTRICAL DIAGRAM - FORD (PRIOR TO AUGUST 1994)	2
	1060300	10.36 m	Ground Control Electrical Diagram (Use p/n 1600016) Cable Electrical - 16/3 (To Horizontal Limit Switch)	
	1060300	4.88 m	Ground Control Electrical Diagram (Use p/n 1600016) Cable Electrical - 16/3 (To Tower Boom Limit Switch)	
	4921273	1	Harness - Engine and Valve	
	3990010	4	Diode - 6 Amp	
	4932756	Ref	GROUND CONTROL ELECTRICAL DIAGRAM - FORD (AUGUST 1994 TO PRESENT)	2
	1060016	10.36 m	Cable Electrical - 16/3 (To Horizontal Limit Switch) Options: (was p/n 1060300)	
	1060016	4.88 m	Cable Electrical - 16/3 (To Tower Boom Limit Switch) Options: (was p/n 1060300)	
	4921273	1	Harness - Engine and Valve	
	3990010	4	Diode - 6 Amp	
	4932326	Ref	GROUND CONTROL ELECTRICAL DIAGRAM - ELECTRIC	C
	1060016	9.14 m	Cable Electrical - 16/3 (To Horizontal Limit Switch)	
	1060300	4.88 m	Cable Electrical - 16/3 (To Tower Boom Limit Switch)	
	1060300	4.88 m	Cable Electrical - 16/3 (To Tilt Level Sensor)	
	4921343	1	Harness - Contactor Box	
	4921291	1	Harness - Valve	
	3990010	6	Diode - 6 Amp	

CLICK HERE TO **DOWNLOAD** THE COMPLETE MANUAL

- Thank you very much for reading the preview of the manual.
- You can download the complete manual from: www.heydownloads.com by clicking the link below



- Please note: If there is no response to CLICKING the link, please download this PDF first and then click on it.

CLICK HERE TO **DOWNLOAD** THE COMPLETE MANUAL