



# Illustrated Parts Manual

**Model  
34HA**

**P/N  
3120676**

*June 27, 2011*

**ANSI**



An Oshkosh Corporation Company

CLICK HERE TO **DOWNLOAD** THE COMPLETE MANUAL

- Thank you very much for reading the preview of the manual.
- You can download the complete manual from: [www.heydownloads.com](http://www.heydownloads.com) by clicking the link below



- Please note: If there is no response to CLICKING the link, please download this PDF first and then click on it.

CLICK HERE TO **DOWNLOAD** THE COMPLETE MANUAL

## SECTION 1 - FRAME

| ITEM | PART NUMBER | QTY | DESCRIPTION  | REV |
|------|-------------|-----|--|-----|
| 158  |             | Ref | Drive Brake Assembly Options:  |     |
| 158  | 0920072     | 2   | Drive Brake Assembly Prior to December 1991 (See DRIVE BRAKE ASSEMBLY (Prior to December 1991) for Breakdown)  |     |
| 158  | 0920084     | 2   | Drive Brake Assembly (December 1991 to SN 33475) (See DRIVE BRAKE ASSEMBLY(December 1991 to SN 33475) for Breakdown)   |     |
| 158  | 0920110     | 2   | Drive Brake Assembly (See DRIVE BRAKE ASSEMBLY (SN 33476 through 56991) for Breakdown)   |     |
| 158  | 0920119     | 2   | Drive Brake Assembly (was p/n 0920117) <b>(SN 56992 to Present)</b>  |     |
| 158  | 7018612     | AR  | Repair Kit - 0920117 & 0920119 Brakes (Includes Case Seal, Piston Inner and Outer O-Rings and Back-up Rings, Stator Disc, Rotor Disc, Return Plate, Springs, Oil Seal, Bearing, 2 Retaining Rings and 2 Mounting Face Gaskets ) (1 Per Assembly) |     |
| 158  | 7000731     | AR  | Gasket, Mounting Face Note: (No Other Parts Available.)  |     |
| 159  | 3311801     | 4   | Nut 1/2in-13NC   |     |
| 160  | 0100011     | AR  | Loctite #242 (Not Shown)   |     |
| 161  | 4751800     | 4   | Flatwasher 1/2in   |     |
| 162  | 0100019     | AR  | Loctite #271 (Not Shown)   |     |

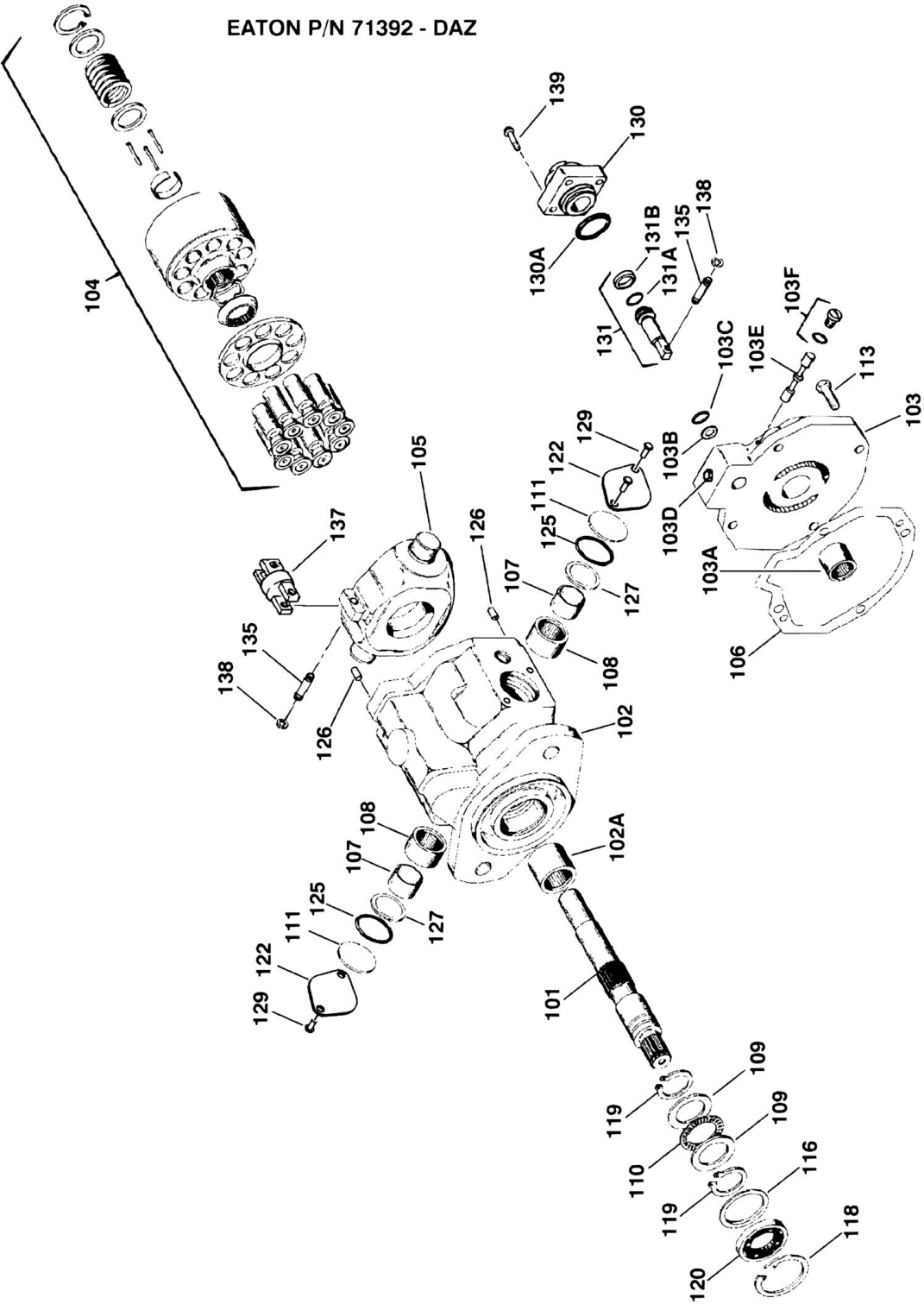
## SECTION 1 - FRAME

| ITEM | PART NUMBER | QTY | DESCRIPTION  | REV |
|------|-------------|-----|--|-----|
| 159  | 0641840     | 4   | Bolt 1/2in-13NC x 5 <b>(SN 56992 to Present)</b>   |     |
| 160  |             | Ref | Drive Brake Assembly Options:  |     |
| 160  | 0920072     | 2   | Drive Brake Assembly (Prior to December 1991) (See DRIVE BRAKE ASSEMBLY (Prior to December 1991) for Breakdown)  |     |
| 160  | 0920084     | 2   | Drive Brake Assembly (December 1991 to SN 33475) (See DRIVE BRAKE ASSEMBLY (December 1991 to SN 33475) for Breakdown)  |     |
| 160  | 0920110     | 2   | Drive Brake Assembly (See DRIVE BRAKE ASSEMBLY (SN 33476 through 56991) for Breakdown)   |     |
| 160  | 0920119     | 2   | Drive Brake Assembly (was p/n 0920117) <b>(SN 56992 to Present)</b>  |     |
| 160  | 7018612     | AR  | Repair Kit - 0920117 & 0920119 Brakes (Includes Case Seal, Piston Inner and Outer O-Rings and Back-up Rings, Stator Disc, Rotor Disc, Return Plate, Springs, Oil Seal, Bearing, 2 Retaining Rings and 2 Mounting Face Gaskets ) (1 Per Assembly) |     |
| 160  | 7000731     | AR  | Gasket, Mounting Face (Note: No Other Parts Available.)  |     |

## SECTION 1 - FRAME

| ITEM | PART NUMBER | QTY | DESCRIPTION   | REV |
|------|-------------|-----|---|-----|
|      | 2900816     | 1   | Brake O-Ring Kit (Includes Items 505-508 & 511)                                     |     |
|      | 7010473     | Ref | <b>BRAKE ASSEMBLY - 4WD MACHINES WITH I.D. PLATE<br/>STAMPED JULY 1992 OR LATER</b> |     |
| 601  | 7014126     | 1   | Spindle   |     |
| 602  | 7010475     | 1   | Brake Lining Kit  |     |
| 603  | 7010476     | 1   | Brake O-Ring Kit  |     |
| 604  | 7010477     | 1   | Brake Spring Repair Kit   |     |
| 605  | 7010478     | 1   | Brake Piston Repair Kit   |     |
|      | 2900754     | 1   | Seal Kit (Includes Items 5, 17, 102, 306 & 307)                                     |     |

SECTION 1 - FRAME



**SECTION 2 - TURNTABLE**

## SECTION 2 - TURNTABLE

**FIGURE 2-3. CONTROL VALVE ASSEMBLY - 3 SECTION RACINE BANG-BANG**

| ITEM | PART NUMBER | QTY | DESCRIPTION   | REV |
|------|-------------|-----|---|-----|
|      | 4640601     | Ref | <b>CONTROL VALVE ASSEMBLY</b>   | -   |
| 1    | 7002317     | 1   | Working Section - Complete  |     |
| 2    | 7004859     | 2   | Solenoid Assembly (Refer to Items 13-28 for Serviced Parts)   |     |
| 3    | 7003841     | 1   | Working Section - Complete  |     |
| 4    | 7004859     | 2   | Solenoid Assembly (Refer to Items 13-28 for Serviced Parts)   |     |
| 5    | 7002262     | NLA | Dual Pilot Check Valve Assembly (Due to various suppliers, internal components are no longer field serviceable) |     |
| 6    | 7002359     | 2   | Poppet  |     |
| 7    | 7002356     | 2   | Spring  |     |
| 8    | 7002225     | 2   | Ball  |     |
| 9    | 7002358     | 2   | Spring  |     |
| 10   | 7002357     | 2   | Plug  |     |
| 10   | Kit         | 2   | O-Ring  |     |
| 11   | 7003855     | 1   | Working Section - Complete  |     |
| 12   | 7004859     | 2   | Solenoid Assembly (Refer to Items 13-28 for Serviced Parts)   |     |
| 13   | 7003825     | 1   | Washer  |     |
| 14   | 7002348     | 1   | Spring  |     |
| 15   | 7002305     | 1   | Guide Tube Assembly   |     |
| 16   | 7002345     | 1   | Cone, Female  |     |
| 16   | Kit         | 1   | O-Ring  |     |
| 16   | Kit         | 1   | O-Ring  |     |
| 17   | 7002346     | 1   | Pin, Push   |     |
| 18   | 7002344     | 1   | Plunger   |     |
| 19   | 7000470     | 1   | Tube, Guide   |     |
| 20   | 7002341     | 1   | Pin, Actuator   |     |
| 20   | Kit         | 1   | Ring, Quad  |     |
| 21   | 7002340     | 1   | Guide, External Push Pln  |     |
| 21   | Kit         | 1   | O-Ring  |     |
| 22   | 7002333     | 1   | Sleeve, Inner Flux  |     |
| 23   | 7002334     | 1   | Spring  |     |
| 24   | 7002336     | 1   | Sleeve, Outer Flux  |     |
| 25   | 7000418     | 1   | Coil  |     |
| 26   | 7002335     | 1   | Case, Solenoid  |     |
| 27   | 7002338     | 1   | Plate, End  |     |
| 28   | 7002339     | 4   | Screw   |     |
| 29   | 7000468     | NLA | Crossover Relief Valve Assembly (Due to various suppliers, internal components are no longer field serviceable) |     |
| 30   | 7002355     | 2   | Spring  |     |
| 31   | 7000116     | 2   | Rivet   |     |
| 32   | 7002350     | 2   | Plug  |     |
| 32   | Kit         | 2   | O-Ring  |     |
| 33   | 7000113     | 2   | Screw, Adjusting  |     |
| 34   | Kit         | 2   | Seal, Thread  |     |
| 35   | 7000114     | 2   | Nut   |     |
| 36   | 7002353     | 4   | Piston  |     |
|      | 7000414     | 3   | Seal, Kit - Working Sections  |     |
|      | 7000439     | 1   | Seal, Kit - Relief Valve Block (7002262 Relief Valve)   |     |
|      | 7000440     | 1   | Seal, Kit - Relief Valve Block (7000468 Relief Valve)   |     |

## SECTION 2 - TURNTABLE

### FIGURE 2-7. SWING DRIVE AND BEARING INSTALLATION

| ITEM | PART NUMBER | QTY | DESCRIPTION   | REV |
|------|-------------|-----|---|-----|
|      | 0238511     | Ref | <b>TURNTABLE BEARING INSTALLATION</b>   | C   |
| 1    | 0440067     | 1   | Bearing, Turntable  |     |
| 3    | 0682020     | 15  | Bolt 5/8in-11NC x 2 1/2in (Grade 8)   |     |
| 4    | 4740004     | 12  | Washer, Hardened  |     |
| 5    | 3300183     | 15  | Nut 5/8in-11NC (Grade 8)  |     |
| 6    | 0681820     | 12  | Bolt 1/2in-13NC x 2 1/2in (Grade 8)   |     |
| 7    | 4740003     | 12  | Washer, Hardened  |     |
| 9    | 4740048     | 3   | Washer, Special   |     |
| 10   | 2160001     | 1   | Fitting, Grease (Prior to March 1993)   |     |
|      | 0100019     | AR  | Loctite #271 (Not Shown)  |     |
|      | 0100004     | 0   | Devcon (Not Required on Machines with Milled Frame and Turntable)                                 |     |
|      | 0238523     | Ref | <b>SWING DRIVE INSTALLATION - MACHINES BUILT THROUGH 1992</b>                                     | E   |
| 101  | 0920074     | 1   | Swing Brake Assembly (See SWING BRAKE ASSEMBLY (MACHINES BUILT THROUGH 1992) for Breakdown)       |     |
| 102  | 3160147     | 1   | Swing Motor Assembly (See SWING MOTOR ASSEMBLY (MACHINES BUILT Prior to 1993) for Breakdown)      |     |
| 103  | 2440056     | 1   | Pinion  |     |
| 104  | 0080148     | 1   | Adapter   |     |
| 105  | 0560793     | 1   | Block, Clamp  |     |
| 106  | 4740018     | 1   | Washer  |     |
| 107  | 0641608     | 1   | Bolt 3/8in-16NC x 1in   |     |
| 109  | 3931856     | 4   | Bolt 1/2in-13NC x 3 1/2in   |     |
| 110  | 4740189     | 4   | Lockwasher 1/2in  |     |
| 111  | 0641810     | 4   | Bolt 1/2in-13NC x 1 1/4in   |     |
| 112  | 4761800     | 4   | Lockwasher 1/2in  |     |
| 113  | 0641610     | 2   | Bolt 3/8in-16NC x 1 1/4in   |     |
| 114  | 4761600     | 2   | Lockwasher 3/8in  |     |
| 115  | 4751600     | 2   | Flatwasher 3/8in  |     |
| 116  | 4563923     | 1   | Spacer  |     |
| 118  | 3790045     | 1   | O-Ring  |     |
|      | 0100011     | AR  | Loctite #242 (Not Shown)  |     |
|      | 0100020     | AR  | Sealant, Pipe (Not Shown)   |     |
|      | 0252578     | Ref | <b>SWING DRIVE INSTALLATION - (MACHINES BUILT 1993 TO MAY 1994)</b>                               | D   |
| 151  | 0920089     | 1   | Swing Brake Assembly  |     |
| 151  | 7012570     | 1   | Seal Kit - 0920089 Brake (Includes Seals, O-Rings, Back-up Rings and Retaining Ring)              |     |
| 151  | 7012571     | 1   | Rebuilt Kit - 0920089 Brake (Includes 7012570 Seal Kit, Inner and Outer Discs and Pressure Plate) |     |
| 152  | 3160183     | 1   | Swing Motor Assembly (See SWING MOTOR ASSEMBLY (MACHINES BUILT 1993 TO PRESENT) for Breakdown)    |     |
| 153  | 3535607     | 1   | Plate, Mounting   |     |
| 154  | 4300107     | 4   | Stud 1/2in-13NC x 2in   |     |
| 155  | 3311801     | 4   | Nut 1/2in-13NC x 2in  |     |
| 156  | 4761800     | 8   | Lockwasher 1/2in  |     |
| 158  | 0642014     | 4   | Bolt 5/8in-11NC x 1 3/4in   |     |
| 159  | 4740004     | 4   | Washer, Hardened  |     |
| 161  | 0641830     | 4   | Bolt 1/2in-13NC x 3 3/4in   |     |
| 162  | 3790155     | 1   | O-Ring  |     |

## SECTION 2 - TURNTABLE

### FIGURE 2-11. ROTARY OIL COUPLING INSTALLATION

| ITEM | PART NUMBER | QTY | DESCRIPTION                         | REV |
|------|-------------|-----|-------------------------------------|-----|
|      | 0238615     | Ref | <b>ROTARY OIL COUPLING ASSEMBLY</b> | A   |
| 2    | 1440154     | 1   | Collar                              |     |
| 3    | 3530403     | 1   | Plate, Retaining                    |     |
| 4    | 0641512     | 4   | Bolt 5/16in-18NC x 1 1/2in          |     |
| 5    | 4761500     | 4   | Lockwasher 5/16in                   |     |
| 6    | 3951820     | 2   | Setscrew 1/2in-13NC x 7/8in         |     |
| 7    | 0100011     | AR  | Loctite #242 (Not Shown)            |     |
| 8    | 0641807     | 2   | Bolt 1/2in-13NC x 7/8in             |     |
| 9    | 4761800     | 2   | Lockwasher 1/2in                    |     |
| 10   | 0100003     | AR  | Loctite (Not Shown)                 |     |
|      | 1660160     | Ref | <b>COUPLING ASSEMBLY</b>            | A   |
| 51   | 0620058     | 1   | Body, Swivel                        |     |
| 52   | 2760091     | 1   | Housing, Swivel                     |     |
| 53   | Kit         | 7   | T-Seal                              |     |
| 54   | 3760004     | 1   | Ring, Retaining                     |     |
| 55   | Kit         | 1   | O-Ring                              |     |
|      | 2901146     | 1   | Seal Kit (Includes Items 53 & 55)   |     |
|      | 0251561     | Ref | <b>COLLECTOR RING ASSEMBLY</b>      | B   |
| 101  | 4843822     | 1   | Bracket Weldment                    |     |
| 102  | 0960224     | 2   | Bushing                             |     |
| 103  | 0641418     | 2   | Bolt 1/4in-20NC x 2 1/4in           |     |
| 104  | 2180763     | 1   | Fitting, Pipe Nipple                |     |
| 105  | 0961531     | 1   | Bushing, Collector Ring             |     |
| 106  | 3760053     | 1   | Collector Ring Assembly             |     |
| 107  | 3311801     | 2   | Nut 1/2in-13NC                      |     |
| 108  | 3420290     | 2   | Pin, Drive                          |     |
| 109  | 0231047     | 2   | Guide, Drive                        |     |
| 110  | 1670594     | 1   | Cover                               |     |
| 111  | 0721004     | 4   | Screw, Round Head #10-24NC x 1/2in  |     |
| 113  | 4761400     | 2   | Lockwasher 1/4in                    |     |
| 114  | 1320040     | 1   | Clamp                               |     |
| 115  | 3911012     | 1   | Screw, Round Head #10-24NC x 3/4in  |     |
| 116  | 4751000     | 6   | Flatwasher #10                      |     |
| 117  | 4761000     | 5   | Lockwasher #10                      |     |
| 118  | 3311001     | 5   | Nut #10-24NC                        |     |
| 119  | 4751400     | 2   | Flatwasher 1/4in                    |     |

## SECTION 2 - TURNTABLE

| ITEM | PART NUMBER | QTY  | DESCRIPTION   | REV |
|------|-------------|------|---|-----|
| 132  | 3980007     | 1    | Masonite  |     |
| 133  | 3300029     | 2    | Wing-Nut 3/8in-16NC                                       |     |
| 134  | 2220273     | 1    | Bushing, Reducer  |     |
| 135  | 2220805     | 1    | Fitting   |     |
| 136  | 1320022     | 2    | Clamp   |     |
| 137  | 2720058     | 9 ft | Hose (Fuel Supply)  |     |
| 138  | 4300038     | 2    | Stud (Welded on Part)                                     |     |
| 139  | 4751600     | 2    | Flatwasher 3/8in  |     |
| 140  | 3600208     | 1    | Auxiliary Pump Assembly                                   |     |
| 141  | 4761600     | 2    | Lockwasher 3/8in  |     |
| 142  | 0641612     | 2    | Bolt 3/8in-16NC x 1 1/2in                                 |     |
| 145  | 4761500     | 2    | Lockwasher 5/16in   |     |
| 148  | 1320026     | 1    | Clamp   |     |
| 149  | 4300032     | 4    | Stud (Welded on Part)                                     |     |
| 150  | 4751400     | 8    | Flatwasher 1/4in  |     |
| 151  | 1600117     | 1    | Box, Control - Precision Governor                         |     |
| 152  | 2200233     | 1    | Plug, Pipe  |     |
| 153  | 4060733     | 1    | Shield  |     |
| 154  | 3911008     | 3    | Screw, Machine #10-24NC x 1 1/2in                         |     |
| 155  | 4761000     | 3    | Lockwasher #10  |     |
| 156  | 3321001     | 3    | Nut #10-32NF  |     |
| 157  | 4751000     | 3    | Lockwasher #10  |     |
| 158  | 4564711     | 1    | Tube, Adapter   |     |
| 159  | 1120218     | 1    | Cap, Rain   |     |
| 160  | 2720042     | 1    | Hose, Heater  |     |
| 161  | 1320032     | 2    | Clamp   |     |
| 162  | 1703162     | 1    | Decal - Fan Blade   |     |
|      | 0250806     | Ref  | <b>AIR HORN INSTALLATION</b>                              | B   |
| 201  | 0080175     | 1    | Adapter, Air Horn   |     |
| 202  | 3960388     | 1    | Gasket  |     |
| 203  | 4300056     | 1    | Stud, Carburetor  |     |
|      |             | Ref  | <b>FORD ENGINE COMPONENTS</b>                             | -   |
| 301  | 7020117     | 1    | Coupling  |     |
| 302  | 7010118     | 1    | Housing   |     |
| 303  | 7020121     | 1    | Starter Plate   |     |
| 304  | 7019989     | AR   | Spark Plug Wire Set Options:                              |     |
| 304  | 7019955     | AR   | Wire - Spark Plug #1 (Wire set prior to December 1998)    |     |
| 304  | 7019956     | AR   | Wire - Spark Plug # 2                                     |     |
| 304  | 7019957     | AR   | Wire - Spark Plug # 3                                     |     |
| 304  | 7019958     | AR   | Wire - Spark Plug # 4                                     |     |
| 304  | 7022176     | AR   | Spark Plug Wire Set Options:                              |     |
| 304  | 7022101     | AR   | Wire - Spark Plug # 2 (Wire set December 1998 to Present) |     |
| 304  | 7022102     | AR   | Wire - Spark Plug # 3                                     |     |
| 304  | 7022103     | AR   | Wire - Spark Plug # 1                                     |     |
| 304  | 7022104     | AR   | Wire - Spark Plug # 4                                     |     |
| 305  | 7019998     | 1    | Coil Assembly (Not Shown) (December 1998 to Present)      |     |
| 306  | 7022173     | 1    | Oil Filter  |     |
| 307  | 7022174     | 1    | Fuel Filter (Not Shown)                                   |     |
| 308  | 7022175     | 4    | Spark Plugs (Not Shown)                                   |     |
|      | 0252625     | Ref  | <b>ENGINE DISTRESS INSTALLATION (OPTIONAL)</b>            | 5   |
| 403  | 2180360     | 1    | Fitting, Tee  |     |

## SECTION 2 - TURNTABLE

| ITEM | PART NUMBER | QTY  | DESCRIPTION   | REV |
|------|-------------|------|---|-----|
| 152  | 3311405     | 8    | Locknut 1/4in-20NC (January 1993 to Present)                          |     |
| 153  | 4300038     | 2    | Stud (Not Shown)  |     |
| 154  | 3311505     | 2    | Nut 5/16in-18NC   |     |
| 155  | 4751500     | 2    | Flatwasher 5/16in   |     |
| 156  | 4280002     | 3 ft | Strip, Rubber   |     |
| 157  | 1320059     | 1    | Clamp   |     |
|      |             | Ref  | <b>COUPLING INSTALLATIONS</b>   |     |
|      | 0250125     | Ref  | <b>Lovejoy (Design A) (Prior to SN 27991)</b>                         | -   |
|      | 0250597     | Ref  | <b>Hayes (Design B) (Prior to SN 27991)</b>                           | -   |
|      | 0256848     | Ref  | <b>Hayes (Design B) (SN 27991 to Present)</b>                         | -   |
| 201  |             | Ref  | Coupling Options:   |     |
| 201  | 1660176     | 1    | Lovejoy (Design A) <b>(Prior to SN 27991)</b>                         |     |
| 201  | 1660184     | 1    | Hayes (Design B) <b>(Prior to SN 27991)</b>                           |     |
| 201  | 1660234     | 1    | Hayes (Design B) <b>(SN 27991 to Present)</b>                         |     |
| 202  | 0080163     | 1    | Plate, Adapter  |     |
| 203  |             | Ref  | Bolt Options:   |     |
| 203  | 0700814     | 6    | Bolt, Metric 8mm x 30mm (Design A) <b>(Prior to SN 27991)</b>         |     |
| 203  | 0700810     | 6    | Bolt, Metric 8mm x 20mm (Design B)                                    |     |
| 204  | 4761900     | 6    | Lockwasher, Metric 8mm  |     |
| 205  | 0701013     | 8    | Bolt, Metric 10mm x 28mm  |     |
| 206  | 4832000     | 8    | Lockwasher, Metric 10mm   |     |
| 207  | 3020021     | AR   | Grease, Coupling (Hayes Only) (Not Shown)                             |     |
|      |             | Ref  | <b>ENGINE COMPONENTS</b>  |     |
| 301  | 7016331     | 1    | Filter, Oil - Spin-on   |     |
| 302  | 7016328     | 1    | Filter, Fuel  |     |
| 303  | 7012598     | 1    | Filter, Fuel - Spin-On  |     |
| 304  | 7020414     | 1    | V-Belt  |     |
| 305  | 7020416     | 1    | Starter (Not Shown)   |     |
| 306  | 7020417     | 1    | Alternator (Not Shown)  |     |
| 307  | 7000699     | 1    | Seal, Exhaust (Not Shown)   |     |
| 308  | 7012599     | 1    | Pump, Fuel  |     |
| 309  | 7020434     | 1    | Dipstick (Not Shown)  |     |
| 310  | 7020465     | 1    | Oil Filler Cap  |     |
| 311  |             | Ref  | Gasket, Cylinder Head Options: (Engine p/n 2000137 Only) (Not Shown)  |     |
| 311  | 70003160    | 1    | 1 Notch   |     |
| 311  | 70003161    | 1    | 2 Notches   |     |
| 311  | 70003162    | 1    | 3 Notches   |     |
|      | 0250229     | Ref  | <b>GENERATOR INSTALLATION (OPTIONAL)</b>                              | L   |
| 427  | 2180730     | 1    | Fitting, Adapter (Prior to September 1993)                            |     |
| 428  | 2180749     | 1    | Fitting, 45   |     |
| 429  |             | Ref  | Fitting Options:  |     |
| 429  | 2180537     | 1    | Fitting Prior to November 1995  |     |
| 429  | 2180730     | 1    | Fitting November 1995 to Present                                      |     |
| 430  | 2180360     | 1    | Fitting, Tee (Prior to November 1995)                                 |     |
| 431  | 2200261     | 1    | Fitting (Prior to November 1995)                                      |     |
| 432  | 4360037     | 1    | Switch, Pressure  |     |
|      |             | Ref  | <b>COLD WEATHER INSTALLATIONS (OPTIONAL)</b>                          |     |
|      | 0250659     | Ref  | <b>Cold Weather Installations (Optional) Prior to November 1994</b>   | B   |
|      | 0255477     | Ref  | <b>Cold Weather Installations (Optional) November 1994 to Present</b> | -   |
| 501  | 2580001     | 1    | Heater, Battery   |     |



**SECTION 2 - TURNTABLE**

**FIGURE 2-22. PUMP ASSEMBLY - SINGLE SECTION (GAS AND DIESEL MACHINES) (PRIOR TO AUGUST 1992)**

| ITEM | PART NUMBER | QTY | DESCRIPTION                    | REV |
|------|-------------|-----|--------------------------------|-----|
|      | 3600172     | Ref | <b>HYDRAULIC PUMP ASSEMBLY</b> | -   |
| 1    | 7010925     | 1   | Shaft, Drive                   |     |
| 2    | 7010926     | 1   | Gear (.750)                    |     |
| 2    | 7010927     | 1   | Pin, Shear.093 x.750 Lg        |     |
| 3    | 7010928     | 8   | Screw                          |     |
| 4    | 7010929     | 1   | Housing, Gear                  |     |
| 5    | 7010905     | 1   | Plug                           |     |
| 6    | 7010914     | 1   | Plate, Pressure                |     |
| 6    | Kit         | 1   | Seal                           |     |
| 6    | Kit         | 1   | Back-Up                        |     |
| 7    | 7010930     | 1   | Idler Shaft                    |     |
| 7    | 7010926     | 1   | Gear (.750)                    |     |
| 7    | 7010918     | 1   | Ball, Steel (.094)             |     |
| 8    | 7010907     | 4   | Bearing                        |     |
| 9    | 7010919     | 1   | Plate, Wear                    |     |
| 9    | Kit         | 1   | Plate, Seal                    |     |
| 9    | 7010902     | 4   | Ring, Crescent                 |     |
| 9    | Kit         | 1   | Seal                           |     |
| 10   | Kit         | 1   | Seal, Shaft                    |     |
| 11   | 7010909     | 1   | Stator                         |     |
| 11   | 7010911     | 2   | Pin, Shear.219 x.50 Lg         |     |
|      | 2900740     | 1   | Seal, Kit                      |     |

CLICK HERE TO **DOWNLOAD** THE COMPLETE MANUAL

- Thank you very much for reading the preview of the manual.
- You can download the complete manual from: [www.heydownloads.com](http://www.heydownloads.com) by clicking the link below



- Please note: If there is no response to CLICKING the link, please download this PDF first and then click on it.

CLICK HERE TO **DOWNLOAD** THE COMPLETE MANUAL

## SECTION 2 - TURNTABLE

### FIGURE 2-26. GROUND CONTROL BOX ASSEMBLY

| ITEM | PART NUMBER | QTY | DESCRIPTION   | REV |
|------|-------------|-----|---|-----|
|      |             | Ref | <b>GROUND CONTROL BOX ASSEMBLIES</b>                                      |     |
|      | 0860658     | Ref | <b>Ford LSG-411 (Prior to August 1994)</b>                                | C   |
|      | 0860953     | Ref | <b>Ford LSG-411 (With Prestolite Alternator) (August 1994 to Present)</b> |     |
|      | 0860961     | Ref | <b>Ford LSG-411 (With Proportional Controls)</b>                          | 2   |
|      | 0860649     | Ref | <b>Deutz F2L1011</b>  | C   |
|      | 0860882     | Ref | <b>Deutz F2L1011 (With Proportional Controls)</b>                         | 3   |
|      | 0860676     | Ref | <b>Electric</b>   | D   |
| 1    |             | Ref | Box Options:  |     |
| 1    | 0860645     | 1   | Gas and Diesel (With Prestolite Alternator)                               |     |
| 1    | 0860576     | 1   | Gas and Diesel (With Proportional Controls)                               |     |
| 1    | 0860637     | 1   | Electric  |     |
| 2    | 3251895     | 1   | Lid   |     |
| 5    | 4751000     | 11  | Flatwasher #10  |     |
| 6    | 4761000     | 11  | Lockwasher #10  |     |
| 7    | 3311001     | 11  | Nut #10-24NC  |     |
| 8    | 4360003     | 1   | Switch, Key (Master Switch)   |     |
| 9    | 3790012     | 9   | O-Ring  |     |
| 10   | 4360073     | 1   | Switch, Toggle - Center Off (Select)                                      |     |
| 11   | 2420009     | 1   | Hourmeter   |     |
| 12   |             | Ref | Gauge Options:  |     |
| 12   | 2420129     | 1   | Voltmeter (Ford and Deutz)  |     |
| 12   | 2420091     | 1   | Voltmeter (Deutz) (With Proportional Controls)                            |     |
| 12   | 3520070     | 1   | Plug (Electric)   |     |
| 13   | 4360199     | 1   | Switch, Toggle (Ignition)   |     |
| 14   | 4360141     | 1   | Switch, Guard   |     |
| 15   | 3790015     | 1   | O-Ring  |     |
| 16   |             | Ref | Switch Options:   |     |
| 16   | 4360274     | 1   | Switch, Push Button (Ford and Deutz)                                      |     |
| 16   | 3520026     | 1   | Plug (Electric)   |     |
| 17   | 4360202     | 6   | Switch, Toggle  |     |
| 18   | 4360200     | 1   | Switch, Toggle  |     |
| 19   | 3740049     | AR  | Relay   |     |
| 20   | 4360216     | 1   | Breaker, Circuit 30 Amp   |     |
| 21   | 4360232     | 1   | Breaker, Circuit 15 Amp   |     |
| 22   |             | Ref | Track   |     |
| 22   | 3640492     | 1   | Ford and Deutz (Prior to November 1990)                                   |     |
| 22   | 3640711     | 1   | Ford and Deutz (November 1990 to Present)                                 |     |
| 22   | 3640492     | 1   | Electric (Prior to March 1995)  |     |
| 22   | 3640764     | 1   | Electric (March 1995 to Present)  |     |
| 23   | 4460299     | 2   | Stop, Terminal  |     |
| 24   | 4460298     | 45  | Block, Terminal   |     |
| 25   | 4460301     | 1   | Marker, Terminal  |     |
| 26   | 4460311     | 1   | Bar, Buss - 5 Position  |     |
| 27   | 4460305     | AR  | Screw, Terminal   |     |
| 28   | 4460306     | AR  | Washer, Terminal  |     |
| 29   | 4460307     | AR  | Sleeve, Terminal  |     |
| 30   | 4460300     | 2   | Barrier, Terminal   |     |
| 31   | 4460308     | AR  | Bar, Buss - 2 Position  |     |
| 32   | 4120013     | AR  | Base, Relay   |     |



## SECTION 4 - PLATFORM

**FIGURE 4-2. LOW MOUNT PLATFORM, CONTROLS AND SUPPORT INSTALLATIONS**

| ITEM     | PART NUMBER  | QTY | DESCRIPTION  | REV |
|----------|--------------|-----|--|-----|
|          |              | Ref | <b>FIXED SUPPORT INSTALLATION OPTIONS:</b>         |     |
|          | 0251267      | Ref | <b>Domestic</b>                                    | D   |
|          | 0252130      | Ref | <b>CSA</b>   | A   |
| 1        | 0250253      | 1   | Pivot Attach Weldment                              |     |
| 1A       | 0961257      | 2   | Bushing, Bronze                                    |     |
| 2        |              | Ref | Shaft Options:                                     |     |
| 2        | 4564579      | 1   | Domestic   |     |
| 2        | 4040227      | 1   | CSA  |     |
| 3 to 9   | Not Required | 0   | Not Required                                       |     |
| 10       | 0641836      | 1   | Bolt 1/2in-13NC x 4 1/2in                          |     |
| 11       | 4751800      | 1   | Flatwasher 1/2in                                   |     |
| 12       | 3311805      | 1   | Locknut 1/2in                                      |     |
| 13 to 21 | Not Required | 0   | Not Required                                       |     |
| 22       |              | Ref | Pin Options:                                       |     |
| 22       | 3421490      | 1   | Standard (Prior to November 1991)                  |     |
| 22       | 3421756      | 1   | Standard (November 1991 to Present)                |     |
| 22       | 3421967      | 1   | CSA  |     |
| 23       | 0641522      | 2   | Bolt 5/16in-18NC x 2 3/4in                         |     |
| 24       | 3311505      | 2   | Locknut 5/16in-18NC                                |     |
| 25       |              | Ref | Pin (Boom End) Options:                            |     |
| 25       | 3421600      | 1   | Standard (Prior to February 1991)                  |     |
| 25       | 3421491      | 1   | Standard (February 1991 to Present)                |     |
| 26       |              | Ref | Pin (Support End) Options:                         |     |
| 26       | 3421612      | 1   | Standard (Prior to February 1991)                  |     |
| 26       | 3421494      | 1   | Standard (February 1991 to Present)                |     |
| 27       | 1682178      | 1   | Cylinder, Platform Level                           |     |
| 28       | 3532054      | 1   | Plate, Retainer                                    |     |
| 29       | 0641506      | 2   | Bolt 5/16in-18NC x 3/4in                           |     |
| 30       | 4761500      | 2   | Lockwasher 5/16in-18NC                             |     |
| 31       | 2160002      | 3   | Fitting, Grease                                    |     |
| 32       | 4740158      | 1   | Washer, Thrust                                     |     |
| 33       | 4220137      | 2   | Bar, Stop (Welded on Part) (Not Shown)             |     |
| 34       | 1320160      | 1   | Clamp (Not Shown)                                  |     |
| 35       |              | Ref | Plug Options: (Not Shown)                          |     |
| 35       | 3520035      | 1   | Domestic   |     |
| 35       | Not Required | 0   | CSA  |     |
| 36 to 37 | Not Required | 0   | Not Required                                       |     |
|          |              | Ref | <b>ROTATING SUPPORT INSTALLATION OPTIONS:</b>      |     |
|          | 0251268      | Ref | <b>Domestic Platform</b>                           | F   |
|          | 0252129      | Ref | <b>CSA Platform</b>                                | C   |
| 1        | 0250253      | 1   | Pivot Attach Weldment                              |     |
| 1A       | 0961257      | 2   | Bushing, Bronze                                    |     |
| 2        |              | Ref | Shaft Options:                                     |     |
| 2        | 4040215      | 1   | Domestic   |     |
| 2        | 4040222      | 1   | CSA  |     |
| 3        | 1120299      | 1   | Cap  |     |
| 4        | 0235238      | 1   | Rotator Assembly (See Items 101-126 for Breakdown) |     |
| 5        | 3340454      | 2   | Pad, Brake   |     |
| 6        | 2880404      | 1   | Key, Square  |     |
| 7        | 4160026      | 8   | Washer, Bellville                                  |     |



## SECTION 5 - CYLINDER

### FIGURE 5-1. AXLE LOCKOUT CYLINDER ASSEMBLY

| ITEM | PART NUMBER | QTY | DESCRIPTION                           | REV |
|------|-------------|-----|---------------------------------------|-----|
|      | 1681785     | Ref | <b>AXLE LOCKOUT CYLINDER ASSEMBLY</b> | D   |
| 1    | 1681787     | 1   | Rod Weldment                          |     |
| 2    | 1681788     | 1   | Barrel Weldment                       |     |
| 3    | 1120179     | 1   | Retainer                              |     |
| 4    | 1680892     | 1   | Head                                  |     |
| 5    | 3480120     | 1   | Piston                                |     |
| 6    | 3300273     | 1   | Nut 3/4in-16NC                        |     |
| 7    | 4563647     | 1   | Tube, Spacer                          |     |
| 8    | Kit         | 1   | Seal, Wiper                           |     |
| 9    | Kit         | 1   | Seal, Rod                             |     |
| 10   | Kit         | 1   | Ring, Wear                            |     |
| 11   | Kit         | 1   | O-Ring                                |     |
| 12   | Kit         | 1   | Ring, Back-up                         |     |
| 13   | Kit         | 1   | O-Ring                                |     |
| 14   | Kit         | 1   | Seal, Piston                          |     |
| 15   | Kit         | 1   | Ring, Wear                            |     |
| 16   | 3900170     | 1   | Set Screw 3/8in-16NC x 3/8in          |     |
| 17   | 0100011     | AR  | Loctite                               |     |
| 18   | 3900175     | 2   | Set Screw 1/4in-28NF x 3/4in          |     |
| 19   | 2160002     | 2   | Fitting, Grease                       |     |
| 21   | 0100035     | AR  | Thread Locking Compound (Not Shown)   |     |
| 22   | 0100038     | AR  | Thread Locking Primer (Not Shown)     |     |
| 23   | 3960416     | 2   | Thread Seal                           |     |
| 24   | 3321401     | 2   | Nut 1/4in-28NF                        |     |
|      | 2900381     | 1   | Seal Kit (Includes Items 8-15)        |     |

## SECTION 5 - CYLINDER

**FIGURE 5-6. STEER CYLINDER ASSEMBLY - 2WD - SINGLE ROD**

| ITEM | PART NUMBER | QTY | DESCRIPTION   | REV |
|------|-------------|-----|---|-----|
|      | 1682020     | Ref | <b>STEER CYLINDER ASSEMBLY</b>                        | C   |
| 1    | 1682084     | 1   | Barrel Weldment                                       |     |
| 2    | 3300273     | 1   | Nut, Hex  |     |
| 3    | 3900170     | 2   | Set Screw 3/8in-16NC x 3/8in                          |     |
| 4    | Kit         | 2   | Ring, Wear  |     |
| 5    | Kit         | 1   | T-Seal  |     |
| 6    | Kit         | 1   | O-Ring  |     |
| 7    | 3480120     | 1   | Piston  |     |
| 8    | 4564134     | 2   | Spacer, Tube  |     |
| 9    | 3760176     | 1   | Ring  |     |
| 10   | Kit         | 1   | O-Ring  |     |
| 11   | Kit         | 1   | Ring, Wear  |     |
| 12   | 1680892     | 1   | Head  |     |
| 13   | Kit         | 1   | Seal, Rod   |     |
| 14   | Kit         | 1   | Wiper, Rod  |     |
| 15   | 1120179     | 1   | Head, Retainer  |     |
| 16   | 1680739     | 1   | Rod   |     |
| 17   | 2160002     | 1   | Fitting, Grease                                       |     |
| 18   | 0100011     | AR  | Loctite #242 (Not Shown)                              |     |
| 19   | 0100038     | AR  | Loctite #222 (Not Shown)                              |     |
|      | 2901119     | 1   | Seal Kit (Includes Items 4, 5, 6, 9, 10, 11, 13 & 14) |     |

## SECTION 6 - HYDRAULIC

**FIGURE 6-1. HYDRAULIC DIAGRAM - AXLE LOCKOUT**

| ITEM | PART NUMBER | QTY | DESCRIPTION  | REV |
|------|-------------|-----|--|-----|
|      |             | Ref | <b>HYDRAULIC DIAGRAMS - AXLE LOCKOUT</b>                   |     |
|      | 2791883     | Ref | <b>6ft 6in Frame 2WD/4WD (With Swivel)</b>                 | -   |
|      | 2791475     | Ref | <b>Optional 5ft 9in Frame 2WD (With Swivel)</b>            | -   |
| 1    | 2220773     | AR  | Fitting, 90  |     |
| 2    | 2220371     | 5   | Fitting, Straight  |     |
| 3    | 2220582     | 1   | Fitting, Straight  |     |
| 4    | 2220635     | 1   | Fitting, Tee   |     |
| 5    | 2220609     | 1   | Fitting, Reducer   |     |
| 6    | 2220385     | 1   | Fitting, Tee (With Swivel)                                 |     |
| 7    | 2220619     | 1   | Fitting, Reducer   |     |
| 8    | 2750900     | 1   | Hose   |     |
| 9    |             | Ref | Hose Options:  |     |
| 9    | 2751006     | 2   | 6ft 6in Frame 2WD/4WD (With Swivel)                        |     |
| 9    | 2750991     | 2   | Optional 5ft 9in Frame 2WD (With Swivel)                   |     |
| 10   | 2751112     | 2   | Hose   |     |
| 12   | 2751004     | 1   | Hose   |     |
| 13   | 0100020     | AR  | Sealant (Not Shown)  |     |
| 14   | 2220399     | 2   | Fitting, Straight Optional 5ft 9in Frame 2WD (With Swivel) |     |

## SECTION 6 - HYDRAULIC

**FIGURE 6-4. HYDRAULIC DIAGRAM - DRIVE (ELECTRIC)**

| ITEM | PART NUMBER | QTY | DESCRIPTION                                  | REV |
|------|-------------|-----|--|-----|
|      |             | Ref | <b>HYDRAULIC DIAGRAMS - DRIVE (ELECTRIC)</b> |     |
|      | 2791710     | Ref | <b>6ft 6in Frame (With Swivel)</b>           | F   |
|      | 2791711     | Ref | <b>5ft 9in Frame (With Swivel)</b>           | E   |
| 1    | 2220593     | 2   | Fitting, Straight                            |     |
| 2    | 2220655     | 2   | Fitting, 90                                  |     |
| 3    | 2751325     | 2   | Hose   |     |
| 4    | 2220347     | 2   | Fitting, Straight                            |     |
| 5    | 2220356     | 2   | Fitting, 45                                  |     |
| 6    | 2751359     | 2   | Hose   |     |
| 7    | 2220451     | 6   | Fitting, Straight                            |     |
| 11   |             | Ref | Hose Options:                                |     |
| 11   | 2751359     | 1   | 6ft 6in Frame                                |     |
| 11   | 2751327     | 1   | 5ft 9in Frame                                |     |
| 12   |             | Ref | Hose Options:                                |     |
| 12   | 2750976     | 2   | 6ft 6in Frame                                |     |
| 12   | 2751502     | 2   | 5ft 9in Frame                                |     |
| 13   | 2220362     | 1   | Fitting, Tee                                 |     |
| 14   |             | Ref | Hose Options:                                |     |
| 14   | 2750777     | 1   | 6ft 6in Frame                                |     |
| 14   | 2750771     | 1   | 5ft 9in Frame                                |     |
| 15   | 2220345     | 2   | Fitting, Straight                            |     |
| 16   | 2220596     | 2   | Fitting                                      |     |
| 18   |             | Ref | Hose Options:                                |     |
| 18   | 2750882     | 2   | 6ft 6in Frame                                |     |
| 18   | 2751018     | 2   | 5ft 9in Frame                                |     |
| 19   | 2220415     | 2   | Fitting, Straight                            |     |
| 20   | 2751021     | 1   | Hose   |     |
| 21   | 2750414     | 2   | Fitting, Straight                            |     |
| 22   | 2220466     | 3   | Fitting, 90                                  |     |
| 24   |             | Ref | Hose Options:                                |     |
| 24   | 2751013     | 2   | 6ft 6in Frame                                |     |
| 24   | 2751015     | 2   | 5ft 9in Frame                                |     |
| 25   | 2220504     | 2   | Fitting, Tee                                 |     |
| 26   | 2220235     | 1   | Fitting, Plug                                |     |
| 27   | 2220585     | 1   | Fitting, 90                                  |     |
| 28   | 2750760     | 2   | Hose   |     |
| 29   | 2750972     | 1   | Hose   |     |
| 30   | 2220355     | 1   | Fitting, 45                                  |     |
| 31   | 2220578     | 2   | Fitting, 90                                  |     |
| 32   | 2220738     | 1   | Fitting, Tee                                 |     |
| 33   |             | Ref | Hose Options:                                |     |
| 33   | 2750685     | 1   | 6ft 6in Frame                                |     |
| 33   | 2751353     | 1   | 5ft 9in Frame                                |     |
| 34   |             | Ref | Hose Options:                                |     |
| 34   | 2751331     | 1   | 6ft 6in Frame                                |     |
| 34   | 2751345     | 1   | 5ft 9in Frame                                |     |
| 35   |             | Ref | Hose Options:                                |     |
| 35   | 2751345     | 1   | 6ft 6in Frame                                |     |
| 35   | 2751359     | 1   | 5ft 9in Frame                                |     |

## SECTION 6 - HYDRAULIC

**FIGURE 6-8. HYDRAULIC DIAGRAM - STANDARD (ELECTRIC)**

| ITEM | PART NUMBER | QTY | DESCRIPTION                | REV |
|------|-------------|-----|----------------------------|-----|
|      | 2791953     | Ref | <b>HYDRAULIC DIAGRAM</b>   | C   |
| 1    | 2720325     | 1   | Hose, Suction - 1in x 19in |     |
| 2    | 2220593     | 2   | Fitting                    |     |
| 3    | 1320033     | 8   | Clamp                      |     |
| 4    | 2180491     | 3   | Fitting, Modified          |     |
| 5    | 2220820     | 1   | Fitting, 90                |     |
| 6    | 2220429     | 3   | Cap, Dust                  |     |
| 7    | 2220428     | 3   | Fitting, Quick Disconnect  |     |
| 8    | 2220758     | 1   | Fitting, Swivel            |     |
| 9    | 2752467     | 1   | Hose                       |     |
| 10   | 2752442     | 1   | Hose                       |     |
| 11   | 2210014     | 2   | Fitting, 90                |     |
| 12   | 2752433     | 1   | Hose                       |     |
| 13   | 2750834     | 1   | Hose                       |     |
| 15   | 2220622     | 2   | Fitting, Reducer           |     |
| 16   | 2752434     | 6   | Hose                       |     |
| 17   | 2220472     | 6   | Fitting, 90                |     |
| 18   | 2220904     | 1   | Fitting, 90                |     |
| 19   | 2220600     | 3   | Fitting                    |     |
| 20   | 2752461     | 2   | Hose                       |     |
| 21   | 2220371     | 5   | Fitting, 90                |     |
| 22   | 2220416     | 1   | Fitting, 90                |     |
| 23   | 2220659     | 1   | Fitting, 90                |     |
| 24   | 2220468     | 5   | Fitting, Straight          |     |
| 25   | 2220466     | 1   | Fitting, 90                |     |
| 26   | 2220609     | 3   | Fitting, Reducer           |     |
| 27   | 2752435     | 2   | Hose                       |     |
| 28   | 4640574     | 1   | Valve, Shuttle             |     |
| 29   | 4640774     | 2   | Valve, Check               |     |
| 30   | 2220582     | 2   | Fitting, Straight          |     |
| 31   | 2220218     | 2   | Fitting                    |     |
| 32   | 2220619     | 2   | Fitting, Reducer           |     |
| 33   | 2752436     | 2   | Hose                       |     |
| 34   | 2752462     | 1   | Hose                       |     |
| 35   | 4640817     | 2   | Valve, Restrictor (.040)   |     |
| 36   | 2752437     | 1   | Hose                       |     |
| 37   | 2220415     | 4   | Fitting                    |     |
| 38   | 2752438     | 3   | Hose                       |     |
| 39   | 2220585     | 1   | Fitting                    |     |
| 40   | 2220446     | 1   | Fitting, Reducer           |     |
| 41   | 2752439     | 2   | Hose                       |     |
| 42   | 2220417     | 3   | Fitting                    |     |
| 43   | 2220628     | 3   | Fitting, 90                |     |
| 44   | 2752440     | 1   | Hose                       |     |
| 45   | 2220726     | 1   | Fitting, 90                |     |
| 46   | 2220385     | 4   | Fitting, Tee               |     |
| 47   | 2752463     | 1   | Hose                       |     |
| 48   | 2220606     | 3   | Fitting, Tee               |     |
| 49   | 2752464     | 2   | Hose                       |     |
| 50   | 2220399     | 3   | Fitting                    |     |

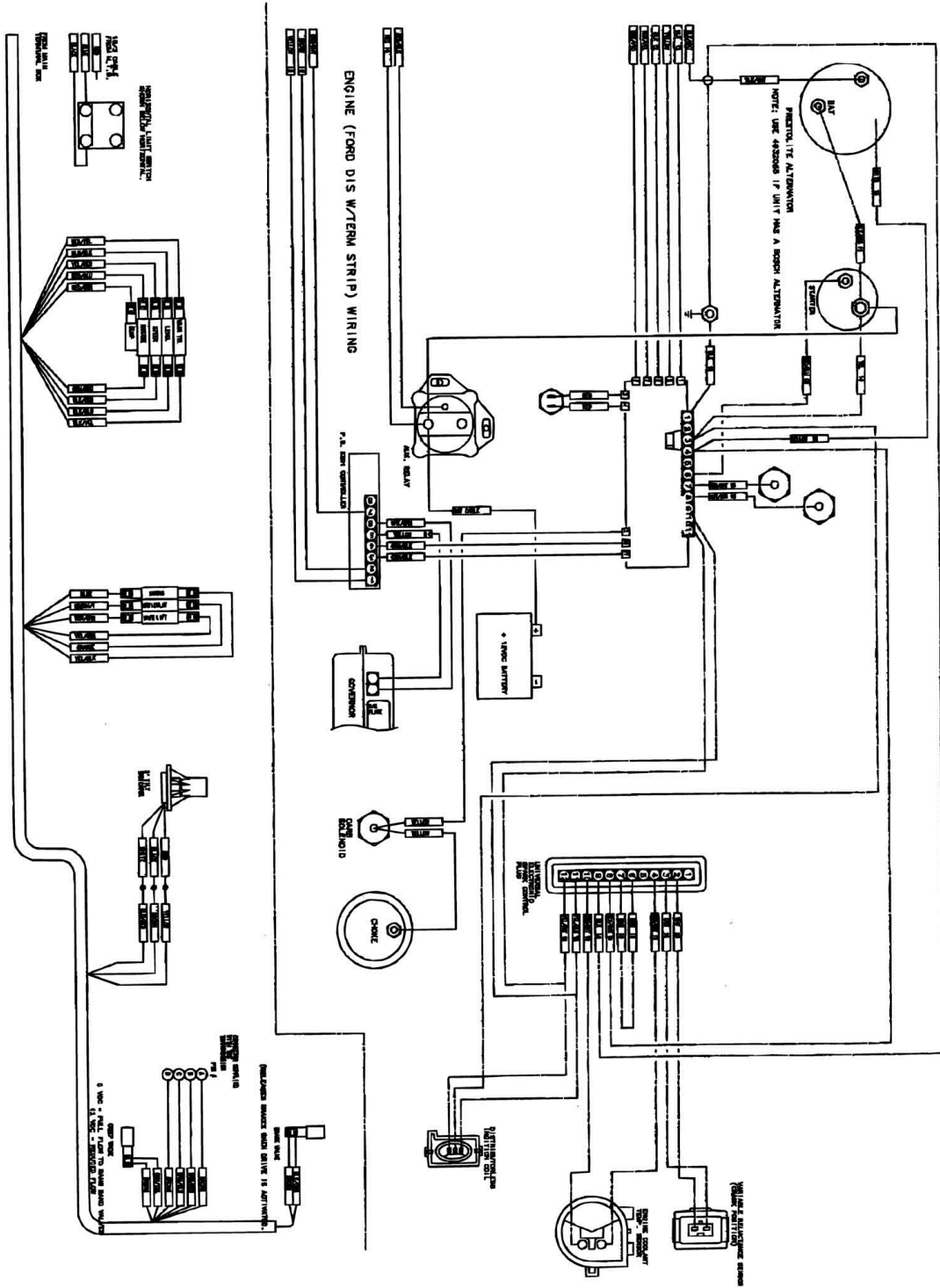
## SECTION 6 - HYDRAULIC

**FIGURE 6-11. HYDRAULIC DIAGRAM - TOW**

| ITEM | PART NUMBER | QTY | DESCRIPTION               | REV |
|------|-------------|-----|---------------------------|-----|
|      |             | Ref | <b>HYDRAULIC DIAGRAMS</b> |     |
|      | 2791788     | Ref | <b>5ft 9in Frame</b>      | B   |
|      | 2791789     | Ref | <b>6ft 6in Frame</b>      | B   |
| 16   | 2220605     | 2   | Fitting, Tee              |     |
| 17   | 2220468     | 3   | Fitting, Straight         |     |
| 18   |             | Ref | Hose Options:             |     |
| 18   | 2751391     | 1   | 5ft 9in Frame             |     |
| 18   | 2751410     | 1   | 6ft 6in Frame             |     |
| 19   |             | Ref | Hose Options:             |     |
| 19   | 2751428     | 2   | 5ft 9in Frame             |     |
| 19   | 2751010     | 2   | 6ft 6in Frame             |     |
| 21   | 2220385     | 1   | Fitting, Tee              |     |
| 22   | 2220619     | 1   | Fitting, Reducer          |     |
| 23   | 2220635     | 1   | Fitting, Swivel           |     |
| 24   | 2220609     | 1   | Fitting, Reducer          |     |



# SECTION 7 - ELECTRICAL



4932750 - Rev. B

## SECTION 8 - DECALS

### FIGURE 8-1. DECALS INSTALLATION - STANDARD

| ITEM | PART NUMBER   | QTY   | DESCRIPTION  | REV |
|------|---------------|-------|--|-----|
|      |               | Ref   | <b>DECAL INSTALLATIONS</b>   |     |
|      | 0250643       | Ref   | <b>Brown and Cream</b>   | 11  |
|      | 0271036       | Ref   | <b>JLG Logo (Brown)</b>  | 1   |
|      | 0250644       | Ref   | <b>Black</b>   | 10  |
| 1    |               | Ref   | Decal - 34HA Options:  |     |
| 1    | 1701340       | 2     | Brown and Cream (Prior to June 1991)                               |     |
| 1    | 1701471       | 2     | Brown and Cream (June 1991 to Present)                             |     |
| 1    | 1701339       | 2     | Black (Prior to June 1991)   |     |
| 1    | 1701593       | 2     | Black (June 1991 to Present)                                       |     |
| 2    | 3251243       | 1     | Nameplate - 120V 60HZ  |     |
| 3    |               | Ref   | Decal - FWD Options:   |     |
| 3    | 1700977       | 4     | Brown and Cream (Prior to November 1992)                           |     |
| 3    | 1700053       | 4     | Black (Prior to November 1992)                                     |     |
| 4    |               | Ref   | Decal - Arrow Options:   |     |
| 4    | 1700978       | 4     | Brown and Cream (Prior to November 1992)                           |     |
| 4    | 1701529       | 4     | Brown and Cream (November 1992 to Present)                         |     |
| 4    | 1700058       | 4     | Black (Prior to November 1992)                                     |     |
| 4    | 1701529       | 4     | Black (November 1992 to Present)                                   |     |
| 5    |               | Ref   | Decal - Stripping Options:   |     |
| 5    | 1700431       | 26 ft | Brown and Cream (Prior to March 1994)                              |     |
| 5    | 1701703       | 33 ft | Brown and Cream (March 1994 to Present)                            |     |
| 5    | 1701334       | 33 ft | Black  |     |
| 6    |               | Ref   | Decal - JLG Lift Options:  |     |
| 6    | 1700422       | 2     | Brown and Cream (Prior to June 1991)                               |     |
| 6    | 1701441       | 2     | Brown and Cream (June 1991 to Present)                             |     |
| 6    | 1700349       | 2     | Black (Prior to June 1991)   |     |
| 6    | 1701550       | 2     | Black (June 1991 to Present)                                       |     |
| 7    |               | Ref   | Decal - Crushing Options:  |     |
| 7    | 1700640       | 3     | Decal - Crushing (Prior to March 1994)                             |     |
| 7    | 1702284       | 3     | Decal - Crushing (March 1994 to Present)                           |     |
| 8    | 1700037       | 1     | Decal - Ground Control   |     |
| 9    |               | Ref   | Decal - Caution Options:   |     |
| 9    | 1700643       | 1     | Decal - Caution (Prior to March 1994)                              |     |
| 9    | 1702299       | 1     | Decal - Caution (March 1994 to Present)                            |     |
| 10   |               | Ref   | Decal - Caution Options:   |     |
| 10   | 1700585       | 3     | Decal - Caution (Prior to March 1994)                              |     |
| 10   | 1702277       | 3     | Decal - Caution (March 1994 to Present)                            |     |
| 11   | 3251813       | 1     | Decal - Made in USA  |     |
| 12   |               | Ref   | Decal - JLG Options:   |     |
| 12   | 1700981       | 2     | Brown and Cream  |     |
| 12   | 1701321       | 2     | Black  |     |
| 13   | 0860520       | 1     | Box Manual Storage   |     |
| 14   |               | Ref   | Decal - Operations, Safety and Maintenance Options:                |     |
| 14   | 1700157       | 1     | Decal - Operations, Safety and Maintenance (Prior to March 1994)   |     |
| 14   | 1701509       | 1     | Decal - Operations, Safety and Maintenance (March 1994 to Present) |     |
| 15   | Not Available | 1     | Nameplate - Manufacturer   |     |
| 16   | 1700584       | 1     | Decal - Patent   |     |
| 17   |               | Ref   | Decal - Inspection Options:  |     |

**SECTION 9 - RECOMMENDED SERVICE PARTS STOCK**

| ITEM | PART NUMBER | QTY | DESCRIPTION                            | REV |
|------|-------------|-----|--|-----|
|      | 1600126     | 1   | Controller, (for fleets of 10 to 20)   |     |
|      | 1600126     | 1   | Controller, (for fleets of 20 or more) |     |

CLICK HERE TO **DOWNLOAD** THE COMPLETE MANUAL

- Thank you very much for reading the preview of the manual.
- You can download the complete manual from: [www.heydownloads.com](http://www.heydownloads.com) by clicking the link below



- Please note: If there is no response to CLICKING the link, please download this PDF first and then click on it.

CLICK HERE TO **DOWNLOAD** THE COMPLETE MANUAL