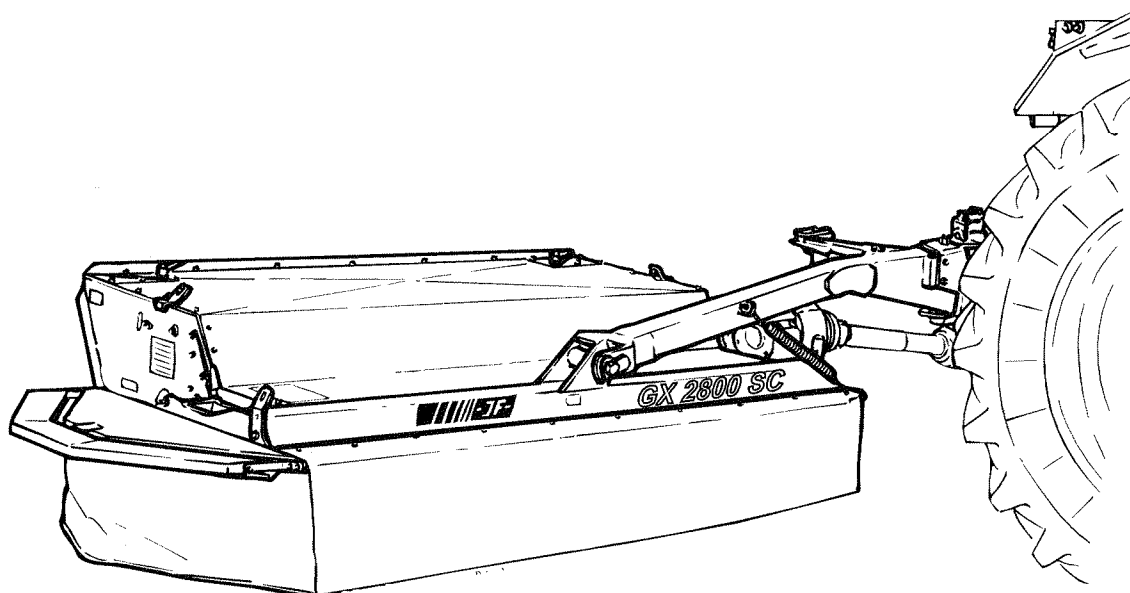




# GX 2800 SC MK II

## Skiveslåmaskine / Scheibenmäher Disc Mower / Faucheuse à Disques

### Reservedelskatalog / Ersatzteilkatalog Spare Parts Book / Catalogue de pièces



Gyldig fra:  
Gültig ab: **2001 02 20**  
Valid from:  
Valable á partir de:

Fabrikationsnr.:  
Machinen Nr.: **2210100501**  
Serial No.:  
No. de serie:

Udgave:  
Ausgabe: **2002 03 18**  
Edition:  
Edition:



Notér fabriksnummeret på Deres maskine på omslagets inderside.  
Notieren Sie die Fabrikationsnummer Ihrer Maschine auf der Innerseite des Umschlages.  
Please note the serial number of Your machine at the inside of the cover.  
Veuillez noter le numero de Votre machine sur la face interne de la couverture.

CLICK HERE TO **DOWNLOAD** THE COMPLETE MANUAL

- Thank you very much for reading the preview of the manual.
- You can download the complete manual from: [www.heydownloads.com](http://www.heydownloads.com) by clicking the link below



- Please note: If there is no response to CLICKING the link, please download this PDF first and then click on it.

CLICK HERE TO **DOWNLOAD** THE COMPLETE MANUAL

FIGURNØGLE - FIGURSCHLÜSSEL - FIGURE KEY - LISTE DE FIGURES

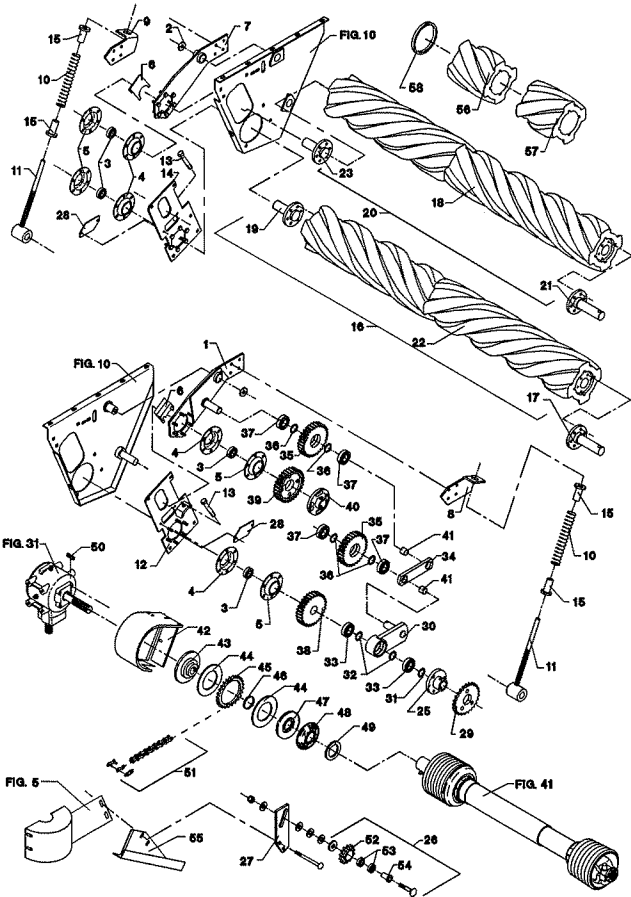


Fig. 09.0

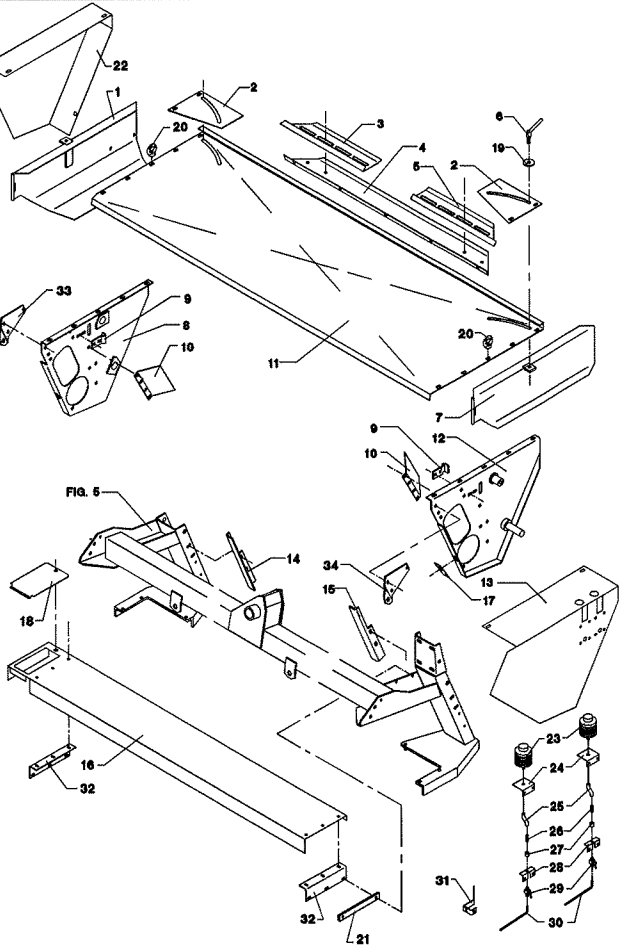
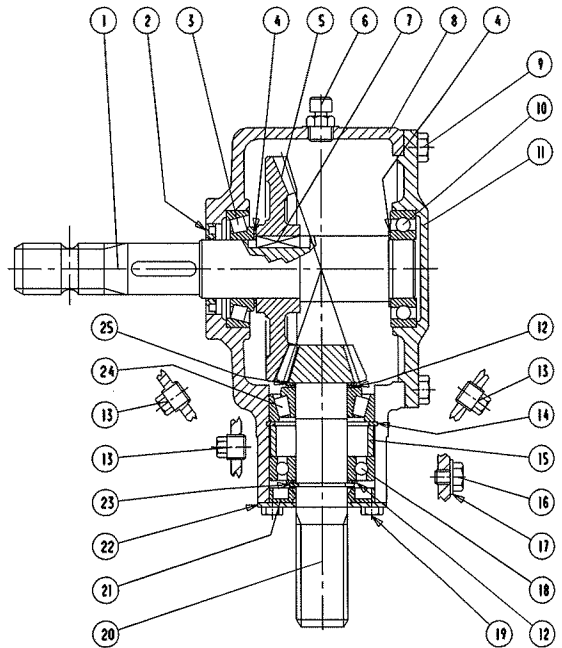
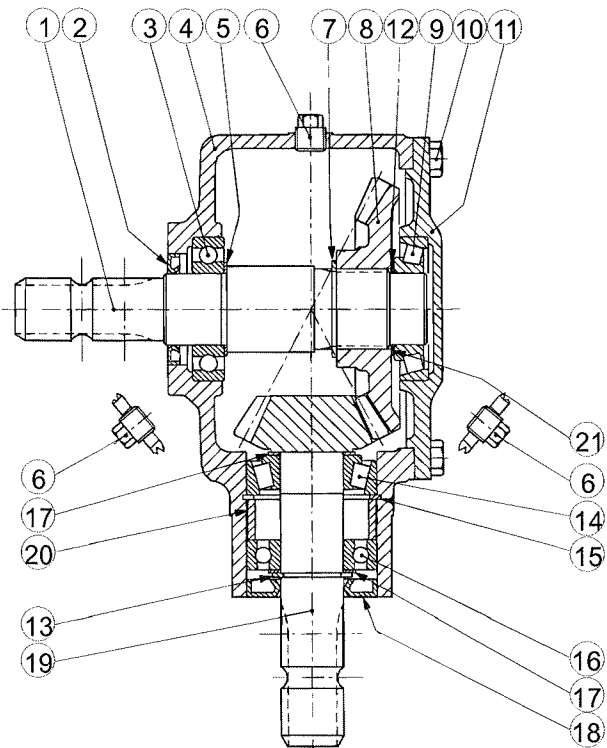


Fig. 10.0

Fig. 30.0

Fig. 31.0



POS.	VARENUMMER	ANTAL	BENÆVNELSE	BEZEICHNUNG	DESIGNATION		
1.	4220-1032	1	OMSTILLING, HYDR. UMSTELUNG, HYDR.		CONVERSION, HYDR.		
2.	1311-1416	2	RØRSTUDS ROHRSTUTZEN		PIPE STUB		
3.	1317-0535	1	KONTRAVENTIL KONTRAVENTIL		NON-RETURN VALVE		
4.	1311-1411	4	RØRFORSKRUNING ROHRVERSCHRABUNG		PIPE COUPLING		
5.	2225-652X	1	HYDRAULIKRØR HYDRAULIKROHR		HYDRAULIC TUBE		
6.	1311-8525	2	VINKELFORSKRUNING WINKELVERSCHRAUB		ANGLE COUPLING		
7.	2307-111X	1	DYSE DUESE		NOZZLE		
8.	1317-0423	2	HUDRAULIKSLANGE L=1500 HYDRAULIKSCHLAUCH L=1500		HYDRAULIC HOSE L=1500		
9.	1311-2601	2	NIPPELMUFFE NIPPEL		BUSHING		
10.	1317-0302	2	STIK F/LYNKOBLING ANSCHLUSS F/SCHNELLKUPPLUNG		CONNECTION F/QUICK-COUPLING		
11.	1393-0140	2	BESKYTTELSESHÆTTE SCHUTZKAPPE		PROTECTION CAP		
12.	2227-790X	1	CYLINDER ZYLINDER		CYLINDER		
13.	1317-9500	1	PAKNINGSSÆT DICHTUNGSSATZ		SET OF GASKETS		
14.	2010-394X	1	DYSE DUESE		NOZZLE		
20.	1317-0715	2	O-RING O-RING		O-RING		
21.	4220-1029	T 1	STOP STOP		STOP	1219-0216 1220-2321	2 2
22.	1399-0225	T 3	SNOR SEIL		STRING	1252-4201	1
23.	3225-681X	T 1	STOP STOPP		STOP		
24.	2225-682X	T 1	STOP STOPP		STOP	1219-0216 1220-2321	2 2
25.	1435-0024	T 1	TRÆKFJEDER ZUGFEDER		TENSION SPRING	1252-4201	1
26.	2226-145X	T 1	TAP SCHNAEPPER		DOWEL	1241-5502 1251-3201	4 2
27.	1317-0725	1	KUGLEHANE 1/4" KUGELHAHN 1/4"		BALL TAP 1/4"		

POS.	VARENUMMER	ANTAL	BENÆVNELSE	BEZEICHNUNG	DESIGNATION
.	1380-0127		KNIVBJÆLKE (7 SKIVER) GX 2800 MESSERBALKEN (7 SCHEIB) GX2800		KNIFE BAR (7 DISC) GX 2800
1.	2085-630X	2	KUGLELEJE KUGLELAGER		BALL BEARING
2.	2085-643X	1	LEJEHUS LAGERGEHAEUSE		BEARING HOUSING
3.	2085-632X	1	AFSTANDSRING DISTANZRING		DISTANCE RING
4.	2085-633X	1	TÆTNINGSRING DICHTUNGSRING		TIGHTENING RING
5.	2085-617X	1	BJÆLKEHALVDEL, UNDERSTE BALKENHAELFTE, UNTERE		HALF OF CUTTERBAR, LOWER
6.	2085-635X	1	DRIVHJUL ANTRIEBSRAD		DRIVING WHEEL
7.	1220-4321	28	NYLOC MØTRIK M12 NYLOC MUTTER M12		NYLOC NUT M12
8.	2085-621X	28	O-RING O-RING		O-RING
9.	2085-619X	7	KONSOL KONSOLE		BRACKET
10.	2085-618X	7	KONSOL KONSOLE		BRACKET
11.	2085-637X	1	UDLUFTNINGSSKRUE ENTLUFTUNGSVENTIL		AIR-ESCAPE VALVE
12.	1317-0208	3	KOBBERPAKNING 17-22-1,5 KUPFERDICHTUNG 17-22-1,5		COPPER GASKET 17-22-1,5
13.	2085-629X	3	MELLEMHJUL Z-29 ZWISCHENRAD Z-29		INTERMEDIATE WHEEL Z-29
14.	2085-641X	7	O-RING O-RING		O-RING
15.	2085-634X	1	O-RING O-RING		O-RING
16.	2085-642X	6	LEJEHUS LAGERGEHAEUSE		BEARING HOUSING
17.	2085-628X	10	MELLEMHJUL Z-38 ZWISCHENRAD Z-38		INTERMEDIATE WHEEL Z-38
18.	2085-189X	26	LÅSERING ANI 75NO3 SICHERUNGSRING 75NO3		SNAP RING ANI 75NO3
19.	2085-627X	13	KUGLELEJE KUGELLAGER		BALL BEADING
20.	2085-620X	1	BJÆLKEHALVDEL, ØVERSTE BALKENHAELFTE, OBERE		HALF OF CUTTERBAR, UPPER
21.	2085-624X	13	SKIVE SCHEIBE		WASHER
22.	2085-625X	13	SKRUE SCHRAUBE		SCREW
23.	2085-413X	1	PAKNING DICHTUNG		GASKET
24.	2085-626X	13	BØSNING, NYLON BUCHSE, NYLON		BUSH, NYLON
25.	2085-214X	2	PROP ROHRVERSCHLUSS		PLUG
27.	3085-242X	1	PAKNINGSSÆT DICHTUNGSSATZ		SET OF GASKETS
29.	3085-243X	1	LEJESÆT LAGERSATZ		SET OF BEARINGS

POS.	VARENUMMER	ANTAL	BENÆVNELSE	BEZEICHNUNG	DESIGNATION
57.	1393-0191	9	CHEVRON PROFIL, VENSTRE CHEVRON PROFIL, LINKE >=2210100501 <=2210100501		CHEVRON PROFILE, LEFT
57. 1	1393-0191	8	CHEVRON PROFIL, VENSTRE CHEVRON PROFIL, LINKE		CHEVRON PROFILE, LEFT
58.	2087-149X	2	INDSATS EINSATZ >=2210100501 <=2210100501		INSERT
58. 1	2087-119X	2	CHEVRON PROFIL, HØJRE (DX) CHEVRON PROFIL, RECHTE (DX) >=2210100501 <=2210100509		CHEVRON PROFILE, RIGHT (DX)
58. 2	2087-145X	2	CHEVRON PROFIL, HØJRE (DX) CHEVRON PROFIL, RECHTE (DX) >=2210100510		CHEVRON PROFILE, RIGHT (DX)
59.	2087-120X	2	CHEVRON PROFIL, VENSTRE (SX) CHEVRON PROFIL, LINKE (SX) >=2210100501 <=2210100509		CHEVRON PROFILE, LEFT (SX)
59. 1	2087-143X	2	CHEVRON PROFIL, VENSTRE (SX) CHEVRON PROFIL, LINKE (SX) >=2210100510		CHEVRON PROFILE, LEFT (SX)

POS.	VARENUMMER	ANTAL	BENÆVNELSE	BEZEICHNUNG	DESIGNATION
.	1350-0029		KO-AKSEL SFT50 - 1000 RPM GELENKWELLE SFT50 - 1000 RPM		PTO SHAFT SFT50 - 1000 RPM
1.	1350-2041	1	GAFFEL GABEL		YOKE
2.	1350-2042	1	KRYDS KREUTZ		CENTRE CROSS
12.	1350-2044	1	PROFILRØR, UDVENDIG PROFILROHR, AUSWENDIG		PROFILE TUBE, OUTER
13.	1350-2040	1	PROFILRØR, INDVENDIG PROFILROHR, INWENDIG		PROFILE TUBE, INNER
29.	1350-2048	1	SMØRESYSTEM SCHMIERSYSTEM		GREASING SYSTEM
30.	1350-2049	1	FRILØB FREILAUF		FREE WHEELING
97.	1350-3085	1	RØRBESKYTTELSE SCHUTZVORRICHTUNG		SHIELDING

POS.	VARENUMMER	ANTAL	BENØVNELSE	BEZEICHNUNG	DESIGNATION
.	1350-0039		KO AKSEL SFT S6 - 1000 RPM GELEMKWELLE SFT S6 - 1000 RPM		SHAFT SFT S6 - 1000 RPM
1.	1350-2073	1	GAFFEL GABEL		YOKE
2.	1350-2982	2	KRYDS KREUTZ		CENTRE CROSS
13.	1350-3047	1	SMØRESYSTEM SCHMIERSYSTEM		LUBRICATION SYSTEM
15.	1350-3046	1	GAFFEL GABEL		YOKE
73.	1350-4501	4	FRIKTIONSBELEGNING REIBBELAG		FRICTION LINING
85.	1350-6509	1	FJEDER FEDER		SPRING
97.	1350-3045	1	RØRBESKYTTELSE SCHUTZVORRICHTUNG		SHIELDING

CLICK HERE TO **DOWNLOAD** THE COMPLETE MANUAL

- Thank you very much for reading the preview of the manual.
- You can download the complete manual from: [www.heydownloads.com](http://www.heydownloads.com) by clicking the link below



- Please note: If there is no response to CLICKING the link, please download this PDF first and then click on it.

CLICK HERE TO **DOWNLOAD** THE COMPLETE MANUAL