

Directions for use of Parts Catalogue

1. Applicable model of machines

All component and option parts used for TG5470 tractors are listed in this parts catalogue.

1) MODEL TYPE

F.....	FOUR WHEEL DRIVE
H.....	HST.
Q.....	IQ SHIFT
S.....	STANDARD MECHANICAL
D.....	DRAFT CONTROL
P.....	POWER REVERSER
W.....	DOUBLE AUXILIARY HYDRAULIC VALVES
J.....	JOY STICK VALVE
M.....	MID PTO.
R.....	FRONT/REAR HITCH & ROPS
CY.....	CABIN
A.....	CENTER ROPS
3.....	HST ASSIST

2) AREA CODE

E4.....	EUROPE
E4D.....	GERMANY
E6.....	OCEANIA

CLICK HERE TO **DOWNLOAD** THE COMPLETE MANUAL

- Thank you very much for reading the preview of the manual.
- You can download the complete manual from: www.heydownloads.com by clicking the link below



- Please note: If there is no response to CLICKING the link, please download this PDF first and then click on it.

CLICK HERE TO **DOWNLOAD** THE COMPLETE MANUAL

***** Structure Table of Model *****

M O D E L	T G			T G							
	5 FFFF	FFFFF	FFFFF	5 FFF							
	4 HHHH	HHHQ	QQSS	4 HPQ							
	7 MMM	333C	RRDD	7 WWW							
	0 CCRR	MMYY	EERR	0 JJJ							
	E Y Y E E	C C R E E	4 4 E E E	R R C							
	4 E E 4 4	Y Y E 4 4	D 4 4 6	E E Y							
	4 4 D	E E 4 D	A	6 6 E							
	D	4 4 D		6							
	FIG.										
271	T T T T	T T T T T	T T T	T T T							
272	T T T T	T T T T T	T T T								
273	T T T T	T T T T T	T T T T	T T T							
274	T T T T	T T T T T	T T T								
275			T								
276		R R R R									
277		R R R R		R							
278	T T	T T T T		T							
279	T T T T	T T T T T	T T T T								
280	R R	R R R R		R							
281	R R	R R R R		R							
282				T							
283	T T	T T T T									
284	T T	T T	T T T T	T T							
285	T T T T	T T T T T	T T T T								
286	****		**	*							
287		*****	**	**							
288		** **	**	*							
289		** *									
290		** **	**	**							
291	****	*****	****	***							
292	T T T T	T T T T T	T T T	***							
293		** **	**	**							
294	****	*****	****	***							
295	T T T T	T T T T T	T T T T	***							
296	****	*****	****	***							
297	T T	T T T T		T							
298			**	**							
299	**	** **		*							
300	**	** **		*							
301	T T	T T T T		T							
302		** **	**	**							
303			**	**							
304	****	** **		*							
305	****	*****	****	***							
306	****	*****	**	*							
307			**	**							
308	**	** **		*							
309	T T	T	T T T T	T T							

Contents

TG5470E6 (CY TYPE)

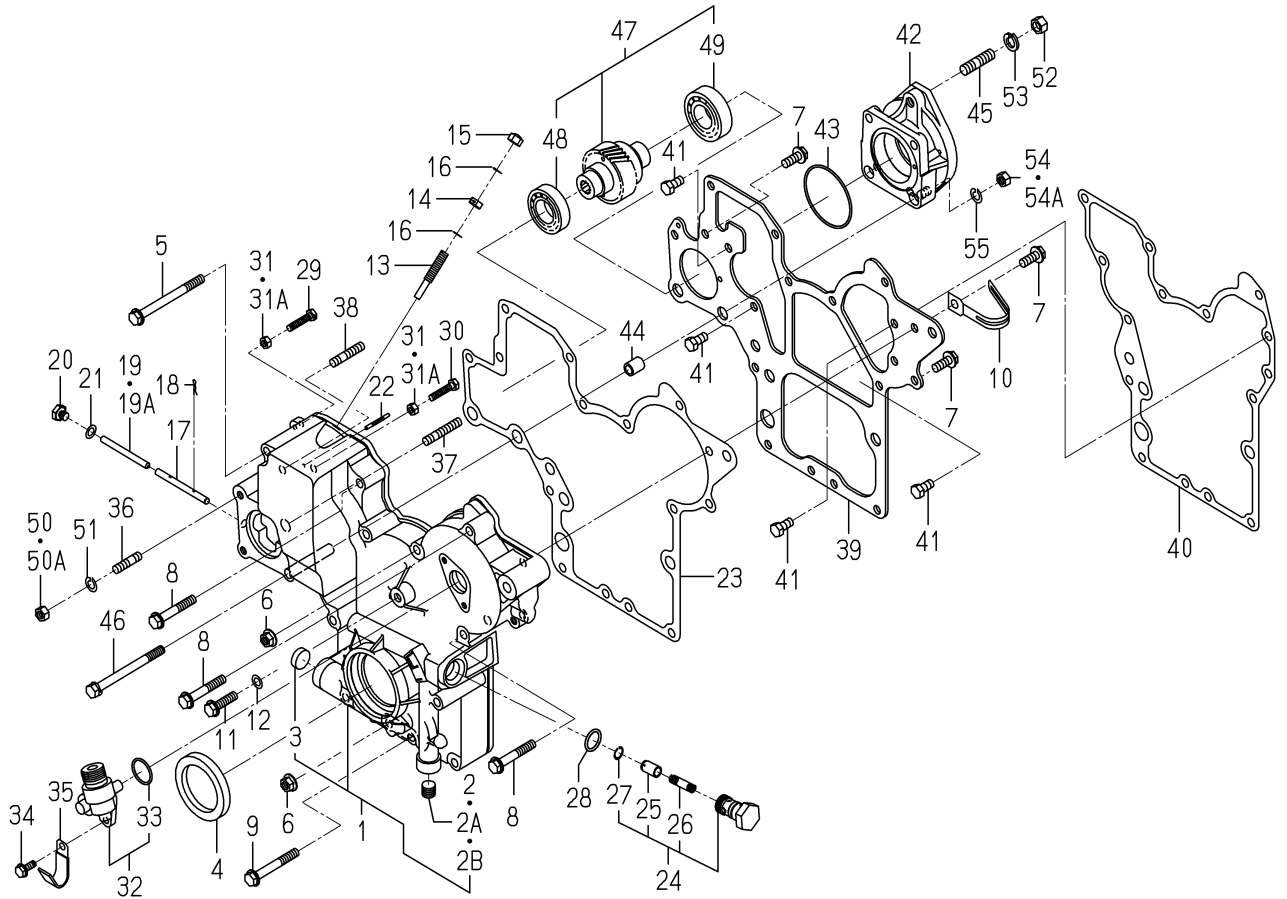
ENGINE (E4CG-VB22)

SHORT BLOCK ENGIASSY.....	Fig. 1
CYLINDER HEAD.....	Fig. 2
CYLINDER HEAD COVER.....	Fig. 3
INLET MANIFOLD.....	Fig. 4
EXHAUST MANIFOLD.....	Fig. 5
CYLINDER BLOCK.....	Fig. 6
CYLINDER BLOCK.....	Fig. 7
BEARING/UNDER SIZE (OPTION).....	Fig. 8
OIL PAN.....	Fig. 9
REAR PLATE.....	Fig. 10
TIMING GEAR CASE.....	Fig. 11
HANGER.....	Fig. 12
VALVE.....	Fig. 13
CAM SHAFT.....	Fig. 14
PISTON.....	Fig. 15
PISTON/OVER SIZE (OPTION).....	Fig. 16
CRANK SHAFT.....	Fig. 17
OIL PUMP.....	Fig. 18
WATER PUMP.....	Fig. 19
COOLING FAN.....	Fig. 20
INJECTION NOZZLE.....	Fig. 21
INJECTION PUMP.....	Fig. 22
FUEL PIPE.....	Fig. 23
ADAPTER.....	Fig. 24

ELC.(FRONT)SYSTEM

(E4 TYPE EXCEPT 3M,S)(1/2)(2/2).....	Fig.188
ELC.(FRONT)SYSTEM(QE6 TYPE)(1/2)(2/2).....	Fig.189
ELC.(FRONT)SYSTEM(3M TYPE)(1/2)(2/2).....	Fig.190
ELC.(MAIN)SYSTEM(S TYPE)(1/2)(2/2).....	Fig.191
ELC.(MAIN)SYSTEM(QE4 TYPE)(1/2)(2/2).....	Fig.192
ELC.(MAIN)SYSTEM(P TYPE)(1/2)(2/2).....	Fig.193
ELC.(MAIN)SYSTEM(QE6 TYPE)(1/2)(2/2).....	Fig.194
ELC.(MAIN)SYSTEM(HE6 TYPE)(1/2)(2/2).....	Fig.195
ELC.(MAIN)SYSTEM	
(H TYPE EXCEPT 3M)(1/2)(2/2).....	Fig.196
ELC.(MAIN)SYSTEM(3M TYPE)(1/2)(2/2).....	Fig.197
ELC.(REAR)SYSTEM(E6 TYPE).....	Fig.198
ELC.(REAR)SYSTEM(RE4 TYPE).....	Fig.199
ELC.(REAR)SYSTEM(CYE4 TYPE).....	Fig.200
PANEL SYSTEM(S, HE6,P TYPE)	
(S TYPE-NO.1-1104/HE6,P TYPE-NO.1-1104).....	Fig.201
PANEL SYSTEM (S, HE6,P TYPE)	
(S TYPE-NO.1105-/HE6,P TYPE-NO.1105-).....	Fig.202
PANEL SYSTEM (H,Q TYPE).....	Fig.203
ELC.(CABIN)SYSTEM(QE6 TYPE)(1/3)-(3/3).....	Fig.204
ELC.(CABIN)SYSTEM(CYE4 TYPE)	
ELC.(CABIN)SYSTEM(CYE5 TYPE)(1/3)-(3/3).....	Fig.205
CONTROL SYSTEM(P TYPE).....	Fig.206
CONTROL SYSTEM(HE6 TYPE)(NO.1-1390).....	Fig.207
CONTROL SYSTEM(QE6 TYPE)(NO.1-1390).....	Fig.208
CONTROL SYSTEM(QE4 TYPE)	
(CY TYPE-NO.1-221/EXCEPT CY TYPE-NO.1-).....	Fig.209
CONTROL SYSTEM(H TYPE EXCEPT 3M).....	Fig.210
CONTROL SYSTEM(QE6 TYPE)(NO.1391-).....	Fig.211
CONTROL SYSTEM(HE6 TYPE)(NO.1391-).....	Fig.212
CONTROL SYSTEM(S TYPE).....	Fig.213
CONTROL SYSTEM(3M TYPE EXCEPT CY).....	Fig.214

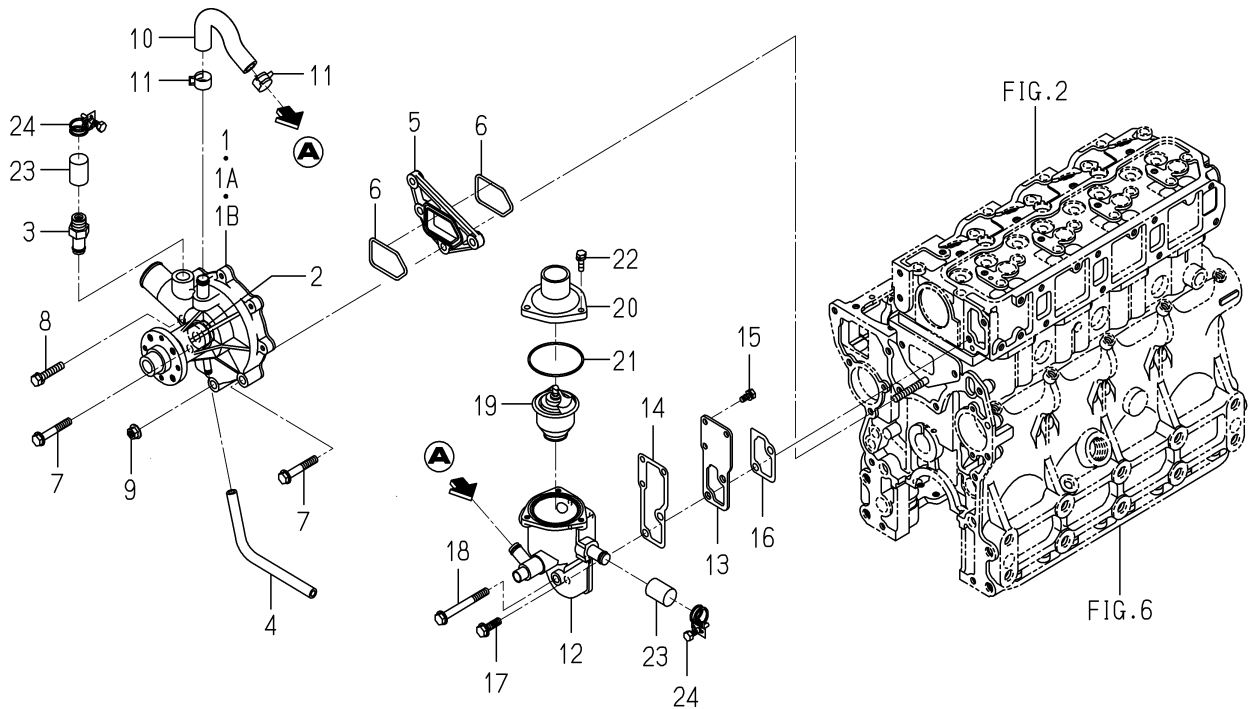
FIG. 10 TIMING GEAR CASE



6008-240D-0100,6008-240D-0200

KEY	PART CODE	DESCRIPTION	S P C	TYPE OF MODEL		I T C	C O L	G R P	REMARKS
				E4CG	VB19				
1	6211-310-039-00	GEARCASE ASSY	*	1					
2	6209-605-003-00	PLUG/PT1/4	*	1	-8544				
2A	6209-605-003-10	PLUG/PT1/4	*	1	-15165		1		
2B	6209-605-003-20	PLUG/PT1/4	*	1	15166		1		
3	6209-610-004-00	CUP/SEALING/20	*	1					
4	6209-625-006-00	OILSEAL	*	1					
5	V231-360-809-00	FLANGEBOLT	*	2					
6	3817-401-001-00	NUT/M8	*	2					
7	V231-360-802-00	FLANGEBOLT	*	3					
8	V231-360-805-00	FLANGEBOLT	*	3					
9	V231-360-806-00	FLANGEBOLT	*	5					
10	1650-650-015-00	CLAMP	*	1					
11	V231-360-803-00	FLANGEBOLT	*	1					
12	6209-500-003-00	WASHER/08X14X01	*	1					
13	6215-546-003-10	STOPPER/FULLLOAD	*	1					
14	6209-409-001-00	NUT/M8	*	1					
15	V341-120-008-00	NUT,CAP/M 8	*	1					
16	6209-920-002-00	PACKING	*	2					
17	6215-542-004-20	PIN/ARM	*	1					
18	P117-303-003-00	PIN/SNAP	*	2					
19	6215-542-005-10	PIN	*	1	-16832				
19A	6215-542-005-20	PIN	*	1	16833		1		
20	6209-600-004-00	PLUG/SCREW	*	1					
21	6209-500-003-00	WASHER/08X14X01	*	1					
22	6209-740-006-00	PIN/GROOVE	*	1					
23	6211-312-012-10	GASKET/GEARCASE	*	1					
24	6213-160-005-00	VALVE/RELIEF ASSY	*	1					
25	6213-161-003-10	PISTON/VALVE/RELIEF	*	1					
26	6213-164-001-00	SPRING/RELIEF VALVE	*	1					
27	V705-140-012-00	RING,SNAP/12 C	*	1					

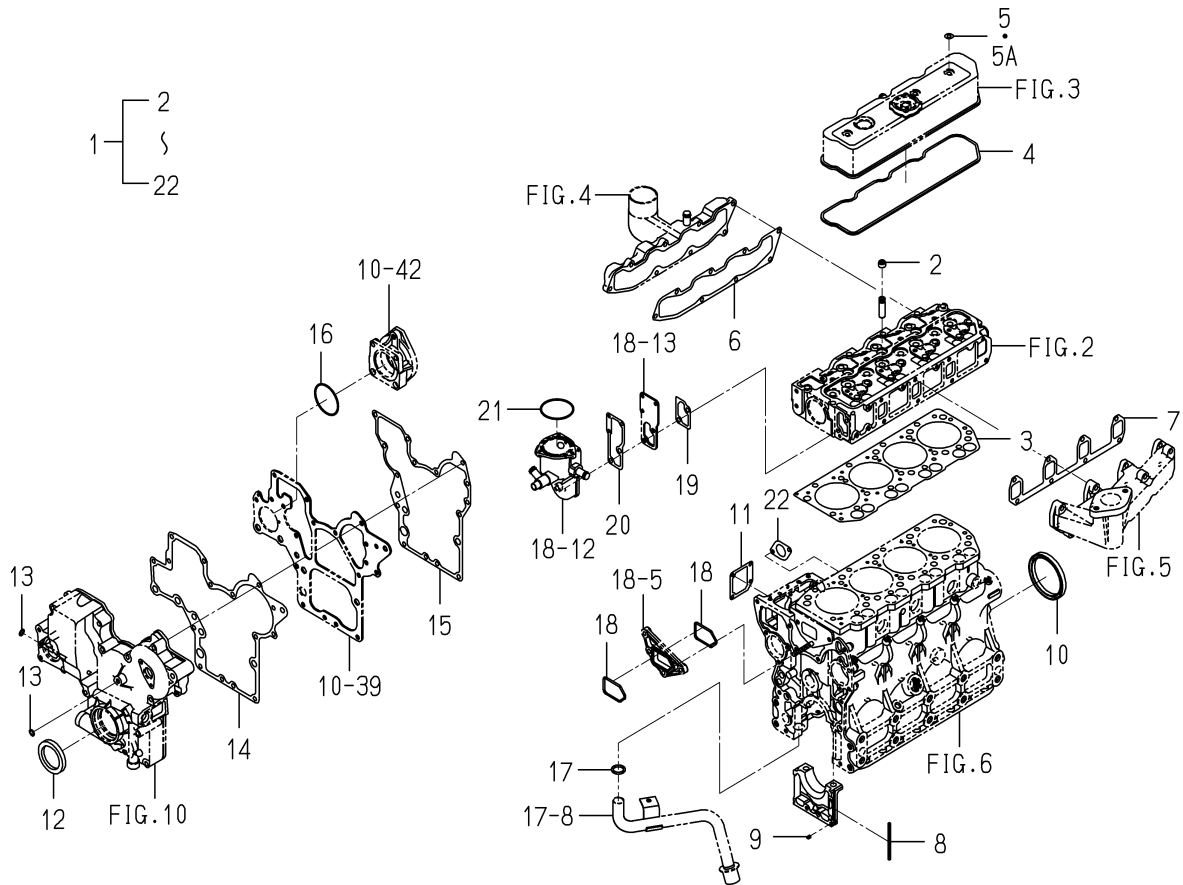
FIG. 18 WATER PUMP



6008-420C-0100

KEY	PART CODE	DESCRIPTION	S P C	TYPE OF MODEL		I T C	C O L	G R P	REMARKS
				E4CG VB19					
1	6213-610-009-40	WATERPUMP ASSY	*	1					
1A	6213-610-009-50	WATERPUMP ASSY	*	1		1			
1B	6213-610-009-60	WATERPUMP ASSY	*	1		1			
2	6213-622-002-10	SEAL SET/WATER PUMP	*	1					
3	6213-721-005-00	PIPE/WATER/HOUSING	*	1					
4	6209-360-084-00	HOSE/RUBBER/230	*	1					
5	6213-619-014-00	SPACER/WATERPUMP	*	1					
6	V721-113-105-00	O-RING HS90 G50	*	2					
7	V231-360-805-00	FLANGEBOLT	*	2					
8	6901-910-840-00	BOLT	*	1					
9	3817-401-001-00	NUT/M08	*	1					
10	6213-729-015-40	HOSERUBBER	*	1					
11	1650-780-011-10	CLIP/HOSE/18-22	*	2					
12	6213-716-009-10	HOUSING/THERMOSTAT	*	1					
13	6213-719-005-10	COVER/HOUSING	*	1					
14	6213-743-004-20	GASKET/HOUSING	*	1					
15	6209-030-097-00	BOLT/WS	*	3					
16	6213-743-002-10	GASKET/HOUSING	*	1					
17	V231-360-802-50	FLANGEBOLT	*	1					
18	V231-360-807-50	FLANGEBOLT	*	1					
19	6213-770-002-00	THERMOSTAT	*	1					
20	6213-711-008-00	PIPE/WATEROUTLET	*	1					
21	V723-102-006-30	RING/O	*	1					
22	V210-560-602-00	BOLT/S	*	3					
23	6213-729-011-00	CAP	*	2					
24	J061-220-024-00	CLAMP/WIRE/20-24	*	2					

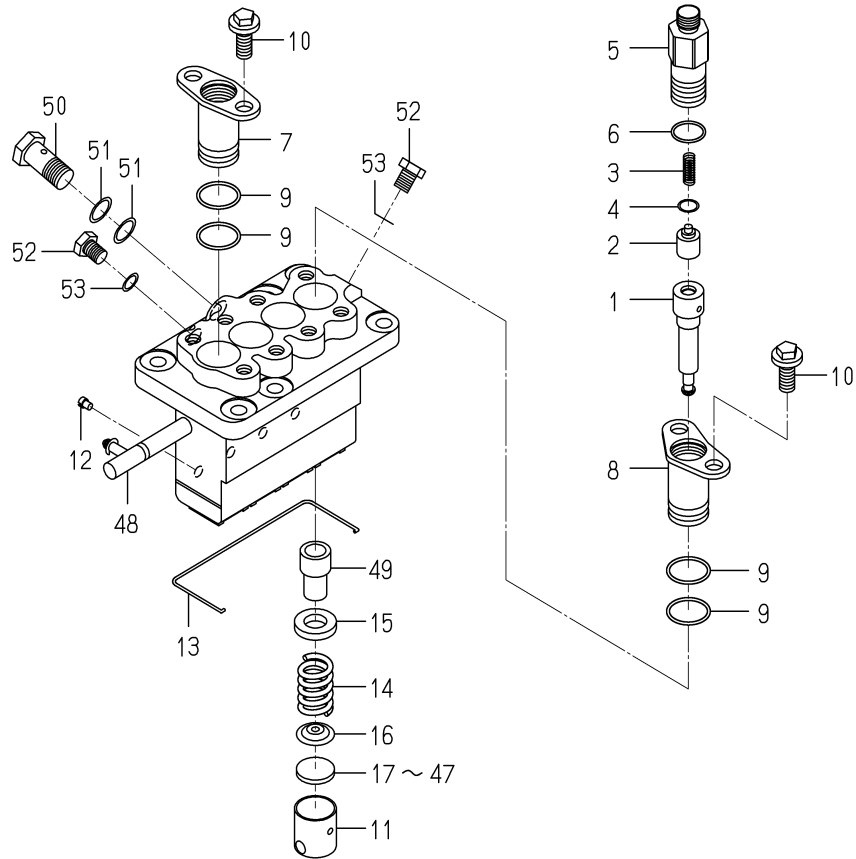
FIG. 27 REPAIR PARTS(OPTION)



6008-999C-0100

KEY	PART CODE	DESCRIPTION	S P C	TYPE OF MODEL		I T C	C O L	G R P	REMARKS
				E4CG VB19					
1	6287-810-042-00	REPAIR/ENGINESET	T	1					
2	6212-569-002-00	SEAL,OIL	T	8					
3	6211-141-047-00	GASKET/CYLINDERHEAD	T	1					
4	6211-173-007-20	SEAL/CYLINDER HEAD C	T	1					
5	6209-572-002-00	GASKET	T	3	-11607				
5A	6209-572-003-00	GASKET	T	3	11608-				
6	6214-115-008-00	GASKET/INLETMANIFOLD	T	1					
7	6214-145-007-00	GASKET/EXHAUST MANIF	T	1					
8	6211-258-001-00	SEAL,BEARING CAP	T	4					
9	6211-258-002-00	SEAL,BEARING CAP/7	T	2					
10	6209-625-003-20	OILSEAL	T	1					
11	6211-292-001-20	GASKET/COVER	T	1					
12	6209-625-006-00	OILSEAL	T	1					
13	6209-500-003-00	WASHER/08X14X01	T	2					
14	6211-312-012-10	GASKET/GEARCASE	T	1					
15	6211-312-013-10	GASKET/PLATE	T	1					
16	V723-102-006-30	RING/O	T	1					
17	V720-103-502-20	O-RING/P22	T	1					
18	V721-113-105-00	O-RING HS90 G50	T	2					
19	6213-743-002-10	GASKET/HOUSING	T	1					
20	6213-743-004-20	GASKET/HOUSING	T	1					
21	V723-102-006-30	RING/O	T	1					
22	6209-630-002-10	GASKET	T	1					

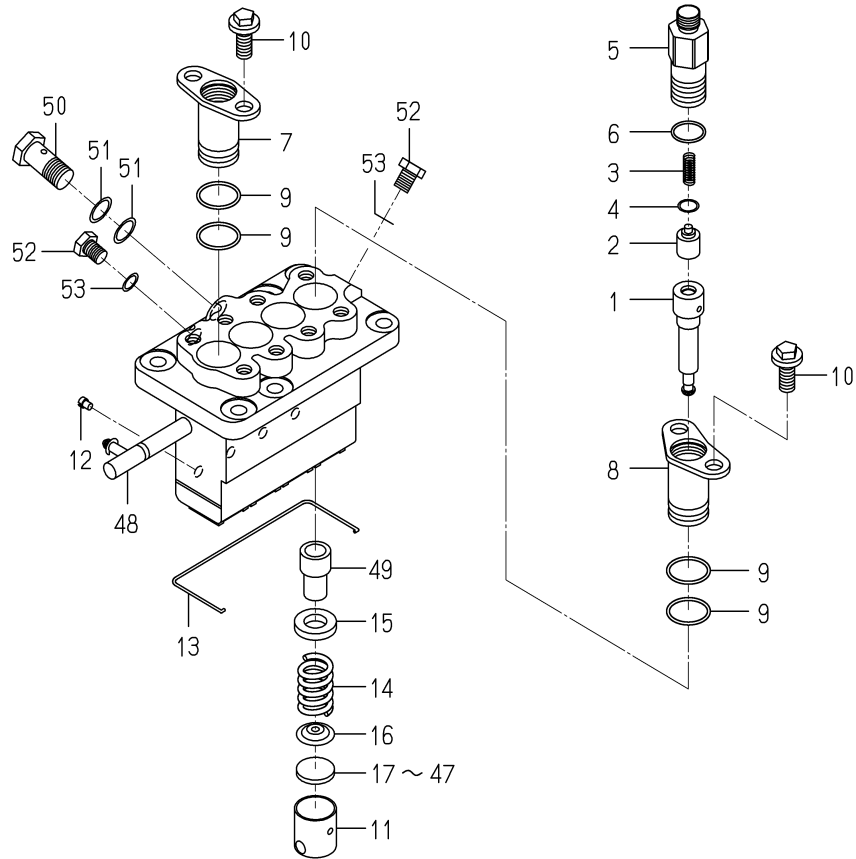
FIG. 29 COMPONENT PARTS FOR 6215-600-119-20 ON Fig.21



6215-600-119-2E

KEY	PART CODE	DESCRIPTION	S P C	TYPE OF MODEL		I T C	C O L	G R P	REMARKS
				E4CG VB21					
1	6215-631-026-00	PLUNGER ASSY	*	4					
2	6215-641-002-00	VALVE, DELIVERY	*	4					
3	6215-643-005-00	SPRING/DELIVERY VALVE	*	4					
4	6215-649-008-00	GASKET	*	4					
5	6215-644-009-00	HOLDER/DELIVERY VALVE	*	4					
6	6215-649-014-00	ORING	*	4					
7	6215-635-004-00	SLEEVE FLANGE	*	3					
8	6215-635-006-00	SLEEVE FLANGE	*	1					
9	6215-649-013-00	ORING	*	8					
10	6215-649-011-00	BOLT	*	8					
11	6215-622-003-00	TAPPET	*	4					
12	6215-629-017-00	PIN	*	4					
13	6215-629-057-00	SNAPRING	*	1					
14	6215-634-003-00	SPRING/PLUNGER	*	4					
15	6215-639-008-00	SPRINGSEAT	*	4					
16	6215-639-009-00	SPRINGSEAT	*	4					
17	6215-629-060-00	PLATE/T=2.60	*	1					
18	6215-629-061-00	PLATE/T=2.65	*	1					
19	6215-629-062-00	PLATE/T=2.70	*	1					
20	6215-629-063-00	PLATE/T=2.75	*	1					
21	6215-629-064-00	PLATE/T=2.80	*	1					
22	6215-629-065-00	PLATE/T=2.85	*	1					
23	6215-629-066-00	PLATE/T=2.90	*	1					
24	6215-629-067-00	PLATE/T=2.95	*	1					
25	6215-629-036-00	PLATE/T=3.00	*	1					
26	6215-629-037-00	PLATE/T=3.05	*	1					
27	6215-629-038-00	PLATE/T=3.10	*	1					
28	6215-629-039-00	PLATE/T=3.15	*	1					
29	6215-629-040-00	PLATE/T=3.20	*	1					
30	6215-629-041-00	PLATE/T=3.25	*	1					

FIG. 30 COMPONENT PARTS FOR 6215-600-119-20 ON Fig.22

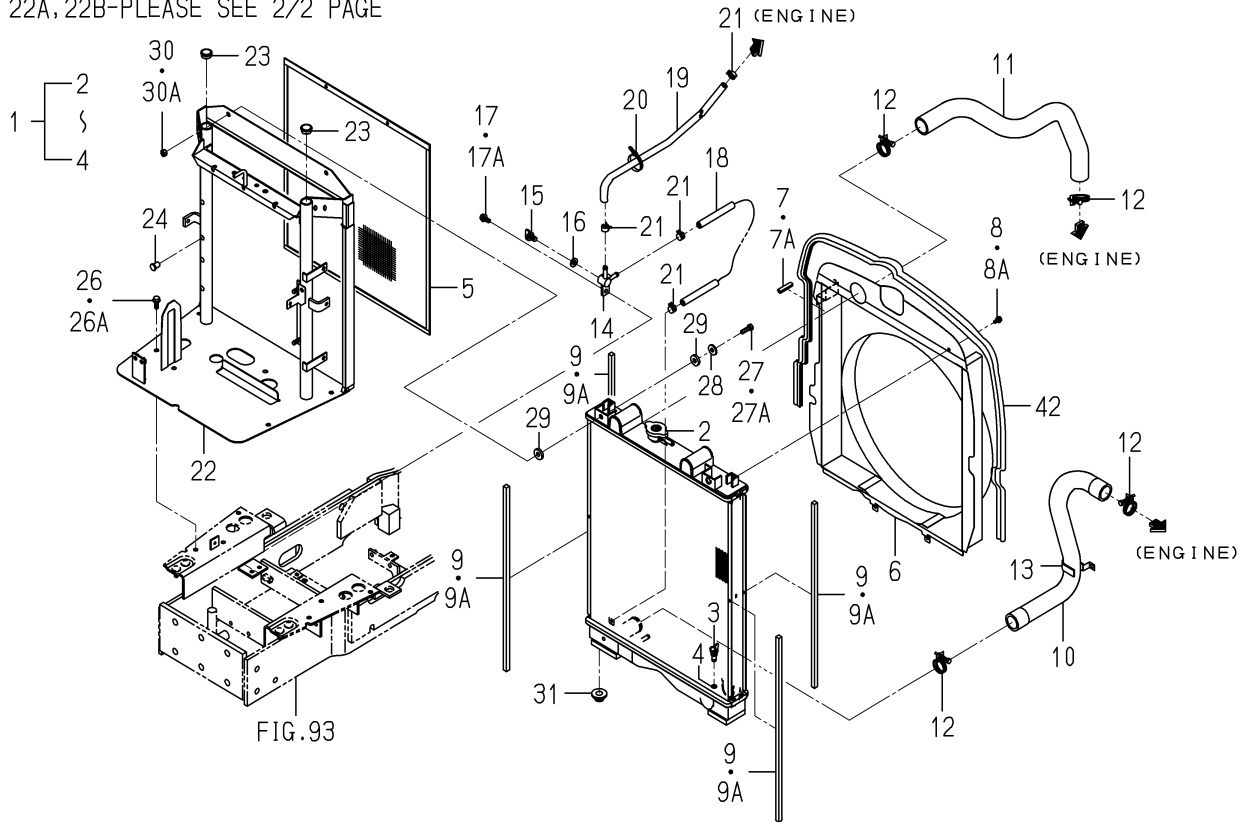


6215-600-119-2E

KEY	PART CODE	DESCRIPTION	S P C	TYPE OF MODEL		I T C	C O L	G R P	REMARKS
				E4CG VB20					
1	6215-631-026-00	PLUNGER ASSY	*	4					
2	6215-641-002-00	VALVE, DELIVERY	*	4					
3	6215-643-005-00	SPRING/DELIVERY VALVE	*	4					
4	6215-649-008-00	GASKET	*	4					
5	6215-644-009-00	HOLDER/DELIVERY VALVE	*	4					
6	6215-649-014-00	ORING	*	4					
7	6215-635-004-00	SLEEVE FLANGE	*	3					
8	6215-635-006-00	SLEEVE FLANGE	*	1					
9	6215-649-013-00	ORING	*	8					
10	6215-649-011-00	BOLT	*	8					
11	6215-622-003-00	TAPPET	*	4					
12	6215-629-017-00	PIN	*	4					
13	6215-629-057-00	SNAPRING	*	1					
14	6215-634-003-00	SPRING/PLUNGER	*	4					
15	6215-639-008-00	SPRINGSEAT	*	4					
16	6215-639-009-00	SPRINGSEAT	*	4					
17	6215-629-060-00	PLATE/T=2.60	*	1					
18	6215-629-061-00	PLATE/T=2.65	*	1					
19	6215-629-062-00	PLATE/T=2.70	*	1					
20	6215-629-063-00	PLATE/T=2.75	*	1					
21	6215-629-064-00	PLATE/T=2.80	*	1					
22	6215-629-065-00	PLATE/T=2.85	*	1					
23	6215-629-066-00	PLATE/T=2.90	*	1					
24	6215-629-067-00	PLATE/T=2.95	*	1					
25	6215-629-036-00	PLATE/T=3.00	*	1					
26	6215-629-037-00	PLATE/T=3.05	*	1					
27	6215-629-038-00	PLATE/T=3.10	*	1					
28	6215-629-039-00	PLATE/T=3.15	*	1					
29	6215-629-040-00	PLATE/T=3.20	*	1					
30	6215-629-041-00	PLATE/T=3.25	*	1					

FIG. 2 RADIATOR SYSTEM(HCY TYPE)(1/2)

22A, 22B-PLEASE SEE 2/2 PAGE

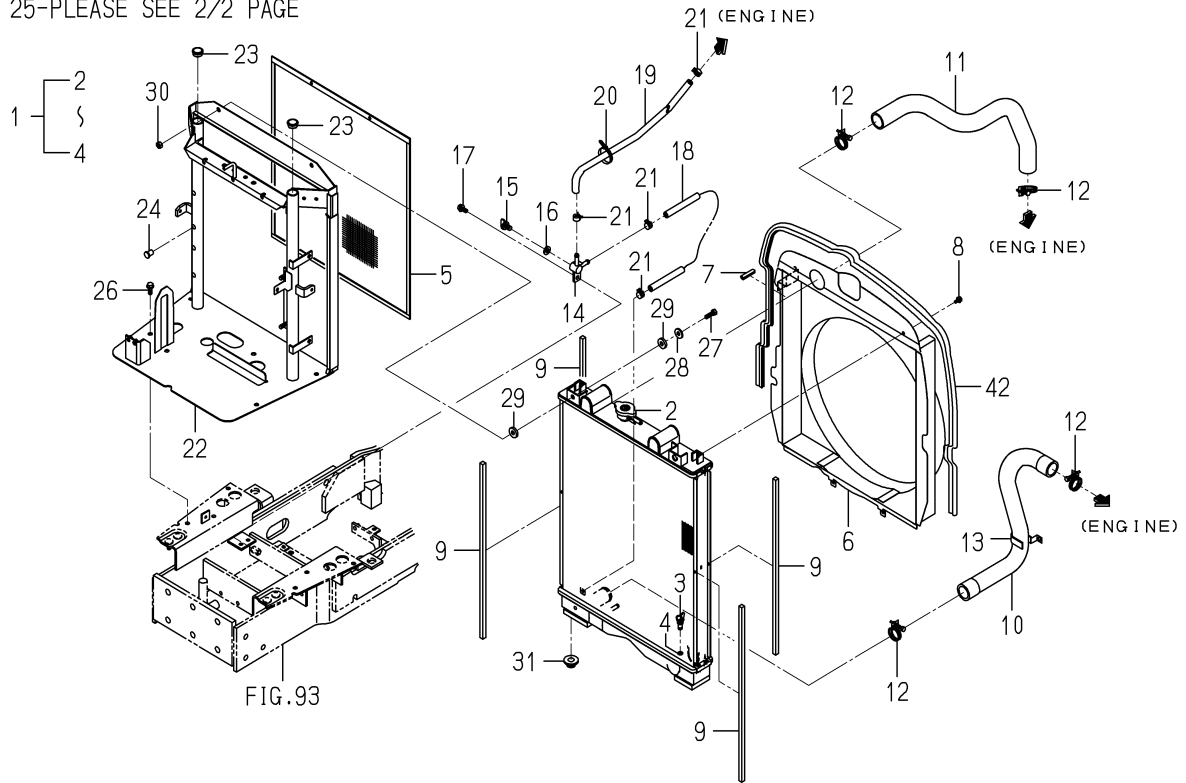


1748-102A-0100

KEY	PART CODE	DESCRIPTION	S P C	TYPE OF MODEL		I T C	C O L	G R P	REMARKS
				TG5470 E4	TG5470 E6				
1	1734-102-200-00	RADIATOR ASSY	*	1					
2	3817-330-210-00	CAP ASSY	*	1					
3	3817-330-201-00	VALVE/STOP	*	1					
4	V720-101-900-70	O-RING/P 7	*	1					
5	1700-102-230-10	NET/12/474X517 COMP	*	1					
6	1734-102-210-20	SHROUD/400 COMP	*	1					
7	1564-630-012-00	INSULATOR	*	1					
7A	3656-212-009-10	PAD/40	*	1					
8	V230-360-601-20	FLANGEBOLT	*	4					
8A	1746-804-001-00	FLANGEBOLT	*	4					
9	1734-102-011-00	INSULATOR	*	4					
9A	1734-102-011-10	INSULATOR	*	4		1			
10	1734-102-001-00	HOSE/RADIATOR/OUTLET	*	1					
11	1734-102-002-00	HOSE/RADIATOR/INLET	*	1					
12	J061-236-044-00	CLAMP/WIRE/36-44	*	4					
13	1617-102-007-00	CLAMP	*	1					
14	1560-104-010-40	CONNECTOR	*	1					
15	1424-101-203-00	PLUG	*	1					
16	1424-101-204-00	PACKING	*	1					
17	V231-360-801-60	FLANGEBOLT	*	1					
17A	1746-804-003-00	FLANGEBOLT	*	1					
18	1698-102-003-00	HOSE/230	*	1					
19	1656-102-007-00	HOSE/750	*	1					
20	1376-402-003-00	BAND,WIRE/140	*	1					
21	J062-147-159-00	CLIP/HOSE/14.7-15.9	*	4					
22	1734-102-500-10	BRACKET/RADIATOR/CY	*	1					
22A	1734-102-500-20	BRACKET/RADIATOR/CY	*	1		1			
22B	1734-102-500-30	BRACKET/RADIATOR/CY	*	1		1			
23	2706-301-021-00	CAP,ROCKER ARM	*	2					
24	1729-102-051-00	NUT/POP/M08	*	4					

FIG. 7 RADIATOR SYSTEM(1/2) (E4 TYPE EXCEPT CY,Q,S)(NO.1397-)

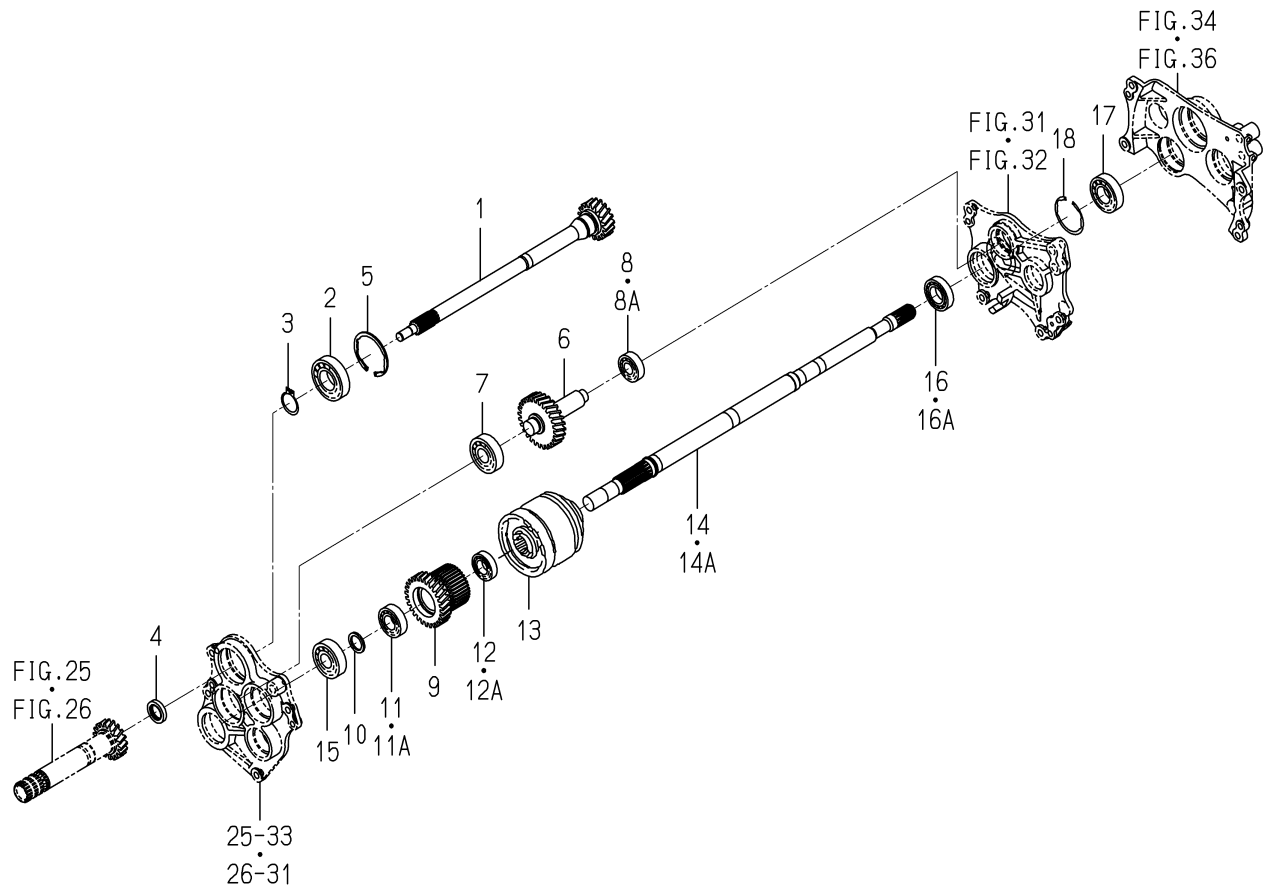
25-PLEASE SEE 2/2 PAGE



1748-102J-0100

KEY	PART CODE	DESCRIPTION	S P C	TYPE OF MODEL		I T C	C O L	G R P	REMARKS
				TG5470 E4	TG5470 E6				
1	1734-102-200-00	RADIATOR ASSY	*	1 1397-					
2	3817-330-210-00	CAP ASSY	*	1 1397-					
3	3817-330-201-00	VALVE/STOP	*	1 1397-					
4	V720-101-900-70	O-RING/P 7	*	1 1397-					
5	1700-102-230-10	NET/12/474X517 COMP	*	1 1397-					
6	1734-102-210-20	SHROUD/400 COMP	*	1 1397-					
7	3656-212-009-10	PAD/40	*	1 1397-					
8	1746-804-001-00	FLANGEBOLT	*	4 1397-					
9	1734-102-011-10	INSULATOR	*	4 1397-					
10	1734-102-001-00	HOSE/RADIATOR/OUTLET	*	1 1397-					
11	1734-102-002-00	HOSE/RADIATOR/INLET	*	1 1397-					
12	J061-236-044-00	CLAMP/WIRE/36-44	*	4 1397-					
13	1617-102-007-00	CLAMP	*	1 1397-					
14	1560-104-010-40	CONNECTOR	*	1 1397-					
15	1424-101-203-00	PLUG	*	1 1397-					
16	1424-101-204-00	PACKING	*	1 1397-					
17	1746-804-003-00	FLANGEBOLT	*	1 1397-					
18	1698-102-003-00	HOSE/230	*	1 1397-					
19	1656-102-007-00	HOSE/750	*	1 1397-					
20	1376-402-003-00	BAND,WIRE/140	*	1 1397-					
21	J062-147-159-00	CLIP/HOSE/14.7-15.9	*	4 1397-					
22	1734-102-500-30	BRACKET/RADIATOR/CY	*	1 1397-					
23	2706-301-021-00	CAP,ROCKER ARM	*	2 1397-					
24	1729-102-051-00	NUT/POP/M08	*	4 1397-					
25	1560-630-029-00	CAP/30	*	1 1397-					
26	1746-804-004-00	FLANGEBOLT	*	3 1397-					
27	1746-803-002-00	BOLT	*	2 1397-					
28	4101-102-038-00	WASHER/24X9X3.2	*	2 1397-					
29	1423-616-004-00	CUSHION/RUBBER/10X25	*	4 1397-					
30	1746-817-001-00	U-NUT	*	2 1397-					

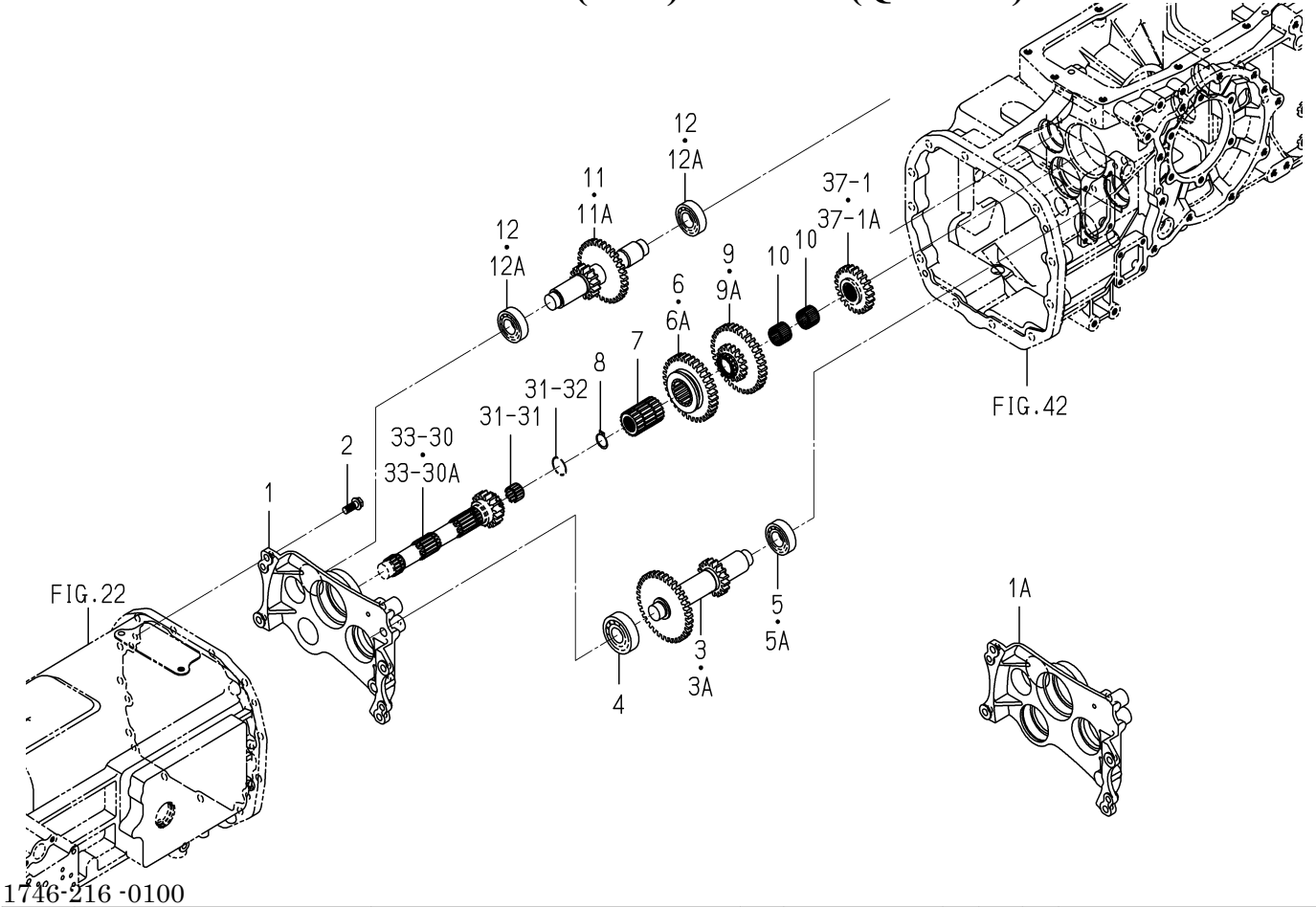
FIG. 28 GEAR(PTO)SYSTEM(Q TYPE)



1744-209-0100

KEY	PART CODE	DESCRIPTION	S P C	TYPE OF MODEL		I T C	C O L	G R P	REMARKS
				TG5470 E4	TG5470 E6				
1	1744-209-001-10	GEAR/HELICAL/18	*	1	1				
2	1734-203-012-00	BEARING/BALL	*	1	1				
3	V704-140-035-00	RING,SNAP/35 C	*	1	1				
4	V744-125-380-70	SEAL,OIL/TC25387	*	1	1				
5	V707-140-072-00	RING/SNAP	*	1	1				
6	1742-209-002-00	GEAR/HELICAL/27	*	1	1				
7	1696-203-004-00	BEARING/BALL	*	1	1				
8	V600-410-620-40	BEARING/BALL	*	1 -1253	1 -1253				
8A	V600-110-620-40	BEARING,RB/6204	*	1 1254-	1 1254-				
9	1742-209-003-00	GEAR/HELICAL/27	*	1	1				
10	1593-307-052-10	COLLAR/26X35X03	*	1	1				
11	V600-410-620-50	BEARING/BALL	*	1 -1253	1 -1253				
11A	V600-110-620-50	BEARING,RB/6205	*	1 1254-	1 1254-				
12	V600-410-600-50	BEARING/BALL	*	1 -1253	1 -1253				
12A	1729-202-002-00	BEARING/BALL	*	1 1254-	1 1254-				
13	1744-209-210-00	CLUTCH/PTO ASSY	*	1	1				FIG 305
14	1742-209-004-10	SHAFT/DRIVE/PTO	*	1 -420	1 -420				
14A	1742-209-004-20	SHAFT/DRIVE/PTO	*	1 421-	1 421-	1			
15	1729-214-049-00	BEARING/BALL	*	1	1				
16	V600-410-600-60	BEARING/BALL	*	1 -1253	1 -1253				
16A	1729-202-003-00	BEARING/BALL	*	1 1254-	1 1254-				
17	V600-410-620-60	BEARING/BALL	*	1 421-	1 421-				
18	V707-140-062-00	RING/SNAP	*	1 421-	1 421-				

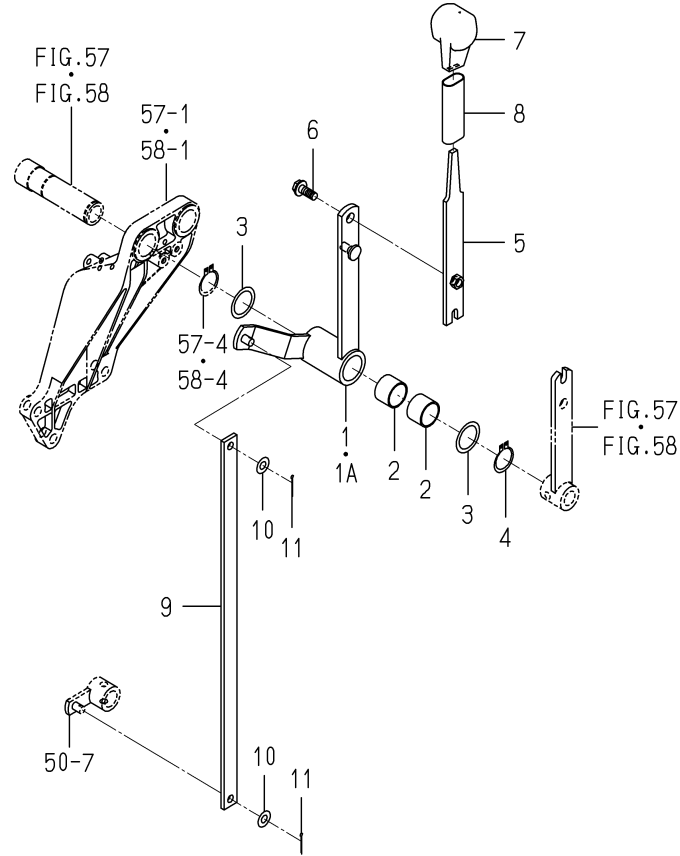
FIG. 36 GEAR(SUB)SYSTEM(Q TYPE)



1746-216-0100

KEY	PART CODE	DESCRIPTION	S P C	TYPE OF MODEL		I T C	C O L	G R P	REMARKS
				TG5470 E4	TG5470 E6				
1	1746-216-001-00	METAL/SUB/Q	*	1 -735	1 -735				
1A	1746-216-011-00	METAL/SUB/Q	*	1 736-	1 736-				
2	V231-361-002-50	FLANGE BOLT	*	4	4				
3	1742-216-001-00	GEAR/36-17	*	1 -1295	1 -1295				
3A	1742-216-001-10	GEAR/36-17	*	1 1296-	1 1296-	1			
4	1729-214-049-00	BEARING/BALL	*	1	1				
5	V600-410-620-50	BEARING/BALL	*	1 -1256	1 -1256				
5A	V600-110-620-50	BEARING,RB/6205	*	1 1257-	1 1257-				
6	1742-216-002-00	GEAR/SPUR/34	*	1 -1336	1 -1336				
6A	1742-216-002-10	GEAR/SPUR/34	*	1 1337-	1 1337-	1			
7	1742-216-003-00	HUB/25X40X58	*	1	1				
8	V704-140-025-00	RING,SNAP/25 C	*	1	1				
9	1742-216-004-00	GEAR/17-35	*	1 -1361	1 -1361				
9A	1742-216-004-10	GEAR/17-35	*	1 1362-	1 1362-	1			
10	1709-301-001-00	BEARING/NEEDLE	*	2	2				
11	1742-216-005-00	GEAR/15-32	*	1 -1336	1 -1336				
11A	1742-216-005-10	GEAR/15-32	*	1 1337-	1 1337-	1			
12	V600-410-620-50	BEARING/BALL	*	2 -1256	2 -1256				
12A	V600-110-620-50	BEARING,RB/6205	*	2 1257-	2 1257-				

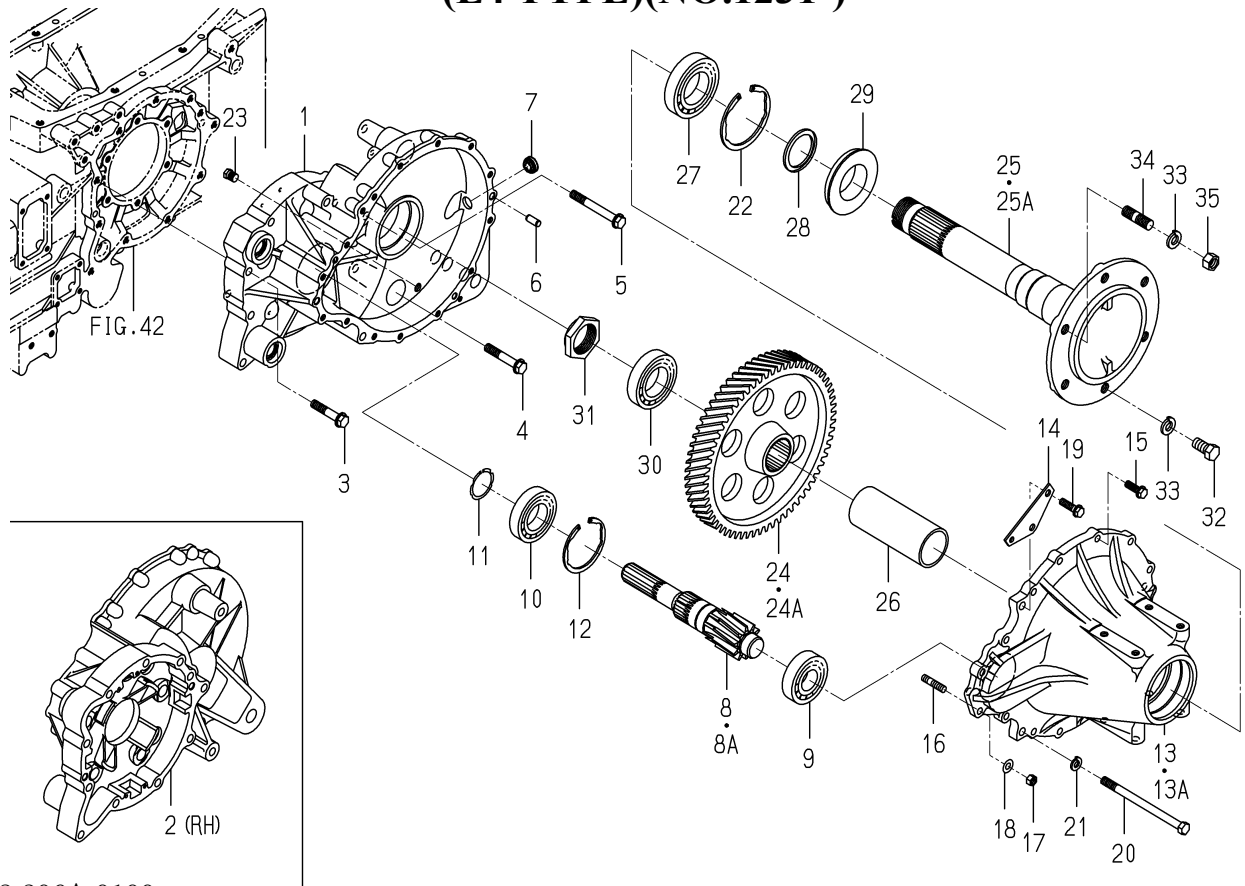
**FIG. 63 LEVER(SHIFT/4WD)SYSTEM(S,E6 TYPE)
(S TYPE NO.537-/E6 TYPE NO.537-998)**



1744-267A-0100

KEY	PART CODE	DESCRIPTION	S P C	TYPE OF MODEL		I T C	C O L	G R P	REMARKS
				TG5470 E4	TG5470 E6				
1	1742-267-300-00	ARM/LEVER/4WD/S COMP	*	1 -1253	1 -998				
1A	1742-267-300-10	ARM/LEVER/4WD/S COMP	*	1 1254-	1	1			
2	3670-836-004-00	BUSH/25X28X20	*	2 537-	2 -998				
3	1421-312-002-00	WASHER/26X35X1	*	2 537-	2 -998				
4	V704-140-025-00	RING,SNAP/25 C	*	1 537-	1 -998				
5	1742-267-210-00	LEVER/4WD COMP	*	1 537-	1 -998				
6	V231-360-802-00	FLANGEBOLT	*	1 537-	1 -998				
7	1703-261-002-00	GRIP/MAIN	*	1 537-	1 -998				
8	1614-262-006-00	INSULATOR/LEVER/SUB	*	1 537-	1 -998				
9	1744-267-001-00	PLATE/I/19X456	*	1 537-	1 -998				
10	V411-260-008-00	WASHER,PL/M 8	*	2 537-	2 -998				
11	V500-162-002-00	PIN,SPLIT/2 X20	*	2 537-	2 -998				

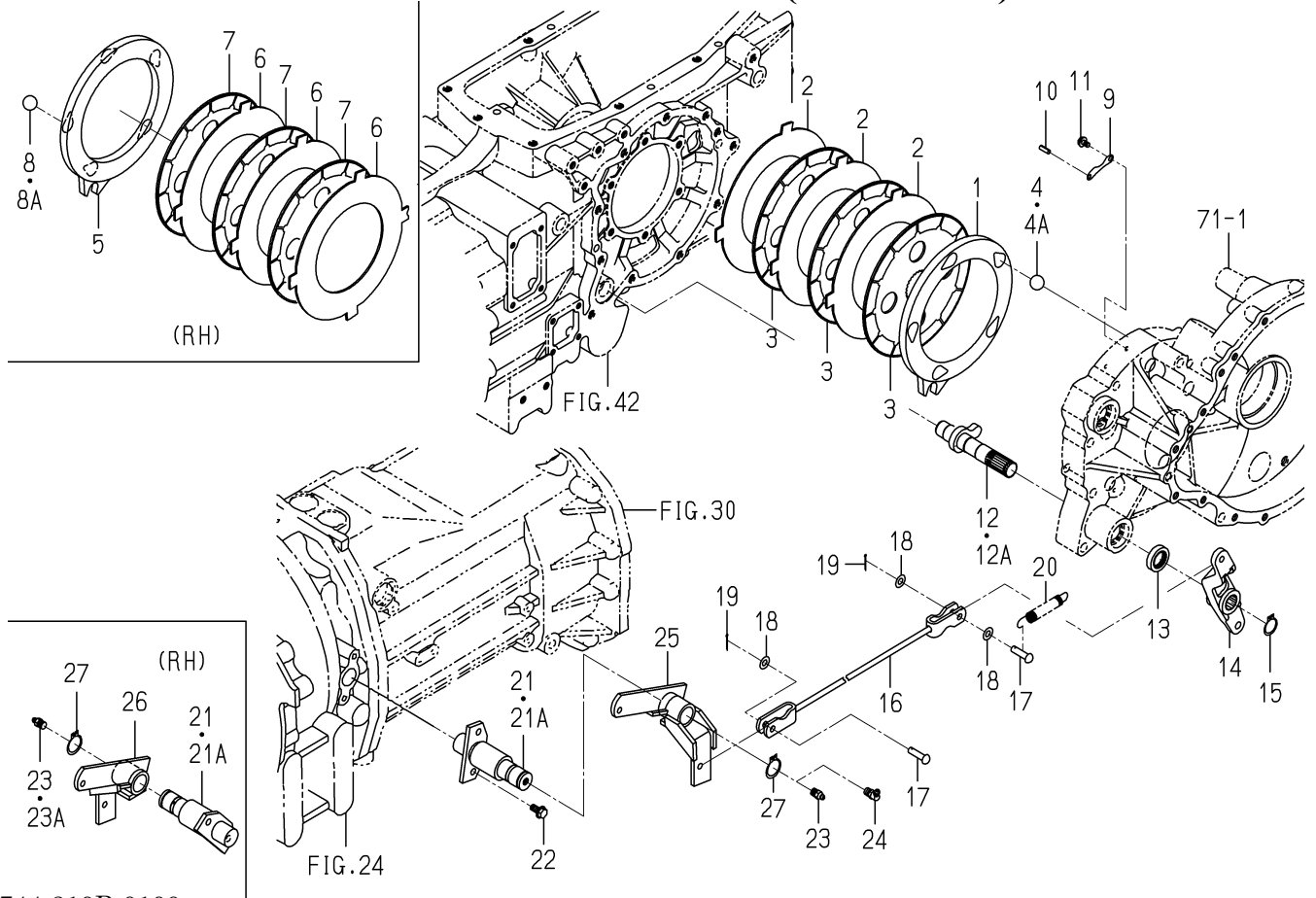
**FIG. 71 HOUSING(AXLE/REAR)SYSTEM
(E4 TYPE)(NO.1231-)**



1748-306A-0100

KEY	PART CODE	DESCRIPTION	S P C	TYPE OF MODEL		I T C	C O L	G R P	REMARKS
				TG5470 E4	TG5470 E6				
1	1744-306-002-40	METAL/SPACER/LH	*	1 1231-					
2	1734-306-002-70	METAL/SPACER/RH	*	1 1231-		1			
3	V231-361-206-00	FLANGE BOLT	*	18 1231-					
4	V231-361-207-00	FLANGE BOLT	*	4 1231-					
5	V231-361-210-00	FLANGE BOLT	*	2 1231-					
6	V523-101-002-40	PIN	*	4 1231-					
7	1690-241-003-00	GAUGE/LEBEL	*	1 1231-					
8	1734-306-003-00	GEAR/HELICAL/10	*	2 -1336					
8A	1734-306-003-10	GEAR/HELICAL/10	*	2 1337-		1			
9	V600-410-630-70	BEARING/BALL	*	2 1231-					
10	V600-110-620-90	BEARING,RB/6209	*	2 1231-					
11	V706-140-045-00	RING/SNAP	*	2 1231-					
12	V707-140-085-00	RING/SNAP	*	2 1231-					
13	1734-306-004-10	HOUSING/AXLE	*	2 -1320					
13A	1734-306-004-20	HOUSING/AXLE	*	2 1321-		1			
14	1734-306-010-00	PLATE	*	2 1231-					
15	V231-361-003-00	FLANGE BOLT	*	16 1231-					
16	V251-341-003-00	BOLT/STUD	*	10 1231-					
17	V304-460-010-00	NUT/M10	*	10 1231-					
18	V401-160-010-00	WASHER,SP/M10	*	10 1231-					
19	V231-361-003-50	FLANGE BOLT	*	4 1231-					
20	1734-306-008-00	BOLT/SM/M12X175	*	2 1231-					
21	V401-160-012-00	WASHER,SP/M12	*	2 1231-					
22	V707-140-100-00	RING/SNAP	*	2 1231-					
23	V782-160-000-4B	PLUG/SCREW/SEAL	*	2 1231-					
24	1734-306-006-00	GEAR/HELICAL/63	*	2 -1336					
24A	1734-306-006-10	GEAR/HELICAL/63	*	2 1337-		1			
25	1736-306-001-00	SHAFT/WHEEL	*	2 -1322					
25A	1736-306-001-10	SHAFT/WHEEL	*	2 1323-		1			
26	1734-306-007-00	COLLAR/56X65X156	*	2 1231-					

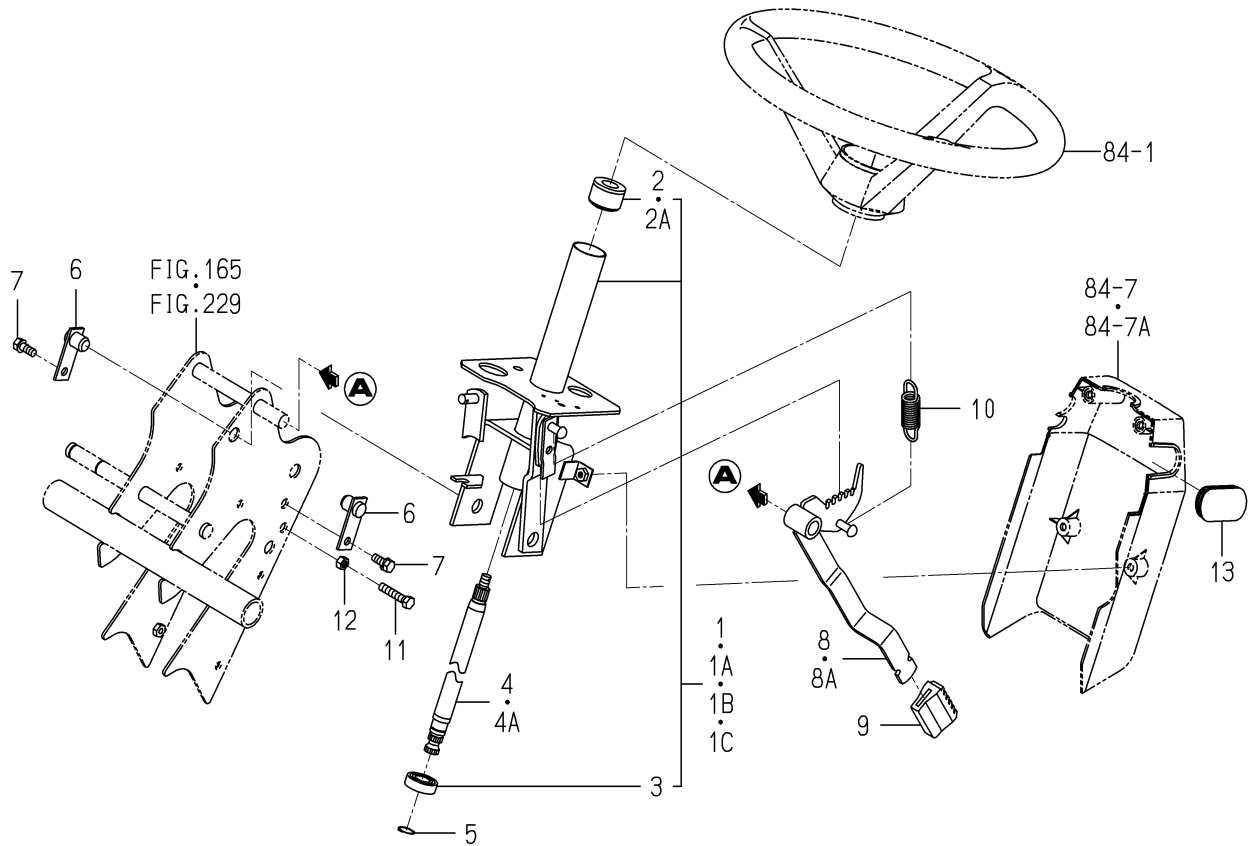
FIG. 77 BRAKE SYSTEM(HE4 TYPE)



1744-310B-0100

KEY	PART CODE	DESCRIPTION	S P C	TYPE OF MODEL		I T C	C O L	G R P	REMARKS
				TG5470 E4	TG5470 E6				
1	1729-310-201-10	PLATE/PRESSURE/LH	*	1					
2	1650-310-202-00	PLATE/SEPARATE	*	3					
3	1650-310-203-00	PLATE/FRICTION	*	3					
4	1650-310-204-00	STEELBALL	*	5 -1205					
4A	1747-310-201-00	STEELBALL	*	5 1206-					
5	1729-310-211-10	PLATE/PRESSURE/RH	*	1					
6	1650-310-202-00	PLATE/SEPARATE	*	3					
7	1650-310-203-00	PLATE/FRICTION	*	3					
8	1650-310-204-00	STEELBALL	*	5 -1205					
8A	1747-310-201-00	STEELBALL	*	5 1206-					
9	1614-306-007-00	PLATE	*	4					
10	V580-140-501-60	PIN,SP.(W)/5.0X16	*	4					
11	V230-360-601-00	FLANGE BOLT	*	4					
12	1729-310-220-10	CAM/BRAKE COMP	*	2 -1090					
12A	1729-310-220-20	CAM/BRAKE COMP	*	2 1091-		3			
13	V744-122-350-80	SEAL,OIL/TC22358	*	2					
14	1742-310-001-00	ARM/BRAKE	*	2					
15	V704-140-022-00	RING,SNAP/22 C	*	2					
16	1742-310-200-00	ROD/FORK COMP	*	2					
17	1404-312-006-00	PIN,YOKE A	*	4					
18	V411-260-008-00	WASHER,PL/M 8	*	6					
19	V500-162-002-00	PIN,SPLIT/2 X20	*	4					
20	1650-135-002-00	SPRING/HE095	*	2					
21	1734-310-270-00	PIN/BRAKE COMP	*	2 -1361					
21A	1734-310-270-10	PIN/BRAKE COMP	*	2 1362-		1			
22	V231-360-801-60	FLANGE BOLT	*	4					
23	V763-150-000-00	NIPPLE,GREASE/PT1/8	*	2 -266					
23A	V763-150-000-00	NIPPLE,GREASE/PT1/8	*	1 267-					
24	V761-150-000-00	NIPPLE/GREASE	*	1 267-					
25	1734-310-200-20	ARM/BRAKE/LH COMP	*	1					

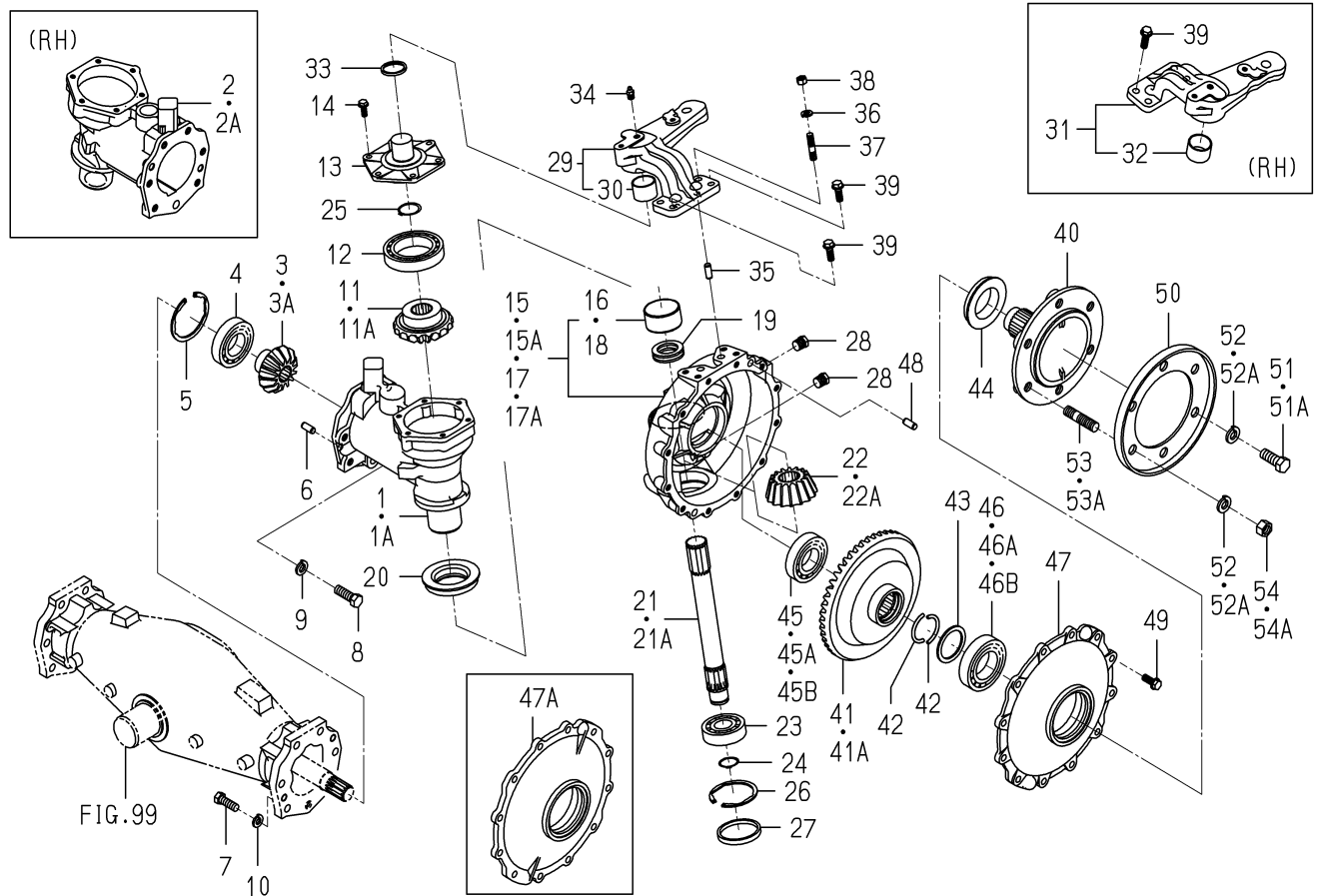
FIG. 86 COLUMN(STEERING)SYSTEM(H TYPE)



1743-404-0100

KEY	PART CODE	DESCRIPTION	S P C	TYPE OF MODEL		I T C	C O L	G R P	REMARKS
				TG5470 E4	TG5470 E6				
1	1743-404-710-00	COLUMN/HST ASSY	*	1 -78	1 -78				
1A	1743-404-710-10	COLUMN/HST ASSY	*	1 -1179	1 -1179	1			
1B	1743-404-710-20	COLUMN/HST ASSY	*	1 -1233	1 -1233	1			
1C	1743-404-710-30	COLUMN/HST ASSY	*	1 1234-	1 1234-	1			
2	1429-406-205-00	BUSH	*	1 -1262	1 -1262				
2A	1429-406-205-10	INSULATOR/STEERING	*	1 1263-	1 1263-	1			
3	V600-430-600-30	BEARING/BALL	*	1	1				
4	1620-401-001-20	SHAFT/STEERING	*	1 -264	1 -264				
4A	1620-401-001-30	SHAFT/STEERING	*	1 265-	1 265-	1			
5	V704-140-017-00	RING,SNAP/17 C	*	1	1				
6	1560-404-210-10	PIN/16X23 COMP	*	2	2				
7	V211-260-802-00	BOLT/S	*	2	2				
8	1650-404-220-00	PEDAL COMP	*	1 -1104	1 -1104				
8A	1650-404-220-10	PEDAL COMP	*	1 1105-	1 1105-	1			
9	1518-406-006-00	COVER,PEDAL	*	1	1				
10	1560-404-002-30	SPRING	*	1	1				
11	V201-260-804-00	BOLT/M 8X40	*	1	1				
12	V304-260-008-00	NUT	*	1	1				
13	1743-401-001-00	COVER/HST	*	1	1				

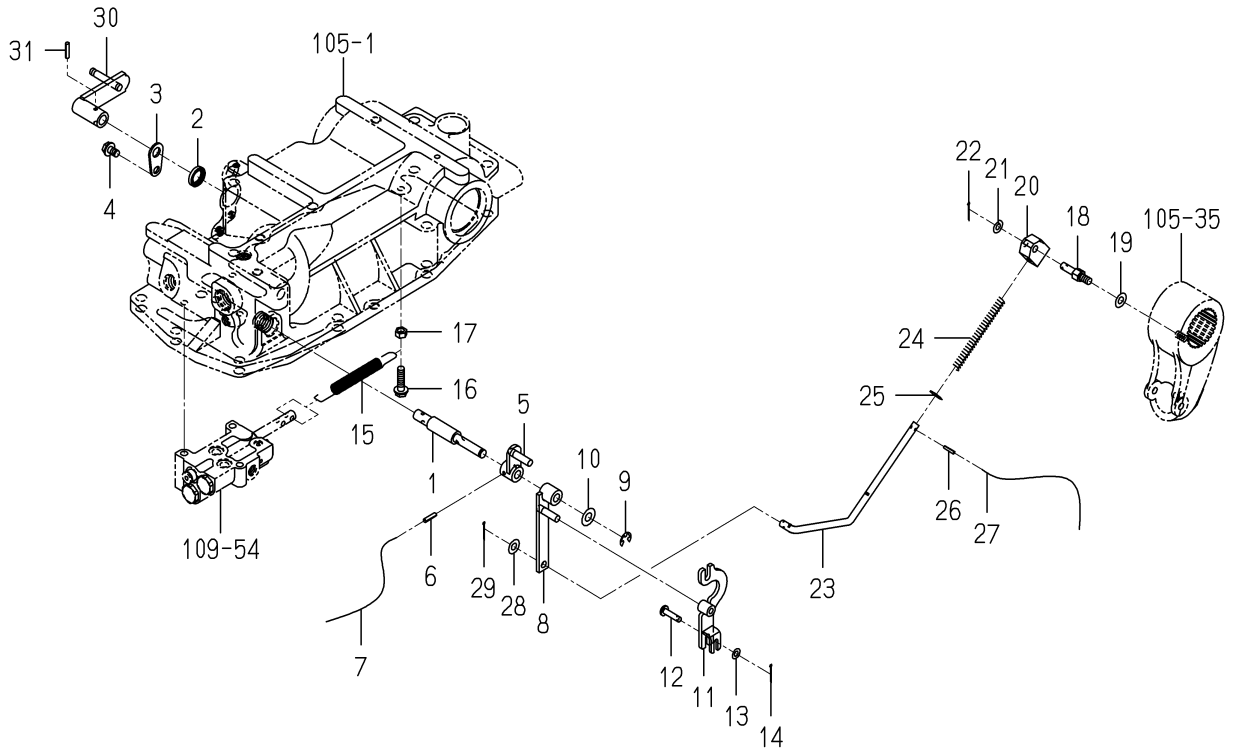
FIG.101 CASE(GEAR/FRONT)SYSTEM(E4 TYPE)



1748-434-0100

KEY	PART CODE	DESCRIPTION	S P C	TYPE OF MODEL		I T C	C O L	G R P	REMARKS
				TG5470 E4	TG5470 E6				
1	1696-434-001-00	CASE/FINAL/LH	*	1 -1322					
1A	1696-434-001-10	CASE/FINAL/LH	*	1 1323-		1			
2	1696-434-002-10	CASE/FINAL/RH	*	1 -1320					
2A	1696-434-002-20	CASE/FINAL/RH	*	1 1321-		1			
3	1656-434-001-00	GEAR/BEVEL/13	*	2 -1361					
3A	1656-434-001-10	GEAR/BEVEL/13	*	2 1362-		1			
4	1488-413-024-00	BEARING,RB/6208	*	2					
5	V707-140-080-00	RING/SNAP	*	2					
6	V523-101-002-40	PIN	*	4					
7	V201-461-203-50	BOLT/M12X35	*	12					
8	1696-434-003-00	BOLT	*	2					
9	V401-160-014-00	WASHER,SP/M14	*	2					
10	V401-160-012-00	WASHER,SP/M12	*	12					
11	1656-434-002-00	GEAR/BEVEL/17	*	2 -1390					
11A	1656-434-002-10	GEAR/BEVEL/17	*	2 1391-		1			
12	V600-110-601-30	BEARING,RB/6013	*	2					
13	1425-433-008-10	COVER,BEARING	*	2					
14	V231-360-802-00	FLANGEBOLT	*	12					
15	1696-434-220-20	CASE/FINAL/LH ASSY	*	1 -477					
15A	1696-434-220-30	CASE/FINAL/LH ASSY	*	1 478-		1			
16	1564-434-202-10	BUSH/55X60X30	*	1					
17	1696-434-230-20	CASE/FINAL/RH ASSY	*	1 -477					
17A	1696-434-230-30	CASE/FINAL/RH ASSY	*	1 478-		1			
18	1564-434-202-10	BUSH/55X60X30	*	1					
19	V610-115-110-70	BEARING,TB/51107	*	2					
20	1564-434-004-10	SEAL OIL	*	2					
21	1564-434-005-20	SHAFT	*	2 -1361					
21A	1564-434-005-30	SHAFT	*	2 1362-		1			
22	1564-434-006-10	GEAR,BEVEL/16T	*	2 -1361					
22A	1564-434-006-20	GEAR/BEVEL/16	*	2 1362-		1			

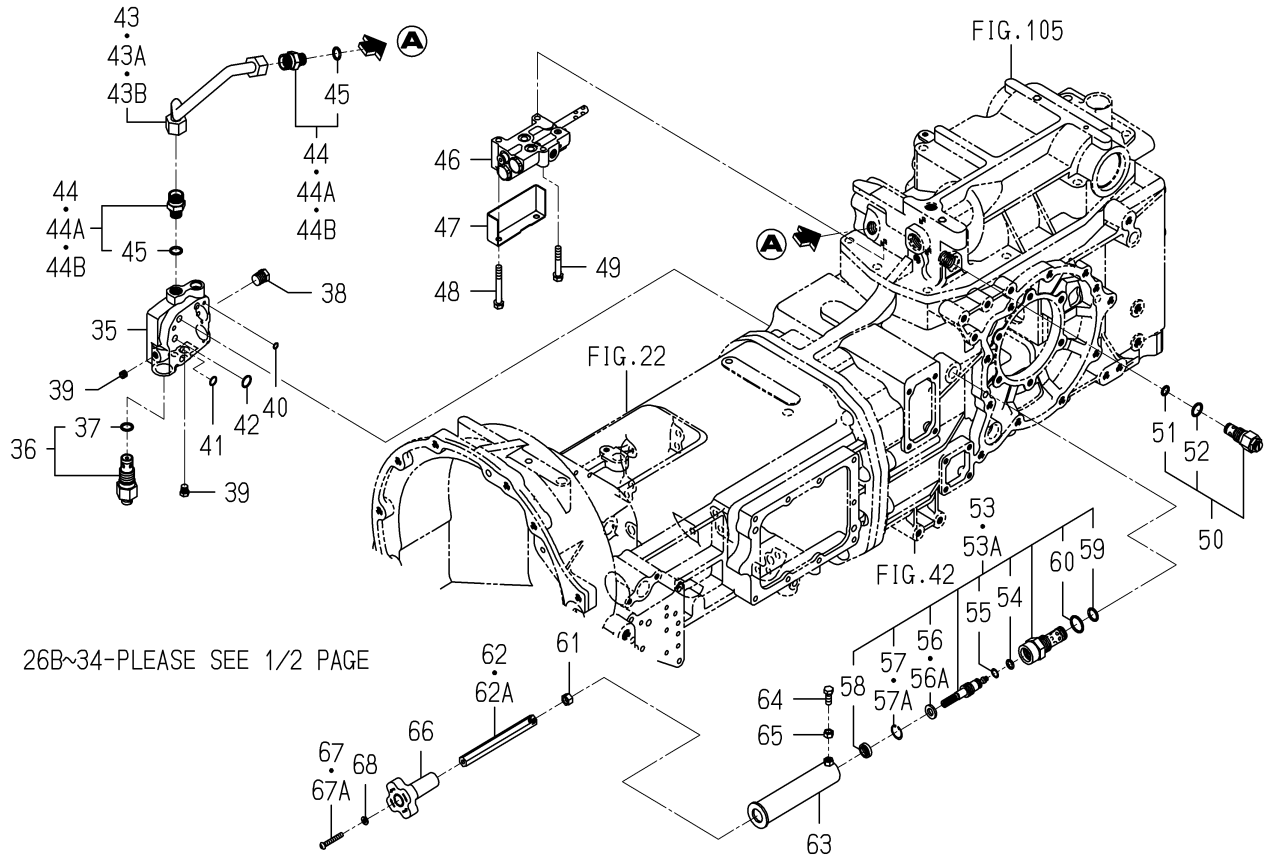
FIG.107 LEVER(POSITION)SYSTEM(1/2)



1744-504-0100

KEY	PART CODE	DESCRIPTION	S P C	TYPE OF MODEL		I T C	C O L	G R P	REMARKS
				TG5470 E4	TG5470 E6				
1	1742-504-001-00	PIN/10X113	*	1	1				
2	V742-116-240-40	SEAL,OIL/VC16244	*	1	1				
3	1421-507-007-00	STOPPER	*	1	1				
4	V231-360-801-20	FLANGE BOLT	*	1	1				
5	1742-504-200-00	ARM COMP	*	1	1				
6	V580-140-401-80	PIN/SPRING	*	1	1				
7		WIRE	*	1	1				
8	1742-504-210-00	ARM COMP	*	1	1				
9	V710-140-008-00	RING,SNAP/8 E	*	1	1				
10	V411-260-010-00	WASHER/M10	*	1	1				
11	1560-509-340-00	ARM	*	1	1				
12	1742-504-003-00	PIN/06X25	*	1	1				
13	V411-260-006-00	WASHER / M6	*	1	1				
14	V500-162-002-00	PIN,SPLIT/2 X20	*	1	1				
15	1560-507-002-40	SPRING	*	1	1				
16	V231-360-803-00	FLANGE BOLT	*	1	1				
17	V304-260-008-00	NUT	*	1	1				
18	1560-505-004-00	PIN/12X45	*	1	1				
19	V401-160-008-00	WASHER,SP/M 8	*	1	1				
20	1560-509-004-50	RING	*	1	1				
21	V411-260-008-00	WASHER,PL/M 8	*	1	1				
22	V500-162-002-00	PIN,SPLIT/2 X20	*	1	1				
23	1742-504-007-00	ROD	*	1	1				
24	1560-509-005-30	SPRING	*	1	1				
25	V411-260-008-00	WASHER,PL/M 8	*	1	1				
26	V580-140-301-60	PIN,SPRING/3 X16 W	*	1	1				
27		WIRE	*	1	1				
28	V411-260-008-00	WASHER,PL/M 8	*	2	2				
29	V500-162-002-00	PIN,SPLIT/2 X20	*	1	1				
30	1742-504-230-00	ARM COMP	*	1	1				

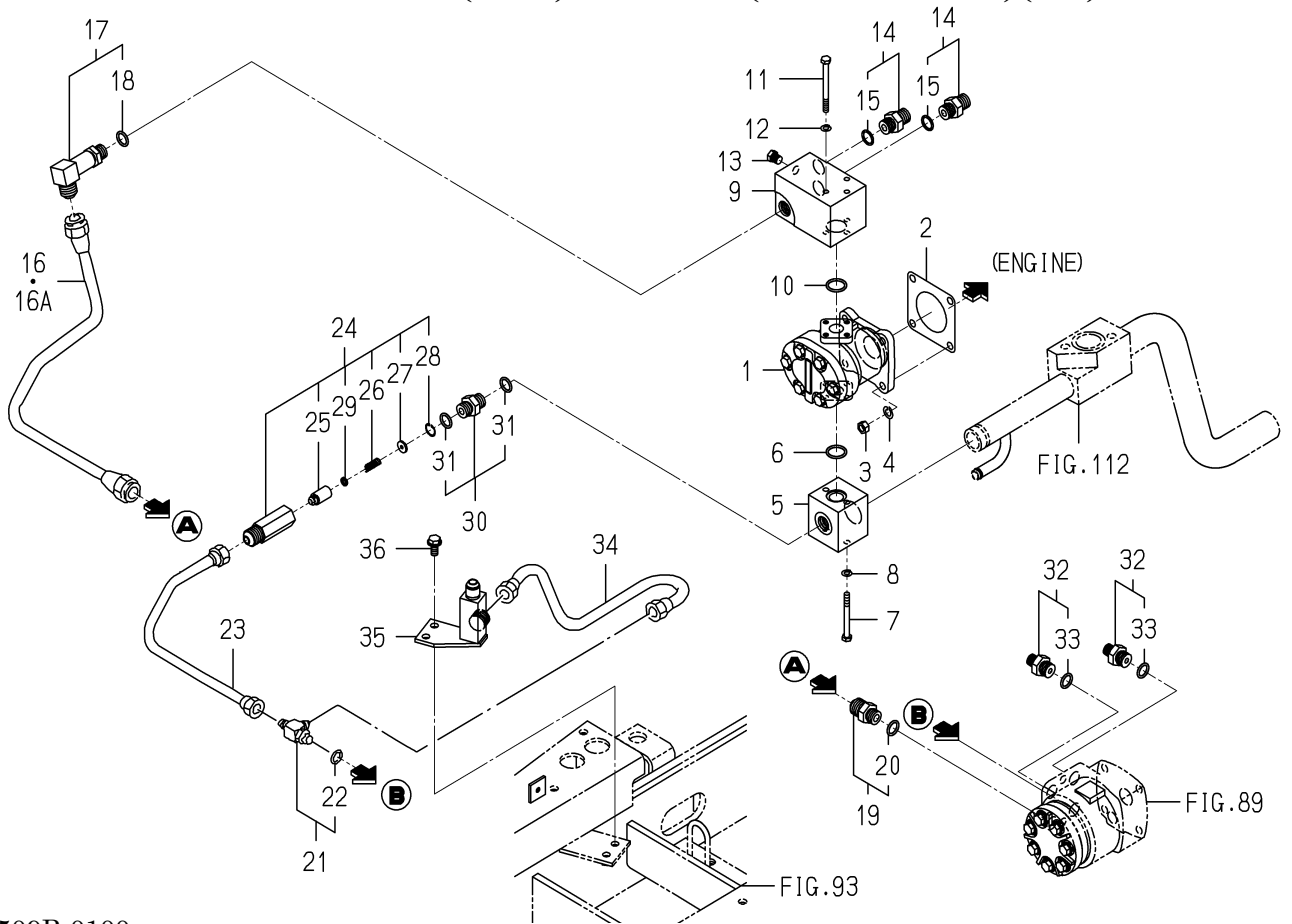
FIG.110 PIPING(MAIN)SYSTEM(Q,P TYPE)(2/2)



1744-508A-0100

KEY	PART CODE	DESCRIPTION	S P C	TYPE OF MODEL		I T C	C O L	G R P	REMARKS
				TG5470 E4	TG5470 E6				
48	V 211-260-806-50	BOLT,SEMS/M8X65	*	2	2				
49	V 211-260-805-00	BOLT/M8X50	*	1	1				
50	K 250-016-000-00	VALVE,RELIEF ASSY	*	1	1				
51	V 720-112-401-20	O-RING/P12	*	1	1				
52	V 720-112-401-80	O-RING/P18	*	1	1				
53	K 231-008-000-10	VALVE/FROCON ASSY	*	1 -1346	1 -1346				
53A	K 231-008-000-20	VALVE/SLOW RETURN/00	*	1 1347-	1 1347-	1			
54	V 720-112-401-00	O-RING/P10	*	1	1				
55	V 730-101-401-00	RING,BACK UP	*	1	1				
56	K 231-004-006-00	COLLAR/11X21X3	*	1 -1346	1 -1346				
56A	K 231-007-003-00	COLLAR/11X21X03	*	1 1347-	1 1347-				
57	V 705-140-021-00	RING,SNAP/21 C	*	1 -1346	1 -1346				
57A	K 231-007-004-00	RING/SNAP	*	1 1347-	1 1347-				
58	K 231-004-007-00	SEAL,DUST	*	1	1				
59	V 720-112-402-20	O-RING/P22	*	1	1				
60	V 720-112-401-60	O-RING/P16	*	1	1				
61	V 304-260-010-00	NUT	*	1	1				
62	1568-507-001-00	SHAFT/SLOWRETURN	*	1 -330	1 -330				
62A	1568-507-001-10	SHAFT/SLOWRETURN	*	1 331-	1 331-	1			
63	1742-508-320-00	COVER/SHAFT COMP	*	1	1				
64	V 201-260-802-00	BOLT/M 8X20	*	1	1				
65	V 304-260-008-00	NUT	*	1	1				
66	1560-507-007-00	KNOB	*	1	1				
67	V 111-166-003-50	SCREW/M6X35	*	1 -330	1 -330				
67A	V 111-166-004-00	SCREW/M6X40	*	1 331-	1 331-				
68	V 401-160-006-00	WASHER,SP/M 6	*	1	1				

FIG.118 PIPING(SUB)SYSTEM(EXCEPT 3M)(1/4)

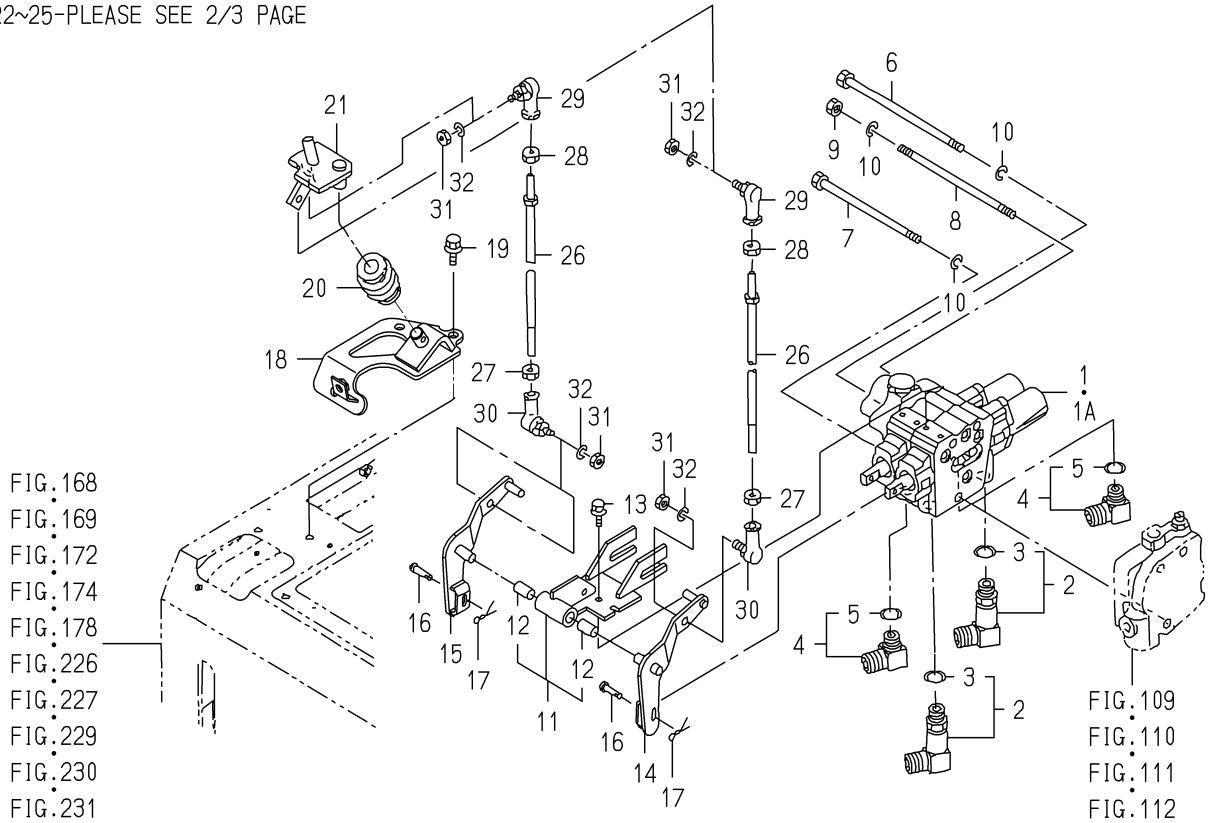


1748-509B-0100

KEY	PART CODE	DESCRIPTION	S P C	TYPE OF MODEL		I T C	C O L	G R P	REMARKS
				TG5470 E4	TG5470 E6				
1	K135-018-000-00	PUMP GEAR ASSY	*	1					FIG 287
2	1404-503-006-00	PACKING,OIL PUMP	*	1					
3	V304-260-008-00	NUT	*	3					
4	V401-160-008-00	WASHER,SP/M 8	*	3					
5	1748-509-072-10	FLANGE/SUCTION/HST	*	1					
6	V720-112-402-00	O-RING/P20	*	1					
7	V200-360-607-00	BOLT	*	2					
8	V401-160-006-00	WASHER,SP/M 6	*	2					
9	1747-509-073-00	MANIFOLD/PUMP	*	1					
10	V720-112-402-00	O-RING/P20	*	1					
11	V200-360-607-00	BOLT	*	3					
12	V401-160-006-00	WASHER,SP/M 6	*	3					
13	V782-160-000-2T	PLUG/SCREW/SEAL	*	1					
14	1650-508-320-00	ADAPTER/PF3/8 ASSY	*	2					
15	V720-112-401-40	O-RING/P14	*	2					
16	1748-509-730-00	PIPE/STEERING/H COMP	*	1					
16A	1786-509-230-00	PIPE/STEERING COMP	*	1					
17	1650-511-250-00	ADAPTER/L/PF3/8 ASSY	*	1					
18	V720-112-401-40	O-RING/P14	*	1					
19	1650-509-300-00	ADAPTER/PF3/8 ASSY	*	1					
20	V720-112-401-40	O-RING/P14	*	1					
21	1646-407-550-00	ADAPTER/G3/8 ASSY	*	1					
22	V720-112-401-40	O-RING/P14	*	1					
23	1744-509-220-00	PIPE/RETURN/H COMP	*	1					
24	K250-049-000-00	VALVE/RELIEF ASSY	*	1					
25	K250-039-002-00	POPPET	*	1					
26	K250-039-003-00	SPRING/HC024	*	1					
27	K250-039-004-10	COLLAR/04X14X02	*	1					
28	V705-140-015-00	RING,SNAP/15 C	*	1					
29	K250-049-001-00	COLLAR/06X10X02	*	1					

FIG.121 JOY STICK VALVE SYSTEM(1/3) (E6 TYPE)(NO.709-)

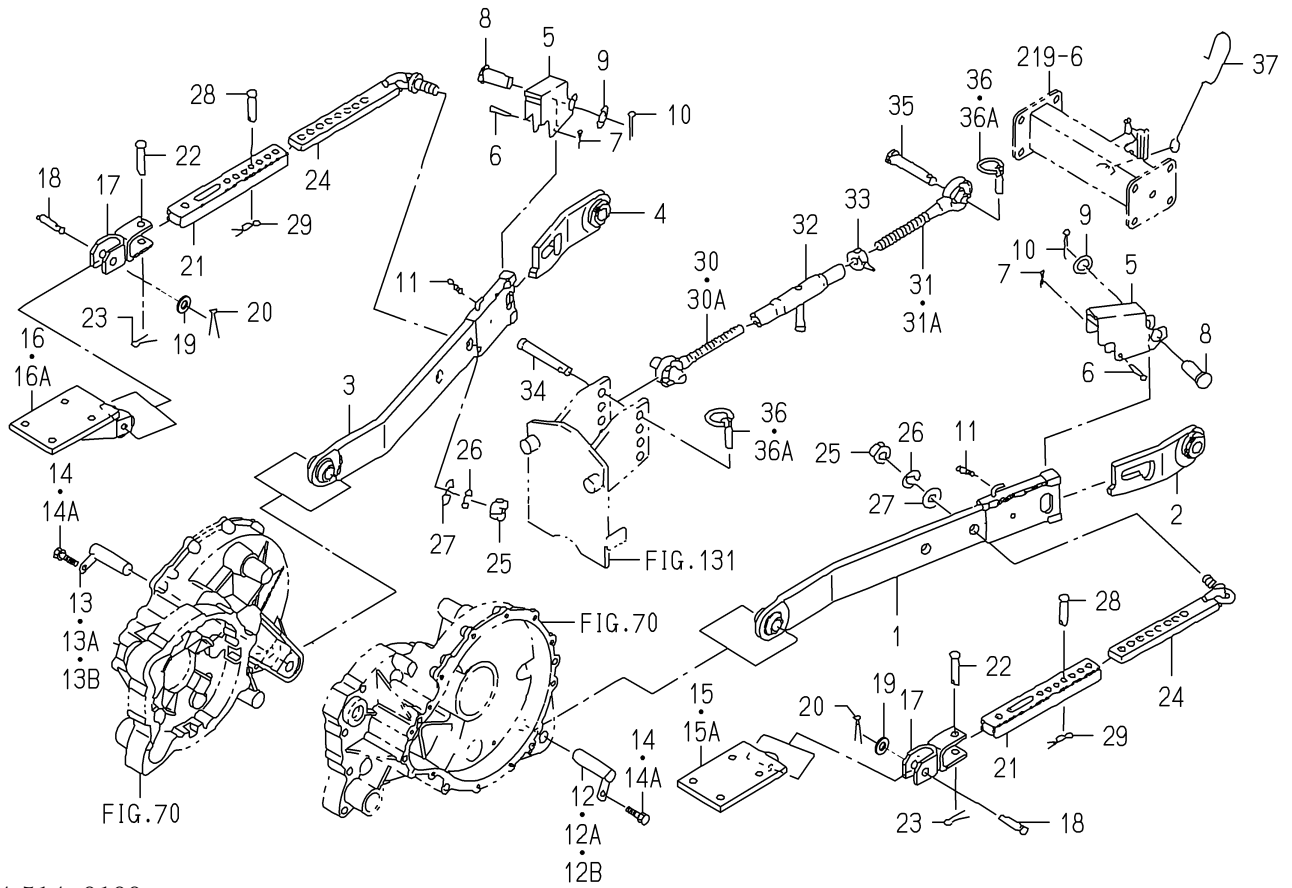
22~25-PLEASE SEE 2/3 PAGE



1744-511D-0100

KEY	PART CODE	DESCRIPTION	S P C	TYPE OF MODEL		I T C	C O L	G R P	REMARKS
				TG5470 E4	TG5470 E6				
1	K211-074-000-10	VALVE/CONTROL ASSY	*		1 -1104				FIG 292
1A	K211-074-000-20	VALVE/CONTROL/074	*		1 1105-	1			FIG 292
2	1650-511-250-00	ADAPTER/L/PF3/8 ASSY	*		2 709-				
3	V720-112-401-40	O-RING/P14	*		2 709-				
4	1650-509-310-00	ADAPTER/L/PF3/8 ASSY	*		2 709-				
5	V720-112-401-40	O-RING/P14	*		2 709-				
6	V201-261-017-00	BOLT	*		709-				
7	V201-261-015-00	BOLT	*		1 709-				
8	1742-511-002-00	BOLT/STUD	*		1 709-				
9	V304-260-010-00	NUT	*		1 709-				
10	V401-160-010-00	WASHER,SP/M10	*		3 709-				
11	1742-511-710-00	PLATE/JOY ASSY	*		1 709-				
12	1560-509-211-00	BUSH/10X12X20	*		2 709-				
13	V230-360-601-20	FLANGE BOLT	*		3 709-				
14	1742-511-740-00	ARM/BOOMCOMP	*		709-				
15	1742-511-750-00	ARM/BUCKETCOMP	*		1 709-				
16	3805-544-016-00	PIN/06X23	*		2 709-				
17	V560-160-008-00	PIN/SNAP	*		1 709-				
18	1742-511-330-20	BRACKET COMP	*		1 709-				
19	V231-360-802-00	FLANGE BOLT	*		3 709-				
20	P112-401-220-00	JOINT ASSY	*		1 709-				
21	1742-511-340-00	BASE/LEVER COMP	*		1 709-				
22	1742-511-350-10	LEVER/JOYSTICK COMP	*		709-				
23	1404-502-013-00	BOLT/M8X25	*		-895				
23A	1600-502-003-00	BOLT,SM/M08X25	*		1 896-				
24	V304-260-008-00	NUT	*		1 709-				
25	1672-207-003-00	GRIP	*		1 709-				
26	1744-511-210-00	ROD/M8X309 COMP	*		2 709-				
27	1560-132-007-30	NUT/M8	*		2 709-				
28	V304-260-008-00	NUT	*		2 709-				

FIG.125 LINK(3P)SYSTEM(E6 TYPE EXCEPT CY)



1744-514-0100

KEY	PART CODE	DESCRIPTION	S P C	TYPE OF MODEL		I T C	C O L	G R P	REMARKS
				TG5470 E4	TG5470 E6				
24	1727-525-320-00	STABILIZER/REAR COMP	*		2				
25	V304-460-016-00	NUT/M16	*		2				
26	V401-160-016-00	WASHER,SP/M16	*		2				
27	V411-260-016-00	WASHER / M16	*		2				
28	7963-611-003-00	PIN/12X48	*		2				
29	1427-317-003-00	CLIP,PIN	*		2				
30	1560-525-290-10	LINK/TOP/LH COMP	*		1				
30A	1560-525-290-20	LINK/TOP/LH COMP	*		1336 1	1			
31	1568-525-300-10	LINK/TOP/RH COMP	*		1				
31A	1568-525-300-20	LINK/TOP/RH COMP	*		1336 1	1			
32	1550-514-290-00	TURNBUCLE COMP	*		1				
33	1402-511-600-00	NUT, TOP LINK LOCK	*		1				
34	1640-525-001-00	PIN 19X132	*		1				
35	1620-514-005-00	PIN/19X94	*		1				
36	1673-525-002-20	LINKPIN	*		2 -763				
36A	1673-525-002-30	LINKPIN	*		2 764-	1			
37	1742-514-001-10	HOOK/TOPLINK	*		1				

CLICK HERE TO **DOWNLOAD** THE COMPLETE MANUAL

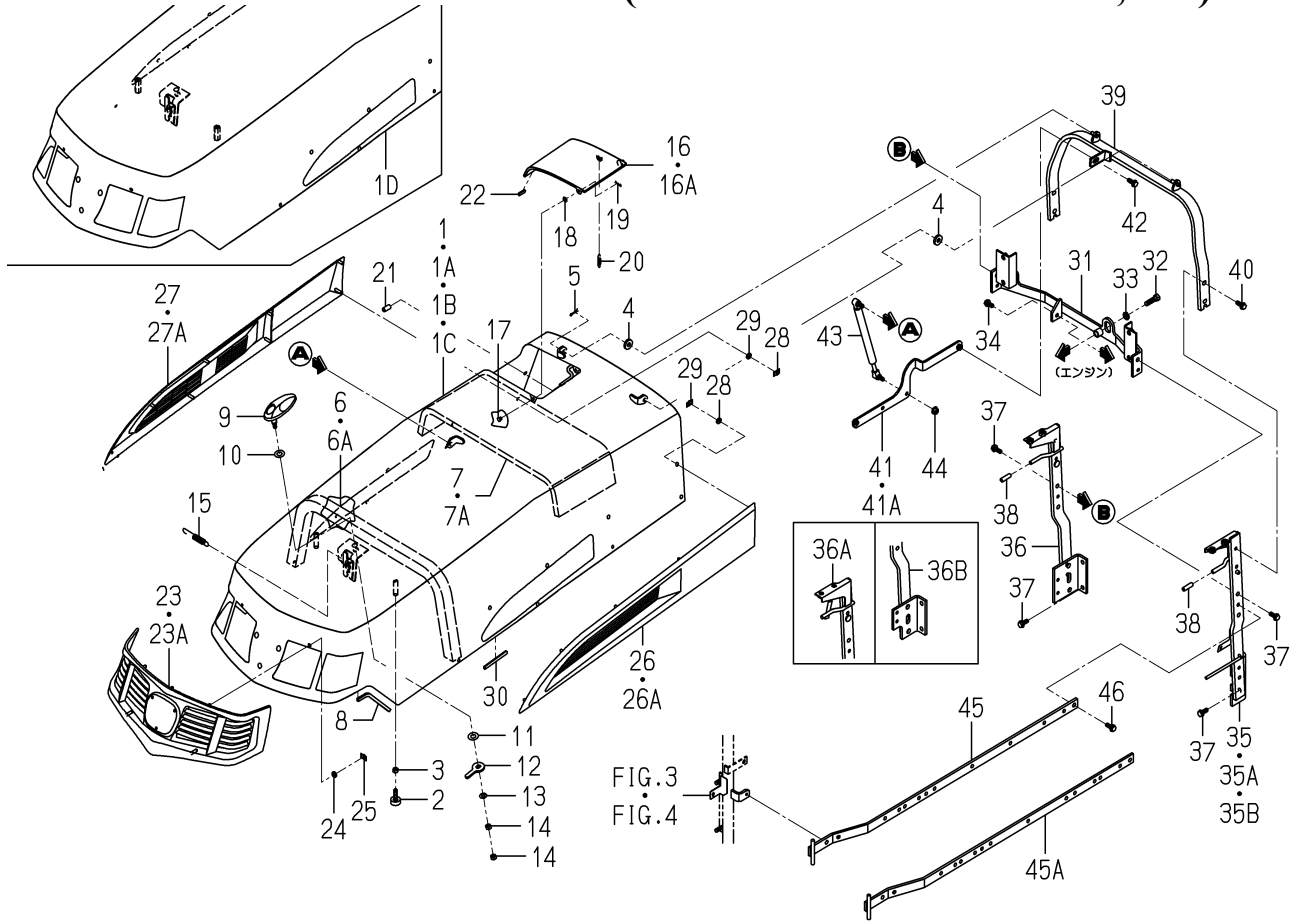
- Thank you very much for reading the preview of the manual.
- You can download the complete manual from: www.heydownloads.com by clicking the link below



- Please note: If there is no response to CLICKING the link, please download this PDF first and then click on it.

CLICK HERE TO **DOWNLOAD** THE COMPLETE MANUAL

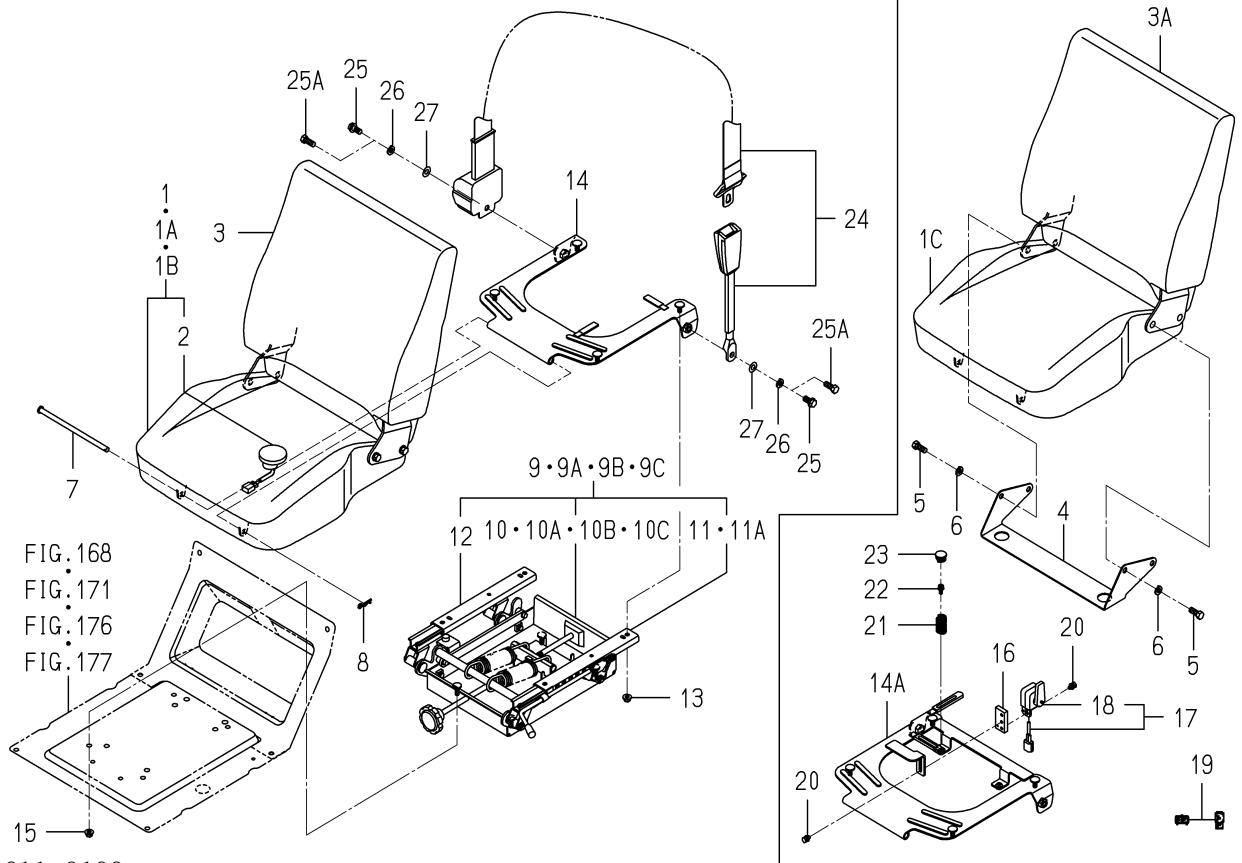
FIG.139 HOOD SYSTEM(RE4 TYPE EXCEPT E4D,CY)



1748-601B-0100

KEY	PART CODE	DESCRIPTION	S P C	TYPE OF MODEL		I T C	C O L	G R P	REMARKS
				TG5470 E4	TG5470 E6				
1	1734-601-200-30	HOOD COMP	*	1 -82			4L		
1A	1734-601-200-40	HOOD COMP	*	1 -453		1	4L		
1B	1734-601-200-50	HOOD COMP	*	1 -1135		1	4L		
1C	1734-601-200-60	HOOD COMP	*	1 -1205		1	4L		
1D	1734-601-200-70	HOOD COMP	*	1 1206-		1	4L		
2	1421-602-005-10	CUSHION,B/ RUBBER	*	2					
3	V304-460-008-00	NUT/M8	*	2					
4	1423-616-004-00	CUSHION/RUBBER/10X25	*	2					
5	V560-160-008-00	PIN/SNAP	*	1					
6	1734-601-006-00	INSULATOR	*	1 -308					
6A	1734-601-006-10	INSULATOR	*	1 309-		1			
7	1734-601-052-10	INSULATOR/HOOD	*	1 -138					
7A	1734-601-052-20	INSULATOR/HOOD	*	1 139-		1			
8	1636-630-008-00	TRIM/150	*	2					
9	1650-601-001-00	HANDLE	*	1					
10	1650-601-007-00	WASHER/12X25X02	*	1					
11	3610-440-018-00	WASHER	*	1					
12	1716-601-002-00	ARM/PLATE	*	1					
13	V411-260-008-00	WASHER,PL/M 8	*	1					
14	V304-260-008-00	NUT	*	2					
15	1588-117-001-00	SPRING/HE089	*	1					
16	1729-601-220-10	COVER COMP	*	1 -134			4L		
16A	1729-601-220-20	COVER COMP	*	1 135-		1	4L		
17	1716-601-021-00	PIN/06X07	*	1					
18	V411-260-006-00	WASHER / M6	*	1					
19	V560-160-006-00	PIN/SNAP	*	1					
20	1716-601-018-00	SPRING/HE036	*	1					
21	1716-601-019-00	TUBE/06X10X20	*	1					
22	1672-601-002-00	TRIM/20	*	2					
23	1729-601-001-10	MOLDING/FRONT	*	1 -816					

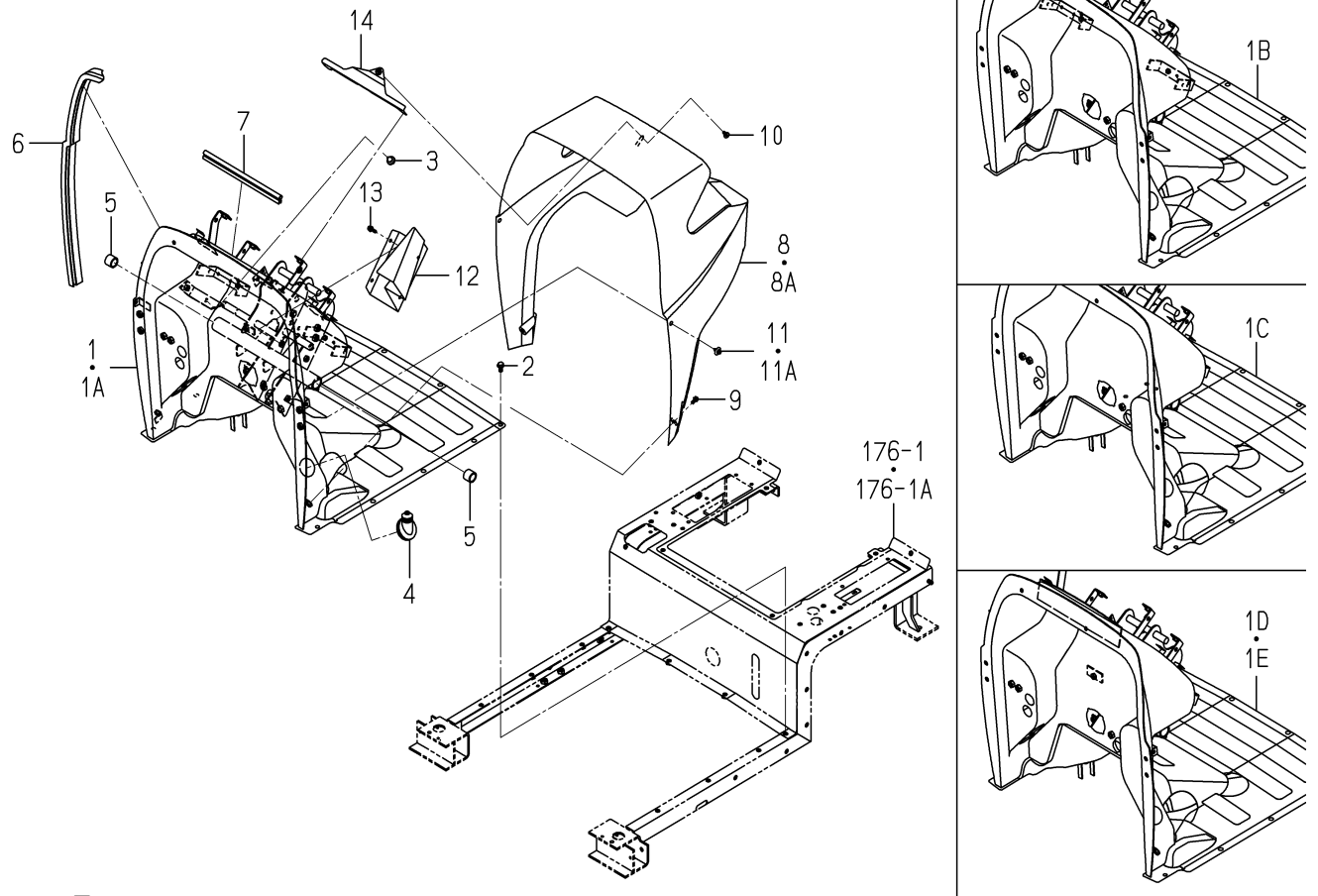
**FIG.154 SEAT SYSTEM (E6 TYPE)
(Q TYPE-NO.1-708/EXCEPT Q TYPE-NO.1-)**



1742-611-0100

KEY	PART CODE	DESCRIPTION	S P C	TYPE OF MODEL		I T C	C O L	G R P	REMARKS
				TG5470 E4	TG5470 E6				
19	1725-690-920-00	HARNESS/SEAT/REPAIR	*		1				
20	V210-360-601-20	BOLT,SEMS	*		3				
21	1773-611-001-10	SPRING/HC037	*		2				
22	V120-366-001-60	SCREW	*		2				
23	1773-611-003-10	GROMMET	*		2				
24	1742-611-240-00	BELT/SEAT SET	*		1				
25	V231-361-002-00	FLANGEBOLT	*		2				
25A	V201-461-002-50	BOLT/M10X25	*		-88				
26	V401-160-010-00	WASHER,SP/M10	*		2				
27	V411-260-010-00	WASHER/M10	*		2				
					89-				
					89-				
					89-				
					89-				

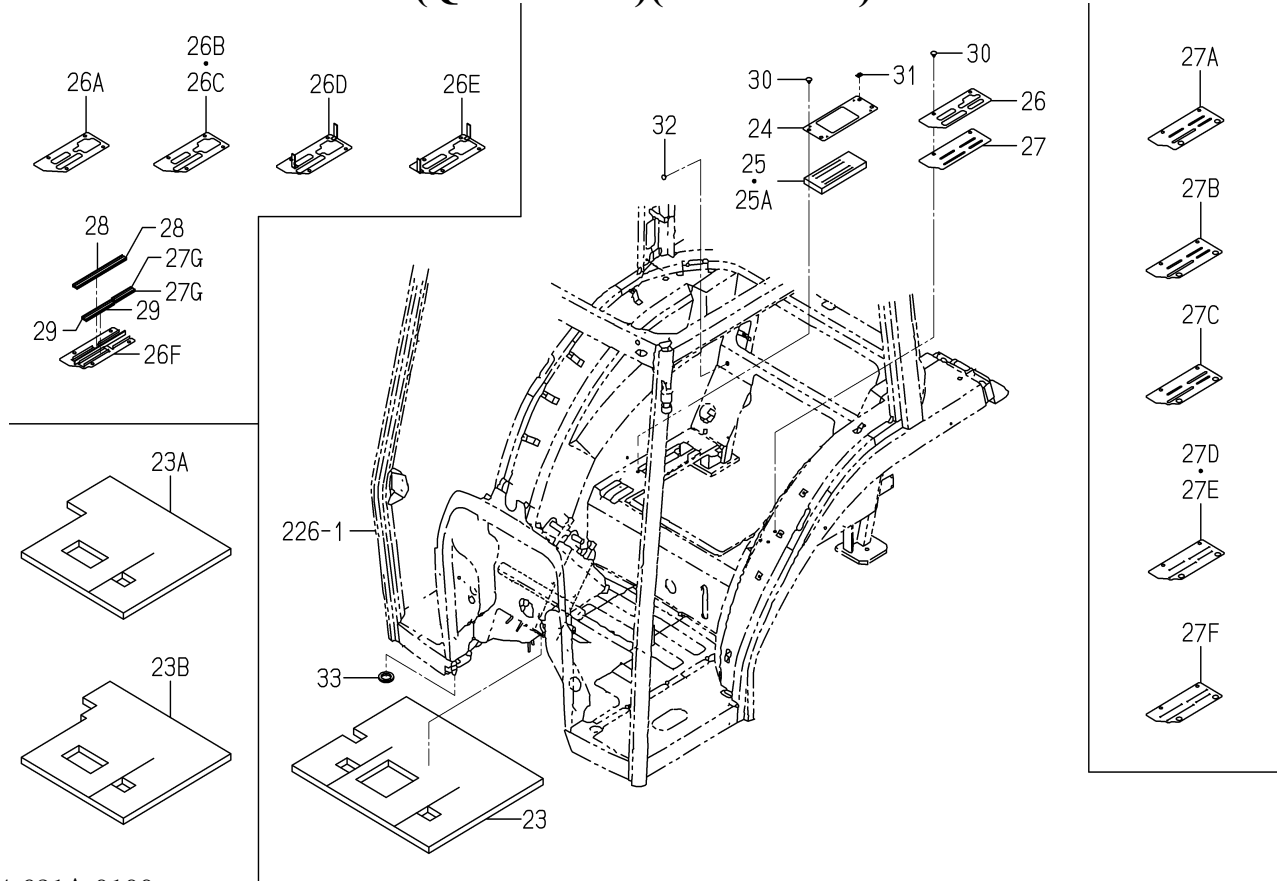
FIG.163 FLOOR(FRONT)SYSTEM(HE6 TYPE)



1744-630E-0100

KEY	PART CODE	DESCRIPTION	S P C	TYPE OF MODEL		I T C	C O L	G R P	REMARKS
				TG5470 E4	TG5470 E6				
1	1744-630-700-10	PANEL/DASH/HST COMP	*		1		5I		
1A	1744-630-700-20	PANEL/DASH/HST COMP	*		-124 1		5I		
1B	1744-630-700-30	PANEL/DASH/HST COMP	*		1		5I		
1C	1744-630-700-40	PANEL/DASH/HST COMP	*		-686 1		5I		
1D	1744-630-700-50	PANEL/DASH/HST COMP	*		-1123 1		5I		
1E	1744-630-700-60	PANEL/DASH/HST COMP	*		-1160 1		5I		
2	V231-360-801-60	FLANGE BOLT	*		1161- 12				
3	1432-616-002-00	RUBBER, CUSHION	*		2				
4	1650-630-011-00	BOOT	*		2				
5	1650-630-017-00	BEARING	*		2				
6	1742-630-003-10	INSULATOR/DASH/E3	*		1				
7	1728-630-005-20	INSULATOR/270	*		1 1124				
8	1729-630-001-20	COVER/DASH	*		1 -793				
8A	1729-630-001-30	COVER/DASH	*		1 794	1			
9	V120-376-001-60	SCREW/SP	*		4				
10	1729-705-009-00	SCREW/TRUSS/M06X16	*		1				
11	1704-705-003-00	RIVET	*		4				
11A	1650-705-006-00	RIVET	*		-119 4				
12	1729-630-006-20	COVER/UNDER	*		120 1		5I		
13	V120-376-002-00	SCREW/SP	*		4				
14	1729-630-270-10	PLATE/DASH COMP	*		1				

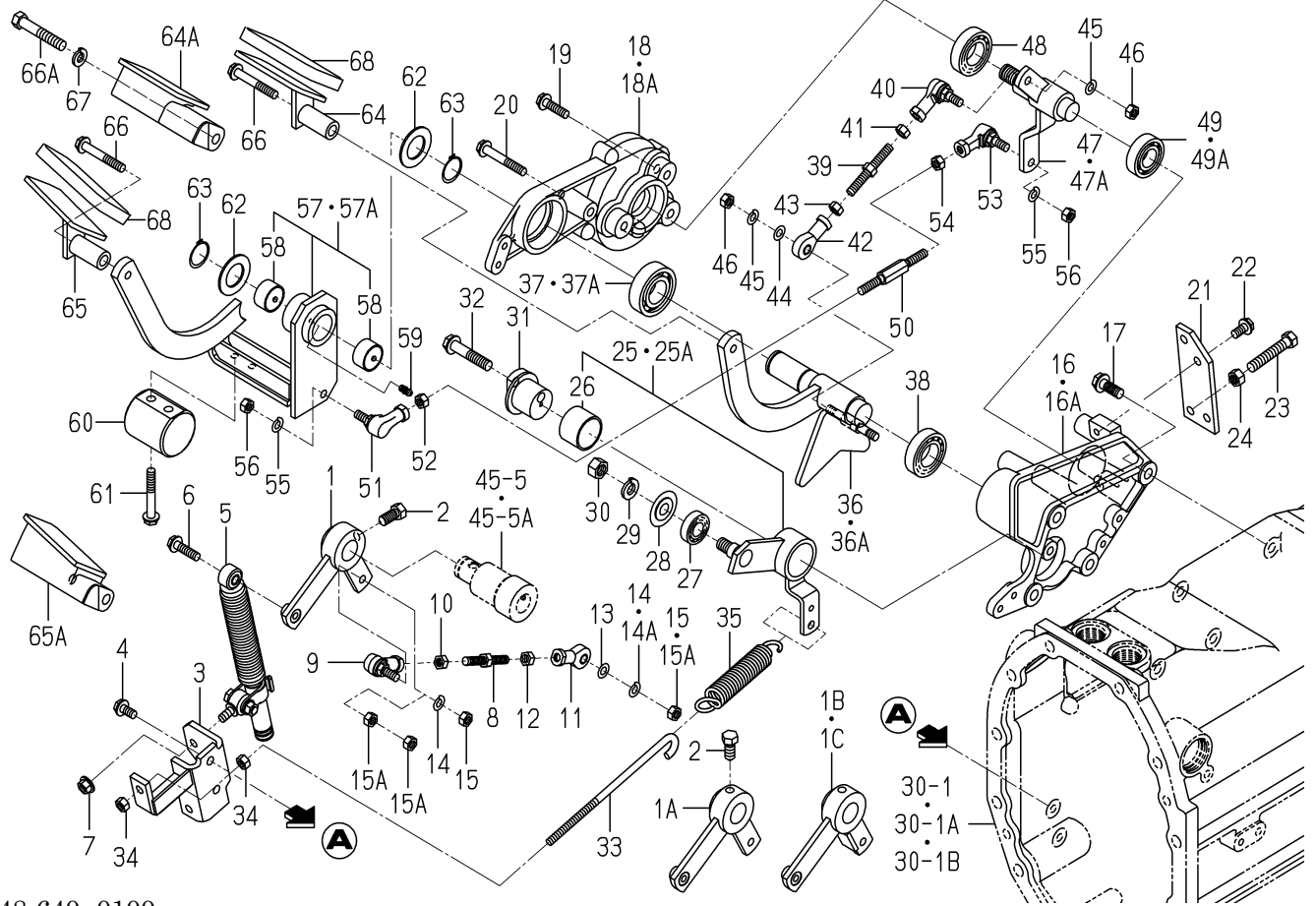
**FIG.171 FLOOR(REAR)SYSTEM(2/2)
(QE6 TYPE)(NO.1-1238)**



1744-631A-0100

KEY	PART CODE	DESCRIPTION	S P C	TYPE OF MODEL		I T C	C O L	G R P	REMARKS
				TG5470 E4	TG5470 E6				
23B	1744-631-054-10	INSULATOR	*		1 -1238	1			
24	1742-631-052-00	PLATE	*		1 -1238				
25	1742-631-053-00	INSULATOR	*		1 -160				
25A	1742-631-053-10	INSULATOR	*		1 -1238	1			
26	1742-631-054-10	PLATE	*		1 -42				
26A	1742-631-054-30	PLATE	*		1 -66	1			
26B	1742-631-054-40	PLATE	*		1 -128	1			
26C	1742-631-054-50	PLATE	*		1 -868	1			
26D	1742-631-580-00	PLATE COMP	*		1 -987				
26E	1742-631-580-10	PLATE COMP	*		1 -1212				
26F	1786-631-590-00	PLATE/GUIDE/SEA COMP	*		1 -1238				
27	1742-631-055-10	INSULATOR	*		1 -42				
27A	1742-631-055-20	INSULATOR	*		1 -64	3			
27B	1742-631-055-30	INSULATOR	*		1 -104	1			
27C	1742-631-055-40	INSULATOR	*		1 -868	1			
27D	1742-631-055-50	INSULATOR/LEVER/LH	*		1 -910	1			
27E	1742-631-055-60	INSULATOR/LEVER/LH	*		1 -992	1			
27F	1742-631-055-70	INSULATOR/LEVER/LH	*		1 -1212	1			
27G	1786-631-056-10	SEAL/GUIDE/85	*		2 -1238	1			
28	1786-631-057-10	SEAL/GUIDE/220	*		2 -1238	1			
29	1786-631-058-10	SEAL/GUIDE/125	*		2 -1238	1			
30	1527-604-002-00	CLIP(B)	*		6 -1238				
31	V350-160-006-00	NUT,SPEED/P6	*		2 -82				
32	1434-611-002-10	CAP(M8)	*		2 -1238				
33	1729-631-055-00	INSULATOR/150	*		1 -1238				

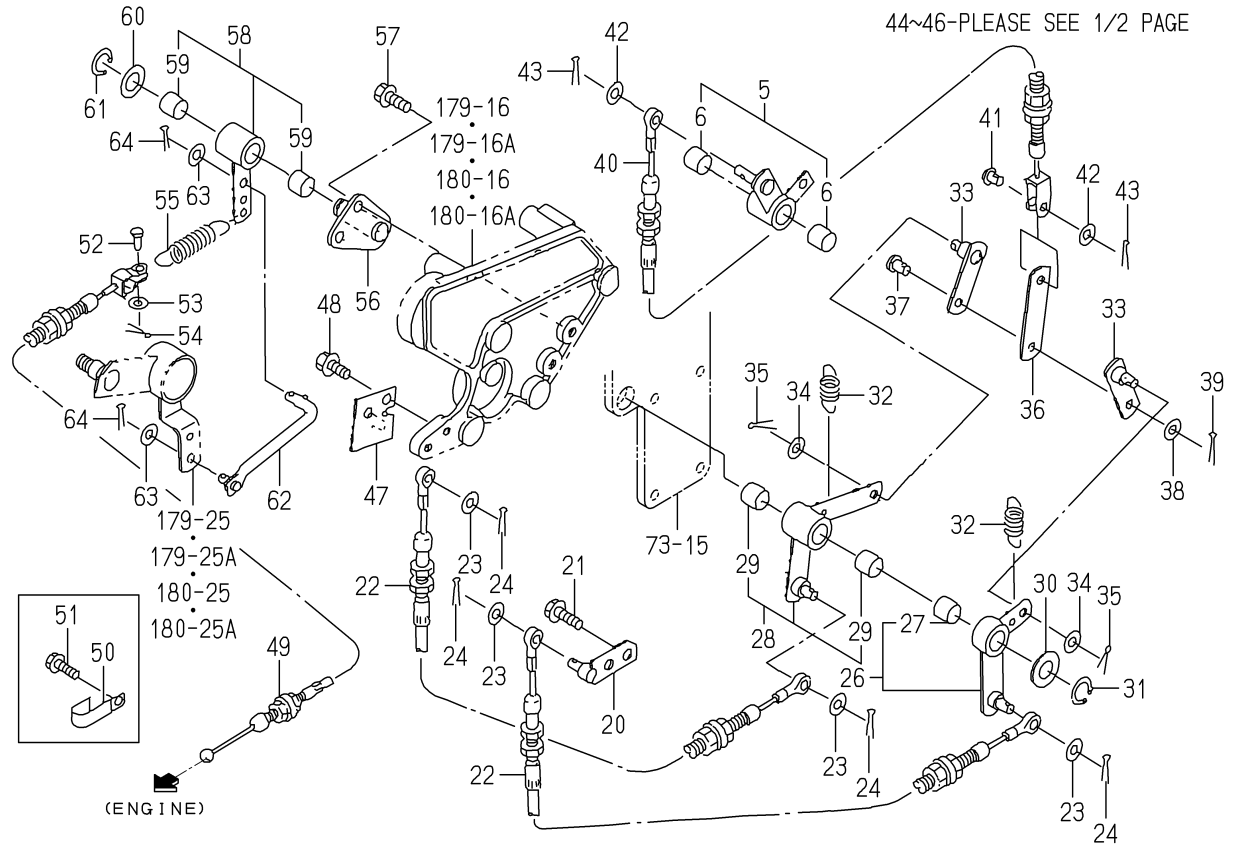
FIG.179 PEDAL(HST)SYSTEM(H TYPE EXCEPT 3M)



1748-640-0100

KEY	PART CODE	DESCRIPTION	S P C	TYPE OF MODEL		I T C	C O L	G R P	REMARKS
				TG5470 E4	TG5470 E6				
1	1748-640-500-00	ARM/TRUNNION/E4 COMP	*	1	-42				
1A	1748-640-500-10	ARM/TRUNNION/E4 COMP	*	1	-1067		3		
1B	1748-640-500-20	ARM/TRUNNION/E4 COMP	*	1	-1287		1		
1C	1748-640-500-30	ARM/TRUNNION/E4 COMP	*	1	1288-		1		
2	1646-226-053-00	BOLT/SM/M10X23	*	1					
3	1744-640-520-00	PLATE/HOLDER COMP	*	1					
4	V231-360-801-60	FLANGE BOLT	*	2					
5	3803-222-890-00	DUMPER/OIL ASSY	*	1					
6	V231-360-803-00	FLANGE BOLT	*	1					
7	V362-260-008-00	NUT/WASHER	*	1					
8	1646-640-002-00	ROD/M08X64	*	1					
9	1560-695-021-00	JOINT BALL M08RH	*	1					
10	V304-460-008-00	NUT/M8	*	1					
11	1646-640-058-00	JOINT/BALL/M08/LH	*	1					
12	1560-132-007-30	NUT/M8	*	1					
13	6209-500-005-00	WASHER/08X15.5X1.6	*	1					
14	V401-160-008-00	WASHER,SP/M 8	*	2	-1084				
14A	V401-160-008-00	WASHER,SP/M 8	*	1	1085-				
15	V304-260-008-00	NUT	*	2	-1084				
15A	V304-260-008-00	NUT	*	3	1085-				
16	1743-640-052-00	BRACKET/LINK	*	1	-100				
16A	1743-640-052-10	BRACKET/LINK	*	1	101-		1		
17	V231-361-002-50	FLANGE BOLT	*	4					
18	1743-640-053-00	METAL/LINK	*	1	-122				
18A	1743-640-053-10	METAL/LINK	*	1	123-		1		
19	V231-360-803-00	FLANGE BOLT	*	3					
20	V231-360-805-50	FLANGE BOLT	*	1					
21	1743-640-054-00	PLATE/STOPPER	*	1					
22	V231-360-801-60	FLANGE BOLT	*	2					
23	W201-261-005-50	BOLT	*	2					

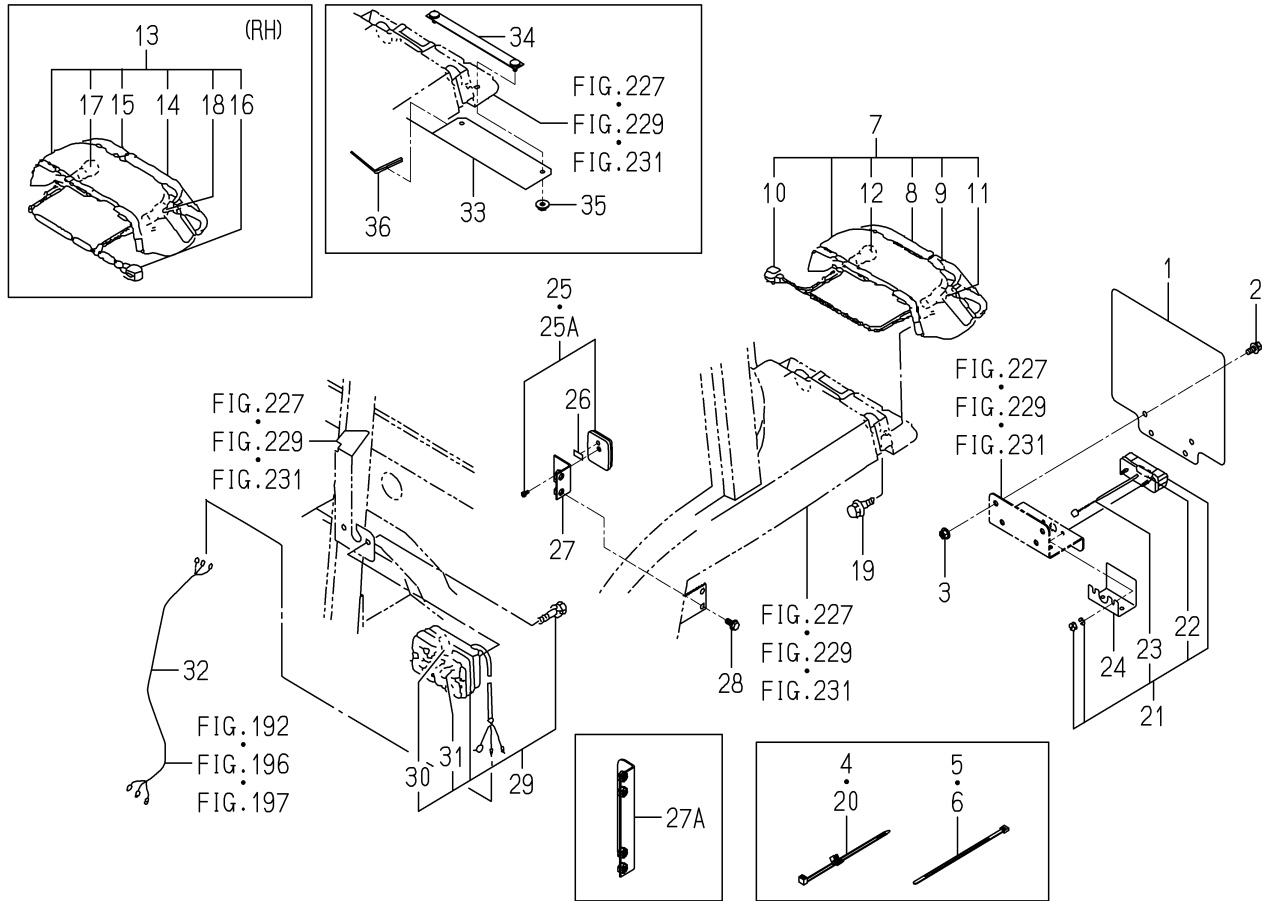
FIG.182 CRUISE CONTROL SYSTEM(2/2) (H TYPE EXCEPT 3M)(NO.1-42)



1743-642-0100

KEY	PART CODE	DESCRIPTION	S P C	TYPE OF MODEL		I T C	C O L	G R P	REMARKS
				TG5470 E4	TG5470 E6				
31	V704-140-015-00	RING,SNAP/15 C	*	1 -42	1 -42				
32	2149-806-025-10	SPRING/HE046	*	2 -42	2 -42				
33	1743-642-540-00	PLATE/IR/19X62 COMP	*	2 -42	2 -42				
34	V411-260-008-00	WASHER,PL/M 8	*	2 -42	2 -42				
35	V500-162-002-00	PIN,SPLIT/2 X20	*	2 -42	2 -42				
36	1743-642-052-00	PLATE/IR/19X80	*	1 -42	1 -42				
37	1432-242-001-00	PIN	*	1 -42	1 -42				
38	V411-260-008-00	WASHER,PL/M 8	*	1 -42	1 -42				
39	V500-162-002-00	PIN,SPLIT/2 X20	*	1 -42	1 -42				
40	1743-642-610-10	CABLE/CRUISE/B ASSY	*	1 -42	1 -42	1			
41	1432-242-001-00	PIN	*	1 -42	1 -42				
42	V411-260-008-00	WASHER,PL/M 8	*	2 -42	2 -42				
43	V500-162-002-00	PIN,SPLIT/2 X20	*	2 -42	2 -42				
44	1432-616-002-00	RUBBER,CUSHION	*	1 -42	1 -42				
45	1560-630-024-00	INSULATOR	*	1 -42	1 -42				
46	V362-260-008-00	NUT/WASHER	*	1 -42	1 -42				
47	1743-642-055-00	STAY/CABLE/ACCELERAT	*	1 -42	1 -42				
48	V231-360-801-60	FLANGE BOLT	*	2 -42	2 -42				
49	1743-642-690-00	CABLE/PEDAL/HST ASSY	*	1 -42	1 -42				
50	1425-621-004-00	HOLDER/JE/9-9	*	1 -42	1 -42				
51	V231-360-801-20	FLANGE BOLT	*	1 -42	1 -42				
52	1560-116-008-30	PIN/6X16	*	1 -42	1 -42				
53	V411-260-006-00	WASHER / M6	*	1 -42	1 -42				
54	V500-162-001-50	PIN,SPLIT/2 X15	*	1 -42	1 -42				
55	3827-221-002-10	SPRING/HE077	*	1 -42	1 -42				
56	1743-642-650-00	PLATE COMP	*	1 -42	1 -42				
57	V231-360-801-60	FLANGE BOLT	*	2 -42	2 -42				
58	1743-642-640-00	ARM/ACCELERATOR ASSY	*	1 -42	1 -42				
59	3650-106-006-00	BUSH/15X17X15	*	2 -42	2 -42				
60	V411-260-014-00	WASHER,PL/M14	*	1 -42	1 -42				

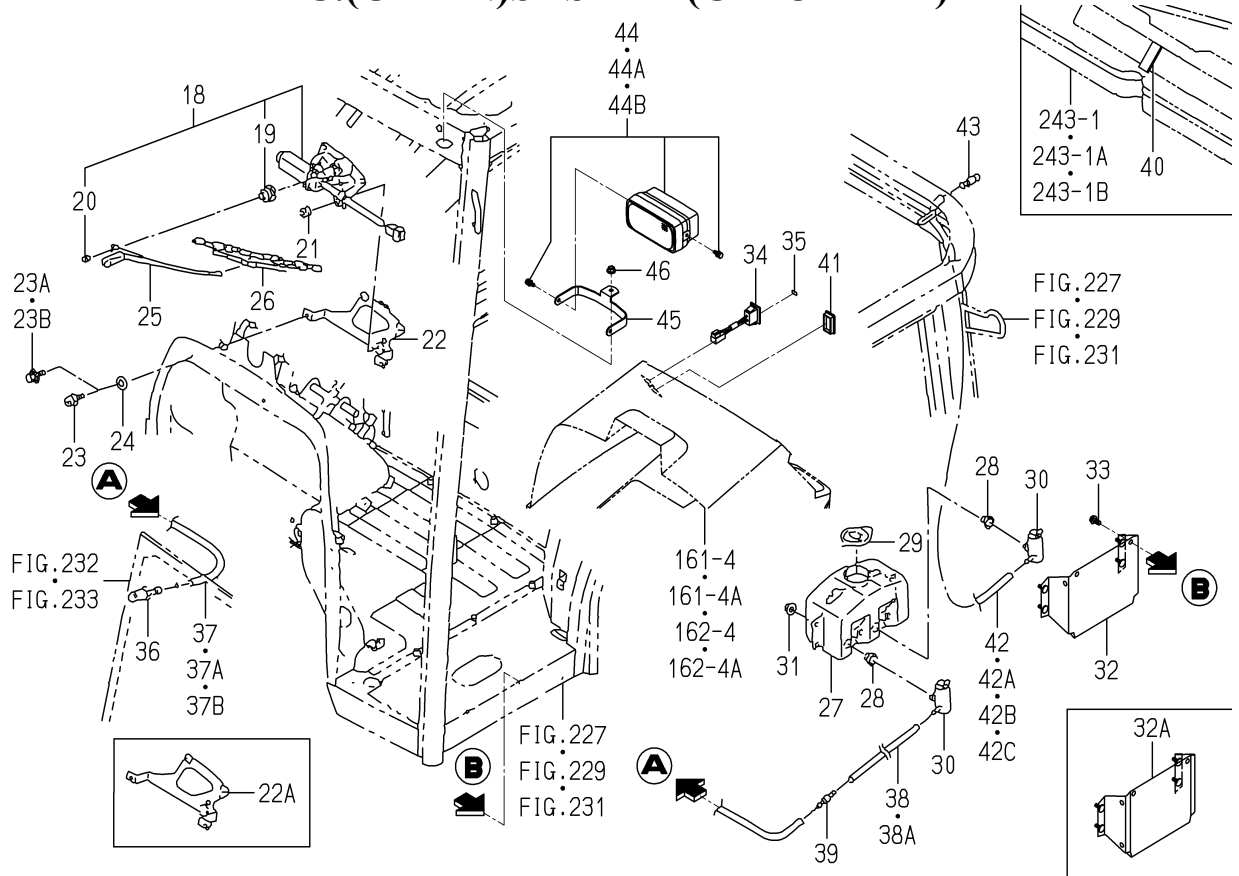
FIG.200 ELC.(REAR)SYSTEM(CYE4 TYPE)



1742-654C-0100

KEY	PART CODE	DESCRIPTION	S P C	TYPE OF MODEL		I T C	C O L	G R P	REMARKS
				TG5470 E4	TG5470 E6				
1	1772-635-001-10	PLATE/NUMBER/E4	*	1 988-					
2	V211-360-802-00	BOLT/SP	*	2 988-					
3	V362-260-008-00	NUT/WASHER	*	2 988-					
4	1560-666-004-00	BAND	*	12					
5	1342-402-006-00	BAND/WIRE/250	*	4					
6	1376-402-003-00	BAND, WIRE/140	*	6					
7	1746-654-200-10	LAMP/REAR/LH SET	*	1					
8	1650-654-252-00	LENS/LH/TAIL	*	1					
9	1650-654-253-00	LENS/LH/TURN	*	1					
10	1746-654-201-10	HARNES	*	1					
11	1564-654-213-00	BULB,LAMP/12V21W	*	1					
12	1566-656-211-00	BULB/12V21-5W	*	1					
13	1746-654-210-10	LAMP/REAR/RH SET	*	1					
14	1650-654-262-00	LENS/RH/TAIL	*	1					
15	1650-654-263-00	LENS/RH/TURN	*	1					
16	1746-654-201-10	HARNES	*	1					
17	1564-654-213-00	BULB,LAMP/12V21W	*	1					
18	1566-656-211-00	BULB/12V21-5W	*	1					
19	V230-360-601-60	FLANGEBOLT	*	4					
20	1560-666-004-00	BAND	*	4					
21	1674-654-270-00	LAMP/NUMBERPLAT SET	*	1					
22	1674-654-271-00	BULB/12V/5W	*	1					
23	1674-654-272-00	HARNES/LAMP	*	1					
24	1774-660-003-10	GUARD/LIGHT	*	1 1391-					
25	1674-654-400-00	REFLECTOR ASSY	*	2 -575					
25A	1674-654-400-10	REFLECTOR ASSY	*	2 576-		1			
26	1674-654-004-00	TAPE/10X20	*	2					
27	1742-654-220-00	STAY/REFLECTOR COMP	*	2 -984					
27A	1742-654-220-10	STAY/REFLECTOR COMP	*	2 985-		1			
28	V231-360-801-60	FLANGEBOLT	*	4					

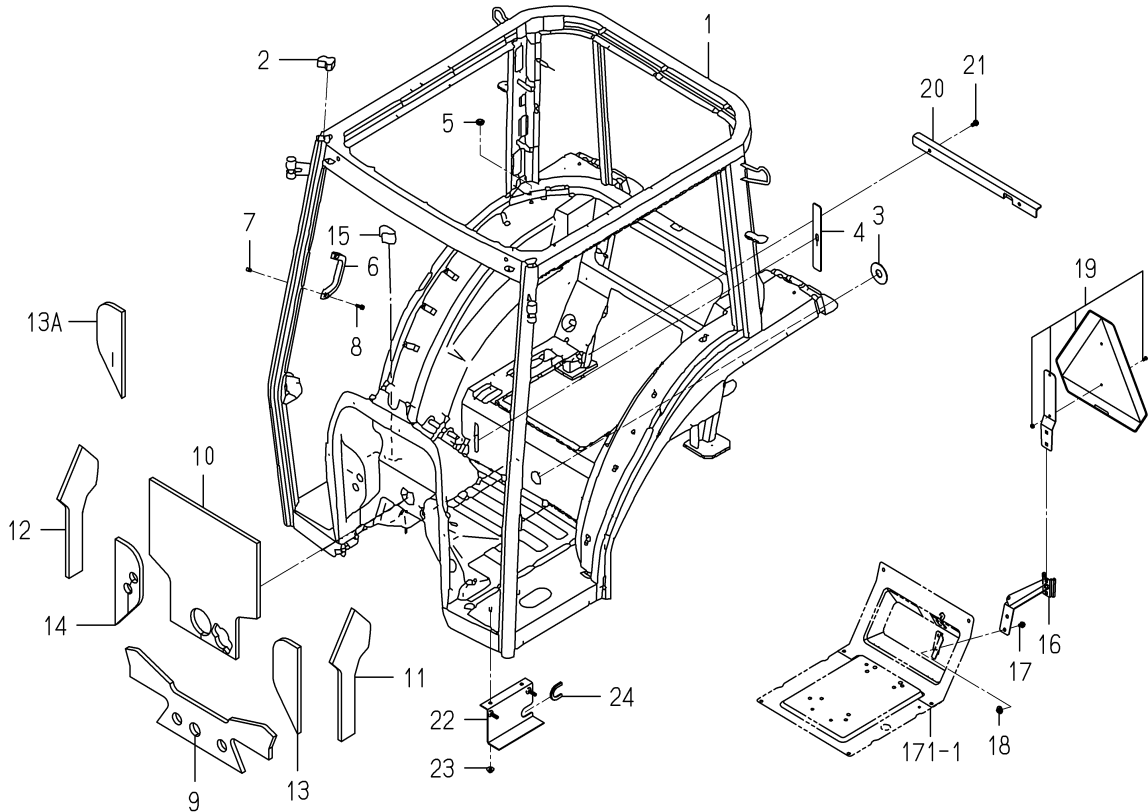
FIG.205 ELC.(CABIN)SYSTEM(CYE4 TYPE)(2/3) ELC.(CABIN)SYSTEM(CYE5 TYPE)



1748-658A-0100

KEY	PART CODE	DESCRIPTION	S P C	TYPE OF MODEL		I T C	C O L	G R P	REMARKS
				TG5470 E4	TG5470 E6				
22A	1729-658-300-30	STAY/WIPER COMP	*	1		1			
23	V120-366-001-60	SCREW	*	2					
23A	4301-210-002-00	BOLT (S/N6X16)	*	2					
23B	2144-501-011-10	BOLT/M6X16X16	*	2					
24	1673-705-008-10	WASHER/06X15X01	*	2					
25	1731-658-210-00	ARM/WIPER/330 ASSY	*	1					
26	1650-658-320-10	BLADE/WIPER/450 ASSY	*	1					
27	1729-658-311-00	TANK/WASHER/2M	*	1					
28	1729-658-312-00	GROMMET/W/T	*	2					
29	1729-658-313-00	CAP/W/T	*	1					
30	1729-658-314-00	PUMP/W/T	*	2					
31	V361-260-006-00	NUT	*	4					
32	1729-658-270-00	STAY/WASHER COMP	*	1					
32A	1729-658-270-10	STAY/WASHER COMP	*	1		1			
33	V231-360-801-60	FLANGE BOLT	*	2					
34	1518-621-540-00	SWITCH, WIPER ASSY	*	1					
35	1746-658-002-00	LABEL/WASHER/WIPER/F	*	1					
36	1691-658-200-00	NOZZLE/WASHER ASSY	*	1					
37	1729-658-001-00	HOSE/4700	*	1					
37A	1704-666-058-00	HOSE/4000	*	1					
37B	1704-666-058-10	HOSE/4100	*	1		1			
38	1729-658-007-00	HOSE/500	*	1					
38A	1650-658-005-00	HOSE/600	*	1					
39	1691-658-003-00	JOINT/WASHER	*	1					
40	1757-705-011-00	INSULATOR/05X25X60	*	1					
41	1742-658-002-00	CAP/22X38	*	1					
42	1729-658-001-00	HOSE/4700	*	1					
42A	1742-658-003-00	HOSE/5000	*	1					
42B	1704-666-058-00	HOSE/4000	*	1					
42C	1704-666-058-10	HOSE/4100	*	1		1			

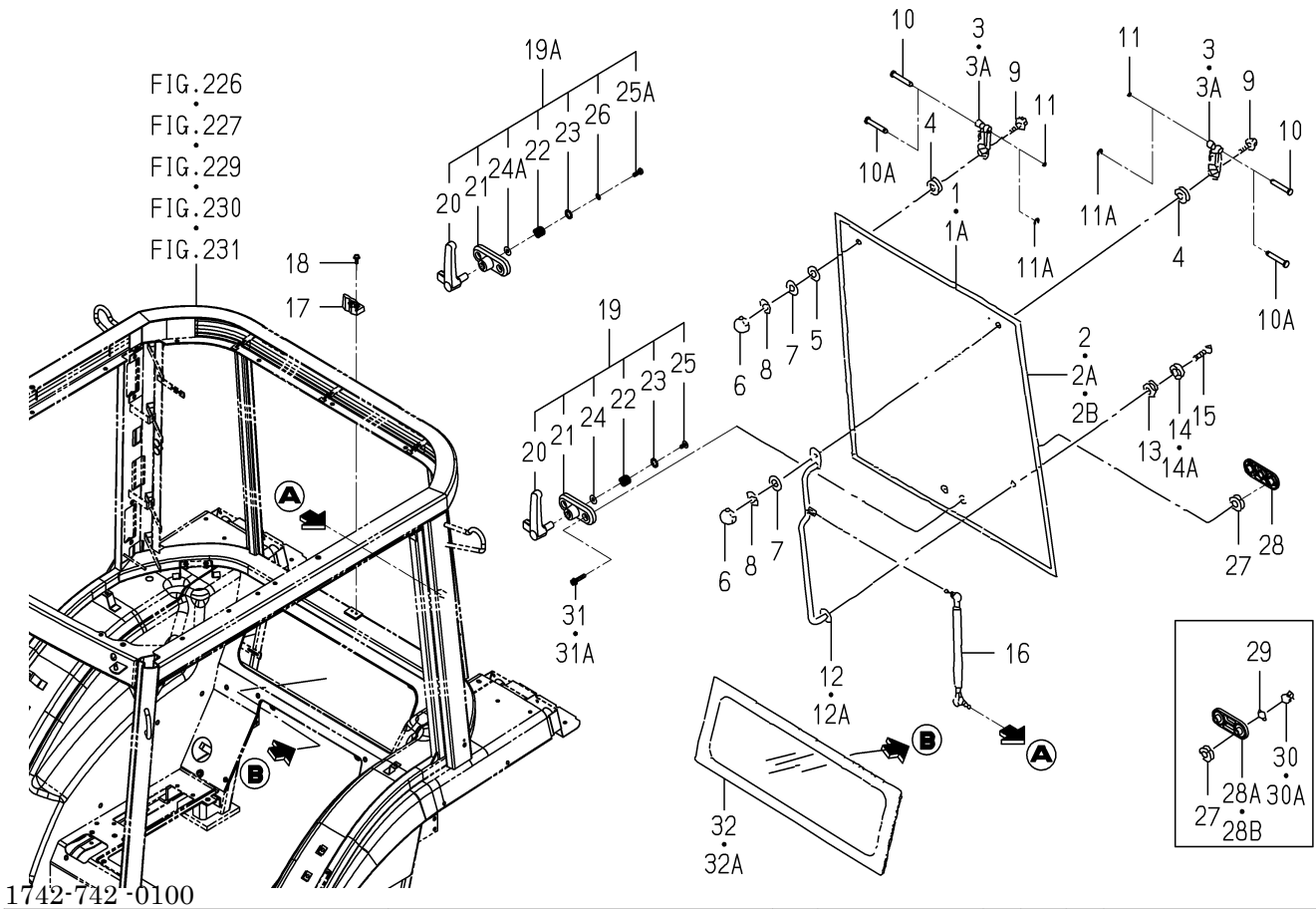
**FIG.226 FRAME(CABIN)SYSTEM
(CYE6 TYPE)(NO.1-106)**



1744-720-0100

KEY	PART CODE	DESCRIPTION	S P C	TYPE OF MODEL		I T C	C O L	G R P	REMARKS
				TG5470 E4	TG5470 E6				
1	1744-720-200-10	FRAME/CY/Q/E3 COMP	*		1 -106	3	7F		
2	1729-720-002-00	INSULATOR	*		2 -106				
3	1650-720-001-00	INSULATOR	*		1 -106				
4	1650-720-015-00	INSULATOR	*		1 -106				
5	1404-621-030-00	GROMMET,SMALL	*		2 -106				
6	1690-760-006-10	GRIP	*		2 -106				
7	3801-232-229-00	POPNUIT/M06	*		4 -106				
8	V120-376-002-50	SCREW/SP	*		4 -106				
9	1729-720-001-10	INSULATOR/DASH/LOWER	*		1 -106	1			
10	1729-720-004-10	INSULATOR/DASH/UPPER	*		1 -106				
11	1729-720-005-10	INSULATOR/DASH/LH	*		1 -106	1			
12	1729-720-006-10	INSULATOR/DASH/RH	*		1 -106	1			
13	1729-720-007-10	INSULATOR/LH	*		1 -106	1			
13A	1729-720-007-20	INSULATOR/LH	*		1 -106	1			
14	1729-720-008-10	INSULATOR/RH	*		1 -106	1			
15	1729-720-003-10	INSULATOR	*		1 -106	1			
16	1742-720-400-00	STAY/SMV COMP	*		1 -106				
17	V231-360-801-20	FLANGE BOLT	*		3 -106				
18	V363-260-008-00	NUT/WASHER	*		3 -106				
19	1640-912-300-00	BRACKET/SMV SET	*		1 -106				
20	1744-720-400-00	STAY COMP	*		1 -106				
21	V231-360-801-60	FLANGE BOLT	*		2 -106				
22	1744-720-410-10	STAY/CONTROLLER COMP	*		1 -106	3			
23	V363-260-008-00	NUT/WASHER	*		4 -106				
24	3805-210-021-00	PAD/100	*		1 -106				

FIG.237 GLASS(REAR)SYSTEM(CY TYPE)

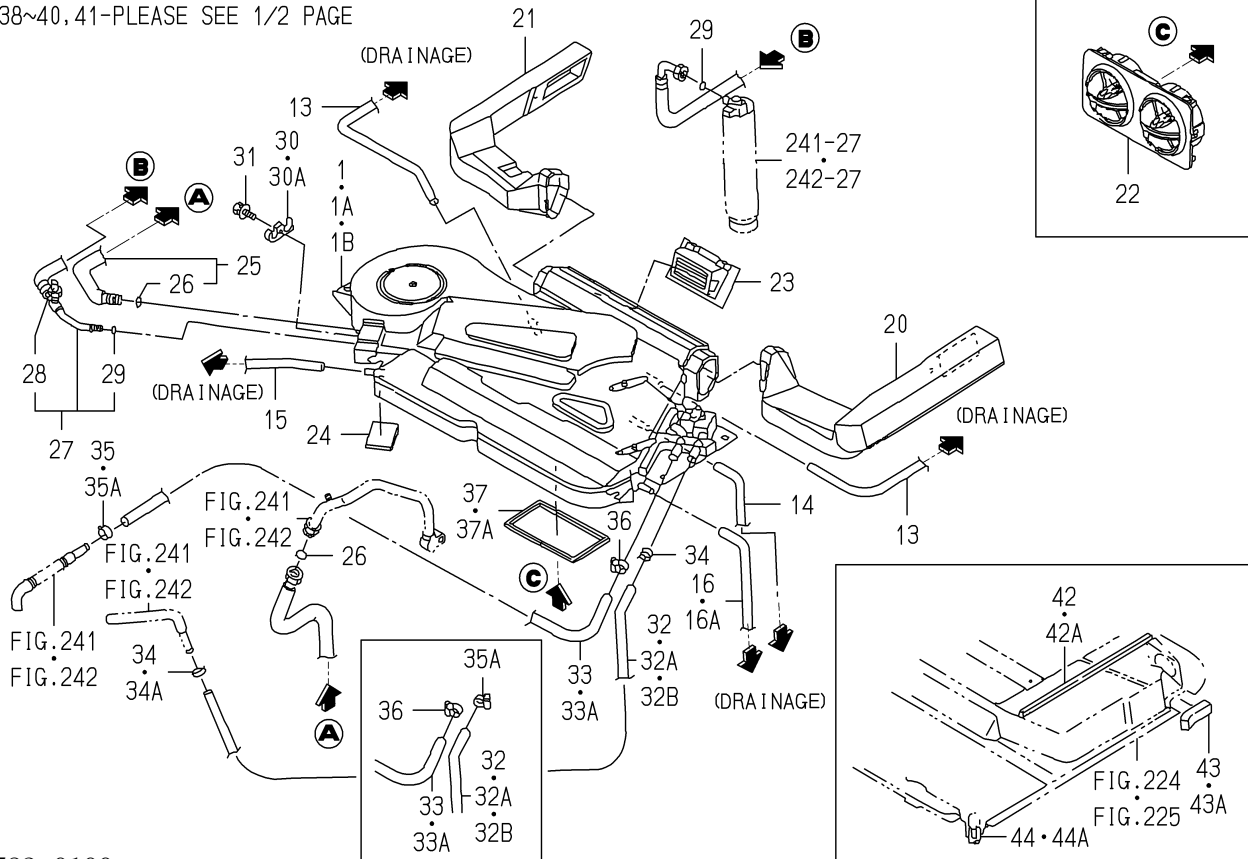


1742-742-0100

KEY	PART CODE	DESCRIPTION	S P C	TYPE OF MODEL		I T C	C O L	G R P	REMARKS
				TG5470 E4	TG5470 E6				
22	1719-742-233-00	SPRING/HC014	*	1	1				
23	1719-742-234-00	WASHER/13X18X02	*	1	1				
24	1719-742-235-00	WASHER/09X22X02	*	1	1				
24A	1719-742-235-10	WASHER/07X18X01	*	828-1	828-1		3		
25	P113-602-009-00	SCREW/M06X12	*	827-1	827-1				
25A	1719-742-236-00	BOLT/SET/M06X16	*	828-1	828-1				
26	1719-742-237-00	S.W/07X12X02	*	828-2	828-2				
27	1729-741-007-00	GROMMET/17X21X05	*	2	2				
28	1704-740-007-00	HANDLE/BASE/OUTER	*	308-1	308-1				
28A	1729-730-005-00	SPACER/GLASS/M08	*	1393-1	1393-1				
28B	1729-730-005-10	SPACER/GLASS/M08	*	1394-1	1394-1		1		
29	3740-162-005-00	WASHER	*	309-2	309-2				
30	V340-120-006-00	NUT,CAP/M6	*	1396-2	1396-2				
30A	1790-742-012-00	NUT/CAP/M06	*	1397-2	1397-2				
31	V120-376-002-00	SCREW/SP	*	308-2	308-2				
31A	V120-376-003-00	SCREW/SP	*	309-2	309-2				
32	1731-742-003-00	GLASS/REAR/UNDER	*	423-1	423-1				
32A	1731-742-003-10	GLASS/REAR/UNDER	*	424-1	424-1				

FIG.243 AIR CONDITIONER(CABIN)SYSTEM(2/2) (CY TYPE)

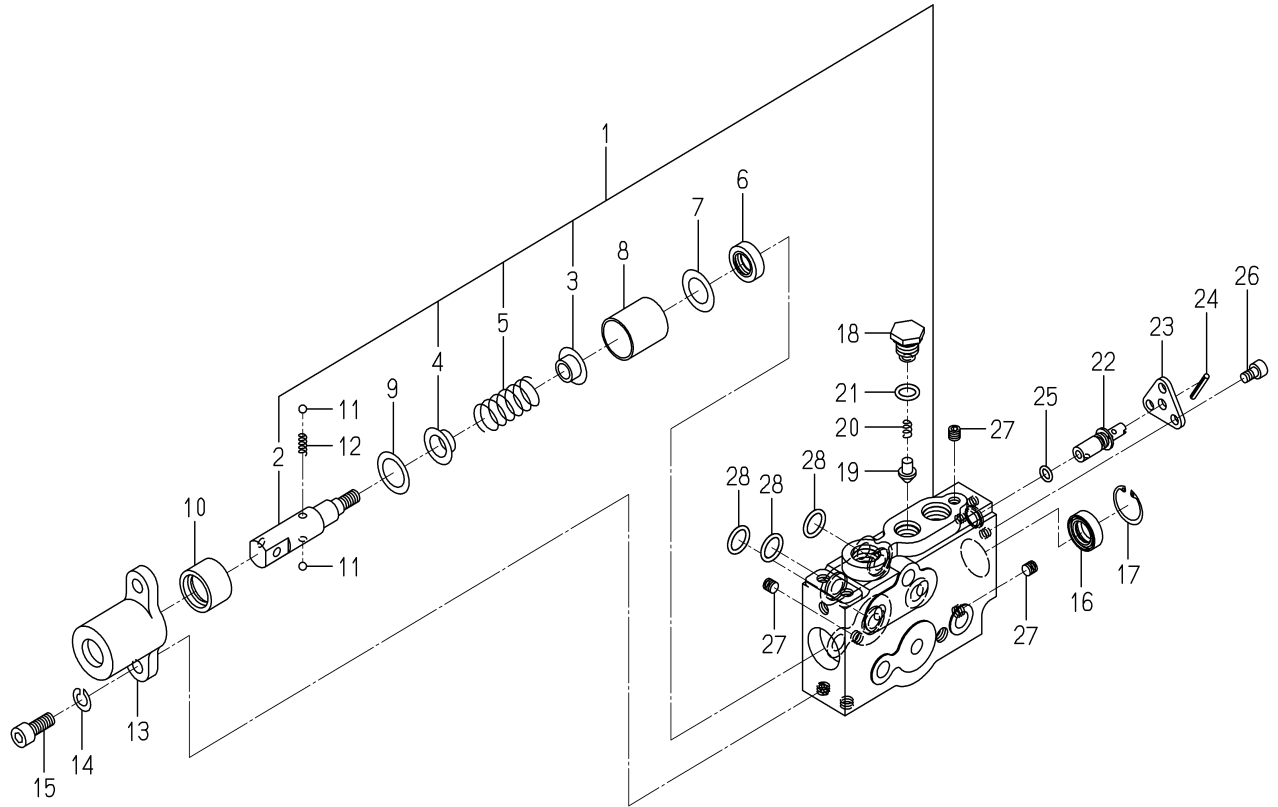
38~40, 41- PLEASE SEE 1/2 PAGE



1734-782-0100

KEY	PART CODE	DESCRIPTION	S P C	TYPE OF MODEL		I T C	C O L	G R P	REMARKS
				TG5470 E4	TG5470 E6				
26	3824-248-342-00	O-RING	*	2	2				
27	1734-782-220-10	HOSE/COOLER/L ASSY	*	1	1				
28	3824-248-332-00	SWITCH/PRESSURE	*	1	1				
29	3824-248-322-00	O-RING	*	2	2				
30	1729-782-021-00	PLATE	*	1 -427	1 -427				
30A	1729-782-021-10	PLATE	*	1 428-	1 428-	1			
31	V210-360-602-50	BOLT/SP	*	1	1				
32	1734-782-001-10	HOSE/HEATER	*	1 -1243	1 -1243				
32A	1734-782-001-20	HOSE/HEATER/2830	*	1 -1379	1 -1379	1			
32B	1734-782-001-30	HOSE/HEATER/VALVE/28	*	1 1380-	1 1380-	1			
33	1734-782-002-00	HOSE/HEATER	*	1 -1240	1 -1240				
33A	1734-782-002-10	HOSE/HEATER/3600	*	1 1241-	1 1241-				
34	1650-780-011-10	CLIP/HOSE/18-22	*	2 -270	2 -270				
34A	1650-780-011-10	CLIP/HOSE/18-22	*	1 271-	1 271-				
35	J061-112-022-00	CLAMP/WORM/12-22	*	1 -270	1 -270				
35A	J061-112-022-00	CLAMP/WORM/12-22	*	2 271-	2 271-				
36	J061-112-022-00	CLAMP/WORM/12-22	*	1	1				
37	1729-782-018-00	INSULATOR	*	2 -140	2 -140				
37A	1729-782-018-10	INSULATOR	*	2 141-	2 141-				
38	V230-360-601-20	FLANGE BOLT	*	2	2				
39	2144-501-011-10	BOLT/M6X16X16	*	1 -160	1 -160				
39A	2144-501-012-00	BOLT/M6X20/16	*	1 161-	1 161-				
40	4101-102-038-00	WASHER/24X9X3.2	*	1 161-	1 161-				
41	1731-782-006-00	PLATE	*	1	1				
42	1731-782-007-00	INSULATOR/20X630	*	2 -140	2 -140				
42A	1731-782-007-10	INSULATOR/20X630	*	2 141-	2 141-				
43	1731-782-008-00	INSULATOR/50X150	*	2 -140	2 -140				
43A	1731-782-008-10	INSULATOR/50X150	*	2 141-	2 141-				
44	1731-782-009-00	INSULATOR/10X180	*	2 -140	2 -140				
44A	1731-782-009-10	INSULATOR/10X180	*	2 141-	2 141-				

**FIG.298 COMPONENT PARTS
FOR 1719-511-350-00 ON Fig.122,124**

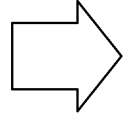
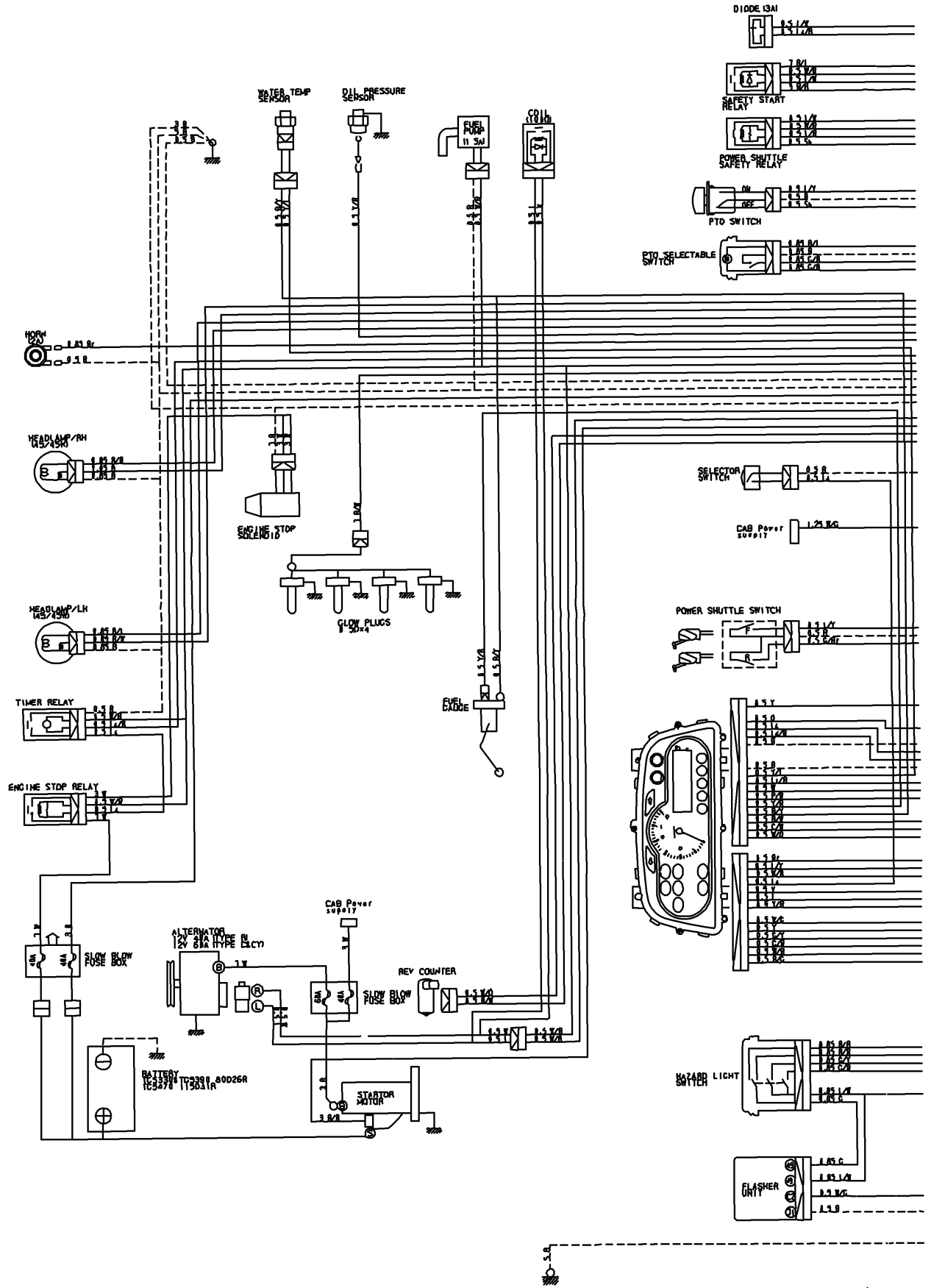


1719-511-350-0

KEY	PART CODE	DESCRIPTION	S P C	TYPE OF MODEL		I T C	C O L	G R P	REMARKS
				TG5470 E4	TG5470 E6				
1	1640-530-610-10	VALVE SET	*		2 349-				
1	1640-530-610-10	VALVE SET	*	1					
2	1640-530-613-00	HEAD/SPOOL	*		2 349-				
2	1640-530-613-00	HEAD/SPOOL	*	1					
3	1640-530-614-00	STOPPER/SPRING/A	*		2 349-				
3	1640-530-614-00	STOPPER/SPRING/A	*	1					
4	1640-530-615-00	STOPPER/SPRING/B	*		2 349-				
4	1640-530-615-00	STOPPER/SPRING/B	*	1					
5	K211-012-006-00	SPRING/HC042	*		2 349-				
5	K211-012-006-00	SPRING/HC042	*	1					
6	K211-004-007-00	SEAL,OIL/TC4,14247	*		2 349-				
6	K211-004-007-00	SEAL,OIL/TC4,14247	*	1					
7	K211-004-006-00	COLLAR	*		2 349-				
7	K211-004-006-00	COLLAR	*	1					
8	1640-530-622-00	SLEEVE	*		2 349-				
8	1640-530-622-00	SLEEVE	*	1					
9	1640-530-623-00	COLLAR/19X28X02	*		2 349-				
9	1640-530-623-00	COLLAR/19X28X02	*	1					
10	1640-530-624-00	SLEEVE/DETENT	*		2 349-				
10	1640-530-624-00	SLEEVE/DETENT	*	1					
11	V682-200-000-60	BALL	*		4 349-				
11	V682-200-000-60	BALL	*	2					
12	1640-530-625-00	SPRING/HC015	*		2 349-				
12	1640-530-625-00	SPRING/HC015	*	1					
13	1640-530-626-00	COVER	*		2 349-				
13	1640-530-626-00	COVER	*	1					
14	V401-160-008-00	WASHER,SP/M 8	*		4 349-				
14	V401-160-008-00	WASHER,SP/M 8	*	2					
15	V220-540-802-00	SCREW/SOCKET	*		4 349-				
15	V220-540-802-00	SCREW/SOCKET	*	2					

WIRING DIAGRAM(E4/Q)(1)

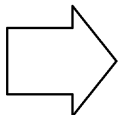
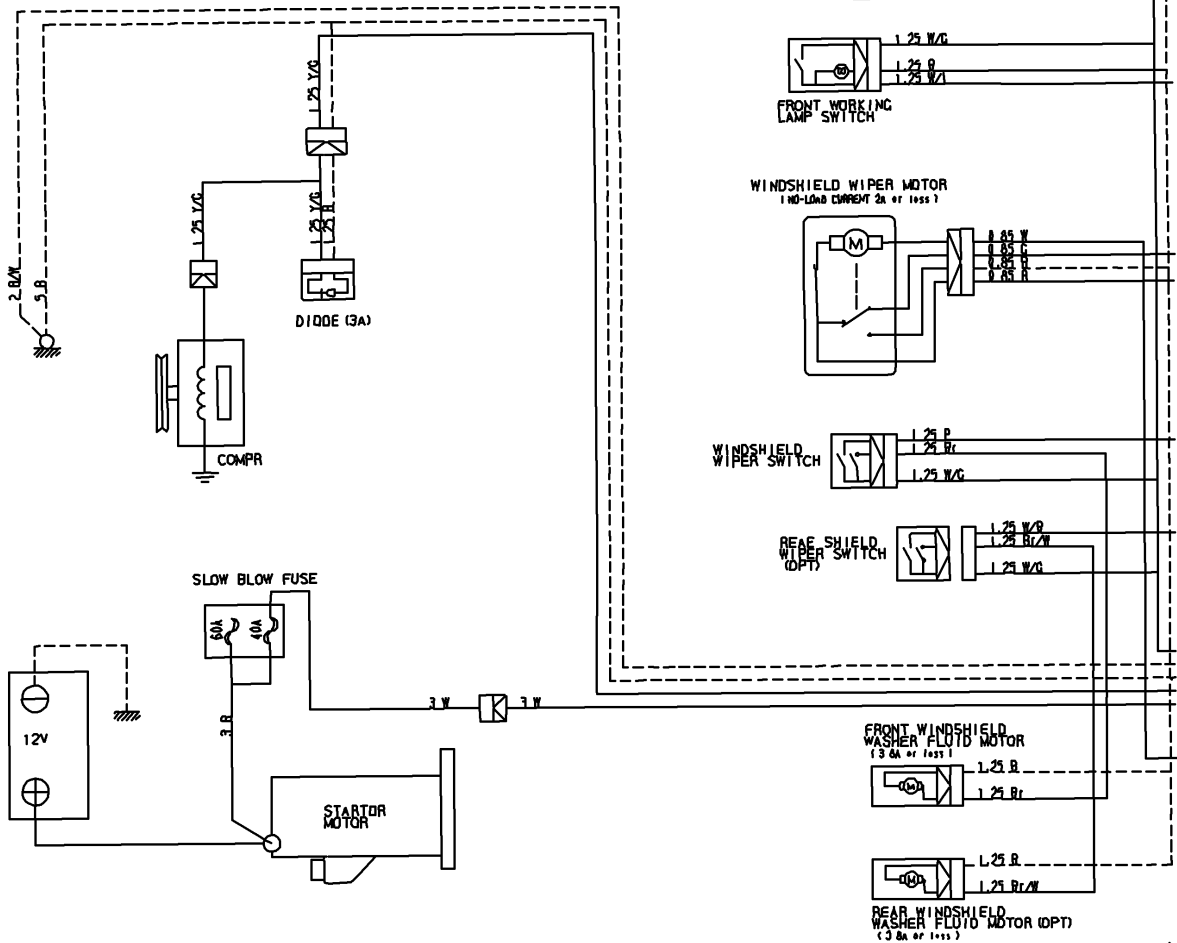
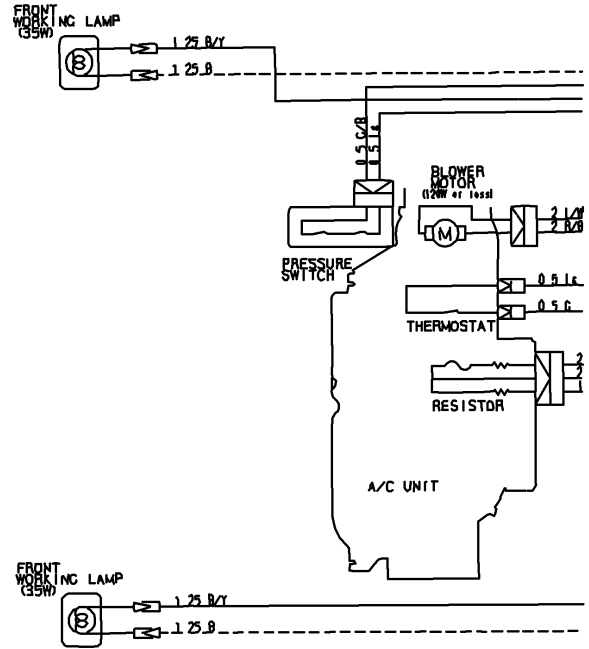
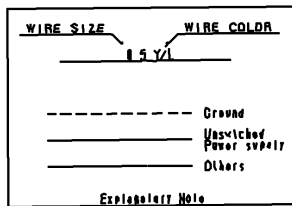
(E4-Q TYPE)



WIRING DIAGRAM(E6/CY)(1)

(E6-CY TYPE)

FUSE LIST		
Ref	Rating	Function
①	5A	Radio cassette player (OPT)
②	15A	Front working lamp
③	15A	Rear working lamp
④	10A	Windshield wiper
⑤	10A	Rear shield wiper (OPT)
⑥	5A	Coastlight
⑦	15A	Blower (A/C)
⑧	15A	Seatbelt
⑨	7.5A	Air conditioner
⑩	10A	Radio cassette player (OPT)



Numerical Index

6008-097-170-20

Part Code	Fig.	Key	Part Code	Fig.	Key	Part Code	Fig.	Key
6215-546-003-10	10	13	6215-629-067-00	29	24	6281-151-016-10	30	7
6215-548-067-00	23	1	6215-631-026-00	29	1	6281-200-004-00	25	1
6215-548-069-00	24	1	6215-634-003-00	29	14	6281-213-018-00	31	1
6215-549-007-10	21	30	6215-635-004-00	29	7	6281-214-003-00	31	6
6215-549-013-00	6	29	6215-635-005-00	29	49	6281-214-004-00	31	12
6215-549-031-10	21	25	6215-635-006-00	29	8	6281-215-001-00	31	9
6215-549-039-00	21	34	6215-637-005-00	29	48	6281-216-001-00	31	10
6215-600-119-20	21	1	6215-639-003-00	29	53	6281-217-002-00	31	8
6215-619-023-00	29	50		29	53	6281-221-007-00	31	19
6215-619-024-00	29	52	6215-639-008-00	29	15	6281-222-002-00	31	22
	29	52	6215-639-009-00	29	16	6281-229-002-00	31	13
6215-621-012-30	21	11	6215-641-002-00	29	2	6281-229-003-00	31	23
6215-622-003-00	29	11	6215-643-005-00	29	3	6281-229-004-00	31	20
6215-629-017-00	29	12	6215-644-009-00	29	5	6281-229-006-00	31	2
6215-629-036-00	29	25	6215-649-008-00	29	4	6281-229-007-00	31	3
6215-629-037-00	29	26	6215-649-011-00	29	10	6281-229-008-00	31	4
6215-629-038-00	29	27	6215-649-013-00	29	9	6281-229-011-00	31	14
6215-629-039-00	29	28	6215-649-014-00	29	6	6281-229-012-00	31	16
6215-629-040-00	29	29	6219-732-012-00	26	6	6281-229-013-00	31	26
6215-629-041-00	29	30	6219-732-018-00	26	6-A	6281-229-014-00	31	25
6215-629-042-00	29	31	6219-752-021-00	21	3	6281-229-015-00	31	24
6215-629-043-00	29	32	6219-752-022-00	21	4	6281-229-016-00	31	17
6215-629-044-00	29	33	6219-752-023-00	21	2	6281-229-017-00	31	15
6215-629-045-00	29	34	6219-752-024-00	21	5	6281-229-018-00	31	18
6215-629-046-00	29	35	6219-752-025-00	21	6	6281-229-029-00	31	7
6215-629-047-00	29	36	6281-100-010-30	25	7	6281-229-032-00	31	21
6215-629-048-00	29	37	6281-111-006-00	30	1	6281-229-033-00	31	5
6215-629-049-00	29	38	6281-115-012-00	30	10	6281-229-041-00	30	23
6215-629-050-00	29	39	6281-115-016-00	30	22	6281-271-002-00	31	11
6215-629-051-00	29	40	6281-116-005-00	30	8	6281-410-023-00	26	4
6215-629-052-00	29	41	6281-121-007-00	30	2	6281-410-023-10	26	4-A
6215-629-053-00	29	42	6281-123-005-00	30	11	6281-910-011-00	26	7
6215-629-054-00	29	43	6281-123-006-00	30	12	6281-971-003-00	26	1
6215-629-055-00	29	44	6281-124-009-10	30	5	6282-450-007-00	26	2
6215-629-056-00	29	45	6281-129-003-00	30	21	6287-810-042-00	27	1
6215-629-057-00	29	13	6281-129-019-00	30	24	6294-453-002-00	6	23
6215-629-058-00	29	46	6281-129-039-00	30	4	6581-129-092-00	30	15
6215-629-059-00	29	47	6281-129-040-00	30	14	6581-129-099-00	30	13
6215-629-060-00	29	17	6281-129-044-00	30	16	6901-910-612-00	13	5
6215-629-061-00	29	18	6281-129-047-00	30	3		21	17
6215-629-062-00	29	19	6281-129-049-00	30	18	6901-910-635-00	8	4
6215-629-063-00	29	20	6281-129-050-00	30	17	6901-910-835-00	5	9
6215-629-064-00	29	21	6281-129-051-00	30	9	6901-910-840-00	8	5
6215-629-065-00	29	22	6281-129-052-10	30	6		18	8
6215-629-066-00	29	23	6281-129-063-00	30	19	6901-931-240-00	25	8

Numerical Index

6008-097-131-20

Part Code	Fig.	Key	Part Code	Fig.	Key	Part Code	Fig.	Key
1373-121-001-00	26	4	6209-572-002-00	29	5	6209-940-004-00	13	14
	27	4	6209-572-003-00	3	10-A	6211-110-055-90	2	1
1600-211-052-00	22	14		29	5-A	6211-110-100-10	2	1-A
1650-650-015-00	11	10	6209-580-002-10	22	29	6211-110-100-20	2	1-B
1650-780-011-10	19	11	6209-587-006-10	11	15	6211-141-047-00	2	7
1690-654-200-00	11	37		11	33		29	3
3640-586-004-00	23	5	6209-600-004-00	11	22	6211-170-009-10	3	1
3651-832-009-00	22	15	6209-605-003-00	11	2	6211-173-007-20	3	8
3748-172-007-00	11	39	6209-605-003-10	11	2-A		29	4
3805-355-002-20	9	2	6209-605-003-20	11	2-B	6211-179-013-10	3	2
3817-401-001-00	5	6	6209-605-004-10	2	3	6211-179-017-10	3	3
	11	6		6	8	6211-179-018-00	3	4
	13	20		7	8	6211-179-019-00	3	5
	19	9	6209-605-007-00	7	7-A	6211-210-063-40	6	1
	22	8	6209-605-007-10	7	7-B		7	1
6008-010-037-00	1	1	6209-610-001-10	6	4	6211-210-063-50	7	1-A
6115-639-008-00	31	51		7	4	6211-210-063-60	7	1-B
6209-000-002-00	13	18	6209-610-003-00	2	2	6211-258-001-00	6	10
6209-000-005-00	2	8		6	6		7	10
6209-000-006-00	6	2		7	6		29	8
	7	2	6209-610-004-00	2	6	6211-258-002-00	6	11
6209-000-024-00	17	13		11	3		7	11
6209-000-039-00	17	9	6209-610-007-00	6	3		29	9
6209-030-043-00	22	19		7	3	6211-291-015-20	6	26
6209-030-096-00	10	3	6209-610-009-00	6	5		7	26
6209-030-097-00	19	15		7	5	6211-292-001-20	6	27
6209-037-015-00	11	51	6209-625-003-20	6	16		7	27
6209-046-008-00	20	4		7	16		29	11
6209-046-059-00	26	5		29	10	6211-310-042-00	11	1
	27	5	6209-625-006-00	11	4	6211-311-053-00	11	44
6209-050-002-00	11	35		29	12	6211-312-012-10	11	25
6209-050-003-00	11	31	6209-630-002-10	28	8		29	14
6209-300-007-00	5	5		29	22	6211-312-013-10	11	45
6209-300-014-00	2	9	6209-730-005-00	14	3		29	15
6209-360-011-00	23	3		22	13	6211-319-014-00	11	47
6209-360-079-20	3	11	6209-730-006-00	17	4	6211-341-074-00	10	1
6209-360-079-30	3	11-A	6209-740-005-00	6	19	6211-361-049-20	9	1
6209-360-084-00	19	4		7	19	6211-510-009-00	6	12
6209-409-003-00	13	17	6209-740-006-00	11	24		7	12
6209-440-005-00	28	5	6209-749-001-20	6	17	6211-511-007-00	6	13
6209-490-002-10	3	9		7	17		7	13
6209-500-003-00	11	12		11	49	6211-511-008-00	6	14
	11	23	6209-800-009-00	11	54		7	14
	29	13	6209-800-011-00	11	53	6211-530-009-00	8	1
6209-572-002-00	3	10	6209-920-002-00	11	17	6211-540-009-00	8	3

Numerical Index

1748-097-100-20

Part Code	Fig. Key	Part Code	Fig. Key	Part Code	Fig. Key				
1560-666-004-00	194	17	1561-221-506-00	305	12	1564-434-015-00	100	42	
	195	15	1561-221-508-00	305	14		101	42	
	196	19	1561-221-509-00	305	10	1564-434-202-10	100	16	
	197	17	1564-141-002-00	122	20		100	18	
	197	67		123	17		101	16	
	198	1		124	17		101	18	
	198	3		274	20	1564-434-222-10	100	30	
	198	21		275	16		100	32	
	199	4	1564-307-200-20	70	29		101	30	
	199	20		71	29		101	32	
1560-666-212-00	200	4	1564-431-200-30	96	6	1564-507-004-10	105	30	
	200	20	1564-433-001-00	98	20		106	29	
	191	8		99	20	1564-527-004-00	294	2	
	192	8	1564-433-210-20	98	8	1564-527-220-10	294	1	
	193	8		99	8	1564-527-300-40	129	10	
	194	6	1564-433-210-30	98	8-A		130	10	
	195	6	1564-433-210-40	98	8-B	1564-530-011-00	126	40	
	196	8	1564-433-212-10	98	9		128	28	
	197	6		99	9	1564-621-030-00	227	5-A	
	204	2	1564-433-222-10	98	18		227	5-B	
1560-695-015-00	204	11		99	18		229	5-A	
	205	2	1564-434-004-10	100	20		229	5-B	
	205	11		101	20		230	5-A	
	241	53	1564-434-005-20	100	21		231	5	
	242	53		101	21		231	5-A	
	1560-695-021-00	120	30	1564-434-005-30	100	21-A	1564-630-012-00	1	7
		121	29		101	21-A		2	7
		179	9	1564-434-006-10	100	22	1564-654-213-00	198	12
		179	40		101	22		198	18
		179	51	1564-434-006-20	100	22-A		199	11
180		9		101	22-A		199	17	
180		40	1564-434-007-20	100	40		200	11	
180		51		101	40		200	17	
181		4	1564-434-008-20	100	41	1565-437-260-03	270	2	
181		49		101	41		270	7	
1560-695-022-00	181	69	1564-434-008-30	100	41-A	1565-437-280-00	270	1	
	120	31		101	41-A	1565-437-290-00	270	6	
	121	30	1564-434-009-10	100	43	1566-656-211-00	199	12	
	179	53		101	43		199	18	
	180	53	1564-434-011-40	100	47		200	12	
	181	51		101	47		200	18	
	181	71	1564-434-011-50	100	47-A	1566-731-107-00	237	11-A	
	1561-221-503-00	305	2	101	47-A	1568-116-210-00	16	21	
	1561-221-504-00	305	3	1564-434-013-10	100	44	1568-507-001-00	109	70
	1561-221-505-00	305	4	101	44		110	62	

Numerical Index

1748-097-100-20

Part Code	Fig. Key	Part Code	Fig. Key	Part Code	Fig. Key
1696-658-340-20	205	1703-261-002-00	182	1711-433-210-10	99
	44-B		2		17-B
1696-658-342-00	278	1704-216-203-00	183	1711-434-200-00	100
	2-B		2		29
1696-658-344-00	297	1704-216-204-00	184	1711-434-210-00	100
1696-658-345-00	297	1704-291-001-00	26	1711-438-200-10	271
1696-658-347-00	297	1704-666-058-00	21	1711-438-201-00	1
1696-658-348-00	297	1704-666-058-10	26	1711-438-210-10	271
1696-658-349-00	297		22		3
1696-660-400-00	208	1711-666-052-00	55	1711-666-052-10	271
	209		15		8
1696-705-006-00	211	1711-666-052-00	204	1711-666-052-10	271
	3		36-A		4
1696-901-006-00	215	1716-105-001-00	204	1716-105-001-00	12
	224		41-B		40
1698-102-003-00	225	1705-902-006-00	205	1716-127-011-00	13
	244		37-A		41
1700-102-230-10	245	1705-902-007-00	205	1716-222-013-00	14
	246		42-B		36
1701-508-003-00	247	1705-902-008-00	205	1716-501-006-00	15
	1		37-B		37
1703-105-210-00	2	1705-904-001-00	205	1716-501-006-10	31
	3		42-C		9
1703-261-002-00	4	1711-433-200-00	255	1711-433-200-10	31
	5		37-B		31
1703-261-002-00	6	1711-433-200-20	256	1711-433-200-20	32
	7		42-C		33
1703-261-002-00	7	1711-433-210-00	258	1711-433-210-00	25
	1		10		22
1703-261-002-00	2	1711-433-210-00	255	1711-433-210-00	21
	5		10		17-A
1703-261-002-00	3	1711-433-210-00	258	1711-433-210-00	22
	4		10		17-A
1703-261-002-00	4	1711-433-210-00	255	1711-433-210-00	23
	5		7		17-A
1703-261-002-00	5	1711-433-210-00	256	1711-433-210-00	105
	6		7		14
1703-261-002-00	6	1711-433-210-00	258	1711-433-210-00	106
	7		7		14
1703-261-002-00	7	1711-433-210-00	255	1711-433-210-00	21
	1		12		17-B
1703-261-002-00	2	1711-433-210-00	256	1711-433-210-00	22
	5		12		17-B
1703-261-002-00	3	1711-433-210-00	258	1711-433-210-00	23
	4		12		17-B
1703-261-002-00	4	1711-433-210-00	255	1711-433-210-00	105
	5		11		14-A
1703-261-002-00	5	1711-433-210-00	256	1711-433-210-00	106
	6		11		14-A
1703-261-002-00	6	1711-433-210-00	258	1711-433-210-00	137
	7		11		11
1703-261-002-00	109	1709-301-001-00	34	1716-601-002-00	138
	110		10		13
1703-261-002-00	111	1709-680-200-00	36	1716-601-009-00	139
	112		10		12
1703-261-002-00	12	1711-433-200-00	193	1716-601-017-00	137
	42		23		37
1703-261-002-00	13	1711-433-200-10	194	1716-601-017-00	138
	43		22		39
1703-261-002-00	14	1711-433-200-10	195	1716-601-017-00	139
	38		19		38
1703-261-002-00	15	1711-433-200-10	99	1716-601-017-00	142
	39		8-A		17
1703-261-002-00	62	1711-433-200-20	99	1716-601-017-00	143
	7		8-B		15
1703-261-002-00	63	1711-433-210-00	99	1716-601-017-00	142
	7		8-C		2
			99		8

Numerical Index

1748-097-100-20

Part Code	Fig. Key	Part Code	Fig. Key	Part Code	Fig. Key
1734-601-051-00	138 7	1734-601-320-00	138 37	1734-631-055-00	171 8
1734-601-052-10	138 8		139 36		175 7
	139 7	1734-601-320-10	137 35-A		177 7
1734-601-052-20	138 8-A		138 37-A	1734-631-056-00	171 9
	139 7-A		139 36-A		175 8
1734-601-200-30	137 1	1734-601-320-20	137 35-B		177 8
	138 1		138 37-B	1734-631-056-10	175 8-A
	139 1		139 36-B		177 8-A
1734-601-200-40	137 1-A	1734-602-003-00	140 2	1734-650-210-00	185 6
	138 1-A		141 2		186 6
	139 1-A	1734-602-210-00	140 17		188 6
1734-601-200-50	137 1-B	1734-602-210-10	140 17-A		189 6
	138 1-B		141 17		190 6
	139 1-B	1734-604-003-00	142 19	1734-650-240-00	187 1
1734-601-200-60	137 1-C		143 17		284 4
	138 1-C	1734-604-003-10	142 19-A	1734-720-001-00	166 2
	139 1-C		143 17-A		227 10
1734-601-200-70	137 1-D	1734-604-004-00	142 5		229 10
	138 1-D		143 5	1734-720-400-00	228 1
	139 1-D	1734-604-004-10	142 5-A	1734-720-410-00	228 2
1734-601-250-20	137 40		143 5-A	1734-780-004-00	241 19-A
	138 42	1734-604-005-00	142 11		242 19
	139 41		143 10	1734-780-200-00	241 1
1734-601-250-30	137 40-A	1734-604-005-10	142 11-A	1734-780-200-10	241 1-A
	138 42-A		143 10-A	1734-780-200-20	241 1-B
	139 41-A	1734-604-006-00	142 24	1734-780-200-30	241 1-C
1734-601-260-00	137 44		143 21	1734-780-200-40	241 1-D
	138 46	1734-604-051-00	142 6		242 1
	139 45	1734-604-052-00	142 12	1734-780-520-10	241 35
1734-601-260-10	137 44-A	1734-604-053-00	142 23		242 35
	138 46-A	1734-604-053-10	142 23-A	1734-782-001-10	243 32
	139 45-A	1734-604-240-00	142 13	1734-782-001-20	243 32-A
1734-601-300-00	137 30		143 11	1734-782-001-30	243 32-B
	138 32	1734-604-250-00	142 14	1734-782-002-00	243 33
	139 31		143 12	1734-782-002-10	243 33-A
1734-601-310-00	137 34	1734-631-052-00	171 22	1734-782-220-10	243 27
	138 36		175 21	1734-782-230-00	243 25
	139 35		177 20	1736-120-200-00	18 1
1734-601-310-10	137 34-A	1734-631-053-00	171 23	1736-306-001-00	70 25
	138 36-A		175 22		71 25
	139 35-A	1734-631-054-00	171 7	1736-306-001-10	70 25-A
1734-601-310-20	137 34-B		177 6		71 25-A
	138 36-B	1734-631-054-10	171 7-A	1738-411-210-00	95 6
	139 35-B		175 6	1738-680-210-00	191 43-A
1734-601-320-00	137 35		177 6-A		192 48-A

Numerical Index

1748-097-100-20

Part Code	Fig. Key	Part Code	Fig. Key	Part Code	Fig. Key
1744-511-380-00	120 43	1744-512-260-00	274 19	1744-515-240-00	130 6
1744-511-380-10	120 43-A		275 15	1744-515-240-10	130 6-A
	121 42	1744-512-320-20	123 1	1744-515-250-00	130 11
1744-511-380-20	120 43-B	1744-512-330-20	274 1	1744-521-002-10	136 6
	121 42-A	1744-512-360-00	124 1	1744-521-004-00	136 20
1744-511-390-00	120 44	1744-512-370-00	275 1	1744-521-004-10	136 20-A
1744-511-390-10	120 44-A	1744-514-200-00	125 1	1744-606-200-00	144 1
	121 43		126 1	1744-606-200-10	144 1-A
1744-511-390-20	120 44-B	1744-514-230-00	125 3	1744-606-200-20	144 1-B
	121 43-A		126 3	1744-606-210-00	144 2
1744-512-001-10	122 11	1744-514-260-00	125 12	1744-606-210-10	144 2-A
	123 10		126 12	1744-608-200-00	147 1
	124 10		127 3	1744-608-250-10	150 1
	274 11		128 3	1744-625-500-00	157 1
1744-512-001-20	122 11-A	1744-514-260-10	125 12-A	1744-625-500-10	157 1-A
	123 10-A		126 12-A	1744-625-510-00	157 6
	124 10-A		127 3-A	1744-625-520-00	157 7
	274 11-A		128 3-A	1744-625-800-00	158 1
1744-512-002-10	122 12	1744-514-260-20	125 12-B	1744-625-810-00	158 2
	274 12		126 12-B	1744-630-001-10	159 12
	275 9		127 3-B		160 12
1744-512-200-10	122 7		128 3-B		164 12
	123 7	1744-514-270-00	125 15	1744-630-001-11	162 9
	124 7		126 15		167 9
	274 7		127 6	1744-630-200-20	159 1
1744-512-210-10	122 8		128 6		160 1
	274 8	1744-514-270-10	125 15-A	1744-630-200-30	159 1-A
	275 6		126 15-A		160 1-A
1744-512-230-00	122 21		127 6-A	1744-630-200-40	159 1-B
	123 18		128 6-A		160 1-B
	124 18	1744-514-280-00	125 16	1744-630-200-50	159 1-C
	274 21		126 16		160 1-C
	275 17		127 7	1744-630-200-60	159 1-D
1744-512-240-00	122 24		128 7		160 1-D
	123 21	1744-514-280-10	125 16-A	1744-630-200-70	159 1-E
	124 21		126 16-A		160 1-E
	274 24		127 7-A		164 1
1744-512-250-00	122 18		128 7-A	1744-630-700-10	163 1
	123 15	1744-514-290-00	125 17		165 1
	124 15		126 17	1744-630-700-20	163 1-A
	274 18	1744-514-300-00	127 1		165 1-A
	275 14		128 1	1744-630-700-30	163 1-B
1744-512-260-00	122 19	1744-515-200-00	129 6		165 1-B
	123 16	1744-515-200-10	129 6-A	1744-630-700-40	163 1-C
	124 16	1744-515-230-00	129 11		165 1-C

Numerical Index

1748-097-100-20

Part Code	Fig.	Key	Part Code	Fig.	Key	Part Code	Fig.	Key	
6281-229-014-00	309	21	J061-112-022-00	116	25	K110-001-106-00	295	20	
6281-229-015-00	309	22		119	25		298	20	
6281-229-016-00	309	23		241	52		298	20	
6281-229-017-00	309	24		242	52	K135-002-009-00	286	7	
6281-229-018-00	309	25		243	35		287	7	
6281-229-032-00	309	6		243	35-A	K135-015-000-00	114	1	
6281-229-033-00	309	11		243	36		117	1	
6281-229-040-00	309	14		J061-236-044-00	1	12	K135-015-002-00	286	2
6281-271-002-00	309	26			2	12		287	2
6281-420-006-00	191	40			3	12	K135-015-100-00	286	1
	192	45	4		12	115		1	
	196	39	5		12	116	1		
	197	44	6		12	118	1		
6909-913-834-00	12	35	7		12	119	1		
	13	36	109		14	K135-018-100-00	287	1	
	14	31	110		14		K167-001-000-20	88	2
	15	32	111		14	K167-001-000-30	88	2-A	
	7932-201-002-00	38	3	112	14	K167-001-000-40	88	2-B	
7963-611-003-00	39	3	J061-254-065-00	9	10	K167-001-001-00	88	4	
	125	18		10	11		89	4	
		125	22	11	10	K167-001-200-00	88	3	
		125	28	J062-076-082-00	12	47	K167-001-300-00	88	5
		126	18		13	48	K167-001-303-00	88	6
		126	22		14	43	89	6	
		126	28	15	44	K167-001-304-00	88	7	
		127	13	J062-138-148-00	21		18-A	89	7
		128	13		22	18-A	K167-001-305-00	88	8
	8595-901-007-00	255	5	23	18-A	K167-001-400-00	88	3-A	
256		5	105	15	K167-007-000-00	89	2		
258		5	106	15	K167-007-000-10	89	2-A		
8654-203-201-00	179	58	J062-147-159-00	1	21	K167-007-200-00	89	3	
	180	58		2	21	K167-007-300-00	89	5	
	181	16		3	20	K182-087-000-10	105	39	
8654-501-006-10	129	13-A	4	21	106	38			
	130	13-A	5	21	K185-078-000-10	118	100		
8654-901-002-00	255	9	6	20		K192-001-002-20	288	2	
	256	9	7	21	K192-001-003-20	288	6		
	258	9	12	39	K192-001-004-10	288	8		
8844-616-001-00	121	60	13	40	K192-001-005-00	288	11		
A101-251-008-00	78	9	14	35	K192-001-006-00	288	12		
	79	9	15	36	K192-003-000-00	47	9		
	80	9	K110-001-106-00	289		13	48	9	
	81	9		292	4	K192-003-001-00	288	1	
J061-112-022-00	114	18	292	24	K200-014-007-00	295	27		
	115	25	295	20		295	27		

Numerical Index

1748-097-100-20

Part Code	Fig.	Key	Part Code	Fig.	Key	Part Code	Fig.	Key	
V301-260-006-00	188	20	V304-260-008-00	119	3	V304-260-010-00	131	7	
	189	4		120	25		144	9	
	189	20		120	29		179	24	
	190	4		120	32		180	24	
	190	20		121	24		181	13	
	204	20		121	28		181	31	
	205	20		121	31		221	4	
	214	8		126	42		222	4	
	214	13		128	30		V304-260-012-00	83	23
	216	8		137	13		167	17	
	216	13		138	15		167	17-A	
	301	1		139	14		179	30	
	V302-460-016-00	263		6	156		16	180	30
		263		16	156		16-A	282	7
		264		6	158		15	V304-260-016-00	221
264		16	179	15	222	11			
V304-260-008-00	16	28	179	15-A	V304-260-020-00	98	16		
	19	5	179	34	99	16			
	19	9	179	46	V304-460-008-00	97	17		
	20	5	179	56	118	88			
	20	9	180	15	137	3			
	78	14	180	15-A	138	3			
	78	21	180	34	139	3			
	79	14	180	46	179	10			
	79	21	180	56	179	41			
	80	14	181	10	179	52			
	80	21	181	54	180	10			
	81	14	181	62	180	41			
	81	21	181	74	180	52			
	83	13	185	11	181	5			
	85	13	186	11	181	50			
	86	12	188	11	181	70			
	87	13	189	11	V304-460-010-00	70	17		
	107	17	190	11	71	17			
	107	46	223	17	100	38			
	108	19	V304-260-010-00	109	24	101	38		
	109	73	109	69	135	8			
	110	65	110	24	136	8			
	111	73	110	61	223	19			
112	69	111	24	V304-460-012-00	21	4			
114	3	111	69	22	4				
115	3	112	24	23	4				
116	3	112	65	24	4				
117	3	120	10	24	8				
118	3	121	9	42	6				

Numerical Index

1748-097-100-20

Part Code	Fig.	Key	Part Code	Fig.	Key	Part Code	Fig.	Key
V744-135-500-80	43	3	V780-140-000-4T	24	12	V783-160-601-50	47	27
	45	3		105	6		48	27
V744-145-600-90	105	27	V780-140-000-6T	106	6	V783-160-601-80	119	56
	106	26		291	14		290	17
V760-150-000-00	59	5	V781-160-000-6B	113	10	V889-000-081-80	270	4
	60	5		292	48		270	9
	61	5	V782-160-000-2B	41	8	V889-001-362-40	264	9
	103	5		262	8		264	19
	103	12	V782-160-000-2T	21	10	V920-551-001-20	261	5
	104	5		22	10		V920-551-401-70	261
	104	12	V782-160-000-4B	23	10	V920-551-902-20	261	7
	105	40		24	11		V920-552-402-70	261
	106	39	V782-160-000-4T	42	11	V936-150-015-00	261	3
	118	109		21	12		V999-200-003-00	263
179	59	22	12	263	20			
V761-150-000-00	180	59	23	12	264	10		
	181	17	30	12	264	20		
	74	24	109	29	265	5		
	74	24-A	110	29	265	10		
	75	24	110	39	266	5		
	75	24-A	111	29	266	10		
	76	24	112	29	267	5		
	77	24	114	14	267	10		
	98	11	117	14	268	5		
	98	19	118	13	268	10		
V762-150-000-00	99	11	70	23	269	5		
	99	19	71	23	269	10		
V763-150-000-00	100	34	V782-160-000-4T	105	5	270	5	
	101	34	V782-160-000-6B	106	5	270	10	
V780-140-000-2T	294	7	V782-160-000-6T	41	8-A	271	5	
	74	25		100	28	271	10	
V780-140-000-2T	75	25	V782-160-000-8B	101	28	272	5	
	76	23		262	8-A	272	10	
	76	23-A	V783-160-501-10	110	38	W201-260-805-50	16	27-A
	77	23		120	45	W201-261-005-50	179	23
	77	23-A	V782-160-000-8B	121	44		180	23
	83	18		122	23	W201-261-206-00	285	2
	109	45	V782-160-000-8B	123	20	W296-133-206-40	236	14
	111	45		124	20	W296-134-007-00	140	20
	112	41	V782-160-000-8B	274	23		141	20
	115	47		275	19	W296-203-208-00	168	21
116	47	V782-160-000-8B	42	10		168	23	
118	72		42	10-A		169	21	
290	15	V783-160-501-10	119	55		169	23	
293	8		290	16		171	16	

Alphabetical Index

6008-097-180-20

Description	Fig. Key	Description	Fig. Key	Description	Fig. Key
ADAPTER/260X120 ASSY	24 1	BOLT	26 8	BRACKET/ROCKERSHAFT	12 12
ADAPTER/260X175 ASSY	23 1		27 9		12 13
ARM/CONTROL	21 30		30 10	BRUSH	32 9
ARM/FLOATING COMP	21 21		30 52		33 17
ARM/TENSION	23 2		30 52	BUSH	32 14
	23 2-A		32 3		33 15
	24 2		32 4	BUSHING/DRAIN	31 22
ARMATURE/STARTE ASSY	31 2		32 15	CAMSHAFT	13 1
BALL	2 5		32 16	CAMSHAFT/INJECTION P	21 11
	31 15		32 24	CAP, OIL FILLER	3 7
BEARING	10 48		32 25	CAP/OILFILLER	6 32
	10 49		32 26	CAP/RABBER	31 24
	31 4		33 9	CARTRIDGE/OILFILTER	17 11
BEARING, RB/6002SS	16 8		33 10	CLAMP	10 10
BEARING/BALL	16 8-A		33 19	CLAMP, 7	10 34
	21 14		33 20	CLIP ASSY	20 10-A
	31 3		33 21	CLIP ASSY	20 10
	32 5		33 22	CLIP/HOSE/18-22	18 11
	32 21		33 24	CLIP/HOSE/7. 6-8. 2	22 4
	33 6	BOLT (WS)	10 46	CLUTCH/STARTER ASSY	31 5
	33 11	BOLT, SEMS/M6X12	13 5	COLLOR	32 23
BEARING/CONNECTING R	7 5		21 17		33 3
	7 6	BOLT, SEMS/M8X25 7T	5 3	CONNECTINGROD ASSY	14 5
	14 7	BOLT, SEMS/M8X35	5 9	CONNECTOR/FUEL	22 1
BEARING/CRANK SET	6 12	BOLT, STUD/M10X25	10 45	CONNECTOR/GLOWPLUG	27 6
BEARING/CRANK/LOWER	6 14	BOLT/CONNECTINGROD	14 6		27 6-A
BEARING/CRANK/UNDER	7 1		14 6-A	CONNECTOR/OILFILTER	6 25
	7 3	BOLT/FLANGE	19 4	CONTROLRACK	30 48
BEARING/CRANK/UPPER	6 13		25 5	CONTROLSLEEVE	30 49
BEARING/THRUST/CRANK	6 15		26 5	COVER	32 12
	7 2	BOLT/M6	10 29	COVER, BEARING	32 20
	7 4		10 30		33 5
BELT/VNR5A41. 0	19 5-A	BOLT/M6X10	21 19	COVER/BLOWBY	3 5
BELT/VR5A41. 0	19 5	BOLT/M8X55	5 4	COVER/CYLINDER/HEAD	3 1
BODY/OILPUMP	17 2	BOLT/S	8 4-A	COVER/END/REAR	33 13
BOLT	2 8		13 5-A	COVER/HOUSING	18 13
	6 2		18 22	COVER/INJECTIONPUMP	6 26
	8 4		21 17-A	CRANKSHAFT ASSY	16 1
	8 5	BOLT/STUD	6 20		16 1-A
	10 41		10 37	CUP/SEALING/16	6 3
	12 18	BOLT/THROUGH	31 18	CUP/SEALING/20	2 6
	16 9	BOLT/WS	9 3		10 3
	16 13		17 6	CUP/SEALING/28	6 4
	18 8		18 15	CUP/SEALING/36	6 5
	25 8	BOSS/SPLINE	16 10	CUP/SEALING/50	2 2

Alphabetical Index

6008-097-131-20

Description	Fig. Key	Description	Fig. Key	Description	Fig. Key	
NUT	11 57	0-RING/P 8	22 28	PISTON/OV	16 1	
	11 59-A	0-RING/P18	9 3		16 1-A	
	13 17		11 30		16 3	
	22 31	0-RING/P22	18 9		16 3-A	
	30 18		29 17	PISTON/VALVE/RELIEF	11 27	
	32 20	0-RING/P25	6 33	PLATE	33 2	
	32 23		7 33		34 8	
	33 13	PACKING	11 17	PLATE/ADJUST	26 2	
	33 17	PIN	6 19		27 2	
	33 18		6 29	PLATE/FRONT	11 44	
	34 2		7 19	PLATE/REAR	10 1	
	34 23		7 29	PLATE/T=2. 60	31 17	
	34 25		10 2	PLATE/T=2. 65	31 18	
	NUT/CAP	3 9		11 21	PLATE/T=2. 70	31 19
	NUT/FLANGE	28 5		11 21-A	PLATE/T=2. 75	31 20
NUT/HI-IDLESTOPPER	11 32		17 2	PLATE/T=2. 80	31 21	
NUT/M08	5 6		17 7	PLATE/T=2. 85	31 22	
	11 6		31 12	PLATE/T=2. 90	31 23	
	13 20	PIN, CONTROL	22 23	PLATE/T=2. 95	31 24	
	19 9	PIN/ARM	11 19	PLATE/T=3. 00	31 25	
	22 8	PIN/GROOVE	11 24	PLATE/T=3. 05	31 26	
NUT/M10	26 6	PIN/IDLEGEAR	6 9	PLATE/T=3. 10	31 27	
	27 6		7 9	PLATE/T=3. 15	31 28	
	27 6-A		7 9-A	PLATE/T=3. 20	31 29	
NUT/M6	11 36-A	PIN/PISTON	15 3	PLATE/T=3. 25	31 30	
	22 31-A	PIN/SNAP	11 20	PLATE/T=3. 30	31 31	
NUT/M8	5 7	PIN/STRAIGHT	6 18	PLATE/T=3. 35	31 32	
	11 55		7 18	PLATE/T=3. 40	31 33	
	11 59		18 5	PLATE/T=3. 45	31 34	
NUT/MAXPOWERSTOPPER	11 14	PIN/TUBE	6 17	PLATE/T=3. 50	31 35	
NUT/NOZZLERETAINING	30 15		7 17	PLATE/T=3. 55	31 36	
OILFILLER COMP	7 34		11 49	PLATE/T=3. 60	31 37	
	7 34-A	PINION/STARTER	32 11	PLATE/T=3. 65	31 38	
OILPAN	9 1		32 12	PLATE/T=3. 70	31 39	
OILPUMP ASSY	18 1	PIPE/FUEL	23 2	PLATE/T=3. 75	31 40	
OILSEAL	6 16	PIPE/INJECTION ASSY	21 6	PLATE/T=3. 80	31 41	
	7 16		21 7	PLATE/T=3. 85	31 42	
	11 4		21 8	PLATE/T=3. 90	31 43	
	29 10		21 9	PLATE/T=3. 95	31 44	
	29 12	PIPE/WATER/HOUSING	19 3	PLATE/T=4. 00	31 45	
	32 21	PIPE/WATERDRAIN	6 24	PLATE/T=4. 05	31 46	
ORING	31 6		7 24	PLATE/T=4. 10	31 47	
	31 9	PIPE/WATEROUTLET	19 20	PLATE/THRUST	14 4	
O-RING HS90 G50	19 6	PISTON	15 1	PLATE/THRUST/INJPUMP	22 16	
	29 18		15 1-A	PLUG	6 7	

Alphabetical Index

1748-097-100-20

Description	Fig.	Key	Description	Fig.	Key	Description	Fig.	Key	
BOLT/M12X30	157	8	BOLT/M14X45	90	3	BOLT/M8X50	109	57	
	219	3		90	7		110	49	
	219	7		91	3		111	57	
	220	3		92	2		112	53	
	220	7		93	3		BOLT/M8X80	241	5
BOLT/M12X32	21	3	BOLT/M14X50	93	7	BOLT/M8XX55	241	5-A	
	22	3		94	3		242	5	
	23	3		95	3		16	27-A	
	24	2		135	4		BOLT/S	47	32
	105	10		136	4		48	32	
BOLT/M12X35	106	10	BOLT/M16X30	71	32	86	7		
	21	5	BOLT/M16X40	101	51-A	87	8		
	22	5	BOLT/M16X85	221	7	109	28		
	23	5		222	7	110	28		
	24	3		223	4	111	28		
	24	7		136	14	112	28		
	30	3		263	4	114	11		
	42	5		263	14	115	11		
	42	5-A		264	4	116	11		
	95	7		264	14	117	11		
	95	10		BOLT/M4X12	303	10	118	77	
	100	7		BOLT/M4X5	291	1	119	11	
	101	7	BOLT/M5X16	201	4	241	44		
	105	9	BOLT/M5X30	202	4	242	44		
	106	9		218	4	BOLT/S/M06X16	297	4-A	
BOLT/M12X40	95	10-A		BOLT/M6X16X16	204	23-B	BOLT/SET/M06X16	237	25-A
	98	12	BOLT/M6X20/16	205	23-B	BOLT/SET/M16X60	221	10	
	99	12		228	3	222	10		
	157	9		243	39	BOLT/SM/M08X20	107	37	
	219	4		204	57	BOLT/SM/M08X26	84	12	
220	4	205		58	BOLT/SM/M10X23	43	6		
BOLT/M12X60	285	2	243	10	45	6			
BOLT/M12X70	156	11	243	39-A	179	2			
	158	10	BOLT/M8X16	46	11	180	2		
BOLT/M12X80	157	15	55	14	181	2			
BOLT/M12X88	73	14	BOLT/M8X20	88	20	BOLT/SM/M12X175	70	20	
BOLT/M14X30	90	2	BOLT/M8X25	89	19	71	20		
	91	2		241	2	BOLT/SM/M14X96	223	7	
	93	2		241	2-A	BOLT/SP	8	5	
	94	2		241	2-B	8	7		
	95	2		242	2	120	38		
	105	37		120	24	121	37		
	106	36		121	23	122	27-A		
	BOLT/M14X40	221		5	BOLT/M8X28 11T	286	7	123	24
		222		5	287	7	124	24	

Alphabetical Index

1748-097-100-20

Description	Fig. Key	Description	Fig. Key	Description	Fig. Key
FENDER/OVER/LH COMP	228 1	FLANGEBOLT	2 8-A	FLANGEBOLT	14 45
FENDER/OVER/RH COMP	228 2		2 17		14 45-A
FENDER/RH COMP	144 2		2 17-A		15 3
	144 2-A		2 26		15 16
FILTER/O8	289 20		2 26-A		15 40
FILTER/AIR/REFINER	224 14		3 8		15 46
	224 14-A		3 16		15 46-A
	225 13		3 23		18 3
FILTER/CHARGE ASSY	117 52		4 8		25 2
	118 56		4 17		25 10
FILTER/FUEL	13 7		4 26		25 34
	13 7-A		5 8		26 2
	15 7		5 17		26 10
FILTER/FUEL ASSY	12 20		5 25		26 32
	12 20-A		6 8		27 6
	13 21		6 16		29 18
	13 21-A		6 23		31 2
	14 16		7 8		32 16
	14 16-A		7 17		33 2
	15 17		7 26		34 2
	15 17-A		9 6		35 10
FILTER/LINE/12X18X15	109 44		9 8		35 11
	111 44		10 7		36 2
	112 40		10 9		40 2
	115 10		11 6		41 4
	116 10		11 8		41 13
	118 71		12 3		41 26
	119 10		12 15		41 29
FILTER/PORT/09	115 49		12 17		41 42
	116 49		12 19		42 9
	119 58		12 19-A		43 4
FILTER/SUCTION/20	109 4		12 43		44 8
	110 4		12 49		45 4
	111 4		12 49-A		47 7
	112 4		13 3		48 7
FLANGE/SUCTION/H	117 5		13 16		50 6
FLANGE/SUCTION/HST	118 5		13 18		51 6
FLANGE/SUCTION/P/Q	115 5		13 20		55 2
	116 5		13 20-A		55 3
	119 5		13 44		55 5
FLANGE/SUCTION/S/V	114 5		13 50		56 2
FLANGEBOLT	1 8		13 50-A		57 2
	1 17		14 3		57 14
	1 25		14 15		58 2
	2 8		14 39		58 16

Alphabetical Index

1748-097-100-20

Description	Fig. Key	Description	Fig. Key	Description	Fig. Key
HOSE/DRAIN/1800	243 14	HOSE/RUBBER	2 38	INSULATOR	1 7
HOSE/DRAIN/2000	243 15		3 34		1 9
HOSE/DRAIN/400	243 16-A		3 35		1 9-A
HOSE/FUEL/600 ASSY	12 37		3 37		1 30
	13 38		4 35		2 7
	14 33		4 36		2 9
	15 34		4 38		2 9-A
HOSE/FUEL/900 ASSY	12 46		5 36		2 31
	13 47		5 37		3 9
	14 42		5 39		3 9-A
	15 43		6 34		3 28
HOSE/HEATER	243 32		6 35		4 9
	243 33		6 37		4 31
HOSE/HEATER/2830	243 32-A		7 35		5 9
HOSE/HEATER/3600	243 33-A		7 36		5 30
HOSE/HEATER/L	241 49		7 38		6 9
HOSE/HEATER/L/150	241 49-A	HOUSING ASSY	303 8		6 28
	242 49	HOUSING COMP	88 14		7 9
HOSE/HEATER/VALVE/28	243 32-B		89 13		7 31
HOSE/OIL	115 13	HOUSING/AXLE	70 13		78 20
	116 13		70 13-A		79 20
	119 13		71 13		80 20
HOSE/RADIATOR/INLET	1 11		71 13-A		90 13
	2 11		98 1		93 13
	3 11		98 1-A		95 17
	4 11		99 1		109 23
	5 11		99 1-A		110 23
	6 11	HST/29.5/30.2 ASSY	27 1		111 23
	7 11	HUB/12X19X42	121 55		112 23
HOSE/RADIATOR/OUTLET	1 10	HUB/18X27X106	57 3		135 11
	2 10		57 3-A		136 11
	3 10		57 3-B		136 19
	4 10		58 3		137 6
	5 10		58 3-A		137 6-A
	6 10		58 3-B		138 6
	7 10	HUB/18X27X79	65 4		138 6-A
HOSE/RETURN	114 17		66 4		139 6
	115 24		67 4		139 6-A
	116 24	HUB/18X32X16	157 2		142 2
	119 24	HUB/23X46X58	35 6		142 8
HOSE/RUBBER	1 36		35 6-A		142 21
	1 37		35 6-B		143 2
	1 39	HUB/25X40X58	34 7		143 7
	2 35		36 7		143 19
	2 36	HUB/25X50X65	25 18		150 10

Alphabetical Index

1748-097-100-20

Description	Fig. Key	Description	Fig. Key	Description	Fig. Key	
NUT/M12	167 17	NUT/M22	191 49	NUT/M6	214 22	
	167 17-A		192 50		215 27	
	167 18		192 54		216 8	
	167 18-A		193 48		216 13	
	179 30		194 48		216 22	
	180 30		195 40		228 4	
	282 7		196 45		282 20	
	282 8		196 49		283 11	
	285 3		197 50		301 1	
	285 3		197 54		301 10	
NUT/M12/LH	83 26					
NUT/M14	90 9	NUT/M33X1.5	68 2	NUT/M8	19 10	
	92 4	NUT/M5	204 69		20 10	
	93 9		205 70		78 13	
NUT/M14X1.5	102 4		243 19		79 13	
	103 6	NUT/M50X1.5	70 31		80 13	
	103 13		71 31		81 13	
	104 6	NUT/M6	47 21		83 10	
	104 8		48 21		97 17	
	104 13		185 4		118 88	
NUT/M16	70 35		185 20		120 28	
	71 35		186 4		121 27	
	100 54		186 20		137 3	
	101 54		188 4		138 3	
	101 54-A		188 20		139 3	
	125 25		188 45		179 10	
	126 25		189 4		179 12	
	127 15		189 20		179 41	
	128 15		189 42		179 43	
	129 2		190 4		179 52	
	129 2-A		190 20		179 54	
	130 2		197 34		180 10	
	130 2-A		197 70		180 12	
	221 11		204 20		180 41	
	222 11		205 20		180 43	
	263 5		206 1		180 52	
	263 6		207 1		180 54	
	263 15		208 12		181 5	
	263 16		209 27		181 7	
	264 5		210 1		181 50	
	264 6		210 10		181 52	
	264 15		211 12		181 70	
	264 16		212 1		181 72	
	NUT/M20	98 16		213 1	NUT/POP/M08	1 24
		99 16		214 8		2 24
	NUT/M22	191 45		214 13		4 24

Alphabetical Index

1748-097-100-20

Description	Fig. Key	Description	Fig. Key	Description	Fig. Key
PLATE/I/30X50	44 7	PLATE/PRESSURE/LH	75 1	PLATE/UNDER	142 19-A
	262 28		76 1		143 17
PLATE/I/32X72	78 6	PLATE/PRESSURE/RH	77 1	PLATE/VALVE	143 17-A
	79 6		74 5		304 16
	80 6		75 5		304 17
	81 6		76 5		PLATE/Z/16X342 COMP 73 8
PLATE/I/44X124	112 8		76 5-A	PLATE/Z/16X86	209 25
PLATE/I/59X178	12 18-A		77 5		210 24
	13 19-A	PLATE/SENSOR COMP	208 10		210 29
PLATE/I/75X132	56 1		209 10		214 36
PLATE/I/75X145	160 18		210 8		214 41
	160 18-A		211 10		215 25
	165 18		214 20		216 36
	165 18-A		215 10		216 41
	153 17		216 20		262 45
PLATE/INNER/LH/H	153 17-A	PLATE/SEPARATE	74 2	PLIERS/G150	261 3
	150 18		74 6	PLUG	1 15
PLATE/INNER/LH/Q	150 18-A		75 2		2 15
	150 18-B		75 6		3 14
	152 18		76 2		4 15
	152 18-A		76 6-A		5 15
	150 19		76 6-B		6 14
PLATE/INNER/RH COMP	152 19		77 2		7 15
PLATE/IR/19X62 COMP	153 18		77 6		241 33
	182 33	PLATE/SEPARATER	76 6		241 37
	183 33	PLATE/SEPARATOR	302 8		242 33
	184 31		305 6		242 37
	12 2	PLATE/SPACER	296 6		288 8
PLATE/IR/19X65	13 2	PLATE/STAY COMP	207 13		289 15
	14 2		208 19		291 8
	15 2		209 18		291 9
	182 36		210 17		293 2
PLATE/IR/19X80	183 36		211 19		293 2
	184 34		212 12		296 13
	234 23		214 29		304 4
PLATE/IR/36X96	280 1		215 18		304 33
	120 12		216 29		304 41
	121 11	PLATE/STOPPER	179 21		304 42
PLATE/MID	41 34		180 21	PLUG COMP	206 4
	262 34	PLATE/SWASH	304 15		207 4
PLATE/NUMBER/E4	199 1	PLATE/THRUST	304 18		213 4
	200 1		304 35	PLUG/60	171 3
PLATE/PARKING/A COMP	83 22	PLATE/U/152X370	154 4		175 3
PLATE/PARKING/B COMP	83 25		155 2		177 3
PLATE/PRESSURE/LH	74 1	PLATE/UNDER	142 19	PLUG/7P	218 1

Alphabetical Index

1748-097-100-20

Description	Fig. Key	Description	Fig. Key	Description	Fig. Key
SPRING/HE042	125 11	STABILIZER/FRON COMP	125 21	STAY/CLAMP COMP	274 24
	126 11		126 21	STAY/CONDENSER/LH	241 22
SPRING/HE044	82 3	STABILIZER/REAR COMP	125 24		242 22
SPRING/HE046	182 32	STAY	126 24	STAY/CONDENSER/RH	241 23
	183 32		122 28		242 23
SPRING/HE055	184 30		123 25	STAY/CONTROLLER	206 2
	121 58		124 25		207 2
SPRING/HE060	16 26		274 28		210 2
SPRING/HE077	182 55	STAY COMP	275 20		212 2
	183 55		200 34		213 2
SPRING/HE089	184 50		204 53	STAY/CONTROLLER COMP	226 22
	137 14		205 54		227 29
SPRING/HE095	138 16		226 20		227 29-A
	139 15		227 24		227 29-B
SPRING/HE095	19 14		229 24		230 19
	20 14		230 17		230 19-A
SPRING/HE095	72 11		231 24		231 30
	73 10		282 12	STAY/DUMPER COMP	137 40
SPRING/HE095	74 20	STAY/AUDIO	283 3		137 40-A
	75 20		204 52-C		138 42
SPRING/HE095	76 20		205 53-C		138 42-A
	77 20		STAY/CABLE/ACCELERAT	182 47	
SPRING/HE095	78 19		183 47		139 41-A
	79 19		STAY/CABLE/CRUISE	182 13	STAY/FILTER/CHARGE
SPRING/HE095	80 19		183 13		118 59
	81 19		183 13-A	STAY/HITCH/FRON COMP	95 9
SPRING/HE110	182 15	STAY/CHAIN/LH COMP	125 15	STAY/HOSE COMP	105 50
	183 15		125 15-A		106 49
SPRING/HE122	179 35		126 15	STAY/LAMP/LH COMP	185 26
	180 35		126 15-A		185 26-A
SPRING/HE60	181 28		127 6		186 26
	182 7		127 6-A		186 26-A
SPRING/HE60	183 7		128 6		188 26
	184 7		128 6-A		188 26-A
SPRING/HT29	181 41	STAY/CHAIN/RH COMP	125 16		189 26
SPRING/PLATE	66 13		125 16-A		189 26-A
SPRING/PLATE/03	47 24		126 16		190 26
	48 24		126 16-A		190 26-A
SPRING/PLATE/03	115 46		127 7	STAY/LAMP/RH COMP	185 27
	116 46		127 7-A		185 27-A
SPRING/PLATE/03	119 52		128 7		186 27
	290 14		128 7-A		186 27-A
SPRING/WASHER	107 52	STAY/CLAMP COMP	122 24		188 27
	108 35		123 21		188 27-A
SPRING/WAVE	305 15		124 21		189 27

CLICK HERE TO **DOWNLOAD** THE COMPLETE MANUAL

- Thank you very much for reading the preview of the manual.
- You can download the complete manual from: www.heydownloads.com by clicking the link below



- Please note: If there is no response to CLICKING the link, please download this PDF first and then click on it.

CLICK HERE TO **DOWNLOAD** THE COMPLETE MANUAL