

Directions for use of Parts Catalogue

1. Applicable model of machines

All component and option parts used for TM3215, TM3245, TM3265 tractors are listed in this parts catalogue.

1) MODEL TYPE

- F..... FOUR WHEEL DRIVE
- H..... HST
- S..... INDEPENDENT PTO
- M..... MID PTO.
- V..... SINGLE AUXILIARY HYDRAULIC VALVE
- W..... DOUBLE AUXILIARY HYDRAULIC VALVES
- R..... REAR ROPS
- A..... CENTER ROPS

2) AREA CODE

- E4..... EUROPE
- E4D..... GERMANY
- E6..... OCEANIA

2. Explanation for head paragraph

KEY	PART CODE	DESCRIPTION	S P C	TYPE OF MODEL						I T C	C O L	G R P	REMARKS
				SSM48M	SSM48F	SSM48G	SRM48M	SRM48F	SRM48G				
1	8595-211-001-20	CASE/UPPER	*	1									
1A	8657-201-081-00	CASE/UPPER	*	1			1						
2	8595-211-002-10	CASE/LOWER	*				1						
3	V523-100-801-80	PIN	*	2			2						
4	V211-260-803-00	BOLT, SEMS	*	4			4						
			*	2			2						
			*	2			2						
			*	2			2						
			*	2			2						
			*	2			2						
			*	2			2						
			*	2			2						

- ① KEY shows the location of parts diagramed in the illustration.
- ② Parts numbers begin with `V` and `W` are standard parts of the

CLICK HERE TO **DOWNLOAD** THE COMPLETE MANUAL

- Thank you very much for reading the preview of the manual.
- You can download the complete manual from: www.heydownloads.com by clicking the link below



- Please note: If there is no response to CLICKING the link, please download this PDF first and then click on it.

CLICK HERE TO **DOWNLOAD** THE COMPLETE MANUAL

Contents

TM3215F

ENGINE(E3112B36)

CYLINDER HEAD.....	Fig.101
CYLINDER HEAD COVER.....	Fig.102
INLET MANIFOLD.....	Fig.103
EXHAUST MANIFOLD.....	Fig.104
CYLINDER BLOCK.....	Fig.201
OIL PAN.....	Fig.202
REAR PLATE.....	Fig.203
TIMING GEAR CASE.....	Fig.204
HANGER.....	Fig.205
VALVE.....	Fig.301
CAM SHAFT.....	Fig.302
PISTON.....	Fig.303
CRANK SHAFT.....	Fig.304
OIL PUMP.....	Fig.401
WATER PUMP.....	Fig.402
COOLING FAN.....	Fig.403
INJECTION NOZZLE.....	Fig.501
INJECTION PUMP.....	Fig.502
FUEL PIPE.....	Fig.503
ADAPTER.....	Fig.504
ELECTRIC (1).....	Fig.801
ELECTRIC (2).....	Fig.802
SHORT BLOCK ENGIASSY.....	Fig.P01
BEARING/UNDER SIZE (OPTION).....	Fig.P02

Contents

CHASSIS

RADIATOR SYSTEM

(TM3215,3245-EXCEPT H TYPE)..... Fig.101

RADIATOR SYSTEM (TM3215,3245-H TYPE)..... Fig.102

RADIATOR SYSTEM

(TM3265-EXCEPT H TYPE)..... Fig.103

RADIATOR SYSTEM (TM3265-H TYPE)..... Fig.104

MUFFLER SYSTEM (TM3265)..... Fig.105

MUFFLER SYSTEM (TM3215,3245)..... Fig.106

AIR CLEANER SYSTEM (TM3215,3245)..... Fig.107

AIR CLEANER SYSTEM (TM3265)..... Fig.108

FILTER SYSTEM (TM3215,3245)..... Fig.109

FILTER SYSTEM (TM3265)..... Fig.110

FUEL TANK SYSTEM..... Fig.111

BATTERY SYSTEM (TM3215,3245)..... Fig.112

BATTERY SYSTEM (TM3265)..... Fig.113

ACCELERATOR PEDAL SYSTEM

(EXCEPT H TYPE)..... Fig.114

ACCELERATOR LEVER SYSTEM..... Fig.115

CLUTCH HOUSING SYSTEM

(TM3215,3245-EXCEPT H TYPE)..... Fig.116

CLUTCH HOUSING SYSTEM

(TM3215,3245-H TYPE)..... Fig.117

CLUTCH HOUSING SYSTEM

(TM3265-EXCEPT H TYPE)..... Fig.118

CLUTCH HOUSING SYSTEM

(TM3265-H TYPE)..... Fig.119

PEDAL (CLUTCH) SYSTEM

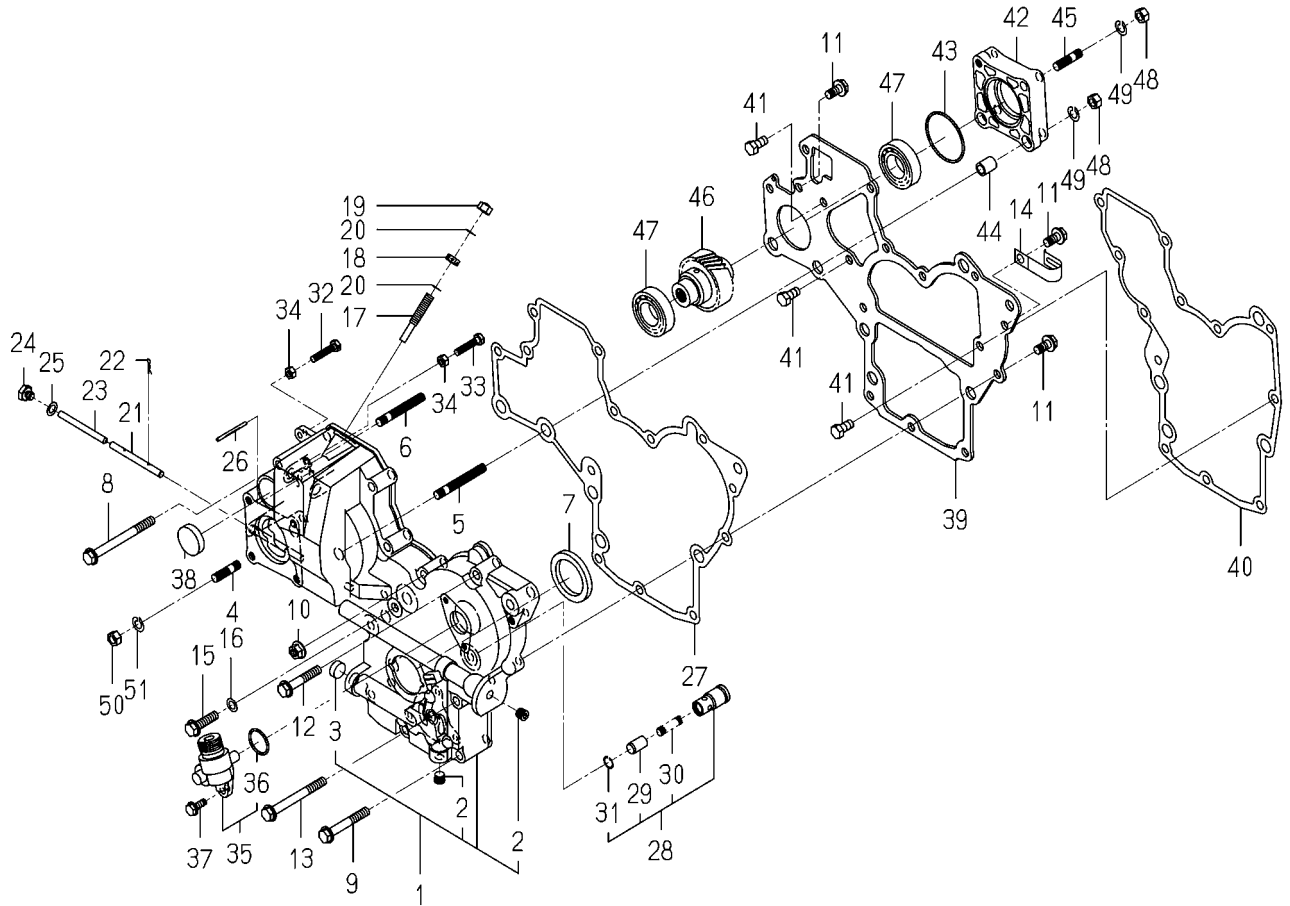
(EXCEPT H TYPE)..... Fig.120

ENGINE

E3112B36...TM3215F

ENGINE

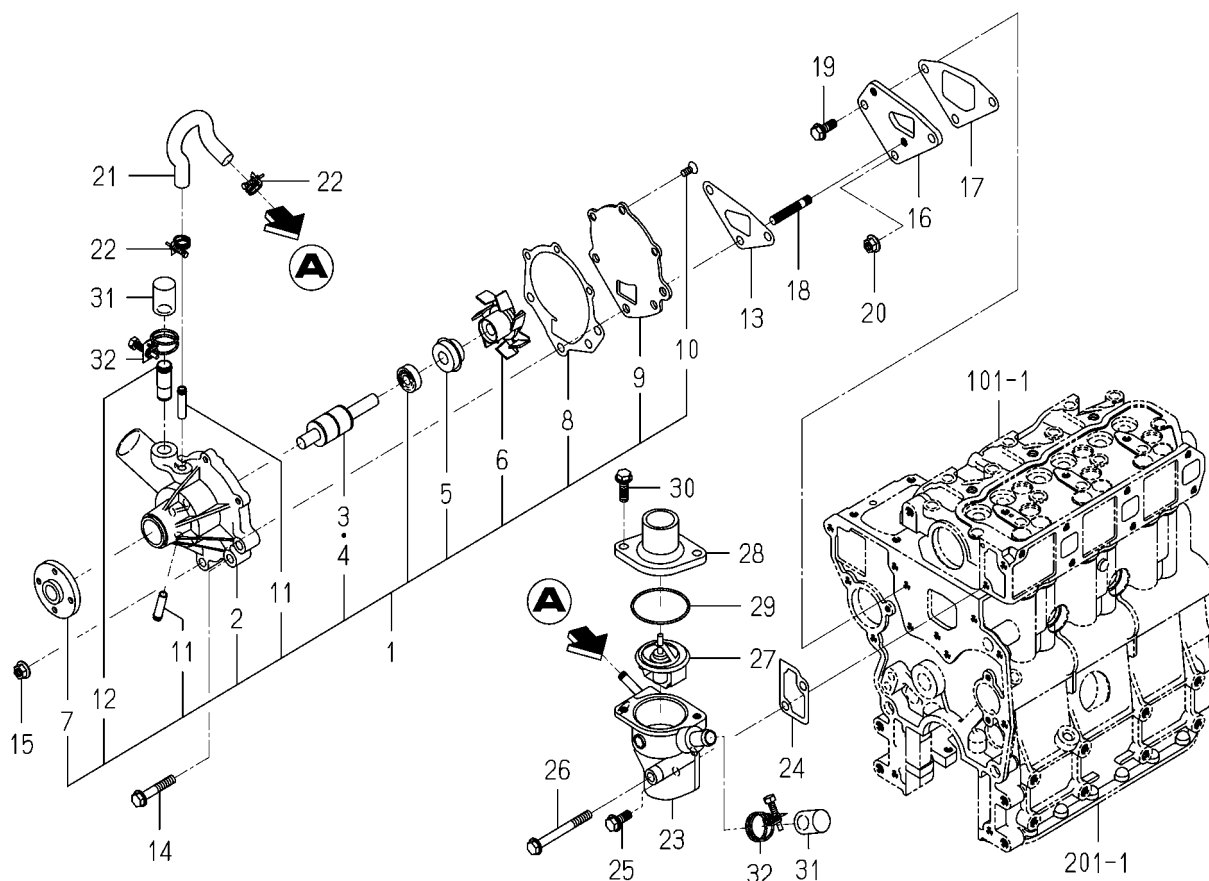
FIG.204 TIMING GEAR CASE



6004-240N-0100,6004-240N-0200

KEY	PART CODE	DESCRIPTION	S P C	TYPE OF MODEL		I T C	C O L	G R P	REMARKS
				E3112	B36				
1	-----	BLANK	*						-----
1	6211-310-012-40	GEARCASE ASSY	*	1					
2	-----	BLANK	*						-----
2	6209-605-007-00	PLUG/PT1/8	*	2					
3	-----	BLANK	*						-----
3	6209-610-007-00	CUP/SEALING/16	*	1					
4	6904-110-822-00	STUD	*	4					
5	6904-110-855-00	STUD	*	2					
6	6904-110-850-00	STUD	*	1					
7	6209-625-002-00	SEAL,OIL	*	1					
8	-----	BLANK	*						-----
8	V231-360-808-50	FLANGEBOLT	*	1					
9	-----	BLANK	*						-----
9	V231-360-805-50	FLANGEBOLT	*	2					
10	3817-401-001-00	NUT/M08	*	1					
11	-----	BLANK	*						-----
11	V231-360-801-60	FLANGEBOLT	*	3					
12	-----	BLANK	*						-----
12	V231-360-804-50	FLANGEBOLT	*	5					
13	-----	BLANK	*						-----
13	V231-360-807-50	FLANGEBOLT	*	1					
14	1425-621-004-00	HOLDER/JE/9-9	*	2					
15	-----	BLANK	*						-----
15	V231-360-803-00	FLANGEBOLT	*	1					
16	6209-500-003-00	WASHER/08X14X01	*	1					
17	6215-546-003-10	STOPPER/FULLLOAD	*	1					
18	6209-409-001-00	NUT/M8	*	1					
19	V341-120-008-00	NUT,CAP/M 8	*	1					
20	6209-920-002-00	PACKING	*	2					
21	6215-542-004-20	PIN/ARM	*	1					

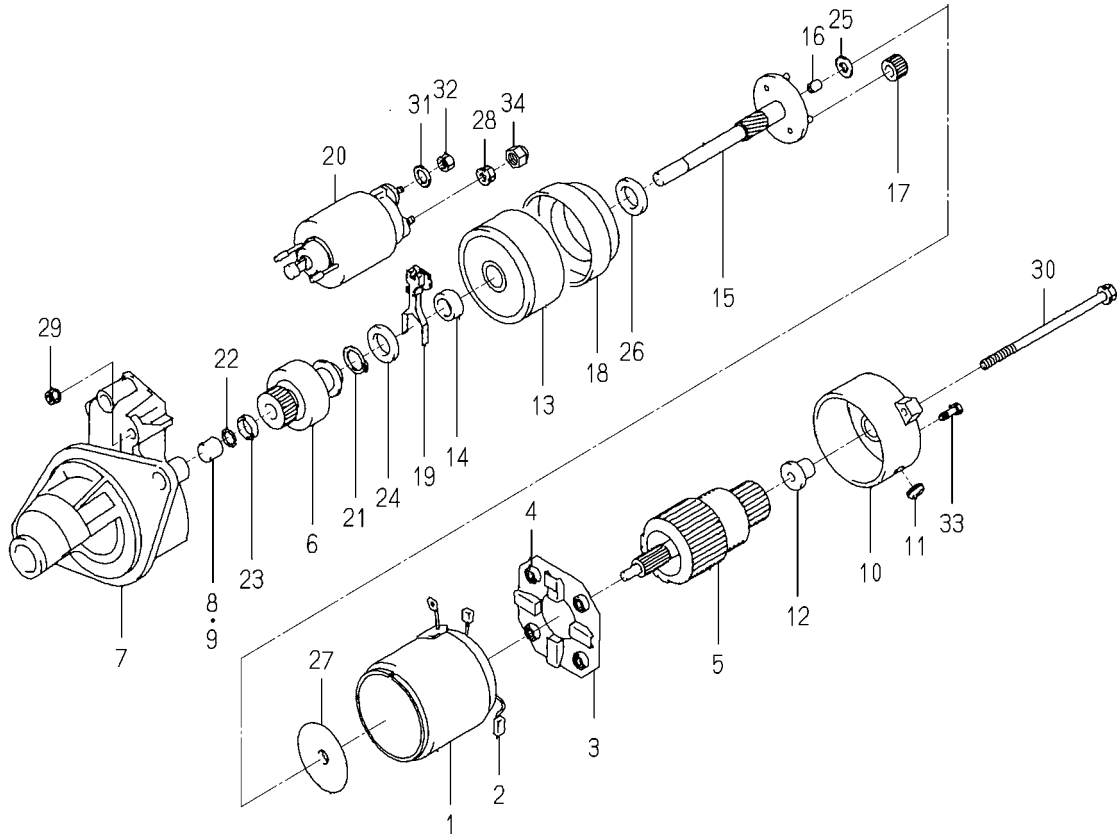
FIG.402 WATER PUMP



6004-420H-0100

KEY	PART CODE	DESCRIPTION	S P C	TYPE OF MODEL		I T C	C O L	G R P	REMARKS
				E3112 B36					
1	6213-610-011-10	WATERPUMP ASSY	*	1					
2	6213-611-006-00	BODY/WATERPUMP	*	1					
3	6213-631-002-00	BEARING/WATER PUMP	*	1					
4	6213-631-005-00	BEARING/WATERPUMP	*	1					
5	6213-622-002-10	SEAL SET/WATER PUMP	*	1					
6	6213-621-003-00	ROTOR/WATERPUMP	*	1					
7	6213-642-002-00	SEAL/WATER PUMPPULLE	*	1					
8	6213-613-002-10	GASKET	*	1					
9	6213-612-004-00	PLATE/WATER PUMP	*	1					
10	6213-619-003-00	SCREW/WATER PUMP	*	3					
11	6213-619-002-00	PIPE/WATER PUMP	*	2					
12	6213-619-009-00	PIPE/WATERPUMP	*	1					
13	6213-614-003-10	GASKET/WATER PUMP	*	1					
14	V231-360-804-50	FLANGE BOLT	*	1					
15	3817-401-001-00	NUT/M08	*	2					
16	6213-619-001-00	SPACER,PUMP.WATER	*	1					
17	6213-614-004-10	GASKET,SPACER	*	1					
18	6904-110-840-00	STUD/M8X40	*	2					
19	V231-360-802-00	FLANGE BOLT	*	1					
20	3817-401-001-00	NUT/M08	*	1					
21	6213-729-013-10	HOSE/RUBBER	*	1					
22	J061-210-015-00	CLAMP/WIRE/10-15	*	2					
23	6213-716-004-10	HOUSING/THERMOSTAT	*	1					
24	6213-743-002-10	GASKET/HOUSING	*	1					
25	V231-360-802-00	FLANGE BOLT	*	1					
26	V231-360-807-50	FLANGE BOLT	*	1					
27	6513-770-022-10	THERMOSTAT	*	1					
28	6213-711-003-20	PIPE,WATER OUTLET	*	1					
29	V723-102-005-50	O-RING	*	1					
30	V231-360-802-50	FLANGE BOLT	*	2					

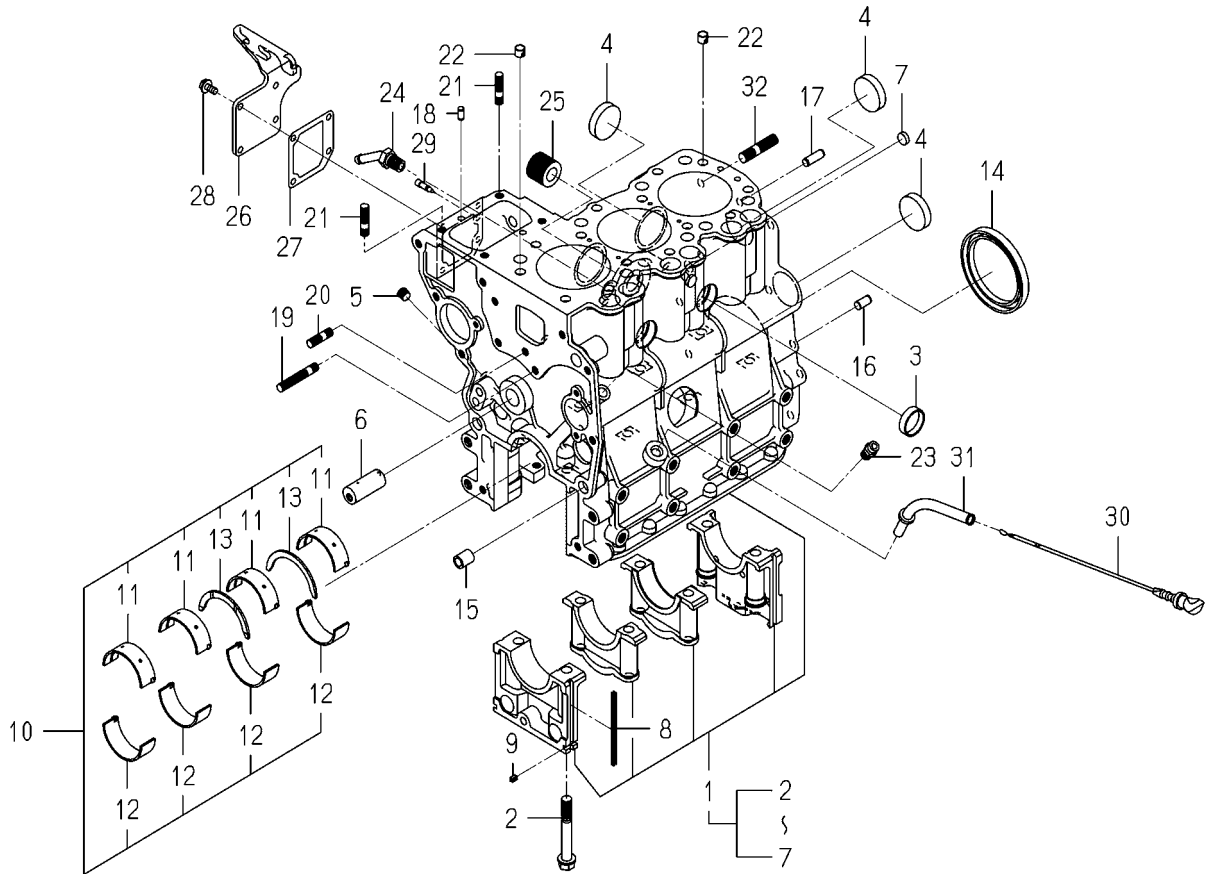
FIG.S03 COMPONENT PARTS FOR 6281-100-014-00 ON Fig.801



6281-100-014-0A

KEY	PART CODE	DESCRIPTION	S P C	TYPE OF MODEL		I T C	C O L	G R P	REMARKS
				E3112 B33					
1	6281-111-009-00	YOKE/STARTER ASSY	*	1					
2	6281-119-009-00	BRUSH/STARTER	*	2					
3	6281-118-007-00	HOLDER/STARTER ASSY	*	1					
4	6281-117-003-00	SPRING/STARTERBRUSH	*	4					
5	6281-121-010-00	ARMATURE/STARTE ASSY	*	1					
6	6281-124-011-00	CLUTCH/STARTER ASSY	*	1					
7	6281-129-064-00	HOUSING/STARTER ASSY	*	1					
8	-----	BLANK	*						-----
8	6281-129-080-00	BEARING/NEEDLE	*	1					
9	6281-129-058-00	BEARING/NEEDLE	*	1					
10	6281-115-017-00	FRAME/COMMUTATOR END	*	1					
11	6281-115-018-00	COVER	*	1					
12	6281-129-065-00	BEARING/OILLESS	*	1					
13	6281-129-066-00	BEARING/WITH SHOCKAB	*	1					
14	6281-129-067-00	BEARING/OILLESS	*	1					
15	6281-129-068-00	SHAFT/STARTER PLANET	*	1					
16	6281-129-069-00	BEARING/OILLESS	*	1					
17	6281-129-070-00	GEAR/STARTER PLANETA	*	3					
18	6281-129-071-00	GEAR/STARTERINTERNAL	*	1					
19	6281-127-003-00	LEVER/PINIONDRIVE	*	1					
20	6281-151-014-00	SWITCH/MAGNETIC ASSY	*	1					
21	6281-129-072-00	RING/SNAP	*	1					
22	6281-129-073-00	RING/SNAP	*	1					
23	6281-129-074-00	NUT/PINIONSTOP	*	1					
24	6281-129-075-00	WASHER/SK	*	1					
25	6281-129-076-00	WASHER/SK	*	1					
26	6281-129-077-00	WASHER/SK	*	1					
27	6281-129-078-00	PLATE	*	1					
28	6281-129-030-00	NUT	*	1					
29	6281-129-029-00	NUT	*	2					

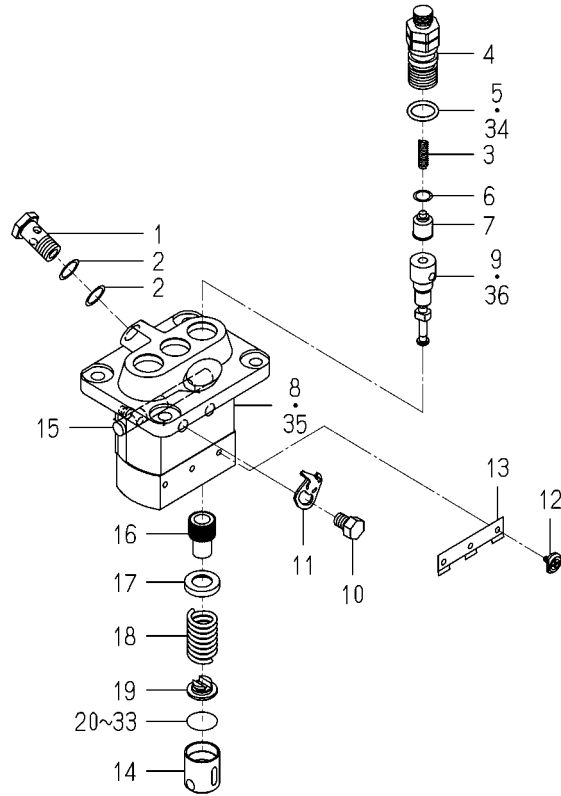
FIG.201 CYLINDER BLOCK



6004-202V-0100

KEY	PART CODE	DESCRIPTION	S P C	TYPE OF MODEL		I T C	C O L	G R P	REMARKS
				E3112	B34				
1	6211-210-037-40	CYLINDERBLOCK ASSY	*	1					
2	6209-000-004-10	BOLT	*	8					
3	6209-610-001-10	CUP/SEALING/28	*	2					
4	6209-610-009-00	CUP/SEALING/36	*	4					
5	6209-605-007-00	PLUG/PT1/8	*	3					
6	6212-531-005-10	PIN/IDLEGEAR	*	1					
7	6209-610-008-00	CUP/SEALING/12	*	2					
8	6211-258-001-00	SEAL,BEARING CAP	*	4					
9	6211-258-002-00	SEAL,BEARING CAP/7	*	2					
10	6211-510-001-00	METAL,CRANK SET	*	1					
11	6211-511-003-00	BEARING/CRANK/UPPER	*	4					
12	6211-511-004-00	BEARING/CRANK/LOWER	*	4					
13	6211-599-001-10	BEARING,THRUST CRANK	*	2					
14	6209-625-001-00	SEAL,OIL	*	1					
15	6209-749-001-20	PIN/TUBE	*	2					
16	6213-129-006-00	PIN/STRAIGHT	*	1					
17	V523-100-802-40	PIN	*	1					
18	6209-740-005-00	PIN	*	2					
19	6904-110-840-00	STUD/M8X40	*	1					
20	6904-110-818-00	STUD	*	1					
21	6904-110-822-00	STUD	*	2					
22	6294-453-002-00	DOWEL	*	2					
23	6909-902-299-00	NIPPLE	*	1					
24	6213-721-007-00	PIPE/WATERDRAIN	*	1					
25	6213-319-001-00	CONNECTOR,OIL FILTER	*	1					
26	6211-291-016-00	COVER/INJECTIONPUMP	*	1					
27	6211-292-001-20	GASKET/COVER	*	1					
28	V230-360-601-20	FLANGE BOLT	*	4					
29	6215-549-013-00	PIN	*	1					
30	6211-760-026-30	LEVEL/GAGE	*	1					

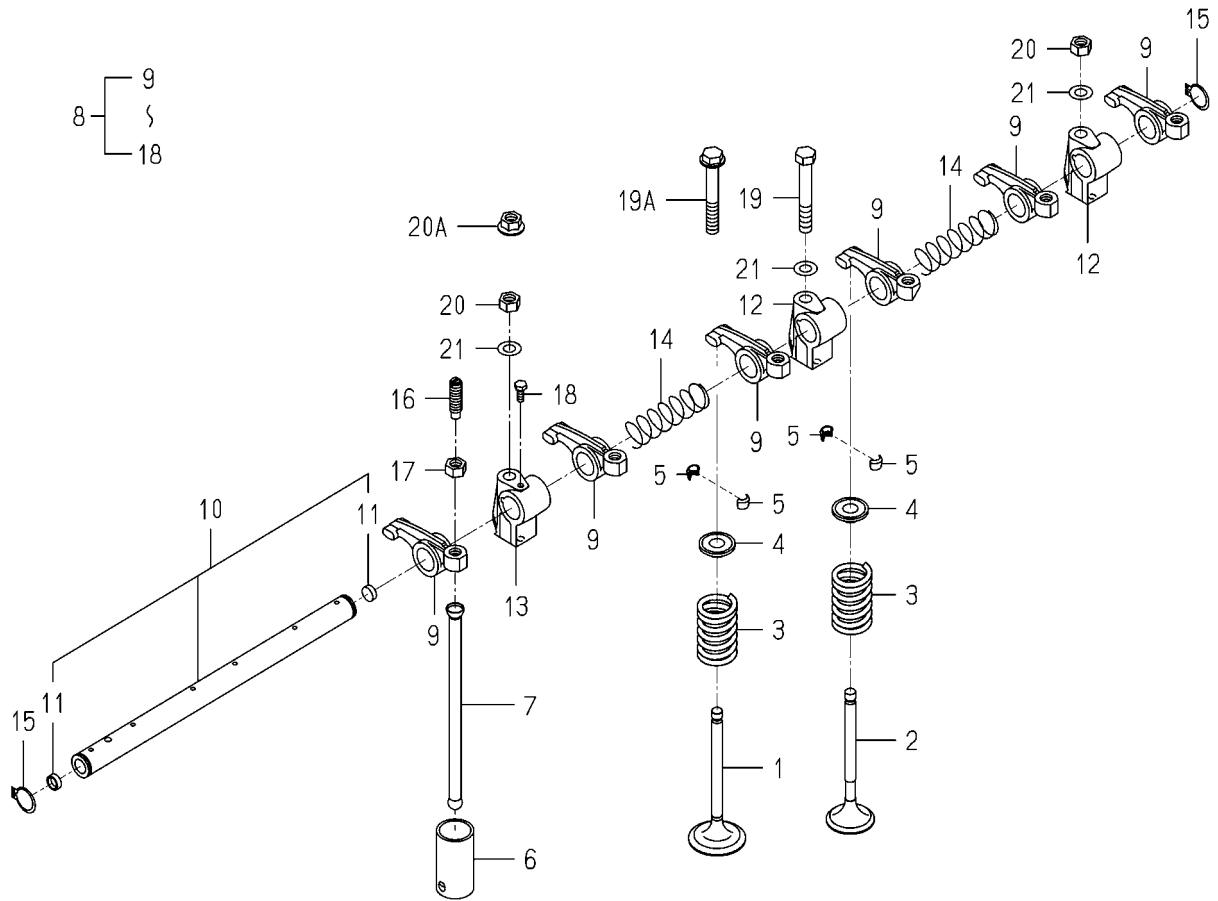
FIG.S02 COMPONENT PARTS FOR 6215-600-103-10 ON Fig.502



6215-600-103-1F

KEY	PART CODE	DESCRIPTION	S P C	TYPE OF MODEL		I T C	C O L	G R P	REMARKS
				E3112 B34					
1	6215-619-009-00	SCREW/HOLLOW	*	1					
2	6215-619-010-00	WASHER/AIR BLEEDER	*	2					
3	6215-643-006-00	SPRING/DELIVERYVALVE	*	3					
4	6215-644-007-00	HOLDER/DELIVERYVALVE	*	3					
5	-----	BLANK	*						-----
6	6215-649-002-00	GASKET/DELIVERYVALVE	*	3					
7	6215-641-006-00	VALVE ASSY	*	3					
8	-----	BLANK	*						-----
9	-----	BLANK	*						-----
10	6215-619-022-00	BOLT/WASHERHEAD	*	2					
11	6215-612-001-00	PLATE/ADJUSTING	*	2					
12	6215-629-001-00	PIN/INJECTIONPUMP	*	3					
13	6215-629-002-00	PLATE	*	1					
14	6215-622-001-00	TAPPET/INJECTIO ASSY	*	3					
15	6215-637-001-00	RACK/CONTROL ASSY	*	1					
16	6215-635-001-00	SLEEVE/PLUNGER	*	3					
17	6215-639-004-00	SEAT/SPRING/UPPER	*	3					
18	6215-634-001-00	SPRING/PUMPPLUNGER	*	3					
19	6215-639-005-00	SEAT/SPRING/LOWER	*	3					
20	-----	BLANK	*						-----
20	6215-629-003-00	PLATE/TAPPET/AD 0.6	*	1					
21	-----	BLANK	*						-----
21	6215-629-004-00	PLATE/TAPPET/AD 0.7	*	1					
22	-----	BLANK	*						-----
22	6215-629-005-00	PLATE/TAPPET/AD 0.8	*	1					
23	-----	BLANK	*						-----
23	6215-629-006-00	PLATE/TAPPET/AD 0.9	*	1					
24	-----	BLANK	*						-----
24	6215-629-007-00	PLATE/TAPPET/AD 1.0	*	1					
25	-----	BLANK	*						-----

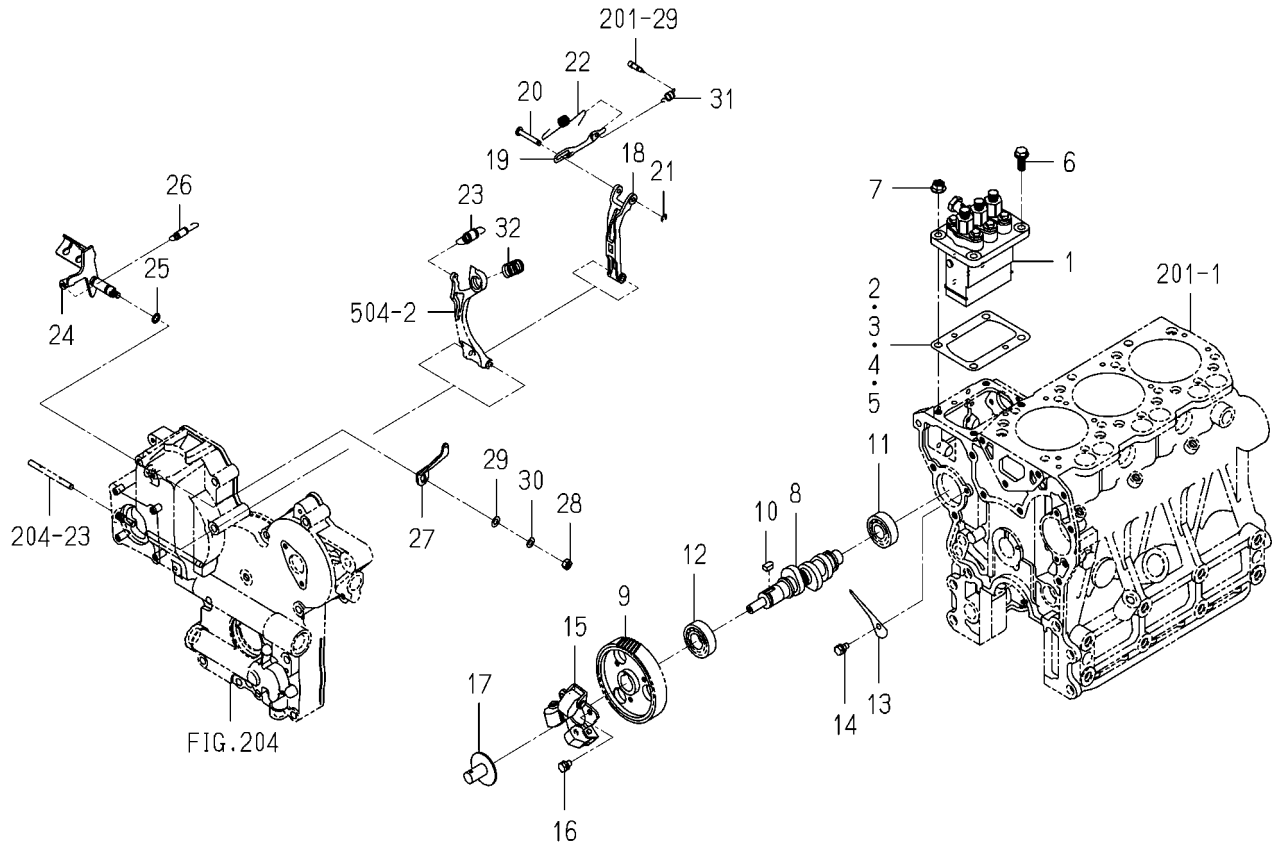
FIG.301 VALVE



6005-301B-0100

KEY	PART CODE	DESCRIPTION	S P C	TYPE OF MODEL		I T C	C O L	G R P	REMARKS
				E3CDB70					
1	-----	BLANK	*						-----
1	-----	BLANK	*						-----
1	6212-551-020-10	VALVE/INTAKE	*	3					
2	6212-552-008-00	VALVE/EXHAUST	*	3					
3	6212-561-003-00	SPRING/VALVE	*	6					
4	6212-563-001-00	SEAT,VALVE SPRING	*	6					
5	6212-565-001-00	CUTTER,VALVE	*	12					
6	-----	BLANK	*						-----
6	6212-571-002-30	TAPPET	*	6					
7	6212-575-003-00	PUSHROD	*	6					
8	-----	BLANK	*						-----
8	6212-600-009-20	ROCKERSHAFT ASSY	*	1					
9	6212-611-004-10	ROCKERARM	*	6					
10	-----	BLANK	*						-----
10	6212-620-008-20	SHAFT/ROCKERARM ASSY	*	1					
11	6212-626-002-10	PLUG	*	2					
12	-----	BLANK	*						-----
12	6212-628-010-10	BRACKET/ROCKERSHAFT	*	2					
13	-----	BLANK	*						-----
13	6212-628-011-10	BRACKET/ROCKERSHAFT	*	1					
14	6209-940-004-00	SPRING	*	2					
15	V704-140-016-00	RING,SNAP/16 C	*	2					
16	6212-616-002-00	SCREW ADJUST	*	6					
17	6209-409-003-00	NUT	*	6					
18	6209-000-002-00	BOLT	*	1					
19	-----	BLANK	*						-----
19A	-----	BLANK	*						-----
19A	V231-360-805-50	FLANGE BOLT	*	1					
20	-----	BLANK	*						-----
20A	3817-401-001-00	NUT/M08	*	2					

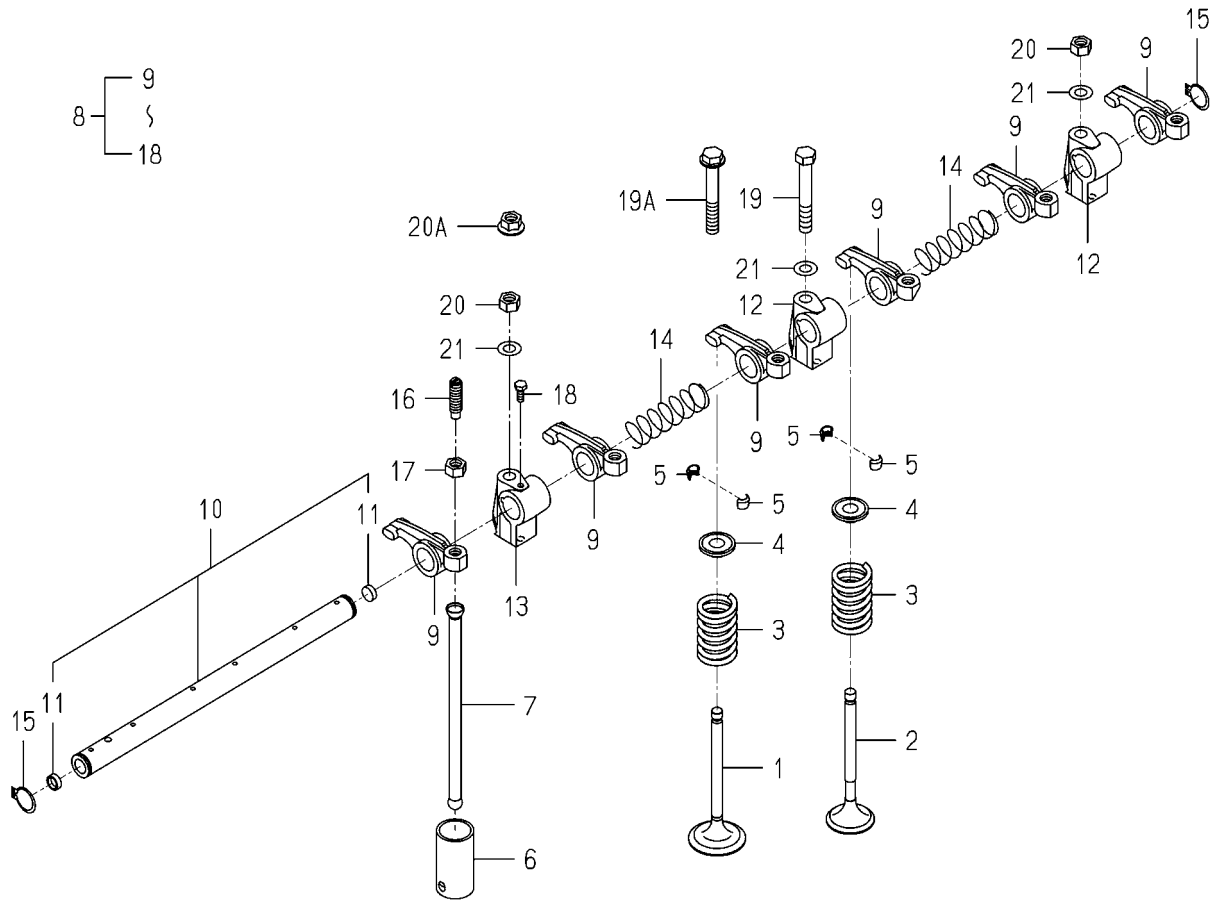
FIG.502 INJECTION PUMP



6005-511N-0100

KEY	PART CODE	DESCRIPTION	S P C	TYPE OF MODEL		I T C	C O L	G R P	REMARKS
				E3CDB70					
1	6215-600-155-00	INJECTIONPUMP ASSY	*	1					FIG S02
2	6219-752-045-00	SHIM/INJECTIONPUMP	*	1					
3	6219-752-044-00	SHIM/INJECTIONPUMP	*	1					
4	6219-752-046-00	SHIM/INJECTIONPUMP	*	1					
5	6219-752-047-00	SHIM/INJECTIONPUMP	*	1					
6	V231-360-802-00	FLANGE BOLT	*	2					
7	3817-401-001-00	NUT/M08	*	2					
8	6215-621-045-00	CAMSHAFT/INJECTION P	*	1					
9	6212-524-006-30	GEAR/INJECTIONPUMP	*	1					
10	6209-730-005-00	KEY/07X05X09	*	1					
11	V600-110-620-30	BEARING,RB/6203	*	1					
12	V600-110-600-40	BEARING,RB/6004	*	1					
13	6212-535-009-00	PLATE/THRUST/INJPUMP	*	1					
14	6901-910-612-00	BOLT,SEMS/M6X12	*	1					
15	6215-520-007-10	FLYWEIGHT ASSY	*	1					
16	6209-030-043-00	BOLT/M6X10	*	3					
17	6215-526-004-00	THRUSTPIECE	*	1					
18	6215-541-001-10	ARM/FLOATING COMP	*	1					
19	6215-543-002-10	RINK/CONTROL	*	1					
20	6215-542-006-00	PIN,CONTROL	*	1					
21	V710-140-004-00	RING,SNAP/ 4 E	*	1					
22	6215-549-031-10	SPRING/SETTING	*	1					
23	6215-531-010-00	SPRING/GOVERNOR	*	1					
24	6215-541-045-10	LEVER/CONTROL COMP	*	1					
25	V720-101-900-80	O-RING/P 8	*	1					
26	6209-580-002-10	SPRING,RETURN	*	1					
27	6215-549-076-10	ARM/CONTROL	*	1					
28	V301-260-006-00	NUT/M6	*	1					
29	V411-260-006-00	WASHER / M6	*	1					
30	V401-160-006-00	WASHER,SP/M 6	*	1					

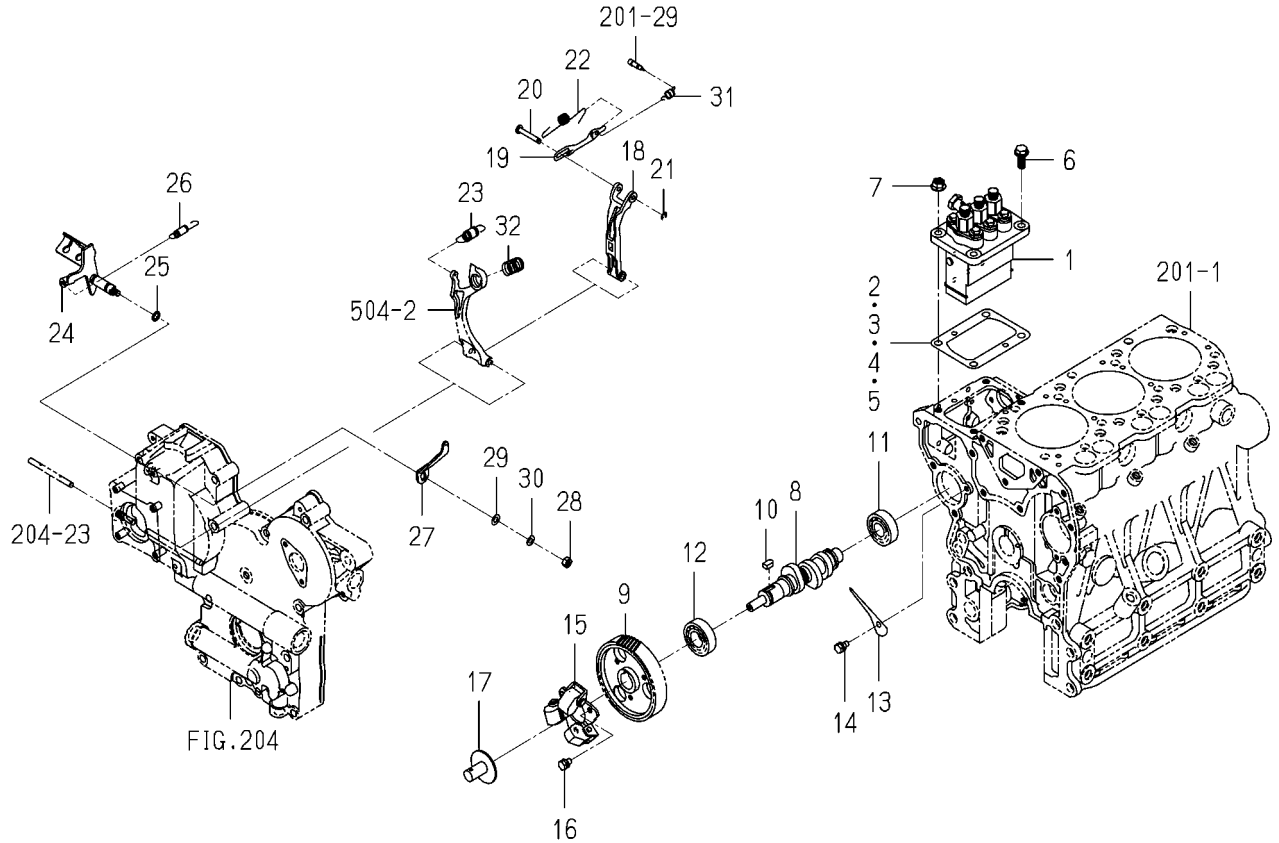
FIG.301 VALVE



6005-301B-0100

KEY	PART CODE	DESCRIPTION	S P C	TYPE OF MODEL		I T C	C O L	G R P	REMARKS
				E3CDB71					
1	-----	BLANK	*						-----
1	-----	BLANK	*						-----
1	6212-551-020-10	VALVE/INTAKE	*	3					
2	6212-552-008-00	VALVE/EXHAUST	*	3					
3	6212-561-003-00	SPRING/VALVE	*	6					
4	6212-563-001-00	SEAT,VALVE SPRING	*	6					
5	6212-565-001-00	CUTTER,VALVE	*	12					
6	-----	BLANK	*						-----
6	6212-571-002-30	TAPPET	*	6					
7	6212-575-003-00	PUSHROD	*	6					
8	-----	BLANK	*						-----
8	6212-600-009-20	ROCKERSHAFT ASSY	*	1					
9	6212-611-004-10	ROCKERARM	*	6					
10	-----	BLANK	*						-----
10	6212-620-008-20	SHAFT/ROCKERARM ASSY	*	1					
11	6212-626-002-10	PLUG	*	2					
12	-----	BLANK	*						-----
12	6212-628-010-10	BRACKET/ROCKERSHAFT	*	2					
13	-----	BLANK	*						-----
13	6212-628-011-10	BRACKET/ROCKERSHAFT	*	1					
14	6209-940-004-00	SPRING	*	2					
15	V704-140-016-00	RING,SNAP/16 C	*	2					
16	6212-616-002-00	SCREW ADJUST	*	6					
17	6209-409-003-00	NUT	*	6					
18	6209-000-002-00	BOLT	*	1					
19	-----	BLANK	*						-----
19A	-----	BLANK	*						-----
19A	V231-360-805-50	FLANGE BOLT	*	1					
20	-----	BLANK	*						-----
20A	3817-401-001-00	NUT/M08	*	2					

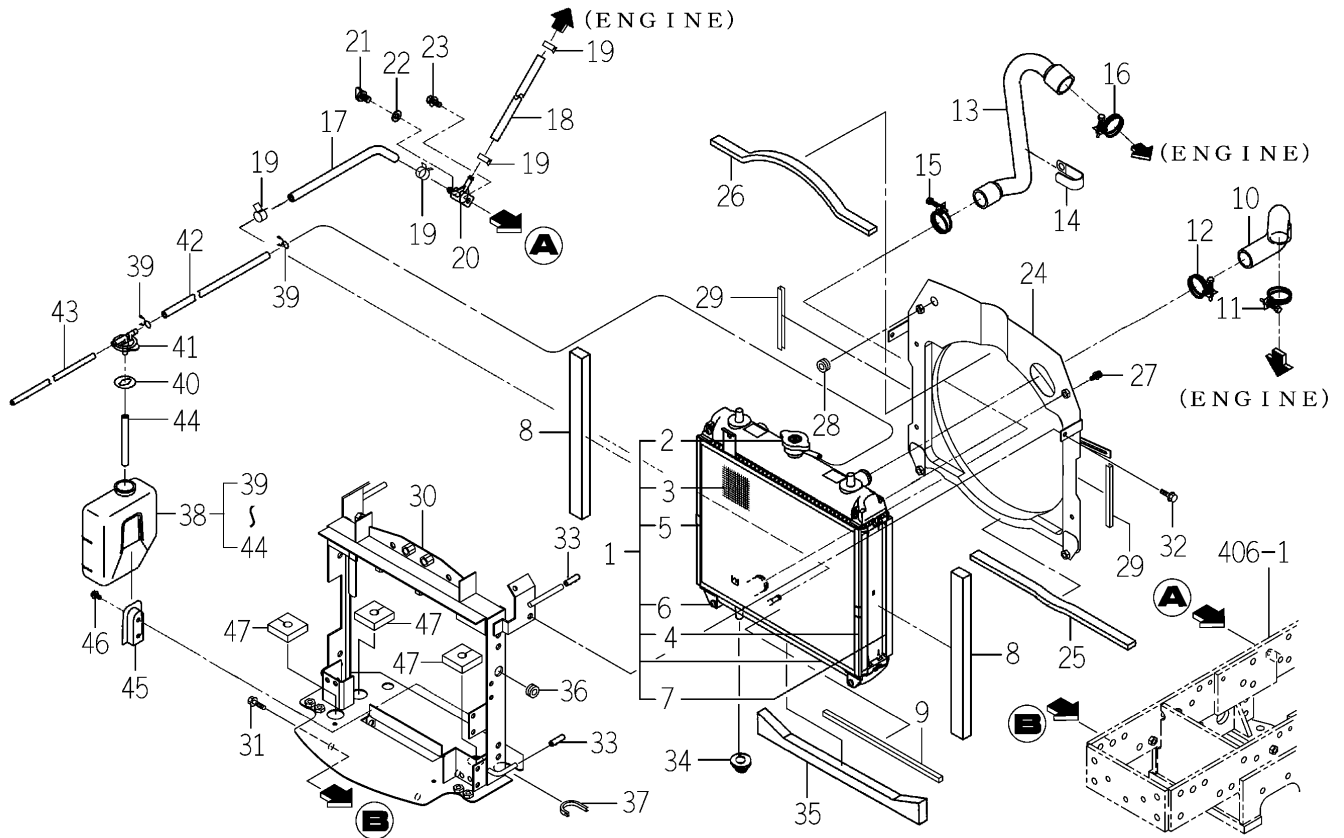
FIG.502 INJECTION PUMP



6005-511N-0100

KEY	PART CODE	DESCRIPTION	S P C	TYPE OF MODEL		I T C	C O L	G R P	REMARKS
				E3CDB71					
1	6215-600-155-00	INJECTIONPUMP ASSY	*	1					FIG S02
2	6219-752-045-00	SHIM/INJECTIONPUMP	*	1					
3	6219-752-044-00	SHIM/INJECTIONPUMP	*	1					
4	6219-752-046-00	SHIM/INJECTIONPUMP	*	1					
5	6219-752-047-00	SHIM/INJECTIONPUMP	*	1					
6	V231-360-802-00	FLANGE BOLT	*	2					
7	3817-401-001-00	NUT/M08	*	2					
8	6215-621-045-00	CAMSHAFT/INJECTION P	*	1					
9	6212-524-006-30	GEAR/INJECTIONPUMP	*	1					
10	6209-730-005-00	KEY/07X05X09	*	1					
11	V600-110-620-30	BEARING,RB/6203	*	1					
12	V600-110-600-40	BEARING,RB/6004	*	1					
13	6212-535-009-00	PLATE/THRUST/INJPUMP	*	1					
14	6901-910-612-00	BOLT,SEMS/M6X12	*	1					
15	6215-520-007-10	FLYWEIGHT ASSY	*	1					
16	6209-030-043-00	BOLT/M6X10	*	3					
17	6215-526-004-00	THRUSTPIECE	*	1					
18	6215-541-001-10	ARM/FLOATING COMP	*	1					
19	6215-543-002-10	RINK/CONTROL	*	1					
20	6215-542-006-00	PIN,CONTROL	*	1					
21	V710-140-004-00	RING,SNAP/ 4 E	*	1					
22	6215-549-031-10	SPRING/SETTING	*	1					
23	6215-531-010-00	SPRING/GOVERNOR	*	1					
24	6215-541-045-10	LEVER/CONTROL COMP	*	1					
25	V720-101-900-80	O-RING/P 8	*	1					
26	6209-580-002-10	SPRING,RETURN	*	1					
27	6215-549-076-10	ARM/CONTROL	*	1					
28	V301-260-006-00	NUT/M6	*	1					
29	V411-260-006-00	WASHER / M6	*	1					
30	V401-160-006-00	WASHER,SP/M 6	*	1					

FIG.102 RADIATOR SYSTEM (TM3215,3245-H TYPE)



1774-102A-0100

KEY	PART CODE	DESCRIPTION	S P C	TYPE OF MODEL			I T C	C O L	G R P	REMARKS
				TM3215	TM3245	TM3265				
1	1705-102-500-00	RADIATOR ASSY	*	1	1					
2	1650-102-202-10	CAP	*	1	1					
3	1705-102-203-00	PROTECTOR	*	1	1					
4	1703-102-205-00	GUIDE	*	1	1					
5	1703-102-206-00	GUIDE	*	1	1					
6	1703-102-203-00	SCREW/P	*	4	4					
7	1705-102-202-00	PACKING	*	4	4					
8	3834-336-051-00	INSULATOR/20X350	*	2	2					
9	1770-102-005-00	INSULATOR/10X10X290	*	1	1					
10	1675-102-004-00	HOSE/RADIATOR/INLET	*	1	1					
11	J061-236-044-00	CLAMP/WIRE/36-44	*	1	1					
12	J061-230-038-00	CLAMP/WIRE/30-38	*	1	1					
13	1738-102-001-10	HOSE/RADIATOR/OUTLET	*	1	1					
14	1425-621-004-00	HOLDER/JE/9-9	*	1	1					
15	J061-230-038-00	CLAMP/WIRE/30-38	*	1	1					
16	J061-236-044-00	CLAMP/WIRE/36-44	*	1	1					
17	1614-102-003-00	HOSE/205	*	1	1					
18	1698-102-003-00	HOSE/230	*	1	1					
19	J062-147-159-00	CLIP/HOSE/14.7-15.9	*	4	4					
20	1560-104-010-40	CONNECTOR	*	1	1					
21	1424-101-203-00	PLUG	*	1	1					
22	1424-101-204-00	PACKING	*	1	1					
23	V211-360-802-00	BOLT/SP	*	1	1					
24	1750-102-820-00	SHROUD COMP	*	1	1					
25	1675-102-002-00	INSULATOR	*	1	1					
26	1650-102-006-10	INSULATOR	*	1	1					
27	V230-360-602-00	FLANGEBOLT	*	4	4					
28	2142-581-002-00	GROMMET/15	*	1	1					
29	1705-102-014-00	TRIM/130	*	2	2					
30	1774-102-210-10	BRACKET/RADIATO COMP	*	1	1					

CLICK HERE TO **DOWNLOAD** THE COMPLETE MANUAL

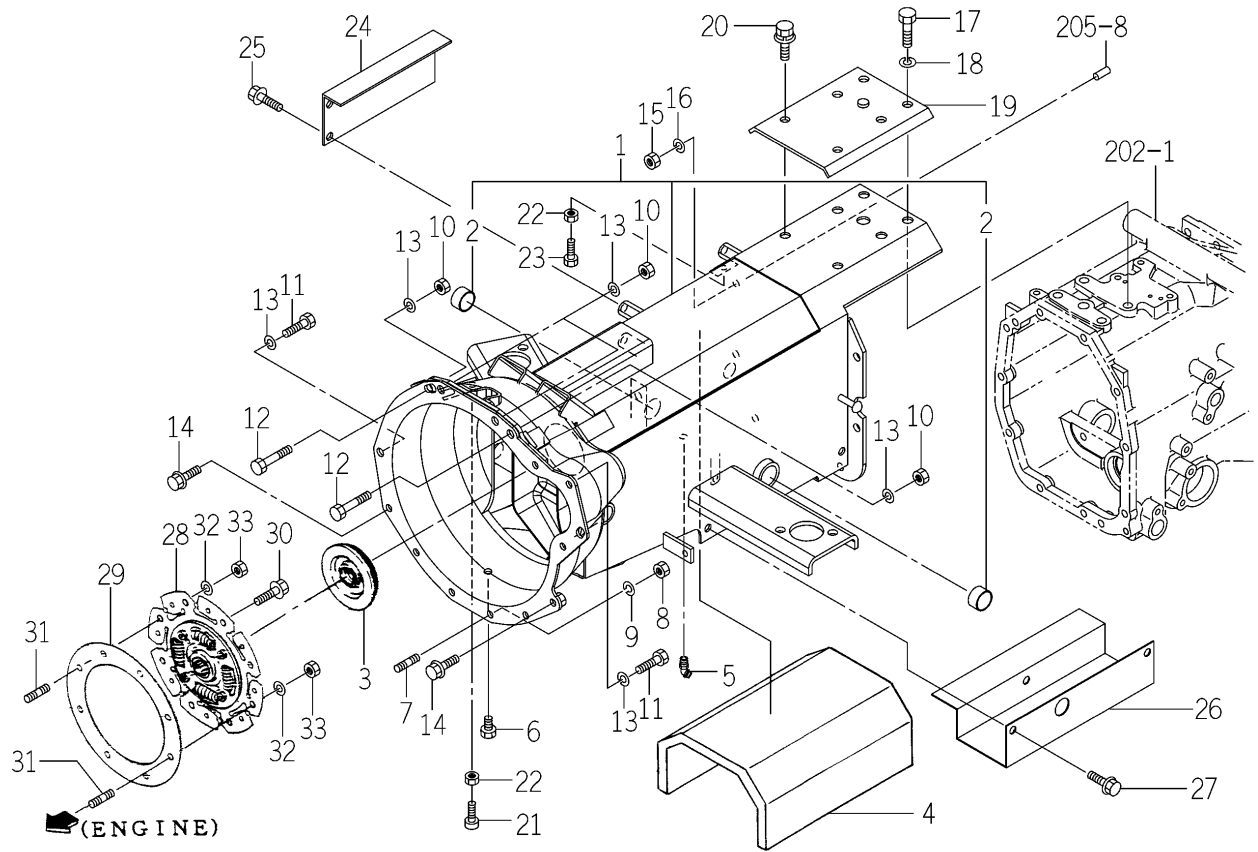
- Thank you very much for reading the preview of the manual.
- You can download the complete manual from: www.heydownloads.com by clicking the link below



- Please note: If there is no response to CLICKING the link, please download this PDF first and then click on it.

CLICK HERE TO **DOWNLOAD** THE COMPLETE MANUAL

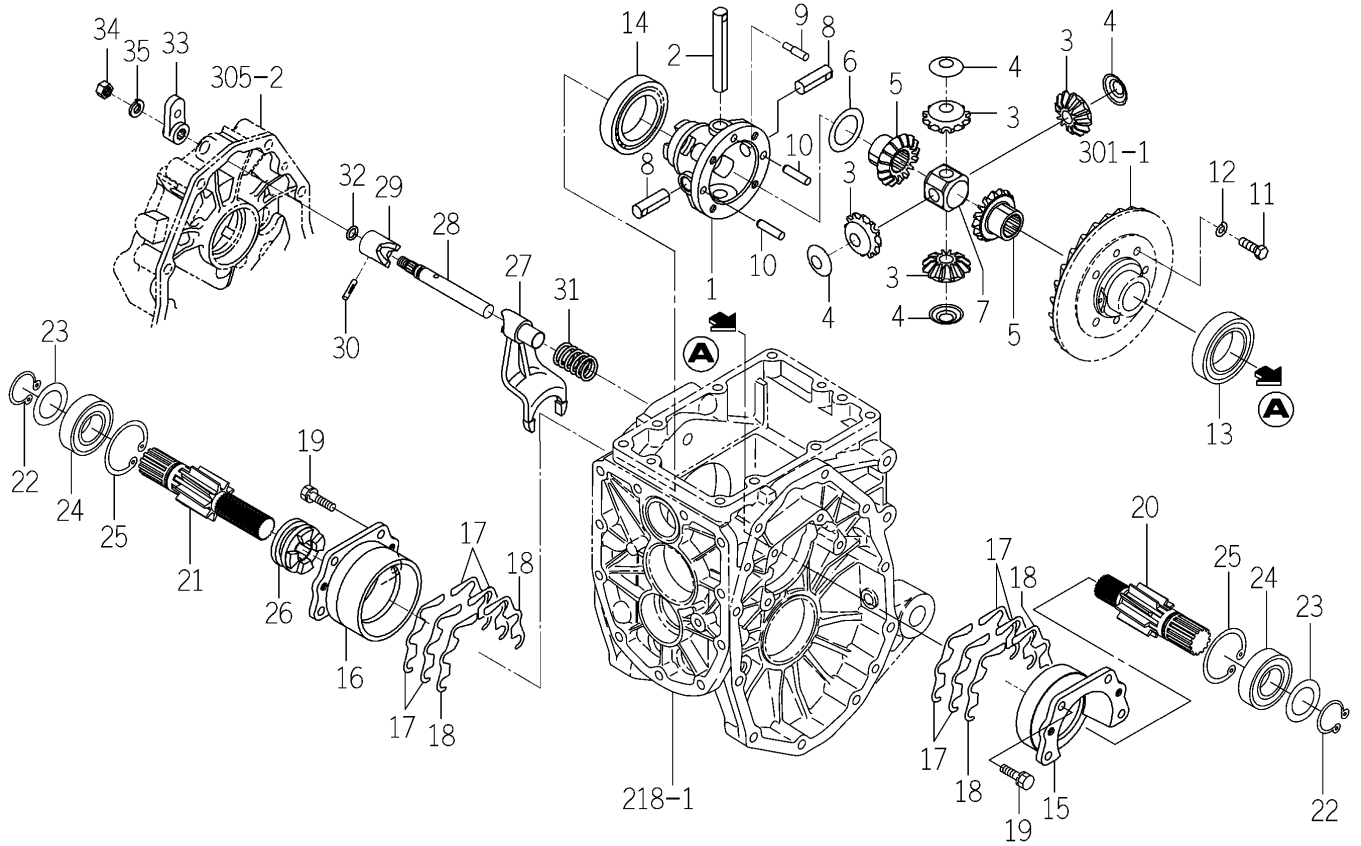
**FIG.117 CLUTCH HOUSING SYSTEM
(TM3215,3245-H TYPE)**



1774-120A-0100

KEY	PART CODE	DESCRIPTION	S P C	TYPE OF MODEL			I T C	C O L	G R P	REMARKS
				TM3215	TM3245	TM3265				
1	1774-120-500-20	HOUSING/CLUTCH/HST	*	1	1					
2	2157-201-201-00	BUSH/25X28X25	*	2	2					
3	1688-120-052-00	GROMMET/25X70X03	*	1	1					
4	1750-120-051-20	INSULATOR	*	1	1					
5	V763-150-000-00	NIPPLE,GREASE/PT1/8	*	1	1					
6	V782-160-000-2T	PLUG/SCREW/SEAL	*	1	1					
7	V251-340-802-50	BOLT/STUD	*	4	4					
8	V304-460-008-00	NUT/M8	*	4	4					
9	V401-160-008-00	WASHER,SP/M 8	*	4	4					
10	V334-460-010-00	NUT/M10 7T P=1.25	*	4	4					
11	V203-361-002-00	BOLT/M10X1.25X20	*	2	2					
12	V203-361-003-00	BOLT	*	2	2					
13	V401-160-010-00	WASHER,SP/M10	*	6	6					
14	V231-361-202-50	FLANGEBOLT	*	2	2					
15	V304-460-010-00	NUT/M10	*	6	6					
16	V401-160-010-00	WASHER,SP/M10	*	6	6					
17	V201-361-202-50	BOLT/M12X25	*	4	4					
18	V401-160-012-00	WASHER,SP/M12	*	4	4					
19	1774-120-350-00	PLATE COMP	*	1	1					
20	V211-661-002-50	BOLT 7T(SP)	*	2	2					
21	1421-602-005-10	CUSHION,B/ RUBBER	*	1	1					
22	V304-260-008-00	NUT	*	2	2					
23	1672-122-003-00	BOLT/TRIMED	*	1	1					
24	1774-120-002-00	PLATE/L/203X80	*	1	1					
25	V231-361-001-60	FLANGEBOLT	*	3	3					
26	1774-120-003-00	COVER/SHAFT/4WD	*	1	1					
27	V231-360-801-60	FLANGEBOLT	*	3	3					
28	1685-120-310-00	DISC/DAMPER ASSY	*	1	1					
29	1685-120-062-00	PLATE/DAMPER	*	1	1					
30	V231-360-802-00	FLANGEBOLT	*	6	6					

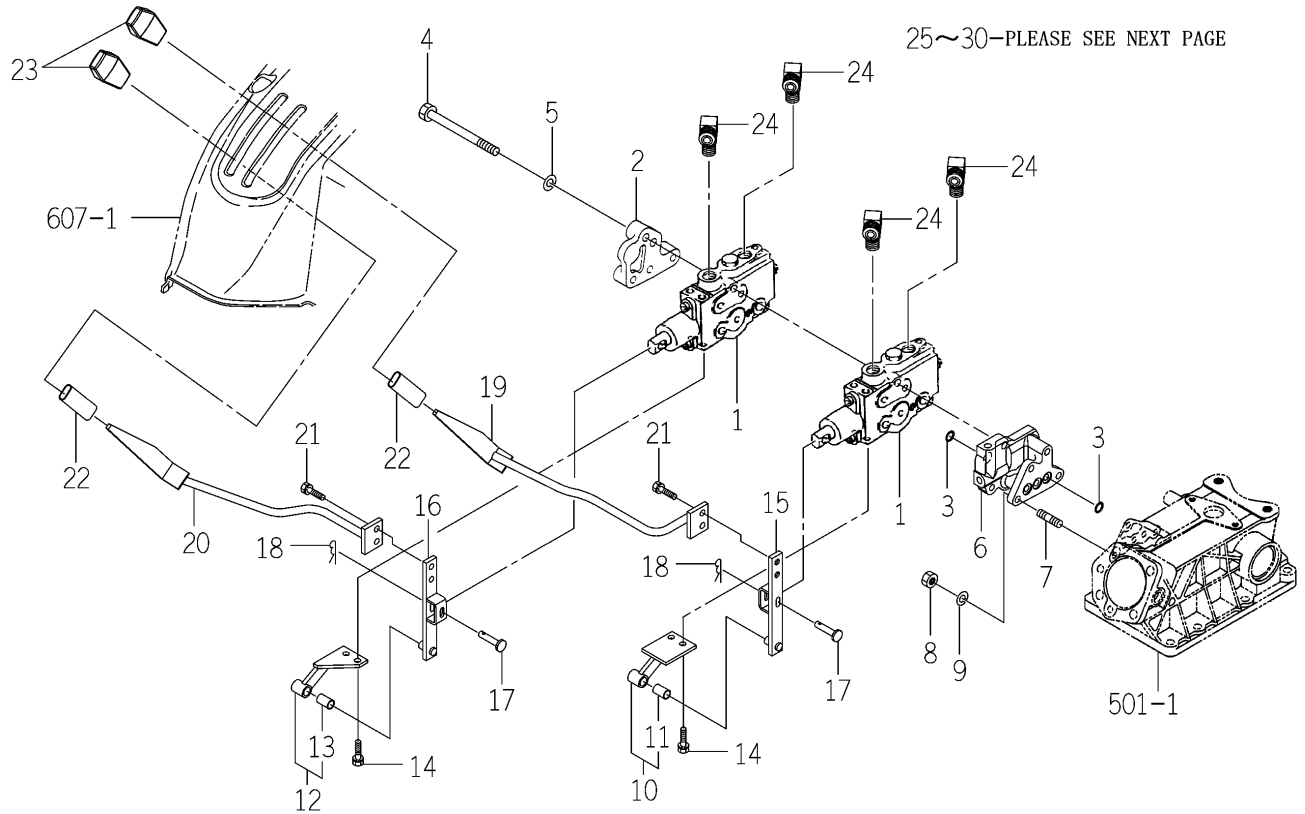
FIG.303 DIFF CASE SYSTEM (EXCEPT H TYPE)



1774-304-0100

KEY	PART CODE	DESCRIPTION	S P C	TYPE OF MODEL			I T C	C O L	G R P	REMARKS
				TM3215	TM3245	TM3265				
1	1774-304-200-10	CASE/DIFF COMP	*	1	1	1				
2	1774-304-009-00	PIN/14X94	*	1	1	1				
3	1717-304-071-00	GEAR/BEVEL/12	*	4	4	4				
4	1427-301-005-00	COLLAR,PINION THRUST	*	4	4	4				
5	1774-304-024-00	GEAR/BEVEL/16	*	2	2	2				
6	1427-301-007-00	COLLAR,THRUST	*	1	1	1				
7	1717-304-073-00	HOLDER/SHAFT/DIFF	*	1	1	1				
8	1717-304-074-00	PIN/14X40	*	2	2	2				
9	1774-304-011-00	PIN/08X32	*	1	1	1				
10	1672-301-002-00	PIN	*	2	2	2				
11	1544-304-006-10	BOLT/M8X25	*	4	4	4				
12	V401-160-008-00	WASHER,SP/M 8	*	4	4	4				
13	1774-301-004-00	BEARING/BALL	*	1	1	1				
14	V600-110-601-00	BEARING,RB/6010	*	1	1	1				
15	1427-201-012-00	METAL,DIFF-CASE LH	*	1	1	1				
16	1427-201-013-00	METAL,DIFF-CASE RH	*	1	1	1				
17	1427-201-014-10	SHIM,DIFF-CASE A	*	8	8	8				
18	1427-201-015-10	SHIM,DIFF-CASE B	*	4	4	4				
19	V211-260-802-00	BOLT/S	*	8	8	8				
20	1774-304-002-00	GEAR/HELICAL/09/LH	*	1	1	1				
21	1774-304-003-00	GEAR/HELICAL/09/RH	*	1	1	1				
22	V704-140-030-00	RING,SNAP/30 C	*	2	2	2				
23	1641-217-032-00	WASHER/36X46X02	*	2	2	2				
24	1614-203-015-00	BEARING/BALL	*	2	2	2				
25	V707-140-062-00	RING/SNAP	*	2	2	2				
26	1427-301-013-20	CLUTCH/DIFFLOCK	*	1	1	1				
27	1774-304-019-00	FORK/SHIFT/DIFFLOCK	*	1	1	1				
28	1774-304-004-00	STAY/SHIFTER	*	1	1	1				
29	1774-304-001-00	CAM/DIFFLOCK	*	1	1	1				
30	V530-240-502-40	PIN/SLITTED	*	1	1	1				

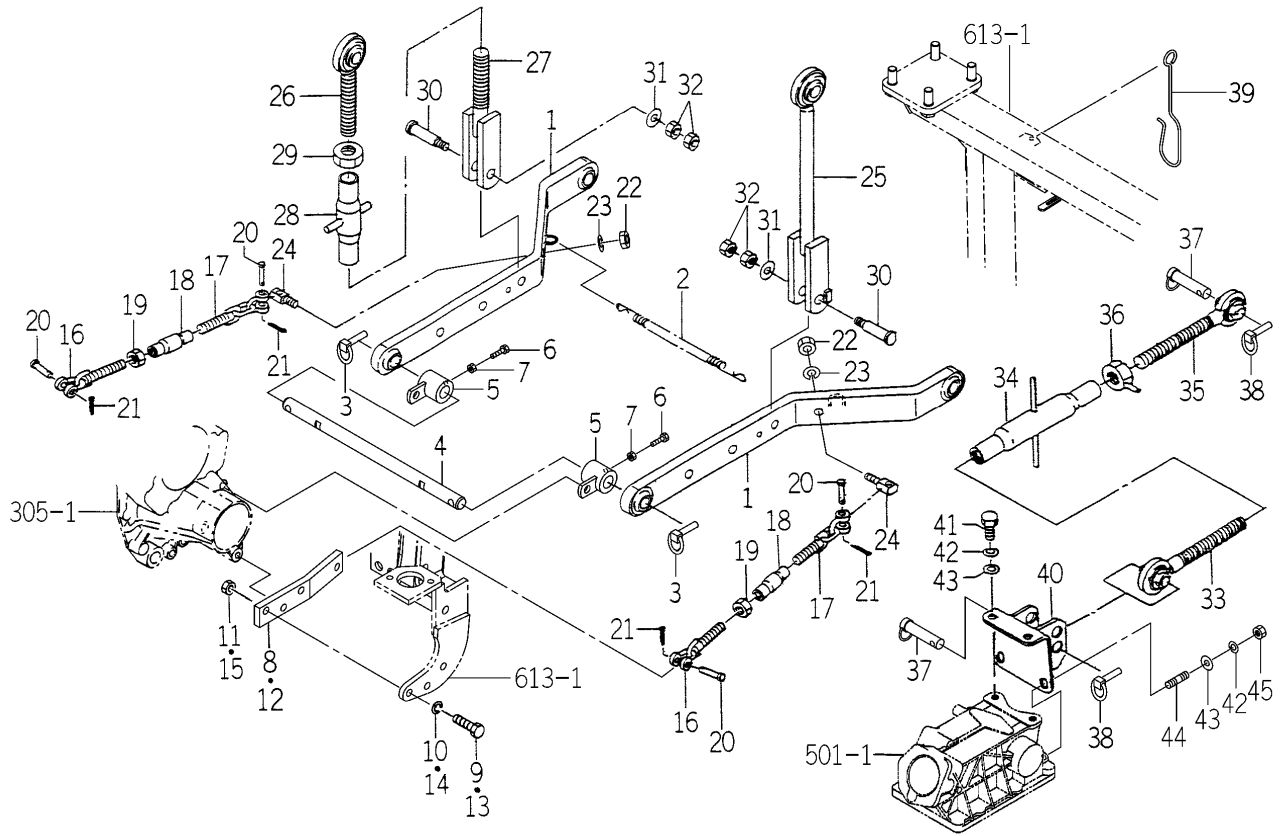
FIG.507 VALVE (REMOTE/2R) SYSTEM(1/2) (WR TYPE)



1774-507A-0100

KEY	PART CODE	DESCRIPTION	S P C	TYPE OF MODEL			I T C	C O L	G R P	REMARKS
				TM3215	TM3245	TM3265				
1	1719-511-350-00	VALVE/CONTROL ASSY	*	2	2	2				FIG S04
2	1614-501-003-10	COVER	*	1	1	1				
3	V720-112-401-20	O-RING/P12	*	6	6	6				
4	V201-261-012-00	BOLT/M10X120	*	3	3	3				
5	V401-160-010-00	WASHER,SP/M10	*	3	3	3				
6	1774-507-001-00	METAL/AUX/VALVE	*	1	1	1				
7	V251-260-802-0D	BOLT/STUD/SEAL	*	3	3	3				
8	V304-460-008-00	NUT/M8	*	3	3	3				
9	V401-160-008-00	WASHER,SP/M 8	*	3	3	3				
10	1774-507-320-00	HOLDER/1ST ASSY	*	1	1	1				
11	1560-509-211-00	BUSH/10X12X20	*	1	1	1				
12	1774-507-330-00	HOLDER/2ND ASSY	*	1	1	1				
13	1560-509-211-00	BUSH/10X12X20	*	1	1	1				
14	V211-260-802-00	BOLT/S	*	4	4	4				
15	1774-507-230-10	ARM/1ST COMP	*	1	1	1				
16	1774-507-240-10	ARM/2ND COMP	*	1	1	1				
17	2144-519-007-00	PIN/06X31	*	2	2	2				
18	2130-601-018-00	PIN,SNAP/6	*	2	2	2				
19	1774-507-250-10	LEVER/1ST COMP	*	1	1	1				
20	1774-507-260-10	LEVER/2ND COMP	*	1	1	1				
21	V211-260-802-00	BOLT/S	*	4	4	4				
22	1614-262-006-00	INSULATOR/LEVER/SUB	*	2	2	2				
23	3659-203-005-00	GRIP/03X17X74	*	2	2	2				
24	1640-530-003-00	CONNECTOR	*	4	4	4				
25	1640-530-270-10	HOSE/660 COMP	*	4	4	4				
26	1342-402-006-00	BAND/WIRE/250	*	1	1	1				
27	3768-185-015-20	ADAPTER/90	*	4	4	4				
28	1774-507-270-00	ADAPTER/1ST COMP	*	1	1	1				
29	1774-507-280-00	ADAPTER/2ND COMP	*	1	1	1				
30	V111-168-005-00	SCREW	*	2	2	2				

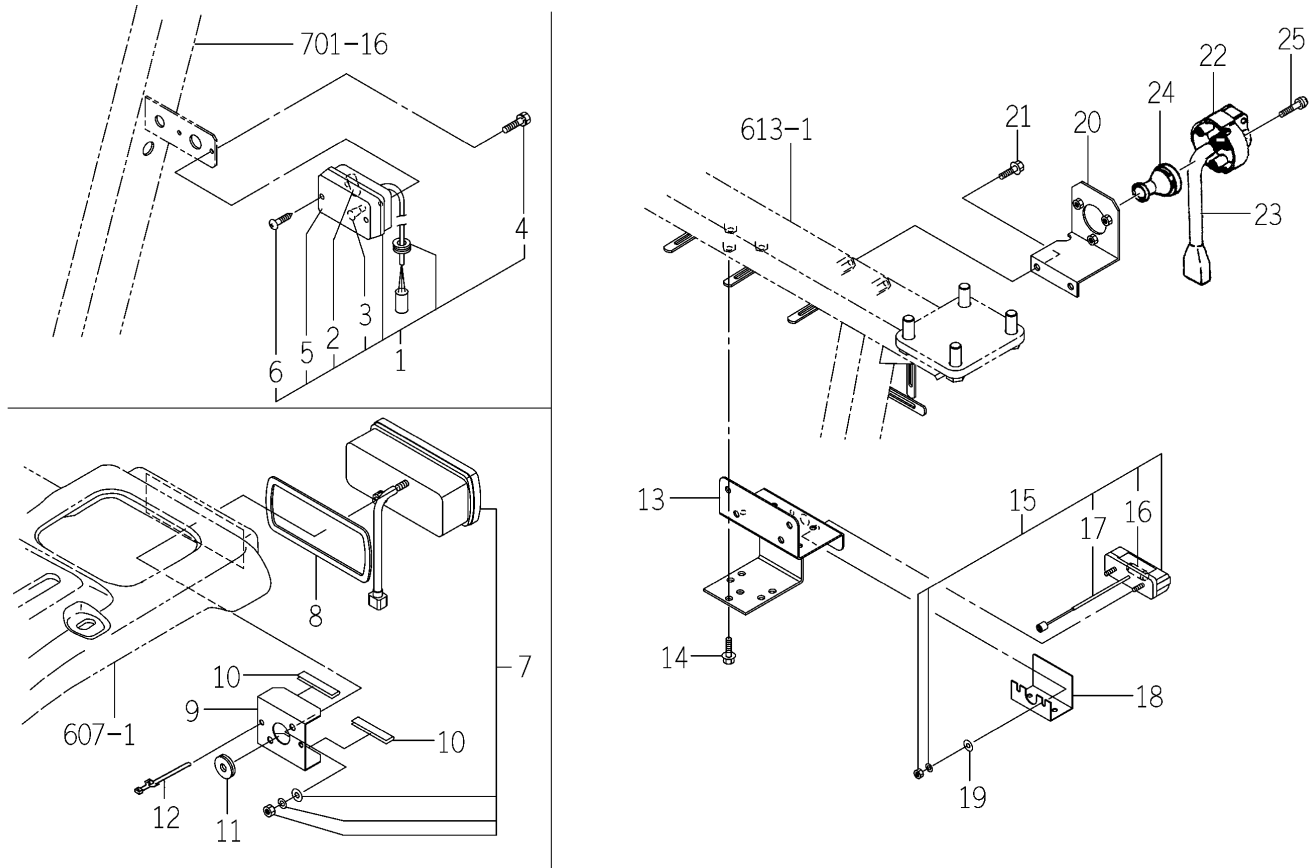
FIG.512 LINK (3P) SYSTEM (EXCEPT D TYPE)



1774-514-0100

KEY	PART CODE	DESCRIPTION	S P C	TYPE OF MODEL			I T C	C O L	G R P	REMARKS
				TM3215	TM3245	TM3265				
1	1685-511-210-00	LINK/LOWER COMP	*	2	2	2				
2	1560-525-001-40	SPRING	*	1	1	1				
3	1673-525-002-30	LINKPIN	*	2	2	2				
4	1738-514-001-00	PIN/22X404	*	1	1	1				
5	1738-514-210-00	HUB/SPACER COMP	*	2	2	2				
6	V201-360-802-50	BOLT/M 8X25	*	2	2	2				
7	V305-260-008-00	NUT/M 8	*	2	2	2				
8	1750-514-001-20	PLATE/CHAIN/LH	*	1	1	1				
9	V201-361-203-50	BOLT/M12X35	*	2	2	2				
10	V401-160-012-00	WASHER,SP/M12	*	2	2	2				
11	V304-460-012-00	NUT/M12	*	2	2	2				
12	1750-514-002-20	PLATE/CHAIN/RH	*	1	1	1				
13	V201-361-203-50	BOLT/M12X35	*	2	2	2				
14	V401-160-012-00	WASHER,SP/M12	*	2	2	2				
15	V304-460-012-00	NUT/M12	*	2	2	2				
16	7963-611-230-00	CHAIN,CHECK/A	*	2	2	2				
17	7963-611-240-00	CHAIN,CHECK,B COMP	*	2	2	2				
18	7963-611-002-00	TURNBUCKLE	*	2	2	2				
19	V304-260-016-00	NUT/M16	*	2	2	2				
20	7963-611-003-00	PIN/12X48	*	4	4	4				
21	V500-163-002-50	PIN,SPLIT/3 X25	*	4	4	4				
22	V304-260-016-00	NUT/M16	*	2	2	2				
23	V401-160-016-00	WASHER,SP/M16	*	2	2	2				
24	7963-611-001-00	PIN,CHAIN	*	2	2	2				
25	1685-511-230-00	ROD/LIFT/LH COMP	*	1	1	1				
26	1600-515-210-10	SCREW,RH/M24 COMP	*	1	1	1				
27	1685-511-220-00	LIFTROD/L COMP	*	1	1	1				
28	1600-515-240-00	BUCKLE,TURN/M24 COMP	*	1	1	1				
29	V304-460-024-00	NUT	*	1	1	1				
30	1600-515-001-00	PIN/16X73	*	2	2	2				

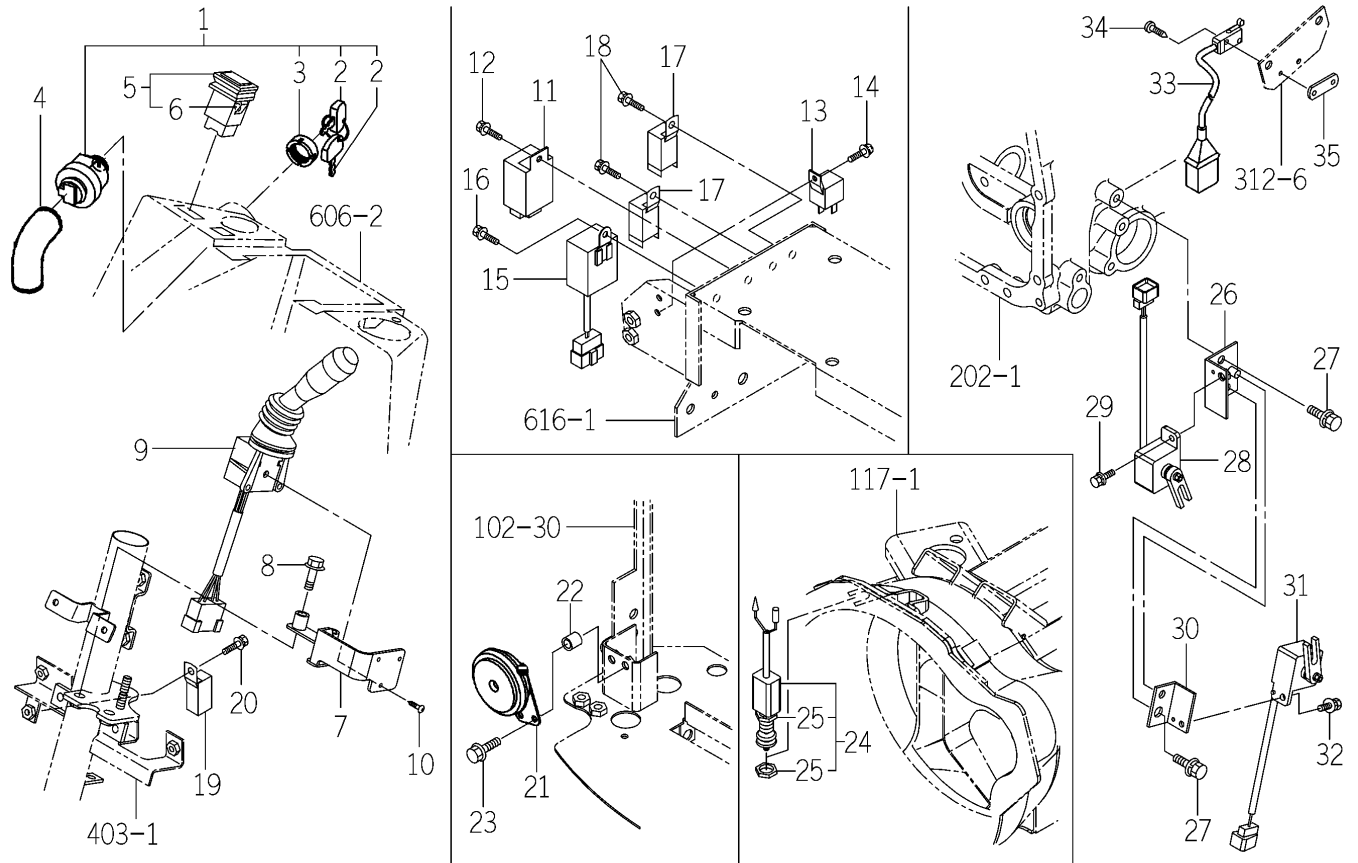
FIG.624 LAMP SYSTEM (EXCEPT A,D TYPE)



1774-660 -0100

KEY	PART CODE	DESCRIPTION	S P C	TYPE OF MODEL			I T C	C O L	G R P	REMARKS
				TM3215	TM3245	TM3265				
1	1772-654-220-00	LAMP/COMBINATION/FRO	*	2	2	2				
2	1674-654-211-00	BULB/12V21W	*	2	2	2				
3	1674-654-212-00	BULB/12V5W	*	2	2	2				
4	1772-654-221-00	BOLT/S	*	4	4	4				
5	1772-654-222-00	LENS	*	2	2	2				
6	1772-654-223-00	SCREW	*	4	4	4				
7	1772-654-210-00	LAMP/COMBINATION/REA	*	2	2	2				FIG S05
8	1772-654-001-00	INSULATOR/LAMP	*	2	2	2				
9	1772-654-310-00	STAY/LAMP COMP	*	2	2	2				
10	P113-201-007-00	TRIM/70	*	4	4	4				
11	1678-782-003-00	GROMMET/10X30X1	*	2	2	2				
12	1560-666-004-00	BAND	*	2	2	2				
13	1774-660-210-10	BRACKET/LAMP/REGISTR	*	1	1	1				
14	V231-360-802-00	FLANGEBOLT	*	3	3	3				
15	1674-654-270-00	LAMP/NUMBERPLAT SET	*	1	1	1				
16	1674-654-271-00	BULB/12V/5W	*	1	1	1				
17	1674-654-272-00	HARNESS/LAMP	*	1	1	1				
18	1774-660-003-10	GUARD/LIGHT	*	1	1	1				
19	V411-260-005-00	WASHER	*	4	4	4				
20	1637-690-260-00	PLATE/SOCKET COMP	*	1	1	1				
21	V231-360-802-00	FLANGEBOLT	*	2	2	2				
22	1600-624-201-00	PLUG/7P	*	1	1	1				8JB0-019-430-01
23	1682-690-380-00	HARNESS/SOCKET ASSY	*	1	1	1				
24	1650-654-036-00	GROMMET/10X40X03	*	1	1	1				
25	V120-265-003-00	BOLT/M5X30	*	3	3	3				

FIG.631 SWITCH SYSTEM (TM3215,3245-H TYPE)

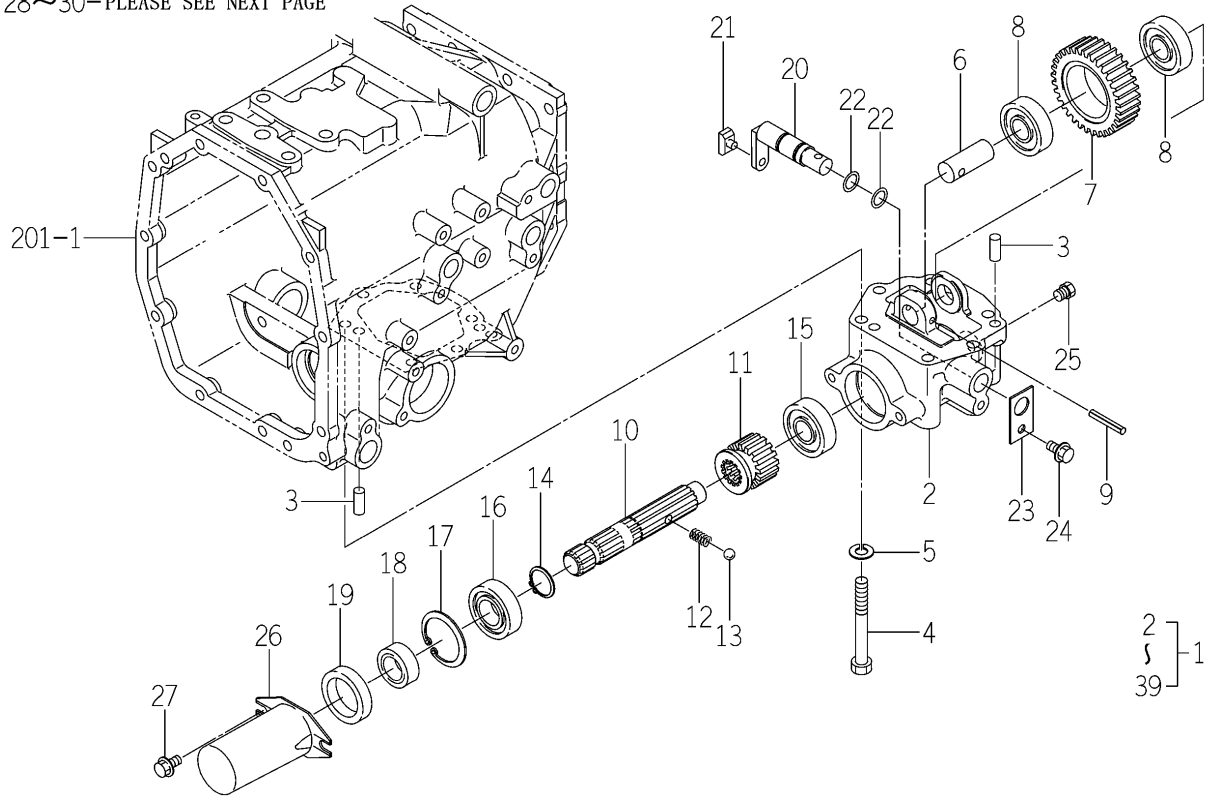


1774-680D-0100

KEY	PART CODE	DESCRIPTION	S P C	TYPE OF MODEL			I T C	C O L	G R P	REMARKS
				TM3215	TM3245	TM3265				
1	1716-680-200-10	SWITCH/MAIN ASSY	*	1	1					
2	2186-536-211-00	KEY	*	2	2					
3	2186-536-212-00	NUT/RING	*	1	1					
4	1716-680-006-00	COVER/SWITCH	*	1	1					
5	1740-680-550-00	SWITCH/HAZARD ASSY	*	1	1					
6	1740-680-551-00	BULB/LAMP/14V60MA	*	1	1					
7	1774-680-210-00	BRACKET/SWITCH/COMBI	*	1	1					
8	V231-360-803-00	FLANGEBOLT	*	2	2					
9	1772-652-220-10	SWITCH/COMBINATION	*	1	1					
10	1772-652-001-00	SCREW/TAPPING/3.5X13	*	3	3					
11	1739-681-220-10	RELAY/FLASHER/EEC	*	1	1					
12	V210-360-601-20	BOLT,SEMS	*	1	1					
13	1725-681-200-00	RELAY/35A ASSY	*	1	1					
14	V120-365-001-60	SCREW/SP	*	1	1					
15	1773-652-220-00	RELAY/CONTROL/ENGINE	*	1	1					
16	V210-360-601-20	BOLT,SEMS	*	1	1					
17	1690-658-370-00	RELAY/4P ASSY	*	2	2					
18	V210-360-601-20	BOLT,SEMS	*	2	2					
19	1650-658-270-00	RELAY/4P ASSY	*	1	1					
20	V210-360-601-20	BOLT,SEMS	*	1	1					
21	1740-680-530-00	HORN ASSY	*	1	1					
22	2150-661-002-00	COLLAR	*	2	2					
23	V230-360-602-50	FLANGEBOLT	*	2	2					
24	1772-654-280-00	SWITCH/PUSH ASSY	*	1	1					
25	1772-654-281-00	NUT	*	2	2					
26	1774-680-230-00	BRACKET/SENSOR COMP	*	1	1					
27	V211-360-801-60	BOLT,SEMS (SP)	*	2	2					
28	1740-680-520-00	SWITCH/SENSOR ASSY	*	1	1					
29	V210-360-601-60	BOLT(SP)/M6X16	*	1	1					
30	1774-680-052-00	BRACKET/SWITCH/SUB	*	1	1					

FIG.P01 MID PTO SET(1/2) (EXCEPT M TYPE) (OPTION)

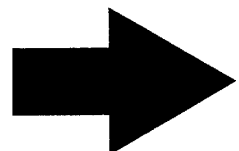
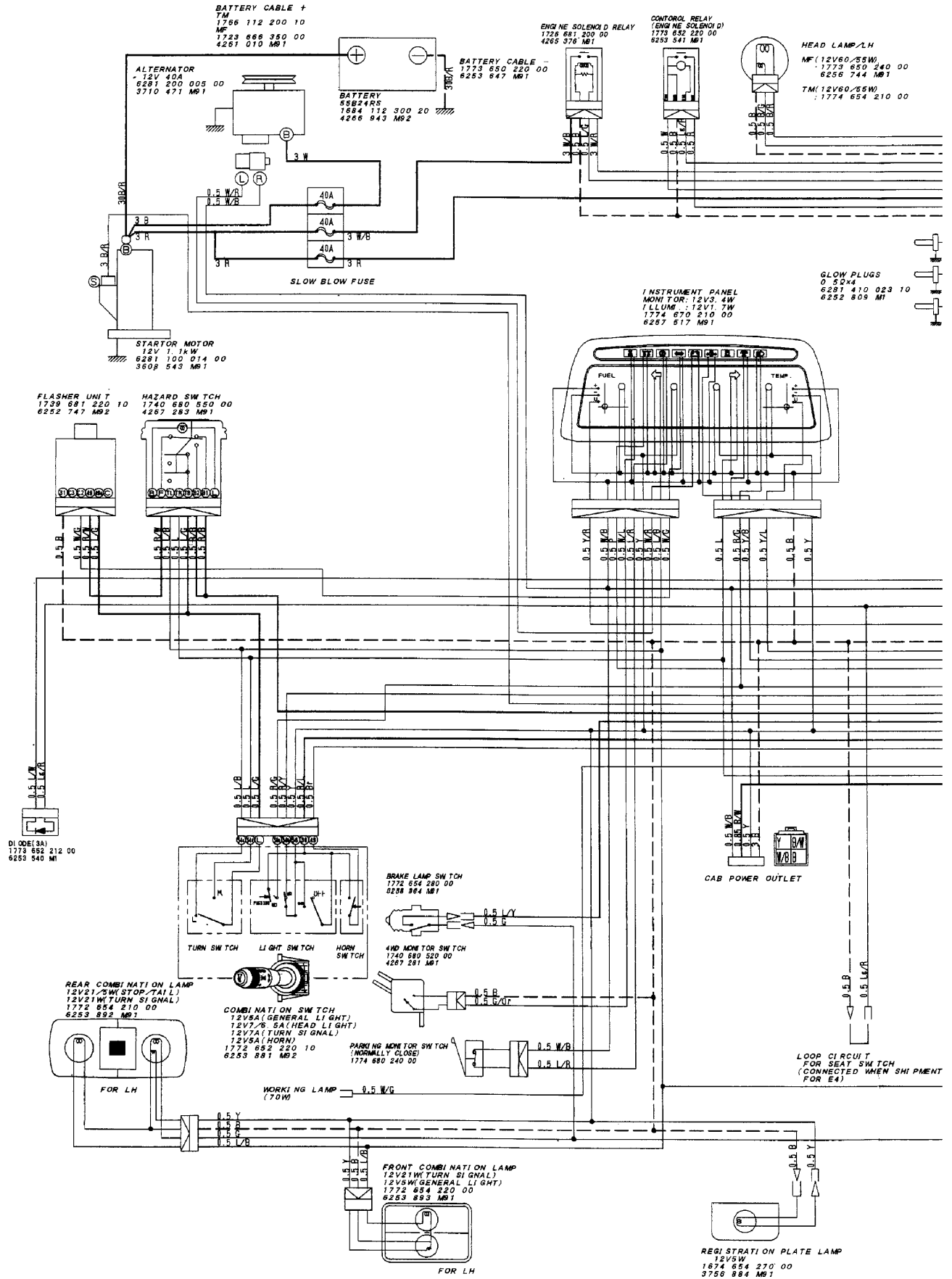
28~30- PLEASE SEE NEXT PAGE



1774-255B-0100

KEY	PART CODE	DESCRIPTION	S P C	TYPE OF MODEL			I T C	C O L	G R P	REMARKS
				TM3215	TM3245	TM3265				
1	1774-255-200-10	PTO/MID SET	T	1	1	1				
2	1774-255-001-10	CASE/PTO/MID	T	1	1	1				
3	V523-101-002-40	PIN	T	2	2	2				
4	V201-361-009-00	BOLT/M10X90	T	6	6	6				
5	V401-160-010-00	WASHER,SP/M10	T	6	6	6				
6	1682-255-203-00	PIN/20X51	T	1	1	1				
7	1774-255-002-00	GEAR/SPUR/33	T	1	1	1				
8	1603-322-003-00	BEARING,BALL	T	2	2	2				
9	V580-140-604-00	PIN,SPRING/6 X40 W	T	1	1	1				
10	1774-255-004-00	SHAFT/PTO/MID	T	1	1	1				
11	1774-255-003-00	GEAR/SPUR/16	T	1	1	1				
12	1302-225-003-00	SPRING,SHIFTER	T	1	1	1				
13	V682-200-001-00	BALL	T	1	1	1				
14	V704-140-025-00	RING,SNAP/25 C	T	1	1	1				
15	V600-410-630-40	BEARING/BALL	T	1	1	1				
16	V600-410-620-50	BEARING/BALL	T	1	1	1				
17	V705-140-052-00	RING,SNAP/52 C	T	1	1	1				
18	1427-212-003-20	SLEEVE	T	1	1	1				
19	V744-135-520-80	SEAL,OIL/TC35528	T	1	1	1				
20	1682-255-210-40	ARM/SHIFT/MID COMP	T	1	1	1				
21	2703-101-020-00	COLLAR,SHIFTER	T	1	1	1				
22	V720-102-401-40	O-RING/P14	T	2	2	2				
23	1620-255-208-00	PLATE/I/30X50	T	1	1	1				
24	V231-360-801-20	FLANGEBOLT	T	1	1	1				
25	V782-160-000-6B	PLUG/SCREW/SEAL	T	1	1	1				
26	1444-314-009-10	CAP,PTO SHAFT	T	1	1	1				
27	V231-360-801-20	FLANGEBOLT	T	2	2	2				
28	1683-208-510-00	ARM/SHIFT/SUB COMP	T	1	1	1				
29	V580-140-602-80	PIN,SPRING/6 X28 W	T	1	1	1				
30		WIRE	T	1	1	1				

WIRING DIAGRAM (TM3215,3245) (1)



Numerical Index

6004-095-510-00

Part Code	Fig. Key	Part Code	Fig. Key	Part Code	Fig. Key
6215-619-009-00	S02 1	6281-121-010-00	S03 5	6281-229-015-00	S04 22
6215-619-010-00	S02 2	6281-124-011-00	S03 6	6281-229-016-00	S04 23
6215-619-022-00	S02 10	6281-127-003-00	S03 19	6281-229-017-00	S04 24
6215-621-016-20	502 9	6281-129-029-00	S03 29	6281-229-018-00	S04 25
6215-622-001-00	S02 14	6281-129-030-00	S03 28	6281-229-029-00	S04 14
6215-629-001-00	S02 12	6281-129-043-00	S03 30	6281-229-032-00	S04 6
6215-629-002-00	S02 13	6281-129-058-00	S03 9	6281-229-033-00	S04 11
6215-629-003-00	S02 20	6281-129-062-00	S03 33	6281-271-002-00	S04 26
6215-629-004-00	S02 21	6281-129-064-00	S03 7	6281-410-023-10	802 3-A
6215-629-005-00	S02 22	6281-129-065-00	S03 12	6281-910-011-00	802 6
6215-629-006-00	S02 23	6281-129-066-00	S03 13	6281-971-003-00	802 1
6215-629-007-00	S02 24	6281-129-067-00	S03 14	6282-450-006-00	802 2
6215-629-008-00	S02 25	6281-129-068-00	S03 15	6287-810-015-20	P04 1
6215-629-009-00	S02 26	6281-129-069-00	S03 16	6294-453-002-00	201 22
6215-629-010-00	S02 27	6281-129-070-00	S03 17	6513-770-022-10	402 27
6215-629-011-00	S02 28	6281-129-071-00	S03 18	6901-910-612-00	302 5
6215-629-012-00	S02 29	6281-129-072-00	S03 21		502 15
6215-629-013-00	S02 30	6281-129-073-00	S03 22	6901-910-625-00	401 7
6215-629-014-00	S02 31	6281-129-074-00	S03 23	6901-911-025-00	203 4
6215-629-015-00	S02 32	6281-129-075-00	S03 24	6902-050-610-00	304 12
6215-629-016-00	S02 33	6281-129-076-00	S03 25	6902-050-816-00	204 41
6215-631-019-00	S02 36	6281-129-077-00	S03 26	6904-110-818-00	201 20
6215-634-001-00	S02 18	6281-129-078-00	S03 27	6904-110-822-00	201 21
6215-635-001-00	S02 16	6281-129-079-00	S03 34		204 4
6215-637-001-00	S02 15	6281-129-080-00	S03 8		204 45
6215-639-004-00	S02 17	6281-151-014-00	S03 20	6904-110-840-00	201 19
6215-639-005-00	S02 19	6281-200-005-00	801 1		402 18
6215-641-006-00	S02 7	6281-213-018-00	S04 7	6904-110-850-00	204 6
6215-643-006-00	S02 3	6281-214-003-00	S04 12	6904-110-855-00	204 5
6215-644-007-00	S02 4	6281-214-004-00	S04 13	6909-110-408-00	S03 32
6215-649-002-00	S02 6	6281-215-001-00	S04 17	6909-150-506-00	304 13
6215-649-019-00	S02 34	6281-216-001-00	S04 18	6909-150-508-00	S03 31
6219-310-003-20	204 35	6281-217-002-00	S04 16	6909-902-299-00	201 23
6219-732-017-00	802 5-A	6281-221-007-00	S04 4	6909-906-105-10	401 13
6219-752-044-00	502 4-A	6281-222-004-00	S04 1	6911-129-006-00	101 2
6219-752-045-00	502 2-A	6281-229-002-00	S04 2	J061-210-015-00	402 22
6219-752-046-00	502 5-A	6281-229-003-00	S04 3	J061-220-024-00	402 32
6219-752-047-00	502 6-A	6281-229-004-00	S04 5	J062-076-082-00	503 4-A
6281-100-014-00	801 7	6281-229-006-00	S04 8	J062-087-093-00	503 9-A
6281-111-009-00	S03 1	6281-229-007-00	S04 9	P117-303-003-00	204 22
6281-115-017-00	S03 10	6281-229-008-00	S04 10	V201-360-802-00	502 7-A
6281-115-018-00	S03 11	6281-229-011-00	S04 15	V211-560-802-50	104 3
6281-117-003-00	S03 4	6281-229-012-00	S04 19	V220-540-601-60	802 8
6281-118-007-00	S03 3	6281-229-013-00	S04 20	V230-360-601-00	202 4
6281-119-009-00	S03 2	6281-229-014-00	S04 21	V230-360-601-20	201 28

Numerical Index

6004-095-500-00

Part Code	Fig.	Key	Part Code	Fig.	Key	Part Code	Fig.	Key
1373-121-001-00	801	4	6209-610-009-00	201	4	6211-540-001-00	P02	1
1425-621-004-00	204	14	6209-625-001-00	201	14	6211-560-001-00	P02	3
3625-540-004-00	204	38		P04	10	6211-599-001-10	201	13
3632-360-036-00	503	6	6209-625-002-00	204	7		P02	2
3640-586-004-00	503	8-A		P04	12		P02	4
3805-355-002-20	202	2	6209-630-002-10	802	7	6211-751-001-10	102	2
3817-401-001-00	204	10		P04	22	6211-760-026-30	201	30
	301	20-A	6209-730-005-00	302	3	6211-766-012-00	201	31
	402	15		502	11	6211-777-007-30	205	1
	402	20	6209-730-006-00	304	4	6212-111-094-20	303	1
	502	8	6209-740-001-00	204	26	6212-114-094-20	P03	1
6004-010-119-00	P01	1	6209-740-005-00	201	18	6212-116-094-20	P03	3
6209-000-002-00	301	18	6209-749-001-20	201	15	6212-121-014-20	303	2
6209-000-004-10	201	2		204	44	6212-124-014-10	P03	2
6209-000-043-00	304	15	6209-920-002-00	204	20	6212-126-014-10	P03	4
6209-000-044-00	101	7		401	14	6212-211-001-10	303	3
6209-030-043-00	502	17		P04	13	6212-230-004-10	303	5-A
6209-030-044-00	403	4	6209-940-004-00	301	14	6212-235-005-00	303	6-A
6209-030-085-00	801	8	6211-110-057-30	101	1	6212-271-016-00	303	8
6209-046-015-00	304	9	6211-141-029-20	101	6	6212-274-016-00	P02	5-A
6209-050-001-00	204	32		P04	3	6212-276-016-00	P02	6-A
6209-050-002-00	204	33	6211-170-004-20	102	1-A	6212-310-009-40	304	1
6209-300-013-00	201	32	6211-173-003-00	102	3	6212-330-090-00	304	5
6209-300-014-00	101	8		P04	4	6212-333-003-00	304	6
6209-360-005-00	503	3	6211-210-037-40	201	1	6212-370-011-00	304	10
6209-360-028-20	102	6	6211-258-001-00	201	8	6212-371-009-00	304	11
6209-360-120-00	503	5-A		P04	8	6212-372-002-10	304	12
6209-409-001-00	204	18	6211-258-002-00	201	9	6212-511-002-00	302	1
6209-409-003-00	301	17		P04	9	6212-521-008-00	304	3
6209-440-005-00	802	4	6211-291-016-00	201	26	6212-522-010-00	302	2
6209-490-002-10	102	4	6211-292-001-20	201	27	6212-523-023-00	302	6
6209-500-003-00	204	16		P04	11	6212-524-002-30	502	10-A
	204	25	6211-310-012-40	204	1	6212-530-005-20	204	46
	P04	23	6211-311-007-40	204	39	6212-531-005-10	201	6
6209-572-003-00	102	5-B	6211-312-003-20	204	27	6212-535-001-00	302	4
	P04	5		P04	14	6212-535-002-00	502	14
6209-580-002-10	502	26	6211-312-004-20	204	40	6212-551-028-00	301	1
6209-587-001-00	303	4		P04	15	6212-552-014-00	301	2
6209-600-004-00	204	24	6211-319-003-00	204	42	6212-561-001-10	301	3
6209-605-004-10	101	3	6211-341-087-00	203	1	6212-563-001-00	301	4
6209-605-007-00	201	5	6211-342-002-10	203	2	6212-565-001-00	301	5
	204	2	6211-361-010-10	202	1	6212-569-002-00	101	4
6209-610-001-10	201	3	6211-510-001-00	201	10		P04	2
6209-610-007-00	204	3	6211-511-003-00	201	11	6212-571-006-00	301	6
6209-610-008-00	201	7	6211-511-004-00	201	12	6212-575-002-00	301	7

Numerical Index

6005-095-930-00

Part Code	Fig. Key	Part Code	Fig. Key	Part Code	Fig. Key
6215-629-062-00	S02 19	6281-129-062-00	S03 17	6904-110-822-00	204 4
6215-629-063-00	S02 20	6281-151-021-00	S03 16		204 47
6215-629-064-00	S02 21	6281-200-021-00	801 1	6904-110-840-00	201 20
6215-629-065-00	S02 22	6281-213-018-00	S04 7		402 17
6215-629-066-00	S02 23	6281-214-003-00	S04 12	6904-110-850-00	204 6
6215-629-067-00	S02 24	6281-214-004-00	S04 13	6904-110-855-00	204 5
6215-631-033-00	S02 2	6281-215-001-00	S04 17	6909-111-508-00	S03 24
6215-634-003-00	S02 14	6281-216-001-00	S04 18	6909-950-115-00	303 4
6215-635-004-00	S02 8	6281-217-002-00	S04 16	J061-210-015-00	402 22
6215-635-005-00	S02 49	6281-221-007-00	S04 4	J061-220-024-00	402 32
6215-637-004-00	S02 48	6281-222-012-00	S04 1	J062-076-082-00	503 4
6215-639-008-00	S02 15	6281-229-002-00	S04 2	P117-303-003-00	204 24
6215-639-009-00	S02 16	6281-229-003-00	S04 3	V195-164-008-30	102 4
6215-641-002-00	S02 3	6281-229-004-00	S04 5	V201-361-204-50	801 8
6215-643-005-00	S02 4	6281-229-006-00	S04 8	V211-560-802-50	104 3
6215-644-009-00	S02 6	6281-229-007-00	S04 9	V220-540-601-60	802 8
6215-649-008-00	S02 5	6281-229-008-00	S04 10	V220-540-602-00	401 7
6215-649-011-00	S02 10	6281-229-011-00	S04 15	V230-360-601-00	202 4
6215-649-013-00	S02 9	6281-229-012-00	S04 19	V230-360-601-20	201 28
6215-649-014-00	S02 7	6281-229-013-00	S04 20	V230-360-601-60	204 39
6219-310-003-20	204 37	6281-229-014-00	S04 21	V231-360-801-60	204 13
6219-732-017-00	802 5-A	6281-229-015-00	S04 22		401 11
6219-752-044-00	502 3	6281-229-016-00	S04 23	V231-360-802-00	402 19
6219-752-045-00	502 2	6281-229-017-00	S04 24		402 25
6219-752-046-00	502 4	6281-229-018-00	S04 25		502 6
6219-752-047-00	502 5	6281-229-029-00	S04 14		801 3
6281-100-002-30	801 7	6281-229-032-00	S04 6	V231-360-802-50	103 3
6281-111-005-00	S03 1	6281-229-033-00	S04 11		402 30
6281-115-008-00	S03 12	6281-229-041-00	S03 25	V231-360-803-00	204 17
6281-115-010-00	S03 26	6281-271-002-00	S04 26	V231-360-804-50	402 18
6281-115-016-00	S03 23	6281-410-023-10	802 3-A	V231-360-805-00	204 14
6281-116-004-00	S03 13	6281-910-011-00	802 6	V231-360-805-50	301 19-A
6281-121-006-00	S03 2	6281-971-003-00	802 1	V231-360-806-00	204 15
6281-123-005-00	S03 10	6282-450-006-00	802 2	V231-360-807-00	204 11-A
6281-124-007-10	S03 7	6287-810-040-00	P04 1	V231-360-807-50	204 9
6281-129-003-00	S03 22	6294-453-002-00	201 23		402 26
6281-129-038-00	S03 3	6513-770-022-10	402 27	V231-360-808-50	204 8
	S03 5	6581-117-007-00	S03 14	V233-361-002-00	205 2
6281-129-039-00	S03 4		S03 15	V233-361-007-00	801 5
	S03 6	6581-129-092-00	S03 20	V251-340-806-00	201 22
6281-129-040-00	S03 9	6581-129-099-00	S03 8	V301-260-006-00	204 36
6281-129-041-10	S03 11	6901-910-612-00	302 5		502 28
6281-129-042-00	S03 18		502 14	V304-260-008-00	204 50
6281-129-043-00	S03 19	6902-050-816-00	204 43		204 52
6281-129-044-00	S03 21	6904-110-822-00	201 21	V334-260-010-00	801 6

Numerical Index

1774-095-100-00

Part Code	Fig.	Key	Part Code	Fig.	Key	Part Code	Fig.	Key
1773-611-002-00	609	12	1774-105-200-00	109	1	1774-126-005-00	123	28
1773-611-003-10	609	24		110	1	1774-126-006-00	123	7
1773-611-005-00	609	25	1774-105-202-00	109	2	1774-126-007-00	123	16
1773-611-210-00	609	1		110	2	1774-126-008-00	123	24
1773-611-230-10	609	11	1774-105-203-00	109	3	1774-126-009-00	123	15
1773-611-250-10	609	17		110	3	1774-126-220-00	123	31
1773-611-260-20	609	19	1774-105-204-00	109	4	1774-127-001-00	124	1
1773-611-262-00	609	20		110	4	1774-127-002-00	124	3
1773-611-270-00	609	7	1774-105-205-00	109	5	1774-127-004-00	124	7
1773-611-279-00	609	8		110	5	1774-127-051-00	125	1
	609	10	1774-111-001-00	111	1	1774-127-053-00	125	11
1773-611-280-00	609	9	1774-111-002-00	111	25	1774-127-055-00	125	19
1773-611-310-00	609	2	1774-111-003-00	111	30	1774-127-500-00	125	4
1773-611-331-00	609	3	1774-111-004-00	111	31	1774-127-510-00	125	3
1773-611-332-00	609	4	1774-111-021-00	111	23	1774-127-520-00	125	15
1773-611-333-00	609	5	1774-111-022-00	111	24	1774-128-001-00	126	4
1773-611-334-00	609	6	1774-111-200-00	111	15	1774-128-003-00	126	1
1773-631-035-00	607	3	1774-111-220-00	111	20	1774-128-200-00	126	5
1773-650-220-00	112	8	1774-111-300-00	111	7	1774-129-001-00	127	3
1773-652-212-00	632	2	1774-120-001-00	121	1	1774-129-200-00	127	12
	633	2	1774-120-002-00	117	24	1774-129-210-00	127	11
	634	2		119	26	1774-129-220-10	127	16
1773-652-213-00	632	9	1774-120-003-00	116	24	1774-129-230-00	127	1
	633	9		117	26	1774-201-002-00	201	10
	634	9		118	26		202	10
1773-652-220-00	628	15		119	28	1774-201-003-10	201	3
	629	15	1774-120-051-00	122	1		202	3
	630	15	1774-120-200-00	116	31	1774-201-200-10	201	1
	631	15		118	33	1774-201-500-10	202	1
1773-654-240-00	629	30	1774-120-220-00	116	26	1774-203-004-00	204	7
	631	31		118	28	1774-203-005-00	204	6
1773-702-001-00	701	3	1774-120-300-10	116	1	1774-203-006-00	204	1
1773-702-002-00	701	11	1774-120-350-00	116	19	1774-203-051-00	205	9
1773-702-011-00	701	13		117	19	1774-203-052-00	205	12
1773-702-012-00	701	12		118	21	1774-203-053-00	205	14
1773-902-007-00	905	6		119	21	1774-203-054-00	205	1
	906	6	1774-120-500-20	117	1	1774-205-001-00	206	9
1774-102-210-10	101	30	1774-120-700-10	118	1	1774-205-002-00	206	6
	102	30	1774-120-800-20	119	1	1774-205-003-00	206	4
1774-102-230-00	103	28	1774-122-200-10	120	1	1774-205-004-00	206	2
	104	28	1774-125-001-00	121	3	1774-205-005-00	206	11
1774-103-220-00	106	8		122	3	1774-205-006-00	206	14
1774-103-230-00	106	10	1774-126-001-00	123	1	1774-205-007-00	206	10
1774-104-001-00	108	14	1774-126-002-00	123	18		211	1
1774-104-210-00	107	11	1774-126-003-00	123	20	1774-206-001-00	207	2

Numerical Index

1774-095-100-00

Part Code	Fig.	Key	Part Code	Fig.	Key	Part Code	Fig.	Key
V401-160-008-00	506	9	V401-160-012-00	410	4	V411-260-006-00	230	23
	507	9		410	13		503	15
	S04	13		410	17		601	21
	S04	13		414	6		601	52
	S05	7		414	37		602	21
V401-160-010-00	105	4		501	20		602	54
	106	4		512	10		605	6
	116	13		512	14		606	6
	116	16		512	42	V411-260-008-00	120	14
	117	13		513	10		224	4
	117	16		513	14		225	4
	118	15		514	3		226	4
	118	18		612	4		228	4
	119	15		613	6		229	5
	119	18		613	14		232	7
	123	4		614	6		232	15
	127	6		614	12		307	2
	201	7		702	27		308	2
	202	7		703	23		309	17
	203	5		P11	3		310	17
	205	6	V401-160-014-00	413	18		310	37
	222	4		626	8		311	13
	303	35		701	18		311	28
	304	33		702	29		312	14
	305	10		703	25		313	14
406	3	V401-160-016-00	306	11		601	16	
408	3		502	10		602	16	
416	6		512	23		P01	32	
501	8		513	23		S05	6	
506	5		514	9	V411-260-010-00	127	8	
507	5	702	7	203		6		
609	29	703	7	227		7		
702	26	V401-170-008-00	508	21		305	11	
P01	5		509	21		401	5	
P10	5		510	21	501	7		
V401-160-012-00	116	18		511	21		503	7
	117	18	V411-260-005-00	503	18		504	11
	118	11		624	19		601	8
	118	20		625	20		602	8
	119	11		626	21		609	30
	119	20	V411-260-006-00	114	3	V411-260-012-00	232	3
	215	2		115	9		305	7
	305	6		120	6		410	14
	407	5		121	4		410	18
	409	5		122	4		512	43

Alphabetical Index

6004-095-520-00

Description	Fig. Key	Description	Fig. Key	Description	Fig. Key
PLATE, THRUST	302 4	RING/SNAP	S03 22	SPRING	S04 18
PLATE, THRUST INJPUMP	502 14	RINGGEAR	304 6	SPRING, RETURN	502 26
PLATE/ADJUST	801 2	RINK/CONTROL	502 20	SPRING, STARTING	502 31
PLATE/ADJUSTING	S02 11	ROCKERARM	301 9	SPRING/DELIVERYVALVE	S02 3
PLATE/FRONT	204 39	ROCKERSHAFT ASSY	301 8	SPRING/GOVERNOR	502 23
PLATE/REAR	203 1	ROD, PUSH	301 7	SPRING/PUMPLUNGER	S02 18
PLATE/TAPPET/AD 0. 2	S02 25	ROTOR ASSY	S04 4	SPRING/RELIEF VALVE	204 30
PLATE/TAPPET/AD 0. 25	S02 29	ROTOR/OUTER	401 4	SPRING/STARTERBRUSH	S03 4
PLATE/TAPPET/AD 0. 3	S02 26	ROTOR/WATERPUMP	402 6	SPRING/VALVE	301 3
PLATE/TAPPET/AD 0. 35	S02 30	SCREW	S03 33	STARTER ASSY	801 7
PLATE/TAPPET/AD 0. 4	S02 27	SCREW ADJUST	301 16	STOPPER/FULLLOAD	204 17
PLATE/TAPPET/AD 0. 45	S02 31	SCREW/HOLLOW	S02 1	STRAINER	401 8-A
PLATE/TAPPET/AD 0. 5	S02 28	SCREW/WATER PUMP	402 10	STUD	101 8
PLATE/TAPPET/AD 0. 55	S02 32	SEAL SET/WATER PUMP	402 5		201 20
PLATE/TAPPET/AD 0. 6	S02 20	SEAL, BEARING CAP	201 8		201 21
PLATE/TAPPET/AD 0. 65	S02 33		P04 8		201 32
PLATE/TAPPET/AD 0. 7	S02 21	SEAL, BEARING CAP/7	201 9		204 4
PLATE/TAPPET/AD 0. 8	S02 22		P04 9		204 5
PLATE/TAPPET/AD 0. 9	S02 23	SEAL, CYL. HEAD COVER	102 3		204 6
PLATE/TAPPET/AD 1. 0	S02 24		P04 4		204 45
PLATE/WATER PUMP	402 9	SEAL, OIL	101 4	STUD/M8X40	201 19
PLUG	301 11		201 14		402 18
PLUG/M14X1. 5	202 2		204 7	SWITCH/MAGNETIC ASSY	S03 20
PLUG/PT1/2	101 3		P04 2	SWITCH/OILPRESSURE	802 1
PLUG/PT1/8	201 5		P04 10	TAPPET	301 6
	204 2		P04 12	TAPPET/INJECTIO ASSY	S02 14
PLUG/SCREW	204 24	SEAL/WATER PUMPPULLE	402 7	THERMOMETER	802 2
POINTER	203 2	SEAT, VALVE SPRING	301 4	THERMOSTAT	402 27
PULLEY	304 11	SEAT/SPRING/LOWER	S02 19	THRUSTPIECE	502 18
	S04 1	SEAT/SPRING/UPPER	S02 17	VALVE ASSY	S02 7
PULLEY ASSY	304 10	SHAFT, CAM	302 1	VALVE/EXHAUST	301 2
PULLEY, WATER PUMP	403 2	SHAFT/HYDRAULIC ASSY	204 46	VALVE/INTAKE	301 1
RACK/CONTROL ASSY	S02 15	SHAFT/ROCKERARM ASSY	301 10	VALVE/RELIEF ASSY	204 28
REGULATOR ASSY	S04 26	SHAFT/STARTER PLANET	S03 15	WASHER	501 2
REPAIR/ENGINE SET	P04 1	SHIM/INJECTIONPUMP	502 2-A		S01 4
RESISTANCE/1. 0	503 8-A		502 4-A		S03 31
RING, SNAP	303 4		502 5-A	WASHER / M6	502 29
RING, SNAP/ 4 E	502 22		502 6-A	WASHER, SP/M 6	502 30
RING, SNAP/12 C	204 31	SHORTBLOCKENGIN ASSY	P01 1		802 9
RING, SNAP/16 C	301 15	SLEEVE/PLUNGER	S02 16	WASHER, SP/M 8	204 49
RING/O	204 36	SOLENOID	802 6		204 51
RING/PISTON SET	303 2	SPACER	204 42	WASHER, SP/M6	304 14
RING/PISTON/OV SET	P03 2	SPACER, PUMP. WATER	402 16	WASHER/0. 9	S01 7
	P03 4	SPACER/FAN/48	403 3	WASHER/0. 925	S01 8
RING/SNAP	S03 21	SPRING	301 14	WASHER/0. 95	S01 9

Alphabetical Index

6005-095-920-00

Description	Fig. Key	Description	Fig. Key	Description	Fig. Key
ADAPTER/225X060 ASSY	504 1	BOLT	S04 22	COVER/CYLINDER HEAD	102 1-A
ARM/CONTROL	502 27		S04 24	COVER/INJECTIONPUMP	201 26
ARM/FLOATING COMP	502 18	BOLT, SEMS/M6X12	302 5	CRANKSHAFT ASSY	304 1
ARM/TENSION	504 2		502 14	CUP/SEALING/16	201 3
ARMATURE/STARTE ASSY	S03 2	BOLT, SEMS/M8X25 7T	104 3	CUP/SEALING/20	204 3
BALL	101 5	BOLT/CONNECTINGROD	303 6	CUP/SEALING/28	201 4
	S03 20	BOLT/CRANK	304 10	CUP/SEALING/36	201 5
BEARING	S03 3	BOLT/FLANGE	304 8	CUP/SEALING/50	101 2
	S03 4	BOLT/M12X45	801 8		201 6
	S03 5	BOLT/M6	204 34	CUTTER, VALVE	301 5
	S03 6		204 35	CYLINDERBLOCK ASSY	201 1
BEARING, RB/6004	502 12	BOLT/M6X10	502 16	CYLINDERHEAD ASSY	101 1
BEARING, RB/6005	204 49	BOLT/STUD	201 22	DOWEL	201 23
BEARING, RB/6203	502 11	BOLT/THROUGH	S03 19	DRIVE/TACHOMETE ASSY	204 37
BEARING/BALL	304 7	BOLT/WS	203 4	EYEBOLT	S02 50
	S04 6		401 6	FAN/COOLING	403 1
	S04 11		403 4	FLANGEBOLT	103 3
BEARING/CONNECTING R	303 7		S03 18		201 28
	P02 5-A	BRACKET/ROCKERSHAFT	301 12		202 4
	P02 6-A		301 13		204 8
BEARING/CRANK SET	201 11	BRUSH	S04 17		204 9
BEARING/CRANK/LOWER	201 13	BUSH	S04 15		204 11-A
BEARING/CRANK/UNDER	P02 1	BUSHING/DRAIN	S03 23		204 13
	P02 3	CAMSHAFT	302 1		204 14
BEARING/CRANK/UPPER	201 12	CAMSHAFT/INJECTION P	502 8		204 15
BEARING/THRUST/CRANK	201 14	CAP	402 31		204 17
	P02 2	CAP, OIL FILLER	102 5		204 39
	P02 4	CAP/OILFILLER	201 32		205 2
BEARING/WATER PUMP	402 3	CARTRIDGE/OILFILTER	401 12		301 19-A
BEARING/WATERPUMP	402 4	CLAMP/STRAINER	401 10		401 11
BELT/V R5 A38.5	403 5	CLAMP/WIRE/10-15	402 22		402 18
BODY/OILPUMP	401 2	CLAMP/WIRE/20-24	402 32		402 19
BODY/WATERPUMP	402 2	CLIP/HOSE/7.6-8.2	503 4		402 25
BOLT	101 7	CLUTCH/STARTER ASSY	S03 7		402 26
	201 2	COLLOR	S04 3		402 30
	204 43	CONNECTINGROD ASSY	303 5		502 6
	301 18	CONNECTOR, OIL FILTER	201 25		801 3
	802 8	CONNECTOR/FUEL	503 1		801 5
	S02 10	CONNECTOR/GLOWPLUG	802 5-A	FLYWEIGHT ASSY	502 15
	S02 52	CONTROLRACK	S02 48	FLYWHEEL ASSY	304 5
	S04 9	CONTROLSLEEVE	S02 49	FRAME	S04 12
	S04 10	COVER	S03 26	FRAME/DRIVEEND ASSY	S04 7
	S04 19		S04 13	FRAME/STARTEREND	S03 12
	S04 20	COVER, BEARING	S04 5	GASHET/EXH MANIFOLD	104 2
	S04 21	COVER/BLOWBY	102 3		P04 7

Alphabetical Index

1774-095-100-00

Description	Fig. Key	Description	Fig. Key	Description	Fig. Key		
BOLT, SEMS	630 12	BOLT/M10X20	205 8	BOLT/M12X70	305 4		
	630 16		403 7		614 11		
	630 18		609 28		BOLT/M12X80	613 2	
	630 20		615 2			614 2	
	631 12		616 2		BOLT/M16X90	701 2	
	631 16		617 2		BOLT/M5X16	605 5	
	631 18		618 2			606 5	
	631 20		BOLT/M10X25		123 2	BOLT/M5X30	624 25
	631 32				205 3		625 26
	BOLT, SEMS (SP)		312 20		BOLT/M10X30	402 13	
	313 19	BOLT/M10X40	402 14	BOLT/M6X20/16	603 17		
	411 13		414 23		604 17		
	504 17	BOLT/M10X75	305 8	BOLT/M8X16	127 2		
	508 36	BOLT/M10X80	506 4		127 13		
	509 36	BOLT/M10X90	222 3		224 2		
	510 36		P01 4		225 2		
	511 36	BOLT/M12X25	116 17		226 2		
	602 4		117 17		228 2		
	628 28		118 19	BOLT/M8X25	303 11		
	629 26		119 19		304 9		
	630 29		410 12	BOLT/M8X28 11T	508 20		
	631 27		410 16		509 20		
BOLT, SEMS (S) M8X16	503 22		414 36		510 20		
	504 6		702 24		511 20		
BOLT, SEMS/M8X45 7T	230 2		703 22	BOLT/M8X40	309 14		
BOLT, SM/M08X25	502 7	BOLT/M12X30	407 4	BOLT/M8X50	503 9		
BOLT. S M8X175	504 4		409 4	BOLT/M8XX55	504 2		
BOLT/BATTERY	112 2		410 3	BOLT/S	111 12		
	113 2		512 41		201 4		
BOLT/KNOB/M06X27	607 8		702 23		202 4		
BOLT/M 8X16	501 34		703 21		205 4		
BOLT/M 8X25	512 6	BOLT/M12X35	413 11		230 16		
	513 6		414 5		303 19		
BOLT/M 8X55	405 20		512 9		304 17		
BOLT/M08X20	312 17		512 13		505 3		
	313 16		513 9		506 12		
BOLT/M10X1.25X20	116 11		513 13		506 17		
	117 11	BOLT/M12X40	501 18		507 14		
	118 13		514 2		507 21		
	119 13		702 25		508 10		
BOLT/M10X100	501 5		P11 2		508 27		
BOLT/M10X120	507 4	BOLT/M12X45	613 8		509 10		
	P10 4		614 8		509 27		
BOLT/M10X20	123 6		703 19		510 10		
	127 17	BOLT/M12X55	305 3		510 27		

Alphabetical Index

1774-095-100-00

Description	Fig. Key	Description	Fig. Key	Description	Fig. Key	
NUT	630 25	NUT/M12	414 39	NUT/M8	119 35	
	630 27		512 11		120 10	
	631 25		512 15		230 7	
	701 15		512 32		309 15	
	702 4		512 45		310 11	
	703 4		513 11		310 35	
	S01 12		513 15		311 7	
	S05 8		513 32		311 26	
	NUT, SM/M10		127 10		613 7	506 8
	NUT, SPEED/P6		601 35		613 16	507 8
	601 46	NUT/M14	614 7	NUT/RING	628 3	
	602 35		614 14		629 3	
	602 45		413 20		630 3	
	603 10		626 9		631 3	
	603 16		701 19		NUT/SPRING	605 4
	604 10		702 30		606 4	
	604 16		703 26		NUT/WASHER	107 15
	605 11		502 12		108 15	
	606 11		512 19		127 18	
	NUT, TOP LINK LOCK		512 36		512 22	231 14
NUT, U/M16	514 8	513 19	312 18			
NUT. U/M10	607 5	513 22	313 17			
NUT/M 8	502 8	701 3	410 10			
	512 7	702 6	411 12			
	513 7	703 6	506 26			
			507 31			
NUT/M10	116 15	NUT/M5	111 9	602 51		
	117 15	NUT/M6	106 11	609 16		
	118 17		112 4	609 26		
	119 17		112 5	621 3		
	123 3		113 4	632 11		
	201 6		113 5	632 19		
	202 6		407 11	633 11		
	205 5		409 11	633 19		
	414 24		605 17	634 11		
	501 9		606 17	634 19		
NUT/M10 7T P=1.25	116 10		609 18	P10 21		
	117 10		609 21	S03 33		
	118 12		632 17	OILSEAL		
	119 12		633 17	O-RING		
NUT/M10X1.25	416 5	634 17	402 11			
NUT/M12	118 10	NUT/M8	116 8	O-RING G60	501 17	
	119 10		117 8	O-RING HS90 G50	508 17	
	215 3		117 33	509 17		
	305 5		118 8	510 17		
	413 12		119 8	511 17		

CLICK HERE TO **DOWNLOAD** THE COMPLETE MANUAL

- Thank you very much for reading the preview of the manual.
- You can download the complete manual from: www.heydownloads.com by clicking the link below



- Please note: If there is no response to CLICKING the link, please download this PDF first and then click on it.

CLICK HERE TO **DOWNLOAD** THE COMPLETE MANUAL