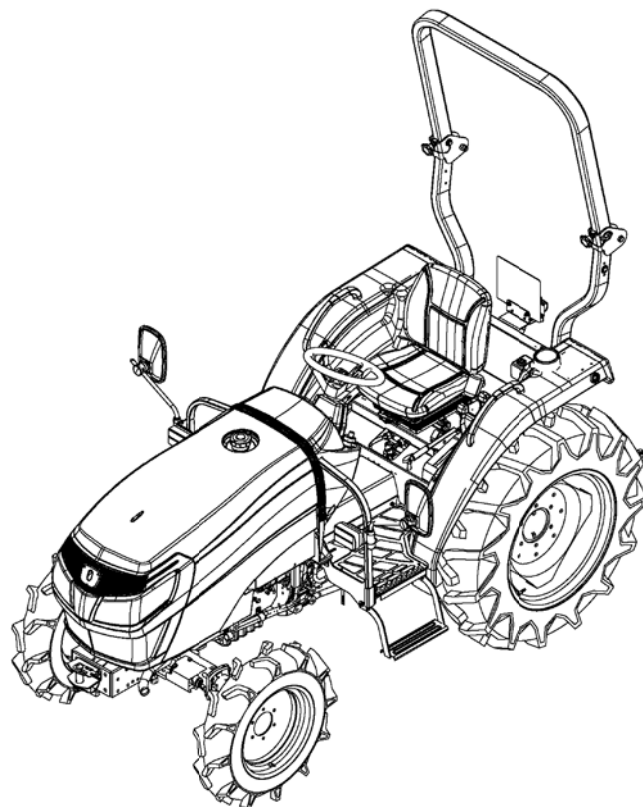




Parts Catalogue



TRACTOR

TLE3400H3

TLE3400H3-ZVRE4,ZVRE4G,ZWRE4

1834-097-110-00

Printed in Japan November,2017

CLICK HERE TO **DOWNLOAD** THE COMPLETE MANUAL

- Thank you very much for reading the preview of the manual.
- You can download the complete manual from: www.heydownloads.com by clicking the link below



- Please note: If there is no response to CLICKING the link, please download this PDF first and then click on it.

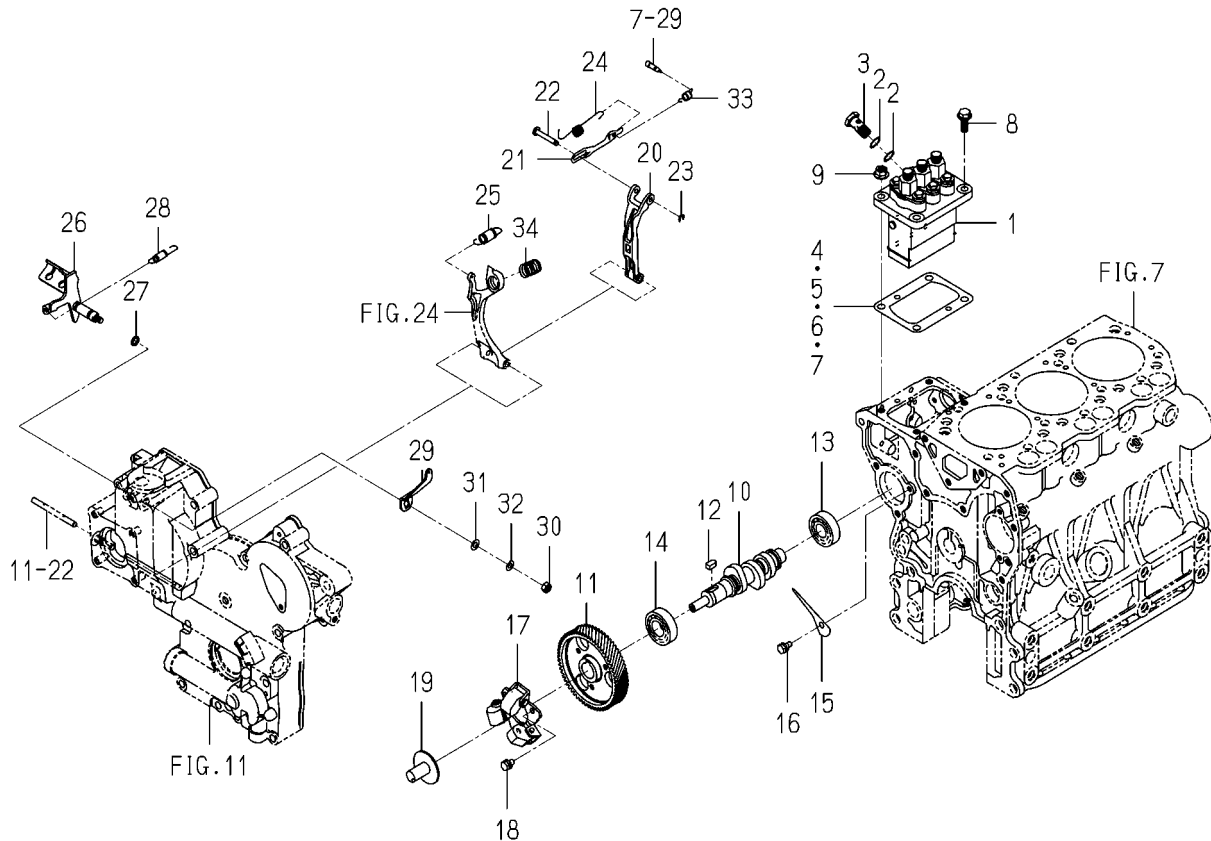
CLICK HERE TO **DOWNLOAD** THE COMPLETE MANUAL

C o n t e n t s

CHASSIS

RADIATOR SYSTEM(1/2)(2/2).....	Fig. 1
MUFFLER SYSTEM.....	Fig. 2
CLEANER(AIR)SYSTEM.....	Fig. 3
TANK(FUEL)SYSTEM.....	Fig. 4
ACCELERATOR SYSTEM.....	Fig. 5
CASE(TRANSMISSION/FRONT)SYSTEM.....	Fig. 6
HST SYSTEM.....	Fig. 7
GEAR(PTO/INPUT)SYSTEM.....	Fig. 8
SHAFT(DRIVE/PTO)SYSTEM.....	Fig. 9
CASE(TRANSMISSION/MID)SYSTEM.....	Fig. 10
GEAR(MAIN)SYSTEM.....	Fig. 11
GEAR(SUB)SYSTEM.....	Fig. 12
GEAR(4WD)SYSTEM.....	Fig. 13
GEAR(PTO/REAR)SYSTEM.....	Fig. 14
CASE(TRANSMISSION/REAR)SYSTEM.....	Fig. 15
METAL(TRUNNION)SYSTEM.....	Fig. 16
SHIFT(SUB)SYSTEM.....	Fig. 17
SHIFT(4WD)SYSTEM.....	Fig. 18
SHIFT(PTO)SYSTEM.....	Fig. 19
LEVER(SUB)SYSTEM.....	Fig. 20
LEVER(4WD)SYSTEM.....	Fig. 21
LEVER(PTO)SYSTEM.....	Fig. 22
PINION(DRIVE/REAR)SYSTEM.....	Fig. 23
CASE(DIFFERENTIAL GEAR/ REAR)SYSTEM.....	Fig. 24
HOUSING(AXLE/REAR)SYSTEM.....	Fig. 25
SHIFT(CLUTCH/ DIFFERENTIAL GEAR)SYSTEM.....	Fig. 26

FIG. 22 INJECTION PUMP



6005-511V-0100

KEY	PART CODE	DESCRIPTION	S P C	TYPE OF MODEL		I T C	C O L	G R P	REMARKS
				E3CD	WTB11				
1	6215-600-183-00	INJECTIONPUMP ASSY	*	1					
2	6215-619-010-00	WASHER/AIR BLEEDER	*	2					
3	6215-619-009-00	SCREW/HOLLOW	*	1					
4	6219-752-045-00	SHIM/INJECTIONPUMP	*	1					
5	6219-752-044-00	SHIM/INJECTIONPUMP	*	1					
6	6219-752-046-00	SHIM/INJECTIONPUMP	*	1					
7	6219-752-047-00	SHIM/INJECTIONPUMP	*	1					
8	V231-360-802-00	FLANGEBOLT/M8X20	*	2					
9	3817-401-001-00	NUT/M08	*	2					
10	6215-621-052-00	CAMSHAFT/INJECTION P	*	1					
11	6212-524-012-30	GEAR/INJECTIONPUMP	*	1					
12	6209-730-005-00	KEY/07X05X09	*	1					
13	V600-110-620-30	BEARING,RB/6203	*	1					
14	6209-800-010-00	BEARING	*	1					
15	6212-535-009-00	PLATE/THRUST/INJPUMP	*	1					
16	V210-560-601-20	BOLT,S/M6X12/7T	*	1					
17	6215-520-007-10	FLYWEIGHT ASSY	*	1					
18	6209-030-043-00	BOLT/M6X10	*	3					
19	6215-526-004-00	THRUSTPIECE	*	1					
20	6215-541-001-10	ARM/FLOATING COMP	*	1					
21	6215-543-002-10	RINK/CONTROL	*	1					
22	6215-542-006-00	PIN,CONTROL	*	1					
23	V710-140-004-00	RING,SNAP/4 E	*	1					
24	6215-549-031-10	SPRING/SETTING	*	1					
25	6215-531-019-00	SPRING/GOVERNOR	*	1					
26	6215-541-045-10	LEVER/CONTROL COMP	*	1					
27	V720-101-900-80	O-RING/1A,P8	*	1					
28	6209-580-002-10	SPRING,RETURN	*	1					
29	6215-549-076-10	ARM/CONTROL	*	1					
30	V301-260-006-00	NUT/M6	*	1					

CLICK HERE TO **DOWNLOAD** THE COMPLETE MANUAL

- Thank you very much for reading the preview of the manual.
- You can download the complete manual from: www.heydownloads.com by clicking the link below

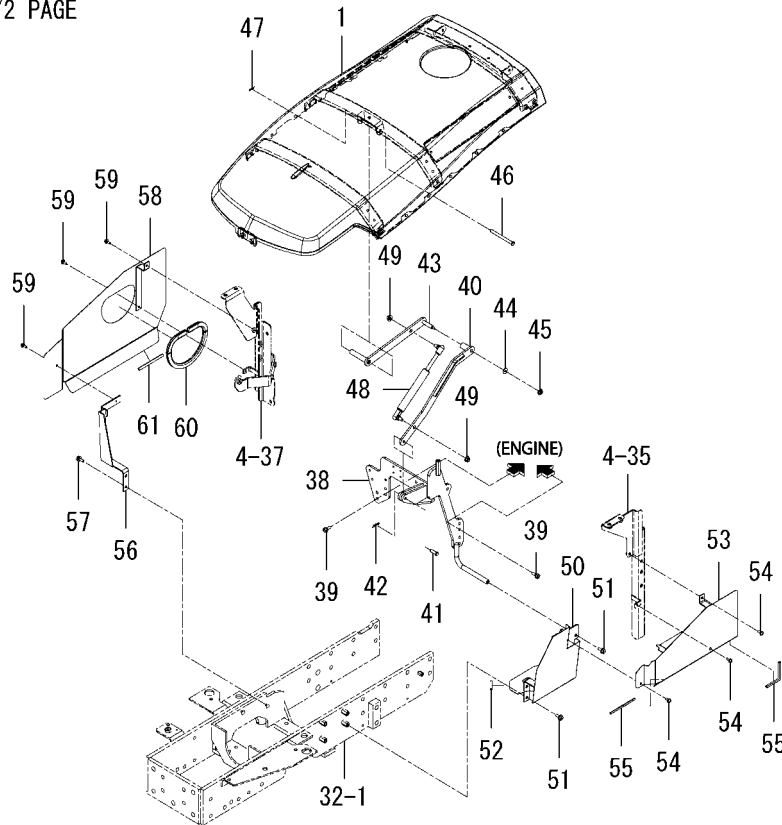


- Please note: If there is no response to CLICKING the link, please download this PDF first and then click on it.

CLICK HERE TO **DOWNLOAD** THE COMPLETE MANUAL

FIG. 49 HOOD SYSTEM(2/2)

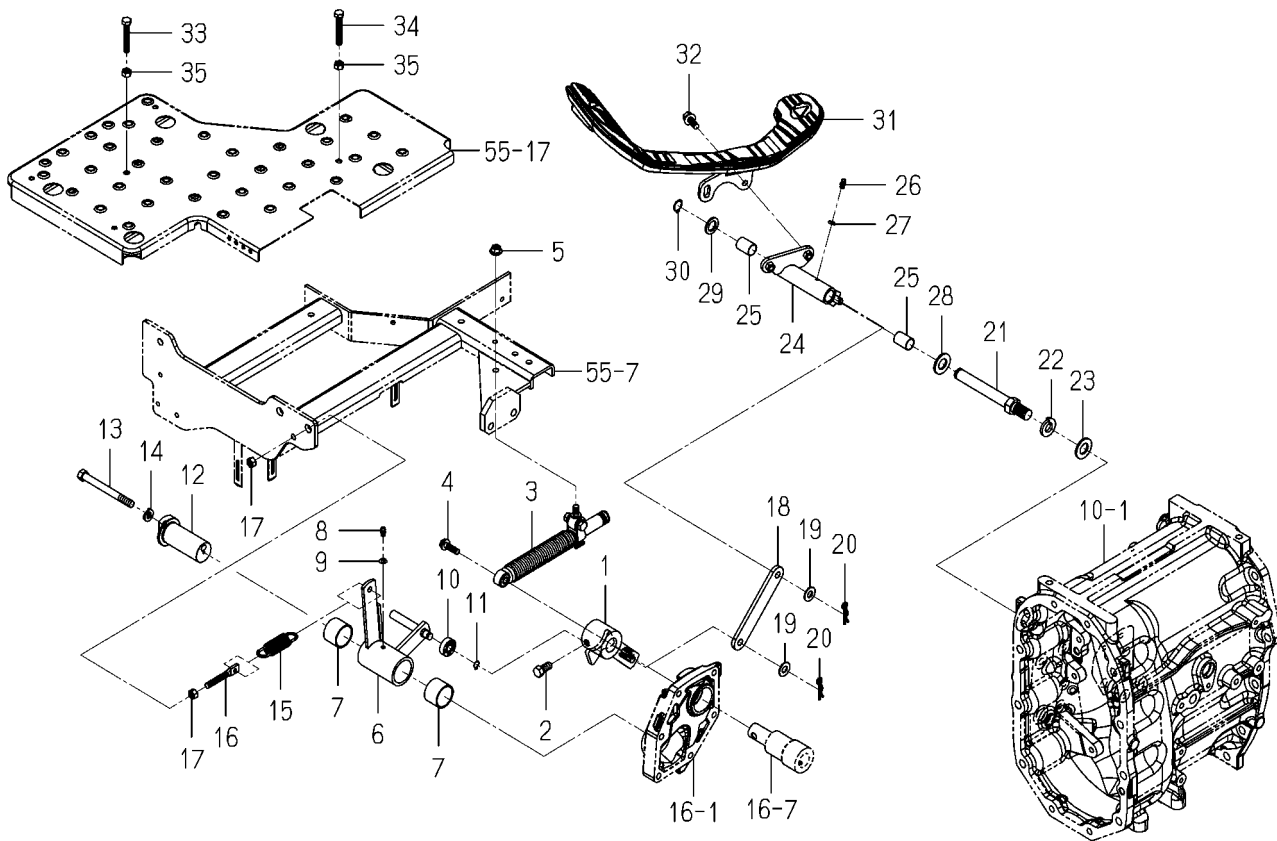
31~37-PLEASE SEE 1/2 PAGE



1834-601A-0100

KEY	PART CODE	DESCRIPTION	S P C	TYPE OF MODEL		I T C	C O L	G R P	REMARKS
				TLE3400	H3				
31	1824-601-013-00	TRIM/170	*	2					
32	1833-601-600-10	FLAME/FRONT COMP	*	1					
33	V211-660-801-60	BOLT,SP/M8X16/7T	*	6					
34	V210-660-601-60	BOLT,SP/M6X16/7T	*	2					
35	1834-601-310-00	PIN COMP	*	1					
36	4101-102-038-00	WASHER/24X9X3.2	*	2					
37	V211-260-802-00	BOLT,S/M8X20	*	2					
38	1834-601-220-10	BRACKET/LINK/HOOD	*	1					
39	V211-560-802-00	BOLT,S/M8X20/7T	*	4					
40	1834-601-600-20	LINK/HOOD/LOWER COMP	*	1					
41	1824-601-005-00	PIN/08X29	*	1					
42	V560-160-008-00	PIN/SNAP	*	1					
43	1834-601-640-10	LINK/HOOD/UPPER COMP	*	1					
44	1146-601-002-00	WASHER/07X18X02	*	1					
45	V361-260-006-00	NUT,WASHER/M6	*	1					
46	1824-601-004-00	PIN/08X97	*	1					
47	V560-160-008-00	PIN/SNAP	*	1					
48	1813-601-650-00	DAMPER/HOOD ASSY	*	1					
49	V362-260-010-00	NUT/WASHER/M10	*	2					
50	1834-601-210-10	NET/SIDE/LH COMP	*	1			7F		
51	V231-360-801-60	FLANGEBOLT/M8X16	*	3					
52	3661-212-001-00	LINING/50	*	1					
53	1834-601-230-00	PROTECTOR/REAR COMP	*	1					
54	V120-376-001-60	SCREW,SP/M6X16	*	3					
55	1705-102-014-00	TRIM/130	*	2					
56	1834-601-250-00	STAY/SIDE/RH COMP	*	1					
57	V231-360-801-60	FLANGEBOLT/M8X16	*	2					
58	1834-601-260-00	NET/SIDE/RH COMP	*	1			7F		
59	V120-376-001-60	SCREW,SP/M6X16	*	3					
60	1599-104-008-00	TRIM/430	*	1					

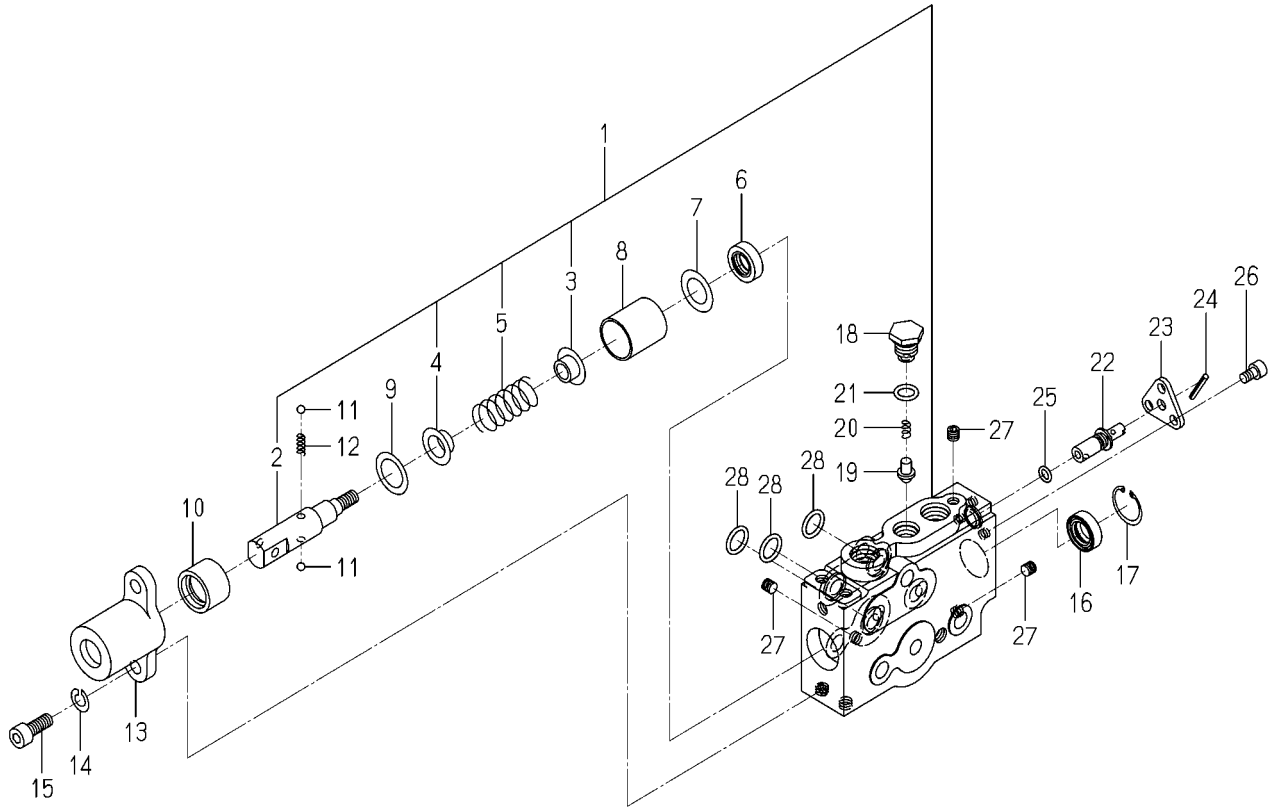
FIG. 56 PEDAL(HST)SYSTEM



1834-640A-0100

KEY	PART CODE	DESCRIPTION	S P C	TYPE OF MODEL	I T C	C O L	G R P	REMARKS
				TLE3400 H3				
1	1834-640-500-00	ARM/TRUNNION COMP	*	1				
2	1646-226-053-00	BOLT/SM/M10X23	*	1				
3	3803-222-890-00	DUMPER/OIL ASSY	*	1				
4	V231-360-802-50	FLANGE BOLT/M8X25	*	1				
5	V362-260-008-00	NUT/WASHER/M8	*	1				
6	1834-640-520-00	ARM/NEUTRAL COMP	*	1				
7	1646-640-221-10	BUSH/32X36X25	*	2				
8	V760-150-000-00	NIPPLE, GREASE	*	1				
9	V401-160-006-00	WASHER, SP/M6	*	1				
10	V600-150-600-00	BEARING, RB/6000SS	*	1				
11	V704-140-010-00	RING, SNAP/10 C	*	1				
12	1821-640-051-10	PIN/ADJUST	*	1				
13	V201-361-010-00	BOLT/M10X100/7T	*	1				
14	V401-160-010-00	WASHER, SP/M10	*	1				
15	1560-404-002-30	SPRING	*	1				
16	3838-203-001-00	ROD/08X057	*	1				
17	V304-260-008-00	NUT/M8	*	2				
18	1834-640-055-00	PLATE/IR/25X138	*	1				
19	V411-260-010-00	WASHER, PL/M10	*	2				
20	1305-241-001-00	PIN, HAIR	*	2				
21	1834-640-053-00	PIN/M16	*	1				
22	V402-160-016-00	WASHER, SP/M16	*	1				
23	V411-260-016-00	WASHER, PL/M16	*	1				
24	1834-640-560-00	ARM/HST COMP	*	1				
25	1656-664-221-10	BUSH/16X18X25	*	2				
26	V760-150-000-00	NIPPLE, GREASE	*	1				
27	V401-160-006-00	WASHER, SP/M6	*	1				
28	V411-260-016-00	WASHER, PL/M16	*	1				
29	1834-640-054-00	WASHER/16X26X02	*	1				
30	V704-140-016-00	RING, SNAP/16 C	*	1				

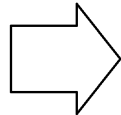
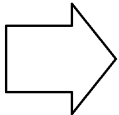
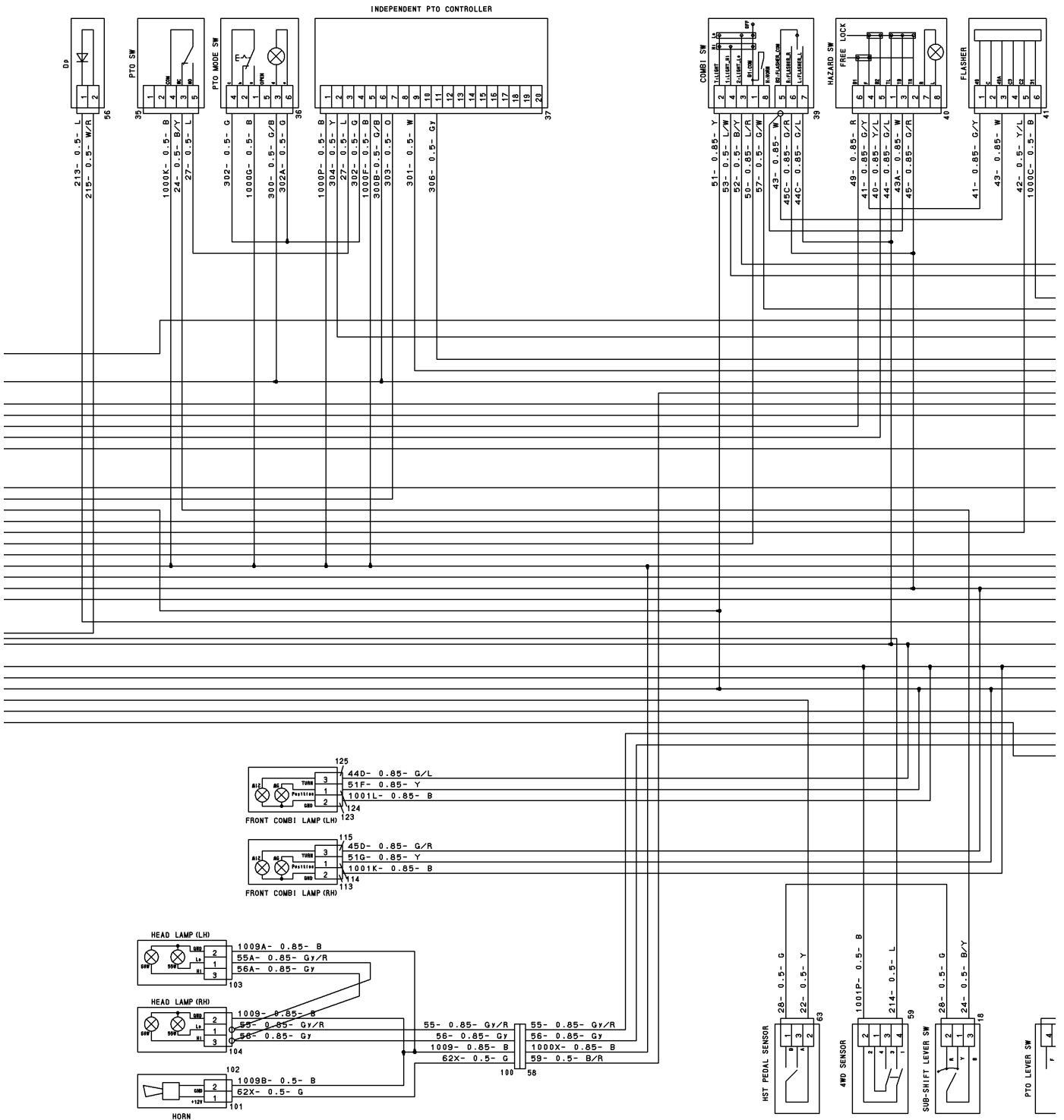
**FIG. 80 COMPONENT PARTS
FOR 1640-530-600-10 ON Fig.74**



1640-530-600-1D

KEY	PART CODE	DESCRIPTION	S P C	TYPE OF MODEL	I T C	C O L	G R P	REMARKS
				TLE3400 H3				
1	1640-530-610-10	VALVE SET	T	1				
2	1640-530-613-00	HEAD/SPOOL	T	1				
3	1640-530-614-00	STOPPER/SPRING/A	T	1				
4	1640-530-615-00	STOPPER/SPRING/B	T	1				
5	K211-012-006-00	SPRING/HC042	T	1				
6	K211-004-007-00	SEAL,OIL/TC4,14247	T	1				
7	K211-004-006-00	COLLAR	T	1				
8	1640-530-622-00	SLEEVE	T	1				
9	1640-530-623-00	COLLAR/19X28X02	T	1				
10	1640-530-624-00	SLEEVE/DETENT	T	1				
11	V682-200-000-60	BALL,STEEL	T	2				
12	1640-530-625-00	SPRING/HC015	T	1				
13	1640-530-626-00	COVER	T	1				
14	V401-160-008-00	WASHER,SP/M8	T	2				
15	V220-540-802-00	SCREW,SOCKET/M8X20	T	2				
16	K211-004-007-00	SEAL,OIL/TC4,14247	T	1				
17	V705-140-024-00	RING,SNAP/24 C	T	1				
18	1640-530-628-00	PLUG/M14	T	1				
19	1640-530-629-00	POPPET	T	1				
20	K110-001-106-00	SPRING	T	1				
21	V720-112-401-20	O-RING/1B,P12	T	1				
22	1640-530-631-00	SPOOL/DELECT	T	1				
23	1640-530-632-00	PLATE	T	1				
24	V580-140-302-50	PIN,SPRING/3X25 W	T	1				
25	V720-111-900-70	O-RING/1B,P7	T	1				
26	V220-540-601-00	SCREW,SOCKET/M6X10	T	3				
27	K200-014-007-00	PLUG/SEAL	T	3				
28	V720-112-401-40	O-RING/1B,P14	T	3				

WIRING DIAGRAM (3/4)



Numerical Index

1834-097-110-00

Part Code	Fig. Key	Part Code	Fig. Key	Part Code	Fig. Key
1813-253-051-00	16 1	1821-434-006-00	36 7	1824-111-001-00	4 1
1813-257-610-00	18 7	1821-434-007-00	36 10	1824-111-210-20	4 10
1813-308-001-00	22 4	1821-434-008-00	36 26	1824-201-003-00	6 18
1813-312-600-00	28 12	1821-434-009-00	36 29		32 16
1813-313-062-00	29 12	1821-436-210-00	37 1	1824-219-002-10	14 2
1813-313-620-00	29 18	1821-436-211-00	37 4	1824-219-004-00	11 19
1813-508-600-00	41 15		37 9		14 1
1813-512-600-00	43 16	1821-436-220-00	37 2	1824-241-001-20	15 1
	44 18	1821-436-230-00	37 3	1824-257-001-00	18 5
1813-512-610-00	44 19		37 8	1824-304-003-00	24 1
	74 18	1821-436-250-00	37 6	1824-304-210-00	24 3
1813-512-620-00	44 20	1821-436-260-00	37 7	1824-304-211-00	24 4
	74 19	1821-504-011-00	40 26	1824-304-212-00	24 5
1813-512-650-10	74 1	1821-504-012-10	40 24	1824-304-213-00	24 6
1813-601-011-00	49 9	1821-504-230-10	40 30	1824-304-214-00	24 7
1813-601-650-00	49 48	1821-508-003-00	41 67	1824-304-215-00	24 8
1813-630-003-00	54 5	1821-509-053-00	42 35	1824-304-216-00	24 9
1815-650-310-00	76 1	1821-606-001-00	51 17	1824-304-217-00	24 10
1815-650-320-00	76 3	1821-608-210-10	52 4	1824-304-218-00	24 11
1815-654-002-00	60 47	1821-630-003-00	1 30	1824-304-220-00	24 12
1821-209-007-00	8 5		59 46	1824-308-001-00	26 1
1821-209-210-00	8 8	1821-630-004-00	54 6	1824-310-301-00	27 1
1821-214-051-00	11 1	1821-640-051-10	56 12	1824-310-302-00	27 2
1821-214-052-00	11 5	1821-702-001-00	63 10		27 6
1821-214-053-00	11 6	1821-702-200-00	62 1	1824-310-303-00	27 3
1821-214-054-00	11 9	1821-702-210-00	62 2		27 7
1821-214-055-00	11 13	1821-902-005-10	65 4	1824-310-311-00	27 5
1821-216-001-00	12 1	1821-902-006-00	65 5	1824-434-001-00	36 19
1821-216-052-00	12 2	1821-902-009-10	65 7	1824-501-002-00	39 15
1821-218-051-00	13 7	1821-902-011-10	65 9	1824-501-003-00	39 23
1821-306-006-00	25 13	1821-902-012-10	65 8	1824-501-004-00	39 13
1821-306-007-00	25 14	1824-102-001-00	1 21	1824-501-007-00	6 8
1821-401-001-00	30 3	1824-102-002-00	1 22		39 27
1821-401-002-00	30 1	1824-102-003-00	1 13	1824-504-007-00	40 31
1821-407-220-00	31 1	1824-102-004-00	1 4	1824-508-270-00	41 34
1821-431-002-00	13 10	1824-102-005-00	1 17		41 45
	33 3	1824-102-007-00	1 11	1824-514-250-00	45 1
1821-431-220-00	33 5	1824-102-008-00	1 12	1824-514-260-00	45 19
1821-433-001-00	35 21		1 20	1824-515-250-00	46 6
1821-433-002-00	35 22	1824-102-220-00	4 13	1824-515-260-00	46 8
1821-433-003-00	35 1	1824-102-280-00	1 15	1824-601-002-10	49 21
1821-434-001-00	36 1	1824-104-001-00	3 7	1824-601-003-00	49 23
1821-434-002-10	36 17	1824-104-002-00	3 11	1824-601-004-00	49 46
1821-434-003-10	36 18	1824-104-004-00	3 16	1824-601-005-00	49 41
1821-434-004-10	36 25	1824-104-005-20	3 15	1824-601-006-00	49 6

Alphabetical Index

6005-097-216-00

Description	Fig. Key	Description	Fig. Key	Description	Fig. Key
GASKET	27 22	HOSE/RUBBER	19 4	0-RING/1A, P18	11 33
	27 23		19 5	0-RING/1A, P22A	18 6
	27 24		23 3		27 17
	27 25		19 9	0-RING/1A, P25	7 34
GASKET, NOZZLE	21 3	INJECTIONNOZZLE ASSY	21 1	0-RING/1A, P8	22 27
GASKET/COVER	7 27	INJECTIONPUMP ASSY	22 1	0-RING/1A, S50	11 44
	11 50	JOINT	19 6		27 16
	11 54	KEY/07X05X09	14 3	0-RING/1A, S55	19 15
	27 11		22 12		27 21
GASKET/CYLINDERHEAD	2 6	KEY/07X05X20	17 4	PACKING	11 21
	27 3	LEVELGAUGE	7 30	PIECE, DISTANCE	28 6
GASKET/EXHAUST MANIF	5 2	LEVER/CONTROL COMP	22 26	PIN	7 18
	27 7	MANIFOLD/EXHAUST	5 1		7 29
GASKET/GEARCASE	11 28	MANIFOLD/INLET	4 1		11 24
	27 14	NIPPLE	7 25	PIN, CONTROL	22 22
GASKET/HOUSING	19 10	NOZZLE ASSY	28 51	PIN, NOZZLE HOLDER	28 3
	27 20	NUT	13 17	PIN, ST, B/10X18	10 3
GASKET/INLETMANIFOLD	4 2		28 50		17 2
	27 6		29 2	PIN/ARM	11 22
GASKET/OILFILLER	7 36		29 23	PIN/GROOVE	11 27
GASKET/PLATE	11 41		29 25	PIN/IDLEGEAR	7 8
	27 15	NUT, CAP/M8	11 20	PIN/PISTON	15 3
GASKET/SPACER	19 18	NUT, SUS/M8	5 8	PIN/SNAP	11 23
	27 19		6 3	PIN/SPRING	7 39
GASKET/WATERPUMP	19 2	NUT/CAP	3 7	PIN/STRAIGHT	7 17
	27 18	NUT/FLANGE	26 4		10 7
	14 2	NUT/FLANGE/M10	25 6		18 2
GEAR/CAMSHAFT	14 2	NUT/M08	11 11	PIN/TUBE	7 16
GEAR/CRANK	17 3		13 20		11 45
GEAR/IDLE ASSY	14 6		19 3	PIPE, WATER OUTLET	19 14
GEAR/INJECTIONPUMP	22 11		19 22	PIPE/FUEL	23 2
GEARCASE ASSY	11 1		22 9	PIPE/INJECTION ASSY	21 7
GENERATOR ASSY	25 1		11 36		21 8
GLOWPLUG	26 3	NUT/M6	22 30		21 9
GUIDE/LEVELGAGE COMP	7 31		11 19	PIPE/INLET	6 6
HANGER	12 1	NUT/M8	11 51	PIPE/OIL	7 32
HANGER/F	12 3		11 55	PIPE/OIL ASSY	18 10
HEATSHILD/NOZZLE	21 4	NUT/NOZZLERETAINING	28 5	PIPE/OIL COMP	18 13
HOLDER ASSY	29 14	OILCOOLER	18 19	PIPE/OILJET	7 37
HOLDER/BRUSH ASSY	29 16	OILFILLER COMP	7 35	PIPE/WATER/HOUSING	7 24
HOLDER/NOZZLE ASSY	28 1	OILPAN	9 1	PIPE/WATERR	11 39
HOSE/OILCOOLER/IN	18 22	OILPUMP ASSY	18 1	PISTON	15 1
HOSE/OILCOOLER/OUT	18 23	OILSEAL	7 15	PISTON (OV/050)	16 1
HOSE/RUBBER	6 7		27 10	PISTON (OV/100)	16 3
	6 9		9 3	PISTON/VALVE/RELIEF	11 30
	18 17	0-RING/1A, P18			

CLICK HERE TO **DOWNLOAD** THE COMPLETE MANUAL

- Thank you very much for reading the preview of the manual.
- You can download the complete manual from: www.heydownloads.com by clicking the link below



- Please note: If there is no response to CLICKING the link, please download this PDF first and then click on it.

CLICK HERE TO **DOWNLOAD** THE COMPLETE MANUAL