

Directions for use of Parts Catalogue

1. Applicable model of machines

All component and option parts used for TK527/TK532/TK538 tractors are listed in this parts catalogue.

1) MODEL TYPE

- F..... 4WD
- S..... POWER STEERING & SYNCHROMESH & INDEPENDENT PTO
- U..... POWER STEERING
- P..... POWER STEERING & SYNCHROMESH & INDEPENDENT PTO
& POWER SHUTTLE
- C..... CABIN
- R..... ROPS

2) AREA CODE

- E1..... ASIA
- E4..... EUROPE
- E6..... OCEANIA

2. Explanation for head paragraph

KEY	PART CODE	DESCRIPTION	S P C	TYPE OF MODEL						I T C	C O L	G R P	REMARKS
				SSM48M	SSM48F	SSM48G	SRM48M	SRM48F	SRM48G				
1	8595-211-001-20	CASE/UPPER	*	1									
1A	8657-201-081-00	CASE/UPPER	*	2			1						
2	8595-211-002-10	CASE/LOWER	*	1			1						
3	V523-100-801-80	PIN	*	2			1						
4	V211-260-803-00	BOLT, SENS	*	1			1						
			*	2			1						
			*	2			1						
			*	2			1						

- ① KEY shows the location of parts diagramed in the illustration.
- ② Parts numbers begin with `V` and `W` are standard parts of the market.
- ③ `LH` and `RH` on the parts name are described against the moving direction of the machine or are described on the condition how to install parts on the machines.

CLICK HERE TO **DOWNLOAD** THE COMPLETE MANUAL

- Thank you very much for reading the preview of the manual.
- You can download the complete manual from: www.heydownloads.com by clicking the link below



- Please note: If there is no response to CLICKING the link, please download this PDF first and then click on it.

CLICK HERE TO **DOWNLOAD** THE COMPLETE MANUAL

C O N T E N T S

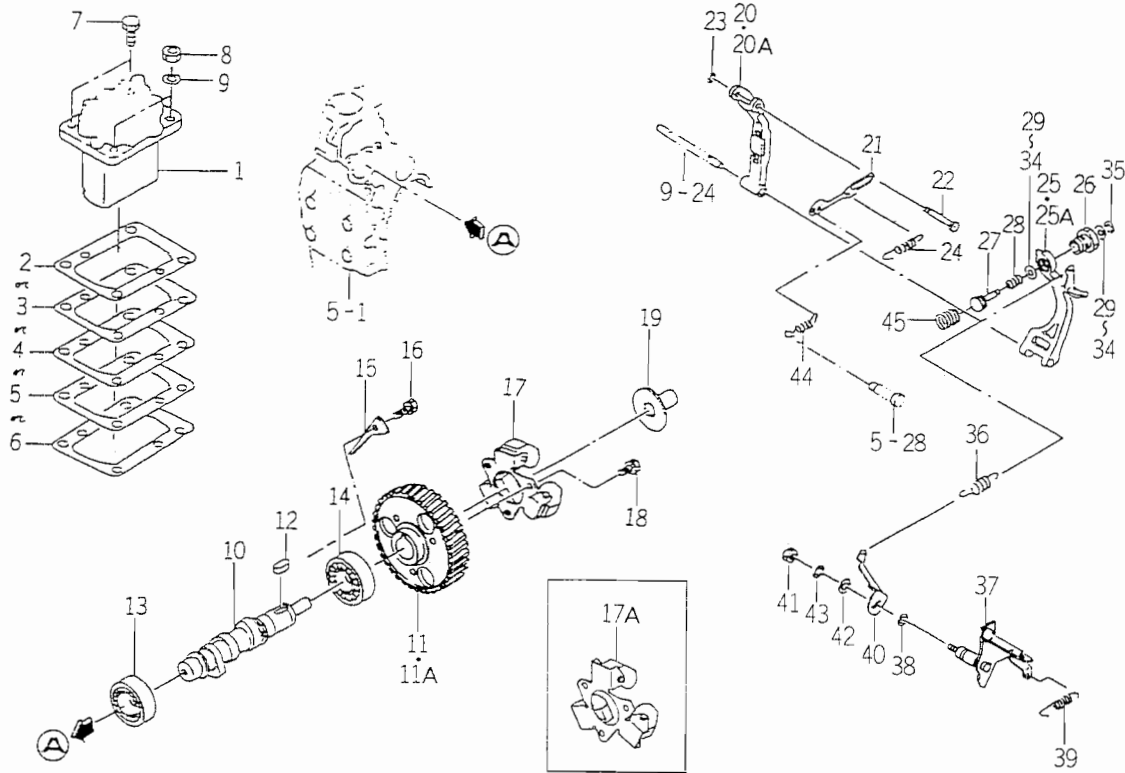
TK527

ENGINE (E3CF-B06)

CYLINDER HEAD.....	Fig. 1
CYLINDER HEAD COVER.....	Fig. 2
INLET MANIFOLD.....	Fig. 3
EXHAUST MANIFOLD.....	Fig. 4
CYLINDER BLOCK.....	Fig. 5
BEARING/UNDER SIZE (OPTION).....	Fig. 6
OIL PAN.....	Fig. 7
REAR PLATE.....	Fig. 8
TIMING GEAR CASE.....	Fig. 9
HANGER.....	Fig. 10
VALVE.....	Fig. 11
CAM SHAFT.....	Fig. 12
PISTON.....	Fig. 13
PISTON/OVER SIZE (OPTION).....	Fig. 14
CRANK SHAFT (No.1~72696).....	Fig. 15
CRANK SHAFT (No.72697~).....	Fig. 16
OIL PUMP.....	Fig. 17
WATER PUMP.....	Fig. 18
COOLING FAN (No.1~72696).....	Fig. 19
COOLING FAN (No.72697~).....	Fig. 20
INJECTION NOZZLE.....	Fig. 21
INJECTION PUMP.....	Fig. 22
FUEL PIPE.....	Fig. 23
ELECTRIC (1) (No.1~72696).....	Fig. 24
ELECTRIC (1) (No.72697~).....	Fig. 25
ELECTRIC (2) (No.53649~).....	Fig. 26
ELECTRIC (2) (No.1~53648).....	Fig. 27
REPAIR PARTS (1) (OPTION).....	Fig. 28
REPAIR PARTS (2) (OPTION).....	Fig. 29

SEAT SYSTEM (S, P TYPE)	Fig. 128
BACK MIRROR SYSTEM (E1, E6 TYPE).....	Fig. 129
BACK MIRROR SYSTEM (E4 TYPE EXCEPT C)	Fig. 130
FRONT MOUNT SYSTEM (R TYPE)	Fig. 131
FRONT MOUNT SYSTEM (EXCEPT C, R TYPE).....	Fig. 132
FRONT MOUNT SYSTEM (C TYPE)	Fig. 133
REAR MOUNT SYSTEM (EXCEPT C, R TYPE)	Fig. 134
REAR MOUNT SYSTEM (R TYPE).....	Fig. 135
REAR MOUNT SYSTEM (C TYPE).....	Fig. 136
FLOOR SYSTEM (TK527, 532 – S, U TYPE EXCEPT C)	Fig. 137
FLOOR SYSTEM (C TYPE)	Fig. 138
FLOOR SYSTEM (TK538 – S TYPE EXCEPT C)	Fig. 139
FLOOR SYSTEM (TK532 – P TYPE EXCEPT C).....	Fig. 140
FLOOR SYSTEM (TK538 – P TYPE EXCEPT C).....	Fig. 141
BATTERY (DELKOR) SYSTEM.....	Fig. 142
HEAD LAMP SYSTEM	Fig. 143
LAMP SYSTEM (E1, E6 TYPE)	Fig. 144
LAMP SYSTEM (E4 TYPE EXCEPT C)	Fig. 145
LAMP SYSTEM (C TYPE)	Fig. 146
PANEL SYSTEM	Fig. 147
SWITCH/SENSOR SYSTEM (SE4 TYPE)	Fig. 148
SWITCH/SENSOR SYSTEM (SE6, UE1 TYPE)	Fig. 149
SWITCH/SENSOR SYSTEM (PE4 TYPE)	Fig. 150
SWITCH/SENSOR SYSTEM (PE6 TYPE)	Fig. 151
HARNESS SYSTEM (E4 TYPE EXCEPT C).....	Fig. 152
HARNESS SYSTEM (E6 TYPE)	Fig. 153
HARNESS SYSTEM (E1 TYPE)	Fig. 154
HARNESS SYSTEM (PC TYPE).....	Fig. 155
HARNESS SYSTEM (SC TYPE)	Fig. 155-1
HARNESS (CAB) SYSTEM (C TYPE)	Fig. 156
SWITCH (PTO) SYSTEM (S, P TYPE).....	Fig. 157
MIRROR SYSTEM (C TYPE).....	Fig. 158
FRAME (FRONT) SYSTEM (C TYPE)	Fig. 159
FRAME (REAR) SYSTEM (C TYPE)	Fig. 160

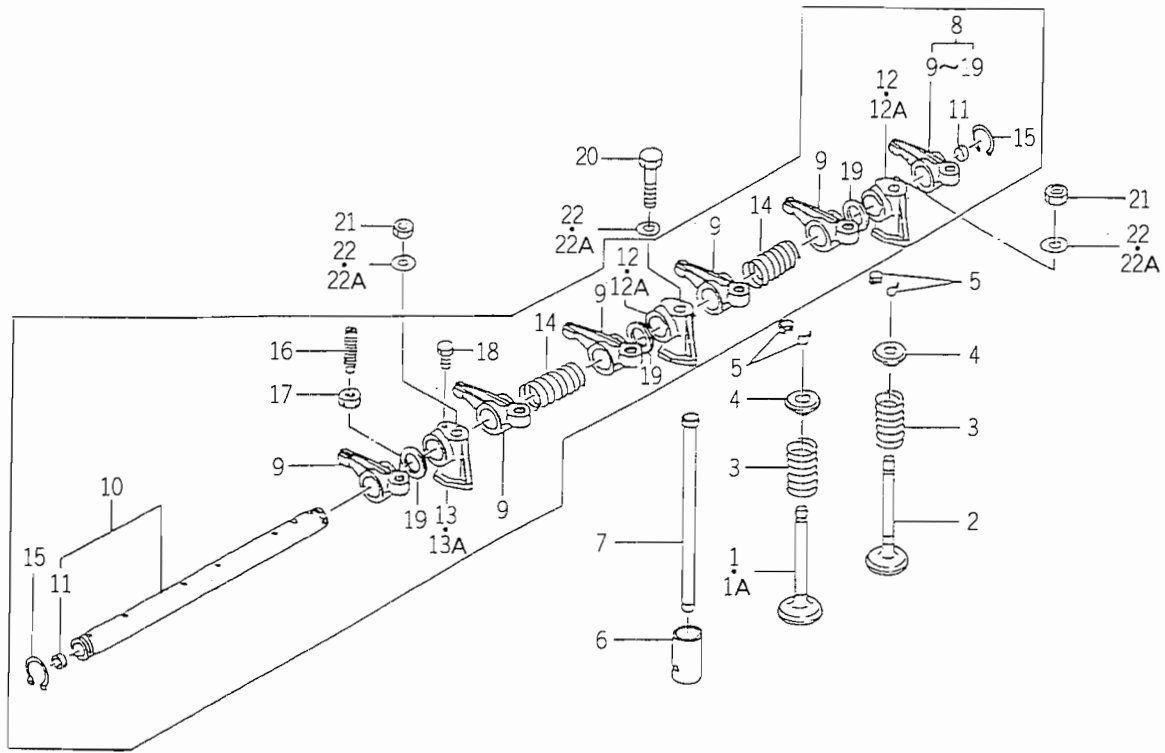
FIG. 22 INJECTION PUMP



6065-5106

KEY	PART CODE	DESCRIPTION	S P C	TYPE OF MODEL		I T C	C O L	G R P	REMARKS
				E3CFB06					
1	6 2 1 5 - 6 0 0 - 1 0 4 - 1 0	INJECTIONPUMP ASSY	*	1					FIG 032
2	6 2 1 9 - 7 5 2 - 0 0 6 - 0 0	SHIM/INJECTION P/0.3	*	1					
3	6 2 1 9 - 7 5 2 - 0 0 7 - 0 0	SHIM/INJECTION P/0.1	*	1					
4	6 2 1 9 - 7 5 2 - 0 0 8 - 0 0	SHIM/INJECTION P/0.2	*	1					
5	6 2 1 9 - 7 5 2 - 0 0 9 - 0 0	SHIM/INJECTION P/0.4	*	1					
6	6 2 1 9 - 7 5 2 - 0 1 0 - 0 0	SHIM/INJECTION P/0.5	*	1					
7	V 2 1 1 - 5 6 0 - 8 0 2 - 0 0	BOLT/M8X20	*	2					
8	6 9 0 9 - 1 1 0 - 5 0 8 - 0 0	NUT/M8	*	2					
9	6 9 0 9 - 1 5 0 - 5 0 8 - 0 0	WASHER	*	2					
10	6 2 1 5 - 6 2 1 - 0 1 7 - 0 0	CAMSHAFT/INJ PUMP	*	1					
11	6 2 1 2 - 5 2 4 - 0 0 6 - 0 0	GEAR/INJECTIONPUMP	*	1					
11A	6 2 1 2 - 5 2 4 - 0 0 6 - 1 0	GEAR/INJECTIONPUMP	*	-66061 1 66062		3			
12	6 9 0 8 - 0 0 0 - 7 1 6 - 0 0	KEY	*	1					
13	V 6 0 0 - 1 1 0 - 6 2 0 - 3 0	BEARING, RB/6203	*	1					
14	V 6 0 0 - 1 1 0 - 6 0 0 - 4 0	BEARING, RB/6004	*	1					
15	6 2 1 2 - 5 3 5 - 0 0 9 - 0 0	PLATE/THRUST/INJPUMP	*	1					
16	6 9 0 1 - 9 1 0 - 6 1 2 - 0 0	BOLT, SEMS/M6X12	*	1					
17	6 2 1 5 - 5 2 0 - 0 0 1 - 0 0	FLYWEIGHT	*	1					
17A	6 2 1 5 - 5 2 0 - 0 0 7 - 1 0	FLYWEIGHT ASSY	*	-67892 1 67893					
18	6 2 0 9 - 0 3 0 - 0 4 3 - 0 0	BOLT/M6X10	*	3					
19	6 2 1 5 - 5 2 6 - 0 0 1 - 1 0	PIECE, THRUST	*	1					
20	6 2 1 5 - 5 4 1 - 0 0 1 - 0 0	ARM, FLOATING	*	1					
20A	6 2 1 5 - 5 4 1 - 0 0 1 - 1 0	ARM/FLOATING COMP	*	-68849 1 68850		1			
21	6 2 1 5 - 5 4 3 - 0 0 2 - 1 0	RINK/CONTROL	*	1					
22	6 2 1 5 - 5 4 2 - 0 0 6 - 0 0	PIN, CONTROL	*	1					
23	V 7 1 0 - 1 4 0 - 0 0 4 - 0 0	RING, SNAP/ 4 E	*	1					
24	6 2 1 5 - 5 4 9 - 0 3 1 - 1 0	SPRING/SETTING	*	1					
25	6 2 1 5 - 5 4 1 - 0 1 6 - 2 0	ARM/TENSION	*	1					
25A	6 2 1 5 - 5 4 1 - 0 1 6 - 3 0	ARM/TENSION	*	-36714 1 36715		1			
26	6 2 1 5 - 5 4 9 - 0 3 8 - 0 0	CASE/ADAPTER	*	1					

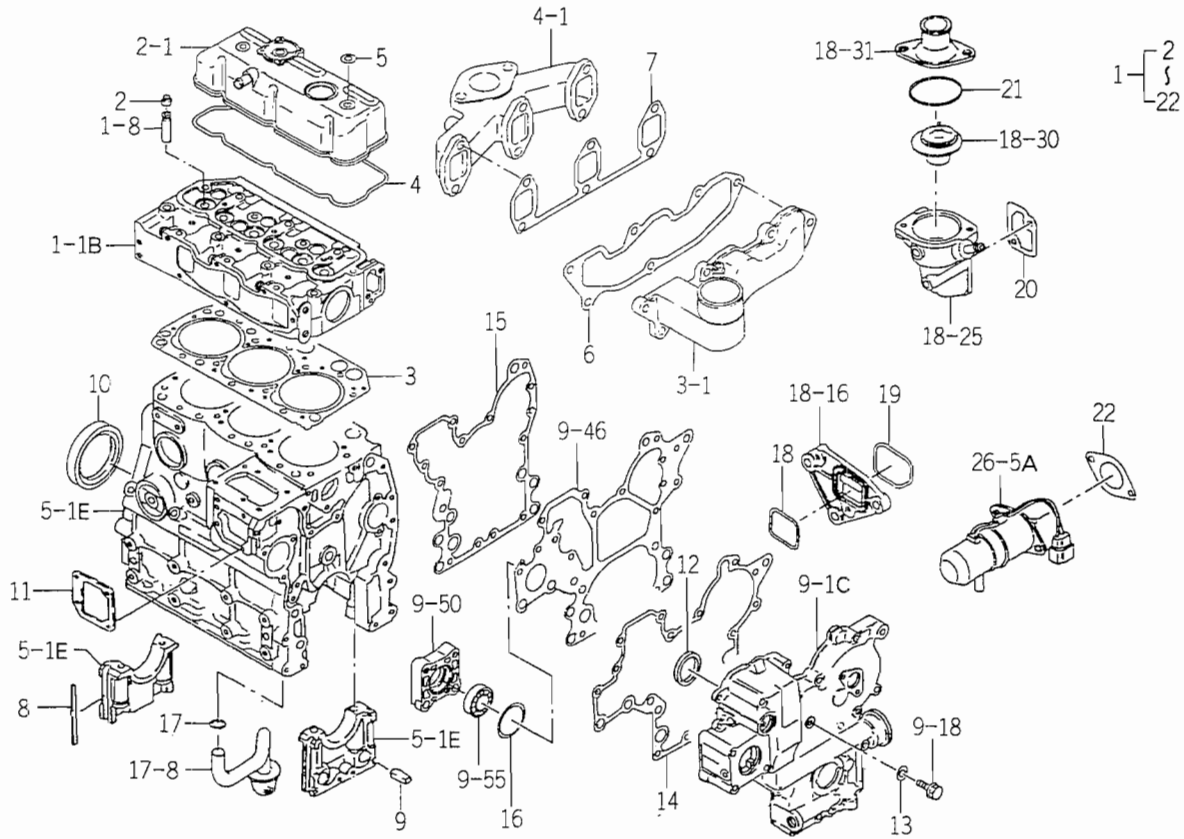
FIG. 11 VALVE



6005-301B

KEY	PART CODE	DESCRIPTION	S P C	TYPE OF MODEL		I T C	C O L	G R P	REMARKS
				E3CDB10					
1	6 2 1 2 - 5 5 1 - 0 0 8 - 0 0	VALVE/INTAKE	*	3	-74238				
1A	6 2 1 2 - 5 5 1 - 0 1 2 - 0 0	VALVE/INTAKE	*	3	74239-				
2	6 2 1 2 - 5 5 2 - 0 0 8 - 0 0	VALVE/EXHAUST	*	3					
3	6 2 1 2 - 5 6 1 - 0 0 3 - 0 0	SPRING/VALVE	*	6					
4	6 2 1 2 - 5 6 3 - 0 0 1 - 0 0	SEAT, VALVE SPRING	*	6					
5	6 2 1 2 - 5 6 5 - 0 0 1 - 0 0	CUTTER, VALVE	*	12					
6	6 2 1 2 - 5 7 1 - 0 0 2 - 2 0	TAPPET	*	6					
7	6 2 1 2 - 5 7 5 - 0 0 3 - 0 0	PUSHROD	*	6					
8	6 2 1 2 - 6 0 0 - 0 0 9 - 1 0	ROCKERSHAFT ASSY	*	1					
9	6 2 1 2 - 6 1 1 - 0 0 4 - 1 0	ROCKERARM	*	6					
10	6 2 1 2 - 6 2 0 - 0 0 8 - 1 0	SHAFT/ROCKERARM ASSY	*	1					
11	6 2 1 2 - 6 2 6 - 0 0 2 - 1 0	PLUG	*	2					
12	6 2 1 2 - 6 2 8 - 0 0 6 - 0 0	BRACKET/ROCKERSHAFT	*	2	-67209				
12A	6 2 1 2 - 6 2 8 - 0 1 0 - 0 0	BRACKET/ROCKERSHAFT	*	2	67210-				
13	6 2 1 2 - 6 2 8 - 0 0 7 - 0 0	BRACKET/ROCKERSHAFT	*	1	-67209				
13A	6 2 1 2 - 6 2 8 - 0 1 1 - 0 0	BRACKET/ROCKERSHAFT	*	1	67210-				
14	6 2 0 9 - 9 4 0 - 0 0 4 - 0 0	SPRING	*	2					
15	V 7 0 4 - 1 4 0 - 0 1 6 - 0 0	RING, SNAP/16 C	*	2					
16	6 2 1 2 - 6 1 6 - 0 0 2 - 0 0	SCREW ADJUST	*	6					
17	6 2 0 9 - 4 0 9 - 0 0 3 - 0 0	NUT	*	6					
18	6 2 0 9 - 0 0 0 - 0 0 2 - 0 0	BOLT	*	1					
19	6 2 1 2 - 6 1 9 - 0 0 1 - 2 0	SPACER/ROCKERARM	*	3	-67209				
20	6 9 0 1 - 0 5 5 - 8 5 5 - 0 0	BOLT/M8X55	*	1					
21	6 9 0 9 - 1 1 0 - 5 0 8 - 0 0	NUT/M8	*	2					
22	6 9 0 9 - 1 6 4 - 5 0 8 - 0 0	WASHER, PL/M8	*	3	-52532				
22A	6 2 0 9 - 5 0 0 - 0 0 5 - 0 0	WASHER/08X15. 5X1. 6	*	3	52533-				

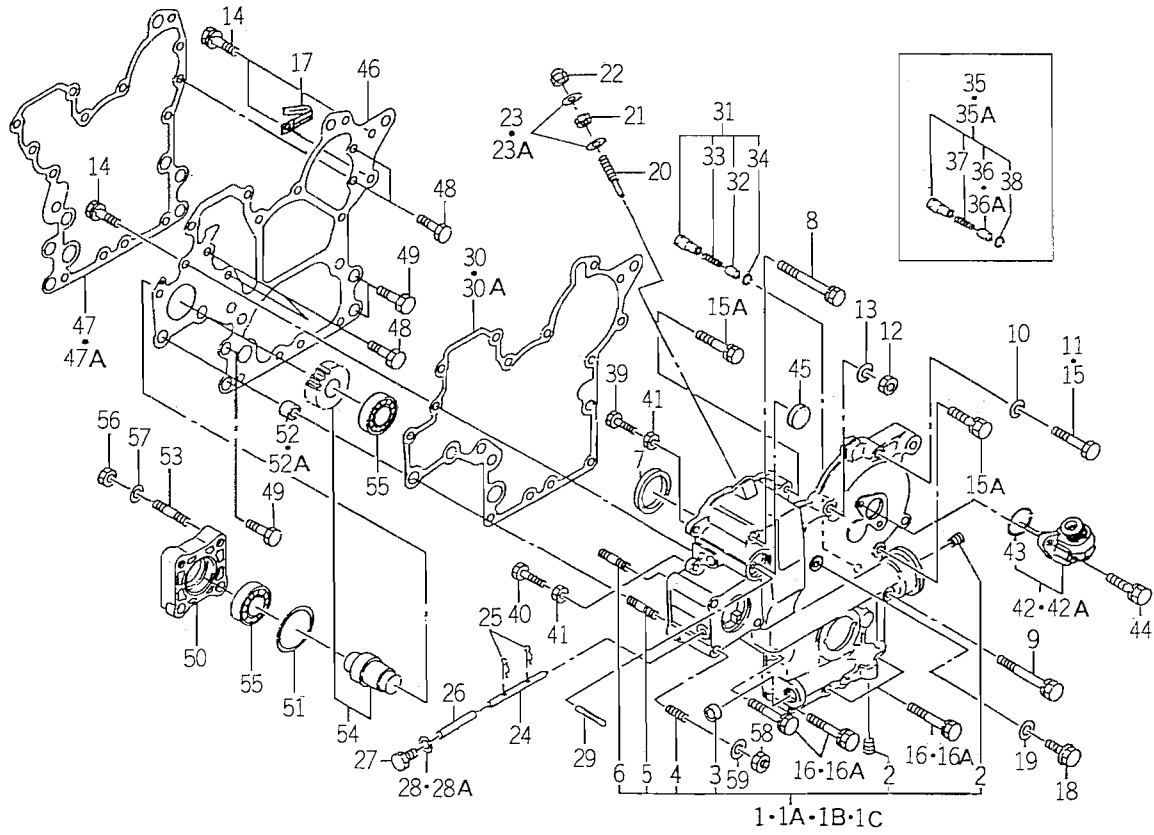
FIG. 29 REPAIR PARTS (2) (OPTION)



6005-999D

KEY	PART CODE	DESCRIPTION	S P C	TYPE OF MODEL		I T C	C O L	G R P	REMARKS
				E3CDB10					
1	6287-810-028-00	REPAIR/ENGINE SET	T	1					
2	6212-569-002-00	SEAL, OIL	T	6					
3	6211-141-023-50	GASKET/CYLINDERHEAD	T	1					
4	6211-173-005-00	SEAL/CYL HEAD/UNDER	T	1					
5	6909-572-008-00	PACKING	T	2					
6	6214-115-003-10	GASKET/INLETMANIFOLD	T	1					
7	6214-145-004-20	GASHET/EXH MANIFOLD	T	1					
8	6211-258-001-00	SEAL, BEARING CAP	T	4					
9	6211-258-002-00	SEAL, BEARING CAP/7	T	2					
10	6209-625-003-20	OILSEAL	T	1					
11	6211-292-001-20	GASKET/COVER	T	1					
12	6209-625-002-00	SEAL, OIL	T	1					
13	6209-500-003-00	WASHER/08X14X01	T	2					
14	6211-312-005-10	GASKET/GEARCASE	T	1					
15	6211-312-006-10	GASKET/PLATE	T	1					
16	V723-102-005-00	O-RING 1A S50	T	1					
17	V720-113-502-20	RING/O	T	1					
18	V721-103-104-00	O-RING/G40	T	1					
19	V721-103-105-00	O-RING/G50	T	1					
20	6213-743-002-10	GASKET/HOUSING	T	1					
21	V723-102-005-50	O-RING	T	1					
22	6209-630-002-10	GASKET	T	1					

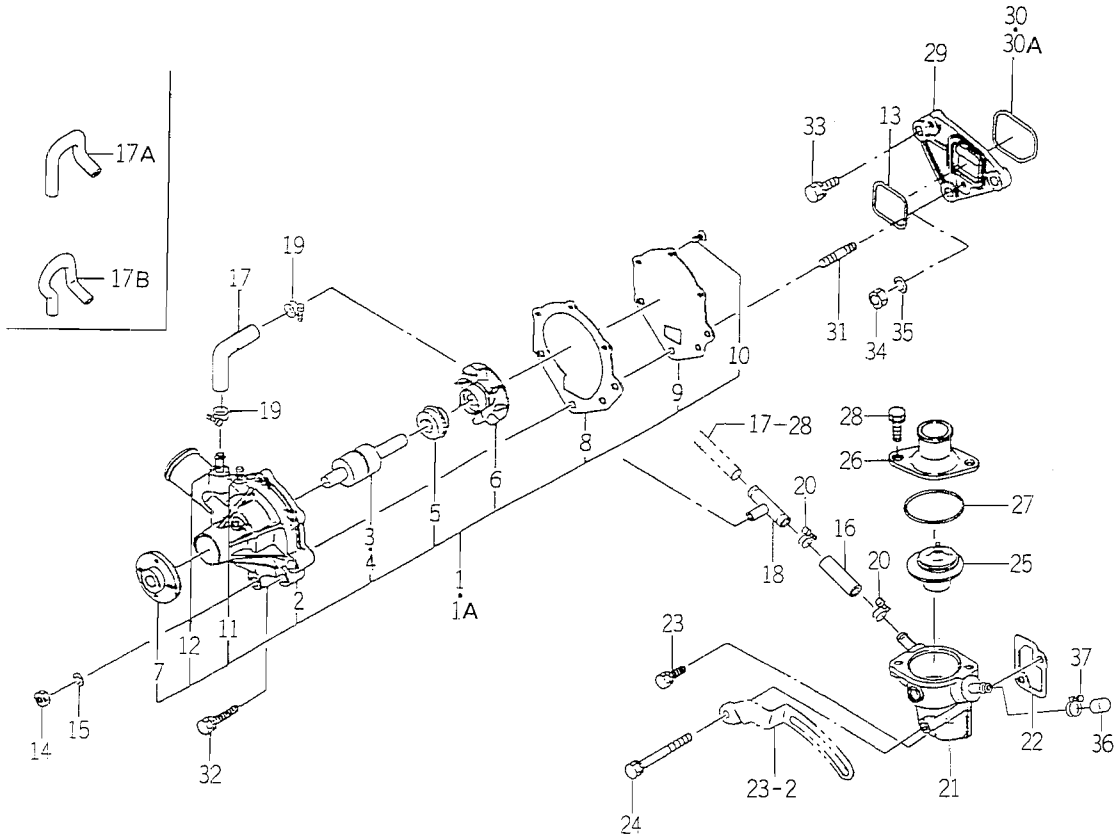
FIG. 10 TIMING GEAR CASE



6005-240B

KEY	PART CODE	DESCRIPTION	S P C	TYPE OF MODEL		I T C	C O L	G R P	REMARKS
				E3CDB					
25	P 117-303-003-00	PIN/SNAP	*	2					
26	6 215-542-005-00	PIN	*	1					
27	6 909-202-308-00	PLUG	*	1					
28	6 909-920-843-00	PACKING	*	1					
28A	6 209-500-003-00	WASHER/08X14X01	*	-39910 1 39911-					
29	6 209-740-001-00	PIN, GROOVE	*	1					
30	6 211-312-005-00	GASKET/GEARCASE	*	1					
30A	6 211-312-005-10	GASKET/GEARCASE	*	-48432 1		1			
31	6 213-160-002-00	VALVE/RELIEF ASSY	*	48433- 1					
32	6 213-161-001-00	PISTON/RELIEF VALVE	*	-63571 1					
33	6 213-164-001-00	SPRING/RELIEF VALVE	*	-63571 1					
34	V 705-140-012-00	RING, SNAP/12 C	*	-63571 1					
35	6 213-160-003-00	VALVE/RELIEF ASSY	*	-86141 1					
35A	6 213-160-003-10	VALVE/RELIEF ASSY	*	86142- 1		1			
36	6 213-161-003-00	PISTON/VALVE/RELIEF	*	-86141 1					
36A	6 213-161-003-10	PISTON/VALVE/RELIEF	*	86142- 1		1			
37	6 213-164-001-00	SPRING/RELIEF VALVE	*	1 63572-					
38	V 705-140-012-00	RING, SNAP/12 C	*	1 63572-					
39	6 209-050-001-00	BOLT/M6	*	1					
40	6 209-050-002-00	BOLT/M6	*	1					
41	6 909-110-406-00	NUT	*	2					
42	6 219-310-003-10	DRIVE/TACHOMETE ASSY	*	1 -69914					
42A	6 219-310-003-20	DRIVE/TACHOMETE ASSY	*	1 69915-		1			
43	V 723-102-002-40	RING/O	*	1					
44	6 901-910-616-00	BOLT, SEMS/M6X16	*	2					
45	3 625-540-004-00	CAP, BLANK/30	*	1					
46	6 211-311-013-00	PLATE/FRONT	*	1					
47	6 211-312-006-00	GASKET/PLATE	*	1 -48432					
47A	6 211-312-006-10	GASKET/PLATE	*	1 48433-		1			
48	6 902-050-816-00	BOLT	*	4					

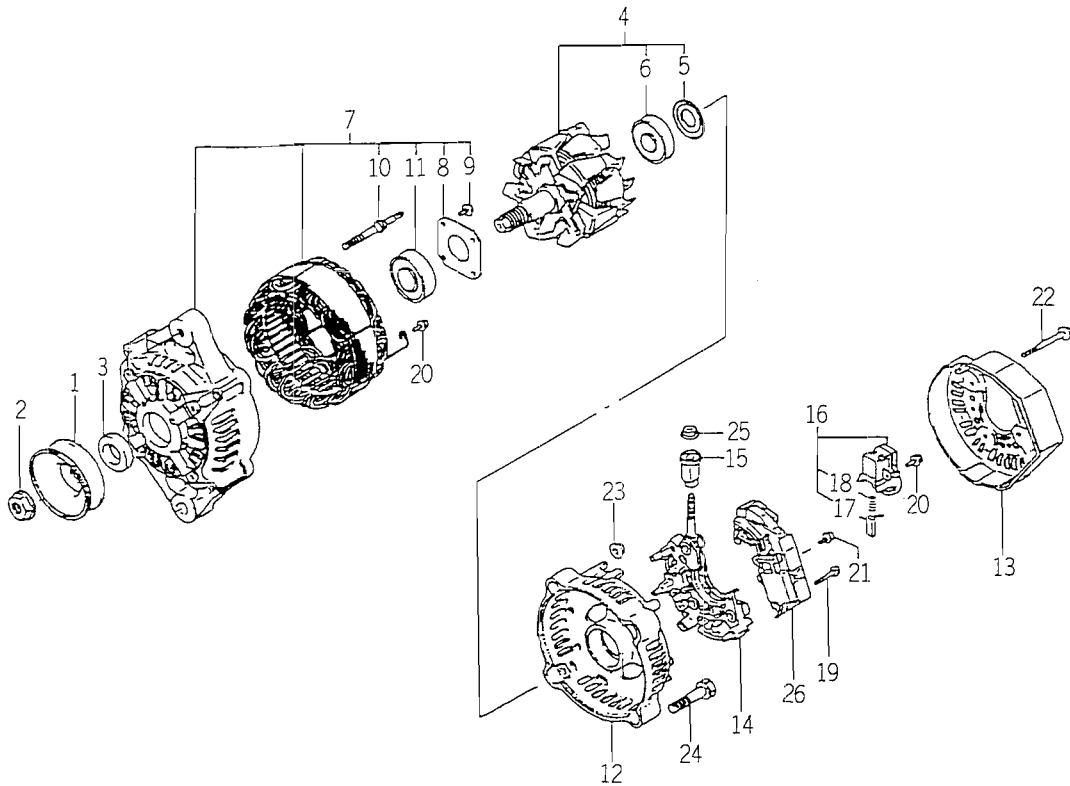
FIG. 18 WATER PUMP



6005-420G

KEY	PART CODE	DESCRIPTION	S P C	TYPE OF MODEL		I T C	C O L	G R P	REMARKS
				E3C	DTB				
1	6213-610-011-00	WATERPUMP ASSY	*	1					
1A	6213-610-011-10	WATERPUMP ASSY	*	-42633 1 42634-		1			
2	6213-611-006-00	BODY/WATERPUMP	*	1					
3	6213-631-002-00	BEARING/WATER PUMP	*	1					
4	6213-631-005-00	BEARING/WATERPUMP	*	1					
5	6213-622-002-10	SEAL SET/WATER PUMP	*	1					
6	6213-621-003-00	ROTOR/WATERPUMP	*	1					
7	6213-642-002-00	SEAL/WATER PUMPPULLE	*	1					
8	6213-613-002-10	GASKET	*	1					
9	6213-612-004-00	PLATE/WATER PUMP	*	1					
10	6213-619-003-00	SCREW/WATER PUMP	*	3					
11	6213-619-002-00	PIPE/WATER PUMP	*	2					
12	6213-619-009-00	PIPE/WATERPUMP	*	1					
13	V721-103-104-00	O-RING/G40	*	1					
14	6909-110-508-00	NUT/M8	*	2					
15	6909-150-508-00	WASHER	*	2					
16	6213-729-004-10	HOSE/RUBBER	*	1					
17	6213-729-005-00	HOSE/RUBBER	*	1					
17A	6213-729-013-00	HOSE/RUBBER	*	-38093 1 -46250					
17B	6213-729-013-10	HOSE/RUBBER	*	1 46251-		1			
18	6213-719-002-00	JOINT	*	1					
19	J061-210-015-00	CLAMP/WIRE/10-15	*	2					
20	J061-216-020-00	CLAMP/WIRE/16-20	*	2					
21	6213-716-003-10	HOUSING/THERMOSTAT	*	1					
22	6213-743-002-10	GASKET/HOUSING	*	1					
23	V211-560-802-00	BOLT/M8X20	*	1					
24	6209-030-006-00	BOLT/M8X75	*	1					
25	6513-770-022-10	THERMOSTAT	*	1					
26	6213-711-003-20	PIPE, WATER OUTLET	*	1					
27	V723-102-005-50	O-RING	*	1					

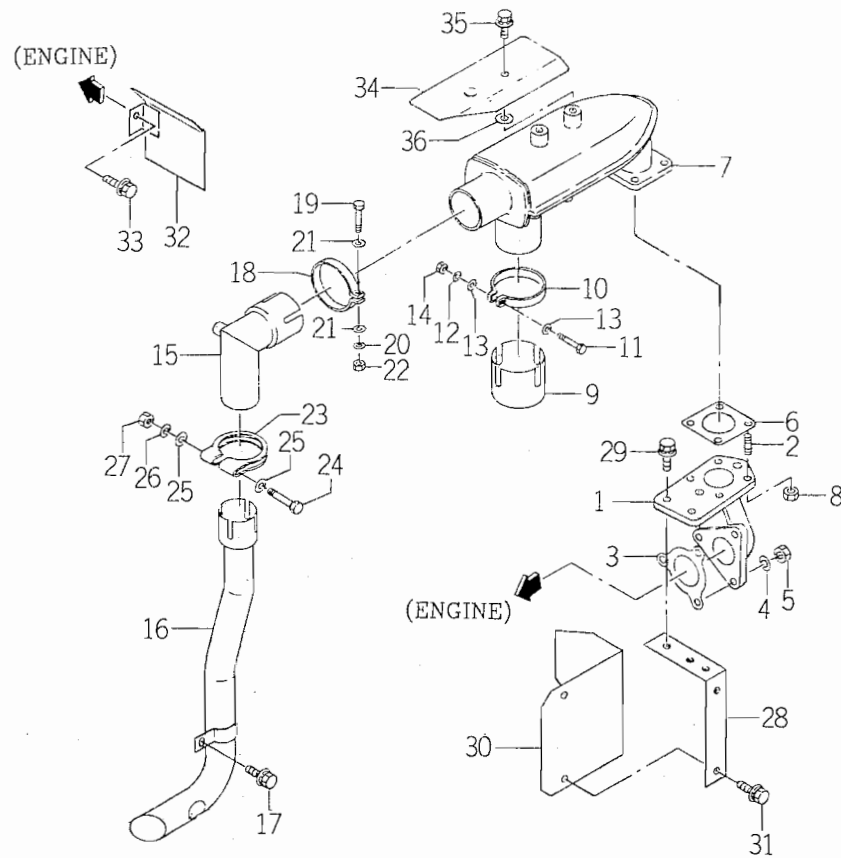
FIG. 35 COMPONENT PARTS FOR 6281 - 200 - 020 - 00 ON Fig.24



6281-2000

KEY	PART CODE	DESCRIPTION	S P C	TYPE OF MODEL		I T C	C O L	G R P	REMARKS
				E3CDB					
1	6281-222-012-00	PULLEY	*	1	71929-				
2	6281-229-002-00	NUT	*	1	71929-				
3	6281-229-003-00	COLLOR	*	1	71929-				
4	6281-221-007-00	ROTOR ASSY	*	1	71929-				
5	6281-229-004-00	COVER, BEARING	*	1	71929-				
6	6281-229-032-00	BEARING/BALL	*	1	71929-				
7	6281-213-017-00	FRAME/DRIVEEND ASSY	*	1	71929-				
8	6281-229-006-00	PLATE	*	1	71929-				
9	6281-229-007-00	BOLT	*	4	71929-				
10	6281-229-008-00	BOLT	*	2	71929-				
11	6281-229-033-00	BEARING/BALL	*	1	71929-				
12	6281-214-003-00	FRAME	*	1	71929-				
13	6281-214-004-00	COVER	*	1	71929-				
14	6281-229-029-00	HOLDER ASSY	*	1	71929-				
15	6281-229-011-00	BUSH	*	1	71929-				
16	2145-161-211-00	HOLDER/BRUSH ASSY	*	1	71929-				
17	6281-215-001-00	BRUSH	*	2	71929-				
18	6281-216-001-00	SPRING	*	2	71929-				
19	6281-229-012-00	BOLT	*	2	71929-				
20	6281-229-013-00	BOLT	*	6	71929-				
21	6281-229-014-00	BOLT	*	1	71929-				
22	6281-229-015-00	BOLT	*	3	71929-				
23	6281-229-016-00	NUT	*	2	71929-				
24	6281-229-017-00	BOLT	*	2	71929-				
25	6281-229-018-00	NUT	*	1	71929-				
26	6281-271-002-00	REGULATOR ASSY	*	1	71929-				

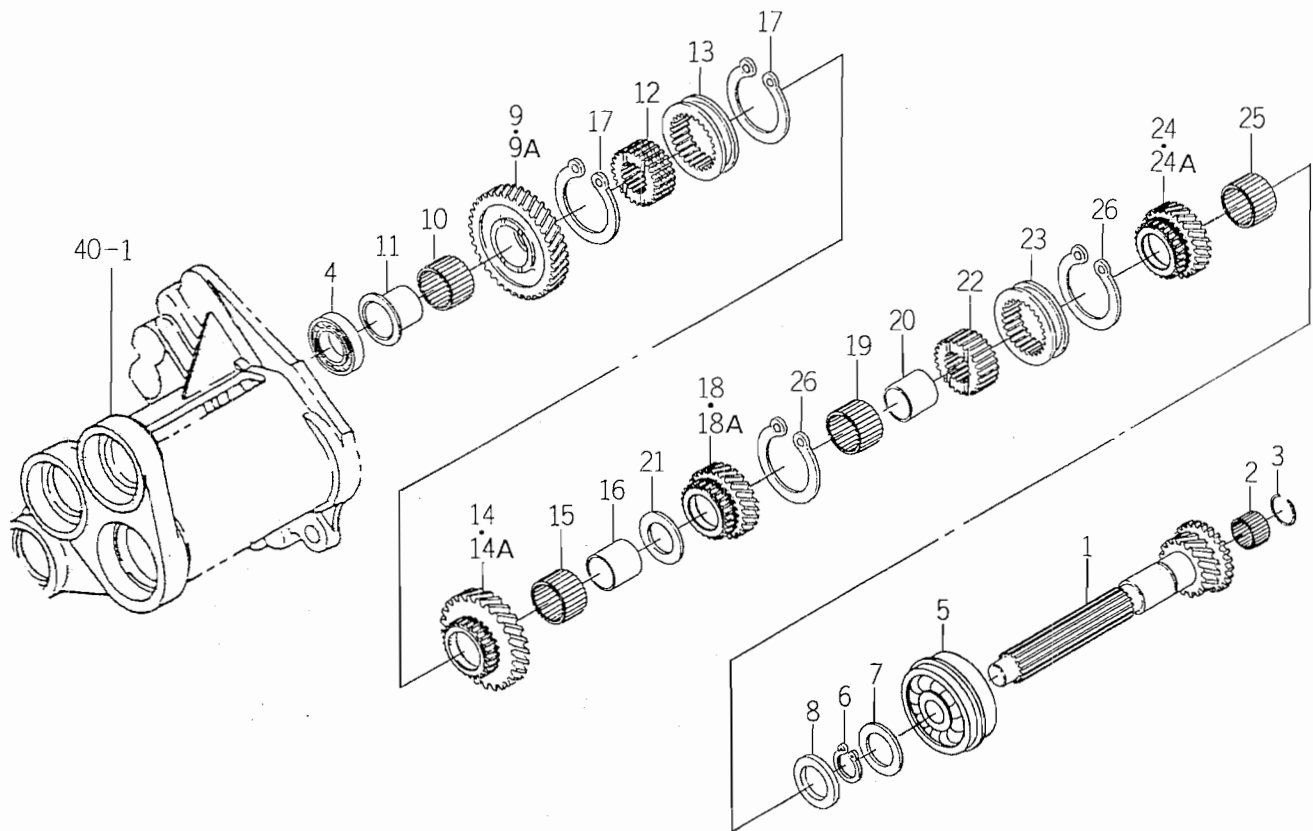
FIG. 8 MUFFLER SYSTEM (TK538 – EXCEPT C TYPE)



1674-105

KEY	PART CODE	DESCRIPTION	S P C	TYPE OF MODEL				I T C	C O L	G R P	REMARKS
				TK527	TK532	TK538					
1	1674-105-001-00	ADAPTER/EXHAUST	*			1					
2	V251-340-802-50	BOLT/STUD	*			4					
3	3678-332-001-00	GASKET	*			1					
4	V401-160-008-00	WASHER, SP/M 8	*			3					
5	V304-460-008-00	NUT/M8	*			3					
6	6222-147-001-00	GASKET/MUFFLER	*			1					
7	1642-105-300-00	MUFFLER COMP	*			1					
8	1544-103-004-00	NUT/M8	*			8					
9	1642-105-004-00	PIPE	*			1					
10	1444-101-440-00	CLAMP COMP	*			1					
11	V201-261-006-50	BOLT/M10X65	*			1					
12	V401-160-010-00	WASHER, SP/M10	*			1					
13	V411-260-010-00	WASHER/M10	*			2					
14	V304-260-010-00	NUT	*			1					
15	1674-105-240-00	PIPE COMP	*			1					
16	1674-105-220-00	PIPE/TAIL/UNDER COMP	*			1					
17	V211-360-801-60	BOLT, SEMS (SP)	*			1					
18	1444-101-440-00	CLAMP COMP	*			1					
19	V201-261-006-50	BOLT/M10X65	*			1					
20	V401-160-010-00	WASHER, SP/M10	*			1					
21	V411-260-010-00	WASHER/M10	*			2					
22	V304-260-010-00	NUT	*			1					
23	1560-105-251-00	CLAMP	*			1					
24	V201-260-808-00	BOLT/M 8X80	*			1					
25	V411-260-008-00	WASHER, PL/M 8	*			2					
26	V401-160-008-00	WASHER, SP/M 8	*			1					
27	V304-260-008-00	NUT/M 8	*			1					
28	1674-105-250-10	PLATE COMP	*			1					
29	V211-360-802-50	BOLT, SEMS	*			2					
30	1674-105-002-10	PLATE	*			1					

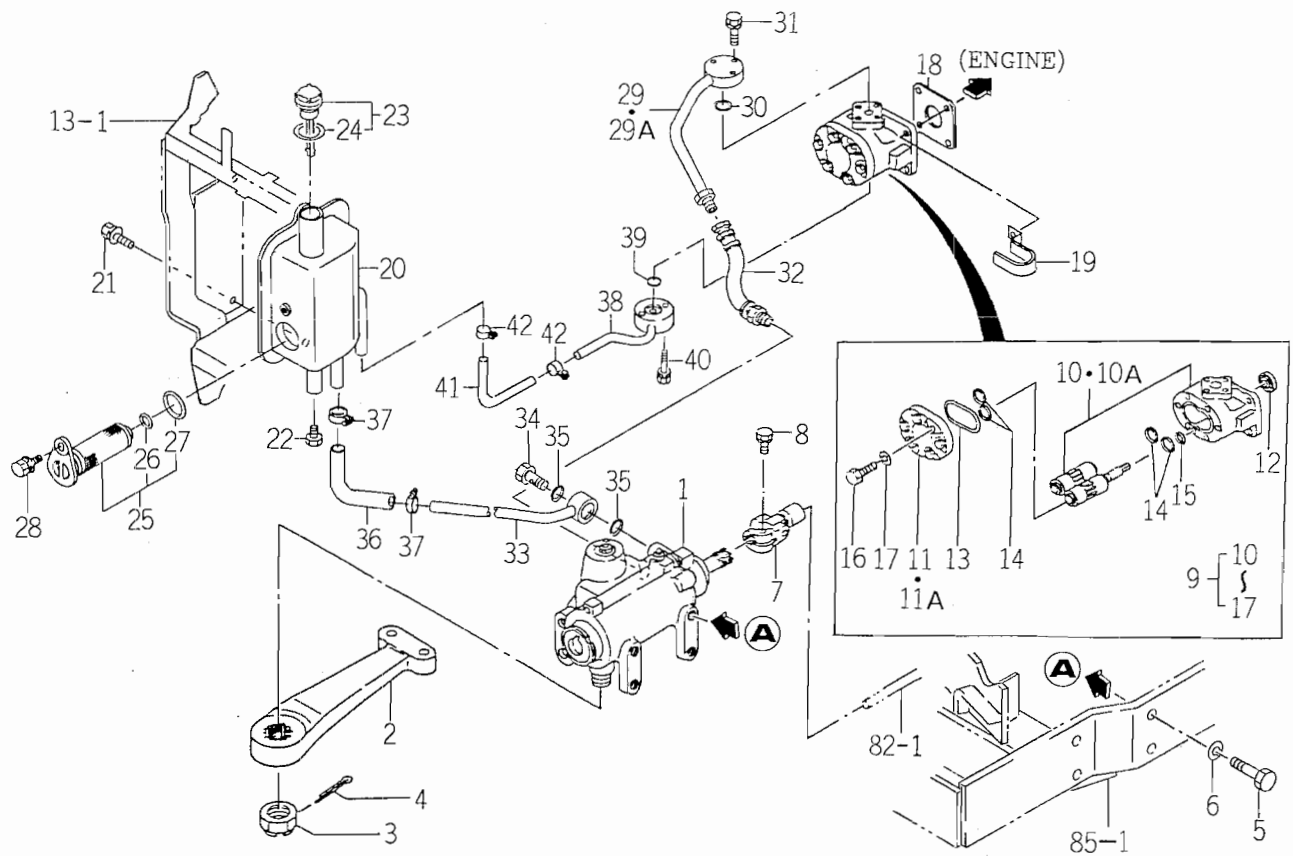
FIG. 25 CHANGE GEAR SYSTEM (U TYPE)



1674-209A

KEY	PART CODE	DESCRIPTION	S P C	TYPE OF MODEL			I T C	C O L	G R P	REMARKS
				TK527	TK532	TK538				
1	1560-208-001-60	GEAR, HERICAL/14	*		1					
2	V654-420-262-00	BEARING, NR	*		1					
3	1560-208-023-00	RING, SNAP	*		1					
4	V600-110-630-40	BEARING, RB/6304	*		1					
5	1560-208-002-00	BEARING, BALL	*		1					
6	V704-140-030-00	RING, SNAP/30 C	*		1					
7	1560-208-018-40	WASHER/30X46X2	*		1					
8	1560-208-021-40	WASHER/30X46X5	*		1					
9	1594-209-001-00	GEAR, HERICAL/35	*		1 -301					
9A	1674-209-003-00	GEAR/HELICAL/35	*		1 302-					
10	V654-432-372-30	BEARING, KT/323723	*		1					
11	1560-208-016-40	BUSH/28X46X34	*		1					
12	1568-209-002-00	HUB	*		1					
13	1560-208-022-40	COUPLING/51X68X18	*		1					
14	1594-209-002-00	GEAR, HERICAL/30	*		1 -301					
14A	1674-209-004-00	GEAR/HELICAL/30	*		1 302-					
15	V654-432-372-30	BEARING, KT/323723	*		1					
16	1560-208-009-30	BUSH/28X32X31	*		1					
17	V706-140-050-00	RING/SNAP	*		2 -301					
18	1594-209-003-00	GEAR, HERICAL/25	*		1 -301					
18A	1674-209-005-00	GEAR/HELICAL/27	*		1 302-					
19	V654-432-372-30	BEARING, KT/323723	*		1					
20	1560-208-009-30	BUSH/28X32X31	*		1					
21	1560-208-010-40	WASHER/28X46X3	*		1					
22	1568-209-002-00	HUB	*		1					
23	1560-208-022-40	COUPLING/51X68X18	*		1					
24	1594-209-004-00	GEAR, HERICAL/22	*		1 -301					
24A	1674-209-006-00	GEAR/HELICAL/22	*		1 302-					
25	V654-430-352-40	BEARING, NR/KT303524	*		1					
26	V706-140-050-00	RING/SNAP	*		2 -301					

FIG. 84 POWER STEERING SYSTEM



1673-407

KEY	PART CODE	DESCRIPTION	S P C	TYPE OF MODEL			I T C	C O L	G R P	REMARKS
				TK527	TK532	TK538				
1	1560-407-260-50	STEERING/POWER ASSY	*	1	1	1				FIG 211
2	1594-407-201-00	ARM	*	1	1	1				
3	1444-408-202-00	NUT, CASTLE/M27X1.5	*	1	1	1				
4	V500-165-005-00	PIN, SPLIT/5X50	*	1	1	1				
5	1560-406-002-00	BOLT/SM/M14X1.5X35	*	6	6	6				
6	1560-406-003-00	WASHER, SP/M14	*	6	6	6				
7	1560-406-001-00	JOINT	*	1	1	1				
8	V211-560-803-00	BOLT/M8X30	*	1	1	1				
9	K135-013-000-00	PUMP, GEAR ASSY	*	1	1	1				
10	K135-013-100-00	PUMP, GEAR SET	*	1 -38	1 -301	1 -419				
10A	K135-013-100-10	PUMP SET	*	1 39-	1 302-	1 420-	3			
11	K135-017-006-00	COVER, PUMP	*	1 -38	1 -301	1 -419				
11A	K135-015-002-00	COVER, PUMP	*	1 39-	1 302-	1 420-				
12	V744-114-280-70	SEAL, OIL	*	1	1	1				
13	V721-113-105-00	O-RING HS90 G50	*	1	1	1				
14	V720-112-402-20	O-RING/P22	*	4	4	4				
15	V720-111-900-60	O-RING P6 HS90	*	1	1	1				
16	K135-002-009-00	BOLT/M8X28 11T	*	6	6	6				
17	V401-170-008-00	S. W	*	6	6	6				
18	1404-503-006-00	PACKING, OIL PUMP	*	1	1	1				
19	1617-102-007-00	CLAMP	*	1	1	1				
20	1673-407-230-10	TANK/OIL COMP	*	1	1	1				
21	V211-360-801-60	BOLT, SEMS (SP)	*	2	2	2				
22	V782-160-000-4B	PLUG/SCREW/SEAL	*	1	1	1				
23	1518-407-240-00	CAP, OIL (B) ASSY	*	1	1	1				
24	1518-306-203-00	PACKING	*	1	1	1				
25	1614-407-260-00	FILTER/OIL ASSY	*	1	1	1				
26	V720-102-401-20	O-RING/P12	*	1	1	1				
27	V720-103-503-10	O-RING P31	*	1	1	1				
28	V210-360-601-60	BOLT (SP) /M6X16	*	1	1	1				

CLICK HERE TO **DOWNLOAD** THE COMPLETE MANUAL

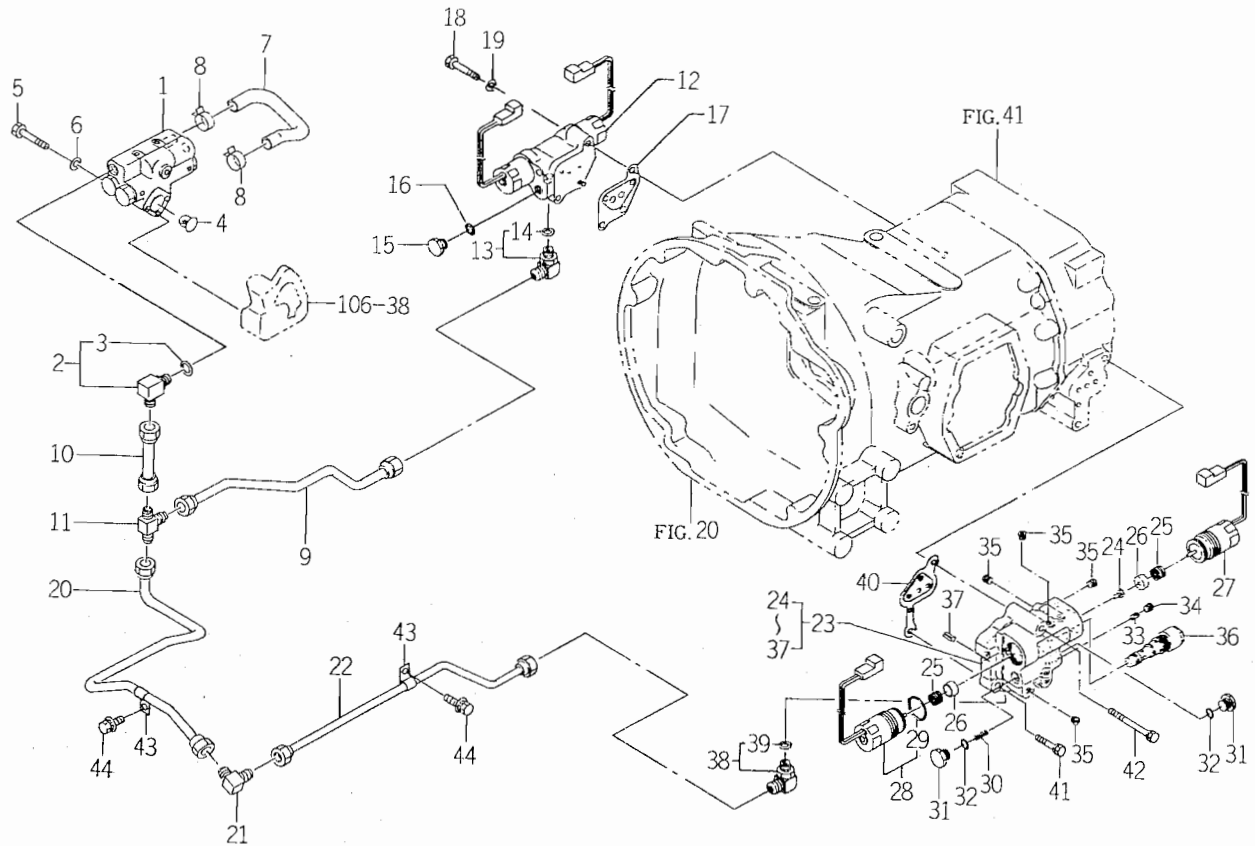
- Thank you very much for reading the preview of the manual.
- You can download the complete manual from: www.heydownloads.com by clicking the link below



- Please note: If there is no response to CLICKING the link, please download this PDF first and then click on it.

CLICK HERE TO **DOWNLOAD** THE COMPLETE MANUAL

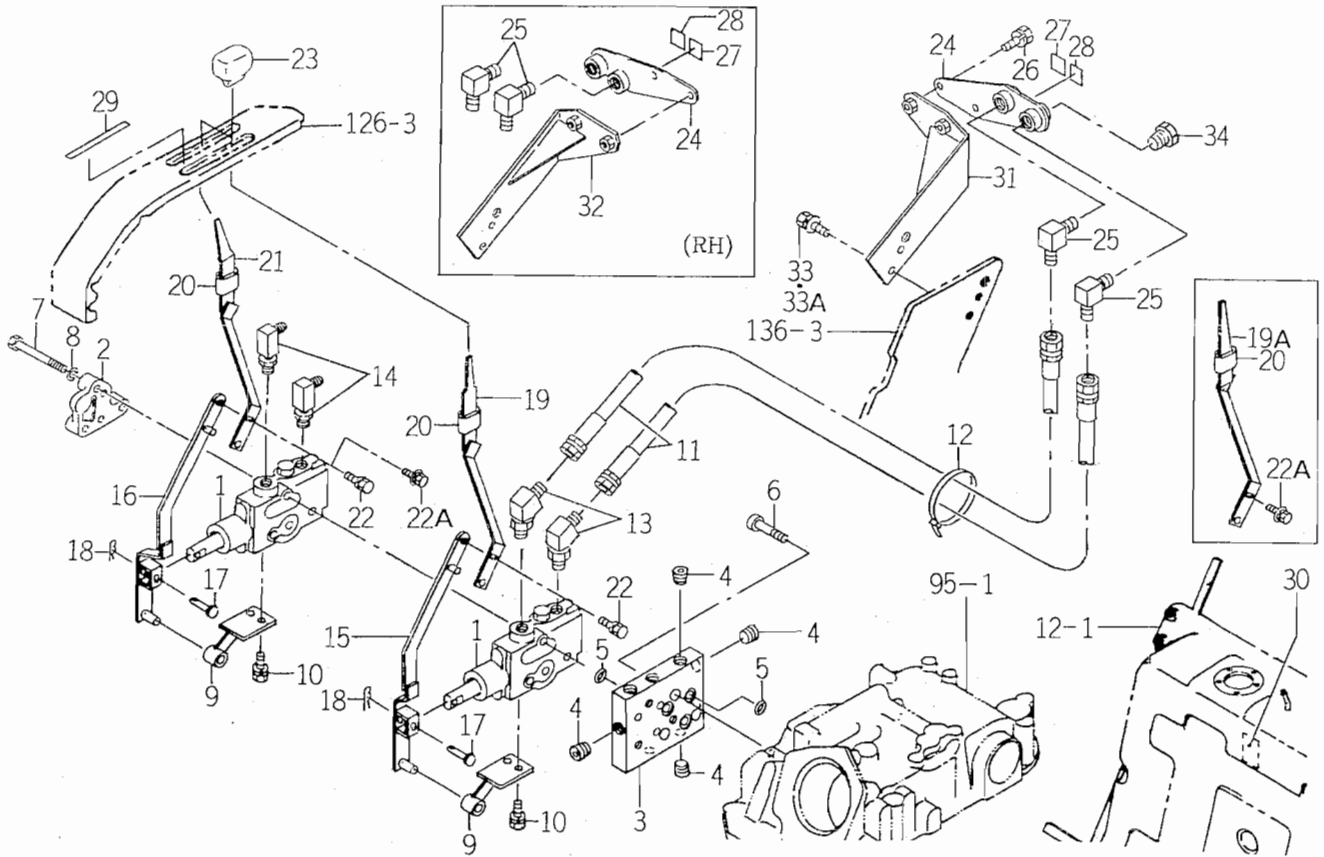
FIG.107 PIPING (SUB) SYSTEM (P TYPE)



1641-516

KEY	PART CODE	DESCRIPTION	S P C	TYPE OF MODEL			I T C	C O L	G R P	REMARKS
				TK527	TK532	TK538				
1	K256-001-000-00	REDUCE VALVE ASSY	*		1	1				FIG 209
2	1701-509-320-10	ADAPTER/L/G1/4 ASSY	*		1	1				
3	V720-112-401-10	RING/O	*		1	1				
4	1650-508-002-00	FILTER/LINE/12X18X15	*		1	1				
5	V200-360-604-50	BOLT	*		3	3				
6	V401-160-006-00	WASHER, SP/M 6	*		3	3				
7	1641-516-031-00	HOSE/OIL	*		1	1				
8	1673-782-016-00	CLIP/HOSE/17-20	*		2	2				
9	1641-516-350-00	PIPE/PTO COMP	*		1	1				
10	1641-516-360-00	PIPE/PTO COMP	*		1	1				
11	1656-509-002-00	ADAPTER/T/M16	*		1	1				
12	K275-001-000-00	SOLINOID VALVE ASSY	*		1	1				FIG 210
13	1656-509-310-10	ADAPTER/L/PF1/4 ASSY	*		1	1				
14	V720-112-401-10	RING/O	*		1	1				
15	K275-001-003-00	PLUG (PF1/4)	*		1	1				
16	V720-102-401-10	O-RING/P11	*		1	1				
17	1650-509-004-00	GASKET/4WD/PTO	*		1	1				
18	V201-260-804-50	BOLT/M 8X45	*		2	2				
19	V401-160-008-00	WASHER, SP/M 8	*		2	2				
20	1641-516-370-00	PIPE/CONTROL/PS COMP	*		1	1				
21	1656-509-006-20	ADAPTER/90°/M16	*		1	1				
22	1641-516-310-00	PIPE/REVERSE COMP	*		1	1				
23	K200-073-000-10	VALVE/REVERSE ASSY	*		1	1				
24	K200-036-003-00	BLOT/M5X19	*		1	1				
25	K270-001-003-10	SPRING/HCO12	*		2	2				
26	K270-001-004-00	PLATE/SPRING	*		2	2				
27	K275-001-200-00	SOLENOID SET	*		1	1				
28	K200-016-200-00	SOLENOID SET	*		1	1				
29	V723-112-002-90	RING/O	*		1	1				
30	K211-008-010-00	SPRING/HCI9	*		1	1				

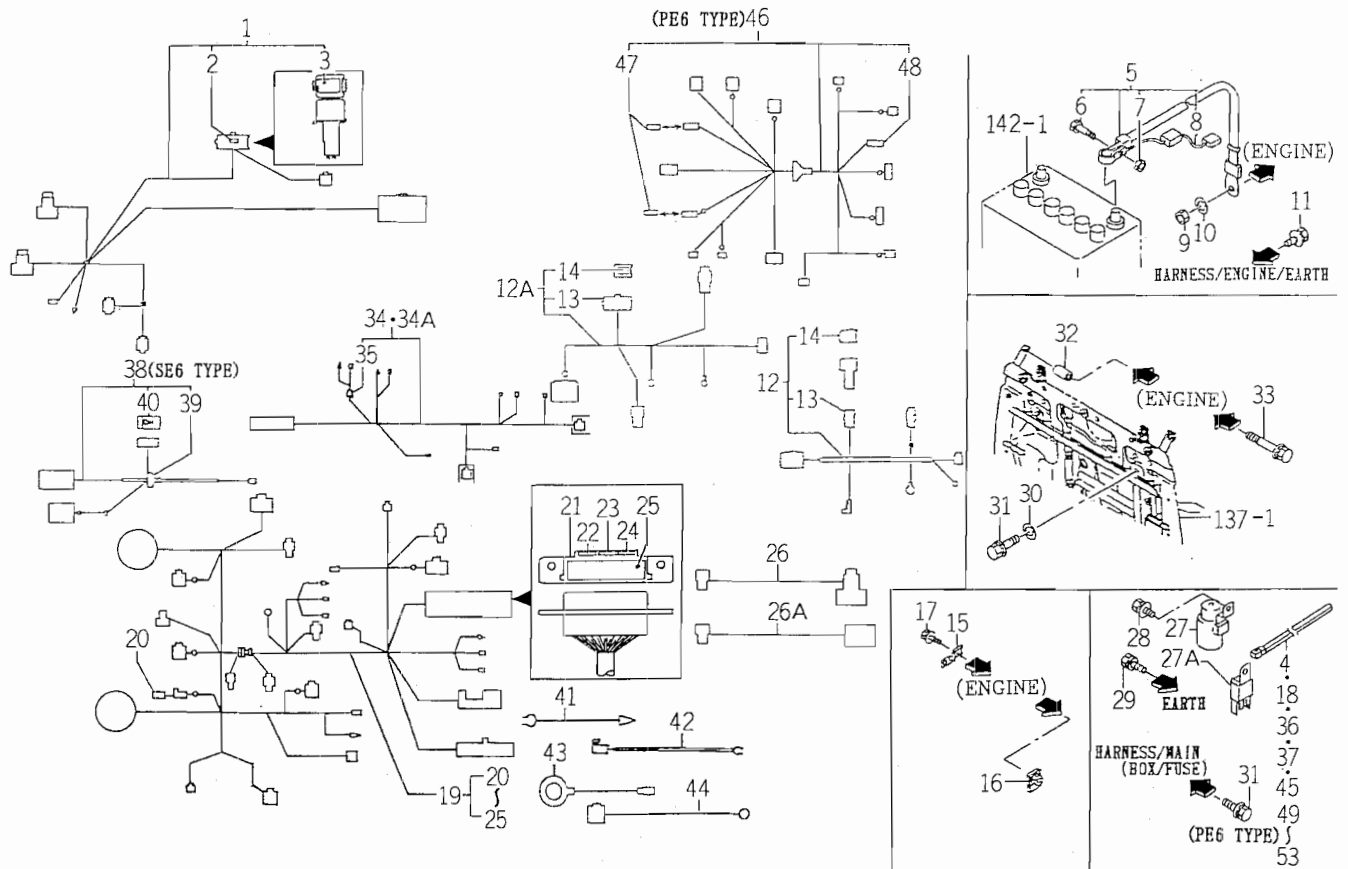
FIG.115 VALVE (REMOTE/2R) SYSTEM (C TYPE)



1674-530

KEY	PART CODE	DESCRIPTION	S P C	TYPE OF MODEL			I T C	C O L	G R P	REMARKS
				TK527	TK532	TK538				
1	1640-530-600-00	VALVE/CONTROL ASSY	*		2	2				FIG 217
2	1614-501-003-10	COVER	*		1	1				
3	1640-530-001-10	METAL/BYPASS	*		1	1				
4	V780-140-000-40	PLUG/SCREW	*		8	8				
5	V720-112-401-40	O-RING/P14	*		6	6				
6	V220-541-002-00	SCREW/SOCKET	*		3	3				
7	V201-261-012-00	BOLT/M10X120	*		3	3				
8	V401-160-010-00	WASHER, SP/M10	*		3	3				
9	1640-530-260-00	HOLDER COMP	*		2	2				
10	V211-260-801-60	BOLT, SEMS (S) M8X16	*		4	4				
11	1640-530-270-10	HOSE/660 COMP	*		4	4				
12	1342-402-006-00	BAND, WIRE/250	*		1	1				
13	1640-530-003-00	CONNECTOR	*		2	2				
14	1640-530-009-00	CONNECTOR/L	*		2	2				
15	1640-530-230-00	ARM/1ST COMP	*		1	1				
16	1640-530-330-00	ARM/2ND COMP	*		1	1				
17	2144-519-007-00	PIN/06X31	*		2	2				
18	2130-601-018-00	PIN, SNAP/6	*		2	2				
19	1640-530-240-00	LEVER/1ST COMP	*		1	1				
19A	1640-530-240-10	LEVER/1ST COMP	*		1-30 31-	1-58 59-	1			
20	1560-511-101-00	PROTECTOR	*		2	2				
21	1640-530-340-00	LEVER/2ND COMP	*		1	1				
22	V211-260-801-60	BOLT, SEMS (S) M8X16	*		2-30 31-	2-43 44-				
22A	V211-360-801-60	BOLT, SEMS (SP)	*		2 31-	2 44-				
23	1612-531-003-00	GRIP	*		2	2				
24	1620-507-460-00	STAY/PIPE COMP	*		2	2				
25	1584-522-001-00	ADAPTER/90°	*		4	4				
26	V211-260-802-00	BOLT, SEMS (S)	*		4	4				
27	1518-903-006-00	MARK, PORT A	*		2	2				
28	1518-903-007-00	MARK, PORT B	*		2	2				

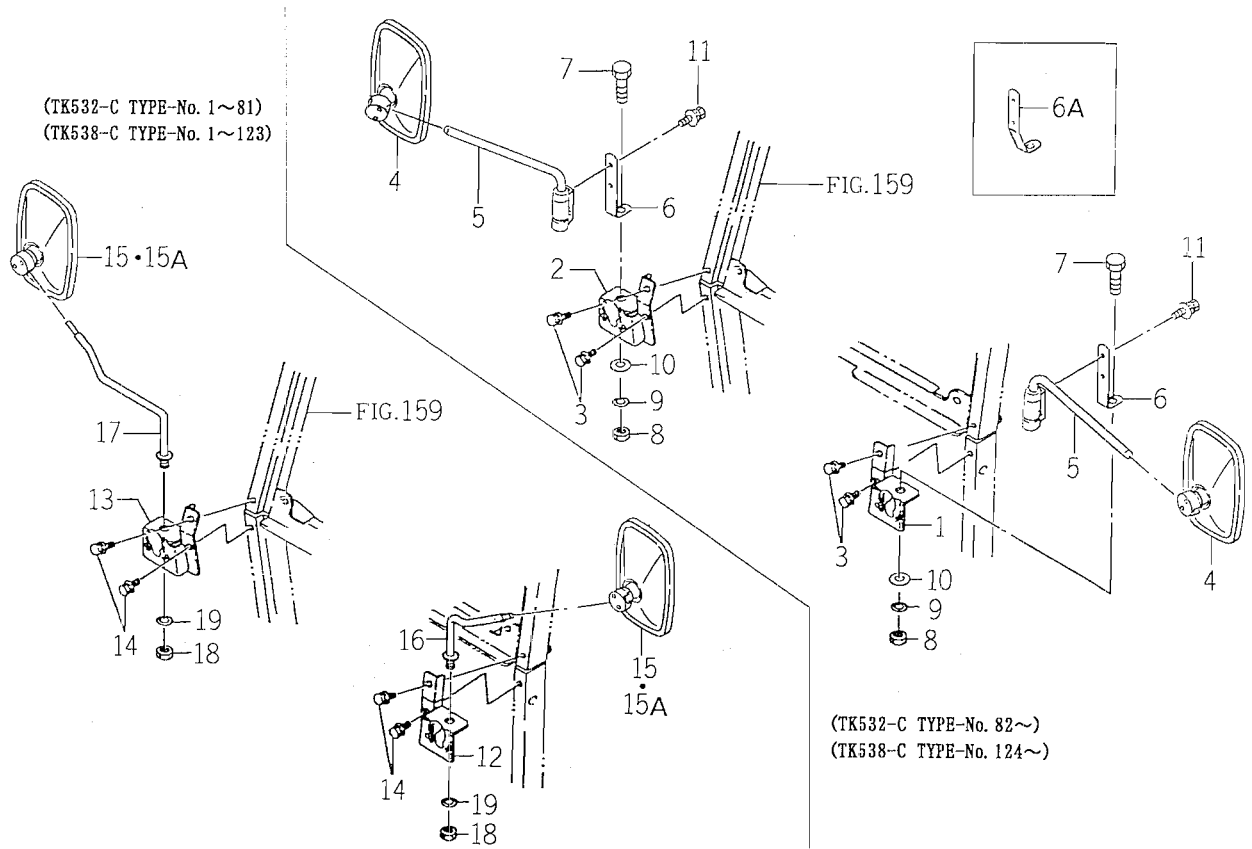
FIG.153 HARNESS SYSTEM (E6 TYPE)



1674-666A

KEY	PART CODE	DESCRIPTION	S P C	TYPE OF MODEL			I T C	C O L	G R P	REMARKS
				TK527	TK532	TK538				
28	V210-360-601-60	BOLT (SP) /M6X16	*		1	1				
29	V211-260-801-20	BOLT, SEMS (S) M8X12	*		2	2				
30	V401-160-008-00	WASHER, SP/M 8	*		1	1				
31	V210-360-602-50	BOLT/SP	*		2	2				
32	3676-274-001-00	COLLAR/O7X11X20	*		1	1				
33	V210-360-603-50	BOLT/SP	*		1	1				
34	1674-666-230-00	HARNESS/REAR/E6 ASSY	*		1 -72	1 -104				
34A	1674-666-230-10	HARNESS/REAR/E6 ASSY	*		1 73-	1 105-	1			
35	1560-666-010-00	GROMMET/30	*		1	1				
36	1376-402-003-00	BAND, WIRE/140	*		1	1				
37	1342-402-006-00	BAND, WIRE/250	*		1	1				
38	1640-666-220-00	HARNESS/PTO ASSY	*		1	1				
39	1560-666-010-00	GROMMET/30	*		1	1				
40	1560-666-212-00	DIODE	*		1	1				
41	1600-624-004-00	HARNESS, OIL PRESSURE	*		1	1				
42	1568-668-203-00	HARNESS, GLOW	*		1	1				
43	1614-690-001-00	HARNESS/EARTH	*		1	1				
44	1650-652-254-00	HARNESS/ENGINE/EARTH	*		1	1				
45	1376-402-003-00	BAND, WIRE/140	*		1	1				
46	1646-666-400-20	HARNESS/PS/PTO ASSY	*		1	1				
47	1652-654-212-00	DIOD	*		2	2				
48	1575-623-010-00	FUSE/32V10A	*		1	1				
49	1342-402-006-00	BAND, WIRE/250	*		3	3				
50	1342-402-006-00	BAND, WIRE/250	*		3	3				
51	1342-402-006-00	BAND, WIRE/250	*		2	2				
52	1342-402-006-00	BAND, WIRE/250	*		2	2				
53	1342-402-006-00	BAND, WIRE/250	*		2	2				

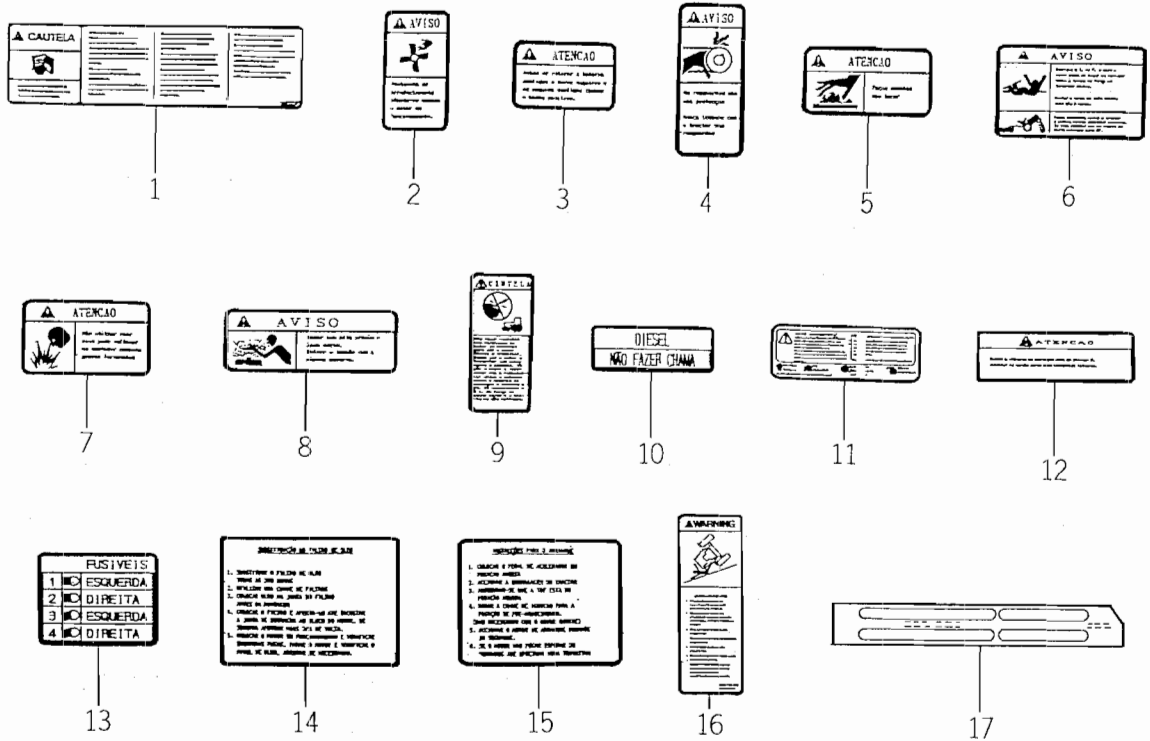
FIG.158 MIRROR SYSTEM (C TYPE)



1674-682H

KEY	PART CODE	DESCRIPTION	S P C	TYPE OF MODEL			I T C	C O L	G R P	REMARKS
				TK527	TK532	TK538				
1	1594-682-500-10	BRACKET/LH COMP	*		1 82- 124-	1 124-				
2	1594-682-510-10	BRACKET/RH COMP	*		1 82- 124-	1 124-				
3	V211-661-002-00	BOLT/M10X20	*		4 82- 124-	4 124-				
4	1674-619-300-10	MIRROR ASSY	*		2 82- 124-	2 124-				
5	1674-619-310-00	ARM/MIRROR ASSY	*		2 82- 124-	2 124-				
6	1674-682-001-00	PLATE/L/62X185	*		2 -104	2 -143				
6A	1674-682-001-10	PLATE	*		2 105-	2 144-	1			
7	V201-361-603-00	BOLT	*		2 82- 124-	2 124-				
8	V304-260-016-00	NUT/M16	*		2 82- 124-	2 124-				
9	V401-160-016-00	WASHER, SP/M16	*		2 82- 124-	2 124-				
10	V411-260-016-00	WASHER / M16	*		2 82- 124-	2 124-				
11	V210-360-601-60	BOLT (SP) /M6X16	*		4 82- 124-	4 124-				
12	1594-682-500-10	BRACKET/LH COMP	*		1 -81	1 -123				
13	1594-682-510-10	BRACKET/RH COMP	*		1 -81	1 -123				
14	V211-661-002-00	BOLT/M10X20	*		4 -81	4 -123				
15	1674-619-300-00	MIRROR ASSY	*		2 -45	2 -75				
15A	1674-619-300-10	MIRROR ASSY	*		2 -81	2 -123	1			
16	1674-682-200-00	STAY/BAR/16/LH COMP	*		1 -81	1 -123				
17	1674-682-210-00	STAY/BAR/16/RH COMP	*		1 -81	1 -123				
18	V304-260-016-00	NUT/M16	*		2 -81	2 -123				
19	V401-160-016-00	WASHER, SP/M16	*		2 -81	2 -123				

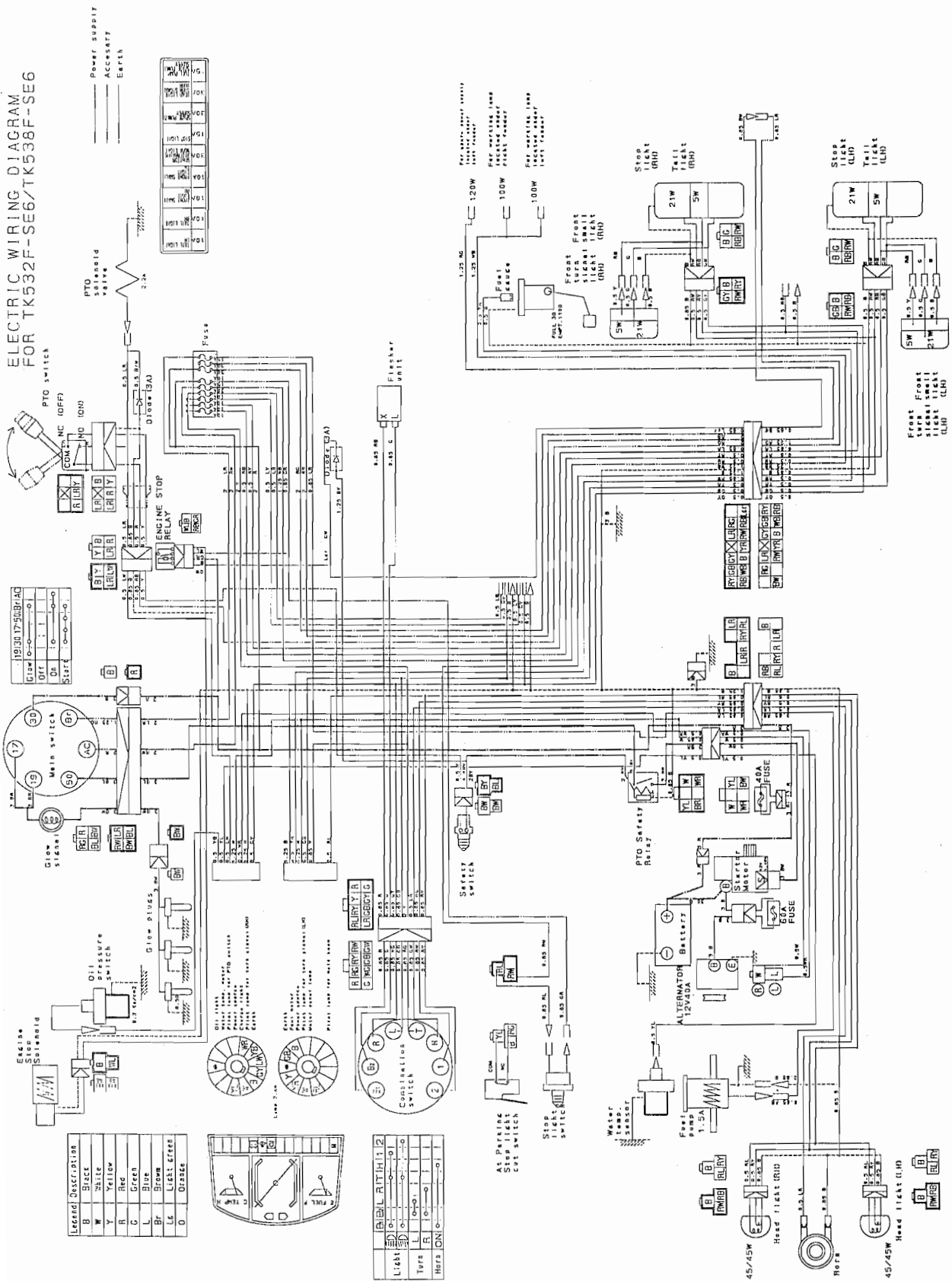
FIG.176 LABEL (PORTUGUESE)



1640-904E

KEY	PART CODE	DESCRIPTION	S P C	TYPE OF MODEL			I T C	C O L	G R P	REMARKS
				TK527	TK532	TK538				
1	1640-904-025-00	LABEL/C/DRIVE/P	T	1	1	1				
2	1640-903-056-00	LABEL/W/FAN	T	2	2	2				
3	1640-903-057-00	LABEL/C/BATTERY	T	1	1	1				
4	1640-903-058-00	LABEL/W/SHIELD	T	2	2	2				
5	1640-903-059-00	LABEL/W/MUFFLER	T	1	1	1				
6	1640-903-062-00	LABEL/W/SHIELD/PTO	T	1	1	1				
7	1640-903-061-00	LABEL/W/ETHER	T	1	1	1				
8	1640-903-063-00	LABEL/W/RADIATOR	T	1	1	1				
9	1640-903-065-00	LABEL/D/STARTER	T	1	1	1				
10	1640-903-067-00	LABEL/FUEL/P	T	1	1	1				
11	1640-903-066-00	LABEL/D/BATTERY	T	1	1	1				
12	1640-903-069-00	LABEL/C/SHIFT	T	1	1	1				
13	1640-903-052-00	LABEL/FUSE/4	T	1	1	1				
14	1640-903-053-00	LABEL/FILTER	T	1	1	1				
15	1640-903-055-10	LABEL/START/P	T	1	1	1	1			
16	1640-903-048-00	LABEL/W/ROPS/E40P	T	1	1	1				
17	1594-904-002-10	LABEL/CONTROL	T	1	1	1				

WIRING DIAGRAM (FOR SE6)



6005-097-160-10

PART CODE	FIG. KEY	PART CODE	FIG. KEY	PART CODE	FIG. KEY
6211-291-015-00	5 25	6212-114-039-20	14 1	6212-522-004-00	12 2
6211-291-015-10	5 25A	6212-114-039-30	14 1A	6212-523-006-30	12 6
6211-292-001-20	5 26	6212-114-039-40	14 1B	6212-524-006-00	22 11
	29 11	6212-114-039-50	14 1C	6212-524-006-10	22 11A
6211-310-009-20	9 1	6212-114-039-60	14 1D	6212-530-005-10	9 54
6211-310-009-30	9 1A	6212-114-039-70	14 1E	6212-531-008-20	5 8
6211-310-009-40	9 1B	6212-116-039-20	14 3	6212-535-007-00	12 4
6211-310-009-50	9 1C	6212-116-039-30	14 3A	6212-535-009-00	22 15
6211-311-013-00	9 46	6212-116-039-40	14 3B	6212-551-008-00	11 1
6211-312-005-00	9 30	6212-116-039-50	14 3C	6212-551-012-00	11 1A
6211-312-005-10	9 30A	6212-116-039-60	14 3D	6212-552-008-00	11 2
	29 14	6212-116-039-70	14 3E	6212-561-003-00	11 3
6211-312-006-00	9 47	6212-121-013-10	13 2	6212-563-001-00	11 4
6211-312-006-10	9 47A	6212-121-013-20	13 2A	6212-565-001-00	11 5
	29 15	6212-124-013-10	14 2	6212-569-002-00	1 9
6211-319-003-00	9 50	6212-124-013-20	14 2A		29 2
6211-341-030-00	8 1	6212-126-013-10	14 4	6212-571-002-20	11 6
6211-341-030-10	8 1A	6212-126-013-20	14 4A	6212-575-003-00	11 7
6211-342-003-10	8 2	6212-230-005-00	13 5	6212-600-009-10	11 8
6211-361-038-10	7 1	6212-230-011-00	13 5A	6212-611-004-10	11 9
6211-510-008-00	5 11	6212-235-002-00	13 6	6212-616-002-00	11 16
6211-511-007-00	5 12	6212-235-002-10	13 6A	6212-619-001-20	11 19
6211-511-008-00	5 13	6212-235-002-20	13 6B	6212-620-008-10	11 10
6211-530-008-00	6 1	6212-261-009-10	13 8	6212-626-002-10	11 11
6211-540-008-00	6 3	6212-263-009-00	6 5	6212-628-006-00	11 12
6211-599-004-00	5 14	6212-264-009-00	6 6	6212-628-007-00	11 13
	6 2	6212-310-011-20	15 1	6212-628-010-00	11 12A
	6 4	6212-310-011-30	15 1A	6212-628-011-00	11 13A
6211-711-005-00	1 6		16 1	6213-100-004-20	17 1
6211-715-006-00	1 5	6212-310-011-40	16 1A	6213-100-004-30	17 1A
6211-715-012-00	1 5A	6212-330-029-30	15 5	6213-111-002-10	17 2
6211-721-003-10	1 7	6212-330-029-40	15 5A	6213-111-002-20	17 2A
6211-721-004-00	1 8	6212-330-029-50	15 5B	6213-119-001-00	17 6
6211-751-001-10	2 5		16 5	6213-120-002-10	17 3
6211-751-002-00	5 31	6212-333-002-00	15 6A	6213-120-002-30	17 3A
6211-760-020-00	5 29		16 6	6213-125-002-00	17 4
6211-760-020-10	5 29A	6212-336-001-00	15 8	6213-125-002-10	17 4A
6211-766-006-10	5 30		16 8	6213-129-003-00	17 5
6211-777-007-20	10 1	6212-371-022-00	15 10	6213-140-013-00	17 8
6212-111-039-20	13 1	6212-371-034-10	16 10	6213-149-003-20	17 10
6212-111-039-30	13 1A	6212-379-001-00	15 11	6213-160-002-00	9 31
6212-111-039-40	13 1B		16 11	6213-160-003-00	9 35
6212-111-039-50	13 1C	6212-511-005-00	12 1	6213-160-003-10	9 35A
6212-111-039-60	13 1D	6212-521-002-00	15 3	6213-161-001-00	9 32
6212-111-039-70	13 1E		16 3	6213-161-003-00	9 36

1674-097-100-10

PART CODE	FIG. KEY	PART CODE	FIG. KEY	PART CODE	FIG. KEY
V111-164-003-00	149 16	V120-366-002-50	163 8	V201-260-808-00	8 24
V111-165-001-00	145 17		163 28		9 19
	146 15	V120-368-002-00	81 8		10 24
V111-165-001-20	144 27		119 14	V201-260-808-50	110 7
V111-165-002-50	169 13	V120-376-001-60	59 20	V201-260-814-00	101 3
V111-165-006-00	144 14		163 20	V201-261-004-00	108 2
	144 23		201 7	V201-261-005-50	57 5
V111-166-001-00	165 24	V195-163-008-30	219 21	V201-261-006-50	8 11
V111-166-003-00	143 4		220 21		8 19
	143 9		221 21		10 11
V111-166-004-00	98 33		222 21		10 19
V112-165-001-60	166 22	V195-164-008-40	144 17	V201-261-008-00	195 8
V112-165-002-50	145 16		144 26	V201-261-008-50	191 3
	146 14	V195-164-012-40	219 17	V201-261-012-00	115 7
V120-264-000-80	219 25		220 17		196 8
	220 25		221 17	V201-261-013-50	197 3
	221 25		222 17	V201-261-202-00	156 21
	222 25	V195-164-020-40	214 8	V201-261-203-00	40 2
V120-264-001-00	219 22	V195-164-025-30	144 6		40 7
	220 22	V200-260-501-0B	148 3		40 13
	221 22		149 3	V201-261-207-50	41 5
	222 22		150 3	V201-261-607-50	193 2
V120-264-001-20	170 33		151 3	V201-360-802-00	198 2
V120-265-001-00	219 27	V200-360-604-50	107 5	V201-360-802-5B	46 8
	220 27	V200-360-608-00	104 11	V201-360-804-00	83 10
	221 27	V200-360-611-00	105 3	V201-360-805-0B	35 7
	222 27	V201-260-801-20	11 22	V201-360-805-00	35 2
V120-265-003-00	200 5		12 3	V201-360-806-0B	35 5
V120-266-001-60	14 15		52 1	V201-360-806-50	46 10
	143 12		60 1	V201-361-002-50	159 9
V120-266-002-00	163 13		99 4	V201-361-005-50	199 13
	167 13		154 31	V201-361-006-00	161 3
V120-364-003-00	61 20	V201-260-801-60	121 21	V201-361-009-00	95 11
V120-365-001-20	164 27		122 28		96 7
V120-366-001-60	147 4		145 23	V201-361-010-00	64 5
	147 8		146 21	V201-361-011-00	64 6
	156 15		197 10	V201-361-202-00	132 7
	156 19	V201-260-802-00	19 6		133 7
	156 38	V201-260-803-00	19 4		134 6
	162 8		98 13		136 6
	162 10	V201-260-803-50	86 9	V201-361-202-50	91 11
	165 6	V201-260-804-50	107 18		92 9
	166 21	V201-260-805-00	106 39		93 11
	167 15	V201-260-808-00	1 15		94 11
	169 3		7 19		182 11

1674-097-100-10

PART CODE	FIG. KEY	PART CODE	FIG. KEY	PART CODE	FIG. KEY
V721-103-104-50	106 2 190 3	V761-150-000-00	88 21 89 32	V782-160-000-60	95 18 96 14
V721-103-106-00	15 17	V762-150-000-00	189 9	V782-160-000-8B	39 7
V721-103-106-50	1 8 211 18	V763-150-000-00	212 6 67 20		104 14 105 6
V721-103-107-00	16 18 17 25 211 29		71 6 71 10 72 6	V793-108-110-30 V889-000-112-40	207 18 78 9 78 19
V721-103-108-50	186 6		72 10	V889-001-242-40	79 9
V721-103-109-50	89 4		73 6		79 19
V721-113-105-00	84 13 103 5 106 24	V780-140-000-1T	73 10 107 35 210 11	V920-551-001-20 V920-551-401-70 V920-551-902-20	177 5 177 6 177 7
V721-113-107-50	98 16	V780-140-000-2T	41 8	V920-552-402-70	177 8
V721-113-109-00	98 3		107 34	V936-150-015-00	177 3
V723-101-500-80	209 12		207 10	V999-200-003-00	78 10
V723-102-002-50	211 12		209 9		78 20
V723-102-003-80	211 38	V780-140-000-4T	208 10		79 10
V723-102-005-30	206 10	V780-140-000-40	115 4		79 20
V723-111-500-80	106 43		195 4		80 4
V723-111-501-20	208 15		196 4		80 8
V723-111-501-40	208 14	V780-140-000-60	95 16		91 5
V723-111-501-60	206 3		96 12		91 10
V723-112-002-90	107 29 210 7	V781-160-000-40	195 5 196 5		92 4 92 8
V730-101-401-00	98 26	V781-160-000-6B	183 6		93 5
V730-105-004-40	206 5	V781-160-000-6T	191 14		93 10
V742-116-240-40	95 5 96 5		195 15 196 16		94 5 94 10
V742-145-600-60	88 13		197 17	W296-134-007-00	116 14
V742-150-720-60	88 19	V781-160-000-60	95 17		117 13
V744-114-250-70	37 16		96 13		121 4
V744-114-280-70	84 12 103 4 106 23	V781-160-000-8B V782-160-000-2B V782-160-000-2T	38 7 20 9 41 7		121 8 122 3 122 7
V744-120-350-70	87 4		98 20		122 11
V744-120-420-80	47 5 212 18		106 34 106 44	W296-203-206-30	122 15 123 4
V744-130-450-80	22 4 23 9	V782-160-000-4B	190 18 39 6		124 4 125 4
V744-135-500-80	23 4		84 22	1118-901-006-00	171 3
V744-145-600-90	95 4 96 4	V782-160-000-4T	109 4 98 19	1302-225-003-00	36 14 37 12
V760-150-000-00	164 10	V782-160-000-6B	89 25		46 4
V761-150-000-00	18 4	V782-160-000-6T	115 34		48 2

1674-097-100-10

PART CODE	FIG. KEY	PART CODE	FIG. KEY	PART CODE	FIG. KEY
1566-730-103-10	164 8	1568-668-203-00	155 40	1576-408-002-00	84 36
1566-730-104-10	164 9		155-1 43		84 41
1566-730-105-10	164 12	1568-669-101-00	156 44	1581-621-290-00	152 28
1566-730-106-00	164 17	1568-701-001-00	159 4		153 27
1566-730-107-00	164 19	1568-731-103-00	165 10		154 30
1566-730-108-00	164 22		165 21		155-1 28
1566-730-113-00	164 21		167 17		156 17
1566-730-540-00	164 11	1572-103-250-00	3 2	1581-621-530-00	156 20
1566-731-106-00	165 22		4 2	1581-740-112-00	163 2
1566-731-107-00	163 3		178 2		165 3
	165 7		179 2		167 9
	167 11	1572-103-260-00	3 4	1581-740-113-00	163 6
1566-731-550-10	165 20		4 4		163 10
1566-732-113-00	166 11		178 4		163 18
1566-733-101-20	166 14		179 4		163 29
1566-733-102-00	166 16	1572-121-202-00	218 2		165 5
1566-733-510-00	166 17	1572-121-204-00	218 4		167 2
1566-733-520-00	166 18	1572-121-205-00	218 5	1581-740-114-00	163 7
1566-733-530-00	166 19	1572-121-206-00	218 7		165 4
1566-733-550-00	166 20	1572-121-207-00	218 8		167 10
1566-743-102-00	167 3	1572-121-209-00	218 10	1581-740-552-10	165 12
1566-743-103-00	163 16	1572-121-230-00	218 1	1581-740-553-10	165 13
	167 5	1572-121-240-00	218 6	1581-740-556-00	165 17
1566-743-520-00	163 23	1572-121-251-00	218 11	1581-740-558-00	165 18
1568-116-210-00	14 14	1572-121-253-00	218 13	1581-742-102-00	163 9
1568-206-001-00	23 2	1572-121-254-00	218 14		163 17
1568-209-002-00	24 12	1572-121-255-00	218 16		163 27
	25 12	1572-121-256-00	218 17		165 16
	25 22	1572-417-001-02	187 1		167 19
1568-525-300-10	112 22	1574-417-220-03	91 2	1581-742-105-00	163 15
1568-650-004-10	142 4		91 7		167 4
	152 8	1575-261-018-00	29 3	1581-742-582-00	163 11
	153 6	1575-623-010-00	152 24		167 14
	154 6		152 48	1581-742-590-00	163 12
	155 8		153 22		167 12
1568-650-005-10	155-1 8		153 48	1581-742-621-00	163 19
	142 5		154 23		167 6
	152 9		155 24	1584-522-001-00	115 25
	153 7		155 45		195 24
	154 7		155-1 24		196 27
1568-668-203-00	155 9	1575-623-011-00	152 25	1588-502-007-00	197 25
	155-1 9		153 23	1593-307-052-10	33 10
	152 43		154 24		34 10
	153 42		155 25	1593-611-011-20	127 2
	154 28		155-1 25	1593-611-011-30	127 2A

1674-097-100-10

PART CODE	FIG. KEY	PART CODE	FIG. KEY	PART CODE	FIG. KEY
1674-209-211-10	24 27	1674-606-200-00	125 1	1674-654-211-00	146 8
1674-209-220-00	24 22	1674-606-200-10	123 1A	1674-654-212-00	145 3
1674-216-001-00	28 4A		124 1A		145 8
1674-216-002-00	28 8A		125 1A		145 11
1674-217-001-00	30 18	1674-606-210-00	123 5		146 3
1674-221-002-00	33 5		124 5		146 6
	34 5		125 5		146 9
1674-221-003-00	33 9	1674-606-210-10	123 5A	1674-654-240-00	145 6
	34 9		124 5A		146 4
1674-221-011-00	33 15		125 5A	1674-654-260-00	145 9
1674-223-001-00	34 16	1674-606-220-10	145 14		146 7
	35 9		146 12	1674-654-270-00	145 20
1674-290-200-10	61 12	1674-606-220-20	145 14A		146 18
1674-290-220-10	61 16		146 12A	1674-654-271-00	145 21
1674-304-001-00	64 11	1674-606-220-30	145 14B		146 19
1674-310-300-00	67 31		146 12B	1674-654-272-00	145 22
1674-312-300-00	73 1	1674-606-330-00	145 15		146 20
1674-312-330-00	73 3		146 13	1674-658-001-00	147 2
1674-312-350-00	73 12	1674-606-330-10	145 15A	1674-658-001-10	147 2A
1674-312-360-00	73 13		146 13A	1674-658-200-00	147 1
1674-312-370-00	70 1	1674-619-300-00	158 15	1674-658-200-10	147 1A
1674-312-380-00	70 2	1674-619-300-10	130 3	1674-658-220-00	147 1B
1674-312-390-00	73 7		158 4	1674-658-300-00	147 6
1674-314-031-00	75 9		158 15A	1674-658-300-10	147 6A
1674-402-001-00	82 3	1674-619-310-00	158 5	1674-658-310-00	147 6B
1674-404-200-00	83 15	1674-630-001-00	138 17	1674-664-200-00	148 8
1674-410-200-10	85 6	1674-630-002-00	138 28		150 8
1674-410-200-20	85 6A	1674-630-004-00	138 31	1674-666-200-00	152 1
1674-410-300-00	185 1		139 3		155 1
1674-410-301-00	185 7		141 2		155-1 1
1674-410-320-00	185 5	1674-652-200-00	143 7	1674-666-210-10	152 21
1674-515-031-00	106 53	1674-652-202-00	143 8		155-1 21
1674-515-400-00	106 48	1674-652-210-00	143 11	1674-666-210-30	152 21A
1674-601-001-10	117 2	1674-652-220-00	143 13		155-1 21A
1674-602-200-00	120 1	1674-654-001-00	145 28	1674-666-210-40	152 21B
1674-602-210-00	120 6		146 26		155 21
1674-604-200-10	122 38	1674-654-002-00	145 29		155-1 21B
1674-604-211-00	122 5		146 27	1674-666-212-00	152 27
	122 13	1674-654-200-00	145 1		153 25
1674-606-001-00	145 12		146 1		154 26
1674-606-002-00	146 10	1674-654-211-00	145 2		155 27
	145 13		145 7		155-1 27
	146 11		145 10	1674-666-220-20	153 19
1674-606-200-00	123 1		146 2		154 20
	124 1		146 5	1674-666-230-00	153 34

DESCRIPTION	REF . NO	DESCRIPTION	REF . NO	DESCRIPTION	REF . NO	DESCRIPTION	REF . NO
STUD	9	WATERPUMP	18				
	9	ASSY	18				
STUD/M8X40	5	YOKE/STARTER	33				
	18		1				
STUD,HEAD COVER	1						
SWITCH/MAGNETIC ASSY	33						
	33						
	33						
SWITCH/OILPRESSURE	26						
	27						
TAPET	11						
	11						
THERMOMETER	32						
	26						
	27						
THERMOSTAT	18						
VALVE/EXHAUST	11						
VALVE/INTAKE	11						
	11						
VALVE/RELIEF	9						
ASSY	31						
	9						
	35						
VALVE, DELIVERY	9						
VALVEGUIDE	32						
	1						
	7						
VALVESEAT/EXHAUST	1						
VALVESEAT/INLET	1						
	5						
	5A						
WASHER	9						
	13						
	9						
	57						
	9						
	59						
	15						
	8						
	15						
	11						
	16						
	8						
	16						
	11						
	18						
	15						
	18						
	22						
	22						
WASHER / M6	22						
WASHER/CORRUGATE	21						
WASHER/08X14X01	9						
	19						
	9						
	28A						
WASHER/08X15.5X1.6	29						
WASHER/9X22X2	11						
	22A						
	24						
	4						
WASHER, PL/M8	25						
	4						
	9						
	10						
	11						
	22						
WASHER, SP/M6	22						
	43						

DESCRIPTION	REF. NO	DESCRIPTION	REF. NO	DESCRIPTION	REF. NO	DESCRIPTION	REF. NO	DESCRIPTION	REF. NO
BRACKET, L COMP	11	BUSH/10X12X20	189	CABLE/METER ASSY	147	CAP, BLANK/M16	133		5
	12	BUSH/12X14X20	101	CABLE/PEDAL ASSY	14	CAP, BLANK/72	42		5
BRACKET, R COMP	11	BUSH/14X16X20	189	CABLE/REVERSE ASSY	55	CAP, FUSE BOX	156		35
	12	BUSH/14X16X20	57	CAM	63	CAP, OIL ASSY	88		3
BRAKE ASSY	57	BUSH/16X18X15	59	CAM COMP	83		95		20
BRAKE/DISK	213	BUSH/16X18X15	83	CANNECTOR	110		96		16
BRAKE/PRESSURE	213	BUSH/16X24X16	58	CAP	6	CAP, OIL(H) ASSY	84		23
BRAKE, PARKING ASSY	75	BUSH/20X23X20	19		142	CAP, PTO SHAFT	42		8
BREATHER	95	BUSH/20X23X20	74		144		181		9
	96		201		144		183		19
	188		58		219	CAP, RUBBER (20)	18		5
BUCKLE/TURN/M08	59	BUSH/25X29X30	182	CAP(M8)	219	CAP, RUBBER (9)	123		13
	70	BUSH/25X30X35	189		220		124		12
	70	BUSH/28X32X31	74		220		125		14
BUCKLE, TURN/M08	69	BUSH/28X32X31	71	CAP/FUEL ASSY	169		79		20
BUCKLE, TURN/M24 COMP	113	BUSH/30X35X39	24	CAP/HOOD	12		80		4
BULB	93	BUSH/33X38X20	24	CAP/SEAL/38	116		80		8
	93	BUSH/40X58X29	25	CAP/STEERING	212		91		5
BULB/12V 45/45W	143	BUSH/45X50X25	25	CAP/TANC ASSY	81		91		10
BULB/12V/45/40W	143	BUSH/45X50X42	24	CAP/10	11		92		4
BULB/12V/5W	145	BUSH/50X55X30	25	CAP/13	116		92		8
	146	BUSH/50X55X42	30	CAP/18	164		93		5
BULB/12V21-5W	144	BUSH/60X65X30	189	CAP/30	144		93		10
	144	BUTTON	44		108		94		5
BULB/12V21W	145	CABLE	88		108		94		10
	145	CABLE/ACCELEATO ASSY	95		108	CARPET/FLOOR	168		4
	145	CABLE/ACCELERATOR	96		108		168		4A
	146	CABLE/BATTERY ASSY	96		109		168		4A
	146	CABLE/BATTERY	88		109	CARTRIDGE	103		23
	146	CABLE/BATTERY/C ASSY	89		109	CARTRIDGE(30)	106		6
BULB, LAMP/12V21W	144	CABLE/METER ASSY	155		137	CARTRIDGE/20	190		12
BUSH	83	CABLE/METER	155-1		138	CASE	63		2
	89		147		138		87		2
	89		147		139		87		2A
BUSH(10X12X10)	197		147		140		87		2B
	25		147		141		89		1
	25		147		141		89		1
	25		147		108		156		33
	25		147		138		170		8
	25		147		138		170		9
	25		147		89		170		9
	25		147		88		170		10
	25		147		20		183		2
	25		147		21		114		4
	25		147		42	CASE/BEVEL	63		1
	25		147		88	CASE/DIFF	87		20A
	25		147		132	CASE/L ASSY	89		12

CLICK HERE TO **DOWNLOAD** THE COMPLETE MANUAL

- Thank you very much for reading the preview of the manual.
- You can download the complete manual from: www.heydownloads.com by clicking the link below



- Please note: If there is no response to CLICKING the link, please download this PDF first and then click on it.

CLICK HERE TO **DOWNLOAD** THE COMPLETE MANUAL