

Directions for use of Parts Catalogue

1. Applicable model of machines

All component and option parts used for SW621 Mower are listed in this parts catalogue.

Description of type of machines and particulars

Type of Machines	Section	Engines	
		FC180V AA00 BA00 CA00	FC180V AB00 BB00
SW621	E01		○
	BE01	○	

Note: When you place an order for spare parts, please check and specify the Engine Model of your machine.

2. Explanation for head paragraph

K500-101

KEY Ref.	PART CODE Pièces No.	DESCRIPTION	Désignation	QTY Quant.	TYPE OF MODEL			Modél FC150V GB03	I T C	C O L	G R P	REMARKS Remarques
					FC150V AB03	FC150V FB03						
1	5130-702-077-XX	GUIDE	Guide	1	*	*	*					130702077
2	5510-012-214-XX	TANK-COMP-FUEL	Reservoir	1	*	*	*					510012214
3	5510-482-069-XX	CAP-ASSY-TANK	Ens. bouchon	1	*	*	*					510482069
4	5110-092-831-XX	GASKET	Joint	1	*	*	*					110092831
		NET BREATHER	Element	1	*							318292665600
			Element	1		*	*					491092054
				1	*	*	*					490192091
				1	*	*	*					490192094
					*	*	*					1316823

- ① KEY shows the location of parts diagramed in the illustration.
- ② Parts numbers begin with `V` and `W` are standard parts of the market.
- ③ `LH` and `RH` on the parts name are described against the moving direction of the machine or are described on the condition how to install parts on the machines.
- ④ QTY shows the number of parts to be used for one unit of machine.
 - `M` is indicated for parts supplied by a meter long.
 - `ℓ` is indicated for parts supplied by liter.
 - `AR` is indicated for parts need to be adjusted or regulated.

CLICK HERE TO **DOWNLOAD** THE COMPLETE MANUAL

- Thank you very much for reading the preview of the manual.
- You can download the complete manual from: www.heydownloads.com by clicking the link below



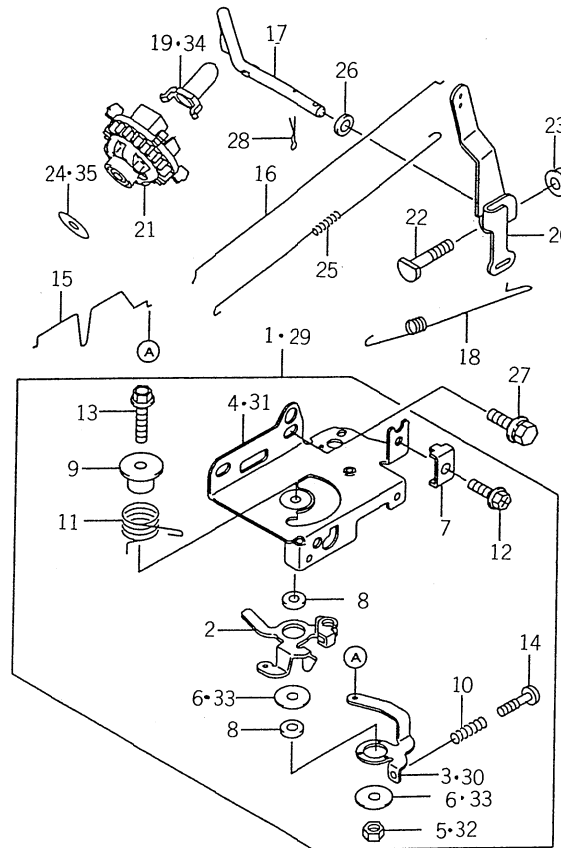
- Please note: If there is no response to CLICKING the link, please download this PDF first and then click on it.

CLICK HERE TO **DOWNLOAD** THE COMPLETE MANUAL

STAY/BAR/HANDLE SYSTEM.....	Fig. 18
Support	
HANDLE (B/E) SYSTEM (EXCEPT B TYPE)	Fig. 19
Mancheron (B/E) (excepté modèle B)	
LEVER SYSTEM (B TYPE).....	Fig. 20
Levier (modèle B)	
CABLE/BRAKE SYSTEM.....	Fig. 21
Câble de Frein	
COLLECTOR SYSTEM.....	Fig. 22
Collecteur	
MARK • LABEL SYSTEM.....	Fig. 23
Etiquettes	
SPECIAL TOOLS SYSTEM.....	Fig. 24
Outils	
ORNAMENT SYSTEM.....	Fig. 25
Enjoliveur	
TOOLS, MANUAL SYSTEM.....	Fig. 26
Outils/manuel	

FIG. 7 CONTROL – EQUIPMENT

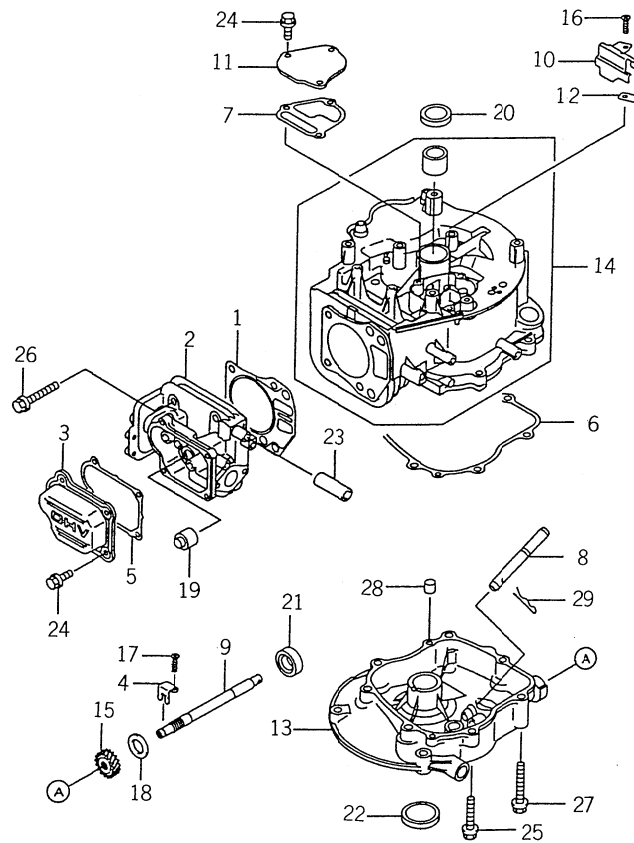
Commandes



K621-0070

KEY Réf.	PART CODE Pièces No.	DESCRIPTION	Désignation	QTY Quant.	TYPE OF MODEL			I T C	C O L	G R P	REMARKS Remarques
					FC180V AA00	FC180V BAC0	Modél FC180V CA00				
1	5391-802-895-XX	PANEL-ASSY-CONTROL	Ens. panneau de commande	1		*	*				391802895
2	5131-682-352-XX	LEVER	Levier	1	*	*	*				131682352
3	5131-682-388-XX	LEVER	Levier	1		*	*				131682388
4	5592-262-291-XX	PANEL-CONTROL	Panneau de commande	1		*	*				592262291
5	5920-152-051-XX	NUT	Ecrou	1		*	*				920152051
6	5920-222-372-XX	WASHER-6X19X1.2	Rondelle	2		*	*				920222372
7	5920-372-209-XX	CLAMP	Attach	1	*	*	*				920372209
8	5921-432-135-XX	COLLAR-6X13X2.3	Entretoise	2	*	*	*				921432135
9	5921-432-148-XX	COLLAR	Entretoise	1	*	*	*				921432148
10	5921-442-266-XX	SPRING	Ressort	1	*	*	*				921442266
11	5921-442-316-XX	SPRING	Ressort	1	*	*	*				921442316
12	5921-502-182-XX	BOLT-5X18	Vis	1	*	*	*				921502182
13	5130-B06-30X-XX	BOLT-FLANGED	Vis	1	*	*	*				130B0630
14	5214-B04-20X-XX	SCREW-PAN	Vis	1	*	*	*				214B0420
15	5161-692-111-XX	LINK-CHOKE	Tige	1	*	*	*				161692111
16	5161-712-068-XX	LINK	Tige	1	*	*	*				161712068
17	5390-032-077-XX	ARM-PIVOT	Bras	1	*	*	*				390032077
18	5391-292-054-XX	SPRING-GOVERNOR	Ressort de regulateur	1	*	*	*				391292054
19	5420-362-051-XX	SLEEVE	Bague	1		*	*				420362051
20	5491-032-127-XX	ARM-GOVERNOR	Bras de regulateur	1	*	*	*				491032127
21	5491-102-080-XX	GOVERNOR-ASSY	Ens. regulateur	1	*	*	*				491102080
22	5920-022-269-XX	BOLT	Vis	1	*	*	*				920022269
23	5920-151-193-XX	NUT	Ecrou	1	*	*	*				920151193
24	5920-222-019-XX	WASHER	Rondelle	1		*	*				920222019
25	5921-442-329-XX	SPRING	Ressort	1	*	*	*				921442329

FIG. 1 CYLINDER/CRANKCASE
Cylindre/Carter



K621-0010

KEY Réf.	PART CODE Pièces No.	DESCRIPTION	Désignation	QTY Quant.	TYPE OF MODEL		Modél	I T C	C O L	G R P	REMARKS Remarques
					FC180V AB00	FC180V BB00					
1	5110-042-117-XX	GASKET-HEAD	Joint de cylindre	1	*	*					110042117
2	5110-082-117-XX	HEAD-COMP-CYLINDER	Culasse	1	*	*					110082117
3	5110-222-067-XX	CASE-ROCKER	Boitier	1	*	*					110222067
4	5110-492-019-XX	BRACKET	Support	1	*	*					110492019
5	5110-602-139-XX	GASKET-ROCKER CASE	Joint	1	*	*					110602139
6	5110-602-142-XX	GASKET-CRANKCASE	Joint	1	*	*					110602142
7	5110-602-143-XX	GASKET	Joint	1	*	*					110602143
8	5131-072-255-XX	SHAFT	Arbre	1	*	*					131072255
9	5131-072-272-XX	SHAFT	Arbre	1	*	*					131072272
10	5131-832-504-XX	PLATE	Praque	1	*	*					131832504
11	5140-902-032-XX	COVER	Capot	1	*	*					140902032
12	5161-262-146-XX	VALVE	Soupape	1	*	*					161262146
13	5490-152-338-XX	COVER-CRANKCASE	Carter	1	*	*					490152338
14	5491-206-112-XX	CRANKCASE-COMP	Carter	1	*	*					491206112
15	5590-562-790-XX	GEAR-HERICAL	Pignon	1	*	*					590562790
16	5920-092-166-XX	SCREW-5X8	Vis	1	*	*					920092166
17	5920-092-308-XX	SCREW	Vis	1	*	*					920092308
18	5920-222-69X-XX	WASHER	Rondelle	1	*	*					92022269
19	5920-491-062-XX	SEAL-OIL	Joint SPI	1	*	*					920491062
20	5920-492-199-XX	SEAL-OIL	Joint SPI	1	*	*					920492199
21	5920-492-204-XX	SEAL-OIL	Joint SPI	1	*	*					920492204
22	5920-492-210-XX	SEAL-OIL	Joint SPI	1	*	*					920492210
23	5921-902-112-XX	TUBE-12X16X46	Tuyau	1	*	*					921902112
24	5130-B06-12X-XX	BOLT-FLANGED	Vis	7	*	*					130B0612
25	5130-G08-35X-XX	BOLT-FLANGED	Vis	4	*	*					130G0835

PART CODE Pièces No.	FIG. KEY Réf No.	PART CODE Pièces No.	FIG. KEY Réf No.	PART CODE Pièces No.	FIG. KEY Réf No.
2500-401-003-00	12 4	2500-510-240-00	20 9	2500-901-026-00	23 6
2500-401-006-00	9 17	2500-510-240-10	14 8	2500-901-027-00	23 7
	10 2		20 9A	2500-930-001-00	26 1
	12 8	2500-510-410-00	20 11	2500-930-002-00	26 2
2500-401-009-00	10 1	2500-510-410-10	20 11A	2500-931-001-00	24 3
2500-401-011-10	12 1	2500-515-001-00	14 17	2500-931-210-00	24 1
2500-401-014-00	12 12	2500-515-230-10	14 2	2500-932-210-00	24 7
2500-420-001-00	11 1	2500-520-002-10	21 2	2500-951-002-00	25 1
2500-420-003-00	11 2	2500-520-003-10	21 3	2500-951-004-00	25 2
2500-420-004-00	11 3	2500-551-019-00	15 5	2500-951-005-10	25 4
2500-420-005-00	11 4		19 2	2500-951-006-00	25 3
2500-451-007-10	12 9	2500-551-210-20	15 1	2500-990-011-00	26 5
2500-451-007-20	12 9A	2500-551-210-30	15 1A	2500-990-011-10	26 5A
2500-451-200-30	12 2	2500-552-002-20	16 7	2500-991-001-20	26 5B
2500-451-200-40	12 2A	2500-552-220-20	16 1	2503-302-201-10	5 2
2500-451-200-60	12 2B		17 1	2503-302-203-10	5 4
2500-451-210-00	12 6	2500-553-001-50	18 7	2503-302-204-10	5 5
2500-501-002-10	14 19	2500-553-002-00	18 12	2503-510-003-20	20 2
	15 2	2500-553-003-00	18 1	2503-510-004-20	14 10
2500-501-003-00	16 2	2500-555-210-10	19 1		20 3
2500-501-003-10	16 2A	2500-555-210-20	19 1A	2706-301-020-00	8 22
	17 2	2500-560-230-20	14 2A		9 21
2500-502-250-00	17 7		20 1	3650-440-014-00	4 7
2500-510-001-10	13 8	2500-570-001-00	21 1	3740-162-005-00	12 10
2500-510-002-00	13 9	2500-570-006-00	21 5		13 6
	14 14	2500-570-007-00	21 6	3747-342-002-00	8 23
2500-510-003-00	20 12	2500-607-001-00	22 2		9 22
2500-510-003-10	20 12A	2500-607-200-00	22 1	3768-172-008-00	6 15
2500-510-005-00	13 2	2500-607-300-00	22 3	J910-000-200-00	23 1
	14 3	2500-901-007-00	25 5	V200-260-501-60	7 6A
2500-510-006-00	5 7A	2500-901-007-10	25 5A	V200-260-601-00	14 20
	7 2	2500-901-008-00	25 6	V201-260-802-00	18 6
	13 3	2500-901-014-20	23 3	V201-260-805-00	18 8
	14 4	2500-901-014-30	23 3A	V201-260-805-50	18 8A
2500-510-011-00	13 1	2500-901-015-20	23 4	V203-361-002-00	3 4
	14 1	2500-901-015-30	23 4A	V203-361-003-00	24 2
2500-510-013-00	14 5	2500-901-016-20	23 5	V210-160-601-00	15 3
	20 8	2500-901-017-00	25 7	V210-360-601-00	15 3A
2500-510-015-00	20 13A	2500-901-017-20	25 7A	V210-360-601-60	8 12
2500-510-051-10	13 5	2500-901-018-00	23 2	V301-260-005-00	7 7
	14 7	2500-901-018-10	23 2A	V304-260-008-00	8 21
	14 23	2500-901-018-30	23 2B		9 11
	20 10	2500-901-025-00	23 8		9 20
2500-510-220-00	13 4	2500-901-025-10	23 8A		18 11
	14 6	2500-901-025-20	23 8B	V304-260-010-00	24 6

CLICK HERE TO **DOWNLOAD** THE COMPLETE MANUAL

- Thank you very much for reading the preview of the manual.
- You can download the complete manual from: www.heydownloads.com by clicking the link below



- Please note: If there is no response to CLICKING the link, please download this PDF first and then click on it.

CLICK HERE TO **DOWNLOAD** THE COMPLETE MANUAL