

## Directions for use of Parts Catalogue

### 1. Applicable model of machines

All component and option parts used for SFH220/SFH240 riding mower are listed in this parts catalogue.

#### 1) MODEL TYPE

- H . . . . . HST
- F . . . . . FOUR WHEEL DRIVE
- T . . . . . TWO WHEEL DRIVE
- B . . . . . BLOWER CASE
- G . . . . . WITH EXTRA SPECIFICATIONS  
FOR LOCAL HOMOLOGATION

#### 2) AREA CODE

- E4 . . . . . EUROPE

### 2. Explanation for head paragraph

KEY	PART CODE	DESCRIPTION	S P C	TYPE OF MODEL						I T C	C O L	G R P	REMARKS
				SSM48M	SSM48F	SSM48G	SRM48M	SRM48F	SRM48G				
1	8595-211-001-20	CASE/UPPER	*	1									
1A	8657-201-081-00	CASE/UPPER	*	1			1						
2	8595-211-002-10	CASE/LOWER	*	1			1						
3	V523-100-801-80	PIN	*	2			2						
4	V211-260-803-00	BOLT, SENS	*	4			4						
			*	2			2						
			*	2			2						
			*	2			2						
			*	1			1						

- ① KEY shows the location of parts diagramed in the illustration.
- ② Parts numbers begin with `V` and `W` are standard parts of the market.
- ③ `LH` and `RH` on the parts name are described against the moving direction of the machine or are described on the condition how to install parts on the machines.

CLICK HERE TO **DOWNLOAD** THE COMPLETE MANUAL

- Thank you very much for reading the preview of the manual.
- You can download the complete manual from: [www.heydownloads.com](http://www.heydownloads.com) by clicking the link below



- Please note: If there is no response to CLICKING the link, please download this PDF first and then click on it.

CLICK HERE TO **DOWNLOAD** THE COMPLETE MANUAL

DRIVE(PTO/BLOWER)SYSTEM.....	Fig. 24
COVER(PTO/MID)SYSTEM(SFH220).....	Fig. 25
LINK(HST)SYSTEM.....	Fig. 26
PEDAL(HST)SYSTEM.....	Fig. 27
LEVER(PTO/MOWER)SYSTEM(SFH240).....	Fig. 28
LEVER(PTO/BLOWER)SYSTEM.....	Fig. 29
AUTO CRUISE SYSTEM(SFH240).....	Fig. 30
HOUSING(AXLE/FRONT)SYSTEM.....	Fig. 31
SHAFT(WHEEL/FRONT)SYSTEM (SFH220:EXCEPT G TYPE)(SFH240:EXCEPT G TYPE).....	Fig. 32
SHAFT(WHEEL/FRONT)SYSTEM (SFH220:G TYPE)(SFH240:G TYPE).....	Fig. 33
BRAKE SYSTEM (SFH220:EXCEPT G TYPE) (SFH240:EXCEPT G TYPE).....	Fig. 34
BRAKE SYSTEM (SFH220:G TYPE) (SFH240:G TYPE).....	Fig. 35
PEDAL(BRAKE)SYSTEM (SFH220:EXCEPT G TYPE) (SFH240:EXCEPT G TYPE).....	Fig. 36
PEDAL(BRAKE)SYSTEM (SFH220:G TYPE) (SFH240:G TYPE).....	Fig. 37
BRAKE(PARKING)SYSTEM (SFH220:EXCEPT G TYPE) (SFH240:EXCEPT G TYPE).....	Fig. 38
BRAKE(PARKING)SYSTEM (SFH220:G TYPE) (SFH240:G TYPE).....	Fig. 39
WHEEL(STEERING)SYSTEM.....	Fig. 40
LEVER(TILT)SYSTEM.....	Fig. 41
COLUMN(STEERING)SYSTEM.....	Fig. 42

















CLICK HERE TO **DOWNLOAD** THE COMPLETE MANUAL

- Thank you very much for reading the preview of the manual.
- You can download the complete manual from: [www.heydownloads.com](http://www.heydownloads.com) by clicking the link below



- Please note: If there is no response to CLICKING the link, please download this PDF first and then click on it.

CLICK HERE TO **DOWNLOAD** THE COMPLETE MANUAL

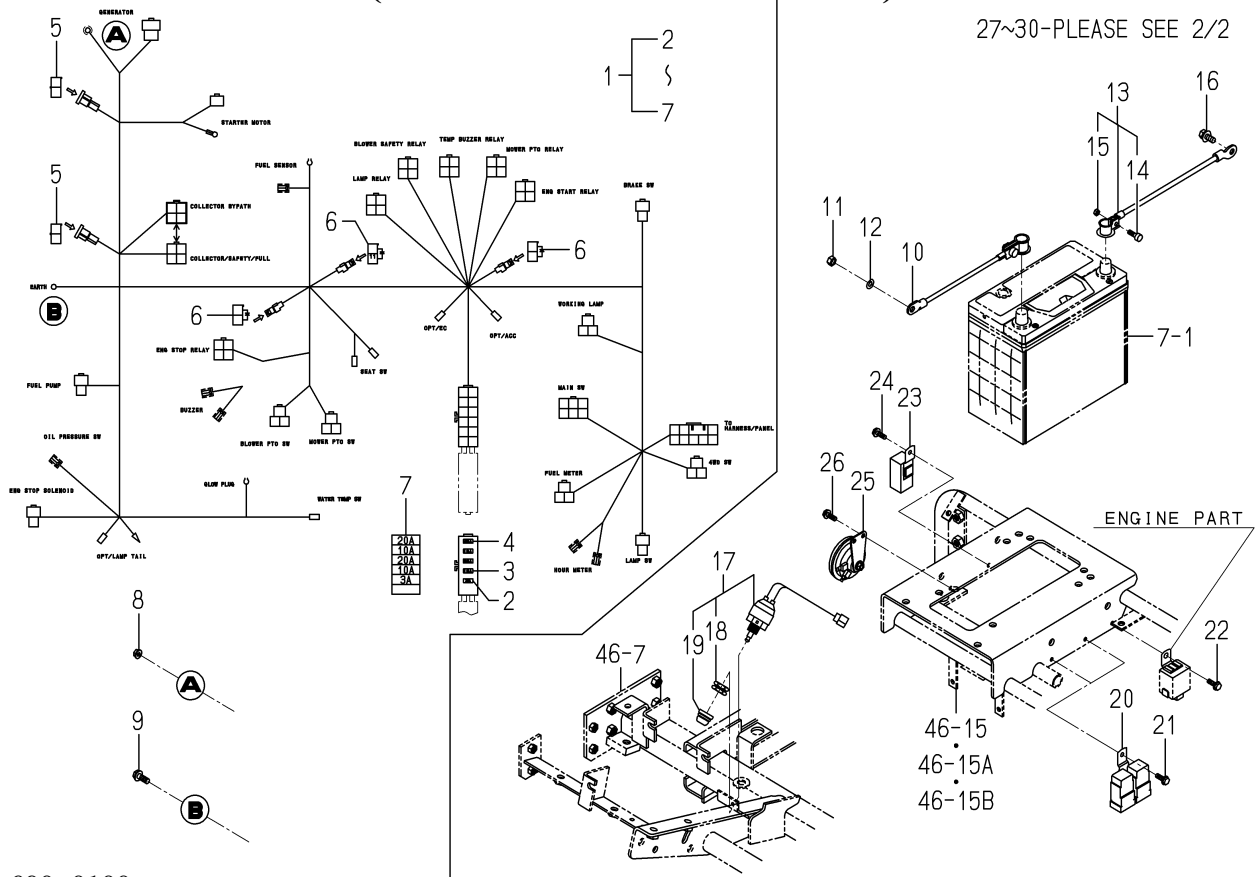








**FIG. 76 HARNESS SYSTEM(1/2)  
(SFH240:EXCEPT G TYPE)**



1771-690-0100

KEY	PART CODE	DESCRIPTION	S P C	TYPE OF MODEL		I T C	C O L	G R P	REMARKS
				SFH220	SFH240				
1	1771-690-200-20	HARNESS/MAIN ASSY	*		1	1			
2	3827-270-003-00	FUSE/BLADE/32V03A	*		1				
3	3821-262-202-00	FUSE/BLADE/32V10A	*		3				
4	3821-262-204-00	FUSE/BLADE/32V20A	*		3				
5	1650-650-222-00	FUSE/SLOWBLOW	*		2				
6	3650-262-202-00	DIODE/3.0A	*		3				
7	1771-690-202-00	LABEL/FUSE	*		1				
8	V360-260-006-00	NUT/M6	*		1				
9	V231-360-802-00	FLANGE BOLT	*		1				
10	1771-690-210-10	CABLE/BATTERY ASSY	*		1	1			
11	V304-260-008-00	NUT	*		1				
12	V401-160-008-00	WASHER,SP/M 8	*		1				
13	1773-650-220-00	CABLE/EARTH ASSY	*		1				
14	1725-112-212-00	BOLT	*		1				
15	1725-112-213-00	NUT	*		1				
16	V211-360-802-00	BOLT/SP	*		1				
17	1560-664-250-00	SWITCH/PUSH SET	*		1				
18	1560-664-252-00	NUT	*		1				
19	1560-664-253-00	BOOT	*		1				
20	1690-658-360-10	RELAY/4P-2 ASSY	*		2				
21	V230-360-601-60	FLANGE BOLT	*		2				
22	V230-360-601-60	FLANGE BOLT	*		1				
23	1690-658-380-10	RELAY/4P ASSY	*		1				
24	V230-360-601-60	FLANGE BOLT	*		1				
25	1740-680-530-00	HORN ASSY	*		1				
26	V230-360-601-60	FLANGE BOLT	*		2				
27	1593-623-520-00	SWITCH, MERIT	*		1				
28	1614-129-003-00	SCREW/M03X20	*		2				
29	3642-496-007-10	PLATE, SWITCH	*		1				
30	1593-623-520-00	SWITCH, MERIT	*		1				







Part Code	Fig. Key	Part Code	Fig. Key	Part Code	Fig. Key
V231-360-801-60	10 11				
	17 11				
V231-360-802-00	4 3				
	18 18				
	18 24				
	24 3				
V231-360-802-50	18 29				
V231-360-803-00	10 15				
V231-360-804-00	4 4				
V231-360-804-50	10 12				
	18 13				
V231-360-805-00	12 19				
V231-360-805-50	10 9				
V231-360-807-50	10 13				
	18 25				
V231-360-808-50	10 8				
V233-361-002-00	11 2				
V233-361-007-00	24 5				
V301-260-006-00	10 34				
	21 27				
V304-260-008-00	10 45				
	10 49				
V304-260-012-00	24 9				
V334-260-010-00	24 6				
V341-120-008-00	10 19				
V401-160-006-00	21 29				
V401-160-008-00	10 46				
	10 50				
V411-260-006-00	21 28				
V523-101-001-80	16 2				
V600-110-600-40	21 12				
V600-110-600-50	10 44				
V600-110-620-30	21 11				
V682-200-000-60	2 5				
V704-140-016-00	12 15				
V705-140-012-00	10 31				
V710-140-004-00	21 21				
V720-101-900-80	21 24				
V720-102-401-50	17 9				
	27 17				
V720-102-401-80	8 3				
V723-102-005-00	10 40				
	27 16				
V723-102-005-50	18 28				
	27 21				

# Numerical Index

1771-097-100-10

Part Code	Fig. Key	Part Code	Fig. Key	Part Code	Fig. Key
V211-561-002-50	65 4	V231-360-801-60	70 4	V301-260-006-00	60 14
V211-561-003-00	23 20		70 10		62 4
	31 3		70 16	V304-260-008-00	23 35
	53 4		71 4		26 21-A
V211-660-801-60	58 12		71 10		36 23
	66 11		71 16		37 25
V211-660-802-00	3 5		72 2		38 3
V211-660-803-00	43 4	V231-360-802-00	29 13		49 22
V211-660-805-00	2 27		30 21		60 16
V211-661-002-00	36 33		46 21		61 11
V211-661-002-50	44 12		46 21-A		76 11
	45 12		46 24		77 12
	46 8		47 21		78 14
	46 8-A		47 21-A		79 15
	47 8		47 24	V304-260-010-00	8 8
	47 8-A		49 15		34 8
V211-661-003-00	23 2		53 41		35 13
	23 12		62 41		94 5
V220-541-003-50	98 42		70 7	V304-260-012-00	1 17
V230-360-601-20	2 53		70 13		51 18
V230-360-601-60	76 21		71 7	V304-260-016-00	23 26
	76 22		71 13		94 11
	76 24		76 9	V304-460-008-00	1 6
	76 26		77 9		10 11
	77 22		78 12		12 5
	77 23		79 12		22 6
	77 25	V231-360-802-50	11 4		27 25
	77 27		22 4	V304-460-010-00	32 25
	78 24		39 8		33 25
	78 28	V231-360-804-00	12 3		53 44
	78 29		31 6	V304-460-012-00	46 14
	78 31	V231-360-805-00	22 3		47 14
	78 33	V231-360-808-00	41 11		51 15
	79 25	V231-361-002-50	37 15		53 21
	79 29	V231-361-201-60	25 4-A		53 27
	79 30	V231-361-202-00	25 4		54 3
	79 32	V251-340-802-00	10 10		54 6
	79 34	V251-340-802-5D	11 7	V304-460-016-00	65 9
V230-360-602-00	78 47	V251-340-804-0D	11 8		66 13
	79 40	V251-341-002-00	32 22	V304-700-008-00	3 3
V231-360-801-60	19 7		33 22	V305-260-012-00	26 6
	23 10		53 32		95 3
	26 12	V251-341-203-00	51 14	V327-261-216-00	52 5
	49 19	V301-260-006-00	7 3	V327-262-110-00	56 8
	61 4		23 48	V328-262-112-00	54 13

# Alphabetical Index

1771-097-100-10

Description	Fig. Key	Description	Fig. Key	Description	Fig. Key
BRACKET/LEVER COMP	47 18	CABLE/BATTERY ASSY	78 13	CASE/CHAIN/A	31 1
	47 18-A		78 13-A	CASE/CHAIN/B	31 4
	47 18-B		79 14	CASE/DIFF	50 8
BRACKET/MOUNT/L COMP	1 1	CABLE/CRUISE ASSY	30 9	CASE/FINAL	53 1
	1 2		20 6		53 1-A
BRACKET/NEUTRAL COMP	26 11	CABLE/EARTH ASSY	76 13	CASE/FINAL/LH	53 16
	26 11-A		77 14		53 16-A
BRACKET/PARKING COMP	39 1		78 16	CASE/FINAL/RH	53 22
BRACKET/RESERVETANK	2 52		79 17		53 22-A
BRACKET/VALVE COMP	62 40	CABLE/HST/F ASSY	27 8	CASE/TRANSMISSION/LH	11 1
			27 8-A	CASE/TRANSMISSION/RH	11 2
BRACKET/WEIGHT COMP	96 6		27 20	CHAIN/ROLLER60X066	32 13
BRAKE/110 ASSY	34 1	CABLE/HST/R ASSY	27 20-A		33 13
BULB	74 23	CABLE/PTO ASSY	28 23	CLAMP	2 19
	75 27	CABLE/RELEASE ASSY	30 22		2 51
BULB/12V25/25W	73 2	CABLE/UPSTOP ASSY	59 1		30 14
BULB/LAMP/14V60MA	75 23		60 1		56 6
BUSH	100 7	CAM/CENTER	100 10	CLAMP, HARNESS	30 15
BUSH(18X20X20)	26 16	CAM/DRAIVE	100 13	CLAMP/WIRE/10-15	2 22
BUSH, LEVER	2 10	CAM/DRIVEN	100 8	CLAMP/WIRE/20-24	62 20
BUSH/10X12X15	49 9	CAM/LOCK/PTO COMP	28 17	CLAMP/WIRE/24-32	61 6
BUSH/12X14X10	28 2	CAP	2 2	CLAMP/WIRE/36-44	2 16
			2 46		2 18
			74 12	CLAMP/WIRE/47-55	4 11
BUSH/12X14X20	30 2		75 13	CLAMP/WIRE/52-63	4 8
BUSH/15X17X11	23 31		99 4		4 10
			51 2	CLEANER/AIR ASSY	4 1
			15 11	CLIP	4 3
BUSH/15X17X16	29 12	CAP, OIL	23 17	CLIP/HOSE/10. 4-11. 1	5 14
			25 2	CLIP/HOSE/11. 9-12. 6	5 15
			89 4		11 11
BUSH/20X23X20	66 2	CAP, TIRE VALVE	91 4		11 11-A
			92 4	CLIP/HOSE/11-13	5 6
			69 3		5 8
BUSH/20X23X30	66 6		53 2		5 12
BUSH/22X25X25	52 3	CAP/22	53 17	CLIP/HOSE/13. 8-14. 8	11 11-B
BUSH/25X28X25	52 2		53 23		11 14
BUSH/35X39X25	65 3	CAP/SEAL/47	37 32		11 20
			40 2	CLUTCH ASSY	49 6
BUSH/35X39X26	51 11		6 4	CLUTCH/DIFFLOCK	19 1
BUSH/62X67X30	51 6	CAP/SHAFT	92 8	CLUTCH/PTO ASSY	24 3
BUSH/68X71X14	98 17	CAP/STEERING	98 1	COLLAR, PINION THRUST	18 9
BUSH/95X100X22	98 16	CAP/TANK/NONLEA ASSY	18 6	COLLAR, THRUST	18 11
BUTTON	39 6	CAP/WHEEL	49 4	COLLAR/08X12X10	28 12
			80 1		28 14
CABLE/4WD/LOCK ASSY	48 6	CASE			
CABLE/ACCELERATOR	8 9	CASE, DIFF			
CABLE/ACCELERATOR/AU	9 1	CASE/4WD			
CABLE/BATTERY ASSY	76 10	CASE/BLOWER COMP			
	77 11				

CLICK HERE TO **DOWNLOAD** THE COMPLETE MANUAL

- Thank you very much for reading the preview of the manual.
- You can download the complete manual from: [www.heydownloads.com](http://www.heydownloads.com) by clicking the link below



- Please note: If there is no response to CLICKING the link, please download this PDF first and then click on it.

CLICK HERE TO **DOWNLOAD** THE COMPLETE MANUAL