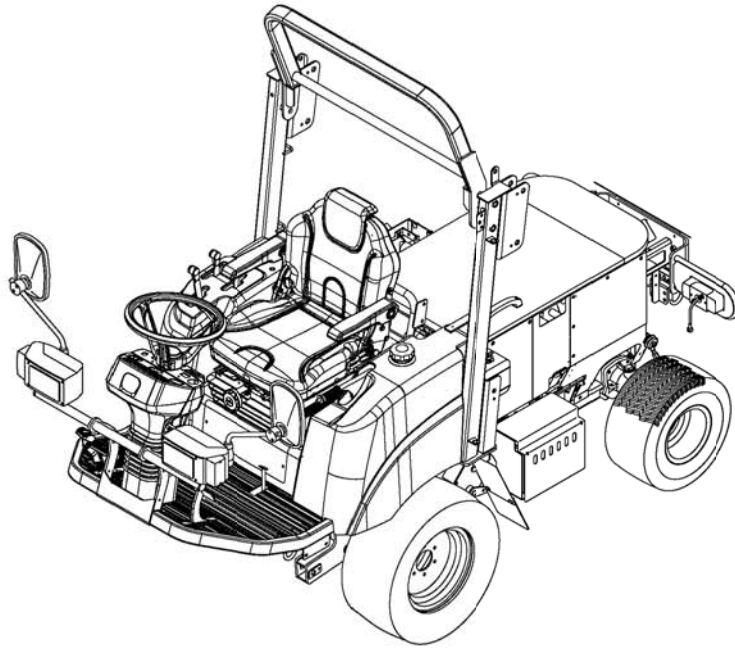




Parts Catalogue



RIDING MOWER

SF224F
SF235F

SF224F-BGRE42,BGZRE42,GWZRE42
SF235F-BGRE42,BGZRE42,GWZRE42

1832-097-100-00

Printed in Japan October,2017

CLICK HERE TO **DOWNLOAD** THE COMPLETE MANUAL

- Thank you very much for reading the preview of the manual.
- You can download the complete manual from: www.heydownloads.com by clicking the link below



- Please note: If there is no response to CLICKING the link, please download this PDF first and then click on it.

CLICK HERE TO **DOWNLOAD** THE COMPLETE MANUAL

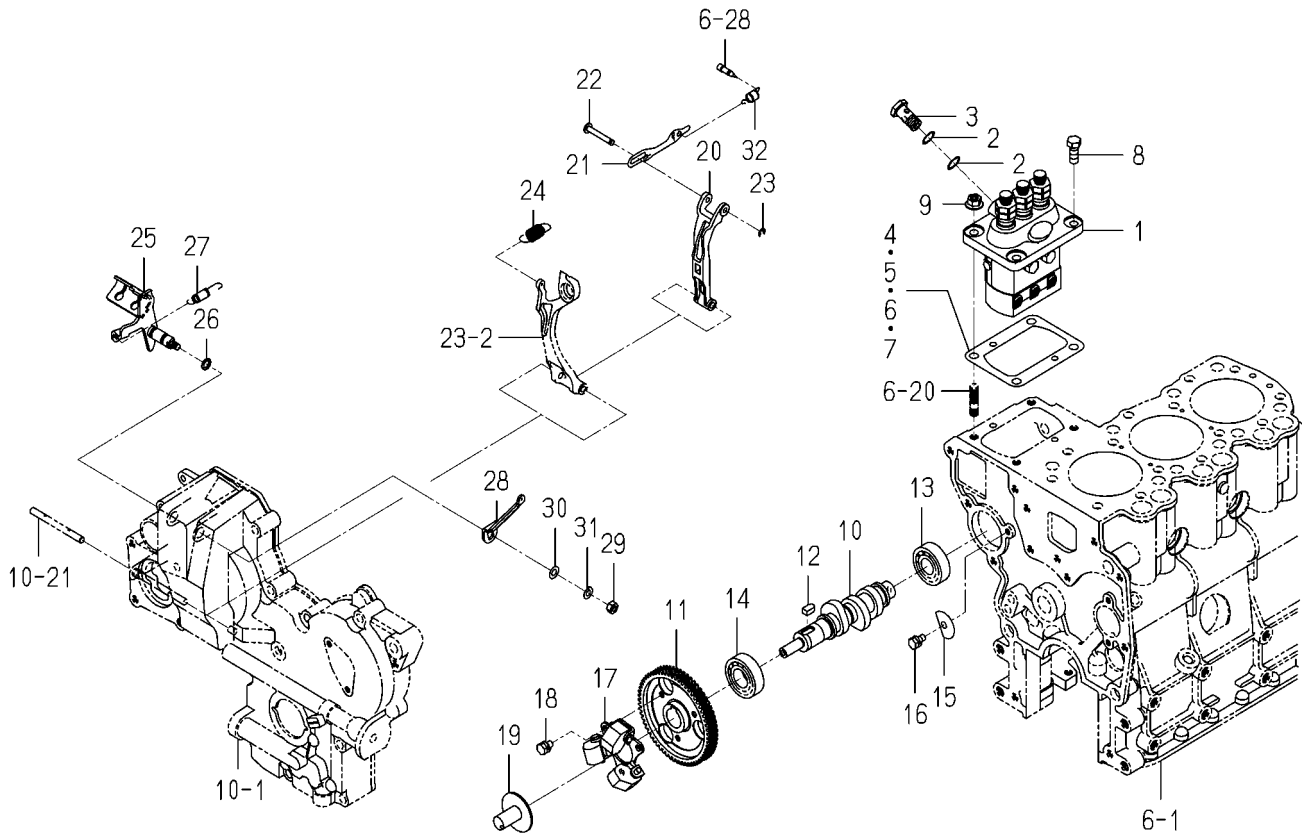
Contents

SF235F

ENGINE(E3CD-VG04)

SHORT BLOCK ENGIASSY.....	Fig. 1
CYLINDER HEAD.....	Fig. 2
CYLINDER HEAD COVER.....	Fig. 3
INLET MANIFOLD.....	Fig. 4
EXHAUST MANIFOLD.....	Fig. 5
CYLINDER BLOCK.....	Fig. 6
BEARING/UNDER SIZE (OPTION).....	Fig. 7
OIL PAN.....	Fig. 8
REAR PLATE.....	Fig. 9
TIMING GEAR CASE.....	Fig. 10
HANGER.....	Fig. 11
VALVE.....	Fig. 12
CAM SHAFT.....	Fig. 13
PISTON.....	Fig. 14
PISTON/OVER SIZE (OPTION).....	Fig. 15
CRANK SHAFT.....	Fig. 16
OIL PUMP.....	Fig. 17
WATER PUMP.....	Fig. 18
COOLING FAN.....	Fig. 19
INJECTION NOZZLE.....	Fig. 20
INJECTION PUMP.....	Fig. 21
FUEL PIPE.....	Fig. 22
ADAPTER.....	Fig. 23
ELECTRIC (1).....	Fig. 24

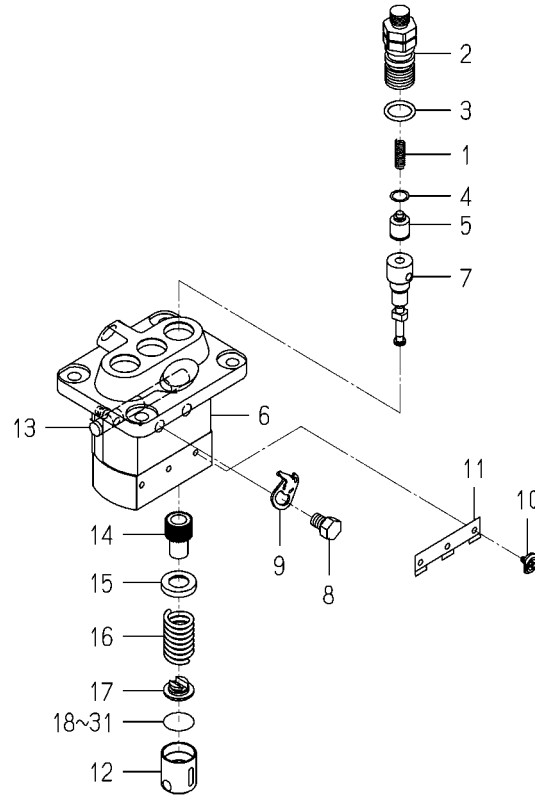
FIG. 21 INJECTION PUMP



6004-511D-0100

KEY	PART CODE	DESCRIPTION	S P C	TYPE OF MODEL		I T C	C O L	G R P	REMARKS
				E3112	G08				
1	6215-600-103-30	INJECTIONPUMP ASSY	*	1					FIG 029
2	6215-619-010-00	WASHER/AIR BLEEDER	*	2					
3	6215-619-009-00	SCREW/HOLLOW	*	1					
4	6219-752-045-00	SHIM/INJECTIONPUMP	*	1					
5	6219-752-044-00	SHIM/INJECTIONPUMP	*	1					
6	6219-752-046-00	SHIM/INJECTIONPUMP	*	1					
7	6219-752-047-00	SHIM/INJECTIONPUMP	*	1					
8	V201-360-802-00	BOLT/M8X20/7T	*	2					
9	3817-401-001-00	NUT/M08	*	2					
10	6215-621-016-30	CAMSHAFT/INJECTION P	*	1					
11	6212-524-002-40	GEAR/INJECTIONPUMP	*	1					
12	6209-730-005-00	KEY/07X05X09	*	1					
13	V600-110-620-30	BEARING,RB/6203	*	1					
14	1729-202-001-00	BEARING/BALL	*	1					
15	6212-535-010-10	PLATE/THRUST/INJECTI	*	1					
16	V210-560-601-20	BOLT,S/M6X12/7T	*	1					
17	6215-520-001-00	FLYWEIGHT	*	1					
18	6209-030-043-00	BOLT/M6X10	*	3					
19	6215-526-004-00	THRUSTPIECE	*	1					
20	6215-541-001-10	ARM/FLOATING COMP	*	1					
21	6215-543-002-10	RINK/CONTROL	*	1					
22	6215-542-006-00	PIN,CONTROL	*	1					
23	V710-140-004-00	RING,SNAP/4 E	*	1					
24	6215-531-023-00	SPRING/GOVERNOR	*	1					
25	6215-541-024-50	LEVER/CONTROL COMP	*	1					
26	V720-101-900-80	O-RING/1A,P8	*	1					
27	6209-580-002-10	SPRING,RETURN	*	1					
28	6215-549-007-10	ARM/CONTROL	*	1					
29	V301-260-006-00	NUT/M6	*	1					
30	V411-260-006-00	WASHER,PL/M6	*	1					

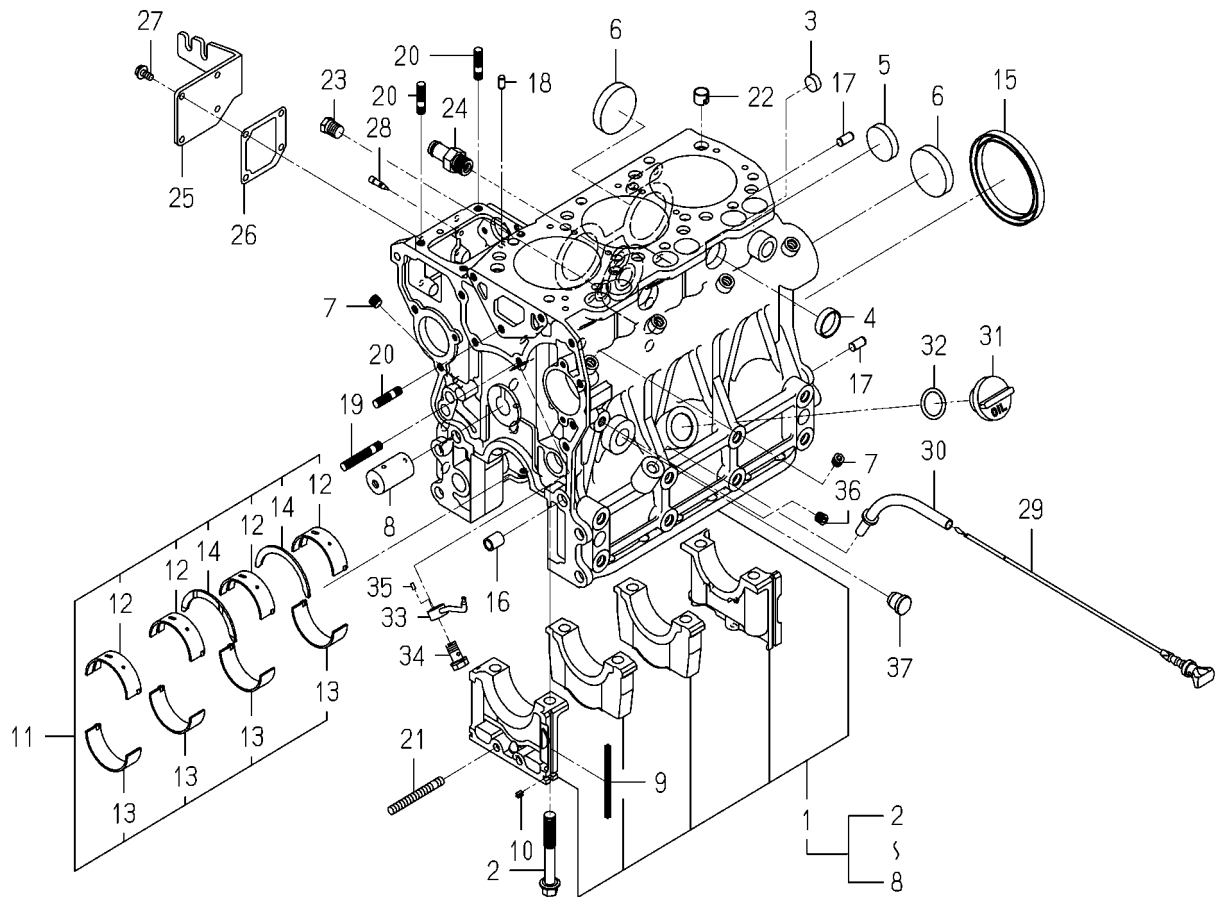
**FIG. 29 COMPONENT PARTS
FOR 6215-600-103-30 ON Fig.21**



6215-600-103-3J

KEY	PART CODE	DESCRIPTION	S P C	TYPE OF MODEL		I T C	C O L	G R P	REMARKS
				E3112 G08					
1	6215-643-006-00	SPRING/DELIVERYVALVE	*	3					
2	6215-644-007-00	HOLDER/DELIVERYVALVE	*	3					
3	6215-649-019-00	ORING	*	3					
4	6215-649-002-00	GASKET/DELIVERYVALVE	*	3					
5	6215-641-006-00	VALVE ASSY	*	3					
6	6215-611-001-00	HOUSING ASSY	*	1					
7	6215-631-019-00	ELEMENT ASSY	*	3					
8	6215-619-022-00	BOLT/WASHERHEAD	*	2					
9	6215-612-001-00	PLATE/ADJUSTING	*	2					
10	6215-629-001-00	PIN/INJECTIONPUMP	*	3					
11	6215-629-002-00	PLATE	*	1					
12	6215-622-001-00	TAPPET/INJECTIO ASSY	*	3					
13	6215-637-001-00	RACK/CONTROL ASSY	*	1					
14	6215-635-001-00	SLEEVE/PLUNGER	*	3					
15	6215-639-004-00	SEAT/SPRING/UPPER	*	3					
16	6215-634-001-00	SPRING/PUMPPLUNGER	*	3					
17	6215-639-005-00	SEAT/SPRING/LOWER	*	3					
18	6215-629-003-00	PLATE/TAPPET/AD 0.6	*	1					
19	6215-629-004-00	PLATE/TAPPET/AD 0.7	*	1					
20	6215-629-005-00	PLATE/TAPPET/AD 0.8	*	1					
21	6215-629-006-00	PLATE/TAPPET/AD 0.9	*	1					
22	6215-629-007-00	PLATE/TAPPET/AD 1.0	*	1					
23	6215-629-008-00	PLATE/TAPPET/AD 0.2	*	1					
24	6215-629-009-00	PLATE/TAPPET/AD 0.3	*	1					
25	6215-629-010-00	PLATE/TAPPET/AD 0.4	*	1					
26	6215-629-011-00	PLATE/TAPPET/AD 0.5	*	3					
27	6215-629-012-00	PLATE/TAPPET/AD 0.25	*	1					
28	6215-629-013-00	PLATE/TAPPET/AD 0.35	*	1					
29	6215-629-014-00	PLATE/TAPPET/AD 0.45	*	1					
30	6215-629-015-00	PLATE/TAPPET/AD 0.55	*	1					

FIG. 6 CYLINDER BLOCK



6005-204F-0100

KEY	PART CODE	DESCRIPTION	S P C	TYPE OF MODEL		I T C	C O L	G R P	REMARKS
				E3CD	VG04				
1	6211-210-116-00	CYLINDERBLOCK ASSY	*	1					
2	6209-000-006-00	BOLT	*	8					
3	6209-610-007-00	CUP/SEALING/16	*	2					
4	6209-610-001-10	CUP/SEALING/28	*	2					
5	6209-610-009-00	CUP/SEALING/36	*	1					
6	6209-610-003-00	CUP/SEALING/50	*	3					
7	6209-605-007-10	PLUG/PT1/8	*	8					
8	6212-531-008-30	PIN/IDLEGEAR	*	1					
9	6211-258-001-00	SEAL, BEARING CAP	*	4					
10	6211-258-002-00	SEAL, BEARING CAP/7	*	2					
11	6211-510-008-00	BEARING/CRANK SET	*	1					
12	6211-511-007-00	BEARING/CRANK/UPPER	*	4					
13	6211-511-008-00	BEARING/CRANK/LOWER	*	4					
14	6211-599-004-00	BEARING/THRUST/CRANK	*	2					
15	6209-625-003-20	OILSEAL	*	1					
16	6209-749-001-20	PIN/TUBE	*	2					
17	6213-129-006-00	PIN/STRAIGHT	*	2					
18	6209-740-005-00	PIN	*	2					
19	6904-110-840-00	STUD/M8X40	*	1					
20	6904-110-822-00	STUD	*	3					
21	V251-340-806-00	STUD/M8X60/7T	*	1					
22	6294-453-002-00	DOWEL	*	2					
23	V782-160-000-4T	PLUG/SCREW/SEAL	*	1					
24	6213-721-015-00	PIPE/WATER/HOUSING	*	1					
25	6211-291-015-20	COVER/INJECTIONPUMP	*	1					
26	6211-292-001-20	GASKET/COVER	*	1					
27	V230-360-601-20	FLANGE BOLT/M6X12	*	4					
28	6215-549-013-00	PIN	*	1					
29	6211-760-057-10	LEVELGAGE	*	1					
30	6211-766-025-00	GUIDE/LEVELGAGE COMP	*	1					

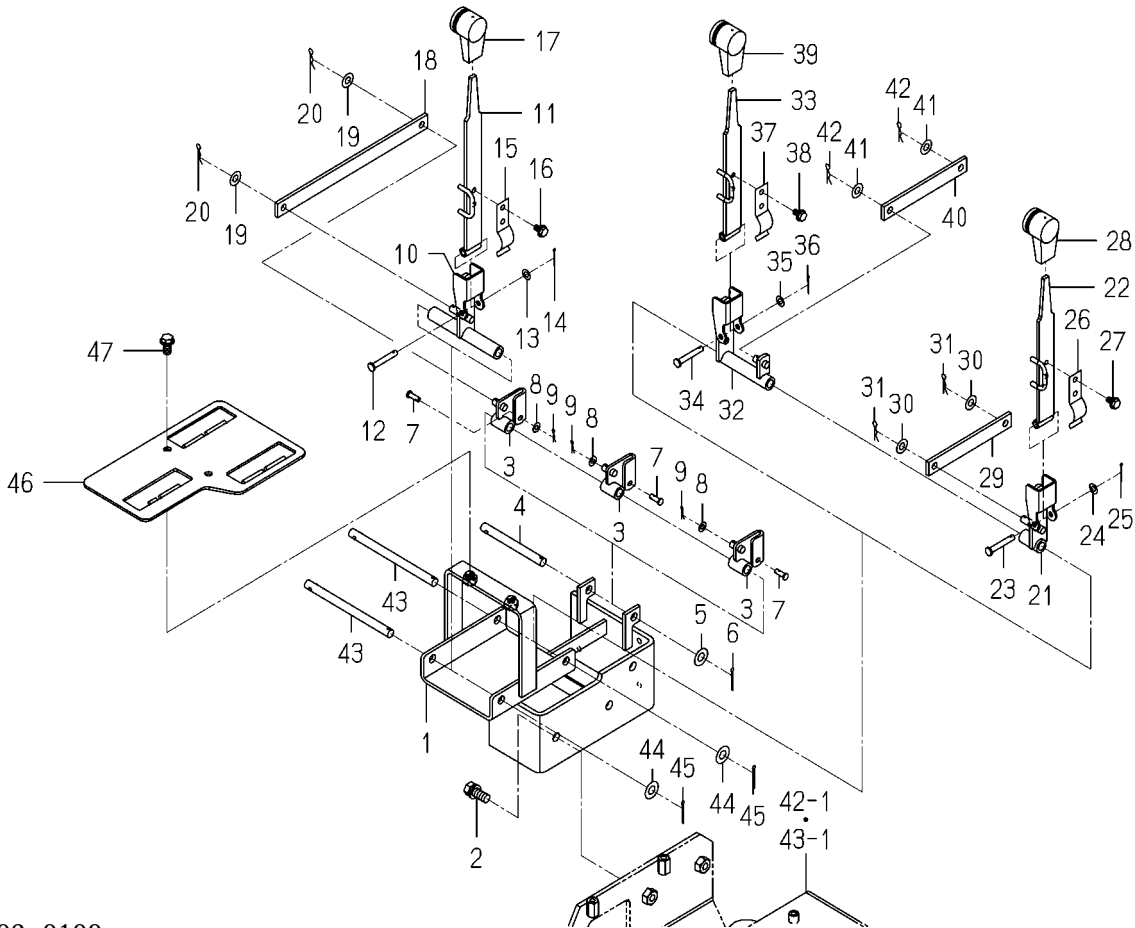
CLICK HERE TO **DOWNLOAD** THE COMPLETE MANUAL

- Thank you very much for reading the preview of the manual.
- You can download the complete manual from: www.heydownloads.com by clicking the link below



- Please note: If there is no response to CLICKING the link, please download this PDF first and then click on it.

CLICK HERE TO **DOWNLOAD** THE COMPLETE MANUAL

FIG. 52 CONTROL SYSTEM

1832-503-0100

KEY	PART CODE	DESCRIPTION	S P C	TYPE OF MODEL		I T C	C O L	G R P	REMARKS
				SF224F	SF235F				
1	1832-503-250-00	BRACKET/VALVE COMP	*	1	1				
2	V211-261-002-50	BOLT,S/M10X25	*	2	2				
3	1832-503-210-00	ARM/SPOOL COMP	*	3	3				
4	1832-503-003-00	PIN/10X101	*	1	1				
5	V411-260-010-00	WASHER,PL/M10	*	1	1				
6	V500-162-502-50	PIN,SPLIT/2.5X25	*	1	1				
7	1771-503-003-00	PIN/05X17	*	3	3				
8	V411-260-005-00	WASHER,PL/M5	*	3	3				
9	V560-160-005-00	PIN/SNAP	*	3	3				
10	1832-503-220-00	ARM/LIFT/MOWER COMP	*	1	1				
11	1809-503-220-10	LEVER/LIFT COMP	*	1	1				
12	2145-586-002-00	PIN/6X42	*	1	1				
13	V411-260-006-00	WASHER,PL/M6	*	1	1				
14	V500-162-002-00	PIN,SPLIT/2X20	*	1	1				
15	1809-503-003-00	SPRING/PLATE	*	1	1				
16	V230-360-601-00	FLANGEBOLT/M6X10	*	2	2				
17	1444-307-007-00	GRIP	*	1	1				
18	1832-503-001-00	PLATE/I/19X254	*	1	1				
19	V411-260-008-00	WASHER,PL/M8	*	2	2				
20	V560-160-008-00	PIN/SNAP	*	2	2				
21	1832-503-230-00	ARM/LIFT/COLLECTOR	*	1	1				
22	1832-503-270-10	LEVER/COLLECTOR COMP	*	1	1				
23	2145-586-002-00	PIN/6X42	*	1	1				
24	V411-260-006-00	WASHER,PL/M6	*	1	1				
25	V500-162-002-00	PIN,SPLIT/2X20	*	1	1				
26	1809-503-003-00	SPRING/PLATE	*	1	1				
27	V230-360-601-00	FLANGEBOLT/M6X10	*	2	2				
28	1444-307-007-00	GRIP	*	1	1				
29	1832-503-002-00	PLATE/I/19X140	*	1	1				
30	V411-260-008-00	WASHER,PL/M8	*	2	2				

Numerical Index

1832-097-100-00

Part Code	Fig. Key	Part Code	Fig. Key	Part Code	Fig. Key
1102-611-006-10	60 7	1560-240-007-40	16 6	1672-301-002-00	21 2
1118-606-002-10	72 10	1560-531-020-00	48 27	1672-301-003-00	21 8
1342-402-006-00	67 19	1560-630-024-00	71 12	1672-301-004-00	21 10
1376-402-003-00	67 20	1560-666-004-00	63 23	1673-431-001-10	26 22
1376-606-005-00	60 3	1560-695-021-00	30 18	1673-525-002-30	71 7
1404-503-006-00	54 13	1560-695-022-00	30 22	1674-619-300-10	63 15
1415-102-007-00	83 1	1564-216-004-10	20 4		64 15
1415-102-008-00	83 3	1572-102-003-00	83 8	1674-619-310-00	63 16
1415-102-013-00	83 9	1575-261-018-00	27 8		64 16
1416-621-037-00	10 5		28 8	1674-654-270-00	63 26
1421-602-005-10	72 5	1575-616-005-00	70 4		64 25
1421-603-004-00	3 19	1593-117-003-10	13 5	1674-654-271-00	63 27
	4 19	1600-505-007-10	13 4		64 26
1423-616-004-00	3 22	1600-624-004-10	67 21	1674-654-272-00	63 28
	4 22	1614-129-003-00	66 44		64 27
1425-433-018-00	25 5	1614-203-015-00	20 2	1674-904-005-10	76 11
1427-301-002-20	21 6	1614-222-007-00	26 16		77 11
1427-301-005-00	21 9	1614-223-221-00	19 2	1674-904-008-00	76 5
1427-301-007-00	21 11	1614-702-551-20	71 8		77 5
1427-310-001-00	34 6	1614-702-552-00	71 9	1675-112-002-00	11 2
1427-310-220-10	34 7	1614-922-200-20	81 1		12 4
1432-616-002-00	60 9	1620-410-001-10	80 1	1675-116-001-00	13 11
1434-310-220-00	34 5	1632-273-200-00	27 17	1675-506-002-00	55 46
1440-103-201-00	83 4		28 17	1683-271-560-00	30 20
1442-313-202-00	36 2	1636-436-002-00	79 2	1684-112-230-00	12 1
1444-102-204-00	83 5	1636-611-011-00	62 4	1685-604-003-00	3 30
1444-122-002-00	35 35	1636-631-008-00	69 4		4 30
1444-307-007-00	52 17	1646-111-210-20	9 13		44 15
	52 28	1646-226-053-00	30 2		45 15
	52 39	1646-640-580-00	30 33	1688-211-057-00	27 9
1444-314-008-00	20 15	1650-104-200-10	7 1		28 9
1444-314-009-10	29 5		8 1	1688-211-505-00	87 4
1444-328-272-00	36 4	1650-104-201-00	7 3	1688-211-506-00	87 8
1444-328-273-00	36 3		8 3	1688-211-509-00	87 11
1444-411-006-00	21 7	1650-104-203-10	7 4	1688-211-522-00	87 13
1480-207-011-00	33 20		8 4	1689-205-005-10	22 3
1518-306-203-10	49 58	1650-104-210-00	7 2	1689-271-006-00	30 3
1518-432-250-10	49 57		8 2	1689-272-240-00	31 15
1524-122-001-10	35 8	1650-135-002-00	35 6	1689-272-260-00	31 1
1544-104-205-00	7 5	1650-509-280-00	55 44	1689-613-260-00	65 2
	8 5	1650-509-310-00	56 19	1690-102-210-00	3 31
1544-120-008-10	16 8	1650-650-222-00	67 5		4 31
1544-304-006-10	21 5	1659-650-200-20	11 1	1690-102-212-00	3 32
1560-132-007-30	30 21	1672-105-210-10	9 1		4 32
	35 36	1672-105-211-00	83 7	1690-102-213-00	3 33

Numerical Index

1832-097-100-00

Part Code	Fig. Key	Part Code	Fig. Key	Part Code	Fig. Key
V744-130-450-80	33 4				
	33 8				
V760-150-000-00	23 3				
	31 6				
	31 20				
	35 3				
	35 15				
	35 26				
	49 61				
V780-140-000-1T	55 26				
	82 40				
V780-140-000-20	55 37				
V782-160-000-2B	48 20				
V782-160-000-4B	48 4				
	49 59				
V782-160-000-6B	32 2				
V782-160-000-8B	16 7				
	32 4				
V793-142-480-60	53 4				
W201-261-206-00	81 2				

CLICK HERE TO **DOWNLOAD** THE COMPLETE MANUAL

- Thank you very much for reading the preview of the manual.
- You can download the complete manual from: www.heydownloads.com by clicking the link below



- Please note: If there is no response to CLICKING the link, please download this PDF first and then click on it.

CLICK HERE TO **DOWNLOAD** THE COMPLETE MANUAL