

CLICK HERE TO **DOWNLOAD** THE COMPLETE MANUAL

- Thank you very much for reading the preview of the manual.
- You can download the complete manual from: www.heydownloads.com by clicking the link below



- Please note: If there is no response to CLICKING the link, please download this PDF first and then click on it.

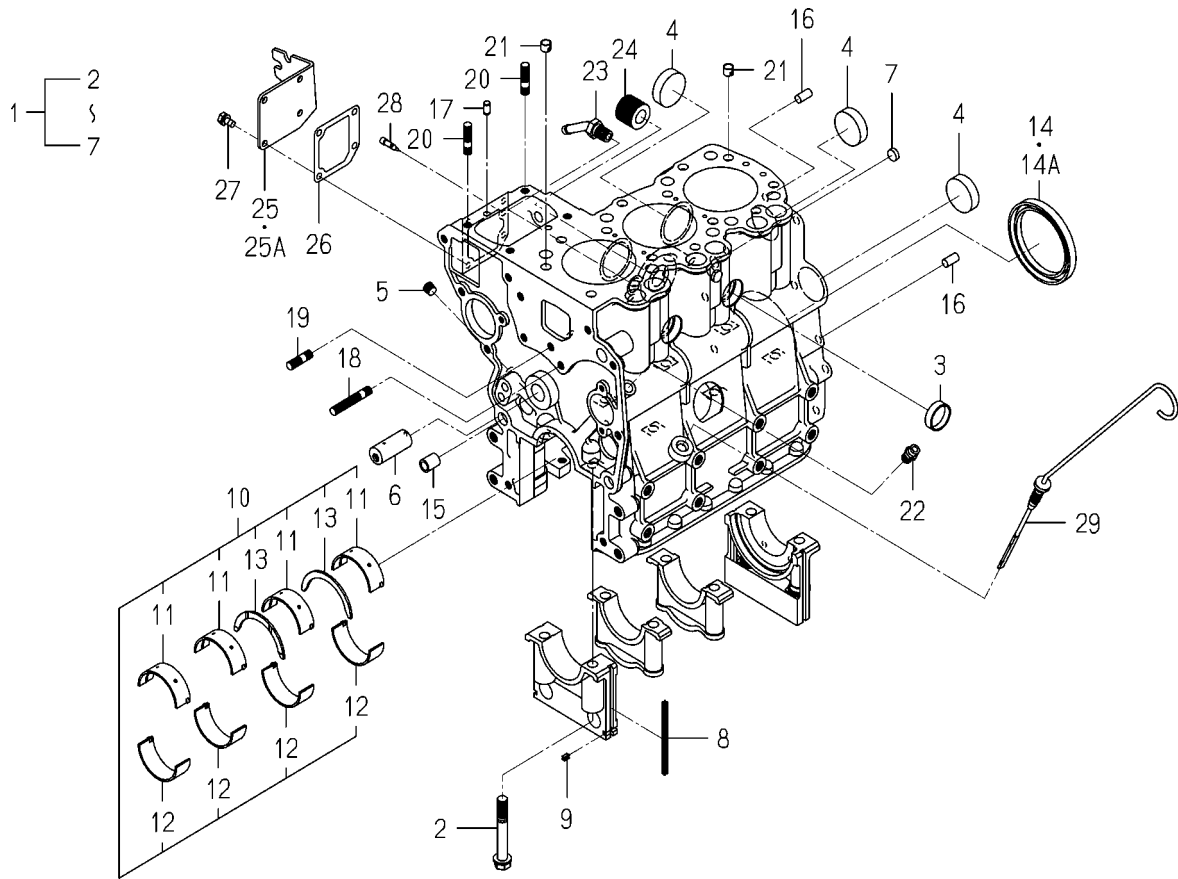
CLICK HERE TO **DOWNLOAD** THE COMPLETE MANUAL

C o n t e n t s

CHASSIS

ENGINE BRACKET SYSTEM.....	Fig. 1
COLLECTOR OPTION.....	Fig. 2
RADIATOR SYSTEM.....	Fig. 3
MUFFLER SYSTEM.....	Fig. 4
AIR CLEANER SYSTEM.....	Fig. 5
FUEL LINE SYSTEM.....	Fig. 6
FUEL TANK SYSTEM.....	Fig. 7
BATTERY SYSTEM.....	Fig. 8
ACCELERATOR LEVER SYSTEM.....	Fig. 9
DRIVE SHAFT SYSTEM.....	Fig. 10
TRANSMISSION CASE SYSTEM.....	Fig. 11
BRAKE SYSTEM.....	Fig. 12
PTO DRIVE SYSTEM.....	Fig. 13
WHEEL SFAFT SYSTEM.....	Fig. 14
DIFF-LOCK AND DIFF-PEDAL SYSTEM	
(SF200).....	Fig. 15
HST UNLOAD SYSTEM.....	Fig. 16
BRAKE PEDAL,PARKING BRAKE SYSTEM.....	Fig. 17
PTO LEVER SYSTEM.....	Fig. 18
FRONT WHEEL SYSTEM.....	Fig. 19
HST LINK SYSTEM.....	Fig. 20
HST PEDAL SYSTEM.....	Fig. 21
HST PIPING SYSTEM.....	Fig. 22
CHASSIS SYSTEM.....	Fig. 23
STEERING WHEEL	
AND STEERING SHAFT SYSTEM.....	Fig. 24
TILT LEVER SYSTEM.....	Fig. 25

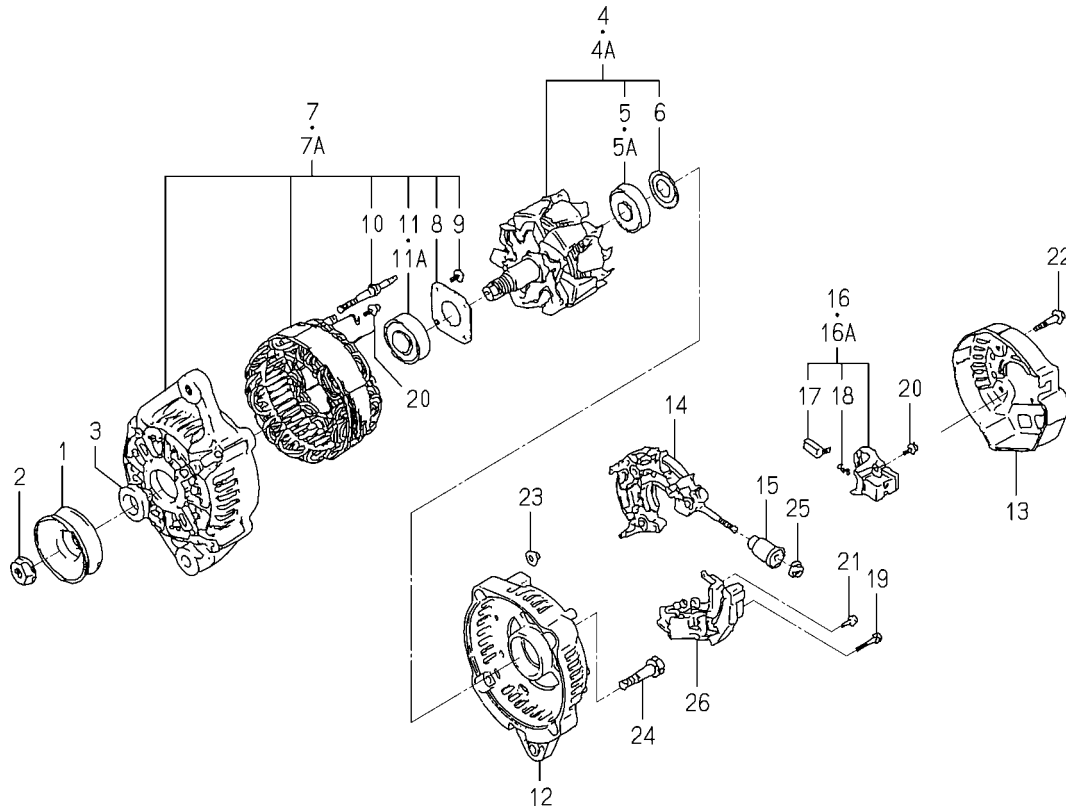
FIG. 5 CYLINDER BLOCK



6004-201R-0100

KEY	PART CODE	DESCRIPTION	S P C	TYPE OF MODEL		I T C	C O L	G R P	REMARKS
				E3100G					
1	6211-210-046-00	CYLINDERBLOCK ASSY	*	1					
2	6209-000-004-10	BOLT	*	8					
3	6209-610-001-00	CAP,SEALING	*	2					
4	6911-219-195-00	CAP,SEALING	*	4					
5	6509-605-019-10	PLUG	*	3					
6	6212-531-005-10	PIN/IDLEGEAR	*	1					
7	6911-129-083-00	CAP,SEALING	*	2					
8	6211-258-001-00	SEAL,BEARING CAP	*	4					
9	6211-258-002-00	SEAL,BEARING CAP/7	*	2					
10	6211-510-001-00	METAL,CRANK SET	*	1					
11	6211-511-003-00	BEARING/CRANK/UPPER	*	4					
12	6211-511-004-00	BEARING/CRANK/LOWER	*	4					
13	6211-599-001-10	BEARING,THRUST CRANK	*	2					
14	6209-625-001-00	SEAL,OIL	*	1	-187632				
14A	6209-625-012-00	OILSEAL	*	1	187633-				
15	6209-749-001-20	PIN/TUBE	*	2					
16	6908-160-816-00	PIN	*	2					
17	6209-740-005-00	PIN	*	2					
18	6904-110-840-00	STUD/M8X40	*	1					
19	6904-110-818-00	STUD	*	1					
20	6904-110-822-00	STUD	*	2					
21	6294-453-002-00	DOWEL	*	2					
22	6909-902-299-00	NIPPLE	*	1					
23	6213-721-007-00	PIPE/WATERDRAIN	*	1					
24	6213-319-001-00	CONNECTOR,OIL FILTER	*	1					
25	6211-291-013-00	COVER/INJECTIONPUMP	*	1	-179810				
25A	6211-291-013-10	COVER/INJECTIONPUMP	*	1	179811-		1		
26	6211-292-001-20	GASKET/COVER	*	1					
27	6901-910-612-00	BOLT,SEMS/M6X12	*	4					
28	6215-549-013-00	PIN	*	1					

**FIG. 29 COMPONENT PARTS FOR 6281-200-005-00
ON Fig.23**



6281-200-005-0B

KEY	PART CODE	DESCRIPTION	S P C	TYPE OF MODEL		I T C	C O L	G R P	REMARKS
				E3100G					
1	6281-222-004-00	PULLEY	*	1					
2	6281-229-002-00	NUT	*	1					
3	6281-229-003-00	COLLOR	*	1					
4	6281-221-001-00	ROTOR ASSY	*	1	-186338				
4A	6281-221-007-00	ROTOR ASSY	*	1	186339-				
5	6281-229-005-00	BEARING	*	1	-186338				
5A	6281-229-032-00	BEARING/BALL	*	1	186339-				
6	6281-229-004-00	COVER,BEARING	*	1					
7	6281-213-006-00	FRAME ASSY	*	1	-186338				
7A	6281-213-018-00	FRAME/DRIVEEND ASSY	*	1	186339-				
8	6281-229-006-00	PLATE	*	1					
9	6281-229-007-00	BOLT	*	4					
10	6281-229-008-00	BOLT	*	2					
11	6281-229-009-00	BEARING	*	1	-186338				
11A	6281-229-033-00	BEARING/BALL	*	1	186339-				
12	6281-214-003-00	FRAME	*	1					
13	6281-214-004-00	COVER	*	1					
14	6281-229-029-00	HOLDER ASSY	*	1					
15	6281-229-011-00	BUSH	*	1					
16	6281-217-001-00	HOLDER,BRUSH ASSY	*	1	-186338				
16A	6281-217-002-00	HOLDER/BRUSH ASSY	*	1	186339-				
17	6281-215-001-00	BRUSH	*	2					
18	6281-216-001-00	SPRING	*	2					
19	6281-229-012-00	BOLT	*	2					
20	6281-229-013-00	BOLT	*	6					
21	6281-229-014-00	BOLT	*	1					
22	6281-229-015-00	BOLT	*	3					
23	6281-229-016-00	NUT	*	2					
24	6281-229-017-00	BOLT	*	2					
25	6281-229-018-00	NUT	*	1					

CLICK HERE TO **DOWNLOAD** THE COMPLETE MANUAL

- Thank you very much for reading the preview of the manual.
- You can download the complete manual from: www.heydownloads.com by clicking the link below

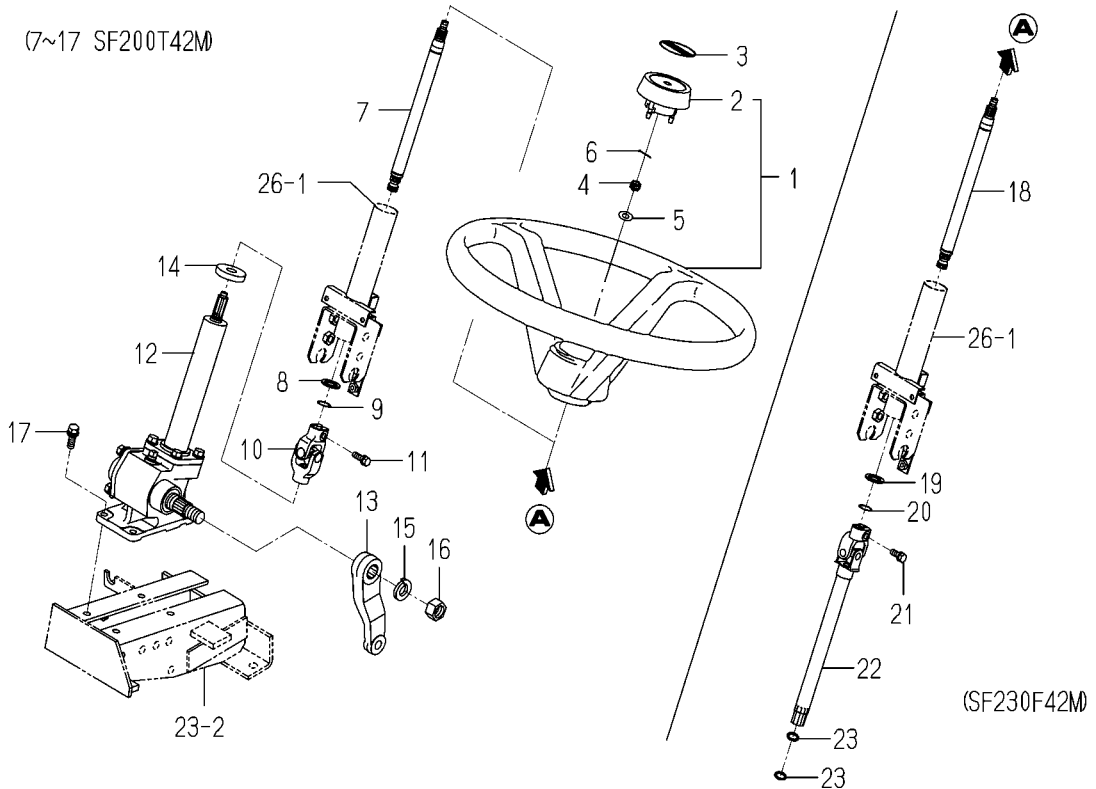


- Please note: If there is no response to CLICKING the link, please download this PDF first and then click on it.

CLICK HERE TO **DOWNLOAD** THE COMPLETE MANUAL

CHASSIS

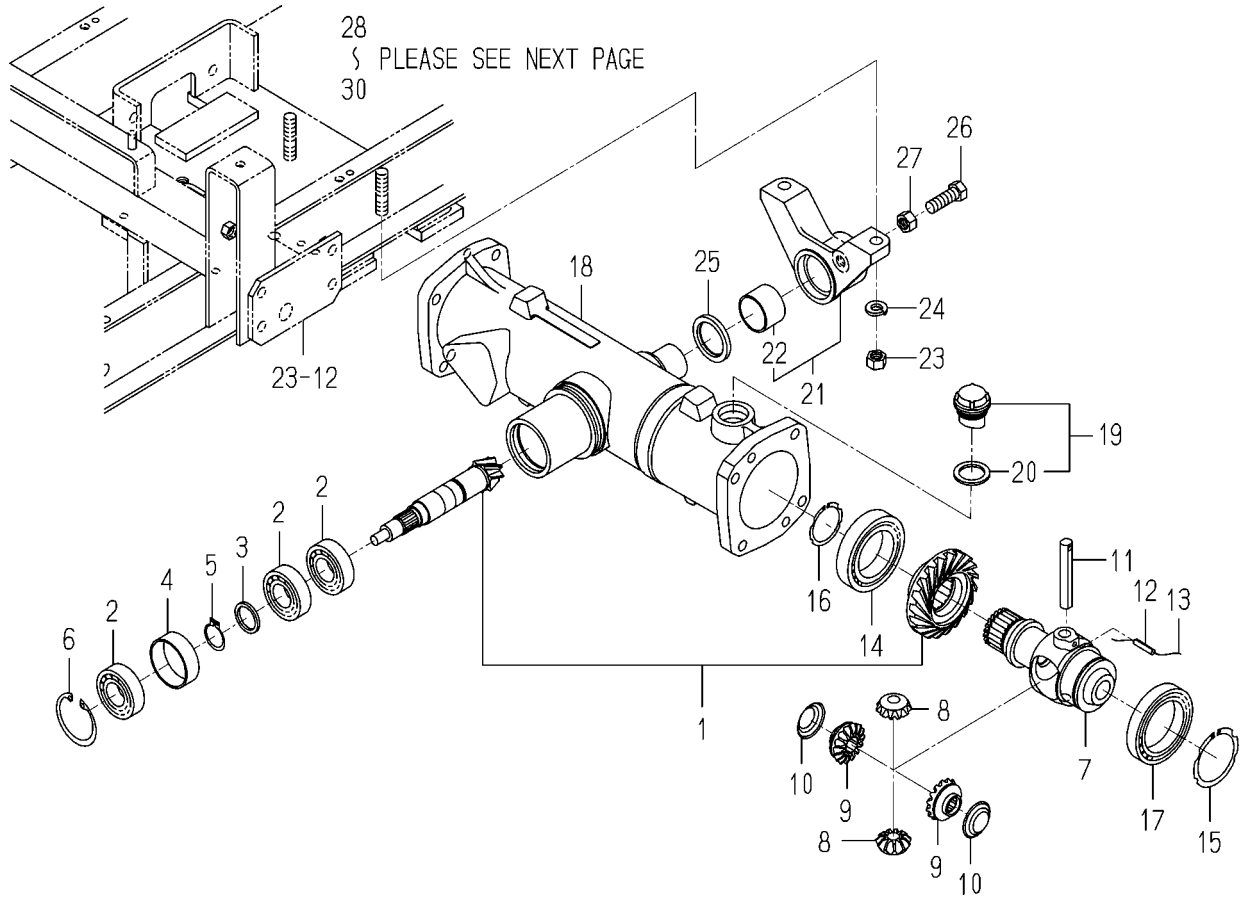
FIG. 24 STEERING WHEEL AND STEERING SHAFT SYSTEM



1689-401-0100,1689-402A-0100,1689-403A-0100

KEY	PART CODE	DESCRIPTION	S P C	TYPE OF MODEL		I T C	C O L	G R P	REMARKS
				SF200 T42M	SF230 F42M				
1	1656-401-220-00	WHEEL/STEERING ASSY	*	1	1				
2	1656-401-222-00	CAP	*	1	1				
3	1656-901-007-00	ORNAMENT/STEERING	*	1	1				
4	V327-262-110-00	NUT/M10X1.25	*	1	1				
5	V411-260-010-00	WASHER/M10	*	1	1				
6	V500-162-002-00	PIN,SPLIT/2 X20	*	1	1				
7	1689-403-002-10	SHAFT/STEERING	*	1					
8	3752-152-007-00	WASHER	*	2					
9	V704-140-019-00	RING,SNAP 19	*	2					
10	1689-402-250-10	JOINT/UNIVERSAL	*	1					
11	V211-560-802-50	BOLT,SEMS/M8X25 7T	*	1					
12	1689-402-260-00	CASE/STEERING ASSY	*	1					FIG 052
13	1689-402-241-00	ARM/PITMAN	*	1					
14	1689-402-242-00	SEAL/DUST	*	1					
15	V401-160-020-00	WASHER,SP/M20	*	1					
16	V334-260-020-00	NUT	*	1					
17	V211-561-003-00	BOLT/M10X30	*	4					
18	1689-403-002-10	SHAFT/STEERING	*		1				
19	3752-152-007-00	WASHER	*		2				
20	V704-140-019-00	RING,SNAP 19	*		2				
21	V211-560-802-50	BOLT,SEMS/M8X25 7T	*		1				
22	1689-403-200-00	SHAFT/STEERING/ COMP	*		1				
23	V720-102-401-40	O-RING/P14	*		2				

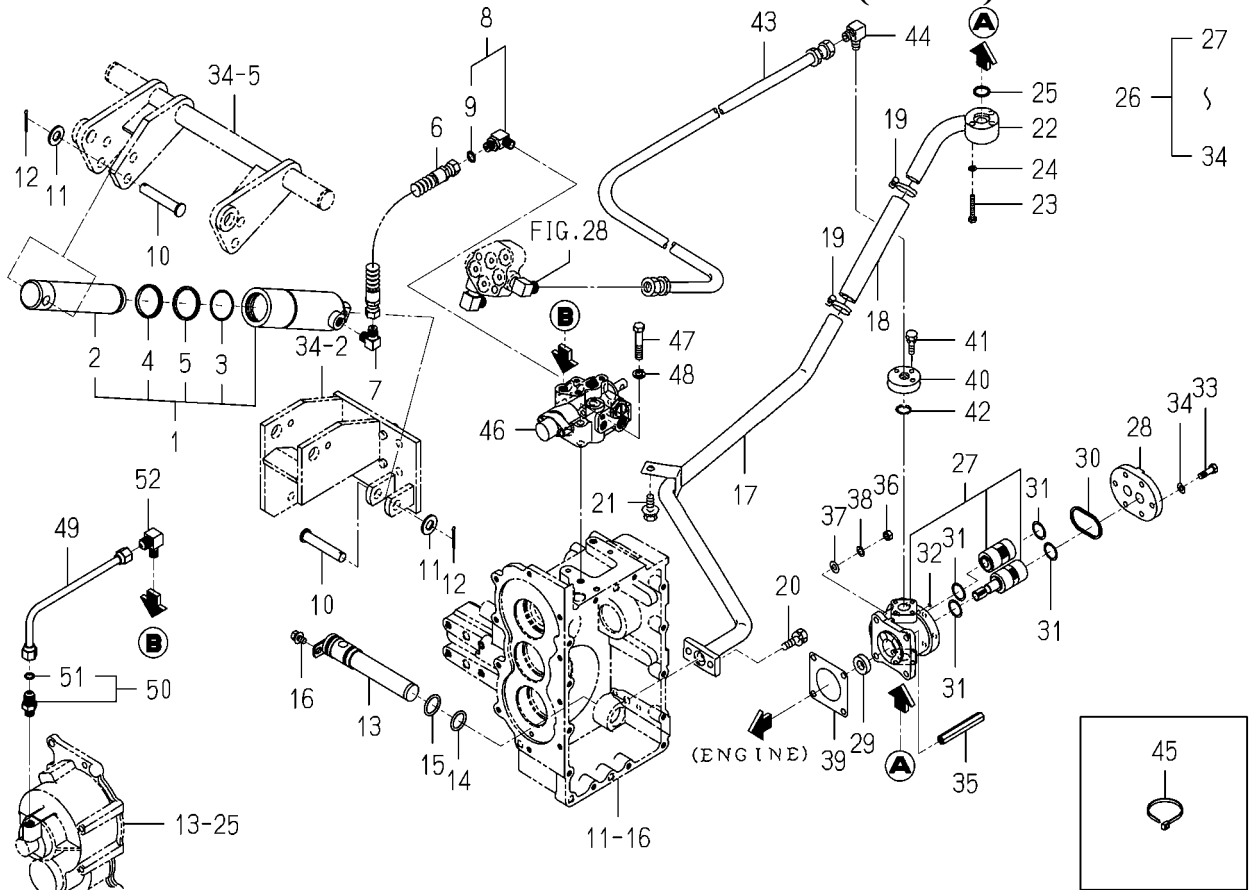
FIG. 32 REAR AXLE SYSTEM (SF230)(1/4)



1689-434 -0100

KEY	PART CODE	DESCRIPTION	S P C	TYPE OF MODEL		I T C	C O L	G R P	REMARKS
				SF200 T42M	SF230 F42M				
1	1689-434-200-00	PINION/BEVEL SET	*		1				
2	1594-221-001-00	BEARING/BALL 6205SH2	*		3				
3	1507-216-004-10	COLLAR/25X32X3	*		1				
4	1650-432-001-00	COLLAR/48X52X17	*		1				
5	V704-140-025-00	RING,SNAP/25 C	*		1				
6	V705-140-052-00	RING,SNAP/52 C	*		1				
7	1614-432-002-00	CASE/DIFF	*		1				
8	1614-432-003-00	PINION/BEVEL/11	*		2				
9	1614-432-004-00	GEAR/BEVEL/15	*		2				
10	1614-432-005-00	WASHER	*		2				
11	1614-432-006-00	PIN/12X75	*		1				
12	V580-140-502-50	PIN,SPRING/5 X25 W	*		1				
13		WIRE	*		1				
14	V600-110-601-00	BEARING,RB/6010	*		1				
15	V706-140-055-00	RING/SNAP	*		1				
16	V706-140-040-00	RING/SNAP	*		1				
17	V600-110-691-10	BEARING	*		1				
18	1672-433-001-10	HOUSING/AXLE	*		1				
19	1518-432-250-00	CAP,OIL ASSY	*		1				
20	1518-306-203-00	PACKING	*		1				
21	1672-433-210-10	METAL/PIVOT/FRONT	*		1				
22	1564-434-222-10	BUSH/35X39X26	*		1				
23	V304-460-012-00	NUT/M12	*		2				
24	V401-160-012-00	WASHER,SP/M12	*		2				
25	1612-433-002-00	SEAL/OIL	*		1				
26	V201-261-203-50	BOLT/M12X35	*		1				
27	V304-260-012-00	NUT/M12	*		1				
28	1689-434-210-10	METAL/PIVOT/FRONT	*		1				
29	1614-433-212-00	BUSH/62X67X30	*		1				
30	V201-461-204-00	BOLT/M12X40	*		2				

FIG. 37 LIFT PIPING SYSTEM (SF230)



1689-504 -0100

KEY	PART CODE	DESCRIPTION	S P C	TYPE OF MODEL		I T C	C O L	G R P	REMARKS
				SF200 T42M	SF230 F42M				
31	V 720-112-402-20	O-RING/P22	*		4				
32	V 720-111-900-60	O-RING P6 HS90	*		1				
33	K 135-002-009-00	BOLT/M8X28 11T	*		6				
34	V 401-170-008-00	S.W	*		6				
35	1560-515-004-50	NUT/M08	*		2				
36	V 304-260-008-00	NUT/M 8	*		2				
37	V 411-260-008-00	WASHER,PL/M 8	*		4				
38	V 401-160-008-00	WASHER,SP/M 8	*		4				
39	1404-503-006-00	PACKING,OIL PUMP	*		1				
40	1689-502-005-10	FLANGE/PUMP	*		1				
41	V 210-560-602-50	BOLT/S	*		3				
42	V 720-102-402-00	O-RING/P20	*		1				
43	1689-504-001-10	HOSE0HYDRO/1550	*		1				
44	3768-185-015-20	ADAPTER/90	*		1				
45	3737-172-010-00	BAND,HARNES	*		1				
46	K 211-042-000-20	CONTROL VALVE ASSY	*		1				FIG 048
47	V 201-261-005-00	BOLT/M10X50	*		2				
48	V 401-160-010-00	WASHER,SP/M10	*		2				
49	1689-502-230-00	PIPE/PTO COMP	*		1				
50	1650-509-280-00	ADAPTER/PF1/4 ASSY	*		1				
51	V 720-112-401-10	RING/O	*		1				
52	3805-352-002-00	ADAPTER/O-/R1/4XM16	*		1				

Numerical Index

Part Code	Fig.Key	Part Code	Fig.Key	Part Code	Fig.Key
6212-561-001-00	11 3	6213-619-003-00	17 10	6215-345-009-00	26 15
6212-563-001-00	11 4	6213-621-003-00	17 6	6215-345-010-00	26 16
6212-565-001-00	11 5	6213-622-002-10	17 5	6215-345-011-00	26 17
6212-569-002-00	1 4	6213-631-002-00	17 3	6215-345-012-00	26 18
	25 2	6213-631-005-00	17 4	6215-345-013-00	26 19
6212-571-003-00	11 6	6213-641-002-10	19 2	6215-345-014-00	26 20
6212-575-002-00	11 7	6213-641-006-00	18 2	6215-345-015-00	26 21
6212-600-002-00	11 8	6213-642-002-00	17 7	6215-345-016-00	26 22
6212-600-002-10	11 8-A	6213-660-004-00	18 1	6215-345-017-00	26 23
6212-611-004-10	11 9	6213-660-022-00	19 1	6215-345-018-00	26 24
6212-616-002-00	11 16	6213-669-008-00	18 3	6215-345-019-00	26 25
6212-620-001-10	11 10		19 3	6215-345-020-00	26 26
6212-620-001-20	11 10-A	6213-671-003-00	18 5	6215-345-021-00	26 27
6212-626-002-10	11 11		19 5	6215-345-022-00	26 28
6212-628-004-00	11 12	6213-674-006-10	23 2	6215-345-023-00	26 29
6212-628-005-00	11 13	6213-711-003-20	17 30	6215-345-024-00	26 30
6213-100-003-30	16 1	6213-716-001-40	17 24	6215-345-025-00	26 31
6213-111-001-30	16 2	6213-721-003-00	17 25	6215-345-026-00	26 32
6213-119-001-00	16 6	6213-721-007-00	5 23	6215-345-027-00	26 33
6213-120-003-20	16 3	6213-729-013-10	17 22	6215-345-028-00	26 34
6213-125-001-00	16 4	6213-743-002-10	17 26	6215-345-029-00	26 35
6213-129-003-00	16 5		25 20	6215-345-030-00	26 36
6213-140-008-00	16 8	6214-111-009-10	3 1	6215-345-031-00	26 37
6213-149-002-00	16 10	6214-115-001-20	3 4	6215-345-032-00	26 38
6213-160-002-00	9 29		25 6	6215-345-033-00	26 39
6213-160-002-10	9 29-A	6214-141-008-20	4 1	6215-345-034-00	26 40
6213-160-002-20	9 29-B	6214-145-001-30	4 2	6215-345-035-00	26 41
6213-161-001-00	9 30		25 7	6215-345-036-00	26 42
6213-161-001-10	9 30-A	6215-300-035-00	20 1	6215-345-037-00	26 43
6213-161-001-20	9 30-B	6215-311-019-00	26 52	6215-345-038-00	26 44
6213-164-001-00	9 31	6215-315-002-00	20 2	6215-345-039-00	26 45
6213-240-002-00	16 15	6215-330-023-00	26 1	6215-345-040-00	26 46
6213-240-002-10	16 15-A	6215-331-007-00	26 2	6215-345-041-00	26 47
6213-311-006-00	16 12	6215-332-012-00	26 5	6215-345-042-00	26 48
6213-319-001-00	5 24	6215-339-001-00	26 6	6215-345-043-00	26 49
6213-610-005-40	17 1	6215-342-001-00	26 3	6215-359-001-00	26 50
6213-611-003-20	17 2	6215-343-001-00	26 4	6215-359-002-00	26 51
6213-612-004-00	17 9	6215-345-001-00	26 7	6215-410-006-10	20 3
6213-613-002-10	17 8	6215-345-002-00	26 8	6215-410-007-10	20 4
6213-614-003-10	17 12	6215-345-003-00	26 9	6215-410-008-10	20 5
	25 18	6215-345-004-00	26 10	6215-411-074-10	22 2
6213-614-004-10	17 17	6215-345-005-00	26 11	6215-411-103-00	20 3-A
	25 19	6215-345-006-00	26 12	6215-411-104-00	20 4-A
6213-619-001-00	17 16	6215-345-007-00	26 13	6215-411-105-00	20 5-A
6213-619-002-00	17 11	6215-345-008-00	26 14	6215-412-002-10	22 1

Numerical Index

1689-097-120-00

Part Code	Fig.Key	Part Code	Fig.Key	Part Code	Fig.Key
1689-271-210-10	20 1	1689-406-310-00	26 8	1689-502-003-00	35 43
1689-271-230-00	20 19	1689-407-201-00	27 1	1689-502-005-10	35 40
1689-271-240-10	20 21	1689-408-004-00	28 2		37 40
1689-271-250-30	20 45	1689-408-200-00	28 6	1689-502-210-00	35 22
1689-271-290-00	20 39	1689-408-210-20	28 9		37 22
1689-271-310-00	20 12	1689-408-230-00	28 1	1689-502-220-00	35 17
1689-271-311-00	20 13	1689-408-500-00	28 19		37 17
	20 25	1689-430-001-20	29 3	1689-502-230-00	35 50
	20 29	1689-430-002-00	29 6		37 49
1689-271-320-10	20 24	1689-430-003-00	29 7	1689-502-250-00	28 5
1689-271-330-10	20 28	1689-430-210-10	29 1		35 49
1689-271-350-00	20 47	1689-430-220-00	29 16	1689-503-002-10	36 15
1689-272-002-00	18 8	1689-430-230-20	29 18	1689-503-260-00	36 7
	21 3	1689-430-240-00	29 10	1689-503-310-00	36 9
	36 12	1689-431-200-00	29 20	1689-503-410-00	36 1
1689-272-201-00	21 8	1689-431-210-00	29 21	1689-503-420-10	36 3
1689-272-210-00	21 1	1689-431-220-00	29 22	1689-504-001-10	37 43
1689-272-240-00	21 17	1689-432-002-10	30 1	1689-506-011-00	38 1
1689-272-260-00	21 14	1689-432-003-00	30 10	1689-506-310-00	38 2
1689-272-330-00	21 9	1689-432-210-00	30 5	1689-603-006-00	39 20
1689-272-400-00	21 7	1689-433-003-00	31 18	1689-603-012-00	39 9
1689-273-003-00	22 1	1689-433-220-10	31 5	1689-603-021-00	39 13
1689-273-004-00	22 7	1689-433-260-00	31 1	1689-603-022-00	39 14
1689-273-210-00	22 2	1689-434-001-20	32 35	1689-603-023-00	39 21
	22 8	1689-434-002-20	32 67	1689-603-024-00	39 22
1689-301-350-00	23 2	1689-434-003-20	32 68	1689-603-025-00	39 23
1689-301-510-00	23 1	1689-434-200-00	32 1	1689-603-026-00	39 24
1689-302-310-00	23 6	1689-434-210-10	32 28	1689-603-027-00	39 25
1689-302-330-00	23 9	1689-434-221-00	32 83	1689-603-220-10	39 10
1689-302-350-00	23 13	1689-434-240-10	32 56	1689-603-230-00	39 16
1689-302-500-00	23 12	1689-440-200-20	33 1	1689-603-310-00	39 1
1689-402-241-00	24 13	1689-440-211-00	33 2	1689-604-001-00	39 26
1689-402-242-00	24 14		33 11	1689-611-002-00	40 14
1689-402-250-10	24 10	1689-440-230-00	33 5	1689-611-003-00	40 15
1689-402-260-00	24 12	1689-441-200-10	33 10	1689-611-004-00	40 16
1689-402-261-00	52 9	1689-441-210-10	33 14	1689-611-005-00	40 18
1689-403-002-10	24 7	1689-501-001-00	34 10	1689-611-201-00	40 1
	24 18	1689-501-002-00	34 12	1689-612-001-00	40 20
1689-403-200-00	24 22	1689-501-200-30	34 1	1689-613-201-00	41 1
1689-404-200-20	25 1	1689-501-230-20	34 2	1689-613-202-00	41 2
1689-404-210-00	25 2	1689-501-280-00	34 6	1689-613-203-00	41 9
1689-404-320-00	25 7	1689-501-281-00	34 7	1689-613-204-00	41 10
1689-405-230-10	26 6	1689-501-310-00	34 5	1689-613-206-00	41 8
1689-405-310-00	26 3	1689-502-001-00	35 10	1689-613-211-00	41 15
1689-406-220-00	26 1		37 10	1689-613-220-10	41 11

Alphabetical Index

Description	Fig.Key	Description	Fig.Key	Description	Fig.Key
ARM, FLOATING	21 20	BOLT	29 22	CAP, BLANK/30	9 36
ARM/CONTROL	21 39	BOLT	29 24	CAP, OIL FILLER	2 2
ARM/FLOATING COMP	21 20-A	BOLT, JOINT	16 13	CAP, SEALING	1 2
ARM/TENSION	21 24	BOLT, SEMS/M10X20	8 3	CAP, SEALING	5 3
ARMATURE/STARTE ASSY	28 2	BOLT, SEMS/M10X20	10 2	CAP, SEALING	5 4
BALL	1 5	BOLT, SEMS/M6X12	5 27	CAP, SEALING	5 7
BALL	28 17	BOLT, SEMS/M6X12	7 4	CARTRIDGE, OIL FILTER	16 15
BEARING	28 3	BOLT, SEMS/M6X12	12 5	CARTRIDGE/OILFILTER	16 15-A
BEARING	28 4	BOLT, SEMS/M6X12	21 16	CASE/ADAPTER	21 25
BEARING	29 5	BOLT, SEMS/M6X12	24 7	CLAMP, HARNESS	9 15
BEARING	29 11	BOLT, SEMS/M8X16	16 11	CLAMP, STRAINER	16 10
BEARING, RB/6004	21 14	BOLT, SEMS/M8X25 7T	4 3	CLAMP/WIRE/10-12	22 7
BEARING, RB/6005	9 45	BOLT, SEMS/M8X45	9 13	CLAMP/WIRE/10-15	17 23
BEARING, RB/6203	21 13	BOLT, SEMS/M8X45	17 13	CLIP/HOSE/7. 6-8. 2	22 4
BEARING, THRUST CRANK	5 13	BOLT/CONNECTINGROD	13 6	CLIP/HOSE/8. 7-9. 3	22 9
BEARING, THRUST CRANK	6 2	BOLT/FLANGE	15 7-A	CLUTCH/STARTER ASSY	28 5
BEARING, THRUST CRANK	6 4	BOLT/L=55	9 9	COLLOR	29 3
BEARING/BALL	29 5-A	BOLT/M10X1. 25X82	1 7	CONNECTOR	22 1
BEARING/BALL	29 11-A	BOLT/M6	9 33	CONNECTOR, GLOW PLUG	24 4
BEARING/CONN ROD	13 8	BOLT/M6	9 34	CONNECTOR, OIL FILTER	5 24
BEARING/CONN ROD/UN	6 5	BOLT/M6X10	21 18	COVER	9 48
BEARING/CONN ROD/UN	6 6	BOLT/M8X20	3 5	COVER	28 23
BEARING/CRANK/LOWER	5 12	BOLT/M8X20	9 12	COVER	29 13
BEARING/CRANK/UPPER	5 11	BOLT/M8X20	17 19	COVER, BEARING	29 6
BEARING/WATER PUMP	17 3	BOLT/M8X20	17 27	COVER, CYLINDER HEAD	2 1
BEARING/WATERPUMP	17 4	BOLT/M8X20	21 7	COVER/INJECTIONPUMP	5 25
BELT VHM034	18 5	BOLT/M8X20	23 3	COVER/INJECTIONPUMP	5 25-A
BELT VHM034	19 5	BOLT/M8X30	9 16	CRANKSHAFT ASSY	15 1
BODY/NOZZLE HOLDER	26 2	BOLT/M8X45	11 19	CRANKSHAFT ASSY	15 1-A
BODY/OILPUMP	16 2	BOLT/M8X75	9 14	CRANKSHAFT ASSY	15 1-B
BODY/WATERPUMP	17 2	BOLT/M8X75	17 28	CUP/SEALING/16	9 3
BOLT	3 6	BOLT/M8X85	9 8	CUTTER, VALVE	11 5
BOLT	5 2	BOLT/THROUGH	28 16	CYLINDERBLOCK ASSY	5 1
BOLT	9 39	BOLT/WASHERHEAD	27 10	CYLINDERBLOCK ASSY	5 1-A
BOLT	11 18	BOLT/WS	16 6	CYLINDERHEAD ASSY	1 1
BOLT	15 7	BOLT/WS	18 4	DOWEL	5 21
BOLT	15 10	BOLT/WS	19 4	ELEMENT ASSY	27 9
BOLT	16 7	BOLT/WS	28 15	FAN, COOLING	18 1
BOLT	17 32	BOLT/WSP	23 5	FAN/COOLING	19 1
BOLT	23 8	BRACKET ROCKER SHAFT	11 12	FLYWEIGHT	21 17
BOLT	29 9	BRACKET, ROCKER SHAFT	11 13	FLYWHEEL ASSY	15 5
BOLT	29 10	BRUSH	29 17	FRAME	29 12
BOLT	29 19	BUSH	29 15	FRAME ASSY	29 7
BOLT	29 20	BUSHING/DRAIN	28 20	FRAME/DRIVEEND ASSY	29 7-A
BOLT	29 21	CAMSHAFT/INJ PUMP	21 10	FRAME/STARTEREND	28 10

CLICK HERE TO **DOWNLOAD** THE COMPLETE MANUAL

- Thank you very much for reading the preview of the manual.
- You can download the complete manual from: www.heydownloads.com by clicking the link below



- Please note: If there is no response to CLICKING the link, please download this PDF first and then click on it.

CLICK HERE TO **DOWNLOAD** THE COMPLETE MANUAL