

## Directions for use of Parts Catalogue

### 1. Applicable model of machines

All component and option parts used for SCMA40 Mower and SBC400X Collector are listed in this parts catalogue.

NOTES: SCMA40-SXG15E4F . . . . . FOR SXG15  
 SBC400X-LAE4F . . . . . FOR SXG15  
 SBC400X-LE4F . . . . . FOR SXG15

### 2. Explanation for head paragraph

KEY	PART CODE	DESCRIPTION	SPC	TYPE OF MODEL						I T C	C O L	G R P	REMARKS
				SSM48M	SSM48F	SSM48G	SRM48M	SRM48F	SRM48G				
1	8595-211-001-20	CASE/UPPER	*	1									
1A	8657-201-081-00	CASE/UPPER	*	1			1						
2	8595-211-002-10	CASE/LOWER	*	1			1						
3	V523-100-801-80	PIN	*	5			2						
4	V211-260-803-00	BOLT, SEMS	*	6			4						
			*	2			2						
			*	2			2						
			*	2			2						
			*	5			1						

- ① KEY shows the location of parts diagramed in the illustration.
- ② Parts numbers begin with `V` and `W` are standard parts of the market.
- ③ `LH` and `RH` on the parts name are described against the moving direction of the machine or are described on the condition how to install parts on the machines.
- ④ SPC : The following symbol classifies parts to be used for machines.
  - `\*` means standard parts.
  - `T` shows that the parts can be installed as optional parts.
  - `R` shows that the parts can be used as applicable parts to replace

CLICK HERE TO **DOWNLOAD** THE COMPLETE MANUAL

- Thank you very much for reading the preview of the manual.
- You can download the complete manual from: [www.heydownloads.com](http://www.heydownloads.com) by clicking the link below



- Please note: If there is no response to CLICKING the link, please download this PDF first and then click on it.

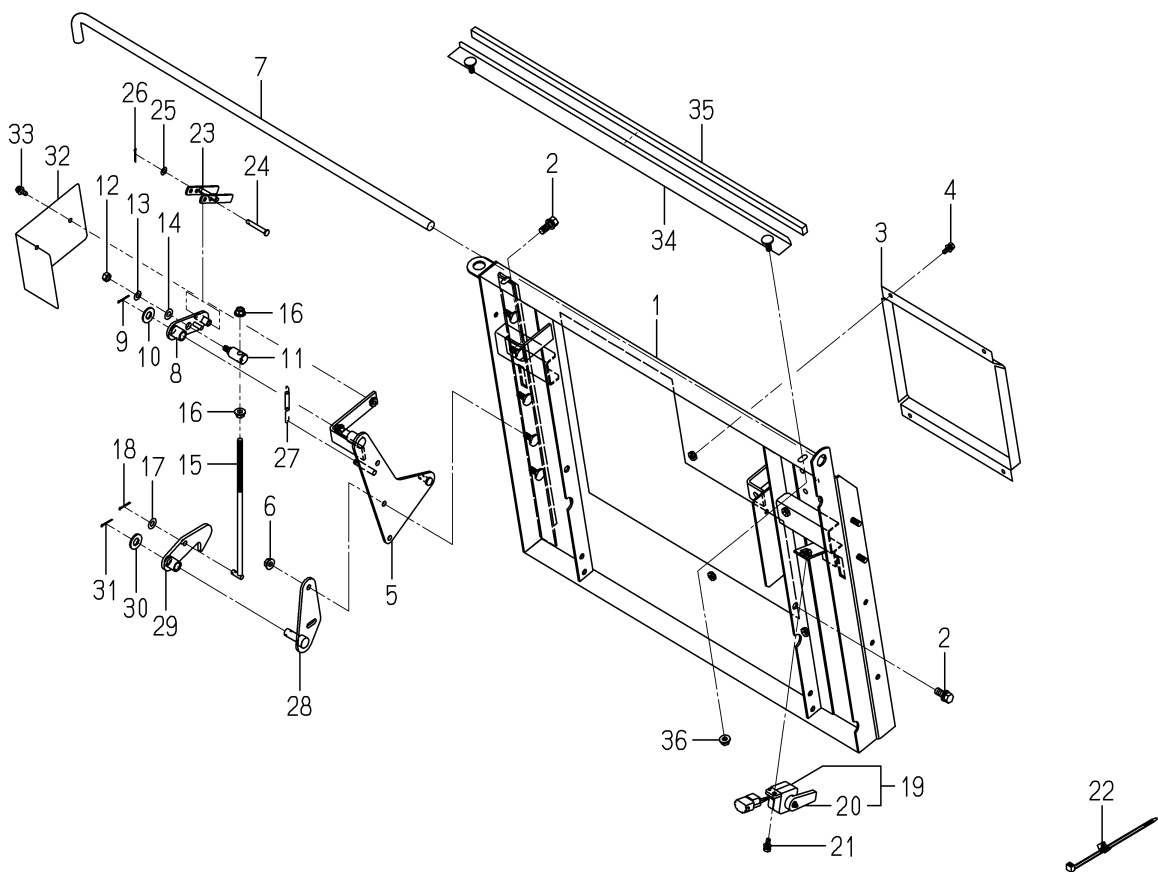
CLICK HERE TO **DOWNLOAD** THE COMPLETE MANUAL

# MOWER

SCMA40SXG15



**FIG.101 FRAME SYSTEM(L TYPE)**

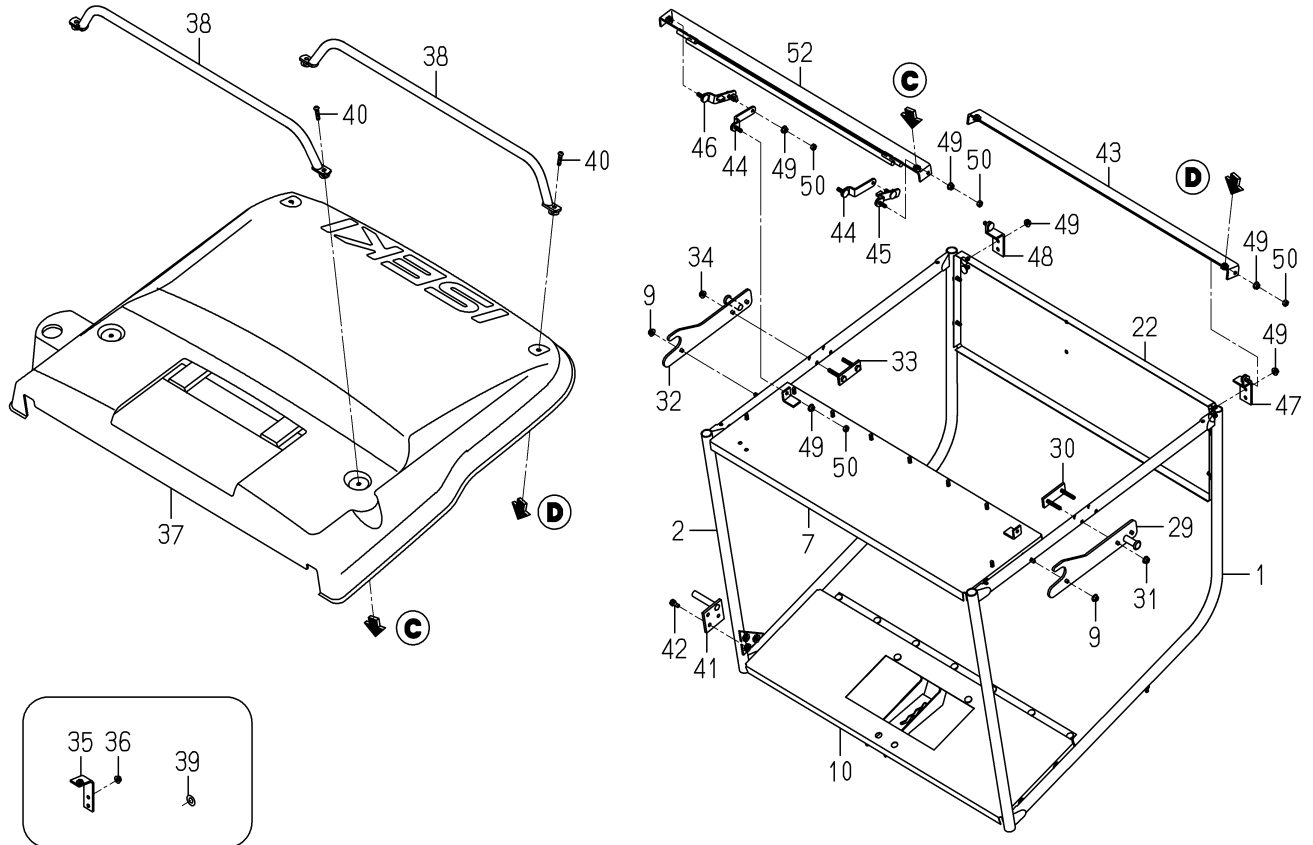


8671-105A-0100

KEY	PART CODE	DESCRIPTION	S P C	TYPE OF MODEL		I T C	C O L	G R P	REMARKS
				SBC400X					
1	8671-105-310-00	FRAME/COLLECTOR COMP	*	1					
2	V211-261-002-50	BOLT(S) M10X25	*	4					
3	8671-105-002-20	COVER/CASE/COUNTER	*	1			7F		
4	V210-360-601-60	BOLT(SP)/M6X16	*	4					
5	8671-105-240-30	BRACKET/ASSIST/RH	*	1					
6	V362-260-008-00	NUT/WASHER	*	3					
7	8671-105-003-00	BAR	*	1					
8	8671-105-280-00	PLATE/IR/30X95 COMP	*	1					
9	V500-162-502-00	PIN,SPLIT/2.5X20	*	1					
10	V411-260-012-00	WASHER /M12	*	1					
11	8596-213-002-10	PIN(JOINT)	*	1					
12	V304-260-008-00	NUT	*	1					
13	V401-160-008-00	WASHER,SP/M 8	*	1					
14	V411-260-008-00	WASHER,PL/M 8	*	1					
15	8671-105-260-00	ROD/LOCK/L COMP	*	1					
16	V362-260-008-00	NUT/WASHER	*	2					
17	V411-260-008-00	WASHER,PL/M 8	*	1					
18	V500-162-502-00	PIN,SPLIT/2.5X20	*	1					
19	1716-680-330-00	SWITCH/LEVER ASSY	*	1					
20	1716-680-222-00	ARM	*	1					
21	V210-360-601-60	BOLT(SP)/M6X16	*	1					
22	1560-666-004-00	BAND	*	1					
23	8671-105-270-00	PLATE/IR/13X80 COMP	*	1					
24	2144-805-056-00	PIN/06X41	*	1					
25	V411-260-006-00	WASHER / M6	*	1					
26	V500-162-502-00	PIN,SPLIT/2.5X20	*	1					
27	2183-776-062-00	SPRING/HE070	*	1					
28	8671-155-280-10	BRACKET/LOCK/RH COMP	*	1					
29	8671-155-290-00	PLATE/HOOK COMP	*	1					
30	V411-260-012-00	WASHER /M12	*	1					

# FIG.302 CONTAINER SYSTEM(LA TYPE)(2/2)

25~28, 52, 53-PLEASE SEE (1/2)



8671-355-0100

KEY	PART CODE	DESCRIPTION	S P C	TYPE OF MODEL		I T C	C O L	G R P	REMARKS
				SBC400X					
25	-----	BLANK	*						-----
25A	8671-305-007-10	PLATE/U/27X770	*	1					
26	V360-260-006-00	NUT/M6	*	2					
27	8671-305-008-10	PLATE/I/16X670	*	2					
28	V360-260-006-00	NUT/M6	*	14					
29	8671-305-310-00	HITCH/CONTAINER/LH	*	1					
30	8671-305-390-00	PLATE/I/22X60 COMP	*	1					
31	V360-260-006-00	NUT/M6	*	2					
32	8671-305-350-00	HITCH/CONTAINER/RH	*	1			7F		
33	8671-305-390-00	PLATE/I/22X60 COMP	*	1					
34	V360-260-006-00	NUT/M6	*	2					
35	-----	BLANK	*						-----
36	-----	BLANK	*						-----
37	-----	BLANK	*						-----
37	8671-355-002-10	COVER/UPPER/PB	*	1					
38	8671-355-280-00	GRIP/CONTAINER COMP	*	2					
39	-----	BLANK	*						-----
40	1690-733-006-00	SCREW/TRUSS/M06X25	*	4					
41	8671-355-260-00	PLATE/LOCK COMP	*	1					
42	-----	BLANK	*						-----
42	V210-360-601-60	BOLT(SP)/M6X16	*	3					
43	-----	BLANK	*						-----
43	-----	BLANK	*						-----
43	-----	BLANK	*						-----
43	8671-157-230-20	PLATE/U/730X32 COMP	*	1					
44	8671-157-240-00	PLATE/Z/16X80 COMP	*	2					
45	8671-157-250-00	PLATE/Z/16X82/L COMP	*	1					
46	8671-157-260-00	PLATE/Z/16X82/R COMP	*	1					
47	8671-157-270-00	PLATE/L/30X54/L COMP	*	1					
48	8671-157-280-00	PLATE/L/30X54/R COMP	*	1					



CLICK HERE TO **DOWNLOAD** THE COMPLETE MANUAL

- Thank you very much for reading the preview of the manual.
- You can download the complete manual from: [www.heydownloads.com](http://www.heydownloads.com) by clicking the link below



- Please note: If there is no response to CLICKING the link, please download this PDF first and then click on it.

CLICK HERE TO **DOWNLOAD** THE COMPLETE MANUAL