

# ***GENERAL PURPOSE ENGINE***

**GXV160  
GXV160K1**

**PARTS CATALOGUE**

**8**

CLICK HERE TO **DOWNLOAD** THE COMPLETE MANUAL

- Thank you very much for reading the preview of the manual.
- You can download the complete manual from: [www.heydownloads.com](http://www.heydownloads.com) by clicking the link below



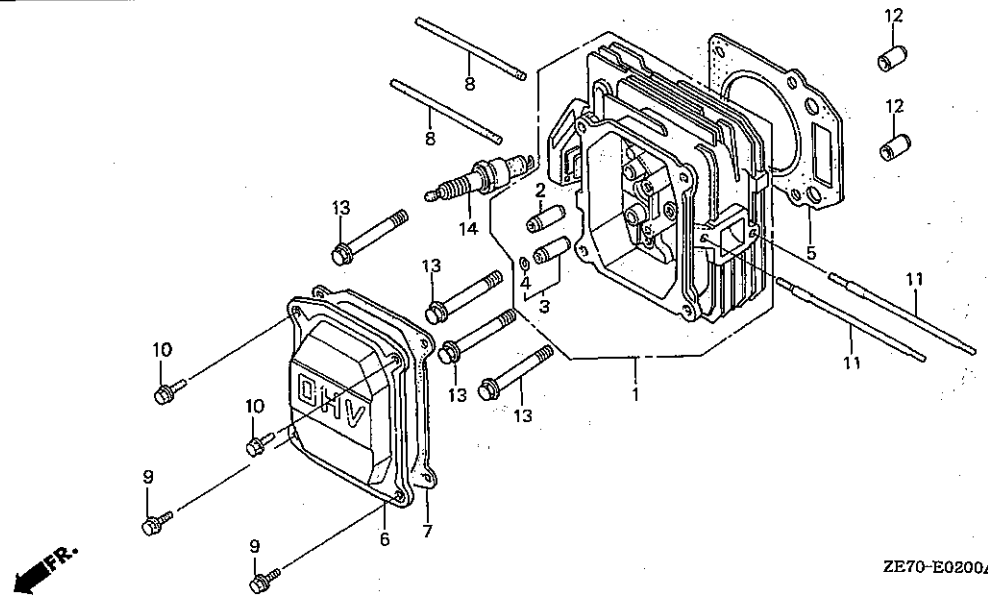
- Please note: If there is no response to CLICKING the link, please download this PDF first and then click on it.

CLICK HERE TO **DOWNLOAD** THE COMPLETE MANUAL

Model		GXV160K1 (Japan)						GXV160K1 (U.S.A.)										
		SFL	SFLA	SFL1	SFSK	SFY1	SFY2	A12	N1A4	N1E2	N1M	N12	N126	N42	N426	N52	N62	
Specifications	Type																	
Crankshaft	22 mm Ø Straight																	●
	22.2 mm Ø Straight							●	●	●	●	●	●					
	25.4 mm Ø Straight																●	
	25.4 mm Ø Straight (Flat key-way)													●	●			
	20 mm Ø Steped thread	●	●	●	●	●	●											
	1/5" Tapered																	
Starter motor					●					●	●							
Charge coil					●					●	●							
Fuel tank																		

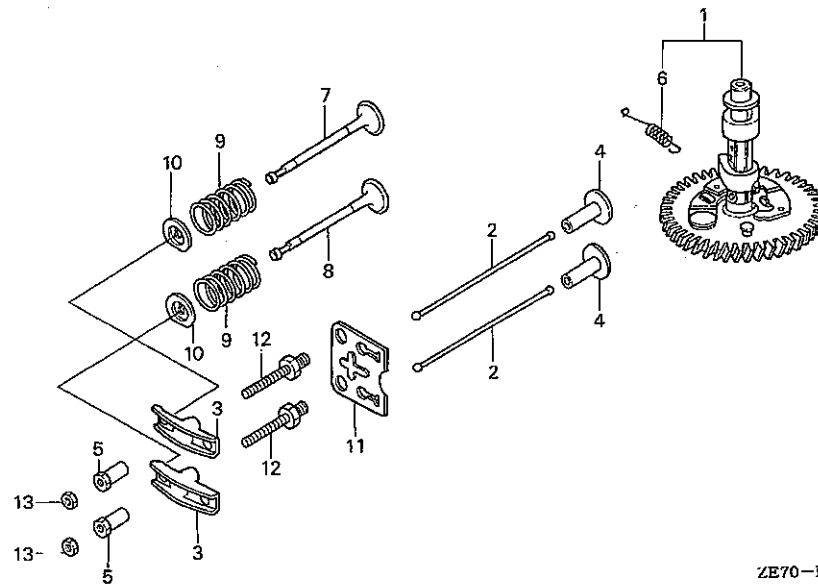
Model		GXV160K1 (France)												
		A1S	A1SA	A15	N1C	N1E5	N1F	N15	N4C	N45	N5C	N5M	N55	N65
Specifications	Type													
Crankshaft	22 mm Ø Straight													●
	22.2 mm Ø Straight	●	●	●	●	●	●	●						
	25.4 mm Ø Straight												●	
	25.4 mm Ø Straight (Flat key-way)								●	●				
	20 mm Ø Steped thread													
	1/5" Tapered											●	●	
Starter motor						●								
Charge coil						●								
Fuel tank														





ZE70-E0200A

Ref. No.	Part No.	Description	Reqd. QTY				Serial No.	Parts catalogue code
			GXV 160 (JPN)	GXV 160K1 (USA)	(FRA)			
14)	98079-54854	PLUG, SPARK (W14EP-U) (DENSO)	(1)	-	-	-	P,S	
	98079-54855	PLUG, SPARK (W14EPR-U) (DENSO)	(1)	-	-	-	A1,A1L,A1L2,A12,GY6K,N1,N1C,N1E,N1E2,N1S,N12,N4,N4C,N42,N5,N5C,N6,N6TH,N62,SF,SFCA,SFL,SFS,SFSK	
	98079-55846	PLUG, SPARK (BPR5ES) (NGK) ...	-	(1)	(1)	(1)	A1,A1L,A1L2,A12,N1,N1C,N1E,N1E2,N1S,N12,N4,N4C,N42,N5,N5C,N6,N62,SFCA,SFL,SFSK	
	98079-55854	PLUG, SPARK (W16EP-U) (DENSO)	-	1	1	1	P,S	
	98079-55855	PLUG, SPARK (W16EPR-U) (DENSO)	1	-	-	-	A1,A1L,A1L2,A12,GY6K,N1,N1C,N1E,N1E2,N1S,N12,N4,N4C,N42,N5,N5C,N6,N6TH,N62,SF,SFCA,SFL,SFS,SFSK	
	98079-56841	PLUG, SPARK (BP6ES) (NGK) ....	-	1	1	1	P,S	
	98079-56854	PLUG, SPARK (W20EP-U) (DENSO)	(1)	-	-	-	P,S	
	98079-56855	PLUG, SPARK (W20EPR-U) (DENSO)	(1)	-	-	-	A1,A1L,A1L2,A12,GY6K,N1,N1C,N1E,N1E2,N1S,N12,N4,N4C,N42,N5,N5C,N6,N6TH,N62,SF,SFCA,SFL,SFS,SFSK	
	98079-54846	PLUG, SPARK (BPR4ES) (NGK) ...	-	(1)	(1)	(1)	A1,A1L,A1L2,A12,GY6K,N1,N1C,N1E,N1E2,N1S,N12,N4,N4C,N42,N5,N5C,N6,N62,SFCA,SFL,SFSK	
	98079-56846	PLUG, SPARK (BPR6ES) (NGK) ...	(1)	-	-	-	A1,A1L,A1L2,A12,GY6K,N1,N1C,N1E,N1E2,N1S,N12,N4,N4C,N42,N5,N5C,N6,N62,SFCA,SFL,SFSK	
			-	(1)	(1)	(1)		



ZE70-E0900

Service Item	F.R.T.
ARM, VALVE ROCKER (ADD 0.1 FOR EACH.)	0.2
.PIVOT, ROCKER ARM	
.ROD, PUSH	
BOLT, PIVOT, 8MM	0.3
CAMSHAFT ASSY.	0.6
.LIFTER, VALVE	
VALVE, IN. (ADD 0.1 FOR EACH.)	0.7

Ref. No.	Part No.	Description	Reqd. QTY			Serial No.	Parts catalogue code	
			GXV 160 (JPN)	GXV 160K1 (USA)	(FRA)			
1	14100-ZE7-000	CAMSHAFT ASSY. ....	1	1	-	-----	A1,A1L,A1L2,A12,N1,N1C,N1E,N1E2,N12,N4,N4C,N42,N5,N5C,N6,N62	
	14100-ZE7-770	.....	-	-	1	1	-----	GY6K,N1S,N6S1,S,SF,SFCA,SFL,SFLA,SFL1,SFS,SFSK,SFY1,SFY2
	14100-ZE7-N40	.....	1	1	-	-	-----	N6S,N6T/A,N6T/B,N6TH
	14100-ZE7-750	.....	1	-	-	-	-----	P
2	14410-ZE1-010	ROD, PUSH .....	2	2	2	2	-----	
3	14431-ZE1-000	ARM, VALVE ROCKER .....	2	2	2	2	-----	
4	14441-ZE1-000	LIFTER, VALVE .....	2	-	-	-	-----	A1,A1L,A1L2,A12,N1,N1C,N1E,N1E2,N1S,N12,N4,N4C,N42,N5,N5C,N6
			2	-	-	-	-----	1363415 N6TH,P
	14441-ZE1-010	.....	2	2	-	-	-----	2007290 A1,N1,N1E,N1S,N4,N5,N6,N6TH,SFCA,SFL,SFSK
			2	-	-	-	-----	GY6K,N6S,N6S1,N6T/A,N6T/B,SFLA,SFL1,SFY1,SFY2
			2	-	-	-	-----	N6TH,P
			-	2	-	-	-----	2007291 A1,N1,N1E,N1S,N4,N5,N6,N6TH,SFCA,SFL,SFSK
5	14451-ZE1-003	PIVOT, ROCKER ARM .....	2	-	-	-	-----	1315993 A1,A1L,N1,N1C,N1E,N1S,N4,N4C,N5,N6,SFL,SFSK
	14451-ZE1-013	.....	2	-	-	-	-----	A1L2,A12,GY6K,N1E2,N12,N42,N5C,N6TH,N62,P,S,SF,SFCA,SFS
			2	-	-	-	-----	1315994 A1,A1L,N1,N1C,N1E,N1S,N4,N4C,N5,N6,SFL,SFSK
			-	2	2	2	-----	
6	14568-ZE1-000	SPRING, WEIGHT RETURN .....	1	1	1	1	-----	
7	14711-ZE7-000	VALVE, IN. ....	1	1	1	1	-----	
8	14721-ZE7-000	VALVE, EX. ....	1	1	1	1	-----	
9	14751-ZE1-000	SPRING, VALVE .....	2	2	2	2	-----	
10	14771-ZE1-000	RETAINER, IN. VALVE SPRING ..	2	2	2	2	-----	
11	14791-ZE1-010	PLATE, PUSH ROD GUIDE .....	1	1	1	1	-----	
12	90012-ZE0-010	BOLT, PIVOT, 8MM .....	2	2	2	2	-----	
13	90206-ZE1-000	NUT, PIVOT ADJUSTING .....	2	2	2	2	-----	



Ref. No.	Part No.	Description	Reqd. QTY				Serial No.	Parts catalogue code
			GXV 160 (JPN)	GXV 160K1 (JPN)	(USA)	(FRA)		
(9)	16045-ZE7-005	CHOKE SET .....	1	-	-	-	A1L,A1L2,A12,GY6K,N1C,N1E2,N1S,N12,N4C,N42,N5C,N6TH,N62,P,S,SF	
		(CARBURETOR NO.)	1	-	-	BE40A E	SFCA,SFL,SFS,SFSK A1,N1,N1E,N4,N5,N6	
10	16100-ZE7-W10	CARBURETOR ASSY. (BE66B A) ..	-	1	1	1	2001686 A1,N1,N1E,N1S,N4,N5,N6,N6TH,SFCA,SFL,SFSK	
	16100-ZE7-005	CARBURETOR ASSY. (BE40A A) ..	1	-	-	-	8127004 A1S,A15,N1C,N1E5,N1F,N15,N4C,N45,N5C,N55,N65	
	16100-ZE7-W11	CARBURETOR ASSY. (BE66B B) ..	-	1	1	1	1132693 A1,N1,N1E,N4,N5,N6	
			-	1	1	1	N1M,N5M,N6T/A	
			-	1	-	-	2001687 A1,N1S,SFCA	
			-	1	-	-	2031754 SFL1	
			-	1	-	-	2038166 N6S,N6T/B,SFLA,SFY1,SFY2	
			-	1	-	-	2001687 2038166 N1,N1E,N4,N5,N6,N6TH,SFL,SFSK	
			-	1	-	1	8127005 A1S,A15,N1C,N1E5,N1F,N15,N4C,N45,N5C,N55,N65	
	16100-ZE7-W20	CARBURETOR ASSY. (BE66C A) ..	-	-	1	-	A12,N1AH,N1E2,N12,N126,N42,N52,N62	
	16100-ZE7-015	CARBURETOR ASSY. (BE40A B) ..	1	-	-	-	1132694 1180000 A1,N1,N1E,N4,N5,N6	
	16100-ZE7-W21	CARBURETOR ASSY. (BE66C B) ..	-	1	1	-	A12,N1AH,N1E2,N12,N126,N42,N426,N52,N6S1,N62	
			-	1	-	-	2031755 SFL1	
			-	1	-	-	2038167 N1,N1E,N4,N5,N6,N6S,N6T/B,N6TH,SFL,SFLA,SFSK,SFY1,SFY2	
			-	-	-	1		
	16100-ZE7-025	CARBURETOR ASSY. (BE40A C/D)	1	-	-	-	1180001 1209045 A1,N1,N1E,N4,N5,N6	
	16100-ZE7-035	CARBURETOR ASSY. (BE40A E) ..	1	-	-	-	1209046 1214225 A1,N1,N1E,N4,N5,N6	
	16100-ZE7-045	CARBURETOR ASSY. (BE40A F) ..	1	-	-	-	1346462 A1L	
			1	-	-	-	1214226 1346462 A1	
			1	-	-	-	1346462 N1C,N1S,N4C,N5C,SFCA,SFL,SFSK	
			1	-	-	-	1214226 1346462 N1,N1E,N4,N5,N6	
	16100-ZE7-055	CARBURETOR ASSY. (BE40A G/H)	1	-	-	-	GY6K,N6TH,P,S,SF,SFS	
			1	-	-	-	1346463 A1,A1L,N1,N1C,N1E,N1S,N4,N4C,N5,N5C,N6,SFCA,SFL,SFSK	
	16100-ZE7-W01	CARBURETOR ASSY. (BE66A B) ..	1	-	-	-	A1L2,A12,N1E2,N12,N42,N62	
11	16124-ZE0-005	SCREW, THROTTLE STOP .....	1	1	1	1		
12	16166-ZE7-005	NOZZLE, MAIN .....	1	-	-	-	BE40A A A1	
		(CARBURETOR NO.)	1	-	-	-	BE40A B N1,N1E,N4,N5,N6	
	16166-ZE7-015	.....	1	-	-	-		
		(CARBURETOR NO.)	1	-	-	-	BE40A D BE40A D A1,N1,N1E,N4,N5,N6	
	16166-ZE7-025	.....	1	-	-	-		
		(CARBURETOR NO.)	1	-	-	-	BE40A F A1L,N1C,N1S,N4C,N5C,SFCA,SFL,SFSK	
			1	-	-	-	BE40A E BE40A F A1,N1,N1E,N4,N5,N6	
	16166-ZE7-W00	.....	1	-	-	-	A1L2,A12,GY6K,N1E2,N12,N42,N6TH,N62,P,S,SF,SFS	
		(CARBURETOR NO.)	1	-	-	-	BE40A G A1,A1L,N1,N1C,N1E,N1S,N4,N4C,N5,N5C,N6,SFCA,SFL,SFSK	
	16166-ZE7-W10	.....	-	1	1	1		
13	16211-ZE7-000	INSULATOR, CARBURETOR .....	1	1	1	1		
14	16212-ZE7-000	PACKING, INSULATOR .....	1	-	-	-	1320208 A1,A1L,N1,N1C,N1E,N1S,N4,N4C,N5,N6,SFL,SFSK	
	16212-ZE7-M10	.....	1	-	-	-	A1L2,A12,GY6K,N1E2,N12,N42,N5C,N6TH,N62,P,S,SF,SFCA,SFS	
			-	1	1	1	1320209 A1,A1L,N1,N1C,N1E,N1S,N4,N4C,N5,N6,SFL,SFSK	
			-	1	1	1		
15	16220-ZE6-000	SPACER COMP., CARBURETOR .....	1	-	-	-	1002050 A1,N1,N1E,N4,N5,N6	
	16220-ZE6-010	.....	-	-	1	-	A12,N1AH,N1E2,N12,N42,N52,N62	
			1	-	1	-	A1L,A1L2,GY6K,N1C,N1M,N1S,N126,N4C,N426,N5C,N6TH,P,S,SF,SFCA	
			1	-	-	-	SFL,SFS,SFSK	
			1	-	-	-	A12,N1E2,N12,N42,N62	
			-	1	-	-	1002051 A1,N1,N1E,N4,N5,N6	
			-	1	-	1		
16	16221-ZE7-000	PACKING, CARBURETOR .....	1	-	-	-	1320298 A1,A1L,N1,N1C,N1E,N1S,N4,N4C,N5,N6,SFL,SFSK	
	16221-ZE7-M10	.....	1	-	-	-	1352534 A1L2,A12,N1E2,N12,N42,N5C,N62,SFCA	
			1	-	-	-	1320299 1352534 A1,A1L,N1,N1C,N1E,N1S,N4,N4C,N5,N6,SFL,SFSK	



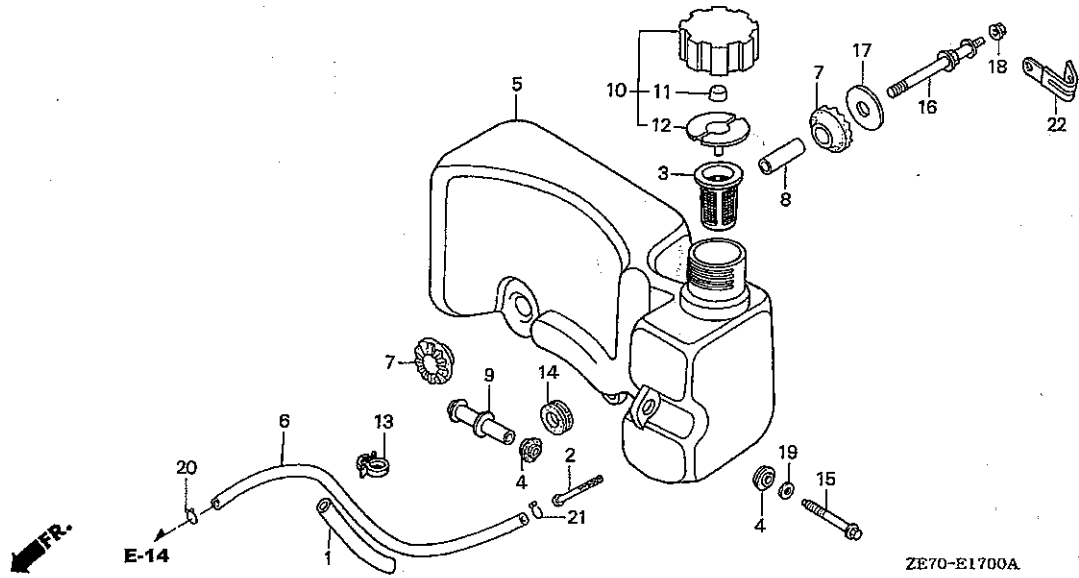
CLICK HERE TO **DOWNLOAD** THE COMPLETE MANUAL

- Thank you very much for reading the preview of the manual.
- You can download the complete manual from: [www.heydownloads.com](http://www.heydownloads.com) by clicking the link below



- Please note: If there is no response to CLICKING the link, please download this PDF first and then click on it.

CLICK HERE TO **DOWNLOAD** THE COMPLETE MANUAL



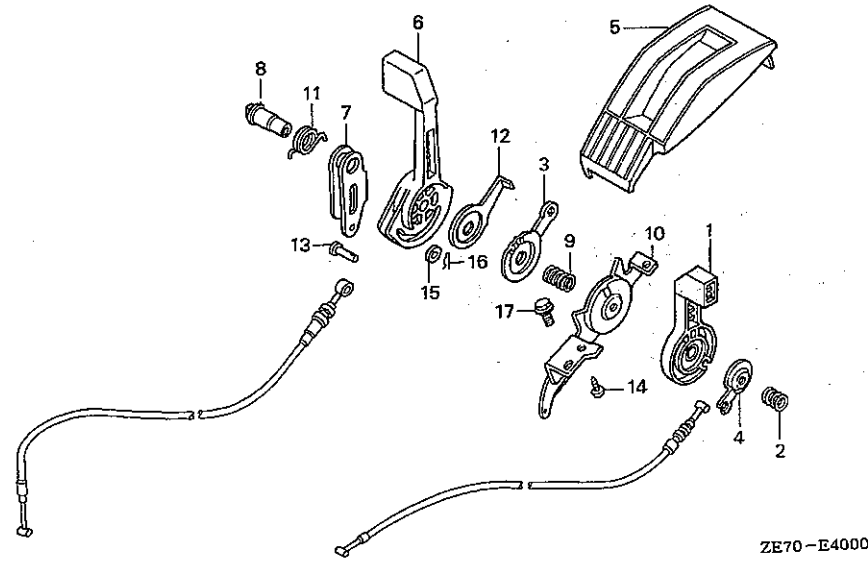
Ref. No.	Part No.	Description	Reqd. QTY				Serial No.	Parts catalogue code
			GXV 160 (JPN)	GXV 160K1 (JPN)	(USA)	(FRA)		
18	94050-06000	NUT, FLANGE, 6MM	1	-	-	-		
19	94103-06000	WASHER, PLAIN, 6MM	1	-	-	-		
20	95002-02080	CLIP, TUBE (B8)	1	-	-	-		
21	95002-70000	CLIP, TUBE (C11)	1	-	-	-		
22	90010-GEO-710	CLIP, TUBE	1	-	-	-	GY6K	



E-40

# THROTTLE LEVER/CHANGE LEVER

E15



Service item F.R.T.  
NOT INFORMATION .....

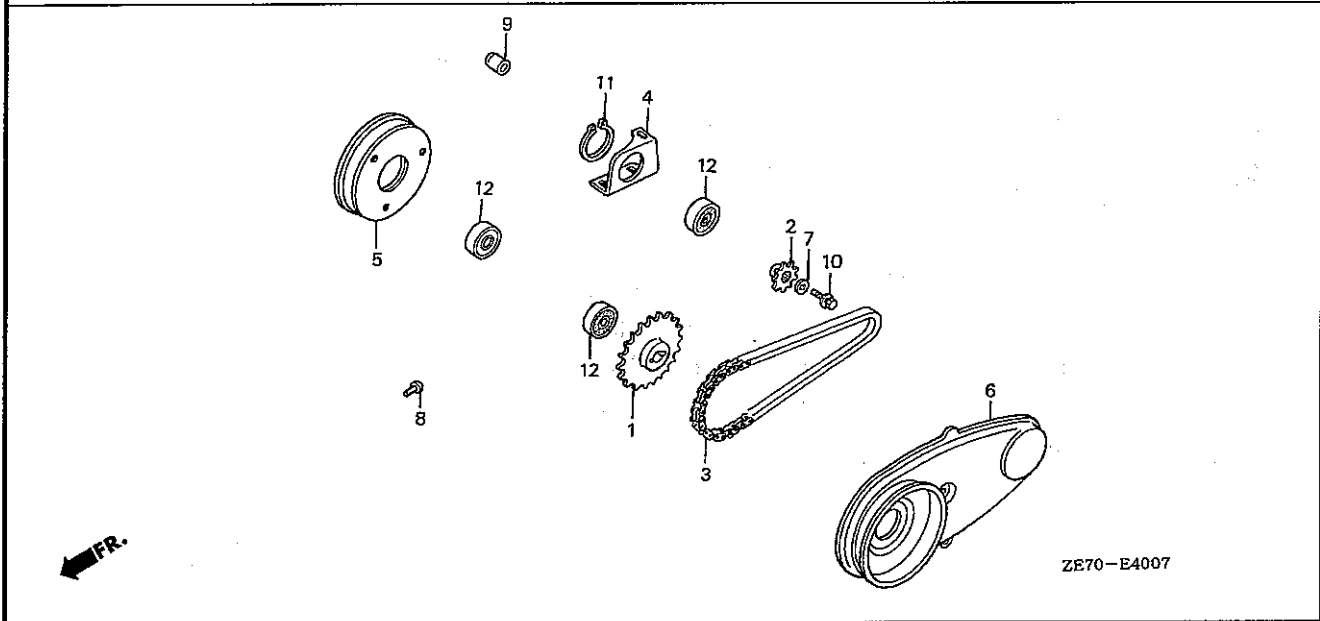
Ref. No.	Part No.	Description	Reqd. QTY				Serial No.	Parts catalogue code
			GXV 160 (JPN)	GXV 160K1 (JPN)	(USA)	(FRA)		
1	17851-VA3-800	LEVER, THROTTLE .....	1	1	-	-	N6T/A,N6T/B,N6TH	
2	17858-VA4-000	SPRING, THROTTLE LEVER .....	1	1	-	-	N6T/A,N6T/B,N6TH	
3	17859-VA3-P00	SEAT, SPRING .....	1	1	-	-	N6T/A,N6T/B,N6TH	
4	17859-VA3-800	SEAT, SPRING .....	1	1	-	-	N6T/A,N6T/B,N6TH	
5	54231-VA3-800	COVER, CONTROL .....	1	1	-	-	N6T/A,N6T/B,N6TH	
6	54311-VA3-P01	LEVER, CHANGE .....	1	1	-	-	N6T/A,N6T/B,N6TH	
7	54312-VA3-P00	ARM, CHANGE LEVER .....	1	1	-	-	N6T/A,N6T/B,N6TH	
8	54313-VA3-P00	NUT, CHANGE LEVER .....	1	1	-	-	N6T/A,N6T/B,N6TH	
9	54314-VA3-P00	SPRING, CHANGE LEVER .....	1	1	-	-	N6T/A,N6T/B,N6TH	
10	54315-VA3-P00	PLATE, STOPPER .....	1	1	-	-	N6T/A,N6T/B,N6TH	
11	54318-VA3-P00	SPRING, ARM RETURN .....	1	1	-	-	N6T/A,N6T/B,N6TH	
12	54319-VA3-P00	PLATE, THRUST .....	1	1	-	-	N6T/A,N6T/B,N6TH	
13	90752-VA3-P01	PIN, 6X22 .....	1	1	-	-	N6T/A,N6T/B,N6TH	
14	93901-35210	SCREW, TAPPING, 5X12 .....	2	2	-	-	N6T/A,N6T/B,N6TH	
15	94101-06000	WASHER, PLAIN, 6MM .....	1	1	-	-	N6T/A,N6T/B,N6TH	
16	94251-06000	PIN, LOCK, 6MM .....	1	1	-	-	N6T/A,N6T/B,N6TH	
17	95701-06010-00	BOLT, FLANGE, 6X10 .....	1	1	-	-	N6T/A,N6T/B,N6TH	

2

E-40-7

DRIVE SPROCKET/DRIVE CHAIN(GY6K)

F 9



Service item	F.R.T.
NOT INFORMATION	.....

Ref. No.	Part No.	Description	Reqd. QTY				Serial No.	Parts catalogue code
			GXV 160 (JPN)	GXV 160K1 (JPN)	(USA)	(FRA)		
1	23373-VA8-013	SPROCKET, DRIVEN	1	-	-	-	GY6K	
2	23711-VA6-003	SPROCKET, DRIVE	1	-	-	-	GY6K	
3	23861-VA8-003	CHAIN, DRIVE (35DHA-52)	1	-	-	-	GY6K	
4	42753-VA8-000	BRACKET, L. MISSION	1	-	-	-	GY6K	
5	42765-V08-000	COVER, DRIVEN SHAFT	1	-	-	-	GY6K	
6	42766-VA8-A00	COVER COMP., CHAIN	1	-	-	-	GY6K	
7	90401-ZA0-000	WASHER, PLAIN, 6.5X15	1	-	-	-	GY6K	
8	90851-VA7-000	RIVET, SAFETY SHIELD, 4.8MM	4	-	-	-	GY6K	
9	91551-VA8-000	COLLAR, ADJUSTING	1	-	-	-	GY6K	
10	93405-06012-08	BOLT-WASHER, 6X12	1	-	-	-	GY6K	
11	94510-40000	CIRCLIP, EXTERNAL, 40MM	1	-	-	-	GY6K	
12	96150-62020-10	BEARING, RADIAL BALL, 6202UU	3	-	-	-	GY6K	

2

# PART NAME INDEX

H 2

Part name	Address	Page	Ref.	Part name	Address	Page	Ref.	Part name	Address	Page	Ref.
COLLAR, EXTENSION .....	C5	21	23	DOWEL PIN, 8X10 .....	F1	65	52	GOVERNOR ASSY. ....	C5	21	15
COLLAR, FAN .....	F3	67	1	DOWEL PIN, 8X14 .....	C7	23	47	GRIP, LEVER .....	F6	70	4
	F10	74	1		E6	54	18	GRIP, STARTER .....	C14	30	10
COLLAR, FINAL GEAR .....	F7	71	8		F6	70	16		C16	32	10
COLLAR, SPECIAL .....	D5	37	21	DOWEL PIN, 8X9 .....	E4	52	16	GROMMET, AIR CLEANER .....	D11	43	8
COLLAR, STOPPER .....	E8	56	13						D13	45	7
	E11	59	12	[ E ]				GROMMET, CHOKE ROD .....	D11	43	2
COLLAR, TANK SETTING .....	D16	48	8	ELBOW COMP., AIR CLEANER .....	D4	36	3	GUARD, MUFFLER .....	D15	47	13
COLLAR, WHEEL SHAFT .....	F10	74	9	ELEMENT, AIR CLEANER .....	D11	43	3	GUARD, MUFFLER PROTECTOR .....	D14	46	7
CONTROL ASSY. ....	E7	55	1		D13	45	1	GUIDE, EX. VALVE .....	C1	17	3
	E8	56	6	EMBLEM .....	E12	60	2	GUIDE, IN. VALVE .....	C1	17	2
	E10	58	1		E14	62	1	[ H ]			
			6					HANDLE .....	C16	32	9
CONTROL COMP. ....	E7	55	6					HANDLE, REINFORCEMENT .....	D1	33	12
	E8	56	7					HEAD COMP., CYLINDER .....	C1	47	1
	E10	58	6	EMBLEM, TOP COVER .....	E12	60	1	HOLDER ASSY., BLADE .....	F3	67	2
			7					HOLDER COMP., BLADE .....	F3	67	3
CORD, STOP SWITCH .....	D3	35	7	E-RING, 10MM .....	E4	52	15	HOLDER COMP., L. RATCHET .....	F10	74	10
			14	EXTENSION, OIL FILLER .....	C5	21	14	HOLDER COMP., R. RATCHET .....	F10	74	7
	D5	37	15	[ F ]				HOLDER, CABLE .....	E8	56	10
	E9	57	15	FAN, COOLING .....	E2	50	2	HOLDER, CONTROL CABLE .....	E10	58	9
	E11	59	14	FILTER, BREATHER .....	C5	21	8	HOLDER, GOVERNOR WEIGHT .....	C5	21	17
			15	FILTER, OUTER .....	D11	43	5	HOLDER, STOP SWITCH CORD .....	D3	35	8
COUNTERSHAFT .....	F7	71	6		D13	45	2		E9	57	16
COVER COMP., BREATHER .....	C5	21	9	FILTER, SUCTION .....	E16	64	20		E11	59	16
COVER COMP., CHAIN .....	F9	73	6	FLOAT SET .....	D6	38	3	HOOD, FAN COVER .....	D5	37	9
COVER COMP., FAN .....	D2	34	1	FLYWHEEL ASSY. ....	E2	50	9	HOUSING ASSY. ....	C16	32	2
	D4	36	8	FLYWHEEL COMP. ....	E2	50	6	HOUSING, BEARING .....	F11	75	24
COVER COMP., MUFFLER PROTECTOR .....	D14	46	7					[ I ]			
COVER COMP., TRANSMISSION .....	E16	64	5	FRAME COMP., MAIN .....	E4	52	3	INSULATOR, CARBURETOR .....	D7	39	13
COVER, AIR CLEANER .....	D11	43	7		F10	74	17	[ J ]			
	D12	44	16	[ G ]				JET SET, PILOT, .....	D10	42	23
	D13	45	3	GASKET KIT .....	F13	77	1	JET, MAIN, .....	D9	41	22
COVER, BELT .....	F11	75	23	GASKET SET .....	D6	38	1		D10	42	22
COVER, CONTROL .....	E15	63	5	GASKET, CYLINDER HEAD .....	C1	17	5	JOINT ASSY. ....	F2	66	1
	F5	69	5	GASKET, MUFFLER .....	D14	46	9		F7	71	1
COVER, DRIVEN SHAFT .....	F9	73	5		D15	47	9	JOINT SUB ASSY. ....	F2	66	4
COVER, HEAD .....	C1	17	6								5
COVER, MISSION .....	F10	74	18	Gauge Comp., Oil Level .....	C5	21	13	[ K ]			
COVER, MUFFLER PROTECTOR .....	D15	47	17		C7	23	51	KEY, SPECIAL WOODRUFF, 25X18 .....	E2	50	1
COVER, SHAFT OUTSIDE .....	F10	74	14	Gauge, Fuel Level .....	D16	48	3		E3	51	1
COVER, TERMINAL .....	E5	53	8	Gear Assy., Pinion .....	E5	53	2	KEY, SPECIAL, 16X15 .....	E4	52	1
CRANKSHAFT COMP. ....	C11	27	5	Gear Comp., Final .....	F7	71	7	KEY, WOODRUFF, 16X15 .....	F4	68	24
			6	Gear, Bevel .....	F7	71	10		F11	75	35
			7	Gear, Driven .....	C5	21	26	Knob, Recoil Starter .....	C14	30	9
			8	Gear, Final Drive .....	E16	64	8				
			9	Gear, Final Drive .....	E16	64	9				
			10	Gear, High Drive .....	F7	71	4				
CUSHION, RR. FENDER .....	D16	48	14	Gear, Low Drive .....	F7	71	5				
[ D ]											
DISK COMP., DRIVEN .....	F3	67	14								
DISK, BRAKE .....	F3	67	8								
DISK, DRIVE .....	F3	67	9								
DOG .....	D1	33	13								
DOWEL PIN, 10X16 .....	C2	18	12								
DOWEL PIN, 3X5.8 .....	F1	65	43								

4

## PARTS CATALOGUE NEWS

BOOKNo. : 13ZE70E8

Block No.	Ref. No.	Note	Part No.	Description	Reqd. QTY				Serial No.	Parts catalogue code	
					GVV 160 (JPN)	GVV 160K1 (USA)	(FRA)				
					-	1	-	-	-----	A1, N1E	
					-	1	-	-	-----	2068161 N1, N4, N5, N6, N6S, N6S1, N6T/B, SFL, SFLA, SFL1, SFY1, SFY2	
					-	-	1	1			
		T	13010-ZL0-003	RING SET, PISTON (STD.) (TEIKOKU)	1	-	-	-	1368641	-----	GY6K
					-	1	-	-	-----	N6S1	
					-	1	-	-	2068162	-----	N1, N4, N5, N6, N6S, N6T/B, SFL, SFLA, SFL1, SFY1, SFY2
		T	13010-ZL0-004	RING SET, PISTON (STD.) (NIPPON)	1	-	-	-	1368641	-----	GY6K
					-	1	-	-	-----	N6S1	
					-	1	-	-	2068162	-----	N1, N4, N5, N6, N6S, N6T/B, SFL, SFLA, SFL1, SFY1, SFY2
		L	13011-ZF1-023	RING SET, PISTON (0.25) (TEIKOKU)	(1)	(1)	-	-	-----	-----	A1L, A1L2, A12, N1C, N1E2, N1S, N12, N4C, N42, N5C, N6T/A N6TH, N62, P, S, SF, SFCA, SFS, SFSK
					(1)	-	-	-	-----	-----	SFL
					(1)	-	-	-	-----	1368640	GY6K
					(1)	-	-	-	1149119	-----	A1, N1, N1E, N4, N5, N6
					-	(1)	-	-	-----	-----	A1, N1E
					-	(1)	-	-	-----	2068161	N1, N4, N5, N6, N6S, N6T/B, SFL, SFLA, SFL1, SFY1, SFY2
					-	-	(1)	(1)			
		L	13011-ZF1-024	RING SET, PISTON (0.25) (NIPPON)	(1)	(1)	-	-	-----	-----	A1L, A1L2, A12, N1C, N1E2, N1S, N12, N4C, N42, N5C, N6T/A N6TH, N62, P, S, SF, SFCA, SFS, SFSK
					(1)	-	-	-	-----	-----	SFL
					(1)	-	-	-	-----	1368640	GY6K
					(1)	-	-	-	1149119	-----	A1, N1, N1E, N4, N5, N6
					-	(1)	-	-	-----	-----	A1, N1E

NOTE A:PART NO.CHANGE D:NEWLY PROVIDED E:PART NO.DELETION K:REQUIRED NO.CORRECTION L:APPLICATION SERIAL NO.CORRECTION  
T:APPLICATION CORRECTION Z:REMARKS CHANGE



# PARTS CATALOGUE NEWS

Honda Motor Co., Ltd. Service Division

## PARTS CATALOGUE - CORRECTED

Printed in Japan

CODE NO.	BOOKLET TYPE	13ZE70E8
	MICRO-FICHE	13ZE70EH/FH/GH
PARTS CATALOGUE NEWS	GXV160 GXV160K1	
NEWS NO.	009	

Block No.	Ref. No.	Note	Part No.	Description	Reqd. QTY				Serial No.	Parts catalogue code
					GXV 160 (JPN)	GXV 160K1 (USA)	(JPN)	(FRA)		
E-28	19	T	87601-ZE7-W30	MARK, TYPE (A12) .....	-	-	1	-	-----	A12
		D	87601-ZE7-800	MARK, TYPE (A1AS) .....	-	-	1	-	-----	A1AS

NOTE A:PART NO.CHANGE D:NEWLY PROVIDED E:PART NO.DELETION K:REQUIRED NO.CORRECTION L:APPLICATION SERIAL NO.CORRECTION  
T:APPLICATION CORRECTION Z:REMARKS CHANGE

CLICK HERE TO **DOWNLOAD** THE COMPLETE MANUAL

- Thank you very much for reading the preview of the manual.
- You can download the complete manual from: [www.heydownloads.com](http://www.heydownloads.com) by clicking the link below



- Please note: If there is no response to CLICKING the link, please download this PDF first and then click on it.

CLICK HERE TO **DOWNLOAD** THE COMPLETE MANUAL