

PARTS MANUAL

**S40-50-60-70FT S55FTS
(G187)**

CUSTOMER EDITION

HYSTER

CLICK HERE TO **DOWNLOAD** THE COMPLETE MANUAL

- Thank you very much for reading the preview of the manual.
- You can download the complete manual from: www.heydownloads.com by clicking the link below



- Please note: If there is no response to CLICKING the link, please download this PDF first and then click on it.

CLICK HERE TO **DOWNLOAD** THE COMPLETE MANUAL

TABLE OF CONTENTS (continued)

DESCRIPTION	PAGE
MAIN LIFT CYLINDER	
LEFT HAND - FOUR STAGE FULL FREE-LIFT	14-12
RIGHT HAND - FOUR STAGE FULL FREE-LIFT	14-14
THREE STAGE FULL FREE-LIFT - F508-F563	13-18
TWO STAGE LIMITED FREE LIFT - F507-F562	11-8
MAIN LIFT CYLINDER - LH	
TWO STAGE FULL FREE- LIFT - E509-E564	12-12
MAIN LIFT CYLINDER - RH	
TWO STAGE FULL FREE- LIFT - E509-E564	12-8
MAIN LIFT CYLINDER AND ATTACHING PARTS	
THREE STAGE FULL FREE-LIFT - F508-F563	13-14
MANUAL VALVE ANTI STALL GROUP	10-26
MAST ELECTRICAL	5-46
MASTER CYLINDER	9-8
MINI LEVER MODULE LABELS	
HYDRAULIC CONTROL FUNCTIONS	1-38
MINI-LEVER CONTROLS	
WITH ARMREST - THREE FUNCTION	5-40
WITH ARMREST - FOUR FUNCTION	5-42
MIRRORS	15-7
MISCELLANEOUS KITS	16-2
MIXER AND THROTTLE BODY ASSEMBLY	
MAZDA 2.2L LPG	4-16
MONOTROL PEDAL ASSEMBLY	4-54
N	
NAMEPLATES AND LABELS	1-36
O	
OIL COOLER ASSEMBLY	
KUBOTA 2.5L - 250 MM FAN HEIGHT	3-41
OIL FILTER ASSEMBLY	
KUBOTA 2.5L	3-24
OIL PAN ASSEMBLY	
KUBOTA 2.5L	3-18
OIL PUMP AND FILTER	
GASOLINE AND LPG - MAZDA 2.2L	2-24
OIL PUMP ASSEMBLY	
KUBOTA 2.5L	3-26
OUTER MAST	
FOUR STAGE FULL FREE-LIFT	14-2
THREE STAGE FULL FREE LIFT - F508-F563	13-2
TWO STAGE FULL FREE LIFT - E509/E564	12-2
TWO STAGE LIMITED FREE-LIFT - F507-F562	11-2
OUTLET SECTION	
MANUAL CONTROL VALVE - THREE AND FOUR FUNCTION	10-32
OVERHEAD GUARD	1-4
P	
PARK BRAKE	9-6

1

FRAME

**FULL SUSPENSION SEAT
SWIVEL AND NON SWIVEL – SHEET 1 OF 4**

ITEM	PART NO.	DESCRIPTION	QTY
	4603382	Seat-Full Suspension (Vinyl) (Non-Swivel)	1
	4603383	Seat-Full Suspension (Cloth) (Non-Swivel)	1
	4603384	Seat-Full Suspension (Vinyl) (Swivel)	1
	4603385	Seat-Full Suspension (Cloth) (Swivel)	1
1	a 1703900	Kit-Cushion (Seat and Back, Cloth)	1
1	a 1703903	Kit-Cushion (Seat and Back, Vinyl)	1
2	a 1703901	Kit-Cushion (Back Cushion, Vinyl)	1
2	a 1703898	Kit-Cushion (Back Cushion, Cloth)	1
2	Back Cushion	1
2	Screw	2
3	a 1703902	Kit-Seat Cushion (Vinyl)	1
3	a 1703899	Kit-Seat Cushion (Cloth)	1
3	Seat Cushion	1
3	Spring	2
3	Cotter Pin	2
4	a 1703892	Kit-Weight Adjuster (☞Figure 1-10).....	1
5	a 1703893	Kit-Service (Front Panel) (Non Swivel) (☞Figure 1-10).....	1
5	a 1703894	Kit-Service (Front Panel) (With Swivel) (☞Figure 1-10).....	1
6	a 1703904	Kit-Seat Rail (With Swivel)	1
6	4043082	Kit-Seat Rail (Non Swivel)	1
6	Locking Rail	1
6	Slave Rail	1
6	Bolt	4
6	Nut	4
7	a 4013095	Wire Harness	1
	ab 1470155	Information Case (Kit)	1
	ab 4027341	Bracket (Angle Controller)	1
	a 1563208	Sensor (Operator Presence)	1

FOOTNOTES:**a** Included with seat**b** Not Illustrated

ARMREST ASSEMBLY
MINI-LEVER MODULES – FULL SUSPENSION SEAT

ITEM	PART NO.	DESCRIPTION	QTY
	4005010	Armrest (Slider for Mini Lever)	1
1	Slider Assembly	1
2	1661511	Armrest (Slider)	1
3	1655865	Handle (Slider)	1
4	227157	Screw	2
5	4007052	Bracket Wldmt	1
6	296360	Washer	4
7	313828	Nut	4
8	1531558	Insert	3
9	296165	Capscrew	2
10	Slider Assembly	1
11	1661511	Armrest (Slider)	1
12	1655865	Handle (Slider)	1
13	227157	Screw	2
14	4004775	Bracket	1
15	316826	Nut	1
16	320160	Washer	1
17	1650640	Washer	2
18	4007319	Spacer	1
19	18738	Capscrew	1
20	296360	Washer	2
21	313828	Nut	2
22	18462	Capscrew	1
23	18471	Capscrew	1
24	4007318	Spacer	1
25	4004776	Cover Plate	1
26	169874	Nut	2
27	4603492	Cover	1
28	2062875	Capscrew	5
29	4603493	Cover	1

**MINI LEVER MODULE LABELS
HYDRAULIC CONTROL FUNCTIONS**

ITEM	PART NO.	DESCRIPTION	QTY
1	2102640	Label	1

**FLYWHEEL AND HOUSING
GASOLINE AND LPG – MAZDA 2.2L**

ITEM	PART NO.	DESCRIPTION	QTY
1	1553266	Flywheel Housing	1
2	296424	Washer	6
3	2072918	Capscrew	6
4	1512403	Capscrew	4
5	303150	Dowel	2
6	292517	Capscrew	6
7	292682	Lockwasher	6
8	1506572 4101675	Hub	1
9	1605467	Flywheel (With Ring Gear)	1
9	1506607	Flywheel (With Ring Gear) (Alternate Part)	1
10	1528415	Capscrew	6
11	296422	Washer	6
12	1658141	Drip Shield	1
13	1625999	Dust Cover	1
14	1534417	Capscrew	5

**CYLINDER HEAD AND COVER
GASOLINE AND LPG – MAZDA 2.2L**

ITEM	PART NO.	DESCRIPTION	QTY
	1652306	Long Block (2.2L, Gasoline)	1
	1652305	Long Block (2.2L, LPG)	1
1	1360883	Engine Cover (LPG)	1
1	1553693	Engine Cover (Gasoline)	1
2	1360884	Plate	1
3	1360886	Gasket	1
4	2022655	Screw	10
5	1553692	PCV Valve	1
6	1360892	Seal	1
7	1360887	Cap	1
8	1360888	Gasket	1
9	Label	1
10	2078941	Screw	2
11	1360885	Bracket	2
12	1362001	Bolt	7
13	1360878	Cylinder Head	1
14	1362002	Pin	10
15	1360895	Guide	8
16	b 1361718	Seal (Inlet)	4
16	a 1361719	Seal (Exhaust)	4
17	1360879	Clip	1
18	1361894	Bolt	10
19	1362003	Plug	1
20	1360880	Bolt	10
21	1360881	Washer	10
22	1360882	Cap	8
23	326608	Bolt	3
24	1361897	Stud	20
25	2314973	Hanger	1
26	2045321	Gasket (Cylinder Head)	1
27	1361899	Stud	2
28	1360890	Bracket	1

FOOTNOTES:**a** Black**b** Red/Brown

**OIL PUMP AND FILTER
GASOLINE AND LPG – MAZDA 2.2L**

ITEM	PART NO.	DESCRIPTION	QTY
	1652306	Long Block (2.2L, Gasoline)	1
	1652305	Long Block (2.2L, LPG)	1
1	1455676	Engine Oil Pump	1
2	1361798	Pin (Timing Indicator)	2
3	1361688	Oil Seal	1
4	1455674	Plunger	1
5	326748	Spring	1
6	326749	Spring Seat	1
7	1361879	Snap Ring	1
8	1495426	Plug	1
9	2029100	Cover	1
10	1455677	Screw	7
11	2029101	Gear (Inner)	1
12	2029102	Gear (Outer)	1
13	1361806	Strainer	1
14	1361807	Gasket	1
15	333642	Oil Filter	1
16	1553878	Bolt	2
17	1361801	O-Ring	1
18	1361878	Screw	2
19	1361868	Screw	1
20	1495427	Pin (Top Indicator)	1
21	2029103	Bolt	4
	2087753	Gasket (Liquid)	AR

**ENGINE FUEL SYSTEM AND INTAKE MANIFOLD
MAZDA 2.2L, GASOLINE**

ITEM	PART NO.	DESCRIPTION	QTY
1	1553838	Governor	1
2	1553832	Gasket	2
3	1553779	Bracket	1
4	1361881	Bolt	1
5	324706	Bolt	2
6	1368805	Bolt	2
7	1553787	Bracket (Throttle)	1
8	1573014	Intake Manifold	1
9	1553773	Stud	2
10	1553774	Stud	2
11	1362005	Plug	1
12	1366874	Bolt	2
13	1553778	Bracket	1
14	1370675	Bolt	1
15	1553777	Bracket	1
16	1553839	Bolt	2
17	1553840	Pressure Regulator	1
18	1553841	O-Ring	1
19	1361756	Gasket (Fuel Pump)	1
20	1361749	Cover	1
21	1361898	Bolt	2
22	1553830	Insulator	2
23	1553831	Manifold	1
24	1553837	Insulator	4
25	1553833	Injector	4
26	1553834	Grommet	1
27	1553835	O-Ring	1
28	1553776	Gasket	1
29	1361893	Screw	2
30	1553864	Throttle Body	1
31	326504	Nut	2
32	2066630	Bolt	2

**SECTION 3
ENGINES (2.5L)**

DESCRIPTION	PAGE
ALTERNATOR AND PULLEY ASSEMBLY	
KUBOTA 2.5L	3-42
CAMSHAFT ASSEMBLY	
KUBOTA 2.5L	3-50
COOLING SYSTEM	
WITH EXTERNAL OIL COOLER - KUBOTA 2.5L LPG	3-4
WITHOUT EXTERNAL OIL COOLER - KUBOTA 2.5L LPG	3-6
COVER ASSEMBLY	
KUBOTA 2.5L	3-34
CRANKSHAFT AND PISTON ASSEMBLY	
KUBOTA 2.5L	3-30
CRANKSHAFT BEARING ASSEMBLY	
KUBOTA 2.5L	3-28
CYLINDER BLOCK ASSEMBLY	
KUBOTA 2.5L	3-16
CYLINDER HEAD ASSEMBLY	
KUBOTA 2.5L	3-20
CYLINDER HEAD COVER ASSEMBLY	
KUBOTA 2.5L	3-22
DIPSTICK TUBE ASSEMBLY	
KUBOTA 2.5L	3-25
ECU ASSEMBLY	
KUBOTA 2.5L	3-48
ENGINE MOUNT	
KUBOTA 2.5L LPG	3-8
EXHAUST	
WITH CATALYTIC CONVERTER	3-10
EXHAUST MANIFOLD ASSEMBLY	
KUBOTA 2.5L	3-40
FAN PULLEY ASSEMBLY	
KUBOTA 2.5L	3-47
FLANGE BREATHER ASSEMBLY	
KUBOTA 2.5L	3-32
FLYWHEEL AND STARTER	
KUBOTA 2.5L LPG	3-14
FLYWHEEL HOUSING	
KUBOTA 2.5L LPG	3-12
GEAR CASE ASSEMBLY	
KUBOTA 2.5L - 250 MM FAN HEIGHT	3-54
IGNITION COIL ASSEMBLY	
KUBOTA 2.5L	3-33
INTAKE MANIFOLD ASSEMBLY	
AND FUEL SYSTEM - KUBOTA 2.5L	3-38
OIL COOLER ASSEMBLY	
KUBOTA 2.5L - 250 MM FAN HEIGHT	3-41
OIL FILTER ASSEMBLY	
KUBOTA 2.5L	3-24
OIL PAN ASSEMBLY	
KUBOTA 2.5L	3-18

**EXHAUST
WITH CATALYTIC CONVERTER**

ITEM	PART NO.	DESCRIPTION	QTY
1	2089895	Muffler (Crimped)	1
2	4634086	Catalytic Converter	1
3	1709996	Isolator	4
4	1510115	Capscrew	2
5	1582222	Locknut	6
6	1589295	Exhaust Pipe	1
7	63117	Clamp	1
8	1636410	Exhaust Pipe	1
9	1460477	Nut	4
10	1469405	Nut	2
11	1547712	Gasket	2
12	4098977	Gasket	2
13	1469379	Gasket	1
14	4098976	Gasket	1
15	4056794	Exhaust Pipe	1
16	1552707	Bracket	1
17	4064158	Gasket	1
18	2073051	Wrap (With Snaps)	1
19	2073052	Wrap (Flex Joint)	1
20	4628483	Exhaust Wrap	1
21	4099533	Clamp	1
22	4104893	Sensor (O2) (Sensor)	2
22	1483329	Connector Body	1

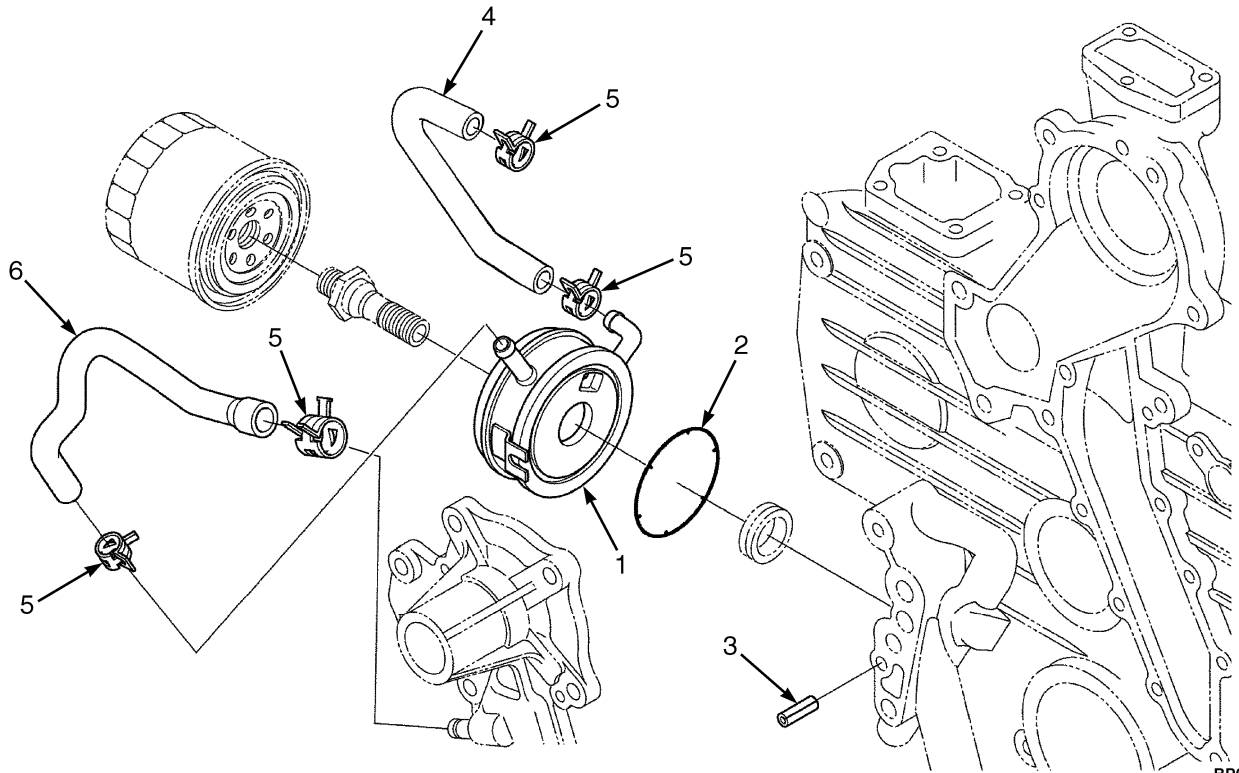
**CYLINDER HEAD ASSEMBLY
KUBOTA 2.5L**

ITEM	PART NO.	DESCRIPTION	QTY
	4625768	Engine Assy (with 250mm Fan Height)	1
1	4096808	Lifting Eye	1
2	4096812	Lifting Eye	1
3	4096813	Bolt	1
4	4042342	Stud	2
5	4096814	Nut	1
6	4096815	Cylinder Head	1
7	4041950	Cap	12
8	4041951	Cap	1
9	4096816	Plug	2
10	4096817	Guide	4
11	4096818	Guide	4
12	4096819	Valve Seat	4
13	4096820	Valve Seat	4
14	4096823	Plug	1
15	4096822	Cylinder Head Gasket	1
16	4096821	Bolt	10
17	4096824	Washer	1
18	4096825	Sensor	1
19	4096826	Bolt	1

**CRANKSHAFT AND PISTON ASSEMBLY
KUBOTA 2.5L**

ITEM	PART NO.	DESCRIPTION	QTY
	4625768	Engine Assy (with 250mm Fan Height)	1
1	4097200	Kit-Piston (Standard)	4
2	4096909	Piston	1
3	4096911	Kit-Piston Ring	1
4	4096913	Pin	1
5	4096914	Retaining Ring	2
6	4096916	Bushing	1
7	4097201	Kit-Piston (+.25mm)	4
8	4096910	Piston	1
9	4096912	Kit-Piston Ring	1
10	4096913	Pin	1
11	4096914	Retaining Ring	2
12	4096916	Bushing	1
13	4096915	Kit-Piston Rod	4
14	4096916	Bushing	1
15	4097172	Bolt	2
16	4097173	Piston Rod Bearing	2
17	4097176	Crankshaft	1
18	61141	Ball	4
19	4097178	Bushing	1
20	4097177	Pin	1
21	4097179	Gear	1
22	4097180	Key	1
23	4097181	Gear	1
24	4097182	Pin	2
25	4097183	Slinger	1
26	4097184	Collar	1
27	4097185	O-Ring	1
28	4097186	Nut	1
29	4097196	Oil Seal	1
30	4097197	Kit-Crankshaft Bearing (Standard)	1
31	4097187	Crankshaft Bearing	1
32	4097173	Piston Rod Bearing	8
33	4096887	Crankshaft Bearing	8
34	4097190	Thrust Washer	2
35	4097193	Thrust Washer	2
36	4097198	Kit-Crankshaft Bearing (-.20mm / +.20mm)	1
37	4097188	Crankshaft Bearing	1
38	4097174	Piston Rod Bearing	8
39	4096898	Crankshaft Bearing	8
40	4097191	Thrust Washer	2
41	4097194	Thrust Washer	2
42	4097199	Kit-Crankshaft Bearing	1
43	4097189	Crankshaft Bearing	1
44	4097175	Piston Rod Bearing	8
45	4096899	Crankshaft Bearing	8
46	4097192	Thrust Washer	2
47	4097195	Thrust Washer	2

**OIL COOLER ASSEMBLY (FIGURE 3-23)
KUBOTA 2.5L — 250 MM FAN HEIGHT**



BP090673

ITEM	PART NO.	DESCRIPTION	QTY
	4625768	Engine Assy (with 250mm Fan Height)	1
1	4097698	Oil Cooler	1
2	4097699	O-Ring	1
3	4097700	Roll Pin	1
4	4097701	Hose	1
5	4097702	Hose Clamp	4
6	4097703	Hose	1

**CAMSHAFT ASSEMBLY
KUBOTA 2.5L**

ITEM	PART NO.	DESCRIPTION	QTY
	4625768	Engine Assy (with 250mm Fan Height)	1
1	4042134	Tappet	8
2	4096900	Push Rod	8
3	4096901	Camshaft	1
4	61141	Ball	1
5	4096902	Gear	1
6	4096903	Key	1
7	4096904	Stop	1
8	4041992	Bolt	5
9	4096905	Idler Gear	1
10	4096907	Bushing	1
11	4096906	Collar	1
12	4054753	Bolt (Flange)	2
13	4096908	Shaft	1

**AIR INTAKE SYSTEM
MAZDA 2.2L, GASOLINE**

ITEM	PART NO.	DESCRIPTION	QTY
1	2067476	Grill	1
2	1502034	Hose (Dirty Air)	1
3	1394008	Hose Clamp	1
4	1581438	Elbow (Dirty Air)	1
5	1581439	Retainer	1
6	1502079	Grommet	1
7	112989	Hose Clamp	3
8	2084252	Hose (Clean Air)	1
9	4611248	Air Filter (☞ Figure 4-3).....	1
10	1530243	Insert	3
11	4069901	Bracket	1
12	1583611	Capscrew	3
13	1527879	Capscrew	2
14	353199	Clamp	1
15	1632565	Hose (PCV)	1
16	1452463	Hose Clamp	1

**FUEL SUPPLY SYSTEM
MAZDA 2.2L, GASOLINE**

ITEM	PART NO.	DESCRIPTION	QTY
1	1634893	Fuel Sender (☞ Figure 4-13).....	1
2	353000	O-Ring	2
3	1527881	Capscrew	2
4	1528893	Quad Ring	1
5	1564582	Tube	1
6	1564949	Tube	1
7	2080130	Hose	1
8	1606544	Clamp	1
9	168718	Clamp	10
10	1561871	Clamp (Swivel)	1
11	1543698	Clamp (Swivel)	2
12	2076344	Hose	1
13	2062587	Hose	3
14	187630	Clamp	1
15	1480237	Nut	2
16	1527879	Capscrew	2
17	1563870	Plate	1
18	1547845	Clamp	1
19	1304950	Fuel Filter	1
20	1547848	Fitting	1
21	1345991	Pressure Valve	1
22	1339438	Seal	1
23	1564583	Tube	1
24	1579677	Fuel Cap	1
25	2021685	Gasket (GS)	1
25	325549	Shim (0.020 in.) (GS)	1
26	1593391	Seal	1
27	1529366	Capscrew	2
28	1564392	Pipe (Fill)	1
29	2021685	Gasket	1
30	1528608	Grommet	1
31	1579677	Fuel Cap	1

LPG FUEL GROUP KUBOTA
PREMIUM LOW FUEL SENSOR – SECTION 1 OF 2

ITEM	PART NO.	DESCRIPTION	QTY
1	4625186	Hose	1
2	4625083	Hose	1
3	4628697	Hose	1
4	4064288	Elbow	2
5	1501994	Hose Clamp	4
6	1542436	Clamp (Swivel)	3
7	153069	Clamp	1
8	1534417	Capscrew	1
9	1502009	Hose Clamp	2
10	1569465	Clamp (Swivel)	3
11	1502061	Clamp	2

**LPG TANK BRACKET
SWING OUT**

ITEM	PART NO.	DESCRIPTION	QTY
1	4075714	LPG Tank Bracket	1
2	1398099	Plug	4
3	1581898	Washer	1
4	1581583	Capscrew	1
5	101809	Relief Valve	1
6	4048941	Fitting (LPG Bulkhead Rear)	1
7	1656325	Latch	1
8	1649565	Plate	1
9	4054932	Capscrew	4
10	1584083	Bracket Wldmt	1
11	1525451	Fitting	1
12	1581579	Capscrew	1
13	1568853	Thrust Washer	1
14	184451	Ball Bearing	2
15	1568839	Washer (Pivot)	1
16	34507	Snap Ring	1
17	1534672	Ring	1
18	1615956	Pin	1
19	1528903	Spring	1
20	4029506	Pin (Alignment)	1
21	4029538	Washer	1
22	4029920	Washer	1
23	4032291	Washer	1
24	4032292	Spacer	1
25	4031146	Capscrew	1
26	1613749	Strap	1
27	1613755	Latch	1
28	1581733	Capscrew	2
29	1581739	Nut	2
30	1586013	Capscrew	6
31	1682758	Striker	1
32	4619095	Hose Assy	1
33	16134	Fitting	2
34	16863	Fitting	1
35	2071517	Sleeve	1
36	97999	Fitting	1
37	4051434	Fitting (Elbow)	1
38	1688803	Shim	3
39	4619094	Hose Assy	1
	a 246108	Sealant	AR
	a 1687376	Sealant (Alternate Part)	AR

FOOTNOTES:**a** Not Illustrated

**THROTTLE PEDAL ASSEMBLY AND ATTACHING PARTS
MONOTROL**

ITEM	PART NO.	DESCRIPTION	QTY
	4051938	Pedal Assy (Monotrol)	1
1	2074702	Pedal	1
2	1340470	Pad	1
3	2072782 4634485	Wire Harness	1
4	Connector Assembly (To Cowl Harness)	1
4	1489655	Connector (4 Way)	1
4	1330416	Connector	1
4	1531312	Terminal	4
5	Switch (Reverse)	1
6	Switch (Forward)	1
7	220428	Screw	4
8	53162	Lockwasher	4
9	16865	Nut	4
10	325699	Spring	2
11	4040523	Washer (Bonded)	2
12	15931	Lockwasher	2
13	16708	Screw	2
14	1500912	Clip	1
15	1582464	Fastener	1
16	360387	Loctite	AR
17	302437	Roll Pin	1
18	4031769	Isolator (Throttle Pedal)	1
19	2063842	Sensor (Hall Throttle Position) (To Cowl Harness)	1
20	296378	Washer	2
21	1564752	Capscrew	2
22	4051924	Base Assembly (Throttle)	1
22	4615964	Molding	1
23	1524267	Bushing	1
24	1654754	Shaft	1
25	1530971	E-Ring	1
26	1654156	Shim	AR
27	1527879	Capscrew	3
28	1530311	Screw (Stop)	1
29	329069	Nut	1
30	251099	Loctite	AR
31	1582301	Spring (Inner)	1
32	1582300	Spring (Outer)	1

**ELECTRICAL SYSTEM
CHASSIS**

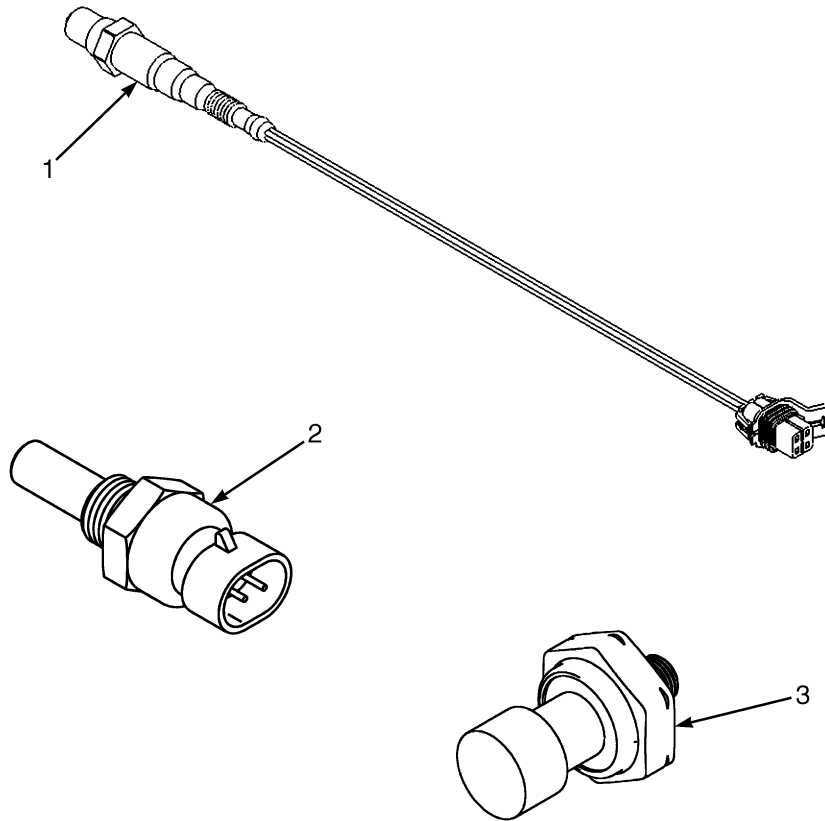
ITEM	PART NO.	DESCRIPTION	QTY
1	1582464	Fastener	6
2	Clip	1
3	2090661	Battery Tray (Plastic)	1
4	1559928	Seal	1
5	1402883	Fuse Puller	1
6	1534417	Capscrew	3
7	1502543	Nut (Flange)	3
7	296380	Washer (Use above item 16)	1
8	2090613	Fuse Box (PDM) (Fuse Box) (☞ Figure 5-12).....	1
9	1500912	Clip	6
10	1593331	Connector	1
11	4077726	Horn (Electronic)	1
12	1527879	Capscrew	1
13	1480237	Nut	4
14	4620354	Wire Harness (Chassis) (Mazda 2.2L) (☞ Figure 5-24).....	1
14	b 4635227	Wire Harness (Chassis) (Mazda 2.2L) (☞ Figure 5-25).....	1
14	4630229	Wire Harness (Chassis) (Kubota 2.5L) (☞ Figure 5-26).....	1
14	b 4635321	Wire Harness (Chassis) (Kubota 2.5L) (☞ Figure 5-27).....	1
15	1383331	Start Battery Wet	1
15	1643935	Start Battery Wet (Optional)	1
16	1638706	Link (Battery Hold Down)	1
17	2065745	Link (Battery Hold Down)	1
18	1540805	Cap	1
19	1617080	Bracket (Hood Switch)	1
20	1529366	Capscrew	1
21	1582337	Bracket	1
22	2058111	Ignition Switch	1
22	262798	Key Set	1
23	2058110	Wire Harness (Remote Keyswitch)	1
24	1527880	Capscrew	3
25	1537551	Nut (Clip)	2
26	4634955	Control Module (Seat Belt Sequence)	1
27	4102512	Bracket	1
28	1672692	Screw	2
	a 4616988	Wire Harness (Jumper) (Electronic Horn)	1

FOOTNOTES:**a** Not Illustrated**b** With Seat Belt Sequence Module

**ENGINE ELECTRICAL SYSTEM
GASOLINE, SHEET 1 OF 2 – MAZDA 2.2L**

ITEM	PART NO.	DESCRIPTION	QTY
1	1542403	Bracket	1
2	4001804	Sensor (Temperature)	1
3	4605855	Wire Harness (Engine)	1
4	1539086	Lockwasher	1
4	1500912	Clip	1
5	1539085	Locknut	1
5	1582464	Fastener	2
6	1534417	Capscrew	5
7	325182	Nut	6
8	2107181	Battery Cable (Positive)	1
8	1560091	Boot	1
8	16079	Terminal	1
8	806426	E-Ring	1
8	148792	Terminal	1
8	1590368	Terminal	1
9	1561225	Bracket	1
10	1646456	Sensor (Oxygen)	2
11	1502543	Nut (Flange)	5
12	1539962	Sensor (Air Temperature)	1
13	1368886	Washer	1
14	367224	Adapter	1
15	4016652	Pressure Transducer (Oil)	1
16	1556838	Plate (Coil Mounting)	1
17	1527879	Capscrew	6
18	1480237	Nut	6
19	1545443	Condenser	1
20	1545444	Igniter	1
21	296150	Capscrew	2
22	1549398	Nut	2
23	1527571	Ignition Coil	1
24	1514429	Nut	1
25	1556623	Bolt	2
26	4603434	Engine Control Module (2.2L, Gasoline) (☞Figure 5-10).....	1
27	1581962	Capscrew	4
28	1582138	Bracket	1
29	1531558	Insert	6
30	2065858	Governor Controller	1
31	1586495	Capscrew	4
32	1582238	Shield	1
33	1582101	Drip Shield	1
34	1399323	Pad	1
35	296380	Washer	1
36	2069225	Battery Cable (Negative)	1
36	128408	Clamp	1
36	1564044	E-Ring	1
36	806426	E-Ring	1
36	148789	Terminal	1
36	1616122	Terminal (Part not replaceable service with assembly)	1
37	1527876	Capscrew	7
38	1529366	Capscrew	2

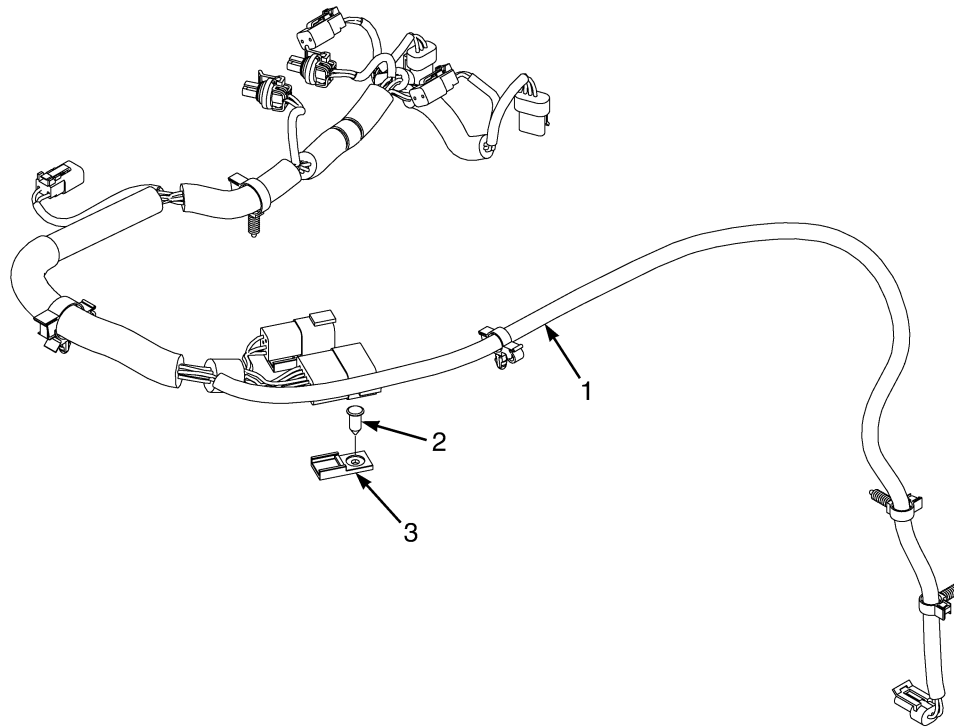
**FUEL SYSTEM SENSORS (FIGURE 5-14)
MAZDA 2.2L, GASOLINE**



BP130251

ITEM	PART NO.	DESCRIPTION	QTY
1	1646456	Sensor (Oxygen)	2
2	4001804	Sensor (Temperature)	1
3	4016652	Pressure Transducer (Oil)	1

TRANSMISSION ELECTRICAL SYSTEM (FIGURE 5-20)



BP240182

ITEM	PART NO.	DESCRIPTION	QTY
1	2105959	Wire Harness (Transmission) (☞ Figure 5-39).....	1
2	1582464	Fastener	2
3	1500912	Clip	2

**WIRE HARNESS
RH CHASSIS – MAZDA**

ITEM	PART NO.	DESCRIPTION	QTY
28	1525577	Connector (With Resistor)	1
29	1699754	Conduit	AR
30	Connector Assembly (Coolant Level)	1
30	4052151	Connector	1
30	1329151	Terminal	1
30	1330281	Terminal	2
30	1402888	Seal	2
31	Connector Assembly (Endcap)	1
31	1329150	Connector	1
31	1329151	Terminal	1
31	1327164	Seal	2
32	1402815	Clip	1
33	1509888	Clip	3
34	Connector Assembly (To Backup Alarm Harness)	1
34	1490242	Connector (2 Way)	1
34	1490243	Connector	1
34	1330438	Terminal (Socket)	2
35	Connector Assembly (Endcap)	1
35	1626727	Connector	1
36	Connector Assembly (Hydraulic Temperature)	1
36	1402868	Connector	1
36	1323576	Terminal	2
37	1509890	Clip	2
38	Connector Assembly (To MLM Harness)	1
38	1541991	Connector	1
38	1541992	Connector	1
38	1463139	Terminal	5
38	1484377	Plug	3
39	Connector Assembly (Endcap)	1
39	1541988	Connector (8 Pin)	1
39	1484377	Plug	8
40	Connector Assembly (To Seat Harness)	1
40	1531973	Connector	1
40	1531974	Connector	1
40	1463139	Terminal	4
40	1484377	Plug	2
41	1531492	T-Fitting	1
42	1534282	Clip	2
43	1500899	Clip	1
44	Connector Assembly (To Transmission Harness)	1
44	1525567	Connector	1
44	1529046	Connector	1
44	1463139	Terminal	11
44	1484377	Plug	1
45	Connector Assembly (To Transmission Harness)	1
45	1531973	Connector	1
45	1531974	Connector	1
45	1463139	Terminal	6
46	Connector Assembly (To Engine Harness)	1
46	1531973	Connector	1

**WIRE HARNESS
RH CHASSIS – KUBOTA 2.5L**

ITEM	PART NO.	DESCRIPTION	QTY
	4630229	Wire Harness (Chassis)	1
	Connector Assembly (Light/Cab Harness)	1
1	4047669	Connector (End Cap)	1
1	1330439	Plug	4
1	1632865	Connector	1
1	1514603	Connector	1
1	1554359	Terminal	4
2	Connector Assembly (Acc 1)	1
2	4060737	Connector (End Cap)	1
2	1330439	Plug	2
2	4047664	Connector	1
2	1546697	Connector (Lock)	1
2	1554359	Terminal	2
3	Connector Assembly (VSM)	1
3	1525570	Connector	1
3	1530037	Connector (Lock)	1
3	1463139	Terminal	7
3	1484377	Plug	5
4	Connector Assembly (VSM)	1
4	1525569	Connector	1
4	1530037	Connector (Lock)	1
4	1484377	Plug	10
4	1463139	Terminal	2
5	Connector Assembly (VSM)	1
5	1525568	Connector	1
5	1530037	Connector (Lock)	1
5	1463139	Terminal	5
5	1484377	Plug	7
6	Connector Assembly (VSM)	1
6	1525567	Connector	1
6	1530037	Connector (Lock)	1
6	1463139	Terminal	9
6	1484377	Plug	2
6	4053052	Terminal	1
7	Connector Assembly (VSM)	1
7	1525563	Connector	1
7	1530037	Connector (Lock)	1
7	1363886	Terminal (Socket)	4
7	1330438	Terminal (Socket)	8
8	Connector Assembly (Cowl Harness)	1
8	1489655	Connector (4 Way)	1
8	1330416	Connector	1
8	1330437	Terminal (Pin)	4
9	Connector Assembly (Cowl Harness)	1
9	1493428	Connector (12-Way)	1
9	1500913	Connector (Lock)	1
9	1330438	Terminal (Socket)	10
9	1484377	Plug	2
10	Connector Assembly (VSM)	1
10	1525567	Connector	1

WIRE HARNESS
RH CHASSIS WITH SEAT BELT SEQUENCE MODULE – KUBOTA 2.5L LPG

ITEM	PART NO.	DESCRIPTION	QTY
58	Connector Assembly (Acc #1)	1
58	4047664	Connector	1
58	1546697	Connector	1
58	1554359	Terminal	2
59	Connector Assembly (Endcap)	1
59	4060737	Connector	1
59	1330439	Plug	2
60	Connector Assembly (Seat Belt Sequence Module)	1
60	1502625	Connector	1
60	1502626	Connector	1
60	1330438	Terminal (Socket)	6
60	1484377	Plug	2
60	1602431	Fuse Holder	1

**WIRE HARNESS (ENGINE)
KUBOTA 2.5L LPG**

ITEM	PART NO.	DESCRIPTION	QTY
	4629050	Wire Harness (Engine) (2.5L LPG)	1
1	148614	E-Ring (Starter B+)	1
2	Connector Assembly (Starter Solenoid)	1
2	1324311	Terminal	1
3	Connector Assembly (Coil-Cylinder #4)	1
3	4612988	Connector	1
3	4612978	Terminal	2
3	4614516	Wire Seal	2
4	Connector Assembly (Coil-Cylinder #3)	1
4	4612988	Connector	1
4	4612978	Terminal	2
4	4614516	Wire Seal	2
5	Connector Assembly (Coil-Cylinder #2)	1
5	4612988	Connector	1
5	4612978	Terminal	2
5	4614516	Wire Seal	2
6	Connector Assembly (Coil-Cylinder #1)	1
6	4612988	Connector	1
6	4612978	Terminal	2
6	4614516	Wire Seal	2
7	Connector Assembly (DEPR)	1
7	4612836	Connector	1
7	2070512	Plug	1
7	2314741	Terminal	5
7	2061333	Wire Seal	5
8	Connector Assembly (TMAP)	1
8	4074909	Connector	1
9	Connector Assembly (HT O2 Sensor)	1
9	1498424	Housing	1
9	1650797	Lock (Secondary)	1
9	1330355	Terminal	4
9	1476108	Wire Seal	4
10	Connector Assembly (Alternator B+)	1
10	148614	E-Ring	1
10	1520864	Boot	1
11	Connector Assembly (Alternator Conn.)	1
11	4614847	Connector	1
11	4613008	Terminal	2
11	4613009	Plug	1
11	4614848	Wire Seal	2
12	Connector Assembly (ENG CLT Sensor)	1
12	4028633	Connector	1
12	2314741	Terminal	2
12	2061333	Wire Seal	2
13	Connector Assembly (Cam Sensor)	1
13	4043880	Connector	1
13	1476598	Terminal	2
13	1476599	Seal	2
14	Connector Assembly (Crank Sensor)	1
14	4074625	Connector	1

WIRE HARNESS
COWL WITH MONOTROL PEDAL – WITH RETURN TO SET TILT

ITEM	PART NO.	DESCRIPTION	QTY
	4603283	Wire Harness	1
1	Connector Assembly (Vehicle System Manager)	1
1	1525568	Connector	1
1	1529046	Connector	1
1	1463139	Terminal	11
1	1484377	Plug	1
2	1540388	Conduit	AR
3	1534282	Clip	1
4	Connector Assembly (Endcap)	1
4	1525573	Connector	1
5	Connector Assembly (To Monotrol Pedal Harness)	1
5	1489656	Connector (4-Way)	1
5	1489657	Connector	1
5	1330438	Terminal (Socket)	4
6	Connector Assembly (Accelerator Pedal Sensor)	1
6	1525584	Connector	1
6	1532571	Terminal	6
7	275496	Conduit	AR
8	1534828	Clip	1
9	1509890	Clip	2
10	275495	Conduit	AR
11	Connector Assembly (To Mast Harness)	1
11	1330438	Terminal (Socket)	3
11	1463194	Connector (Secondary Lock)	1
11	1484397	Connector (3-Way)	1
12	Connector Assembly (Endcap)	1
12	1351682	Connector (End Cap)	1
13	Connector Assembly (Brake Pressure)	1
13	1603021	Connector	1
13	1603236	Connector (Secondary Lock)	1
13	1548517	Terminal (Socket)	3
13	1548519	Seal	3
14	275493	Conduit	AR
15	Connector Assembly (Brake Pedal)	1
15	1700460	Connector	1
15	1700461	Terminal	3
16	1402816	Clip	2
17	Connector Assembly (Park Brake)	1
17	1700460	Connector	1
17	1700461	Terminal	3
18	1500899	Clip	2
19	275497	Conduit	AR
20	Connector Assembly (Brake Fluid)	1
20	1566227	Terminal	1
20	1566076	Seal	1
21	Connector Assembly (Brake Fluid)	1
21	1566227	Terminal	1
21	1566076	Seal	1
22	Connector Assembly (Endcap w/ Resistor)	1
22	1525577	Connector (With Resistor)	1

CLICK HERE TO **DOWNLOAD** THE COMPLETE MANUAL

- Thank you very much for reading the preview of the manual.
- You can download the complete manual from: www.heydownloads.com by clicking the link below



- Please note: If there is no response to CLICKING the link, please download this PDF first and then click on it.

CLICK HERE TO **DOWNLOAD** THE COMPLETE MANUAL

**WIRE HARNESS
LIGHTS**

ITEM	PART NO.	DESCRIPTION	QTY
	2098385	Wire Harness (Lights)	1
1	Connector Assembly (Vehicle System Management)	1
1	1525566	Connector	1
1	1500913	Connector	1
1	1330438	Terminal (Socket)	3
1	1484377	Plug	9
2	Connector Assembly (RH Chassis)	1
2	1514597	Connector	1
2	1514598	Connector	1
2	1484709	Terminal (Pin)	4
3	Connector Assembly (RH Front Work Light)	1
3	1490242	Connector (2 Way)	1
3	1490243	Connector	1
3	1363886	Terminal (Socket)	2
4	Connector Assembly (RH Rear Signal)	1
4	1531486	Connector	1
4	930591	Connector	1
4	1330355	Terminal	4
4	1330356	Seal	1
4	1482668	Plug (Cavity Plug)	2
4	1476108	Wire Seal	3
5	Connector Assembly (Strobe)	1
5	1484557	Connector (2 Socket)	1
5	1484558	Connector	1
5	1463139	Terminal	2
6	Connector Assembly (Rear Work Light)	1
6	1490242	Connector (2 Way)	1
6	1490243	Connector	1
6	1363886	Terminal (Socket)	2
7	Connector Assembly (LH Rear Signal)	1
7	1531486	Connector	1
7	930591	Connector	1
7	1330355	Terminal	4
7	1330356	Seal	1
7	1482668	Plug (Cavity Plug)	2
7	1476108	Wire Seal	3
8	Connector Assembly (LH Front Work Light)	1
8	1490242	Connector (2 Way)	1
8	1490243	Connector	1
8	1363886	Terminal (Socket)	2
9	275493	Conduit	AR
10	275495	Conduit	AR
11	175944	Heat Shrink	AR
12	1509890	Clip	2

TRANSMISSION COOLING
WITH AIR OIL COOLER – MAZDA 2.2L AND KUBOTA 2.5L LPG

ITEM	PART NO.	DESCRIPTION	QTY
1	2111783	Hose	1
2	2109692	Hose	1
3	1562648	Clip	2
4	1527879	Capscrew	2
5	1480237	Nut	2
6	2109875	Tube Assy	1
7	1486749	Fitting	1
8	222512	Fitting	1
8	16485	O-Ring	1
9	130845	Clamp	4
10	17223	Fitting	2
10	16485	O-Ring	1

TORQUE CONVERTER HOUSING AND ATTACHING PARTS
SINGLE SPEED – ALUMINUM CHAIN DRIVE

ITEM	PART NO.	DESCRIPTION	QTY
	4043334	Transmission Assy	1
1	4016150	Converter Housing	1
2	1624401	Dipstick	1
3	1632741	Breather	1
3	16486	O-Ring	1
4	1589792		
	235691	Fitting	1
5	1703644	Plug	1
6	233693	Fitting	3
6	16485	O-Ring	1
7	1515654	Temperature Sensor	1
8	292500	Capscrew	2
9	292680	Washer	4
10	1702520	Cover (Suction Screen)	1
11	334560	Magnet	1
12	334450	Screen	1
13	1688598	Spring	1
14	43207	Ball Bearing	1
15	4016152	Sprocket (Driven)	1
16	4020467	Drive Chain	1
17	4020466	Drive Chain	1
18	4010318	Sprocket (Driven)	1
19	44307	Ball Bearing	1
20	39375	O-Ring	1
21	1558515	Fitting	1
22	58916	Snap Ring	1
23	44308	Ball Bearing	1
24	1684389	Transmission Gear (Output)	1
25	43208	Ball Bearing	2
26	1675647	Housing (Stator Support Assembly) (☞ Figure 6-9).....	1
27	287860	Capscrew	4
28	292682	Lockwasher	4
29	104681	O-Ring	2
30	1544218	Sealing Ring	1
31	4016151	Sprocket (Driving)	1
32	1544216	Bearing	1
33	1544217	Oil Seal (Torque Converter)	1
34	303150	Dowel	2
35	4020311	Plate	1
36	292679	Washer	2
37	293741	Capscrew	2
38	4103236	Cover (Converter Housing)	1
39	136681	Capscrew	2
40	292681	Lockwasher	2
41	145481	O-Ring	1

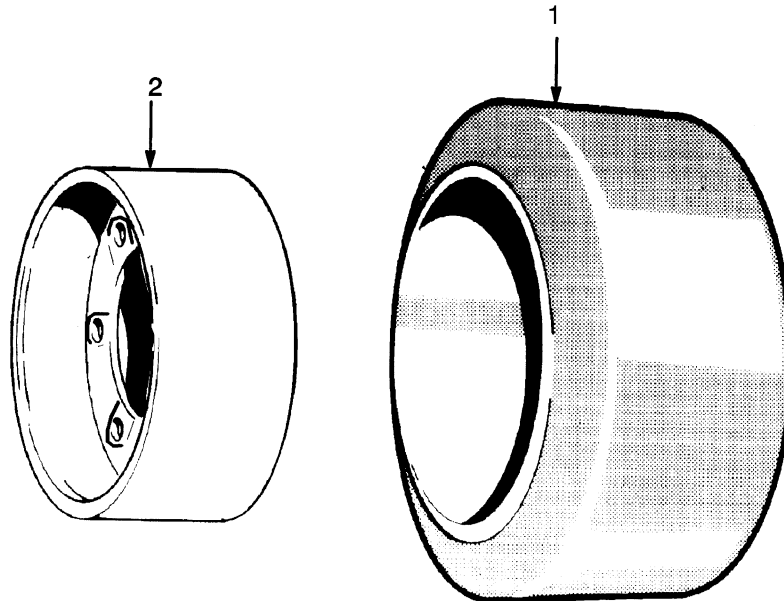
**SECTION 7
DRIVE AXLE**

DESCRIPTION	PAGE
DRIVE AXLE	7-2
DRIVE TIRES AND WHEELS	
S40-50FT	7-5
S55-60FT	7-6
S70FT	7-7

**SECTION 8
STEERING SYSTEM**

DESCRIPTION	PAGE
STEER TIRES AND WHEELS	8-11
STEERING AXLE	8-8
STEERING COLUMN ASSEMBLY	
NON-ISOLATED	8-4
STEERING CONTROL UNIT	8-6
STEERING CYLINDER	8-10
STEERING SYSTEM	8-2

STEER TIRES AND WHEELS (FIGURE 8-6)



BP220055

KEY:

- A: S40-50FT**
- B: S40-60FT**
- C: S40-70FT**
- D: S70FT**

ITEM	PART NO.	DESCRIPTION	QTY			
			A	B	C	D
1	e 1540115	Cushion Tire (16 x 5 x 10.5)	2
1	e 1540116	Cushion Tire (16 x 6 x 10.5)	2
1	c 1540119	Cushion Tire (16 x 5 x 10.5)	2
1	c 1540120	Cushion Tire (16 x 6 x 10.5)	2
1	d 1655319	Cushion Tire (16 x 5 x 10.5)	2
1	d 1655320	Cushion Tire (16 x 6 x 10.5)	2	..
1	b 1563507	Cushion Tire (16 x 6 x 10.5)	2
1	1668112	Cushion Tire (16 x 7 x 10.5) (Standard Compound) (Alternate Part)	2
1	d 1668116	Cushion Tire (16 x 7 x 10.5) (Non Marking) (Alternate Part)	2
1	a 1582332	Cushion Tire (16 x 6 x 10.5)	2
2	1461669	Wheel	2	2	2	2
2	1668113	Wheel	2

FOOTNOTES:

- a** High Capacity Non-Marking
- b** High Load Plain Tread
- c** Lug Tread
- d** Non-Marking
- e** Plain Tread

PARK BRAKE

ITEM	PART NO.	DESCRIPTION	QTY
1	4039373	Parking Brake Assembly	1
2	4039366	Parking Brake Lever	1
2	1583915	Grip	1
3	1683486	Sensor (Brake Position)	1
4	296378	Washer	2
5	1701768	Screw	2
6	4011940	Capscrew	4
	a 2111171	Wire Harness (Jumper) (Parking Brake Sensor/Cowl Harness)	1

FOOTNOTES:

a Not Illustrated

HYDRAULIC SUPPLY AND RETURN

ITEM	PART NO.	DESCRIPTION	QTY
1	Gear Pump (☞Figure 10-2).....	1
2	4605946	Hose	1
3	2109937	Tube	1
4	4605974	Hose	1
5	1624904	Strainer	1
5	16984	O-Ring	1
6	369804	Clamp	4
6	127045	Clamp (Hose)	1
7	4612084	Hose Assy	1
7	4611860	Hose Assy (Optional)	1
8	1486751	Fitting	1
8	4028686	Adapter (Optional)	1
9	252729	O-Ring	1
10	1568199	Adapter (Suction)	1
11	1486749	Fitting	1
11	4028685	Adapter (Optional)	1
12	1564515	Capscrew	2
13	296420	Washer	2
14	292513	Capscrew	2
15	2111325	Hose (Three Function)	1
15	2111326	Hose (Four Function)	1
16	339530	Clamp	1
17	1510113	Capscrew	1
18	1530243	Insert	1
19	1502123	Hose	1
19	127918	Hose (Optional)	1
20	1582161	Breather	1
20	16486	O-Ring	1
21	1582160	Adapter (Breather)	1
22	222510	Fitting	1
23	16484	O-Ring	1
24	1502007	Hose Clamp	1
25	1510116	Capscrew	2
26	1393879	Nut	2
27	1528481	Plug (With O-Ring for Drain)	1
28	1502543	Nut (Flange)	4
29	2060751	Dipstick	1
29	1580682	O-Ring	1
30	Hydraulic Filter (☞Figure 10-4).....	1
31	2306118	Clamp	1
32	127045	Clamp (Hose)	1
33	Hydraulic Control Valve (☞Figure 10-11, ☞Figure 10-21).....	1
	264159	Adhesive	AR

KEY:**A: Three Function****B: Four Function**

ITEM	PART NO.	DESCRIPTION	QTY	
			A	B
1	4624924	Hose Assy	1	1
2	1487061	Fitting	1	2
3	4624925	Hose Assy	1	2
4	1486742	Fitting	1	2
5	1360386	Clamp (Double Hose)	1	1
6	4064677	Plate	1	1
7	293796	Capscrew	2	2
8	1531558	Insert	2	2
9	4624926	Hose Assy	1

CONTROL VALVE ASSEMBLY
MANUAL CONTROL – THREE AND FOUR FUNCTION

KEY:**A: S40-60FT****B: S70FT**

ITEM	PART NO.	DESCRIPTION	QTY	
			A	B
	4629068	Hyd Control Valve (3 Function)	1	..
	4629070	Hyd Control Valve (4 Function)	1	..
	4629072	Hyd Control Valve (3 Function)	1
	4629074	Hyd Control Valve (4 Function)	1
1	4629077	Hyd Control Valve (3 Function)	1	..
1	1670434	Kit-Seal (Three Function)	1	..
1	4626786	Hyd Control Valve (4 Function)	1	..
1	1670054	Kit-Seal (Four Function)	1	..
1	4629078	Hyd Control Valve (3 Function)	1
1	1670434	Kit-Seal (Three Function)	1
1	4629079	Hyd Control Valve (4 Function)	1
1	1670054	Kit-Seal (Four Function)	1
2	4098672	Relief Valve (Main)	1	1
3	1578707	Relief Valve (Secondary) (2250 PSI)	1	1
4	4088047	Valve Section (Lift And Tilt) (☞Figure 10-14).....	1	1
5	4087334	Valve Section (Aux 1) (☞Figure 10-15).....	1	1
6	4087335	Valve Section (Aux 2) (☞Figure 10-15).....	1	1
7	1578746	Valve Section (Outlet Section) (☞Figure 10-16).....	1	1
8	2056868	Steering Control Unit (☞Figure 8-3).....	1	..
8	2056869	Steering Control Unit (☞Figure 8-3).....	..	1

**HYDRAULIC CONTROL VALVE
ELECTRONIC VALVE AUXILIARY ONE SECTION – THREE AND FOUR FUNCTION**

ITEM	PART NO.	DESCRIPTION	QTY
	1708263	Valve Section (Aux. 1)	1
1	1664395	Capscrew	4
2	1578711	Valve (Pressure Reducing)	2
2	1687534	Kit-Seal (Solenoid Pressure Reducing)	1
3	4031469	Plug Assembly	1
4	1578883	Washer	2
5	1578882	Spring	2
6	1578889	Plug	2
7	1578713	Plug Assembly	1
8	77442	Spring	2
9	77443	Poppet	2
10	1578906	Kit-Seal (Auxiliary Section)	1

**TILT CYLINDERS
S60-70FT**

ITEM	PART NO.	DESCRIPTION	QTY
	b 2068888	Tilt Cylinder	2
	a 2084525	Tilt Cylinder (LH)	1
	a 2068889	Tilt Cylinder (RH)	1
1	b 2067345	Tube Wldmt-Cylinder	1
1	a 2084524	Tube Wldmt-Cylinder (LH)	1
1	a 2067346	Tube Wldmt-Cylinder (RH)	1
2	2070018	Locknut	1
3	199852	Wear Ring	1
4	1381078	Piston	1
5	1381083	Rod Seal	1
5	2044371	Piston Seal	1
6	237812	O-Ring	1
7	b 2072657	Cylinder Rod	1
7	a 2072658	Cylinder Rod	1
8	268619	O-Ring	1
9	147973	Back-Up Ring	1
10	1383063	Rod Wiper	1
11	1527520	Gland	1
12	287854	Capscrew	2
13	292682	Lockwasher	2
	1527719	Kit-Seal (Tilt Cylinder)	1

FOOTNOTES:**a** 10° Forward/5° Back**b** 5° Forward/8° Back, 5° Forward/5° Back, 5° Forward/4° Back, 8° Forward/5° Back

MAIN LIFT
TWO STAGE LIMITED FREE LIFT – F507-F562

ITEM	PART NO.	DESCRIPTION	QTY
1	4058916	Housing (Lowering Control)	1
2	1581836	Capscrew	2
3	2062651	Lowering Control Valve (S40-50FT)	1
3	2062652	Lowering Control Valve (S60-70FT)	1
4	1486773	Fitting	1
5	1581566	Nut	2
6	2062686	Hyd Velocity Fuse (S40-50FT)	2
6	2062687	Hyd Velocity Fuse (S60-70FT)	2
7	4620151	Hose Assy (LH)	1
8	4620152	Hose Assy (RH)	1
9	1592853	Fitting	1
10	131358	Snap Ring	2
11	1333382	Washer (0.060 in.)	2
12	4054558	Isolator	2
13	4029051	Capscrew	2
14	Main Cylinder (☞Figure 11-4).....	2
15	1581557	Washer	4
16	1354915	Washer (0.010 in.)	2
16	1354916	Washer (0.030 in.)	2
16	1354917	Washer (0.060 in.)	2

CARRIAGE
TWO STAGE LIMITED FREE-LIFT – F507-F562

KEY:**A: S40-50FT, 55FTS****B: S60-70FT**

ITEM	PART NO.	DESCRIPTION	QTY	
			A	B
	4625585	Carriage (38.5 in.)	1	..
	4625593	Carriage (38.5 in.)	1
1	4065172	Carriage Wldmt (38.5 in.)	1	..
1	4065199	Carriage Wldmt (38.5 in.)	1
1	1345264	Stubshaft	6	6
2	1345219	Load Roller ("B") (111.48/111.22)	6	6
3	366116	Spacer	2	2
4	12891	Snap Ring	6	6
5	131358	Snap Ring	4	4
6	1345263	Shim (0.020 in.)	AR	AR
7	1353408	Pin	2	2
8	1369345	Chain Anchor (Dual Hole)	2	..
8	1504010	Chain Anchor (Single Hole) (Optional)	2	..
8	1369344	Chain Anchor (Dual Hole)	2
8	1504012	Chain Anchor (Single Hole) (Optional)	2
9	1514866	Pin	2	2
10	15211	Cotter Pin	2	2
	a 386422	Snap Ring	6	6

FOOTNOTES:**a** Not Illustrated

MAIN LIFT
TWO STAGE FULL FREE- LIFT – E509-E564

ITEM	PART NO.	DESCRIPTION	QTY
1	Main Lift Cylinder (LH) (☞Figure 12-5).....	1
2	1486749	Fitting	1
2	16485	O-Ring	1
2	252729	O-Ring	1
3	1481097	Hose Assy	2
4	1532650	Fitting	1
4	16485	O-Ring	1
4	252729	O-Ring	1
5	1581566	Nut	2
6	1379687	Housing (Lowering Control)	1
7	14603	Plug	1
7	16486	O-Ring	1
8	2062651	Lowering Control Valve (S40-50FT E509-3262mm)	1
8	2062652	Lowering Control Valve (S60-70FT E562-3060 and 3260 mm)	1
8	280154	O-Ring	1
8	252729	O-Ring	1
9	1486773	Fitting	1
9	252729	O-Ring	2
10	2062686	Hyd Velocity Fuse (S40-50FT, E509-3262 mm)	1
10	2062687	Hyd Velocity Fuse (S60-70FT E564-3060 and 3260 mm)	1
11	1581849	Nut	2
12	1581852	Washer	4
13	323090	Spacer	2
14	1581829	Capscrew	2
15	Main Lift Cylinder (RH) (☞Figure 12-4).....	1
16	1354915	Washer (0.010 in.)	AR
16	1354916	Washer (0.030 in.)	AR
16	1354917	Washer (0.060 in.)	AR
17	1333382	Washer (0.060 in.)	1
18	131358	Snap Ring	1
19	1581835	Capscrew	2
20	1581556	Washer	2

**FREE-LIFT
TWO STAGE FULL FREE- LIFT – E509-E564**

E509

ITEM	DESCRIPTION 1 2 3 4	LIFT HEIGHT TO BOTTOM OF FORKS	
		3262 mm (128.4 in.)	
	Mast Group Number	E509 3262	
	Mast Assy	4624667	
1	Tube Assy	1481742	
21	Chain	180177	

E564

ITEM	DESCRIPTION 1 2 3 4	LIFT HEIGHT TO BOTTOM OF FORKS	
		3060 mm (120.5 in.)	3260 mm (128.3 in.)
	Mast Group Number	E564 3060	E564 3260
	Mast Assy	4624725	4624729
1	Tube Assy	1481742	1481744
21	Chain	1342377	1342117

ITEM	PART NO.	DESCRIPTION	QTY
	a	Mast Assy	1
1	a	Tube Assy	1
2	1481090	Fitting	1
2	16485	O-Ring	1
2	244167	O-Ring	1
3	131358	Snap Ring	1
4	1395285	Chain Guard	2
5	1378690	Crosshead	1
6	1354902	Spacer (H60-70FT)	4
7	1581828	Capscrew	2
8	1465504	Tie Down	1
9	1354967	Bracket Wldmt	1
10	1581559	Washer	4
11	1581849	Nut	4
12	356505	Washer	1
13	154355	Spring	1
14	1481096	Fitting	1
15	1581827	Capscrew	2
16	1581567	Nut	2
17	178119	Clamp	2
18	1581587	Capscrew	1
19	1581557	Washer	3
20	1581841	Capscrew	1
21	a	Chain	2
22	1379683	Chain Sheave Assembly (H60-70FT)	2

**MAIN LIFT CYLINDER AND ATTACHING PARTS
THREE STAGE FULL FREE-LIFT – F508-F563**

S40-50FT, 55FTS

ITEM	DESCRIPTION 1 2 3 4	LIFT HEIGHT TO BOTTOM OF FORKS				
		4310 mm (169.7 in.)	4760 mm (187.4 in.)	4910 mm (193.3 in.)	5060 mm (199.2 in.)	5510 mm (216.9 in.)
		F508 4310	F508 4760	F508 4910	F508 5060	F508 5510
	Mast Assy	4623058	4623061	4623062	4623063	4623066

S60-70FT

ITEM	DESCRIPTION 1 2 3 4	LIFT HEIGHT TO BOTTOM OF FORKS			
		4568 mm (179.8 in.)	4718 mm (185.7 in.)	5318 mm (209.4 in.)	5768 mm (227.1 in.)
		F563 4568	F563 4718	F563 5318	F563 5768
	Mast Assy	4623042	4623043	4623047	4623050

ITEM	PART NO.	DESCRIPTION	QTY
	a	Mast Assy	1
1	Outer Mast (☞Figure 13-1).....	1
2	Intermediate Mast (☞Figure 13-2).....	1
3	1333382	Washer (0.060 in.)	2
4	1354915	Washer (0.010 in.)	2
4	1354916	Washer (0.030 in.)	2
4	1354917	Washer (0.060 in.)	2
5	Main Lift Cylinder (☞Figure 13-6).....	2
6	215211	Wear Strip	2
7	131716	Shim (0.020 in.)	4
7	131715	Shim (0.007 in.)	4
8	1486751	Fitting	1
9	4055582	Housing (Lowering Control)	1
10	4029051	Capscrew	2
11	4620151	Hose Assy	1
12	4620152	Hose Assy	1
13	4065168	Capscrew	2
14	1581566	Nut	2
15	4065167	Spacer	1
16	1592853	Fitting	1
17	1486773	Fitting	1
18	2062686	Hyd Velocity Fuse (S40-50FT, 55FTS)	2
18	2062687	Hyd Velocity Fuse (S60-70FT)	2
18	16485	O-Ring	1
18	252729	O-Ring	1
19	2062651	Lowering Control Valve (S40-50FT, 55FTS)	1
19	2062652	Lowering Control Valve (S60-70FT)	1
19	16982	O-Ring	1
19	252729	O-Ring	1
20	104506	O-Ring	4

**INNER MAST
FOUR STAGE FULL FREE-LIFT**

D515

ITEM	DESCRIPTION 1 2 3 4	LIFT HEIGHT TO BOTTOM OF FORKS	
		6058 mm (238.5 in.)	6977 mm (274.7 in.)
		Mast Group Number	D515 6058
	Mast Assy	2071068	2071071
1	Inner Mast	1381389	1381392
10	Chain	182332	88441
12	Chain	164474	986599

ITEM	PART NO.	DESCRIPTION	QTY
	b	Mast Assy	1
1	1345216	Stubshaft	2
1	b	Inner Mast	1
2	c 1395168	Load Roller ("A") (111.10/110.84)	2
2	1333396	Load Roller ("B") (111.48/111.22)	2
2	1333397	Load Roller ("C") (112.62/112.36)	2
3	129387	Shim (0.020 in.)	AR
4	58901	Snap Ring	2
5	161003	Nut	2
6	296426	Washer	2
7	1369357	Chain Anchor	2
7	a 1566564	Cap	2
8	1514866	Pin	2
9	15211	Cotter Pin	2
10	b	Chain	2
11	1365140	Chain Anchor	2
12	b	Chain	2

FOOTNOTES:

- a** Not Illustrated
- b** Refer to Table

- c** Replace with larger depending on wear

**HEADER HOSE
FOUR STAGE FULL FREE-LIFT – WITH HOSE CHANNELS**

D515

ITEM	DESCRIPTION 1 2 3 4	LIFT HEIGHT TO BOTTOM OF FORKS		
		6058 mm (238.5 in.)	6364 mm (250.6 in.)	6670 mm (262.6 in.)
		Mast Group Number	D515 6058	D515 6364
10	Hose Assy	2104035	2104036	2104037

KEY:

A: Three Function

B: Four Function

ITEM	PART NO.	DESCRIPTION	QTY	
			A	B
1	1581838	Capscrew	1	2
2	1360548	Stubshaft	1	2
3	1360549	Spacer	1	2
4	1494017	Hose Sheave	2	4
5	1345190	Washer	1	2
6	1581849	Nut	2	4
7	1654323	Capscrew	4	8
8	1360386	Clamp (Double Hose)	2	4
9	1581565	Nut	8	16
10	b	Hose Assy	1	2
11	1477996	Hose Clamp	2	4
12	1569979	Clamp	2	4
13	1581591	Capscrew	1	2
14	1597696	Metric Washer	1	2
15	1482726	Guard (RH)	1	..
16	1474913	Stubshaft	1	2
17	1482729	Guard (LH)	1
18	58902	Snap Ring	1	2
19	1581560	Washer	1	2
20	1581842	Capscrew	3	6
21	1370469	Plate	1	..
22	1581566	Nut	8	16
23	1581580	Capscrew	8	16
24	1566564	Cap	1	2
25	110322	Clamp	2	4
26	1581556	Washer	2	4
27	1371947	Bracket Wldmt	1	2
28	273775	Strap Clamp	2	4
29	1643405	Hose Clamp	1	..
29	1370470	Hose Clamp	1
30	1529015	Cap	2	4
	a 1581834	Capscrew	4	8

**INTEGRAL SIDE-SHIFT CARRIAGE
TWO STAGE LIMITED FREE-LIFT – F507/F562****KEY:****A: S40-55FT F507****B: S60-70FT F562**

ITEM	PART NO.	DESCRIPTION	QTY	
			A	B
	4625589	Side-Shift Carriage (38.5 in.)	1	..
	4625597	Side-Shift Carriage (38.5 in.)	1
1	4065186	Carriage Wldmt (38.5 in.)	1	..
1	4065213	Carriage Wldmt (38.5 in.)	1
2	4033954	Frame (Outer) (38.5 in.)	1	..
2	4033959	Frame (Outer) (38.5 in.)	1
3	2043528	Sideshift Cylinder Assembly (☞Figure 15-14).....	1	..
3	2043529	Sideshift Cylinder Assembly (☞Figure 15-14).....	..	1
4	2043531	Bearing Strip (Upper)	2	..
4	2043532	Bearing (Upper)	2
5	2043533	Bearing Strip (Lower)	2	..
5	2043534	Bearing (Lower)	2
6	4611363	Hook	2	2
7	1581833	Capscrew	4	4
8	1581854	Washer	4	4
9	1401746	Pin	2	2
10	18832	Cotter Pin	2	2
11	1498326	Shim	3	3
12	16041	Grease Fitting	2	2
13	1345219	Load Roller ("B") (111.48/111.22)	6	6
14	12891	Snap Ring	6	6
14	a 386422	Snap Ring (Optional)	6	6
15	1345263	Shim (0.020 in.)	28	28
16	366116	Spacer	2	2
17	1369344	Chain Anchor (Dual Hole)	2
17	1504012	Chain Anchor (Single Hole) (Optional)	2
17	1369345	Chain Anchor (Dual Hole)	2	..
17	1504010	Chain Anchor (Single Hole) (Optional)	2	..
18	1353408	Pin	2	2
19	131358	Snap Ring	4	4
20	1514866	Pin	2	2
21	15211	Cotter Pin	2	2
	a 4611878	Carriage (38.5 in) (Fork Positioner) (☞Figure 15-15).....	1	..
	a 4611881	Carriage (38.5 in.) (Fork Positioner) (☞Figure 15-15).....	..	1

FOOTNOTES:**a** Not Illustrated

**INTEGRAL SIDE-SHIFT
FORK POSITIONER (F508-F563) – THREE STAGE FULL FREE-LIFT**

KEY:**A: F508 (S40-50FT)****B: F563 (S60-70FT)**

ITEM	PART NO.	DESCRIPTION	QTY	
			A	B
1	4633850	Tube Assy (LH)	1	..
1	4633852	Tube Assy (LH)	1
2	4633851	Tube Assy (RH)	1	..
2	4633853	Tube Assy (RH)	1
3	4050817	Bracket Wldmt	2	2
4	1673754	Washer	2	2
5	1670032	Capscrew	2	2
6	4611913	Hose Assy	2	..
6	4622266	Hose Assy	2
7	4611878	Carriage (38.5 in) (Fork Positioner) (☞Figure 15-15).....	1	..
7	4611881	Carriage (38.5 in.) (Fork Positioner) (☞Figure 15-15).....	..	1
7	4034634	Kit-Service Cylinder	1	1
7	4034635	Kit-Bearing	1	1
8	Carriage Assembly (☞Figure 15-11).....	1	1
9	4061319	Guide (Hose) (RH)	1	1
10	4061318	Guide (Hose) (LH)	1	1
11	4055634	Setscrew	4	4

AUXILIARY TUBES**TWO STAGE LIMITED FREE LIFT (F507/F562 SERIES MAST – WITH MANUAL AND E-HYDRAULICS VALVE
WITHOUT QUICK DISCONNECT****KEY:****A: F507****B: F562**

ITEM	PART NO.	DESCRIPTION	QTY	
			A	B
1	d 4628181	Tube Assy	1	..
2	d 4628182	Tube Assy	1	..
3	1550070	Bracket	1	2
4	1658934	Capscrew	1	2
5	a 4628179	Tube Assy	1	..
6	a 4628180	Tube Assy	1	..
7	d 4628185	Tube Assy	1
8	d 4628186	Tube Assy	1
9	a 4628183	Tube Assy	1
10	a 4628184	Tube Assy	1
11	b 4060493	Bracket (LH)	1
11	b 4060492	Bracket (LH)	1	..
12	1528573	Fitting	2	4
13	c 1529015	Cap	2	4

FOOTNOTES:**a** Four Function**b** Integral Side-Shift Carriage**c** Not Illustrated**d** Three Function

AUXILIARY QUICK DISCONNECT MANIFOLD AND HOSES
SINGLE AUXILIARY WITH INTEGRAL SIDE-SHIFT AND E-HYDRAULICS – TWO STAGE LIMITED FREE-LIFT
(F507/F562 SERIES MAST) (FOUR FUNCTION)

ITEM	PART NO.	DESCRIPTION	QTY
1	4067017	Bracket	1
2	2111754	Valve	1
3	1487097	Fitting	2
4	1487058	Fitting	1
5	292505	Capscrew	2
6	302399	Nut	2
7	222501	Fitting	1
8	4626476	Hose Assy	1
9	4606305	T-Fitting	1
10	1569616	Hose Clamp	2
11	4628430	Hose Assy	1
12	4628431	Hose Assy	1
13	222500	Fitting	1
14	1644398	Clamp (Swivel)	1
15	1606544	Clamp	1
16	1486737	Fitting	1

**HEADER HOSE CONVERSION KITS
THREE STAGE FULL FREE-LIFT — F508 SERIES MAST**

F508

DESCRIPTION	LIFT HEIGHT TO BOTTOM OF FORKS				
	4310 mm (169.7 in.)	4760 mm (187.4 in.)	4910 mm (193.3 in.)	5060 mm (199.2 in.)	5510 mm (216.9 in.)
Mast Group Number	F508 4310	F508 4760	F508 4910	F508 5060	F508 5510
Kit-Hose Group 2 TO 3 Way	4073516	4073525	4073528	4073531	4073540

F508

DESCRIPTION	LIFT HEIGHT TO BOTTOM OF FORKS			
	4310 mm (169.7 in.)	4760 mm (187.4 in.)	4910 mm (193.3 in.)	5060 mm (199.2 in.)
Mast Group Number	F508 4310	F508 4760	F508 4910	F508 5060
Kit-Hose Group 2 TO 4 Way	4073518	4073527	4073530	4073530

F508

DESCRIPTION	LIFT HEIGHT TO BOTTOM OF FORKS				
	4310 mm (169.7 in.)	4760 mm (187.4 in.)	4910 mm (193.3 in.)	5060 mm (199.2 in.)	5510 mm (216.9 in.)
Mast Group Number	F508 4310	F508 4760	F508 4910	F508 5060	F508 5510
Kit-Hose Group 3 TO 4 Way	4073517	4073526	4073529	4073532	4073541

NUMERICAL INDEX (continued)

PART NO.	PAGE	ITEM	PART NO.	PAGE	ITEM	PART NO.	PAGE	ITEM	PART NO.	PAGE	ITEM
320157	1-11	3	335012	11-9	8	369804	2-7	7		5-115	7
	14-26	35		13-20	8		3-5	25	986599	14-7	17
320159	5-23	11	335661	11-5	12		3-7	31		14-9	12
	5-39	36		13-7	10		4-27	12	1301703	13-28	16
320160	1-8	3		14-5	19		10-3	6	1302024	5-51	3
	1-27	18	336550	2-8	35		11-13	21	1304950	4-23	19
	1-29	16		3-5	31	369812	8-9	15	1304971	1-7	34
	14-25	31		3-7	12	369815	2-8	37	1308093	1-32	1
320161	8-9	25	339530	10-3	16		3-5	35	1308259	5-77	6
	10-17	13	341462	10-29	13		3-7	17		5-81	10
	10-21	14	345453	2-8	33	374923	4-6	1	1310391	8-10	5
320165	6-9	4		3-5	30	376480	2-7	11	1319668	12-9	12
320171	14-26	43		3-7	13		3-5	34		12-14	11
320289	10-29	7	345454	2-8	34		3-7	16	1323576	5-55	36
	10-31	8		3-5	29	378177	10-49	10		5-61	36
322824	11-10	13		3-7	14	379405	4-31	13		5-67	27
	13-20	14	345455	2-8	31	383789	5-39	35		5-73	42
322902	11-10	11		3-5	28	384211	1-32	1		5-79	36
	13-20	12		3-7	11	384213	1-32	1		5-83	43
323090	12-7	13	346656	5-23	10	384214	1-32	1		5-113	1
	14-11	13		5-39	23	384215	1-32	1		5-113	7
324706	2-23	22	351666	14-3	8	384216	1-32	1		5-113	12
	2-33	3	353000	4-23	2	386422	11-17		1323578	5-77	4
	2-35	5	353199	4-3	14		15-13	14		5-81	4
325182	5-15	7	353206	1-11	3	389688	1-37	7		5-87	29
	5-19	17	356505	12-17	12	399898	3-13	10	1323579	5-53	11
325549	4-23	25	356556	14-7	14	615135	14-18	13		5-53	12
325699	4-53	10	360387	4-53	16	636941	12-21	8		5-54	18
	4-55	13		6-10	99		13-24	10		5-54	19
325897	9-3	14	362036	4-55	10	637565	12-21	10		5-59	11
	9-5	14	362255	1-5	14		13-23	8		5-59	12
326504	2-23	1	364868	1-7	14	637635	11-9	6		5-60	18
	2-27	8	366115	13-31	5		13-19	6		5-60	19
	2-31	1		13-33	5		13-24	12		5-66	13
	2-35	31		14-21	11	638246	11-9	8		5-66	14
326608	2-15	23		14-23	5		13-19	8		5-66	17
326612	2-21	10		15-17	20	638249	14-13	7		5-66	18
326748	2-25	5		15-19	14		14-15	8		5-72	15
326749	2-25	6	366116	11-17	3	638250	14-18	10		5-72	16
326850	5-13	2		12-29	5	806426	5-9	15		5-72	20
326898	5-13	25		15-13	16		5-9	15		5-72	21
326926	4-17	22		15-15	20		5-9	16		5-81	5
329069	1-7	8	367224	5-10	42		5-15	8		5-86	18
	1-7	25		5-15	14		5-15	36		5-117	6
	4-51	10	367323	5-23	12		5-19	4	1323581	5-6	13
	4-53	29		5-39	20		5-19	9	1323586	5-77	10
329218	8-10	7	367419	1-32	1		5-23	19		5-81	7
333642	2-25	15	367420	1-32	1		5-23	20	1324309	5-93	10
334155	14-13	17	367421	1-32	1		5-24	25		5-93	11
	14-15	13	367422	1-32	1	866401	5-6	12		5-97	16
334450	6-15	12	367423	1-32	1		5-86	23		5-97	17
334560	6-15	11	367424	1-32	1	930591	5-115	4		5-101	12

NUMERICAL INDEX (continued)

PART NO.	PAGE	ITEM	PART NO.	PAGE	ITEM	PART NO.	PAGE	ITEM	PART NO.	PAGE	ITEM
	5-5	24		5-66	11		5-65	3	1531486	5-115	4
	5-6	3		5-68	31		5-65	4		5-115	7
1527881	1-7	28		5-71	8		5-65	5	1531490	5-54	15
	3-5	21		5-71	9		5-65	6		5-60	15
	3-7	28		5-74	47		5-65	7	1531492	5-55	41
	4-11	21		5-93	1		5-71	1		5-61	41
	4-23	3		5-94	21		5-71	2		5-68	37
	9-3	13		5-94	25		5-71	3		5-73	38
	9-5	13		5-97	1		5-71	4	1531557	1-5	6
1527884	3-14	6		5-97	20	1530043	10-49	10		4-35	18
	5-13			5-98	24	1530135	1-11	23		4-39	18
	6-13	14		5-101	1	1530243	1-7	19	1531558	1-5	12
1527888	1-5	18		5-102	23		2-7	3		1-11	2
1527899	10-49	10		5-102	27		3-5	6		1-27	8
1527900	10-49	10		5-105	1		3-7	6		1-29	8
1527905	10-49	7		5-106	24		4-3	10		2-7	13
1528132	5-33	3		5-106	28		4-5	11		3-5	16
1528133	5-33	4	1529257	5-10	35		4-11	20		3-7	24
1528315	5-33	2		5-16	39		4-31	5		4-9	5
1528415	2-5	10		5-19	31		4-47	15		5-15	29
1528481	10-3	27		5-23	3		4-48	15		5-39	6
1528482	5-29	8	1529366	4-23	27		10-3	18		10-11	16
	10-15	13		4-35	13	1530311	4-51	9		10-13	8
1528573	15-33	12		4-39	13		4-53	28		10-26	2
	15-39	8		5-5	20	1530429	7-4	42	1531563	8-3	13
	15-39	8		5-9	21	1530430	7-4	42	1531569	9-3	7
1528574	14-17	33		5-15	38	1530431	7-4	44		9-5	7
1528602	15-35	13		5-19	12	1530588	7-3	5	1531973	5-55	40
	15-35	13		5-23	24	1530721	7-4	54		5-55	45
	15-37	14		5-27	4	1530960	5-79	49		5-55	46
	15-37	14		5-27	11		5-83	38		5-61	40
1528608	4-23	30		5-29	2		5-113	13		5-61	45
1528630	5-33	5		5-29	2	1530961	5-79	49		5-62	46
1528631	5-33	6		5-39	14		5-83	38		5-67	26
1528869	5-53	5		9-3	20		5-113	13		5-68	32
1528888	1-5	3		9-5	20	1530971	4-51	6		5-73	32
1528893	4-23	4	1529426	1-11	34		4-53	25		5-74	48
1528903	4-43	19	1529623	2-7	1	1531001	1-11	11	1531974	5-55	40
	4-45	29	1529787	2-8	30		1-11	17		5-55	45
1528938	2-11	10		3-5	4		5-51	10		5-56	46
1529015	12-25	5		3-7	4	1531162	5-109	3		5-61	40
	14-29	30	1529929	10-49	7		5-109	4		5-61	45
	15-33	13	1529930	10-49	7		5-111	3		5-62	46
	15-39		1529931	10-49	7	1531312	4-53	4		5-67	26
	15-39		1530037	5-56	55		4-55	6		5-68	32
1529046	5-53	4		5-56	56	1531404	2-8	28		5-73	32
	5-53	5		5-56	57		3-7			5-74	48
	5-55	44		5-56	58	1531480	5-9	9	1531975	5-27	3
	5-59	4		5-62	55		5-16	45	1532571	5-77	7
	5-59	5		5-62	56		5-19	34		5-77	10
	5-61	44		5-62	57		5-79	46		5-81	6
	5-66	10		5-63	58		5-83	36		5-93	7

NUMERICAL INDEX (continued)

PART NO.	PAGE	ITEM	PART NO.	PAGE	ITEM	PART NO.	PAGE	ITEM	PART NO.	PAGE	ITEM
	14-7		2074702	4-53	1	2090661	5-5	3	2107383	5-51	4
	14-9			4-55	1	2090666	5-117		2107384	5-51	4
2071071	14-3		2074741	1-37	12	2091232	4-5	18	2107957	1-11	6
	14-5		2075120	7-3	8	2095229	10-11	1	2107958	1-11	10
	14-7		2075418	1-37	14	2095895	5-51	16	2107969	1-15	22
	14-9		2075615	1-37	13	2097620	5-13	19		1-17	12
2071094	8-10	1	2075656	1-37	10		5-39			1-25	18
2071181	4-51	1	2076153	7-3	12	2098082	5-51	4	2108249	5-41	5
2071261	4-9	3	2076169	1-37	13		5-51	4	2109665	6-3	3
2071497	5-39	7	2076344	4-23	12	2098083	5-51	4	2109692	6-3	4
2071498	5-9	15	2076695	5-44	2	2098084	5-51	4		6-5	2
	5-23	20	2077604	9-3	1	2098085	5-51	4	2109698	1-37	33
	5-39	10		9-5	1	2098330	1-11	13	2109869	6-8	9
2071501	5-39	3	2077818	13-19	3	2098385	5-51	6	2109875	6-3	2
2071508	1-12	46		13-19	3		5-115			6-5	6
2071517	4-43	35	2078488	2-23	25	2098694	10-7			6-8	6
	4-45	44	2078881	15-5	10	2098695	10-7		2109937	10-3	3
2071593	1-11	18		15-6		2099393	10-15	6	2110024	6-8	8
2071594	1-11	18	2078941	2-15	10		10-17	20	2110791	5-41	2
2071862	10-51		2079326	5-49	1		10-19	9		5-41	3
2072213	1-11	36	2080130	4-23	7		10-21	21		5-41	4
2072657	10-53	7	2080790	5-16	43	2099394	10-15	7		5-43	2
2072658	10-53	7	2081289	5-16	42		10-17	19		5-43	3
2072659	10-51		2082929	2-23	4		10-19	8		5-43	4
2072660	10-51	1	2084252	4-3	8		10-21	20		5-43	5
2072661	10-51	1	2084524	10-53	1	2099395	10-15	8	2110792	5-41	4
2072662	10-51	6	2084525	10-53			10-19	7		5-43	5
2072663	10-51	6	2084536	10-11	25		10-21	19	2110793	5-41	3
2072664	1-13	4	2084812	5-23	1	2099396	10-19	6		5-43	3
2072802	1-12	45		5-39	28	2099397	10-21	18	2110942	5-41	19
2072918	2-5	3	2085129	6-19	6	2099398	10-17	18		5-43	19
2073051	2-11	21		6-21	6	2099951	1-25	2	2110943	5-41	18
	3-11	18	2085259	4-5	9	2101978	2-7	18		5-43	18
2073052	2-11	20	2085421	4-5	15	2102507	1-12	39	2111004	5-27	2
	3-11	19	2087753	2-25		2102508	1-11	32		5-29	3
2073053	2-11	19	2087756	2-23	23	2102640	1-39	1	2111005	5-27	2
2073087	13-19	3	2087757	2-23	32	2102904	5-44	1		5-29	3
2073159	12-9	7	2088515	5-13	19	2102906	5-44	6	2111171	9-3	
	12-9	7	2088677	2-7	9	2104035	14-29	10		9-5	
	12-13	6	2088727	2-7	8	2104036	14-29	10		9-7	
	12-13	6	2089239	4-27	16	2104037	14-29	10	2111325	10-3	15
2073197	1-37	1	2089368	4-27	14	2105803	4-11	13	2111326	10-3	15
2073495	10-11	14	2089894	2-11	3		4-35	4	2111754	15-41	2
2073496	10-11	21	2089895	2-11	3		4-39	4		15-43	2
2073763	4-35	19		3-11	1	2105959	5-45	1		15-47	2
	4-39	20	2090110	5-44	1		5-113			15-49	2
2073764	4-35	19	2090111	5-44	6	2105972	2-19	1	2111755	15-45	2
	4-39	20	2090196	2-7	8	2107181	5-9	15		15-51	2
2074209	1-37	4	2090361	4-11	12		5-15	8	2111769	5-41	7
2074230	10-5		2090362	4-11	12		5-19	9		5-43	7
2074255	1-37	29	2090613	5-5	8		5-23	19	2111770	5-41	17
2074397	2-7	9		5-33		2107382	5-51	4		5-43	17

CLICK HERE TO **DOWNLOAD** THE COMPLETE MANUAL

- Thank you very much for reading the preview of the manual.
- You can download the complete manual from: www.heydownloads.com by clicking the link below



- Please note: If there is no response to CLICKING the link, please download this PDF first and then click on it.

CLICK HERE TO **DOWNLOAD** THE COMPLETE MANUAL