

PARTS MANUAL

**ELECTRIC
N50FA
N40-45FR
(D138)**

CUSTOMER EDITION

HYSTER

CLICK HERE TO **DOWNLOAD** THE COMPLETE MANUAL

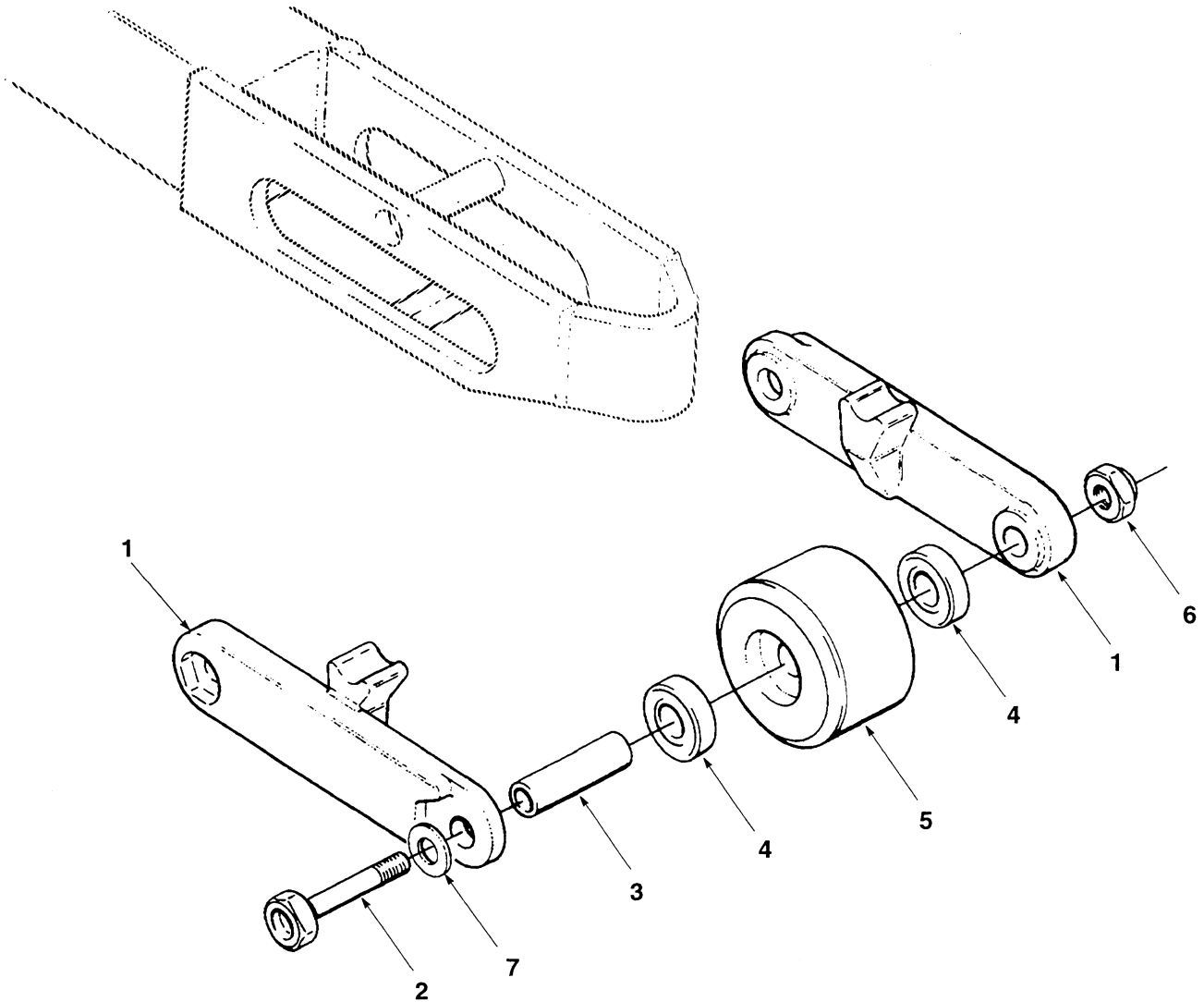
- Thank you very much for reading the preview of the manual.
- You can download the complete manual from: www.heydownloads.com by clicking the link below



- Please note: If there is no response to CLICKING the link, please download this PDF first and then click on it.

CLICK HERE TO **DOWNLOAD** THE COMPLETE MANUAL

WHEEL-LOAD (Figure 5)



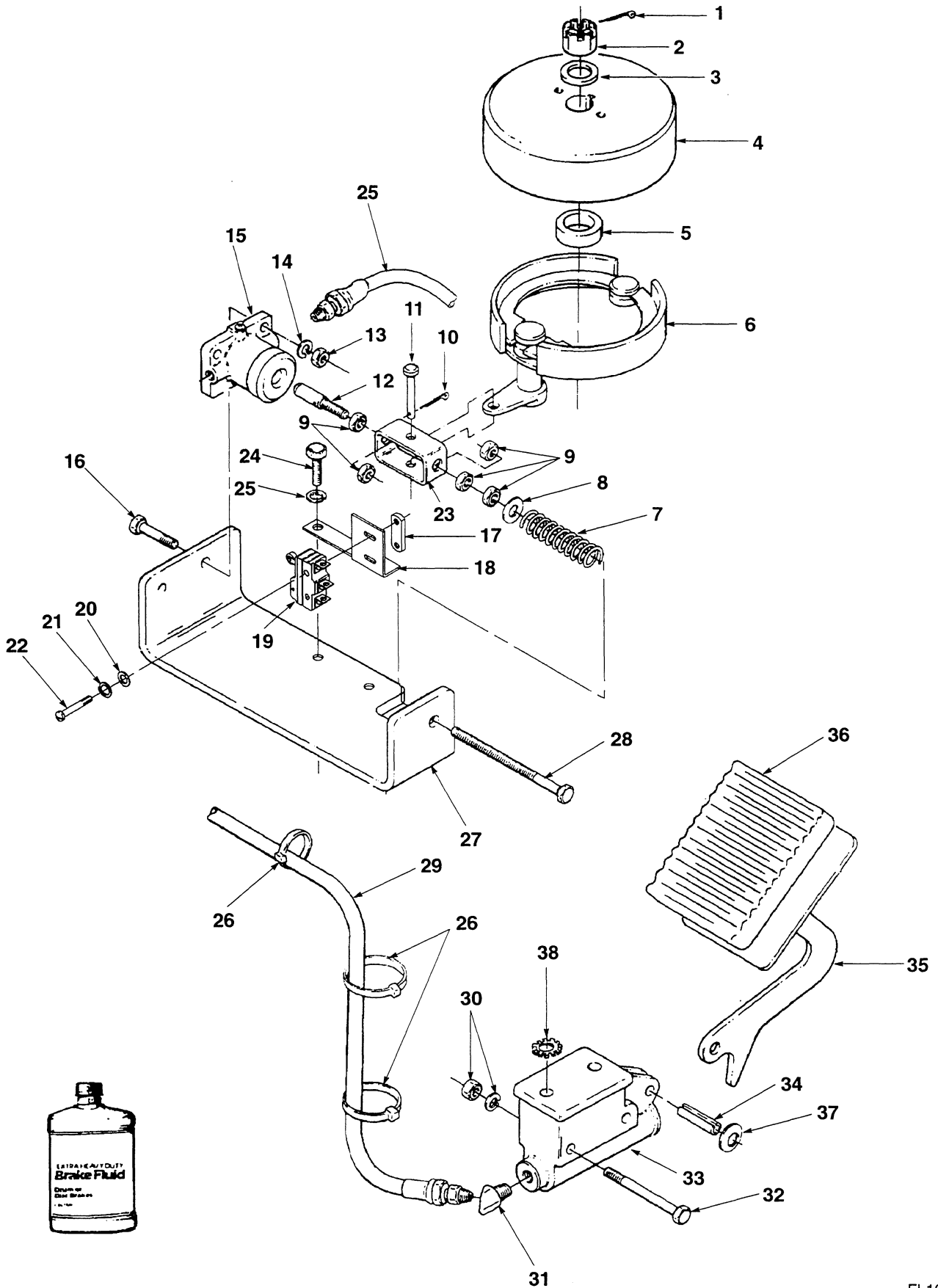
KEY

A: Standard

B: FRE/CRE

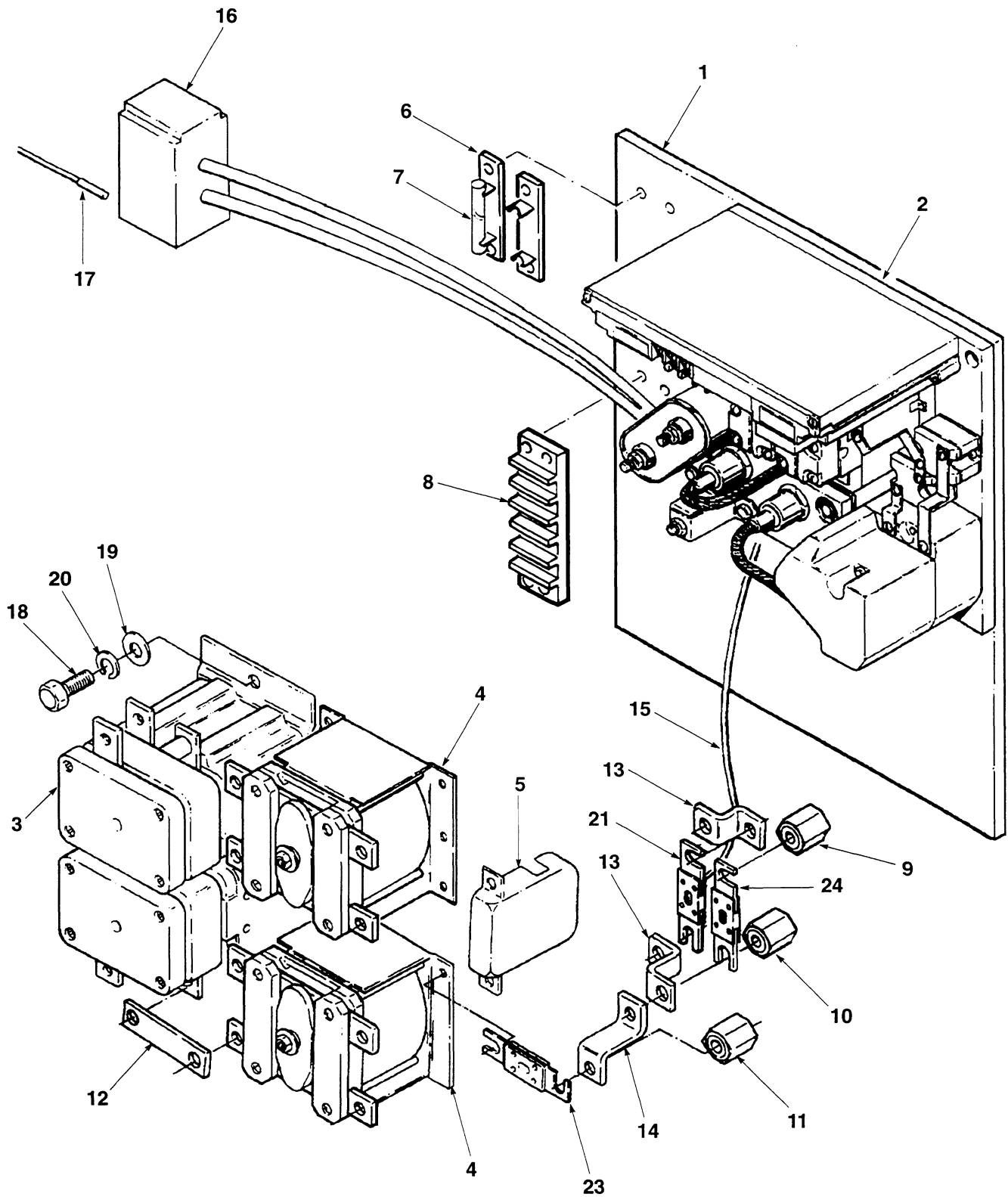
REF.	PART NO.	NAME OF PART	QTY.		REF.	PART NO.	NAME OF PART	QTY.	
			A	B				A	B
1	360121	Bracket	4	4	5	+ 365649	Wheel	4	4
2	389608	Bolt	4	..	6	222673	Nut	4	4
3	374563	Sleeve	4	..	7	15146	Washer	4	4
3	365648	Sleeve	4					
4	194723	Bearing	8	8	@	N40			
5	@ 1032195	Wheel	4	4	+	N45-50			

BRAKE-LINKAGE (Figure 15)



FL1074

PANEL-CONTROL (Figure 21)



CLICK HERE TO **DOWNLOAD** THE COMPLETE MANUAL

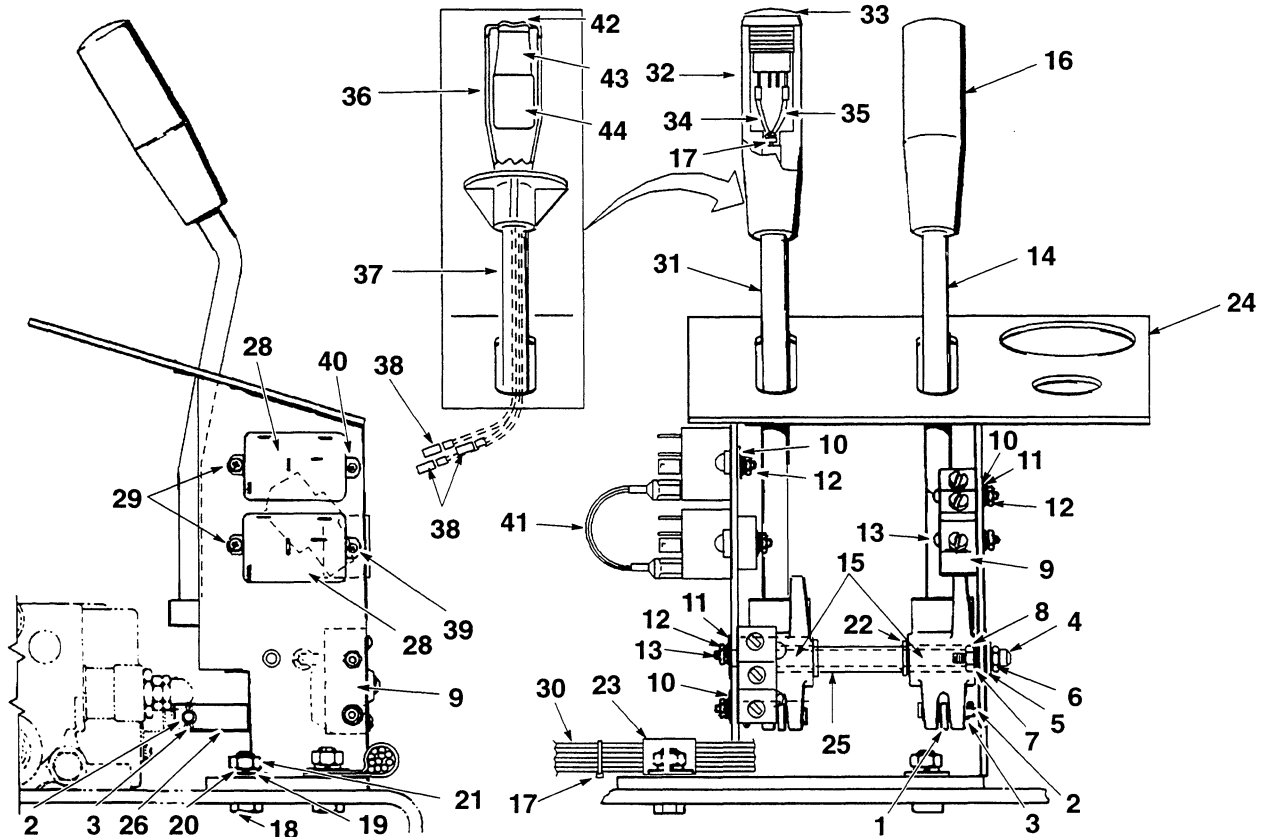
- Thank you very much for reading the preview of the manual.
- You can download the complete manual from: www.heydownloads.com by clicking the link below



- Please note: If there is no response to CLICKING the link, please download this PDF first and then click on it.

CLICK HERE TO **DOWNLOAD** THE COMPLETE MANUAL

LEVERS-HAND (Figure 37)



KEY

A: Straddle

B: Reach without Sideshift

C: Reach with Sideshift

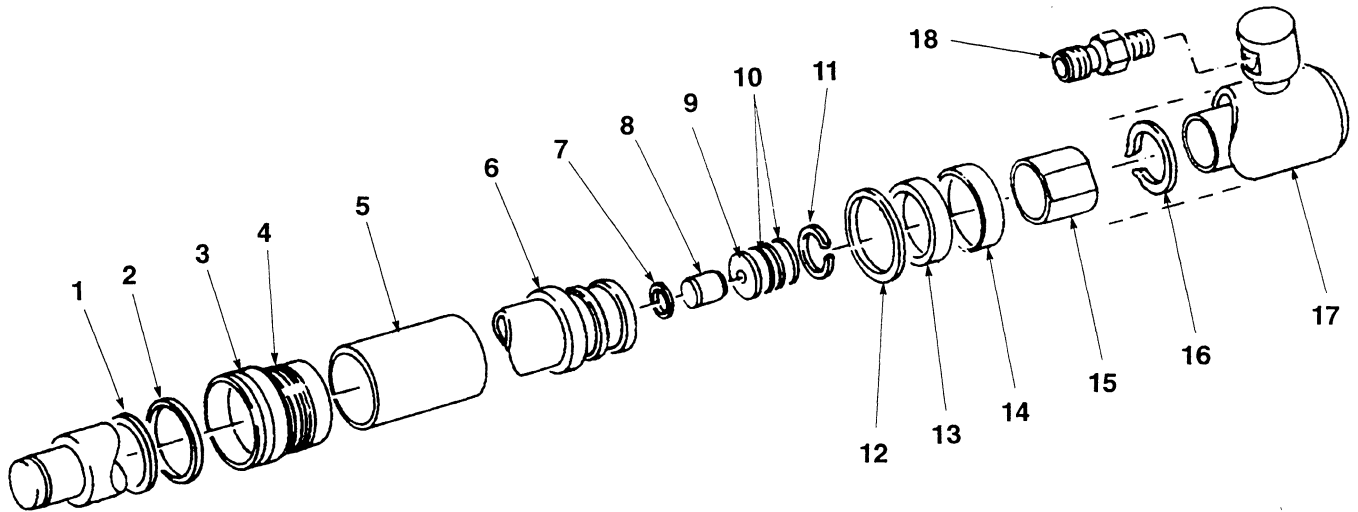
D: Straddle with Single Function

REF.	PART NO.	NAME OF PART	QTY.			
			A	B	C	D
1	365514	Link	1	1	1	1
2	309109	Pin-Rod-End	2	4	4	2
3	15200	Pin-Cotter	2	4	4	2
4	1328725	Rod	1	1	1	1
5	1328732	Keeper	1	1	1	1
6	18460	Capscrew	1	1	1	1
7	15154	Lockwasher	1	1	1	1
8	15054	Nut	1	1	1	1
9	303216	Switch	1	2	2	1
10	197065	Flat Washer	2	6	8	2
11	15151	Lockwasher	2	6	8	2
12	15049	Nut	2	6	8	2
13	86510	Screw	2	4	4	2
14	1328726	Cam	1	1	1	1
15	119464	Bushing	2	4	4	2
16	372643	Handle	1	1	1	1
17	114312	Clamp-Strap	AR	AR	AR	AR
18	18497	Capscrew	2	2	2	2
19	18515	Flat Washer	2	2	2	2
20	15155	Lockwasher	2	2	2	2
21	15055	Nut	2	2	2	2
22	15134	Flat Washer	AR	AR	AR	AR
23	391484	Clamp-Insulated	1	1	1	1
24	1328728	Bracket	..	1	1	1

REF.	PART NO.	NAME OF PART	QTY.			
			A	B	C	D
24	1328727	Bracket	1
25	1328730	Spacer	..	1	1	1
25	1330241	Spacer	1
26	365514	Link	..	1	1	1
28	372647	Relay	..	1	2	..
29	16728	Screw	..	2	3	..
30	1332528	Harness	1	1
30	826308	Harness	1
30	826309	Harness	1	..
31	1328726	Cam	..	1	..	1
32	382464	Handle	..	1
33	826387	Switch	..	1
34	1332537	Wire	..	1
35	1332538	Wire	..	1
36	1326699	Handle	1	..
37	1328731	Cam	1	..
38	1306271	Fitting	3	..
39	123702	Screw	1	..
40	16728	Screw	..	2	2	..
41	389607	Wire	1	..
42	1357218	Boot	1	..
43	1357219	Switch	2	..
44	1357220	Switch-Rocker	1	..
45	118389	O-Ring	..	1

MAIN LIFT CYLINDER (Figure 42)

TWO STAGE



REF. NO.	NAME OF PART	LIFT HEIGHT TO TOP OF FORKS							
		135 in	138 in	147 in	150 in	157 in	160 in	169 in	172 in
	Main Cylinder	+2307608 -	- #2304982	+2306127 -	- #2306861	+2310602 -	- #2309402	+2306140 -	- #2305003
5	Spacer	+2305723 -	- -	+2305723 -	- -	+2307132 -	- #2306859	+2307132 -	- #2306859
6	Rod Assembly	+2304999 -	- #2304999	+2311551 -	- #2311551	+2310842 -	- #2310842	+2303866 -	- #2303866
17	Shell	+2307320 -	- #2307320	+2303350 -	- #2303350	+2308991 -	- #2308991	+2307028 -	- #2307028

+ N40FR-Reach
N50FA-Straddle

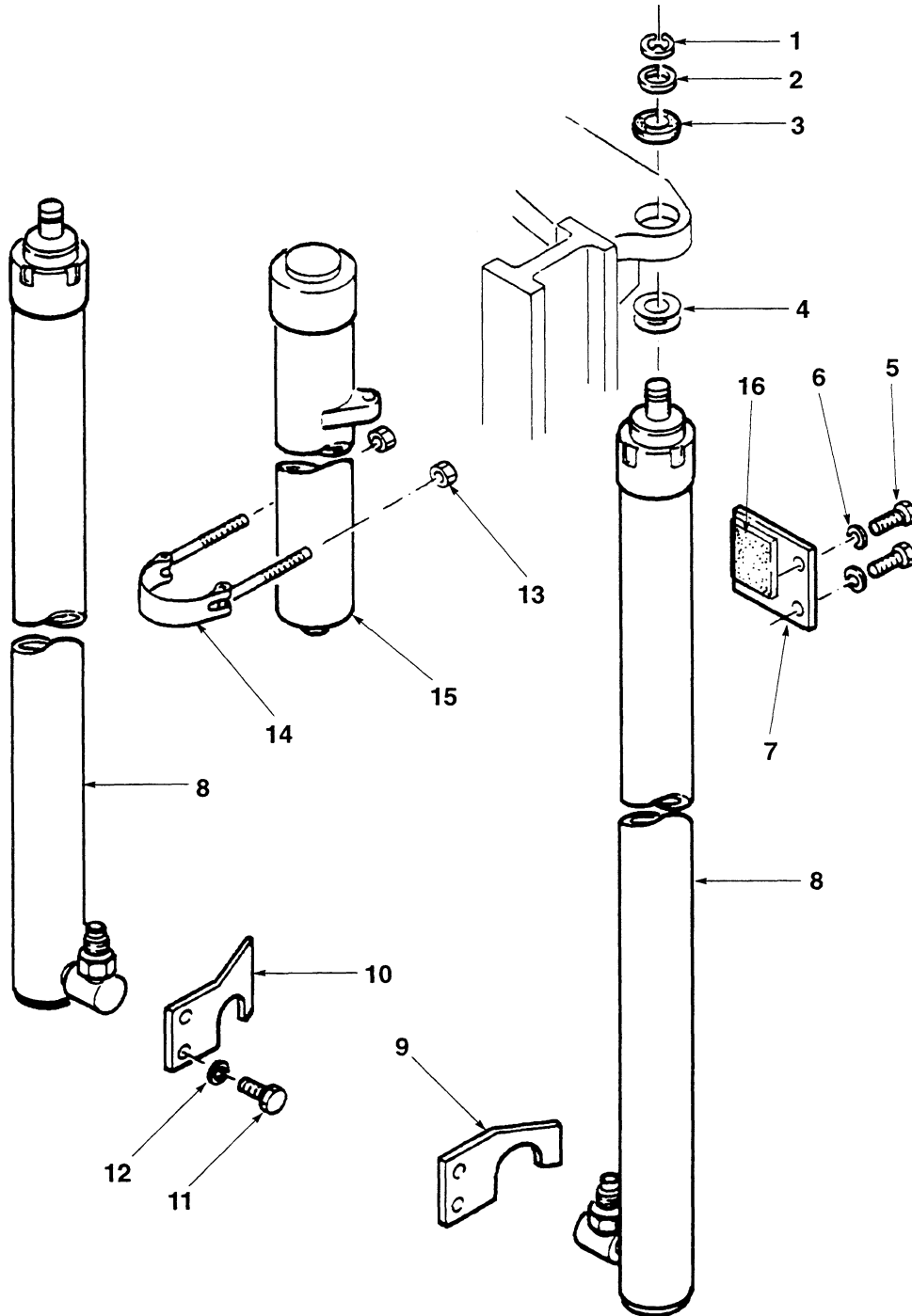
REF.	PART NO.	NAME OF PART	QTY.	REF.	PART NO.	NAME OF PART	QTY.
*	Main Cylinder	1	10	386684	Shim	AR
1	* 2305540	Rod Wiper	1	11	187388	Snap Ring	1
2	* 334156	Seal	2	12	* 335012	Back-up Ring	1
3	2304638	Gland	1	13	* 334156	Seal	1
4	* 59229	O-Ring	1	14	* 1356751	Wear Ring	1
5	+	Spacer	1	15	1310339	Floating Piston	1
6	+	Rod	1	16	58916	Snap Ring	1
7	* 265787	O-Ring	1	17	+	Shell	1
8	297530	Check Valve	1	18	2307856	Velocity Fuse	1
9	297531	Washer	1				
10	386682	Shim	AR				
10	386683	Shim	AR				

* Included in Seal Kit 2304902

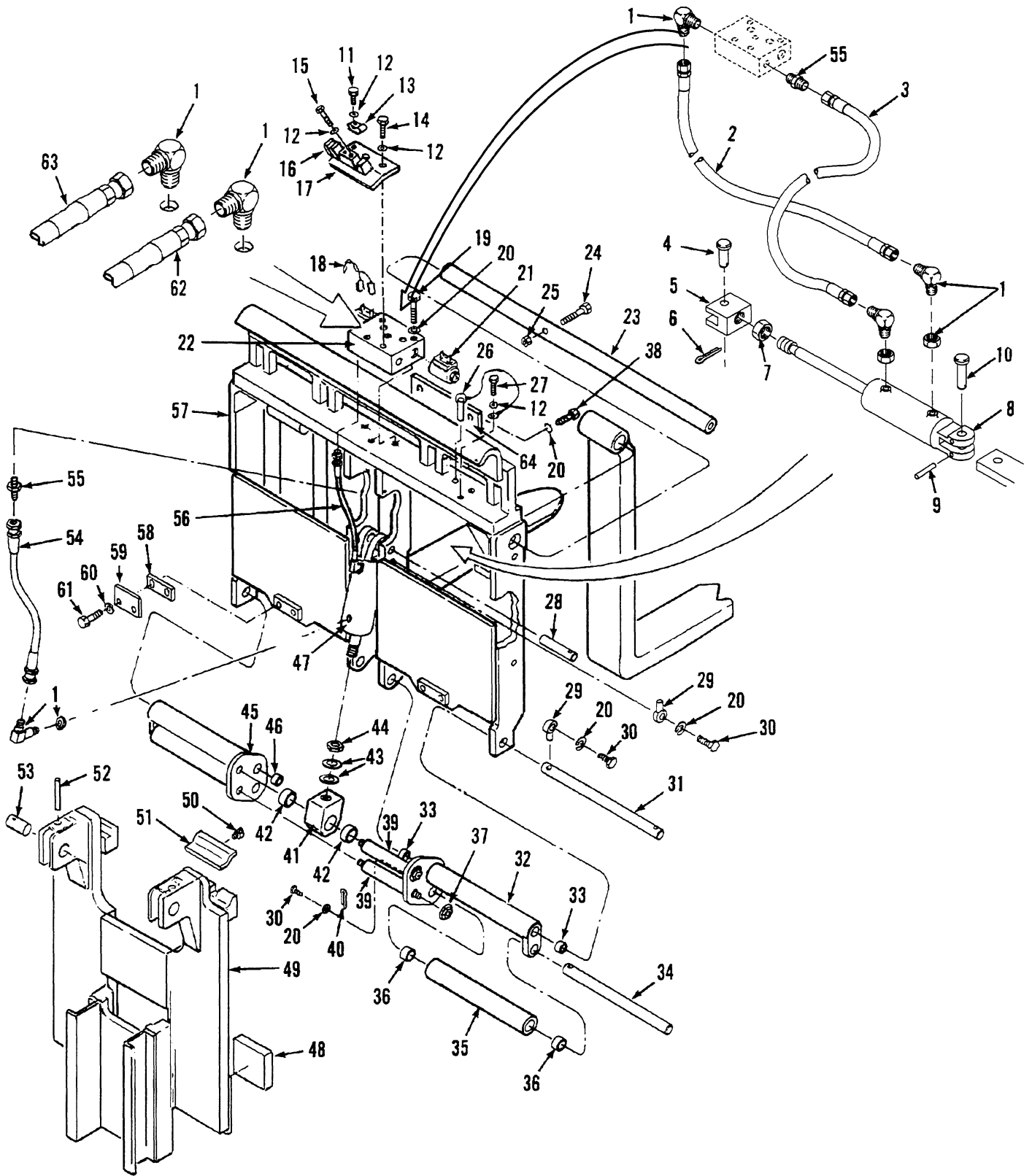
+ Table Above

MAIN AND FREE LIFT CYLINDER INSTALLATION (Figure 47)

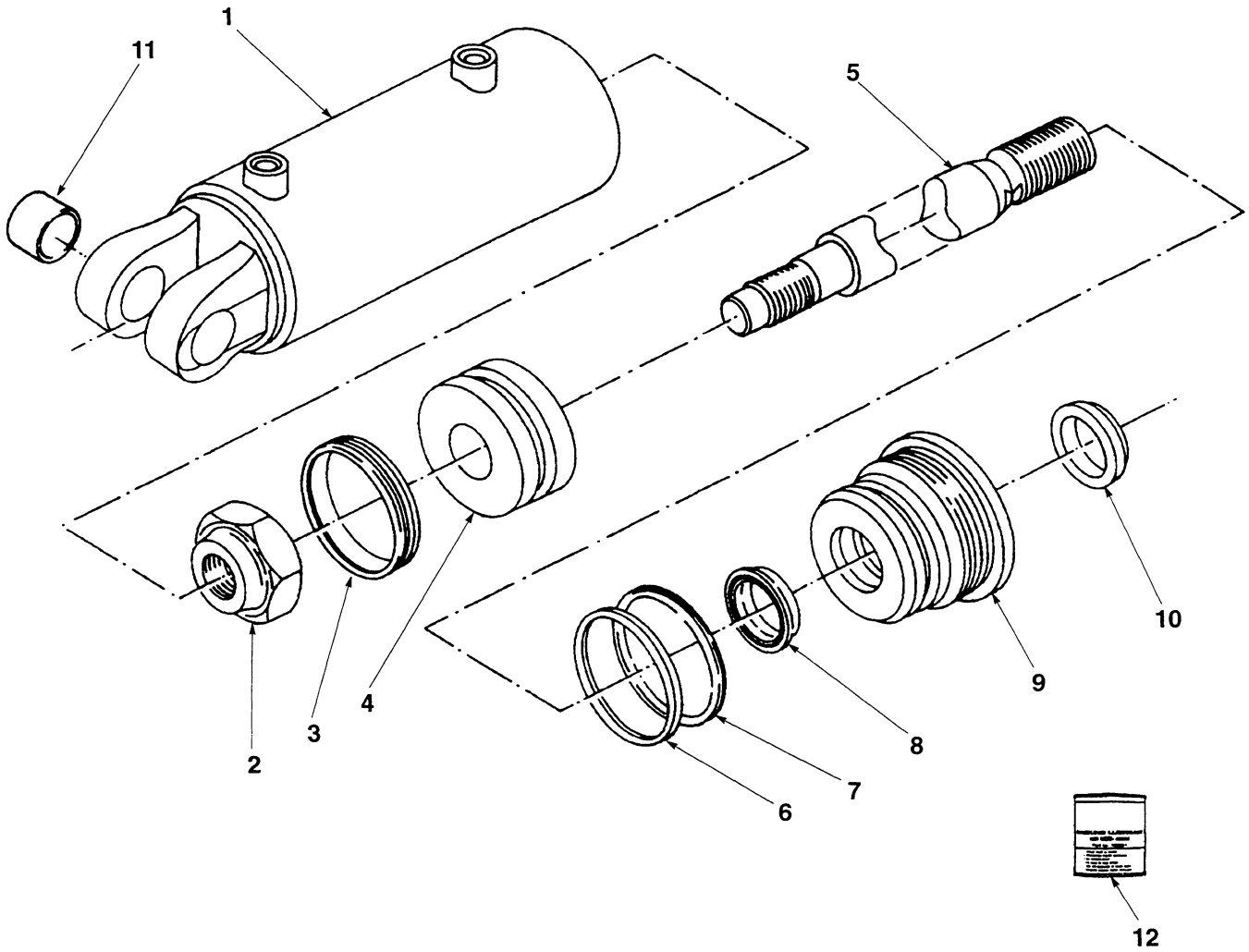
THREE STAGE



CARRIAGE-OUTER FRAME-SIDESHIFTER (Figure 51)



CYLINDER-TILT (Figure 57)



REF.	PART NO.	NAME OF PART	QTY.
	2304350	Cylinder-Tilt-Group #8602616	1
1	2303464	Tube	1
2	2302899	Locknut	1
3	2306303	Seal, Piston	1
4	2304677	Piston	1
5	* 2304351	Rod	1
6	* 57664	O-Ring	1
7	* 166659	Back-up Ring	1

REF.	PART NO.	NAME OF PART	QTY.
8	* 2311816	Rod Seal	1
9	2308169	Gland	1
10	* 2311937	Wiper Ring	1
11	328133	Bushing	2
12	186061	Packing Lubricant	AR

* Included in Packing Kit 2302714

CLICK HERE TO **DOWNLOAD** THE COMPLETE MANUAL

- Thank you very much for reading the preview of the manual.
- You can download the complete manual from: www.heydownloads.com by clicking the link below



- Please note: If there is no response to CLICKING the link, please download this PDF first and then click on it.

CLICK HERE TO **DOWNLOAD** THE COMPLETE MANUAL