

PARTS MANUAL

**ELECTRIC
N30AH
(B210)**

CUSTOMER EDITION

HYSTER

CLICK HERE TO **DOWNLOAD** THE COMPLETE MANUAL

- Thank you very much for reading the preview of the manual.
- You can download the complete manual from: www.heydownloads.com by clicking the link below



- Please note: If there is no response to CLICKING the link, please download this PDF first and then click on it.

CLICK HERE TO **DOWNLOAD** THE COMPLETE MANUAL

HOW TO FIND THE DESIRED PART NUMBER

WHEN THE PART NUMBER AND THE NEXT HIGHER ASSEMBLY IS NOT KNOWN:

1. Determine the function and application of the part required. Turn to the illustrated index page immediately behind the front cover. Choose the general area of reference most likely to include the part.
2. Find the page number for the reference number you choose and turn to that page. Use the division index to determine the assembly which would normally contain the part required. Then locate the part on the assembly breakdown page.

WHEN THE PART NUMBER IS NOT KNOWN AND THE NEXT HIGHER ASSEMBLY IS KNOWN:

3. Determine the assembly the required part is used on. Turn to the Master Index immediately following the Illustrated Index.
4. Locate the assembly the required part is used on and turn to the page indicated for that assembly. Then locate the part on the assembly breakdown page.

WHEN THE PART NUMBER IS KNOWN:

5. Use the numerical index at the back of the manual to find the part number. Turn to the figure listed and locate the part as indicated by the reference number.

GENERAL:

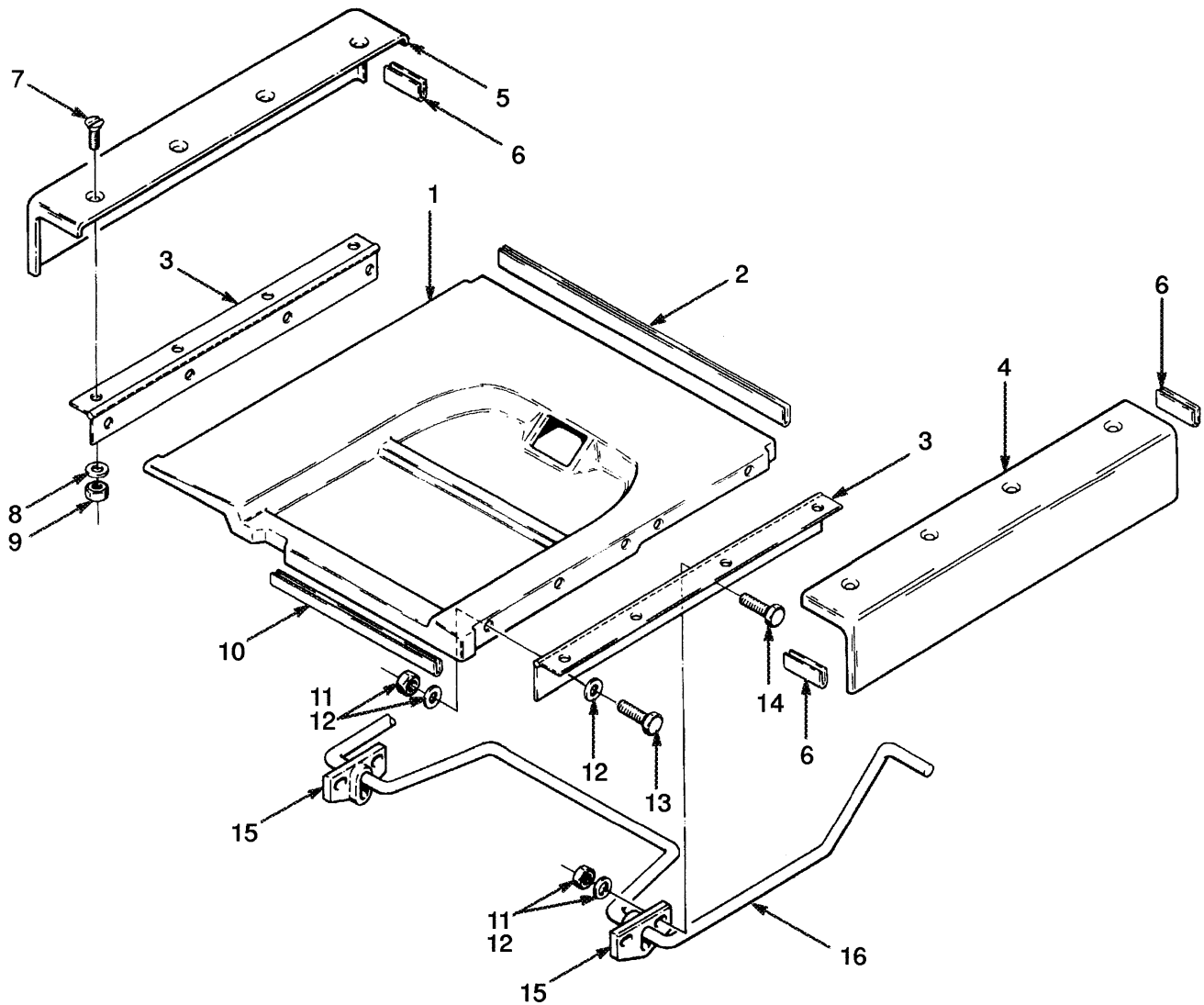
- The assembly breakdowns include part numbers, description, quantities required, keys and footnotes to help in selecting the correct parts.
6. Keys are used to show effective serial numbers for two or more similar assemblies, RH and LH assembly parts, etc. select the appropriate key, "A", "B", "C" or "D" and the corresponding quantity column to find the required parts.
 7. Indented descriptions under "Name of Part" are used to indicate assemblies and sub-parts of assemblies. In the example (Item 7), *LOAD ROLLER* is a sub-part of the major assembly *CARRIAGE*.
 8. Quantities shown are for one assembly, but the quantities of the subparts are indicated as six and six. This means six per assembly.
 9. Engineering change notice (ECN) numbers for pending serial numbers are shown to allow for the inclusion of the most current parts information. Contact your local dealer for Hyster lift trucks for serial number information listed by ECN number.
 10. Additional fork lengths are available. Contact your dealer for Hyster lift trucks.

ORDERING PARTS:

When ordering replacement parts, give the unit serial number, part number, name of part and quantity required.

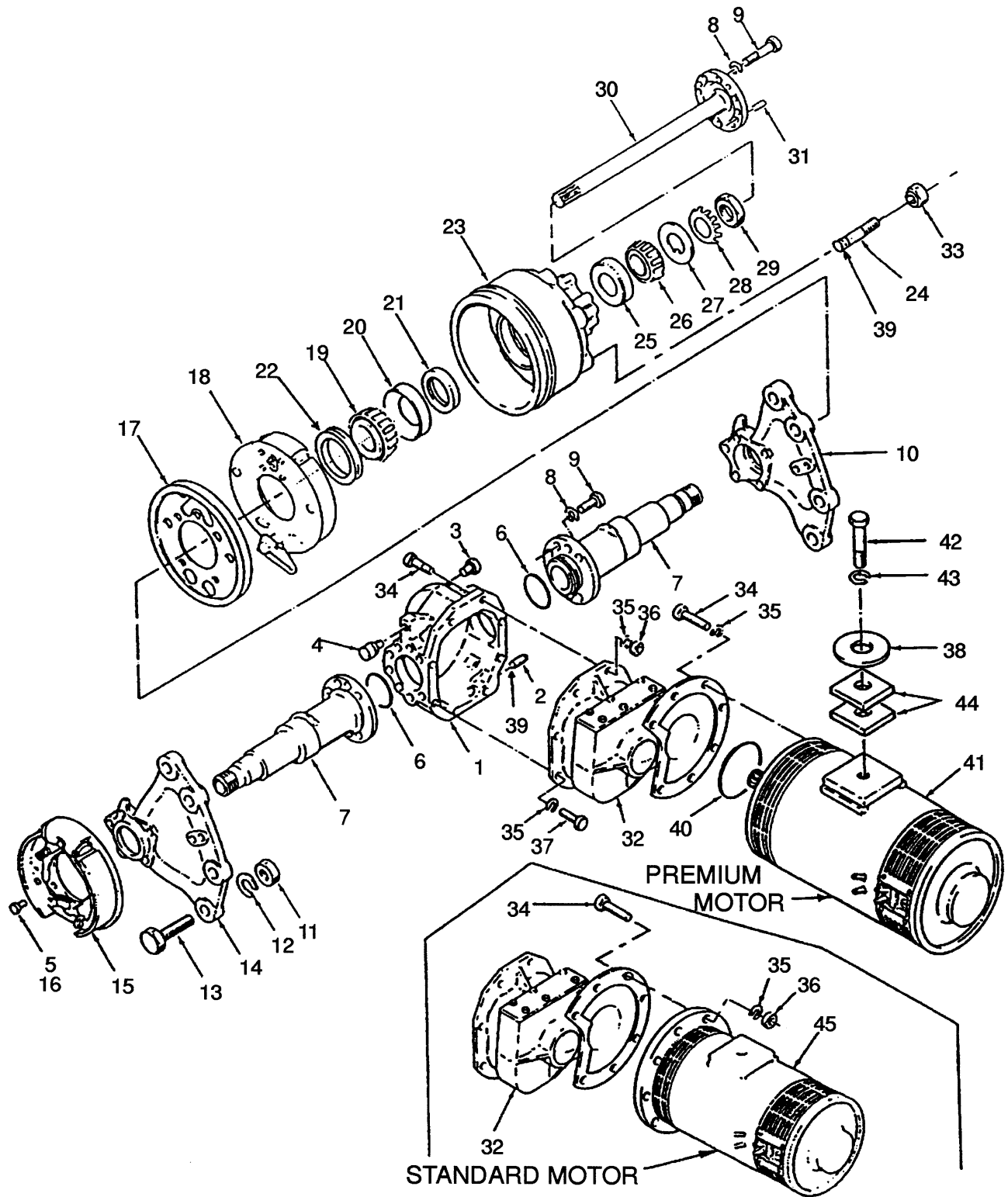
For any further information on parts, service, or ordering, consult your local dealer for Hyster lift trucks.

HOOD (Figure 4)

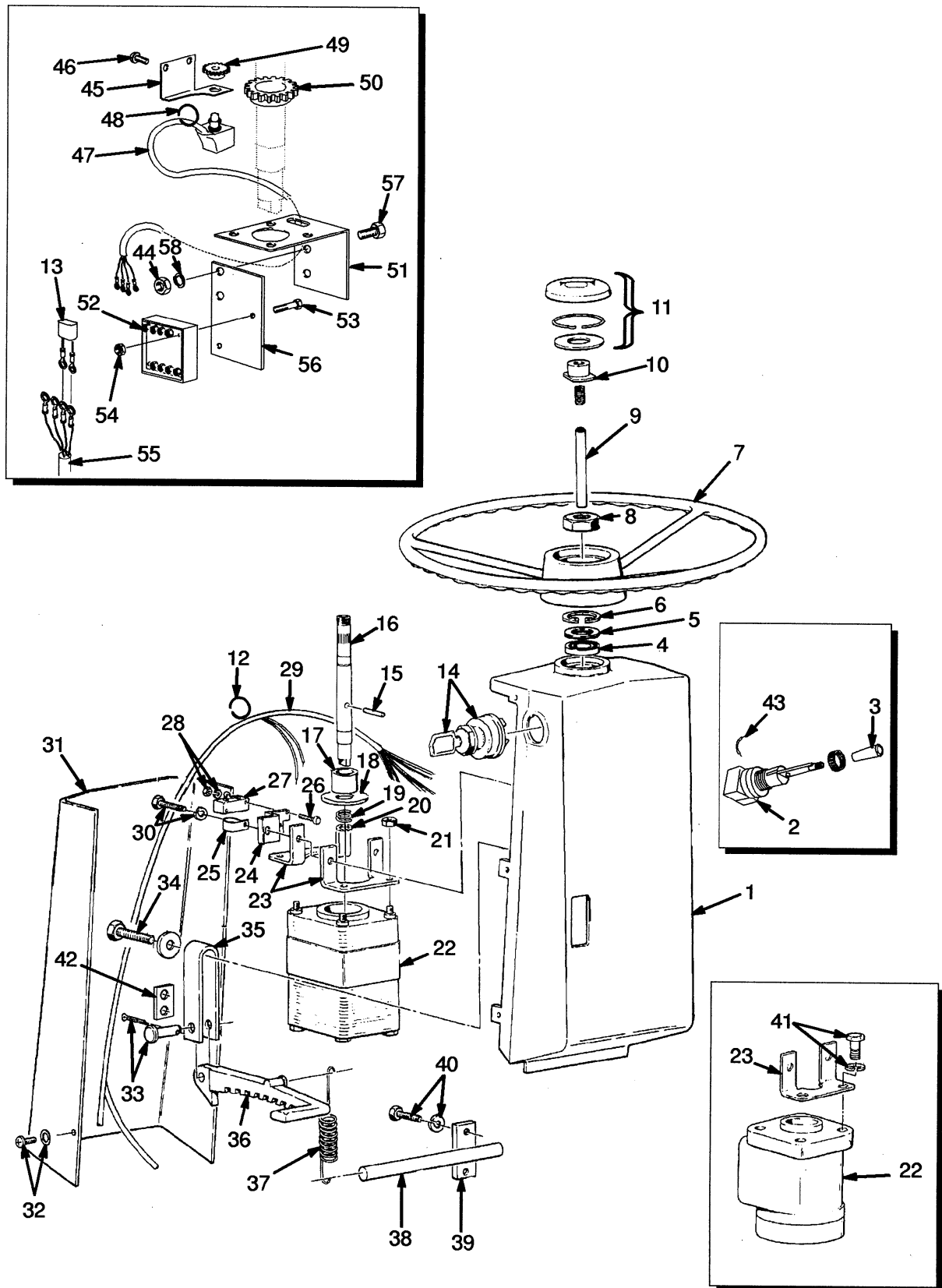


REF	PART NO.	NAME OF PART	QTY	REF	PART NO.	NAME OF PART	QTY
1	353990	Hood	1	9	313805	Nut	8
2	325981	Edge Trim	1	10	325982	Edge Trim	1
3	353994	Hinge	2	11	313805	Nut	10
4	353992	Wing (LH)	1	12	320156	Washer	20
5	353993	Wing (RH)	1	13	292500	Capscrew	6
6	325980	Edge Trim	3	14	287816	Screw	4
7	296215	Capscrew	8	15	326064	Bracket	2
8	320156	Washer	8	16	325936	Hinge	1

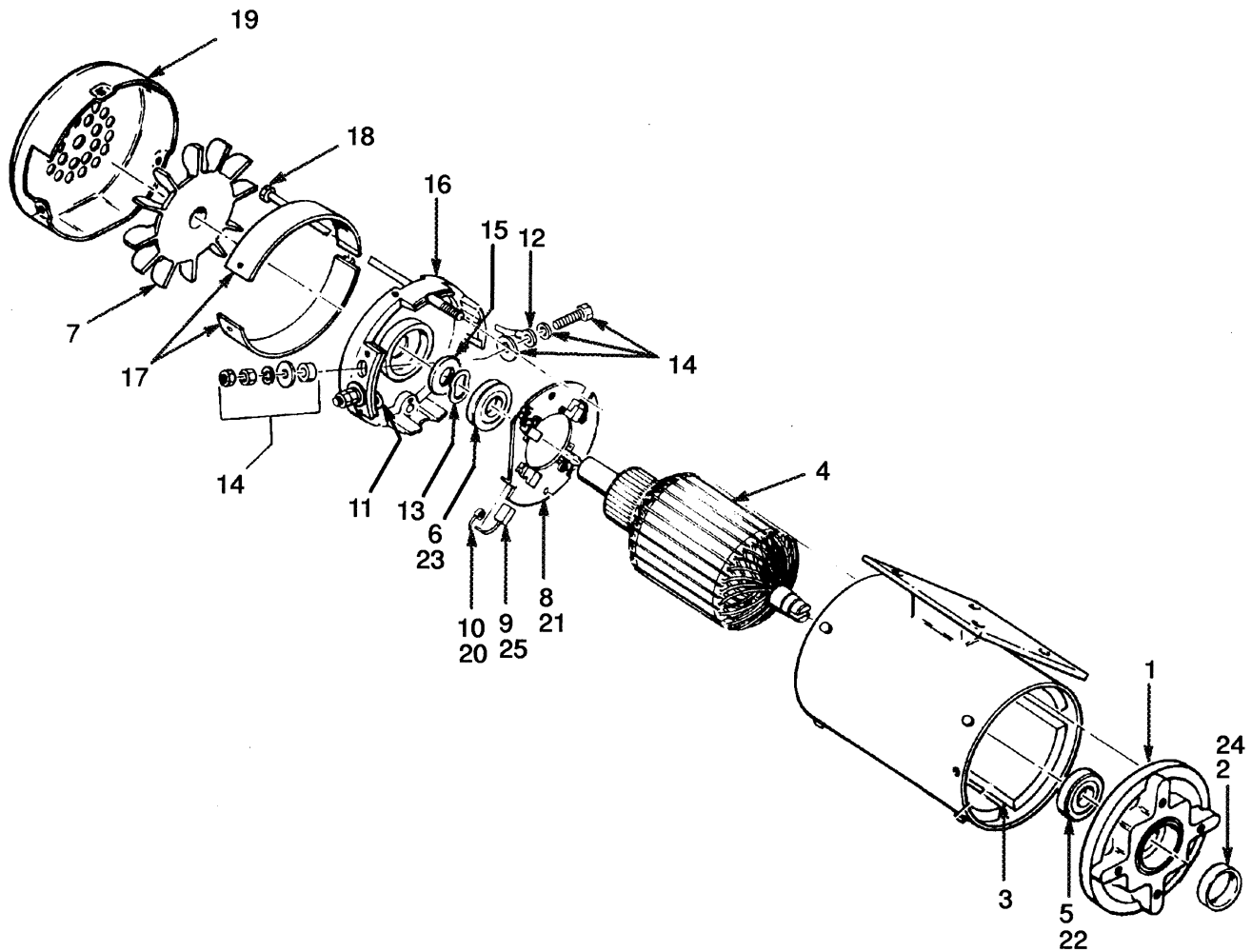
DRIVE AXLE (Figure 9)



STEERING COLUMN (Figure 13)



STEERING MOTOR (Figure 19)



KEY

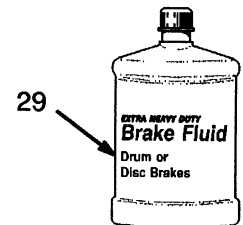
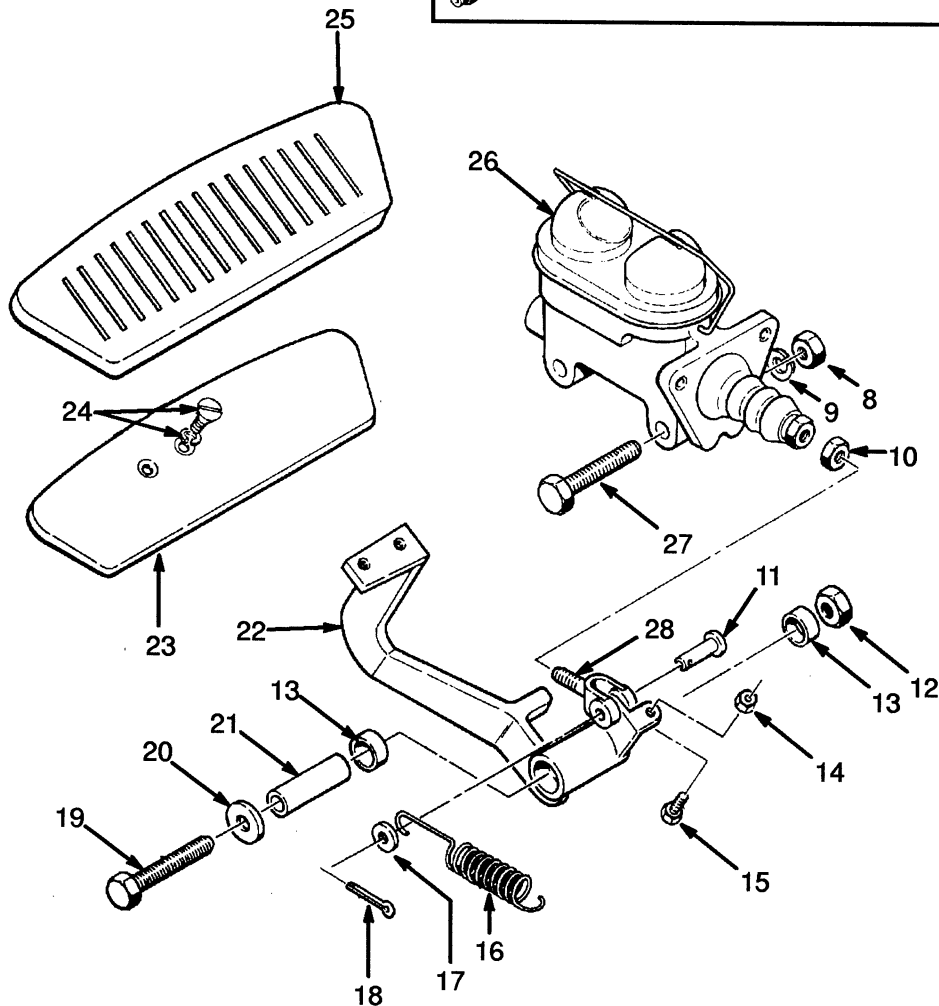
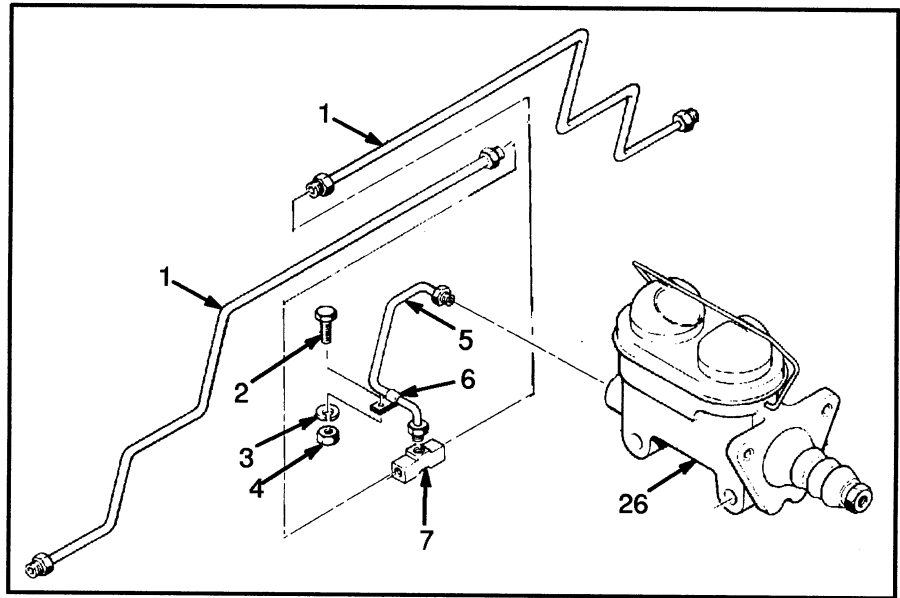
A: Motor 325680

**B: Optional Motor 1300768 Last Used On S/N C108V-13130
(Except 13074, 13125-6, 13128)**

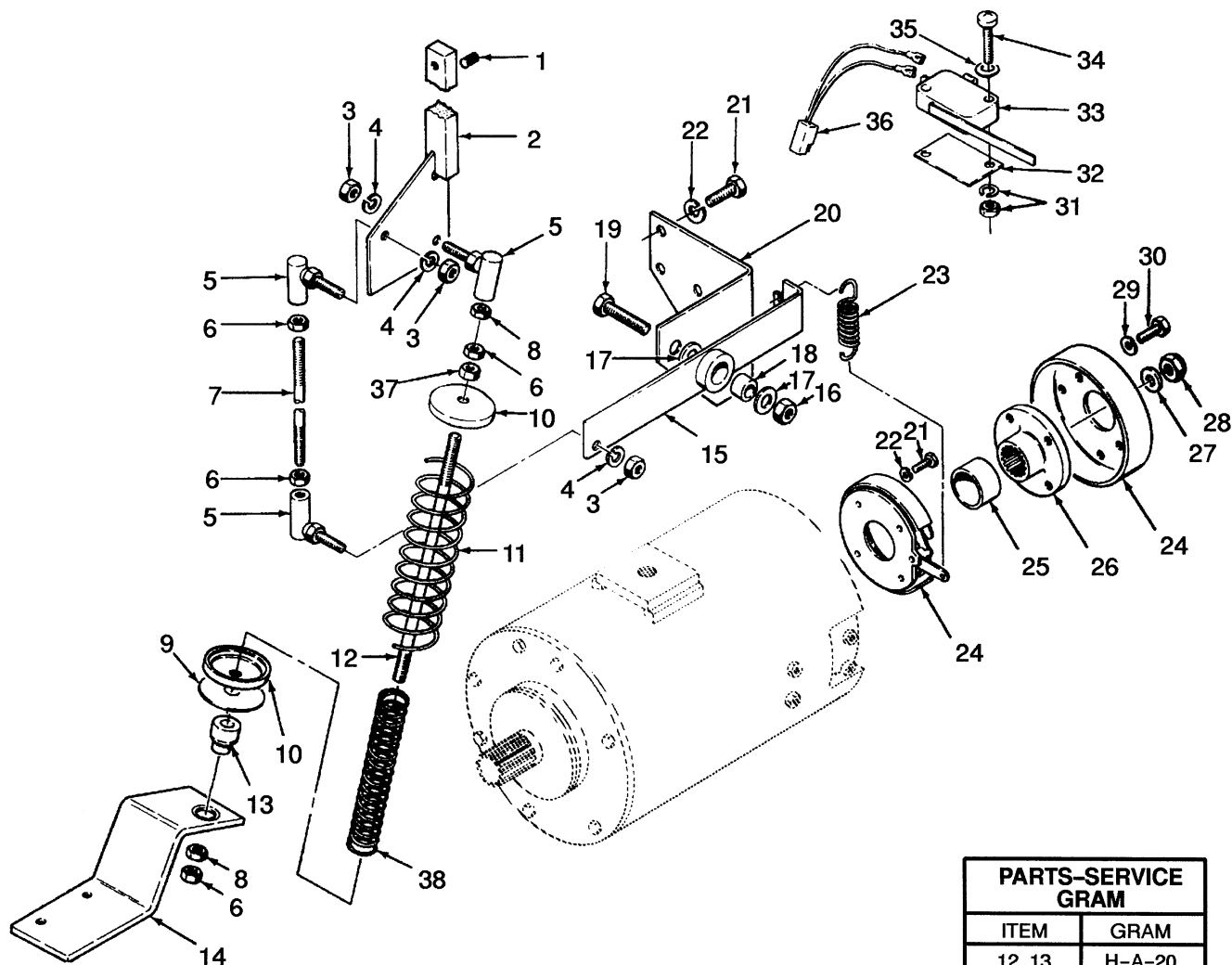
REF	PART NO.	NAME OF PART	QTY		REF	PART NO.	NAME OF PART	QTY	
			A	B				A	B
	325680	Motor	1	..	12	286083	Wire	1	..
	1300768	Motor	..	1	13	286097	Washer	2	..
1	286093	Frame (DE)	1	..	14	306974	Kit-Terminal	1	..
2	301181	Oil Seal	1	..	15	362822	Shim	1	..
3	362823	Stator	1	..	16	286079	Frame (CE)	1	..
3	1309384	Stator	..	1	17	286095	Cover	2	..
4	286091	Armature	1	..	18	286094	Capscrew	2	..
4	1309390	Armature	..	1	19	286098	Cover (Fan)	1	..
5	128469	Ball Bearing	1	..	20	1309378	Brush Spring	..	2
6	97847	Bearing	1	..	21	1367535	Brush Holder	..	1
7	286099	Fan	1	..	22	128469	Bearing (DE)	..	1
8	286080	Brush Holder	1	..	23	1309381	Bearing (CE)	..	1
9	286081	Brush	4	..	24	301181	Seal (Shaft)	..	1
10	286082	Brush Spring	4	..	25	1309377	Brushes	..	2
11	286084	Wire	1	..					

BRAKE LINKAGE (Figure 24) WITHOUT TRACTION CONTROL SWITCH

PARTS-SERVICE GRAM	
ITEM	GRAM
10, 22, 23, 26, 28	H-A-19
10	H-F-10

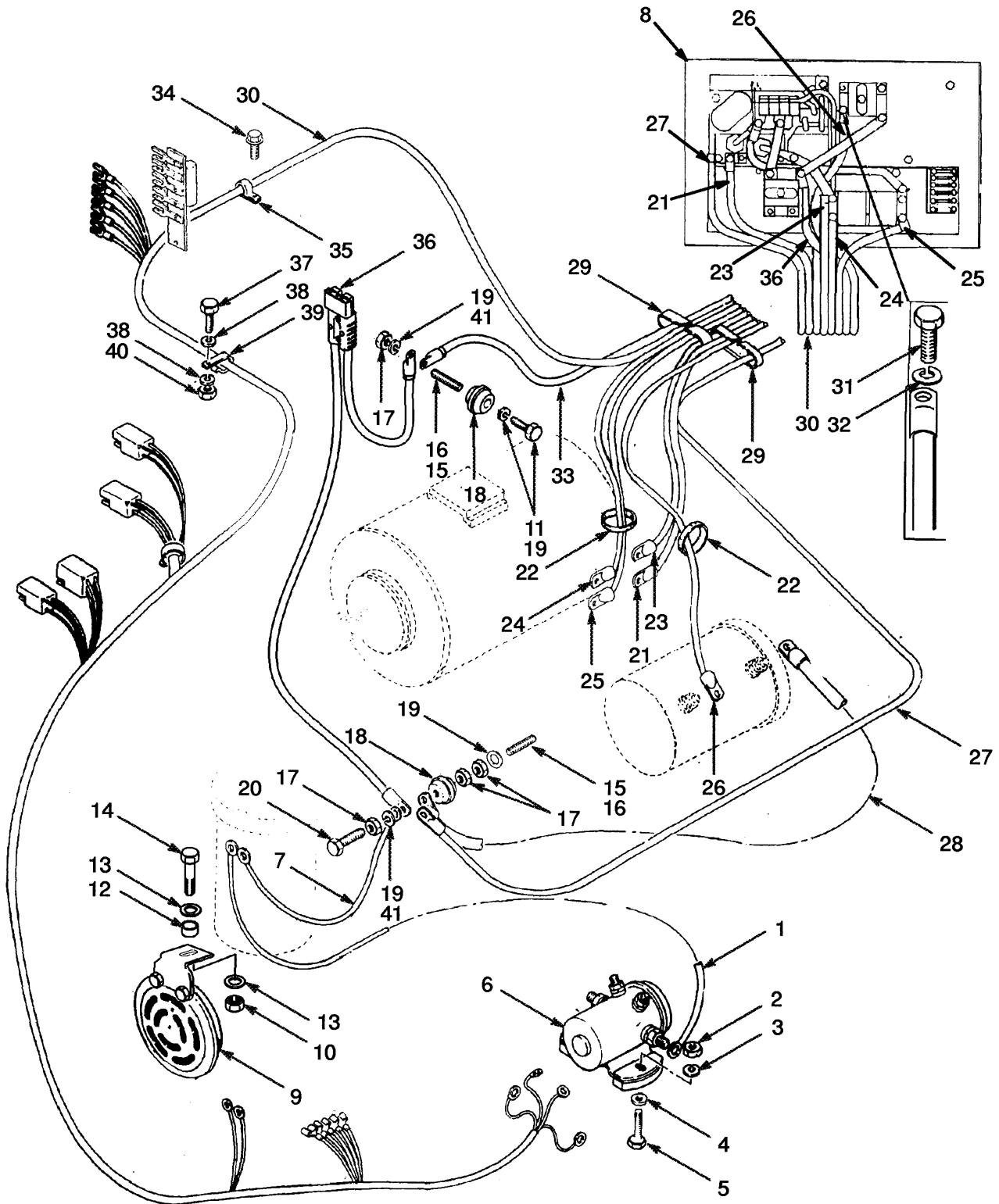


PARK BRAKE LINKAGE (Figure 30) SEAT ACTUATED



PARTS-SERVICE GRAM	
ITEM	GRAM
12, 13	H-A-20
33	F-G-55

ELECTRICAL SYSTEM (Figure 34) CONTACTOR HYDRAULIC FIRST USED ON S/N C108V-17612 & B210V-1501



CLICK HERE TO **DOWNLOAD** THE COMPLETE MANUAL

- Thank you very much for reading the preview of the manual.
- You can download the complete manual from: www.heydownloads.com by clicking the link below



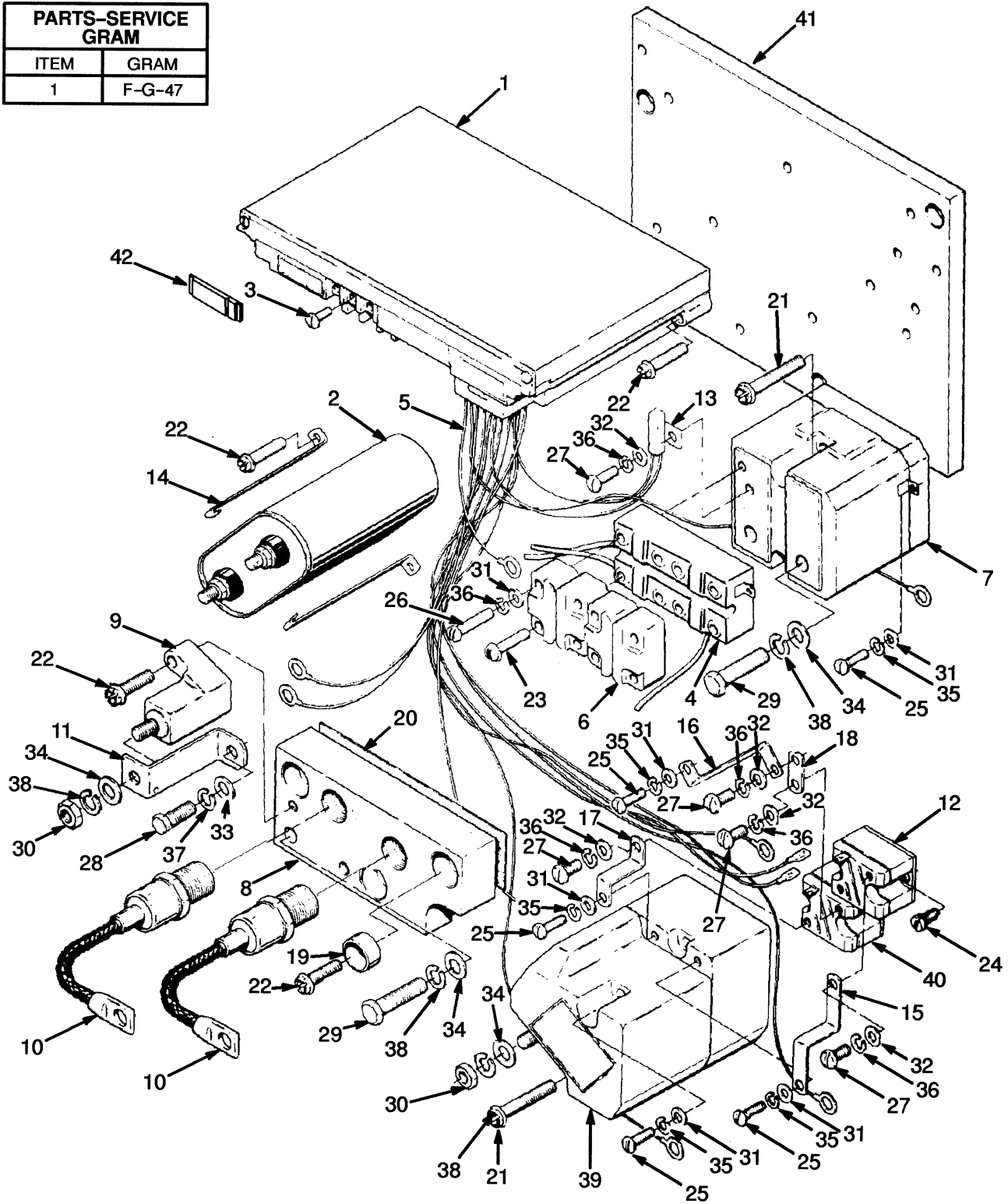
- Please note: If there is no response to CLICKING the link, please download this PDF first and then click on it.

CLICK HERE TO **DOWNLOAD** THE COMPLETE MANUAL

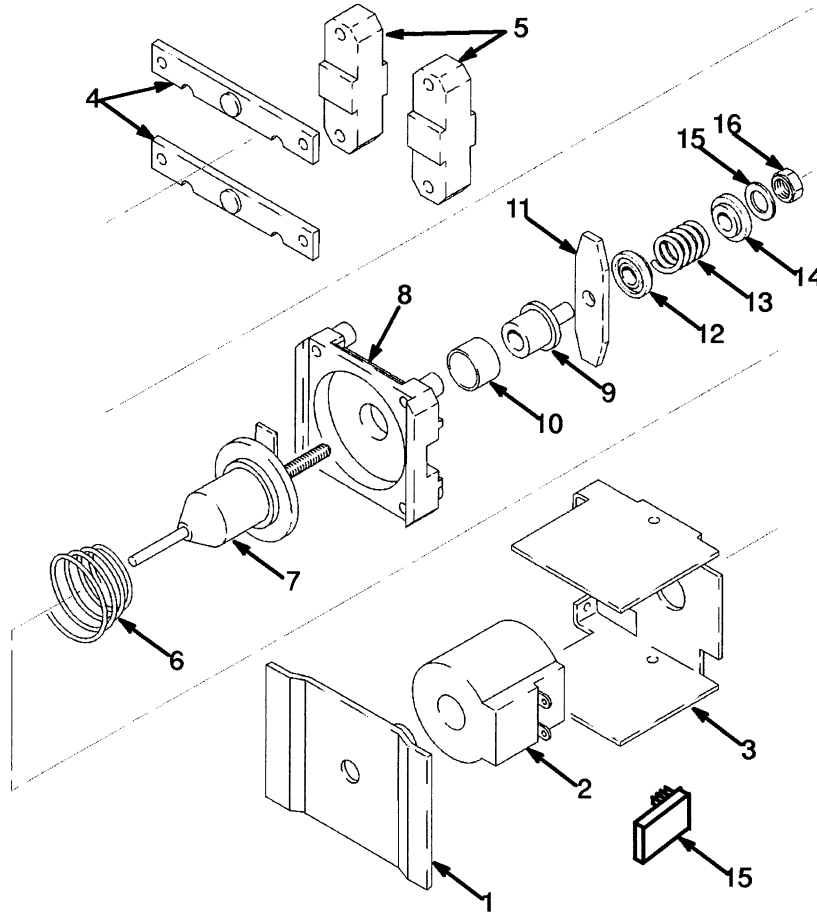
TRACTION PANEL (Figure 39)

CONTACTOR & SCR HYDRAULIC: FIRST USED ON S/N C108V-5667 & B210V-1501

PARTS-SERVICE GRAM	
ITEM	GRAM
1	F-G-47



CONTACTOR-1A/RB (Figure 46) FIRST USED ON S/N C108V-13185 & B210V-1501

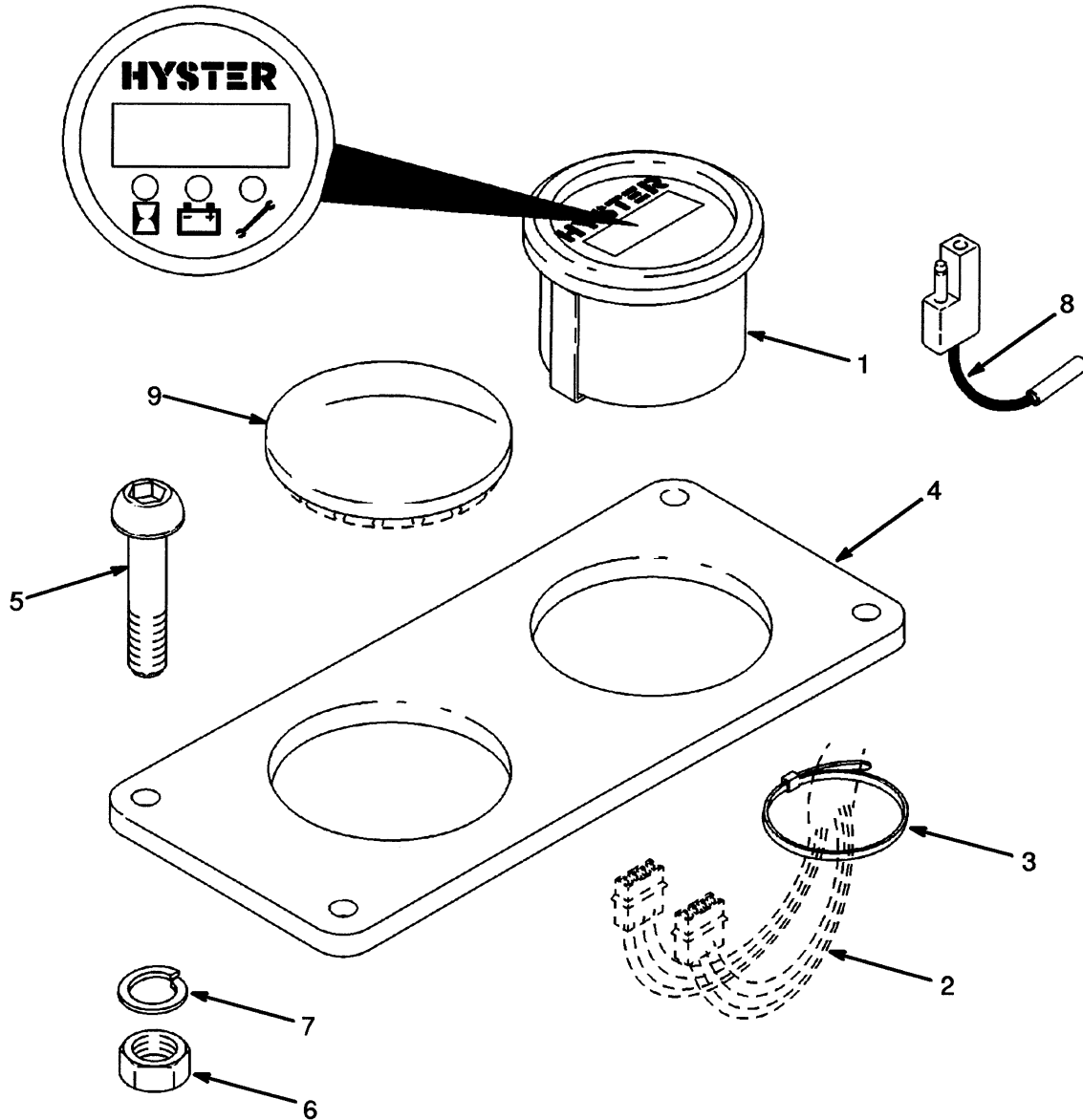


KEY

A: 1A Contactor
B: RB Contactor

REF	PART NO.	NAME OF PART	QTY		REF	PART NO.	NAME OF PART	QTY	
			A	B				A	B
	af	1300938 Contactor	1	..	11	e	388239 Tip	1	..
	ac	388226 Contactor	1	..	11	bd	1300278 Movable Tip	1	1
	b	389184 Contactor	1	1	12	de	388232 Seat	1	1
1		388228 Base	1	1	13	e	271887 Spring	1	..
2	ab	1300276 Coil	1	1	13	bd	271893 Spring	1	1
2	ac	388229 Coil	1	..	14		274075 Cup	1	1
3		388238 Frame	1	1	15		197067 Washer	1	1
4	e	388236 Connector	2	..	16		132401 Nut	1	1
4	bd	1300945 Connector	2	2					
5		388235 Clamp	2	2	a		Without Regenerative Braking		
6		271892 Return Spring	1	1	b		With Regenerative Braking		
7		388230 Armature	1	1	c		First Used On S/N C108V-13186		
8		388234 Base	1	1	d		Included In Kit-Contacts 996111		
9	de	388233 Carrier	1	1	e		Included In Kit-Contacts 996120		
10	de	388231 Bushing	1	1	f		Last Used On S/N C108V-13185		

BATTERY DISCHARGE INDICATOR (Figure 53) WITH LIFT INTERRUPT & BRUSH WEAR INDICATOR FIRST USED ON S/N C108V-15516 & B210V-1501



REF	PART NO.	NAME OF PART	QTY
1	1328307	Battery Gauge	1
2	1328323	Wire Harness	1
3	129563	Strap Clamp	AR
4	1350598	Instrument Panel	1
5	^a 18695	Cap screw	4
5	^b 1338168	Cap screw	4
6	230881	Nut	4

REF	PART NO.	NAME OF PART	QTY
7	15163	Washer	4
8	1328461	Wire Harness (Dash)	1
9	69296	Plug	1
^a	Last Used On S/N C108V-17630 (Except 17608-12, 17614, 17617-29)		
^b	First Used On S/N C108V-17631 (Also 17608-12, 17614, 17617-29)		

**MAIN AND FREE-LIFT INSTALLATION
 THREE-STAGE FFL**

REF NO.	Name Of Part	Lift Height To Bottom Of Forks						QTY
		170 in.	188 in.	224 in.	256 in.	292 in.	322 in.	
8	Main Cylinder	2308989	2303382	2309182	2307197	2304365	2306718	1
15	Free-Lift Cylinder	2304116	2309671	2304500	2311906	2303446	2303480	1
17	Spacer	2803864	2803865	2803866	2803867	1

REF	PART NO.	NAME OF PART	QTY	REF	PART NO.	NAME OF PART	QTY
1	248212	Snap Ring	2	10	2304231	Lock Plate (R.H.)	1
2	2310075	Back-Up Washer	2	11	287851	Screw	4
3	2311159	Rubber Bushing	2	12	2304307	Lockwasher	4
4	2306942	Shim	AR	13	15107	Nut	2
5	287854	Screw	4	14	2309120	Clamp	1
6	2311241	Snap Ring	4	15	^a	Free-Lift Cylinder	1
7	2308943	Main Cylinder Retainer	2	16	2803577	Cylinder Spacer	1
8	^a	Main Cylinder	2	17	^a	Spacer	2
9	2305992	Lock Plate (L.H.)	1	^a	☞ Table		

**FREE-LIFT CYLINDER
 THREE-STAGE FFL**

REF NO.	Name Of Part	Lift Height To Bottom Of Forks						QTY
		170 in.	188 in.	224 in.	256 in.	292 in.	322 in.	
	Free-Lift Cylinder	2304116	2309671	2304500	2311906	2303446	2303480	1
5	Shell	2308965	2307945	2305814	2304626	2309854	2305468	1
10	Piston Rod	2308663	2304440	2309137	2303008	2302020	2311337	1

REF	PART NO.	NAME OF PART	QTY	REF	PART NO.	NAME OF PART	QTY
	a Free-Lift Cylinder	1	8	b Ring-Wear	1
1	b Wiper	1	9	2305120	Plug	2
2	b Seal	1	10	a Piston Rod	1
3	b Back-Up Ring	1	11	295649	Screw	1
4	b O-Ring	1	12	b Seal	1
5	a Shell	1	13	2308612	Gland	1
6	2309712	Velocity Fuse	1	14	2803577	Cylinder Spacer	1
6	16486	O-Ring	1	a	☞ Tables Above		
7	2302806	Steel Ball	2	b	Included In Seal Kit 2303974		

STEERING MOTOR & PUMP

<u>REF</u>	<u>PART NO.</u>	<u>NAME OF PART</u>	<u>QTY</u>	<u>REF</u>	<u>PART NO.</u>	<u>NAME OF PART</u>	<u>QTY</u>
1	Steering Motor	1	6	370109	Steering Pump	1
		See Figure 76		7	2009659	Motor and Pump Base	1
2	292501	Capscrew	4	8	1305989	Key	1
2	292680	Lockwasher	4	9	302134	Screw	2
3	2008592	Flexible Coupling	1	10	Capscrew	4
4	2008591	Shaft	1	11	Nut	4
5	16805	Capscrew	4	12	Lockwasher	4
5	15156	Lockwasher	4				

**HEADER HOSE WITHOUT SIDESHIFT
 THREE-STAGE FFL**

Ref No.	Name Of Part	Lift Height to Top of Forks						QTY
		170 in.	188 in.	224 in.	256 in.	292 in.	322 in.	
4	Hose Reel	323187	323187	323187	356456	356456	356456	1
6	Hose	2803938	2803939	2803940	2803941	2803942	2803943	1
8	Hose	2803690	2803926	2803929	2803931	2803933	2803692	1
9	Hose	2803689	2803925	2803925	2803925	2803925	2803925	1
10	Hose	2803691	2803927	2803927	2803927	2803927	2803927	1

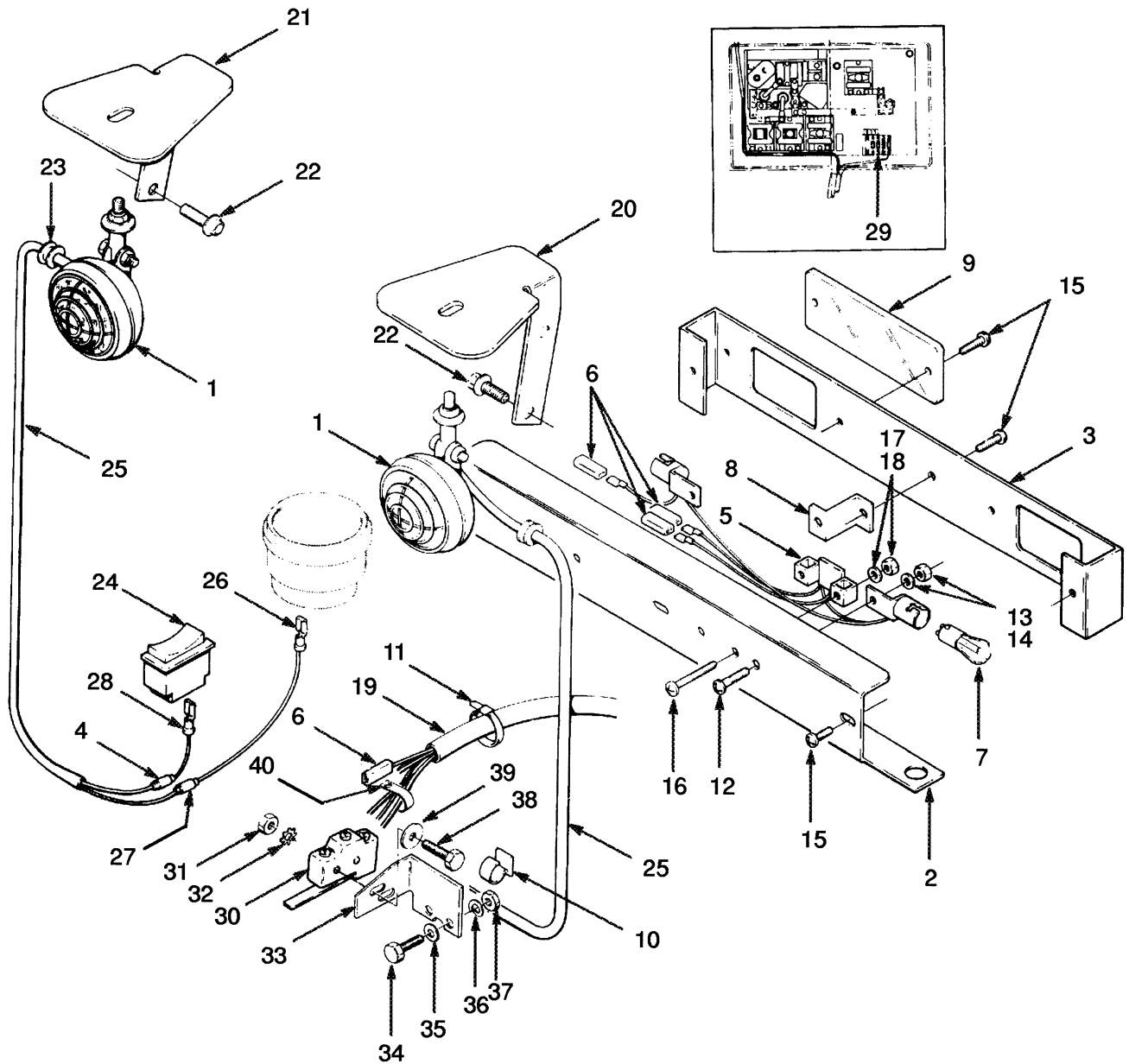
REF	PART NO.	NAME OF PART	QTY	REF	PART NO.	NAME OF PART	QTY
1	18594	Capscrew	2	9	^a	Hose	1
2	15158	Lockwasher	2	10	^a	Hose	1
3	15058	Nut	2	11	340046	Bracket	1
4	^a	Hose Reel	1	12	16597	Capscrew	2
5	16540	Fitting	4	13	15156	Washer	2
6	^a	Hose	1	14	15134	Washer	2
7	340047	Strain Relief	1		^a	See Chart Above	
8	^a	Hose	2				

**CARRIAGE WITH SIDESHIFT
THREE-STAGE FFL**

Ref No.	Name Of Part	Traverse Frame Width		
		56 in.	58 in.	62 in.
1	Frame Weldment	2803879	2803527	2803880
6	Cylinder	2803388	1337810	2803389
15	Roller Chain	2803895	2803561	2803896
24	Tube Assy	2803893	2803556	2803894

REF	PART NO.	NAME OF PART	QTY	REF	PART NO.	NAME OF PART	QTY
1	^a	Frame Weldment	1	24	^a	Tube Assembly	1
2	2803574	Hose Assembly	2	25	18903	Clamp	2
3	357712	Roller Assembly	4	26	18705	Capscrew	2
4	58901	External Snap Ring	4	27	15152	Lockwasher	2
5	16041	Lube Fitting	4	28	814828	Slideshift Cylinder	1
6	^a	Traverse Cylinder	1	29	2803571	Hose Sheave	1
7	2803573	Hose Assembly	2	30	16556	Fitting	2
8	2803572	Hose Assembly	4	31	57664	O-Ring	2
9	347330	Sprocket	4	32	2803554	L. H. Tube Assembly	1
10	206641	Thrust Washer	4	33	2803553	R. H. Tube Assembly	1
11	58933	Snap Ring	4	34	16828	Capscrew	4
12	16455	Fitting	4	35	15156	Lockwasher	6
13	2803574	Hose Assembly	2	36	345303	Roller Bracket Assy	2
14	16445	Fitting	2	37	347385	Shim	AR
15	^a	Roller Chain	4	38	357712	Roller Assembly	4
16	347382	Chain Anchor Rod	4	39	58901	Ext. Snap Ring	4
17	15116	Nut	4	40	347384	Pin	1
18	814990	Setscrew	2	41	347883	Lock Plate	1
19	264134	Adhesive/Sealant	AR	42	18460	Capscrew	1
20	16538	Fitting	4	43	15154	Lockwasher	1
21	2803555	Tube Assembly	1	44	16455	Fitting	6
22	15034	Nut	1	45	16987	Fitting	4
23	17423	Nut	1		^a	See Chart Above	

LIGHTS (Figure 90) FIRST USED ON S/N C108V-3410



CLICK HERE TO **DOWNLOAD** THE COMPLETE MANUAL

- Thank you very much for reading the preview of the manual.
- You can download the complete manual from: www.heydownloads.com by clicking the link below



- Please note: If there is no response to CLICKING the link, please download this PDF first and then click on it.

CLICK HERE TO **DOWNLOAD** THE COMPLETE MANUAL